

Hysteresis in soil hydraulic conductivity as driven by salinity and sodicity: a modeling framework

Isaac Kramer¹, Yuval Bayer¹, Taiwo Adeyemo¹, and Yair Mau¹

¹The Institute of Environmental Sciences, The Robert H. Smith Faculty of Agriculture, Food and Environment, The Hebrew University of Jerusalem, Rehovot 76100 Israel

Correspondence: Yair Mau (yair.mau@mail.huji.ac.il)

Abstract. Declines in soil saturated hydraulic conductivity (K_s) as a result of saline and sodic irrigation water are a major cause of soil degradation. While it is understood that the mechanisms that lead to degradation can cause irreversible changes in K_s , existing models do not account for hysteresis between the degradation and rehabilitation processes. We develop the first model for the effect of saline and sodic water on K_s that explicitly includes hysteresis. As such, the idea that a soil's history of degradation and rehabilitation determines its future K_s lies at the center of ~~our~~ this model. By means of a "weight" function, the model accounts for soil specific differences, such as clay content. The weight function also determines the form of the hysteresis curves, which are not restricted to a single shape, as in some existing models for irreversible soil processes. The concept of the weight function is used to develop a reversibility index, which allows for the quantitative comparison of different soils and their susceptibility to irreversible degradation. We discuss the experimental setup required to find a soil's weight function and show how the weight function determines the degree to which K_s is reversible, for a given soil. We demonstrate the feasibility of this procedure by presenting ~~novel~~ experimental results showcasing the presence of hysteresis in soil K_s , and using these results to calculate a weight function. Past experiments and models on the decline of K_s due to salinity and sodicity focus on degradation alone, ignoring any characterization of the degree to which declines in K_s are reversible. Our model and experimental results emphasize the need to measure "reversal curves," obtained from rehabilitation measurements following mild declines in K_s . The developed model has the potential to significantly improve our ability to assess the risk of soil degradation, by allowing for the consideration of how the accumulation of small degradation events can cause significant land degradation.

20 1 Introduction

Soil degradation caused by the use of saline and sodic irrigation water is a major threat to agricultural production and food security. Each year, as much as 1.5 million hectares of farmland are irretrievably lost due to salinity and sodicity induced degradation, while crop output is decreased on an additional 20 to 46 million hectares (FAO and ITPS, 2015). Together, this results in widespread economic losses and declines in production that elevate stress
25 on food supplies (Qadir et al., 2014). ~~Increased~~ Growing strain on freshwater resources, ~~growing~~ rising human populations, and climate change are all likely to increase reliance on saline and sodic irrigation water to support food production, further raising the risk of debilitating soil degradation in the near future.

In this paper we focus on changes to saturated hydraulic conductivity, K_s , as the major indicator of soil degradation (McNeal and Coleman, 1966; Yaron and Thomas, 1968; Chen and Banin, 1975; Shainberg and
30 Singer, 2011; Hillel, 2000). Saline and sodic conditions cause declines in K_s through a combination of different soil processes, including clay swelling, clay dispersion, and slaking. While swelling is usually considered to be a reversible process, clay dispersion is thought to cause irreversible changes in the soil matrix, and thus K_s (Quirk and Schofield, 1955; McNeal and Coleman, 1966; Chen and Banin, 1975; Ezlit et al., 2013; Dang et al., 2018a, b). No clear dividing line exists, however, between the onset of swelling and dispersion, and experimental studies
35 have shown that declines in K_s are characterized by smooth curves as water quality is changed, rather than by abrupt jumps (Quirk and Schofield, 1955; McNeal and Coleman, 1966; Chen and Banin, 1975). We hypothesize that this smooth behavior is due to soil heterogeneity, with different aggregates exhibiting different thresholds between swelling and dispersion, and the overall behavior of the soil corresponding to the integrated response of all aggregates. This point constitutes a cornerstone of the framework upon which our model lies, and we will
40 return to it during the model development.

While numerous experimental studies have led to models describing declines in K_s due to salinity and sodicity, we are unaware of any model that considers differences between degradation and rehabilitation (McNeal and Coleman, 1966; McNeal, 1968; Yaron and Thomas, 1968; Lagerwerff et al., 1969; Russo, 1988; Ezlit et al., 2013; Ali et al., 2019). That is, all existing models assume that these two processes are strictly reversible, meaning
45 decreases in K_s can be restored simply by changing the chemical properties of the soil water (McNeal and Coleman, 1966; McNeal, 1968; Yaron and Thomas, 1968; Lagerwerff et al., 1969; Russo, 1988; Ezlit et al., 2013). There is strong reason to believe, however, that this is not the case. Clay dispersion, for instance, is widely understood to be irreversible (Goldenberg et al., 1983; Yaron et al., 2008). For this reason, a significant reduction

in K_s , i.e., a decrease of more than 15-25% compared to its initial level, is considered a threshold beyond which a
50 soil will suffer irreparable damage (Quirk and Schofield, 1955; McNeal and Coleman, 1966; Rengasamy et al.,
1984; Cook et al., 2006; Bennett et al., 2019). Likewise, the experimental evidence that has considered
degradation and rehabilitation together suggests that changes in K_s are defined by hysteresis (Dane and Klute,
1977), the exact nature of which can be expected to vary on a soil specific basis (Levy et al., 2005).

Failure to account for hysteresis limits ~~our~~ the ability to forecast whether a particular climate and irrigation
55 regime will lead to long-term land degradation (Kramer and Mau, 2020). When even a crude hysteresis mechanism
is considered, it has been shown that ~~seasonally~~ changes in K_s may be compounded, such that initially small
declines in K_s may lead to serious degradation (Kramer and Mau, 2020). Considering the limited nature of land
and fresh water resources, maximizing land production through the use of saline and sodic water is likely to prove
essential to maintaining food security. It is similarly critical, however, to realize this goal without causing long-
60 term damage to soils. The long-term viability of irrigation practices with poor-quality water therefore hinges on
improving our understanding how hysteresis affects the processes of degradation and rehabilitation.

In this paper, we present a model for the effect of salinity and sodicity on K_s that considers hysteresis. That
is, in contrast to existing models, ~~ours~~ the presented model accounts for how a soil's history of degradation and
rehabilitation will affect K_s in the future. Our goal is to provide a modeling framework that can be incorporated
65 into numerical models of water and solute dynamics, to tackle questions of sustainable water resources use. As
such, ~~our model has the potential to significantly enhance the~~ the presented model represents an important step in
bringing forward the ability to assess the risk of soil degradation and to identify optimal rehabilitation strategies.

In constructing our model, we rely on the Preisach framework, which was originally developed in magnetism
and has been applied to a wide variety of fields, including the modeling of soil water retention
70 ~~(Flynn et al., 2006; McNamara, 2014)~~
(Flynn and Rasskazov, 2005; Flynn et al., 2006; O'Kane and Flynn, 2007; McNamara, 2014) and the effect of
stress and strains on soil and rock structures (Guyer, 2006). A comprehensive overview of the Preisach model can
be found in Mayergoyz (1986, 2003). We begin this paper by introducing the Preisach framework and how it can
be applied to model hysteresis in soil K_s . We then discuss the experiments necessary to parameterize the model
75 and to account for soil specific properties. We demonstrate a limited version of this experimental procedure and
show how the parametrized model can be used to infer future behavior. Finally, we incorporate data from past

degradation experiments to demonstrate how our model can be used to improve future assessments of the risk of soil degradation.

2 Modeling hysteresis in soil hydraulic conductivity

80 Our modeling of hysteresis in K_s is based on Preisach’s framework. We will briefly present this framework, and then apply it to ~~our specific needs for modeling model~~ K_s . We highly encourage the reader to use the interactive widgets found in the GitHub repository for this paper (Kramer et al., 2020), as they greatly enhance the explanatory power of the figures in the following sections.

2.1 The Preisach framework

85 At the foundation of the Preisach framework is the idea of the hysteron, which functions as a system’s basic memory unit. The hysteron admits two output states, “on” ($f = 1$) and “off” ($f = 0$), that are determined by an input, $u(t)$, and its history. Figure 1a presents a single hysteron, and the hysteresis loop between two threshold values, α and β , such that:

$$f(t) = \begin{cases} 1, & \text{for } u(t) \geq \alpha \\ k, & \text{for } \beta < u(t) < \alpha, \\ 0, & \text{for } u(t) \leq \beta \end{cases} \quad (1)$$

90 where k is the previous state of f , and by convention $\alpha \geq \beta$.

The conceptual leap offered by the Preisach framework is to imagine a myriad of hysterons in all possible threshold configurations, each infinitesimally contributing to the system’s overall behavior. This step recognizes the heterogeneity within a system, where its different constituents may not respond in tandem to external forcing, which we hypothesize is the case in soils. To this end, the Preisach model is often interpreted geometrically over
95 a limiting triangle ($\alpha \geq \beta$), in which each unique pair of points (α_i, β_i) corresponds to a hysteron, as depicted in Figure 1b. The system’s output can then be determined by integrating over the limiting triangle, considering the fraction of hysterons that are “on.” Increases in input are modeled by turning “on” hysterons for which $u(t) \geq \alpha$. Decreases in input are modeled by turning “off” hysterons for which $u(t) \leq \beta$ (see *Widget 1* on GitHub). For simplicity’s sake, we will use the more natural ordering (α, β) , although in all the graphs in this paper α is the
100 ordinate (vertical) axis and β is the abscissa (horizontal) axis.

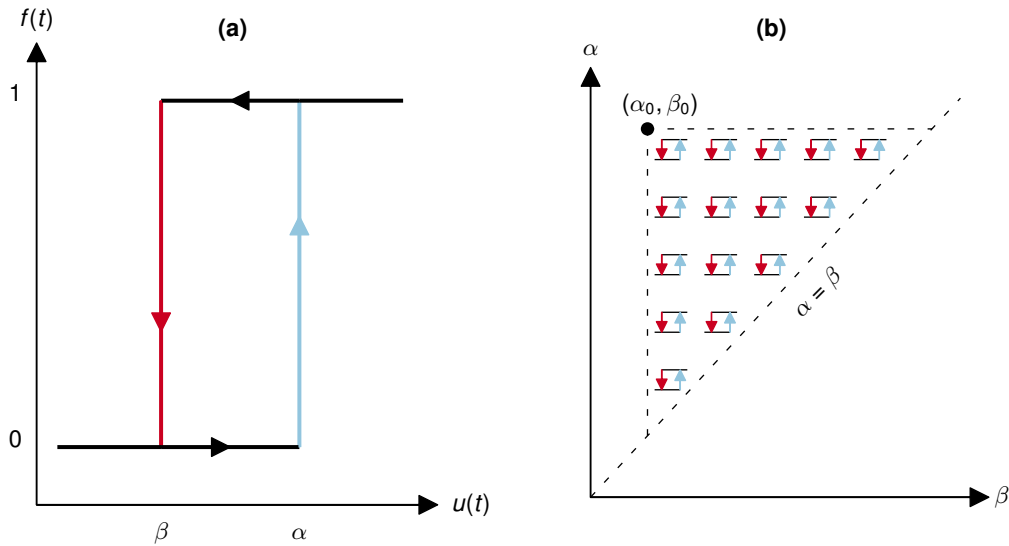


Figure 1. (a) The hysteron forms the foundation of the Preisach model, making output (f) dependent on threshold input values (α and β) and the previous output value. (b) The study of hysteresis on the system level is enabled by considering an infinitude of hysterons spread over a limiting triangle, in which each coordinate pair corresponds to specific threshold values (α_i, β_i).

The geometric interpretation of the Preisach framework is demonstrated in Figure 2, where the panels represent the following steps:

- (a) We begin at $t = 0$ with input $u = u_0$. All of the hysterons within the limiting triangle are “on” and output, f , is at its maximum level. This state is known as positive saturation.
- 105 (b) Input u is decreased to u_1 . We swipe **left** on the limiting triangle, turning **off** all hysterons for which $\beta > u_1$, which causes a decrease in f .
- (c) Input is increased to u_2 . We swipe **up** on the limiting triangle, turning **on** all hysterons for which $\alpha < u_2$, which leads to an increase in f .
- (d) A further decrease in input to u_3 will again cause a swipe **left, turning off left, turning off** all hysterons for
 110 which $\beta > u_3$, and leading to a decline in f .

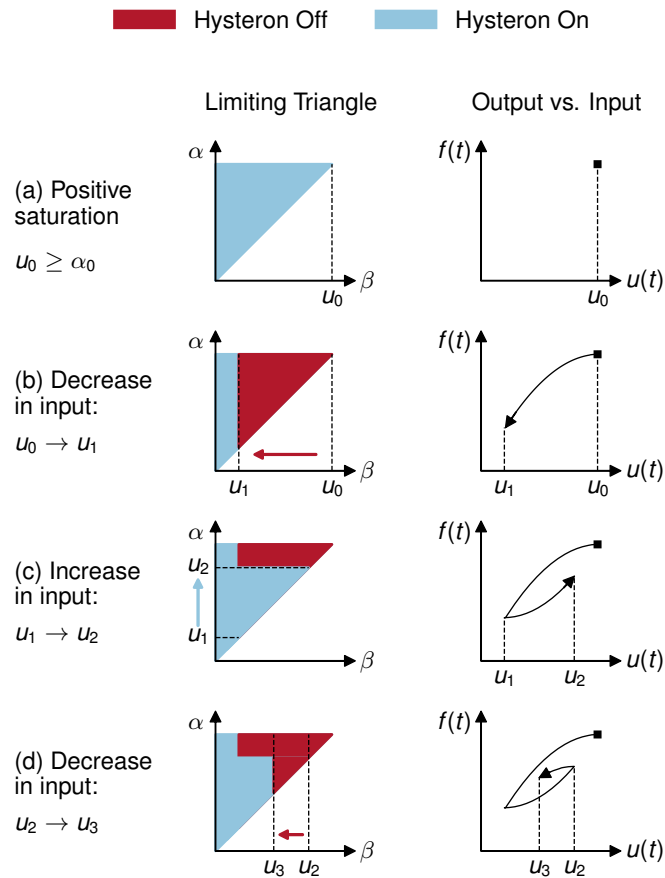


Figure 2. The Preisach model can be geometrically interpreted over the $\alpha \geq \beta$ half-plane, such that output, f , is the fraction of the limiting triangle in which hysterons are “on.” Changes to input, u , result in “swipes” on the limiting triangle (left-hand column). When u decreases, hysterons are turned off by swiping left. When u increases, hysterons are turned on by swiping up. Output corresponds to the fraction of the hysterons that are “on” (right-hand column).

2.2 Application of the Preisach framework to soil hydraulic conductivity

The Preisach model can be adapted to study the effects of salinity and sodicity on soils by setting K_s as the output, while the inputs are given by the chemical composition of the soil water. In our model, the two inputs are electrolyte concentration (C , $\text{mmol}_c \text{L}^{-1}$) and Sodium Adsorption Ratio (SAR, $\text{mmol}_c^{1/2} \text{L}^{-1/2}$). In doing so, the
115 framework presented in subsection 2.1 must be expanded to accommodate two input variables, but this is easily accomplished (see Appendix A). In addition to ~~our~~the two input variables (C and SAR), many covariates can have an important role in the K_s response, such as clay content, clay mineralogy, soil pH, organic matter, etc. The Preisach framework is able to account for soil-specific characteristics by using a weighting function, μ .

The weighting function $\mu(\alpha, \beta)$ assigns a relative weight to each hysteron within the limiting triangle. When
120 integrating over the limiting triangle to compute the output, the value of each hysteron at (α_i, β_i) is then multiplied by its respective weight $\mu(\alpha_i, \beta_i)$. An interactive (~~and highly elucidating~~) example of the role of the weighting function can be found in *Widget 2* of our GitHub repository.

The distribution of weights significantly affects the shape of the hysteresis curves and, therefore, the output value, given an input history. Assuming a constant SAR so that salinity, C , is the only input variable, Figure 3
125 presents three weight functions together with their corresponding hysteresis curves. Every weight function (left-hand column) is associated with a unique set of hysteresis curves showing how K_s responds to changes in C (right-hand column). The hysteresis graphs depict major loop curves (solid lines), as well as first-order reversal curves (hereafter FORCs, indicated by dashed lines). The major hysteresis loop determines the limits of the system. The upper half of the major loop defines the resilience of an initially stable soil to degradation, while the lower
130 half indicates the path to rehabilitation for a completely degraded soil. The smaller the gap between the upper and lower curves, the greater the degree of reversibility, if K_s is fully degraded. That is, when the gap is thin, as in Figure 3a, degradation in K_s is highly reversible. When the gap between the two curves of the major hysteresis loop is wider, as in Figure 3c, degradation in K_s is less reversible. The FORCs correspond to the system's behavior within the limits of the major loop, showing the degree of hysteresis when degradation in K_s is limited. The closer
135 the FORCs are to the top curve of the major loop, the higher the degree of reversibility. The FORCs in Figure 3 show high, medium, and low degrees of reversibility, for panels (a)-(c) respectively. Because the weight function uniquely defines a hysteresis graph, characterizing the degree to which a given soil is susceptible to irreversible changes in K_s can be done by finding that soil's weight function $\mu(\alpha, \beta)$.

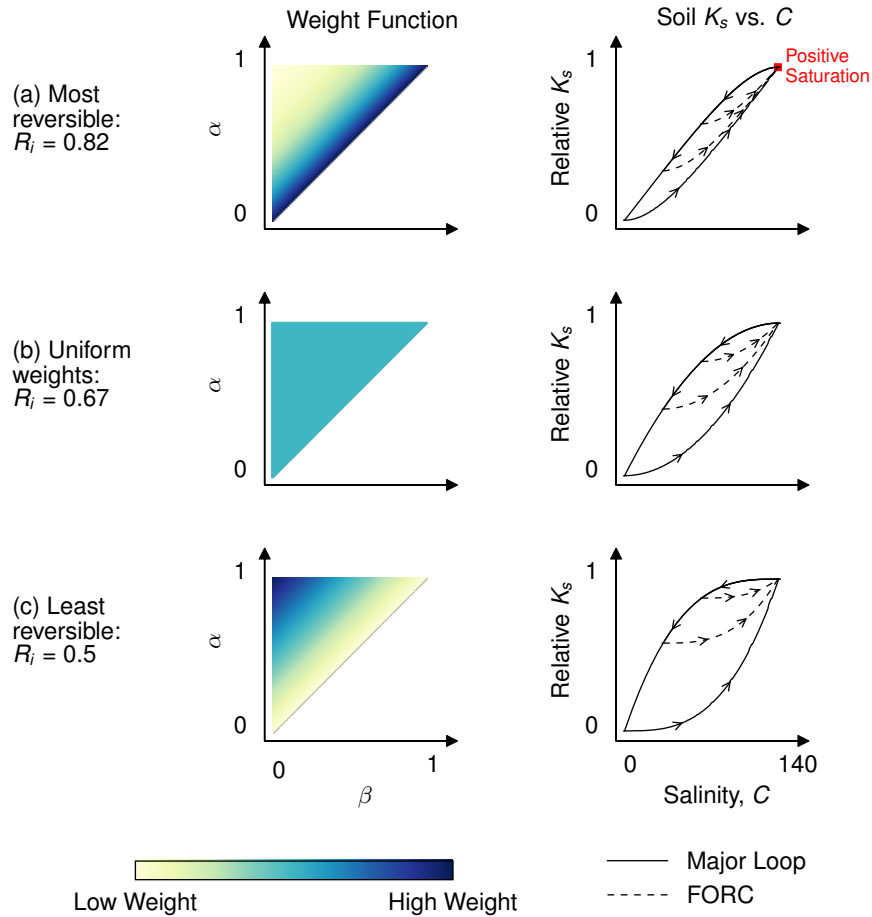


Figure 3. The degree to which a given soil is reversible and the shape of its hysteresis curves is determined by the soil's weight function (left column). Weight functions can be determined experimentally through the measurement of first order reversal curves, FORCs, the dashed lines shown in the right-hand column. R_i refers to the reversibility index, with a value of one indicating full reversibility and a value of zero corresponding to full irreversibility.

2.3 Reversibility index

140 To facilitate quantitative comparison of the degree to which different soils are reversible, we use the weight function to define a reversibility index, R_i . The full development of the reversibility index is contained in Appendix C, but the fundamental idea behind it is that the closer the weight distribution is to the diagonal of the limiting triangle (i.e., the line $\alpha = \beta$), the more reversible the soil, as in Figure 3a. Conversely, as the weight distribution becomes closer to the vertex of the triangle on the top left ($\alpha_{\max}, 0$), the more irreversible the soil, as in Figure 3c. The
145 reversibility index is defined to range from 0 to 1, with a value of one indicating a completely reversible soil (no hysteresis) and a value of zero corresponding to a completely irreversible soil.

3 Determination of the weight function

As a result of the one-to-one correspondence between the weight function and the hysteresis graph, a soil's weight function can be determined by measuring its FORCs. In this section, we outline the experimental
150 ~~procedure required~~ framework needed to measure FORCs and demonstrate how the data collected from these experiments can be used to determine a soil's weight function. While the experimental work necessary to compute weight functions for multiple soils is outside the scope of this paper, in what follows we present a "proof of concept," wherein we show limited FORC measurements and use these to construct a partial weight function. This proof of concept relies on soil column experiments, but we also note that the same framework could be used
155 to measure FORCs in the field.

3.1 Experimental setup

Experiments to measure FORCs should begin with the same setup commonly used to study degradation of K_s due to salinity and sodicity (McNeal and Coleman, 1966; Ezlit et al., 2013; De Menezes et al., 2014). In these experiments, a fixed water head (H) is imposed on the soil column, so that K_s can be found using Darcy's law,
160 $q = -K_s \nabla H$, where q is the discharge flux and ∇H is the hydraulic head gradient. The SAR of the input water is typically held constant as salinity is gradually reduced, with the procedure repeated for a range of SAR values. Conversely, the role of the variables can be flipped, with C held constant and the SAR of the applied water gradually increased. In either case, changes in K_s are recorded as the quality of the input water is changed. In the context of the Preisach framework, these experiments begin from "positive saturation," the state when all hysterons are

165 “on.” This corresponds to the point where both K_s and the input variable are maximal, as seen in the annotation in Figure 3a. As the quality of the applied water is changed (C decreased or SAR increased), the experiments effectively sample the upper curve of the major hysteresis loop.

Measurement of FORCs can be achieved by extending the procedure described above, so that following the initial decline in K_s , we “reverse” the trend in water quality (now either towards higher C or lower SAR) and
170 measure the response of K_s to conditions that favor improvements in soil structure. Several FORCs can be measured by repeating this procedure and varying the reversal point. For example, for the case when SAR is fixed, one should alter the point of minimum salinity at which the trend in C is reversed. In Figure 3, two FORCs (the dashed lines) are shown for each hysteresis graph. Because ~~our~~ the presented model considers changes in K_s as a result of both C and SAR, calculation of a particular soil’s complete weight function requires the
175 measurement of two sets of FORCs, one in which changes in K_s are measured as SAR is held constant, and one in which C is held constant.

After measuring several FORCs, the weight function can be calculated by taking the mixed partial derivative of the output (i.e., K_s) at points along these curves (Mayergoyz, 2003), see Eq. (A4). An annotated example of the code necessary to compute the weight function from experimental data is included in the GitHub repository. We
180 note that in the case where SAR is varied while C is kept constant, positive saturation occurs for low input values, not high values, as assumed in the presented graphs. In order to keep the mathematical framework the same for all cases, we define the two inputs in the code as C and $-SAR$, thus maintaining uniformity: K_s declines as the inputs are decreased.

3.2 Initial results

185 To showcase how FORCs can be used to calculate a soil’s weight function, we conducted a limited experiment to measure FORCs on a test soil. In doing this, our goal is to demonstrate both the feasibility of such experiments and the suitability of the tools we developed to analyze the results. As such, ~~our experiments do~~ this experiment does not constitute the whole set of procedures delineated above, necessary for the full characterization of a soil, but must be seen as a proof of concept. To the best of our knowledge, the results shown in this subsection are the
190 first experimental account of the partial reversibility in K_s , as influenced by salinity and sodicity.

In this experiment, we used a brown steppe soil (Ravikovitch, 1992) from the Kiryat Gat region of Israel, with 25% clay content. We held $SAR = 20 \text{ (mmol}_c\text{L}^{-1})^{-1/2}$ constant, and measured K_s as the value of C was

repeatedly decreased and then increased. Measurements of K_s were recorded following the equilibration of the flow, the electrical conductivity, and the sodium concentration between the soil column's inflow and outflow solutions (in three replicates). The typical time for equilibration of a single measurement point was three hours, after which determination of K_s was conducted, and the solution was changed for the next step of the procedure. For more details of the soil properties and experimental setup, see Appendix B.

Figure 4a shows the major loop of degradation and first-order reversal curves starting from concentrations 5, 10, 15, 20, and 50 $\text{mmol}_c \text{L}^{-1}$. In what follows, we will refer to each FORC by its lowest concentration value. The degradation in K_s experienced by the soil before salinity was decreased below $C = 20 \text{ mmol}_c \text{L}^{-1}$ was found to be fully reversible, as FORCs 20 and 50 depict (they overlap with the major loop). FORCs 5, 10 and 15 show partial reversibility only, with K_s not returning to its original value, even for very concentrated solutions of 400 $\text{mmol}_c \text{L}^{-1}$ (not shown in the graph).

We used the data from the FORCs in Figure 4a to determine a limited weight function, shown in Figure 4b. This is a limited weight function because it contains information on one SAR value only. Because the decay in K_s , shown by the major loop curve, is most pronounced for low C values, most of the weight is concentrated on the left of the triangle. Furthermore, the moderate rehabilitation in K_s shown by the FORCs also takes place in low C values, therefore we see a higher density on the bottom of the triangle. Note that the triangle's upper input bounds are 300 $\text{mmol}_c \text{L}^{-1}$, while the experiment's upper bound was 200 $\text{mmol}_c \text{L}^{-1}$. This expansion of the triangle is necessary because the reversal curves do not go back to full rehabilitation (relative $K_s = 1.0$), and according to Preisach's framework the system always reaches full saturation upon arrival at the upper input bound. The expansion of the triangle leaves some weight beyond the experimental bounds (see dotted line in Figure 4b), thus allowing for incomplete rehabilitation.

In order to make sure that the weight triangle contains ~~indeed~~ the information of the hysteresis graph, we modeled the soil's response ~~according to this triangle~~ using this weight function. The modeled results, shown in Figure 4c, are quite similar to the experimental data of Figure 4a. It is worth noting that the modeled FORCs return to higher K_s values, i.e., there is a slight overestimation of rehabilitation, and several FORCs converge ~~together~~ as C increases. This is due to ~~our~~ the effort to build a high-resolution picture of the weight function from very few data points. It is possible to eliminate this issue by increasing the number of FORCs (as shown in Figure B1). Of course, this comes at the cost of additional time and resources, and we believe that our results are quite satisfactory, given the high level of upscaling involved in the process. ~~In our estimation, the~~ The algorithm

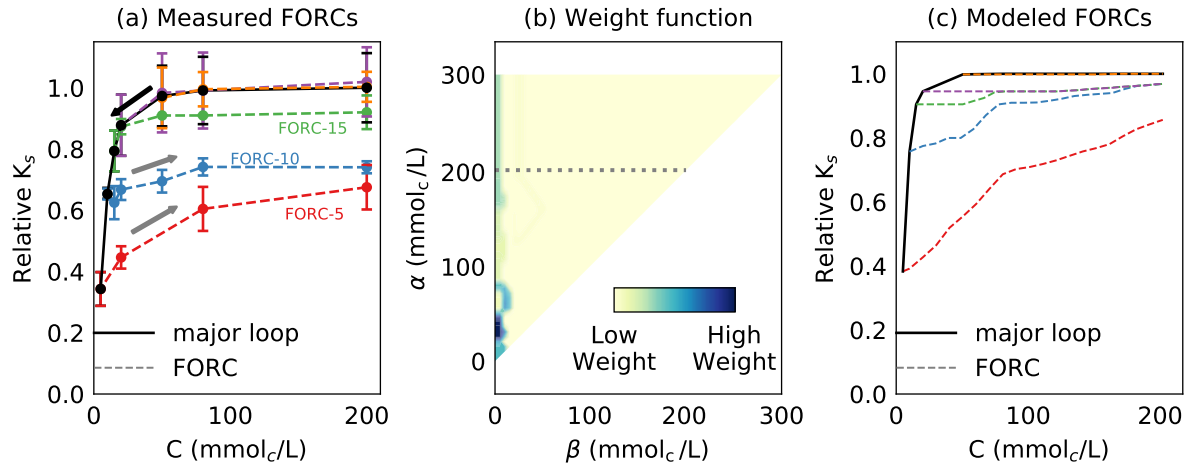


Figure 4. (a) Measured hysteresis in K_s , while keeping $SAR = 20 \text{ (mmol}_c \text{ L}^{-1})^{-1/2}$ constant. The major loop of degradation is shown by the solid black line, while FORCs are denoted by dashed lines. (b) The calculated weight function for the experimental data. Most of the weight is concentrated on the left side of the triangle as a light vertical strip and a heavy stain. (c) Modeled hysteresis graph using the weight function shown in panel (b). The accuracy of modeled results improves with the number of experimental points.

devised to reconstitute the weight function from experimental data (see the GitHub repository) ~~is able to impart~~ [incorporates](#) both the qualitative and quantitative behavior of the soil under salinity and sodicity changes.

3.3 Insights for future experiments

225 This limited experiment yields a number of important insights, and we hope that these will prove useful to future efforts to characterize trends of partial reversibility in soil K_s .

The experimental setup is relatively simple and the whole procedure is straightforward, although full characterization of a soil's weight function has the potential to be long and laborious. Determination of a soil's complete weight function requires measuring hysteresis graphs for at least five fixed SAR values (i.e., when C is varied, as seen in Figure 4a) and for five fixed C values (i.e., when SAR is varied). Each of these hysteresis graphs must contain at least five FORCs, with each FORC itself requiring several measurement points. The suggested number of five is, of course, a rule of thumb. If one wishes to obtain weight functions of finer detail, then more hysteresis curves or FORCs per hysteresis could be measured. We do not recommend, however,

230

measuring fewer than four hysteresis curves or fewer than four reversal curves, since this would translate into
235 highly coarse weight functions, which would ~~impair~~ limit their usefulness.

Given the typical times of equilibration we experienced, we estimate that a full characterization of the soil hysteresis would take approximately one month. Soils with higher clay content may require significantly more time, since these soils can be expected to need additional time to equilibrate. Conversely, characterization of soils with a lower clay content may require less time than we have estimated here.

240 The first thing one should do before measuring the FORCs is to measure the major loop (i.e., the pattern of decay), to determine the range of input values where K_s varies the most. The points of return of each FORC should be distributed roughly equally along the decay in K_s . For instance, Figure 4a shows that the return points are more concentrated between concentrations 5 and 20 $\text{mmol}_c \text{L}^{-1}$, because ~~there~~ these return points roughly sample ~~equally~~ the steepest decline in K_s . Conversely, return points where the slope of the major loop is ~~mild~~ flat,
245 do not yield as much useful information for ~~reconstituting~~ characterizing the weight function. It is important to note that the measurement points along all FORCs have the same input values. This is necessary because of the way we developed our algorithm for building the weight functions.

4 Model applications

In this section, we use the model to demonstrate how consideration of hysteresis is essential when analyzing
250 degradation and rehabilitation in soils. While controlled soil column experiments are expected to behave differently than field conditions, they still provide invaluable information regarding degradation and rehabilitation trends. More importantly, these experiments allow us to generate testable hypotheses on the interactions between soil and environmental conditions over the long run. However, the modeling formalism presented here is general, and does not depend on the idiosyncrasies of particular experiments. This is to say that, while we measure FORCs using soil
255 columns, FORCs could also be measured with field experiments. The lab experiments described here are a first attempt to parametrize and constrain the model, and further lab and field experiments are necessary to ensure the model's applicability in real-life conditions. At this stage, no experimental work has addressed ~~this issue in detail,~~ ~~we~~ the K_s hysteresis in detail. We incorporate results from the well-known ~~McNeal and Coleman (1966)~~ McNeal and Coleman (1966) experiments to show how it is possible for soils with the same degradation patterns to exhibit
260 very different levels of reversibility.

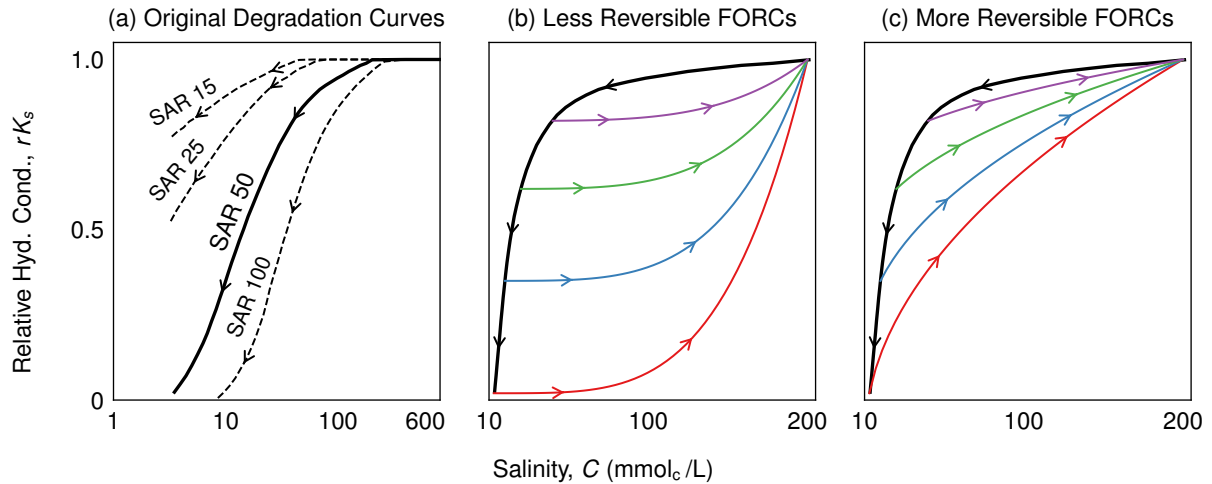


Figure 5. Different levels of irreversibility can be possible from the same degradation curve. (a) Degradation curves from experiments performed by McNeal and Coleman (1966) (note: results presented on logarithmic scale). The degradation curve associated with SAR 50 is used to construct two sets of possible FORCs, one showing a low level of reversibility (b) and the other a high level of reversibility (c).

The experimental setup employed by McNeal and Coleman (1966) is ideal for this purpose because it resembles the degradation portion of the experimental procedure described in section 3. Specifically, McNeal and Coleman (1966) measured K_s as input water of fixed SAR, but declining salinity, was applied to soil columns. The procedure was repeated for several SAR values, as shown in Figure 5a, which reproduces the degradation curves presented
 265 by McNeal and Coleman (1966) for SAR 15, 25, 50, and 100 $\text{mmol}_c^{1/2} \text{L}^{-1/2}$ (henceforth we will omit the units of SAR).

The possibility for different levels of reversibility, given the same degradation curves, is presented in Figure 5b-c. Here, we use the degradation curve associated with SAR 50 to construct two potential sets of FORCs. The FORCs in Figure 5b correspond to a low level of reversibility — once the soil has been degraded, an increase to higher
 270 K_s values requires a significant increase in salinity. By contrast, the FORCs in Figure 5c indicate a high level of reversibility, such that K_s values are more easily restored following degradation. It is important to emphasize that we constructed both sets of presented FORCs, and that neither derive from experiments. That is, they are meant to demonstrate the need for detailed experiments on irreversibility, according to the guidelines discussed in section 3, which will allow us to more accurately determine the true extent to which a given soil exhibits hysteresis

275 in degradation and rehabilitation. We also note that even the concave FORCs in Figure 5c consider a higher level of irreversibility than existing models for degradation and rehabilitation, which allow K_s to increase by returning along the original degradation curve (i.e., the top curve of the major loop).

By extending the approach used in Figure 5b-c, we produce two potential weight functions based on the degradation curves in McNeal and Coleman (1966). To do this, we first construct two sets of FORCs (low and high reversibility) for each of the respective SAR values (15, 25, 50, 100). We then use these FORCs to compute 280 weight functions, using the technique and code described in section 3. The resulting weight functions are presented in Figure 6. The different areas occupied by the limiting triangle in these plots reflect the different values of C_{\max} — the unique salinity value at which degradation begins — for each respective SAR value. When determining the weight function, salinity values greater than u_{\max} are not assigned any weights.

285 Examination of the weight functions in Figure 6 shows the crucial way in which our model is able to distinguish between less reversible and more reversible soils. Focusing first on SAR 100, we observe that for the weight function derived from the less reversible FORCs (Figure 6a), the heavy weights are concentrated exclusively in the region close to $(\alpha_{\max}, 0)$. For the weight function derived from the more reversible FORCs (Figure 6b), the heavy weights are similarly concentrated in the region for which β is close to zero. A major contrast can be seen, however, 290 in the distribution of the weights along the α -axis, with the heavy weights in the more reversible case distributed along the entire α -axis, and not only in the region for which α is large, as is the case for the less reversible example. In both examples, the weight distributions along the β -axis are identical, because this axis is associated with degradation, and both weight functions were derived from the same degradation data. The concentration of weights in the region where β is low reflects the soil's relative resilience to degradation when salinity is high, as 295 seen in Figure 5. The α -axis, by contrast, is associated with rehabilitation. Because the weights in Figure 6b are distributed along the entire α -axis, we can expect any increase in salinity to lead to an increase in K_s , matching the pattern observed in the FORCs from which the weight function was derived. In Figure 6a, on the other hand, the heavy weights are concentrated in the region for which α is high, such that increases in K_s will only occur when salinity crosses some specific threshold, again reflecting what we expect based on the FORCs. Similar patterns are 300 observed for SAR 50, 25, and 15.

The difference between these two weight functions can be expressed quantitatively by calculating the reversibility index for each. For the weights in Figure 6a the reversibility index is $R_i = 0.33$, while for the weights in Figure 6b the reversibility index is $R_i = 0.64$. In this case, we are comparing two sets of hypothesized

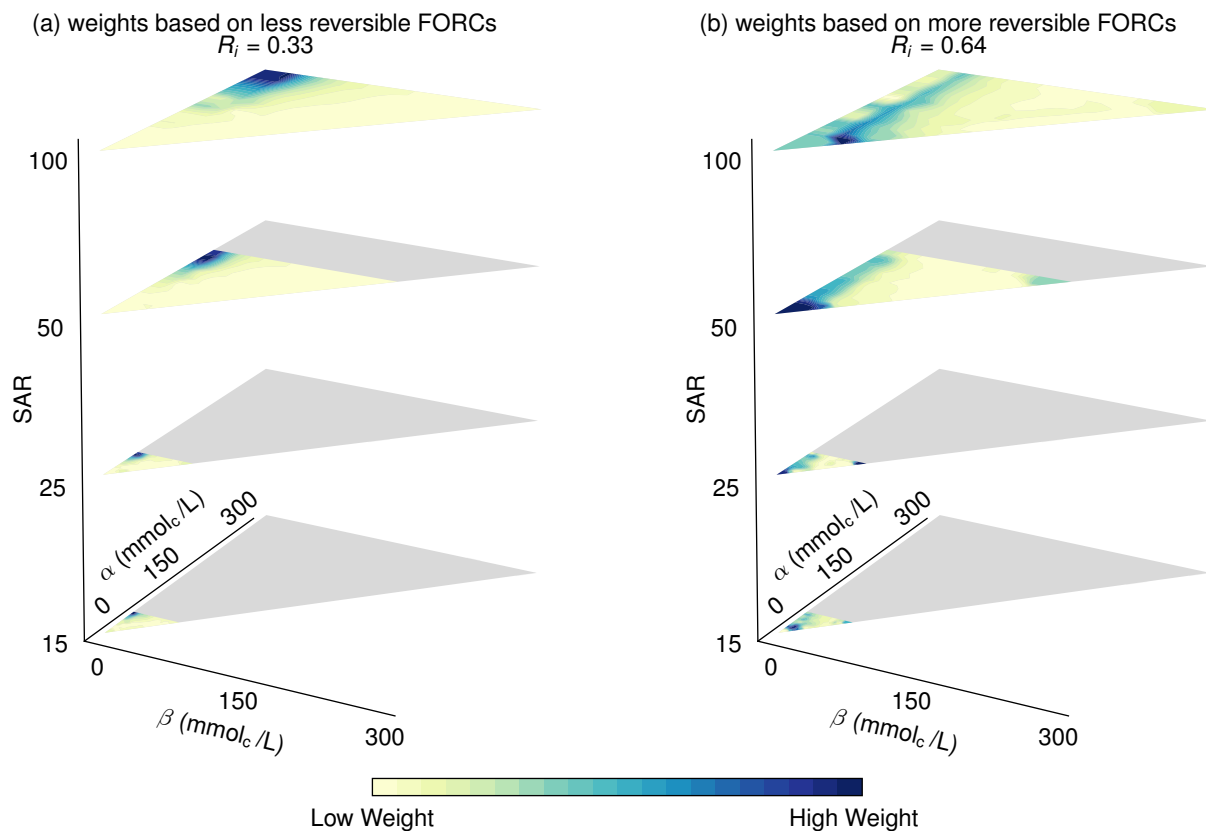


Figure 6. Potential weight functions, showing low (a) and high (b) levels of reversibility, are constructed based on the degradation experiments in McNeal and Coleman (1966). (a) Weight functions based on less reversible FORCs, reversibility index, $R_i = 0.33$. (b) Weight functions based on more reversible FORCs, reversibility index $R_i = 0.64$.

FORCs based on the same soil, but we believe the reversibility index's true power is in its ability to compare
 305 between different soil types. The index gives us a tool to speak precisely about the degree of reversibility, without
 having to resort to vague descriptions of “more” or “less” reversible soils.

It is worth mentioning that the weight “stacks” of Figure 6 are only half the complete weight function. Their
 complement is another set of stacks, where the vertical axis is salinity concentration, C , while α and β refer to
 SAR. For simplicity's sake these extra stacks are not shown here, but an example can be seen in Appendix C,
 310 Figure C1.

While the discussion up to now has not considered dynamics, integration of the presented framework with models for salinity and sodicity dynamics would allow us to consider the influence of a soil's previous degradation and rehabilitation cycles on its future state. This is a crucial step in improving our ability to assess the risk of soil degradation, because often degradation is triggered by seasonal patterns, which may only lead to significant declines in K_s after a number of years. While models that consider changes in K_s to be reversible are unable to capture the sort of cumulative damage that may result from such cycles, our model is ideally suited for this purpose because it makes future values of K_s dependent on the soil's history. As seen here, we can expect that the soil's weight function will play a crucial role in determining the risk of irreversible soil degradation past critical thresholds. These insights, however, can only be obtained if we widen our attention from traditional degradation experiments and begin to focus on rehabilitation processes through FORC measurements, as demonstrated here.

5 Discussion and Conclusions

The model developed here is the first to consider irreversibility in soil degradation as a result of water quality. Specifically focused on changes to K_s as a result of salinity and sodicity, the model demonstrates how hysteresis has the potential to significantly affect our expectations of soil rehabilitation following declines in K_s . The model accounts for soil-specific differences using a "weight function," which allows us to ascertain a given soil's future response to any change in water quality. In this paper, we demonstrated how a soil's weight function can be determined from experimental data, namely the measurement of first-order reversal curves, or FORCs. We showcased how to parametrize the model with FORCs obtained from soil column experiments, but in the future field experiments could increase our understanding of rehabilitation mechanisms in a richer and more realistic environment, over longer time scales. Much more than the major loop curves, the FORCs are key to the full characterization of a soil's irreversible behavior. To the best of our knowledge, the scant experimental literature on irreversible decay in K_s (Dane and Klute, 1977) did not exhibit any measurements of FORCs. The experimental results presented here, therefore, are the first to measure FORCs and underscore the need to focus on these measurements, serving as a typical example of the beneficial interaction between theory and experiments.

As a measure of the degree to which a given soil can be rehabilitated following degradation, we introduced a reversibility index. The reversibility index uses the soil's weight functions to quantify the degree to which a given soil is reversible. With this index, one can directly compare the degree to which different soils are susceptible to

irreversible degradation. This represents an important advance beyond qualitative statements, such as “the soil with the greater clay content is more prone to irreversible degradation.”

340 The reversibility index is a convenient quantitative measure, however, it does not determine the *risk* of irreversible degradation given a particular climate and irrigation regime (Kramer and Mau, 2020). This risk depends on the specific history a soil has been through, and further research is required to unravel the interplay between soil characteristics, environmental drivers, and the actual dynamics of water and solutes in the soil. To this end, a critical next step will be the integration of the model presented here with leading numerical models
345 used for studying the dynamics of soil salinity and sodicity over the long-term. At present, all such models consider changes in K_s to be completely reversible ($R_i = 1$), limiting our ability to predict and control the fate of agricultural soils in the face of global climatic change and dwindling water resources.

Finally, while this work focused on the effects of salinity and sodicity on K_s , we believe the conceptual foundation offered by the Preisach framework may have wide ranging application to other soil processes. As
350 demonstrated here and in its application to modeling hysteresis in soil-moisture patterns (Flynn et al., 2006; McNamara, 2014), a major appeal of the Preisach framework is its generality and lack of major assumptions. This stands in contrast to other models that have been used to describe hysteresis phenomena in soil science, such as those that focus on the response of water retention curves to drying and wetting (Mualem, 1974; Parlange, 1976; Haverkamp et al., 2002). Parlange’s (1976) model, for instance, assumes that all hysteresis curves have the same
355 shape (e.g., follow van Genuchten’s equation). As we argue here, at this point, our understanding on the degree of reversibility in K_s is still based on extremely limited experimental data, and we find no justification for the significant assumption that all reversal curves should have shape similarity with the major hysteresis loop curves. We believe that the Preisach approach is advantageously suited to studying hysteresis in K_s , specifically because of its ability to consider various secondary factors, including soil texture and mineralogy.

360 Beyond salinity and sodicity, the framework may be adapted to address research questions related to covariates, including composition, clay mineralogy, and soil pH, among others. We do note that while the mathematical formalism admits any number of inputs, that does not mean that the optimal way to use the presented framework would be to increase the number of input variables. We believe that using more than two inputs would obfuscate the understanding of the hysteresis process. Each additional input variable would require a corresponding weight
365 function, such that more than two input variables would require an impractical number of experiments for determining the weights. Nonetheless, we believe that the framework presented here may be of great use to

studying the aforementioned soil processes in their own right, especially because many of them are marked by hysteresis. To that end, we encourage readers to make use of our code, all of which is accessible in the repository for this paper.

370 *Code availability.* All code described in the manuscript is available in our GitHub repository: <https://github.com/yairmau/hysteresis-python> (Kramer et al., 2020). This repository also includes interactive widgets designed to supplement the theoretical overview of the model.

Appendix A: The Preisach framework

For the case of a single input variable, we can use the Preisach framework to determine the output value, $f(t)$, for
375 a given input, $u(t)$, by integrating over the limiting triangle such that,

$$f(t) = \iint_{\alpha \geq \beta} \mu(\alpha, \beta) \hat{\gamma}_{\alpha\beta} u(t) d\alpha d\beta, \quad (\text{A1})$$

where $\hat{\gamma}$ is an operator that indicates the state of the hysteron, i.e, whether it is “on” or “off” given the value of $u(t)$, and $\mu(\alpha, \beta)$ is the weight function (Mayergoyz, 2003).

The weight function, $\mu(\alpha, \beta)$, can be determined experimentally, as described in section 3, by measuring output
380 along the FORCs. Specifically, the experimental procedure calls for starting at positive saturation ($u = u_{\max}$) and then reducing input so that $u = \beta'$. The output on the FORCs then corresponds to the values as input is gradually increased from β' to $u = \alpha'$, as shown in Figure A1. The output at points (α', β') is denoted $f_{\alpha'\beta'}$. The “weight” at a given point (α', β') on the FORC can be found according to the equation (Mayergoyz, 2003)

$$\mu(\alpha', \beta') = \frac{1}{2} \frac{\partial^2 f_{\alpha'\beta'}}{\partial \alpha' \partial \beta'}. \quad (\text{A2})$$

385 For the case when there are two inputs, $u(t)$ and $v(t)$, then Equation A1 is expanded so that

$$f(t) = \iint_{\alpha \geq \beta} \mu(\alpha, \beta, v(t)) \hat{\gamma}_{\alpha\beta} u(t) d\alpha d\beta + \iint_{\alpha \geq \beta} \nu(\alpha, \beta, u(t)) \hat{\gamma}_{\alpha\beta} v(t) d\alpha d\beta, \quad (\text{A3})$$

where μ and ν are the respective weight functions (Mayergoyz, 2003). The dependency of μ and ν on v and u , respectively, serves to couple the inputs. The weight functions μ and ν are given by (Mayergoyz, 2003)

$$\mu(\alpha, \beta, v) = \frac{\partial^2 F(\alpha, \beta, v)}{\partial \alpha \partial \beta} \quad (\text{A4a})$$

$$390 \quad \nu(\alpha, \beta, u) = \frac{\partial^2 G(\alpha, \beta, u)}{\partial \alpha \partial \beta}, \quad (\text{A4b})$$

where F and G are defined as follows (Mayergoyz, 2003)

$$F(\alpha, \beta, v) = \frac{1}{2} \left(f_{\alpha\beta v} - f_{\beta v}^+ \right) \quad (\text{A5a})$$

$$G(\alpha, \beta, u) = \frac{1}{2} \left(f_{u\alpha\beta} - f_{u\beta}^+ \right). \quad (\text{A5b})$$

Here, $f_{\beta v}^+$ denotes the “branching” point of the FORC output for a fixed value of $v(t)$. Likewise, $f_{\alpha\beta v}$ corresponds
 395 to the output as we move along the FORC by increasing the value of α , following the same methodology as in the one input case.

Appendix B: Experimental setup

We measured saturated hydraulic conductivity, K_s , in soil columns (length 5.0 cm, internal diameter 5.4 cm), within transparent perspex pipes (length 8.0 cm, external diameter 6.0 cm), where the hydraulic head $H = 31$
 400 cm was maintained constant using a Mariotte’s bottle. The air-dried soil was sieved through a 2 mm sieve, and packed to a bulk density of 1.30 g cm^{-3} . For each column, a soil mass of 149 g, divided into 5 equal parts, was packed into the pipe and bulked with equal pressure to ensure uniform packing across the columns length and between all the 15 columns. The soil was lined with a geotex fibre, and the pipes were closed at both ends with rubber stoppers. The soil columns were allowed to capillary wet with a solution of concentration $200 \text{ mmol}_c \text{ L}^{-1}$
 405 and $\text{SAR} = 20 \text{ (mmol}_c \text{ L}^{-1})^{-1/2}$ for at least four hours. Upon saturation, leaching started from the top of the soil column. While $\text{SAR} = 20 \text{ (mmol}_c \text{ L}^{-1})^{-1/2}$ was kept constant, solutions of decreasing concentrations were made to flow through the columns (200, 80, 50, 20, 15, 10, and $5 \text{ mmol}_c \text{ L}^{-1}$). For each concentration, K_s was measured using Darcy’s equation only upon equilibration of the efflux with respect to flow rate, electrical conductivity, and sodium concentration. Electrical conductivity and sodium concentration were measured with Mettler Toledo’s
 410 InLab 752-6MM and perfectION comb NA, respectively. Three replicates were used for each K_s measurement.

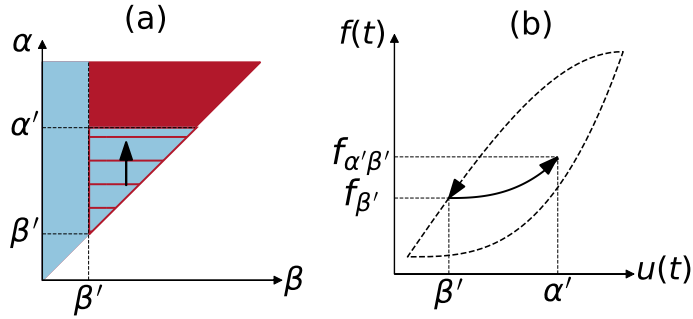


Figure A1. Output along the FORC is used to find the weight function, $\mu(\alpha, \beta)$. For the case with a single input variable, the weight of the hysteron at (α', β') can be found by starting at positive saturation ($u = u_{\max}$), decreasing input to $u = \beta'$, and then gradually increasing input to $u = \alpha'$. Changes in the fraction of the hysterons in the limiting triangle that are on (a) result in changes in output (b).

The soil used in the experiment is a brown steppe soil (Ravikovitch, 1992) from the Kiryat Gat region of Israel. The measured soil texture is 25% clay, 25% silt, and 50% sand (METER's PARIO soil particle size analyzer). The dominant clay mineral is montmorillonite (60%), and the soil's CaCO_3 content is 16%.

Appendix C: Reversibility index

415 It is easiest to start defining the reversibility index R_i for the case of a single input variable:

$$R_i = 1 - \frac{\sqrt{2}}{u_{\max}} \frac{I[\mu(\alpha, \beta)\mathcal{D}(\alpha, \beta)]}{I[\mu(\alpha, \beta)]}, \quad (\text{C1})$$

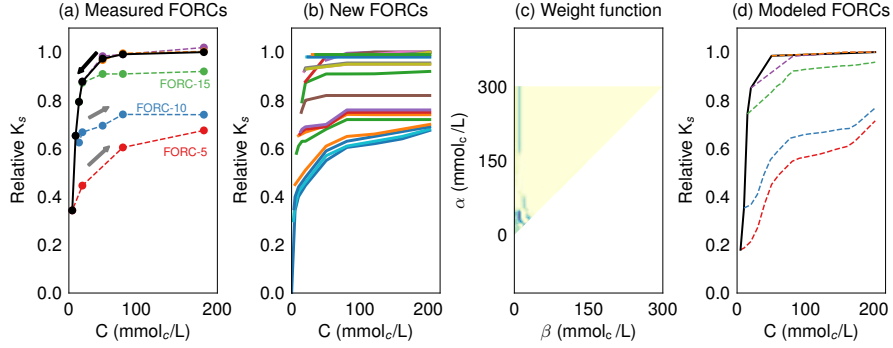


Figure B1. Experimental results (panel a) can be augmented by ~~extra “guesstimated”~~ interpolated FORCs (panel b), resulting in a finer weight function (panel c), which in turn can reproduce the initial data more faithfully (panel d). This exercise demonstrates that increasing the number of experimental points will yield more accurate predictions, exemplifying the well-known tradeoff between resource expenditures (more data) and accuracy.

where I denotes the integral over the limiting triangle

$$I[f(\alpha, \beta)] = \int_0^{u_{\max}} d\alpha \int_0^{\alpha} d\beta f(\alpha, \beta), \quad (\text{C2})$$

and

$$420 \quad \mathcal{D}(\alpha, \beta) = \frac{\alpha - \beta}{\sqrt{2}} \quad (\text{C3})$$

is the Euclidean distance of a point (α, β) in the limiting triangle to the diagonal $\alpha = \beta$. The reversibility index $0 \leq R_i \leq 1$, where $R_i = 1$ means total reversibility, while $R_i = 0$ means total irreversibility. In this definition we assume that the input varies between $0 \leq u \leq u_{\max}$. In the more general case that the input u varies between $u_{\min} \leq u \leq u_{\max}$, then the denominator in Eq. (C1) should be substituted by $u_{\max} - u_{\min}$, and the integration limits

425 in Eq. (C2) accordingly.

The intuition behind this definition is as follows. Every point (α, β) in the weight function μ is itself weighted by its distance to the diagonal $\alpha = \beta$, given by the function $\mathcal{D}(\alpha, \beta)$. If all the weights in μ are concentrated along this diagonal, then we have that $\mathcal{D} = 0$, and the reversibility index yields 1, meaning complete reversibility. On the other extreme, if all the weight in μ is as far as possible from the diagonal, namely concentrated at the point

430 $(\alpha = u_{\max}, \beta = 0)$, then the reversibility index yields 0, i.e., total irreversibility. The denominator $I[\mu(\alpha, \beta)]$ in Eq. (C1) simply normalizes the weight function to 1, while the factor $\frac{\sqrt{2}}{u_{\max}}$ normalizes the maximal distance to 1.

Roughly speaking, the more weight is concentrated near the diagonal $\alpha = \beta$, the thinner the major hysteresis loop, and the higher the reversibility index, R_i . Conversely, the further the weight is from the diagonal, the wider the major hysteresis loop, and consequently R_i will be closer to zero. Of course, the factor $\sqrt{2}$ in Eq. (C1) could be
 435 cancelled out with the same factor in the distance function \mathcal{D} . We chose to leave \mathcal{D} as defined to maintain the link between the reversibility index and the distance of the weights from the diagonal $\alpha = \beta$.

We can now expand the definition of R_i for two input variables:

$$R_i = 1 - \frac{1}{2} \left[\frac{\sqrt{2}}{u_{\max}} \frac{I[\mu(\alpha, \beta, v(t))\mathcal{D}(\alpha, \beta)]}{I[\mu(\alpha, \beta, v(t))]} + \frac{\sqrt{2}}{v_{\max}} \frac{I[\nu(\alpha, \beta, u(t))\mathcal{D}(\alpha, \beta)]}{I[\nu(\alpha, \beta, u(t))]} \right], \quad (\text{C4})$$

where now I denotes

$$440 \quad I[f(\alpha, \beta, w)] = \int_0^{u_{\max}} d\alpha \int_0^{\alpha} d\beta \int_0^{w_{\max}} dw f(\alpha, \beta, w). \quad (\text{C5})$$

The brackets in Eq. (C4) simply show the arithmetic mean of the same operation done in Eq. (C1), computed for the weight densities μ and ν .

C1 Discrete version of R_i

Often the weight functions μ and ν will be calculated numerically from experimental data, as done in Sect. 4 (see
 445 also our full code and widget on GitHub). In this case, μ (ν) will be composed of N (M) discrete stacked layers, each composed by right triangles of side M (N), see Fig. C1. The reversibility index in the discrete case then becomes

$$R_i = 1 - \frac{1}{2} \left[\frac{\sqrt{2}}{M} \frac{\sum_k^N \sum_{i \geq j}^M \mu(i, j, k) \mathcal{D}(i, j)}{\sum_k^N \sum_{i \geq j}^M \mu(i, j, k)} + \frac{\sqrt{2}}{N} \frac{\sum_k^M \sum_{i \geq j}^N \nu(i, j, k) \mathcal{D}(i, j)}{\sum_k^M \sum_{i \geq j}^N \nu(i, j, k)} \right], \quad (\text{C6})$$

and for the particular case of one input only it reads

$$450 \quad R_i = 1 - \frac{\sqrt{2}}{N} \frac{\sum_{i \geq j}^N \mu(i, j) \mathcal{D}(i, j)}{\sum_{i \geq j}^N \mu(i, j)}. \quad (\text{C7})$$

Note that $\sum_{i \geq j}^N$ represents the double summation $\sum_i^N \sum_j^i$. Figure C1 depicts an example of the discrete weight functions for $N = 3$, $M = 5$.

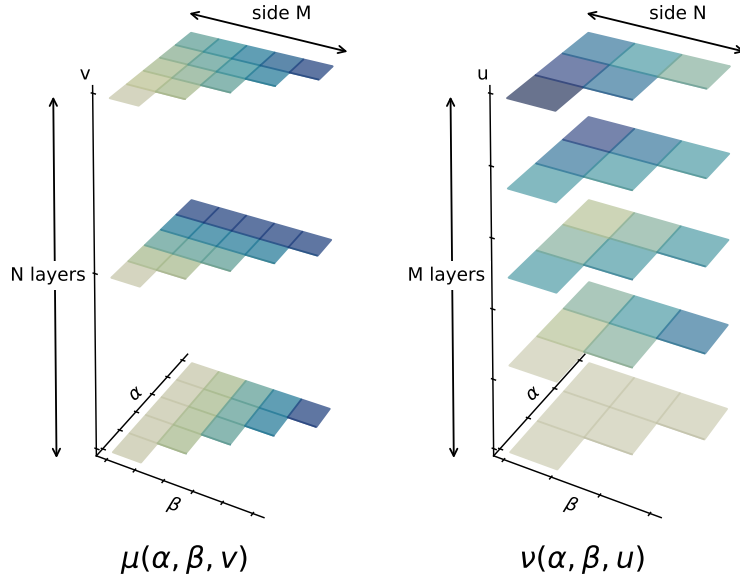


Figure C1. The discrete representation of the weight functions $\mu(\alpha, \beta, v)$ and $\nu(\alpha, \beta, u)$.

C2 Some simple cases

We calculate here the 1-input reversibility index of three simple examples, in order to build some intuition of how
 455 R_i relates to specific weight distributions.

Uniform weight distribution

For uniform $\mu(\alpha, \beta) = c_0$, the reversibility index reads:

$$R_i = \frac{2}{3}. \quad (\text{C8})$$

Thin diagonal weight distribution

460 The weight distribution $\mu(\alpha, \beta) = \delta(\alpha - \beta - c_0 u_{\max})$, where $0 \leq c_0 \leq 1$, corresponds to an infinitesimally thin diagonal line in the (α, β) plane (δ is the Dirac delta). This diagonal line can be offset from the origin by $c_0 u_{\max}$. Its reversibility index reads:

$$R_i = 1 - c_0. \quad (\text{C9})$$

For $c_0 = 0$ there is no offset, and the diagonal line sits at $\alpha = \beta$, therefore $R_i = 1$. As the offset is increased, R_i decreases, until $R_i = 0$ for $c_0 = 1$.

Dirac delta weight distribution

In the case that all the weight distribution is concentrated at a single point ($\alpha = a_0 u_{\max}, \beta = b_0 u_{\max}$), the distribution reads: $\mu(\alpha, \beta) = \delta(\alpha - a_0 u_{\max})\delta(\beta - b_0 u_{\max})$, where $a_0, b_0 \in [0, 1]$. The reversibility index then yields

$$R_i = 1 - (a_0 - b_0). \tag{C10}$$

Again, when the weight distribution is on the diagonal line of the limiting triangle ($a_0 = b_0$), we have $R_i = 1$. As the locus of the distribution moves away from this diagonal, the reversibility index decreases.

Author contributions. IK and YM developed the mathematical model. IK and YB wrote the code for the model and developed the widgets that accompany this paper. TA and YM designed the experimental setup and TA conducted the experiment and data analysis. YB and IK did the bibliographic research concerning experimental evidence of irreversible decay in K_s . IK and YM wrote the first version of the manuscript, and all authors discussed the content, provided feedback and wrote the final paper.

Competing interests. The authors declare that they have no conflict of interest.

Acknowledgements. The authors would like to thank Yona Chen, Guy Levy, Naftali Lazarovitch, and Simon Emmanuel for useful discussion. [We would also like to thank the two reviewers, Willem Vervoort and Denis Flynn, for invaluable feedback and suggestions.](#)

References

- Ali, A., Biggs, A. J., Šimůnek, J., and Bennett, J. M.: A pH-Based Pedotransfer Function for Scaling Saturated Hydraulic Conductivity Reduction: Improved Estimation of Hydraulic Dynamics in HYDRUS, *Vadose Zone Journal*, 18, <https://doi.org/10.2136/vzj2019.07.0072>, 2019.
- 485 Bennett, J. M., Marchuk, A., Marchuk, S., and Raine, S. R.: Towards predicting the soil-specific threshold electrolyte concentration of soil as a reduction in saturated hydraulic conductivity: The role of clay net negative charge, *Geoderma*, 337, 122–131, <https://doi.org/10.1016/j.geoderma.2018.08.030>, 2019.
- Chen, Y. and Banin, A.: Scanning electron microscope (SEM) observations of soil structure changes induced by sodium-calcium exchange in relation to hydraulic conductivity, *Soil Science*, 120, 428–436, 1975.
- 490 Cook, F. J., Jayawardane, N. S., Rassam, D. W., Christen, E. W., Hornbuckle, J. W., Stirzaker, R. J., Bristow, K. L., and Biswas, T. K.: The state of measuring, diagnosing, ameliorating and managing solute effects in irrigated systems, *CRC for Irrigation Futures Technical Report*, 2006.
- Dane, J. H. and Klute, A.: Salt Effects on the Hydraulic Properties of a Swelling Soil, *Soil Science Society of America Journal*, 41, 1043–1049, <https://doi.org/10.2136/sssaj1977.03615995004100060005x>, 1977.
- 495 Dang, A., Bennett, J. M., Marchuk, A., Biggs, A., and Raine, S.: Evaluating dispersive potential to identify the threshold electrolyte concentration in non-dispersive soils, *Soil Research*, 56, 549–559, <https://doi.org/10.1071/SR17304>, 2018a.
- Dang, A., Bennett, J. M., Marchuk, A., Biggs, A., and Raine, S.: Quantifying the aggregation-dispersion boundary condition in terms of saturated hydraulic conductivity reduction and the threshold electrolyte concentration, *Agricultural Water Management*, 203, 172–178, <https://doi.org/10.1016/J.AGWAT.2018.03.005>, 2018b.
- 500 De Menezes, H. R., De Almeida, B. G., De Almeida, C. D. G. C., Bennett, J. M., Da Silva, E. M., and dos S. Freirer, M. B. G.: Use of threshold electrolyte concentration analysis to determine salinity and sodicity limit of irrigation water, *Revista Brasileira de Engenharia Agrícola e Ambiental*, 18, s53–s58, 2014.
- Ezlit, Y. D., Bennett, J. M., Raine, S. R., and Smith, R. J.: Modification of the McNeal Clay Swelling Model Improves Prediction of Saturated Hydraulic Conductivity as a Function of Applied Water Quality, *Soil Science Society of America Journal*, 77, 2149, <https://doi.org/10.2136/sssaj2013.03.0097>, 2013.
- 505
- FAO and ITPS: *Status of the World's Soil Resources*, Food and Agriculture Organization of the United Nations and Intergovernmental Technical Panel on Soils, Rome, Italy, 2015.
- Flynn, D. and Rasskazov, O.: On the integration of an ODE involving the derivative of a Preisach nonlinearity, *Journal of Physics: Conference Series*, 22, 43–55, <https://doi.org/10.1088/1742-6596/22/1/003>, <https://doi.org/10.1088/1742-6596/22/1/003>, 2005.
- 510

- Flynn, D., McNamara, H., O’Kane, P., and Pokrovskii, A.: Chapter 7 - Application of the Preisach Model to Soil-Moisture Hysteresis, in: *The Science of Hysteresis*, edited by Bertotti, G. and Mayergoyz, I. D., pp. 689 – 744, Academic Press, Oxford, <https://doi.org/doi.org/10.1016/B978-012480874-4/50025-7>, 2006.
- 515 Goldenberg, L., Magaritz, M., and Mandel, S.: Experimental investigation on irreversible changes of hydraulic conductivity on the seawater-freshwater interface in coastal aquifers, *Water Resources Research*, 19, 77–85, 1983.
- Guyer, R. A.: Chapter 6 - Hysteretic Elastic Systems: Geophysical Materials, in: *The Science of Hysteresis*, edited by Bertotti, G. and Mayergoyz, I. D., pp. 555 – 688, Academic Press, Oxford, <https://doi.org/doi.org/10.1016/B978-012480874-4/50024-5>, 2006.
- 520 Haverkamp, R., Reggiani, P., Ross, P. J., and Parlange, J.-Y.: Soil water hysteresis prediction model based on theory and geometric scaling, in: *Environmental Mechanics: Water, Mass and Energy Transfer in the Biosphere*, edited by Raats, P. A. C., Smiles, D., and Warrick, A. W., pp. 213–246, American Geophysical Union, 2002.
- Hillel, D.: *Salinity Management for Sustainable Irrigation: Integrating Science, Environment, and Economics*, Tech. rep., The World Bank, Washington, D.C., 2000.
- Kramer, I. and Mau, Y.: Soil Degradation Risks Assessed by the SOTE Model for Salinity and Sodicy, *Water Resources*
525 *Research*, 56, <https://doi.org/10.1029/2020WR027456>, 2020.
- Kramer, I., Bayer, Y., and Mau, Y.: GitHub Repository — Modeling Irreversible Soil Degradation and Rehabilitation with the Preisach Framework, <https://doi.org/10.5281/zenodo.4013423>, 2020.
- Lagerwerff, J., Nakayama, F., and Frere, M.: Hydraulic Conductivity Related to Porosity and Swelling of Soil, *Soil Science Society of America Journal*, 33, <https://doi.org/10.2136/sssaj1969.03615995003300010008x>, 1969.
- 530 Levy, G. J., Goldstein, D., and Mamedov, A. I.: Saturated Hydraulic Conductivity of Semiarid Soils: Combined Effects of Salinity, Sodicy, and Rate of Wetting, *Soil Science Society of America Journal*, 69, 653–662, <https://doi.org/10.2136/sssaj2004.0232>, 2005.
- Mayergoyz, I. D.: Mathematical models of hysteresis, *Physical Review Letters*, 56, 1518–1521, <https://doi.org/10.1103/PhysRevLett.56.1518>, 1986.
- 535 Mayergoyz, I. D., ed.: *Mathematical Models of Hysteresis and Their Applications*, Elsevier, New York, New York, <https://doi.org/10.1016/B978-0-12-480873-7.X5000-2>, 2003.
- McNamara, H.: An estimate of energy dissipation due to soil-moisture hysteresis, *Water Resources Research*, 50, 725–735, <https://doi.org/10.1002/2012WR012634>, 2014.
- McNeal, B. L.: Prediction of the effect of mixed-salt solutions on soil hydraulic conductivity, *Soil Science Society of America*
540 *Journal*, 32, 190–193, <https://doi.org/10.2136/sssaj1968.03615995003200020013x>, 1968.
- McNeal, B. L. and Coleman, N. T.: Effect of solution composition on soil hydraulic conductivity, *Soil Science Society of America Journal*, 30, 308–312, <https://doi.org/10.2136/sssaj1966.03615995003000030007x>, 1966.

- Mualem, Y.: A conceptual model of hysteresis, *Water Resources Research*, 10, 514–520, <https://doi.org/10.1029/WR010i003p00514>, 1974.
- 545 O’Kane, J. P. and Flynn, D.: Thresholds, switches and hysteresis in hydrology from the pedon to the catchment scale: a non-linear systems theory, *Hydrology and Earth System Sciences*, 11, 443–459, <https://doi.org/10.5194/hess-11-443-2007>, <https://hess.copernicus.org/articles/11/443/2007/>, 2007.
- Parlange, J.-Y.: Capillary hysteresis and the relationship between drying and wetting curves, *Water Resources Research*, 12, 224–228, 1976.
- 550 Qadir, M., Quill  rou, E., Nangia, V., Murtaza, G., Singh, M., Thomas, R. J., Drechsel, P., and Noble, A. D.: Economics of salt-induced land degradation and restoration, *Natural Resources Forum*, 38, 282–295, <https://doi.org/10.1111/1477-8947.12054>, 2014.
- Quirk, J. and Schofield, R.: The Effect of Electrolyte Concentration on Soil Permeability, *Journal of Soil Science*, 6, 163–178, <https://doi.org/10.1111/j.1365-2389.1955.tb00841.x>, 1955.
- 555 Ravikovitch, S.: *The Soils of Israel: Formation, Nature and Properties (in hebrew)*, HaKibbutz Hameuchad Publishing House, 1992.
- Rengasamy, P., Greene, R., Ford, G., and Mehanni, A.: Identification of dispersive behaviour and the management of red-brown earths, *Soil Research*, 22, 413–431, 1984.
- Russo, D.: Numerical analysis of the nonsteady transport of interacting solutes through unsaturated soil: 1. Homogeneous
560 systems, *Water Resources Research*, 24, 271–284, <https://doi.org/10.1029/WR024i002p00271>, 1988.
- Shainberg, I. and Singer, M. J.: Soil Response to Saline and Sodic Conditions, in: *Agricultural Salinity Assessment and Management*, edited by Wallender, W. W. and Tanji, K. K., pp. 139–167, American Society of Civil Engineers, Reston, VA, <https://doi.org/10.1061/9780784411698.ch05>, 2011.
- Yaron, B. and Thomas, G. W.: Soil Hydraulic Conductivity as Affected by Sodic Water, *Water Resources Research*, 4, 545–552,
565 <https://doi.org/10.1029/WR004i003p00545>, 1968.
- Yaron, B., Dror, I., and Berkowitz, B.: Contaminant-induced irreversible changes in properties of the soil–vadose–aquifer zone: an overview, *Chemosphere*, 71, 1409–1421, 2008.