

# Impacts of land use/cover change and reforestation on summer rainfall for the Yangtze River Basin

Wei Li<sup>1,2</sup>, Lu Li<sup>3</sup>, Jie Chen<sup>1,2</sup>, Qian Lin<sup>1,2</sup>, Hua Chen<sup>1,2</sup>

<sup>1</sup>State Key Laboratory of Water Resources and Hydropower Engineering Science, Wuhan University, Wuhan, 430072, China

5 <sup>2</sup>Hubei Key Laboratory of Water System Science for Sponge City Construction, Wuhan University, Wuhan, 430072, China

<sup>3</sup>NORCE Norwegian Research Centre, Bjerknes Centre for Climate Research, Bergen, Jahnebakken 5, 5008, Bergen, Norway

*Corresponding to:* Jie Chen (jiechen@whu.edu.cn)

**Abstract.** Land use and cover have been significantly changed all around the world during the last decade. In particular, the Grain for Green (GG) has resulted in significant changes in regional land use and cover, especially in China. The land use and cover change (LULCC) may lead to changes in regional climate. In this study, we take the Yangtze river basin as a case study and analyse the impacts of LULCC and reforestation on summer rainfall amounts and extremes based on the Weather Research and Forecasting model. Firstly, two observed land use and cover scenarios (1990 and 2010) were chosen to investigate the impacts of LULCC on the summer rainfall during the last decade. Secondly, two hypothetical reforestation scenarios (i.e., scenarios of 20% and 50% cropland changed to be forest) were taken based on the control year of 2010 to test the sensitivity of summer rainfall (amounts and extremes) to reforestation. The results showed that average summer rainfall and extreme summer daily rainfall decreased in the Yangtze River basin between 1990 and 2010 due to LULCC. Reforestation could increase summer rainfall amount and extremes, and the effects were more pronounced in the populated area than over the whole basin. Moreover, the effects of reforestation were influenced by the reforestation proportion. In addition, the summer rainfall increased less conversely with the transform proportion of cropland to forest increased from 20% to 50%. By analysing the changes in water vapor mixing ratio and upward moisture flux, it suggested that this result might be caused by the horizontal transportation processes of moisture. Although a comprehensive assessment of the impacts of LULCC on summer rainfall amounts and extremes was conducted, further studies are needed to investigate the uncertainty better.

## 1 Introduction

Human activities intensified land use and land cover change (LULCC) all around the world. With the human population increasing, more than one-third of global natural land uses were altered by human activities during the past three centuries (Hurt et al., 2006, 2011). The land surface was the lower boundary of atmospheric motion. Thus, LULCC could influence climate through various geophysical processes, such as the water and heat flux between land surface and atmosphere, surface wind speed, and boundary layer turbulence. LULCC could affect regional climate significantly, which had become a broad consensus as many studies proved this. For instance, Pitman et al. (2012) found that many of the temperature indices showed

30 locally strong and statistically significant responses to LULCC, such as that commonly 30-50% of the continental surfaces of the tropics and Northern and Southern Hemispheres were affected statistically significantly by LULCC. Wen et al. (2013) also found that land use changes in China could contribute to the warmest day temperature increases. Furthermore, Yu et al. (2020) found that the recent greening in China inferred a country-averaged surface cooling of 0.11 °C. Lin et al. (2020) showed that the urbanization tended to weak extreme rainfall events in urban agglomerations over coastal regions and intensify the  
35 influences on those in central/western China.

China is experiencing significant land use changes due to human activities, especially for the high-population-density Yangtze River basin (YRB). The Yangtze River is the longest river in Asia and the third-longest globally, with a length of over 6300 km. The YRB is the largest basin in China, which supports 34% of the national population and contributes 41.1% of China's gross domestic products (Zhang et al., 2014). Considering agricultural activities, urbanization, and dam construction, LULCC  
40 is quite significant in this basin (Liu et al., 2003; Zhang et al., 2009; Shen et al., 2019; Lin et al., 2021). Moreover, China launched the Grain for Green (GG) to expand forestland in 1999, aiming to reduce soil erosion and alleviate poverty (Robbins and Harrell, 2014; Li et al., 2020). From 1999 to 2008, forest coverage, reported as a percentage of the country's total land area, increased from 16.55 % to 20.36 %, adding 41.6 million ha of forest (Trac et al., 2013). By 2013, China government had invested over 320 billion RMB in afforesting over 29 million hectares (Zinda et al., 2017). The GG focused on increasing  
45 forest cover through cropland conversion and afforestation and reforestation of barren hillsides. Sloping cropland was a core target of the program, which was blamed for 65% of the 2 to 4 billion tons of silts released into the Yangtze and middle and upper reaches of the Yellow River each year (Bennett et al., 2011). Because of the GG, there was also a trend of LULCC in the YRB that returning cropland to forest. All the LULCC in the YRB changed the regional climate during the past few decades. For example, Cui et al. (2012) found that reforestation could increase evapotranspiration and decrease water yield at the forest  
50 stand level in the upper reach of the YRB. Liu et al. (2013) displayed that reforestation in the upstream of the YRB increased annual evapotranspiration, leading to reductions in surface flow and baseflow. Besides, Hu et al. (2015) found that LULCC in eastern China caused a decrease in rainfall over the lower reaches of the YRB of approximately 3% in the summer from the 1980s to the 2000s. Zhang et al. (2017) showed that the temperature decreased by 0.2-0.4°C in the midstream and downstream of the YRB in spring, autumn and winter, and the seasonal rainfall also decreased from the 1980s to the 2000s due to LULCC.  
55 Furthermore, Feng et al. (2018) showed that the land surface temperature over the Taihu Lake Basin, which was located in the lower reaches of the YRB, has been increasing since 1996 caused by local urbanization.

The YRB plays a vital role in ecosystem protection and economic development for the whole country. However, the YRB suffered from flooding frequently during the past decades. Summer rainfall from June to August is the leading cause of summer flooding in the YRB, which largely influences the lives of local people. Thus, it is crucial to better understand the impacts of

60 LULCC on summer rainfall in the YRB, especially the effects of the GG reforestation program. Although many studies estimated the impacts of LULCC on rainfall in the YRB, it should be noted that most of the previous studies only focused on the midstream and downstream of the YRB. Moreover, the sensitivity of summer rainfall to reforestation in the YRB was rarely investigated. And few previous studies discussed the potential physical mechanisms linked to the changes in summer rainfall under reforestation. To investigate the impacts of LULCC, especially the reforestation on rainfall, is of great  
65 importance for the economic and ecological development of the YRB as well as for China. There is an urgent need considering the Yangtze River Coordinated Protection Strategy proposed by the Chinese government in 2016, aiming to prioritise ecology and green development, promote well-coordinated environmental conservation, and avoid excessive development.

Therefore, this study took the YRB as a case study and investigated the impact of LULCC and reforestation on summer rainfall and extreme hazards (from June to August). More specifically, two observed LULCC scenarios were chosen to study the  
70 impacts of observed LULCC on summer rainfall, including both amounts and extremes, while two hypothetical reforestation scenarios were taken to quantitatively assess the impacts of reforestation on summer rainfall (amount and extremes) under different reforestation proportions. The differences in summer rainfall between the four land use scenarios (two observed and two hypothetical ones) were applied and investigated based on the Weather Research and Forecasting (WRF) model. The major objectives of this study were to: (1) estimate the impacts of LULCC and reforestation on summer rainfall (amount and  
75 extremes) in the YRB; and (2) investigate how the proportion of reforestation affects summer rainfall (amount and extremes) in the YRB.

To better understand the impacts of LULCC and reforestation on summer rainfall, the performance of WRF-simulated rainfall was first evaluated in section 4.1. Then, the changes in summer rainfall between the 1990 scenario and 2010 scenario were analysed to investigate the impacts of observed LULCC on summer rainfall in section 4.2. In sections 4.3.1 and 4.3.2, the  
80 impacts of reforestation on summer rainfall were analysed based on the spatial changes and area average changes, respectively. Moreover, in section 4.3.3 and 4.3.4, the impacts of reforestation on some other climate variables related to the rainfall were also investigated. These climate variables contained the surface skin temperature, 2m relative humidity, latent heat flux (LHF), sensible heat flux (SHF), and planetary boundary layer height (PBLH). The analyses of these variables aimed to explain the potential mechanisms of the changes in summer rainfall under reforestation. The discussions and conclusions are given at the  
85 end. Our results will contribute to a better understanding of regional climate characteristics (summer rainfall and extremes) under the impacts of LULCC and the reforestation program in the YRB and provide a knowledge base for ecological reconstruction programs in the future.

## 2 Study area and data

### 2.1 Study area

90 This study focuses on YRB (Fig. 1), which has a total area of  $\sim 1.8 \times 10^6 \text{ km}^2$  (Wang et al., 2018). The YRB is located between  $24^\circ\text{-}35^\circ\text{N}$  and  $90^\circ\text{-}122^\circ\text{E}$ , spanning from the eastern Tibetan Plateau to the East China Sea and crossing 19 provinces in China. The upper, middle, and lower reaches of the YRB cover  $1.0 \times 10^6 \text{ km}^2$ ,  $6.8 \times 10^5 \text{ km}^2$ , and  $1.2 \times 10^5 \text{ km}^2$ , respectively (Zhang et al., 2014). LULCC in the YRB was quite significant during the past few decades. The main types of LULCC including urbanization which leads to the conversion of cropland to the urban area in the middle and lower reaches (Liu et al., 2010, 2012; Gao et al., 2012), degradation of grassland caused by overgrazing in the headwater region (Gao et al., 2009;2010), and reforestation and afforestation as a result of the implementation of the GG (Liu et al., 2010; Li et al., 2014). The upper reaches of the YRB belong to a high-cold climate zone, whereas the middle and lower reaches belong to subtropical and temperate climate zones (Zhang et al., 2019a). The whole YRB is sensitive and vulnerable to climate change (Fang et al., 2010). The average air temperature ranges from 9 to 18 °C, and the average annual rainfall ranges from 692 to 1611 mm (Zhang et al., 2019a). The flash flooding in the Yangtze River basin is often caused by continuous rainfall that lasts for a few days, as it is a big basin (Chen et al., 2020; Nanding et al., 2020). A few hours of high-intensity rainfall do not cause severe flooding due to cascade reservoirs' construction along the river. Because of relatively good water and temperature conditions, vegetation productivity is generally high in this area. However, human activities are intensifying LULCC in the YRB from the upper reaches to the lower reaches (Sun et al., 2016), which will gradually change the local climate and influence agriculture production.

### 2.2 Data

This study used WRF simulations to investigate the impacts of LULCC on summer rainfall. The WRF model with the Advanced Research WRF dynamics solver version 3.9.1 was used (Skamarock et al., 2008). The WRF model was a flexible, state-of-the-art, non-hydrostatic, mesoscale numerical weather prediction, and atmospheric simulation system (Wagner et al., 2016). The lateral boundaries of the WRF model were forced with the  $0.5^\circ$  ERA-Interim reanalysis (Berrisford et al., 2011). The output interval of the WRF model was one day. The output variables of the WRF model contained rainfall, surface skin temperature, 2m relative humidity, LHF, SHF, and PBLH were used in this study to analyse the changes in rainfall under LULCC and the potential physical mechanisms.

Besides, the observed rainfall and temperature from 171 stations in the YRB were used for model validation (Fig. 1). The observed data were quality controlled and provided by the China Meteorological Data Sharing Service System. In our study, the observed data from stations were interpolated to model grids by the Inverse Distance Weight (IDW) interpolation method.

Meanwhile, to better validate the model performance, the ERA5 data were used as the benchmark to validate some thermodynamics variables as we did not have gauged observations for these variables. The spatial resolution of ERA5 data is 0.25°. In this study, the ERA5 data were interpolated to model grids by using the bilinear interpolation method. Moreover, to better understand the impacts of LULCC and reforestation on human lives, the 2010 Grid Population Dataset of China developed by Fu et al. (2014) was used. This dataset was developed based on remote sensing derived land use types and statistical population data. The spatial resolution of this dataset is 1km. This dataset was also interpolated to model grids using the IDW method.

In addition, the 1990 and 2010 land use data of the YRB were derived from the Landsat thematic mapper (TM) digital images (<http://www.dsac.cn/ServiceCase/Detail/174574>). It was interpreted based on the geometric shape, texture features, spatial distribution of the ground objects, and the spectral characteristics of images. Moreover, the outdoor survey and random sample check were also taken to enhance the accuracy of land use data. The land use changes were included in the WRF modelling by modifying the static geographical data, which further changed the simulation of subprocesses such as the vegetation phenology, canopy stomatal resistance, runoff, and groundwater in the land surface model Noah-MP (Li et al., 2018). Many parameters were used in Noah-MP to describe the characteristics of different land use types, such as albedo, HVT (Top of canopy), LAI (Monthly leaf area index), and VCMX25 (Maximum rate of carboxylation at 25 °C). When the land use changed, these parameters changed accordingly, which finally led to the changes in substance and energy exchanges between the atmosphere and land surface. In the study, we used the U.S. Geological Survey (USGS) land cover with 30s resolution (~ 1km resolution; "landuse\_30s\_with\_lakes") in the WRF Preprocessing System (WPS). The new land use data of 1990 and 2010 derived from the Landsat TM digital images at 1km resolution, was then used to replace the USGS land cover data in the WRF simulation in YRB. As the resolutions of the outer and inner WRF domain were set as 75km and 15km, respectively, the post-processed land use data was resampled from 1km to 75km and 15km by using the WPS. The dominant land use categories in model grids were then used for the Noah-MP model to reflect the intended land use changes correctly. The land use categories of the 1990 and 2010 land use data from Landsat TM digital images were defined by Liu et al. (2002, 2005), which were commonly used in China; while, the USGS data for WRF modelling has 24 land use categories (including lake). Thus, we used the method of land use type conversions based on the study of Hu et al. (2015). According to this method, the four classes of land use in the Liu's category from Landsat TM digital images, including the Forest (Liu code 21), Shrub (Liu code 22), Sparse woodland (Liu code 23), and Cut over land (Liu code 24), were converted to four classes of USGS land use category, including the Deciduous broadleaf forest (USGS code 11), Shrubland (USGS 45 code 8), Savanna (USGS code 10), and Savanna (USGS code 10), respectively.

### 3 Methods

#### 3.1 WRF Model configuration

The WRF model was set up with two nested domains in this study (Fig. 2). The resolutions of the outer and inner domain were 75 km ( $95 \times 82$  grids) and 15 km ( $236 \times 161$  grids), respectively. The model was set up with 32 vertical levels, and the top  
150 was at 50 hPa in all domains. The simulated period was 11 years from 2000 to 2010, with the first year taken as spin-up time. The initial and lateral boundary conditions were taken from the  $0.5^\circ$  ERA-Interim reanalysis data set. The time step was 90 s in both domains.

The choices of the microphysical scheme and cumulus parameterization are important for rainfall simulations (Li et al., 2017). According to previous studies in China (Hu et al., 2015; Zhang et al., 2019b; Feng et al., 2012; Xue et al., 2017), three  
155 microphysical schemes, i.e., Purdue Lin Scheme (Lin) (Chen and Sun, 2002), WRF Single-moment 5-class Scheme (WSM5) (Hong et al., 2004) and Eta (Ferrier) Scheme (Ferrier) (Rogers et al., 2001), and two cumulus parameterizations, i.e., Kain–Fritsch Scheme (KFN) (Kain, 2004) and Grell–Devenyi Ensemble Scheme (GD) (Grell and Dévényi, 2002), were chosen to validate the WRF model. Five parameterization schemes combinations (i.e., Lin-KFN, WSM5-KFN, Ferrier-KFN, Lin-GD and WSM5-GD) were then used to simulate the rainfall and temperature in the YRB during the 2005 summer, as there were  
160 several rainstorm events in 2005 summer for this basin. The most suitable parameterization schemes were chosen by comparing the performance of these five combinations in simulating these rainstorm events. The domain setting was same as the whole experiment which can be seen in Fig. 2. The simulation length was 3 months from June to August. Finally, the Lin and GD were set as microphysical scheme and cumulus parameterization, respectively.

Besides, the Yonsei University scheme was used for planetary boundary layer (Hong et al., 2006); the Dudhia scheme for  
165 shortwave radiation (Dudhia, 1988); the RRTM scheme for longwave radiation (Mlawer et al., 1997), and the Noah–MP scheme for the land surface model (Niu et al., 2011; Yang et al., 2011).

#### 3.2 The observed land use scenarios and hypothetical reforestation scenarios

The 1990 and 2010 land use scenarios were chosen to estimate the impacts of observed LULCC on summer rainfall amount and extremes in this study (Fig. 3a and 3b). From 1990 to 2010, the YRB suffered significant LULCC. In this period, the main  
170 LULCC in the YRB was urbanization and reforestation and the constructions of dams (Liu et al., 2003; Zhang et al., 2009; Shen et al., 2019). Furthermore, to investigate the impacts of reforestation due to the GG, we randomly changed 20% and 50% of the cropland to be forest based on the observed land use scenario of 2010 (Fig. 3c and 3d). These two reforestation scenarios were independently produced using random sampling and can be considered as two extreme cases in the progress of GG for the future. The hypothetical reforestation scenarios (named with 20% scenario and 50% scenario) were used in the study as

175 well as the observed land use in 1990 and 2010 (named with 1990 scenario and 2010 scenario). When we changed croplands to forests, the proportions of each type of croplands (forests) occupied in total croplands (forests) were kept fixed. Moreover, Table 1 displayed the percentages of land use classes under four scenarios, while Table A1 displayed the percentages of land cover under four scenarios after resampled to 15km.

## 4 Results

### 180 4.1 WRF Model validation

Figure 4 displays the spatial distributions of biases in the average summer rainfall and extreme summer daily rainfall (the 99th and 99.95th percentile of summer daily rainfall) simulated by WRF relative to observation and the qq-plot of observed rainfall versus simulated rainfall. From Fig. 4a, it can be seen that the biases of WRF-simulated average summer rainfall range from -120% to 200%. The positive biases are mainly observed in the transaction region between Sichuan Basin and Tibet plateau, with the maximum positive biases in the front zone of the Tibet plateau where the altitudes shift from low to high rapidly. The negative biases are mainly observed in the southeastern YRB, which were also found in other studies (Zhang et al., 2017). Figure 4b and 4c present the biases of 99th and 99.95th percentile of summer daily rainfall simulated by WRF relative to observation, respectively. The 99th and 99.95th percentile are the multiyear-averaged value from the 99th and 99.95th percentile rainfall in each year. The biases of 99th and 99.95th percentile of summer daily rainfall have almost identical spatial distributions and vary from -80% to 200%. The positive biases are mainly observed in the upstream area where the altitudes are higher than 1200 m, while the negative biases are mainly observed in the midstream and downstream areas with the maximum negative biases located in the south-eastern YRB. The qq-plot of observed basin-averaged rainfall versus simulated basin-averaged rainfall in Fig. 4d shows that the distribution of basin-averaged rainfall simulated by WRF is linearly correlated with that of observation.

195 Figure 5a presents the basin-averaged summer rainfall processes (from June to August) of observed, ERA5 and WRF-simulated rainfall (2010 scenario). The summer rainfall processes are the multiyear-averaged results of 10-year data from 2001 to 2010. It can be seen that ERA5 rainfall is overestimated comparing with the observed rainfall. The rainfall simulated by WRF falls within the spread between the observation and ERA5 rainfall at the beginning of summer and then become smaller than observation. Figure 5b presents the probability distribution functions (PDFs) of observed, ERA5 and WRF-simulated summer rainfall. The PDF of WRF-simulated rainfall is larger than that of observation when rainfall is smaller than 3 mm/day. The PDF of ERA5 rainfall is larger than that of observation when rainfall is larger than 5mm/day. In general, the PDF of WRF-simulated rainfall is more similar to that of observation than that of ERA5.

The spatial distribution of biases in average summer temperature simulated by WRF relative to observation is presented in Fig. 6a. The results show that temperature simulated by WRF tends to be lower than observation mainly in the upstream of the YRB. In most places of the YRB, the biases of temperature simulated by WRF range from -10% to 10%. The qq-plot of observed basin-averaged temperature versus simulated basin-averaged temperature in Fig. 6b shows that the distribution of basin-averaged temperature simulated by WRF is linearly correlated with that of observation. Figure 6c presents the basin-averaged summer temperature processes of observation, ERA5 and WRF-simulation. The summer temperature process simulated by WRF always falls within the spread between observation and ERA5 data from June to August.

To better validate the model performance, biases of the LHF, SHF and PBLH simulated by WRF are further analysed using ERA5 as the benchmark since no such observations are available in the study. Figure A1 presents the spatial distributions of biases in the LHF, SHF and PBLH simulated by WRF relative to ERA5. The LHF simulated by WRF is lower than ERA5 for most places of the YRB. The most significant biases are mainly observed in the upstream of the YRB (Fig. A1a). For most places of the YRB, biases of LHF range from -40% to 0. For the SHF (Fig. A1b), the negative biases are mainly observed in the upstream of the YRB, while the positive biases are mainly observed in the east of the YRB. For the PBLH (Fig. A1c), the positive biases are mainly observed in the upstream of the YRB, ranging from 20% to 100%. The negative biases are mainly observed in the midstream and downstream of the YRB, ranging from -80% to -20%. For most places of the YRB, biases of PBLH range from -20% to 20%. Although the absolute percent biases of these three variables between simulated data and ERA5 data are large than 20% in some places of the YRB, it does not mean that the model is not properly configured, as biases exist between observed data and ERA5 data and sometimes the biases are large (Gleixner et al., 2020; Tarek et al., 2020). For example, Al-Falahi et al. (2020) showed that the percent bias of average annual precipitation of ERA5 and ground stations was -88.97% over the Al Mahwit governorate in Yemen. Moreover, the simulated data are closer to the observation than the ERA5 data for the rainfall and temperature.

#### **4.2 The impacts of LULCC between the 2010 and 1990 on the summer rainfall**

Figure 7 shows the differences in the average summer rainfall and extreme summer daily rainfall in YRB between the 2010 and 1990 scenarios. According to the results, the average summer rainfall differences vary from -200 mm to 200 mm over the YRB (Fig. 7a). In most places of the YRB, the average summer rainfall decreases for the 2010 scenario compared with the 1990 scenario. The increases in average summer rainfall are mainly observed in the upstream and midstream. Compared with the average summer rainfall, the changes in extreme summer daily rainfall between the 1990 and 2010 scenarios show a slightly different spatial distribution (Fig. 7b and 7c). For example, the extreme summer daily rainfall increases up to 50 mm, mainly observed in the midstream and downstream. Besides, the changes in 99th and 99.95th percentile summer daily rainfall show



similar spatial distributions. The only difference is that the changes in 99.95th percentile summer daily rainfall are more significant than those in 99th percentile summer daily rainfall.

Furthermore, changes in rainfall between the 2010 and 1990 scenarios are analysed based on two types of area average: one is  
235 the area average based on all grids of the whole YRB (ALL-YRB), and the other is based on only the grids where the population density is greater than 100 per square kilometres (PDG-YRB). There are 3625 grids of the PDG-YRB out of 7935 grids of the whole YRB. The spatial distributions of grids of the PDG-YRB are displayed in Fig. 8. Figure A2 presents the changes in average summer rainfall and extreme summer daily rainfall between the 2010 and 1990 scenarios for ALL-YRB and PDG-YRB. Similarly, Figure A3 presents the changes in maximum 1-, 3- and 5-day summer rainfall between the 2010 and 1990  
240 scenarios. The results show that for most of the years, the rainfall statistics decrease from the 2010 scenario to the 1990 scenario. Moreover, the variation ranges of all statistics are always larger for PDG-YRB than for ALL-YRB.

To further understand the responses and sensitivities of summer rainfall to the impacts of LULCC, PDFs of average summer rainfall are shown in Fig. A4a and A4b for 1990 and 2010 scenarios, respectively. In general, the PDF of the 2010 scenario is higher than that of the 1990 scenario for both ALL-YRB and PDG-YRB. Moreover, the PDF of the same scenario (1990 or  
245 2010 scenario) is higher for PDG-YRB than for ALL-YRB. Figure A4c and A4d present the relative changes in multiyear-averaged monthly rainfall during the summer period between the 2010 and 1990 scenarios for both ALL-YRB and PDG-YRB. It can be found that the summer rainfall for the 2010 scenario decreases compared with the 1990 scenario as the relative changes from June to August are all negative.

### **4.3 The impacts of reforestation on the regional climate in the YRB**

#### **250 4.3.1 Changes in the summer rainfall**

Figure 9a and 9b show the spatial changes in the average summer rainfall between the 20% scenario and 2010 scenario, and between the 50% scenario and 2010 scenario, respectively. From the results, we can see that the average summer rainfall shows a large spatial heterogeneity over the study area. For the 20% scenario, the increases of average summer rainfall (up to 200 mm) are observed in most places of the YRB, while the decreases (up to -100 mm) are mainly observed in the upstream region.  
255 For the 50% scenario, the most significant increase in average summer rainfall is observed in the upstream of the YRB, while the most significant decrease is observed in the midstream region. When comparing the changes in average summer rainfall between the 20% and 50% scenarios, areas with an increase in average summer rainfall are more expansive for the 20% scenario than for the 50% scenario.

Figure 9c and 9d show the changes in the 99th percentile summer daily rainfall between the 20% scenario and 2010 scenario,  
260 and between the 50% scenario and 2010 scenario, respectively. For the 20% scenario, the 99th percentile summer daily rainfall

increases in most places of the YRB, while the decreases are mainly observed in the midstream. For the 50% scenario, the most significant increase in the 99th percentile summer daily rainfall (up to 50 mm) is mainly observed in the upstream of the YRB, while the most significant decrease (up to -50 mm) is mainly observed in the midstream. Besides, the decrease of the 99th percentile summer daily rainfall for the 50% scenario (up to -50 mm) is more significant than that for the 20% scenario (up to -40 mm). The spatial distributions of the changes in 99.95th percentile summer daily rainfall (Fig. 9e and 9f) are similar to those in 99th percentile summer daily rainfall for both 20% and 50% scenario. The only difference is that changes in 99.95th percentile summer daily rainfall are more significant than those in 99th percentile summer daily rainfall. The above results indicate that the average summer rainfall and extreme summer daily rainfall are sensitive to reforestation (conversion from cropland to forest).

#### 270 4.3.2 Area average changes in rainfall

Figure 10 presents the changes in average summer rainfall and extreme summer daily rainfall between the two hypothetical reforestation scenarios and the 2010 scenario for ALL-YRB and PDG-YRB. For most of the years, the average summer rainfall increases for both hypothetical reforestation scenarios comparing with the 2010 scenario. The mean values of changes in extreme summer daily rainfall among ten years also show that all the extreme indices increase for both hypothetical reforestation scenarios comparing with the 2010 scenario. The median values of the changes in all indices are more significant for the 20% scenario than for the 50% scenario for both ALL-YRB and PDG-YRB. Furthermore, the variation ranges of average and extreme summer daily rainfall are always larger for PDG-YRB than for ALL-YRB. In other words, the impacts of reforestation are more significant in the populated area.

Figure 11 presents the changes in maximum 1-, 3- and 5-day summer rainfall between the two hypothetical reforestation scenarios and the 2010 scenario. For the maximum 1-day rainfall, the median values of the 20% scenarios are positive, while those of the 50% scenario are negative. The maximum 3- and 5-day summer rainfall increase for most of the years for both hypothetical reforestation scenarios comparing with the 2010 scenario. Moreover, the median values of the changes in all indices are larger for the 20% scenario than for the 50% scenario for both ALL-YRB and PDG-YRB. Besides, the impacts of reforestation are also more significant in the populated area than over the whole basin.

285 To indicate more clearly the responses and sensitivities of summer rainfall to the impacts of reforestation, the PDFs of average summer rainfall for the three scenarios (i.e., 2010, 20% and 50% scenarios) are shown in Fig. 12a and 12b. Figure 12a presents the PDFs of average summer rainfall for the three scenarios for ALL-YRB. The PDFs of rainfall for the three scenarios are pretty similar averaged for ALL-YRB, except for the light rainfall of 2 ~ 4 mm/day, which is more for the 2010 scenario than for the 20% scenario and 50% scenario. Figure 12b presents the PDFs of average summer rainfall for three scenarios for PDG-YRB. The PDF of rainfall for the 2010 scenario is higher than that for the 20% and 50% scenarios when rainfall is smaller

than 4mm/day. The PDF for the 20% scenario is higher than that for the 50% scenario when rainfall is about 2 – 4 mm/day. Moreover, the PDF for the 20% scenario is higher than that for the 2010 scenario when rainfall is around 5.5-7.5 mm/day. Figure 12c and 12d present the relative changes in multiyear-averaged monthly rainfall during the summer period between the two hypothetical reforestation scenarios and the 2010 scenario for both ALL-YRB and PDG-YRB. For rainfall for both ALL-  
295 YRB and PDG-YRB, all the relative changes for the 20% and 50% scenarios are positive. The relative changes in rainfall for the 20% scenario are more significant than those for the 50% scenario, except in June for ALL-YRB. Furthermore, the relative changes for PDG-YRB are more significant than those for ALL-YRB for all months in summer. The results indicate that (1) the reforestation, no matter for the 20% or 50% scenarios, increases summer rainfall; (2) Under the impact of the reforestation, the 20% scenario results in a more significant increase of summer rainfall than the 50% scenario; (3) The impacts of  
300 reforestation on average monthly rainfall during the summer period are more significant for the populated area.

#### 4.3.3 Changes in the latent heat flux, sensible heat flux, and PBL height

The changes in the LHF, SHF, and PBLH are investigated after analysing the changes in rainfall under reforestation. Figure 13a and 13b show the changes in LHF between the 20% scenario and 2010 scenario, and between the 50% scenario and 2010 scenario, respectively. The spatial distributions of LHF changes for the 20% and 50% scenarios are similar. For example, the  
305 LHF increases in most places of the southeastern YRB and decreases in most places of the upstream and midstream for both scenarios. The most significant increases of LHF (up to 20 W/m<sup>2</sup>) are also mainly observed in the southeastern YRB for both scenarios. From the results of the significance test in Fig. 13a and 13b, it can be found that the increases of LHF were more significant than decreases after reforestation. The changes in SHF have similar spatial distribution for both 20% and 50% scenarios (Fig. 13c and Fig. 13d). The SHF decreases in many places of the YRB, while the increases of SHF are mainly  
310 observed in the north YRB. The largest SHF decreases up to -15 W/m<sup>2</sup> are mainly seen in the southeastern YRB. However, areas with increased SHF are more for the 50% scenario than for the 20% scenario. Moreover, through a quantitative investigation in changes of LHF and SHF over the whole basin, it can be found that the multiyear-averaged summer daily LHF increases by  $2.08 \times 10^3$  and  $4.82 \times 10^3$  W/m<sup>2</sup> for the 20% and 50% scenarios, respectively, while the multiyear-averaged summer daily SHF decreases by  $4.30 \times 10^3$  and increases by  $4.25 \times 10^3$  W/m<sup>2</sup> for the 20% and 50% scenarios, respectively. Figure 13e  
315 and 13f show the changes in PBLH between the 20% scenario and 2010 scenario, and between the 50% scenario and 2010 scenario, respectively. The spatial distributions of PBLH change are similar for both 20% and 50% scenarios. Nevertheless, areas with PBLH increases by more than 30 m or decreases by more than -30 m is more for the 50% scenario than for the 20% scenario.

The changes in SHF caused by reforestation can alter the thermodynamic variable PBLH. From Fig. 13, it can be seen that the  
320 changes in SHF and PBLH have a similar spatial pattern. When the SHF increases, it leads to the increases of PBLH, which

will increase the possibility of cloud formation and finally enhance the intensity and frequency of extreme rainfall (Shem and Shepherd, 2009).

#### 4.3.4 Changes in the summer temperature, relative humidity and water vapor mixing ratio

The changes in the summer temperature, 2m relative humidity and 2m water vapor mixing ratio under reforestation are also analysed. Figures 14a and 14b present the average summer temperature changes between the 20% scenario and 2010 scenario, and between the 50% scenario and 2010 scenario, respectively. The temperature here refers to surface skin temperature. For the 20% scenario, the average summer temperature decreases in most places of the YRB, while the decreases are mainly observed in the central YRB. In only a few small areas in the source region and the eastern part of the YRB, the temperature increases. For the 50% scenario, areas with decreased average summer temperature are reduced compared with that for the 20% scenario. The maximum drop in the summer temperature is  $-0.8\text{ }^{\circ}\text{C}$  for the 20% scenario and  $-0.6\text{ }^{\circ}\text{C}$  for the 50% scenario. Meanwhile, there are significant differences between the two scenarios in some regions. For example, in the north of the central YRB, the average summer temperature increases in the 50% scenario while decreases in the 20% scenario. Moreover, changes in 2m air temperature are also analysed, and the results are almost the same as changes in surface skin temperature (Fig. A5). Figure 14c and 14d present the changes in 2 m relative humidity between the 20% scenario and 2010 scenario, and between the 50% scenario and 2010 scenario, respectively. We can find that the relative humidity changes for these two hypothetical reforestation scenarios have different spatial distributions from the figures. For instance, for the 20% scenario, the relative humidity increases in most places of the YRB with the most significant increases (up to 6%) in the central YRB. When comparing Fig. 14c and Fig. 14d, it can be seen that more areas with increased relative humidity can be found in the 20% scenario than in the 50% scenario. Furthermore, the relative humidity decreases in the north of the central YRB in the 50% scenario, which is not observed in the 20% scenario. Figures 14e and 14f present the changes in the 2m water vapor mixing ratio between the 20% scenario and 2010 scenario and between the 50% scenario and 2010 scenario, respectively. The results show that the water vapor mixing increased at 2m, especially for the 20% scenario. For the 50% scenario, areas with the significant water vapor mixing ratio increased were more than areas with significant water vapor mixing ratio decreased.

From the changes in the surface skin temperature and 2m relative humidity under reforestation, it can be seen that the 2m relative humidity decreases where the surface skin temperature increases. Besides, the water vapor mixing ratio in the atmosphere increases, which finally provides conditions for the increases of summer rainfall amount and extremes.

## 5 Discussions

Comparing the WRF modelling results with observation data, the summer rainfall from the WRF model tends to have positive biases in the north-western YRB while negative biases in the south-eastern YRB. The explanations are that on the one hand,

350 the upstream of the YRB is a mountainous region, where has only few rainfall stations and many of the rainfall stations located in the valley, which may result in an underestimation of the rainfall. On the other hand, the resolution of topography used in the model of 15 km probably impacts the performance of rainfall. Previous studies found that the drag forces of the mesoscale (3-10 km) and microscale (<3 km) orography would prevent the moisture flux from being taken to the high-altitude complex terrain region (Wang et al., 2020). However, in our studies, the horizontal resolution of the inner domain is 15 km, which  
355 cannot take the mesoscale and microscale orography into account. Thus, the drag forces of the terrain are diminished, and more moisture is taken from the low-altitude region (i.e., the south-eastern YRB) to the high-altitude region (i.e., the upstream of the YRB), which finally causes that the simulated rainfall tends to have positive biases in the high elevation area over the upstream of the YRB, and negative biases in the low elevation area over the south-eastern YRB. We acknowledge that there are uncertainties from the bias of WRF modelling in the study. However, the WRF model can still be used to investigate the  
360 impacts of LULCC and reforestation on summer rainfall. The only difference in the initial conditions used to force the WRF model for the four scenarios is the land cover. Thus, the changes in summer rainfall between different scenarios can be considered as the results of LULCC.

The changes in average summer rainfall show a sizeable spatial heterogeneity between the 1990 and 2010 scenarios, while the extreme summer daily rainfall shows significant increases in most places of the midstream and downstream of the YRB. The  
365 land use changes from 1990 to 2010 involve not only the increase of forests but also the change of other land uses. Therefore, although the forests increase between 1990 and 2010, the rainfall decreases with the joint impacts of all other land use changes. Furthermore, the main LULCC in the midstream and downstream of the YRB between the 1990 and 2010 scenarios is the rapid expansion of the urban area. Therefore, it can be inferred that urbanization may increase the intensity of extreme summer daily rainfall at a local scale. Similar results can be found in other studies. For example, Wang et al. (2015) found that extreme  
370 rainfall events had a strong positive spatial correlation with the urban extent. Zhang et al. (2018) also found that urbanization led to an amplification of the total rainfall along with a shift in the location of the maximum rainfall and further increased the intensity and frequency of extreme flooding events. However, from the basin-averaged results, both the average summer rainfall and extreme summer rainfall decrease for the 2010 scenario compared with the 1990 scenario.

The rainfall changes between the two hypothetical reforestation scenarios (20% and 50% scenarios) and the 2010 scenario  
375 show that transforming cropland to forest increases summer rainfall. However, transforming different proportions of cropland to forest has different impacts on local rainfall. With the transform proportion of cropland to forest increases from 20% to 50%, the summer rainfall increases less conversely. To better explain this result, the changes in the water vapor mixing ratio at 2m (Fig. 14) and upward moisture flux at the surface (Fig. A6) are further analysed. It can be found that the number of grids showing increased upward moisture flux in the 50% scenario slightly exceeds that in the 20% scenario. In contrast, the 2m

380 water vapor mixing ratio increases over almost all basin in the 20% scenario while shows significant decreases in the midstream  
of the basin in the 50% scenarios. From the surface level to the 2m level, the moisture keeps increased in the 20% scenarios  
while decreases in the 50% scenarios. This suggests that the distribution of moisture may be changed by the horizontal  
transportation processes. Moreover, Yu et al. (2020) found that the vegetation greening reduced rainfall in some region in  
southern China, which may be caused by the East Asian monsoon, as the East Asian monsoon significantly influenced the  
385 summer rainfall patterns in China (Ding et al., 2007). Furthermore, comparing the simulation results from the whole YRB with  
the results from grids where the population density is greater than 100 per square kilometres, it can be seen that the impacts of  
LULCC on summer rainfall are more significant for the populated area, which means that reforestation will have significant  
impacts on human lives.

Although a comprehensive assessment of the impacts of LULCC on summer rainfall amount and extremes was conducted in  
390 this study, some issues remained. For example, only one regional climate model (i.e., the WRF model) was used in this study,  
although it has been widely used in China (Huang et al., 2020; Azmat et al., 2020). Some previous studies indicated that results  
from a single RCM had a significant uncertainty since RCMs could perform differently in the same region (Davin et al., 2020;  
Zhang et al., 2017). In this case, it is worthwhile to look at the impacts of LULCC on summer rainfall and extremes based on  
an ensemble of multiple RCMs in future researches. We also aware that convective parameterizations differ significantly in  
395 their treatment of the cloud up draughts and down draughts, mass-flux closure and triggering, often assuming that one is  
averaging over both cloud up draughts and the subsiding environment. As a result, all these schemes are better at predicting  
the area-average rainfall (Clark et al., 2016). Additionally, the cumulus parameterizations also introduce uncertainties to the  
model results (Liu et al., 2016). Besides, regarding the WRF spatial resolution impacts, we used 15 km in the study regarding  
a large nested domain focusing on the Yangtze River basin with a total area of  $\sim 1.8 \times 10^6$  km<sup>2</sup>. The modelling resolution in the  
400 study was comparable with other studies that investigate the impacts of land use/cover changes over a large region (e.g., Zhang  
et al., 2017; Zha et al., 2019; Zhang et al., 2021). However, we acknowledged that higher model resolution of WRF simulation,  
e.g., convection-permitting scale, may better represent rainfall processes and land surface (Knist et al., 2020; Kurkute et al.,  
2020).

Moreover, there were 32 eta levels of the model, and the top was at 50 hPa. We acknowledged that we did not test whether  
405 there were enough layers near the bottom to trust the surface values. However, many relevant studies used similar or less  
vertical levels to study the changes of these surface variables (e.g., Hu et al., 2015; Yu et al., 2020). Moreover, Gallus et al.  
(2009) found that doubling the number of vertical levels from 31 to 62 did not result in a consistent improvement in the rainfall  
forecasts. The skill might not be improved much by refining the number of levels, although we acknowledge that the finding  
from Gallus's study may be different if it is in a different study area. On the other hand, adding the number of levels requires

410 more computing resources and running time, which will limit what we can achieve in the study regarding it, since it is already quite heavy to finish around 40 years WRF simulations with such a big nested domain. Furthermore, we didn't use urban scheme in the WRF modelling in the study. However, the urban area was only 0.19 % of the total area in 1990 and increased to be 0.86% in 2010. In this case, the impact of urbanization is ignorable in the study, regarding the increased urban area is only around 0.67% of total area of YRB from 1990 to 2010.

415 Furthermore, the random sampling method was used to produce the two hypothetical reforestation scenarios in this study. Thus, the grids where the cropland was changed to be forest tended to be distributed evenly among the croplands in the YRB. However, the reforestation process usually happened in specific areas that were relative to local policy. It was challenging to gather the related policies from multiple local governments over such a big basin. It could also be noticed that the crops were mainly located in specific areas such as the Sichuan Basin and the middle and downstream of the YRB. Although we randomly  
420 chose the crop grids, the restoration grids concentrated on these specific areas similar to the actual reforestation processes. Despite these, this study could still provide a sight of what would happen to summer rainfall under reforestation.

## 6 Conclusions

In this study, analysis based on the WRF model simulations was used to research the impacts of LULCC and reforestation on summer rainfall amount and extremes in the YRB. Two observed scenarios (1990 and 2010 scenarios) were chosen to compare  
425 and investigate the changes in summer rainfall under the impacts of LULCC during the last decades. Besides, two hypothetical reforestation scenarios (20% and 50% scenarios) produced based on the 2010 scenario were used to test the sensitivity of summer rainfall to reforestation. The changes in summer rainfall between different scenarios were analysed, and the potential mechanisms were discussed. The main conclusions are outlined below:

1. LULCC largely influenced summer rainfall amount and extremes during 1990-2010 in the YRB. The LULCC between the  
430 1990 and 2010 scenarios decreases average summer rainfall. Although the extreme summer daily rainfall increases up to 50 mm in some places of the midstream and downstream, the overall pattern is decrease for the whole basin.

2. Reforestation can affect heat flux, surface skin temperature, relative humidity and PBLH in the YRB, leading to more water vapor mixing in the atmosphere, which provides conditions for the increases of summer rainfall amount and extremes. Moreover, the effects of reforestation are more pronounced in the populated area than over the whole basin.

435 3. Although reforestation increases summer rainfall both in the total amount and extremes, the differences exist in the scenarios with different reforestation proportions of 20% and 50%. Specifically, with the transform proportion of cropland to forest increases from 20% to 50%, the summer rainfall increases less conversely. By analysing the changes in water vapor mixing ratio and upward moisture flux, it suggests that this result may be caused by the horizontal transportation processes of moisture.

## Acknowledgements

- 440 This work has been partially supported by the Hubei Provincial Natural Science Foundation of China (Grant No. 2020CFA100), the National Natural Science Foundation of China (Grant No. 52079093, 51779176), the Overseas Expertise Introduction Project for Discipline Innovation (111 Project) funded by Ministry of Education and State Administration of Foreign Experts Affairs P.R. China (Grant No. B18037), and the Center for Climate Dynamics (SKD) through the Bjerknes Centre for Climate Research (CHEX and 100878-FTI). We thank Priscilla Mooney (NORCE) for providing her suggestions in the early analysis.
- 445 The numerical calculations in this paper have been done on the supercomputing system in the Supercomputing Center of Wuhan University.

## References

- Al-Falahi, A. H., Saddique, N., Spank, U., Gebrechorkos, S. H., and Bernhofer, C.: Evaluation the Performance of Several Gridded Precipitation Products over the Highland Region of Yemen for Water Resources Management, *Remote Sensing*, 12, 450 <https://doi.org/10.3390/rs12182984>, 2020.
- Azmat, M., Wahab, A., Huggel, C., Qamar, M. U., Hussain, E., Ahmad, S., and Waheed, A.: Climatic and hydrological projections to changing climate under CORDEX-South Asia experiments over the Karakoram-Hindukush-Himalayan water towers, *Science of The Total Environment*, 703, 135010, <https://doi.org/10.1016/j.scitotenv.2019.135010>, 2020.
- Bennett, M. T., Mehta, A., and Xu, J.: Incomplete property rights, exposure to markets and the provision of environmental 455 services in China, *China Economic Review*, 22, 485-498, <https://doi.org/10.1016/j.chieco.2010.12.002>, 2011.
- Berrisford, P., Dee, D. P., Poli, P., Brugge, R., Mark, F., Manuel, F., Kållberg, P. W., Kobayashi, S., Uppala, S., and Adrian, S.: The ERA-Interim archive Version 2.0, ECMWF, Shinfield Park, Reading, 2011.
- Chen, S.-H., and Sun, W.-Y.: A One-dimensional Time Dependent Cloud Model, *Journal of the Meteorological Society of Japan. Ser. II*, 80, 99-118, <https://doi.org/10.2151/jmsj.80.99>, 2002.
- 460 Chen, Y., Zhang, A., Zhang, Y., Cui, C., Wan, R., Wang, B., and Fu, Y.: A Heavy Precipitation Event in the Yangtze River Basin Led by an Eastward Moving Tibetan Plateau Cloud System in the Summer of 2016, *Journal of Geophysical Research: Atmospheres*, 125, <https://doi.org/10.1029/2020jd032429>, 2020.
- Clark, P., Roberts, N., Lean, H., Ballard, S. P., and Charlton-Perez, C.: Convection-permitting models: a step-change in rainfall forecasting, *Meteorological Applications*, 23, 165-181, <https://doi.org/10.1002/met.1538>, 2016.
- 465 Cui, X., Liu, S., and Wei, X.: Impacts of forest changes on hydrology: a case study of large watersheds in the upper reaches of Minjiang River watershed in China, *Hydrol. Earth Syst. Sci.*, 16, 4279-4290, <https://doi.org/10.5194/hess-16-4279-2012>, 2012.



- Davin, E. L., Rechid, D., Breil, M., Cardoso, R. M., Coppola, E., Hoffmann, P., Jach, L. L., Katragkou, E., de Noblet-Ducoudré, N., Radtke, K., Raffa, M., Soares, P. M. M., Sofiadis, G., Strada, S., Strandberg, G., Tölle, M. H., Warrach-Sagi, K., and Wulfmeyer, V.: Biogeophysical impacts of forestation in Europe: first results from the LUCAS (Land Use and Climate Across Scales) regional climate model intercomparison, *Earth System Dynamics*, 11, 183-200, <https://doi.org/10.5194/esd-11-183-2020>, 2020.
- Ding, Y., Ren, G., Zhao, Z., Xu, Y., Luo, Y., Li, Q., and Zhang, J.: Detection, causes and projection of climate change over China: An overview of recent progress, *Advances in Atmospheric Sciences*, 24, 954-971, <https://doi.org/10.1007/s00376-007-0954-4>, 2007.
- Dudhia, J.: Numerical Study of Convection Observed during the Winter Monsoon Experiment Using a Mesoscale Two-Dimensional Model, *Journal of the Atmospheric Sciences*, 46, 3077-3107, [https://doi.org/10.1175/1520-0469\(1989\)046<3077:NSOCOD>2.0.CO;2](https://doi.org/10.1175/1520-0469(1989)046<3077:NSOCOD>2.0.CO;2), 1988.
- Fang, J., Tang, Y., and Son, Y.: Why are East Asian ecosystems important for carbon cycle research?, *Sci China Life Sci*, 53, 753-756, <https://doi.org/10.1007/s11427-010-4032-2>, 2010.
- Feng, J.-M., Wang, Y.-L., Ma, Z.-G., and Liu, Y.-H.: Simulating the Regional Impacts of Urbanization and Anthropogenic Heat Release on Climate across China, *Journal of Climate*, 25, 7187-7203, <https://doi.org/10.1175/JCLI-D-11-00333.1>, 2012.
- Feng, Y., Li, H., Tong, X., Chen, L., and Liu, Y.: Projection of land surface temperature considering the effects of future land change in the Taihu Lake Basin of China, *Global and Planetary Change*, 167, 24-34, <https://doi.org/10.1016/j.gloplacha.2018.05.007>, 2018.
- Fu, J., Jiang, D., and Huang, Y.: 1 km Grid Population Dataset of China, Global Change Research Data Publishing and Repository, <http://10.3974/geodb.2014.01.06.v1>, 2014.
- Gallus, W. A., Aligo, E. A., and Segal, M.: On the Impact of WRF Model Vertical Grid Resolution on Midwest Summer Rainfall Forecasts, *Weather and Forecasting*, 24, 575-594, <https://doi.org/10.1175/2008waf2007101.1>, 2009.
- Gao, F., de Colstoun, E. B., Ma, R., Weng, Q., Masek, J. G., Chen, J., Pan, Y., and Song, C.: Mapping impervious surface expansion using medium-resolution satellite image time series: a case study in the Yangtze River Delta, China, *International Journal of Remote Sensing*, 33, 7609-7628, <https://doi.org/10.1080/01431161.2012.700424>, 2012.
- Gao, Q.-z., Wan, Y.-f., Xu, H.-m., Li, Y., Jiangcun, W.-z., and Borjigidai, A.: Alpine grassland degradation index and its response to recent climate variability in Northern Tibet, China, *Quaternary International*, 226, 143-150, <https://doi.org/10.1016/j.quaint.2009.10.035>, 2010.
- Gao, Q., Li, Y., Wan, Y., Qin, X., Jiangcun, W., and Liu, Y.: Dynamics of alpine grassland NPP and its response to climate change in Northern Tibet, *Climatic Change*, 97, 515-528, <https://doi.org/10.1007/s10584-009-9617-z>, 2009.

- Gleixner, S., Demissie, T., and Diro, G. T.: Did ERA5 Improve Temperature and Precipitation Reanalysis over East Africa?, *Atmosphere*, 11, <https://doi.org/10.3390/atmos11090996>, 2020.
- 500 Grell, G. A., and Dévényi, D.: A generalized approach to parameterizing convection combining ensemble and data assimilation techniques, *Geophysical Research Letters*, 29, 38-31-38-34, <https://doi.org/10.1029/2002gl015311>, 2002.
- Hong, S.-Y., Dudhia, J., and Chen, S.-H.: A Revised Approach to Ice Microphysical Processes for the Bulk Parameterization of Clouds and Precipitation, *Monthly Weather Review*, 132, 103-120, [https://doi.org/10.1175/1520-0493\(2004\)132<0103:ARATIM>2.0.CO;2](https://doi.org/10.1175/1520-0493(2004)132<0103:ARATIM>2.0.CO;2), 2004.
- 505 Hong, S.-Y., Noh, Y., and Dudhia, J.: A New Vertical Diffusion Package with an Explicit Treatment of Entrainment Processes, *Monthly Weather Review*, 134, 2318-2341, <https://doi.org/10.1175/MWR3199.1>, 2006.
- Hu, Y., Zhang, X.-Z., Mao, R., Gong, D.-Y., Liu, H.-b., and Yang, J.: Modeled responses of summer climate to realistic land use/cover changes from the 1980s to the 2000s over eastern China, *Journal of Geophysical Research: Atmospheres*, 120, 167-179, <https://doi.org/10.1002/2014jd022288>, 2015.
- 510 Huang, Y., Wang, Y., Xue, L., Wei, X., Zhang, L., and Li, H.: Comparison of three microphysics parameterization schemes in the WRF model for an extreme rainfall event in the coastal metropolitan City of Guangzhou, China, *Atmospheric Research*, 240, 104939, <https://doi.org/10.1016/j.atmosres.2020.104939>, 2020.
- HURTT, G. C., FROLKING, S., FEARON, M. G., MOORE, B., SHEVLIKOVA, E., MALYSHEV, S., PACALA, S. W., and HOUGHTON, R. A.: The underpinnings of land-use history: three centuries of global gridded land-use transitions, wood-  
 515 harvest activity, and resulting secondary lands, *Global Change Biology*, 12, 1208-1229, <https://doi.org/10.1111/j.1365-2486.2006.01150.x>, 2006.
- Hurt, G. C., Chini, L. P., Frolking, S., Betts, R. A., Feddema, J., Fischer, G., Fisk, J. P., Hibbard, K., Houghton, R. A., Janetos, A., Jones, C. D., Kindermann, G., Kinoshita, T., Klein Goldewijk, K., Riahi, K., Shevliakova, E., Smith, S., Stehfest, E., Thomson, A., Thornton, P., van Vuuren, D. P., and Wang, Y. P.: Harmonization of land-use scenarios for the period 1500–  
 520 2100: 600 years of global gridded annual land-use transitions, wood harvest, and resulting secondary lands, *Climatic Change*, 109, 117, <https://doi.org/10.1007/s10584-011-0153-2>, 2011.
- Kain, J. S.: The Kain–Fritsch Convective Parameterization: An Update, *Journal of Applied Meteorology*, 43, 170-181, [https://doi.org/10.1175/1520-0450\(2004\)043<0170:TKCPAU>2.0.CO;2](https://doi.org/10.1175/1520-0450(2004)043<0170:TKCPAU>2.0.CO;2), 2004.
- Knist, S., Goergen, K., and Simmer, C.: Evaluation and projected changes of precipitation statistics in convection-permitting  
 525 WRF climate simulations over Central Europe, *Climate Dynamics*, 55, 325-341, <https://doi.org/10.1007/s00382-018-4147-x>, 2020.

- Kurkute, S., Li, Z., Li, Y., and Huo, F.: Assessment and projection of the water budget over western Canada using convection-permitting weather research and forecasting simulations, *Hydrology and Earth System Sciences*, 24, 3677-3697, <https://doi.org/10.5194/hess-24-3677-2020>, 2020.
- 530 Li, J., Chen, F., Zhang, G., Barlage, M., Gan, Y., Xin, Y., and Wang, C.: Impacts of Land Cover and Soil Texture Uncertainty on Land Model Simulations Over the Central Tibetan Plateau, *Journal of Advances in Modeling Earth Systems*, 10, 2121-2146, <https://doi.org/10.1029/2018ms001377>, 2018.
- Li, L., Gochis, D. J., Sobolowski, S., and Mesquita, M. D. S.: Evaluating the present annual water budget of a Himalayan headwater river basin using a high-resolution atmosphere-hydrology model, *Journal of Geophysical Research: Atmospheres*, 122, 4786-4807, <https://doi.org/10.1002/2016jd026279>, 2017.
- 535 Li, S., Xu, M., and Sun, B.: Long-term hydrological response to reforestation in a large watershed in southeastern China, *Hydrological Processes*, 28, 5573-5582, <https://doi.org/10.1002/hyp.10018>, 2014.
- Li, W., Chen, J., and Zhang, Z.: Forest quality-based assessment of the Returning Farmland to Forest Program at the community level in SW China, *Forest Ecology and Management*, 461, 117938, <https://doi.org/10.1016/j.foreco.2020.117938>, 2020.
- 540 Lin, L., Gao, T., Luo, M., Ge, E., Yang, Y., Liu, Z., Zhao, Y., and Ning, G.: Contribution of urbanization to the changes in extreme climate events in urban agglomerations across China, *Science of The Total Environment*, 744, 140264, <https://doi.org/10.1016/j.scitotenv.2020.140264>, 2020.
- Lin, Q., Chen, J., Li, W., Huang, K., Tan, X., and Chen, H.: Impacts of land use change on thermodynamic and dynamic changes of precipitation for the Yangtze River Basin, China, *International Journal of Climatology*, n/a, <https://doi.org/10.1002/joc.7037>, 2021.
- 545 Liu, C., Ikeda, K., Rasmussen, R., Barlage, M., Newman, A. J., Prein, A. F., Chen, F., Chen, L., Clark, M., Dai, A., Dudhia, J., Eidhammer, T., Gochis, D., Gutmann, E., Kurkute, S., Li, Y., Thompson, G., and Yates, D.: Continental-scale convection-permitting modeling of the current and future climate of North America, *Climate Dynamics*, 49, 71-95, <https://doi.org/10.1007/s00382-016-3327-9>, 2016.
- 550 Liu, J., Liu, M., Deng, X., Zhuang, D., Zhang, Z., and Luo, D.: The land use and land cover change database and its relative studies in China, *Journal of Geographical Sciences*, 12, 275-282, <https://doi.org/10.1007/BF02837545>, 2002.
- Liu, J., Liu, M., Zhuang, D., Zhang, Z., and Deng, X.: Study on spatial pattern of land-use change in China during 1995–2000, *Science in China Series D: Earth Sciences*, 46, 373-384, <https://doi.org/10.1360/03yd9033>, 2003.

- 555 Liu, J., Liu, M., Tian, H., Zhuang, D., Zhang, Z., Zhang, W., Tang, X., and Deng, X.: Spatial and temporal patterns of China's cropland during 1990–2000: An analysis based on Landsat TM data, *Remote Sensing of Environment*, 98, 442-456, <https://doi.org/10.1016/j.rse.2005.08.012>, 2005.
- Liu, J., Zhang, Z., Xu, X., Kuang, W., Zhou, W., Zhang, S., Li, R., Yan, C., Yu, D., Wu, S., and Jiang, N.: Spatial patterns and driving forces of land use change in China during the early 21st century, *Journal of Geographical Sciences*, 20, 483-494, 560 <https://doi.org/10.1007/s11442-010-0483-4>, 2010.
- Liu, J., Zhang, Q., and Hu, Y.: Regional differences of China's urban expansion from late 20th to early 21st century based on remote sensing information, *Chinese Geographical Science*, 22, 1-14, <https://doi.org/10.1007/s11769-012-0510-8>, 2012.
- Liu, Y., Zhang, X., Xia, D., You, J., Rong, Y., and Bakir, M.: Impacts of Land-Use and Climate Changes on Hydrologic Processes in the Qingyi River Watershed, China, *Journal of Hydrologic Engineering*, 18, 1495-1512, 565 [https://doi.org/10.1061/\(asce\)he.1943-5584.0000485](https://doi.org/10.1061/(asce)he.1943-5584.0000485), 2013.
- Mlawer, E. J., Taubman, S. J., Brown, P. D., Iacono, M. J., and Clough, S. A.: Radiative transfer for inhomogeneous atmospheres: RRTM, a validated correlated-k model for the longwave, *Journal of Geophysical Research: Atmospheres*, 102, 16663-16682, <https://doi.org/10.1029/97JD00237>, 1997.
- Nanding, N., Chen, Y., Wu, H., Dong, B., Tian, F., Lott, F. C., Tett, S. F. B., Rico-Ramirez, M. A., Chen, Y., Huang, Z., Yan, 570 Y., Li, D., Li, R., Wang, X., and Fan, X.: Anthropogenic Influences on 2019 July Precipitation Extremes Over the Mid–Lower Reaches of the Yangtze River, *Frontiers in Environmental Science*, 8, <https://doi.org/10.3389/fenvs.2020.603061>, 2020.
- Niu, G.-Y., Yang, Z.-L., Mitchell, K. E., Chen, F., Ek, M. B., Barlage, M., Kumar, A., Manning, K., Niyogi, D., Rosero, E., Tewari, M., and Xia, Y.: The community Noah land surface model with multiparameterization options (Noah-MP): 1. Model description and evaluation with local-scale measurements, *Journal of Geophysical Research: Atmospheres*, 116, 575 <https://doi.org/10.1029/2010JD015139>, 2011.
- Pitman, A. J., de Noblet-Ducoudré, N., Avila, F. B., Alexander, L. V., Boisier, J. P., Brovkin, V., Delire, C., Cruz, F., Donat, M. G., Gayler, V., van den Hurk, B., Reick, C., and Voldoire, A.: Effects of land cover change on temperature and rainfall extremes in multi-model ensemble simulations, *Earth System Dynamics*, 3, 213-231, <https://doi.org/10.5194/esd-3-213-2012>, 2012.
- 580 Robbins, A. S. T., and Harrell, S.: Paradoxes and Challenges for China's Forests in the Reform Era, *The China Quarterly*, 218, 381-403, <https://doi.org/10.1017/S0305741014000344>, 2014.
- Rogers, E., T. Black, B. Ferrier, Y. Lin, D. Parrish, and DiMego, G.: Changes to the NCEP Meso Eta Analysis and Forecast System: Increase in resolution, new cloud microphysics, modified precipitation assimilation, modified 3DVAR analysis., *NWS Technical Procedures Bulletin*, 2001.

- 585 Shem, W., and Shepherd, M.: On the impact of urbanization on summertime thunderstorms in Atlanta: Two numerical model case studies, *Atmospheric Research*, 92, 172-189, <https://doi.org/10.1016/j.atmosres.2008.09.013>, 2009.
- Shen, S., Yue, P., and Fan, C.: Quantitative assessment of land use dynamic variation using remote sensing data and landscape pattern in the Yangtze River Delta, China, *Sustainable Computing: Informatics and Systems*, 23, 111-119, <https://doi.org/10.1016/j.suscom.2019.07.006>, 2019.
- 590 Skamarock, W. C., Klemp, J. B., Dudhia, J., Gill, , D. O., B., D., , and Duda, M. G.: A Description of the Advanced Research WRF Version 3 (No. NCAR/TN-475+STR), University Corporation for Atmospheric Research, <https://doi.org/10.5065/D68S4MVH>, 2008.
- Sun, X., Li, C. a., Kuiper, K. F., Zhang, Z., Gao, J., and Wijbrans, J. R.: Human impact on erosion patterns and sediment transport in the Yangtze River, *Global and Planetary Change*, 143, 88-99, <https://doi.org/10.1016/j.gloplacha.2016.06.004>,
- 595 2016.
- Tarek, M., Brissette, F. P., and Arsenault, R.: Evaluation of the ERA5 reanalysis as a potential reference dataset for hydrological modelling over North America, *Hydrol. Earth Syst. Sci.*, 24, 2527-2544, <https://doi.org/10.5194/hess-24-2527-2020>, 2020.
- Trac, C. J., Schmidt, A. H., Harrell, S., and Hinckley, T. M.: Is the Returning Farmland to Forest Program a Success? Three
- 600 Case Studies from Sichuan, *Environ Pract*, 15, 350-366, <https://doi.org/10.1017/S1466046613000355>, 2013.
- Wagner, S., Fersch, B., Yuan, F., Yu, Z., and Kunstmann, H.: Fully coupled atmospheric-hydrological modeling at regional and long-term scales: Development, application, and analysis of WRF-HMS, *Water Resources Research*, 52, 3187-3211, <https://doi.org/10.1002/2015WR018185>, 2016.
- Wang, D., Jiang, P., Wang, G., and Wang, D.: Urban extent enhances extreme precipitation over the Pearl River Delta, China,
- 605 *Atmospheric Science Letters*, 16, 310-317, <https://doi.org/10.1002/asl2.559>, 2015.
- Wang, Y., Rhoads, B. L., Wang, D., Wu, J., and Zhang, X.: Impacts of large dams on the complexity of suspended sediment dynamics in the Yangtze River, *Journal of Hydrology*, 558, 184-195, <https://doi.org/10.1016/j.jhydrol.2018.01.027>, 2018.
- Wang, Y., Yang, K., Zhou, X., Chen, D., Lu, H., Ouyang, L., Chen, Y., Lazhu, and Wang, B.: Synergy of orographic drag parameterization and high resolution greatly reduces biases of WRF-simulated precipitation in central Himalaya, *Climate*
- 610 *Dynamics*, <https://doi.org/10.1007/s00382-019-05080-w>, 2020.
- Wen, Q. H., Zhang, X., Xu, Y., and Wang, B.: Detecting human influence on extreme temperatures in China, *Geophysical Research Letters*, 40, 1171-1176, <https://doi.org/10.1002/grl.50285>, 2013.

- Xue, H., Jin, Q., Yi, B., Mullendore, G. L., Zheng, X., and Jin, H.: Modulation of Soil Initial State on WRF Model Performance Over China, *Journal of Geophysical Research: Atmospheres*, 122, 11,278-211,300, <https://doi.org/10.1002/2017JD027023>, 615 2017.
- Yang, Z.-L., Niu, G.-Y., Mitchell, K. E., Chen, F., Ek, M. B., Barlage, M., Longuevergne, L., Manning, K., Niyogi, D., Tewari, M., and Xia, Y.: The community Noah land surface model with multiparameterization options (Noah-MP): 2. Evaluation over global river basins, *Journal of Geophysical Research: Atmospheres*, 116, <https://doi.org/10.1029/2010JD015140>, 2011.
- Yu, L., Liu, Y., Liu, T., and Yan, F.: Impact of recent vegetation greening on temperature and precipitation over China, *Agricultural and Forest Meteorology*, 295, <https://doi.org/10.1016/j.agrformet.2020.108197>, 620 2020.
- Zha, J., Zhao, D., Wu, J., and Zhang, P.: Numerical simulation of the effects of land use and cover change on the near-surface wind speed over Eastern China, *Climate Dynamics*, 53, 1783-1803, <https://doi.org/10.1007/s00382-019-04737-w>, 2019.
- Zhang, D., Liu, X., and Bai, P.: Assessment of hydrological drought and its recovery time for eight tributaries of the Yangtze River (China) based on downscaled GRACE data, *Journal of Hydrology*, 568, 592-603, 625 <https://doi.org/10.1016/j.jhydrol.2018.11.030>, 2019a.
- Zhang, H., Wu, C., Chen, W., and Huang, G.: Effect of urban expansion on summer rainfall in the Pearl River Delta, South China, *Journal of Hydrology*, 568, 747-757, <https://doi.org/10.1016/j.jhydrol.2018.11.036>, 2019b.
- Zhang, J., Zhengjun, L., and Xiaoxia, S.: Changing landscape in the Three Gorges Reservoir Area of Yangtze River from 1977 to 2005: Land use/land cover, vegetation cover changes estimated using multi-source satellite data, *International Journal of Applied Earth Observation and Geoinformation*, 11, 403-412, <https://doi.org/10.1016/j.jag.2009.07.004>, 630 2009.
- Zhang, W., Villarini, G., Vecchi, G. A., and Smith, J. A.: Urbanization exacerbated the rainfall and flooding caused by hurricane Harvey in Houston, *Nature*, 563, 384-388, <https://doi.org/10.1038/s41586-018-0676-z>, 2018.
- Zhang, X., Xiong, Z., Zhang, X., Shi, Y., Liu, J., Shao, Q., and Yan, X.: Simulation of the climatic effects of land use/land cover changes in eastern China using multi-model ensembles, *Global and Planetary Change*, 154, 1-9, 635 <https://doi.org/10.1016/j.gloplacha.2017.05.003>, 2017.
- Zhang, X., Chen, J., and Song, S.: Divergent impacts of land use/cover change on summer precipitation in eastern China from 1980 to 2000, *International Journal of Climatology*, 41, 2360-2374, <https://doi.org/10.1002/joc.6963>, 2021.
- Zhang, Y., Song, C., Zhang, K., Cheng, X., Band, L. E., and Zhang, Q.: Effects of land use/land cover and climate changes on terrestrial net primary productivity in the Yangtze River Basin, China, from 2001 to 2010, *Journal of Geophysical Research: Biogeosciences*, 119, 1092-1109, <https://doi.org/10.1002/2014JG002616>, 640 2014.
- Zinda, J. A., Trac, C. J., Zhai, D., and Harrell, S.: Dual-function forests in the returning farmland to forest program and the flexibility of environmental policy in China, *Geoforum*, 78, 119-132, <https://doi.org/10.1016/j.geoforum.2016.03.012>, 2017.

## Tables

**Table 1. The percentages of land use classes under four scenarios.**

Scenarios	Cropland	Forest	Grassland	Water and wetland	Urban	Unused land
1990 scenario	29.15	42.82	23.50	1.65	0.19	2.69
2010 scenario	28.48	43.60	23.13	1.79	0.86	2.14
20% scenario	22.80	49.28	23.13	1.79	0.86	2.14
50% scenario	14.58	57.50	23.13	1.79	0.86	2.14

645

## Figures

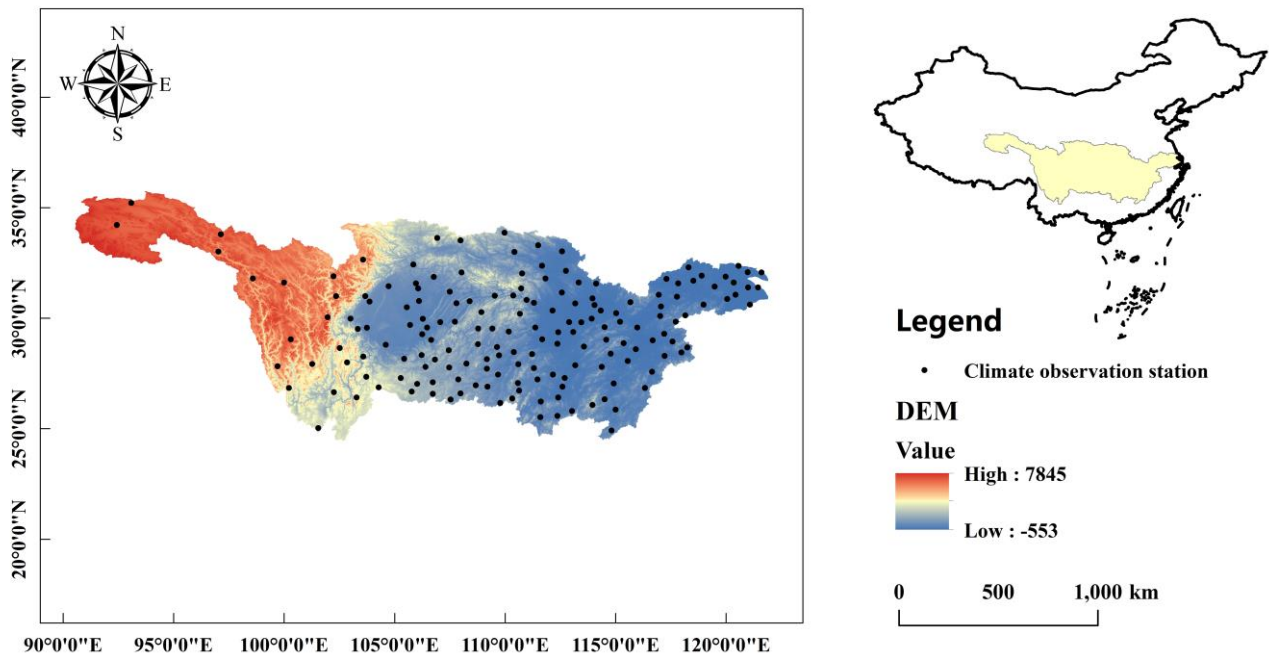
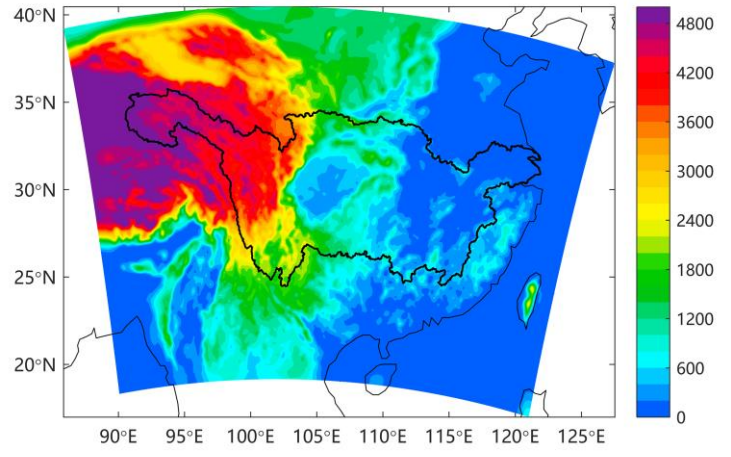
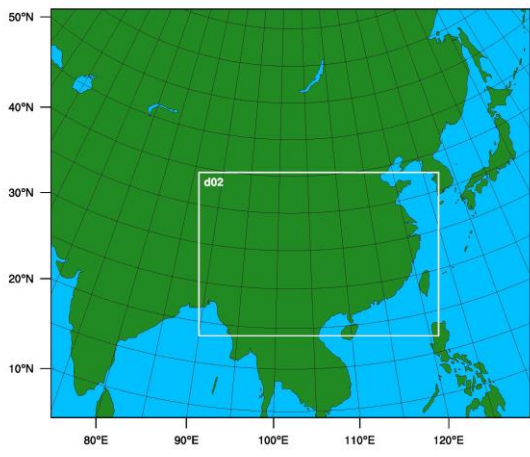


Figure 1. The location and topography of the Yangtze River basin and the location of climate observation stations.

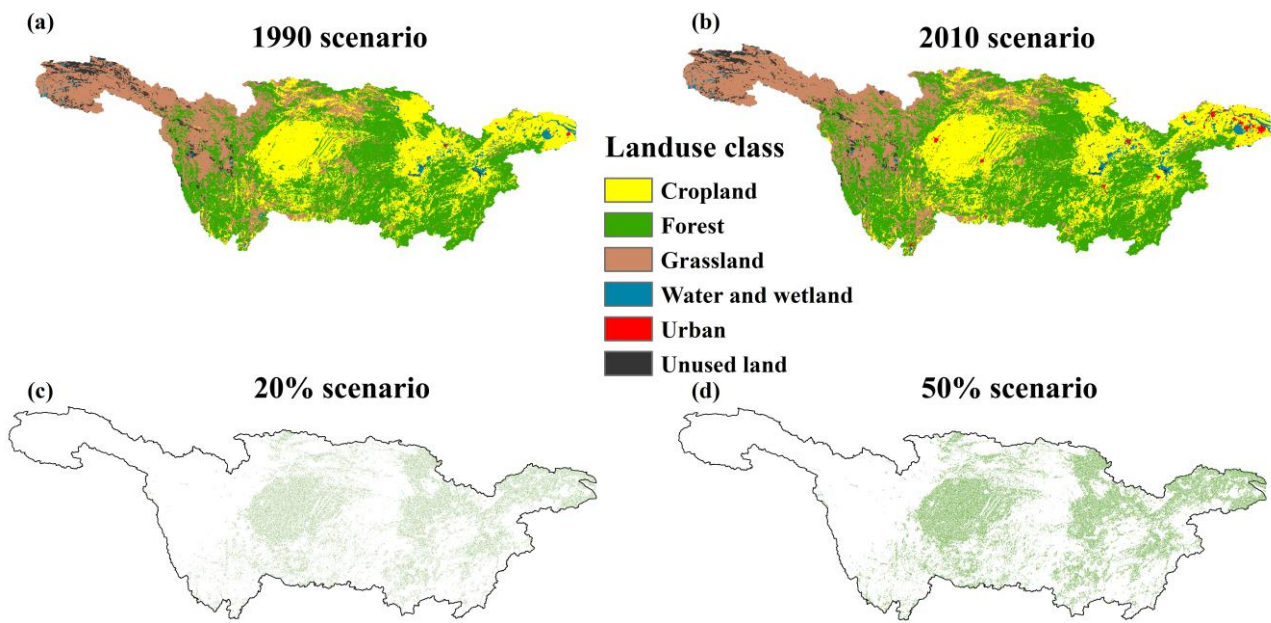


### WPS Domain Configuration

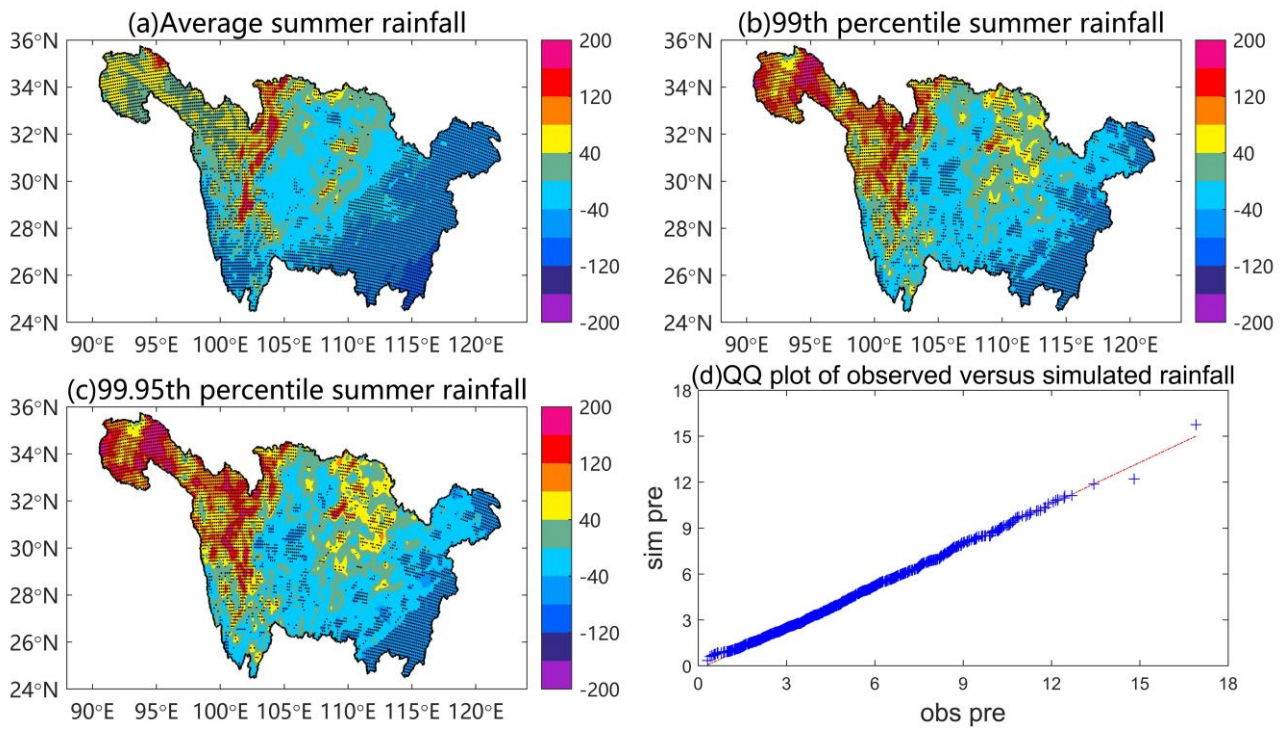


650

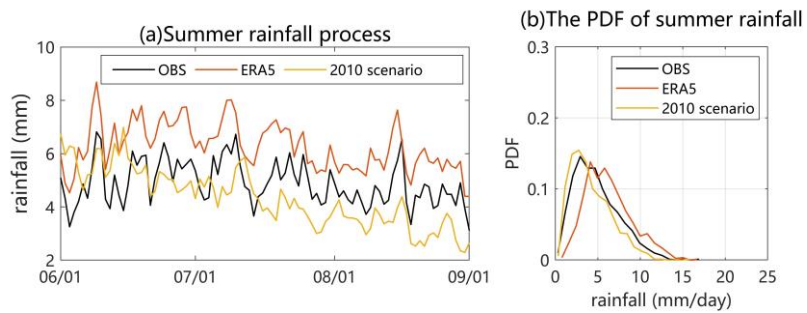
Figure 2. The WRF model domain and the model topography (units: m).



655 **Figure 3. (a-b) Land use and cover under 1990 and 2010 scenarios; (c-d) Land use and cover changes between the two hypothesis scenarios (20% and 50% scenarios) and 2010 scenario.**

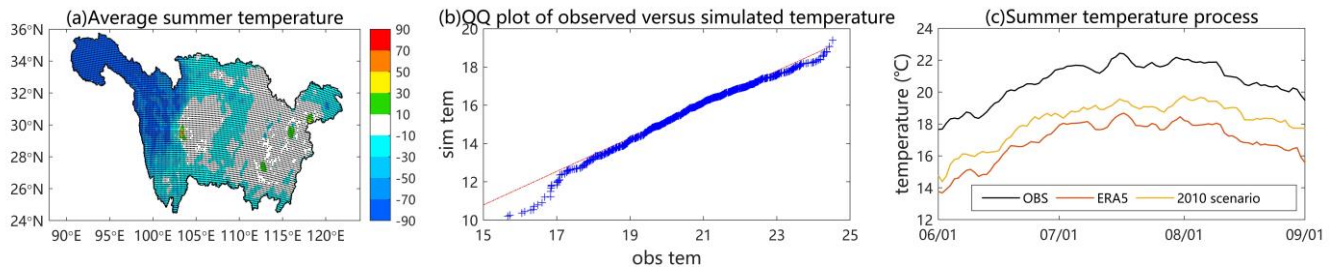


660 **Figure 4.** The bias of (a) average summer rainfall (%), (b) 99th percentile summer rainfall (%) and (c) 99.95th percentile summer rainfall (%) between the 2010 scenario and observed data, and (d) the qq-plot of observed rainfall versus simulated rainfall. The stippling regions show statistically significance of bias identified by t-test at a 5% significance level.



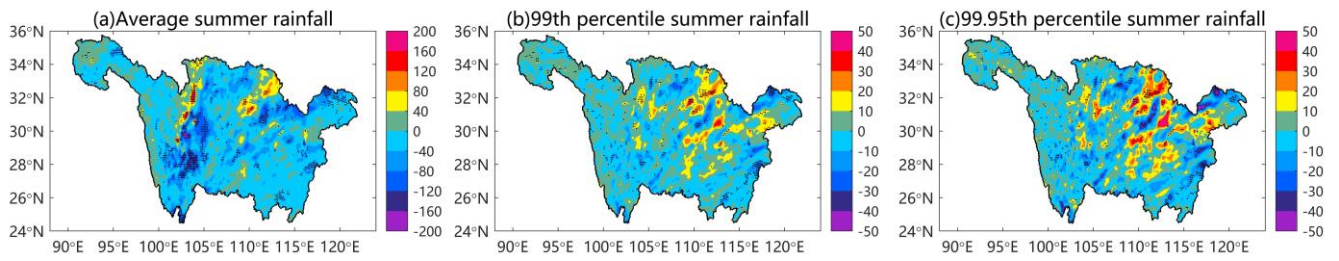
**Figure 5. (a) The basin-averaged summer rainfall processes of observation, ERA5 and 2010 scenario; (b) The probability distribution functions of summer rainfall of observation, ERA5 and 2010 scenario.**

665



**Figure 6. (a) The biases of average summer temperature (%) between the 2010 scenario and observed data, the stippling regions show statistically significance of bias identified by t-test at a 5% significance level.; (b) The qq-plot of observed temperature versus simulated temperature; (c) The basin-averaged summer temperature processes of observation, ERA5 and 2010 scenario.**

670



**Figure 7. The changes in (a) average summer rainfall (mm), (b) 99th percentile summer rainfall (mm/day) and (c) 99.95th percentile summer rainfall (mm/day) between the 2010 scenario and 1990 scenario. The stippling regions show statistically significance of changes identified by t-test at a 5% significance level.**

675

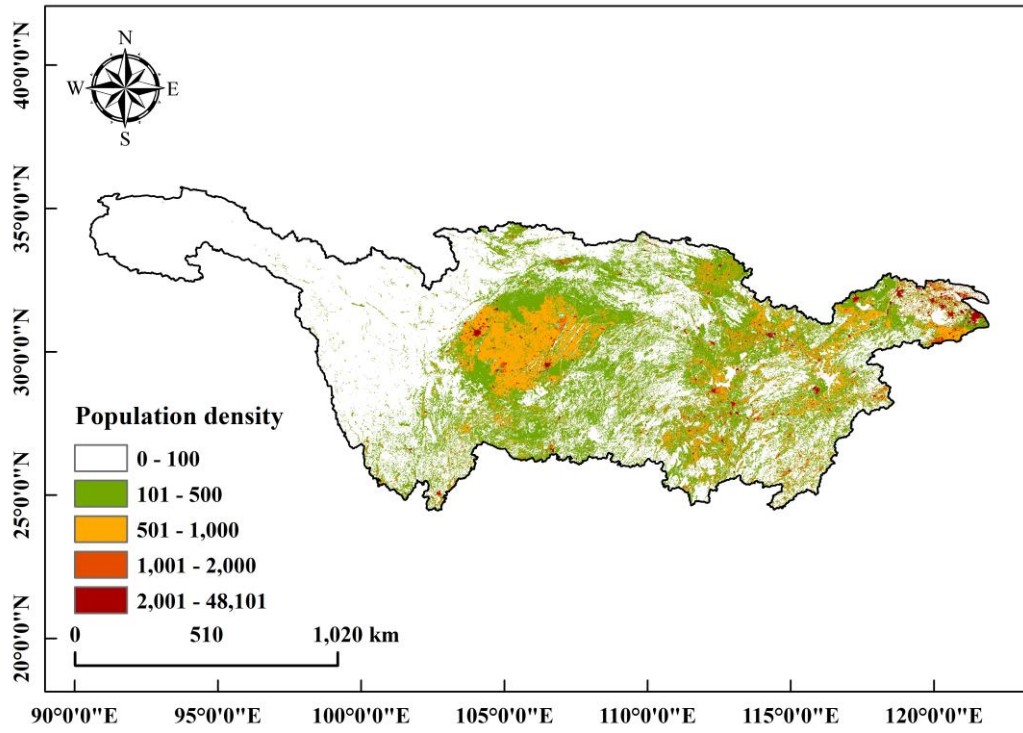
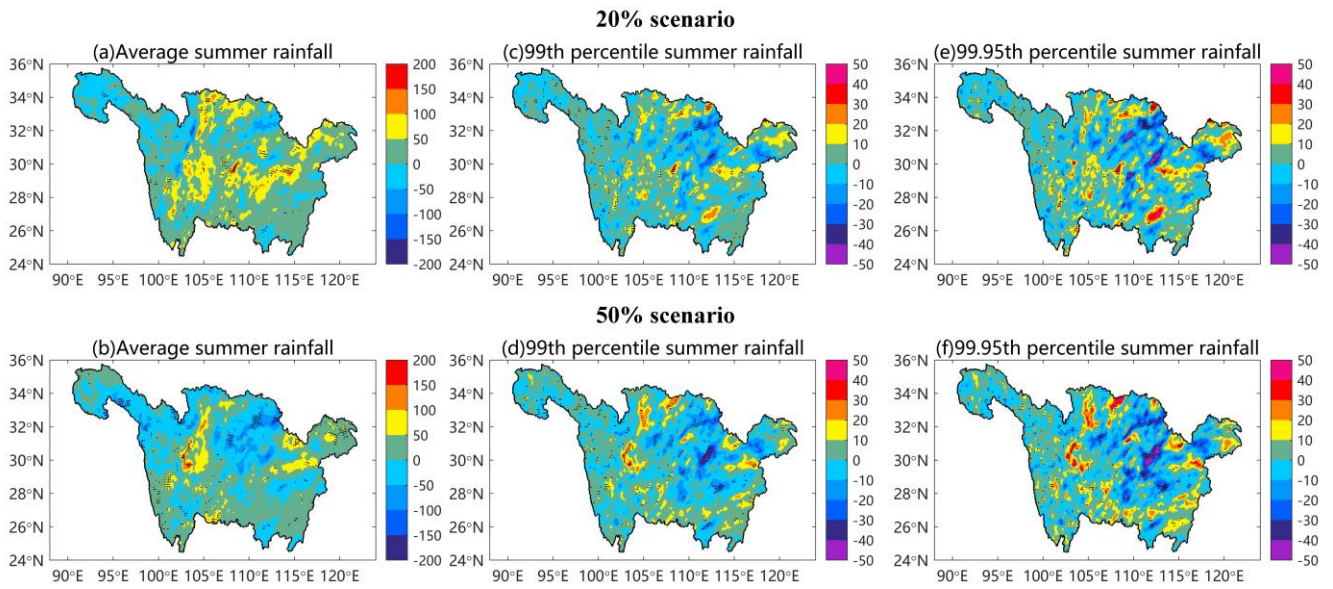


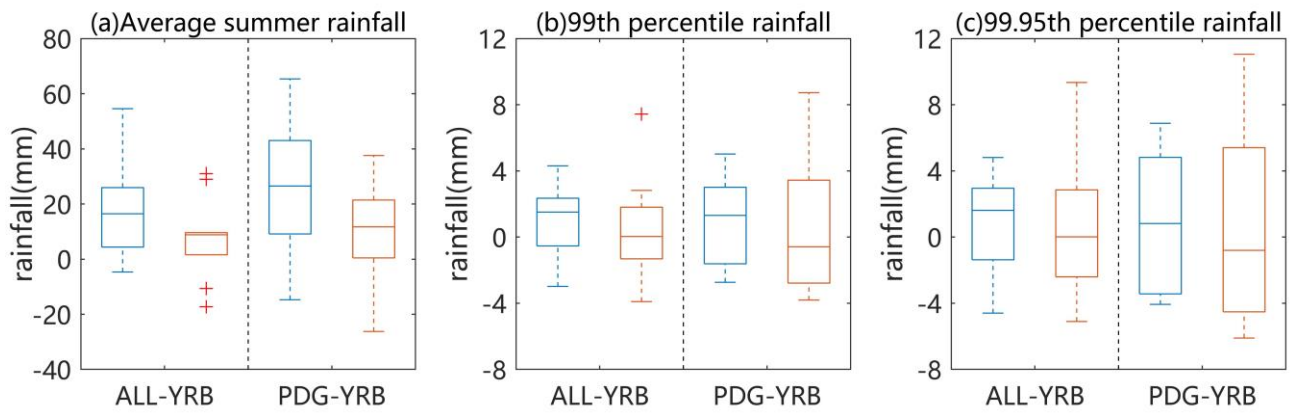
Figure 8. The spatial distributions of grids where the population density is greater than 100 per square kilometres (PDG-YRB).



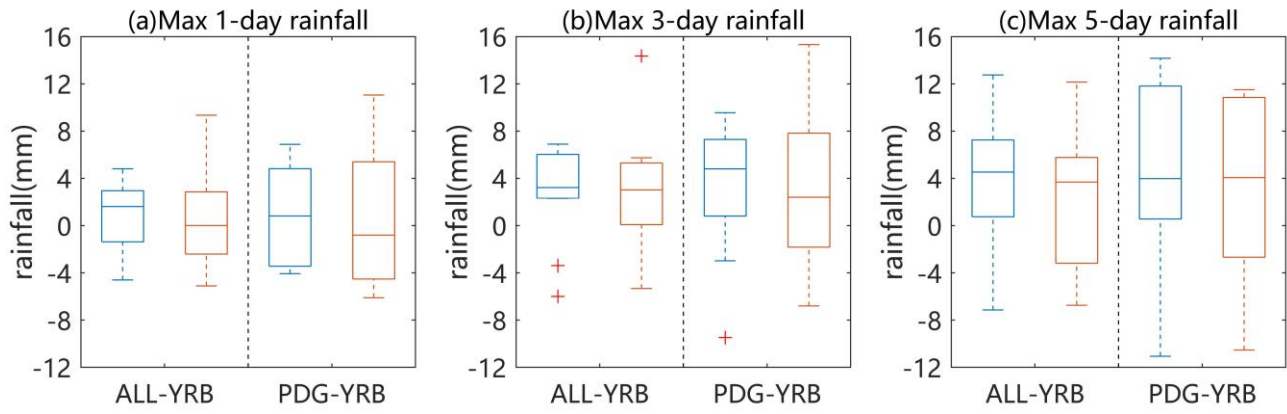


680 **Figure 9.** The changes in (a-b) average summer rainfall (mm), (c-d) 99th percentile summer rainfall (mm/day) and (e-f) 99.95th percentile summer rainfall (mm/day) between the 20% scenario and 2010 scenario, and between the 50% scenario and 2010 scenario. The stippling regions show statistically significance of changes identified by t-test at a 5% significance level.

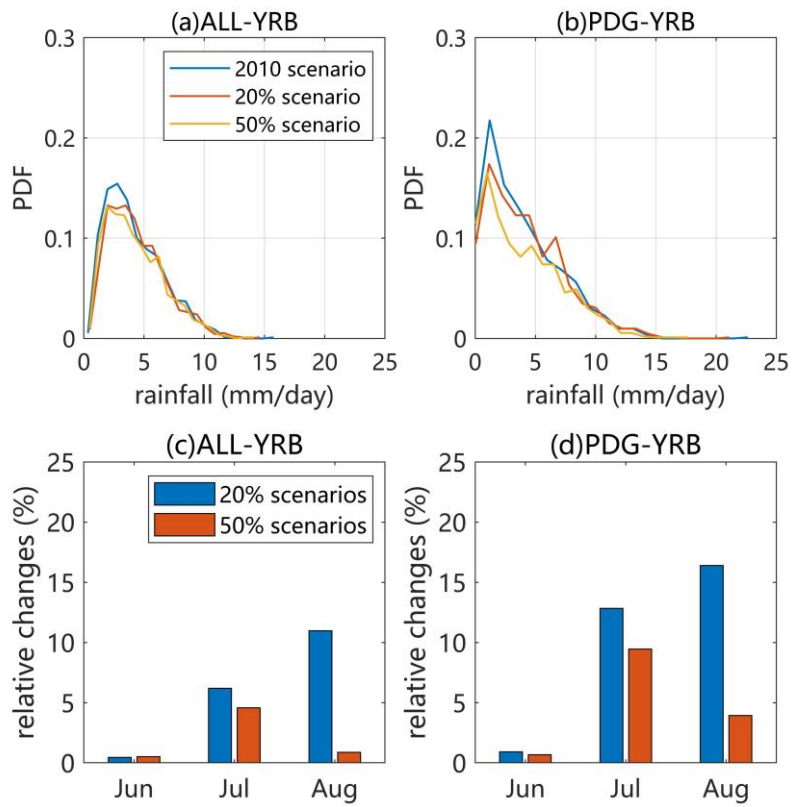




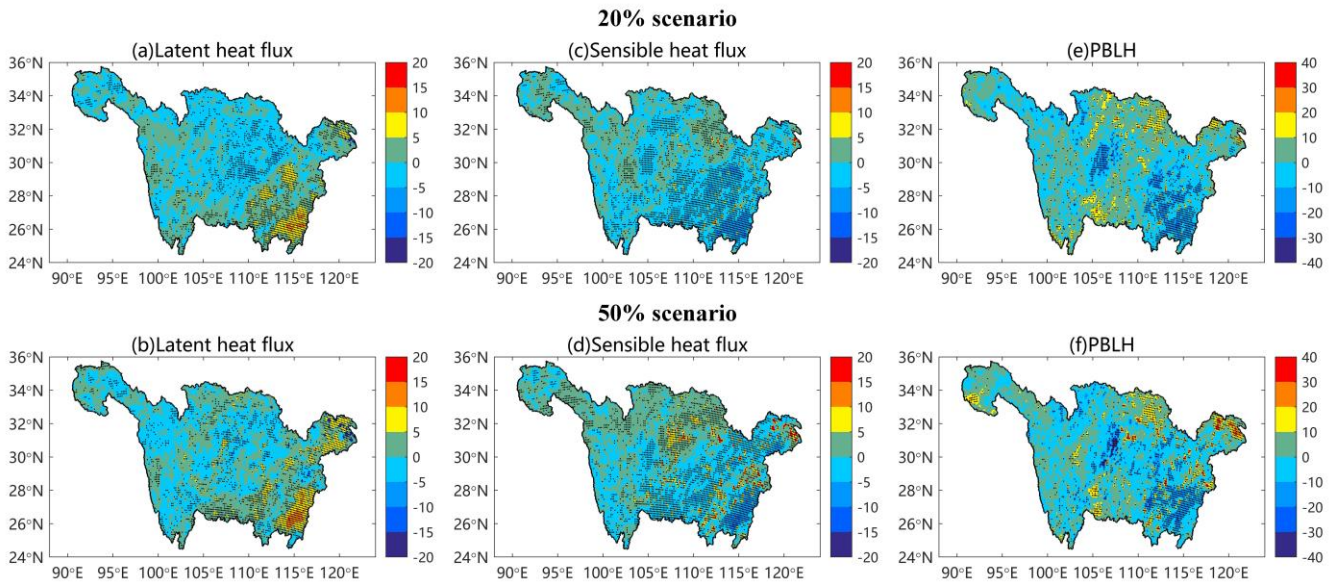
685 **Figure 10. The changes in (a) average summer rainfall (mm), (b) 99th percentile summer rainfall (mm/day) and (c) 99.95th percentile summer rainfall (mm/day) between the two hypothesis scenarios (20% and 50% scenarios) and 2010 scenario in ALL-YRB and PDG-YRB area. The blue boxes represent the 20% scenario, while the red boxes represent the 50% scenario.**



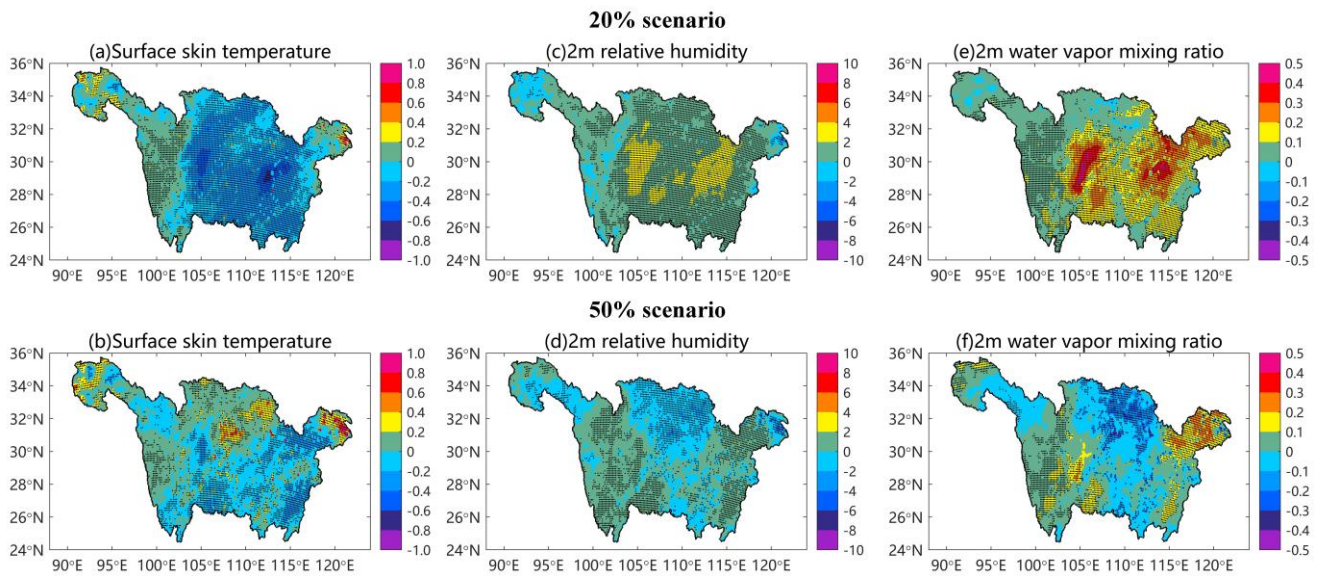
690 **Figure 11.** The changes in maximum 1-, 3-, 5-day rainfall between the two hypothesis scenarios (20% and 50% scenarios) and 2010 scenario in ALL-YRB and PDG-YRB area. The blue boxes represent the 20% scenario, while the red boxes represent the 50% scenario.



695 **Figure 12.** The probability distribution functions of summer rainfall in 2010, 20% and 50% scenarios in (a) ALL-YRB and (b) PDG-YRB; The changes in multiyear-averaged summer monthly rainfall between the two hypothesis scenarios (20% and 50% scenarios) and 2010 scenario in (c) ALL-YRB and (d) PDG-YRB.



700 **Figure 13.** The changes in (a-b) latent heat flux (LHF, W/m<sup>2</sup>), (c-d) sensible heat flux (SHF, W/m<sup>2</sup>) and (e-f) PBL height (PBLH, m) between the 20% scenario and 2010 scenario, and between the 50% scenario and 2010 scenario. The stippling regions show statistically significance of changes identified by t-test at a 5% significance level.



705 **Figure 14.** The changes in (a-b) surface skin temperature ( $^{\circ}\text{C}$ ), (c-d) 2m relative humidity (%) and (e-f) 2m water vapor mixing ratio (g/kg) between the 20% scenario and 2010 scenario, and between the 50% scenario and 2010 scenario. The stippling regions show statistically significance of changes identified by t-test at a 5% significance level.