

1 **Supplementary Material to paper ‘Compositional balance should be considered**
2 **in soil particle-size fractions mapping using hybrid interpolators’**

3 **Mo Zhang, Wenjiao Shi**

4

5 This supplementary material consists of details of statistical chart and prediction results
6 in the paper and in the following 3 sections. **Section S1** is the precedence table of model
7 performance in order to define which choices of ILR balance is the best. **Section S2**
8 shows the distribution and their relative values of soil sampling points. **Section S3**
9 includes the fitted biplots using random sampling test.

10

11

12

13

	GLM			GLMRK			RF			RFRK		
	SBP1	SBP2	SBP3	SBP1	SBP2	SBP3	SBP1	SBP2	SBP3	SBP1	SBP2	SBP3
ME	3	1	2	3	2	1	1	2	2	1	2	3
	1	2	3	1	2	3	1	3	2	1	2	3
	1	2	3	1	2	3	1	3	2	1	2	3
SUM1	5	5	8	5	6	7	3	8	6	3	6	9
RMSE	1	3	2	1	3	2	1	1	2	3	2	1
	2	3	1	1	3	2	1	2	3	3	2	1
	3	2	1	3	1	2	1	2	1	2	1	1
SUM2	6	8	4	5	7	6	3	5	6	8	5	1
AD	2	2	1	1	1	1	1	1	1	2	1	1
SUM3	13	15	13	11	14	14	7	14	13	13	12	11
	ME			RMSE			ME			RMSE		
SUM4	10	11	15				6	14	15			
SUM5				11	15	10				11	10	7
SUM6	44	55	51									

Supplementary Material

Section S2 The distribution and their relative values of soil sampling points

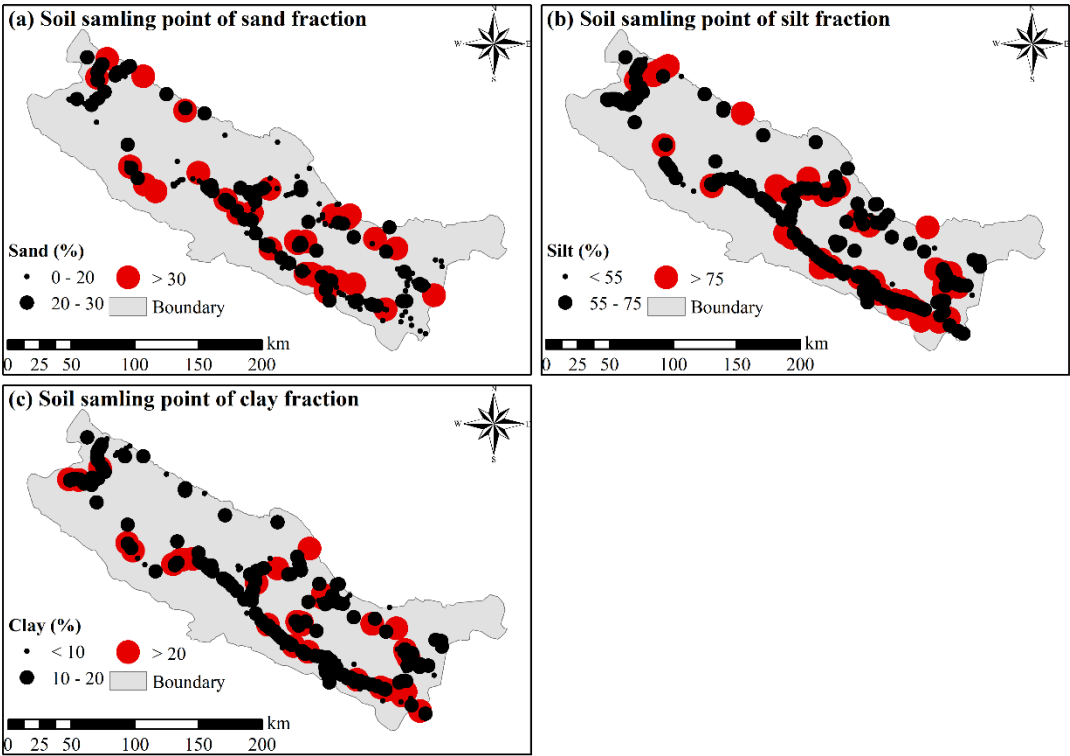


Figure. S2.1 Distribution and relative values of soil sampling points for (a) sand, (b) silt and (c) clay fractions.

23

24

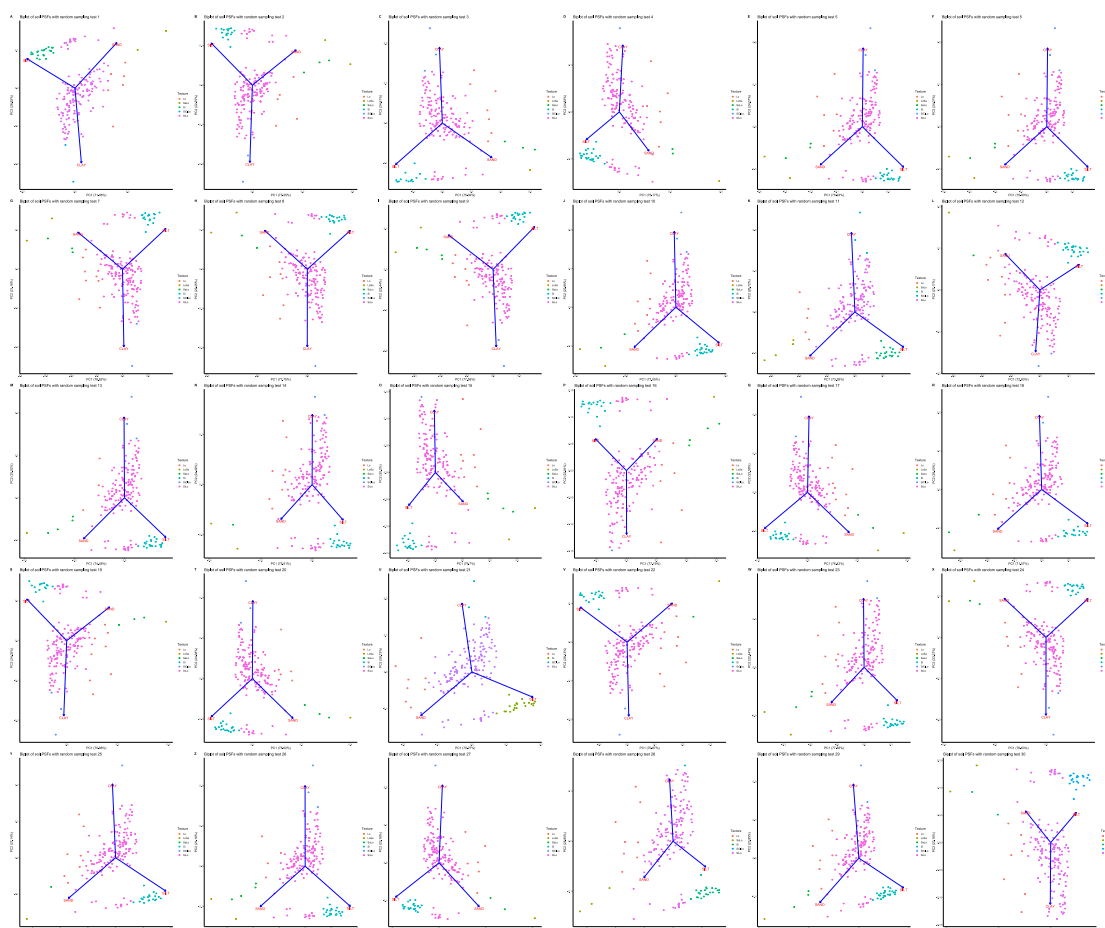
Supplementary Material

25

Section S3 The fitted biplots using random sampling test

26

27



28

29

Figure. S3.1 Biplots of soil PSFs data using random sampling test (30 times)

30