

Lake thermal structure drives inter-annual variability in summer anoxia dynamics in a eutrophic lake over 37 years

Robert Ladwig¹, Paul C. Hanson¹, Hilary A. Dugan¹, Cayelan C. Carey², Yu Zhang³, Lele Shu⁴, Christopher J. Duffy⁵, Kelly M. Cobourn⁶

5 ¹Center for Limnology, University of Wisconsin-Madison, Madison, WI, USA

²Department of Biological Sciences, Virginia Tech, Blacksburg, VA, USA

³Earth and Environmental Sciences, Los Alamos National Laboratory, Los Alamos, NM, USA

⁴Department of Land, Air and Water Resources, University of California, Davis, Davis, CA, USA

⁵Department of Civil & Environmental Engineering, The Pennsylvania State University, State College, PA, USA

10 ⁶Department of Forest Resources and Environmental Conservation, Virginia Tech, Blacksburg, VA, USA

Correspondence to: Robert Ladwig (rladwig2@wisc.edu)

Abstract. The concentration of oxygen is fundamental to lake water quality and ecosystem functioning through its control over habitat availability for organisms, redox reactions, and recycling of organic material. In many eutrophic lakes, oxygen depletion in the bottom layer (hypolimnion) occurs annually during summer stratification. The temporal and spatial extent of summer hypolimnetic anoxia is determined by interactions between the lake and its external drivers (e.g., catchment characteristics/nutrient loads, meteorology), as well as internal feedback mechanisms (e.g., organic matter recycling, phytoplankton blooms). How these drivers interact to control the evolution of lake anoxia over decadal time scales will determine, in part, the future lake water quality. In this study, we used a vertical one-dimensional hydrodynamic-ecological model (GLM-AED2) coupled with a calibrated hydrological catchment model (PIHM-Lake) to simulate the thermal and water quality dynamics of the eutrophic Lake Mendota (USA) over a 37-year period. The calibration and validation of the lake model consisted of a global sensitivity evaluation as well as the application of an ~~evolutionary~~ optimization algorithm to improve the fit between observed and simulated data. We calculated stability indices (Schmidt Stability, Birgean Work, stored internal heat), identified spring mixing and summer stratification periods, and quantified the energy required for stratification and mixing. To qualify which external and internal factors were most important in driving the inter-annual variation in summer anoxia, we applied a random-forest classifier and multiple linear regression to modeled ecosystem variables (e.g., stratification onset and offset, ice duration, gross primary production.) Lake Mendota exhibited prolonged hypolimnetic anoxia each summer, lasting between 50-60 days. The summer heat budget, the timing of thermal stratification, and the gross primary production in the epilimnion prior to summer stratification were the most important predictors of the spatial and temporal extent of summer anoxia periods in Lake Mendota. Inter-annual variability in anoxia was largely driven by physical factors: earlier onset of thermal stratification in combination with a higher vertical stability strongly affected the duration and spatial extent of summer anoxia. A measured step change upward in summer anoxia in 2010 was unexplained by the GLM-AED2 model. Although the cause remains unknown, possible factors include invasion by the predacious zooplankton, *Bythotrephes*

15
20
25
30

longimanus. As the heat budget depended primarily on external meteorological conditions, the spatial and temporal extent of summer anoxia in Lake Mendota is likely to increase in the near future as a result of projected climate change in the region.

35 **1 Introduction**

The availability of dissolved oxygen in lakes governs ecological habitats and niches, the rates of redox reactions, and the processing of organic matter throughout the water column (Cole and Weihe, 2016). When a lake is thermally stratified, metabolism in the surface layer (epilimnion) can act as a net source or sink of oxygen, depending on the balance of gross primary production and ecosystem respiration, and deviations of dissolved oxygen from saturation values are modulated by atmospheric exchange (Odum, 1956). Additionally, entraining inflows can also act as an important oxygen sink or source depending on the lake morphometry, the inlet discharge, and the carrying capacity for dissolved oxygen (Burns, 1995). Below the thermocline, dissolved oxygen is depleted in the bottom layer (hypolimnion) by organic matter mineralization in the water column and the sediment oxygen demand (Livingstone and Imboden, 1996). These oxygen depletion processes can be quantified as either a volumetric sink (e.g., due to organic matter mineralization in the water column) or as an areal sink (e.g. oxygen demand in the sediments). The depletion rates of oxygen depend on the organic matter pool (Müller et al., 2012, 2019), the trophic status of the lake (Rhodes et al., 2017; Rippey and McSorley, 2009), the area to volume relationship over depth (Livingstone and Imboden, 1996), and the chemical demand of the water column and sediments (Yin et al., 2011).

While the biogeochemistry of lake oxygen is well studied, there is much to be learned about decadal-scale controls over ecosystem patterns in oxygen and the interactions of external drivers with internal processes that control those patterns. Oxygen depletion in the hypolimnion that results in hypoxia (dissolved oxygen $< 2 \text{ mg L}^{-1}$; Diaz and Rosenberg, 2008) and anoxia (dissolved oxygen $< 1 \text{ mg L}^{-1}$; Nürnberg, 1995b) is a product of interacting external drivers (e.g., climate, land use practices in the catchment) that control mass fluxes (Jenny et al., 2016b), morphometric characteristics, and productivity that influences vertical transport and water column stability (Meding and Jackson, 2003). Unprecedented changes to the climate and catchment land use are likely to have nonlinear consequences on aquatic water bodies and will potentially intensify hypolimnetic anoxia (Jenny et al., 2014, 2016a; Sánchez-España et al., 2017).

The influence of physical controls on lake anoxia is of particular interest because it provides clues to how lakes might respond to long-term changes in exogenous drivers. The timing of anoxia has been found to be strongly related to the onset and offset of stratification, as well as sediment oxygen demand in small eutrophic lakes (Biddanda et al., 2018; Foley et al., 2012; Nürnberg, 2004). A reduction of winter/spring mixing and increase in stratification can be major drivers of deep-water oxygen depletion (North et al., 2014). For Lake Mendota (USA), Snortheim et al. (2017) concluded that changes in air temperature were the main driver of the spatio-temporal extent of summer hypolimnetic anoxia, but was unable to disentangle the direct effect of air temperature (i.e., warmer water temperatures) vs. its indirect effect (i.e., stronger thermal stratification) on oxygen dynamics. The question thus remains open: Under what circumstances and at what time scales does thermal stratification strength act as the dominant driver of hypolimnetic anoxia versus biogeochemical processes?

65 Studying decadal-scale lake anoxia requires an ecosystem-scale metric of lake anoxia and an analytical framework
for tying that metric to physical and biological processes. Several metrics of oxygen availability have been developed by
previous studies, such as mean areal hypolimnetic oxygen depletion (AHOD, in $\text{mg O}_2 \text{ m}^{-2} \text{ d}^{-1}$, Cornett and Rigler, 1979;
Hutchinson, 1938), volumetric rate of oxygen consumption (VOD, in $\text{mg O}_2 \text{ m}^{-3} \text{ d}^{-1}$, Cornett, 1989), areal hypolimnetic
70 mineralization (AHM, in $\text{g O}_2 \text{ m}^{-2} \text{ d}^{-1}$, Matzinger et al., 2010), and the Anoxic Factor (AF, in days, Nürnberg, 1995a, 1995b,
2004). Compared to the Anoxic Factor, most metrics calculate an oxygen depletion rate, whereas the Anoxic Factor provides
an integrated metric that includes the spatial as well as temporal dimensions of anoxia per season. As the Anoxic Factor sums
up the product of anoxia duration with the corresponding area, it is therefore a useful metric to evaluate long-term dynamics
of hypolimnetic anoxia, and to compare the intensity of anoxia between years and different study sites. The Anoxic Factor and
its derivative the Hypoxic Factor (the difference being the threshold of dissolved oxygen; (Nürnberg, 2004) have been used in
75 several studies, and observations range from 0 to 83 days per summer for different lake ecosystems (Nürnberg, 1995b).

Coupled hydrodynamic-water quality models are an established approach to studying lake physical and biological
responses to external drivers (Hipsey et al. 2019). An advantage of a lake ecosystem model calibrated to observed long-term
data is that it can reproduce finer temporal and spatial resolution than observational data permits for most ecosystems (Stanley
et al., 2019) allowing for the investigation of complex ecosystem dynamics (Ward et al., 2020). By applying an ecosystem
80 model driven by sub-daily meteorological and daily hydrological inflow data, physical processes relevant to hypolimnetic
oxygen depletion (such as the onset and seasonal evolution of thermal stratification and gas transfer velocities) can be resolved
at an hourly resolution, and can subsequently be incorporated into stochastic models to gain an understanding about the
relationships between drivers and their respective impacts on hypolimnetic anoxia (Snortheim et al., 2017). Results from
deterministic lakes models can be analysed using statistical models to derive general empirical relationships of cause and effect
85 in the model space. Results can also be compared with alternative, deductive approaches, which tend to be simpler models
meant to reproduce gross ecosystem properties. An example relevant to lake anoxia is the simple deductive hypolimnetic
oxygen depletion model by Livingstone and Imboden (1996), which established that minor year-to-year meteorological
variations during spring can cause an expansion of the thickness of the summer anoxia layer.

This study aims to determine the extent to which physical, chemical, and biological (internal and external) factors
90 control the inter-annual variability of the summer Anoxic Factor over 37 years in the eutrophic Lake Mendota. We first use a
lake hydrodynamic-water quality model to generate fine scale ecosystem states and fluxes based on observational data. Second,
we use a deductive lake anoxia model and data-driven empirical models to evaluate observed and simulated data and to
determine broad-scale control over lake anoxia. We answer three questions with our modeling framework: (1) Overall, do
internal biogeochemical processes or external loadings control year-to-year variability of the Anoxic Factor? (2) What are
95 essential in-lake physical and biological controls over the long-term variability in anoxia? (3) As the timing of thermal
stratification governs hypolimnetic oxygen depletion, what is the year-to-year variability of Lake Mendota's head budget?
Answers to these questions will further our understanding of lake ecosystem responses to climate and landscape changes to
support water quality management.

2 Materials and Methods

100 2.1 Study Site

Lake Mendota is a 39.61 km², 25 m deep, eutrophic lake in southern Wisconsin, USA (Figure 1). The lake has a mean water residence time of 4.3 years (McDonald and Lathrop, 2017). Lake Mendota's mixing regime is characterized by a summer stratification period from late April through October and an inverse winter stratification period under ice (Brock, 1985). Lake Mendota's air temperature ranges from -39 to 40 °C with a mean annual value of 8 °C, and an annual precipitation ranging from 540 to 990 mm with an average of 780 mm (Lathrop, 1992). The 604 km² watershed is dominated by agricultural land (67%) and developed urban land (22%) (Duffy et al., 2018). Since 1995, physical, chemical, and biological characteristics have been sampled biweekly to monthly by the North Temperate Lakes Long Term Ecological Research Program (Magnuson et al., 2006). We note that Lake Mendota is a "hard water" lake with pH > 7 and exhibits consistently high dissolved inorganic carbon concentrations, with speciation dominated by bicarbonate and carbonate (Hart et al., 2020).

110 2.2 Driver Data Acquisition

Meteorological forcing data were obtained from the second phase of the North American Land Data Assimilation System (NLDAS-2, Xia et al., 2012). The data from the grid cell were centered at -89.4375, 43.0625. The NLDAS-2 grid cells are 1/8th-degree spacing and data are at an hourly resolution from January 1, 1979 to present (Mitchell, 2004). Meteorological parameters used in this study included wind speed, air temperature, specific humidity, surface pressure, surface downward short- and longwave radiation, and total precipitation, which were used primarily as boundary data for GLM-AED2. Relative humidity was calculated *post hoc* as a function of specific humidity, air temperature, and surface pressure.

To quantify the water budget in Lake Mendota, we simulated the water inflow from the catchment (through stream flow, overland flow, and groundwater flow) to the lake, and water outflow from the lake to the catchments using a physically based distributed hydrologic model, PIHM-Lake (Penn State Integrated Hydrologic Model, Qu and Duffy, 2007). PIHM-Lake integrates hydrologic processes in a lake-catchment coupled system simulating the surface and subsurface hydrologic interactions within the catchment and between the catchment and the lake. Hydrologic interactions within the catchment are modeled in three dimensions, while the lake is represented in PIHM-Lake as a simplified one-dimensional bucket model assuming a uniform lake surface area and depth. PIHM-Lake tracks the change in water storage from the watershed's vegetation canopy, ground surface, unsaturated soil zone, saturated soil zone, and lake by using the semi-discrete finite volume method and a triangular irregular network (TIN). The PIHM-Lake simulation covers a 37-year period (from 1979 to 2015), and its parameters were calibrated and validated with *in-situ* measured stream inflow and lake outflow discharges from the US Geological Survey. The application of the PIHM-Lake model for quantifying the lake inflows helped closing the water balance of Lake Mendota as groundwater inflow and surface overland flow were not measured, and the model simulations provided these inflows.

130 Surface nutrient loadings from the Yahara River and Pheasant Branch inflows into Lake Mendota were estimated by regression models using discharge and nutrient concentration data from USGS gages (Appling et al., 2015; data is available at Ladwig et al. (2020) via the Environmental Data Initiative). Combined with the simulated discharge time series from PIHM-Lake, these regressions were used to compute daily loading data. We included the following nutrients in the inflow boundary conditions soluble reactive phosphate, adsorbed soluble reactive phosphate, dissolved organic phosphorus, particulate organic
135 phosphorus, dissolved organic nitrogen, ammonia, nitrate, refractory dissolved organic carbon, dissolved inorganic carbon, and reactive silica. For a complete description of the inflow loading regressions, see Weng et al. (2020). To provide information regarding adsorbed soluble reactive phosphate, we doubled measured total phosphorus (TP) concentrations and applied specific ratios to individual phosphorus forms (Farrell et al., 2020; Snorheim et al., 2017; Weng et al., 2020). This put our estimates of TP near the upper range of previous load estimates. Bennett et al., (1999) estimated the long-term average annual
140 TP load to be about 34 t, whereas our average annual TP load (with adsorbed phosphate) was about 50.6 t and ranged between 5.3 to 146.1 t (1979-2015). Our average annual TP load (without adsorbed phosphate) was about 25.3 t and ranged between 2.7 to 73.1 t (1979-2015), which is similar to previous annual TP load estimates ~~between-of~~ 15 to 67 t (Kara et al., 2012) and 10 to 80 t (Lathrop and Carpenter, 2014). By doubling our TP by adding adsorbed phosphate, we accommodate a potential TP load underestimation due to the importance of extreme storm events on particulate loads (Carpenter et al., 2018). As direct
145 measurements of inlet loadings of refractory organic matter, dissolved inorganic carbon (DIC) and silica were not available, we used constant average values for the inflow loadings similar to the long-term mean values of the water column.

Monitored NTL-LTER data from 1995 to 2015 were used for model calibration and validation. Data included water temperature and dissolved oxygen concentrations (Magnuson et al., 2020b) with a vertical spatial resolution of 1 m from the surface to 24 m. Data were measured biweekly during summer, monthly during fall and once per winter. The dissolved oxygen
150 data set was complemented with historical measured dissolved oxygen data from 1992 to 1994 (Soranno, 1995). NTL-LTER data also included pH, dissolved inorganic carbon, dissolved organic carbon, nitrate, ammonia, soluble reactive phosphate and silica sampled at the depths 0, 3, 8, 10, 12, 14, 16, 18, 20 and 22 m (Magnuson et al., 2020a). Surface integrated samples of epilimnetic chlorophyll-a and Secchi depth were used to evaluate GLM-AED2's predictions of phytoplankton biomass and light extinction (Magnuson et al., 2020c, 2020d).

155 **2.3 Modeling Framework**

Our modeling framework to investigate drivers of hypolimnetic anoxia consisted of three components (Figure 2):

(1) *Deductive model*: A deductive model formulated by Livingstone and Imboden (1996) was run on the monitored field data to characterize the empirical relationships between observed dissolved oxygen data and oxygen depletion processes and to quantify the contributions of water column and sediments to hypolimnetic oxygen demand (Figure 2). The deductive
160 model furthered our ecosystem-scale understanding of the partitioning between volumetric and areal oxygen depletion sinks in Lake Mendota. Therefore, this approach was used independently of the other modeling approaches as a “check” on the sediment oxygen demand rates of Lake Mendota used in GLM-AED2.

(2a) *GLM-AED2*: To gain a more mechanistic understanding of how processes driving oxygen depletion lead to ecosystem-scale oxygen dynamics, we used the vertical one-dimensional hydrodynamic water quality model, GLM-AED2 (Hipsey et al., 2019). GLM-AED2 uses meteorological, hydrological, and nutrient load data as inputs and predicts lake physical, chemical, and biological dynamics, including those of dissolved oxygen. The advantage of using GLM-AED2 is that it quantifies and tracks processes relevant to oxygen cycling using well-accepted physical and biogeochemical interactions that otherwise are difficult to infer from observational data alone (see section ‘2.3.2 GLM-AED2’; Figure 2). Although GLM-AED2 is a deterministic model, hypolimnetic anoxia is an emergent ecosystem property that derives from a complex suite of interactions within the model (Snorheim et al., 2017). Therefore, we used GLM-AED2 to simulate and track states and fluxes of modeled variables.

(2b) *Regression model*: To derive generalized relationships between the interannual variation in hypolimnetic anoxia and the driving data, as well as the output from GLM-AED2, we used statistical models on our combined dataset of monitored and modeled data. Because the number of potential candidate predictors is high, we used a machine learning approach to determine the most significant predictors of seasonal hypolimnetic anoxia at the inter-annual scale (Figure 2). These predictors were then used in a multiple linear regression to rank their influence on hypolimnetic anoxia.

2.3.1 Deductive Model

Using temporal and spatial linearly interpolated observed dissolved oxygen data, we applied the simple deductive oxygen depletion model according to Livingstone and Imboden (1996) in which the oxygen depletion rate $J(z)$ at depth z is conceptualized as

$$J(z) = J_v(z) + J_A(z)\alpha(z), \quad (1)$$

Where the intercept J_v is the volume sink (mass per volume per time) representing organic matter mineralization processes, e.g. microbial respiration in the water column, the gradient J_A is the area sink (mass per area per time) representing sediment oxygen demand, and α is a function for the ratio of sediment area to water volume over the depth z (Bossard and Gächter, 1981; Livingstone and Imboden, 1996):

$$\alpha(z) = -\frac{1}{A(z)} \frac{dA(z)}{dz}. \quad (2)$$

We used observed dissolved oxygen data from 1992 to 2015 (measured biweekly after ice offset) to calculate the specific oxygen depletion $J(z)$ over depth for each year individually from the concentration, $[DO]_{spring}$, at the date -of spring mixing offset, t_{spring} , to the date, t_{2mgL} , when oxygen concentrations, $[DO]_{2mgL}$, were below 2 mg L⁻¹ (criterion for hypoxia):

$$J(z) = \frac{[DO]_{spring} - [DO]_{2mgL}}{t_{spring} - t_{2mgL}}. \quad (3)$$

Only dissolved oxygen data below a depth of 15 m were used. The derivatives of area to depth were approximated by using forward and backward differencing. The terms J_v and J_A were assumed to be constant for every year (assuming the hypolimnion to be homothermic) and were determined by using weighted linear regression.

2.3.2 GLM-AED2

195 For simulating Lake Mendota, we used the coupled 1D vertical hydrodynamic-ecological model GLM-AED2 (GLM: v.3.1.0a1, AED2: 1.3.4, developed by University of Western Australia, Hipsey et al. 2019). The hydrodynamic model GLM incorporates a flexible Lagrangian grid with each layer's thickness dynamically changing in response to the respective water density (Hipsey et al., 2019). Surface mixing processes are computed via an energy balance approach that compares the available (turbulent) kinetic energy to the internal potential energy of the water column (Hipsey et al., 2019).

200 The water quality module, AED2, was configured to simulate the dynamics of dissolved oxygen, silica, inorganic carbon, organic matter (refractory, particulate and dissolved C, N and P), inorganic matter (refractory, particulate and dissolved C, N and P) as well as PO₄, NO₃, and NH₄, and two functional phytoplankton groups (representing diatoms and cyanobacteria, Supplement Table A1). The model was run on an hourly time step and output data were saved at a daily timestep on noon. The thickness of each model layer (set to a maximum of 75 layers) could vary between 0.15 and 1.5 m with a minimum layer
205 volume of 0.1 m³. The source code of the model's version, configuration files, input and output data are stored and accessible at Ladwig et al. (2020) via the Environmental Data Initiative.

A global sensitivity analysis (Morris Method after Morris 1991) was conducted to identify the most influential parameters for the predictions of water temperature, dissolved oxygen, dissolved inorganic carbon, silica, nitrate and phosphate, respectively. Using the Morris Method with 10 iterative runs, the distributions of the absolute elementary
210 effects (the model change quantified by a fit function, here the root-mean squared error (RMSE) between observed and simulated data) of each parameter were calculated. According to Morris (1991) and Saltelli et al. (2004), the mean of the absolute elementary effects represents the overall sensitivity of the model outcome to each parameter, and the standard deviations are a metric of the interactions between different parameters. All parameters with a normalized mean elementary effect over 0.1 were declared sensitive and were used for the calibration.

215 According to our calculated absolute elementary effects, we included the following parameters in the calibration, listed according to their respective state parameter (Supplement Figure A1). For calibrating the six state variables, these parameters were: 1) water temperature: bulk aerodynamic coefficient for sensible heat transfer (ch), long-wave radiation factor (lw_factor), mean sediment temperature (sed_temp_mean), shortwave radiation factor (sw_factor); 2) Dissolved oxygen: Sediment flux (Fsed_oxy), mineralization rate of dissolved organic matter (Rdom), temperature multiplier for sediment flux (theta_sed_oxy); 3) Dissolved inorganic carbon: Sediment flux (Fsed_dic), half-saturation constant for oxygen dependence on sediment flux (Ksed_dic), temperature multiplier for sediment flux (theta_sed_dic); 4) Silica: Sediment flux (Fsed_rsi), half-saturation constant for oxygen dependence on sediment flux (Ksed_rsi), temperature multiplier for sediment flux (theta_sed_rsi); 5) Nitrate: Sediment flux (Fsed_nit), half-saturation constant for oxygen dependence on denitrification (Kdenit), half-saturation constant for oxygen dependence on sediment flux (Ksed_nit), maximum reaction rate of
225 denitrification at 20 °C (Rdenit); and 6) Phosphate: Sediment flux (Fsed_frp), half-saturation constant for oxygen dependence on sediment flux (Ksed_frp), temperature multiplier for sediment flux (theta_sed_frp).

We applied a combination of an automatic calibration technique and manual calibration for the calibration period from 2005 to 2015. First, the derivative-free, ~~evolutionary~~-optimization algorithm (CMA-ES, Hansen (2016)) was used to minimize the RMSE between observed and simulated data (data were split into a calibration, 2005-2015, and a validation period, 1995-2004). We used a time period prior to the calibration period for validation to stress-test the model by applying it a time period with potential different ecological characteristics. The model parameters were calibrated iteratively (and fixed for the next calibration step) in the following order: water temperature, dissolved oxygen, dissolved inorganic carbon, silica, nitrate and, last, phosphate. We did not calibrate for phytoplankton functional group biomass because it was out of scope for this analysis, but the model qualitatively recreated observed seasonal succession. Initial model parameter values were taken from default parameter values and ranges, as well as literature values (Hipsey et al., 2017; Snortheim et al., 2017). Calibration of water temperature and dissolved oxygen concentrations were run for 300 iterations, the other variables for 200 iterations. The fit criteria were root-mean square error (RMSE), Nash-Sutcliffe Coefficient of Efficiency (NSE) and Kling-Gupta Efficiency (KGE) (Gupta et al., 2009) for the calibration period, the validation period and the total time period. The advantage of combining an automatic approach and a manual post-calibration for an overparameterized model such as GLM was that CMA-ES first limited the possible parameter space of each parameter, then in a second calibration step, parameters could be manually changed to improve overall dynamics and behavior without relying on a fixed objective function. The manual calibration was done to ensure that the model was not overoptimized with unrealistic parameter combinations of the biological parameters. This calibration approach was done in accordance with other aquatic ecosystem modeling studies (Fenocchi et al., 2019; Mi et al., 2020), that did not apply computational optimization to water quality models.

2.3.3 Post-Processing of GLM-AED2 Output

We quantified two heat budget metrics from simulated water temperature data, the Schmidt Stability (Idso, 1973; Read et al., 2011; Schmidt, 1928) and the Birgean Work (Birge, 1916; Idso, 1973). Schmidt Stability (St) is a stability index that expresses the amount of energy needed to mix the entire water column to uniform temperatures without affecting the amount of internal energy, whereas Birgean Work (B) is a stability index that quantifies the amount of external energy that is theoretically needed to build up the current stratification from a hypothetical completely mixed state. The sum of both terms, the total work G , gives an estimate of the energy needed to keep a lake isothermal during stratified conditions:

$$G = St + B, \quad (3)$$

$$G = \frac{g}{A_s} \int_0^{z_m} A_z (1 - \rho_z) (z_v - z) dz + \frac{g}{A_s} \int_0^{z_m} A_z (1 - \rho_z) z dz, \quad (4)$$

where g is gravity, A_s is the surface area (m^2), z_m is the maximum depth (m), A_z is the respective area at the depth z , ρ_z is the respective density at the depth z ($kg\ m^{-3}$), z_v is the depth of the center of volume ($z_v = \frac{1}{V} \int_0^{z_m} A_z z dz$), and V is the volume (m^3). The stagnancy of deep water can be quantified by calculating a heat budget ratio (HBR):

$$HBR = \frac{G}{B}, \quad (5)$$

which compares the amount of energy needed to maintain isothermal conditions to the amount of available external energy (Kjensmo, 1994). Here, an increased stagnancy of deep waters results in a reduced exchange of fluxes between the surface mixed and the bottom layer. Therefore, HBR values > 1 indicate the isolation of the bottom water layers from surface fluxes in a lake.

Internal energy - as the stored thermal energy in the water column - was quantified using the R package rLakeAnalyzer (Winslow et al., 2019) as:

$$E_{internal} = \frac{1}{A_s} \int_0^{z_m} T_z * c_w * m_z dz , \quad (6)$$

where T_z is the water temperature at depth z ($^{\circ}C$), c_w is the specific heat of water ($J kg^{-1} K^{-1}$), and m_z is the mass of water at depth z (kg).

The thermocline depth was defined as a planar separation between the surface mixed and the bottom stagnant layer. The specific depth of this planar thermocline was quantified as the depth of the maximum density difference over the vertical axis where the minimum water temperature was above $4^{\circ}C$ and the density difference between surface and bottom layer was above $0.1 kg m^{-3}$, signaling stratified conditions.

The temporal and spatial extent of anoxia during the summer season was quantified using the Anoxic Factor:

$$AF = \sum_{i=1}^n \frac{t_i A_i}{A_s} , \quad (7)$$

which sums the product of the anoxia duration t (days) with the corresponding area A (m^2) to the total surface area A_s when the in-water dissolved oxygen concentrations were below a threshold of $1 mg L^{-1}$ (Nürnberg, 1995b). As the Anoxic and Hypoxic Factor use the same equation with different thresholds relating essentially all anoxia information also to hypoxia, we focused on only quantifying the Anoxic Factor in this study. Observed Anoxic Factors were calculated by temporally and spatially interpolating bi-weekly monitored field data, using an ensemble of approaches (linear, constant and spline interpolation between neighboring data points). We quantified the seasonal Anoxic Factor only for the summer season, respectively for the modeled and observed data. We then compared the modeled Anoxic Factor (quantified by using modeled daily dissolved oxygen data profiles) against a set of observed Anoxic Factors (here, the bi-weekly data were temporally and spatially interpolated to get daily estimates over a finer vertical resolution) that were obtained by the application of three interpolation techniques. Anoxic Factor was calculated using the simulated dissolved oxygen concentrations as well as the approximately bi-weekly monitored field data, in which case data were temporally and spatially interpolated using an ensemble of approaches (linear, constant and spline interpolation between neighboring data points). We quantified the seasonal Anoxic Factor only for the summer season.

2.3.4 Regression Model

We evaluated 21 candidate predictors on their relative importance in predicting the simulated summer Anoxic Factor of the respective year n (see [Table 1](#) for an overview and further explanation). All candidate predictors were either modeled

output or boundary data for the model. This enabled the regression analysis to identify internal connections in the numerical
 290 model itself (similar analyses of modeled output and driver data were done in Snortheim et al., 2017; Ward et al., 2020; Weng
 et al., 2020). For the calculation of certain candidate predictors, the water column was separated into an upper layer (from
 surface to a depth of 10 m) and a lower layer (from 10 m to maximum depth). Although this is a rough approximation, this
 depth roughly represents the thermocline depth and further separates the water column into a zone without light limitation and
 one with light limitation.

295 To represent external forcing processes, we included the seasonal total phosphorus inflow and seasonal total nitrogen
 inflow loadings for the pre-summer period (winter, spring, summer) of each respective year. Further, we included the Birgean
 Work for spring and summer of each year as the Birgean Work represents the amount of external energy (mostly by wind shear
 stress) that is needed to build up the current thermal structure. In addition to Birgean Work, we also included Schmidt Stability,
 the HBR ratio, the onset, end and duration of spring mixing, the onset, end and duration of summer stratification, the mean
 300 hypolimnetic water temperature at the onset of stratification, as well as the end and duration of the ice period prior to summer
 to investigate the effects of physical control on hypolimnetic anoxia.

In-lake biogeochemical processes were represented by the dissolved oxygen concentration differences between spring
 mixing onset and offset in the hypolimnion (Livingstone and Imboden (1996) suggested that in eutrophic lakes dissolved
 oxygen reductions during the mixing phase can have profound effects on the summer anoxia), organic carbon (both dissolved
 305 and particulate, respectively) concentration differences between spring mixing and stratification in the hypolimnion, as well
 as cumulative gross primary production in the epilimnion and hypolimnion. Organic matter gradients were investigated
 because dissolved organic carbon can be used as a proxy for allochthonous organic matter contributions to bacterial
 mineralization rates (Hanson et al., 2003). Gross primary production (GPP) was included as an example organic matter source
 that can fuel bacterial mineralization (Yuan and Jones, 2019). Here, GPP represents the sum of all functional phytoplankton
 310 group's photosynthesis rates parameterized as the total carbon uptake:

$$f_{uptake}^{PHYC} = R_{growth}^{PHY} (1 - k_{pr}^{PHY}) \phi_{temp}^{PHY}(T) \phi_{stress}^{PHY}(X) \min\{\phi_{light}^{PHY}(I) \phi_N^{PHY}(NO_3, NH_4, PHY_N) \phi_P^{PHY}(PO_4, PHY_P) \phi_{Si}^{PHY}(Rsi)\} [PHY] \quad (7)$$

where the carbon uptake f_{uptake}^{PHYC} of an individual group PHY depends on the growth rate R_{growth}^{PHY} , the photorespiratory loss
 (1 - k_{pr}^{PHY}), temperature scaling $\phi_{temp}^{PHY}(T)$, metabolic stress $\phi_{stress}^{PHY}(X)$, and a minimum function taking into account
 315 limitations by light $\phi_{light}^{PHY}(I)$, nitrogen $\phi_N^{PHY}(NO_3, NH_4, PHY_N)$, phosphorus $\phi_P^{PHY}(PO_4, PHY_P)$ and silica $\phi_{Si}^{PHY}(Rsi)$
 (Hipsey et al., 2017; adapted from Hipsey and Hamilton, 2008). As the GPP is the main model output variable for
 phytoplankton dynamics, it scales directly with biomass and Chl-a concentrations.

To determine the relative importance of these candidate predictors that may influence the duration and extent of
 anoxia, we applied the Boruta R package (Kursa and Rudnicki, 2010) to identify the relevant predictors by using a wrapper
 320 built around a random forest classifier. The Boruta feature selection duplicates predictor values, which are then randomly
 shuffled to create so-called shadow attributes. If the variable predictor values (here the averaged accuracy loss normalized by

the standard deviation, obtained from multiple random forest classifier runs) of the original values are significantly greater than the shadow predictor values, these variables are deemed relevant (Kursa and Rudnicki, 2010). Only model output and model driver data from the period 1980-2009 were used in the regression analysis. The first year, 1979, was dropped from the investigations due to a lack of prior winter information. The years 2010-2015 were dropped due to an apparent ecosystem shift (see Section '3.4 Oxygen Dynamics'). Meteorological quarterly divisions (DJF, MAM, JJA, SON) of the year were used to define seasons. After selecting important predictors driving the inter-annual variability in Anoxic Factor using the random forest method, we applied the remaining 7 selected predictors in a multiple linear regression model to quantify their respective importance on predicting the Anoxic Factor. Stepwise model-selection iteratively removed predictors to improve the regression model's AIC. This multiple linear regression model to predict Anoxic Factor included seven variables: HBR ratio during spring, HBR ratio during summer, Birgean Work in spring, epilimnetic GPP, Schmidt Stability in summer, Birgean Work in summer, and onset date of stratification. We reduced the complexity of the final multiple linear regression model to only three predictors of Anoxic Factor: onset date of stratification, Schmidt Stability in summer, and epilimnetic GPP in winter/spring. Schmidt Stability was included instead of Birgean Work as the resulting AIC of both models were similar, but the concept of Schmidt Stability is more commonly used in the limnological research community (Supplement Table A3). The final multiple linear regression model was configured as (scaled predictors, adjusted R² = 0.84, p < 0.001 Supplement Table A4).

$$\hat{y} = 0.24Epi. GPP + 0.54Summer. St - 0.46Onset. Strat - 5.44 * 10^{-17} + \epsilon, \quad (8)$$

where $\epsilon \sim N(0, 38^2)$.

Relative importance of model fit was calculated as the R² contribution averaged over ordering among regressors (relaimpo package, Grömping 2006).

3 Results

3.1 Oxygen Depletion Rates

The derived annual oxygen depletion rates by the deductive model confirmed Lake Mendota's hypolimnetic anoxia as primarily driven by mineralization of organic matter. Observed oxygen depletion rates, $J(z)$, and against area-volume ratios, $\alpha(z)$, were positively correlated for all years except 1993, 1997 and 2007 (Figure 3). For years with a positive relationship, the average intercept representing the volumetric sink J_V as-was 0.16 g m⁻³ d⁻¹ and the average gradient representing the areal sink J_A with-was 0.04 g m⁻² d⁻¹ (adjusted R² = 0.13, p < 0.001). Lake Mendota's hypolimnetic oxygen depletion was mainly driven by water column respiration-mineralization processes over sediment oxygen demand. The annual volumetric depletions rate followed a normal distribution with an increase in the volumetric sink in recent years. The areal depletion rate distribution was positively skewed. An inspection of the residuals from the model fits indicates that the linear regression model may not be appropriate for some years, especially for values of the sediment to area volume ratio $\alpha(z)$ near 0.5 m² m⁻³.

Averaging this total oxygen depletion rate (volume and area sinks) over the hypolimnion gave a potential total oxygen depletion of ~1 g m⁻² d⁻¹ (~ 32 mmol [O₂] m⁻² d⁻¹). To conceptualize this a depletion rate in our deterministic GLM-AED2

model, we used a maximum sediment oxygen demand (SOD) of $100 \text{ mmol } [\text{O}_2] \text{ m}^{-2} \text{ d}^{-1}$. This rate represented the total sum of volumetric and areal oxygen sinks indirectly as internal fluxes of organic carbon from the sediment back into the water column would drive additional oxygen depletion. This high value of SOD was scaled by the water temperature using an Arrhenius multiplier, effectively reducing it to a value between 1 to $1.5 \text{ g m}^{-2} \text{ d}^{-1}$ (32 to $47 \text{ mmol } [\text{O}_2] \text{ m}^{-2} \text{ d}^{-1}$) of maximum oxygen depletion by the sediment sink in the hypolimnion during summer stratification. A recent modeling study investigating the formation of metalimnetic oxygen minima in a drinking water reservoir by Mi et al. (2020) confirmed that such high maximum SOD values are typical for many lakes.

3.2 GLM-AED2 Calibration and Validation

The thermal characteristics of Lake Mendota were replicated well, especially water temperatures in the surface layers (Table 2, [Figure 4](#)~~Figure 4~~, Supplement Figure A2), with an RMSE of $1.30 \text{ }^\circ\text{C}$, an NSE and an KGE of 0.97, which is within the range of previous modeling studies (Bruce et al., 2018; Read et al., 2014). The simulated dissolved oxygen concentrations in the whole water column achieved an RMSE of 3.22 mg L^{-1} , an NSE of 0.56, and an KGE of 0.77. Here, the average fits were better in the surface layer (RMSE of 2.77 mg L^{-1}) compared to the bottom layer (RMSE of 3.31 mg L^{-1}), whereas the temporal dynamics (as expressed in NSE and KGE) were slightly better in the bottom layer (an NSE of 0.64, KGE of 0.81) compared to the surface layer (NSE of -0.36, KGE of 0.47).

In contrast, the water quality model reproduced concentrations of the biogeochemical variables better at depth than at the surface, as evidenced by higher NSE values (Table 2, Supplement Figure A3 – A8). The density distributions of residuals (observed minus simulated data) are in agreement (Figure 5) for water temperature, dissolved oxygen concentrations, nitrate, phosphate and ammonium (we did not use ammonium data during calibration, but included it in the visual inspection to check general nitrogen dynamics replicated by the GLM-AED2 model), whereas the model overestimated dissolved inorganic carbon concentrations and chlorophyll-a concentrations, and underestimated silica concentrations. As described above, the inflow concentrations of DIC and silica were assumed to be constant over the simulation period, likely causing the discrepancies between model results and observed data.

3.3 Heat Budget Dynamics

Lake Mendota's annual stratification dynamics were characterized by a short spring mixing period followed by a very stable summer stratification period, which further promotes hypolimnetic oxygen depletion. A low Schmidt Stability value in spring close to zero was representative of the overturn period (period I, [Figure 6](#)~~Figure 6~~). During this time, the Birgean Work, as well as stored internal energy, increased rapidly, and the water column remained well oxygenated. The spring overturn period (period I) was characterized by low HBR values (ratio of St+B to B) with an average of 0.85 (MMA in Figure 7A). Low HBR denoted very unstable regimes due to an abundance of external energy compared to the required energy to keep the lake mixed. The start of the spring overturn period coincided with ice melt and open-water conditions, although in some years, the thermal structure of the lake was well mixed prior to ice off and spring overturn. May was the earliest month when the average HBR

was above 1 (Figure 7B), which indicated that the water layers below the thermocline became isolated from the surface layers. Following period I, Schmidt Stability increased in conjunction with the spatial extent of anoxia in the lake water column (Figure 6Figure-6). The heat budgets, as well as the anoxic area, peaked during this second phase (period II) and declined, although the peak of anoxic area lagged behind the heat budget peaks. As the Schmidt Stability decreased to near zero in fall, mixing is initiated causing the water column to become oxygenated.

The stratification phase (period 2) had an average HBR value of 1.45, which indicated that an additional energy input of 45% would be needed to keep Lake Mendota isothermal during stratified summer conditions (Figure 7A). Lake Mendota's mean summer HBR value was similar to Lake Steinsfjord, Norway (max. depth 22 m, Kjensmo, (1994)) and was larger than the HBR values of the unstable lake systems Lake Marion, USA (max. depth 4.5 m) and Lake Wingra, USA (max. depth 6.1 m) (Kjensmo, 1994). The oxygenation of the water column lagged behind the stratification period, and even when the Schmidt Stability values at the end of the 2nd period were close to zero, a certain amount of the lake's area can remain anoxic.

Heat storage in Lake Mendota began after ice off and increased rapidly between the end of the mixing period and the onset of stratification (Figure 8A). The amount of internal energy stored at the beginning of stratification correlated with the maximum available amount of internal energy that will be stored during the stratified period, despite year-to-year fluctuations in internal energy. Over the course of each year, the amount of stored internal energy was positively correlated with Schmidt Stability (Figure 8B). Birgean Work was also positively correlated with both Schmidt Stability and Internal Energy. The relationship between Schmidt Stability and the spatial anoxia extent exhibited a clockwise hysteresis (Figure 8C). Beginning in June, Schmidt Stability increased as stratified conditions established in the water column. Schmidt Stability peaked on average in August at $\sim 720 \text{ J m}^{-2}$ (Figure 6Figure-6), followed by a peak in the Birgean Work at $\sim 1250 \text{ J m}^{-2}$. Simultaneously, the depth of anoxia in the water column (anoxia height) followed the progression of Schmidt Stability, peaking in September. In Lake Mendota, the anoxia height was limited by the thermocline depth, as the low vertical turbulent diffusivity of the thermocline acted as a barrier for an encroachment of anoxic conditions into the surface mixed layer. Anoxia height decreased after September as Schmidt Stability decreased. Thermocline depth and anoxia height declined in parallel until Schmidt Stability reached zero. In Lake Mendota, as in most lakes, the surface layer was the region of significant heat storage (Figure 8D). Once stratified, heat storage in deeper water layers was limited, whereas heat in the upper 5 m of the lake increased throughout the summer, and accounted for up to 40% of the total internal energy stored during summer.

3.4 Oxygen Dynamics

Dissolved oxygen dynamics, including the spatial extent of oxygen depletion in the water column, and the timing of summer anoxia periods, were replicated by the GLM-AED model (Figure 9Figure-9A-B, Table 2); although the model overestimated spring and summer time surface oxygen concentrations due to a higher net ecosystem production. The depth-averaged fit criteria of dissolved oxygen concentrations were similar but slightly higher to a recent study from Farrell et al. (2020) in which the RMSE were 1.88 mg/L and 2.49 mg/L in the epilimnion and hypolimnion, respectively, of a GLM-AED model calibrated for Lake Mendota. Our model captured annual anoxia events in the hypolimnion (Figure 10Figure-10A), and the range of the

simulated Anoxic Factor was similar to the derived Anoxic Factor from observed data (Figure 10B). The model failed to replicate extreme events (e.g., the very low Anoxic Factor in 2002) and did not capture a recent positive trend of Anoxic Factor since 2010. The simulated Anoxic Factor over the total time period averaged 56.7 ± 5.2 days with an RMSE of 7 days, an NSE of -0.22, and an KGE of 0.26 (correlation coefficient $r = 0.28$). The model's underestimation of the recent positive trend of Anoxic Factors starting in 2010 was investigated by quantifying the fits during two periods: 1992-2009 (Figure 10C) and 2010-2005 (Figure 10D). In the pre-2010 period (1992-2009), the model achieved an RMSE of 6.79 days, an NSE of -0.25, an KGE of 0.44 and r of 0.45 for Anoxic Factor predictions. In the post-2010 period (2010-2015), the model achieved an RMSE of 8.04 days, an NSE of -31.99, an KGE of 0.21 and r of 0.62. A subsequent Wilcoxon signed-rank test highlighted that the observed average and modeled Anoxic Factors from the pre-2010 period showed no significant differences between the two distributions, suggesting they belong to the same population (p -value = 0.13, Supplement Figure A9 A), whereas the distributions of observed mean Anoxic Factors and modeled ones after 2010 were significantly different (p -value = 0.032, Supplement Figure A9 B), highlighting a potential decadal shift in oxygen depletion patterns. On the contrary, the modeled Anoxic Factor distributions of the pre- and post-2010 period were not significantly different (p -value = 0.49, Supplement Figure A9 C), whereas the distributions of the observed Anoxic Factors were significantly different (p -value = 0.0049, Supplement Figure A9 D).

3.5 Regression Model

We included in total three predictors in our final multiple linear regression which were deemed important by the Boruta algorithm and stepwise linear model investigations using AIC for the period 1980-2009: Schmidt Stability during summer (rel. importance of 43 %), the onset date of stratification (rel. importance of 42 %), and winter to spring gross primary production in the epilimnion (rel. importance of 15 %)-(Supplement Table A4).

The linear model showed a good agreement between simulated and predicted Anoxic Factor (Figure 11A, Supplement Table A4). The Anoxic Factor was positively correlated to the summer Schmidt Stability ($r = 0.72$, Figure 11B) and the gross primary production in the epilimnion ($r = 0.48$). It was negatively correlated to the onset of stratification ($r = -0.78$, Figure 11B).

4 Discussion

4.1 Controls of Inter-annual variability on Hypolimnetic Anoxia

Inter-annual variability in the Anoxic Factor for Lake Mendota is influenced primarily by physical processes that regulate thermal and stratification dynamics, and less so by processes that influence organic matter. The Schmidt Stability during summer (rel. importance of 43 %) as well as the timing of stratification (rel. importance of 42 %) all influence Anoxic Factor, and are all driven mainly by atmospheric drivers and heat convection throughout the water column. The most important predictor of Anoxic Factor directly related to biological processes is gross primary production in the epilimnion (rel.

450 importance of 15 %), Supplement Table A4) [prior to summer](#). For eutrophic lakes, this suggests two critical points. First, climate has direct control over lake phenology. Climate drives the timing of stratification onset and stratification strength, and that controls the year-to-year variability in Anoxic Factor. Second, biology matters, but its interannual dynamics are not that influential, at least for this eutrophic lake with a residence time greater than one year. We also acknowledge that a step change in the Anoxic Factor occurred in 2010 and was unexplained by our model. Although the cause remains unknown, the timing
455 was coincident with large increases in the invasive zooplankton, *Bythotrephes* (Walsh et al., 2017).

4.2 Physical Control over Anoxic Factor

Our work demonstrates that oxygen dynamics in Lake Mendota are strongly governed by the stratification strength [and timing](#) in the water column. Snorheim et al. (2017) came to a similar conclusion in an analysis of Lake Mendota during a shorter time period (2007-2010), arguing that changes in the atmospheric boundary conditions - air temperature, wind speed and
460 relative humidity - are driving changes in the hypolimnetic anoxia development of Lake Mendota. Here, we link these atmospheric drivers to changes in the water column's stratification (as quantified by Schmidt Stability and Birgean Work). Over our 37-year simulation, anoxia onset occurred in the days following stratification onset. During stratification, the establishment of a strong density gradient between the upper and the lower layers in the water column reduces vertical turbulent diffusivities and limits the downward flux of dissolved oxygen. Without any additional oxygen source (e.g., atmospheric fluxes
465 or primary production), dissolved oxygen concentrations below the thermocline are rapidly consumed by bacterial mineralization of organic matter in the water column and sediment.

In Lake Mendota, the temporal and spatial extent of anoxia is limited by the length of the summer stratification period (e.g. onset and offset of stratification, heat storage in water column prior to stratification, see [Figure 6](#)~~Figure 6~~), the stratification strength and thermocline depth (e.g. Schmidt Stability, wind shear stress, see Figure 8), respectively. The number
470 of days between the onset of spring mixing, which begins immediately following ice off, and summer stratification, determines the maximum amount of internal energy stored in summer. An early spring overturn and a slightly later stratification start would lead to increased anoxia height in the water column, though not necessarily a higher Anoxic Factor as the duration of anoxia could be shorter. The mixing period is essentially a turning point in the year for the gradient of the internal heat accumulation, which increases rapidly following mixing. Still, as most energy is stored in a thin surface layer, short-duration
475 extreme wind events or cold weather periods can deplete that additional stored heat before summer stratified conditions are reached. The storage of heat simultaneously increases Birgean Work, and later Schmidt Stability, increasing the resistance of the water column to mixing and limiting vertical fluxes from the epilimnion to the hypolimnion and vice versa. In summer, a higher amount of stored internal energy is also related to a higher Schmidt Stability, further increasing the spatial extent of anoxia. Ultimately, the spatial extent of anoxia is limited by the thermocline depth, as in all simulated years the anoxia height
480 reaches a maximum during late summer when the thermocline depth was already deepening.

4.3 Biological Control over Anoxic Factor

Gross primary production (GPP) in the epilimnion prior to summer stratification is a secondary, but still important, predictor of anoxia. GPP fuels the sinking of particulate organic carbon (POC) into deeper layers before the establishment of a thermocline. In the hypolimnion, POC is readily decomposed into DOC and mineralized by bacteria in the numerical model, and reflects the dissolved oxygen volume sink. Unexpectedly, factors controlling year-to-year variation in GPP, such as external loadings of nutrients (specifically nitrogen and phosphorus), are not evident in the anoxia patterns in Lake Mendota. This is likely due to the historically high autochthony of the eutrophic lake (Hart, 2017), with phytoplankton blooms documented back to the early 1900s (Lathrop, 2007), thereby minimizing the need for external nutrient loads to stimulate phytoplankton production. While biological contributions to volumetric and sediment oxygen demands are well-described for a broad range of lakes (Gelda and Auer, 1996; Matzinger et al., 2010; Müller et al., 2012; Rippey and McSorley, 2009; Yuan and Jones, 2019), for eutrophic lakes, the control over available organic substrate for hypolimnetic oxygen demand may depend more on internal processing (autochthony) than external subsidies (allochthony).

Although the model replicated well the long-term DOC dynamics (Supplement Figure A8), it also overestimated surface layer dissolved oxygen concentrations compared to the observed data. This overestimation must have a concomitant increase in organic matter as a consequence of photosynthesis, and in this case in POC. Considering our proxy for the dynamics of phytoplankton biomass is reasonably well predicted (Fig. 5), this suggests our over-estimate of primary production results in increase in POC that is exported from the epilimnion to the hypolimnion. Unfortunately, we do not have observed POC to calibrate this part of the model, but we feel it is likely that our model has overestimated the contribution of primary production to hypolimnetic organic matter and subsequent oxygen depletion.

The regression models showed that variables related to load dynamics were not significant predictors of Anoxic Factor over nearly four decades. The total phosphorus and nitrogen loads, the change in dissolved oxygen during spring overturn, the temporal change in organic carbon pools, and ice duration were not found important based on the random-forest classifier. Phosphorus cycling in Lake Mendota is complex, so it may not be surprising that load dynamics in any one year are, to a certain extent, uncoupled from the hypolimnetic oxygen demand (Hanson et al., 2020). The relatively long water residence time of Lake Mendota (approx. 4 years, McDonald and Lathrop, 2017), along with the high internal phosphorus loading rate, means that external phosphorus loads represent only about 1/3 of the available phosphorus in the epilimnion (Soranno et al., 1997). Furthermore, high primary production rates that exceed the total lake mineralization, along with external loads of organic carbon, lead to a high storage of organic matter in the sediments that can likely carry over from one year to the next (Hart, 2017). In a more nutrient-poor system, the nutrient and carbon availability would likely be more important predictors.

The model replicated the maximum anoxia event in 1998 but struggled to replicate the minimum in 2002. The discrepancies of 5-10 days between the simulated and observed range of the Anoxic Factor beginning in 2010 are related to an increased spatial as well as temporal extent of summer anoxia (Supplement Figure A10), which was not captured by the model. [A similar increase in observed Anoxic Factors starting in 2010 was also visualized in the study by](#) Snortheim et al.

(2017), ~~but possible causes were not discussed.~~ ~~This~~ The increased spatial as well as temporal extent of summer anoxia was highlighted by the statistical analysis of the pre-2010 (1992-2009) and post-2010 (2010-2015) Anoxic Factors. Prior to 2010, there were no significant differences between observed and modeled distributions ($p=0.13$); whereas, after 2010, the observed distribution was significantly higher than the modeled distribution ($p=0.032$) (Supplement Figure A9). Similarly, the pre-2010 observed Anoxic Factors were significantly different than the post-2010 observed Anoxic Factors ($p=0.0049$). For simplicity and due to limitations in Lake Mendota monitoring data post-2010, we focused the regression analysis of the Anoxic Factor in this study only on the pre-2010 period. The detection of this decadal shift in summer anoxia post-2010 highlights a hidden biological process that was not considered in the process-based model and -

~~The change in Anoxic Factor post-2010~~ may be due to an ecosystem shift in Lake Mendota that began in 2009, when the invasive spiny water flea (*Bythotrephes longimanus*) was detected in surprisingly high densities in the lake (Walsh et al., 2016b, 2018). Spiny water flea effectively became the dominant *Daphnia* grazer, causing historically low *Daphnia* biomass in 2010, 2014 and 2015 (Walsh et al., 2016a) and reducing water clarity. The spiny water flea may have increased organic matter supply to the hypolimnion by grazing down certain ~~phytoplankton~~ zooplankton, and indirectly affecting phytoplankton. Mendota's *Daphnia* population historically consisted of *Daphnia pulicaria* and the smaller-bodied *Daphnia galeata mendotae*, who compete differently with spiny water flea. *D. mendotae* biomass increased in spring after the spiny water flea invasion (Walsh et al., 2017), grazing on phytoplankton and probably accelerating organic matter mineralization before stratification onset. This could be one potential cause that contributed to the increase in hypolimnetic oxygen depletion after 2010. Our GLM-AED2 model could not replicate this food web change, and subsequent shift in anoxia dynamics, due to limitations of the numerical model, i.e., GLM-AED2 had constant ecological parameters over the entire modeling period and did not have zooplankton dynamics instantiated. ~~We envision future monitoring and modeling studies that focus entirely on ecosystem differences and shifts between the pre 2010 and post 2010 periods of Lake Mendota.~~ We envision future monitoring and modeling studies of Lake Mendota that focus entirely on ecosystem shifts associated with the invasion of spiny water flea in 2009 and the exponential growth of zebra mussels from 2015-2018 (Spear, 2020).

The simple deductive model established that the volumetric oxygen sink (i.e. water column oxygen demand) is consistently higher (on average about four times higher) than the sediment oxygen sink. The volumetric sink in lakes has been found to be strongly dependent on the trophic state of the lake, whereas the sediment sink is not (Rippey and McSorley, 2009). Eutrophic lakes tend to have high volumetric sinks that reach maxima of about $0.23 \text{ g m}^{-3} \text{ d}^{-1}$ (Rippey and McSorley, 2009) similar to the average volumetric sink of $0.16 \text{ g m}^{-3} \text{ d}^{-1}$ quantified by the deductive model for Lake Mendota. This finding is confirmed by the works of Conway (1972), who found that the high hypolimnetic oxygen demand of Lake Mendota was driven by algae decomposition, originating from the surface layer. Although eutrophic lakes tend to have a high sediment oxygen demand, the specific values can range from $0.3 \text{ g m}^{-2} \text{ d}^{-1}$ (Romero et al., 2004; Steinsberger et al., 2019) to extreme values of $80 \text{ g m}^{-2} \text{ d}^{-1}$ (Cross and Summerfelt, 1987), most studies measured or applied a value between 1 to $4 \text{ g m}^{-2} \text{ d}^{-1}$ (Mi et al., 2020; Veenstra and Nolen, 1991). The sediment oxygen demand calculated by our deductive model of $0.04 \text{ g m}^{-2} \text{ d}^{-1}$ was closer to the average value of approx. $0.08 \text{ g m}^{-2} \text{ d}^{-1}$ measured by Rippey and McSorley (2009) on 32 lakes. We note that the simple

deductive model itself can only differentiate between two sources of depletion and neglects any physical transport drivers of oxygen, e.g., diffusion. Therefore, the results of the deductive model only add direct information to the actual depletion process of dissolved oxygen, but not of the dominant drivers.

4.4 Improving the Modeling Framework

The coupled GLM-AED2 model was able to generally replicate the thermal dynamics and biogeochemistry of Lake Mendota. In contrast to the calibration of Lake Mendota by Bruce et al. (2018) using an earlier version of GLM (v. 2.2.0), our model reproduced the water temperatures in the surface layer better than the bottom layer dynamics (RMSE for epilimnion and hypolimnion water temperatures, respectively, from Bruce et al., 2018: 1.94 °C and 1.42 °C). This is probably due to the close proximity of the atmospheric forcing boundary condition to the surface layers, whereas the energy balance approach used by GLM potentially underestimates vertical mixing, and hence overpredicts bottom layer water temperatures. In contrast, the model achieved better fits of the biogeochemical variables in the bottom layer. Better fits in the hypolimnion were likely achieved through directed calibration of sediment fluxes during the calibration-validation approach. The implementation and testing of alternative vertical mixing schemes for the Lake Mendota model (e.g. vertical mixing using a k- ϵ turbulence model) could potentially improve vertical transport and water temperature dynamics in deep layers. Further, using transient sediment boundary conditions with dynamic parameters over time could improve the model fit with the observed data, and could replicate potential ecosystem shifts. As the spatial extent of hypolimnetic anoxia is fundamentally three-dimensional (Biddanda et al., 2018), fully resolving anoxia in space and time likely requires a 3D model (Bocaniov and Scavia, 2016). Still, such a model has higher computational needs for long-term calibration-validation analysis, and current monitoring is inadequate to validate the results as most measurements are only made at the deepest point of the lake. Therefore, additional monitoring sites would need to be established. Improved spatial monitoring would be useful in validating our 1D approach and setting up higher dimensional numerical models.

Our GLM-AED2 model overestimated spring phytoplankton biomass, which resulted in an overestimation of surface dissolved oxygen concentrations. This primary overproduction is a potential source of uncertainty for the anoxia timing below the thermocline as the model's anoxia dynamics lag behind the observed ones. The time difference between the simulated and observed dissolved oxygen decline below the thermocline during stratification could be explained by an underestimation of sinking simulated organic material into the hypolimnion. Discrepancies between simulated and observed Anoxic Factors, therefore, could be rooted in our simplifications of the phytoplankton dynamics and its model parameter calibration, and the related organic matter fluxes, and highlight the importance of improving the representation of phytoplankton and zooplankton dynamics in numerical models. Simulating a magnitude of individual species rather than functional phytoplankton groups has been shown to improve numerical water quality and ecosystem predictions (Hellweger, 2017), though it is unclear if it could improve spring bloom predictions in Lake Mendota. This depends also on a more extensive monitoring program that measures and specifies specific phytoplankton species over the vertical gradient on a regular basis. Further, better numerical representations of phytoplankton life cycles (Hense, 2010; Shimoda and Arhonditsis, 2016), and/or allometric scaling

(Shimoda et al., 2016) could significantly improve numerical phytoplankton predictions. It is noteworthy that biweekly monitored data of Lake Mendota required interpolation of the observed data in order to calculate the observed Anoxic Factors. This adds uncertainty to the observed Anoxic Factor, as monitoring likely missed important daily (or even sub-biweekly) fluctuations in dissolved oxygen.

585 It should be noted that as a statistical approach, the deductive regression model does not account for important mechanisms that may explain nonlinearities in the hypothetical linear relationships between oxygen depletion rate and the sediment to volume rate. Thus, the deductive regression model may be biased for Lake Mendota. As the model still advanced our broader system understanding by quantifying the range of the sediment oxygen demand, it was still helpful to investigate observed dissolved oxygen concentration data.

590 **4.5 Implications for landscape and climate change**

The strong relationship between anoxia and water column stability suggests that a changing climate might increase Anoxic Factor. Future climate in the region is expected to warm (Veloz et al., 2012), which may amplify and prolong water column stratification through increasing air temperatures (O'Reilly et al., 2015; Winslow et al., 2017). Shorter ice duration or even the total loss of ice (Sharma et al., 2019) could promote earlier heat storage in Lake Mendota, which could potentially increase summer Schmidt Stability, as demonstrated by Farrell et al. (2020). Earlier heat accumulation would cause a stability increase and an earlier onset of stratification, thereby extending the duration of anoxia. Further, a warmer epilimnion can cause the thermocline to become more shallow during the course of summer, which would cause the anoxia height to be spatially limited by a layer that is closer to the surface, hence more lake area would be anoxic. ~~Earlier onset of anoxia~~ Increased oxygen depletion rates may also cause the anoxia height to be spatially limited by an earlier, and therefore lower, thermocline depth. Therefore, warming air temperatures will likely increase the Anoxic Factor of Lake Mendota through prolonged temporal and increased spatial extent of anoxia. It is worth noting that our initial regression quantified the correlation between Anoxic Factor and the water temperature in the hypolimnion at stratification onset as weakly negative. Higher water temperatures in a mixed water column prior to stratification onset are related to less stable stratified summer conditions. This feedback, potentially enhanced by shorter ice periods and warmer spring overturn periods, could shorten the extent of summer anoxia (similar findings were reported in Flaim et al., 2020).

600 Although our model evaluation supported the claim that external phosphorus loads are not important predictors of inter-annual variability in anoxia, future changes in the landscape (Motew et al., 2019), e.g. reduced agricultural application of phosphorus, less direct run-off pathways from the catchment to the lake, or more urbanization, may change these relationships. Lakes with nutrient concentrations lower than Lake Mendota would almost certainly experience higher primary production with elevated nutrient loads, and higher primary production would likely fuel higher hypolimnetic respiration (Rippey and McSorley, 2009). Thus, the link between catchment processes and lake anoxia, which was not detectable in this study, would likely be important in lakes with meso- or oligotrophic states (Ward et al., 2020). For Lake Mendota, the only

reasonable management approach to reducing anoxia is to lower external nutrient loads, especially given that anoxia duration in Lake Mendota is related to thermal stratification, which is predicted to increase with future warmer air temperatures.

615 **5 Conclusions**

We presented a novel modeling framework combining three complementary approaches (deductive model, numerical GLM-AED2 model, and regression model) to conceptually identify the important drivers of year-to-year variability in the spatial and temporal summer hypolimnetic anoxia extent of eutrophic Lake Mendota over a period spanning nearly four decades. Physical metrics – summer Schmidt Stability and onset date of stratification – were the most important predictors driving the summer
620 Anoxic Factor. Although the gross primary production prior to summer stratification was still influential in affecting year-to-year variability of hypolimnetic anoxia, biological control over the Anoxic Factor was limited in our study period. As climate change is positively correlated to lake stratification characteristics (earlier, longer and more intense summer stratification), we expect an increase in the Anoxic Factor of Lake Mendota in coming decades. The only local management option to mitigate future hypolimnetic anoxia in Lake Mendota is a reduction of external nutrient loads, which aims at shifting the lake towards
625 oligotrophic conditions. Further, our modelling framework detected a decadal shift in the Anoxic Factor starting in 2010, which was not replicated by our process-based model and therefore probably not driven by physical or chemical drivers, but related to an ecosystem shift caused by the invasive *Bythotrephes longimanus*. The modeling framework developed here can be extended by an advanced sediment diagenesis model and an uncertainty analysis, e.g. Bayesian analysis, to develop greater insight into effective strategies to mitigate environmental degradation. Consequently, as managers and decision makers work
630 to prevent a decline in lake water quality as a result of climate change, decision support tools that support an understanding of lake dynamics over the long term are essential.

Code and data availability

The data to run the 37-year simulation, including configuration files, driver data and model source code, as well as the simulation output used in this study are available at the Environmental Data Initiative (<https://portal-s.edirepository.org/nis/mapbrowse?scope=knb-lter-ntl&identifier=389&revision=1>, Ladwig et al., 2020).
635

Author Contributions

PCH, HAD, CCC, KMC and RL designed the conceptual model study and aim. HAD pre-processed the input data. RL and PCH performed the lake model simulations. YZ, LS and CD performed the catchment model simulations. RL analysed the data and prepared the manuscript with contributions from all co-authors.

640 Acknowledgments

The project was funded through an NSF ABI development grant (#DBI 1759865), an NSF CNH grant (#1517823), as well as NSF grants DEB 1753639 and DEB 1753657. Lake Mendota data were obtained from the North Temperate Lakes Long Term Ecological Research program (#DEB-1440297). We are thankful for supplementary dissolved oxygen field data from 1992-1994 by Patricia Soranno and insights from the CNH-Lakes team.

645 Competing Interests

The authors declare that they have no conflict of interest.

References

- Appling, A. P., Leon, M. C. and McDowell, W. H.: Reducing bias and quantifying uncertainty in watershed flux estimates: the R package loadflex, *Ecosphere*, 6(12), art269, doi:10.1890/ES14-00517.1, 2015.
- 650 Bennett, E. M., Reed-Andersen, T., Houser, J. N., Gabriel, J. R. and Carpenter, S. R.: A Phosphorus Budget for the Lake Mendota Watershed, *Ecosystems*, 2(1), 69–75, doi:10.1007/s100219900059, 1999.
- Biddanda, B. A., Weinke, A. D., Kendall, S. T., Gereaux, L. C., Holcomb, T. M., Snider, M. J., Dila, D. K., Long, S. A., VandenBerg, C., Knapp, K., Koopmans, D. J., Thompson, K., Vail, J. H., Ogdahl, M. E., Liu, Q., Johengen, T. H., Anderson, E. J. and Ruberg, S. A.: Chronicles of hypoxia: Time-series buoy observations reveal annually recurring seasonal basin-wide
655 hypoxia in Muskegon Lake – A Great Lakes estuary, *J. Gt. Lakes Res.*, 44(2), 219–229, doi:10.1016/j.jglr.2017.12.008, 2018.
- Birge, E. A.: The work of wind in warming a lake, *Transl. Wis. Acad Sciens Arts Lett.*, 18 Pt II, 341, 1916.
- Bocaniov, S. A. and Scavia, D.: Temporal and spatial dynamics of large lake hypoxia: Integrating statistical and three-dimensional dynamic models to enhance lake management criteria: LAKE HYPOXIA: INTEGRATING MODELS TO ENHANCE LAKE MANAGEMENT, *Water Resour. Res.*, 52(6), 4247–4263, doi:10.1002/2015WR018170, 2016.
- 660 Bossard, P. and Gächter, R.: Methan- und Sauerstoffhaushalt im mesotrophen Lungernsee, *Schweiz. Z. Für Hydrol.*, 43(2), 219–252, doi:10.1007/BF02502135, 1981.
- Brock, T. D.: *A Eutrophic Lake: Lake Mendota, Wisconsin*, Springer-Verlag, New York, Berlin, Heidelberg, Tokyo., 1985.
- Bruce, L. C., Frassl, M. A., Arhonditsis, G. B., Gal, G., Hamilton, D. P., Hanson, P. C., Hetherington, A. L., Melack, J. M., Read, J. S., Rinke, K., Rigosi, A., Trolle, D., Winslow, L., Adrian, R., Ayala, A. I., Bocaniov, S. A., Boehrer, B., Boon, C.,
665 Brookes, J. D., Bueche, T., Busch, B. D., Copetti, D., Cortés, A., de Eyto, E., Elliott, J. A., Gallina, N., Gilboa, Y., Guyennon, N., Huang, L., Kerimoglu, O., Lenters, J. D., MacIntyre, S., Makler-Pick, V., McBride, C. G., Moreira, S., Özkundakci, D., Pilotti, M., Rueda, F. J., Rusak, J. A., Samal, N. R., Schmid, M., Shatwell, T., Snorthheim, C., Soullignac, F., Valerio, G., van der Linden, L., Vetter, M., Vinçon-Leite, B., Wang, J., Weber, M., Wickramaratne, C., Woolway, R. I., Yao, H. and Hipsey, M. R.: A multi-lake comparative analysis of the General Lake Model (GLM): Stress-testing across a global observatory
670 network, *Environ. Model. Softw.*, 102, 274–291, doi:10.1016/j.envsoft.2017.11.016, 2018.

- Burns, N. M.: Using hypolimnetic dissolved oxygen depletion rates for monitoring lakes, *N. Z. J. Mar. Freshw. Res.*, 29(1), 1–11, doi:10.1080/00288330.1995.9516634, 1995.
- Carpenter, S. R., Booth, E. G. and Kucharik, C. J.: Extreme precipitation and phosphorus loads from two agricultural watersheds: Extreme precipitation and phosphorus load, *Limnol. Oceanogr.*, 63(3), 1221–1233, doi:10.1002/lno.10767, 2018.
- 675 Cole, G. and Weihe, P.: *Textbook of Limnology*, 5., Waveland Press, Inc., 2016.
- Conway, C. J.: Oxygen depletion in the hypolimnion, M.Sc. thesis, UW-Madison, Madison., 1972.
- Cornett, R. J.: Predicting changes in hypolimnetic oxygen concentrations with phosphorus retention, temperature, and morphometry, *Limnol. Oceanogr.*, 34(7), 1359–1366, doi:10.4319/lo.1989.34.7.1359, 1989.
- 680 Cornett, R. J. and Rigler, F. H.: Hypolimnetic Oxygen Deficits: Their Prediction and Interpretation, *Science*, 205(4406), 580–581, doi:10.1126/science.205.4406.580, 1979.
- Cross, T. K. and Summerfelt, R. C.: OXYGEN DEMAND OF LAKES: SEDIMENT AND WATER COLUMN BOD, *Lake Reserv. Manag.*, 3(1), 109–116, doi:10.1080/07438148709354766, 1987.
- Diaz, R. J. and Rosenberg, R.: Spreading Dead Zones and Consequences for Marine Ecosystems, *Science*, 321(5891), 926–929, doi:10.1126/science.1156401, 2008.
- 685 Duffy, C. J., Dugan, H. A. and Hanson, P. C.: The age of water and carbon in lake-catchments: A simple dynamical model: Age of water and carbon in lake-catchments, *Limnol. Oceanogr. Lett.*, 3(3), 236–245, doi:10.1002/lol2.10070, 2018.
- Farrell, K. J., Ward, N. K., Krinos, A. I., Hanson, P. C., Daneshmand, V., Figueiredo, R. J. and Carey, C. C.: Ecosystem-scale nutrient cycling responses to increasing air temperatures vary with lake trophic state, *Ecol. Model.*, 430, 109134, doi:10.1016/j.ecolmodel.2020.109134, 2020.
- 690 Fenocchi, A., Rogora, M., Morabito, G., Marchetto, A., Sibilla, S. and Dresti, C.: Applicability of a one-dimensional coupled ecological-hydrodynamic numerical model to future projections in a very deep large lake (Lake Maggiore, Northern Italy/Southern Switzerland), *Ecol. Model.*, 392, 38–51, doi:10.1016/j.ecolmodel.2018.11.005, 2019.
- Flaim, G., Andreis, D., Piccolroaz, S. and Obertegger, U.: Ice Cover and Extreme Events Determine Dissolved Oxygen in a Placid Mountain Lake, *Water Resour. Res.*, 56(9), doi:10.1029/2020WR027321, 2020.
- 695 Foley, B., Jones, I. D., Maberly, S. C. and Rippey, B.: Long-term changes in oxygen depletion in a small temperate lake: effects of climate change and eutrophication, *Freshw. Biol.*, 57(2), 278–289, doi:10.1111/j.1365-2427.2011.02662.x, 2012.
- Gelda, R. K. and Auer, M. T.: Development and Testing of a Dissolved Oxygen Model for a Hypereutrophic Lake, *Lake Reserv. Manag.*, 12(1), 165–179, doi:10.1080/07438149609354006, 1996.
- Grömping, U.: Relative Importance for Linear Regression in *R*: The Package **relaimpo**, *J. Stat. Softw.*, 17(1), 700 doi:10.18637/jss.v017.i01, 2006.
- Gupta, H. V., Kling, H., Yilmaz, K. K. and Martinez, G. F.: Decomposition of the mean squared error and NSE performance criteria: Implications for improving hydrological modelling, *J. Hydrol.*, 377(1–2), 80–91, doi:10.1016/j.jhydrol.2009.08.003, 2009.

- 705 Hansen, N.: The CMA Evolution Strategy: A Tutorial, ArXiv160400772 Cs Stat [online] Available from: <http://arxiv.org/abs/1604.00772> (Accessed 25 November 2019), 2016.
- Hanson, P. C., Bade, D. L., Carpenter, S. R. and Kratz, T. K.: Lake metabolism: Relationships with dissolved organic carbon and phosphorus, *Limnol. Oceanogr.*, 48(3), 1112–1119, doi:10.4319/lo.2003.48.3.1112, 2003.
- 710 Hanson, P. C., Stillman, A. B., Jia, X., Karpatne, A., Dugan, H. A., Carey, C. C., Stachelek, J., Ward, N. K., Zhang, Y., Read, J. S. and Kumar, V.: Predicting lake surface water phosphorus dynamics using process-guided machine learning, *Ecol. Model.*, 430, 109136, doi:10.1016/j.ecolmodel.2020.109136, 2020.
- Hart, J.: Greenhouse Gas Formation and Organic Carbon Dynamics in a Eutrophic Lake, Master Thesis, University of Wisconsin-Madison, Madison., 2017.
- 715 Hart, J., Dugan, H., Carey, C., Stanley, E. and Hanson, P.: Lake Mendota Carbon and Greenhouse Gas Measurements at North Temperate Lakes LTER 2016 ver 19, [online] Available from: <https://doi.org/10.6073/pasta/170e5ba0ed09fe3d5837ef04c47e432e>, 2020.
- Hellweger, F.: 75 years since Monod: It is time to increase the complexity of our predictive ecosystem models (opinion), *Ecol. Model.*, 346, 77–87, doi:10.1016/j.ecolmodel.2016.12.001, 2017.
- Hense, I.: Approaches to model the life cycle of harmful algae, *J. Mar. Syst.*, 83(3–4), 108–114, doi:10.1016/j.jmarsys.2010.02.014, 2010.
- 720 Hipsey, M. R. and Hamilton, D. P.: The Computational Aquatic Ecosystem Dynamics Model (CAEDYM): v3 Science Manual, Centre for Water Research Technical Report, Centre for Water Research, Perth, Australia., 2008.
- Hipsey, M. R., Huang, P., Paraska, D., Busch, B. and Boon, C.: Aquatic Ecodynamics (AED/AED2) model library, *Aquat. Ecodynamics Model. Libr. AED2* [online] Available from: <https://aed.see.uwa.edu.au/research/models/aed/> (Accessed 7 October 2020), 2017.
- 725 Hipsey, M. R., Bruce, L. C., Boon, C., Busch, B., Carey, C. C., Hamilton, D. P., Hanson, P. C., Read, J. S., Sousa, E. de, Weber, M. and Winslow, L. A.: A General Lake Model (GLM 3.0) for linking with high-frequency sensor data from the Global Lake Ecological Observatory Network (GLEON), *Geosci. Model Dev.*, 12(1), 473–523, doi:<https://doi.org/10.5194/gmd-12-473-2019>, 2019.
- 730 Hutchinson, G. E.: On the Relation between the Oxygen Deficit and the productivity and Typology of Lakes, *Int. Rev. Gesamten Hydrobiol.*, 36(2), 336–355, doi:10.1002/iroh.19380360205, 1938.
- Idso, S. B.: On the concept of lake stability, *Limnol. Oceanogr.*, 18(4), 681–683, doi:10.4319/lo.1973.18.4.0681, 1973.
- Jenny, J.-P., Arnaud, F., Alric, B., Dorioz, J.-M., Sabatier, P., Meybeck, M. and Perga, M.-E.: Inherited hypoxia: A new challenge for reoligotrophicated lakes under global warming: Holocene hypoxia dynamics in large lakes, *Glob. Biogeochem. Cycles*, 28(12), 1413–1423, doi:10.1002/2014GB004932, 2014.
- 735 Jenny, J.-P., Francus, P., Normandeau, A., Lapointe, F., Perga, M.-E., Ojala, A., Schimmelmann, A. and Zolitschka, B.: Global spread of hypoxia in freshwater ecosystems during the last three centuries is caused by rising local human pressure, *Glob. Change Biol.*, 22(4), 1481–1489, doi:10.1111/gcb.13193, 2016a.

- 740 Jenny, J.-P., Normandeau, A., Francus, P., Taranu, Z. E., Gregory-Eaves, I., Lapointe, F., Jautzy, J., Ojala, A. E. K., Dorioz, J.-M., Schimmelmann, A. and Zolitschka, B.: Urban point sources of nutrients were the leading cause for the historical spread of hypoxia across European lakes, *Proc. Natl. Acad. Sci.*, 113(45), 12655–12660, doi:10.1073/pnas.1605480113, 2016b.
- Kara, E. L., Heimerl, C., Killpack, T., Van de Bogert, M. C., Yoshida, H. and Carpenter, S. R.: Assessing a decade of phosphorus management in the Lake Mendota, Wisconsin watershed and scenarios for enhanced phosphorus management, *Aquat. Sci.*, 74(2), 241–253, doi:10.1007/s00027-011-0215-6, 2012.
- 745 Kjensmo, J.: Internal energy, the work of the wind, and the thermal stability in Lake Tyrifjord, southeastern Norway, *Hydrobiologia*, 286(1), 53–59, doi:10.1007/BF00007280, 1994.
- Kursa, M. B. and Rudnicki, W. R.: Feature Selection with the Boruta Package, *J. Stat. Softw.*, 36(11), doi:10.18637/jss.v036.i11, 2010.
- 750 Ladwig, R., Hanson, P. C., Dugan, H. A., Carey, C. C., Zhang, Y., Shu, L., Duffy, C. and Cobourn, K. M.: Lake thermal structure drives inter-annual variability in summer anoxia dynamics in a eutrophic lake over 37 years ver 1, [online] Available from: <https://portal-s.edirepository.org/nis/mapbrowse?scope=knb-lter-ntl&identifier=389&revision=1> (Accessed 3 July 2020), 2020.
- Lathrop, R. and Carpenter, S.: Water quality implications from three decades of phosphorus loads and trophic dynamics in the Yahara chain of lakes, *Inland Waters*, 4(1), 1–14, doi:10.5268/IW-4.1.680, 2014.
- 755 Lathrop, R. C.: Lake Mendota and the Yahara River chain, in *Food web management: A case study of Lake Mendota, Wisconsin*, pp. 17–29, Springer-Verlag, N.Y., 1992.
- Lathrop, R. C.: Perspectives on the eutrophication of the Yahara lakes, *Lake Reserv. Manag.*, 23(4), 345–365, doi:10.1080/07438140709354023, 2007.
- Livingstone, D. M. and Imboden, D. M.: The prediction of hypolimnetic oxygen profiles: a plea for a deductive approach, *Can. J. Fish. Aquat. Sci.*, 53(4), 924–932, doi:10.1139/f95-230, 1996.
- 760 Magnuson, J., Carpenter, S. and Stanley, E.: North Temperate Lakes LTER: Chemical Limnology of Primary Study Lakes: Nutrients, pH and Carbon 1981 - current ver 52, [online] Available from: <https://doi.org/10.6073/pasta/8359d27bbd91028f222d923a7936077d>, 2020a.
- Magnuson, J., Carpenter, S. and Stanley, E.: North Temperate Lakes LTER: Physical Limnology of Primary Study Lakes 1981 - current ver 27, [online] Available from: <https://doi.org/10.6073/pasta/c120b223f80c63982457a2e1e76f6038>, 2020b.
- 765 Magnuson, J., Carpenter, S. and Stanley, E.: North Temperate Lakes LTER: Phytoplankton - Madison Lakes Area 1995 - current ver 28, [online] Available from: <https://doi.org/10.6073/pasta/13ea8f578654493155a660ab886f695e>, 2020c.
- Magnuson, J., Carpenter, S. and Stanley, E.: North Temperate Lakes LTER: Secchi Disk Depth; Other Auxiliary Base Crew Sample Data 1981 - current ver 29, [online] Available from: <https://doi.org/10.6073/pasta/c0b0b52c4c41446b76e14662f9a9a0ce>, 2020d.
- 770 Magnuson, J. J., Kratz, T. K. and Benson: Long-term dynamics of lakes in the landscape : long-term ecological research on North Temperate Lakes, Oxford; New York: Oxford University Press. [online] Available from: <https://books.google.com/books?hl=en&lr=&id=CkFuLsV5tuMC&oi=fnd&pg=PR17&dq=Long-term+dynamics+of+lakes+in+the+landscape+:+long-term+ecological+research+on+North+Temperate+Lakes&ots=T8-QMy4uNX&sig=lhoqbzi6bitAPJIGrBy-2hslDjs#v=onepage&q=Long-term%20dynamic.>, 2006.

- 775 Matzinger, A., Müller, B., Niederhauser, P., Schmid, M. and Wüest, A.: Hypolimnetic oxygen consumption by sediment-based reduced substances in former eutrophic lakes, *Limnol. Oceanogr.*, 55(5), 2073–2084, doi:10.4319/lo.2010.55.5.2073, 2010.
- McDonald, C. P. and Lathrop, R. C.: Seasonal shifts in the relative importance of local versus upstream sources of phosphorus to individual lakes in a chain, *Aquat. Sci.*, 79(2), 385–394, doi:10.1007/s00027-016-0504-1, 2017.
- 780 Meding, M. E. and Jackson, L. J.: Biotic, chemical, and morphometric factors contributing to winter anoxia in prairie lakes, *Limnol. Oceanogr.*, 48(4), 1633–1642, doi:10.4319/lo.2003.48.4.1633, 2003.
- Mi, C., Shatwell, T., Ma, J., Wentzky, V. C., Boehrer, B., Xu, Y. and Rinke, K.: The formation of a metalimnetic oxygen minimum exemplifies how ecosystem dynamics shape biogeochemical processes: A modelling study, *Water Res.*, 175, 115701, doi:10.1016/j.watres.2020.115701, 2020.
- 785 Mitchell, K. E.: The multi-institution North American Land Data Assimilation System (NLDAS): Utilizing multiple GCIP products and partners in a continental distributed hydrological modeling system, *J. Geophys. Res.*, 109(D7), D07S90, doi:10.1029/2003JD003823, 2004.
- Morris, M. D.: Factorial Sampling Plans for Preliminary Computational Experiments, *Technometrics*, 33(2), 161–174, doi:10.1080/00401706.1991.10484804, 1991.
- 790 Motew, M., Chen, X., Carpenter, S. R., Booth, E. G., Seifert, J., Qiu, J., Loheide, S. P., Turner, M. G., Zipper, S. C. and Kucharik, C. J.: Comparing the effects of climate and land use on surface water quality using future watershed scenarios, *Sci. Total Environ.*, 693, 133484, doi:10.1016/j.scitotenv.2019.07.290, 2019.
- Müller, B., Bryant, L. D., Matzinger, A. and Wüest, A.: Hypolimnetic Oxygen Depletion in Eutrophic Lakes, *Environ. Sci. Technol.*, 120824131307006, doi:10.1021/es301422r, 2012.
- 795 Müller, B., Steinsberger, T., Schwefel, R., Gächter, R., Sturm, M. and Wüest, A.: Oxygen consumption in seasonally stratified lakes decreases only below a marginal phosphorus threshold, *Sci. Rep.*, 9(1), 18054, doi:10.1038/s41598-019-54486-3, 2019.
- North, R. P., North, R. L., Livingstone, D. M., Köster, O. and Kipfer, R.: Long-term changes in hypoxia and soluble reactive phosphorus in the hypolimnion of a large temperate lake: consequences of a climate regime shift, *Glob. Change Biol.*, 20(3), 811–823, doi:10.1111/gcb.12371, 2014.
- 800 Nürnberg, G.: Quantifying anoxia in lakes, *Limnol. Oceanogr.*, 40(6), 1100–1111, doi:https://doi.org/10.4319/lo.1995.40.6.1100, 1995a.
- Nürnberg, G. K.: The Anoxic Factor, a Quantitative Measure of Anoxia and Fish Species Richness in Central Ontario Lakes, *Trans. Am. Fish. Soc.*, 124(5), 677–686, doi:10.1577/1548-8659(1995)124<0677:TAFAQM>2.3.CO;2, 1995b.
- Nürnberg, G. K.: Quantified hypoxia and anoxia in lakes and reservoirs, *ScientificWorldJournal*, 4, 42–54, doi:10.1100/tsw.2004.5, 2004.
- 805 Odum, H. T.: Primary Production in Flowing Waters, *Limnol. Oceanogr.*, 1(2), 102–117, doi:10.4319/lo.1956.1.2.0102, 1956.
- O'Reilly, C. M., Sharma, S., Gray, D. K., Hampton, S. E., Read, J. S., Rowley, R. J., Schneider, P., Lenters, J. D., McIntyre, P. B., Kraemer, B. M., Weyhenmeyer, G. A., Straile, D., Dong, B., Adrian, R., Allan, M. G., Anneville, O., Arvola, L., Austin, J., Bailey, J. L., Baron, J. S., Brookes, J. D., de Eyto, E., Dokulil, M. T., Hamilton, D. P., Havens, K., Hetherington, A. L., Higgins, S. N., Hook, S., Izmet'eva, L. R., Joehnk, K. D., Kangur, K., Kasprzak, P., Kumagai, M., Kuusisto, E., Leshkevich, G., Livingstone, D. M., MacIntyre, S., May, L., Melack, J. M., Mueller-Navarra, D. C., Naumenko, M., Noges, P., Noges, T.,

- North, R. P., Plisnier, P.-D., Rigosi, A., Rimmer, A., Rogora, M., Rudstam, L. G., Rusak, J. A., Salmaso, N., Samal, N. R., Schindler, D. E., Schladow, S. G., Schmid, M., Schmidt, S. R., Silow, E., Soylu, M. E., Teubner, K., Verburg, P., Voutilainen, A., Watkinson, A., Williamson, C. E. and Zhang, G.: Rapid and highly variable warming of lake surface waters around the globe, *Geophys. Res. Lett.*, 42(24), 10,773–10,781, doi:10.1002/2015GL066235, 2015.
- 815 Qu, Y. and Duffy, C. J.: A semidiscrete finite volume formulation for multiprocess watershed simulation: MULTIPROCESS WATERSHED SIMULATION, *Water Resour. Res.*, 43(8), doi:10.1029/2006WR005752, 2007.
- Read, J. S., Hamilton, D. P., Jones, I. D., Muraoka, K., Winslow, L. A., Kroiss, R., Wu, C. H. and Gaiser, E.: Derivation of lake mixing and stratification indices from high-resolution lake buoy data, *Environ. Model. Softw.*, 26(11), 1325–1336, doi:10.1016/j.envsoft.2011.05.006, 2011.
- 820 Read, J. S., Winslow, L. A., Hansen, G. J. A., Van Den Hoek, J., Hanson, P. C., Bruce, L. C. and Markfort, C. D.: Simulating 2368 temperate lakes reveals weak coherence in stratification phenology, *Ecol. Model.*, 291, 142–150, doi:10.1016/j.ecolmodel.2014.07.029, 2014.
- Rhodes, J., Hetzenauer, H., Frassl, M. A., Rothhaupt, K.-O. and Rinke, K.: Long-term development of hypolimnetic oxygen depletion rates in the large Lake Constance, *Ambio*, 46(5), 554–565, doi:10.1007/s13280-017-0896-8, 2017.
- 825 Rippey, B. and McSorley, C.: Oxygen depletion in lake hypolimnia, *Limnol. Oceanogr.*, 54(3), 905–916, doi:10.4319/lo.2009.54.3.0905, 2009.
- Romero, J. R., Antenucci, J. P. and Imberger, J.: One- and three-dimensional biogeochemical simulations of two differing reservoirs, *Ecol. Model.*, 174(1–2), 143–160, doi:10.1016/j.ecolmodel.2004.01.005, 2004.
- 830 Saltelli, A., Tarantola, S., Campolongo, F. and Ratto, M.: *Sensitivity Analysis in Practice: A Guide to Assessing Scientific Methods*, John Wiley and Sons, Ltd., 2004.
- Sánchez-España, J., Mata, M. P., Vegas, J., Morellón, M., Rodríguez, J. A., Salazar, Á., Yusta, I., Chaos, A., Pérez-Martínez, C. and Navas, A.: Anthropogenic and climatic factors enhancing hypolimnetic anoxia in a temperate mountain lake, *J. Hydrol.*, 555, 832–850, doi:10.1016/j.jhydrol.2017.10.049, 2017.
- Schmidt, W.: Über die Temperatur- und Stabilitätsverhältnisse von Seen, *Geogr. Ann.*, 10, 145, doi:10.2307/519789, 1928.
- 835 Sharma, S., Blagrove, K., Magnuson, J. J., O'Reilly, C. M., Oliver, S., Batt, R. D., Magee, M. R., Straile, D., Weyhenmeyer, G. A., Winslow, L. and Woolway, R. I.: Widespread loss of lake ice around the Northern Hemisphere in a warming world, *Nat. Clim. Change*, 9(3), 227–231, doi:10.1038/s41558-018-0393-5, 2019.
- Shimoda, Y. and Arhonditsis, G. B.: Phytoplankton functional type modelling: Running before we can walk? A critical evaluation of the current state of knowledge, *Ecol. Model.*, 320, 29–43, doi:10.1016/j.ecolmodel.2015.08.029, 2016.
- 840 Shimoda, Y., Rao, Y. R., Watson, S. and Arhonditsis, G. B.: Optimizing the complexity of phytoplankton functional group modeling: An allometric approach, *Ecol. Inform.*, 31, 1–17, doi:10.1016/j.ecoinf.2015.11.001, 2016.
- Snorheim, C. A., Hanson, P. C., McMahon, K. D., Read, J. S., Carey, C. C. and Dugan, H. A.: Meteorological drivers of hypolimnetic anoxia in a eutrophic, north temperate lake, *Ecol. Model.*, 343, 39–53, doi:10.1016/j.ecolmodel.2016.10.014, 2017.
- 845 Soranno, P. A.: *Phosphorus Cycling in the Lake Mendota Ecosystem: Internal versus External Nutrient Supply*, University of Wisconsin-Madison, Madison., 1995.

- Soranno, P. A., Carpenter, S. R. and Lathrop, R. C.: Internal phosphorus loading in Lake Mendota: response to external loads and weather, *Can. J. Fish. Aquat. Sci.*, 54(8), 1883–1893, doi:10.1139/f97-095, 1997.
- 850 Spear, M. J.: Estimating the abundance of organisms for the study and management of fisheries and biological invasions, PhD Thesis, University of Wisconsin-Madison, Madison., 2020.
- Stanley, E. H., Collins, S. M., Lottig, N. R., Oliver, S. K., Webster, K. E., Cheruvilil, K. S. and Soranno, P. A.: Biases in lake water quality sampling and implications for macroscale research: Biases in studying and monitoring lakes, *Limnol. Oceanogr.*, 64(4), 1572–1585, doi:10.1002/lno.11136, 2019.
- 855 Steinsberger, T., Müller, B., Gerber, C., Shafei, B. and Schmid, M.: Modeling sediment oxygen demand in a highly productive lake under various trophic scenarios, edited by W. Duan, *PLOS ONE*, 14(10), e0222318, doi:10.1371/journal.pone.0222318, 2019.
- Veenstra, J. and Nolen, S.: In-Situ sediment oxygen demand in five Southwestern U.S. lakes, *Water Res.*, 25(3), 351–354, doi:10.1016/0043-1354(91)90016-J, 1991.
- 860 Veloz, S., Williams, J. W., Lorenz, D., Notaro, M., Vavrus, S. and Vimont, D. J.: Identifying climatic analogs for Wisconsin under 21st-century climate-change scenarios, *Clim. Change*, 112(3–4), 1037–1058, doi:10.1007/s10584-011-0261-z, 2012.
- Walsh, J. R., Carpenter, S. R. and Vander Zanden, M. J.: Invasive species triggers a massive loss of ecosystem services through a trophic cascade, *Proc. Natl. Acad. Sci.*, 113(15), 4081–4085, doi:10.1073/pnas.1600366113, 2016a.
- Walsh, J. R., Munoz, S. E. and Vander Zanden, M. J.: Outbreak of an undetected invasive species triggered by a climate anomaly, *Ecosphere*, 7(12), doi:10.1002/ecs2.1628, 2016b.
- 865 Walsh, J. R., Lathrop, R. C. and Vander Zanden, M. J.: Invasive invertebrate predator, *Bythotrephes longimanus*, reverses trophic cascade in a north-temperate lake: Invasive invertebrate reverses cascade, *Limnol. Oceanogr.*, 62(6), 2498–2509, doi:10.1002/lno.10582, 2017.
- Walsh, J. R., Lathrop, R. C. and Zanden, M. J. V.: Uncoupling indicators of water quality due to the invasive zooplankter, *Bythotrephes longimanus*, *Limnol. Oceanogr.*, 63(3), 1313–1327, doi:10.1002/lno.10773, 2018.
- 870 Ward, N. K., Steele, B. G., Weathers, K. C., Cottingham, K. L., Ewing, H. A., Hanson, P. C. and Carey, C. C.: Differential Responses of Maximum Versus Median Chlorophyll-a to Air Temperature and Nutrient Loads in an Oligotrophic Lake Over 31 Years, *Water Resour. Res.*, 56(7), doi:10.1029/2020WR027296, 2020.
- 875 Weng, W., Boyle, K. J., Farrell, K. J., Carey, C. C., Cobourn, K. M., Dugan, H. A., Hanson, P. C., Ward, N. K. and Weathers, K. C.: Coupling Natural and Human Models in the Context of a Lake Ecosystem: Lake Mendota, Wisconsin, USA, *Ecol. Econ.*, 169, 106556, doi:10.1016/j.ecolecon.2019.106556, 2020.
- Winslow, L. A., Read, J. S., Hansen, G. J. A., Rose, K. C. and Robertson, D. M.: Seasonality of change: Summer warming rates do not fully represent effects of climate change on lake temperatures: Seasonal heterogeneity in lake warming, *Limnol. Oceanogr.*, 62(5), 2168–2178, doi:10.1002/lno.10557, 2017.
- 880 Winslow, L. A., Read, J. S., Woolway, R. I., Brenttrup, T., Leach, H., Zwart, J. A., Snortheim, C., Albers, S. and Collinge, D.: rLakeAnaluyzer: Lake physics tool. [online] Available from: doi:10.5281/zenodo.58411, 2019.
- Xia, Y., Mitchell, K., Ek, M., Sheffield, J., Cosgrove, B., Wood, E., Luo, L., Alonge, C., Wei, H., Meng, J., Livneh, B., Lettenmaier, D., Koren, V., Duan, Q., Mo, K., Fan, Y. and Mocko, D.: Continental-scale water and energy flux analysis and

validation for the North American Land Data Assimilation System project phase 2 (NLDAS-2): 1. Intercomparison and application of model products: WATER AND ENERGY FLUX ANALYSIS, *J. Geophys. Res. Atmospheres*, 117(D3), n/a-n/a, doi:10.1029/2011JD016048, 2012.

885

Yin, Y., Zhang, Y., Liu, X., Zhu, G., Qin, B., Shi, Z. and Feng, L.: Temporal and spatial variations of chemical oxygen demand in Lake Taihu, China, from 2005 to 2009, *Hydrobiologia*, 665(1), 129–141, doi:10.1007/s10750-011-0610-y, 2011.

Yuan, L. L. and Jones, J. R.: Modeling hypolimnetic dissolved oxygen depletion using monitoring data, *Can. J. Fish. Aquat. Sci.*, 1–10, doi:10.1139/cjfas-2019-0294, 2019.

890

Figures

Land Cover

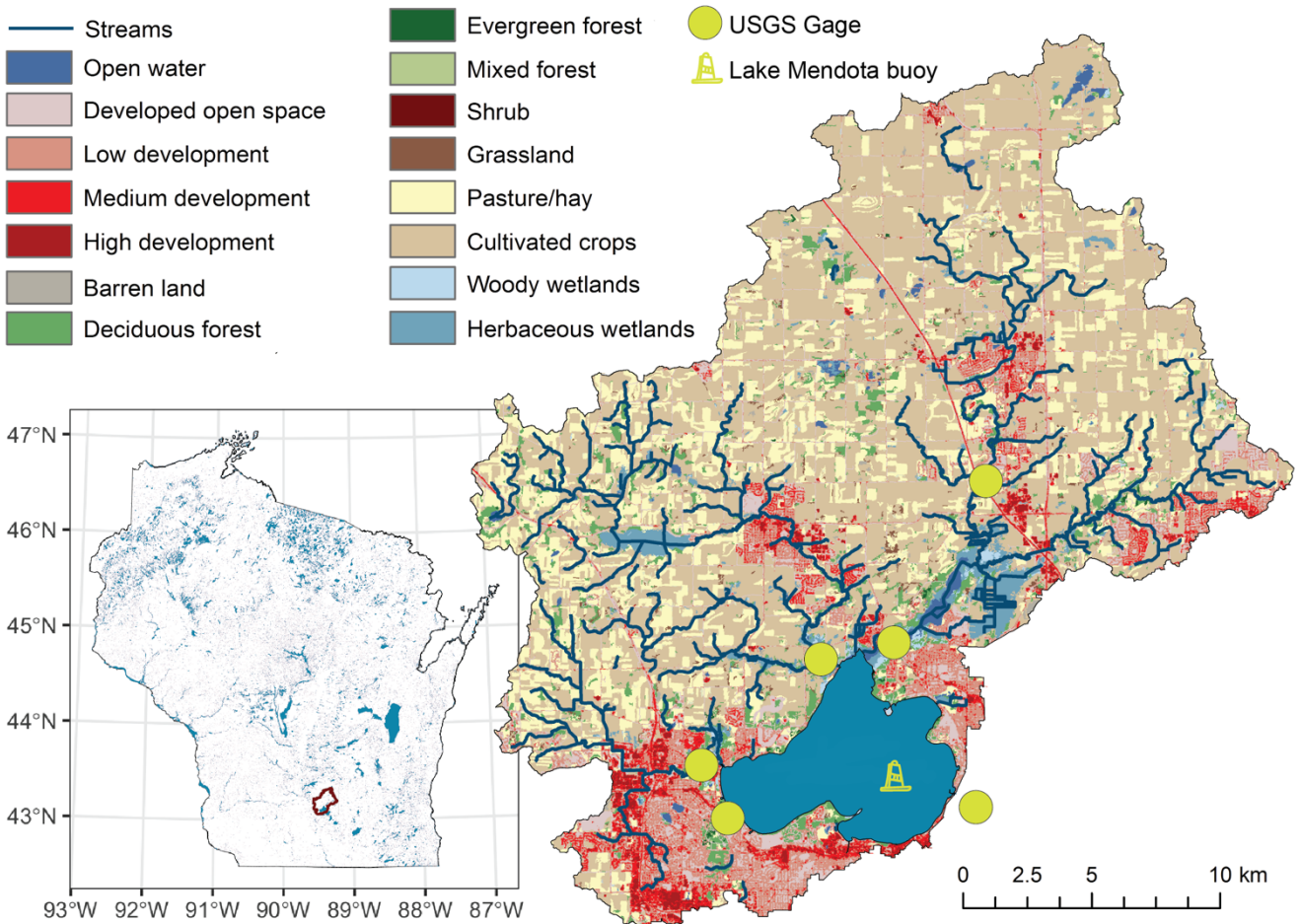


Figure 1 Location and overview map of Lake Mendota, Wisconsin, which is located in the Yahara River catchment in southern Wisconsin, USA. USGS gage stations for the PIHM-Lake model and the location of the Lake Mendota monitoring buoy are placed in the map. Land cover was ~~obtained~~ sourced from the open-access US National Land Cover database.

895

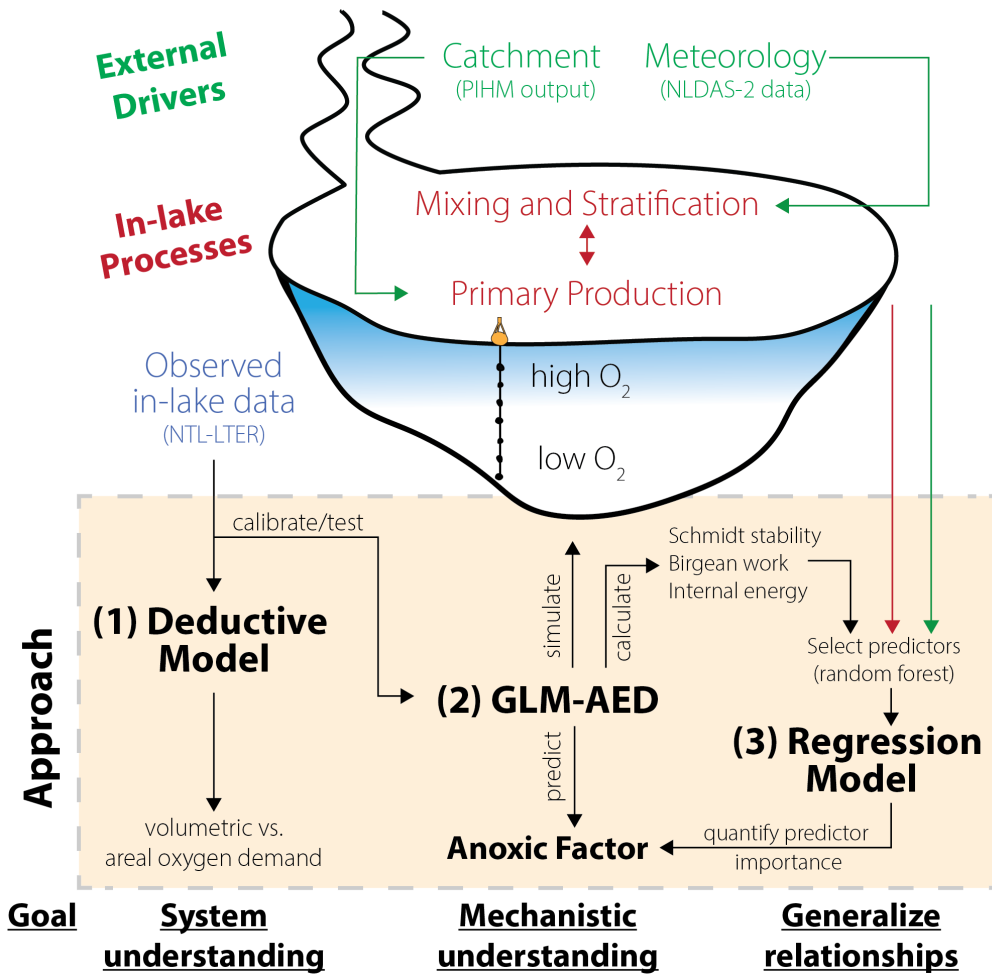


Figure 2 Schematic overview of the modeling workflow: application of a (1) deductive model to further our system understanding about oxygen sink terms; replication of Lake Mendota using (2) GLM-AED2 to investigate hydrodynamic and ecosystem mechanisms; and application of (3) regression models to quantify the importance of ecosystem predictors on the Anoxic Factor.

900

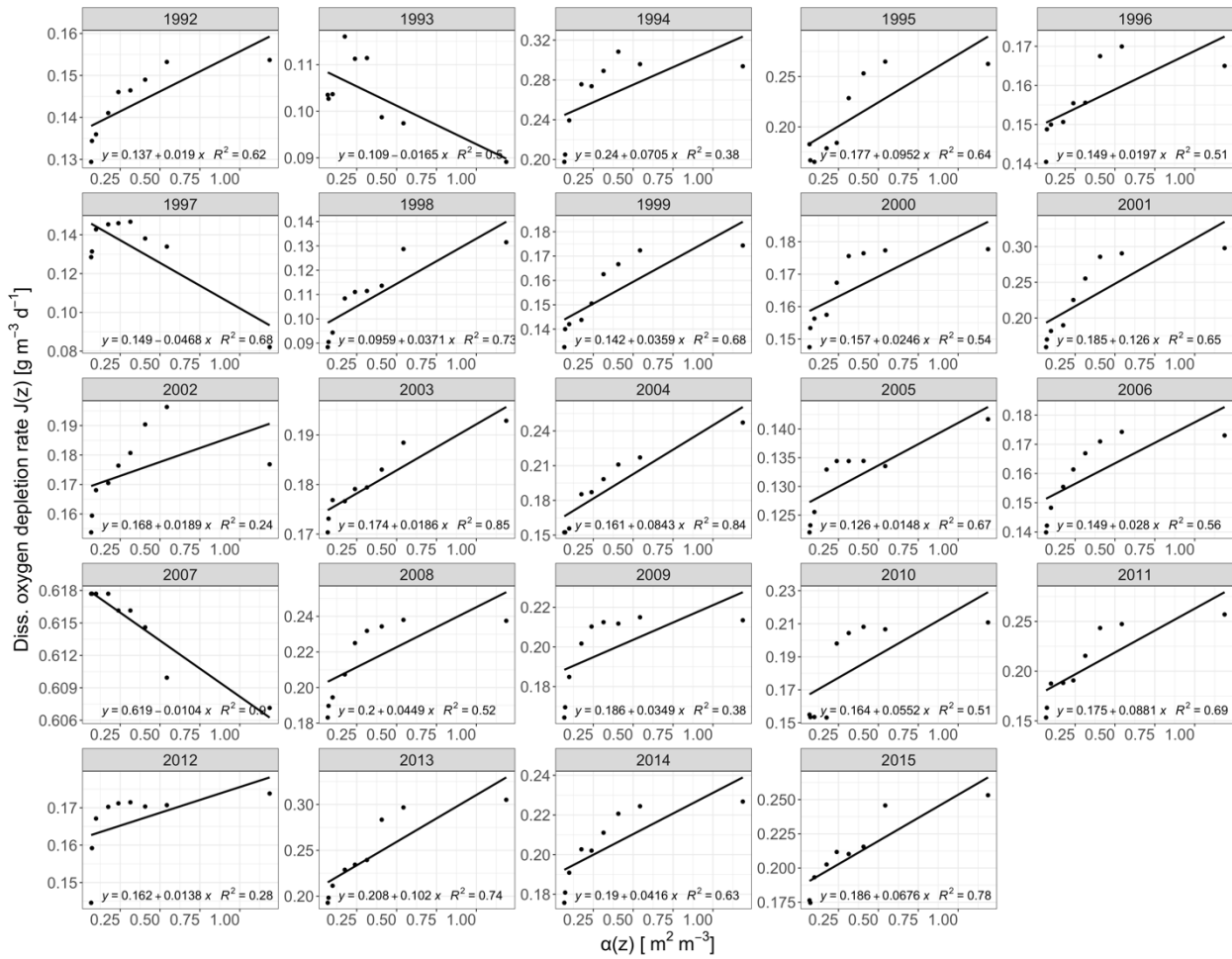
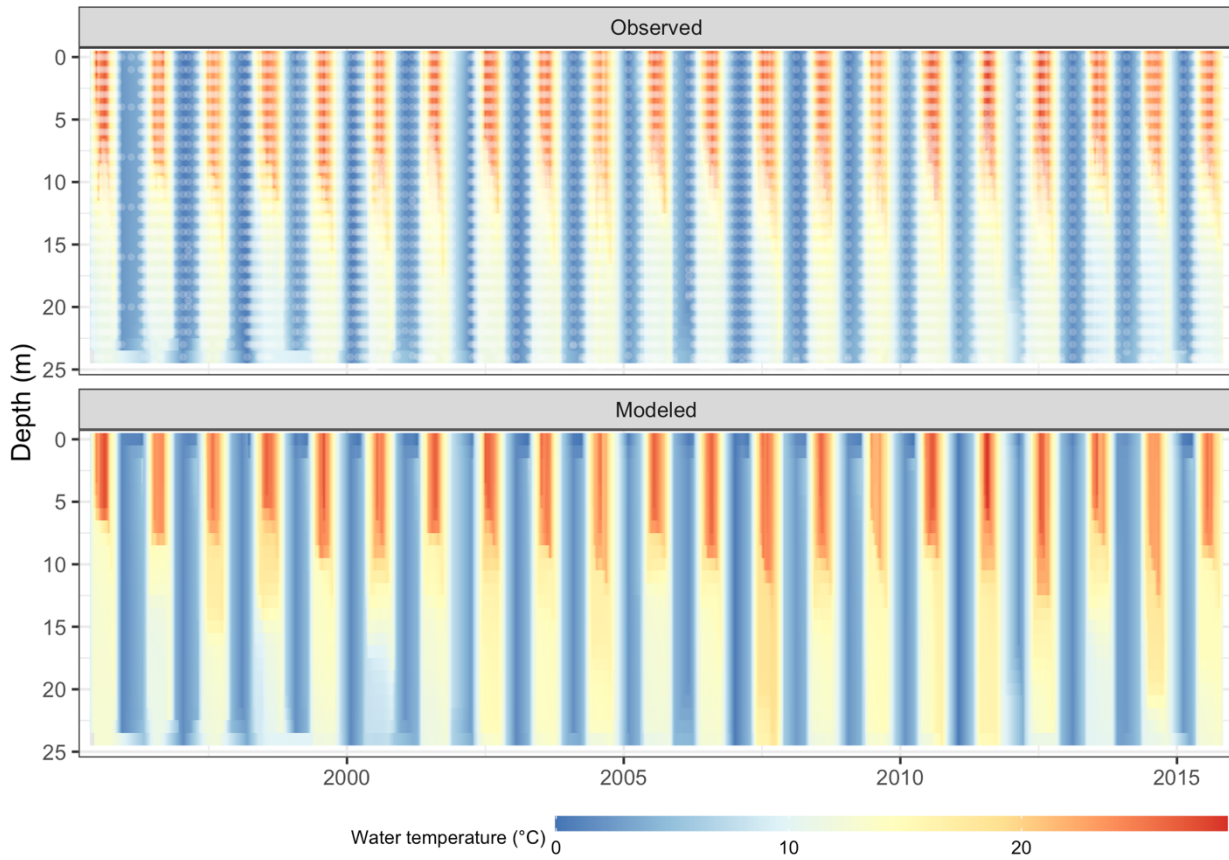


Figure 3 Regression plots of the morphometric function $\alpha(z)$ against oxygen depletion rates for the years 1992 to 2018, which were calculated from temporally linearly interpolated observed data. The respective equations represent weighted linear regressions.



905 **Figure 4 Comparison of Lake Mendota water temperature from observations (upper panel, white dots mark sampling events) and GLM-AED2 simulations (lower panel).**

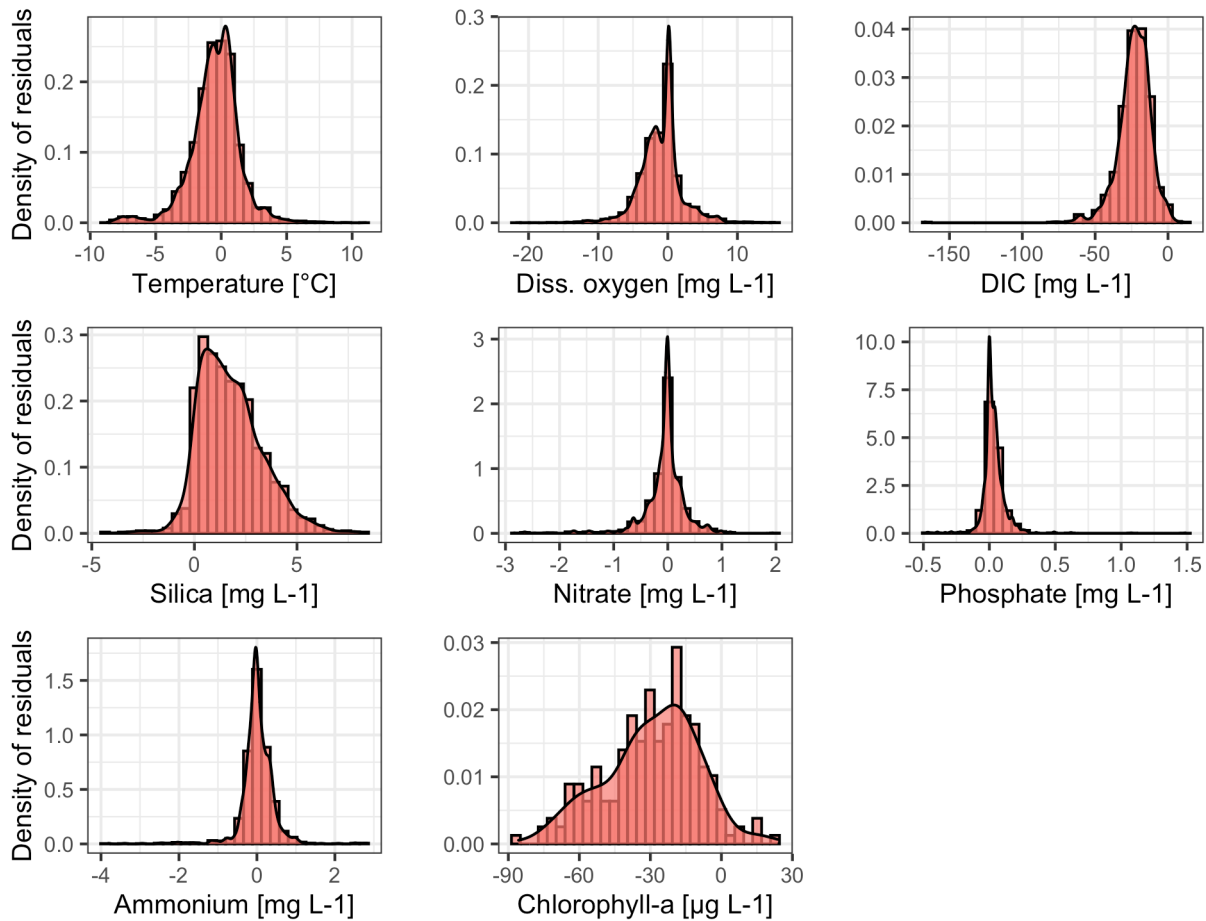


Figure 5 Density distributions of residuals (observed - modeled) for water temperature, dissolved oxygen, dissolved inorganic carbon (DIC), silica, nitrate, phosphate, ammonium and phytoplankton. The density distributions include residuals over all data points (over each time-step over each depth), calculated from observations minus model predictions.

910

II Stratification

- Increase, peak and decline of both heat budgets
- Increase, peak and decline of anoxic area

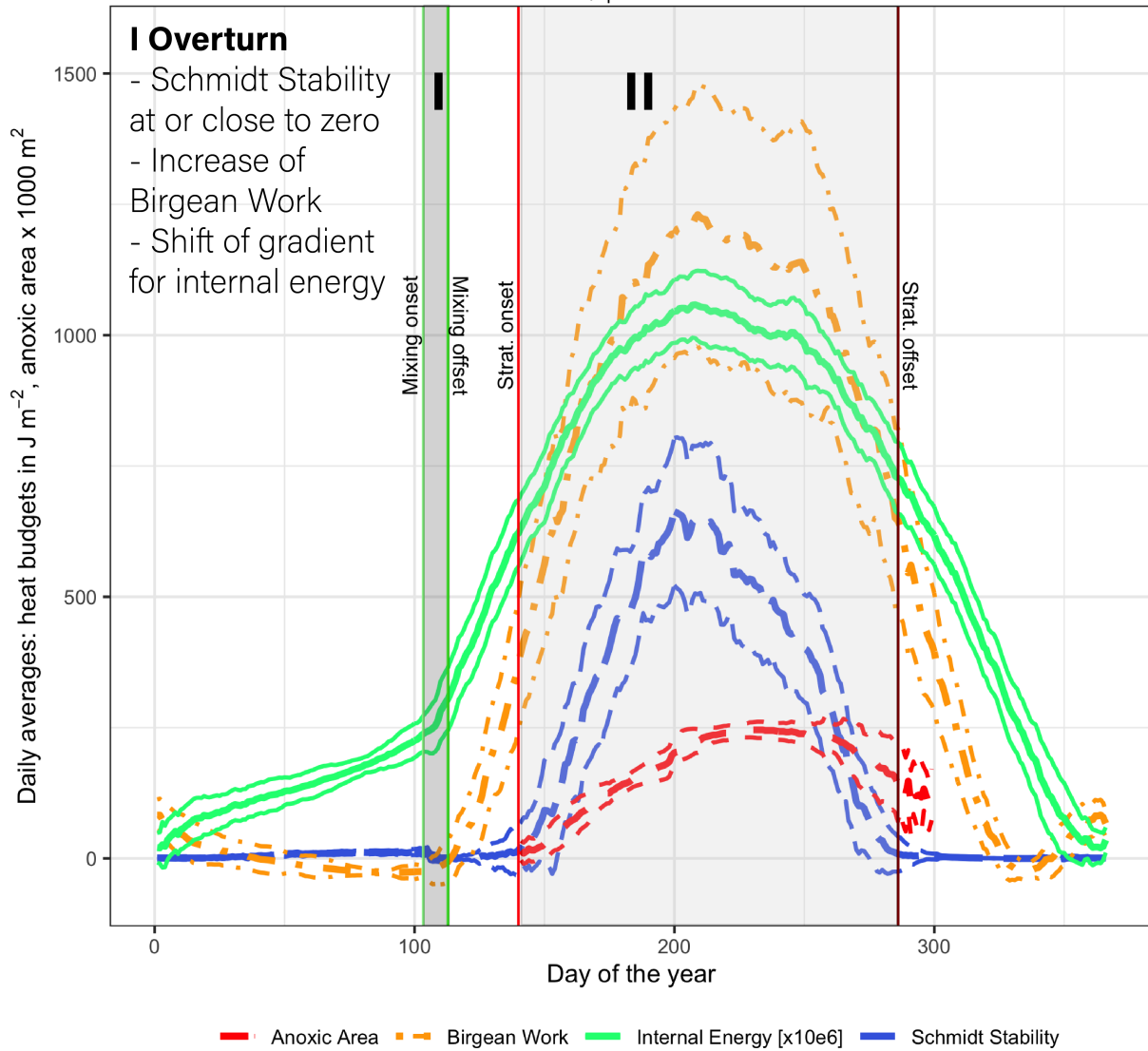
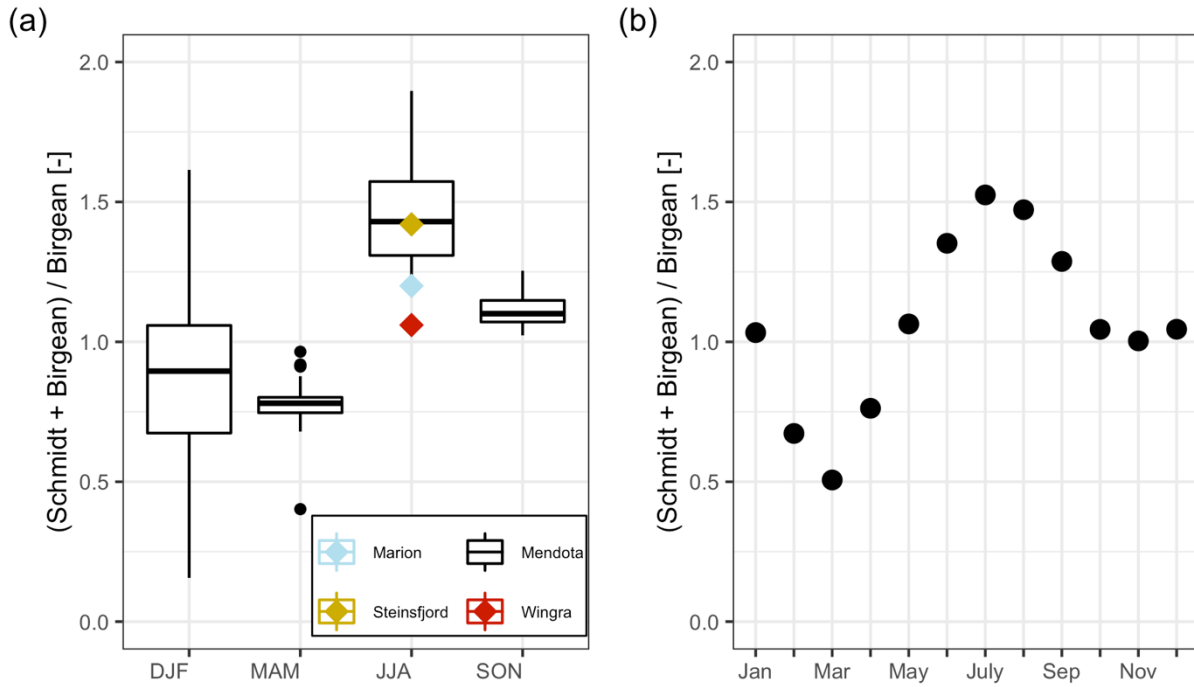
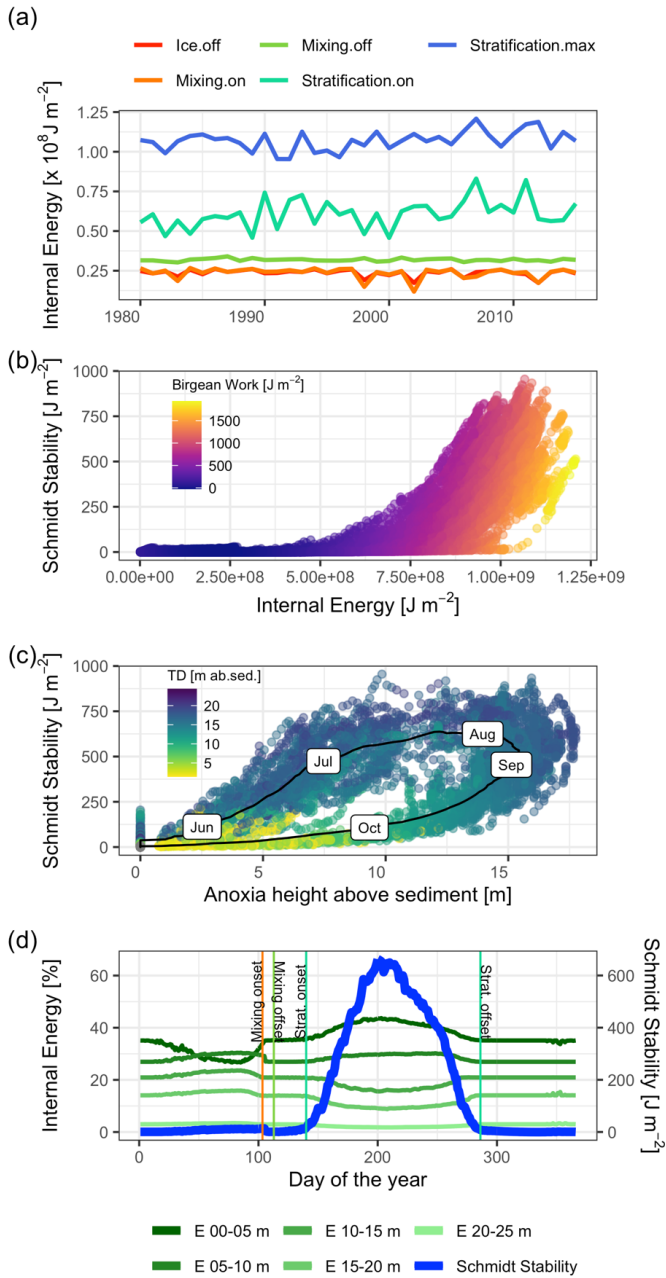


Figure 6 Daily average values of Schmidt Stability, Birgean Work, internal energy and anoxic area (below 1 mg L^{-1}) plus/minus the respective standard deviations (dashed lines) (internal energy is given in 10^6 J m^{-2}). [Anoxic area units were adjusted for display.]



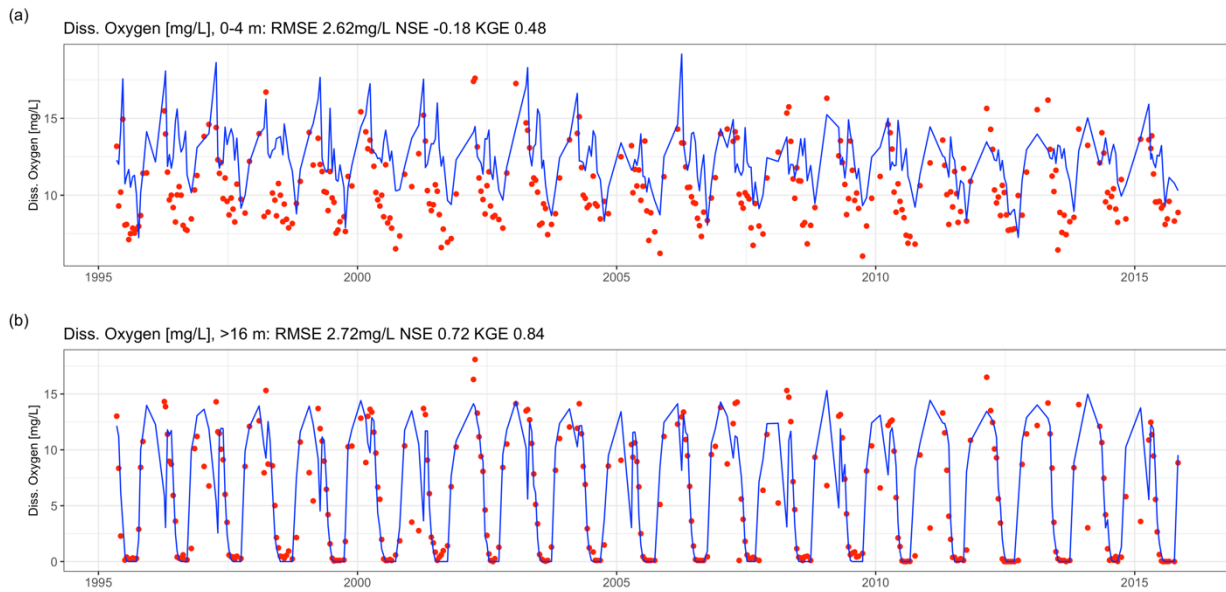
915

Figure 7 Dynamics of average HBR = $(\text{St}+\text{B})/\text{B}$ over time. A: Box-plots of HBR over the meteorological seasons, which represent seasonal quarters of the year, beginning in December. The summer HBR values for Lake Marion, Lake Steinsfjord, and Lake Wingra were taken from Kjensmo (1994). B: Scatterplot of average HBR values for each month

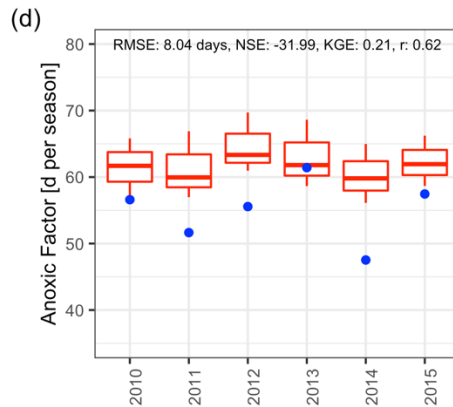
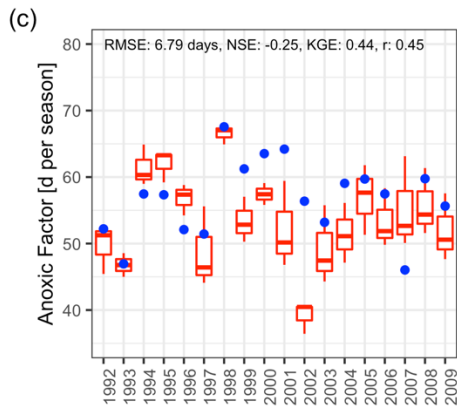
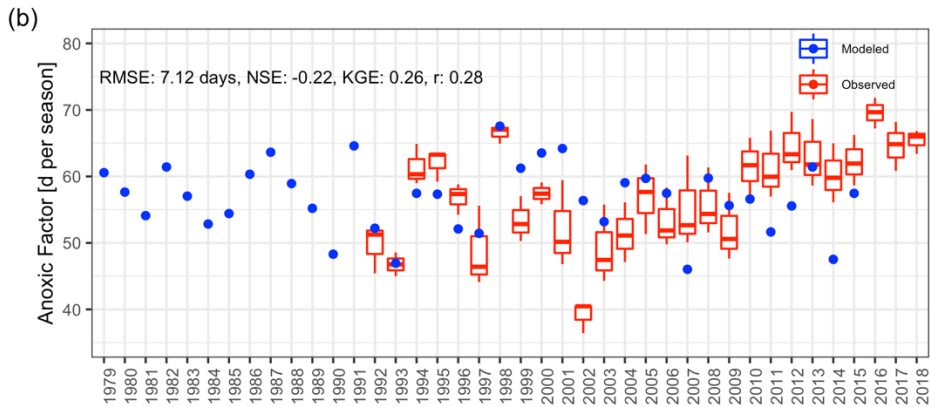
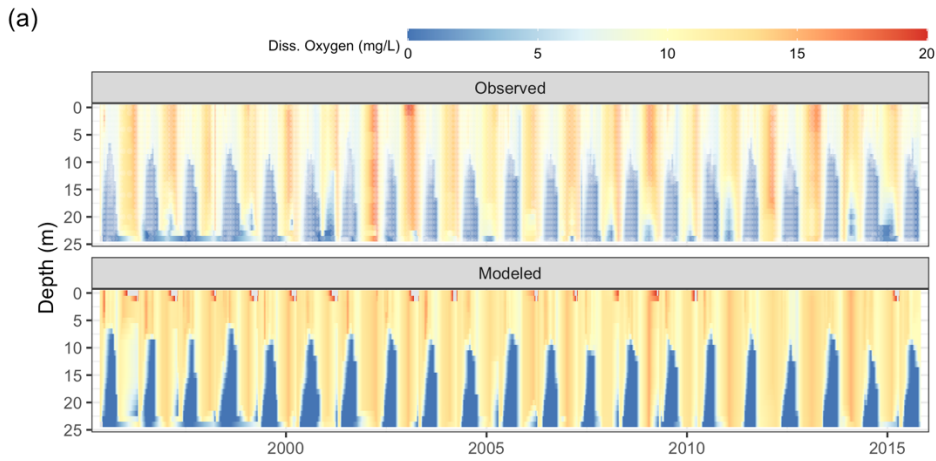


920 **Figure 8** Stored heat dynamics and relationships to stratification strength, thermocline depth and anoxia height (hypso-graphic height of anoxia area in the lake above sediment). **A:** Time series of internal energy at the respective dates of ice off, mixing onset, mixing offset, stratification onset, and stratification offset. **B:** Scatter plot of internal energy against Schmidt Stability whereas the color represents the magnitude of Birgean Work. **C:** Scatter plot of anoxia height against Schmidt Stability. The black line represents the average dynamic over the course of a year with the respective months as labels. The color corresponds to the thermocline depth in meters above the sediment. **D:** Time series of daily averaged internal energies stored over different depths and Schmidt Stability). The main heat storage happens in a shallow surface layer effectively after ice off and the simultaneous onset of a mixing period.

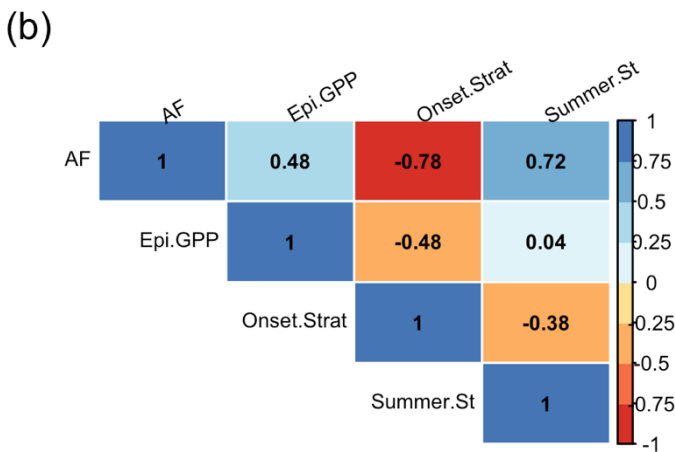
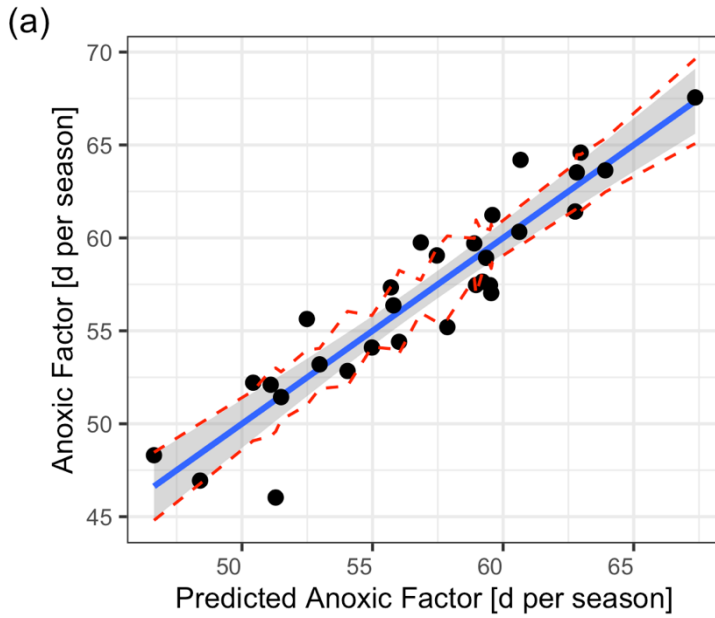
925



930 **Figure 9** Time-series comparison between observed (red dots) and modeled dissolved oxygen concentrations (blue lines). The fit criteria root-mean square error (RMSE), Nash-Sutcliffe coefficient of efficiency (NSE) and Kling-Gupta coefficient of efficiency (KGE). A: averaged dissolved oxygen concentrations in the epilimnion (0-4 m). B: averaged dissolved oxygen concentrations in the hypolimnion (deeper than 16 m).



935 **Figure 10 Comparison of observations to GLM-AED modeled dissolved oxygen concentrations and ecosystem response. A: Contour plot of observed (upper figure, white dots mark sample events) and simulated dissolved oxygen concentrations. B: Comparison of simulated Anoxic Factor (red dots) against interpolated range of Anoxic Factor derived from observed data (box-whisker plots) over the period 1979 to 2018. C: Comparison of simulated Anoxic Factor (red dots) against interpolated range of Anoxic Factor derived from observed data (box-whisker plots) over the period 1992 to 2009. D: Comparison of simulated Anoxic Factor (red dots) against**
 940 **interpolated range of Anoxic Factor derived from observed data (box-whisker plots) over the period 2010 to 2015.**



945 **Figure 11 Predicted against simulated summer Anoxic Factor. A: Linear model with a prediction which was done using a multiple linear regression model of the form: $\hat{y} = 0.24Epi.GPP + 0.54Summer.St - 0.46Onset.Strat - 5.44 * 10^{-17} + \hat{\epsilon}$, where $\hat{\epsilon} \sim N(0, 38^2)$. The red lines represent confidence intervals. B: Correlogram of the input data using Pearson correlation coefficients.**

Tables

Table 1 Overview of investigated predictors in a linear regression model on estimating the Anoxic Factor

Candidate predictor	Temporal period	Method	Unit
Schmidt Stability	Summer of year n	See section ‘2.3.3 Post-Processing of GLM-AED2 output’	J per m ²
Schmidt Stability	Spring of year n	See section ‘2.3.3 Post-Processing of GLM-AED2 output’	J per m ²
Birgean Work	Summer of year n	See section ‘‘2.3.3 Post-Processing of GLM-AED2 output’	J per m ²
Birgean Work	Spring of year n	See section ‘2.3.3 Post-Processing of GLM-AED2 output’	J per m ²
Ratio HBR	Summer of year n	See section ‘2.3.3 Post-Processing of GLM-AED2 output’	-
Ratio HBR	Spring of year n	See section ‘2.3.3 Post-Processing of GLM-AED2 output’	-
Onset, end and duration of spring mixing	Spring/summer of year n	Determined by Schmidt Stability values (close to or at zero, indicating mixed conditions)	Day of the year, or days
Onset, end and duration of summer stratification	Spring/summer/fall of year n	Stratification was defined when density difference between surface and bottom layer was above 0.1 kg m ⁻³ and surface temperature was above 4 °C	Day of the year, or days
End and duration of ice period	Winter/spring of year n-1 and n	Extracted from simulation output	Day of the year, or days
Dissolved oxygen difference between mixing end and mixing onset in the lower layer	Spring/summer of year n	Extracted from simulation output	mmol O ₂ per m ² d
Dissolved organic carbon gradient between stratification onset and mixing onset in the lower layer	Spring/summer of year n	Extracted from simulation output	mmol C per m ² d
Particulate organic carbon gradient between stratification onset and mixing onset in the lower layer	Spring/summer of year n	Extracted from simulation output	mmol C per m ² d
Mean water temperature in the lower layer at the onset of stratification	Summer of year n	Extracted from simulation output	°C

Total phosphorus inflow loading	Winter/spring/summer of year n-1 and n	Extracted from driver data	g P per day per m ²
Total nitrogen inflow loading	Winter/spring/summer of year n-1 and n	Extracted from driver data	g N per day per m ²
Cumulative gross primary production in the upper layer	Winter/spring of year n-1 and n	Extracted from simulation output	mmol per m ² per day
Cumulative gross primary production in the lower layer	Winter/spring of year n-1 and n	Extracted from simulation output	mmol per m ² per day

950

Table 2 Model performance for water temperature, dissolved oxygen, dissolved inorganic carbon, silica, nitrate, ammonium, and phosphate. During calibration and validation, only the total fits over all depths and time-steps were calculated. Surface layers refers to a depth of 0 m below water table, and bottom layer to a depth of 20 m below water table. Fits for surface and bottom layer during calibration and validation are not shown as the fit over the whole water column and over time were used.

Variable	Calibration (2005 – 2015)			Validation (1995 – 2004)			Total period (1995 – 2015)		
	RMSE	NSE	KGE	RMSE	NSE	KGE	RMSE	NSE	KGE
Water temperature [°C]	2.26	0.87	0.92	1.78	0.92	0.96	1.96	0.91	0.94
surface layer							1.30	0.97	0.97
bottom layer							2.43	0.20	0.71
Dissolved oxygen [mg L ⁻¹]	3.33	0.54	0.76	3.29	0.53	0.76	3.22	0.56	0.77
surface layer							2.77	-0.36	0.46
bottom layer							3.31	0.64	0.81
Dissolved inorganic carbon [mg L ⁻¹]	25.87	-7.03	0.18	15.41	-8.65	0.20	25.92	-10.13	0.20
surface layer							19.71	-10.79	0.22
bottom layer							29.19	-12.84	0.15
Silica [mg L ⁻¹]	2.83	-1.32	-4.55	1.42	-0.55	-1.77	2.33	-0.83	-3.10
surface layer							1.61	-1.32	-6.53
bottom layer							2.78	-0.97	-0.90
Nitrate [mg L ⁻¹]	0.36	-0.01	0.56	0.45	-1.44	0.26	0.40	-0.40	0.44
surface layer							0.35	-0.18	0.49
bottom layer							0.30	0.29	0.34
Ammonium [mg L ⁻¹]	0.60	-3.03	0.17	0.48	-3.28	0.15	0.56	-3.05	0.17
surface layer							0.25	-1.76	0.08
bottom layer							0.64	0.41	0.70
Phosphate [mg L ⁻¹]	0.10	0.56	0.51	0.09	0.59	0.62	0.09	0.56	0.51s
surface layer							0.03	0.40	0.43
bottom layer							0.17	0.40	0.36