

Last Decade Progress in Understanding and Modeling the Land Surface Processes on the Tibetan Plateau

By Hui Lu, Donghai Zheng, Kun Yang, and Fan Yang

Dear Editor and reviewers,

We would like to thank the editor and three referees for your comments and suggestions, which improve the quality of our manuscript substantially. In this document, we present the point-by-point responses to comments from you. In the marked-up manuscript version, all changes are highlighted by yellow colour.

Best Regards

Hui Lu

Response to Editor

Comments:

- 1) I have received three reviews for your manuscript, and they are basically positive. According to the comments, you may want to expand the review or perspectives for parameterizations related to radiation, lake and vegetation, for fine-scale data and modeling, and recent deployment of observations, and for new technology including deep learning.

Response:

Many thanks for your comments. In our revised version, we addressed referees' comments and suggestion by expanding the review and perspectives. Details can be found in the point-to-point responses to each referee and also in the change-tracked document.

Response to Referee #1

Reviewer comment	Response
<p>In this study, the authors reviewed the several progress in the understanding and modelling of land surface processes on the Tibet Plateau in the last decade and summarized the major advances. This manuscript also provided the land surface modelling community potential directions of the further improvement of land surface modelling on TP. Overall, the paper is well organized and written. I only have some minor comments listed as follows:.</p>	<p>We thank the reviewer's comments and encouragement.</p>
<p>1. The advance in the impact of Sub-grid Terrain Radiative effect over TP is missed. References are listed as follows:</p> <p>Gu Chunlei, Anning Huang*, et al., 2020. Effects of Sub-grid Terrain Radiative Forcing on the Ability of RegCM4.1 in the Simulation of Summer Precipitation over China. Journal of Geophysical Research: Atmospheres, DOI:10.1029/2019JD032215.</p> <p>Lee, W.-L., K. N. Liou, and C.-c. Wang (2013). Impact of 3-D topography on surface radiation budget over the</p>	<p>We thank the reviewer's comments. Sub-grid terrain radiative effect is very important in land surface process. We have added a new sub-section to discuss it, from Line 179 to Line 202, as:</p> <p>“2.5 Representation of sub-grid topographic effects</p> <p>The TP is characterized by high elevation and complex terrain, which exert obvious sub-grid topographic effects on radiative and moment transfer processes. A 3D Monte Carlo photon tracing program for radiation transfer was developed by Liou et al. (2007) and applied to simulate the surface solar fluxes on the TP. It was found that the inclusion of subgrid variability can lead to a significant solar flux deviation from the conventional smoothed topography simulation. Lee et al. (2013) further improved this 3D model and applied it to investigate the topographic effect on surface radiative energy</p>

<p>Tibetan Plateau. Theor. Appl. Climatol., 113, 95-103, doi:10.1007/s00704-012-0767-y.</p> <p>Another missed advance is the Sub-grid orographic drag effect. references: Zhou, X., Yang, K. & Wang, Y. Implementation of a turbulent orographic form drag scheme in WRF and its application to the Tibetan Plateau. Clim Dyn 50, 2443–2455</p> <p>Zhou Xu et al.,2019. Dynamical impact of parameterized turbulent orographic form drag on the simulation of winter precipitation over the western Tibetan Plateau .Climate Dynamics, 53:707–720.</p>	<p>budget on the TP. The results demonstrated that the TP would receive more solar flux that leads to stronger convection and enhanced snowmelt rate when the 3D topographic effects were considered. Recently, Lee et al. (2019) investigated the climate effects of the 3D radiation-topography interactions by incorporating their model into the Community Climate System Model version 4 (CCSM4). After including this topographic effect, the energy budget and air temperature simulated by the CCSM4 could be significantly improved. Gu et al. (2020) also coupled a subgrid terrain radiative forcing scheme into the Regional Climate Model Version 4.1 (RegCM4.1). They found that adopting this scheme in the RegCM4.1 could produce a better simulation of the energy budget on the TP, which thus lead to a better simulation of East Asian summer monsoon and precipitation over China.</p> <p>Representing the effect of subgrid terrain variability on the moment transfer is very important for improving the simulation of wind speed, water vapour transfer, and precipitation over the TP. Wang et al. (2017) demonstrated that water vapour transfer over the South Tibetan Plateau is overestimated by current climate models. Lin et al. (2018) also found similar biases in WRF simulations and demonstrated that the complex terrain of the Himalaya can retard water vapour transfer through exerting an orographic drag on the atmosphere. Han et al. (2015) suggested an aerodynamic length of about 10 m is needed to reflect the drag, which, however, is difficult to apply such a “big number” directly to the framework of Monin-Obhukov similarity theory. Alternatively, Zhou et al. (2018; 2019) implemented a turbulent orographic form drag scheme (Bejaars et al., 2004) in the WRF model, which reduce the</p>
--	--

	<p>positive biases in the surface wind simulation, leading to the reduction of water vapour transfer from the surroundings to the TP. This parameterization is also critical for the successful simulation of precipitation distribution from the low altitudes to high latitudes of the central Himalaya (Wang et al., 2020).”</p> <p>We also added several references to this part, including Liou et al. (2007), Lee et al. (2013; 2019), Gu et al. (2020), Wang et al. (2017), Lin et al. (2018), Han et al., (2015), Zhou et al. (2018;2019), and Wang et al. (2020).</p>
<p>2. I think some key lake process parameterizations including the light extinction coefficient, turbulent mixing in deep lakes, lake surface roughness length, and lake ice surface albedo need to be improved based on more field observations in the future LSM developments. This issues are necessary mentioned in perspectives on the further improvement of land surface modelling.</p>	<p>We thank the reviewer’s suggestions. We reviewed the parameterization of vertical mixing process of lake models in current version. We have added the lake model development in the perspectives part, from Line 306-308, as “and high elevation lakes, which are typical for the TP. For example, the parameterization of the light extinction coefficient and turbulent mixing in lakes are critical to freeze-up simulation but their values are empirically given (Huang et al., 2019).”</p>
<p>3. As the vegetation types are very sensitive to climate change on TP, the parameterization of dynamic vegetation should be improved further LSM development.</p>	<p>We thank the reviewer’s suggestions. We have added the vegetation parameterization in the perspectives part, from Line 308 to Line 310, as “Meanwhile, since the vegetation types on the TP have unique characteristics and are very sensitive to climate change, the parameterization of vegetation effects should be improved as demonstrated by Li et al (2019)”.</p>

Response to Referee #2

Reviewer comment	Response
<p>This manuscript reviews the progresses in modeling land surface processes on the Tibetan Plateau (TP) in the past decade from four aspects listed in abstract. The review is relatively comprehensive. The manuscript is also well written. Regarding to the modeling land surface processes on TP, I have several comments, which have not been mentioned or mentioned but not well addressed in the manuscript.</p>	<p>We thank the reviewer for providing a thorough and insightful review of our manuscript.</p>
<p>1) In the past decade, the LSM simulations have been performed on more fine scales in comparison with previous, which were benefited from the fine resolution forcing datasets and the improved model parameterization schemes.</p>	<p>We are glad the reviewer agrees with the point that development of meteorological forcing data is important. We emphasized this point at Line 215 to 217, as:</p> <p>“These improved forcing data and other supporting data generally outperform the corresponding global data set not only in accuracy but also in both spatial and temporal scales, which make a finer scale land surface simulation possible”</p>
<p>2) The implication of satellite observation, in particular, in the ungauged/non-observational areas, has been greatly improved our understanding the land surface processes. For example, the satellite observation provides high resolution precipitation (e.g., CMORPH, FY-x), the revolutionary of land use/land</p>	<p>We thank the reviewer’s suggestions. In the revised version, we have reviewed the contribution from remote sensing data to LSM development on the TP, in Line 269 to 272, as:</p> <p>“Besides the abovementioned improved forcing and soil data sets, other remote sensing or reanalysis data sets have also been widely used for land surface modeling on the TP, especially in ungauged/poor-gauged areas. They were used to drive hydrological simulation (Wang et al., 2015; Tong et al., 2014; Qi et al., 2018) or land data assimilation system</p>

<p>cover, and the streamflow information etc.</p>	<p>(Lu et al., 2012), to validate model simulation (Li et al., 2020), and to improve understanding of physical processes (Liu et al., 2018).” Some references related to satellite precipitation data validation and application on the TP were added, such as (Tong et al., 2014; Qi et al., 2018).</p>
<p>3) In recent years, more in-situ meteorological stations have been installed and more field trips have also been conducted in the TP (e.g., the Second Tibetan Plateau Scientific Expedition and Research). All of them bring new information over TP which are known little in previous.</p>	<p>We thank the reviewer’s suggestions. We fully agree with the reviewer. As we stated in the perspectives part, from Line 294-296, as: “new experimental activities (e.g. the Second Scientific Expedition to the Tibetan Plateau and the Third Atmospheric Science Experiment on the Tibetan Plateau) may provide new observations to improve/validate the quality of the forcing datasets.”</p>

Response to Referee #3

Reviewer comment	Response
This review has great value in summarizing the progresses in land surface researches of the Tibetan Plateau and thus provides perspectives in future researches. The paper was well organized and written.	We thank the reviewer's comments and encouragement.
Regarding to the supporting data, it is worth to review the calibration and validation site and reanalysis datasets, including soil moisture and so on. And how does them help the "observation-based" land surface researches proposed by Kun Yang et al.	<p>We thank the reviewer's suggestions. We have added a paragraph to introduce the contribution of reanalysis data and ground observation to land surface study on the TP, from line 269 to Line 279, as:</p> <p>"Besides the abovementioned improved forcing and soil data sets, other remote sensing or reanalysis data sets have also been widely used for land surface modeling on the TP, especially in ungauged/poor-gauged areas. They were used to drive hydrological simulation (Wang et al., 2015; Tong et al., 2014; Qi et al., 2018) or land data assimilation system (Lu et al., 2012), to validate model simulation (Li et al., 2020), and to improve understanding of physical processes (Liu et al., 2018). On the other hand, current in situ observation networks also made contributions to understanding the land surface process by serving as calibration and validation sources. For example, the multiscale soil moisture and freeze-thaw monitoring network on the central TP (CTP-SMTMN) (Yang et al., 2013) and the Tibetan Plateau observatory of plateau scale soil moisture and soil temperature (Tibet-Obs) (Su et al., 2011) provide valuable data set to validate and calibrate remote sensing products and model simulations. However,</p>

	<p>the density of in situ observation networks on the TP is still very sparse. Consequently, integration of the ground observation, remote sensing products, and reanalysis data may provide a complete and reliable supporting data set for studying the land surface processes on the TP.”</p>
<p>In addition, it may also be worthwhile to mention data driven methods’ potential in this area. Ref: 1. Deep learning process understanding data-driven Earth system science; 2. Big Earth data: A new frontier in Earth and information sciences</p>	<p>We thank the reviewer’s suggestions. We have added the data driven methods in the perspectives part, from Line 313 to 317, as:</p> <p>“(4) Adoption of data-driven methods and artificial intelligence in land surface process study. Big data methods could provide vast data and clues in model development, parameter optimization, and so on (Guo, 2017), while artificial intelligence could help in process understanding (Reichstein et al., 2019). As demonstrated by Jing et al. (2020), the integration of physical process-based models with data-driven approaches shows high potential to improve the understanding and simulation of land surface processes.”</p>

Last Decade Progress in Understanding and Modeling the Land Surface Processes on the Tibetan Plateau

Hui Lu^{1,4}, Donghai Zheng², Kun Yang^{1,3}, Fan Yang¹

¹Ministry of Education Key Laboratory for Earth System Modeling, Department of Earth System Science, Tsinghua University, Beijing 100084, China

²National Tibetan Plateau Data Center, Key Laboratory of Tibetan Environmental Changes and Land Surface Processes, Institute of Tibetan Plateau Research, Chinese Academy of Sciences, Beijing 100101, China

³Center for Excellence in Tibetan Plateau Earth Sciences, Chinese Academy of Sciences, Beijing 100101, China

⁴Ministry of Education Ecological Field Station for East Asian Migratory Birds, Beijing 100084, China

Correspondence to: Hui Lu (luhui@tsinghua.edu.cn)

Abstract. The Land Surface Model (LSM) that simulates water and energy exchanges at the land-atmosphere interface is a key component of the Earth system model. The Tibetan Plateau (TP) drives the Asian monsoon through surface heating and thus plays a key role in regulating the climate system in the Northern Hemisphere. Therefore, it's vital to understand and represent well the land surface processes on the TP. After an early review that identified key issues in the understanding and modelling of land surface processes on the TP in 2009, several progresses have been made in the last decade in developing new land surface schemes and supporting datasets. This review summarizes the major advances, including (i) An enthalpy-based approach was adopted to enhance the description of cryosphere processes such as glacier/snow mass balance and soil freeze-thaw transition. (ii) Parameterization of the vertical mixing process was improved in lake models to ensure reasonable heat transfer to the deep water and to the near-surface atmosphere. (iii) New schemes were proposed for modelling water flow and heat transfer in soils accounting for the effects of vertical soil heterogeneity due to the presence of high soil organic matter content and dense vegetation roots in surface soils, or gravel in soil columns. (iv) Supporting datasets of meteorological forcing and soil parameters were developed by integrating multi-source datasets including ground-based observations. Perspectives on the further improvement of land surface modelling on the TP are provided, including the continuous updating of supporting datasets, parameter estimation through assimilation of satellite observations, improvement of snow and lake processes, adoption of data-driven and artificial intelligence methods, and the development of an integrated LSM for the TP.

1 Introduction

The Land surface model (LSM) is a key component of the earth system model, which simulates the water and energy exchanges at the land-atmosphere interface (Dickinson et al., 2006; Hurrell et al., 2013). Moreover, the LSM is a powerful tool to provide a better understanding of the interactions among hydrological, ecological, and biogeochemical processes (Pan et al., 2012). Over the past decades, the LSMs have evolved from a simple bucket model (Manabe, 1969) to more sophisticated model systems (Dai et al., 2003; Dickinson et al., 1993; Oleson et al., 2010; Sellers et al., 1986; Sellers et al., 1996) that have

incorporated many physical and physiological processes occurring in the atmosphere-snow-vegetation-soil-aquifer system. Meanwhile, several offline multi-model intercomparison projects have been conducted to identify the strength and weakness of LSMs, such as the Project for the Intercomparison of Land-Surface Parameterization Schemes (PILPS) (Henderson-Sellers et al., 1995; Henderson-Sellers et al., 1993), the Global Soil Wetness Project (GSWP) (Dirmeyer et al., 1999; Dirmeyer, 2011), and the African Monsoon Multidisciplinary Analyses (AMMA) Land Surface Model Intercomparison Project (ALMIP) (Boone et al., 2009). A general conclusion is that there are still big differences among various LSMs and none of them outperforms others for all conditions. Jimenez et al. (2011) and Xia et al. (2014) also reported that large discrepancies exist between various LSM simulations even when driven with the same meteorological forcing. Therefore, further improvement of LSMs remains imperative.

The Tibetan Plateau (TP), well-known as the Third Pole and the Asian water tower, shows very strong interactions among its hydrosphere, cryosphere, biosphere, and atmosphere that manifest TP's impact on surrounding regions and regional/global climate system (Wu et al., 2015; Yao et al., 2015). The land surface processes in the TP show thus unique features due to the multispherical interactions. The land-atmospheric exchange on the TP is generally intense due to strong solar radiation, which is further considerably regulated by the complex terrain. Typical processes of the cryosphere (such as glacier, soil freeze-thaw, and snow processes), lake-air interactions, and vertical soil heterogeneity coexist and consist of the TP's complex land surface processes that are not well represented by current LSMs. The coupled land-atmospheric numerical experiments (Gao et al., 2015; Zhao et al., 2018) demonstrate also the important role of the TP's land surface processes on affecting the simulations of atmospheric processes and variables. These numerical experiments further highlight the necessity to improve current LSMs to better represent the TP's complex land surface processes.

After Yang et al. (2009) identified key issues in the understanding and modelling of land surface processes on the TP, many endeavors have been made to evaluate and validate the performance of current LSMs, as well as to identify the model deficiencies and to propose solutions (Wang et al., 2016b; Zheng et al., 2017b; Zheng et al., 2016). Based on the evaluation results, the LSMs have been improved from two aspects. One is to improve the existing schemes, such as improvement of parameter values (Dai et al., 2013; Shangguan et al., 2014; Shangguan et al., 2013; Shangguan et al., 2017), development of more realistic and reliable process representations (Wang and Yang, 2018; Wang et al., 2020a), and usage of better mathematic solutions (Wang et al., 2017; Luo et al., 2018). The other is to extend modelling capability through adding new schemes and functions that are missing or ignored in current LSMs (Chen et al., 2012; Zheng et al., 2015a, b; Zhu et al., 2017). In addition, new meteorological forcing datasets have also been developed by integrating multi-source datasets including ground-based observations (He et al., 2020).

To the best of our knowledge, there is no systematic review of the last decade's progress in understanding and modelling the land surface processes on the TP. The presented topics in this paper cover the new development of land surface schemes for the TP (section 2) and the supporting datasets such as meteorological forcing and soil datasets (section 3). Finally, perspectives on the further improvement of land surface modelling on the TP are given (section 4).

2.1 Cryosphere processes

Deficiencies in representing soil freeze-thaw and glacier/snow processes in cold and high mountainous regions are the main sources of uncertainties for applying the LSMs to the TP's cryosphere. Land surface processes in the cryosphere, including the phase change of water and water-heat interactions, are more complex than those in unfrozen areas. Zheng et al. (2017b) showed that the rates of water phase change are different in freezing and thawing periods, and the concept of phase change efficiency is introduced for improving the simulation of soil freeze-thaw processes as confirmed by Yang et al. (2018). A major advance in representing the transition process of water phase change on the TP is the introduction of enthalpy in the energy governing equations for heat transfer. The introduction of enthalpy not only makes the governing equation simpler but also makes the solution more stable. Enthalpy was used as a prognostic variable instead of temperature to simulate snow accumulation and melting (Sun et al., 1999), lake ice formation and melting (Sun et al., 2007), as well as soil freeze-thaw processes (Li and Sun, 2008). Based on these pioneer practices, Bao et al. (2016) developed a frozen soil scheme, and Wang et al. (2017) further coupled this scheme with a snow scheme originally from Sun et al. (1999), in which enthalpy was adopted as a prognostic variable instead of snow/soil temperature for simulating heat transfer. The coupled model of Wang et al. (2017) was proved to be able to realistically capture the measured soil/snow water and temperature dynamics on the TP, confirming the advantage of adopting the enthalpy as the prognostic variable for snow and frozen soil simulations.

The enthalpy concept was also applied to the development of a glacier mass balance model, i.e. the Water and Enthalpy Budget-based Glacier mass balance Model (WEB-GM) (Ding et al., 2017). The WEB-GM contains a dynamic scheme to judge precipitation type (rain/sleet/snow) based on wet-bulb temperature, relative humidity, and elevation (Ding et al., 2014), a new albedo scheme to consider the impacts of shallow snow, and a parameterization scheme for turbulent heat transfer (Yang et al., 2008). Compared to the traditional temperature-based glacier mass balance model (i.e. Fujita model), the WEB-GM model performs better in simulating glacier surface temperature, turbulent heat fluxes and glacier mass balance at the Parlung No.4 Glacier in the southeast TP (Fig. 1).

Since soil water flow and heat transport are strongly coupled in the freeze-thaw transition processes, Wang and Yang (2018) incorporated a fully coupled soil water-heat transport scheme into the CLM4.5 model, whereby the interaction between soil water flow and heat transport as well as the soil water vapor diffusion process are considered. The results show that the measured frozen soil dynamics (e.g. soil moisture and temperature) in the TP are better captured in comparison to the original isothermal scheme, which also highlight the importance of considering the process of water vapor diffusion in cold regions that is generally neglected in current LSMs. Considering that the snow cover on the TP is generally thin (~ a few centimeters) and therefore the subsurface albedo has a large influence on the snow surface albedo, a new snow albedo scheme was developed recently, with which simulations of snow ablation were improved (Wang et al., 2020a).

2.2 Lake processes

In recent years, modelling of lake-air interactions has drawn more and more attention, and hydro-meteorological models such as WRF and CLM have included lake models as a component. The WRF-lake model generally performs well for shallow lakes (Gu et al., 2015). However, Fang et al. (2017) showed that the WRF-lake model performs poorly when applied to Lake Nam Co, a deep lake, on the TP. Compared to the in situ measurements, the simulated lake surface temperature is too low, the lake ice appears too early, and the seasonality of lake temperature in deep water is too smooth. These biases indicate that the WRF-lake model underestimates the process of strong vertical mixing between surface water and deep water. On the other hand, Lazhu et al. (2016) found that a semi-empirical lake model, Flake, can reproduce well the measurements of surface temperature, surface turbulent fluxes and ice phenology in the Lake Nam Co. The performance evaluations of the above two models indicate that a semi-empirical model like Flake may be superior for the application to deep lakes on the TP. The Flake simulations also showed that the actual lake evaporation is less than the potential evaporation that is traditionally used as a surrogate of the former (Lazhu et al., 2016). Huang et al. (2019) also compared the performance of Flake, WRF-lake and CoLM-lake models for their applications to Lake Nam Co, which further investigated the sensitivity of lake models to several key parameters, such as light extinction coefficient, turbulent mixing, and temperature of maximum water density. The results demonstrated that the simulations can be largely improved via model calibrations.

Based on the above model evaluations, lake models have been improved through better representing the processes of lake-air interaction and lake interior vertical mixing on the TP. Based on in situ measurements, Wang et al. (2015) evaluated the performance of two lake-air exchange models in the small Nam Co lake and showed that the simulated surface heat fluxes can be enhanced by increasing the values of Charnock and roughness Reynold numbers from 0.013 and 0.11 to 0.031 and 0.54, respectively. Zhang et al. (2019) developed a new scheme to improve vertical mixing in the lake interior based on a K-profile parameterization (KPP) associated with internal wave activity and shear instability. The KPP was incorporated into the CLM lake model (CLM-KPP), which represents better the transition between stratification and turnover and effectively reproduces strong mixing between the lake surface and deep water during windy conditions, leading to improved simulation of water surface temperature in comparison to the original model (CLM-ORG) (Fig. 2).

In addition to the improvements in those general processes, lake models were developed to consider some typical processes for the TP lakes. Dai et al. (2018) developed the CoLM-Lake with a focus on freezing and thawing transition of lakes, which was tested at 10 lakes worldwide, and the results show that the model can perform well if model parameters are calibrated. Considering that there are a number of salt lakes in the TP, Su et al. (2019) incorporated the salinity effects on the temperatures of maximum water density and freezing point into the Flake model and validated its performance in the brackish endorheic Qinghai Lake. The results showed that consideration of salinity effects reduces the simulated maximum ice thickness and advances the break-up date that are closer to the in situ buoy measurements.

2.3 Soil subsurface processes

Soil subsurface processes in the TP are largely affected by the vertical heterogeneity. The vertical stratification is caused by the presence of high soil organic matter (SOM) content and dense vegetation roots in surface soils (Yang et al., 2005; Zheng et al., 2015a, b) or gravel (Yi et al., 2018) in soil columns. Their existences considerably influence soil thermal and hydraulic properties and therefore soil state and land surface fluxes.

The existence of SOM in the surface soils leads to lower thermal conductivity and larger heat capacity (Zheng et al., 2015b; Chen et al., 2012). Chen et al. (2012) evaluated three widely used thermal conductivity schemes (e.g. Farouki, 1981; Johansen, 1975; Yang et al., 2005) implemented by current LSMs using laboratory measurements. The results showed that all three schemes overestimate the measured thermal conductivity for Tibetan soils including SOM content, and the scheme of Yang et al. (2005) was further modified to include the SOM effect that reduces the noted overestimations (Fig. 3). Similar work was done by Zheng et al. (2015b) to incorporate the SOM effect into the scheme of Johansen (1975). Luo et al. (2017) showed that consideration of SOM effect in the thermal scheme can also improve the soil temperature simulations produced by the CLM4.5 model for two Tibetan grassland sites. Zheng et al. (2015b) further demonstrated that consideration of SOM effect tends to produce larger sensible heat flux and smaller latent heat flux, and the amplitude of the diurnal surface temperature cycle is increased.

The existence of SOM in the surface soils also increases soil porosity and water holding capacity (Chen et al., 2012; Zheng et al., 2015a). Previous studies (Chen et al., 2013; Li et al., 2018a; Li et al., 2017; Su et al., 2013) have shown that current LSMs generally underestimate the surface soil moisture in the TP by ignoring the SOM effect in the hydraulic parameterization. Chen et al. (2012) and Zheng et al. (2015a) showed that the presence of SOM content in the surface layer of Tibetan soils leads to larger porosity and higher water holding capacity, and the saturated hydraulic conductivity is found exponentially decreased with soil depth (Zheng et al., 2015a). Accordingly, a new hydraulic parameterization was developed by Zheng et al. (2015a) to include the above SOM effect, which reduces the noted underestimation of surface soil moisture under wet conditions. However, an overestimation of surface soil moisture was noted for the drying period, which can be addressed by implementing either the exponential or asymptotic vertical root distribution function that is able to represent the presence of abundant roots in the surface layer (Zheng et al., 2015a; Zheng et al., 2015c). Besides affecting the water uptake, Gao et al. (2015) inferred that the presence of the rhizosphere in the surface layer could reduce the saturated hydraulic conductivity and infiltration that increases the water holding capacity, which can also mitigate the dry biases noted for the simulation of surface soil moisture on the TP.

The existence of gravels is another characteristic that should be considered in some part of the TP (Yi et al., 2018), in which soils are usually not well-developed and large gravels (particle size ≥ 2 mm) may occupy considerable volumes. The existence of gravels tends to decrease the water holding capacity and increase the hydraulic conductivity and thermal conductivity. Laboratory experiments were conducted by Yi et al. (2018) that for the first time the impact of gravels on soil hydraulic and thermal parameters as well as the soil water content and frozen soil depth was quantified. A new soil hydraulic and thermal

160 scheme was also developed by Pan et al. (2017) for simulating the freeze-thaw process in gravel-contained soils. The scheme was incorporated into the CLM4.0 model that captures well the measured freeze-thaw dynamics in two typical Tibetan sites that contain different levels of gravel content in the soil columns.

2.4 Hydrological processes

The understanding and modelling of hydrological characteristics on the TP, such as the runoff seasonality and parameterization of subsurface/groundwater flow, was also much improved. Bai et al. (2016) evaluated the performance of GLDAS products in representing the streamflow dynamics of five Tibetan river basins based on the gauged measurements. It demonstrated that the four LSMs (CLM, VIC, Noah, and MOSAIC) implemented by the GLDAS capture well the trend of annual streamflow dynamics, but fail to reproduce the seasonal pattern such as the timing of peak flow. Zheng et al. (2018; 2016) showed that the seasonality of the runoff regime in the eastern Tibetan river basins is mainly controlled by the soil freeze-thaw mechanism (Fig. 4a-4b). An annual hysteresis loop between measured/simulated runoff and precipitation was also reported (Fig. 4c-4d), which is related to both the amount and the state of water stored in the soils. Zheng et al. (2017a) further showed that the soil water storage-based runoff parameterizations outperform the groundwater table-based schemes in representing the runoff dynamics in the seasonally frozen Tibetan river basins as confirmed by Yuan et al. (2018). Both Bai et al. (2016) and Zheng et al. (2017a) also highlight the importance of including groundwater and lateral flow schemes in current LSMs. Recently, a groundwater scheme (Xie et al., 2012; Zeng et al., 2016a; Zeng et al., 2016b; Xie et al., 2018) has been developed and coupled into the CLM4.5 model, and the results demonstrated that the scheme can simulate well the groundwater level and lateral flow. Nevertheless, it is still a big challenge to simulate well the hydrological processes across all the Tibetan rivers due to the lack of gauged measurements (including precipitation and streamflow) in most parts of the TP.

2.5 Representation of sub-grid topographic effects

180 The TP is characterized by high elevation and complex terrain, which exert obvious sub-grid topographic effects on radiative and moment transfer processes. A 3D Monte Carlo photon tracing program for radiation transfer was developed by Liou et al. (2007) and applied to simulate the surface solar fluxes on the TP. It was found that the inclusion of subgrid variability can lead to a significant solar flux deviation from the conventional smoothed topography simulation. Lee et al. (2013) further improved this 3D model and applied it to investigate the topographic effect on surface radiative energy budget on the TP. The results demonstrated that the TP would receive more solar flux that leads to stronger convection and enhanced snowmelt rate when the 3D topographic effects were considered. Recently, Lee et al. (2019) investigated the climate effects of the 3D radiation-topography interactions by incorporating their model into the Community Climate System Model version 4 (CCSM4). After including this topographic effect, the energy budget and air temperature simulated by the CCSM4 could be significantly improved. Gu et al. (2020) also coupled a subgrid terrain radiative forcing scheme into the Regional Climate Model Version 4.1 (RegCM4.1). They found that adopting this scheme in the RegCM4.1 could produce a better simulation of the energy budget on the TP, which thus lead to a better simulation of East Asian summer monsoon and precipitation over China.

Representing the effect of subgrid terrain variability on the moment transfer is very important for improving the simulation of wind speed, water vapour transfer, and precipitation over the TP. Wang et al. (2017) demonstrated that water vapour transfer over the South Tibetan Plateau is overestimated by current climate models. Lin et al. (2018) also found similar biases in WRF simulations and demonstrated that the complex terrain of the Himalaya can retard water vapour transfer through exerting an orographic drag on the atmosphere. Han et al. (2015) suggested an aerodynamic length of about 10 m is needed to reflect the drag, which, however, is difficult to apply such a “big number” directly to the framework of Monin-Obhukov similarity theory. Alternatively, Zhou et al. (2018; 2019) implemented a turbulent orographic form drag scheme (Bejaars et al., 2004) in the WRF model, which reduce the positive biases in the surface wind simulation, leading to the reduction of water vapour transfer from the surroundings to the TP. This parameterization is also critical for the successful simulation of precipitation distribution from the low altitudes to high latitudes of the central Himalaya (Wang et al., 2020).

3 Improvement of supporting data

Offline simulation is generally adopted to test model performance, and meteorological forcing, as well as static land parameter datasets, are required for running the LSM. There are several global forcing datasets dedicated to driving the LSMs, such as the global land data assimilation system (GLDAS) (Rodell et al., 2004), ERA-Interim (Dee et al., 2011), and Modern-Era Retrospective Analysis for Research and Applications (MERRA) (Gelaro et al., 2017; Rienecker et al., 2011). Wang and Zeng (2012) compared the performance of several precipitation datasets derived from GLDAS, MERRA, NCEP/NCAR-1, CFSR, ERA-40, and ERA-Interim for their applications to the TP. The results showed that the GLDAS performs better than other datasets due to the fact that the GLDAS has merged products from the ground- and satellite-based measurements. However, the development of these datasets only utilized measurements from limited Chinese weather stations (~200 stations), and their performance can be improved if more ground-based measurements are used (Wang and Zeng, 2012; Wang et al., 2016a; Wang et al., 2016c). On the other hand, the global land parameter datasets such as the soil data derived from the FAO Soil Map (FAO, 2003), Harmonized World Soil Database (HWSD) (FAO/IIASA/ISRIC/ISS-CAS/JRC, 2012), and SoilGrid (Hengl et al., 2014) show similar problems. Accordingly, several meteorological forcing and soil datasets have been developed specifically for the mainland of China via merging more available ground-based measurements during the last decade. These improved forcing data and other supporting data generally outperform the corresponding global data set not only in accuracy but also in both spatial and temporal resolution, which make a finer scale land surface simulation possible and contribute to substantial improvements of land surface modelling in China.

3.1 Improvement of meteorological forcing data

The accuracy of LSM simulations highly depends on the quality of meteorological forcing data. Among them, the accuracy of precipitation and radiation data is more addressed. For lake simulations, particularly for modeling lake ice, it is also crucial to provide accurate information on wind speed.

Table 1 lists several commonly-used precipitation datasets in China. Among them, the CN05.1 was produced by China Meteorological Administrator through the interpolation from more than 2000 gauge stations over the mainland of China (Wu and Gao, 2013). The CMFD was developed by the Institute of Tibetan Plateau Research, Chinese Academy of Sciences (ITPCAS) via merging a variety of data sources including reanalysis data, satellite-based products, and ground-based measurements (He et al., 2020). Fig. 5 shows the comparison of mean annual precipitation derived from the six forcing datasets for the TP during the period between 1985 and 2014. Large differences can be noted among the six precipitation datasets. According to the CN05.1 that produced based on the interpolation of ground-based measurements, the mean annual precipitation is about 410 mm on the TP with a larger amount in the southeast and smaller amount in the northwest. Compared to the CN05.1, both the ERA-Interim and MERRA2 largely overestimates the precipitation in the southeastern part of the Himalaya, and the precipitation in the southeastern part of the TP is generally overestimated by the MERRA2. On the contrary, the GLDAS-1 underestimates the precipitation in the southeastern part of the TP, which is resolved in the GLDAS-2. However, the overestimation of precipitation in the central part of Himalaya can be noted for the GLDAS-2. Overall, the CMFD integrating the ground-based measurements produce spatial distribution and variation of precipitation comparable to the CN05.1. The reliability of the CMFD precipitation data has also been validated by other studies (He et al., 2015; Xie et al., 2017; Yang et al., 2017). Yang et al. (2017) evaluated the precipitation data of the CMFD, CN05.1, and GLDAS using independent ground-based measurements collected by the China Ministry of Water Resources (MWR). The results demonstrated that the CMFD generally outperforms the CN05.1 and GLDAS in capturing the spatial and temporal variability of precipitation in China. Similar findings were also reported by He et al. (2015) for their applications to the upper reach of Heihe River Basin.

Until now, the CMFD forcing data has been adopted in hundreds of research publications with respect to land surface simulations, ecological modeling, and climate change studies. For instance, the data was used to (i) improve the land surface temperature simulation in China (Chen et al., 2011), (ii) simulate the distribution of permafrost and seasonal frozen soil on the TP (Guo and Wang, 2013), (iii) drive the LSM to obtain a high spatial resolution simulation of soil moisture on the TP (Li et al., 2018a), and (iv) drive a land data assimilation system to improve the soil moisture simulation in China (Yang et al., 2020; Yang et al., 2016).

3.2 Improvement of static land parameter data

Recently, a series of land parameter datasets have been developed for running the LSMs by the Land-Atmosphere Interaction Research Group at Beijing Normal University and Sun Yat-sen University available from <http://globalchange.bnu.edu.cn/research/data>. These datasets include (i) a soil particle-size distribution dataset of China (Shangguan et al., 2012), (ii) a China dataset of soil properties (Shangguan et al., 2013), (iii) a China dataset of soil hydraulic parameters (Dai et al., 2013), (iv) a Global Soil Dataset for use in Earth System Models (GSDE) (Shangguan et al., 2014), (v) a global depth to bedrock dataset (Shangguan et al., 2017), (vi) a global dataset of soil hydraulic and thermal parameters (Dai et al., 2019), and (vii) a reprocessed global LAI dataset (Yuan et al., 2011). Among these datasets, the GSDE has been widely

used, which provides soil information including soil texture, organic carbon, and bulk density at a spatial resolution of 30 arc-seconds for eight vertical soil layers to a depth of 2.3 m.

Fig. 6 and Fig. 7 show respectively the spatial distribution of bulk density and clay content on the TP derived from the GSDE and two other widely-used soil datasets, i.e. the HWSD and SoilGrid provided by the ISRIC (International Soil Reference and Information Centre). Large differences can be also noted among the three soil datasets. Compared to the GSDE that produced based on more soil samples taken from China, the SoilGrid tends to provide larger values in the northwest and smaller values in the southeast for the bulk density, and the HWSD tends to provide lower values of clay content. Since soil hydraulic parameters are closely related to the bulk density and clay content, different values of bulk density and clay content derived from different soil datasets would affect the soil hydraulic properties and thus the water budget simulation by the LSMs. For instance, Li et al. (2018b) investigated the impact of soil texture on the LSM simulations over the central Tibetan Plateau, in which the FAO Soil Map and GSDE were used. The results showed that soil parameters play a dominative role in simulating energy and water fluxes. Therefore, additional efforts are needed to investigate the accuracy of these newly developed soil datasets, as well as to investigate their impacts on the LSM simulations.

Besides the abovementioned improved forcing and soil data sets, other remote sensing or reanalysis data sets have also been widely used for land surface modeling on the TP, especially in ungauged/poor-gauged areas. They were used to drive hydrological simulation (Wang et al., 2015; Tong et al., 2014; Qi et al., 2018) or land data assimilation system (Lu et al., 2012), to validate model simulation (Li et al., 2020), and to improve understanding of physical processes (Liu et al., 2018). On the other hand, current in situ observation networks also made contributions to understanding the land surface process by serving as calibration and validation sources. For example, the multiscale soil moisture and freeze–thaw monitoring network on the central TP (CTP-SMTMN) (Yang et al., 2013) and the Tibetan Plateau observatory of plateau scale soil moisture and soil temperature (Tibet-Obs) (Su et al., 2011) provide valuable data set to validate and calibrate remote sensing products and model simulations. However, the density of in situ observation networks on the TP is still very sparse. Consequently, integration of the ground observation, remote sensing products, and reanalysis data may provide a complete and reliable supporting data set for studying the land surface processes on the TP.

4 Summary and perspectives

After Yang et al. (2009) identified key issues in the understanding and modelling of land surface processes on the TP, several progress has been made in developing new land surface schemes and supporting datasets in the past decade. The main advances are summarized in this mini-review, including (i) an enthalpy-based approach was adopted to enhance the description of cryosphere processes such as glacier/snow mass balance and soil freeze-thaw transitions; (ii) parameterization of vertical mixing process was improved in lake models to ensure reasonable heat transfer into deep water; (iii) new schemes were proposed for modelling water flow and heat transfer in the soils accounting for the effect of vertical soil heterogeneity due to the presence of high soil organic matter content and dense vegetation roots in surface soils or gravel in soil columns; (iv)

supporting datasets of meteorological forcing and soil parameter datasets were developed by integrating more ground-based measurements.

290 Based on the review, the following research perspectives in land surface modeling on the TP are given.

(1) Continuous improvement of meteorological forcing and land parameter datasets. The quality of current datasets are generally good for East China but not so reliable for the Tibetan Plateau and Northwest China, because of limited access to station data. With the progress in data sharing policy, it is possible to merge more station data from these remote regions. In addition, new experimental activities (e.g. the Second Scientific Expedition to the Tibetan Plateau and the Third Atmospheric
295 Science Experiment on the Tibetan Plateau) may provide new observations to improve/validate the quality of the forcing datasets. Also, high-resolution modeling can provide a new meteorological data source to improve the data quality in regions with complex terrain (Li et al., 2020; Wang et al., 2020b).

(2) Estimation of land parameters at model grid-scale through data assimilation and/or multi-objective optimization. Parameter upscaling faces big challenges with field sampling. By contrast, satellite data can avoid this kind of issues, although the remote
300 sensing products may also encounter uncertainties. Satellite data assimilation and/or multi-objective optimization may provide a new feasible way to estimate model parameters. A recent work (Luo et al., 2020) proves the concept, showing inverse estimation with in situ data is indeed able to reproduce the spatial pattern of soil organic carbon content measured in a mesoscale area of the TP and some pioneering studies (Corbari et al., 2015; Pinnington et al., 2018; Yang et al., 2016) show the potential of this type of methods.

(3) Development of new schemes and integration of multiple schemes into a single LSM. Some parameterizations are still questionable or even excluded, such as rhizosphere effect, complex terrain, and high elevation lakes, which are typical for the TP. For example, the parameterization of the light extinction coefficient and turbulent mixing in lakes are critical to freeze-up simulation but their values are empirically given (Huang et al., 2019). Meanwhile, since the vegetation types on the TP have unique characteristics and are very sensitive to climate change, the parameterization of vegetation-related processes should be
310 improved as demonstrated by Li et al (2019). The role of these processes should be understood and parameterized with new observations. Coupling new schemes into a LSM can increase the diversity of the LSM community and thus better quantify the uncertainties of LSMs.

(4) Adoption of data-driven methods and artificial intelligence in land surface process study. Big data methods could provide vast data and clues in model development, parameter optimization, and so on (Guo, 2017), while artificial intelligence could help in process understanding (Reichstein et al., 2019). As demonstrated by Jing et al. (2020), the integration of physical
315 process-based models with data-driven approaches shows high potential to improve the understanding and simulation of land surface processes.

Data availability.

Sources of the precipitation data and soil data have been described in section 3, “Improvement of supporting data”.

320 **Author contributions.**

HL and KY conceptualized the work. HL drafted the paper. DZ and KY revised the paper. HL, DZ, KY and FY collected data and contributed to analyses and discussions.

Competing interests.

The authors declare that they have no conflict of interest.

325 **Acknowledgements**

This work was jointly supported by the Second Tibetan Plateau Scientific Expedition and Research Program (2019QZKK0206), the National Key Research and Development Program of China (2017YFA0603703), the Strategic Priority Research Program of Chinese Academy of Sciences (XDA20100103), and the National Natural Science Foundation of China (91747101).

References

330 Bai, P., Liu, X. M., Yang, T. T., Liang, K., and Liu, C. M.: Evaluation of streamflow simulation results of land surface models in GLDAS on the Tibetan plateau, *Journal of Geophysical Research-Atmospheres*, 121, 12180-12197, 2016.

Bao, H., Koike, T., Yang, K., Wang, L., Shrestha, M., and Lawford, P.: Development of an enthalpy-based frozen soil model and its validation in a cold region in China, *Journal of Geophysical Research-Atmospheres*, 121, 5259-5280, 10.1002/2015jd024451, 2016.

335 Beljaars, A. C. M., Brown, A. R., and Wood, N.: A new parametrization of turbulent orographic form drag, *Q J Roy Meteor Soc*, 130, 1327-1347, 10.1256/qj.03.73, 2004

Boone, A., de Rosnay, P., Balsamo, G., Beljaars, A., Chopin, F., Decharme, B., Delire, C., Ducharne, A., Gascoin, S., Grippa, M., Guichard, F., Gusev, Y., Harris, P., Jarlan, L., Kergoat, L., Mougin, E., Nasonova, O., Norgaard, A., Orgeval, T., Ottle, C., Pocard-Leclercq, I., Polcher, J., Sandholt, I., Saux-Picart, S., Taylor, C., and Xue, Y. K.: The Amma Land Surface Model

340 Intercomparison Project (Almip), *B Am Meteorol Soc*, 90, 1865-1880, 2009.

Chen, Y. Y., Yang, K., He, J., Qin, J., Shi, J. C., Du, J. Y., and He, Q.: Improving land surface temperature modeling for dry land of China, *Journal of Geophysical Research-Atmospheres*, 116, 2011.

Chen, Y. Y., Yang, K., Tang, W. J., Qin, J., and Zhao, L.: Parameterizing soil organic carbon's impacts on soil porosity and thermal parameters for Eastern Tibet grasslands, *Sci China Earth Sci*, 55, 1001-1011, 2012.

345 Chen, Y. Y., Yang, K., Qin, J., Zhao, L., Tang, W. J., and Han, M. L.: Evaluation of AMSR-E retrievals and GLDAS simulations against observations of a soil moisture network on the central Tibetan Plateau, *Journal of Geophysical Research-Atmospheres*, 118, 4466-4475, 2013.

- Corbari, C., Mancini, M., Li, J., and Su, Z.: Can satellite land surface temperature data be used similarly to river discharge measurements for distributed hydrological model calibration?, *Hydrological Sciences Journal-Journal Des Sciences Hydrologiques*, 60, 202-217, 10.1080/02626667.2013.866709, 2015.
- Dai, Y., Wei, N., Huang, A., Zhu, S., Shangguan, W., Yuan, H., Zhang, S., and Liu, S.: The lake scheme of the Common Land Model and its performance evaluation, *Chinese Science Bulletin*, 63, 3002-3021, 2018.
- Dai, Y., Xin, Q., Wei, N., Zhang, Y., Wei, S., Yuan, H., Zhang, S., Liu, S., and Lu, X.: A Global High-Resolution Data Set of Soil Hydraulic and Thermal Properties for Land Surface Modeling, *J Adv Model Earth Sy*, 11, 2996-3023, 10.1029/2019ms001784, 2019.
- Dai, Y. J., Zeng, X. B., Dickinson, R. E., Baker, I., Bonan, G. B., Bosilovich, M. G., Denning, A. S., Dirmeyer, P. A., Houser, P. R., Niu, G. Y., Oleson, K. W., Schlosser, C. A., and Yang, Z. L.: The Common Land Model, *B Am Meteorol Soc*, 84, 1013-1023, 2003.
- Dai, Y. J., Shangguan, W., Duan, Q. Y., Liu, B. Y., Fu, S. H., and Niu, G.: Development of a China Dataset of Soil Hydraulic Parameters Using Pedotransfer Functions for Land Surface Modeling, *J Hydrometeorol*, 14, 869-887, 2013.
- Dee, D., Uppala, S., Simmons, A., Berrisford, P., Poli, P., Kobayashi, S., Andrae, U., Balmaseda, M., Balsamo, G., Bauer, P., Bechtold, P., Beljaars, A., van de Berg, L., Bidlot, J., Bormann, N., Delsol, C., Dragani, R., Fuentes, M., Geer, A., Haimberger, L., Healy, S., Hersbach, H., Holm, E., Isaksen, L., Kallberg, P., Kohler, M., Matricardi, M., McNally, A., Monge-Sanz, B., Morcrette, J., Park, B., Peubey, C., de Rosnay, P., Tavolato, C., Thepaut, J., and Vitart, F.: The ERA-Interim reanalysis: configuration and performance of the data assimilation system, *Quarterly Journal of the Royal Meteorological Society*, 137, 553-597, 10.1002/qj.828, 2011.
- Dickinson, R. E., Kennedy, P. J., and Henderson-Sellers, A.: Biosphere-Atmosphere Transfer Scheme (BATS) version 1e as coupled to the NCAR community climate model, National Center for Atmospheric Research, Climate and Global Dynamics Division, 1993.
- Dickinson, R. E., Oleson, K. W., Bonan, G., Hoffman, F., Thornton, P., Vertenstein, M., Yang, Z. L., and Zeng, X. B.: The Community Land Model and its climate statistics as a component of the Community Climate System Model, *J Climate*, 19, 2302-2324, 2006.
- Ding, B. H., Yang, K., Qin, J., Wang, L., Chen, Y. Y., and He, X. B.: The dependence of precipitation types on surface elevation and meteorological conditions and its parameterization, *Journal of Hydrology*, 513, 154-163, 10.1016/j.jhydrol.2014.03.038, 2014.
- Ding, B. H., Yang, K., Yang, W., He, X. B., Chen, Y. Y., Lazhu, Guo, X. F., Wang, L., Wu, H., and Yao, T. D.: Development of a Water and Enthalpy Budget-based Glacier mass balance Model (WEB-GM) and its preliminary validation, *Water Resour Res*, 53, 3146-3178, 2017.
- Dirmeyer, P. A., Dolman, A. J., and Sato, N.: The pilot phase of the Global Soil Wetness Project, *B Am Meteorol Soc*, 80, 851-878, 1999.
- Dirmeyer, P. A.: A History and Review of the Global Soil Wetness Project (GSWP), *J Hydrometeorol*, 12, 729-749, 2011.

- Fang, N., Yang, K., Lazhu, Chen, Y., Wang, J., and Zhu, L.: Research on the Application of WRF-Lake Modeling at Nam Co Lake on the Qinghai-Tibetan Plateau, *Plateau Meteorology*, 36, 610-618, 2017.
- FAO: The Digitized Soil Map of the World Including Derived Soil Properties (version 3.6), in, FAO, Rome, Italy., 2003.
- 385 FAO/IIASA/ISRIC/ISS-CAS/JRC: Harmonized World Soil Database (ver. 1.2), in, FAO, Rome, Italy, 2012.
- Farouki, O. T.: The Thermal-Properties of Soils in Cold Regions, *Cold Reg Sci Technol*, 5, 67-75, 1981.
- Gao, Y. H., Li, K., Chen, F., Jiang, Y. S., and Lu, C. G.: Assessing and improving Noah-MP land model simulations for the central Tibetan Plateau, *Journal of Geophysical Research-Atmospheres*, 120, 9258-9278, 2015.
- Gelaro, R., McCarty, W., Suarez, M. J., Todling, R., Molod, A., Takacs, L., Randles, C. A., Darmenov, A., Bosilovich, M. G.,
- 390 Reichle, R., Wargan, K., Coy, L., Cullather, R., Draper, C., Akella, S., Buchard, V., Conaty, A., da Silva, A. M., Gu, W., Kim, G. K., Koster, R., Lucchesi, R., Merkova, D., Nielsen, J. E., Partyka, G., Pawson, S., Putman, W., Rienecker, M., Schubert, S. D., Sienkiewicz, M., and Zhao, B.: The Modern-Era Retrospective Analysis for Research and Applications, Version 2 (MERRA-2), *J Climate*, 30, 5419-5454, 2017.
- Gu, C., Huang, A., Wu, Y., Yang, B., Mu, X., Zhang, X., and Cai, S.: Effects of Subgrid Terrain Radiative Forcing on the
- 395 Ability of RegCM4.1 in the Simulation of Summer Precipitation Over China, *Journal of Geophysical Research-Atmospheres*, 125, 10.1029/2019jd032215, 2020.
- Gu, H., Jin, J., Wu, Y., Ek, M. B., and Subin, Z. M.: Calibration and validation of lake surface temperature simulations with the coupled WRF-lake model, *Climatic Change*, 129, 471-483, 10.1007/s10584-013-0978-y, 2015.
- Guo, D. L., and Wang, H. J.: Simulation of permafrost and seasonally frozen ground conditions on the Tibetan Plateau, 1981–
- 400 2010, *Journal of Geophysical Research-Atmospheres*, 118, 5216-5230, 10.1002/jgrd.50457, 2013.
- Guo, H.: Big Earth data: A new frontier in Earth and information sciences, *Big Earth Data*, 1, 4-20, 10.1080/20964471.2017.1403062, 2017.
- Han, C. B., Ma, Y. M., Su, Z. B., Chen, X. L., Zhang, L., Li, M. S., and Sun, F. L.: Estimates of effective aerodynamic roughness length over mountainous areas of the Tibetan Plateau, *Q J Roy Meteor Soc*, 141, 1457-1465, 10.1002/qj.2462, 2015
- 405 He, J., Yang, K., Tang, W., Lu, H., Qin, J., Chen, Y., and Li, X.: The first high-resolution meteorological forcing dataset for land process studies over China, *Scientific Data*, 7, 10.1038/s41597-020-0369-y, 2020.
- He, S. W., Nan, Z. T., and Hou, Y. T.: Accuracy evaluation of two precipitation datasets over upper reach of Heihe River Basin, northwestern China, *Sci Cold Arid Reg*, 7, 157-169, 10.3724/Sp.J.1226.2015.00157, 2015.
- Henderson-Sellers, A., Yang, Z. L., and Dickinson, R. E.: The Project for Intercomparison of Land-Surface Parameterization
- 410 Schemes, *B Am Meteorol Soc*, 74, 1335-1349, 1993.
- Henderson-Sellers, A., Pitman, A. J., Love, P. K., Irannejad, P., and Chen, T. H.: The Project for Intercomparison of Land-Surface Parameterization Schemes (Pilps) - Phase-2 and Phase-3, *B Am Meteorol Soc*, 76, 489-503, 1995.
- Hengl, T., de Jesus, J. M., MacMillan, R. A., Batjes, N. H., Heuvelink, G. B. M., Ribeiro, E., Samuel-Rosa, A., Kempen, B., Leenaars, J. G. B., Walsh, M. G., and Gonzalez, M. R.: SoilGrids1km-Global Soil Information Based on Automated Mapping,
- 415 Plos One, 9, 10.1371/journal.pone.0105992, 2014.

- Huang, A., Lazhu, Wang, J., Dai, Y., Yang, K., Wei, N., Wen, L., Wu, Y., Zhu, X., Zhang, X., and Cai, S.: Evaluating and Improving the Performance of Three 1-D Lake Models in a Large Deep Lake of the Central Tibetan Plateau, *Journal of Geophysical Research-Atmospheres*, 124, 3143-3167, 10.1029/2018jd029610, 2019.
- Hurrell, J. W., Holland, M. M., Gent, P. R., Ghan, S., Kay, J. E., Kushner, P. J., Lamarque, J. F., Large, W. G., Lawrence, D.,
420 Lindsay, K., Lipscomb, W. H., Long, M. C., Mahowald, N., Marsh, D. R., Neale, R. B., Rasch, P., Vavrus, S., Vertenstein, M., Bader, D., Collins, W. D., Hack, J. J., Kiehl, J., and Marshall, S.: The Community Earth System Model A Framework for Collaborative Research, *B Am Meteorol Soc*, 94, 1339-1360, 2013.
- Jimenez, C., Prigent, C., Mueller, B., Seneviratne, S. I., McCabe, M. F., Wood, E. F., Rossow, W. B., Balsamo, G., Betts, A. K., Dirmeyer, P. A., Fisher, J. B., Jung, M., Kanamitsu, M., Reichle, R. H., Reichstein, M., Rodell, M., Sheffield, J., Tu, K.,
425 and Wang, K.: Global intercomparison of 12 land surface heat flux estimates, *Journal of Geophysical Research-Atmospheres*, 116, 10.1029/2010jd014545, 2011.
- Jing, W. L., Di, L. P., Zhao, X. D., Yao, L., Xia, X. L., Liu, Y. X., Yang, J., Li, Y., and Zhou, C. H.: A data-driven approach to generate past GRACE-like terrestrial water storage solution by calibrating the land surface model simulations, *Adv Water Resour*, 143, ARTN 103683, 10.1016/j.advwatres.2020.103683, 2020.
- Johansen, O.: Thermal conductivity of soils, Ph. D. dissertation,, University of Trondheim, Trondheim, Norway, 236 pp., 1975.
- Lazhu, Yang, K., Wang, J. B., Lei, Y. B., Chen, Y. Y., Zhu, L. P., Ding, B. H., and Qin, J.: Quantifying evaporation and its decadal change for Lake Nam Co, central Tibetan Plateau, *Journal of Geophysical Research-Atmospheres*, 121, 7578-7591, 2016.
- Lee, W.-L., Liou, K. N., and Wang, C.-c.: Impact of 3-D topography on surface radiation budget over the Tibetan Plateau,
435 *Theoretical and Applied Climatology*, 113, 95-103, 10.1007/s00704-012-0767-y, 2013.
- Lee, W.-L., Liou, K.-N., Wang, C.-c., Gu, Y., Hsu, H.-H., and Li, J.-L. F.: Impact of 3-D Radiation-Topography Interactions on Surface Temperature and Energy Budget Over the Tibetan Plateau in Winter, *Journal of Geophysical Research-Atmospheres*, 124, 1537-1549, 10.1029/2018jd029592, 2019.
- Li, C. W., Lu, H., Yang, K., Wright, J. S., Yu, L., Chen, Y. Y., Huang, X. M., and Xu, S. M.: Evaluation of the Common Land
440 Model (CoLM) from the Perspective of Water and Energy Budget Simulation: Towards Inclusion in CMIP6, *Atmosphere-Basel*, 8, 10.3390/atmos8080141, 2017.
- Li, C. W., Lu, H., Yang, K., Han, M. L., Wright, J. S., Chen, Y. Y., Yu, L., Xu, S. M., Huang, X. M., and Gong, W.: The Evaluation of SMAP Enhanced Soil Moisture Products Using High-Resolution Model Simulations and In-Situ Observations on the Tibetan Plateau, *Remote Sens-Basel*, 10, 2018a.
- Li, C., Lu, H., Leung, L. R., Yang, K., Li, H., Wang, W., Han, M., and Chen, Y.: Improving Land Surface Temperature
445 *Simulation in CoLM Over the Tibetan Plateau Through Fractional Vegetation Cover Derived From a Remotely Sensed Clumping Index and Model-Simulated Leaf Area Index*, *Journal of Geophysical Research-Atmospheres*, 124, 2620-2642, 10.1029/2018jd028640, 2019.

- Li, D., Yang, K., Tang, W. J., Li, X., Zhou, X., and Guo, D. L.: Characterizing precipitation in high altitudes of the western Tibetan plateau with a focus on major glacier areas, *International Journal of Climatology*, 10.1002/joc.6509, 2020.
- Li, J. D., Chen, F., Zhang, G., Barlage, M., Gan, Y. J., Xin, Y. F., and Wang, C.: Impacts of Land Cover and Soil Texture Uncertainty on Land Model Simulations Over the Central Tibetan Plateau, *J Adv Model Earth Sy*, 10, 2018b.
- Li, Q., and Sun, S.: Development of the universal and simplified soil model coupling heat and water transport, *Science in China Series D-Earth Sciences*, 51, 88-102, 10.1007/s11430-007-0153-2, 2008.
- 455 Lin, C. G., Chen, D. L., Yang, K., and Ou, T. H.: Impact of model resolution on simulating the water vapor transport through the central Himalayas: implication for models' wet bias over the Tibetan Plateau, *Climate Dynamics*, 51, 3195-3207, 10.1007/s00382-018-4074-x, 2018.
- Liou, K. N., Lee, W.-L., and Hall, A.: Radiative transfer in mountains: Application to the Tibetan Plateau, *Geophysical Research Letters*, 34, L23809, 10.1029/2007GL031762, 2007.
- 460 Liu, W. B., Sun, F. B., Li, Y. Z., Zhang, G. Q., Sang, Y. F., Lim, W. H., Liu, J. H., Wang, H., and Bai, P.: Investigating water budget dynamics in 18 river basins across the Tibetan Plateau through multiple datasets, *Hydrology and Earth System Sciences*, 22, 351-371, 10.5194/hess-22-351-2018, 2018.
- Lu, H., Koike, T., Yang, K., Hu, Z. Y., Xu, X. D., Rasmy, M., Kuria, D., and Tamagawa, K.: Improving land surface soil moisture and energy flux simulations over the Tibetan plateau by the assimilation of the microwave remote sensing data and the GCM output into a land surface model, *International Journal of Applied Earth Observation and Geoinformation*, 17, 43-54, 10.1016/j.jag.2011.09.006, 2012.
- 465 Luo, Q., Yang, K., Chen, Y., and Zhou, X.: Method development for estimating soil organic carbon content in an alpine region using soil moisture data, *Sci China Earth Sci*, 63, 591-601, 10.1007/s11430-019-9554-8, 2020.
- Luo, S. Q., Fang, X. W., Lyu, S. H., Zhang, Y., and Chen, B. L.: Improving CLM4.5 Simulations of Land-Atmosphere Exchange during Freeze-Thaw Processes on the Tibetan Plateau, *J Meteorol Res-Prc*, 31, 916-930, 2017.
- 470 Luo, S. Q., Chen, B. L., Lyu, S. H., Fang, X. W., Wang, J. Y., Meng, X. H., Shang, L. Y., Wang, S. Y., and Ma, D.: An improvement of soil temperature simulations on the Tibetan Plateau, *Sci Cold Arid Reg*, 10, 80-94, 10.3724/Sp.J.1226.2018.00080, 2018.
- Manabe, S.: Climate and Ocean Circulation .I. Atmospheric Circulation and Hydrology of Earths Surface, *Mon Weather Rev*, 97, 739-+, 1969.
- 475 Oleson, K. W., Lawrence, D. M., Gordon, B., Flanner, M. G., Kluzek, E., Peter, J., Levis, S., Swenson, S. C., Thornton, E., and Feddema, J.: Technical description of version 4.0 of the Community Land model (CLM), The National Center for Atmospheric Research (NCAR), 2010.
- Pan, M., Sahoo, A. K., Troy, T. J., Vinukollu, R. K., Sheffield, J., and Wood, E. F.: Multisource Estimation of Long-Term Terrestrial Water Budget for Major Global River Basins, *J Climate*, 25, 3191-3206, 2012.
- 480 Pan, Y. J., Lyu, S. H., Li, S. S., Gao, Y. H., Meng, X. H., Ao, Y. H., and Wang, S. J.: Simulating the role of gravel in freeze-thaw process on the Qinghai-Tibet Plateau, *Theor Appl Climatol*, 127, 1011-1022, 2017.

- Pinnington, E., Quaife, T., and Black, E.: Impact of remotely sensed soil moisture and precipitation on soil moisture prediction in a data assimilation system with the JULES land surface model, *Hydrology and Earth System Sciences*, 22, 2575-2588, 10.5194/hess-22-2575-2018, 2018.
- 485 Qi, W., Liu, J. G., and Chen, D. L.: Evaluations and Improvements of GLDAS2.0 and GLDAS2.1 Forcing Data's Applicability for Basin Scale Hydrological Simulations in the Tibetan Plateau, *Journal of Geophysical Research-Atmospheres*, 123, 13128-13148, 10.1029/2018jd029116, 2018.
- 490 Reichstein, M., Camps-Valls, G., Stevens, B., Jung, M., Denzler, J., Carvalhais, N., and Prabhat: Deep learning and process understanding for data-driven Earth system science, *Nature*, 566, 195-204, 10.1038/s41586-019-0912-1, 2019.
- Rienecker, M. M., Suarez, M. J., Gelaro, R., Todling, R., Bacmeister, J., Liu, E., Bosilovich, M. G., Schubert, S. D., Takacs, L., Kim, G. K., Bloom, S., Chen, J. Y., Collins, D., Conaty, A., Da Silva, A., Gu, W., Joiner, J., Koster, R. D., Lucchesi, R., Molod, A., Owens, T., Pawson, S., Pegion, P., Redder, C. R., Reichle, R., Robertson, F. R., Ruddick, A. G., Sienkiewicz, M., and Woollen, J.: MERRA: NASA's Modern-Era Retrospective Analysis for Research and Applications, *J Climate*, 24, 3624-3648, 2011.
- 495 Rodell, M., Houser, P. R., Jambor, U., Gottschalck, J., Mitchell, K., Meng, C. J., Arsenault, K., Cosgrove, B., Radakovich, J., Bosilovich, M., Entin, J. K., Walker, J. P., Lohmann, D., and Toll, D.: The global land data assimilation system, *B Am Meteorol Soc*, 85, 381-+, 2004.
- Sellers, P. J., Mintz, Y., Sud, Y. C., and Dalcher, A.: A Simple Biosphere Model (Sib) for Use within General-Circulation Models, *J Atmos Sci*, 43, 505-531, 1986.
- 500 Sellers, P. J., Randall, D. A., Collatz, G. J., Berry, J. A., Field, C. B., Dazlich, D. A., Zhang, C., Collelo, G. D., and Bounoua, L.: A revised land surface parameterization (SiB2) for atmospheric GCMs .1. Model formulation, *J Climate*, 9, 676-705, 1996.
- Shangguan, W., Dai, Y. J., Liu, B. Y., Ye, A. Z., and Yuan, H.: A soil particle-size distribution dataset for regional land and climate modelling in China, *Geoderma*, 171, 85-91, 2012.
- 505 Shangguan, W., Dai, Y. J., Liu, B. Y., Zhu, A. X., Duan, Q. Y., Wu, L. Z., Ji, D. Y., Ye, A. Z., Yuan, H., Zhang, Q., Chen, D. D., Chen, M., Chu, J. T., Dou, Y. J., Guo, J. X., Li, H. Q., Li, J. J., Liang, L., Liang, X., Liu, H. P., Liu, S. Y., Miao, C. Y., and Zhang, Y. Z.: A China data set of soil properties for land surface modeling, *J Adv Model Earth Sy*, 5, 212-224, 2013.
- Shangguan, W., Dai, Y. J., Duan, Q. Y., Liu, B. Y., and Yuan, H.: A global soil data set for earth system modeling, *J Adv Model Earth Sy*, 6, 249-263, 2014.
- 510 Shangguan, W., Hengl, T., de Jesus, J. M., Yuan, H., and Dai, Y. J.: Mapping the global depth to bedrock for land surface modeling, *J Adv Model Earth Sy*, 9, 65-88, 2017.
- Su, D., Hu, X., Wen, L., Lyu, S., Gao, X., Zhao, L., Li, Z., Du, J., and Kirillin, G.: Numerical study on the response of the largest lake in China to climate change, *Hydrology and Earth System Sciences*, 23, 2093-2109, 10.5194/hess-23-2093-2019, 2019.

- 515 Su, Z., Wen, J., Dente, L., van der Velde, R., Wang, L., Ma, Y., Yang, K., and Hu, Z.: The Tibetan Plateau observatory of plateau scale soil moisture and soil temperature (Tibet-Obs) for quantifying uncertainties in coarse resolution satellite and model products, *Hydrology and Earth System Sciences*, 15, 2303-2316, 10.5194/hess-15-2303-2011, 2011.
Su, Z., de Rosnay, P., Wen, J., Wang, L., and Zeng, Y.: Evaluation of ECMWF's soil moisture analyses using observations on the Tibetan Plateau, *Journal of Geophysical Research-Atmospheres*, 118, 5304-5318, 10.1002/jgrd.50468, 2013.
- 520 Sun, S., Yan, J., Xia, N., and Sun, C.: Development of a model for water and heat exchange between the atmosphere and a water body, *Advances in Atmospheric Sciences*, 24, 927-938, 10.1007/s00376-007-0927-7, 2007.
Sun, S. F., Jin, J. M., and Xue, Y. K.: A simple snow-atmosphere-soil transfer model, *Journal of Geophysical Research-Atmospheres*, 104, 19587-19597, 10.1029/1999jd900305, 1999.
Tong, K., Su, F. G., Yang, D. Q., and Hao, Z. C.: Evaluation of satellite precipitation retrievals and their potential utilities in hydrologic modeling over the Tibetan Plateau, *J Hydrol*, 519, 423-437, 10.1016/j.jhydrol.2014.07.044, 2014.
- 525 Wang, A. H., and Zeng, X. B.: Evaluation of multireanalysis products with in situ observations over the Tibetan Plateau, *Journal of Geophysical Research-Atmospheres*, 117, 2012.
Wang, A. H., Zeng, X. B., and Guo, D. L.: Estimates of Global Surface Hydrology and Heat Fluxes from the Community Land Model (CLM4.5) with Four Atmospheric Forcing Datasets, *J Hydrometeorol*, 17, 2493-2510, 2016a.
- 530 Wang, B., Ma, Y., Chen, X., Ma, W., Su, Z., and Menenti, M.: Observation and simulation of lake-air heat and water transfer processes in a high-altitude shallow lake on the Tibetan Plateau, *Journal of Geophysical Research-Atmospheres*, 120, 12327-12344, 10.1002/2015jd023863, 2015.
Wang, C. H., and Yang, K.: A New Scheme for Considering Soil Water-Heat Transport Coupling Based on Community Land Model: Model Description and Preliminary Validation, *J Adv Model Earth Sy*, 10, 927-950, 2018.
- 535 Wang, L., Li, X. P., Chen, Y. Y., Yang, K., Chen, D. L., Zhou, J., Liu, W. B., Qi, J., and Huang, J. B.: Validation of the global land data assimilation system based on measurements of soil temperature profiles, *Agr Forest Meteorol*, 218, 288-297, 2016b.
Wang, L., Zhou, J., Qi, J., Sun, L. T., Yang, K., Tian, L. D., Lin, Y. L., Liu, W. B., Shrestha, M., Xue, Y. K., Koike, T., Ma, Y. M., Li, X. P., Chen, Y. Y., Chen, D. L., Piao, S. L., and Lu, H.: Development of a land surface model with coupled snow and frozen soil physics, *Water Resour Res*, 53, 5085-5103, 2017.
- 540 Wang, S., Liu, S. X., Mo, X. G., Peng, B., Qiu, J. X., Li, M. X., Liu, C. M., Wang, Z. G., and Bauer-Gottwein, P.: Evaluation of Remotely Sensed Precipitation and Its Performance for Streamflow Simulations in Basins of the Southeast Tibetan Plateau, *J Hydrometeorol*, 16, 2577-2594, 10.1175/Jhm-D-14-0166.1, 2015.
Wang, W., Cui, W., Wang, X. J., and Chen, X.: Evaluation of GLDAS-1 and GLDAS-2 Forcing Data and Noah Model Simulations over China at the Monthly Scale, *J Hydrometeorol*, 17, 2815-2833, 2016c.
- 545 Wang, W., Yang, K., Zhao, L., Zheng, Z., Lu, H., Mamtimin, A., Ding, B., Li, X., Zhao, L., Li, H., Che, T., and Moore, J. C.: Characterizing surface albedo of shallow fresh snow and its importance for snow ablation on the interior of the Tibetan Plateau, *J Hydrometeorol*, 21, 815-827, 10.1175/JHM-D-19-0193.1, 2020a.

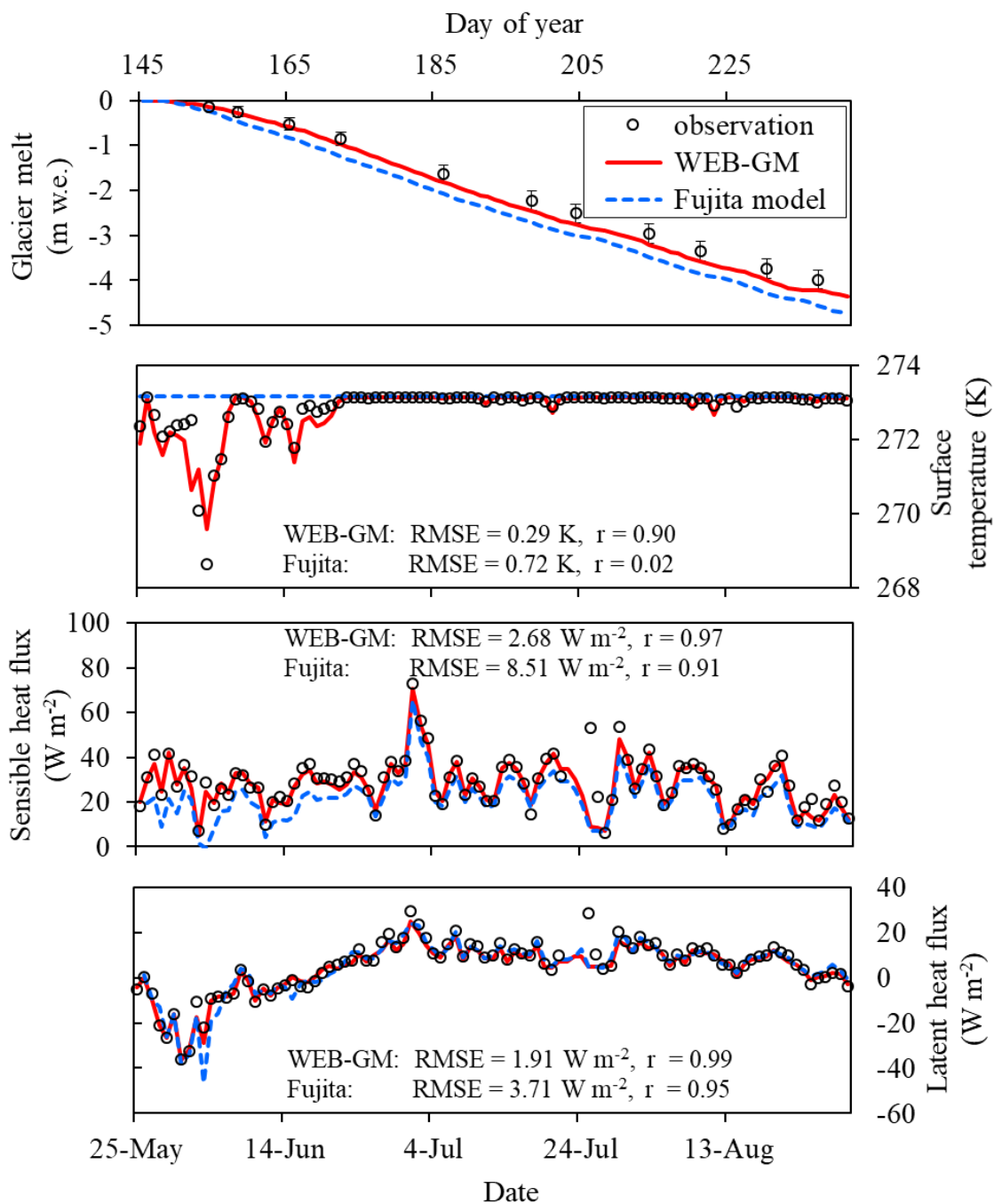
- Wang, Y., Yang, K., Pan, Z. Y., Qin, J., Chen, D. L., Lin, C. G., Chen, Y. Y., Lazhu, Tang, W. J., Han, M. L., Lu, N., and Wu, H.: Evaluation of Precipitable Water Vapor from Four Satellite Products and Four Reanalysis Datasets against GPS Measurements on the Southern Tibetan Plateau, *J Climate*, 30, 5699-5713, 10.1175/Jcli-D-16-0630.1, 2017.
- Wang, Y., Yang, K., Zhou, X., Chen, D. L., Lu, H., Ouyang, L., Chen, Y. Y., Lazhu, and Wang, B. B.: Synergy of orographic drag parameterization and high resolution greatly reduces biases of WRF-simulated precipitation in central Himalaya, *Climate Dynamics*, 54, 1729–1740, 2020b.
- Wu, G., Duan, A., Liu, Y., Mao, J., Ren, R., Bao, Q., He, B., Liu, B., and Hu, W.: Tibetan Plateau climate dynamics: recent research progress and outlook, *National Science Review*, 2, 100-116, 10.1093/nsr/nwu045, 2015.
- Wu, J., and Gao, X.-J.: A gridded daily observation dataset over China region and comparison with the other datasets, *Chinese Journal of Geophysics-Chinese Edition*, 56, 1102-1111, 10.6038/cjg20130406, 2013.
- Xia, Y., Sheffield, J., Ek, M. B., Dong, J., Chaney, N., Wei, H., Meng, J., and Wood, E. F.: Evaluation of multi-model simulated soil moisture in NLDAS-2, *Journal of Hydrology*, 512, 107-125, 10.1016/j.jhydrol.2014.02.027, 2014.
- Xie, Z., Hu, Z., Gu, L., Sun, G., Du, Y., and Yan, X.: Meteorological Forcing Datasets for Blowing Snow Modeling on the Tibetan Plateau: Evaluation and Intercomparison, *J Hydrometeorol*, 18, 20, 10.1175/JHM-D-17-0075.1 2017.
- Xie, Z. H., Di, Z. H., Luo, Z. D., and Ma, Q.: A Quasi-Three-Dimensional Variably Saturated Groundwater Flow Model for Climate Modeling, *J Hydrometeorol*, 13, 27-46, 2012.
- Xie, Z. H., Liu, S., Zeng, Y. J., Gao, J. Q., Qin, P. H., Jia, B. H., Xie, J. B., Liu, B., Li, R. C., Wang, Y., and Wang, L. H.: A High-Resolution Land Model With Groundwater Lateral Flow, Water Use, and Soil Freeze-Thaw Front Dynamics and its Applications in an Endorheic Basin, *Journal of Geophysical Research-Atmospheres*, 123, 7204-7222, 10.1029/2018JD028369, 2018.
- Yang, F., Lu, H., Yang, K., He, J., Wang, W., Wright, J. S., Li, C. W., Han, M. L., and Li, Y. S.: Evaluation of multiple forcing data sets for precipitation and shortwave radiation over major land areas of China, *Hydrology and Earth System Sciences*, 21, 5805-5821, 2017.
- Yang, K., Koike, T., Ye, B. S., and Bastidas, L.: Inverse analysis of the role of soil vertical heterogeneity in controlling surface soil state and energy partition, *Journal of Geophysical Research-Atmospheres*, 110, 2005.
- Yang, K., Koike, T., Ishikawa, H., Kim, J., Li, X., Liu, H. Z., Liu, S. M., Ma, Y. M., and Wang, J. M.: Turbulent flux transfer over bare-soil surfaces: Characteristics and parameterization, *Journal of applied meteorology and climatology*, 47, 276-290, 2008.
- Yang, K., Chen, Y. Y., and Qin, J.: Some practical notes on the land surface modeling in the Tibetan Plateau, *Hydrology and Earth System Sciences*, 13, 687-701, 10.5194/hess-13-687-2009, 2009.
- Yang, K., Qin, J., Zhao, L., Chen, Y. Y., Tang, W. J., Han, M. L., Lazhu, Chen, Z. Q., Lv, N., Ding, B. H., Wu, H., and Lin, C. G.: A MULTISCALE SOIL MOISTURE AND FREEZE-THAW MONITORING NETWORK ON THE THIRD POLE, *Bulletin of the American Meteorological Society*, 94, 1907-1916, 10.1175/bams-d-12-00203.1, 2013.

- Yang, K., Zhu, L., Chen, Y. Y., Zhao, L., Qin, J., Lu, H., Tang, W. J., Han, M. L., Ding, B. H., and Fang, N.: Land surface model calibration through microwave data assimilation for improving soil moisture simulations, *Journal of Hydrology*, 533, 266-276, 2016.
- Yang, K., Wang, C. H., and Li, S. Y.: Improved Simulation of Frozen-Thawing Process in Land Surface Model (CLM4.5),
585 *Journal of Geophysical Research-Atmospheres*, 123, 13238-13258, 10.1029/2017jd028260, 2018.
- Yang, K., Chen, Y. Y., He, J., Zhao, L., Lu, H., Qin, J., Zheng, D. H., and Li, X.: Development of a daily soil moisture product for the period of 2002-2011 in Chinese Mainland, *Sci China Earth Sci*, 63, 1113-1125, /10.1007/s11430-019-9588-5, 2020.
- Yao, T., Wu, F., Ding, L., Sun, J., Zhu, L., Piao, S. L., Deng, T., Ni, X., Zheng, H., and Ouyang, H.: Multispherical interactions and their effects on the Tibetan Plateau's earth system: a review of the recent researches, *National Science Review*, 2, 468-488,
590 10.1093/nsr/nwv070, 2015.
- Yi, S., He, Y., Guo, X., Chen, J., Wu, Q., Qin, Y., and Ding, Y.: The physical properties of coarse-fragment soils and their effects on permafrost dynamics: a case study on the central Qinghai-Tibetan Plateau, *Cryosphere*, 12, 3067-3083, 10.5194/tc-12-3067-2018, 2018.
- Yuan, H., Dai, Y. J., Xiao, Z. Q., Ji, D. Y., and Shanguan, W.: Reprocessing the MODIS Leaf Area Index products for land
595 surface and climate modelling, *Remote Sens Environ*, 115, 1171-1187, 2011.
- Yuan, X., Ji, P., Wang, L., Liang, X.-Z., Yang, K., Ye, A., Su, Z., and Wen, J.: High-Resolution Land Surface Modeling of Hydrological Changes Over the Sanjiangyuan Region in the Eastern Tibetan Plateau: 1. Model Development and Evaluation, *J Adv Model Earth Sy*, 10, 2806-2828, 10.1029/2018ms001412, 2018.
- Zeng, Y. J., Xie, Z. H., Yu, Y., Liu, S., Wang, L. Y., Jia, B. H., Qin, P. H., and Chen, Y. N.: Ecohydrological effects of stream-
600 aquifer water interaction: a case study of the Heihe River basin, northwestern China, *Hydrology and Earth System Sciences*, 20, 2333-2352, 2016a.
- Zeng, Y. J., Xie, Z. H., Yu, Y., Liu, S., Wang, L. Y., Zou, J., Qin, P. H., and Jia, B. H.: Effects of anthropogenic water regulation and groundwater lateral flow on land processes, *J Adv Model Earth Sy*, 8, 1106-1131, 2016b.
- Zhang, Q., Jin, J., Wang, X., Budy, P., Barrett, N., and Null, S. E.: Improving lake mixing process simulations in the
605 *Community Land Model* by using K profile parameterization, *Hydrology and Earth System Sciences*, 23, 4969-4982, 10.5194/hess-23-4969-2019, 2019.
- Zhao, P., Xu, X., Chen, F., Guo, X., Zheng, X., Liu, L., Hong, Y., Li, Y., La, Z., Peng, H., Zhong, L., Ma, Y., Tang, S., Liu, Y., Liu, H., Li, Y., Zhang, Q., Hu, Z., Sun, J., Zhang, S., Dong, L., Zhang, H., Zhao, Y., Yan, X., Xiao, A., Wan, W., Liu, Y., Chen, J., Liu, G., Zhaxi, Y., and Zhou, X.: The third atmospheric scientific experiment for understanding the Earth-atmosphere
610 coupled system over the Tibetan Plateau and its effects, *B Am Meteorol Soc*, 99, 757-776, 10.1175/bams-d-16-0050.1, 2018.
- Zheng, D., van der Velde, R., Su, Z., Wang, X., Wen, J., Booi, M. J., Hoekstra, A. Y., and Chen, Y.: Augmentations to the Noah Model Physics for Application to the Yellow River Source Area. Part I: Soil Water Flow, *J Hydrometeorol*, 16, 2659-2676, 10.1175/jhm-d-14-0198.1, 2015a.

- Zheng, D., van der Velde, R., Su, Z., Wang, X., Wen, J., Booij, M. J., Hoekstra, A. Y., and Chen, Y.: Augmentations to the
615 Noah Model Physics for Application to the Yellow River Source Area. Part II: Turbulent Heat Fluxes and Soil Heat Transport, *J Hydrometeorol*, 16, 2677-2694, 10.1175/jhm-d-14-0199.1, 2015b.
- Zheng, D., Van der Velde, R., Su, Z., Wen, J., Booij, M. J., Hoekstra, A. Y., and Wang, X.: Under-canopy turbulence and root
water uptake of a Tibetan meadow ecosystem modeled by Noah-MP, *Water Resour Res*, 51, 5735-5755,
10.1002/2015wr017115, 2015c.
- 620 Zheng, D., Van der Velde, R., Su, Z., Wen, J., and Wang, X.: Assessment of Noah land surface model with various runoff
parameterizations over a Tibetan river, *Journal of Geophysical Research-Atmospheres*, 122, 1488-1504,
10.1002/2016jd025572, 2017a.
- Zheng, D., van der Velde, R., Su, Z., Wen, J., Wang, X., and Yang, K.: Evaluation of Noah Frozen Soil Parameterization for
Application to a Tibetan Meadow Ecosystem, *J Hydrometeorol*, 18, 1749-1763, 10.1175/jhm-d-16-0199.1, 2017b.
- 625 Zheng, D., van der Velde, R., Su, Z., Wen, J., Wang, X., and Yang, K.: Impact of soil freeze-thaw mechanism on the runoff
dynamics of two Tibetan rivers, *Journal of Hydrology*, 563, 382-394, 10.1016/j.jhydrol.2018.06.024, 2018.
- Zheng, D. H., Van der Velde, R., Su, Z. B., Wen, J., Wang, X., Booij, M. J., Hoekstra, A. Y., Lv, S. H., Zhang, Y., and Ek, M.
B.: Impacts of Noah model physics on catchment-scale runoff simulations, *Journal of Geophysical Research-Atmospheres*,
121, 807-832, 2016.
- 630 Zhou, X., Yang, K., and Wang, Y.: Implementation of a turbulent orographic form drag scheme in WRF and its application to
the Tibetan Plateau, *Climate Dynamics*, 50, 2443-2455, 10.1007/s00382-017-3677-y, 2018.
- Zhou, X., Yang, K., Beljaars, A., Li, H., Lin, C., Huang, B., and Wang, Y.: Dynamical impact of parameterized turbulent
orographic form drag on the simulation of winter precipitation over the western Tibetan Plateau, *Climate Dynamics*, 53, 707-
720, 10.1007/s00382-019-04628-0, 2019.
- 635 Zhu, S. G., Chen, H. S., Zhang, X. X., Wei, N., Wei, S. G., Yuan, H., Zhang, S. P., Wang, L. L., Zhou, L. H., and Dai, Y. J.:
Incorporating root hydraulic redistribution and compensatory water uptake in the Common Land Model: Effects on site level
and global land modeling, *Journal of Geophysical Research-Atmospheres*, 122, 7308-7322, 2017.

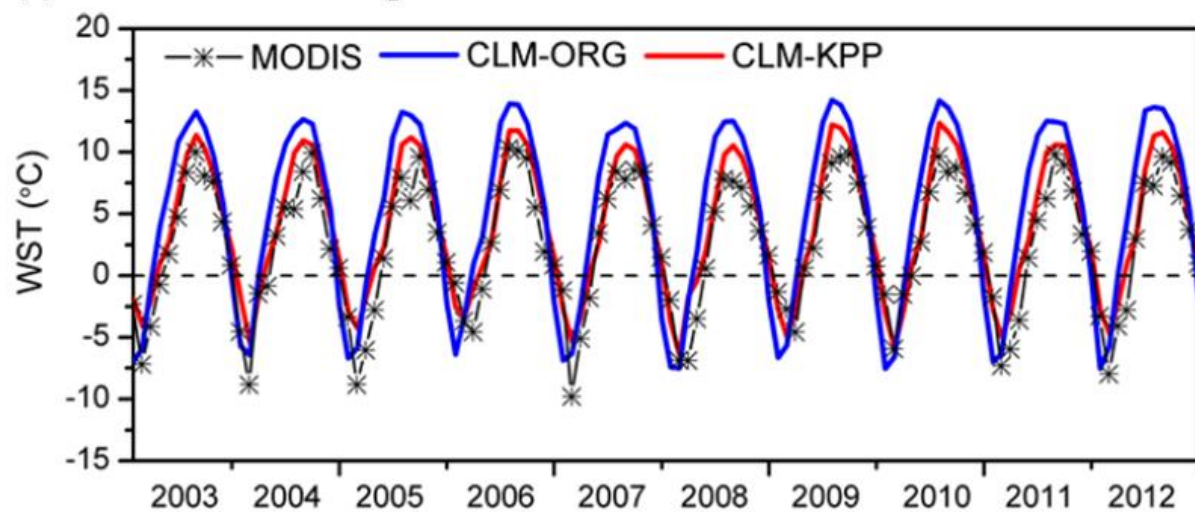
640 **Table 1. List of six commonly-used precipitation data**

Precipitation DataSets	Available period	Spatial resolution	Producer
CN05.1	1961—2014	0.25°×0.25°	CMA
CMFD	1979 —2018	0.1°×0.1°	ITPCAS
ERA-Interim	1979—2019	0.125°×0.125°	ECMWF
MERRA2	1979—2016	0.5° × 0.66°	NASA
GLDAS-1	1979—2019	1°×1°	NASA
GLDAS-2	1948—2014	0.25°×0.25°	NASA

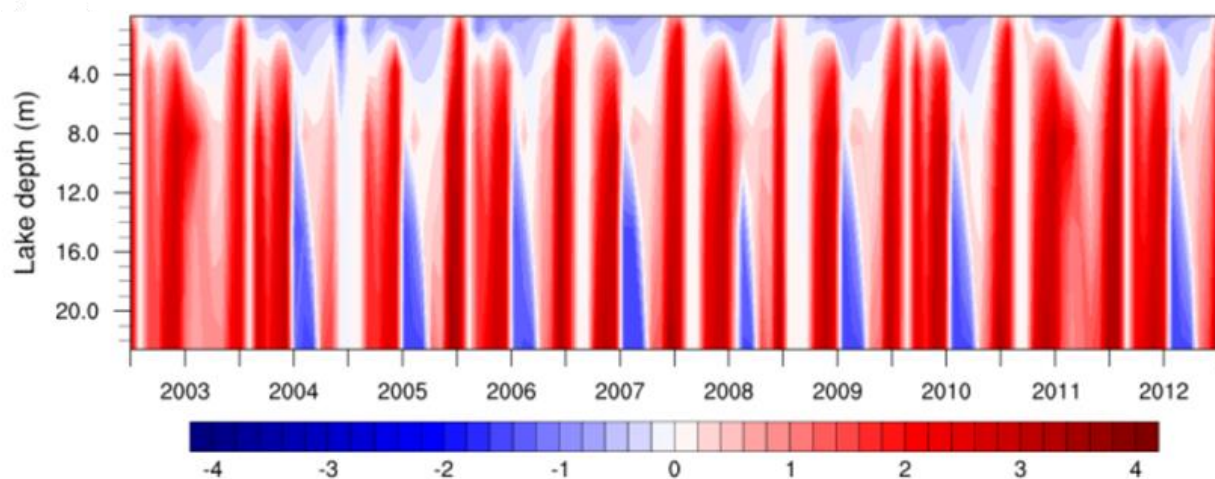


645 **Fig. 1: Comparisons of the WEB-GM and Fujita model in simulating glacier melt (a), surface temperature (b), sensible (c) and latent heat fluxes (d) at the Parlung No. 4 Glacier. The figure is reproduced from Ding et al. (2017).**

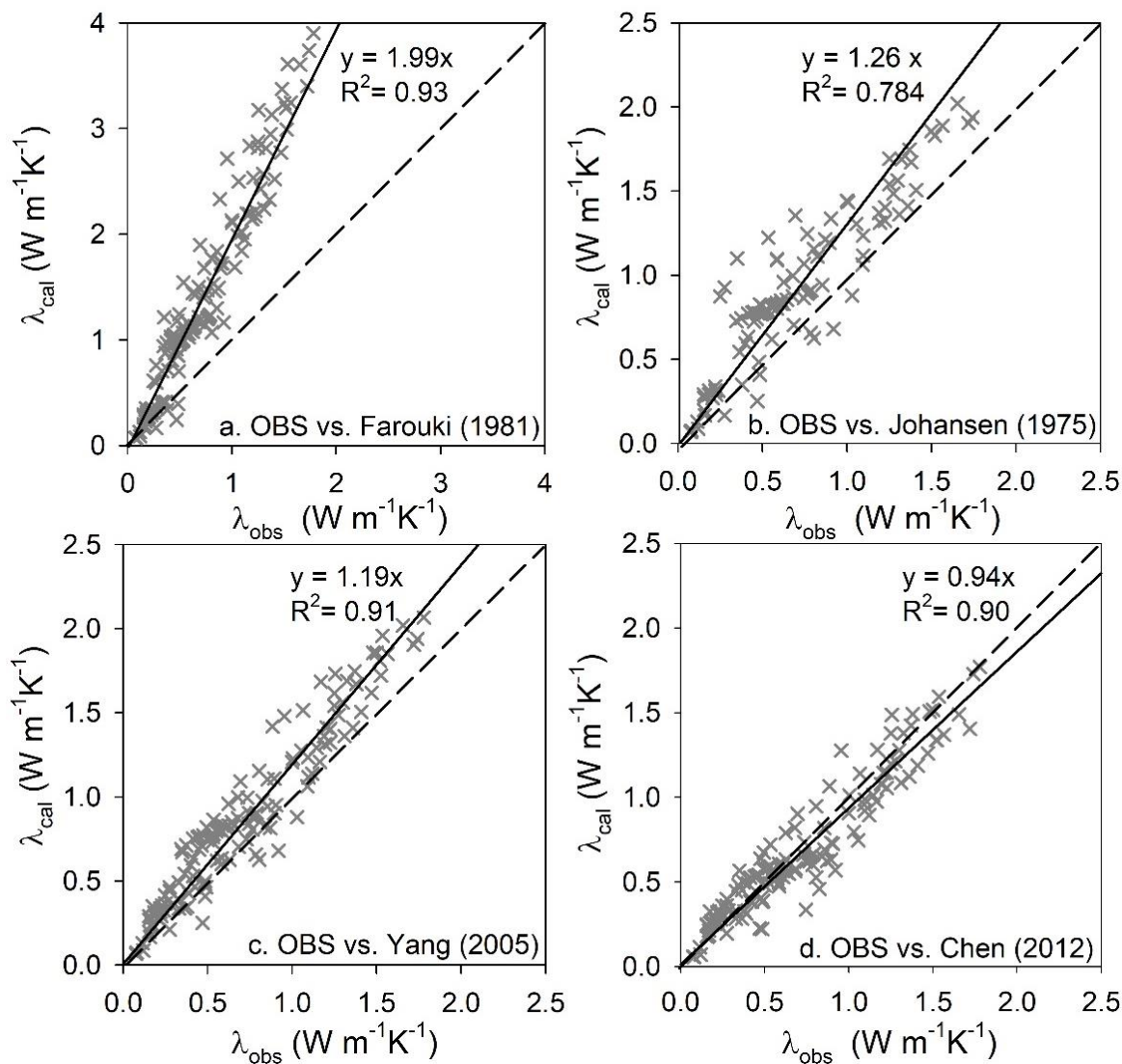
(a) Water surface temperature



(b) Difference between simulated water diffusivity



650 Fig. 2: Comparisons of the original (CLM-ORG) and revised (CLM-KPP) CLM lake models in simulating water surface temperature (WST) (a), and their differences in simulating water diffusivity ($\log_{10}K_w$) (b) in Nam Co lake. The figure is reproduced from Zhang et al. (2019).



655 **Fig. 3: Scatterplots of laboratory-measured (OBS, shown in x-axis) and estimated thermal conductivity produced by the schemes of Farouki (1981) (a), Johansen (1975) (b), Yang et al. (2005) (c), and Chen et al. (2012) (d) for 4 alpine grassland stations. The figure is reproduced from Chen et al. (2012).**

660

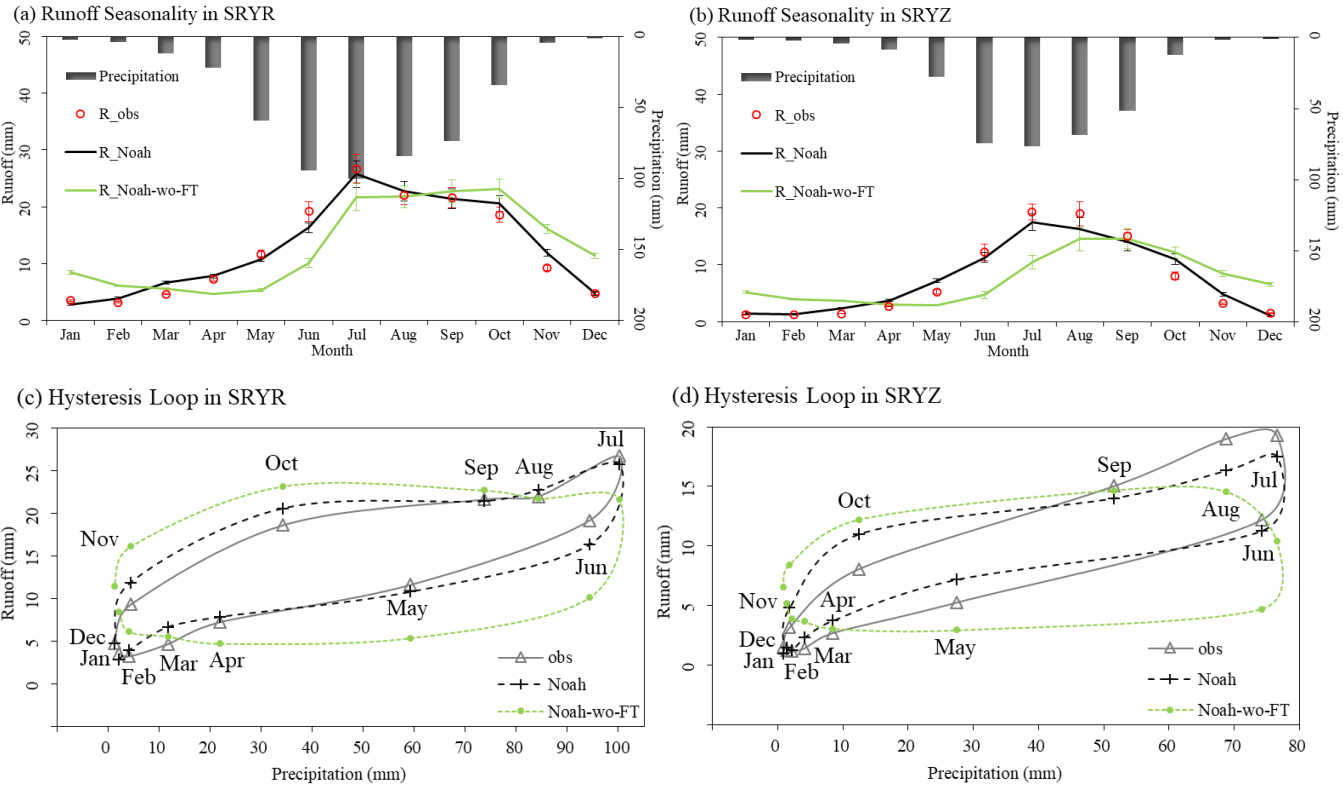


Fig. 4: Monthly mean measured (R_{obs}) and simulated runoff (a, b), and annual precipitation-runoff hysteresis loops (c, d) plotted from measured and simulated runoff produced by the improved Noah LSM with (Noah) and without (Noah-wo-FT) the soil freeze-thaw mechanism for the source regions of Yellow (SRYR, 1984-2009) (a, c) and Yangtze rivers (SRYZ, 1984-2005) (b, d).

665

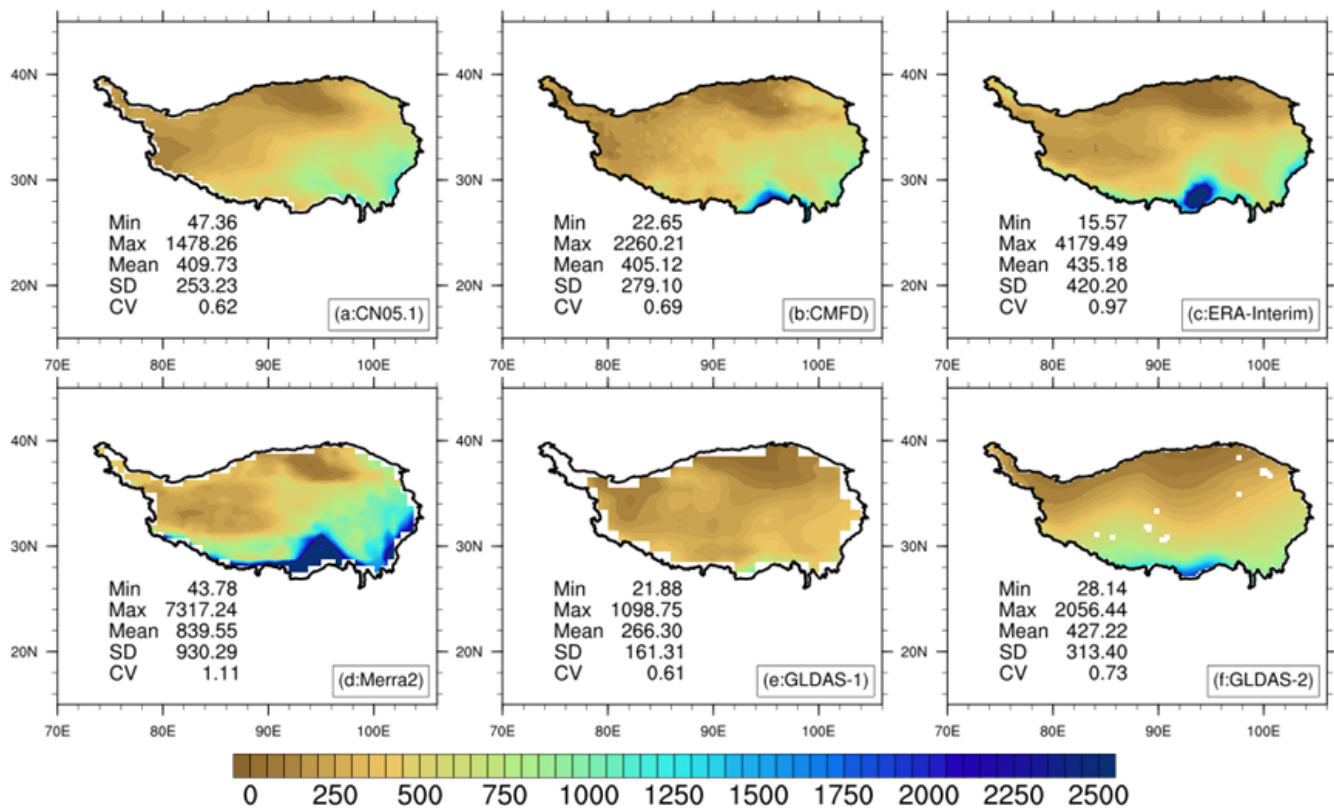


Fig. 5: Spatial distribution of mean annual precipitation derived from six forcing datasets for the Tibetan Plateau (1985-2014): (a) CN05.1, (b) CMFD, (c) ERA-Interim, (d) MERRA2, (e) GLDAS version1, and (f) GLDAS version 2. Statistic values, such as minimum (Min), maximum (Max), mean (Mean), standard deviation (SD), and Coefficient of Variation (CV) are also shown in each plot.

670

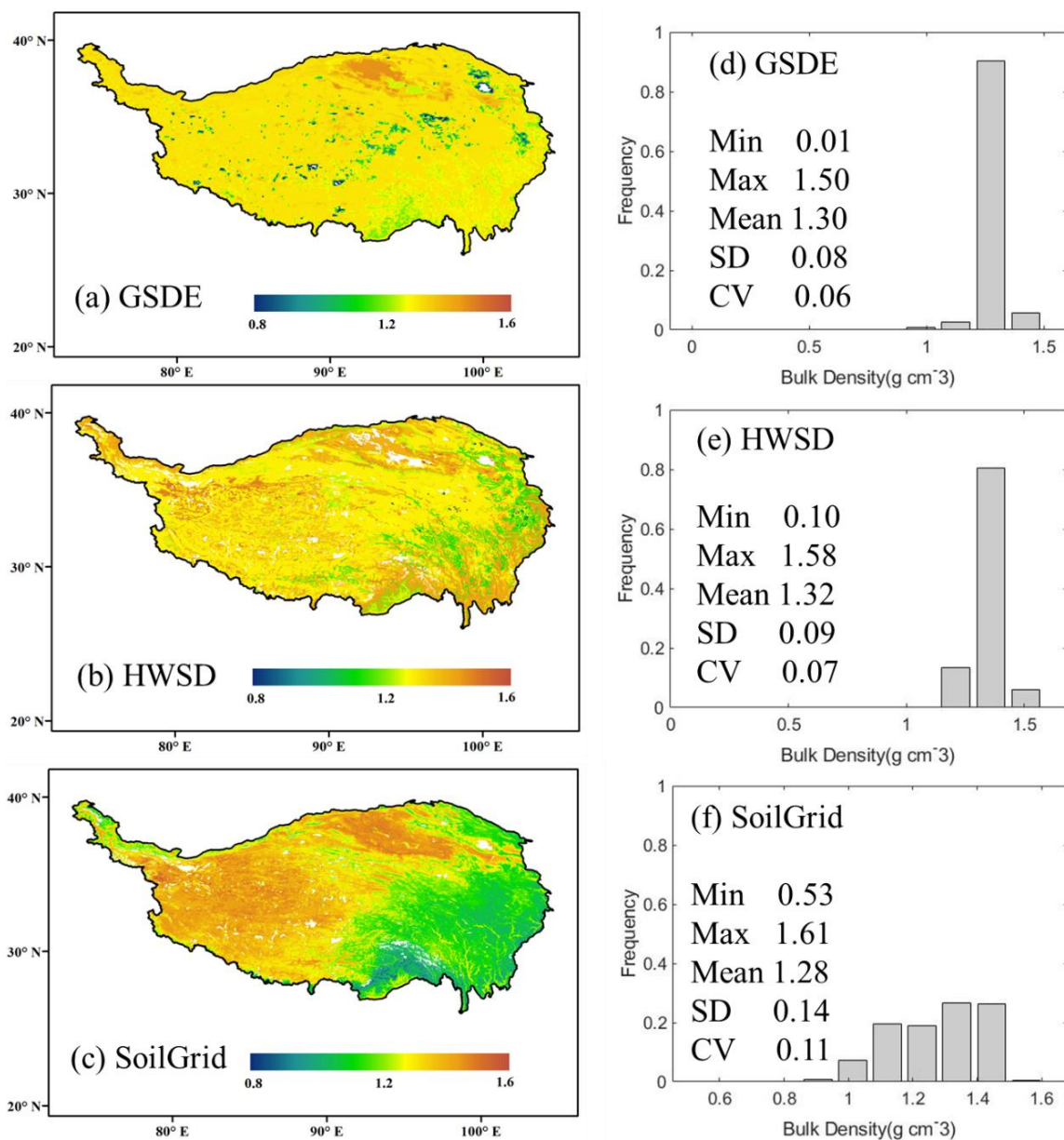


Fig. 6: Spatial distribution of soil bulk density on the TP derived from (a) GSDE, (b) HWSD, and (c) SoilGrid, corresponding histogram are also shown in (e)-(f).

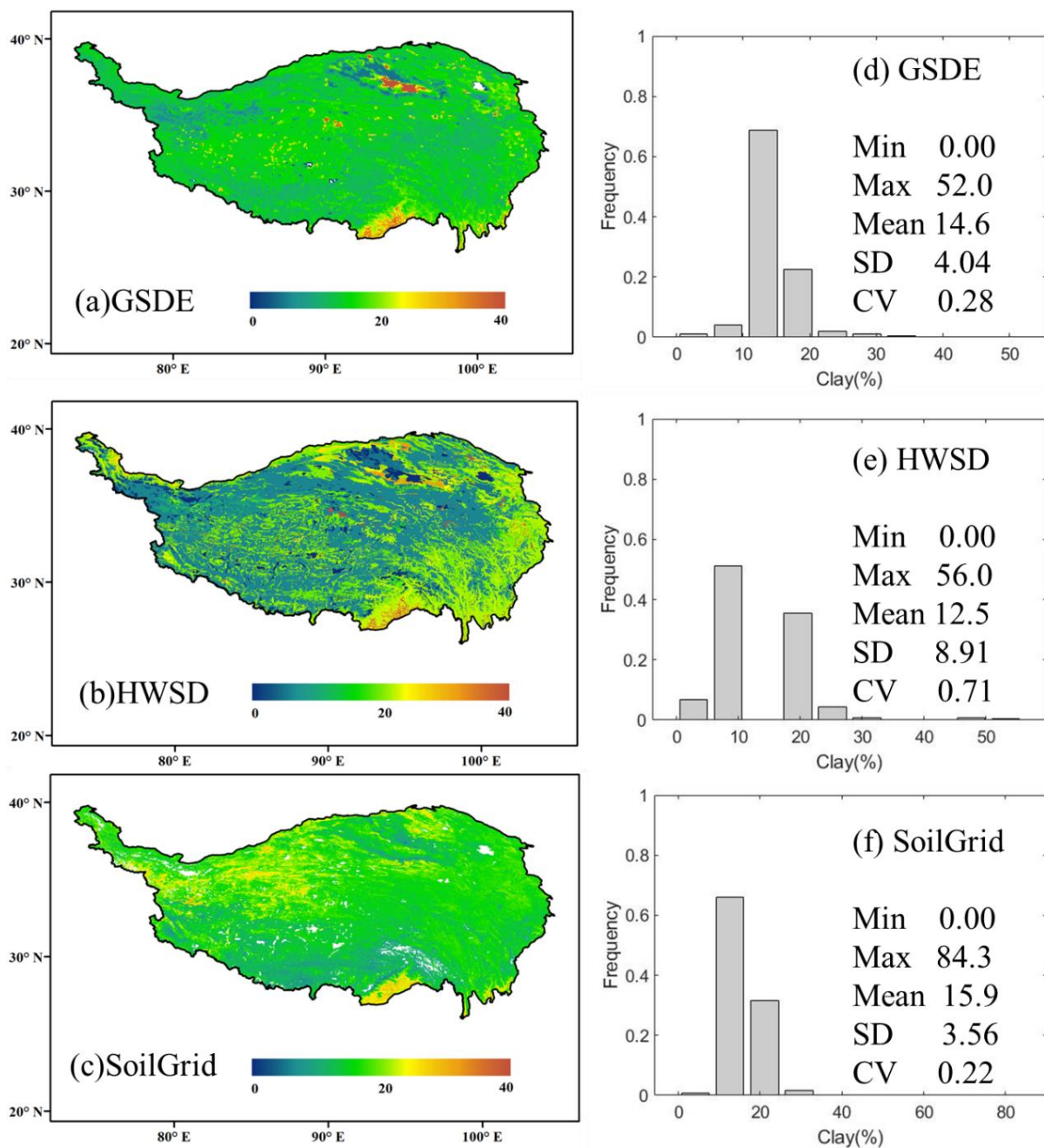


Fig. 7: Same as Fig. 6, but for soil clay content (%).