

Reply to technical corrections requested by
Referee 2 on “Multivariate autoregressive
modelling and conditional simulation for
temporal uncertainty analysis of an urban water
system in Luxembourg” by Jairo Arturo
Torres-Matallana et al.

Jairo Arturo Torres-Matallana, Ulrich Leopold,
Gerard B.M. Heuvelink

Received and published: 10 November 2020

Dear Dr. Nadav Peleg,

We are very pleased with the conditional acceptance of our manuscript. We moved Tables 1 and 2 to the Supplementary Information as suggested. We also addressed the two remaining small technical comments raised by Referee 2. Please see our replies (in blue) after each original comment.

For clarification we also added Appendix A at the end of the paper, which lists all EmiStatR inputs and outputs. We thought it useful to include this list because it provides the reader with a clear overview and reference of most variables used, which became less accessible after moving Tables 1 and 2 to the Supplementary Information. We noticed it is not uncommon to include such appendix in HESS publications and hope that you agree that it has added value.

Referee 2: Thanks for the revisions. Most unclear points are now clarified. The only points I’m still unsure are (line numbers refer to the one used in the authors reply):

L115: The new equation (1) means that the runoff from EmiStatR has the same shape as the precipitation (with an offset). Is there no ”smoothing” or convolution involved at all? Even the simplest bucket model has this feature.

Reply: the Referee is right that we do not include a convolution when transforming rainfall to runoff, but only a delay. In a new release of EmistatR we will incorporate convolution. We have now stated this in the revised manuscript in page 28, lines 649-651.

L211: If I understand your reply you only model wet periods. If this is correct, it would be helpful to state it explicitly.

Reply: Perhaps this point is not totally clear. We simulate the entire time period in EmiStatR and hence model both dry and wet periods. In our reply to your comment L211 we explained that precipitation data were smoothed using a Kernel filter prior to modelling and that for calibration of the AR(1) precipitation model we only used periods with precipitation of 0.01 mm or higher. But we simulated the precipitation time series ensemble for uncertainty propagation for the entire year, which includes wet and dry periods.

Multivariate autoregressive modelling and conditional simulation for temporal uncertainty analysis of an urban water system in Luxembourg

Jairo Arturo Torres-Matallana^{1,2}, Ulrich Leopold², and Gerard B.M. Heuvelink¹

¹Soil Geography and Landscape Group, Wageningen University

²Research Group for Sustainable Urban and Built Environment, Department for Environmental Research and Innovation, Luxembourg Institute of Science and Technology

Correspondence: Jairo Arturo Torres-Matallana (arturo.torres@list.lu)

Abstract. Uncertainty is often ignored in urban water systems modelling. Commercial software used in engineering practice often ignores uncertainties of input variables and their propagation because of a lack of user-friendly implementations. This can have serious consequences, such as the wrong dimensioning of urban drainage systems (UDS) and the inaccurate estimation of pollution released to the environment. This paper introduces an uncertainty analysis in urban drainage modelling, built on existing methods and applied to a case study in the Haute-Sûre catchment in Luxembourg. The case study makes use of the EmiStatR model which simulates the volume and substance flows in UDS using simplified representations of the drainage system and processes. A Monte Carlo uncertainty propagation analysis showed that uncertainties in chemical oxygen demand (COD) and ammonium (NH₄) loads and concentrations can be large and have a high temporal variability. Further, a stochastic sensitivity analysis that assesses the uncertainty contributions of input variables to the model output response showed that precipitation has the largest contribution to output uncertainty related with water quantity variables, such as volume in the chamber, overflow volume and flow. Regarding the water quality variables, the input variable related to COD in the wastewater has an important contribution to the uncertainty for COD load (66%) and COD concentration (62%). Similarly, the input variable related to NH₄ in the wastewater plays an important role in the contribution of total uncertainty for NH₄ load (34%) and NH₄ concentration (35%). The Monte Carlo simulation procedure used to propagate input uncertainty showed that among the water quantity output variables, the overflow flow is the most uncertain output variable with a coefficient of variation (cv) of 1.59. Among water quality variables, the annual average spill COD concentration and the average spill NH₄ concentration were the most uncertain model outputs (coefficients of variation of 0.99 and 0.82, respectively). Also, low standard errors for the coefficient of variation were obtained for all seven outputs. These were never greater than 0.05, which indicates that the selected MC replication size (1,500 simulations) was sufficient. We also evaluated how uncertainty propagation can explain more comprehensively the impact of water quality indicators for the receiving river. While the mean model water quality outputs for COD and NH₄ concentrations were slightly above the threshold, the 0.95 quantile was 2.7 times above the mean value for COD concentration, and 2.4 times above the mean value for NH₄. This implies that there is a considerable probability that these concentrations in the spilled CSO are substantially larger than the threshold. However, COD and NH₄ concentration levels of the river water will likely stay below the water quality threshold, due to rapid dilution after CSO spill enters the river.

Copyright statement. TEXT

1 Introduction

Combined sewer systems are important components of the urban water infrastructure. These systems are typically found in old and large cities (Baker, 2009; Litrico and Fromion, 2009) and are designed to transport the water generated and accumulated in an urban catchment to the receiving water body. During normal conditions all water is transported to the treatment facility before it is released to the environment. This is the so-called *throttled outflow* or pass-forward flow (Hager, 2010). However, during extreme conditions with heavy precipitation, the *combined sewer overflow* (CSO) discharges excess water directly to nearby streams, rivers, lakes or other water bodies (Baker, 2009). The CSO contains polluted water and solid matter (Hager, 2010), which, when released to the environment, can have a damaging impact on the water quality status of the receiving waters (Bachmann-Machnik et al., 2018; Gasperi et al., 2012). CSO pollutant load emissions are of similar or greater magnitude than the emissions from wastewater treatment plants (Gasperi et al., 2012; Bachmann-Machnik et al., 2018). CSO discharge impacts are mainly high peak flows, high organic loads from single events, which can lead to oxygen depletion, and ecotoxic concentrations of ammonia (NH_3) (Miskewitz and Uchirin, 2013; Bachmann-Machnik et al., 2018). To reduce pollution in receiving waters it is important to minimise CSO load and concentration.

One of the main variables is chemical oxygen demand (COD), which is an indicator of organic compounds in water. It is used to measure the effluent quality (Viana da Silva et al., 2011). High levels of COD are correlated with a decrease of the amount of dissolved oxygen (DO) available for aquatic organisms. A depletion of DO concentration in the water column from near 9 mg/l (the maximum solubility of oxygen in estuarine water on an average summer day), to below 2 mg/l, is referred to as hypoxia. If hypoxic conditions are reached, the health of the ecosystem is affected, and cause physiological stress, and even death, to aquatic organisms (on Environmental and atural Resources - CENR, 2003). Ammonium (NH_4) is another important variable and is an indicator of nitrogen compounds in water. Concentrations of NH_4 in water and wastewater are relevant because high levels of nitrogen in receiving waters can cause eutrophication and, therefore, excessive growth of algae and other micro-organisms, resulting in oxygen dissolved depletion and fish toxicity (Huang et al., 2010).

To better assess environmental impacts, numerical models are applied in urban hydrology to simulate CSO emissions into the environment. It is recommended, however, that such modelling approaches consider the inherent uncertainty associated with the system representation and the approximation of the model to the reality (Hutton et al., 2011). Moreover, the model inputs are also not free of errors and associated uncertainties will also propagate to the model output (Heuvelink, 1998).

Five approaches to represent the presence or absence of uncertainty and how it is represented in the context of urban water systems are often distinguished (Walker et al., 2003; Refsgaard et al., 2007; van der Keur et al., 2008; Bach et al., 2014): 1) determinism; 2) statistical uncertainty; 3) scenario uncertainty; 4) recognised ignorance; and 5) total (unrecognised) ignorance.

Following van der Keur et al. (2008), *determinism* applies when we have knowledge with absolute certainty about the system under analysis. This is the “ideal world” case which is not realistic for urban hydrology systems. The *statistical* approach is useful when it is possible to describe uncertainty in statistical terms, i.e. when uncertainty can be characterised by probability distribution functions (pdfs). The *scenario* approach, in contrast, applies when quantitative probabilities cannot be determined, and instead qualitative measures of uncertainty are used. It is used when possible outcomes of uncertain inputs are known but not the probabilities of these outcomes (Brown, 2004). There is also no claim that the list of possible outcomes (scenarios) is exhaustive. *Recognised ignorance* occurs when there is awareness of lack of knowledge, but without any further possibility to process and address the recognised uncertainty. This is the case of very complex functional or inherently unidentifiable relationships, when e.g. predictions are infeasible due to chaotic behaviour of the system or when our understanding of the system behaviour is too limited (van der Keur et al., 2008). This is common in social systems where behaviour of humans and groups of humans may often be unpredictable. Finally, *total ignorance* is the state of “complete lack of awareness about imperfect knowledge” (van der Keur et al., 2008). It is the opposite of determinism and reflects a state where we do not know that we do not know (Walker et al., 2003). Among the approaches described above, in this paper we will use the statistical approach to characterise and propagate uncertainties.

Three main sources of uncertainty in the context of performance evaluation analysis and design of urban water infrastructure and urban drainage modelling are identified (Walker et al., 2003; Neumann, 2007; Deletic et al., 2012). First, *model input* uncertainty is related to errors in input data, i.e. in driving forces such as precipitation. Second, *parameter uncertainty* is related to the uncertainty regarding the (calibrated) parameters of the model. Third, *model structural uncertainty* relates to uncertainty due to model conceptualisation and simplification. For instance, an urban drainage model might ignore certain sub-processes such as evaporation or chemical transformation or might simplify a non-linear relation between model variables to a linear relation. These types of uncertainties are not captured in model input and model parameter uncertainty and are represented by model structural uncertainty. The focus of this work is on the propagation of model input uncertainty.

Regarding methods for uncertainty propagation analysis, a distinction can be made between analytical methods, such as the Taylor series method (Heuvelink, 1998), and numerical techniques, such as Monte Carlo (MC) simulation. Numerical techniques are more flexible and hence more convenient to analyse uncertainty propagation with complex models (Zoppou, 2001). MC simulations are computationally demanding, especially in the case of complex models, but they can still be used if there are sufficient computational resources (Bastin et al., 2013), among others because it can greatly benefit from parallel computing.

Although uncertainty propagation analysis has been applied extensively in hydrologic modelling (e.g. Beven and Binley (1992); Kuczera and Parent (1998); Hutton et al. (2011); Vrugt et al. (2003b,a); Vrugt and Robinson (2007); Renard et al. (2010); Datta (2011)), the number of applications of long-term simulations in urban drainage modelling is limited and typically does not consider the influence of temporal and spatial correlation in the analysis of propagation of input uncertainty. Temporal correlation occurs in uncertain dynamic variables such as precipitation and COD of household wastewater, because values of these variables over short time lags will be more similar than over large time lags. The same concept applies to variables that are spatially distributed (Webster and Oliver, 2007). It is important to take temporal (and spatial) correlation of uncertain

inputs into account because this may have a major influence on the outcomes of an uncertainty analysis (Heuvelink, 1998). In this paper we perform a temporal uncertainty propagation analysis in urban water modelling, using MC simulation. As a case study we use the simplified model EmiStatR (Torres-Matallana et al., 2018b) to predict wastewater volume, COD and NH₄ concentrations in CSOs for three urban-rural sub-catchments of the Haute-Sûre catchment in the North-West of the Grand Duchy of Luxembourg.

The objectives of this study are to: 1) select and characterise the main sources of input uncertainty accounting for temporal auto- and cross-correlation within EmiStatR; 2) propagate input uncertainty through EmiStatR, taking into account temporal auto- and cross-correlation of uncertain dynamic inputs; 3) quantify and assess the contributions of each uncertainty source to model output uncertainty dynamically (over time) for the Luxembourg case study.

100 2 Materials and methods

2.1 The EmiStatR model

EmiStatR is used to simulate CSO flows and water quality concentrations. Details regarding the conceptual and mathematical model are provided in Torres-Matallana et al. (2018b). [A list of the EmiStatR inputs and outputs is provided in Appendix A.](#) The main components of the EmiStatR model are: 1) Dry Weather Flow (DWF) including Infiltration Flow (IF); 2) Pollution of DWF; 3) Rain Weather Flow (RWF); 4) Pollution of RWF; 5) Combined Sewer Flow (CSF) and pollution; and 6) Combined Sewer Overflow (CSO) and pollution. Figure 1 illustrates the scheme of the sewer system analysed.

Basically, the total dry weather flow, Q_{DWF} [$\text{l} \cdot \text{s}^{-1}$] is calculated as:

$$Q_{DWF_t} = Q_{s_t} + Q_{f_t} \quad (1)$$

where Q_{DWF_t} [$\text{l} \cdot \text{s}^{-1}$] is the dry weather flow at time t and Q_{s_t} [$\text{l} \cdot \text{s}^{-1}$] is the dry weather flow of the residential sewage in the catchment at time t , calculated as $86,400^{-1} \cdot pe_t \cdot qs_t$ (where $86,400 = 24 \times 60 \times 60$ is a measurement unit conversion factor), with pe_t [PE] the population equivalents of the connected CSO structure at time t , and qs_t [$\text{l} \cdot \text{PE}^{-1} \cdot \text{d}^{-1}$] the individual water consumption of households at time t . Q_{f_t} [$\text{l} \cdot \text{s}^{-1}$] is the infiltration flow at time t that enters the pipes from groundwater flow through cracks and joints, calculated as $A_{imp} \cdot q_{f_t}$, where A_{imp} [ha] is the impervious area of the catchment, and q_{f_t} [$\text{l} \cdot \text{s}^{-1} \cdot \text{ha}^{-1}$] is the infiltration water inflow flux (specific infiltration discharge from groundwater flow) at time t . Variables qs_t and pe_t are dynamic and can be defined as time series with daily, weekly and seasonal patterns.

The contribution of rainwater to the combined sewage flow, Q_r [$\text{m}^3 \cdot \text{s}^{-1}$], is derived from precipitation as follows:

$$Q_{r_t} = \frac{1}{6} \cdot P_{t-t_{fs}} \cdot [C_{imp} \cdot A_{imp} + C_{per} \cdot (A_{total} - A_{imp})], \quad (2)$$

where $\frac{1}{6}$ is a factor for units conversion, $P_{t-t_{fs}}$ precipitation at time $t - t_{fs}$ [$\text{mm} \cdot \text{min}^{-1}$]; t_{fs} is a delay in time response related to flow time in the sewer system; A_{imp} is the impervious area of the catchment [ha]; A_{total} is the total area of the catchment [ha]; C_{imp} is the run-off coefficient for impervious areas [-]; and C_{per} is the run-off coefficient for pervious areas [-]. From

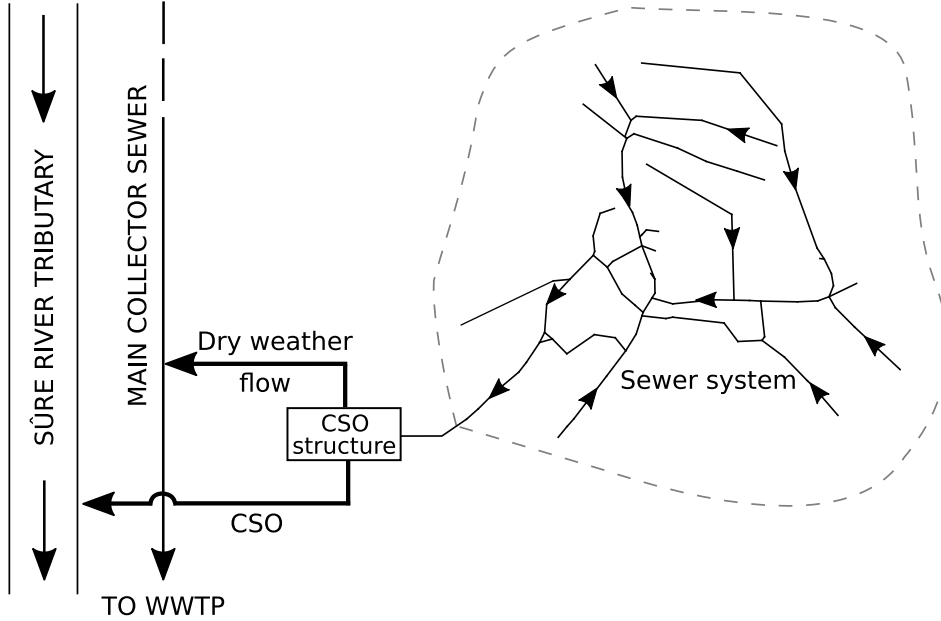


Figure 1. Scheme of the sewer system analysed. Adapted from: Andrés-Doménech et al. (2010)

Q_{r_t} , the CSO volume calculation is based on the exceeding volume stored in the Combined Sewer Overflow Chamber (CSOC). The CSO volume depends on four CSOC stages: (1) filling up; (2) CSO spill volume; (3) stagnation; and (4) emptying. The sum of the total dry weather flow, Q_{DWF_t} , and the rain water flow, Q_{r_t} , is called combined sewer flow at time t , Q_{CSF_t} .

The COD load, $B_{COD,Sv}$ [g], in the spill overflow volume is calculated as a function of the spill overflow volume at time t , V_{Sv_t} [m³], a combined sewer mixing ratio at time t , cs_{mr_t} [-], the mean dry weather pollutant concentration at time t , C_{COD_t} [mg · l⁻¹], and the concentration due to rainwater pollution at time t , COD_{r_t} [mg · l⁻¹]:

$$B_{COD,Sv_t} = (cs_{mr_t} + 1)^{-1} V_{Sv_t} (cs_{mr_t} \cdot C_{COD_t} + COD_{r_t}) \quad (3)$$

The variable V_{Sv_t} depends directly on the water volume in the CSO chamber at time t , $V_{Chamber_t}$ [m³]. It is computed as:

$$V_{Sv_t} = \begin{cases} V_{r_t} + V_{dw_t} - V_{d_t}, & \text{if } V_{Chamber_t} = V, \\ V_{Chamber_t} - V & \text{if } V_{Chamber_t} > V, \\ \epsilon & \text{if } V_{Chamber_t} < V. \end{cases} \quad (4)$$

130 where V_{r_t} is the rain weather volume at time t accumulated during a time interval Δt [min], V_{dw_t} [m³] is the total dry weather volume (amount of dry weather water in combined sewage flow) at time t , V_{d_t} is the volume of throttled outflow to the WWTP at time t [m³], V [m³] is the CSOC volume, and ϵ is a numerical precision term set equal to 10^{-5} [m³]. While V_{Sv} , cs_{mr} and

C_{COD} are dynamic, COD_{t_t} can either be dynamic or assumed constant if the pollution concentration is assumed constant in time. C_{COD_t} [$\text{mg} \cdot \text{l}^{-1}$] is calculated as (Torres-Matallana et al., 2018b):

$$135 \quad C_{COD_t} = \frac{10^3 \cdot p_{e_t} \cdot C_{COD,S}}{q_{s_t} \cdot p_{e_t} + 86,400 \cdot A_{imp} \cdot q_{f_t}} \quad (5)$$

where $C_{COD,S}$ is the COD sewage pollution per capita [PE] load per day [$\text{g} \cdot \text{PE}^{-1} \cdot \text{d}^{-1}$]. Similar equations as above apply to the second water pollution indicator NH_4 .

2.2 Sewer system in the Haute-Sûre catchment

The study area is composed of three sub-catchments of the Haute-Sûre catchment in the north-west of the Grand-Duchy of Luxembourg. The combined sewer system drains three villages: Goesdorf (GOE), Kaundorf (KAU), and Nocher-Route (NOR). The local sewer system downstream each village has a CSO [tank-structure](#) to store pollutant peaks in the first flush of combined sewage flows. ~~Table ?? shows the general characteristics of each CSO tank for each village.~~ Figure 2 depicts the location of the CSO [tanks-structures](#) and the delineation of the sub-catchments. The main land use types in the villages are residential, smaller industries and farms. Outside of the villages forest as well as agricultural arable and grassland are the dominating land uses. The receiving water bodies of the CSO structures are tributaries of the river Sûre (Sauer, in German).

2.3 Input data

The input variables of the EmiStatR model are shown in Table [??S1 \(Supplementary Material\)](#). Following Torres-Matallana et al. (2018b), seven input variables were calibrated: water consumption (q_{s_t}), infiltration flow (q_{f_t}), flow time structure equivalent to the time of concentration to the combined sewer overflow ~~tank (CSOT)~~ structure (t_{f_s}), run-off coefficient for impervious area (C_{imp}), run-off coefficient for pervious area (C_{per}), orifice coefficient of discharge (C_d), and the initial water level (Lev_{ini}). The main objective of the calibration process is to represent appropriately the water volume in the ~~CSOT~~[CSOC](#).

The observed precipitation (P_t) is a one year time series for 2010 at 10 minute time interval, measured at stations Esch-sur-Sûre and Dahl (Fig. 2). The variable water consumption (q_{s_t}) is also dynamic and represented as a time series with a daily pattern according to factors proposed in the design German guideline ATV-A 134 (Evers et al., 2000).

The hydraulic variable measured is water level in the ~~CSOT~~[CSOC](#), Lev [[emm](#)]. The temporal resolution of measurements of Lev is 30 seconds. Regarding wastewater quality (WWQ) characterisation, values of C_{COD_s} and $C_{NH_4_s}$ in the wastewater were derived from DWF measurements at Goesdorf, Kaundorf and Nocher-Route. A total of 91 two-hour composite samples were taken and measured in the laboratory for determination of concentrations of COD [$\text{mg} \cdot \text{l}^{-1}$] and NH_4 [$\text{mg} \cdot \text{l}^{-1}$]: 7 at Goesdorf on 4 May 2011, 48 between 19 June and 21 July 2010 at Kaundorf, and 36 between 9 March and 2 August 2011 at Nocher-Route. The variables COD_f and NH_4_f were set to zero because the pollution contribution of the infiltration water is negligible in the study area. The contribution of ammonium from rainwater NH_4_r was assumed constant and set to 2.00 [$\text{mg} \cdot \text{l}^{-1}$], while COD_r was equal to zero. Table [??S1](#) summarises the base values of the general input variables and Table [?? presents the S2 \(Supplementary Material\) presents the general characteristics of each CSO structure for each village and the](#) base values of input variables ~~for each individual CSO~~. These base values were used when running EmiStatR in deterministic

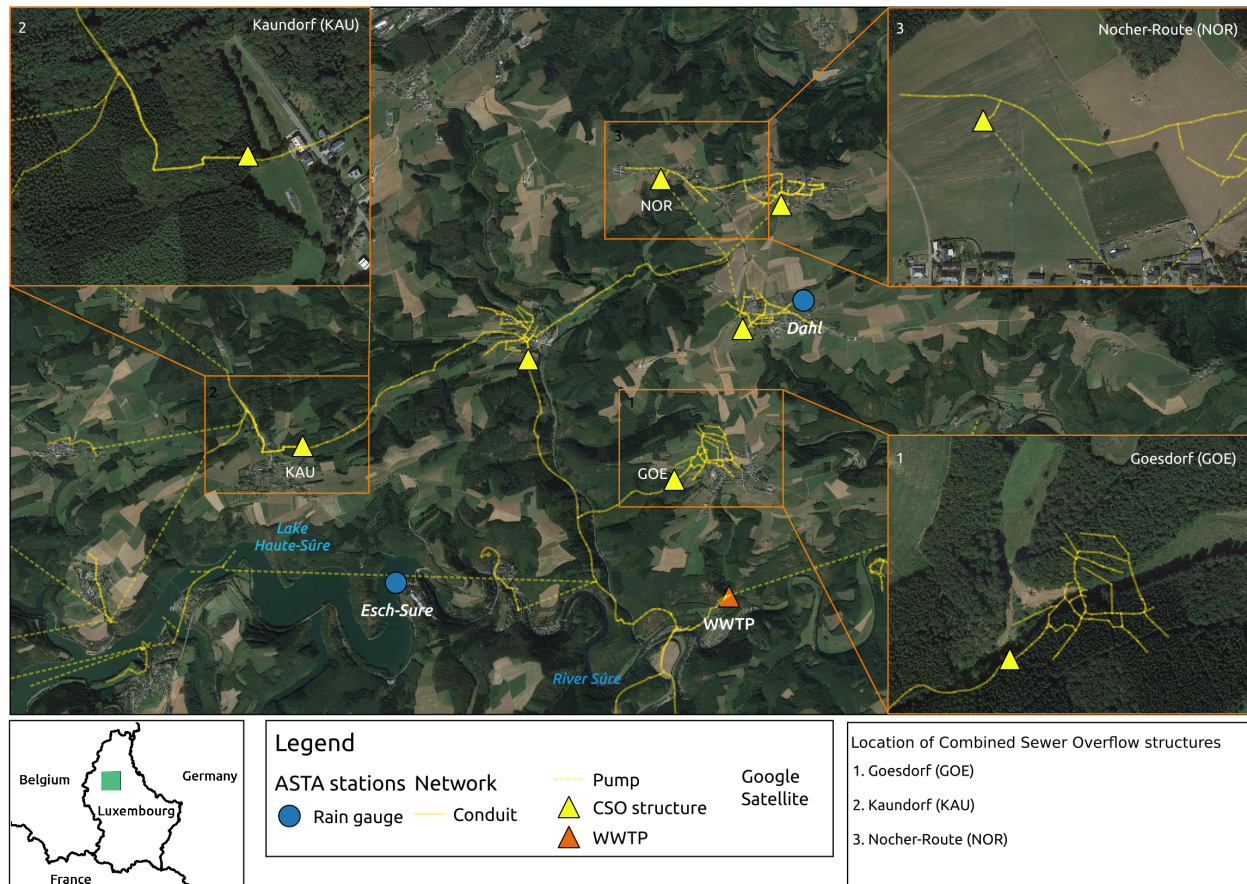


Figure 2. The three Haute-Sûre sub-catchments and locations of **CSO** structures considered in this study. The background map is provided by © Google Maps.

mode (see Section 3.1). Some of the variables were calibrated based on observations in the **CSO** to simulate water level and concentrations and loads of pollutants spilled in the CSO to the stream, river or lake. These variables are water consumption (q_s), infiltration flow (q_f), time flow (t_{fS}), run-off coefficient for impervious area (C_{imp}), run-off coefficient for pervious area (C_{per}), orifice coefficient of discharge (C_d) and initial water level (lev_{ini}).

Most important general, CSO input and output variables of EmiStatR, with base values for the general input variables.

General input Units Base value CSO input Units

1. Wastewater

1. Catchment data

Water consumption, q_s [$(PE^3 \cdot d)^{-1}$] 152

Total area, A_{total} ha

Pollution COD^b, $C_{COD,S}$ [$g(PE \cdot d)^{-1}$] 104.2

Impervious area, A_{imp} ha

Pollution NH₄^c, $C_{NH_4,S}$ [$g(PE \cdot d)^{-1}$] 4.7

Run-off coeff.^d for impervious area, C_{imp} -2.

Infiltration water

Run-off coeff. for pervious area, C_{per} -

Inflow, q_f $l(s \cdot ha)^{-1}$ 0.116

Flow time structure, t_{fS} time-step

Pollution COD, COD_f [$g(PE \cdot d)^{-1}$] 0

Population equivalents, pe PEPollution NH₄, NH_{4f} [$g(PE \cdot d)^{-1}$] 0

2. CSO structure data

3. Rainwater

Volume, V m³

Rain time series, P mm

Initial water level, lev_{ini} m

Pollution COD, COD_r [$mg \cdot l^{-1}$] 71.0

Maximum throttled outflow, $Q_{d,max}$ $l \cdot s^{-1}$

Pollution NH₄, NH_{4r} [$mg \cdot l^{-1}$]

2.0 Orifice diameter, D_d m Orifice coefficient of discharge, C_d Output variables 1. Quantity Volume in the CSO chamber, $V_{Chamber}$ m³ Overflow spill volume, V_{Sv} m³ Overflow spill flow, Q_{Sv} [l·s⁻¹] 2. Quality Spill COD load, $B_{COD,Sv}$ g Average spill COD conc., $C_{COD,Sv,av}$ [mg·l⁻¹] 99.9th perc. spill COD conc., $C_{COD,Sv,99.9}$ [mg·l⁻¹] Maximum overflow COD conc., $C_{COD,Sv,max}$ [mg·l⁻¹] Spill NH₄ load, $B_{NH_4,Sv}$ g Average spill NH₄ conc., $C_{NH_4,Sv,av}$ [mg·l⁻¹] 99.9th perc. spill NH₄ conc., $C_{NH_4,Sv,99.9}$ [mg·l⁻¹] Maximum spill NH₄ conc., $C_{NH_4,Sv,max}$ [mg·l⁻¹]

The CSO structure input data for the EmiStatR model, after calibration. Structures 2 and 3, only C_d was calibrated. CSO input 1. Identification ID of the structure 1 2 3 Name of the structure FBH Goesdorf FBN Kaundorf FBH Nocher Route 2. Catchment data Name of the municipality Goesdorf Kaundorf Nocher Route Name of the catchment Haute-Sûre Haute-Sûre Haute-Sûre Number of the catchment 1 1 1 Land Use^a R/I R/I R/I Total area, A_{total} ha 30.0 22 18.6 Impervious area, A_{imp} ha 5.0 11.0 4.3 Run-off coefficient for impervious area, C_{imp} 0.28 0.3 0.3 Run-off coefficient for pervious area, C_{per} 0.07 0.10 0.10 Flow time structure, t_{FS} time step 1 2 2 Population equivalents, pe PE 611 358 326 3. CSO structure data Volume, V m³ 190 180 157 Initial water level, Lev_{ini} m 0.57 1.8 1.8 Maximum throttled outflow, $Q_{d,max}$ l·s⁻¹ 5.0 9 4 Orifice diameter, D_d , m 0.15 0.20 Orifice coefficient of discharge, C_d 0.67 0.67 0.67

2.4 Selection of model input for uncertainty quantification

Following recommendations from Nol et al. (2010), not all model inputs were taken into account in the uncertainty propagation analysis. Only inputs that are very uncertain and to which the model output is very sensitive were included because these are the ones that have the largest contribution to output uncertainty (Heuvelink (1998), Section 4.4). The level of uncertainty of the inputs was defined by expert judgement and similar case studies in the literature. A quick-scan was used to determine the model sensitivity to each of the model inputs, by running EmiStatR in deterministic mode with input base values given in Table 2.1. The level of model sensitivity was defined by analysing the mathematical model structure and components of the model, expert judgement and simulations with EmiStatR. Inputs that rank high on both the level of uncertainty and on model sensitivity were selected and included in the uncertainty propagation analysis.

2.5 Uncertainty quantification of selected model input

Because we used a statistical approach, probability distribution functions (pdfs) are the basis to represent uncertainties of the selected model inputs. This constitutes the most difficult step of an uncertainty propagation analysis and is done in different ways for constants and dynamic variables, as explained in the following sub-sections.

2.5.1 Uncertain constants

Following Heuvelink et al. (2007), an uncertain continuous numerical constant C can be characterised by its marginal (cumulative) pdf (mpdf):

$$F_C(c) = P(C \leq c) \tag{6}$$

Usually a parametric approach can be taken, meaning that a common shape for F_C is chosen (e.g., normal, lognormal, exponential, uniform) so that the mpdf is reduced to a number of parameters. In this study, the input variables that are in this category are: water consumption (q_s), infiltration inflow (q_f), total area (A_{total}), impervious area (A_{imp}), the run-off coefficients for impervious area (C_{imp}) and pervious area (C_{per}), population equivalents (pe), flow time structure (t_{fS}), and initial water level
 210 (Lev_{ini}).

2.5.2 Univariate autoregressive modelling

Dynamic uncertain inputs may be temporally autocorrelated. This may dramatically influence the outcome of an uncertainty propagation analysis and must therefore be accounted for. One way of doing this is by assuming an autoregressive order one (AR(1)) model:

$$215 \quad y_t = \mu + \phi(y_{t-1} - \mu) + w_t, \quad t = 1, 2, \dots, T, \quad y_0 \sim \mathcal{N}(\mu, \sigma^2) \quad (7)$$

where y_t is the uncertain input at time t , μ is its mean, ϕ is the autoregressive parameter ($0 \leq \phi < 1$), and w_t is a Gaussian white noise time series with mean zero and variance σ_w^2 . The initial value y_0 is taken from a normal distribution with mean μ and variance σ^2 . The parameters of the model can be estimated based on observations, or in absence of observations, suitable values are taken based on expert judgment or literature reference values. Note that the effect of the initial condition usually
 220 fades out quickly and hence is not of important concern.

The implementation of the AR(1) model in R was done via the R function `arma.sim` of the R base package `stats` (R-Core-Team and contributors worldwide, 2017), both for model calibration and simulation.

2.5.3 Multivariate autoregressive modelling

In case of multiple uncertain dynamic inputs, cross-correlation between these inputs may also need to be included. For ex-
 225 ample, $C_{COD,S}$ and $C_{NH_4,S}$ and their uncertainties are likely correlated. This can be done using a multivariate AR(1) model (Luetkepohl, 2005), which is a natural extension of the univariate AR(1) model:

$$Y(t+1) = \boldsymbol{\mu} + \mathbf{A} \cdot [Y(t) - \boldsymbol{\mu}] + \boldsymbol{\varepsilon}(t), \quad t = 1, 2, \dots, T, \quad Y_0 \sim \mathcal{N}(\boldsymbol{\mu}, \boldsymbol{\Lambda}) \quad (8)$$

where $Y(t)$ is a vector of inputs at time t , \mathbf{A} is a square matrix with parameters that define how the variables at time $t+1$ depend on those at time t , $\boldsymbol{\mu}$ is now a vector of means and $\boldsymbol{\varepsilon}(t)$ a vector of zero-mean, normally distributed white noise
 230 processes. We further assume that the variance-covariance matrix \mathbf{C} of $\boldsymbol{\varepsilon}(t)$ is time-invariant. The initial value Y_0 is assumed normally distributed and uncorrelated ($\boldsymbol{\Lambda}$ is a diagonal matrix). In order to estimate the vector $\boldsymbol{\mu}$ and matrices \mathbf{A} and \mathbf{C} , a sample of the variables of interest is needed. Parameter estimation is done by means of the R-package `mAr` (Barbosa, 2015).

2.5.4 Input precipitation model

In case precipitation is selected as an uncertain input to be included in the uncertainty analysis, then it too must be characterised
 235 by a pdf. Since precipitation, however, is not normally distributed and has many zeros, we cannot make the Gaussian assumption

and hence we cannot use the approach described in Section 2.5.2 to model its dynamic behaviour and uncertainty. In addition, we usually have precipitation measurements nearby so we need to condition the simulations to these measurements. Recall from Section 2.3 that in the case study precipitation data are recorded at stations Esch-sur-Sûre and Dahl.

Torres-Matallana et al. (2017) present a model to simulate precipitation inside a target catchment given a known precipitation time series in a nearby location outside the catchment, while accounting for the uncertainty that is introduced due to spatial variation in precipitation. The method used for input precipitation uncertainty characterisation is essentially the same as the application of a Kalman filter/smoother (Kalman, 1960; Webster and Heuvelink, 2006). Calibration of the model requires precipitation time series at two locations near the catchment of interest. Once the model is calibrated, it is used to simulate precipitation inside the target catchment from a single precipitation time series nearby the catchment. Details of the calibration and conditional simulation are presented in section [S3-S4](#) of the Supplementary Material.

2.6 Uncertainty analysis

We used MC simulation (Hammersley and Handscomb, 1964; Kalos and Whitlock, 2008) to analyse how input uncertainty propagates through the EmiStatR model, because it is flexible and straightforward to implement. It is also feasible in our case study because EmiStatR is a relatively simple model that does not involve a long computation time.

250 2.6.1 Monte Carlo simulation

The MC method runs the EmiStatR model repeatedly, each time using different model input values, sampled from their pdf. The method thus consists of the following steps:

1. Repeat n times:

(a) Generate a set of realisations of the uncertain model inputs at 10 min resolution

255 (b) For this set of realisations, run the model at 10 min resolution and store output. Later, in order to compute the summary statistics, a temporal aggregation of the model output to one hour intervals is done.

2. Compute and store sample statistics from the n model outputs.

Here, n is the number of MC runs, i.e. the MC sample size. Common sample statistics that measure the uncertainty are the standard deviation and quantiles of the distribution of MC outputs, such as the difference between the 0.95 and % 0.05 quantile, which can be easily calculated from the n Monte Carlo outputs.

260 Sampling from the pdf of uncertain inputs was done using simple random sampling.

2.6.2 Monte Carlo output summary

Proper presentation of MC outputs is important to get the most out of the experiment. Therefore, summary statistics are one important way to summarise the MC outputs. Commonly, a MC study yields n model outputs, which are stored in the MC result

265 matrix \mathbf{X} in Boos and Osborne (2015). From this matrix, various statistics can be computed. Basic summary statistics include the mean μ_{MC} , the standard deviation (σ_{MC}) and the variance σ_{MC}^2 . From these we can compute the coefficient of variation CV_{MC} (σ_{MC}/μ_{MC}), which is a dimensionless expression of relative uncertainty. The coefficient of variation is a standardised measure of the spread of a sampling distribution, being useful because it allows to directly compare variation in samples with different units, or with very different means (Marwick and Krishnamoorthy, 2019). We computed estimates and standard errors
 270 for these statistics and also for the interquartile range (IQR_{MC}), 0.005 ($\zeta_{0.005}$) and 0.995 ($\zeta_{0.995}$) quantiles, and the 99% width of the prediction band ($\zeta_{w,0.99}$).

2.6.3 Bootstrap computation for Monte Carlo summary

Following Boos and Osborne (2015) "Good statistical practice dictates that summaries in MC studies should always be accompanied by standard errors", we used the bootstrap method to compute standard errors of all MC statistics. These tools are particularly relevant in a case without analytic solutions (Boos, 2003). According to Boos and Osborne (2015, p. 228) standard
 275 errors for MC output statistics are often not computed, being an additional computational step on top of the overall analysis. Standard errors are straightforward to compute for simple statistics such as the sample mean over the replications of the MC output, but are more difficult to compute for more complex statistics, such as medians, sample variances and the classical Pearson measures of skewness and kurtosis. Therefore, to avoid burdensome computations we opted to compute the standard
 280 errors by the bootstrap method. We briefly explain the bootstrap method below. For a detailed explanation we refer to Efron (1979).

To compute the bootstrap variance of estimators we follow the logic given by Boos and Osborne (2015). From a MC sample Y_1, \dots, Y_n , we draw a random sample of size n with replacement Y_1^*, \dots, Y_n^* , and compute an estimator $\hat{\theta}$ of the MC statistic θ from this resample. We independently repeat this process B times, resulting in a sample of estimators $\hat{\theta}_1, \dots, \hat{\theta}_B$. Then the
 285 bootstrap variance estimate, \hat{V}_B , is the sample variance of this sample of estimators:

$$\hat{V}_B = \frac{1}{B-1} \sum_{i=1}^B (\hat{\theta}_i - \bar{\hat{\theta}})^2 \quad (9)$$

where $\bar{\hat{\theta}}$ is the mean of the sample of estimators. The MC standard error, se , is simply the square root of the bootstrap variance.

We implemented in `stUPscales` (Torres-Matallana et al., 2019) specific routines for computing, by means of the bootstrap method, the MC estimators and their standard error for all MC statistics, where the variance of the model output is the most
 290 important. We compared our results with the results obtained using the `Monte.Carlo.se` R-package (Boos et al., 2019).

2.6.4 Contributions of input variables to total uncertainty

A number of $m + 1$ MC analysis are needed to compute the contributions of input variables to total uncertainty, where m is the number of model input variables selected for uncertainty quantification. The first MC analysis, MC_{tot} , is done to compute the total output uncertainty by varying stochastically all input variables. The uncertainty associated with the first variable x_1 is
 295 quantified by a second MC analysis MC_1 , in which only x_1 is equal to its deterministic value, while the other input variables

vary stochastically. Similarly, the other MC simulations MC_2, MC_3, \dots, MC_m are used to quantify the uncertainty for the variables x_2, x_3, \dots, x_m .

To quantify the contributions of individual input variables to the total uncertainty of the model inputs, the stochastic sensitivity S_i for each uncertain input x_i is computed. The first-order stochastic sensitivity index S_i is defined as (Saltelli et al., 300 2008, p. 160-161):

$$S_i = \frac{\text{Var}(MC_i)}{\text{Var}(MC_{tot})} \quad (10)$$

The first-order stochastic sensitivity index represents the main effect contribution of each input factor to the total variance of the output. The larger the index, the more important the input uncertainty. We computed stochastic sensitivity indices per time step and aggregated contributions for the whole year. For plotting purpose, we aggregated the outputs from 10 minutes time 305 step to hourly time steps. The aggregation was done for each individual MC run before the contributions were computed.

2.7 Water quality impact

The results of the MC uncertainty propagation were also compared with the water quality standards. Standards are introduced to evaluate the impact of emissions of COD and NH_4 in CSOs into the receiving water. However, as Toffol (2006) recognises, although there are European emission standards for wastewater treatment plant effluent, standards for combined sewer over- 310 flow are not so clear. According to Steinel and Margane (2011), the European Water Framework Directive (WFD) is mainly concerned with the natural state of waters. Therefore, emission standards for effluent discharge are not set. The EU Directive 91/271/EEC (1991) sets standards for COD and total Nitrogen, hence similar values have been adopted in many European member states. For more details about guidelines and design procedures in Europe see Blumensaat et al. (2012). We assessed the emissions accordingly to the German guideline ATV-A 128 (1992), which is the standard for dimensioning and design 315 of stormwater structures in combined sewers and commonly used in Luxembourg. The Austrian ÖWAV-RB 19 (2007) is also taken into account because it provides key reference guidelines for design of urban water infrastructure in central Europe. Three main indicators are taken into account: hydraulic impact, COD concentration, and acute ammonium toxicity.

2.7.1 Hydraulic impact

According to the Austrian guidelines and as summarised by Kleidorfer and Rauch (2011), the evaluation of the hydraulic 320 impact is given by:

$$Q_1 \leq f_h \cdot Q_{r1} \quad (11)$$

where $0.1 \leq f_h \leq 0.5$, Q_1 [$l \cdot s^{-1}$] is the maximum sewer overflow discharge with return period one year, and Q_{r1} [$l \cdot s^{-1}$] is the maximum water discharge in the river with return period once per year. The factor f_h is taken as 0.1 in more sensitive streams, whereas it is 0.5 for streams with more stable bed and higher re-colonisation potential Toffol (2006). Time series of 325 daily values recorded in 2006 to 2013 of the river Sûre at Heiderscheidergrund were used to compute the daily flow expected with return period once per year (1.01 years), Q_{r1} .

We used the German guideline ATV-A 128 (1992), which computes the throttle discharge at CSOs, $Q_{t,CSO} [l \cdot s^{-1}]$ as:

$$Q_{t,CSO} = f_t \cdot A_{imp} \quad (12)$$

where $7.5 \leq f_t \leq 15$ and A_{imp} [ha] is the impervious area connected to the combined sewer system. For the overflow flow MC
330 output mean, 0.95 quantile and 0.995 quantile, we computed the exceedance percentage over the thresholds, calculated as the proportion of time steps exceeding the number of total time steps in the year (8,759 time steps at 1-hour).

2.7.2 COD concentration

Steinel and Margane (2011, Table 14) presents the effluent standards for discharging into freshwater adopted in selected Euro-
pean countries. A COD concentration of 125 [$mg \cdot l^{-1}$] is reported for the European Union countries. Austria has stricter rules
335 with a standard of 90 [$mg \cdot l^{-1}$] for populations between 50 and 500 inhabitants, and 75 [$mg \cdot l^{-1}$] for populations greater than 500 inhabitants. The Goesdorf population by 2001 was 1,025 inhabitants and by 2011 was 1,297 inhabitants (Statec, 2020). For NH_4 a similar approach was used.

2.7.3 Acute ammonium toxicity

Following Kleidorfer and Rauch (2011), "*the ammonia (NH_3) concentration depends on the ammonium (NH_4) concentration
340 and on the dissociation equilibrium between NH_3 and NH_4 (which is influenced by temperature and pH-value)*". According to Kleidorfer and Rauch (2011), the Austrian guideline ÖWAV-RB 19 (2007) establishes a maximum value of 2.5 $mg \cdot l^{-1}$ for the ammonium (NH_4) concentration calculated for one hour duration for salmonid streams. For cyprinid streams a maximum value of 5.0 $mg \cdot l^{-1}$ is recommended.

3 Results

345 3.1 Selection of model inputs for uncertainty quantification

In this section we assess the degree of uncertainty and sensitivity for all input variables, following the procedure described in Section 2.4. We summarise the results in Tables 1 and 2. To better support our decisions we also include a graphical assessment of the degree of uncertainty and sensitivity of each input, as in Tscheikner-Gratl et al. (2017). See Figure S1 in the Supplementary Material.

350 3.1.1 Wastewater

Water consumption, qs , is a fairly uncertain input variable and the model output is sensitive to this variable. Volume and flow of CSO are sensitive to changes in qs . Regarding water quality output, total load of NH_4 is very sensitive to changes in qs . Pollution of sewage as COD load per capita per day, $C_{COD,S}$ is the first selected input variable for propagation of uncertainty, due to the fact that it is both a very uncertain input variable and the model output (average and 99.9 percentile overflow COD

355 concentration) is very sensitive to it. Pollution of sewage as NH_4 load per capita per day, $C_{\text{NH}_4,S}$, is also included in the uncertainty propagation analysis. It is a very uncertain input variable and the model output (overflow load and concentrations of NH_4) is very sensitive to it. The variables $C_{\text{COD},S}$ and $C_{\text{NH}_4,S}$ are very uncertain because these are correlated to the temporal and spatial pattern of water consumption, which has a daily, weekly and seasonal temporal variability.

3.1.2 Infiltration water

360 Inflow of infiltration water, q_f is a very uncertain input variable because this inflow depends of the number of anomalies in the pipes (cracks or wrong connections) that allow infiltrations flowing into and out of the system. The distribution of these anomalies has a strong random component and hence q_f is very uncertain, and model output is sensitive to it. Although this is a very uncertain input, the quick-scan analysis showed that model output sensitivity is not very high as is indicated in Table 1. For this reason we did not include this variable in the uncertainty propagation analysis.

365 Pollution of infiltration water as COD load per capita per day, COD_f and pollution of infiltration water as NH_4 load per capita per day, NH_{4f} are not uncertain because in the Haute-Sûre study area the values of these variables are negligibly small.

3.1.3 Rainwater

Precipitation, P is the main driving force of the model and given the spatial variability of the rain fields, this input is considered very uncertain. The model output, additionally, is very sensitive to it. As a consequence, this input variable is treated as the
370 third input variable in the uncertainty propagation analysis. Pollution of runoff as COD concentration, COD_r is the fourth input variable considered in the uncertainty propagation, given that it is a very uncertain and very sensitive input variable, particularly to load and concentration of COD in the overflow.

Pollution in rainwater as NH_4 concentration, NH_{4r} is considered fairly uncertain. The model output (overflow load and concentration of NH_4) is very sensitive to it. Although model output is very sensitive to this model input variable, model input
375 uncertainty is not very high as is indicated in Table 1. For this reason it was not included in the uncertainty propagation analysis.

3.1.4 Sub-catchment

The model is very sensitive to the total area A_{total} and to the run-off coefficient for pervious area (C_{per}) and sensitive to the impervious area A_{imp} and to the run-off coefficient for impervious area (C_{imp}). However, we did not include A_{total} in the uncertainty analysis because it can be fairly accurately derived from spatial databases and hence their uncertainty is not
380 large. Although model output is very sensitive to the input variable C_{per} , the uncertainty about this variable is not very high, as indicated in Table 1. The reason behind this is that C_{per} can be derived fairly accurately from GIS products, such as land use and soil type maps. Therefore, we did not include this variable in the uncertainty propagation analysis. The population equivalents pe is a sensitive variable but not very uncertain. Hence this variable was not included in the uncertainty analysis. The theoretical largest flow time in the catchment t_{fS} is not uncertain and not sensitive.

Table 1. Results of deterministic sensitivity analysis. Average percentage of change of model output caused by $\pm 10\%$ change in model inputs (qs , $C_{COD,S}$, $C_{NH_4,S}$, COD_r , pe , and P as time series, VAR(1) model for $C_{COD,S}$ and $C_{NH_4,S}$, AR(1) model for COD_r and AR(1) conditioned for P . See [Table ??-Appendix A](#) for nomenclature definition). Output change greater than 15% is considered very high. Variable C_d (not shown in the table) leads to a percentage of change less than 0.3%, while variables t_{fS} and Lev_{ini} (not shown in the table) lead to no change in the output. Values greater than 15 are shown in bold font.

Output variable	Input variable														
	qs	$C_{COD,S}$	$C_{NH_4,S}$	q_f	COD_r	NH_4_r	A_{total}	A_{imp}	C_{imp}	C_{per}	pe	$Q_{d,max}$	V	D_d	P
$V_{Chamber}$	4.2	0.0	0.0	3.0	0.0	0.0	8.6	7.1	5.9	7.2	4.2	16.7	7.5	0.8	13.4
V_{Sv}	2.9	0.0	0.0	1.7	0.0	0.0	19.6	11.6	13.5	16.1	2.9	13.1	16.5	0.2	17.8
Q_{Sv}	0.6	0.0	0.0	0.2	0.0	0.0	2.7	1.5	1.1	1.8	0.6	13.1	14.8	0.6	12.4
$BCOD_{Sv}$	2.9	2.4	0.0	1.7	7.7	0.0	20.1	11.8	13.7	16.6	5.3	15.7	14.5	0.2	20.7
$CCOD_{Sv,Av}$	0.7	4.6	0.0	0.5	5.4	0.0	0.5	0.6	0.6	0.7	4.0	3.2	4.0	0.2	1.1
$CCOD_{Sv,99.9}$	1.6	6.7	0.0	0.8	3.4	0.0	2.8	2.3	1.9	2.4	5.1	0.0	0.0	0.0	9.2
$CCOD_{Sv,Max}$	1.6	6.7	0.0	0.8	3.4	0.0	2.8	2.3	1.9	2.4	5.1	0.0	0.0	0.0	9.2
BNH_4_{Sv}	3.1	0.0	3.3	1.8	0.0	6.7	20.4	12.0	13.8	16.8	6.4	17.0	13.4	0.3	22.1
$CNH_4_{Sv,Av}$	0.9	0.0	5.8	0.6	0.0	4.2	0.6	0.8	0.9	0.9	5.3	4.3	5.4	0.2	1.5
$CNH_4_{Sv,99.9}$	1.6	0.0	7.6	0.8	0.0	2.4	3.5	2.6	2.3	2.9	6.1	0.0	0.0	0.0	11.3
$CNH_4_{Sv,Max}$	1.6	0.0	7.6	0.8	0.0	2.4	3.5	2.6	2.3	2.9	6.1	0.0	0.0	0.0	11.3

385 3.1.5 CSO structure

Although model output is very sensitive to maximum throttled outflow $Q_{d,max}$ and volume V , these are not included in the uncertainty analysis because their values are accurately known. The same is true for the variables curve level - volume $lev2vol$, orifice diameter D_d and discharge coefficient C_d . These variables are accurately known and therefore not considered as uncertain variables. The initial water level in the chamber Lev_{ini} is very uncertain but the model output is not sensitive to this variable. Therefore, Lev_{ini} was not included in the uncertainty analysis.

3.2 Uncertainty quantification of selected model input

After ranking all inputs on level of uncertainty and model sensitivity, we selected four input variables to be included in the uncertainty analysis. These are $C_{COD,S}$, $C_{NH_4,S}$, COD_r and P (Table 2).

3.2.1 Sewage per capita COD and Ammonium

395 The fit of pdfs for the two uncertain inputs $C_{COD,S}$ and $C_{NH_4,S}$ was based on measurements under dry weather flow conditions. Measurement campaigns were done in Goesdorf from 28th April to 24th June 2011, in Kaundorf from 22nd June to 18th August in 2010 and from 20th July to 5th August in 2011, and in Nocher-Route from 18th November 2010 to 27th April 2011.

Table 2. Input variables of the EmiStatR model and selection of inputs for uncertainty analysis based on input uncertainty level and model sensitivity level (legend: from ++ very uncertain/sensitive to -- not uncertain/sensitive).

Input variable	Input uncertainty	Model sensitivity	Uncertainty analysis
<i>Wastewater</i>			
1. q_s	+	+	no
2. $C_{COD,S}$	++	++	yes
3. $C_{NH_4,S}$	++	++	yes
<i>Infiltration water</i>			
4. q_f	++	+	no
5. COD_f	--	--	no
6. NH_4_f	--	--	no
<i>Rainwater</i>			
7. P	++	++	yes
8. COD_r	++	++	yes
9. NH_4_r	+	++	no
<i>Sub-catchment</i>			
10. A_{total}	+	++	no
11. A_{imp}	+	+	no
12. C_{imp}	+	+	no
13. C_{per}	+	++	no
14. pe	+	+	no
15. t_{fS}	-	--	no
<i>CSO structure</i>			
16. $Q_{d,max}$	-	++	no
17. V	-	++	no
18. D_d	--	--	no
19. C_d	--	--	no
20. Lev_{ini}	++	--	no

Samples of COD and NH_4 in $mg \cdot l^{-1}$ (91 in total for each variable) were analysed. An average wastewater amount was calculated for Goesdorf ($153 l \cdot PE^{-1} \cdot d^{-1}$), Kaundorf ($112 l \cdot PE^{-1} \cdot d^{-1}$) and Nocher-Route ($94.3 l \cdot PE^{-1} \cdot d^{-1}$). Table 3 presents summary statistics of the dry weather flow measurements of COD and NH_4 and the corresponding value of $C_{COD,S}$ and $C_{NH_4,S}$. COD is converted to $C_{COD,S}$ by means of a simple conversion from $mg \cdot l^{-1}$ to $g \cdot PE^{-1} \cdot d^{-1}$, by multiplying COD by the measured per capita flow ($112 l \cdot PE^{-1} \cdot d^{-1}$) and dividing by 1,000. NH_4 was converted to $C_{NH_4,S}$ in a similar way.

Table 3. Summary statistics of dry weather flow measurements for $C_{COD,S}$ and $C_{NH_4,S}$ characterisation.

	COD [$mg \cdot l^{-1}$]	$C_{COD,S}$ [$g \cdot PE^{-1} \cdot d^{-1}$]	$\log(C_{COD,S})$ $\log(g \cdot PE^{-1} \cdot d^{-1})$	NH_4 [$mg \cdot l^{-1}$]	$C_{NH_4,S}$ [$g \cdot PE^{-1} \cdot d^{-1}$]	$\log(C_{NH_4,S})$ $\log(g \cdot PE^{-1} \cdot d^{-1})$
Min	61.9	6.9	1.936	16.10	1.745	0.556
P5	216.8	23.8	3.167	20.55	2.102	3.018
Mean	925.5	104.2	4.378	44.38	4.733	1.473
P95	2032.0	236.8	5.466	79.00	7.684	2.039
Max	3454.0	528.5	6.270	81.20	10.771	2.377
St. deviation	631.7	87.5	0.751	18.56	1.917	0.410

Closer inspection showed that $C_{COD,S}$ and $C_{NH_4,S}$ observations are best characterised by a lognormal distribution (Supplementary Material, Section S4S5). Since $C_{COD,S}$ and $C_{NH_4,S}$ are dynamic and cross-correlated, we calibrated a bivariate AR(1) model with state vector $Y = [\log(C_{COD,S}) \ \log(C_{NH_4,S})]^T$. The estimated parameters of the model using the methodology described in Section 2.5.3 are:

$$\boldsymbol{\mu} = \begin{bmatrix} 4.40947 \\ 3.70411 \end{bmatrix} \quad \mathbf{A} = \begin{bmatrix} 0.99165 & -0.00319 \\ -0.00009 & 0.99455 \end{bmatrix} \quad \mathbf{C} = \begin{bmatrix} 0.00913 & 0.00224 \\ 0.00224 & 0.00185 \end{bmatrix} \quad (13)$$

The defined multivariate autoregressive model also capture the dynamic behaviour, temporal correlation and cross-correlation of the input variables, deriving the probability distributions of $C_{COD,S}$ and $C_{NH_4,S}$ from measurements in the Haute-Sûre catchment, which agreed well with values reported in the literature (Katukiza et al., 2014; Heip et al., 1997).

3.2.2 Runoff COD concentration

Regarding COD_r , due to the fact that no field measurements were available, expert judgement and reference values from the literature were the basis to characterise the pdf of this input variable. The variable was assumed to be lognormally distributed with a mean value of 71 [$mg \cdot l^{-1}$]. Although, House et al. (1993) and Welker (2008) reported a higher value, 107 [$mg \cdot l^{-1}$] for COD_r , we selected a lower value due to the specific characteristics of the CSO system in the Haute-Sûre catchment. The value of 150 [$mg \cdot l^{-1}$] as standard deviation of COD_r leads to a coefficient of variation ($sd \cdot mean^{-1}$) equal to 2.11, which is greater than the coefficient of variation for $C_{COD,S}$ (0.84). We allow the standard deviation of COD_r to be greater than the standard deviation of $C_{COD,S}$, because COD measurements in rain water are very uncertain.

3.2.3 Input precipitation model

420 Precipitation and its associated uncertainty was modelled as an autoregressive model conditioned to the observed precipitation at a nearby measurement station. We assumed a multivariate lognormal distribution and included temporal correlation of the simulated time series. Calibration of the precipitation model is done with the mAr package as explained in Section 2.5.4 and using 10-minute precipitation time series of stations Esch-sur-Sûre and Dahl for 2010. Upon calibration of the multivariate autoregressive model, we proceeded with the conditional simulation of Y_c (Supplementary Material, Section S3S4.2, Eq. (5)).
425 For this, we computed the parameters of the model as shown in Eq. (14). The model parameters are given by (Torres-Matallana et al., 2017):

$$\begin{aligned} \mu_1 &= 2.85501 \\ \mu_\delta &= 0.10194 \end{aligned} \quad \mathbf{B} = \begin{bmatrix} 0.95650 & 0.03980 \\ 0.02429 & 0.88304 \end{bmatrix} \quad \begin{aligned} \sigma_1^2 &= 0.07241 \\ \sigma_\delta^2 &= 0.07951 \\ \rho_{1\delta} &= -0.03876 \end{aligned} \quad (14)$$

Next we generated conditional simulations of the 10-minute precipitation for 2010 for each subcatchment using the approach described in Section 2.5.4. Note that this involves simulating log-transformed precipitation which can easily be transformed
430 to precipitation data using the antilog. The simulation procedure was repeated as many times as simulated precipitation time series were required for the MC uncertainty propagation analysis.

The simulated precipitation time series captured the main statistics of the observed time series well. The reader can find evidence for this in the Supplementary Material (Table S1-S3 and Figure S2). Despite the satisfactory performance of the proposed method, some cases showed an overestimation of the simulated precipitation, mainly due to high values of the ratio of
435 the multiplicative factor $\delta(t)$. This behaviour was also recognised by McMillan et al. (2011), who stated that the multiplicative factor used in their study “*does not capture the distribution tails, especially during heavy precipitation where input errors would have important consequences for runoff prediction*”.

3.3 Uncertainty analysis

Model output sensitivity and the degree of uncertainties evaluation of each model input helped to define the four input variables
440 included in the uncertainty analysis: $C_{COD,S}$, $C_{NH_4,S}$, COD_r and P . In this section we present the results of the uncertainty propagation for these four selected input variables to the model output, both for water quantity (volume in the combined sewer overflow tank, CSOTchamber, CSOC, and overflow volume and flow) and for water quality (loads and concentrations of chemical oxygen demand, COD, and ammonium, NH_4).

3.3.1 Monte Carlo output and uncertainty quantification

445 The seven output variables from EmiStatR were analysed by MC input uncertainty propagation. A detailed description of the Monte Carlo simulation size and timing is presented in the Supplementary Material (Section S5S6).

Figure 3 illustrates the uncertainty propagation outcomes for the first Monte Carlo simulation, where all input variables vary stochastically. The MC simulations were performed for the entire year 2010 at 10 minutes time step, which were aggregated to hourly time steps in the figure. The aggregation function used for precipitation, CSO chamber volume, CSO spill volume and loads was the sum, whereas for CSO spill flow and concentrations the aggregation function it was the mean. The figure (top) shows input precipitation as main driving input. For illustration purposes, two events of two-day duration each are shown. The first event occurred in spring (May 2010), the second in both events, and shows that the uncertainty is high when there is a high precipitation event. The more intense the precipitation input, as seen in the figure inset at top-left (May event), the greater the uncertainty band width for overflow flow, as well as for COD and NH₄ loads (insets three and four) and concentrations (insets five and bottom). The MC estimated statistics and the standard errors (se) are presented in Table 4. The table shows the uncertainty quantification of outputs obtained from the MC uncertainty propagation for the first MC simulation (all selected input variables are uncertain).

Table 4. Monte Carlo estimated statistics and standard errors (se) by bootstrapping for the MC simulations, where all selected input variables are uncertain R (model run at 10 minute time steps and MC results aggregated to one hour averages over one year period). See [Table ?? Appendix A](#) for output variable nomenclature and units. Interq. = Interquartile; quant. = quantile; pbw = prediction band width; sd = standard deviation; var = variance; cv = coefficient of variation.

	Mean	Interq. Range	0.005 quant.	0.995 quant.	99% pbw	0.05 quant.	0.95 quant.	90% pbw	sd	var	cv
	μ_{MC}	IQR	$\zeta_{0.005}$	$\zeta_{0.995}$	$\zeta_{w,0.99}$	$\zeta_{0.05}$	$\zeta_{0.95}$	$\zeta_{w,0.90}$	σ_{MC}	σ_{MC}^2	CV_{MC}
$V_{Chamber}$	92.51	13.65	77.55	109.16	31.60	81.02	104.28	23.25	8.27	2,984	0.100
se	2.53	1.17	2.18	3.17	1.48	2.27	2.95	1.36	0.56	482	0.001
V_{Sv}	3.18	3.69	0.85	6.60	5.76	0.94	5.76	4.82	1.98	1,100	0.070
se	0.51	0.73	0.24	0.95	0.95	0.26	0.91	0.83	0.35	259	0.012
Q_{Sv}	55.49	76.77	0.37	267.1	266.7	1.24	165.3	164.1	64.50	7,332	1.585
se	5.67	10.26	0.13	13.75	14.54	0.22	10.82	10.89	4.57	1,102	0.048
$B_{COD,Sv}$	1.18	1.69	0.04	6.11	6.06	0.07	3.49	3.41	1.27	394	0.087
se	0.20	0.31	0.02	1.02	1.00	0.03	0.59	0.59	0.21	81.71	0.013
$B_{NH4,Sv}$	0.052	0.077	0.004	0.174	0.170	0.006	0.125	0.120	0.045	0.546	0.075
se	0.009	0.014	0.002	0.029	0.028	0.002	0.022	0.021	0.008	0.115	0.013
$C_{COD,Sv,av}$	170.0	164.6	3.80	909.7	905.9	15.49	465.8	450.3	161.9	36,151	0.988
se	9.02	11.38	0.33	40.12	40.40	1.02	24.66	24.03	7.94	4,615	0.016
$C_{NH4,Sv,av}$	7.19	6.65	0.47	29.20	28.74	0.86	17.51	16.64	5.66	46.93	0.815
se	0.41	0.61	0.02	1.23	1.22	0.06	0.91	0.87	0.29	6.62	0.016

Table 4 shows the standard deviation (sd) and the coefficient of variation (cv) for the seven output variables considered in the uncertainty propagation. For the volume in the CSO chamber, $V_{Chamber}$, the annual mean standard deviation, σ_{MC} , (8.27 m³) is lower than the mean, μ_{MC} , (92.51 m³). This goes along with an annual mean coefficient of variation (CV_{MC}) of 0.100. A (CV_{MC}) greater than 1 means large uncertainty. The overflow spill volume, V_{Sv} , had a coefficient of variation of 0.070, while it was 1.585 for the overflow flow, Q_{Sv} . This shows that the relative uncertainty of the overflow flow is very

large. Regarding the overflow COD load, the annual mean (1.18 kg) is similar as the annual mean standard deviation (1.27 kg). Similar behaviour was observed for the overflow COD concentration, which had an annual mean value of 170 mg/l and a standard deviation of 162 mg/l. For overflow NH_4 load and overflow NH_4 concentration the annual mean also had the same order of magnitude as the annual mean standard deviation. Overflow COD and NH_4 loads had a coefficient of variation of 0.087 and 0.075, respectively, whereas the coefficient of variation for concentrations were 0.988 and 0.815, respectively. This suggests that overflow concentrations are more uncertain.

Low standard errors (se) for the coefficient of variation were obtained for all seven outputs. These were never greater than 0.05, which indicates that the selected MC replication size (1,500 for $mc1$) is a suitable value. This holds for all output statistics, because in all cases the standard error is small to the estimated value.

3.3.2 Contributions of input variables to total uncertainty

The contributions of input variables to the total uncertainty of the model inputs were also computed using the procedure described in Section 2.6.4. A total of four MC simulations with a total of 6,000 runs were performed for estimating S_i (Eq. (10)). Afterwards, four contributions were evaluated per time step and aggregated for the whole year. Following Eq. (10), the per time step contributions of input variables to output variables in terms of percentage of variance, stochastic sensitivity S_i of the input variables $C_{COD,S}$, $C_{NH_4,S}$, COD_r and P were calculated. An example of the contributions analysis per time step is presented in Fig. 4. Here we remark that a high uncertainty over time is shown mainly for the Spring event.

The aggregated over time contributions of input variables to output variables in terms of percentage of variance, stochastic sensitivity S_i of the input variables, were also calculated (Table 5). Note that P is the only source of uncertainty for $V_{Chamber}$ and V_{Sv} , while uncertainty in NH_4 inputs only propagates to NH_4 outputs, and similar for COD (Fig. 4).

Table 5. Aggregated over time contribution of input variables to output variables in terms of percentage of total variance

Output variable	Stochastic sensitivity, S_i , of input variable [%]				
	Total	$C_{COD,S}$	$C_{NH_4,s}$	COD_r	P
$V_{Chamber}$	100.0	0.0	0.0	0.0	100.0
V_{Sv}	100.0	0.0	0.0	0.0	100.0
$B_{COD,Sv}$	100.0	65.7	0.0	2.9	31.4
$C_{COD,Sv,av}$	100.0	62.4	0.0	8.7	28.9
$B_{NH_4,Sv}$	100.0	0.0	34.4	0.0	65.6
$C_{NH_4,Sv,av}$	100.0	0.0	35.3	0.0	64.7

We found, as expected, that precipitation, P , is the only source of uncertainty from all uncertain input considered for water quantity output variables $V_{Chamber}$ and V_{Sv} . Regarding average values for the whole year, for the water quality output variables $B_{COD,Sv}$ and $C_{COD,Sv,av}$, $C_{COD,s}$ has the largest contribution to the output variance, about 66 percent for $B_{COD,Sv}$ and about 62 percent for $C_{COD,Sv,av}$. The second variable that contributes to uncertainty of these COD output variables is P , with about

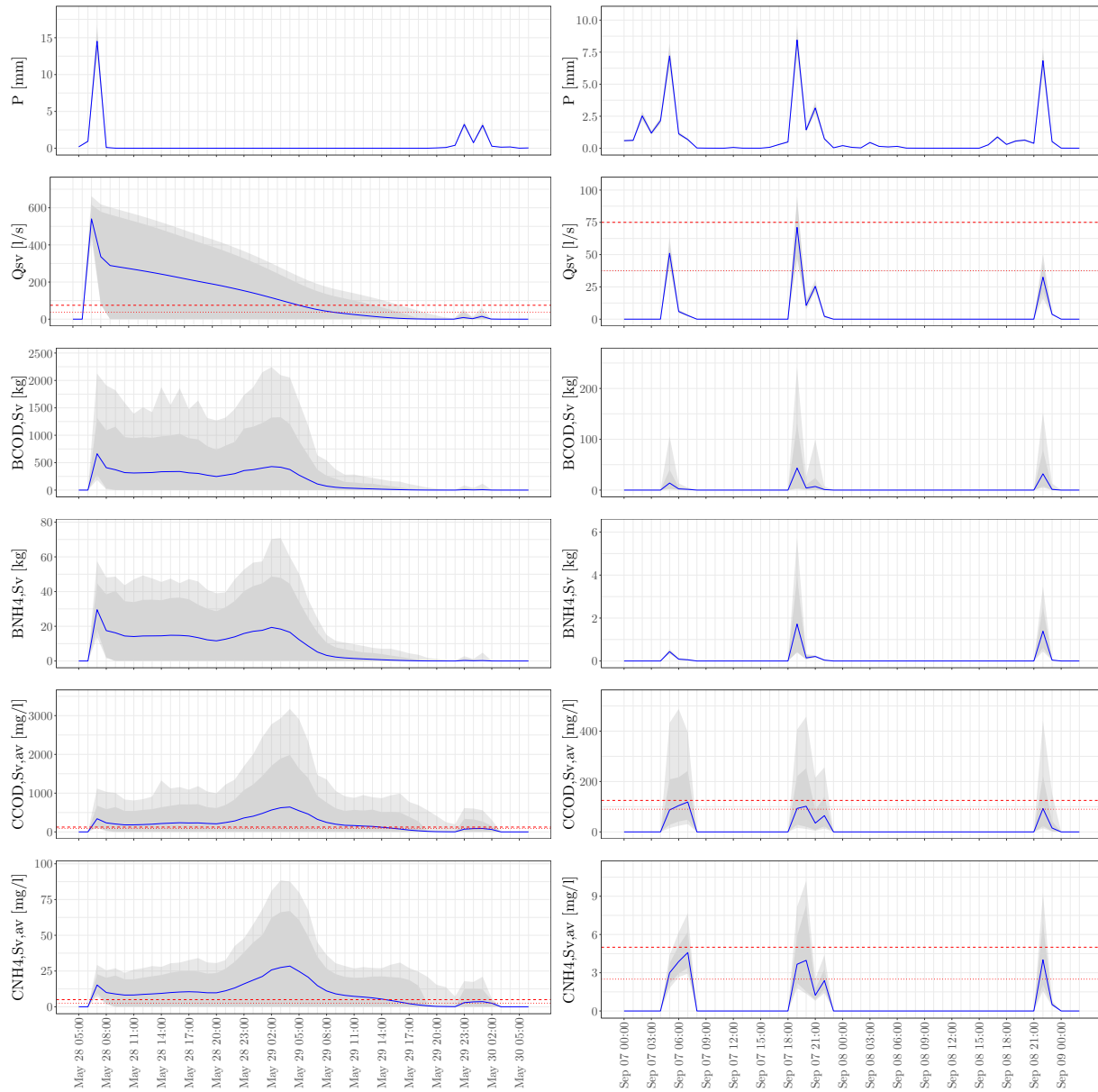


Figure 3. Uncertainty propagation outcomes for the first Monte Carlo simulation, where all input variables vary stochastically. The 99% prediction interval is shown as light grey shade, 90% prediction interval is shown as dark grey shade, mean value as blue line. The MC simulations were performed for the entire year 2010 at 10 minutes time step, aggregated to hourly time steps in the figure. Input precipitation (**top**). Overflow spill flow, the upper dashed red line indicates the 75 l/s threshold, lower dotted red line the 37.5 l/s threshold (**second**). Load of overflow COD (**third**). Load of overflow NH_4 (**fourth**). Average spill COD concentration. Upper dashed red line indicates the 125 mg/l threshold and the lower dotted red line indicates the 90 mg/l threshold (**fifth**). Average spill NH_4 concentration. Upper dashed red line indicates the 5.0 mg/l threshold, lower dotted red line the 2.5 mg/l threshold (**bottom**).

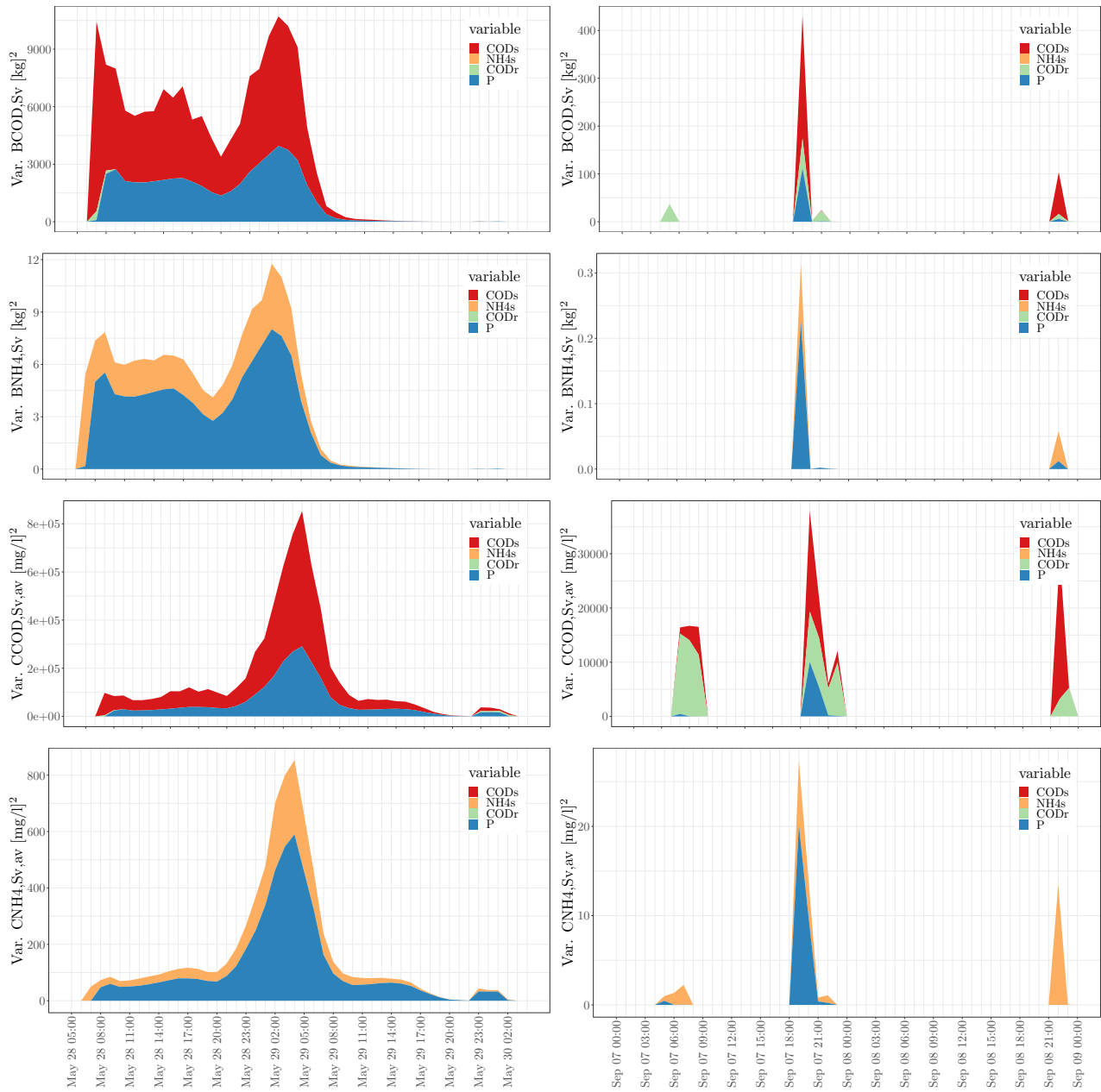


Figure 4. Temporal contributions of input variables to load of overflow COD (**top**) load of overflow NH₄ (**second**); concentration of overflow COD (**third**); concentration of overflow NH₄ (**bottom**) in terms of variance. The MC simulations were performed for the entire year 2010 at 10 minutes time step, which were aggregated to hourly time steps. For illustration two periods are shown from 28 to 30 May 2010 (**left**); and from 7 to 9 September 2010 (**right**).

3 percent for $B_{COD,Sv}$ and 9 percent for $C_{COD,Sv,av}$. Similarly, the input variable $C_{NH_4,S}$ play an important role in the contribution of total uncertainty for $B_{NH_4,Sv}$ (on average about 34 percent of the variance for the whole year) and $C_{NH_4,Sv,av}$ (about 35 percent). Equally contributing to uncertainty of these NH_4 output variables is P with about 66 percent for $B_{NH_4,Sv}$ and 65 percent for $C_{NH_4,Sv,av}$. From these results we can infer that precipitation is a main source of uncertainty for all six
490 outputs considered.

3.4 Uncertainty and water quality impact

Quantification and assessment of the water quality impact is an important step after the uncertainty propagation. As described in Section 2.7, the assessment of water quality standards was done taking into account the reference thresholds recommended in the European Union guidelines for COD, and the German and Austrian guidelines for hydraulic impact and acute ammonium
495 toxicity.

3.4.1 Hydraulic impact

From the time series of daily values for 2006 to 2013 of the river Sûre, a daily flow expected with return period once per year (1.01 years), Q_{r1} of $16 \text{ m}^3 \cdot \text{s}^{-1}$ was computed at Heiderscheidergrund, which corresponds with the entire catchment area of the Haute-Sûre stormwater system (182.1 ha). Therefore, we estimated the river daily flow in the Goesdorf ~~CSOT~~ [CSO structure](#)
500 as a proportion to 30 ha, which is equal to $2.6 \text{ m}^3 \cdot \text{s}^{-1}$. Following Eq. (11), the maximum sewer overflow discharge with return period one year Q_1 can have a value between $0.26 \text{ m}^3 \cdot \text{s}^{-1}$ and $1.32 \text{ m}^3 \cdot \text{s}^{-1}$. Accordingly, with the German guideline ATV-A 128 (1992) (Eq. (12)), two additional thresholds are defined for the maximum sewer overflow discharge with return period one year for the Goesdorf catchment ($A_{imp} = 5.0 \text{ ha}$). Q_1 is expected to vary between $37.5 \text{ l} \cdot \text{s}^{-1}$ and $75.0 \text{ l} \cdot \text{s}^{-1}$. We contrasted these values with those obtained from the uncertainty analysis. From Table 4, we obtained a one hour mean value
505 for the overflow spill flow, Q_{Sv} , of $55.5 \text{ l} \cdot \text{s}^{-1}$, 90% prediction band width of $164.1 \text{ l} \cdot \text{s}^{-1}$, and standard deviation of $64.5 \text{ l} \cdot \text{s}^{-1}$. Figure 3 (second) presents the overflow spill flow for the two periods chosen for illustration. The upper dashed red line indicates the $75 \text{ l} \cdot \text{s}^{-1}$ threshold and the lower dotted red line indicates the $37.5 \text{ l} \cdot \text{s}^{-1}$ threshold. Table 6 (top) shows the exceedance percentage of overflow spill flow over the 37.5 and $75.0 \text{ l} \cdot \text{s}^{-1}$ thresholds for the mean, 0.95 quantile and 0.995 quantile. We found a 0.49% exceedance of the mean value over the $37.5 \text{ l} \cdot \text{s}^{-1}$ threshold and about 1.7% for the quantiles. As
510 expected, slightly lower percentages were found for the $75.0 \text{ l} \cdot \text{s}^{-1}$ threshold.

3.4.2 COD concentration

A reference COD concentration emission in CSOs was presented in Section 2.7.2. For the European Union, a value of $125 \text{ mg} \cdot \text{l}^{-1}$ is used. We obtained a one hour average spill COD concentration with a mean of $170 \text{ mg} \cdot \text{l}^{-1}$, standard deviation of $162 \text{ mg} \cdot \text{l}^{-1}$, and a 90% prediction band width of $450 \text{ mg} \cdot \text{l}^{-1}$. Figure 3 (fifth) presents the average spill COD concentration. Upper
515 dashed red line indicates the 125 mg/l threshold, lower dotted red line the 90 mg/l threshold. The mean COD concentration

in the overflow volume was higher than the thresholds. However, note that when entering the river system it will quickly be diluted, suggesting that the negative impact on the environment will be dampened by the receiving water body.

Table 6 (centre) shows the exceedance percentage of overflow COD concentration over the 90 and 125 $\text{mg}\cdot\text{l}^{-1}$ thresholds for the mean, 0.95 quantile and 0.995 quantile. We found a 1.62% exceedance of the mean value over the 90 $\text{mg}\cdot\text{l}^{-1}$ threshold and about 1.8% for the quantiles. Slightly lower percentages were found for the 125 $\text{mg}\cdot\text{l}^{-1}$ threshold for the mean value (1.03%). For the quantiles equal values were found as for the 90 $\text{mg}\cdot\text{l}^{-1}$ threshold.

3.4.3 Acute ammonium toxicity

We compared the acute ammonium toxicity reference values presented in Section 2.7.3 (2.5 $\text{mg}\cdot\text{l}^{-1}$ for the ammonium concentration calculated for one hour duration for salmonid streams, and for cyprinid streams a maximum value of 5.0 $\text{mg}\cdot\text{l}^{-1}$), with the values we found for ammonium. An average spill NH_4 concentration with a mean of 7.19 $\text{mg}\cdot\text{l}^{-1}$, standard deviation of 5.66 $\text{mg}\cdot\text{l}^{-1}$, and 90% prediction band width of 16.64 $\text{mg}\cdot\text{l}^{-1}$ was obtained. Figure 3 (bottom) shows the average spill NH_4 concentration for the two periods chosen for illustration. The ammonium (NH_4) concentrations in the overflow flow are higher than the reference values, which are given for concentrations in the river.

Table 6 (bottom) shows the exceedance percentage of overflow NH_4 concentration over the 2.5 and 5.0 $\text{mg}\cdot\text{l}^{-1}$ thresholds for the mean, 0.95 quantile and 0.995 quantile. We found a 1.8% exceedance of the mean and quantile values over the 2.5 and 5.0 $\text{mg}\cdot\text{l}^{-1}$ thresholds. A slightly lower percentage (1.1%) was found for the 5.0 $\text{mg}\cdot\text{l}^{-1}$ threshold, regarding mean value.

4 Discussion

This study aimed to select and characterise the main sources of input uncertainty in urban water systems, while accounting for temporal auto- and cross-correlation of uncertain model inputs, by propagating input uncertainty through the [EmiStatR](#) [EmiStatR](#) model, and quantifying and assessing the contributions of each uncertainty source to model output uncertainty dynamically (over time). In the following discussion, we start with the uncertainty and water quality impact of the model outputs to the environment, in relation to the uncertainty analysis. Next, we discuss the accuracy of Monte Carlo analysis, followed by a discussion of other sources of uncertainty. Finally, we highlight some limitations and possible solutions of the approach used in this work.

4.1 Uncertainty and water quality impact

Next we discuss how the uncertainty propagation analysis done gives additional insight regarding hydraulics, COD concentration and acute ammonium toxicity impact on water quality over the river Sûre due to the CSO discharges under study. After doing the uncertainty propagation analysis we not only have predictions of model outputs but we also know how uncertain these are. An added value arises when we take into account the uncertainty information. For the case of the overflow spill flow, the expected model output (mean of 55.5 $\text{l}\cdot\text{s}^{-1}$) is below the environmental threshold of 75 $\text{l}\cdot\text{s}^{-1}$, but the 0.95 quantile (164.1 $\text{l}\cdot\text{s}^{-1}$) is much above the threshold. This indicates that there is a considerable chance of being above the threshold.

Table 6. Frequency (percentage) over time that environmental thresholds are exceeded for different statistics of the overflow spill flow, COD and NH₄ concentration.

Output variable	Threshold	Statistic	Exceedance percentage
Q_{Sv} [$l \cdot s^{-1}$]	37.5	Mean	0.49
	37.5	0.95 quantile	1.71
	37.5	0.995 quantile	1.74
	75.0	Mean	0.31
	75.0	0.95 quantile	1.51
	75.0	0.995 quantile	1.72
$C_{COD,Sv,av}$ [$mg \cdot l^{-1}$]	90.0	Mean	1.62
	90.0	0.95 quantile	1.80
	90.0	0.995 quantile	1.82
	125.0	Mean	1.03
	125.0	0.95 quantile	1.80
	125.0	0.995 quantile	1.82
$C_{NH4,Sv,av}$ [$mg \cdot l^{-1}$]	2.5	Mean	1.78
	2.5	0.95 quantile	1.80
	2.5	0.995 quantile	1.82
	5.0	Mean	1.05
	5.0	0.95 quantile	1.78
	5.0	0.995 quantile	1.82

Regarding water quality outputs, although the mean model output for COD and NH₄ concentrations is fairly above of the thresholds, the 0.95 quantile is 2.7 times above the mean value for COD concentration, and 2.4 times above the mean value for NH₄. Also here we can conclude that we are not certain that we are below the threshold, because there is a considerable probability that the true values are above, even though the expected value is below the thresholds.

We were able to compute the water quantity and quality at CSO outlet to the river. We found that water quality (COD and NH₄) were sometimes above the environmental threshold. Even if the expected value was below the threshold there could still be a considerable probability that the quality was above the threshold because of the large uncertainty. Therefore, policy and decision makers and water managers need to be aware of this, because whenever concentrations are above the threshold this may harm the environment. Nevertheless it is worth noting that we computed concentration in the outlet of the CSO. When this spilled water enters the river it will quickly mix with the much cleaner river water and concentrations will drop quickly, so it is only a local problem. How local it is and how the river water quality is distributed in space and time is not an easy problem to solve and requires the use of hydrological and hydraulic river models e.g. SIMBA (IFAK, 2007) or MIKE 11 (DHI, 2017). Those models have been well-developed and for some of them uncertainty analyses have also been done (Beven and Binley,

560 1992; Refsgaard, 1997; Beven and Freer, 2001; Vrugt et al., 2003a, 2008; Beven et al., 2010; Andrés-Doménech et al., 2010; Beven, 2012; Jerves-Cobo et al., 2020; Yu et al., 2020), but obviously such uncertainty analyses can only be done if the inputs to these models are known as well as the uncertainty associated with these inputs. One of these inputs is inlet from CSO. That is where our paper makes a very valuable contribution, because our work has quantified water quantity and quality of CSO structures, including uncertainty, and that is exactly what these river models need to be able to do an uncertainty propagation
565 analysis. We also recognise other attempts on quantity (e.g. Sriwastava et al. (2018)) and quality, especially measurements taken at CSOs, which demonstrate that the measured water quality at the WWTP influent is expected to render a low representativity of the conditions at the CSOs (e.g. Brombach et al. (2005); Diaz-Fierros T et al. (2002)). We present some comparisons with these studies in the following lines.

Sriwastava et al. (2018) apply uncertainty propagation to a complex hydrodynamic model for quantifying uncertainty in
570 sewer overflow volume. They used MC for uncertainty propagation and Latin hypercube sampling (LHS) as an efficient sampling scheme. Although LHS ensures a full coverage of the sample space and provides a faster convergence than simple random sampling, the LHS application in the case of dynamic model inputs (e.g. precipitation, COD and NH_4 inputs) is not trivial and its implementation is more complex than in the case of sampling from static variables (i.e., uncertain constants). In our study, we sampled time series of dynamic inputs using an implementation in stUPscales (Torres-Matallana et al., 2019, 2018a).

575 Diaz-Fierros T et al. (2002), in a study in the city of Santiago de Compostela (North-West Spain, population about 100,000 inhabitants), where a combined sewer system feeds to a grossly under-sized wastewater treatment plant, reported an event mean concentration (Diaz-Fierros T et al. (2002), Table 4) for the output variables $C_{\text{COD},Sv,av}$ and $C_{\text{NH}_4,Sv,av}$ of $329.1 \text{ mg}\cdot\text{l}^{-1}$ and $8.7 \text{ mg}\cdot\text{l}^{-1}$, respectively. These values are larger than those found by Brombach et al. (2005), and more in agreement with our findings, especially for the case of $C_{\text{NH}_4,Sv,av}$. Diaz-Fierros T et al. (2002) reported values of $C_{\text{COD},Sv,av}$ as high as 1073
580 $\text{mg}\cdot\text{l}^{-1}$, which agrees with the right-hand tail of the distribution obtained in our study (i.e. a 0.995 quantile of $909.7 \text{ mg}\cdot\text{l}^{-1}$). Similarly, for the case of $C_{\text{NH}_4,Sv,av}$, Diaz-Fierros T et al. (2002) reported values as high as $32.5 \text{ mg}\cdot\text{l}^{-1}$, comparable with the 0.995 quantile ($29.20 \text{ mg}\cdot\text{l}^{-1}$) found in our study.

It is worth noting that regarding measurements taken at CSOs, the measured water quality at the WWTP influent is expected to render a low representativity of the conditions at the CSOs as reported by Diaz-Fierros T et al. (2002) and Brombach et al.
585 (2005). Thus, when comparing model outputs with independent measurements, one should bear in mind that discrepancies between measured and predicted are not only caused by errors in model inputs, model parameters and model structure, but are also the result of errors in the water quality measurements.

4.2 Accuracy of Monte Carlo analysis

Regarding the Monte Carlo replication size for uncertainty propagation, we presented in Fig. S4 (Supplementary Material) the
590 results for three output variables and three replications size 250, 1,000 and the selected 1,500 (NSE closer to 1.0 for most of the output variables). We compute replications for 50, 100, and from 250 to 2,000 at steps of 250 replications the comparison of two equal MC runs (MC1 and MC2) with different seed for the pseudo-random number generator. the results suggest that the output variables related to COD (load and concentration) have a larger dispersion when we compare MC1 and MC2 for the

same replications size. This is also reflected in the larger standard errors reported in Table 4 for e.g. the overflow COD load. 595 Nevertheless, 1,500 runs are a feasible MC replication size for running a relative simple and fast model as EmiStatR (7.29 minutes in average execution time using parallel computing and 50 cores for a time series with 4,464 time steps). For a more complex full hydrodynamic model with a high computational burden, 1,500 replication four times to compute contributions it may be not possible. Therefore, we suggest to check the intermediate results of the MC convergence test and we will find that e.g. for quantity variables as the spill overflow volume and quality variables as the overflow NH₄ load, 250 replications 600 (7.10 minutes in average execution time using parallel computing and three cores for a time series with 4,464 time steps) per individual MC execution seem to be enough, which make more feasible the execution of this kind of uncertainty propagation.

Figures 3 and 4 shows that there is a large uncertainty for the early May event and smaller uncertainty for the September event. This is due mainly to the presence of a large dry period before the spill event in May, i.e. a shorter dry period preceding the spill flow leads to a lower uncertainty. This finding suggest also an interaction between the antecedent dry period and the 605 concentration of pollutants.

4.3 Other sources of uncertainty

In this work we only looked at input uncertainty and not at parameter and model structural uncertainty. Further research can be done on those topics. Neumann (2007) address how are uncertainty ranges for parameters of full scale systems obtained and how does model structure uncertainty manifest itself and can be quantified for performance evaluation and design of urban 610 water infrastructure. Moreno-Rodenas et al. (2019) also studied and depicted how model parameter is an important source of uncertainty. They emphasised that “*still, uncertainty analysis is seldom applied in practice and the relative contribution of the individual model elements is poorly understood.*”. Also, they highlighted that after inferring the river process parameters with system measurements of flow and dissolved oxygen, combined sewer overflow pollution loads became the dominant uncertainty source along with rainfall variability. These findings agreed with our results.

615 Bachmann-Machnik et al. (2018) recognised that the most important parameters causing uncertainties in the sewer system model are connected area and the stormwater runoff quality. Our analysis confirms these findings, specifically regarding the stormwater runoff quality. In our study the input variable runoff COD was an important source of uncertainty with relation to the annual mean overflow COD released from the CSO.

4.4 Limitations and possible improvements

620 Despite the extensive temporal uncertainty propagation analysis the approach also has some limitations which we present hereafter addressing possible solutions in future work.

1. **Incorporation of the spatial distribution of model inputs.** Specifically for precipitation, Breinholt et al. (2012) stated that due to a poor representation of the spatial precipitation that is measured by point gauges and the complexity of the sewer systems, large output uncertainty can be expected. We also infer that we obtained a large output uncertainty 625 due to neglect of the inherent spatial variability of precipitation. Therefore, we suggest that further research is needed

to account for spatial variability of precipitation, that can bring light to understand how this variability impacts in the output uncertainty and quantify it properly. This issue should be related also to the problem of change of support. When modelling precipitation, we also ignored the support effect, i.e. we ignored that the sub-catchment area is much greater than a point. Future research may address this issue of change-of-support. Studies that tackled this issue are found e.g. Leopold et al. (2006); Wadoux et al. (2017); Cecinati et al. (2018).

630

2. **Linkage of sub-models and uncertainty compensation effect.** Tscheikner-Gratl et al. (2019) addressed the question as to whether there is an increase in uncertainty by linking integrated models or whether a compensation effect could take place by which overall uncertainty in key water quality parameters decreases. Some further insight into this topic could be obtained by quantifying uncertainties at sub-model level, and analysing whether uncertainty at sub-model level is greater or smaller than at the overall level. With our implementation this is not a difficult task because EmiStatR has a stringent modular design in which it is easy to analyse outputs and their uncertainties at sub-model level.

635

3. **Accounting for cross-correlation between the inputs precipitation and runoff COD concentration.** It is worth noting that we did not include correlation between COD_r and P . Including such correlation would yield a more realistic model of the uncertainty because these variables are known to have a strong correlation. It is highly recommendable to include correlations between COD_r and precipitation, because loads in chemical oxygen demand are correlated with the overland flow due to precipitation, which may transport distributed pollutants to the sewer system. Also the inputs $C_{COD,s}$ and $C_{NH_4,s}$ can be related with a daily curve that reflect the pattern of consumption in the household like the German ATV-A 134 curve. We used the latest version of EmiStatR (version 1.2.2.0), which considers this kind of patterns.

640

4. **Absence of high frequency water quality observations to compare with model outputs and uncertainty prediction bands.** In order to gain understanding of the temporal dynamics of nutrients (nitrogen, N, and phosphorus, P), Yu et al. (2020) applied high frequency monitoring in a groundwater fed low-lying urban polder in Amsterdam (The Netherlands). They argued that although spatial and temporal concentration patterns from discrete sampling campaigns of water quality parameters, such as EColi, showed a clear dilution pattern, the temporal patterns of N and P were still poorly understood, given their reactive nature and more complex biogeochemistry. Therefore, high frequency measurement, is a key factor to understand these temporal dynamics and patterns.

645

650

5. **Absence of a joint spatio-temporal uncertainty analysis.** According to Zhou et al. (2020), the limitations in algorithms for classic uncertainty estimates is the cause that only the uncertainty in one dimension (either temporal variability or spatial heterogeneity) is considered, whereas the variation in the other dimension is dismissed, resulting in an incomplete assessment of the uncertainties. Zhou et al. (2020), also showed that classic metrics underestimate the uncertainty through averaging, which means a loss of information in the variation across spatio-temporal scales. To handle this limitation, suitable methods are the three-dimensional variance partitioning for a new uncertainty estimation in both spatio-temporal scales (Zhou et al., 2020), or spatio-temporal geostatistics (Gräler et al., 2016).

655

660 6. **Uncertainty analysis with complex models.** In this research we were able to conduct a comprehensive Monte Carlo uncertainty propagation analysis, which required a large number of Monte Carlo runs. This was possible because we used a strongly simplified urban water system model, EmiStatR. For more complex models that take much more computing time, application of a Monte Carlo uncertainty propagation analysis is more challenging. However, given sufficient resources it is possible, because each model run can be run independently and hence the analysis is extremely suitable for parallelisation and cloud computing. In particular, the use of graphics processing units (GPU) for heavy computation

665 is promising. Some recent examples that demonstrate the potential of GPU for this purpose are Eränen et al. (2014), Sten et al. (2016), and Sandric et al. (2019). Sriwastava et al. (2018) applied uncertainty propagation to a complex hydrodynamic model, by selecting a small subset of dominant input/model parameters that explain most of the model output variance.

670 7. Convolution of precipitation to runoff. Equation 2 indicates that the runoff that enters the combined sewage in EmiStatR has the same shape as the precipitation, with an offset. Thus, for precipitation no convolution is applied. In a new release of EmiStatR we will incorporate convolution of precipitation when transforming precipitation to runoff.

5 Conclusions

675 In this final section we conclude with highlighting the importance of temporal uncertainty propagation analysis and the selection and characterisation of uncertain model inputs impacting model sensitivity. We also point out that uncertainty propagation analysis helps to identify the most contributing sources and can provide better evidence for the impact assessment of pollutant release from sewer systems to the environment, in particular to the receiving waters.

680 1. **Uncertainty analysis is important because it quantifies the accuracy of model outputs and quantifies the uncertainty source contributions.** The latter provides essential information to take informed decisions about how to improve the accuracy of the model output. But MC uncertainty analysis is only possible if it is computationally feasible. We used a simplified urban water system model with capabilities to apply for *minimising transient pollution from urban wastewater systems* in parallel mode, which minimises model running time, allowing uncertainty propagation, long term simulations and evaluation of complex scenarios. These capabilities are crucial also for e.g. real time control applications, where simplified models of fast running times are desirable.

685 2. **Input variables that were very uncertain for which model output was very sensitive were selected to be included in the uncertainty propagation analysis.** We found four main input variables to be analysed: 1) Precipitation, P ; 2) Chemical oxygen demand sewage pollution per capita load per day, $C_{COD,S}$; 3) Ammonium pollution per capita load per day, $C_{NH_4,S}$; and 4) Chemical oxygen demand COD_r concentration.

690 3. **Selected input variables for uncertainty propagation can be characterised in terms of input uncertainty in four specific cases, depending on the type of input variable:** i) Uncertain constant inputs, characterised by their marginal

(cumulative) pdf e.g. water consumption, infiltration flow, impervious area and run-off coefficients; ii) Temporally autocorrelated dynamic uncertain inputs, characterised by univariate time series autoregressive modelling e.g. COD_r ; iii) Temporally cross-correlated multiple dynamic uncertain inputs, characterised by multivariate time series modelling, considering cross- and no-correlations among variables e.g. $C_{COD,S}$ and $C_{NH_4,S}$; and iv) rain gauge input precipitation, characterised by autoregressive model conditioned to the observed precipitation (P).

695

4. **Model input uncertainty propagation through the simplified combined sewer overflow model (EmiStatR) helped to understand how does uncertainty propagate and how large is the uncertainty of EmiStatR outputs in a case study.** Three output variables were considered for water quantity and four variables for water quality. The Monte Carlo uncertainty propagation analysis showed that among the water quantity output variables, the overflow flow, Q_{Sv} , is the more uncertain output variable and has a large coefficient of variation (cv of 1.585). Among water quality variables, the annual average spill COD concentration, $C_{COD,Sv,av}$, and the average spill NH_4 concentration, $C_{NH_4,Sv,av}$, were found to have large uncertainty (coefficients of variation of 0.988 and 0.815, respectively). Also, low standard errors (se) for the coefficient of variation were obtained for all seven outputs. They were never greater than 0.05, which indicated that the selected MC replication size (1,500 simulations) was a suitable value.

700

705

5. Regarding the **main sources of uncertainty model outputs**, for water quantity outputs, was precipitation, while for COD water quality outputs were P , $C_{COD,S}$ and COD_r , and for NH_4 outputs P and $C_{NH_4,S}$.

710

6. Finally, we evaluated how **uncertainty propagation analysis can explain more comprehensively the impact of water quality indicators to the receiving river** for the Luxembourg case study. Although the mean model water quality outputs for COD and NH_4 concentrations is fairly above of the thresholds, the 0,95 quantile is 2.7 times above the mean value for COD concentration, and 2.4 times above the mean value for NH_4 . We conclude that we are not certain that environmental thresholds are not exceeded, because there is a considerable probability that values are above, even though the expected value is below the thresholds. This is valid for concentrations in the spilled CSO, therefore, is important to highlight that the results confirmed our hypothesis that annual mean COD and NH_4 river concentrations are lower than the released CSO concentrations due to dilution and henceforth compliant with the water quality thresholds given by the guidelines consulted.

715

Code and data availability. The code scripts and datasets related to Figures 3 and 4 of this paper, and Figures S3 and S4 of the Supplementary Material are available on Zenodo:

<https://doi.org/10.5281/zenodo.3928079>

and GitHub:

720

https://github.com/ArturoTorres/temporal_uncertainty_paper_reproducible.git

Appendix A: List of variables of EmiStatR

cS_{mrt}	Combined sewer mixing ratio at time t	[-]
pe_t	Population equivalents of the connected CSO structure at time t	[PE]
q_{ft}	Infiltration water inflow flux at time t	$[l \cdot s^{-1} \cdot ha^{-1}]$
qs_t	Individual water consumption of households at time t	$[l \cdot PE^{-1} \cdot d^{-1}]$
t_{fs}	Delay in time response related to flow time in the sewer system	[time step]
A_{imp}	Impervious area of the catchment	[ha]
A_{total}	Total area of the catchment	[ha]
$B_{COD,Sv}$	COD load in the spill overflow	[g]
$B_{NH_4,Sv}$	Spill overflow NH_4 load	[g]
C_d	Orifice coefficient of discharge in the CSOC structure	[-]
C_{imp}	Run-off coefficient for impervious areas	[-]
C_{per}	Run-off coefficient for pervious areas	[-]
$CCOD_t$	Mean dry weather pollutant (COD) concentration at time t	$[mg \cdot l^{-1}]$
$CCOD,S$	COD sewage pollution per capita load per day	$[g \cdot PE^{-1} \cdot d^{-1}]$
$CCOD,Sv,99.9$	99.9th percentile spill COD concentration	$[mg \cdot l^{-1}]$
$CCOD,Sv,av$	Average spill COD concentration	$[mg \cdot l^{-1}]$
$CCOD,Sv,max$	Maximum overflow COD concentration	$[mg \cdot l^{-1}]$
$C_{NH_4,S}$	NH_4 sewage pollution per capita load per day	$[g \cdot PE^{-1} \cdot d^{-1}]$
$C_{NH_4,Sv,99.9}$	99.9th perc. spill NH_4 concentration	$[mg \cdot l^{-1}]$
$C_{NH_4,Sv,av}$	Average spill NH_4 concentration	$[mg \cdot l^{-1}]$
$C_{NH_4,Sv,max}$	Maximum spill NH_4 concentration	$[mg \cdot l^{-1}]$
COD_f	Infiltration pollution COD	$[g(PE \cdot d)^{-1}]$
COD_{rt}	Concentration due to rainwater pollution (COD) at time t	$[mg \cdot l^{-1}]$
D_d	Orifice diameter	[m]
Lev	Measured water level in the CSOC	[m]
Lev_{ini}	Initial water level in the CSOC	[m]
NH_4_f	Infiltration pollution NH_4	$[g(PE \cdot d)^{-1}]$
NH_4_r	Concentration due to rainwater pollution (NH_4)	$[mg \cdot l^{-1}]$
P_t	Precipitation at time t	$[mm \cdot min^{-1}]$
$Q_{d,max}$	Maximum throttled outflow	$[l \cdot s^{-1}]$
Q_{ft}	Infiltration flow at time t	$[l \cdot s^{-1}]$
Q_{rt}	Flow contribution of rainwater to the combined sewage flow at time t	$[m^3 \cdot s^{-1}]$
Q_{st}	Dry weather flow of the residential sewage in the catchment at time t	$[l \cdot s^{-1}]$
Q_{CSF_t}	Combined sewer flow at time t	$[m^3 \cdot s^{-1}]$
Q_{DWF_t}	Total dry weather flow at time t	$[l \cdot s^{-1}]$
Q_{Sv}	Overflow spill flow	$[l \cdot s^{-1}]$
V	Volume of the CSOC structure	$[m^3]$
V_{dt}	Volume of throttled outflow to the WWTP at time t	$[m^3]$
V_{dwt}	Total dry weather volume (amount of dry weather water in combined sewage flow) at time t	$[m^3]$
V_{rt}	Rain weather volume at time t	$[m^3]$
$V_{Chamber_t}$	Water volume in the CSO chamber at time t	$[m^3]$
V_{Svt}	Spill overflow volume at time t	$[m^3]$
ϵ	numerical precision term	$[m^3]$
Δt	Time interval	[min]

Author contributions. J. A. Torres-Matallana is the main author of the text in this article. Ulrich Leopold and Gerard Heuvelink contributed to this article with their statistical, geostatistical and programming knowledge, and reviewed and edited the text. J. A. Torres-Matallana

725 developed all R-code scripts for the computations and Monte Carlo simulations, performed the simulations and analysis, with collaboration from Ulrich Leopold and Gerard Heuvelink.

Competing interests. The authors declare no competing interests.

Acknowledgements. The work presented was part of the QUICS (Quantifying Uncertainty in Integrated Catchment Studies) project. This project has received funding from the EU Marie Skłodowska-Curie research programme under the European Union's Seventh Framework Programme for research, technological development and demonstration with the grant agreement No. 607000, as well as the Luxembourg Institute of Science and Technology, LIST. We thank the Luxembourgish Administration des Services Techniques de l'Agriculture (ASTA) for the rainfall time series, as well as the Observatory for Climate and Environment (OCE) of LIST for technical support. We thank Dr. Kai Klepizewski for his advice and involvement during early stages of this research and two anonymous reviewers for constructive and valuable comments that helped us to improve this paper.

730

735 **References**

- Andrés-Doménech, I., Múnera, J. C., Francés, F., and Marco, J. B.: Coupling urban event-based and catchment continuous modelling for combined sewer overflow river impact assessment, *Hydrology and Earth System Sciences*, 14, 2057–2072, <https://doi.org/10.5194/hess-14-2057-2010>, 2010.
- Bach, P. M., Rauch, W., Mikkelsen, P. S., McCarthy, D. T., and Deletic, A.: A critical review of integrated urban water modelling - Urban
740 drainage and beyond, *Environmental Modelling & Software*, 54, 88 – 107, 2014.
- Bachmann-Machnik, A., Meyer, D., Waldhoff, A., Fuchs, S., and Dittmer, U.: Integrating retention soil filters into urban hydrologic models – Relevant processes and important parameters, *Journal of Hydrology*, 559, 442 – 453, <https://doi.org/10.1016/j.jhydrol.2018.02.046>, 2018.
- Baker, L. A., ed.: *The Water Environment of Cities*, Springer, 2009.
- Barbosa, S. M.: Package "mAr": Multivariate AutoRegressive analysis, The Comprehensive R Archive Network, CRAN, 1.1-2 edn., 2015.
- 745 Bastin, L., Cornford, D., Jones, R., Heuvelink, G. B. M., Pebesma, E., Stasch, C., Nativi, S., Mazzetti, P., and Williams, M.: Managing uncertainty in integrated environmental modelling: The UncertWeb framework, *Environmental Modelling & Software*, 39, 116–134, 2013.
- Beven, K. and Binley, A.: The future of distributed models: model calibration and uncertainty prediction., *Hydrological Processes*, pp. 279–98, 1992.
- 750 Beven, K. and Freer, J.: Equifinality, data assimilation, and uncertainty estimation in mechanistic modelling of complex environmental systems using the GLUE methodology, *Journal of Hydrology*, 249, 11–29, [https://doi.org/10.1016/S0022-1694\(01\)00421-8](https://doi.org/10.1016/S0022-1694(01)00421-8), 2001.
- Beven, K., Leedal, D., and Alcock, R.: Uncertainty and Good Practice in Hydrological Prediction, *VATTEN*, 66, 159–163, 2010.
- Beven, K. J.: *Rainfall-Runoff Modelling: The Primer*, Wiley-Blackwell, second edn., Lancaster University, UK, 2012.
- Blumensaat, F., Stauffer, P., Heusch, S., Reussner, F., Schütze, M., Seiffert, S., Gruber, G., Zawilski, M., and Rieckermann, J.: Water
755 quality-based assessment of urban drainage impacts in Europe where do we stand today?, *Water Science & Technology*, 66, 304, <https://doi.org/10.2166/wst.2012.178>, <http://dx.doi.org/10.2166/wst.2012.178>, iWA Publishing, 2012.
- Boos, D., Matthew, K., and Osborne, J.: Monte.Carlo.se: Monte Carlo Standard Errors, <https://CRAN.R-project.org/package=Monte.Carlo.se>, r package version 0.1.0, 2019.
- Boos, D. D.: Introduction to the Bootstrap and World, *Statistical Science*, 18, 168–174, institute of Mathematical Statistics, 2003.
- 760 Boos, D. D. and Osborne, J. A.: Assessing Variability of Complex Descriptive Statistics in Monte Carlo Studies Using Resampling Methods, *International Statistical Review*, 83, 228–238, <https://doi.org/10.1111/insr.12087>, 2015.
- Breinholt, A., Moller, J. K., Madsen, H., and Mikkelsen, P. S.: "A formal statistical approach to representing uncertainty in rainfall–runoff modelling with focus on residual analysis and probabilistic output evaluation – Distinguishing simulation and prediction", *Journal of Hydrology*, pp. 36–52, 2012.
- 765 Brombach, H., Weiss, G., and Fuchs, S.: A new database on urban runoff pollution: comparison of separate and combined sewer systems, *Water Science and Technology*, 51, 119–128, <https://doi.org/10.2166/wst.2005.0039>, 2005.
- Brown, J. D.: Knowledge, uncertainty and physical geography: Towards the development of methodologies for questioning belief, *Transactions of the Institute of British Geographers*, 29, 367–381, <https://doi.org/10.1111/j.0020-2754.2004.00342.x>, 2004.
- Cecinati, F., Moreno-Ródenas, A. M., Rico-Ramirez, M. A., ten Veldhuis, M. C., and Langeveld, J. G.: Considering rain gauge uncertainty
770 using kriging for uncertain data, *Atmosphere*, 9, 1–17, <https://doi.org/10.3390/atmos9110446>, 2018.
- Datta, A. R.: Evaluation of Implicit and Explicit Methods of Uncertainty Analysis on a Hydrological Modeling, Ph.D. thesis, University of Windsor, Canada, 2011.

- Deletic, A., Dotto, C., McCarthy, D., Kleidorfer, M., Freni, G., Mannina, G., Uhl, M., Henrichs, M., Fletcher, T., Rauch, W., Bertrand-Krajewski, J., and Tait, S.: Assessing uncertainties in urban drainage models, *Physics and Chemistry of the Earth*, 42-44, 3–10, 775 <https://doi.org/10.1016/j.pce.2011.04.007>, 2012.
- DHI: MIKE11, A modeling system for rivers and channels, Reference Manual, DHI Water and Environment, 2017.
- Diaz-Fierros T, F., Puerta, J., Suarez, J., and Diaz-Fierros V, F.: Contaminant loads of CSOs at the wastewater treatment plant of a city in NW Spain, *Urban Water*, 4, 291 – 299, [https://doi.org/https://doi.org/10.1016/S1462-0758\(02\)00020-1](https://doi.org/https://doi.org/10.1016/S1462-0758(02)00020-1), 2002.
- Efron, B.: Bootstrap methods: Another look at the Jackknife, *The Annals of Statistics*, 7, 1–26, 1979.
- 780 Eränen, D., Oksanen, J., Westerholm, J., and Sarjakoski, T.: A full graphics processing unit implementation of uncertainty-aware drainage basin delineation, *Computers & Geosciences*, 73, 48 – 60, <https://doi.org/https://doi.org/10.1016/j.cageo.2014.08.012>, 2014.
- Evers, P., Heinz, H., Hanitsch, P. H., Koch, G., Naupold, L., Tochtermann, W., Tornow, M., Zander, B., Mahret, H., and Warnow, D.: ATV-DVWK-A 134E: Planning and Construction of Wastewater Pumping Stations, Tech. rep., DWA, Germany, 2000.
- Gasperi, J., Zgheib, S., Cladière, M., Rocher, V., Moilleron, R., and Chebbo, G.: Priority pollutants in urban stormwater: Part 2 – Case of 785 combined sewers, *Water Research*, 46, 6693 – 6703, <https://doi.org/10.1016/j.watres.2011.09.041>, special Issue on Stormwater in urban areas, 2012.
- Gräler, B., Pebesma, E., and Heuvelink, G.: Spatio-Temporal Interpolation using {gstat}, *The R Journal*, 8 (1), 204–218, <http://journal.r-project.org/archive/2016-1/na-pebesma-heuvelink.pdf>, 2016.
- Hager, W. H.: Wastewater hydraulics, Springer, second edn., <https://doi.org/10.1080/00221686.2011.614723>, 2010.
- 790 Hammersley, J. and Handscomb, D.: Monte Carlo Methods, Methuen & Co Ltd, London, 1964.
- Heip, L., Assel, J. V., and Swartentenbroekx, P.: Sewer flow quality modelling, *Water Science & Technology*, 36, 177–184, 1997.
- Heuvelink, G. B. M.: Error Propagation in Environmental Modelling with GIS, Reserach Monographs in GIS, CRC Press Taylor & Francis Group, 1998.
- Heuvelink, G. B. M., Brown, J. D., and van Loon, E. E.: A probabilistic framework for representing and simulating uncertain environmental 795 variables, *International Journal of Geographical Information Science*, 21, 497–513, <https://doi.org/10.1080/13658810601063951>, 2007.
- House, M. A., Ellis, J. B., Herricks, E. E., Hvitved-Jacobsen, T., Seager, J., Lijklema, L., Aalderink, H., and Clifforde, I. T.: Urban Drainage – Impacts on Receiving Water Quality, *Water Science and Technology*, 27, 117, <https://doi.org/10.2166/wst.1993.0293>, <http://dx.doi.org/10.2166/wst.1993.0293>, 1993.
- Huang, H., Xiao, X., Yan, B., and Yang, L.: Ammonium removal from aqueous solutions by using natural Chinese (Chende) zeolite as 800 adsorbent, *Journal of Hazardous Materials*, 175, 247–252, <https://doi.org/10.1016/j.jhazmat.2009.09.156>, 2010.
- Hutton, C., Vamvakiridou-Lyroudia, L., Kapelan, Z., and Savic, D.: Uncertainty Quantification and Reduction in Urban Water Systems (UWS) Modelling: Evaluation Report, Tech. rep., The European Commission, 2011.
- IFAK: SIMBA (Simulation of Biological Wastewater Systems): Manual and Reference, Tech. rep., Institut für Automation und Kommunikation e. V, Magdeburg, Germany, 2007.
- 805 Jerves-Cobo, R., Benedetti, L., Amerlinck, Y., Lock, K., De Mulder, C., Van Butsel, J., Cisneros, F., Goethals, P., and Nopens, I.: Integrated ecological modelling for evidence-based determination of water management interventions in urbanized river basins: Case study in the Cuenca River basin (Ecuador), *Science of the Total Environment*, 709, <https://doi.org/10.1016/j.scitotenv.2019.136067>, 2020.
- Kalman, R. E.: A new approach to linear filtering and prediction problems, *Transactions of the American Society of Mechanical Engineers: Journal of Basic Engineering*, 82D, 35–45, 1960.
- 810 Kalos, M. H. and Whitlock, P. A.: Monte Carlo Methods, Wiley-Blackwell, 2 edn., 2008.

- Katukiza, A. Y., Ronteltap, M., Niwagaba, C. B., Kansime, F., and Lens, P. N. L.: Grey water characterisation and pollutant loads in an urban slum, *Int. J. Environ. Sci. Technol.*, 12, 423–436, <https://doi.org/10.1007/s13762-013-0451-5>, <http://dx.doi.org/10.1007/s13762-013-0451-5>, 2014.
- 815 Kleidorfer, M. and Rauch, W.: An application of Austrian legal requirements for CSO emissions, *Water Science & Technology*, 64, 1081, <https://doi.org/10.2166/wst.2011.560>, 2011.
- Kuczera, G. and Parent, E.: Monte Carlo assessment of parameter uncertainty in conceptual catchment models: The Metropolis algorithm, *Journal of Hydrology*, 211, 69–85, [https://doi.org/10.1016/S0022-1694\(98\)00198-X](https://doi.org/10.1016/S0022-1694(98)00198-X), 1998.
- Leopold, U., Heuvelink, G. B. M., Tiktak, A., Finke, P. A., and Schoumans, O.: Accounting for change of support in spatial accuracy assessment of modelled soil mineral phosphorous concentration, *Geoderma*, 130, 368–386, 2006.
- 820 Litrico, X. and Fromion, V.: *Modeling and Control of Hydroystems*, Springer, <https://doi.org/10.1017/CBO9781107415324.004>, 2009.
- Luetkepohl, H.: *New Introduction to Multiple Time Series Analysis*, Springer, 2005.
- Marwick, B. and Krishnamoorthy, K.: *cvequality: Tests for the Equality of Coefficients of Variation from Multiple Groups*, <https://github.com/benmarwick/cvequality>, r package version 0.2.0, 2019.
- 825 McMillan, H., Jackson, B., Clark, M., Kavetski, D., and Woods, R.: Rainfall uncertainty in hydrological modelling: An evaluation of multiplicative error models, *Journal of Hydrology*, 400, 8394, <https://doi.org/10.1016/j.jhydrol.2011.01.026>, <http://dx.doi.org/10.1016/j.jhydrol.2011.01.026>, 2011.
- Miskewitz, R. and Uchrin, C.: In-Stream Dissolved Oxygen Impacts and Sediment Oxygen Demand Resulting from Combined Sewer Overflow Discharges, *Journal of Environmental Engineering*, 139, 1307–1313, [https://doi.org/10.1061/\(ASCE\)EE.1943-7870.0000739](https://doi.org/10.1061/(ASCE)EE.1943-7870.0000739), 2013.
- 830 Moreno-Rodenas, A. M., Tscheikner-Gratl, F., Langeveld, J. G., and Clemens, F. H.: Uncertainty analysis in a large-scale water quality integrated catchment modelling study, *Water Research*, 158, 46 – 60, <https://doi.org/10.1016/j.watres.2019.04.016>, 2019.
- Neumann, M. B.: *Uncertainty Analysis for Performance Evaluation and Design of Urban Water Infrastructure*, Ph.D. thesis, Swiss Federal Institute of Technology, ETH Zurich, 2007.
- Nol, L., Heuvelink, G. B. M., a. Veldkamp, de Vries, W., and Kros, J.: Uncertainty propagation analysis of an N₂O emission model at the plot and landscape scale, *Geoderma*, 159, 9–23, 2010.
- 835 on Environmental, C. and atural Resources - CENR: *An Assessment of Coastal Hypoxia and Eutrophication in U.S. Waters*, Tech. rep., NSTC, National Science and Technology Council, 2003.
- R-Core-Team and contributors worldwide: *The R Stats Package, The R Project for Statistical Computing*, 3.5.0 edn., <https://stat.ethz.ch/R-manual/R-devel/library/stats/html/00Index.html>, 2017.
- Refsgaard, J. C.: Parameterisation, calibration and validation of distributed hydrological models, *J. Hydrol.*, 1997.
- 840 Refsgaard, J. C., van der Sluijs, J. P., Højberg, A. L., and Vanrolleghem, P. A.: Uncertainty in the environmental modelling process - A framework and guidance, *Environmental Modelling and Software*, 22, 1543–1556, <https://doi.org/10.1016/j.envsoft.2007.02.004>, 2007.
- Renard, B., Kavetski, D., Kuczera, G., Thyer, M., and Franks, S. W.: Understanding predictive uncertainty in hydrologic modeling: The challenge of identifying input and structural errors, *Water Resources Research*, 46, <https://doi.org/10.1029/2009wr008328>, 2010.
- 845 Saltelli, A., Ratto, M., Andres, T., Campolongo, F., Cariboni, J., Gatelli, D., Saisana, M., and Tarantola, S.: *Global sensitivity analysis : the primer*, John Wiley & Sons, Ltd, Chichester, England, <https://doi.org/10.1002/9780470725184>, 2008.
- Sandric, I., Ionita, C., Chitu, Z., Dardala, M., Irimia, R., and Furtuna, F. T.: Using CUDA to accelerate uncertainty propagation modelling for landslide susceptibility assessment, *Environmental Modelling & Software*, 115, 176 – 186, <https://doi.org/https://doi.org/10.1016/j.envsoft.2019.02.016>, 2019.

- 850 Sriwastava, A. K., Tait, S., Schellart, A., Kroll, S., Dorpe, M. V., Assel, J. V., and Shucksmith, J.: Quantifying Uncertainty in Simulation of
Sewer Overflow Volume, *Journal of Environmental Engineering*, 144, 04018 050, [https://doi.org/10.1061/\(ASCE\)EE.1943-7870.0001392](https://doi.org/10.1061/(ASCE)EE.1943-7870.0001392),
2018.
- Statec: Statistics Portal of the Grans-Duchy of Luxembourg, <https://statistiques.public.lu>, 2020.
- Steinel, A. and Margane, A.: Best management practice guideline for wastewater facilities in karstic areas of Lebanon with special respect
to the protection of ground- and surface waters, Tech. Rep. 2, Federal Ministry for Economic Cooperation and Development, Project:
855 Protection of Jeita Spring, 2011.
- Sten, J., Lilja, H., Hyvälouma, J., Westerholm, J., and Aspñäs, M.: Parallel flow accumulation algorithms for graphical processing units with
application to RUSLE model, *Computers & Geosciences*, 89, 88 – 95, <https://doi.org/https://doi.org/10.1016/j.cageo.2016.01.006>, 2016.
- Toffol, S. D.: Sewer system performance assessment - an indicators based methodology, Ph.D. thesis, Universität Innsbruck, Universität
Innsbruck, Innsbruck, Austria, 2006.
- 860 Torres-Matallana, J., Leopold, U., and Heuvelink, G.: stUPscales: an R-package for spatio-temporal Uncertainty Propagation across multiple
scales with examples in urban water modelling, *Water*, 10(7), 1–30, <https://doi.org/https://doi.org/10.3390/w10070837>, 2018a.
- Torres-Matallana, J., Leopold, U., and Heuvelink, G.: stUPscales: Spatio-Temporal Uncertainty Propagation Across Multiple Scales, <https://CRAN.R-project.org/package=stUPscales>, r package version 1.0.5.0, 2019.
- Torres-Matallana, J. A., Leopold, U., and Heuvelink, G. B. M.: Multivariate autoregressive modelling and conditional simulation of precipi-
865 tation time series for urban water models, *European Water*, 57, 299–306, 2017.
- Torres-Matallana, J. A., Klepizewski, K., Leopold, U., and Heuvelink, G.: EmiStatR: a simplified and scalable urban water quality model
for simulation of combined sewer overflows, *Water*, 10(6), 1–24, <https://doi.org/10.3390/w10060782>, 2018b.
- Tscheikner-Gratl, F., Lepot, M., Moreno-Rodenas, A., and Schellart, A.: QUICS Deliverable 6.7: A Framework for the application of un-
certainty analysis, Tech. rep., Delft University of Technology, University of Sheffield and CH2M, <https://zenodo.org/record/1240926>,
870 2017.
- Tscheikner-Gratl, F., Bellos, V., Schellart, A., Moreno-Rodenas, A., Muthusamy, M., Langeveld, J., Clemens, F., Benedetti, L., Rico-Ramirez,
M. A., de Carvalho, R. F., Breuer, L., Shucksmith, J., Heuvelink, G. B., and Tait, S.: Recent insights on uncertainties present in integrated
catchment water quality modelling, *Water Research*, 150, 368 – 379, <https://doi.org/10.1016/j.watres.2018.11.079>, 2019.
- van der Keur, P., Henriksen, H. J., Refsgaard, J. C., Brugnach, M., Pahl-Wostl, C., Dewulf, A., and Buiteveld, H.: Identification of ma-
875 jor sources of uncertainty in current IWRM practice. Illustrated for the Rhine Basin, *Water Resources Management*, 22, 1677–1708,
<https://doi.org/10.1007/s11269-008-9248-6>, 2008.
- Viana da Silva, A. M. E., Bettencourt da Silva, R. J. N., and Camões, M. F. G. F. C.: Optimization of the determination of chemical oxygen
demand in wastewaters, *Analytica Chimica Acta*, 699, 161–169, <https://doi.org/10.1016/j.aca.2011.05.026>, <http://dx.doi.org/10.1016/j.aca.2011.05.026>, 2011.
- 880 Vrugt, J. A. and Robinson, B. A.: Improved evolutionary optimization from genetically adaptive multimethod search, *Proceedings of the
National Academy of Sciences of the United States of America*, 2007.
- Vrugt, J. A., Gupta, H. V., Bastidas, L. A., Bouten, W., and Sorooshian, S.: Effective and efficient algorithm for multiobjective optimization
of hydrologic models, *Water Resources Research*, 39, <https://doi.org/10.1029/2002wr001746>, <http://dx.doi.org/10.1029/2002WR001746>,
2003a.
- 885 Vrugt, J. A., Gupta, H. V., Bouten, W., and Sorooshian, S.: A Shuffled Complex Evolution Metropolis algorithm for optimization and
uncertainty assessment of hydrologic model parameters, *Water Resources Research*, 39, 2003b.

- Vrugt, J. A., ter Braak, C. J. F., Clark, M. P., Hyman, J. M., and Robinson, B. A.: Treatment of input uncertainty in hydrologic modeling: Doing hydrology backward with Markov chain Monte Carlo simulation, *Water Resources Research*, 44, 1–15, <https://doi.org/10.1029/2007WR006720>, 2008.
- 890 Wadoux, A.-C., Brus, D., Rico-Ramirez, M., and Heuvelink, G.: Sampling design optimisation for rainfall prediction using a non-stationary geostatistical model, *Advances in Water Resources*, 107, 126–138, <https://doi.org/10.1016/j.advwatres.2017.06.005>, cited By 13, 2017.
- Walker, W., Harremoës, P., Rotmans, J., van der Sluijs, J., van Asselt, M., Janssen, P., and Kreyer von Krauss, M.: Defining Uncertainty: A Conceptual Basis for Uncertainty Management in Model-Based Decision Support, *Integrated Assessment*, 4, 5–17, <https://doi.org/10.1076/iaij.4.1.5.16466>, 2003.
- 895 Webster, R. and Heuvelink, G. B. M.: The Kalman filter for the pedologist's tool kit, *European Journal of Soil Science*, 57, 758–773, <https://doi.org/10.1111/j.1365-2389.2006.00879.x>, 2006.
- Webster, R. and Oliver, M.: *Geostatistics for Environmental Scientists*, Wiley, 2nd edn., 2007.
- Welker, A.: Emissions of pollutant loads from combined sewer systems and separate sewer systems – Which sewer system is better, in: 11th International Conference on Urban Drainage, edited by ICUD, Edinburgh, Scotland, UK, 2008.
- 900 Yu, L., Rozemeijer, J. C., Broers, H. P., van Breukelen, B. M., Middelburg, J. J., Ouboter, M., and van der Velde, Y.: Drivers of nitrogen and phosphorus dynamics in a groundwater-fed urban catchment revealed by high frequency monitoring, *Hydrology and Earth System Sciences Discussions*, 2020, 1–22, <https://doi.org/10.5194/hess-2020-34>, <https://www.hydrol-earth-syst-sci-discuss.net/hess-2020-34/>, 2020.
- Zhou, X., Polcher, J., Yang, T., and Huang, C.-S.: A new uncertainty estimation approach with multiple datasets and implementation for various precipitation products, *Hydrology and Earth System Sciences*, 24, 2061–2081, <https://doi.org/10.5194/hess-24-2061-2020>, <https://www.hydrol-earth-syst-sci.net/24/2061/2020/>, 2020.
- 905 Zoppou, C.: Review of urban storm water models, *Environmental Modelling and Software*, 16, 195–231, [https://doi.org/10.1016/S1364-8152\(00\)00084-0](https://doi.org/10.1016/S1364-8152(00)00084-0), 2001.