

## Reply to reviewer's comments

1. *For the discussion on the relationship between lake evaporation and lake-level variation, the sub-surface water inflow and outflow present the highest uncertainties, but are lacking and considered to be not important in the manuscript. But this may not be the case. From my own experience, the subsurface flows are very important for lake-level variations and should be considered with a great attention. Considering the importance of sub surface flows, the related contents can not appear as results in “abstract” and “conclusions”. As most of the contents focus on the Paiku Co, the last sentence in abstract should be revised to exclude the information on “deep and shallow lakes and the southern and northern lakes”*

10 Reply: We appreciate the reviewer's constructive comments very much. At present, it is still difficult to accurately quantify the contribution of sub-surface inflow and outflow to lake level variations at Paiku Co. One solution is to investigate the lake water budget during the ice-covered season because both lake water input (snowfall, runoff) and output (sublimation) are very limited. If there is significant sub-surface inflow and outflow, the lake level should increase or decrease considerably. According to the in-situ lake level observations we have acquired between 2013 and 2020, we found that there is no  
15 significant lake level variations during the ice covered season. Taking 2013/2014 as an example, the lake level decreased slightly at a rate of 13 mm per month between mid-January and mid-April when the lake surface frozen up (Lei et al., 2018). During this period, surface runoff was still negligible because the melting of glacier and snow has not started yet. Lake sublimation is estimated to be ~40 mm per month on average according to the results at Nam Co (Wang et al., 2019). Based on lake water budget, we can conclude that sub-surface inflow to Paiku Co should be less than the rate of lake ice  
20 sublimation, which is much less than the seasonal lake level variations. Therefore, we do not consider the contribution of sub-surface inflow in this study. We have addressed this in line 137-145 in the revision.

About the abstract and conclusion, we agree with the reviewer's suggestion because most of the contents focus on Paiku Co. We have deleted the information on “deep and shallow lakes and the southern and northern lakes” in the abstract and conclusion.

25

Lei, Y., Yao, T., Yang, K., Bird B.W., Tian, L., Zhang, X., Wang W., Xiang Y., Dai, Y.F., Lazhu, Zhou, J., Wang, L.: An integrated investigation of lake storage and water level changes in the Paiku Co basin, central Himalayas, *J. Hydrol.*, 562, 599–608.

30 Wang, B., Ma, Y., Wang, Y., Su, Z., Ma, W.: Significant differences exist in lake-atmosphere interactions and the evaporation rates of high-elevation small and large lakes, *J. Hydrol.*, 573, 220–234, 2019.

2. *In section 3.2, ‘ the main components of energy budget over the lake surface, including solar radiation, ...f the lake body’, generally all the three variables of ‘ solar radiation, atmospheric longwave radiation to the lake and upward longwave radiation from the lake body’ belongs to the radiation budget, rather than energy budget in references. Thus, I suggest to revise ‘energy budget’ to radiation budget’ in this sentence.*

35

Reply: We agree with reviewer's suggestion and have revised this sentence in the revision.

# Contrasting hydrological and thermal intensities determine seasonal lake-level variations – A case study at Paiku Co on the southern Tibetan Plateau

Yanbin Lei<sup>1,2</sup>, Tandong Yao<sup>1,2</sup>, Kun Yang<sup>1,2,3</sup>, Lazhu<sup>1</sup>, Yaoming Ma<sup>1,2,4</sup>, Broxton W. Bird<sup>5</sup>

<sup>1</sup> Key Laboratory of Tibetan Environment Changes and Land Surface Processes, Institute of Tibetan Plateau Research, Chinese Academy of Sciences, Beijing 100101, China

<sup>2</sup> CAS Center for Excellence in Tibetan Plateau Earth System, Beijing, 100101, China

<sup>3</sup> Department of Earth System Science, Tsinghua University, Beijing 10084, China

<sup>4</sup> University of Chinese Academy of Sciences, Beijing, China

<sup>5</sup> Department of Earth Sciences, Indiana University-Purdue University Indianapolis (IUPUI), Indianapolis, IN 46202, USA

Correspondence to: Yanbin Lei (leiyb@itpcas.ac.cn)

**Abstract.** Evaporation from hydrologically-closed lakes is one of the largest components of lake water budget, however, its effects on seasonal lake-level variations remain unclear on the Tibetan Plateau (TP) due to a lack of comprehensive observations. In this study, weekly lake evaporation and its effects on seasonal lake-level variations are investigated at Paiku Co on the southern TP using in-situ observations of thermal structure and hydrometeorology (2015-2018). Lake evaporation ~~at~~from Paiku Co was estimated to be  $975 \pm 142$  mm during the ice-free period (May to Dec), characterized by low values of  $1.7 \pm 0.6$  mm/day during the pre-monsoon season (May to Jun), high values of  $5.5 \pm 0.6$  mm/day during the post-monsoon season (Oct to Dec) and intermediate values of  $4.0 \pm 0.6$  mm/day during the monsoon season (Jul to Sep). There was ~5 months lag between the maximum net radiation (Jun) and maximum lake evaporation (Nov). These results indicate that the seasonal pattern of lake evaporation ~~at~~from Paiku Co was significantly affected by the large lake heat storage. Contrasting hydrological and thermal intensities may play an important role in the large amplitude of seasonal lake-level variations at deep lakes like Paiku Co. High inflow from monsoon precipitation and glacier melting and moderate lake evaporation, for instance, drove rapid lake-level increase during the monsoon season. In contrast, high lake evaporation and reduced inflow caused lake level to decrease significantly during the post-monsoon season. This study implies that lake evaporation may play an important role in the different amplitudes of seasonal lake-level variations on the TP-between-deep-and-shallow-lakes and-between-the-southern-and-northern-TP.

## 1 Introduction

70 The Tibetan Plateau (TP) hosts the greatest concentration of high-altitude inland lakes in the world. More than 1200 lakes (>1 km<sup>2</sup>) are distributed on the TP, with a total lake area of more than 45000 km<sup>2</sup> in the 2010s (Ma et al., 2011; Zhang et al., 2014a). During the past few decades, lakes on the TP experienced significant changes in response to climate warming, increased precipitation, glacier mass loss and permafrost thawing (Song et al., 2014; Lei and Yang, 2017). Most lakes on the interior TP have expanded dramatically since the late 1990s, in contrast with lake contraction on the southern TP (Lei et al., 75 2014). For most lakes across the TP, water temperature has also increased (Zhang et al., 2014b; Su et al., 2019), while lake ice duration has shortened considerably at the same time in response to rapid climate warming since the 1970s (Ke et al., 2013; Cai et al., 2017).

Compared to numerous studies of inter-annual to decadal lake changes, seasonal lake-level changes and the associated hydrological processes on the TP are less understood (Song et al., 2014). Phan et al. (2012) showed that seasonal lake-level 80 variations on the southern TP were much larger than those on the northern and western TP. In-situ observations gave additional details of seasonal lake-level variations, showing that large lakes usually exhibited considerably greater seasonal lake-level variations relative to small lakes (Lei et al., 2017). For example, lake levels at Zhari Namco and Nam Co, two large and deep lakes on the central TP (Wang et al., 2009, 2010), increased significantly by 0.3~0.6 m during the summer monsoon season and decreased by a similar amount during the post-monsoon season. Two nearby relatively small and 85 shallow lakes, Dawa Co and Bam Co, exhibited considerably less lake-level variability despite showing similar seasonal cycle (Lei et al., 2017). What caused these lake systems to experience different amplitudes of seasonal lake-level variations remains unstudied. Understanding how large and small lakes respond differently to similar forcing mechanisms is critical for understanding how continued warming will impact water storage on the TP. This work additionally may provide insight into discrepancies in lake-level reconstructions from large and small lakes on the TP that are used to reconstruct and understand 90 long-term relationships between climate and water storage.

Evaporation from hydrologically-closed lakes is one of the largest components of lake water budget (Li et al., 2001; Morrill, 2004; Xu et al., 2009; Yu et al., 2011). Both the eddy covariance system and energy budget method are effective ways to determine lake evaporation (Blanken et al., 2000; Winter et al., 2003; Rouse et al., 2003, 2008; Lenters et al., 2005; Rosenberry et al., 2007; Giannoiu and Antonopoulos, 2007; Zhang and Liu, 2014; Sugita, 2014, 2019, 2020). On the TP, 95 several studies have used eddy covariance system to estimate lake evaporation, e.g. Nogrings Lake (Li et al., 2015), Qinghai Lake (Li et al., 2016), Nam Co (Wang et al., 2017, 2019), Siling Co (Guo et al., 2016). Their results show that the seasonal pattern of lake evaporation is significantly affected by lake heat storage, especially for deep lakes. At Nam Co, for example, Haginoya et al. (2009) found that the sensible and latent heat fluxes were small during the spring and early summer, and increased considerably during the autumn and early winter due to the large heat storage. However, lake evaporation during 100 the late autumn and early winter is not typically investigated through eddy covariance system because it is difficult to maintain the measurement platform due to the influence of lake ice. Likewise, energy budget studies that investigate changes

in lake heat storage and its effects on lake evaporation have been limited on the TP. Although the energy budget method needs significant personnel commitment for fieldwork, it is more suitable for accurate, long-term monitoring of lake evaporation (Winter et al., 2003).

105 To fully understand the process that affects lake water budget on the TP, we conducted comprehensive in-situ observations  
at Paiku Co, a deep alpine lake on the southern TP since 2013. In this study, lake evaporation ~~at~~from Paiku Co during the  
ice-free period is estimated through energy budget (Bowen ratio) method and its effects on seasonal lake-level variations are  
investigated. We first ~~address~~show the thermal regime and changes in lake heat storage based on three years' water  
temperature profile data (2015-2018), then investigate energy budget and latent and sensible heat fluxes over the lake surface,  
110 and finally analyze the seasonal pattern of lake evaporation and its impact on seasonal lake-level variations. Meanwhile, the  
effects of lake evaporation on the different amplitude of seasonal lake-level changes between deep and shallow lakes and  
between the southern and northern TP is also discussed.

## 2 Methodology

### 2.1 Site description

115 Paiku Co (85°35.12' E, 28°53.52' N, 4590m a.s.l) is a hydrologically closed lake on the southern TP with a surface area of  
280 km<sup>2</sup>, watershed area of 2376 km<sup>2</sup>, and salinity of 1.7 g/L. Bathymetry survey showed that the lake has mean water depth  
of 41.1 m with the maximum water depth of 72.8 m (Lei et al., 2018). Glaciers are widely developed to the south of the lake,  
with a total area of ~123 km<sup>2</sup>. Dozens of paleo-shorelines are visible around Paiku Co. The highest paleo-shoreline is ~80 m  
above the modern lake level. Wünnemann et al. (2015) found that there was a close relationship between glacier dynamics  
and lake-level changes since the Last Glacial Maximum (LGM). The lake has been shrinking since the 1970s (Nie et al.,  
120 2013; Dai et al., 2013). Between 1972 and 2015, lake level at Paiku Co decreased by  $3.7 \pm 0.3$  m and water storage reduced  
by 8.5 % (Lei et al., 2018). According to rain gauge data collected between 2013 and 2016, annual rainfall in Paiku Co basin  
fluctuated significantly year to year. Typical annual precipitation varied between 150~200 mm, indicating that the lake basin  
belongs to the dry belt in the northern slope of Himalaya mountains (Wang et al., 2019). The mean annual temperature was  
125 4.4°C between June 2015 and May 2016 (Lei et al., 2018).

### 2.2 Data acquisition

In-situ observations, including lake water temperature, hydrometeorology, lake level and runoff, were carried out in Paiku  
Co basin. HOBO water-temperature loggers (U22-001, Onset Corp., USA) were used to monitor water temperature with an  
accuracy of  $\pm 0.2$  °C. Two water-temperature profiles were ~~set up~~monitored in Paiku Co's southern (0-42 m in depth) and  
130 northern (0-72 m in depth) basins (Fig. 1). In the southern basin, water temperature was monitored at the depths of 0.4 m, 5m,  
10 m, 15 m, 20 m, 30 m and 40 m. In the northern basin, water temperature was monitored at the depths of 0.4 m, 10 m, 20  
m, 40 m, 50 m, 60 m and 70 m. Since lake level fluctuates seasonally, the depth of water-temperature loggers may also have

fluctuated in a range of ~~0~0.45-0.8~~ m. Water temperatures were recorded at an interval of 1 hour and daily values were used to investigate lake thermal structure and changes in lake heat storage. Three years' observational data from June 2015 to May 2018 from the southern basin was acquired, while only one year's data (June 2016 and May 2017) from the northern basin was acquired.

>>Fig. 1<<

Air temperature and relative humidity above the shoreline were monitored since June 2015 using HOBO air-temperature and humidity loggers (U12-012, Onset Corp., USA). The instrument has an accuracy of 0.35 °C for air temperature and 2.5% for relative humidity. Two loggers were installed in an outcrop ~2 m above the lake surface. One is located in the north shoreline, the other is located in the central shoreline (Fig. 1). The instruments were under a large rock where there was a hole facing the lake. The monitoring site was ventilated and therefore the meteorological condition over the lake surface can be recorded (Fig. S1). Air temperature and relative humidity were recorded at an interval of 1 hour and daily values were used to calculate Bowen ratio. The related information about hydrometeorology observations in Paiku Co basin are listed in Table 1. There was no data available between February and May 2017 because the instrument battery was too low. The air temperature and humidity measurements in the shoreline were further validated by a simple Automatic Weather Station (AWS) in the Paiku Co's southern center (Section 3.6).

Radiation, including solar radiation and downward longwave radiation to lake, was measured at Qomolangma station for Atmospheric Environmental Observation and Research, Chinese Academy of Sciences (CAS). This station (87°1.22'E, 28°25.23'N, 4276 m a.s.l) is located at the northern slope of Mount Everest, about 150 km east of Paiku Co. The 2 m air temperature, relative humidity, wind speed and radiation were recorded at an interval of 10 min. In this study, daily solar radiation and downward longwave radiation at this station were used to calculate net radiation over the lake surface. The climate conditions between Paiku Co and Qomolangma station were similar, including topography, altitude, precipitation etc. As an important part of lake water budget, runoff was measured at three main rivers, i.e. Daqu, Bulaqu and Barixiongqu (Fig. 1). The water level of the three rivers was recorded at an interval of 1 hour by using HOBO water-level loggers (U20-001-01). Runoff during the pre-monsoon and post-monsoon seasons was measured at least twice a day, including the largest runoff in the afternoon and lowest runoff in the morning during field expedition using a LS1206B propeller-driven current meter (Nanjing Institute of Hydrological Automatization). Meanwhile, lake level was recorded at an interval of 1 hour in the littoral zone of north Paiku Co (Lei et al., 2018). Daily water levels of Paiku Co and its rivers were used to compare with the seasonal pattern of lake evaporation.

### 2.3 Energy budget derived lake evaporation

Lake evaporation was calculated using energy budget (Bowen-ratio) method, which has been described by Winter et al. (2003) and Rosenberry et al. (2007). The energy budget of a lake can be mathematically expressed as:

$$R_{net} = H + LE + S + G + A_v \quad (1)$$

165 where  $R_{net}$  is the net radiation over the lake, H is the sensible heat flux from lake surface, IE is the latent heat utilized for evaporation, S is change in lake heat storage, G is the heat transfer between lake water and bottom sediment, and  $A_v$  is the energy advected into lake water. The units used for the terms of Eq (1) are  $W \cdot m^{-2}$ .

170 ~~The energy advection into the lake ( $A_v$ ) was~~ can be roughly estimated ~~by using~~ according to total river discharge and the water temperature difference between river and lake. Lake water temperature was similar to that of river between April and June, but 2-6°C higher between July and December (Fig. S3). As a deep lake, total river discharge to Paiku Co was about 800-1000 mm water equivalent to lake level, accounting for 2-2.5% of total lake storage. The river discharge can accumulatively decrease lake water temperature by ~0.1 °C in summer, which corresponds to 2.1  $W \cdot m^{-2}$  of heat flux between July and September and 0.07 mm/day of lake evaporation. Therefore, we do not consider the impact of river discharge and precipitation on the energy budget at Paiku Co ~~is because of its relatively small contribution and can be neglected~~ to energy budget of Paiku Co.

175 ~~Meanwhile, the heat transfer between lake water and bottom sediment (G) is also neglected because groundwater discharge is usually considered to be much less than surface runoff and geothermal is not detected at the lake bottom of Paiku Co. Although it is still challenging to accurately quantify groundwater inflow, lake level variations during the ice-covered season can give us some evidence because both lake water input (snowfall and runoff) and output (sublimation) are very limited.~~ According to in-situ lake level observations, we found that there was no significant lake level variation during the ice-covered season. Taking 2013/2014 as an example, the lake level decreased slightly at a rate of 13 mm per month between mid-January and mid-April when the lake surface frozen up (Lei et al., 2018). Lake ice sublimation is estimated to be ~40 mm per month on average according to the results at Nam Co (Wang et al., 2019). Based on lake water budget, we can conclude that groundwater inflow should be less than the rate of lake ice sublimation, which has very limited impact on energy budget of Paiku Co. Therefore, we do not consider the heat transfer between lake water and bottom sediment (G) during the estimation of energy budget at Paiku Co.

180 The net radiation over the lake ( $R_{net}$ ) can be expressed as the following:

$$R_{net} = R_s - R_{sr} + R_l - R_{lr} - R_w \quad (2)$$

190 where  $R_s$  is solar radiation,  $R_{sr}$  is the reflection of solar radiation from lake surface, which is taken as 0.07  $R_s$  (Gianniou and Antonopoulis, 2007),  $R_l$  is downward atmospheric longwave radiation to lake,  $R_{lr}$  is the reflected longwave radiation from the lake surface, which is taken as 0.03  $R_l$ , and  $R_w$  is the upward longwave radiation from lake. The units of the items in Eq (2) are  $W \cdot m^{-2}$ .

The upward longwave radiation from lake ( $R_w$ ) is approached by the equation:

$$R_w = \varepsilon_a \times \sigma \times (T_w + 273.15)^4 \quad (3)$$

195 where  $\sigma$  is the Stefan-Boltzmann constant ( $=5.67 \times 10^{-8} W \cdot m^{-2} \cdot K^{-4}$ ),  $\varepsilon_a$  is the water emissivity (0.97 for water surface) and  $T_w$  is lake surface temperature (°C). In this study, the water temperature at the depth of 0.4-0.8 m was used to represent the lake surface temperature. Note that the bulk temperature is slightly different from the ‘skin’ temperature (Wilson et al., 2013;

Prats et al., 2018; Sugita et al., 2020). There exists surface warming during the day and surface cooling at night for high elevation lakes. However, the daily difference between them is small during most time of a year because surface water can be mixed quickly by water convection or strong wind in the afternoon and the two uncertainties by surface warming and cooling can cancel each other on daily scale.

The sensible heat flux is related to the evaporative heat flux through the Bowen ratio (Henderson-Sellers, 1984):

$$\beta = \frac{H}{LE} = \gamma \times P \times \frac{T_w - T_a}{e_{sw} - e_d} \quad (4)$$

where  $\beta$  is Bowen ratio,  $T_w$  is lake surface temperature ( $^{\circ}\text{C}$ ),  $T_a$  is air temperature ( $^{\circ}\text{C}$ ) at 2 m high above the water surface,  $e_{sw}$  and  $e_d$  are the saturated vapour pressure (kPa) at the lake surface and the air vapour pressure (kPa) above the lake surface, respectively,  $P$  is air pressure (kPa), and  $\gamma$  is the psychrometric constant,  $6.5 \times 10^{-4} \text{ }^{\circ}\text{C}^{-1}$ . Air temperature, air pressure and relative humidity were monitored at the lake's shoreline. Saturated vapour pressure at the lake surface was calculated according to the lake water temperature at the depth of 0.4-0.8 m in the lake centre. Daily Bowen ratio is calculated in this study.

Changes in lake heat storage ( $S$ ) were calculated according to the detailed lake bathymetry and water temperature profile:

$$S = \frac{\sum_{i=0}^{15} c_w \times \rho_w \times \Delta V_i \times \Delta T_i}{A_l} \quad (5)$$

where  $c_w$  is the specific heat of water ( $\text{J} \cdot \text{kg}^{-1} \cdot \text{K}^{-1}$ ),  $\rho_w$  is water density ( $=1000 \text{ kg} \cdot \text{m}^{-3}$ ),  $\Delta V_i$  is the lake volume at certain depth ( $\text{m}^3$ ), and  $\Delta T_i$  is water temperature change at the same depth,  $A_l$  is lake area ( $\text{m}^2$ ). Changes in lake heat storage were calculated at an interval of 5 m and therefore there are 15 layers in vertical direction (the maximum depth: 72.8 m).  $\Delta V_i$  was acquired according to the 5 m isobath of Paiku Co (Lei et al., 2018).  $\Delta T_i$  was calculated at 5 m interval as the average temperature of the top and bottom layer. Changes in lake heat storage for the bottom water ( $>40$  m) were calculated according to the data in 2016/2017 since there is no data available in the other two years. Lake heat storage, sensible and latent heat fluxes and lake evaporation were calculated at weekly interval in order to reduce their uncertainty caused by the spatial difference of solar radiation and lake water temperature.

## 3 Results and discussion

### 3.1 Thermal regime

Water temperature profiles between 2015 and 2018 show that Paiku Co was thermally stratified between July and October, and fully mixed between November and June in each year of the study period (Fig. 2). Lake water temperature increased rapidly from 2 to 7  $^{\circ}\text{C}$  between April and June due to the high solar radiation. During this warming period, water temperature between the lake surface and bottom was almost same, indicating the lake water was well mixed. The vertical temperature gradient increased considerably ~~in~~ in late June and clear stratification occurred by July. The occurrence of thermal stratification corresponded to a significant reduction in wind speed between July and the middle of October (Fig. S2). Strong

lake surface heating and a reduction in wind speed together contributed to the development of thermal stratification (Wetzel, 2001). During the summer stratification period, the surface water warmed rapidly from 7 to ~13 °C between July and August, while the bottom water warmed much more slowly. As a result, surface water reached its highest temperature ~~in-by~~ late August while bottom water (>40 m) reached to its highest temperature by middle to late October. The thermocline formed between 15 m and 25 m water depth, with the largest temperature difference of 5~6 °C ~~in-by~~ late August.

Lake surface temperature started to decrease gradually since September, while the bottom water continued to warm slowly (Fig. 2). As a result, the vertical temperature gradient decreased gradually. The lake stratification ~~totally-completely~~ broke down ~~in-by~~ late October of each year, corresponding to significantly increased wind speed during this period (Fig. S2). Notably, the breakdown of stratification occurred gradually, with the mixed layer deepening throughout October (Fig. 2). The mixed layer reached 40 m water depth on 13 October, and to 70 m water depth about two weeks later (30 October). Following the complete breakdown of the water column's stratification, the bottom water experienced rapid warming over several days due to its mixing with the warmer water from the upper layer. For example, the water temperature at 70 m water depth remained stable at ~6.9 °C from July to October, but increased abruptly from 6.9 to 8.6 °C over several days (25 October to 30 October). Paiku Co's water column was fully mixed by November as indicated by the identical lake water temperature profiles at the two monitoring sites (Fig. 2, 3). Water temperature of the whole lake decreased gradually from 8.6 to 1 °C from November to January and remained stable at 1-2 °C until March.

~~These e~~Changes in thermal structure indicate that Paiku Co is a dimictic lake, which is similar to Bangong Co (Wang et al., 2014) and Nam Co (Wang et al., 2019), but different from Dagze Co (Wang et al., 2014). The vertical temperature gradients of Paiku Co (~~also including~~and other dimictic lakes on the TP) are considerably lower compared with lakes in other parts of the world, for example Lake Qiaodaohu (area: 580 km<sup>2</sup>, maximum depth: 108 m) in east China (Zhang et al., 2014), Lake Zurich (area: 65 km<sup>2</sup>, maximum depth: 136 m) on the Swiss Plateau (Livingstone, 2003) and Lake Simcoe (area: 580 km<sup>2</sup>, maximum depth: >40 m) in Canada (Stainsby et al., 2011). This may be mainly related to the high elevation of Paiku Co. Due to the elevation effect, the highest air temperature near Paiku Co is only ~12 °C in summer and the highest lake surface temperature is 13 °C, which is considerably lower than lakes in other parts of the world (e.g. Lake Qiaodaohu: ~32 °C, Lake Zurich: ~22 °C and Lake Simcoe: ~22 °C), while the bottom water temperature does not show much difference (e.g. Paiku Co: 7 °C, Lake Qiaodaohu: ~10 °C, Lake Zurich: ~5 °C, and Lake Simcoe: ~4 °C).

>>Fig. 2<<

255 >>Fig. 3<<

### 3.2 Energy budget over the lake surface

The main components of energy-radiation budget over the lake surface, including solar radiation, atmospheric longwave radiation to the lake and upward longwave radiation from the lake body, are shown in Fig. 4a-c. Solar radiation had an annual average of 251.8 W·m<sup>-2</sup> (Fig. 4), which is slightly higher than the TP average due to its lower latitude (Yang et al., 2010). Atmospheric longwave radiation and upward longwave radiation from the lake body had an annual average of 235.8



$\text{W}\cdot\text{m}^{-2}$  and  $336.8 \text{ W}\cdot\text{m}^{-2}$ , respectively. The net radiation over Paiku Co varied seasonally in a range of  $19.0\sim 212.1 \text{ W}\cdot\text{m}^{-2}$ , with an average value of  $125.8 \text{ W}\cdot\text{m}^{-2}$ . Relatively high net radiation occurred between April and August, with the highest value of  $212.1 \text{ W}\cdot\text{m}^{-2}$  in June. Relatively low net radiation occurred between October and February, with the lowest value of  $19.7 \text{ W}\cdot\text{m}^{-2}$  in December.

265 >>Fig. 4<<

Changes in heat storage at Paiku Co were quantified using in-situ observations of water temperature profiles and detailed lake bathymetry (Fig. 4d), which makes it possible to evaluate the impact of lake heat storage on the heat flux over the lake surface. Between April and July, when Paiku Co warmed gradually, the lake water absorbed energy at an average rate of  $128.6 \text{ W}\cdot\text{m}^{-2}$ , accounting for 66.5% of the net radiation during the same period. The lake heat storage increased most rapidly in June, with an average rate of  $191.6 \text{ W}\cdot\text{m}^{-2}$ , accounting for 91.6% of the net radiation during the same period. The lake heat storage reached its peak ~~in~~by late August, when the surface water temperature was highest. Between October and January, when the lake water cooled, the lake released energy to the overlying atmosphere at an average rate of  $137.5 \text{ W}\cdot\text{m}^{-2}$ , which was more than 3 times greater than the net radiation during the same period. The lake heat storage decreased most rapidly in November at an average rate of  $193.6 \text{ W}\cdot\text{m}^{-2}$ , which was about 5 times greater than the net radiation during the same period (Tab. 2).

275 Bowen ratio at Paiku Co varied in a range of  $-0.26\sim +0.37$  between May and December (Fig. 5c). Negative values occurred between May and July, with an average value of  $-0.12$ . Positive values occurred between August and December, with an average value of  $+0.20$ . Latent heat flux was the main component of the total heat flux with an average value of  $112.3 \text{ W}\cdot\text{m}^{-2}$  between May and December. Latent heat flux at Paiku Co was low between May and June with an average of  $38.7 \text{ W}\cdot\text{m}^{-2}$  and was high between October and December with an average of  $153.3 \text{ W}\cdot\text{m}^{-2}$  (Tab. 2). Latent heat flux was positively correlated with the water vapour pressure difference between ~~lake surface and the overlying~~ atmosphere and the underlying surface water ( $r^2=0.41$ ,  $P<0.001$ ). Sensible heat flux had an average value of  $13.3 \text{ W}\cdot\text{m}^{-2}$  between May and December, accounting for  $\sim 11\%$  of latent heat flux. Sensible heat flux was negative between May and July with an average value of  $-5.6 \text{ W}\cdot\text{m}^{-2}$  and was positive between August and December with an average of  $23.0 \text{ W}\cdot\text{m}^{-2}$  (Tab.2). The sensible heat flux was positively correlated with the water temperature difference between ~~atmosphere and the underlying surface~~ surface water ~~and the overlying atmosphere~~ ( $r^2=0.86$ ,  $P<0.001$ ).

285 >>Fig. 5<<

### 3.3 Lake evaporation

Lake evaporation ~~at~~from Paiku Co between May and December was determined using energy budget method (Fig. 6). Lake evaporation between January and April was not determined because part of the lake surface was covered by lake ice which can significantly affect the energy balance over the lake surface. Monthly lake evaporation ~~at~~from Paiku Co during the ice-free season is shown in Fig.6. Lake evaporation was generally low during the pre-monsoon season (May and Jun) with an

average value of 1.7 mm/day. During the monsoon season (Jul to Sep), lake evaporation increased rapidly from 2.9 to 5.1 mm/day. High lake evaporation occurred during the post-monsoon season (Oct to Dec), with an average value of 5.4 mm/day. Total lake evaporation ~~at~~from Paiku Co was estimated to be 975 mm between May and December.

>>Fig. 6<<

Lake evaporation ~~at~~from Paiku Co was in anti-phase with the seasonal pattern of net radiation (Fig. 6), indicating that lake evaporation was not ~~mainly~~directly driven by the input energy. There is ~5 months lag between the maximum net radiation and maximum lake evaporation ~~at~~from Paiku Co due to the large lake heat storage. When the net radiation was high between May and July, most of the energy was used to heat the lake water and only a small part of it was consumed as the latent heat flux, which led to low latent heat flux. When the net radiation was low between October and December, a large amount of heat was released from the lake water as latent heat to the overlying atmosphere, which led to high latent heat flux. Instead, lake evaporation exhibited a similar seasonal pattern with changes in lake heat storage, indicating that lake evaporation was significantly affected by large lake heat storage. Regression analysis shows that lake evaporation ~~at~~from Paiku Co was positively correlated with changes in lake heat storage ( $r^2=0.63$ ,  $P<0.001$ ), but negatively correlated with net radiation ( $r^2=0.22$ ,  $P<0.001$ ). Lake evaporation exhibited similar patterns with the water vapour pressure difference between ~~atmosphere and the underlying surface water~~ surface water and the overlying atmosphere ( $r^2=0.33$ ,  $P<0.001$ ). According to bulk transfer relation, lake evaporation is mainly controlled by humidity gradient in the atmospheric layer (Zhang and Liu, 2014). For deep lakes like Paiku Co, although net radiation and air temperature decreases considerably during the post-monsoon season, lake water temperature was still high due to its large lake heat storage, which led to large water vapor difference and high evaporation. During the pre-monsoon season, the above process was reversed, which led to relatively low lake evaporation.

### 3.4 Impact of lake heat storage on the seasonal pattern of lake evaporation

To further explore the impact of lake heat storage on the seasonal pattern of lake evaporation, we compare lake evaporation ~~at~~from Paiku Co with other lakes on the TP. We only select lakes with eddy covariance system measurements. At Ngoring Lake (area, 610 km<sup>2</sup>; mean depth, 17 m) on the eastern TP, Z. Li et al. (2015) investigated the lake's energy budget and evaporation in 2011-2012, and found that the latent heat at Ngoring Lake was lowest in June, peaked in August and then decreased gradually from September to November. At Qinghai Lake (area, 4430 km<sup>2</sup>; mean depth, 19 m) on the northeast TP, X. Li et al. (2016) conducted studies concerning the lake's energy budget and evaporation in 2013-2015, and found that there was a 2–3 month delay between the maximum net radiation and maximum heat flux. Compared with Paiku Co, there was shorter time lag between net radiation and evaporation ~~at~~from the two relatively shallow lakes. The different phase of lake evaporation among these lakes can be partly attributed to lake heat storage. As we have shown, Paiku Co has a mean water depth of ~41 m and the water column is fully mixed between November and June. This means that Paiku Co as a deep lake can store more energy during the pre-monsoon and monsoon seasons than relatively shallow lakes, and subsequently release more energy to the overlying atmosphere during the post-monsoon season.

At Nam Co, a large and deep lake on the central TP, there have been several studies regarding lake evaporation (Haginoya et al., 2009; Ma et al., 2016; Wang et al., 2017, 2019). Haginoya et al. (2009) found that lake evaporation ~~at-from~~ Nam Co was lowest in May and highest in October. Lake evaporation ~~at-from~~ Nam Co was estimated to be 916~986 mm through Bowen ratio method (Lazhu et al. 2016) and eddy covariance system (Wang et al., 2019). Fig. 6c shows that lake evaporation ~~at~~ ~~from~~ Paiku Co and Nam Co exhibits similar seasonal variations. In fact, although the maximum depth at Nam Co is greater than that at Paiku Co, the average water depth of the two lakes is similar (Wang et al., 2009; Lei et al., 2018), which results in a similar seasonal pattern of changes in lake heat storage and lake evaporation (Fig. 6c). At Siling Co, another large lake on the central TP, monthly lake evaporation varied within a range of 2.4-3.3 mm/day between May and September with a total amount of 417.0 mm during the study period in 2014 (Guo et al., 2016). Although the cumulative evaporation between Paiku Co and Siling Co is similar between May and September, lake evaporation during the post-monsoon season cannot be further compared because the heat flux at Siling Co was not measured after October.

### 3.5 ~~Implications-The effects of lake evaporation~~ ~~for~~ ~~on~~ the seasonal lake-level variations across the TP

The quantification of lake evaporation is important for understanding lake water budget and associated lake-level changes. Compared with the eddy covariance system that is easily affected by lake ice after October/November when the lake surface begins to freeze (Li et al., 2015; Wang et al., 2017; Guo et al., 2016), our results give a full description of lake evaporation during the entire ice-free period. More importantly, our results indicate that for deep lakes on the TP, evaporation during the post-monsoon season can be much higher than that during the pre-monsoon season due to the release of large amount of stored heat, despite both air temperature and net radiation are already low. In this sense, lake evaporation during the post-monsoon season is of great importance to lake water budget and can significantly affect the amplitude of seasonal lake-level changes, especially for deep lakes.

As a monsoon dominated region, Indian summer monsoon around Paiku Co usually starts in middle June and ends in late September (Yu et al., 2016). For most years, more than 80% precipitation occurs during the summer monsoon season. Glacier melting also occurs during the summer monsoon season. In contrast, ~~total~~-heat flux ~~at-from~~ Paiku Co is ~~still~~ low during ~~the summer the pre-monsoon and~~ monsoon seasons ~~and high during the post-monsoon season~~. ~~During the post-monsoon season, precipitation and glacier melting decrease considerably while heat flux from Paiku Co is high~~. This contrasting pattern of hydrological and thermal intensities ~~played-plays~~ an important role in the large amplitude of seasonal lake-level ~~changes-variations~~ at Paiku Co. Precipitation and lake inflow, for instance, are mainly concentrated during the monsoon season, while lake evaporation is still low during this period (Fig. 7a-b), which causes a positive lake water budget and a rapid increase in lake level (40~60 cm). During the post-monsoon season, precipitation and lake inflow are already very low, while lake evaporation ~~was-is~~ high, which ~~leads~~ to a negative lake water budget and a rapid decrease in lake level (~40 cm). The slight lake-level decrease is mainly due to low lake evaporation and lake inflow during the pre-monsoon season.

>>Fig. 7<<

On a broader scale, lake evaporation may affect the different amplitude of seasonal lake-level variations between deep and shallow lakes on the TP. Lei et al (2017) investigated the lake-level seasonality across the TP and found that there were different amplitudes of seasonal lake-level fluctuations even in similar climate regimes. For example, lake level at Nam Co and Zhari Namco, two large and deep lakes on the central TP (Wang et al., 2009, 2010), decreased considerably by 0.3-0.5 m during the post-monsoon season (Fig. 8), while lake level at two nearby small lakes, Bam Co and Dawa Co, decreased slightly by 0.1-0.2 m during the same period. Different seasonal pattern of lake evaporation may play an important role in the amplitude of lake-level seasonality. For deep lakes (e.g. Paiku Co, Nam Co and Zhari Namco), the latent heat flux (lake evaporation) over lake surface may lag the net radiation by several months due to the large heat storage. For this kind of lake, the lake-level drop mainly occurs during the post-monsoon season when lake evaporation is high but lake water input is low. For shallow lakes, the latent heat flux closely follows solar radiation due to relatively small lake heat storage, ~~namely~~ ~~h~~High lake evaporation occurs during the pre-monsoon and monsoon seasons, and low lake evaporation occurs during the post-monsoon season (Morrill et al., 2004). Meanwhile, shallow lakes freeze up 1-2 months earlier than deep lakes. When the lake surface is covered by ice, lake evaporation (sublimation) is significantly reduced (Huang et al., 2019). Consequently, lake level at shallow lakes decreased slowly during the post-monsoon season compared with deep lakes. This phenomenon can also be seen ~~in-at shallow~~some thermokarst lakes on the northern TP (Luo et al., 2015; Pan et al., 2017).

Lake evaporation may also have significant impact on the different amplitude of seasonal lake-level variations between the northern and southern TP. Based on ICESat satellite altimetry data, Phan et al. (2012) showed that there was a larger amplitude of seasonal lake-level variations on the southern TP relative to the northern TP. However, the main causes have not been investigated until now. ~~Generally, it is much colder on the northern TP than the southern TP due to elevation and latitude effects (Maussion et al., 2014).~~Lakes on the northern TP usually freeze up earlier and break up later ~~due to its lower temperature~~ (Kropacek et al., 2013; Maussion et al., 2014), which results in longer ice cover duration on the northern TP (159-209 days) relative to the southern TP (126 days). Longer ice cover duration can considerably reduce lake evaporation during the post-monsoon season (Wang et al., 2020). Meanwhile, lakes on the southern TP are usually larger and deeper than those on the northern TP (e.g. Wang et al., 2009, 2010), which indicates that it can store more energy during the pre-monsoon and monsoon seasons, and release it to the overlying atmosphere during the post-monsoon season. For endorheic lakes, relatively higher lake evaporation during the post-monsoon season may lead to larger lake-level decrease on the southern TP compared with the northern TP. Therefore, the different amplitudes of seasonal lake-level variations between the southern and northern TP can be partly attributed to the different seasonal patterns of lake evaporation. Note that ~~besides lake ice phenology~~ other factors including lake salinity and solar radiation may also have impact on lake evaporation across the TP ~~besides lake ice phenology~~. More studies are still needed to quantify their impact on annual lake evaporation and the seasonal distribution.

>>Fig. 8<<

### 3.6 Uncertainty of lake evaporation

In this study, energy budget and lake evaporation ~~at-from~~ Paiku Co are estimated based on in-situ measurements from a single point. However, studies showed that there are considerable spatial differences in lake evaporation due to the different surface temperature and meteorological conditions over lake surface (Sugita et al., 2014). ~~For example, At-Lake Kasumigaura, Japan,~~ Sugita (2019) showed that lake surface temperature and evaporation differs horizontally ~~at Lake Kasumigaura~~ due to the spatial variations of surface temperature, air temperature and wind speed. Lake evaporation was larger at the centre and the south of Lake Kasumigaura due to the strong wind regime ~~in the part of the lake~~. More detailed measurements ~~from Paiku Co~~ are still needed to investigate the spatial variations of lake evaporation. Here, uncertainty of lake evaporation ~~at Paiku Co~~ is estimated from the following aspects: solar radiation, lake surface temperature, changes in lake heat storage, meteorological data (air temperature and humidity).

Firstly, solar radiation and atmospheric longwave radiation at Qomolangma station were used to represent those at Paiku Co. To evaluate the spatial difference, we made a comparison of solar radiation at Paiku Co and Qomolangma Station by using Hamawari-8 satellite data (Fig. S4; Tang et al., 2019). The results show that daily solar radiation at the two sites exhibited similar seasonal fluctuations ( $R^2=0.55$ ,  $P<0.001$ ). The mean difference of solar radiation at the two sites was estimated to be  $3.8 \text{ W}\cdot\text{m}^{-2}$  ( $\Delta E_1$ ). The uncertainty in the atmospheric longwave radiation is not estimated, but the variations of solar radiation and atmospheric longwave radiation are usually opposite at a site, so their total uncertainty should not exceed the individual uncertainty (Yang et al., 2010).

Secondly, lake water temperature at the depth of 0.4-0.8 m, not lake skin temperature is used to calculate upward longwave radiation. Studies show that lake skin temperature is higher than surface water temperature at daytime, and vice versa at nighttime (Prats et al., 2018). Here Aqua MODIS 8-day lake surface temperature product is used to determine the difference between lake bulk temperature and skin temperature. The product is produced with spatial resolution of about 1 km and the accuracy is estimated to be 1 K under clear sky conditions (Wan, 2013). During the pre-monsoon and monsoon seasons when the lake water got warm, the skin temperature derived from MODIS data was about  $1.2 \text{ }^\circ\text{C}$  higher than lake body temperature. During the post-monsoon season when the lake water got cool, the skin temperature derived from MODIS data was about  $0.05 \text{ }^\circ\text{C}$  higher than lake body temperature. Because MODIS data is easily affected by cloud cover and other factors during the monsoon season, the mean difference of  $0.05 \text{ }^\circ\text{C}$  during the post-monsoon season is used to estimate uncertainty of upward longwave radiation, which corresponded to be  $7.6 \text{ W}\cdot\text{m}^{-2}$  of heat flux ( $\Delta E_2$ ) by using error propagation. Thirdly, uncertainty of changes in lake heat storage mainly comes from the spatial distribution of lake water temperature. A comparison of lake water temperature between Paiku Co's southern and northern basins in 2016/2017 is shown in Fig. S5. Since the northern basin is ~~much~~ deeper than the southern basin, lake water in the northern basin warmed more slowly than that in the southern basin during the pre-monsoon and monsoon seasons, and cooled more slowly during the post-monsoon season. The daily surface water temperature in the southern basin was about  $0.85 \text{ }^\circ\text{C}$  higher on average than that in the northern basin between April and September, but was about  $0.45 \text{ }^\circ\text{C}$  lower on average in November and December (Fig. S5).

Water temperature became spatially uniform at both basins between January and March. Similar spatial difference can also  
425 be found at 10 m depth, indicating that this phenomenon may exist in the entire epilimnion. Uncertainty of changes in lake  
water temperature is estimated to be 0.007 °C/day during the ice-free period, corresponding to 14.3 W·m<sup>-2</sup> of heat flux ( $\Delta E_3$ ).  
Fourthly, air temperature and relative humidity at the shoreline are used to calculate Bowen ratio and lake evaporation. To  
validate its representativeness, we set up a platform (water depth: 19 m; least distance from shoreline: 2 km) in the southern  
centre of Paiku Co in September 2019 and a simple AWS station (GMX600) was installed on the platform. Meteorological  
430 data between 22 September and 26 October were acquired. We made a comparison of meteorological data between shoreline  
and lake centre. Results show that both air temperature and relative humidity fluctuated similarly between the shoreline and  
lake centre (Fig. 9), indicating the meteorological data from the shoreline of Paiku Co can be used to represent the general  
condition of the whole lake at least during the observed period. The RMSE of daily air temperature and water vapour  
pressure in the shoreline was estimated to be 0.91 °C and 0.069 kPa. The uncertainty of Bowen ratio was estimated to be  
435 0.02 during the ice-free period by using error propagation, which corresponds to 2.2 W·m<sup>-2</sup> of heat flux ( $\Delta E_4$ ). By using error  
propagation, the uncertainties of latent heat flux and lake evaporation are estimated to be 16.8 Wm<sup>-2</sup>  
( $=\sqrt{\Delta E_1^2 + \Delta E_2^2 + \Delta E_3^2 + \Delta E_4^2}$ ) and 0.6 mm/day, respectively. The total uncertainty of lake evaporation is 142 mm during  
the ice-free period between May and December.

>>Fig. 9<<

440 Lake evaporation is validated by comparing with lake-level changes during the pre-monsoon and post-monsoon seasons.  
Runoff measurements at the three largest rivers feeding Paiku Co are shown in Tab. 3. During the pre-monsoon season  
(May), lake evaporation (1.7 mm/day) was similar with the rate of lake-level decrease (1.8 mm/day). During the post-  
monsoon season (Oct to Dec), lake evaporation (5.4 mm/day) was considerably higher than the rate of lake-level decrease  
(3.8 mm/day). This discrepancy (1.6 mm/day) may be partly-largely due to the contribution of precipitation and surface  
445 runoff. As shown in Table 3, runoff at the three large rivers can contribute to lake-level increase by 1.0 mm/day on average  
in October, thereby partially offsetting lake-level changes from lake evaporation. This difference (0.6 mm/day) between the  
estimated lake evaporation and the in-situ measurements of lake-level decrease and runoff during the post-monsoon season is  
very close to the uncertainty of lake evaporation estimated by error propagation.

#### 4 Conclusion

450 Lake evaporation and its effects on seasonal lake-level variations at Paiku Co on the southern TP were investigated based on  
three years' comprehensive observations of lake water budget, ~~including hydrometeorology, water temperature profile, lake  
level and runoff etc.~~ The results show that Paiku Co is a dimictic lake with clear lake stratification between July and October.  
The surface water ~~reached-reaches~~ its highest temperature ~~in-by~~ late August while the bottom water ~~reached-reaches~~ its

highest two months later. The thermocline formed at the depth of 15~25 m, with the largest temperature difference of 5~6 °C  
455 in late August.

As a deep alpine lake, the seasonal patterns of heat flux and lake evaporation are significantly affected by the large lake heat storage. The lake absorbed most of net radiation to heat the lake water during the pre-monsoon and monsoon seasons and released it to the overlying atmosphere during the post-monsoon season. Between April and July, about 66.5% of the net radiation was consumed to heat the lake water. Between October and January, heat released from lake water was about 3  
460 times larger than the net radiation. As a result, there was ~5 months lag between the maximum net radiation and the maximum lake evaporation due to the large heat storage of lake water. Lake evaporation ~~at~~-from Paiku Co was estimated to be  $975 \pm 142$  mm during the ice-free period between May and December, with low values of  $1.7 \pm 0.6$  mm/day during the pre-monsoon season (May and Jun), and high values of  $5.4 \pm 0.6$  mm/day during the post-monsoon season (Oct to Dec).

Our results imply that lake evaporation plays an important role in the different amplitudes of seasonal lake-level variations  
465 on the TP. For deep lakes like Paiku Co, contrasting hydrological and thermal intensities determines the large amplitude of seasonal lake-level variations. High lake evaporation and low lake inflow leads to the considerable lake-level decrease during the post-monsoon season. In contrast, relatively low lake evaporation but high lake inflow leads to rapid lake-level increase during the monsoon season. For relatively shallow lakes, the seasonal pattern of lake evaporation varies similarly with the net radiation, which results in slight lake-level decrease during the post-monsoon season and less amplitude of lake-  
470 level seasonality. Therefore, lake evaporation may plays an important role in the different amplitudes of seasonal lake-level variations ~~between deep and shallow lakes and between the southern and northern TP.~~

### **Data availability**

All original data presented in this paper are publicly available via National Tibetan Plateau Data Center  
475 (<http://data.tpdc.ac.cn/en/>).

### **Author contribution**

Lei Y.B. and Yao T.D. conceived and designed the experiments; Lei. Y.B., Yao T.D., Yang K., Lazhu, and Ma Y.M. analyzed the data; Lei Y.B. performed the fieldwork and wrote the paper; Bird B.W. helped write the paper.

### **Competing interests**

480 The authors declare that they have no conflict of interest.



## Acknowledgement

This research has been supported by the Second Tibetan Plateau Scientific Expedition and Research Program (2019QZKK0201), the Strategic Priority Research Program of Chinese Academy of Sciences (XDA2006020102), the NSFC project (41971097 and 21661132003) and Youth Innovation Promotion Association CAS (2017099). We thank  
485 Qomolangma Atmospheric and Environmental Observation and Research Station CAS for providing radiation data, Dr. Wenjun Tang for providing Hamawari-8 satellite radiation data. We are also grateful to all the members who took part in the fieldwork.

## References

- Blanken, P. D., Rouse, W. R., Culf, A.D., Spence, C., Boudreau, L.D., Jasper, J.N., Kochtubajda, B., Schertzer, W. M.,  
490 Marsh, P., and Verseghy, D.: Eddy covariance measurements of evaporation from Great Slave Lake, Northwest Territories, Canada, *Water Resour. Res.*, 36, 1069–1078, 2000.
- Cai, Y., Ke, C. Q., and Duan, Z.: Monitoring ice variations in Qinghai Lake from 1979 to 2016 using passive microwave remote sensing data. *Sci. Total Environ.*, 607–608, 120–131, doi:425 10.1016/j.scitotenv.2017.07.027, 2017.
- Dai, Y., Gao, Y., Zhang, G., and Xiang, Y.: Water volume change of the Paiku Co in the southern Tibetan Plateau and its  
495 response to climate change in 2003–2011, *J. Glaciol. Geocryol.*, 35 (3), 723–732, 2013.
- Gianniou, S. K., and Antonopoulos V. Z.: Evaporation and energy budget in Lake Vegoritis. Greece, *J. Hydrol.*, 345, 212–223, 2007.
- Guo, Y., Zhang, Y., Ma, N., Song, H., Gao, H.: Quantifying Surface Energy Fluxes and Evaporation over a significant Expanding Endorheic Lake in the Central Tibetan Plateau, *J. Meteorol. Soc. Jpn.*, 94, 453–465, 2016.
- 500 Haginoya, S., Fujii H., Kuwagata T., Xu J., Ishigooka Y., Kang S., and Zhang Y.: Air-lake interaction features found in heat and water exchanges over Nam Co on the Tibetan Plateau, *Sci. Online Lett. Atmos.*, 5, 172–175, doi:10.2151/sola.2009-044, 2009.
- Henderson-Sellers, B. *Engineering Limnology*. Pitman Publishing, Great Britain. 1984.
- Huang, W., Cheng, B., Zhang, J., Zhang, Z., Vihma, T., Li, Z., Niu, F.: Modeling experiments on seasonal lake ice mass and  
505 energy balance in the Qinghai-Tibet Plateau: a case study, *Hydrol. Earth Syst. Sci.* 23, 2173–3186, 2019.
- Ke, C., Tao, A., Jin, X.: Variability in the ice phenology of Nam Co Lake in central Tibet from scanning multichannel microwave radiometer and special sensor microwave/imager: 1978 to 2013. *J. Appl. Remote. Sens.* 7, 073477. <http://dx.doi.org/10.1117/1.JRS.7.073477>, 2013.
- Kropacek, J., Maussion, F., Chen, F., Hoerz, S., Hochschild, V.: Analysis of ice phenology of lakes on the Tibetan Plateau  
510 from MODIS data. *Cryosphere*, 7 (1), 287–301. <http://dx.doi.org/10.5194/tc-7-287-2013>, 2013.
- Lazhu, Yang, K., Wang, J., Lei, Y., Chen, Y., Zhu, L., Ding, B., and Qin, J.: Quantifying evaporation and its decadal change for Lake Nam Co, central Tibetan Plateau, *J. Geophys. Res. Atmos.*, 121, doi:10.1002/2015JD024523, 2016.



- Lei, Y., Yang, K., Wang, B., Sheng, Y., Bird, B., Zhang, G., and Tian, L.: Response of inland lake dynamics over the 405 Tibetan Plateau to climate change, *Clim. Change*, 125, 281–290, 2014.
- 515 Lei, Y., Yao, T., Yang, K., Sheng, Y., Kleinerherenbrink, M., Yi, S., Bird, B.W., Zhang, X., Lazhu, Zhang, G.Q.: Lake seasonality across the Tibetan Plateau and their varying relationship with regional mass changes and local hydrology, *Geophys. Res. Lett.*, 44, doi:10.1002/2016GL072062, 2017.
- Lei Y., and Yang K.: The cause of rapid lake expansion in the Tibetan Plateau: climate wetting or warming? *WIREs Water*, e1236. DOI:10.1002/wat2.1236, 2017.
- 520 Lei, Y., Yao, T., Yang, K., Bird B.W., Tian, L., Zhang, X., Wang W., Xiang Y., Dai, Y.F., Lazhu, Zhou, J., Wang, L.: An integrated investigation of lake storage and water level changes in the Paiku Co basin, central Himalayas, *J. Hydrol.*, 562, 599–608, doi.org/10.1016/j.jhydrol.2018.05.040, 2018.
- Lenters, J., Kratz, T., and Bowser, C.: Effects of climate variability on lake evaporation: results from a long-term energy budget study of Sparkling Lake, northern Wisconsin (USA), *J. Hydrol.*, 308, 168–195, 2005.
- 525 Li, W., Li, S., and Pu P.: Estimates of plateau lake evaporation: A case study of Zige Tangco, *J. Lake Sci.*, 13(3): 227–232, 2001.
- Li, X.Y., Ma Y.J., Huang Y.M., Hu X., Wu X.C., Wang P., Li G.Y., and Zhang S.Y.: Evaporation and surface energy budget over the largest high-altitude saline lake on the Qinghai-Tibet Plateau, *J. Geophys. Res. Atmos.*, 121, 10,470–10,485, doi:10.1002/2016JD025027, 2016.
- 530 Li, Z., Lyu, S., Ao, Y., Wen, L., Zhao, L., and Wang S.: Long-term energy flux and radiation balance observations over Lake Ngoring, Tibetan Plateau. *Atmos. Res.*, 155, 13–25, doi:10.1016/j.atmosres.2014.11.019, 2015.
- Livingstone, D.: Impact of secular climate change on the thermal structure of a large temperate central European lake. *Climatic Changes*, 57, 205-225, 2003
- Luo, J., Niu, F., Lin, Z., Liu, M., Yin, G. Thermokarst lake changes between 1969 and 2010 in the Beilu River Basin, 535 Qinghai–Tibet Plateau, China. *Sci. Bull.* 60(5),556–564, 2015.
- Ma, N., J. Szilagyi, Niu, G.Y., Zhang, Y., Zhang, T., Wang, B., and Wu, Y.: Evaporation variability of Nam Co Lake in the Tibetan Plateau and its role in recent rapid lake expansion, *J. Hydrol.*, 537, 27–35, doi:10.1016/j.jhydrol.2016.03.030, 2016.
- Ma, R., Yang, G., Duan, H., Jiang, J., Wang, S., Feng, X., Li, A., Kong, F., Xue, B., Wu, J., Li, S.: China’s lakes at present: number, area and spatial distribution. *Sci. China Earth Sci.* 54(2), 283–289, 2011.
- 540 Maussion, F., Scherer, D., Mölg, T., Collier, E., Curio, J., and Finkelnburg, R.: Precipitation Seasonality and Variability over the Tibetan Plateau as Resolved by the High Asia Reanalysis, *J. Climate*, 27, 1910–1927, 2014.
- Morrill, C.: The influence of Asian summer monsoon variability on the water balance of a Tibetan lake, *J. Paleolimnol.*, 32, 273-286, 2004.
- Nie, Y., Zhang, Y., Ding, M., Liu, L., Wang, Z.: Lake change and its implication in the vicinity of Mt. Qomolangma 545 (Everest), central high Himalayas, 1970–2009, *Environ. Earth Sci.* 68, 251–265, 2013.

- Pan, X., Yu, Q., You, Y., Chun, K.P., Shi, X., Li, Y.: Contribution of supra-permafrost discharge to thermokarst lake water balances on the northeastern Qinghai-Tibet Plateau, *J. Hydrol.*, 555, 621–630, 2017.
- Phan, V. H., Lindenbergh, R., and Menenti, M.: ICESat derived elevation changes of Tibetan lakes between 2003 and 2009, *Int. J. Appl. Earth Obs.*, 17, 12–22, 2012.
- 550 Prats, J., Reynaud, N., Rebière, D., Peroux, T., Tormos, T., and Danis, P.A.: LakeSST: Lake Skin Surface Temperature in French inland water bodies for 1999-2016 from Landsat archives. *Earth Syst. Sci. Data*, 10, 727–743, 2018.
- Rosenberry, D.O., Winter, T.C., Buso, D.C., and Likens, G. E.: Comparison of 15 evaporation methods applied to a small mountain lake in the northeastern USA, *J. Hydrol.*, 340, 149–166, doi:10.1016/j.jhydrol.2007.03.018, 2007.
- Rouse, W. R., Oswald, C. J., Binyamin, J., Blanken, P. D., Schertzer, W. M., and Spence, C.: Interannual and seasonal  
555 variability of the surface energy balance and temperature of central Great Slave Lake, *J. Hydrometeor.*, 4, 720–730, 2003.
- Rouse, W. R., Blanken, P. D., Bussi ères, N., Oswald, C.J., Schertzer, W.M., Spence, C., and Walker, A.E.: An Investigation of the Thermal and Energy Balance Regimes of Great Slave and Great Bear Lakes, *J. Hydrometeor.*, 9, 1318–1333., 2008.
- Song, C., Huang, B., Ke, L., and Richards K.: Seasonal and abrupt changes in the water level of closed lakes on the Tibetan Plateau and implications for climate impacts, *J. Hydrol.*, 514, 131–144, 2014.
- 560 Stainsby, E.A., Winter J.G., Jarjanazi, H., Paterson, A.M., Evans, D.O., Young, J.D.: Changes in the thermal stability of Lake Simcoe from 1980 to 2008. *J. Great Lakes Res.*, 37, 55–62, 2011.
- Su, D., Hu, X., Wen, L., Lyu, S., Gao, X., Zhao, L., Li, Z., Du, J., and Kirillin G.: Numerical study on the response of the largest lake in China to climate change. *Hydrol. Earth Syst. Sci.*, 23, 2093–2109, <https://doi.org/10.5194/hess-23-2093-2019>, 2019.
- 565 Sugita, M., Ikura, H., Miyano, A., Yamamoto, K., and Wei Z.: Evaporation from Lake Kasumigaura: annual totals and variability in time and space. *Hydrological Research Letters*, 8(3), 103-107, 2014.
- Sugita, M.: Spatial variability of the surface energy balance of Lake Kasumigaura and implications for flux measurements, *Hydrological Sci. J.*, DOI:10.1080/02626667.2019.1701676, 2019.
- Sugita, M., Ogawa, S., and Kawade, M.: Wind as a main driver of spatial variability of surface energy balance over a  
570 shallow  $10^2$  -  $km^2$  scale lake: Lake Kasumigaura, Japan. *Water Resour. Res.*, 56, e2020WR027173. <https://doi.org/10.1029/2020WR027173>, 2020.
- Tang, W., Li, J., Yang, K., Qin, J., Zhang, G., Wang, Y.: Dependence of remote sensing accuracy of global horizontal irradiance at different scales on satellite sampling frequency. *Solar Energy*, 193, 597-603, 2019.
- Wan, Z.: Collection-6 MODIS land surface temperature products users' guide. ICESSE, University of California, Santa  
575 Barbara. 2013.
- Wang, B., Ma, Y., Ma, W., and Su, Z.: Physical controls on half-hourly, daily, and monthly turbulent flux and energy budget over a high-altitude small lake on the Tibetan Plateau, *J. Geophys. Res. Atmos.*, 122, 2289–2303, doi:10.1002/2016JD026109, 2017.

- Wang, B., Ma, Y., Wang, Y., Su, Z., Ma, W.: Significant differences exist in lake-atmosphere interactions and the evaporation rates of high-elevation small and large lakes, *J. Hydrol.*, 573, 220–234, 2019.
- Wang, B., Ma, Y., Su, Z., Wang, Y., Ma, W.: Quantifying the evaporation amounts of 75 high-elevation large dimictic lakes on the Tibetan Plateau. *Sci. Adv.* 6, eaay8558, 2020.
- Wang, J., Zhu, L., Daut, G., Ju, J., Lin, X., Wang, Y., and Zhen, X.: Investigation of bathymetry and water quality of Lake Nam Co, the largest lake on the central Tibetan Plateau, China, *Limnology*, 10, 149–158, doi:10.1007/s10201-009-0266-8. 2009.
- Wang, J., Peng, P., Ma, Q., Zhu, L.: Modern limnological features of Tangra Yumco and Zhari Namco, Tibetan Plateau, *J. Lake Sci.*, 22 (4), 629–632, 2010.
- Wang, J., Huang, L., Ju, J., Daut, G., Wang, Y., Ma, Q., Zhu, L., Haberzettl, T., Baade, J., Mäusbacher, R.: Spatial and temporal variations in water temperature in a high-altitude deep dimictic mountain lake (Nam Co), central Tibetan Plateau. *J. Great Lakes Res.* 45, 212–223, 2019.
- Wang, M., Hou, J., Lei, Y.: Classification of Tibetan lakes based on variations in seasonal lake water temperature. *Chin. Sci. Bull.*, DOI 10.1007/s11434-014-0588-8, 2014.
- Wang, Y., Yang, K., Zhou, X., Wang, B., Chen, D., Lu, H., Lin, C., and Zhang, F.: The formation of a dry - belt in the north side of central Himalaya Mountains. *Geophys. Res. Lett.*, 46, 2993–3000. <https://doi.org/10.1029/2018GL081061>, 2019.
- Wetzel, R.G.: *Limnology: lake and river ecosystems*. Elsevier, San Diego, 2001.
- Wilson, R. C., Hook, S. J., Schneider, P., and Schladow, S. G.: Skin and bulk temperature difference at Lake Tahoe: A case study on lake skin effect, *J. Geophys. Res. Atmos.*, 118, 10,332–10,346, doi:10.1002/jgrd.50786, 2013.
- Winter, T., Buso, D., Rosenberry, D., Likens, G., Sturrock Jr., A., Mau, D.: Evaporation determined by the energy-budget method for Mirror Lake, New Hampshire, *Limnol. Oceanogr.* 48 (3), 995–1009, 2003.
- Winnemann, B., Yan, D., Ci, R.: Morphodynamics and lake level variations at Paiku Co, southern Tibetan Plateau, China, *Geomorphology*. 246: 489–501, 2015.
- Xu, J., Yu, S., Liu, J., Haginoya, S., Ishigooka, Y., Kuwagata, T., Hara, M., and Yasunari T.: The implication of heat and water balance changes in a lake basin on the Tibetan Plateau. *Hydrol. Res. Lett.*, 3, 1–5, 2009.
- Yang, K., He, J., Tang, W., Qin, J., and Cheng, C.: On downward shortwave and longwave radiations over high altitude regions: Observation and modeling in the Tibetan Plateau, *Agric. For. Meteorol.*, 150(1), 38–46, doi:10.1016/j.agrformet.2009.08.004, 2010.
- Yu, S., Liu, J., Xu, J., and Wang, H.: Evaporation and energy balance estimates over a large inland lake in the Tibet-Himalaya, *Environ. Earth Sci.*, 64(4), 1169–1176, 2011.
- Yu, W., Yao, T., Tian, L., Ma, Y., Wen, R., Devkota, L., Wang, W., Qu, D., Chhetri, T.B.: Short-term variability in the dates of the Indian monsoon onset and retreat on the southern and northern slopes of the central Himalayas as determined by precipitation stable isotopes. *Clim. Dyn.* 47, 159–172, 2016.

Zhang, G., Yao, T., Xie, H., Zhang, K., Zhu, F.: Lakes' state and abundance across the Tibetan Plateau, *Chin. Sci. Bull.* 59 (24), 3010–3021, 2014a.

615 Zhang, G., Yao, T., Xie, H., Qin, J., Ye, Q., Dai, Y., & Guo, R.: Estimating surface temperature changes of lakes in the Tibetan Plateau using MODIS LST data. *Journal of Geophysical Research: Atmospheres*, 119, 8552–8567. <https://doi.org/10.1002/2014JD021615>, 2014b.

Zhang, Q., and Liu, H.: Seasonal changes in physical processes controlling evaporation over inland water, *J. Geophys. Res. Atmos.*, 119, 9779–9792, doi:10.1002/2014JD021797, 2014.

620 Zhang, Y., Wu, Z., Liu, M., He, J., Shi, K., Wang, M., and Yu, Z.: Thermal structure and response to long-term climatic changes in Lake Qiandaohu, a deep subtropical reservoir in China, *Limnol. Oceanogr.*, 59(4), 1193–1202, 2014.

625

## 630 Figure and Captions

**Table 1 The related information about hydro-meteorology observations**

Parameter	Sensor	Accuracy	Location	Duration
$T_w$	HOBO U22-001	0.21 °C	South center	2015.6-2018.5
			North center	2016.6-2017.5
$T_a$ and RH	HOBO U12-012	0.35 °C 2.5%	Shoreline	2015.6-2017.1, 2017.6-2018.5
$T_a$ and RH	GMX600	0.3 °C 2%	South center	2019.9-2019.10
$R_s$ and $R_l$	Kipp & Zonen CNR4 net radiometer	1%	Qomolangma Station, CAS	2015.6-2017.12

$T_w$ =water temperature;  $T_a$ =air temperature; RH=relative humidity;  $R_s$ =shortwave solar radiation;  $R_l$ =downward long wave radiation

635

640

645

650

655

**Table 2 Monthly net radiation, total lake heat storage, Bowen ratio and lake evaporation between 2015 and 2017**

Month	Net energy ( $\text{W}\cdot\text{m}^{-2}$ )			Heat storage ( $\text{W}\cdot\text{m}^{-2}$ )			Bowen Ratio			Evaporation (mm/day)		
	2015	2016	2017	2015	2016	2017	2015	2016	2017	2015	2016	2017
May		188.5	194.8		145.2	138.6		-0.10			1.72	
Jun	217.2	214.3	224.8	157.3	191.6	181.8	-0.15	-0.24	-0.20	2.40	0.98	1.81
Jul	198.0	185.2	218.1	123	101.0	93.4	-0.02	0	-0.04	2.6	2.89	3.28
Aug	170.4	178.6	177.2	62.3	32.4	39.3	0.11	0.13	0.11	3.33	4.47	4.31
Sep	148.4	140.2	154.1	-24.6	-10.7	-15.4	0.13	0.14	0.08	5.29	4.57	5.40
Oct	89.1	91.4	92.4	-115	-87.1	-86.4	0.23	0.20	0.20	5.67	5.12	5.15
Nov	34.7	34.9	34.3	-140.6	-193.7	-199.5	0.17	0.18	0.24	5.12	6.69	6.51
Dec	17.7	16.6	19.7	-192	-125.3	-148.5	0.26	0.14	0.20	5.78	4.22	4.88

660

665

670

675

680

685

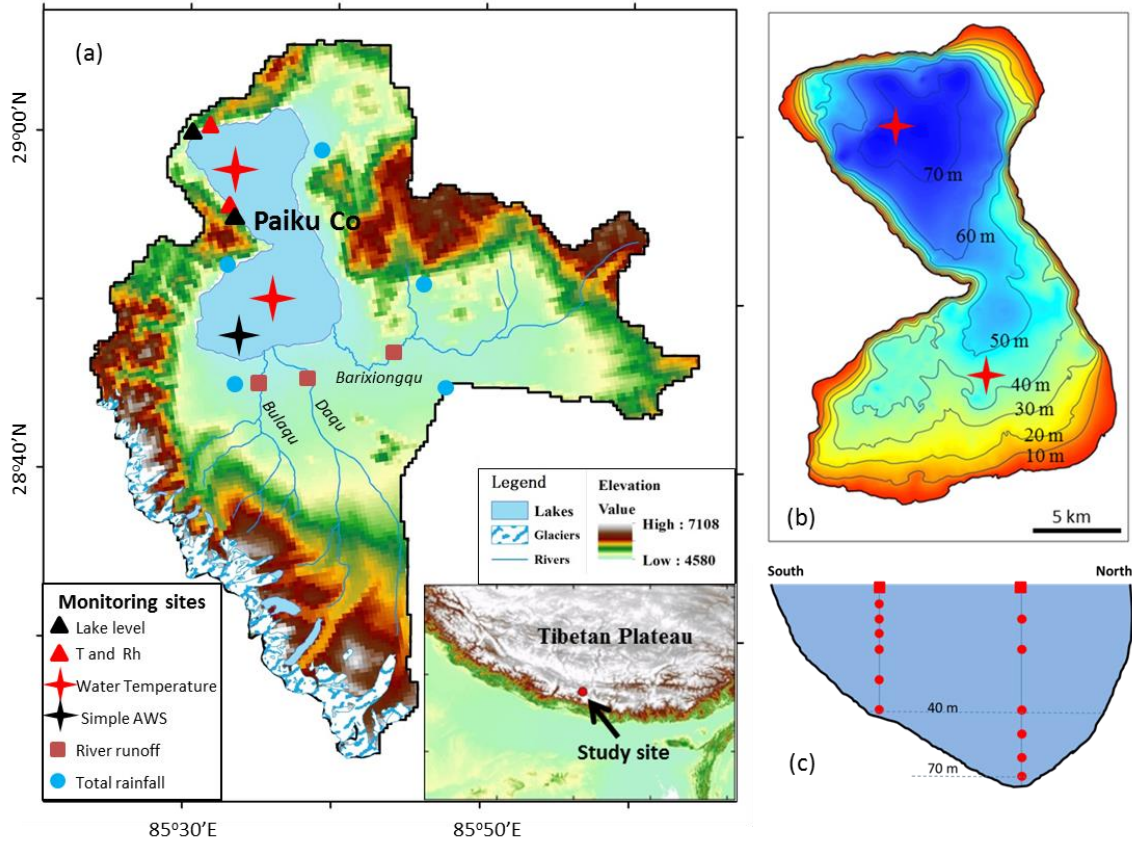
**Table 3 Runoff ( $\text{m}^3/\text{s}$ ) of the three main rivers in Paiku Co basin during the pre-monsoon and post-monsoon seasons between 2015 and 2017 and their total contribution to lake-level increase (mm/day).**

Rivers	Runoff-2015		Runoff-2016		Runoff-2017	
	Spring (6.1~6.2)	Autumn (10.6~10.7)	Spring (6.2)	Autumn (10.11~10.13)	Spring (5.25~5.28)	Autumn (10.14~10.16)
Bulaqu	2.3	2.1	0.8	0.7	0.5	0.7
Daqu	0.4	2.8	1.1	1	0.5	1.2
Barixiongqu	0.2	0.4	0.1	0.5	0.1	0.5
Total contribution	0.89	1.64	0.62	0.71	0.62	0.74

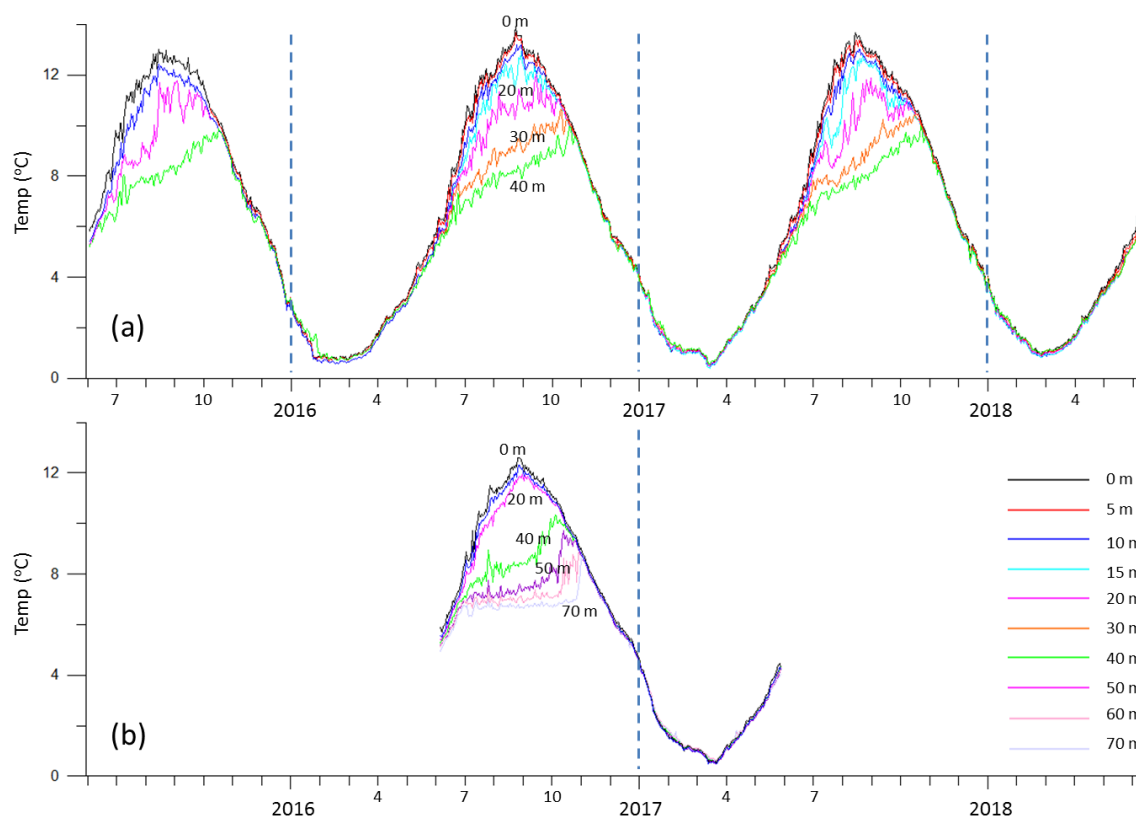
Total contribution is calculated according to the total runoff of the three main rivers and lake area. The measuring dates are shown in brackets.

690

695

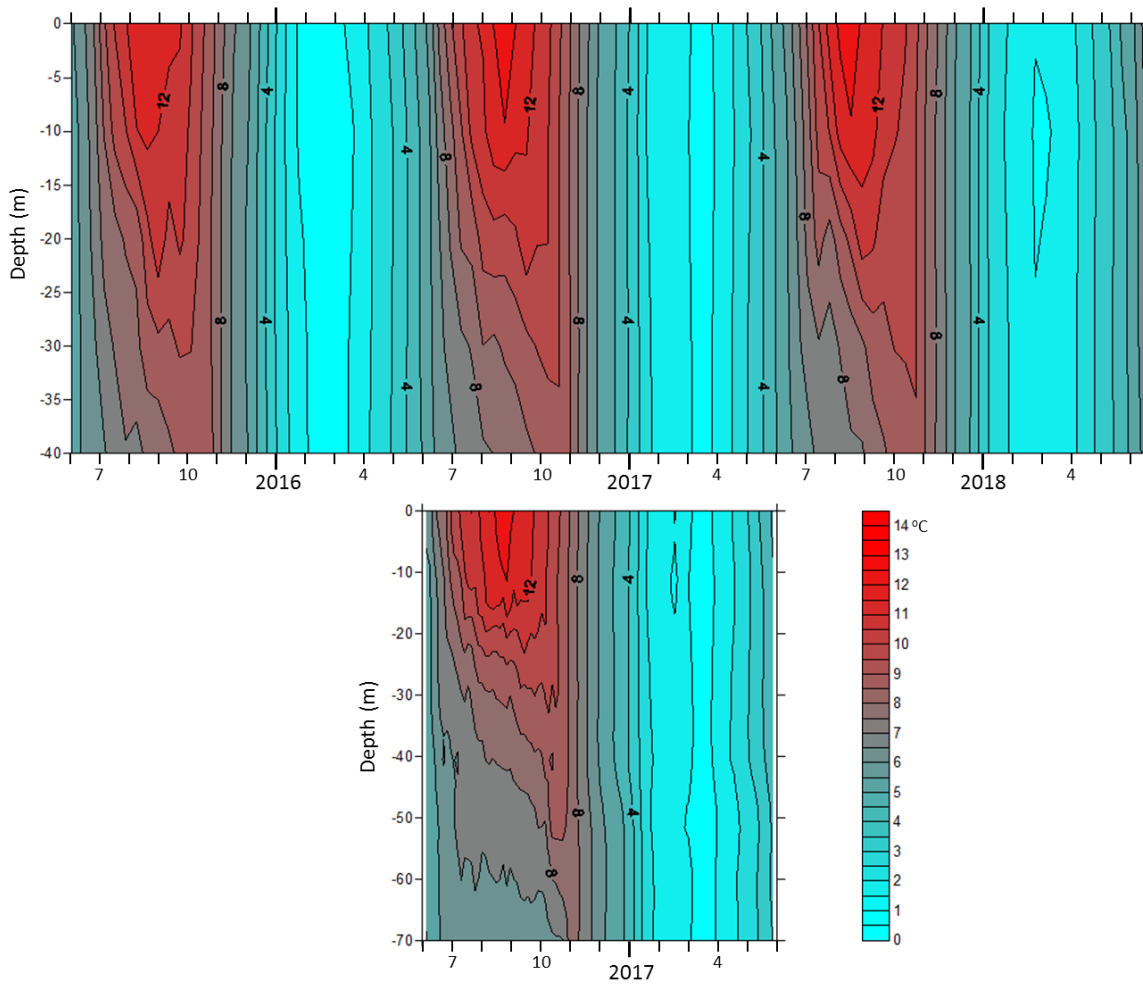


**Figure 1: Monitoring sites of lake water budget in Paiku Co basin. (a): Monitoring sites of lake level, hydro-meteorology, water temperature profile, runoff, and total rainfall. (b): The isobath of Paiku Co and the two monitoring sites of water temperature profile. (c): The water temperature monitoring at different water depths.**



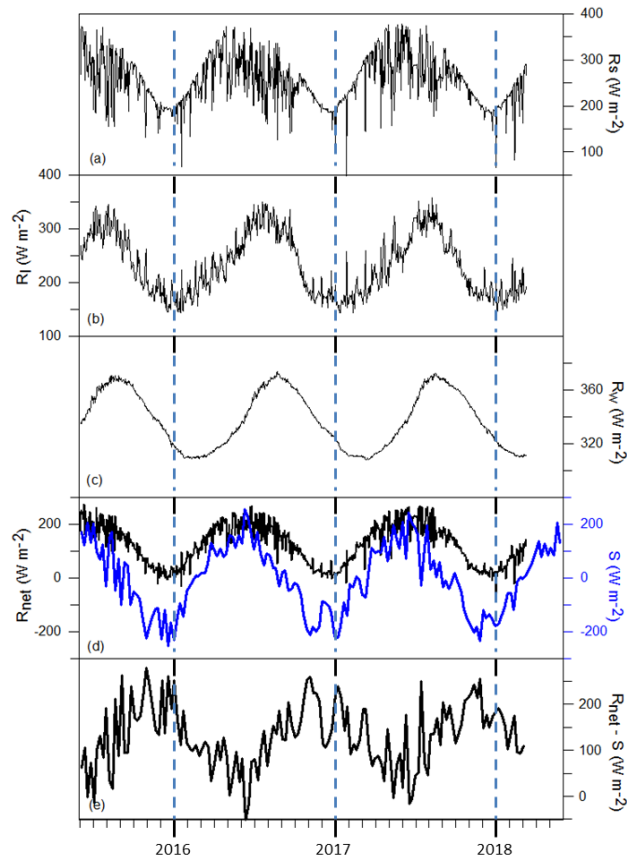
**Figure 2: Time series of daily lake water temperature at different water depths in Paiku Co's southern (a) and northern basins.**





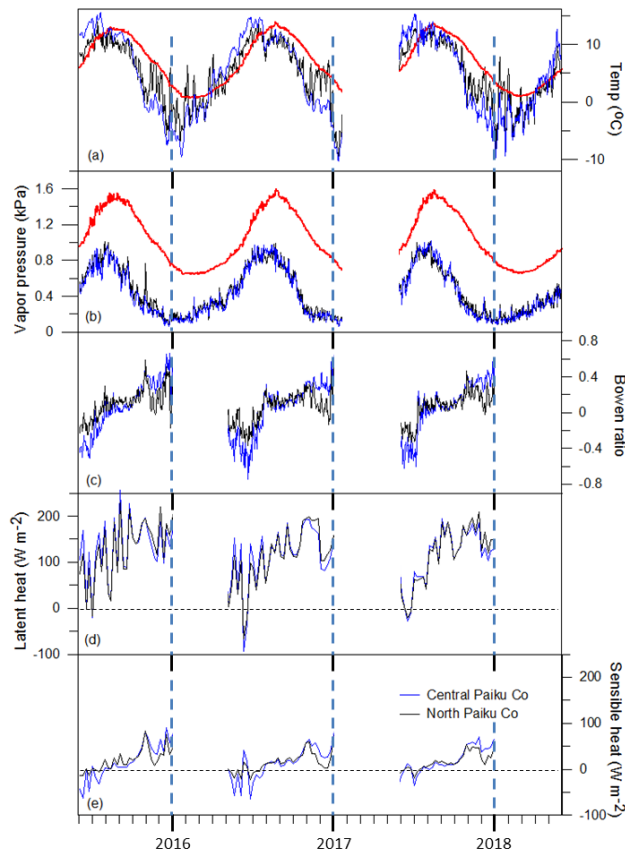
720

**Figure 3: Depth-time diagram of isotherm ( $^{\circ}\text{C}$ ) in Paiku Co's southern (upper, 42 m in depth) and northern (below, 72 m in depth) basins between June 2015 and May 2018.**



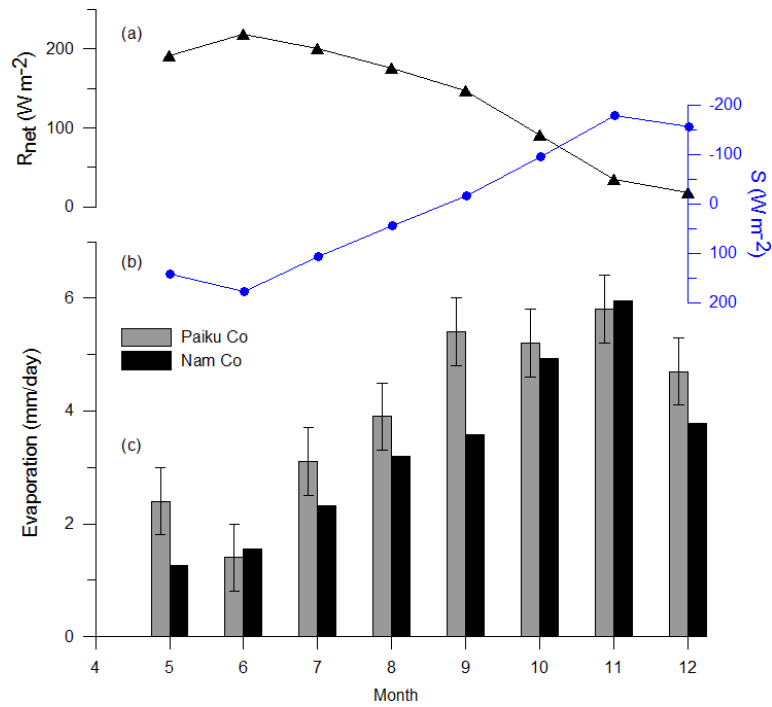
725 **Figure 4: The main components of energy budget at the lake surface. (a): Daily solar radiation ( $R_s$ ), (b): Daily atmospheric longwave radiation to the lake ( $R_l$ ), (c): Daily long wave radiation emitted from the lake ( $R_w$ ), (d): Daily net radiation ( $R_{net}$ ) and weekly changes in lake heat storage ( $S$ ), (e): The available energy ( $R_{net}-S$ ).**

730



735 **Figure 5: Hydrometeorology and heat fluxes at the lake surface. (a): Daily air temperature and lake surface temperature (red line), (b): Daily actual vapour pressure at lake surface (red line) and the overlying atmosphere, (c): Daily Bowen ratio between May and December, (d-e): Weekly averaged latent and sensible heat fluxes between May and December. For a-e, black lines denote north Paiku Co and blue lines denote central Paiku Co. There was no data available between February and May 2017.**

740

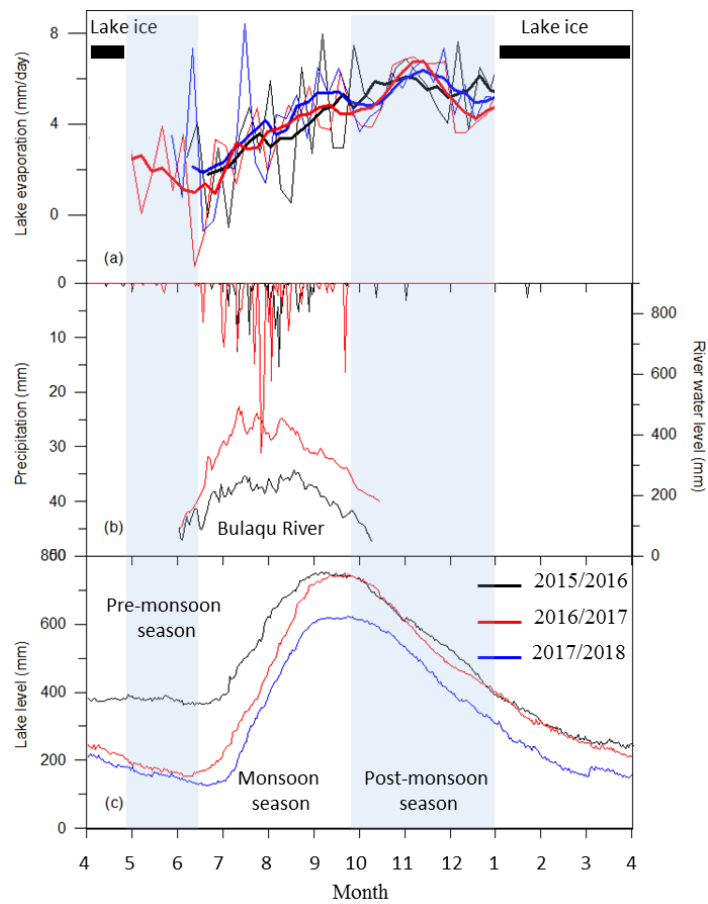


745 **Fig. 6 A Comparison of monthly lake evaporation with net radiation ( $R_{net}$ ) and changes in lake heat storage ( $S$ ). (a):**  
**Net radiation, (b): Changes in lake heat storage, (c): Lake evaporation at from Paiku Co and Nam Co on the central**  
**TP. Lake evaporation at from Nam Co was determined by using eddy covariance system in the lake center (Wang et**  
**al., 2019). The bars denote the uncertainty of lake evaporation at from Paiku Co.**

750

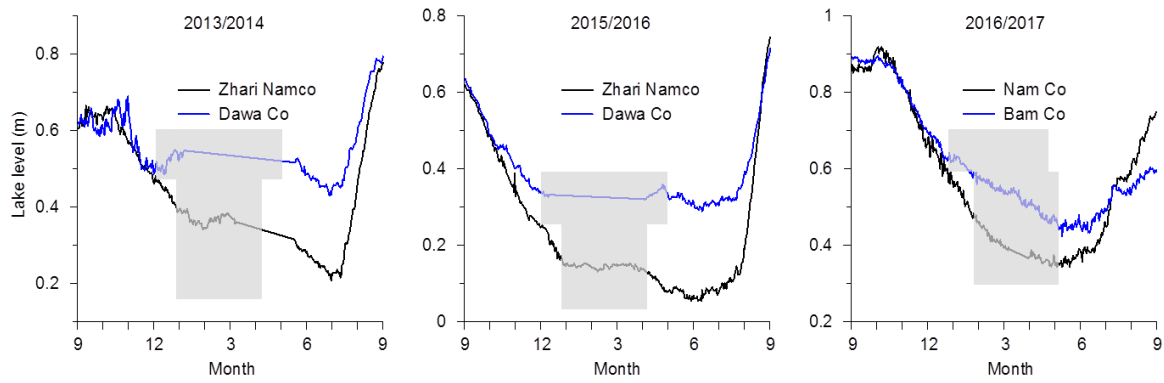
755

760



**Figure 7: The main components of lake water budget at Paiku Co between 2015 and 2018. (a): Lake evaporation**  
 765 **(mm/day) derived from the north shoreline of Paiku Co. (b): Daily precipitation (mm) at Qomolangma station and**  
**water level (mm) of Bulaqu River in 2015 and 2016. Note the Y axis (left) of precipitation is reversed. (c): Daily lake**  
**level (mm) at Paiku Co. The thick lines (a) denote the 5-point running average. The blue rectangles represent pre-**  
**monsoon and post-monsoon seasons periods, respectively.**

770



**Figure 8: Different amplitude of seasonal lake-level changes between deep and shallow lakes on the central TP.**

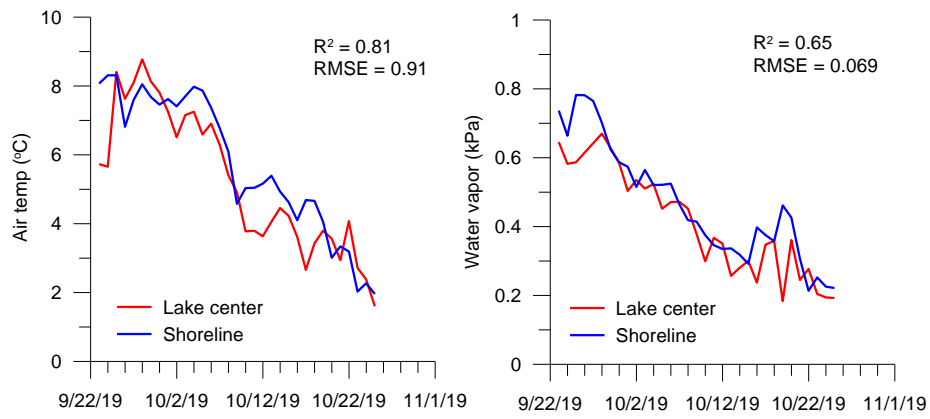
775 **Relatively deep lakes: Zhari Namco (85.61 °E, 30.93 °N) and Nam Co (90.60 °E, 30.74 °N); Relatively shallow lakes:**  
**Dawa Co (84.96 °E, 31.24 °N) and Bam Co (90.58 °E, 31.26 °N). Grey rectangles in each figure represent lake ice**  
**covered periods.**

780

785

790

795



**Figure 9: Comparison of daily air temperature and water vapour pressure between shoreline and lake centre during the period of 23/9/2019-25/10/2019.**