



Intercomparison of freshwater fluxes over ocean and investigations into water budget closure

Marloes Gutenstein¹, Karsten Fennig¹, Marc Schröder¹, Tim Trent², Stephan Bakan³, J. Brent Roberts⁴, and Franklin R. Robertson⁴

¹Deutscher Wetterdienst, Offenbach, Germany

²University of Leicester, Leicester, United Kingdom

³Max Planck Institute for Meteorology, Hamburg, Germany

⁴NASA Marshall Space Flight Center, Huntsville, AL, USA

Correspondence: Marloes Gutenstein (marloes.gutenstein@dwd.de)

Abstract. The development of algorithms for the retrieval of water cycle components from satellite data, such as total column water vapor content (TCWV), precipitation (P), latent heat flux, and evaporation (E) has seen much progress in the past three decades. In the present study, we compare six recent satellite-based retrieval algorithms and ERA5 (the European Centre for Medium-Range Weather Forecasts' fifth reanalysis) freshwater flux (E-P) data regarding global and regional, seasonal and inter-annual variation to assess the degree of correspondence among them. The compared data sets are recent, freely available and documented climate data records (CDRs), developed with a focus on stability and homogeneity of the time series, as opposed to instantaneous accuracy.

One main finding of our study is the agreement of global ocean means of all E-P data sets within the uncertainty ranges of satellite-based data. Regionally, however, significant differences are found among the satellite data and with ERA5. Regression analyses of regional monthly means of E, P, and E-P against the statistical median of the satellite data ensemble (SEM) show that, despite substantial differences in global E patterns, deviations among E-P data are dominated by differences in P throughout the globe. E-P differences among data sets are spatially inhomogeneous.

We observe that for ERA5 long-term global E-P is very close to 0 mm/day and that there is good agreement between land and ocean mean E-P, vertically integrated moisture divergence (VIMD), and global TCWV tendency. The fact that E and P are balanced globally provides an opportunity to investigate the consistency between E and P data sets. Over ocean, P (nearly) balances with E if the net transport of water vapor from ocean to land (over-ocean VIMD, i.e., ∇Q_{ocean}) is taken into account. Correlation of $E_{ocean} - \nabla Q_{ocean}$ with P_{ocean} yields $R^2 = 0.86$ for ERA5, but smaller R^2 are found for satellite data sets.

Climatological global yearly totals of water cycle components (E, P, E-P, and net transport from ocean to land and *vice versa*) calculated from the data sets used in this study are in agreement with previous studies, with ERA5 E and P are occupying the upper part of the range. Over ocean, both the spread among satellite-based E and the difference between two satellite-based P data sets are greater than E-P and these remain the largest sources of uncertainty within the observed global water budget.

We conclude that for a better understanding of the global water budget, the quality of E and P data sets themselves and their associated uncertainties need to be further investigated.



1 Introduction

25 The water and energy cycles are key components of Earth's climate system. Energy exchange from water phase changes plays a direct role in atmospheric heating; therefore, precipitation (P) and evaporation (E) are two critical processes connecting the land/ocean surface and overlying atmosphere (Trenberth et al., 2009). The difference between E and P rates, $E - P$, is the freshwater flux from the surface to the atmosphere, which is positive where E dominates and negative where P dominates. Over the global oceans, total $E - P$ is positive, as a considerable amount of water evaporates from the oceans and is transported
30 to land by advection, mainly in the form of water vapor, where it precipitates. Averaged over a year, changes in atmospheric storage vanish and net negative $E - P$ over land is balanced by continental runoff of water into the ocean. Although numerous studies have addressed the question of how variations in the ocean state affect the water cycle and freshwater fluxes with a particular view on global warming (Wentz et al., 2007; Trenberth et al., 2007; Schlosser and Houser, 2007; Robertson et al., 2014), a clear and consistent picture has yet to emerge — one of the significant challenges in climate science (Bony et al.,
35 2015; Hegerl et al., 2014).

The study of the global water cycle is not only compelling from a scientific point of view: it also aids the evaluation of climate models and model reanalyses by verifying the degree of consistency among the various components of the cycle. Such an approach is adopted here for the evaluation of satellite observations of E and P , which, particularly over ocean, are difficult to validate otherwise. The fact that the global water cycle is closed puts a strong constraint on global total E and P fluxes. This
40 has been exploited in various studies in the past (Trenberth et al., 2007; Schlosser and Houser, 2007; Berrisford et al., 2011; Trenberth et al., 2011; Trenberth and Asrar, 2014; Trenberth and Fasullo, 2013; Seager and Henderson, 2013; Robertson et al., 2014) from which the general conclusion emerged that, although much progress has been made regarding E and P estimates, observations and models still require substantial improvements in accuracy to achieve budget closure.

Over the years, methods to determine E and P based (mainly) on satellite data have been developed and repeatedly updated:
45 HOAPS E and P (Andersson et al., 2017), J-OFURO E (Tomita et al., 2019), IFREMER E (Bentamy et al., 2013), SEAFLUX E (Clayson and Brown, 2016), OAFflux E (Yu et al., 2008), and GPCP P (GPCP, 2018) are the most widely used data sets. Acronyms are explained in Section 2 and listed in Table 1. We present an intercomparison of these data sets, all freely available Climate Data Records (CDRs), characterized by the stability of input data and retrieval algorithms, emphasizing data homogeneity over local, instantaneous accuracy. European Centre for Medium-range Weather Forecast (ECMWF) ERA5 re-
50 analysis data (Hersbach et al., 2020) are included for comparison in the present study. Our main focus lies with the assessment of correspondence among E - P data sets on a global and regional scale by the inter-comparison of six data sets and putting the results into perspective regarding uncertainty estimates. Moreover, we investigate to what extent water budget closure is achieved by satellite-based over-ocean estimates by comparing with ERA5 data, and previously published estimates of water cycle components.

55 Here, we consider the atmospheric water vapor budget with a focus on the oceans, where satellite observations of E are available. The net change in atmospheric water vapor content can be written as:

$$\frac{\delta W}{\delta t} = E - P - \nabla Q \quad (1)$$



With W the total column water vapor and ∇Q the moisture divergence, i.e., the amount of moisture removed by advection from the considered volume. See Table 2 for all symbols and abbreviations. Compared to water vapor, the contributions of liquid water and ice are very small (e.g., Berrisford et al., 2011) and can be safely ignored in the context of this study.

On the global scale ∇Q vanishes (as the Earth is a closed system) and Eq. 1 reduces to:

$$\Delta W = E - P \quad (2)$$

Where, for brevity, we write the W tendency during large (monthly) time steps as ΔW .

Assuming that ΔW is small compared to E and P , Eq. 2 dictates that global total E must equal global total P . Hence, an observed imbalance in global totals of E and P indicates either an inconsistency in E and P data sets or a change in the global water cycle, e.g. an increase in the amount of atmospheric water vapor (possibly caused by global warming), invalidating the assumption that ΔW is negligible. Moreover, globally, E and P co-vary, meaning that their inter-annual, seasonal, and even monthly variability are correlated.

At regional scales and for monthly averages, ΔW is small compared to $E - P$ and ∇Q , so that Eq. 1 can be approximated by:

$$E - P = \nabla Q \quad (3)$$

This is also valid for the large ocean and land regions, and since globally, $\nabla Q = 0$, from Eq. 3 it follows that:

$$(E - P)_{ocean} = \nabla Q_{ocean} = -\nabla Q_{land} = -(E - P)_{land} \quad (4)$$

with subscripts denoting summation over ocean or land. This separation into land and ocean contributions allows us to assess the consistency of different E and P data sets, as satellite E data are not available over land.

In addition to the spatio-temporal distributions of individual budget terms, e.g., $E - P$, information on the accuracy and precision of that value is of importance. Uncertainty estimates indicate whether observed differences — between data sets (e.g., observations and models), over time (trends, variability), or in space — are statistically relevant. Moreover, they play a major role in data assimilation. Quantification of retrieval uncertainty, however, is a difficult task, particularly for non-linear retrieval algorithms such as those used to retrieve E and P from satellite observations. Of the E CDRs investigated here, only HOAPS-4.0 and OAFflux3 provide monthly mean uncertainty ranges. In HOAPS, random and systematic uncertainty components are provided separately (Kinzel et al., 2016), allowing error propagation along with the calculation of temporal and/or spatial averages, as random errors (no covariance) disappear for large numbers of data points, whereas systematic errors (100% covariance) do not. For lack of information of error covariances, OAFflux3 monthly mean uncertainty is similarly treated as having 100% covariance. An estimate of uncertainty is provided with ERA5 data in the form of results from ten separate model runs (Hersbach et al., 2020).

In the following section, we provide some background on E and P retrievals and introduce the E , P , and other data sets used for our study. Section 3 details the methods applied to the various data sets to enable a fair comparison. Results of our analyses are presented and discussed in Sections 4–5, and we close our study with a set of conclusions and recommendations.



90 2 Data sets

In this inter-comparison study, we assess the degree of agreement between five satellite-based E retrievals, two observation-based P retrievals, and a reanalysis data set. In this section, the retrieval algorithms will be briefly introduced: for more details, please refer to the literature listed in Table 1.

The retrieval of E from satellite observations is challenging. It is determined from the bulk flux parameters near-surface
95 wind speed and humidity gradient near the surface. Wind speed can be retrieved from satellite passive microwave brightness temperature (BT) measurements and BTs have also some sensitivity to near-surface specific humidity. Specific humidity at the ocean surface is derived from sea surface temperature (SST). All satellite-based E algorithms use reanalysis data to some extent and, *vice versa*, ERA5 also assimilates satellite data. Hence, these products cannot be considered completely independent and the distinction between "satellite data" and "reanalysis" is somewhat artificial and not always appropriate. However, for
100 historical reasons — and for lack of a suitable alternative — we will retain these terms throughout this paper.

The main characteristics of the evaporation retrieval from passive microwave data are common to all satellite algorithms, but there is quite some variation regarding the input of Level-1 (calibrated observations) and Level-2 (retrieval results) data, as will be discussed below. First, we will give a brief description of the retrieval basics, followed by details of the various satellite algorithms.

105 2.1 Evaporation Data Records

The liquid-water equivalent evaporation rate, E , is calculated from the latent heat flux Q_l as follows :

$$E = \frac{Q_l}{L_E} \quad (5)$$

Where L_E is specific heat of evaporation of water. The latent heat flux, in turn, is parameterized according to the bulk flux algorithm (based on the Monin-Obukhov similarity theory representation of fluxes in terms of mean quantities):

$$110 \quad Q_l = \rho L_E C_E u (q_s - q_a) \quad (6)$$

with ρ the density of air, C_E the coefficient of turbulent exchange, u the wind speed at 10 m height relative to the ocean surface current speed, and q_s and q_a the specific humidity at the sea surface and at 10 m height, respectively. Whereas q_a and u are derived from satellite observations of BT, ρ , q_s and L_E are derived from their dependences on SST and/or air temperature. The turbulent exchange coefficient C_E is obtained from the Coupled Ocean-Atmosphere Response Experiment (COARE) version
115 3.0 algorithm (Fairall et al., 1996, 2003). The algorithm iteratively estimates stability-dependent scaling parameters and wind gustiness to account for sub-scale variability.

Most of the data sets used here do not explicitly contain E , therefore, we calculated those from monthly means of Q_l and SST using Eq. 5 and L_E (in J/kg) given by (Henderson-Sellers, 1984):

$$L_E = 1.91846 \cdot 10^6 \cdot \left(\frac{T_s}{T_s - 33.91} \right)^2 \quad (7)$$



120 where T_s is SST in K. The slight difference with the definition of L_E used in the COARE-3.0 algorithm causes negligible differences of 0.03–0.04% for T_s between 278–298 K.

The BT observations common to satellite-based retrievals of ocean turbulent fluxes come from the Special Microwave Imager (SSM/I, Hollinger et al., 1990) and Special Microwave Imager/Sounder (SSMIS, Kunkin et al., 2008) instruments on the Defense Meteorological Satellite Program (DMSP) platforms F08–F18. These data were corrected and inter-calibrated
125 using various approaches to create FCDRs, stable fundamental climate data records (see, e.g., Wentz et al., 2013; Sapiano et al., 2013; Berg et al., 2018; Fennig et al., 2020), which then serve as input to various satellite retrievals. Slight differences in calibration approaches lead to differences in FCDRs that propagate into the retrieved data. Issues with sensor stability, especially with SSM/I and SSMIS sensors, usually express themselves as slow drifts or sudden jumps of the global mean.

2.1.1 HOAPS-4.0

130 HOAPS (Andersson et al., 2010) relies almost completely on satellite data, as it only uses an ERA-interim profile climatology as *a priori* starting point for the 1D-Var retrieval of u and the humidity profile (Graw et al., 2017). The only other auxiliary data set is the daily Optimum Interpolated Sea Surface Temperature (OISST, Reynolds et al. (2007)), version 2, derived from AVHRR satellite data. OISST provides a bulk SST at 0.5 m which is transformed to a skin SST using the approach by Donlon et al. (2002), which is then used for the determination of q_s . The parameterization described in Bentamy et al. (2003) is used
135 to determine q_a . For calculation of the flux parameters Q_l and E , HOAPS-4.0 uses COARE version 2.6a (Bradley et al., 2000), which is nearly identical to COARE-3.0 (Fairall et al., 2003). HOAPS-4.0 is a CDR derived from CM SAF (Climate Monitoring Satellite Application Facility) BT FCDR (Fennig et al., 2017, 2020) and is available at 0.5° and 6-hourly (except E-P) and monthly resolution from July 1987 — December 2014 (Andersson et al., 2017). HOAPS data can be obtained from <https://wui.cmsaf.eu>.

140 2.1.2 J-OFURO3

The latest update to J-OFURO involved improvements in the methods of flux retrieval and expansion of the data set in terms of time range and parameters (Tomita et al., 2019). The algorithm is similar to that described above. In addition to BT from SSM/I and SSMIS (from Remote Sensing Systems (RSS), Wentz et al., 2013), J-OFURO3 uses BT data from AMSR-E and AMSR2 (JAXA Version 3 and 2.1, respectively), and TMI (1B11 Version 7 from NASA-GESDISC) for the retrieval of flux parameters.
145 To determine q_a a parameterization based on BTs, total column water vapor, and water vapor scale height was developed using match-ups of *in situ* buoy- and ship-based q_a and DMSP-F13 BTs from eight channels (Tomita et al., 2018). From the instantaneous q_a values, gridded daily averages are determined and inter-calibrated to DMSP-F13 q_a to remove systematic differences caused by the use of different FCDRs. The T_s required for the calculation of q_s and other flux parameters is the median value of an ensemble of twelve *in situ*, satellite-based, and reanalysis data sets. Other auxiliary data sets include water
150 vapor surface mixing ratios from ERA-interim (Dee et al., 2011), OSTIA sea ice concentration (Donlon et al., 2012), and air temperature from NCEP/DOE reanalysis (Kanamitsu et al., 2002). Near-surface wind speed is determined as the simple mean



of values derived from microwave radiometers and scatterometers (Tomita et al., 2019). J-OFURO3 is available at 0.25° and daily resolution from 1988–2013. It was acquired from <https://j-ofuro.scc.u-tokai.ac.jp/>.

2.1.3 OAFlux3

155 Satellite data used for the production of OAFlux3 data include wind speed from active (scatterometer) and passive (radiometer) microwave instruments, SST from OISST (Reynolds et al., 2007), and q_a from Goddard Satellite-Based Surface Turbulent Fluxes Dataset — Version 2 (GSSTF2.0, Shie et al. (2009)). These are merged with NCEP and ERA40 reanalysis data using weighting factors that put more emphasis on satellite data (for u), on reanalyses (q_a), or weights both equally (T_s), whenever satellite data are available (Yu et al., 2008). OAFlux3 data are available from 1958–2018 (monthly) or 1985–2017 (daily) at 1° resolution from https://www.esrl.noaa.gov/psd/data/gridded/data.oaflux_v3.html .

2.1.4 IFREMER4.1

Similar to J-OFURO and OAFlux, IFREMER's ocean flux retrieval algorithm is based on a synergy of remote sensing and reanalysis data (Bentamy et al., 2013). The current version 4.1 contains, among others, latent heat flux (LHF) and SST at daily and monthly, 0.25° resolution from 1992–2018. The BTs used for retrievals are inter-calibrated by Colorado State University (CSU, Sapiano et al., 2013), except for data beyond June 2017, where CSU data ends and a switch to BTs from RSS (Wentz et al., 2013) is made. Inter-calibrated scatterometer wind data (Bentamy et al., 2017a) are supplemented by wind speeds determined by RSS from the SSM/I, SSMIS, and WindSat instruments. SST are from OISST (Reynolds et al., 2007). The model relating BTs to q_a using satellite – *in situ* data match-ups was updated from Bentamy et al. (2003) and now includes two additional terms: T_s and $T_a - T_s$ (with T_a the air temperature at 10 m height from interpolated ERA-interim data (Bentamy et al., 2013)). IFREMER4.1 data were obtained via <https://wwz.ifremer.fr/oceanheatflux/Data> .

2.1.5 SEAFLUX2

The SEAFLUX2 data set consists of LHF, SST, and several other parameters at 3-hourly, 0.25° resolution. It makes use of a neural network (NN) algorithm to transform CSU BTs (Sapiano et al., 2013) into ocean-atmosphere fluxes (Clayson and Brown , 2016). The NN that determines q_a and u at 10 m height is trained with values from the SeaFlux *in situ* dataset (Curry et al., 2004). After gridding and merging of swath-level data, Q_l is calculated from q_a , u , and T_s using a NN version of the COARE-3.0 parameterization (Fairall et al., 2003). A separate NN corrects OISST SST (Reynolds et al., 2007) for diurnal variations and influences of wind and precipitation. SEAFLUX2 is available for the time range 1988–2019 at <https://www.ncdc.noaa.gov/cdr/atmospheric/ocean-heat-fluxes>. Please note that a new SEAFLUX version is currently under development.



180 2.1.6 ERA5

ERA5 is the current operational reanalysis running at ECMWF, the European Centre for Medium-range Weather Forecasts. Compared to its predecessor, ERA-interim, ERA5 includes improved model physics and data assimilation techniques, higher spatial (31 km) and temporal (1 hour) resolution. These lead to a gain in forecasting skill of up to one day compared to ERA-interim (Hersbach et al., 2020). Among many other observations, ERA5 assimilates CM SAF BT FCDR (Fennig et al., 2017);
185 conditions for SST are prescribed using HadISST2.1. (Kennedy et al., 2016) and OSTIA (Donlon et al., 2012) from 09/2007 onwards (Hersbach et al., 2020). ERA5 encompasses data from ten model runs, which allows estimation of the uncertainty range from ensemble statistics. The analysis presented here is performed with the ECMWF ensemble mean, uncertainty is determined from the 10-member ensemble.

The monthly averaged data set on single levels, available from the Copernicus Climate Data Store (<https://cds.climate.copernicus.eu/>),
190 contains, among many others, total column water vapor (TCWV), vertically integrated moisture divergence (VIMD), total precipitation and evaporation rates (ECMWF, 2019). Monthly averages are calculated from daily means starting at 00 UTC and ending at 00 UTC the following day (ECMWF, 2020). Evaporation rates are derived from the gradients of specific humidity between the surface and the lowest model level (10 m for ERA5) as described above (ECMWF, 2016). The main differences between the satellite-based retrievals described here and ERA5 determination of E are the consistency of atmospheric variables involved (u , q_a , q_s) and the high temporal sampling rate. Moreover, satellite-based data sets only provide fluxes over
195 ocean, whereas ERA5 contains data over land and ocean. VIMD, i.e., the total amount of water vapor removed from the atmospheric column by dynamical transport is provided in ERA5 as a gridded monthly mean field. We calculated the TCWV tendency from monthly mean ERA5 TCWV data by determining the gradient between two sequential time steps, then dividing by 30 days/month to obtain the mean TCWV tendency in km^3/day . This was converted to units of mm d^{-1} by multiplication
200 with the Earth's surface area for comparison with freshwater fluxes.

2.2 Precipitation Data Records

Microwave-based retrievals of precipitation are based on the interaction of liquid or solid hydrometeors with the upwelling radiation field. In HOAPS-4.0, P is determined by an NN retrieval trained on profiles from an ERA-interim climatology (Andersson et al., 2010). The training data set consists of one month (August 2004) of assimilated SSM/I BTs and the corresponding
205 ERA-interim P (Bauer et al., 2006).

There is a multitude of global precipitation products in existence (see, e.g., Kidd and Huffman, 2011; Tapiador et al., 2017), but for this study we selected GPCP as the P data set with which to calculate E-P (except for the HOAPS product, which makes us of its own P data) because it is generally regarded as the data set that performs best globally. Moreover, J-OFURO also makes use of GPCP P to determine E-P (Tomita et al., 2019).

210 The Global Precipitation Climatology Project - 1 Degree Daily (GPCP-1DD; denoted GPCP hereafter), contains P estimated from a combination of data from ground-based rain gauges and satellites — the latter including near-infrared, passive and active microwave observations (Huffman et al., 2001). Daily global precipitation rates are provided by GPCP-1DD at



1° resolution for the time range 1996–2017. We calculate monthly mean P from version 1.3 GPCP-1DD (GPCP, 2018), because the spatial resolution of the monthly product is not sufficient for our purposes. These data were obtained from
215 <https://rda.ucar.edu/datasets/ds728.5/>.

2.3 Errors, biases, uncertainty

Only three out of seven data sets analyzed here contain explicit information on uncertainty. HOAPS contains estimates of random and systematic bias errors (Kinzel et al., 2016; Liman et al., 2018). The errors in E were obtained by separating biases of HOAPS Level-2 E with respect to collocated *in situ* ship-based data into equally populated E , u , T_s , and W bins. The mean
220 and standard deviation of the biases are assumed to represent the systematic and random components of the 2σ uncertainty range, respectively, which is probably a conservative estimate. By taking the approach of determining uncertainty ranges as a function of turbulent flux parameters these can also be assigned to times and regions not covered by the ship-based reference data set (Liman et al., 2018). For the current study, we calculated the mean uncertainty by averaging the systematic uncertainty component. The random component is negligible when averaging long time series. The HOAPS P data set does not contain
225 uncertainty information; instead, a constant relative 1σ uncertainty range of 13% was assumed, based on a comparison with ship-based *in situ* data (Burdanowitz, 2017). The total $E - P$ uncertainty was determined by error propagation.

Bias errors given in the OAFlux data set were computed based on the uncertainty ranges of individual input data sets, assuming no correlation between uncertainties from different data sets (Yu et al., 2008). Like for HOAPS uncertainty ranges, the OAFlux bias error was simply averaged for our investigations.

230 In contrast to the monthly GPCP product, GPCP-1DD Version 1.3 does not provide explicit uncertainty estimates, hence here we assume a constant relative 1σ uncertainty range of 8%. This is the estimated bias error for GPCP data over the tropical oceans (Adler et al., 2012), which is where most of the P signal originates. Over the global oceans, the bias error was estimated at 10%, but Adler et al. (2012) considered this an upper bound.

In contrast to uncertainty ranges estimated by comparing with other (e.g., *in situ*) data sets, the uncertainty of ERA5 data
235 is described by the standard deviation and the range of the ensemble, consisting of 10 separate model runs (Hersbach et al., 2020). We determined these statistics after averaging of the data: first, the mean (e.g., global monthly mean) of each individual ensemble member was calculated, then standard deviation and range were determined. Note that ERA5 ensemble statistics should be interpreted in a relative sense (i.e., ensemble spread is larger where uncertainty is higher), as the numerical values are over-confident (ECMWF, 2020).

240 3 Methods

HOAPS is the only satellite data set containing E , P , and $E-P$ data from a single source (i.e., microwave BTs). Within the HOAPS algorithm, $E - P$ is obtained by subtracting monthly mean P from E (Andersson et al., 2010). For this study, the data were remapped from 0.5° to 1° . For the J-OFURO3 freshwater flux product, monthly mean GPCP-1DD P are subtracted from the corresponding J-OFURO3 E (Tomita et al., 2019). We determined $E - P$ of the other satellite-based data sets by subtracting



245 monthly mean GPCP P from the respective monthly mean E . These data sets will be denoted as IFREMER-G, SEAFLEX-G, and OAFlex-G to indicate that GPCP data were subtracted. IFREMER and SEAFLEX do not provide E , therefore we calculated those from their respective Q_l and T_s data using Eqs. 5 and 7. The calculation of E from Q_l was performed at 0.5° and monthly resolution. Subsequently, all E data were conservatively remapped to 1° to match GPCP resolution prior to subtraction of P . Similarly, ERA5 E-P was determined by subtracting monthly mean P from E at 1° resolution.

250 All comparisons presented here are performed with collocated data, i.e., only grid boxes (at x , y , and t) present in all data sets were used to create climatological or global averages. A more accurate collocation procedure would be performed at shorter, e.g., daily, time scale, because differences in filtering of high-precipitation scenes (where E retrieval is impaired) and selection of included satellite instruments lead to differences in sub-monthly sampling. This was, however, not feasible in this study, as HOAPS and J-OFURO E-P data are only provided on monthly resolution.

255 The satellite reference data set used in regional comparisons is determined by the statistical median of the satellite-based data ensemble and therefore does not include ERA5. The median is chosen over the mean to exclude outliers. In the following, this reference data set is abbreviated SEM (satellite ensemble median).

Global averages were determined by converting the relative unit of mm d^{-1} (equivalent to $\text{kg m}^{-2} \text{d}^{-1}$) to absolute units of $(\text{km}^3 \text{d}^{-1})$, computing the global (or ocean or land) mean and multiplying with the corresponding total surface area ($510 \cdot 10^6$,
260 $350 \cdot 10^6$, and $160 \cdot 10^6 \text{ km}^2$, respectively). Seasonally varying amounts of sea-ice are not taken into account. Most comparisons in this study are shown in relative units, but for the comparison of global totals over land and ocean presented in Sect. 4.6, data were converted to absolute units ($\text{km}^3 \text{yr}^{-1}$) so that the totals balance.

4 Results

4.1 Freshwater flux climatology

265 Freshwater flux climatologies obtained from 17 years of data (1997–2013) were determined from satellite ensemble median (SEM) and ERA5 data. They are shown in Fig. 1, panels A and B, to illustrate the overall spatial distribution of mean $E - P$. The chosen time range is the largest common time range of the data sets used in this study. Note that ERA5 data were matched to satellite data coverage.

Regions where mean $P > E$ are dominated by atmospheric freshwater outflux (into the ocean), shown in blue, and are
270 concentrated at the inter-tropical convergence zone (ITCZ) and the Pacific warm pool. In the subtropics, E generally outweighs P . At higher latitudes P and E are approximately equal, but with a tendency to $E - P < 0$. Comparison of panels C-F with A and B shows that the E-P pattern is mainly determined by P , as there is less spatial variation in E . The agreement between SEM and ERA5 E-P climatologies is good, yet, some systematic differences can be observed. Due to higher P at the ITCZ, ERA5 shows more negative $E - P$ there. Conversely, the overall higher E level in ERA5 causes $E - P$ values larger than those
275 found for SEM over most of the global oceans. Excessive E was also found to produce high E-P in ERA-interim (Brown and Kummerow, 2014).



The deviations are more apparent when climatological differences are analyzed. For this comparison we select ERA5 as a reference due to its spatio-temporal completeness and because it is the only "other" data set (i.e., not satellite data), keeping in mind that ERA5 data very likely also have inaccuracies and/or biases. Figure 2 shows climatological difference plots of HOAPS (upper panel) and OAFflux-G (lower panel) with collocated ERA5 data. As seen above, the differences are not homogeneously distributed over the globe. The HOAPS difference plot is characterized by an alternating pattern of positive and negative deviations. Stronger HOAPS E in the subtropical central north and eastern South Pacific produce elevated $E - P$ compared to ERA5. In contrast, elevated ERA5 E over the east China Sea combines with smaller ERA5 P in the region, resulting in higher ERA5 $E - P$. The positive bands on either side of the equator are due to higher HOAPS E , whereas the negative $E - P$ differences at the equator are due to smaller HOAPS P . The negative deviations to the east and west of Australia are similarly due to differences in P , whereas the deviations at latitudes $< 40^\circ$ S are due in equal parts to E and P . The differences between OAFflux-G and ERA5 are mainly due to P , apart from the regions in the subtropical Pacific and Atlantic Oceans, where OAFflux E is smaller than ERA5 E . The difference plots of J-OFURO, IFREMER-G, and SEAFflux-G with ERA5 are not shown here, but are very similar to the lower left panel because the differences in P between GPCP and ERA5 are larger than differences in E in most regions. All plots, including difference climatologies of E and P , can be found in the Appendix, Fig. A1.

To investigate where the differences are significant, the right column of Fig. 2 presents the 1σ uncertainty range from HOAPS (upper panel) and OAFflux-G (lower panel). Moreover, regions where the difference between satellite E-P and ERA5 E-P are greater than the 2σ uncertainty range are enclosed by white contour lines in the left panels. The ERA5 E-P uncertainty shows a pattern similar to that of OAFflux-G, but is a factor of 10 smaller than the uncertainties estimated for satellite data and therefore adds a negligible component to the total uncertainty estimate. The HOAPS uncertainty range is larger than HOAPS-ERA5 $E - P$ differences over most of the globe. This is mainly due to P , for which we assumed 13% uncertainty. The deviations $> 1 \text{ mm d}^{-1}$ in the oceans' desert regions (off the west coasts of Peru and Southern Africa) and in the higher latitudes are clearly outside the 2σ uncertainty ranges. In contrast, OAFflux-G $E - P$ deviations are larger than the estimated 2σ uncertainties in the ITCZ, the west coasts of the Pacific and Atlantic Ocean, the Arabian Sea, and the Southern high latitudes. Again, the uncertainty range is mainly given by P , for which we assumed a relative uncertainty of 8%.

4.2 Inter-comparison of freshwater flux over ocean: global means

Monthly mean E , P , and $E - P$ of six (or three) data sets were collocated (see Section 3) and averaged over the global oceans ($80^\circ\text{S} - 80^\circ\text{N}$). Climatological seasonal cycles were determined for the overlapping time range (1997–2013) and are shown in Fig. 3, panels A–C. HOAPS, ERA5, OAFflux, and GPCP 1σ uncertainty ranges are indicated by light blue, purple, red, and brown shading, respectively. Subtracting the seasonal cycle from the respective monthly mean time series yields global ocean anomalies of $E - P$, E , and P , which are presented as three-month running means in panels D–F. Seasonal and inter-annual variability are of the same order of magnitude, which can be seen by comparing the left panels with those on the right (the y-axis spans 1 mm d^{-1} in all panels). There are substantial biases between E , P , and $E - P$ data. A bias of about 0.4 mm d^{-1} is found between SEAFflux and J-OFURO E . An additional 0.2 mm d^{-1} deviation exists between J-OFURO and ERA5. E data from HOAPS, IFREMER, and OAFflux are much closer to each other: satellite-based E all fall within the OAFflux



uncertainty range (light red shading), whereas ERA5 falls within the larger HOAPS uncertainty range for only 4 months of the year. The HOAPS uncertainty range is much larger than the seasonal variation, which indicates that HOAPS uncertainty is likely overestimated, which may be due to the assumption of 100% covariance for systematic uncertainty.

Panel B shows that the seasonal cycle of global ocean mean P is shallow and the two satellite-based data sets agree within the GPCP uncertainty for ten months in the year. The trough in March and April in the HOAPS climatology is caused by the strong sensitivity to the ENSO (El Niño - Southern Oscillation) phase and is a known characteristic of HOAPS data (see, e.g., Andersson et al., 2011; Masunaga et al., 2019). It is most apparent in panel E, where the Niño 3.4 SST index (Trenberth and Stepaniak, 2001) is plotted in gray bars along with P anomalies: HOAPS P correlates with Niño 3.4 if a lag of 4 months is taken into account. Like for E , we find substantial biases among the three P data sets: compared to GPCP, HOAPS has a bias of about -0.1 mm d^{-1} , ERA5 is biased by about $+0.25 \text{ mm d}^{-1}$, which was also found by (Hersbach et al., 2020). These differences can, in part, be explained by differences in P frequency distributions and, in particular, by the fraction of rain occurrences, which is much lower in HOAPS than in GPCP or ERA5. This will be discussed in Sect. 5. Since in this paper the focus is on the inter-comparison of E-P (not specific E or P algorithm issues), we only describe the observed differences between P (and E) data sets to obtain a better understanding of differences between E-P data.

Apart from HOAPS $E - P$ in March–April, all satellite data sets agree on phase and amplitude of the $E - P$ seasonal cycle. ERA5 shows hardly any dependence on season, as the magnitude of the summer maximum is smaller in ERA5 due to the relatively larger summer P maximum. The monthly and inter-annual variability of ERA5 $E - P$ is, like the seasonal cycle, of smaller amplitude than that of satellite data which is caused by the high degree of coherence between E and P , and will be discussed in more detail in Sect. 4.5. Because compared to satellite data, ERA5 E and P are biased high by about the same amount, $E - P$ is close to the satellite data (except SEAFUX-G). SEAFUX-G shows the smallest $E - P$ throughout the year and the global means come close to 0 mm d^{-1} in March/April. In contrast, HOAPS yields the highest $E - P$ due to its low mean P . All E-P data are contained within the HOAPS and OAFflux uncertainty ranges.

The E anomalies in panel D display a high degree of correlation on the monthly time scale. On the multi-annual scale all data sets show some degree of variability, which is most likely linked to sensor and inter-calibration issues (e.g., Robertson et al., 2019), and the variability is not consensual. For example, the slow, decadal-scale oscillation observed in HOAPS and IFREMER appears to be in anti-phase compared to OAFflux. SEAFUX shows a behavior different from all other data sets and E is biased low from late 2000 to the beginning of 2006. The three P data sets yield inter-annual variations with amplitudes that are similar in amplitude to those found for E , and show a high degree of correspondence in their monthly and inter-annual variability — apart from the stronger ENSO dependence of HOAPS. Apparent agreement is found among all $E - P$ anomalies — again apart from the ENSO-related deviations found in HOAPS P . The agreement among $E - P$ anomalies is best in the “quiet” ENSO years (2001–2005), but this is probably a coincidence as the spread in $E - P$ in other years is mainly due to differences in E and not in P . Note that differences between J-OFURO-G, IFREMER-G, SEAFUX-G, and OAFflux-G are due to differences in E , as in all cases GPCP P was used for the calculation of $E - P$.



4.3 Inter-comparison of freshwater flux over ocean: time series on regional scales

345 In this section, we investigate the temporal correlation of water cycle components on regional scales. This approach will help to understand differences between the various data sets by uncovering in which regions the differences are particularly large (or small). As a reference for the E and E-P comparisons, we use SEM, a data set determined by the statistical median of all satellite data sets. Since we use only two satellite P data sets, GPCP is selected as a reference for the P comparison. We determine correlation coefficient, slope and intercept of the linear regression ($y = ax + b$) between $1^\circ \times 1^\circ$ monthly means (not
350 anomalies) of each data set, y , and the reference, x , to examine where estimates are most consistent.

The results are shown for all six E data sets in Fig. 4, where the left column displays the correlation coefficient. On the top row, HOAPS yields $R^2 > 0.75$ over most of the globe, with some notable exceptions at the ITCZ and the Peruvian coast. The other satellite data yield higher correlation coefficients in general, except for SEAFLEX at latitudes $> 40^\circ$, where R^2 decreases to 0.5 in the North and below 0.25 in the Southern Ocean. The correlation pattern of ERA5 with SEM is similar to
355 that found for HOAPS, although the tropical areas with $R^2 < 0.75$ are not at the same locations. The highest overall correlation with SEM is found for J-OFURO, with R^2 exceeding 0.75 essentially everywhere.

The middle panels of Fig. 4 display the slope of the linear regression. A slope greater (smaller) than 1 implies an over- (under-) estimation, particularly of large values, compared to SEM. HOAPS overestimates E in the tropics, except in an area in the eastern Pacific at $0^\circ - 5^\circ$ N, where $a < 1$. J-OFURO and SEAFLEX show opposing patterns, as the former consistently
360 overestimates large E over the global oceans, particularly near the equator and in a band at 60° S, whereas the latter underestimates large E everywhere. Slopes determined from IFREMER and OAFlux show only small deviations from 1, except for a region in the tropical eastern Pacific, where OAFlux underestimates large E compared to SEM. An inhomogeneous pattern is found for ERA5, but the slope is generally close to 1. A small region in the tropical Atlantic stands out due to its large slope, and since this is not seen in any of the satellite data sets, it must be a feature in ERA5 data.

365 The patterns in the middle panels are nearly all mirrored in the right panels, i.e., wherever large values are overestimated ($a > 1$), small values are underestimated ($b < 0$), and *vice versa*. All data sets thus appear to agree on intermediate values. Overall, the correspondence between E data sets is best in the subtropics, as the largest deviations appear in the tropics and, in some cases, in the (southern) high latitudes.

Figure 5 shows the same analysis for P from HOAPS (upper panels) and ERA5 (lower panels). The correlation coefficient
370 between HOAPS and GPCP P is > 0.75 at the ITCZ and about 0.5 for most of the global oceans. In the oceans' deserts $R^2 < 0.25$ are found, which is mostly due to the small dynamic range of mean P . Compared to GPCP, HOAPS underestimates P in this region, as $a < 1$. At latitudes poleward of 50° similarly small R^2 are found that are in part due to the small dynamic range, and in part to difficulties pertaining to the detection of snow. HOAPS underestimates high P here and overestimates small P ($b > 0 \text{ mm d}^{-1}$) compared to GPCP. Very similar patterns are seen for ERA5, although in general, the correlation
375 coefficient is higher than for HOAPS. ERA5 is biased high almost everywhere compared to GPCP. Both HOAPS and ERA5 show a smaller range of P in the Southern Oceans, as the slope is less than 0.5, but the large intercept indicates an overestimation



of small P compared to GPCP. The narrow band of $R^2 < 0.75$ and $b > 1 \text{ mm d}^{-1}$ at the equator is also found in both HOAPS and ERA5.

For E-P, the results of the regression analysis are shown in Fig. 6. The highest correlation coefficients (and slopes and intercepts closest to 1 and 0 mm d^{-1}) are found among the data sets calculated with GPCP P . This shows that most of the variability in E-P is due to differences in P . Since GPCP P is used in four out of five data sets included in the SEM, those data sets show high correlations, whereas HOAPS and ERA5 yield patterns very similar to those found for the P comparison in Fig. 5. Nevertheless, both for ERA5 and HOAPS the correlation in most of the tropics is higher for E-P than for P . In summary, the correlation patterns for HOAPS and ERA5 indicate agreement on the seasonal cycle in the tropics, a result found previously by Brown and Kummerow (2014), although we find that its amplitude is reduced in the GPCP-based E-P data (Fig. 3). Less agreement is found in the Southern Oceans, where GPCP-based $E - P$ are underestimated relative to SEM. In the mid-latitudes, the regression with SEM yields slopes near 1 and intercepts close to 0 mm d^{-1} for ERA5 and HOAPS, but the correlation is less than in the tropics, probably due to the smaller dynamic range of E-P.

In the present study, we compare satellite-based E-P with ERA5 E-P because we are also examine the separate contributions from E and P . It can, however, be argued that VIMD from reanalysis is a more reliable quantity than reanalysis E-P, since VIMD is calculated from the state variables wind and water vapor, whereas E and P are model-physics derived (e.g., Trenberth et al., 2011)). We verified that in ERA5, the agreement between $E - P$ and ∇Q is generally good, as shown in Appendix B. Changes to the plots in Fig. 6 are minor if we use ERA5 ∇Q instead of ERA5 $E - P$ to calculate the regression with SEM $E - P$, as shown in Fig. A2 in the Appendix.

4.4 Examination of the water budget in ERA5

One way of investigating the consistency of different water cycle components is determining if the global water budget (Eq. 1) is closed. However, satellite E-P data sets are available over ocean only, so we revert to a comparison with gap-free reanalysis data. There is no internal constraint for budget closure in ERA reanalyses (Berrisford et al., 2011; Hersbach et al., 2020), and as the budget was not closed in ERA-interim, it is worthwhile to investigate ERA5's behavior in this regard. Monthly mean total ERA5 $E - P$ over the globe, the ocean, and land are shown in Fig. 7 in black, blue, and green, respectively. The mean values over the globe and land were scaled by their surface area relative to the ocean surface area (i.e., they were multiplied by $510/350$ and $160/350$, respectively) to obtain consistency with the over-ocean means shown in Fig. 3. The error bars on ERA5 data depict the standard deviation of the 10-member ensemble. Nearly all of the uncertainty in global mean E-P is due to the uncertainty over ocean; the error bars on the over-land E-P are smaller than the graph's line width. This is due in equal parts to E and P , which have similar ensemble standard deviations (not shown). For the time range shown in Fig. 7 global $E - P$ is seen to oscillate around 0 mm d^{-1} , meaning that the ERA5 water budget is closed on a yearly time scale (in agreement with the findings by Hersbach et al., 2020). The seasonal cycle is mainly driven by increased evapo-transpiration of vegetation on land and peaks in northern hemispheric summer due to the larger fraction of land in the Northern Hemisphere. Precipitation shows a similar seasonal cycle over land, but does not completely cancel out in E-P due to a slight phase shift with respect to the E seasonal cycle (not shown).



Figure 7 shows that monthly means of global $E - P$ and ΔW (light blue line) display a high degree of coherence, as expected from Eq. 2. This is an indication that the (atmospheric) water cycle is well represented in ERA5.

Globally, VIMD is zero, as no water vapor is transported out of (or into) the Earth system. However, we find ERA5 global total VIMD to be about -0.04 mm d^{-1} , which is probably due to inaccuracies in the transformation from the spectral to grid
415 point space (P. Berrisford, personal communication 2020). Interestingly, VIMD over land (pink) agrees well with over-land E-P, whereas VIMD over ocean (purple line) is smaller than over-ocean E-P also by -0.04 mm d^{-1} . Based on the results of the regression analysis shown in the upper panels of Fig. A2 we speculate that discrepancies between $E - P$ and ∇Q over the ocean's desert regions also play a role in causing ∇Q to be smaller over ocean than over land.

4.5 Examination of the water budget in satellite data sets

420 Globally, $E - P$ is equal to ΔW (Eq. 2 and Fig. 7), and because ΔW is two orders of magnitude smaller than E and P , global mean E should necessarily be almost equal to global mean P . This seemingly trivial finding provides us with a tool to investigate the consistency of E and P data sets: by determining how well they correlate. For ERA5, global mean E and P yield correlation coefficients $R^2 = 0.82$ and $R^2 = 0.84$ for monthly and yearly means, respectively. This procedure cannot be applied to the satellite E-P data considered here, as they contain values over ocean only. Since there is a substantial seasonality
425 in water vapor transport (Fig. 7), the correlation between ocean-only E and P is expected to be much lower. A regression of ERA5 E_{ocean} and P_{ocean} monthly means (where the subscript $ocean$ indicates averaging over ocean only) indeed yields only $R^2 = 0.42$, increasing to $R^2 = 0.57$ for yearly means. To account for the net transport of water from ocean to land, we include ∇Q_{ocean} into the analysis, and, applying Eq. 4, correlate $E_{ocean} - \nabla Q_{ocean}$ with P_{ocean} . For ERA5, the resulting R^2 are 0.86 for yearly and monthly means: very similar to the coefficients found for the correlation of global E with P .

430 We calculated correlation coefficients of the various E and P data sets used in this study, combined with ERA5 ∇Q_{ocean} , and listed them in Table 3. The analyses were performed separately on (i) monthly means, primarily indicating agreement on the seasonal cycle; (ii) yearly means, a measure of consistency of inter-annual variability, including trends; and (iii) monthly anomalies, focused on short-scale variability.

The small correlation coefficients found for monthly mean satellite data in part reflect the differences in the seasonal cycles
435 of E and P (see panels A and B of Fig. 3). But the results from the analysis of monthly anomalies (where the mean seasonal cycle was subtracted) are very similar to those found for monthly means, indicating that, compared to monthly and inter-annual variability, the seasonal cycle is of lesser importance on the global scale. For satellite data, the influence of ∇Q_{ocean} on the correlation is minor, as similar R^2 are found if the analysis is performed with E_{ocean} against P_{ocean} (not shown). This is not the case for ERA5, where including ∇Q_{ocean} improves the correlation coefficient appreciably, as mentioned above. On a yearly
440 time scale, we do not expect a high degree of correlation, as inter-annual variability is small and no clear trends are observed in panels D and E of Fig. 3. For ERA5, $R^2 = 0.86$, but this is primarily caused by small E and P in 1997 and 1999, which is also the case for IFREMER. The correlation found for J-OFURO, $R^2 = 0.31$, is the highest found among satellite data. The remaining satellite data sets are not significantly correlated on a yearly time scale (p-value > 0.05), and for SEAFUX-G



445 $E_{ocean} - \nabla Q_{ocean}$ is smaller than GPCP P_{ocean} . Clearly, time series longer than the 17 years investigated here would benefit the analysis of yearly mean data.

Overall, this analysis shows that satellite-based estimates of E are less consistent with satellite-based P data than ERA5 E and P. To a certain degree, this is expected, as the three variables used in the analysis come from different sources (e.g., E from IFREMER, P from GPCP, and ∇Q_{ocean} from ERA5), each with its own sampling and uncertainty characteristics. Nevertheless, from the global water cycle perspective, some degree of correspondence between E_{ocean} and P_{ocean} is expected.

450 4.6 Estimates of global total water cycle components

From the data shown in the previous sections we calculated climatological (1997–2013) global ocean total E and P , total $E - P$ (separated into land and ocean contributions), runoff and net transport. The latter is equal to the total over-ocean (or over-land) ∇Q . Our results are given in the three upper rows of Table 4. For brevity, we again denote total E , P , and $E - P$ over ocean as E_{ocean} , P_{ocean} , and $(E - P)_{ocean}$ respectively, and similarly, over-land $E - P$ as $(E - P)_{land}$. For better comparison with
455 earlier estimates, values are given in units of $10^3 \text{ km}^3 \text{ yr}^{-1}$.

The rows labeled "obs." display the mean, standard deviation (std) and range of P_{ocean} (from GPCP and HOAPS) and E_{ocean} (from HOAPS, J-OFURO, IFREMER, SEAFLEX, and OAFlex). Various estimates of global totals of water cycle components can be found in the literature, for example in (Oki and Kanae, 2006; Trenberth and Asrar, 2014; Rodell et al., 2015), and are shown in the lower half of Table 4.

460 The largest spread among water cycle components is found for E and P over ocean, both in an absolute and a relative sense, each with a range spanning about $100 \cdot 10^3 \text{ km}^3 \text{ yr}^{-1}$, or 20–25%. The relative spread in R is similar, but is a factor of ten smaller in absolute values. In their study, Rodell et al. (2015) estimated E_{ocean} from observations at $410 \cdot 10^3 \text{ km}^3 \text{ yr}^{-1}$ (corresponding to 3.21 mm d^{-1}), in agreement with Trenberth and Asrar (2014), but found a value of $450 \cdot 10^3 \text{ km}^3 \text{ yr}^{-1}$ by applying an algorithm that optimized all water cycle components to achieve water and energy budget closure. The algorithm
465 caused a concurrent increase in P_{ocean} from the observed $385 \cdot 10^3 \text{ km}^3 \text{ yr}^{-1}$ to $403 \cdot 10^3 \text{ km}^3 \text{ yr}^{-1}$. In our study, we find a large range of E_{ocean} : HOAPS yields $397 \pm 96 \cdot 10^3 \text{ km}^3 \text{ yr}^{-1}$, OAFlex $414 \pm 37 \cdot 10^3 \text{ km}^3 \text{ yr}^{-1}$, IFREMER $418 \cdot 10^3 \text{ km}^3 \text{ yr}^{-1}$, and J-OFURO $453 \cdot 10^3 \text{ km}^3 \text{ yr}^{-1}$. We calculate a value of $360 \cdot 10^3 \text{ km}^3 \text{ yr}^{-1}$ from SEAFLEX, which is somewhat surprising as Rodell et al. (2015) report $410 \cdot 10^3 \text{ km}^3 \text{ yr}^{-1}$ for the preceding SEAFLEX version 1. Note that HOAPS 1σ uncertainty is as large as the range among satellite-based E_{ocean} and more than three times the corresponding std, again implying an
470 overestimation of the HOAPS uncertainty range (see Sect. 4.2). The OAFlex 1σ uncertainty is of the same magnitude as the std among satellite-based E_{ocean} . The small E_{ocean} found by HOAPS is partly due to data coverage, as data are only available over the ice-free ocean within 80° of the equator. A test with ERA5 data showed that E_{ocean} decreases by 5% when the data are adapted to HOAPS coverage. Conversely assuming a 5% increase for HOAPS yields $417 \cdot 10^3 \text{ km}^3 \text{ yr}^{-1}$. The same reasoning applies to the other satellite data sets with similar effects on E_{ocean} .

475 The spread in P_{ocean} is of the same magnitude as that found for E_{ocean} : HOAPS yields $335 \pm 44 \cdot 10^3 \text{ km}^3 \text{ yr}^{-1}$, GPCP $384 \pm 31 \cdot 10^3 \text{ km}^3 \text{ yr}^{-1}$, assuming uncertainty ranges of 13% and 8% for HOAPS and GPCP, respectively. ERA5 yields $426 \pm 2 \cdot 10^3 \text{ km}^3 \text{ yr}^{-1}$, which is significantly larger than either HOAPS or GPCP. From the GPCP-1DD data used in this



study, we determine $P_{land} = 116 \cdot 10^3 \text{ km}^3 \text{ yr}^{-1}$, which is close to the estimates presented previously (which range from $111 \cdot 10^3 \text{ km}^3 \text{ yr}^{-1}$ (Oki and Kanae, 2006) to $117 \cdot 10^3 \text{ km}^3 \text{ yr}^{-1}$ (Rodell et al., 2015)). This is due to the fact that GPCP is used for all observation-based estimates. ERA5 P_{land} is somewhat higher than the observations ($122 \cdot 10^3 \text{ km}^3 \text{ yr}^{-1}$).

From the estimates of E_{ocean} and P_{ocean} it follows that for HOAPS $(E - P)_{ocean} = 62 \pm 106 \cdot 10^3 \text{ km}^3 \text{ yr}^{-1}$, for OAFlux $(E - P)_{ocean} = 30 \pm 48 \cdot 10^3 \text{ km}^3 \text{ yr}^{-1}$. IFREMER yields $(E - P)_{ocean} = 34 \cdot 10^3 \text{ km}^3 \text{ yr}^{-1}$, J-OFURO $(E - P)_{ocean} = 69 \cdot 10^3 \text{ km}^3 \text{ yr}^{-1}$, and SEAFLUX the unphysical $(E - P)_{ocean} = -24 \cdot 10^3 \text{ km}^3 \text{ yr}^{-1}$.

The spread in R ($40\text{--}50 \cdot 10^3 \text{ km}^3 \text{ yr}^{-1}$) is quite large. The total continental runoff from ERA5 is $41.2 \cdot 10^3 \text{ km}^3 \text{ yr}^{-1}$, which is slightly higher than the $39 \cdot 10^3 \text{ km}^3 \text{ yr}^{-1}$ found in ERA-interim (Berrisford et al., 2011). Data from the Global Runoff Data Centre (GRDC, Wilkinson et al., 2014) yield an average of $41 \cdot 10^3 \text{ km}^3 \text{ yr}^{-1}$ with a standard deviation of $1.8 \cdot 10^3 \text{ km}^3 \text{ yr}^{-1}$ for 1987–2010. They are at the lower bound of the estimates by Clark et al. (2015), who find $44.2 \pm 2.7 \cdot 10^3 \text{ km}^3 \text{ yr}^{-1}$ for 1950–2008. The same study cites estimates by various authors that range from $25\text{--}50 \cdot 10^3 \text{ km}^3 \text{ yr}^{-1}$, with those based on freshwater fluxes representing the lower boundary ($25\text{--}39 \cdot 10^3 \text{ km}^3 \text{ yr}^{-1}$). The long-term average runoff estimated from the GRUN (Global RUNoff, Ghiggi et al., 2019) data set is $38 \cdot 10^3 \text{ km}^3 \text{ yr}^{-1}$, consistent with the above-mentioned range, albeit somewhat smaller than the best estimate by Clark et al. (2015). Note that GRUN runoff estimates are not independent of reanalysis data, as the machine-learning algorithm uses surface temperature and P data from 20CR reanalysis (Compo et al., 2011; Ghiggi et al., 2019). Improvements in the quality of E-P estimates will aid the quantification of river runoff by providing an independent estimate of the total freshwater flux.

Where runoff is the net transport of (liquid) water from land to ocean, over-ocean VIMD (∇Q_{ocean}) is the net amount of water vapor advected from ocean to land. Hence, $R = \nabla Q_{ocean} = -\nabla Q_{land}$. Whereas ERA5 estimates of ∇Q_{land} are at the high end of the range of R mentioned above, at $31\text{--}33 \cdot 10^3 \text{ km}^3 \text{ yr}^{-1}$, ∇Q_{ocean} is too small. As observed above, the transformation of reanalysis data in spectral space to grid-point space introduces errors that cause global total ∇Q to be about $10 \cdot 10^3 \text{ km}^3 \text{ yr}^{-1}$, and not zero (P. Berrisford, pers. comm., 2020). The estimates by (Oki and Kanae, 2006; Trenberth and Asrar, 2014; Rodell et al., 2015) of net transport are in agreement with ERA5 R and ∇Q_{land} . The consistency between runoff and net transport seen in the last four rows of Table 4 is mainly by construction, as both are usually required (or defined) to be equal.

The five left-most columns of Table 4 should, theoretically, all contain identical values (except for the sign). In practice, however, $(E - P)_{land}$ ranges from -46 to $-40 \cdot 10^3 \text{ km}^3 \text{ yr}^{-1}$, $(E - P)_{ocean}$ from 25 to $49 \cdot 10^3 \text{ km}^3 \text{ yr}^{-1}$, ∇Q ranges from 40 to $47 \cdot 10^3 \text{ km}^3 \text{ yr}^{-1}$ (disregarding the erroneous ERA5 ∇Q_{ocean} value), and R from $40\text{--}46 \cdot 10^3 \text{ km}^3 \text{ yr}^{-1}$. Assuming the degree of consistency found among these values represents the reliability of the estimate, it is clear that E-P uncertainty is largest over ocean, and from the first two columns of Table 4 it follows that E and P contribute almost equally to that uncertainty.



5 Discussion

510 We present an inter-comparison of five recent satellite-based E-P data sets. All five E data sets are the latest official versions of CDRs generated from (different) BT FCDRs and are combined with GPCP (or HOAPS) P CDR to form E-P data.

Of the E data sets used in this study, HOAPS depends on the least amount of model data, using these on a climatological (as opposed to collocated, instantaneous) basis. ERA5, being a model reanalysis, represents the other extreme, and the remaining retrieval algorithms are somewhere in between. All algorithms, including ERA5 physics, rely on the same parameterization
515 of bulk fluxes (Eq. 6) and on the COARE algorithm for the determination of the turbulent exchange coefficient (see Sect. 2). The origin of E differences between various data sets must therefore lie with the bulk flux parameters u , q_a , and q_s , and with differences in sampling characteristics. A recent study by Roberts et al. (2019) showed that HOAPS, SEAFLUX, and J-OFURO retrieve global mean q_a that are systematically too small compared to *in situ* ship-based NOCSv2 data (Berry and Kent, 2011); IFREMER slightly overestimates q_a . This difference could be largely improved by applying a correction based
520 on the subtraction of a regime-dependent bias (in which regimes are defined by their water vapor vertical stratification, cloud liquid water content, and SST; and the bias determined with respect to NOCSv2). The HOAPS algorithm determines Q_l (and E) systematic error estimates in a similar fashion: biases with respect to ship-based data were binned by Q_l , u , T_s , and W , then collected into a 4-dimensional look-up-table (Kinzel et al., 2016; Liman et al., 2018). Subtracting the systematic error from HOAPS Q_l (or E) would raise the global mean and improve the agreement with ship-borne data sets such as NOCSv2.
525 Initial tests show that this is, indeed, the case for Q_l . This is the topic of a forthcoming study. We stress, however, that reducing biases with respect to reference (e.g., *in situ*) data by improving the retrieval algorithm through better understanding of physical processes should be the preferred way forward.

Forcing improved agreement of satellite-based estimates of E with respect to *in situ* data (and ERA5) via bias adjustment has a downside: the bias removed from E reappears in $E - P$, different estimates of $(E - P)_{land}$, ∇Q , and estimates of continental
530 runoff rates. Satellite $E - P$ is also in agreement with ERA5 $E - P$ due to the cancellation of biases, which was already noted in Sect. 4, when discussing the large positive biases of ERA5 E and P with respect to satellite observations (Fig. 3, B and C).

Andersson et al. (2011) found a high bias of HOAPS-3.2 E-P for the time period 1992–2005, which was much reduced (although still high compared to GRDC estimates of runoff) in the successive version 3.3 (Liman et al., 2018). In fact, the mean over-ocean HOAPS-3.3 E-P, determined between 70° S– 70° N and 1988–2012, is 0.45 mm d^{-1} , similar to the value we
535 compute for the same time and latitude range using HOAPS-4.0, of 0.51 mm d^{-1} . For the time and spatial range in the current study, 1997–2013 and within 80° of latitude, HOAPS-4.0 mean $E - P = 0.49 \text{ mm d}^{-1}$ ($62 \cdot 10^3 \text{ km}^3 \text{ yr}^{-1}$), about 50% larger than the GRDC estimate of $41 \cdot 10^3 \text{ km}^3 \text{ yr}^{-1}$. Nevertheless, the over-ocean freshwater fluxes of all studied data sets agree with each other and with runoff data within the HOAPS and OAFlux uncertainty ranges.

The differences in over-ocean mean P between ERA5, GPCP, and HOAPS can be traced back to differences in their probability density functions. HOAPS has a smaller probability for yielding intermediate rain rates, whereas GPCP yields less
540 occurrences of large rain rates (Masunaga et al., 2019). In addition, HOAPS shows a much higher fraction of monthly, $1^\circ \times 1^\circ$ non-raining grid boxes (3–4%) than either GPCP (0.5–1%) or ERA5 (0.2%), which has a large impact on the mean value of P .



The inter-comparison of global P data sets is the topic of a range of papers, but since the validation of P is difficult due to its inherent variability and the lack of sufficient *in situ* data — particularly over ocean — judging which algorithm performs best under which circumstances is a complicated task (Kidd and Huffman, 2011; Gehne et al. , 2016; Tapiador et al. , 2017).

Since the studied data sets contain values over ocean only, it is not possible to check if total E and P balance globally. For this reason we include ERA5 reanalysis data into the comparison. Model physics parameterizations and dynamics presumably act to ensure that the large positive biases found in both ERA5 E and P (compared to satellite data) cancel out almost completely and ERA5 $E - P$ is in good agreement with most satellite data at latitudes $\leq 45^\circ$. We show that ERA5's water budget is closed for the studied time range (1997–2013) and that the various components — E, P, VIMD, TCWV tendency — are consistent on a monthly, global scale (Fig. 7). Cautiously interpreting this consistency as an indication of good quality, we use ERA5 data to devise methods to examine the consistency of ocean-only satellite E and P data sets. The high correlation coefficient found for the regression of ERA5 $E_{ocean} - \nabla Q_{ocean}$ with ERA5 P_{ocean} implies a high degree of coherence, yet correlations of satellite E data with GPCP or HOAPS P are small (Table 3). This is certainly partly due to the number of different sources of data, which for ERA5 is 1, but for (e.g.) J-OFURO is 3: J-OFURO E, ERA5 VIMD, and GPCP P, each having its own sampling characteristics and uncertainties. But the lack of correlation is probably also caused in part by an actual lack of coherence between satellite E data and GPCP (or HOAPS) P. This, in turn, implies that inaccuracies in satellite E and/or P data remain that may prevent closure of the over-ocean part of the water cycle. The comparison of estimates of total E_{ocean} and P_{ocean} with estimates of transport, continental runoff, and $(E - P)_{land}$ (Table 4) paints a similar picture: over-ocean E and P show a large spread in values, coupled with high uncertainties.

6 Final Comments

Our inter-comparison of six CDRs shows agreement among global means of $E - P$ within HOAPS-4.0 and OAFflux3 uncertainty ranges. Despite considerable positive biases in ERA5 E and P, over-ocean ERA5 E-P is in agreement with satellite data, showing some temporal coherence in variations on monthly–decadal time scales, but with notable departures depending on time and on the E data set used. Within uncertainty, over-ocean total $E - P$ from satellites is in agreement with estimates of continental runoff and net ocean-to-land transport. However, uncertainties of and the spread among satellite data sets are both still very large in comparison with the magnitude of over-ocean $E - P$. Improving estimates of E and P , particularly over ocean, thus remains an important task. Moreover, emphasis should be put on the development of uncertainty ranges. We recommend that to monitor the quality of results, in addition to performing independent validation studies, the whole global water cycle and the constraints it imposes should be taken into consideration.

There is a pressing need to understand the nature of changes to the Earth's water cycle induced by global warming. The consensus in recent scientific literature is that there will be a larger amount of water vapor in the atmosphere as the atmosphere warms and, consequently, its water-holding capacity increases at a rate consistent with the Clausius-Clapeyron relationship (e.g. Allen and Ingram , 2002; Held and Soden , 2006; Trenberth et al., 2007). Model simulations agree on E and P flux responses to SST change of about $1\% - 2\% \text{ K}^{-1}$, but observational confirmation through satellite estimates is only now emerging



from the background of noise from natural climate variability. We here show that ERA5, a state-of-the-art model reanalysis, underestimates seasonal and inter-annual variability of E-P compared to satellite-based observations, which is also the case for climate models (Wentz et al. , 2007). This could tentatively be interpreted as indicating that the water cycle is more sensitive to changes in the state of the atmosphere and ocean than models predict. However, the stability of observations is affected by
580 changes in satellite observing system. These changes, combined with assumptions contained in algorithms for near-surface humidity and wind speed (needed for bulk aerodynamic retrievals) complicate the detection and quantification of long-term trends (Wentz et al. , 2007; Trenberth et al., 2007; Schlosser and Houser , 2007; Robertson et al. , 2014). Moreover, and despite the fact that the satellite record of water cycle components now encompasses more than three decades' worth of data, changes in E-P expected from (anthropogenic) global warming within this time period are weak compared to natural changes (Allen
585 and Ingram , 2002).

In general, our understanding of the water cycle as it is now needs to improve substantially before any attempt at assessing effects of climate change can be undertaken.

...

Data availability. All presented data sets are freely available from the cited websites.

590 **Appendix A: Difference climatologies**

All difference maps of satellite-based E-P, E, and P climatologies with collocated ERA5 data are shown in Fig. A1. The maps in the left column are very similar (apart from HOAPS) because the E-P deviations are dominated by P and the same GPCP data were used to generate all E-P data sets (except HOAPS).

Appendix B: Regression of ERA5 E-P against ∇Q

595 Locally and over long time scales (e.g. one month) E-P and VIMD are equal (Eq. 3), as the change in TCWV is negligible on those scales. To see if this is the case for ERA5, the upper panels of Fig. A2 show the correlation coefficient, slope, and intercept of the linear regression of monthly mean E-P with VIMD. A linear fit given by $\nabla Q = a(E - P) + b$ yields a slope a very near to 1.0 and an intercept b close to 0 mm d⁻¹ everywhere, with a tendency to $a > 1$ over high P regions (e.g. the ITCZ) and $a < 1$ elsewhere, as shown in the middle and right panels of Fig. A2. Due to errors introduced during data processing (e.g.,
600 by moving between spectral and grid-point space) a perfect match between the ERA5 variables is not expected. But there are a few regions where the decreased R^2 can only be partly ascribed to averaging errors. These are the oceans' desert regions, e.g., at the Peruvian coast and southern Africa's west coast, where climatological mean P is less than 1 mm d⁻¹, and the dynamic range of $E - P$ is small (≤ 2 mm d⁻¹). In the ocean deserts, the slope is < 1 and the intercept > 0 mm d⁻¹ (e.g., 0.75 and 1.5 mm d⁻¹ for the tropical East Pacific region with small R^2). Since mean P is near 0 mm d⁻¹ in these regions, ∇Q is



605 approximately equal to E . Hence the deviations between $E - P$ and ∇Q in these regions indicate an inconsistency between ERA5 E and ∇Q . From the similarity of ERA5 $E - P$ and ∇Q it follows that the results of the regression analysis of ERA5 E-P with SEM E-P, presented in Sect. 4.3, are very similar to those obtained for ERA5 ∇Q with SEM $E - P$, as shown in the lower panels of Fig. A2. The correlation coefficient is somewhat smaller than for ERA5 $E - P$, but the patterns of all three statistical parameters are very similar to those in the last row of Fig. 6.

610 *Author contributions.* M.S. initiated the study on E-P intercomparisons and M.G. on water cycle closure; M.G. designed and performed the analyses; M.G., M.S., K.F., T.T., S.B., J.B.R., and F.R.R. discussed results; M.G. wrote the paper with contributions from all.

Competing interests. There are no competing interests.

Acknowledgements. We are grateful to Hans Hersbach, Paul Berrisford, and Anton Beljaars (ECMWF) for their helpful comments on ERA5 assimilation and parameterization. Hannes Konrad (DWD) is acknowledged for stimulating discussions and Frits Penning de Vries for critical
615 reading of the manuscript.

K.F. and M.S. acknowledge financial support by the EUMETSAT member states through CM SAF.

Version 1.3 GPCP-1DD combined precipitation data were provided by the NCEI CDR Program as a contribution to the GEWEX Global Precipitation Climatology Project. Global ocean heat flux and evaporation products were provided by the Woods Hole Oceanographic Institution (WHOI) OAFflux project funded by the NOAA Climate Observations and Monitoring program. We thank IFREMER, the J-OFURO
620 project and the SeaFlux project at WHOI for sharing their data free of charge. ERA5 results shown here were generated using data from Copernicus Climate Change Service Information (2020).

Finally, we gratefully acknowledge developers and contributors to Python and Stackexchange.



References

- Adler, R. F., Huffman, G. J., Chang, A., Ferraro, R., Xie, P.-P., Janowiak, J., Rudolf, B., Schneider, U., Curtis, S., Bolvin, D., Gruber, A.,
625 Susskind, J., Arkin, P. and Nelkin, E.: The Version-2 Global Precipitation Climatology Project (GPCP) Monthly Precipitation Analysis
(1979–Present), *J. Hydrometeor.*, 4(6), 1147–1167, doi:10.1175/1525-7541(2003)004<1147:TVGPCP>2.0.CO;2, 2003.
- Adler, R. F., Gu, G. and Huffman, G. J.: Estimating Climatological Bias Errors for the Global Precipitation Climatology Project (GPCP), *J.*
Appl. Meteor. Climatol., 51(1), 84–99, doi:10.1175/JAMC-D-11-052.1, 2012.
- Allen, M. R. and Ingram, W. J.: Constraints on future changes in climate and the hydrologic cycle, *Nature*, 419(6903), 228–232,
630 doi:10.1038/nature01092, 2002.
- Andersson, A., Fennig, K., Klepp, C., Bakan, S., Graßl, H., and Schulz, J.: The Hamburg Ocean Atmosphere Parameters and Fluxes from
Satellite Data – HOAPS-3, *Earth Syst. Sci. Data*, 2, 215–234, <https://doi.org/10.5194/essd-2-215-2010>, 2010.
- Andersson, A., Klepp, C., Fennig, K., Bakan, S., Graßl, H. and Schulz, J.: Evaluation of HOAPS-3 Ocean Surface Freshwater Flux Compo-
nents, *J. Appl. Meteor. Climatol.*, 50(2), 379–398, doi:10.1175/2010JAMC2341.1, 2011.
- 635 Andersson, A., Graw, K., Schröder, M., Fennig, K., Liman, J., Bakan, S., Hollmann, R., Klepp, C.: Hamburg Ocean Atmosphere
Parameters and Fluxes from Satellite Data - HOAPS 4.0, Satellite Application Facility on Climate Monitoring, Data set, doi:
10.5676/EUM_SAF_CM/HOAPS/V002, 2017.
- Bauer, P., Moreau, E., Chevallier, F. and O’keeffe, U.: Multiple-scattering microwave radiative transfer for data assimilation applications,
Quart. J. Roy. Met. Soc., 132(617), 1259–1281, doi:10.1256/qj.05.153, 2006.
- 640 Behrangi, A., Stephens, G., Adler, R. F., Huffman, G. J., Lambriksen, B. and Lebsock, M.: An Update on the Oceanic Precipitation Rate and
Its Zonal Distribution in Light of Advanced Observations from Space, *J. Climate*, 27(11), 3957–3965, doi:10.1175/JCLI-D-13-00679.1,
2014.
- Bentamy, A., Katsaros, K. B., Ez, A. M. M.-N., Drennan, W. M., Forde, E. B. and Roquet, H.: Satellite Estimates of Wind Speed and Latent
Heat Flux over the Global Oceans, *J. Climate*, 16, 20, 2003.
- 645 Bentamy, A., Grodsky, S. A., Katsaros, K., Mestas-Núñez, A. M., Blanke, B. and Desbiolles, F.: Improvement in air–sea flux estimates
derived from satellite observations, *International Journal of Remote Sensing*, 34(14), 5243–5261, doi:10.1080/01431161.2013.787502,
2013.
- Bentamy, A., Grodsky, S. A., Elyouncha, A., Chapron, B. and Desbiolles, F.: Homogenization of scatterometer wind retrievals, *International
Journal of Climatology*, 37(2), 870–889, doi:10.1002/joc.4746, 2017a.
- 650 Bentamy, A., Piollé, J. F., Grouazel, A., Danielson, R., Gulev, S., Paul, F., Azelmat, H., Mathieu, P. P., von Schuckmann, K., Sathyendranath,
S., Evers-King, H., Esau, I., Johannessen, J. A., Clayson, C. A., Pinker, R. T., Grodsky, S. A., Bourassa, M., Smith, S. R., Haines, K.,
Valdivieso, M., Merchant, C. J., Chapron, B., Anderson, A., Hollmann, R. and Josey, S. A.: Review and assessment of latent and sensible
heat flux accuracy over the global oceans, *Remote Sensing of Environment*, 201, 196–218, doi:10.1016/j.rse.2017.08.016, 2017.
- Berg, W., Kroodsma, R., Kummerow, C. D. and McKague, D. S.: Fundamental Climate Data Records of Microwave Brightness Temperatures,
655 *Remote Sensing*, 10(8), 1306, doi:10.3390/rs10081306, 2018.
- Berrisford, P., Kållberg, P., Kobayashi, S., Dee, D., Uppala, S., Simmons, A. J., Poli, P. and Sato, H.: Atmospheric conservation properties in
ERA-Interim, *Quart. J. Roy. Met. Soc.*, 137(659), 1381–1399, doi:10.1002/qj.864, 2011.
- Berry, D. I. and Kent, E. C.: Air–Sea fluxes from ICOADS: the construction of a new gridded dataset with uncertainty estimates, *International
Journal of Climatology*, 31(7), 987–1001, doi:10.1002/joc.2059, 2011.



- 660 Bony, S., Stevens, B., Frierson, D. M. W., Jakob, C., Kageyama, M., Pincus, R., Shepherd, T. G., Sherwood, S. C., Siebesma, A. P., Sobel, A. H., Watanabe, M. and Webb, M. J.: Clouds, circulation and climate sensitivity, *Nature Geosci.*, 8(4), 261–268, doi:10.1038/ngeo2398, 2015.
- Bourras, D.: Comparison of Five Satellite-Derived Latent Heat Flux Products to Moored Buoy Data, *J. Climate*, 19(24), 6291–6313, doi:10.1175/JCLI3977.1, 2006.
- 665 Bradley, E. F., Fairall, C. W., Hare, J. E., and Grachev, A. A.: An old and improved bulk algorithm for air–sea fluxes: COARE 2.6A. Preprints, 14th Symp. on Boundary Layer and Turbulence, Aspen, CO, Amer. Meteor. Soc., 294–296, 2000.
- Brown, P. J. and Kummerow, C. D.: An Assessment of Atmospheric Water Budget Components over Tropical Oceans, *J. Climate*, 27(5), 2054–2071, doi:10.1175/JCLI-D-13-00385.1, 2014.
- Burdanowitz, J.: Point-to-area validation of passive microwave satellite precipitation with shipboard disdrometers. PhD Thesis, Universität Hamburg, Hamburg. doi:10.17617/2.2385648, 2017.
- 670 Burdanowitz, J., Klepp, C., Bakan, S. and Buehler, S. A.: Towards an along-track validation of HOAPS precipitation using OceanRAIN optical disdrometer data over the Atlantic Ocean, *Quart. J. Roy. Met. Soc.*, 144(S1), 235–254, doi:10.1002/qj.3248, 2018.
- Clark, E. A., Sheffield, J., van Vliet, M. T. H., Nijssen, B. and Lettenmaier, D. P.: Continental Runoff into the Oceans (1950–2008), *J. Hydrometeor.*, 16(4), 1502–1520, doi:10.1175/JHM-D-14-0183.1, 2015.
- 675 Clayson, C. A. and Brown, J. (2016). Ocean surface bundle—Climate Algorithm Theoretical Basis Document, NOAA Climate Data Record Program [CDRP-ATBD-0578] Rev. 2 (2016). Available at <https://www.ncdc.noaa.gov/cdr/>
- Compo, G. P., Whitaker, J. S., Sardeshmukh, P. D., Matsui, N., Allan, R. J., Yin, X., Gleason, B. E., Vose, R. S., Rutledge, G., Bessemoulin, P., Brönnimann, S., Brunet, M., Crouthamel, R. I., Grant, A. N., Groisman, P. Y., Jones, P. D., Kruk, M. C., Kruger, A. C., Marshall, G. J., Maugeri, M., Mok, H. Y., Nordli, Ø., Ross, T. F., Trigo, R. M., Wang, X. L., Woodruff, S. D. and Worley, S. J.: The Twentieth Century
- 680 Reanalysis Project, *Quart. J. Roy. Met. Soc.*, 137(654), 1–28, doi:10.1002/qj.776, 2011.
- Curry, J. A., Bentamy, A., Bourassa, M. A., Bourras, D., Bradley, E. F., Brunke, M., Castro, S., Chou, S. H., Clayson, C. A., Emery, W. J., Eymard, L., Fairall, C. W., Kubota, M., Lin, B., Perrie, W., Reeder, R. A., Renfrew, I. A., Rossow, W. B., Schulz, J., Smith, S. R., Webster, P. J., Wick, G. A. and Zeng, X.: Seaflux, *Bull. Amer. Meteor. Soc.*, 85(3), 409–424, doi:10.1175/BAMS-85-3-409, 2004.
- Dee, D. P., Uppala, S. M., Simmons, A. J., Berrisford, P., Poli, P., Kobayashi, S., Andrae, U., Balmaseda, M. A., Balsamo, G., Bauer, P.,
- 685 Bechtold, P., Beljaars, A. C. M., Berg, L. van de, Bidlot, J., Bormann, N., Delsol, C., Dragani, R., Fuentes, M., Geer, A. J., Haimberger, L., Healy, S. B., Hersbach, H., Hölm, E. V., Isaksen, L., Kållberg, P., Köhler, M., Matricardi, M., McNally, A. P., Monge-Sanz, B. M., Morcrette, J.-J., Park, B.-K., Peubey, C., Rosnay, P. de, Tavolato, C., Thépaut, J.-N. and Vitart, F.: The ERA-Interim reanalysis: configuration and performance of the data assimilation system, *Quart. J. Roy. Met. Soc.*, 137(656), 553–597, doi:10.1002/qj.828, 2011.
- Donlon, C. J., Minnett, P. J., Gentemann, C., Nightingale, T. J., Barton, I. J., Ward, B. and Murray, M. J.: Toward Improved Validation of Satellite Sea Surface Skin Temperature Measurements for Climate Research, *J. Climate*, 15(17), 353–369, doi:10.1175/1520-0442(2002)015<0353%3ATIVOSS>2.0.CO%3B2, 2002.
- 690 Donlon, C. J., Martin, M., Stark, J., Roberts-Jones, J., Fiedler, E. and Wimmer, W.: The Operational Sea Surface Temperature and Sea Ice Analysis (OSTIA) system, *Remote Sensing of Environment*, 116, 140–158, doi:10.1016/j.rse.2010.10.017, 2012.
- ECMWF: IFS Documentation CY41R2, ECMWF, available at <https://www.ecmwf.int/en/elibrary/16648-part-iv-physical-processes>, 2016.
- 695 ECMWF: ERA5 monthly averaged data on single levels from 1979 to present, Data set, doi: 10.24381/cds.f17050d7, 2019.
- ECMWF: ERA5 Data Documentation, <https://confluence.ecmwf.int/display/CKB/ERA5%3A+data+documentation>, latest access: March 2020.



- Fairall, C. W., Bradley, E. F., Rogers, D. P., Edson, J. B. and Young, G. S.: Bulk parameterization of air-sea fluxes for Tropical Ocean-Global Atmosphere Coupled-Ocean Atmosphere Response Experiment, *Journal of Geophysical Research: Oceans*, 101(C2), 3747–3764, doi:10.1029/95JC03205, 1996.
- Fairall, C. W., Bradley, E. F., Hare, J. E., Grachev, A. A. and Edson, J. B.: Bulk Parameterization of Air–Sea Fluxes: Updates and Verification for the COARE Algorithm, *J. Climate*, 16(4), 571–591, doi:10.1175/1520-0442(2003)016<0571:BPOASF>2.0.CO;2, 2003.
- Fennig, K., Schröder, M., and Hollmann, R.: Fundamental Climate Data Record of Microwave Imager Radiances, Edition 3, Dataset, Satellite Application Facility on Climate Monitoring, Data set, doi: 10.5676/EUM_SAF_CM/FCDR_MWI/V003, 2017.
- Fennig, K., Schröder, M., Andersson, A. and Hollmann, R.: A Fundamental climate data record of SMMR, SSM/I, and SSMIS brightness temperatures, *Earth Syst. Sci. Data*, 12, 647–681, doi: 10.5194/essd-12-647-2020, 2020.
- Gehne, M., Hamill, T. M., Kiladis, G. N. and Trenberth, K. E.: Comparison of Global Precipitation Estimates across a Range of Temporal and Spatial Scales, *J. Climate*, 29(21), 7773–7795, doi:10.1175/JCLI-D-15-0618.1, 2016.
- Ghiggi, G., Humphrey, V., Seneviratne, S. I. and Gudmundsson, L.: GRUN: an observation-based global gridded runoff dataset from 1902 to 2014, *Earth System Science Data*, 11(4), 1655–1674, doi: 10.5194/essd-11-1655-2019, 2019.
- GPCP Version 1.3 One-Degree Daily Precipitation Data Set. Research Data Archive at the National Center for Atmospheric Research, Computational and Information Systems Laboratory, Boulder, CO. doi: 10.5065/PV8B-HV76. Accessed June 2019.
- Graw, K., Kinzel, J., Schröder, M., Fennig, K., and Andersson, A.: Algorithm Theoretical Baseline Document HOAPS version 4.0, EUMETSAT CM SAF, doi: 10.5676/EUM_SAF_CM/HOAPS/V002, 2017.
- Hegerl, G. C., Black, E., Allan, R. P., Ingram, W. J., Polson, D., Trenberth, K. E., Chadwick, R. S., Arkin, P. A., Sarojini, B. B., Becker, A., Dai, A., Durack, P. J., Easterling, D., Fowler, H. J., Kendon, E. J., Huffman, G. J., Liu, C., Marsh, R., New, M., Osborn, T. J., Skliris, N., Stott, P. A., Vidale, P.-L., Wijffels, S. E., Wilcox, L. J., Willett, K. M. and Zhang, X.: Challenges in Quantifying Changes in the Global Water Cycle, *Bull. Amer. Meteor. Soc.*, 96(7), 1097–1115, doi:10.1175/BAMS-D-13-00212.1, 2014.
- Held, I. M. and Soden, B. J.: Robust Responses of the Hydrological Cycle to Global Warming, *J. Climate*, 19(21), 5686–5699, doi:10.1175/JCLI3990.1, 2006.
- Henderson-Sellers, B.: A new formula for latent heat of vaporization of water as a function of temperature, *Quart. J. Roy. Met. Soc.*, 110(466), 1186–1190, doi:10.1002/qj.49711046626, 1984.
- Hersbach, H., Bell, B., Berrisford, P., Hirahara, S., Horányi, A., Muñoz-Sabater, J., Nicolas, J., Peubey, C., Radu, R., Schepers, D., Simmons, A., Soci, C., Abdalla, S., Abellan, X., Balsamo, G., Bechtold, P., Biavati, G., Bidlot, J., Bonavita, M., De Chiara, G., Dahlgren, P., Dee, D., Diamantakis, M., Dragani, R., Flemming, J., Forbes, R., Fuentes, M., Geer, A., Haimberger, L., Healy, S., Hogan, R.J., Hólm, E., Janisková, M., Keeley, S., Laloyaux, P., Lopez, P., Lupu, C., Radnoti, G., de Rosnay, P., Rozum, I., Vamborg, F., Villaume, S., and Thépaut, J.-N.: The ERA5 global reanalysis, *Quart. J. Roy. Met. Soc.*, 2020, 1–51, 2020.
- Hollinger, J. P., Peirce, J. L., and Poe, G. A.: SSM/I Instrument Evaluation, *IEEE Trans. Geosci. Remote Sens.*, 28, 781–790, 1990.
- Huffman, G. J., Adler, R. F., Arkin, P., Chang, A., Ferraro, R., Gruber, A., Janowiak, J., McNab, A., Rudolf, B. and Schneider, U.: The Global Precipitation Climatology Project (GPCP) Combined Precipitation Dataset, *Bull. Amer. Meteor. Soc.*, 78(1), 5–20, doi:10.1175/1520-0477(1997)078<0005:TGPCPG>2.0.CO;2, 1997.
- Huffman, G. J., Adler, R. F., Morrissey, M. M., Bolvin, D. T., Curtis, S., Joyce, R., McGavock, B. and Susskind, J.: Global Precipitation at One-Degree Daily Resolution from Multisatellite Observations, *J. Hydrometeor.*, 2(1), 36–50, doi:10.1175/1525-7541(2001)002<0036:GPAODD>2.0.CO;2, 2001.



- 735 Kanamitsu, M., W. Ebisuzaki, J. Woollen, S. Yang, J.J. Hnilo, M. Fiorino, and G.L. Potter: NCEP–DOE AMIP-II Reanalysis (R-2), *Bull. Amer. Meteor. Soc.*, 83, 1631–1644, doi: 10.1175/BAMS-83-11-1631, 2002.
- Kennedy, J., Reyner, N., Millington, S.C., and Saunby, M.: The Met Office Hadley Centre sea ice and sea-surface temperature data set, version 2, part 2: seasurface temperature analysis. *In prep.*, <http://www.metoffice.gov.uk/hadobs/hadisst2/>, 2016.
- Kidd, C. and Huffman, G.: Global precipitation measurement, *Meteorological Applications*, 18(3), 334–353, doi:10.1002/met.284, 2011.
- 740 Kinzel, J., Fennig, K., Schröder, M., Andersson, A., Bumke, K. and Hollmann, R.: Decomposition of Random Errors Inherent to HOAPS-3.2 Near-Surface Humidity Estimates Using Multiple Triple Collocation Analysis, *J. Atmos. Oceanic Technol.*, 33(7), 1455–1471, doi:10.1175/JTECH-D-15-0122.1, 2016.
- Kunkee, D. B., Poe, G. A., Swadley, S. D., Hong, Y., Wessel, J. E., and Uliana, E. A.: Design and Evaluation of the First Special Sensor Microwave Imager/Sounder, *IEEE Trans. Geosci. Remote Sens.*, 46, 863–883, 2008.
- 745 Liman, J., Schröder, M., Fennig, K., Andersson, A. and Hollmann, R.: Uncertainty characterization of HOAPS 3.3 latent heat-flux-related parameters, *Atmospheric Measurement Techniques*, 11(3), 1793–1815, doi:10.5194/amt-11-1793-2018, 2018.
- Masunaga, H., Schröder, M., Furuzawa, F.A., Kummerow, C., Rustemeier, E., and Schneider, U.: Inter-product biases in global precipitation extremes. *Environ. Res. Lett.*, in press, doi: 10.1088/1748-9326/ab5da9
- Oki, T. and Kanae, S.: Global Hydrological Cycles and World Water Resources, *Science*, 313(5790), 1068–1072, doi:10.1126/science.1128845, 2006.
- 750 Rayner, N. A., Parker, D. E., Horton, E. B., Folland, C. K., Alexander, L. V., Powell, D. P., Kent, E.C., and Kaplan, A.: Global analyses of sea surface temperature, sea ice, and night marine air temperature since the late nineteenth century, *J. Geophys. Res.*, 108(D14), 4407, doi:10.1029/2002JD002670, 2003.
- Reynolds, R. W., Smith, T. M., Liu, C., Chelton, D. B., Casey, K. S. and Schlax, M. G.: Daily High-Resolution-Blended Analyses for Sea Surface Temperature, *J. Climate*, 20(22), 5473–5496, doi:10.1175/2007JCLI1824.1, 2007.
- 755 Roberts, J. B., Clayson, C. A. and Robertson, F. R.: Improving Near-Surface Retrievals of Surface Humidity Over the Global Open Oceans From Passive Microwave Observations, *Earth and Space Science*, 6(7), 1220–1233, doi:10.1029/2018EA000436, 2019.
- Robertson, F. R., Bosilovich, M. G., Roberts, J. B., Reichle, R. H., Adler, R., Ricciardulli, L., Berg, W. and Huffman, G. J.: Consistency of Estimated Global Water Cycle Variations over the Satellite Era, *J. Climate*, 27(16), 6135–6154, doi:10.1175/JCLI-D-13-00384.1, 2014.
- 760 Robertson, F. R., Roberts, J. B., Bosilovich, M. G., Bentamy, A., Schröder, M., Tomita, H., Clayson, C. A., Compo, G. P., Fennig, K., Gutenstein, M., Kobayashi, C., Sardeshmukh, P., and Slivinski, L. C.: Ocean Latent Heat Flux Uncertainties at Interannual to Inter-decadal Scales in Satellite Retrievals and Reduced Observation Reanalyses, *J. Clim.*, in preparation.
- Rodell, M., Beaudoin, H. K., L’Ecuyer, T. S., Olson, W. S., Famiglietti, J. S., Houser, P. R., Adler, R., Bosilovich, M. G., Clayson, C. A., Chambers, D., Clark, E., Fetzer, E. J., Gao, X., Gu, G., Hilburn, K., Huffman, G. J., Lettenmaier, D. P., Liu, W. T., Robertson, F. R., Schlosser, C. A., Sheffield, J. and Wood, E. F.: The Observed State of the Water Cycle in the Early Twenty-First Century, *J. Climate*, 28(21), 8289–8318, doi:10.1175/JCLI-D-14-00555.1, 2015.
- 765 Sapiano, M. R. P., Berg, W.K., McKague, D. S. , and Kummerow, C. D.: Toward an Intercalibrated Fundamental Climate Data Record of the SSM/I Sensors, *IEEE Trans. Geosci. Remote Sens.*, 51(3), 1492–1503, doi:10.1109/TGRS.2012.2206601, 2013.
- Schlosser, C. A. and Houser, P. R.: Assessing a Satellite-Era Perspective of the Global Water Cycle, *J. Climate*, 20(7), 1316–1338, doi:10.1175/JCLI4057.1, 2007.
- 770



- Schröder, M., Lockhoff, M., Shi, L., August, T., Bennartz, R., Brogniez, H., Calbet, X., Fell, F., Forsythe, J., Gambacorta, A., Ho, S., Kursinski, E. R., Reale, A., Trent, T. and Yang, Q.: The GEWEX Water Vapor Assessment: Overview and Introduction to Results and Recommendations, *Remote Sensing*, 11(3), 251, doi:10.3390/rs11030251, 2019.
- Seager, R. and Henderson, N.: Diagnostic Computation of Moisture Budgets in the ERA-Interim Reanalysis with Reference to Analysis of
775 CMIP-Archived Atmospheric Model Data, *J. Climate*, 26(20), 7876–7901, doi:10.1175/JCLI-D-13-00018.1, 2013.
- Shie, C.-L., Chiu, L. S., Adler, R., Nelkin, E., Lin, I.-I., Xie, P., Wang, F.-C., Chokngamwong, R., Olson, W. and Chu, D. A.: A note on re-
viving the Goddard Satellite-based Surface Turbulent Fluxes (GSSTF) dataset, *Adv. Atmos. Sci.*, 26(6), 1071–1080, doi:10.1007/s00376-
009-8138-z, 2009.
- Tapiador, F. J., Navarro, A., Levizzani, V., García-Ortega, E., Huffman, G. J., Kidd, C., Kucera, P. A., Kummerow, C. D., Masunaga, H.,
780 Petersen, W. A., Roca, R., Sánchez, J.-L., Tao, W.-K. and Turk, F. J.: Global precipitation measurements for validating climate models, *Atmospheric Research*, 197, 1–20, doi:10.1016/j.atmosres.2017.06.021, 2017.
- Tomita, H., Hihara, T. and Kubota, M.: Improved Satellite Estimation of Near-Surface Humidity Using Vertical Water Vapor Profile Infor-
mation, *Geophysical Research Letters*, 45(2), 899–906, doi:10.1002/2017GL076384, 2018.
- Tomita, H., Hihara, T., Kako, S., Kubota, M. and Kutsuwada, K.: An introduction to J-OFURO3, a third-generation Japanese ocean flux data
785 set using remote-sensing observations, *J. Oceanogr.*, 75(2), 171–194, doi:10.1007/s10872-018-0493-x, 2019.
- Trenberth, K. E. and Stepaniak, D. P.: Indices of El Niño Evolution, *J. Climate*, 14(8), 1697–1701, doi:10.1175/1520-
0442(2001)014<1697:LIOENO>2.0.CO;2, 2001.
- Trenberth, K.E., Smith, L., Qian, T., Dai, A. and Fasullo, J., 2007. Estimates of the global water budget and its annual cycle using observa-
tional and model data. *Journal of Hydrometeorology*, 8(4), pp.758-769.
- 790 Trenberth, K. E., Fasullo, J. T. and Kiehl, J.: Earth's Global Energy Budget, *Bull. Amer. Meteor. Soc.*, 90(3), 311–324,
doi:10.1175/2008BAMS2634.1, 2009.
- Trenberth, K. E., Fasullo, J. T. and Mackaro, J.: Atmospheric Moisture Transports from Ocean to Land and Global Energy Flows in Reanal-
yses, *J. Climate*, 24(18), 4907–4924, doi:10.1175/2011JCLI4171.1, 2011.
- Trenberth, K. E. and Fasullo, J. T.: Regional Energy and Water Cycles: Transports from Ocean to Land, *J. Climate*, 26(20), 7837–7851,
795 doi:10.1175/JCLI-D-13-00008.1, 2013.
- Trenberth, K. E. and Asrar, G. R.: Challenges and Opportunities in Water Cycle Research: WCRP Contributions, *Surv Geophys*, 35(3),
515–532, doi:10.1007/s10712-012-9214-y, 2014.
- Wentz, F. J.: SSM/I Version-7 Calibration Report, report number 011012, Santa Rosa, CA, Remote Sensing Systems
- Wentz, F. J., Ricciardulli, L., Hilburn, K. and Mears, C.: How Much More Rain Will Global Warming Bring?, *Science*, 317(5835), 233–235,
800 doi:10.1126/science.1140746, 2007.
- Wilkinson, K., von Zubern, M., and Scherzer, J.: Global Freshwater Fluxes into the World Oceans: Technical Report prepared for the GRDC,
GRDC Report, 44, doi: 10.5675/GRDC_Report_44, 2014.
- Yu, L., X. Jin, and R. A. Weller, 2008: Multidecade Global Flux Datasets from the Objectively Analyzed Air-sea Fluxes (OAFlux) Project:
Latent and sensible heat fluxes, ocean evaporation, and related surface meteorological variables. Woods Hole Oceanographic Institution,
805 OAFlux Project Technical Report. OA-2008-01, 64pp. Woods Hole. Massachusetts.

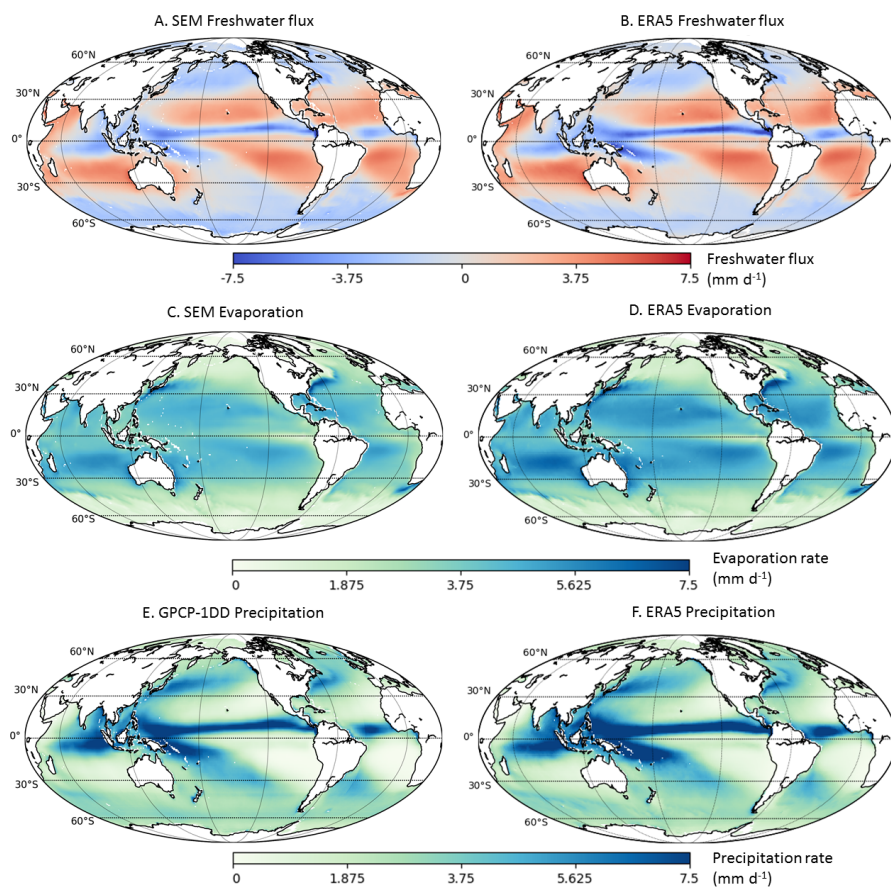


Figure 1. Satellite ensemble median (SEM) and ERA5 climatologies (1997-2013) of freshwater flux (A and B) and evaporation (C and D), and GPCP and ERA5 precipitation (panels E and F). ERA5 data coverage was reduced to match satellite data (see text for details).

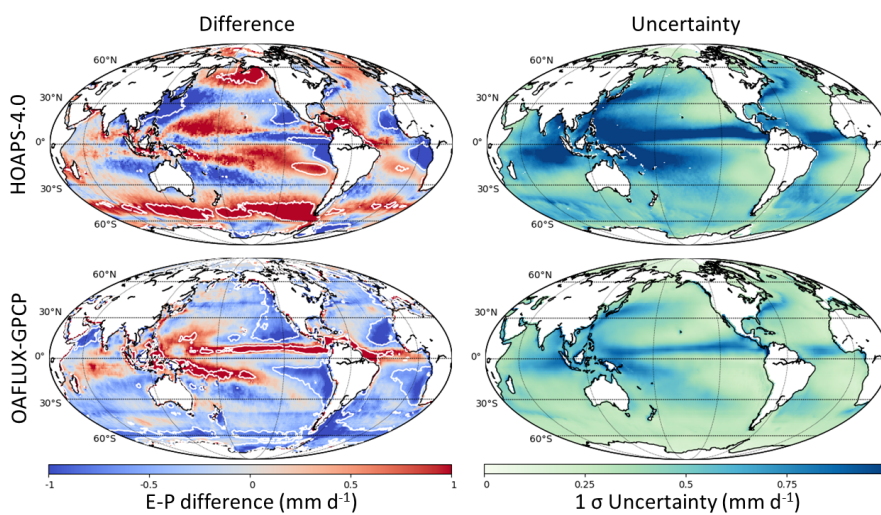


Figure 2. Left panels: Difference maps of HOAPS (upper) or OAFlux-G (lower) climatological mean E-P minus the corresponding collocated ERA5 climatology (1997-2013). Right panels: HOAPS (upper) and OAFlux-G (lower) climatological mean 1σ uncertainty. White lines in the left panels enclose regions where the difference with ERA5 E-P exceeds the 2σ uncertainty range.

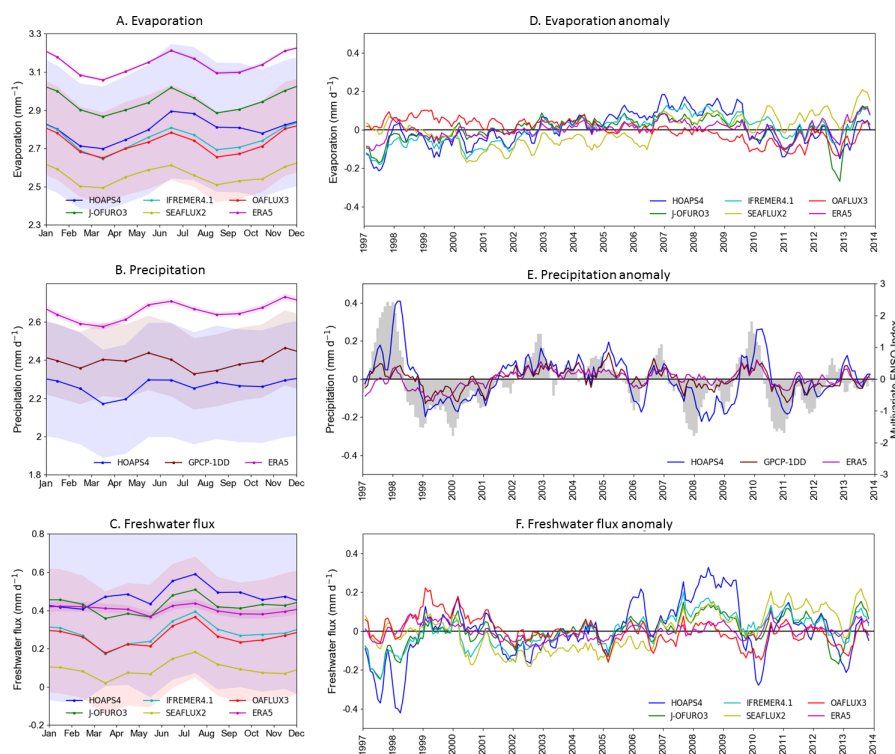


Figure 3. Climatological (1997–2013) seasonal cycle of global ocean mean evaporation rate (A), precipitation rate (B), and freshwater flux (C). HOAPS, ERA5, OAFux, and GPCP 1σ uncertainty ranges are shown by light blue, purple, red, and brown shading, respectively (matching their line colors). Monthly mean anomaly (w.r.t. the climatological seasonal cycle depicted at left) over the global oceans (80°S – 80°N) of evaporation rate (D), precipitation rate (E), and freshwater flux (F). The anomaly data are smoothed using a three-month running mean. Panel E additionally displays the Niño3.4 index (right y-axis). Ticks on the time axis mark January of the indicated year.

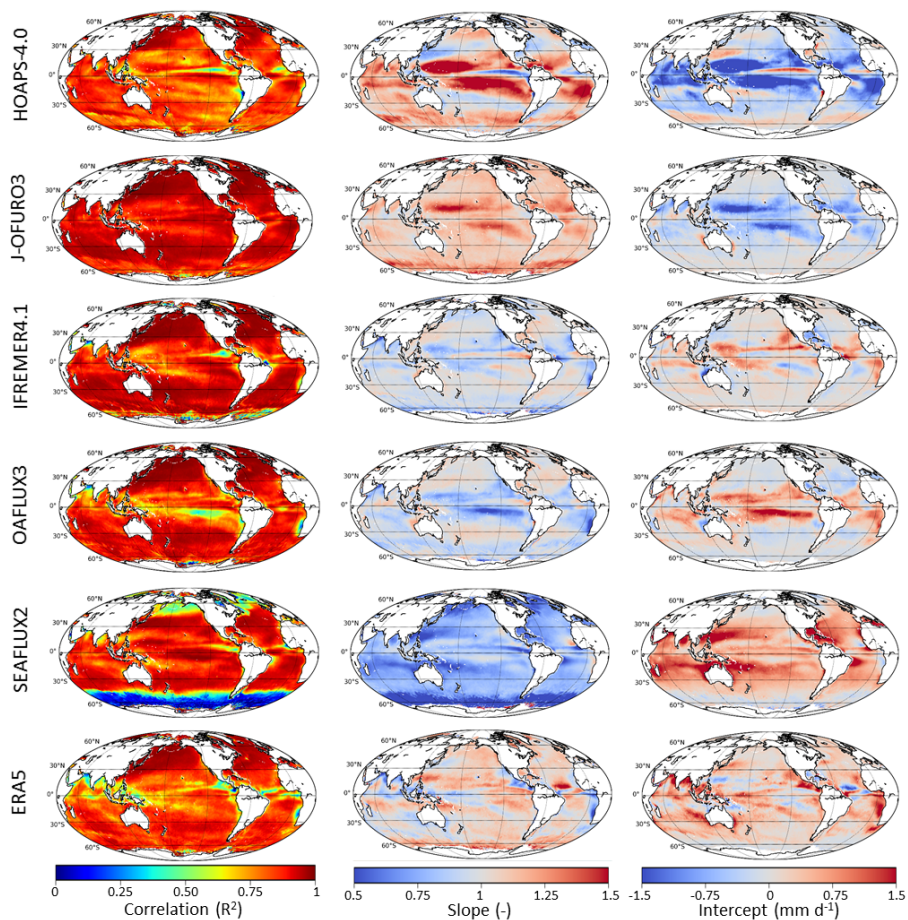


Figure 4. Correlation, slope and intercept of the linear regression of monthly mean E from (top to bottom): HOAPS, J-OFURO, IFREMER, OAFux, SEAFUX, or ERA5 with satellite ensemble median (SEM) monthly mean E (1997–2013).

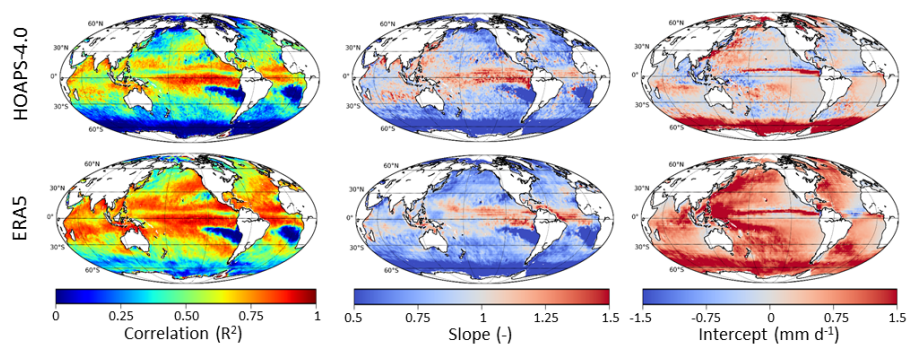


Figure 5. Correlation, slope and intercept of the linear regression of monthly mean P from HOAPS (upper panels) or ERA5 (lower panels) with GPCP monthly mean P (1997–2013).

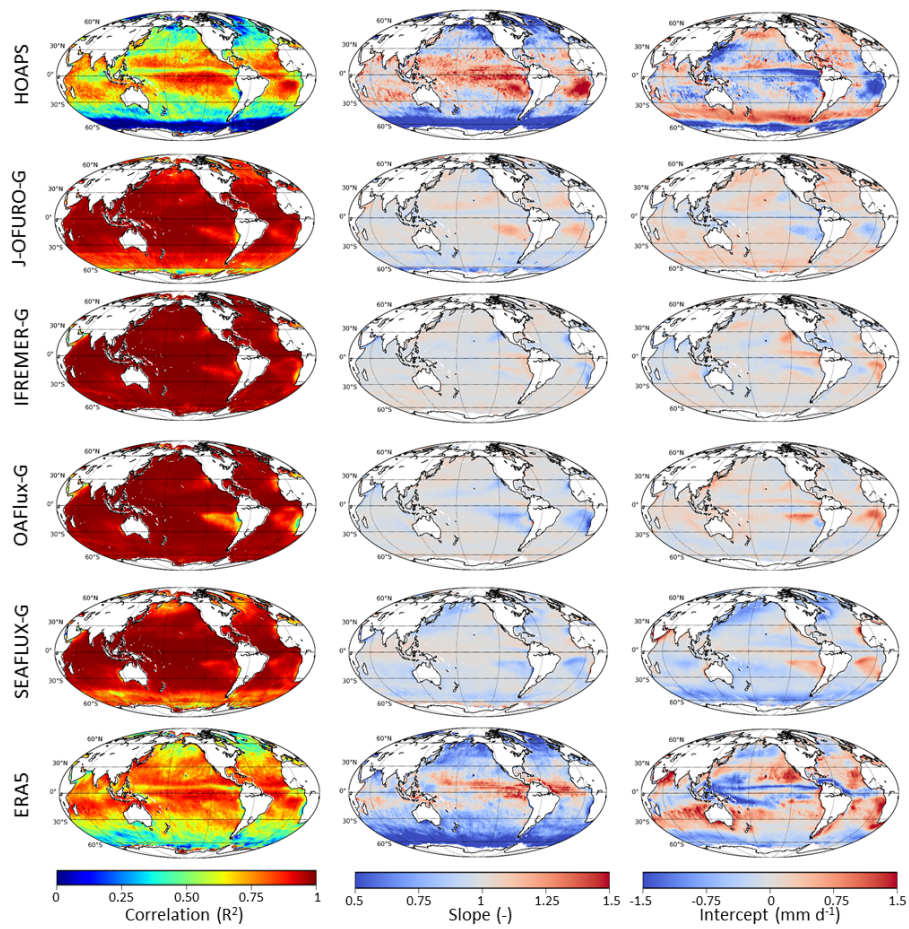


Figure 6. Correlation, slope and intercept of the linear regression of monthly mean $E - P$ from (top to bottom): HOAPS, J-OFURO-G, IFREMER-G, OAFflux-G, SEAFflux-G, or ERA5 with satellite ensemble median (SEM) monthly mean $E - P$ (1997–2013).

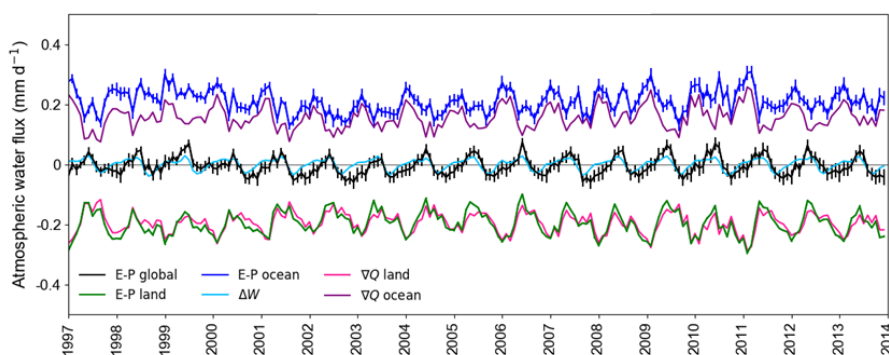


Figure 7. ERA5 monthly mean $E - P$ over the whole globe (black), land only (green), and ocean (blue); global mean ΔW (light blue), mean ∇Q over land (pink) and ocean (purple). The mean values over the globe and land were scaled by their surface area relative to the ocean surface area (i.e., they were multiplied by $510/350$ and $160/350$, respectively) to obtain consistency with the over-ocean means shown in Fig. 3. Error bars represent the standard deviation within the 10-member ensemble, which is smaller than the graph's line width for $E - P$ over land, ΔW , and ∇Q .

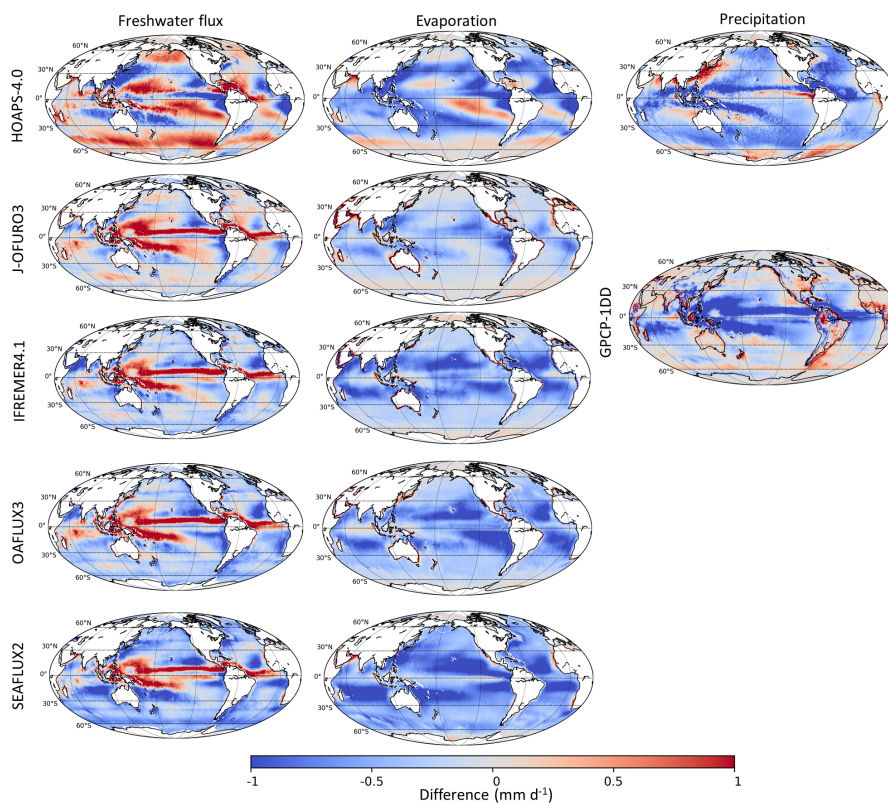


Figure A1. Difference maps of satellite-based E-P (left), E (center), and P (right) climatologies and the respective ERA5 climatology (1997-2013).

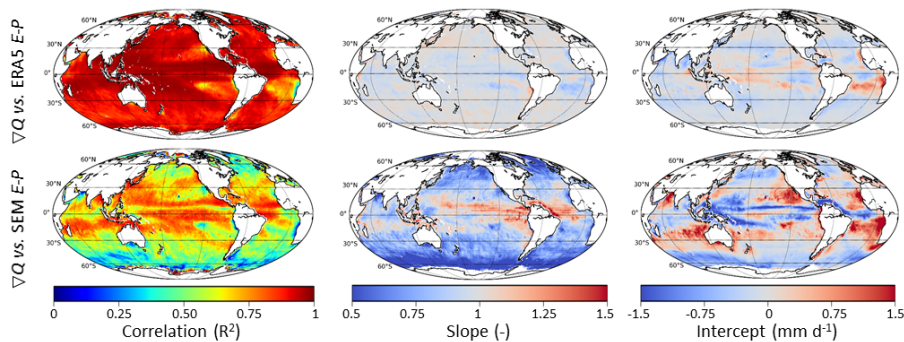


Figure A2. Correlation, slope and intercept of the linear regression of monthly mean ERA5 ∇Q with ERA5 $E - P$ (upper panels) or with the satellite ensemble median (SEM) $E - P$ (lower panels).



Table 1. Compilation of the datasets used within this study

Acronym	Dataset Name	Date Range	Resolution	Variables	Reference
ERA5	ECMWF Reanalysis 5	01/1979 to present	0.25° x 0.25°	E, P, TCWV, VIMD	Hersbach et al. (2020)
GPCP-IDD V 1.3	Global Precipitation Climate Program	01/1996 – 12/2017	1.0° x 1.0°	P	Huffman et al. (2001)
HOAPS V4.0	Hamburg Ocean Atmosphere Parameters and Fluxes from Satellite	07/1987 – 12/2014	0.5° x 0.5°	E, P, E-P,	Andersson et al. (2010)
J-OFURO V3	Japanese Ocean Flux Data Sets with Use of Remote-Sensing Observations	01/1988 – 12/2013	0.25° x 0.25°	LHF, E-P	Tomita et al. (2018)
OAFIux V3	Objectively Analyzed Air-sea Fluxes ¹	1958–2018 (monthly) 1985–2017 (daily)	1.0° x 1.0°	q _e , SST	Yu et al. (2008)
IFREMER V4.1	Institut Français de recherche pour l'exploitation de la mer	01/1992 – 12/2018	0.25° x 0.25°	LHF, SST	Bentamy et al. (2013)
SEAFIux V2	Sea Flux Project	01/1988 – 12/2015	0.25° x 0.25°	LHF	Clayson and Brown (2016)

¹ https://www.esrl.noaa.gov/psd/data/gridded/data.oafIux_v3.html



Table 2. Abbreviations and symbols of variables used throughout the manuscript.

Variable	Abbreviation	Symbol
Air density	-	ρ
Evaporation rate	E	E
Latent heat flux	LHF	Q_l
Near-surface (10 m) humidity	-	q_a
Near-surface (10 m) wind speed	-	u
Precipitation rate	P	P
Runoff	R	R
Sea surface humidity	-	q_s
Sea surface temperature	SST	T_s
Specific heat of water vaporization	-	L_E
Total column water vapor	TCWV	W
TCWV tendency	Δ TCWV	ΔW
Turbulent exchange coefficient	-	C_E
Vertically integrated moisture flux divergence	VIMD	∇Q

Table 3. Pearson's correlation coefficient squared (R^2) for monthly (mean or anomaly) or yearly global ocean mean $E_{ocean} - \nabla Q$ vs. P_{ocean} , with ∇Q data from ERA5. R^2 was calculated from data sets that were collocated prior to the calculation of global means. Non-significant correlation coefficients (p-value > 0.05) are marked with an asterisk.

Data set	monthly mean	yearly mean	monthly anomaly
HOAPS-4.0	0.03	0.00*	0.06
J-OFURO3 - GPCP-1DD	0.16	0.31	0.22
IFREMER4.1 - GPCP-1DD	0.13	0.23	0.20
OAFflux3 - GPCP-1DD	0.14	0.01*	0.11
SEAFLUX2 - GPCP-1DD	0.09	0.17*	0.14
ERA5	0.86	0.86	0.83



Table 4. Estimates of ocean total E and P , land and ocean total $E - P$, net transport of water vapor, and continental runoff given in $10^3 \text{ km}^3 \text{ yr}^{-1}$. The upper three rows contain results from this study, the lower four those from earlier investigations. ERA5 estimates are calculated from ensemble mean data, the standard deviation (std) is derived from ensemble statistics. The satellite-based data sets used in our study were averaged to obtain the mean and std of observed (Obs.) E_{ocean} and P_{ocean} , and the range is given in the third row. Net water vapor divergence over land (∇Q_{land}) and ocean (∇Q_{ocean}) and continental runoff R are given in the last three columns. The estimates from the study by Rodell et al. (2015) are separated into observations (obs.) and model-optimized observations (opt.), see the text for details.

	E_{ocean}	P_{ocean}	$(E - P)_{land}$	$(E - P)_{ocean}$	∇Q_{land}	∇Q_{ocean}	R
ERA5	467 ± 1	426 ± 2	-44 ± 0.4	43 ± 2	-43 ± 0.2	31 ± 0.2	42.1
Obs. mean \pm std	408 ± 30	360 ± 25	–	$49 \pm 17^*$	–	–	–
Obs. range	360–453	335–384	–	30–69*	–	–	–
Oki and Kanae (2006)	436.5	391	–45.5	45.5	–45.5	45.5	45.5
Trenberth and Asrar (2014)	413	373	–40	40	–40	40	40
Rodell et al. (2015) obs.	410 ± 36	385 ± 39	-45 ± 9	25 ± 53	-43 ± 8	47 ± 19	50 ± 7
Rodell et al. (2015) opt.	450 ± 22	403 ± 22	-46 ± 7	47 ± 31	-46 ± 4	46 ± 2	46 ± 4

*Not including the unphysical $(E - P)_{ocean} = -24 \cdot 10^3 \text{ km}^3 \text{ yr}^{-1}$ found for SEAFLUX-G.