

Comparison of published palaeoclimate records suitable for reconstructing annual to sub-decadal hydroclimatic variability in eastern Australia: implications for water resource management and planning

5 Anna L. Flack¹, Anthony S. Kiem¹, Tessa R. Vance², Carly R. Tozer^{2,3}, and Jason L. Roberts⁴

¹Centre for Water, Climate and Land (CWCL), Faculty of Science, University of Newcastle, Callaghan, NSW 2308, Australia

²Institute for Marine and Antarctic Studies (previously Antarctic Climate and Ecosystems Cooperative Research Centre (ACE CRC)), University of Tasmania, Hobart, Tasmania 7004, Australia

10 ³CSIRO Oceans & Atmosphere, Hobart, Tasmania 7004, Australia

⁴Australian Antarctic Division, Kingston, Tasmania 7050, Australia

Correspondence to: Anthony S. Kiem (Anthony.Kiem@newcastle.edu.au)

Abstract. Knowledge of past, current and future hydroclimatic risk is of great importance. However, like many other countries, Australia's observed hydroclimate records are at best only ~120 years long (i.e. from ~1900 to present) but are typically less than ~50 years long. Therefore, recent research has focused on developing longer hydroclimate records based on palaeoclimate information from a variety of different sources. Here we review and compare the insights emerging from 11 published palaeoclimate records that are relevant to annual to sub-decadal hydroclimatic variability in eastern Australia over the last ~1000 years. The sources of palaeoclimate information include ice cores, tree rings, cave deposits and lake sediment deposits. The published palaeoclimate information was then analysed to determine when (and where) there was agreement (or uncertainty) about the timing of wet and dry epochs in the pre-instrumental period (1000-1899). The occurrence, frequency, duration and spatial extent of pre-instrumental wet and dry epochs was then compared to wet and dry epochs since 1900. The results show that instrumental records (~1900-present) underestimate (or at least misrepresent) the full range of rainfall variability that has occurred, and is possible, in eastern Australia. Even more disturbing is the suggestion, based on insights from the published palaeoclimate data analysed, that 71% of the pre-instrumental period appears to have no equivalent in the instrumental period. This implies that the majority of the past 1000 years was unlike anything encountered in the period that informs water infrastructure, planning and policy in Australia. A case study, using a typical water storage reservoir in eastern Australia, demonstrates that current water resource infrastructure and management strategies would not cope under the range of pre-instrumental conditions that this study suggests has occurred. When coupled with projected impacts of climate change and growing demands, these results highlight some major challenges for water resource management and infrastructure. Though our case study location is eastern Australia, these challenges, and the limitations associated with current methods that depend on instrumental records that are too short to realistically characterise interannual to multidecadal variability, also apply globally.

1 Introduction

35 Knowledge of drought and flood history is of great importance and has many implications for current and future water
resource management. To date, methods to quantify drought/flood frequency and risk have relied primarily on instrumental
records. However, recent research demonstrates that the instrumental period is not long enough to get a true indication of the
variability possible or the risk of extreme hydrological events (e.g. prolonged drought or flood dominated epochs) in, for
example:

- 40 • Australia (e.g. Gallant and Gergis, 2011; Ho et al., 2014; Allen et al., 2015a, 2015b; Ho et al., 2015a, 2015b; Vance
et al., 2015; Tozer et al., 2016, 2018; Dixon et al., 2017, 2019; Kiem et al., 2020);
- Asia (e.g. Davi et al., 2013; Feng et al., 2013; Pederson et al., 2014; Nguyen and Galelli, 2018; Rao, 2018; Wang et
al., 2019);
- the United States of America (USA) (e.g. Cook et al., 2004; Littell et al., 2016; Martin et al., 2019; England Jr et al.,
2019; Robeson et al., 2020);
- 45 • Europe (e.g. Cook et al., 2015; Perçoiu et al., 2017; Hanel et al., 2018);
- South America (e.g. Lara et al., 2008; Urrutia et al., 2011; Barria et al., 2018; Fernández et al., 2018).

Like many other countries, most instrumental rainfall records in Australia only exist for ~120 years at best, and streamflow
records longer than ~50 years are rare. During this short time, Australia has experienced some serious droughts and floods.
50 For example, the Millennium drought, which lasted from ~1997 to 2010, and during which urban and rural water resources
in eastern Australia were put under significant stress (Verdon-Kidd and Kiem, 2009; Kiem et al., 2016), and the 2010-2011
Queensland floods where the Wivenhoe Dam reached capacity, overflowed and destroyed dozens of properties
(<http://www.floodcommission.qld.gov.au/>) (Van den Honert and McAneney, 2011; McMahon and Kiem, 2018). To enable
design and implementation of robust adaptation and management plans it is important to properly understand the chance of
55 similar or worse droughts and floods happening again. This requires understanding into, and quantification of, interannual to
multidecadal variability beyond that seen in the instrumental records (e.g. England Jr et al., 2019; Natural Resources Canada,
2019; Armstrong et al., 2020; Kiem et al., 2020)

Climate variability in the pre-instrumental past can be inferred from palaeoclimate proxies. However, in the Southern
60 Hemisphere and eastern Australia in particular, there are limited palaeoclimate records available, especially in comparison to
the Northern Hemisphere (Ho et al., 2014; Neukom et al., 2014). Therefore, it is important to determine how the few
palaeoclimate records that exist, and are relevant in terms of variables reconstructed and temporal/spatial resolution, can be
best utilized to infer pre-instrumental hydroclimatic histories for locations within eastern Australia. Pre-instrumental
hydroclimate reconstructions for Australia have been attempted using palaeoclimate proxies including tree rings, ice cores,
65 corals and lake sediments (e.g. Lough, 2011; Vance et al., 2013; Barr et al., 2014; Allen et al., 2015a; Palmer et al., 2015;

Allen et al., 2017). Due to the lack of in-situ (local) proxies in Australia, many of these reconstructions rely on using remote proxies (i.e. proxies outside of Australia or the catchment of interest). Remote proxies utilize a climate teleconnection between the location of the proxy record and the location of the target climate variable (e.g. a water catchment).

70 Currently there is no comprehensive comparison of where and when the few palaeoclimate records that exist for Australia agree or disagree with respect to pre-instrumental hydroclimatic conditions for eastern Australia. This study reviews and compares the insights emerging from 11 published palaeoclimate records that are relevant to annual to sub-decadal hydroclimatic variability in eastern Australia over the last ~1000 years. Based on where and when the pre-instrumental records agree, the occurrence, frequency, duration and spatial extent of pre-instrumental (1000-1899) wet and dry epochs are
75 inferred and this is then compared with the same characteristics derived from the instrumental period (1900-1999). A case study, using a typical water storage reservoir in eastern Australia, then demonstrates some implications of the insights emerging from the pre-instrumental data and discusses the challenges posed for water resources management and planning in a variable and changing climate. Though our case study location is eastern Australia, these challenges, and the limitations associated with current methods that depend on instrumental records that are too short to realistically characterise interannual
80 to multidecadal variability, also apply globally.

2 Selecting published palaeoclimate records that are relevant to annual to sub-decadal hydroclimatic variability in eastern Australia

Palaeoclimate information can be sourced from local or remote proxies. Local proxies provide climate records directly from or applicable to a target location, for example cave deposits within a study region/catchment or local tree ring records (e.g.
85 McDonald et al., 2007; Heinrich et al., 2009; Allen et al., 2015b; Ho et al., 2015b). Remote proxies are located outside the region/catchment of interest, and maybe outside of Australia (e.g. Vance et al., 2015; Palmer et al., 2015).

Table 1 shows the 11 palaeoclimate records that were selected and analysed in this study. The palaeoclimate records used were selected from palaeoclimate information available (i.e. published) at the time of study, based on the following criteria:

- 90
- *Spatial extent.* Records must be sourced from locations within eastern Australia (if a local record) or be relevant to eastern Australia (if a remote record). Figure 1 shows the spatial extent (or relevant location) for the palaeoclimate records used in this study. Figure 1 also indicates the type of proxy used and the type of information provided. The information may be in the form of a rainfall/streamflow reconstruction (or inference) or an indication of dry or wet epochs over time.
- 95
- *Temporal resolution.* Records with annual resolution were preferred (9 out of 11 records), however, two records with ~4-5 year temporal resolution were also used as this is consistent with this study's focus on sub-decadal hydroclimatic variability.

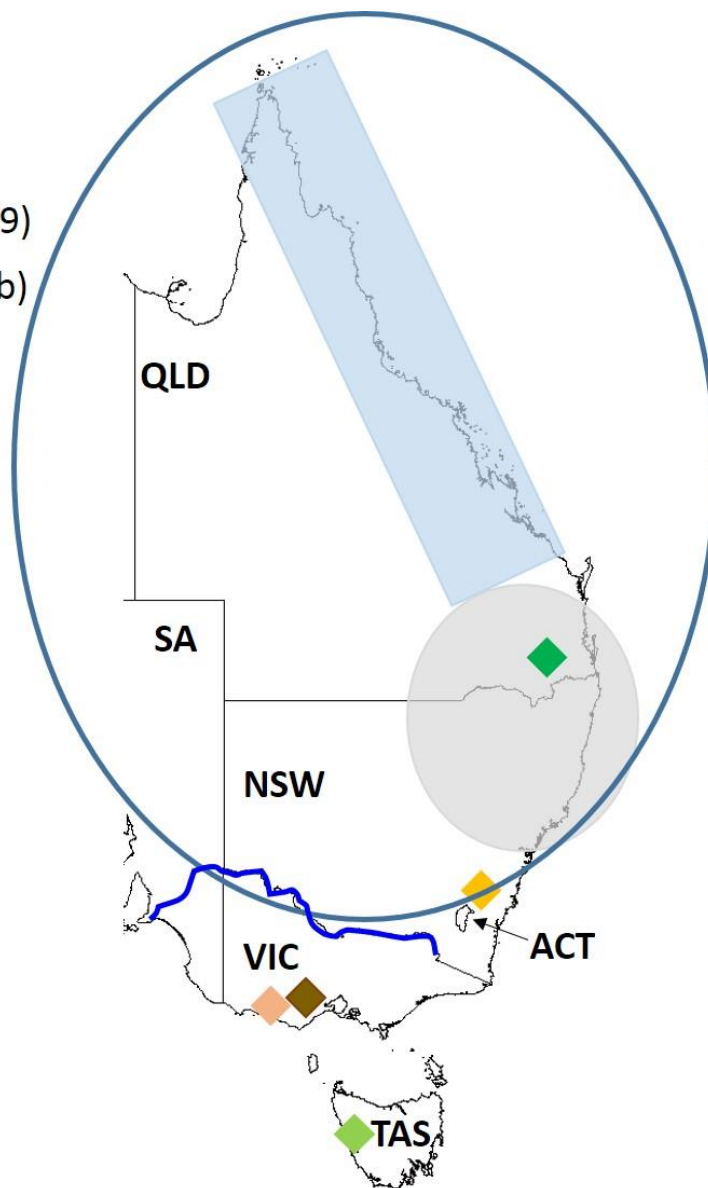
- *Time period covered.* Records used need to provide data for some or all of the 1000-1999 study period. Figure 2 shows the temporal coverage of the 11 chosen palaeoclimate records.
- 100 • *Hydroclimatic significance.* Records used need to provide (i) hydroclimatic information such as precipitation or streamflow or (ii) information that is related to hydroclimatic variability in eastern Australia (e.g. reconstructions of influential large-scale ocean-atmospheric processes such as the El Niño/Southern Oscillation (ENSO), the Interdecadal Pacific Oscillation (IPO), or the Pacific Decadal Oscillation (PDO)).
- 105 • *Availability and accessibility.* Records used need to be readily available (i.e. published) as dated time series so that wet/dry epochs can be easily determined.

Table 1: Published palaeoclimate records used in this study.

	Source of record	Relevant location within eastern Australia	Authors	Temporal resolution	Further details
Local records	Speleothems (cave deposits)	Wombeyan Caves near Sydney, NSW	Ho et al. (2015b), based on earlier work by McDonald et al. (2007)	Annual	We use the annually resolved two-state aridity index (dry or not dry)
	Tree rings	Lamington National Park in southeast Queensland	Heinrich et al. (2009)	Annual	Reconstructed precipitation (wet or dry)
	Tree rings	Western Tasmania	Allen et al. (2015a,b)	Annual	Reconstructed streamflow (wet or dry)
	Lake sediments	Lake Elingamite, northern Victoria	Barr et al. (2014)	~4 years	Diatom (microfossil) presence and abundance used to infer low (wet) or high (dry) conductivity
	Lake sediments	Lake Surprise, northern Victoria	Barr et al. (2014)	~5 years	
Remote records	Ice cores	Eastern Australia	Vance et al. (2015)	Annual	Reconstructed IPO and associated rainfall variability
	Corals	Tropical eastern Australia	Hendy et al. (2003); Lough et al. (2011)	Annual	Presence (wet) and absence (dry) of luminescence lines; Reconstructed rainfall anomalies (positive=wet, negative=dry)
	Multiproxy (tree rings and coral)	Murray-Darling River	Gallant and Gergis (2011)	Annual	Reconstructed streamflow
	Multiproxy (correlation with PDO derived from Chinese historical documents)	Murray-Darling River	McGowan et al. (2009)	Annual	Reconstructed streamflow
	ENSO/PDO reconstruction	Eastern Australia	Verdon and Franks (2006)	Annual	Reconstructed ENSO/PDO and associated rainfall variability
	ENSO/IPO reconstruction	Eastern Australia	Buckley et al. (2019)	Annual	IPO reconstructed from trans-Pacific tree rings

Legend

- ◆ Speleothems (cave deposits)
- ◆ Tree rings (Heinrich et al., 2009)
- ◆ Tree rings (Allen et al., 2015a,b)
- ◆ Lake Elingamite sediments
- ◆ Lake Surprise sediments
- Ice cores
- Corals
- ~ Multiproxy
- ENSO/IPO/PDO



110 **Figure 1: Location map of selected palaeoclimate reconstructions for Queensland (QLD), New South Wales (NSW), the Australian Capital Territory (ACT), Victoria (VIC), Tasmania (TAS) and South Australia (SA). For remote palaeoclimate records the map indicates where the studies listed have found significant relationships/impacts while for local records the map shows the actual location of the proxy (refer to Table 1 for further details on the local and remote palaeoclimate records used in this study).**

	Source of record	Relevant location within eastern Australia	1000s	1100s	1200s	1300s	1400s	1500s	1600s	1700s	1800s	1900s
Local records	Speleothems (cave deposits)	Wombeyan Caves near Sydney, NSW	*****									
	Tree rings	Lamington National Park in southeast Queensland	*****									
	Tree rings	Western Tasmania	*****									
	Lake sediments	Lake Elingamite, northern Victoria	*****									
	Lake sediments	Lake Surprise, northern Victoria	*****									
Remote records	Ice cores	Eastern Australia	*****									
	Corals	Tropical eastern Australia	*****									
	Multiproxy	Murray-Darling River (Gallant & Gergis, 2011)	*****									
	Multiproxy	Murray-Darling River (McGowan et al., 2009)	*****									
	ENSO/PDO reconstruction	Eastern Australia (Verdon and Franks, 2006)	*****									
	ENSO/IPO reconstruction	Eastern Australia (Buckley et al., 2019)	*****									

Figure 2: Time period covered by the published palaeoclimate records used in this study.

3 Creating a composite index of wet/dry epochs based on where/when the majority of pre-instrumental records agree

120 Each of the selected palaeoclimate records shown in Table 1, Figure 1 and Figure 2 were analysed to determine the occurrence of wet, dry and neutral epochs based on a 5-yearly temporal resolution. The focus is on prolonged (5-yearly or greater) wet and dry periods as these are the most challenging for water resource management and planning (Kiem and Franks, 2004; Johnson et al., 2016; Kiem et al., 2016).

125 The process for determining wet, dry and neutral 5-year period involved comparing the value for each 5-year period from an individual palaeoclimate record with the average value across the entire period that palaeoclimate record had information available for. If the value for a given 5-year period was more than 20% above (below) average then that 5-year period was classed as wet (dry). All other 5-year periods were classed as neutral (i.e. neither wet or dry) (refer to Section S1 in Supplementary Material for the complete wet/dry/neutral time series for all selected palaeoclimate records).

130

The insights emerging from each individual palaeoclimate record were then compared to identify if/when there was consensus about hydroclimatic conditions. As documented in previous studies (e.g. Ho et al., 2015a; Tozer et al., 2016, 2018; Dixon et al., 2017, 2019; Zhang et al., 2018), and as evident from Section S1 in the Supplementary Material, there are numerous sources of uncertainty associated with palaeoclimate records and lack of agreement across different sources of

135 palaeoclimate information is common. However, there are also instances of agreement and it is these periods where multiple lines of independent evidence agree that we focus on here.

A wet/dry composite index is developed which identifies 5-year periods that the majority of palaeoclimate records (i.e. 6 or more) analysed here agree were wet or dry (Figure 3). Where there is a lack of information or where there is no clear agreement the 5-year period is classed as Neutral to indicate it is unclear what the hydroclimatic conditions were during that 140 5-year period (i.e. no consensus across the palaeoclimate records analysed). Three versions of the wet/dry composite index were calculated: one using all palaeoclimate records (top of Figure 3); one using just local palaeoclimate records (middle of Figure 3); and one using just remote palaeoclimate records (bottom of Figure 3). It is acknowledged that more sophisticated methods for using palaeoclimate data exist and that the composite index of 5-year wet/dry epochs removes the ability to gain 145 insights into (a) interannual variability (e.g. a single very wet year in an overall dry spell or vice-versa) and (b) spatial variability of hydroclimatic conditions across the study area (e.g. a palaeoclimate record correctly identifying wet conditions for a certain location in the study area and another palaeoclimate record correctly identifying dry conditions for a different location results in an unrealistic classification of neutral conditions across the whole study area). However, while interannual and spatial variability across the study area is important, the focus here is on (a) persistent (i.e. decadal) wet/dry epochs as 150 they are what cause the most problems for water resources management and planning and (b) significant climate events (or shifts) that affect the whole of eastern Australia (i.e. the climate events detected in multiple different types of palaeoclimate records even though the spatial extents (or relevant locations) for the palaeoclimate records are very different (as illustrated in Figure 1)).

155 To verify the reliability of each wet/dry composite index, we assessed how closely they represent conditions in the instrumental period. The majority of palaeoclimate records clearly identify the second half of the Federation drought (1895-1902), the extremely dry periods of the late 1960s and 1982-1983 (Verdon-Kidd and Kiem, 2009), and the dry IPO-positive phase between ~1915 and ~1942. Major wet periods can also be seen, such as the 1950s and 1970s during which several major flood events occurred across New South Wales and Queensland (especially during the La Niña years of 1956 and 160 1974) (e.g. McMahon and Kiem, 2018; Holland et al., 1987). Given the palaeoclimate data (and the resulting wet/dry composite index) satisfactorily identify known instrumental wet and dry periods, it is reasonable to assume that the pre-instrumental parts of the wet/dry composite index are also realistic. Note, however, that this is based on the assumption of stationarity, which is a potentially flawed but currently necessary assumption required when reconstructing pre-instrumental data from palaeoclimate proxies (Gallant et al., 2013).

165

Also highlighted by Figure 3 is that local and remote reconstructions do not always give the same result. This is expected since remote proxies give information about overarching conditions for a large area (e.g. an ENSO reconstruction) and frequently explain less of the variability in the region of interest than local proxies which record specific information for the

170 local region where the proxy is sourced from (or directly applicable to). This emphasizes that, whenever possible, multiple
proxies from both remote and local sources should be considered and that care should be taken when looking to infer
location-specific information from remote proxies, or any aggregation that includes local or remote proxies that are not
specifically developed for the target location. Where and when remote and local proxies disagree also raises interesting
questions about why this is the case and points to areas where improvement in our understanding of climate dynamics is
required (e.g. Gallant et al., 2013) – this is further explored in Section 4.3.2.

175

Despite some obvious differences between the three versions of the wet/dry composite index there is also some coherence.
All three versions of the wet/dry composite index show a generally dry period from ~1000-1150 and a wet period from
~1550-1600. Both remote and local proxies also indicate that there have been wet and dry epochs in the past that have
persisted for significantly longer than wet and dry epochs in the instrumental period (1900-1999). Therefore, despite some
180 differences between the remote and local proxies, the results suggest that the instrumental period may not be a true indicator
of the potential for prolonged wet and dry conditions in eastern Australia. Another interesting feature, demonstrated in all
three versions of the wet/dry composite index, is that the past ~200 years appear to show the most variability (i.e. the most
frequent shifts between wet and dry conditions). This is consistent with the findings from other studies (e.g. Zhang et al.,
2018; Dixon et al., 2019) and again suggests that the last ~200 years is unusual and that multidecadal-scale persistence rather
185 than more frequent fluctuations between wet and dry conditions has dominated most of the last 1000 years.

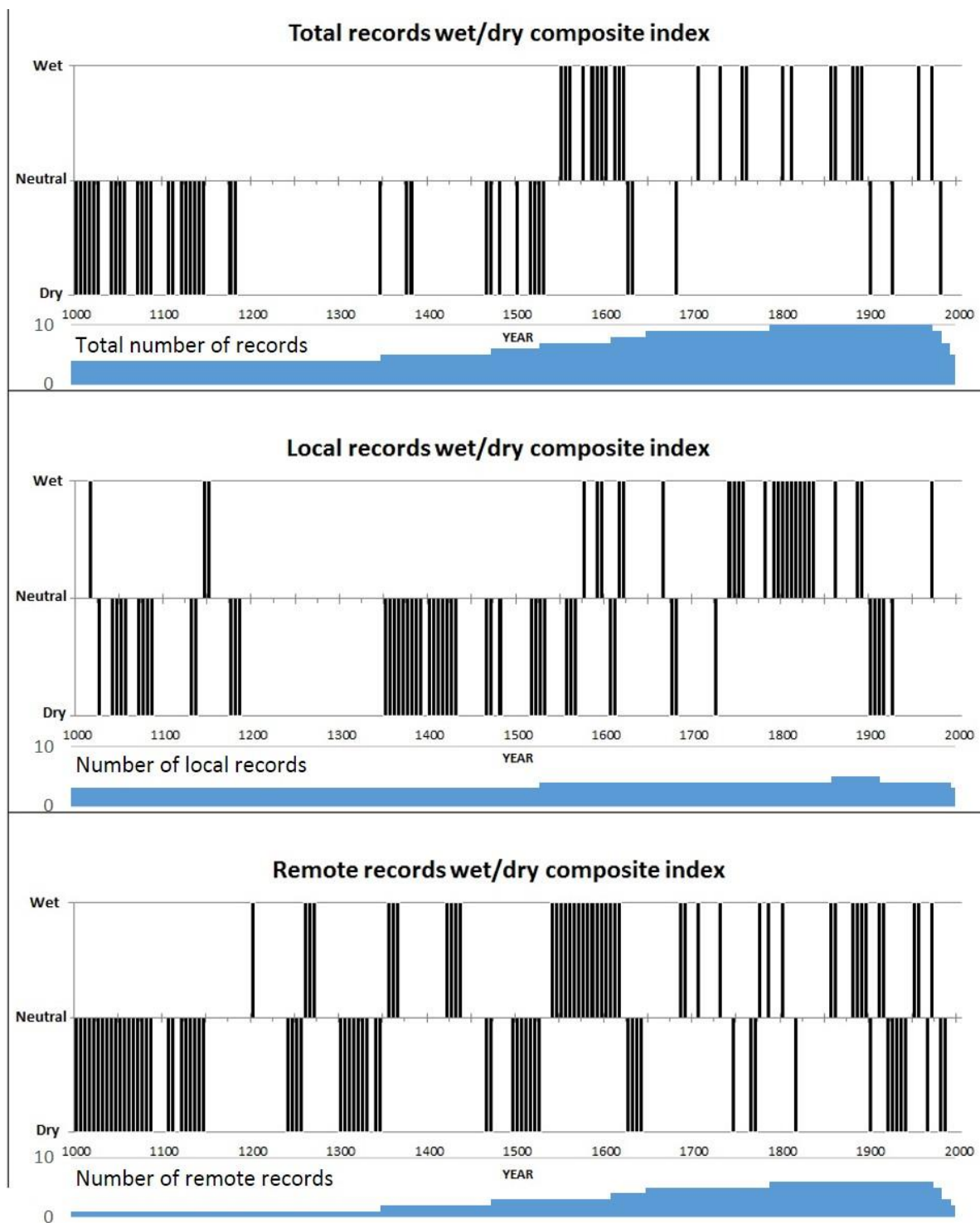


Figure 3: Wet/dry composite index for all palaeoclimate records (top), just local records (middle), just remote records (bottom). Number of records available for each 5-year period is also shown (11 records in total were used in this study as per Table 1).

4 Results

190 4.1 Frequency of pre-instrumental wet and dry epochs

The frequency of wet and dry epochs was determined by dividing the total wet/dry composite time series (top of Figure 3) into ten 105-year periods (starting every 100 years from 1000 to 1900). Overlapping 105-year periods were chosen in order to identify any wet or dry events that may have occurred across the turn of the century, such as the Federation and Millennium droughts. This allowed for a calculation of the relative difference and frequencies of wet and dry epochs of the pre-instrumental and the most recent 105-year instrumental period (1895-1999).

Figure 4 shows the percentage of dry, neutral and wet years for each 105-year period between 1000 and 1999. It is clear that the most recent 105-year period (1895-1999) does not accurately reflect conditions in any of the other centuries, and that none of the 105-year periods are particularly alike (with the possible exception of 1300-1405 and 1400-1505). The 1000s, 1100s and 1400s all experienced a much greater proportion of dry years than the instrumental period, as well as no wet years, while the 1500s, 1600s, 1700s and 1800s all recorded a greater proportion of wet years than the instrumental period. Water resource managers therefore need to be cautious when using the instrumental period as a basis for planning and infrastructure design since it is clear that the 105 years from 1895 have a very different distribution of wet and dry years to the previous nine centuries. Similar conclusions and recommendations were also made in Tozer et al. (2016) for a different study location and using a different methodology and approach.

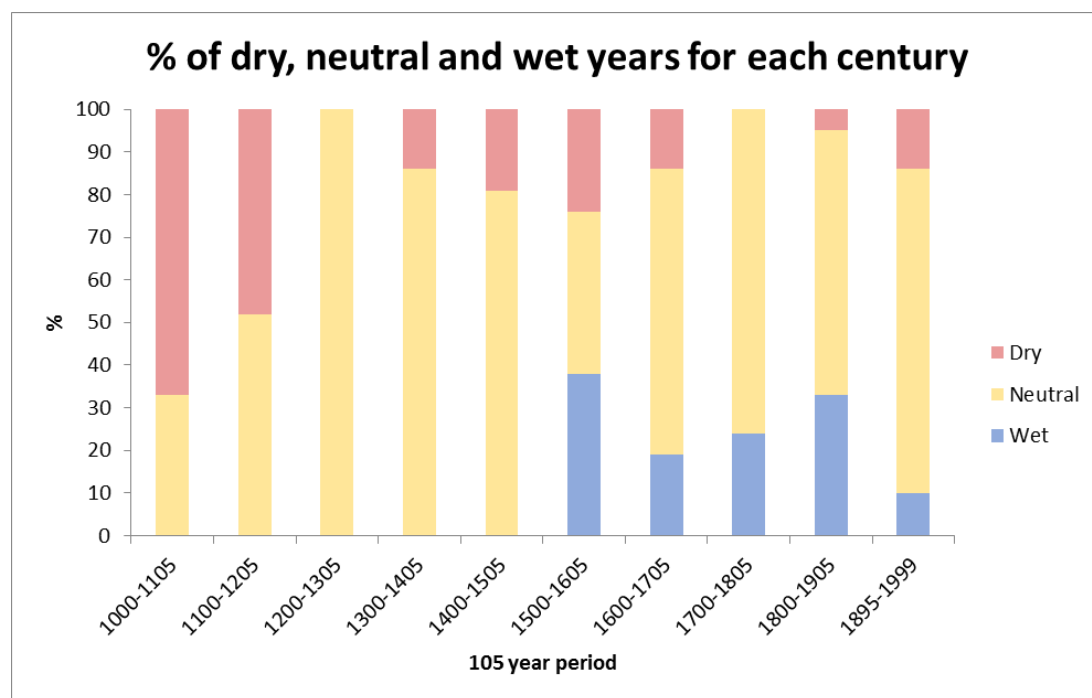


Figure 4: Proportion (%) of dry, neutral and wet years for each 105-year period starting every 100 years from 1000 to 1895.

4.2 Duration of pre-instrumental wet and dry epochs

For all individual palaeoclimate records, the instrumental period was compared to the pre-instrumental period to determine if any pre-instrumental conditions have an instrumental period analogue. Instrumental period analogues were identified by listing, for each 5-year instrumental period (i.e. 1900-1904, 1905-1909, ...), the 5-year pre-instrumental periods in which all palaeoclimate records had exactly the same wet, dry or neutral classification (as per Section S1 in Supplementary Material). Figure 5 shows, where possible, the 5-year instrumental periods that were determined to be equivalent to the pre-instrumental 5-year periods (Section S2 in Supplementary Material lists the actual periods). Figure 5 shows that every 5-year instrumental period had at least one equivalent in the pre-instrumental information. However, while there were 53 5-year pre-instrumental periods identified which did have an instrumental equivalent (29% of the pre-instrumental study period), the majority do not have any instrumental analogue. In other words, 71% of the pre-instrumental period was found to have no equivalent instrumental periods. Hence, for most 5-year pre-instrumental periods there is no modern equivalent captured by the instrumental record, meaning that the vast majority of the 900 years from 1000-1899 was unlike anything that has been encountered in the period on which all water infrastructure, planning and policy is based.

Where there were a number of consecutively similar periods, duration was calculated, allowing for an assessment of whether conditions experienced in the instrumental period have persisted for longer during the pre-instrumental period. Figure 6 shows the duration of pre-instrumental periods found to be equivalent to certain instrumental 5-year periods. As Figure 6 demonstrates, similar pre-instrumental periods have durations ranging from 5 to 70 years.

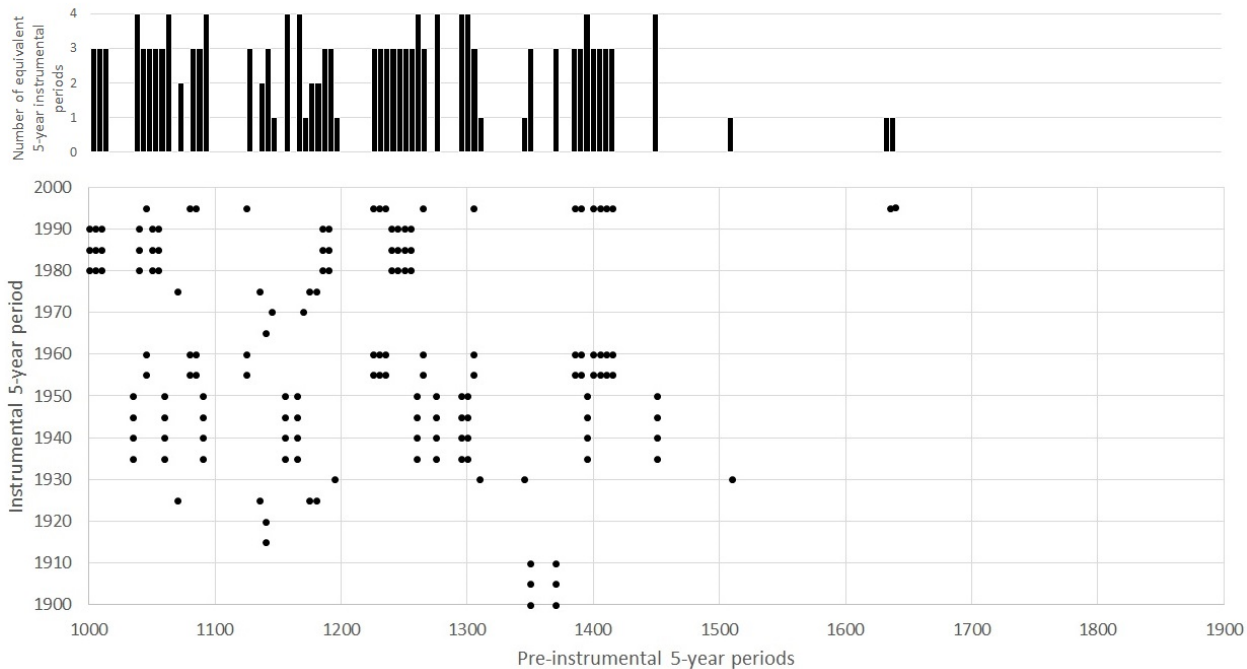


Figure 5: Instrumental equivalents to pre-instrumental 5-year periods.

Duration of periods equivalent to instrumental periods

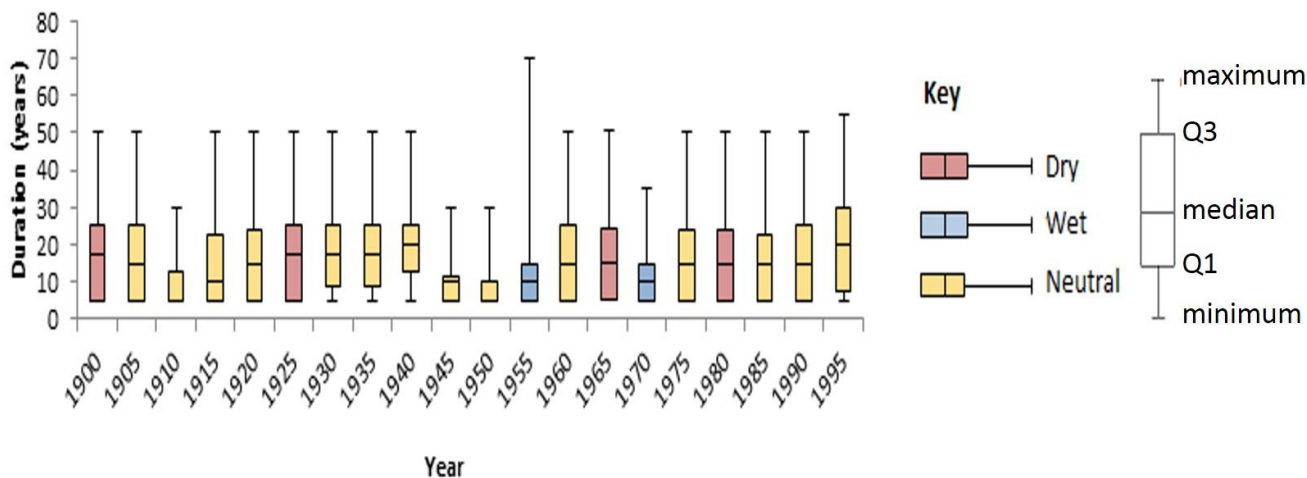


Figure 6: Duration of pre-instrumental periods with similar hydroclimatic conditions as 5-year periods from the instrumental record. Instrumental periods identified as being wet, dry or neutral are coloured correspondingly.

230

The 1900-1904, 1925-1929 and 1980-1984 periods were all considerably dry. As Figure 6 shows, pre-instrumental conditions similar to these periods have lasted for up to 50 years in the past. For example, 16 periods greater than 5 years between 1000 and 1899 were found that are similar to the dry 1900-1904 period (a period associated with the well-known 1895-1902 Federation drought). This suggests that dry conditions similar to those experienced during the Federation drought
235 have occurred previously for up to 10 consecutive 5-year periods, and that there is potential for dry periods of similar duration to occur again. Due to the variables reconstructed in some of the proxy studies, the magnitude of these dry periods cannot be determined using these data. However, even slightly drier than average conditions for these durations can have significant effects on water supplies, the environment and socioeconomic conditions (e.g. Kiem, 2013; Kiem and Austin, 2013; Kiem et al., 2016).

240

Similarly, 1955-1959 is a known wet period that was associated with significant flooding across much of eastern Australia. Fifteen periods in the palaeo-record were identified between 1000 and 1899, which demonstrated a similar combination of records as 1955-1959 but had durations ranging from 1 to 14 5-year periods (i.e. 5 to 70 years). Given wet epochs of these durations have occurred in the past, there is potential for similar to happen again in the future. Again, while it is not possible
245 to determine the upper magnitude of these wet events, wet conditions that persist for decades can lead to serious water management issues and significantly elevated flood risk due to the role antecedent catchment conditions play in modulating flood risk (e.g. Kiem et al., 2006; Pui et al., 2011; Johnson et al., 2016).

4.3 Spatial extent of pre-instrumental wet and dry epochs

Australian Water Availability Project (AWAP) (Jones et al., 2009) rainfall data was used to produce rainfall anomaly maps
250 for eastern Australia. AWAP data is an Australia wide gridded rainfall dataset available as monthly rainfall averages and anomalies, extrapolated from gauged daily or monthly rainfall data (Tozer et al., 2012; King et al., 2013). Annual gridded AWAP data was obtained and combined into 5-year periods from 1900 to 1999 (1900-1904, 1905-1909, ...) to produce maps showing 5-yearly totals relative to the total 5-yearly average over the instrumental period when AWAP data is available (refer to Section S3 in Supplementary Material for the maps for each 5-year period).

255

The pre-instrumental 5-year periods previously identified as being equivalent to specific 5-year instrumental periods were then matched to the corresponding maps created using AWAP data. The spatial extent of individual palaeoclimate reconstructions indicating either wet or dry conditions was overlaid on the AWAP maps to give an indication of the spatial extent of pre-instrumental wet and dry epochs. Where the spatial extent of palaeoclimate reconstructions matched actual
260 rainfall patterns for 5-year instrumental periods, there is a chance that the pre-instrumental hydroclimatic conditions were also similar. One wet and one dry period will be examined in closer detail.

4.3.1 Pre-instrumental dry epochs similar to the 1965-1969 drought experienced across most of eastern Australia

265 The late 1960s were associated with serious drought conditions for much of eastern Australia. As shown in Figure 7a, this drought was very widespread but particularly affected eastern Australia between 1964 and 1968. The 1965-1969 drought is chosen rather than the more iconic Federation, World War II or Millennium droughts (Verdon-Kidd and Kiem, 2009) because (i) instrumental data records are incomplete for the Federation and World War II droughts and (ii) the majority of palaeoclimate records used in this study do not cover the full duration of the Millennium drought.

270 Our results suggest that the period from 1140 to 1144 is equivalent to 1965-1969. Palaeoclimate records for both of these periods indicate drier conditions, particularly the Wombeyan record (Ho et al., 2015b), the ice core record (Vance et al., 2015) and the Barr et al. (2014) lake sediment records. The areas covered by these records, the NSW southern tablelands, southeast Queensland and the Murray River respectively, can be seen on Figure 7a as some of the driest areas recorded between 1965 and 1969. The number of similarities found between records when comparing 1965-1969 and 1140-1144 suggest that ‘extreme’ dry or wet conditions encountered in the instrumental period are not unprecedented. Additionally, this shows that it is possible to estimate the spatial extent of pre-instrumental wet and dry periods if there is a modern analogue available to base an estimate on.

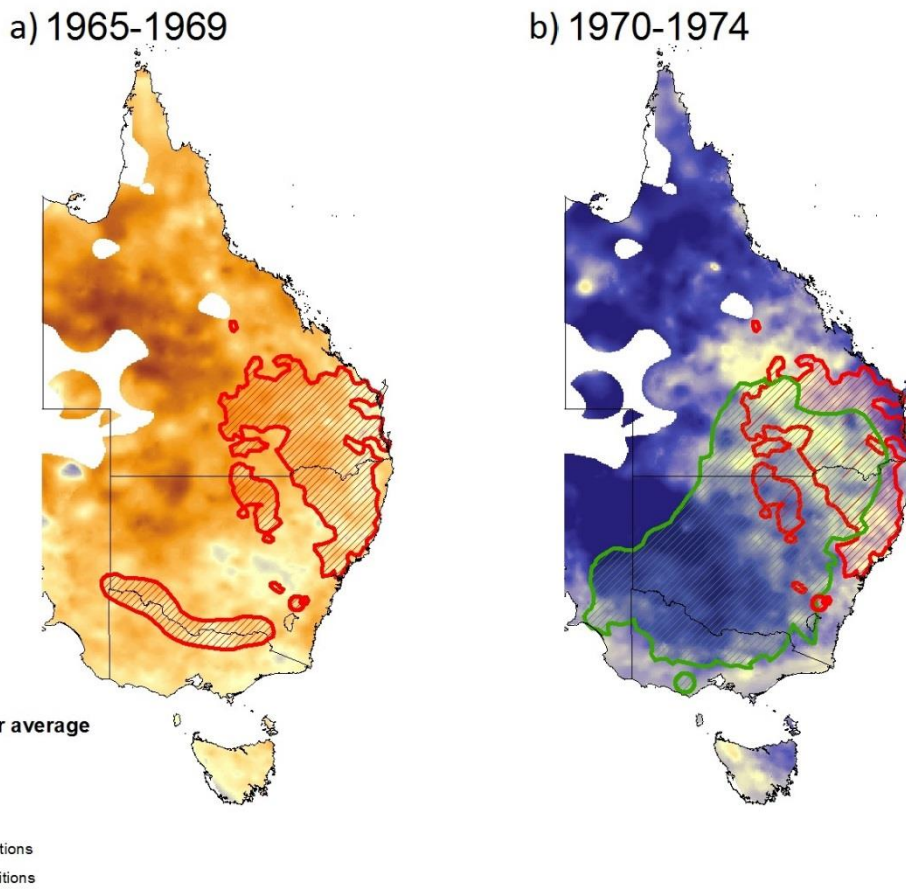


Figure 7: 1965-1969 and 1970-1974 AWAP maps, showing spatial extent of wet/dry conditions suggested by palaeoclimate reconstructions of corresponding pre-instrumental periods.

280 **4.3.2 Pre-instrumental wet epochs similar to the flood-dominated 1970-1974 period experienced across most of eastern Australia**

The period between 1970 and 1974 was a strong La Niña period with above average rainfall for most of eastern Australia. A number of tropical cyclones combined with excessive rainfall caused flooding in Brisbane and Tasmania, and Victoria also experienced its highest recorded rainfall. Figure 7b clearly shows widespread, above average rainfall during this 5-year period.

285

The majority of local, remote and total records for 1970-1974 all indicate wet conditions. According to previous analysis, 1145-1149 and 1170-1174 also experienced similar rainfall conditions. However, the majority of records for these periods do not agree on persistent wet conditions. In 1170-1174, Ho et al. (2015b) and Vance et al. (2015) suggest conditions were dry.

290 However, Figure 7b shows that these records do in fact cover the regions of eastern Australia that were drier between 1970

and 1974. Similarly, in 1170-1174 Barr et al. (2014) (Lake Surprise) show wet conditions, and these overlap with the wetter regions in Figure 7b. Similar trends can also be seen with the other equivalent period, 1145-1149. A low resolution eastern Australian record (not used here because it did not meet the temporal resolution criteria) from Stradbroke Island in eastern subtropical Australia also suggests the mid-1100s were particularly dry (Barr et al., 2019).

295

This further validates the methods used in this study, and shows that the wet/dry composite index displayed in Figure 3 is likely a conservative estimate of the actual pre-instrumental wet and dry conditions. If this is indeed the case, there is a high chance that ‘extreme’ rainfall and flood conditions experienced between 1970 and 1974 may have been surpassed by wetter events in the past. As discussed previously, only 29% of the pre-instrumental study period was found to have an instrumental equivalent, meaning that conditions for the majority of 1000-1899 were unlike anything experienced in the instrumental period. At this stage there is no way of determining the spatial signature of events that do not have an instrumental analogue, making it difficult to estimate exactly which areas would be impacted if/when those pre-instrumental wet or dry conditions return. What is certain, however, is that existing water resource planning, infrastructure and management has been developed based on only 29% of the hydroclimatic variability that is possible. Furthermore, the reliability of existing water resource and water hazard management systems under conditions experienced in the remaining 71% of the last 1000 years is currently unknown – and this represents a significant source of vulnerability to our environmental and socioeconomic sustainability.

300

305

5 Implications for water resource management and planning: A case study using a typical water storage reservoir from eastern Australia

The preceding results showed that there is potential for more extreme and prolonged wet and dry epochs to occur throughout eastern Australia. To gain more of an understanding into exactly what impact these events may have on catchment-scale water resources, the 1000-year “total records” wet-dry composite index (Figure 3, top) is used in a model that estimates the water stored (as a percentage of total capacity) in a water storage reservoir. The water storage reservoir is typical of most dams in eastern Australia and it, and the water storage model, is further described in Kiem and Franks (2004). Annual dam capacity is influenced by inputs (rainfall, catchment runoff and inflow via pumping stations) and outputs (evaporation, spill and supply to the population). This analysis has assumed conservative conditions with an initial capacity of 100%. According to Australian standards, dam levels must not be under the critical threshold (30%) for more than 1% of the time (Kiem and Franks, 2004).

310

315

Based on annual rainfall, the averages for the wettest, driest and middle input and output values were calculated to give an indicative value for a typical ‘wet’, ‘dry’ and ‘neutral’ period. These values are then applied to the 1000-year wet-dry composite index previously developed to produce a 1000-year reconstruction of the case study’s water storage levels (see Figure 8). While this dam obviously has not existed for the past 1000 years, this reconstruction provides insight into how

320

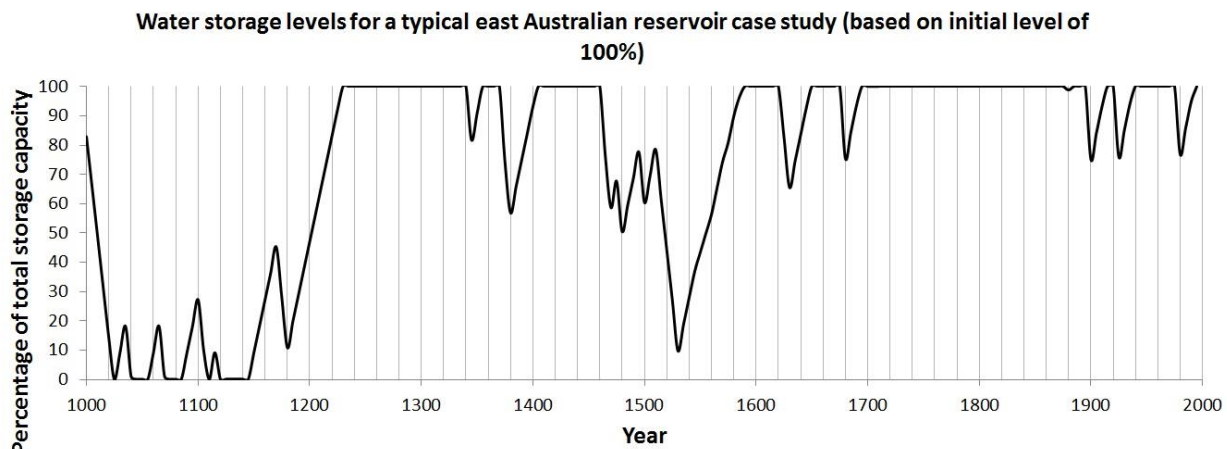
water security in the region could be affected if some of the pre-instrumental conditions described previously were to occur again.

325

Figure 8 clearly identifies the Federation drought as a time of potentially lower dam levels as well as an intense drought experienced by eastern Australia in 1982-1983 (Verdon-Kidd and Kiem, 2009). This highlights the model's ability to portray realistic results throughout the instrumental period, and the limited range of drought and flooding experienced since 1900, relative to the pre-1900 conditions. This is highlighted by two examples:

330

1. The first 200 years (1000-1200) were significantly drier than the most recent century and during this period dam level was constantly below the critical threshold of 30% capacity.
2. Apart from dry epochs in the late 1300s, mid-1400s to the mid-1500s, 1620-1650 and late 1600s, most of the period post-1200 was associated with wet conditions, with the case study showing several extended periods at capacity (e.g. almost 200 years between ~1700 and 1900 where the reservoir would have been spilling).



335

Figure 8: Case study reservoir water storage levels based on initial storage in CE 1000 equal to 100% of capacity.

Figure 8 shows that this case study reservoir was under the critical threshold of 30% capacity for 18.5% of the past 1000 years. Therefore, if conditions similar to any one of these centuries were to take place again, this water catchment area would be placed under significant stress and would need to implement additional water conservation and supply measures.

340

On the other hand, a dam at capacity for an extended period of time could also pose major issues. For example, Wivenhoe Dam in southeast Queensland reached capacity during the 2010-2011 Queensland floods and its controlled water release (i.e. spilling) was associated with extensive flooding in the Brisbane area, destroying many homes and businesses (<http://www.floodcommission.qld.gov.au/>) (Van den Honert and McAneney, 2011; McMahan and Kiem, 2018). According to Figure 8 there were many times in the past 1000 years where the case study reservoir used here would have been at

345

capacity, and frequent spilling, often for extended periods, would have been necessary. Whether or not this would lead to flooding and damages similar to, or worse than, that seen in southeast Queensland in 2010-2011 is a question that requires further investigation. Nevertheless, the durations the reservoir has been at capacity pre-1900 far exceed anything observed in the instrumental period and therefore such situations are unlikely to be accounted for in existing design, planning and management.

When combined with the projected increases in population and demand for water, it is likely that droughts and floods will have an even greater impact on eastern Australia's water supplies. This again highlights how underprepared water management authorities are with regard to extreme and prolonged wet/dry periods like those identified in the palaeoclimate record.

Though our case study location is eastern Australia, these challenges, and the limitations associated with current methods that depend on instrumental records that are too short to realistically characterise interannual to multidecadal variability, also apply globally. For example, as summarised in the Introduction, palaeoclimate reconstructions from many places around the world (e.g. non-eastern Australia, Asia, USA, Europe, South America) also demonstrate that, as with eastern Australia, the relatively short instrumental hydroclimatic records (typically available from ~1900 at best) misrepresent the range of hydroclimatic variability that is possible and the risks associated with extreme hydrological events (e.g. prolonged drought or flood dominated epochs). The inadequacies of relying on relatively short instrumental record for drought risk quantification and management and for flood frequency analysis is increasingly being recognised by practitioners. For example, in 2019 the USA Geological Survey released new guidelines for flood frequency analysis (England Jr et al., 2019), the first update in 37 years, that documented for the first time how instrumental and palaeoclimate evidence should be used in flood frequency analysis and flood risk assessments. Canada (Natural Resources Canada, 2019) and Australia (in the recently updated Australian Rainfall and Runoff, <http://arr.ga.gov.au/>) also recognise the need to better account for interannual to multidecadal variability beyond that seen in the instrumental records but limited details are given on how to do this.

6 Conclusions

This study suggests that only 29% of the pre-instrumental period is equivalent to conditions experienced in the instrumental period. This means that 71% of the pre-instrumental study period has no instrumental equivalent with which to compare it. Therefore, the most important, and concerning, finding from this study is that the range of hydroclimatic conditions experienced in the instrumental period is not indicative of the broader 1000-year period. The proportion, frequency and duration of wet and dry events in the pre-instrumental period is mostly unlike anything experienced instrumentally and the pre-instrumental records also identify much more severe and prolonged wet/dry epochs. Given that current water resource management strategies are based on the instrumental period only, eastern Australia is probably not equipped to manage

water resources during prolonged (i.e. decadal-scale) wet/dry epochs that have occurred in the pre-instrumental period.

380 When coupled with projected impacts of climate change and the demands of a growing population, the impacts of future ‘extreme’ wet or dry events will likely be significantly greater and more widespread. This represents a significant challenge for water resources and water hazard management in Australia and highlights that infrastructure design and adaptation strategies are probably not as resilient or secure as is suggested by instrumental-record based risk assessments.

385 Though our case study location is eastern Australia, there is also evidence in the literature that short instrumental hydroclimatic records misrepresent the range of hydroclimatic variability and risk that is possible in, for example, non-eastern Australia, Asia, USA, Europe, and South America. These realities require a paradigm shift from current practice that assumes probability models calibrated to short instrumental records realistically account for the worst dry or wet epochs possible and that the chance of drought or flood risk does not change over time. These assumptions are clearly incorrect, and

390 leave water supply managers without the tools to properly deal with multidecadal climate variability. Numerous sources of pre-instrumental (palaeoclimate) data (e.g. tree-rings, corals, speleothems) have emerged over the last decade and more are being worked on currently (e.g. refer to Section 4.2 and the Supplementary Material associated with Kiem et al. (2016) for a detailed review and comparison of existing palaeoclimate information relevant to drought in Australia). Palaeoclimate records can extend hydroclimatic records by centuries or millennia, which, as demonstrated here via a simple case study and

395 a deliberately unsophisticated use of palaeoclimate records, can provide new information about what hydroclimatic conditions are plausible (which is potentially of great value to water resources managers and planners). However, palaeoclimate-based reconstructions of past hydroclimatic variability come with their own uncertainties, assumptions, and limitations (e.g. Tozer et al., 2016, 2018; Dixon et al., 2017, 2019; Zhang et al., 2018). Consequently, as also recommended in Kiem et al. (2016), further research is needed to (i) better understand, quantify, and deal with uncertainties and

400 inconsistencies in the palaeoclimate information and (ii) provide the translational science required for water resources managers and planners to maximise the practical value of palaeoclimate records in assessing and managing drought and flood risks.

7 Code availability

No code was developed or used in this study.

405 8 Data availability

All data used in this paper is publicly available. The palaeoclimate records used were selected from palaeoclimate information available (i.e. published) at the time of study. Refer to Section 2 for details on where to access the palaeoclimate

information used. Australian Water Availability Project (AWAP) rainfall data is available from the Australian Bureau of Meteorology.

410 **9 Author contribution**

Anna L. Flack: review of palaeoclimate literature to identify palaeoclimate data to use, collection of palaeoclimate data that met the criteria for use in this study, analysis, assist with writing of original draft and subsequent revisions and finalisation.

Anthony S. Kiem: conceptualisation, methodology, analysis, assist with writing of original draft and subsequent revisions and finalisation.

415 Tessa R. Vance: conceptualisation, methodology, collection/development/provision of ice core information used in the rainfall reconstruction, writing of original draft and subsequent revisions and finalisation.

Carly R. Tozer: methodology, analysis, writing – reviewing and editing.

Jason L. Roberts: conceptualisation, methodology, collection/development/provision of ice core information used in the rainfall reconstruction, writing – reviewing and editing.

420 **10 Competing interests**

There are no competing interests to declare.

11 Acknowledgements

The authors would like to thank Peter Briggs (CSIRO) for supplying the AWAP data. The work conducted to produce this paper was funded by:

- 425
- Australian Research Council Discovery Project on “Flooding in Australia – are we properly prepared for how bad it can get?” (ARC DP180102522).
 - Australian Research Council Special Research Initiative for Antarctic Gateway Partnership (Project number: SR140300001).

12 References

- 430 Allen, K. J., Lee, G., Ling, F., Allie, S., Willis, M., and Baker, P. J.: Palaeohydrology in climatological context: Developing the case for use of remote predictors in Australian streamflow reconstructions, *Applied Geography*, 64, 132-152, <https://doi.org/10.1016/j.apgeog.2015.09.007>, 2015a.

- Allen, K. J., Nichols, S. C., Evans, R., Cook, E. R., Allie, S., Carson, G., Ling, F., and Baker, P. J.: Preliminary December–
435 January inflow and streamflow reconstructions from tree rings for western Tasmania, southeastern Australia, *Water Resources Research*, 51, 5487-5503, 10.1002/2015wr017062, 2015b.
- Allen, K. J., Nichols, S. C., Evans, R., Allie, S., Carson, G., Ling, F., Cook, E. R., Lee, G., and Baker, P. J.: A 277 year cool
season dam inflow reconstruction for Tasmania, southeastern Australia, *Water Resources Research*, 53, 400-414,
10.1002/2016wr018906, 2017.
- Armstrong, M. S., Kiem, A. S., and Vance, T. R.: Comparing instrumental, palaeoclimate, and projected rainfall data:
440 Implications for water resources management and hydrological modelling, *Journal of Hydrology: Regional Studies*,
31, 100728, <https://doi.org/10.1016/j.ejrh.2020.100728>, 2020.
- Barr, C., Tibby, J., Gell, P., Tyler, J., Zawadzki, A., and Jacobsen, G. E.: Climate variability in south-eastern Australia over
the last 1500 years inferred from the high-resolution diatom records of two crater lakes, *Quaternary Science Reviews*,
95, 115-131, <https://doi.org/10.1016/j.quascirev.2014.05.001>, 2014.
- 445 Barr, C., Tibby, J., Leng, M. J., Tyler, J. J., Henderson, A. C. G., Overpeck, J. T., Simpson, G. L., Cole, J. E., Phipps, S. J.,
Marshall, J. C., McGregor, G. B., Hua, Q., and McRobie, F. H.: Holocene El Niño–Southern Oscillation variability
reflected in subtropical Australian precipitation, *Scientific Reports*, 9, 1627, 10.1038/s41598-019-38626-3, 2019.
- Barria, P., Peel, M. C., Walsh, K. J. E., and Muñoz, A.: The first 300-year streamflow reconstruction of a high-elevation
river in Chile using tree rings, *International Journal of Climatology*, 38, 436-451, 10.1002/joc.5186, 2018.
- 450 Buckley, B. M., Ummenhofer, C. C., D’Arrigo, R. D., Hansen, K. G., Truong, L. H., Le, C. N., and Stahle, D. K.:
Interdecadal Pacific Oscillation reconstructed from trans-Pacific tree rings: 1350–2004 CE, *Climate Dynamics*, 53,
3181-3196, 10.1007/s00382-019-04694-4, 2019.
- Cook, E. R., Woodhouse, C. A., Eakin, C. M., Meko, D. M., and Stahle, D. W.: Long-Term Aridity Changes in the Western
United States, *Science*, 306, 1015, 10.1126/science.1102586, 2004.
- 455 Cook, E. R., Seager, R., Kushnir, Y., Briffa, K. R., Büntgen, U., Frank, D., Krusic, P. J., Tegel, W., van der Schrier, G.,
Andreu-Hayles, L., Baillie, M., Baittinger, C., Bleicher, N., Bonde, N., Brown, D., Carrer, M., Cooper, R., Čufar, K.,
Dittmar, C., Esper, J., Griggs, C., Gunnarson, B., Günther, B., Gutierrez, E., Haneca, K., Helama, S., Herzig, F.,
Heussner, K.-U., Hofmann, J., Janda, P., Kontic, R., Köse, N., Kyncl, T., Levanič, T., Linderholm, H., Manning, S.,
Melvin, T. M., Miles, D., Neuwirth, B., Nicolussi, K., Nola, P., Panayotov, M., Popa, I., Rothe, A., Seftigen, K.,
460 Seim, A., Svarva, H., Svoboda, M., Thun, T., Timonen, M., Touchan, R., Trotsiuk, V., Trouet, V., Walder, F.,
Ważny, T., Wilson, R., and Zang, C.: Old World megadroughts and pluvials during the Common Era, *Science
Advances*, 1, e1500561, 10.1126/sciadv.1500561, 2015.
- Davi, N. K., Pederson, N., Leland, C., Nachin, B., Suran, B., and Jacoby, G. C.: Is eastern Mongolia drying? A long-term
perspective of a multidecadal trend, *Water Resources Research*, 49, 151-158, 10.1029/2012wr011834, 2013.
- 465 Dixon, B. C., Tyler, J. J., Lorrey, A. M., Goodwin, I. D., Gergis, J., and Drysdale, R. N.: Low-resolution Australasian
palaeoclimate records of the last 2000 years, *Clim. Past*, 13, 1403-1433, 10.5194/cp-13-1403-2017, 2017.

- Dixon, B. C., Tyler, J. T., Henley, B. J., and Drysdale, R.: Regional patterns of hydroclimate variability in southeastern Australia over the past 1200 years, *Earth and Space Science Open Archive*, 32, <https://doi.org/10.1002/essoar.10501482.10501481>, 2019.
- 470 England Jr, J. F., Cohn, T. A., Faber, B. A., Stedinger, J. R., Thomas Jr, W. O., Veilleux, A. G., Kiang, J. E., and Mason, J. R. R.: Guidelines for determining flood flow frequency—Bulletin 17C (<https://pubs.er.usgs.gov/publication/tm4B5>), Reston, VA, Report 4-B5, 168, 2019.
- Feng, S., Hu, Q., Wu, Q., and Mann, M. E.: A Gridded Reconstruction of Warm Season Precipitation for Asia Spanning the Past Half Millennium, *Journal of Climate*, 26, 2192-2204, 10.1175/JCLI-D-12-00099.1, 2013.
- 475 Fernández, A., Muñoz, A., González-Reyes, Á., Aguilera-Betti, I., Toledo, I., Puchi, P., Sauchyn, D., Crespo, S., Frene, C., Mundo, I., González, M., and Vignola, R.: Dendrohydrology and water resources management in south-central Chile: lessons from the Río Imperial streamflow reconstruction, *Hydrol. Earth Syst. Sci.*, 22, 2921-2935, 10.5194/hess-22-2921-2018, 2018.
- Gallant, A. J. E., and Gergis, J.: An experimental streamflow reconstruction for the River Murray, Australia, 1783–1988, 480 *Water Resources Research*, 47, 10.1029/2010wr009832, 2011.
- Gallant, A. J. E., Phipps, S. J., Karoly, D. J., Mullan, A. B., and Lorrey, A. M.: Nonstationary Australasian Teleconnections and Implications for Paleoclimate Reconstructions, *Journal of Climate*, 26, 8827-8849, 10.1175/jcli-d-12-00338.1, 2013.
- Hanel, M., Rakovec, O., Markonis, Y., Máca, P., Samaniego, L., Kyselý, J., and Kumar, R.: Revisiting the recent European 485 droughts from a long-term perspective, *Scientific Reports*, 8, 9499, 10.1038/s41598-018-27464-4, 2018.
- Heinrich, I., Weidner, K., Helle, G., Vos, H., Lindesay, J., and Banks, J. C. G.: Interdecadal modulation of the relationship between ENSO, IPO and precipitation: insights from tree rings in Australia, *Climate Dynamics*, 33, 63-73, 10.1007/s00382-009-0544-5, 2009.
- Hendy, E. J., Gagan, M. K., and Lough, J. M.: Chronological control of coral records using luminescent lines and evidence 490 for non-stationary ENSO teleconnections in northeast Australia, *The Holocene*, 13, 187-199, 10.1191/0959683603hl606rp, 2003.
- Ho, M., Verdon-Kidd, D. C., Kiem, A. S., and Drysdale, R. N.: Broadening the spatial applicability of paleoclimate information – a case-study for the Murray-Darling Basin, Australia, *Journal of Climate*, 27, 2477-2495, <http://dx.doi.org/2410.1175/JCLI-D-2413-00071.00071>, 2014.
- 495 Ho, M., Kiem, A. S., and Verdon-Kidd, D. C.: A paleoclimate rainfall reconstruction in the Murray-Darling Basin (MDB), Australia: 1. Evaluation of different paleoclimate archives, rainfall networks and reconstruction techniques, *Water Resources Research*, 51, doi:10.1002/2015WR017058, 2015a.
- Ho, M., Kiem, A. S., and Verdon-Kidd, D. C.: A paleoclimate rainfall reconstruction in the Murray-Darling Basin (MDB), Australia: 2. Assessing hydroclimatic risk using preinstrumental information on wet and dry epochs, *Water Resources 500 Research*, 51, doi:10.1002/2015WR017059, 2015b.

- Holland, G. J., Lynch, A. H., and Leslie, L. M.: Australian East-Coast Cyclones. Part I: Synoptic Overview and Case Study, *Monthly Weather Review*, 115, 3024-3036, 10.1175/1520-0493(1987)115<3024:Aeccpi>2.0.Co;2, 1987.
- Johnson, F., White, C. J., van Dijk, A., Ekstrom, M., Evans, J. P., Jakob, D., Kiem, A. S., Leonard, M., Rouillard, A., and Westra, S.: Natural hazards in Australia: floods, *Climatic Change*, 139, 21-35, doi:10.1007/s10584-10016-11689-y, 505 2016.
- Jones, D. A., Wang, W., and Fawcett, R.: High-quality spatial climate data-sets for Australia, *Australian Meteorological and Oceanographic Journal*, 58, 233-248, 10.22499/2.5804.003, 2009.
- Kiem, A. S., and Franks, S. W.: Multi-decadal variability of drought risk - Eastern Australia, *Hydrological Processes*, 18, 2039-2050, 2004.
- 510 Kiem, A. S., Franks, S. W., and Verdon, D. C.: Climate variability in the land of fire and flooding rain, *Australian Journal of Emergency Management*, 21, 52-56, 2006.
- Kiem, A. S.: Drought and water policy in Australia: challenges for the future illustrated by the issues associated with water trading and climate change adaptation in the Murray-Darling Basin, *Global Environmental Change*, 23, 1615-1626, doi:1610.1016/j.gloenvcha.2013.1609.1006, 2013.
- 515 Kiem, A. S., and Austin, E. K.: Drought and the future of rural communities: opportunities and challenges for climate change adaptation in regional Victoria, Australia, *Global Environmental Change*, 23, 1307-1316, doi:1310.1016/j.gloenvcha.2013.1306.1003, 2013.
- Kiem, A. S., Johnson, F., Westra, S., van Dijk, A., Evans, J. P., O'Donnell, A., Rouillard, A., Barr, C., Tyler, J., Thyer, M., Jakob, D., Woldemeskel, F., Sivakumar, B., and Mehrotra, R.: Natural hazards in Australia: droughts, *Climatic* 520 *Change*, 139, 37-54, 10.1007/s10584-016-1798-7, 2016.
- Kiem, A. S., Vance, T. R., Tozer, C. R., Roberts, J. L., Dalla Pozza, R., Vitkovsky, J., Smolders, K., and Curran, M. A. J.: Learning from the past – Using palaeoclimate data to better understand and manage drought in South East Queensland (SEQ), Australia, *Journal of Hydrology: Regional Studies*, 29, 100686, <https://doi.org/10.1016/j.ejrh.2020.100686>, 2020.
- 525 King, A. D., Alexander, L. V., and Donat, M. G.: The efficacy of using gridded data to examine extreme rainfall characteristics: a case study for Australia, *International Journal of Climatology*, 33, 2376-2387, 10.1002/joc.3588, 2013.
- Lara, A., Villalba, R., and Urrutia, R.: A 400-year tree-ring record of the Puelo River summer–fall streamflow in the Valdivian Rainforest eco-region, Chile, *Climatic Change*, 86, 331-356, 10.1007/s10584-007-9287-7, 2008.
- 530 Littell, J. S., Pederson, G. T., Gray, S. T., Tjoelker, M., Hamlet, A. F., and Woodhouse, C. A.: Reconstructions of Columbia River streamflow from tree-ring chronologies in the Pacific Northwest, USA, *JAWRA*, 52, 1121-1141, 10.1111/1752-1688.12442, 2016.
- Lough, J. M.: Great Barrier Reef coral luminescence reveals rainfall variability over northeastern Australia since the 17th century, *Paleoceanography*, 26, 10.1029/2010pa002050, 2011.

- 535 Martin, J. T., Pederson, G. T., Woodhouse, C. A., Cook, E. R., McCabe, G. J., Wise, E. K., Erger, P., Dolan, L., McGuire, M., Gangopadhyay, S., Chase, K., Littell, J. S., Gray, S. T., George, S. S., Friedman, J., Sauchyn, D., Jacques, J. S., and King, J.: 1200 years of Upper Missouri River streamflow reconstructed from tree rings, *Quaternary Science Reviews*, 224, 105971, <https://doi.org/10.1016/j.quascirev.2019.105971>, 2019.
- McDonald, J., Drysdale, R., Hill, D., Chisari, R., and Wong, H.: The hydrochemical response of cave drip waters to sub-
540 annual and inter-annual climate variability, Wombeyan Caves, SE Australia, *Chemical Geology*, 244, 605-623, <https://doi.org/10.1016/j.chemgeo.2007.07.007>, 2007.
- McGowan, H. A., Marx, S. K., Denholm, J., Soderholm, J., and Kamber, B. S.: Reconstructing annual inflows to the headwater catchments of the Murray River, Australia, using the Pacific Decadal Oscillation, *Geophysical Research Letters*, 36, 10.1029/2008gl037049, 2009.
- 545 McMahon, G. M., and Kiem, A. S.: Large floods in South East Queensland, Australia: is it valid to assume they occur randomly?, *Australasian Journal of Water Resources*, 22, 4-14, doi:10.1080/13241583.13242018.11446677, 2018.
- Natural Resources Canada: Federal hydrologic and hydraulic procedures for floodplain delineation; Natural Resources Canada; Public Safety Canada. Natural Resources Canada, General Information Product 113e, (ed. version 1.0), 2019, 61 pages, <https://doi.org/10.4095/299808> (Open Access) 2019.
- 550 Neukom, R., Gergis, J., Karoly, D. J., Wanner, H., Curran, M., Elbert, J., González-Rouco, F., Linsley, B. K., Moy, A. D., Mundo, I., Raible, C. C., Steig, E. J., van Ommen, T., Vance, T., Villalba, R., Zinke, J., and Frank, D.: Inter-hemispheric temperature variability over the past millennium, *Nature Climate Change*, 4, 362-367, 10.1038/nclimate2174, 2014.
- Nguyen, H. T. T., and Galelli, S.: A Linear Dynamical Systems Approach to Streamflow Reconstruction Reveals History of
555 Regime Shifts in Northern Thailand, *Water Resources Research*, 54, 2057-2077, 10.1002/2017wr022114, 2018.
- Palmer, J. G., Cook, E. R., Turney, C. S. M., Allen, K., Fenwick, P., Cook, B. I., O'Donnell, A., Lough, J., Grierson, P., and Baker, P.: Drought variability in the eastern Australia and New Zealand summer drought atlas (ANZDA, CE 1500–2012) modulated by the Interdecadal Pacific Oscillation, *Environmental Research Letters*, 10, 124002, 10.1088/1748-9326/10/12/124002, 2015.
- 560 Pederson, N., Hessel, A. E., Baatarbileg, N., Anchukaitis, K. J., and Di Cosmo, N.: Pluvials, droughts, the Mongol Empire, and modern Mongolia, *Proceedings of the National Academy of Sciences*, 111, 4375, 10.1073/pnas.1318677111, 2014.
- Perşoiu, A., Onac, B. P., Wynn, J. G., Blaauw, M., Ionita, M., and Hansson, M.: Holocene winter climate variability in Central and Eastern Europe, *Scientific Reports*, 7, 1196, 10.1038/s41598-017-01397-w, 2017.
- 565 Pui, A., Lal, A., and Sharma, A.: How does the Interdecadal Pacific Oscillation affect design floods in Australia?, *Water Resources Research*, 47, 10.1029/2010wr009420, 2011.

- Rao, M. P., Cook, E. R., Cook, B. I., Palmer, J. G., Uriarte, M., Devineni, N., Lall, U., D'Arrigo, R. D., Woodhouse, C. A., Ahmed, M., Zafar, M. U., Khan, N., Khan, A., and Wahab, M.: Six Centuries of Upper Indus Basin Streamflow Variability and Its Climatic Drivers, *Water Resources Research*, 54, 5687-5701, 10.1029/2018wr023080, 2018.
- 570 Robeson, S. M., Maxwell, J. T., and Ficklin, D. L.: Bias Correction of Paleoclimatic Reconstructions: A New Look at 1,200+ Years of Upper Colorado River Flow, *Geophysical Research Letters*, 47, e2019GL086689, 10.1029/2019gl086689, 2020.
- Tozer, C. R., Kiem, A. S., and Verdon-Kidd, D. C.: On the uncertainties associated with using gridded rainfall data as a proxy for observed, *Hydrology and Earth System Sciences*, 16, 1481-1499, doi:1410.5194/hess-1416-1481-2012, 575 2012.
- Tozer, C. R., Vance, T. R., Roberts, J. L., Kiem, A. S., Curran, M. A. J., and Moy, A. D.: An ice core derived 1013-year catchment-scale annual rainfall reconstruction in subtropical eastern Australia, *Hydrology and Earth System Sciences*, 20, 1703-1717, doi:1710.5194/hess-1720-1703-2016, 2016.
- Tozer, C. R., Kiem, A. S., Vance, T. R., Roberts, J. L., Curran, M. A. J., and Moy, A. D.: Reconstructing pre-instrumental streamflow in Eastern Australia using a water balance approach, *Journal of Hydrology*, 558, 632-646, 580 doi:610.1016/j.jhydrol.2018.1001.1064, 2018.
- Urrutia, R. B., Lara, A., Villalba, R., Christie, D. A., Le Quesne, C., and Cuq, A.: Multicentury tree ring reconstruction of annual streamflow for the Maule River watershed in south central Chile, *Water Resources Research*, 47, 10.1029/2010wr009562, 2011.
- 585 Van den Honert, R. C., and McAneney, J.: The 2011 Brisbane Floods: Causes, Impacts and Implications, *Water*, 3, 1149-1173, <https://doi.org/1110.3390/w3041149>, 2011.
- Vance, T. R., Ommen, T. D. v., Curran, M. A. J., Plummer, C. T., and Moy, A. D.: A Millennial Proxy Record of ENSO and Eastern Australian Rainfall from the Law Dome Ice Core, East Antarctica, *Journal of Climate*, 26, 710-725, 10.1175/jcli-d-12-00003.1, 2013.
- 590 Vance, T. R., Roberts, J. L., Plummer, C. T., Kiem, A. S., and van Ommen, T. D.: Interdecadal Pacific variability and eastern Australian mega-droughts over the last millennium, *Geophysical Research Letters*, 41, 10.1002/2014GL062447, 2015.
- Verdon-Kidd, D. C., and Kiem, A. S.: Nature and causes of protracted droughts in Southeast Australia - Comparison between the Federation, WWII and Big Dry droughts, *Geophysical Research Letters*, 36, L22707, 595 10.1029/2009GL041067, 2009.
- Wang, J. K., Johnson, K. R., Borsato, A., Amaya, D. J., Griffiths, M. L., Henderson, G. M., Frisia, S., and Mason, A.: Hydroclimatic variability in Southeast Asia over the past two millennia, *Earth and Planetary Science Letters*, 525, 115737, <https://doi.org/10.1016/j.epsl.2019.115737>, 2019.

600 Zhang, L., Kuczera, G., Kiem, A. S., and Willgoose, G. R.: Using paleoclimate reconstructions to analyse hydrological
epochs associated with Pacific decadal variability, *Hydrology and Earth System Sciences*, 22, 6399-6414,
doi:6310.5194/hess-6322-6399-2018, 2018.