

Technical Note: Evaluation and bias correction of an observations-based global runoff dataset using streamflow observations from small tropical catchments in the Philippines

Daniel E. Ibarra^{1,2}, Carlos Primo C. David³, Pamela Louise M. Tolentino³

5

¹ Department of Earth and Planetary Science, University of California, Berkeley, California 94720 USA

² Institute at Brown for Environment and Society and the Department of Earth, Environmental and Planetary Science, Brown University, Providence, Rhode Island 02912 USA

³ National Institute of Geological Sciences, University of the Philippines, Diliman, Quezon City, Philippines 1101

10 *Correspondence to:* Daniel E. Ibarra (dibarra@berkeley.edu) and Carlos Primo C. David (cpdavid@nigs.upd.edu.ph)

Abstract

Even in relatively wet tropical regions, seasonal fluctuations in the water cycle affect the consistent and reliable
15 supply of water for urban, industrial and agricultural uses. Historic streamflow monitoring datasets are crucial in assessing
our ability to model and subsequently plan for future hydrologic changes. In this technical note, we evaluate a new
observations-based global product of monthly runoff (GRUN; Ghiggi et al., 2019) for 55 small tropical catchments in the
Philippines with at least 10 years of data, extending back to 1946 in some cases. Since GRUN didn't use discharge data from
the Philippines to train/calibrate their models, the data presented in this study, 11,915 monthly data points, provide an
20 independent evaluation of this product. We demonstrate across all observations a significant but weak correlation ($r^2 =$
0.372) between the GRUN predicted values and observed river discharge, and somewhat skilful prediction (Volumetric
Efficiency = 0.363 and $\log(\text{Nash-Sutcliffe Efficiency}) = 0.453$). GRUN performs best among catchments located in Climate
Types III (no pronounced maximum rainfall with short dry season) and IV (evenly distributed rainfall, no dry season). There
was a weak negative correlation between volumetric efficiency and catchment area, and a positive correlation between
25 volumetric efficiency and mean observed runoff. Further, analysis for individual rivers demonstrates systematic biases (over
and under estimation) of baseflow during the dry season, and under-prediction of peak flow during some wet months for
most catchments. To correct for underprediction during wet months, we applied a log-transform bias correction which
greatly improves the nationwide Root Mean Square Error between GRUN and the observations by an order of magnitude
(2.648 vs. 0.292 mm/day). This technical note demonstrates the importance of performing such corrections when
30 determining the proportional contribution of smaller catchments or tropical islands such as the Philippines to global
tabulations of discharge. These results also demonstrate the potential use of GRUN and future data products of this nature
after consideration and correction of systematic biases to: 1) assess trends in regional scale runoff over the past century, 2)

validate hydrologic models for un-monitored catchments in the Philippines, and 3) assess the impact of hydrometeorological phenomena to seasonal water supply in this wet but drought prone archipelago.

35 **1 Introduction**

The global water crisis affects an estimated two-thirds of the world's population and is considered one of the three biggest global issues that we need to contend with (Kummu et al., 2016; WEF, 2018). The most important source of freshwater in terms of use is surface water. It is the primary resource for irrigation, industrial use and provides the bulk of water supply for many large cities. Long term streamflow datasets are useful for resource management and infrastructure
40 planning (e.g., Evaristo and McDonnell, 2019). Such data is even more critical in areas that rely on run-of-the-river and do not use storage structures, such as dams and impoundments. Further, a robust, long term dataset is crucial in the face of increased variability in stream discharge due to land use change, increased occurrence of mesoscale disturbances and climate change (e.g., Abon et al., 2016; David, et al., 2017; Kumar et al., 2018). In the absence of long-term streamflow datasets for
45 un-gauged areas (Maybeck et al., 2013, Gudmundsson et al., 2018, Do et al., 2018; Alfieri et al., 2020; Harrigan et al., 2020). Several global hydrological models have also been created to project variations in streamflow and extend present-day measurements to the future (Hagemann et al., 2011; Davie et al., 2013; Winsemius et al., 2016). A recent contribution to modelled global runoff products is the Global Runoff Reconstruction (GRUN) (Ghiggi et al., 2019). GRUN is a global gridded reconstruction of monthly runoff for the period 1902-2014 at 0.5 degree (~50km by 50km) spatial resolution. It used
50 global streamflow data from 7,264 river basins that to train a machine learning algorithm that inferred runoff generation processes from precipitation and temperature data.

There is a disparity in the availability of long-term gauged rivers datasets between continental areas and smaller island nations, which have more dynamic hydrometeorologic system owing to the size of the catchments and proximity to the ocean (e.g., Abon et al., 2011; Paronda et al., 2019). As a result, information from island nations is usually not used to
55 train or evaluate global model. The Philippines offers a unique example where manual stream gauging programs have started in 1904 and, while spotty at times, have continued to today. This island nation on the western side of the Pacific Ocean is characterized by a very dynamic hydrologic system because it is affected by tropical cyclones, seasonal monsoon rains, sub-decadal cycles such as the El Nino Southern Oscillation (ENSO) and climate change (Abon et al., 2016; David, et al., 2017; Kumar et al., 2018). The impact of climate change on the hydrological cycle can be observed the most for tropical island
60 nations, including the Philippines (Nurse et al., 2014).

This technical note evaluates the accuracy of the GRUN dataset (GRUN_v1) as applied to the hydrodynamically-active smaller river basins in the Philippines. Additionally, it explores the possible hydrologic parameters that may need to be considered and/or optimized so that such global datasets can predict runoff in smaller, ungauged basins more accurately.

2.1 Climate Types

The Philippines has four Climate Types (see also Abon et al., 2016; Tolentino et al., 2017; Figure 1): Type I Climate on the western seaboard of the Philippines is characterized by distinct wet (May to October) and dry (November to April) seasons; Type II Climate on the eastern seaboard has no distinct dry period with maximum rainfall occurring from November to February; Type III inland climate experiences less annual rainfall with a short dry season (December to May) and a less pronounced wet season (June to November); and, Type IV southeast inland climate receives less rainfall and is characterized by an evenly distributed rainfall pattern throughout the year.

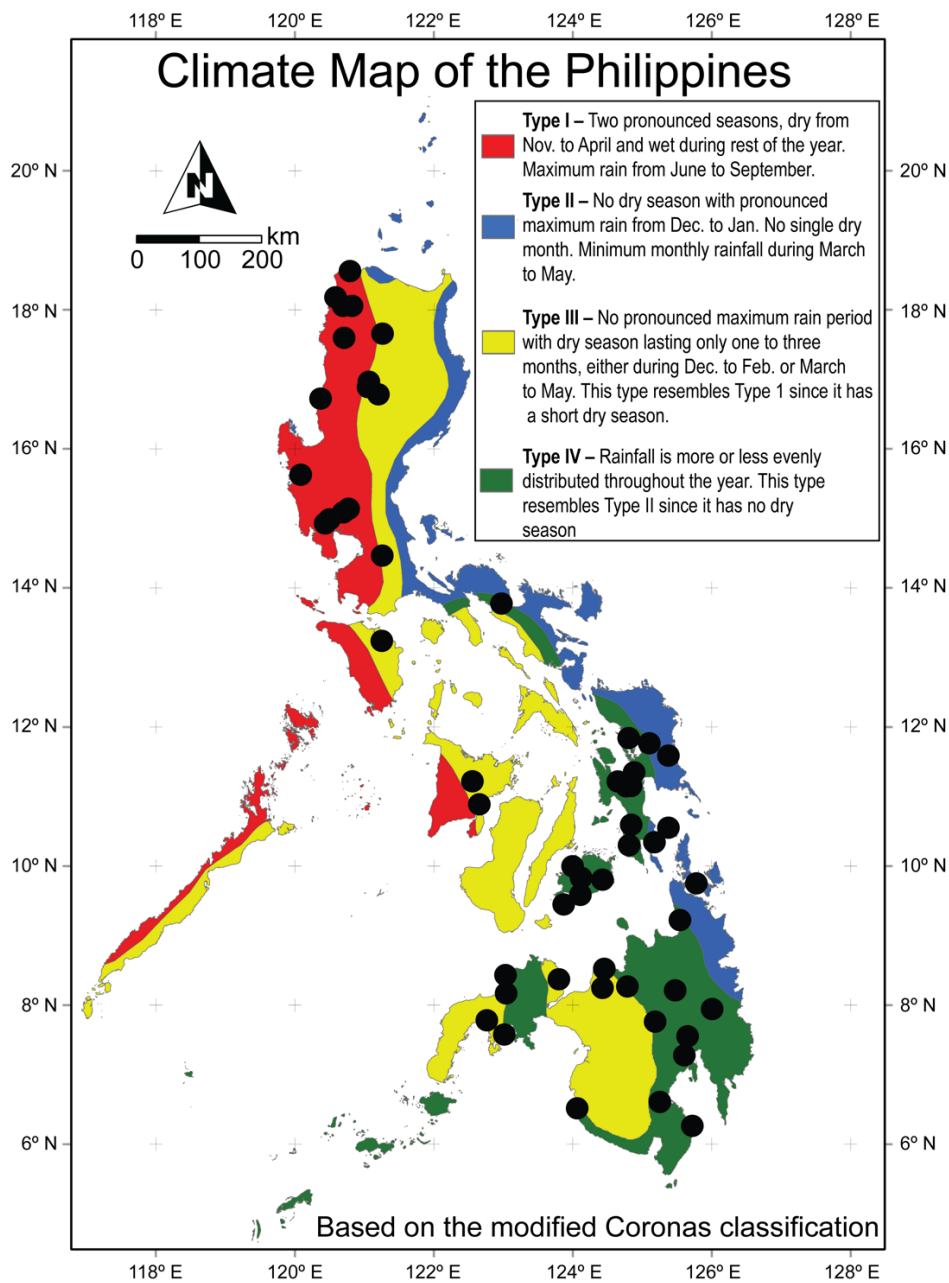
2.2 Historical streamflow data

In this contribution we analyse monthly observations of discharge from 55 manually observed streamflow stations from three Philippine datasets. The observations span the period between 1946 to 2016, although only data through 2014 are used due to the time period included in GRUN (see section 2.3). All datasets needed to include at least 10 years of data. The location of all streamflow stations is shown on Figure 1 and listed in Table 1.

80

2.2.1 Bureau of Research and Standards (BRS) Dataset

The discharge data was originally acquired from the Bureau of Research Standards (BRS) under the Department of Public Works and Highways (DPWH). The records keeping was transferred to the Bureau of Design, also under DPWH, which continues to record gage data from some rivers up to today. The majority of the reprocessed BRS data used in this analysis come from Tolentino et al. (2016), some of the datasets were updated using data available from the Department of Public Works and Highways. A discussion of the accuracy of this data based on comparison to manual daily discharge measurements can be found in Tolentino et al. (2016).



90 **Figure 1: Map of Philippines with the location of streamflow stations** used in this analysis and climatic type (as in Tolentino et al., 2016; Kintanar, 1984; Jose and Cruz, 1999). Note that no publicly available long-term gauging station data are available for Palawan.

2.2.2 Global Runoff Data Centre (GRDC) Reference Dataset

95 Data from ten catchments from the GRDC Reference Dataset
(https://www.bafg.de/GRDC/EN/04_spcldtbss/43_GRfN/refDataset_node.html; requested July 2019) were analysed. Over
45 sites from the Philippines are available in the GRDC data; however, almost none fulfilled our criteria of having over 10
years of data. Four of these catchments match or extended the BRS datasets, and one extends a GSIM dataset (see below).
Notably four of the time series available from GRDC are available back to the 1940s (Table 1).

100

2.2.3 Global Streamflow Indices and Metadata Archive (GSIM) Reference Dataset

Only two of the available five GSIM time series for the Philippines (Gudmundsson et al., 2016, Do et al., 2018)
contain more than 10 years of data.

105 2.3 GRUN observations-based global gridded (0.5°x0.5°) runoff dataset

GRUN is a recently published global reconstruction of monthly runoff time series for the period 1902 to 2014. It
was created using a machine learning algorithm based on temperature and precipitation data from the Global Soil Wetness
Project Phase 3 (GSWP3; Kim et al., 2017; <http://hydro.iis.u-tokyo.ac.jp/GSWP3/index.html>) using the Global Streamflow
Indices and Metadata Archive (GISM) (Ghiggi et al., 2019). In this contribution we analysed GRUN v1
110 (https://figshare.com/articles/GRUN_Global_Runoff_Reconstruction/9228176; accessed September 9th 2019) which was
trained on a selection of catchments with an area between 10 and 2500 km² GSIM (Do et al., 2018; Gudmundsson et al.,
2018) and validated using 379 large (>50,000 km²) monthly river discharge datasets from the Global Runoff Data Centre
(GRDC) Reference Dataset (https://www.bafg.de/GRDC/EN/04_spcldtbss/43_GRfN/refDataset_node.html). Additionally,
due to the criteria for training data, GRUN's calibration is biased towards the northern hemisphere mid-latitudes; discharge
115 data are available for only a few sites in the tropics in Africa and southeast Asia (Mulligan, 2013). Ghiggi et al. (2019)
discuss that because of the dataset training technique, uncertainty scales with the magnitude of runoff. GRUN is likely to
have high prediction uncertainty in regions with less dense runoff observations and high discharge such as in tropical
southeast Asia. However, Ghiggi et al. (2019) show for southeast Asia an increase in runoff and a strong correlation of
runoff with ENSO for the period of analysis (1902 to 2014). We refer the reader to Ghiggi et al. (2019) for more information
120 but note that because of the catchment size filtering criteria, none of the GISM and GRDC data from the Philippines were
used in calibration or evaluation (*Personal Communications*, G. Ghiggi, 2019). As such, we view our analysis as a
completely independent test of the GRUN runoff prediction for small tropical catchments.

2.4 Catchment Area and Pairing with GRUN Grid Cells

125 All catchment areas were verified using the digital elevation model from the 2013 Interferometric Synthetic
Aperture Radar (IfSAR) data. All runoff datasets were normalized (mm/yr), i.e., 'specific discharge'. We only considered
streamflow stations where the published and verified areas agreed. Catchment areas span 4 orders of magnitude (8.93 to

6,487 km²) and cover the majority of the Philippines excluding Palawan (see Figure 1). The location of catchments was paired to GRUN grid cells (0.5° by 0.5°) for the analysis. Instead of computing the weighted area runoff over the catchment, we employed the nearest neighbour interpolation between the catchment outlet location and the GRUN gridded product (0.5° by 0.5° resolution). All but one catchment is smaller than the area of the GRUN grid cells (~2,500 km²), thus, we view this pairing as sufficient for validation purposes. This assumption was tested by interpolating the GRUN grid to the gauging location as well as the watershed centroids, but this did not lead to a significant difference in correlation.

2.5 Comparison of GRUN Estimates and Observations

To assess the performance of GRUN, we use a suite of metrics commonly used to assess model performance in hydrologic studies. Given the emphasis on a country scale evaluation of GRUN we primarily focus below on results in aggregate grouped by climate type or for all catchments. These metrics are calculated for each individual catchment (n=55) and in aggregate for each climate type (n=4; see below) shown in Figure 1. GRUN was not intended to be used for estimating discharge for single small catchments, therefore we focus on the aggregated data but also report the range for the result for the individual catchments.

Firstly, we use the commonly used coefficient of determination (r^2 or r-squared). This bivariate correlation metric measures the linear correlation between two variables. In this case the predicted monthly values from GRUN and the observed monthly values from the streamflow datasets. It varies from 0 (no linear correlation) to 1 (perfect correlation). The use of r-squared does not account for systematic over- or under-prediction in runoff because it only accounts for correlation among the observed and predicted values (see Krause et al. (2005) for further discussion of the use of r-squared in hydrological model assessment).

The second metric used here is the Volumetric Efficiency (VE) (Criss and Winston, 2008), utilized previously by Tolentino et al. (2016) on a subset of the BRS catchments analysed here. VE is defined as:

150

$$VE = 1 - \frac{\sum |Q_P - Q_O|}{\sum Q_O} \quad (1)$$

where Q is the monthly discharge and subscript P is used for the modelled/predicted values and O the observed runoff values. A value of 1 indicates a perfect score. Because we are interested in the performance of GRUN over the period of each streamflow record, we calculate VE using all paired monthly observed and simulated values rather than the monthly medians that were used in Tolentino et al. (2016). This results in lower VE scores than those reported by Tolentino et al. (2016).

Further, we use the linear Nash-Sutcliffe efficiency (NSE) (Nash and Sutcliffe (1970):

160

$$NSE = 1 - \frac{\sum (Q_P - Q_O)^2}{\sum (Q_O - \text{mean}(Q_O))^2} \quad (2)$$

The NSE can vary between $-\infty$ and 1 (perfect fit). NSE values are useful because values less than zero indicate that the model is no better than using the mean value of the observed data as a predictor. The logged NSE was also calculated using logarithmic values of runoff to reduce the influence of a mismatch during peak flow and to increase the influence of low flow values (see further discussion in Krause et al., 2005).
165

To evaluate a possible strategy for performing a bias correction of the GRUN simulated values at a countrywide scale, we use the Root Mean Square Error (RMSE) in units of runoff (i.e., mm/day). The RMSE was applied to the raw GRUN simulated values and the observation based bias corrected GRUN values at the country, climate type (see below) and individual catchment level.

170 Finally, to evaluate distributions of flow duration using flow duration curves by catchment and aggregated by climate type we use the 'fdc' function in the R package 'hydroTSM' (Zambrano-Bigiarini, 2020), and include in our comparison GRUN predicted values only for months which observations are available.

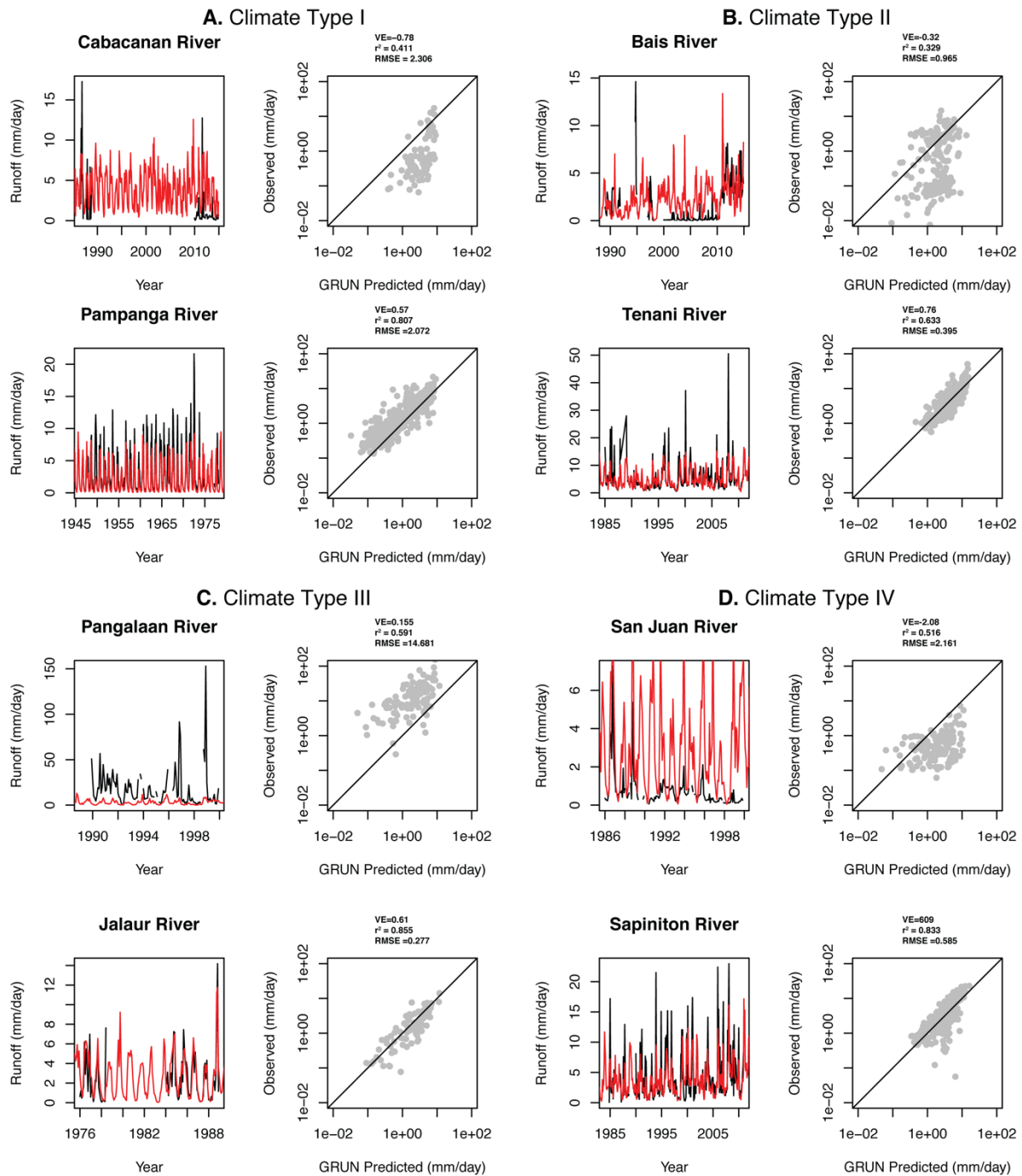


Figure 2. Example timeseries of GRUN predicted (red lines) and observed (black lines) runoff values, and cross-plots (log-scale) with VE, r^2 and RSME values for the worst (top) and best (bottom) performing river basins within Climate Types I, II, III and IV (panels A-D, respectively).

180 **3 Results and Discussion**

Figure 2 and the supplemental figures (Figure A1) show comparisons between the time series of the GRUN runoff values and runoff (area normalized discharge). Statistics performance metrics across all data as well as by climate types I to IV are listed in Table 2 and Table A1. In the following sections, we break down the comparison between the streamflow observations and GRUN by reporting summary statistics, comparing runoff distributions and extreme values at the individual basin level and by Climate Type, analyse flow duration curves, and finally look at several correlations of VE to watershed characteristics. Following this we calculate bias correction regressions and provide an outlook for future work.

3.1 Comparison of runoff distributions

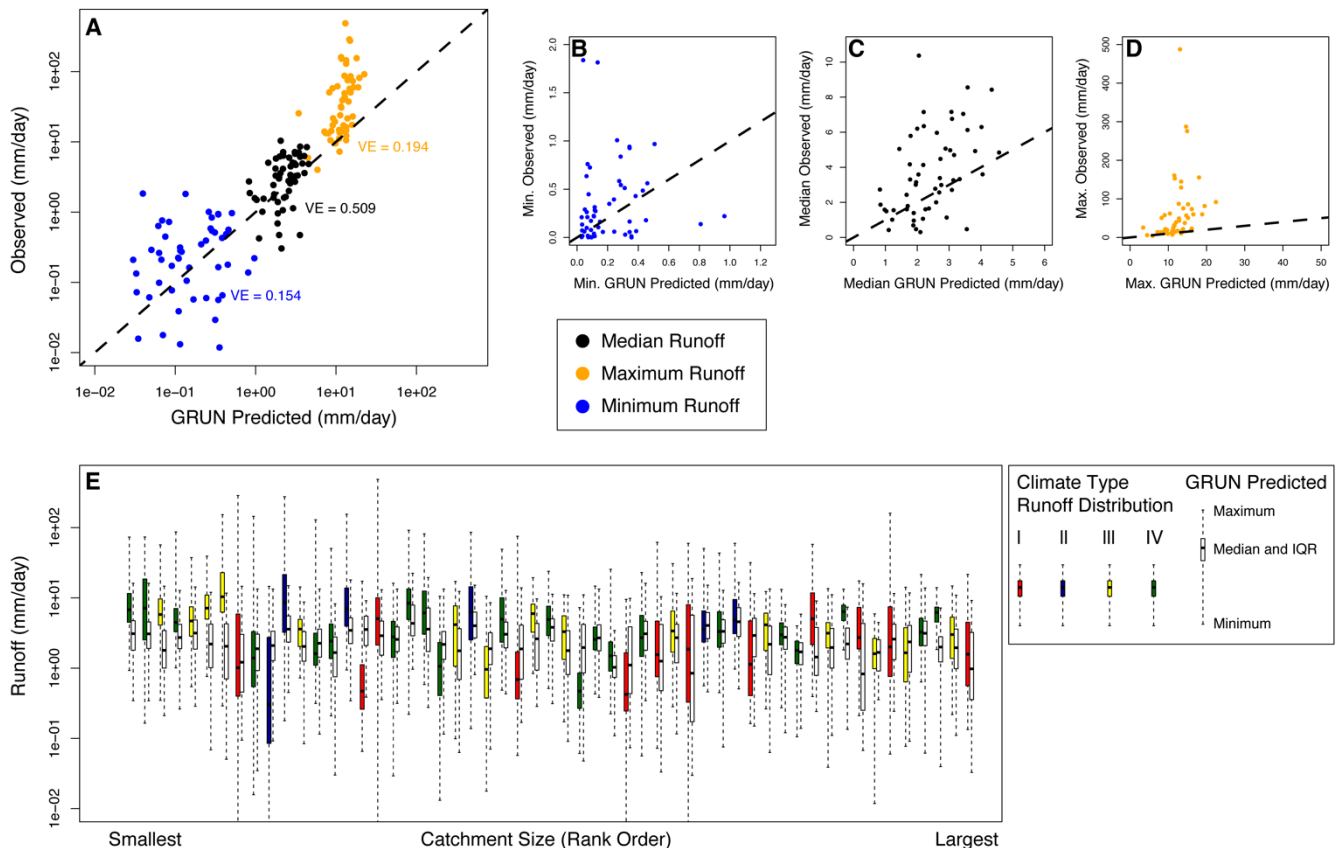
Average runoff values among all catchments are somewhat well predicted by GRUN. Across all observations the r-squared of the correlation between GRUN prediction and observation was of 0.372 and VE was 0.363 (Table 2). Using log(runoff) values (following Criss and Winston, 2008) the r-squared improved to 0.546 and a VE to 0.733, suggesting reasonable utility in the GRUN product at the country scale for the Philippines, even though no training data from the Philippines were used in the creation of GRUN. The RMSE across the dataset was 2.648 mm/day (Table 2). NSE and NSE-log10 values, ranged, from -10.70 to 0.68 and -11.53 to 0.76, for individual catchment comparisons, with median values of 0.02 and 0.24, respectively. For more than half of the catchments, (29 of 55) NSE values were greater than 0 but for, only 5 catchments it was higher than 0.5. Similarly, for 32 of 55 catchments the NSE-log10 values were greater than 0, and for 12 catchments greater than 0.5.

The VE of the median values of runoff (black dots in Figure 3A) was 0.509 across all catchments; the average (mean) difference between the observed and simulated median runoff values was +16% (Figure 3A). The median and interquartile ranges (IQR, 25% to 75%) of the runoff for the individual catchments for the GRUN and the observations overlap (Figure 2E). For two large catchments and three relatively small catchments the IQR of the observations does not overlap with the GRUN runoff IQR. The three small catchments are located in Climate Type III (yellow) and the two large catchments are Climate Type IV. For two catchments of moderate size, the GRUN IQR is greater than the observed IQR runoff range.

Looking at extreme monthly values (maximum and minimum) over the period of observation demonstrates significant underprediction during the wettest conditions (orange dots in Figure 3A and 3D). For almost all catchments' the maximum observations plot above the 1:1 line. The VE for the maximum runoff is lower than for the median runoff (0.194). The minimum values plot around the 1:1 line and are more evenly distributed, however the VE score for the minimum runoff (0.154) is similarly low due to greater spread than for the median values.

Regardless of Climate Type, there is a general underestimation of the model is seen for the highest runoff but this is especially evident for catchments in Climate Types I and II with pronounced wet seasons (as also shown by their lower r-squared values; Figure 4) and lower VE values. For Climate Type II the RMSE value of 4.55 mm/day (compared to an

average observed flow of 9.03 mm/day) is also the highest. Climate Types III and IV have comparable r-squared and VE values and skewness towards underprediction during the highest runoff months is still evident, particularly for Climate Type IV. These patterns are particularly evident looking at Figure 5, which shows flow duration curves (FDC) by climate type for individual catchments groups (see Figure A2 for individual catchment comparisons). Such an analysis allows for inspection of runoff distributions and biases across the range of observed and predicted values. At low flows (high exceedance probability, >80%) there is reasonable agreement in the shape and magnitude of the distributions between GRUN and the observations for Climate Types I and IV (bottom right of the FDC plots). For Climate Type III there is a consistent bias across all runoff values with an exceedance probability <90%. At high flow (low exceedance probability, <20%), as also noted above, runoff for all Climate Types is underestimated by GRUN, with the greatest discrepancy for Climate Types I and II (top left of each FDC plot).



225

Figure 3. Comparison of runoff ranges and distributions. (A) Comparison of median and extreme (maximum and minimum) monthly runoff for the observations and GRUN in log space. (B-D) As in (A) for the minimum, median and maximum

monthly values, respectively, in linear space. **(E)** Distribution of runoff (observations (coloured) and GRUN (white)) for the individual catchments (ordered by size). Plots show the median (line), interquartile range (box) and maximum/minimum values (whiskers). The boxplots for GRUN also only include months for which observations are available.

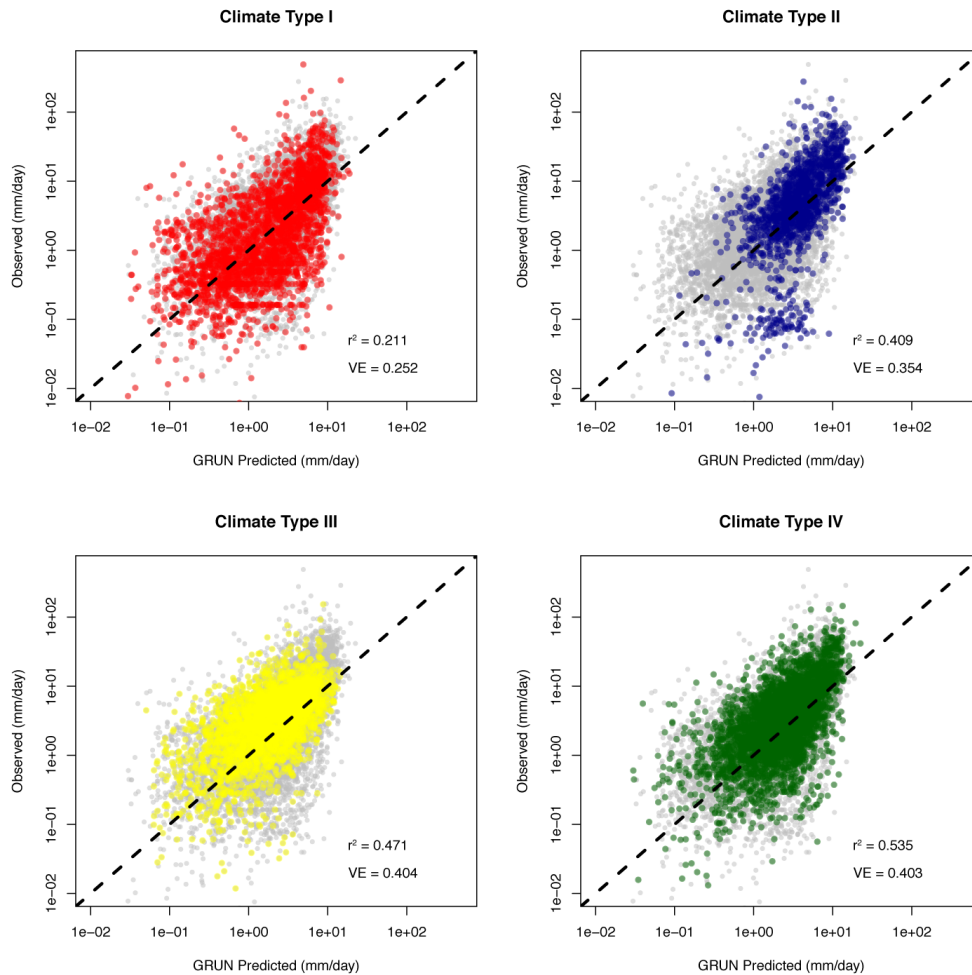


Figure 4: Plots of GRUN predicted vs. observed monthly runoff by climate type (see Figure 1 for climate type distributions). Grey dots represent all data, colored dots represent data points from that region. The squared pearson correlation coefficient (r^2) and volumetric efficiency (VE) metrics are listed for each panel.

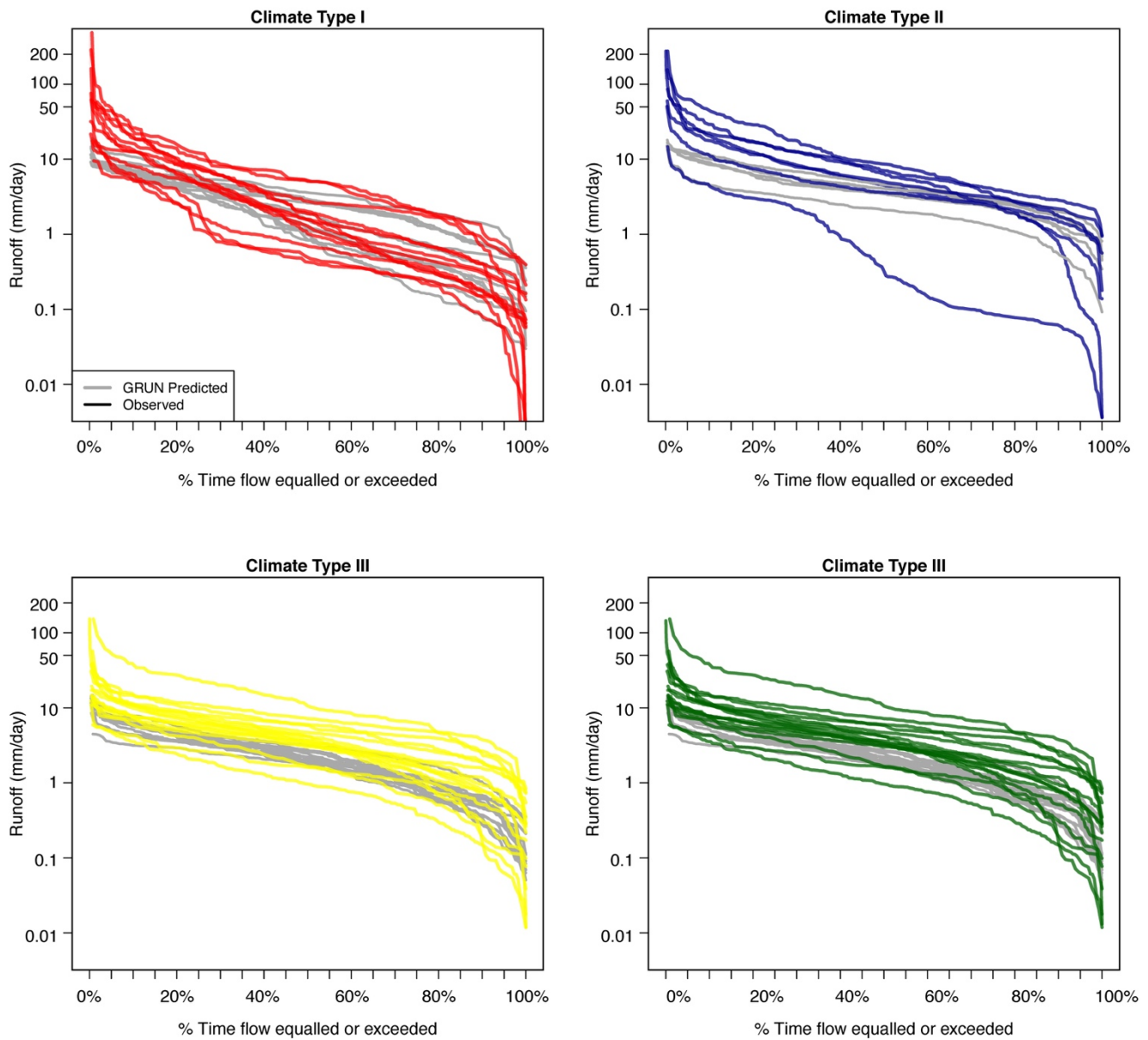


Figure 5. Flow Duration Curves (FDC) of individual catchments by Climate Type. For each Climate Type the observed (coloured) and GRUN predicted (grey) runoff distributions are shown for each catchment. These plots represent the rank ordered data shown in Figure 4. FDC comparisons for each individual catchments are compiled in Figure A2.

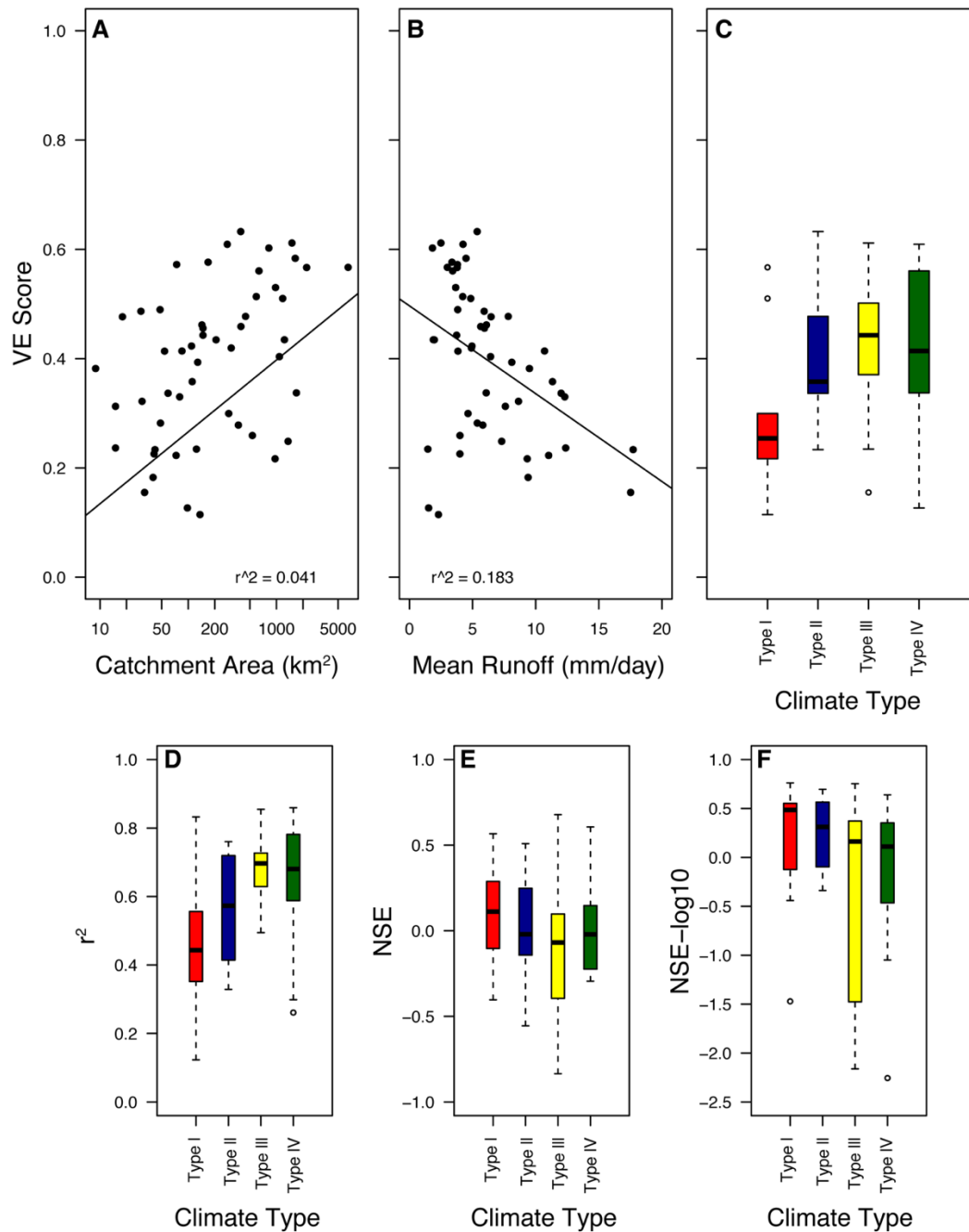
3.2 Correlation and trends with watershed characteristics

245 The biases noted above are likely due to the high uncertainty and underprediction in monsoonal precipitation that is used for input into GRUN. There is a significant negative correlation (at $p < 0.01$, $r^2 = 0.391$) between log values of maximum runoff difference (observed minus predicted) and catchment area (not shown). This suggests two possibilities: first, that particularly for small catchments which may have steeper average slope, GRUN underpredicts monthly runoff values during the wet season due to the bias in the precipitation datasets used to create GRUN; and second model-data agreement improves
250 with catchment size. In this section we explore these possibilities.

There was a weak positive correlation ($r^2 = 0.041$, $p = 0.137$) between VE and $\log(\text{catchment size})$ (Figure 6) and a stronger negative correlation with mean runoff ($r^2 = 0.182$, $p < 0.01$). However, for catchments with a low mean runoff there is significant spread in VE score, driven primarily by Climate Type I catchments (red box and whisker plot in Figure 6C). These catchments experience distinct wet and dry seasons and are predominantly located in the northwest Philippines. The
255 positive correlation with catchment size is likely primarily due to the extreme wet months. The bias of the GRUN data at high and moderate flow conditions is particularly evident in the flow duration curves (Figure 5). This is also more in line with the Nash-Sutcliffe Efficiency (NSE) compared to the $\log(\text{Nash-Sutcliffe Efficiency})$ (NSE- \log_{10}) scores (Table 2 and Table A1) because NSE puts more weight on high flow (Criss and Winston, 2008) as well as the higher VE scores for \log_{10} runoff values for all the runoff data across the entire dataset (0.363 vs. 0.733; Table 2). The physical significance of these
260 results could be that for large basins the time of concentration of any given flood event will be much longer, thus flood peaks will be wider and subdued due to infiltration into the shallow aquifers. However, a more likely explanation is that the average rainfall intensity is too low in the GSWP3 precipitation data used in producing GRUN. This is likely due to downscaling from averages over larger areas with topographic complexity. While GSWP3 uses downscaled 20th century reanalysis products (Kim et al., 2017) at T248 resolution ($\sim 0.5^\circ$, the same resolution as GRUN), the topographic complexity
265 of tropical islands such as the Philippines on the sub- 0.5° scale would likely results in smoothing of the variability and lowering of the absolute magnitude of the precipitation fields, particularly for small catchments and during the wet season and during large synoptic precipitation events during the monsoon season. Finally, while the GSWP3 precipitation inputs are bias-corrected using the Global Precipitation Climatology Centre precipitation network, previous work has highlighted data quality issues with some historical data from the Philippines (Schneider et al., 2014).

270 The underestimation of runoff values during extreme rain events is most likely due to an underestimation in the wet season rainfall products from GSWP3 used to create GRUN as described above. Alternatively, it may be a result of the fast saturation of the overlying soil and shallow aquifers filling up during the wet season, and potentially high amounts of direct runoff (e.g., Tarasova et al., 2018). On the other hand, the underestimation of flow during low flow events may be a result of not accurately accounting for stream baseflow which is fed by shallow aquifers and influenced by land use and surface
275 properties. These effects may be buffered in larger catchments leading to the increase in that model-data agreement with catchment size (Figure 6B).

Previous studies have investigated the correlation between runoff and catchment size (Mayor et al., 2011), and the different hydrologic and geologic factors that cause non-linear relationships between these two variables (Rodriguez et al., 2014). Recently, Zhang et al. (2019) point out that runoff coefficients increase logarithmically as catchment size decreases. 280 Moreover, the same study reports that the effects of vegetation cover, slope, and land use are larger for smaller catchments than for larger catchments. This implies that prediction of basin runoff for smaller catchments is more difficult due to the variations in the compounding factors mentioned above. We hypothesize that the effects proposed by Zhang et al. (2019) also influence the Philippines streamflow dataset used in this study.



285 **Figure 6: Diagnostic plots of volumetric efficiency (VE) results and comparison across metrics.** Cross plots show the correlation of VE with (A) catchment area and (B) mean runoff. (C) Box and whisker plots show data from distribution of VE by climate type. Box and whisker plots show the median, interquartile range and 95% confidence intervals and outliers (dots). The regression in (A) is between the VE scores and $\ln(\text{Catchment Area})$. (D-F) As in (C) for r^2 , NSE and $NSE - \log_{10}$.

290 3.3 Bias Correction and Outlook

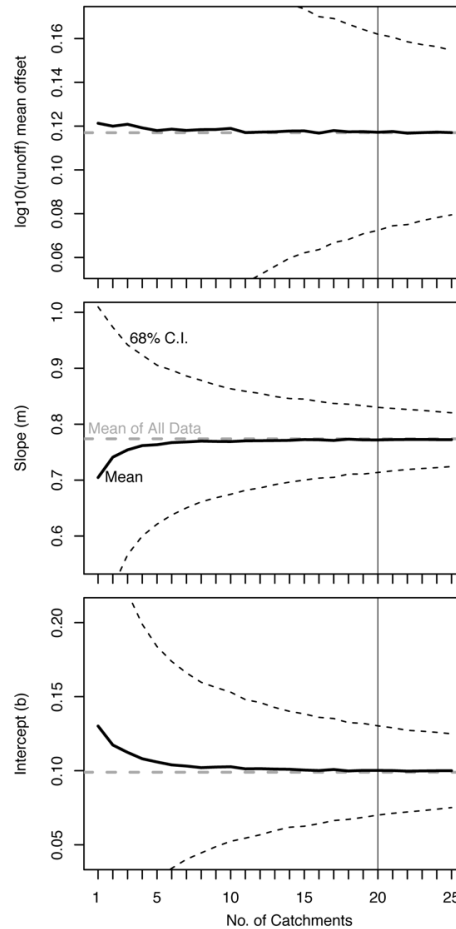
Overall, GRUN underestimates the actual observed runoff for the Philippine basins. The GRUN dataset predicts a range of 0 to 10mm/day for most basins and up to 20mm/day for larger basins. The observed maximum monthly runoff values are on average higher and exceed 50mm/day during months with extreme rain events (Figure 4). The bias is largest for the high flows (Figure 3a and Figure 5). Furthermore, the GRUN dataset also appears to underestimate minimum flow in
295 streams from highly seasonal catchments (e.g. Types I and II).

Given the biases and in particular the clear underprediction of streamflow in GRUN during the wettest months we perform a bias correction of the GRUN dataset at a nationwide level using all the available data used in our analysis. We do so in a two-step process to both correct the mean offset and stretch the wettest months to higher values with all transformations occurring in log-transform space (i.e., as displayed in cross plots in Figures 2 and 4). Thus, we first add the
300 mean $\log_{10}(\text{runoff})$ difference between the observations and the predicted values (0.117 ± 0.045). Following this, using the *lm* function in R, we fit a linear regression between the observations and the GRUN predicted values ($\log_{10}(\text{runoff, observed}) = m \times \log_{10}(\text{runoff, predicted}) + b$) and correct the predicted values using the slope ($m=0.774 \pm 0.058$) and intercept ($b=0.099 \pm 0.030$) derived from this regression. Uncertainties reported here are 68% confidence intervals and were assessed by bootstrap resampling observation and prediction pairs from 20 catchments (vertical line in Figure 7) without
305 replacement 10,000 times. In Figure 7 we show the influence of including an increasing number of catchments from the dataset in our bootstrap resampling to assess how the mean value of the coefficients asymptote as more catchments are included. While the mean $\log_{10}(\text{runoff})$ offset is relatively unaffected, the slope and intercept of the bias correction do not reach a stable number until more than 10 catchments are included in the analysis. A leave-one-out approach (i.e., calculating the coefficients with 54 of 55 catchments) indicates 68% confidence uncertainties of ± 0.005 , ± 0.006 , and ± 0.003 for the
310 $\log_{10}(\text{runoff})$ offset, the slope and intercept, lower than those reported above, as expected.

By carrying out these calculations in log-transform space the highest GRUN runoff values are the most affected, which are the data points that were most underpredicted (Figures 3A and 4). Because these corrections were carried out in \log_{10} space statistical bias in the form of underestimation is possible (Ferguson, 1986). Following Ferguson (1986) we calculated the unbiased estimate of the variance (notated as 's') as 0.0686 mm/day which gives a correction factor
315 (calculated as $\exp(2.65s^2)$ of 1.0126. This correction factor, a multiplier, can be applied to the bias corrected values to adjust for possible the bias due to the \log_{10} space regression we have implemented.

To assess this bias correction, we calculated RMSE values at a catchment, climate type and countrywide level (Figure 8 and Tables 2 and A1). The log-transform bias correction improves the nationwide RMSE value by an order of magnitude (2.648 vs. 0.292) and most significantly improves catchments in Climate Types III and IV (Figure 8; 2.285 vs.
320 0.432 and 2.398 vs. 0.131, respectively; Table 2). Interestingly, the median RMSE value for Climate Type I and II catchments was not notably improved, however, the RMSE range for both was reduced (red and blue boxes in Figure 8, respectively).

325 This analysis and the improvement of RMSE values, as well as some of performance metrics such as NSE (see scores tabulated in Table 2), using a simple log-transform based bias correction demonstrates the importance of either: 1) including smaller catchments in future products such as GRUN, or 2) performing similar bias corrections on a country, region or even catchment scale as needed. This is particularly important because if taken at face value the proportional contribution of relatively small tropical land areas to global discharge (e.g., Dai and Trenberth, 2002) would be underestimated without such corrections.



330

Figure 7. Bootstrap uncertainty of bias correction. Plotted versus the number of catchments is the mean and confidence interval (68%) log10(runoff) offset, the slope and intercept of the bias correction determined via random sampling at the catchment level without replacement. The vertical line at 20 catchments is the uncertainty reported in the text where all three coefficients asymptote to the mean values determined using the entire dataset.

335

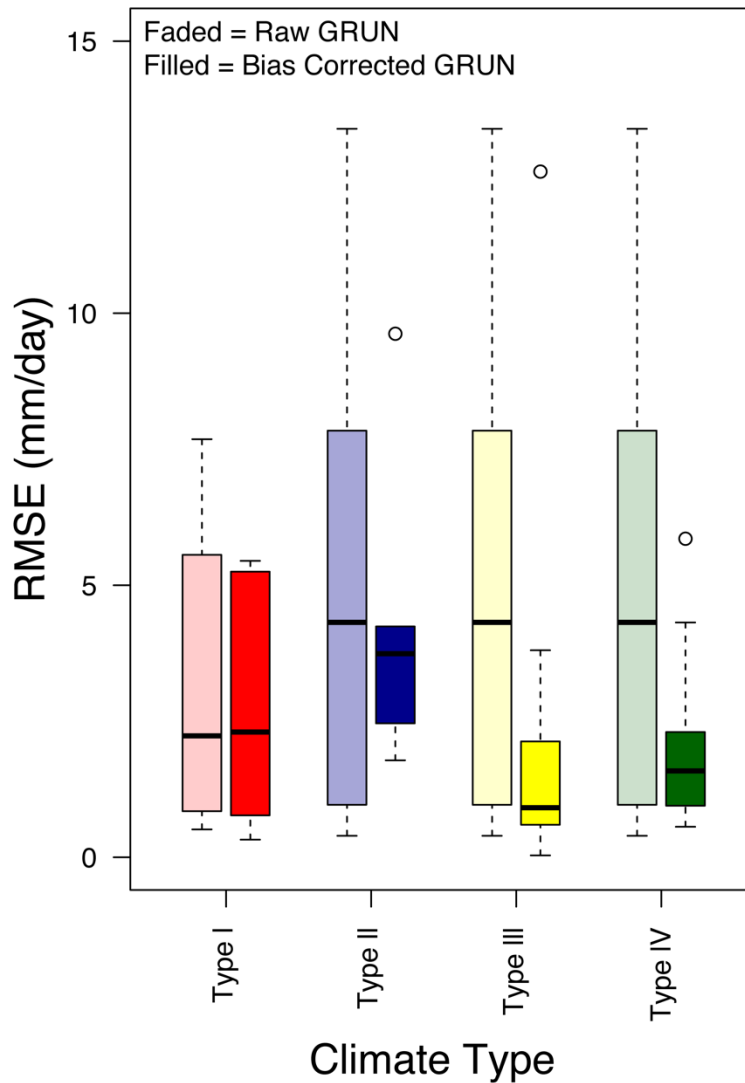


Figure 8. Box and whisker plots of the Root Mean Square Error (RMSE) for catchments grouped by climate type of observed values versus raw GRUN values (light-coloured boxes) and bias-corrected GRUN values (bold-coloured boxes). For bias correction equation and country-wide results see Table 2.

340

4 Conclusion

Based on monthly runoff observations from catchments in the Philippines with more than 10 years of data between 1946 and 2014, there is a significant but weak correlation ($r^2 = 0.372$) between the GRUN-predicted runoff values and actual observations. The results indicate a somewhat skilful prediction for monthly runoff (Volumetric Efficiency = 0.363 and log(Nash-Sutcliffe Efficiency) = 0.453) when all data are pooled. Looking at different hydrometeorological regimes, we

345

demonstrated that GRUN performs better for low rainfall catchments located in climate types III and IV. There was a weak negative positive correlation between volumetric efficiency and catchment area. Further, we found that particularly for smaller catchments, maximum wet season runoff values are grossly underpredicted by GRUN. The application of a nationwide bias correction to stretch high runoff values using log-transformed runoff values greatly improved the RMSE of the predicted values. Global databases such as GRUN can be applicable for aggregated stream discharge estimates and to investigate general trends in the hydrologic characteristics of a region (such as in previous work: e.g., Merz et al., 2011; Wanders and Wada, 2015) but bias correction is needed when applying them to smaller catchments or regions for which data were not used in the development of the dataset. GRUN was not intended to be used for estimating discharge for single small catchments, however it is applicable for use in regional and country scale analyses provided that proper statistical comparison of modelled versus actual gauged data are performed. The recommended bias correction presented here will likely improve such estimates and analysis for the Philippines. We thus propose that the use of the GRUN dataset can be extended to other ungauged tropical regions with smaller catchments after at least applying a similar correction as described in this study.

360

Acknowledgements

We thank the Republic of the Philippines Department of Science and Technology Philippine Council for Industry, Energy, and Emerging Technology Research and Development (DOST-PCIEERD) Balik Scientist program for facilitating collaboration between the authors in 2019. This project was partially supported through the DOST-PCIEERD project entitled, Catchment Susceptibility to Hydrometeorological Events supporting Tolentino and David, and a DOST-PCIEERD Balik Scientist award to Ibarra. Ibarra is funded by the UC Berkeley Miller Institute and UC President's Postdoctoral Fellowship. We acknowledge the help of Mart Geronia, Allen Marvin Yutuc, Iris Joy Gonzales, Jia Domingo and EJ Terciano Jr. for help with dataset compilation, and Tyler Kukla for discussing the statistical methods. We thank DPWH-BRS, GISM and GRDC for datasets availability. Finally, we thank Jaivime Evaristo and an anonymous referee for thorough and helpful reviews and edits, the editor, Wouter Buytaert, for handling our paper, and Gionata Ghiggi for ensuring accurate representation of the GRUN product and comments on the manuscript.

370

Data availability

Data was compiled from the DPWH-BRS, GISM and GRDC datasets (see links in text) and is made available as a supplemental file. The supplemental file "PhilippinesRiverDischarge_Ibarra_HESS.xlsx" contains individual tabs for each catchment in the same order as Figures A1 and A2. The runoff time series start with January of the first year that data is available. Blank cells indicate no measurement. The first three rows include the major river basin, the river name and the

375

location of the station. Further metadata including location (latitude and longitude), area and data source can be found in
380 Table 1.

Author contributions

DEI and CPCD designed the study, DEI and PLMT carried out the dataset compilation and screening, PLMT
verified catchment areas, DEI and PLMT carried out the analysis, and DEI and CPCD prepared the manuscript with
385 contributions from PLMT.

Competing interests

The authors declare that they have no conflict of interest.

References

- 390 Abon, C. C., David, C. P. C., and Bellejera, N. E. B.: Reconstructing the Tropical Storm Ketsana flood event in Marikina River, Philippines, *Hydrol. Earth Syst. Sci.*, 15, 1283–1289, doi:10.5194/hess-15-1283-2011, 2011.
- Abon, C. C., Kneis, D., Crisologo, I., Bronstert, A., David, C. P. C., Heistermann, M.; Evaluating the potential of radar-based rainfall estimates for streamflow and flood simulations in the Philippines, *Geomat. Nat. Haz. Risk.*, 7, 1390-1405, doi:10.1080/19475705.2015.1058862, 2016.
- Alfieri, L., Lorini, V., Hirpa, F. A., Harrigan, S., Zsoter, E., Prudhomme, C., and Salamon, P.: A global streamflow reanalysis for 1980–2018. *Journal of Hydrology X*, 6, 100049, doi: 10.1016/j.hydroa.2019.100049, 2020.
- 400 Criss, R. E. and Winston, W. E.: Do Nash values have value? Discussion and alternate proposals. *Hydrol. Process.*, 22(14), 2723-2725, doi:10.1002/hyp.7072, 2008.
- Dai, A., and Trenberth, K. E.: Estimates of Freshwater Discharge from Continents: Latitudinal and Seasonal Variations, *Journal of Hydrometeorology*, 3 (6), 660-687, 2002.
- 405 David, C. P., Cruz, R. V. O., Pulhin, J. M., and Uy, N. M., *Freshwater Resources and Their Management*, In, *Philippine Climate Change Assessment Report WG2: Impacts, Vulnerabilities and Adaptation*, OML Foundation, 34-54, 2017.
- Davie, J.C., Falloon, P.D., Kahana, R., Dankers, R., Betts, R., Portmann, F.T., Wisser, D., Clark, D.B., Ito, A., Masaki, Y. and Nishina, K.: Comparing projections of future changes in runoff from hydrological and biome models in ISI-MIP, *Earth System Dynamics*, 4(2), 359-374, doi: 10.5194/esd-4-359-2013, 2013
- 410 Do, H. X., Gudmundsson, L., Leonard, M., and Westra, S.: The Global Streamflow Indices and Metadata Archive (GSIM) – Part 1: The production of a daily streamflow archive and metadata, *Earth Syst. Sci. Data*, 10, 765–785, doi:10.5194/essd-10-765-2018, 2018.
- 415 Evaristo, J., and McDonnell, J. J.: Global analysis of streamflow response to forest management: *Nature*, 570, 455-461, doi:10.1038/s41586-019-1306-0, 2019.
- 420 Ferguson, R. I.: River Loads Underestimated by Rating Curves, *Water Resources Research*, 22, 74-76, doi: 10.1029/WR022i001p00074, 1986.
- Ghiggi, G., Humphrey, V., Seneviratne, S.I., Gudmundsson, L. 2019. GRUN: An observations-based global gridded runoff dataset from 1902 to 2014. *Earth Sys. Sci.*, 11, 1655-1674, doi:10.5194/essd-11-1655-2019, 2019. Dataset analysed: doi:10.5194/essd-11-1655-2019
- 425 https://figshare.com/articles/GRUN_Global_Runoff_Reconstruction/9228176
- Gudmundsson, L., Do, H. X., Leonard, M., and Westra, S.: The Global Streamflow Indices and Metadata Archive (GSIM) – Part 2: Quality control, time-series indices and homogeneity assessment, *Earth Syst. Sci. Data*, 10, 787–804, doi:10.5194/essd-10-787-2018, 2018.
- 430 Hagemann, S., Chen C., Haerter, J. O., Heinke, J., Gerten, D., and Piani, C.: Impact of a Statistical Bias Correction on the Projected Hydrological Changes Obtained from Three GCMs and Two Hydrology Models, *Journal of Hydrometeorology*, 12 (4), 556-578, doi: 10.1175/2011JHM1336.1, 2011.
- 435 Harrigan, S., Zsoter, E., Alfieri, L., Prudhomme, C., Salamon, P., Wetterhall, F., Barnard, C., Cloke, H., and Pappenberger, F.: GloFAS-ERA5 operational global river discharge reanalysis 1979-present. *Earth System Science Data*, doi: 10.5194/essd-2019-232, 2020

- 440 Jose, A. M., and Cruz, N. A.: Climate change impacts and responses in the Philippines: water resources, *Clim Res.*, 12 (2-3), 77–84, 1999.
- 445 Kim, H., Watanabe, S., Chang, E. C., Yoshimura, K., Hirabayashi, J., Famiglietti, J., and Oki, T.: Global Soil Wetness Project Phase 3 Atmospheric Boundary Conditions (Experiment 1) [Data set], Data Integration and Analysis System (DIAS), doi:10.20783/DIAS.501, 2017.
- Kintanar R. L.: Climate of the Philippines, PASAGA report, 38, 1984.
- 450 Kumar, P., Masago, Y., Mishra, B. K., and fukushi, K., Evaluating future stress due to combined effects of climate change and rapid urbanization for Pasig Marikina river, Manila, *Groundwater Sustain. Develop.*, 6, 227-34, doi:10.1016/j.gsd.2018.01.004, 2018.
- 455 Kумму, M., Guillaume, J. H. A., de Moel, H., Eisner, S., Flörke, M., Porkka, M., Siebert, S., Veldkamp, T. I. E., and Ward, P. J.: The world’s road to water scarcity: shortage and stress in the 20th century and pathways towards sustainability, *Nat. Sci. Rep.*, 6, 38495, <https://doi.org/10.1038/srep38495>, 2016.
- Meybeck, M., Kумму, M., and Dürri, H. H.: Global hydrobelts and hydroregions: improved reporting scale for water-related issues, *Hydrol. Earth Syst. Sci.*, 17, 1093–1111, doi: 10.5194/hess-17-1093-2013, 2013.
- 460 Mayor, A. G., Bautista, S., and Bellot, J.: Scale-dependent variation in runoff and sediment yield in a semiarid Mediterranean catchment, *J. Hydrol.*, 397 (1-2), 128-135, doi:10.1016/j.jydrol.2010.11.039, 2010.
- Merz, R., Parajka, J., and Blöschl, G.: Time stability of catchment model parameters: Implications for climate impact analyses, *Water Resources Research*, 47 (2), doi: 10.1029/2010WR009505, 2011.
- 465 Mulligan, M.: WaterWorld: a self-parameterising, physically based model for application in data-poor but problem-rich environments globally, *Hydrology Research*, 44 (5), 748-769, doi: 10.2166/nh.2012.217, 2013.
- 470 Nash, J. E. and Sutcliffe, J. V.: River flow forecasting through conceptual models part I – A discussion of principles, *J. Hydrol.*, 10, 282–290, doi:10.1016/0022-1694(70)90255-6, 1970.
- 475 Nurse, L. A., McLean, R. F., Agard, J. Briguglio, L.P., Duvat-Magnan, V., Pelesikoti, N., Tompkins, E. and Webb, A.: Small islands. In: *Climate Change 2014: Impacts, Adaptation, and Vulnerability. Part B: Regional Aspects. Contribution of Working Group II to the Fifth Assessment Report of the Intergovernmental Panel on Climate Change* [Barros, V.R., et al. (eds.)]. Cambridge University Press, Cambridge, United Kingdom and New York, NY, USA, Ch. 29, 1613-1654, 2014.
- Paronda, G. R. A., David, C. P. C., and Apodaca, D. C.: River flow patterns and heavy metals concentrations in Pasig River, Philippines as affected by varying seasons and astronomical tides, *IOP Conf. Series: Earth and Environmental Science* 344, 012049, doi: 10.1088/1755-1315/344/1/012049, 2019.
- 480 Rodríguez-Caballero, E., Cantón, Y., Lazaro, R., and Sole-Benet, A.: Cross-scale interactions between surface components and rainfall properties. Non-linearities in the hydrological and erosive behavior of semiarid catchments. *Journal of Hydrology* 517, 815–825, doi: 10.1016/j.jhydrol.2014.06.018, 2014.
- 485 Schneider, U., Becker, A., Finger, P., Meyer-Christoffer, A., Ziese, M., and Rudolf, B.: GPCP’s new land surface precipitation climatology based on quality-controlled in situ data and its role in quantifying the global water cycle. *Theoretical and Applied Climatology* 115, 15-40, doi: 10.1007/s00704-013-0860-x, 2014.

- 490 Tarasova, L., Basso, S., Zink, M. and Merz, R.: Exploring Controls on Rainfall-Runoff Events: 1. Time Series-Based Event Separation and Temporal Dynamics of Event Runoff Response in Germany, *Water Resources Research*, 54 (10), 7711-7732, doi:10.1029/2018WR022587, 2018.
- 495 Tolentino, P. L. M., poortinga, A., Kanamaru, H., Keesstra, S., Maroulis, J., David, C. P. C., Ritsema, C. J.: Projected Impact of Climate Change on Hydrological Regimes in the Philippines, *PLoS ONE*, 11(10), e0163941, doi: 10.1371/journal.pone.0163941, 2016.
- Wanders, N. and Wada, Y.: Decadal predictability of river discharge with climate oscillations over the 20th and early 21st century, *Geophys. Res. Lett.*, 42, 10689–10695, <https://doi.org/10.1002/2015GL066929>, 2015.
- 500 Winsemius, H.C., Aerts, J.C., Van Beek, L.P., Bierkens, M.F., Bouwman, A., Jongman, B., Kwadijk, J.C., Ligtoet, W., Lucas, P.L., Van Vuuren, D.P. and Ward, P.J.: Global drivers of future river flood risk. *Nature Climate Change*, 6(4), 381-385, doi: 10.1038/nclimate2893, 2016.
- WEF: The Global Risks Report 2018, available at: <http://reports.weforum.org/global-risks-2018/>.
- 505 Zhang, Q., Liu, J., Yu, X. and chen, L.: Scale effects on runoff and a decomposition analysis of the main driving factors in the Haihe Basin mountainous area. *Sci. Tot. Env.*, 690, 1089-1099, doi: 10.1016/j.scitotenv.2019.06.540, 2019

Table 1: List of stations used in this analysis including full station names, updated catchment areas, years of coverage, division and climate type.

River Name	Station Name	Latitude	Longitude	Coverage	Years of Coverage	Catchment Area (km ²)	Dataset	Climate Type
Sinalang River	Penarrubia, Abra	17.622	120.715	1984-2015	32	136.128	BRS	1
Antequera River	Sto. Rosario, Antequera, Bohol	9.493	123.890	1984-2016	33	54	BRS	4
Amparo River	Brgy. Mabini, Macrohon, So. Leyte	10.042	124.018	1985-2007	23	74	BRS	4
Hira-an River	Upper Hiraan, Rarigara, Leyte	11.258	124.672	1986-2010	27	8.93	BRS	4
Leyte River	San Joaquin, Capocan, Leyte	11.880	124.829	1985-2007	23	29.15	BRS	3
Surigao River	Surigao City	9.796	125.808	1986-2010	25	85	BRS	4
Bais River	Cabanlutan, Bais City, Negros Oriental	9.876	124.140	1989-2015	27	41	BRS	2
Lingayon River	Lingayon, Alang-Alang, Leyte	11.192	124.863	1957-1991	35	18	BRS	4
Sapiniton River	Libton, San Miguel, Leyte	11.188	124.795	1984-2010	27	277.3	BRS	4
Laoag River	Poblacion, Laoag City, Ilocos Norte	18.203	120.590	1984-2016	33	1355	BRS; updated from Tolentino et al. (2016)	1
Pared River	Baybayog, Alcala, Cagayan	17.682	121.270	1983-1996	14	966	BRS; used in Tolentino et al. (2016)	1
Ganano River	Ipil, Echague, Isabela	16.812	121.211	1986-2001	16	977	BRS; used in Tolentino et al. (2016)	3
Magat River	Baretbet, Bagabag, Nueva Vizcaya	16.992	121.073	1986-2002	17	2199	BRS; used in Tolentino et al. (2016)	3
Camiling River	Poblacion, Mayantoc, Tarlac	15.018	120.503	1985-2017	33	288	BRS; updated from Tolentino et al. (2016)	1
Gumain River	Sta. Cruz, Lubao, Pampanga	14.960	120.441	1985-2001	17	370	BRS; used in Tolentino et al. (2016)	1
Rio Chico River	Sto. Rosario, Zaragoza, Nueva Ecija	15.658	120.088	1985-2006	22	1177	BRS; used in Tolentino et al. (2016)	1
San Juan River	Porac, Calamba, Laguna	14.498	121.267	1986-1999	14	165	BRS; used in Tolentino et al. (2016)	4
Pangalaan River	Pangalaan, Pinamlayan, Oriental Mindoro	13.275	121.260	1989-1999	11	32	BRS; used in Tolentino et al. (2016)	3
Das-ay River	Sto. Nino II, Hinunangan, Leyte	10.385	125.202	1987-2007	21	59	BRS; used in Tolentino et al. (2016)	2
Tukuran River	Tintongan, Tukuran, Zamboanga del Sur	7.627	123.030	1986-2009	24	147	BRS; used in Tolentino et al. (2016)	3
Hijo River	Apokan, Tagum, Davao del Norte	7.812	125.211	1986-2016	31	634	BRS; updated from Tolentino et al. (2016)	4
Cagayan de Oro River	Cabula, Cagayan de Oro City, Misamis Oriental	8.316	124.811	1991-2004	14	1079	BRS; used in Tolentino et al. (2016)	4
Davao River	Tigatto, Davao City	7.329	125.634	1984-1999	16	1683	BRS; used in Tolentino et al. (2016)	4
Allah River	Impao, Isulan, Sultan Kudarat	6.568	124.085	1980-1994	15	1231	BRS; used in Tolentino et al. (2016)	3
Agusan Canyon River	Camp Philips, Manolo Fortich, Bukidnon	8.296	124.450	1986-2004	19	48	BRS; updated from Tolentino et al. (2016)	3
Wawa River	Wawa, Bayugan, Agusan del Sur	8.261	125.501	1981-2010	30	396	BRS; updated from Tolentino et al. (2016)	4
Buayan River	Malandag, Malungon, South Cotabato	6.317	125.749	1986-2004	19	207	BRS; used in Tolentino et al. (2016)	4
Gasgas River	Manalpac, Solsona	18.080	120.830	1978-1988	11	73	GISM	1
Jalaur River	Calyan, Pototan, Iloilo	10.930	122.670	1976-1988	13	1499	GISM and GRDC	3
Padsan River	Bangay	18.080	120.700	1946-1979	34	534	GRDC	1
Pampanga River	San Agustin	15.170	120.780	1946-1977	32	6487	GRDC	1
Sipocot River	Sabang	13.810	122.990	1946-1970	25	447	GRDC	2
Mambusao River	Tumalalud	11.260	122.570	1950-1978	29	307	GRDC	3
Padada River	Lapulabao	6.660	125.280	1949-1978	30	821	GRDC	4
Aloran River	Juan Bacay, Aloran, Misamis Occ.	8.420	123.820	1978-2003	26	30	GRDC + BRS	3
Cabacanan River	Baduang, Pagudpud	18.580	120.800	1979-2017	39	60	GRDC + BRS	1
Maragayap River	Sta. Rita, Bacnotan, La Union	16.750	120.374	2004-2017	14	40	BRS	1
Abacan River	San Juan, Mexico, Pampanga	15.118	120.703	2004-2017	14	217	BRS	1
Hibayog River	La Victoria, Carmen, Bohol	9.876	124.141	2004-2017	14	41	BRS	4
Manaba River	Calma, Garcia-Hernandez, Bohol	9.631	124.131	2001-2016	16	98	BRS	4
Gabayon River	Canawa, Candijay, Bohol	9.848	124.450	2001-2017	17	48.5	BRS	4
Bangkerohan River	Brgy. Tagaytay, Bato, Leyte	10.342	124.834	1984-1990; 2000-2009	17	168	BRS	4
Borongon River	Brgy. San Mateo, Borongan City	11.628	125.403	1990-2008	19	111	BRS	2
Loom River	Brgy. Calico-an, Borongan City	10.594	125.404	1986-2004	19	42	BRS	2
Pagbanganan River	Brgy. Makinhas, Baybay City	10.637	124.865	1984-2008	25	128	BRS	4
Rizal River	Brgy. Rizal, Babatngon, Leyte	11.389	124.908	1990-2008	18	15	BRS	4
Tenani River	Brgy. Tenani, Paranas (Wright), Samar	11.806	125.127	1985-2001; 1985-1991; 1997-2000	17	394	BRS	2
Disakan River	Disakan, Manukan, Zamboanga del Norte	8.480	123.048	1997-2000	11	109	BRS	3
Kabasalan River	Banker, Kabasalan, Sibugay, Province	7.831	122.778	2002-2011	10	143	BRS	3
Sindangan River	Dicoyong, Sindangan, Zamboanga del Norte	8.217	123.057	1990-2003	14	590.5	BRS	3
Alubijid River	Alubijid, Misamis Oriental	8.570	124.476	1991-2009	19	124	BRS	3
Kipaliko River	Tiburcia, Kapalong, Davao del Norte	7.602	125.681	2004-2016; 1987-1995; 2005-2010	13	147	BRS	4
Banaue River	Poblacion, Banaue, Ifugao	16.915	121.061	2005-2010	15	15	BRS	3
Aciga River	Santiago, Agusan del Norte	9.269	125.570	2002-2015; 1982; 1984-1987; 1989-2010	14	80	BRS	4
Agusan River	Sta. Josefa, Agusan del Sur	7.993	126.036	2010	27	1633	BRS	4

Table 2: Results of statistical agreement between GRUN aggregated by Climate Type and for the entire dataset (see Table A1 for individual catchments). Median monthly runoff values are 5.29, 9.03, 4.99 and 5.51 mm/day for Climate Types 1, 2, 3 and 4, respectively.

	Pearsons Coeff (r^2) [*]	Volumetric Efficiency (VE)	Nash-Sutcliffe Efficiency (NSE)	Nash-Sutcliffe Efficiency (NSE-log10)	Root Mean Square Error	Volumetric Efficiency (VE) Bias Corrected **	Nash-Sutcliffe Efficiency (NSE) Bias Corrected **	Nash-Sutcliffe Efficiency (NSE-log10) Bias Corrected **	Root Mean Square Error Bias Corrected **
Entire Dataset	0.372	0.363	0.091	0.453	2.648	0.323	0.182	0.385	0.292
Entire Dataset log10(runoff)	0.546	0.733	n/a	n/a	n/a	1.067	n/a	n/a	n/a
Climate Type 1 (n=12)	0.211	0.252	0.062	0.538	2.476	0.168	0.111	0.432	0.298
Climate Type 2 (n=6)	0.409	0.354	0.05	0.49	4.554	0.349	0.188	0.457	0.544
Climate Type 3 (n=15)	0.471	0.404	0.026	0.23	2.285	0.345	0.011	0.188	0.432
Climate Type 4 (n=22)	0.535	0.403	0.159	0.414	2.398	0.377	0.323	0.36	0.131
Entire Dataset, Individual Catchment Median	0.658	-0.404	0.02	0.239	2.072	0.322	-0.158	0.051	1.840
Entire Dataset, Individual Catchment Range	0.123 to 0.859	-2.079 to 0.633	-10.697 to 0.678	-11.525 to 0.761	0.038 to 14.681	-5.082 to 0.579	-53.842 to 0.650	-10.534 to 0.779	0.035 to 12.602
Climate Type 1 (n=12), Individual Catchment Median	0.444	0.236	0.112	0.485	2.232	0.258	0.027	0.330	2.303
Climate Type 1 (n=12), Individual Catchment Range	0.123 to 0.833	-0.782 to 0.567	-1.481 to 0.567	-1.472 to 0.761	0.513 to 7.684	-2.316 to 2.316	-6.917 to 0.389	-2.172 to 0.779	0.325 to 5.448
Climate Type 2 (n=6), Individual Catchment Median	0.574	0.348	-0.021	0.312	4.319	0.339	0.007	0.158	3.742
Climate Type 2 (n=6), Individual Catchment Range	0.329 to 0.760	-0.322 to 0.633	-0.555 to 0.509	-0.338 to 0.696	0.395 to 13.389	-1.083 to 0.533	-3.937 to 0.516	-0.346 to 0.646	1.783 to 9.622
Climate Type 3 (n=15), Individual Catchment Median	0.697	0.443	-0.069	0.163	1.491	0.360	-0.614	-0.002	0.911
Climate Type 3 (n=15), Individual Catchment Range	0.495 to 0.855	0.155 to 0.612	-0.835 to 0.678	-4.577 to 0.753	0.057 to 14.681	-0.478 to 0.540	-3.079 to 0.126	-3.921 to 0.557	0.035 to 12.602
Climate Type 4 (n=22), Individual Catchment Median	0.681	0.414	-0.022	0.11	1.959	0.357	-0.064	-0.185	1.588
Climate Type 4 (n=22), Individual Catchment Range	0.261 to 0.859	-2.079 to 0.609	-10.697 to 0.607	-11.525 to 0.640	0.038 to 8.728	-5.082 to 0.579	-53.842 to 0.650	-10.534 to 0.627	0.561 to 5.855

Notes

* For regressions forced through intercept of 0

** Two-step bias correction procedure where first mean offset is added to the predicted GRUN values and then a log-transform stretch correction is applied (see text for details)

For raw data please also see excel document uploaded with figures for Tables 1 and 2. Below I have put them in word format.

Table 1. List of stations used in this analysis including full station names, updated catchment areas, years of coverage, division and climate type.

River Name	Station Name	Latitude	Longitude	Coverage	Years of Coverage	Catchment		Climate Type
						Area (km ²)	Dataset	
Sinalang River	Penarrubia, Abra	17.622	120.715	1984-2015	32	136.128	BRS	1
Antequera River	Sto. Rosario, Antequera, Bohol	9.493	123.890	1984-2016	33	54	BRS	4
Amparo River	Brgy. Mabini, Macrohon, So. Leyte	10.042	124.018	1985-2007	23	74	BRS	4
Hira-an River	Upper Hiraan, Rarigara, Leyte	11.258	124.672	1986-2010	27	8.93	BRS	4
Leyte River	San Joaquin, Capocan, Leyte	11.880	124.829	1985-2007	23	29.15	BRS	3
Surigao River	Surigao City	9.796	125.808	1986-2010	25	85	BRS	4
Bais River	Cabanlutan, Bais City, Negros Oriental	9.876	124.140	1989-2015	27	41	BRS	2
Lingayon River	Lingayon, Alang-Alang, Leyte	11.192	124.863	1957-1991	35	18	BRS	4
Sapiton River	Libton, San Miguel, Leyte	11.188	124.795	1984-2010	27	277.3	BRS	4
Laoag River	Poblacion, Laoag City, Ilocos Norte	18.203	120.590	1984-2016	33	1355	BRS; updated from Tolentino et al. (2016)	1
Pared River	Baybayog, Alcala, Cagayan	17.682	121.270	1983-1996	14	966	BRS; used in Tolentino et al. (2016)	1
Ganano River	Ipil, Echague, Isabela	16.812	121.211	1986-2001	16	977	BRS; used in Tolentino et al. (2016)	3
Magat River	Baretbet, Bagabag, Nueva Vizcaya	16.992	121.073	1986-2002	17	2199	BRS; used in Tolentino et al. (2016)	3
Camiling River	Poblacion, Mayantoc, Tarlac	15.018	120.503	1985-2017	33	288	BRS; updated from Tolentino et al. (2016)	1
Gumain River	Sta. Cruz, Lubao, Pampanga	14.960	120.441	1985-2001	17	370	BRS; used in Tolentino et al. (2016)	1
Rio Chico River	Sto. Rosario, Zaragosa, Nueva Ecija	15.658	120.088	1985-2006	22	1177	BRS; used in Tolentino et al. (2016)	1
San Juan River	Porac, Calamba, Laguna	14.498	121.267	1986-1999	14	165	BRS; used in Tolentino et al. (2016)	4
Pangalaan River	Pangalaan, Pinamalayan, Oriental Mindoro	13.275	121.260	1989-1999	11	32	BRS; used in Tolentino et al. (2016)	3
Das-ay River	Sto. Nino II, Hinungangan, Leyte	10.385	125.202	1987-2007	21	59	BRS; used in Tolentino et al. (2016)	2
Tukuran River	Tinotongan, Tukuran, Zamboanga del Sur	7.627	123.030	1986-2009	24	147	BRS; updated from Tolentino et al. (2016)	3
Hijo River	Apokan, Tagum, Davao del Norte	7.812	125.211	1986-2016	31	634	BRS; used in Tolentino et al. (2016)	4
Cagayan de Oro River	Cabula, Cagayan de Oro City, Misamis Oriental	8.316	124.811	1991-2004	14	1079	BRS; used in Tolentino et al. (2016)	4
Davao River	Tigatto, Davao City	7.329	125.634	1984-1999	16	1683	BRS; used in Tolentino et al. (2016)	4
Allah River	Impao, Isulan, Sultan Kudarat	6.568	124.085	1980-1994	15	1231	BRS; used in Tolentino et al. (2016)	3
Agusan Canyon River	Camp Philips, Manolo Fortich, Bukidnon	8.296	124.450	1986-2004	19	48	BRS; updated from Tolentino et al. (2016)	3
Wawa River	Wawa, Bayugan, Agusan del Sur	8.261	125.501	1981-2010	30	396	BRS; updated from Tolentino et al. (2016)	4
Buayan River	Malandag, Malungon, South Cotabato	6.317	125.749	1986-2004	19	207	BRS; used in Tolentino et al. (2016)	4
Gasgas River	Manalpac, Solsona	18.080	120.830	1978-1988	11	73	GISM	1
Jalaur River	Calyan, Pototan, Iloilo	10.930	122.670	1976-1988	13	1499	GISM and GRDC	3
Padsan River	Bangay	18.080	120.700	1946-1979	34	534	GRDC	1
Pampanga River	San Agustin	15.170	120.780	1946-1977	32	6487	GRDC	1
Sipocot River	Sabang	13.810	122.990	1946-1970	25	447	GRDC	2
Mambusao River	Tumalalud	11.260	122.570	1950-1978	29	307	GRDC	3
Padada River	Lapulabao	6.660	125.280	1949-1978	30	821	GRDC	4
Aloran River	Juan Bacay, Aloran, Misamis Occ.	8.420	123.820	1978-2003	26	30	GRDC + BRS	3
Cabacanan River	Baduang, Pagudpud	18.580	120.800	1979-2017	39	60	GRDC + BRS	1
Maragayap River	Sta. Rita, Baconotan, La Union	16.750	120.374	2004-2017	14	40	BRS	1
Abacan River	San Juan, Mexico, Pampanga	15.118	120.703	2004-2017	14	217	BRS	1
Hibayog River	La Victoria, Carmen, Bohol	9.876	124.141	2004-2017	14	41	BRS	4
Manaba River	Calma, Garcia-Hernandez, Bohol	9.631	124.131	2001-2016	16	98	BRS	4
Gabayan River	Canawa, Candijay, Bohol	9.848	124.450	2001-2017	17	48.5	BRS	4
Bangkerohan River	Brgy. Tagaytay, Bato, Leyte	10.342	124.834	1984-1990;	17	168	BRS	4
Borongan River	Brgy. San Mateo, Borongan City	11.628	125.403	2000-2009	19	111	BRS	2
Loom River	Brgy. Calico-an, Borongan City	10.594	125.404	1986-2004	19	42	BRS	2
Pagbanganan River	Brgy. Makinhas, Baybay City	10.637	124.865	1984-2008	25	128	BRS	4
Rizal River	Brgy. Rizal, Babatngon, Leyte	11.389	124.908	1990-2008	18	15	BRS	4
Tenani River	Brgy. Tenani, Paranas (Wright), Samar	11.806	125.127	1985-2001;	17	394	BRS	2
Disakan River	Disakan, Manukan, Zamboanga del Norte	8.480	123.048	1997-2000	11	109	BRS	3
Kabasalan River	Banker, Kabasalan, Sibugay, Province	7.831	122.778	2002-2011	10	143	BRS	3
Sindangan River	Dicoyong, Sindangan, Zamboanga del Norte	8.217	123.057	1990-2003	14	590.5	BRS	3
Alubijid River	Alubijid, Misamis Oriental	8.570	124.476	1991-2009	19	124	BRS	3
Kipaliko River	Tiburcia, Kapalong, Davao del Norte	7.602	125.681	2004-2016	13	147	BRS	4
Banaue River	Poblacion, Banaue, Ifugao	16.915	121.061	1987-1995;	15	15	BRS	3
Aciga River	Santiago, Agusan del Norte	9.269	125.570	2005-2010	14	80	BRS	4
Agusan River	Sta. Josefa, Agusan del Sur	7.993	126.036	2002-2015	14	80	BRS	4
				1982; 1984-	27	1633	BRS	4

Table 2. Results of statistical agreement between GRUN aggregated by Climate Type and for the entire dataset (see Table A1 for individual catchments). Median monthly runoff values are 5.29, 9.03, 4.99 and 5.51 mm/day for Climate Types 1, 2, 3 and 4, respectively.

	Pearsons Coeff (r^2)*	Volumetric Efficiency (VE)	Nash-Sutcliff Efficiency (NSE)	Nash-Sutcliff Efficiency (NSE-log10)	Root Mean Square Error	Volumetric Efficiency (VE) Bias Corrected **	Nash-Sutcliff Efficiency (NSE) Bias Corrected **	Nash-Sutcliff Efficiency (NSE-log10) Bias Corrected **	Root Mean Square Error Bias Corrected **
Entire Dataset	0.372	0.363	0.091	0.453	2.648	0.323	0.182	0.385	0.292
Entire Dataset log10(runoff)	0.546	0.733	n/a	n/a	n/a	1.067	n/a	n/a	n/a
Climate Type 1 (n=12)	0.211	0.252	0.062	0.538	2.476	0.168	0.111	0.432	0.298
Climate Type 2 (n=6)	0.409	0.354	0.05	0.49	4.554	0.349	0.188	0.457	0.544
Climate Type 3 (n=15)	0.471	0.404	0.026	0.23	2.285	0.345	0.011	0.188	0.432
Climate Type 4 (n=22)	0.535	0.403	0.159	0.414	2.398	0.377	0.323	0.36	0.131
Entire Dataset, Individual Catchment Median	0.658	0.404	0.02	0.239	2.072	0.322	-0.158	0.051	1.840
Entire Dataset, Individual Catchment Range	0.123 to 0.859	-2.079 to 0.633	-10.697 to 0.678	-11.525 to 0.761	0.038 to 14.681	-5.082 to 0.579	-53.842 to 0.650	-10.534 to 0.779	0.035 to 12.602
Climate Type 1 (n=12), Individual Catchment Median	0.444	0.236	0.112	0.485	2.232	0.258	0.027	0.330	2.303
Climate Type 1 (n=12), Individual Catchment Range	0.123 to 0.833	-0.782 to 0.567	-1.481 to 0.567	-1.472 to 0.761	0.513 to 7.684	-2.316 to 2.316	-6.917 to 0.389	-2.172 to 0.779	0.325 to 5.448
Climate Type 2 (n=6), Individual Catchment Median	0.574	0.348	-0.021	0.312	4.319	0.339	0.007	0.158	3.742
Climate Type 2 (n=6), Individual Catchment Range	0.329 to 0.760	-0.322 to 0.633	-0.555 to 0.509	-0.338 to 0.696	0.395 to 13.389	-1.083 to 0.533	-3.937 to 0.516	-0.346 to 0.646	1.783 to 9.622
Climate Type 3 (n=15), Individual Catchment Median	0.697	0.443	-0.069	0.163	1.491	0.360	-0.614	-0.002	0.911
Climate Type 3 (n=15), Individual Catchment Range	0.495 to 0.855	0.155 to 0.612	-0.835 to 0.678	-4.577 to 0.753	0.057 to 14.681	-0.478 to 0.540	-3.079 to 0.126	-3.921 to 0.557	0.035 to 12.602
Climate Type 4 (n=22), Individual Catchment Median	0.681	0.414	-0.022	0.11	1.959	0.357	-0.064	-0.185	1.588
Climate Type 4 (n=22), Individual Catchment Range	0.261 to 0.859	-2.079 to 0.609	-10.697 to 0.607	-11.525 to 0.640	0.038 to 8.728	-5.082 to 0.579	-53.842 to 0.650	-10.534 to 0.627	0.561 to 5.855

Notes

525 * For regressions forced through intercept of 0

** Two-step bias correction procedure where first mean offset is added to the predicted GRUN values and then a log-transform stretch correction is applied (see text for details)