

The 2018 northern European hydrological drought and its drivers in a historical perspective

Sigrid J. Bakke¹, Monica Ionita², and Lena M. Tallaksen¹

¹Department of Geosciences, University of Oslo, Oslo, Norway

²Alfred Wegener Institute Helmholtz Centre for Polar and Marine Research, Bremerhaven, Germany

Correspondence: Sigrid J. Bakke (s.j.bakke@geo.uio.no)

Abstract. In 2018, large parts of northern Europe were affected by an extreme drought. A better understanding of the characteristics and the large-scale atmospheric circulation driving such events is of high importance to enhance drought forecasting and mitigation. This paper examines the historical extremeness of the May–August 2018 meteorological situation and the accompanying meteorological and hydrological (streamflow and groundwater) drought. Further, it investigates the relationship between the large-scale atmospheric circulation and summer streamflow in the Nordic region. In May and July 2018, record-breaking temperatures were observed in large parts of northern Europe associated with blocking systems centred over Fennoscandia and sea surface temperature anomalies of more than 3 °C in the Baltic Sea. Extreme meteorological drought, as indicated by the three-month standard precipitation index (SPI3) and precipitation-evapotranspiration index (SPEI3), was observed in May and covered large parts of northern Europe by July. Streamflow drought in the Nordic region started to develop in June, and in July 68 % of the stations had record-low or near-record-low streamflow. Extreme streamflow conditions persisted in the southeastern part of the region throughout 2018. Many groundwater wells had record-low or near-record-low levels in July and August. However, extremeness in groundwater levels and (to a lesser degree) streamflow showed a diverse spatial pattern. This points to the role of local terrestrial processes in controlling the hydrological response to meteorological conditions. Composite analysis of low summer streamflow and 500 mb geopotential height anomalies revealed two distinct patterns of summer streamflow variability; one in western/northern Norway and one in the rest of the region. Low summer streamflow in western/northern Norway was related to high-pressure systems centred over the Norwegian Sea. In the rest of the Nordic region, low summer

streamflow was associated with a high-pressure system over the North Sea and a low-pressure system over Greenland and Russia, resembling the pattern of 2018. This study provides new insight into hydro-meteorological aspects of the 2018 northern European drought, and identifies large-scale atmospheric circulation patterns associated with summer streamflow drought in the Nordic region.

1 Introduction

From May and throughout the summer of 2018, the northern and parts of central Europe experienced drought and record-breaking and persistent high temperatures, leading to severe impacts across a range of sectors (Table 1). Drought is a complex phenomenon characterised by below average natural water availability affecting all components of the hydrological cycle. Unlike most other natural hazards, it is a "creeping phenomenon" with a wide range of economic, societal, and environmental impacts gradually accumulating over time and space (Stahl et al., 2016; Mishra and Singh, 2010; Tallaksen and Van Lanen, 2004).

In 2018, wild fires destroyed vast areas in northern and central Europe. Sweden was especially impacted, with record-breaking 24,310 ha (835 % of average) of burnt area (Table 1,a). The drought also led to significant drop in EU cereal production, whereas beef production grew more than expected due to increased slaughter following fodder shortage (Table 1,b). In Scandinavia and Germany, wheat and barley yields were described as catastrophically low (Table 1,c–f). Ecosystems in northern Europe are less adapted to extremely dry conditions as compared to other European regions, and direct negative impacts on terrestrial ecosystems productivity were both significantly stronger and more widespread

Table 1. Reports and news articles about 2018 heat and drought related impacts. The impact categories follow the EDII Impact categorisation (Stahl et al., 2016).

Ref.	Impact category	Region	Publisher	URL (last updated/last accessed)
a	Wildfires	Europe	Joint Research Centre, European Commission	https://op.europa.eu/en/publication-detail/-/publication/435ef008-14db-11ea-8c1f-01aa75ed71a1/language-en (29.11.18/24.03.20)
b	Agriculture and livestock farming	European Union	Agriculture and Rural Development, European Commission	https://ec.europa.eu/info/news/drop-eu-cereal-harvest-due-summer-drought-2018-oct-03_en (31.10.19/24.03.20)
c	Agriculture and livestock farming	European Union	Reuters	www.reuters.com/article/us-europe-grains-analyst/analysts-cut-eu-wheat-crop-outlook-again-on-catastrophic-north-idUSKBN1KU15E (09.08.18/24.03.20)
d	Agriculture and livestock farming (mainly)	Europe	Euronews	www.euronews.com/2018/08/10/explained-europe-s-devastating-drought-and-the-countries-worst-hit (12.08.18/24.03.20)
e	Agriculture and livestock farming	Sweden	Swedish Board of Agriculture	https://www2.jordbruksverket.se/download/18.21625ee16a16bf0cc0eed70/1555396324560/ra19_13.pdf (16.04.19/24.03.20)
f	Agriculture and livestock farming	Norway	Norwegian Agriculture Agency	www.landbruksdirektoratet.no/no/statistikk/landbrukserstatning/klimarelaterte-skader-og-tap/avlingssvikt-statistikk (02.09.19/24.03.20)
g	Energy and industry	Norway, Sweden, Finland	Norwegian Water Resources and Energy Directorate	www.nve.no/Media/7385/q3_2018.pdf (17.10.18/24.03.20)
h	Energy and industry	Norway	newsinenglish.no	www.newsinenglish.no/2018/07/13/drought-blamed-for-high-electricity-rates/ (13.07.18/24.03.20)
i	Waterborne transportation	Germany	Handelsblatt Today	www.handelsblatt.com/today/companies/low-water-dwindling-rhine-paralyzes-shipping-transport/23695020.html?ticket=ST-3121873-yvfwqi1ee3yWiy3BK1Zv-ap4 (27.11.18/24.03.20)
j	Waterborne transportation	Hungary	Reuters	www.reuters.com/article/us-europe-weather-hungary-shipment/water-levels-in-danube-recede-to-record-lows-hindering-shipment-in-hungary-idUSKCN1L71DH (22.08.18/24.03.20)
k	-	Germany	Deutsche Welle	www.dw.com/en/hot-weather-exposes-world-war-ii-munitions-in-german-waters/a-44924959 (02.08.18/24.03.20)
l	-	Czech Republic	Business Insider	www.businessinsider.com/sinister-hunger-stones-dire-warnings-surfaced-europe-2018-8?r=US&IR=T (27.08.18/24.03.20)
m	Freshwater ecosystems	Norway	Adresseavisen	www.adressa.no/nyheter/trondelag/2018/07/28/Gaula-stengt-for-fiske-pa-grunn-av-varmen-17208221.ece (30.07.18/24.03.20)
n	Public water supply	Sweden	The Local Sweden	www.thelocal.se/20190425/sweden-may-be-heading-for-a-new-water-crisis (25.04.19/24.03.20)

in 2018 compared to the more southerly located extreme drought in 2003 (Buras et al., 2020). Already in June, the water volumes in Nordic hydropower reservoirs dropped well below normal, which together with high fuel prices caused the July–August power rates to be the highest in 20 years (Table 1,g,h). Record low river levels disrupted main inland waterways in central Europe, forcing transportation ships to reduce their loads by up to 85 % (Table 1,i,j). Low water levels in the river Elbe exposed World War 2 munitions (Table 1,k) and so-called hunger stones with centuries old low

water level marks along with dire warnings (Table 1,l). Extremely low streamflow and high river temperatures led to fishing bans in major salmon fishing rivers in Norway (Table 1,m). Low groundwater tables led Swedish municipalities to ban residents from using water from the municipal network for anything other than drinking (Table 1,n). The high costs and wide range of impacts associated with the 2018 drought, emphasise the need to improve the understanding of such extreme, high impact events affecting large regions

in Europe. The latter requires transnational data and international collaboration for in-depth analyses.

To understand how the severity and timing of impacts vary among and within drought affected areas, it is important to distinguish between different stages of drought development. Typically, three types of drought are distinguished, reflecting the propagation of drought through the hydrological cycle; meteorological, soil moisture and hydrological (streamflow and groundwater) drought (Tallaksen and Van Lanen, 2004). Meteorological drought refers to a precipitation deficit often combined with abnormal high (potential) evapotranspiration. If a meteorological drought is sustained, it typically causes soil moisture drought, which mainly concerns water deficits in the root zone impacting water uptake by vegetation (Van Loon, 2015). When soil moisture depletes, a positive feedback loop may occur due to a reduction in the latent heat flux (less energy is used for evapotranspiration) and an associated increase in the sensible heat flux (more energy is used to heat the air), which in turn increases the near-surface temperature (Seneviratne et al., 2010). Soil moisture drought can further reduce groundwater recharge and water sources that feed streams and rivers. This may, depending on the catchment characteristics and initial hydrological conditions, lead to groundwater and streamflow drought (Tallaksen and Van Lanen, 2004). Several studies have demonstrated how meteorological and hydrological droughts develop differently in space and time (e.g. Barker et al., 2016; Kumar et al., 2016; Haslinger et al., 2014; Vidal et al., 2010; Tallaksen et al., 2009; Peters et al., 2003; Changnon, 1987). The delay between a meteorological and a hydrological drought may amount to several months, with groundwater typically being the last to react and the last to recover (Hisdal and Tallaksen, 2000). The concept *drought*, unless specified, refers broadly to the multifaceted phenomenon that includes all three types of drought, along with their specific characteristics.

Many large-scale studies on drought focus on the meteorological aspect, such as anomalies in precipitation or climatic water balance (i.e. precipitation minus potential evapotranspiration), as this is based on data often easily at hand (e.g. Ionita et al., 2017; Stagge et al., 2017; Vicente-Serrano et al., 2014; Bordi et al., 2009). As opposed to meteorological data, transboundary near-real-time observations of hydrological variables are generally lacking, making timely observation-based, large-scale soil moisture, streamflow or groundwater drought assessments challenging (Liu et al., 2018; Laaha et al., 2016; Hannah et al., 2011). Long-term observational soil moisture data is sparse except for satellite based estimates covering only a few centimetres depth (Hirschi et al., 2014; Kerr, 2007), which is too shallow to include the root zones of main vegetation types (e.g. Yang et al., 2016; Schenk and Jackson, 2002). Updated streamflow and groundwater level observations usually need to be collected in a country-by-country based manner, which is time-consuming as well as challenging due to differences

in agency structure, data quality requirements, availability of physiographic properties and information on human influence. Despite these challenges, research on large-scale droughts cannot rely solely on meteorological data (Van Lanen et al., 2016). Drought assessments using hydrological data are needed to investigate the drought footprint on water resources, which is of high importance for hydropower, navigation, water use sectors and freshwater ecosystems among others (Laaha et al., 2016; Stahl et al., 2016).

A key natural driver of drought is persistent high-pressure systems leading to prolonged periods of low precipitation and/or high evapotranspiration (Tallaksen and Van Lanen, 2004). To improve drought forecasts and projections, we therefore need a better understanding of the relation between the different types of drought and their large-scale atmospheric and oceanographic drivers. Stationary Rossby waves have been found to play an important role in the development of summer patterns of monthly surface temperature and precipitation variability across northern Eurasia, and appear to have led to the extreme heat wave and drought in 2003 and 2010 (Schubert et al., 2014, 2011). Kingston et al. (2015) found that the most widespread and long-duration meteorological droughts in Europe fall into two categories; northern European droughts with onset associated with an Atlantic meridional-dipole atmospheric circulation anomaly similar to the North Atlantic Oscillation (NAO), and droughts elsewhere in Europe associated with anomalies related to a north-eastward expansion of the Azores high, resembling an eastern Atlantic/western Russia (EA/WR) atmospheric circulation pattern. Fleig et al. (2011) investigated the relation between various circulation types and streamflow drought in Denmark and Great Britain. They found that hydrological droughts are most frequently linked to circulation types representing a high-pressure system over the region affected by drought, which promote hydrological drought development by advection of warm dry air. In addition to stationary high and low-pressure systems, sea surface temperatures associated with large-scale climate modes of variability have also been found to be important drivers for dryness and wetness variability over Europe (Ionita et al., 2015, 2012). In a study of streamflow drought in Great Britain, Kingston et al. (2013) found statistically significant SST and atmospheric anomalies linked to drought onset. The authors emphasise the shortcomings in the ability of circulation indices (such as NAO) to capture fully the atmospheric variation preceding drought onsets, and highlights the value of composite analysis in developing an improved understanding of ocean-atmosphere-drought connections.

The 2018 event was unique in the northern location of the high-pressure system initiating the drought, as compared to other major European drought events in the last decades (Ionita et al., 2017; Stahl, 2001). The affected Nordic region (Norway, Denmark, Sweden and Finland) exhibits a high heterogeneity in terrestrial and hydroclimatological characteristics. Despite its rather limited size, the region spans several

latitudes and has a pronounced west-east gradient in climate and topography, ranging from high mountains in the west to low-lying regions in the south and east. Prevailing westerly winds run northeastwards from the Atlantic, bringing abundant rainfall along the west. Orographic effects lead to large local variability in precipitation in the western part of the region. Denmark, southern Sweden, and western coast of Norway have a maritime climate, in contrast to the more continental climate in eastern Norway, Sweden and Finland. The landscape is largely affected by last glaciations, with typical landforms such as U-shaped valleys, fjords, and lakes, as well as a large spatial heterogeneity in glacial deposits. Land cover varies from vast areas of bare rock and shallow deposits in the west and north, to undulating inland areas characterised by numerous lakes, forests and wetlands, and to areas in the south with thick soils and large aquifers (e.g. Sømme, 1960). Combined with the important effect of seasonal snow on hydrology, varying with latitude and altitude, excluding the very south, the result is a high diversity in hydroclimatological conditions.

In depth analyses of historical drought events, what triggers them and how they manifest themselves in the hydrological cycle, enable us to increase our understanding of this complex phenomenon, which is vital to enhance drought forecasting, projection and mitigation. Motivated by these considerations, this paper focuses on characterising the 2018 drought in northern Europe in a historical context. Traditionally, anomaly maps (in absolute or relative terms) have been used to characterise the meteorological situation of past European events and their spatiotemporal development. Recent examples include events such as the major European drought in 2003 (Black et al., 2004), 2010 (Barriopedro et al., 2011) and 2015 (Ionita et al., 2017). Ranking maps are another way of communicating the extremeness of an event in a long-term perspective, which is simple and easy to communicate (e.g. Ionita et al., 2017). By ranking the events selected from a time series (e.g. one value each year) according to their magnitude (e.g. temperature), one can map the rank of a particular event, compared to all other years on record, across a region of interest. In this study, we embedded both these approaches; i.e., 2018 anomalies relative to a period of reference (1971–2000), and ranking maps for the 2018 event based on the 60-year period 1959–2018.

The aim of the study is twofold; 1) to investigate the extremeness of the 2018 situation and the accompanying meteorological and hydrological drought in northern Europe, and 2) to identify large-scale atmospheric circulations associated with below normal summer streamflow in the Nordic region. The latter is investigated using Empirical orthogonal functions (EOFs), which is a well-known method to detect spatial patterns of variability and how they change with time. In Ionita et al. (2015), EOFs are used to study the variability in meteorological drought in Europe and its relationship to geopotential height, which is similar to the approach adopted here for the main patterns of summer streamflow variability.

The paper is organised as follows: The data and methods are described in Sect. 2 and 3, respectively. In Sect. 4 (Results), the 2018 meteorological situation (Sect. 4.1), meteorological drought (Sect. 4.2) and hydrological drought (Sect. 4.3) are presented, and the relation between summer streamflow and large-scale atmospheric circulation investigated (Sect. 4.4). A detailed discussion is provided in Sect. 5, followed by the conclusion in Sect. 6.

2 Data

2.1 Meteorological data

Meteorological data used in this study comprises the 500 mb geopotential height (HGT500), the zonal and meridional wind, sea surface temperature (SST), air temperature and precipitation. Monthly data of HGT500, and zonal and meridional wind, used to describe the atmospheric circulation, were extracted from the NCEP-NCAR 40-year reanalysis project (Kalnay et al., 1996). These datasets are available from 1948 to near-present, and have a global coverage on a $2.5^\circ \times 2.5^\circ$ longitude/latitude grid. SST data was extracted from the Hadley Centre Sea Ice and Sea Surface Temperature dataset (HadISST; Rayner et al., 2003), consisting of monthly SST from January 1805 to near-present on a global scale with a spatial resolution of $1^\circ \times 1^\circ$ longitude/latitude.

Europe-wide ($35.625\text{--}71.875^\circ$ N and $-10.875\text{--}41.625^\circ$ E) daily total precipitation and daily maximum, minimum and mean air temperature on a 0.1° regular longitude/latitude grid, were derived from the E-OBS dataset version 21.0e (Cornes et al., 2018). The E-OBS dataset is based on the European Climate Assessment and Dataset station information (ECA&D), and consists of daily data from 01.01.1950 until near-present.

2.2 Hydrological data

Hydrological data used includes time series of streamflow and groundwater levels from stations in the Nordic region. Streamflow measured at a given point reflects the accumulated responses to precipitation over space and time, whereas groundwater levels represent the lagged response in groundwater over an area varying with local conditions. Streamflow data stems from gauges in Norway, Sweden, Denmark and Finland. Quality-controlled, daily observational streamflow time series were provided by the Norwegian Water Resources and Energy Directorate (NVE), Danish Environment Portal for Denmark, Swedish Meteorological and Hydrological Institute (SMHI), and Finnish Environmental Institute (SYKE). All gauges had near-natural catchments, i.e. limited or no human interventions (such as reservoirs or water abstractions) influencing the streamflow. Only gauges having less than 10 days with missing values between May–September each year in the 60-year period 01.01.1959–31.12.2018, were chosen.

The resulting dataset consisted of time series from 79 gauges, with catchment areas ranging from 6.6 km² to 10864 km² (median of 276 km²). Figure 1 shows the locations of the gauges as well as the streamflow regime at each site, reflecting the typical streamflow variability over the year. The regime classification was based on Gottschalk et al. (1979) and calculated for the period 1959–2018 (a detailed description of the classification procedure is provided in Appendix A1). The five regimes are classified according to whether the streamflow is dominated by 1) winter high flow and summer low flow, mainly due to high evapotranspiration during summer (Atlantic regime), 2) winter low flow and spring high flow, due to snow accumulation and snowmelt (Mountain regime), or 3)–5) various combinations of these two patterns (Baltic, Transition and Inland regime). Three of the stations with a mountain regime (marked with crosses) experience high flow during late summer due to a high percentage (>30 %) of glaciers in their catchments. Standardised monthly streamflow statistics for each station are shown in Fig. S3–S5 in the Supplement.

Observed time series of near-natural groundwater levels, i.e. data from stations with limited or no human influence (such as water abstractions), are even less accessible than streamflow data. This includes the necessary metadata with local site information. As a result, the groundwater analysis was limited to data from stations in Norway and Sweden, provided by NVE and the Geological Survey of Sweden (SGU), respectively. The time series were quality controlled at the host institutions, however, a visual inspection was performed to delete potential erroneous outliers. Groundwater level time series were generally shorter than the streamflow time series, and rather than a 60-year period as used for streamflow, a 30-year period (1989–2018) was selected as a balance between the number of stations and the record length.

In a majority of the groundwater wells, observations were taken on a weekly to monthly basis in most of the period. In Norway, daily or sub-daily measurements were available from the beginning of the 21st century. Half of the Swedish wells had daily or sub-daily measurements from 2016 onwards, whereas the other half had a coarser temporal resolution across the whole 30-year period. Only groundwater stations with at least one monthly measurement during April–September over the 30-year period analysed, were selected. Groundwater has in many cases a slow response and thus holds valuable information at a monthly resolution (e.g. Hisdal and Tallaksen, 2000). Sub-daily measurements were aggregated into daily means, whereas days of missing data were filled by linear interpolation between the two adjacent measurements, following the method used by the National Hydrological Monitoring Programme in the UK (NHMP, 2017).

The resulting groundwater dataset includes groundwater level observations from 56 wells. Their locations and groundwater regimes are shown in Fig. 2. Several of the Swedish wells are closely located, sharing the same location name,

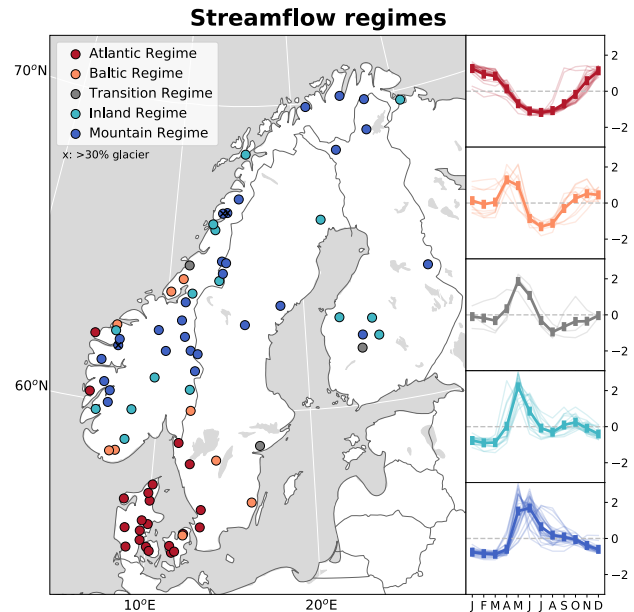


Figure 1. Locations and streamflow regimes (based on Gottschalk et al., 1979) of the 79 streamflow stations used in the study. The right panel shows plots of mean monthly standardised (i.e. subtracted the mean and divided by the standard deviation) streamflow for each regime (indicated by thin lines) together with the regime mean streamflow (bold line).

however, representing different depths and soil types. These are plotted as pies of the same point. The number of wells represented by each site is given in the figure. The groundwater regime classification was based on Kirkhusmo (1988), using data for the period 1989–2018 (a detailed description of the classification procedure is provided in Appendix A2). Region I is characterised by low groundwater levels in late summer due to warm season evapotranspiration losses. Region III has a minima in late winter prior to the start of the snowmelt period. Region II, being a mix of the two, experiences two minima, one in late winter and one in late summer. Some of the wells were classified as a delayed version of a regime due to slow-responding groundwater fluctuations. Standardised monthly groundwater level statistics for each well are shown in Fig. S6–S7 in the Supplement.

3 Methods

The variables, indices (including periods used) and spatial coverages used to characterise the 2018 meteorological situation, meteorological drought and hydrological drought, are summarised in Table 2. From looking at a large spatial domain, including Europe and its surrounding regions, when describing the main climate drivers, the analysis gradually "zooms in" on the Nordic region, which experienced the most extreme meteorological situation in spring and summer of

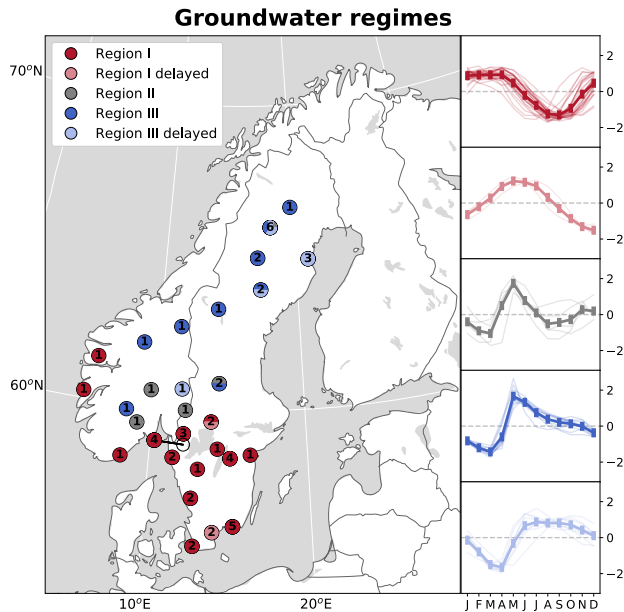


Figure 2. Locations and groundwater regimes (based on Kirkhusmo, 1988) of the 56 groundwater wells used in the study. The number on each point represents the number of stations at that location. To ease readability, one site with four wells in southwestern Sweden (red point on the map) is shifted to the left of, and pointing to, its real location. The right panel shows plots of mean monthly standardised (i.e. subtracted the mean and divided by the standard deviation) groundwater levels for each regime (indicated by thin lines) together with the regime mean groundwater levels (bold line).

2018. Calculations were done for each month in 2018, however, the results mainly focus on the period May–August.

3.1 Meteorological situation

The extremeness of the meteorological situation for each month was analysed using the sea surface temperature (SST), geopotential height at 500 mb (HGT500), daily maximum air temperature (Tx) and precipitation (P). For HGT500 and SST, the 2018 anomalies (in meters and degree Celsius, respectively) relative to the reference period 1971–2000 were computed for each month in the period over Europe and the surrounding regions. The reference period 1971–2000 was chosen to allow for easier comparison with other studies (e.g. Ionita et al., 2017). We note that a more recent 30-year reference period would result in different values as such, e.g. in the presence of a (overall warming) trend. In addition, mean May–August HGT500 60-year (1959–2018) time series and corresponding 2018 anomalies (in standard deviations from the 60-year mean) were computed for each sub-domain of $20^\circ \times 20^\circ$ longitude/latitude throughout the European domain, i.e. the area $35^\circ \text{ N}–80^\circ \text{ N}$ and $12.5^\circ \text{ W}–42.5^\circ \text{ E}$ moving one grid cell (2.5°) at a time. This allowed

the extremeness in the persistent high-pressure system for the whole May–August period to be estimated.

The extremeness in temperature and precipitation was analysed by ranking maps of each month in 2018. First, monthly mean Tx and monthly total sums of P were computed for the 60-year period (1959–2018), and for each month the years were ordered from the most extreme (highest temperature and lowest precipitation) to the least extreme value. Then, ranking maps of 2018 were made by finding the position (rank) of 2018 if it were among the six highest temperatures (in the case of Tx) or six lowest precipitation totals (in the case of P). Similar maps were computed for the European 2015 drought by Ionita et al. (2017) using the period 1950–2015. In case of ties between years, 2018 was set as the least extreme of the years with equal values. This was done to avoid exaggerating the extremeness of 2018 in terms of precipitation totals, such as in some Mediterranean regions where it is not uncommon with months with zero precipitation. A rank of one implies record-breaking high temperature (in the case of Tx) or low precipitation (in the case of P) in 2018, a rank of two indicates that 2018 had the second most extreme value in that month, etc. Here, temperature/precipitation with ranks of 1–6 are referred to as extreme. The ranks correspond to specific percentiles of the data, such that a rank of 3 or 6 corresponds to the 5th or 10th percentile, respectively, when the period under investigation is 60 years.

3.2 Meteorological drought indices

The meteorological drought of each month May–August 2018 was assessed using the Standardized Precipitation Index (SPI; McKee et al., 1993; Guttman, 1999) and the Standardized Precipitation Evapotranspiration Index (SPEI; Vicente-Serrano et al., 2010; Beguería et al., 2014). A three-month accumulation period was chosen in both cases (i.e. SPI3 and SPEI3) to reflect the seasonality in northern Europe (WMO, 2012).

SPI is recommended as a meteorological drought index for drought monitoring by the World Meteorological Organization (WMO and GWP, 2016). It is a widely used measure of precipitation anomalies that can be compared across locations with different climatology and highly non-normal precipitation distributions (Stagge et al., 2014). SPEI is a more recent drought index that measures normalised anomalies in the climatic water balance, defined as precipitation minus potential evapotranspiration (PET; Vicente-Serrano et al., 2010). As opposed to SPI, SPEI takes into account atmospheric variables other than precipitation that may affect drought. Additional atmospheric variables to include depend on the equation chosen to estimate PET. The Hargreaves equation (Hargreaves and Samani, 1985) was used in this study following the recommendation by Stagge et al. (2014). The Hargreaves equation estimates daily PET based on each day's mean temperature, the difference between daily min-

Table 2. Variables, extremeness indices and spatial coverage used to characterise the 2018 meteorological situation, meteorological drought and hydrological drought. All indices are calculated on a monthly basis.

Variable(s)	Extremeness index	Spatial Coverage
<i>Meteorological situation</i>		
Sea Surface Temperature (SST)	2018 anomaly (in degree Celsius) relative to 1971–2000	Europe and surrounding regions
Geopotential Height at 500 mb (HGT500)	2018 anomaly (in meters) relative to 1971–2000	Europe and surrounding regions
Geopotential Height at 500 mb (HGT500)	2018 anomaly (in standard deviations from the mean) relative to 1959–2018 for European subdomains	Europe and surrounding regions
Maximum Temperature (Tx)	Rank of 2018 based on highest 1959–2018 maximum temperatures	Europe
Precipitation (P)	Rank of 2018 based on lowest 1959–2018 precipitation	Europe
<i>Meteorological drought</i>		
Precipitation	Three-month Standardized Precipitation Index (SPI3) of 2018 relative to 1971–2000	Europe
Precipitation, and Minimum, Maximum and Mean Temperature	Three-month Standardized Precipitation Evapotranspiration Index (SPEI3) of 2018 relative to 1971–2000	Europe
<i>Hydrological drought</i>		
Streamflow	Rank of 2018 based on lowest 1959–2018 streamflow	Norway, Sweden, Finland and Denmark
Groundwater	Rank of 2018 based on lowest 1989–2018 groundwater level	Norway and Sweden

imum and maximum temperature (proxy for net radiation), and an estimate of (extraterrestrial) radiation based on the latitude and day of the year.

SPI3 (SPEI3) was computed by: 1) fitting three-month accumulated P (or P-PET) in the reference period 1971–2000 to a parametric distribution, 2) transforming non-exceedance probabilities from the parametric distribution to the standard normal distribution, and finally, 3) using the normal distribution to estimate the 2018 anomaly in terms of standard deviations (Lloyd-Hughes and Saunders, 2002; Guttman, 1999; McKee et al., 1993). Both SPI and SPEI rely on the choice of reference period and a parametric distribution. To assess the effect of reference period, we calculated the SPI3 and SPEI3 in 2018 using the 60-year period (1959–2018) as reference in addition to 1971–2000. Compared to 1971–2000, the 1959–2018 reference period shifted SPI3 and SPEI3 values between 0 and -3 (dry range) to slightly less extreme values in regions affected by major droughts after 2000 (mainly cen-

tral, southwestern and eastern Europe). Most of the Nordic region, however, showed a slight shift to more extreme values. The main purpose of including SPI and SPEI was to map the meteorological drought dynamic, and we found overall similar spatiotemporal development of SPI3 and SPEI3 comparing the two reference periods. In terms of parametric distribution, this study followed the recommendations by Stagge et al. (2015) to use the gamma distribution for the SPI calculation, including a "centre of mass" adjustment for zero precipitation periods, and the generalized extreme value distribution for the SPEI calculation. Except for differences in input data and transformation procedure to the standard normal distribution, the computation routine is the same for SPEI and SPI, and the multi-temporal nature and statistical interpretability of the two indices are therefore also the same (Stagge et al., 2014). SPI and SPEI were calculated using the R-package *SCI* developed by Gudmundsson and Stagge (2016).

Dry conditions are represented by negative SPI and SPEI values, and wet conditions by positive values. A categorisation of SPI values is found in Lloyd-Hughes and Saunders (2002), defining SPI values between -1 and -1.5 (9.2 % probability) as moderate drought, SPI values between -1.5 and -2 (4.4 % probability) as severe drought, and SPI values less than -2 (2.3 % probability) as extreme drought. Correspondingly, positive SPI values are categorised as moderately wet (1–1.5), severely wet (1.5–2) and extremely wet (>2). This categorisation was adopted for the interpretation of the SPI3 and SPEI3 results in this study.

3.3 Hydrological drought

The extremeness in streamflow and groundwater level was analysed by calculating the monthly means and ranking the lowest values (low streamflow and low groundwater tables) for each month May–August in 2018, following the same procedure as for temperature and precipitation (Sect. 3.1). For streamflow, the 60-year period 1959–2018 was used as a basis for the ranking, and thus the same percentile equivalents as for temperature and precipitation apply. A 30-year period was used for groundwater due to the generally shorter time series. Thus, a rank in groundwater of 3 or 6 corresponds to the 10th or 20th percentile, respectively.

The response in groundwater to climatic input is often delayed and smoothed, however, the delay may vary greatly from site to site affecting the occurrence and duration of groundwater drought (Van Loon, 2015; Van Loon and Van Lanen, 2012). Here, the delay in groundwater response to precipitation was assessed, defined as the accumulation period (at daily resolution) of the nearest grid cell's daily precipitation yielding the highest correlation between accumulated precipitation and daily groundwater levels for the period 1989–2018.

3.4 Empirical orthogonal function analysis and composite maps

Key patterns in large-scale atmospheric circulation associated with low and high summer streamflow in the Nordic region were analysed by computing the HGT500 anomalies for the years of high and low anomalies. The anomalies were identified by the three first principle components resulting from an empirical orthogonal function (EOF) analysis of the summer streamflow data. An EOF analysis allows insight into the most dominant modes of variability in a complex temporally and spatially varying dataset by decomposing the dataset into fixed spatial patterns (EOFs) with corresponding time series (principle components, PCs), each representing a given proportion of the total variance in the dataset (Wilks, 2006). The magnitude of a given EOF loading gives the strength of the relationship between the summer streamflow time series and the corresponding PC. A negative EOF loading represent an inverse relationship between the

summer streamflow time series and the corresponding PC, which can take on both negative and positive values. Mean summer (June–July–August) streamflows were computed for each year 1959–2018 and the time series standardised and detrended prior to the empirical orthogonal function analysis. The June–August period was chosen for the EOF analysis (rather than May–August, which is in focus in Sect. 3.1–3.3) to avoid the effect of high flow in May caused by snowmelt. Furthermore, EOF analysis and composite maps are traditionally done on a three-month seasonal basis, making the results more easily comparable to other studies. The EOFs and PCs were calculated using the Python library *eofs* (Dawson, 2016). For each of the principle components (PCs), years with absolute values larger than one standard deviation were defined as high (positive values) and low (negative values) anomaly years. For each set, we computed "high years composite maps" and "low years composite maps" of concurrent (mean summer; June–July–August) HGT500 anomalies. The significance of the composite maps were estimated by a two-sided t-test at a 5 % significance level.

4 Results

4.1 Meteorological situation

Figure 3a–d shows the evolution of SST anomalies from May–August 2018 as compared to the reference period (1971–2000; all months throughout 2018 are shown in Fig. A1). The strongest SST anomalies in the seas surrounding Europe in 2018 were found in May–September. Patterns of negative and positive SST anomalies were relatively stable from May–September, characterised by one negative and two positive anomalous SST centers. The strongest negative SST anomalies were found in an area south of Greenland (50–60° N), whereas strong positive SST anomalies were found below this area, in a belt from 20–80° W at approx. 40° N. A second region of positive SST anomalies was found in the regions surrounding Europe between 0–40° E (Barents Sea, Norwegian Sea, North Sea, Baltic Sea, Black Sea and parts of the Mediterranean Sea). The highest SST anomalies exceeded 3 °C and were found in the Baltic Sea.

HGT500 anomalies for each month May–August 2018 as compared to the reference period (1971–2000) are shown in Fig. 3e–h (all months throughout 2018 are shown in Fig. A2). May 2018 was characterised by a dipole-like structure in the atmospheric circulation, with HGT500 anomalies ranging from -120 m to 120 m. A high-pressure system (anticyclonic circulation) was centred over Fennoscandia, whereas Greenland and eastern Canada were under the influence of a low-pressure system (cyclonic circulation). This represents a northwestern movement of the high and low-pressure systems present in April, when these were located over central/eastern Europe and the North Atlantic west of Ireland, respectively. South of the cyclonic circulation in May, a weaker

anticyclonic circulation was observed over the east coast of the US. In June, the HGT500 anomalies were generally lower than in May, with anticyclonic conditions centred over the British Isles and at similar latitudes, two cyclonic circulations, one centred over the Canadian east coast and one centred over Russia at approx. 70° E. The HGT500 anomalies in July were similar to the ones in May in their spatial patterns and anomaly magnitudes, however, with a slight northward shift. In August, the high-pressure systems weakened in magnitude, with a high-pressure system located southeast of Fennoscandia, and a low-pressure system developed over the North Atlantic between Iceland and Norway. Similar anomaly pattern and magnitudes persisted in September–October, before Fennoscandia again was under the influence of a strong high-pressure system in November and (too a lesser degree) December 2018.

The 2018 anomalies of the mean May–August HGT500 relative to 1959–2018 (represented as standard deviations, std, from the 60-year mean) for a sequence of subdomains in Europe, are shown in Fig. 4a. Each subdomain covers 20° × 20° longitude/latitude. Results for each month May–August 2018 separately are shown in Fig. A3. Most of Europe showed HGT500 values of more than 2 std, and in regions centred around Denmark (between 2.5–12.5° E and 52.5–57.5° N), HGT500 deviated more than 3 std. Figure 4b shows the aggregated May–August HGT500 time series for a selected subdomain centred over Scandinavia (Scandinavian subdomain: 52.5–72.5° N and 5–25° E), demonstrating a record-breaking high-pressure system over the period May–August for this subdomain. As shown in Fig. A3, particular high anomalies were observed in May and June, whereas more normal values were found in June and August. In May 2018, the std was twice as high as the second most extreme year (1993) and more than 3 std away from the mean.

Figure 5a–d shows the top-six ranking of each month May–August 2018 highest temperatures (all months throughout 2018 are shown in Fig. A4, and monthly anomalies in Fig. S1). Temperatures during this period were exceptionally high, with record-breaking (rank 1) or near-record-breaking (rank 2–6) temperatures in several European regions. The most widespread extreme temperatures were found in May, when the top-six ranks (dominated by rank 1 and 2) covered almost the whole of the Nordic region and large parts of northern and eastern Europe. Record-breaking weather was reported by meteorological offices across the affected countries. In Norway and Germany, for example, the meteorological institutes reported that the country average May temperature was the highest on (the more than 100-year) record, and 97 meteorological stations in Norway (with record lengths between 15 and 155 years) registered record-breaking May temperature (Grinde et al., 2018a; Deutscher Wetterdienst, 2018). In June, the area covered by extreme temperatures decreased, mainly covering a smaller region from northern France to Poland, southern Scandinavia and the British Isles. Ireland stood out this month, with record-breaking tempera-

tures. Only southern parts of Fennoscandia had ranks of 1–6 in June, however, this changed drastically in July, when almost the whole of Fennoscandia experienced the highest, or second highest, temperatures on the record. In Norway, 43 meteorological stations broke their mean July temperature record (Grinde et al., 2018b). High ranks were also seen in regions facing the North Sea and the Baltic Sea. A southern shift was seen in August, when a southwest-eastern belt of extreme temperatures extended from the Iberian Peninsula to southeastern Fennoscandia. Regions, mainly in Spain, Portugal and Germany, experienced record-breaking temperatures this month. Extreme temperatures were also observed in the months before and after May–August 2018 (mainly in April, September and October), covering regions south of Fennoscandia. In November, temperatures in northern and western Fennoscandia were again extremely high.

Record-breaking, or near-record-breaking, low precipitation for each month May–August (Fig. 5e–h; rank of all months are shown in Fig A5, and monthly anomalies in Fig. S2) were much less common and only found in smaller and more scattered areas across northeastern Europe. Some localised extreme clusters were found in June, mainly in southern UK, Benelux, Germany and Belarus. In July, larger clusters were seen covering Benelux, Denmark, parts of Fennoscandia and Germany. A relatively large region north of the Black Sea, including Moldova and parts of Romania, Ukraine and Russia, experienced record-breaking and near-record-breaking, low precipitation in August. In addition, smaller clusters of extremely low August precipitation were found in central Europe. Apart from May–August, scatters of record-breaking or near-record-breaking low precipitation in 2018 were mainly found in southwestern, central and southeastern Europe. Exceptions are February and November, when larger parts of northern/northeastern Europe experienced extremely low precipitation.

4.2 Meteorological drought

SPI3 and SPEI3 for each month May–August 2018 are shown in Fig. 6 (all months are shown in Fig A6 for SPI3 and Fig A7 for SPEI3). From a slow development at the start of the year, a meteorological drought manifested itself (as indicated by SPI3 < -1) across a larger region north of 45° N in April and May. The situation worsened to peak in July when 18 % of the grid cells had SPI3 < -1.5. The most extreme meteorological drought in northern Europe (SPI3 < -2) was found in July in a region surrounding Denmark, including southern Norway, Sweden, Benelux and Germany. Regions within the British Isles and the Baltic countries also recorded extreme meteorological drought this month. In August, extreme conditions persisted in Germany and neighboring countries, whereas the meteorological drought in Fennoscandia, the Baltic countries and the British Isles generally lessened (or ceased). Dry conditions persisted in central Europe, and extended to southern and eastern parts

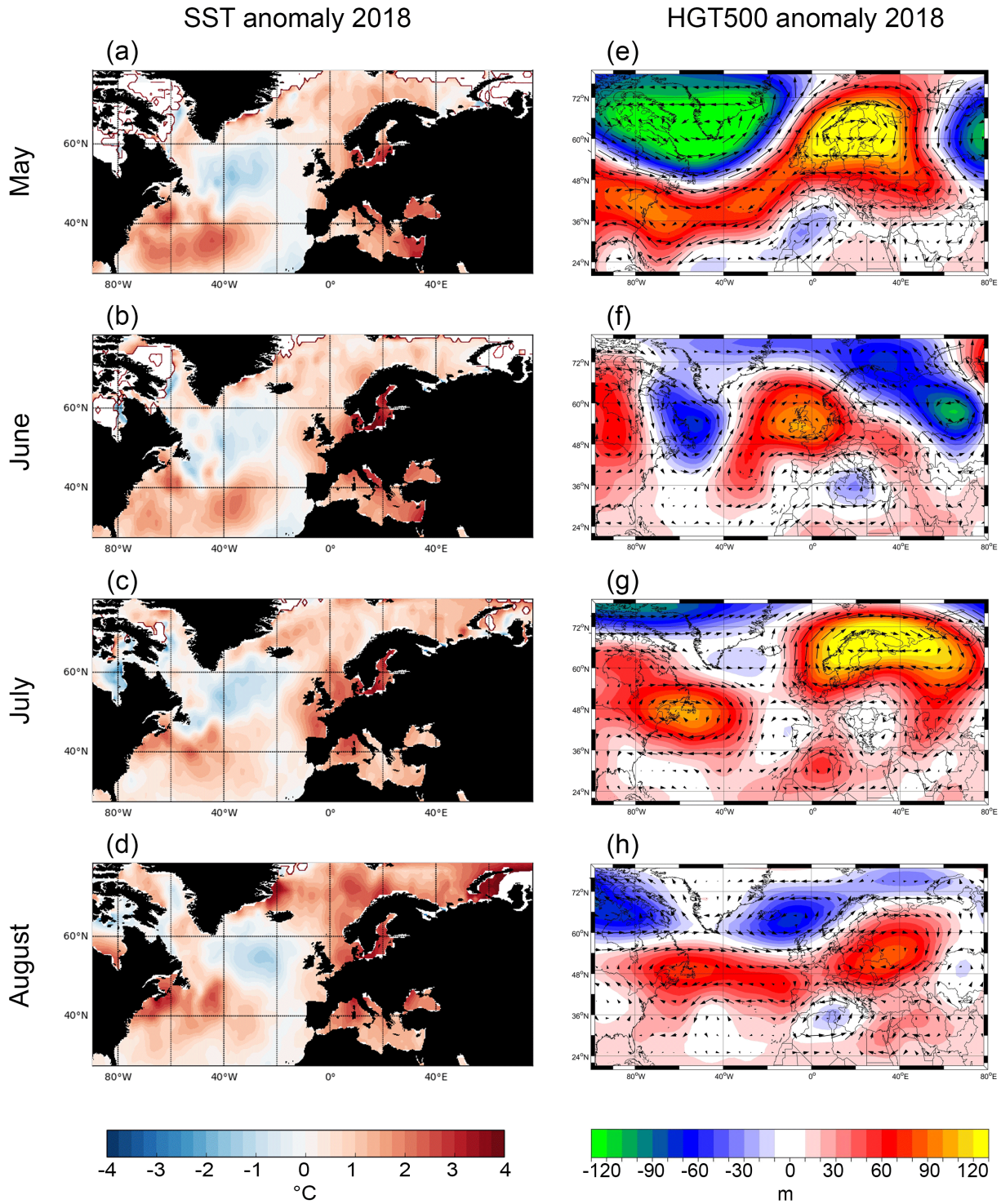


Figure 3. Left panel: Sea Surface Temperature (SST) anomalies for (a) May, (b) June, (c) July and (d) August 2018 relative to the reference period 1971–2000. Right panel: Geopotential Height at 500 mb (HGT500) anomalies for (e) May, (f) June, (g) July and (h) August 2018 relative to the reference period 1971–2000. Zonal and meridional wind at 500 mb level are added to indicate wind directions.

of Europe in September–November. Eastern and southeastern parts of Fennoscandia were again affected by moderate

drought in November–December, after three months of only scatters of moderate drought in this region.

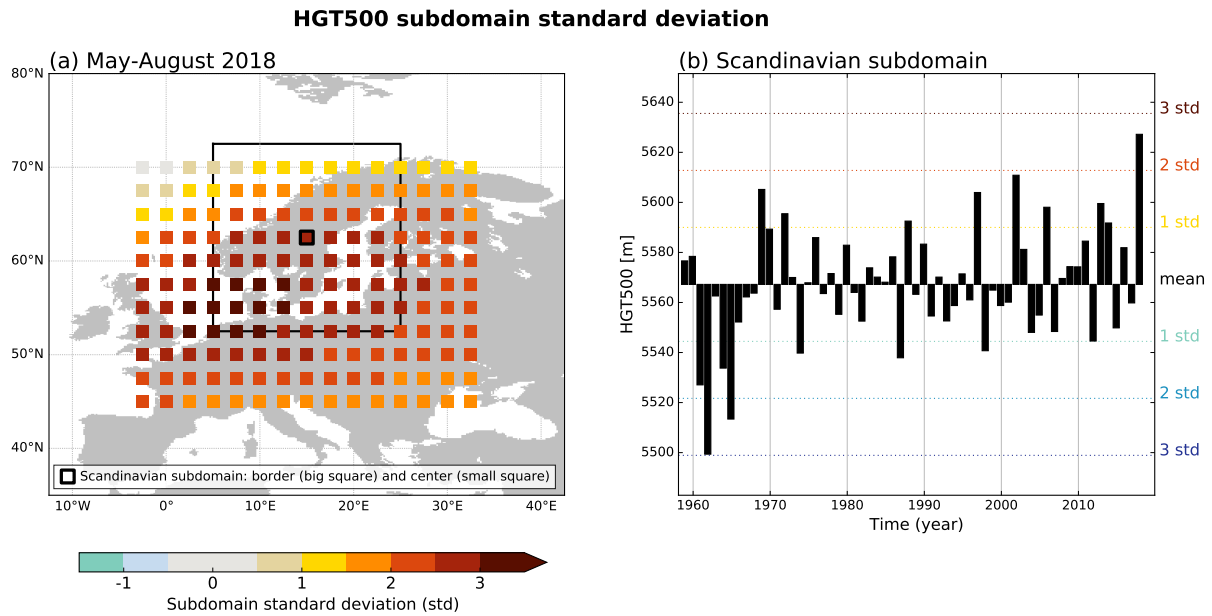


Figure 4. (a) Geopotential height at 500 mb (HGT500) shown as standard deviation (std) of aggregated May–August 2018 based on the 60-year period (1959–2018) for subdomains of 20° longitude/latitude throughout Europe, shifted 2.5° at a time. The coloured squares are the center points of each subdomain. This is illustrated for one subdomain over Scandinavia, with a large square and a small square marking the subdomain’s border and centerpoint, respectively. (b) Aggregated May–August HGT500 1959–2018 time series for the Scandinavian subdomain marked in (a).

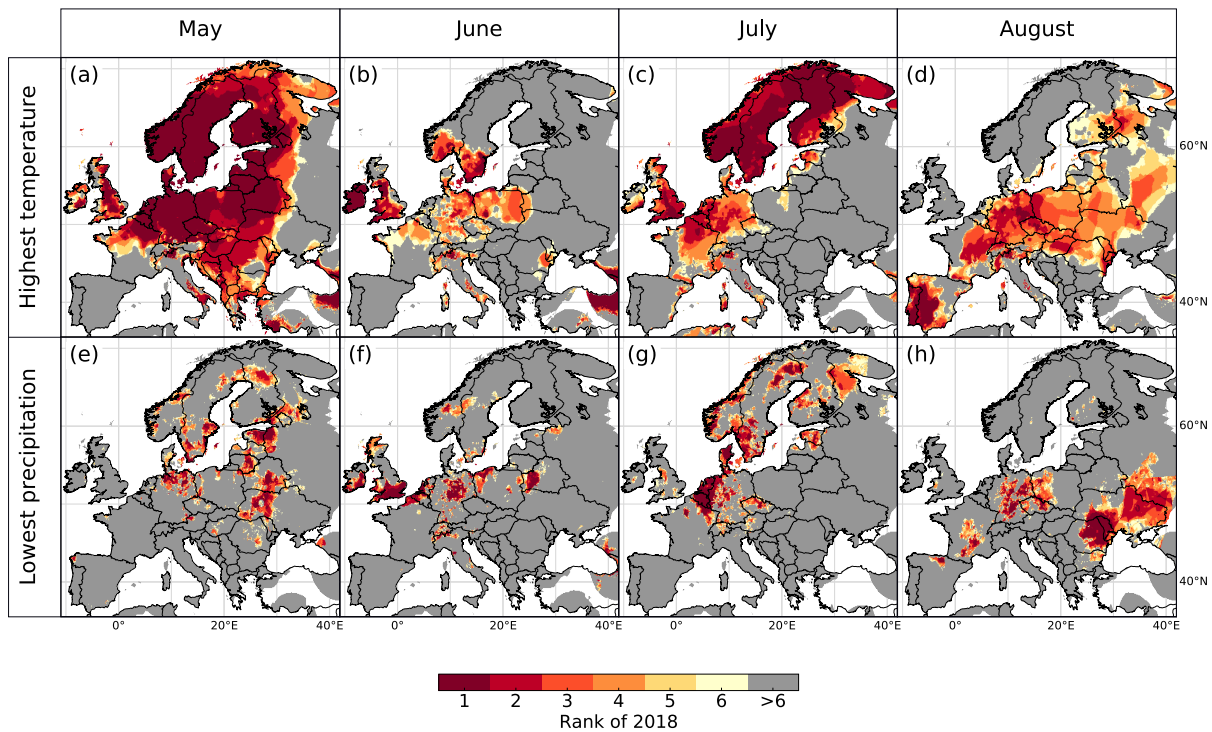


Figure 5. Top-six ranking of 2018 highest temperature (monthly mean of daily maximum temperature) for (a) May, (b) June, (c) July and (d) August, and top-six ranking of 2018 lowest precipitation for (e) May, (f) June, (g) July and (h) August. Analysed period is 1959–2018. A rank of one signifies that 2018 had the warmest (in the case of temperature) or driest (in the case of precipitation) month since 1959, a rank of two signifies that 2018 had the second most extreme value in that month, etc.

The year started rather wet across Europe in terms of SPI3, with wet conditions persisting in southeastern Europe until May. SPI3 also revealed extreme wet conditions ($SPI3 > 2$) on the fringe of the drought affected area, i.e. along the coastal regions in northern Norway (June–October) and southern parts of Europe, notable the Iberian Peninsula (March–May) and southeastern Europe (February–April and July–August). The SPEI3 showed a similar spatial pattern as SPI3, although somewhat higher anomalies were seen in May and June for SPEI3, with 11 %, respectively 16 % of the grid cells in severe or extreme drought (i.e. values < -1.5) as compared to 7 % (May) and 13 % (June) for SPI3.

4.3 Hydrological drought

The 60-year (top-six) ranking of lowest monthly streamflow in 2018 in the Nordic region (Norway, Sweden, Finland and Denmark) revealed record-breaking or near-record-breaking low streamflow in several regions from June, peaking in July (Fig. 7a–d). Ranks of all months in 2018 are shown in Fig. A8, and standardised monthly hydrographs for 2018 are shown in Fig. S3–S5. In May, only two (3 %) of the stations experienced extremely low streamflow (rank of 1–6). In June, however, 46 % of the stations had extremely low streamflow, and 13 % were record-breaking. The proportion of stations with extremely low streamflow expanded to 68 % in July (28 % were record-breaking). Extreme conditions persisted in the southeastern area of the region (mainly eastern Denmark, southeastern Sweden and southern Finland) until the end of the year.

The 30-year (top-six) ranking of lowest monthly groundwater levels in Sweden and Norway for each month May–August 2018 are shown in Fig. 7e–h (all months are shown in Fig. A9, and monthly standardised groundwater tables can be found in Fig. S6–7). Four (7 %) of the stations in Norway and Sweden had extremely low groundwater levels (rank of 1–6) in May 2018. In June, 43 % of the stations had a rank of 1–6 (7 % were record-breaking), expanding to 55 % (14 % record-breaking) in July and 63 % (14 % record-breaking) in August. Ranks between 1 and 6 were seen in 38–54 % of the wells until the end of 2018. Extremely low groundwater levels did not show any distinct spatial patterns. In several cases, stations located close to each other (pairs of the same point) showed different results, reflecting the importance of local conditions in determining the groundwater level.

The delay in groundwater response to precipitation (as defined in Sect. 3.3) varied among the study sites from 30 to 1500 days (Fig. 8a), whereas mean groundwater levels (measured from the surface) ranged from 0.36–13.4 m (median of 2.16 m; Fig. 8b). With one exception, the most extreme groundwater levels in Norway in June and July 2018 (in terms of ranks), were found for locations with the fastest response time, i.e. 30–90 days. Figure 8c shows the top-six groundwater ranks for each month throughout 2018, plotted with the response delay along the x-axis and the mean

groundwater level depth (Fig. 8b) along the y-axis. Extreme groundwater levels emerged in June in the most shallow wells (less than 3 meters depth from surface), followed by deeper wells in July–August, with response delays of up to 400 days. In September, the most shallow wells with the fastest response showed less extreme ranks, whereas deeper and more slowly responding wells started to experience extreme conditions. This pattern continued throughout 2018.

4.4 Relation between summer streamflow and large-scale atmospheric circulation

The three first principle components of the EOF analysis explained 52 % of the detrended and standardised summer streamflow variability over the period 1959–2018, and their time series and loadings are shown in Fig. 9. EOF1 explained 23 % of the variability and was mostly relevant for the streamflow in the western and northern part of Norway (Fig. 9a). EOF1 was also relevant for some stations in Denmark, which were characterised by high flow when stations in Norway had low flow and vice versa. In summer 2018, PC1 was close to one standard deviation higher than the time series mean (Fig. 9d), reflecting dry conditions in western and northern Norway. Similar to EOF1, EOF2 explained 21 % of the summer streamflow variability (Fig. 9b). EOF2 was mostly relevant for the streamflow in Denmark, southeastern Norway and southwestern Sweden. The PC2 time series indicated extreme low flow conditions in summer 2018 in these regions (Fig. 9e). A smaller amount of variability (8 %) was explained by EOF3 (Fig. 9c). EOF3 reflected opposite summer streamflow conditions in the west (Norway and Denmark) relative to the east (easternmost Norway, Sweden and Finland). The PC3 value for 2018 was close to the time series mean (Fig. 9f), and thus the conditions represented by EOF3 and PC3 were not relevant for the summer 2018.

Summers of low and high streamflow were related to the prevailing large-scale atmospheric circulation by extracting the summer HGT500 of low and high anomaly years from the three first PCs time series from the summer streamflow EOF analysis. Years with absolute PC values larger than one standard deviation from the time series mean were defined as high (positive values) and low (negative values) anomaly years. Summer (June–August) HGT500 composites for these years along with wind directions and significance, are shown in Fig. 10.

Summer low flow in western and northern Norway as indicated by high PC1 values, was associated with a high-pressure system centred over the Norwegian Sea and covering most of Fennoscandia, and a low-pressure system centred over the British Isles and over Russia at approx. 60° E. In summers with low PC1 values, western and northern parts of Fennoscandia lied on the border between a low-pressure system in the north and a high-pressure system in the south. Years of high (low) PC2 values were associated with a low-

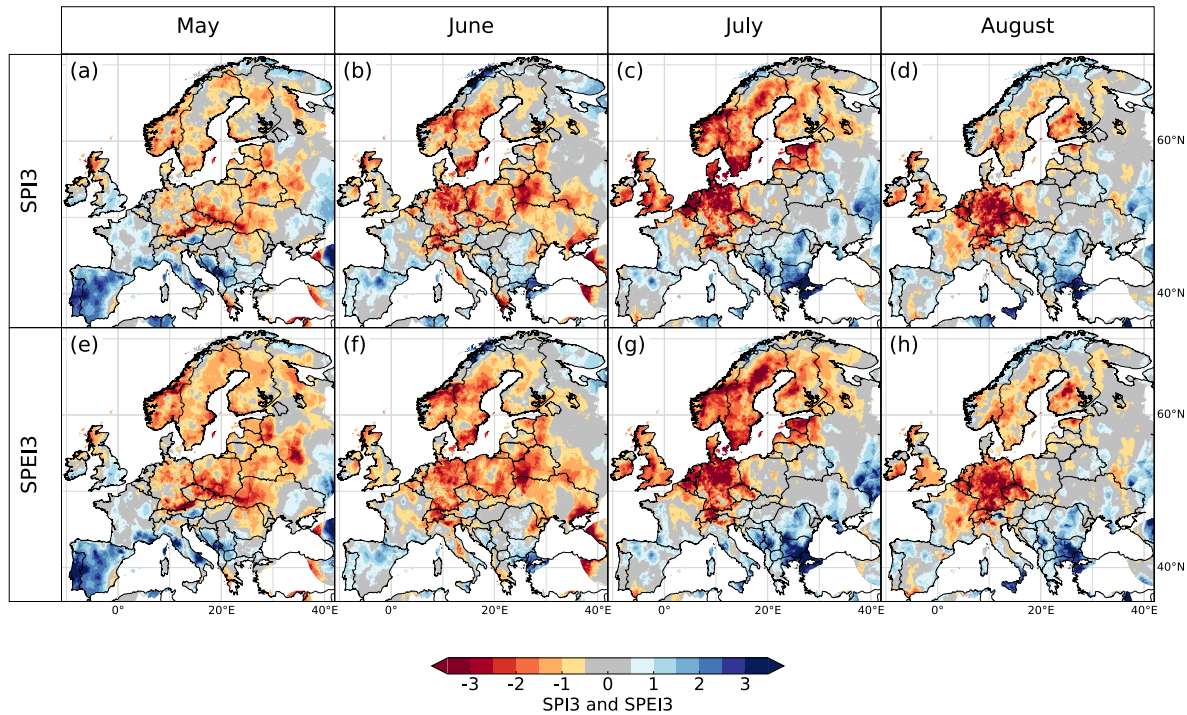


Figure 6. Meteorological drought 2018 indexed by SPI3 for (a) May, (b) June, (c) July and (d) August, and SPEI3 for (e) May, (f) June, (g) July and (h) August. Reference period used is 1971–2000.

pressure (high-pressure) system over the North Sea, flanked by a high-pressure (low-pressure) system on the central part of the North Atlantic and over Russia. These pressure systems covered the region with the largest EOF2 loadings, with summer high flow associated with cyclonic circulation, and summer low flow associated with the an anticyclonic circulation over the region. A high-pressure system centered over southern Scandinavia and a low-pressure system over Russia at approx. 40° E were observed for summers of high PC3 values, and a low-pressure system over the North Sea and southern Scandinavia for summers with low PC3 values.

5 Discussion

The 2018 extreme drought centred in northern Europe, substantially affected the Nordic region, particularly in late spring and summer before moving southwards in August. The Nordic region has widely different hydroclimatological and terrestrial characteristics as compared to other recently drought-affected regions, such as southern and central Europe in 2003 and 2015. This makes the drought of 2018 and its propagation in the hydrological cycle unique. Special for the region is a high diversity in hydroclimatological conditions, including the effect of snow on hydrology. Accordingly, the response to a meteorological drought and its propagation in the hydrological cycle will vary. Here, we

discuss the 2018 drought, first from a climatological perspective (Sect. 5.1), then by considering its hydrological footprint (Sect. 5.2). Further, the results of the EOF analysis, linking atmospheric circulation and low summer streamflow in the Nordic region, are discussed (Sect. 5.3), followed by some final remarks on the representativity of the hydrological data used in the study (Sect. 5.4).

5.1 The 2018 drought from a climatological perspective

The 2018 drought confirmed the central role of anticyclones in the development of northern (>40° N) Eurasian droughts as highlighted by Schubert et al. (2014). The strongest HGT500 anomalies over the period May–August were found in May and July. May was characterised by a cyclonic circulation centred over Greenland and western Russia, and pronounced anticyclonic circulation centred over the continental Nordic region, extending south to central North Atlantic and the east-coast of North America. This wave train pattern resembles the atmospheric circulation associated with the leading mode of drought variability over Europe as presented by Ionita et al. (2015). Large parts of the region experiencing anticyclonic conditions in the months from May–August 2018, also showed extreme temperatures (defined as having a rank between 1 and 6). The stronger the HGT500 anomaly, the more extreme the temperature, emphasising the strong link between the two variables.

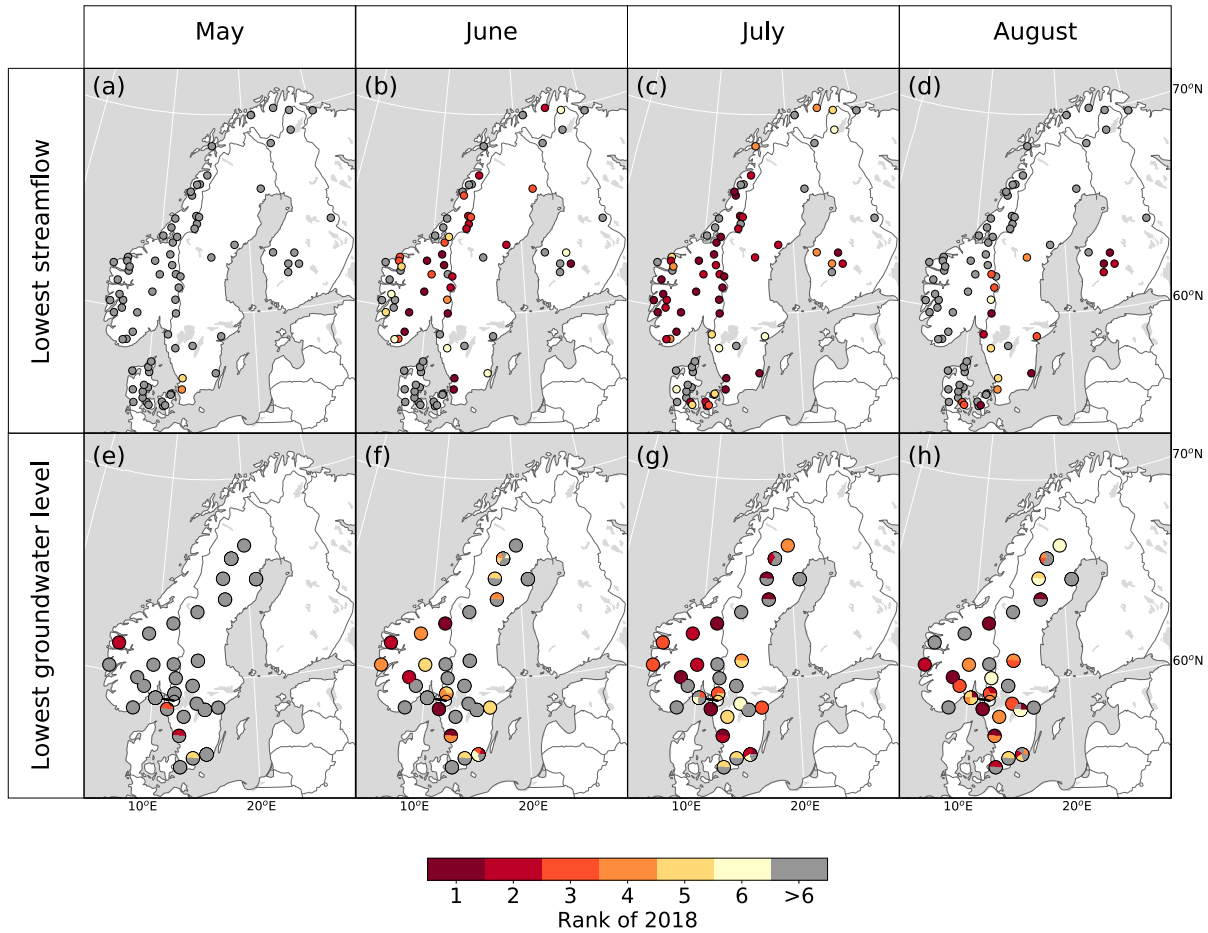


Figure 7. Top-six ranking of lowest streamflow for (a) May, (b) June, (c) July and (d) August, and top-six ranking of 2018 lowest groundwater level for (e) May, (f) June, (g) July and (h) August. Analysed period is 1959–2018 for streamflow and 1989–2018 for groundwater. A rank of one signifies that 2018 had the lowest monthly streamflow since 1959 (upper panel), or the lowest groundwater level in that month since 1989 (lower panel). A rank of two signifies that 2018 had the second most extreme value in that month, etc.

Overall, the observed positive SST anomalies in summer 2018 overlapped spatially with the anticyclonic circulation (positive HGT500 anomalies) in May and July 2018. Anomalous anticyclonic circulation, as observed in these two months, decrease convection and increase incoming solar radiation, leading to warmer SST in the underlying seas (Feudale and Shukla, 2011). The spatial pattern of SST anomalies in 2018 are similar to those in the summers of 2003 and 2015, representing two of the most extreme drought events in Europe in recent years (Ionita et al., 2017; Laaha et al., 2016; Fischer et al., 2007b; Black et al., 2004). During all three events, a persistent negative anomaly was centred south of Greenland over the period May–August. The anticyclonic centres and associated temperature extremes over continental Europe in 2018, were generally located more towards the northeast as compared to the 2003 and 2015 events. An overlapping region in central Europe experienced temperature extremes all three summers. Overall, most major European

streamflow droughts between 1960–90 were associated with high-pressure systems across central Europe (Stahl, 2001), highlighting the unique location of the 2018 event. This is especially the case for May and July, when the high-pressure system centred over the Nordic region was more than 3 std, respectively 2 std, away from the 60-year mean (Fig. A3). However, in August 2018, the region of extreme temperature moved southeast, covering a region extending from the southwest to northeast Europe, resembling the affected region in summer of 2015 (and to a lesser degree 2003).

Monthly precipitation extremes across the period May–August were not as widespread as temperature extremes, however, areas with extreme low precipitation (rank between 1 and 6), generally also experienced extreme high temperatures. Overall, the region affected was located further north as compared to previous large-scale droughts in Europe, such as the summer droughts in 2003 and 2015 (Ionita et al., 2017). The SPI3 and SPEI3 both showed similar northern

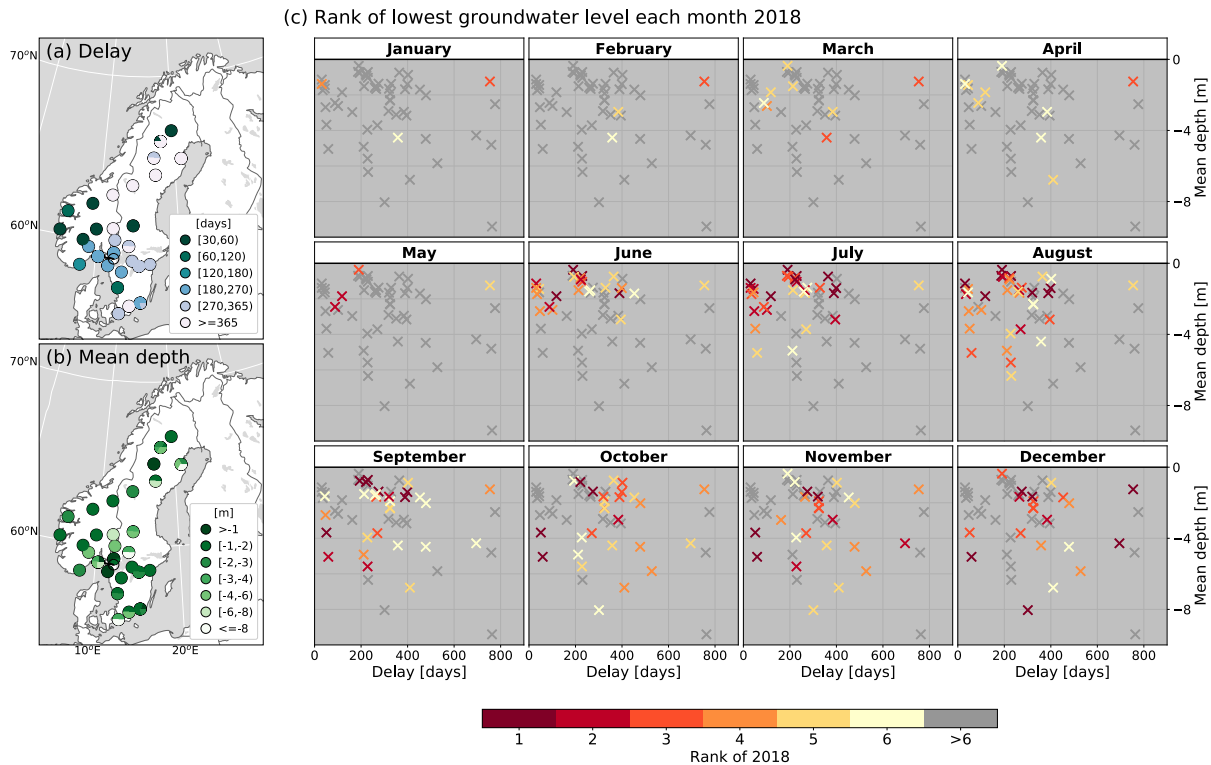


Figure 8. (a) Delay in groundwater response to precipitation, (b) mean 1989–2018 groundwater depth below surface, and (c) top-six ranking of lowest groundwater level in each month of 2018 plotted with each well’s delay and mean depth along the x-axis and y-axis, respectively. Two wells, one with delay of 1500 days and one with mean depth of -13.4 m, are outside the range of the ranking plots. Those two wells had no rank of 1–6 in April–December 2018.

European located dry anomalies. These indices both reflect a 3-month accumulated deficit in precipitation, respectively a climatic water deficit, and thus a higher consistency is seen in time. Furthermore, both indices showed widespread dry conditions already in April, reflecting conditions in the months February–April. As seen in Fig. A4, extreme high temperatures were seen already in April in large parts of Europe, which potentially led to drier than normal conditions in the soils.

For both SPI3 and SPEI3, the spatial extent of severe and extreme drought peaked in July. Overall, the percentage of grid cells showing extreme drought was higher for SPEI3, highlighting the importance of looking not only at precipitation when analysing the impact of drought, as already recognised by Stagge et al. (2017). The use of potential evapotranspiration in SPEI (rather than actual evapotranspiration) may be less an issue in the Nordic region where evapotranspiration in general is limited by energy, as opposed to water-limited areas dominating in central and southern Europe (McVicar et al., 2012). The inclusion of potential evapotranspiration in SPEI (as opposed to using only precipitation in SPI), may therefore prove acceptable for drought assessments in energy-limited regions. However, water may become a limiting factor in these regions in exceptional years,

such as the summer of 2018 (Buitink et al., 2020). As the soil dries out, it may give rise to a positive land-atmosphere feedback, i.e. an enhanced warming is seen as less energy is spent on evapotranspiration. Such soil moisture-temperature feedbacks have played an important role in the evolution of previous European heat waves (Fischer et al., 2007a), and may have played an important role in the 2018 event as well. Being outside the scope of this study, this would be an interesting aspect of a further study.

5.2 The 2018 drought from a hydrological perspective

Overall, drought impacts are commonly related to deficits in different components of the hydrological cycle, not in the meteorological variables as such. Key impacts of the 2018 drought were related to soil moisture (crop failure and wild fires) and hydrological drought (e.g. impacts on energy, water supply and aquatic ecosystems). As a drought propagate, the event is normally lagged, attenuated and lengthened as compared to the original meteorological event (Van Loon and Van Lanen, 2012; Van Loon et al., 2011). The degree to which this happens vary with event and region impacted. Furthermore, antecedent water storage (initial conditions), such as snow, glaciers and groundwater, plays an important role

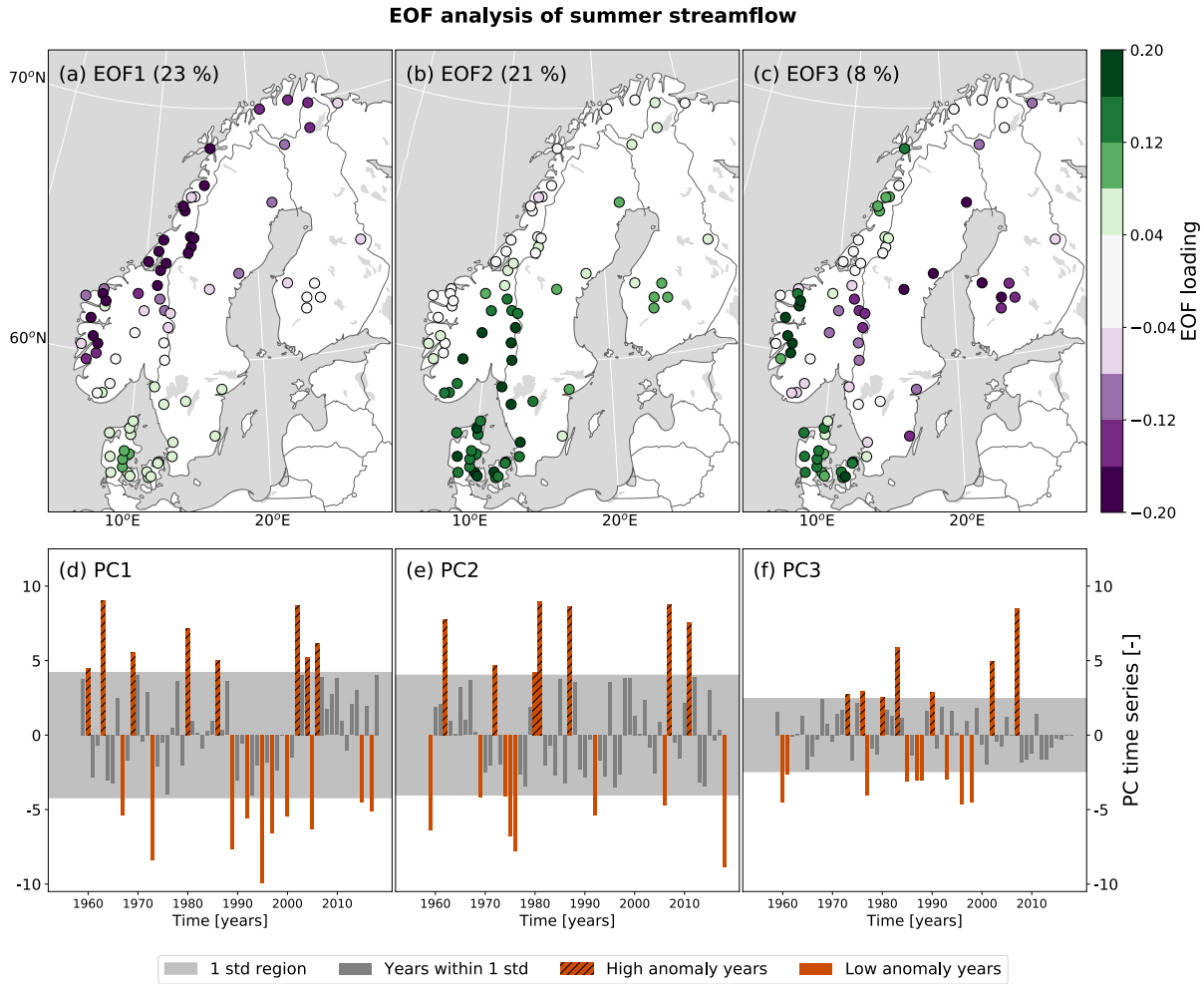


Figure 9. Empirical Orthogonal Function (EOF) analysis based on aggregated summer (June–August) standardised and detrended streamflow (1959–2018). Maps (a–c) show the EOF loadings and time series (d–f) show the three first principle components (PCs). The explained variability of each mode is given in brackets in the corresponding EOF plot. For each of the PCs, years with absolute values larger than one standard deviation (std) are highlighted as high (positive values) and low (negative values) anomaly years.

in the occurrence, timing and development of a hydrological drought.

In regions affected by seasonal snow, drought occurrence and propagation is to a large degree influenced by the snow volume and snowmelt timing as compared to a normal year. During the snow accumulation season in 2018, above normal precipitation fell in early winter in most of the Nordic region, and less than normal precipitation in western/northern Norway and Finland towards the end of the snow season (as indicated by SPI3; Fig. A6a–c). Most of the snow-dominated catchments (with the exception of the northernmost part of the Nordic region), experienced meteorological drought in May–July. Record high temperatures emerged during the snowmelt season (i.e. in May), and 19 stations (24 %), all with a mountain or inland regime, experienced one of their six highest May streamflow since 1959. For other stations affected by snowmelt, however, a more normal flood situ-

ation followed (Fig. S4–5); one hypothesis being that part of the snow was lost due to sublimation. In addition, higher than normal evapotranspiration rates led to less water feeding the streams. The high snowmelt and evapotranspiration rates likely caused an earlier end of the snowmelt season as well as a smaller total volume of melt water contribution to streamflow compared to normal (given the same preconditions). Following the snowmelt peak, streamflow drought started emerging in June in large parts of the Nordic region. Noteworthy exceptions were the three glacier dominated streamflow stations (Fig. S5), for which high summer temperatures led to high melt rates and sustained water contribution from the glaciers.

Streamflow stations without a snow season are mainly located in Denmark and southern Sweden. Extreme temperatures were found in part of this region in April, extending to the whole region in May. In southern Sweden, me-

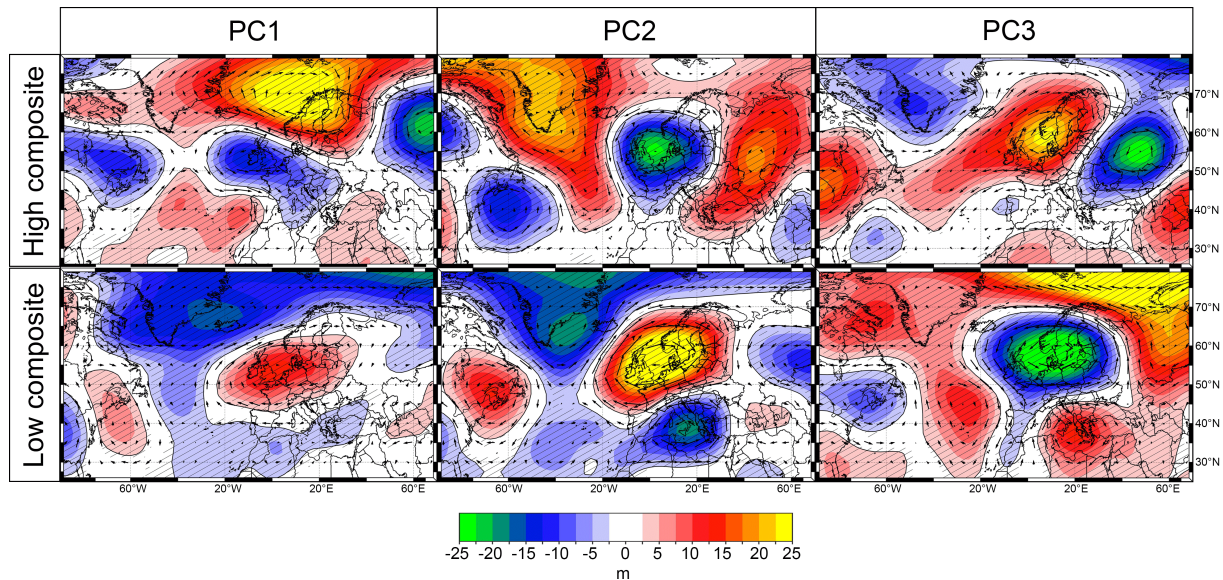


Figure 10. Composite maps of summer (June–August) Geopotential height at 500 mb (HGT500) anomaly relative to 1971–2000 for the first three PCs. High and low composites maps are shown, representing years with (positive and negative) values more extreme than one standard deviation in the corresponding PC time series.

teological and hydrological drought developed from May, and record-breaking low streamflow seen from June. Most of Denmark, on the other hand, did not experience a meteorological drought until July. Accordingly, streamflow drought was first observed in July and (to a lesser degree) August. However, this was only seen for stations located in the southeastern parts of Denmark. Stations in western and northern Denmark did not experience extremely low streamflow at all during May–August 2018. As a whole, Denmark had extremely low precipitation and severe to extreme meteorological drought, as indicated by SPI3, in July. A southeastern-northwestern gradient in extreme temperature (and SPEI3) this month, however, reflects the spatial pattern of extremely low streamflow in Denmark, indicating that higher than usual evapotranspiration rates likely contributed to extreme conditions in the southeast. Correspondingly, less extreme evapotranspiration in the west and north might have prevented streamflow drought to develop there.

Whereas extremely low streamflow conditions sustained in the southeastern area of the Nordic region (southeastern Denmark, southeastern Sweden and southern Finland) throughout 2018, streamflow in the north and western part of the region was replenished by high precipitation totals in August (Fig. S2h). This divide reflects the southeastern movement of the anticyclonic circulation as well as the cyclonic circulation over the Norwegian Sea in August, with winds from the North Sea bringing precipitation towards the coast. The precipitation did not only replenish the rivers and end the streamflow drought, but led to extremely wet conditions at several streamflow stations (Fig. S3–5). Western and northern stations experienced one of their six highest monthly

streamflow since 1959 in August (five stations), September (21 stations) and October (16 stations). In the southeastern area, extreme streamflow conditions persisted towards the end of 2018. Extreme conditions reappeared in November, even affecting stations that did not experience extremely low streamflow during the summer. This can be explained by continued below normal precipitation in September–October (Fig. S2), and a new high-pressure system over northeastern Europe in November leading to extremely low precipitation and severe to extreme meteorological drought in large parts of the southeastern Nordic region.

The groundwater wells were all located in areas affected by moderate to extreme meteorological drought, as indicated by SPEI3, in May, June, July and (to a lesser degree) August. The high spatial variability in hydrogeological properties across the Nordic region is mirrored in the diversity in groundwater response to meteorological conditions, as reflected in a high local variability for groundwater drought (rank between 1 and 6) even for closely located wells. Except for four wells that experienced low groundwater levels already from March, no wells showed groundwater drought in May. Similar to streamflow, this was likely due to wet preconditions, such as high groundwater levels and/or snow volumes recharging groundwater during the melt season (Fig. S6–7). In June, extreme conditions were found among the most shallow groundwater wells, probably due to high evapotranspiration rates in combination with precipitation deficits. From July onwards, extreme conditions were found in wells of increasing depth and response time. The extreme conditions first started to cease in the shallowest and fast responding wells from September. At the end of

the year, 38 % of the wells still experienced extreme conditions, and below normal groundwater levels persisted well into 2019 (e.g. Table 1,n). Similar to streamflow, this was likely a combined effect of a delay in the hydrological system, a continued below normal precipitation, and meteorological drought associated with a high-pressure system establishing over northeastern Europe in November.

5.3 Atmospheric circulation associated with low summer streamflow in the Nordic region

The EOF analysis revealed that more than half (52 %) of the variability in summer streamflow in the Nordic region (1959–2018), can be explained by the three first principle components, whereof the two first EOFs explained 44 % (Fig. 9). The analysis was somewhat biased towards Danish conditions, as the station density was much higher here compared to the rest of the region, in particular Sweden and Finland. EOF1 and EOF2 indicated two distinct patterns in summer streamflow variability; in western/northern Norway (EOF1) and in the southeastern part of the Nordic region (EOF2). During 1959–2018, low summer streamflow in the whole region only occurred twice, i.e. 1969 and 2006. These summers have also previously been identified as exceptionally dry by different drought indices (e.g. Spinoni et al., 2015; Hannaford et al., 2011), and here found to correspond to May–August HGT500 anomalies of more than 1 std above the 1959–2018 mean (Fig. 4).

High values of summer PC1 indicated low summer streamflow in the northwestern part of the Nordic region, and were associated with a high-pressure system over the Norwegian Sea (Fig. 10). Several of the streamflow stations with strong EOF1 loadings recorded extremely low streamflow values in June and July 2018. However, the summer of 2018 was not a high anomaly year in PC1, which might be due to the high precipitation in August 2018 replenishing the rivers.

Low values of PC2 indicated low summer streamflow in the southeastern part of the Nordic region, with the summer of 2018 as the most extreme year. This may result from the extreme streamflow conditions throughout June–August at several of the stations that had the strongest EOF loadings along the Sweden–Norway border and southern Sweden (Fig.7b–d). Following 2018, the most extreme low anomaly years, as indicated by PC2, were 1975–76. This period has previously been identified as benchmark drought event in western and northern Europe (e.g. Zaidman and Rees, 2000; Stahl, 2001). Low values of PC2 were also associated with a high-pressure system over the North Sea, surrounded by low-pressure systems over Greenland/North Atlantic, Russia and the Mediterranean region. The pattern has some resemblance with the Scandinavian teleconnection pattern (SCAN). Interestingly, May 2018 had the highest May SCAN value (of 1.69) and July 2018 the third highest July SCAN value (of 2.27, the highest being 2.61 from 1997)

over the period 1950–2019 (data from https://climexp.knmi.nl/data/icpc_sca.dat, retrieved 14.04.2020).

5.4 Hydrological data representativity

The streamflow dataset covers a rather wide range of catchments areas (6.6–10864 km²), and includes stations across all of Norway, Denmark, Sweden and Finland. However, the density of stations varies, being much higher in Denmark and Norway as compared to Sweden and Finland. This lack of spatial representation affects the EOF analysis in particular, but also the percentages of stations with extremely low streamflow.

The number of wells included in the groundwater dataset was strongly limited by the requirement of no/little human influence (or lack of knowledge thereof), data quality and the period defined. The selected groundwater wells are relatively shallow, with a median depth of 2.16 m below surface, however, the range across the region or average value is not known, thus it is difficult to state whether this is a representative set of wells or not. Nevertheless, the large span in the ‘delay in groundwater response’ variable suggests a good coverage. The groundwater dataset only covers Sweden and (southern) Norway, and as much as 46 of the 56 stations are located in Sweden, thus the results are biased towards Swedish conditions. In addition, several of the wells are located at the same site, often at different depths, affecting the spatial representativity of the dataset. Nevertheless, these wells confirm the high local variability seen in the groundwater level response, reflecting the local heterogeneity in hydrogeological properties. Accordingly, this calls for caution when drawing conclusions at a regional scale based on local groundwater data.

6 Conclusions

This study characterised the 2018 northern European drought from both a climatological and hydrological perspective. This event was unique in its northern location, affecting a region with highly diverse hydroclimatological conditions compared to the more central and southern parts of Europe, recently hit by major droughts such as the events of 2003 and 2015.

The North Atlantic and seas surrounding Europe experienced persistent anomalously high SST from May–August and record-breaking temperatures over the Nordic region in May and July, which were associated with record-breaking high-pressure systems overlying the region. Extreme monthly precipitation deficits were not as wide spread as extreme monthly temperatures, however the persistent lack of precipitation from May–July led to extreme meteorological drought (estimated by SPI3) in a region surrounding Denmark, including southern Norway, Sweden, Benelux and Germany. The meteorological drought in this region was

found more extreme when considering the climatic water balance (estimated by SPEI3), emphasising the importance of accounting for temperature (and not solely precipitation as in SPI) in meteorological drought assessments. After July, the high-pressure system shifted southward and centred over Germany, and meteorological drought was only seen in small clusters across the Nordic region.

Whereas record-breaking temperatures and moderate meteorological drought emerged over most of the Nordic region in May, hydrological drought (estimated as monthly ranks between 1–6 of streamflow and groundwater) did not appear before June. Snow plays an important role over large parts of the region, and at many locations the streamflow were still fed by meltwater during May 2018. The number of stations experiencing extremely low streamflow (rank between 1 and 6) expanded from 43 % in June to 68 % in July. Stations with more than 30 % of their catchment covered by glaciers did not experienced streamflow drought during the summer due to the contribution of glacial melt water. In mid-August, high precipitation totals replenished rivers in western and northern parts of the Nordic region, whereas extremely low streamflow persisted throughout 2018 in southeastern parts. Groundwater drought peaked in August with 63 % of the stations experiencing extremely low groundwater levels (rank between 1 and 6). The spatial and temporal patterns of groundwater drought were heterogeneous, and an interpretation of the patterns first made sense when looking at the groundwater depth and ‘delay in groundwater response to precipitation’ combined. Extremely low groundwater levels emerged in the shallowest wells in June. With time, extreme conditions were found in wells of increasing depth and response delay, and by the end of 2018, 38 % of the wells had extreme low groundwater levels. The high local variability observed in the development of groundwater drought in 2018, highlights the care and awareness needed when analysing groundwater drought at the regional scale based on local well data with different site characteristics.

The leading modes of Nordic summer streamflow variability (1959–2018) revealed two distinct patterns in summer streamflow variability; one in the western/northern part and one in the southeastern part of the region. As identified by composite maps of summer geopotential height anomalies, high-pressure systems centred over the Norwegian Sea and the North Sea were associated with low summer streamflow in the western/northern and southeastern part of the Nordic region, respectively. In both cases, significant high-pressure systems overlaid the region experiencing low summer streamflow, emphasising the important link between streamflow variability and large-scale atmospheric circulation.

The complexity of the 2018 drought event as revealed by the large variability in drought characteristics seen across space and time in the Nordic region, serves as yet another example of the care needed when analysing drought in different components of the hydrological cycle. The diversity,

caused by high local variability in terrestrial properties, reflects different responses to the meteorological forcing and thus, different footprints of meteorological and hydrological drought. As the majority of drought impacts are felt on the ground, and thus more directly related to hydrology than meteorology, it is important to incorporate variables other than weather alone, when characterising drought.

Data availability. Our study is based on third party data. Citations to the datasets are included in the reference list, and data providers are acknowledged in the acknowledgment section.

Author contributions. SJB, MI and LMT designed the study. MI performed the analysis and visualization of the geopotential height anomalies, and SJB performed the analysis and visualization of the remaining. SJB and LMT prepared the original draft. All authors reviewed and edited the final manuscript.

Competing interests. The authors declare that they have no conflict of interest.

Acknowledgements. Data providers are greatly acknowledged. HadISST data was obtained from <https://www.metoffice.gov.uk/hadobs/hadisst/> and are © British Crown Copyright, Met Office, 2020, provided under a Non-Commercial Government Licence <http://www.nationalarchives.gov.uk/doc/non-commercial-government-licence/version/2/>. NCEP-NCAR 40-year reanalysis project data was obtained from <ftp://ftp.cdc.noaa.gov/Datasets/ncep.reanalysis.derived/pressure/>. We acknowledge the E-OBS dataset from the EU-FP6 project UERRA (<http://www.uerra.eu>) and the Copernicus Climate Change Service, and the data providers in the ECA&D project (<https://www.ecad.eu>). We thank the Norwegian Water Resources and Energy Directorate (NVE), Danish Environment Portal for Denmark, Swedish Meteorological and Hydrological Institute (SMHI) and Finnish Environmental Institute (SYKE) for providing streamflow data for Norway, Denmark, Sweden and Finland, respectively. We also thank NVE and the Geological Survey of Sweden (SGU) for providing groundwater data for Norway and Sweden, respectively. Funding by the AWI Strategy Fund Project - PalEX and by the Helmholtz Climate Initiative - REKLIM are gratefully acknowledged. This paper supports the work of the UNESCO-IHP VIII FRIEND programme and the Panta Rhei Initiative of the International Association of Hydrological Sciences (IAHS).

References

Barker, L. J., Hannaford, J., Chiverton, A., and Svensson, C.: From meteorological to hydrological drought using standardised indicators, *Hydrology and Earth System Sciences*, 20, 2483–2505, 2016.

- Barriopedro, D., Fischer, E. M., Luterbacher, J., Trigo, R. M., and García-Herrera, R.: The hot summer of 2010: redrawing the temperature record map of Europe, *Science*, 332, 220–224, 2011.
- Beguiría, S., Vicente-Serrano, S. M., Reig, F., and Latorre, B.: Standardized precipitation evapotranspiration index (SPEI) revisited: parameter fitting, evapotranspiration models, tools, datasets and drought monitoring, *International Journal of Climatology*, 34, 3001–3023, 2014.
- Black, E., Blackburn, M., Harrison, G., Hoskins, B., and Methven, J.: Factors contributing to the summer 2003 European heatwave, *Weather*, 59, 217–223, 2004.
- Bordi, I., Fraedrich, K., and Sutera, A.: Observed drought and wetness trends in Europe: an update, *Hydrology and Earth System Sciences*, 13, 1519–1530, 2009.
- Buitink, J., Swank, A. M., van der Ploeg, M., Smith, N. E., Benninga, H.-J. F., van der Bolt, F., Carranza, C. D., Koren, G., van der Velde, R., and Teuling, A. J.: Anatomy of the 2018 agricultural drought in The Netherlands using in situ soil moisture and satellite vegetation indices, *Hydrology and Earth System Sciences Discussions*, pp. 1–17, 2020.
- Buras, A., Rammig, A., and Zang, C. S.: Quantifying impacts of the 2018 drought on European ecosystems in comparison to 2003, *Biogeosciences*, 17, 1655–1672, 2020.
- Changnon, S.: Detecting drought conditions in Illinois, Illinois State Water Survey, Champaign, Illinois, USA, Circular, 169, 1–36, 1987.
- Cornes, R. C., van der Schrier, G., van den Besselaar, E. J., and Jones, P. D.: An Ensemble Version of the E-OBS Temperature and Precipitation Data Sets, *Journal of Geophysical Research: Atmospheres*, 123, 9391–9409, <https://doi.org/10.1029/2017JD028200>, 2018.
- Dawson, A.: eofs: A library for eof analysis of meteorological, oceanographic, and climate data, *Journal of Open Research Software*, 4, 2016.
- Deutscher Wetterdienst: Monatlicher Klimastatus Deutschland Mai 2018, Tech. rep., Deutscher Wetterdienst, www.dwd.de/DE/derdwd/bibliothek/fachpublikationen/selbstverlag/selbstverlag_node.html, 2018.
- Feudale, L. and Shukla, J.: Influence of sea surface temperature on the European heat wave of 2003 summer. Part I: an observational study, *Climate dynamics*, 36, 1691–1703, 2011.
- Fischer, E. M., Seneviratne, S. I., Lüthi, D., and Schär, C.: Contribution of land-atmosphere coupling to recent European summer heat waves, *Geophysical Research Letters*, 34, 2007a.
- Fischer, E. M., Seneviratne, S. I., Vidale, P. L., Lüthi, D., and Schär, C.: Soil moisture–atmosphere interactions during the 2003 European summer heat wave, *Journal of Climate*, 20, 5081–5099, 2007b.
- Fleig, A. K., Tallaksen, L. M., Hisdal, H., and Hannah, D. M.: Regional hydrological drought in north-western Europe: linking a new Regional Drought Area Index with weather types, *Hydrological Processes*, 25, 1163–1179, 2011.
- Gottschalk, L., Jensen, J. L., Lundquist, D., Solantie, R., and Tollan, A.: Hydrologic regions in the Nordic countries, *Hydrology Research*, 10, 273–286, 1979.
- Grinde, L., Kristiansen, S., and Mamen, J.: Været i Norge – Klimatologisk månedsoversikt Mai 2018, Tech. rep., Norwegian Meteorological Institute, 2018a.
- Grinde, L., Lundstad, E., Skaland, R., and Tajet, H. T. T.: Været i Norge – Klimatologisk månedsoversikt Juli 2018, Tech. rep., Norwegian Meteorological Institute, 2018b.
- Gudmundsson, L. and Stagge, J. H.: SCI: Standardized Climate Indices such as SPI, SRI or SPEI, r package version 1.0-2, 2016.
- Guttman, N. B.: Accepting the standardized precipitation index: a calculation algorithm 1, *JAWRA Journal of the American Water Resources Association*, 35, 311–322, 1999.
- Hannaford, J., Lloyd-Hughes, B., Keef, C., Parry, S., and Prudhomme, C.: Examining the large-scale spatial coherence of European drought using regional indicators of precipitation and streamflow deficit, *Hydrological Processes*, 25, 1146–1162, 2011.
- Hannah, D. M., Demuth, S., van Lanen, H. A., Looser, U., Prudhomme, C., Rees, G., Stahl, K., and Tallaksen, L. M.: Large-scale river flow archives: importance, current status and future needs, *Hydrological Processes*, 25, 1191–1200, 2011.
- Hargreaves, G. H. and Samani, Z. A.: Reference crop evapotranspiration from temperature, in: *Proceedings of the Winter Meeting of American Society of Agricultural and Biological Engineers*, pp. 96–99, 1985.
- Haslinger, K., Koffler, D., Schöner, W., and Laaha, G.: Exploring the link between meteorological drought and streamflow: Effects of climate-catchment interaction, *Water Resources Research*, 50, 2468–2487, 2014.
- Hirschi, M., Mueller, B., Dorigo, W., and Seneviratne, S. I.: Using remotely sensed soil moisture for land–atmosphere coupling diagnostics: The role of surface vs. root-zone soil moisture variability, *Remote Sensing of Environment*, 154, 246–252, 2014.
- Hisdal, H. and Tallaksen, L. M.: Drought event definition, ARIDE Technical Report 6, University of Oslo, Norway, 2000.
- Ionita, M., Lohmann, G., Rambu, N., Chelcea, S., and Dima, M.: Interannual to decadal summer drought variability over Europe and its relationship to global sea surface temperature, *Climate Dynamics*, 38, 363–377, 2012.
- Ionita, M., Boroneant, C., and Chelcea, S.: Seasonal modes of dryness and wetness variability over Europe and their connections with large scale atmospheric circulation and global sea surface temperature, *Climate dynamics*, 45, 2803–2829, 2015.
- Ionita, M., Tallaksen, L., Kingston, D., Stagge, J., Laaha, G., Van Lanen, H., Scholz, P., Chelcea, S., and Haslinger, K.: The European 2015 drought from a climatological perspective, *Hydrology and Earth System Sciences*, 21, 1397–1419, 2017.
- Kalnay, E., Kanamitsu, M., Kistler, R., Collins, W., Deaven, D., Gandin, L., Iredell, M., Saha, S., White, G., Woollen, J., et al.: The NCEP/NCAR 40-year reanalysis project, *Bulletin of the American meteorological Society*, 77, 437–472, 1996.
- Kerr, Y. H.: Soil moisture from space: Where are we?, *Hydrogeology journal*, 15, 117–120, 2007.
- Kingston, D. G., Fleig, A. K., Tallaksen, L. M., and Hannah, D. M.: Ocean–atmosphere forcing of summer streamflow drought in Great Britain, *Journal of Hydrometeorology*, 14, 331–344, 2013.
- Kingston, D. G., Stagge, J. H., Tallaksen, L. M., and Hannah, D. M.: European-scale drought: understanding connections between atmospheric circulation and meteorological drought indices, *Journal of Climate*, 28, 505–516, 2015.
- Kirkhusmo, L.: Groundwater fluctuation patterns in Scandinavia, NHP-report, pp. 32–35, 1988.

- Kumar, R., Musuza, J. L., Loon, A. F. V., Teuling, A. J., Barthel, R., Ten Broek, J., Mai, J., Samaniego, L., and Attinger, S.: Multiscale evaluation of the Standardized Precipitation Index as a groundwater drought indicator, *Hydrology and Earth System Sciences*, 20, 1117–1131, 2016.
- Laaha, G., Gauster, T., Tallaksen, L., Vidal, J.-P., Stahl, K., Prudhomme, C., Heudorfer, B., Vlnas, R., Ionita, M., Van Lanen, H. A., et al.: The European 2015 drought from a hydrological perspective, *Hydrology and Earth System Sciences*, 21, 3001–3024, 2016.
- Liu, Q., Reichle, R. H., Bindlish, R., Cosh, M. H., Crow, W. T., de Jeu, R., De Lannoy, G. J., Huffman, G. J., and Jackson, T. J.: The contributions of precipitation and soil moisture observations to the skill of soil moisture estimates in a land data assimilation system, *Journal of Hydrometeorology*, 19, 2018.
- Lloyd-Hughes, B. and Saunders, M. A.: A drought climatology for Europe, *International journal of climatology*, 22, 1571–1592, 2002.
- McKee, T. B., Doesken, N. J., Kleist, J., et al.: The relationship of drought frequency and duration to time scales, in: *Proceedings of the 8th Conference on Applied Climatology*, pp. 179–184, American Meteorological Society, Anaheim, CA, 1993.
- McVicar, T. R., Roderick, M. L., Donohue, R. J., Li, L. T., Van Niel, T. G., Thomas, A., Grieser, J., Jhajharia, D., Himri, Y., Mahowald, N. M., et al.: Global review and synthesis of trends in observed terrestrial near-surface wind speeds: Implications for evaporation, *Journal of Hydrology*, 416, 182–205, 2012.
- Mishra, A. K. and Singh, V. P.: A review of drought concepts, *Journal of hydrology*, 391, 202–216, 2010.
- NHMP (National Hydrological Monitoring Programme): Hydrological Summary for the United Kingdom: October 2017, Tech. rep., Centre for Ecology and Hydrology, Wallingford, United Kingdom, 2017.
- Peters, E., Torfs, P., Van Lanen, H., and Bier, G.: Propagation of drought through groundwater—a new approach using linear reservoir theory, *Hydrological processes*, 17, 3023–3040, 2003.
- Rayner, N., Parker, D. E., Horton, E., Folland, C. K., Alexander, L. V., Rowell, D., Kent, E., and Kaplan, A.: Global analyses of sea surface temperature, sea ice, and night marine air temperature since the late nineteenth century, *Journal of Geophysical Research: Atmospheres*, 108, 2003.
- Schenk, H. J. and Jackson, R. B.: The global biogeography of roots, *Ecological monographs*, 72, 311–328, 2002.
- Schubert, S., Wang, H., and Suarez, M.: Warm season subseasonal variability and climate extremes in the Northern Hemisphere: The role of stationary Rossby waves, *Journal of Climate*, 24, 4773–4792, 2011.
- Schubert, S. D., Wang, H., Koster, R. D., Suarez, M. J., and Groisman, P. Y.: Northern Eurasian heat waves and droughts, *Journal of Climate*, 27, 3169–3207, 2014.
- Seneviratne, S. I., Corti, T., Davin, E. L., Hirschi, M., Jaeger, E. B., Lehner, I., Orlowsky, B., and Teuling, A. J.: Investigating soil moisture–climate interactions in a changing climate: A review, *Earth-Science Reviews*, 99, 125–161, 2010.
- Sømme, A.: *A Geography of Norden: Denmark, Finland, Iceland, Norway, Sweden*, J.W. Cappelens Forlag, Oslo, 1960.
- Spinoni, J., Naumann, G., Vogt, J. V., and Barbosa, P.: The biggest drought events in Europe from 1950 to 2012, *Journal of Hydrology: Regional Studies*, 3, 509–524, 2015.
- Stagge, J. H., Tallaksen, L. M., Xu, C., and Van Lanen, H.: Standardized precipitation–evapotranspiration index (SPEI): Sensitivity to potential evapotranspiration model and parameters, *Proceedings of FRIEND-water*, pp. 367–373, 2014.
- Stagge, J. H., Tallaksen, L. M., Gudmundsson, L., Van Loon, A. F., and Stahl, K.: Candidate distributions for climatological drought indices (SPI and SPEI), *International Journal of Climatology*, 35, 4027–4040, 2015.
- Stagge, J. H., Kingston, D. G., Tallaksen, L. M., and Hannah, D. M.: Observed drought indices show increasing divergence across Europe, *Scientific reports*, 7, 14045, 2017.
- Stahl, K.: Hydrological drought: A study across Europe, Ph.D. thesis, Institut für Hydrologie der Universität, <http://www.hydrology.uni-freiburg.de/publika/band15.html>, 2001.
- Stahl, K., Kohn, I., Blauhut, V., Urquijo, J., De Stefano, L., Acácio, V., Dias, S., Stagge, J. H., Tallaksen, L. M., Kampragou, E., et al.: Impacts of European drought events: insights from an international database of text-based reports, *Natural Hazards and Earth System Sciences*, 16, 801–819, 2016.
- Tallaksen, L. M. and Van Lanen, H. A.: Hydrological drought: processes and estimation methods for streamflow and groundwater, vol. 48, Elsevier, 2004.
- Tallaksen, L. M., Hisdal, H., and Van Lanen, H. A.: Space–time modelling of catchment scale drought characteristics, *Journal of Hydrology*, 375, 363–372, 2009.
- Van Lanen, H. A., Laaha, G., Kingston, D. G., Gauster, T., Ionita, M., Vidal, J.-P., Vlnas, R., Tallaksen, L. M., Stahl, K., Hannaford, J., et al.: Hydrology needed to manage droughts: the 2015 European case, *Hydrological Processes*, 30, 3097–3104, 2016.
- Van Loon, A. F.: Hydrological drought explained, *Wiley Interdisciplinary Reviews: Water*, 2, 359–392, 2015.
- Van Loon, A. F. and Van Lanen, H. A.: A process-based typology of hydrological drought, *Hydrology and Earth System Sciences*, 16, 1915, 2012.
- Van Loon, A. F., van Lanen, H. A., Tallaksen, L. M., Hanel, M., Fendeková, M., Machilica, M., Sapriza, G., Koutroulis, A., van Huijgevoort, M. H., Bermúdez, J. J., et al.: Propagation of drought through the hydrological cycle, Tech. rep., European Commission, 2011.
- Vicente-Serrano, S. M., Beguería, S., and López-Moreno, J. I.: A multiscalar drought index sensitive to global warming: the standardized precipitation evapotranspiration index, *Journal of climate*, 23, 1696–1718, 2010.
- Vicente-Serrano, S. M., Lopez-Moreno, J.-I., Beguería, S., Lorenzo-Lacruz, J., Sanchez-Lorenzo, A., García-Ruiz, J. M., Azorin-Molina, C., Morán-Tejeda, E., Revuelto, J., Trigo, R., et al.: Evidence of increasing drought severity caused by temperature rise in southern Europe, *Environmental Research Letters*, 9, 044001, 2014.
- Vidal, J.-P., Martin, E., Franchistéguy, L., Habets, F., Soubeyroux, J.-M., Blanchard, M., and Baillon, M.: Multilevel and multiscale drought reanalysis over France with the Safran-Isba-Modcou hydrometeorological suite, *Hydrology and Earth System Sciences Discussions*, 14, 459–478, 2010.
- Wilks, D. S.: *Statistical Analysis in the Atmospheric Sciences*, London: Academic Press, 2006.
- WMO (World Meteorological Organization): Standardized precipitation index user guide, 2012.

WMO (World Meteorological Organization) and GWP (Global Water Partnership): Handbook of Drought Indicators and Indices, World Meteorological Organization and Global Water Partnership, Geneva, Switzerland, 2016.

- 5 Yang, Y., Donohue, R. J., and McVicar, T. R.: Global estimation of effective plant rooting depth: Implications for hydrological modeling, *Water Resources Research*, 52, 8260–8276, 2016.

Zaidman, M. and Rees, H.: Spatial patterns of streamflow drought in Western Europe 1960–1995, Tech. rep., Technical Report to
10 the ARIDE project, 2000.

Appendix A

A1

Streamflow regimes shown in Fig. 1 are calculated following the regime classification of Gottschalk et al. (1979), which consists of five main classes: Mountain, Inland, Transition, Baltic, and Atlantic regime. The classification is based on when high and low monthly streamflow typically occur during the year. Exact periods of low and high flow occurrences for each class are not provided in Gottschalk et al. (1979). Thus, we had to make choices regarding which months to be included for the definition of each class. Specifically, we calculated the 1959–2018 mean streamflow for each month, and classified the stations as follows:

- Mountain regime is characterised by the two months of lowest flow occurring in winter or early spring due to snow accumulation, and the three months of highest flow occurring in spring or early summer due to snow melt. Because the snow melt season typically occur later with increasing altitude or latitude, a somewhat generous period for snow melt was applied. Mountain regime was assigned to stations with the two lowest monthly flow in January–April and three highest monthly flow in March–August. November and December were not included in the low flow season because none of the streamflow stations had the minimum or second minimum flow in these months. Whereas most Mountain regimes in this study had a distinct maximum flow in May or June, three of them had a later and less distinct peak in July. The later high flow peak is explained by the contribution of melt water from glaciers, which cover more than 30 % of the catchment of these three stations.
- Inland regime also have low flow during winter or early spring and high flow during snow melt, however, the second or third highest monthly flow occur during rainfall in autumn. Thus, the same months as for Mountain regime were used to define low flow period and snow melt period, whereas the autumn period was defined as September–November.
- Atlantic regimes have the highest monthly flow in autumn or winter due to rainfall, and the two months with lowest flow during summer or autumn due to high evapotranspiration and/or low precipitation. Atlantic regime was assigned to stations with the highest monthly flow in September–February and the two lowest monthly flows in June–October.
- Baltic regime have the same definition of the low flow period as Atlantic regime. However, either the second or third highest monthly flow occurs in September–February, whereas the highest flow occur during the snow melt period, here defined as March–May.

- Transition regime was assigned to stations that was not assigned to any of the other regimes, and is an intermediate regime between Inland and Baltic regime.

A2

The groundwater regime classification in Fig. 2 is based on the classification of groundwater fluctuation patterns by Kirkhusmo (1988) who divides groundwater fluctuation patterns into three idealised regions, with the possibility of a time shifted version of each fluctuation pattern. Region I represents groundwater levels reaching their maximum in late winter or early spring and their minimum in late summer (similar to Atlantic streamflow regime), Region II consists of groundwater levels with two annual maxima and two annual minima (similar to Transition streamflow regime), and Region III represent groundwater levels with a minimum just before the snowmelt, and a maximum after the snowmelt (similar to Mountain streamflow regime). In this study, we calculated the 1989–2018 mean groundwater level for each month and defined the classes as follows:

- If the three months with highest groundwater level occur in October–April or in January–May and the three months with lowest groundwater level occur in June–December, the groundwater station was classified as belonging to Region I.
- If the three months with highest groundwater level occur in April–July and all the three months with lowest groundwater level occur in December–May, the station was classified as Region III.
- If instead of during April–July, the three months with highest groundwater level occur in May–November, and the three months with lowest groundwater level still occur in December–May, we assumed a time-lag effect and the station was classified as Region III delayed.
- If neither of the above, and the groundwater level have two minima and two maxima during the year, the groundwater station was classified as Region II.
- For the remaining three stations, the three months with highest groundwater level occurred in April–July and the three months with lowest groundwater level occurred in October–January, and these stations were classified as Region I delayed.

A3

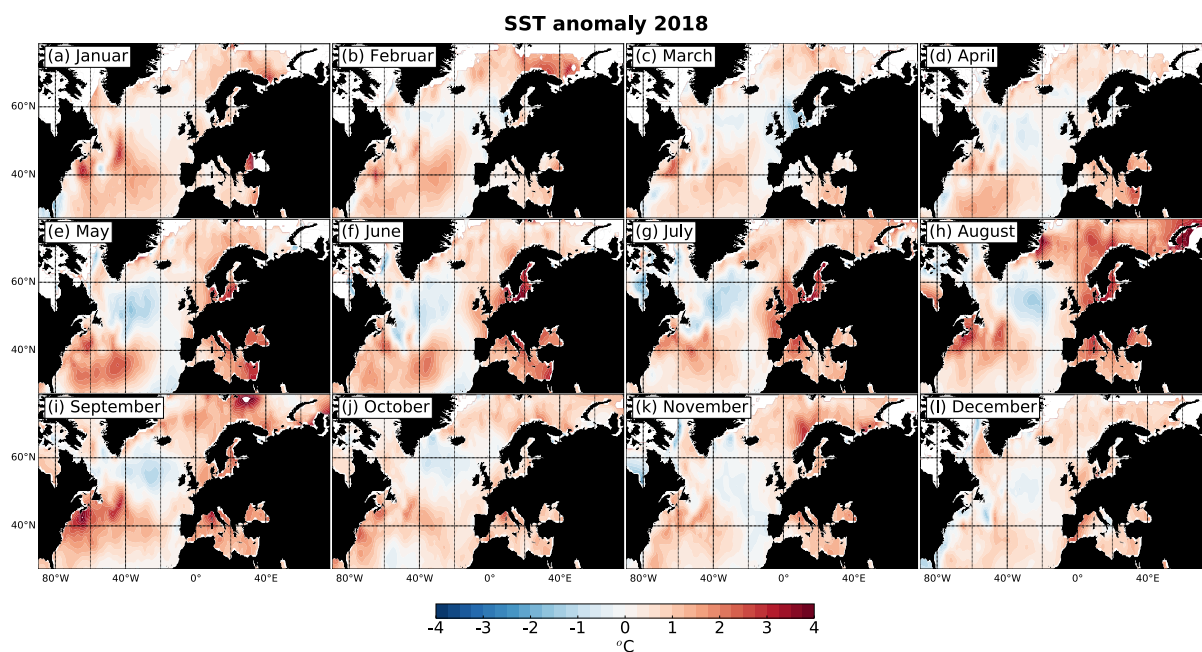


Figure A1. Monthly Sea Surface Temperature (SST) anomalies throughout 2018 relative to the reference period 1971–2000.

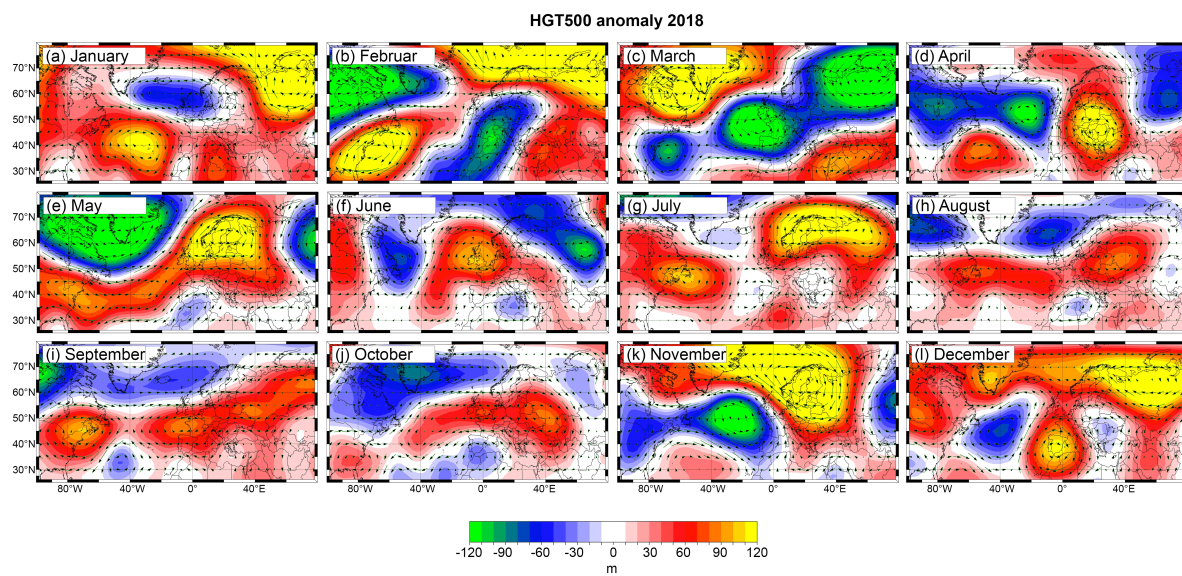


Figure A2. Monthly geopotential height at 500 mb (HGT500) anomalies throughout 2018 relative to the reference period 1971–2000.

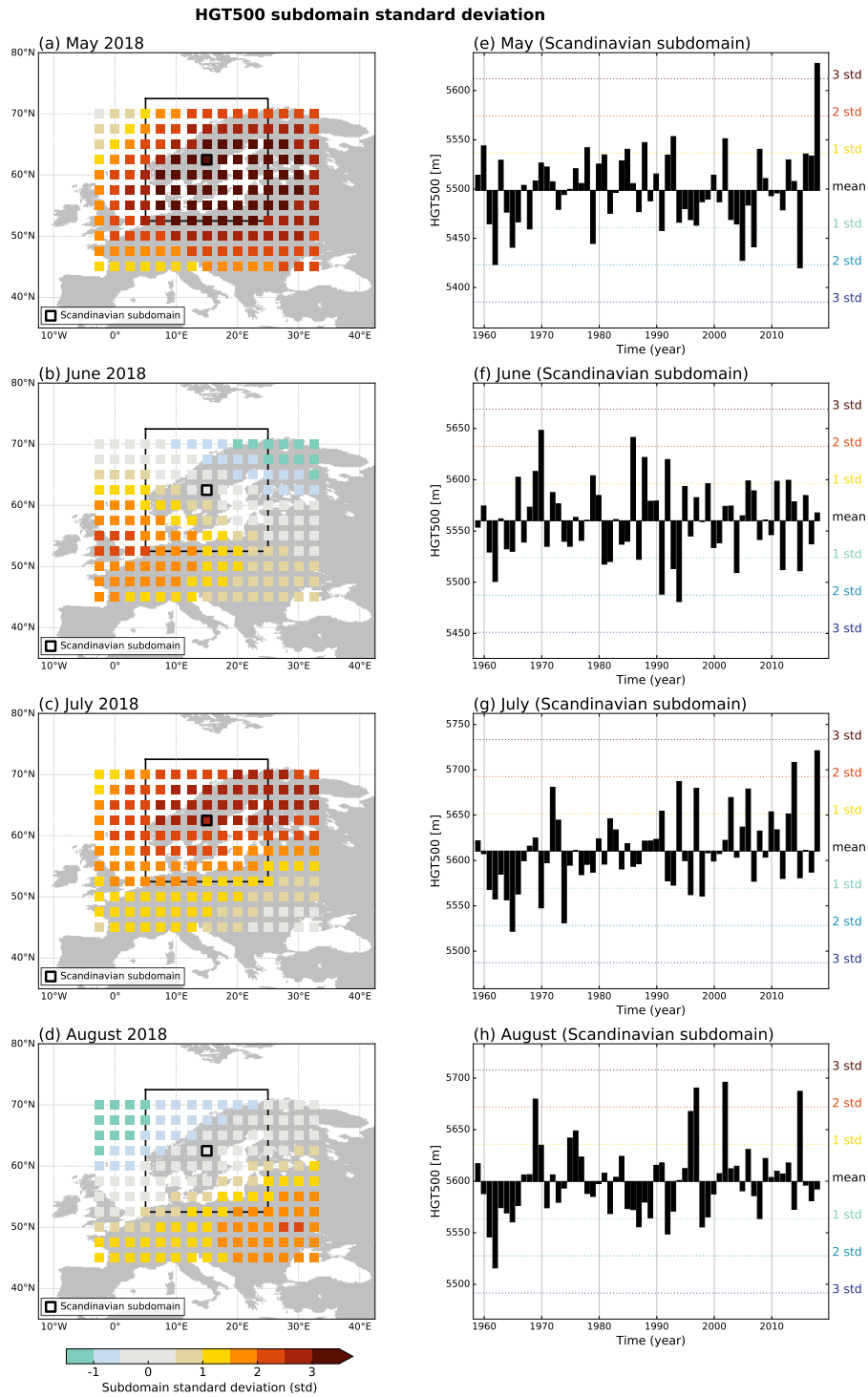


Figure A3. Left panel: Geopotential height at 500 mb (HGT500) shown as standard deviation (std) of (a) May, (b) June, (c) July and (d) August 2018 based on the 60-year period (1959–2018) for subdomains of 20° longitude/latitude throughout Europe, shifted 2.5° at a time. The coloured squares are the center points of each subdomain. This is illustrated for one subdomain over Scandinavia, with a large and a small square marking the subdomain’s border and centerpoint, respectively. Right panel: HGT500 1959–2018 time series of (e) May, (f) June, (g) July and (h) August for the Scandinavian subdomain. Note the different ranges of the y-axes.

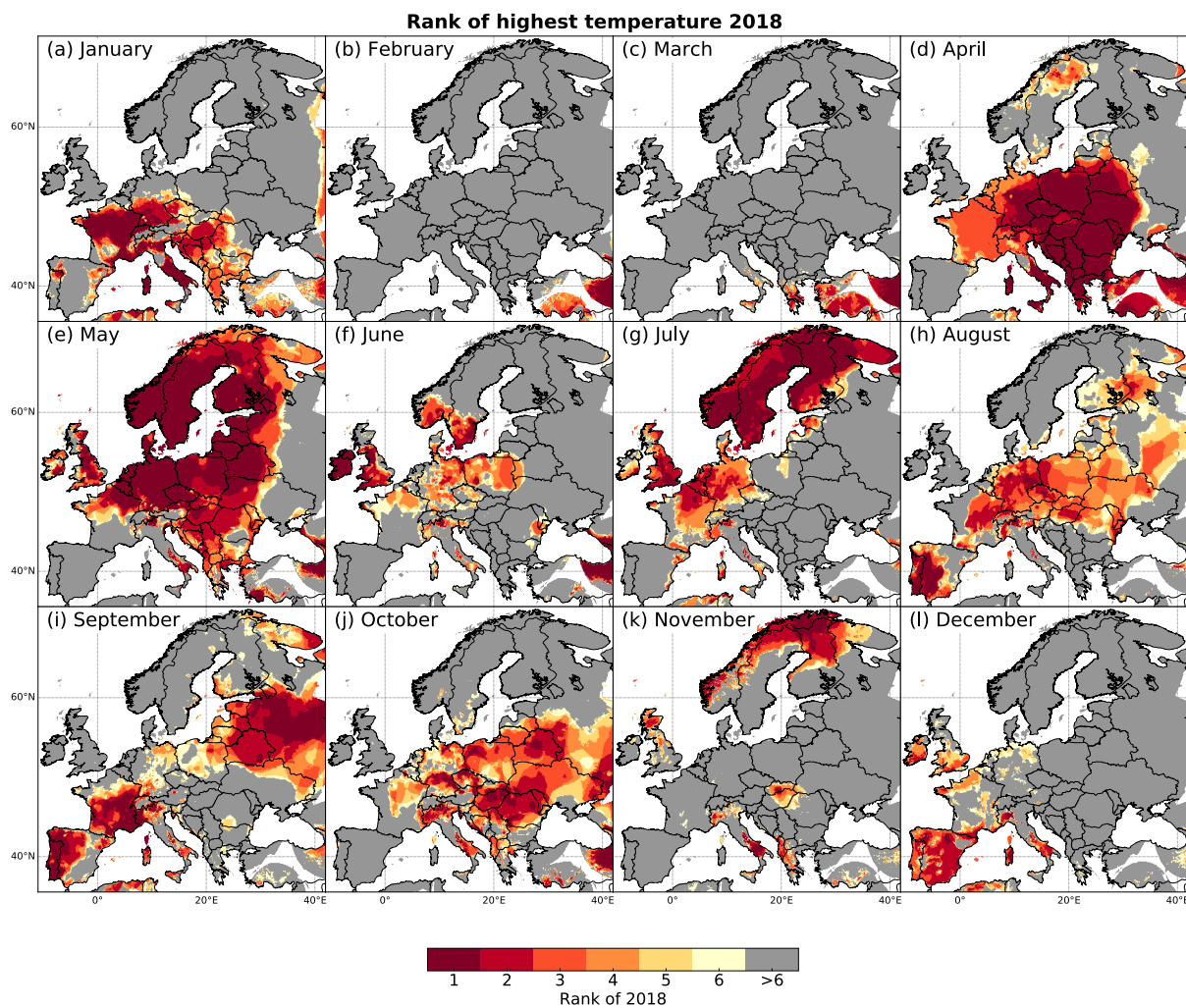


Figure A4. Top-six ranking of 2018 monthly highest temperature (monthly mean of daily maximum temperature) relative to the period 1959–2018.

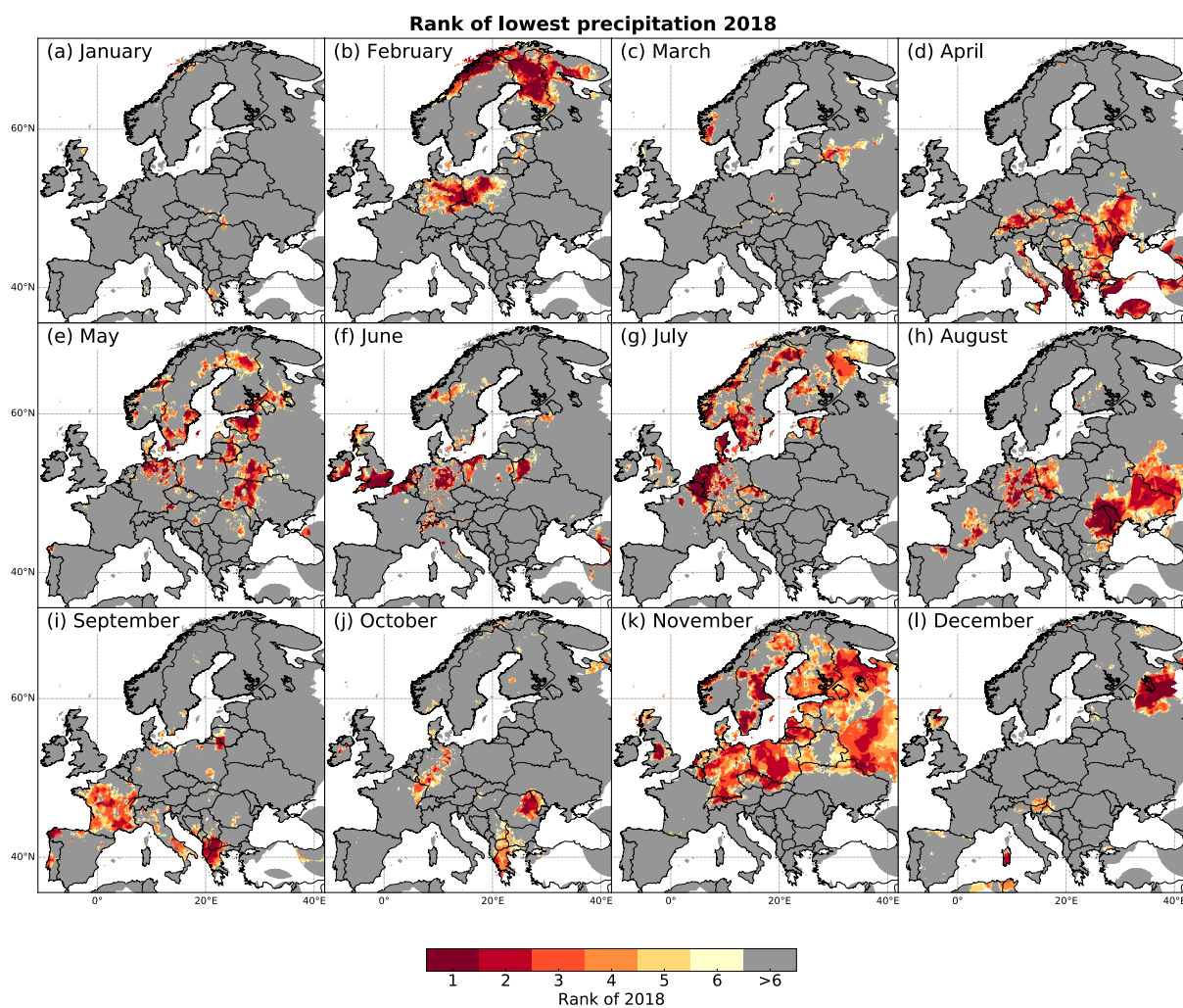


Figure A5. Top-six ranking of 2018 monthly lowest precipitation relative to the period 1959–2018.

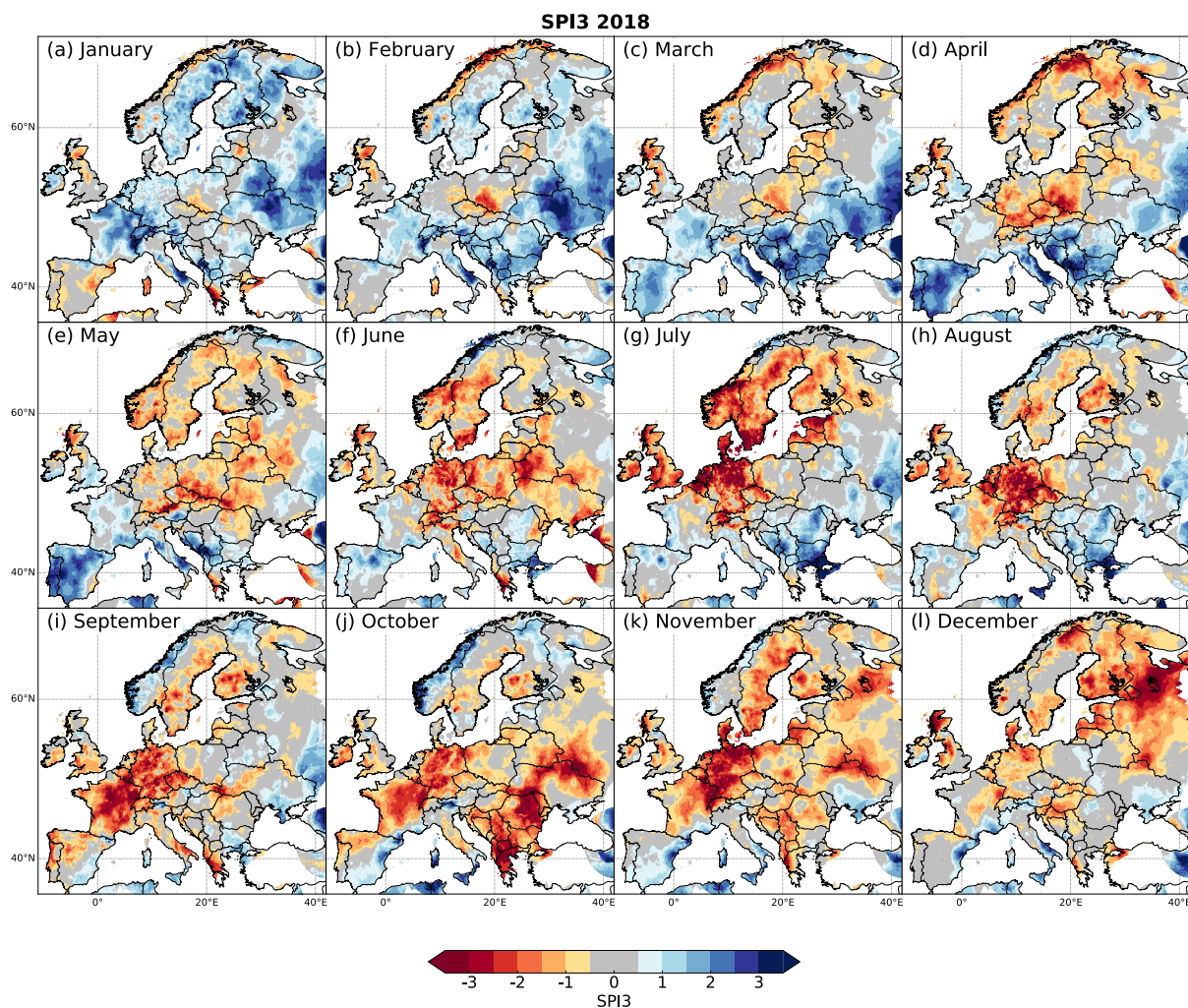


Figure A6. Monthly meteorological drought indexed by SPI3 throughout 2018 relative to the reference period 1971–2000.

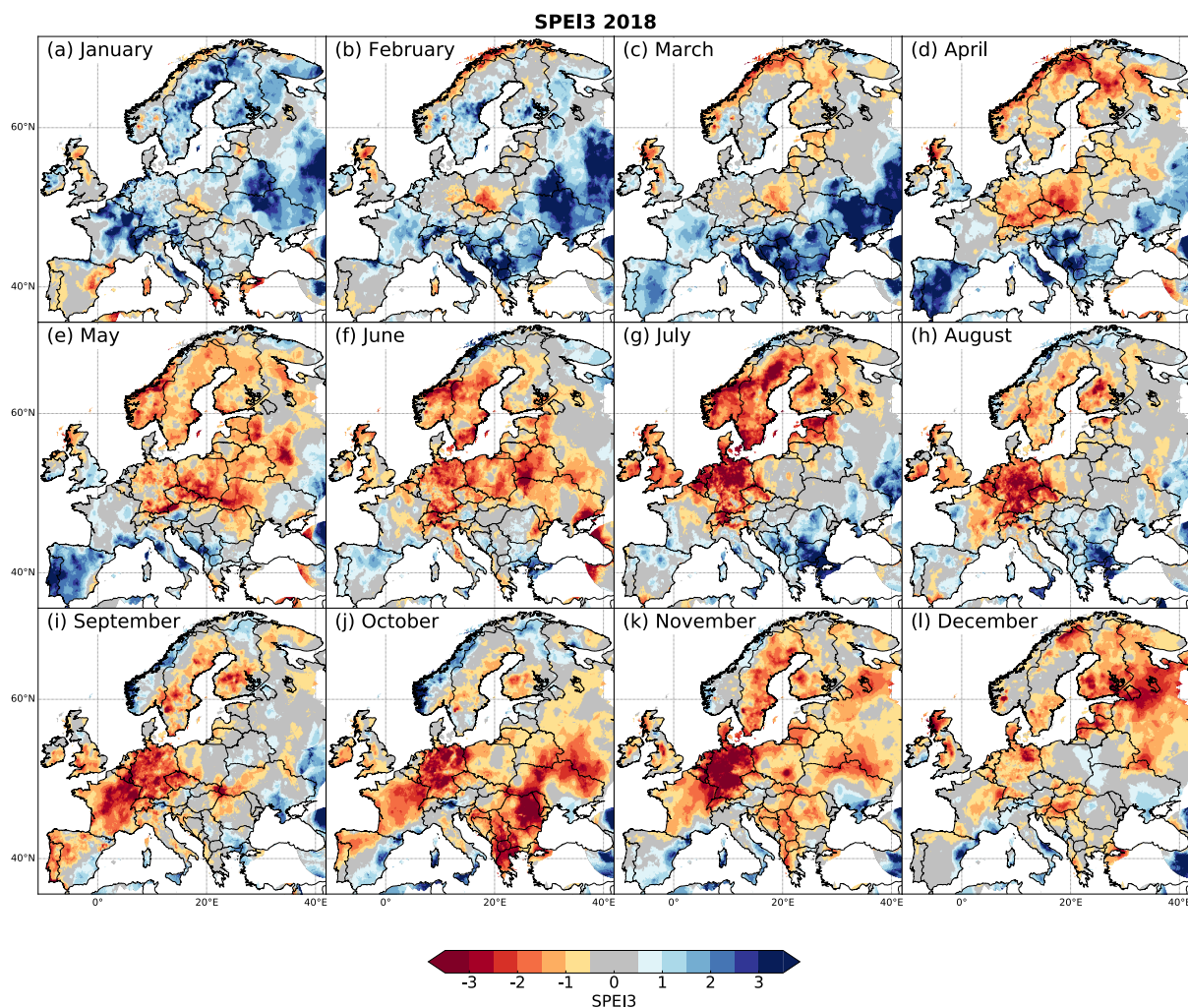


Figure A7. Monthly meteorological drought indexed by SPEI3 throughout 2018 relative to the reference period 1971–2000.

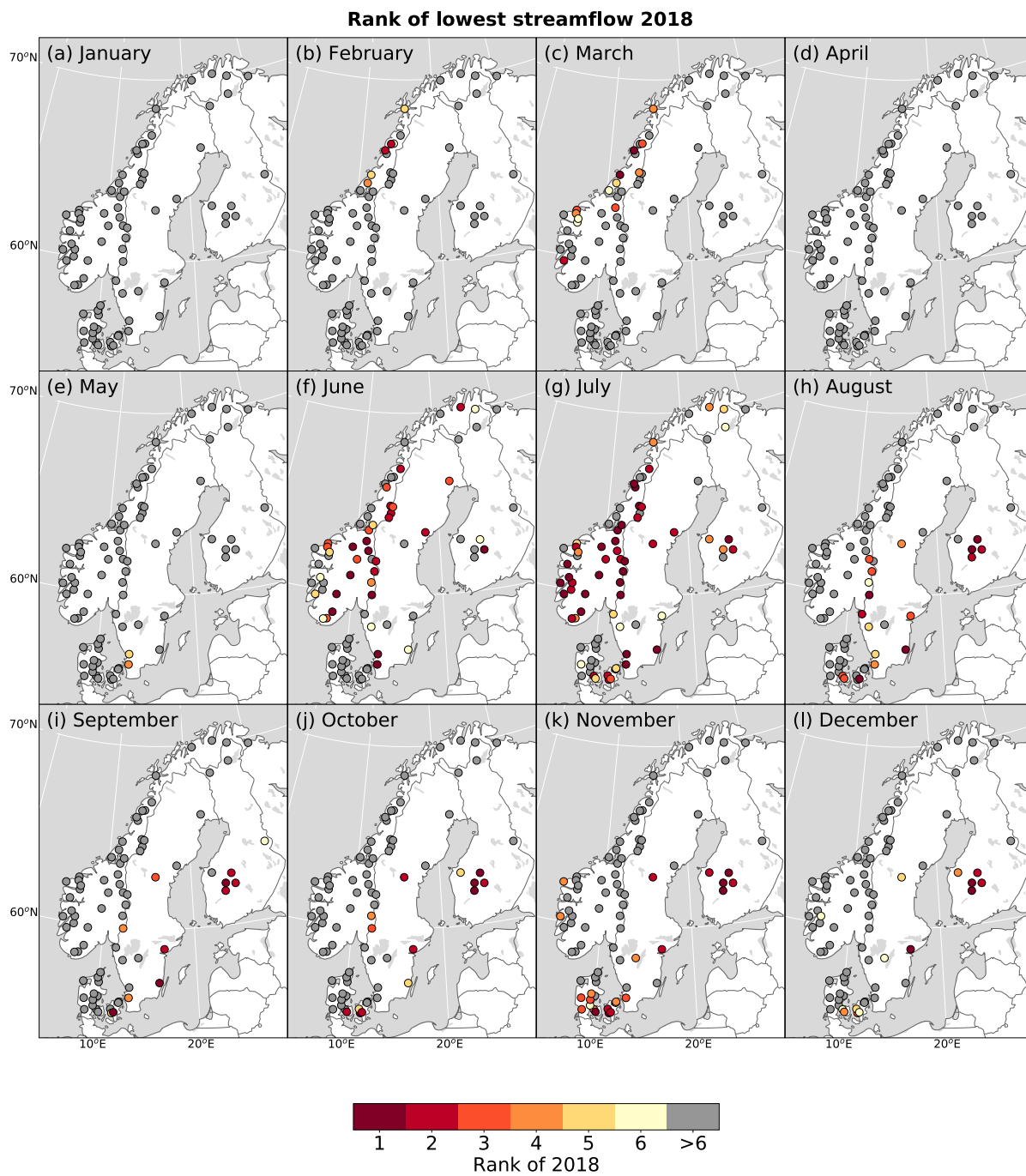


Figure A8. Top-six ranking of 2018 monthly lowest streamflow relative to the period 1959–2018.

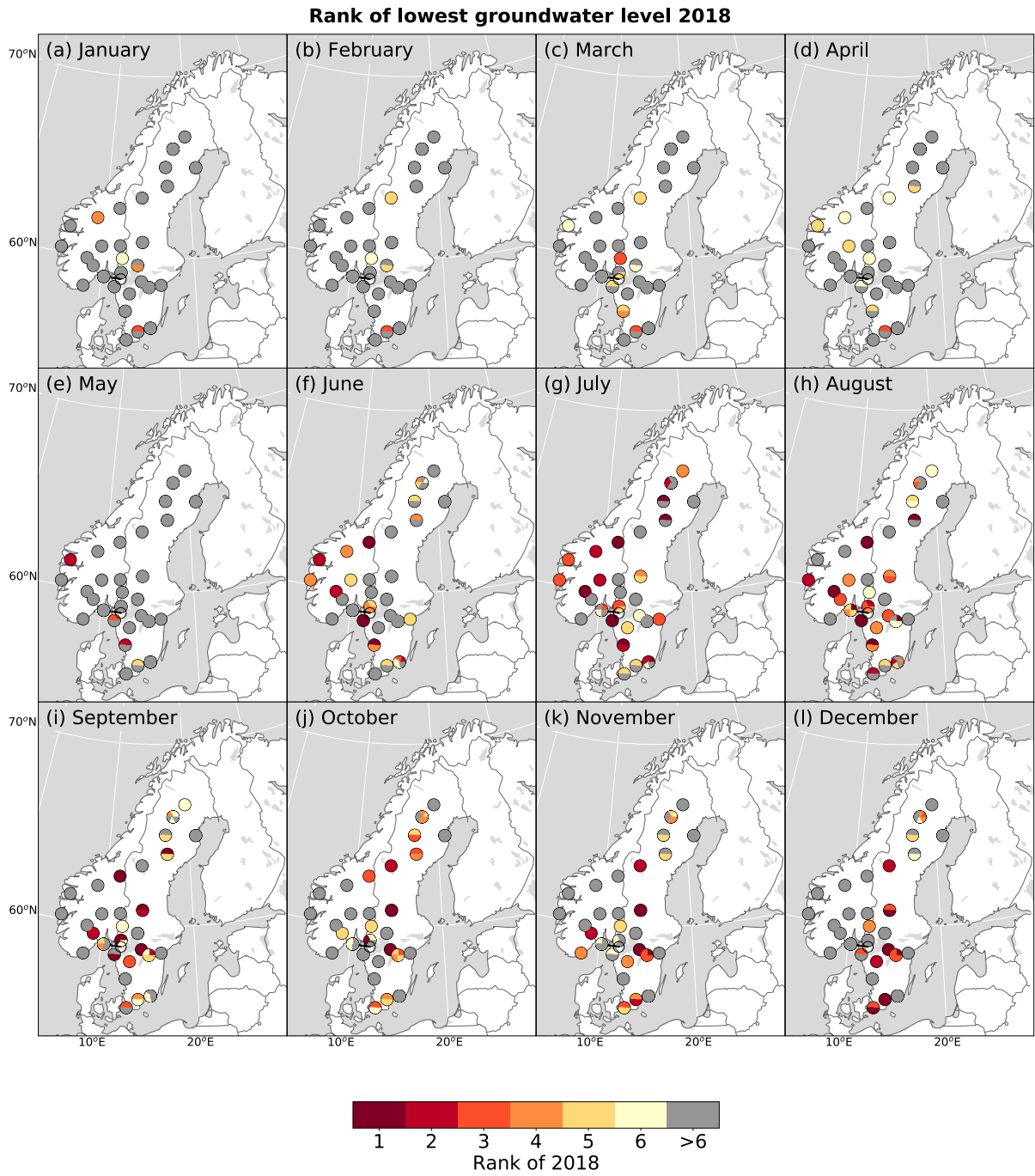


Figure A9. Top-six ranking of 2018 monthly lowest groundwater level relative to the period 1989–2018.