

Responses to the Comments by Reviewers

We thank Professor Bob Su and an anonymous reviewer for their constructive comments. The manuscript has been significantly improved by addressing the comments. The following is our point-to-point responses to their comments.

1. Line 44-49. The author responds that

“The condensate of the soil layer in the semi-arid area is indeed an important source, but the groundwater level in this area is about 7 meters deep, so the groundwater replenishment on soil moisture for shallow soil layers less than 2.2 m deep is essentially negligible. Therefore, the source of condensate at a depth of 2.2 meters comes solely from precipitation, and we can still use the water balance principle to calculate the distribution of precipitation-induced infiltration in each soil layer.”

First of all, as I commented, even the groundwater is very deep down to hundreds of meters, you still can find continuous upwards vapor flow (either driven by thermal gradient or soil matric potential gradient)^{1,2}. This is essentially important source of water in desert area like your study site. There are also relevant studies implemented over the Badain Jaran Desert, indicating the important role of vapor transport in the sand, and how it affects infiltration and land surface evaporation³⁻⁷. Furthermore, the vapor transport is also important for freeze-thaw cycles in soil^{8,9}. As such, the statement of “the source of condensation at a depth of 2.2 meters comes solely from precipitation” cannot be hold.

To this reviewer, it is ok you can use simplified equation to derive how much water leave the root zone, and how much infiltrated by precipitation etc.. On the other hand, the total ignorance on the importance of other mechanisms will let readers (incl. this reviewer) to question the scientific rigorousness on this study.

Response: We thank this reviewer for carefully documented the importance of airflow and vapor transport issues. We have created a new section 4.2 to address the limitations and future works. See line 602-646. We have also pointed out this in the conclusion part (see line 683-684).

Specifically, we point out that airflow and vapor transport has not been considered in this experimental investigation and it should be incorporated in future studies because of two considerations.

Firstly, it has been reported that airflow may play an important role for mass and energy transport in arid and semi-arid areas (e.g., Scanlon, 1994; Scanlon and Milly, 1994; Zeng et al., 2009a, 2009b; Zeng et al., 2011a, 2011b; Yu et al., 2018, Yu et al., 2020), this is particularly true when discussing evaporation process. For instance, Zeng et al. (2011a) has established a one-dimensional (vertical) two-phase heat and mass flow model to explain the field measurements of soil moisture content and temperature in the Badain Jaran Desert of China for both low- and high-permeability soils. They reported that the evaporation was underestimated when the airflow was neglected and such underestimations were more evident in the low-permeability soil (6.4%) as in the high-permeability soil (8.85%). Zeng et al. (2011a) concluded that such underestimations of evaporation were mainly caused by underestimation of isothermal hydraulic conductivity by neglecting airflow. Mohanty and Yang (2013) agreed with Zeng et al. (2011a)

that the underestimation of evaporation was caused by underestimation of isothermal hydraulic conductivity, but they disagreed with Zeng et al. (2011a) that negligence of airflow was responsible for the underestimation of isothermal hydraulic conductivity. The critical comment made by Mohanty and Yang (2013) was disputed by Zeng and Su (2013) who upheld the conclusions of Zeng et al. (2011a), but at the same time Zeng and Su (2013) recognized that some other mechanisms such as adsorption of component of the soil water retention (which has been pointed out by Mohanty and Yang (2013)) can be important and should be included in addition to diffusion, advection, and dispersion when discussing the balance equations of water (liquid and vapor), dry air, and heat. In summary, there is a general consensus that airflow is relevant when discussing the mass and energy transport in the unsaturated zone, particularly near the land-atmospheric surface. However, it is still not fully understood to what degree the airflow has contributed to the land-atmosphere interaction.

Secondly, this study mostly concerns liquid water movement below the shallow soil zones (like 2.2 m below ground surface) with a water table as deep as 7 meters in an semi-arid region. How important is vapor transport in the study site is an open question that should be answered when new experiments are conducted in the future. It is speculated that even for ground water table as deep as hundreds of meters, continuous upward vapor transport either driven by thermal gradient, soil matrix potential, or diffusion and dispersion processes may still exist and can be important source of water in desert area like the site of this study (Scanlon, 1994; Scanlon and Milly, 1994). In the past decades, relevant studies in Badain Jaran Desert of China have indicated that vapor transport has played an important role in regulating infiltration and land surface evaporation (Zeng et al., 2009a, 2009b; Zeng et al., 2011a, 2011b; Zeng and Su, 2013). In addition, the vapor transport is also important for freeze-thaw cycles in the Badain Jaran Desert (Yu et al., 2018, Yu et al., 2020). In summary, further research is needed to quantify the importance of airflow and vapor transport and source of condensation at the study site.

2. Line 108. “the amount of vapor transmission is small, so it is not considered”

Over moist region, it is ok to neglect this vapor transport mechanism. However, in arid and semi-arid area, the vapor transport is dominant, or at least the same important as the liquid flow in the soil. See my point 1 and relevant literatures.

Response: Please see reply to comment #1.

3. Line 109 “It is impossible for it to return to atmosphere ... and it can only keep going down to recharge the deep soil”

This is a very rough and not necessarily correct statement. As here, the author only assume gravitational potential and ignore the soil water flow driven by soil matric potential gradient.

Although the author assumed that 60cm is the capillary rise, as such, any water below 180cm is essentially kept in the soil. This assumption is very strong, and lacking rigorous physically-based proof. Furthermore, in this site, you still have a thick unsaturated zone between the bottom of

1.8m to the groundwater table 5-7m. Such assumption of all soil water within this thick unsaturated zone is purely driven by gravity is essentially not correct.

Response: Please see reply to comment #1.

New measures of deep soil water recharge during vegetation restoration process in semi-arid regions of northern China

Yiben Cheng^{1,5*}, Xinle Li^{2*}, Yunqi Wang^{1,5}, Hongbin Zhan³, Wenbin Yang⁴, Qunou Jiang^{1,5}

5

¹School of Soil and Water Conservation, Beijing Forestry University, Beijing 100083, China

²Experimental Center of Desert Forestry, Chinese Academy of Forestry, Dengkou 015200, China

10 ³Department of Geology & Geophysics, Texas A&M University, College Station, TX 77843-3115, USA.

⁴Institute of desertification control, Chinese Academy of Forestry, Beijing, 100093, China

15 ⁵Jinyun Forest Ecosystem Research Station, School of Soil and Water Conservation, Beijing Forestry University, Beijing 100083, China

Corresponding Author:

Yiben Cheng (chengyiben@bjfu.edu.cn), Xinle Li (nxylxl@126.com).

Abstract

20 Desertification in semi-arid regions is currently a global environmental and societal problem. This research attempts to understand whether a 40-year-old rain-feed *Artamisia sphaerocephala* Krasch sand-fixing land in Three North Shelterbelt Program (3NSP) of China can be developed sustainably or not, using a newly designed lysimeter to monitor the precipitation-induced deep soil recharge (DSR) at 220 cm depth.

25 Evapotranspiration is calculated through a water balance equation when precipitation and soil moisture data are collected. Comparison of soil particle sizes and soil moisture distributions in artificial sand-fixing land and neighboring bare land is made to assess the impact of sand-fixing reforestation. Results show that such a sand-fixing reforestation results in a root system being mainly developed in the horizontal direction

30 and the changed soil particle distribution. Specifically, the sandy soil with 50.53% medium sand has been transformed into a sandy soil with 68.53% fine sand. Within the *Artamisia sphaerocephala* Krasch sand-fixing experimental area, the DSR values in bare sand plot and *Artamisia sphaerocephala* Krasch plot are respectively 283.6 mm and 90.6 mm in wet years, reflecting a difference of more than three times. The deep

35 soil layer moisture in semi-arid sandy land is largely replenished by precipitation-induced infiltration. The DSR values of bare sandy land plot and *Artamisia sphaerocephala* Krasch plot are respectively 51.6 mm and 2 mm in dry years, a difference of more than 25 times. The proportions of DSR reduced by *Artamisia sphaerocephala* Krasch is 68.06% and 96.12% in wet and dry years, respectively. This

40 research shows that *Artamisia sphaerocephala* Krasch in semi-arid region can continue to grow and has the capacity of fixing sand. It consumes a large amount of precipitated water, and reduces the amount of DSR considerably.

Keywords: Semi-arid land, *Artamisia sphaerocephala* Krasch, rain-feed vegetation, replantation, infiltration, 3NSP

45 **1. Introduction**

Desertification is currently a global environmental and societal concern (Reynolds et al., 2007b). Arid region covers about 41% of the Earth's surface, and supports more than 38% of the world's population. 20% of these areas have experienced serious land degradation, which is expected to affect the survival of 250 million people (Reynolds et al., 2007a; Dregne and Chou, 1992; D'Odorico et al., 2013). In 1992, the United Nations adopted the International Convention to Combat Desertification in order to focus on desertification issues (Bestelmeyer et al., 2015). With no exception, China is also facing severe desertification problems (Liu and Diamond, 2005). Up to 2010, the total desertification area in China is 2,623,700 km², which is 27.33% of the country's entire land area. Among this, the arid region desertification area is 1,158,600 km² (44.16% of the total desertification area of China), the semi-arid region desertification area is 971,600 km² (37.03% of the total desertification area of China), and the sub-humid arid region desertification area is 493,500 km² (18.81% of the total desertification area of China). To battle desertification, an effective prevention and control measure is to build shelterbelts, using artificial sand-fixing vegetation (Tao, 2014).

The Three North Shelterbelt Program (3NSP), a reforestation program initiated in 1978 in Northeast, Northwest, and North China is the largest shelterbelt project in China (Wang et al., 2004; Wang et al., 2010b). It has been constructed for 40 years, and plays a key role for desertification prevention in Northeast, Northwest, and North China (Li et al., 2004). The shelterbelts of 3NSP have slowed down, halted, and even reversed the desertification process in Northern China (Zha and Gao, 1997; Wang et al., 2012). According to NASA's latest observations, the restoration of vegetation has shown some

signs of reversing the trend of desertification in China, accounting for a quarter of the
70 Earth's new green areas (Chen et al., 2019).

It is unquestionable that the implementation of 3NSP in China has reduced aeolian
erosion, and improved the overall living environment in the impacted regions (Hanjie
and Hao, 2003). However, it is undeniable that the poor choices of vegetation species
in some areas of 3NSP has resulted in consumption of a large amount of water resources,
75 causing shortage of water supply to meet other needs, thus threatening the sustainable
development of the regions (Wang et al., 2010a). Furthermore, a high planting density
in some areas resulted in the death and/or malfunction of a large number of trees (Duan
et al., 2011). In contrast, shrubs and herb sand-fixing vegetation appear to grow
healthily, thus receive great interests to become proper choices of vegetation species
80 for desertification prevention (Tao, 2014). The infiltration process also closely related
to the development of plant roots, the distribution depth and development direction of
roots in the soil are related to precipitation infiltration(Fan et al., 2017).

To understand the impact of afforestation to the ecohydrological system, thus to
assess the long-term sustainability, especially after vegetation reconstruction(Cheng et
85 al., 2020). Soil water is the most important factor in this system, thus we need to know
how the soil moisture changes in these area(Cheng et al., 2020). Evapotranspiration(ET)
is also an important ecological indicator in semi-arid regions, the methods of directly
measuring ET include Lysimeter, Eddy correlation method, Bowen ratio method, Large
aperture scintillation method, etc (Billesbach and Meteorology, 2011;Maes et al., 2019).
90 Taking the most advanced Eddy correlation method as an example, the measurement
error may be 20% or higher and the required monitoring conditions are quite demanding
(Burba and Anderson, 2010). Furthermore, it is difficult to avoid the influence of human
factors on the experimental results. In this research, we try to solve these problems, we

select a typical semi-arid area in 3NSP for this research. *Artamisia sphaerocephala*
95 *Krasch* (ASK) is a unique Chinese native sand-fixing shrub plant with strong
adaptability (Wang et al., 2013). ASK sand-fixing land developed on top of bare sandy
land has increased evapotranspiration. Meanwhile, because of the form of an organic-
rick biofilm commonly seen in ASK forest, the near surface soil permeability has been
reduced (Su and lin Zhao, 2003). This will reduce the soil infiltration capacity, resulting
100 in the concentration of soil moisture in shallow soils, and reducing the replenishment
of soil moisture in deep soils. In order to understand the soil moisture variation and
deep soil recharge (DSR) changes resulted from ASK sand-fixing forest, this research
choose a 40-year-old ASK sand-fixing land as the experimental site and use a new
designed Lysimeter directly measure the DSR. We have also conducted a comparative
105 research using a bare sandy land 400 m away from the ASK sand-fixing land site. This
research focuses on monitoring precipitation-induced infiltration, soil moisture
distribution, and DSR changes in ASK sand-fixing land, then calculate the annual
change of ET on a small scale according to the principle of water balance. We try to
answer the following questions through in-situ measured result: 1) Does the vegetation
110 reconstruction blocked the mutual conversion of atmospheric water, surface water, soil
water, and groundwater? 2) How much influence does vegetation reconstruction have
on precipitation infiltration and DSR? 3) Is this kind of vegetation reconstruction
sustainable in north China?

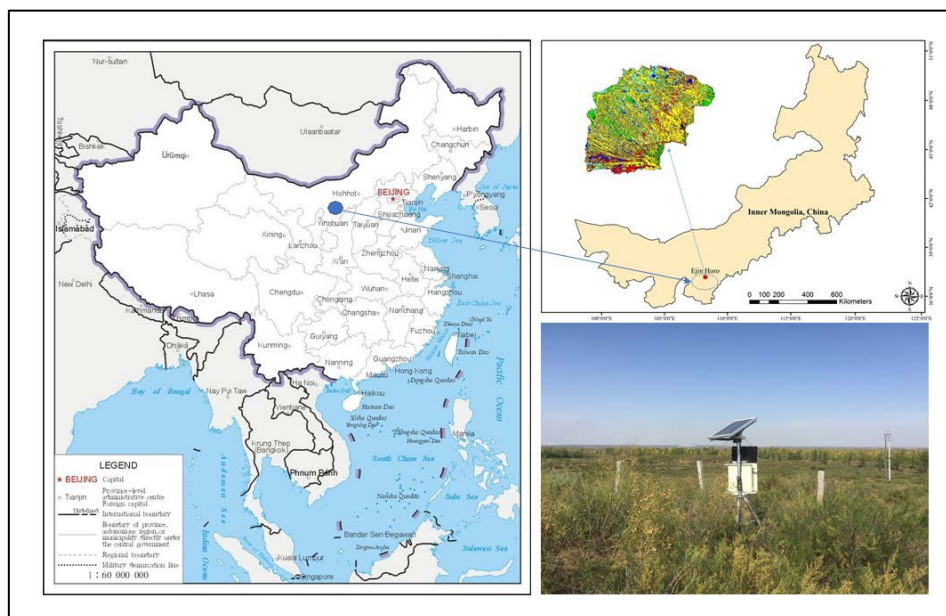
2. Material and Methods

115 2.1 Research area description

Figure 1 shows the research site which is located in Ejin Horo Banner, on the
Eastern margin of Mu Us Sandy Land in the Ordos basin of China, with a geographic
location of 39°05'02.8 N, 109°35'37.9 E, and an altitude of 1303 m above mean sea

level (m.s.l.). The groundwater table between sand dunes are 5.3-6.8 m below ground
120 surface. The climate is within the semi-arid continental monsoon climate zone. Annual
precipitation concentrates from July to September and is highly sporadic. The average
annual precipitation from 1960 to 2010 is 358.2 mm (Li et al., 2009). The average
annual temperature of this area is 6.5°C, with about 151 days of frost-free season, and
125 1809 mm, the average annual sunshine is 2900 hours, and the average annual wind
speed is 3.24 m/s. The research area is located in relatively gentle mobile dunes, and
the soil type is aeolian sandy soil (Liu et al., 2015).

The experimental site was flat sandy land before ASK was planted for sand control
40 years ago. After 40 years of development, the region is dominated by ASK, scattered
130 *Rhamnus parvifolia*, *Chenopodium glaucum*, *Setaria viridis* and the field average
vegetation coverage has reached 80%. The site is relatively homogeneous that brings
convenience to experiment so we can use one point experimental observation result to
represent the entire homogeneous site.



135 Figure 1. Overview of the experimental field.

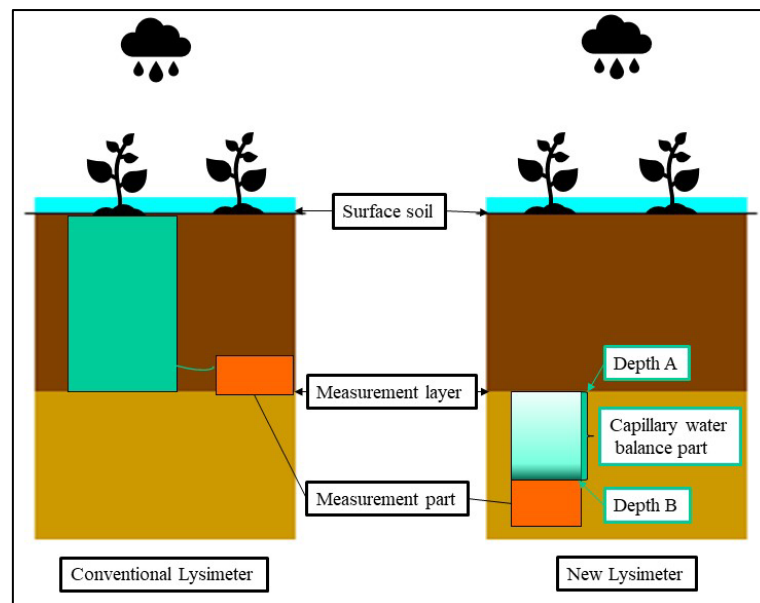
2.2 Experimental design

2.2.1 Root system distribution survey, soil moisture and DS monitoring

This research chooses five ASK plants with similar heights and crown widths, in which the heights are around 60 cm above the ground. Using the whole root system excavation method, the plant soil is excavated layer by layer with a 20 cm vertical interval, until there are no observable roots. As the deepest root is at a depth of 120 cm (the root system will be discussed in details later in this section), thus the deepest soil moisture that the plant can utilize is 180 cm (120 cm root depth plus 60 cm capillary rise, where the capillary rise is calculated based on the soil texture from experimental plot) (Cheng et al., 2017). The 180 cm depth can be regarded as the maximal depth of evapotranspiration. A new lysimeter is used to measure the deep infiltration, or deep soil recharge (ds) at a depth of 220 cm (to avoid root water absorption), 40 cm below the maximal depth of surface evapotranspiration. The newly designed lysimeter is improved on the basis of the traditional lysimeter, but it has a reduced size and a new water balance part to improve the measurement accuracy. As shown in the Figure 2, the measurement surface is transferred from the soil surface to soil layer at any designated depth. The detailed explanation of such a lysimeter has been documented in a previous research of Cheng et al. (2017) and will not be repeated here. To understand the soil condition in the research site, the sandy soil samples are collected using a ring cut method, layer by layer with a 20 cm vertical interval, until reaching a 220 cm depth. Soil samples from five ASK plots were collected and mixed together, soil particle size distribution measurements are conducted using a laser particle size analyzer (Mastersizer 2000, Salver, U.K.). We use EC-5 soil moisture probe to measure every 20 cm soil layer of the first 100 cm depth, and every 40 cm soil after the first 100 cm depth until reaching 220 cm depth. The reason of doing so is because the shallow soil

layer has roots thus is monitored more closely while the deep soil is relatively uniform and has less roots, thus can be monitored more sparsely.

To study the soil water dynamics of ASK plot, we selected a typical ASK plot in the Mu Us Sandy Land and an adjacent bare sandy plot as a comparison study to quantify the differences in the characteristics of soil water dynamics in bare sandy plot and ASK plot. The experimental design is shown in Fig.2, Fig.3 and explained sequentially as follows.



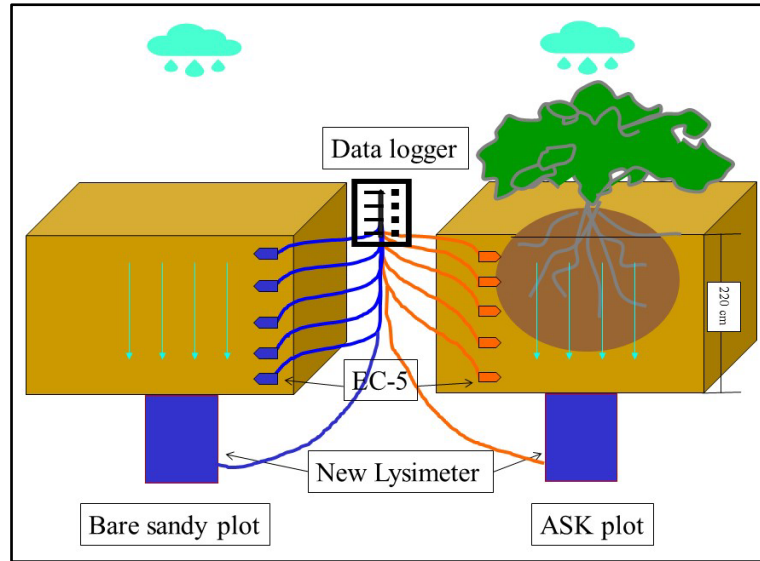
170 Figure 2 Schematic diagram of conventional Lysimeter and new designed Lysimeter.

The conventional Lysimeter uses an impermeable container (constructed all the way from ground surface downward) to wrap the soil column, blocking the horizontal flow of the soil layer in the root zones. Meanwhile, if a conventional Lysimeter is used, the vegetation needs to be transplanted into the container, so the soil structure and the vegetation root system will be disturbed. If the roots of the vegetation are too long, it is impossible to measure the DSR with a conventional Lysimeter. The new Lysimeter has an upper water balance part and a lower measurement part which can directly measure the water flux (Cheng et al., 2017b; Cheng et al., 2018b). The height of the balance part

is equal to the capillary water rising height of this sandy soil. After irrigation and
180 standing still, the balance part will reaches a balanced state that the soil at the bottom
is saturated, and the top is the highest distance that the capillary water can rise.
Specifically, the flux infiltrating into the balance part at the depth of the measurement
face should equal the flux exiting the balance part and entering the measurement part.
There is no need to build an impervious container to wrap the vegetation tested for the
185 new Lysimeter above the measurement face. The plot is relatively homogeneous, so we
can use one point experimental observation result to represent the entire homogeneous
field. The conventional lysimeter can measures the DSR of a plant, but the new
lysimeter measures the DSR of a certain soil layer. For a relatively uniform plot, this
measured DSR would be more accurate.

190 In order to minimize the disturbance of the original soil structure, we need to water
both plots in advance before installing the instruments. Firstly, watering the soil in the
test area makes the relatively dry sandy soil stable and easy to excavate, as the native
dry sandy soil is relatively loose. Secondly, after watering the ASK plot, we start to
excavate a soil profile vertically downward at a distance of 1 meter from the main
195 branch of ASK, reaching a depth of 3.2 meters. After this, at the depth of 3.2 meters,
we excavate horizontally toward the location of the main branch of ASK to a distance
about 1.3 m. Eventually, a body with a height of 1 m, a length and width both of 0.3 m
is excavated to install the lysimeter right below the main branch of ASK. By doing so,
the distance from the ground surface to the top of lysimeter is 220 cm, and the root
200 system (which is less than 220 cm deep) will not be disturbed. Meanwhile, as the plot
has been watered to make the soil stable, no collapse of soil has occurred during the
installation of the lysimeter. Thirdly, after putting the lysimeter in place, we use in-situ
soil to backfill. During this process, one needs to continuously water each layer of

backfill to ensure that the soil is relatively compact. For the installation of lysimeter in
205 the bare sand plot, it is straightforward as one does not need to worry about the
disturbance of integrity of the root system. For such a plot, as shown in Fig.3 one can
water the soil first, then excavate a square of 1 meter by 0.3 meters to a depth of 3.2
meters to install the lysimeter. After the installation of lysimeter, one can backfill using
native soil, making sure to continuously water each layer of backfill to ensure the soil
210 compaction. Soil moisture probes are installed at different depths for both plots. Finally,
wait for the watered plots to stabilize to its pre-excavation status, since pre-watered
sandy plot and excavated sand layer will take six months to settle down and meet the
requirements of the experiment. Then one can start the experiments. There is a notable
limitation of this new lysimeter that should be improved in the future. When measuring
215 DSR, a gauge with a measurement accuracy of 0.2 mm was used to automatically record
the amount of DSR. The measuring mechanism of this gauge was that when the
accumulated amount of DSR reached a certain amount (0.2 mm), which is the
downward volumetric flux over a unit area over a certain time lapse, then a data point
will be recorded. When the amount of DSR is large or there is continuous DSR, there
220 will be no measurement problem, but when DSR is very small (less than 0.2mm), it is
impossible to know precisely the DSR variation over that time lapse. In the future, we
need a more sensitive measuring apparatus that can precisely record the DSR variation
with time in a higher precision.



225

Figure 3. Design of Precipitation-DSR observation site

2.2.2 Water balance of rain-fed ASK forest land

When precipitation reaches ground surface in semi-arid sandy land, the infiltration rate is usually unpredictable, it may evaporate or run away, or infiltrate. Years of observation records in the area show no occurrence of surface runoff. The water infiltrating into the soil goes through a redistribution process. Part of it is absorbed and utilized by plants' root system, and part of it is stored in soils as soil moisture. The rest will infiltrate passing the maximal depth of evapotranspiration depth and eventually recharges the groundwater system. This research uses the following water balance method to calculate moisture distribution at different depths:

230

$$P + C_m * d - DSR - E = \pm \Delta W \quad (1)$$

235

where P is annual precipitation (mm) measured by a rain gauge as the volume per unit square meters, C_m is soil volumetric moisture content (m^3/m^3), d is soil column depth to be measured (mm), DSR is annual deep soil recharge (mm), measured by the newly designed lysimeter as the volume per unit square meters, E is annual evapotranspiration (mm) which is the volume of water lost to the atmosphere due to

240

evapotranspiration per square meters, and ΔW is the annual soil moisture storage change per unit square meters (mm).

3. Results

3.1 Root system distribution

245 This research selects representative plants and excavate the soil profile to research the ASK root system growth range. The results show that the ASK root system distribution is umbrella-shaped, as shown in Table 1. The root system distribution range mainly concentrates within 0-60 cm depth, and can reach as deep as 120 cm. The main root grows through the entire depth. The lateral roots are distributed around the main
250 root and can reach a 200 cm diameter horizontally. The density of lateral roots gradually decreases when moving away from the central main root. The lateral roots mainly concentrate within depths of 20-60 cm. From ground surface to a depth of 40 cm, the root system gradually increases, and reaches the maximum density at the 40 cm depth. The dry weight of root between 20-40 cm layer is 51.77% of the weight of the entire
255 root system. The root system gradually decreases after depths of 40 cm, with the deepest root system depth of 120 cm. The results show that the ASK root system in this area is mainly developed in the horizontal direction, which confirms that rainfall is the main water supply for plants in the Mu Us Sandy Land. This conclusion is based on the following reasons. The root development of plans is closely dependent on the source of
260 water supply for the root system, and there are generally two sources of supply: a) rainfall-induced downward infiltration and b) uptake of groundwater from the underneath soil and aquifer. If the primary source of supply for the ASK root system comes from the deep groundwater table, then the root prefers to grow vertically in order to access the underneath groundwater. On the other hand, if the primary source of

265 supply for the root system comes from the rainfall-induced infiltration, the root system
 prefers to grow horizontally to maximize the intercept of such infiltrated water, and the
 field observation results confirm that this is the case in Mu Us Sandy Land.

Table 1. Root distribution of the ASK in the vertical direction

Excavation depth(cm)	Root dry matter content (g)	The dry matter accounts for the weight ratio of the whole root system (%)
0-20	21.85	13.26
20-40	85.32	51.77
40-60	30.56	18.54
60-80	14.86	9.02
80-100	8.57	5.2
100-120	3.64	2.21

270 **3.2 Effect of ASK on soil development**

There are many factors that affect the soil particle size, including soil crust,
 vegetation root secrete acidic substances to decompose the parent material, ionic
 strength, flow rate and surface vegetation fixed sand dust (Yan et al., 2013; Yu et al.,
 2013; Zhang et al., 2011). The soil particle size of each layer is also different. It is
 275 necessary to analyze each soil layer one by one and it is not easy to see the main
 affecting factors. In this research, to understand the impact of ASK on the local soil,
 the ASK soil samples and bare land soil samples are collected and sorted based on U.S.
 Department of Agriculture's soil particle size grading scheme, we collected samples of
 every 20 cm depth and mixed them together, treated the entire 220 cm thick soil layer
 280 each as a homogenized system.

The soil particle size distribution was measured using the MS2000 soil particle size
 analyzer produced by Malvern, UK. Samples need to be pretreated before the

experiment. All soil samples have passed through a 2 mm soil sieve, added 30% H₂O₂ solution to remove organic matter (including biological crust) from the sample, then
285 add NaHMP solution to fully dissolved, and shake 30 seconds to destroy the microaggregate structure of the soil particles.

Table 2 shows the particle size distributions in both the ASK plot and bare sandy plot. Overall, in ASK plot, the medium sand is 19.26%, the fine sand is 68.53%, the very fine sand (or powder sand) is 9.35%, and silt is 2.86%. The soil particle size
290 distributions of the bare sandy plot are as follows. The coarse sand is 3.23%, the medium sand is 50.53%, the fine sand is 36.06%, the very fine soil is 7.19%, and the silt is 2.99%. Comparing the results in ASK plot and bare sandy plot, one can see that the main soil type in the ASK plot is fine sand (68.53%), and the main soil types in bare sandy plot is medium (50.53%) and fine sands (36.06%). Another notable point is that
295 there is 3.23% of coarse sand in the bare sandy plot, but no coarse sand in the ASK plot.

There are clear evidences that the sand-fixing vegetation changes the particle size distribution of the soil (Fearnehough et al., 1998; Pei et al., 2008). A few possible reasons may be responsible for such a change. First, the fine-sand in the 220 cm-thick soil of the bare sandy land is easily removed or eroded from its original position under
300 the force of wind, which initiates sand movement both horizontally and vertically (as suspended particles carrying away by wind), consequently the content of fine sand in the bare sandy land decreases, and the soil structure continuously coarsens. In contrast to this, the content of fine particle in the ASK plot is significantly higher than that in the bare sand. This is largely due to the presence of vegetation in the ASK plot which
305 has substantially subdued the eroding force of wind. In another word, ASK essentially protects the fine sands in the soil to be removed or eroded by wind force. This observation is direct evidence showing that vegetation has a positive role in improving

soil particle size composition by maintaining the fine sand particles in the plot. However, one must also be aware that such a change of particle size distribution is a consequence of a complex interplay of aerodynamic force, sand mass movement mechanics, and root-soil interaction force, which are not completely understood up to now and needs further investigation. In summary, the sand-fixing vegetation in northern China not only fixes the quicksand, but also greatly improves the soil texture, which is far faster than traditional expectations.

Table 2. The distribution of soil particle size in research site

Particle size distribution	Extra coarse sand	Coarse sand	Middle sand	Fine sand	Very fine sand	Silt sand
Diameter range (mm)	>1.0	1.0-0.5	0.5-0.25	0.25-0.1	0.1-0.05	<0.05
ASK plot	0.00	0.00	19.26	68.53	9.35	2.86
Bare sandy plot	0.00	3.23	50.53	36.06	7.19	2.99

3.3 Annual soil moisture variation of rainfed ASK plot

The experimental area is located in Northern China, with more than three months of intermittent frozen soil period in winter. Multi-year observations show that the frozen soil period is from December of the previous year to March of the following year. The annual soil moisture variation in 2015 is shown in Figure 3. According to the change of soil volumetric water content and the influence of precipitation, the whole year is divided into five stages, which are the thawing recharge period, germination consumption period, rain season recharge period and plant dormancy period (the freeze-thaw period refers to the top soil (2 meters depth) from the beginning of freezing to the complete melting of the frozen soil. The germination period begins from the end of freeze-thaw period to the period when branches of ASK are enlarged and one or two

new leaves start to grow. The rainy season refers to a period of relatively concentrated precipitation experienced after the germination period of ASK plot in this region. the frozen soil period is not shown in Figure 4). From 2015 to 2018, the trend of soil moisture is basically the same, only the time of the rainy season and the amount of annual precipitation are different.

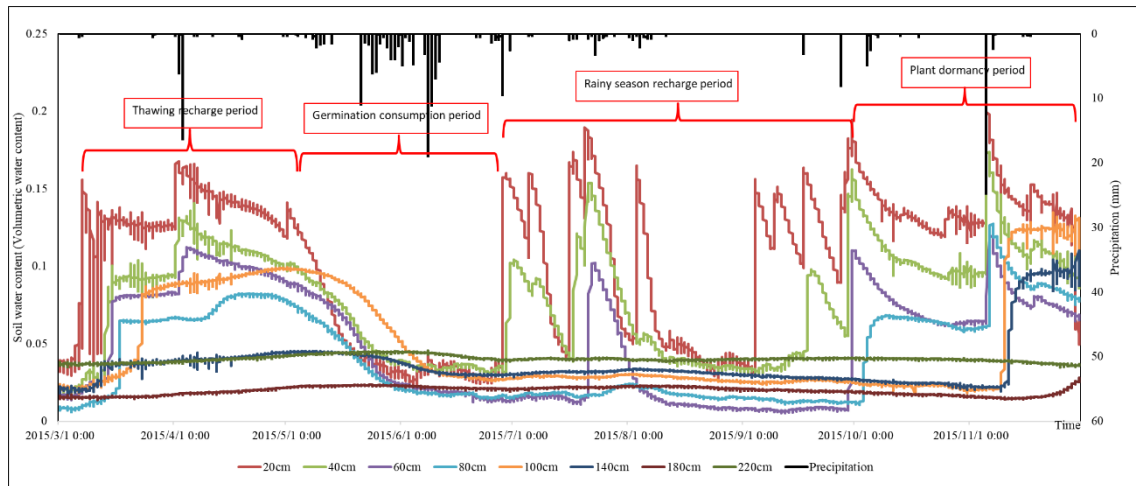


Figure 4 Daily soil water content distribution of ASK plot in 2015.

After March 6th, the melting snow in ground surface leads to increased soil moisture contents. Around this time, ASK is still in winter dormancy, and does not absorb soil moisture. As shown in Figure 4, from March 6th to May 5th, soil moisture increases significantly. Soil moisture resulted from melting snow can infiltrate into depths of 100 cm to 140 cm. After April 25th, ASK starts germination, and soil moisture gradually decreases. From April 25th to June 27th, there are 31 observed precipitation events in total. The maximum precipitation is 18.8 mm, and the minimum precipitation is 0.2 mm. However, these precipitation events did not change the decreasing trend of soil moisture. This means that during the germination and early growth periods, the moisture absorbing capacity of the ASK root system is extremely high. There is a 9.4 mm precipitation event on June 28th, and the infiltration associated with this event can reach a depth of 20 cm. This means that the growth of ASK starts to slow down around

this time, and the shallow soil moisture starts to increase. In October, temperature drops and ASK starts to enter winter dormancy. There is a 4.2 mm precipitation event on October 4th, and the infiltration associated with this event can reach a depth of 60 cm. There is a 24.6 mm precipitation event on November 7th, and the infiltration associated with this event can reach a depth of 140 cm. Soil moisture at 220 cm depth changes very mildly. The results show that though DSR occurs in all seasons, especially during freeze-thaw period, due to vegetation consumption, the amount of DSR is relatively small.

3.4 Effects of annual precipitation on soil moisture and DSR

3.4.1 Comparison of DSR on rain-feed ASK land and bare sandy land

For deep soil moisture variation and distribution, this research uses a newly designed lysimeter to measure DSR on-site (Cheng et al., 2017). The soil layer may be disturbed after the instrument is installed in 2015, so the 2015 precipitation-infiltration data are not used in this study. Results are shown in Table 3. From 2016-2018, the precipitations of bare sandy land are 464.8 mm, 313.4 mm, 245.2 mm, and DSR are 283.6 mm, 67.6 mm, 51.6 mm, respectively. The ratios of DSR to annual precipitation are 60.02%, 21.57%, 21.04%, respectively. The experimental plot of Artamisia is less than 100 m away from the bare sandy land plot, the annual precipitation is basically the same, and DSR values are 90.6 mm, 31.2 mm, 2 mm, respectively. The ratios of DSR to annual precipitation are 19.49%, 9.96%, 0.82%, respectively. According to above data, DSR of the bare sandy land is obviously higher than the Artamisia plot. On Artamisia plot, the interception of the aboveground vegetation, root absorption, evapotranspiration consumes a large amount of water resources, which affects the production of DSR.

370

Table 3. Comparative of precipitation and DSR in ASK land and bare sand field

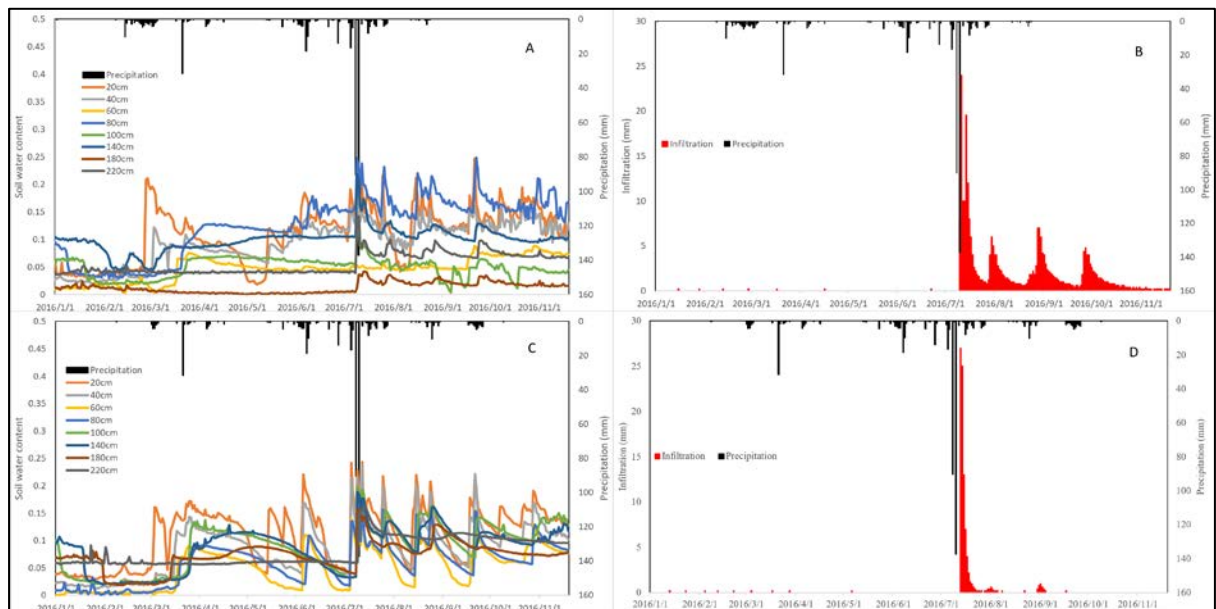
Year	Field type	Precipitation (mm)	DSR (mm)	D/P (%)
2016	Bare sand plot	464.8	283.6	60.02
	ASK plot	464.8	90.6	19.49
2017	Bare sand plot	313.4	67.6	21.57
	ASK plot	313.4	31.2	9.96
2018	Bare sand plot	245.2	51.6	21.04
	ASK plot	245.2	2	0.82

When the annual precipitation at a particular year is higher than 358.2 mm, it is considered a wet year; if the annual precipitation at a particular year is lower than 358.2 mm, it is considered a dry year. As shown in Table 3, 2016 is a wet year, 2017 is a normal year, and 2018 is a dry year. In the wet year, the deep soil moistures of the two experimental sites were greatly supplemented, and the effect of bare sand was more obvious. The amount of DSR in the dry years is significantly reduced on both plots, especially in the Artamisia plot, from 90.6 mm in wet years to 2 mm in dry year. Based on these, one can conclude that in semi-arid areas, though vegetation cover can fix mobile sand dunes, it consumes a lot of water resource. Bare sandy land can transport large amounts of water resource to shallow groundwater.

3.4.2 Precipitation response to soil moisture and DSR on two experiment plots

The relationship between precipitation and soil moisture content fluctuations and DSR in 2016 is shown in Figure 5 (ABCD). There are 84 precipitation events throughout the year in 2016, with the maximum precipitation amount of 137.2 mm/d happened on July 10th. According to local weather station data, this is the second largest daily precipitation since 1950, and the minimum precipitation amount of 0.2 mm/d happened 11 times throughout the year. On bare sandy land, there are 138 infiltration

events throughout the year in 2016, with the maximum DSR amount of 24 mm/d,
 390 happened on July 11th, and the minimum DSR amount of 0.2 mm/d happened 25 times
 throughout the year. On ASK plot, there are 42 infiltration events throughout the year
 in 2016, with the maximum DSR amount of 27 mm/d, happened on July 13th, and the
 minimum DSR amount of 0.2 mm/d happened 22 times throughout the year. The
 comparison of these two sets of DSR data shows that ASK can substantially reduce the
 395 soil moisture infiltration, DSR of Artamisia plot is reduced by 68.05% compared to
 bare sandy plot. Heavy precipitation completely wets the entire soil layer and forming
 a moisture transport channel that facilitates the transport of moisture throughout the soil
 layer. In bare sandy land, as the entire soil layer is wet, the subsequent small
 precipitation can also replenish the deep soil layer moisture, as shown in Figure 3A. In
 400 the experimental area of Artamisia plot, heavy rainfall wets the entire soil layer, but for
 the root system soil water consumption, the subsequent small precipitation cannot
 significantly replenish the deep soil moisture, as shown in Figure 4D.



405 Figure 5. Effects of precipitation on soil moisture (A) and DSR (B) in bare sandy land plot; Effects of precipitation
 on soil moisture (C) and DSR (D) on ASK plot, 2016.

The relationship of precipitation on soil moisture and DSR in bare sandy land plot and ASK plot of 2017 is showed in Figure 6(A-D). There are 94 precipitation events throughout the year in 2017, with the maximum precipitation amount of 18.8 mm/d happened on June 29th, and the minimum precipitation amount of 0.2 mm/d happened
410 24 times throughout the year. On bare sandy land, there are 178 infiltration events throughout the year in 2017, with the maximum DSR amount of 8 mm/d, happened on August 23th, and the minimum DSR amount of 0.2 mm/d happened 128 times throughout the year. On the ASK plot, there are 52 infiltration events throughout the year in 2017, with the maximum DSR amount of 1.6 mm/d, happened on September
415 5th, and the minimum DSR amount of 0.2 mm/d happened 21 times throughout the year. There were only 6 times of infiltration in bare sand plot from January to April in 2016, and 50 times in 2017, as shown in Figures 4 and 5. Since the surface is frozen at this time, there will be no surface infiltration. The source of infiltration in the first three months is essentially from the soil layer reservoir of 2016. One can speculate that the
420 accumulation of water in the soil in the previous year can continue to infiltrate to the second year. This also makes it difficult to subdivide which precipitation process induced how much soil water content. In 2017, there was less precipitation than the previous year, so the DSR was reduced in both plots, especially the ASK plot. Only after the vegetation had dried up in September 9th did a large infiltration process
425 occurred.

The results show that in the Mu Us Sandy Land, whether there is vegetation coverage or not, DSR occurs in all seasons of the year and there is a significant difference in terms of DSR characteristics in the bare sand plot and the ASK plot. More specifically, the annual DSR of the bare sandy lands reaches 3.13 times of that of the

430 ASK land. After the freeze-thaw period, the ASK root system begins to utilize the soil moisture, and soil moisture consequently decreases significantly.

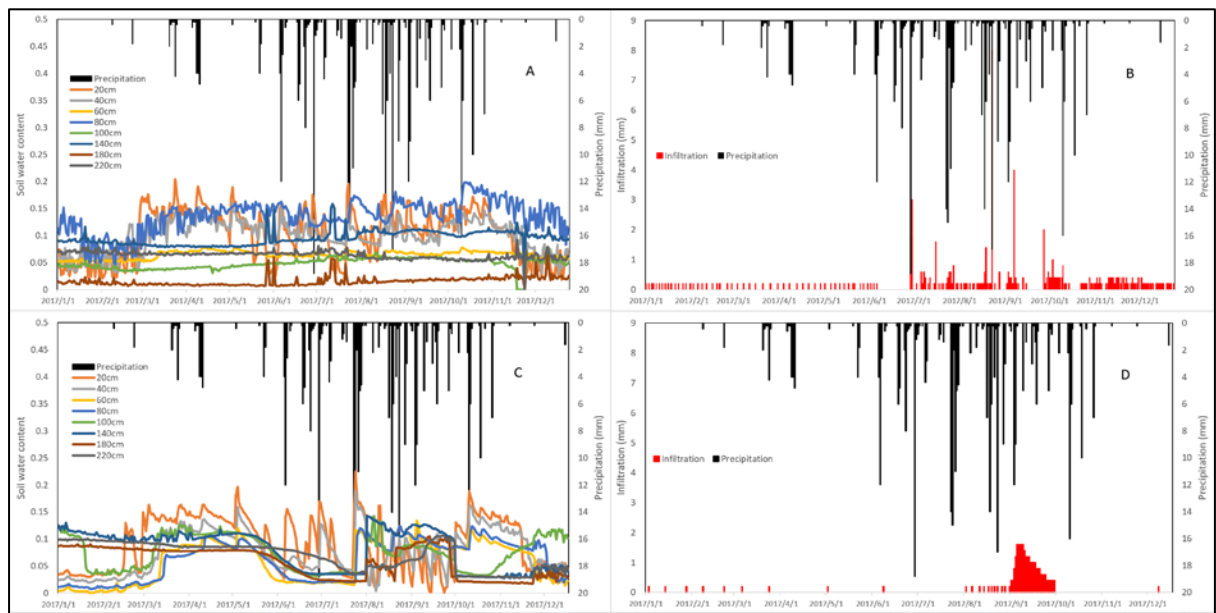


Figure 6 Effects of precipitation on soil moisture (A) and DSR (B) in bare sandy land plot; Effects of rainfall on soil moisture (C) and DSR (D) on ASK plot, 2017.

435 The relationship between precipitation and soil moisture content fluctuations and DSR in 2018 is shown in Figure 7(A-D). There are 71 precipitation events throughout the year in 2018, with the maximum precipitation amount of 30 mm/d happened on August 31th, and the minimum precipitation amount of 0.2 mm/d happened 15 times throughout the year. On bare sandy land, there are 122 infiltration events throughout the year in 2018, with the maximum DSR of 1.6 mm/d happened on June 4th, and the minimum DSR of 0.2 mm/d happened 74 times throughout the year. On ASK plot, there are 10 infiltration events throughout the year in 2016, with the maximum and the minimum DSR at the same amount of 0.2 mm/d happened 10 times throughout the year.

445 The results show that under the heavy precipitation event on August 31th, 2018, DSR in the bare sandy land is obviously visible. The precipitation replenishes deep soil layer and shallow groundwater. However, in the ASK plot, a large percentage of precipitation-induced infiltration is intercepted by vegetation coverage, meaning that the sand-fixing vegetation strongly affects the infiltration process and has a greater

450 impact on groundwater recharge. At the same time, DSR can be found in both plots in all seasons throughout the year.

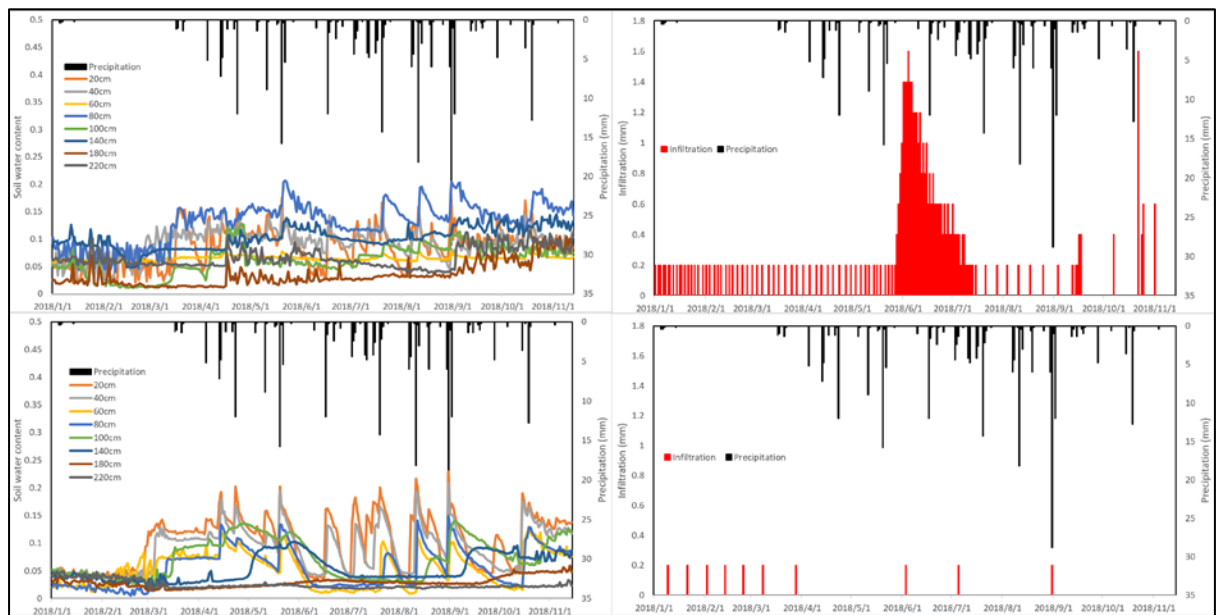


Figure 7 Effects of precipitation on soil moisture (A) and DSR (B) in bare sandy land plot; Effects of rainfall on soil moisture (C) and DSR (D) on ASK plot, 2018.

3.5 Research on rain-feed ASK land water distribution

455 There are many methods of measure surface layer evapotranspiration, but all have poor precise, because there are many factors that affect surface layer evapotranspiration and one cannot consider all impact factors, these factors including vegetation coverage, environmental and temperature factors. This study treats shallow soil as a whole layer and measures the amount of surface rainfall recharge, soil water storage and DSR
 460 directly. Based on the directly measured DSR and precipitation, the soil moisture storage change can be calculated using equation (1). During the five-month intermittent frozen period, soil moisture sensors provide less reliable soil water content measurements as the soil moisture sensors are designed to detect liquid water instead of solid ice. Therefore, this research uses the unfrozen time period from April 1th to
 465 November 30th to investigate the water distribution. The average soil water contents in the first week of April and the first week of November are used as the initial and final

values of annual soil water storage, to calculate the change of soil water storage annually. Based on measured precipitation, DSR and soil water storage, and the water balance equation (1), the evapotranspiration can be accurately calculated and the results
470 are shown in Table 4.

In 2016, the soil moisture reserve in the 220 cm soil layer of bare sand increased by 47.15 mm, and the annual evaporation was 134.04 mm, while the soil water storage of Artamisia plot increased by 31.95 mm, and the evapotranspiration was 342.25 mm. In 2017, the soil water storage of bare sandy plot increased by 13.77 mm, and the annual
475 evaporation was 232.03 mm, while the soil water storage of Artamisia plot was reduced by 83.7 mm, and the evapotranspiration was 365.9 mm. In 2018, the soil water storage of bare sandy plot increased by 72.14 mm, and the annual evaporation was 121.46 mm, while the soil water storage of Artamisia plot increased by 2 mm, and the evapotranspiration was 202.63 mm. One should be noted that the change in soil water
480 storage only represents the distribution of soil moisture from April to November, rather than the net increase of the whole year, because the water in the soil will continue to infiltrate to deep soil layer when the surface soil layer is frozen. As shown in Figure 3, there is no significant precipitation from January to June 2017, but deep infiltration has been occurring. Comparing the data from 2016 to 2018 in Table 4, it can be found that
485 when there is sufficient precipitation, for example, in 2016, soil water storage increases and evapotranspiration increases as well. When the precipitation is low, the soil water storage decreases and the evapotranspiration decreases as well. The results show that after vegetation reconstruction in this area, the amount of DSR is significantly reduced, which may threaten the safety of groundwater recharge; The precipitation water
490 resource is concentrated in the shallow soil layer, vegetation gets sufficient moisture, then evaporation increases, and the regional microclimate environment will be

improved. Evapotranspiration of plants in drought years is significantly reduced, which shows that vegetation will adapt to the environment by increasing or decreasing water consumption according to the amount of precipitation.

495

Table 4. Annual water distribution of ASK land and bare sand field

Year	Field type	Precipitation (mm)	DSR (mm)	Change of the SWS (mm)	Evapotransp iration (mm)
2016	Bare sand plot	464.8	283.6	47.15	134.05
	ASK plot	464.8	90.6	31.95	342.25
2017	Bare sand plot	313.4	67.6	13.77	232.03
	ASK plot	313.4	31.2	-83.7	365.9
2018	Bare sand plot	245.2	51.6	72.14	121.46
	ASK plot	245.2	2	40.57	202.63

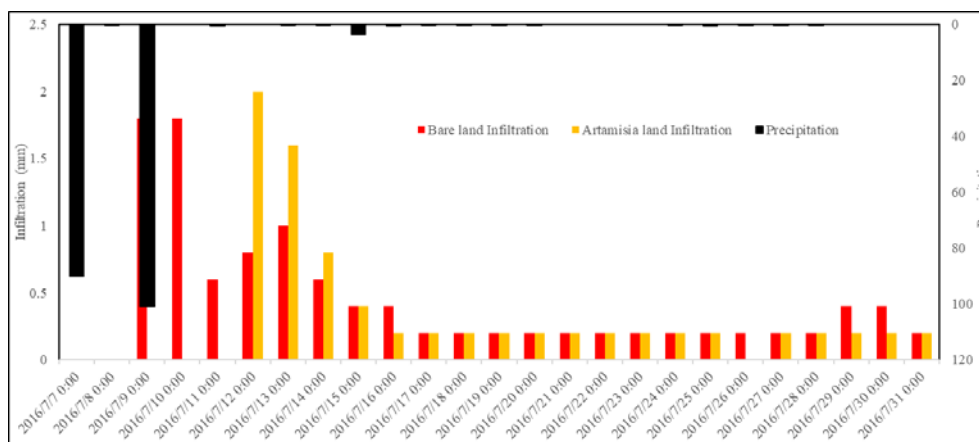
*Note: SWS stands for soil water storage.

3.6 Influence of vegetation coverage on infiltration rate

In many aspects one can find the influence of vegetation on infiltration, the interception of precipitation by the aboveground part of vegetation, the interception and
500 absorption of surface soil layer moisture by vegetation, the absorption and utilization of soil water by vegetation roots, the root system occupying soil voids to reduce infiltration speed, and the conduction effect of the catheter formed by death root on the infiltration ability. In this study, we consider the above-ground and underground parts of vegetation as a whole system, and compare the bare sand plot and ASK plot on the
505 infiltration speed. During the observation period, the Precipitation-DSR interaction occurred alternatively. In order to show the characteristics of the two types of infiltration, we selected a typical infiltration process, and the result is shown in Figure 8. A precipitation of 90.2 mm/d was generated at 23:00 on July 7, 2016, and a DSR event was observed at 21:00 on July 9 on the bare sand plot. From the surface soil layer

510 to 220 cm depth soil layer, the infiltrate process took 46 hours. The DSR of the ASK
 plot was observed at 8:00 on July 12, and the infiltrate process from the surface layer
 to the depth of 220 cm soil layer took 107 hours. The infiltration rate of ASK plot is
 2.33 times of bare sandy land. One can see that vegetation cover significantly affects
 the infiltration rate. However, under natural conditions, multiple precipitation processes
 515 occur in a short period, so it is difficult to distinguish the DSR event caused by a certain
 precipitation of different land coverage types under sufficient precipitation.

The results show that the characteristics of precipitation-induced DSR in the sandy
 land plot and the ASK plot are different. The two precipitation events leave marks on
 the bare sandy plot, leading to two spikes of DSR. In contrast, such spikes do not appear
 520 in the ASK plot, because water is utilized by the root system mostly and only a very
 small portion of the precipitation-induced infiltration can reach as far as 220 cm to be
 detected by the lysimeter. ASK not only delays the infiltration rate but also reduces the
 total amount of DSR.



525

Figure 8. DSR response to precipitation on bare sandy plot and ASK plot

4. Discussion

4.1 Insights gained from this study

Monitoring and quantifying precipitation induced shallow groundwater recharge process is a long-lasting challenges in the hydrological communities, and it is especially
530 difficult to do so in arid and semi-arid regions because of the spatiotemporally highly variable precipitation and complex soil moisture dynamics during the infiltration process (Newman et al., 2006). Studies of the interrelationship of precipitation and shallow groundwater is very important to local vegetation reconstruction, with or without anthropogenic mitigation (Ramier et al., 2009;Scibek et al., 2007). The
535 difficulty of attempting to establish a relationship between precipitation and groundwater recharge is mainly reflected in the following aspects. Firstly, there are fewer instruments for direct long-term, large-scale measurements (Krishnaswamy et al., 2013). The commonly used methods such as double ring filter method, lysimeter, rainfall simulation method, water flux method and stable isotope based tracking
540 methods all have certain specific restrictions (Sprenger et al., 2015;Groh et al., 2018). For instance, the heterogeneous nature of soil and point observations made with most above mentioned methods will make it difficult to conduct a basin scale analysis (Mousavi and Shourian, 2010). Secondly, ecological elements (such as ASK root systems in this study) are always changing, thus any monitoring methods that cannot
545 continuously accommodate the ecological elements will miss a significant piece of the machinery of understanding the precipitation-recharge relationship. Our research here is an attempt to utilize a low-cost, field-based lysimeter method to monitor DSR for four years in Mu Us sandy land, a task that measure DSR without disturbing the horizontal flow of soil moisture has never reported before.

550 The improvement of soil texture takes hundreds of years. It also takes a long time to improve soil texture with the participation of vegetation roots. In the Mu Us Sandy Land, due to the participation of the sand-fixing vegetation, a large number of dust

particles are fixed by the sand-fixing vegetation. When rainfall happens, water infiltrates into the deep soil with these dust. Over the forty years, the texture of the soil in this plot has undergone significant changes. From this one can infer that the speed of soil improvement in this area far exceeds our expectations.

In semi-arid areas, Mu Us sandy land as an example, the main limiting factor for trees is available water resources (Gao et al., 2014; Skarpe, 1991). Therefore, the key to understand the vegetation ecosystem in semi-arid areas is to study the supply of water resources (Cheng et al., 2018a; Cheng et al., 2017a). The ASK has been in existence in the study area for more than 40 years, so the purpose of this study is to find out whether there is sufficient water resource available in the region to support vegetation ecosystem, through the measurement of DSR. The “sustainable” growth of plants in this study means that water resource from precipitation can meet the growth needs of ASK, and can still have an excess amount of water to replenish deep soil layer. In this study, the soil moisture distribution has been studied by using the newly designed lysimeter to measure whether the soil layer below the root layer could produce DSR or not.

In the dry years, the differences in soil water storage and DSR between the two plots are significant, taking 2018 as an example. At the beginning of the experiment, the soil moisture storage in the ASK plot is 126.16 mm, and the soil moisture storage of bare sandy land is 147.22 mm. At the end of the experiment, the soil moisture storage in the ASK plot is 166.72 mm, which is 40.56 mm less than that at the beginning of the experiment. The soil moisture storage of the bare sandy plot at the end of the experiment is 219.37 mm, which is 72.15 mm more than its counterpart at the beginning of the experiment. There is no significant difference in soil water storage, but the DSR difference is obvious. The DSR of bare sand is 51.6 mm, and that of ASK plot is only 2 mm. Although the DSR is significantly reduced, even in the dry years, there is still a

small amount of DSR, indicating that the selection of ASK as sand-fixing vegetation in this area is a suitable plant species. Another interesting point to note is that ASK is
580 capable of adjusting their own growth conditions based on the available moisture recharge, and a larger moisture recharge will result in a faster growth rate of such plants. When the rainfall is insufficient, the evapotranspiration of ASK is reduced from 342.25 mm in 2016 to 202.63 mm in 2018.

As surface soil is frozen and ASK enters dormancy during winter in the research
585 site, snow can only accumulate on the surface and cannot recharge soil moisture. However, moisture in deep soil continues to infiltrate downwards because of the driving force of gravity. This is particularly true in bare sandy land as a large amount of soil moisture has been accumulated at the start of the frozen period. A portion of those accumulated soil moisture will slowly infiltrate downwards and recharge groundwater
590 reservoir. Because the amount of snowfall in winter is difficult to calculate, the amount of frozen water accumulated in winter cannot be obtained.

Traditional lysimeter have impervious containers for loading plants. The air in the container will cause increased DSR when it expands and contracts. Some researchers believe that it is condensed water generated by soil water vapor. The new designed
595 lysimeter has improved this design and no longer has the interference of condensate for there is no container. But it should also be mentioned that condensed water does exist in sandy soil layer and it is not easy to measure. We also need to mention that although vegetation in arid areas grows slowly, the amount of water that becomes plant tissue during the growth is relatively small, and most of the water is consumed by
600 evapotranspiration. The tissue water consumed by vegetation is not calculated separately in this research but is counted in evapotranspiration.

4.2 Limitations and future works

We need to point out that airflow and vapor transport has not been considered in this experimental investigation and it should be incorporated in future studies because
605 of two considerations.

Firstly, it has been reported that airflow may play an important role for mass and energy transport in arid and semi-arid areas (e.g., Scanlon, 1994; Scanlon and Milly, 1994; Zeng et al., 2009a, 2009b; Zeng et al., 2011a, 2011b; Yu et al., 2018, Yu et al., 2020), this is particularly true when discussing evaporation process. For instance, Zeng
610 et al. (2011a) has established a one-dimensional (vertical) two-phase heat and mass flow model to explain the field measurements of soil moisture content and temperature in the Badain Jaran Desert of China for both low- and high-permeability soils. They reported that the evaporation was underestimated when the airflow was neglected and such underestimations were more evident in the low-permeability soil (6.4%) as in the
615 high-permeability soil (8.85%). Zeng et al. (2011a) concluded that such underestimations of evaporation were mainly caused by underestimation of isothermal hydraulic conductivity by neglecting airflow. Mohanty and Yang (2013) agreed with Zeng et al. (2011a) that the underestimation of evaporation was caused by underestimation of isothermal hydraulic conductivity, but they disagreed with Zeng et al.
620 (2011a) that negligence of airflow was responsible for the underestimation of isothermal hydraulic conductivity. The critical comment made by Mohanty and Yang (2013) was disputed by Zeng and Su (2013) who upheld the conclusions of Zeng et al. (2011a), but at the same time Zeng and Su (2013) recognized that some other mechanisms such as adsorption of component of the soil water retention (which has been
625 pointed out by Mohanty and Yang (2013)) can be important and should be included in addition to diffusion, advection, and dispersion when discussing the balance equations

of water (liquid and vapor), dry air, and heat. In summary, there is a general consensus that airflow is relevant when discussing the mass and energy transport in the unsaturated zone, particularly near the land-atmospheric surface. However, it is still not fully understood to what degree the airflow has contributed to the land-atmosphere interaction.

Secondly, this study mostly concerns liquid water movement below the shallow soil zones (like 2.2 m below ground surface) with a water table as deep as 7 meters in an semi-arid region. How important is vapor transport in the study site is an open question that should be answered when new experiments are conducted in the future. It is speculated that even for ground watertable as deep as hundres of meters, continuous upward vapor transport either driven by thermal gradient, soil matrix potential, or diffusion and dispersion processes may still exist and can be important source of water in desert area like the site of this study (Scanlon, 1994; Scanlon and Milly, 1994). In the past decades, relevant studies in Badain Jaran Desert of China have indicated that vapor transport has played an important role in regulating infiltration and land surface evaporation (Zeng et al., 2009a, 2009b; Zeng et al., 2011a, 2011b; Zeng and Su, 2013). In addition, the vapor transport is also important for freeze-thaw cycles in the Badain Jaran Desert (Yu et al., 2018, Yu et al., 2020). In summary, further research is needed to quantify the importance of airflow and vapor transport and source of condensation at the study site.

5. Conclusions

This research uses a newly designed lysimeter to monitor shallow soil layer infiltration, and results show that in order to absorb more precipitation moisture, ASK develops a horizontal root system and retains more water in the shallow soil layer. ASK

has shown to be effective in fixing the mobile sand and increasing the proportion of fine particles in the sandy land. ASK changes its own evapotranspiration amount to adapt to the annual precipitation changes. Under the existing precipitation conditions, the ASK community can develop healthily, as a small amount of precipitation can recharge
655 the groundwater, even in dry year. This indicates that precipitation in the area is sufficient to meet the needs of vegetation water consumption. However, with the unforeseeable global warming and abnormal precipitation events, semi-arid region may become drier and the ASK community may be seriously affected. Therefore, continuously monitoring the key controlling factors associated with the ecological
660 system in the semi-arid region is needed.

The following conclusions can be drawn from this research:

- 1) In Mu Us sandy land, the ASK root system develops horizontally to absorb more precipitation-induced infiltration. The root system reaches 120 cm depth and mainly concentrates within the upper 40 cm deep soil layer.
- 665 2) After 40 years of vegetation reconstruction, the soil particle size distribution has been significantly changed; soil texture improvement in semi-arid sandy land far exceeds expectations. Specifically, the sandy soil mainly consisting of medium sand (50.53%) grows into a sandy soil mainly consisting of fine sand (60.53%). Vegetation is particularly important in semi-arid areas since it
670 directly changes the composition of soil.
- 3) The yearly DSR in the ASK sand-fixing experimental plot is from 2 mm to 90.6 mm. In contrast, the yearly DSR in the bare sand plot is from 51.6 mm to 283.6 mm. This shows that the rainfed vegetation has reduced DSR substantially but there is still a small amount of recharge left to replenish the deep soil moisture,
675 implying that the current ASK community is still hydrologically self-

sustainable because it does not consume all the water moisture replenished by precipitation and the DSR has not been reduced to zero.

4) With the coverage of ASK at this stage, the sand-fixing forest in the Mu Us Sandy Land can still achieve connectivity between atmospheric water, surface water and ground water. During the observation period, the infiltration of bare sandy land can reach 25.8 times of ASK land, and during a single precipitation process, the infiltration rate of ASK plot can reach 2.33 times of bare sandy land.

The airflow and vapor transport have not been considered in this study and should be incorporated in future experimental and theoretical investigations at the site.

685 **Acknowledgements**

This research was supported by the National Key R&D Programme of China(2016YFE0202900). Major Program of the National Natural Science Foundation of China, National Science and Technology Major Project and Ministry of Science and Technology of China (No. 2017ZX07101004, No. 2018YFC0507100, No. 2019ZD003, 690 NO. 31971726), the National Non-profit Institute Research Grant of Chinese Academy of Forestry (grant number CAFYBB2018ZA004) and the research grants from the Fundamental Research Funds for the Central Universities (BLX201814, No. 2015ZCQ-SB-01). We gratefully acknowledge the Beijing Municipal Education Commission for their financial support through Innovative Transdisciplinary Program "Ecological 695 Restoration Engineering". Thanks to the experimental site provided by Inner Mongolia Dengkou Desert Ecosystem National Observation Research Station, the Experimental Center of Desert Forestry, Chinese Academy Forestry. The authors thank two anonymous reviewers for their constructive comments which help improve the quality of the manuscript.

700 **References**

- [1] Bestelmeyer, B. T., Okin, G. S., Duniway, M. C., Archer, S. R., Sayre, N. F., Williamson, J. C., and Herrick, J. E.: Desertification, land use, and the transformation of global drylands, *Frontiers in Ecology and the Environment*, 13, 28-36, 2015.
- 705 [2] Billesbach, D. J. A., and Meteorology, F.: Estimating uncertainties in individual eddy covariance flux measurements: A comparison of methods and a proposed new method, 151, 394-405, 2011.
- [3] Burba, G., and Anderson, D.: A brief practical guide to eddy covariance flux measurements: principles and workflow examples for scientific and industrial
710 applications, Li-Cor Biosciences, 2010.
- [4] Chen, C., Park, T., Wang, X., Piao, S., Xu, B., Chaturvedi, R. K., Fuchs, R., Brovkin, V., Ciais, P., and Fensholt, R.: China and India lead in greening of the world through land-use management, *Nature Sustainability*, 2, 122, 2019.
- [5] Cheng, Y., Zhan, H., Yang, W., Jiang, Q., Wang, Y., and Guo, F. J. A. W. M.: An
715 ecohydrological perspective of reconstructed vegetation in the semi-arid region in drought seasons, *Agricultural Water Management*, 243, 106488, 2020.
- [6] Cheng, Y., Zhan, H., Yang, W., Dang, H., and Li, W.: Is annual recharge coefficient a valid concept in arid and semi-arid regions, *Hydrol. Earth Syst. Sci*, 21, 5031-5042, 2017a.
720
- [7] Cheng, Y., Zhan, H., Yang, W., Dang, H., Li, W. J. H., and Sciences, E. S.: Is annual recharge coefficient a valid concept in arid and semi-arid regions?, 21, 5031, 2017b.

- 725 [8] Cheng, Y., Li, Y., Zhan, H., Liang, H., Yang, W., Zhao, Y., and Li, T.: New comparative experiments of different soil types for farmland water conservation in arid regions, *Water*, 10, 298, 2018a.
- [9] Cheng, Y., Li, Y., Zhan, H., Liang, H., Yang, W., Zhao, Y., and Li, T. J. W.: New comparative experiments of different soil types for farmland water conservation in arid regions, 10, 298, 2018b.
- 730 [10] Cheng, Y., Zhan, H., Yang, W., Guo, F., Jiang, Q., and Wang, Y.: On change of soil moisture distribution with vegetation reconstruction in Mu Us sandy land of China, with new designed Lysimeter, 2020.
- [11] D’Odorico, P., Bhattachan, A., Davis, K. F., Ravi, S., and Runyan, C. W.: Global desertification: drivers and feedbacks, *Advances in Water Resources*, 51, 326-
735 344, 2013.
- [12] Dregne, H. E., and Chou, N.-T.: Global desertification dimensions and costs, *Degradation and restoration of arid lands*, 73-92, 1992.
- [13] Duan, H., Yan, C., Tsunekawa, A., Song, X., Li, S., and Xie, J.: Assessing vegetation dynamics in the Three-North Shelter Forest region of China using
740 AVHRR NDVI data, *Environmental Earth Sciences*, 64, 1011-1020, 2011.
- [14] Fan, Y., Miguez-Macho, G., Jobbágy, E. G., Jackson, R. B., and Otero-Casal, C. J. P. o. t. N. A. o. S.: Hydrologic regulation of plant rooting depth, 114, 10572-10577, 2017.
- [15] Fearnough, W., Fullen, M., Mitchell, D., Trueman, I., and Zhang, J. J. G.:
745 Aeolian deposition and its effect on soil and vegetation changes on stabilised desert dunes in northern China, 23, 171-182, 1998.

- [16] Gao, Y., Zhu, X., Yu, G., He, N., Wang, Q., and Tian, J.: Water use efficiency threshold for terrestrial ecosystem carbon sequestration in China under afforestation, *Agricultural and Forest Meteorology*, 195, 32-37, 2014.
- 750 [17] Groh, J., Stumpp, C., Lücke, A., Pütz, T., Vanderborght, J., and Vereecken, H.: Inverse estimation of soil hydraulic and transport parameters of layered soils from water stable isotope and lysimeter data, *Vadose Zone Journal*, 17, 2018.
- [18] Hanjie, W., and Hao, Z.: A simulation study on the eco-environmental effects of 3N Shelterbelt in North China, *Global and Planetary Change*, 37, 231-246, 755 [https://doi.org/10.1016/S0921-8181\(02\)00208-4](https://doi.org/10.1016/S0921-8181(02)00208-4), 2003.
- [19] Krishnaswamy, J., Bonell, M., Venkatesh, B., Purandara, B. K., Rakesh, K., Lele, S., Kiran, M., Reddy, V., and Badiger, S.: The groundwater recharge response and hydrologic services of tropical humid forest ecosystems to use and reforestation: Support for the “infiltration-evapotranspiration trade-off 760 hypothesis”, *Journal of Hydrology*, 498, 191-209, 2013.
- [20] Li, H.-r., Liu, Q.-b., Wang, W.-y., Yang, L.-s., Li, Y.-h., Feng, F.-j., Zhao, X.-y., Hou, K., and Wang, G. J. J. o. H. M.: Fluoride in drinking water, brick tea infusion and human urine in two counties in Inner Mongolia, China, 167, 892-895, 2009.
- 765 [21] Li, X. R., Ma, F. Y., Xiao, H. L., Wang, X. P., and Kim, K. C.: Long-term effects of revegetation on soil water content of sand dunes in arid region of Northern China, *Journal of Arid Environments*, 57, 1-16, [https://doi.org/10.1016/S0140-1963\(03\)00089-2](https://doi.org/10.1016/S0140-1963(03)00089-2), 2004.
- [22] Liu, J., and Diamond, J.: China's environment in a globalizing world, *Nature*, 770 435, 1179, 10.1038/4351179a, 2005.

- [23] Liu, X., He, Y., Zhao, X., Zhang, T., Zhang, L., Ma, Y., Yao, S., Wang, S., and Wei, S.: Characteristics of deep drainage and soil water in the mobile sandy lands of Inner Mongolia, northern China, *Journal of Arid Land*, 7, 238-250, 10.1007/s40333-014-0095-4, 2015.
- 775 [24] Maes, W. H., Gentine, P., Verhoest, N. E., Miralles, D. G. J. H., and Sciences, E. S.: Potential evaporation at eddy-covariance sites across the globe, 23, 925-948, 2019.
- [25] Mousavi, S. J., and Shourian, M.: Adaptive sequentially space-filling
metamodeling applied in optimal water quantity allocation at basin scale,
780 *Water Resources Research*, 46, 2010.
- [26] Newman, B. D., Vivoni, E. R., and Groffman, A. R.: Surface water–groundwater interactions in semiarid drainages of the American southwest, *Hydrological Processes: An International Journal*, 20, 3371-3394, 2006.
- [27] Pei, S., Fu, H., Wan, C. J. A., *Ecosystems, and Environment: Changes in soil*
785 *properties and vegetation following exclosure and grazing in degraded Alxa desert steppe of Inner Mongolia, China*, 124, 33-39, 2008.
- [28] Ramier, D., Boulain, N., Cappelaere, B., Timouk, F., Rabanit, M., Lloyd, C. R., Boubkraoui, S., Métayer, F., Descroix, L., and Wawrzyniak, V.: Towards an understanding of coupled physical and biological processes in the cultivated
790 *Sahel–1. Energy and water*, *Journal of Hydrology*, 375, 204-216, 2009.
- [29] Reynolds, J. F., Smith, D. M. S., Lambin, E. F., Turner, B., Mortimore, M., Batterbury, S. P., Downing, T. E., Dowlatabadi, H., Fernández, R. J., and Herrick, J. E.: Global desertification: building a science for dryland development, *science*, 316, 847-851, 2007a.

- 795 [30] Reynolds, J. F., Smith, D. M. S., Lambin, E. F., Turner, B. L., Mortimore, M.,
Batterbury, S. P. J., Downing, T. E., Dowlatabadi, H., Fernández, R. J.,
Herrick, J. E., Huber-Sannwald, E., Jiang, H., Leemans, R., Lynam, T.,
Maestre, F. T., Ayarza, M., and Walker, B.: Global Desertification: Building a
Science for Dryland Development, *Science*, 316, 847-851,
800 [10.1126/science.1131634](https://doi.org/10.1126/science.1131634), 2007b.
- [31] Scibek, J., Allen, D. M., Cannon, A. J., and Whitfield, P. H.: Groundwater–
surface water interaction under scenarios of climate change using a high-
resolution transient groundwater model, *Journal of Hydrology*, 333, 165-181,
2007.
- 805 [32] Skarpe, C.: Spatial patterns and dynamics of woody vegetation in an arid
savanna, *Journal of Vegetation Science*, 2, 565-572, 1991.
- [33] Sprenger, M., Volkmann, T. H., Blume, T., and Weiler, M.: Estimating flow and
transport parameters in the unsaturated zone with pore water stable isotopes,
Hydrology and Earth System Sciences, 2015.
- 810 [34] Su, Y. Z., and Lin Zhao, H.: Soil properties and plant species in an age sequence
of *Caragana microphylla* plantations in the Horqin Sandy Land, north China,
Ecological Engineering, 20, 223-235, 2003.
- [35] Tao, W.: Aeolian desertification and its control in Northern China, *International
Soil and Water Conservation Research*, 2, 34-41,
815 [https://doi.org/10.1016/S2095-6339\(15\)30056-3](https://doi.org/10.1016/S2095-6339(15)30056-3), 2014.
- [36] Wang, S., Cornelis van Kooten, G., and Wilson, B.: Mosaic of reform: forest
policy in post-1978 China, *Forest Policy and Economics*, 6, 71-83,
[https://doi.org/10.1016/S1389-9341\(02\)00078-3](https://doi.org/10.1016/S1389-9341(02)00078-3), 2004.

- [37] Wang, T., Sun, J.-g., Han, H., and Yan, C.-z.: The relative role of climate change
820 and human activities in the desertification process in Yulin region of
northwest China, *Environmental Monitoring and Assessment*, 184, 7165-7173,
10.1007/s10661-011-2488-6, 2012.
- [38] Wang, X., Zhang, C., Hasi, E., and Dong, Z.: Has the Three Norths Forest
Shelterbelt Program solved the desertification and dust storm problems in arid
825 and semiarid China?, *Journal of Arid Environments*, 74, 13-22, 2010a.
- [39] Wang, X. M., Zhang, C. X., Hasi, E., and Dong, Z. B.: Has the Three Norths
Forest Shelterbelt Program solved the desertification and dust storm problems
in arid and semiarid China?, *Journal of Arid Environments*, 74, 13-22,
<https://doi.org/10.1016/j.jaridenv.2009.08.001>, 2010b.
- 830 [40] Wang, Y., Zhao, H.-L., and Zhao, X.-Y.: Effects of land use intensity on the
restoration capacity of sandy land vegetation and soil moisture in fenced sandy
land in desert area, *Contemporary Problems of Ecology*, 6, 128-136, 2013.
- [41] Yan, Y., Xin, X., Xu, X., Wang, X., Yang, G., Yan, R., Chen, B. J. P., and soil:
Quantitative effects of wind erosion on the soil texture and soil nutrients under
835 different vegetation coverage in a semiarid steppe of northern China, 369,
585-598, 2013.
- [42] Yu, C., Muñoz-Carpena, R., Gao, B., and Perez-Ovilla, O. J. J. o. h.: Effects of
ionic strength, particle size, flow rate, and vegetation type on colloid transport
through a dense vegetation saturated soil system: Experiments and modeling,
840 499, 316-323, 2013.
- [43] Zha, Y., and Gao, J.: Characteristics of desertification and its rehabilitation in
China, *Journal of Arid Environments*, 37, 419-432,
<https://doi.org/10.1006/jare.1997.0290>, 1997.

- [44] Zhang, G.-H., Liu, G.B., Wang, G.L., Wang, Y.X. J. J. o. S., and Conservation,
845 W.: Effects of vegetation cover and rainfall intensity on sediment-associated
nitrogen and phosphorus losses and particle size composition on the Loess
Plateau, 66, 192-200, 2011.
- [45] Scanlon, B. R. Water and heat fluxes in desert soils 1 field studies. Water
Resources Research 30, 709-719, 1994.
- 850 [46] Scanlon, B. R. & Milly, P. C. D. Water and heat fluxes in desert soils 2
numerical simulation. Water Resources Research 30, 721-733, 1994.
- [47] Zeng, Y. & Su, Z. Reply to comment by Binayak P. Mohanty and Zhenlei Yang
on “A simulation analysis of the advective effect on evaporation using a two-
phase heat and mass flow model”. Water Resources Research 49, 7836-7840,
855 2013.
- [48] Zeng, Y., Su, Z., Wan, L. & Wen, J. A simulation analysis of the advective
effect on evaporation using a two-phase heat and mass flow model. Water
Resources Research 47, 2011.
- [49] Zeng, Y., Su, Z., Wan, L. & Wen, J. Numerical analysis of air-water-heat flow
860 in unsaturated soil: Is it necessary to consider airflow in land surface models?
Journal of Geophysical Research Atmospheres 116, 2011.
- [50] Zeng, Y. et al. Diurnal pattern of the drying front in desert and its application for
determining the effective infiltration. Hydrol. Earth Syst. Sci. 13, 703-714, 2009.
- [51] Zeng, Y. J. et al. Diurnal soil water dynamics in the shallow vadose zone (field
865 site of China University of Geosciences, China). Environmental Geology 58, 11-
23, 2009.

[52] Yu, L., Zeng, Y. & Su, Z. Understanding the mass, momentum, and energy transfer in the frozen soil with three levels of model complexities. *Hydrol. Earth Syst. Sci.* 24, 4813-4830, 2020.

870 [53] Yu, L., Zeng, Y., Wen, J. & Su, Z. Liquid-Vapor-Air Flow in the Frozen Soil. *Journal of Geophysical Research: Atmospheres* 123, 7393-7415, 2018.