

## Changes in glacial lakes in the Poiqu River Basin in the central Himalayas

Pengcheng Su <sup>1,2</sup>, Jingjing Liu <sup>\*1,2</sup>, Yong Li <sup>1,2</sup>, Wei Liu <sup>1,2</sup>, Yang Wang <sup>1</sup>, Chun Ma <sup>1,2</sup>, Qimin Li <sup>1,2</sup>

1. Key Laboratory of Mountain Hazards and Surface Process / Institute of Mountain Hazards and Environment, Chinese Academy of Science, Chengdu, 610041, China

2. University of Chinese Academy of Sciences, Beijing, 100049, China

Correspondence: Jingjing Liu ([chouchoujj@163.com](mailto:chouchoujj@163.com) and [liujingjing@imde.ac.cn](mailto:liujingjing@imde.ac.cn))

**Abstract:** The Poiqu River Basin is an area of concentration for glaciers and glacial lakes in the central Himalayas, where 147 glacial lakes were interpreted based on perennial remote sensing images, with lake area ranging from 0.0002 km<sup>2</sup> to 5.5 km<sup>2</sup>, in total of 19.89 km<sup>2</sup>. Since 2004, the retreat rate of glacier has reached as high as 5.0 km<sup>2</sup>/a, while the growth rate of glacial lake has reached 0.24 km<sup>2</sup>/a. We take 5 typical lakes for case study and find the retreat of glacier area reaches 31.2% while the glacial lake area has expanded by 166%. Moreover, we reconstruct the topography of the lake basin to calculate the water capacity and propose a water balance equation (WBE) to explore the lake evolution. Using WBE to the 5 lakes we calculate the water supplies in the last years and compare with the results of field surveys, in agreement within error of only 1.86% on average. The WBE also reveals that the water supplies to lake depend strongly on the altitude. Lakes on low altitude are supplied by glacier melting, and lakes on high altitude are supplied by snowmelts. The WBE is not only applicable for predicting future changes in glacial lakes under climate warming conditions but is also useful for assessing water resources from rivers in the central Himalayas.

**Keywords:** glacier; glacial lake; water balance; Poiqu River Basin; central Himalayas

### 1 Introduction

Worldwide glacial retreat due to global warming has led to great changes in alpine glacial lakes (IPCC, 2013; Mergili *et al.*, 2013; Nie *et al.*, 2014; Wang and Zhang, 2014; Prakash and Nagarajan, 2017). Most glaciers retreat at increasing rates (Solomina *et al.*, 2016). In the mountains of the Andes, Caucasus, Altay, and the Canadian Arctic region, glaciers have reduced in thickness by 3.6-11 m, while in the mountains of Tianshan, Alaska, Svalbard, Alps, and the Pacific coast, glaciers have thinned by up to 30 m (Zhang, *et al.*, 2015; 2019). As the warming rate is much higher in Asian alpine areas, it is expected that approximately 36% of the ice will be lost by the end of this century (Kraaijenbrink *et al.*, 2017). In

particular in the central Himalayas, temperature increased at a rate of 0.3-0.4°C per ten years, nearly two times the global rate; and at present the glacial lake area increases by 40% at a rate of 0.28 km<sup>2</sup>/a, which is higher than the other regions in the Himalayas (Nie *et al.*, 2017).

Inventory indicates that the area of glaciers has reduced by 9.5% (767 km<sup>2</sup>) in the last 40 years (Wang *et al.*, 2012; Nie *et al.*, 2017), at an rate higher in the south than in the north (Wei *et al.*, 2014). The retreat of glaciers has led to the expansion and generation of glacial lakes (Richardson and Reynolds, 2000; Komori, 2008; Bolch *et al.*, 2008; Bajracharya *et al.*, 2007; Yao, 2010; Shrestha and Aryal, 2011; Raj *et al.*, 2013). 4950 lakes were identified in the Himalayas in 2015, mainly located between altitudes of 4000 and 5700 m, with a total area of 455.3 ±72.7 km<sup>2</sup>, which has increased by approximately 14.1% since 1990 (Nie *et al.*, 2017). In the central Chinese Himalayas, the glacial lake area has increased greatly, from 166.48 to 215.28 km<sup>2</sup>, although the number of lakes has decreased from 1750 to 1680 in the last 40 years (Wang *et al.*, 2012). This implies that the changes in glacial lakes are mainly due to the area expansion, which accounts for 67% of the area increase, while the formation of a new glacial lake contributes only 33% (Wang *et al.*, 2015). This expansion depends on the fact that most lakes are fed by melt water of glaciers. In fact, the lakes associated with glaciers increased by 122.1% in area during 1976-2010 in the central Himalayas, while lakes without melt water remained steady, increasing only 2.8% in area during the same period (Wang *et al.*, 2015).

Glacial retreat appears most remarkably in the south central Himalayas (Nie *et al.*, 2017), where the last 30 years have witnessed a glacier length reduction of 48.2 m on average and area reduction at a rate of 0.57% (Yao *et al.*, 2012). In the southern Himalayas lies the Koshi River, which has attracted great attention because glaciers have decreased by 19% in area in the last 40 years (Shangguan *et al.*, 2014; Xiang *et al.*, 2018), and the melting rate has been accelerating in the last decade (Zhang *et al.*, 2019). Moreover, the Poiqu River (Bhote Koshi River), a tributary of the Sun Koshi River, is a more active location for dramatic changes in glaciers and glacial lakes. Landsat data indicate that the annual retreat rate of glaciers in Poiqu Basin was approximately 0.54% in 1976-2010, and the area of glacier lakes increased up to 1.3% per year in 1986-2001 (Chen *et al.*, 2007). Consequently, the glacial lake increased by 47% in area (0.37 km<sup>2</sup>/a) (Chen *et al.*, 2007) in 1986-2001.

The retreat of glaciers and the growth of lakes are generally believed to be caused by rising temperatures and decreasing rainfall (Yao *et al.*, 2012; Xiang *et al.*, 2014; Mir *et al.*, 2014). Records show that the temperature in the west Himalayas has increased by approximately 1.7°C in the last century, while the rainfall is decreasing (e.g., Bhutiyani *et al.*, 2009; Mir *et al.*, 2015a; 2015b). In particular, observations

in the Tibetan Plateau indicate that there is a strong tendency of temperature rise at high elevations (*Liu and Chen., 2000*), and the rising rate increases with elevation, reaching its highest value at approximately 4800 to 6200 m. (*Qin et al., 2009*), which is in the range of glacier development.

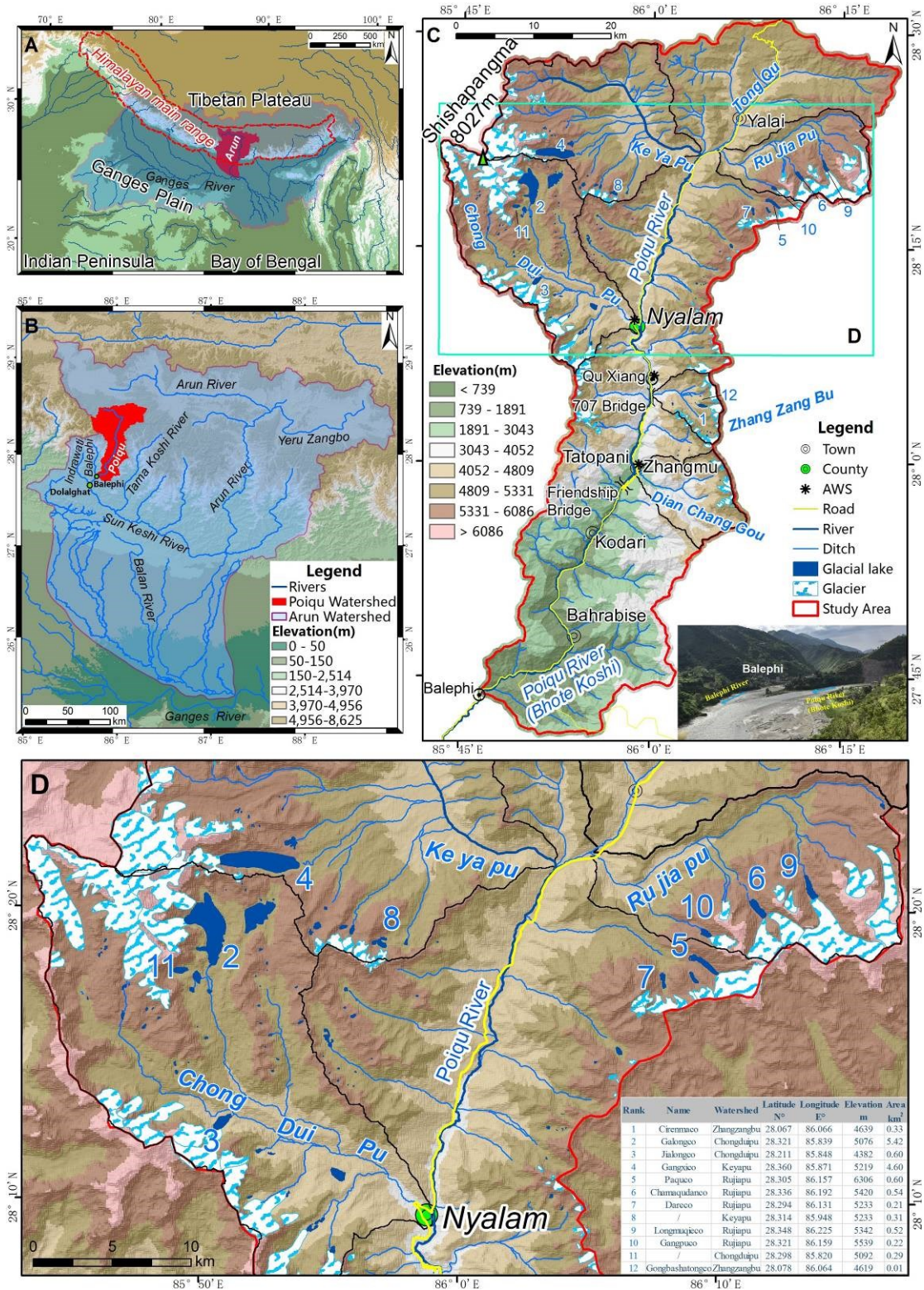
Although it is well acknowledged that glaciers and glacial lakes are sensitive indicators of climate change, most studies are merely taken at large spatial and temporal scales, and only a gross tendency is outlined for the changes (*Chen et al., 2007; Wang and Zhang, 2014; Wang et al., 2015; Wang and Jiao, 2015; Xiang et al., 2018; Zhang et al., 2019*); special cases are only concerned with lake breaks (*Xu and Feng, 1988; Chen et al., 2007; Wang et al., 2018; Nie Y et al., 2018*). In the present study, we use multisource images from the last 30 years to explore the lake variation in the Poiqu River Basin and provide a quantitative analysis of the water balance, which leads to a method for assessing glacial lake change under a warming climate and sheds new light on the mechanism of glacial lake evolution.

## **2 Background of the Poiqu River Basin and Data sources**

### **2.1 Background of the Poiqu River Basin**

#### **2.1.1 Geomorphic and geological background**

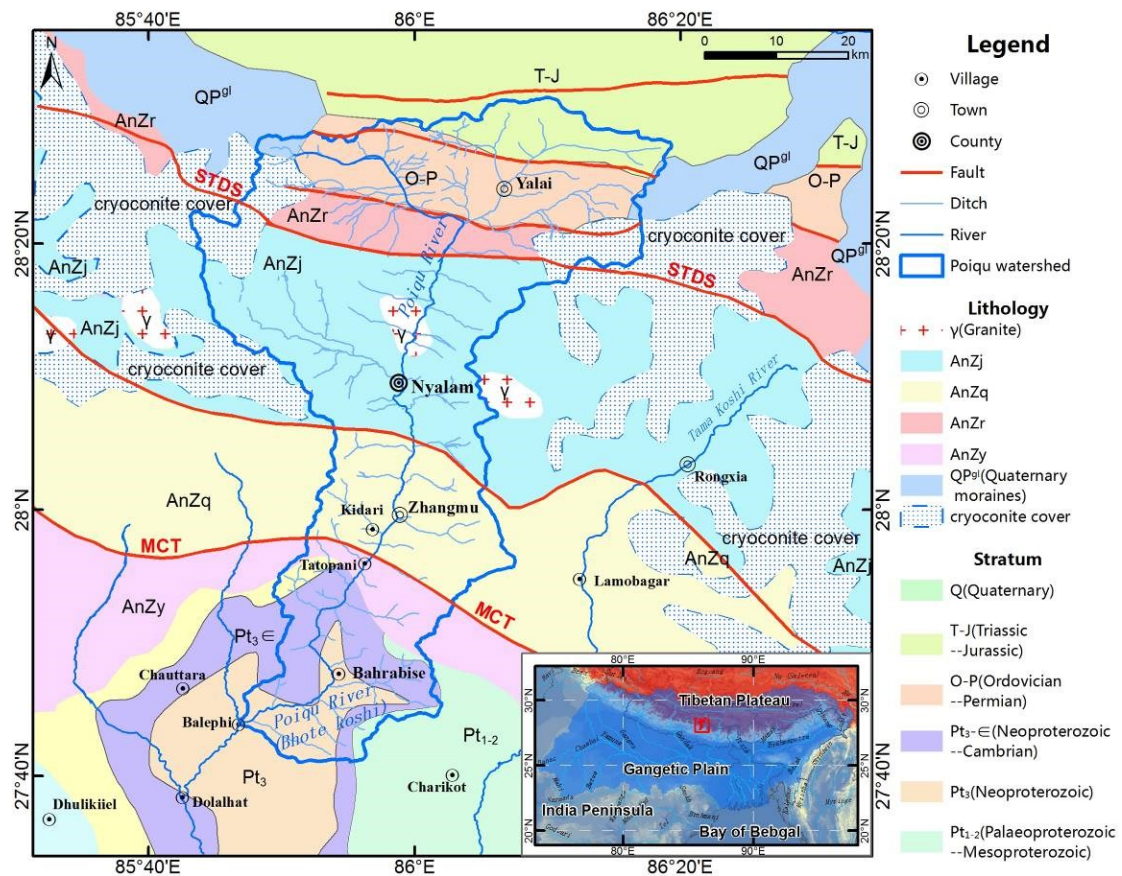
The Poiqu River Basin is an area of concentration for glaciers and glacial lakes (*Lambrecht et al., 2009*). The Poiqu River (known as the Bhote Keshi River in Nepal) is the boundary river between China and Nepal, which is located along the southern slope of the central Himalayas, between the Himalayas and Laguigang Mountains (Fig.1). The river is 117.1km and 2602km<sup>2</sup>, originating from the Mt. Shishapangma at 8027m down to 1567m at the outlet. The upper stream is located in the Chinese territory, the length of the Poiqu River is 90 km.



**Fig. 1 The Poiqu River Basin in the central Himalayas**

Geologically, the Poiqu River Basin is located in the central Himalayan terrane (Zhang et al., 2015), which was formed by the Indian-Eurasian plate collision (Zheng et al., 2014). The Himalayan orogenic belt has a crystalline basement complex anticline north wing (the anticline is located in Nepal). The whole basin runs through the northern Himalayan Tethyan sedimentary rock belt, high Himalayan, low

Himalayan and other tectonic units, all of which are bounded by the South Tibet detachment fault (STDS) and the main central fault (MCT) (Fig. 2).



**Fig. 2 Geological background of the Poiqu River Basin (Base map based on Pan, 2013)**

The Sun Koshi River developed and cut through the MCT, and the Poiqu River has experienced many tectonic movements since the Pliocene; however, the difference in the local zone due to tectonic effects has been relatively reduced because of the large uplift of the plateau. The uplifted mountains continue to be eroded and denuded, while the relatively sloped gullies receive uneven amounts of loose accumulation. Under such a background, the Poiqu River is mainly characterized by alluvial and diluvial valleys, with widths of 20 m to 200 m. The riverbed twists and turns and develops multilevel terraces. To the south of Nyalam County, the valley bottom is narrow with steep walls, most of which are V-shaped and Y-shaped valleys. The longitudinal section of the riverbed is undulating, with multiple waterfalls and turbulence.

### 2.1.2 Climate background

The main Himalayas edge divides the Poiqu River into two climate zones: the northern zone, featured by Yalai village, is temperate and subhumid, with an average annual temperature ( $T_a$ ) of 3.5°C and rainfall ( $R_a$ ) of 1100 mm; the southern zone, featured by Zhangmu town, is in the subtropic monsoon climate, with  $T_a$  of 10~20°C,  $R_a$  of 2500~3000 mm, and frost-free period of 250 days, which is the area with the highest

concentration of rainfall worldwide. Temperature and precipitation decreases from south to north with the rising altitude. The Poiqu has 5 major tributary rivers larger than 100 km<sup>2</sup>, i.e., Chongduipu, Keyapu, Rujiapu, Tongqu, and Dianchanggou, where floods occur frequently in rainy seasons. The average annual discharge in the Chongduipu is 5.8 m<sup>3</sup>/s and it is 31.7 m<sup>3</sup>/s in the Poiqu mainstream.

## 2.2 Data sources and processing method

### 2.2.1 Sources of image data

Landform data are mainly from ALOS-12.5 m and ASTER-30 m elevation data, which are used for correcting remote sensing data and interpretation. Geological data come from geological maps of the Tibet Plateau. Remote sensing data come from the Landsat, GF-2, ZY-3, and UAV satellites, as listed in Table 1.

**Table 1 Data sources and features for interpretation of glaciers and glacial lakes**

| Satellites | Number                         | Date       | Sensors          | Spectrum features  | Spatial Resolution(m)   |
|------------|--------------------------------|------------|------------------|--|---|
| Landsat 3  | LM21510401977259AAA01          | 1977-09-16 | MSS              | 4 bands, from visible to near infrared   | Multi-Spectral (60m)  |
| Landsat 5  | LT51410401988030BKT00          | 1988-01-30 | TM               | 7 bands, from visible to near infrared   | Multi-Spectral (30m)  |
| Landsat 7  | LE71410402004306PFS00          | 2004-11-01 | ETM              | 7 bands, from visible to intermediate infrared Micron Panchromatic                       | Multi-Spectral (30m)<br>Panchromatic (15m)  |
| Landsat 7  | LE71410402005308PFS00          | 2005-11-04 |                  |  |   |
| Landsat 7  | LE71410402006359SGS00          | 2006-12-25 |                  |  |   |
| Landsat 7  | LE71410402007362SGS00          | 2007-12-28 |                  |  |   |
| Landsat 7  | LE71410402008365SGS00          | 2008-12-30 |                  |  |   |
| Landsat 7  | LE71410402009335SGS00          | 2009-12-01 |                  |  |   |
| Landsat 7  | LE71410402010354PFS00          | 2010-12-20 |                  |  |   |
| Landsat 7  | LE71410402012360PFS00          | 2012-12-25 |                  |  |   |
| ASTER      | ASTGTM_N27E085/                | 2009       | ASTER            | 14 bands, 3 visible/ near infrared, 6 visible/ near infrared (15m),                      | short-wave infrared (30m), 3 thermal infrared (90m)   |
| GDEM       | N27E086/ N28E085/ N28E086      |            |                  |  |   |
| SPOT-5     | S5G1B201004230520204YZYZMX     | 2010-04-23 | HRG <sub>s</sub> | 5 bands, 1 Panchromatic, 1 short-wave infrared, 3 Multi-Spectral                         | Panchromatic (2.5m),  |
|            | S5G1J201004230520206YZYZMX     |            |                  |  | Multi-Spectral (10m),   |
|            | S5G1A201004230520201YZYZMX     |            |                  |  | short-wave infrared (20m)   |
| Landsat 8  | LC81410402013338LGN00          | 2013-12-04 | OLI              | 7 bands, from visible to intermediate infrared, 2 thermal infrared, Panchromatic, Cirrus | Multi-Spectral (30m),<br>Multi-Spectral(30m), Cirrus,<br>Thermal infrared (100m),<br>Panchromatic (15m) |
| Landsat 8  | LC81410402014309LGN02          | 2014-11-05 |                  |  |   |
| Landsat 8  | LC81410402015344LGN00          | 2015-12-10 |                  |  |   |
| Landsat 8  | LC81410402016363LGN00          | 2016-12-28 |                  |  |   |
| Landsat 8  | LC81410402017333LGN00          | 2017-11-29 |                  |  |   |
| Landsat 8  | LC81410402018112LGN00          | 2018-04-22 |                  |  |   |
| Landsat 8  | LC81410402019307LGN00          | 2019-11-03 |                  |  |   |
| Landsat 8  | LC81410402020326LGN00          | 2020-11-21 |                  |  |   |
| GF-2       | L1A0003537778/GF2_PMS2_3537778 | 2018-10-20 | MSS<br>/PAN      | 4 bands, from visible to near infrared, Panchromatic                                     | Panchromatic (1m),<br>Multi-Spectral (4m)   |
| GF-2       | L1A0002952275/GF2_PMS2_2952275 | 2018-01-22 |                  |  |   |
| GF-2       | L1A0002952269/GF2_PMS2_2952269 | 2018-01-22 |                  |  |   |
| GF-2       | L1A0002951335/GF2_PMS2_2951335 | 2018-01-22 |                  |  |   |

|      |                                |            |               |   |   |
|------|--------------------------------|------------|---------------|---|---|
| GF-2 | L1A0002951338/GF2_PMS2_2951338 | 2018-01-22 |               |   |   |
| GF-2 | L1A0005238270/GF2_PMS_28384895 | 2020-11-22 |               |   |   |
| UAV  | SONY Alpha 7 III (4)           | 2019-05-30 | Visible light |   |   |
| ZY-3 | L1A0004392692/ZY3_TLC_4852417  |            |               |   | Foresight, Backsight (3.5m); Orthophoto (2.1m), Multi-Spectral (3.5m) |
|      | L1A0004392693/ZY3_TLC_4852418  | 2019-08-28 | TLC           | 4 bands, from visible to near infrared<br>Foresight, back sight, Panchromatic |   |

### 2.2.2 Processing method of image data

We use the fusion method to integrate the multispectrum data of 4 m GF-2 and the full-color data of 1 m GF-2 to create a base map for interpretation. In detail, for TM data, we use 742 band combinations and 432 combinations to highlight the colors of glaciers and glacial lakes; for the data from GF-2, we combine the 321 bands of true color and the standard 432 bands of false color images. Then, the ratios between different bands of the multispectrum data are used to create images at different gray levels (*Shangguan et al., 2014; Mir, R.A. et al., 2014; Wang et al., 2014*).

For glaciers, reflectivity is large for the green light and small for the intermediate infrared light. Thus, the gray images can be obtained by NDSI (Zhang *et al.*, 2006):

$$\text{NDSI} = (\text{float}(b_G) - \text{float}(b_S)) / (\text{float}(b_G) + \text{float}(b_S)) \quad (1)$$

where  $b_G$  is the green band and  $b_S$  is the intermediate infrared band. The index falls between  $-1$  and  $1$ , which can be further readjusted using ENVI software to provide the proper threshold. In this study, we set  $\text{NDSI} > 0.35$  as the threshold for glaciers.

For glacial lakes, reflectivity of blue light is large and it approaches zero for near infrared, so the gray images are obtained by the NDWI (Zhang *et al.*, 2006):

$$\text{NDWI} = (p_G - p_N) / (p_G + p_N) \quad (2)$$

where  $p_G$  and  $p_N$  are the reflectivity of the green and near infrared light, respectively. Similar to the NDSI, we set  $\text{NDWI} > 0$  for water, which can be used as a criterion to identify glacial lakes since there are no other water bodies in the study area.

### 2.2.3 Sources of meteorological data

As glaciers are sensitive to temperature, it is reasonable to consider the effects of weather on the changes in glaciers and glacial lakes. Unfortunately, weather stations are very sparse in the Himalayas, and no stations in the tributaries are under consideration; only records from nearby stations are accessible. Near

the study area, we have three weather stations in Nylamu, Quxiang, and Zhangmu at altitudes of 3811 m, 3345 m, and 2305 m (Table 2). The Nylamu weather station was built before 1950, while the Quxiang and Zhangmu station was built as late as 2016, so the data before 2016 in our study were from the National Center (<http://data.cma.cn/>) in Nylamu station.

**Table 2 Information about meteorological stations and meteorological data**

| Weather station | Longitude E | Latitude N | Elevation (m) | Collection time | Related parameters  |
|-----------------|-------------|------------|---------------|-----------------|---|
| Nylamu          | 85°58'53"   | 28°09'27"  | 3811          | 1950-2020       | Snowfall (PS), Rainfall (QR),<br>Temperature (T), Solar<br>radiation (IR), Wind speed (v) |
| Quxiang         | 85°59'51"   | 28°05'34"  | 3345          | 2016-2020       |   |
| Zhangmu         | 85°58'52"   | 27°59'36"  | 2305          | 2016-2020       |   |

#### 2.2.4 Processing method of meteorological data

The data from weather stations cannot be used directly to represent the lake temperature. All the lakes in study are distant to the stations and located in high-altitude regions with significant differences in elevation. Data correction, especially the altitude correction, is necessary before we analyze the temperature variations (*Liu et al., 2014*).

Combining the data from the three stations may comprehensively reflect the weather features of the study area. The key factor for interpolation is the gradient of temperature ( $R_T$ ) varying with elevation. To obtain the  $R_T$ , we take the records of Nylamu and Zhangmu in 2016. The daily average temperature  $T_T$  is defined as follows:

$$R_T = (T_N - T_Z) / (Al_N - Al_Z) \quad (3)$$

where  $T_N$  and  $T_Z$  are the daily average temperature in Nylamu and Zhangmu weather station, respectively, and  $Al_N$  and  $Al_Z$  are the altitudes of the two stations. Formulas (3) and (4) give the  $R_T$  of -6.1°C/km.

Then, the interpolated temperature for the target point can be obtained in the same way:

$$T_H = T_0 - R_T \Delta H \quad (4)$$

where the subscript H means the altitude of the target points (i.e., the tributary rivers or the glacial lakes) and 0 indicates the recorded values.

### 2.3 Distribution of glacial lakes in the Poiqu River Basin

According to the ZY-3 satellite image of August 28, 2019, a total of 147 glacial lakes and related glaciers have been identified in the Poiqu River Basin (Fig. 1), with area ranging from 0.0002 km<sup>2</sup> to 5.5 km<sup>2</sup>, in total of 19.89 km<sup>2</sup>. There are 55 lakes in area greater than 0.02 km<sup>2</sup>, accounting for 19.24 km<sup>2</sup>. For comparison, the lake number in 2001 was 49 and the total area was 17.61 km<sup>2</sup> (*Chen et al., 2007*).

Lakes larger than 0.1 km<sup>2</sup> are mainly in the tributaries of Keyapu, Rujiapu, and Chongduipu in upper



Poiqu and in Zhangzangbu in middle Poiqu. More than half of the lake area is located in Chonduipu, approximately 9.51 km<sup>2</sup>, and the second largest is Keyapu at approximately 5.44 km<sup>2</sup>. These lakes account for 83% of the total area of glacial lakes (Table 3).

**Table 3 Area distribution of glacial lakes in the Poiqu River Basin**

| Area range (km <sup>2</sup> ) | Number | Total area (km <sup>2</sup> ) | Proportion of total number (%) | Proportion of total area (%) |
|-------------------------------|--------|-------------------------------|--------------------------------|------------------------------|
| <0.02                         | 92     | 0.56                          | 62.6                           | 2.8                          |
| 0.02-0.1                      | 32     | 1.44                          | 21.8                           | 7.2                          |
| 0.1-0.5                       | 16     | 3.51                          | 10.9                           | 17.6                         |
| 0.5-1                         | 4      | 2.24                          | 2.7                            | 11.3                         |
| >1                            | 3      | 12.14                         | 2.0                            | 61.0                         |

The lakes are distributed between 4200 ~ 5800m, concentrated in 5000 ~ 5800m, coinciding with the range of maximal retreat of glaciers (*Ji et al., 2020*); and more than 84% glaciers are located between 4800 ~ 6200m (Table 4). This fact suggests that the melt water from glaciers has supplied the lakes.

**Table 4 Altitude distribution of glacial lakes in the Poiqu River Basin**

| Altitude range (m) | Number | Total area (km <sup>2</sup> ) | Proportion of total number (%) | Proportion of total area (%) |
|--------------------|--------|-------------------------------|--------------------------------|------------------------------|
| <4500 m            | 8      | 1.2                           | 5.4                            | 6                            |
| 4500-5000          | 31     | 1.0                           | 21.1                           | 5.1                          |
| 5000-5200          | 35     | 8.7                           | 23.8                           | 43.7                         |
| 5200-5400          | 42     | 7.5                           | 28.6                           | 37.7                         |
| 5400-5800          | 31     | 1.5                           | 21.1                           | 7.5                          |

There are moraine lakes, glacial erosion lakes, ice-surface lakes, and cirque lakes in the area, and moraine lakes take domination (Table 5).

**Table 5 Types of glacial lakes in the Poiqu River Basin**

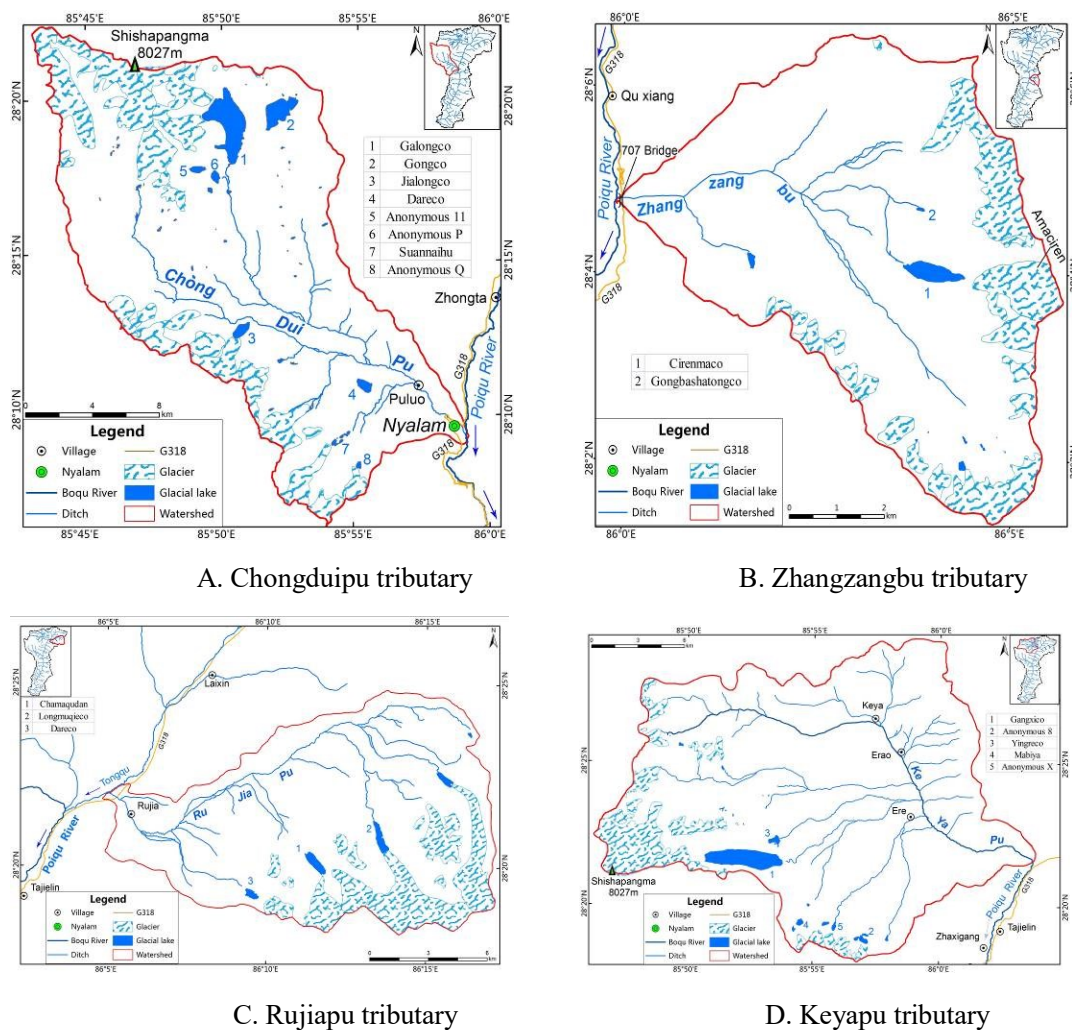
| Types                   | Moraine lake | Glacier-eroded lake | Glacier-surface lake | Cirque lake |
|-------------------------|--------------|---------------------|----------------------|-------------|
| Numbers                 | 75           | 29                  | 24                   | 19          |
| Percentage              | 52%          | 19%                 | 16%                  | 13%         |
| Area (km <sup>2</sup> ) | 18.8         | 0.36                | 0.48                 | 0.25        |

### 3 Evolution of typical lakes

#### 3.1 The 5 typical glacial lakes

In order to explore the detailed evolution processes of glacial lakes, we take case studies of five large (>0.3km<sup>2</sup>) glacial lakes, i.e., the Galongco Lake (5.50 km<sup>2</sup>), the Gangxico Lake (4.63 km<sup>2</sup>), the Jialongco Lake (0.64 km<sup>2</sup>), the Longmuqieco Lake (0.54 km<sup>2</sup>), and the Cirenmaco Lake (0.31 km<sup>2</sup>).

These lakes are located in four major tributaries with high concentration of glacial lakes: Chongduipu (51 lakes), Keyapi (19 lakes), Rujiapu and Zhangzangpu (11 lakes) (Fig.3). And Fig.4-6 show the Cirenmaco, Gangxico and Longmuqieco Lake and their related "mother glaciers" that are associated with their generation and water supplies, including pictures in different years between 1977 and 2018.



**Fig. 3 Distribution of glaciers and glacial lakes in the 4 major tributaries of the Poiqu River Basin**

1) Chongduipu lies in the western part of middle Poiqu, with a long, lobate form and U-shaped channel, which flows from northwest to southeast. Chongduipu has four tributaries, and the largest glacial Lake Galongco is located in the Jirepu tributary and supplied by the Jipuchong glacier on the southeastern slope of Mt. Shisha Pangma.

2) Zhangzangbu joins Poiqu from the east in the middle reach in the form of broad branches and V-shaped channels, which deeply cut the valley and leaves flow marks of approximately 30 m. Glaciers are mainly distributed in the upper reaches, and Cirenmaco Lake is located in a tributary in the eastern source area.

3) Rujiapu is a tributary of Tongqu and thus a secondary tributary of Poiqu. Rujiapu lies in the eastern part of the upper reaches, forming long branches and U-shaped channels. It has a 90°-turn near the mainstream, flowing from northeast to southwest, and the glacial lakes are concentrated in the southeast. Moreover, the Rujiapu tributary has four tributaries with distributions of glaciers and lakes.

4) Keyapu lies in the upper western part of Poiqu, near Chongduipu in the source area. Keyapu has broad branches and a U-shaped channel. Glaciers and glacial lakes are mainly distributed in the southeast.

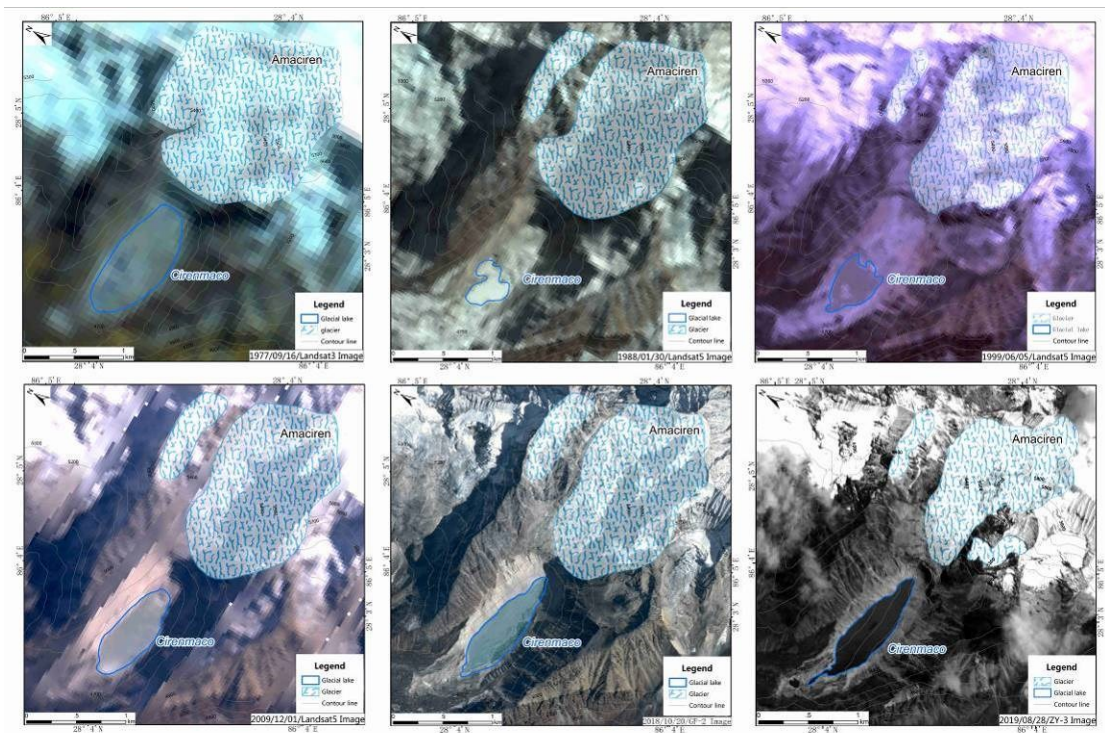
Table 6 lists basic parameters of the tributaries, which are crucial for the formation and evolution of the lakes, and Table 7 lists parameters for the major lakes in the present state, based on interpretation of 2018 images. The table 7 also lists the distance of the lake to its connected glacier, indicating that most lakes are nearly linked to the glacier and thus their changes are expected to be well correlated.

**Table 6 Parameters of the 4 glacial lake tributaries**

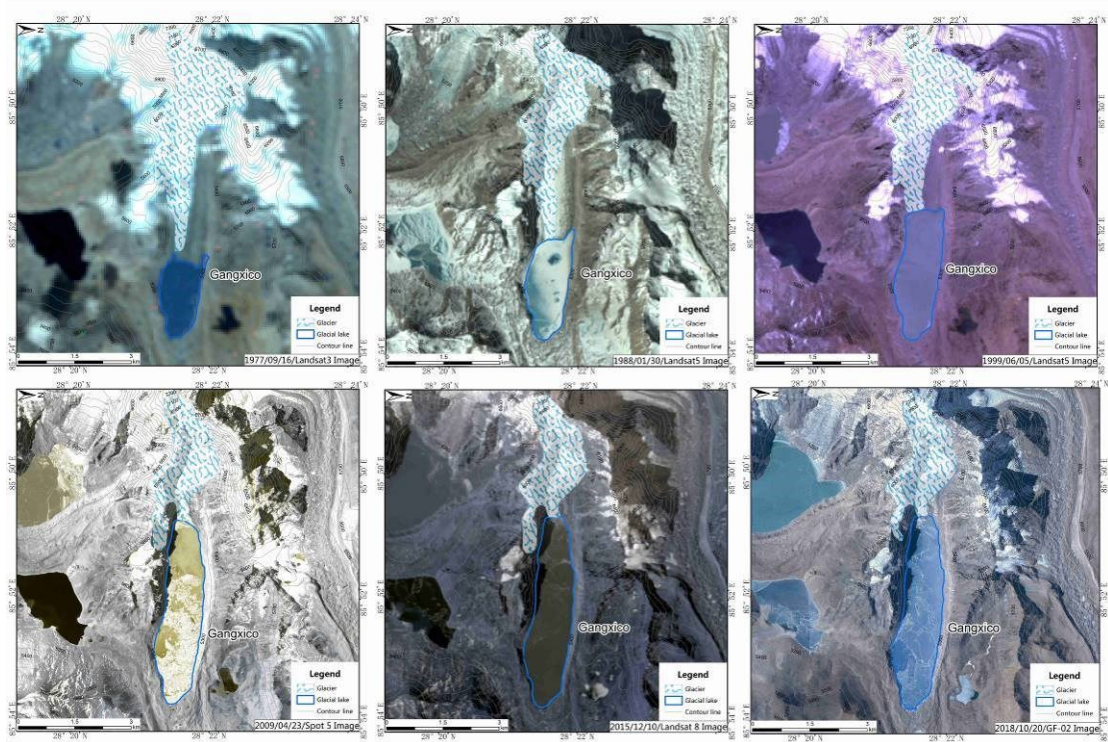
| Tributaries | Area (km <sup>2</sup> ) | Glacier number | Average slope | Elevation difference (m) | Moraine (km <sup>2</sup> ) | Glacier area (km <sup>2</sup> ) | Lake area (km <sup>2</sup> ) |
|-------------|-------------------------|----------------|---------------|--------------------------|----------------------------|---------------------------------|------------------------------|
| Chongduipu  | 372.77                  | 55             | 23.7°         | 4277                     | 64.1                       | 68.66                           | 10.44                        |
| Zhangzangbu | 49.92                   | 14             | 29.3°         | 2941                     | 9.2                        | 8.28                            | 0.42                         |
| Rujiapu     | 354.89                  | 13             | 21.9°         | 2636                     | 7.1                        | 27.33                           | 1.63                         |
| Keyapu      | 163.96                  | 25             | 18.7°         | 3807                     | 29.2                       | 27.5                            | 5.87                         |

**Table 7 Basic parameters for major glacial lakes in the Poiqu River Basin**

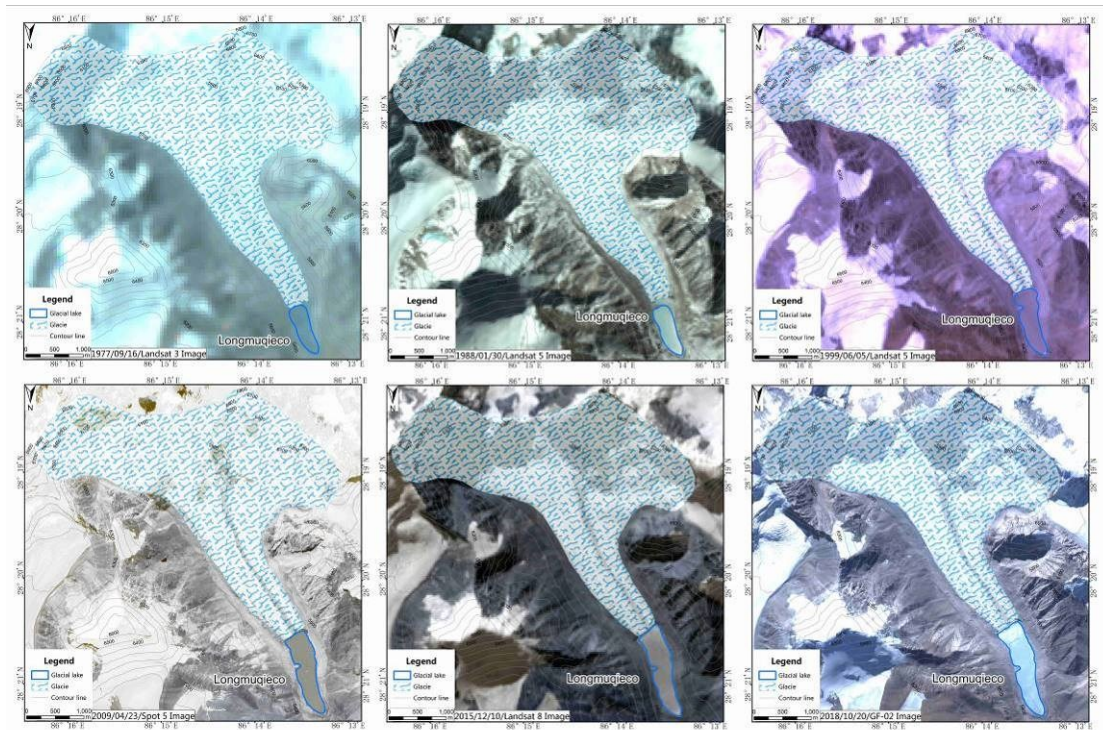
| Major lakes | Tributaries | Water supply area (km <sup>2</sup> ) | Connected glacier (km <sup>2</sup> ) | Distance to glacier (km) | Water level altitude (m) |
|-------------|-------------|--------------------------------------|--------------------------------------|--------------------------|--------------------------|
| Galongco    | Chongduipu  | 29.61                                | 10.71                                | 0.18                     | 5076                     |
| Jialongco   | Chongduipu  | 5.61                                 | 0.88                                 | 0                        | 4382                     |
| Longmuqieco | Rujiapu     | 19.30                                | 9.58                                 | 0                        | 5342                     |
| Cirenmaco   | Zhangzangbu | 5.10                                 | 1.61                                 | 0.29                     | 4639                     |
| Gangxico    | Keyapu      | 15.91                                | 3.38                                 | 0                        | 5219                     |



**Fig. 4 Comparison of area change between the Cirenmaco Lake and its connected glacier**



**Fig. 5 Comparison of area change between the Gangxico Lake and its connected glacier**



**Fig. 6 Comparison of area change between the Longmuqieco Lake and its connected glacier**

### 3.2 Change in lake area

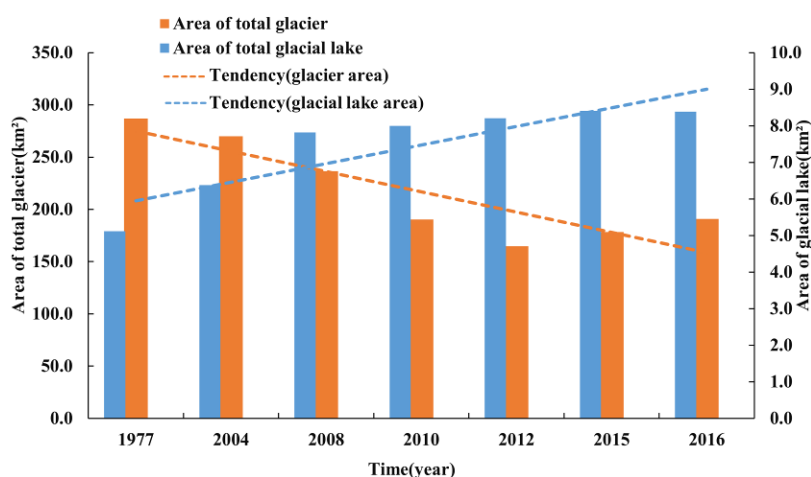
We may trace the lake variations using multisource images. Fig. 7 shows the total area changes of the 5 lakes and related glaciers since 1977; the dotted line means that the curve is inferred only because of the lack of data before 1999; the gross tendency of glacier loss and glacial lake growth is clear. The retreat of glacier area reaches 31.2%, at a rate of  $2.91 \text{ km}^2/\text{a}$ ; accordingly, the glacial lake area has expanded by 166%, at a rate of  $0.17 \text{ km}^2/\text{a}$ . Since 2004, the retreat rate has reached as high as  $5.0 \text{ km}^2/\text{a}$ , while the growth rate of lake has reached  $0.24 \text{ km}^2/\text{a}$  (in Table 8). These are comparable with the results in literatures. For example, from 1975 to 2010, glaciers decreased by 19% in area (Xiang *et al.*, 2014), while glacial lake area increased by 83% ( $0.26 \text{ km}^2/\text{a}$ ) from 1976-2010 (Wang *et al.*, 2015). In 1986-2001, the glacial area increased by 47% ( $0.37 \text{ km}^2/\text{a}$ ) (Chen *et al.*, 2007).

For comparison, glacial lakes increased by 29.7% in the entire Chinese Koshi River (including Poiqu and six other tributary rivers) in 1976-2000 (Shrestha and Aryal, 2011; Wang *et al.*, 2012) at a rate of  $1.6 \text{ km}^2/\text{a}$ . In the Koshi River, the glacier area has decreased by 19% ( $23.48 \text{ km}^2/\text{a}$ ), and the glacial lake area has increased by 10.6 % (Shangguan *et al.*, 2014; Xiang *et al.*, 2018). In 2000-2010, the glacial lake increased by 6% in area ( $0.72 \text{ km}^2/\text{a}$ ) (Wang *et al.*, 2015). This result means that Poiqu undergoes more dramatic changes in glaciers and glacial lakes. Specifically, the Cirenmaco, Galongco, Jialongco, Gangxico, and Longmuqieco Lake, have increased up to -54%, 313%, 640%, 254%, and 245% at rates of  $-0.006 \text{ km}^2/\text{a}$ ,  $0.094 \text{ km}^2/\text{a}$ ,  $0.013 \text{ km}^2/\text{a}$ ,  $0.069 \text{ km}^2/\text{a}$ , and  $0.008 \text{ km}^2/\text{a}$ , respectively, from 1977 to 2018. For each

lake, the retreat-growth correlation is clearly shown in Table 9 and Fig.8. Notably, there was a sudden decrease in area in 1981, simply because there was an outburst (*Xu and Feng, 1988*). Thus, historical anomalies in glacial lake areas may be caused by lake outbursts.

**Table 8 Area changes in the 5 typical glacial lakes and their glaciers since 1977**

| Date       | Cirenmaco                          |   | Galongco                           |   | Jialongco                          |   | Gangxico                           |   | Longmuqieco                        |   |
|------------|------------------------------------|---|------------------------------------|---|------------------------------------|---|------------------------------------|---|------------------------------------|---|
|            | Area of Glacier (km <sup>2</sup> ) | Area of Glacial Lake (km <sup>2</sup> ) | Area of Glacier (km <sup>2</sup> ) | Area of Glacial Lake (km <sup>2</sup> ) | Area of Glacier (km <sup>2</sup> ) | Area of Glacial Lake (km <sup>2</sup> ) | Area of Glacier (km <sup>2</sup> ) | Area of Glacial Lake (km <sup>2</sup> ) | Area of Glacier (km <sup>2</sup> ) | Area of Glacial lake (km <sup>2</sup> ) |
| 1977/9/16  | 25.8                               | 0.57                                    | 171.5                              | 1.66                                    | 18.1                               | 0.10                                    | 61.3                               | 1.82                                    | 106                                | 0.22                                    |
| 1988/1/30  | 22.4                               | 0.12                                    | 149.1                              | 2.07                                    | 14.7                               | 0.15                                    | 54.9                               | 2.53                                    | 102.5                              | 0.24                                    |
| 1999/6/5   | 20.4                               | 0.19                                    | 147.8                              | 2.98                                    | 14.8                               | 0.20                                    | 51.2                               | 3.31                                    | 101.9                              | 0.35                                    |
| 2002/12/1  |                                    |   |                                    |   |                                    | 0.24                                    | 0                                  |   | 0                                  |   |
| 2002/12/1  |                                    |   |                                    |   |                                    | 0.30                                    | 0                                  |   | 0                                  |   |
| 2004/11/01 | 22.2                               | 0.23                                    | 147.2                              | 3.50                                    | 14.5                               | 0.31                                    | 49.2                               | 3.77                                    | 100.7                              | 0.39                                    |
| 2005/11/04 | 22.1                               | 0.23                                    | 141.2                              | 3.60                                    | 14.1                               | 0.36                                    | 46.5                               | 3.86                                    | 100.2                              | 0.40                                    |
| 2006/12/25 | 22.1                               | 0.23                                    | 143.7                              | 3.93                                    | 13.9                               | 0.46                                    | 44.6                               | 3.99                                    | 100.2                              | 0.40                                    |
| 2007/12/28 | 22                                 | 0.31                                    | 147.3                              | 4.01                                    | 13.3                               | 0.46                                    | 44                                 | 4.04                                    | 100.2                              | 0.42                                    |
| 2008/12/30 | 21.7                               | 0.32                                    | 137.1                              | 4.78                                    | 13.1                               | 0.51                                    | 42.2                               | 4.17                                    | 99.7                               | 0.43                                    |
| 2009/12/1  | 21.7                               | 0.32                                    | 130.5                              | 4.81                                    | 13.1                               | 0.63                                    | 37.3                               | 4.41                                    | 100.2                              | 0.44                                    |
| 2010/12/20 | 21.4                               | 0.33                                    | 129.8                              | 4.95                                    | 13                                 | 0.63                                    | 36.8                               | 4.54                                    | 99.6                               | 0.45                                    |
| 2012/12/25 | 21.3                               | 0.31                                    | 129.9                              | 5.17                                    | 12.4                               | 0.64                                    | 37.4                               | 4.56                                    | 97.9                               | 0.46                                    |
| 2013/12/04 | 20.2                               | 0.31                                    | 119.6                              | 5.18                                    | 12.8                               |   | 37.1                               | 4.58                                    | 97.7                               | 0.49                                    |
| 2014/11/05 | 20.1                               | 0.34                                    | 118.1                              | 5.38                                    | 11.6                               | 0.64                                    | 37.9                               | 4.59                                    | 97.4                               | 0.50                                    |
| 2015/12/10 | 17.5                               | 0.32                                    | 101.5                              | 5.43                                    | 10.5                               | 0.64                                    | 36.4                               | 4.60                                    | 96.9                               | 0.50                                    |
| 2016/12/28 | 17.7                               | 0.33                                    | 105.4                              | 5.44                                    | 10.5                               | 0.64                                    | 36.4                               | 4.61                                    | 96.6                               | 0.52                                    |
| 2017/11/29 | 17.8                               | 0.33                                    | 103.1                              | 5.45                                    | 10.5                               |   | 34.2                               | 4.62                                    | 96.7                               | 0.54                                    |
| 2018/4/22  | 16.1                               | 0.31                                    | 107.1                              | 5.50                                    | 10.5                               | 0.64                                    | 33.8                               | 4.63                                    | 95.8                               | 0.54                                    |



**Fig. 7 Area changes in the 5 typical glacial lakes and glaciers**

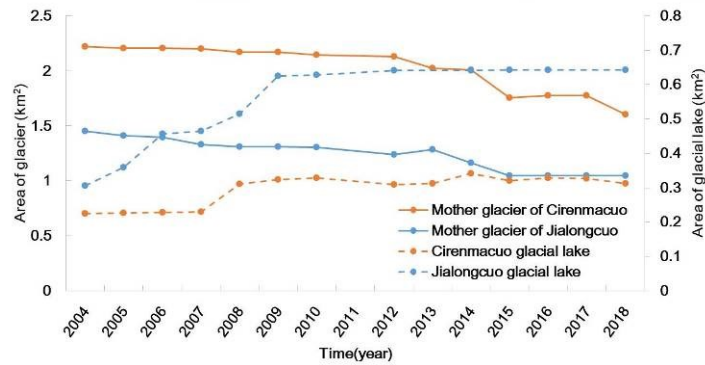
1

**Table 9 Annual rates of change in 5 typical glacial lakes and their glaciers**

| Glacial lake | Annual speed of change 1997-2018 |                      | Annual speed of change 2004-2018 |                      |
|--------------|----------------------------------|----------------------|----------------------------------|----------------------|
|              | (km <sup>2</sup> )               |                      | (km <sup>2</sup> )               |                      |
|              | Area of Glacier                  | Area of Glacial lake | Area of Glacier                  | Area of Glacial lake |
| Cirenmacuo   | -0.018                           | -0.006               | -0.044                           | +0.006               |
| Galongco     | -0.167                           | +0.093               | -0.286                           | +0.143               |
| Jialongco    | -0.018                           | +0.013               | -0.029                           | +0.024               |
| Gangxico     | -0.066                           | +0.068               | -0.110                           | +0.061               |
| Longmuqieco  | -0.015                           | +0.008               | -0.035                           | +0.011               |

2

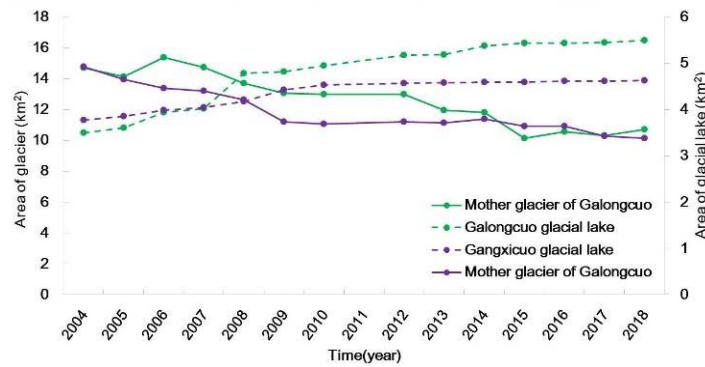
3



**A.**

4

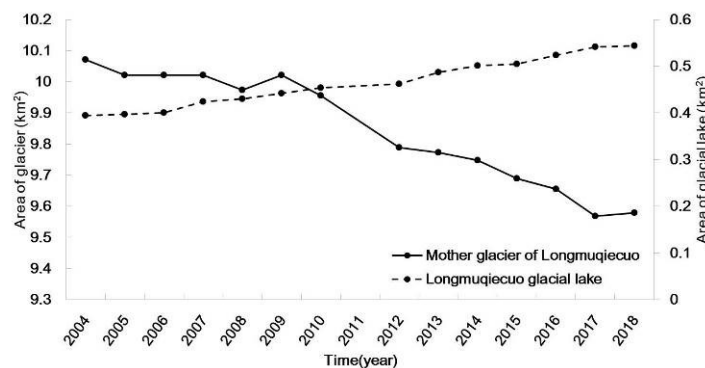
5



**B.**

6

7



**C.**

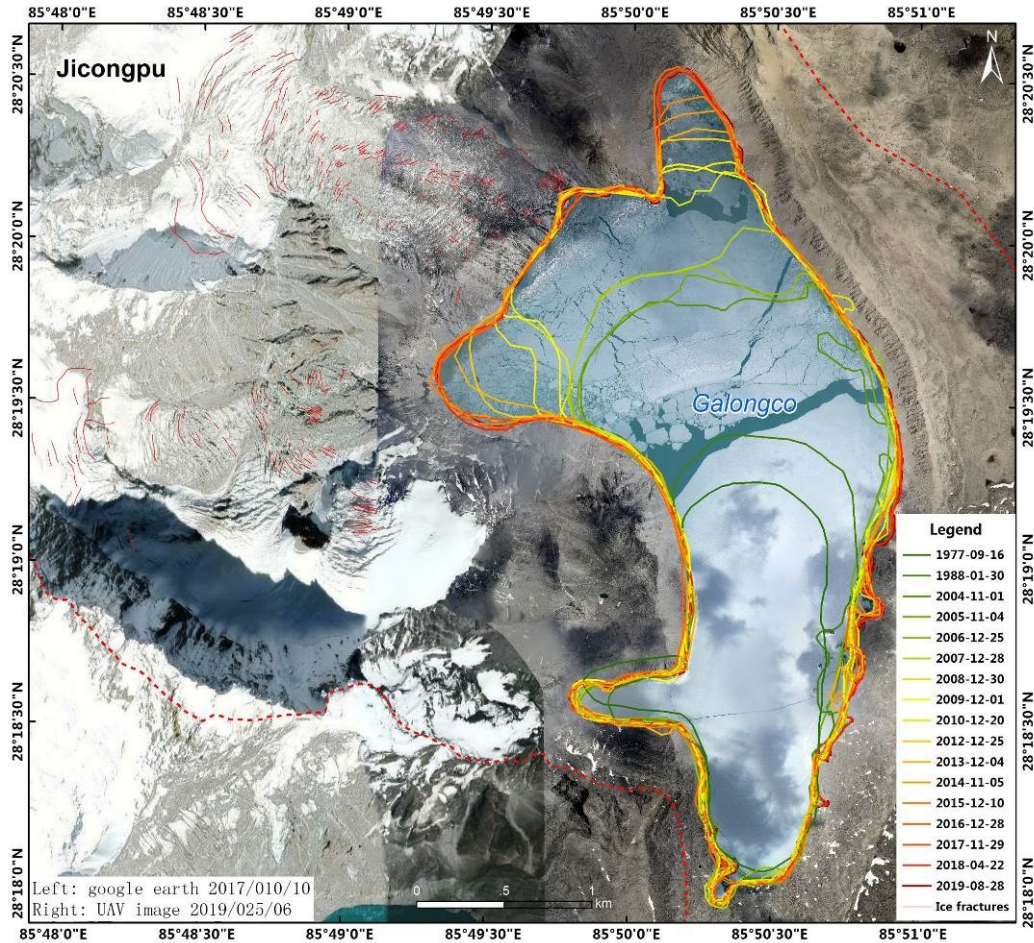
8

**Fig. 8 Retreat of the 5 typical glaciers, growth of 5 typical glacial lakes and rates of change in**

9

**the Poiqu River Basin**

1 As an illustration, Fig.9 shows the variation in Galongco Lake since 1977, which increased  
 2 abruptly from 1.66 km<sup>2</sup> to 5.50 km<sup>2</sup> from 1977 to 2018. (The left image is from Google Earth and  
 3 the right image about the Galongco Lake is from UAV image.)



4  
 5 **Fig. 9 Variation in the area of Galongco Lake (1977-2019) (The left image is from Google**  
 6 **Earth and the right image about the Galongco Lake is from UAV image)**

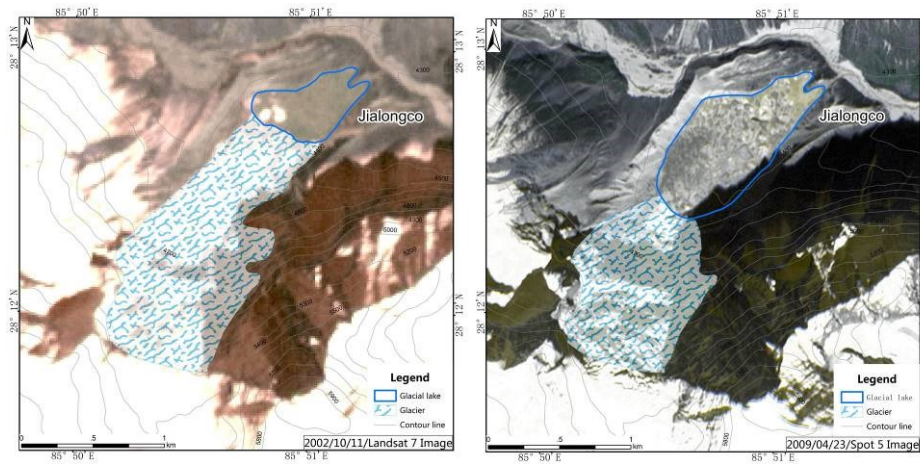
7  
 8 Corresponding to the decrease in glaciers, the variations in glacial lakes under consideration  
 9 have presented three patterns in recent years:

10 1) Fluctuation in area, as in the case of the Cirenmaco and Jialongco Lake

11 Both lakes are located at relatively low altitudes (the Jialongco Lake is at 4382 m and  
 12 Cirenmaco is at 4639 m), are sensitive to temperature and both experienced an outburst in this  
 13 episode (in 1981 and 2002, respectively) and then increased steadily. Jialongco Lake even  
 14 experienced a sudden rise during 2006 and 2008 (Fig.10), when the local temperature reached its  
 15 50-year peak. Moreover, a field survey indicates that Jialongco has an overflow at 0.3 m<sup>3</sup>/s in the  
 16 rainy season, meaning that the lake has reached its maximum and thus fluctuates, similar to



1 ordinary lakes undergoing seasonal changes. This finding implies that small amounts of variation  
2 in glacial lakes do not mean that the related glaciers also vary by small amounts. Dramatic change  
3 in glaciers results in a great loss of water but does not necessarily increase the size of the  
4 connected lake.



5

6 **Fig.10 Rapid expansion in the area of Jialongco Lake due to glacial loss (2002-2009)**

7 2) Remarkable increase in area, as in the case of Galong Lake and Longmuqieco Lake

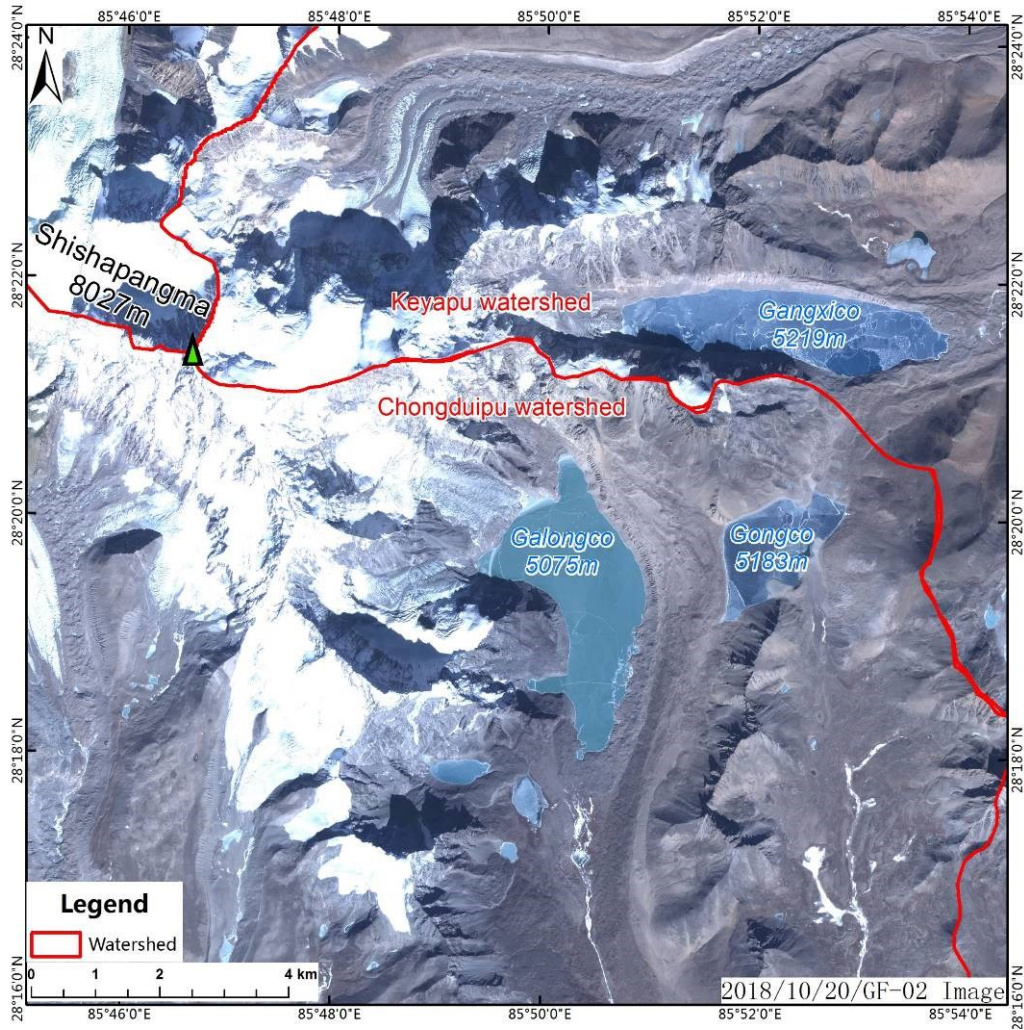
8 Historic remote sensing data (1954 ~ 2018) indicate that Galongco formed in the late 1960s  
9 as a result of a warming climate. Then, the lake increased steadily, with no marks of historic  
10 outburst and no overflow events based on recent UAV images. Indeed, the lake level is still 10 m  
11 below the front moraine bank, and it is only at 1 km downstream that the water flows from  
12 infiltration. Thus, the lake has had little loss of water and increases steadily. Despite no field  
13 survey data, the same case can be expected for Longmuqieco, which has similar altitude and water  
14 supply areas and connected glaciers.

15 3) Gentle increase in area, as in the case of the Gangxico Lake

16 The Gangxico Lake is supplied by the back glacier. As the glacier is small, the lake grows  
17 slowly. Moreover, the Gongxico Lake is hydraulically connected near the Gongco and Galongco  
18 Lake, and its water enters the Gongco Lake in the southern area through infiltration, while the  
19 water of Gongco infiltrates into Galongco (Fig.11). As the Gongco Lake has remained steady in  
20 last 50 years, the Gongxico Lake is also in a balanced state and shows a small tendency to  
21 increase.

22 These observations suggest that glacial lakes change in various patterns even under the same  
23 local conditions. Furthermore, little variation in glacial lake area does not necessarily mean that

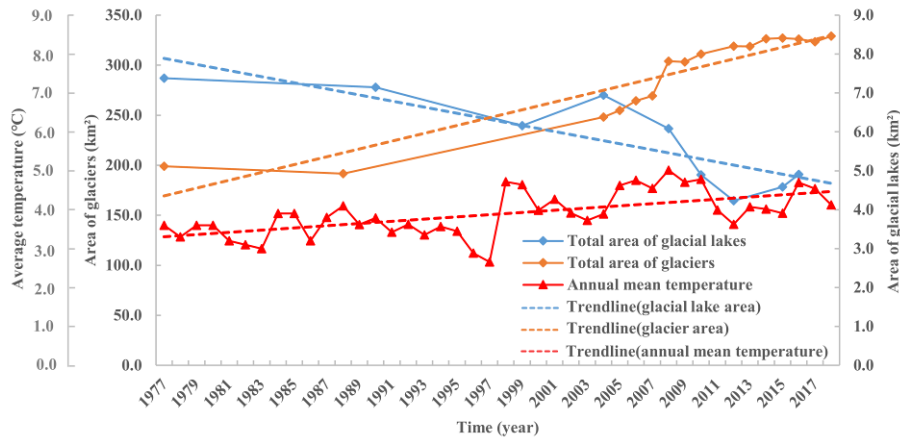
1 there are no changes in related glaciers. In this sense, glaciers are more sensitive to changes in  
2 weather or climate.



3  
4 **Fig. 11 Hydraulically connected glacial lakes (Galongco, Gangco, and Gangxico)**

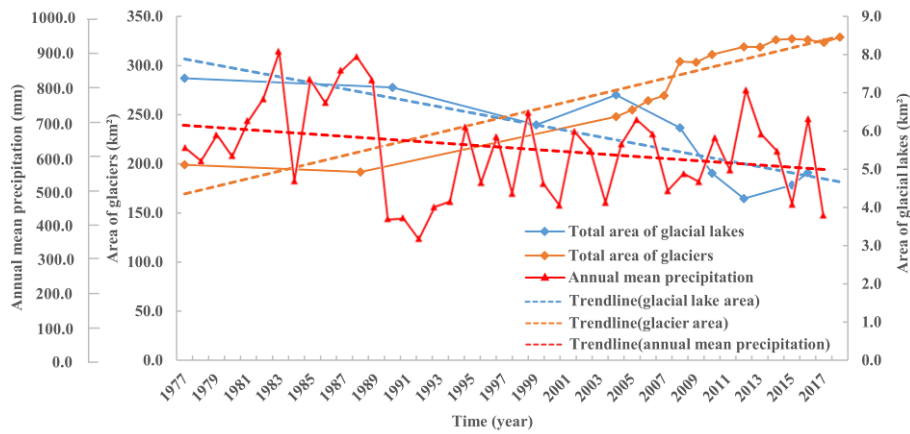
5  
6 **3.3 Relation to temperature and precipitation**

7 The temperature in Poiqu rises at a rate of 0.02°C/a between 1989 and 2018, accompanied by  
8 a rainfall rate of 0.76 mm/a. Fig. 12 shows the temperature series in the last forty years in contrast  
9 to the areas of the 5 lakes and the related glaciers, indicating that the temperature is negatively and  
10 positively related to glaciers and glacial lakes. Fig. 13 shows the precipitation series in contrast to  
11 the areas of glaciers and glacial lakes, indicating that the tendency of precipitation is negatively  
12 associated with glaciers but positively associated with glacial lakes. In short, the growth of glacial  
13 lakes following the retreat of glaciers is governed by warming conditions.



1  
2

**Fig. 12 Changes in the area of the 5 typical glacial lakes and glaciers vs. temperature**



3  
4

**Fig. 13 Changes in the area of the 5 typical glacial lakes and glaciers vs. precipitation**

5

#### 6 **4 Water balance for glacial lakes**

##### 7 **4.1 Calculation of glacial lake volume**

8 Discussions above are focused on the changes in lake area; and it is still necessary to know  
 9 the variation in water volume of the lake. For this the key point is to construct the lake basin  
 10 topography using multiphase RS images. Generally, the water level represents a contour line for  
 11 the lake, and lake boundaries in a period provide evidence for the variation of water level, which  
 12 can be easily identified in RS images. The water contours can be used to correct the DEM data and  
 13 create the topography of lake basin, and then the variation of volume can be estimated (Fig.14).

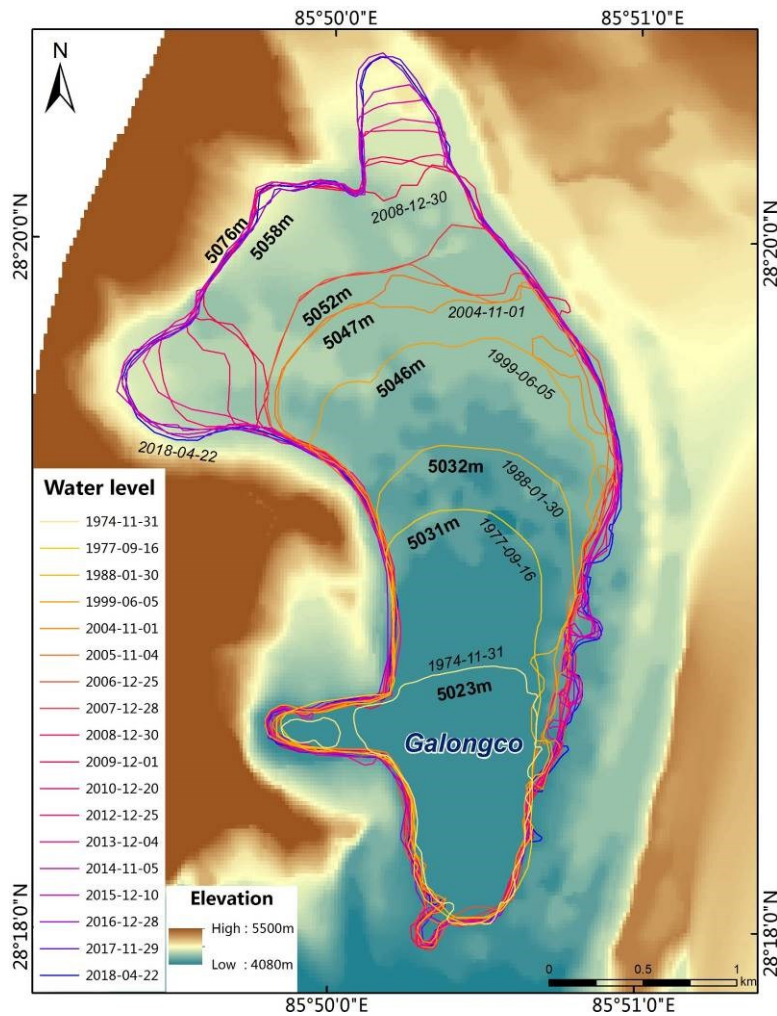
14 The procedures are as follows: 1) Interpret the water level as the lake boundary; 2) Transform the  
 15 water-level vector data to point data in ArcGIS, with high point density representing high accuracy;  
 16 3) Assign DEM data to the point data. Then the average of the point data is the altitude of water  
 17 level (lake boundary). After these procedures, we may use the level data of multiple years to create

1 Tin, and transform Tin to grid data to obtain the morphology model of lake above the minimum  
 2 water level, which represents the topography of lake.

3 The lake volume is simply the integral of the boundary area  $s(h)$  over the level difference between  
 4 base ( $h_0$ ) and surface ( $h_s$ ):

$$V = \int_{h_0}^{h_s} s(h)dh \quad (5)$$

6 In practice, we may take a discrete form, i.e.,  $V = \sum_i s_i \Delta h_i$ , with  $\Delta h_i$  being the difference of  
 7 altitude (water level) between two successive measurements of the lake.



8

9

**Fig. 14 Terrain reconstruction of GB Lake below the water level**

10 **4.2 Water balance equation (WBE)**

11 The observations above indicate that the expansion of glacial lakes is well related to the retreat  
 12 of glaciers, which in turn relies on changes in temperature and precipitation (rainfall and snow) in  
 13 recent years. Then, it is possible to propose the following water balance equation (WBE) for a  
 14 glacial lake:

$$\Delta V = \Delta P + \Delta G - \Delta I - \Delta E \quad (6)$$

where  $V$ ,  $P$ ,  $G$ ,  $I$ , and  $E$  are the water quantities of the glacial lake, the water supplies from precipitation (rainfall and snow), glacier loss and ice-snow melting, and water loss through infiltration and evaporation, respectively;  $\Delta$  represents the annual increment.

In detail, the items in WBE are closely related to weather and geomorphologic conditions and can only be determined empirically.

#### 1) Water supplies from precipitation ( $P_R, P_S$ )

This involves rainfall and snowfall. The water supply from rainfall ( $P_R$ ) is governed by the hydrological process in the valley. For a given valley, the runoff depends on the rainfall process (often featured by intensity  $R$  and quantity  $Q_R$ ), the drainage area contributing to the lake ( $S$ ), and the geomorphologic factors such as slope  $\theta$ , vegetation cover, and permeability  $K$ . In general, this can be expressed as follows:

$$P_R = f(R, Q_R, S, \theta, K) \quad (7)$$

Water supplies from snowfall ( $P_S$ ) also depend on temperature  $T$ , solar radiation  $I_R$ , snow density  $\rho_S$ , and snow permeability  $k$ , in addition to the geomorphologic factors:

$$P_S = f(T, I_R, \rho_S, k, S, \theta, K) \quad (8)$$

Then, the water supplied from precipitation is as follows:

$$P = P_R + P_S \quad (9)$$

#### 2) Water supplies from glaciers ( $G$ )

The major controlling factors are temperature  $T$ , solar radiation  $I_R$ , glacier density  $\rho_G$ , fracture density  $\sigma$ , and geomorphologic factors:

$$G = f(T, I, \rho_G, \sigma, S, \theta, K) \quad (10)$$

#### 3) Water loss from infiltration ( $I$ )

Infiltration mainly depends on the permeability of the materials constituting the lake, and in the present case, the materials are mainly moraines, which are generally poorly graded in terms of grain composition and have high porosity. Infiltration also occurs underground and depends on the substrate sediment of the valley channel downstream of the lake.

$$I = f(K, GSD, J) \quad (11)$$

where  $GSD$  describes the granular features of moraines and sediments (*Li et al., 2013, 2017*) in terms of grain size distribution, and  $J$  is the hydraulic slope between the water level and seepage points.

In addition, when the lake is "saturated", i.e., the capacity reaches the maximum due to the limitation of the local landform, the lake will not increase in area, and the water supplies exceeding the capacity will be lost through overflow. In such a case, the supply is balanced by the

1 loss.

2 4) Water loss from evaporation ( $E$ )

3 Theoretically, evaporation is controlled by temperature, solar radiation, lake area  $A$ , wind speed  
4  $v$ , surface saturated vapor pressure  $p$ , and turbulent energy  $\varepsilon$  (Lu *et al.*, 2017):

$$5 \quad E = f(T, I_R, v, p, \varepsilon) \quad (12)$$

6 However, for the present case, the effect due to evaporation is much smaller and is usually  
7 ignorable compared with the other contributing terms.

### 8 4.3 Practical operation of the balance equation

9 In practice, each item introduced in the WBE can be empirically estimated, especially in the  
10 present case, where we suffer from a severe lack of basic data. In the following section, we  
11 provide a practical routine for the calculations.

12 1) Water supplies from rainfall and snow

13 In principle, the supply is equal to the runoff drainage to the lake, which is calculated using  
14 the standard hydrologic method for each rainfall event, depending on the temporal process and  
15 spatial distribution of the rainfall over the drainage area. However, for the case of glacial lakes, we  
16 have only annual area variation and weather data from nearby stations, and it is impossible to  
17 perform standard hydrograph calculations; instead, we reduce the calculation to the runoff of the  
18 slope (Gao *et al.*, 2019):

$$19 \quad P_R = \alpha S R_a \quad (13)$$

20 where  $P_R$  is the runoff and employed here as the water supply from rainfall,  $S$  is the drainage area  
21 contributing to the lake,  $R_a$  is the annual rainfall, and  $\alpha$  is the coefficient, depending on local  
22 conditions of the drainage slope, such as the material properties and vegetation cover, which is  
23 empirically determined as follows (Liang *et al.* 2018):

$$24 \quad \alpha = 0.065 + 0.0086\theta + 0.33ALs \quad (14)$$

25 where  $\theta$  is the slope angle, and  $ALs$  varies among arid, semiarid, semihumid, and humid areas. As  
26 the Poiqu River Basin is located in the semiarid area but has sufficient moisture content in air,  $ALs$   
27 can be taken as the upper limit of 0.75. Then,  $\alpha$  is mainly governed by the slope gradient of the  
28 drainage area to the lake.

29 2) Melt water from ice and snow

30 There have been various methods used in glacial hydrology (Braithwaite and Olesen, 1989).  
31 Physical models have incorporated many influencing factors, such as temperature and radiation  
32 intensity; thus, these models have high calculation accuracy. However, they do not apply to areas  
33 lacking a sufficient database, as in the case in the Himalayas. Instead, empirical methods are  
34 widely employed, among which the Degree-Day Model (DDM) is generally most used to calculate  
35 the melting of glaciers and snow cover (Kayastha *et al.*, 2005; Zhang *et al.*, 2006;  
36 Pradhananga *et al.*, 2014). The DDM is practical, simple and well-accepted, considering the

1 influence of the degree-day factor (DDF) and the normal accumulated temperature. Following the  
2 method, the melted thickness of the glacier ( $M$ ) is determined by the production of DDF and the  
3 positive cumulative temperature in a certain period (PDD, in units of  $d \cdot ^\circ C$ ):

$$4 \quad M = DDF \cdot PDD \quad (15)$$

5 where DDF is in units of  $mm \cdot d^{-1} \cdot ^\circ C^{-1}$ , and varies with elevation (*Liu et al., 2014*). PDD can be  
6 directly calculated from the daily temperature record, i.e., the cumulative temperature of the days  
7 with temperatures higher than  $2^\circ C$ . In fact, the PDD involves two components applied to the melt  
8 of snow cover and glaciers,  $PDD_S$  and  $PDD_G$ . In other words, only the residual cumulative  
9 temperature  $PDD_G$  applies to glacial melting.

10 Then the melt water quantity is the production of  $M$  and the glacier area ( $A_G$ ):

$$11 \quad G = M \cdot A_G \quad (16)$$

12 Similarly, this also applies to the water supply from snow cover melting. DDF is generally hard  
13 to obtain, but in Poiqu, we may make a reference to the results in the nearby area, 80 km away at  
14 Mt. Everest. According to previous studies, the DDF is 16.9 for the Kunbu glacier at an altitude of  
15 5350 m ( $86^\circ 52'E$ ,  $27^\circ 59'N$ ) (*Kayastha et al., 2005*), and the DDF is 8.21 for the Rongbu glacier at  
16 the same altitude (*Liu et al., 2014*). Then, we take the average value, 12.6, as the overall DDF for  
17 glaciers in Poiqu, and for individuals, we make some corrections depending on the slope  
18 orientations of the glaciers. For the west-oriented slope (e.g., Cirenmaco Lake), the melt is  
19 relatively more intense than the east-oriented slope (e.g., the Galongco and Gangxico Lakes); for  
20 the cases of Jialongco and Longmuqieco, the slopes are north-oriented, the sunshine is shielded,  
21 and the melt is relatively weak. Based on these results, we obtain a corrected DDF for each glacier  
22 (Table 10).

23 According to studies on the snow cover of the Dokriani Glacier in the Indian Himalayas  
24 ( $78^\circ 50'E$ ,  $28^\circ 50'N$ ) (*Singh et al., 2000*), the DDF for snow is approximately 30% less than that for  
25 glaciers. As this is geographically similar to the Poiqu area, a reduction rate of 30% can be used  
26 for determining the DDF of snow cover for the glaciers and glacial lakes under consideration, as  
27 listed in Table 10.

28 On the other hand, not all meltwater can reach the connected lake; some infiltrates into the  
29 bed through the crevasses. This creates a loss of water supplies from melt water, and a reduction  
30 coefficient,  $R_c$ , is considered when the water supplies are estimated (Table 10).

### 31 3) Water loss through evaporation

32 The Poiqu River is located at a high altitude, where the stored water is in a liquid state only in  
33 July and August. It is reasonable to assume that the evaporation is very weak ignorable in  
34 estimating water balance. We take Gongco Lake as the reference. The lake is located in the  
35 tributary of Chongduipu, similar to Galongco and Gangxico, and at similar altitudes (5173, 5075  
36 and 5218 m, respectively). However, it is distinctive in that the Gangco does not receive a water  
37 supply from glaciers; the major water supplies come from rainfall. Notably, Gongco has not  
38 increased in area, remaining at approximately  $2.1 \text{ km}^2$  in recent years. It is possible that the water

1 supplies are balanced by the water losses due to infiltration and evaporation. Since Gongco  
 2 receives seepage flow from Gangxico and simultaneously feeds Galongco through seepage, the  
 3 supplies from rainfall are balanced by evaporation. However, according to the estimation, water  
 4 supplies from rainfall are generally very small compared with those from the meltwater of glaciers  
 5 and snow cover. Therefore, evaporation is negligible in the Poiqu River.

6 4) Water loss through infiltration

7 Water loss due to infiltration is controlled by the permeability of the moraine bank of the lake  
 8 and the sediment in the valley channel. As it is inaccessible to most glacial lake areas, we can only  
 9 trace the marks of infiltration through remote sensing images (including UAV and Google Earth).

10 For the permeability coefficient  $K$ , we conducted experiments on material samples from the  
 11 moraines and sediments, and it was found that  $K$  (cm/s) is well related to the grain size distribution  
 12 (GSD) of the loose granular materials:

13 
$$K=0.003D_c^{1.5}-29.46\mu^{2.5}-0.0196 \text{ (R}^2=0.9892\text{)} \tag{17}$$

14 where  $D_c$  and  $\mu$  are GSD parameters (Li *et al.*, 2013; 2017), which can be directly obtained from  
 15 the granulometric analysis of moraine and sediment samples for each lake. Then, the infiltration  
 16 discharge can be calculated by Darcy's law:

17 
$$Q = KJA \tag{18}$$

18 where  $J$  is the hydraulic slope and  $A$  is the infiltration area. For a given valley, the water loss from  
 19 infiltration is  $I = QT$ , with  $T$  as the effective time for infiltration, which is mainly the rainy season  
 20 when the valley has flow water.

21 Discussions above suggest that the WBE can be simplified as

22 
$$\Delta V = \alpha SR_a + R_{CS}DDF_S \cdot PDD_S \cdot S + R_{CG}DDF_G \cdot PDD_G \cdot A_G - KJAT \tag{19}$$

23 where  $\alpha$  is a coefficient related to local topography (cf. Eq.13),  $S$  is the drainage area of  
 24 the lake,  $A_G$  is the glacier lake, and  $R_a$  is the annual rainfall. Since not all melt water supplies to  
 25 the lakes, we consider the reduction ratio of snow melt  $R_{CS}$  and glacier melt  $R_{CG}$ . Other symbols  
 26 are referred to the equations above (e.g., Eq.14-18). Finally, we tabulate the parameters for the  
 27 WBE calculation (Table 10).

28 **Table 10 Parameters for the water balance calculation of glacial lakes**

| Glaciers    | Runoff coefficient | R <sub>c</sub> for snow cover (R <sub>CS</sub> ) | R <sub>c</sub> for glacier (R <sub>CG</sub> ) | DDF (snow) (DDF <sub>S</sub> ) | DDF (glacier) (DDF <sub>G</sub> ) | Drainage area to lake (km <sup>2</sup> ) (S) |
|-------------|--------------------|--|---|--------------------------------|-----------------------------------|--|
| Cirenmaco   | 0.60               | 0.60   | 0.53  | 8.30                           | 12.60                             | 9.77   |
| Galongco    | 0.56               | 0.56   | 0.50  | 8.30                           | 12.60                             | 22.33  |
| Gangxico    | 0.54               | 0.54   | 0.47  | 8.30                           | 12.60                             | 19.1   |
| Jialongco   | 0.61               | 0.61   | 0.45  | 6.70                           | 9.60                              | 5.76   |
| Longmeqieco | 0.56               | 0.56   | 0.90  | 7.40                           | 11.60                             | 19.47  |



1 **4.4 Cases calculations**

2 **4.4.1 An exemplification of the Galongco Lake**

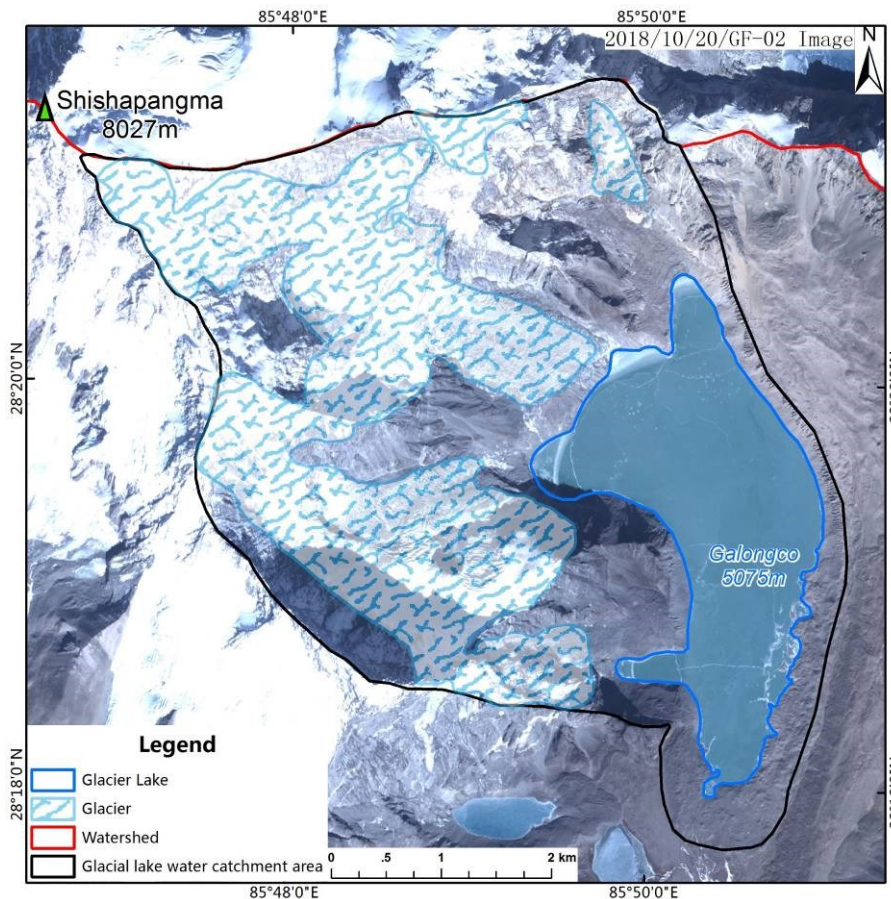
3 Now, we apply the WBE to the five major lakes to see how the area has increased in recent  
4 decades. For this procedure, we first take glacial Lake Galongco in 2006 as an example to show  
5 the calculation process.

6 1) Geomorphologic background and related parameters

7 As mentioned above, the Galongco Lake is located in a small tributary of the Chongduipu  
8 tributary, at an altitude of 5076 m, in an area 5.5 km<sup>2</sup>, and the drainage area to the lake, including  
9 slopes around the lake, is 22.33 km<sup>2</sup>. Two glaciers are directly connected to the lake in the  
10 northwestern and western parts of the upstream area, with a total area of 13.5 km<sup>2</sup> according to the  
11 GF-2 satellite images in 2018.

12 In 2006, the lake area was 3.93 km<sup>2</sup> and the glacier area was 143.7 km<sup>2</sup> (Fig. 15). Based on  
13 the DEM, the angle of the draining slope is estimated to be 23.7° on average, and thus, the runoff  
14 coefficient is 0.56 according to Eq. (13).

15 Following the background of the lake and glaciers, the DDFs for glaciers and snow cover are  
16 12.6 and 8.3, respectively, and the reduction coefficients for glaciers and snow cover are 0.61 and  
17 0.56, respectively.

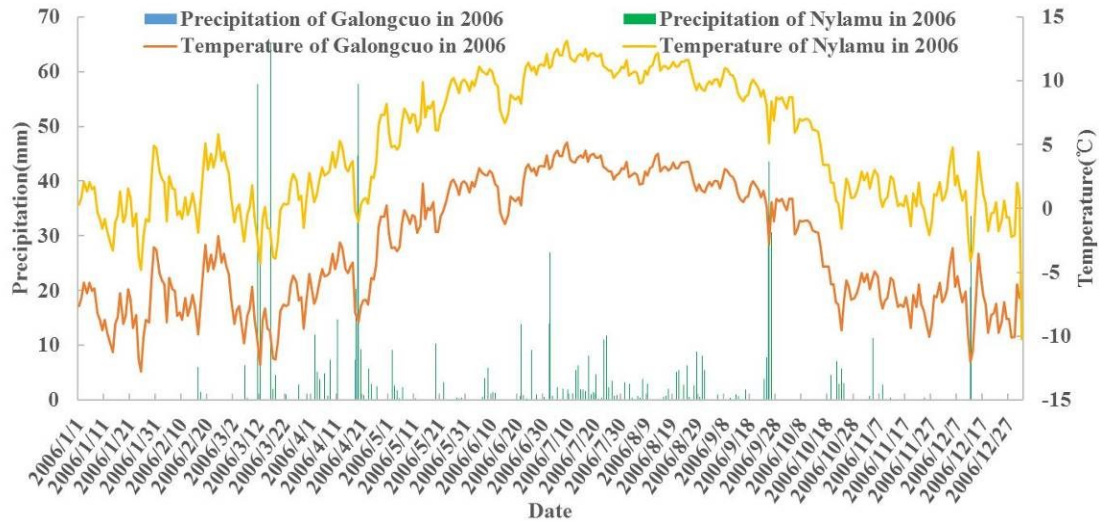


18

19 **Fig. 15 The Galongco Lake and the connected glaciers in 2006 (The image is from GF-02**  
20 **image)**

1 2) Weather conditions

2 The weather conditions are interpolated from the records in Nylamu; the annual temperature  
3 and precipitation in 2006 are shown in Fig.16.



4

5

**Fig. 16 Temperature and precipitation of the Galongcuo Lake in 2006**

6

Following the instruction above, the rainfall and snowfall in 2006 were 1.5 mm and 1545 mm, respectively, and the cumulative temperature was 282.3°C. Based on the DDM, the cumulative temperature for snow cover melt is 128.3°C, and thus the cumulative temperature for glacial melt is 153°C.

9

10 3) Infiltration

11

According to samples of moraine materials in the lake tributary, the GSD parameter  $\mu$  is 0.03 and  $D_C$  is 11.2 mm, which yields a permeability coefficient  $K$  of 0.088 cm/s. According to Google Earth images, the infiltration area is approximately 8426 m<sup>2</sup>, and the hydraulic slope is 0.13, which gives a discharge of infiltration of 0.96 m<sup>3</sup>/s. Considering that only July and August have positive temperatures higher than 2°C, infiltration only occurs in these months.

16

4) Water supplies and losses

17

Based on the parameters described above and using formulas (7)-(10), we obtain the water supplies and losses:

19

(i) the water supply from rainfall ( $P_R$ ) is  $0.175 \times 10^6$  m<sup>3</sup>,

20

(ii) the water supply from glacial melting ( $G$ ) is  $14.9 \times 10^6$  m<sup>3</sup>,

21

(iii) the water supply from snow melting ( $P_S$ ) is  $1.90 \times 10^6$  m<sup>3</sup>,

22

(iv) the water loss from infiltration ( $I$ ) is  $5.92 \times 10^6$  m<sup>3</sup>.

1 In the same way, we can calculate the water balance for other years. Notably, for some years,  
 2 no data are available for glaciers or lakes (e.g., only three sets of data are available between 1988  
 3 and 2004); for these situations, we use an extrapolation method. Considering that the changes in  
 4 glaciers and glacial lakes have steady near-linear tendencies in recent years, we can assume that  
 5 both glaciers and glacial lakes in the years between 1988 and 2004 vary linearly, with the average  
 6 rate determined by the slope of the line linking the points of 1988 and 2004. Thus, we can infer  
 7 the area of glaciers and glacial lakes in those years. Specifically, for Galongco, the variation rate  
 8 of glaciers between 2004 and 2018 is -0.36 ( $R^2=0.8956$ ), and the variation rate of glacial lakes is  
 9 0.15 ( $R^2=0.8779$ ), which provides a baseline for extrapolation in recent years.

10 Using the methods above, we obtain the water balance for Galomngco between 1988 and 2018,  
 11 as listed in Table 11.

12 **Table 11 Water balance for Galongco Lake between 1988 and 2018**

| Year | Glacier area (km <sup>2</sup> ) | Rainfall (mm) | Runoff (10 <sup>4</sup> m <sup>3</sup> ) | T <sub>c</sub> (°C) | T <sub>cG</sub> (°C) | M <sub>G</sub> (mm) | W <sub>G</sub> (10 <sup>4</sup> m) | Snowfall (mm) | T <sub>cS</sub> (°C) | W <sub>snov</sub> (10 <sup>4</sup> m <sup>3</sup> ) | W <sub>total</sub> (10 <sup>4</sup> m <sup>3</sup> ) | Infiltration (10 <sup>4</sup> m <sup>3</sup> ) |
|------|---------------------------------|---------------|--|---------------------|----------------------|---------------------|------------------------------------|---------------|----------------------|---|--|--|
| 1987 | 21.3                            | 16.5          | 20.6                                     | 210.4               | 57.7                 | 363.4               | 774.1                              | 253.5         | 152.7                | 226.4   | 1018.9   | 404.5  |
| 1988 | 21.0                            | 1.5           | 1.9                                      | 233.4               | 47.3                 | 297.7               | 625.2                              | 309.0         | 186.1                | 276.0   | 902.9  | 414.4  |
| 1989 | 20.6                            | 7.4           | 9.3                                      | 204.0               | 18.5                 | 116.3               | 239.5                              | 308.0         | 185.5                | 275.1   | 522.9  | 424.2  |
| 1990 | 20.2                            | 0.0           | 0.0                                      | 252.8               | 135.8                | 855.2               | 1727.6                             | 194.3         | 117.0                | 16.3  | 1743.9   | 434.1  |
| 1991 | 19.9                            | 5.4           | 6.8                                      | 214.5               | 115.2                | 725.9               | 1444.5                             | 164.8         | 99.3                 | 5.4   | 1455.9   | 444.0  |
| 1992 | 19.5                            | 2.3           | 2.9                                      | 142.1               | 84.5                 | 532.4               | 1038.2                             | 95.6          | 57.6                 | 0.0   | 1040.8   | 453.8  |
| 1993 | 19.2                            | 0.0           | 0.0                                      | 190.8               | 102.7                | 646.8               | 1241.9                             | 146.3         | 88.1                 | 46.1  | 1288.0   | 463.7  |
| 1994 | 18.8                            | 4.1           | 5.1                                      | 257.9               | 141.7                | 892.7               | 1678.2                             | 192.9         | 116.2                | 57.0  | 1739.8   | 473.5  |
| 1995 | 18.4                            | 23.3          | 29.1                                     | 253.5               | 149.3                | 940.9               | 1731.2                             | 172.9         | 104.2                | 103.7   | 1860.9   | 483.4  |
| 1996 | 18.1                            | 7.1           | 8.9                                      | 207.2               | 108.0                | 680.3               | 1231.3                             | 164.7         | 99.2                 | 52.2  | 1291.4   | 493.2  |
| 1997 | 17.7                            | 19.2          | 24.0                                     | 199.3               | 110.9                | 698.5               | 1236.3                             | 146.8         | 88.4                 | 95.0  | 1352.7   | 503.1  |
| 1998 | 17.4                            | 13.0          | 16.3                                     | 326.1               | 168.6                | 1062.4              | 1848.5                             | 261.4         | 157.5                | 77.6  | 1940.6   | 512.9  |
| 1999 | 17.0                            | 27.3          | 34.1                                     | 218.4               | 112.5                | 708.7               | 1204.8                             | 175.8         | 105.9                | 157.0   | 1392.3   | 522.8  |
| 2000 | 16.6                            | 3.0           | 3.8                                      | 257.0               | 127.1                | 800.5               | 1328.8                             | 215.7         | 129.9                | 48.9  | 1381.0   | 532.6  |
| 2001 | 16.3                            | 8.2           | 10.3                                     | 256.2               | 112.2                | 706.6               | 1151.8                             | 239.1         | 144.0                | 24.4  | 1185.4   | 542.5  |
| 2002 | 15.9                            | 0.0           | 0.0                                      | 229.1               | 124.4                | 783.7               | 1246.1                             | 173.8         | 104.7                | 125.5   | 1371.6   | 552.3  |
| 2003 | 15.5                            | 22.9          | 28.6                                     | 260.6               | 159.7                | 1006.1              | 1559.4                             | 167.5         | 100.9                | 49.8  | 1634.8   | 562.2  |
| 2004 | 14.7                            | 21.0          | 26.3                                     | 235.8               | 180.7                | 1138.3              | 1673.3                             | 91.5          | 55.1                 | 41.7  | 1738.4   | 572.0  |
| 2005 | 14.1                            | 24.7          | 30.9                                     | 266.2               | 174.3                | 1097.9              | 1548.1                             | 152.6         | 91.9                 | 112.3   | 1688.0   | 581.9  |
| 2006 | 15.4                            | 14.0          | 17.5                                     | 282.3               | 154.0                | 970.5               | 1494.6                             | 212.9         | 128.3                | 190.2   | 1700.4   | 591.8  |
| 2007 | 14.7                            | 7.5           | 9.4                                      | 285.7               | 176.4                | 1111.1              | 1633.3                             | 181.5         | 109.3                | 162.1   | 1803.8   | 601.6  |
| 2008 | 13.7                            | 8.6           | 10.8                                     | 249.1               | 171.1                | 1077.9              | 1476.7                             | 129.5         | 78.0                 | 11.3  | 1497.6   | 611.4  |
| 2009 | 13.1                            | 3.6           | 4.5                                      | 261.5               | 169.6                | 1068.3              | 1399.5                             | 152.6         | 91.9                 | 94.0  | 1497.5   | 621.3  |
| 2010 | 13.0                            | 2.9           | 3.6                                      | 258.4               | 187.0                | 1177.8              | 1531.2                             | 118.6         | 71.4                 | 35.5  | 1569.9   | 631.1  |
| 2011 | 12.7                            | 41.2          | 51.5                                     | 205.0               | 145.8                | 918.8               | 1166.9                             | 98.2          | 59.2                 | 122.5   | 1335.4   | 641.0  |
| 2012 | 13.0                            | 14.5          | 18.1                                     | 240.3               | 172.3                | 1085.8              | 1411.5                             | 112.8         | 68.0                 | 91.8  | 1519.5   | 650.8  |
| 2013 | 12.0                            | 8.9           | 11.1                                     | 258.1               | 186.0                | 1171.7              | 1406.1                             | 119.7         | 72.1                 | 278.5   | 1694.5   | 660.7  |
| 2014 | 11.8                            | 35.0          | 43.8                                     | 235.9               | 178.0                | 1121.5              | 1323.3                             | 96.1          | 57.9                 | 67.3  | 1429.7   | 670.5  |
| 2015 | 10.2                            | 0.6           | 0.8                                      | 211.0               | 148.0                | 932.3               | 951.0                              | 104.6         | 63.0                 | 157.6   | 1109.3   | 680.4  |

|      |      |      |      |       |       |        |        |       |      |      |        |       |
|------|------|------|------|-------|-------|--------|--------|-------|------|------|--------|-------|
| 2016 | 10.5 | 10.4 | 13.0 | 248.0 | 186.3 | 1173.8 | 1232.5 | 102.4 | 61.7 | 14.8 | 1258.9 | 690.3 |
| 2017 | 10.3 | 12.0 | 15.0 | 221.5 | 164.7 | 1037.6 | 1068.7 | 94.3  | 56.8 | 98.1 | 1180.2 | 700.1 |
| 2018 | 10.7 | 4.2  | 5.3  | 260.6 | 199.5 | 1256.6 | 1344.5 | 101.5 | 61.1 | 1.9  | 1351.1 | 710.0 |

Note:  $T_c$  – cumulative temperature;  $T_{cG}$  – cumulative temperature for glacial melting;  $T_{cS}$  – cumulative temperature for snow melting, which is  $T_c - T_{cG}$ ;  $M_G$  – melt thickness of a glacier;  $W_G$  – water supply from glaciers;  $W_{snow}$  – water supply from snow cover; and  $W_{total}$  – total quantity of water supplies.

1

## 2 4.4.2 Water balance for 5 typical lakes

3 Similarly, we can perform balance calculations for other lakes, from which we obtain the  
4 variation in water quantity for the lakes since 1988 using the parameters listed in Table 11. Table  
5 12 displays the calculated water quantity and the measured quantity for the five typical lakes. One  
6 sees that the error between calculated and measured water volume of lakes are -19.7% -33.6% on  
7 average. Maximal error occurs at Gangxico Lake and smallest error occurs at Galongco Lake  
8 (1.2%).

9

10 **Table 12 Comparison between the calculated water quantity and the observed quantity**

| Lake name | Cirenmaco           |                     |           | Galongco            |                     |           | Gangxico            |                     |           | Jialongco           |                     |           | Longmuqieco         |                     |           |
|-----------|---------------------|---------------------|-----------|---------------------|---------------------|-----------|---------------------|---------------------|-----------|---------------------|---------------------|-----------|---------------------|---------------------|-----------|
|           | MV<br>( $10^4m^3$ ) | TV<br>( $10^4m^3$ ) | ER<br>(%) | MV<br>( $10^4m^3$ ) | TV<br>( $10^4m^3$ ) | ER<br>(%) | MV<br>( $10^4m^3$ ) | TV<br>( $10^4m^3$ ) | ER<br>(%) | MV<br>( $10^4m^3$ ) | TV<br>( $10^4m^3$ ) | ER<br>(%) | MV<br>( $10^4m^3$ ) | TV<br>( $10^4m^3$ ) | ER<br>(%) |
| 1988      | 341.0               | 371.0               | 8.8       | 11964.8             | 12579.2             | -5.1      | 15631.9             | 15699.5             | -0.4      | 632.0               | 694.3               | -9.8      | 824.5               | 833.2               | -1.1      |
| 1999      |                     | 382.2               |           |                     | 22618.8             |           | 21903.5             | 17241.4             | 21.3      | 848.1               | 1733.6              | -104.4    | 1306.0              | 1374.9              | -5.3      |
| 2000      |                     | 472.0               |           |                     | 23488.3             |           |                     | 17283.2             |           |                     | 1890.9              |           |                     | 1377.0              |           |
| 2001      |                     | 533.3               |           |                     | 24336.7             |           |                     | 17400.2             |           |                     | 2042.2              |           |                     | 1380.0              |           |
| 2002      |                     | 562.8               |           |                     | 24979.6             |           |                     | 17763.7             |           |                     | 2184.3              |           |                     | 1555.9              |           |
| 2003      |                     | 535.6               |           |                     | 25798.9             |           |                     | 17873.4             |           |                     | 2276.1              |           |                     | 1595.6              |           |
| 2004      | 727.4               | 563.2               | -22.6     | 23082.7             | 26871.6             | -16.4     | 25764.9             | 18062.2             | 29.9      | 1199.4              | 2396.6              | -99.8     | 1529.2              | 1604.4              | -4.9      |
| 2005      | 734.4               | 600.9               | -18.2     | 23760.3             | 28037.9             | -18.0     | 26507.8             | 18175.3             | 31.4      | 1241.6              | 2538.7              | -104.5    | 1540.9              | 1613.4              | -4.7      |
| 2006      | 735.6               | 662.0               | -10.0     | 27130.8             | 29144.0             | -7.4      | 27613.0             | 18373.3             | 33.5      | 2631.6              | 2645.1              | -0.5      | 1558.8              | 1634.8              | -4.9      |
| 2007      | 741.0               | 752.5               | 1.6       | 27856.4             | 30252.6             | -8.6      | 28066.8             | 18549.9             | 33.9      | 3143.0              | 2807.3              | 10.7      | 1675.5              | 1724.7              | -2.9      |
| 2008      | 1122.7              | 825.4               | -26.5     | 34603.0             | 31454.8             | 9.1       | 29209.9             | 18733.8             | 35.9      | 3511.8              | 2973.3              | 15.3      | 1707.8              | 1748.3              | -2.4      |
| 2009      | 1184.8              | 828.6               | -30.1     | 34929.4             | 32340.9             | 7.4       | 31397.5             | 18995.9             | 39.5      | 3515.2              | 3102.5              | 11.7      | 1764.6              | 1893.9              | -7.32     |
| 2010      | 1208.5              | 870.0               | -28.0     | 36169.2             | 33217.1             | 8.2       | 32438.7             | 19380.4             | 40.3      | 3681.7              | 3233.6              | 12.2      | 1824.8              | 2219.9              | -21.7     |
| 2011      |                     | 891.0               |           |                     | 34155.9             |           |                     | 19703.7             |           |                     | 3383.3              |           |                     | 2290.4              |           |
| 2012      | 1129.7              | 914.0               | -19.1     | 38204.4             | 34850.3             | 8.8       | 32685.3             | 19770.6             | 39.5      | 3509.7              | 3496.2              | 0.4       | 1865.9              | 2299.6              | -23.2     |
| 2013      | 1146.0              | 941.5               | -17.9     | 38338.7             | 35719.0             | 6.8       | 32789.4             | 19854.9             | 39.5      | 3484.9              | 3608.1              | -3.5      | 1990.1              | 2312.1              | -16.2     |
| 2014      | 1282.2              | 1009.2              | -21.3     | 40154.2             | 36752.8             | 8.5       | 32909.7             | 19994.6             | 39.2      | 3656.4              | 3709.9              | -1.5      | 2063.1              | 2329.8              | -12.9     |
| 2015      | 1179.0              | 1033.5              | -12.4     | 40661.9             | 37512.0             | 7.7       | 32982.4             | 20110.7             | 39.0      | 3564.0              | 3790.0              | -6.3      | 2082.5              | 2359.3              | -13.3     |
| 2016      | 1221.5              | 1017.7              | -16.7     | 40722.0             | 37940.9             | 6.8       | 33127.0             | 20174.1             | 39.1      | 3553.1              | 3847.5              | -8.3      | 2185.2              | 2371.8              | -8.5      |
| 2017      | 1211.3              | 1040.3              | -14.1     | 40807.9             | 38509.4             | 5.6       | 33165.6             | 20421.8             | 38.4      | 3705.3              | 3968.8              | -7.1      | 2274.5              | 2580.8              | -13.5     |
| 2018      | 1194.2              | 1093.8              | -8.4      | 41259.9             | 38989.5             | 5.5       | 33287.3             | 20540.9             | 38.3      | 3441.4              | 4113.0              | -19.5     | 2286.4              | 2607.0              | -14.0     |

Illustration: MV-Measured Volume, TV- Theoretical Volume, ER- Error Rate

1 It is noted that great discrepancy occurs in the case of the Jialongco Lake, the lowest among  
 2 the five samples at altitude of 4306 m, which experienced an outburst in 2002 and sudden rise  
 3 during 2006 and 2008 due to dramatic changes in the connected glacier. As the WBE does not  
 4 consider the glacial dynamics and dramatic changes in local conditions, the calculation cannot  
 5 incorporate the sudden changes. This means that the WBE operation should be further improved to  
 6 incorporate the water variations due to catastrophic processes.

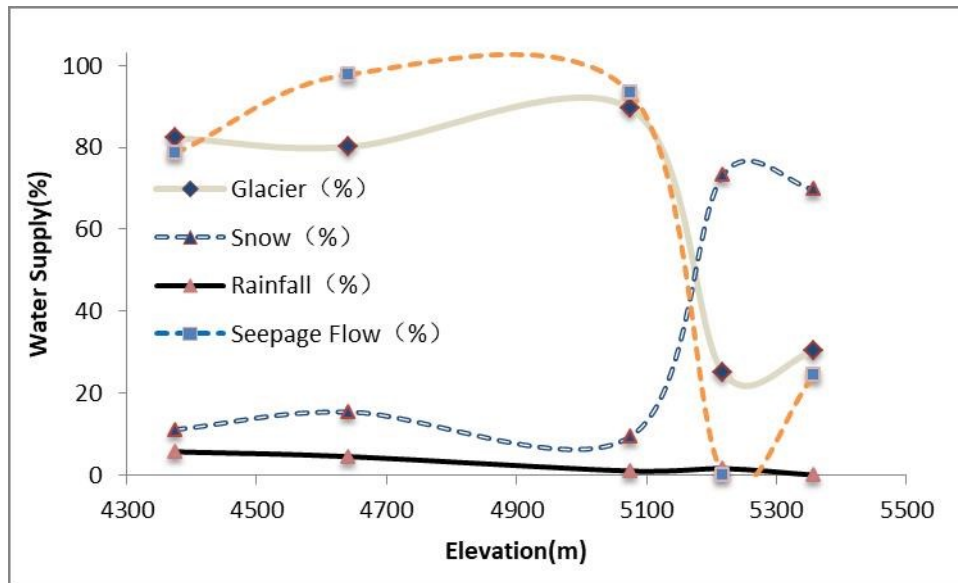
7 However, the gross agreement between the calculation and observation does suggest that the  
 8 WBE has provided a practical and functional framework for understanding the characteristics of  
 9 changes in individual glacial lakes. Moreover, it provides a practical method for quantitatively  
 10 assessing the growth of glacial lakes. In particular, the calculation reveals that the lakes in Poiqu  
 11 have undergone different water supply balance proportions, which makes it possible to distinguish  
 12 among the local conditions of the lakes.

13 The WBE not only provides a method to account for the water supplies to glacial lakes but  
 14 also reveals differences between lakes. Although glaciers are sensitive to temperature, the lake  
 15 grows in various ways depending on local conditions, especially altitude and basin circumstances.  
 16 Table 13 lists the average fraction of water supplies from glaciers melting, snow melting, and  
 17 rainfall over the calculation period. It is obvious that the supply form of glacial lake is affected by  
 18 altitude. The lakes at relatively low elevations (<5000 m) are mainly supplied by glaciers melting,  
 19 and lakes at high elevations, especially at 5100-5300m, are mainly supplied by snow melting.

20 For all these lakes, the water supplies from rainfall are much smaller, even below 5%, and  
 21 this can almost be ignored considering the accuracy of the estimation. This clearly reflects the  
 22 altitude effect on glaciers. At low altitudes, the cumulative annual temperature is positive and  
 23 directly melts the glaciers. At high altitudes, glaciers are covered by snow, and the positive  
 24 temperature mainly acts on snow cover. Indeed, several years have shown near-zero cumulative  
 25 temperatures for Gangxico Lake and Longmuqieco Lake, which results in a small fraction of  
 26 glacial ablation (Fig.17).

27  
 28 **Table 13 Fractions of various water supplies to the lakes**

| Glacial lakes | Elevation<br>(m) | Water supply (%) |             |                 | Loss                |
|---------------|------------------|------------------|-------------|-----------------|---------------------|
|               |                  | Glacier<br>(%)   | Snow<br>(%) | Rainfall<br>(%) | Seepage Flow<br>(%) |
| Jialongco     | 4382             | 82.3             | 11.1        | 5.7             | 78.5                |
| Cirenmaco     | 4639             | 80.1             | 15.4        | 4.5             | 97.8                |
| Galongco      | 5076             | 89.5             | 9.4         | 1.0             | 93.3                |
| Gangxico      | 5219             | 25.0             | 73.3        | 1.6             | 0.0                 |
| Longmuqieco   | 5342             | 30.3             | 69.7        | 0.0             | 24.3                |



**Fig.17 Water supplies to the lakes at different altitudes**

### 5 Discussions

Based on the present study, we can remark on some of the problems concerning changes in glaciers and glacial lakes under warming conditions.

1) Changes in glaciers and glacial lakes in Poiqu are at remarkably high levels compared with other regions in the Himalayas (Nie *et al.*, 2017), this vividly illustrates the prediction that glacier area in highly mountainous Asia will decrease by half at an accelerating rate, about one decade ahead of schedule (Farinotti *et al.*, 2019). A detailed analysis proves that although the glaciers are generally in their retreat phase, water supplies from glaciers are still dominant in the central Himalayas. However, it is also noted that the fluctuation of temperature and precipitation in local areas does not present a clear-cut tendency in parallel with the retreat of glaciers or growth of glacial lakes. Changes in individual glaciers and glacial lakes are dominated by local conditions but not global changes.

2) Mass balance for glaciers and ice caps is of great importance in Earth's hydrological cycle and response to climate change (Aizen and Aizen, 1997; Haerberli *et al.*, 1999; Valentina Radić and Hock, 2013; Lambrecht and Mayer, 2009; Huss, 2011; Huss and Hock, 2018). The results of this study provide a detailed scenario of water balance for individual lakes through operation of WBE for typical glacial lakes, revealing details in water supplies from precipitation, glaciers, and snow cover and water losses from infiltration. The WBE provides the mechanism for lake growth and agrees well with the observations and image interpretations, and the calculation for individual

1 lakes has made up for the deficiencies in previous studies, which only gave an overall view of lake  
2 expansion at the regional scale (e.g., Nie *et al.*, 2017). In addition, the WBE operation has also  
3 discovered that glacial lakes under similar background conditions may vary in different ways,  
4 depending on local elements at small scales, which would be inevitably neglected in studies at  
5 large scales. The lake may remain at their greatest sizes (e.g., at the maximal area of extension)  
6 even if the glaciers undergo dramatic changes.

7 3) As each item of the water contribution in the WBE specifically depends on local weather and  
8 morphology, the balance equation provides a direct link between glacier and glacial lake changes  
9 and climate changes under local conditions. Furthermore, WBE operation is crucial to gain a  
10 better understanding of water supplies for glacierized river basins. Near the study area originate  
11 many rivers, such as the rivers of Yarlong Zangbo (Brahmaputra), Indus, Ganges, Nujiang  
12 (Salween) and Lancangjiang (Mekong), but the quantification of water sources is usually highly  
13 uncertain because of a lack of understanding of the hydrological regimes and runoff calculations  
14 (Winiger *et al.*, 2005; Bookhagen and Burbank, 2010; Immerzeel and Bierkens, 2012; Miller *et al.*,  
15 2012; Lutz *et al.*, 2014; Hassan *et al.*, 2017). The proposed WBE has revealed the variety of water  
16 supplies from glaciers, snow cover, and precipitation for individual glacial lakes; this calculation  
17 is expected to be applicable for estimating glaciohydrologic processes in large glacierized rivers.

18 4) Admittedly, the WBE for glacial lakes is proposed here only at the annual scale, which makes  
19 it difficult to be accurate when considering individual lakes during a given period. This is mainly  
20 due to the lack of data and ignorance of specific water supply and loss processes. For example,  
21 runoff should be calculated for the tributary watershed using records for individual rainfall events,  
22 which strongly depend on the watershed conditions (i.e., conditions of slope, channel, vegetation,  
23 and soils or sediments, especially moraines for the lakes) and the rainfall pattern. However, in the  
24 study area, and even in the Himalayas, only annual (and usually incomplete) weather records are  
25 available at several points, and it is only possible to provide a gross estimate of the runoff simply  
26 by the production of rainfall and watershed area. Similarly, water quantities from other sources  
27 can only be accurately estimated in terms of order of magnitude.

28 On the other hand, the WBE does not consider the dynamical processes of glaciers (Copland  
29 *et al.*, 2011; Dowdeswell *et al.*, 1995), such as glacial surging, its hydrologic consequences or the  
30 possible dramatic changes in morphology, such as the collapse of lakes or other surface processes

1 (e.g., icefalls, landslides, or debris flows due to earthquakes or extreme weather events), which  
2 may bring dramatic changes that overwhelm the steady, gentle changes that occur over tens or  
3 even hundreds of years. Therefore, the model cannot explain the sudden changes in glaciers and  
4 glacial lakes, as in the case of Jialongco. In addition, the parameters involved for these items are  
5 highly uncertain in practice, and systematic and detailed scrutinization is required to improve the  
6 accuracy of the operation.

## 7 **6 Conclusions**

8 We have explored the evolution of glacial lakes in the Poiqu River Basin in the central  
9 Himalayas based on multi-source RS images and UAV photos. A total of 147 glacial lakes and  
10 related glaciers have been identified in the area, which are distributed between 4200 ~ 5800m and  
11 concentrated in 5000 ~ 5800m, with area ranging from 0.0002 km<sup>2</sup> to 5.5 km<sup>2</sup>, in total of 19.89  
12 km<sup>2</sup>. In particular, we take five typical glacial lakes to trace the evolution in last 40 years and find  
13 the glaciers have undergone increasing retreat and the retreat area of main glaciers is 119.4 km<sup>2</sup> at  
14 the rate of 2.91 km<sup>2</sup>/a. At the same time, we also find that the glacial lakes grew and expanded and  
15 the expansion area of main glacial lakes is 7.25 km<sup>2</sup> at the rate of 0.18 km<sup>2</sup>/a. It is proved that the  
16 Poiqu River Basin is an area of high levels of glacier and glacial lake changes in recent decades.  
17 Temperature is negatively and positively related to glaciers and glacial lakes, and precipitation has  
18 the opposite effect.

19 Moreover, we construct the lake basin topography using multiphase RS images, and propose  
20 the water balance equation incorporating water supplies from precipitation, glaciers, and water  
21 loss from infiltration and evaporation. As each item of the water contribution specifically depends  
22 on local weather and morphology, the balance equation provides a direct link between glacier and  
23 glacial lake changes and climate changes under local conditions.

24 Operation of the WBE for the five glacial lakes has shown that individual lakes vary in  
25 different ways and receive water supplies from glaciers, snow cover, and precipitation in different  
26 fractions. WBE also reveals that water supplies depend on altitude. At low altitudes, temperature  
27 is more effective for glacier ablation, and lakes are mainly supplied by melted water from glaciers.  
28 At high altitudes, temperature acts more on snow cover, and melted snow becomes the major  
29 water supply to lakes. The difference between water supplies from glaciers and snow cover is as  
30 high as 50%, according to the present cases. This implies that it is insufficient to apply weather or



1 climate conditions to individual glacial lakes at a large scale to determine climate effects on  
2 glacial lake changes.

3

#### 4 **Data availability**

5 The Landsat image data is available on USGS: <https://earthexplorer.usgs.gov/>. The GF-2 and  
6 ZY-3 image data is available on China Centre for Resources Satellite Data and Application:  
7 <http://www.cresda.com/CN/>. The ASTER GDEM image data is available on NASA:  
8 <https://search.earthdata.nasa.gov/search>. The SPOT image is available on Airbus:  
9 <https://www.intelligence-airbusds.com/>. The meteorological data is available on China  
10 Meteorological Data Service Centre: <http://data.cma.cn/>.

#### 11 **Author contributions**

12 The initial idea was proposed by PS, JL and YL. The initial version of the paper was written  
13 by PS and JL, with a contribution from YL for the analysis of results. WL contributed to  
14 meteorological data collection and analysis. YW contributed to interpretation and drawing of the  
15 satellite images. CM and QL contributed to checking the calculation results of WBE. All the  
16 authors have been involved in interpreting the results, discussing the findings, and editing the  
17 paper.

#### 18 **Competing interests**

19 The authors declare that they have no conflict of interests.

#### 20 **Disclaimer**

21 Publisher's note: Copernicus Publications remains neutral with regard to jurisdictional claims  
22 in published maps and institutional affiliations.

#### 23 **Acknowledgements**

24 We thank the editor Anas Ghadouani and two additional anonymous referees for their  
25 constructive comments that greatly improved the original manuscript. We gratefully acknowledge  
26 the CPC Shigatse Municipal Party Committee gives us support for building the two field  
27 meteorological stations.

#### 28 **Financial support**

29 This research is supported by National Natural Science Foundation of China (Grant No.

1 41877261, U19A2049), West Young Scholars Program of the Chinese Academy of Sciences and  
2 the CAS Key Technology Talent Program, the Strategic Priority Research Program of the Chinese  
3 Academy of Sciences (Grant No. XDA23090202), Construction of Prevention and Control  
4 Capacity System of Department of Natural Resources of Tibet Autonomous Region (2020-0890-2),  
5 the China Geological Survey projects (Grant No. DD20190637).

## 6 **Review statement**

7 This paper was edited by Anas Ghadouani and reviewed by two anonymous referees.

## 8 **References:**

- 9 Aizen, V., and Aizen, E.: Hydrological cycles on the north and south peripheries of  
10 mountain–glacial basins of central Asia. *Hydrol. Process.*, 11, 451–469, <https://doi.org/10.1002/>  
11 [https://doi.org/10.1002/](https://doi.org/10.1002/(SICI)1099-1085(199704)11:5<451::AID-HYP448>3.0.CO;2-M)  
[https://doi.org/10.1002/](https://doi.org/10.1002/(SICI)1099-1085(199704)11:5<451::AID-HYP448>3.0.CO;2-M)  
12 Bajracharya, B., Shrestha, A. B., and Rajbhandari, L.: Glacial lake outburst floods in the  
13 Sagarmatha region - Hazard assessment using GIS and hydrodynamic modeling. *Mt. Res. Dev.*,  
14 27, 336–344, <https://doi.org/10.2307/25164154>, 2007.
- 15 Bhutiyan, M.R., Kale, V.S., and Pawar, N. J.: Climate change and the precipitation variations in  
16 the north-western Himalaya: 1866–2006. *Int J Climatol.*, 30, 535–548,  
17 <https://doi.org/10.1002/joc.1920>, 2009.
- 18 Bolch, T., Buchroithner, M. F., Peters, J., Baessler, M., and Bajracharya, S.: Identification of  
19 glacier motion and potentially dangerous glacial lakes in the Mt. Everest region/Nepal using  
20 spaceborne imagery. *Nat. Hazard. Earth Sys.*, 8, 1329–1340,  
21 <https://doi.org/10.5194/nhess-8-1329-2008>, 2008.
- 22 Bookhagen, B., and Burbank, D. W.: Towards a complete Himalayan hydrological budget:  
23 Spatiotemporal distribution of snowmelt and rainfall and their impact on river discharge. *J.*  
24 *Geophys. Res.*, 115, <https://doi.org/10.1029/2009JF001426>, 2010.
- 25 Braithwaite, R. J., and Olesen, O. B. (eds.): Calculation of glacier ablation from air temperature,  
26 West Greenland, *Glacier Fluctuations and Climatic Change*, 219–233,  
27 [https://doi.org/10.1007/978-94-015-7823-3\\_15](https://doi.org/10.1007/978-94-015-7823-3_15), 1989.
- 28 Chen, X.Q., Cui, P., Li, Y., Yang, Z., Qi, Y. Q.: Changes in glacial lakes and glaciers of post-1986  
29 in the Poiqu River basin, Nyalam, Xizang (Tibet). *Geomorphology.*, 88, 298–311,  
30 <https://doi.org/10.1016/j.geomorph.2006.11.012>, 2007.
- 31 Copland, L., Sylvestre, T., Bishop, M. P., Shroder, J. F., Seong, Y. B., Owen, L.A., Bush, A., and  
32 Kamp, U.: Expanded and Recently Increased Glacier Surging in the Karakoram. *Arct. Antarct.*  
33 *Alp. Res.*, 43, 503–516, <https://doi.org/10.1657/1938-4246-43.4.503>, 2011.
- 34 Dowdeswell, J. A., Hodgkins, R., Nuttall, A-M., Hagen, J. O., and Hamilton, G. S.: Mass balance  
35 change as a control on the frequency and occurrence of glacier surges in Svalbard, Norwegian  
36 High Arctic. *Geophys. Res. Lett.*, 22, 2909–2912, <https://doi.org/10.1029/95GL02821>, 1995.

1 Farinotti, D., Huss, M., Furerst, J. J., Landmann, J., Machguth, H., Maussion, F., and Pandit, A.: A  
2 consensus estimates for the ice thickness distribution of all glaciers on Earth. *Nat. Geosci.* 12,  
3 168-173, <https://doi.org/10.3929/ethz-b-000315707>, 2019.

4 Gao, J.F., Yang, Z.H., Su, W.C., and Cao, Y.: Research Status and Prospect of Runoff Collection  
5 and Utilization in Karst Hillslope. *Water Saving Irrigation.*, 104, 97-99. 2019. (in Chinese with  
6 English abstract)

7 Haeberli, W., Frauenfelder, R., Hoelzle, M., and Maisch, M.: On rates and acceleration trends of  
8 global glacier mass changes. *Geogr. Ann. A.*, 81A, 585-591,  
9 <https://doi.org/10.1111/1468-0459.00086>, 1999.

10 Hassan, J., Kayastha, R. B., Shrestha, A., Bano, I., li, S.H., and Magsi, Z.: Predictions of future  
11 hydrological conditions and contribution of snow and ice melt in total discharge of Shigar  
12 River Basin in Central Karakoram, Pakistan. *Sciences in Cold and Arid Regions* 9, 511-524,  
13 <https://doi.org/CNKI:SUN:HAQK.0.2017-06-002>, 2017.

14 Huss, M. and Hock, R.: Global-scale hydrological response to future glacier mass loss. *Nat Clim*  
15 *Change.*, 8, 135–140, <https://doi.org/10.1038/s41558-017-0049-x>, 2018.

16 Huss, M.: Present and future contribution of glacier storage change to runoff from macroscale  
17 drainage basins in Europe. *Water Resour. Res.*47(W07511),  
18 <https://doi.org/10.1029/2010WR010299>, 2011.

19 Immerzeel, W.W. and Bierkens, M. F. P.: Asia's water balance. *Nat. Geosci.*, 5, 841-842,  
20 <https://doi.org/10.1038/ngeo1643>, 2012.

21 Immerzeel, W.W., Pellicciotti, F., and Bierkens, M. F. P.: Rising river flows throughout the  
22 twenty-first century in two Himalayan glacierized watersheds. *Nat. Geosci.*, 6, 742-745,  
23 <https://doi.org/10.1038/NCEO1896>, 2013.

24 IPCC. 2013. Climate change 2013 – the physical science basis. Contribution of Working Group I  
25 to the Fifth Assessment Report of the Intergovernmental Panel on Climate Change. In: Stocker  
26 TF, Qin D, Plattner G.-K., editors. Cambridge: Cambridge University Press.

27 Ji, Q., Dong, J., Liu, R., Xiao, Z.L., Yang, T.B.: Glacier Changes in Response to Climate Change  
28 in the Himalayas in 1990-2015. *Scientia Geographica Sinica*, 40(03), 486-496,  
29 <https://doi.org/10.13249/j.cnki.sgs.2020.03.017>, 2020. (in Chinese with English abstract)

30 Kayastha, R.B., Ageta, Y., Fujita, K.: Use of positive degree-day methods for calculating snow  
31 and ice melting and discharge in glacierized basins in the Langtang Valley, Central Nepal.  
32 *Climate and Hydrology of Mountain Areas*, 5-14, <https://doi.org/10.1002/0470858249.ch2>,  
33 2005.

34 Komori, J.: Recent expansions of glacial lakes in the Bhutan Himalayas. *Quatern. Int.*, 184,  
35 177-186, <https://doi.org/10.1016/j.quaint.2007.09.012>, 2008.

36 Kraaijenbrink, P. D. A., Bierkens, M. F. P., Lutz, A. F., and Immerzeel, W. W.: Impact of a global  
37 temperature rise of 1.5 degrees Celsius on Asia's glaciers. *Nature.*, 549, 257-260,  
38 <https://doi.org/10.1038/nature23878>, 2017.

- 1 Lambrecht, A. and Mayer, C.: Temporal variability of the non-steady contribution from glaciers to  
2 water discharge in western Austria. *J. Hydrol.*, 376, 353-361,  
3 <https://doi.org/10.1016/j.jhydrol.2009.07.045>, 2009.
- 4 Li, Y., Huang, C.M., Wang, B.L., Tian, X.F., and Liu, J.J.: A unified expression for grain size  
5 distribution of soils. *Geoderma.*, 288, 105-119, <https://doi.org/10.1016/j.geoderma.2016.11.011>,  
6 2017.
- 7 Li, Y., Zhou, X., Su, P., Kong, Y., and Liu, J.: A scaling distribution for grain composition of  
8 debris flow. *Geomorphology.*, 192, 30-42, <http://dx.doi.org/10.1016/j.geomorph.2013.03.015>,  
9 2013.
- 10 Liang, S.M. and Yu, Z.Y.: Global Distribution Fields of Runoff Depths Calculated by Empirical  
11 Runoff Coefficient. *Arid Zone Research.*, 35, 1-11, <http://dx.doi.org/10.13866/j.azr.2018.01.01>,  
12 2018. (in Chinese with English abstract)
- 13 Liu, J.J., Cheng, Z.L., and Su, P.C.: The relationship between air temperature fluctuation and  
14 Glacial Lake Outburst Floods in Tibet, China. *Quaternary International.*, 321, 7-87,  
15 <http://dx.doi.org/10.1016/j.quaint.2013.11.023>, 2014.
- 16 Liu, W.G., Xiao, C.D., Liu, J.S., Wang, J., Wang, H., Liu, J.F., Liu, N., Zhang, T., and Lin, X.:  
17 Study of the degree-day factors on the Rongbuk Glacier in the Mt. Qomolangma, Central  
18 Himalayas. *J. Glaciol. Geocryol.*, 36, 1101-1110,  
19 <http://dx.doi.org/10.7522/j.issn.1000-0240.2014.0132>, 2014. (in Chinese with English abstract)
- 20 Liu, X.D. and Chen, B.D.: Climatic warming in the Tibetan Plateau during recent decades. *Int. J.*  
21 *Climatol.*, 20, 1729-1742,  
22 [https://doi.org/10.1002/1097-0088\(20001130\)20:14<1729::AID-JOC556>3.0.CO;2-Y](https://doi.org/10.1002/1097-0088(20001130)20:14<1729::AID-JOC556>3.0.CO;2-Y), 2000.
- 23 Lu, M. M., Zhou, S.Q., and He, X.: A comparison of the formulas for estimation of the lake  
24 evaporation on the Tibetan Plateau: taking Lake Nam Co as an example. *J. Glaciology and*  
25 *Geocryology.*, 39, 281-291, 2017. (in Chinese with English abstract)
- 26 Lutz, A.F., Immerzeel, W. W., Shrestha, A. B., and Bierkens, M. F. P.: Consistent increase in High  
27 Asia's runoff due to increasing glacier melt and precipitation. *Nat. Clim. Change.*, 4, 587-592,  
28 <https://doi.org/10.1038/nclimate2237>, 2014.
- 29 Mergili, M., Müller, J.P., and Schneider, J.F.: Spatial-temporal development of high mountain  
30 lakes in the headwaters of the Amu Darya River (Central Asia). *Glob. Planet. Chang.*, 107,  
31 13–24, <https://doi.org/10.1016/j.gloplacha.2013.04.001>, 2013.
- 32 Miller, J. D., Immerzeel, W. W., and Rees, G.: Climate Change Impacts on Glacier Hydrology and  
33 River Discharge in the Hindu Kush-Himalay as A Synthesis of the Scientific Basis. *Mt. Res.*  
34 *Dev.*, 32, 461-467, <https://doi.org/10.1659/MRD-JOURNAL-D-12-00027.1>, 2012.
- 35 Mir, R.A., Jain, S. K., and Saraf, A. K.: Analysis of current trends in climatic parameters and its  
36 effect on discharge of Satluj River basin, western Himalaya. *Nat. Hazards.*, 79, 587-619,  
37 <https://doi.org/10.1007/s11069-015-1864-x>, 2015b.
- 38 Mir, R.A., Jain, S. K., Saraf, A. K., and Goswami, A.: Decline in snowfall in response to

1 temperature in Satluj basin, western Himalaya. *J. Earth Syst. Sci.*, 124, 365-382,  
2 <https://doi.org/10.1007/s12040-015-0539-z>, 2015a.

3 Mir, R.A., Jain, S. K., Saraf, A. K., and Goswami, A.: Detection of Changes in Glacier Mass  
4 Balance Using Satellite and Meteorological Data in Tirungkhad Basin Located in Western  
5 Himalaya. *J. Indian Soc. Remote.*, 42, 91-105, <https://doi.org/10.1007/s12524-013-0303-2>,  
6 2014.

7 Nie, Y., Liu, Q., and Liu, S.: Glacial Lake Expansion in the Central Himalayas by Landsat Images,  
8 1990-2010. *PLoSOne.*, 8, e83973, <https://doi.org/10.1371/journal.pone.0083973>, 2014.

9 Nie, Y., Liu, Q., Wang, J. D., Zhang, Y. L., Sheng, Y. W., and Liu, S.Y.: An inventory of historical  
10 glacial lake outburst floods in the Himalayas based on remote sensing observations and  
11 geomorphological analysis. *Geomorphology.*, 308, 91-106,  
12 <https://doi.org/10.1016/j.geomorph.2018.02.002>, 2018.

13 Nie, Y., Sheng, Y.W., Liu, Q., Liu, L., Liu, S., Zhang, Y., and Song, C.: A regional-scale assessment  
14 of Himalayan glacial lake changes using satellite observations from 1990 to 2015. *Remote  
15 Sens. Environ.* 189, 1-13, <https://doi.org/10.1016/j.rse.2016.11.008>, 2017.

16 Pan, Guitang. (eds.): *Tectonic Map and Instructions for the Tibet Plateau and Adjacent Areas*,  
17 Geological Publishing House, Beijing, China, 2013. (in Chinese)

18 Pradhananga, N.S., Kayastha, R.B., Bhattarai, B.C., Adhikari, T. R., Pradhan, S. C., Devkota, L. P.,  
19 Shrestha, A. B., and Mool, P. K.: Estimation of discharge from Langtang River basin, Rasuwa,  
20 Nepal, using a glacio-hydrological model. *Ann. Glaciol.*, 55, 223-230,  
21 <https://doi.org/10.3189/2014aog66a123>, 2014.

22 Prakash, C. and Nagarajan, R.: Glacial Lake Inventory and Evolution in Northwestern Indian  
23 Himalaya. *IEEE J-Stars.*, 10, 5284-5294, <https://doi.org/10.1109/JSTARS.2017.2767098>, 2017.

24 Qin, J., Yang, K., Liang, S., and Guo, X.: The altitudinal dependence of recent rapid warming over  
25 the Tibetan Plateau. *Climatic Change.*, 97, 321-327,  
26 <https://doi.org/10.1007/s10584-009-9733-9>, 2009.

27 Raj, K. B. G., Kumar, V. K., and Remya, S. N., Remote sensing-based inventory of glacial lakes in  
28 Sikkim Himalaya: semi-automated approach using satellite data. *Geomat. Nat. Haz. Risk.*, 4,  
29 241-253, <https://doi.org/10.1080/19475705.2012.707153>, 2013.

30 Richardson, S. D. and Reynolds, J. M.: An overview of glacial hazards in the Himalayas. *Quatern.  
31 Int.*, 65-6, 31-47, [https://doi.org/10.1016/S1040-6182\(99\)00035-X](https://doi.org/10.1016/S1040-6182(99)00035-X), 2000.

32 Shangguan, D. H., Liu, S. Y., Ding, Y. J., Wu, L. Z., Deng, W., Guo, W. Q., Wang, Y., Xu, J., Yao,  
33 X. J., Guo, Z. L., and Zhu, W. W.: Glacier changes in the Koshi River basin, central Himalaya,  
34 from 1976 to 2009, derived from remote-sensing imagery. *Ann. Glaciol.*, 55, 61-68,  
35 <https://doi.org/10.3189/2014AoG66A057>, 2014.

36 Shrestha, A. B. and Aryal, R.: Climate change in Nepal and its impact on Himalayan glaciers. *Reg.  
37 Environ. Change.* 111, S65-S77, <https://doi.org/10.1007/s10113-010-0174-9>, 2011.

38 Singh, P., Kumar, N., and Arora, M.: Degree-day factors for snow and ice for Dokriani Glacier,

- 1 Garhwal Himalayas. *J. Hydrol.*, 235, 1-11, [https://doi.org/10.1016/S0022-1694\(00\)00249-3](https://doi.org/10.1016/S0022-1694(00)00249-3),  
2 2000.
- 3 Solomina, O. N., Bradley, R. S., Jomelli, V., Geirsdottir, A., Kaufman, D. S., Koch, J., McKay, N.  
4 P., Masiokas, M., Miller, G., Nesje, A., Nicolussi, K., Owen, L. A., Putnam, A. E., Wanner, H.,  
5 Wiles, G., and Yang, B.: Glacier fluctuations during the past 2000 years. *Quaternary Sci. Rev.*  
6 149, 61-90, <https://doi.org/10.1016/j.quascirev.2016.04.008>, 2016.
- 7 Valentina Radić., and Hock, R.: Glaciers in the earth's hydrological cycle: assessments of glacier  
8 mass and runoff changes on global and regional scales. *Surv Geophys*, 35, 813-837,  
9 <https://doi.org/10.1007/s10712-013-9262-y>, 2013.
- 10 Wang, S. J. and Jiao, S. T.: Evolution and outburst risk analysis of moraine-dammed lakes in the  
11 central Chinese Himalaya. *J. Earth Syst. Sci.*, 124, 567-576,  
12 <https://doi.org/10.1007/s12040-015-0559-8>, 2015.
- 13 Wang, S. J. and Zhang, T.: Spatially change detection of glacial lakes in the Koshi River Basin, the  
14 Central Himalaya. *Environ. Earth Sci.*, 72, 4381–4391,  
15 <https://doi.org/10.1007/s12665-014-3338-y>, 2014.
- 16 Wang, W.C., Xiang, Y., Gao, Y., Lu, A.X., and Yao, T.D.: Rapid expansion of glacial lakes caused  
17 by climate and glacier retreat in the Central Himalayas. *Hydrol. Process.*, 29, 859-874,  
18 <https://doi.org/10.1002/hyp.10199>, 2015.
- 19 Wang, X., Liu, S. Y., Guo, W.Q., Yao, X. J., Jiang, Z. L., and Han, Y.S.: Using Remote Sensing  
20 Data to Quantify Changes in Glacial Lakes in the Chinese Himalaya. *Mt. Res. Dev.*, 32,  
21 203-212, <https://doi.org/10.1659/MRD-JOURNAL-D-11-00044.1>, 2012.
- 22 Wang, W. C., Gao, Y., Anaconda, P. I., Lei, Y.B., Xiang, Y., Zhang, G. Q., Li, S.H., and Lu, A. X.:  
23 Integrated hazard assessment of Cirenmaco glacial lake in Zhangzangbo valley, Central  
24 Himalayas. *Geomorphology.*, 306, 292-305, <https://doi.org/10.1016/j.geomorph.2015.08.013>,  
25 2018.
- 26 Wei, J.F., Liu, S.Y., Guo, W.Q., Yao, X.J.: Surface-area changes of glaciers in the Tibetan Plateau  
27 interior area since the 1970s using recent Landsat images and historical maps. *Ann. Glaciol.*,  
28 55, 213-222, <https://doi.org/10.3189/2014AoG66A038>, 2014.
- 29 Winiger, M., Gumpert, M., and Yamout, H.: Karakorum-Hindukush-western Himalaya: Assessing  
30 high-altitude water resources. *Hydrol. Process.*, 19, 2329–2338,  
31 <https://doi.org/10.1002/hyp.5887>, 2005.
- 32 Xiang, Y., Gao, Y., and Yao, T.D.: Glacier change in the Poiqu River basin inferred from Landsat  
33 data from 1975 to 2010. *Quatern. Int.*, 349, 392-401,  
34 <https://doi.org/10.1016/j.quaint.2014.03.017>, 2014.
- 35 Xiang, Y., Yao, T.D., Gao, Y., Zhang, G.Q., Wang, W.C., and Tian, L.D., Retreat rates of  
36 debris-covered and debris-free glaciers in the Koshi River Basin, central Himalayas, from 1975  
37 to 2010. *Environ. Earth Sci.*, 77, 285, <https://doi.org/10.1007/s12665-018-7457-8>, 2018.
- 38 Xu, D.M. and Feng, Q.H.: Studies on catastrophes of glacial debris flow and glacial lake outburst

1 flood in China. *J. Glaciol. Geocryol.*, 10,284-289, 1988. (in Chinese with English abstract)

2 Yao, T.D., Thompson, L., Yang, W., Yu, W. S., Gao, Y., Guo, X. J., Yang, X. X., Duan, K.Q., Zhao,  
3 H.B., Xu, B.Q., Pu, J.C., Lu, A.X., Xiang, Y., Kattel, D.B., and Joswiak, D.: Different glacier  
4 status with atmospheric circulations in Tibetan Plateau and surroundings. *Nat. Clim. Chang.*, 2,  
5 663–667, <https://doi.org/10.1038/nclimate1580>, 2012.

6 Yao, T.D.: Glacial fluctuations and its impacts on lakes in the southern Tibetan Plateau. *Chinese  
7 Science Bulletin.*, 55, 2071-2071, <https://doi.org/10.1007/s11434-010-4327-5>, 2010. (in  
8 Chinese with English abstract)

9 Zhang, G.Q., Bolch, T., Allen, S., Linsbauer, A., Chen, W.F., and Wang, W.C.: Glacial lake  
10 evolution and glacier-lake interactions in the Poiqu River basin, central Himalaya, 1964-2017.  
11 *J. Glaciol.*, 65, 347-365, <https://doi.org/10.1017/jog.2019.13>, 2019.

12 Zhang, G.Q., Yao, T. D., Xie, H. J., Wang, W. C., and Yang, W.: An inventory of glacial lakes in  
13 the Third Pole region and their changes in response to global warming. *Global Planet. Change.*,  
14 131, 148-157, <https://doi.org/10.1016/j.gloplacha.2015.05.013>, 2015.

15 Zhang, Y., Liu, S. Y., and Ding, Y. J.: Spatial Variation of Degree-day Factors on the Observed  
16 Glaciers in Western China. *Acta Geographica Sinica.*, 61, 89-98,  
17 <https://doi.org/10.3321/j.issn:0375-5444.2006.01.009>, 2006. (in Chinese with English abstract)

18 Zheng, Y., Zhang, J.J., Wang, J.M., Wang, X.X., and Wang, M.: The rapid denudation events of the  
19 Himalayan orogenic belt in the Nyalam area since the Pliocene and its tectonic-climate  
20 coupling significance. *J. Science Bulletin*, 59(11): 987-998, 2