

# Simulation Analysis of Local Land Atmosphere Coupling in Rainy Season over a Typical Underlying Surface in the Tibetan Plateau

Genhou SUN<sup>1,2</sup>, Zeyong HU<sup>3</sup>, Yaoming MA<sup>4,5</sup>, Zhipeng XIE<sup>4</sup>, Jiemin WANG<sup>3</sup>, Song YANG<sup>1,2</sup>

<sup>1</sup>School of Atmospheric Sciences and Guangdong Province Key Laboratory for Climate Change and Natural Disaster Studies, Sun Yat-sen University, Guangzhou, China

<sup>2</sup>Southern Marine Science and Engineering Guangdong Laboratory (Zhuhai), Zhuhai, China

<sup>3</sup>Northwest Institute of Eco-Environment and Resources, Chinese Academy of Sciences, Lanzhou, China

<sup>4</sup>Institute of Tibetan Plateau, Chinese Academy of Sciences, Beijing, China

<sup>5</sup>CAS Center for Excellence in Tibetan Plateau Earth Sciences, Beijing, China

10 *Correspondence to:* Genhou SUN (sungh6@mail.sysu.edu.cn); Yaoming Ma (ymma@itpcas.ac.cn)

**Abstract.** The Local land atmosphere coupling (LoCo) **investigates** the interactions between soil conditions, surface fluxes, planetary boundary layer (PBL) growth, and the formations of convective clouds and precipitations. Study of LoCo over the Tibetan Plateau (TP) is of great significance for understanding TP's role in the "Asian Water Tower". A series of real-case simulations using the Weather Research and Forecasting Model (WRF) with different combinations of land surface models (LSM) schemes and PBL schemes has been carried out to investigate the LoCo characteristics over a typical underlying surface in the central TP in rainy season. The LoCo characteristics in the study area are analyzed by applying a mixing diagram to the simulation results. The analysis indicates that the WRF simulations using the Noah with BouLac, MYNN, and YSU produce closer results to the observation in terms of curves of  $C_p \cdot \theta$  and  $L_v \cdot q$ , surface fluxes ( $H_{sfc}$  and  $LE_{sfc}$ ), entrainment fluxes ( $H_{ent}$  and  $LE_{ent}$ ) at site BJ/Nagqu than those using the CLM with BouLac, MYNN, and YSU. The frequency distributions of  $H_{sfc}$ ,  $LE_{sfc}$ ,  $H_{ent}$ , and  $LE_{ent}$  in the study area confirm this result. The spatial distributions of simulated  $H_{sfc}$ ,  $LE_{sfc}$ ,  $H_{ent}$ , and  $LE_{ent}$  using WRF with Noah and BouLac suggest that the spatial distributions of  $H_{sfc}$  and  $LE_{sfc}$  in the study area are consistent with that of soil moisture, but the spatial distributions of  $H_{ent}$  and  $LE_{ent}$  are quite different from that of soil moisture. A close examination of the relationship between entrainment fluxes and cloud water content (QCloud) reveals that the grids with small  $H_{ent}$  and large  $LE_{ent}$  tend to have high QCloud and  $H_{sfc}$ , suggesting that high  $H_{sfc}$  is conducive to convective cloud formation, which leads to small  $H_{ent}$  and large  $LE_{ent}$ . Sensitivity analysis of LoCo to the soil moisture at site BJ/Nagqu indicates that on a sunny day, an increase in soil moisture leads to an increase in  $LE_{sfc}$  but decreases in  $H_{sfc}$ ,  $H_{ent}$ , and  $LE_{ent}$ . The sensitivity of the relationship between simulated maximum daytime PBL height (PBLH) and mean daytime evapotranspiration (**ET**) in the study area to soil moisture indicates that the rate at which the maximum daytime PBLH decreases with the mean **ET** increase as the initial soil moisture goes up. The analysis of simulated  $H_{sfc}$ ,  $LE_{sfc}$ ,  $H_{ent}$ , and  $LE_{ent}$  under different soil moisture conditions reveals that the frequency of  $H_{ent}$  ranging from 80 to 240  $W \cdot m^{-2}$  and the frequency of  $LE_{ent}$  ranging from -240 to -90  $W \cdot m^{-2}$  both increase as the initial soil moisture increases. Coupled with the changes in QCloud, the changes in  $H_{ent}$  and  $LE_{ent}$  as the initial soil moisture increases indicate that the rise in soil moisture leads to an increase in the cloud amount but a decrease in QCloud.

## 35 1. Introduction

With an average altitude of over 4000 m, the Tibetan Plateau (TP) is also known as the “Asian Water Tower” because it is home to many well-known rivers like the Yangzi River, the Yellow River, the Mekong River, the Yalung Tsangpo River, the Indian River, and the Ganges River (Lu et al., 2005; Immerzeel et al., 2010; Pithan et al., 2014). Local land atmosphere coupling (LoCo) (Santanello et al., 2009, 2011, 2018) explores the interactions between land surface states, surface fluxes, planetary boundary layer (PBL) development and the formations of convective clouds and precipitations, which are closely linked to the relevant processes of the Water Tower. Therefore, studying the LoCo over the TP is of great significance for understanding the characteristics of Asian Water Tower.

LoCo is defined by Santanello (Santanello et al., 2011) as the interactions among the land surface state, surface fluxes, PBL development, and the developments of convective clouds and precipitation. The processes of LoCo can be simplified four individual processes: 1) the responses of surface fluxes to land surface states, 2) the responses of PBL evolutions to surface fluxes, 3) the responses of entrainment fluxes, 4) the collective feedback of the free atmosphere on PBL thermodynamics. Therefore, LoCo analysis can help us understand land-atmospheric interactions from meteorological and climatological perspectives. These processes are highly nonlinear, making it difficult to quantitatively understand LoCo in a reliable way. Therefore, a couple of metrics, which try to produce quantitative understanding of LoCo, have been developed (Santanello et al., 2018). A framework called “mixing diagram” is one of the metrics (Santanello et al., 2009, 2011, 2018) which analyzes the PBL thermodynamics using the 2-m potential temperature and humidity, surface fluxes and PBL height (PBLH). Santanello (2009) constructed a diagnostic framework “mixing diagram” to investigate quantitatively the relationship between soil moisture and PBL evolution, and PBL energy budget. Then, they furthered this study in Santanello (2011) by combining the mixing diagram with the equivalent potential temperature and the level of lifting condensation to examine the possible role of soil moisture in the formation and development of convective clouds in the Southern Great Plains. The positive and negative feedbacks of LoCo on the formations of convective clouds and precipitation were identified. Santanello (2019) investigated the possible impact of initial soil impact on the numerical weather prediction (NWP) and stated that both initial soil moisture and spatial resolution may have profound impacts on the spread of the NWP. The LoCo analysis using the mixing diagram show a great potential to advance our understanding of the interactions between soil conditions and surface fluxes, PBL growth and the formations of convective clouds.

In the last few decades, our understanding of the individual processes of LoCo in TP has been greatly advanced because a series of scientific programs have been carried out in the TP. Based on the observed datasets from the stations established in the TP, the spatiotemporal distribution of soil temperature and soil moisture in TP has been obtained (Yang et al., 2013; Su et al., 2013; Qin et al., 2013; Zhao et al., 2014), the temporal variations of surface fluxes over different underlying surfaces have been quantitatively analysed (Yao et al 2008; Sun et al., 2016, 2019; Wang et al., 2017; Xin et al., 2018). The spatial distribution of surface fluxes over the whole TP have been gained based on in-situ measurements and satellite images (Ma et al., 2005, 2009, 2014) and long-term variations of surface fluxes have investigated (Yang et al., 2011, 2014; Han et al., 2017). The profiles of temperature, humidity, and wind speed obtained using radiosonde in Nagqu (Li et al., 2004), NamCo (Lv et al.,

2008), Madoi (Li et al., 2017) and Qomulangma (Chen et al., 2008; Li et al., 2011) were used to investigate PBL evolution at  
70 different stations in seasons over the TP. These studies suggested that the PBL in the rainy and dry seasons exhibited distinct  
daily evolutions and seasonal variations due to the diurnal and seasonal variations of strong surface heating. **The simulation  
analysis of the PBL over Nam Co (Yang et al., 2015) reveals that the Lake Nam Co enhanced the circulation between the lake  
and land. A study on the reason for the extremely high PBL in the dry season (Chen et al., 2016) reveals that the PBL growth  
in the dry season is influenced by the surface heating, weak stability of atmosphere and high upper-level potential vorticity.**  
75 **Xu (2018) assessed the performance of eight PBL schemes in producing reliable PBL characteristics over Nagqu area and  
found that all the PBL schemes produce warm lower-troposphere and higher PBL.** Properties of clouds and precipitation have  
been gained thanks to the radar and lidar measurements over the TP. Liu (2015) studied the clouds and precipitation at Nagqu  
using one-year radar and lidar observations; they stated that the cloud amount and depth in the rainy season exhibited distinct  
diurnal variation and that strong updrafts existed during the formation of cumuli. Chang (2016) studied the characteristics of  
80 convective clouds in summer based on radar and lidar measurements and found that surface heating played an important role  
in diurnal variations of convective clouds and precipitation. The simulation analysis of mechanism convective precipitation  
events in TP (Chen et al., 2019) stressed the important role of surface heating in the formation of convective precipitations in  
the east and west part of TP in summer. These studies have greatly advanced our understanding of the relevant processes of  
LoCo in the TP based on in-situ measurements, remote sensing images, and radar and lidar measurements; they highlighted  
85 possible connections among these individual processes. However, the underlying mechanisms are still unclear. In this study,  
we will investigate the possible roles of land surface conditions in convective cloud formation on a sunny day of the rainy  
reason in terms of LoCo characteristics.

Site BJ of Nagqu Station for Plateau Climate and Environment, Chinese Academy of Sciences (site BJ/Nagqu, 31.37°N,  
91.90°E, 4509 m) is located in the central TP and has been chosen by a series of scientific programs as the key station to carry  
90 out their field measurements (Ma et al., 2008, 2014a; Zhao et al., 2018, 2019). In this study, an area of 150 km by 150 km with  
Site BJ/Nagqu in the center was chosen as our study area. One important reason for taking this region as our study area is that  
there was an intense observation period for a scientific program in 2011 at Site BJ/Nagqu (Ma et al., 2014a). Those observation  
data will be used in this study. Another reason is that the vegetation types in the study area are alpine grassland and alpine  
wetland, which are very common in the TP. The analysis based on the measurements at Site BJ/Nagqu thus can provide  
95 valuable information to understand the land atmosphere coupling over the TP. The paper is organized as follows. Section 2  
introduces the study area, the observation data, and setups of simulations in this study. Section 3 presents the LoCo  
characteristics in the study area on a sunny day in terms of PBL energy budget and the possible impact of soil condition on  
shallow convective clouds. Section 4 present a discussion based on the analysis above. Section 5 shows the conclusions and  
the future plans.

100

## **2. Study area and methodology**

### **2.1 Study area**

105 Simulations using three-nested domains (Fig. 1) are carried out. The innermost domain is a region of 150 km\*150 km with Site BJ/Nagqu in the center (Fig. 1 b)). The altitude in the study area varies from 4400 to 5800 m. The central area is relatively flat, but there are mountains in the south and west parts of the study area. Based on the observation results of the Nagqu Meteorological Station of the Chinese Meteorological Administration (<http://data.cma.cn/>) from 1980 to 2016, the multi-year monthly mean temperature varies from -11.81 to 9.59°C, and the multi-year monthly mean rainfall varies from 2.16 to 109.69 mm. The climate from July to September is wet and warm, with frequent convective clouds and precipitation due to the strong surface heating and to the abundant water vapor brought in by the South Asian monsoon.

110 A scientific experiment was carried out at Site BJ/Nagqu in July and August 2011. The measurement instruments of this experiment included one automatic weather station (AWS), which provided the measurements of air temperature and humidity at both 1.0 and 8.4 m, wind direction and speed at 10.0 m, surface pressure, the instruments for the 4-layer soil temperature and moisture (5, 10, 20, and 40 cm), one eddy covariance system for surface fluxes and radiosonde measurements for the profiles of temperature, humidity, and wind. Profile data of temperature, humidity, and wind in the daytime were collected in this campaign. The profile data coupled with surface measurements make it possible to carry out LoCo simulation analysis in the central TP in the rainy season.

## 2.2 WRF model setup

The WRF is a state-of-the-art mesoscale numerical simulation system and has been widely used in atmospheric research and forecasting applications. Developed based on the fifth-generation Mesoscale Model (MM5), WRF has a Eulerian mass dynamic core and offers a flexible platform, which can combine various schemes of radiation, land surface processes, PBL, and microphysics. The system can produce simulations based on real or idealized atmospheric conditions.

125 WRF 3.6.1 is used in this study to simulate LoCo interactions in the rainy season in the TP. There are 99\*99 grid cells with a grid resolution of 0.135° \*0.135° in the outermost domain, and 99\*99 grid cells with a grid resolution of 0.015°\*0.015° in the innermost domain. The vertical levels in the simulations are 39 from the surface to 200 hPa. The forcing data for the simulations are the ERA-Interim, with a spatial resolution of 0.75°\*0.75° and a temporal resolution of 6 h. To carry out the real-case simulations, the initial soil moisture was modified based on in-situ measurements at Site BJ/Nagqu and the leaf area index (LAI) of the MODIS. This is based on the fact that the soil moisture and LAI show similar variation in the rainy season and that the soil moisture in the study from the ERA-Interim is too homogeneous, which is far from the reality. First, the relationship between LAI and soil moisture at 5 cm was derived based on the observed 5-cm soil moisture data at Site BJ/Nagqu and LAI product in the rainy season in 2011 (Fig. 2 (a)). The derived relationship between LAI and soil moisture was applied to the LAI product of the study area to obtain a realistic soil moisture for the simulations. Note that there are four layers of soil moisture in Noah (10, 40, 100, 160 cm) and 10 layers of soil moisture in CLM (1.8, 4.5, 9.06, 16.6, 28.9, 49.3, 82.9, 138.3, 229.6, and 343.3 cm). **The variation of soil moisture**

135 in the ERA-Interim from 40-cm depth to the top shows very small changes and we assume that the soil moisture from  
top to 40 cm depth is the same. We thus modified the soil from 40-cm depth to the top by applying the relationship  
between soil moisture at 5 cm and LAI (Fig. 2 b)).

The setups of WRF simulation in this study are as follows: WSM 5-class scheme for microphysics, RRTM scheme for  
shortwave, Duhia scheme for longwave radiation, and Kain-Fritsch (new Eta) scheme for convective cloud parameterization  
140 only in the outermost domain. The land surface process schemes used here are Noah (Ek et al., 2003) and CLM4 (Oleson et  
al., 2010; Lawrence et al., 2010). The PBL schemes used in this study are Yonsei University (YSU; Hong et al., 2006), Mellor-  
Yamada Nakanishi and Niino Level-2.5 PBL (MYNN; Nakanishi et al., 2001, 2004), and BouLac (Bougeault et al., 1989).  
Simulations using WRF with different combinations of LSMs and PBL schemes are carried out to study LoCo characteristics  
over a typical underlying surface in the central TP.

145 To investigate the sensitivity of LoCo characteristics to soil moisture, the simulations using WRF Noah-BouLac with  
different initial soil moisture conditions are carried out. The initial soil moisture conditions in the study area for the sensitivity  
simulations are set to real soil moisture minus 0.05 (real SM-0.05), real soil moisture (real SM), real soil moisture plus 0.05  
(real SM+0.05), and real soil moisture plus 0.1 (real SM + 0.1).

All the simulations start from 02:00 August 7, 2011 Beijing Time, and run for 36 h. The first 6 h of the simulation is for the  
150 spin-up, and the simulation results from 08:00 -17:00 August 7, 2011 of the domain 3 are used for the following analysis.

### 2.2.1 Land surface models

Both Noah and CLM4 can simulate surface sensible heat fluxes, latent heat fluxes, and soil states, but they are different  
in specific parameterizations and representations of soil and vegetation properties and of physics. Noah calculates  
moisture and heat transports using four layers of soil temperature and moisture in each grid cell. CLM4 calculates the  
155 water and heat transports in the soil using 10 layers of soil temperature and soil moisture in each grid cell. Noah LSM  
us A static vegetation dataset based on the monthly Normalized Differential Vegetation Index is used for the, while a  
look-up table of vegetation conditions is used CLM4.

### 2.2.2 PBL schemes

There are several options for PBL schemes in WRF 3.6.1. We choose YSU, MYNN, and BouLac schemes in this study.  
160 YSU is a nonlocal PBL scheme, which uses the K-profile method to parameterize the turbulent mixing in the convective  
boundary layer and takes the non-local mixing by convective large eddies into consideration. Besides, YSU has an  
explicit treatment of entrainment fluxes at the top of the PBL. PBLH in the YSU scheme is determined using the bulk  
Richardson number. MYNN is a one-and-a-half order, local closure scheme, and the turbulent fluxes of any adiabatically  
conserved variable are calculated based on the gradients of their mean values at adjacent levels only. BouLac is also a  
165 one-and-a-half order, local closure scheme, and needs one additional prognostic option to predict turbulence kinetic  
energy (TKE).

### 2.3 Mixing diagram

The mixing diagram was first proposed by Betts (1984, 1992) in order to quantify the heat and moisture fluxes transported into the PBL in the daytime. The mixing diagram quantifies the heat and water into the PBL from the surface and from the entrainment based on the daytime evolutions of 2-m potential temperature and humidity, PBLH, and surface sensible and latent heat fluxes ( $H_{sfc}$  and  $LE_{sfc}$ ). Then Santanello (2009, 2011) furthered this method by investigating the PBL thermodynamics and the possible influence of surface heating on cloud formations. In this study, the mixing diagram was used to explore the PBL thermodynamics and the role of surface heating in convective cloud formations. The observed and simulated  $T_2$ ,  $q_{2m}$ ,  $H_{sfc}$ ,  $LE_{sfc}$ , and PBLH from 08:00 to 17:00 (Beijing standard time) on August 7, 2011 were used in this study. The reasons for why the data from 08:00 to 17:00 was used in the analysis are because the underlying surface starts to influence the PBL at 08:00 and the PBLH usually reaches its maximum at 17:00. The mixing diagram analysis based on observed  $T_2$ ,  $q_{2m}$ ,  $H_{sfc}$ ,  $LE_{sfc}$ , and PBLH on August 07, 2011 is shown in Fig. 3. The black line is the evolutions of  $C_p \cdot \theta$  and  $L_v \cdot q$  in the daytime, and the red and purple lines are vectors for surface fluxes and entrainment fluxes. The point ( $q_m$ ,  $T_m$ ) in Fig. 3 is the PBL condition caused by the heat and water vapor from the surface only. The equations for  $q_m$ ,  $T_m$ ,  $H_{ent}$ , and  $LE_{ent}$  are listed as follows:

$$180 \quad \overline{H_{sfc}} = C_p \cdot (T_m - T_s) \cdot (\rho_m \cdot \overline{PBLH}) / \Delta t \quad (1)$$

$$\overline{LE_{sfc}} = L_v \cdot (q_m - q_s) \cdot (\rho_m \cdot \overline{PBLH}) / \Delta t \quad (2)$$

$$\overline{H_{ent}} = C_p \cdot (T_f - T_m) \cdot (\rho_m \cdot \overline{PBLH}) / \Delta t \quad (3)$$

$$\overline{LE_{ent}} = L_v \cdot (q_f - q_m) \cdot (\rho_m \cdot \overline{PBLH}) / \Delta t \quad (4)$$

where  $T_s$  and  $q_s$  are the potential temperature and specific humidity at 08:00, respectively;  $T_f$  and  $q_f$  are the potential temperature and specific humidity at 17:00, respectively;  $C_p$  is the air specific heat capacity constant ( $1004.7 \text{ kg}^{-1} \cdot \text{K}^{-1}$ );  $L_v$  is the constant for latent heat of vaporization ( $2.5 \cdot 10^6 \text{ kg}^{-1} \cdot \text{K}^{-1}$ );  $\rho_m$  is air density ( $\text{kg} \cdot \text{m}^{-3}$ ),  $\Delta t$  is the seconds from 08:00 to 17:00.

## 2.4 Other variables

PBLH is an important variable for the mixing diagram. The observed PBLH in this study was determined using a potential temperature gradient method from the profiles of temperature obtained by radiosonde measurements.

Equivalent potential temperature ( $\theta_e$ ) is the temperature a sample of air would have if all its moisture were condensed by a pseudo-adiabatic process and the sample then brought dry-adiabatically back to 10000 hPa.  $\theta_e$  can be calculated using the following equation:

$$195 \quad \theta_e = \left( T + \frac{L_v}{c_{pd}} \cdot r \right) \cdot \left( \frac{P_0}{P} \right)^{\frac{R_d}{c_{pd}}} \quad (5)$$

where  $T$  is absolute temperature (K);  $P_0$  is pressure at sea level (1000 hPa);  $P$  is surface pressure (hPa);  $r$  is mixing ratio of water vapor ( $\text{kg} \cdot \text{kg}^{-1}$ );  $c_{pd}$  is specific heat of dry air at constant pressure ( $1005.7 \text{ J} \cdot \text{kg}^{-1} \cdot \text{K}^{-1}$ ); and  $R_d$  is specific gas constant for air ( $287.04 \text{ J} \cdot \text{kg}^{-1} \cdot \text{K}^{-1}$ ).

## 3. Result analysis

### 200 3.1 Mixing analysis at Site BJ/Nagqu

The mixing diagrams of August 7, 2011 based on the simulations at site BJ/Nagqu using Noah with BouLac, MYNN, or YSU are shown in Fig. 4. The curves of simulated  $C_p*\theta$  and  $L_v*q$  using Noah with different PBL schemes show similar variations with differences in values. The simulated increases in  $C_p*\theta$  using Noah with the three PBL schemes are similar, from about 320 to 335  $\text{kJ*kg}^{-1}$ . The changes in  $L_v*q$  using Noah with the three PBL schemes are different. The increases in simulated  
205  $L_v*q$  using Noah with BouLac, MYNN, and YSU are 0.94, 0.50, and 2.48  $\text{kJ*kg}^{-1}$ , respectively. The  $H_{sfc}$  simulated using Noah with BouLac, MYNN, and YSU are 144.12, 162.95, and 145.83  $\text{W*m}^{-2}$ , respectively. The  $LE_{sfc}$  simulated using Noah with BouLac, MYNN, and YSU are 235.86, 218.98, and 236.44  $\text{W*m}^{-2}$ , respectively. **The simulated fluxes using Noah are close to the simulation results in the previous studies (Bao et al., 2013; Gao et al., 2015; Ma 2019).** The simulated  $H_{ent}$  is positive and larger than  $H_{sfc}$ , and the simulated  $LE_{ent}$  values are negative. This suggests that significant heat and dry air are  
210 entrained into the PBL. The simulated  $H_{sfc}$  by Noah-MYNN is larger than those by Noah-BouLac and Noah-YSU while the simulated  $LE_{sfc}$  by Noah-MYNN is smaller. This indicates that there is more heat and less vapor into the PBL in the Noah-MYNN than in the Noah-BouLac and Noah-YSU. **According to the  $H_{ent}$  and  $LE_{ent}$ , there is less heat and dryer air entrained into PBL in the Noah-MYNN than that in the Noah-BouLac and Noah-YSU. The differences in  $H_{ent}$  and  $LE_{ent}$  could be attributed to the relatively small PBLH (1418m) in Noah-MYNN than those (1566m and 1468m) in Noah-BouLac and Noah-**  
215 **YSU.** Compared to the observed fluxes, the simulations using Noah with different PBL schemes produce larger  $H_{sfc}$  and similar  $LE_{sfc}$ , and also produce smaller  $H_{ent}$  and similar  $LE_{ent}$ .

$\theta_e$  is a thermal conservative variable, which is useful to quantify the changes in thermodynamics in the PBL due to surface heating. The increases in simulated  $\theta_e$  using Noah with BouLac, MYNN, and YSU are similar, indicating that the atmosphere becomes unstable due to the surface heating. The simulated relative humidity (RH) in the three cases decreases first from 80%  
220 to 60% at a slow rate, then decreases to below 40% at a fast rate. Therefore, the PBL becomes wetter before noon, and dryer and more unstable on the sunny day.

The mixing diagrams at site BJ/Nagqu on August 7, 2011 based on simulations using CLM with BouLac, MYNN, and YSU are shown in Fig 5. The simulated curves using CLM with the three PBL schemes are different from those simulated using Noah because of the large variation in  $C_p*\theta$ . The  $C_p*\theta$  simulated using CLM with different PBL schemes increases from  
225 315.0 to about 337.0  $\text{kJ*kg}^{-1}$ . The  $L_v*q$  values simulated using CLM-BouLac and CLM-YSU increase from 10.0 to about 12.3  $\text{kJ*kg}^{-1}$ , while the  $L_v*q$  simulated using CLM with MYNN decreases from 10.13 to 9.5  $\text{kJ*kg}^{-1}$ . **Compared to the surface fluxes in previous studies (Bao et al., 2013; Gao et al., 2015; Ma 2019), the  $H_{sfc}$  simulated using CLM are similar but the  $LE_{sfc}$  are too small.** The simulated  $H_{sfc}$  and  $LE_{sfc}$  by CLM with different PBL schemes are similar, which may be one of the reasons for the similarity in these curves. **The simulated  $H_{ent}$  and  $LE_{ent}$  values using CLM with BouLac and YSU are much larger than**  
230 **the observed while, indicating that more heat and less dry air is entrained into PBL than the observed. The  $H_{ent}$  using CLM-MYNN is close to the observed while the  $LE_{ent}$  is larger than the observed, indicating that similar heat and less dry air is entrained into PBL than the observation.**



The simulated  $\theta_e$  increases from about 324.83 to 345.21 K for CLM-MYNN, and from 324.56 to 348.80 K for CLM-BouLac and CLM-YSU. This indicates that the simulated PBL becomes more unstable in the CLM cases than it does in the Noah cases.

235 The RH in PBL **simulated using CLM** decreases from about 100% to about 30%. The simulated PBL using CLM is warmer and dryer than that simulated by Noah.

### 3.2 PBL energy budget analysis at Site BJ/Nagqu

The PBL energy budgets at Site BJ/Nagqu simulated using different LSMs and PBL schemes are shown in Fig. 6. The simulated surface fluxes by Noah and CLM are different, which leads to differences in entrainment fluxes and the total fluxes ( $H_{\text{tot}}$  and  $LE_{\text{tot}}$ ). Both  $H_{\text{ent}}$  and  $H_{\text{tot}}$  simulated using CLM with BouLac, MYNN, and YSU are higher than those simulated by Noah, which means more warm air is entrained into PBL in the CLM simulations than it does in the Noah simulations. Both  $LE_{\text{ent}}$  and  $LE_{\text{tot}}$  simulated using Noah with BouLac, MYNN, and YSU are smaller than those simulated by CLM, suggesting that there is more dry air entrained into PBL in the Noah simulations. The Noah simulations with BouLac, MYNN, and YSU produce much larger  $H_{\text{sfc}}$  and slightly larger  $LE_{\text{sfc}}$  than the observed. The CLM simulations with BouLac, MYNN, and YSU produce larger  $H_{\text{sfc}}$  but smaller  $LE_{\text{sfc}}$  than the observed. The  $H_{\text{ent}}$  simulated using Noah is smaller than the observed, while the  $H_{\text{ent}}$  values simulated using CLM with BouLac and YSU are larger than the observed. Compared to the observation, most simulated  $LE_{\text{ent}}$  values are larger than the observed, indicating that less dry air is entrained into PBL in the simulations.

240  
245

### 3.3 PBL energy budget analysis in the study area

The frequencies of PBL energy budget components in the study area simulated using WRF with different combinations of LSMs and PBL schemes are shown in Fig. 7. There are apparent differences in the frequencies of simulated PBL budget components, suggesting discrepancies in simulated LoCo characteristics in the rainy season in the TP using WRF with different combinations of LSMs and PBL schemes.

250

The  $H_{\text{sfc}}$  values simulated using CLM with BouLac, MYNN, and YSU vary in narrow ranges. The mean  $H_{\text{sfc}}$  simulated using CLM is larger than that using Noah with BouLac and YSU but smaller than that using Noah with MYNN. The simulated  $LE_{\text{sfc}}$  using CLM with BouLac, MYNN, and YSU show little differences and vary in narrower ranges than those simulated using Noah. CLM with BouLac, MYNN, or YSU produces stronger  $H_{\text{ent}}$  and  $LE_{\text{ent}}$  than Noah does. This suggests that more warm air and less dry air are entrained into PBL in the CLM simulations than in the Noah simulations. Consequently, CLM produces stronger  $H_{\text{tot}}$  and  $LE_{\text{tot}}$  than Noah does.

255

Here, we take the spatial distributions of PBL energy budget components simulated using Noah with BouLac as an example to investigate the possible relationship between soil moisture and LoCo characteristics in the study area. The spatial distribution of the PBL energy budget simulated using Noah with BouLac is shown in Fig. 8. The heterogeneity in the spatial distributions of  $H_{\text{sfc}}$ ,  $LE_{\text{sfc}}$ ,  $H_{\text{ent}}$ ,  $LE_{\text{ent}}$ ,  $H_{\text{tot}}$ , and  $LE_{\text{tot}}$  is strong. The spatial distributions of simulated  $H_{\text{sfc}}$  and  $LE_{\text{sfc}}$  are consistent with that of soil moisture. The area with small soil moisture shows large  $H_{\text{sfc}}$  and small  $LE_{\text{sfc}}$  because soil moisture plays a critical role in partitioning the available energy into  $H_{\text{sfc}}$  and  $LE_{\text{sfc}}$ . However, the spatial distributions of  $H_{\text{ent}}$  and  $LE_{\text{ent}}$  are not consistent with that of soil moisture. It seems that the area with strong  $H_{\text{sfc}}$  has weak  $H_{\text{ent}}$  and large  $LE_{\text{ent}}$ , which contradicts to the analysis

260  
265



above. A possible explanation can be found in the relationship between entrainment fluxes and cloud liquid water content (QCloud) (Fig. 9).  $H_{ent}$  and  $LE_{ent}$  at the grid with the maximum sum of QCloud are about 100 and  $-50 \text{ W}\cdot\text{m}^{-2}$ , respectively. The  $H_{ent}$  at the grid with the maximum sum of QCloud is much smaller than that at Site BJ/Nagqu, and the  $LE_{ent}$  of the same grid is larger than that at Site BJ/Nagqu. Note that both  $H_{ent}$  and  $LE_{ent}$  at Site BJ/Nagqu are the entrainment fluxes on a sunny day. It is reasonable to deduce that the area with large  $LE_{ent}$  (over  $-100 \text{ W}\cdot\text{m}^{-2}$ ) and small  $H_{ent}$  (below  $200 \text{ W}\cdot\text{m}^{-2}$ ) is the area with cloud formation. Therefore, high  $H_{sfc}$  in the study area is very likely to lead to the convective cloud formation and results in small  $H_{ent}$  and large  $LE_{ent}$ . This is why the spatial distributions of  $H_{ent}$  and  $LE_{ent}$  are not consistent with that of soil moisture.

### 275 3.4 Relationship between ET and PBLH

LoCo characteristics using WRF with different combinations of LSMs and PBL schemes can be thoroughly investigated by studying the relationship between the mean daytime ET and maximum daytime PBLH since the PBL growth is a direct response to surface heating. The possible impact of lakes is excluded by dismissing the grids where the mean daytime soil moisture is 1.0. The relationships between daily mean ET and maximum daytime PBLH by different simulations are shown in Fig. 10.

The relationships between mean daily ET and maximum daytime PBLH in the six simulations are similar but differ in terms of linear fitting slopes. It seems that the maximum daytime PBLH decreases faster with mean daily ET in the CLM cases than it does in the Noah cases. This is mainly caused by the fact that the mean daytime ET simulated using CLM varies in a much smaller range, which is much narrower than that simulated using Noah. The slope in the relationship between mean daytime ET and maximum daytime ET simulated using Noah with MYNN is gentler than the slopes simulated by Noah with BouLac and YSU. But the slope simulated CLM with MYNN is steeper than those simulated using CLM with BouLac and YSU. This can be explained by the frequency distributions of  $H_{sfc}$  and  $LE_{ent}$  in Fig. 7.

The similarities and differences in the relationships between simulated mean daytime ET and maximum daytime PBLH using the six simulations indicate that the LoCo characteristics simulated by Noah may be more plausible, regardless of which PBL scheme is used.

### 3.5 Sensitivity of LoCo to soil moisture

Sensitivity of LoCo characteristics to different soil moisture conditions in the study area in the rainy season is investigated based on the simulation results using WRF Noah-BouLac with different initial soil moistures. The frequency distributions of PBL energy budget in the study area reveals that the Noah-BouLac could produce more reliable surface fluxes in the study area (Fig. 7). This agrees with Xu (2018) which indicates that the simulation using BouLac produces closest result to the observation.

The curves of the mixing diagram at Site BJ/Nagqu with different initial soil moisture conditions are shown in Fig. 11. The simulated curves of  $C_p\theta$  and  $L_vq$  with different initial soil moisture conditions show similar variation but with different magnitude. As the initial soil moisture at Site BJ/Nagqu increases from 0.32 to  $0.47 \text{ m}^3\cdot\text{m}^{-3}$ , the simulated  $LE_{sfc}$  increases from

220.40 to 245.46  $W*m^{-2}$  and the simulated  $H_{sfc}$  decreases from 153.19 to 134.28  $W*m^{-2}$ . As a consequence, the simulated  $Lv*q$  in the daytime shows a clear gradient as the initial soil moisture increases. Similarly, as the initial soil moisture at Site BJ/Nagqu increases, the simulated  $H_{ent}$  decreases from 368.34 to 361.95  $W*m^{-2}$ , while the simulated  $LE_{ent}$  increases from -222.27 to -170.63  $W*m^{-2}$ . This indicates that as the initial soil moisture increases, less heat and dry air are entrained into the  
305 PBL at Site BJ/Nagqu. The results at Site BJ/Nagqu indicate the sensitivity of LoCo to soil moisture under no-cloud conditions because the sum of QCloud in each of the four cases is 0.00  $kg*m^{-2}$  as the initial soil moisture increases.

The frequency distributions of the mean soil moisture at 5 cm and PBL energy budgets in the study area are shown in Fig. 12. As initial soil moisture in the sensitivity experiments increases, the simulated PBL energy budget components change differently. The simulated  $H_{sfc}$  decreases and  $LE_{sfc}$  increases as the initial soil moisture increases because soil moisture plays  
310 a critical role in the surface available energy partitioning. But the changes in the simulated  $H_{ent}$  and  $LE_{ent}$  as the initial soil moisture increases are complex. As the initial soil moisture increases, there is an increase in the frequency of  $H_{ent}$  ranging from 80 to 240  $W*m^{-2}$  but a decrease in the frequency of  $H_{ent}$  below 80 and over 240  $W*m^{-2}$ . Similarly, as the initial soil moisture increases, there is an increase in the frequency of  $LE_{ent}$  ranging from -240 to -90  $W*m^{-2}$  and a decrease in the frequency of  $LE_{ent}$  below -90 and over -240  $W*m^{-2}$ . Based on the analysis of the relationship between entrainment fluxes and QCloud in  
315 section 3.3, the increases in the frequency of  $H_{ent}$  ranging from 80 to 240  $W*m^{-2}$  and  $LE_{ent}$  ranging from -240 to -90  $W*m^{-2}$  indicate an increase in convective cloud amount. The relationship of sum of QCloud and entrainment fluxes in different initial soil moisture conditions are shown in Fig. 13. The maximum values of the sum of QCloud in the sensitivity simulations are 0.0192, 0.019, 0.0162, and 0.0150  $kg*kg^{-1}$  as the initial soil moisture increases. The decrease in the maximum values of the sum of QCloud may indicate that a decrease in deep cumulus. Therefore, the changes in  $H_{ent}$ ,  $LE_{ent}$ , and the sum of QCloud  
320 may indicate that an increase in the soil moisture is conducive to an increase in the shallow cumulus amount, but not favorable for the formation of deep cumuli.

As the initial soil moisture increases, the medians of  $H_{sfc}$  and  $H_{ent}$  decrease from 181.80 to 154.74  $W*m^{-2}$  and from 181.16 to 177.16  $W*m^{-2}$ , respectively. The median of  $LE_{sfc}$  increases from 169.18 to 201.97  $W*m^{-2}$ , while the median of  $LE_{ent}$  decreases from -122.37 to -131.96  $W*m^{-2}$ . The median  $H_{tot}$  in the study area decreases from 363.91 to 335.95  $W*m^{-2}$ . The  
325 decrease in  $H_{tot}$  is mainly caused by  $H_{sfc}$ . The median  $LE_{tot}$  increase from 44.63 to 66.57  $W*m^{-2}$ , and the increase in  $LE_{tot}$  is mainly caused by  $LE_{sfc}$ . It is safe to say that the change in the initial soil moisture has a strong impact on surface fluxes and entrainment fluxes.

The relationship of mean ET and maximum PBLH at daytime in the study area simulated by Noah-BouLac with different initial soil moisture values are shown in Fig. 14. The maximum daytime PBLH decreases as the daytime mean ET increases,  
330 but the slope between maximum PBLH and mean ET at daytime becomes steep as the initial soil moisture increases. This can be attributed to the fact that the number of grids with high ET increases as the initial soil moisture increases and the maximum PBLH decreases due to the increase in shallow convective clouds.

#### 4. Discussion

335 LoCo contains a series of nonlinear processes, which include the interactions among soil states, surface fluxes, PBL development, entrainment, and the formations of convective clouds and precipitations. Accurately modeling these processes is not easy, especially in the TP. In this study, we investigate the LoCo characteristics based on a series of real-case simulations using WRF with different combinations of LSMs and PBL schemes. The simulations using Noah with BouLac, MYNN, and YSU produce better results than those using CLM. The analysis indicates as the initial soil moisture increases from real SM–  
340 0.05 to real SM + 0.1, the domain averaged  $H_{sfc}$  decrease from 261.45 to 219.57  $W*m^{-2}$ , domain averaged  $LE_{sfc}$  increase from 251.93 to 307.51  $W*m^{-2}$ . Due to the weakening of surface heating, the max domain averaged PBLH decrease from 2045.0 to 1910.2 m and the max domain averaged convective inhibition (CIN) increase from 2.5 to 4.23  $W*m^{-2}$ . The analysis also reveals the specific influence of surface heating on entrainments and cloud formations at the top of the PBL. It seems that there is a certain critical value for  $H_{sfc}$ . When  $H_{sfc}$  is below the critical value, there is an increase in  $H_{ent}$  and a decrease in  $LE_{ent}$  as  
345  $H_{sfc}$  increases, which means that more warm and dry air is entrained into the PBL as  $H_{sfc}$  increases. When  $H_{sfc}$  is over the critical value, there is a decrease in  $H_{ent}$  and an increase in  $LE_{ent}$  as  $H_{sfc}$  increases, which means that less warm and dry air is entrained into the PBL. This is because the formation of convective clouds at the top of the PBL weakens the intensity of entrainments. The is a direct evidence of the impact of the surface heating on the formation of convective clouds.

Another interesting fact is the sensitivity of convective clouds formations to soil moisture in the study area on the sunny  
350 day in the rainy season. The temporal evolution of domain average cloud water content (the sum of ice water and liquid water) under different initial soil moisture conditions indicate that the cloud forms in 11:00 in all the cases and that domain average cloud water content in the real SM - 0.05 case is larger than that in the real SM + 0.1 case until 16:00 (which is not shown here). The analysis show that the simulated QCloud over a dry soil case is larger than that over a wet soil. Therefore, the impact of relatively strong surface heating over a dry soil on the cloud formations is not that straightforward. More observation data  
355 including sunny days, cloudy days and days with convective rain events will be collected in the future. With these data, we will study the LoCo characteristics and the underlying mechanism how the soil state influences the formation of convective clouds and precipitations over a complex surface in rainy season in TP.

## 5. Conclusions

In this study, the LoCo characteristics over a typical underlying surface in the rainy season over the TP were simulated and  
360 discussed using different combinations of LSMs and PBL schemes. The sensitivity of LoCo to soil moisture over a typical underlying surface was investigated via simulations with different initial soil moisture conditions.

The simulated LoCo characteristics using different combinations of LSMs and PBL schemes behave differently in this study. In terms of the curves of mixing diagrams, surface fluxes, and entrainment fluxes, Noah with different PBL schemes produces more realistic curves,  $H_{sfc}$ ,  $LE_{sfc}$ , and  $LE_{ent}$  and smaller  $H_{ent}$  than CLM with different PBL schemes does. The frequency  
365 distributions of  $H_{sfc}$ ,  $LE_{sfc}$ ,  $H_{ent}$ , and  $LE_{ent}$  in the study area confirmed the differences in the simulation results. It was also found that the spatial distributions of  $H_{sfc}$  and  $LE_{sfc}$  in the study area were consistent with that of soil moisture, but the spatial distributions of  $H_{ent}$  and  $LE_{ent}$  were quite different from that of soil moisture. The reason for the disagreements is that high  $H_{sfc}$  may lead to cloud formation, which decreases  $H_{ent}$  and increases  $LE_{ent}$ . The simulations using Noah produce a reasonable

relationship between the maximum PBLH and mean daytime ET because the simulations using Noah can produce reasonable  
370 mean daytime ET in the study area.

Sensitivity analysis of LoCo characteristics to soil moisture reveals that the changes in entrainment fluxes and surface fluxes  
to soil moisture are not the same with soil moisture increase. The changes in entrainment fluxes may be complex due to the  
possible presence of convective clouds. The results also show that the increase in initial soil moisture may cause an increase  
in shallow cumuli and a decrease in QCloud

375 This study investigated the LoCo characteristics on a sunny day over a typical underlying surface in the central TP in terms  
of the role of the soil moisture in PBL energy growth and convective clouds based on in-situ measurements and numerical  
simulations. It is the first part of our LoCo analysis in the TP. More observation data including sunny days, cloudy days and  
days with convective rain events will be collected. We will focus on the basic fact and the possible underlying mechanisms of  
LoCo over complex surface in TP by exploring the possible influence of the heterogeneity of land surface conditions on LoCo  
380 characteristics.

**Code and data availability.** The simulations presented in this study were conducted using the WRF model, which can be  
download from its official website (<https://www.mmm.ucar.edu/weather-research-and-forecasting-model>) free of charge.

The forcing data of the ERA-Interim are available at its official website  
385 (<https://www.ecmwf.int/en/forecasts/datasets/reanalysis-datasets/era-interim>). The simulation results presented in this paper  
are available from the corresponding author upon request. The observational data at Site BJ/Nagqu are available from Profs.  
Zeyong HU and Yaoming MA upon request.

**Author contributions.** Genhou SUN conceived the initial idea for this work and completed the simulation analysis and  
390 manuscript. Zeyong HU and Yaoming MA produced the valuable observation data for this work. Zhipeng XIE offered valuable  
suggestions and help the modeling work. Song YANG and Jiemin WANG provided ideas to improve analyses used in this  
study.

**Competing interests.** The authors declare no conflict of interests.  
395

**Acknowledgments.** The authors thank the National Supercomputer Center in Guangzhou and Zhuhai Joint Innovative Center  
for Climate, Environment and Ecosystem, China for their support.

**Financial support.** The National Key Research and Development Program of China (2018YFC1505701) and the National  
400 Scientific Foundation of China (Grants 41805009, 41675106, 91637208, and 91837208).

## References

Bougeault P., Lacarrere P.: Parameterization of orography-induced turbulence in a mesobeta—scale model. Mon.  
Weather Rev. 117(8), 1872-90, 1989.

- Chang Y., Guo X.: Characteristics of convective cloud and precipitation during summertime at Nagqu over Tibetan Plateau. *Chinese Sci. Bull.*, 61(15), 1706-20, 2016
- 405 Chen J., Wu X., and Yin Y.: Thermal effects of the surface heat flux on cloud systems over the Tibetan Plateau in boreal summer. *J. Climate*; 32, 4699-4714, 2019
- Chen X., Škerlak B., Rotach W., Anel A., Su Z., Ma Y. and Li M.: Reasons for the extremely high-ranging planetary boundary layer over the western Tibetan Plateau in winter. *J. Atmos. Sci.*, 73(5), 2021-2038, 2016
- 410 Ek M.B., Mitchell K.E., Lin Y., Rogers E., Grunmann P., Koren V., Gayno G., Tarpley J.D.: Implementation of Noah land surface model advances in the National Centers for Environmental Prediction operational mesoscale Eta model. *J. Geophys. Res. Atmos.* 108(D22), 2003.
- Gao, Y., K. Li, F. Chen, Y. Jiang, and C. Lu, Assessing and improving Noah-MP land model simulations for the central Tibetan Plateau, *J. Geophys. Res. Atmos.*, 120, 9258–9278, doi:10.1002/ 2015JD023404, 2015.
- 415 Guillod, B. P., Orlowsky, B., Miralles, D., Teuling, A. J., Blanken, P. D., Buchmann, N., Ciais, P., Ek, M., Findell, K. L., Gentine, P. and Lintner, B.R.: Land-surface controls on afternoon precipitation diagnosed from observational data: uncertainties and confounding factors. *Atmos. Chem. and Phys.*, 14(16), 8343-8367, 2014.
- Hong SY, Noh Y, Dudhia J.: A new vertical diffusion package with an explicit treatment of entrainment processes. *Mon. Weather Rev.* 134(9), 2318-41, 2006.
- 420 Immerzeel W. W., Van Beek L. P., Bierkens M. F.: Climate change will affect the Asian water towers. *Science*. 328(5984),1382-5, 2010
- Lawrence D. M., Oleson K. W., Flanner M. G., Thornton P. E., Swenson S. C., Lawrence P. J., Zeng X., Yang Z., Levis S., Sakaguchi K., Bonan G. B.: Parameterization improvements and functional and structural advances in version 4 of the Community Land Model, *J. Adv. Model. Earth Syst.*, 3, doi:10.1029/2011MS000045, 2011.
- 425 Li M., Ma Y., Hu Z., Ma W., Wang J.: Study on Characteristics of Atmospheric Boundary Layer over Nagqu Region of Northern Tibetan Plateau. *Plateau Meteorol.*, 23(5), 728-733, 2004
- Li M., Ma Y., Ma W., Sun F.: Structure Difference of Atmospheric Boundary Layer Between Dry and Rainy Seasons over the Central Tibetan Plateau, *Journal of Glaciology and geocryology*, 33(1) , 72-79, 2011
- Li Z., Lve S., Wen L., Zhao L., Ao Y., Wang S.: Effect of a cold, dry air incursion on atmospheric boundary layer processes over a high-altitude lake in the Tibetan Plateau *Atmos. Res.* 185,32-43, 2017
- 430 Liu L, Zheng J, Ruan Z, Cui Z, Hu Z, Wu S, Dai G, Wu Y.: Comprehensive radar observations of clouds and precipitation over the Tibetan Plateau and preliminary analysis of cloud properties. *J. of Meteorol. Res-PRC.* 29(4),546-61, 2015.
- Lu C, Yu G, Xie G.: Tibetan plateau serves as a water tower. In *Proceedings. 2005 IEEE International Geoscience and Remote Sensing Symposium, IGARSS'05.* 5, 2120-3123, 2005
- 435 Lve Y., Ma Y., Li M., Sun F.: Study on Characteristic of Atmospheric Boundary Layer over Lake Namco Region, Tibetan Plateau, *Plateau Meteorol.*, 27(6) , 1205-1210, 2008
- Ma Y., Wang Y., Wu R., Hu Z., Yang K., Li M., Ma W., Zhong L., Sun F., Chen X., Zhu Z., Wang S., Ishikawa H.: Recent advances on the study of atmosphere-land interaction observations on the Tibetan Plateau. *Hydrol Earth Syst Sci* 13(7),1103–1111. <https://doi.org/10.5194/hess-13-1103-2009>, 2009.
- 440 Ma Y., Hu Z., Tian L.: Study process of the Tibet Plateau climate system change and mechanism of its impact on East Asia. *Adv Earth Sci* 29, 207–215, 2014a.
- Ma Y., Zhu Z., Zhong L., Wang B., Han C., Wang Z., Wang Y, Lu L.: Amatya PM, Ma W, Hu Z. Combining MODIS, AVHRR and in situ data for evapotranspiration estimation over heterogeneous landscape of the Tibetan Plateau. *Atmos. Chem. and Phys.* 14(3),1507-15, 2014b.
- 445 Ma W, Ma Y., The evaluation of AMSR-E soil moisture data in atmospheric modeling using a suitable time series

- iteration to derive land surface fluxes over the Tibetan Plateau. *PLoS ONE* 14(12): e0226373. <https://doi.org/10.1371/journal.pone.0226373>, 2019.
- Nakanish M.: Improvement of the Mellor–Yamada turbulence closure model based on large-eddy simulation data. *Bound.-lay. Meteorol.*, 99(3),349-78, 2001.
- 450 Nakanishi M., Niino H.: An improved Mellor–Yamada level-3 model with condensation physics, Its design and verification. *Bound.-lay. Meteorol.*, 112(1),1-31, 2004.
- Oleson, K. W., D. M. Lawrence, G. B. Bonan, M. G. Flanner, E. Kluzek, P. J. Lawrence, S. Levis, S. C. Swenson, and P. E. Thornton: Technical description of version 4.0 of the Community Land Model (CLM), NCAR/TN-478+STR, Natl. Cent. for Atmos. Res., Boulder, Colo, 2010.
- 455 Pithan F. Asian water towers: More on monsoons. *Science*. 330(6004),584-5; 2010
- Qin, J., Yang, K., Lu, N., Chen, Y., Zhao, L. and Han, M.: Spatial upscaling of in-situ soil moisture measurements based on MODIS-derived apparent thermal inertia. *Remote Sens. Environ.*, 138, 1-9, 2013.
- Santanello Jr, J.A., Dirmeyer, P.A., Ferguson, C.R., Findell, K.L., Tawfik, A.B., Berg, A., Ek, M., Gentine, P., Guillod, B.P., van Heerwaarden, C. and Roundy, J.: Land–atmosphere interactions: the LoCo perspective. *B. Am. Meteorol.*
- 460 *Soc.*, 99(6) : 1253-1272, 2018
- Santanello Jr JA, Lawston P, Kumar S, Dennis E. Understanding the Impacts of Soil Moisture Initial Conditions on NWP in the Context of Land–Atmosphere Coupling. *J. Hydrometeorol.* 20(5),793-819., 2019
- Santanello Jr, J.A., Peters-Lidard, C.D., Kumar, S.V., Alonge, C. and Tao, W.K.: A modeling and observational framework for diagnosing local land–atmosphere coupling on diurnal time scales. *J. Hydrometeorol.*, 10(3) , 577-599.,
- 465 2009
- Santanello Jr, J.A., Peters-Lidard, C.D. and Kumar, S.V.: Diagnosing the sensitivity of local land–atmosphere coupling via the soil moisture–boundary layer interaction. *J. Hydrometeorol.*, 12(5) , 766-786., 2011
- Welty J, Zeng X.: Does soil moisture affect warm season precipitation over the Southern Great Plains?. *Geophys. Res. Lett.*, 45(15),7866-73, 2018.
- 470 Xu L., Liu H., Xu X., Du J., Wang L.: Evaluation of WRF model to simulation atmospheric boundary layer over Nagqu area in Tibetan Plateau. *Acta Meteorol. Sin.*76(6),955-967, 2018.
- Xue B., Wang L., Li X., Yang K., Chen D., Sun L.: Evaluation of evapotranspiration estimates for two river basins on the Tibetan Plateau by a water balance method. *J. Hydrol.*, 492,290-7, 2013.
- Yao J., Zhao L., Ding Y., Gu L., Jiao K., Qiao Y., Wang Y.: The surface energy budget and evapotranspiration in the
- 475 Tanggula region on the Tibetan Plateau. *Cold Reg. Sci. Technol.*, 52(3),326-40, 2008
- Yang K., Qin J., Zhao L., Chen Y., Tang W., Han M., Chen Z., Lv N., Ding B., Wu H., Lin C.: A multiscale soil moisture and freeze–thaw monitoring network on the third pole. *Bull. Amer. Meteor. Soc.*, 94(12),1907-16, 2013
- Yang X. Lu Y/, Ma Y.,Wen J.: Summertime thermally-induced circulations over the Lake Nam Co region of the Tibetan Plateau. *J. Meteor. Res.*, 29(2), 305–314, doi: 10.1007/s13351-015-4024-z, 2015.
- 480 Zhao, L., Yang, K., Qin, J., Chen, Y., Tang, W., Lu, H. and Yang, Z.L.: The scale-dependence of SMOS soil moisture accuracy and its improvement through land data assimilation in the central Tibetan Plateau. *Remote Sens. Environ.*, 152, 345-355, 2014.
- Zhao P., Xu X., Chen F., Guo X., Zheng X., Liu L., Hong Y., Li Y., La Z., Peng H., Zhong L.: The third atmospheric scientific experiment for understanding the earth–atmosphere coupled system over the Tibetan Plateau and its effects.
- 485 *Bull. Amer. Meteor. Soc.*, 99(4),757-76, 2018
- Zhao P., Li Y., Guo X., Xu X., Liu Y., Tang S., Xiao W., Shi C., Ma Y., Yu X., Liu H.: The Tibetan Plateau Surface-Atmosphere Coupling System and Its Weather and Climate Effects: The Third Tibetan Plateau Atmospheric Science





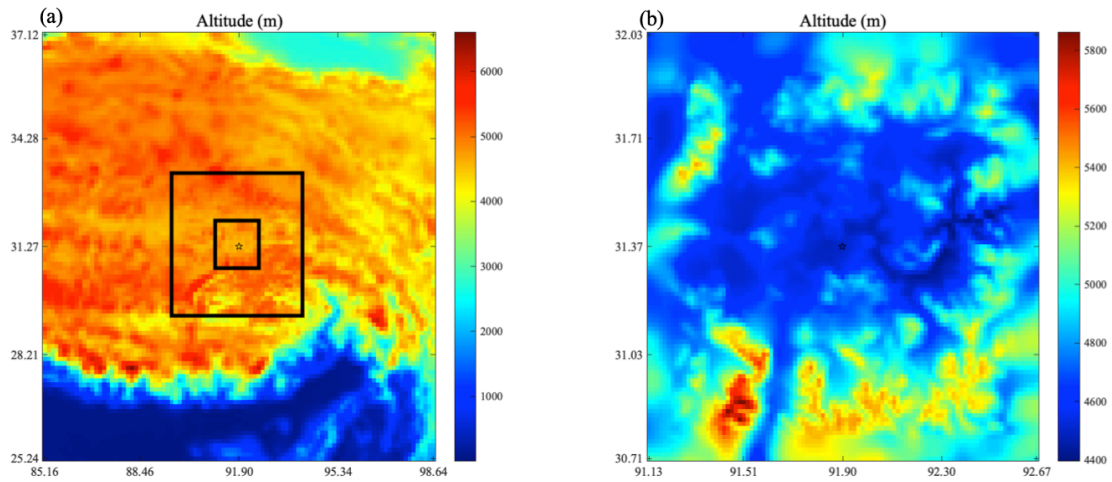


Fig 1 (a) 3-nesting domains in the simulations and (b) Altitude in the study area and the mark (☆) is the location of site BJ/Nagqu

495

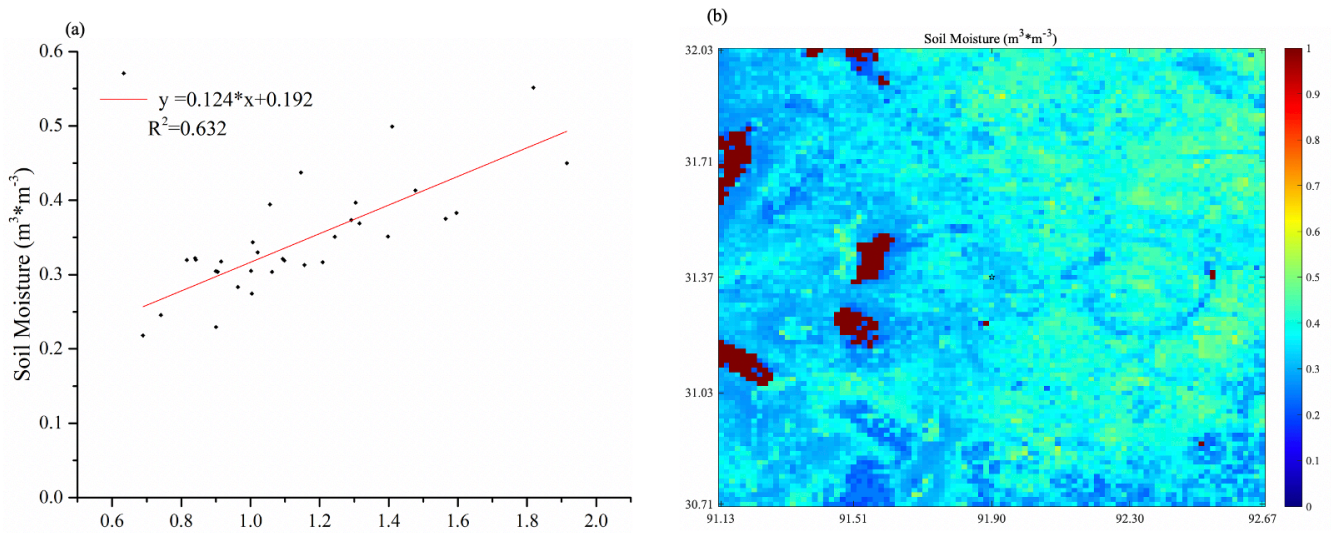


Fig 2 (a) Relationship between LAI from MODIS and the observed soil moisture at 5 cm and (b) Modified soil moisture in the innermost layer of wrfinput. The mark (☆) is the location of site BJ/Nagqu. The 5 cm soil moisture of land surface in the study area vary from 0.2 to 0.5  $m^3*m^{-3}$ . The red grid in Fig. 2b) represent lakes in the study area, where the soil moisture is close to 1.0  $m^3*m^{-3}$ .

500

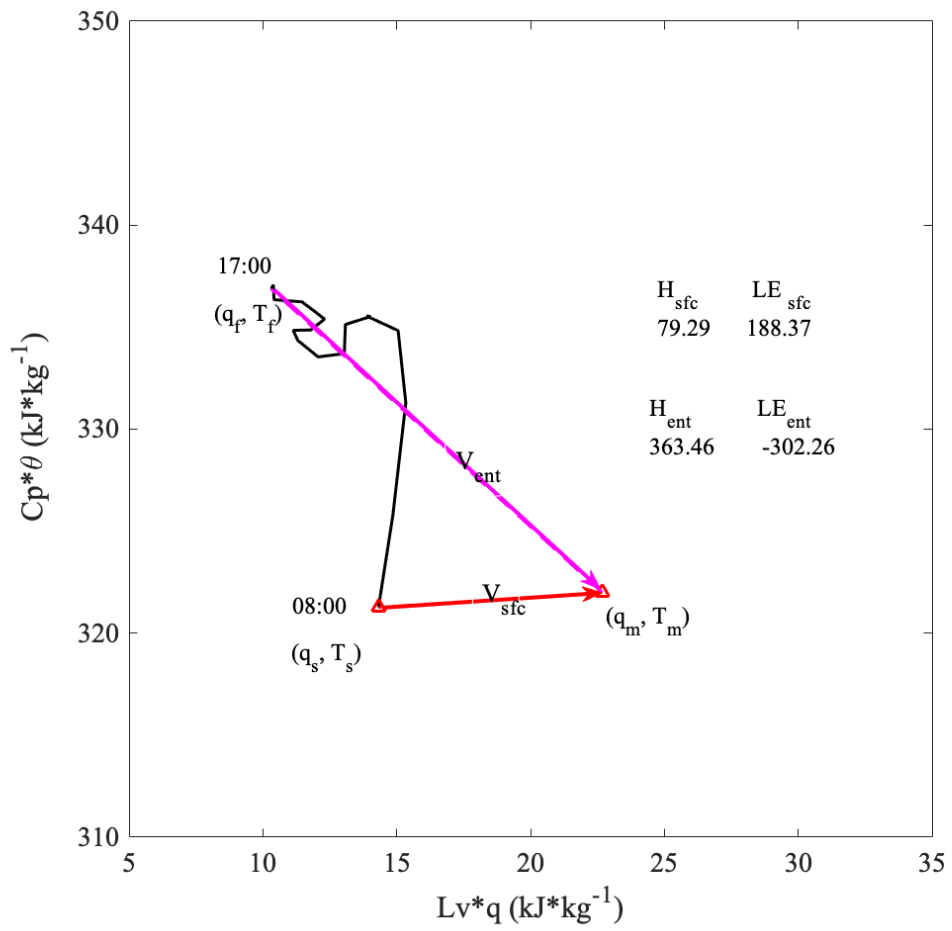


Fig. 3 Mixing diagram analysis based on observation of August 07, 2011

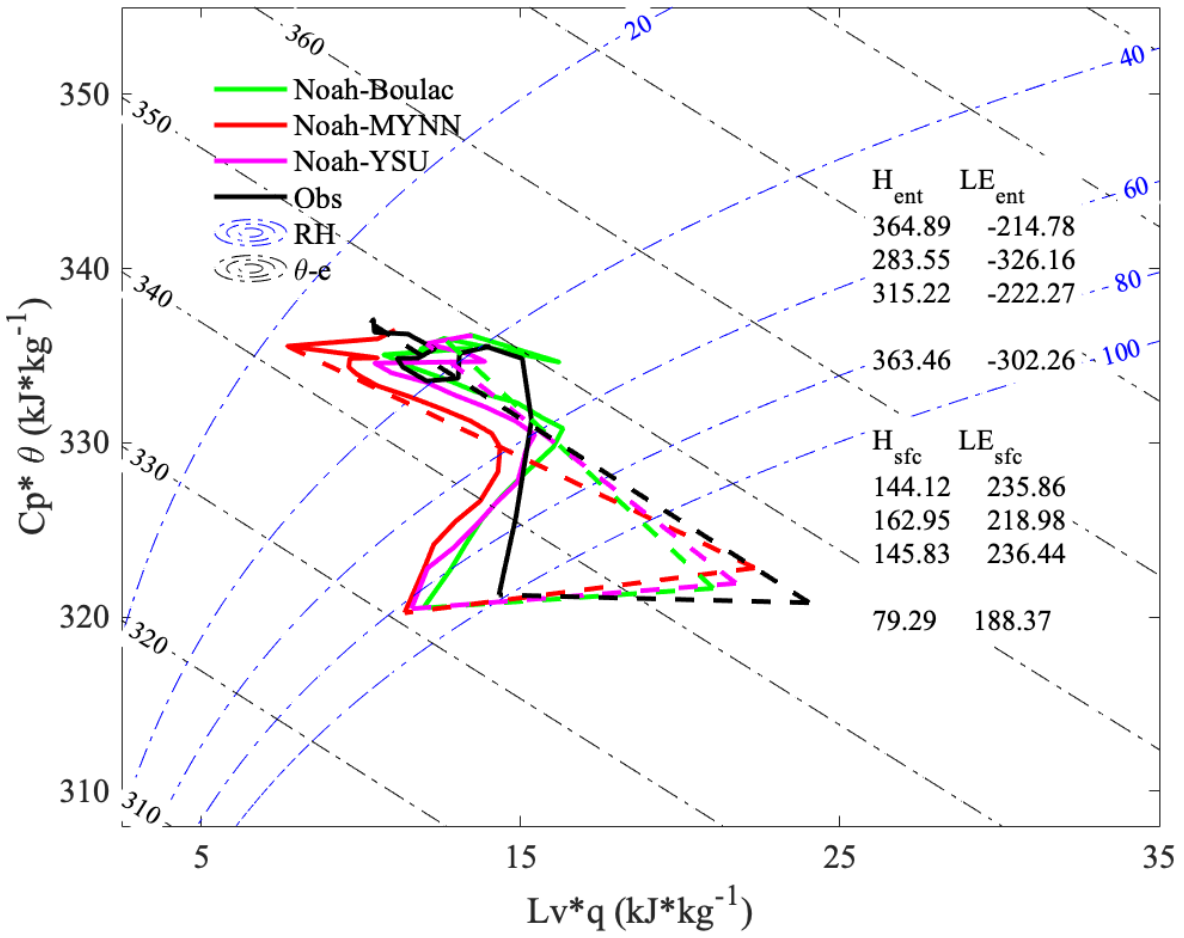
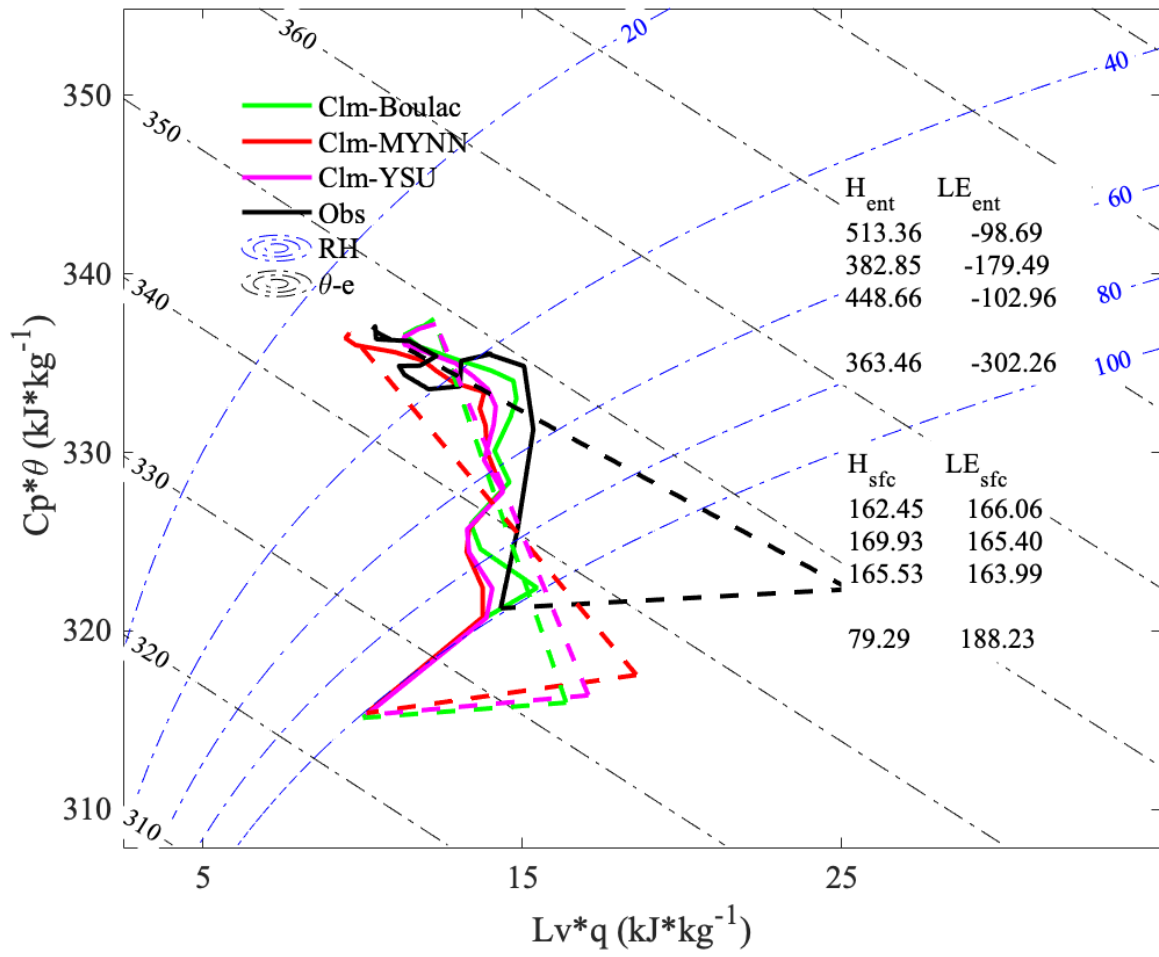


Fig. 4 Mixing diagram at site BJ/Nagqu on Aug 7, 2011 simulated using Noah with different PBL schemes



510

Fig. 5 Mixing diagram at site BJ/Nagqu on Aug 7, 2011 simulated using CLM with different PBL schemes

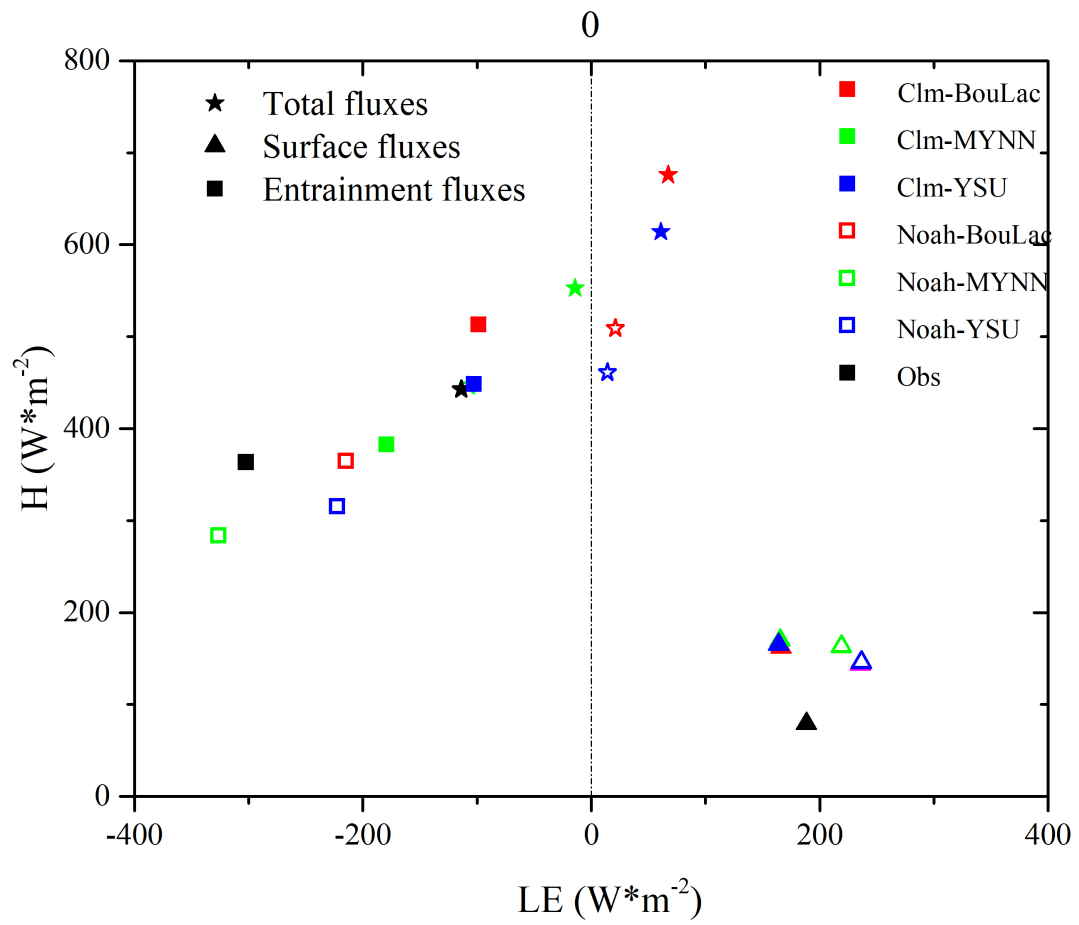


Fig. 6 PBL energy balance at BJ/Nagqu simulated using CLM and Noah with different PBL schemes

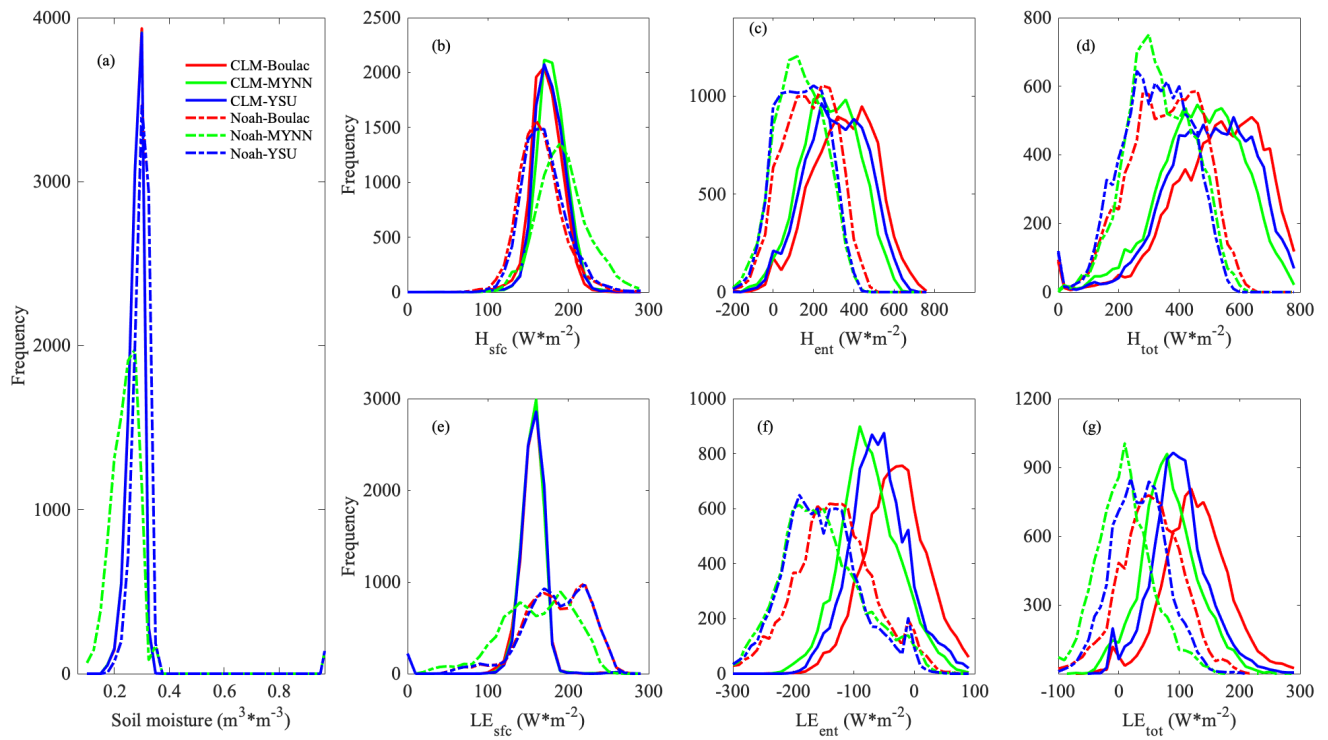


Fig. 7 Frequency distribution of (a) mean soil moisture at 0-10 cm and (b) - (g) PBL energy budgets on August 7, 2011 simulated using different combinations of LSM and PBL schemes

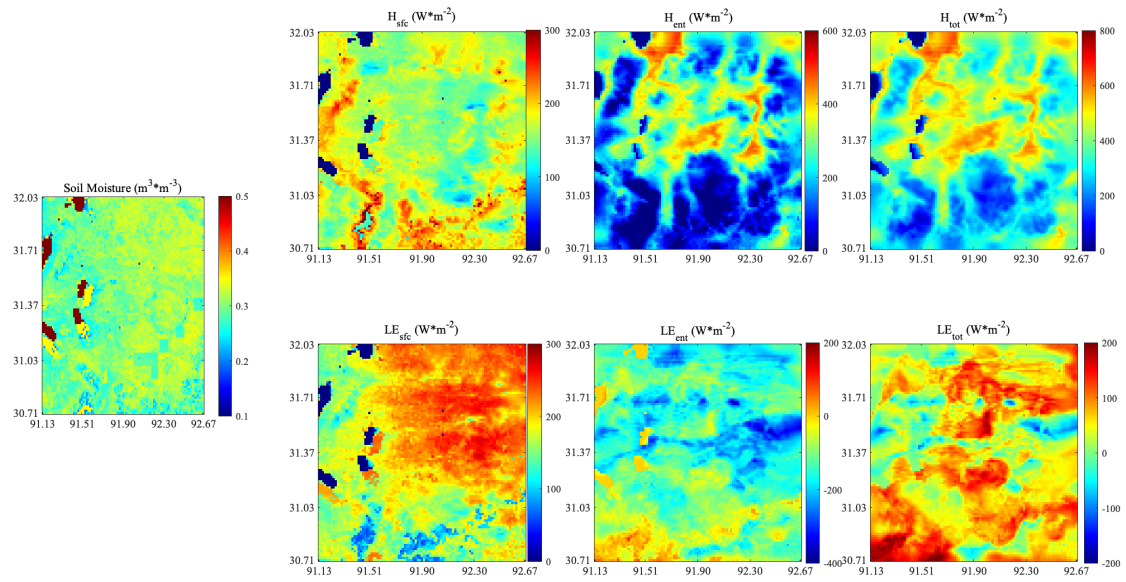


Fig. 8 Spatial distributions of mean soil moisture at 0-10 cm and PBL energy budgets on August 7, 2011 simulated using WRF with Noah-BouLac. The scale of colormap for the soil moisture is  $0\sim 0.6\text{ m}^3\cdot\text{m}^{-3}$  in order to highlight the spatial variability of soil moisture. The soil moisture in the area in dark red is  $1.0\text{ m}^3\cdot\text{m}^{-3}$ .

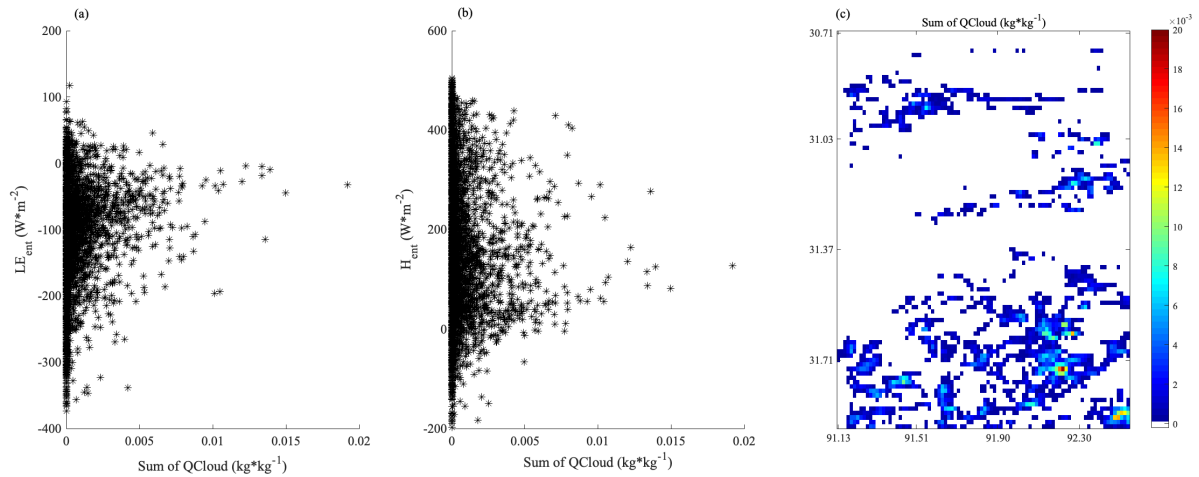
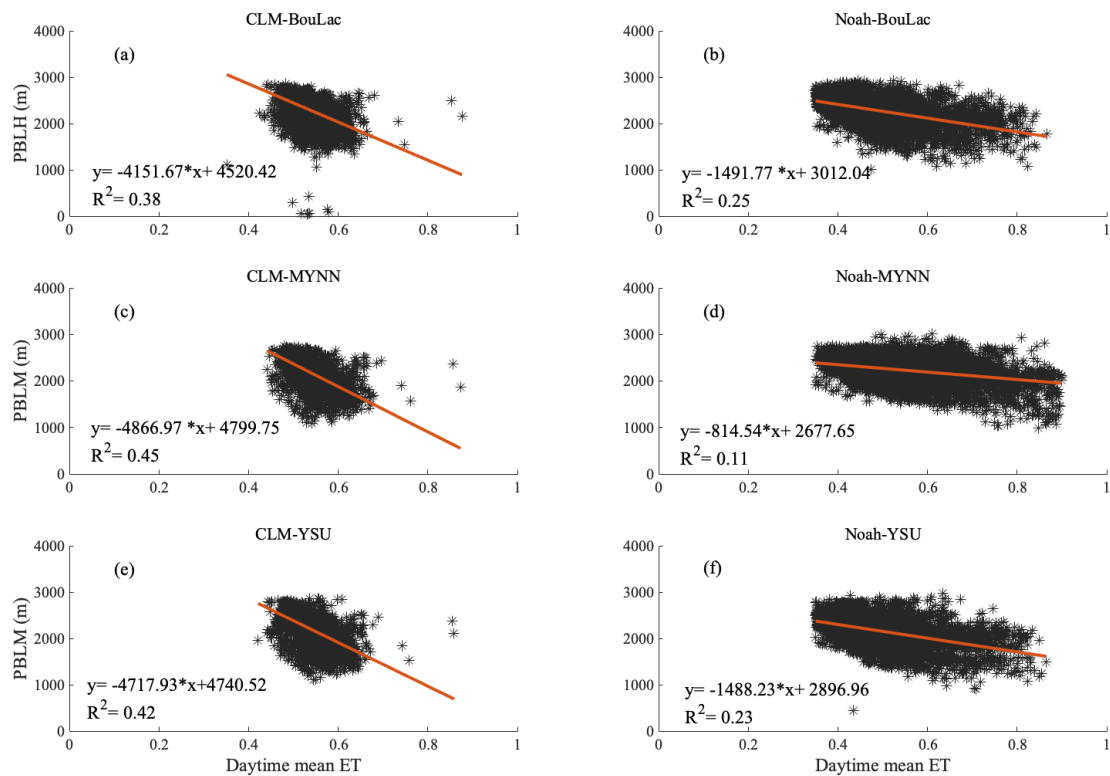


Fig. 9 (a) Relationship between  $LE_{ent}$  and sum of  $Q_{Cloud}$ , (b) Relationship between  $H_{ent}$  and  $Q_{cloud}$  simulated using WRF with Noah-BouLac, (c) spatial distribution of sum of  $Q_{Cloud}$





530

Fig. 10 Relationship between mean daytime ET and the max daytime PBLH simulated by CLM and Noah with different PBL schemes. The grid in which the mean soil moisture is 1.0 is excluded to avoid the possible influence of lakes in the study area. The t-test indicates that the fitting relationships of the four subplots pass 0.05 significance level test.

535

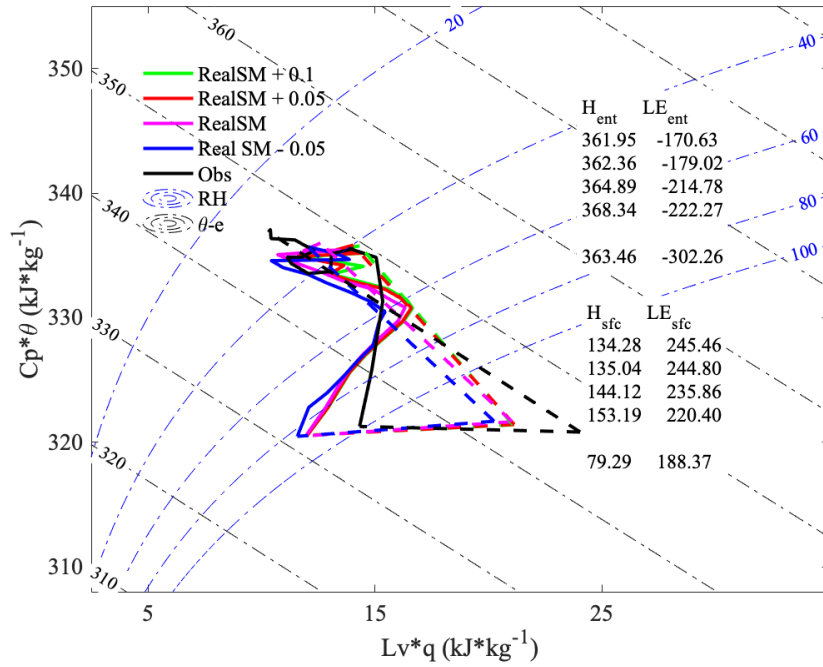
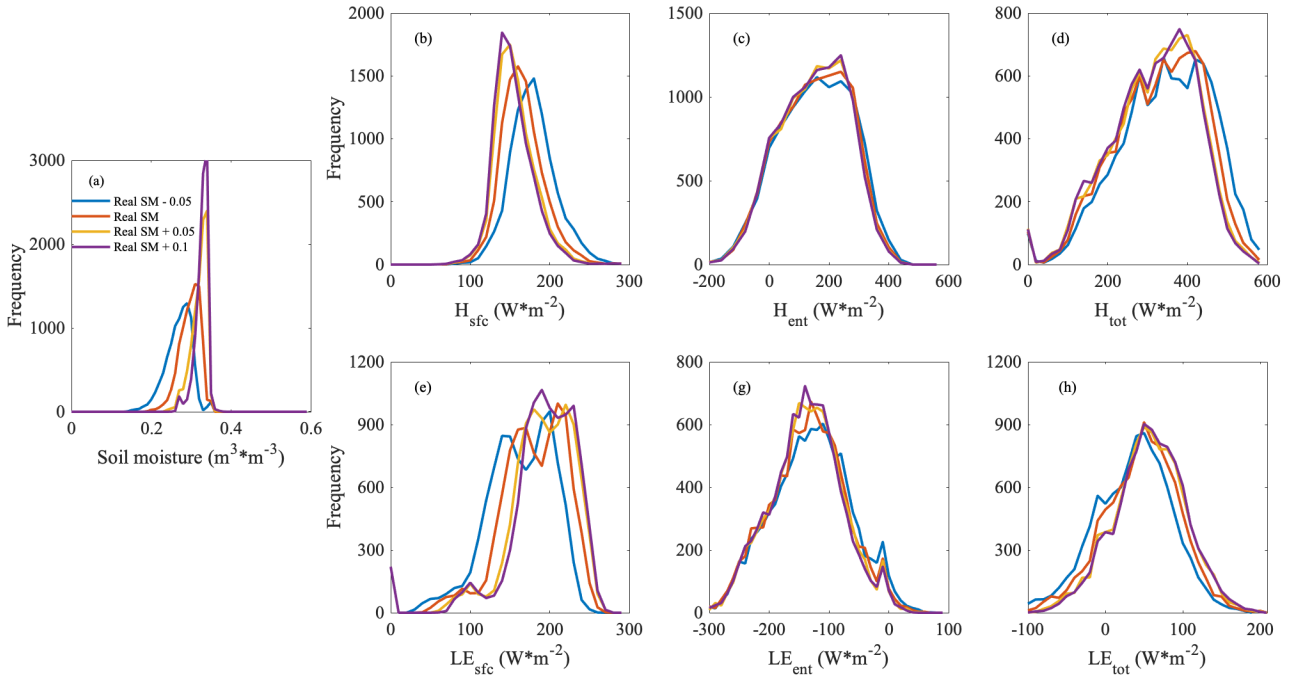


Fig. 11 Mixing diagram under different soil moisture at site BJ/Nagqu simulated using WRF with Noah-BouLac under different initial soil moisture conditions



540 Fig.12 Frequency distribution of (a) mean soil moisture and (b) - (g) PBL energy budget components simulated using Noah-BouLac with different initial soil moisture conditions

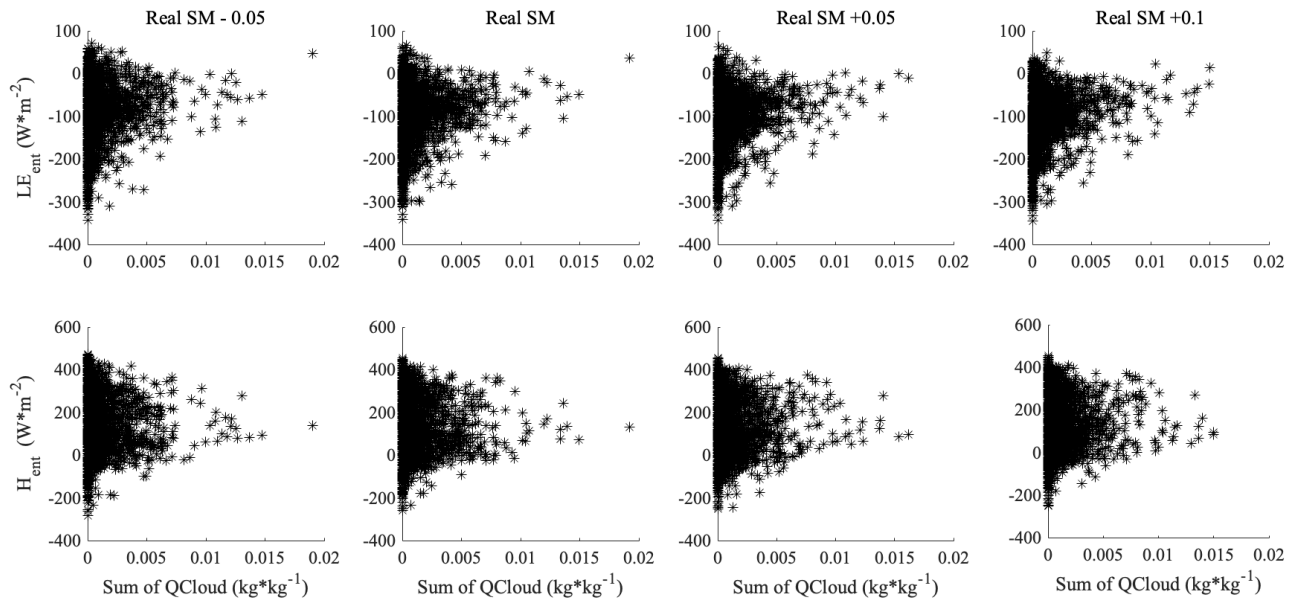


Fig.13 Relationship between sum of Qcloud and entrainment fluxes in the study area simulated using WRF with Noah-BouLac under different initial soil moisture conditions

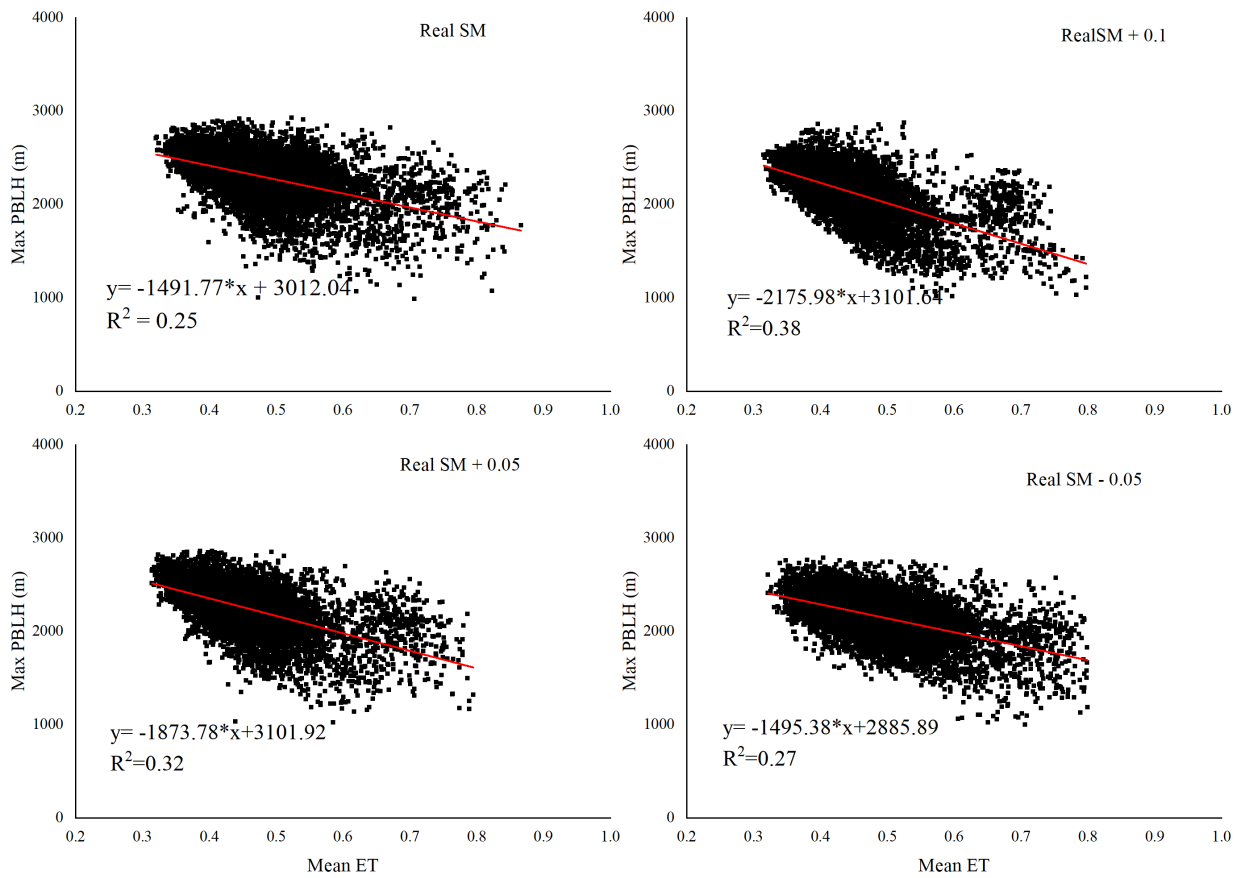


Fig. 14 Relationship between mean daytime EF and the max daytime PBLH simulated using Noah-BouLac with different initial soil moistures. The grid with mean soil moisture over  $0.9 \text{ m}^3 \cdot \text{m}^{-3}$  is excluded to avoid the possible influence of lakes in the study area. The t-test indicates that the fitting relationships of the four subplots pass 0.05 significance level test.

550