

We would appreciate all the constructive comments by the anonymous referees. We have substantially revised the paper and improved the English expression. All the modification can be found in the revised manuscript (marked-up manuscript is at the end of this pdf file).

The responses in detail to RC1 are listed below. (text in blue)

5 Recent urbanization has been changing the regional climate significantly, and the urban irrigation and road sprinkling not only make the land surface processes more complex, but also influence the urban canopy temperature. Bin Liu et al. did a novel job to optimize the limited water supply between urban irrigation and road sprinkling to get the maximum cooling effects over the Beijing city. The authors introduced the urban irrigation and road sprinkling in the WRF model, estimated the cooling efficiency of urban irrigation and road sprinkling over the urban, suburban and rural areas, and developed an optimal water management scheme to get the largest cooling effects with limited water resource. However, there are still some issues should to be revised before its publication on the HESS journal. Major comments:

Q1: Is it appropriate to include the rural areas (outside the sixth ring road) in the analysis? Although the authors treat the “urban irrigation” as ecological and farmland irrigation, the farmland irrigation in the rural region seems only cools the rural temperature with little influence on the urban temperature.)

15 **A:** we think it is better to take rural areas into consideration because (1) total amount of water applied (including rural, suburb and city center) is one of known constraint conditions, and it is not easy to separate those water; (2) We take the whole city as an optimal objective, rural areas cannot be considered separately when applying optimization method; (3) the rural urban irrigation has influence to other parts of city, although smaller than non-rural area.

20 **Q2:**

■ (1) the description of the experimental design is confusing. For example, the authors said “Three experiments were conducted to consider no water usage, urban irrigation and road sprinkling”. Does it mean only one experiment was conducted with consideration of road sprinkling? If so, how can they separate the cooling effects of urban road sprinkling on the suburban and rural areas (Fig. 8a)?

25 **A:** They are three kinds of experiments actually, not only 3 experiments (total 1+21+27=49 experiments). they are (1) no water usage experiment includes no urban irrigation and no road sprinkling in city center, suburb and rural areas; (2) urban irrigation experiments include 21(7x3) individual experiments, they are 0.1 to 1.9 times (0.1, 0.4, 0.7, 1, 1.3, 1.6, 1.9) of the estimated urban irrigation among city center, suburb and rural areas separately. (3) Road sprinkling experiments include 27(9x3) individual experiments, they are road sprinkling in city center, suburb and rural areas separately, water amount ranged from 0.2 to 1 times (0.2, 0.3, 0.4, 0.5,0.6,0.7,0.8,0.9,1) of the maximum water-holding capacity. A new table added to detail this, see Table 2, L144.

35

Table 1. Descriptions of experiments designs

Experiments	Area	Water amount	Descriptions
Raw experiment	/	/	No urban irrigation and no road sprinkling
Urban irrigation experiments	City centers	0.1, 0.4, 0.7, 1, 1.3, 1.6 and 1.9 times of the estimated urban irrigation in each part of city	Urban irrigation in city center with different water amount
	Suburb areas		Urban irrigation in suburb areas with different water amount
	Rural areas		Urban irrigation in rural areas with different water amount
Road sprinkling experiments	City centers	0.2, 0.3, 0.4, 0.5, 0.6, 0.7, 0.8, 0.9 and 1 times of the maximum water-holding capacity of impervious layer	Road sprinkling in city center with different water amount
	Suburb areas		Road sprinkling in suburb areas with different water amount
	Rural areas		Road sprinkling in rural areas with different water amount

Fig. 8a shows the cooling effect of city center in the condition of 0.5 times of the maximum water-holding capacity.

- 40 ■ (2) In addition, what does the “A climate summer time periods from 2000 to 2017 were averaged to 4 days which represent the climatic May, June, July and August. And the first day was considered as the spin up period.” mean? Does this mean for each month, only one day simulation forced by climatic boundary condition is performed?

A: Yes. Firstly, we found out all data for May from 2000 to 2017. Then, averaged all these data to one day which represented climatic May. At last, climatic June, July and August were got by repeating above two steps. We did this to save simulation time. Revised in L152-153.

Q3:

- The offline experiment using CLM4.5 model was used to “illustrate the cooling effect of urban irrigation and road sprinkling”. Does the author also choose the CLM4.5 model in the WRF modeling?

50 A: The offline simulation is to validate the urban water usage scheme (urban irrigation and road sprinkling), (here we just take CLM4.5 as an example). It proves that taking urban water usage scheme into land surface model is better (no matter which land surface model). In WRF model, we didn’t use CLM4.5 because 1) WRF does not couple the complete CLM model 2) the plant function types are different between offline (CLM in CESM) and coupling model (WRF), so we choose SLUCM in coupling simulation with the same urban water usage schemes (the same in CLM).

- 55 ■ (2) Moreover, the offline modeling shows that urban irrigation does not influence the latent/sensible heat significantly over the urban region (within the fifth ring road; Figs. 5a,5c), but the online modeling shows contrary result where clear

influence of urban irrigation over urban region (Figs. 10a,10d). How to interpret this?

A: Urban irrigation has the influence, with little influence (even no) influence within the 3rd ring road, but the influence between 4th to 5th ring road (including some part of 3rd ring road) are strong.

60 The difference between offline and coupling model are (1) subgrid type of offline model within 3rd ring road are mostly urban and little pfts (plant function types), and impervious layers, walls and roofs are major parts in urban without evaporation. Besides, the estimated water amount within 3rd ring road are less, so influence of urban irrigation was not so significant (especially with 3rd ring road); (2) offline simulations had no interactive effect between atmosphere and land surface, but online simulation had which influence some variables over larger region.

65

Q4: Can the default USGS land use category in the WRF model represent the urban land use in the research region? As is shown in Figure 3, the land use type in the Beijing city is 12~14. But the urban land use type in USGS category is 1.

A: I recheck the data, they were MODIS-based Land Use Classifications, I mix them up in this manuscript. The cooling effect mostly driven by water use amount. The simulation with default land use type (not the land use type of 2000-2017) may bring some uncertainty; I have discussed the uncertainty in the last section. See L333-338.

70

Q5:The current optimization method does not consider the urban extension or land cover change in the future. The author should at least discuss the influence of this neglect on the result.

A: I discussed the uncertainty in the last section. See L333-338.

75

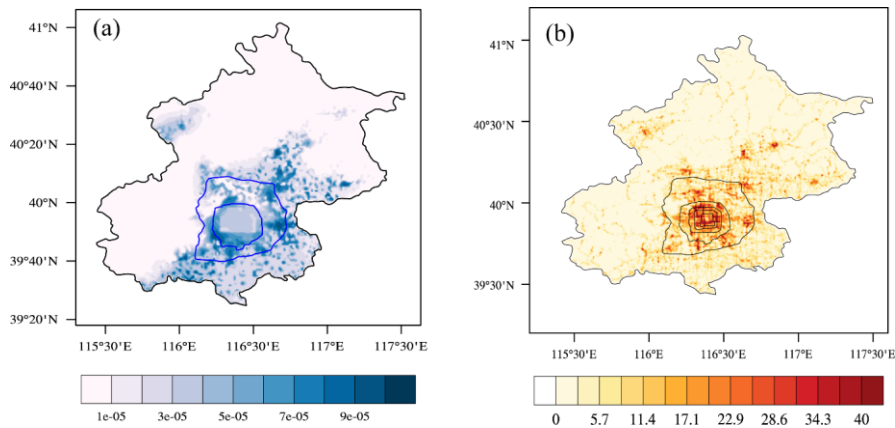
Minor comments:

Q1:L134, change “in-situ” to “In-situ”

A: Revised

80 **Q2:**I suggest the authors to give a short description of how to estimate the road sprinkling in section 2.3 and a plot of road sprinkling water use in Beijing in Figure 2.

A: Water amount of road sprinkling is proportional to the maximum water-holding capacity (Eq. 1) in road sprinkling scheme. So, spatial distribution of road area proportion was added in Figure 2(b).



85 **Figure 1. (a) Estimated urban irrigation water use in Beijing (mm/s), (b) spatial distribution of road area proportion (%).**

Q3.In Table2, the land surface model option is “CLM/NOAH-MP”, does this mean the authors performed ensemble simulation using different land surface models?

A: Revised. See Table 3

90

Q4.“The simulation results showed that urban irrigation decreased the water table depth due to groundwater extraction ” . Why does the water table depth decrease? If the water is extracted, the water table depth will increase (e.g., from 4m to 5m), and the difference is positive.

A: It’s water table of ground not water table depth. The two variables are opposite. Revised in L165.

95

Q5.L205-L215. The author evaluate the WRF simulation by using CLDAS and observation. Does the WRF simulation used here consider the urban irrigation and road sprinkling? And will the incorporation of the above two processes have some improvements on the temperature simulations?

A: We validate the schemes in offline model (we take CLM as an example), it improves in sensible/latent heat flux (see Figure 6). In WRF simulation we drew the spatial distribution of correlation coefficients between simulation and CLDAS data in Figure 7.

100

The responses in detail to RC2 are listed below. (text in blue)

105 This paper aims to determine an optimal water use strategy for urban cooling in Beijing by coupling a novel water use scheme into WRF and conducting summertime simulations. The topic does read interesting and the paper well fits the scope of HESS; however, the presentation of current manuscript, which has great room to improve, does hinder the my understanding of some key points of this work.

As such, the authors are suggested to improve the manuscript by considering the following concerns:

110 **Q1:**As numerous WRF simulations have been done in Beijing, I have less concerns about the model performance per se; instead, I would encourage the authors to investigate more if the consideration of urban water use could effectively improve the WRF simulations in Beijing

A: we have validated urban water usage scheme in offline model (take CLM as an example), it shows better results (latent/sensible heat flux) in Figure 6, this process cannot be missed in land surface model.

115 **Q2.** It is very unclear how the optimisation of water use is done in section 3.3, which, however, should be one of the key contributions the paper attempted to make. I suggest to incorporate sections 2.1 into 3.3, so the optimal strategy part could be more coherently presented.

A:We revised this manuscript as suggested, and detail the part of optimization. See section 3.3

120 **Q3.** Presentation is a major issue: grammatical errors and typos are pervasive; figures in general miss appropriate caption and proper legends. A small portion of the issues are given below as examples: - L58: "role" -> "roles" - L101: "nonmatter" -> "no matter" - L115: "he specific" -> "the specific" - caption of Figure 1: "it's coupling" -> "its coupling"; the full name of WRF is unnecessarily given twice; - caption of Figure 4: "moister" -> "moisture". - units: watts should be in uppercase, i.e., "W". - in English, the words and punctuations should be separated by spaces. e.g., in "model(CLM4.5)", a space should be added between "model" and "(" - ...

A: Errors above have been revised.

Q4:

130 **(1)** Other specific comments: Figure 1, What is 'time judge'? - Why is the road sprinkling only activated during summer night? And when is summer? When is night? (when kdown==0?) - What is "imperative layer" in the "Urban Canopy" circle of panel b?

A: According to "Cleaning quality and operation requirements of urban road cleaning (DB11/T 353-2014)"(revised in L114), road sprinkling should be finished before 5:00 a.m. I think this action is to avoid disturbing traffic. although road sprinkling was seen in daytime.

In the model we can judge summer and night according to model time.

imperative layer here mainly means the imperative road in this manuscript. Description added in L105.

(2)Section 2.3, Unclear what experiments were actually carried out in this work.

A: A new table added to detail the experiments and more description in section 2.2. See Table 2 from L144.

140 **Table 2. Descriptions of experiments designs**

Experiments	Area	Water amount	Descriptions
Raw experiment	/	/	No urban irrigation and no road sprinkling
Urban irrigation experiments	City centers	0.1, 0.4, 0.7, 1, 1.3, 1.6 and 1.9 times of the estimated urban irrigation in each part of city	Urban irrigation in city center with different water amount
	Suburb areas		Urban irrigation in suburb areas with different water amount
	Rural areas		Urban irrigation in rural areas with different water amount
Road sprinkling experiments	City centers	0.2, 0.3, 0.4, 0.5, 0.6, 0.7, 0.8, 0.9 and 1 times of the maximum water-holding capacity of impervious layer	Road sprinkling in city center with different water amount
	Suburb areas		Road sprinkling in suburb areas with different water amount
	Rural areas		Road sprinkling in rural areas with different water amount

(3)L165: Please provide more details on the construction of 4-day climate ensemble

A: Revised, see L152-154. "A climate summer time periods from 2000 to 2017 were averaged to 4 days which represent the climatic May, June, July and August. Firstly, we found out all data for May from 2000 to 2017. Then, averaged all these data to one day which represented climatic May. At last, climatic June, July and August were got by repeating above two steps."

(4)L175, This term "atmospheric stochastic processes" is confusing: either provide examples or reword it.

A: reword to "random processes in the atmosphere" L160

(5)Figure 11a: the regression for results of city center looks problematic

A: I rechecked them, it's correct, it showed like that because one-point deviates from other points larger.

(6)Table 4: it's unclear what the "units" row (the first row) indicate

A: the first raw are conversion factors. We regard the estimated water amount in each part of city (city center, suburb and rural area) as the standard one unit. The optimized results are standard values, so the actual water amount can be got by multiply the conversion factors. To avoid misunderstanding we reword to "conversion factor". See Table 4 in L336

Optimal water use strategies for mitigating high urban temperatures

Bin Liu^{1,2,3}, Zhenghui Xie^{1,3}, Shuang Liu⁴, Yujing Zeng⁵, Ruichao Li^{1,3}, Longhuan Wang^{1,3}, Yan Wang^{1,3}, Binghao Jia¹, Peihua Qin¹, Si Chen^{1,3}, Jinbo Xie¹, ChunXiang Shi⁶

¹State Key Laboratory of Numerical Modeling for Atmospheric Sciences and Geophysical Fluid Dynamics, Institute of Atmospheric Physics, Chinese Academy of Sciences, Beijing, China.

²[School of Software Engineering, Chengdu University of Information Technology, Chengdu, China.](#)

³[University of Chinese Academy of Sciences, Beijing, China.](#)

⁴[Key-Laboratory of Mountain Hazards and Earth Surface Processes, Institute of Mountain Hazards and Environment, Chinese Academy of Sciences, Chengdu, China.](#)

⁵[Program in Atmospheric and Oceanic Sciences, Princeton University, Princeton, New Jersey 08540, USA](#)

⁶[National Meteorological Information Center, China Meteorological Administration, Beijing, China.](#)

Correspondence to: Zhenghui Xie (zxie@lasg.iap.ac.cn)

Abstract. Urban irrigation and road sprinkling are methods for mitigating high urban temperatures which are expected to enhance evapotranspiration and affect the urban weather, climate, and environment, and the optimization of limited water supplies is necessary in regions with water shortages. In this study, we implemented urban water usage schemes such as urban irrigation and road sprinkling in the Weather Research and Forecasting (WRF) model, and assessed their effects with different amounts of water in city centers, suburbs, and rural areas by using the WRF model at a resolution of 1-km Beijing, China. In addition, we developed an optimization scheme with a cooling effect as the optimal objective and the total water supply as the constraint condition. Nonlinear relationships were identified between the cooling effect and water consumption for both road sprinkling and urban irrigation, and the cooling effect due to urban irrigation was more effective than that attributed to road sprinkling. Based on the optimal water management scheme and according to the Beijing's 13th Five Year Plan, about 90% of the total water supply should be used for urban irrigation and 10% for road sprinkling as the most effective approach for decreasing urban temperatures by about 1.9°C.

1 Introduction

Throughout the world, the level of urbanization increased from 39% to 55% in the last four decades (Chen et al., 2014). Vast numbers of people have moved from rural to urban areas across the world, thereby increasing greenhouse gas emissions, anthropogenic heat release, and energy consumption in urban areas, as well as causing land use and land cover changes that increase the likelihood of urban high temperature events (McCarthy et al., 2010). The frequency of high temperature events in the first decade of the 21st Century was much higher compared with that in the last 10 years of the 20th Century (WMO, 2013). According to a previous report, the temperature reached a maximum of 42.1°C in Beijing, China on August 3, 2018. In addition, increased temperatures can substantially increase the rate of temperature-related illnesses (Zhang et al., 2014). Applying water can cool urban areas directly by increasing transpiration from vegetation and evaporation from the soil (Coutts et al., 2013). Beijing is a region that lacks adequate water resources and optimal water use strategies can help to

带格式的: 上标

带格式的: 字体:(默认) Times New Roman, (中文) Times New Roman

带格式的: 字体:(默认) 宋体, (中文) 宋体

域代码已更改

域代码已更改

域代码已更改

域代码已更改

域代码已更改

190 improve water cooling efficiency. Thus, understanding and quantifying the relationships between the amounts of water applied and the cooling effect are critical for designing and planning better cities.

Urban irrigation includes ecological irrigation in city centers and farmland irrigation in suburban and rural areas. Many previous studies focused on the impacts of urban irrigation on hydrometeorological variables at different scales (Kueppers et al., 2007;Vahmani and Hogue, 2014). Clearly, irrigation is a critical component of the regional water cycle because it enhances evapotranspiration due to the increased soil moisture contents and it contributes substantially to the latent heat flux in land-atmosphere interactions (Coutts et al., 2013;Pei et al., 2016). This so-called phenomenon “oasis effect” is common in arid and semiarid cities. The impacts of irrigation on precipitation depend on the atmospheric circulation, where increasing the soil moisture can increase rainfall (Pei et al., 2016;DeAngelis et al., 2010;Yang et al., 2017;Moore and Rojstaczer, 2001;Alter et al., 2015), whereas it may inhibit rainfall in other cases due to the evaporative cooling effect strengthening the atmospheric stability and weakening deep convection (Ek and Holtslag, 2004;Zeng et al., 2017). In addition, outdoor water use changes the partitioning of the available energy between the sensible and latent heat fluxes. A decrease in the sensible heat flux can reduce the urban air temperature by more than 3 °C, which helps to reduce thermal stress in cities during the summer (Lobell et al., 2008;Kueppers et al., 2007;Puma and Cook, 2010;Mueller et al., 2016). However, the cooling effects of different irrigation distributions differ slightly. The reductions in the daily maximum air temperature due to irrigation are evident in all urban land use types, but well vegetated low-intensity residential areas such as suburbs and rural areas exhibit the largest effects (Gao and Santamouris, 2019). The optimal distribution of water supplies to mitigate urban high temperatures in the summer is a problem. Indeed, optimizing water usage is limited by the agricultural water demand, crop production, and water transactions (Amir and Fisher, 1999;Kuschel-Otarola et al., 2018;Feinerman et al., 1985). However, a effective method is not available for determining the distribution of the water supply to achieve the optimal cooling effect while also meeting the minimal requirements for plants.

Sprinkling water on the road can keep roads clean and control air pollution, and it is also an effective method for mitigating urban high temperatures and the urban heat island effect (Yamagata et al., 2008;Hendel et al., 2016;Hendel and Royon, 2015). However, the relationship between the amount of water applied by road sprinkling and the cooling effect in different urban areas has not been investigated. Moreover, urban irrigation and road sprinkling have different roles in the water cycle process, where urban irrigation is related to plant and soil processes, whereas road sprinkling responds directly to the atmosphere. Thus, determining the different effects of these two water usage approaches is essential for developing water management strategies to mitigate urban high temperatures.

In this study, we determined the optimal method for distributing water by urban irrigation and road sprinkling in different part of city in order to mitigate urban high temperatures. We elucidated the relationship between the amount of water applied and the cooling effects of urban irrigation and road sprinkling based on simulations with the Weather Research and Forecasting (WRF) model. We then investigate whether the proposed method can be applied to other cities. We also collected water usage data for Beijing based on the water deficit coefficient, water supply, and land use cover in our case

域代码已更改

域代码已更改

域代码已更改

域代码已更改

域代码已更改

域代码已更改

域代码已更改

域代码已更改

带格式的: 字体: (默认) Times New Roman

study, and modified the urban irrigation and road sprinkling schemes in the urban canopy and hydrology modules of the WRF model before conducting the simulations.

225 The remainder of this paper is organized as follows. In Section 2, we describe the materials and methods employed, including the optimal water management method, development of the model, data, and experiments conducted. In Section 3, we present our results and discussion, including the model validation process, relationships between the amount of water applied and the cooling effect, and the optimal water use strategies. We give our concluding remarks in Section 4.

2 Materials and Methods

230 2.1 Optimal water usage scheme

The problem of how to distribute the water supply to plants and road in different parts of a city in order to obtain the optimal cooling effect can be solved with an optimization scheme. In this study, we divided the city into three parts according to the population density and urban type as the city center, suburbs, and rural areas. If the relationships between the amount of water applied and the cooling effect are known for the three parts of city, then an optimal water usage scheme can be developed whose optimization objective can be stated as the comprehensive temperature decrease attributable to both road sprinkling and urban irrigation in the city center, suburbs, and rural areas. The optimal water usage scheme can be described as follows:

235
$$\text{Max: } \sum_{j=1}^3 \sum_{i=1}^2 f_{i,j}(w_{i,j}), \quad (1)$$
 where i represents road sprinkling and urban irrigation as i equal to 1 or 2, respectively; j represents the city center, suburbs, and rural areas as j equal to 1, 2, and 3, respectively, and $f_{i,j}(w_{i,j})$ is a function of the normalized amount of water applied and the cooling effect, which can be fitted based on the model simulation results presented in Section 3.2.

Considering that the total amount of urban water supplied for road sprinkling and urban irrigation is a fixed value, the water demand for each part of city should be satisfy the minimal needs for the municipal services and plants in terms of ecology, farmland, and roads. Thus, the constraint conditions for optimizing the usage of water are as follows:

245
$$\text{s.t. } \sum_{j=1}^3 \sum_{i=1}^2 w_{i,j} = A, \quad (2)$$

$$b_j \ll w_{1,j} \ll B_j, j = 1,2,3, \quad (3)$$

$$c_j \ll w_{2,j} \ll C_j, j = 1,2,3. \quad (4)$$

250 where A represents the total water supplied for road sprinkling and urban irrigation; j represents the city center, suburbs, and rural area as j equal to 1, 2, and 3, respectively; b_j represents the minimal water demand for road sprinkling, B_j represents the maximum water supply for road sprinkling, c_j represents the minimal water demand for urban irrigation, and C_j represents the maximum water supply for urban irrigation. In addition, other water restrictions applied in each part of the city can be expressed as another equality or inequality among this optimal water usage scheme.

2.2.1. Model development

The WRF model is a limited area, nonhydrostatic, mesoscale ~~modeling~~ modeling system with a terrain-following eta coordinate, which is coupled with land surface models and the Urban Canopy Model (UCM) to provide a better representation of the physical processes related to the exchange of heat, momentum, and water vapor in an urban environment. The land surface model ~~nonmatter-no matter~~ Noah-MP or Community Land model (CLM) describes the physical soil hydrological processes explicitly, including infiltration, storage, redistribution, drainage, and evaporation. The UCM is a single-layer model with a simplified urban geometry, where its features include shadowing from buildings, reflection of short and long-wave radiation, the wind profile in the canopy layer, and multi-layer heat transfer equations for roof, wall, and road surfaces (Tewari et al., 2007). The impervious roads lack soil hydrological processes but the evaporation of liquid water above the road still occurs which can change urban weather, climate and environment.

A simple urban water usage scheme including urban irrigation and road sprinkling was incorporated into the WRF model based on the scheme of Zeng et al. (2017). Here, ecological and farmland irrigation were both treated as urban irrigation and implemented the same in the model. The soil hydrological processes were changed and the water balance between the land surface and atmosphere was disturbed provided that the irrigation water was added to the first layer of the soil and it was regarded as the available liquid water in the model, where this process was conducted for farmland and urban land use types, also to keep water balance the added water from surface soil should be remove from the water table of ground. According to Cleaning Quality and Operation Requirements of Urban Road Cleaning (NO: DB11/T 353-2014), The road sprinkling scheme was activated in the night ~~during the summer~~ when water was applied to the impervious road layer to accelerate evaporation. The flow chart of urban water usage scheme including irrigation and road sprinkling in model can be seen in Figure 2~~Figure 4~~, and the specific scheme is represented by Eqs (51)–(84). The advanced water usage scheme mentioned above was coupled into the WRF model. Water from urban irrigation with a specific spatial distribution was entered as an input for the model via a data interface with the WRF model. The program was initialized for the real three-dimensional case study and the amount of water applied for road sprinkling was no more than the maximum water-holding capacity of the urban impervious layer.

$$w_{i,j,t} = \begin{cases} w_{i,j,t} , pervious layer \\ a \times pondmax_{urban} , impervious layer \\ 0 , otherwise \end{cases} \quad (51)$$

$$W_{i,j,t} = W_{i,j,t-1} + w_{i,j,t} \quad (62)$$

$$wo_{i,j,t} = \begin{cases} w_{i,j,t} , pervious layer \\ 0 , otherwise \end{cases} \quad (73)$$

$$zwt_{i,j,t} = zwt_{i,j,t-1} - wo_{i,j,t} \quad (84)$$

where the subscript i, j, t represent the latitude, longitude and time; $w_{i,j,t}$ represent the water amount of urban irrigation, a is a coefficient from 0 to 1, $pondmax_{urban}$ represent the maximum water-holding capacity of the urban impervious layer, here mainly means the impervious road, $W_{i,j,t}$ is the surface liquid water enter into the first layer soil or impervious

域代码已更改

域代码已更改

域代码已更改

285 layer, $W_{i,j,t-1}$ is previous timestep of $W_{i,j,t}$, $w_{i,j,t}$ represents the water amount that need to be removed from water table of the ground, $zwt_{i,j,t}$ represents the water table of time t, and $zwt_{i,j,t-1}$ represents the previous timestep of $zwt_{i,j,t}$.

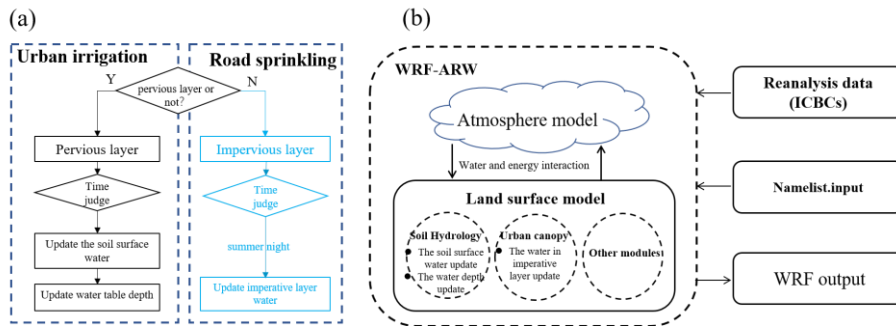


Figure 21. Water usage scheme and its coupling with Weather Research and Forecasting (WRF) model. (a) Flow chart of water usage scheme including urban irrigation and road sprinkling, (b) schematic showing the Weather Research and Forecasting (WRF) model coupled with the water usage scheme.

290 2.3.2 Data and experiments

Air temperatures obtained from reanalysis data and in-situ data were used to validate WRF model output. In-situ data were obtained from 20 national meteorological stations in Beijing, and the regional reanalysis data came from the China Meteorological Administration Land Data Assimilation System (CLDAS) as hourly outputs with a resolution of $0.0625^\circ \times 0.0625^\circ$; more detail data descriptions can see Table 3Table 4. In addition, these data were also collected to verify the effectiveness of the WRF physical schemes.

Table 34. Data set descriptions

Site/Regional	Resource	Other details
	National meteorological stations	20 observation sites; hourly; 2001–2017
Site	Flux station	140 meters high in 39.9 N, 116.38 E, July to August in 2012
Regional	CLDAS	$0.0625^\circ \times 0.0625^\circ$; hourly; 2008–2014

CLDAS: China Meteorological Administration Land Data Assimilation System (Shi et al., 2011)

The gridded water usage data was derived from the total water consumption in Beijing and distributed according to the gridded population density, GDP and water deficit efficiency. The downscaling method employed was reported previously (Zeng et al., 2017). The spatial distribution of water usage amounts for the sum of irrigation and ecological water are shown in Figure 3Figure 2(a), and spatial distribution of road area proportion which quite related to road sprinkling are shown in Figure 2(b). Farmland irrigation was mainly located in the south of Beijing and the ecological water consumption occurred

域代码已更改

域代码已更改

域代码已更改

带格式的: 字体: 小五

带格式的: 字体: 小五

域代码已更改

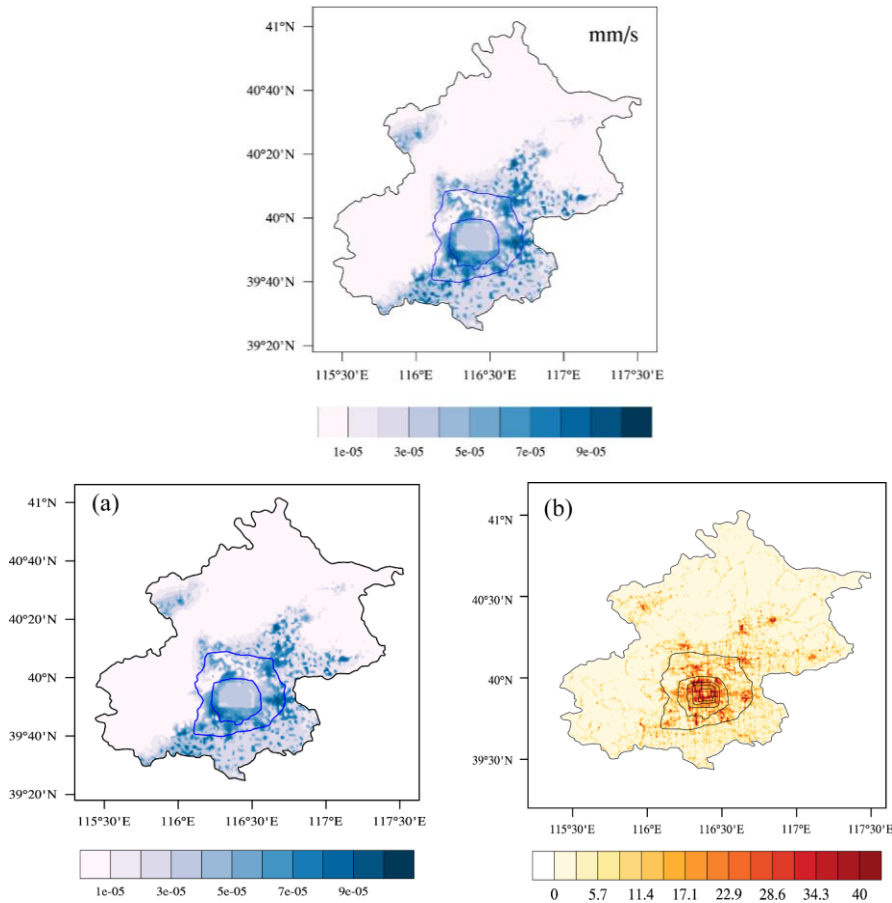
带格式的: 字体: Times New Roman

域代码已更改

域代码已更改

305

mainly in the center of the city. A primeval forest with little human influence is located to the north of Beijing and the water consumption was low in this area. The urban plan for Beijing can be divided into urban, suburban and rural areas divided by the fifth and sixth ring roads. The area within the fifth ring road was treated as the urban area inhabited by the majority of the population. The population declined from the fifth to the sixth ring road in the so-called suburban transition area. The rural areas were located outside the sixth ring road, where they mainly comprised farmland with few building and factories.



310 **Figure 32.** (a) Estimated urban irrigation water use in Beijing (mm/s), (b) spatial distribution of road area proportion (%).

城代码已更改

We used the WRF model (Skamarock WC, 2008) with the Advanced Research WRF Dynamic Core version 3.9.1 coupled with a single-layer UCM in the experiments. Three kinds of experiments were conducted to consider no water usage, urban irrigation and road sprinkling in city center, suburb and rural areas. The urban irrigation experiments include 21 individual model simulations, the gridded water usage data were range from 0.1 to 1.9 times of the estimated urban irrigation in city center, suburbs and rural areas, each of the data were regarded as new input variables and added to the model initial input files with the same spatial resolution as the model when WRF model was running. The road sprinkling experiments include 27 individual model simulations, the water amount of road sprinkling was ranged from 0.2 to 1 times of the maximum water-holding capacity of impervious layer in three parts of city showing different urban sprinkling frequency and strength. The detail descriptions of experiments design see Table 2.

Table 4. Descriptions of experiments designs

Experiments	Area	Water amount	Descriptions
Raw experiment			No urban irrigation and no road sprinkling
urban irrigation experiments	City centers	0.1, 0.4, 0.7, 1, 1.3, 1.6 and 1.9 times of the estimated urban irrigation in each part of city	Urban irrigation in city center with different water amount
	Suburb areas		Urban irrigation in suburb areas with different water amount
	Rural areas		Urban irrigation in rural areas with different water amount
Road sprinkling experiments	City centers	0.2, 0.3, 0.4, 0.5, 0.6, 0.7, 0.8, 0.9 and 1 times of the maximum water-holding capacity of impervious layer	Road sprinkling in city center with different water amount
	Suburb areas		Road sprinkling in suburb areas with different water amount
	Rural areas		Road sprinkling in rural areas with different water amount

Three-layer nested domains with horizontal resolutions of 15 km (d01; mesh size 95 × 121, most of northern China), 5 km (d02; mesh size 135 × 185; almost all of the Jing-Jin-Ji metropolitan area), and 1 km (d03; mesh size 205 × 270; Beijing as the area of interest) were designed for the experiments (Figure 4Figure-3). The National Centers for Environmental Prediction Global Final Analysis 6-h data (soil water, moisture, and temperature) were used for the first-guess initial field and lateral boundary conditions. The ~~terrestrial and United States Geological Survey (USGS)MODIS-based Land Use Classifications~~ land-use data provided in the WRF model described the real terrestrial and land-cover characteristics of the regions of interest, and the default static data were used in the experiments. A climate summer time periods from 2000 to 2017 were averaged to 4 days which represent the climatic May, June, July and August. Firstly, we found out all data for

域代码已更改

带格式的: 字体: 10 磅

带格式的: 字体: (中文) + 中文正文 (宋体), 10 磅, (中文) 中文 (中国)

带格式表格

带格式的: 字体: 10 磅

带格式的: 缩进: 左侧: 0 厘米

带格式的: 字体: (中文) + 中文正文 (宋体), 10 磅, (中文) 中文 (中国)

带格式的: 字体: (中文) + 中文正文 (宋体), 10 磅, (中文) 中文 (中国)

带格式的: 缩进: 左侧: 0 厘米

带格式的: 字体: (中文) + 中文正文 (宋体), 10 磅, (中文) 中文 (中国)

带格式的: 字体: 10 磅

带格式的: 字体: (中文) + 中文正文 (宋体), 10 磅, (中文) 中文 (中国)

带格式的: 字体: 10 磅

带格式的: 字体: (中文) + 中文正文 (宋体), 10 磅, (中文) 中文 (中国)

带格式的: 字体: 10 磅

带格式的: 字体: 10 磅

带格式的: 缩进: 左侧: 0 厘米

带格式的: 字体: 10 磅

带格式的: 字体: (中文) + 中文正文 (宋体), 10 磅, (中文) 中文 (中国)

带格式的: 字体: 10 磅

带格式的: 缩进: 左侧: 0 厘米

带格式的: 字体: 10 磅

域代码已更改

330 [May from 2000 to 2017](#). Then, averaged all these data to one day which represented climatic May. At last, climatic June, July and August were got by repeating above two steps. And the first day (climatic May) was considered as the spin up period. The schemes in terms of the physical options are presented in [Table 5Table 2](#).

城代码已更改

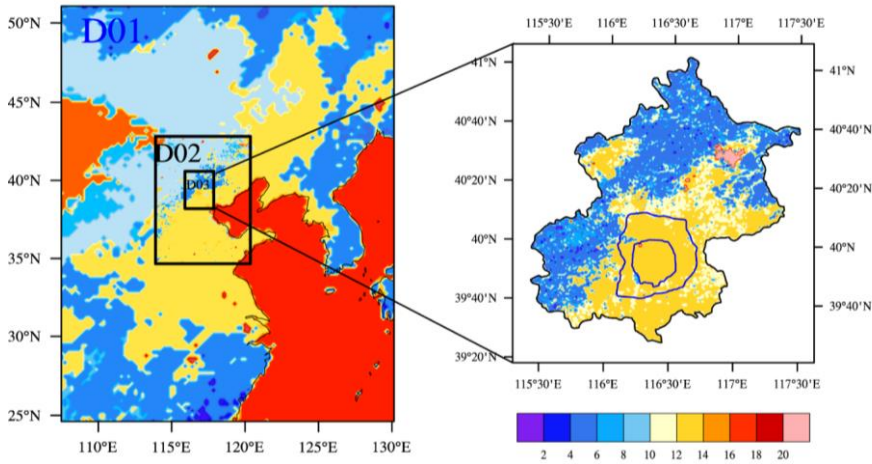


Figure 43. Simulated area and land use and land cover in Beijing.

城代码已更改

335 Table 52. Physical parameterization schemes

城代码已更改

Physical scheme	Selected scheme option
Microphysics	Kessler scheme
Longwave	RRTM scheme
Shortwave	MM5 shortwave scheme
Cumulus	Grell-Devenyi
Planetary boundary physics	ACM2 PBL scheme
Land surface model	CLM NOAH-MP
Urban model	SLUCM

3 Results and Discussion

3.1 Model Validation

Considering that ~~random processes in the atmosphere~~atmospheric stochastic processes may lead to the uncertainty of cooling effect, offline comparison experiments were conducted to illustrate the cooling effect of urban irrigation and road

340 sprinkling. These experiments were raw simulation without urban water usage, urban irrigation and road sprinkling with
community land model_(CLM4.5). The simulations were driven by ITP atmosphere forcing data (June to August of year
2012) which was obtained from the Data Assimilation and Modeling Center for Tibetan Multi-spheres, Institute of Tibetan
Plateau Research, Chinese Academy of Science(Yang et al., 2010a). The simulation results showed that urban irrigation
decreased the water table of ground depth due to groundwater extraction which is similar to the research of Yang et al.
345 (2010b), and increased the surface soil moisturemoister (Figure 5Figure-4). There was no change of water table depth and
surface soil moisturemoister for road sprinkling because of lacking underground water process under the impervious layer.
Evapotranspiration were strengthened when more water was irrigated to soil or farmland, and heat from ground and air were
taken away. This phenomenon was quite similar for road sprinkling but has slightly different physical process. As a result,
both two schemes decrease the sensible heat flux, ground temperature, air temperature and wind speed, and increased the
350 latent heat flux (Figure 6Figure-5). Besides, The impact to land surface variables are limited to the areas where water applied,
because offline simulations had no climate effect between atmosphere and land surface. So, Cooling effect was quite obvious
for urban irrigation and road sprinkling. And they were also confirmed by other researches (Wang et al., 2019;Hendel and
Royon, 2015). Moreover, road sprinkling has been carried out in Beijing and Tokyo. In addition, the results of sensible heat
flux_(SH) and latent heat flux_(LH) from urban water usage simulations (including both urban irrigation and road sprinkling)
355 are better than the raw model results (Figure 7Figure-6). Flux station observations were from July to August in year 2012 and
the station simulation results are interpolated from a regional simulation results of year 2012. Comparing those two data, it
showed that the correlation coefficient increased slightly, and root mean square error for SH and LH were decrease 4.69 and
6.94Ww/m². And the absolute error for SH and LH decreased 7.3 and 9.62 Ww/m² respectively. This means that urban
water usage including both urban irrigation and road sprinkling should be taken into consideration when conducting weather
360 and climate simulations.

域代码已更改

域代码已更改

带格式的: 字体: (中文) 宋体, 非加粗, (中文) 中文(中国)

域代码已更改

域代码已更改

带格式的: 字体: (中文) 宋体, (中文) 中文(中国)

域代码已更改

域代码已更改

带格式的: 字体: (中文) 宋体, (中文) 中文(中国)

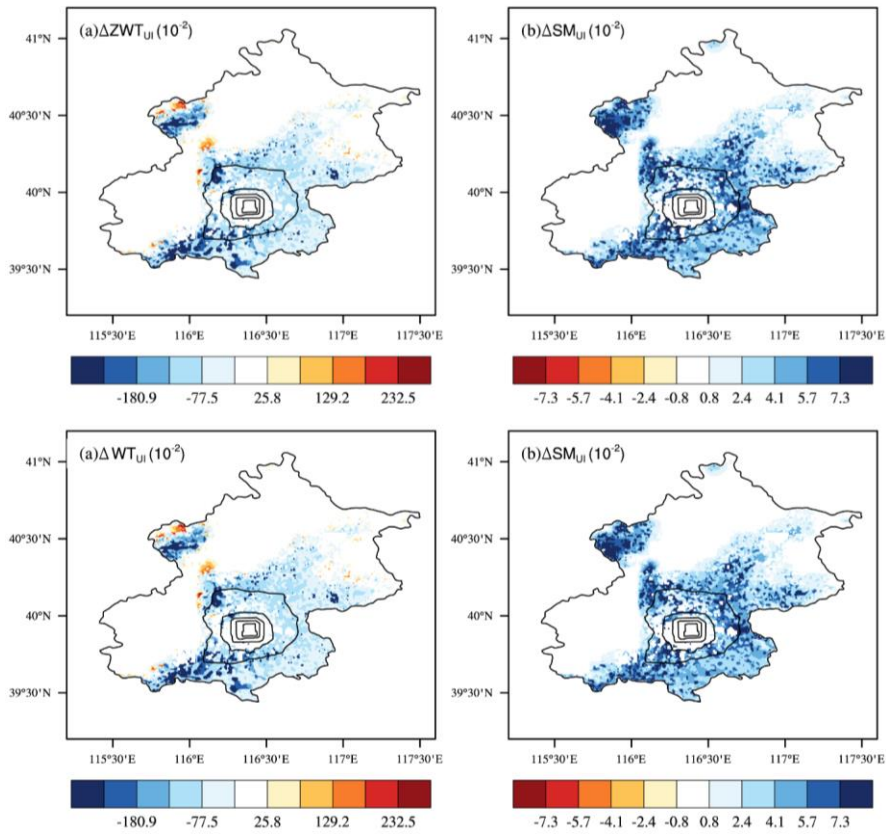


Figure 54. Changes of (a) water table of ground depth and (b) surface soil moisture due to urban irrigation (UI) (unit: 10^{-2})

域代码已更改

带格式的: 上标

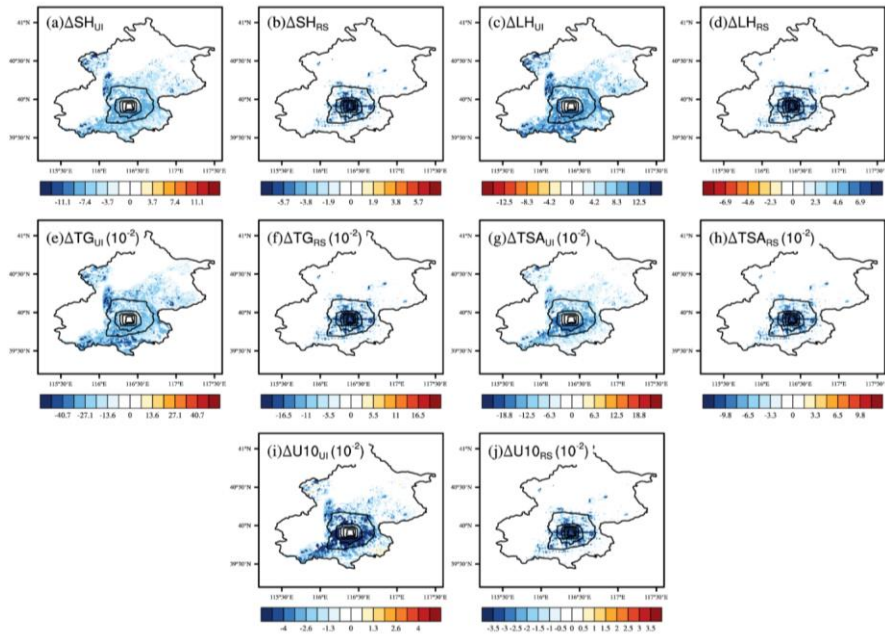


Figure 65. Changes of land surface variables due to urban irrigation (UI) and road sprinkling (RS). (a) sensible heat flux of UI, (b) sensible heat flux of RS, (c) latent heat flux of UI, (d) latent heat flux of RS, (e) ground temperature of UI, (f) ground temperature of RS, (g) air temperature of UI, (h) air temperature of RS, (i) 10 meter wind speed of UI, (j) 10 meter wind speed of RS.

城代码已更改

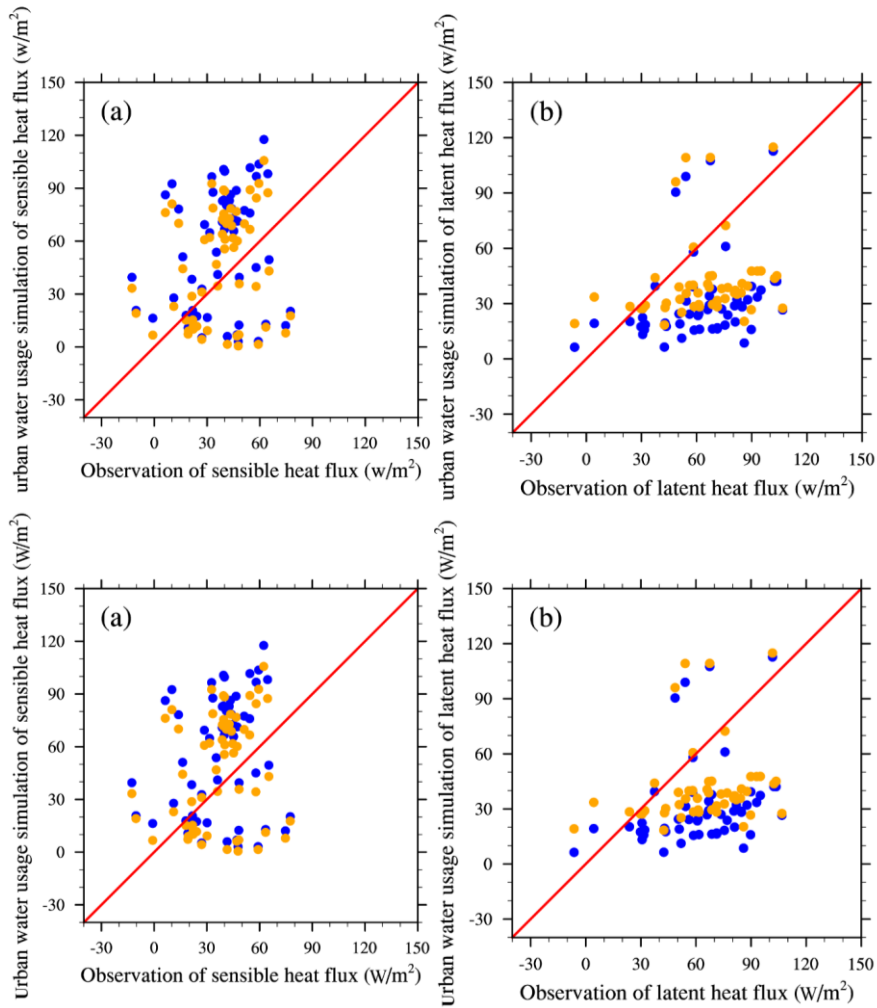
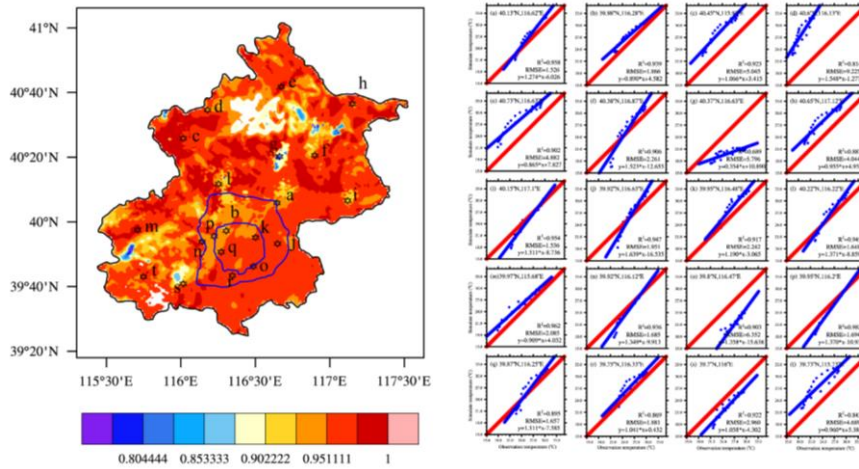


Figure 76. (a) Sensible heat flux (a) and (b) latent heat flux (b) comparisons between station observations and water usage simulations (including water irrigation and road sprinkling). The blue dots are raw simulation results and the orange dots are water usage simulation results.

城代码已更改

375 In addition to the comparisons between station observations and offline model simulations, Comparisons between 7-
 year summer average temperatures in the CLDAS and WRF simulation has also been done to show the simulation ability of
 the raw WRF model-, the temperatures were higher in the city center than the suburbs. The similar spatial distributions
 showed that the WRF physical scheme was reasonable. The correlation coefficients between the CLDAS temperatures and
 WRF simulation results were generally close to one, and the average root mean square error (RMSE) for the two data sets
 380 was 0.8°C. The gridded model results were interpolated to the sites according to the coordinates of the stations in urban and
 suburban areas, and comparisons of the site observations and WRF simulation results also showed that the temperature
 simulation results were in good agreement with the observations (see in [Figure 8Figure 7](#)). It showed that the WRF model
 simulation results were reasonable, where the simulated temperatures were slightly higher than the observations and RMSE
 was mostly less than 2.5°C. So WRF model can be a good tool to start out research.

域代码已更改



385 **Figure 87.** Temperature validation between simulations and reanalysis or in-situ data. Left figure is spatial distribution of
 correlation coefficients between simulations and CLDAS reanalysis data, right figure form (a)-(t) are regression line, RMSE and
 coefficient coefficients between simulations and in-situ data.

域代码已更改

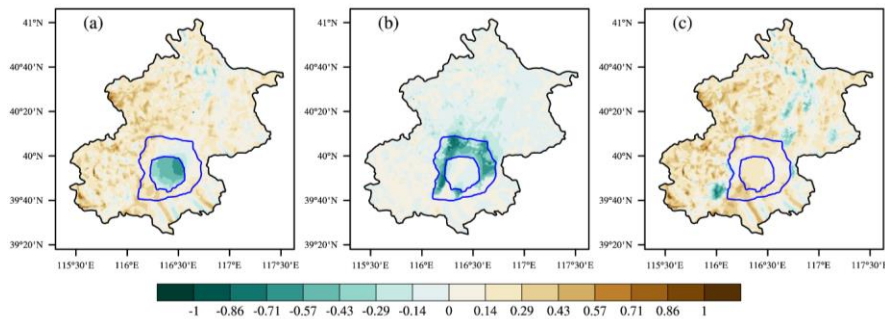
3.2 Relationships between the amounts of water applied and the cooling effect

390 [Figure 9Figure 8](#) shows that road sprinkling and urban irrigation both decreased air temperature. Road sprinkling was
 mainly conducted at night to avoid disturbing traffic. The simulation results in [Figure 9Figure 8](#) show that the temperature
 decreased by a maximum of around 0.5–1°C in the city center where most roads were found, whereas there were no
 significant decreases in the temperature in rural areas where the lowest amount of road sprinkling occurred due to the low
 quantity of road surfaces in these areas. However, urban irrigation during the daytime decreased the temperatures in the day

域代码已更改

域代码已更改

395 and night. **Figure 10**Figure-9 shows that urban irrigation in the city center decreased the temperature by more than 1°C when
large volumes of water were applied. In the rural areas, the water applied for farmland irrigation had a reasonable cooling
effect in the daytime, and the cooling effect continued but smaller in the nighttime due to the evaporation from farmland
crops and urban plants after irrigating in the daytime. This effect was much more significant in the rural areas than the city
center and suburbs. In addition, localized water usage could influence all of the areas, where road sprinkling or urban
irrigation in the city center could decrease the temperatures in the suburbs or rural areas, and this effect may also occur in
400 other locations. In general, the cooling effect of urban irrigation was stronger than that of road sprinkling because the amount
of water applied for urban irrigation was greater than that for road sprinkling.



405 **Figure 98.** Cooling effects in the city center (a), suburbs (b), and rural areas (c) caused by road sprinkling in the night. Here, the
water amount is half of the maximum water-holding capacity of the urban impervious layer.

域代码已更改

域代码已更改

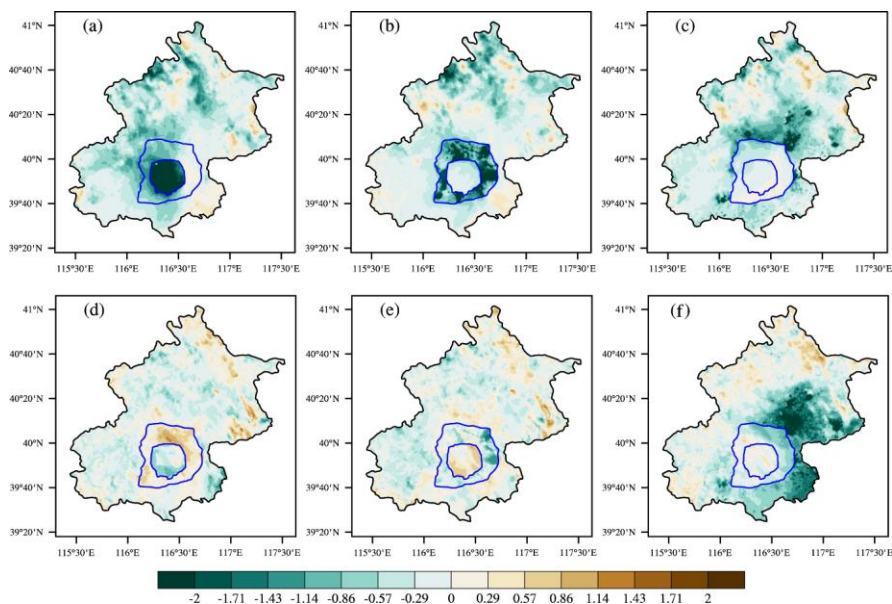


Figure 109. Cooling effects in the city center, suburbs, and rural areas caused by urban irrigation in the day and night. (a) cooling effect of urban irrigation in city center in the day (b) cooling effect of urban irrigation in suburbs in the day, (c) cooling effect of urban irrigation in rural areas in the day, (d) cooling effect of urban irrigation in city center in the night, (e) cooling effect of urban irrigation in the suburbs in the night, (f) cooling effect of urban irrigation in rural areas in the night. Here, the water amount is as the estimated urban irrigation.

城代码已更改

The application of water in urban areas could change the energy cycles and dynamic processes. Figure 11Figure-10 shows that the changes in these variables were most significant in the areas where road sprinkling or urban irrigation were conducted and it may weak the atmospheric dynamic processes. The application of water by road sprinkling or urban irrigation increased the latent heat flux, decreased the sensible heat flux, and lowered the boundary layer heights locally. However, changes could be more general throughout the whole region. For example, urban irrigation in the city center not only lowered the boundary layer height in the city center, but also have impact in the suburbs and rural areas. Similar results were found for the latent heat flux and sensible heat flux, but they were not as significant.

城代码已更改

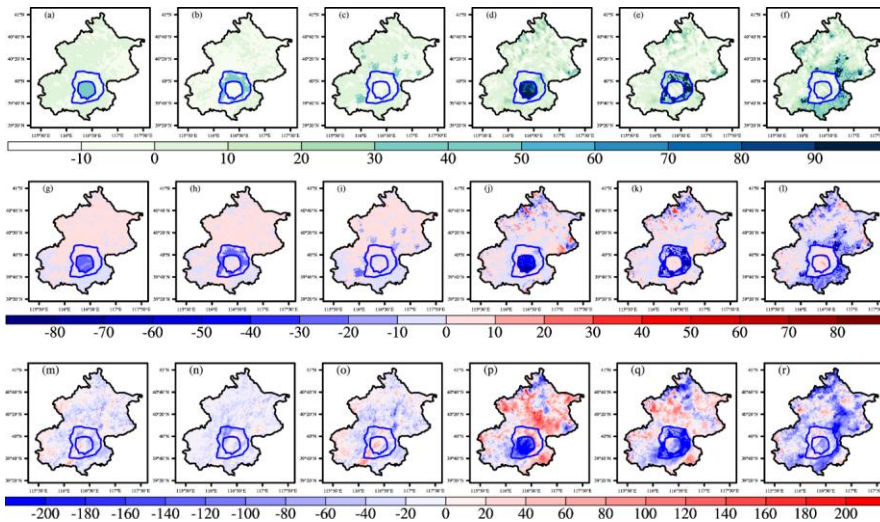


Figure 11-10. Changes in the latent heat flux, sensible heat flux, and boundary layer height due to road sprinkling and urban irrigation. (a) change in latent heat flux (LH) due to road sprinkling in the city center, (b) change in LH due to road sprinkling in the suburbs, (c) change in LH due to road sprinkling in rural areas, (d) change in LH due to urban irrigation in the city center, (e) change in the LH due to urban irrigation in suburbs, (f) change in LH due to urban irrigation in rural areas, (g)-(l) change in sensible heat flux, similar to (a)-(f), (m)-(r) change in the boundary layer height, similar to (a)-(f).

The quadratic functions fitted to the relationships between the amounts of water applied and the cooling effects in the simulations are shown in Figure 12Figure 44 and Table 6Table 3. The normalized amounts of water applied in the city center, suburbs, and rural areas for road sprinkling and urban irrigation were 0.528×10^8 , 0.2868×10^8 , and 0.039×10^8 , and 0.81×10^8 , 1.72×10^8 , and $4.45 \times 10^8 m^3/month$, respectively. The actual amounts of water applied can be determined by multiplying the values on the x-axis and those given above. The results showed that the cooling effects of road sprinkling were similar in three parts of city, where the temperature decreased by a maximum of about $0.55^\circ C$, and the cooling effects kept steady when more water was sprinkled on the roads in suburbs and rural areas. Sprinkling the roads in the city center changed the regional temperature more quickly compared with sprinkling water in the suburbs and rural areas. However, the cooling efficiency did not increase according to the amount of water applied (for each normalized amount of water applied, the water sprinkling in the city center was twice as many as that in the suburbs and 10 times than that in the rural areas, but the cooling effect was similar, so that the cooling efficiency in city center is lower than suburb and rural areas), possibly because the water sprinkled in the city center was concentrated in a smaller area where the wind was reduced and this decreased the cooling efficiency. The cooling effect of urban irrigation was generally greater than that of road sprinkling and it was most significant in rural areas. However, the cooling efficiency of urban irrigation in rural area was less than city center and suburbs, for the reason that applying the same normalized amount of water for irrigation, the actual water amount

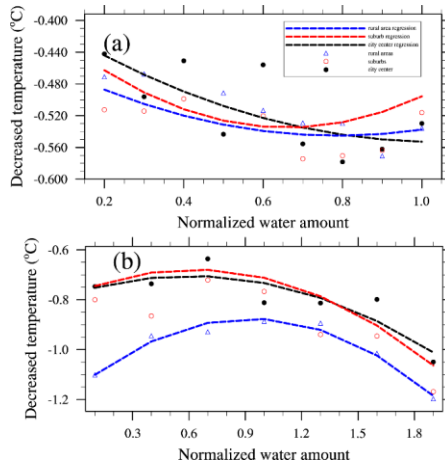
城代码已更改

城代码已更改

城代码已更改

带格式的: 字体: Times New Roman

440 in rural areas was almost five times more than the city center and two times more than that in the suburbs; but the temperature decrease in the rural areas was only 1.5 times higher than those in the city center and suburbs. Thus, the effect of urban irrigation was most efficient in the city center. The cooling effects in the city center and suburbs increased as the amount of water applied increased, which was a little bit different from the effect of road sprinkling.



445 **Figure 1214.** Relationships between the amount of water applied and the cooling effect. (a) for road sprinkling and (b) for urban irrigation. the black dot is the cooling effect of water applied in city center from model simulations, red circle is the cooling effect of water applied in suburbs from model simulations, blue triangle is cooling effect of water applied in rural areas from model simulations; the lines are polynomial regression curves, and the black, red and blue colors represent the city center, suburbs and rural areas.

450 **Table 63.** Relationships between the amounts of water applied and the cooling effects

	Road sprinkling	Urban irrigation
City center	$f = 0.15 * w^2 - 0.32 * w - 0.39$	$f = -0.18 * w^2 + 0.22 * w - 0.77$
Suburb	$f = 0.34 * w^2 - 0.45 * w - 0.42$	$f = -0.23 * w^2 + 0.30 * w - 0.86$
Rural area	$f = 0.16 * w^2 - 0.26 * w - 0.44$	$f = -0.33 * w^2 + 0.61 * w - 1.16$

3.3 Optimal water use strategies.

455 The problem of how to distribute the water supply to plants and road in different parts of a city in order to obtain the optimal cooling effect can be solved with an optimization scheme. In this study, we divided the city into three parts according to the population density and urban type as the city center, suburbs, and rural areas. If the relationships between the amount of water applied and the cooling effect are known for the three parts of city, then an optimal water usage scheme can be developed whose optimization objective can be stated as the comprehensive temperature decrease attributable to both

城代码已更改

城代码已更改

road sprinkling and urban irrigation in the city center, suburbs, and rural areas. The optimal water usage scheme can be described as follows:

$$\text{Max: } \sum_{j=1}^3 \sum_{i=1}^2 f_{i,j}(w_{i,j}), \quad (5)$$

where i represents road sprinkling and urban irrigation as i equal to 1 or 2, respectively; j represents the city center, suburbs, and rural areas as j equal to 1, 2, and 3, respectively, and $f_{i,j}(w_{i,j})$ is a function of the normalized amount of water applied and the cooling effect, which can be fitted based on the model simulation results presented in Section 3.2.

Considering that the total amount of urban water supplied for road sprinkling and urban irrigation is a fixed value, the water demand for each part of city should satisfy the minimal needs for the municipal services and plants in terms of ecology, farmland, and roads. Thus, the constraint conditions for optimizing the usage of water are as follows:

$$\text{s.t. } \sum_{j=1}^3 \sum_{i=1}^2 w_{i,j} = A, \quad (6)$$

$$b_j \ll w_{1,j} \ll B_j, j = 1,2,3, \quad (7)$$

$$c_j \ll w_{2,j} \ll C_j, j = 1,2,3. \quad (8)$$

where A represents the total water supplied for road sprinkling and urban irrigation; j represents the city center, suburbs, and rural area as j equal to 1, 2, and 3, respectively; b_j represents the minimal water demand for road sprinkling, B_j represents the maximum water supply for road sprinkling, c_j represents the minimal water demand for urban irrigation, and C_j represents the maximum water supply for urban irrigation. In addition, other water restrictions applied in each part of the city can be expressed as another equality or inequality among this optimal water usage scheme.

Based on the historical water demand and supply for municipal services described in the Water Resources Bulletin of Beijing, Quality Standards for Road Cleaning (NO: DB11/T 353-2006), and the textbook entitled "Water Supply Engineering" we set the constraint conditions given in Table 7Table 4. In addition, according to the Beijing's 13th Five Year Plan, the water supply for the whole city was set as $43 \times 10^8 \text{ m}^3/\text{year}$ and the total amount of water for road sprinkling and urban irrigation was set as about $17 \times 10^8 \text{ m}^3/\text{year}$ which mainly consumed in summer periods, excluding the water usage by industry and residents. Solving this optimization problem starts from assigning initial values of the solution artificially and solving the initial objective function value of Eq. (5), then assigned new values of the solution according to searching algorithms and constraint conditions from Eqs. (6)-(8). A new objective function value can be solved during this step. Do not stop repeating two steps above until objective function value changes little. After 24 loop iterations using Here we use athen Optimization Toolbox in MATLAB to solve the problem. After 24 loop iterations, the results showed that the normalized amounts of water applied for road sprinkling from the city center to the rural areas were 0.4, 0.2 and 0.1 (the actual amounts of water applied were 0.21×10^8 , 0.06×10^8 , $0.04 \times 10^7 \text{ m}^3/\text{month}$, and road sprinkling for whole city is almost 10% of the total water supply) and the normalized amounts of water applied from urban irrigation from the city center to the rural areas were 0.43, 0.36 and 0.40 (the actual amounts of water applied were 0.35×10^8 , 0.62×10^8 , $1.78 \times 10^8 \text{ m}^3/\text{month}$, respectively; and urban irrigation for whole city is almost 90% of the total water supply) to obtain the greater cooling effect with a temperature decrease of 1.9°C. These results are reasonable because the enhanced cooling effect of road sprinkling

域代码已更改

490 decreased as the amount of water applied increased, so the lowest water demand was similar when more water was applied by road sprinkling. Urban irrigation in rural areas accounted for a large proportion of the total water supply in order to satisfy the needs of crop growth and environmental cooling.

Table 74. Constraint conditions for water usage in urban, suburban, and rural areas

	RS-urban	RS-suburb	RS-rural	UI-urban	UI-suburb	UI-rural
conversion factor units ($10^8 \text{ m}^3/\text{month}$)	0.528	0.2868	0.039	0.81	1.72	4.45
The lowest water demand	0.4	0.2	0.1	0.1	0.1	0.1
The highest water supply	1	1	1	2	2	2

RS means road sprinkling, UI means urban irrigation

495 The optimized results may be slightly higher than the actual requirements because the water usage in one part of a city will affect the cooling effects in other parts. The uncertainties related to the constraint conditions will also affect the results. The total amount of water applied for road sprinkling and urban irrigation (A in Eq. (62)) must be considered among these uncertainties. Thus, we conducted sensitivity based on proportions ranging from 0.7 to 1.5 relative to $17 \times 10^8 \text{ m}^3/\text{year}$ for the total amount of water applied. The results showed that the relationship between the total amount of water applied (A) and the cooling effect was nonlinear, where the temperature decreased sharply as the total amount of water applied (A) increased (see Figure 13Figure-12).

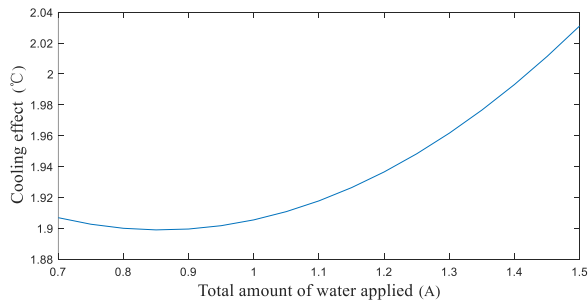


Figure 13Figure-12. Sensitivity analysis based on the total amount of water applied and the cooling effect.

域代码已更改

带格式表格

带格式的: 字体: Times New Roman

带格式的: 字体: (默认) 宋体, (中文) 宋体

带格式的: 字体: (默认) 宋体, (中文) 宋体

域代码已更改

域代码已更改

4 Conclusions

505 In this study, we coupled improved water usage schemes for road sprinkling and urban irrigation in the WRF model. The soil hydrological and urban canopy modules were modified for this study. Simulations were then conducted at a resolution of 1 km where different amounts of water were applied via road sprinkling and urban irrigation in a case study set in Beijing, China. We determined the relationships between the amounts of water applied and the cooling effects in different parts of the city. The efficiency of the cooling effect due to road sprinkling decreased as the amount of water applied increased, where the city center cooled the most because more roads were present in a small area, whereas sprinkling had no significant effect in rural areas. Urban irrigation in the daytime cooled the city during the day and night because evapotranspiration from the plants and soil was enhanced. The cooling effect was more general throughout the region and not limited to local areas. In addition, urban water usage locally increased the latent heat flux, but decreased the sensible heat flux and the boundary layer height. There are some uncertainties during the —simulations. Different land use type data change the distribution of urban and plants, and the simulation conducted with the default MODIS-based land use data may cause cooling effect errors. The direct driving factor of cooling effect are water use amount for those land use types with small differences. Better water use estimation can reduce the errors caused by land use data. And the cooling effect of each part of the city was regional averaged which can reduce the significance of land use. But in the future, the errors may be increasing with land use changes larger.

520 We also conducted an optimization process to determine the appropriate amounts of water for application by urban irrigation and road sprinkling in different parts of city, where we treated decreasing the temperature as the optimization objective and the total water supply, highest water supply in different parts of the city, and lowest water demands in the city center, suburbs, and rural areas as the constraint conditions. The optimization results showed that the temperature could be reduced by 1.9°C using road sprinkling and urban irrigation in the city center, suburbs, and rural areas when the normalized amounts of water are applied (i.e., 0.4, 0.2, and 0.1 for road sprinkling, and 0.43, 0.36, and 0.40 for urban irrigation, respectively). Sensitivity analysis based on the total water supply for the whole city (A) detected a nonlinear relationship between the total water supply (A) and the optimized decrease in the temperature, where the cooling effect increased sharply as the amount of water applied increased. Considering the Beijing's 13th Five Year Plan, allocating about 90% of the total water to urban irrigation and 10% to road sprinkling is the most effective approach for mitigating high urban temperatures.

530 Besides, other big cities like Tokyo, London, Phoenix and so on are facing the threat of high temperature in summer, too. There, urban water use managements are important part in municipal planning, it makes balance of both water demand and supply, as well as improve urban climate. Although road sprinkling may not a common solution to mitigate high temperature in other countries, the optimal water usage scheme in this study is still applicable to other cities and road sprinkling supply can set to zero if no road sprinkling occurs.

535 **Code availability.** Model code can be obtained from the corresponding author, and the data of this manuscript is available in 4TU.Centre for Research Data (<http://doi.org/10.4121/uuid:01621202-7ec4-4643-84b5-5f9ec2966004>)

带格式的: 字体: Times New Roman

带格式的: 字体: Times New Roman

带格式的: 字体: Times New Roman

域代码已更改

带格式的: 字体: Times New Roman

540 **Author contributions.** Bin Liu completed the simulation analysis and manuscript. Zhenghui Xie aided with manuscript preparation and editing. ChunXiang Shi provided the validation data. Shuang Liu and Yujing Zeng did the initial model development. Ruichao Li, Longhuan Wang, Yan Wang and Si Chen helps in data analysis. Binghao Jia, Peihua Qin and Jinbo Xie offered valuable suggestions.

545 **Competing interests.** The authors declare that they have no conflict of interest.

Acknowledgements. The authors thank the National Meteorological Information Center, China Meteorological Administration for data support.

550 **Financial support.** This study was supported by the National Natural Science Foundation of China (NSFC) project (grant numbers 41830967 and 41575096), the Key Research Program of Frontier Sciences, Chinese Academy of Sciences (CAS) (grant number QYZDY-SSW-DQC012), and the National Key Research and Development Program of China (grant number 2018YFC1506602).

References

- 555 [Alter, R. E., Im, E. S., and Eltahir, E. A. B.: Rainfall consistently enhanced around the Gezira Scheme in East Africa due to irrigation, Nat Geosci, 8, 763, 10.1038/Ngeo2514, 2015.](#)
- Amir, I., and Fisher, F. M.: Analyzing agricultural demand for water with an optimizing model, Agr Syst, 61, 45-56, Doi 10.1016/S0308-521x(99)00031-1, 1999.
- Chen, M. X., Zhang, H., Liu, W. D., and Zhang, W. Z.: The Global Pattern of Urbanization and Economic Growth: Evidence from the Last Three Decades, Plos One, 9, ARTN e103799
- 560 10.1371/journal.pone.0103799, 2014.
- Coutts, A. M., Tapper, N. J., Beringer, J., Loughnan, M., and Demuzere, M. J. P. i. P. G.: Watering our cities: The capacity for Water Sensitive Urban Design to support urban cooling and improve human thermal comfort in the Australian context, 37, 2-28, 2013.
- DeAngelis, A., Dominguez, F., Fan, Y., Robock, A., Kustu, M. D., and Robinson, D.: Evidence of enhanced precipitation
- 565 due to irrigation over the Great Plains of the United States, J Geophys Res-Atmos, 115, Artn D15115
10.1029/2010jd013892, 2010.
- Ek, M. B., and Holtslag, A. A. M.: Influence of soil moisture on boundary layer cloud development, J Hydrometeorol, 5, 86-99, Doi 10.1175/1525-7541(2004)005<0086:Iosmob>2.0.Co;2, 2004.
- Feinerman, E., Bresler, E., and Dagan, G.: Optimization of a Spatially-Variable Resource - an Illustration for Irrigated Crops,
- 570 Water Resour Res, 21, 793-800, DOI 10.1029/WR021i006p00793, 1985.
- Gao, K., and Santamouris, M.: The use of water irrigation to mitigate ambient overheating in the built environment: Recent progress, Building and Environment, 106346, 2019.
- Hendel, M., and Royon, L.: The effect of pavement-watering on subsurface pavement temperatures, Urban Climate, 14, 650-654, 2015.

域代码已更改

- 575 Hendel, M., Gutierrez, P., Colombert, M., Diab, Y., and Royon, L.: Measuring the effects of urban heat island mitigation techniques in the field: Application to the case of pavement-watering in Paris, *Urban Climate*, 16, 43-58, 2016.
- Kueppers, L. M., Snyder, M. A., and Sloan, L. C.: Irrigation cooling effect: Regional climate forcing by land-use change, *Geophys Res Lett*, 34, Artn L03703
10.1029/2006gl028679, 2007.
- 580 Kuschel-Otarola, M., Rivera, D., Holzapfel, E., Palma, C. D., and Godoy-Faundez, A.: Multiperiod Optimisation of Irrigated Crops under Different Conditions of Water Availability, *Water-Sui*, 10, ARTN 1434
10.3390/w10101434, 2018.
- Lobell, D. B., Bonfils, C. J., Kueppers, L. M., and Snyder, M. A.: Irrigation cooling effect on temperature and heat index extremes, *Geophys Res Lett*, 35, Artn L09705
10.1029/2008gl034145, 2008.
- 585 McCarthy, M. P., Best, M. J., and Betts, R. A.: Climate change in cities due to global warming and urban effects, *Geophys Res Lett*, 37, 2010.
- Moore, N., and Rojstaczer, S.: Irrigation-induced rainfall and the great plains, *J Appl Meteorol*, 40, 1297-1309, Doi 10.1175/1520-0450(2001)040<1297:Iiratg>2.0.Co;2, 2001.
- 590 Mueller, N. D., Butler, E. E., McKinnon, K. A., Rhines, A., Tingley, M., Holbrook, N. M., and Huybers, P.: Cooling of US Midwest summer temperature extremes from cropland intensification, *Nat Clim Change*, 6, 317-+, 10.1038/Nclimate2825, 2016.
- Pei, L. S., Moore, N., Zhong, S. Y., Kendall, A. D., Gao, Z. Q., and Hyndman, D. W.: Effects of Irrigation on Summer Precipitation over the United States, *J Climate*, 29, 3541-3558, 10.1175/Jcli-D-15-0337.1, 2016.
- 595 Puma, M. J., and Cook, B. I.: Effects of irrigation on global climate during the 20th century, *J Geophys Res-Atmos*, 115, Artn D16120
10.1029/2010jd014122, 2010.
- Shi, C., Xie, Z., Qian, H., Liang, M., and Yang, X.: China land soil moisture EnKF data assimilation based on satellite remote sensing data, *Science China Earth Sciences*, 54, 1430-1440, 2011.
- 600 Skamarock WC, K. J., Dudhia J, Gill DO, Barker DM, Duda MG: A description of the advanced research WRF version 3, NCAR Technical Note, 2008.
- Tewari, M., Chen, F., Kusaka, H., and Miao, S. J. N. W. D., NCAR, Boulder: Coupled WRF/Unified Noah/urban-canopy modeling system, 1-22, 2007.
- Vahmani, P., and Hogue, T. S.: Incorporating an urban irrigation module into the Noah land surface model coupled with an urban canopy model, *J Hydrometeorol*, 15, 1440-1456, 2014.
- 605 Wang, C., Wang, Z.-H., and Yang, J.: Urban water capacity: Irrigation for heat mitigation, *Computers, Environment Urban Systems*, 78, 101397, 2019.

WMO: The global climate 2001–2010: A decade of climate extremes, summary report, WMO, Geneva, Switzerland, 16, 2013.

610 Yamagata, H., Nasu, M., Yoshizawa, M., Miyamoto, A., and Minamiyama, M.: Heat island mitigation using water retentive pavement sprinkled with reclaimed wastewater, *Water Sci Technol*, 57, 763-771, 10.2166/wst.2008.187, 2008.

Yang, K., He, J., Tang, W., Qin, J., and Cheng, C. C.: On downward shortwave and longwave radiations over high altitude regions: Observation and modeling in the Tibetan Plateau, *Agricultural Forest Meteorology*, 150, 38-46, 2010a.

615 Yang, Z., Dou, Y., and Wang, Z.: Analysis on the reasons of the decline of ground water level in the primary water supply source area of Beijing and the countermeasures, *China Water Resources*, 52-54, 2010b.

Yang, Z., Dominguez, F., Zeng, X. B., Hu, H. C., Gupta, H., and Yang, B.: Impact of Irrigation over the California Central Valley on Regional Climate, *J Hydrometeorol*, 18, 1341-1357, 2017.

Zeng, Y. J., Xie, Z. H., and Zou, J.: Hydrologic and Climatic Responses to Global Anthropogenic Groundwater Extraction, *J Climate*, 30, 71-90, 10.1175/Jcli-D-16-0209.1, 2017.

620 Zhang, J., Li, T. T., Tan, J. G., Huang, C. R., and Kan, H. D.: Impact of Temperature on Mortality in Three Major Chinese Cities, *Biomed Environ Sci*, 27, 485-496, 2014.