

Supplemental figures

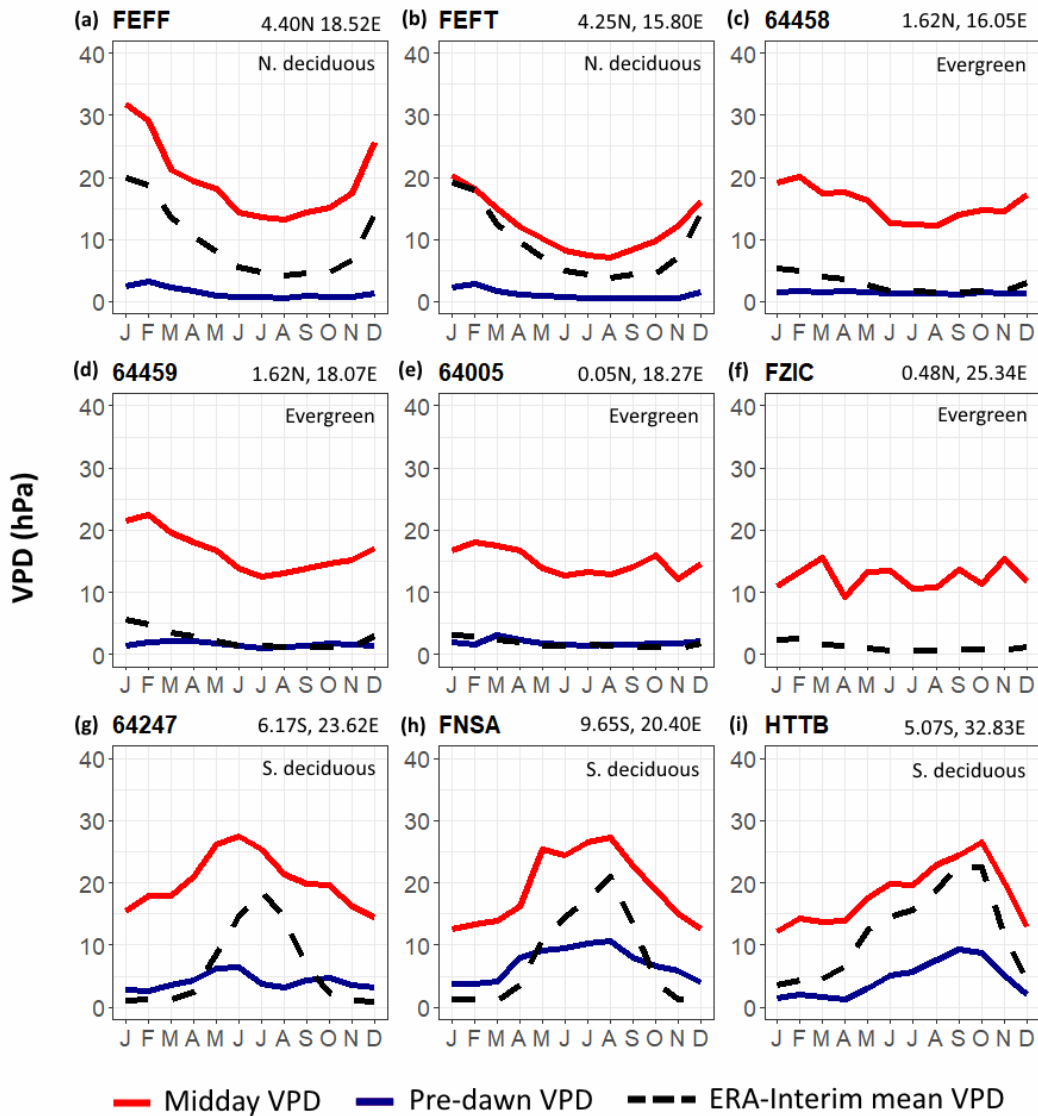
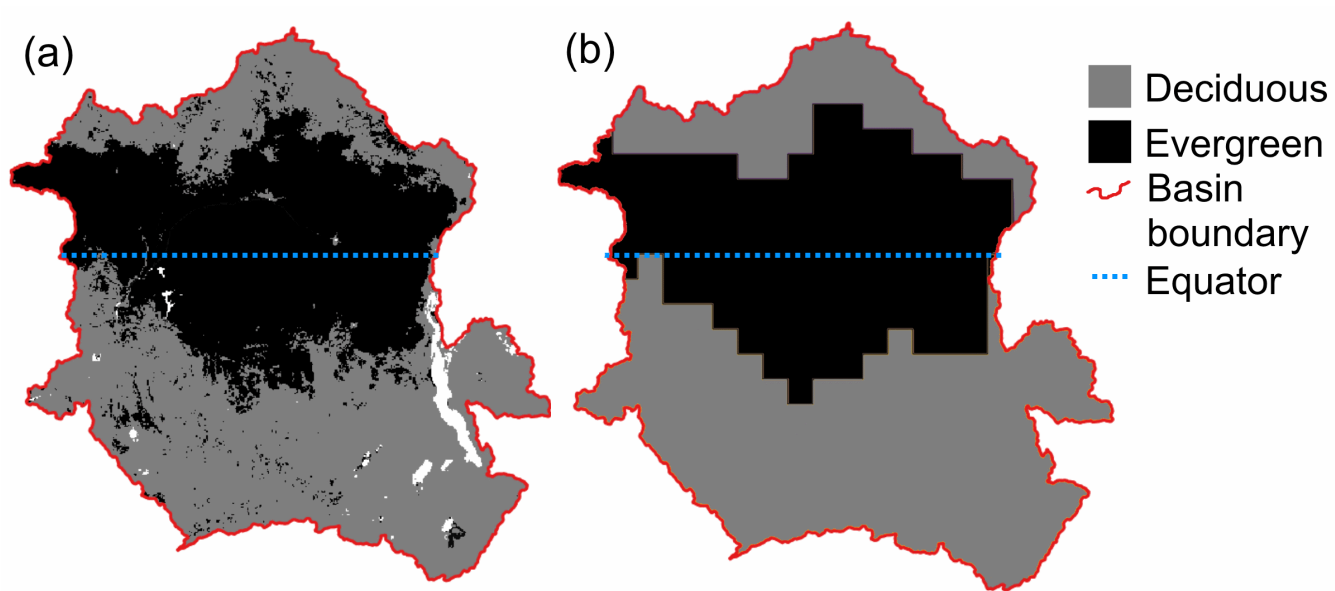
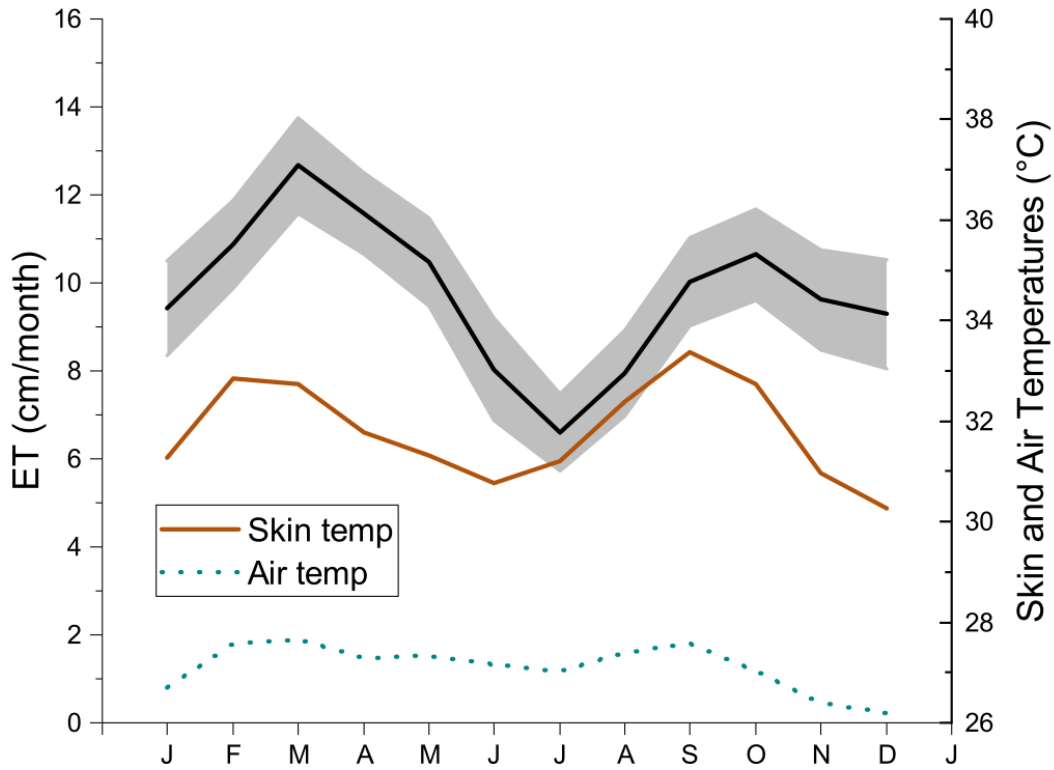


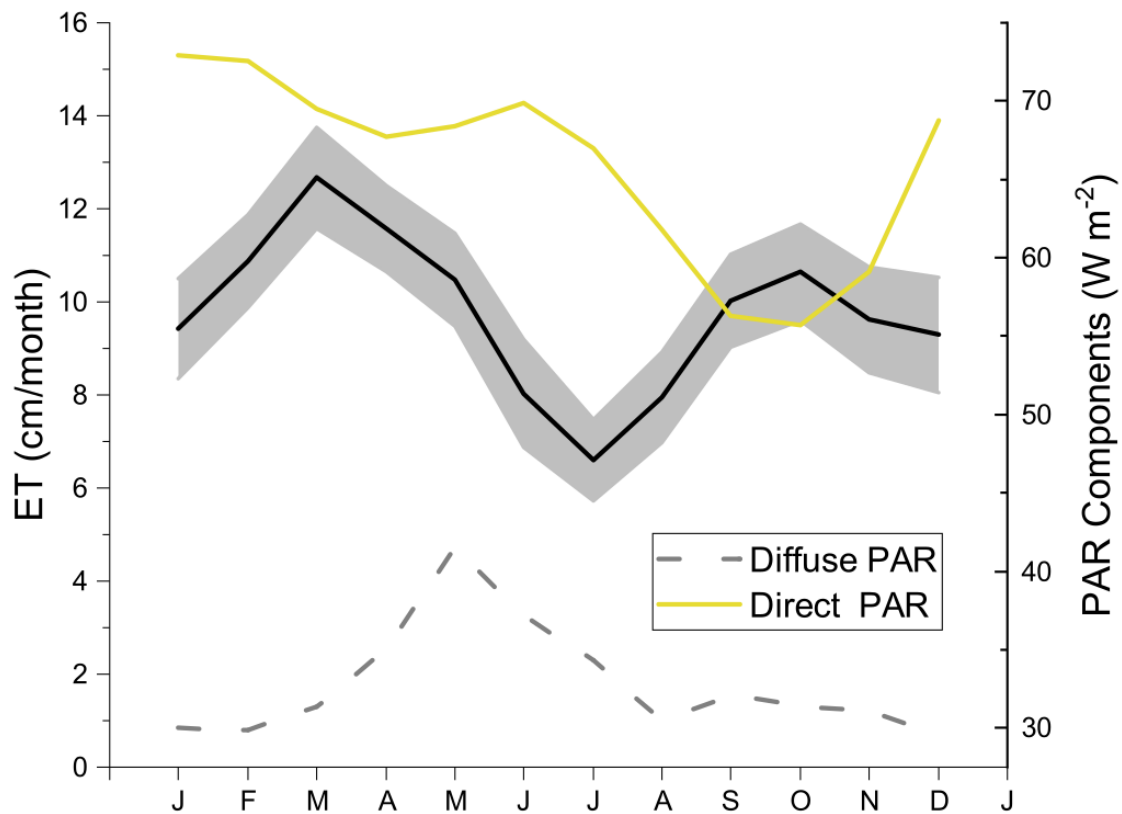
Figure S1: Averaged hourly VPD data (hPa) from Automated Surface Observing Systems (ASOS) and Met Office Integrated Data Archive System (MIDAS) weather reports from the Congo Basin plotted alongside ERA-Interim daily VPD averages from 2002-2016 (black dashed line). Observational VPD data are plotted as pre-dawn retrievals (blue line) and midday retrievals (red line). Panel titles reflect the International Civil Aviation Organization (ICAO) or World Meteorological Organization (WMO) location identifier for each observation station (ERA-Interim data were retrieved from the pixel within which each station is located). Latitude, longitude, and ecoregion are also provided for each panel. The observational VPD data span 2002-2016, but often with significant data gaps; only stations with at least 500 datapoints for each time of day over multiple years were included. FEFF (a) and FEFT (b) are located in the area classified as northern deciduous for this study; stations 64458, 64459, 64005, and FZIC (c)-(f) are located in the equatorial rainforest region; and stations 64247, FNSA, and HTT B are located in the southern deciduous ecoregion.



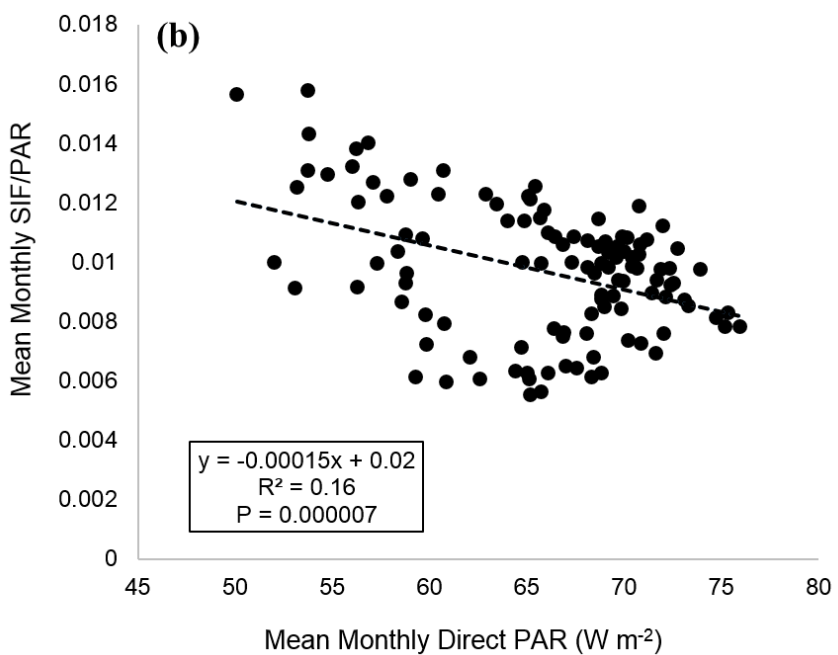
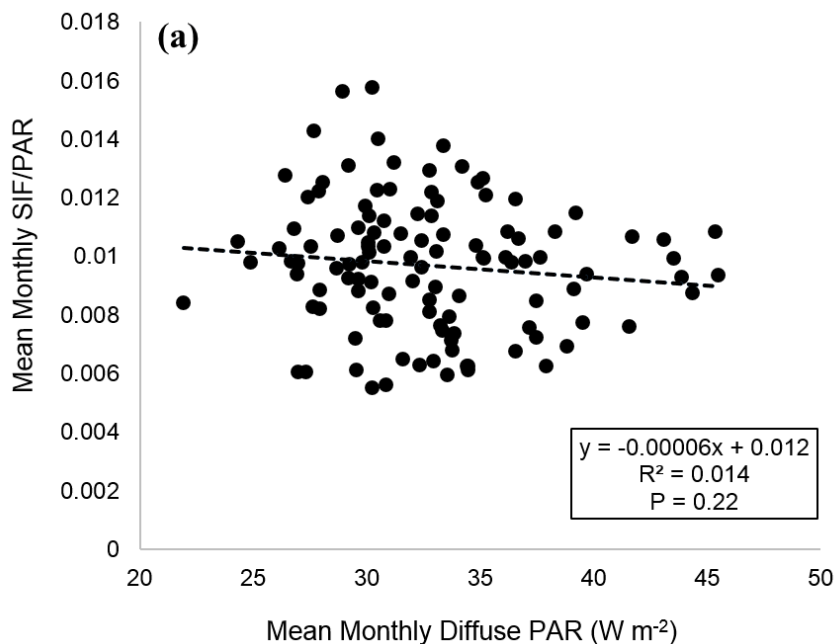
15 **Figure S2: (a) MCD12C1-IGBP land cover classification, modally-averaged over the 15 study years and merged into evergreen and deciduous forest types, and (b) majority-resampled to match the coarsest spatial resolution of our other datasets (1°).**



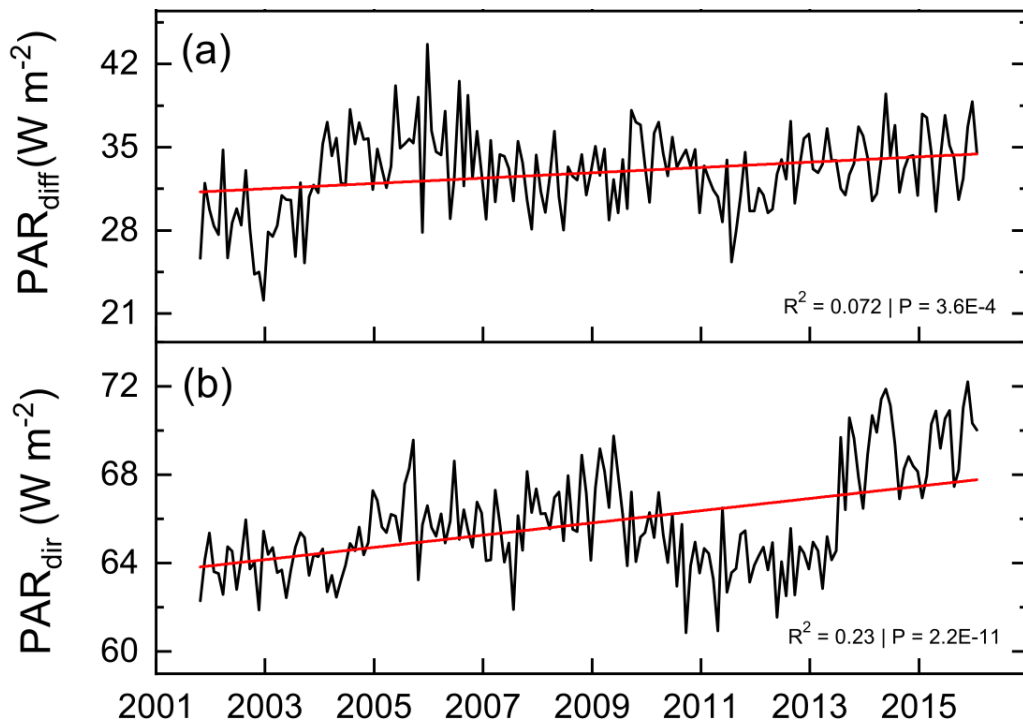
**Figure S3: Mean monthly cycle of  $ET_{wb}$  (black line with gray uncertainty range) plotted alongside those of skin temperature (brown line) and air temperature (blue dotted line). Data are averaged over the entire basin area.**



20 **Figure S4: Mean monthly cycle of  $ET_{wb}$  (black line with gray uncertainty range) plotted alongside those of  $PAR_{diff}$  (gray dashed line) and  $PAR_{dir}$  (yellow line). Data are averaged over the entire basin area.**



**Figure S5: Linear regressions of monthly SIF/PAR data against (a)  $\text{PAR}_{\text{diff}}$  and (b)  $\text{PAR}_{\text{dir}}$ . Mean seasonal cycles and long-term trends (where applicable) were removed.**



25 Figure S6: Linear trends from 2002-2016 of (a) PAR<sub>diff</sub> and (b) PAR<sub>dir</sub>. Average seasonal cycles were removed from the data.