

Reply to Editor Comments

In blue we copied the comments of the editor, in black our replies.

Dear authors,

5 following up on the reviews received for your contribution on 'Vapor plumes in a tropical wet forest - spotting the invisible evaporation', I invite you to submit a revised version of your manuscript. Given the fact that the two reviews are exposing rather contrasting viewpoints - please pay particular attention in the revised version to address issues obviously related to the potential for misunderstandings on the objectives of your work (e.g., stating clearly that it is not targeting a quantification of the contribution of vapour plumes to total evaporation, but rather exposing preliminary results on an approach for identifying the meteorological conditions triggering visible vapor plumes).

Reply:

We improved the work objectives as follows (Page 3, line 6):

15 “This work aims (1) to test an innovative approach to link visual information and conventional meteorological data describing a local hydrological phenomenon. Also, (2) to identify the meteorological conditions when visible vapor plumes are present in a Tropical Wet Forest, and it tries (3) to explain the processes involve on the formation of these visible vapor plumes. The data analysis is based on conventional meteorological data vertically distributed along the forest canopy layer and time-lapse videos during day-time conditions.”

20 Along similar lines, please include in the manuscript further details on the design of the proposed experimental set-up and appropriateness for measuring vertical air temperature profiles, as well as wind speed measurements.

Reply:

Add to the introduction in page 2, line 35:

30 “... to the surface. Visible vapor plumes are classified as ascending clouds formed by clusters of tiny particles of water in liquid form (Spellman, 2012). This characteristic makes difficult to measure them with sophisticated systems based on 3D wind components (e.g., eddy-covariance systems) that are developed to measure water in gas form (Foken et al., 2012a). This type of measurements are sensitive to rainy and high humidity conditions (Camuffo 2019, Foken et al., 2012b, Kelton and Bricout, 1964, Moncrieff et al., 2005, Mauder and Zeeman, 2018, Peters et al., 1998) making difficult to use them to identify the occurrence of visible vapor plumes in forested ecosystems. This mismatch between measurement systems and target phenomena, underlines the need to identify the conditions under which visible vapor plumes are formed. This type of methodological constraints requires an innovative data analysis approach, which is the focus of this paper.”

We added this explanation to the manuscript in Page 4, line 4 as follows:

40 “The use of radiation shields together with conventional air temperature sensors allows keeping a mean absolute error during day time in warm tropical ecosystems below 0.3 °C (da Cunha, 2015, Terando et al., 2017). Also, the shelter provided by the forest canopy for the measurements carried out at 2 m helps to record similar temperatures to the surrounding near-surface environment (Lundquist & Huggett, 2008). Meanwhile, the measurement of minimum air temperatures or night-time temperatures does not require the cover of the radiation shield to keep low biases (<0.5 °C) on the mean air temperature due to the reduced or total absence of solar radiation (Terando et al., 2017).”

We also proposed an experimental setup for measuring the plumes at the end of the Results and Discussion section. This methodology opens the opportunity to use available data sets collected worldwide (Page 13, line 1):

50 “Further studies aiming to analyze in more detail the occurrence of visible vapor plumes and its
contribution to the hydrological cycle will need to consider the conditions that give origin to this
phenomenon: air convection, precipitation presence, and lifting condensation level at the top of the
canopy. The identification of air convection should be based on direct measurements of ground heat flux
55 (e.g, soil heat flux plates), a more detailed air temperature profile along de forest canopy (e.g, using
distributed temperature sensing), and multiple wind speed measurements along the canopy profile (e.g,
at least one per canopy layer plus one above the canopy). This set of measurements will help to identify
air convection and advection within the canopy structure. The wind measurements should be carried
60 pairing sonic and cup anemometers at the same locations, allowing to overcome the limitations of sonic
anemometers during rain events. The evaporation contribution to the local hydrological cycle by visible
vapor plumes requires a detailed quantification of the latent heat flux ($\rho\lambda E$) above and below the canopy.
The use of net radiometers at different heights (same locations as wind speed measurements) will
complement the detailed air temperature, and wind speed measurements. It is important to underline
65 that some experimental sites worldwide accomplish the equipment requirements above mentioned
(FLUXNET, 2020), opening the opportunity to reanalyze their data sets towards the identification of the
conditions needed for the formation of visible vapor plumes. Finally, these measurements will benefit
from combining high-resolution infrared images from above and below the canopy. These images will
provide information during day and night conditions, helping to identify the splash-droplet evaporation
70 process at canopy and ground level when the view field is focused towards specific locations of the forest
canopy.”

Further clarifications are needed with respect to evaporation estimates - even if used as a proxy in this study (since no direct measurements of the components of the energy balance method were at hand).

Reply:

75 We add the following paragraph replacing the section describing the estimation of evaporation carried
out by Jimenez-Rodriguez et al (2020):

80 “An estimation of the evaporation during the monitored period was retrieved from m Jiménez-
Rodríguez et al. (2020). This data set is used only as a reference of the evaporation process
during the monitoring period on the same site. This because this quantification has limitations
accomplishing the Monin-Obukhov similarity (MOST) theory for complex terrains (Breedt et al.,
2018). So, it is based only on the vertical transport of water vapor, neglecting the advected
energy of the forest canopy.”

85 Also, aiming to improve the manuscript quality, we included a series of the changes proposed on the
referee’s replies. We provide a full list of the main changes done to the manuscript.

Page 1, Line 19 (Paragraph improvement):

90 “... 2007), where the forest presence at continental scale induced the “biotic pump mechanism”
that favored the maintenance of similar precipitation amounts between inland and coastal
environments (Makarieva and Gorshkov, 2007; Makarieva et al., 2013a). Meanwhile, the vertical
transport ...”

Add in Page 4, line 11:

95 “... H21-USB). Meteorological data collected along the tower and soil temperature data were recorded with 1 min and 5 min averages, respectively. All data was summarized in 5 min time intervals for the analysis. A Bushnell® ... ”

Page 7, Line 3 (Sentence and equation improvements):

100 “... The parameters Ψ_s and Ψ_L were determined with equations 7 and 8, respectively. These equations requires to know the mass of the liquid water in the air ($m_{liq.air}$), the mass of the dry air ($m_{dry.air}$), the density of the air (ρ_{air}) and the density of the liquid water content of the air (ρ_{LWC}). These variables were determined using the saturation and actual vapor pressures of the air (Stull, 2017). ...”

105

$$\Psi_s = \frac{m_{liq.water}}{m_{dry.air}} \quad (7)$$

$$\Psi_L = \frac{\rho_{LWC}}{\rho_{air}} \quad (8)$$

110 Add in Page 7, line 15:

“... gradient $\left(\frac{\Delta\theta}{\Delta z}\right)$ due the absence of wind profile measurements to determine the atmospheric stability parameter along the tower. Values of ...”

Page 8, Line 29 (New sentence):

115

“...7:00 a.m. Mist might be formed early in the morning during the sampling dates 2018-03-21 and 2018-03-22. However, the time lapse video did not work at those times (Table B1). These mist ...”

120 Page 11, Line 18 (Paragraph improvement):

125 “... As plumes are not stagnant and continue moving upwards thanks to air convection, the water vapor is removed from the understory towards higher altitudes. The water condensation at the canopy level drastically reduced the volume of water vapor due to the phase change (Makarieva et al., 2013b). This allowed the ambient air to remain unsaturated and keeping the “splash droplet evaporation” process providing continuously more water vapor.”

Page 11, line 12:

130 “... LSBS. Additionally, it cannot be discarded the presence of bioparticles (e.g., airborne bacteria, fungi, pollen, plant fragments, organic compounds) as a source of aerosols from the forests (Huffman et al., 2013, Pöschlet al., 2010, Valsan et al., 2015). The high intensity rains may induce the bioparticles burst from the forest canopy. These bioparticles have been in Australia (Bigg et al., 2015), India (Valsan et al., 2015), Mexico (Rodriguez-Gomez et al., 2020), and the Amazon (Pöschlet al., 2010). Also, convective rains transport from the free troposphere
135 into the boundary layer a portion of the required aerosols ...”

Page 7, Line 4:

140 “Due to the lack of instrumentation to estimate the liquid water content in the air, we used a fixed value of 0.05 g m^{-3} . This value corresponds to the liquid water in the air reported by Thompson (2007) for continental fog events. The selection of this value was based on (1) the similarity in terms of color and transparency between the vapor plumes and fog, and (2) because both types of events occur close to the ground surface.”

145 Page 8, line 25:

“These days were characterized by cumulus clouds crossing the sky above the forest canopy in the day time. Any water vapor ascending from the forest canopy will need to reach a height of more than 100 m to form visible vapor plumes (Figure 3)”

Page 12, line 10:

150 “The description of the formation process of visible vapor plumes provides a first step on the understanding of this phenomenon within forest hydrology. This description helps to identify the timing when this phenomenon occurs, allowing to screen existing data sets in other tropical research sites to analyze its frequency of occurrence. However, it is important to test if the conditions required to form visible vapor plumes are the same in other latitudes and ecosystems. Also, new developments in air temperature monitoring techniques such as distributed temperature sensing (Euser et al., 2014; Heusinkveld et al., 2020; Izett et al., 2019; Schilperoort et al., 2018) or thermal infrared imagery (Costa et al., 2019; Egea et al., 2017) (Costa et al., 2019, Egea et al., 2017, Nieto et al., 2020, Lapidot et al., 2019) may contribute to accurately quantify the contribution of visible vapor plumes as local recyclers of forest evaporation. These methods are suitable alternatives to eddy-covariance systems that are sensitive to rainy conditions when visible vapor plumes occur.”

155

160

Also, there is a series of small changes related to grammar or addition of individual words to improve the readability of the manuscript. These changes are not listed in this reply but those are highlighted in the new pdf.

Vapor plumes in a tropical wet forest: spotting the invisible evaporation

César Dionisio Jiménez–Rodríguez^{1,2}, Miriam Coenders–Gerrits¹, Bart Schilperoort¹, Adriana del Pilar González–Angarita³, and Hubert Savenije¹

¹Delft University of Technology. Water Resources Section. Stevinweg 1, 2628 CN Delft, The Netherlands.

²Tecnológico de Costa Rica. Escuela de Ingeniería Forestal. 159-7050, Cartago, Costa Rica.

³Independent Researcher

Correspondence: César Dionisio Jiménez–Rodríguez (cdjimenezcr@gmail.com)

Abstract. Forest evaporation exports a vast amount of water vapor from land ecosystems into the atmosphere. Meanwhile, evaporation during rain events is neglected or considered of minor importance in dense ecosystems. Air convection moves the water vapor upwards leading the formation of ~~largely-large~~ invisible vapor plumes, while the identification of visible vapor plumes has not been studied yet. This work describes the formation process of vapor plumes in a tropical wet forest as evidence of evaporation processes happening during rain events. In the dry season of 2018 at La Selva Biological Station (LSBS) in Costa Rica it was possible to spot visible vapor plumes within the forest canopy. ~~This phenomenon happened only during rain events, where evaporation measurements showed contributions of 1.8 mm d⁻¹.~~ The combination of time-lapse videos at the canopy top with meteorological measurements along the canopy profile allowed to identify the conditions required for this process to happen. This phenomenon happened only during rain events, where evaporation measurements showed contributions of 1.8 mm d⁻¹. Visible vapor plumes during day time occurred on the presence of precipitation (P), air convection identified by the temperature gradient ($\frac{\Delta\theta_v}{\Delta z}$) at 2 m height, and a lifting condensation level at 43 m height ($Z_{lcl,43}$) smaller than 100 m.

1 Introduction

Forest cover in tropical regions is endangered by deforestation (Curtis et al., 2018; Rosa et al., 2016), compromising the evaporation flux from land. Forest evaporation is a mixture of water vapor originated from water intercepted on plant surfaces, soil water and plant transpiration (Roberts, 1999; Savenije, 2004; Shuttleworth, 1993). Forest evaporation is considered of major importance as a regional and local cooling system (Ellison et al., 2017) as a result of their capacity to recycle the atmospheric moisture at different time scales (van der Ent and Savenije, 2011). The water vapor originated from evaporation ~~on~~ at the surface is horizontally transported in the atmosphere by advection (Lavers et al., 2015; Strong et al., 2007), ~~whilst~~ where the forest presence at continental scale induced the “biotic pump mechanism” that favored the maintenance of similar precipitation amounts between inland and coastal environments (Makarieva and Gorshkov, 2007; Makarieva et al., 2013a). Meanwhile, the vertical transport is linked to wind shear (Chen et al., 2015) and convection (Trzeciak et al., 2017). ~~Large~~ that in large ecosystems influence the formation of convective clouds at the top of the atmospheric boundary layer (Fuentes et al., 2016; Manoli

et al., 2016). This process plays an important role in the formation of precipitation in tropical basins (Adams et al., 2011; van der Ent and Savenije, 2011), because of the contribution of water vapor ~~originating~~originated from local evaporation (Brubaker et al., 1993).

5 Evaporation is usually neglected or considered of minor importance during rain events in dense forest ecosystems (Klaassen et al., 1998). This is because during rainfall the vapor pressure deficit is close to zero (Bosveld and Bouten, 2003; Loescher et al., 2005; Mallick et al., 2016), reducing the atmospheric water demand and stopping the transpiration process (Gotsch et al., 2014). However, ~~some discrepancies have been~~the increment of evaporation with the size of rain events suggest that evaporation also occurs during the events and not only afterwards (Allen et al., 2020). This has been evidenced by discrepancies
10 found between modelled and measured evaporation rates in tropical forests (Schellekens et al., 2000). When it rains part of the precipitation is intercepted and evaporated directly to the atmosphere (David et al., 2006), ~~creating the so-called "interception". The interception will vary depending on forest type and structure, rainfall intensity and micro-meteorological conditions~~
~~(Calvo-Alvarado et al., 2018; Carlyle-Moses and Gash, 2011; Chen and Li, 2016). During small rain events, when the canopy is not fully saturated, the interception includes all precipitation. During storms the low available energy and low~~even when
15 vapor pressure deficit ~~does not drive the evaporation of intercepted water and available radiation are low~~ (Lankreijer et al., 1999). Under high humidity conditions a portion of the precipitation ~~is evaporated~~can evaporate after a raindrop splashes on the canopy or the forest floor. This process is known as "splash droplet evaporation" (~~Murakami, 2006; Dunkerley, 2009~~)
~~It~~(Dunin et al., 1988; Dunkerley, 2009; Murakami, 2006) and is based on the principle that raindrop size increases with rain intensity. ~~When~~Consequently, when larger drops hit the surface (e.g. ground, leaves, branches) allow the formation of smaller
20 rain droplets that can be easily evaporated after the splash. This process has been ~~included on the study of canopy interception of banana plantations~~pointed out as the main source of evaporation to explain the difference between intercepted water and measured evaporation in studies carried out in banana plants (Bassette and Bussi re, 2008) and Eucalyptus plantations (Dunin et al., 1988), ~~helping to quantify the evaporation process of the intercepted water.~~

25 ~~Rising plumes~~Forest evaporation produce coherent structures of water vapor called plumes, cells or rolls (Couvreur et al., 2010). Plumes of water vapor ~~had~~have been identified above forest ecosystems during day time with high resolution scanning Raman LIDAR technique (Cooper et al., 2006; Kao et al., 2000). These plumes reached heights above the canopy up to 100 m, depicting their importance as water vapor providers at local scale. This phenomenon has been ~~widely~~ studied in astrophysics (Berg et al., 2016; Sparks et al., 2019), ~~global meteorology~~ (Herman et al., 2017; Wang, 2003) ~~and vulcanology~~
30 ~~(Kern et al., 2017; Sioris et al., 2016). Unfortunately, vulcanology~~ (Kern et al., 2017; Sioris et al., 2016), ~~regional and global meteorology~~ (Herman et al., 2017; Knoche and Kunstmann, 2013; Wang, 2003; Wright et al., 2017). However, ~~to the authors best knowledge~~ little attention has been drawn to ~~smaller scale events that have been observed at different climates and ecosystems~~small events observed during rain events. ~~This work describes how the formation process~~Additionally, Couvreur et al. (2010) highlighted the lack of sampling techniques being able to characterize the occurrence of these plumes close to the surface.
35 Visible vapor plumes are classified as ascending clouds formed by clusters of tiny particles of water in liquid form (Spellman, 2012)

. This characteristic makes difficult to measure them with sophisticated systems based on 3D wind components (e.g., eddy-covariance systems) that are developed to measure water in gas form (Foken et al., 2012a). This type of measurements are sensitive to rainy and high humidity conditions (Camuffo, 2019; Foken et al., 2012b; Kelton and Bricout, 1964; Moncrieff et al., 2005; Mauder and Zeeman making difficult to use them to identify the occurrence of visible vapor plumes in a forested ecosystems. This mismatch between measurement systems and target phenomena, underlines the need to identify the conditions under which visible vapor plumes are formed. This type of constraints requires an innovative data analysis approach, which is the focus of this paper. This work aims (1) to test an innovative approach to link visual information and conventional meteorological data describing a local hydrological phenomena. Also, (2) to identify the meteorological conditions when visible vapor plumes are present in a Tropical Wet Forest ~~is the evidence of evaporation during rain events. Thus using~~, and it tries (3) to explain the processes involve on the formation of these plumes. The data analysis is based on conventional meteorological data vertically distributed along the forest canopy ~~and time-lapse videos~~ layer and time-lapse videos during day-time conditions.

2 Methodology

2.1 Study Site

15 The monitoring was carried out at La Selva Biological Station (LSBS) on the Caribbean lowlands of Costa Rica (N: 10°26'0" – W: 83°59'0"). This station registered a mean annual precipitation of 4351 mm yr⁻¹, a mean annual temperature of 26.3 °C, and a mean daily temperature difference of 9.5 °C. A short dry season is present in LSBS between February and April every year, and it is characterized by a reduction in the precipitation without vegetation experiencing a soil water deficit (Sanford Jr. et al., 1994; Lieberman and Lieberman, 1987; Loescher et al., 2005). LSBS is covered by a matrix of old growth and secondary 20 forests, small forest plantations, and permanent plots with mixed tree species (Figure 1). All the instrumentation was placed at the Major Research Infrastructure plot (MRI-plot) of 1.0 ha, located within an old growth forest on the upper terrace of the Puerto Viejo river (Sanford Jr. et al., 1994). The MRI-plot is situated in the upper section of a small hill facing South-West towards an affluent of the Puerto Viejo river. The soil is classified as Andic Humidotropept with a clay and organic matter content of 35 % and 23 %, respectively (Sollins et al., 1994). Tree density in 2017 was 371 trees ha⁻¹ of individuals with a tree 25 diameter bigger than 10 cm. The palm *Welfia regia* and the tree *Pentaclethra macroloba* are the most abundant species with 56 trees ha⁻¹ and 43 trees ha⁻¹, respectively. Average leaf area index (LAI) in 2005 was 3.56 m² m⁻² (Tang et al., 2012). The plot is located within a stable forest plot in terms of changes in canopy height and tree biomass fixation (Dubayah et al., 2010).

2.2 Experimental Design

30 The monitoring was carried out on the MRI-plot in the highest tower (43 m), which is located within a depression of the forest canopy (Figure 1). Along the vertical axis of the tower, the air temperature (°C) and relative humidity (%) were measured

with HOBO[®] smart sensors (part code: S-THB-M008). The sensors were located at 2 m, 8 m and 43 m height, placed at a distance of 1.5 m from the tower and protected with a radiation shield (HOBO[®] part code: RS-3) of 10 cm diameter. The use of radiation shields together with conventional air temperature sensors allows keeping a mean absolute error during day time in warm tropical ecosystems below 0.3 °C (da Cunha, 2015; Terando et al., 2017). Also, the shelter provided by the forest canopy for the measurements carried out at 2 m helps to record similar temperatures to the surrounding near-surface environment (Lundquist and Huggett, 2008). Meanwhile, the measurement of minimum air temperatures or night-time temperatures does not require the cover of the radiation shield to keep low biases (<0.5 °C) on the mean air temperature due to the reduced or total absence of solar radiation (Terando et al., 2017). At the highest point of the tower, the precipitation (mm min⁻¹) was recorded with a Davis[®] rain gauge. Soil temperature (°C) was measured in two different locations at 5 cm and 15 cm depth with a soil temperature sensor (HOBO[®] part code: TMC20-HD). Soil moisture (Θ, m³ m⁻³) was measured at the same locations as soil temperature at 5 cm depth with an ECH₂O[®] EC sensor. Soil temperature was recorded with a 4-channel data logger (HOBO[®] part code: U12-008) and the other sensors with a USB Micro Station (HOBO[®] part code: H21-USB) every ~~1 min~~. Meteorological data collected along the tower and soil temperature data were recorded with 1 min and 5 min average, respectively. All data was summarized in 5 min time intervals for the analysis. A Bushnell[®] Natureview[®] Essential HD camera (12 megapixels) was installed at the top of the tower facing North–West.

2.3 Monitoring Period

All environmental variables were monitored between 2018-01-24 and 2018-03-26 (see Appendix A). The camera was installed to collect photographs above the canopy between 2018-03-21 and 2018-03-25 at different time windows (see Appendix B). The photographs were collected continuously from 5:00 to 18:30 hours local time (UTC-6). These pictures were used to determine the timing when the vapor plumes were visible at the MRI-plot. The photographs were classified into three conditions (Figure 2):

- ~~– Plumes: includes the presence of buoyant vapor clouds risen from the forest canopy. These cloud bodies change their vertical position in consecutive frames. Rising vapor plumes can be observed in the online video of 2018-03-24 available at (Jiménez-Rodríguez et al., 2019b).~~ Clear View: includes all the pictures with clear and cloudy sky where the canopy is clearly visible and there is neither mist nor plumes present (Figure 2 A and B).
- Mist and Fog: includes the presence of a homogeneous blurry view of the canopy. The blurriness of each picture varies depending on the humidity conditions. Special care was taken to prevent the erroneous classification of photographs affected by a fogged-up lens. This category is called "mist" from now onwards (Figure 2 C).
- ~~– Clear View: includes all the pictures with clear and cloudy sky where the canopy is clearly visible and there is neither mist nor plumes present.~~ Plumes: includes the presence of buoyant vapor clouds risen from the forest canopy (Figure 2 D). These cloud bodies change their vertical position in consecutive frames. Rising vapor plumes can be observed in the online video of 2018-03-24 available at <https://doi.org/10.4121/uuid:997cc9d8-2281-453e-b631-5f93cfebe00e> (Jiménez-Rodríguez et al., 2019b).

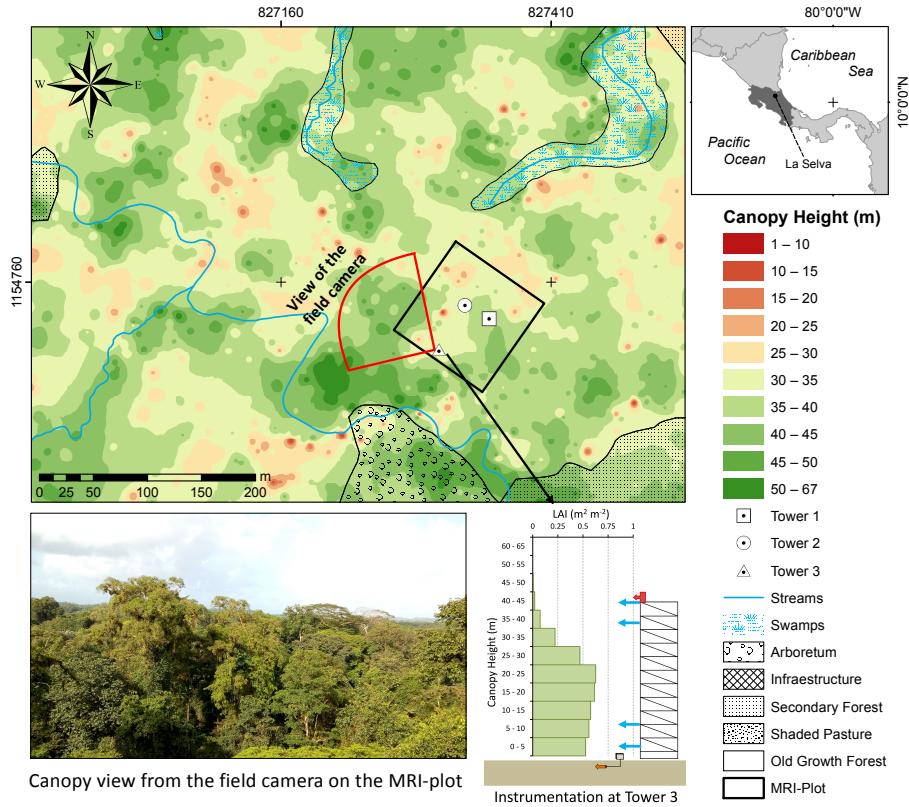


Figure 1. Canopy height [and land cover map](#) of the area surrounding the Major Research Infrastructure plot (MRI-plot) at La Selva Biological Station, Costa Rica. The photograph in the map shows a view from the field camera at the top of the tower (red box with arrow). The blue arrows along the Tower 3 diagram show the locations of temperature and relative humidity sensors.

2.4 Data Analysis

Data processing and analysis was performed with the open source software R (R Core Team, 2017). All temperatures were converted from K to °C. Superficial soil temperature ($T_{s,0}$, °C) was estimated with equation 1 (Holmes et al., 2008). This equation describes the diurnal variations of soil temperature as sine waves depending on the 24 h moving averages of soil temperature at 5 cm depth ($T_{s,5}$, °C). The daily amplitude of air temperature (T_A , °C) is defined as the difference between $T_{s,5}$ and the air temperature at 2 m (T_{2m}). The oscillations are determined by the damping depth (ν , m) which is calculated with equation 2. Depth difference between the $T_{ss} - T_{s,0}$ and $T_{s,5}$ is defined as z_b (m). The sine pattern depends on the angular frequency (ω , s^{-1}), time (t) in s and ϕ (-) as a constant for phase change. Equation 3 is used to determine ω with τ (s) as the wave period. Equation 2 calculates ν with the soil thermal diffusivity (η , $m^2 s^{-1}$) and ω . Equation 4 (Nakshabandi and Kohnke, 1965) is used to determine η , where ρ_s is the soil bulk density of $0.76 g cm^{-3}$ (Sollins et al., 1994) for the experimental plot, c_s is the specific heat for clay soils ($837.36 W kg^{-1} °C^{-1}$) and k is the soil thermal conductivity of $1.58 W m^{-1} °C^{-1}$ (Pielke,

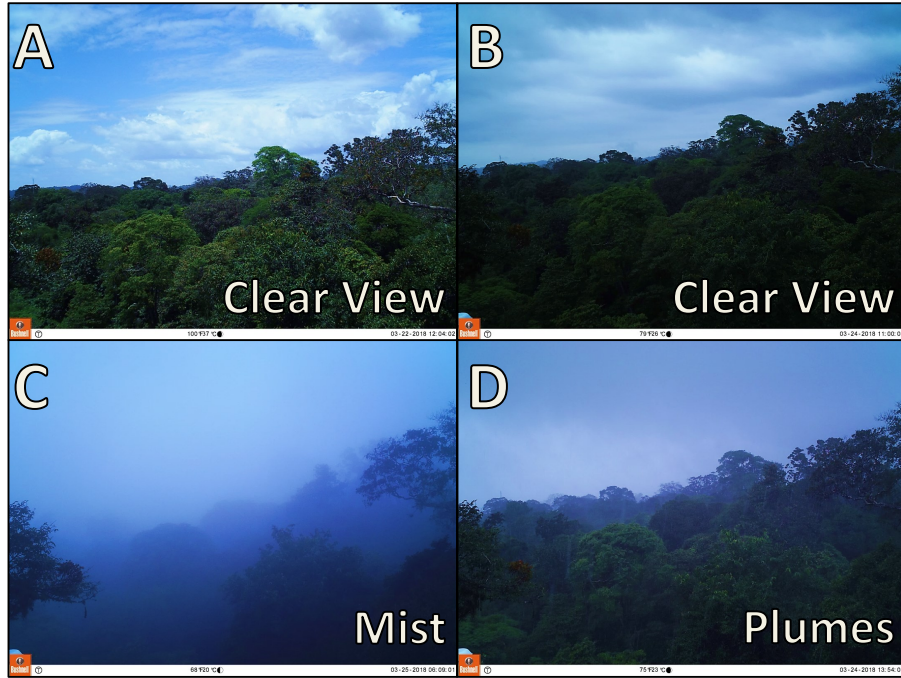


Figure 2. Visual monitoring showing the 3 conditions used to classify the canopy photographs on the time-lapse-time-lapse videos. The pictures A and B shows-show the "Clear View" classification, picture A on a sunny day and picture B during rain. Picture C describe describes the Mist and picture D shows the plumes rising from the forest canopy.

2013). These last two parameters were chosen according to the soil water conditions during the monitoring period, which was close to soil field capacity (see Appendix A).

$$T_{s,0} = T_{s,5} + T_A e^{\left(\frac{-z_s}{\nu}\right)\left(\frac{-z_b}{\nu}\right)} \sin\left(\omega t - \frac{z_b}{\nu} + \phi\right) \quad (1)$$

$$\nu = \sqrt{\frac{2\eta}{\omega}} \quad (2)$$

$$5 \quad \omega = \frac{2\pi}{\tau} \quad (3)$$

$$\eta = \frac{k}{\rho_s c_s} \quad (4)$$

Virtual potential temperature (θ_v , °C) of the air was calculated to take into account the variation in the adiabatic lapse rate due to changes in pressure (Barr et al., 1994; Stull, 1988, 2017). For saturated (cloudy) air conditions equation 5 calculates

the θ_v based on the water-vapor mixing ratio (ψ_s) of the moist-saturated air, the liquid water mixing ratio (ψ_L) and the virtual temperature (θ). The parameters ψ_s and ψ_L were determined using the vapor pressure deficit of the air on each height with equations 7 and 8, respectively. These equations requires to know the mass of the liquid water in the air ($m_{liq.air}$), the mass of the vapor water in the air ($m_{vap.air}$), and the mass of the dry air ($m_{dry.air}$). Due to the lack of instrumentation to estimate

5 the mass of liquid water in the air, we used a fixed value of 0.05 g m^{-3} . This value corresponds to the liquid water content (LWC) in the air reported by Thompson (2007) for continental fog events. The selection of this value was based on (1) the similarity between the vapor plumes and fog, and (2) because both types of events occur close to the ground surface. The variables $m_{vap.air}$ and $m_{dry.air}$ were determined using the saturation and actual vapor pressures of the air (Stull, 2017). The

10 virtual temperature was estimated with equation 6 where Γ_d is the dry adiabatic lapse rate near the surface ($0.0098 \text{ }^\circ\text{C m}^{-1}$), z is the height above the ground in m and T_z is the air temperature at the same heights.

$$\theta_{v,z} = \theta_z(1 + 0.608\psi_s - \psi_L) \quad (5)$$

$$\theta_z = T_z + \Gamma_d z \quad (6)$$

$$\psi_s = \frac{m_{vap.water}}{m_{dry.air}} \quad (7)$$

$$\psi_L = \frac{m_{liq.water}}{m_{dry.air}} \quad (8)$$

15 Convection can be identified by evaluating the temperature gradient ($\frac{\Delta\theta_v}{\Delta z}$) due the absence of wind profile measurements to determine the atmospheric stability parameter along the tower. Values of $\frac{\Delta\theta_v}{\Delta z} > 0$ are linked to stable stratification, meanwhile $\frac{\Delta\theta_v}{\Delta z} < 0$ show an unstable stratification (Stull, 2017), which will drive convection.

The condensation of vapor close to the forest canopy can be identified by calculating the lifting condensation level (z_{lcl}) in m with equation 9. This equation determines the elevation at which a parcel of air condensates allowing the formation of clouds. This equation uses the difference between air temperature (T_z) and dew point temperature ($T_{dew,z}$) at one specific height (z), divided by the difference between Γ_d and the moist adiabatic lapse rate (Γ_{dew}) at T_z and $T_{dew,z}$ (Stull, 2017).

$$z_{lcl} = \frac{T_z - T_{dew,z}}{\Gamma_d - \Gamma_{dew}} \quad (9)$$

25 The energy balance equation (Equation ??) was used to estimate the evaporation (E_z) in mm hr^{-1} at 2 m, 8 m and 43 m height. In this equation, G is the ground heat flux (W m^{-2}), $R_{n,z}$ is the net radiation (W m^{-2}), H_z the sensible heat flux

($W m^{-2}$), ρ_w is the water density ($1.0 kg m^{-3}$) and λ the latent heat of vaporization ($2.405 MJ kg^{-1}$). $R_{n,z}$ and H_z are estimated at 2 m, 8 m and 43 m. The estimation of all the fluxes is described in detail by Jiménez-Rodríguez et al. (2020). Equation ?? is based on an estimation of the evaporation during the monitored period was retrieved from Jiménez-Rodríguez et al. (2020). This data set is used only as a reference of the evaporation process during the monitoring period on the same site. This because this quantification has limitations accomplishing the Monin-Obukhov similarity (MOST) theory for complex terrains (Breedt et al., 2018). So, it is based only on the vertical transport of heat and neglects water vapor, neglecting the advected energy on of the forest canopy as a consequence of the lack of more detailed measurements (e.g, eddy covariance system).

$$E_z = \frac{R_{n,z} - H_z - G}{\rho_w \lambda}$$

10 3 Results and Discussion

The monitoring period experienced a diurnal variation in air temperature along the vertical profile of the canopy, with a temperature difference of more than $10^\circ C$ at 43 m and less than $7^\circ C$ at 2 m height (Figure 3). The highest temperatures were registered at 43 m height reaching more than $30^\circ C$, decreasing in magnitude towards the forest floor. These peak temperatures were recorded around noon with differences up to $5^\circ C$ between the air temperature at 43 m and 2 m height. The $T_{s,0}$ oscillates between $20.7^\circ C$ and $25.4^\circ C$. The amplitude of the oscillation increased with the sunniest days but the daily difference does not exceed the $4^\circ C$. The maximum Θ value was $0.47 m^3 m^{-3}$ during the heavy rains, almost reaching the saturation point for clay soils of $0.50 m^3 m^{-3}$ (Saxton and Rawls, 2006). The minimum Θ was recorded after the driest period just before the rains on 2018-03-24 ($0.42 m^3 m^{-3}$) getting close to soil field capacity for clay soils (Saxton and Rawls, 2006). Evaporation always occurs during daytime in on all sampling days (Figure 3). During the four sunny days the evaporation was larger than $5 mm d^{-1}$, with a contribution of more than $1.0 mm d^{-1}$ from 8 m height and no more than $0.7 mm d^{-1}$ from 2 m height (Jiménez-Rodríguez et al., 2020). In contrast, during 2018-03-24 the continuous rains sum up $58.7 mm d^{-1}$ and the evaporation was estimated as $1.8 mm d^{-1}$ at 43 m and only $0.2 mm d^{-1}$ at 2 m height (Table 1).

During the visual monitoring with the field camera, clear view conditions were predominant along four days (Figure 3). These days were characterized by sunny conditions with temperatures above the $25^\circ C$, no large rain events and a decreasing trend in soil moisture. These days were characterized by cumulus clouds crossing the sky above the forest canopy in day time. Any water vapor ascending from the forest canopy will need to reach a height of more than 100 m to form visible vapor plumes (Figure 3). Also, on 2018-03-24 it was possible to identify three short periods with clear view conditions in between the rains. Mist formation was identify identified on 2018-03-23 and 2018-03-25 before 7:00 a.m. Meanwhile the photographs of the other sampling days did not show mist formation because of its timing. Mist might be formed early in the morning during the sampling dates 2018-03-21 and 2018-03-22. However, the time lapse video did not work at those times (Table B1). These mist events were linked with superficial soil temperatures higher than $2^\circ C$ with respect to air temperature. Finally, the vapor plumes were visible only during rainy conditions on 2018-03-24 (videos available at Jiménez-Rodríguez et al. (2019b)). Soil

Table 1. ~~Summary~~ Daily summary of ~~daily~~ precipitation and evaporation at 43 m, 8 m, and 2 m height ~~estimated based on~~ according to Jiménez-Rodríguez et al. (2020) for the meteorological data collected on experimental site during the monitoring period.

Date	Precipitation (mm d ⁻¹)	Evaporation (mm d ⁻¹)		
		0–43 m	0–8 m	0–2 m
2018-03-21	0.0	6.0	1.5	0.7
2018-03-22	0.0	5.4	1.1	0.4
2018-03-23	4.6	5.8	1.1	0.3
2018-03-24	58.7	1.8	0.5	0.2
2018-03-25	0.0	5.3	1.2	0.5

Note: all evaporation values corresponds to the water vapor produced from the forest floor up to the specified height.

temperatures during this day were warmer than the air column along the forest canopy (Figure 3).

Evaporation during sunny days provided the conditions to form vapor plumes as those ones described by Cooper et al. (2006) and Kao et al. (2000). The evaporation peaks during these days occurred around noon, registering a z_{1cl} higher than 5 500 m (Figure 3) which is the height required to form clouds and be visible. This is the reason why is not possible to see the vapor rising from the surface. The vapor plumes were visible on the day with continuous precipitation (2018-03-24). On this day, the z_{1cl} dropped beneath 100 m because during rain events the θ_v of all the air column dropped quickly. This drop kept the θ_v beneath the superficial soil temperature, allowing a localized convection event. This convection process forced the evaporated water to move upwards forming buoyant clouds close to the forest surface. The evaporation during rain events is 10 the result of the splash droplet evaporation process (Murakami, 2006; Dunkerley, 2009), which can provide water vapor as a consequence of the fragmentation of raindrops when hitting the surface.

Energy convection plays an important role in forest ecosystems during night time (Bosveld et al., 1999). This is a consequence of the mass transport capacity of the intermittent nocturnal convective fluxes (Cooper et al., 2006). The convection 15 process is forced by the ground heat flux (Jacobs et al., 1994), which is enhanced by the larger soil moisture in the clay soil which increases the soil heat capacity (Abu-Hamdeh, 2003). A coupled canopy system enables sensible heat and water vapor transport from the soil to the atmosphere just above the canopy layer (Göckede et al., 2007). This facilitates the generation of the convection process, allowing the ascending warm air to cool down at the canopy top and condensate forming the visible water vapor plumes. The condensation releases heat (Goosse, 2015), driving the convection. Vapor plumes are always present 20 as a consequence of the moisture exchange between the surface and the atmosphere (Lawford, 1996), where evaporation from land covers with enough water supply provides the required air moisture (Kao et al., 2000). However, the conditions needed to form a visible buoyant cloud close to the surface require a big difference in air temperature over height. Temperature gradient

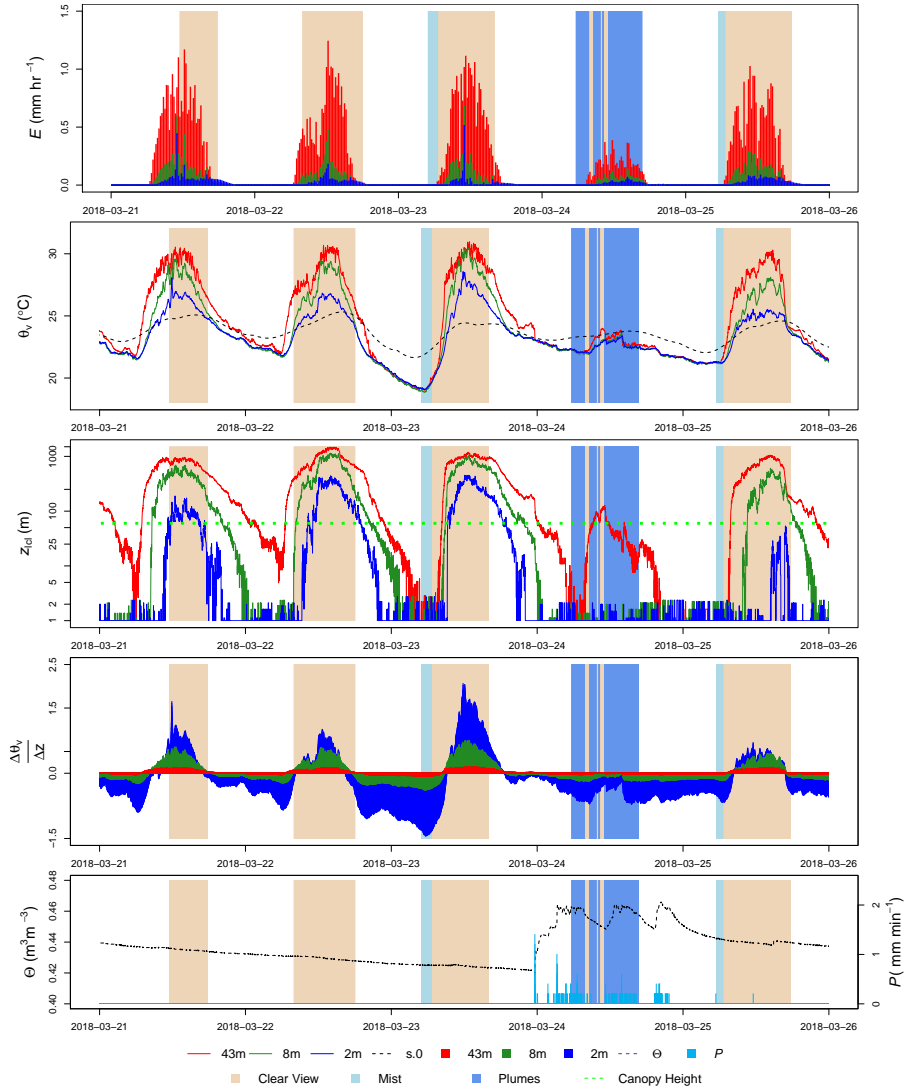


Figure 3. *Evaporation (E),* Virtual potential temperature (θ_v), lifting condensation level (z_{lc1}) in an untransformed semi-logarithmic scale and temperature gradient ($\frac{\Delta\theta_v}{\Delta z}$) at 43 m, 8 m and 2 m height. Additionally, precipitation (P) and soil moisture (Θ) are also shown during the visual monitoring between 2018-03-21 and 2018-03-25. [Evaporation \(\$E\$ \) measurements were retrieved from Jiménez-Rodríguez et al. \(2020\)](#). Background colored areas denoted the three categories in which the photographs were classified: Clear View, Mist and Plumes.

at 43 m, 8 m and 2 m is negative during plumes and mist conditions, meanwhile clear view conditions has a larger range with more positive values (see Appendix C).

5 The visible vapor plumes can be spotted on the canopy depressions surrounding the tower (Figure 1). These depressions are characterized by a low leaf area index and shorter canopy height, which translates into areas with low potential to produce transpiration during rain events. This implies that the main source of water vapor is linked to water evaporated from wet surfaces and soil evaporation, while transpiration may contribute to a lesser extent. Visible vapor plumes are the result of the condensation of water vapor rising from a warmer surface. When a column of warm humid air reaches ~~a lower density than air above~~ the dew point temperature, the water vapor condenses around aerosols in the air allowing the formation of clouds (Stull, 2017). In this regard, there are ~~two different~~ sources of aerosols at LSBS. One source is linked to ~~windy wind~~ carrying aerosols from nearby agricultural land uses (Loescher et al., 2004). ~~The~~ A second source is linked to convective rains that characterize the dry season at LSBS. ~~These rains~~ Additionally, it cannot be discarded the presence of bioparticles (e.g., airborne bacteria, fungi, pollen, plant fragments) as a source of aerosols from the forests (Huffman et al., 2013; Valsan et al., 2015). The high intensity rains may induce the bioparticles burst from the forest canopy. This bioparticles have been reported in Australia (Bigg et al., 2015), India (Valsan et al., 2015), Mexico (Rodriguez-Gomez et al., 2020), and the Amazon (Pöschl et al., 2010) Also, convective rains transport from the free troposphere into the boundary layer a portion of the required aerosols for the condensation process and later ~~formation of they form~~ clouds (Wang et al., 2016). Meanwhile the "splash droplet evaporation" process (Murakami, 2006) provides the main source of water vapor after rain drops hit the canopy and soil surfaces. As plumes are not stagnant and continue moving upwards thanks to air convection, the water vapor is removed from the understory towards higher altitudes. The water condensation at the canopy level reduced drastically the volume of water vapor due to the phase change (Makarieva et al., 2013b). This allowed the ambient air to remain unsaturated and keeping the "splash droplet evaporation" process providing continuously more water vapor.

Cloud formation usually happens high above the surface boundary layer where the forest canopy is located, but available information of cloud formation close to the forest canopy is scarce. The temperature gradient ($\frac{\Delta\theta_v}{\Delta z}$) at 43 m, 8 m and 2 m is negative during plumes and mist conditions, meanwhile clear view conditions have a larger range with more positive gradients. Lifting condensation level is a key element that allowed to differentiate between plumes and mist conditions (see Appendix C). The combination of variables such as Z_{TCL} , z_{lcl} , $\frac{\Delta\theta_v}{\Delta z}$, and P allows to identify the formation of vapor plumes in Tropical Wet Forests (Figure 4). The z_{lcl} is the height in the atmosphere at which a parcel of moist air becomes saturated if experience a forced ascent (Stull, 2017). It provides an estimate of the height at which the clouds can be formed. The temperature gradient is an indicator of how easily a parcel of air can be lifted (Spellman, 2012) and can be used as a proxy of the atmospheric stability. During unstable atmospheric conditions ($\frac{\Delta\theta_v}{\Delta z} < 0$) ~~is more easy it is easier for the air parcels~~ to move upwards the parcels of air than under stable conditions ($\frac{\Delta\theta_v}{\Delta z} > 0$). Finally, precipitation saturates the air column and provides the water vapor after the splash droplet evaporation process on the canopy and forest floor surfaces.

35

During the full monitoring period at La Selva Biological Station, only 1.4 % of our study period accomplished the conditions required for the formation of visible vapor plumes (precipitation, $Z_{\text{fc}} z_{\text{cl}} < 100 \text{ m}$ and $0 > \frac{\Delta\theta_v}{\Delta z} > -1$). These conditions differ from those needed to form mist. In a tropical wet forest in Costa Rica, fog and mist formation happens before sunrise (Allen et al., 1972). However, fog does not involve the upward convective flux needed for vapor plumes, while mist is affected by this upward convective flux but without rain (Stull, 2017). Vapor plumes are buoyant cloud formations with an identifiable shape Spellman (2012), main characteristics that allow the differentiation from fog and mist events. While mist and fog are formed by microscopic water droplets floating in the air which can reduce the visibility to less than one kilometer in the case of fog or a lesser extent with the mist Spellman (2012)(Spellman, 2012).

10 The description of the formation process of visible vapor plumes provides a first step on the understanding of this phenomenon within forest hydrology. This description helps to identify the timing when this phenomenon occurs, allowing to screen existing data sets in other tropical research sites to analyze its frequency of occurrence. However, is important to test if the conditions required to form visible vapor plumes are the same in other latitudes and ecosystems. Also, new developments in air temperature monitoring techniques such as distributed temperature sensing (Euser et al., 2014; Heusinkveld et al., 2020; Izett et al., 2019; Schilperoort

15 or thermal infrared imagery (Costa et al., 2019; Egea et al., 2017) (Costa et al., 2019, Egea et al., 2017, Nieto et al., 2020, Lapidot et al., 2019) may contribute to accurately quantify the contribution of visible vapor plumes as local recyclers of forest evaporation. These methods are suitable alternatives to eddy-covariance systems that are sensitive to rainy conditions when visible vapor plumes occur.

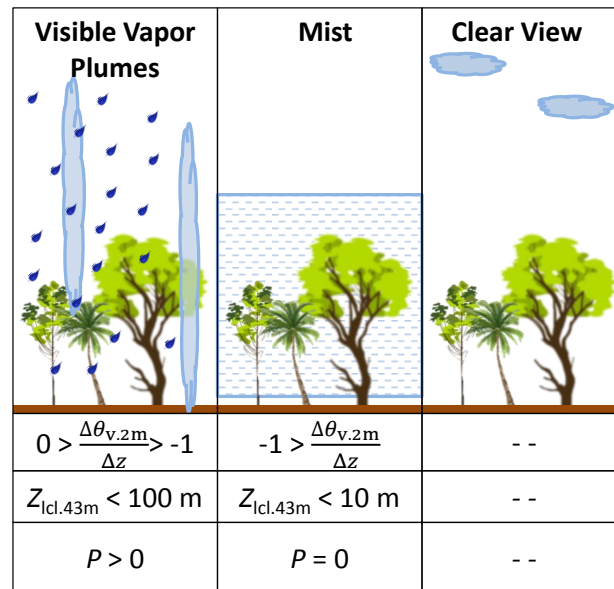


Figure 4. Simplification diagram describing the required conditions to form visible vapor plumes in a Tropical Wet Forest and the differences between mist and clear view conditions.

Further studies aiming to analyze in more detail the occurrence of visible vapor plumes and its contribution to the hydrological cycle will need to consider the conditions that give origin to this phenomenon: air convection, precipitation presence, and lifting condensation level at the top of the canopy. The identification of air convection should be based on direct measurements of ground heat flux (e.g. soil heat flux plates), a more detailed air temperature profile along the forest canopy (e.g. using distributed temperature sensing), and multiple wind speed measurements along the canopy profile (e.g. at least one per canopy layer plus one above the canopy). This set of measurements will help to identify air convection and advection within the canopy structure. The wind measurements should be carried pairing sonic and cup anemometers at the same locations, allowing to overcome the limitations of sonic anemometers during rain events. The evaporation contribution to the local hydrological cycle by visible vapor plumes requires a detailed quantification of the latent heat flux ($\rho\lambda E$) above and below the canopy. The use of net radiometers at different heights (same locations as wind speed measurements) will complement the detailed air temperature, and wind speed measurements. It is important to underline that some experimental sites worldwide accomplish the equipment requirements above mentioned (FLUXNET, 2020), opening the opportunity to reanalyze their data sets towards the identification of the conditions needed for the formation of visible vapor plumes. Finally, these measurements will benefit from combining high resolution infrared images from above and below canopy. These images will provide information under day and night conditions, helping to identify the splash-droplet evaporation process at canopy and ground level when the view field is focused towards specific locations of the forest canopy.

4 Conclusions

The visual monitoring captured the formation of visible vapor plumes close to the surface boundary layer of a Tropical Wet Forest (TWF) during rainy conditions. These visible plumes are the visual evidence of evaporation processes happening during rain events, where the splash droplet evaporation process provides the required water vapor to form visible vapor plumes. This water vapor is part of the intercepted water evaporated from the forest floor and plant surfaces since transpiration is likely reduced by the low vapor pressure deficit but not stopped. It is raised up by air convection driven by warm soil temperatures. Finally, condensing close to the forest canopy due to the drop in the virtual potential air temperature along the forest air column. Consequently, this phenomenon can be identified in TWF when precipitation occurs, the lifting condensation level at 43 m height ($z_{\text{ref}} - z_{\text{icl}}$) is lower than 100 m, and the temperature gradient ($\frac{\Delta\theta_v}{\Delta z}$) at 2 m height is between 0 and ~~+1~~ -1°C m^{-1} . Contrary to the vapor plumes, mist appear when no precipitation occurs ($P = 0$), z_{icl} at 43 m is less than 10 m and $\frac{\Delta\theta_v}{\Delta z}$ is less than -1°C m^{-1} . This work also brings the attention to the forest evaporation role during rain events, where little information is still available.

Competing interests. The authors declare that they have no conflict of interest.

Acknowledgements. This work was carried out with a fellowship from the Organization for Tropical Studies (Glaxo Centroamerica Fellowship–Fund 502). With the aid of a scholarship from PINN-MICITT Costa Rica (contract: PED-032-2015-1) and the aid of the grant 863.15.022 from The Netherlands Organization for Scientific Research (NWO). Also, NASA’s funding NNX12AN43H and 80NSSC18K0708 for providing the LAI data sets. Special thanks to Bernal Matarrita, Orlando Vargas, Wagner López, Danilo Brenes, Diego Dierick, Enrique Castro and Marisol Luna for their help and advice in the research station. Finally, to all the staff of the OTS for its willingness to support our project.

Data availability. Time lapse videos are available online in the 4TU data repository at <https://data.4tu.nl/repository/uuid:997cc9d8-2281-453e-b631-5f93cfebe00e> (Jiménez-Rodríguez et al., 2019b). Meteorological data used in this manuscript are available online in the 4TU data repository (<https://doi.org/10.4121/uuid:e70993d2-5852-4f63-9aff-39451fbd3fde>; Jiménez-Rodríguez et al. (2019a)).

References

- Abu-Hamdeh, N. H.: Thermal Properties of Soils as affected by Density and Water Content, *Biosystems Engineering*, 86, 97–102, [https://doi.org/10.1016/S1537-5110\(03\)00112-0](https://doi.org/10.1016/S1537-5110(03)00112-0), 2003.
- Adams, D. K., Fernandes, R. M. S., Kursinski, E. R., Maia, J. M., Sapucci, L. F., Machado, L. A. T., Vitorello, I., Monico, J. F. G., Holub, K. L., Gutman, S. I., Filizola, N., and Bennett, R. A.: A dense GNSS meteorological network for observing deep convection in the Amazon, *Atmospheric Science Letters*, 12, 207–212, <https://doi.org/10.1002/asl.312>, 2011.
- Allen, L. H., Lemon, E., and Müller, L.: Environment of a Costa Rican Forest, *Ecology*, 53, 102–111, <https://doi.org/10.2307/1935714>, 1972.
- Allen, S. T., Aubrey, D. P., Bader, M. Y., Coenders-Gerrits, M., Friesen, J., Gutmann, E. D., Guillemette, F., Jiménez-Rodríguez, C., Keim, R. F., Klammerus-Iwan, A., Mendieta-Leiva, G., Porada, P., Qualls, R. G., Schilperoord, B., Stubbins, A., and Van Stan II, J. T.: Key Questions on the Evaporation and Transport of Intercepted Precipitation, pp. 269–280, Springer International Publishing, Cham, https://doi.org/10.1007/978-3-030-29702-2_16, 2020.
- Barr, A. G., King, K. M., Gillespie, T. J., Den Hartog, G., and Neumann, H. H.: A comparison of bowen ratio and eddy correlation sensible and latent heat flux measurements above deciduous forest, *Boundary-Layer Meteorology*, 71, 21–41, <https://doi.org/10.1007/BF00709218>, 1994.
- Bassette, C. and Bussièrè, F.: Partitioning of splash and storage during raindrop impacts on banana leaves, *Agricultural and Forest Meteorology*, 148, 991 – 1004, <https://doi.org/10.1016/j.agrformet.2008.01.016>, 2008.
- Berg, J., Goldstein, D., Varghese, P., and Trafton, L.: DSMC simulation of Europa water vapor plumes, *Icarus*, 277, 370–380, <https://doi.org/10.1016/j.icarus.2016.05.030>, 2016.
- Bigg, E. K., Soubeyrand, S., and Morris, C. E.: Persistent after-effects of heavy rain on concentrations of ice nuclei and rainfall suggest a biological cause, *Atmospheric Chemistry and Physics*, 15, 2313–2326, <https://doi.org/10.5194/acp-15-2313-2015>, 2015.
- Bosveld, F. C. and Bouten, W.: Evaluating a Model of Evaporation and Transpiration with Observations in a Partially Wet Douglas-Fir Forest, *Boundary-Layer Meteorology*, 108, 365–396, <https://doi.org/10.1023/A:1024148707239>, 2003.
- Bosveld, F. C., Holtslag, A. M., and Van Den Hurk, B. J.: Nighttime convection in the interior of a dense Douglas fir forest, *Boundary-Layer Meteorology*, 93, 171–195, <https://doi.org/10.1023/A:1002039610790>, 1999.
- Breedt, H. J., Craig, K. J., and Jothiprakasam, V. D.: Monin-Obukhov similarity theory and its application to wind flow modelling over complex terrain, *Journal of Wind Engineering and Industrial Aerodynamics*, 182, 308 – 321, <https://doi.org/https://doi.org/10.1016/j.jweia.2018.09.026>, <http://www.sciencedirect.com/science/article/pii/S0167610518300886>, 2018.
- Brubaker, K. L., Entekhabi, D., and Eagleson, P. S.: Estimation of Continental Precipitation Recycling, *Journal of Climate*, 6, 1077–1089, [https://doi.org/10.1175/1520-0442\(1993\)006<1077:EOCPR>2.0.CO;2](https://doi.org/10.1175/1520-0442(1993)006<1077:EOCPR>2.0.CO;2), 1993.
- Calvo-Alvarado, J. C., Jiménez-Rodríguez, C. D., Calvo-Obando, A. J., Marcos do Espírito-Santo, M., and Gonçalves-Silva, T.: Interception of Rainfall in Successional Tropical Dry Forests in Brazil and Costa Rica, *Geosciences*, 8, <https://doi.org/10.3390/geosciences8120486>, 2018.
- Camuffo, D.: Chapter 20 - Measuring Wind and Indoor Air Motions, in: *Microclimate for Cultural Heritage (Third Edition)*, edited by Camuffo, D., pp. 483–511, Elsevier, third edition edn., <https://doi.org/10.1016/B978-0-444-64106-9.00020-1>, 2019.
- Carlyle-Moses, D. E. and Gash, J. H. C.: Rainfall Interception Loss by Forest Canopies, pp. 407–423, Springer Netherlands, Dordrecht, https://doi.org/10.1007/978-94-007-1363-5_20, 2011.

- Chen, Q., Fan, J., Hagos, S., Gustafson Jr., W. I., and Berg, L. K.: Roles of wind shear at different vertical levels: Cloud system organization and properties, *Journal of Geophysical Research: Atmospheres*, 120, 6551–6574, <https://doi.org/10.1002/2015JD023253>, 2015.
- Chen, Y.-Y. and Li, M.-H.: Quantifying Rainfall Interception Loss of a Subtropical Broadleaved Forest in Central Taiwan, *Water*, 8, <https://doi.org/10.3390/w8010014>, 2016.
- 5 Cooper, D., Leclerc, M., Archuleta, J., Coulter, R., Eichinger, W., Kao, C., and Nappo, C.: Mass exchange in the stable boundary layer by coherent structures, *Agricultural and Forest Meteorology*, 136, 114–131, <https://doi.org/10.1016/j.agrformet.2004.12.012>, advances in Surface-Atmosphere Exchange - A Tribute to Marv Wesely, 2006.
- Costa, J., Egipto, R., Sánchez-Virosta, A., Lopes, C., and Chaves, M.: Canopy and soil thermal patterns to support water and heat stress management in vineyards, *Agricultural Water Management*, 216, 484–496, <https://doi.org/10.1016/j.agwat.2018.06.001>, 2019.
- 10 Couvreux, F., Hourdin, F., and Rio, C.: Resolved Versus Parametrized Boundary-Layer Plumes. Part I: A Parametrization-Oriented Conditional Sampling in Large-Eddy Simulations, *Boundary-Layer Meteorology*, 134, 441–458, <https://doi.org/10.1007/s10546-009-9456-5>, 2010.
- Curtis, P. G., Slay, C. M., Harris, N. L., Tyukavina, A., and Hansen, M. C.: Classifying drivers of global forest loss, *Science*, 361, 1108–1111, <https://doi.org/10.1126/science.aau3445>, 2018.
- 15 da Cunha, A. R.: Evaluation of measurement errors of temperature and relative humidity from HOBO data logger under different conditions of exposure to solar radiation., *Environmental monitoring and assessment*, 187, 236, <https://doi.org/10.1007/s10661-015-4458-x>, 2015.
- David, J. S., Valente, F., and Gash, J. H.: Evaporation of Intercepted Rainfall, in: *Encyclopedia of Hydrological Sciences*, chap. 43, American Cancer Society, <https://doi.org/10.1002/0470848944.hsa046>, 2006.
- Dubayah, R. O., Sheldon, S. L., Clark, D. B., Hofton, M. A., Blair, J. B., Hurtt, G. C., and Chazdon, R. L.: Estimation of tropical forest
20 height and biomass dynamics using lidar remote sensing at La Selva, Costa Rica, *Journal of Geophysical Research: Biogeosciences*, 115, <https://doi.org/10.1029/2009JG000933>, 2010.
- Dunin, F. X., O’Loughlin, E. M., and Reyenga, W.: Interception loss from eucalypt forest: Lysimeter determination of hourly rates for long term evaluation, *Hydrological Processes*, 2, 315–329, <https://doi.org/10.1002/hyp.3360020403>, 1988.
- Dunkerley, D. L.: Evaporation of impact water droplets in interception processes: Historical precedence of the hypothesis and a brief literature
25 overview, *Journal of Hydrology*, 376, 599 – 604, <https://doi.org/10.1016/j.jhydrol.2009.08.004>, 2009.
- Egea, G., Padilla-Díaz, C. M., Martínez-Guanter, J., Fernández, J. E., and Pérez-Ruiz, M.: Assessing a crop water stress index derived from aerial thermal imaging and infrared thermometry in super-high density olive orchards, *Agricultural Water Management*, 187, 210–221, <https://doi.org/10.1016/j.agwat.2017.03.030>, 2017.
- Ellison, D., Morris, C. E., Locatelli, B., Sheil, D., Cohen, J., Murdiyarto, D., Gutierrez, V., van Noordwijk, M., Creed, I. F., Pokorny, J.,
30 Gaveau, D., Spracklen, D. V., Tobella, A. B., Ilstedt, U., Teuling, A. J., Gebrehiwot, S. G., Sands, D. C., Muys, B., Verbist, B., Springgay, E., Sugandi, Y., and Sullivan, C. A.: Trees, forests and water: Cool insights for a hot world, *Global Environmental Change*, 43, 51–61, <https://doi.org/10.1016/j.gloenvcha.2017.01.002>, 2017.
- Euser, T., Luxemburg, W. M. J., Everson, C. S., Mengistu, M. G., Clulow, A. D., and Bastiaanssen, W. G. M.: A new method to measure
Bowen ratios using high-resolution vertical dry and wet bulb temperature profiles, *Hydrology and Earth System Sciences*, 18, 2021–2032,
35 <https://doi.org/10.5194/hess-18-2021-2014>, <https://www.hydrol-earth-syst-sci.net/18/2021/2014/>, 2014.
- FLUXNET: Fluxdata. The Data Portal serving the FLUXNET community, <https://fluxnet.fluxdata.org/>, accessed: 2020-04-05, 2020.
- Foken, T., Aubinet, M., and Leuning, R.: *The Eddy Covariance Method*, pp. 1–19, Springer Netherlands, Dordrecht, https://doi.org/10.1007/978-94-007-2351-1_1, 2012a.

- Foken, T., Leuning, R., Oncley, S. R., Mauder, M., and Aubinet, M.: Corrections and Data Quality Control, pp. 85–131, Springer Netherlands, Dordrecht, https://doi.org/10.1007/978-94-007-2351-1_4, 2012b.
- Fuentes, J. D., Chamecki, M., Nascimento dos Santos, R. M., Von Randow, C., Stoy, P. C., Katul, G., Fitzjarrald, D., Manzi, A., Gerken, T., Trowbridge, A., Souza Freire, L., Ruiz-Plancarte, J., Furtunato Maia, J. M., TÁ³ta, J., Dias, N., Fisch, G., Schumacher, C., Acevedo, O., Rezende Mercer, J., and YaÁ±ez-Serrano, A. M.: Linking Meteorology, Turbulence, and Air Chemistry in the Amazon Rain Forest, *Bulletin of the American Meteorological Society*, 97, 2329–2342, <https://doi.org/10.1175/BAMS-D-15-00152.1>, 2016.
- Göckede, M., Thomas, C., Markkanen, T., Mauder, M., Ruppert, J., and Foken, T.: Sensitivity of Lagrangian Stochastic footprints to turbulence statistics, *Tellus B: Chemical and Physical Meteorology*, 59, 577–586, <https://doi.org/10.1111/j.1600-0889.2007.00275.x>, 2007.
- Goosse, H.: The energy balance, hydrological and carbon cycles, in: *Climate System Dynamics and Modelling*, chap. 2, Cambridge University Press, 2015.
- Gotsch, S. G., Asbjornsen, H., Holwerda, F., Goldsmith, G. R., Weintraub, A. E., and Dawson, T. E.: Foggy days and dry nights determine crown-level water balance in a seasonal tropical montane cloud forest, *Plant, Cell & Environment*, 37, 261–272, <https://doi.org/10.1111/pce.12151>, 2014.
- Herman, R. L., Ray, E. A., Rosenlof, K. H., Bedka, K. M., Schwartz, M. J., Read, W. G., Troy, R. F., Chin, K., Christensen, L. E., Fu, D., Stachnik, R. A., Bui, T. P., and Dean-Day, J. M.: Enhanced stratospheric water vapor over the summertime continental United States and the role of overshooting convection, *Atmospheric Chemistry and Physics*, 17, 6113–6124, <https://doi.org/10.5194/acp-17-6113-2017>, 2017.
- Heusinkveld, V. W., Antoon van Hooft, J., Schilperoort, B., Baas, P., Claire ten Veldhuis, M., and van de Wiel, B. J.: Towards a physics-based understanding of fruit frost protection using wind machines, *Agricultural and Forest Meteorology*, 282–283, 107 868, <https://doi.org/10.1016/j.agrformet.2019.107868>, 2020.
- Holmes, T. R. H., Owe, M., De Jeu, R. A. M., and Kooi, H.: Estimating the soil temperature profile from a single depth observation: A simple empirical heatflow solution, *Water Resources Research*, 44, 1–11, <https://doi.org/10.1029/2007WR005994>, 2008.
- Huffman, J. A., Prenni, A. J., DeMott, P. J., Pöhlker, C., Mason, R. H., Robinson, N. H., Fröhlich-Nowoisky, J., Tobo, Y., Després, V. R., Garcia, E., Gochis, D. J., Harris, E., Müller-Germann, I., Ruzene, C., Schmer, B., Sinha, B., Day, D. A., Andreae, M. O., Jimenez, J. L., Gallagher, M., Kreidenweis, S. M., Bertram, A. K., and Pöschl, U.: High concentrations of biological aerosol particles and ice nuclei during and after rain, *Atmospheric Chemistry and Physics*, 13, 6151–6164, <https://doi.org/10.5194/acp-13-6151-2013>, 2013.
- Izett, J. G., Schilperoort, B., Coenders-Gerrits, M., Baas, P., Bosveld, F. C., and van de Wiel, B. J. H.: Missed Fog?, *Boundary-Layer Meteorology*, 173, 289–309, <https://doi.org/10.1007/s10546-019-00462-3>, 2019.
- Jacobs, A. F. G., Van Boxel, J. H., and El-Kilani, R. M. M.: Nighttime free convection characteristics within a plant canopy, *Boundary-Layer Meteorology*, 71, 375–391, <https://doi.org/10.1007/BF00712176>, 1994.
- Jiménez-Rodríguez, C. D., González-Angarita, A. P., Coenders-Gerrits, A., Savenije, H., and Wenninger, J.: Meteorological data and isotope signatures of water samples collected at La Selva., <https://doi.org/10.4121/uuid:e70993d2-5852-4f63-9aff-39451fbd3fde>, 2019a.
- Jiménez-Rodríguez, C. D., González-Angarita, A. P., and Coenders-Gerrits, A. M. J.: Vapor Plumes Video at La Selva Biological Station. 4TU.Centre for Research Data. Dataset, *4TU.Centre for Research Data* <https://data.4tu.nl/repository/uuid:997cc9d8-2281-453e-b631-5f93cfebe00e>, 2019b.
- Jiménez-Rodríguez, C. D., Coenders-Gerrits, M., Wenninger, J., Gonzalez-Angarita, A., and Savenije, H.: Contribution of understory evaporation in a tropical wet forest during the dry season, *Hydrology and Earth System Sciences*, 24, 2179–2206, <https://doi.org/10.5194/hess-24-2179-2020>, 2020.

- Kao, C.-Y., Hang, Y.-H., Cooper, D., Eichinger, W., Smith, W., and Reisner, J.: High-resolution modeling of LIDAR data: Mechanisms governing surface water vapor variability during SALSA, *Agricultural and Forest Meteorology*, 105, 185–194, [https://doi.org/10.1016/S0168-1923\(00\)00182-9](https://doi.org/10.1016/S0168-1923(00)00182-9), 2000.
- Kelton, G. and Bricout, P.: wind velocity measurements using sonic techniques¹, *Bulletin of the American Meteorological Society*, 45, 571–580, <https://doi.org/10.1175/1520-0477-45.9.571>, 1964.
- Kern, C., Masias, P., Apaza, F., Reath, K. A., and Platt, U.: Remote measurement of high preruptive water vapor emissions at Sabancaya volcano by passive differential optical absorption spectroscopy, *Journal of Geophysical Research: Solid Earth*, 122, 3540–3564, <https://doi.org/10.1002/2017JB014020>, 2017.
- Klaassen, W., Bosveld, F., and de Water, E.: Water storage and evaporation as constituents of rainfall interception, *Journal of Hydrology*, 212–213, 36–50, [https://doi.org/10.1016/S0022-1694\(98\)00200-5](https://doi.org/10.1016/S0022-1694(98)00200-5), 1998.
- Knoche, H. R. and Kunstmann, H.: Tracking atmospheric water pathways by direct evaporation tagging: A case study for West Africa, *Journal of Geophysical Research: Atmospheres*, 118, 12,345–12,358, <https://doi.org/10.1002/2013JD019976>, 2013.
- Lankreijer, H., Lundberg, A., Grelle, A., Lindroth, A., and Seibert, J.: Evaporation and storage of intercepted rain analysed by comparing two models applied to a boreal forest, *Agricultural and Forest Meteorology*, 98–99, 595–604, [https://doi.org/10.1016/S0168-1923\(99\)00126-4](https://doi.org/10.1016/S0168-1923(99)00126-4), <http://www.sciencedirect.com/science/article/pii/S0168192399001264>, 1999.
- Lavers, D. A., Ralph, F. M., Waliser, D. E., Gershunov, A., and Dettinger, M. D.: Climate change intensification of horizontal water vapor transport in CMIP5, *Geophysical Research Letters*, 42, 5617–5625, <https://doi.org/10.1002/2015GL064672>, 2015.
- Lawford, R.: Some scientific questions and issues for the GEWEX Continental-scale International Project (GCIP) research community, in: *Proceedings of the Second International Science Conference on Global Energy and Water Cycle*, June 17–21, Washington, DC., pp. 162–167, 1996.
- Lieberman, D. and Lieberman, M.: Forest tree growth and dynamics at La Selva, Costa Rica (1969–1982), *Journal of Tropical Ecology*, 3, 347–358, <https://doi.org/10.1017/S0266467400002327>, 1987.
- Loescher, H., Gholz, H., Jacobs, J., and Oberbauer, S.: Energy dynamics and modeled evapotranspiration from a wet tropical forest in Costa Rica, *Journal of Hydrology*, 315, 274–294, <https://doi.org/10.1016/j.jhydrol.2005.03.040>, 2005.
- Loescher, H. W., Bentz, J. A., Oberbauer, S. F., Ghosh, T. K., Tompson, R. V., and Loyalka, S. K.: Characterization and dry deposition of carbonaceous aerosols in a wet tropical forest canopy, *Journal of Geophysical Research: Atmospheres*, 109, <https://doi.org/10.1029/2002JD003353>, 2004.
- Lundquist, J. D. and Huggett, B.: Evergreen trees as inexpensive radiation shields for temperature sensors, *Water Resources Research*, 44, <https://doi.org/10.1029/2008WR006979>, 2008.
- Makarieva, A. M. and Gorshkov, V. G.: Biotic pump of atmospheric moisture as driver of the hydrological cycle on land, *Hydrology and Earth System Sciences*, 11, 1013–1033, <https://doi.org/10.5194/hess-11-1013-2007>, <https://www.hydrol-earth-syst-sci.net/11/1013/2007/>, 2007.
- Makarieva, A. M., Gorshkov, V. G., and Li, B.-L.: Revisiting forest impact on atmospheric water vapor transport and precipitation, *Theoretical and Applied Climatology*, 111, 79–96, <https://doi.org/10.1007/s00704-012-0643-9>, 2013a.
- Makarieva, A. M., Gorshkov, V. G., Sheil, D., Nobre, A. D., and Li, B.-L.: Where do winds come from? A new theory on how water vapor condensation influences atmospheric pressure and dynamics, *Atmospheric Chemistry and Physics*, 13, 1039–1056, <https://doi.org/10.5194/acp-13-1039-2013>, 2013b.

- Mallick, K., Trebs, I., Boegh, E., Giustarini, L., Schlerf, M., Drewry, D. T., Hoffmann, L., von Randow, C., Kruijt, B., Araùjo, A., Saleska, S., Ehleringer, J. R., Domingues, T. F., Ometto, J. P. H. B., Nobre, A. D., de Moraes, O. L. L., Hayek, M., Munger, J. W., and Wofsy, S. C.: Canopy-scale biophysical controls of transpiration and evaporation in the Amazon Basin, *Hydrology and Earth System Sciences*, 20, 4237–4264, <https://doi.org/10.5194/hess-20-4237-2016>, 2016.
- 5 Manoli, G., Domec, J.-C., Novick, K., Oishi, A. C., Noormets, A., Marani, M., and Katul, G.: Soil “plant” atmosphere conditions regulating convective cloud formation above southeastern US pine plantations, *Global Change Biology*, 22, 2238–2254, <https://doi.org/10.1111/gcb.13221>, 2016.
- Mauder, M. and Zeeman, M. J.: Field intercomparison of prevailing sonic anemometers, *Atmospheric Measurement Techniques*, 11, 249–263, <https://doi.org/10.5194/amt-11-249-2018>, 2018.
- 10 Moncrieff, J., Clement, R., Finnigan, J., and Meyers, T.: *Averaging, Detrending, and Filtering of Eddy Covariance Time Series*, pp. 7–31, Springer Netherlands, Dordrecht, https://doi.org/10.1007/1-4020-2265-4_2, 2005.
- Murakami, S.: A proposal for a new forest canopy interception mechanism: Splash droplet evaporation, *Journal of Hydrology*, 319, 72 – 82, <https://doi.org/10.1016/j.jhydrol.2005.07.002>, 2006.
- Nakshabandi, G. A. and Kohnke, H.: Thermal conductivity and diffusivity of soils as related to moisture tension and other physical properties, *Agricultural Meteorology*, 2, 271–279, [https://doi.org/10.1016/0002-1571\(65\)90013-0](https://doi.org/10.1016/0002-1571(65)90013-0), 1965.
- 15 Peters, G., Fischer, B., and Kirtzel, H. J.: One-Year Operational Measurements with a Sonic Anemometer–Thermometer and a Doppler Sodar, *Journal of Atmospheric and Oceanic Technology*, 15, 18–28, [https://doi.org/10.1175/1520-0426\(1998\)015<0018:OYOMWA>2.0.CO;2](https://doi.org/10.1175/1520-0426(1998)015<0018:OYOMWA>2.0.CO;2), 1998.
- Pielke, R.: *Mesoscale Meteorological Modeling*, International Geophysics, Elsevier Science, <https://books.google.nl/books?id=ExlFulltpeC>,
 20 2013.
- Pöschl, U., Martin, S. T., Sinha, B., Chen, Q., Gunthe, S. S., Huffman, J. A., Borrmann, S., Farmer, D. K., Garland, R. M., Helas, G., Jimenez, J. L., King, S. M., Manzi, A., Mikhailov, E., Pauliquevis, T., Petters, M. D., Prenni, A. J., Roldin, P., Rose, D., Schneider, J., Su, H., Zorn, S. R., Artaxo, P., and Andreae, M. O.: Rainforest Aerosols as Biogenic Nuclei of Clouds and Precipitation in the Amazon, *Science*, 329, 1513–1516, <https://doi.org/10.1126/science.1191056>, 2010.
- 25 R Core Team: *R: A Language and Environment for Statistical Computing*, R Foundation for Statistical Computing, Vienna, Austria, <https://www.R-project.org/>, 2017.
- Roberts, J.: *Plants and water in forests and woodlands*, pp. 181–236, Routledge, 1999.
- Rodriguez-Gomez, C., Ramirez-Romero, C., Cordoba, F., Raga, G. B., Salinas, E., Martinez, L., Rosas, I., Quintana, E. T., Maldonado, L. A., Rosas, D., Amador, T., Alvarez, H., and Ladino, L. A.: Characterization of culturable airborne microorganisms in the Yucatan Peninsula, *Atmospheric Environment*, 223, 117 183, <https://doi.org/10.1016/j.atmosenv.2019.117183>, 2020.
- 30 Rosa, I. M., Smith, M. J., Wearn, O. R., Purves, D., and Ewers, R. M.: The Environmental Legacy of Modern Tropical Deforestation, *Current Biology*, 26, 2161–2166, <https://doi.org/10.1016/j.cub.2016.06.013>, <http://www.sciencedirect.com/science/article/pii/S096098221630625X>, 2016.
- Sanford Jr., R. L., Paaby, P., Luvall, J. C., and Phillips, E.: Climate, geomorphology, and aquatic systems., in: *La Selva. Ecology and natural history of a Neotropical Rainforest*, edited by McDade, L. A., Bawa, K. S., Hespdenheide, H. A., and Hartshorn, G. S., chap. 3, pp. 19–33, The University of Chicago Press, 1994.
- Savenije, H. H. G.: The importance of interception and why we should delete the term evapotranspiration from our vocabulary, *Hydrological Processes*, 18, 1507–1511, <https://doi.org/10.1002/hyp.5563>, 2004.

- Saxton, K. and Rawls, W.: Soil Water Characteristic Estimates by Texture and Organic Matter for Hydrologic Solutions, *Soil Science Society of America journal*, 70, 1569–1578, <https://doi.org/10.2136/sssaj2005.0117>, 2006.
- Schellekens, J., Bruijnzeel, L. A., Scatena, F. N., Bink, N. J., and Holwerda, F.: Evaporation from a tropical rain forest, Luquillo Experimental Forest, eastern Puerto Rico, *Water Resources Research*, 36, 2183–2196, <https://doi.org/10.1029/2000WR900074>, 2000.
- 5 Schilperoort, B., Coenders-Gerrits, M., Luxemburg, W., Jiménez Rodríguez, C., Cisneros Vaca, C., and Savenije, H.: Technical note: Using distributed temperature sensing for Bowen ratio evaporation measurements, *Hydrology and Earth System Sciences*, 22, 819–830, <https://doi.org/10.5194/hess-22-819-2018>, <https://www.hydrol-earth-syst-sci.net/22/819/2018/>, 2018.
- Shuttleworth, W.: Evaporation, in: *Handbook of hydrology*, edited by Maidment, D. R., chap. 4, pp. 4.1–4.53, Mc-Graw Hill, Inc., New York, 1993.
- 10 Sioris, C. E., Malo, A., McLinden, C. A., and D'Amours, R.: Direct injection of water vapor into the stratosphere by volcanic eruptions, *Geophysical Research Letters*, 43, 7694–7700, <https://doi.org/10.1002/2016GL069918>, 2016.
- Sollins, P., Sancho M., F., Mata Ch., R., and Sanford Jr., R. L.: Soils and soil process research, in: *La Selva. Ecology and natural history of a Neotropical Rainforest*, edited by McDade, L. A., Bawa, K. S., Hespeneide, H. A., and Hartshorn, G. S., chap. 4, pp. 34–53, The University of Chicago Press, 1994.
- 15 Sparks, W. B., Richter, M., deWitt, C., Montiel, E., Russo, N. D., Grunsfeld, J. M., McGrath, M. A., Weaver, H., Hand, K. P., Bergeron, E., and Reach, W.: A Search for Water Vapor Plumes on Europa using SOFIA, *The Astrophysical Journal*, 871, L5, <https://doi.org/10.3847/2041-8213/aafb0a>, 2019.
- Spellman, F. R.: *The Handbook of Meteorology*, Scarecrow Press, <http://ebookcentral.proquest.com/lib/delft/detail.action?docID=1077405>, 2012.
- 20 Strong, M., Sharp, Z. D., and Gutzler, D. S.: Diagnosing moisture transport using D/H ratios of water vapor, *Geophysical Research Letters*, 34, <https://doi.org/10.1029/2006GL028307>, 2007.
- Stull, R. B.: *An introduction to boundary layer meteorology*, vol. 4, Springer Netherlands, Dordrecht, 1 edn., <https://doi.org/10.1007/978-94-009-3027-8>, 1988.
- Stull, R. B.: *Practical meteorology: an algebra based survey of atmospheric science*, BC Campus, http://www.eos.ubc.ca/books/Practical_Meteorology/, 2017.
- 25 Tang, H., Dubayah, R., Swatantran, A., Hofton, M., Sheldon, S., Clark, D. B., and Blair, B.: Retrieval of vertical LAI profiles over tropical rain forests using waveform lidar at La Selva, Costa Rica, *Remote Sensing of Environment*, 124, 242 – 250, <https://doi.org/10.1016/j.rse.2012.05.005>, <http://www.sciencedirect.com/science/article/pii/S0034425712002088>, 2012.
- Terando, A. J., Youngsteadt, E., Meineke, E. K., and Prado, S. G.: Ad hoc instrumentation methods in ecological studies produce highly
- 30 biased temperature measurements, *Ecology and Evolution*, 7, 9890–9904, <https://doi.org/10.1002/ece3.3499>, 2017.
- Thompson, A.: *Simulating the adiabatic ascent of atmospheric air parcels using the cloud chamber*, Department of Meteorology, Penn State, 2007.
- Trzeciak, T. M., Garcia-Carreras, L., and Marsham, J. H.: Cross-Saharan transport of water vapor via recycled cold pool outflows from moist convection, *Geophysical Research Letters*, 44, 1554–1563, <https://doi.org/10.1002/2016GL072108>, 2017.
- 35 Valsan, A. E., Priyamvada, H., Ravikrishna, R., Després, V. R., Biju, C., Sahu, L. K., Kumar, A., Verma, R., Philip, L., and Gunthe, S. S.: Morphological characteristics of bioaerosols from contrasting locations in southern tropical India – A case study, *Atmospheric Environment*, 122, 321–331, <https://doi.org/10.1016/j.atmosenv.2015.09.071>, 2015.

- van der Ent, R. J. and Savenije, H. H. G.: Length and time scales of atmospheric moisture recycling, *Atmospheric Chemistry and Physics*, 11, 1853–1863, <https://doi.org/10.5194/acp-11-1853-2011>, <https://www.atmos-chem-phys.net/11/1853/2011/>, 2011.
- Wang, J., Krejci, R., Giangrande, S., Kuang, C., Barbosa, H. M. J., Brito, J., Carbone, S., Chi, X., Comstock, J., Ditas, F., Lavric, J., Manninen, H. E., Mei, F., Moran-Zuloaga, D., Pöhlker, C., Pöhlker, M. L., Saturno, J., Schmid, B., Souza, R. A. F., Springston, S. R., Tomlinson, J. M., Toto, T., Walter, D., Wimmer, D., Smith, J. N., Kulmala, M., Machado, L. A. T., Artaxo, P., Andreae, M. O., Petäjä, T., and Martin, S. T.: Amazon boundary layer aerosol concentration sustained by vertical transport during rainfall, *Nature*, 539, <https://doi.org/10.1038/nature19819>, 2016.
- Wang, P. K.: Moisture plumes above thunderstorm anvils and their contributions to cross-tropopause transport of water vapor in midlatitudes, *Journal of Geophysical Research: Atmospheres*, 108, <https://doi.org/10.1029/2002JD002581>, 2003.
- 10 Wright, J. S., Fu, R., Worden, J. R., Chakraborty, S., Clinton, N. E., Risi, C., Sun, Y., and Yin, L.: Rainforest-initiated wet season onset over the southern Amazon, *Proceedings of the National Academy of Sciences*, 114, 8481–8486, <https://doi.org/10.1073/pnas.1621516114>, 2017.

Appendix A: Daily variables measured at the MRI-plot

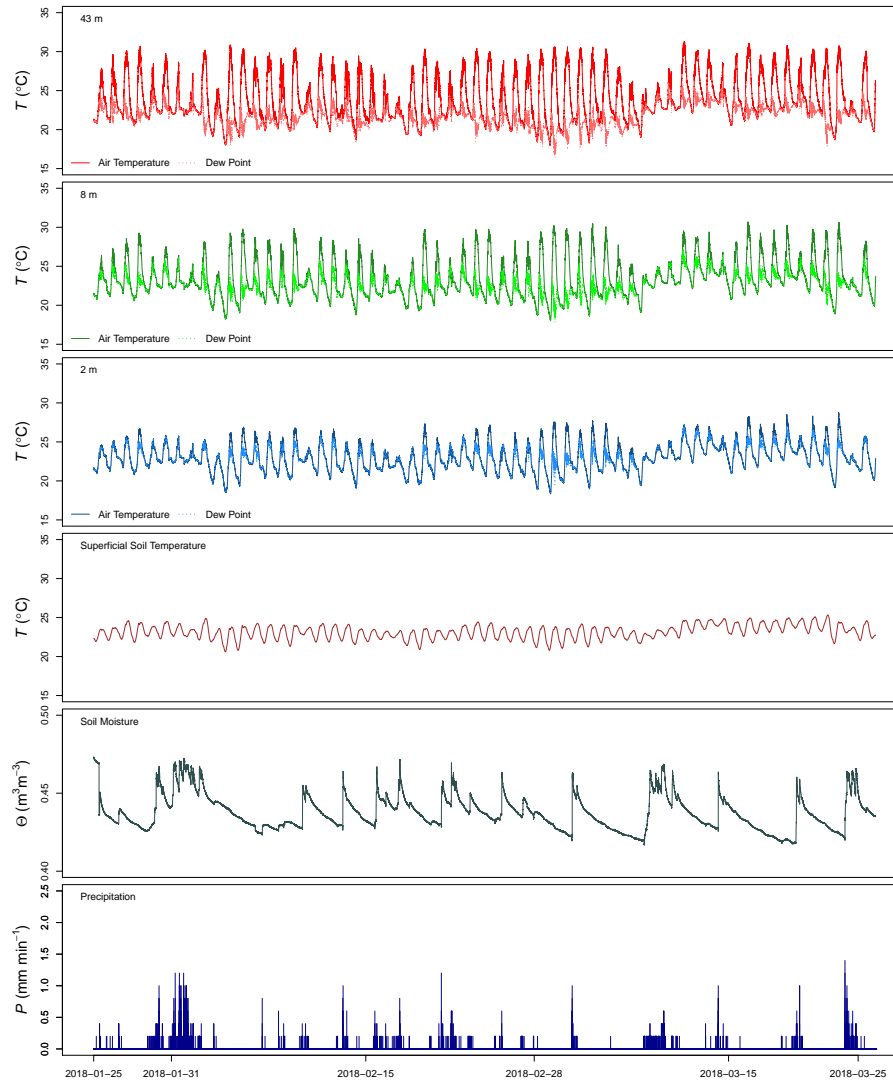


Figure A1. Detailed measurements performed at the MRI-plot between 2018-01-24 and 2018-03-26 along the canopy and within the soil.

Appendix B: Time-lapse videos detailed information

Table B1. Sampling intervals and time frame of the 4 sampling days surveyed with the camera.

Sampling Date	Time Interval	Initial Time	Final Time
2018-03-21	5 minutes	11:27	17:45
2018-03-22	5 minutes	8:00	11:00
2018-03-22	1 minute	11:00	18:00
2018-03-23	1 minute	5:10	16:42
2018-03-24	1 minute	5:30	16:42
2018-03-25	1 minute	5:32	17:38

Note: the change of sampling intervals from 5 minutes to 1 minute was carried out the second day of video monitoring aiming to improve the quality of the survey.

Appendix C: Boxplots

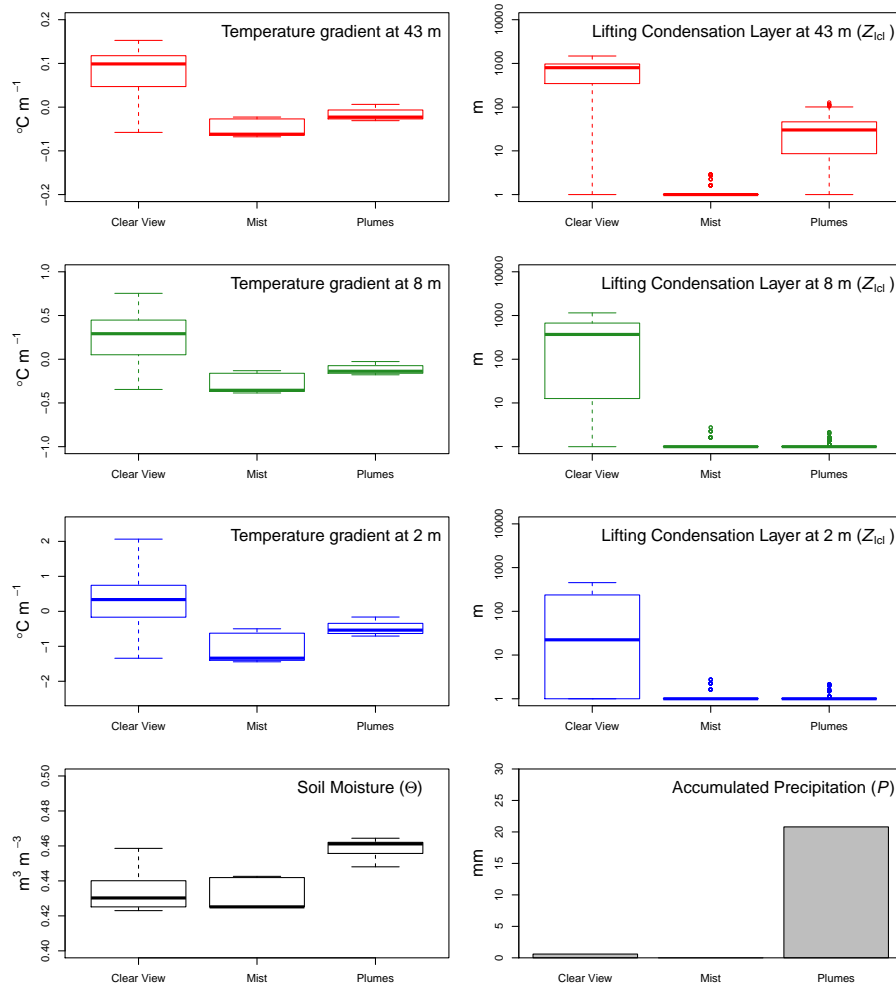


Figure C1. Boxplots describing the temperature gradients ($\frac{\Delta\theta_v}{\Delta z}$) and lifting condensation level (Z_{lcl}) at 43 m, 8 m and 2 m, as well as soil moisture (Θ) and total precipitation (P) of the three visual categories evaluated.