

# Assessing different imaging velocimetry techniques to measure shallow runoff velocities during rain events using an urban drainage physical model

Juan Naves<sup>1</sup>, Juan T. García<sup>2</sup>, Jerónimo Puertas<sup>1</sup>, Jose Anta<sup>1</sup>

5 <sup>1</sup>Universidade da Coruña, Water and Environmental Engineering Research Team (GEAMA), Civil Engineering School, A Coruña, 15071, Spain

<sup>2</sup>Mining and Civil Engineering Department, Universidad Politécnica de Cartagena, Cartagena, 30203, Spain

*Correspondence to:* Juan Naves (juan.naves@udc.es)

**Abstract.** Although surface velocities are key in the calibration of physically based urban drainage models, the shallow water depths developed during non-extreme precipitations and the potential risks during flood events limit the availability of this type of data in urban catchments. In this context, imaging velocimetry techniques are being investigated as suitable non-intrusive methods to estimate runoff velocities, when the possible influence of rain has yet to be analyzed. This study carried out a comparative assessment of different seeded and unseeded imaging velocimetry techniques based on Large Scale Particle Image Velocimetry (LSPIV) and Bubble Image Velocimetry (BIV) through six realistic but laboratory-controlled experiments where the runoff generated by three different rain intensities was recorded. First, the use of naturally-generated bubbles and water shadows and glares as tracers allows unseeded techniques to measure extremely shallow flows. However, these techniques are more affected by raindrop impacts, which even lead to erroneous velocities in the case of high rain intensities. At the same time, better results were obtained for high intensities and in complex flows with techniques that use artificial particles. Finally, the study highlights the feasibility-potential of these imaging techniques forte-be-used-in measuring surface velocities in real field applications and-as-well-as the importance of considering rain properties to interpret and assess the results obtained. The robustness of the techniques for real-life applications yet remains to be proven by means of further studies in non-controlled environments.

10  
15  
20

## 1 Introduction

Since the last years of the 19th century, urban drainage systems have fulfilled a fundamental mission that has enabled us to guarantee the hygienic-sanitary conditions and growth of denser cities (Butler et al., 2018; Brown et al., 2009). However, several factors are today threatening the sustainability and flood response capacity of urban drainage systems are today threatened by several factors. These are led by the increment in impervious areas, due to urbanization (Shuster et al., 2005; Yao et al., 2016) and ongoing climate change, among other factors, are resulting in a higher and more frequent number of heavy rainfall events (Willems et al., 2012; Arnbjerg-Nielsen et al., 2013). The increased flood risk is a consequence of these

25

30 factors (Chen et al., 2015) ~~which that~~ must be accurately assessed (Apel et al., 2004; Martinez-Gomariz et al., 2016). This continuous development of impervious areas also leads to a significant increase in the load and peak concentrations of pollutants, which are accumulated on urban catchments surfaces and can be washed off and transported by runoff into drainage systems and eventually to aquatic media (Lee and Bank 2000, Anta et al., 2006; Zafra et al., 2017; Muthusamy et al., 2018). This process depends on multiple factors (Hatt et al., 2004; García et al., 2017) and requires a clear understanding of the surface drainage in urban areas, from the hydrodynamic point of view.

In this context, physically-based urban drainage models can help to assess complex cases, such as the definition of the inlet capacity of different storm drains to transfer runoff stormwater into sewers (Martins et al., 2018; Rubinato et al., 2018) or to assess particle wash-off processes (Hong et al., 2016; Naves et al., 2020a). ~~Calibrating these models requires~~ a precise characterization of the surface velocities and flow depths ~~is required when, calibrating these models~~ due to their key role in flood risk assessment and in the detachment and transport of surface pollutants. However, punctual velocity measurement equipment such as Acoustic Doppler Velocimetry (ADV) does not ~~allow-enable~~ a two-dimensional velocity field to be obtained in large urban areas during flood events without ~~requiring~~ a huge deployment of instrumentation and a ~~great-major~~ risk to workers. Furthermore, due to the shallow runoff flows during non-extreme events, ADV reliability is reduced as it is an intrusive technique that also needs about 5-7 cm to obtain velocity measurements (Cea et al., 2007). Imaging techniques are ~~becoming more widely used~~ ~~thus-expanding~~ in open and large-scale environments as non-intrusive methods for the characterization of surface velocity fields (Aberle et al., 2017), and ~~their use is~~ increasingly common ~~in-for~~ river monitoring (e.g. Tauro et al., 2016; Tauro et al., 2018; Manfreda et al., 2018; Pearce et al., 2020). Large-Scale Particle Image Velocimetry (LSPIV) is an image velocimetry technique that provides velocity fields in large areas, even in the proximity of hydraulic structures (Muste et al., 2008; Fujita et al., 1998; Kantoush et al. 2011). LSPIV velocity determination can be affected by deficient illumination, diffuse light reflections or free-surface waviness generated by wind or large-scale turbulence structures. Seeding is also a key parameter of the technique that may need to be artificially improved (Aberle et al., 2017). Zhu et al. (2019) achieved errors below 14% using this technique in a full-scale stormwater detention basin, although in some ~~bordering boundary~~ points the ~~errorse~~ could ~~reach-rise up to~~ 44%.

In addition, LSPIV-based methods can be applied to determine runoff velocities without the presence of particles, such as in Leitão et al. (2018), where a method called Surface Structure Image Velocimetry (Lüthi et al., 2014; Hansen et al., 2017) introduces some improvements based on image pre-processing analysis to measure shallow flows in a flood experimental facility. In addition, bubbles are used as tracers to estimate overland velocities in the technique known as bubble imaging velocimetry (BIV). The BIV technique was first introduced to measure the velocity field in high aerated flows from backlit images analysis without the need for laser-like illumination (Ryu et al., 2005). Bubbly flows are illuminated by a uniform light source while a high-speed camera captures shadow textures created by gas-liquid inter-faces (Aberle et al., 2017). Lin et al. (2012) have already used this technique to measure the flow structure in hydraulic jumps in the aerated zone.

In Naves et al. (2019a), a variation of the LSPIV technique was applied to measure the surface velocity fields generated by three different rain intensities in a full-scale urban drainage physical model. The presence of raindrops in the experiments can

generate disturbances in the water surface and also interfere in the visualization of images, so that study used UV illumination and fluorescent particles as artificial tracers to satisfactorily address ~~these-those~~ issues. To the best of the authors' knowledge, that was the first and only study where an imaging velocimetry technique has been applied during rainy conditions. Despite the ~~proposed methodology's~~ good results ~~achieved~~ and ~~the-its~~ great suitability for laboratory applications ~~of the proposed methodology~~, its transferability to field studies is restricted by the difficulties in using artificial particles and special illumination. However, in addition to the interferences mentioned above, the raindrop impacts also generate bubbles and some other structures on free-flow surfaces that may be used as tracers ~~by-in~~ unseeded techniques. Due to the great potential of these unseeded techniques to obtain overland flow velocity data in field applications using, for example, pre-installed surveillance cameras (Leitão et al., 2018), studying their performance under rainy conditions is an interesting and novel research gap to be addressed.

Therefore, experimental videos of the overland flow generated by three different rain intensities, under laboratory-controlled conditions and recorded with and without artificial particles, are used in this study to comparatively assess the performance of different seeded and unseeded imaging velocimetry techniques under rainy conditions. First, the sensitivity of the velocity results to the analysis parameters is investigated in order to test the robustness of each method. Then, the resulting velocity fields are compared to analyze the feasibility of using each visualization technique in different characteristic flows developed in urban catchments, and to investigate the influence of rain intensity in velocity measurements as ~~the~~ novel contribution. The LSPIV procedure, already validated in Naves et al. (2019a), is used as the reference technique in this analysis. Finally, the ~~feasibility-potential~~ of these imaging techniques to measure runoff velocities in real field applications is discussed.

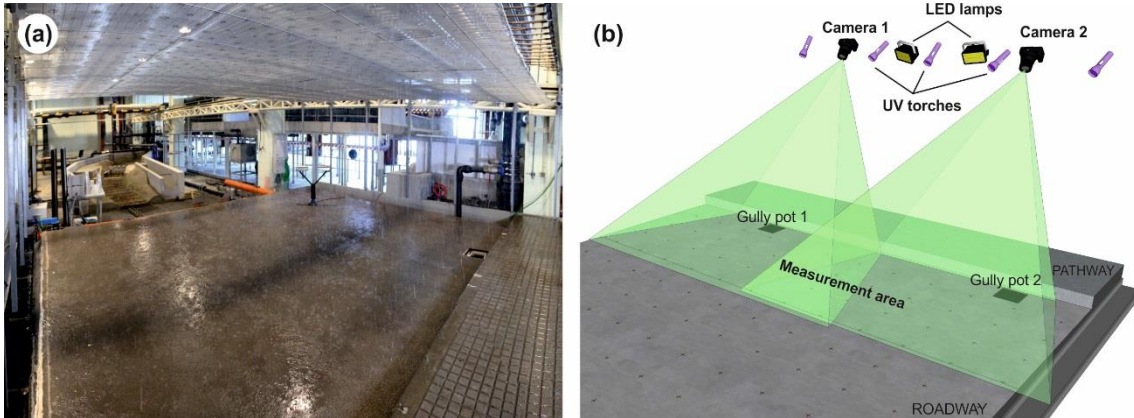
## 2 Materials and methods

The experimental work performed to record the overland shallow flows generated by three different simulated rainfalls in an urban drainage physical model is introduced first, in Sect. 2.1. Then, Sect. 2.2 includes a description of the procedure followed to obtain velocity results from the original video frames. Sect. 2.3 describes the strategy to assess the performance of different image velocimetry techniques depending on rain intensity and the typology of flow. Finally, the surface areas where the analysis was focused, the ranges of variation of the parameters involved in the assessment of the robustness of each technique, and the procedure implementation details are explained in detail in Sect. 2.4, 2.5, and 2.6.

### 2.1 Experimental data

The freely available experimental dataset (Naves et al., 2019b) described in Naves et al. (2020b) was used in this study for the assessment of different imaging velocimetry techniques. The dataset comprises a series of videos where the surface runoff was recorded in a 36 m<sup>2</sup> urban drainage physical model. The facility (Fig. 1a) consists of a full-scale street section where the rainfall-runoff generated by a dripper-based rainfall simulator, which is able to produce three different rain intensities (30, 50, and 80 mm h<sup>-1</sup>), drains into a pipe system through two gully pots. ~~The roughness value of the roadway concrete surface is~~

95 [0.016 \(Naves et al., 2019a\)](#). Two types of configurations have been used to visualize overland flow: a) experiments using fluorescent particles and UV illumination; and b) using white-LED lamps without artificial particles to highlight air bubbles and water reflections generated by raindrops in the flow. While seeded videos were already used in the application of a modified LSPIV technique in Naves et al. (2019a) as stated in the introduction section, unseeded videos are used for the first time in this work to consider imaging velocimetry techniques that do not require artificial tracers. Figure 1b shows a scheme of the configuration of the experiments where the videos were recorded.



**Figure 1: General image of the urban drainage physical model with the rainfall simulator (a) and experimental setup of the PIV experiments (b).**

As seen in Fig. 1b, two Lumix GH4 cameras with 28 mm focal length recorded the first 2 m attached to the curb along 5 m of the physical model. UV torches and LED lamps were installed next to the cameras 2.2 m above the pathway. During the experiments, videos were recorded at 4K resolution and 25 Hz. 1500 frames of steady flow (equivalent to 60 s) were then extracted from the longer recording and processed for analysis. To do this, frames were scaled and ortho-rectified using the known 2D coordinates of 28 and 24 reference surface points for each camera and the Matlab functions 'fitgeotrans' and 'imwarp'. Finally, the reference points placed in the intersection between the recorded areas of each camera were used to crop and join the image, resulting in raw images where 1 pixel corresponds to 1 mm in real-world coordinates. Examples of these images obtained from UV seeded and LED unseeded experiments, which are openly available for others to use in the dataset published by the authors (Naves et al., 2019b), are included in Fig. 2. These six sets of images considering both the experimental setup and the three rain intensities were used as the basis for the different imaging velocimetry techniques assessed in this study. A more detailed description of the physical model, the simulated rain, or the procedure to extract the images can be consulted in Naves et al. (2020b, 2020c, 2019a), respectively.

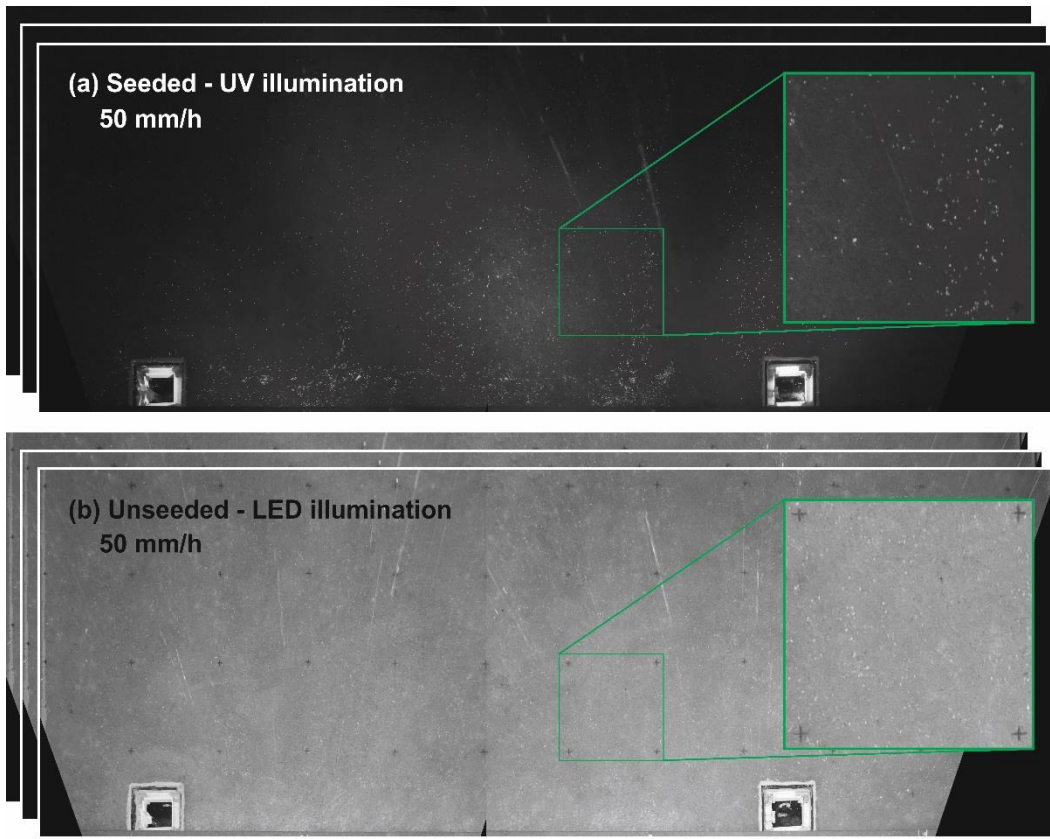
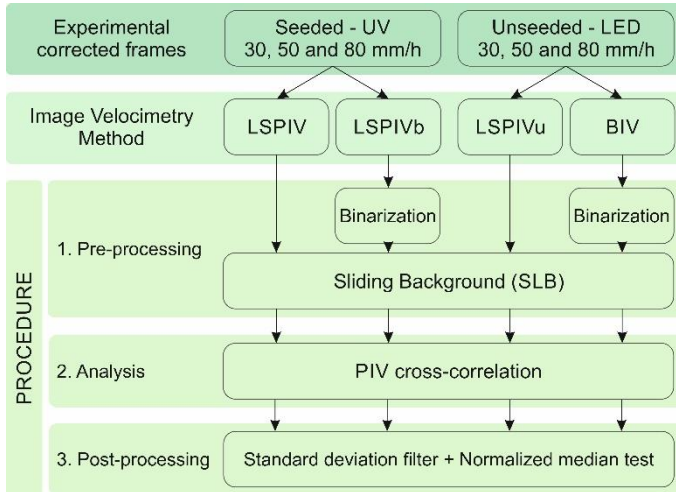


Figure 2: Example of frames used for the assessment of different imaging velocimetry techniques. Images correspond ~~with~~ to the two experiments performed for the rain intensity of  $50 \text{ mm h}^{-1}$ : using fluorescent particles and UV illumination (a) and using led lamps to highlight water reflections and air bubbles present in the flow (b).

## 2.2 Analysis procedure and imaging velocimetry techniques

Four imaging velocimetry techniques were considered in this study to estimate overland flow velocities. First, the LSPIV methodology was assessed using the images with fluorescent particles and UV illumination. That methodology requires pre-processing of images through a sliding background (SLB), which eliminates the background of the images and particles that remain immobile between frames. These particles, which are deposited due to the extreme low depths developed and the ~~rugosity-roughness~~ of the concrete surface, should be removed to avoid ~~that~~ the null velocities ~~resulted~~ ~~resulting~~ from them ~~condition-conditioning~~ the PIV analysis. Then, a LSPIV-based method named as LSPIVu in this work, and the BIV technique were used to obtain velocity fields from the unseeded and LED-illuminated experiments. LSPIVu is inspired in the non-open SSIV procedure employed in Leitao et al. (2018) and uses a SLB image pre-processing to remove the background from the analysis and satisfactorily trace the movement of air bubbles and surface water reflections generated by raindrops. Additionally, BIV implements a previous binarization of the grayscale images to highlight bubbles from a determined threshold. Finally, a slight variation of the LSPIV methodology named LSPIVb was implemented to investigate the influence

of binarization also in the analysis of seeded UV experiments. This strategy seeks to isolate the brightest pixels, which in this case correspond with the fluorescence particles, to ensure that other elements such as bubbles or water reflections are-do not interfering-interfere in the PIV analysis. Therefore, the image velocimetry techniques differ in the pre-processing of the images and the experiments used for the analysis. A diagram of the procedure followed for each technique is presented in Fig. 3, which includes a common PIV cross-correlation analysis and a post-processing of the velocity results. The different image velocimetry techniques and the steps of the analysis are further explained below.



140 **Figure 3: Diagram of the procedure performed to obtain velocity fields from video frames for the different image velocimetry techniques.**

### 2.2.1 Pre-processing

As seen in Fig. 3, the first step in the analysis procedure was the pre-processing of the images depending on the technique employed. The objective of this part of the analysis was to optimize the input images through different strategies to enhance the objective tracers and then measure their movement with PIV algorithms in the next step. The specific procedure followed for each technique is now described:

LSPIV velocity determinations were undertaken using the experimental videos with fluorescent tracers and UV illumination as in Naves et al. (2019a). The pre-processing in the implementation of this method consists of a sliding background filter. This filter compares the gray values of the pixels of a-one frame with the same pixels of the following one, turning those pixels with a certain percentage of agreement between them to black. Therefore, it is necessary to determine a certain threshold of similitude to remove the background of the images and the particles that stay still between frames, whilst keeping those that are transported by flow. Thus, it is possible to avoid interferences in the cross-correlation of the particle movement that may reduce the mean velocity obtained.

In the case of the LSPIVb procedure, a binarization of the images was performed in the image pre-processing, prior to applying the sliding background filter. This converts the grayscale images to binary images, turning the pixels with gray values greater



than a certain threshold to white and all other pixels to black. This filter ensures that only the fluorescent particles are ~~being~~ ~~considering-considered~~ in the PIV cross-correlation, preventing possible small interferences that bubbles or water reflections may produce despite the special illumination (Zhou et al. 2013). Due to this binarization, the subsequent sliding background filter is applied considering a threshold of 100% of similitude to remove the pixel, so only the binarization threshold should be adjusted.

In contrast to LSPIV and LSPIVb, the LSPIVu technique was applied to the images taken from the unseeded and LED illuminated experiments. LSPIVu is analogous to ~~the~~ LSPIV procedure, applying the sliding background filter below a certain threshold to remove the background of the original images. In this technique, the pre-processing of the images seeks to analyze the movement of both surface air bubbles and water reflections generated by raindrops. Lastly, the procedure of the BIV technique additionally includes an image binarization filter, as was used in the LSPIVb methodology, to isolate air bubbles to be used as tracers in the analysis of the images taken from the unseeded experiments.

### 2.2.2 PIV cross-correlation

The different alternatives of image processing, depending on the image velocimetry technique (LSPIV, LSPIVb, LSPIVu or BIV), were applied to 60 s of images taken in steady flow conditions, and the resulting frames were then analyzed by the PIV image software PIVLab (Thielicke and Stamhuis, 2014). This software performs a cross-correlation analysis between consecutive frames, which are divided into different interrogation areas (IA), to obtain the mean displacement vector for each of the IA. ~~being the~~ ~~The~~ size of the IA ~~is~~ a parameter that must be adjusted as a function of the mean displacement in order to achieve suitable results. Common procedures to estimate this particle displacement, and thus flow velocity, ~~has-have~~ been applied in the present work (Raffel et al., 2007; Adrian et al., 2011). The discrete Fourier transform (DFT), calculated using a fast Fourier transform (FFT), was used to compute the correlation matrix in the frequency domain. Moreover, two passes of a multi-pass window deformation algorithm were used ~~in the present work~~, halving the window size at the second pass to achieve a higher spatial resolution. The searching area (SA) matches with the IA and 50% of overlapping was selected in all cases ~~in the present work~~. These procedures are included in most of the conventional PIV algorithms such as PIVLab (Thieckle and Stamihus 2014), or OpenPIV (Taylor et al. 2010).

### 2.2.3 Post-processing

Two filters for the detection of spurious vectors were applied to the velocity fields obtained. First, the results were filtered to remove those velocity vectors that differed four times the standard deviation from the mean velocity of the individual velocity fields. Then, the normalized median test was applied in a 3×3 neighborhood as proposed in Westerweel and Scarano (2005). After preliminary tests assessing the performance detecting spurious vectors in the PIV results, the values of the two parameters of this filter were set ~~to-at~~  $\epsilon = 0.15$  and threshold = 3. Outliers and missing data were removed and not replaced in any case. The average velocity field was obtained from the 1500 velocity results in steady conditions obtained for each case of study, which makes them comparable to the results achieved in Naves et al. (2019a) using the LSPIV technique. In this ~~case~~ ~~study~~,

the velocities were compared as measured from the movement of tracers without applying velocity indexes to estimate depth-averaged velocities.

### 190 **2.3 Comparative evaluation of image velocimetry methods**

The repetitiveness of the experiments has allowed the evaluation of techniques that require different experimental setups varying the seeding and illumination. First, following the specific procedure explained in the previous section (Sect. 2.2) for each technique, the analysis started with the individual assessment of the robustness of the velocity results achieved by each technique. This assessment was carried out in a manner similar to Legout et al. (2012). The key parameters of the procedure  
195 were varied one-at-a-time within reasonable ranges to investigate their influence on the average velocity results. The parameters considered were: a) the pre-processing parameter, which corresponds with the sliding background or the binarization threshold depending on the image velocimetry technique; b) the IA initial size in the cross-correlation algorithm; and c) the frame acquisition rate (FAR) of the experimental videos. The entire analysis was focused on four areas of the model surface in order to separately consider different types of flow that are developed in real catchments.

200 Moreover, a detailed comparison of the mean velocity fields achieved from one minute of steady conditions using each technique was performed considering each of the three rain intensities and each of the four surface areas, and using the LSPIV method as reference. Finally, the transferability of the previous imaging velocimetry techniques to field studies is discussed considering the previous results and an additional convergence analysis, which assesses the uncertainties ~~of~~involved in  
measuring velocities in transient conditions. Further details of the studied areas, the ranges of the parameters and the  
205 implementation methodology are included in the following Sect. 2.4, 2.5, and 2.6.

### **2.4 Areas considered for analysis**

The urban drainage physical model considered in this study enables typical flows such as those that are developed in real catchments to be reproduced. Figure 4 includes the previous velocity field results obtained in Naves et al. (2019a) for the rain intensity of 50 mm h<sup>-1</sup> and the drainage basin of gully pot 2. As can be observed, the runoff generated by the rainfall simulator  
210 produces two perpendicular flows: a very shallow flow towards the curb, and a longitudinal curb flow with depths of up to 10 mm that drains the runoff into the gully pots. In addition, some preferential drainage channels, where velocities are significantly increased, have been detected in the overland flow perpendicular to the curb due to irregularities in the model surface.

The comparative analysis performed in this study was focused on four specific areas of the model surface in order to assess the performance of the techniques considered for different types of water flows that may be found in real catchments. These  
215 are: straight one-main-direction overland flow as presented in Area 1, where a preferential channel with high velocities is distinguished; a parallel overland flow out of the main drainage channels with very low velocities and water depths (Area 2); the curb flow gathering different secondary flows with a vertical boundary (Area 3); and a combination of the previous type of flows in the vicinity of gully pot 2 (Area 4). Figure 4 includes the specific position in the model surface of each area considered in the analysis performed.



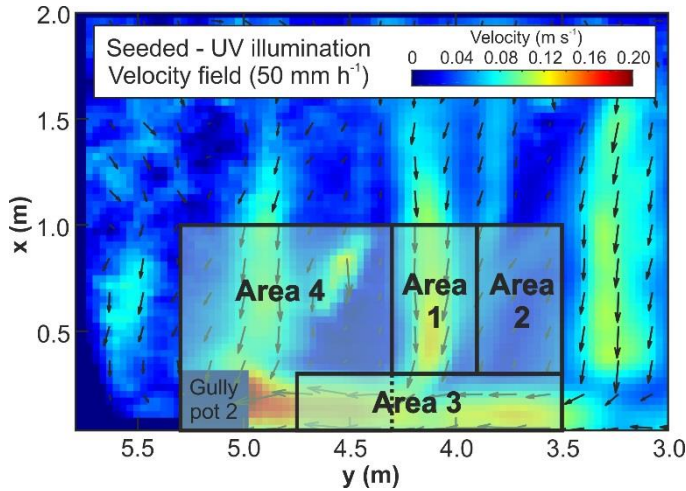


Figure 4: Areas of the model surface analyzed with the image velocimetry methods considering different types of flows that are developed in urban catchments: ~~such as~~ perpendicular drainage to the curb (Areas 1 and 2), curb flow (Area 3), and vicinities of gully pot 2 (Area 4). The velocity field plotted to understand the choice of the analyzed areas was taken from Naves et al. (2019a), where the LSPIV was ~~satisfactory~~ satisfactorily applied.

## 2.5 Parameters ranges

As stated in Sect. 2.3, the first part of the analysis performed seeks to assess the robustness of the velocity results and their sensitivity to changes in the different input parameters of the procedure, depending on the image velocimetry technique used. The base parameters established in the analysis and their ranges of variation are given in Table 1. First, the FAR of the videos taken from the experiments was 25 Hz, which was established as the reference value since it is typical of ~~with~~ most imaging devices available on the market. However, those cases in which only one of each two images (12.5 Hz) and one of each three images (6.25 Hz) are used for the analysis were also investigated in this study. This simulates the FAR of some already installed devices ~~that may serve as media source to measure urban runoff velocities in field applications~~, such as traffic or surveillance cameras, that may serve as a media source to measure urban runoff velocities in field applications following as per the ideas stated in Leitão et al. (2018).

Table 1. Ranges of the parameters considered in the analysis of the different image velocimetry methods. Values in parentheses specify the base value of the parameters used as reference.

Image velocimetry method	FAR (Hz)	Pre-processing thresholds		IA size (px)
		Binarization	SLB (%)	
LSPIV	6.25 - 25 (25)	-	0 - 50 (25)	16 - 48 (32)
LSPIVb	6.25 - 25 (25)	0.15 - 0.35 (0.25)	100	16 - 48 (32)
LSPIVu	6.25 - 25 (25)	-	5 - 25 (15)	16 - 48 (32)
BIV	6.25 - 25 (25)	0.50 - 0.70 (0.60)	100	16 - 48 (32)

The variations produced in the velocities because of changes in the pre-processing parameters were also investigated. In the cases of LSPIV and LSPIVu, only the sliding background threshold was considered since binarization was not performed. In contrast, LSPIVb and BIV required the definition of the binarization threshold, but the sliding background threshold had to be fixed at 100 % to delete those pixels that appear in white in two consecutive and binarized frames. The reference value of these thresholds and their range of variation during the analysis were determined based on expertise and preliminary tests. ~~This resulted~~ ~~resulting~~ in variations of the SLB threshold from 0 % to 50 % for LSPIV and from 5 % to 25 % for LSPIVu; and binarization thresholds from 0.15 to 0.35 for LSPIVb and from 0.50 to 0.70 for BIV. Reference values were thus established as the mean value for each range.

The reference value for the IA size during the cross-correlation process was set following the recommendations in Raffel et al. (2007) and Adrian et al. (2011). As the maximum velocity vectors are around 10 pixels/frame in absolute values, the reference interrogation area (IA) is set at 32x32 pixels. This ~~assures~~ ~~ensures~~ the rule of thumb that displacements cover around 25 % of the total size of the IA. The range of IA sizes was established within 16 and 48 pixels.

## 2.6 Implementation

The variations of the velocity results because of changes in the parameters were analyzed by varying the reference value of one determined parameter within its established range. In addition to the reference value, four different values were also considered using uniform steps for the IA size and the pre-processing parameter. For example, IA sizes of 16, 24, 32, 40, and 48 pixels were investigated whilst ~~keeping~~ the remaining parameters ~~were kept~~ constant. As commented in Sect. 2.5, the FAR has been modified between 25, 12.5, and 6.25 Hz. This resulted in 11 different parameter sets for each of the four different image techniques, three different rainfalls and four different areas. Therefore, a total of 528 cases were considered when analyzing the 1500 raw frames recorded in the seeded or unseeded experiments. The representation of velocity fields was performed through the Matlab toolbox 'pivmat' (Moisy, 2017).

## 3 Results and discussion

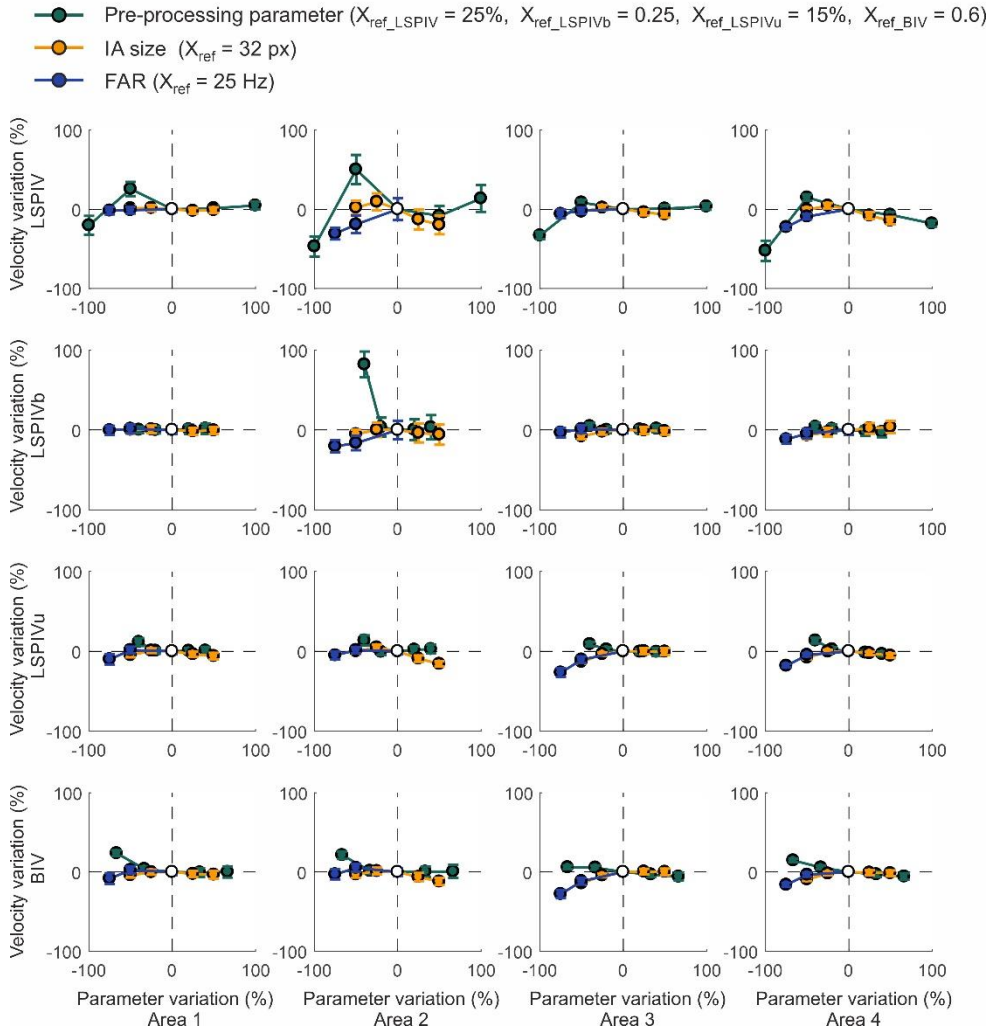
In the present section, the differences obtained in the velocity fields resulting from analyzing the experimental videos by four image velocimetry techniques (LSPIV, LSPIVb, LSPIVu and BIV) are presented and discussed. First, the sensitivity of the different methods to image processing variables is investigated to assess their robustness and performance in analyzing shallow flows with the presence of raindrops. Then, velocity results are compared and the feasibility of using these techniques in transient flow conditions is analyzed.

### 3.1 Sensitivity to image processing analysis

The changes in the mean velocities obtained by varying the key parameters of the analysis for the three study areas, the four imaging velocimetry techniques and the rain intensity of 50 mm h<sup>-1</sup> are shown in Fig. 5. The graph includes velocity results as

the average of the mean velocities resulting from each pair of frames analyzed (1500 in the case of ~~the~~ frequency acquisition rate of 25 Hz), plotting their standard deviation using whiskers. The reference value and the range of variation of the parameters considered, which are the pre-processing parameter (binary threshold or sliding background depending on the technique used);  
270 the interrogation area size (IA);~~;~~ and the frequency acquisition rate (FAR), ~~have been~~were previously defined in Sect. 2.5. This analysis focused on the intermediate rain intensity experiments, ~~Results for although 30 and 80 mm h<sup>-1</sup> experiments are similar and can be consulted also gave similar results were obtained for 30 and 80 mm h<sup>-1</sup>, which are included~~ in the supplementary information. Generally speaking, Fig. 5 shows how ~~the variation-varying~~of the parameters within the established ranges did  
275 not produce significant variations in the mean velocity results. Therefore, the methodology and the imaging velocimetry techniques analyzed in this work are presented as being robust and the reference values can be considered when comparing the velocity results obtained by each technique.

50 mm h<sup>-1</sup>-rain-intensity experiments



280 **Figure 5: Percentage of variation in the mean velocities when varying parameters of the analysis for the four studied areas (columns) and the four imaging velocimetry techniques considered (rows) in the case of 50 mm h<sup>-1</sup> rainfall. Mean velocity variability for the different pairs of frames analyzed are included using whiskers.**

Considering techniques that use seeded experiments (LSPIV and LSPIVb), the pre-processing parameter showed the greatest influence on the results. This is due to the importance of removing particles that remain still on the model surface in order to achieve reliable results. As seen in the results, the binarization considered in LSPIVb reduces this sensitivity to the pre-processing parameter, except in Area 2 where the extremely shallow flow considered greatly favors particle deposition. The very low depths developed in this area also increases the variability of the mean velocities depending on the pair of frames analyzed, which remains low for the rest of the cases, as can be seen from the plotted whiskers. The techniques that analyze the videos without particles (LSPIVu and BIV) are slightly less sensitive to variations in the parameters. In summary, the results obtained by the imaging velocimetry techniques are presented as being quite stable and the velocities do not depend on

285

290

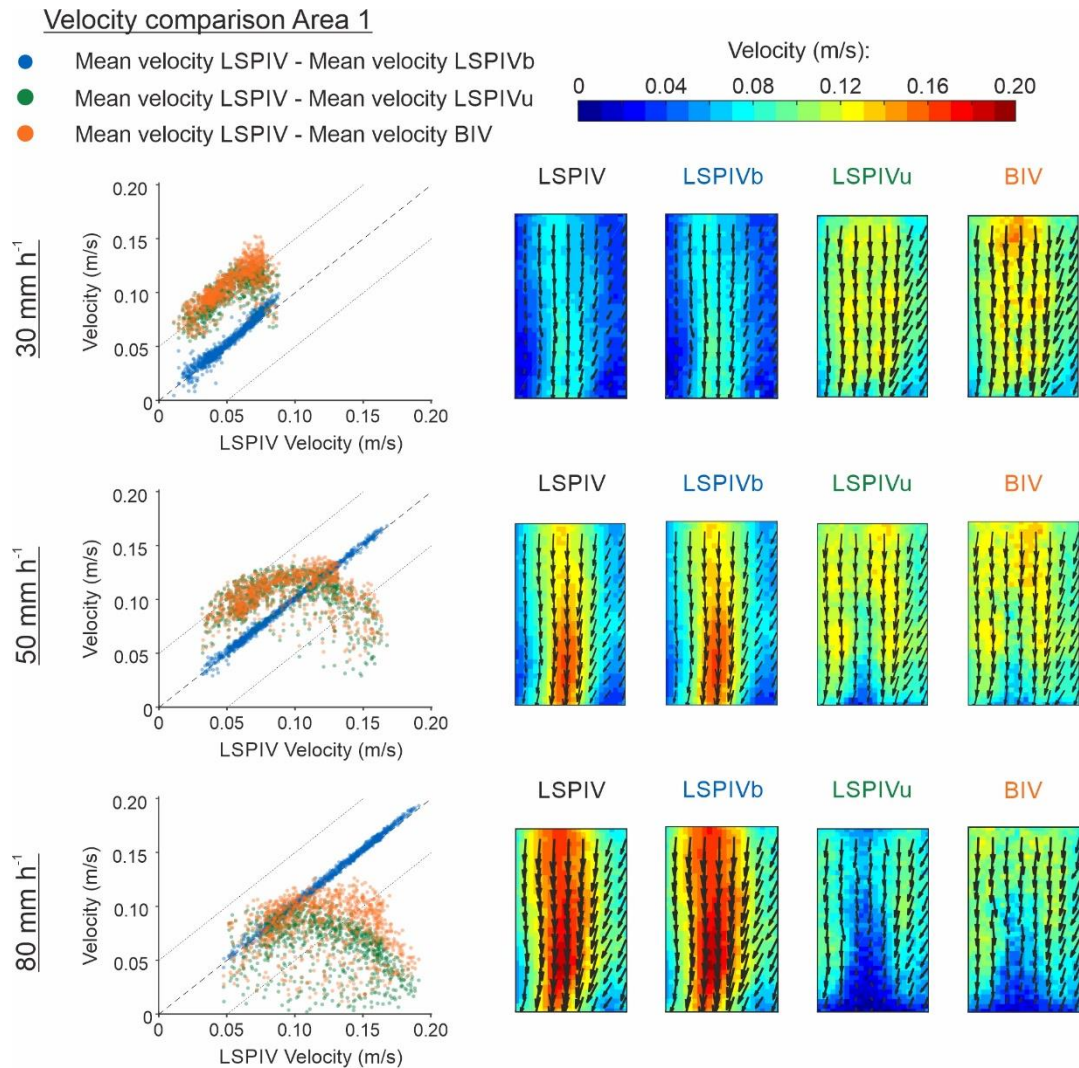
the parameters being within reasonable ranges established by expertise. Therefore, the velocity results obtained from the reference parameter values are representative of each technique and can [thus](#) be used to assess their performance. Finally, an expected degradation was noted when FAR is reduced, but within assumable ranges that make it possible to consider cameras with lower FAR as [a](#) media source for field applications.

### 295 3.2 Velocity results comparison

The performance of each technique was assessed by comparing the velocity field results obtained in the study areas by each technique for the three rain intensities considered. ~~To do this and f~~Following the previous results (Sect. 3.1), ~~the the velocities obtained using the~~ reference values of the parameters (Table 1) have been considered for this comparison. ~~In addition~~[Additionally](#), the LSPIV technique was used as the reference results since it had been previously validated in Naves et al. (2019a). The comparative results are presented ~~separately~~ below for each study area ~~in order~~ to analyze [in detail](#) the performance of each technique ~~in detail~~ for the different types of flow developed on the model surface.

First, Fig. 6 shows the comparison of the velocity fields in Area 1, which corresponds to a main drainage channel perpendicular to the curb where high velocities are developed. The velocity fields obtained and a derived disparity plot using the LSPIV results as [the](#) reference ~~were are~~ included in Fig. 6 for the three different rain intensities. The first [result aspect](#) to highlight is that the implementation of binarization in the pre-processing of the frames introduced no significant improvements in the velocity field results. In contrast, very important differences were observed by comparing techniques that analyze videos with (LSPIV and LSPIVb) and without (LSPIVu and BIV) particles. All visualization techniques presented a similar velocity distribution for the lowest rain intensity (first row), although an offset of approximately  $0.05 \text{ m s}^{-1}$  was obtained for the unseeded techniques. This offset ~~is produced~~[occurred](#) because the different tracers used in seeded and unseeded experiments, ~~which~~ are affected [by raindrop impacts in to](#) different degrees ~~by raindrop impacts~~ and may be transported at different velocities. ~~Considering~~ [When considering](#) the novel application of these techniques in [the](#) presence of rain, ~~it one can be deduced~~ that all techniques obtained a good performance for  $30 \text{ mm h}^{-1}$  rainfall. ~~It can be further stated and~~ that, ~~lower velocity indexes are required~~ in the case of unseeded techniques, [lower velocity indexes are required in order](#) to convert the results to depth-averaged velocities, as observed in previous references (Leitão et al., 2018; Martins et al., 2018; Naves et al., 2019a).

315 However, the velocity fields obtained for rain intensities of  $50$  and  $80 \text{ mm h}^{-1}$  showed that both the LSPIVu as well as the BIV techniques resulted in erroneous velocity distributions, being more affected [these](#) areas where greater velocities are developed. In the case of the rain intensity of  $50 \text{ mm h}^{-1}$ , there is an unexpected reduction in velocities for the unseeded techniques, which is greatly incremented as the velocities are roughly higher than  $0.10 \text{ m s}^{-1}$  for the LSPIV technique. ~~Considering~~ [With regard to](#) the  $80 \text{ mm h}^{-1}$  results, it can be deduced that this issue [in](#) measuring velocities is clearly related with the rain intensity, since the perturbations in the velocity results started to occur for lower LSPIV velocities and to a greater extent as the rain intensity ~~increases~~[increased](#).



325 **Figure 6: Velocity comparison between imaging velocimetry techniques results (LSPIV, LSPIVb, LSPIVu and BIV) in Area 1 for the three different rain intensities (30, 50, and 80 mm h<sup>-1</sup>). The velocity fields obtained for each case are also plotted for a qualitative comparison.**

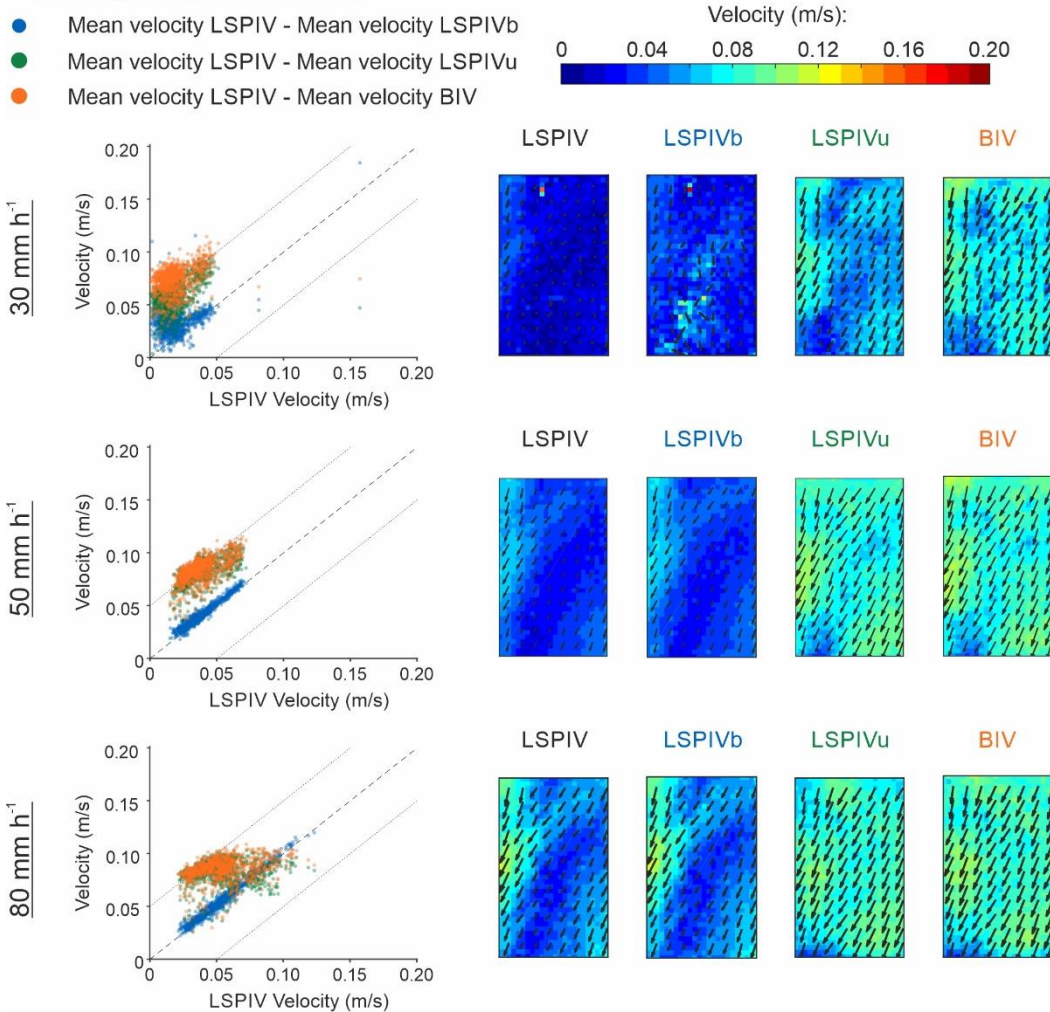
This phenomenon can be explained by the combination of two different processes. First, the reduction in the gap between velocities obtained from the seeded and unseeded techniques for LSPIV velocities lower than 0.10 m s<sup>-1</sup> is ~~due to explained because of~~ the turbulences generated by the raindrop impacts, which decrease the flow surface velocity. The velocity index to estimate depth average velocities therefore depends on the rain intensity. Then, the problems of unseeded techniques (LSPIVu and BIV) measuring velocities with high rain intensities ~~do not arise are not produced~~ because of a lack of tracers since, as can be observed in the videos provided in Naves et al. (2019b), the number of bubbles in that area increases with the rain intensity. These are caused by the erratic trajectory of the bubbles observed in the unseeded videos for high rain intensities, due to the

330



335 impact of raindrops on the water surface. It is assumed that raindrops, when falling, interrupt part of the existing flow and produce acceleration of the flow in all directions in the surrounding area surrounding to the impact (Kilinc and Richardson, 1973). The natural bubbles used as tracers for the LSPIV and BIV techniques are highly affected by these such accelerations, producing very fast, random and major changes in the position of the tracers; these this phenomenon is are exacerbated as the velocity of the bubbles and the rain intensity increases. This prevents cross-correlation algorithms from obtaining displacements of tracers and results in erroneous velocities. The mass of the fluorescent particles used as tracers in the case of  
 340 LSPIV and LSPIVb, with a density slightly higher than water, confers themselves inertia to avoid such sudden movements and allows cross-correlation between consecutive frames.

### Velocity comparison Area 2



345 **Figure 7: Velocity comparison between imaging velocimetry techniques results (LSPIV, LSPIVb, LSPIVu and BIV) in Area 2 for the three different rain intensities (30, 50, and 80 mm h<sup>-1</sup>). The velocity fields obtained for each case are also plotted for a qualitative comparison.**

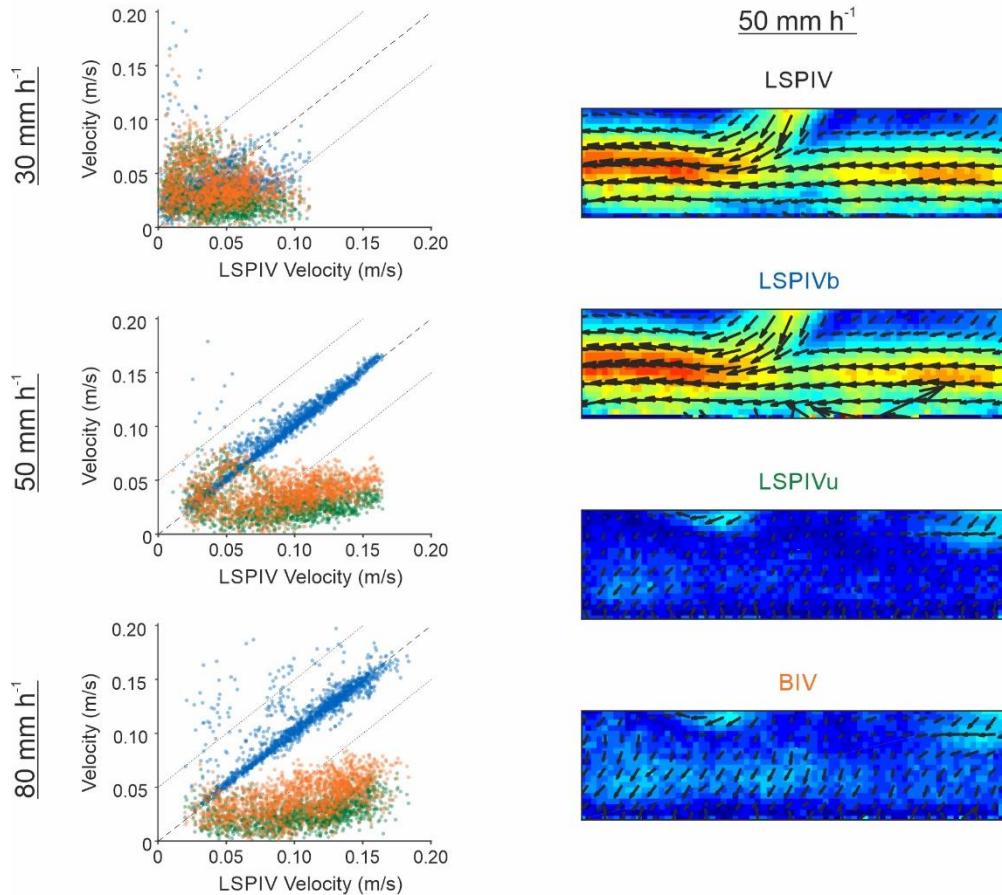
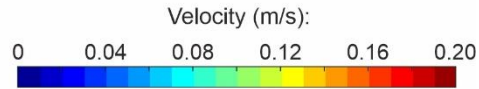
Despite these problems in measuring velocities with high rain intensities, the use of bubbles as tracers [in low rain intensities](#) can [be provide](#) an opportunity [with low rain intensities](#) to measure velocities in extremely shallow flows where the particles tend to be deposited, as can be seen on the sides of the drainage channel in the velocity fields of Fig. 6. This is better assessed in the analysis of the results in Area 2 (Fig. 7), which is attached to Area 1 and considers a perpendicular flow to the curb, out  
350 of the main drainage channels and where very shallow flows are developed.

As can be seen in Fig. 7, there is a central zone in Area 2 where the methods that use particles as tracers (LSPIV and LSPIVb) are not able to obtain velocity data (dark blue areas in the respective velocity fields). In this zone, which corresponds [with to](#) the lowest water depths and becomes smaller as the rain intensity is higher and the water depths increase, [it is necessary to use](#) the LSPIVu or BIV techniques [need to be used](#) to obtain reliable results. [As can be checked in the recorded videos, this](#) This  
355 is because bubbles [are able to can](#) pass through the extremely shallow areas where fluorescent particles tend to be deposited, [which can be checked in the recorded videos](#). Regarding the influence of the rain intensity on the results, a similar behavior to that for Area 1 is observed but in this case, only the experiment with the highest rain intensities results in erroneous velocities, due to the low velocities registered.

Figure 8 presents the comparison between the velocity results in Area 3. The velocity fields in this area refer to the channel  
360 attached to the curb that runs perpendicular to the flows presented in Areas 1 and 2, and where most of the overland flows are gathered on their way to the drain inlet. Figure 8 only includes velocity fields for the rain intensity of 50 mm h<sup>-1</sup>, since no interesting differences were found between rain intensities; the rest of the velocity field can be consulted in the supplementary information. In the recorded videos of the unseeded experiments, it was observed that raindrop impacts do not produce bubbles in that area due to the greater water depths. [M and moreover](#), existing bubbles cannot access [that to this](#) flow from the rest of  
365 the catchment and [therefore](#) stay retained in the confluence of flows. This results in a lack of tracers and thus the impossibility of measuring velocities correctly with the LSPIVu and BIV techniques. In contrast, LSPIV and LSPIVb present a high density of particles and accurate velocity results with a high concordance between both techniques. Therefore, it can be concluded that [it is not possible to measure measuring](#) velocities in those conditions [is not possible](#) using the LSPIVu technique to trace water reflections without the presence of bubbles, so the use of particles as tracers is highly recommendable in this type of complex  
370 flows.

### Velocity comparison Area 3

- Mean velocity LSPIV - Mean velocity LSPIVb
- Mean velocity LSPIV - Mean velocity LSPIVu
- Mean velocity LSPIV - Mean velocity BIV



**Figure 8: Velocity comparison between imaging velocimetry techniques results (LSPIV, LSPIVb, LSPIVu and BIV) in Area 3 for the three different rain intensities (30, 50, and 80 mm h<sup>-1</sup>). The velocity fields obtained for the case of 50 mm h<sup>-1</sup> are also plotted for a qualitative comparison.**

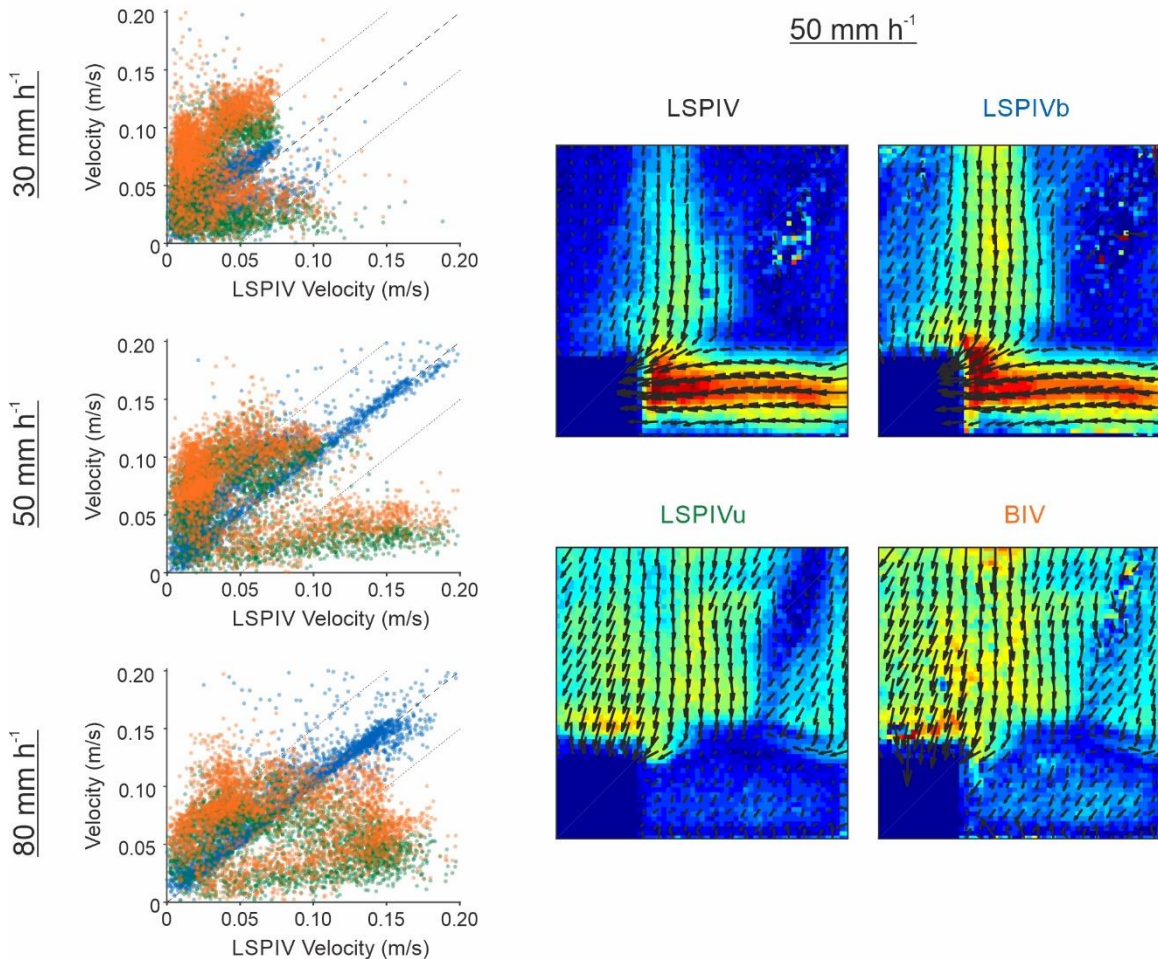
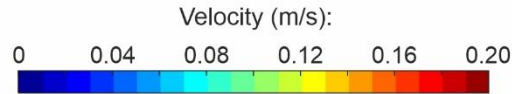
375

Finally, Fig. 9 shows the velocity fields obtained in Area 4 for the case of 50 mm h<sup>-1</sup> and the comparison between the results obtained by using the four imaging velocimetry techniques and the three rain intensities. The velocity fields for the rain of 30 and 80 mm h<sup>-1</sup> can be consulted in the supplementary information. [Area 4](#) This area covers the vicinity of gully pot 2 and is a combination of the previous cases studied considering overland flows perpendicular to the curb, such as those in Areas 1 and 2, and the curb flow analyzed in Area 3. The results plotted in Fig. 9 agree with the observations made for the previous areas and confirm the insights achieved.

380

### Velocity comparison Area 4

- Mean velocity LSPIV - Mean velocity LSPIVb
- Mean velocity LSPIV - Mean velocity LSPIVu
- Mean velocity LSPIV - Mean velocity BIV



**Figure 9: Velocity comparison between imaging velocimetry techniques results (LSPIV, LSPIVb, LSPIVu and BIV) in Area 4 for the three different rain intensities (30, 50, and 80 mm h<sup>-1</sup>). The velocity fields obtained for the case of 50 mm h<sup>-1</sup> case are also plotted for a qualitative comparison.**

As seen in Naves et al. (2019a), LSPIV obtained-gave suitable results for the entire model surface, with some difficulties in extremely shallow flows with depths of around 1 mm where particles tend to be deposited. Then, the velocity fields showed very similar results between LSPIV and LSPIVb and between LSPIVu and BIV with slightly higher velocities measured by methods using binarization pre-processing (LSPIVb and BIV). This similarity indicates that, except for particles and bubbles, the cameras did not record many other moving elements that disturb the results, so binarization does not includes significant benefits in these-those experiments. In addition, it washas-been observed that techniques that include binarization result in



noisier velocity results (see velocity fields for 30 and 80 mm h<sup>-1</sup> in the supplementary information). This may be ~~because due~~  
~~to the fact that~~, if binarization is applied, the sliding background filter may remove parts of tracers in motion that are overlapped  
in consecutive frames since no different grey values are considered. ~~This, which also~~ might ~~also~~ explain the slightly higher  
395 velocities obtained. Therefore, this filter should be used with care in future applications if it ~~were would be~~ necessary to isolate  
tracers from other mobile elements. In the case of the lowest rain intensity, all the techniques ~~resulted-gave in~~ similar velocity  
distributions with the offset of around 0.05 m s<sup>-1</sup> observed in the previous areas between the seeded and unseeded techniques,  
which is due to the different tracers analyzed. The use of bubbles as tracers gives unseeded techniques ~~an-the~~ opportunity to  
measure velocities in extremely shallow flows where particles tend to be deposited. However, LSPIV<sub>u</sub> and BIV are more  
400 affected by the impact of raindrops, ~~thus~~ leading to erroneous results for high rain intensities, especially for high velocity  
flows. These techniques also presented problems in the flow attached to the curb because of the absence of bubbles in that  
area.

### 3.3 Transferability to field applications

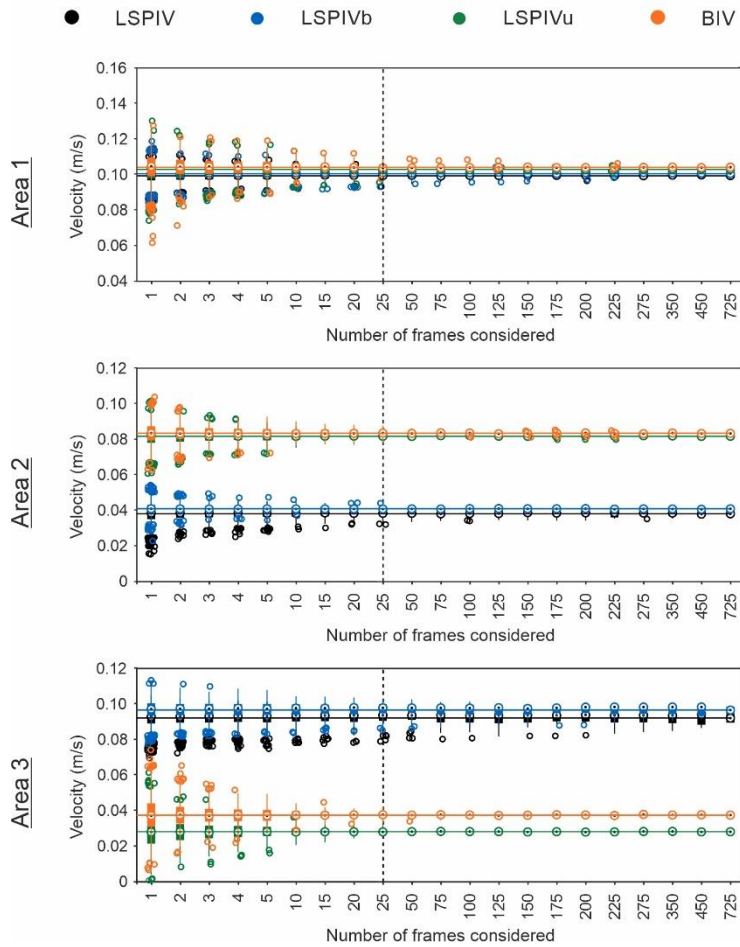
The assessment of different imaging velocimetry techniques and the analysis of the influence of different factors on the velocity  
405 results contribute to understanding how these methodologies could be adequately transferred to real urban catchments. ~~The~~  
~~use of these techniques would favor new velocity data sources to calibrate physically-based urban drainage models, such as~~  
~~traffic, public or surveillance cameras (Leitão et al., 2018; Moy de Vitry et al. 2020) or even unmanned aerial vehicles, which~~  
~~have already been used in river flow measurements (e.g. Lewis and Rhoads, 2018; Pearce et al., 2020). The insights~~  
~~gained-achieved~~ in this study show the limitations of unseeded LSPIV<sub>u</sub> and BIV ~~unseeded~~ techniques to estimate runoff  
410 velocities under high rain intensity conditions or when complex flows are developed. Raindrop impacts on the water surface  
produces disturbances in the movement of the bubbles used as tracers that can prevent cross-correlation algorithms from  
obtaining reliable ~~displacements and thus~~ velocity distributions. In our experiments, ~~this problem was has been~~ observed in  
~~this case for experiments~~ when the with-rain intensity ~~i~~ was higher than 30 mm/h, ~~but and~~ but this threshold may vary depending  
on the overland flow velocity or the raindrop kinetic energy. However, ~~as there is no need to add artificial particles in the~~  
415 ~~the unseeded techniques they present benefits from-in being -terms of straightforwards simplicity in their to implementation by~~  
~~not having to add artificial particeles. to the flow and t~~ Their ability to estimate velocities in extremely shallow flows, where  
particles tend to be deposited, also make ~~unseeded~~ these techniques a potential tool for measuring velocities in field applications  
without the interference of raindrops or under ~~low light~~ rain conditions. ~~In contrast, it was has been~~ observed that using ~~the use~~  
of artificial particles as tracers makes the LSPIV and LSPIV<sub>b</sub> techniques robust against heavy rain conditions and complex  
420 flows, such as those developed in Area 3 of the present study (Fig. 8), ~~being the velocity results obtained suitable even for high~~  
~~rain intensities since particles are less affected by raindrop impacts~~. Therefore, the use of ~~these~~ seeded techniques ~~is~~  
~~recommended~~ may also be very interesting to estimate overland velocities in real urban catchments ~~under rainy conditions, or~~  
~~when the measured flows are not simple enough. Special, having to pay special~~ attention must be paid to the deposition of

~~particles when the flow is extremely shallow in order to analyze specific areas of special relevance, such as for example the vicinity of manhole inlet grates, where more complex methodologies could be implemented.~~

Besides the ability of each technique to adequately measure overland flow velocities in urban catchments with shallow water flows and the presence of raindrops, it is important to ~~assess-determine~~ the minimum requirements of the recording devices when evaluating the ~~feasibility-potential~~ of using these techniques in field studies. This work has ~~proven-demonstrated~~ that a low frequency acquisition rate of 6.25 Hz could be used, incorporating ~~assumable-acceptable~~ errors into the velocity results obtained. However, in light of the problems observed in Leitão et al. (2018) for rates lower than 20 Hz using only water reflections as tracers, this requirement varies according to the magnitude of the measured velocities and the tracer used. Therefore, it is deduced that artificial particles and naturally generated bubbles considered in the present study favor cross-correlation when the time step between frames is increased. The outdoor study carried out by Leitão et al. (2018) also concluded that ~~a-an~~ LSPIV-based method provides robust results analyzing images with a resolution as low as 256×144 pixels for an area of around 5 m<sup>2</sup>. These values are easily overcome by most imaging devices available on the market so, although low acquisition rates and image resolutions will decrease the precision and quality of the velocity results, they ~~do not represent se~~ ~~are not presented as~~ a major constraint to transferring imaging velocity techniques to real applications in urban catchments.



Convergence study: mean velocities (rain intensity = 50 mm h<sup>-1</sup>)



440 **Figure 20: Mean velocity convergence study for rain intensity of 50 mm h<sup>-1</sup> and Areas 1, 2, and 3. The horizontal line represents the mean velocity considering all the frames available (1500) for LSPIV (black), LSPIVb (blue), LSPIVu (green) and BIV (orange) techniques. Then, the variability in the mean velocity when the frames are divided into groups of different numbers of frames was represented by boxplots.**

445 Finally, the analysis presented in this article has been performed for steady flows comparing average velocity fields obtained from one minute of steady conditions. This [allows-enables](#) the [results to be compared-comparability-of-the-results](#) with those obtained in Naves et al. (2019a) and reduces the uncertainties in velocity estimations, but is not representative of field conditions. Therefore, another important point to address [is-concerns](#) the uncertainties assumed when using these techniques in transient flows, such as those that would be recorded in real catchments. A convergence analysis is presented in Fig. 10 for the experiments with 50 mm h<sup>-1</sup> of rain intensity and for Areas 1, 2, and 3, showing the variations in the mean velocities that

450 arise when the number of frames considered is reduced. The first result to highlight is that the mean velocities obtained from each method and from each area follow the insights presented and discussed in Sect. 3.2. In addition, the variations in the mean velocity remain low [when](#) considering 25 frames in the analysis, which corresponds to one second in the present case study.

This value is considered to be enough to ensure reliable velocity results analyzing transient flows and to enhance the possible usability of these imaging velocimetry techniques in future real field studies, meriting further investigation. Convergence results for other rain intensities and for Area 4 are similar and can be consulted in the supplementary information.

#### 4 Conclusions

In this study, the performance of different seeded and unseeded imaging velocimetry techniques has been assessed from videos of the overland flow generated by three different rain intensities in an urban drainage physical model. These techniques use artificial-seeded particles or existing bubbles and water reflections as tracers to estimate surface velocity distributions. The influence of the rain intensity on the reliability of the results has also been explored as a novel scientific contribution by comparing the velocity fields achieved from each study case. Based on the results obtained, the following conclusions can be drawn:

- The variation in the parameters of the imaging velocimetry techniques within the established ranges did not produce significant variations in mean velocity results. Therefore, the methodology and the imaging velocimetry techniques analyzed in this work are presented as being robust, and expertise can be used to set the required parameters for the analysis.
- Both the seeded and unseeded techniques provide suitable velocity distributions in cases of unidirectional flows and the lowest rain intensity of 30 mm/h~~for lower rain intensities in case of unidirectional flows, observing with~~ an offset of approximately  $0.05 \text{ m s}^{-1}$  between them. This offset is a consequence of the different tracers used in the seeded and unseeded experiments, which are affected in-to different degrees by raindrop impacts and may be transported at different velocities. Lower velocity indexes are thus required in the case of unseeded techniques to convert the results to depth-averaged velocities and these are affected by rain intensity. In case of more complex flows, unseeded techniques are not able to adequately measure velocities since bubbles have difficulties to follow the runoff generated.
- LSPIV<sub>u</sub> and BIV unseeded techniques are not able to estimate runoff velocities for higher rain intensities due to the disturbances introduced by raindrop impacts, which prevent cross-correlation algorithms from obtaining displacements and thus velocity distributions. The use of artificial particles as tracers by LSPIV and LSPIV<sub>b</sub> makes these seeded techniques robust against heavy rain conditions and thus are thus recommended in future field studies during rain events. Seeded techniques are also able to measure complex flows, where bubbles have difficulties to in following the overland flow avoiding that unseeded techniques can to estimate determine velocities. However, unseeded techniques can be suitable in field and laboratory applications in unidirectional flows and without the interference of raindrops or under low light rain conditions, since they need require a simpler experimental setup and are able to measure velocities in extremely shallow waters where artificial particles tend to be deposited.
- Unseeded techniques are highly affected by raindrop impacts. First, the gap between seeded and unseeded techniques is reduced as the rain intensity is increased, so rain intensity should be also considered to determine the velocity index

485 ~~for estimating depth-average velocities. Then, raindrop impacts also produce fast and random changes of position of the bubbles used as tracers, leading to erroneous velocities for high rain intensities. However, the ability of measuring extremely shallow flows where particles tend to be deposited, and their easy implementation without the need of adding artificial particles, make unseeded techniques worthy of future investigations as new source of runoff velocity data in urban catchments.~~

490 - The similarity found between LSPIV and LSPIVb and between LSPIVu and BIV indicates that binarization pre-processing has not significant benefits in these experiments ~~since as the~~ cameras did not record moving elements that significantly disturb the results. In addition, it has been found that this procedure leads to noisier results, so binarization should be used with care in future applications if it ~~were would be~~ necessary to isolate tracers from other mobile elements.

495 - The rapid convergence of velocity results makes the analysis of transient flows feasible. This fact, as well as the not very demanding requirements of the recorded videos, favor the transferability of these techniques to field studies, where they can be used as a novel tool to obtain runoff velocities in order to calibrate physically-based urban drainage models.

This work evaluated the reliability of different imaging techniques obtaining urban runoff velocities in different type of flows and with the presence of raindrops, highlighting the importance of considering rain properties to interpret and assess the results obtained by these techniques. The potential use of seeded and unseeded techniques in urban catchments has been proven, but  
500 Future research should be oriented towards studying their robustness in real-world applications under non-controlled environments. The influence of the wind on rainfall distribution, catchment surface roughness or variable illumination conditions should be assessed in order to develop suitable pre-and post-processing procedures and correctly estimate runoff  
505 velocity results.

### Author contribution

J.N. performed the experiments with the supervision of J.A. and J.P.. J.N. processed the experimental data with the supervision of J.G. and J.A. J.N., J.G. and J.A. conceptualized the study, interpreted the results, structured the paper, and prepared the original draft. All authors revised the manuscript critically for important intellectual content.

### 510 Competing interests

The authors declare that they have no conflict of interest.

## Acknowledgments

The project receives funding from the Spanish Ministry of Science and Innovation under POREDRAIN project RTI2018-094217-B-C33 (MINECO/FEDER-EU).

## 515 References

- Aberle, J., Rennie, C., Admiraal, D., and Muste, M.: *Experimental Hydraulics: Methods, Instrumentation, Data Processing and Management: Volume II: Instrumentation and Measurement Techniques*, CRC Press, 2017.
- Adrian, L., Adrian, R. J., and Westerweel, J.: *Particle image velocimetry* (No. 30), Cambridge University Press, 2011.
- Anta, J., Peña, E., Suárez, J., and Cagiao, J.: A BMP selection process based on the granulometry of runoff solids in a separate  
520 urban catchment, *Water Sa*, 32(3), 419-428, <http://dx.doi.org/10.4314/wsa.v32i3.5268>, 2006.
- Apel, H., Thielen, A. H., Merz, B., and Blöschl, G.: Flood risk assessment and associated uncertainty, *Nat. Hazards Earth Sys.*, 4(2), 295-308, 2004.
- Arnbjerg-Nielsen, K., Willems, P., Olsson, J., Beecham, S., Pathirana, A., Bülow Gregersen, I., Madsen, H., and Nguyen, V.T.V.: Impacts of climate change on rainfall extremes and urban drainage systems: a review, *Water Sci. Technol.*, 68(1), 16-  
525 28, <https://doi.org/10.2166/wst.2013.251>, 2013.
- Brown, R. R., Keath, N., and Wong, T. H.: Urban water management in cities: historical, current and future regimes, *Water Sci. Technol.*, 59(5), 847-855, <https://doi.org/10.2166/wst.2009.029>, 2009.
- Butler, D., Digman, C. J., Makropoulos, C., and Davies, J. W.: *Urban drainage*, Crc Press, 2018.
- Cea, L., Puertas, J., and Pena, L.: Velocity measurements on highly turbulent free surface flow using ADV, *Exp. Fluids*, 42(3),  
530 333-348, <https://doi.org/10.1007/s00348-006-0237-3>, 2007.
- Chen, Y., Zhou, H., Zhang, H., Du, G., and Zhou, J.: Urban flood risk warning under rapid urbanization, *Environ. Res.*, 139, 3-10, <https://doi.org/10.1016/j.envres.2015.02.028>, 2015.
- Fujita, I., Muste, M., and Kruger, A. Large-scale particle image velocimetry for flow analysis in hydraulic engineering applications, *J. Hydraul. Res.*, 36(3), 397-414, <https://doi.org/10.1080/00221689809498626>, 1998.
- 535 García, J.T., Espín-Leal, P., Viguera-Rodríguez, A., Castillo, L., Carrillo, J., Martínez-Solano, P., and Nevado-Santos, S.: Urban Runoff Characteristics in Combined Sewer Overflows (CSOs): Analysis of Storm Events in Southeastern Spain. *Water*, 9(5), 303, <https://doi.org/10.3390/w9050303>, 2017.
- Hatt, B.E., Fletcher, T.D., Walsh, C.J., and Taylor, S.L.: The influence of urban density and drainage infrastructure on the concentrations and loads of pollutants in small streams, *Environ. Manage.*, 34(1), 112-124, <https://doi.org/10.1007/s00267->  
540 004-0221-8, 2004.
- Hansen, I., Warriar, R., Satzger, C., Sattler, M., Luethi, B., Peña-Haro, S., and Duester, R.: An Innovative Image Processing Method for Flow Measurement in Open Channels and Rivers. In *Global Conference & Exhibition-2017 "Innovative Solutions in Flow Measurement and Control-Oil, Water and Gas"*, Palakkad, India. 2017.

- Hong, M., Bonhomme, C., Le, M.H., and Chebbo, G.: New insights into the urban washoff process with detailed physical  
545 modelling, *Sci. Total Environ.*, 573, 924–936, <https://doi.org/10.1016/j.scitotenv.2016.08.193>, 2016.
- Kantoush, S.A., Schleiss, A.J., Sumi, T., and Murasaki, M.: LSPIV implementation for environmental flow in various  
laboratory and field cases. *J. Hydro-environ. Res.*, 5(4), 263-276, <https://doi.org/10.1016/j.jher.2011.07.002>, 2011.
- Kilinc, M.Y., and Richardson, E.V.: Mechanics of soil erosion from overland flow generated by simulated rainfall. *Hydrology  
papers (Colorado State University)*, 63, 1973.
- 550 Lee, J.H., and Bang, K.W.: Characterization of urban stormwater runoff, *Water Res.*, 34(6), 1773-1780,  
[https://doi.org/10.1016/S0043-1354\(99\)00325-5](https://doi.org/10.1016/S0043-1354(99)00325-5), 2000.
- Legout, C., Darboux, F., Nédélec, Y., Hauet, A., Esteves, M., Renaux, B., Denis, H. and Cordier, S.: High spatial resolution  
mapping of surface velocities and depths for shallow overland flow, *Earth Surf. Proc. Land.*, 37(9), 984-993,  
<https://doi.org/10.1002/esp.3220>, 2012.
- 555 Leitão, J.P., Peña-Haro, S., Lüthi, B., Scheidegger, A., and de Vitry, M.M. Urban overland runoff velocity measurement with  
consumer-grade surveillance cameras and surface structure image velocimetry. *J. Hydrol.*, 565, 791-804,  
<https://doi.org/10.1016/j.jhydrol.2018.09.001>, 2018.
- Lewis, Q.W., and Rhoads, B.L.: LSPIV Measurements of Two-Dimensional Flow Structure in Streams Using Small  
Unmanned Aerial Systems: 1. Accuracy Assessment Based on Comparison With Stationary Camera Platforms and In-Stream  
560 Velocity Measurements, *Water Resour. Res.*, 54(10), 8000-8018, <https://doi.org/10.1029/2018WR022550>, 2018.
- Lin, C., Hsieh, S.C., Lin, I.J., Chang, K.A., and Raikar, R.V.: Flow property and self-similarity in steady hydraulic jumps.  
*Exp. Fluids*, 53(5), 1591-1616, <https://doi.org/10.1007/s00348-012-1377-2>, 2012.
- Lüthi, B., Philippe, T., and Peña-Haro, S.: Mobile device app for small open-channel flow measurement, *Proceedings of the  
7th International Congress on Environmental Modelling and Software, San Diego, CA, USA (pp. 15-19)*. 2014.
- 565 Manfreda, S., McCabe, M. F., Miller, P. E., Lucas, R., Pajuelo Madrigal, V., Mallinis, G., ... and Müllerová, J.: On the use of  
unmanned aerial systems for environmental monitoring. *Remote sensing*, 10(4), 641. <https://doi.org/10.3390/rs10040641>.  
2018.
- Martínez-Gomariz, E., Gómez, M., and Russo, B.: Experimental study of the stability of pedestrians exposed to urban pluvial  
flooding, *Nat. Hazards*, 82(2), 1259-1278, <https://doi.org/10.1007/s11069-016-2242-z>, 2016.
- 570 Martins, R., Rubinato, M., Kesserwani, G., Leandro, J., Djordjević, S., and Shucksmith, J. D.: On the Characteristics of  
Velocities Fields in the Vicinity of Manhole Inlet Grates During Flood Events, *Water Resour. Res.*, 54(9), 6408-6422,  
<https://doi.org/10.1029/2018WR022782>, 2018.
- Moisy, F.: PIVMat, Available at: <http://www.fast.u-psud.fr/pivmat/> [Accessed: 24 Mar 2020], 2017.
- Muste, M., Fujita, I., and Hauet, A.: Large-scale particle image velocimetry for measurements in riverine environments, *Water  
575 Resour. Res.*, 44(4), <https://doi.org/10.1029/2008WR006950>, 2008.

- Muthusamy, M., Tait, S., Schellart, A., Beg, M.N.A., Carvalho, R.F., and de Lima, J.L.: Improving understanding of the underlying physical process of sediment wash-off from urban road surfaces. *J. Hydrol.*, 557, 426-433, <https://doi.org/10.1016/j.jhydrol.2017.11.047>, 2018.
- 580 Naves, J., Anta, J., Puertas, J., Regueiro-Picallo, M., and Suárez, J.: Using a 2D shallow water model to assess Large-Scale Particle Image Velocimetry (LSPIV) and Structure from Motion (SfM) techniques in a street-scale urban drainage physical model, *J. Hydrol.*, 575, 54-65, <https://doi.org/10.1016/j.jhydrol.2019.05.003>, 2019a.
- Naves, J., Puertas, J., Suárez, J., and Anta, J.: WASHTREET Runoff velocity data using different Particle Image Velocimetry (PIV) techniques in a full scale urban drainage physical model, *Zenodo*, <https://doi.org/10.5281/zenodo.3239401>, 2019b.
- 585 Naves, J., Rieckermann, J., Cea, L., Puertas, J., and Anta, J.: Global and local sensitivity analysis to improve the understanding of physically-based urban wash-off models from high-resolution laboratory experiments. *Sci. Total Environ.*, 709, 136152, <https://doi.org/10.1016/j.scitotenv.2019.136152>, 2020a.
- Naves, J., Anta, J., Suárez, J., and Puertas, J.: Hydraulic, wash-off and sediment transport experiments in a full-scale urban drainage physical model, *Sci. Data*, 7, 44. <https://doi.org/10.1038/s41597-020-0384-z>, 2020b.
- Naves, J., Anta, J., Suárez, J., and Puertas, J.: Development and calibration of a new dripper-based rainfall simulator for large-  
590 scale sediment wash-off studies. *Water*, 12(1), 152, <https://doi.org/10.3390/w12010152>, 2020c.
- Pearce, S., Ljubičić, R., Peña-Haro, S., Perks, M., Tauro, F., Pizarro, A., Dal Sasso, S.F., Strelnikova, D., Grimaldi, S., Maddock, I., Paulus, G., Plavšić, J., Prodanović, D., Manfreda, S.: An evaluation of image velocimetry techniques under low flow conditions and high seeding densities using unmanned aerial systems. *Remote Sens.*, 12, 232, 2020.
- Raffel, M., Willert, C.E., Wereley, S.T., and Kompenhans, J.: *Particle Image Velocimetry*. Springer Berlin Heidelberg. 2007.
- 595 Rubinato, M., Lee, S., Martins, R., and Shucksmith, J. D.: Surface to sewer flow exchange through circular inlets during urban flood conditions. *J. Hydroinform.*, 20(3), 564-576, <https://doi.org/10.2166/hydro.2018.127>, 2018.
- Ryu, Y., Chang, K.A., and Lim, H.J.: Use of bubble image velocimetry for measurement of plunging wave impinging on structure and associated greenwater, *Meas. Sci. Technol.*, 16(10), 1945–1953, <http://dx.doi.org/10.1088/0957-0233/16/10/009>, 2005.
- 600 Shuster, W.D., Bonta, J., Thurston, H., Warnemuende, E., and Smith, D.R.: Impacts of impervious surface on watershed hydrology: A review, *Urban Water J.*, 2(4), 263-275, <https://doi.org/10.1080/15730620500386529>, 2005.
- Tauro, F., Petroselli, A., Porfiri, M., Giandomenico, L., Bernardi, G., Mele, F., ... and Grimaldi, S.: A novel permanent gauge-cam station for surface-flow observations on the Tiber River. *Geoscientific Instrumentation, Methods and Data Systems*, 5(1), 241-251. <https://doi.org/10.5194/gi-5-241-2016>. 2016.
- 605 Tauro, F., Petroselli, A., and Grimaldi, S.: Optical sensing for stream flow observations: A review. *Journal of Agricultural Engineering*, 49(4), 199-206. <https://doi.org/10.4081/jae.2018.836>. 2018.
- Taylor, Z.J., Gurka, R., Kopp, G.A., and Liberzon, A.: Long-duration timeresolved PIV to study unsteady aerodynamics. *IEEE Transactions on Instrumentation and Measurement*, 59(12): 3262–3269. <https://doi.org/10.1016/10.1109/TIM.2010.2047149>. 2010.



- 610 Thielicke, W., and Stamhuis, E.: PIVlab—towards user-friendly, affordable and accurate digital particle image velocimetry in Matlab, *J. Open Res. Softw.*, 2(1), <http://doi.org/10.5334/jors.bl>, 2014.
- de Vitry, M. M., and Leitão, J. P.: The potential of proxy water level measurements for calibrating urban pluvial flood models. *Water Research*, 115669. <https://doi.org/10.1016/j.watres.2020.115669>, 2020.
- Westerweel, J., and Scarano, F.: Universal outlier detection for PIV data, *Exp. Fluids*, 39(6), 1096-1100, <https://doi.org/10.1007/s00348-005-0016-6>, 2005.
- 615 Willems, P., Olsson, J., Arnbjerg-Nielsen, K., Beecham, S., Pathirana, A., Gregersen, I. B., Madsen, H. and Nguyen, V.T.V.: *Impacts of Climate Change on Rainfall Extremes and Urban Drainage*, IWA Publishing, London, UK, 2012.
- Yao, L., Wei, W., and Chen, L.: How does imperviousness impact the urban rainfall-runoff process under various storm cases?, *Ecol. Indic.*, 60, 893-905, <https://doi.org/10.1016/j.ecolind.2015.08.041>, 2016.
- 620 Zafra, C., Temprano, J., and Suárez, J.: A simplified method for determining potential heavy metal loads washed off by stormwater runoff from road-deposited sediments. *Sci. Total Environ.*, 601, 260-270. <https://doi.org/10.1016/j.scitotenv.2017.05.178>, 2017.
- Zhou, X., Doup, B., and Sun, X.: Measurements of liquid-phase turbulence in gas–liquid two-phase flows using particle image velocimetry. *Meas. Sci. Technol.*, 24(12), 125303. <https://doi.org/10.1088/0957-0233/24/12/125303>, 2013.
- 625 Zhu, X., and Lipeme Kouyi, G.: An analysis of LSPIV-based surface velocity measurement techniques for stormwater detention basin management. *Water Resour. Res.*, 55(2), 888-903, <https://doi.org/10.1029/2018WR023813>, 2019.