

## Responses to comments posted by Referee #1

As outlined by the authors, the study aims to better predict the impact of reservoirs and riparian cover on water temperature using the coupled DHSVM-RMB modeling system and to assess the usefulness of the modeling system to aid in watershed planning. The authors conducted four simulations (baseline, removal of dams, removal of riparian buffers, and removal of dams and riparian buffers) and evaluated how water temperature dynamics changed across these scenarios. Overall, results indicated that larger reservoirs were providing a cooling effect downstream of outlets and that riparian shading also provided a cooling effect on water temperature. However, there appears to be another aspect of the manuscript which focuses more on the use of state-space models. But this section on state-space models is not currently well aligned with the reservoir and riparian buffer component of the model and detracts from the readability. As currently written, I recommend this work to be considered for publication with major modifications as outline below. While the inclusion of the reservoirs in the RMB model is novel, the authors need to make the manuscript considerably more focused to be considered for publication.

**Response:** We thank the reviewer for constructive comments that have been of great help in improving the manuscript. Our responses to the comments are given below.

**General:** Per the title, this manuscript appears to use a water temperature model to simulate the impacts of reservoirs and riparian cover on water temperature dynamics. However, the introduction does not appear to cover these topics in much detail, but rather spends most of the text outlining the use of state-space models. While the description of state-space modeling is interesting, this reviewer would like to see the introduction adapted and to focus more on the ways in which reservoirs and riparian cover alter stream temperature dynamics and how this manuscript will address this.

**Response:** We have rewritten the Introduction to provide background on the effects of dams and riparian vegetation on stream temperature. We agree with the reviewer that the paper will benefit from more discussion of the impacts of hydrologic modification and loss of riparian shading and have added relevant text in Sections 4.3 (pg 12, lines 3-23) and Section 5.2 (pg 15-16). However, we would also like to ensure that our concept of model development is considered. We believe that state-space estimation represents an approach to model development that is more general than that of characterizing models as either process/deterministic or statistical and have therefore maintained this discussion and revised the text throughout the manuscript to tie this better to the rest of the paper.

**General:** The method used to estimate riparian vegetation characteristics (outline on page 4) seem lacking in text detail and potentially very error prone (i.e. someone manually using Google streets to record tree heights for hundreds of miles of stream). The authors state that Google street view was used to estimate canopy height by comparing vegetation to nearby features, such as telephone poles. The reviewer feels this is a very subjective method, which would need some type of validation approach before it should be used in a published study. Additionally, how to tree height estimates for zones where there is not Google street view available, i.e. headwaters?

**Response:** As seen in a large body of literature, it is a common practice to apply basin or subbasin uniform riparian parameters based on 'representative' tree species in basin-scale temperature modeling where field data on riparian vegetation are often lacking. In comparison, the survey approach we adopted here combined with literature values and the results from previous studies is, in fact, much less error-prone. We have incorporated our responses to the

revised text in Section 3.1 (pg 5, lines 18-32).

We inferred vegetation types (trees and shrubs) from forest surveys (Wharton et al., 2004), and assigned tree height based on tree species (Wharton et al., 2004; Lamson, 1987). In addition, where possible, we compared our derived tree height with utility poles using Google Maps Street View, assuming that the average height of wooden utility poles is 15 meters ([https://en.wikipedia.org/wiki/Utility\\_pole](https://en.wikipedia.org/wiki/Utility_pole)). The survey of riparian vegetation characteristics was performed by Marise Baptise, one of the paper's co-authors. There are approximately 750 km of stream segments in our model of the Farmington River watershed. Ms. Baptise performed this analysis in less than a week, enabled by the fact that forest coverage in the watershed is reasonably uniform. In Section 3.1 (pg 5, lines 18-32), we have referenced those sources that characterize the forests of Connecticut. We also believe that the use of cultural features such as utility poles provides a reasonable good estimate of tree height and provided a reference.

References:

*Lamson, N.I.: Estimating Northern Red Oak Site-Index Class from Total Height and Diameter of Dominant and Codominant Trees in Central Appalachian Hardwood Stands, NE-RP-605, Northeastern Forest Experiment Station, Forest Service, United States Department of Agriculture, 1987.*

*Wharton, E. H., Widmann, R. H., Alerich, C. L., Barnett, C. H., Lister, A. J., Lister, T. W., Smith, D. and Borman, F.: The forests of Connecticut. Resour. Bull. NE-160, 2004.*

**General:** Pertaining to results shown in Figure 8, where water temperatures are classified into cold, cool, and warm. Why does Scenario 2 (subplot B) having different conditions above reservoirs compared to the baseline condition (subplot A). It seems that some small streams above reservoirs change from being cold in the baseline condition to be cool. It is hard for the reviewer to find a justification for this output. For example, why would removing a reservoir tens of kilometers downstream impact upstream headwater temperatures. This potential error puts into question the other results. Please consider re-checking the model structure and output to ensure this is not an error.

**Response:** Thank you for pointing this out. We did, indeed, have an error in the input for Scenario 2. We corrected the error and updated Figure 8 and Table 7.

**General:** The role of riparian shading seems to be completely missing from the discussion. Since this was one of the two perturbed characteristics of the system, the findings should be discussed.

**Response:** We agree that the paper would benefit from a more thorough discussion of the impact of both reservoirs and riparian shading on stream temperature. In response, we have expanded result analyses in Sections 4.3 (pg 12, lines 3-23) and expanded on discussions in Section 5.2.

**Specific:**

Page 2, paragraph 1: This paragraph seems out of place for the second paragraph in the introduction. The reviewer would prefer to see more background into the topic being addressed in the manuscript before jumping into some of the technical details of the modeling.

**Response:** We have rewritten the Introduction in response to this comment.

Page 3, line 22: Please consider providing some explanation/criteria for why the seven large

reservoirs were thought to significantly modify the thermal regime of the basin. For example, do the outlet works of these reservoirs allow water to be drawn from different depths and thus one could have cold hypolimnion water being released during the warm summer period?

**Response:** We have added discussion to this comment in Section 2 (pg 4, lines 22-30).

Page 4, lines 16 and 17: Please consider indicating what method was used to re-scale the 30 m data to 150 m.

**Responses:** We have added the method for re-scaling to Section 3.1 (pg 6, line 11).

Page 5, line 17: Please clarify why only gage CT-15844 was use to fit the relationship and applied to all other gages. How valid is the assumption that these parameters are representative of the headwaters? It would be preferred to see how much variability there is in the parameters across gages to better understand how this variability might impact headwater temperature inputs.

**Response:** Headwaters play an important role in maintaining coldwater habitat, as we show in Figure 8. We agree it would be valuable to understand how parameter variability affects our results. However, there are four parameters in the Mohseni relationship (Equation S.12) and 160 headwaters. We believe that evaluating the variability would be beyond the scope of this study.

For our study we have access to limited data with multi-year continuous temperature records from only three stations located near headwaters. They are CT-14442, CT-14713, and CT-15844. Based on the model evaluation on temperature predictions (Figure 5), the use of Mohseni parameters derived from CT-15844 for all headwater segments yielded quite good agreement between simulations and observations where available. For example, at CT-14442 and CT-14713 gages, NSE > 0.9 and Pearson's R is close to 1.0. This, to the extent possible, provides support for assuming that the applied parameters are representative and robust for modeling the headwater temperatures in the basin. We have revised the text in Section 3.2 (pg 6, lines 9-15) in response to this comment.

Page 6, line 3: How valid is the assumption that volume remains constant during the simulation period (multiple years)? For example, in reservoirs functioning as a flood control mechanism, one would think that their volume would change over a period of a year. Please consider adding some text to justify this assumption or address how it is a limitation in the modeling in the discussion section.

**Response:** We have added discussion in Section 5.2 in response to this comment (see pg 16, lines 18-25).

Page 9, line 23: This paragraph reads like it belongs in the methods sections. Please consider re-ordering.

**Response:** We moved this paragraph to Section 3 as recommended.

Page 10, line 3: Text starts with 'similar to their approach'. Please be more specific.

**Response:** We modified the text to be more specific, as recommended (pg 12, line 31).

Page 10, line 4: Since the reviewer/reader does not have access to Table 3 in Beauchene et al. (2014), the authors should consider a different way of referencing this table as currently it is not

helpful to the reader.

**Response:** We included Table 3 of Beauchene et al (2014) as Table 6 and renumbered the original Table 6 as Table 7.

Page 10, line 17: Please consider opening the discussion with a paragraph that better orients the reader to the main goals/methods of the manuscript and the primary findings. As it currently reads, the first paragraph of the discussion seems to point to limitations in the modeling, which would be better suited later in the text.

**Response:** We've revised the leading paragraph in Section 5.1 as the reviewer suggested.

Page 11, line 8: This paragraph does not belong in the discussion, it is merely restating general ideas about state-space model and water temperature dynamics. Consider placing somewhere other than the discussion or re-write to relate the work performed in the manuscript to other research and future efforts.

**Response:** We have revised and added text to Section 5.2 (pg 14-16) by including a more general discussion of model related research, model limitations, and future improvements.

Page 11, line 15: Similar comment to Page 11, line 8.

**Response:** We have added to Section 5.2 (pg 14-16) a more general discussion of model related research, model limitations, and future improvements.

Page 11, line 26: A paragraph needs at least 3 sentences. Additionally, this paragraph seems only partially thought out.

**Response:** We have added text to this paragraph and discussed the point that sampling design is not always done with model development in mind. Furthermore, this can lead to more uncertainty in state estimates (pg 15, lines 2-5).

Page 12, line 16: The statement that about diurnal variation is difficult to assess in Figure 5 which sometime spans multiple years (i.e. diurnal variation cannot be seen). Consider generating new plots with shorter time periods if the authors wish to discuss this modeling issue in the discussion.

**Response:** To enhance readability of Figure 5, we kept six CTDEEP sites in Figure 5 and moved the remaining 16 sites to Figure S.1 in Supplementary Material.

## Responses to comments posted by Referee #2

### General comments

The manuscript documents the extension of the coupled hydrologic and stream temperature models DHSVM-RBM to include the simulation of the effect of stratified and “run-of-river” reservoirs on stream temperature. The riparian vegetation model was also modified to account for changes in riparian vegetation in time and space, although it seems this modification was not evaluated in this study. Simplifying assumptions were acknowledged (e.g., constant water elevation in reservoirs, no water diversions, no river exchange with groundwater or bed heat exchange) and potential for further improvement of the model was recognized. In general, the authors describe the further development of the DHSVM-RBM modeling system and demonstrate its capabilities using readily available data for the Farmington River basin. In particular, the model evaluation (error statistics and graphical presentations) is well done and highlights what the model did relatively well (e.g., high river flows) and what it did not (e.g., low flows, stream temperature at headwater locations).

**Response:** We thank the reviewer for the positive feedback. We have addressed the comments in the response below and revised the manuscript accordingly.

Some statement might be needed to explain the potential effect of low flow prediction errors on temperature.

**Response:** We have added text in Section 5.2 (pg 15, lines 20-29) that discusses the effect of low flow prediction errors on temperature modeling.

The manuscript appears to assume that the reader is already familiar with the complexities of stream temperature modeling and the potential effects of reservoirs on downstream temperature. For example, there is no mention of the potential difference in effects of surface vs deep reservoir outlets, although the main effect described is downstream cooling due to “storing and releasing water from the hypolimnion” (line Discussion p. 12, line 27). The need for time and space varying riparian vegetation in the model was also not explained and there is not much discussion of the effects of riparian loss on water temperatures I believe the manuscript would benefit from at least a brief section on stream temperature modeling with an emphasis on riparian shade effects and the potential effects of various types of reservoirs on downstream temperatures. Some discussion of the effect of riparian loss on temperature results.

**Response:** We agree that the paper would benefit from expanded analyses and discussion on the role of both reservoirs and riparian shading. We have rewritten the Introduction that describes many of the aspects of the effect of dams and riparian vegetation on stream temperature. In Section 3.1 (pg 5), we have added text to address the need for time and space varying riparian vegetation in temperature modeling, and elaborated the approach we took to develop the riparian vegetation parameters. In Sections 4.3 (pg 12, lines 3-23) and Sections 5.2 (pg 15-16), we have expanded analyses and discussions on the effect of riparian loss and reservoirs on stream temperature modeling.

### Specific comments

p. 6, line 5: Recommend including the location of the outlet for each reservoir in Table 1 or Table 1

**Response:** We have added the locations of outlets to Table 1.

p. 6, line 8: Niemeyer et al. (2018) does not appear in references

**Response:** We have added this reference.

p. 9, line 4: Moriasi et al. (2007) does not appear in references

**Response:** We have added this reference.

p. 10, line 16, 5.1 Hydrology: From these two paragraphs it appears that this version of DHSVM does not account for transient storage or water diversions, which was implied earlier by stating that all reservoir inflows were equal to outflows. I wasn't until p.11, line 2 that I understood that the flow model evaluation was based on long-term naturalized flows. It might help the reader to make this point in 3.3 Model Evaluation section. It was also confusing that the flow calibration figures and text refer to observed rather than naturalized flows. I'm assuming they are the latter.

**Response:** The version of DHSVM we used does not account for water management projects. The flows simulated by DHSVM are the unregulated flows, but we calibrated/validated these flows with observed streamflows collected at the USGS flow gages. We have clarified this in Section 3.1 (pg 5, lines 10-16). In addition, we now discuss the effect of our simplified modeling approach (i.e. natural flow without regulation) on temperature modeling, and recommend future model improvements in Section 5.2 (pg 16, lines 18-25).

p. 11, line 26: I'm not sure I understand the purpose of this paragraph. I thought the temperature data were collected by a Connecticut government agency. Furthermore, the application was a demonstration so would naturally rely on available data. Furthermore, in practical applications, I think it is rare for modelers to design the data collection systems to support model development – for flow networks in particular.

**Response:** We have revised text and discussed the point that sampling design is not always done with model development in mind. Furthermore, this can lead to more uncertainty in state estimates (pg 15, lines 1-7).

p. 12, line 30: The inability of the model to simulate the delayed warming effect of deep reservoir releases seems like a significant weakness in the model. It might be useful to suggest how the model might be improved to better simulate this feature.

**Response:** We have added text in Section 5.2 in response to this comment (pg 16, lines 18-25).

p. 13, line 9: The general influences on water temperature might be a good starting point for material in the introduction describing basic stream temperature modeling and the role riparian vegetation and reservoirs modify temperature.

**Response:** We have added text in the Introduction and Section 4.3 and 5.2 which we believe responds to this comment.



# Assessing the Impacts of Hydrologic and Land Use Alterations on Water Temperature in the Farmington River Basin in Connecticut

John R. Yearsley<sup>1</sup>, Ning Sun<sup>2</sup>, Marisa Baptiste<sup>3</sup>, Bart Nijssen<sup>1</sup>

<sup>1</sup>Department example, University example, city, postal code, country

5 <sup>2</sup>Laboratory example, city, postal code, country

<sup>1</sup>Department of Civil and Environmental Engineering, University of Washington, Seattle, 98195, USA

<sup>2</sup>Energy and Environment Directorate, Pacific Northwest National Laboratory, Richland, 99352, USA

<sup>3</sup>King County Department of Natural Resources and Parks, Seattle, 98104, USA

*Correspondence to:* John Yearsley (jyearsle@uw.edu)

10 **Abstract.** Aquatic ecosystems can be significantly altered by the construction of dams and modification of riparian buffers and the effects are often reflected in spatial and temporal changes to water temperature. To investigate the implications for water temperature of spatially and temporally varying riparian buffers and dam-induced hydrologic alterations, we have implemented a modeling system (DHSVM-RBM) within the framework of the state-space paradigm that couples a spatially distributed land surface hydrologic model, DHSVM, with the distributed stream temperature model, RBM. The basic modeling system has been applied previously to several similar-sized watersheds. However, we have made enhancements to DHSVM-RBM that simulate spatial heterogeneity and temporal variation (i.e. seasonal changes in canopy cover) in riparian vegetation, and we included additional features in DHSVM-RBM that provide the capability for simulating the impacts of reservoirs that may develop thermal stratification. We have tested the modeling system in the Farmington River basin in the Connecticut River system that includes varying types of watershed development (e.g. deforestation and reservoirs) that can alter the streams' hydrologic regime and thermal energy budget. We evaluated streamflow and stream temperature simulations against all available observations distributed along the Farmington River basin. Results based on metrics recommended for model evaluation compare well to those obtained in similar studies. We demonstrate the way in which the model system can provide decision support for watershed planning by simulating a limited number of scenarios associated with hydrologic and land use alterations.

## 25 **1 Introduction**

Aquatic ecosystems can be significantly altered by the construction of dams ~~((Bednarek, 2001; Brooker, 1981; Lessard and Hayes, 2003; Ligon et al., 1995; Magilligan and Nislow, 2001; Olden and Naiman, 2010; Power et al., 1996; Preece and Jones, 2002; Yang, 2005)~~ and modification of riparian buffers, which consist of the trees and shrubs bordering streams and rivers (Chen and Carsel, 1998; Gomi et al., 2006; McGurk, 1989; Moore et al., 2005; Sun et al., 2015). While the construction and operation of dams and their associated impoundments provide many services, including the generation of electricity, flood



control, navigation, water supply, irrigation and recreation (Bednarek, 2001), they can also have a significant impact on ecosystem functions (Brooker, 1981; Ligon et al., 1995; Power et al., 1996). Their effects of these alterations are often reflected in the spatial and temporal changes to stream temperatures, which play a major role in the function of aquatic ecosystems (Poole and Berman, 2001). For example, studies have shown that releases of warm water from the surface layers of an impoundment can have an impact on coldwater fishes, macroinvertebrates and aquatic habitat downstream of the dam (Lessard et al., 2003). Impoundments with long residence times (the ratio of reservoir volume to annual average reservoir outflow) can become thermally stratified, with warm water at the surface (epilimnion) and coldwater at depth (hypolimnion) (Niemeyer et al., 2018; Preece et al., 2002). In some cases, the cold water is released from the hypolimnion to support or enhance coldwater fisheries (Pike et al., 2012; Yearsley, 2009). However, releases of hypolimnetic water can also have deleterious effects on important warmwater assemblages of native fishes and other aquatic organisms downstream of the dam (Olden et al., 2010), and because of this, enhancing riparian vegetation has become an important part of stream restoration projects and water quality management plans (e.g. Oregon Department of Environmental Quality, 2016). Similarly, construction and operation of impoundments and reservoirs for flood control, hydroelectric power generation and water supply can have significant impacts on stream temperatures (Bednarek, 2001).

Alteration or removal of riparian buffers can also have a significant impact on the physical, chemical and biological characteristics of aquatic ecosystems (Albertson et al., 2018; Sweeney and Newbold, 2014). An assessment of national streams and rivers in 2008-2009 by the US Environmental Protection Agency (USEPA) concluded that lack of adequate riparian vegetation was the most common stressor in the streams and rivers of the United States that were in poor condition (USEPA, 2013). Shading of solar radiation is one of the many important benefits to aquatic ecosystems provided by streamside buffers of riparian vegetation (Cole and Newton, 2013; Sweeney and Newbold, 2014). Brown and Krygier (1970) found that increases in stream temperature were due to loss of riparian buffers resulting from the logging practice of clearcutting in the Pacific Northwest. Studies such as this have played an important part in the creation of legislation that protects aquatic ecosystems, such as the Oregon Forest Practices Act of 1971 (Bladon et al., 2016). In addition to forest harvest, other land uses, including road building, livestock grazing, and mining (McGurk, 1989; Chen et al., 1998) have resulted in loss of riparian buffers. In the United States, for example, environmental agencies have addressed these issues in terms of Section 303 (d) of the U.S. Clean Water Act by requiring specific programs for riparian buffer restoration that will meet water quality standards for stream temperature. In addition to providing the scientific basis for watershed planning actions that protect or restore streamside buffers, some studies predict that stream channel restoration has the potential to mitigate some of the impacts of a changing climate (Cuo et al., 2009; Justice et al., 2017).

In this study, we develop methods for simulating certain features of dam operations and riparian vegetation that influence stream temperature in the Farmington River watershed in the Connecticut River system. We do so within the context of state space estimation (Schweppe, 1973), as defined in (Equations S.1 and S.2 in Supplementary Material), for which the matrices of the state space estimators can be parameterized from the conservation laws governing momentum and energy (Boyd and

Kasper, 2007; Chapra et al., 2008; Cole and Wells, 2002; Pike et al., 2013; Wu et al., 2012; Yearsley, 2009). ~~The state-space paradigm (see Supplementary Material) provides a broad class of mathematical methods for state estimation that includes estimation for static linear systems, discrete time linear dynamic systems, continuous time linear dynamic systems, static nonlinear systems, and discrete time nonlinear systems. State-space estimators of stream temperature, for which the matrices in Equations S.1 and S.2 have been parameterized from first principles within the framework of the conservation laws governing momentum and energy (Boyd and Kasper, 2007; Chapra et al., 2008; Cole and Wells, 2002; Pike et al., 2013; Yearsley, 2009), provide a general approach for simulating non-stationary natural and anthropogenic processes. These model constructs for stream temperature that are based on these conservation laws are sufficiently general to accommodate a broad spectrum of time and space scales; ones that are based on the thermal energy budget for streams and rivers.~~

~~Model development~~They often comes with a price, however, because estimating the parameters can become an exercise in solving a highly underdetermined geophysical data analysis problem. This is a problem that depends on time and space scales and model complexity. In the case of model development for complex aquatic ecosystems at high frequencies and small scales, some have approached these issues by limiting spatial and temporal scales and by designing rigorous and extensive data collection programs (Boyd and Kasper, 2007; Glose et al., 2017). State-space models of water temperature, developed at regional and global scales, have a higher level of aggregation for spatial scales and include only the most important components of the thermal energy budget (van Vliet et al., 2012; Wu et al., 2012; Yearsley, 2012, 2009).

Working within the broad framework of the conservation of momentum and thermal energy, here we investigate the way in which an integrated state-space model system of hydrology and water temperature (DHSVM-RBM) can be used to characterize the impacts of landscape alteration at intermediate spatial and temporal scales. ~~In Supplementary Material we describe the matrices of the nominal solution (Equations S.5 and S.6) for the linearized state-space water temperature model, RBM (Yearsley, 2012, 2009). We do so using a limited number of field observations and relying to a greater degree on data that are readily available from multiple sources rather than from monitoring programs designed specifically for our purposes. Furthermore, we can rely on the robust nature of the temperature response of streams and rivers to environmental forcings.~~ Using this approach, our goals are to: (1) develop and evaluate the nominal solutions for state-space estimates of streamflow and water temperature in the Farmington River basin ~~of in~~ Connecticut using methods derived from physical principles and data gleaned from publicly-available repositories, and (2) use our model to provide examples from the Farmington River basin of the way in which the models can be used to evaluate water temperature impacts of changes in riparian vegetation and water storage.

## 2 Background and Site Description

The Farmington River basin (Figure 1) has an area of 1,559 km<sup>2</sup> with two main branches, the West Branch and the East Branch. The West Branch is 129.4 km in length and has its source in Hayden Pond near Otis, Massachusetts, while the East Branch is

75.2 km in length with headwaters in the Barkhamsted Reservoir near New Hartford, Connecticut. Land cover for the Farmington River basin, according to National Land Cover Database 2011 (NLCD 2011), is characterized by 58% of forest and 24% of developed land with the remaining 18% comprised of wetlands (8%), farmland (7%), and open water (3%). Seventy-three percent of the soils in the Farmington River basin are sandy loams according to the US Department of Agriculture (USDA) Natural Resources Conservation Service (NRCS) States Soil Geographic (STATSGO).

As was true for the entire Connecticut River basin (Cogbill et al., 2002), deforestation began in the Farmington River basin in the 18<sup>th</sup> century as European settlers cleared land for agriculture and timber harvesting (Wharton et al., 2004). However, as a result of the decline of the agricultural industry in the State of Connecticut, reforestation began in the later part of the 19<sup>th</sup> century. More recently, forestlands have decreased again as a result of forest harvest and urban growth. Jeon et al. (2014) reported that the annual rate of loss of forestlands due to permanent changes in land use in Connecticut was 1321 ha/year from 1990-2000 and 979 ha/year from 2000-2005, particularly in the heavily urbanized counties of Connecticut (Fairfield and New Haven counties). Nevertheless, about 60% of Connecticut remains in forestland, including the counties of Litchfield and Hartford comprising the Farmington River basin (75% and 53% forested, respectively; Wharton et al., 2004).

In addition to landscape alterations due to forest transition, the Farmington River basin has experienced considerable development of water management projects for purposes of water supply, flood control, hydroelectric power generation and recreation. The study of the Farmington River watershed by the Farmington River Watershed Association (2004) reported a total of 409 impounded lakes and reservoirs in the basin. They described most of these as smaller-scale impoundments, many of which were constructed in the early 1900's and are in disrepair or no longer necessary. There are, however, a number of impoundments developed for water supply, recreation, flood control or generation of hydroelectric power that are of sufficient size to have an impact on the aquatic ecosystem of the river basin. For the purposes of this study, we chose to limit our study to seven large reservoirs (Table 1) with the potential for significantly modifying the water temperature regime of the natural system. This includes the five major reservoirs in the Farmington River watershed in Connecticut, Otis Reservoir in Massachusetts and Rainbow Reservoir, in the lower Farmington River (Table 1). We modelled Otis Reservoir and Rainbow Reservoir as river-run reservoirs that are vertically well-mixed. As a result, the primary effects of these two reservoirs on stream temperature would be to reduce the amplitude of diurnal variations due to an increase in water depth (Edinger et al., 1970). Nepaug Reservoir, Barkhamsted Reservoir, and McDonough Reservoir are deep reservoirs whose primary function is for domestic water supply. We modeled these reservoirs as comprising two layers, a surface layer (epilimnion) and deep layer (hypolimnion), which stratify vertically. Colebrook Lake and West Branch Reservoir are also treated as deep reservoirs that have multiple functions including flood control, flow augmentation, fishery enhancement, recreation, and generation of hydroelectric power. More details on reservoir representation in the temperature model are provided in Section 3.2.

### 3 DHSVM-RBM Model Identification

DHSVM-RBM (Sun et al., 2015) integrates the physics-based Distributed Hydrology Soil Vegetation Model (DHSVM; Wigmosta et al., 1994), modified to include a riparian shading module (Sun et al., 2015), into the vector-based version of the semi-Lagrangian stream temperature model RBM (Yearsley, 2009). In addition, we incorporated extended-with-a module into RBM that simulates certain basic features of deep reservoirs.

#### 3.1 Hydrology and Riparian Shading Model

DHSVM was developed originally to simulate the hydrologic cycle in mountainous terrain (Wigmosta et al., 1994) based on saturation excess mechanisms. Subsequent adaptations have extended the capability of DHSVM to include urban landscapes with impervious surfaces and runoff detention (Cuo et al., 2008), glacier hydrology (Naz et al., 2014), riparian shading (Sun et al., 2015), urban water quality (Sun et al., 2016), and forest-snow interactions in canopy gaps (Sun et al., 2018). As applied in the Farmington River basin, DHSVM simulates the water and energy budget at three-hourly time scales and 150-meter spatial scales for the physical processes of canopy interception, evaporation, transpiration and runoff generation driven by spatial input of soil, vegetation, topography and climate. The version of DHSVM that we used does not have the capability for simulating the effects of water management projects in the watersheds that regulate streamflows and, as a result, alter the natural hydrograph. Thus, in our study the flows simulated by DHSVM are the unregulated flows. The model limitations and implications are further discussed in Section 5.2.

For this study, the riparian vegetation module of DHSVM described in Sun et al. (2015) has been modified to account for spatial and temporal variation in riparian vegetation. The temporal variability of riparian vegetation is described by a monthly-varying extinction coefficient in the Beer's law representation of radiation transmission through the canopy (Wilson and Baldocchi, 2000). This approach is well suited to the deciduous forests of the northeastern United States for which the shade density of riparian vegetation varies annually. The capability to include spatial variability provides more information to decision-makers for watershed planning. The spatial variations of riparian vegetation along the longitudinal axes of river segments are characterized by varying riparian vegetation parameters on a stream segment-by-segment basis. Rather than applying basin or subbasin uniform riparian parameters based on 'representative' tree species as field data on basin-wide riparian vegetation are often lacking, we estimated the riparian parameters that calculate radiation incident on the stream surface using Google products, literature values and the results from previous studies. We estimated buffer width and extent of vegetation coverage by sampling all stream segments at about 1000 meter intervals using the online tools in Google Maps. We inferred vegetation types (trees and shrubs) from forest surveys (Wharton et al., 2004) and tree height based on tree species identified in Wharton et al. (2004) and studies of the height of hardwoods (Lamson, 1987). In addition, where possible, we compared the height of trees with utility poles using Google Maps Browse Street View, assuming that the average height of wooden utility poles is 15 meters. We treated the riparian vegetation parameters estimated in this way as the baseline condition, representative of existing conditions in the watershed. ~~The temporal variability of the effects of riparian vegetation is described~~

~~by a monthly-varying extinction coefficient in the Beer's law representation of radiation transmission through the canopy (Wilson and Baldocchi, 2000).~~

~~Other DHSVM model input includes simulates the water and energy budget in the Farmington River basin at three hourly time scales and 150 meter spatial scales for the physical processes of canopy interception, evaporation, transpiration and runoff generation driven by spatial input of soil, vegetation, topography and climate.~~

5 ~~g~~Gridded meteorological ~~inputs data~~ consisting of precipitation, air temperature, downward shortwave and longwave radiation, wind speed, and relative humidity (Table 2). The 3-hourly meteorological forcing data were disaggregated, using MTCLIM (Bohn et al., 2013; Thornton and Running, 1999), from a daily forcing dataset for the Conterminous United States developed by Livneh et al. (2013). We used the DEM from the US Geological Survey (USGS) National Elevation Dataset (NED) rescaled from 1 arc-second (app. 30 m) to 150 m. 10 The soil class map was taken from STATSGO. The land cover data was taken from the USGS NLCD for Year 2011 rescaled from 30 m to 150 m with the Resample tool in ArcGIS.

~~We derived the riparian vegetation parameters by aggregating estimates of tree height, buffer width, bank to canopy distance and stream width in 1000 meter segments using online tools in Google Maps. We estimated tree height by comparing the height of trees with cultural features such as buildings or utility poles using Google Maps Browse Street View. We incorporated time-dependent leaf area indices from Wilson and Baldocchi (2000) into the riparian shading model to characterize the monthly variability of the deciduous forest stands. We treated the riparian vegetation parameters estimated in this way as the baseline condition, representative of existing conditions in the watershed.~~

### 3.2 Stream and Reservoir Temperature Models

20 RBM is a one-dimensional, time-dependent model of water temperature for streams and rivers dominated by advection that are well mixed vertically and laterally. RBM employs a semi-Lagrangian particle-tracking numerical scheme that has proven to be accurate and efficient in riverine systems dominated by advection. The numerical scheme is highly scalable in time and space and has been applied to study the water temperature responses to changing climate, land use and riparian vegetation at ~~the~~ watershed and regional scales (Cao et al., 2016; Sun et al., 2015).

25 For those stream and river segments dominated by advection, we ~~follow the method for obtaining the nominal solution to solve~~ the one-dimensional, time-dependent equations for the thermal energy budget (Yearsley, 2012, 2009) (see Supplementary Materials). Initial conditions are required for solving difference equations with the form of Equation S.5 (see Supplementary Materials). Errors in estimating initial conditions will introduce uncertainty into the solution only for the time it takes for the particle of water to traverse from its headwaters to its outlet. For example, the West Branch is the longest (129 km) branch of the Farmington River. Assuming a moderate stream speed of 0.5 meters/second, the time of travel associated with an initial 30 parcel in the West Branch would be about three days. Since our simulations span a period of several months, we have assumed the initial water temperature, throughout the Farmington River to be 0.0 °C, and that errors associated with initial conditions

have been dissipated after a spin-up time that is greater than the travel time of a water parcel from the headwaters to the confluence with main stem Connecticut River.

Headwaters temperatures are the temperatures of the water that enter the surface water at the stream source and can result from rainfall, snow melt or hyporheic flow. They have an important role in the heat budget of stream and rivers, the extent of which depends on the nature of the watershed (Janisch et al., 2012). However, their influence on downstream water temperatures diminishes as a function of stream speed, stream depth and meteorological forcing, reducing the uncertainty associated with errors in estimates as water parcels travel downstream (Yearsley, 2012). Here, as in previous studies (Sun et al., 2015; Wu et al., 2012; Yearsley, 2012, 2009), we used the nonlinear regression of the logistic relationship between air temperature and water temperature from Mohseni et al. (1998). We estimated the parameters,  $\alpha$ ,  $\beta$ ,  $\gamma$ , and  $\mu$ , in Equation S.8 (see Supplementary Material) by minimizing the sum of the squared difference between Equation S.8 and the water temperature at the Connecticut Department of Energy and Environmental Protection (CTDEEP) gage site, referred to as CT-15844 (Figure 1), which is located near the headwaters and has multi-year continuous temperature records located near headwater. We further assumed that the estimates of the parameters for this location could be extended to the other headwaters in the Farmington River basin given that the parameters applied to CT-14442 and CT-14713 gage sites produced reasonable agreement between simulated and observed headwater temperatures (Table 5).

The reservoir module added to the RBM software represents a simplified approach to characterizing those river segments with reservoirs having long residence times and potential for vertical stratification of water temperature. Based on their volume and outflow rate, we included those reservoirs on significant tributaries that had the potential for developing thermal stratification. Reservoirs included in our study with these characteristics are shown in Table 1. We obtained the reservoir geometry and operating characteristics for those segments in the Farmington River basin with longer residence times (Table 1) from the NID USACE (2015) and Julian et al. (2013). Our approach, similar to that described in Boehlert et al. (2015), Chapra (1997), and Niemeyer et al. (2018), conceptualizes river segments with reservoirs that may stratify as two layers, a surface layer, the epilimnion and a bottom layer, the hypolimnion. Those stream segments identified as having a reservoir with potential for stratification were treated as multiple cells, depending on reservoir length, for purposes of estimating the flux of thermal energy across the air-water interface and advective tributary input. For reservoirs with more than one cell, the cells were combined after computing surface transfer of thermal energy and advective tributary input into a single well-mixed epilimnion and single well-mixed hypolimnion CSTR's as in Figure 2. Specific details of the development of the nominal solutions for both the stream segments dominated by advection and those that may develop an epilimnion and hypolimnion are given in the Supplementary Material.

For the purposes of this study only, we assumed that the volumes of the epilimnion and hypolimnion were equal and were constant for the duration of the simulation period and that the outflow from each reservoir was equal to the total inflow. For those reservoirs whose primary function is water supply (Table 1), all outflow was from the epilimnion. In the case of Lake Colebrook, which has a controlled hydraulic sluice and hydropower turbines near the reservoir bottom, we assumed that all

outflow was from the hypolimnion. Tributary inflow was placed into either the epilimnion or hypolimnion depending on whether the density of the inflow was lesser or greater than the density of the epilimnion, as in Niemeyer et al. (2018). There are also lakes and impounded segments in the Farmington River with shallow depths and short residence times. We simulated the water temperature in these segments assuming they could be treated as cross-sectionally-averaged, well-mixed segments.

5 Furthermore, we assumed that all these reservoirs had constant surface elevation and that the speed of the water parcel  $U(n\Delta, x_j)$  at time  $n\Delta$  and location  $x_j$ , could be estimated from the continuity equation. Stream speeds for those reservoirs in the Farmington River basin described as “River Run” in Table 1 were estimated in this way.

Within the coupling scheme, DHSVM provided DHSVM-RBM hydrologic and meteorological forcing input for each river segment, which ~~are~~ was aggregated as the length-weighted average of the gridded 150 m cells that intercept a stream segment as in Sun et al. (2015). RBM makes use of DHSVM stream network file to establish the topology for its numerical solution technique. Stream networks, created in DHSVM with DEMs and ESRI Arcinfo macro language (AML) scripts, are composed of shorter stream segments connected within a network, with unique attributes of length, width, orientation, and Strahler stream order. Stream segment connectivity was used to define the network topology for DHSVM-RBM’s particle tracking scheme.

15 We used inflow and outflow to each segment in the stream network simulated by DHSVM to estimate (1) the depth,  $D(n\Delta, x_j)$ , in one-dimensional, time-dependent formulation of the thermal energy budget (Equation S.14 in Supplementary Materials)-, and (2) the stream speed,  $U(n\Delta, x_j)$ , in the particle-tracking algorithm (Equation S.6) with the method from Leopold and Maddock (1953). We estimated the parameters,  $d_a$ ,  $d_b$ ,  $u_a$  and  $u_b$ , in Equations S.7 and S.8 for the freely flowing segments RBM from the rating curve/stage-discharge relationships at the USGS gage sites shown in Table 3. RBM accommodates spatial variability for the coefficients that describe stream speed and depth as a function of streamflow. However, there are only a limited number of gages from which to estimate their values. We then assumed the parameter estimates at the individual gages could be extended to other stream segments as shown in Table 3.

### 3.3 Model Evaluation

State estimation techniques are applied to a broad spectrum of environmental fields and there has been considerable effort to develop approaches for evaluating model performance. In general, these efforts recognize the many aspects to assessing model performance and attempt to identify appropriate metrics for doing so (Bennett et al., 2013; Moriasi et al., 2007; Krause et al., 2005; Willmott, 1982). Moriasi et al. (2007) have recommended a qualitative rating system for evaluating model results at daily, monthly and annual time steps at watershed scale based on a meta-analysis of several applications of the watershed models, e.g. Soil & Water Assessment Tool (SWAT) (Neitsch et al., 2011), the Hydrological Simulation Program-FORTRAN (HSPF) (Bicknell et al., 1997) and WARMF (Herr and Chen, 2012). Performance measures for streamflows in these recommendations include the Nash-Sutcliffe Efficiency (NSE), the coefficient of determination ( $r^2$ ) in conjunction with gradient and intercept of the regression line, the root-mean-square error (RMSE) and the percent bias (PBIAS). The hydrologic

model, DHSVM, simulates streamflow at the length and time scales similar to SWAT, HSPF and WARMF and we used these same performance measures at daily and monthly time steps to evaluate the results in our study.

There has been no similar meta-analysis of performance measures for stream temperature. However, most studies of stream temperature provide estimates of one or more of the same performance measures (Ficklin et al., 2012; Sun et al., 2015) as those estimated for hydrologic models. This suite of performance measures provides a way of assessing agreement between model simulations and observations (NSE), the correlation of the simulated and observed (Pearson R), differences between simulated and observed (RMSE), and percent average difference between simulated and observed (PBIAS). These statistics provide quantitative measures of model performance and, because of their widespread usage, they also serve as benchmarks for comparison with other models of stream temperature.

In addition, we have modified the method developed by Taylor (2001) for purposes of summarizing model performance based on Pearson R, ~~the correlation coefficient~~, RMSE, ~~the root-mean-square error between simulated and observed~~, and RMSD, a measure of the pattern root-mean-square difference, given as:

$$RMSD = (RMSE^2 + RMSE_{ref}^2 - 2 \cdot RMSE \cdot RMSE_{ref} \cdot R)^{0.5} \quad (1)$$

where RMSE is the root-mean-square difference of a test field,  $RMSE_{ref}$  is a root-mean-square difference of a reference field, and R is the correlation between test and reference fields (Taylor, 2001). In our modification, RMSE is the root-mean-square difference between simulated and observed,  $RMSE_{ref}$  is an acceptable measure of standard deviation between simulated and observed, and R is the correlation between simulated and observed. We selected a value of  $RMSE_{ref} = 2.0^\circ\text{C}$  as a reasonable measure based on a review of statistical measures found in other water temperature studies (Yearsley, 2012). The goal of our modification is to show how well the model results compare to the reference value for which the RMSE is  $2.0^\circ\text{C}$  and the correlation between simulated and observed is equal to 1.0.

### 3.4. Scenarios of Watershed Management

There can be significant impacts on streamflow and stream temperatures in watersheds where there is a transition from forested to urbanized lands and where there is development of watershed projects for water supply, flood control and generation of hydroelectric power. These are processes that have been ongoing in the Farmington River basin since the 18<sup>th</sup> century and are likely to continue. As a result, there will be a need for watershed planning and models such as the one we have developed that can provide support for these plans. The State of Connecticut's Department of Energy and Environmental Protection, in their Triennial Review of Water Quality Standards (CTDEEP, 2014), concluded that

“The current temperature criteria in the WQS (Water Quality Standards) are insufficient to be protective of cold-water aquatic life species. Temperature criteria should be revised to better align with fisheries management and restoration priorities of the state”.



Beauchene et al. (2014) describe a stream classification system in Connecticut for fishes in three Thermal Classes, “Cold”, “Cool” and “Warm” that could be the basis for developing new water temperature criteria for the State of Connecticut’s water quality standards. We compare water temperatures simulated with DHSVM-RBM modeling system to the metrics from their classification system for selected scenarios of management actions. For this example, we consider the following four scenarios  
5 in the Farmington River basin that characterize maximum impacts for the riparian vegetation and watershed projects for water supply, flood control and generation of hydroelectric power:

**Scenario 1 (baseline):** Simulated stream temperatures for the existing conditions for riparian vegetation and water storage projects.

**Scenario 2 (dam removal):** Simulated stream temperatures for the existing conditions of riparian vegetation and no water  
10 storage projects.

**Scenario 3 (riparian removal):** Simulated stream temperatures for the removal of all riparian vegetation with existing water storage projects remaining in place.

**Scenario 4 (dam & riparian removal):** Simulated stream temperatures for the removal of both existing riparian vegetation and water storage projects.

## 15 4. Results

### 4.1 Hydrology

We simulated streamflows and the energy budget components with DHSVM, for the Farmington River basin by estimating parameters in a manner similar to that described in previous studies (Cao et al., 2016; Meyer et al., 1997; Sun et al., 2015, 2016). Some parameters were estimated from available data sources including physiographic features of the basin. For others,  
20 we approached the problem by (1) choosing the range of parameter estimates from previous studies, and (2) varying a subset of parameters until a satisfactory measure of model performance, using the NSE, was met.

In our evaluation of DHSVM (Table 4; Figure 3 and 4), we compare model results for both daily and monthly streamflows at six USGS gages distributed across the river network (Figure 1) with the general performance ratings recommended in Table 3 of Moriasi et al. (2007). Although the parameters were calibrated to observed streamflows at USGS gage 01189995 near the  
25 basin outlet, the model performance at upstream gages is generally satisfactory. With the exception of daily flows at USGS gage 01187300 and monthly flows at USGS 01185500, both located in smaller tributaries, our results fall within the ratings of Satisfactory (S) to Very Good (VG), recommended in Moriasi et al. (2007). Model performance is best for the two gages with the greatest drainage area (USGS gage 01189995 and USGSG gage 01188090). We have also included the cumulative distribution function (CDF) for the daily flows as an additional metric for evaluating streamflow results. Overall, the CDF’s  
30 at the two gaging stations with the greatest drainage characterize the distribution of flows better than for those gaging stations

in the smaller tributaries, ~~while the model performance in simulating the low flows is not as good as~~ ~~Our simulations do not capture the low flows as well as for~~ the higher flows in the smaller tributaries.

#### 4.2 Stream Temperature

We obtained realizations of water temperature using the state estimates for the nominal solution (Supplementary Material) in stream networks for the Farmington River basin ~~(Figure 4)~~. We accessed stream temperature data in three-hourly times steps from the Spatial Hydro-Ecological Decision System (SHEDS) (2016) database at 22 monitoring sites (Figure 1), made by the Connecticut Department of Energy and Environmental Protection (CTDEEP) (2011) for three-hourly times steps in the Farmington River basin, with which to evaluate our simulation results. The period of available temperature observations varies by location. At some locations, the observations were collected for summer months only (e.g. CT-15320). Figure 5 presents the model evaluation at selected six CTDEEP sites, and Figure S.1 in Supplementary Material presents the model evaluation at the remaining 16 CTDEEP sites in the Farmington River basin. From this set of observations, we calculated the metrics for evaluating model performance based on the rationale described in Section 3.3, above. The statistical measures that characterize the stream temperature model performance at three-hourly time steps are shown in Table 5 and the modified Taylor diagram for summarizing the degree to which the results cluster near the reference value is shown in Figure 6.

#### 4.3. Scenarios of Watershed Management

The four scenarios described in Section 3.4 provide an envelope of stream temperature outcomes for certain aspects of watershed management. We simulated stream temperatures in the Farmington River basin within the context of these scenarios. We use the results to examine: (1) the difference in the stream temperature regime in streams between deep reservoirs and those without, and (2) the effect of watershed management on aquatic habitat.

To examine the effect of deep reservoirs on stream temperature, we used the simulations to estimate the average water temperature in the West Branch from its headwaters to the confluence with the Connecticut River for each month for the period 1996-2011. Figure 7 displays these results for the months of April, June, August and October with (Scenario 1) and without (Scenario 2) the major reservoirs, respectively, and also displays the available monthly-averaged CTDEEP observations for comparison with the actual data.

We made use of the study by Beauchene et al. (2014) to examine the effect of watershed management on aquatic habitat. They defined three stream temperature metrics that classify streams in Connecticut as Cold, Cool, or Warm based on a comprehensive study of water temperature and fish communities in the rivers of Connecticut, including those in the Farmington River basin (Table 6). For each of the four management scenarios, we calculated the three metrics, June-August mean water temperature, July mean water temperature and maximum daily mean water temperature for the period 1996-2011. Based on the results, we estimated the manner in which each of the scenarios would affect thermal habitat for aquatic species throughout the Farmington River basin. ~~Similar to their approach, w~~We estimated the summer thermal thresholds of fish community

~~transitions stream-temperature-classification~~ when two or more of the three conditions of Table 6 were met. This is similar to the approach used by Beauchene et al. (2014) in their Table 3 were met. The results are shown in Figures 8(a-d) and Table 67.

We evaluated the impacts of modifications in hydrology and riparian vegetation using the metrics for the thermal classes associated with summer thermal thresholds of fish community transitions proposed by Beauchene et al. (2014). Model results showed that for the conditions of Scenario 1 (baseline) there are 57.7 km (7.7%) of the Cold water thermal class, 586.8 km (78.4%) of Cool water thermal class and 103.7 km (13.9%) of Warm water stream thermal class in the Farmington River basin as primarily cool water habitat (84%) with fewer segments of warm water (10%) and cold water (6%) habitats. In comparison, Beauchene et al. (2014) found that in the 160 sites in Connecticut they studied, 68.1% could be characterized as cool water habitat. Since they do not report the percentages of stream segments with cold water or warm water habitat, there is no direct comparison with those habitat types, however. In addition, they limited their study to wadable streams only, and did not include stream segments below dams, as we have.

In our assessment, model results for Scenario 2 indicated that removing the seven dams (Table 1), but maintaining the riparian vegetation would decrease the length of Cold water classes by 30.0 km and increase Warm water thermal classes by 34.1 km. The impacts on thermal classes would be felt primarily in the main stem of the Farmington River from Lake Colebrook downstream as far as Rainbow reservoir. Results from Scenario 2 also show the role of reservoirs play in reducing the diurnal variations in stream temperature (Figure 9).

Removing the riparian vegetation, while keeping the seven dams in place (Scenario 3) would have a significant impact on both Cold water and Cool water thermal classes. Coldwater classes would be reduced by 31.3 km and Cool water classes by 359.0 km. Results showed that the impacts of removing riparian vegetation are systemic. They occur throughout the Farmington River watershed with the exception of 7.0 km of headwaters segments and 19.3 km below Lake Colebrook and West Branch reservoirs, the two reservoirs that release cold water from the hypolimnion. Removing both dams and riparian vegetation (Scenario 4) leaves only the 7.1 km of headwaters as Cold water habitat and results in an increase of the Warm water class to 531.4 km, compared to the 103.6 km results for Scenario 1 (Baseline).

Viewed within the context of the thermal classes defined by Beauchene et al. (2014), 6% of the Farmington River basin under present conditions (Scenario 1) would be characterized as cold water habitat, 84% as cool water habitat and 10% as warm water habitat (Table 6). Most of the cold water habitat is associated with the portion of the Farmington River downstream from the two deep reservoirs, Lake Colebrook and West Branch.

For the unimpounded river (Scenario 2), there is no longer coldwater habitat associated with the deep reservoirs (Figure 8b). There is only an estimated 2% of coldwater habitat in the basin associated with a few headwaters of the small streams. The percentage of cool water habitat remains the same at 84% (Table 6) and there is a slight increase in the warm water habitat to 14%. Major changes in habitat from cool water to warm water are associated with the simulated results in which riparian

vegetation is removed (Scenarios 3 and 4). Cool water habitat is reduced to 44% in Scenario 3 and to 41% in Scenario 4. Warm water habitat increases to 54% in Scenario 3 and 58% in Scenario 4.

## 5. Discussion

### 5.1 Hydrology

5 In our assessment of the impacts of hydrologic and land use alterations on water temperature in the Farmington River Basin we applied the distributed hydrologic model, DHSVM for purposes of estimating the hydrology for the four management scenarios of Section 3.4. The version of DHSVM, we used does not have the capability for simulating the effects of water management projects in the watersheds that regulate streamflows and, as a result, alter the natural hydrograph. There are five reservoirs in the basin for which water management for flood control, water supply, fisheries releases and generation of hydroelectric power regulate the streamflow (Table 1). Two of the largest reservoirs in the basin, Barkhamsted and Nepaug, are sources of drinking water for the City of Hartford, Connecticut for which there is a permitted withdrawal rate of 3.34 m<sup>3</sup>/sec (120 cfs). Inflow to these two reservoirs can be diverted for this purpose and is not accounted for in the water balance simulated by our version of DHSVM. One of the other deep reservoirs, Lake Colebrook, is an US Army Corps of Engineers project whose primary function is flood control. However, it also provides flow augmentation for fisheries and storage for potential water supply for the City of Hartford. Inflow is similar to outflow except during periods when the reservoir is drafting for flood storage. For the two other reservoirs treated as deep reservoirs, Lake McDonough and West Branch, outflow is generally equal to inflow and reservoir elevations are relatively constant.

The water management projects we have included in our study (Table 1) modify the natural streamflow to varying degrees.

For example, those that are primarily for purposes of municipal water supply such as the Nepaug and the Barkhamsted

20 Reservoirs that divert water are that is not accounted for in our analysis. Colebrook Lake is managed for flood control, hydroelectric power generation and riverflow augmentation for fisheries enhancement, all of which can modify the timing and amount of streamflow. The statistical metrics we calculated (Table 4) are for daily-averaged and monthly-averaged simulated unregulated streamflows for the 15-year period from 1996 through 2011. Nevertheless, the statistical metrics for the simulated unregulated flows at the two stream gages downstream from the major confluences (USGS gages 01188090 and 01189995) are are comparable to those obtained in other applications of DHSVM (Cao et al., 2016) and the Soil & Water Assessment Tool, SWAT (Ficklin et al., 2012). With the exception of R<sup>2</sup> at USGS gage 01188090, the results can be characterized as varying from Satisfactory to Very Good using the recommendations of Moriasi et al. (2007). Future applications of DHSVM for river basins with reservoir that are regulated would benefit from adaptations to DHSVM such as those of Zhao et al. (2016).

## 5.2 Stream Temperature

For purposes of assessing the impacts of hydrologic and land use alterations on water temperature in the Farmington River watershed we have developed the nominal solution (Equations S.5 and S.6) for the linearized state-space water temperature model, RBM (Yearsley 2009, 2012). The information required for complete development of the RBM model system is considerable and depends on the time and space scales that are to be modeled, as well as on the important physical processes that affect stream water temperatures in the basin. In addition, there are many processes that affect stream temperature which have received little or no study in the river basin. This includes the effects of groundwater return and hyporheic flow, conduction of heat through the stream bed and snowmelt (e.g., Evans et al., 1998; Kurylyk et al., 2016). The ability to incorporate these processes into the state space structure of RBM is limited to the number of available stream temperature monitoring sites. As a result, the number of degrees of freedom in the parameter space is simply too large to bound the problem with existing observations. Given the size of the parameter space and the limited number of stream temperature monitoring sites, we developed the RBM parameter space with the results from previous applications (Cao et al., 2016; Sun et al., 2015, 2016) and other studies (e.g., Boyd and Kasper, 2007; Chapra et al., 2008; Mohseni et al., 1998). Where possible, we used field observations and data that are readily available from multiple sources rather than from monitoring programs designed specifically for our purposes.

The information required for complete development of the DHSVM-RBM model system in applications of the state space estimation paradigm is considerable and depends on the time and space scales that are to be modeled, as well as on the important physical processes that affect stream water temperatures in the basin. For the Farmington River, the spatial resolution of these models is 150 meters in a watershed of 1,559 km<sup>2</sup> and the temporal resolution is three hourly for the simulation period, 1996-2011. In addition, there are many processes that affect stream temperature which have received little or no study in the river basin. This includes the effects of groundwater return and hyporheic flow, conduction of heat through the stream bed and snowmelt (e.g., Evans et al., 1998; Kurylyk et al., 2016).

It is not difficult to create the algorithms that incorporate these processes into the state space structure of RBM. However, there is a limited number of stream temperature monitoring sites in SHEDS data base for the Farmington River basin. As a result, the number of degrees of freedom in the parameter space is simply too large to bound the problem with existing observations. Given the size of the parameter space and the limited number of stream temperature monitoring sites, we developed the stream temperature model, RBM with state space structure within the framework of conservation laws for mass, momentum and energy. Within this framework, we made use of the results from previous applications (Cao et al., 2016; Sun et al., 2015, 2016) and other studies (e.g., (Boyd and Kasper, 2007; Chapra et al., 2008; Mohseni et al., 1998) to populate the parameter space. We used publicly available databases for land cover (NLCD), surface elevation (NED), soil characteristics (STATSGO), and meteorologic forcing (Livneh et al., 2013) to populate the parameter space of DHSVM to simulate forcing inputs for RBM in the Farmington River basin. Finally, where parameter estimates were not available, we assumed they could be treated as being similar to other estimates.

In our study, as well as others (Ficklin et al., 2014; van Vliet et al., 2012), the ability to test how well our approach leads to acceptable model results depends on the quality and quantity of observational data from publicly available sources. They are most often ones that are -rather than from monitoring networks- maintained by state and federal resource agencies. These are valuable sources of data; ones that are most often used to test and evaluate environmental models. However, the sampling design may not necessarily be one that is best suited for this purpose. As a result, there can be more uncertainty in applying these databases compared to studies for which monitoring programs are designed specifically for model development (e.g., Glose et al., 2017; Vatland et al., 2015).

For this study, we have estimated the metrics for model evaluation, described in Section 3.3, using 22 sites in the SHEDS database where the CTDEEP has archived observations of water temperature (Figure 1). For the statistical measures in Table 5, the modified Taylor diagram (Figure 6) provides a graphical way of summarizing the results in terms of Pearson R, RMSE and RMSD. These three metrics are referenced to a standard deviation (REF) of 2.0°C, corresponding to the estimated variance for the uncertainty analysis in Yearsley (2012). The clustering of points within the 2.0°C RMSD arc of the Taylor diagram correspond to those monitoring sites where model performance as measured by Pearson R and RMSE, is within the range of other studies (e.g. Beaufort et al., 2016; Du et al., 2017; Yearsley, 2012). The three monitoring sites in the Farmington River basin that are outside the 2.0°C RMSD arc (CTDEEP-14484, CTDEEP-16091, and CTDEEP-17365) have markedly lower values of standard deviation and correlation coefficient, as well as having negative values of NSE. These three sites are in locations with physical and hydrologic characteristics similar to the other 19 monitoring sites. Without more observations, it is difficult to conclude from the existing data why the simulations at these three sites differ markedly from the observed compared to the other sites.

The ~~ability of~~ water temperature model, RBM, as developed here, has limitations for ~~to~~ accurately simulating ~~diurnal variations in~~ stream temperatures ~~as streamflows become low-increases in difficulty with decreasing the stream depths and speeds.~~ The contribution of bed conduction, nonpoint source inputs and hyporheic flows to the thermal energy budget becomes more important as stream depths and speeds become small (Boyd and Kasper, 2007; Kurylyk et al., 2016). In the DHSVM-RBM model system, we account for this condition by imposing minimum values on stream depths and speed rather than accounting for other depth-dependent process in the nominal solution (Equations S.5 and S.6), such as exchange of heat with the stream bed (Boyd and Kasper, 2007; Kurylyk et al., 2016). There are limitations of this approach for conditions of summer low flow periods in freely flowing stream segments of the Farmington River basin. This is evident in the simulated results shown in Figure 5, which overestimate the diurnal variations at some monitoring sites (e.g. CTDEEP-14197, CTDEEP-14435, CTDEEP-16066, and CTDEEP-17364).

Important features of thermal thresholds in the Farmington River that emerge from our study include: (1) the importance of headwaters temperatures, (2) the impact of releases from deep reservoirs on downstream water temperatures, and (3) the role of riparian vegetation. The role of headwaters temperatures in providing coldwater habitat for stream fish assemblages is evident from the results for Scenarios 3 and 4. In the case of Scenario 3, for which riparian vegetation is removed, while dams

are kept in place, the only coldwater thermal classes remaining, other than below the two deep reservoirs that release water from the hypolimnion (Lake Colebrook and West Branch), are 7.1 km of headwaters stream segments. Similarly, these are the only Cold water segments remaining in Scenario 4, for which both dams and riparian vegetation are removed. Understanding the role of groundwater in headwaters temperatures, although not directly considered in our study, would be important for preserving coldwater habitat, especially during summer low flow.

By incorporating two-layer reservoir model (Figure 2) into the RBM model framework, we are able to capture certain important features of the water temperature regime downstream from the two deep reservoirs on the West Branch, Lake Colebrook and West Branch. Figure 9 illustrates the way in which the two-layer model simulates both the delay in timing of the maximum temperature and its magnitude, compared to the simulated results without the reservoirs. Furthermore, there is also a noticeable reduction in the magnitude of the diurnal variations, a feature associated with the thermal inertia of the large volume of water that is a characteristic of both river-run and deep reservoirs in the reservoir hypolimnion.

The longitudinal distribution of monthly-averaged stream temperatures in the West Branch of the Farmington River (Figure 7) tells a similar story regarding the impact of the deep reservoirs. The impact on stream temperature downstream of reservoirs with long residence times and which have the capability for storing and releasing water from the hypolimnion is evident for the segment of the river below the Lake Colebrook-Hogback series of reservoirs (~River KM 60-95). For the months of April, June and August, the effect of the reservoirs is to provide cooling of stream temperatures for this segment of the river. The results for October (Figure 7(Oct)) do indicate, however, that the two-layer representation of the reservoirs does not entirely capture the delayed heating effects that are associated with reservoir operations. This may be due to the simplified approach to stream hydrology we have implemented for the Farmington River system (i.e. natural flow without regulation). This is most likely to be important in the hydrologic and thermal dynamics for the Lake Colebrook-Hogback series of reservoirs. A major function of Lake Colebrook is flood control and the reservoir is generally drafted in late summer and fall, increasing the ratio of heated surface area to volume of the reservoir during this period. In addition, the state-space formulation of the reservoir model (Equations S.13a and S.13b) does not include vertical diffusion of thermal energy as is the case for other similar approaches, such that of Niemeyer et al. (2018). In future applications, further model refinement in this regard is necessary to improve model performance.

Important features of thermal habitat in the Farmington River that emerge from our study include: (1) the importance of headwaters temperatures, (2) the impact of releases from deep reservoirs on downstream water temperatures, and (3) the role of riparian vegetation. Using the metrics proposed by Beauchene et al. (2014), we have characterized stream segments in the Farmington River basin as primarily cool water habitat (84%) with fewer segments of warm water (10%) and cold water (6%) habitats. In comparison, Beauchene et al. (2014) found that in the 160 sites in Connecticut they studied, 68.1% could be characterized as cool water habitat. Since they do not report the percentages of stream segments with cold water or warm water habitat, there is no direct comparison with those habitat types. In addition, they limited their study to wadable streams only, and did not include stream segments below dams, as we have.

After removal of the dams (Scenario 2), we estimated that only 2% of the stream segments are coldwater habitat. This means that approximately 4% of the coldwater habitat in our analysis is associated with stream segments in the main stem of Farmington River below the two deep reservoirs (Colebrook Lake and West Branch). Other than dams, geographical and physical influences on coldwater habitat at basin and subbasin scale ( $10^2$ – $10^3$  km<sup>2</sup>) and stream segments of  $10^3$  m include elevation, air temperature, precipitation, groundwater/surface water interaction, hyporheic exchange and land use/landcover (Torgerson et al., 2012). Processes included in the development of the DHSVM-RBM model system are elevation, air temperature, precipitation and land use/land cover, but does not include the contribution from groundwater/surface water interactions. As Beauchene et al. (2014) observe, however, understanding the role of groundwater may be necessary to explain temperature variations within the watershed that affect cold water habitat, especially during summer low flow.

## 10 6. Conclusions

Our goals in this research were: (1) develop nominal solutions for state-space estimates of streamflow and water temperature based on first principles, results of previous studies and data available from publicly available sources, and (2) provide examples of the way in which the models might be applied to watershed management.

15 Our development of a nominal solution for obtaining state estimates of streamflow and stream temperature has many similarities to other approaches formulated in terms of conservation laws. However, we believe it differs conceptually from others by acknowledging the uncertainty, as well as providing a more general paradigm for environmental models, whether they have been characterized as “data-driven/statistical” or “deterministic/process-based”.

20 We have parameterized the hydrologic model, DHSVM, and the stream temperature model, RBM, with data from publicly available sources and taken advantage of the mature status of stream temperature modeling based on the conservation laws of mass, momentum and energy. It is encouraging that when we test our models with available observation, our approach results in metrics that are within the range of similar studies. By obtaining the nominal solutions for streamflow and stream temperature, we have addressed previous concerns regarding the lack of available information for model development by accessing publicly available data and making use of previous research. There is room for improvement, of course and it is important to emphasize that maintenance and updating of these databases and monitoring programs is essential.

25 We have presented an example of the way in which these methods can be used for evaluating watershed management decisions. Our approach to the characterization of aquatic habitat based on simulated thermal classes (Figures 8a-d) should be viewed, first of all, in terms of its potential as a decision support system. Given the robust performance of DHSVM-RBM for the Farmington River basin, the outcomes we have presented provide basic insights into the impacts of land use management on aquatic habitat.



## Acknowledgements

The research on which this paper is based was funded in part by U.S. Environmental Protection Agency Science to Achieve Results (STAR) grant No. R835195 to the University of Washington. The authors gratefully acknowledge the assistance of the Connecticut Department of Energy and Environment in making stream temperature data available. Peter Rochford of Symplectic, LLC in Fairfax, Virginia provided assistance in the implementation of SkillMetrics to produce the modified Taylor diagram. Professor Dennis Lettenmaier of UCLA's Department of Geography provided program guidance during early stages of the study.

## References

- Albertson, L. K., Ouellet, V., and Daniels, M. D.: Impacts of stream riparian buffer land use on water temperature and food availability for fish. *Journal of Freshwater Ecology*, 33(1), 195-210. doi:10.1080/02705060.1017.1422558, 2018.
- Bladon, K. D., Cook, N. A., Light, J. T., and Segura, C.: A catchment-scale, assessment of stream temperature response to contemporary forest harvesting in the Oregon Coast Range. *Forest Ecology and Management*, 379, 153-164. doi:10.1016/j.foreco.2016.08.021, 2016.
- Brown, G. W. and Krygier, J. T.: Effects of clear-cutting on stream temperature. *Water Resources Research*, 6(4), 1133-1139. doi:10.1029/WR006i004p01133, 1970.
- Beauchene, M., Becker, M., Bellucci, C. J., Hagstrom, N. and Kanno, Y.: Summer Thermal Thresholds of Fish Community Transitions in Connecticut Streams, *North American Journal of Fisheries Management*, 34(1), 119–131, doi:10.1080/02755947.2013.855280, 2014.
- Beaufort, A., Curie, F., Moatar, F., Ducharne, A., Melin, E. and Thiery, D.: T-NET, a dynamic model for simulating daily stream temperature at the regional scale based on a network topology, *Hydrological Processes*, 30(13), 2196–2210, doi:10.1002/hyp.10787, 2016.
- Bednarek, A. T.: Undamming rivers: A review of the ecological impacts of dam removal, *Environmental Management*, 27(6), 803–814, doi:10.1007/s002670010189, 2001.
- Bennett, N. D., Croke, B. F. W., Guariso, G., Guillaume, J. H. A., Hamilton, S. H., Jakeman, A. J., Marsili-Libelli, S., Newham, L. T. H., Norton, J. P., Perrin, C., Pierce, S. A., Robson, B., Seppelt, R., Voinov, A. A., Fath, B. D. and Andreassian, V.: Characterising performance of environmental models, *Environmental Modelling and Software*, 40, 1–20, doi:10.1016/j.envsoft.2012.09.011, 2013.
- Bicknell, B. R., Imhoff, J. C., Jr., J. L. K., A.S. Donigan, J. and Johans Connecticut Department of Energy on, R. C.: Hydrological Simulation Program-Fortran, Version 11, Athens, Georgia., 1997.
- Boehlert, B., Strzepek, K. M., Chapra, S. C., Fant, C., Gebretsadik, Y., Lickley, M., Swanson, R., McCluskey, A., Neumann, J. E. and Martinich, J.: Climate change impacts and greenhouse gas mitigation effects on U.S. water quality, *Journal of Advances in Modeling Earth Systems*, 7(3), 1326–1338, doi:10.1002/2014MS000400, 2015.

Formatted: Left

- Bohn, T. J., Livneh, B., Oyler, J. W., Running, S. W., Nijssen, B. and Lettenmaier, D. P.: Global evaluation of MTCLIM and related algorithms for forcing of ecological and hydrological models, *Agricultural and Forest Meteorology*, 176, 38–49, doi:10.1016/j.agrformet.2013.03.003, 2013.
- Boyd, M. and Kasper, B.: Analytical methods for dynamic open channel heat and mass transfer: Methodology for heat source model version 7.0, Portland, OR., 2007.
- Brooker, M.: The Impact of Impoundments on the Downstream Fisheries and General Ecology of Rivers, *Advances in Applied Biology*, (6), 91–152, 1981.
- Cao, Q., Sun, N., Yearsley, J., Nijssen, B. and Lettenmaier, D. P.: Climate and land cover effects on the temperature of Puget Sound streams, *Hydrological Processes*, 30(13), 2286–2304, doi:10.1002/hyp.10784, 2016.
- Chapra, S., Pelletier, G. and Tao, H.: QUAL2K: A Modeling Framework for Simulating River and Stream Water Quality, Version 2.11: Documentation and Users Manual, 109, 2008.
- Chapra, S. C.: *Surface Water-Quality Modeling*, McGraw-Hill, New York, NY., 1997.
- Chen, Y.D., S.C. McCutcheon, D.J. Norton and W.L. Nutter. Stream temperature simulations of forested riparian areas: II. Model applicationm *Journal of Environmental ENgineering*. 124(4):316-328, 1998.
- Cogbill, C. V., Burk, J. and Motzkin, G.: The forests of presettlement New England, USA: spatial and compositional patterns based on town proprietor surveys, *Journal of Biogeography*, 29(10–11), 1279–1304, doi:10.1046/j.1365-2699.2002.00757.x, 2002.
- Cole, T. M. and Wells, S. A.: CE-QUAL-W2: A two-dimensional, laterally-averaged, hydrodynamic and water quality model, version 3.1., 2002.
- CTDEEP. Triennial Review of Water Quality Standards. [https://www.ct.gov/deep/cwp/view.asp?a=2719&q=325618&deepNav\\_GID=1654](https://www.ct.gov/deep/cwp/view.asp?a=2719&q=325618&deepNav_GID=1654), 2014.
- Cuo, L., Lettenmaier, D. P., Mattheussen, B. V., Storck, P. and Wiley, M.: Hydrologic prediction for urban watersheds with the Distributed Hydrology-Soil-Vegetation Model, *Hydrological Processes*, 22(21), 4205–4213, doi:10.1002/hyp.7023, 2008.
- Cuo, L., Lettenmaier, D. P., Alberti, M. and Richey, J. E.: Effects of a century of land cover and climate change on the hydrology of the Puget Sound basin, *Hydrological Processes*, 933, 907–933, doi:10.1002/hyp.7228, 2009.
- Cuo, L., Beyene, T. K., Voisin, N., Su, F., Lettenmaier, D. P., Alberti, M. and Richey, J. E.: Effects of mid-twenty first century climate and land cover change on the hydrology of the Puget Sound basin, Washington, *Hydrological Processes*, 1753(December 2010), 1729–1753, doi:10.1002/hyp.7932, 2011.
- D. N. Moriasi, J. G. Arnold, M. W. Van Liew, R. L. Bingner, R. D. Harmel and T. L. Veith: Model Evaluation Guidelines for Systematic Quantification of Accuracy in Watershed Simulations, *Transactions of the ASABE*, 50(3), 885–900, doi:10.13031/2013.23153, 2007.
- Du, X., Shrestha, N. K., Ficklin, D. L. and Wang, J.: Incorporation of the equilibrium temperature approach in a Soil and Water Assessment Tool hydroclimatological stream temperature model, *Hydrology and Earth System Sciences*

Field Code Changed

Discussions, 1–17, doi:10.5194/hess-2017-443, 2017.

[Edinger, J. E., Duttweiler, D. W., and Geyer, J. C.: The response of water temperatures to meteorological conditions, \*Water Resources Research\*, 4\(5\), 1137–1143, 1968.](#)

Evans, E. C., McGregor, G. R. and Petts, G. E.: River energy budgets with special reference to river bed processes, *Hydrological Processes*, 12(4), 575–595, doi:10.1002/(SICI)1099-1085(19980330)12:4<575::AID-HYP595>3.0.CO;2-Y, 1998.

Farmington River Watershed Association: State of the Farmington River Watershed report. [online] Available from: <https://www.frwa.org/publications.html>, 2004.

Ficklin, D. L., Luo, Y., Stewart, I. T. and Maurer, E. P.: Development and application of a hydroclimatological stream temperature model within the Soil and Water Assessment Tool, *Water Resources Research*, 48(1), doi:10.1029/2011WR011256, 2012.

Ficklin, D. L., Barnhart, B. L., Knouft, J. H., Stewart, I. T., Maurer, E. P., Letsinger, S. L. and Whittaker, G. W.: Climate change and stream temperature projections in the Columbia River basin: habitat implications of spatial variation in hydrologic drivers, *Hydrology and Earth System Sciences*, 18(12), 4897–4912, doi:10.5194/hess-18-4897-2014, 2014.

Glose, A., Lautz, L. K. and Baker, E. A.: Stream heat budget modeling with HFLUX: Model development, evaluation, and applications across contrasting sites and seasons, *Environmental Modelling & Software*, 92, 213–228, doi:10.1016/j.envsoft.2017.02.021, 2017.

~~Gomi, T., Moore, R. D. and Dhakal, A. S.: Headwater stream temperature response to clear-cut harvesting with different riparian treatments, coastal British Columbia, Canada, *Water Resources Research*, 42(8), doi:10.1029/2005WR004162, 2006.~~

Herr, J. W. and Chen, C. W.: WARMF: Model Use, Calibration, and Validation, *Transactions of the ASABE*, 55(4), 1387–1396, doi:10.13031/2013.42249, 2012.

Janisch, J. E., Wondzell, S. M. and Ehinger, W. J.: Headwater stream temperature: Interpreting response after logging, with and without riparian buffers, *Washington, USA, Forest Ecology and Management*, 270, 302–313, doi:10.1016/j.foreco.2011.12.035, 2012.

Jeon, S. B., Olofsson, P. and Woodcock, C. E.: Land use change in New England: a reversal of the forest transition, *Journal of Land Use Science*, 9(1), 105–130, doi:10.1080/1747423X.2012.754962, 2014.

Julian, D., Fields, W., Ostadrahimi, L., Hickey, J., Barker, T. and Hatfield, C.: Report PR-88b, Appendix A: Reservoir management decision support system for the Connecticut River watershed, Concord, MA., 2013.

[Justice, C., White, S. M., McCullough, D. A., Graves, D. S., and Blanchard, M. R.: Can stream and riparian restoration offset climate change impacts to salmon populations?, \*Journal of Environmental Management\*, 188, 212-227, 2017.](#)

Krause, C. W., Lockard, B., Newcomb, T. J. and Kibler, D.: Predicting influences of urban development on thermal habitat in a warm stream, *JAWRA Journal of the American Water Resources Association*, 40(6), 1645–1658, 2005.

Kurylyk, B. L., Moore, R. D. and MacQuarrie, K. T. B.: Scientific briefing: quantifying streambed heat advection associated

Formatted: Left

with groundwater-surface water interactions, *Hydrological Processes*, 30(6), 987–992, doi:10.1002/hyp.10709, 2016.

Lamson, N.I.: Estimating Northern Red Oak Site-Index Class from Total Height and Diameter of Dominant and Codominant Trees in Central Appalachian Hardwood Stands, NE-RP-605, Northeastern Forest Experiment Station, Forest Service, United States Department of Agriculture, 1987.

5 Leopold, L. B. and Maddock, T.: The hydraulic geometry of channels and some physiographic implications, Washington, D.C., 1953.

Lessard, J. L. and Hayes, D. B.: Effects of elevated water temperature on fish and macroinvertebrate communities below small dams, *River Research and Applications*, 19(7), 721–732, doi:10.1002/rra.713, 2003.

10 Ligon, F. K., Dietrich, W. E. and Trush, W. J.: Downstream Ecological Effects of Dams, *BioScience*, 45(3), 183–192, doi:10.2307/1312557, 1995.

Livneh, B., Rosenberg, E. A., Lin, C., Nijssen, B., Mishra, V., Andreadis, K. M., Maurer, E. P. and Lettenmaier, D. P.: A Long-Term Hydrologically Based Dataset of Land Surface Fluxes and States for the Conterminous United States: Update and Extensions, *Journal of Climate*, 26(23), 9384–9392, doi:10.1175/JCLI-D-12-00508.1, 2013.

15 Magilligan, F. J. and Nislow, K. H.: Long-Term Changes in Regional Hydrologic Regime Following Impoundment in a Humid Climate Watershed, *Journal of the American Water Resources Association*, 37(6), 1551–1569, doi:DOI 10.1111/j.1752-1688.2001.tb03659.x, 2001.

McGurk, B. J.: Predicting stream temperature after riparian vegetation removal, in Proc. Calif. Riparian Systems Conf. General Technical Report PSW-110, pp. 157–164, USDA Forest Service Berkeley, CA., 1989.

20 Meyer, P. D., Rockhold, M. L. and Gee, G. W.: Uncertainty Analyses of Infiltration and Subsurface Flow and Transport for SDMP Sites, NUREG/CR-6565, Richland, Washington, 1997.

Mohseni, O., Stefan, H. G. and Erickson, T. R.: A nonlinear regression model for weekly stream temperatures, *Water Resources Research*, 34(10), 2685–2692, doi:10.1029/98WR01877, 1998.

25 Moriasi, D. N., Arnold, J. G., Van Liew, M. W., Bingner, R. L., Harmel, R. D. and Veith, T. L.: Model evaluation guidelines for systematic quantification of accuracy in watershed simulations, *Transactions of the ASABE*, 50(3): 885–900, 2007.

Moore, R. D., Spittlehouse, D. L. and Story, A.: RIPARIAN MICROCLIMATE AND STREAM TEMPERATURE RESPONSE TO FOREST HARVESTING: A REVIEW, *Journal of the American Water Resources Association*, 41(4), 813–834, doi:10.1111/j.1752-1688.2005.tb03772.x, 2005.

30 Naz, B. S., Frans, C. D., Clarke, G. K. C., Burns, P. and Lettenmaier, D. P.: Modeling the effect of glacier recession on streamflow response using a coupled glacio-hydrological model, *Hydrology and Earth System Sciences*, 18(2), 787–802, doi:10.5194/hess-18-787-2014, 2014.

Neitsch, A. L., Arnold, J. G., Kiniry, J. R. and Williams, J. R.: Soil and Water Assessment Tool Theoretical Documentation Version 2009, 2011.

Niemeyer, R. J., Cheng, Y., Mao, Y., Yearsley, J. R. and Nijssen, B.: A thermally stratified reservoir module for large-scale

Formatted: Left

[distributed stream temperature models with application in the Tennessee River Basin, Water Resources Research, 54\(10\), 8103-8119, doi:10.1029/2018WR022615, 2018.](#)

Olden, J. D. and Naiman, R. J.: Incorporating thermal regimes into environmental flows assessments: Modifying dam operations to restore freshwater ecosystem integrity, *Freshwater Biology*, 55(1), 86–107, doi:10.1111/j.1365-2427.2009.02179.x, 2010.

[Oregon Department of Environmental Quality: Oregon Department of Environmental Quality, \[online\] Available from: <http://www.deq.state.or.us/wq/tmdl/s/approved.htm>, 2016.](#)

Pike, A., Danner, E., Boughton, D., Melton, F., Nemani, R., Rajagopalan, B. and Lindley, S.: Forecasting river temperatures in real time using a stochastic dynamics approach, *Water Resources Research*, 49(9), 5168–5182, doi:10.1002/wrcr.20389, 2013.

Poole, G. C. and Berman, C. H.: An Ecological Perspective on In-Stream Temperature: Natural Heat Dynamics and Mechanisms of Human-Caused Thermal Degradation, *Environmental Management*, 27(6), 787–802, doi:10.1007/s002670010188, 2001.

Power, M. E., Dietrich, W. E. and Finlay, J. C.: Dams and downstream aquatic biodiversity: Potential food web consequences of hydrologic and geomorphic change, *Environmental Management*, 20(6), 887–895, doi:10.1007/BF01205969, 1996.

Preece, R. M. and Jones, H. A.: The effect of Keepit Dam on the temperature regime of the Namoi River, Australia, *River Research and Applications*, 18(4), 397–414, doi:10.1002/rra.686, 2002.

Schwebbe, F. C.: *Uncertain dynamic systems*, Prentice-Hall, Inc., Englewood Cliffs, New Jersey, 1973.

Spatial Hydro-Ecological Decision System: Stream temperature database, 2016 [online] Available from: <http://db.ecosheds.org>, 2016.

Sun, N., Yearsley, J., Voisin, N. and Lettenmaier, D. P.: A spatially distributed model for the assessment of land use impacts on stream temperature in small urban watersheds, *Hydrological Processes*, 29(10), 2331–2345, doi:10.1002/hyp.10363, 2015.

Sun, N., Yearsley, J., Baptiste, M., Cao, Q., Lettenmaier, D. P. and Nijssen, B.: A spatially distributed model for assessment of the effects of changing land use and climate on urban stream quality, *Hydrological Processes*, 30(25), 4779–4798, doi:10.1002/hyp.10964, 2016.

Sun, N., Wigmosta, M., Zhou, T., Lundquist, J., Dickerson-Lange, S. and Cristea, N.: Evaluating the functionality and streamflow impacts of explicitly modelling forest-snow interactions and canopy gaps in a distributed hydrologic model, *Hydrological Processes*, 32(13), 2128–2140, doi:10.1002/hyp.13150, 2018.

[Sweeney, B. W. and Newbold, J. D.: Streamside forest buffer width needed to protect streamwater quality, habitat, and organisms: A literature review. \*J. Am. Water Resour. As.\* 50\(3\): 560-584. doi: 10.1111/jawr.12203, 2014.](#)

Taylor, K. E.: Summarizing multiple aspects of model performance in a single diagram, *Journal of Geophysical Research: Atmospheres*, 106(D7), 7183–7192, doi:10.1029/2000JD900719, 2001.

Thornton, P. E. and Running, S. W.: An improved algorithm for estimating incident daily solar radiation from measurements of temperature, humidity, and precipitation, *Agricultural and Forest Meteorology*, 93(4), 211–228, doi:10.1016/S0168-1923(98)00126-9, 1999.

~~Torgerson, C. E., Ebersole, J. L. and D.M.Keenan: Primer for identifying cold water refuges to protect and restore thermal diversity in riverine landscape, EPA 910-C-12-001., 2012.~~

USACE: National inventory of dams, US Army Corps of Engineers [online] Available from: [~~USEPA, National Rivers andn Streams Assessment 2008-2009: A Collaborative Survey, EPA/841/D-13/001, 110 pp., 2013.~~](http://nid.usace.army.mil/cm_apex/f?p=838:12, 2015.</a></p></div><div data-bbox=)

Vatland, S. J., Gresswell, R. E. and Poole, G. C.: Quantifying stream thermal regimes at multiple scales: Combining thermal infrared imagery and stationary stream temperature data in a novel modeling framework, *Water Resources Research*, 51(1), 31–46, doi:10.1002/2014WR015588, 2015.

van Vliet, M. T. H., Yearsley, J. R., Franssen, W. H. P., Ludwig, F., Haddeland, I., Lettenmaier, D. P. and Kabat, P.: Coupled daily streamflow and water temperature modelling in large river basins, *Hydrology and Earth System Sciences*, 16(11), 4303–4321, doi:10.5194/hess-16-4303-2012, 2012.~~Webb B, Zhang Y. 1997. Spatial and Seasonal Variability in the Components of the River Heat Budget. *Hydrological Processes* 11 (1): 79–101, DOI: 10.1002/(SICI)1099-1085(199701)11:1<79::AID-HYP404>3.0.CO;2-N~~

Wharton, E. H., Widmann, R. H., Alerich, C. L., Barnett, C. H., Lister, A. J., Lister, T. W., Smith, D. and Borman, F.: The forests of Connecticut. *Resour. Bull. NE-160.*, 2004.

Wigmosta, M. S., Vail, L. W. and Lettenmaier, D. P.: A distributed hydrology-vegetation model for complex terrain, *Water Resources Research*, 30(6), 1665–1679, 1994.

Willmott, C. J.: Some Comments on the Evaluation of Model Performance, *Bulletin of the American Meteorological Society*, 63(11), 1309–1313, doi:10.1175/1520-0477(1982)063<1309:SCOTEO>2.0.CO;2, 1982.

Wilson, K. B. and Baldocchi, D. D.: Seasonal and interannual variability of energy fluxes over a broadleaved temperate deciduous forest in North America, *Agricultural and Forest Meteorology*, 100(1), 1–18, doi:10.1016/S0168-1923(99)00088-X, 2000.

Wu, H., Kimball, J. S., Elsner, M. M., Mantua, N., Adler, R. F. and Stanford, J.: Projected climate change impacts on the hydrology and temperature of Pacific Northwest rivers, *Water Resources Research*, 48(11), doi:10.1029/2012WR012082, 2012.

~~Yang, D.: Stream temperature changes over Lena River Basin in Siberia, *Geophysical Research Letters*, 32(5), L05401, doi:10.1029/2004GL021568, 2005.~~

Yearsley, J.: A grid-based approach for simulating stream temperature, *Water Resources Research*, 48(3), doi:10.1029/2011WR011515, 2012.

Yearsley, J. R.: A semi-Lagrangian water temperature model for advection-dominated river systems, *Water Resources Research*, 45(12), W12405, doi:10.1029/2008WR007629, 2009.

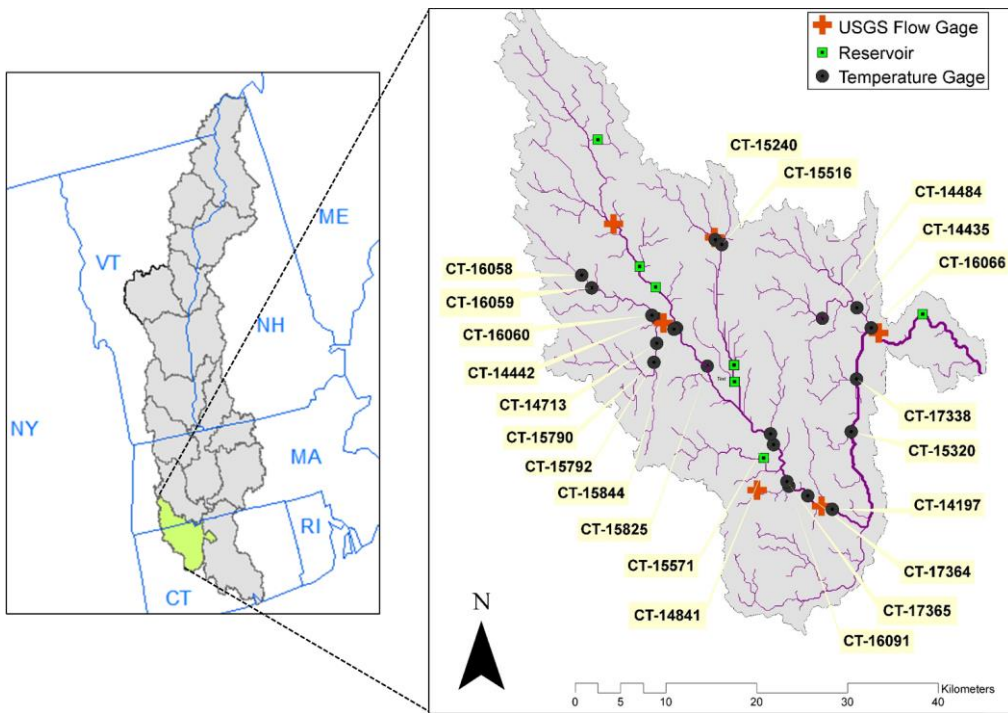
Formatted: Left, No widow/orphan control, Don't adjust space between Latin and Asian text, Don't adjust space between Asian text and numbers

Formatted: Left

Zhao, G., Gao, H., Naz, B. S., Kao, S.-C. and Voisin, N.: Integrating a Reservoir Regulation Scheme into a Spatially Distributed Hydrological Model, *Advances in Water Resources*, doi:10.1016/j.advwatres.2016.10.014, 2016.

5

Figures



5 Figure 1: Map of Farmington River basin showing (22) CTDEEP water temperature monitoring sites, (6) USGS flow gage sites and (7) major reservoirs characterized by the two-layer module of DHSVM-RBM.



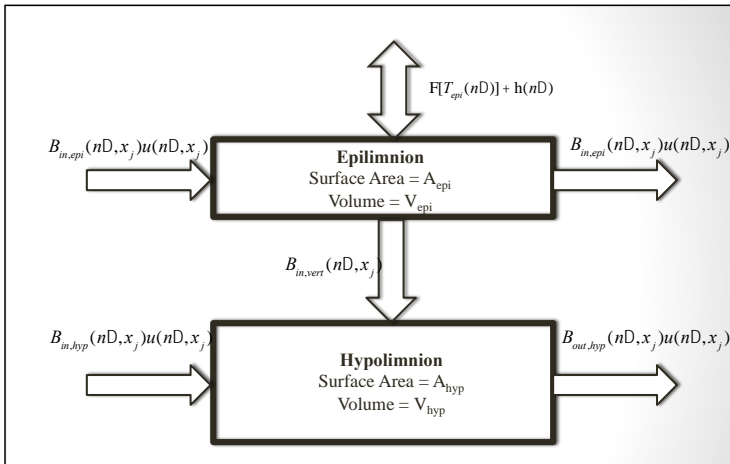


Figure 2: Conceptual model of Continuously Stirred Reactor (CSTR) for the two-layer reservoir model.

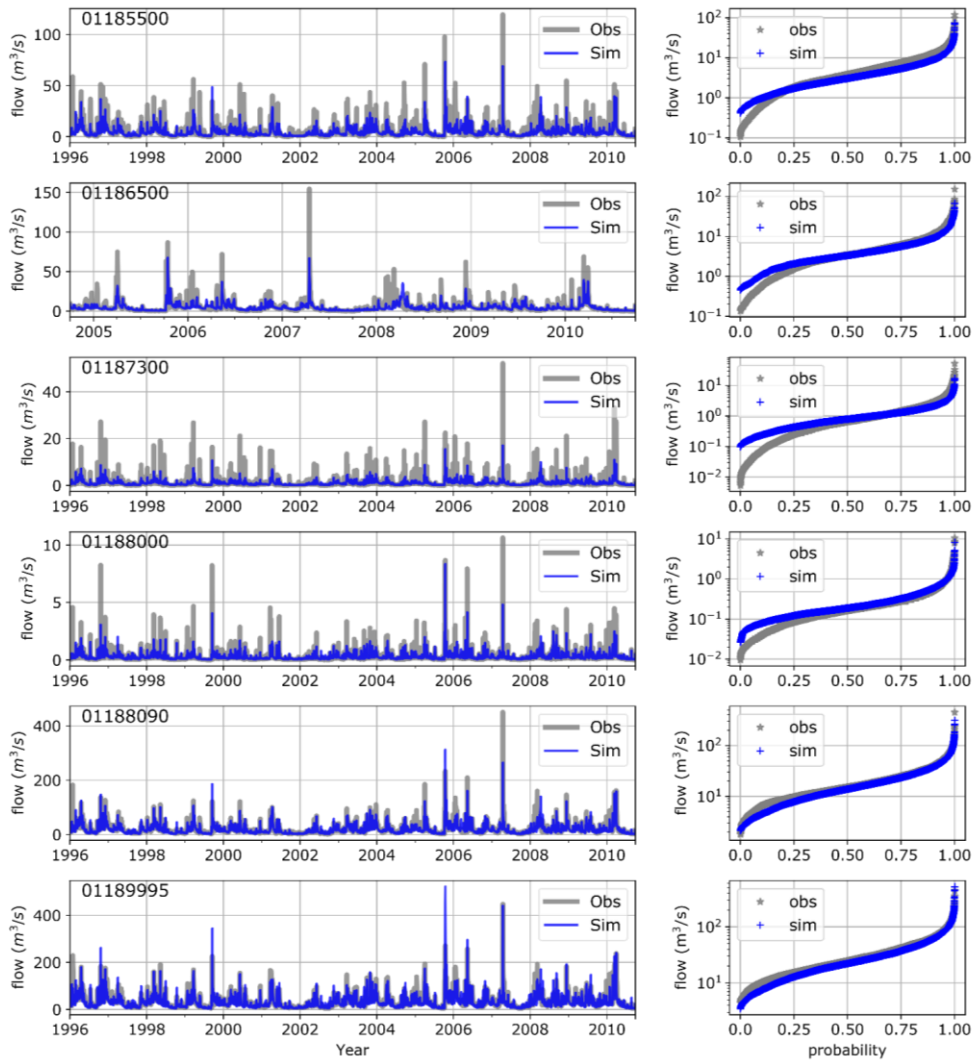


Figure 3: Time series and cumulative distribution function comparing simulated and observed daily stream flows at selected USGS gages in the Farmington River basin.

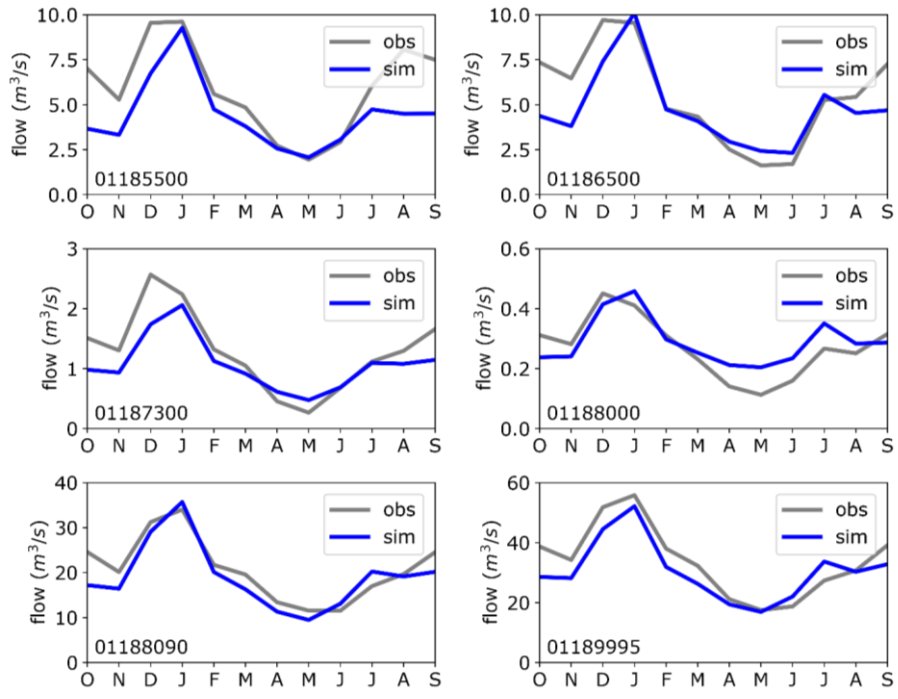
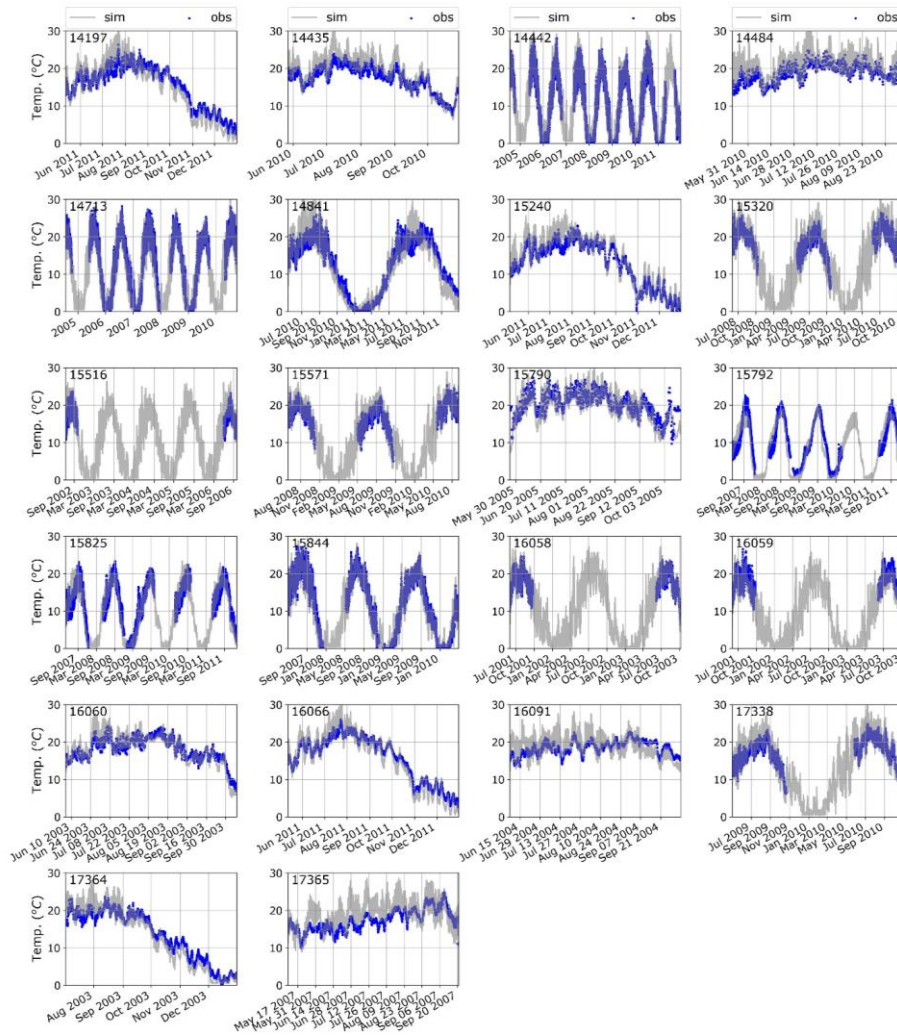


Figure 4: Time series comparing simulated and observed monthly-averaged stream flows at selected USGS gages in the Farmington River basin.



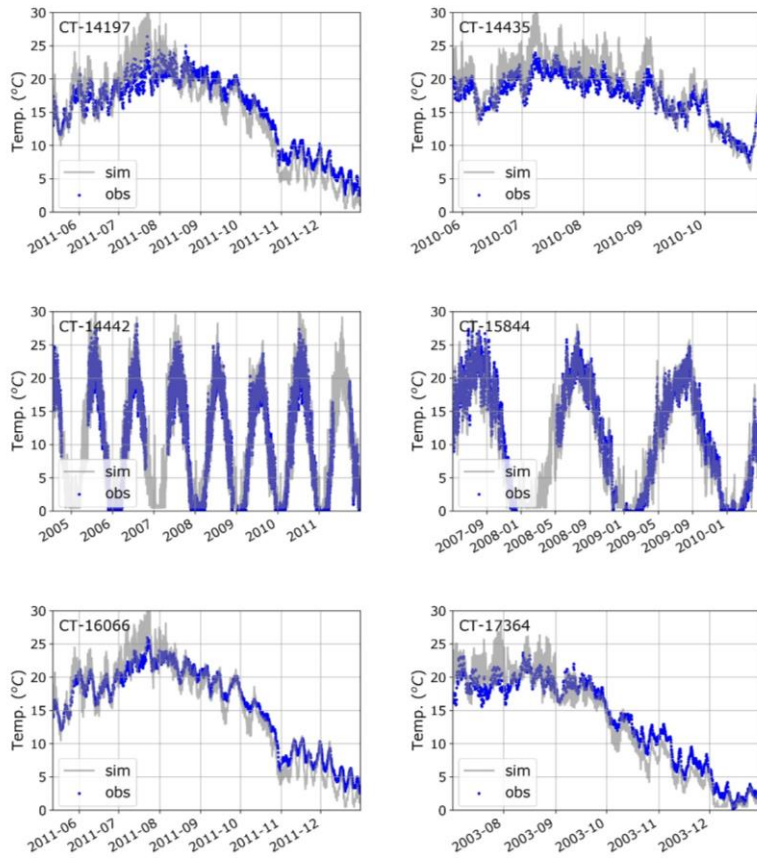


Figure 5: Time series comparing simulated and observed three-hourly stream temperatures at selected six CTDEEP sites in the Farmington River basin. The period of available temperature observations varies by location. **At some locations, the observations were collected for summer months only (e.g. station 15320).**

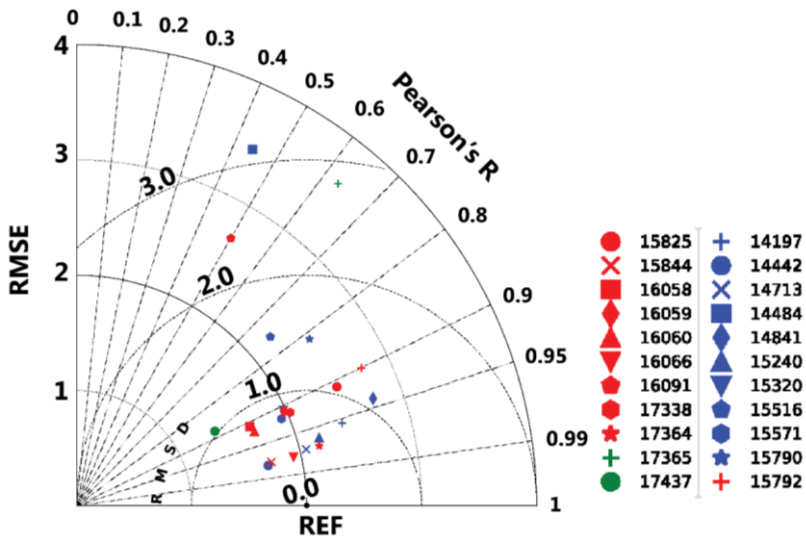


Figure 6: Modified Taylor diagram (Taylor, 2001) summarizing model performance in terms of RMSE, Pearson R and centered RMSD. The point labeled, "REF", represents a reference value for RMSE from Yearsley (2012).

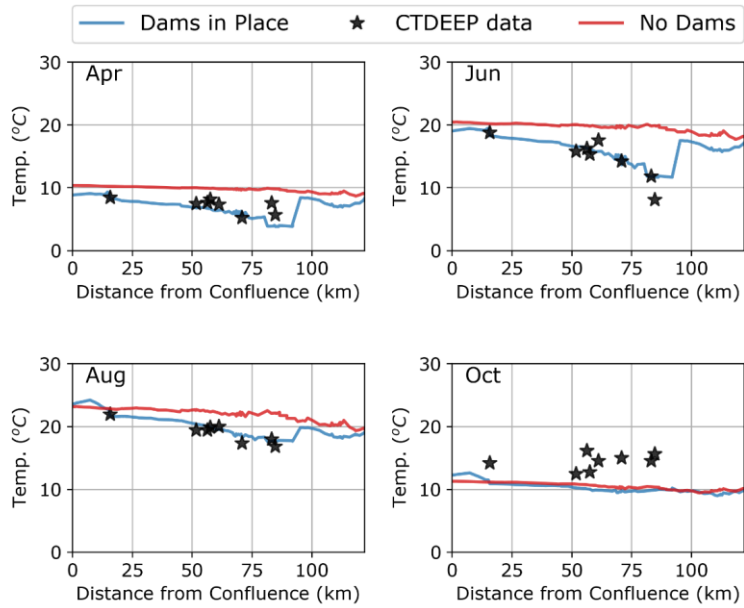
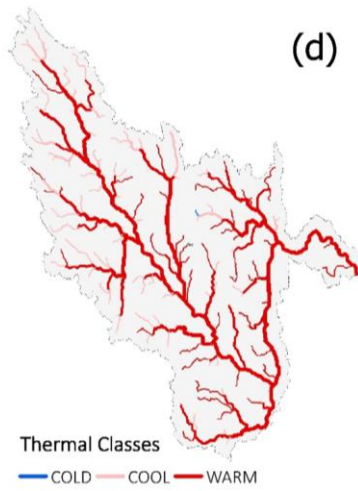
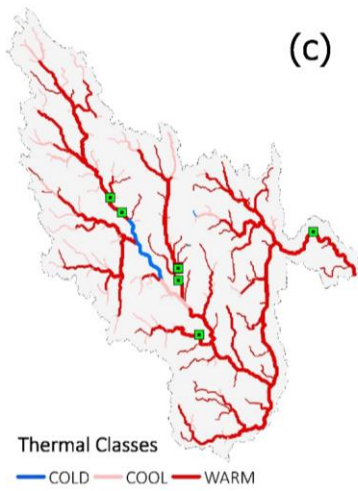
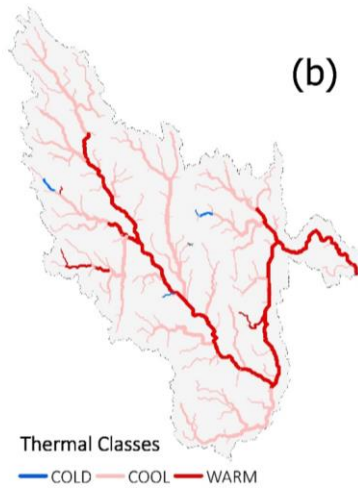
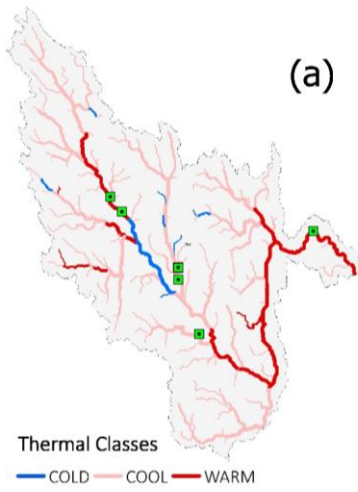
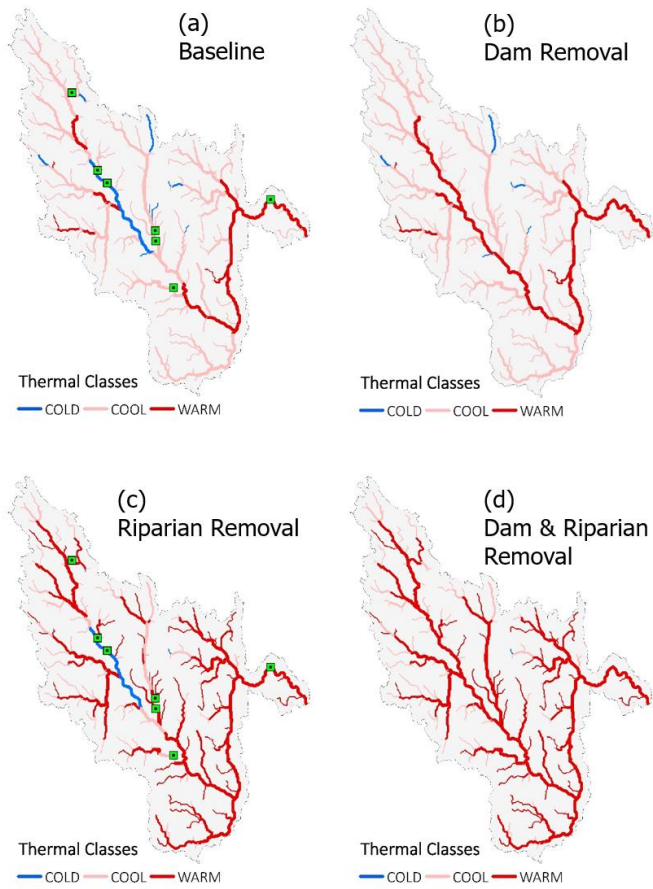


Figure 7: Monthly-averaged stream temperatures of April, June, August and October in the West Branch and Main Stem of the Farmington River for: Dams in Place – Existing riparian shading and water management projects; No Dams – Removal of water management projects maintaining existing riparian shading; and Monthly-averaged water temperatures at locations monitored by the Connecticut Department of Energy and Environment (CTDEEP).







**Figure 8: Thermal classes (cold, cool, and warm) in the Farmington River basin using simulated results for (a) Scenario 1, (b) Scenario 2, (c) Scenario 3, and (d) Scenario 4 from Section 3.4. The green square in (a) and (c) indicate the location of the reservoirs.**

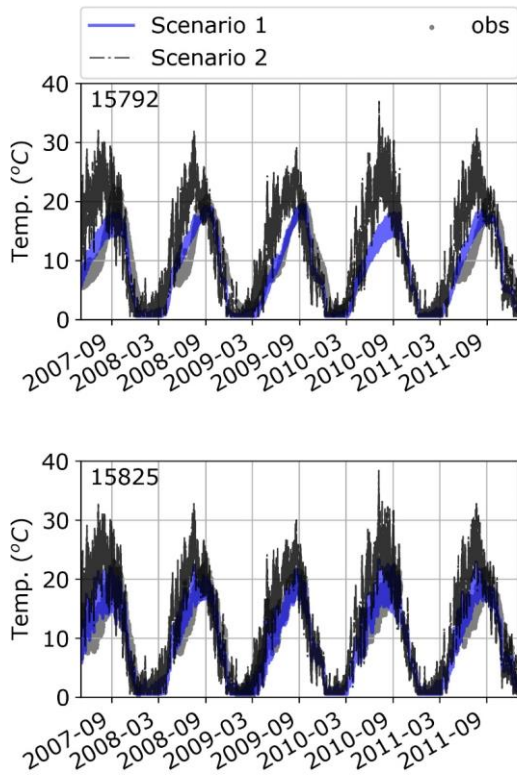


Figure 9: Simulated and observed water temperatures in the Farmington River downstream from West Branch reservoir (CTDEEP-15792 and CTDEEP 15825).

Tables

Table 1: Water storage projects in the Farmington River basin modeled with one-dimensional (River Run) or two-dimensional (Deep Reservoir) modules of RBM (msl indicates meters above mean sea level)

<u>Reservoir Name (Lat/Lon)</u>	<u>Purpose</u>	<u>Surface Area (m<sup>2</sup>)</u>	<u>Volume (m<sup>3</sup>)</u>	<u>Surface Elev. (msl) Outlet Elev. (msl) Modeled As</u>
<u>Otis Reservoir (42.16/-73.06)</u>	<u>Recreation</u>	<u>4.193x10<sup>6</sup></u>	<u>2.300x10<sup>7</sup></u>	<u>431.21 431.21 River Run</u>
<u>Nepaug Reservoir (41.83/-72.94)</u>	<u>Water Supply</u>	<u>3.592x10<sup>7</sup></u>	<u>1.971x10<sup>8</sup></u>	<u>146.67 146.67 Deep Reservoir</u>
<u>Barkhamsted Lake (41.91/- 72.96)</u>	<u>Water Supply</u>	<u>1.100x10<sup>7</sup></u>	<u>1.390x10<sup>8</sup></u>	<u>161.36 161.36 Deep Reservoir</u>
<u>Lake McDonough (41.88/-72.96)</u>	<u>Hydroelectric Power</u>	<u>1.583x10<sup>6</sup></u>	<u>1.206x10<sup>7</sup></u>	<u>128.10 128.10 Deep Reservoir</u>
<u>Colebrook Lake (42.01/-73.04)</u>	<u>Flood Control Hydroelectric Power Fisheries Releases</u>	<u>2.830x10<sup>6</sup></u>	<u>4.930x10<sup>7</sup></u>	<u>216.84 175.26 Deep Reservoir</u>
<u>West Branch (42.00/-73.03)</u>	<u>Hydroelectric Power Fisheries Releases</u>	<u>8.151x10<sup>5</sup></u>	<u>2.460x10<sup>7</sup></u>	<u>194.69 167.26 Deep Reservoir</u>
<u>Rainbow Reservoir (41.92/-72.69)</u>	<u>Hydroelectric Power</u>	<u>9.490x10<sup>5</sup></u>	<u>5.930x10<sup>6</sup></u>	<u>51.30 51.30 River Run</u>

**Table 2: Data sets and sources used for estimating parameters in the model identification process**

<b>Database (Spatial Resolution)</b>	<b>Source</b>	<b>Application</b>
National Elevation Data Set (NED) (30 meters)	US Geological Survey	DHSVM – Digital Elevation Model (DEM)
State Soil Geographic (STATSGO) (1000 meters)	US Department of Agriculture National Resources	DHSVM – Soils Information
National Land Cover Database (30 meters)	US Geological Survey	DHSVM – Vegetation Information
Meteorological Forcing (1/16° lat. x 1/16° lon.)	Livneh et al. (2013)	DHSVM - Meteorology
National Inventory of Dams (NID) Reservoir Area-Volume	US Army Corps of Engineers	RBM – Reservoir Characteristics
Reservoir Area-Volume	Julian et al. (2013)	RBM – Reservoir
National Water Information System: Web Interface (NWIS)	US Geological Observation	RBM – Leopold Streamflow Data
Spatial Hydro-Ecological Decision	SHEDS Development Team	Water Temperature Data
Google Maps	Google.com	RBM – Riparian

**Table 3: Parameters for stream speed and depth in Equations S.7 and S.8 (see Supplementary Materials) estimated from rating measurements at USGS gages in the Farmington River basin. Coefficients from individual USGS gages are extended to other river segments as shown.**

USGS Gage	Stream Speed		Stream Depth		Region of Farmington Watershed Included
	U <sub>a</sub>	U <sub>b</sub>	D <sub>a</sub>	D <sub>b</sub>	
West Branch near New 01185500	0.0634	0.5749	0.4175	0.2894	Above Colebrook Lake
West Branch Farmington 01186000	0.1516	0.4342	0.3733	0.4704	Hogback Dam to Riverton CT
Still River @ 01186500	0.0611	0.5619	0.4631	0.3190	Still River and Tributaries
Hubbard River nr West 01187300	0.1914	0.4253	0.5482	0.2822	Watershed above Barkhamsted Reservoir
Bonnell Brook nr 01188000	0.3643	0.4392	0.5482	0.2821	Nepaug Reservoir Watershed
Farmington River @ 01188090	0.1119	0.4237	0.1022	0.1800	Riverton CT to Pequaback River
Farmington River @ 01189995	0.4616	0.3203	0.1725	0.3906	Pequaback River to Connecticut River

**Table 4: USGS gage stations in the Farmington River basin (Figure 1) and model performance evaluation criteria for daily and monthly flows simulated by DHSVM based on performance ratings from Moriasi et al. (2007). (VG – Very Good, G – Good, S – Satisfactory, U – Unsatisfactory)**

USGS Gage	Area (km <sup>2</sup> )	NSE		PBIAS		R <sup>2</sup>	
		Daily	Monthly	Daily	Monthly	Daily	Monthly
West Branch near 01185500	237	0.52(S)	0.33(U)	-25.2(U)	-25.5(U)	0.57(U)	0.71(S)
Still River @ 01186500	220	0.58(S)	0.63(S)	-13.6(G)	-16.9(S)	0.61(S)	0.87(VG)
Hubbard River nr 01187300	52	0.48(U)	0.68(G)	-16.8(S)	-13.6(G)	0.61(G)	0.71(S)
Bonnell Brook nr 01188000	10.6	0.54(S)	0.65(G)	7.1(VG)	-9.6(VG)	0.75(S)	0.85(VG)
Farmington River 01188090	979	0.64(S)	0.77(G)	-8.4(VG)	7.1(VG)	0.54(U)	0.70(S)
Farmington River 01189995	1494	0.71(G)	0.76(G)	-9.7(VG)	-8.3(VG)	0.67(S)	0.84(G)

**Table 5: Statistical measures for comparison of daily-averaged simulated and observed water temperatures in the Farmington River**

	CTDEEP Station	NSE	Pearson's R	BIAS (°C)	RMS (°C)	RMSE
1	<b>14197</b> Farmington River @ Route 4	0.81	0.93	-0.8	2.42	0.78
2	<b>14435</b> Salmon Brook adjacent Granbrook Park	0.46	0.95	1.67	2.50	0.86
3	<b>14442</b> Sandy Brook opposite Grange hall	0.95	0.98	0.5	1.70	0.48
4	<b>14713</b> Still River @ Route 8	0.93	0.97	-0.8	2.05	0.49
5	<b>14484</b> West Br.Salmon Brook @ Barndoor Rd	-1.1	0.44	1.8	3.45	3.13
6	<b>14841</b> West Branch Salmon Brook	0.78	0.92	-0.7	2.74	1.10
7	<b>15240</b> Hubbard Brook u/s Route 20	0.86	0.96	1.2	2.19	0.60
8	<b>15320</b> Nod Brook @Footbridge Pond	0.71	0.91	0.4	1.98	0.85
9	<b>15516</b> Valley Brook d/s Route 20	0.06	0.77	1.6	2.23	1.50
10	<b>15571</b> Cherry Brook u/s Route 44	0.66	0.92	1.0	1.93	0.79
11	<b>15790</b> Still River @ White St. Bridge	0.39	0.81	-0.8	2.49	1.45
12	<b>15792</b> West Branch Farmington River @ Route 20	0.52	0.8	-1.1	2.75	1.29
13	<b>15825</b> West Branch Farmington River u/s Route 318	0.69	0.89	-1.4	2.49	1.07
14	<b>15844</b> Still River u/s Route 20	0.95	0.98	-0.3	1.74	0.49
15	<b>16058</b> Sandy Brook @ Wolford Hill Rd	0.78	0.91	0.6	1.65	0.85
16	<b>16059</b> Sandy Brook @ Route 183	0.57	0.91	-1.4	1.98	0.84
17	<b>16060</b> Sandy Brook @Route 8	0.73	0.92	0.1	1.67	0.79
18	<b>16066</b> Farmington River @ Route 189	0.85	0.97	-0.6	1.93	0.44
19	<b>16091</b> Farmington River nr Bunnell Brook	-1.57	0.5	0.9	2.68	2.41
20	<b>17338</b> Hop Brook @ US Route 10	0.69	0.92	0.8	2.03	0.82
21	<b>17364</b> Farmington River nr US Route 4	0.82	0.96	-0.6	2.17	0.53
22	<b>17365</b> Farmington River nr Burlington	-0.89	0.63	2.5	3.60	2.81

**Table 6. Stream temperature metrics (°C) for classifying streams in Connecticut into thermal classes (after Table 3 of Beauchene et al., 2014)**

<u>Thermal Class</u>	<u>June-August Mean</u> (°C)	<u>July Mean</u> (°C)	<u>Max Daily Mean</u> (°C)
<u>Cold</u>	<u>&lt;18.29</u>	<u>&lt;18.45</u>	<u>&lt;22.4</u>
<u>Cool</u>	<u>18.29-21.70</u>	<u>18.45-22.30</u>	<u>22.40-26.30</u>
<u>Warm</u>	<u>&gt;21.70</u>	<u>&gt;22.30</u>	<u>&gt;26.30</u>

**Table 67: Percentage of watershed with Cold, Cool or Warm thermal class for watershed management scenarios described in Section 3.4. Metrics for estimating thermal classes are from Table 6 (following Beauchene et al., (2014)**

<u>Habitat Type</u>	<u>Scenario 1</u>	<u>Scenario 2</u>	<u>Scenario 3</u>	<u>Scenario 4</u>
<u>Cold</u>	<u>6%</u>	<u>2%</u>	<u>2%</u>	<u>1%</u>
<u>Cool</u>	<u>84%</u>	<u>84%</u>	<u>44%</u>	<u>41%</u>
<u>Warm</u>	<u>10%</u>	<u>14%</u>	<u>54%</u>	<u>58%</u>
<u>Habitat Type</u>	<u>Scenario 1</u> <u>baseline</u>	<u>Scenario 2</u> <u>dam removal</u>	<u>Scenario 3</u> <u>riparian removal</u>	<u>Scenario 4</u> <u>dam &amp; riparian removal</u>
<u>Cold</u>	<u>6.0%</u>	<u>2.2%</u>	<u>2.2%</u>	<u>0.6%</u>
<u>Cool</u>	<u>83.7%</u>	<u>83.4%</u>	<u>43.9%</u>	<u>41.4%</u>
<u>Warm</u>	<u>10.3%</u>	<u>14.4%</u>	<u>53.9%</u>	<u>58.0%</u>