

We thank both referees for their comments, which have improved the clarity of key points of the manuscript as well as the figures and other aspects of data presentation. The input from both referees enabled us to better elucidate the nuance in some of our findings through new figures and better substantiate some points through statistical analyses. Their attention to detail was appreciated and we have outlined our responses to general, specific and technical comments below.

This document is structured so that Anonymous Referee comments are in **bold**, followed by our response and either a figure, table or text with changes in *italics*.

Anonymous Referee #1:

It seems like you are suggesting the DOM will shift from organic soils to more DOM from decomposing vegetation?

Suggestion: ... may alter DOM sources, shifting from DOM derived predominantly from organic soils (high aromaticity, less fresh) towards a greater contributions from decomposing vegetation (more fresh and lower aromaticity), and facilitate flow and transport through deeper flow pathways and enhance groundwater contributions to runoff.

Our response: The sentence has been changed to suggested phrasing.

Forecasted vegetation shifts, permafrost thaw and other changes due to climate change *may alter DOM sources, shifting from DOM derived predominantly from organic soils (high aromaticity, less fresh) towards a greater contribution from decomposing vegetation (more fresh and lower aromaticity). These changes may also facilitate flow and transport through deeper flow pathways and enhance groundwater contributions to runoff.*

Introduction

Line 74-75: “DOC is a fraction of the DOM pool...” This requires rephrasing. DOC is the mass of C in the entire DOM pool, so this statement is incorrect.

Our response: We have corrected this inaccuracy. Sentence has been changed to:

DOC is the mass of C in the DOM pool whose lability, aromaticity and origins can in part be characterized using optical techniques.

Line 91: Would be better to have this statement of the goal in the first paragraph or start of paragraph two.

Our response: Unfortunately, although the authors see how moving the statement of the goal upwards could be helpful, we believe flow of the paper is better maintained with its current structure.

Also I suggest rephrasing this for clarity: "The goal ... understanding of the coupled dynamics of hydrology and DOC export and composition (using optical properties of DOM), in a well studied... Yukon, Canada."

Our response: Thank you for this suggestion. The sentence has been rephrased as follows:
The goal of this paper is to enhance our *understanding of the coupled dynamics of hydrology and DOC export and composition (using optical properties of DOM), in a well-studied, discontinuous permafrost alpine catchment in subarctic Yukon, Canada.*

Methods

I have concerns about the sampling and filtration methods for the DOC and DOM analyses, and the lack of proper reporting of the precision error on these measurements. Section 2.4 the authors should report on the detection limits and uncertainty in the DOC concentrations. This is not a trivial issue when concentrations in the watersheds hover around the 1ppm level through the winter.

Our response: Thank you for your comments regarding Section 2.4 and the inclusion of detection limits and uncertainty. We have added the relevant information to that section:

Water samples were sent to the Biogeochemical Analysis Service Laboratory (BASL, University of Alberta) for analysis on a Shimadzu *TOC-5000A Total Organic Carbon analyzer for DOC concentration following the US EPA protocol 415.1. The reportable detection limit provided by BASL for these samples was 0.1 mg/L.*

Also some additional information on the repeatability of the fluorescent measurements would be helpful here – did you correct or compare to a standard (e.g. Quinine Sulfate or other?)

Our response: To address the concerns related to repeatability of fluorescence measurements as well as comparison to standards, we've separated out the reviewer's comments to clearly provide the relevant information.

The fluorescence measurements were compared to both a Raman and a Quinone Sulfate standard (and associated blank) before each sample run (one batch of samples). All of which arrived sealed from the manufacturer with the relevant certificates. Fluorescence measurements of these two standards were tracked to ensure that no instrument error or inconsistency was occurring. In addition, the Raman standard was included with every batch of samples that was run at each integration time. A lab blank of distilled water was also included in each run at each integration time.

did you repeat samples and compare values for FI, BIX or SUVA to determine repeatability of these values?

Our response: Yes, samples were selected at random to be re-run to determine repeatability.

My other concern relates to the sample collection and filtration methods. The authors report that they used plastic syringes and PES filters, which can both leach DOM.

Standard methods for DOC and DOM analysis involve use of pre-combusted glass filtration apparatus and glass fiber filters. The authors need to demonstrate that the DOC concentrations in their method blanks, and the impact of the methods on the optical properties are negligible, or cite other studies that have demonstrated these methods have little effect on background DOC and optical properties. Although I suspect the effects of the filtration methods may be trivial, given that these methods are not standard, the authors need to demonstrate this in fact the case.

In response to this concern, method blanks at a southern Ontario field site using the same syringe + filter set up and in situ filtering showed that DOC concentrations and optical properties of the samples seemed unaffected by their brief contact time with the plastic syringe and the PES filter. DOC concentrations for method blanks were <0.1 mg/L (below detection for BASL) for 6 samples and in one case, 0.4 mg/L.

In addition, the authors carried out a small intercomparison experiment using PES + plastic syringes and glass filter apparatus + GF filters to have a direct comparison of the two filter types.

We collected water from small headwater site in Southern Ontario in 4 pre-combusted 240 mL glass amber bottles. Samples were placed in cooler and returned to lab for filtration on the same day using glass filter apparatus and glass fiber filters. Pre-combusted 40mL glass amber vials were environmentalized with filtrate 3 times before being filled (no headspace). A method blank was included. Samples were analyzed the next day.

For comparison, 5 syringes and PES filters were also brought to the field site and 5 samples were collected in situ. The syringes were submersed in the stream 3-4 times before being filled. PES filters were attached. Sample water was pushed through the PES filter into pre-combusted 120 mL glass amber bottles. These bottles were environmentalized 3 times before being filled (no headspace). These samples were also placed in a cooler, returned to the lab and then placed in the fridge until analysis. Two method blanks for field filtration were included.

Once the samples were run on the Aqualog following the procedures described in the manuscript, the effects of plastic syringes and PES filters were undetectable. EEMs were extremely similar between all samples (same site, within 10 minutes) regardless of filter method, and the method blanks from GF and PES filters were also directly comparable to unfiltered DI water.

Results

Line 324: I do not see the ‘inconsistency’ you are describing in the figure (though I agree there are differences). It seems to me that BIX reaches a minimum at onset of melt and then increases in both years. The difference appears to be that in 2015 the BIX increases

and then more or less plateaus overall (there is one sample that is higher than the rest, and there is some minor variability but it is difficult to discern a clear decrease?), while in 2016 the BIX values keep increasing steadily after the minimum during freshet.

Our response: The sentence has been reworded for clarity.

BIX exhibited similar patterns between 2015 and 2016 at the headwater sites with minimum values during spring in both years followed by an increase, which plateaued in summer 2015 but continued to rise slightly during the 2016 summer.

Line 331: Can you provide an indication as to what constitutes a meaningful (significant) change in FI (form the repeatability or your own results, or from information derived from literature)?

We appreciate the subjective nature of what ‘meaningful’ or ‘significant’ means, particularly with regards to issues of repeated measures. From the literature and in our study, FI values can be located within a small subset of the typical range of values (1.2 to 1.8) depending on the source DOM. In our case, we calculated the average standard deviation of FI from samples measured more than once as 0.022. The range of FI values from WCRB sites was relatively small (~0.3) so we relied on nonparametric Kruskal-Wallis to determine a statistically significant shift in FI.

Line 347-348: Please include the full details of the PCA as supplemental information.

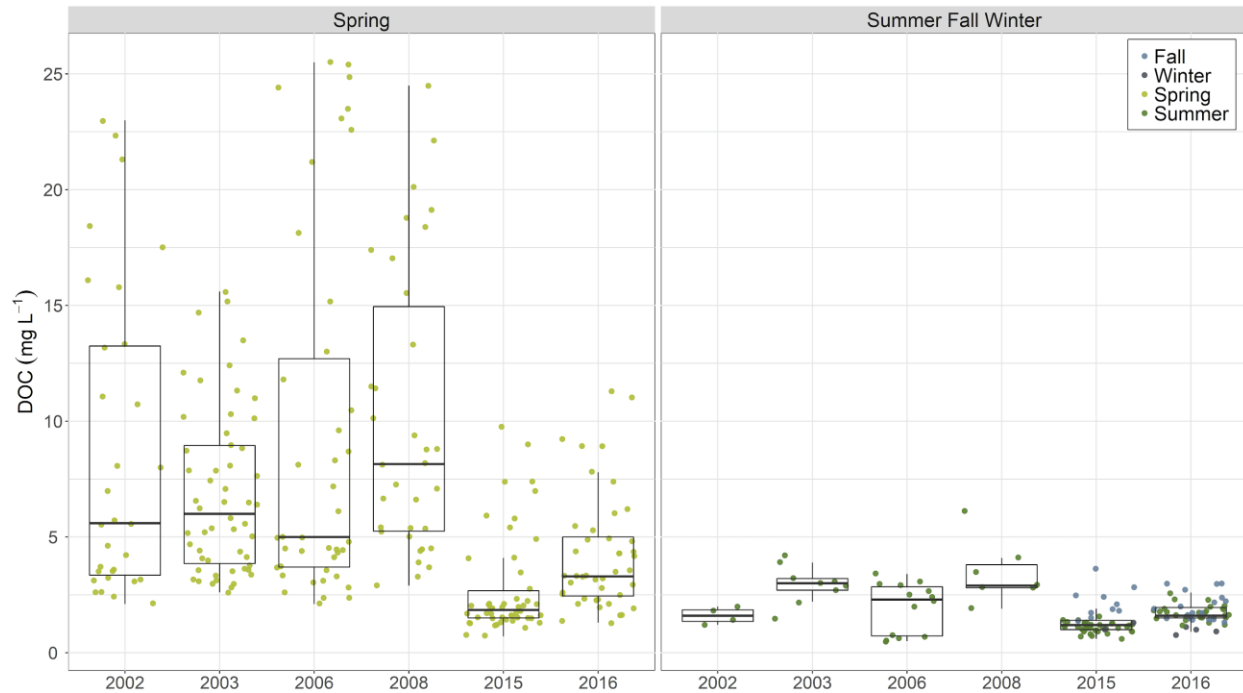
Our response: Although we struggled with what entails the ‘full details’ of a PCA, the authors have assembled some background information in the supplemental document as requested.

Discussion

Line 415 and 426/427: You should include the data Carey et al 2013a data here, as a table or graph. If you are using them as a basis of these arguments, you must show the data.

Our response: The data from Carey et al 2013a has now been included in the figure below and added to the manuscript.

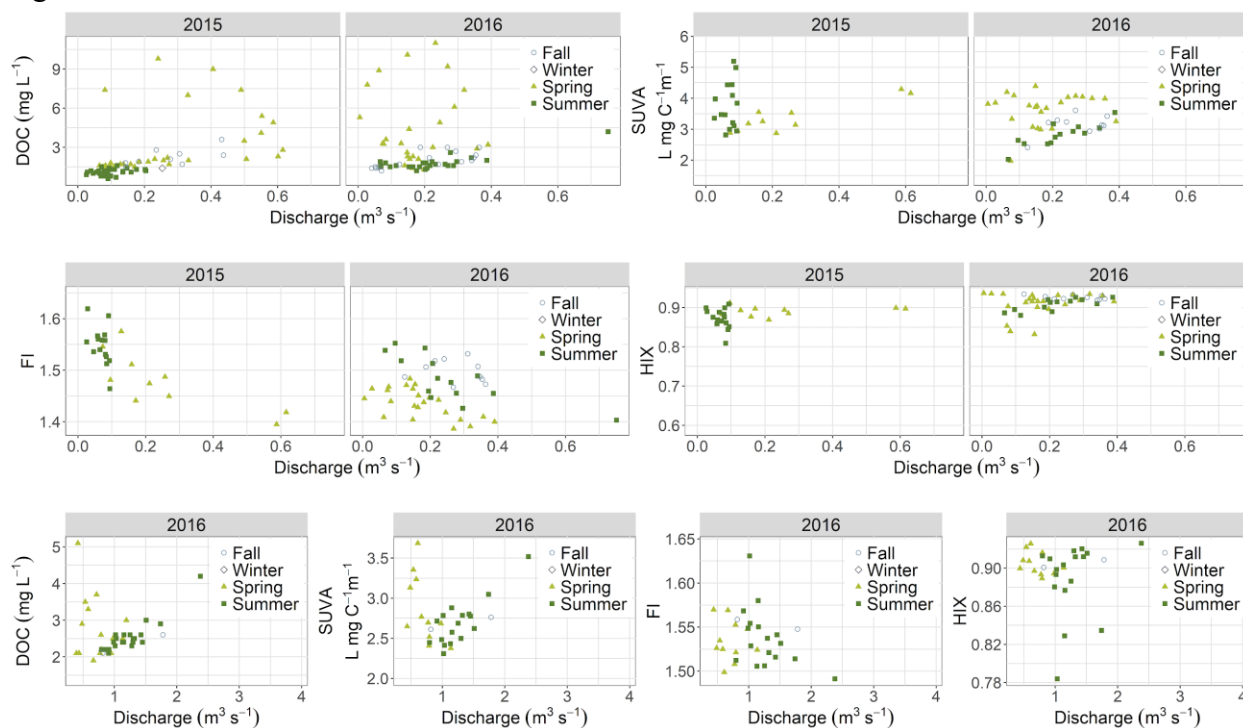
Fig 7.



Line 463-464: The authors state that “As with DOC concentration, the important implication is that seasonality as opposed to flow magnitude has a greater influence on the quality of DOM” Although I do not disagree with this statement, I do not believe the authors have demonstrated clearly or quantitatively, how the flow magnitude relates to the quality of DOM.

Our response: Thank you bringing up this point. In response to this comment as well as Referee #2’s suggestion, C-Q plots of DOC and several optical indices have been added to the manuscript to better elucidate this point. We have included a table with C-Q regressions and have discussed their patterns in the revised manuscript.

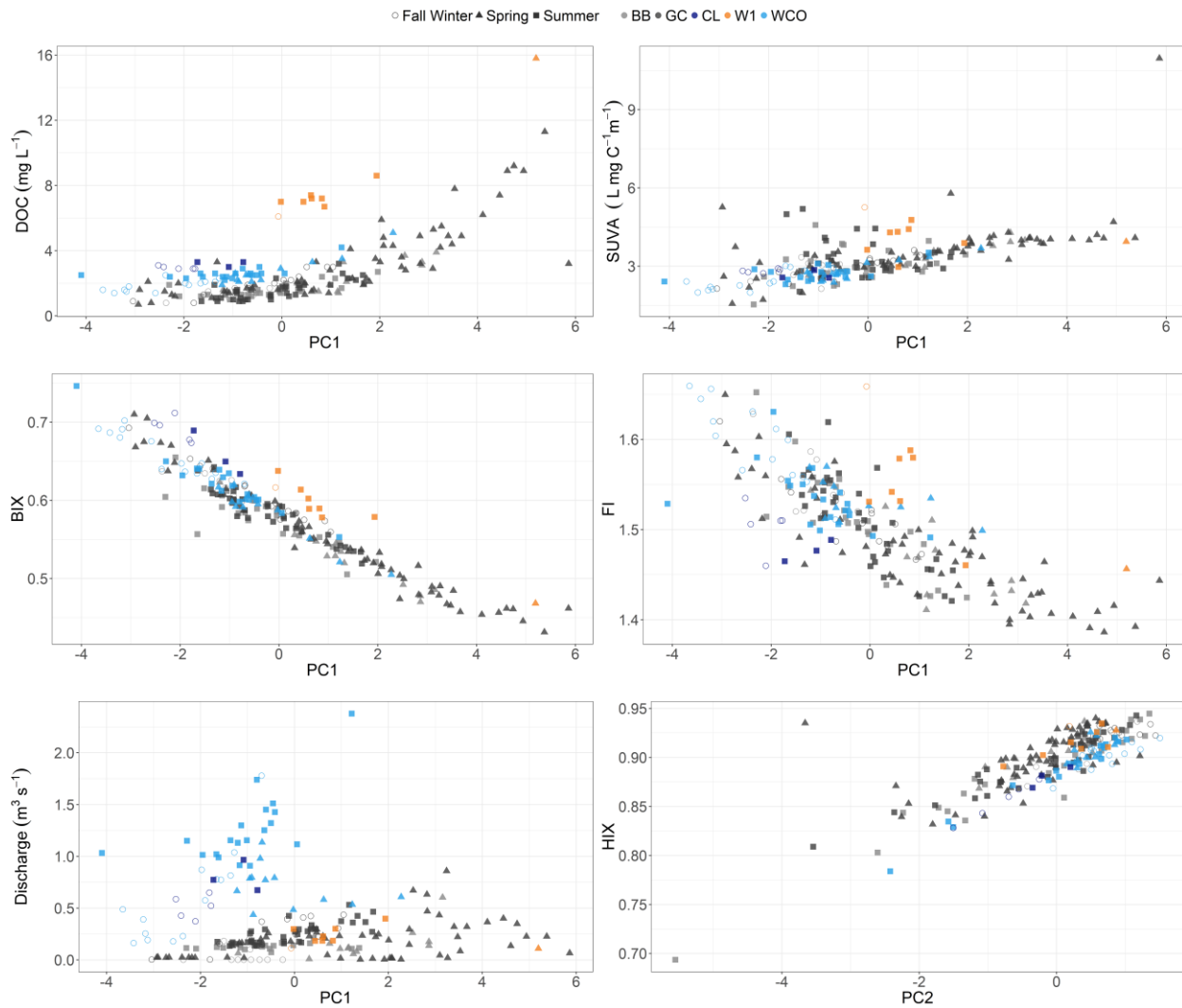
Fig 8.



Can you plot Q vs PC1 and show the seasons? As you do for the fluorescence indices in Figure 4. Figure 4 shows a strong change in the PC and optical indices with seasons. But you do not show relationship between Q and the optical indices (except in the timeseries, but this does not effectively demonstrate that seasonality has a greater influence than Q on the quality of DOM.

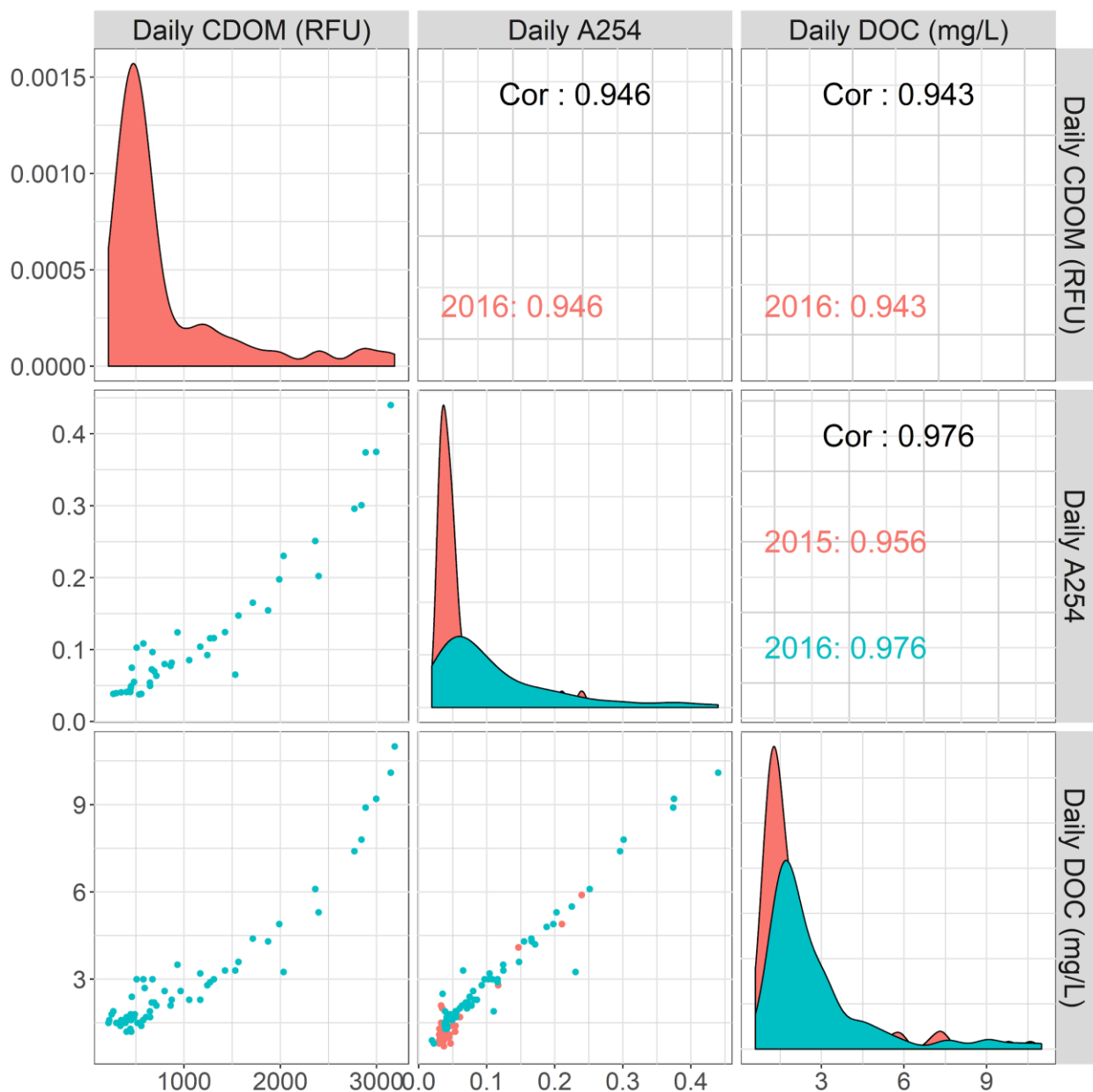
Our response: We have added the C-Q plots mentioned above to help clarify our point about seasonality having a greater influence than flow magnitude although there is some relationship between the two. We meant to communicate that the range of flow was greatest during spring and fall, however, the range of optical indices values in fall was much less than what was measured in spring.

We have also added a panel showing Q vs PC1 with the seasons shown. This figure is below:



Line 525: I do not see where you have shown any relationships between CDOM and A254 and DOC - you need to include these relationships (correlation analyses) in the paper or in the supplemental if you are making this a principle conclusion of the work.

Our response: We have now included the key information and a plot in the supplemental material (Fig. S1) showing the Pearson correlation for the average daily DOC concentration in mg/L and the average daily CDOM in RFU ($p < 0.001$); DOC concentration and average daily absorption at 254nm ($p < 0.001$); average daily absorption at 254nm and CDOM (RFU) ($p < 0.001$). New correlation figure is shown below:



Line 456: You cannot say the DOM is older, as you do not have age measurements. You can only say that there is a decline in aromaticity with lower SUVA. SUVA cannot be used to infer DOM age, unless you can demonstrate the two are correlated here. It is possible especially in permafrost systems to have very old or modern DOM with low SUVA.

Our response: We have rephrased it to avoid attributing age to the DOM. Sentence has been reworded as follows:

The gradual change in the three fluorescence indices as summer progresses suggests a continual *decline in more aromatic DOM (lower SUVA₂₅₄)* and a greater proportion of recently produced DOM.

Conclusions

Line 482-483: I see there are shifts in the indices in the figures, and Table 1. However, to strengthen your argument you should indicate whether these differences statistically significant or not. See my comment for Table 1 in pdf.

We have run nonparametric Kruskal-Wallis tests across seasons at the same site in the same year, and also across sites for the same season in the same year (per Table 1). We indicated the first case as superscript A: significantly different across seasons for same site at $p < 0.05$ (*) or $p < 0.001$ (**). The second case was denoted by superscript B.

Line 524-526: “We show that DOC concentration and optical indices have a strong temporal variability associated with seasonality, and that A254 and CDOM were reliable proxies for DOC concentrations.” Nowhere in this paper (or supp. Info) do you show any relationships between CDOM or A254 and DOC - you need to include these relationships in the paper or in the supplemental if you are making this conclusion.

Our response: We have added a figure (also shown above) to the supplemental information to show the correlation between daily averages of A254, DOC and CDOM.

Line 531-532: “Optical indices also showed the largest variation during freshet and were relatively insensitive to flow volumes despite large differences in freshet between 2015 and 2016.” You have not clearly demonstrated these relationships. You should include some statistical analyses in data tables (correlation analyses?) or an additional figure (e.g. similar to Figure 4) to support that the optical indices are less sensitive to Q than to seasons.

Our response: We believe now with the inclusion of the C-Q data this point is clear. The variability of C to Q in spring is markedly greater than in all other seasons. We have also rewritten the sentence above to better reflect the observation that the range in DOC concentration remains consistent despite much less flow in 2016 compared to 2015. We have also added that while DOC concentrations are similar, DOC export is much less in 2016.

Technical corrections: Please see the annotated pdf provided by the reviewer for suggested minor editorial and typographic corrections. Please also note the supplement to this comment: <https://www.hydrol-earth-syst-sci-discuss.net/hess-2019-81/hess-2019-81-RC1-supplement.pdf>

L10:

Our response: arctic changed to *Arctic*.

L25-28: Other changes such as?

Our response: Sentence has been rewritten to incorporate more details about particular aspects of climate change. Also, the original sentence has been changed to include more details about how DOM composition will be altered.

Forecasted vegetation shifts, *enhanced permafrost and seasonal thaw, earlier snowmelt, increased rainfall*, and other projected climate driven changes will alter DOM sources and transport pathways. *Results here support a projected shift from DOM derived predominantly from organic soils (high aromaticity, less fresh) towards greater contributions from decomposing vegetation (more fresh and lower aromaticity), and transport through deeper flow pathways with enhanced groundwater contributions to runoff.*

L33-37: You should refer to the newer and better constrained numbers reported in Hugelius et al. 2014.

Our response: We have incorporated the newer Hugelius et al SOC estimates.

Carbon storage and cycling have been the focus of considerable attention, *as soils and sediments in the northern high latitudes are estimated to store approximately 1300 Pg (~40%) of the global belowground organic carbon pool (Hugelius et al., 2014) and deliver ~10 % of the total freshwater input to global oceans (Gordeev et al., 1996; Opsahl et al., 1999; Shiklomanov, 2000).*

L45-47: Strikethrough on weathering solutes.

Our response: Sentence changed:

In a more recent analysis of the Yukon River, Toohey et al. (2016) suggest that from 2001-2014, there has been no trend in DOC, *whereas Ca, Mg, Na, SO₄, and P fluxes have increased significantly over the last thirty years. These increases are attributed to deeper flowpaths as permafrost degrades, increased weathering and increased sulfate oxidation (Toohey et al., 2016).*

L52-55:

Our response: We added “non-permafrost” to describe terrigenous sources originally mentioned in this sentence. The sentence has been changed to:

These disturbances have a transient influence on hydrologically-mediated DOC transport that confounds spatial and temporal patterns of DOC flux from *non-permafrost* terrigenous sources to the river-ocean continuum (Larouche et al., 2015; Littlefair et al., 2017; Burd et al., 2018).

L67-70: Process driver such as?

Our response: In response to the request for examples of process drivers, we have added “including in-stream transformation” to the following sentence:

How this temporal relationship varies across scales is less certain as few studies provide nested datasets yet analysis by Tiwari et al. (2014, 2017), and synthesis by Creed et al. (2015), suggest downstream mixing and deeper subsurface sources of DOC mask process drivers *including in-stream transformation* as scale increases.

L151: More detail about instrumentation, measurement intervals etc.

Our response: Although it was not mentioned by referee #1, we added information on how we determined when headwater streams were ice-free with this sentence:

Bushnell game cameras and in-person observation were used to document when the headwater streams and outlet were ice-free in spring to validate the use of pressure transducer measurements.

As pointed out, details were scarce concerning instrumentation, measurement intervals, snow courses, and soil moisture and temperature. We have added the following paragraph to the methods section to explain the location/position of instrumentation, provide more details about precipitation and rain measurements, and soil moisture and temperature. We also added information about the Plateau weather station (specifically the SR50 sensor) and the 2 soil moisture stations located within Granger Basin. Other instrumentation that has been collecting data at the Buckbrush weather station is well-documented in Rasouli et al., 2019.

All radiation components, air temperature, wind speed, vapour pressure and total precipitation are measured at *30 minute resolution*, year-round at each site with some gaps due to power loss (Rasouli et al., 2019). *The rainfall data reported in this study is from a tipping bucket rain gauge located at the nearby Buckbrush weather station and compared with an Alter-shielded Geonor total precipitation gauge for accuracy. A fourth meteorological tower (Plateau) in GC watershed has been operating since 2015.*

Section 2.3: Referee #1 questioned the use of syringes and PES filters rather than the standard method using pre-combusted glass fibre filters.

Our response: We have added this sentence to clarify why we used syringes at these particular sites. In particular, we were constrained by a lack of lab space in 2015 since most of our time was spent camping near WCRB at high elevation to facilitate both water sample collection as well vegetation surveys, vegetation and soil sampling etc. The sentence below was added to the end of Section 2.3:

In situ filtration with a syringe kept the time between sample collection and filtration to a minimum, particularly during spring freshet when logistical constraints meant that researchers remained in the catchment for up to two weeks at a time before returning to Whitehorse.

Section 2.4:

Our response: We want to thank Referee #1 for pointing out areas where the methodology surrounding fluorescence and absorption measurements were not well articulated. We went through this section and added detail where it was pointed to be lacking (e.g. specifying which filter was used) and have included more information about standards and blanks.

Fluorescence excitation emission matrices (EEMs) were obtained from 0.45 μm PES-filtered water samples using a Yvon Jobin Aqualog Benchtop Spectrofluorometer (HORIBA Scientific, Edison, NJ, USA). *Extra steps were taken to ensure that no background DOM from PES filter and syringe provided a fluorescence signature (see Supplement for further information, data and example EEMs).* Fluorescence spectra were recorded at an excitation range of 240-600 nm in steps of 5 nm with an emission range of 212-620 nm, in steps of 3 nm. The integrated Raman spectrum was checked before each run and compared to prior values to ensure consistent lamp intensity. *A sealed Quinone Sulfate sample and blank pair were also run prior to each batch of samples and compared to prior values to ensure consistency.* Fluorescence spectra were normalized to the area under the Raman scatter peak (peak excitation wavelength 397 nm) of a sealed Raman Milli-Q water sample

prior to all sample runs. A lab blank of distilled water was also appended to each sample run and every 4 sample runs, a sample was repeated. Scatter from the Raman Milli-Q sample was subtracted from each sample fluorescence spectrum. The correction and normalization of samples to the Raman standard resulted in normalized intensity spectra being expressed in Raman units ($R.U., nm^{-1}$).

Figure 1. Map adjustments.

Our response: We have added a point to the inset map to indicate the location of WCRB relative to Whitehorse.

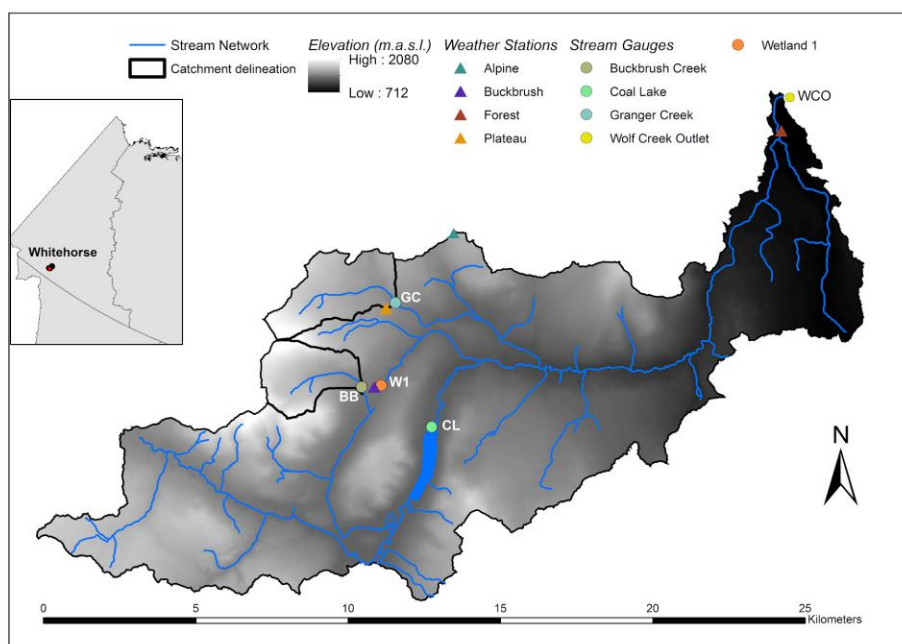


Figure 2. We have added titles at the top of each panel to indicate the location of the data: Whitehorse and Buckbrush weather stations.

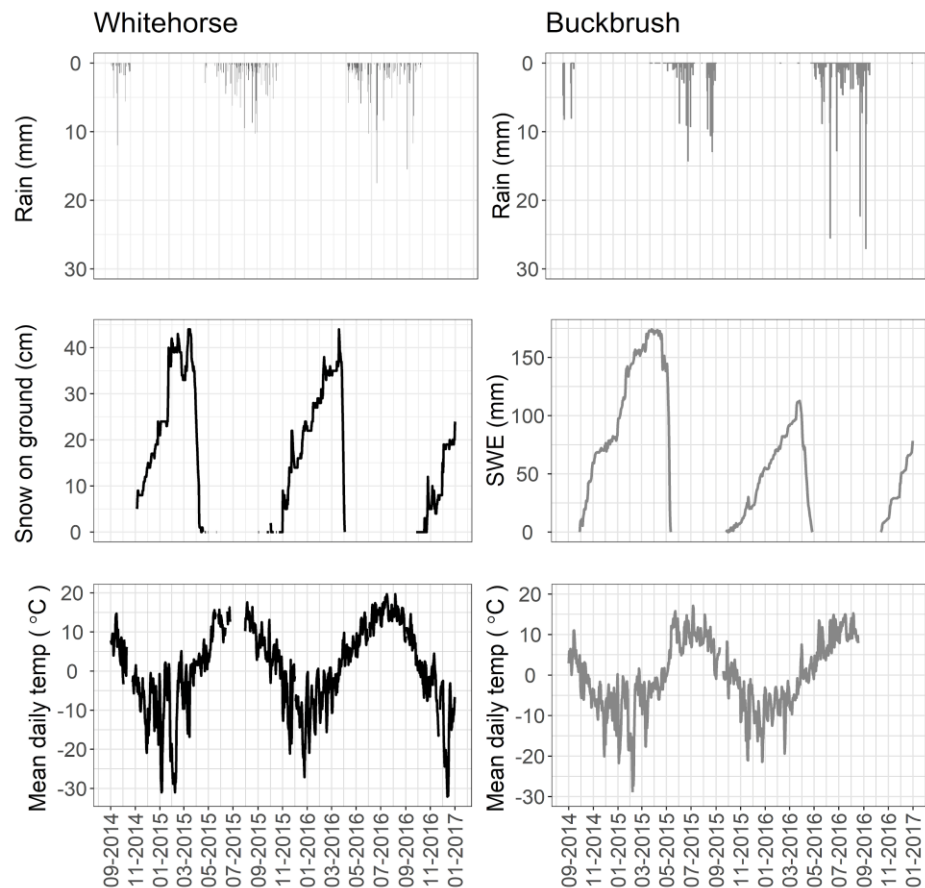


Figure 3: Referee #1 noticed an error wherein symbols in different panels had differing opacities and mentioned that the blue + for WCO was difficult to pick up in some panels.

Our response: We apologize for the oversight and the differences between panels of Figure 3. We have redone the figure with zero transparency (like panel d), which we believe has helped the blue + representing WCO become more visible. Figure 3 with no transparency is shown below:

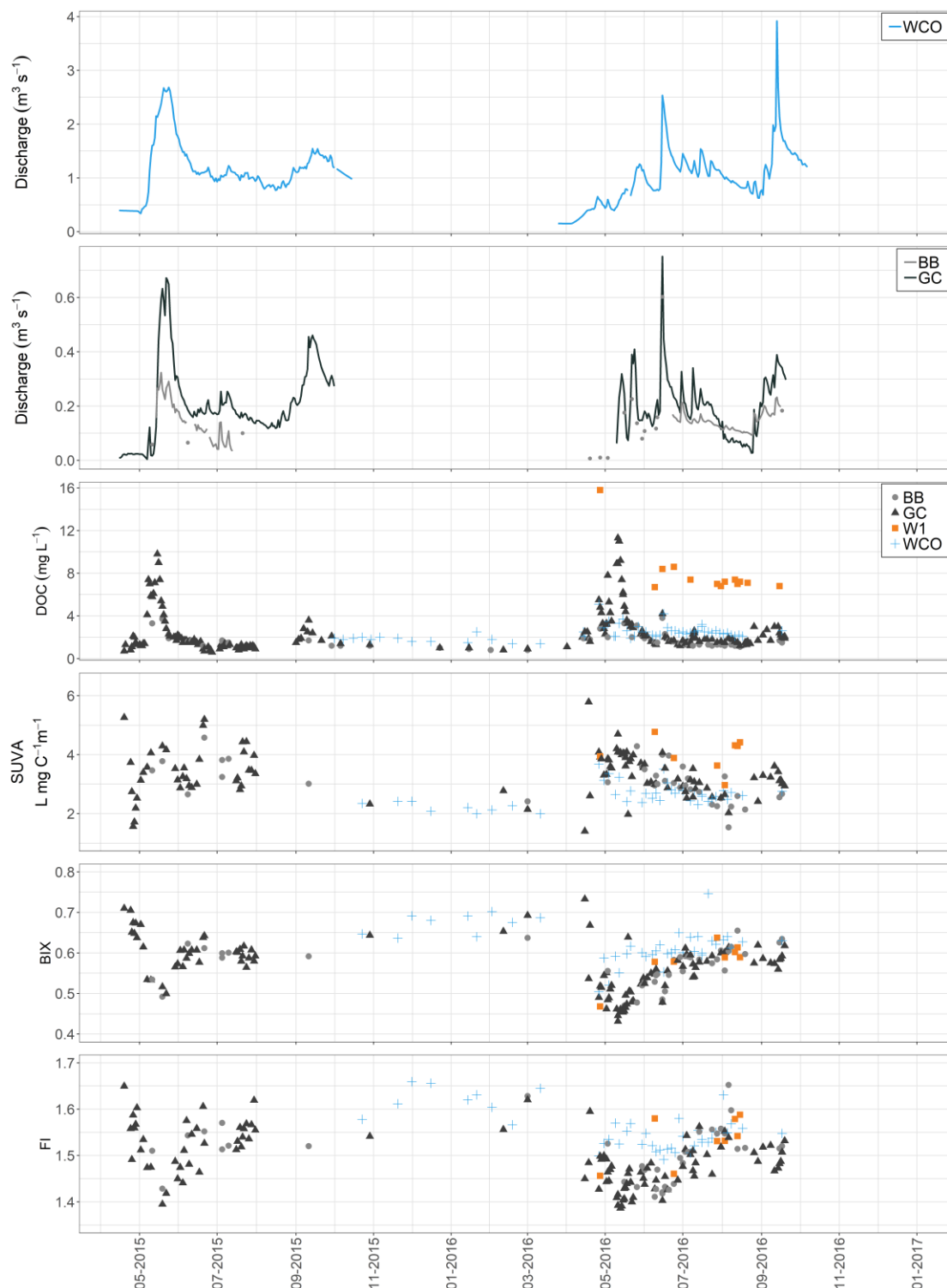
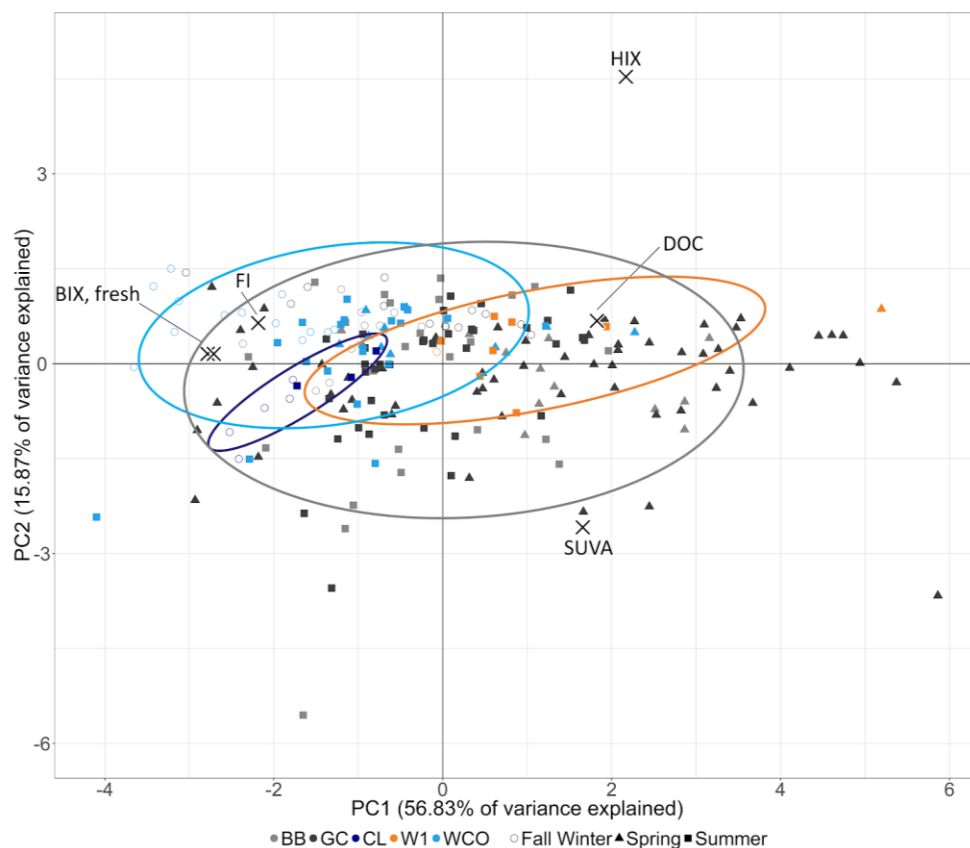


Figure 4: Referee #1 suggested changing the symbols to be able to clearly differentiate between the seasons.

Our response: We agree that the original choice of symbols did not provide an obvious differentiation of seasons. We have changed the figure so that “fall winter” is shown as an open circle while spring and summer are a filled triangle and square, respectively. Figure 4 is shown below:



Anonymous Referee #2:

Overall, I find that the authors provide useful data to help bolster our understanding of carbon cycling in northern regions. However, there were some areas of concern for me: the change in DOC concentrations documented between older studies and the present day was really quite striking; I would have liked to have seen more attention paid to ruling out analytical error. Several of the SUVA measurements were also quite high, suggesting possible iron interference. If Fe value are available for these sites, it would be useful to confirm whether these concentrations may have affected overall values, or change across seasons.

Our response: With regard to potential analytical errors, we have added information to the manuscript and to this document to address the change in DOC concentrations. For Fe, a study by Herod et al. 2016¹ in Wolf Creek provided Fe concentrations in their supplementary materials, which shows that Fe is quite low in Wolf Creek (or WCO as per the manuscript). Mean Fe for 17 samples was 0.06+/-0.09 mg/L. There were also 10 samples from WCO below detection limit.

¹Herod, M. N., Li, T., Pellerin, A., Kieser, W. E., & Clark, I. D. (2016). The seasonal fluctuations and accumulation of iodine-129 in relation to the hydrogeochemistry of the Wolf Creek Research Basin, a discontinuous permafrost watershed. *Science of the Total Environment*, 569, 1212-1223.

In addition to these analytical points, I found myself looking for the manuscript to delve into the data a bit further, to add to our process-based understanding of seasonal variation in DOC dynamics in sub-Arctic regions. Examining seasonal variation in C-Q plots, or plots of the various optical metrics might be one good way to do this. Making better use of what sounds to be a rich historical dataset seems like it would also be worthwhile. Finally, the authors discuss the high fall flows that are unique to the study years. While it is interesting that concentration does not change during this time, it would have been nice to have seen an assessment of this effect on overall C export: do these fall flows have a substantial effect on export from the catchment. It is not that surprising that concentration and measures of aromaticity increase during the spring freshet (as the authors point out!), but this becomes one of the main take-homes of the manuscript, as currently structured. It would be nice to see this rich dataset used in a slightly more nuanced way. Finally, I would recommend some work to create slightly higher quality figures for publication.

Our response: We appreciate the opportunity to delve more into dynamics and C export. We have adjusted sections of the discussion to better relate the DOC and DOM data to processes. More focus has been placed on C export rather than just DOC concentrations as well. We have added two plots (C-Q of DOC and other indices; boxplots of historical and current DOC concentrations before and after mid-June). Figure quality has also been increased. We have addressed these and other concerns in more detail below.

Specific comments:

L10: Reference to large Arctic rivers seems misplaced for this manuscript focused on small stream processes?

Our response: The mention of large Arctic rivers is meant to contextualize the dataset and the study catchment by alluding to research undertaken at much larger scales before coming back to process understanding at the mesoscale. Paralleling Wolf Creek Research Basin (WCRB) and areas like the Yukon River Basin are meant to highlight the complexity inherent at all scales as well as the lack of consensus in how climate change has already and will continue to alter stream and river DOC concentration and export. Although much of this manuscript focuses on $\sim 6 \text{ km}^2$ to 179 km^2 catchments, the emphasis is on the processes that are difficult to elucidate at much larger scales.

L42: Note that Striegl et al. document declines in flow weighted concentration, rather than overall flux. DOC flux was still documented to increase. Also, Frey and McClelland (2009; cited later in this work) and some other authors provide some discussion on why regions might vary in this way.

Our response: We have changed L42 to better reflect the more common increase in DOC flux and noted that Striegl et al. (2005) refer to a decline in flow-weighted DOC concentration rather than flux. We also added more information from Frey and McClelland (2009) to discuss why regions are variable. The sentence has been changed to: Changes in DOC export associated with warming are largely associated with analysis of data from large rivers and links to altered catchment characteristics and processes vary across study areas (McClelland et al., 2007). Regionally, Tank et al., 2016 reported a 39% increase in DOC flux estimates between 1978 and 2012 while Striegl et al. (2005) documented an increase in flux along with a 40% decline in flow weighted DOC concentration between 1978-1980 and 2001-2003 for the Yukon River.

L61: An obvious point, but it's the combination of high concentration and high flow that causes these high exports to occur; perhaps tweak your sentence here slightly for clarity? In addition, substantially elevated concentrations during the freshet are not necessarily going to occur, even if this is the typical response in western Canada. See, for example Li Yung Lung et al. 2018.

<https://agupubs.onlinelibrary.wiley.com/doi/abs/10.1029/2018JG004659>

Our response: We have changed L61 to avoid generalizing observations from some northern areas as ubiquitous after reading the article suggested above. The sentence has been changed to: DOC export is *often* greatest during snowmelt freshet when DOC mobilized from organic rich layers *result in peak concentrations and spring flows are also high*, resulting in a large annual 'flush' as is typically observed in Western Canada (Boyer et al., 2000; Carey, 2003; Finlay et al., 2006).

L64-65: Again, this is likely to be region specific, and depend upon the soil profile.

Dependent on the soil profile, as flowpaths descend in response to soil thaw, DOC mobilization can decline with depth as mineral layers provide more opportunity for immobilization and adsorption (MacLean et al., 1999; review by Kalbitz et al., 2000; Carey, 2003; Kawahigashi et al., 2004, 2006; Frey and Smith, 2005).

L85: Kokelj reference might be mis-placed here? It is an excellent study, but does not examine DOM.

Our response: We have removed it this reference.

L91: Consider adding a reference for this statement. “Furthermore, much of our understanding of DOC is biased towards lowland ecosystems, with relatively scarce information from northern alpine systems.”

Added Laudon et al. (2012) for support.

L99: Note two different tenses being used in this sentence.

Our response: Sentence changed to: “The specific questions addressed in this work *were*:”

L109: Some edits needed in this sentence for grammar; switch between passive and active wording about half way through

Our response: Sentence changed to: *WCRB is a long-term research watershed located at the edge of the Coast Mountains, spans an elevation ranging from 712 m a.s.l. to 2080 m a.s.l., and has a drainage area of ~179 km².*

L151: Clarify location of the three long-term weather stations.

Our response: Sentence changed to include the names of the three long-term weather weather stations so that their name and corresponding presence on the map is directly referenced.

WCRB has three long-term weather stations to characterize the climate in each ecozone (*Alpine, Buckbrush, Forest*).

L187: Note that SUVA is based on absorbance, rather than fluorescence, so the use of ‘fluorescence indices’ here is technically incorrect. Switch to ‘optical indices’?

Our response: Thank you for the note. Fluorescence has been switched to optical.

L191: Values as high as 6 (typically, anything over~4.5) almost certainly indicates interference from Fe. See Poulain et al. 2014 ES&T for more information on correction procedures, etc.

Our response: As noted above, we have examined the possible influence of iron and values that have been reported for WCO are very low (see above). While not impossible, we cannot conclusively state that Fe is an issue and we have kept the data as-is.

We have adjusted this sentence to emphasize that Fe interference is typically responsible for values > 0.45 .

SUVA₂₅₄ is commonly reported along with DOC concentration and is *positively related to aromaticity in bulk DOM (Weishaar et al., 2003) with higher values indicative of a strong terrestrial signal (Jaffé et al., 2008). Typically, SUVA₂₅₄ values greater than 4.5 L mg C⁻¹ m⁻¹ denotes high absorption at 254 nm due to colloids or iron (Weishaar et al., 2003; Hudson et al., 2007).*

L195: Typically, terrestrially-derived DOM would have SUVA values that are higher, rather than lower; perhaps tweak the text inside the bracket? I think you're referring to modified terrestrial DOM here, but this is not necessarily clear from how the parenthetical text is worded.

Our response: Sentence has been reworded for clarity.

Allochthonous, terrestrial DOM (terrestrial DOM) is associated with increased aromaticity and a higher SUVA₂₅₄ value while lower SUVA₂₅₄ values are related to modified terrestrial DOM.

L233 “resulted”

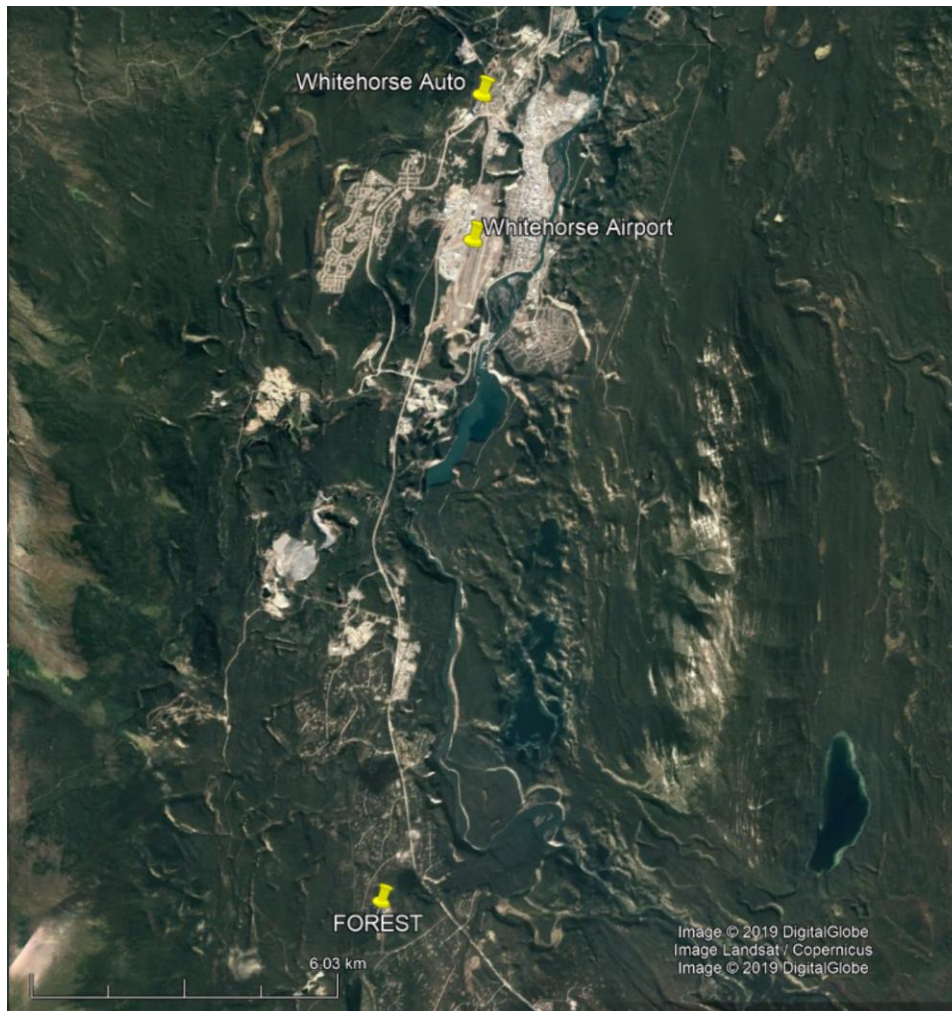
Our response: Verb tense has been changed : The correction and normalization of samples to the Raman standard *resulted* in normalized intensity spectra being expressed in Raman units (R.U., nm⁻¹).

L234: Rework this sentence for clarity. It's also unclear to me what the nearby weather station is / where it is located, particularly in the context of Figure 2.

Our response: The Whitehorse Airport station (60°42' N 135°04' W, 706m) is located in Whitehorse and was referenced for the Environment Canada 30 year climate normal as context. The Whitehorse A station has a similar elevation to the Forest weather station albeit ~14 km NW along the Alaska Highway. Due to gaps in the Forest site climate station and no records in recent years at Whitehorse Airport, we used the Whitehorse Auto weather station (located 3km from the airport) for 2014-2016. We added a point to Figure 1 to show the location of WCRB relative to Whitehorse and changed the Figure 2 caption to clearly identify the location and differentiate between data sources.

Figure 2. Climate variables from *Whitehorse Auto (Rainfall; 60°43'59.000" N, 135°05'52.000" W, 707 m a.s.l., Whitehorse Airport (Snow on ground, Mean daily temp; 60°42'34.200" N, 135°04'07.800" W) and Buckbrush weather stations. (Left) Rain (measured in mm) from Whitehorse Auto (Climate ID: 2101310) located 3 km from Whitehorse Airport, snow on ground (in cm) and mean daily air temperature (°C) from the Environment Canada Airport weather station (YXY, Climate ID: 2101300) located ~ 14 km NW of Forest at 706 m a.s.l. (Right) Rainfall daily totals in mm were derived from hourly measurements, snow water equivalent (SWE)*

in mm based on 3 hour measurements from a snow pillow beside Buckbrush weather station. Daily average air temperature ($^{\circ}\text{C}$), derived from 30 min measurements.



L247: Is it possible to display this long-term average, to give the reader a comparison point? (i.e., perhaps move up Figure 6).

Our response: Thank you for this suggestion. We have moved up Figure 6 to follow the time series (Figure 3). Figure 6 is now Figure 4 and we have renamed the subsequent figures.

L272: As worded, a bit repetitive with previous text (ie, from the site description).

Our response: Sentence has been deleted.

L299: See previous comment re: tweak to your terminology here; note that SUVA is an absorbance-based metric.

Our response: Fluorescence has been changed to optical.

L304: As mentioned previously, these values are somewhat high. Do you have any corresponding Fe data that might help to get a sense of Fe interference?

See above. Yes, published values by Herod et al., (2016) are low.

Plot DOM quality indices against Q, rather than time series (or, as a compliment to time series)? Would this help to think about process?

Our response: Thank you for the suggestion. Referee #1 had a similar suggestion and we have added C-Q plots for DOC, SUVA, FI and HIX for both Granger Creek and Wolf Creek Outlet with season indicated by color and shape. The plot is below (Fig. 8):

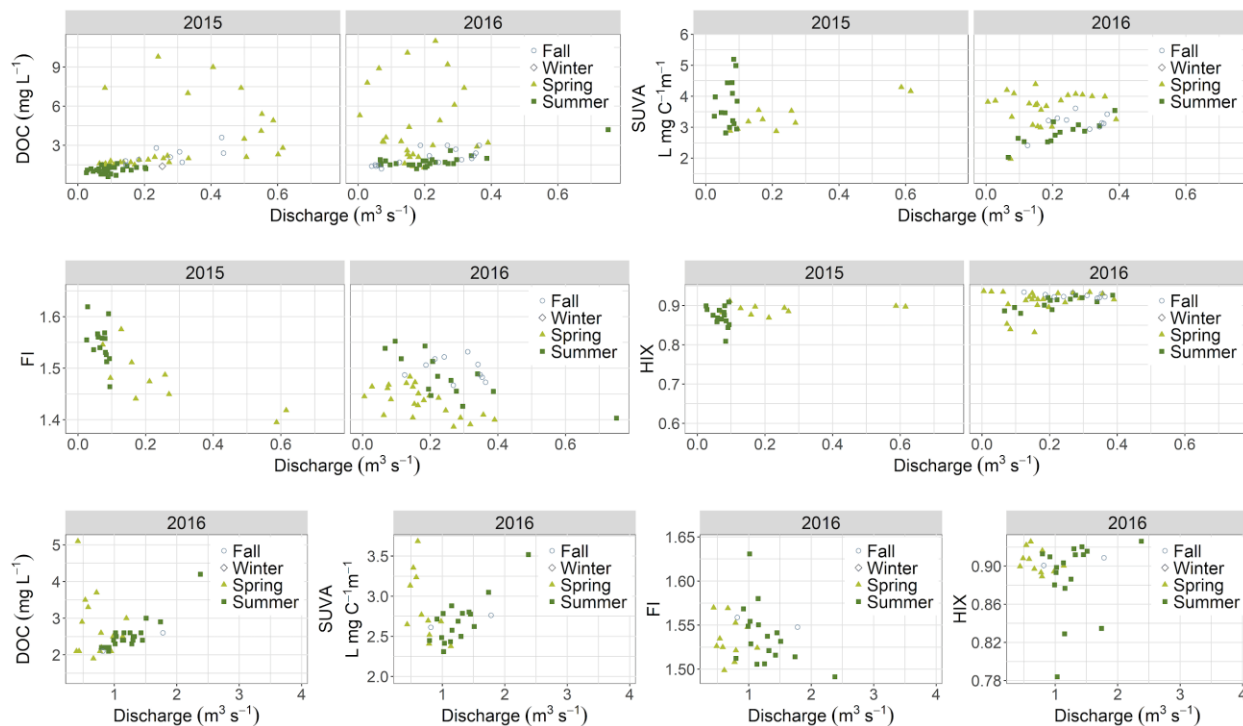
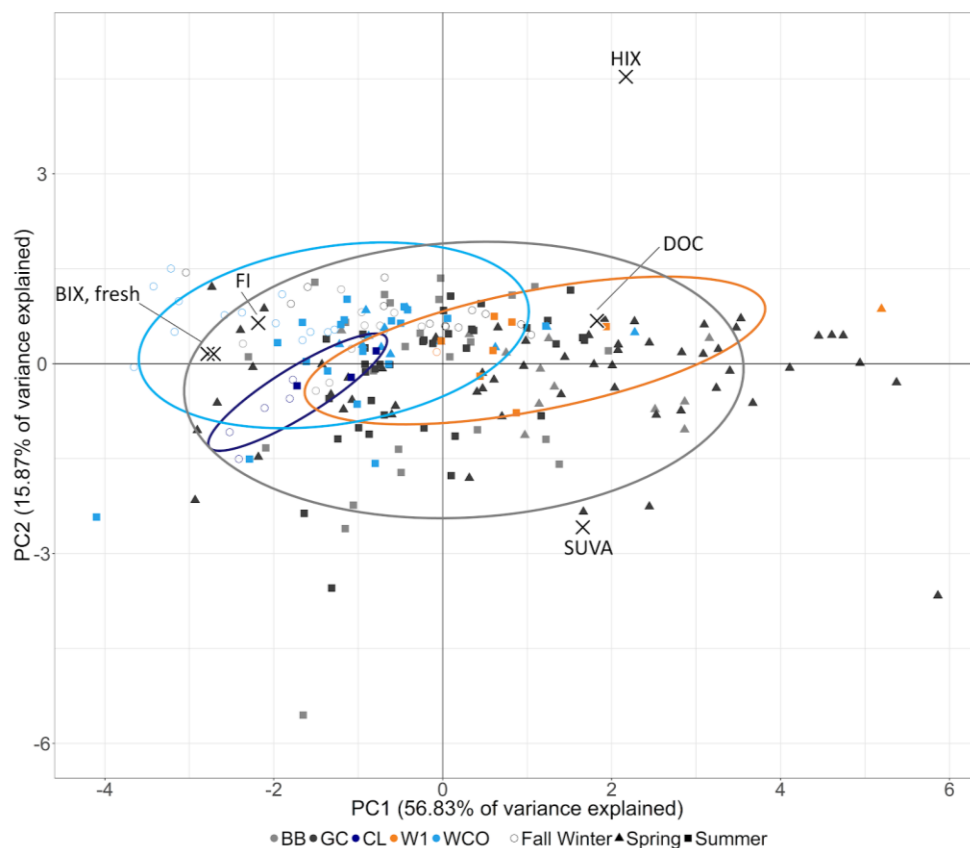


Figure 4: Similar to Figure 5, why not use different shadings of grey for BB and GC? This would allow the reader to differentiate between these catchments (or, see the of overlap between catchments within a landscape type) if they wish.

Our response: Thank you for this recommendation. We have changed the colors to reflect previous figures with BB and GC being represented with a light and dark shade of grey. Please see the revised figure below (now Fig. 5):



L372: Certainly, this will be true in systems that switch from baseflow sourced from deeper mineral layers to flow during the freshet that is sourced from organic-rich surface layers (similar to the large river studies being referred to here). But, I'm not sure it will necessarily be universal.

Our response: We have changed this sentence to avoid implying that the phenomenon is universal.

A distinct feature of OC export in *some* northern watersheds is the sudden increase in DOC concentration on the rising limb of the freshet hydrograph *as the baseflow-driven system switches to near-surface flowpaths in organic-rich soils* (Striegl et al., 2005; Raymond et al., 2007; Holmes et al., 2012).

L386: See also Creed et al. (Can J. Fish Aquat. Sci) on this point.

Our response: We have referred to the parallels in the river continuum concept and have added Creed et al. 2015 as a reference.

L390: Is this export estimate a unique calculation for this paper, or taken from elsewhere?

Our response: The original set of calculations were done using a nearest neighbour interpolation approach. To better compare between years and for better reproducibility, the authors chose to use the RiverLoad package in R (Nava et al., 2019).

If the former, then some text in the methods and results should be included. If the latter, then a reference is warranted.

Our response: Information about the RiverLoad package and the time-weighted interpolation of DOC concentrations has been added to methods as section 2.5 with reference to Nava et al (2019):

2.5 DOC Load Calculations

DOC fluxes for GC were estimated using the R package RiverLoad (Nava et al., 2019). RiverLoad provided several methods to generate estimates of DOC flux and for this paper, Method1 (time-weighted Q and C) was chosen as most appropriate. Briefly, Method1 considers the mean concentration and mean flow of each sample to obtain a load value and is biased towards underestimating load in some situations (see Nava et al. 2019, Section 2.1.1 for full details and equation). Daily discharge data and DOC concentrations (maximum of 1 measurement per day) for 2002, 2003, 2006 and 2008 were obtained from the authors of Carey et al., 2013a. DOC concentrations (maximum of 2 per day) and discharge at 15 minute resolution for 2015 and 2016 are outlined in Sections 3.2 and 3.3). Any gaps in the discharge data were filled by time-weighted interpolation, however there were no gaps greater than 3 days during springs flows for any year (2002, 2003, 2006, 2008, 2015, 2016).

L391: Given the last sentence, I'm unclear on whether DOC concentration or export is being referred to here.

Our response: We have added "concentration." Sentence has been changed to:

For WCO, the pattern of DOC *concentrations* during freshet was similar to GC, yet dampened with lower values during freshet over a longer period from mixing of various landscapes that integrate three distinct ecosystems and a small lake over a large elevation range.

L394: For clarity, it would be useful to refer specifically to "DOC concentration"

Our response: We have changed the wording in this sentence to specifically refer to DOC concentration.

Following freshet, DOC *concentrations* were remarkably consistent across the sampling sites.

L396: While it's somewhat self-evident that wetlands will increase DOC concentration across integrated scales, the residence time of lakes (and, associated biological /

photochemical processing) will often cause outlet DOC concentrations to be lower than inlet concentrations.

Can you provide data to support the statement that the lake might have increased integrated [DOC] at the outlet?

Our response: We agree with this statement about how lake outlet DOC concentrations are often lower than inlet concentrations. However, while lake outlet DOC concentrations were often extremely similar to headwater concentrations during spring, the lake is located downstream of a large wetland complex and not the two headwaters mentioned so it is probable that source DOC concentrations are much greater than if GC and BB ‘fed’ the lake. DOC concentrations measured at the lake outlet during summer were typically twice that of headwater (BB and GC) concentrations albeit less than wetland (W1) concentrations based on a comparison of 70 samples wherein BB, GC and CL DOC concentrations follow this pattern. We have adjusted the following sentence slightly to account for the lake having higher concentrations than the headwaters during summer. “The headwater GC and BB values were $\sim 1.5 \text{ mg L}^{-1}$ whereas those at WCO were typically 2-3 mg L^{-1} , suggesting that additional sources such as wetlands and Coal Lake contributed slightly to downstream increases in DOC concentration *during summer months.*”

We are principally referring to DOC concentration data from 2015-7 to support for this statement. DOC concentrations from the same day or within 1-2 days of sampling Coal Lake (CL) are more numerous in 2017, which is (mostly) outside the scope of this paper except for the PCA. A follow up to this paper that focuses on C-Q relationships from 2016-2018 is currently underway.

L399: However, if flow was substantial, this period may have been important for overall flux, even in the absence of a change in concentration?

Our response: Thank you for bringing this up. We have amended Section 4.1 in the discussion to address this point.

For GC, estimates of DOC export between 15 April-14 June over the six years range between 0.29 and 1.48 g C m^{-2} with 2015 and 2016 on the lower end (Table 2).

Year		Spring (g C m ⁻²)	Summer (g C m ⁻²)	Fall (g C m ⁻²)	Spring & Summer (g C m ⁻²)	Spring, Summer & Fall (g C m ⁻²)
2002	GC	0.83	0.12		0.95	
2003	GC	0.42	0.19		0.61	
2006	GC	1.48	0.14		1.61	
2008	GC	0.97	0.31		1.28	
2015	GC	0.55	0.08	0.28	0.63	0.90
2016	GC	0.29	0.28	0.20	0.57	0.77
2016	WCO	0.06	0.09	0.09	0.15	0.24

Table 2. Load estimates for GC and WCO for 6 years by individual season, spring and summer, all relevant seasons together (spring, summer, fall) in g C m⁻².

In the years that had multiple spring warming events (2003, 2016), loads were typically smaller as DOC concentrations had declined ahead of larger runoff volumes. For WCO, the pattern of DOC concentrations during freshet was similar to GC, yet dampened with lower values during freshet over a longer period from mixing of various landscapes that integrate three distinct ecosystems and a small lake over a large elevation range. From an export perspective, springtime area-normalized loads were much smaller at WCO, suggesting that headwater ecosystems such as GC is where the bulk of DOC is sourced during freshet.

Following freshet, DOC concentrations were remarkably consistent across the sampling sites. The headwater GC and BB values were ~1.5 mg L⁻¹ whereas those at WCO were typically 2-3 mg L⁻¹, suggesting that additional sources such as wetlands and Coal Lake contributed slightly to downstream increases in DOC concentration *during summer months*. There were small increases in DOC concentrations associated with rainfall events *in summer*. A notable feature of both 2015 and 2016 were the substantial late season rains that generated flows outside the typical range at both GC and WCO (Fig. 3). Despite these large flows, DOC concentrations did not rise to the levels observed during freshet, *and the effect on DOC export varied between years (Table 2). In 2015, freshet was typical of prior observations with a large increase in both discharge and DOC concentrations with 1.9 times the DOC exported compared to fall. While DOC concentrations peaked in spring at both GC and WCO in 2016, export remained similar across all seasons. In*

both years, DOC export was consistent or approached half of spring export suggesting either alternate runoff pathways/flow generation mechanisms or a reduced source of soluble OM in soils available for transport. Considering water tables were very high during this period, we presume that the available pool of OM in shallow organic layers was more depleted than in spring yielding less terrestrially-derived, aromatic DOM (Mutschlecner et al., 2018).

Unlike results elsewhere (Petrone et al., 2006, 2007; Raymond et al., 2007; Striegl et al., 2007; Balcarczyk et al 2009; Prokushkin et al., 2011; Holmes et al., 2012), there was no robust relationship between discharge and DOC concentration over multiple years or within single years, suggesting that for this environment and at the headwater scale, discharge is a poor predictor of DOC export on an annual basis at the GC catchment (Table S2). However, on a seasonal basis, the relationship between DOC and discharge was at times stronger during summer, fall and winter when concentrations and discharge were relatively low (Table S2) (Fig. 8).

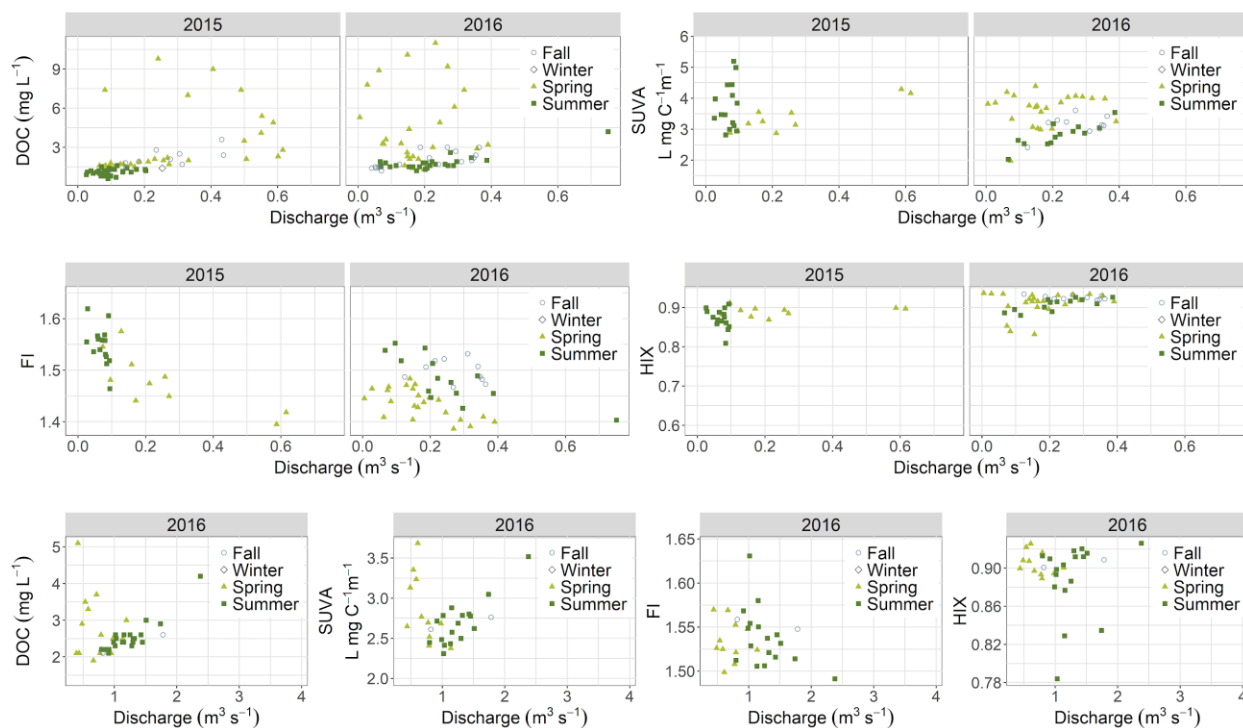


Figure 8. Concentration-discharge (C-Q) plots of DOC concentration, SUVA, FI and HIX for GC (2015-6) and WCO (2016). Season is indicated by shape and color (light green/filled triangle -

Spring; dark green/filled square - Summer; light blue/open circle - Fall; dark blue/open diamond - Winter).

The lack of robust relationships between flow and DOC concentration over time is not surprising given the complex interaction of transport pathways and available organic carbon as the season progresses. The highly dynamic nature of freshet complicates C-Q patterns when concentration and export is greatest (see section 4.3), whereas later in the year as thaw increases and subsurface pathways contribute more, weaker (yet more significant) relations exist. We caution the use of regression equations relating DOC and flow to predict DOC loads, at least during spring or on an annual basis. However, for larger streams such as WCO, this approach may be more tractable due to mixing of sources and process integration (Buffam et al., 2007; Creed et al., 2015; Peralta-Tapia et al., 2015a).

L402: There is some literature to support this assertion: ie, that the pool of OM will build up during dry periods, or periods when decomposition is not possible (ie, winter). This material then becomes available for flushing at the onset of rains and/or thaw. It might be useful to reference some of these studies here.

Our response: Reference was added.

L406: It would be really nice to see a plot of this data, and to see this used for a deeper consideration of process-level effects.

Our response: The statistically significant R² of the relationship between DOC and Q has been included in the supplemental materials (Table S2) after also being run in R using the C-Q regression function from the RiverLoad package (Nava et al., 2019). Table included below for reference:

<i>Year Site</i>	Spring (R ²)	Summer (R ²)	Fall (R ²)	Spring & Summer (R ²)	Spring, Summer & Fall (R ²)
2002 GC	0.047	0.180		0.063	
2003 GC	0.041	0.001		0.034	
2006 GC	0.021	0.175		0.029	
2008 GC	0.024	0.215		0.005	
2015 GC	0.263	0.004	0.547	0.316	0.314
2016 GC	0.115	0.536	0.551	0.039	0.048
2016 WCO	0.066	0.783		0.010	0.011

Does a C-Q plot show distinct seasonal patterns, for example?

Our response: As seen in these plots, hysteresis plays a large part in DOC-Q patterns in spring, however, there is not much of a discernible relationship between DOC concentration and Q according to season. A seasonal pattern is most distinguishable during spring as prominent hysteresis. We also provided Table S2 (as shown above) to address these questions.

Swapping Q for runoff in a plot would allow comparison of multiple panels from different watershed components, which could be very instructive

Our response: Although substituting Q with runoff would be instructive, we believe that the influence of flow magnitude is of greater importance in our analysis and patterns can be observed well in the newly included C-Q plots.

L415: Similar to the comment above, it would be nice to see this data plotted, so that the reader could understand the magnitude of the effect.

Our response: Thank you for the suggestion. We have added new C-Q plots for GC and WCO (Figure 7 as shown above) to the manuscript with the season indicated using both shapes and colors.

L417: Agreed – this is a very big difference! Were early samples properly acidified to remove inorganic carbon during analyses?

Our response: Carey et al. 2003 & 2013 report sample acidification using H₂SO₄ to 0.035M.

Also, please tweak the sentence to clarify whether in all cases you're referring to concentrations measured at GC.

Our response: Sentence has been changed to clearly refer to DOC concentrations and we added DOC export calculations for additional context:

In each of the early years, peak DOC *concentrations* ranged between 17 and 27 mg L⁻¹ with overall higher concentrations during freshet (*0.42 to 1.48 g C m⁻² exported*), whereas the maximum DOC *concentrations* for GC were 9.5 and 11.3 mg L⁻¹ (*0.55 and 0.29 g C m⁻² exported*) in 2015 and 2016, respectively.

Section 4.2: As worded, this section is a bit repetitive with the results section. Consider weaking to move away from a restatement of the results, and more towards a discussion of what these optical indices can tell you about process.

We have recast this section to differentiate it from the results and provide greater reflection on processes.

Also consider cutting much of the first paragraph, where you discuss the inability to validate the PARAFAC model. If the model is not to be included, then perhaps it is best to omit its discussion from the paper?

Our response: Thank you for this comment. Any mention of the parafac model was removed from the paper.

L475: If this is well documented, this seems like an excellent opportunity to take this data and generate a more process-level understanding of DOM generation. Can knowledge of flowpaths be more directly tied to the DOC and DOM patterns being observed to more directly discuss OM generation at the sub-catchment and catchment outlet?

We have attempted to provide more process-level in the revised manuscript, although we are hesitant to reach too far. Quite often, more data asks more questions than it answers.

L481: Note that this is in agreement with expectations from the literature. See, for example Creed et al. CJFAS (as above).

Our response: We changed the sentence to mention the river continuum concept and added Creed et al 2015 as a reference:

As scale increases, DOC concentrations increase during summer and low flows yet are more muted during freshet at the outlet compared with headwater streams *in accordance with the river continuum concept (Creed et al., 2015).*

L498: To me, the change that might be expected in this catchment with permafrost thaw is not clear from the text that precedes.

Most work from permafrost regions is now suggesting that biodegradability, at least, should increase with thaw, although it's not clear that this change will be visible at even the sub-catchment outlet scale (see, for example, work by Spencer and others).

Declines in concentration are presumably more related to soil profiles than the presence or absence of thermokarst.

“ Results from this work compare well with others in permafrost regions that are not experiencing rapid thermokarst, suggesting a gradual decrease in biodegradability and changes in DOM likely due to mineralization and adsorption as thaw increases (Striegl et al., 2007; Mu et al., 2017).”

Our response: We apologize for the confusion and meant to write increase. Thank you for the additional guidance to seek out and reread other work concerning whether these changes would be visible at the scale of our study areas. We have changed this sentence to:

At the scale of WCRB and its sub-catchments, results from other research in permafrost regions not experiencing rapid thermokarst that suggest a gradual increase in biodegradability (Spencer et al., 2008; Mann et al., 2015) are not necessarily discernable. However, changes in DOC concentrations and export are likely due to mineralization and adsorption within the soil profile as thaw increases and active layers expand (Striegl et al., 2007; Mu et al., 2017) with a warming climate.

L503: Effects of late summer / fall precipitation. I agree that this is an understudied, and worthwhile avenue of investigation.

Can you pull out this section with more clarity?

For example, it would be nice to see a more quantitative examination of effects on export – surely if discharge is increasing substantially, export is also affected? Is it possible to calculate overall effect on export?

Our response: Table 2 now displays the export from Granger Creek (GC) for each year, for each study period (spring to fall in 2015 and 2016; spring to late summer in 2002, 2003, 2006 and 2008). Mentioned in Section 4.1 rather than 4.3 with excerpt from 4.1 above.

L520: Again, I do wonder about these DOC values. Any chance you have some old, preserved (or frozen) samples that could be re-analyzed?

Our response: Unfortunately, no samples from previous years (2002-2008) were preserved so re-analysis was not possible.

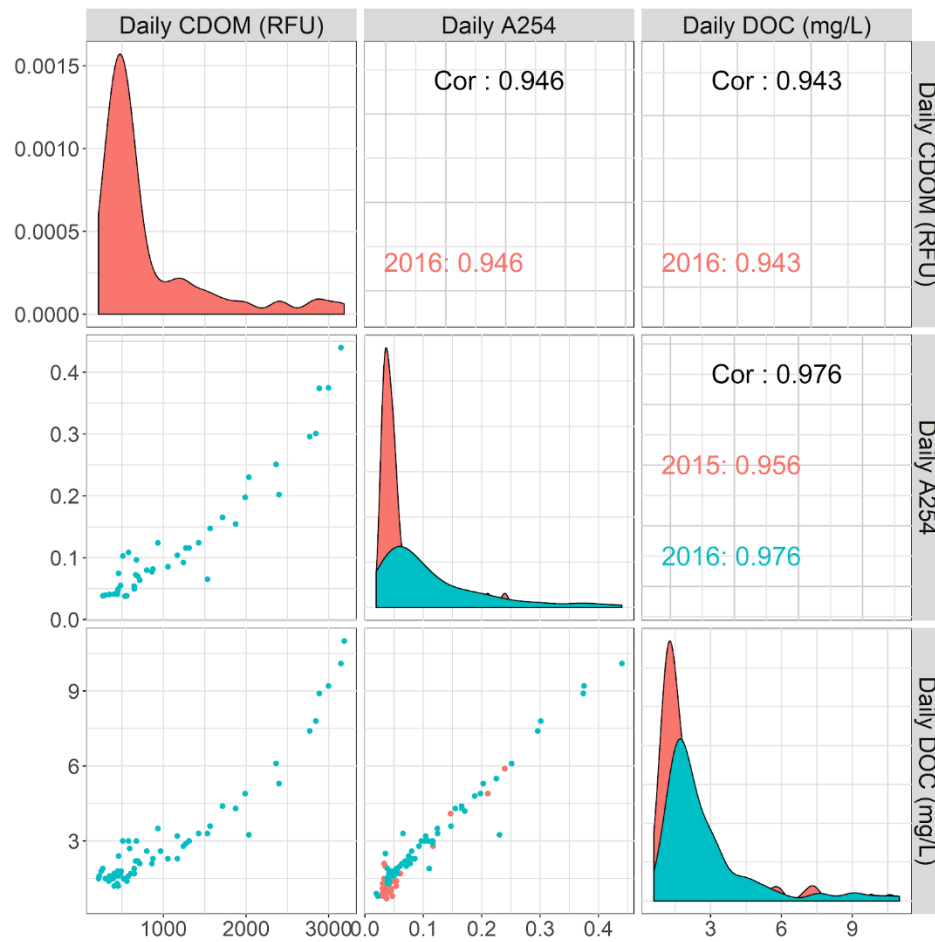
A difference of ~10 mg/L is substantial, and an obvious culprit is a lack of full removal of inorganics (ie, bicarbonates) from the sample during processing.

Our response: While we agree that the differences between concentrations between the study periods in 2002-2008 and 2015-2016 are substantial, analytical error (due to collection, preservation and analysis) has been ruled out to the best of our ability. Ideally, as stated above by the referee, samples would have been preserved so that re-analysis could definitively address any possibility of analytic error but we do not have any preserved samples.

L537: Try to avoid single sentence paragraphs.

Our response: We have restructured the conclusion (according to similar input from Referee #1) to avoid single sentence paragraphs.

Supplementary Materials



<i>Year Site</i>	Spring (R^2)	Summer (R^2)	Fall (R^2)	Spring & Summer (R^2)	Spring, Summer & Fall (R^2)
2002 GC	0.047	0.180		0.063	
2003 GC	0.041	0.001		0.034	
2006 GC	0.021	0.175		0.029	
2008 GC	0.024	0.215		0.005	
2015 GC	0.263	0.004	0.547	0.316	0.314
2016 GC	0.115	0.536	0.551	0.039	0.048
2016 WCO	0.066	0.783		0.010	0.011

Kaiser-Meyer-Olkin factor
Overall MSA = 0.77

MSA for each item:

FI = 0.98

Fresh = 0.68

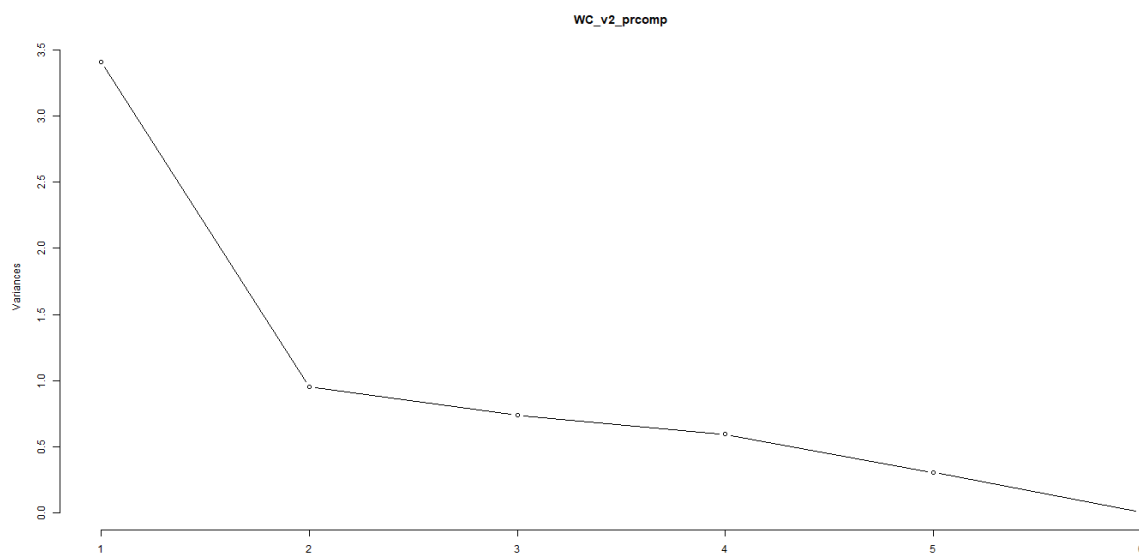
HIX = 0.86

BIX = 0.69

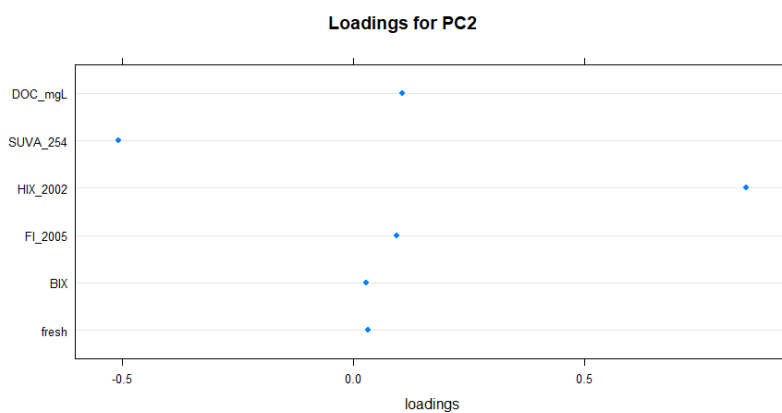
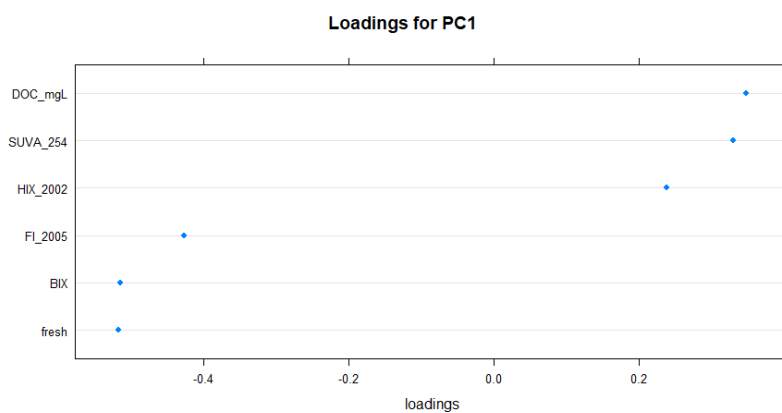
SUVA = 0.91

DOC = 0.94

Figure S2. Scree plot for PCA.



	PC1	PC2	PC3	PC4
Standard dev	1.8472	0.9747	0.8577	0.7702
Proportion of variance	0.5687	0.1583	0.1226	0.09887
Cumulative proportion	0.5687	0.7270	0.8496	0.9485



Assessing inter-annual and seasonal patterns of DOC and DOM quality across a complex alpine watershed underlain by discontinuous permafrost in Yukon, Canada

Nadine J. Shatilla¹, Sean Carey¹

¹Watershed Hydrology Group, School of Geography and Earth Sciences, McMaster University, Hamilton, Canada, L8S 4K1

Correspondence to: Nadine J. Shatilla (n.j.shatilla@gmail.com)

Abstract

High latitude environments store approximately half of the global organic carbon pool in peatlands, organic soils and permafrost while large Arctic rivers convey an estimated 18-50 Tg C a⁻¹ to the Arctic Ocean. Warming trends associated with climate change affect dissolved organic carbon (DOC) export from terrestrial to riverine environments. However, there is limited consensus as to whether exports will increase or decrease due to complex interactions between climate, soils, vegetation, and associated production, mobilization and transport processes. A large body of research has focused on large river system DOC and DOM lability and observed trends conserved across years, whereas investigation at smaller watershed scales show that thermokarst and fire have a transient impact on hydrologically-mediated solute transport. This study, located in the Wolf Creek Research Basin situated ~20 km south of Whitehorse, YT, Canada, utilises a nested design to assess seasonal and annual patterns of DOC and DOM composition across diverse landscape types (headwater, wetland, lake) and watershed scales. Peak DOC concentration and export occurred during freshet per most northern watersheds, however, peaks were lower than a decade ago at the headwater site Granger Creek. DOM composition was most variable during freshet with high A₂₅₄, SUVA₂₅₄ and low FI and BIX. DOM composition was relatively insensitive to flow variation during summer and fall. The influence of increasing watershed scale and downstream mixing of landscape contributions was an overall dampening of DOC

concentrations and optical indices with increasing groundwater contribution. Forecasted vegetation shifts, [enhanced](#) permafrost [and seasonal thaw](#), [earlier snowmelt](#), [increased rainfall](#) and other [projected climate driven](#) changes ~~due to climate change may will~~ alter DOM sources [and transport pathways](#). [Results here support a projected shift](#) from predominantly organic soils ([high aromaticity, less fresh](#)) to decomposing vegetation ([more fresh and lower aromaticity](#)). ~~These changes may also and~~ facilitate [flow and](#) transport through deeper flow pathways [and enhance](#) ~~with an enhanced~~ groundwater ~~role~~ [contributions to runoff](#).

1 Introduction

High latitudes, particularly north-western regions of North America, are experiencing some of the most rapid documented warming on the planet (Serreze and Francis, 2006; DeBeer et al., 2016). This warming has intensified the Arctic freshwater cycle (Bring et al., 2016) and resulted in landscape disturbance and change that alters biogeochemical cycles (Vonk et al., 2015; Wrona et al., 2016). Carbon storage and cycling have been the focus of considerable attention, as [soils and sediments in the](#) ~~the~~ northern high latitudes are estimated to store approximately [1300 Pg \(~40%\) of the global belowground organic carbon pool \(Hugelius et al., 2014\) and half of the global belowground organic carbon pool in peatlands, organic soils and permafrost \(Tarnocai et al., 2009; Schuur et al., 2015\) and](#) deliver ~10 % of the total freshwater input to global oceans (Gordeev et al., 1996; Opsahl et al., 1999; Shiklomanov, 2000). The mobilization and delivery of this terrestrial organic carbon has been identified as critical to the global carbon cycle given initial estimates that Arctic rivers convey 18-26 Tg C fa⁻¹ to the Arctic Ocean (Dixon et al., 1994; Dittmar and Kattner, 2003). More recent studies estimate between 25 and 50 Tg C a⁻¹ are exported (Raymond et al., 2007; McGuire et al., 2009; Johnston et al., 2018).

53 Changes in DOC export associated with warming are ~~uncertain, often contradictory and largely~~
54 ~~associated with analysis of data from large rivers and links to altered catchment characteristics and~~
55 ~~processes vary across study areas (McClelland et al., 2007).~~ Regionally, Tank et al., 2016 reported a
56 39% increase in DOC flux estimates between 1978 and 2012 while Striegl et al. (2005) documented an
57 increase in flux along with a 40% decline in flow weighted DOC concentration between 1978-1980 and
58 2001-2003 for the Yukon River, ~~whereas Tank et al. (2016) report a 39% increase for the Mackenzie~~
59 ~~River between 1978 and 2012.~~ In a more recent analysis of the Yukon River, Toohey et al. (2016)
60 suggest that from 2001-2014, there has been no trend in DOC export whereas weathering Ca, Mg, Na
61 and SO₄ and P fluxes have ~~solute have~~ increased significantly over the last thirty years. These increases
62 are attributed to, ~~reflecting~~ deeper flowpaths as permafrost degrades, increased weathering and
63 increased sulphate oxidation (Toohey et al., 2016). Typically, DOC flux estimates are derived from
64 limited spot water quality sampling and rely on a relationship between water yield and DOC
65 concentration to calculate loads (Raymond et al., 2007; McClelland et al., 2007; Manizza et al., 2009;
66 Holmes et al., 2012; Tank et al., 2016). While the influence of changing mean annual temperature on
67 DOC production and transport across 49 northern watersheds was summarized by Laudon et al. (2012),
68 northern landscapes are also susceptible to fire and thermokarst. These disturbances have a transient
69 influence on hydrologically-mediated DOC transport that confounds spatial and temporal patterns of
70 DOC flux from non-permafrost terrigenous sources to the river-ocean continuum (Larouche et al., 2015;
71 Littlefair et al., 2017; Burd et al., 2018).
72 In northern and permafrost landscapes, the link between hydrological and biogeochemical cycles and
73 the role of frozen ground and organic matter has been well documented in process-based studies (e.g.

Formatted: Highlight

Formatted: Highlight

Formatted: Highlight

Formatted: Highlight

Formatted: Highlight

74 Maclean et al., 1999; Carey, 2003; O'Donnell and Jones, 2006; Petrone et al., 2006; Carey et al., 2013a;
75 Koch et al., 2013; Olefeldt and Roulet, 2014; Burd et al., 2018). While wetlands have been highlighted
76 as a source of DOC, particularly in Scandinavian catchments, in permafrost environments the presence
77 of thermally-mediated flowpaths are critical. DOC export is often greatest during snowmelt freshet
78 when DOC is mobilized from organic rich layers ~~is mobilized~~such that peak concentrations and high
79 spring flows- result in -resulting in a large annual 'flush' ~~(as is typically observed in Western Canada~~
80 ~~Boyer et al., 2000; Carey, 2003; Finlay et al., 2006). This behaviour is often observed in Western~~
81 ~~Canada but is not ubiquitous (Li Yung Lung et al., 2018). Dependent on the soil profile, As~~ flowpaths
82 descend in response to soil thaw, DOC mobilization typically declines and flow in mineral layers
83 provides more opportunity for immobilization and adsorption (MacLean et al., 1999; review by Kalbitz
84 et al., 2000; Carey, 2003; Kawahigashi et al., 2004, 2006; Frey and Smith, 2005). In some
85 environments, an increase in late fall DOC flux has been ascribed to freezing processes in the soil
86 column (Johnson et al., 2018). How this temporal relationship varies across scales is less certain as few
87 studies provide nested datasets yet analysis by Tiwari et al. (2014, 2017), and synthesis by Creed et al.
88 (2015), suggest downstream mixing and deeper subsurface sources of DOC mask process drivers
89 including in-stream transformation as scale increases. In addition, the role of photodegradation and
90 oxidation of DOC to CO₂ in large Arctic rivers has received considerable attention (Cory et al., 2014;
91 Ward and Cory, 2016).

92 The lability (i.e. biodegradability) of dissolved organic matter (DOM) is a key regulator of ecosystem
93 function and primarily linked to molecular structure and environmental factors such as temperature,
94 vegetation, oxygen availability and microbial activity (Schmidt et al., 2011). DOC is the mass of C in

95 ~~the DOMa fraction of the DOM~~ pool whose ~~lability, aromaticity and origins~~~~weight, aromaticity and~~
96 ~~origins~~ can in part be characterized using optical techniques. DOM exported from large Arctic rivers
97 during spring freshet has previously been reported as highly labile (Raymond et al., 2007; Holmes et al.,
98 2008; Spencer et al., 2008) with more refractory DOM during recession periods (Holmes et al., 2008;
99 Wickland et al., 2012). DOM quality is expected to shift in response to permafrost thaw, thermokarst,
100 vegetation shifts, wildfire and increasing precipitation during summer months associated with climate
101 warming (Davidson and Janssens, 2006; Frey and McClelland, 2009; Schuur et al., 2015). Spectral
102 indices and multi-dimensional analysis of large optical data sets from northern landscapes have resulted
103 in important insights into how DOM quality varies seasonally (e.g. Striegl et al., 2005; Neff et al., 2006;
104 Finlay et al., 2006; Spencer et al., 2008, 2009; Prokushkin et al., 2011; Mutschlecner et al., 2018), and
105 is linked to source material, landscape characteristics (Kawahigashi et al., 2004; Harms et al., 2016) and
106 disturbance (Balcarczyk et al 2009; ~~Kokelj et al., 2013~~; Abbott et al., 2015; Littlefair et al., 2017; Burd
107 et al., 2018).

108 While information from large rivers is critical for estimates of DOM loading to the Arctic Ocean,
109 research at headwater scales that identifies controls on DOC production and transport is relatively
110 scarce and often points to multiple process mechanisms (Maclean et al., 1999; Temnerud and Bishop,
111 2005; Larouche et al., 2015). Furthermore, much of our understanding of DOC is biased towards
112 lowland ecosystems, with relatively scarce information from northern alpine systems (~~Laudon et al.,~~
113 ~~2012~~). The goal of this paper is to enhance our understanding of ~~the~~ coupled ~~dynamics of~~ hydrology ~~and~~
114 ~~-DOC export and composition (using optical properties of DOM) in a well-studied, discontinuous~~
115 ~~permafrost alpine catchment in subarctic Yukon, Canada. sources and dynamics with additional context~~

116 ~~from DOM optical properties in a well-studied, discontinuous permafrost alpine research catchment in~~
117 ~~subarctic Yukon, Canada, over multiple years.~~ We collected samples over two consecutive years from
118 freshet to late fall from two headwater catchments, a lake, wetland and the outlet of a mesoscale
119 catchment in a nested design to explore seasonal and annual variability in DOC concentrations and
120 DOM composition. Impacts of increasing catchment scale and differing landscape types on DOM
121 optical indices were also assessed.

122 The specific questions addressed in this work weare:

123 1) How do DOC concentration and DOM composition vary over multiple seasons across a diverse
124 mountain watershed, and 2) what are the factors that drive this variability across scales. This study
125 provides important insights into how season and scale influence the sources and transport of DOM in a
126 cold alpine setting.

127 **2 Materials and methods**

128 **2.1 Study area**

129 Several headwater streams, a wetland and a high elevation lake outlet were studied within the Wolf
130 Creek Research Basin (WCRB, 61°310 N, 135°310 W) located ~20 km south of Whitehorse in Yukon
131 Territory, Canada (Fig. 1). WCRB is a long-term research watershed located at the edge of the Coast
132 Mountains, ~~and~~ spans an elevation ranging from 712 m a.s.l. to 2080 m a.s.l., and has a drainage
133 aread~~drains an area of~~ ~179 km². WCRB straddles three ecological zones with boreal forest at lower
134 elevations (predominantly White Spruce (*Picea glauca* var. *porsildii*)) covering ~28% of the watershed;

at intermediate elevations shrub taiga comprises ~47 %, and at elevations above ~1500 m, alpine tundra and bare rock surfaces predominate. WCRB has a relatively dry Subarctic climate (Koppen classification *Dfc*) with 30-year climate normals (1981-2010) reported for Whitehorse Airport (706 m). Average airport air temperature is -0.1 °C and precipitation is 262.3 mm, with 161 mm falling as rain. However, considering that WCRB covers a large elevation gradient, colder temperatures and considerably larger volumes of precipitation have been reported for high-elevation sub-watersheds (Pomeroy et al., 1999; Carey et al., 2013b; Rasouli et al., 2019). The geological setting of WCRB is sedimentary sandstone, siltstone, limestone and conglomerate. Atop bedrock, thick stony till and glacial drift covers most of the basin. Soils in the top metre are generally sandy to silty and at higher elevations (taiga and lower tundra ecozones), a veneer of surface organic soils with variable thickness predominate. Permafrost underlies much of the basin (~43 %), particularly at higher elevations and on north-facing slopes in the taiga and alpine ecozones (Lewkowicz and Ednie, 2004). Much of this study focussed on the headwater catchment of Granger Creek (GC), which drains an area of 7.6 km² and ranges in elevation from 1355 to 2080 m a.s.l. (McCartney et al., 2006; Carey et al., 2013a) (Fig. 1). GC is above treeline (~1200 m) and is dominated by Willow (*Salix* Sp.) and Birch (*Betula* Sp.) shrubs at lower elevations with dwarf shrubs, lichen and bare rock above 1500 m. South facing slopes have a thin organic layer overtop sandy soils whereas north slopes have thicker organic layers (10-30 cm) and are underlain with discontinuous permafrost. A wide riparian zone (50 to 100 m) with a consistently high water table in the lower reaches of GC lies between the slopes. Buckbrush Creek (BB, 60°31'18.01" N, 135°12'17.27" W), another headwater catchment, drains an area of 5.75 km² and is located approximately 2 km west of GC (Fig. 1). BB ranges in elevation from 1324 to 2080

156 m a.s.l. with similar physiographic characteristics to GC. However, Buckbrush Creek is less incised
157 than GC and the riparian zone shows evidence of multiple overbank channels during high flow events.
158 The site Wetland 1 (W1, 60°31'18.72" N, 135°11'34.71" W) is located at the edge of a wetland complex
159 located downstream of BB with an indeterminate drainage area. The vegetation is dominantly sedges,
160 with ponded water covering 200 m². Coal Lake (CL, 60°30'36.65" N, 135° 9'44.47" W) is a long-term
161 hydrometric station located approximately at the mid-point in the watershed at the outlet of an ~1 km²
162 lake (Rasouli et al., 2019). A large wetland complex is located upstream of CL, which is surrounded by
163 steep slopes and vegetation that transitions from boreal forest at lake level to alpine tundra at the top of
164 surrounding slopes.

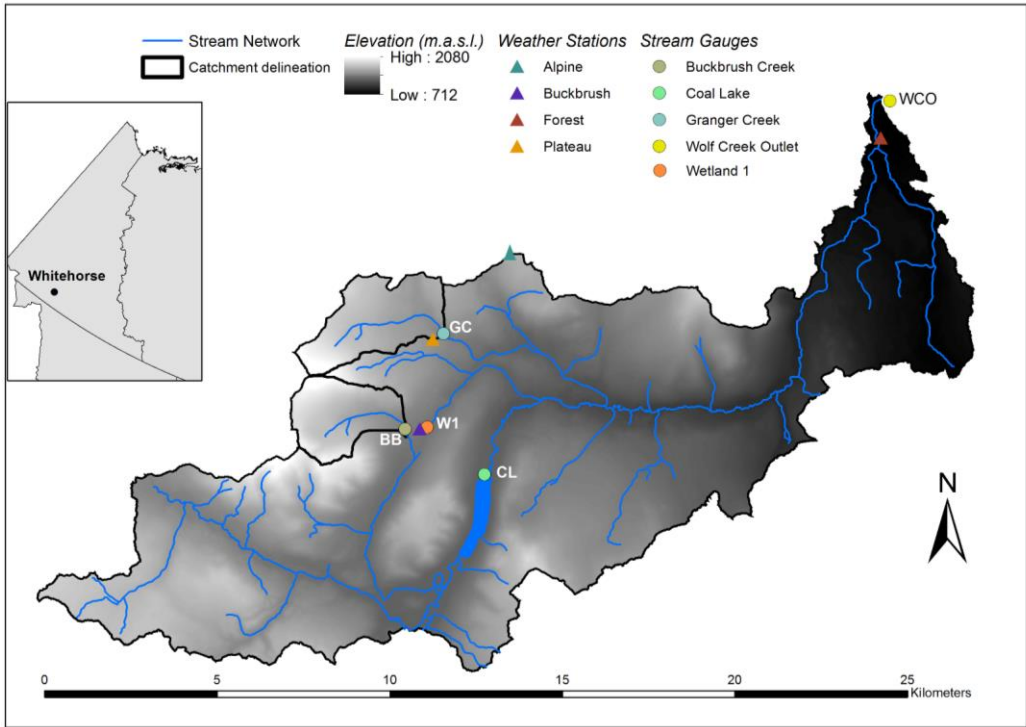
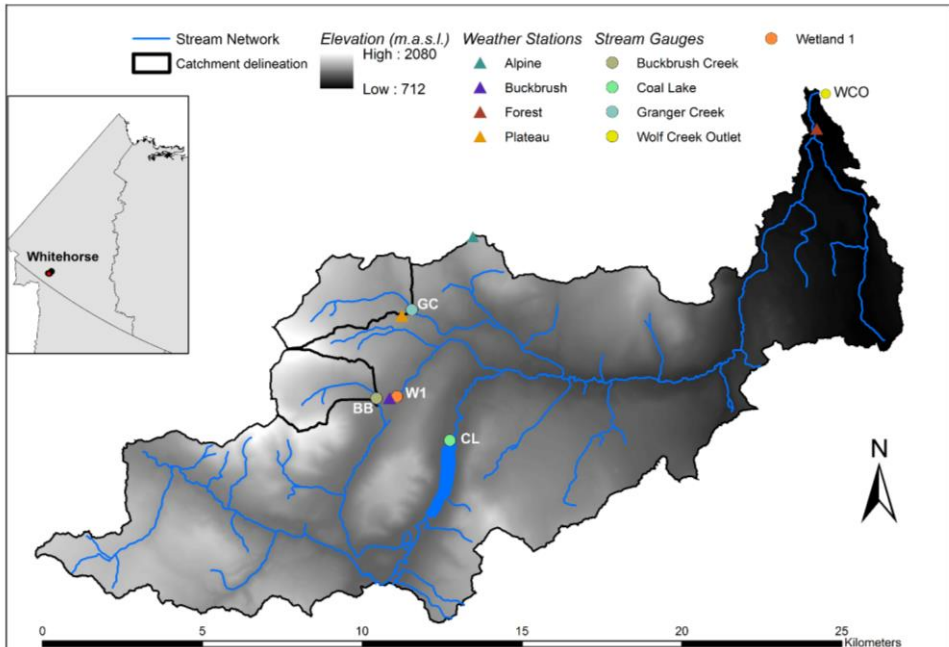


Figure 1. Map of Wolf Creek Research Basin (WCRB) with BB and GC catchments delineated. All stream gauges (BB, GC, CL, W1 and WCO) are indicated by circles; weather stations within WCRB are shown as triangles.



Formatted: Font: 12 pt, Bold

Formatted: Font: (Default) +Body (Times New Roman), 12 pt

2.2. Field measurements

Discharge was measured using rating curves developed for each study season at all sites except the WCRB outlet (WCO) and CL, which has retained a stable curve for the past several years (discharge measurements at the WCRB outlet exist from 1992). Stilling wells at each site were instrumented with Solinst Leveloggers and compensated with adjacent Solinst Barologgers measuring stage/pressure every 15 minutes to provide continuous flow records. Manual flows were taken frequently using a SonTek Flowtracker during high and low flows with salt-dilution gauging during periods when the channels were beneath ice. [Bushnell game cameras and in-person observation were used to document when the headwater streams and outlet were ice-free in spring to validate the use of pressure transducer measurements.](#)

WCRB has three long-term weather stations to characterize the climate in each ecozone ([Alpine, Buckbrush, Forest](#)). All radiation components, air temperature, wind speed, vapour pressure and total precipitation are measured [at 30 minute resolution](#), year-round at each site with some gaps due to power loss (Rasouli et al., 2019). [The rainfall data reported in this study is from a tipping bucket rain gauge located at the nearby Buckbrush weather station and have been compared with an Alter-shielded Geonor total precipitation gauge for accuracy. Concomitant measurements of soil temperature and moisture exist at each site. Monthly snow courses are completed in each ecozone to determine snow water equivalent \(SWE\), and on-site continuous measurements supplement these and provide information on melt rates.](#) A fourth meteorological tower (Plateau) in GC watershed has been operating since 2015. [Monthly snow courses are completed in each ecozone to determine snow water equivalent \(SWE\), and on-site continuous measurements from a SR50 sensor at Plateau along with snow pillow](#)

[measurements from Buckbrush \(Rasouli et al., 2019 provide instrumentation details\) supplement these](#)
[and provide information on melt rates.](#)

2.3 Surface water sample collection and preparation

Surface water samples were collected from April 2015 to December 2016, with the bulk of collection between April and September of each year with most samples collected at GC and frequent sampling at BB and WCO. Only a few samples were taken at W1 from 2015 to 2016. For DOC, samples were field filtered with single use plastic syringes submersed in the sample water immediately prior to sampling. Water was displaced through a 0.45 µm VWR polyethersulfone syringe filter and collected in a 60 ml opaque amber HDPE bottle. Duplicates were taken approximately every 10 samples. All samples were kept cool and out of direct light before being shipped for analysis. DOM water samples were filtered in situ and stored cool in 40 ml glass amber vials. [In situ filtration with a syringe kept the time between sample collection and filtration to a minimum, particularly during freshet when logistical constraints meant that researchers remained in the catchment for up to two weeks at a time before returning to Whitehorse.](#)

2.4 DOC and DOM fluorescence analysis

Water samples were sent to the Biogeochemical Analysis Service Laboratory (University of Alberta) for analysis on a Shimadzu 5000A [Total Organic Carbon](#) ~~TOC~~ analyzer for DOC concentration [following the US EPA protocol 415.1. The reportable detection limit provided by BASL for these samples was 0.1](#)

206 [mg/L](#). In total, 330 surface water samples were collected from 2015 to 2016 as outlined in Table 1. Of
207 the 330 DOC samples, ~215 were analysed for DOM quality using fluorescence spectroscopy. Seven
208 additional samples from CL in 2017 were analysed for DOC concentration and DOM quality.

209 Fluorescence excitation emission matrices (EEMs) were obtained from 0.45 μm [PES](#)-filtered water
210 samples using a Yvon Jobin Aqualog Benchtop Spectrofluorometer (HORIBA Scientific, Edison, NJ,
211 USA). ~~Extra steps were taken to ensure that no background DOM from the PES filter and syringe~~
212 ~~provided a fluorescence signature (see Supplemental Materials for further information).~~ Fluorescence
213 spectra were recorded at an excitation range of 240-600 nm in steps of 5 nm with an emission range of
214 212-620 nm, in steps of 3 nm. The integrated Raman spectrum was checked before each run and
215 compared to prior values to ensure consistent lamp intensity. [A sealed Quinone Sulfate sample and](#)
216 [blank pair were also run prior to each batch of samples and compared to prior values to ensure](#)
217 [consistency.](#) Fluorescence spectra were normalized to the area under the Raman scatter peak (peak
218 excitation wavelength 397 nm) of a sealed Milli-Q water sample prior to all sample runs. [A lab blank of](#)
219 [distilled water was also appended to each sample run and every 4 sample runs, a sample was repeated.](#)
220 Scatter from the Raman Milli-Q sample was subtracted from each sample fluorescence spectrum. The
221 correction and normalization of samples to the Raman standard resulted in normalized intensity spectra
222 being expressed in Raman units (R.U., nm^{-1}).

223 Blank subtraction, Rayleigh scatter and inner filter effects were corrected using the Aqualog(R)
224 software. Subsequent EEM corrections and smoothing were done using the DrEEM toolbox (Murphy et
225 al., 2013) in Matlab (Mathworks Inc., Massachusetts, USA). Results were considered comparable to

each other since all data were collected from a single instrument and the Raman standard emission intensity was verified for each data run.

Optical data obtained from the Aqualog(R) was used to calculate ~~fluorescence-optical~~ indices. $SUVA_{254}$ ($L\ mg\ C^{-1}\ m^{-1}$) is calculated as UV absorbance at 254 nm (m^{-1}) divided by DOC concentration ($mg\ L^{-1}$) (Weishaar et al., 2003) with a unit correction based on the cuvette path length. $SUVA_{254}$ is commonly reported along with DOC concentration ~~and is positively related to aromaticity in bulk DOM and is used to determine the degree of aromaticity in bulk DOM~~ (Weishaar et al., 2003) ~~with higher values indicative of a strong terrestrial signal. Higher $SUVA_{254}$ values (sometimes greater than $6.0\ L\ mg\ C^{-1}\ m^{-1}$) indicate more aromatic carbon with a strong terrestrial signal~~ (Jaffé et al., 2008). ~~or potentially~~ Typically, ~~$SUVA$ values greater than $4.5\ L\ mg\ C^{-1}\ m^{-1}$ denote high~~ $SUVA_{254}$ absorption at 254 nm due to colloids or iron (Weishaar et al., 2003; Hudson et al., 2007). Research in northern peatlands associated peat soil leachates with relatively lower $SUVA_{254}$ values of $3.0\ L\ mg\ C^{-1}\ m^{-1}$ (Olefelt et al., 2013).

~~Allochthonutot~~ ~~autochthonous, terrestrial-or-modified-terrestrial~~ DOM (~~microbial and soil-derived DOM~~) is associated with ~~increased~~ aromaticity and a ~~lower-higher~~ $SUVA_{254}$ value ~~while lower $SUVA$ values are related to modified terrestrial DOM~~. The biological index (BIX) is the ratio of emission intensities at 380/430 nm at an excitation wavelength of 310 nm (Huguet et al., 2009). Higher BIX values indicate greater autotrophic productivity (Huguet et al., 2009) or greater relative freshness of bulk DOM (Wilson and Xenopoulos, 2009) while lower values indicate older, more terrestrial DOM. The fluorescence index (FI) is calculated as the ratio of fluorescence emission intensities at 470/520 nm at an excitation wavelength of 370 nm (Cory and McKnight, 2005). FI is used to differentiate between DOM derived from microbial sources (1.7-2.0) or higher terrestrial plant sources (1.3-1.4) with intermediary values

indicative of mixing (McKnight et al., 2001; Jaffé et al., 2008; Fellman et al., 2010). Typical values reported for inland rivers are between 1.3-1.8 (Brooks and Lemon, 2007).

In addition to the DOM quality indices reported and discussed throughout this paper, absorbance at 254 nm (A254), the freshness index (Parlanti et al., 2000) and the modified humification index (HIX: Ohno, 2002) were also calculated and compared with the other indices. BIX and the freshness index were highly correlated ($r^2 : 0.99$, $p < 0.001$) for all sites, years and seasons. A254 and DOC concentrations also showed high correlation ($r^2 : 0.95-7$, $p < 0.001$). Due to similarity in temporal trends of DOM indices, HIX was not reported independently of the parameters mentioned above. HIX is calculated by summing the peak area under emission intensities from 435-480 nm divided by that of 300-345 nm at an excitation of 254 nm (Zsolnay et al., 1999). Higher HIX values are related to an increased degree of humification (Huguet et al., 2009; Fellman et al., 2010).

2.5 DOC Load Calculations

DOC fluxes for GC were estimated using the R package RiverLoad (Nava et al., 2019). RiverLoad provided several methods to generate estimates of DOC flux and for this paper, Method1 (time-weighted Q and C) was chosen as most appropriate. Briefly, Method1 considers the mean concentration and mean flow of each sample to obtain a load value and is biased towards underestimating load in some situations (see Nava et al. 2019, Section 2.1.1 for full details and equation). Daily discharge data and DOC concentrations (maximum of 1 measurement per day) for 2002, 2003, 2006 and 2008 were obtained from the authors of Carey et al., 2013a. DOC concentrations (maximum of 2 per day) and discharge at 15 minute resolution for 2015 and 2016 are outlined in Sections 3.2 and 3.3). Any gaps in

268 [the discharge data were filled by time-weighted interpolation, however there were no gaps greater than](#)
269 [3 days during springs flows for any year \(2002, 2003, 2006, 2008, 2015, 2016.](#)

270 **2.65 Statistical analysis**

271 General descriptive statistics including the mean and standard deviation were calculated for DOC,
272 SUVA₂₅₄ and the fluorescence indices and compiled in Table 1. To better assess differences between
273 landscape units (e.g. headwaters, wetland, lake, catchment outlet), principal component analysis (PCA)
274 was performed using DOC concentrations and optical indices (i.e. FI, BIX, Freshness, HI, SUVA₂₅₄).
275 These variables were scaled and then standardized into a covariance matrix to avoid larger magnitudes
276 exerting greater influence than smaller magnitudes.

Table 1. Summary statistics for DOC, SUVA, BIX and FI at all sites over 2015-6. Seasons are separated with spring (15 April - 15 June); Summer (16 June - 15 August); Fall/Winter (16 August - 14 April).

Year	Sites	DOC (mg/L)			SUVA ₂₅₄			BIX			FI		
		Spring	Summer	F/W	Spring	Summer	F/W	Spring	Summer	F/W	Spring	Summer	F/W
2015	BB	2.44±0.98(5)	1.2±0.31(11)	1.19±0.39(9)	3.30±0.58(3)	3.88±0.55(4)	2.72±0.42(2)	0.55±0.04	0.60±0.01	0.60±0.03	1.49±0.06	1.54±0.03	1.57±0.76
	GC	2.89±2.29(52)	1.07±0.21(36)	1.75±0.76(17)	3.21±0.84(22)	3.81±0.75(14)	2.42±0.33(3)	0.69±0.06	0.60±0.02	0.65±0.02	1.52±0.06	1.54±0.04	1.57±0.04
	W1	15.8(1)			3.94(1)			0.468 (1)			1.46(1)		
	WCO			1.79±0.90(14)			2.21±0.17(10)			0.66±0.03			1.62±0.03
	BB	2.34±0.87(14)	1.42±0.27(23)	1.69±0.20(3)	3.56±0.48(10)	2.81±0.59(16)	2.45±0.28(3)	0.513±0.03	0.58±0.03	0.62±0.02	1.45±0.04	1.52±0.06	1.59±0.00
2016	GC	4.32±2.39(43)	1.71±0.54(53)	2.06±0.71(26)	3.86±1.40(37)	2.86±0.28(17)	3.14±0.53(11)	0.213±0.06	0.28±0.03	0.60±0.04	1.45±0.04	1.56±0.04	1.59±0.02
	W1	6.7(1)	7.31±0.64(10)	6.52±0.21(2)	4.77(1)	4.04±0.60(7)		0.28(1)	0.63±0.05		1.38(1)	1.54±0.04	
	WCO	2.09±0.80(18)	2.58±0.44(22)	2.35±0.33(3)	2.83±0.42(12)	2.70±0.28(13)	2.69±0.11(2)	0.382±0.04	0.60±0.02	0.66±0.03	1.33±0.02	1.34±0.03	1.55±0.01

278
279 The PCA was performed using R software version 3.4.0 (R Core Team 2017) in RStudio with R
280 function princomp(), and packages ggplot2, GGally, ggpubr, lubridate, magrittr, grid, dplyr and tidyr for
281 calculating descriptive statistics, correlations, data manipulation and visualization.

282

283 **3 Results**

284 **3.1 Climate**

285 For 2015 and 2016, the average annual air temperature as recorded at the Whitehorse airport weather
286 station was 1.4 and 2.4 °C respectively, which is warmer than the 30-year normal (1980-2010). May
287 average monthly temperatures in both years were well above the normal, with an average air
288 temperature of 11.8 °C in May 2015 compared with a normal of 7.3 °C. Average annual air
289 temperatures measured at the Buckbrush weather station (mid-basin) were -0.6 and -0.0 °C respectively
290 for the two years (Fig. 2). Persistent inversions in winter result in warmer temperatures at higher
291 elevations from December through to February. Accurate measurements of total precipitation have not
292 been recorded at Whitehorse airport for several years, limiting long-term context but rainfall values
293 from a nearby (~ 3 km) station were used for 2015-6 as well as rainfall from the Buckbrush weather
294 stations (Fig. 2).

Formatted: Font: Bold

Formatted: Normal

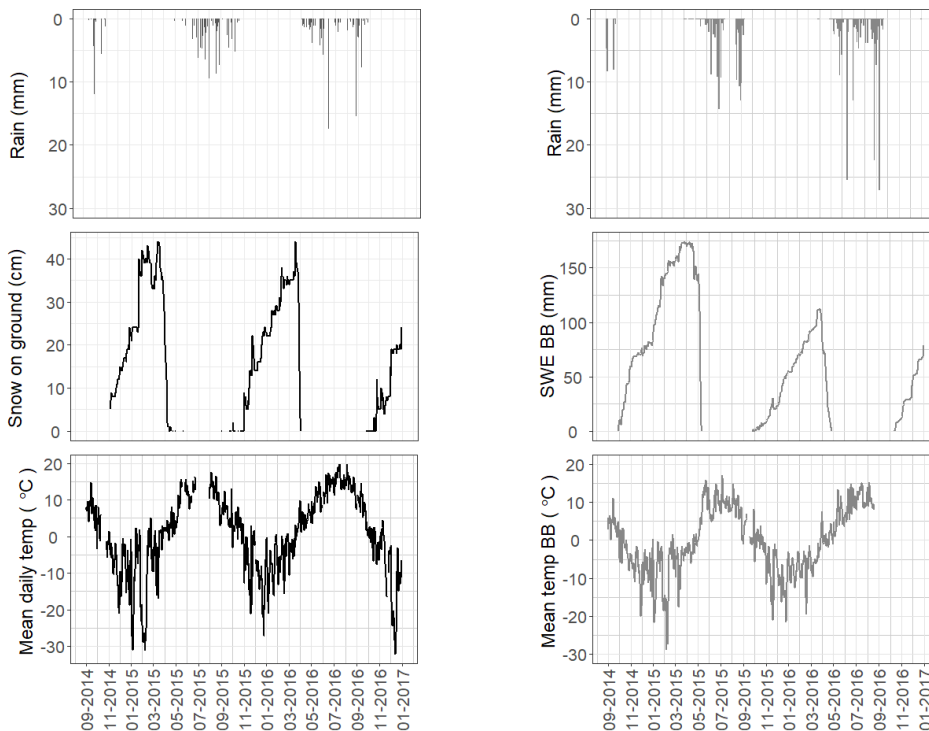


Figure 2. Figure 2. Climate variables from Whitehorse Auto (Rainfall: 60°43'59.000" N, 135°05'52.000" W) 135°05'52.000" W, 707 m a.s.l., Whitehorse Airport (Snow on ground, Mean daily temp; 60°42'34.200" N, 135°04'07.800" W) and Buckbrush weather stations. (Left) Rain (measured in mm) from Whitehorse Auto (Climate ID: 2101310) located 3 km from Whitehorse Airport, snow on ground (in cm) and mean daily air temperature (°C) from the Environment Canada Airport weather station (YXY, Climate ID: 2101300) located ~ 14 km NW of Forest at 706 m a.s.l. (Right) Rainfall daily totals in mm were derived from hourly measurements, snow water equivalent (SWE) in mm based on 3 hour measurements from a snow pillow beside Buckbrush weather station. Daily average air temperature (°C), derived from 30 min measurements. Climate variables from Whitehorse Airport and Buckbrush weather stations. (Left) Rain (measured in mm), snow on ground (in cm) and mean daily air temperature (°C) from the Environment Canada Airport weather station (YXY, Climate ID: 2101300). (Right) Rain measurements were summed to daily totals in mm, snow water equivalent (SWE) in mm

Formatted: Font: Not Bold

308 ~~was taken as the cumulative total based on 3 hour measurements from a snow pillow beside Buckbrush~~
309 ~~weather station. 30 minute air temperature measurements were averaged to get daily values.~~

310 **3.2 Discharge**

311 The 2015 and 2016 hydrographs for GC and the Wolf Creek outlet (WCO) exhibited patterns typical of
312 northern watersheds but were distinct in that both years have a late-season increase (Fig. 3), which is
313 rare in the GC and WCO historical record (Carey et al., 2013a,b; Rasouli et al., 2019).

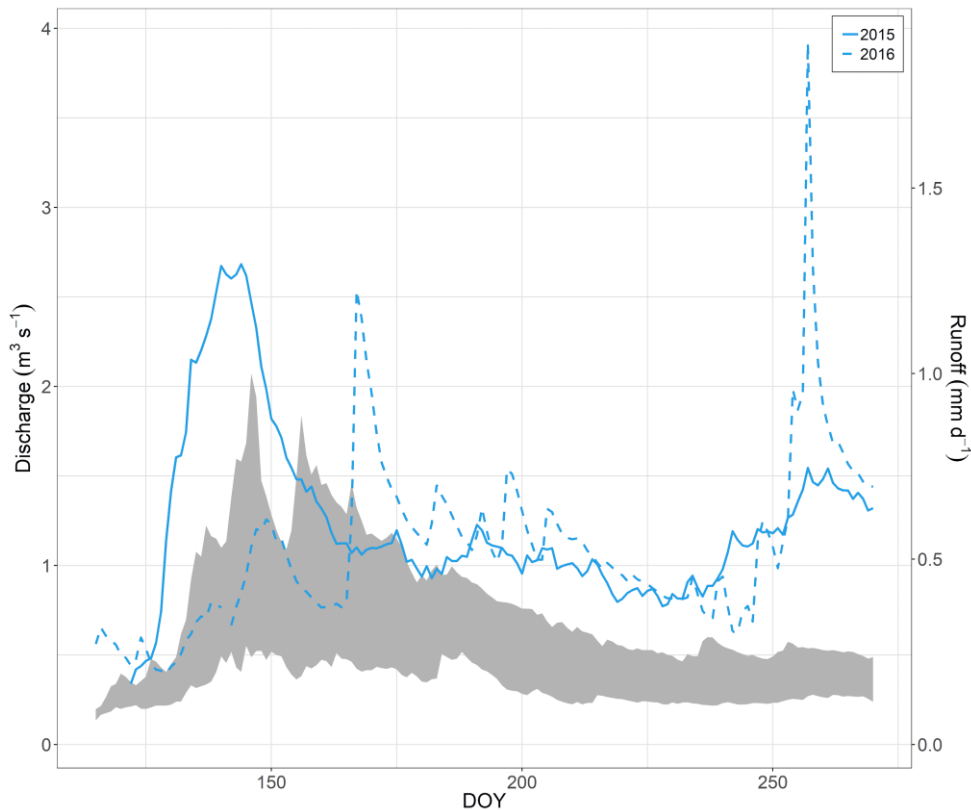


Figure 3. Historical flow at WCO with 2015-6 flows superimposed. Grey area represents inter-quartile range of 1993-2013 data. Solid line = 2015; dashed line = 2016. Day of year (DOY) along x-axis.

Summer flows were also greater than typically observed. For GC, in 2015 while there was an early measurable stream response on 9 May, freshet began on 14 May when flows increased from $\sim 0.02 \text{ m}^3 \text{ s}^{-1}$ to daily flows averaging $\sim 0.5 \text{ m}^3 \text{ s}^{-1}$ over 9 days. Peak 2015 daily discharge was $0.67 \text{ m}^3 \text{ s}^{-1}$ on 22 May, thereafter flows began to decline to summer levels $\sim 0.2 \text{ m}^3 \text{ s}^{-1}$. In response to $\sim 125 \text{ mm}$ of rain between 17 August and 11 September, flows increased to $\sim 0.46 \text{ m}^3 \text{ s}^{-1}$ on 14 September before gradually

Formatted: Font: (Default) +Body (Times New Roman), 12 pt

322 declining. Discharge at BB for 2015 and 2016 were slightly lower magnitude than GC with delayed
323 flow response to both freshet and summer rainfall. Data loss resulted in incomplete discharge data for
324 both years at BB. Manual measurements are shown in Fig. 3 to supplement continuous measurements.
325 Discharge at WCO followed a similar pattern to GC, rising from a winter baseflow of $\sim 0.4\text{-}0.5\text{ m}^3\text{s}^{-1}$ on
326 3 May to a peak freshet of $2.68\text{ m}^3\text{s}^{-1}$ on 24 May. As with GC, flows increased in September prior to the
327 removal of the transducer on 1 October.

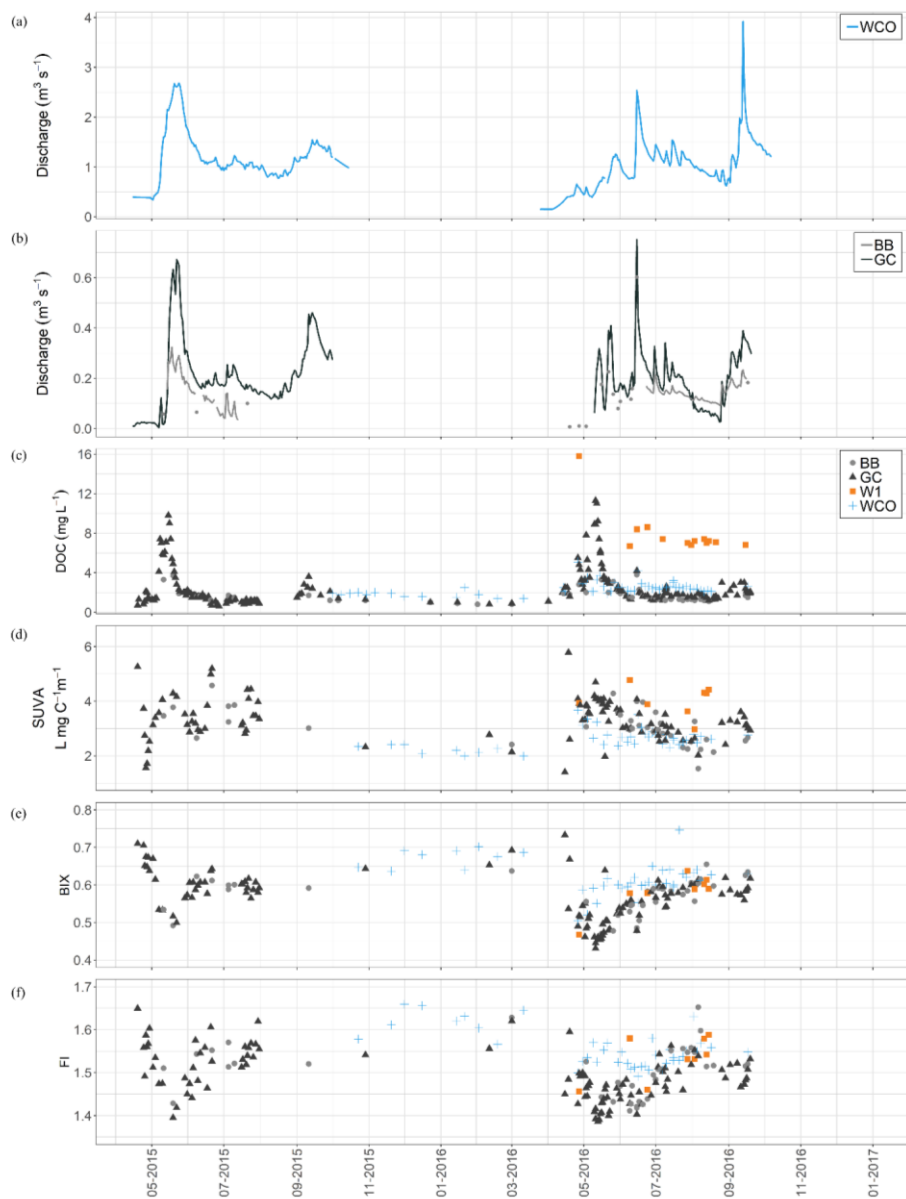


Figure 3. Flow, DOC and ~~fluorescence-optical~~ indices for WCRB study sites. (a) Daily discharge data from WCO shown from April 2015 to October 2016. (b) Daily discharge data from GC (dark grey) and BB (light grey). (c) DOC concentrations in mg/L from grab samples over the study period with BB (light grey, circle), GC (dark grey, triangle), Wetland 1 or W1 (orange, square), WCO (light blue, +).

Flows in 2016 were distinct at both GC and WCO when compared with 2015 and the historical record, exhibiting a more pronounced response to snowmelt than 2015 that occurred much earlier in the year in comparison to the 25 year record (Fig. 3). There was no distinct snowmelt freshet event in 2016, instead a gradual increase in flows was punctuated with hydrograph rises that corresponded with both snowmelt and summer rainfall events. Flows were of the same general magnitude to those in 2015, and once again large late season rainfalls (~115 mm between 17 August and 10 September) resulted in high September flows, with peak discharge at WCO recorded at $3.9 \text{ m}^3\text{s}^{-1}$ on 13 September. ~~Flows in 2016 were distinct at both GC and WCO compared with 2015 and the historical record, and exhibited flashier behaviour early in the season (Fig. 3). There was no distinct snowmelt freshet event, instead a gradual increase in flows was punctuated with hydrograph rises that corresponded with snowmelt and summer rainfall events. Flows were of the same general magnitude to those in 2015, and once again large late season rainfalls (~115 mm between 17 August and 10 September) resulted in high September flows, with peak discharge at WCO of $3.9 \text{ m}^3\text{s}^{-1}$ recorded on 13 September.~~ Flows declined again until the transducers were removed on 17 October, yet were very high compared with mid-season flows.

3.3 Dissolved Organic Carbon (DOC) Concentrations

~~DOC was sampled over two years at four sites: GC, WCO, BB and W1, a wetland complex in the taiga ecozone near the Buckbrush tower (Fig. 1).~~ Sampling in 2015 was largely confined to GC and BB with more extensive sampling at other sites in 2016. For GC, similar patterns were observed in both years

with over-winter and pre-freshet DOC concentrations below 1 mg L⁻¹ and rising to ~10 mg L⁻¹ on the rising limb of the first snowmelt flush followed by a rapid decline to levels between 1 and 2 mg L⁻¹ throughout the summer and with a slight rise in the fall. Seasonal statistics for DOC are presented in Table 1. In 2015, the single freshet event corresponded with the rise in DOC, yet the rise and fall in DOC concentration occurred fully on the rising limb of the freshet hydrograph between 7 May and 29 May. The maximum DOC concentration of 9.8 mg L⁻¹ on 15 May corresponded to a 13.8 mm rain event atop a sporadic snowpack with largely frozen soils. After June, DOC concentrations continued to decline with slight increases corresponding to rainfall events. Towards the end of the measurement period in 2015, DOC concentrations rose to a maximum of 3.6 mg L⁻¹ with increasing discharge in response to sustained precipitation. Over-winter values in December and January declined to ~1 mg L⁻¹. This pattern of DOC behaviour was remarkably similar at the adjacent BB catchment which had more limited sampling. In 2016, the spring rise in DOC at GC and BB corresponded to the period immediately after the first small snowmelt pulse but prior to the bulk of the freshet signal (Fig. 3). Concentrations again rose to ~11 mg L⁻¹ with a steep recession to summer levels where rainstorms would occasionally increase concentrations above 2 mg L⁻¹. As in 2015, a wet late season with a large hydrograph increase resulted in increased DOC concentrations near 3 mg L⁻¹ but concentrations were much less than for corresponding freshet flows. Sampling at WCO began in late fall 2015 with DOC concentrations of ~2 mg L⁻¹ and remained near this level through April 2016. Concentrations increased during the early phases of open water freshet, yet only rose to ~5 mg L⁻¹ on 26 April and then declined to summer levels between 2 and 3 mg L⁻¹, with some variability related to rainfall events. While sampling was limited, there did not appear to be a

372 notable increase at WCO during the wet fall in 2016. At W1, DOC was ~16 mg L⁻¹ on the first sampling
373 date of 27 April, and then post-freshet samples in June through September had concentrations between
374 7 and 9 mg L⁻¹. Concurrent DOC and fluorescence samples were only collected from CL post-freshet
375 during summer and fall of 2017.

376 **3.4 DOC Loads**

377
378 Export estimates for the six years of available data from GC range from 0.29 to 1.48 g C m⁻² during
379 spring (15 April to 14 June); between 0.08 to 0.31 g C m⁻² in summer (15 June to 14 August); 0.28 and
380 0.20 g C m⁻² during fall in 2015 and 2016, respectively (Table 2). No estimates were made for fall in
381 2002, 2003, 2006 and 2008 due to a lack of concentration data. Spring DOC export was lowest during
382 2003 (0.42 g C m⁻²) and 2016 (0.29 g C m⁻²), two years characterized by a staggered snowmelt leading
383 to relatively low discharge during peak DOC concentrations (Fig. 4abc; Fig 4 in Carey et al., 2013a).
384 Total export during summer was relatively consistent across 2002, 2003, 2006 and 2015 at 0.12, 0.19,
385 0.14 and 0.08 g C m⁻² while it was appreciably higher in 2008 and 2016 at 0.31 and 0.28 g C m⁻²,
386 respectively. Fall DOC export estimates for 2015 and 2016 were 0.28 g C m⁻² -and 0.20 g C m⁻². DOC
387 export estimates for WCO in 2016 were 0.06 g C m⁻²- in spring, 0.09 g C m⁻² in summer and 0.09 g C
388 m⁻²-for fall (Table 2).

Formatted: Normal

389 **3.54 Fluorescence-Optical Indices**

390 While there exists a large number of optical fluorescence-indices in the literature (see Hansen et al.
391 2016), in this work we report the widely utilized SUVA₂₅₄, biological index (BIX) and fluorescence
392 index (FI) to help infer the source and composition of DOM (Table 1).

393 For GC, SUVA₂₅₄ exhibited considerable variability compared with DOC concentrations. In 2015,
 394 SUVA₂₅₄ declined from > 5 to ~ 1 L mg C⁻¹ m⁻¹ rapidly between 19 and 26 April in response to loss of
 395 channel ice, and then rose to reach a local maximum of ~4.1 L mg C⁻¹ m⁻¹ on 10 May that corresponds
 396 to the annual peak in stream discharge. SUVA₂₅₄ then declined on the receding freshet limb yet
 397 increased markedly in June in response to 18 mm of rain (11 to 18 June), whereupon it ranged between
 398 2.8 and 4.5 L mg C⁻¹ m⁻¹. Limited under-ice sampling suggests SUVA₂₅₄ remained relatively consistent
 399 between 2 and 3 L mg C⁻¹ m⁻¹ before falling to 1 L mg C⁻¹ m⁻¹, prior to the onset of freshet when values
 400 rose dramatically to 5.2 L mg C⁻¹ m⁻¹ before gradually declining through August with considerable
 401 variability. Following the wet fall in 2016, SUVA₂₅₄ began to rise to values > 3 L mg C⁻¹ m⁻¹. Patterns
 402 of SUVA₂₅₄ for BB were similar to GC in both years. SUVA₂₅₄ started low in spring 2015 at the
 403 headwater catchments before rising slightly in summer whereas the opposite occurred in 2016. For
 404 WCO, samples over the 2015-16 winter declined slightly from 2.5 to 2 L mg C⁻¹ m⁻¹, and then during
 405 freshet increased to ~3.7 L mg C⁻¹ m⁻¹ and then gradually declined to ~2.5 L mg C⁻¹ m⁻¹ with some
 406 increases associated with rising discharge. SUVA₂₅₄ at W1 was on average higher compared with other
 407 sites, although limited sampling makes it uncertain as to any temporal pattern.
 408 BIX tended to be inversely related to discharge (and DOC concentration) during freshet at the
 409 headwater sites (GC, BB) (Fig. 43). For GC in 2015, BIX fell from just above 0.7 to 0.49 during peak
 410 freshet and then increased to between 0.55 and 0.65 during summer. Values increased over winter to a
 411 maximum of 0.71 prior to 2016 freshet where a steep decline to values < 0.45 occurred during the early
 412 phase of runoff in May and then gradually returned to values between 0.55 and 0.65 with declines
 413 associated with rainfall-driven spikes in the hydrograph. The late season increase in discharge did not

414 strongly influence BIX at GC. BIX exhibited similar patterns ~~inconsistencies~~ between 2015 and 2016 at
415 the headwater sites with lower minimum values during spring in both years followed by an increase,
416 which plateaued in summer 2015 but continue to rise slightly during the 2016 summer ~~spring values in~~
417 ~~2016 and an increase in summer whereas 2015 showed a decrease during summer to lower or 'older'~~
418 ~~values.~~ BIX for WCO increased over winter before also declining during early melt in 2016 and then
419 rose to values ~0.65 with some large increases (as opposed to decreases at GC) during storm events.
420 Timing of declines to rainfall events was slightly offset between the headwater sites and the outlet
421 WCO. At W1, BIX values increased slightly throughout the sampling period in 2016 (Fig. 43).
422 FI at GC and BB exhibited patterns similar to BIX but inverse to SUVA₂₅₄ (Fig. 43). In 2015, FI
423 declined from 1.65 to 1.4 as DOC rose on the rising freshet limb, and then declined to values between
424 1.5 and 1.6 during summer. In 2016, FI values again declined from 1.6 to 1. during freshet yet were on
425 average lower than 2015 but also gradually increased throughout summer with a small decline during
426 the wet late summer. For WCO, winter FI ranged between 1.55 and 1.65 and more gradually declined
427 during freshet to ~ 1.5 and then increased slightly with more limited variability throughout the summer.
428 A small decline during the wet period in late September was observed. Over the two study years at GC,
429 BB and WCO, mean FI was lowest during spring, and higher in summer (2015, 2016) than in fall 2016.
430 For W1, FI was low at 1.45 on the first sampling date in spring 2016 when DOC was high, and then
431 increased with some variability but values were on average greater than those at GC and BB.

454

455

Year	Sites	DOC (mg/L)		SUV ₂₅₄		BIX		FI	
		Spring	Summer	F/W	Spring	Summer	F/W	Spring	Summer
2015	BB	1.77±0.66(5) ^{A*}	1.25±0.31(11)	1.19±0.39(9) ^{A*}	3.30±0.38(3)	3.88±0.55	2.72±0.42	0.55±0.04	0.60±0.01
						(4)	(2)		
	CL	2.90(1)	2.60(1)	2.60(1)					
	GC	2.69±2.29(52)	1.07±0.21(36)	1.75±0.76(17)	3.21±0.84(22)	3.81±0.75	2.42±0.33	0.69±0.06	0.60±0.02
						(14)	(5)		
2016	W1	15.8(1)		1.79±0.90(14)	3.94(1)		2.71±0.17	0.47(1)	
	W2						(10)		
	O								
	BB	2.34±0.87(14)	1.42±0.27(23)	1.50±0.20(3)	3.56±0.48(10)	2.81±0.59	2.45±0.28	0.513±0.03	0.58±0.03
						(16)	(3)		
	CL								
	GC	4.32±2.56(43)	1.71±0.34(32)	2.00±0.57(20)	3.86±1.40(37)	2.86±0.38	3.14±0.32	0.513±0.06	0.58±0.03
						(17)	(11) ^{A**}		
	W1	6.70(1)	7.37±0.64(10)	6.95±0.21(2)	4.77(1)	4.04±0.60		0.58(1)	0.63±0.05
						(7)			
	W2	2.69±0.80(18)	2.58±0.44(22)	2.35±0.35(3)	2.83±0.42(12)	2.70±0.28	2.69±0.11	0.582±0.04	0.60±0.02
	O					(19)	(2)		

455

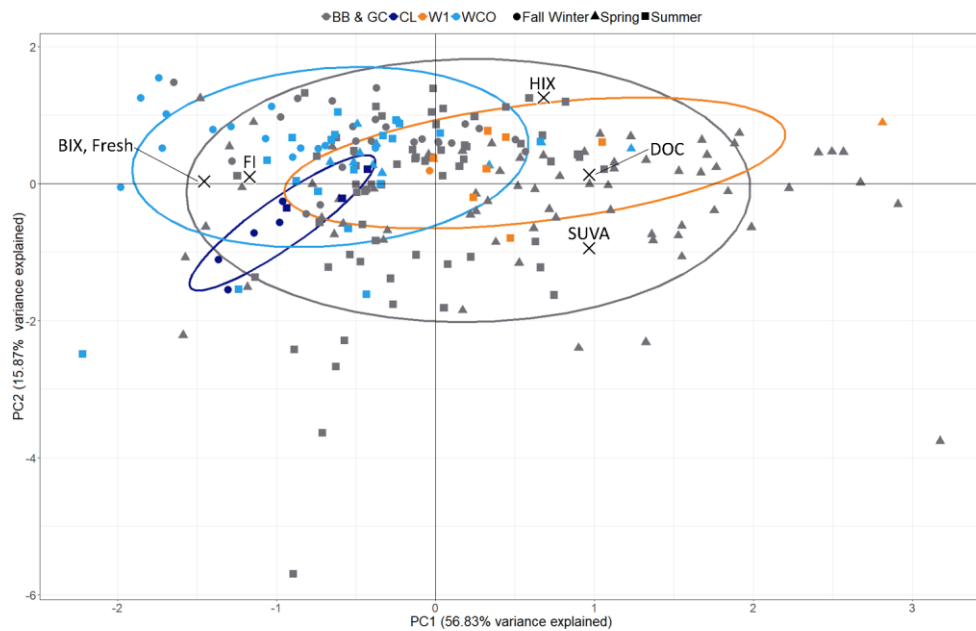
Formatted: Font: (Default) +Body (Times New Roman), 12 pt

456
457
458
459
460
461
462
463
464
465
466
467
468
469
470
471
472
473
474
475
476

3.6.5 Principal Component Analysis

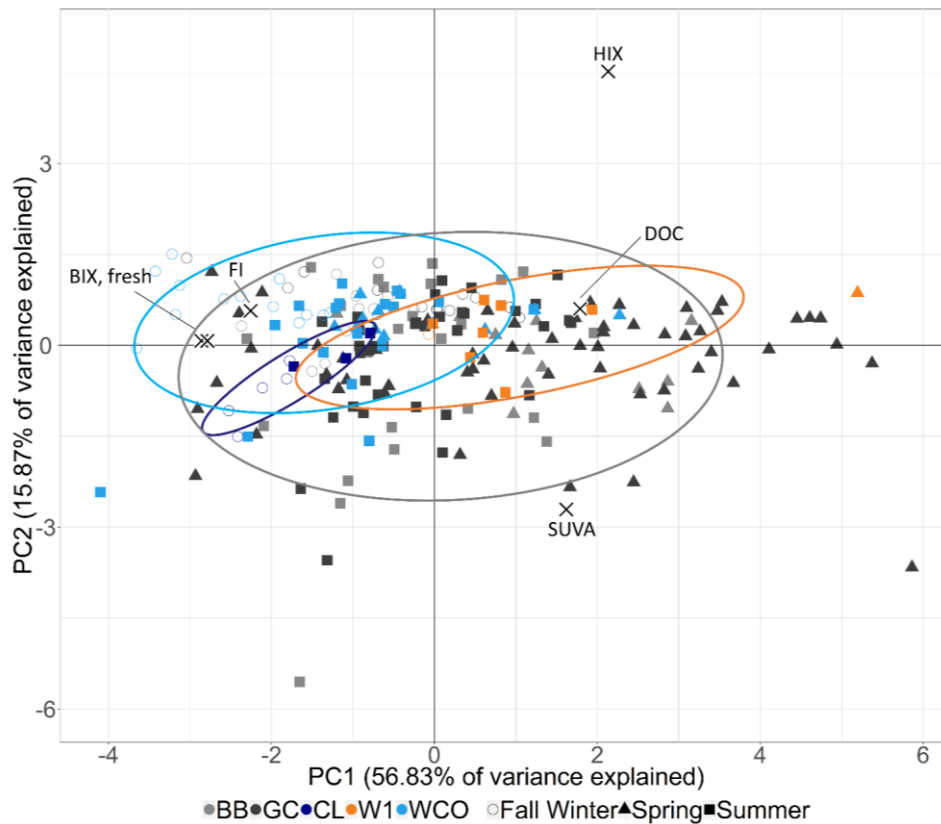
A principal component analysis (PCA) using 216 samples from across WCRB over three years was completed to explore landscape and seasonal climate controls on DOC concentration and quality (Fig. 4). DOC concentrations and fluorescence indices at BB (2015-7), CL (2017), GC (2015-7), W1 (2016-7) and WCO (2015-7) were introduced into the PCA for insight into how landscape type influences DOM quality at WCO (Table S1). The first principal component (PC1) explained 56.8 % of the variance in the data and was selected based on screeplot analysis, a drop in the proportion of variance explained and the Kaiser criterion (Kaiser and Rice, 1974). The remaining principal components (PCs) explained much less of the variance than PC1 (Table S3). PC1 predominantly represents the relationship

477 among DOM quality and concentration and is positively and negatively correlated with all DOM
478 fluorescence indices except for HIX. PC2 explained 15.8% of the variance and was most closely related
479 to a single variable (HIX) with little relationship to the other analytes (Fig. 4). Further PCs were not
480 explored ([See Supplemental Materials for more details](#)).



Formatted: Font: 12 pt

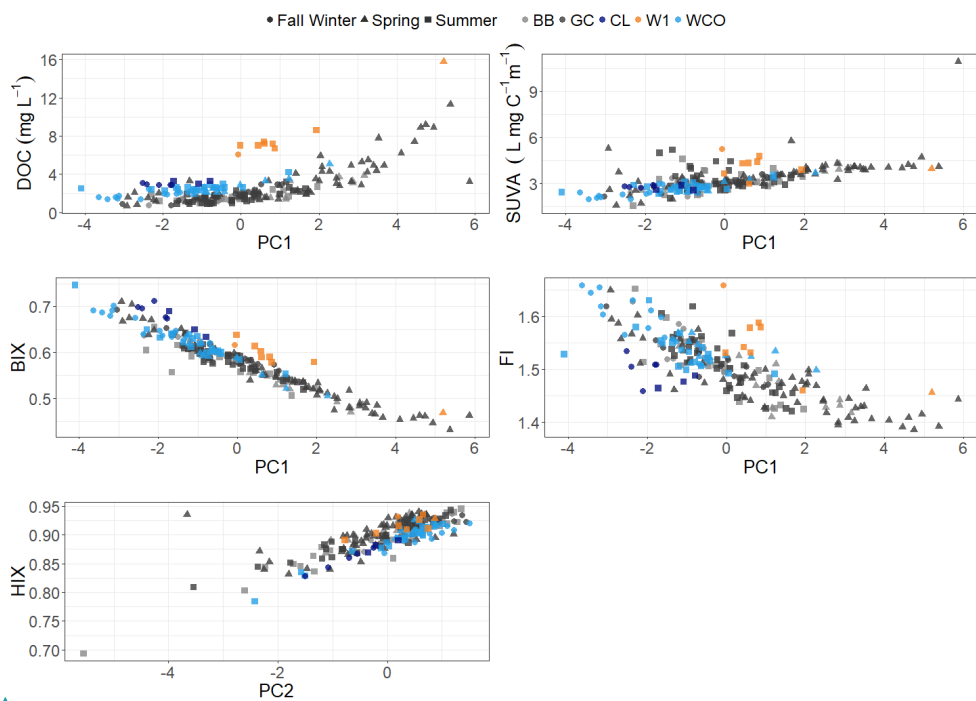
Formatted: Don't keep with next



Formatted: Font: (Default) +Body (Times New Roman), 12 pt

Figure 5. Biplot from PCA. PC1 on the x-axis and PC2 along the y-axis. X indicates where the point of the loadings with the applicable index written nearby. Samples are grouped by season: Triangles = Spring (15 April-15 June); Squares = Summer (16 June-15 August); Circles = Fall/Winter (16 August-14 April). Samples are also grouped by landscape type: Bright blue = Mesoscale outlet (WCO); Dark blue = Lake (CL); Orange = Wetland (W1); Grey = Headwaters (light grey – BB, dark grey – GC).

Figure 4. Biplots from PCA. Ellipses represent 0.8 probability of sample values being within the shape.



Formatted: Font: 12 pt

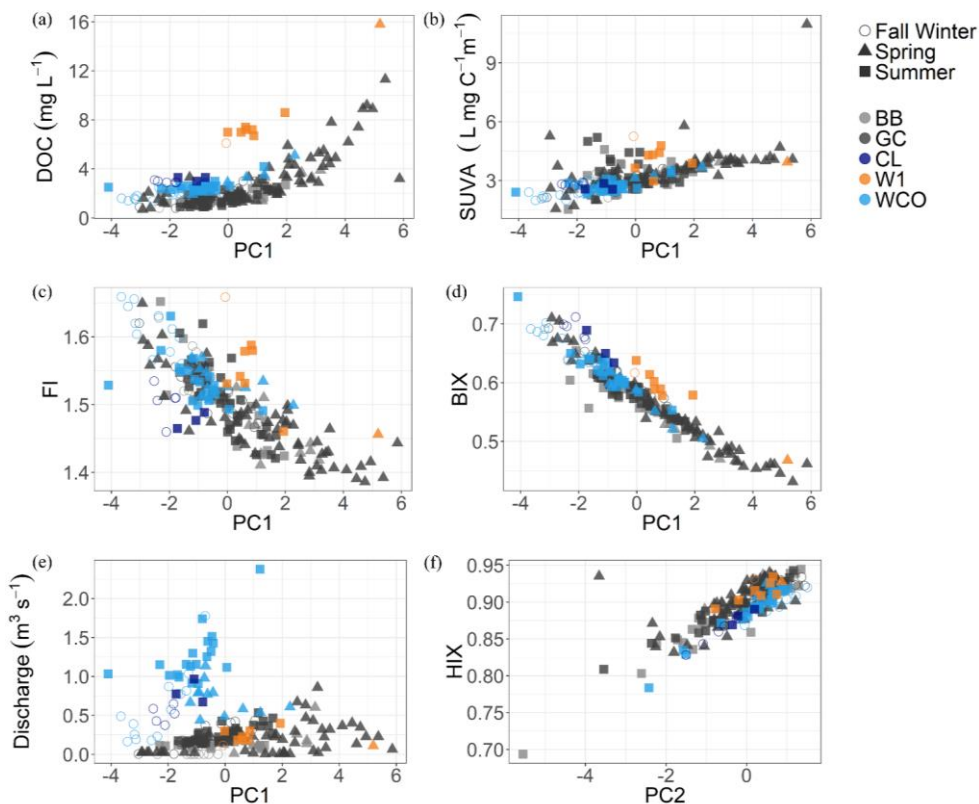


Figure 56. Regressions of principal components to DOC concentrations and DOM indices. Regression of PC1 to DOC concentrations implies some non-linear behaviour. Samples are grouped by season: Triangles = Spring (15 April-15 June); Squares = Summer (16 June-15 August); Circles = Fall/Winter (16 August-14 April). Samples are also grouped by landscape type: Bright blue = Mesoscale outlet (WCO); Dark blue = Lake (CL); Orange = Wetland (W1); Grey = Headwaters (light grey – BB, dark grey – GC).

BB and GC plotted similarly and are shown together (Fig. 54) to highlight differences between the landscape types rather than between the two headwater sites. DOC concentrations and SUVA₂₅₄,

499 BIX/Freshness and HIX most strongly distinguish the samples in the PCA. Spring samples from the
500 headwaters and wetland plot mostly to the right along PC1 due to high DOC concentrations and
501 SUVA₂₅₄ measured during that time period. Headwater samples span almost the entire PC1 axis due to
502 the high variability in spring-time DOC and streamflow. Fall/winter samples are predominantly located
503 left of the zero-line (Fig. 54) for all sites. All CL samples cluster together. Some separation of DOC
504 concentrations and DOM indices is shown due to high DOC, BIX and/or SUVA₂₅₄ values (Fig. 6).

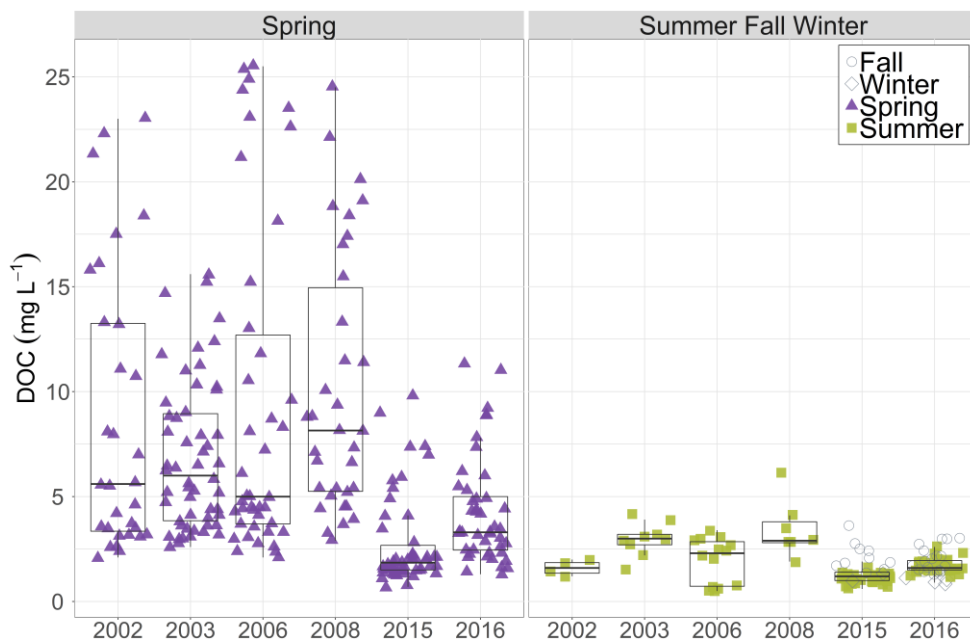
505
506 **4 Discussion**

507 **4.1 DOC quantity and timing in streams**

508 ~~The most distinct feature of OC export in some northern watersheds is the sudden increase in DOC~~
509 ~~concentration on the rising limb of the freshet hydrograph as the baseflow-driven system switches to~~
510 ~~near-surface flowpaths in organic-rich soils (Striegl et al., 2005; Raymond et al., 2007; Holmes et al.,~~
511 ~~2012). The most distinct feature of OC export in northern watersheds is the sudden increase in DOC~~
512 ~~concentration on the rising limb of the freshet hydrograph (Striegl et al., 2005; Raymond et al., 2007;~~
513 ~~Holmes et al., 2012).~~ This is particularly well resolved in headwater catchments where there is limited
514 mixing of signals and sources (Ågren et al., 2007). For GC, DOC concentrations have now been
515 observed over freshet for six years (2002, 2003, 2006, 2008, 2015, 2016—see Carey et al., 2013a; Fig. 4
516 ~~for data on early years~~Fig. 7).

Formatted: Font: Not Italic

Formatted: Font: Not Italic



Formatted: Font: (Default) +Body (Times New Roman), 12 pt

Figure 7. DOC concentration in mg/L is displayed on the y-axis with the left panel showing DOC concentrations measured in 2002, 2003, 2006, 2008, 2015 and 2016 during spring (April 15 to June 14). The right panel displays DOC concentrations for the same years during summer, fall and winter (prior to April 15; June 15 to Dec 31). Season is additionally indicated by shape and color (purple/filled triangle - Spring; light green/filled square - Summer; open circle - Fall; open diamond - Winter).

There is a considerable variability in freshet timing and volume as some years show a single, rapid event (e.g. 2015) while others have a staggered response in relation to multiple spring warming events (e.g. 2003, 2016). Regardless of freshet timing and volume, DOC concentrations always rise in response to the first onset of flows and are insensitive to the volume of water exported during freshet. While there are notable contrasts in both 2015 and 2016 freshets, in both cases, the initial DOC response to flows is

529 similar (Fig. 43), and corresponds with those reported in earlier years (Carey et al., 2013a). The
530 implication of these historical and recent observations is that while DOC exported during spring is
531 hydrologically mediated via the transport pathways, DOC concentrations are not related to flow
532 volumes at the headwater scale. Although investigation into headwaters is relatively rare (Bishop et al.,
533 2008), studies have reported greater variation in DOC at the headwater scale than in large rivers (Sedell
534 and Dahm, 1990; Wolock et al., 1997; Temnerud and Bishop, 2005; Temnerud et al., 2010; Creed et al.,
535 2015). Relatively small amounts of water are sufficient to extinguish the available pool of OM
536 responsible for DOC peak concentration in the spring at this headwater catchment. For GC, estimates of
537 DOC export between 15 April-14 June over the six years range between 0.29 and 1.48 g C m⁻² with
538 2015 and 2016 on the lower end (Table 2).

Year	Site	Spring (g C m ⁻²)	Summer (g C m ⁻²)	Fall (g C m ⁻²)	Spring & Summer (g C m ⁻²)	Spring, Summer & Fall (g C m ⁻²)
2002	GC	0.83	0.12		0.95	
2003	GC	0.42	0.19		0.61	
2006	GC	1.48	0.14		1.61	
2008	GC	0.97	0.31		1.28	
2015	GC	0.55	0.08	0.28	0.63	0.90
2016	GC	0.29	0.28	0.20	0.57	0.77
2016	WCO	0.06	0.09	0.09	0.15	0.24

539
540 **Table 2.** Load estimates for GC and WCO for 6 years by individual season, spring and summer, all
541 relevant seasons together (spring, summer, fall) in g C m⁻².

543 In the years that had multiple spring warming events (2003, 2016), loads were typically smaller as DOC
544 concentrations had declined ahead of larger runoff volumes. For WCO, the pattern of DOC
545 concentrations during freshet was similar to GC, yet dampened with lower values during freshet over a
546 longer period from mixing of various landscapes that integrate three distinct ecosystems and a small

Formatted: Font: (Default) +Body (Times New Roman), 12 pt, Bold

Formatted: Font: Not Italic

lake over a large elevation range. From an export perspective, springtime area-normalized loads were much smaller at WCO, suggesting that headwater ecosystems such as GC is where the bulk of DOC is sourced during freshet.

Following freshet, DOC concentrations were remarkably consistent across the sampling sites. The headwater GC and BB values were ~1.5 mg L⁻¹ whereas those at WCO were typically 2-3 mg L⁻¹, suggesting that additional sources such as wetlands and Coal Lake contributed slightly to downstream increases in DOC concentration during summer months. There were small increases in DOC concentrations associated with rainfall events in summer. A notable feature of both 2015 and 2016 were the substantial late season rains that generated flows outside the typical range at both GC and WCO (Fig. 3). Despite these large flows, DOC concentrations did not rise to the levels observed during freshet, and the effect on DOC export varied between years (Table 2). In 2015, freshet was typical of prior observations with a large increase in both discharge and DOC concentrations with 1.9 times the DOC exported compared to fall. While DOC concentrations peaked in spring at both GC and WCO in 2016, export remained similar across all seasons. In both years, DOC export was consistent or approached half of spring export suggesting either alternate runoff pathways/flow generation mechanisms or a reduced source of soluble OM in soils available for transport. Considering water tables were very high during this period, we presume that the available pool of OM in shallow organic layers was more depleted than in spring yielding less terrestrially-derived, aromatic DOM (Mutschlecner et al., 2018).

Formatted: Font: Not Italic

Formatted: Line spacing: Double

Formatted: Font: 12 pt, Superscript

Formatted: Font: 12 pt, Superscript

Formatted: Font: Not Italic

Formatted: Font: Not Italic

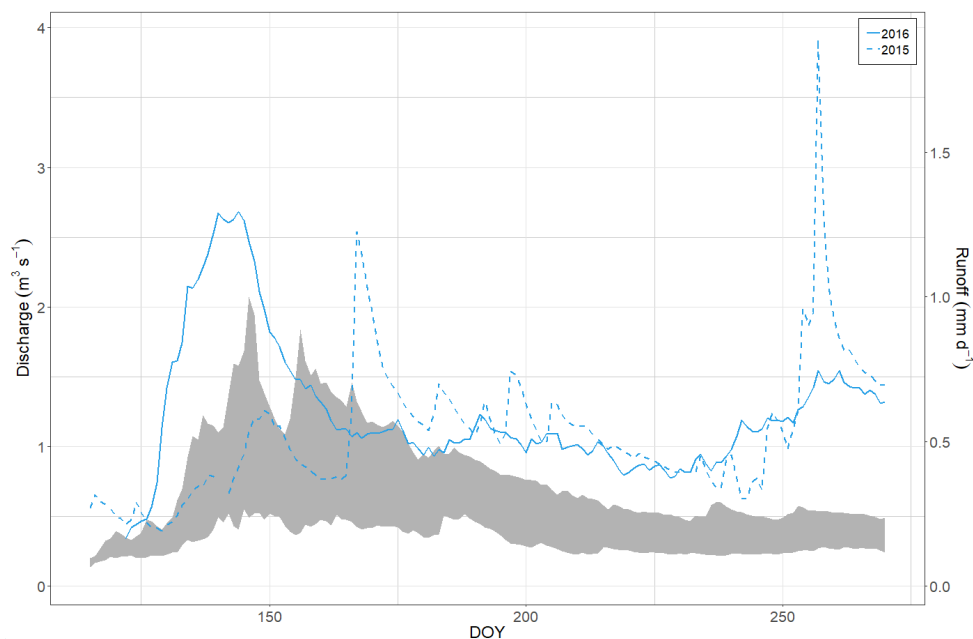
Formatted: Font: Not Italic

Formatted: Font: (Default) +Body (Times New Roman), 12 pt

Formatted: Font: Not Italic

Formatted: Font: Not Italic

For WCO, the pattern of DOC during freshet w similar to GC, yet dampened with lower values during freshet over a longer period from mixing of various landscapes that integrate three distinct ecosystems and a small lake over a large elevation range. Following freshet, DOC was remarkably consistent across the sampling sites. The headwater GC and BB values were 1.5 mg L^{-1} whereas those at WCO were typically $2\text{--}3 \text{ mg L}^{-1}$, suggesting that additional sources such as wetlands and Coal Lake contributed slightly to downstream increases in DOC. There were small increases in DOC concentration associated with rainfall events. A notable feature of both 2015 and 2016 were the substantial late season rains that generated flows outside the typical range at both GC and WCO (Fig. 5). Despite these large flows, DOC concentrations did not rise to the levels observed during freshet, suggesting either alternate runoff pathways/flow generation mechanisms or a reduced source of soluble OM in soils available for transport. Considering water tables were very high during this period, we presume that the available pool of OM in shallow organic layers was less than in spring.



Formatted: Font: 12 pt

Figure 6. Historical flow at WCO with 2015–6 flows superimposed. Grey area represents inter-quartile range of 1993–2013 data. Dashed line = 2015; Solid line = 2016. Day of year along x-axis.

Unlike results elsewhere (Petrone et al., 2006, 2007; Raymond et al., 2007; Striegl et al., 2007; Balcarczyk et al 2009; Prokushkin et al., 2011; Holmes et al., 2012), there is no robust relationship between discharge and DOC over multiple years or within single years, suggesting that for this environment and at the headwater scale, discharge is a poor predictor of DOC [export](#) on an annual basis at the GC catchment ([Table S2](#)). However, on a seasonal basis, the relationship between DOC and discharge was [at times](#) stronger, ~~particularly for~~ [during](#) summer, fall and winter when concentrations [and discharge](#) were relatively low ([Table S2; Fig. 8](#)).

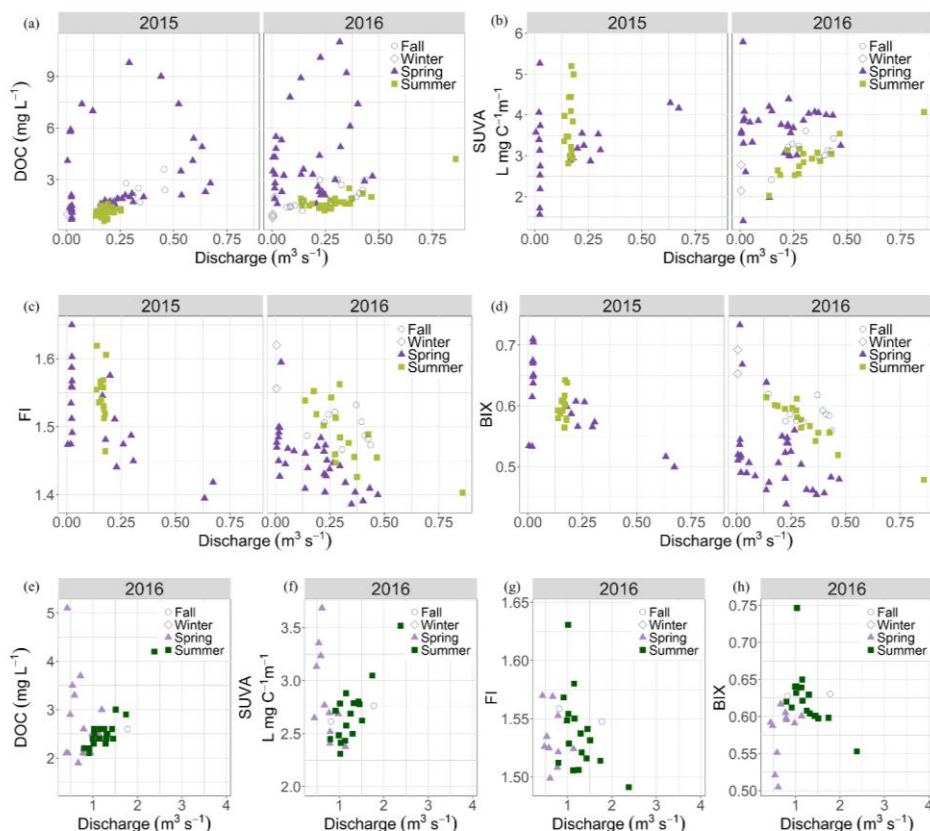


Figure 8. Concentration-discharge (C-Q) plots of DOC concentration, SUVA, FI and HIX for GC (2015-6) and WCO (2016). Panels a, b, c, d show DOC concentration, SUVA₂₅₄, FI and HIX optical indices in relation to discharge for 2015 and 2016 at Granger Creek (GC). The bottom four panels (e, f, g, h) show the same sets of concentration-discharge relationships for 2016 at Wolf Creek Outlet (WCO). Season is indicated by shape and color (purple/filled triangle - Spring; green/filled square - Summer; open circle - Fall; open diamond - Winter). Y-axis values differ for each plot.

The lack of robust relationships between flow and DOC concentration over time is not surprising given the complex interaction of transport pathways and available organic carbon as the season progresses. The highly dynamic nature of freshet complicates C-Q patterns when concentration and export is greatest (see section 4.3), whereas later in the year as thaw increases and subsurface pathways contribute more, weaker (yet more significant) relations exist.

We caution the use of regression equations relating DOC and flow to predict DOC loads, at least on an annual basis. However, for larger streams such as WCO, this approach may be more tractable due to mixing of sources and process integration (Buffam et al., 2007; Creed et al., 2015; Peralta-Tapia et al., 2015a).

A curious result was a notable decline in freshet DOC concentrations between the four years in the 2000s (Carey et al., 2013a) and the 2015-2016 study years (Fig. 7). In each of the early years, peak DOC concentrations ranged between 17 and 27 mg L⁻¹ (0.42 to 1.48 g C m⁻² exported) with overall higher concentrations during freshet, whereas the maximum DOC values for GC were 9.5 and 11.3 mg L⁻¹ (0.55 and 0.29 g C m⁻² exported) in 2015 and 2016, respectively. The reason for this decline is uncertain, yet is not related to freshet conditions as flows and climate during freshet were similar among certain years. We have also largely ruled out instrumentation or sampling as a source of this difference as mid-season values were unchanged. Tiwari et al. (2018), using 23 years of data from the Krycklan research catchment in central Sweden, suggest that peak DOC concentrations are most closely related to warm fall temperatures, cold winter conditions and shallow snowpacks. In addition, Ågren et al. (2010a) used 15 years of data from boreal catchments also located in the Krycklan research catchment to show that high export of DOC in the snow-free season led to decreased export in the subsequent year. For six years of data at GC catchment, winter (Nov-Mar) temperatures show a weak correspondence

with DOC export, in that warmer winters tend to have lower DOC export during the following spring, which is supported by Scandinavian research (Ågren et al., 2010a,b; Haei et al., 2010). However, there was no relation between snow depth and peak DOC concentration for the six years [\(data not shown, snow data available in Rasouli et al., 2019\)](#). A final possibility may be that increased summer and fall wetness that has occurred in recent years is reducing decomposition as outlined by Balcarczyk et al. (2009).

4.2 DOM indices in streams

Optical indices are closely aligned with seasonal hydrological patterns in northern rivers across scales (Neff et al., 2006; Striegl et al., 2007; Spencer et al., 2008; Holmes et al., 2012). An expanding knowledge base linking optical indices with OM sources and biodegradability (Balcarczyk et al., 2009; Kellerman et al., 2018) and catchment processes exists with observations from both temperate and northern study sites. A number of widely-used indices (reviewed in Hansen et al. 2016) facilitate comparison among sites, and chemometric components through the ever-expanding library OpenFluor (<http://www.openfluor.org>). We applied the widely used drEEM toolkit (Murphy et al., 2013) to our dataset, yet we were unable to validate the model using a split-half approach to the dataset. However, the overall relationship between CDOM and DOC is robust in WCRB [\(Fig. S1\)](#) as observed in other rivers (Stedmon et al., 2011; Spencer et al., 2012; Frey et al., 2015), with a strong relationship between A254 and DOC (r^2 : 0.97, $p < 0.001$).

The predominant signals in DOM indices observed in WCRB streams correspond well with those reported in the literature for northern and permafrost basins (Walker et al., 2013; Cory et al., 2014), and support conceptual models of coupled runoff generation and DOM transport (Mu et al., 2017). At the

onset of freshet and the rise in DOC, SUVA₂₅₄ rises while both BIX and FI decline to annual minima. This freshet response is attributed to the mobilization of DOM derived from leaf litter and older terrestrial precursor material with high molecular weight and aromatic DOM (Wickland et al., 2012). This pattern is particularly clear at GC, where BIX and FI are closely correlated with each other and negatively correlated with SUVA₂₅₄. At this time, near-surface pathways across frozen ground are the only mechanism to rapidly transport OM and water to the stream. Once DOC declines, SUVA₂₅₄ decreases and FI and BIX begin to increase. A number of mechanisms can be attributed to these changes: an increase in more microbial DOM as thaw depths increase and soil temperatures warm, and an increased ability of mineral soils to adsorb DOM with high organic weight and large aromatic structures along flow pathways (Ussiri and Johnson, 2004). The gradual change in the three fluorescence indices as summer progresses suggests a continual decline in high molecular weight, older DOM (lower SUVA₂₅₄) and a greater proportion of recently produced DOM. During the unusually wet fall periods, rising water tables and activation of near-surface and overland flow pathways resulted in increases in SUVA and declines in BIX and FI, yet not to the same magnitude as spring when flows were of similar volume. The smaller influence of wet fall periods on changing DOM composition can be explained in part by a much wider range of flow pathways across deeply thawed soils and also considerable adsorption sites for DOM. In addition, sources of leaf decomposition compounds located in upper soil horizons leached in spring have had less time to replenish prior to leaf-fall. As with DOC concentration, the important implication is that seasonality as opposed to flow magnitude has a greater influence on the quality of DOM. By early November, temperatures throughout WCRB are below freezing and a long winter recession occurs. Limited over-winter sampling at WCO and GC show

SUVA₂₅₄ values declining to their lowest values prior to freshet with a corresponding maximum in BIX and FI. This pattern corresponds to those reported elsewhere in the Yukon River Basin and other watersheds in Alaska (Striegl et al., 2007; O'Donnell et al., 2010; Mutschlecner et al., 2018).

4.4 Patterns across space and time

Understanding the integration of biogeochemical signals across temporal and spatial scales is a fundamental challenge in diverse catchments such as WCRB. The link between catchment processes and spatial scale to control coupled hydrological-biogeochemical processes has garnered considerable attention (Ågren et al., 2007; Buffam et al., 2007; Creed et al., 2015; Tiwari et al., 2017). Whereas flowpaths at the headwater catchments (GC, BB) are well documented (Quinton and Carey, 2008; Carey et al., 2013a), the dominant hydrological pathways at the scale of WCRB shift from the supra- and intra-permafrost pathways to one that is more groundwater driven. In addition, a ~1 km² lake in the centre of the basin has an important storage and mixing effect. The impact of these changes on the pattern of DOM indices at WCO is complex and not easily resolved back to component landscape types. From the PCA, a host of controls act to influence DOC and fluorescence indices throughout WCRB (Fig. 4, Fig. 6, Table 3). As scale increases, DOC concentrations increase during summer and low flows yet are more muted during freshet at the outlet compared with headwater streams [in accordance with the river continuum concept \(Creed et al., 2015\)](#). WCO had lower SUVA₂₅₄, greater BIX and FI compared with both headwater and wetland systems. The lower SUVA₂₅₄ at WCO corresponds to an increasing dominance of groundwater or greater baseflow along with deeper subsurface pathways due to a lesser extent of frozen ground (Walvoord and Striegl, 2007; O'Donnell et al., 2010). In contrast, higher FI and BIX likely reflect the influence of these deeper flow pathways and any processes and production that

681 occur in Coal Lake, which sits in the approximate mid-point of WCRB. Most FI values at the headwater
682 catchments are between 1.4 and 1.6, reflecting terrestrial plants as the dominant source of DOM. By
683 contrast, values in excess of 1.6 at WCO, particularly during winter and low flow periods, suggest some
684 microbial DOM sources. The high values of BIX in winter at WCO supports some moderate autotrophic
685 production, yet certainly not at the levels of many aquatic ecosystems (Kellerman et al., 2018).

<i>PCs</i>	DOY	Q (m ³ s ⁻¹)	Degree days > 0°C	Riparian SM (5-15 cm avg)	Riparian ST (5-15 cm avg)	Midslope SM (5-15 cm avg)	Midslope ST (5-15 cm avg)	Air temp – BB weather station
<i>PC1</i>	-0.26***	-0.11*	-0.36***	0.20**	-0.23***	0.32***	-0.13*	0.23***
<i>PC2</i>	0.081	0.12*	0.14*	-0.032	-0.049	-0.15*	-0.092	-0.19**
<i>PC3</i>	-0.024	-0.019	-0.07	0.28***	0.13*	0.41***	0.22**	0.26***

Table 3. Correlations between principal components (PCs) with DOY (day of year), degree days > 0 Celsius, average riparian soil moisture between 5 to 15cm depth, average riparian soil temperature between 5 and 15 cm depth, average soil moisture at midpoint of north-facing slope between 5-15 cm depth, average soil temperature at the midpoint of north-facing slope between 5 and 15 cm depth and air temperature recorded at the BB weather station. *p<0.05, **p<0.01, ***p<0.001

686 Changes in DOC export as a result of climate change in permafrost regions are uncertain for aquatic
687 ecosystems and in the overall carbon balance of northern regions (Striegl et al., 2005, 2007; Raymond et
688 al., 2007; Frey and McClelland, 2009; Guo et al., 2012; Laudon et al., 2013; Kicklighter et al., 2013;
689 Abbott et al., 2015; Johnston et al., 2018). DOC concentration, optical properties and associated
690 biodegradability change with source, residence time and processing, all of which vary with thaw depth
691 (review by Kalbitz et al., 2000; Wickland et al., 2007). [At the scale of WCRB and its sub-catchments,](#)
692 [results from other research in permafrost regions not experiencing rapid thermokarst that suggest a](#)
693 [gradual increase in biodegradability \(Spencer et al., 2008; Mann et al., 2015\) are not necessarily](#)
694 [discernable. However, changes in DOC concentrations and export are likely due to mineralization and](#)

Formatted: Font: Not Italic

695 ~~adsorption within the soil profile as thaw increases and active layers expand (Striegl et al., 2007; Mu et~~
696 ~~al., 2017) with a warming climate. Results from this work compare well with others in permafrost~~
697 ~~regions that are not experiencing rapid thermokarst, suggesting a gradual decrease in biodegradability~~
698 ~~and changes in DOM likely due to mineralization and adsorption as thaw increases (Striegl et al., 2007;~~
699 ~~Mu et al., 2017).~~ Whereas most conceptual models have focussed on the implications of thaw and
700 thermokarst on DOM (Mu et al., 2017), in this study we had the opportunity to evaluate the influence of
701 increased late summer and fall precipitation, which is a notable feature in fall across much of subarctic
702 Canada (Spence and Rausch, 2005; Spence et al., 2015; DeBeer et al., 2016). Despite late-season
703 wetness and flow conditions similar to freshet in both years, which is anomalous in the WCRB record
704 (Fig. 5), the change in DOC concentration and DOM indices were small compared to changes observed
705 during snowmelt. Large late-season rain events on deeply thawed soils did not transport the same
706 volume of DOM as freshet despite high water tables due to a depleted DOM source and increased
707 adsorption potential. FI and BIX were typically higher at the outlet than the headwater and wetland
708 sites, which is attributed to lake influences and greater autotrophic production with increasing stream
709 order.
710 While there was an increase in concentrations and a shift to heavier, more aromatic DOM during fall,
711 values were still closer to those experienced during summer baseflow.
712 The implication is that changes in precipitation, particularly in summer, will have a limited influence on
713 changing DOC export and quality compared to changes that result from emergent flow pathways,
714 thermokarst or factors that influence values during freshet. From DOC concentrations that have been
715 measured intermittently over the course of 15 years, we report a recent decline in freshet DOC

concentrations at a headwater catchment, which is difficult to reconcile with permafrost thaw (which has not been observed or documented). Possible explanations are warmer winters and winter soils (Haei et al., 2010; Tiwari et al., 2017), or that the increase in fall wetness results in a decline in spring DOC concentrations through a second, albeit smaller, flushing event (similar to Ågren et al., 2010b).

5 Conclusions

This study reports patterns of DOC concentration and DOM quality derived from optical indices over several years in a subarctic alpine watershed where hydrological processes have been studied for approximately two decades. We show that DOC concentration and optical indices have a strong temporal variability associated with seasonality, and that A254 and CDOM were reliable proxies for DOC concentrations. Observations from nested watersheds with drainage areas of ~6 to 179 km² indicate that mixing and complex process interactions dampen variability in downstream responses and result in a gradual shift in DOM characteristics. Despite considerable fluctuations among years, DOC concentrations and export are consistently highest during freshet despite differences in timing and magnitude of hydrological response during six years of coupled DOC and discharge measurements. Optical indices also showed the largest variation during freshet and were relatively insensitive to flow volumes despite large differences in freshet between 2015 and 2016. At the headwater scale, DOM is less responsive to rainfall events in summer when the water table descends into deeper mineral soil layers. Mobilization and transport mechanisms operating at the headwater scale are linked to stream hydrochemistry while material inputs from different landscape types causes mixing and dilutes DOM signals at increasing watershed scales.

Recent years have shown an increase in late fall streamflow that is uncommon in the long-term hydrometric record that is more often observed across northern watersheds. DOC flux in recent years falls on the low end of the range reported a decade ago.

Other factors that have the capacity to influence the availability, movement and export of DOC and DOM are forecasted to change with rapid warming in this environment (DeBeer et al., 2016). Factors that play are a longer growing season, a shift in vegetation community composition and spatial extent, warmer winters, increased baseflow with greater groundwater input, earlier freshet or disruption of the typical northern hydrograph and an altered precipitation regime. Ultimately, watershed scale and the arrangement of landscape types will play important roles in determining how DOC flux and DOM lability change under a warming climate, and altered precipitation, disturbance and vegetation regimes.

Data availability. Streamflow datasets used for this study are available on the GWF/CCRN database (<http://giws.usask.ca/meta/>) per the outlined data policy. For DOC/fluorescence, please contact the corresponding author as a data repository is currently being developed.

Competing Interests. There are no competing interests.

Acknowledgements. Financial support for this project was provided by the Changing Cold Regions Network (CCRN) through the Natural Sciences and Engineering Research Council of Canada (NSERC). The authors would like to thank Renée Lemmond, Heather Bonn, Dave Barrett, Mike Treberg, Tyler Williams and Crystal Beaudry for help in the field from 2013-2017. We also thank Claire Oswald for help with preliminary Aqualog sample runs and analysis, and Sean Leipe for verifying WCRB geospatial data to create an updated site map; and Supriya Singh for providing Spencer Creek DOC and optical data for filter method validation. Comments from two anonymous reviewers greatly improved the clarity and quality of the manuscript.

759 -

760 **References**

761 Abbott, B. W., Jones, J. B., Godsey, S. E., Larouche, J. R., and Bowden, W. B.: Patterns and persistence
762 of hydrologic carbon and nutrient export from collapsing upland permafrost, *J. Geophys. Res.*
763 *Biogeosci.*, 12, 12, 3725-3740, 2015.

764 Ågren, A., Buffam, I., Jansson, M., and Laudon, H.: Importance of seasonality and small streams for the
765 landscape regulation of dissolved organic carbon export. *J. Geophys. Res. Biogeosci.*, 112, G3, 2007.

766 Ågren, A., Haei, M., Köhler, S., Bishop, K., and Laudon, H.: Long cold winters give higher stream
767 water dissolved organic carbon (DOC) concentrations during snowmelt, *Biogeosci. Discuss.*, 7, 3, 4857,
768 2010a.

769 Ågren, A., Haei, M., Kohler, S. J., Bishop, K., and Laudon, H.: Regulation of stream water dissolved
770 organic carbon (DOC) concentrations during snowmelt: The role of discharge, winter climate and
771 memory effects, *J. Geophys. Res. Biogeosci.*, 7, 9, 2901-2913, 2010b.

772 Bache, S. M. and Wickham, H.: magrittr: A Forward-Pipe Operator for R. R package version 1.5,
773 <https://CRAN.R-project.org/package=magrittr>, 2014.

774 Balcarczyk, K. L., Jones, J. B., Jaffé, R., and Maie, N.: Stream dissolved organic matter bioavailability
775 and composition in watersheds underlain with discontinuous permafrost, *Biogeochemistry*, 94, 3, 255-
776 270, 2009.

777 Bishop, K., Buffam, I., Erlandsson, M., Fölster, J., Laudon, H., Seibert, J., and Temnerud, J.: Aqua
778 Incognita: the unknown headwaters, *Hydrol. Process.*, 22, 8, 1239-1242, 2008.

779 Boyer, E. W., Hornberger, G. M., Bencala, K. E., and McKnight, D. M.: Effects of asynchronous
780 snowmelt on flushing of dissolved organic carbon: a mixing model approach, *Hydrol. Process.*, 14, 18,
781 3291-3308, 2000.

782 Bring, A., Fedorova, I., Dibike, Y., Hinzman, L., Mård, J., Mernild, S. H., Prowse, T., Semenova, O.,
783 and Woo, M. K.: Arctic terrestrial hydrology: A synthesis of processes, regional effects, and research
784 challenges, *J. Geophys. Res. Biogeosci.*, 121, 3, 621-649, 2016.

785 Brooks, P. D., and Lemon, M. M.: Spatial variability in dissolved organic matter and inorganic nitrogen
786 concentrations in a semiarid stream, San Pedro River, Arizona, *J. Geophys. Res. Biogeosci.*, 112, G3,
787 2007.

788 Buffam, I., Laudon, H., Temnerud, J., Mörtz, C. M., and Bishop, K.: Landscape-scale variability of
789 acidity and dissolved organic carbon during spring flood in a boreal stream network, *J. Geophys. Res.*
790 *Biogeosci.*, 112, G1, 2007.

Burd, K., Tank, S. E., Dion, N., Quinton, W. L., Spence, C., Tanentzap, A. J., and Olefeldt, D.: Seasonal shifts in export of DOC and nutrients from burned and unburned peatland-rich catchments, Northwest Territories, Canada, *Hydrol. Earth Syst. Sci.*, 22, 4455–4472, doi: 10.5194/hess-22-4455-2018, 2018.

Carey, S. K.: Dissolved organic carbon fluxes in a discontinuous permafrost subarctic alpine catchment, *Permafrost Periglacial Processes*, 14, 2, 161-171, 2003.

Carey, S. K., Boucher, J. L., and Duarte, C. M.: Inferring groundwater contributions and pathways to streamflow during snowmelt over multiple years in a discontinuous permafrost subarctic environment (Yukon, Canada), *Hydrogeol. J.*, 21, 1, 67-77, 2013a.

Carey, S. K., Tetzlaff, D., Buttle, J., Laudon, H., McDonnell, J., McGuire, K., Seibert, J., Soulsby, C., and Shanley, J.: Use of color maps and wavelet coherence to discern seasonal and interannual climate influences on streamflow variability in northern catchments, *Water Resour. Res.*, 49, 10, 6194-6207, 2013b.

[Coch, C., Juhls, B., Lamoureux, S.F., Lafrenière, M., Fritz, M., Heim, B., and Lantuit, H.: Characterizing organic matter composition in small Low and High Arctic catchments using terrestrial colored dissolved organic matter \(cDOM\), *Biogeosci. Discuss.*, 2019 \(In review\).](#)

Cory, R. M., and McKnight, D. M.: Fluorescence spectroscopy reveals ubiquitous presence of oxidized and reduced quinones in dissolved organic matter, *Environ. Sci. Technol.*, 39, 21, 8142-8149, 2005.

Cory, R. M., Ward, C. P., Crump, B. C., and Kling, G. W.: Sunlight controls water column processing of carbon in arctic fresh waters, *Science*, 345, 6199, 925-928, 2014.

Creed, I. F., McKnight, D. M., Pellerin, B. A., Green, M. B., Bergamaschi, B. A., Aiken, G. R., Burns, D. A., Findlay, S. E. G., Shanley, J. B., Striegl, R. G., Aulenbach, B. T., Clow, D. W., Laudon, H., McGlynn, B. L., McGuire, K. J., Smith, R. A., and Stackpoole, S. M.: The river as a chemostat: fresh perspectives on dissolved organic matter flowing down the river continuum, *Can. J. Fish. Aquat. Sci.*, 72, 8, 1272-1285, 2015.

Davidson, E. A., and Janssens, I. A.: Temperature sensitivity of soil carbon decomposition and feedbacks to climate change, *Nature*, 440, 7081, 165, 2006.

DeBeer, C. M., Wheeler, H. S., Carey, S. K., and Chun, K. P.: Recent climatic, cryospheric, and hydrological changes over the interior of western Canada: a review and synthesis, *Hydrol. Earth Syst. Sci.*, 20, 4, 1573, 2016.

Formatted: Line spacing: single

- Dittmar, T., and Kattner, G.: The biogeochemistry of the river and shelf ecosystem of the Arctic Ocean: a review, *Mar. Chem.*, 83, 3-4, 103-120, 2003.
- Dixon, R. K., Solomon, A. M., Brown, S., Houghton, R. A., Trexler, M. C., and Wisniewski, J.: Carbon pools and flux of global forest ecosystems, *Science*, 263, 5144, 185-190, 1994.
- Fellman, J. B., Hood, E., and Spencer, R. G.: Fluorescence spectroscopy opens new windows into dissolved organic matter dynamics in freshwater ecosystems: A review, *Limnol. Oceanogr.*, 55, 6, 2452-2462, 2010.
- Finlay, J., Neff, J., Zimov, S., Davydova, A., and Davydov, S.: Snowmelt dominance of dissolved organic carbon in high-latitude watersheds: Implications for characterization and flux of river DOC, *Geophys. Res. Lett.*, 33, 10, 2006.
- Finlay, J. C., Hood, J. M., Limm, M. P., Power, M. E., Schade, J. D., and Welter, J. R.: Light-mediated thresholds in stream-water nutrient composition in a river network, *Ecology*, 92, 1, 140-150, 2011.
- Frey, K. E., and Smith, L. C.: Amplified carbon release from vast West Siberian peatlands by 2100. *Geophys. Res. Lett.*, 32(9), 2005.
- Frey, K. E., and McClelland, J. W.: Impacts of permafrost degradation on arctic river biogeochemistry. *Hydrol. Process.*, 23 (1), 169-182, doi: 10.1002/hyp.7196, 2009.
- Frey, K. E., Sobczak, W. V., Mann, P. J., and Holmes, R. M.: Optical properties and bioavailability of dissolved organic matter along a flow-path continuum from soil pore waters to the Kolyma River, Siberia. *Biogeosci. Discuss.*, 12 (15), 2015.
- Gordeev, V. V., Martin, J. M., Sidorov, I. S., and Sidorova, M. V.: A reassessment of the Eurasian river input of water, sediment, major elements, and nutrients to the Arctic Ocean, *Am. J. Sci.*, 296, 6, 664-691, 1996.
- Grolemund, G., and Wickham, H.: Dates and Times Made Easy with lubridate, *J. Stat. Soft.*, 40, 3, 1-25, <http://www.jstatsoft.org/v40/i03/>, 2011.
- Guo, L., Cai, Y., Belzile, C., and Macdonald, R. W.: Sources and export fluxes of inorganic and organic carbon and nutrient species from the seasonally ice-covered Yukon River, *Biogeochemistry*, 107, 1-3, 187-206. <https://doi.org/10.1007/s10533-010-9545-z>, 2012.
- Haei, M., Öquist, M. G., Buffam, I., Ågren, A., Blomkvist, P., Bishop, K., Ottosson Löfvenius, M., and Laudon, H.: Cold winter soils enhance dissolved organic carbon concentrations in soil and stream water, *Geophys. Res. Lett.*, 37, 8, 2010.

884 Hansen, A. M., Kraus, T. E., Pellerin, B. A., Fleck, J. A., Downing, B. D., and Bergamaschi, B. A.:
885 Optical properties of dissolved organic matter (DOM): Effects of biological and photolytic degradation.
886 *Limnol. Oceanogr.*, 61, 3, 1015-1032, 2016.

887
888 Harms, T. K., Edmonds, J. W., Genet, H., Creed, I. F., Aldred, D., Balser, A., and Jones, J. B.:
889 Catchment influence on nitrate and dissolved organic matter in Alaskan streams across a latitudinal
890 gradient. *J. Geophys. Res. Biogeosci.*, 121, 2, 350-369, 2016.

891
892 [Herod, M. N., Li, T., Pellerin, A., Kieser, W. E., and Clark, I. D.: The seasonal fluctuations and](#)
893 [accumulation of iodine-129 in relation to the hydrogeochemistry of the Wolf Creek Research Basin, a](#)
894 [discontinuous permafrost watershed, *Science of the Total Environment*, 569, 1212-1223, 2016.](#)

895
896 Holmes, R. M., McClelland, J. W., Raymond, P. A., Frazer, B. B., Peterson, B. J., and Stieglitz, M.:
897 Lability of DOC transported by Alaskan rivers to the Arctic Ocean, *Geophys. Res. Lett.*, 35, L03402,
898 doi: 10.1029/2007GL032837, 2008.

899
900 Holmes, R. M., McClelland, J. W., Peterson, B. J., Tank, S. E., Bulygina, E., Eglinton, T. I., Gordeev,
901 V. V., Gurtovaya, T. Y., Raymond, P. A., Repeta, D. J., Staples, R., Striegl, R. G., Zhulidov, . V., and
902 Zimov, S. A.: Seasonal and annual fluxes of nutrients and organic matter from large rivers to the Arctic
903 Ocean and surrounding seas, *Estuaries Coasts*, 35, 2, 369–382, doi:10.1007/s12237-011-9386-6, 2012.

904
905 [Hugelius, G., Strauss, J., Zubrycz, S., Schirrmeister, L., Grosse, G., Michaelson, G.J., Koven, C.D.,](#)
906 [O'Donnell, J.A., Elberling, B., Mishra, U., Camill, P., Yu, Z., Palmtag, J., and Kuhry, P.: Estimated](#)
907 [stocks of circumpolar permafrost carbon with quantified uncertainty ranges and identified data gaps,](#)
908 [*Biogeosci.*, 11, 6573–6593, 2014.](#)

909
910 Huguet, A., Roux-De Balman, H., and Parlanti, E.: Fluorescence spectroscopy applied to the
911 optimisation of a desalting step by electrodialysis for the characterisation of marine organic matter, *J.*
912 *Membr. Sci.*, 326, 1, 186-196, 2009.

913
914 Jaffé, R., McKnight, D., Maie, N., Cory, R., McDowell, W. H., and Campbell, J. L.: Spatial and
915 temporal variations in DOM composition in ecosystems: The importance of long-term monitoring of
916 optical properties. *J. Geophys. Res. Biogeosci.*, 113(G4), 2008.

917
918 Johnston, S. E., Shorina, N., Bulygina, E., Vorobjeva, T., Chupakova, A., Klimov, S. I., Kellerman, A.
919 M., Guillemette, F., Shiklomanov, A., Podgorski, D. C., and Spencer, R. G.: Flux and seasonality of
920 dissolved organic matter from the Northern Dvina (Severnaya Dvina) River, Russia, *J. Geophys. Res.*
921 *Biogeosci.*, 123, 3, 1041-1056, 2018.

922
923 Kaiser, H. F., and Rice, J.: Little jiffy, mark IV, *SAGE J. Education. Psychol. Measur.*, 34, 1, 111-117,
924 1974.

925

Formatted: Line spacing: single

Formatted: Line spacing: single

926 Kalbitz, K., Solinger, S., Park, J. H., Michalzik, B., and Mtzner, E.: Controls on the dynamics of
 927 dissolved organic matter in soils: a review, *Soil Sci.*, 165, 4, 277-304, 2000.
 928
 929 Kassambara, A. (2018).: ggpubr: ‘ggplot2’ Based Publication Ready Plots, R package version 0.1.7,
 930 <https://CRAN.R-project.org/package=ggpubr>, 2018.
 931
 932 Kawahigashi, M., Kaiser, K., Kalbitz, K., Rodionov, A., and Guggenberger, G.: Dissolved organic
 933 matter in small streams along a gradient from discontinuous to continuous permafrost, *Global Change*
 934 *Biol.*, 10, 9, 1576-1586, 2004.
 935
 936 Kawahigashi, M., Kaiser, K., Rodionov, A., and Guggenberger, G.: Sorption of dissolved organic
 937 matter by mineral soils of the Siberian forest tundra, *Global Change Biol.*, 12, 10, 1868-1877, 2006.
 938
 939 Kellerman, A. M., Guillemette, F., Podgorski, D. C., Aiken, G. R., Butler, K. D., and Spencer, R. G.:
 940 Unifying concepts linking dissolved organic matter composition to persistence in aquatic ecosystems,
 941 *Environ. Sci. Technol.*, 52, 5, 2538-2548, 2018.
 942
 943 Kicklighter, D. W., Hayes, D. J., McClelland, J. W., Peterson, B. J., McGuire, A. D., and Melillo, J. M.:
 944 Insights and issues with simulating terrestrial DOC loading of Arctic river networks, *Ecol. Appl.*, 23, 8,
 945 1817–1836, doi:10.1890/11-1050.1, 2013.
 946
 947 Koch, J. C., Runkel, R. L., Striegl, R., and McKnight, D. M.: Hydrologic controls on the transport and
 948 cycling of carbon and nitrogen in a boreal catchment underlain by continuous permafrost, *J. Geophys.*
 949 *Res. Biogeosci.*, 118, 2, 698-712, 2013.
 950
 951 Kokelj, S. V., Lacelle, D., Lantz, T. C., Tunnicliffe, J., Malone, L., Clark, I. D., and Chin, K. S.:
 952 Thawing of massive ground ice in mega slumps drives increases in stream sediment and solute flux
 953 across a range of watershed scales, *J. Geophys. Res. Earth Surf.*, 118, 2, 681-692, 2013.
 954
 955 Meteorological Service of Canada (MSC): National climate data archive of Canada.Environment
 956 Canada, Dorval, QB, 202017.
 957
 958 Larouche, J. R., Abbott, B. W., Bowden, W. B., and Jones, J. B.: The role of watershed characteristics,
 959 permafrost thaw, and wildfire on dissolved organic carbon biodegradability and water chemistry in
 960 Arctic headwater streams, *J. Geophys. Res. Biogeosci.*, 12, 14, 4221-4233, 2015.
 961
 962 Laudon, H., Buttle, J., Carey, S. K., McDonnell, J., McGuire, K., Seibert, J., Shanley, J., Soulsby, C.,
 963 and Tetzlaff, D.: Cross-regional prediction of long-term trajectory of stream water DOC response to
 964 climate change. *Geophys. Res. Lett.*, 39 (18), 2012.
 965

966 Laudon, H., Tetzlaff, D., Soulsby, C., Carey, S., Seibert, J., Buttle, J., Shanley, J., McDonnell, J. J., and
 967 McGuire, K.: Change in winter climate will affect dissolved organic carbon and water fluxes in mid-to-
 968 high latitude catchments, *Hydrol. Process.*, 27, 5, 700-709, 2013.
 969
 970 Lewkowicz, A. G., and Ednie, M.: Probability mapping of mountain permafrost using the BTS method,
 971 Wolf Creek, Yukon Territory, Canada, *Permafrost Periglacial Processes*, 15, 1, 67-80, 2004.
 972
 973 [Li Yung Lung, J.Y.S., Tank, S.E., Spence, C., Yang, D., Bonsal, B., McClelland, J.W., and Holmes, R.:](#)
 974 [Seasonal and Geographic Variation in Dissolved Organic Biogeochemistry of Rivers Draining to the](#)
 975 [Arctic Ocean and Hudson Bay, *J. Geophys. Res. Biogeosci.*, 123 \(10\), 3371-3386, 2018.](#)
 976
 977 Littlefair, C. A., Tank, S. E., and Kokelj, S. V.: Retrogressive thaw slumps temper dissolved organic
 978 carbon delivery to streams of the Peel Plateau, NWT, Canada. *J. Geophys. Res. Biogeosci.*, 14(23),
 979 5487-5505, 2017.
 980
 981 MacLean R., Oswood, M. W., Irons, J. G., and McDowell, W. H.: The effect of permafrost on stream
 982 biogeochemistry: a case study of two streams in the Alaskan (USA) taiga. *Biogeochemistry*, 47 (3),
 983 239-267, 1999.
 984
 985 Manizza, M., Follows, M. J., Dutkiewicz, S., McClelland, J. W., Menemenlis, D., Hill, C. N.,
 986 Townsend-Small, A., and Peterson, B. J.: Modeling transport and fate of riverine dissolved organic
 987 carbon in the Arctic Ocean. *Global Biogeochem. Cycles*, 23 (4), 2009.
 988
 989 McClelland, J. W., Stieglitz, M., Pan, F., Holmes, R. M., and Peterson, B. J.: Recent changes in nitrate
 990 and dissolved organic carbon export from the upper Kuparuk River, North Slope, Alaska. *J. Geophys.*
 991 *Res. Biogeosci.*, 112 (G4), 2007.
 992
 993 McGuire, A. D., Anderson, L. G., Christensen, T. R., Dallimore, S., Guo, L., Hayes, D. J., Heimann,
 994 M., Lorenson, T. D., MacDonald, R. W., and Roulet, N.: Sensitivity of the carbon cycle in the Arctic
 995 to climate change, *Ecol. Monogr.*, 79 (4), 523-555, 2009.
 996
 997 McKnight, D. M., Boyer, E. W., Westerhoff, P. K., Doran, P. T., Kulbe, T., and Andersen, D. T.:
 998 Spectrofluorometric characterization of dissolved organic matter for indication of precursor organic
 999 material and aromaticity, *Limnol. Oceanogr.*, 46 (1), 38-48, doi: 10.4319/lo.2001.46.1.0038, 2001.
 1000
 1001 Mu, C. C., Abbott, B. W., Zhao, Q., Su, H., Wang, S. F., Wu, Q. B., Zhang, T. J., and Wu, X. D.:
 1002 Permafrost collapse shifts alpine tundra to a carbon source but reduces N₂O and CH₄ release on the
 1003 northern Qinghai-Tibetan Plateau, *Geophys. Res. Lett.*, 44 (17), 8945-8952, 2017.
 1004
 1005 Murphy, K. R., Stedmon, C. A., Graeber, D., and Bro, R.: Fluorescence spectroscopy and multi-way
 1006 techniques PARAFAC, *Anal. Methods*, 5 (23), 6557-6566, 2013.
 1007

Formatted: Line spacing: single

1008 Mutschlecner, A. E., Guerard, J. J., Jones, J. B., and Harms, T. K.: Regional and intra-annual stability of
1009 dissolved organic matter composition and biolability in high-latitude Alaskan rivers, *Limnol.*
1010 *Oceanogr.*, 63, 4, 1605-1621, doi: 10.1002/lno.10795, 2018.

1011
1012 Neff, J. C., Finlay, J. C., Zimov, S. A., Davydov, S. P., Carrasco, J. J., Schuur, E. A. G., and Davydova,
1013 A. I.: Seasonal changes in the age and structure of dissolved organic carbon in Siberian rivers and
1014 streams, *Geophys. Res. Lett.*, 33(23), 2006.

1015
1016 O'Donnell, J. A., and Jones, J. B.: Nitrogen retention in the riparian zone of catchments underlain by
1017 discontinuous permafrost, *Freshwater Biol.*, 51 (5), 854-864, 2006.

1018
1019 O'Donnell, J. A., Aiken, G. R., Kane, E. S., and Jones, J. B.: Source water controls on the character and
1020 origin of dissolved organic matter in streams of the Yukon River basin, Alaska, *J. Geophys. Res.*
1021 *Biogeosci.*, 115 (G3), 2010.

1022
1023 Ohno, T.: Fluorescence inner-filtering correction for determining the humification index of dissolved
1024 organic matter, *Environ. Sci. Technol.*, 36 (4), 742-746, 2002.

1025
1026 Olefeldt, D., Roulet, N., Giesler, R., and Persson, A.: Total waterborne carbon export and DOC
1027 composition from ten nested subarctic peatland catchments—importance of peatland cover,
1028 groundwater influence, and inter-annual variability of precipitation patterns, *Hydrol. Process.*, 27 (16),
1029 2280-2294, 2013.

1030
1031 Olefeldt, D., and Roulet, N. T.: Permafrost conditions in peatlands regulate magnitude, timing, and
1032 chemical composition of catchment dissolved organic carbon export, *Global Change Biol.*, 20 (10),
1033 3122-3136, 2014.

1034
1035 Opsahl, S., Benner, R., and Amon, R. W.: Major flux of terrigenous dissolved organic matter through
1036 the Arctic Ocean, *Limnol. Oceanogr.*, 44, 2017–2023, 1999.

1037
1038 Parlanti, E., Wörz, K., Geoffroy, L., and Lamotte, M.: Dissolved organic matter fluorescence
1039 spectroscopy as a tool to estimate biological activity in a coastal zone submitted to anthropogenic
1040 inputs, *Org. Geochem.*, 31(12), 1765-1781, 2000.

1041
1042 Peralta-Tapia, A., Sponseller, R. A., Ågren, A., Tetzlaff, D., Soulsby, C., and Laudon, H.: Scale-
1043 dependent groundwater contributions influence patterns of winter baseflow stream chemistry in boreal
1044 catchments, *J. Geophys. Res. Biogeosci.*, 120 (5), 847-858, 2015.

1045
1046 Petrone, K. C., J. B. Jones, L. D. Hinzman, and R. D. Boone.: Seasonal export of carbon, nitrogen, and
1047 major solutes from Alaskan catchments with discontinuous permafrost, *J. Geophys. Res.*, 111, G02020,
1048 doi:10.1029/2005JG000055, 2006.

Petrone, K., Buffam, I., and Laudon, H.: Hydrologic and biotic control of nitrogen export during snowmelt: a combined conservative and reactive tracer approach, *Water Resour. Res.*, 43(6), 2007.

Pomeroy, J. W., Hedstrom, N., and Parviainen, J.: The snow mass balance of Wolf Creek, Yukon: effects of snow sublimation and redistribution, *Wolf Creek, Research Basin: Hydrology, Ecology, Environment*, edited by: Pomeroy, JW and Granger RJ, 15-30, 1999.

Prokushkin, A. S., Pokrovsky, O. S., Shirokova, L. S., Korets, M. A., Viers, J., Prokushkin, S. G., Amon, R. M. W., Guggenberger, G., and McDowell, W. H.: Sources and the flux pattern of dissolved carbon in rivers of the Yenisey basin draining the Central Siberian Plateau, *Environ. Res. Lett.*, 6 (4), 045212, 2011.

Quinton, W. L., and Carey, S. K.: Towards an energy-based runoff generation theory for tundra landscapes, *Hydrol. Process.*, 22 (23), 4649-4653, 2008.

Rasouli, K., Pomeroy, J. W., Janowicz, J. R., Williams, T. J., and Carey, S. K.: A long-term hydrometeorological dataset (1993–2014) of a northern mountain basin: Wolf Creek Research Basin, Yukon Territory, Canada, *Earth Sys. Sci. Data* 11, 89-100, <https://doi.org/10.5194/essd-11-89-2019>, 2019.

Raymond, P. A., McClelland, J. W., Holmes, R. M., Zhulidov, A. V., Mull, K., Peterson, B. J., Striegl, R. G., Aiken, G. R., and Gurtovaya, T. Y.: Flux and age of dissolved organic carbon exported to the Arctic Ocean: A carbon isotopic study of the five largest arctic rivers, *Global Biogeochem. Cycles*, 21(4), 2007.

R Core Team. R: A language and environment for statistical computing. R Foundation for Statistical Computing, Vienna, Austria. <https://www.R-project.org/>, 2017.

Schloerke, B., Crowley, J., Cook, D., Briatte, F., Marbach, M., Thoen, E., Elberg, A., and Larmarange, J.: GGally: Extension to 'ggplot2', R package version 1.4.0, <https://CRAN.R-project.org/package=GGally>, 2018.

Schmidt, B. H., Kalbitz, K., Braun, S., Fuß, R., McDowell, W. H., and Matzner, E.: Microbial immobilization and mineralization of dissolved organic nitrogen from forest floors, *Soil Biol. Biochem.*, 43(8), 1742-1745, 2011.

Schuur, E. A. G., McGuire, A. D., Schädel, C., Grosse, G., Harden, J. W., Hayes, D. J., Hugelius, G., Koven, C. D., Kuhry, P., Lawrence, D. M., Natali, S. M., Olefeldt, D., Romanovsky, V. E., Schaefer, K., Turetsky, M. R., Treat, C. C., and Vonk, J. E.: Climate change and the permafrost carbon feedback, *Nature*, 520 (7546), 171–179, <https://doi.org/10.1038/nature14338>, 2015.

1091 Sedell, J. R., and Dahm, C. N.: Spatial and temporal scales of dissolved organic carbon in streams and
1092 rivers, *Organic acids in aquatic ecosystems*, edited by: Perdue, E. M., and Gjessing, E. T., John Wiley &
1093 Sons Ltd, Berlin, Germany, 261-279, 1990.

1094

1095 Serreze, M. C., and Francis, J. A.: The Arctic amplification debate, *Clim. Change*, 76 (3-4), 241-264,
1096 2006.

1097

1098 Shiklomanov, I. A.: Appraisal and assessment of world water resources, *Water Int.*, 25 (1), 11-32,
1099 <https://doi.org/10.1080/02508060008686794>, 2000.

1100

1101 Spence, C., and Rausch, J.: Autumn synoptic conditions and rainfall in the subarctic Canadian Shield of
1102 the Northwest Territories, Canada, *Int. J. Climatol.*, 25 (11), 1493-1506, 2005.

1103

1104 Spence, C., Kokelj, S. V., Kokelj, S. A., McCluskie, M., and Hedstrom, N. Evidence of a change in
1105 water chemistry in Canada's subarctic associated with enhanced winter streamflow, *J. Geophys. Res.*
1106 *Biogeosci.*, 120 (1), 113-127, 2015.

1107

1108 Spencer, R. G. M., Aiken, G. R., Wickland, K. P., Striegl, R. G., and Hernes, P. J.: Seasonal and spatial
1109 variability in dissolved organic matter quantity and composition from the Yukon River basin, Alaska:
1110 Yukon River basin DOM dynamics, *Global Biogeochem. Cycles*, 22, GB4002,
1111 <https://doi.org/10.1029/2008GB003231>, 2008.

1112

1113 Spencer, R. G., Aiken, G. R., Butler, K. D., Dornblaser, M. M., Striegl, R. G., and Hernes, P. J.:
1114 Utilizing chromophoric dissolved organic matter measurements to derive export and reactivity of
1115 dissolved organic carbon exported to the Arctic Ocean: A case study of the Yukon River, Alaska,
1116 *Geophys. Res. Lett.*, 36(6), 2009.

1117

1118 Spencer, R. G., Butler, K. D., and Aiken, G. R. Dissolved organic carbon and chromophoric dissolved
1119 organic matter properties of rivers in the USA, *J. Geophys. Res. Biogeosci.*, 117(G3), 2012.

1120

1121 Stedmon, C. A., Amon, R. M. W., Rinehart, A. J., and Walker, S. A. The supply and characteristics of
1122 colored dissolved organic matter (CDOM) in the Arctic Ocean: Pan Arctic trends and differences, *Mar.*
1123 *Chem.*, 124 (1-4), 108-118, 2011.

1124

1125 Striegl, R. G., Aiken, G. R., Dornblaser, M. M., Raymond, P. A., and Wickland, K. P.: A decrease in
1126 discharge-normalized DOC export by the Yukon River during summer through autumn, *Geophys. Res.*
1127 *Lett.*, 32(21), 2005.

1128

1129 Striegl, R. G., Dornblaser, M. M., Aiken, G. R., Wickland, K. P., and Raymond, P. A.: Carbon export
1130 and cycling by the Yukon, Tanana, and Porcupine Rivers, Alaska, 2001–2005, *Water Resour. Res.*, 43,
1131 W02411, <https://doi.org/10.1029/2006WR005201>, 2007.

1132

1133 Tang, Y., Horikoshi, M., and Li, W.: ggfortify: Unified Interface to Visualize Statistical Result of
1134 Popular R Packages, *The R Journal* 8.2, 478-489, <https://CRAN.R-project.org/package=ggfortify>,
1135 2016.

1136

1137 Tank, S. E., Striegl, R. G., McClelland, J. W., and Kokelj, S. V.: Multi-decadal increases in dissolved
1138 organic carbon and alkalinity flux from the Mackenzie drainage basin to the Arctic Ocean, *Environ.*
1139 *Res. Lett.*, 11(5), 054015, 2016.

1140

1141 Tarnocai, C., Canadell, J. G., Schuur, E. A. G., Kuhry, P., Mazhitova, G., and Zimov, S.: Soil organic
1142 carbon pools in the northern circumpolar permafrost region., *Global Biogeochem. Cycles*, 23 (2), 2009.

1143

1144 Temnerud, J., and Bishop, K.: Spatial variation of streamwater chemistry in two Swedish boreal
1145 catchments: Implications for environmental assessment, *Environ. Sci. Technol.*, 39 (6), 1463-1469,
1146 2005.

1147

1148 Temnerud, J., Fölster, J., Buffam, I., Laudon, H., Erlandsson, M., and Bishop, K.: Can the distribution
1149 of headwater stream chemistry be predicted from downstream observations? *Hydrol. Process.*, 24 (16),
1150 2269-2276, 2010.

1151

1152 Tiwari, T., Laudon, H., Beven, K., and Ågren, A. M.: Downstream changes in DOC: Inferring
1153 contributions in the face of model uncertainties, *Water Resour. Res.*, 50 (1), 514-525, 2014.

1154

1155 Tiwari, T., Buffam, I., Sponseller, R. A., and Laudon, H.: Inferring scale-dependent processes
1156 influencing stream water biogeochemistry from headwater to sea, *Limnol. Oceanogr.*, 62 (S1), S58-S70.
1157 Doi: 10.1002/lno.10738, 2017.

1158

1159 Tiwari, T., Sponseller, R. A., and Laudon, H.: Extreme Climate Effects on Dissolved Organic Carbon
1160 Concentrations During Snowmelt, *J. Geophys. Res. Biogeosci.*, 123 (4), 1277-1288, 2018.

1161

1162 Toohey, R. C., Herman-Mercer, N. M., Schuster, P. F., Mutter, E. A., and Koch, J. C.: Multidecadal
1163 increases in the Yukon River Basin of chemical fluxes as indicators of changing flowpaths,
1164 groundwater, and permafrost, *Geophys. Res. Lett.*, 43 (23), 2016.

1165

1166 Ussiri, D. A., and Johnson, C. E.: Sorption of organic carbon fractions by Spodosol mineral horizons,
1167 *Soil Sci. Soc. Am. J.*, 68 (1), 253-262, 2004.

1168

1169 Vonk, J. E., Tank, S. E., Bowden, W. B., Laurion, I., Vincent, W. F., Alekseychik, P., Amyot, M.,
1170 Billet, M. F., Canario, J., Cory, R. M., Deshpande, B. N., Helbig, M., Jammet, M., Karlsson, J.,
1171 Larouche, MacMillan, G., Rautio, M., Walther Anthony, K. M., and Wickland, K. P.: Reviews and
1172 syntheses: Effects of permafrost thaw on Arctic aquatic ecosystems, *J. Geophys. Res. Biogeosci.*,
1173 12(23): 7129-7167. Doi: 10.5194/bg-12-7129-2015, 2015.

1174

1175 Walker, S. A., Amon, R. M., and Stedmon, C. A.: Variations in high-latitude riverine fluorescent
1176 dissolved organic matter: A comparison of large Arctic rivers, *J. Geophys. Res. Biogeosci.*, 118 (4),
1177 1689-1702, 2013.

1178

1179 Walvoord, M. A., and Striegl, R. G.: Increased groundwater to stream discharge from permafrost
1180 thawing in the Yukon River basin: Potential impacts on lateral export of carbon and nitrogen, *Geophys.*
1181 *Res. Lett.*, 34 (12), 2007.

1182

1183 Ward, C. P., and Cory, R. M.: Complete and partial photo-oxidation of dissolved organic matter
1184 draining permafrost soils, *Environ. Sci. Technol.*, 50 (7), 3545-3553, 2016.

1185

1186 Weishaar, J. L., Aiken, G. R., Bergamaschi, B. A., Fram, M. S., Fujii, R., and Mopper, K.: Evaluation
1187 of specific ultraviolet absorbance as an indicator of the chemical composition and reactivity of dissolved
1188 organic carbon, *Environ. Sci. Technol.*, 37 (20), 4702–4708, doi: 10.1021/es030360x, 2003.

1189

1190 Wickham, H.: *ggplot2: Elegant Graphics for Data Analysis*, R package version 3.1.0.9000,
1191 <http://ggplot2.org>, 2016.

1192

1193 Wickham, H., François, R., Henry, L., and Müller, K. *dplyr: A Grammar of Data Manipulation*, R
1194 package version 0.7.6, <https://CRAN.R-project.org/package=dplyr>, 2018.

1195

1196 Wickham, H. and Henry, L.: *tidyr: Easily Tidy Data with 'spread()' and 'gather()' Functions*, R package
1197 version 0.8.1, <https://CRAN.R-project.org/package=tidyr>, 2018.

1198

1199 Wickland, K. P., Neff, J. C., and Aiken, G. R.: Dissolved organic carbon in Alaskan boreal forest:
1200 sources, chemical characteristics, and biodegradability, *Ecosystems*, 10 (8), 1323–1340, doi:
1201 10.1007/s10021-007-9101-4, 2007.

1202

1203 Wickland, K. P., Aiken, G. R., Butler, K., Dornblaser, M. M., Spencer, R. G. M., and Striegl, R. G.:
1204 Biodegradability of dissolved organic carbon in the Yukon River and its tributaries: Seasonality and
1205 importance of inorganic nitrogen, *Global Biogeochem. Cycles*, 26(4), 2012.

1206

1207 Wilson, H. F., and Xenopoulos, M. A.: Effects of agricultural land use on the composition of fluvial
1208 dissolved organic matter, *Nat. Geosci.*, 2 (1), 37, 2009.

1209

1210 Wolock, D. M., Fan, J., and Lawrence, G. B.: Effects of basin size on low-flow stream chemistry and
1211 subsurface contact time in the Neversink River watershed, New York, *Hydrol. Process.*, 11 (9), 1273-
1212 1286, 1997.

1213

1214 Wrona, F. J., Johansson, M., Culp, J. M., Jenkins, A., Mård, J., Myers-Smith, I. H., Prowse, D. T.,
1215 Vincent, W.F., and Wookey, P. A.: Transitions in Arctic ecosystems: Ecological implications of a
1216 changing hydrological regime, *J. Geophys. Res. Biogeosci.*, 121 (3), 650-674, 2016.

1217
1218 Zsolnay, A., Baigar, E., Jimenez, M., Steinweg, B., and Saccomandi, F.: Differentiating with
1219 fluorescence spectroscopy the sources of dissolved organic matter in soils subjected to drying,
1220 Chemosphere, 38 (1), 45-50, 1999.
1221

