

***Interactive comment on “Do streamwater solute concentrations reflect when connectivity occurs in a small pre-alpine headwater catchment?” by Leonie Kiewiet et al.***

**Leonie Kiewiet et al.**

leonie.kiewiet@geo.uzh.ch

Received and published: 3 April 2020

The figures attached to the authors comments of March 27 2020 still included all tracers. Our apologies for this mistake.

Please see the supplement attached to this comment for the adapted figures including only conservative tracers.

Please also note the supplement to this comment:

<https://www.hydrol-earth-syst-sci-discuss.net/hess-2019-686/hess-2019-686-AC3-supplement.pdf>

C1

---

Interactive comment on Hydrol. Earth Syst. Sci. Discuss., <https://doi.org/10.5194/hess-2019-686>, 2020.

C2

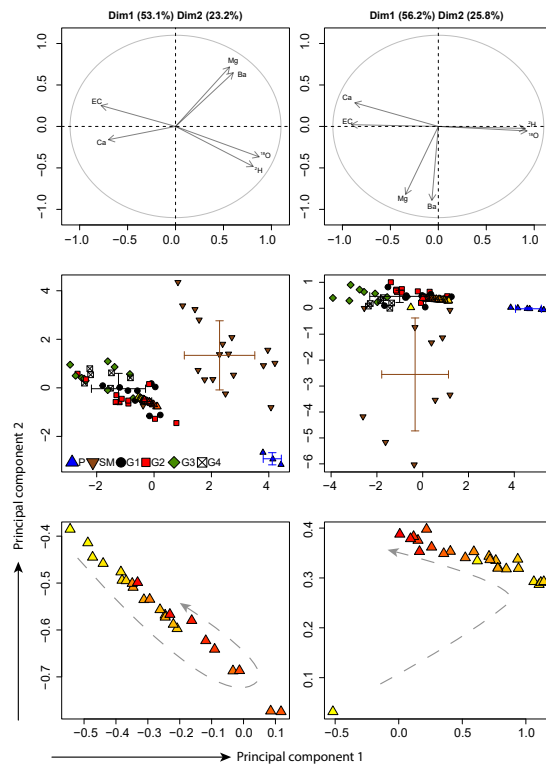


Fig. 1.

C3

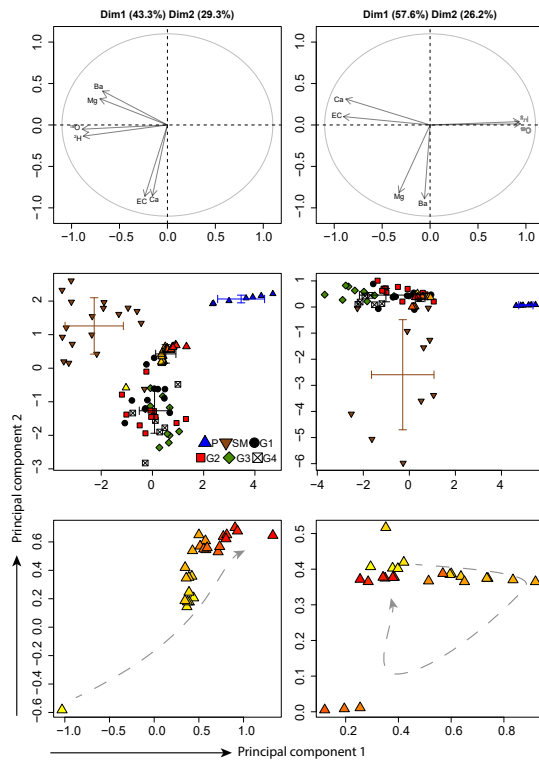


Fig. 2.

C4