

## ***Interactive comment on “Do streamwater solute concentrations reflect when connectivity occurs in a small pre-alpine headwater catchment?” by Leonie Kiewiet et al.***

**Leonie Kiewiet et al.**

leonie.kiewiet@geo.uzh.ch

Received and published: 27 March 2020

Please see the supplement.

Please also note the supplement to this comment:

<https://www.hydrol-earth-syst-sci-discuss.net/hess-2019-686/hess-2019-686-AC2-supplement.pdf>

---

Interactive comment on Hydrol. Earth Syst. Sci. Discuss., <https://doi.org/10.5194/hess-2019-686>, 2020.

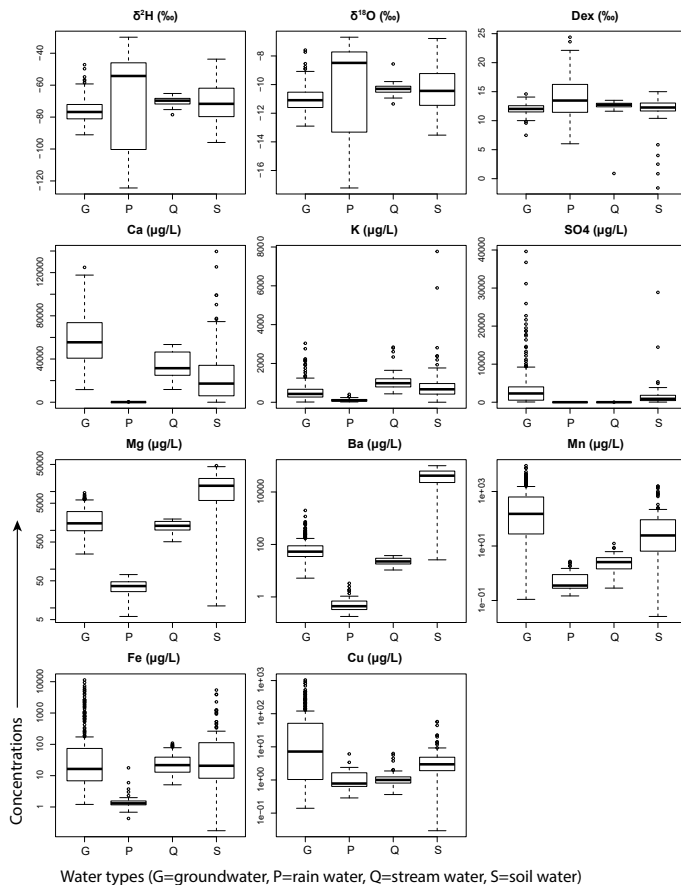


Fig. 1.

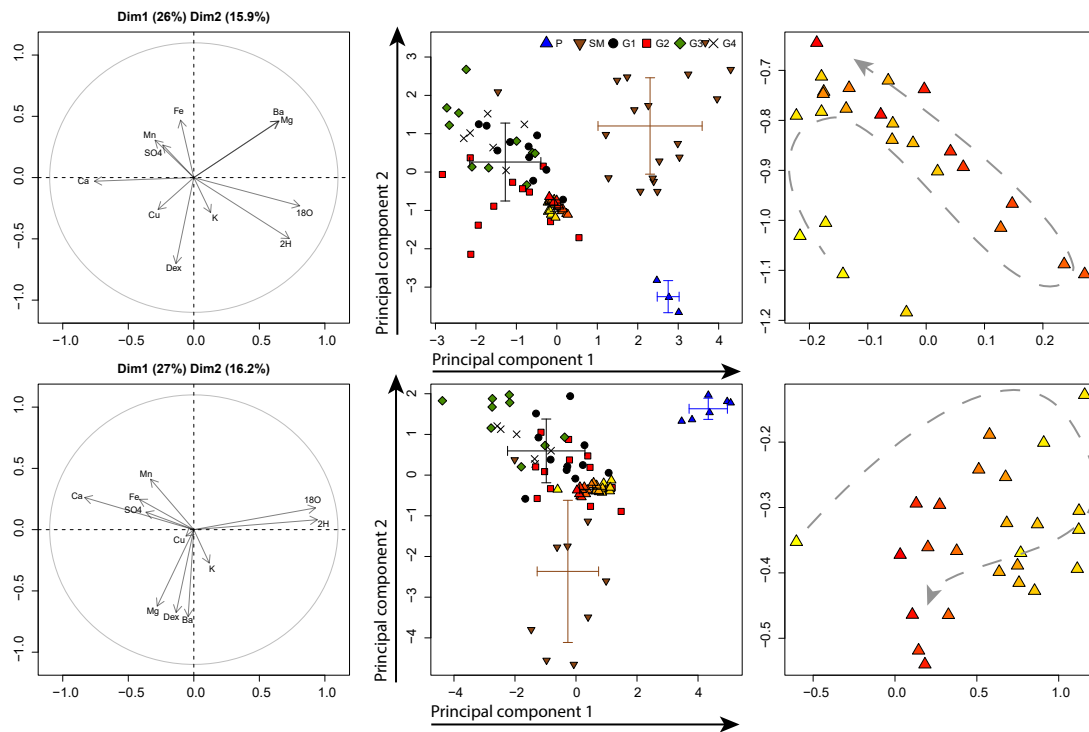


Fig. 2.

Printer-friendly version

Discussion paper



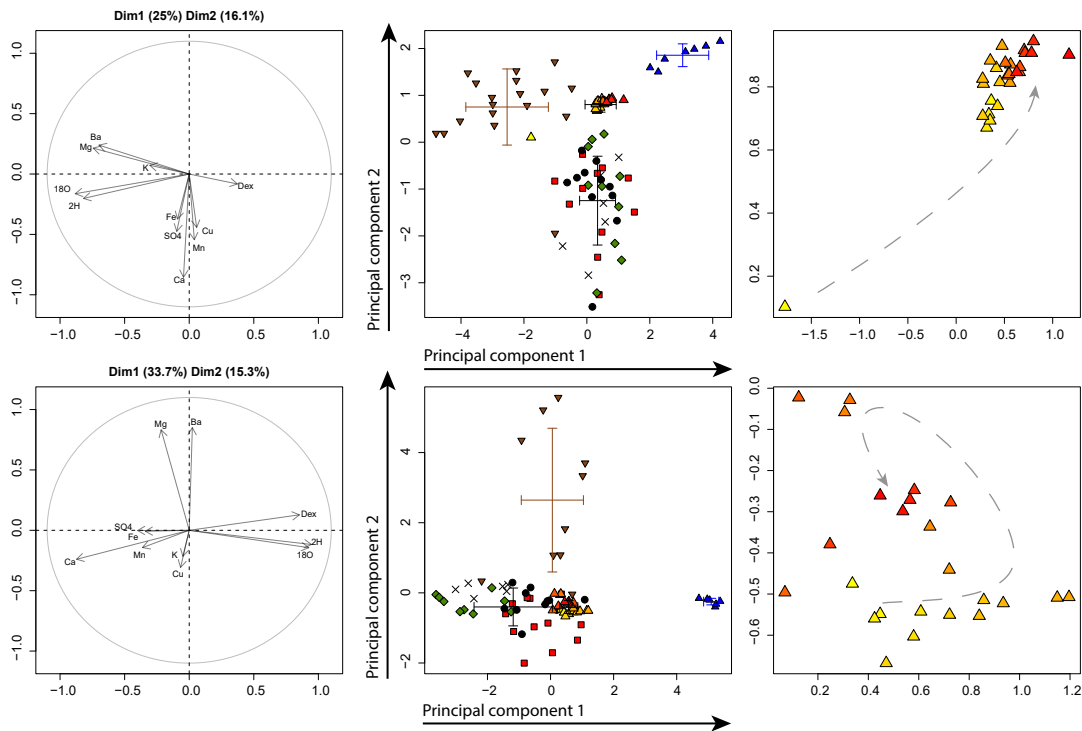


Fig. 3.

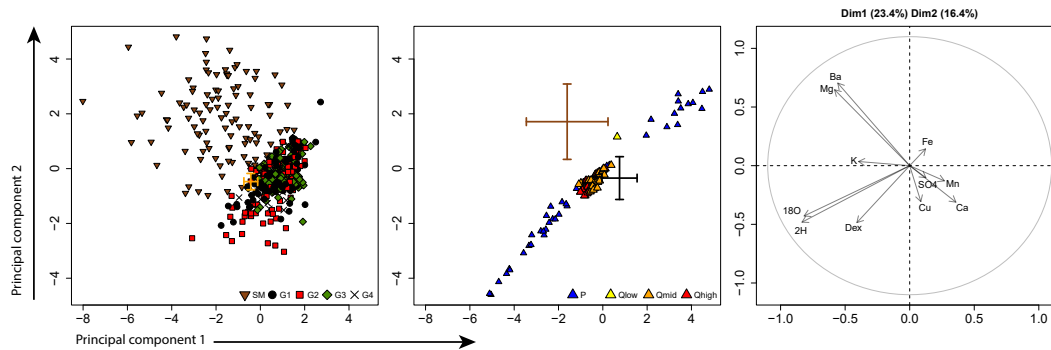


Fig. 4.

Printer-friendly version

Discussion paper

