



POLITECNICO
MILANO 1863

Reply to reviewers about paper hess-2019-659

From skill to value: isolating the influence of end-user behaviour on seasonal forecast assessment

Matteo Giuliani, Louise Crochemore, Ilias Pechlivanidis, Andrea Castelletti

Matteo Giuliani, Assistant Professor
Department of Electronics, Information, and Bioengineering, Politecnico di Milano

Via Ponzio 34/5, 20133 Milano, Italy
Tel: +39 02 2399 9040
E-mail: matteo.giuliani@polimi.it

Dear Editor,

We would like to thank you and the two anonymous reviewers for the comments and suggestions. In preparing the response to reviewers, we used the following rules: references to line numbers and figures are all to the revised manuscript; authors' replies are in blue; brief text additions are reported in blue italics.

Editor

Dear authors: finally I have both reviews. Reviewer 2 recommends the paper for publication, without providing comments, putting all judgments at 'excellent'. Reviewer 1 however, recommends 'major revision', provides extensive comments, and asks for more attention to the previously made comments (at Discussion phase), and for deeper revisions, and perhaps certain reformulations of generalisations ("claims" as the reviewer puts it). Please address them since I think taking them into account would contribute to the the quality of the paper - or present a rebuttal if you don't agree with them.

Good luck!

We thank the editor for the encouraging and constructive comments. As suggested, we improved the manuscript by working on the following main aspects:

- We better clarified that the paper contribution is not the evaluation framework itself, but rather the analyses we conducted using this framework as our methodology, namely (1) the isolation of the part of the hydrological modelling chain mostly contributing to the estimated forecast value, (2) the assessment of the sensitivity of the results on different end-user interpretations of the probabilistic forecast information, (3) the inference of a relation between gains in forecast skill and end-user profit.
- We reinforced the inference of skill-value relationship by using annual results that allowed increasing the number of samples used for the regression to 65 (see new Figure 6 in the revised manuscript).
- We added the complete formulation of forecast skill.

Reviewer#1

No comments, suggested “accepted as is”.

We thank the reviewer for the positive evaluation of the paper.

Reviewer#2

Rather than rework their study in response to comments raised, the authors have opted to provide a full rebuttal. I’m afraid I remain unconvinced of the key contribution having carefully considered the responses.

We respectfully disagree with the reviewer comment. We provided 10 pages of detailed replies (6 dedicated to R#2 comments), leading to major edits of the paper (i.e. 95 lines of track changes, that correspond to about 23% of the paper). Far from being a full rebuttal, our reply once again tried to better clarify the contribution of the paper following the reviewer indications.

In brief:

- The authors retain their claim that the paper provides a novel framework, based on the argument that the input data are state-of-the-art, reservoir model is accurate, and so on. I don’t doubt any of these claims. However, for the framework to be novel it must involve more than one-way coupling of forecasts -> reservoir model -> ag profit model. This is just linking output of one model to another, and not a novel framework.

In revising the manuscript the first time, we actually tried to clarify that the framework itself is not the novel contribution of our paper (we removed all the occurrence of “novel framework”). Following the reviewer suggestion, we further adjusted our text to better stress that the framework is part of our methodology, while the novel contributions of the work are the type of analyses we conducted, namely (1) the isolation of the part of the hydrological modelling chain mostly contributing to the estimated forecast value, (2) the assessment of the sensitivity of the results on different end-user interpretations of the probabilistic forecast information, (3) the inference of a relation between gains in forecast skill and end-user profit.

- I agree with the authors that the value Euro490million is a valuable insight, particularly for those with an interest in the region. But it’s very case specific and not a broad enough contribution to knowledge for a scientific paper.

Following the reviewer suggestion, a section discussing the limitations and future research, including this point, was already added during the previous round of review and we are fully aware that our results might not be fully generalizable. However, we argue that the selection of our case study located in the region with the highest share of irrigated areas in Europe (Eurostat 2019) makes our findings relevant for a scientific publication.

In addition, there is a general growing interest in studying real systems by developing tailored applications to the specific needs and requirements of the considered case study (see, for example, Nayak et al. (2018), Neumann et al.

(2018), Delorit and Block (2019), Anghileri et al. (2019), Alexander et al. (2020), Macian-Sorribes et al. (2020)).

- Alexander et al. (2020), Forecast-informed reservoir operations to guide hydropower and agriculture allocations in the Blue Nile Basin, Ethiopia, *International Journal of Water Resources Development*
- Anghileri et al. (2019). The value of subseasonal hydrometeorological forecasts to hydropower operations: How much does preprocessing matter? *Water Resources Research*, 55, 10159–10178.
- Delorit, J. and Block, P. (2019), Using Seasonal Forecasts to Inform Water Market-Scale Option Contracts, *Journal of Water Resources Planning and Management*, 145
- Eurostat (2019), Agri-environmental indicator - irrigation, https://ec.europa.eu/eurostat/statistics-explained/index.php/Agri-environmental_indicator_-_irrigation#Analysis_at_regional_level.
- Macian-Sorribes et al. (2020). Fuzzy post-processing to advance the quality of continental seasonal hydrological forecasts for river basin management. *Journal of Hydrometeorology*, 1-47.
- Nayak, M., Herman, J., and Steinschneider, S. (2018), Balancing Flood Risk and Water Supply in California: Policy Search Integrating Short-Term Forecast Ensembles With Conjunctive Use, *Water Resources Research*, 54, 7557–7576
- Neumann et al. (2018). The 2013/14 Thames Basin floods: Do improved meteorological forecasts lead to more skillful hydrological forecasts at seasonal time scales?. *Journal of Hydrometeorology*, 19(6), 1059-1075.

- Modeling risk aversion of decision makers through use of different forecast percentiles is still poorly justified in my view.

This point represents one of the main contributions of the paper as the assessment of forecast value is filtered by the way end-users make use of the provided information. In the literature, there is growing evidence that higher forecast accuracy does not necessarily imply better decisions because of the challenges associated to the human interpretation of forecasts as well as to the communication of probabilistic information (Ramos et al., 2010, 2013; Crochemore et al., 2016).

Individual behaviours and risk perceptions – which can be modeled by using different metrics/statistics to filter the uncertainty in forecast information (see, for example, Peterson 2017) - therefore play a key role in influencing the end-user assessment of probabilistic seasonal forecast value. So far, this point has been investigated mostly via serious games, interviews, or direct interactions with decision makers, while our work aims at providing a quantitative analysis of this challenge by simulating how different behavioral attitudes (modeled by specific forecast quantiles capturing increasing levels of drought risk aversion) influence the interpretation of the forecast ensemble and ultimately impact on operational decisions and resulting performance.

- Crochemore et al. (2016), An experiment on risk-based decision-making in water management using monthly probabilistic forecasts, *Bulletin of the American Meteorological Society*, 97, 541–551
- Peterson, M. (2017). *An introduction to decision theory*. Cambridge University Press (second edition).
- Ramos et al. (2010), Communicating uncertainty in hydro- meteorological forecasts: mission impossible?, *Meteorological Applications*, 17, 223–235

- Ramos et al. (2013), Do probabilistic forecasts lead to better decisions?, Hydrology and Earth System Sciences, 17, 2219–2232

- The authors continue to press the claim of an exponential relationship given the very limited nature of the inputs and the fact that full simulation period results are combined with 2005-only results in this graphic. The authors acknowledge that this is problematic, conceding that more points would make the analysis more statistically sound. The authors' response is that generating more points is too computationally intensive. If this is the case, then the associated conclusion needs to be removed or properly caveated. The abstract reads "...our results show an exponential skill to value relation where large gains in forecast skills are necessary to generate moderate gains in end-user profit". This is a powerful statement and must be backed up with rigor.

In the revised version of the paper, we have now improved our analysis by inferring the skill-value relation using more data samples. The new figure 6 relies on 65 points, representing the individual values of skill and profit for all the 13 years simulated in our study. Moreover, we also investigate how the relation is impacted by hydrologic conditions as well as by the isolated source of forecast value (see the new Figure 6 in the revised manuscript, also reported below). While still being not fully statistically rigorous, we believe these new results are now more robust as they cover a wider range of hydroclimatic conditions, that are also impacting on the inferred relation.

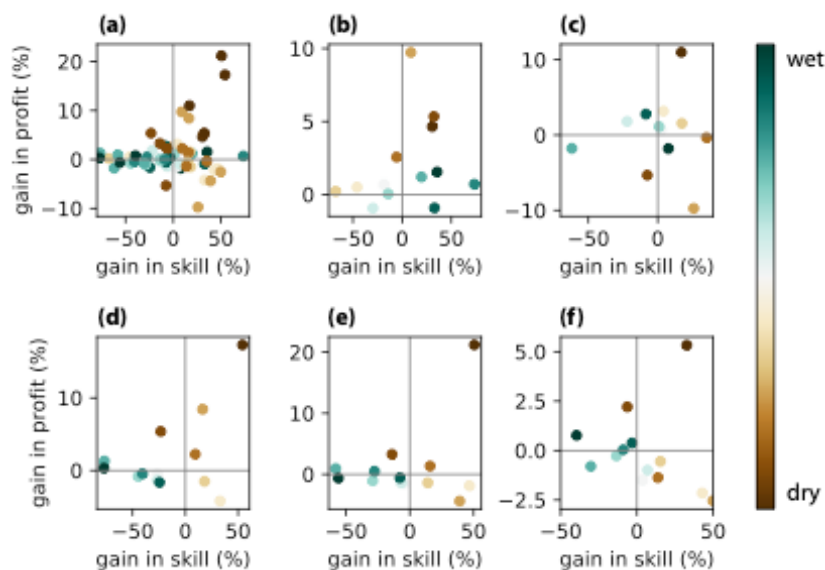


Figure 6: Scatterplot between forecast skill and value. The color of the circles represents the hydrologic conditions (i.e., annual inflow to the lake) of the different years. Markers represent either an isolated component of the forecast system or a behavioral factor for each year over the 1996-2008 time period: all components (panel a), ESP vs baseline (panel b), SYS4-mean vs ESP (panel c), SYS4-min vs SYS4-mean (panel d), SYS4-p10 vs SYS4-mean (panel e), SYS4-p25 vs SYS4-mean (panel f).

(Also, I don't think "skill" is actually defined qualitatively or mathematically anywhere in the paper)

The skill is defined as a function of the ratio in Root Mean Square Error between forecast systems and benchmarks from Table 3. We added this formulation as reported below in the revised version of the paper (see lines 350-353):

Here, skill is computed as $1 - RMSE_S / RMSE_B$, where S is the considered forecast system selected from the columns of Table 3, while B is the benchmark used to isolate the sources of forecast skill/value selected from the rows of the table.

From skill to value: isolating the influence of end-user behaviour on seasonal forecast assessment

Matteo Giuliani¹, Louise Crochemore², Ilias Pechlivanidis², and Andrea Castelletti¹

¹Department of Electronics, Information and Bioengineering, Politecnico di Milano, Piazza L. da Vinci, 32, I-20133 Milano, Italy

²Swedish Meteorological and Hydrological Institute (SMHI), Hydrology Research Unit, Folkborgsvagen 17, SE-601 76, Norrköping, Sweden

Abstract. Recent improvements in initialization procedures and representation of large scale hydro-meteorological processes contributed in advancing the accuracy of hydroclimatic forecasts, which are progressively more skillful over seasonal and longer timescales. These forecasts are potentially valuable for informing strategic multisector decisions, including irrigated agriculture, where they can improve crop choices and irrigation scheduling. In this operational context, the accuracy associated with the forecast system setup does not necessarily yield proportional marginal benefit, as this is also affected by how forecasts are employed by end-users. [This paper aims at quantifying the value of hydroclimatic forecasts in terms of potential economic benefit to the end-users, which allows the inference of a relation between gains in forecast skill and gains in end-user profit. We also explore the sensitivity of this benefit to both forecast system setup and end-user behavioral factors. These analyses are supported by an evaluation framework demonstrated on the Lake Como system \(Italy\), a regulated lake operated for flood protection and irrigation supply.](#) Our framework relies on an integrated modeling chain composed of three building blocks: bias-adjusted seasonal meteorological forecasts are used as input to the continentally-calibrated E-HYPE hydrological model; predicted lake inflows are used for conditioning the daily lake operations; the resulting lake releases feed an agricultural model to estimate the net profit of the farmers in a downstream irrigation district. Results suggest that despite the gain on average conditions is negligible, during intense drought episodes informing the operations of Lake Como based on seasonal hydrological forecasts allows gaining about 15% of the farmers' profit with respect to a baseline solution not informed by any forecast. Moreover, our analysis suggests that behavioral factors capturing different perceptions of risk and uncertainty significantly impact on the quantification of the benefit to the end-users, where the estimated forecast value is potentially undermined by different levels of end-user risk aversion.

Lastly, our results show an intricate skill-to-value relation modulated by the underlying hydrologic conditions, which is well aligned over an exponential function in dry years while the gains in profit result almost insensitive to the improvements in forecast skill in wet years.

1 Introduction

Recent advances in initialization procedures (e.g., Ceglar et al., 2018) and representation of large-scale hydro-meteorological processes (e.g., Krysanova et al., 2017) have contributed in greatly advancing the accuracy of hydroclimatic services. State-of-the-art meteorological and hydrological forecast products are increasingly skillful over seasonal and longer time scales and thus become valuable assets for informing strategic decisions contributing to flood protection (e.g., Coughlan de Perez et al., 2017; Neumann et al., 2018), drought management (e.g., Crochemore et al., 2017; Turco et al., 2017), or hydropower production (e.g., Block 2011; Boucher and Ramos 2018). Irrigated agriculture is one of the sectors expected to benefit the most from hydroclimatic services to better inform crop choices and irrigation scheduling decisions (e.g., Li et al., 2017; Guimarães Nobre et al., 2019), which strongly depend on the expected hydro-meteorological conditions.

In such operational contexts, forecast accuracy is key to communicate along with hydroclimatic services (Contreras et al., 2020). Accuracy depends on the forecast system setup, which introduces uncertainties that depend on initial hydro-climatic conditions on the forecast date, scenarios of predicted meteorological conditions (e.g., climate model outputs), and sometimes the adopted impact model (Pechlivanidis et al., 2020). At seasonal time scales, probabilistic forecasts are often used to convey these uncertainties, potentially adding value for decision making (see Georgakakos and Graham 2008; Cloke and Pappenberger 2009 and references therein).

The idea of moving from forecast accuracy to value has been explored in a few recent studies that quantify the value generated by informing water system operations with perfect or synthetic forecasts (e.g., Turner et al., 2017; Denaro et al., 2017), or a pre-specified real forecast product (e.g., Anghileri et al., 2016; Nayak et al., 2018), in terms of increased system reliability. Only a few studies (e.g., Li et al., 2017; Delorit and Block 2019) assess the economic value of existing hydroclimatic services in informing the solution of planning problems, which require making single decisions (e.g., selection of crop to cultivate) without considering how they influence analogous decisions in the future.

Building on these studies, in this paper we quantify the value of hydroclimatic services by extending traditional forecast quality assessment methods with estimates of the potential economic benefit of the forecasts in informing operational decisions. The approach is demonstrated on the Lake Como system (Italy), a regulated lake primarily operated for flood control and irrigation supply. Here, we use an evaluation framework to support the inference of a relation between gains in forecast skill and in end-user (farmers) profit over a range of diverse hydroclimatic conditions, including extreme drought episodes. The proposed framework relies on an integrated modeling chain

composed of three building blocks: (1) bias-adjusted seasonal meteorological forecasts are used as input to a European-wide hydrological model; (2) predicted lake inflows are then used for conditioning the daily lake operations; (3) the resulting lake releases finally feed a crop growth model to estimate the forecast value in terms of gain in net profit for the farmers in the downstream irrigation district. This combination of a state-of-the-art hydroclimatic service with a detailed model of the Lake Como basin makes our findings particularly valuable for the selected case study area, which is located in the region with the highest share of irrigated areas in Europe (Eurostat 2019).

In this context, we used our framework to isolate the component of the hydrological modelling chain mostly contributing to the estimated forecast value, as well as to assess the sensitivity of the results on different end-user interpretations of the probabilistic forecast information. Forecast value is filtered by the way end-users make use of the provided information, and there is growing evidence that higher forecast accuracy does not necessarily imply better decisions because of the challenges associated to the human interpretation of forecasts as well as to the communication of probabilistic information (Ramos et al. 2010, 2013; Crochemore et al. 2016). The personal interpretation of uncertainty is indeed a subjective process affected by multiple factors, including the way outcomes are framed, the severity of the event being forecasted, and the personal behavioral attitude of the end-users (Gigerenzer et al. 2005; Joslyn et al. 2009). Individual behaviours and risk perceptions therefore play a key role in influencing the end-user assessment of probabilistic seasonal forecast value (Kirchhoff et al. 2013). However, this point has been so far investigated mostly via serious games, interviews, or direct interactions with decision makers, while our work aims at providing a quantitative analysis of this challenge by simulating how different behavioral attitudes (modeled by specific forecast quantiles capturing increasing levels of drought risk aversion) influence the interpretation of the forecast ensemble and ultimately impact on operational decisions and resulting performance.

The paper is organized as follows: in the next section we introduce the Lake Como study site, while Section 3 describes the adopted evaluation framework. Results and discussion are reported in Section 4, while conclusions and final remarks are presented in the last section.

2 Study site

Located in the Italian Alps, the Lake Como basin (Figure 1) is a highly controlled water system, including a large regulated lake (active capacity 247 Mm³) serving a wide irrigation-fed cultivated area (1,320 km²), where maize is the most widely grown and productive crop (52% of the area and 1.5 Mton/year). The hydro-meteorological regime is typical of sub-alpine regions, characterized by dry periods in winter and summer, and peaks in late spring and autumn fed by snowmelt and rainfall, respectively. Snowmelt during May-July is the most important contribution to the accumulation of the seasonal storage, which is then used for irrigation supply in the summer during the peak demand

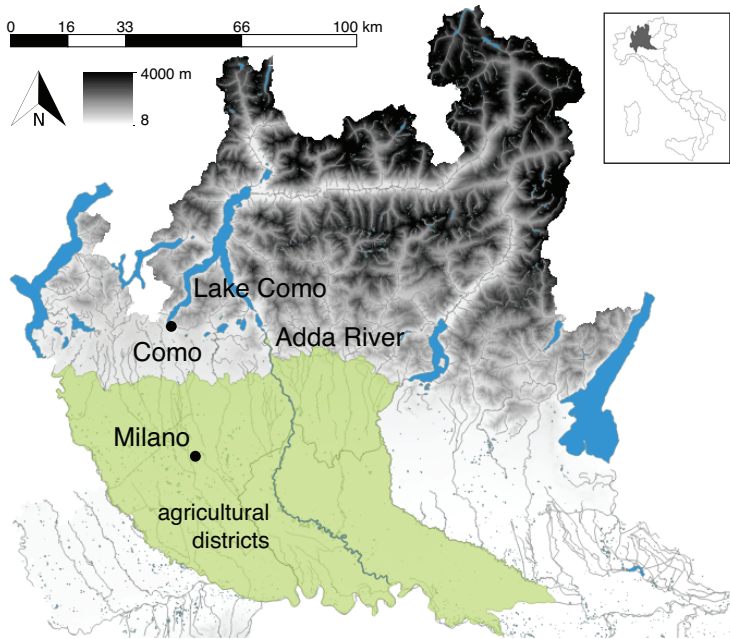


Figure 1. Map of the Lake Como basin. The map was generated via Q-GIS using layers from the Geoportal of Regione Lombardia (www.geoportale.regione.lombardia.it).

period. The latter often exceeds the natural water availability and makes the role of the lake operation paramount for the system.

95 The regulation of the lake has been actively studied since the 1980s (e.g., Guariso et al., 1984, 1986) and is driven by two primary competing objectives: water supply, mainly for irrigation, and flood control in the city of Como, which sits at the lowest elevation on the lake shoreline and hence is exposed to flood risk. The agricultural districts downstream prefer to store snowmelt in the lake to satisfy the peak summer water demands, when the natural inflow is insufficient to meet irrigation requirements. Yet, storing such water increases the lake level and, consequently, the flood risk. Ad-
 100 ditional interests are related to navigation, fishing, tourism, and ecosystems, that further challenge the existing water management strategies and motivate the search for more efficient solutions relying on hydroclimatic services. On the basis of previous works (e.g., Castelletti et al., 2010; Giuliani and Castelletti, 2016; Giuliani et al., 2016a; Denaro et al., 2017), these two objectives (both to be
 105 minimized) can be formulated as follows:

- Flood control (J^F): the average annual number of flooding days in the simulation horizon, defined as days when the lake level is higher than the flooding threshold of 1.24 m;
- Water supply deficit (J^D): the daily average quadratic water deficit between the lake release and the daily water demand of the downstream system, subject to the minimum environmental flow constraint to ensure adequate environmental conditions in the Adda River. The water

110

demand is given by the sum of the water rights of different users and does not vary across years. This quadratic formulation (Hashimoto et al., 1982) generates hedging strategies that minimize large deficits that would generate crop failures, while accepting small, distributed deficits that can be tolerated by most cultivated crops. Notably, the computation of the water supply deficit includes a time-varying parameter that penalizes more the deficit experienced after germination to the beginning of phenological maturity, with these crop stages determined by the agricultural district model.

3 Evaluation framework

The overall workflow of our evaluation framework relies on an integrated modeling chain composed of the three building blocks illustrated in Figure 2 (i) the E-HYPE hydrological model produces seasonal forecasts of the Lake Como inflows driven by ECMWF System 4; (ii) the Lake Como operational model designs the optimal lake regulation including the inflow forecasts as additional input in the operating policy that determines the water released by the dam; (iii) the agricultural district model estimates the profit of the farmers in the Muzza district, which is the largest among the irrigation districts served solely by the Adda River (about 700 km²) as well as the one with the largest water concession (2370 Mm³/yr). A detailed description of each component of the evaluation framework is provided in the next subsections.

3.1 E-HYPE hydrological model

The European setup of the HYPE hydrological model (E-HYPE; Hundscha et al., 2016) was used to generate dynamical seasonal streamflow forecasts (Pechlivanidis et al., 2020). E-HYPE is a process-based model that reproduces streamflow and water balance over the entire European continent. Its parameters were calibrated based on a set of 115 catchments representing the diversity of land-use and soil characteristics, as well as human impacts, and over the 1980–1999 period. The model was validated in about 550 catchments for which streamflow observations are available (see details in Hundscha et al., 2016). Here, precipitation and temperature data from the WFDEI reanalysis (Weedon et al., 2014) were used as reference and streamflow simulations were generated by forcing the E-HYPE model with WFDEI meteorological inputs. In the Lake Como basin, E-HYPE exhibits good overall performance in simulating yearly streamflow, though a distinct bias can be seen (Figure 3a). E-HYPE achieves an average yearly root-mean squared error (RMSE) of 748 Mm³/year in the Lake Como basin. This yearly performance hides an underestimation of winter flows, and an overestimation of summer flows at the monthly time step (Figure 3b), which is potentially due to an inaccurate representation of snowmelt dynamics in E-HYPE along with the alterations of the natural hydrologic processes introduced by the operations of the Alpine hydropower reservoirs in the upstream part of the basin. Despite these biases, Crochemore et al. (2020) showed that E-HYPE seasonal forecasts

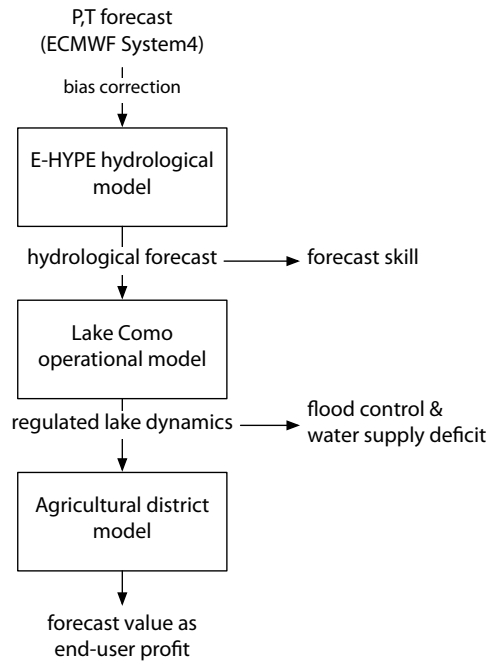


Figure 2. Overview of the integrated modeling chain used in the evaluation framework.

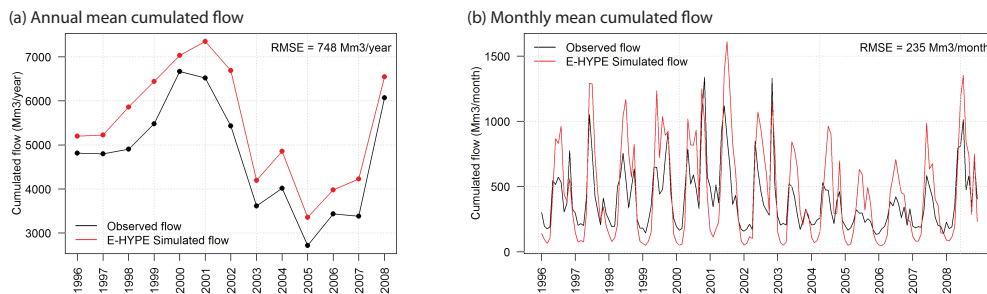


Figure 3. Annual mean accumulated flow (panel a) and monthly mean accumulated flow from observations and E-HYPE simulations from 1996 to 2008 (panel b).

145 can yield as skilful information as a local model when looking at anomalies relative to model long-term means as done in this work, where the Lake Como operations are optimized using E-HYPE seasonal forecast anomalies.

3.2 Operational model of the lake

As mentioned in the previous section, Lake Como is primarily operated looking at two competing 150 objectives, namely water supply and flood control in the city of Como. The operational model of the

lake is focused on reproducing the controlled dynamics of the lake, which is described by a mass balance equation assuming a modeling and decision-making time-step of 24 hours, i.e.

$$s_{t+1} = s_t + q_{t+1} - r_{t+1} \quad (1)$$

where s_t is the lake storage [m^3], while q_{t+1} and r_{t+1} are the net inflow (i.e., inflow minus evaporation losses) and the outflow volumes in the time interval $[t, t + 1)$, respectively. The release volume r_{t+1} is determined by a nonlinear, stochastic function that depends on the release decision u_t (Soncini-Sessa et al., 2007). This function allows representing the effect of the uncertain inflows between the time t (at which the decision is taken) and the time $t + 1$ (at which the release is completed). The actual release might not be equal to the decision due to existing legal and physical constraints on the reservoir level and release, including spills when the reservoir level exceeds the maximum capacity.

The lake operations is determined by a closed-loop operating policy p that computes the release decision u_t at each time step t as a function of the day of the year d_t , the lake level h_t and the inflow forecast $\hat{q}_{t+\tau}$ over the lead time τ . The Pareto optimal operating policies are computed by solving a multi-objective optimal control problem (Castelletti et al., 2008) formulated as follows:

$$p^* = \arg \min_p \mathbf{J}(p) = |J^F, J^D| \quad (2)$$

Note that the resolution of this problem does not yield a unique optimal solution but a set of optimal solutions exploring different tradeoffs between flood control and irrigation supply. A solution is defined as Pareto optimal (or nondominated) if no other solution gives a better value for one objective without degrading the performance in at least one other objective. The image in the objective space of the Pareto-optimal solutions is the Pareto front. To evaluate the quality of the Pareto front we used the hypervolume indicator HV , which allows set-to-set evaluations by measuring both the convergence of the Pareto front under examination \mathcal{F} to the optimal one \mathcal{F}^* as well as the representation of the full extent of tradeoffs in the objective space (Zitzler et al., 2003). Specifically, this metric measures the volume of objective space dominated by the considered set of solutions as the hypervolume ratio between \mathcal{F} and \mathcal{F}^* .

3.3 Agricultural district model

The agricultural district model simulates the dynamic processes in the Muzza irrigation district. The model is composed of three distinct modules devoted to specific tasks: (i) a distributed-parameter water balance module that simulates water sources, conveyance, distribution, and soil-crop water balance (Facchi et al., 2004); (ii) a heat unit module that computes the sequence of growth stages as a function of the temperature (Neitsch et al., 2011); (iii) a crop yield module that estimates the

optimal and actual yields, accounting for the effects of stresses due to insufficient water supply that may have occurred during the agricultural season (Steduto et al., 2009). The water balance module partitions the irrigation district with a regular mesh of cells with a side length of 250 m, which allows the representation of the space variability of crops, soil types, meteorological inputs, and irrigation distribution. Further details about the different model components are provided in Giuliani et al. (2016c) and Li et al. (2017). In this work we are however not exploring any farmers' decision and the agricultural district model is therefore not informed by the seasonal forecasts, while the value of weather and climate services in informing cropping pattern decisions is investigated in Li et al. (2017).

3.4 Data and Experimental Settings

The assessment of the forecast operational value is performed over the time period from January 1, 1996 to December 31, 2008. This period was selected because it shows good variability in the local hydrological conditions including some intense droughts events that negatively impacted the agricultural production of the system.

For the purpose of this study, we consider two ensemble streamflow forecasts produced by E-HYPE. The first one is named *ESP* (Ensemble Streamflow Prediction; Day (1985)) and is generated by forcing E-HYPE with WFDEI historical scenarios of precipitation and temperature that correspond to the time period of the forecast. The second one is named *SYS4* and uses dynamical precipitation and temperature forecasts from the European Centre for Medium-range Weather Forecasts (Molteni et al., 2011) as input to the E-HYPE model. These forecast inputs are bias adjusted against the WFDEI reference with the Distribution-Based Scaling method (Yang et al., 2010) prior to running the hydrological model. Both *ESP* and *SYS4* forecasts are delivered once a month in the form of a 15-member ensemble with a 7-month lead time. The ensemble means of both *ESP* and *SYS4* are then accumulated over a lead-time of 51 days. This time frame was demonstrated by Denaro et al. (2017) to be the most valuable among different lead times from 1 week to 2 months for improving Lake Como operations. In addition to considering the ensemble means, we investigate the sensitivity of the overall assessment framework with respect to end-user behavioral factors. Specifically, we replace the ensemble mean with the 25th and 10th percentiles as well as with the ensemble minimum, which capture increasing levels of drought risk aversion. Lastly, the operational value of these forecast systems is benchmarked against a set of baseline solutions that rely on the local observed climatology and two sets of upper bound solutions using perfect forecasts corresponding to either E-HYPE simulations forced with meteorological observations or the observed lake inflows.

The comparative analysis of results obtained using different forecast products allows isolating the sources of forecast value as illustrated in Table 1. The sources of forecast value include the initial hydrologic conditions, the hydrologic model, the predictions of precipitation and temperature, and the behavioral factors (i.e., the different percentiles of the forecast ensemble considered). In this

Table 1. Benchmarking matrix to isolate the sources of forecast value; baseline is observed climatology, ESP E-HYPE Ensemble Streamflow Prediction, SYS4 E-HYPE driven by dynamical precipitation and temperature forecasts, SYS4* replaces the ensemble mean used in SYS4 with different statistics capturing increasing levels of drought risk aversion.

	ESP	SYS4	SYS4*
baseline	hydrological model + initial conditions	hydrological model + initial conditions + P,T forecast	hydrological model + initial conditions + P,T forecast
ESP		P,T forecast	P,T forecast + behavioral factors
SYS4			behavioral factors

matrix, each cell identifies the specific forecasting component that is responsible for the differences in farmers' profit using the forecast system indicated on the columns with respect to the benchmark indicated on the rows.

To optimize the operating policy (see eq. 2), we used the evolutionary multi-objective direct policy search (EMODPS) method (Giuliani et al. 2016b), a Reinforcement Learning approach that combines direct policy search, nonlinear approximating networks, and multi-objective evolutionary algorithms. The policies are defined as Gaussian radial basis functions (Busoniu et al. 2011) and the policy parameters are optimized using the self-adaptive Borg MOEA (Hadka and Reed, 2013), a combination that has been demonstrated to be effective in solving these types of multi-objective policy design problems featuring the possibility of enlarging the information used for conditioning operational decisions (Giuliani et al. 2015; Zatarain-Salazar et al. 2016; Giuliani et al. 2018). Each optimization was run for 2 million function evaluations over the simulation horizon 1996-2008. To improve solution diversity and avoid dependence on randomness, the solution set from each formulation is the result of 20 random optimization trials. The final set of Pareto optimal policies for each experiment is defined as the set of non-dominated solutions from the results of all the optimization trials. In total, the analysis comprises 320 million simulations that required approximately 42,670 computing hours on an Intel Xeon E5-2660 2.20 GHz with 32 processing cores and 96 GB Ram. These high computational requirements explain the use of the water supply deficit as objective in the policy design rather than the farmers profit, as the latter would require including the simulation of the agricultural model within the EMODPS optimization substantially increasing the overall computation cost.

Table 2. Value of ESP, SYS4, and perfect forecasts in terms of Hypervolume Indicator (HV).

Policies	HV	ΔHV	relative ΔHV
Baseline	0.32	-	-
ESP	0.34	0.02	6%
SYS4	0.37	0.05	16%
Perfect forecast (EHYPE sim)	0.67	0.35	109%
Perfect forecast (observations)	1.00	0.68	212%

240 4 Results and Discussion

4.1 Forecast value for irrigated agriculture

Following the proposed evaluation framework (Figure 2), the operational value of alternative forecast systems can firstly be assessed in terms of improvement in the overall set of Pareto optimal solutions produced by the use of forecast information using the hypervolume indicator. Then, the simulation of the agricultural district model will provide a more tangible measure of the forecast operational value by converting the water supply deficit J^D into monetary values of farmers' profit.

The performance of different sets of solutions obtained by solving the Problem in eq. (2) is shown in Figure 4a, where each circle represents a different operating policy of Lake Como. The two axes of the figure represent the two operating objectives (to be minimized) and the arrows indicate the direction of increasing preference, with the best solution located in the bottom-left corner of the figure. The comparison of the different Pareto-optimal sets shows large differences in performance that determine a clear ranking of the generated solutions. Not surprisingly, the use of perfect forecasts, either in the form of local observations (black circles) or of E-HYPE simulation (blue circles), allow designing (ideal) policies that largely outperform the other solutions. The policies using ESP and SYS4 forecasts are also superior to the baseline solutions, particularly in terms of water supply deficit values. The considered 51-days lead time is indeed too long to provide valuable information to control the fast flood dynamics, which is on the order of few days and would therefore require much shorter lead times. However, the downward shift of the Pareto fronts indirectly influences the performance in flood control as the new sets of operating policies using forecast information allow identifying better compromise alternatives. The numerical quantification of the improvements in terms of both objectives is provided by the values of hypervolume indicator reported in Table 2, which estimate the ESP and SYS4 forecast values being equal to 6% and 16% of the system performance, respectively.

To better understand the contribution of the different forecast information to the Lake Como operations, we analyze the dynamic behavior of the system under operating policies that use distinct information. This analysis focuses on the solutions located along the green dashed line in Figure 4a,

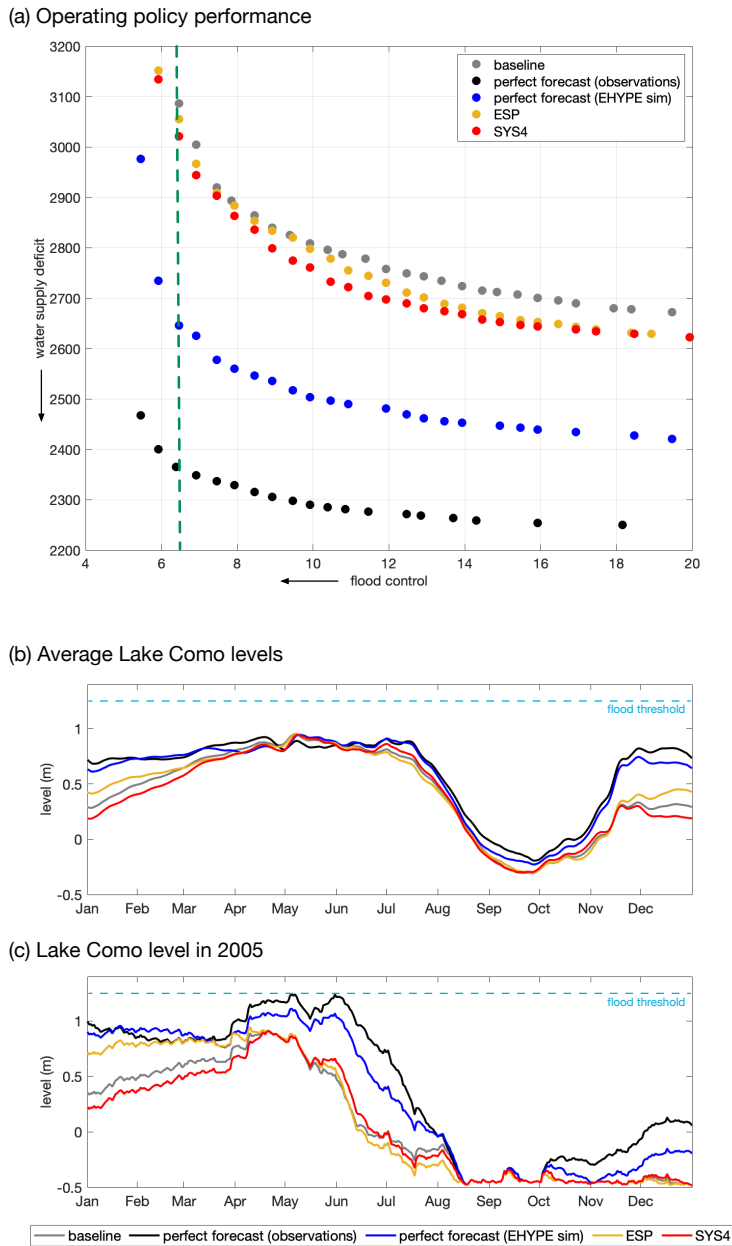


Figure 4. Performance obtained by different Lake Como operating policies (panel a) informed with ESP and SYS4 forecasts, along with the upper bound of the system performance (perfect inflow forecasts from observations or E-HYPE simulation) and the baseline operating policies based on observed climatology. The green dashed line marks the performance of the historical lake regulation in terms of flood control. Analysis of average Lake Como levels (measured with respect to the Malgrate reference level at 197.37 m.a.s.l.) under different operating policies (panel b) and during the extreme drought recorded in 2005 (panel c).

which marks the performance of the historical lake regulation in terms of flood control. The rationale of this choice is to look at solutions that reduce the water supply deficit J^D without degrading the performance in J^F . The historical regulation cannot be used as a reference since it also includes additional objectives not accounted for in our model (e.g., navigation, fishing, tourism, ecosystem). All the simulated trajectories of the Lake Como level under each considered policy show a clear annual pattern, with the highest levels observed in late spring due to the snowmelt contribution (Figure 4b). In this period, maximizing the storage while avoiding floods is crucial to support the summer drawdown cycle driven by high irrigation demands. The policies conditioned on perfect forecast (black and blue lines) are able to maintain the highest level and to delay the drawdown. Conversely, the baseline solution (gray line), which has no information about future inflows, reaches the highest level at the beginning of May and, subsequently, the level is maintained about 10 cm below the perfect forecast trajectory to have space for buffering potential floods. A similar trajectory is followed by the policy informed by ESP and SYS4 forecasts (orange and red lines, respectively), which are on average almost overlapped until the third week of June, while they look more separated during the drawdown period with the SYS4 that is able to keep a high level also in July. In addition to the average levels, it is interesting to investigate how the different solutions operate the lake during the extreme drought recorded in 2005 (Figure 4c). The low inflows experienced during this drought event produced an early drawdown of the lake level starting at the beginning of June, when the downstream water demand is at its maximum, with the levels reaching the lower limit of -0.50 m around middle August. This extreme event confirms and emphasizes the differences observed on the average lake levels; the policies conditioned on perfect forecast maintain the highest level from April to mid-August thus delaying the drawdown. ESP and SYS4 forecasts, although less efficient than the perfect forecast solutions, are able to keep higher lake levels than the baseline solution from mid-May to the beginning of July, thus reducing the water supply deficit. ESP and SYS4 solutions then reach lower levels than the baseline in the second half of the 2005 summer. This strategy can be considered as an extreme drought mitigation measure triggered by the extreme drought conditions predicted for August in order to support a more reliable irrigation supply than under the baseline operations by sacrificing few extra centimeters of lake level.

This analysis can be translated into economic terms via simulation of the Agricultural district model, which estimates the crop production and the associated net profit (i.e., gross revenue minus production costs, also accounting for the EU Common Agricultural Policy subsidies (Gandolfi et al., 2014)) for the farmers in the Muzza irrigation district served by the Lake Como releases under different operating policies. Figure 5 shows the same ranking of solutions obtained in the space of the operating objective (Figure 4a), with the use of forecast information that allows gaining, on average, from 1% (ESP forecast) to 3.8% (perfect forecasts from observations) of annual farmers' profit (i.e., from 300,000 €/year to 900,000 €/year) in comparison to the 24.07 million €/year attained by the baseline solution. Interestingly, these values are much larger when evaluated over the 2005 drought,

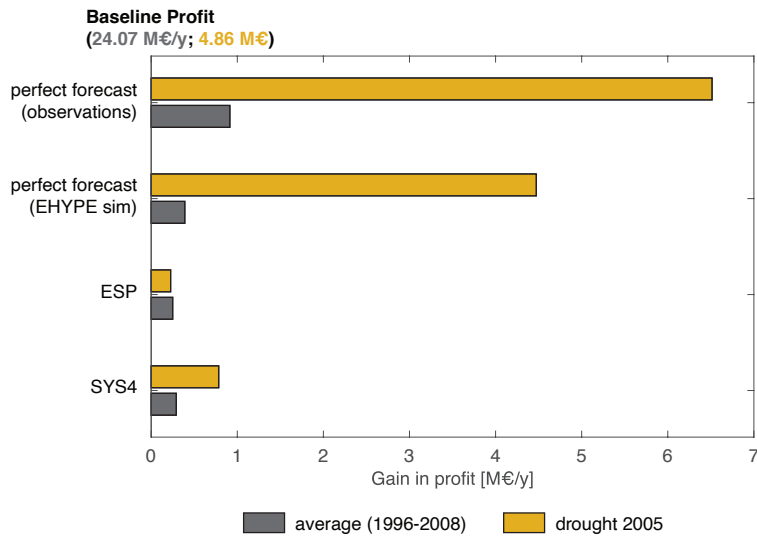


Figure 5. Comparison of gains in farmers’ profit with respect to the baseline solution under different Lake Como operating policies informed with ESP and SYS4 forecasts, along with the upper bound of the system performance (perfect inflow forecasts from observations or E-HYPE simulation).

when the baseline annual profit is only 20% of the 1996-2008 average value. In this case, the perfect forecasts generate a profit that is 134% (observations) and 92% (E-HYPE simulation) higher than the baseline; the value of ESP and SYS4 also grows, producing a 5% and 16% increase in farmers’ profit, respectively. These results suggest a large potential for using E-HYPE forecast in the management of extreme droughts.

4.2 Impact of forecast system setup and behavioral factors on forecast value

Following the benchmarking analysis in Table 1 we investigate the isolated sources of forecast value by assessing the sensitivity of the farmers’ profit on both forecast system set up and end-user behavioral factors. For the former aspect, we compare our baseline solution against the operating policies informed by ESP and SYS4 forecasts (using the ensemble means). For the latter, we explore increasing levels of risk aversion in the use of SYS4 forecasts by informing the operating policy with the 25th and 10th percentiles as well as the minimum of the forecast ensemble.

The results are reported in the comparative matrix in Table 3 which shows again the superiority of ESP and SYS4 over the baseline. Interestingly, the role of predicted precipitation and temperature in drought conditions differs from the average conditions. The use of SYS4 instead of ESP in 2005 generates a 11% gain in farmers’ profit, while this difference drops to 0.2% in average conditions. Over the full period, the most important components of the forecast system are the hydrological model and the initial conditions, which together produce more than 1% increase in farmers’ profit.

Table 3. Results of benchmarking analysis to isolate the sources of forecast value. The matrix reports the percentage change in farmers' profit for the forecast systems on the columns with respect to the benchmarks on the rows, estimated as average over the 1996-2008 period and for the 2005 drought (in parenthesis).

	ESP	SYS4 - mean	SYS4 - min	SYS4 - p10	SYS4 - p25
baseline	1.04 (4.65)	1.21 (16.13)	1.35 (36.26)	1.16 (40.80)	0.90 (22.32)
ESP		0.17 (10.97)	0.31 (30.20)	0.12 (34.54)	-0.14 (16.88)
SYS4 - mean			0.14 (17.34)	-0.05 (21.25)	-0.31 (5.33)
SYS4 - min				-0.19 (3.33)	-0.45 (-10.23)
SYS4 - p10					-0.26 (-13.13)

Hydrological initial conditions provide the most similar gains between the entire period and the 2005 dry conditions, suggesting that this component is the least sensitive to hydrological conditions. The analysis of the behavioral factors shows that the potential operational value of SYS4 depends on the level of risk aversion used in interpreting the information provided by the forecast ensemble. The average 1.2% increase in farmers' profit with respect to the baseline using the ensemble average grows to 1.35% when the policy is informed by the ensemble minimum, probably because E-HYPE generally overestimates observed inflows (Figure 3a) and predictions of winter low flows are more interesting for managing drought risk. However, results do not demonstrate a linear relationship between forecast value and risk aversion, with the average gain over the baseline being 1.16% when using the 10th percentile of the ensemble (which is equal to the gain produced by the ensemble mean) and 0.9% when using the 25th percentile of the ensemble.

In addition, our results show that the average contribution to the forecast value of predicted precipitation and temperature (+0.12%) is comparable to the one of the isolated behavioral factors. A solution that uses the ensemble minimum produces a profit 0.14% higher than using the ensemble mean (+0.31% with respect to ESP), whereas the 25th percentile of the ensemble generates a 0.31% reduction (-0.14% with respect to ESP). This means that the added value of SYS4 meteorological forecasts can be potentially undermined if end-users are not able to properly extract the most valuable information from the forecast ensemble. However, it should be noted that our results also show that there is not a single best statistic that consistently provides the most valuable information for improving the Lake Como operations. In average conditions, using the ensemble minimum marginally improves the farmers' profit with respect to all the other solutions informed by SYS4 forecasts; conversely, during the 2005 drought, the 10th percentile results to be more valuable than the minimum. The use of risk averse statistics in interpreting the forecast ensemble is therefore recommended for water supply operations exposed to drought risk, but more extensive investigations over multiple extreme events and, possibly, across different case studies is necessary to provide general recommendations.

4.3 From forecast skills to end-user value

Lastly, we aim to identify a relation between the increase in forecast skill and the resulting gain in farmer profit from the isolated forecast system components. Here, skill is computed as $1 - RMSE_S/RMSE_B$, where S is the considered forecast system selected from the columns of Table 3, while B is the benchmark used to isolate the sources of forecast skill/value selected from the rows of the table. The general assumption is that a gain in forecast skill should result in a gain in profits; however, the scatterplots in Figure 6 show that this relation is more complex and is strongly dependent on the hydrologic conditions (i.e., annual inflow) of the considered year. The overall skill-profit relation in Figure 6a suggests the existence of an exponential function in dry years (brown circles), while in wet years (green circles) the gain in profit does not seem to be sensitive to the gain in skill. This dependence is confirmed by Figure 6b, where the dry years follow quite well an exponential relationship (i.e., the fitted function attains a $R^2 = 0.87$) according to which a 10% improvement in forecast skill obtained by initializing the hydrological model is associated to a 1% gain in farmers' profit. Conversely, the blue circles are almost horizontally distributed with the gain in profit resulting almost insensitive to the improvements in forecast skill.

Interestingly, results significantly change when we compare SYS4-mean against ESP to isolate the gain from dynamical precipitation and temperature forecasts (Figure 6c). The forecasts are characterized by small losses and gains in both skill and profit that are not systematic and hardly interpretable. Moreover, in dry years the gains in skill using SYS4 forecasts do not necessarily translate into a gain in profit. Similar results appear in panels (d-e-f) of the figure, which explore the gain in skill and profit generated by risk averse behaviors against the SYS4-mean benchmark. However, in these three scatterplots we can still notice an exponential skill-profit relation for the driest years (dark brown circles). If we focus on the 2005 drought, which is the darkest circle in the top-right corner of Figure 6d-e-f, we observe an average 45% increase in skill that is associated to an average 14% gain in farmer profit. In these cases, the skill to profit relation becomes 3 to 1, confirming that improving the skill of seasonal forecasts is expected to be particularly valuable to inform the management of extreme drought events.

4.4 Limitations and future research

A limitation in the presented results is the relatively small number of points used to fit the forecast skill-value relationship. While it would certainly be interesting to repeat the analysis across multiple drought events as well as across different case studies characterized by diverse hydroclimatic regimes, in the context of this work we preferred to perform the analysis using highly detailed models whose associated computational requirements limit the possibility of easily increasing the sample size.

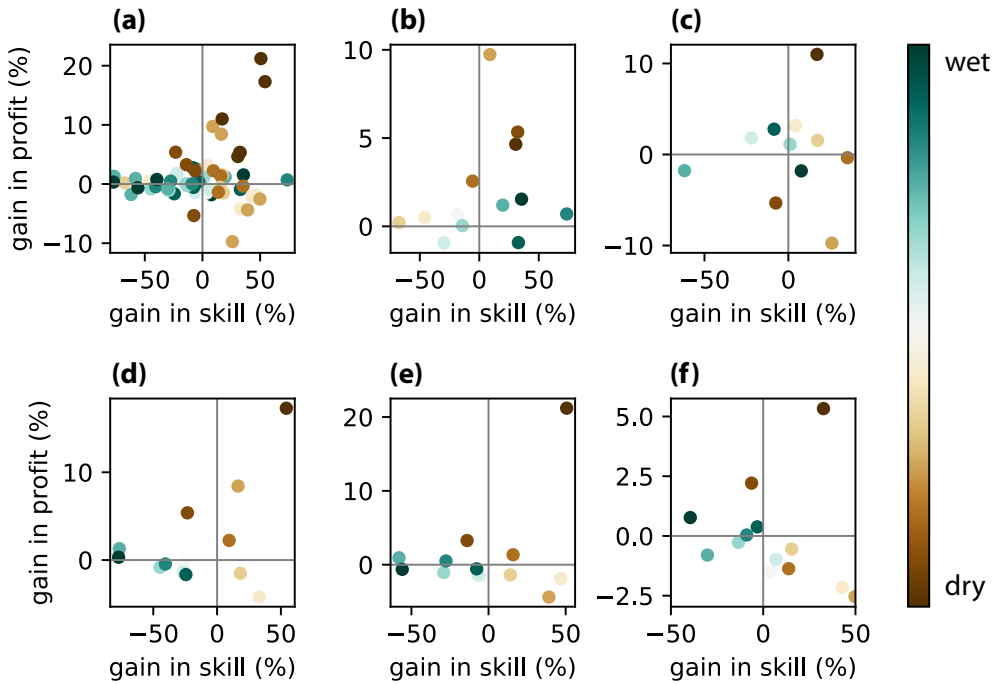


Figure 6. Scatterplot between forecast skill and value. The color of the circles represents the hydrologic conditions (i.e., annual inflow to the lake) of the different years. Markers represent either an isolated component of the forecast system or a behavioral factor for each year over the 1996-2008 time period: all components (panel a), ESP vs baseline (panel b), SYS4-mean vs ESP (panel c), SYS4-min vs SYS4-mean (panel d), SYS4-p10 vs SYS4-mean (panel e), SYS4-p25 vs SYS4-mean (panel f).

Moreover, it could be interesting to verify if the conclusions drawn by [Crochemore et al. \(2020\)](#) hold for the Lake Como basin by comparing the skill and value of E-HYPE forecasts against the ones generated by a fine-tuned local hydrologic model. Extending the economic analysis to other irrigated agricultural systems as well as other sectors (e.g., hydropower, flood protection) is also warranted. Finally, it would be interesting to assess the value of hydroclimatic services under a projected future climate characterized by more frequent and intense extreme events, which can make forecast information more valuable than under the historical climate.

5 Conclusions

In this paper, we quantify the value of hydroclimatic services in terms of added economic benefit of the forecasts in informing end-user decisions. Moreover, we analyze the isolated sources of forecast value in terms of both forecast system set up and end-user behavioral factors, and we also infer a relation between gains in forecast skill and gains in end-user value. The evaluation framework is applied to the operations of Lake Como in the Italian lake district.

395 Numerical results demonstrate the potential of the E-HYPE hydrological forecast to inform the operations of Lake Como, generating an average 290,000 €/year gain in the net profit of the farmers served by the lake releases (about 1% of the average profit obtained by a baseline solution without forecast information). This gain rises up to 16% (i.e., 800,000 € against a baseline profit equal to 4.9 M€) during the extreme drought experienced in 2005.

400 The analysis of the isolated sources of the estimated forecast value attributes the largest share of value to the initialization of the hydrological forecasts with conditions relevant to the forecast issue date. For the extreme drought of 2005, the forecast value is instead mostly attributable to the use of precipitation and temperature predictions and to risk averse decisions focused on the lowest part of the forecast ensemble. In addition, our results shows the need of transitioning from
405 forecast skill assessment to integrated frameworks that include decision models and account for end-user behavioral factors capturing different perception of risk and uncertainty. Investing in advanced training for decision makers and reservoir operators is expected to be crucial for maximizing the uptake of forecast information and their operational value (Crochemore et al., 2016). Conversely, the added value of hydroclimatic services might be undermined if end-users are not able to adequately
410 interpret the uncertainty associated to the forecast ensemble. *Lastly, our results suggest a complex skill-to-value relation modulated by the underlying hydrologic conditions. While the gains in profit result almost insensitive to the improvements in forecast skill in wet years, our results show an exponential skill-to-value relation in dry conditions, where large gains in forecast skills are necessary to generate moderate gains in end-user profit. This ratio becomes less demanding during extreme*
415 *drought events.*

Data and code availability: The seasonal meteorological forecasts SEAS5 from the European Centre for Medium-Range Weather Forecasts are freely accessible from the Copernicus Climate Data Store (<https://cds.climate.copernicus.eu/>). The HYPE model code is available from the HYPEweb portal
420 (<http://hypeweb.smhi.se/model-water/>). Real-time seasonal forecasts obtained through E-HYPE are openly available on the HYPEweb portal (<http://hypeweb.smhi.se/explore-water/forecasts/seasonal-forecasts-europe/>). Local observations of lake inflows along with the other meteorological variables used by the agricultural district model were provided by Consorzio dell'Adda (<http://www.addaconsorzio.it>) and by Agenzia Regionale per la Protezione dell'Ambiente (<http://ita.arpalombardia.it>). The source
425 code for the Lake Como simulation and EMODPS implementation is available on Github (<https://github.com/mxgiuliani00/LakeCom>)

Acknowledgements. The work has been partially funded by the European Commission under the IMPREX project belonging to Horizon 2020 framework programme (grant n. 641811). Funding was also received from the EU Horizon 2020 project S2S4E (Sub-seasonal to seasonal forecasting for the energy sector) under grant agreement No. 776787.

430 References

- Anghileri, D., Voisin, N., Castelletti, A., Pianosi, F., Nijssen, B., and Lettenmaier, D.: Value of long-term streamflow forecasts to reservoir operations for water supply in snow-dominated river catchments, *Water Resources Research*, pp. –, 2016.
- Block, P.: Tailoring seasonal climate forecasts for hydropower operations, *Hydrology and Earth System Sciences*, 15, 1355–1368, doi:[10.5194/hess-15-1355-2011](https://doi.org/10.5194/hess-15-1355-2011), <https://www.hydrol-earth-syst-sci.net/15/1355/2011/> 2011.
- Boucher, M. and Ramos, M.: Ensemble Streamflow Forecasts for Hydropower Systems, *Handbook of Hydrometeorological Ensemble Forecasting*, pp. 1–19, 2018.
- Busoniu, L., Ernst, D., De Schutter, B., and Babuska, R.: Cross-Entropy Optimization of Control Policies With Adaptive Basis Functions, *IEEE Transactions on systems, man and cybernetics–Part B: cybernetics*, 41, 196–209, doi:[10.1109/TSMCB.2010.2050586](https://doi.org/10.1109/TSMCB.2010.2050586) 2011.
- Castelletti, A., Pianosi, F., and Soncini-Sessa, R.: Water reservoir control under economic, social and environmental constraints, *Automatica*, 44, 1595–1607, 2008.
- Castelletti, A., Galelli, S., Restelli, M., and Soncini-Sessa, R.: Tree-based reinforcement learning for optimal water reservoir operation, *Water Resources Research*, 46, 2010.
- Ceglar, A., Toreti, A., Prodhomme, C., Zampieri, M., Turco, M., and Doblaz-Reyes, F.: Land-surface initialisation improves seasonal climate prediction skill for maize yield forecast, *Scientific reports*, 8, 1322, 2018.
- Cloke, H. and Pappenberger, F.: Ensemble flood forecasting: a review, *Journal of Hydrology*, 375, 613–626, 2009.
- 450 Contreras, E., Herrero, J., Crochemore, L., Pechlivanidis, I., Photiadou, C., Aguilar, C., and Polo, M. J.: Advances in the Definition of Needs and Specifications for a Climate Service Tool Aimed at Small Hydropower Plants’ Operation and Management, *Energies*, 13, 1827, 2020.
- Coughlan de Perez, E., Stephens, E., Bischiniotis, K., van Aalst, M., van den Hurk, B., Mason, S., Nissan, H., and Pappenberger, F.: Should seasonal rainfall forecasts be used for flood preparedness?, *Hydrology and Earth System Sciences*, 21, 4517–4524, 2017.
- 455 Crochemore, L., Ramos, M., Pappenberger, F., van Andel, S., and Wood, A.: An experiment on risk-based decision-making in water management using monthly probabilistic forecasts, *Bulletin of the American Meteorological Society*, 97, 541–551, 2016.
- Crochemore, L., Ramos, M., Pappenberger, F., and Perrin, C.: Seasonal streamflow forecasting by conditioning climatology with precipitation indices, *Hydrology and Earth System Sciences*, 21, 1573–1591, 2017.
- 460 Crochemore, L., Ramos, M., and Pechlivanidis, I.: Can Continental Models Convey Useful Seasonal Hydrologic Information at the Catchment Scale?, *Water Resources Research*, 56, 2020.
- Day, G.: Extended streamflow forecasting using NWSRFS, *Journal of Water Resources Planning and Management*, 111, 157–170, 1985.
- 465 Delorit, J. and Block, P.: Using Seasonal Forecasts to Inform Water Market-Scale Option Contracts, *Journal of Water Resources Planning and Management*, 145, 04019018, 2019.
- Denaro, S., Anghileri, D., Giuliani, M., and Castelletti, A.: Informing the operations of water reservoirs over multiple temporal scales by direct use of hydro-meteorological data, *Advances in Water Resources*, 103, 51–63, doi:[10.1016/j.advwatres.2017.02.012](https://doi.org/10.1016/j.advwatres.2017.02.012) 2017.

- 470 Eurostat: Agri-environmental indicator - irrigation, https://ec.europa.eu/eurostat/statistics-explained/index.php/Agri-environmental_indicator_-_irrigation#Analysis_at_regional_level, 2019.
- Facchi, A., Ortuni, B., Maggi, D., and Gandolfi, C.: Coupled SVAT-groundwater model for water resources simulation in irrigated alluvial plains, *Environmental Modeling & Software*, 19, 1053–1063, 2004.
- Gandolfi, C., Sali, G., Facchi, A., Tediosi, A., Bulgheroni, C., Rienzner, M., and Weber, E.: Integrated modelling
475 for agricultural policies and water resources planning coordination, *Biosystems Engineering*, 128, 100–112, 2014.
- Georgakakos, K. and Graham, N.: Potential benefits of seasonal inflow prediction uncertainty for reservoir release decisions, *Journal of Applied Meteorology and Climatology*, 47, 1297–1321, 2008.
- Gigerenzer, G., Hertwig, R., Van Den Broek, E., Fasolo, B., and Katsikopoulos, K.: “A 30% chance of rain
480 tomorrow”: How does the public understand probabilistic weather forecasts?, *Risk Analysis*, 25, 623–629, 2005.
- Giuliani, M. and Castelletti, A.: Is robustness really robust? How different definitions of robustness impact decision-making under climate change, *Climatic Change*, 135, 409–424, 2016.
- Giuliani, M., Pianosi, F., and Castelletti, A.: Making the most of data: an information selection and as-
485 sessment framework to improve water systems operations, *Water Resources Research*, 51, 9073–9093, doi:[10.1002/2015WR017044](https://doi.org/10.1002/2015WR017044), 2015.
- Giuliani, M., Castelletti, A., Fedorov, R., and Fraternali, P.: Using crowdsourced web content for informing water systems operations in snow-dominated catchments, *Hydrology and Earth System Sciences*, 20, 5049–5062, doi:[10.5194/hess-20-5049-2016](https://doi.org/10.5194/hess-20-5049-2016), 2016a.
- 490 Giuliani, M., Castelletti, A., Pianosi, F., Mason, E., and Reed, P.: Curses, tradeoffs, and scalable management: advancing evolutionary multi-objective direct policy search to improve water reservoir operations, *Journal of Water Resources Planning and Management*, 142, doi:[10.1061/\(ASCE\)WR.1943-5452.0000570](https://doi.org/10.1061/(ASCE)WR.1943-5452.0000570), 2016b.
- Giuliani, M., Li, Y., Castelletti, A., and Gandolfi, C.: A coupled human-natural systems analysis of irrigated agriculture under changing climate, *Water Resources Research*, 52, 6928–6947, 2016c.
- 495 Giuliani, M., Quinn, J. D., Herman, J. D., Castelletti, A., and Reed, P. M.: Scalable Multiobjective Control for Large-Scale Water Resources Systems Under Uncertainty, *IEEE Transactions on Control Systems Technology*, 26, 1492–1499, doi:[10.1109/TCST.2017.2705162](https://doi.org/10.1109/TCST.2017.2705162), 2018.
- Guariso, G., Orlovski, S., Rinaldi, S., and Soncini-Sessa, R.: An application of the risk-averse approach to the management of Lake Como, *Journal of Applied Systems Analysis*, 5, 54–64, 1984.
- 500 Guariso, G., Rinaldi, S., and Soncini-Sessa, R.: The Management of Lake Como: A Multiobjective Analysis, *Water Resources Research*, 22, 109–120, doi:[10.1029/WR022i002p00109](https://doi.org/10.1029/WR022i002p00109), 1986.
- Guimarães Nobre, G., Hunink, J. E., Baruth, B., Aerts, J. C., and Ward, P. J.: Translating large-scale climate variability into crop production forecast in Europe, *Scientific reports*, 9, 1277, 2019.
- Hadka, D. and Reed, P.: Borg: An Auto-Adaptive Many-Objective Evolutionary Computing Framework, *Evolutionary Computation*, 21, 231–259, 2013.
- 505 Hashimoto, T., Stedinger, J., and Loucks, D.: Reliability, resilience, and vulnerability criteria for water resource system performance evaluation, *Water Resources Research*, 18, 14–20, 1982.
- Hundecha, Y., Arheimer, B., Donnelly, C., and Pechlivanidis, I.: A regional parameter estimation scheme for a pan-European multi-basin model, *Journal of Hydrology: Regional Studies*, 6, 90–111, 2016.

- 510 Joslyn, S., Nadav-Greenberg, L., Taing, M., and Nichols, R.: The effects of wording on the understanding and use of uncertainty information in a threshold forecasting decision, *Applied Cognitive Psychology: The Official Journal of the Society for Applied Research in Memory and Cognition*, 23, 55–72, 2009.
- Kirchhoff, C., Lemos, M., and Engle, N.: What influences climate information use in water management? The role of boundary organizations and governance regimes in Brazil and the US, *Environmental Science & Policy*, 26, 6–18, 2013.
- 515 Kryanova, V., Vetter, T., Eisner, S., Huang, S., Pechlivanidis, I., Strauch, M., Gelfan, A., Kumar, R., Aich, V., Arheimer, B., Chamorro, A., van Griensven, A., Kundu, D., Lobanova, A., Mishra, V., Plotner, S., Reinhardt, J., Seidou, O., Wang, X., Wortmann, M., Zeng, X., and Hattermann, F.: Intercomparison of regional-scale hydrological models and climate change impacts projected for 12 large river basins worldwide - a synthesis, *Environmental Research Letters*, 12, 105 002, 2017.
- 520 Li, Y., Giuliani, M., and Castelletti, A.: A coupled human–natural system to assess the operational value of weather and climate services for agriculture, *Hydrology and Earth System Sciences*, 21, 4693–4709, doi:[10.5194/hess-21-4693-2017](https://doi.org/10.5194/hess-21-4693-2017) 2017.
- Molteni, F., Stockdale, T., Balmaseda, M., Balsamo, G., Buizza, R., Ferranti, L., Magnusson, L., Mogensen, K., 525 Palmer, T., and Vitart, F.: The new ECMWF seasonal forecast system (System 4), vol. 49, European Centre for Medium-Range Weather Forecasts Reading, U. K, 2011.
- Nayak, M., Herman, J., and Steinschneider, S.: Balancing Flood Risk and Water Supply in California: Policy Search Integrating Short-Term Forecast Ensembles With Conjunctive Use, *Water Resources Research*, 54, 7557–7576, doi:[10.1029/2018WR023177](https://doi.org/10.1029/2018WR023177) 2018.
- 530 Neitsch, S., Arnold, J., Kiniry, J., and Williams, J.: Soil and Water Assessment Tool Theoretical Documentation Version 2009, Tech. Rep. 406, Grassland, Soil and Water Research Laboratory–Agricultural Research Service Blackland Research Center–Texas AgriLife Research, College Station, Texas, 2011.
- Neumann, J., Arnal, L., Magnusson, L., and Cloke, H.: The 2013/14 Thames Basin Floods: Do Improved Meteorological Forecasts Lead to More Skillful Hydrological Forecasts at Seasonal Time Scales?, *Journal of Hydrometeorology*, 19, 1059–1075, 2018.
- 535 Pechlivanidis, I., Crochemore, L., Rosberg, J., and Bosshard, T.: What are the key drivers controlling the quality of seasonal streamflow forecasts?, *Water Resources Research*, 56, e2019WR026 987, 2020.
- Ramos, M., Mathevet, T., Thielen, J., and Pappenberger, F.: Communicating uncertainty in hydro-meteorological forecasts: mission impossible?, *Meteorological Applications*, 17, 223–235, 2010.
- 540 Ramos, M., van Andel, S., and Pappenberger, F.: Do probabilistic forecasts lead to better decisions?, *Hydrology and Earth System Sciences*, 17, 2219–2232, doi:[10.5194/hess-17-2219-2013](https://doi.org/10.5194/hess-17-2219-2013) 2013.
- Soncini-Sessa, R., Castelletti, A., and Weber, E.: *Integrated and participatory water resources management: Theory*, Elsevier, Amsterdam, NL, 2007.
- Steduto, P., Hsiao, T., Raes, D., and Fereres, E.: AquaCrop –The FAO Crop Model to Simulate Yield Response 545 to Water: I. Concepts and Underlying Principles, *Agronomy Journal*, 101, 426–437, 2009.
- Turco, M., Ceglar, A., Prodhomme, C., Soret, A., Toreti, A., and Doblas-Reyes, F.: Summer drought predictability over Europe: empirical versus dynamical forecasts, *Environmental Research Letters*, 12, 084 006, 2017.
- Turner, S., Bennett, J., Robertson, D., and Galelli, S.: Complex relationship between seasonal streamflow forecast skill and value in reservoir operations, *Hydrology and Earth System Sciences*, 21, 4841–4859, 2017.

- 550 Weedon, G., Balsamo, G., Bellouin, N., Gomes, S., Best, M., and Viterbo, P.: The WFDEI meteorological forcing data set: WATCH Forcing Data methodology applied to ERA-Interim reanalysis data, *Water Resources Research*, 50, 7505–7514, 2014.
- Yang, W., Andréasson, J., Phil Graham, L., Olsson, J., Rosberg, J., and Wetterhall, F.: Distribution-based scaling to improve usability of regional climate model projections for hydrological climate change impacts studies, 555 *Hydrology Research*, 41, 211–229, 2010.
- Zatarain-Salazar, J., Reed, P., Herman, J., Giuliani, M., and Castelletti, A.: A diagnostic assessment of evolutionary algorithms for multi-objective surface water reservoir control, *Advances in Water Resources*, 92, 172–185, doi [10.1016/j.advwatres.2016.04.006](https://doi.org/10.1016/j.advwatres.2016.04.006) 2016.
- Zitzler, E., Thiele, L., Laumanns, M., Fonseca, C., and da Fonseca, V.: Performance assessment of multiobjective optimizers: an analysis and review, *IEEE Transactions on Evolutionary Computation*, 7, 117–132, 560 2003.