

# Data assimilation for continuous global assessment of severe conditions over terrestrial surfaces

Clément Albergel<sup>1</sup>, Yongjun Zheng<sup>1</sup>, Bertrand Bonan<sup>1</sup>, Emanuel Dutra<sup>2</sup>, Nemesio Rodríguez-Fernández<sup>3</sup>, Simon Munier<sup>1</sup>, Clara Draper<sup>4</sup>, Patricia de Rosnay<sup>5</sup>, Joaquin Muñoz-Sabater<sup>5</sup>,  
5 Gianpaolo Balsamo<sup>5</sup>, David Fairbairn<sup>5</sup>, Catherine Meurey<sup>1</sup>, Jean-Christophe Calvet<sup>1</sup>

<sup>1</sup> CNRM, Université de Toulouse, Météo-France, CNRS, Toulouse, France

<sup>2</sup> Instituto Dom Luiz, IDL, Faculty of Sciences, University of Lisbon, Portugal

<sup>3</sup> CESBIO, Université de Toulouse, CNRS, CNES, IRD, Toulouse, France

<sup>4</sup> CIRES/NOAA Earth System Research Laboratories, Boulder, CO, USA

10 <sup>5</sup> European Centre for Medium-Range Weather Forecasts, Shinfield Road, Reading RG2 9AX, UK

\* Correspondence: [clement.albergel@meteo.fr](mailto:clement.albergel@meteo.fr)

**Abstract-** LDAS-Monde is a global offline Land Data Assimilation System (LDAS) that jointly assimilates satellite-derived observations of Surface Soil Moisture (SSM) and Leaf Area Index  
15 (LAI) into the ISBA (Interaction between Soil Biosphere and Atmosphere) Land Surface Model (LSM). This study demonstrates that LDAS-Monde is able to detect, monitor and forecast the impact of extreme weather on land surface states. Firstly, LDAS-Monde is run globally at 0.25° spatial resolution over 2010-2018. It is forced by the state-of-the-art ERA5 reanalysis (LDAS\_ERA5) from the European Centre for Medium Range Weather Forecast (ECMWF). The  
20 behaviour of the assimilation system is evaluated by comparing the analysis with the assimilated observations. Then the Land Surface Variables (LSVs) are validated with independent satellite datasets of evapotranspiration, Gross Primary Production, Sun Induced Fluorescence and snow cover. Furthermore, in situ measurements of SSM, evapotranspiration and river discharge are employed for the validation. Secondly, the global analysis is used to (i) detect regions exposed to  
25 extreme weather such as droughts and heatwave events and (ii) address specific monitoring and forecasting requirements of LSVs for those regions. This is performed by computing anomalies of the land surface states. They display strong negative values for LAI and SSM in 2018 for two regions: North Western Europe and the Murray-Darling basin in South Eastern Australia. For those regions, LDAS-Monde is forced with the ECMWF Integrated Forecasting System (IFS) high  
30 resolution operational analysis (LDAS\_HRES, 0.10° spatial resolution) over 2017-2018. Monitoring capacities are studied by comparing open-loop and analysis experiments again against the assimilated observations. Forecasting abilities are assessed by initializing 4- and 8-day LDAS\_HRES forecasts of the LSVs with the LDAS\_HRES assimilation run compared to the open-loop experiment. The positive impact of initialization from an analysis in forecast mode is

35 particularly visible for LAI that evolves at a slower pace than SSM and is more sensitive to initial conditions than to atmospheric forcing, even at an 8-day lead time. This highlights the impact of initial conditions on LSV forecasts and the value of jointly analysing soil moisture and vegetation states.

## 40 1 Introduction

Extreme events are likely to increase in frequency and/or magnitude as a result of anthropogenic climate change (IPCC, 2012, Ionita et al., 2017). Amongst all the natural disasters, droughts are arguably the most detrimental (Bruce, 1994; Obasi, 1994; Cook et al., 2007; Mishra and Singh, 2010; WMO 2017) as about one-fifth of damages caused by natural hazards can be attributed to  
45 droughts (Wilhite, 2000). They cost society billions of dollars every year (WMO, 2017). It is therefore important for communities to develop tools that can monitor and predict drought conditions (Svoboda, 2002; Luo and Wood, 2007; Blyverket et al., 2019) as well as their impact on land surface variables (LSVs) and society (Di Napoli et al., 2019). A major scientific challenge in relation to the adaptation to climate change is to observe and simulate how land biophysical  
50 variables respond to those extreme events (IPCC, 2012).

Droughts are generally caused by a lack of precipitation. However, different drought types are classified according to the part of the hydrological cycle that suffers from a water deficit (IPCC, 2014; Barella-Ortiz and Quintana-Seguí, 2018). They include meteorological droughts (lack of precipitation), agricultural droughts (deficit of water in the soil), hydrological droughts (deficit of  
55 streamflow or water level in rivers) and environmental droughts (a combination of the previous droughts types). Because of the effect of precipitation deficit on the whole hydrological system, all drought types are related (Wilhite, 2000). Complex interactions between continental surface and atmospheric processes have to be combined with human action in order to fully understand the wide ranging impacts of droughts on land surface conditions (Van Loon, 2015). As a consequence, Land  
60 Surface Models (LSMs) driven by high-quality gridded atmospheric variables and coupled to river-routing system, are key tools to address these challenges (Dirmeyer et al., 2006; Schellekens et al., 2017). Initially developed to provide boundary conditions to atmospheric models, LSMs can now be used to monitor and forecast land surface conditions (Balsamo et al., 2015; Balsamo et al., 2018; Schellekens et al., 2017). Additionally, the representation of LSVs by LSMs can be improved by  
65 coupling ~~them~~LSM's with other models of the Earth system like atmosphere, oceans and river routing-systems (e.g., de Rosnay et al., 2013, 2014; Kumar et al., 2018, Balsamo et al., 2018; Rodríguez-Fernández et al., 2019; Muñoz-Sabater et al., 2019).

Earth Observations (EOs) provide long-term records, which can complement LSMs. Satellite products are particularly relevant for the monitoring of LSVs. Satellite EOs related to the terrestrial hydrological, vegetation and energy cycles are now available globally, at kilometric scales and below (e.g., Lettenmaier et al., 2015, Balsamo et al., 2018). Combining EOs and LSMs through Land Data Assimilation Systems (LDASs) can lead to enhanced initial land surface conditions (e.g. Reichle et al., 2007; Lahoz and De Lannoy, 2014; Kumar et al., 2018; Albergel et al., 2017, 2018a, 2019; Balsamo et al., 2018). Subsequently, this can benefit weather forecasts, including temperature and precipitation. It can also indirectly benefit agricultural and vegetation productivity [prediction](#), streamflow prediction, warning systems for floods and droughts and the representation of the carbon cycle (Bamzai and Shukla, 1999; Schlosser and Dirmeyer, 2001; Bierkens, ~~M.~~ and van Beek, 2009; Koster et al., 2010; Bauer et al., 2015; Massari et al., 2018; Albergel et al., 2018a, 2019, Rodríguez-Fernández et al., 2019; Muñoz-Sabater et al., 2019). Amongst the current land-only LDAS activities several are led by NASA (National Aeronautics and Space Administration) projects. Examples of such activities are the Global Land Data Assimilation System (GLDAS, Rodell et al., 2004), the North American Land Data Assimilation System (NLDAS, Xia et al., 2012a, b) and the National Climate Assessment-Land Data Assimilation System (NCA-LDAS, Kumar et al., 2016, 2018, 2019). The Famine Early Warning Systems Network (FEWS NET) Land Data Assimilation System (FLDAS, McNally et al., 2017) is run over Western, Eastern and Southern Africa. Additional examples include the Carbon Cycle Data Assimilation System (CCDAS, Kaminski et al., 2002), the Coupled Land Vegetation LDAS (CLVLDAS, Sawada and Koike, 2014, Sawada et al., 2015), the Data Assimilation System for Land Surface Models using CLM4.5 (Fox et al., 2018) and the SMAP (Soil Moisture Active Passive) level 4 system (Reichle et al., 2019). Finally, LDAS-Monde (Albergel et al., 2017, 2018, 2019) developed by the research department of Météo-France. Details of these studies are provided [ds](#) by Kumar et al., (2018), Albergel et al., (2019) but few applications are global and include the assimilation of multiple EOs. LDAS-Monde consists in an offline (i.e. non coupled with the atmosphere) joint assimilation of Surface Soil Moisture (SSM) and Leaf Area Index (LAI) EOs into the ISBA (Interaction between Soil Biosphere and Atmosphere) LSM (Noilhan and Planton, 1989, Noilhan and Mahfouf, 1996). Several previous studies using LDAS-Monde have been published at regional and continental scales (Albergel et al., 2017, 2018, 2019, Leroux et al., 2018, Tall et al., 2019, Blyverket et al., 2019, Bonan et al., 2020). In this study, LDAS-Monde is run at the global scale and is forced by the latest atmospheric reanalysis (ERA5) from the European Centre for Medium Range Weather Forecast (ECMWF), over 2010-2018. The resulting 0.25° spatial resolution reanalysis of the LSVs is hereafter referred to as LDAS\_ERA5. In this paper, it is shown that LDAS-Monde can be used to

detect, monitor and forecast the impact of extreme events on LSVs. The following items are presented and discussed:

• An evaluation of LDAS-Monde at a global scale is carried out. This assessment involves the assimilated observations to demonstrate that the system is working as intended. Importantly, LDAS-Monde is then validated using diverse, independent and complementary satellite-derived datasets of evapotranspiration (EVAP) from the GLEAM project (Miralles et al., 2011, Martens et al., 2017), Gross Primary Production (GPP) from the FLUXCOM project (Tramontana et al., 2016, Jung et al., 2017), Solar Induced Fluorescence (SIF) from the GOME-2 (Global Ozone Monitoring Experiment-2) scanning spectrometer (Munro et al., 2006, Joiner et al., 2016) and snow cover data from the Interactive Multi-sensor Snow and Ice Mapping System (IMS, <https://www.natice.noaa.gov/ims/>, last accessed June 2019). Additional validations are performed with in situ measurements of evapotranspiration from the FLUXNET 2015 synthesis data set (<http://fluxnet.fluxdata.org/>, last accessed June 2019), soil moisture from the International Soil Moisture Network (ISMN, Dorigo et al., 2011, 2015, <https://ismn.geo.tuwien.ac.at/en/>, last accessed June 2019) and river discharge from several networks across the world.

• The LDAS-Monde global analysis over 2010-2018 is used to detect droughts and heatwave events in 2018. This identification is performed by computing anomalies of LSVs over the 9-year period and identifying where the strongest negative anomalies are located in 2018. For the identified regions, the abilities of LDAS-Monde to forecast such events in near-real-time is investigated by forcing it with high resolution forecasts from ECMWF.

The paper is organised in five sections: section 2 details the various components constituting LDAS-Monde (the ISBA LSM, the data assimilation scheme, the EOs assimilated as well as the different atmospheric forcing datasets used), followed by the experimental and evaluation setup. Section 3 describes and discusses the impact of the analysis on the representation of the LSVs. Section 4 details the identification of 2 case studies over regions particularly affected by extreme heatwave events during 2018. Furthermore the detailed monitoring and land surface forecasts of these events are presented at higher spatial resolution. Finally section 5 provides conclusions and prospects for future work.

## 2 Material and methods

The following subsections briefly describe the main components of LDAS-Monde: the ISBA LSM, its data assimilation scheme and two other key elements of the setup: atmospheric forcing and assimilated satellite derived observations. The experimental setup and the evaluation datasets used in this study are also presented.

LDAS-Monde (Albergel et al., 2017) is embedded within the SURFEX (SURFace EXternalisée, Masson et al., 2013, version 8.1) modelling platform developed by the research department of Météo-France (CNRM, Centre National de Recherches Météorologiques). LDAS-Monde (Albergel et al., 2017) It allows the joint integration of satellite derived SSM and LAI into the CO<sub>2</sub>-responsive (Calvet, et al., 1998, 2004, Gibelin et al., 2006), multilayer diffusion scheme (Boone et al., 2000, Decharme et al., 2011) version of the ISBA LSM (Noilhan and Planton, 1989, Noilhan and Mahfouf, 1996). LDAS-Monde can also be coupled with ~~the~~ CTRIP (CNRM Total Runoff Integrating Pathways, Decharme et al., 2019) hydrological model using a Simplified Extended Kalman Filter (SEKF, Mahfouf et al., 2009).

### 145 2.1.1 ISBA Land Surface Model

The ISBA LSM aims to model the evolution of LSVs. In the chosen configuration for this study, ISBA is able to represent the transfer of water and heat through the soil based on a multilayer diffusion scheme, as well as plant growth and leaf-scale physiological processes. ISBA models key vegetation variables like LAI, ~~and~~ above ground biomass ~~and~~; the diurnal cycle of water, carbon and energy fluxes. In ISBA, It computes at the soil-vegetation composite is computed using a single-source energy budget. In the CO<sub>2</sub>-responsive version of ISBA, ISBA-A-gs, the model can simulate the CO<sub>2</sub> net assimilation and GPP by considering the functional relationship between the photosynthesis rate (A) and the stomatal aperture (gs) based on the biochemical A-gs model proposed by Jacob et al., 1996. Photosynthesis controls the evolution of vegetation variables. It makes vegetation growth possible as a result of an uptake of CO<sub>2</sub>. Contrastingly, a deficit of photosynthesis triggers higher mortality rates. Ecosystem respiration (RECO) represents the CO<sub>2</sub> being released by the soil-plant system and GPP by the carbon uptake via photosynthesis. Finally, the net ecosystem exchange (NEE) consists of the difference between GPP and RECO. Each ISBA grid cell is composed of up to 12 generic land surface types, namely bare soil, rocks, permanent snow and ice surfaces as well as nine plant functional types (needle leaf trees, evergreen broadleaf trees, deciduous broadleaf trees, C3 crops, C4 crops, C4 irrigated crops, herbaceous, tropical herbaceous and wetlands). The ECOCLIMAP-II land cover database (Faroux et al., 2013) provides these parameters for each patch and each grid cell of the ISBA model.

The ISBA multilayer diffusion scheme's default discretization is 14 layers over 12 m depth. This study follows Decharme et al., (2011), which is illustrated in Figure 1 of their paper. The thickness

(depth) of each layer is (from top to bottom), 1 cm (0-1 cm), 3 cm (1-4 cm), 6 cm (4-10 cm), 10 cm (10-20 cm), 20 cm (20-40 cm), 20 cm (40-60 cm), 20 cm (60-80 cm), 20 cm (80-100 cm), 50 cm (100-150cm), 50 cm (150-200cm), 100 cm (200-300 cm), 200 cm (300-500 cm), 300 cm (500-800 cm) and 400 cm (800 to 1200 cm). Snow is represented using the ISBA 12-layer explicit snow  
170 | scheme (Boone and Etchevers, 2001, Decharme et al., 2016).

### 2.1.2 CTRIP river routing system

The ISBA-CTRIP river routing system is able to simulate continental scale hydrological variables based on a set of three prognostic equations. They correspond to (i) the groundwater, (ii) the  
175 | surface stream water and (iii) the seasonal floodplains. It converts the runoff simulated by ISBA into river discharge. The ISBA-CTRIP river-routing network has a spatial resolution of 0.5° globally and is coupled daily with ISBA through the OASIS3-LCT coupler (Voldoire et al., 2017). ISBA provides CTRIP with updated fields of runoff, drainage, groundwater and floodplain recharges. In turn, CTRIP provides ISBA with water table depth, floodplain fraction as well as  
180 | flood potential infiltration. Subsequently, ISBA can simulate capillary rise, evaporation and infiltration over flooded areas. A comprehensive overview of how CTRIP is coupled with ISBA is available in Decharme et al. (2019).

### 2.1.3 Data assimilation

The SEKF used in LDAS-Monde is a 2-step sequential approach in which a prior forecast step is  
185 | followed by an analysis step. The prior forecast propagates the initial states to the next time step with the ISBA LSM and the analysis step then corrects this forecast by assimilating observations. The flow-dependency (dynamic link) between the prognostic variables and the observations is ensured in the SEKF through the observation operator and its Jacobians, which propagate  
190 | information from the observations to the analysis via finite-difference computations (de Rosnay et al., 2013). The Jacobian matrix has as many rows as assimilated observation types (two in our case: SSM and LAI) and as many columns as model control variables requested (8 in our case, soil moisture from layers 2 to 8 and LAI). In addition to a control run (i.e. the forecast step), computing the Jacobian matrix requires perturbed runs, one for each control variable. The eight control  
195 | variables are directly updated using their sensitivity to observed variables (i.e. defined by the Jacobian). Other variables are indirectly modified through biophysical processes and feedback from the model. Several studies (e.g. Draper et al., 2009; Rüdiger et al., 2010) have demonstrated that small perturbations lead to a good linear approximation of ~~this linear~~the model behaviour, provided that computational round-off error is not significant. Typically, for those runs, the initial state of the

200 control variable is perturbed by about 0.1% (see Albergel et al., 2017; Rüdiger et al., 2010). The  
length of the LDAS-Monde assimilation window is 24 hours. ~~A mean volumetric standard deviation  
error is specified that is proportional to the soil moisture range (the difference between the  
volumetric field capacity and the wilting point, calculated as a function of the soil type, as given by  
Noilhan et Mahfouf, 1996). It is scaled by a factor 0.04 for SSM in its model equivalent (the second  
205 layer of soil between 1 and 4 cm), and 0.02 for deeper layers (soil layers 3 to 8, 4-100 cm). The  
observational SSM error follows the same approach and is scaled by 0.05, which is consistent with  
errors typically expected for remotely sensed SSM (e.g., de Jeu et al., 2008, Gruber et al, 2016). A  
mean volumetric standard deviation error of  $0.04 \text{ m}^3\text{m}^{-3}$  is prescribed for soil moisture in the second  
layer of soil (i.e. the model equivalent of the observations, between 1 and 4 cm), it is  $0.02 \text{ m}^3\text{m}^{-3}$  for  
210 soil moisture in deeper layers (soil layers 3 to 8, 4-100cm). Both are then scaled by the dynamic  
range of soil moisture (the difference between the volumetric field capacity and the wilting point,  
calculated as a function of the soil type, as given by Noilhan et Mahfouf, 1996). The observational  
SSM error follows the same approach and a value of  $0.05 \text{ m}^3\text{m}^{-3}$  is used. This is consistent with  
errors typically expected for remotely sensed SSM (e.g., de Jeu et al., 2008, Gruber et al., 2016).~~  
215 Based on previous results from Jarlan et al., 2008, Rüdiger et al., 2010 and Barbu et al., 2011,  
observed LAI standard deviation errors are set to 20 % of the LAI value itself. The LAI prior  
forecast errors are set equivalent to the observation errors for values higher than  $2 \text{ m}^2\text{m}^{-2}$ . For values  
lower than  $2 \text{ m}^2\text{m}^{-2}$ , a fixed standard deviation error of  $0.04 \text{ m}^2\text{m}^{-2}$  has been used. More details about  
this approach can be found in Barbu et al., 2011 (section 2.3 and figure 2).

220

## 2.2 Atmospheric forcing

The lowest ~~level of the atmospheric~~ model-level (about 10 metres above ground level) of air  
temperature, wind speed, specific humidity and pressure, the downwelling fluxes of shortwave,  
longwave radiations as well as precipitation (partitioned in solid and liquid phases) are needed to  
225 force LDAS-Monde. In this study, LDAS-Monde is driven by several near-surface meteorological  
fields from ECMWF:

- its most recent atmospheric reanalysis (ERA5) to produce an LDAS-Monde global reanalysis
- its high resolution Integrated Forecast System (IFS HRES) to monitor and predict the  
230 evolution of LSVs for regions under severe droughts and heatwaves.

ERA5 (Hersbach et al., 2018, 2020) is the fifth generation of global reanalyses produced by  
ECWMF. This atmospheric reanalysis is a key element of the Copernicus Climate Change Service

(C3S) and is available from 1979 onward (data is released about 2 months behind real time). ERA5 produces analyses at an hourly output, at 31 km horizontal resolution and consisting of 137 levels in the vertical. Several studies have validated the ERA5 dataset. For example, Urraca et al. (2018) have compared incoming solar radiation from both ERA5 and the ERA-interim reanalysis (Dee et al., 2011) at a global scale and found evidence that ERA5 outperforms ERA-Interim. In another study, Beck et al. (2019) have highlighted the good performance of ERA5 precipitation with respect to a set of 26 gridded (sub-daily) precipitation data sources by comparing them to Stage-IV gauge-radar data over the CONUS domain (CONTinental United States of America). Tall et al. (2019) have used in situ measurements of precipitation at more than 100 stations spanning all over Burkina-Faso in Western Africa as well as incoming solar radiation from 4 in situ stations. They evaluated the performance of ERA5 compared to ERA-Interim and found improved results for ERA5 as well. Furthermore, they evaluated both reanalysis datasets for their ability to force the ISBA LSM, which demonstrates a clear advantage for ERA5 in terms of the performance of LSVs. Albergel et al. (2018a) made similar comparisons of the ISBA LSM forcing over North America. They showed enhanced performances in the representation of evapotranspiration, snow depth, soil moisture and river discharge for ERA5 relative to ERA-Interim.

At the time of writing, the ERA5 model and data assimilation system (Cycle 41r2 of the ECMWF IFS) are very similar to that of the operational weather forecast, HRES, which has production cycles ranging from 41r2 to 45r1 during the study period (more information at <https://www.ecmwf.int/en/forecasts/documentation-and-support/changes-ecmwf-model>, last accessed July 2019). The main difference between ERA5 and HRES over the considered period is the horizontal resolution, consisting of 9 km in HRES and 31 km in ERA5. The atmospheric forcing is interpolated from the native grids of ERA5 and HRES to regular grids at  $0.25^\circ$  and  $0.1^\circ$ , respectively, using a bilinear interpolation from the native grid to the regular grid. ERA5 and HRES were used in Albergel et al. (2019) to force LDAS-Monde in order to study the impact of the 2018 summer heatwave in Europe. Authors have highlighted that the HRES configuration (LDAS\_HRES hereafter) exhibits better monitoring skills than the coarser resolution ERA5 configuration.

In forecasting mode, the HRES forecast is also available daily from 00:00 UTC with a 10-day lead time. The HRES forecast step frequency is hourly up to time step 90 (i.e. day 3), 3-hourly from time-step 90 to 144 (i.e. day 6) and 6-hourly from time-step 144 to 240 (i.e. day 10). In the forecast experiments in this study (see section 2.4 for details on the experimental setup) HRES forecasts with a 10-day lead time are used to force the LSM forecasts of the LSVs. By comparing LDAS\_HRES open-loop and analysis configurations it is possible to evaluate the impact of the initialisation on the forecast of LSVs. The original 3-hourly time steps are used up to day 6 (time



step 144). The 6-hourly time steps from day 6 to 10 are interpolated to 3-hourly frequency to avoid discontinuities.

### 2.3 Assimilated satellite Earth Observations

270 Two types of satellite-derived variables are assimilated in LDAS-Monde: ASCAT Soil Water Index (SWI) and LAI GEOV1. They are both freely available through the Copernicus Global Land Service (CGLS, <https://land.copernicus.eu/global/index.html>, last accessed June 2019).

ASCAT stands for Advanced Scatterometer, which is an active C-band microwave sensor that is onboard the European MetOp polar orbiting satellites (METOP-A, from 2006, B from 2012 and  
275 also C from 2019). From ASCAT radar backscatter coefficients, it is possible to derive information on SSM following a change detection approach (Wagner et al., 1999, Bartalis et al., 2007). The recursive form of an exponential filter (Albergel et al., 2008) is then applied to estimate the SWI using a timescale parameter, T (varying between 1 day and 100 days). T is a surrogate parameter for all the processes potentially affecting the temporal dynamics of soil moisture including soil  
280 hydraulic properties, soil layer thickness, evaporation, runoff and vertical gradient of soil properties. The obtained SWI then ranges between 0 (dry) and 100 (wet). In this study, CGLS SWI-001 (produced with a T-value of 1 day) is used as a proxy for SSM (Kidd et al., 2013). Grid points with an average altitude exceeding 1500 m above sea level as well as those with more than 15 % of urban land cover are rejected as those conditions are known to inhibit the retrieval of SSM from  
285 space. Prior to the assimilation, SSM has to be converted from the observation space to the model space. This is done through a linear rescaling as proposed by Scipal et al. (2007), where the mean and variance of observations are matched to the mean and variance of the modelled soil moisture from the second layer of soil (1-4 cm depth). In practice, the rescaling gives similar results to CDF (cumulative distribution function) matching. The linear rescaling is performed on a seasonal basis  
290 (with a 3-month moving window) as suggested by Draper et al., (2011) and Barbu et al., (2014).

The LAI GEOV1 observations are based on data from both SPOT-VGT (up to 2014) and PROBA-V (from 2014) satellites. They span from 1999 to present, have 1 km spatial resolution and are produced according to the methodology developed by Baret et al. (2013). LAI GEOV1 observations have a temporal frequency of 10 days at best and no observations are available during cloudy  
295 conditions. LAI data are masked in the presence of modelled snow by the ISBA LSM.

As in previous studies (e.g. Barbu et al., 2014, Albergel et al., 2019), observations are interpolated by an arithmetic average to the model grid points ( $0.25^\circ$  or  $0.10^\circ$  in this study), if at least 50 % of the model grid points are observed (i.e. half the maximum amount). ASCAT SSM and LAI GEOV1 are illustrated by Figure 1.

LDAS-Monde is first run globally, at  $0.25^\circ$  spatial resolution, forced by the ERA5 atmospheric reanalysis. It assimilates both SSM and LAI EOs from 2010 to 2018 (LDAS\_ERA5). LDAS\_ERA5 is spun-up by running the year 2010 twenty times. The LDAS\_ERA5 analysis and its model counterpart (open-loop, i.e. no data assimilation) are presented and evaluated in this study.

This 9-yr global reanalysis is then used to provide a monthly climatology for estimating anomalies of the land surface conditions. For each month (and variable considered) of 2018 we have removed the monthly mean and scaled by the monthly standard deviation of the 2010-2018 period. Significant anomalies are used to trigger more detailed monitoring and forecasting activities for a region of interest. A total of 19 regions across the globe have been selected, which are known for being potential hot spots for droughts and heatwaves. They are listed in Table I and presented in Figure 2. Monthly anomalies of SSM and LAI in the LDAS\_ERA5 analysis are calculated for 2018 (with respect to the 2010-2018 period) over these 19 regions. In turn, regions presenting significant level of negative anomalies are selected and further investigated. For those regions, a new LDAS-Monde experiment was driven by the HRES atmospheric analysis leading to a  $0.1^\circ$  analysis of the LSVs from April 2016 to December 2018 (LDAS\_HRES). Note that HRES is only available at a  $0.1^\circ$  spatial resolution from April 2016. April to December 2016 is used as a short period for spin-up and results are presented for the period 2017-2018. Although a 9-month spin-up period is rather short, evaluating LDAS\_HRES over either 2017-2018 or 2018 (using instead a 21-month spin-up) lead to similar results on surface soil moisture and LAI (not shown). While the system is not fully spun-up, it is long enough to capture the system response to data assimilation. LDAS\_HRES complements the coarser spatial resolution LDAS\_ERA5.

HRES forecasts with a 10 day lead time are initialized either from LDAS\_HRES analysis or open-loop experiments (LDAS\_Fc hereafter) in order to assess the impact of the initialisation on the forecast. For simplicity, only forecasts with a four and eight day lead time are presented (LDAS\_fc4 and LDAS\_fc8, respectively). A summary of the experimental setup is given in Table II.

## 2.5 Evaluation datasets and metrics

Both satellite-derived estimates of EOs and in situ measurements are used as reference datasets in this study. The LDAS\_ERA5 analysis performance is assessed with respect to the open-loop model run (i.e. no assimilation). The two assimilated datasets, CGLS SSM and LAI, are firstly used to verify that the data assimilation is behaving as expected. Then several independent datasets are used for the validation, namely evapotranspiration from the GLEAM project (Miralles et al., 2011, Martens et al., 2017, version 3b entirely satellite driven), GPP from the FLUXCOM project

(Tramontana et al., 2016, Jung et al., 2017), SIF from the GOME-2 (Global Ozone Monitoring Experiment-2) scanning spectrometer (Munro et al., 2006, Joiner et al., 2016) and snow cover data  
335 from the Interactive Multi-sensor Snow and Ice Mapping System (IMS, <https://www.natice.noaa.gov/ims/>). The IMS snow cover product combines ground observations and satellite data from microwave and visible sensors (using geostationary and polar orbiting satellites) to provide snow cover information in all weather conditions. The IMS product is available daily for the northern hemisphere.

340 Soil moisture is validated using in situ measurements of soil moisture from the ISMN, a pool of stations which consists of 19 networks across 14 countries (see Table S3). In total, 782 stations are represented with at least 2 years of daily data over 2010-2018. In situ measurements at 5 cm depth (SSM) are compared with soil moisture from the third layer of soil (4-10 cm) in LDAS\_ERA5. In situ measurements at 20 cm depth are compared with LDAS\_ERA5 soil moisture from the fourth  
345 layer of soil (10-20 cm, 685 stations from 10 networks). Besides 11 stations located in 4 countries of Western Africa (Benin, Mali, Sénégal and Niger) and 21 stations in Australia, most of the stations are located in North America and Europe (see Table S3).

Evaluation datasets are listed in Table III along with the metrics used for the evaluation. For satellite datasets of SWI, LAI, evapotranspiration and GPP, the metrics consist of the correlation coefficient  
350 (R), Root Mean Square Difference (RMSD) and Normalized RMSD ( $N_{RMSD}$ , Eq.(1)).

$$N_{RMSD} = \frac{RMSD_{(Analysis)} - RMSD_{(Model)}}{RMSD_{(Model)}} \times 100 \quad \text{Eq.(1)}$$

Regarding the SIF satellite dataset, fluorescence is not simulated directly in the ISBA LSM. However, photosynthesis activity is simulated through the calculation of the GPP, which is driven by plant growth and mortality in the model. Modelled GPP values are expressed in  $g(C) \cdot m^{-2} \cdot day^{-1}$ ,  
355 while SIF is an energy flux emitted by the vegetation ( $mW \cdot m^{-2} \cdot sr^{-1} \cdot nm^{-1}$ ). Hence, GPP and SIF cannot be directly compared as they do not represent the same physical quantities. However, several studies (e.g, Zhang et al., 2016, Sun et al., 2017, Leroux et al., 2018) have found a high correspondence in both time and space between those two variables, highlighting the potential of SIF products to support the validation of modelled GPP. Therefore, the correlation between  
360 modelled GPP and observed SIF is used as an evaluation metric. Concerning the snow cover dataset, differences between observed and modelled snow cover is considered for the evaluation.

For in situ datasets of soil moisture and evapotranspiration, the standard metrics are considered, namely the correlation coefficient, RMSD, unbiased RMSD and bias. Moreover, a Normalized Information Contribution (NIC, Eq.(2)) measure is applied to the correlation values to quantify the  
365 improvement or degradation due to the specific configuration.

$$NIC_R = \frac{R_{(Analysis)} - R_{(Model)}}{1 - R_{(Model)}} \times 100 \quad \text{Eq. (2)}$$

370 NIC scores are classified according to three categories: (i) negative impact from the analysis with respect to the open-loop with values smaller than -3 %, (ii) positive impact from the analysis with respect to the open-loop with values greater than +3 % and (iii) neutral impact from the analysis with respect to the open-loop with values between -3 % and 3 %.

In addition, for surface soil moisture, the correlation is calculated for both absolute (R) and anomaly ( $R_{anomaly}$ ) time-series in order to remove the strong impact from the SSM seasonal cycle (see e.g. Albergel et al., 2018a, 2018b).

375 The Nash-Sutcliffe Efficiency score (NSE, Nash and Sutcliffe, 1970, Eq.(3)) is used to evaluate LDAS\_ERA5 experiments ability to represent the monthly discharge dynamics.

$$NSE = 1 - \frac{\sum_{mt=1}^T (Q_s^{mt} - Q_o^{mt})^2}{\sum_{mt=1}^t (Q_s^{mt} - \overline{Q_s^{mt}})^2} \quad \text{Eq.(3)}$$

where  $Q_s^{mt}$  is the monthly river discharge from LDAS\_ERA5 (analysis or open-loop) at month  $mt$ , and  $Q_o^{mt}$  is the observed river discharge at month  $mt$ . NSE can vary between  $-\infty$  and 1. An exact match between model predictions and observed data is defined as a value of 1, whereas a value of 0 means that the model predictions have the same accuracy as the mean of the observed data. Finally negative values represent situations where the observed mean is a better predictor than the model simulation. NIC presented in Eq.(1) has also been applied to NSE scores to assess the added value of LDAS\_ERA5 analysis over its open-loop counterpart. Stations with NSE values less than -2 have been discarded. A similar threshold has already been used in previous studies evaluating LDAS-  
380 Monde (e.g. Albergel et al., 2017, 2018a). Many anthropogenic processes are not yet represented in ISBA, including water management from dams and reservoirs, irrigation, water uptake in urban areas. This could lead to a poor representation of river discharges in those regions. As with previous studies it has been decided to exclude these areas by focusing on stations with reasonable NSE values.

390

### 3 Global assessment of LDAS\_ERA5

#### 3.1 Gridded datasets

In this sub-section, the LDAS-Monde open-loop and analysis are firstly compared against the assimilated observations (SSM and LAI) to demonstrate that the assimilation system is working as

395 intended. Both experiments are also compared with independent sources of information to evaluate the analysis impact (GPP, EVAP and SIF).

Figure 3 presents mean LAI RMSD values between the observations and LDAS\_ERA5 for the open-loop (Figure 3a), and for the analysis (Figure 3b) over 2010-2018. Because LAI observations are ingested into the model, the assimilation reduces the LAI RMSD values almost everywhere. It should be noted that rather large LAI RMSD values ( $> 1.5 \text{ m}^2\text{m}^{-2}$ ) can remain in some areas after the assimilation, especially in densely forested areas.

Figure 4 illustrates latitudinal plots of LAI, SSM, GPP and EVAP for LDAS\_ERA5 before assimilation (the open-loop) and after assimilation (the analysis) along with observations. The number of points considered per  $0.25^\circ$  stripe is also represented. From Figure 4a it is possible to see the positive impact the analysis has on LAI compared to the open-loop, with the former being closer to the observations. Improvements in the analysis fit are visible between nearly  $80^\circ$  North to about  $55^\circ$  South and areas around the equator are impacted the most from the assimilation. This demonstrates that the data assimilation system is working as intended. A smaller impact is obtained for SSM, GPP and EVAP relative to LAI, which is hardly visible at this scale. The mean latitudinal results show a consistent difference in terms of GPP and EVAP between LDAS\_ERA5 and the observational products. These differences are systematic with higher values in tropical regions.

Figure 5 presents latitudinal plots of score differences (correlations and  $N_{\text{RMSD}}$ ) for LAI, SSM, GPP, EVAP and SIF. For SIF, it only makes sense to show the correlation differences, since this metric is used to evaluate GPP variability as in Leroux et al., 2018. Score differences are computed by subtracting the open loop from the analysis. Monthly averages are calculated over 2010-2018 for LAI and SSM, 2010-2013 for GPP, 2010-2016 for EVAP and 2010-2015 for SIF. For each panel of Figure 5, the vertical dashed line represents the 0-value. For plots of correlation differences, positive values indicate an improvement in the analysis with respect to the open-loop simulation. Similarly, for plots of RMSD differences, negative values indicate an improvement in the analysis with respect to the open-loop simulation. Given that LAI and SSM are assimilated variables, the analysis leads to a clear improvement in both correlation and RMSD. Such an improvement is expected and reflects the healthy behaviour of the assimilation system. Both variables are improved at almost all latitudes with the exception around  $45^\circ\text{S}$  for LAI correlation values (very few land points). For SSM a noticeable improvement in both correlation and RMSD is found around  $20^\circ\text{N}$ , which corresponds mainly to an improvement in the Sahara desert (not shown). Being linked to LAI, GPP is also improved across almost all latitudes (to a lesser extent than LAI) with a particularly positive impact below  $20^\circ\text{N}$ . As seen on Figure 5 d) and i), there is a negligible impact

of the assimilation on EVAP. It highlights the difficulty of land surface data assimilation to impact model fluxes by modifying model states.

430 The panels of Figure 6 illustrate histograms of score differences (correlation and RMSD, analysis minus open-loop) for LAI, SSM, GPP, EVAP and SIF. The number of available data and the percentage of positive and negative values are reported. For correlations (RMSD) differences, positive (negative) values indicate an improvement in the analysis relative to the open-loop. Regarding LAI, the analysis improves 96.9% of the grid points for correlations and 99.9% for  
435  $N_{\text{RMSD}}$ . As for SSM, correlation values are improved for 92.8% of the grid points (92.4% for  $R_{\text{MSD}}$ ). The independent GPP and SIF datasets also demonstrate improvements in the analysis relative to the open loop. Indeed, the GPP correlation (RMSD) is better for 81.1% (74.1%) of the gridpoints and the SIF correlation is enhanced for 79.7%. Results using the GLEAM dataset for evapotranspiration are more contrasting with 63.6% (48.9%) of the grid points showing an  
440 improvement from the analysis. It is worth mentioning that 24.9% (39.6%) of the grid point shows a decrease in skill. However, GLEAM is an evaporation model designed to be driven by remote sensing observations only. GLEAM only estimates (root-zone) soil moisture and terrestrial evaporation while the CO<sub>2</sub>-responsive version of ISBA in LDAS\_ERA5 is a physically-based land surface model, accounting for more processes linked to vegetation (see section 2.1.1). It should be  
445 noted that the auxiliary datasets used to represent the different land cover types also differ. Within GLEAM, the land cover types are sourced from the Global Vegetation Continuous Fields product (MOD44B), based on observations from the Moderate Resolution Image Spectroradiometer (MODIS). Four land cover types are considered, namely bare soil, low vegetation (e.g. grass), tall vegetation (e.g. trees), and open water (e.g. lakes). In ISBA, the fraction of the 12 land cover types  
450 over some areas departs from prevalent land cover products such as CLC2000 (Corine Land Cover) and GLC2000 (Global Land Cover). It could potentially impact the distribution of the terrestrial evaporation between GLEAM and ISBA. Further work at CNRM will focus on understanding the differences between ISBA and GLEAM, in particular investigating the sub-components of terrestrial evaporation.

455 Finally, Figure S1 and Figure S2 illustrate snow cover evaluation. LDAS\_ERA5 snow cover is evaluated against the IMS snow cover. Figure S1 shows the averaged northern hemisphere snow cover fraction for the 2010-2018 period. It is complemented by Figure S2 which shows (i) maps of IMS snow cover (top row) for 3 seasons, (ii) equivalent maps of snow cover from LDAS\_ERA5 open-loop (second row), (iii) maps of snow cover differences between the open-loop and IMS data  
460 and (iv) maps of snow cover differences between the analysis and the open-loop. LDAS\_ERA5 open-loop compares very well with the IMS snow-cover data in the accumulation season from

September to February (Figure S2 and panels d) to i) of Figure S1), except for an overestimation over the Tibetan Plateau. The issue over Tibet from ERA5 is not new and is consistent with Orsolini et al., (2019). An early melt in spring is visible in LDAS\_ERA5 compared to observations and could be related to the snow cover parametrization in ISBA. As expected, the analysis has an almost neutral impact on snow as both SSM and LAI observations are filtered out during frozen/snow-covered conditions and there is no snow data assimilation yet in LDAS\_ERA5 (Figure S2 and panels (j), (k) and (l) of Figure S1). Clearly an area of potential improvement in LDAS-Monde is to incorporate snow data assimilation using satellite data such as IMS (as in e.g. de Rosnay et al., 2014).

### 3.2 Ground-based datasets

LDAS\_ERA5 analysis and open-loop are also evaluated using independent in situ measurements of evapotranspiration, river discharge and surface soil moisture across the world. Daily in situ measurements of evapotranspiration from the FLUXNET-2015 synthesis data set (<http://fluxnet.fluxdata.org/>, last accessed June 2019) are first used in this study. The LDAS\_ERA5 evapotranspiration performance is evaluated using the correlation coefficient (R), RMSD, ubRMSD and the bias (LDAS\_ERA5 minus observations) using the 85 selected FLUXNET-2015 stations. The median R, RMSD, ubRMSD and bias for LDAS\_ERA5 analysis (open-loop) are 0.73 (0.72), 28.74 (29.60) W.m<sup>-2</sup>, 27.37 (26.92) W.m<sup>-2</sup> and 4.64 (4.40) w.m<sup>-2</sup>, respectively. Although these values depict a small advantage of the analysis over the open-loop, it is worth mentioning that these differences are rather small and likely to fall within the uncertainty of the in situ measurements.

Figure 7(a) represents the added value of the analysis based on NIC<sub>R</sub> (Eq.(2)), the large blue circles represent a positive impact from the analysis (20 stations) with a NIC<sub>R</sub> greater than +3 (i.e. R values are better when the analysis is used than when the model is used) while large red circles represent a degradation from the analysis (5 stations) with a NIC<sub>R</sub> smaller than -3. Stations with a rather neutral impact (60 stations) have a NIC<sub>R</sub> between [-3 ; +3] and are reported using small dots. Note that at the scale of Figure 7(a), some stations are overlapping. Figure 7(a) is complemented by panels (b), (c), (d) and (e) which show scatter-plots of R, ubRMSD, absolute bias and RMSD between LDAS\_ERA5 analysis (x-axis) and the open-loop (y-axis) for the 85 stations from the Fluxnet2015. Out of the 85 stations considered, 56 have better R values in the analysis compared to the open loop. The respective numbers of improved stations for ubRMSD, RMSD and the absolute bias equate to 41,47 and 44 respectively. The set of 20 stations from Figure 7(a) where the analysis has a positive impact on the NIC<sub>R</sub> (greater than +3) are reported in green on Figure 7(b).

495 Results on river discharge are illustrated by Figure 8 (panels a and b). Figure 8(a) represents NSE scores for the subset of 982 stations selected. Most of them are located in North America and Europe while a few are available in South America and Africa. Figure 8(a) is complemented by Figure 8(b) which shows the NIC score applied to the NSE score. It emphasizes the added value of the LDAS\_ERA5 analysis over the open-loop. From this subset of stations 74% present a rather neutral impact from the analysis (with a NIC ranging between -3% and +3%) while 26% (254 stations) present a significant impact (with a NIC above +3% or below -3%). When the analysis significantly impacts the representation of river discharge, this impact tends to be positive. Indeed, 74% of this subset of stations (189 stations) have a NIC score greater than 3% while only 26% (65 stations) show NIC score smaller than -3%.

505 The statistical scores for soil moisture from LDAS\_ERA5 open-loop and analysis are presented for the third and fourth layers of soil, corresponding to 4-10 cm depth and 10-20 cm depth respectively. The soil moisture at layers 3 and 4 is compared with ground measurements over 2010-2018 from the ISMN at depths of 5 cm and 20 cm respectively. The results are displayed in Table S3 for each individual network. Averaged statistical scores (ubRMSD, R,  $R_{\text{anomaly}}$  and bias) are similar for both LDAS\_ERA5 analysis and open-loop even if local differences exist. For the analysis, averaged R ( $R_{\text{anomaly}}$ ) values for the third layer, along with their 95% Confidence Intervals (CI) (782 stations from 19 networks), are  $0.68 \pm 0.03$  ( $0.53 \pm 0.04$ ). For the open loop, the averaged R ( $R_{\text{anomaly}}$ ) values are  $0.67 \pm 0.03$  ( $0.53 \pm 0.04$ ). Averaged-network values are highest for the SOILSCAPE network with values of  $0.88 \pm 0.01$  ( $0.58 \pm 0.04$ ) for the analysis (49 stations in the USA). For all networks, the average R values are higher than 0.55, with the exception of ARM (10 stations in the USA), which presents an averaged R value of  $0.29 \pm 0.05$ . Averaged ubRMSD and bias (LDAS\_ERA5 minus in situ) are  $0.060 \text{ m}^3\text{m}^{-3}$  and  $0.077 \text{ m}^3\text{m}^{-3}$  for the analysis respectively. The open loop has a similar performance, with an ubRMSD and bias of  $0.060 \text{ m}^3\text{m}^{-3}$  and  $0.076 \text{ m}^3\text{m}^{-3}$  respectively. NIC (Eq.2) has also been applied to R values. In total, 65% of stations present a neutral impact of the analysis compared to the open loop (511 stations at NIC ranging between -3 and +3), 12% present a negative impact (91 stations at  $\text{NIC} < -3$ ) and 23% present a positive impact (180 stations at  $\text{NIC} > +3$ ).

The number of stations where R differences between the analysis and the open-loop are significant (i.e. their 95% CI are not overlapping) is 186 out of 782 (about 26%). There is an improvement from the analysis with respect to the open-loop for 128 stations (about 69%) and a degradation for 58 stations (about 31%). Figure 9 illustrates R differences between the analysis and the open-loop runs over CONUS where most of the stations are located (552 out of 782). When differences (analysis minus openloop) are not significant stations are represented by a small dot (425 stations out of 552). When they are significant (127 stations out of 552), large circles have been used, with



blue corresponding to positive differences (99 stations out of 127) and red ~~for~~to negative differences (28 stations out of 127). For most of the stations where a significant difference is obtained, it represents an improvement from the analysis.

Averaged analysis R (95%CI), bias and ubRMSD for the fourth layer of soil (685 stations from 10 networks) are  $0.65\pm 0.03$ ,  $0.049 \text{ m}^3\text{m}^{-3}$  and  $0.055 \text{ m}^3\text{m}^{-3}$ , respectively. For the open-loop, they are  $0.64\pm 0.03$ ,  $0.048 \text{ m}^3\text{m}^{-3}$  and  $0.056 \text{ m}^3\text{m}^{-3}$ , respectively. In terms of the NIC, about 60% of the stations demonstrate a neutral impact of the analysis compared with the open loop, while 28% show a positive impact and 12% a negative impact. Although differences between the open-loop run and the analysis are rather small, these results underline the added value of the analysis with respect to the model run. Figure S3 represents the distribution of the scores values for LDAS\_ERA5 open-loop and analysis using boxplots centred on the median value. It is difficult to see any important differences between them.

For evapotranspiration, river discharge and surface soil moisture there is a slight advantage for the LDAS\_ERA5 analysis with respect to its open-loop counterpart. Even if the averaged statistical metrics are rather similar for both, there are significant differences at the regional scale.

#### 4. Monitoring and forecasts for areas under severe/extreme conditions

##### 4.1 Selection of two regional case studies

For each individual region presented in Table I and Figure 2, monthly anomalies (scaled by the standard deviation) of analysed SSM (second layer of soil, 1-4cm) and LAI for 2018 are assessed with respect to the 2010-2018 average. The anomalies (see Figure 10) highlight three regions, two of which present strong negative anomalies for both SSM and LAI for almost all of 2018. These are North Western Europe (WEUR), and the Murray-Darling basin (MUDA), in South Eastern Australia. Contrastingly, ~~one region~~Eastern Africa (EAFR) presents strong positive anomalies of SSM and LAI ~~in Eastern Africa (EAFR)~~. WEUR and MUDA regions were affected by a severe heatwave and a drought in 2018, which impacted the LSVs analysed by LDAS\_ERA5. According to Figure 10, monthly anomalies of SSM and LAI for MUDA are negative through 2018 with 7 (6) months presenting LAI (SSM) anomalies below -1 standard deviation (stdev), respectively. WEUR has negative SSM anomalies from May to December 2018 with values dipping below -2 stdev. LAI was severely impacted as well with July to October 2018 presenting negative anomalies below -2 stdev. For WEUR, 5 months show LAI and SSM anomalies below -1 stdev. On the other hand, EAFR experienced 3 (7) months with positive anomalies for SSM and LAI in 2018 above 1 stdev.

According to the National Oceanic and Atmospheric Administration (NOAA), Europe experienced its warmest summer since continental records began in 1910 with a positive anomaly at +2.16°C above mean (Global Climate Report, <https://www.ncdc.noaa.gov/sotc/global/> last accessed April 2019). In Europe, temperatures over all the summer months in 2018 were above the climatological mean. The summer 2018 heatwave in Europe has already been reported in the scientific literature (e.g. Magnusson et al., 2018, Albergel et al., 2019, Blyverket et al., 2019).

In its 70<sup>th</sup> Special Climate Statement, the Australian Bureau of Meteorology (BoM) reported a very hot and dry summer 2018 in eastern Australia (BoM, 2019). Like much of Australia, the Murray Darling basin also experienced remarkably dry and hot weather during 2018. The annual maximum temperature for the Murray Darling basin as a whole was more than two degrees above average during 2018. The northern Murray–Darling Basin in particular was severely affected with inflows to all rivers catchments persistently well below normal (<http://www.bom.gov.au/state-of-the-climate/>, last visited: April 2019). Finally, the East African Seasonal Monitor based on the Famine Early Warning System Network (FEWS) confirms above-average rainfall amounts and significantly greener than normal vegetation conditions (e.g., <https://reliefweb.int/report/somalia/east-africa-seasonal-monitor-july-27-2018>, last visited: April 2019). As this study focuses on monitoring and forecasting the impact of severe drought conditions on LSVs, the WEUR and MUDA regions are selected for further investigation.

#### 4.2 Case studies: LDAS-Monde medium resolution (0.25°) experiments

Figure 11 illustrates seasonal cycles of observed LAI (Figure 11a) and SWI (Figure 11e), LDAS\_ERA5 analysis and open-loop LAI (Figure 11b) and SSM (Figure 11f) for the WEUR domain. The 2018 period is compared to 2010-2017 average. From Figure 11a, shows one may see the heatwave impact with a sharp drop in observed LAI values from June to November 2018 (solid green line). Such low LAI values have never been observed over the eight previous years (it is below the minimum value in shaded green). A similar behaviour is also visible in the ASCAT SWI dataset in Figure 11e with the lowest values recorded in 2018 for the 2010-2018 period. Over WEUR, LDAS\_ERA5 open-loop overestimates LAI in the second part of the year, as already highlighted by several studies (e.g. Albergel et al., 2017, 2019). The LDAS\_ERA5 analysis has a positive impact and reduces LAI values, as seen in Figure 11b. Panels c), d), g) and h) of Figure 11) depict a similar situation for the MUDA area, almost every month of 2018 presents the lowest values for both SSM and LAI. For both MUDA and WEUR, the smaller differences for LAI and SSM between LDAS\_ERA5 analysis and open-loop in 2018 indicates that both extreme events were well captured in the atmospheric forcing used to drive LDAS\_ERA5.

### 4.3 Case studies: LDAS-Monde high resolutions (0.1°) analysis and forecast experiments

For the two selected areas (WEUR and MUDA), LDAS-Monde is also run over April 2016 to December 2018 with the atmospheric forcing from HRES (LDAS\_HRES) at 0.1° spatial resolution. Additionally daily forecast experiments are performed and the results presented for LAI and SSM for lead-times of 4-days and 8-days. These forecasts are initialised by either LDAS\_HRES analysis or open-loop over 2017-2018 in order to assess the impact of the initial conditions. In this subsection, this new set of six experiments is verified against the assimilated observations. Verification of the forecasts with these observations can be viewed as an independent validation as those observations are not assimilated yet. It is worth mentioning that there is a difference between the use of SSM and LAI observations to evaluate the forecast. For SSM, the assimilation is done after a rescaling of the observations to the model climatology (see section 2.3), which removes bias. However, for LAI this is not the case and the assimilation process removes the bias in the modelled LAI with respect to the observations. This difference, together with the longer memory of LAI (compared to SSM), contributes to the results presented in this sub-section. Statistical scores for LDAS\_HRES open-loop and analysis are also presented, which serve as a benchmark for the forecast experiments.

Figure 12 (for WEUR) and Figure 13 (for MUDA) upper panels illustrate the seasonal RMSD (Figure 12a, 13a) and correlation (Figure 12b, 13b) between LDAS\_HRES SSM from the second layer of soil (1–4 cm) and ASCAT SSM estimates over 2017-2018. Scores are also reported for the LDAS\_HRES 4-day (LDAS\_fc4) and 8-day forecasts (LDAS\_fc8). From the upper panels of those figures one may notice a small improvement from the analysis (solid red line) over the open-loop simulation (solid blue line), with slightly reduced RMSD values and increased correlation values. However, no improvement (nor degradation) is visible from the 4-d and 8-d forecasts experiments initialised by LDAS\_HRES analysis over those initialised by LDAS\_HRES open-loop. As expected, LDAS\_HRES SSM is closer to the observations compared with LDAS\_fc4 and LDAS\_fc8. It is worth pointing out that for the MUDA area there is a small positive impact of the initialisation on the 4-d and 8-d forecast of surface soil moisture (Figure 13a, b). These results suggest that the fast evolving SSM model variable is more sensitive to the atmospheric forcing than to the initial conditions (at least within the forecast range presented in this study). Results for LAI are different from SSM (lower panels of Figure 12 and Figure 13). Firstly, there is a large improvement from the analysis (solid red line) over the open-loop (solid blue line), particularly during the LAI decaying phase (Boreal and Austral autumns mainly). Secondly, the LDAS\_HRES open-loop (solid blue line) and the forecasts initialized by the open loop (LDAS\_fc4 and

LDAS\_fc8) perform similarly. Furthermore, the LDAS\_fc4 and LDAS\_fc8 forecasts are quite  
630 consistent when initialised by the LDAS\_HRES analysis. Importantly, the LDAS\_HRES analysis  
and forecasts outperform the LDAS\_HRES open-loop initial conditions and forecasts. This suggests  
that LAI forecasts are more sensitive to initial conditions than to the atmospheric forcing within the  
4-8 day range for both WEUR and MUDA regions.

These results are corroborated by Figures 14 (for WEUR) and 15 (for MUDA), for both SSM (top)  
635 and LAI (bottom). Figures 14(a) and 15(a) show RMSD values between LDAS\_HRES open-loop  
SSM (1-4 cm) and ASCAT SSM over 2017-2018 for the WEUR and MUDA domains, respectively.  
Due to the seasonal linear rescaling applied to ASCAT estimates, the RMSD values are rather small.  
For the WEUR (MUDA) domain they range from 0 to 0.048  $\text{m}^3\text{m}^{-3}$  (0 to 0.040  $\text{m}^3\text{m}^{-3}$ ). Figures  
14(b) and 15(b) present maps of RMSD differences between LDAS\_HRES analysis (open-loop)  
640 and ASCAT SSM estimates over 2017-2018 for the WEUR and MUDA domains. Both maps are  
dominated by negative values (in blue) indicating that RMSD values are consistently smaller when  
using LDAS\_HRES analysis than when using LDAS\_HRES open-loop. For the MUDA domain,  
the RMSD values are reduced by about 15%. Figures 14(c, d) and 15(c, d) show maps of RMSD  
differences for forecast experiments (LDAS\_fc4, LDAS\_fc8). It appears that over both domains,  
645 the impact from the initialisation is rather small. This supports previous results indicating that the  
forcing quality is more important than the initial conditions for the SSM forecast. However, the  
results for LAI support the opposite conclusion. The RMSD values for LDAS\_HRES open-loop  
range from 0 to 1.6  $\text{m}^2\text{m}^{-2}$  over WEUR and 0 to 1  $\text{m}^2\text{m}^{-2}$  over MUDA (Figures 14(e) and 15(e)). The  
RMSD values are reduced by up to 37 % over WEUR and up to 60% over MUDA by the analysis  
650 (Figures 14(f) and 15(f)). The enhancement from the data assimilation is consistent through-out the  
WEUR domain while the improvement over the MUDA domain is concentrated in the south-eastern  
part (the north-western part is largely unchanged).

Similarly to Figures 14(a, b, c, d), Figure 16 illustrates the impact of the analysis on SSM in terms  
of the correlation coefficient. But this time, ASCAT SWI (i.e. no rescaling) has been used for the  
655 validation. Figure 16 (top panels) shows maps of R values based on the absolute values while  
Figure 16 (bottom panels) shows R values based on the anomaly time series (capturing short term  
variability) as defined in Albergel et al., 2018a. Figure 16 (a) and (e) represents R values and  
anomaly R values for LDAS\_HRES, respectively. As expected R values are higher than anomaly R  
values. Maps of differences (panels b and f) of Figure 16 suggest that after assimilation, both scores  
660 are improved almost equally. ~~While the 4-day and 8-day forecasts still show improvements from  
the using initial conditions from the analysis over the open loop on R values (panels c and d of  
Figure 16).~~ Looking maps of at anomaly  $R_{\text{anomaly}}$  values (panels g and h of Figure 16), no do not

~~display any~~ negative or positive impact from the initial conditions can be seen (~~panels g and h of Figure 16~~).

665 Finally, the top panels of Figure 17 illustrate the impact of the analysis on drainage monitoring and forecasts over WEUR. Fig. 17 a) represents drainage from the LDAS\_HRES open-loop with values ranging between 0 and 1 kg.m<sup>-2</sup>.day<sup>-1</sup>. Fig.17 b) shows the drainage difference between LDAS\_HRES analysis and open-loop. The analysis impact on drainage is rather small (within ±3%) and more pronounced in areas where the analysis has largely affected LAI (see panels f, g and h of  
670 Figure 14). As seen in Figure 17 (c) and (d), the forecasts are also sensitive to the initialisation in areas where the analysis effectively corrected LAI. The bottom panels of Figure 17 illustrate a similar impact on runoff. Although we did not validate drainage and runoff in this study, previous findings suggest a neutral to positive impact of the analysis on river discharge through modifications to drainage and runoff (Albergel et al., 2017, 2018a).

675

## 5. Discussion and conclusions

This study has demonstrated the potential of LDAS-Monde for assimilating Earth Observations (EOs) into a Land Surface Model (LSM) to predict the impact of heatwaves and droughts on land surface conditions. LDAS-Monde is now ready for various applications including (i) land surface reanalyses of Essential Climate Variables (ECVs), (ii) monitoring of water resources, such as the impact of droughts on vegetation, (iii) the detection of extreme land surface conditions; and (iv) the effective initialisation of LSVs for land surface forecasting. LDAS-Monde has been applied in this study to past events of 2018 with respect to a relatively short climatology (2010-2018). It is planned that it will be applied to much longer periods for future reanalysis applications. The operational  
685 application of LDAS-Monde near-real-time could potentially improve emergency monitoring systems for LSVs. Using high quality atmospheric reanalyses like ERA5 to force LDAS-Monde guarantees a high level of consistency since the configuration is frozen in time (no changes in spatial and vertical resolutions, data assimilation or parametrizations). The coarse spatial resolution of ERA5 makes it affordable to run long time periods and large-scale LDAS-Monde experiments.  
690 With ERA5 available from 1979 and now covering near real-time needs with its ERA5T version (<https://climate.copernicus.eu/climate-reanalysis>), an LDAS\_ERA5 configuration would be able to provide a long term climatology as well as near-real-time anomaly detections of the land surface conditions at coarse resolution (0.25°). Significant anomalies could then be used to trigger more focused “on-demand” simulations for regions experiencing extreme conditions. For these  
695 simulations, LDAS-Monde could be run at higher resolution by forcing the LSM with an enhanced

resolution forecast in order to provide more information, such as the ECMWF operational high resolution product ( $0.10^\circ$ ). The capability of such an approach was illustrated in our study for two regions in ~~nNorthw~~-Western Europe and ~~sSouthe~~-Eastern Australia. In term of the RMSD, our results showed a very small impact of initial conditions on the forecasts of SSM. This was expected due to the short term memory of ~~the~~ surface soil layer-, which is dominated by the antecedent meteorological forcing. However, the LAI initialisation had significant impact on the LAI forecast skill. This was also expected due to the long-term memory of vegetation evolution. For SSM, the assimilation is performed after a rescaling of the observations to the model climatology (see section 2.3), which ensures that the model and observations are unbiased with respect to each other. However, LAI is not bias-corrected, which allows the assimilation process to remove bias in the modelled LAI (with respect to the observation). This technical difference between SSM and LAI assimilation, combined with the longer memory of LAI compared to SSM, contributes to the results presented in this study. Despite the expected behaviour of these two LSVs in forecasting, our results show that the LDAS-Monde system is capable of propagating the initial LAI conditions, which is relevant for LSV medium-range forecasting and potentially for longer lead-times, such as seasonal forecasts. The strong impact of LAI initialisation on the forecast does not seem to propagate to the surface soil moisture and further studies are necessary to test the impact of initial conditions on other variables from LDAS-Monde (including soil moisture in deeper layers and evapotranspiration). Another possibility would be to force LDAS-Monde using the 51-member ECMWF ensemble forecasts. Although the ensemble system has coarser spatial-resolution ( $\sim 0.20^\circ$ ) than the deterministic forecast, it accounts for forcing uncertainty in the LSVs through the ensemble spread and extends to a 15-day lead time. The maximum range of the soil and vegetation forecasts could even be extended to six months if seasonal atmospheric forecasts were used as forcing. LDAS-Monde has some limitations, where future developments are needed to improve the representation of LSVs. For instance, it does not consider snow data assimilation yet. It has been shown in this study that if the snow accumulation seems to be represented correctly in the system, the onset of snow-melt is too early in the spring. To overcome this issue, two possibilities will be explored. Firstly, a recently developed ISBA parametrisation, MEB (Multiple Energy Budget), is known to lead to a better representation of the snowpack (Boone et al., 2017). This could be particularly useful in the densely forested areas of the Northern Hemisphere where large differences between LDAS-Monde and the IMS snow cover were found in spring (Figure S2(i), Aaron Boone CNRM, personal communication June 2019). Another enhancement of LDAS-Monde will be to adapt the current data assimilation scheme to permit the assimilation the IMS snow cover data, which is implemented at NWP centres such as ECMWF (de Rosnay et al., 2014). The current SEKF

730 data assimilation scheme is also being revisited. Even though it has provided good results, one of its limitations is the computational cost of the Jacobian matrix, which needs one model run for each control variable. As the number of control variables is expected to increase, this approach would require significant computational resources. Therefore, more flexible ensemble based data assimilation approaches have recently been implemented in LDAS-Monde, such as the Ensemble  
735 Square Root Filter (EnSRF, Fairbain et al., 2015, Bonan et al., 2020). Bonan et al., 2020 have evaluated performances from the EnSRF and the SEKF over the Euro-Mediterranean area. Both data assimilation schemes have a similar behaviour for LAI while for SSM, the EnSRF estimates tend to be closer to observations than those from the SEKF. They have also conducted an independent evaluation of both assimilation approaches using satellite estimates of  
740 evapotranspiration and GPP together with river discharge observations from gauging stations. They have found that the EnSRF gives a systematic (moderate) improvement for evapotranspiration and GPP and a highly positive impact on river discharges, while the SEKF lead to more contrasting performance. As for applications in hydrology, the 0.5° spatial resolution TRIP river network is currently being improved to 1/12° globally.

745 CNRM is also investigating the direct assimilation of ASCAT radar backscatter (Shamambo et al., 2019). This has the potential to improve the way vegetation is accounted for in the change detection approach used to retrieve SSM with an improved representation of its effect. Assimilating ASCAT radar backscatter also raises the question of how to properly specify SSM observation, background, and model error covariance matrices, which are currently based on soil properties (see section 2.1.3  
750 on data assimilation). The last decade has seen the development of techniques to estimate those matrices. Approaches based on Desroziers diagnostics (Desroziers et al., 2005) are computationally affordable for land data assimilation systems and could provide insightful information on the various sources of the data assimilation system.

Furthermore, a comparison of LDAS-Monde with existing datasets from other centres needs to be  
755 considered. Current work at Météo-France has begun to compare its quality against state of the art reanalyses such as those from NASA at both the global scale (GLDAS, Rodell et al., 2004, MERRA-2, Reichle et al., 2017, Draper et al., 2018) and regional scale (NCALDAS over the continental USA, FLDAS over Africa). Finally, first work has begun to run LDAS-Monde at  
760 kilometric and sub-kilometric scale spatial resolutions. Promising results have been obtained by assimilating SSM and LAI over the AROME domain (Applications de la Recherche à l'Opérationnel à Méso-Echelle, <https://www.umr-cnrm.fr/spip.php?article120>, last accessed July 2019) of Météo-France.

**Code availability.** LDAS-Monde is a part of the ISBA land surface model and is available as open  
765 source via the surface modelling platform called SURFEX. SURFEX can be downloaded freely at  
http: //www.umr-cnrm.fr/surfex/ using a CECILL-C Licence (a French equivalent to the L-GPL  
licence; http://www.cecill.info/licences/Licence\_CeCILL-C\_V1-en.txt). It is updated at a relatively  
low frequency (every 3 to 6 months). If more frequent updates are needed, or if what is required is  
770 not in Open-SURFEX (DrHOOK, FA/LFI formats, GAUSSIAN grid), you are invited to follow the  
procedure to get a SVN account and to access real-time modifications of the code (see the  
instructions at the first link). The developments presented in this study stemmed on SURFEX  
version 8.1. LDAS-Monde technical documentation and contact point are freely available at: [https://  
opensource.umr-cnrm.fr/projects/opensurfxmonde/files](https://opensource.umr-cnrm.fr/projects/opensurfxmonde/files)

775 **Data availability:** upon request by contacting the corresponding author.

**Author Contributions:** Conceptualization, CA, JCC.; Investigation, CA, YZ, BA, SM, NRF;  
Methodology, CA; Writing—original draft, CA, BA; Writing—review and editing, All

**Funding:** This research was funded by IRT Antoine de Saint-Exupéry Foundation, grant number  
CDT-R056-L00-T00 (POMME-V project), the Climate Change Initiative Programme Extension,  
780 Phase 1 - Climate Modeling User Group ESA/contract No [4000125156/18/I-NB](#)

**Acknowledgments:** Results were generated using the Copernicus Climate Change Service  
Information, 2017. The Authors would like to thanks the Copernicus Global Land Service for  
providing the satellite derived Leaf Area Index and Surface Soil Moisture.

785 **Conflicts of Interest:** The authors declare no conflict of interest



## References

- Albergel, C.; Rüdiger, C.; Pellarin, T.; Calvet, J.-C.; Fritz, N.; Froissard, F.; Suquia, D.; Petitpa, A.;  
790 Piguet, B.; Martin, E. From near-surface to root-zone soil moisture using an exponential filter: An  
assessment of the method based on in-situ observations and model simulations. *Hydrol. Earth Syst.  
Sci.*, 12, 1323–1337, 2008.
- Albergel, C., Munier, S., Leroux, D. J., Dewaele, H., Fairbairn, D., Barbu, A. L., Gelati, E., Dorigo,  
W., Faroux, S., Meurey, C., Le Moigne, P., Decharme, B., Mahfouf, J.-F., and Calvet, J.-C.:  
795 Sequential assimilation of satellite-derived vegetation and soil moisture products using  
SURFEX\_v8.0: LDAS-Monde assessment over the Euro-Mediterranean area, *Geosci. Model Dev.*,  
10, 3889–3912, <https://doi.org/10.5194/gmd-10-3889-2017>, 2017.
- Albergel, C.; Munier, S.; Bocher, A.; Bonan, B.; Zheng, Y.; Draper, C.; Leroux, D.J.; Calvet, J.-C.  
LDAS-Monde Sequential Assimilation of Satellite Derived Observations Applied to the Contiguous  
800 US: An ERA5 Driven Reanalysis of the Land Surface Variables. *Remote Sens.*, 10, 1627, 2018a
- Albergel, C.; Dutra, E.; Munier, S.; Calvet, J.-C.; Munoz-Sabater, J.; de Rosnay, P.; Balsamo, G.  
ERA-5 and ERA-Interim driven ISBA land surface model simulations: Which one performs better?  
*Hydrol. Earth Syst. Sci.*, 22, 3515–3532, 2018b.
- Albergel, C.; Dutra, E.; Bonan, B.; Zheng, Y.; Munier, S.; Balsamo, G.; de Rosnay, P.; Muñoz-  
805 Sabater, J.; Calvet, J.-C. Monitoring and Forecasting the Impact of the 2018 Summer Heatwave on  
Vegetation. *Remote Sens.*, 11, 520, 2019.
- Balsamo, G., Albergel, C., Beljaars, A., Boussetta, S., Brun, E., Cloke, H., Dee, D., Dutra, E.,  
Muñoz-Sabater, J., Pappenberger, F., de Rosnay, P., Stockdale, T., and Vitart, F.:  
ERA-Interim/Land: a global land surface reanalysis data set, *Hydrol. Earth Syst. Sci.*, 19, 389-407,  
810 <https://doi.org/10.5194/hess-19-389-2015>, 2015.
- Balsamo, G.; Agusti-Panareda, A.; Albergel, C.; Arduini, G.; Beljaars, A.; Bidlot, J.; Bousserez, N.;  
Boussetta, S.; Brown, A.; Buizza, R.; Buontempo, C.; Chevallier, F.; Choulga, M.; Cloke, H.;  
Cronin, M.F.; Dahoui, M.; De Rosnay, P.; Dirmeyer, P.A.; Dutra, M.D.E.; Ek, M.B.; Gentine, P.;  
Hewitt, H.; Keeley, S.P.E.; Kerr, Y.; Kumar, S.; Lupu, C.; Mahfouf, J.-F.; McNorton, J.;  
815 Mecklenburg, S.; Mogensen, K.; Muñoz-Sabater, J.; Orth, R.; Rabier, F.; Reichle, R.; Ruston, B.;  
Pappenberger, F.; Sandu, I.; Seneviratne, S.I.; Tietsche, S.; Trigo, I.F.; Uijlenhoet, R.; Wedi, N.;  
Woolway, R.I.; Zeng, X. Satellite and In Situ Observations for Advancing Global Earth Surface  
Modelling: A Review. *Remote Sens.*, 10(12), 2038;  
<https://doi.org/10.3390/rs10122038>, 2018.
- 820 Bamzai, A.; Shukla, J. Relation between Eurasian snow cover, snow depth and the Indian summer  
monsoon: An observational study. *J. Clim.*, 12, 3117–3132, 1999.
- Barbu, A.L.; Calvet, J.-C.; Mahfouf, J.-F.; Albergel, C.; Lafont, S. Assimilation of Soil Wetness  
Index and Leaf Area Index into the ISBA-A-gs land surface model: Grassland case study.  
*Biogeosciences*, 8, 1971–1986., 2011.
- 825 Barbu, A. L., Calvet, J.-C., Mahfouf, J.-F., and Lafont, S.: Integrating ASCAT surface soil moisture  
and GEOV1 leaf area index into the SURFEX modelling platform: a land data assimilation  
application over France, *Hydrol. Earth Syst. Sci.*, 18, 173–192, [https://doi.org/10.5194/hess-18-173-  
2014](https://doi.org/10.5194/hess-18-173-2014), 2014.
- Barella-Ortiz, A. and Quintana-Seguí, P.: Evaluation of drought representation and propagation in  
830 Regional Climate Model simulations over Spain, *Hydrol. Earth Syst. Sci. Discuss.*,  
<https://doi.org/10.5194/hess-2018-603>, in review, 2018.

- 835 Baret, F.; Weiss, M.; Lacaze, R.; Camacho, F.; Makhmarad, H.; Pacholczyk, P.; Smetse, B. GEOV1: LAI, FAPAR essential climate variables and FCOVER global time series capitalizing over existing products, Part 1: Principles of development and production. *Remote Sens. Environ.*, 137, 299–309, doi:10.1016/j.rse.2012.12.027, 2013.
- Bartalis, Z.; Wagner, W.; Naeimi, V.; Hasenauer, S.; Scipal, K.; Bonekamp, H.; Figa, J.; Anderson, C.: Initial soil moisture retrievals from the METOP-A advanced Scatterometer (ASCAT). *Geophys. Res. Lett.*, 34, L20401, doi: 10.1029/2007GL031088., 2007.
- 840 Bauer, P.; Thorpe, A.; Brunet, G. The quiet revolution of numerical weather prediction. *Nature*, 525, 47–55, doi:10.1038/nature14956, 2015.
- Beck, H. E., Pan, M., Roy, T., Weedon, G. P., Pappenberger, F., van Dijk, A. I. J. M., Huffman, G. J., Adler, R. F., and Wood, E. F.: Daily evaluation of 26 precipitation datasets using Stage-IV gauge-radar data for the CONUS, *Hydrol. Earth Syst. Sci.*, 23, 207–224, <https://doi.org/10.5194/hess-23-207-2019>, 2019.
- 845 Bell, J. E., M. A. Palecki, C. B. Baker, W. G. Collins, J. H. Lawrimore, R. D. Leeper, M. E. Hall, J. Kochendorfer, T. P. Meyers, T. Wilson, and H. J. Diamond.: U.S. Climate Reference Network soil moisture and temperature observations. *J. Hydrometeorol.*, 14, 977-988. doi: 10.1175/JHM-D-12-0146.1, 2013.
- 850 Bierkens, M.; van Beek, L. Seasonal predictability of European discharge: Nao and hydrological response time. *J. Hydrometeorol*, 10, 953–968, 2009.
- Blyverket, J.; Hamer, P.D.; Schneider, P.; Albergel, C.; Lahoz, W.A. Monitoring Soil Moisture Drought over Northern High Latitudes from Space. *Remote Sens.*, 11, 1200, 2019.
- 855 Bonan, B., Albergel, C., Zheng, Y., Barbu, A. L., Fairbairn, D., Munier, S., and Calvet, J.-C.: An ensemble square root filter for the joint assimilation of surface soil moisture and leaf area index within the Land Data Assimilation System LDAS-Monde: application over the Euro-Mediterranean region, *Hydrol. Earth Syst. Sci.*, 24, 325–347, <https://doi.org/10.5194/hess-24-325-2020>, 2020.
- Boone, A.; Masson, V.; Meyers, T.; Noilhan, J. The influence of the inclusion of soil freezing on simulations by a soil-vegetation-atmosphere transfer scheme. *J. Appl. Meteorol.*, 39, 1544–1569, 2000.
- 860 Boone, A. and Etchevers, P.: An intercomparison of three snow schemes of varying complexity coupled to the same land-surface model: local scale evaluation at an Alpine site, *J. Hydrometeorol.*, 2, 374–394, 2001.
- 865 Boone, A., Samuelsson, P., Gollvik, S., Napoly, A., Jarlan, L., Brun, E., and Decharme, B.: The interactions between soil–biosphere–atmosphere land surface model with a multi-energy balance (ISBA-MEB) option in SURFEXv8 – Part 1: Model description, *Geosci. Model Dev.*, 10, 843-872, <https://doi.org/10.5194/gmd-10-843-2017>, 2017.
- Bruce, J.P., Natural disaster reduction and global change. *Bulletin of the American Meteorological Society*, 75(10): 1831–1835, 1994.
- 870 Bureau of Meteorology Special Climate Statement 70: Drought conditions in eastern Australia and impact on water resources in the Murray–Darling Basin, Issued 9 April 2019, <http://www.bom.gov.au/climate/current/statements/scs70.pdf>, 2019.
- Calvet, J.-C.; Noilhan, J.; Roujean, J.-L.; Bessemoulin, P.; Cabelguenne, M.; Olioso, A.; Wigneron, J.-P. An interactive vegetation SVAT model tested against data from six 780 contrasting sites. *Agric. For. Meteorol*, 92, 73–95, 1998.
- 875 Calvet, J.-C.; Rivalland, V.; Picon-Cochard, C.; Guehl, J.-M. Modelling forest transpiration and CO2 fluxes—Response to soil moisture stress. *Agric. For. Meteorol*, 124, 143–156, 2004.

- Cook, E.R., Seager, R., Cane, M.A. and Stahle, D.W., North American drought: reconstructions, causes, and consequences. *Earth Science Reviews*, 81(1): 93–134, 2007.
- 880 de Jeu, R.A.; Wagner, W.; Holmes, T.R.H.; Dolman, A.J.; Van De Giesen, N.C.; Friesen, J. Global soil moisture patterns observed by space borne microwave radiometers and scatterometers. *Surv. Geophys.*, 29, 399–420, 2008.
- de Rosnay, P. A simplified Extended Kalman Filter for the global operational soil moisture analysis at ECMWF. *Q. J. R. Meteorol. Soc.*, 139, 1199–1213, doi: [10.1002/qj.2023](https://doi.org/10.1002/qj.2023), 2013.
- 885 de Rosnay, P.; Balsamo, G.; Albergel, C.; Muñoz-Sabater, J.; Isaksen, L. Initialisation of land surface variables for numerical weather prediction. *Surv. Geophys.*, 35, 607–621, doi: [10.1007/s10712-012-9207-x](https://doi.org/10.1007/s10712-012-9207-x), 2014.
- Desroziers, G.; Berre, L.; Chapnik, B.; Poli, P. Diagnosis of observation, background and analysis-error statistics in observation space. *Q. J. Roy. Meteor. Soc.*, 131, 3385–3396, 2005.
- 890 Di Napoli, C., F. Pappenberger, and H.L. Cloke: Verification of Heat Stress Thresholds for a Health-Based Heat-Wave Definition. *J. Appl. Meteor. Climatol.*, 58, 1177–1194, <https://doi.org/10.1175/JAMC-D-18-0246.1>, 2019.
- Decharme, B., Boone, A., Delire, C., and Noilhan, J.: Local evaluation of the Interaction between soil biosphere atmosphere soil multilayer diffusion scheme using four pedotransfer functions, *J. Geophys. Res.*, 116, D20126, <https://doi.org/10.1029/2011JD016002>, 2011.
- 895 Decharme, B.; Martin, E.; Faroux, S. Reconciling soil thermal and hydrological lower boundary conditions in land surface models. *J. Geophys. Res. Atmos.*, 118, 7819–7834, 2013.
- Decharme, B., Brun, E., Boone, A., Delire, C., Le Moigne, P., and Morin, S.: Impacts of snow and organic soils parameterization on northern Eurasian soil temperature profiles simulated by the ISBA land surface model, *The Cryosphere*, 10, 853–877, <https://doi.org/10.5194/tc-10-853-2016>, 2016.
- 900 Decharme, B., Delire, C., Minvielle, M., Colin, J., Vergnes, J.-P., Alias, A., Saint-Martin, D., Séférian, R., Sénési, S. and Voldoire, A.: Recent changes in the ISBA-CTRIP Land Surface System for use in the CNRM-CM6 climate model and in global off-line hydrological applications, *J. Adv. Model Earth Sy.*, 11, 1207-1252, [10.1029/2018MS001545](https://doi.org/10.1029/2018MS001545), 2019.
- 905 Dee, D.P.; Uppala, S.M.; Simmons, A.J.; Berrisford, P.; Poli, P.; Kobayashi, S.; Andrae, U.; Balmaseda, M.A.; Balsamo, G.; Bauer, D.P. The ERA-Interim reanalysis: Configuration and performance of the data assimilation system. *Q. J. R. Meteorol. Soc.*, 137, 553–597, 2011.
- Dirmeyer, P. A., Gao, X., Zhao, M., Guo, Z., Oki, T., and Hanasaki N.: The Second Global Soil Wetness Project (GSWP-2): Multi-model analysis and implications for our perception of the land surface, *B. Am. Meteorol. Soc.*, 87, 1381–1397, <https://doi.org/10.1175/BAMS-87-10-1381>, 2006.
- 910 Dorigo, W. A., Wagner, W., Hohensinn, R., Hahn, S., Paulik, C., Xaver, A., Gruber, A., Drusch, M., Mecklenburg, S., van Oevelen, P., Robock, A., and Jackson, T.: The International Soil Moisture Network: a data hosting facility for global in situ soil moisture measurements, *Hydrol. Earth Syst. Sci.*, 15, 1675-1698, <https://doi.org/10.5194/hess-15-1675-2011>, 2011.
- 915 Dorigo, W.A., A. Gruber, R.A.M. De Jeu, W. Wagner, T. Stacke, A. Loew, C. Albergel, L. Brocca, D. Chung, R.M. Parinussa and R. Kidd: Evaluation of the ESA CCI soil moisture product using ground-based observations, *Remote Sensing of Environment*, <http://dx.doi.org/10.1016/j.rse.2014.07.023>, 2015.
- 920 Draper, C. S., Mahfouf, J.-F., and Walker, J. P.: An EKF assimilation of AMSR-E soil moisture into the ISBA land surface scheme, *J. Geophys. Res.*, 114, D20104, <https://doi.org/10.1029/2008JD011650>, 2009.

- Draper, C.; Mahfouf, J.-F.; Calvet, J.-C.; Martin, E.; Wagner, W. Assimilation of ASCAT near-surface soil moisture into the SIM hydrological model over France. *Hydrol. Earth Syst. Sci.*, 15, 3829–3841, 2011.
- 925 Draper, C. S., R. H. Reichle, and R. D. Koster, Assessment of MERRA-2 Land Surface Energy Flux Estimates, *Journal of Climate*, 31, 671–691, doi:10.1175/JCLI-D-17-0121.1, 2018.
- Faroux, S.; Kaptué Tchuenté, A.T.; Roujean, J.-L.; Masson, V.; Martin, E.; Moigne, P.L. ECOCLIMAP-II/Europe: A twofold database of ecosystems and surface parameters at 1 km resolution based on satellite information for use in land surface, meteorological and climate models. *Geosci. Model Dev.*, 6, 563–582, 2013.
- 930 Fairbairn, D., Barbu, A. L., Mahfouf, J.-F., Calvet, J.-C. and Gelati, E.: Comparing the ensemble and extended Kalman filters for in situ soil moisture assimilation with contrasting conditions, *Hydrol. Earth Syst. Sci.*, 19, 4811–4830, doi: [10.5194/hess-19-4811-2015](https://doi.org/10.5194/hess-19-4811-2015), 2015.
- 935 Fairbairn, D.; Barbu, A.L.; Napoly, A.; Albergel, C.; Mahfouf, J.-F.; Calvet, J.-C. The effect of satellite-derived surface soil moisture and leaf area index land data assimilation on streamflow simulations over France. *Hydrol. Earth Syst. Sci.*, 21, 2015–2033, 2017.
- Fox, A.M.; Hoar, T.J.; Anderson, J.L.; Arellano, A.F.; Smith, W.K.; Litvak, M.E.; MacBean, N.; Schimel, D.S.; Moore, D.J.P. Evaluation of a Data Assimilation System for Land Surface Models using CLM4.5. *J. Adv. Model. Earth Syst.*, 10, 2471–24942, 2018.
- 940 Gibelin, A.-L.; Calvet, J.-C.; Roujean, J.-L.; Jarlan, L.; Los, S.O. Ability of the land surface model ISBA-A-gs to simulate leaf area index at global scale: Comparison with satellite products. *J. Geophys. Res.*, 111, 1–16, 2006.
- Gruber, A.; Su, C.-H.; Zwieback, S.; Crow, W.; Dorigo, W.; Wagner, W. Recent advances in (soil moisture) triple collocation analysis. *Int. J. Appl. Earth Obs. Geoinf.*, 45, 200–211, 2016.
- 945 Hersbach, H., de Rosnay, P. Bell, B., Schepers, D., Simmons, S., Soci, S., Abdalla, S., Alonso Balmaseda, M., Balsamo, G., Bechtold, P., Berrisford, P., Bidlot, J., de Boissésón, E., Bonavita, M., Browne, P., Buizza, R., Dahlgren, P., Dee, D., Dragani, R., Diamantakis, M., Flemming, J., Forbes, R., Geer, A., Haiden, T., Hólm, E., Haimberger, L., Hogan, R., Horányi, A., Janisková, M., Laloyaux, P., Lopez, P., Muñoz-Sabater, J., Peubey, C., Radu, R., Richardson, D., Thépaut, J.-N., Vitart, F., Yang, X., Zsótér, E. and Zuo H. Operational global reanalysis: Progress, future directions and synergies with NWP. *ERA Rep. Ser.*, 27, 65., 2018.
- 950 Hersbach, H., B. Bell, P. Berrisford, S. Hirahara, A. Horanyi, J. Muñoz-Sabater, J. Nicolas, C. Peubey, R. Radu, D. Schepers, A. Simmons, C. Soci, S. Abdalla, X. Abellan, G. Balsamo, P. Bechtold, G. Biavati, J. Bidlot, M. Bonavita, G. De Chiara, P. Dahlgren, D. Dee, M. Diamantakis, R. Dragani, J. Flemming, R. Forbes, M. Fuentes, A. Geer, L. Haimberger, S. Healy, R. J. Hogan, E. Holm, M. Janiskova, S. Keeley, P. Laloyaux, P. Lopez, G. Radnoti, P. de Rosnay, I. Rozum, F. Vamborg, S. Villaume, J.-N. Thépaut: The ERA5 global reanalysis. *Q J R Meteorol Soc.* 2020; 1–51. <https://doi.org/10.1002/qj.3803>
- 960 IPCC: Managing the Risks of Extreme Events and Disasters to Advance Climate Change Adaptation. A Special Report of Working Groups I and II of the Intergovernmental Panel on Climate Change . Cambridge University Press, Cambridge, UK, and New York, NY, USA, 582 pp, 2012.
- IPCC: Climate change 2014: Synthesis Report. Contribution of Working Groups I, II and III to the Fifth Assessment Report of the Intergovernmental Panel on Climate Change [Core Writing Team, R.K. Pachauri and L.A. Meyer (eds.)]. IPCC, Geneva, Switzerland, 151 pp, 2014.

- 965 Jacobs, C.M.J.; van den Hurk, B.J.J.M.; de Bruin, H.A.R. Stomatal behaviour and photosynthetic rate of unstressed grapevines in semi-arid conditions. *Agric. For. Meteorol.* 80, 111–134, 1996.
- Jarlan, L., Balsamo, G., Lafont, S., Beljaars, A., Calvet, J.-C., and Mougin, E.: Analysis of leaf area index in the ECMWF land surface model and impact on latent heat on carbon fluxes: Application to West Africa, *J. Geophys. Res.*, 113, D24117, doi:10.1029/2007JD009370, 2008.
- 970 Joiner, J.; Yoshida, Y.; Guanter, L.; Middleton, E.M. New methods for the retrieval of chlorophyll red fluorescence from hyperspectral satellite instruments: Simulations and application to GOME-2 and SCIAMACHY. *Atmos. Meas. Tech.* 2016, 9, 3939–3967, 2016.
- Jung, M., Reichstein, M., Schwalm, C. R., Huntingford, C., Sitch, S., Ahlström, A., Arneeth, A., Camps-Valls, G., Ciais, P., Friedlingstein, P., Gans, F., Ichii, K., Jain, A. K., Kato, E., Papale, D., Poulter, B., Raduly, B., Rödenbeck, C., Tramontana, G., Viovy, N., Wang, Y.-P., Weber, U., Zaehle, S., and Zeng, N.: Compensatory water effects link yearly global land CO<sub>2</sub> sink changes to temperature, *Nature*, 541, 516–520, <https://doi.org/10.1038/nature20780>, 2017.
- 975 Ionita, M., Tallaksen, L. M., Kingston, D. G., Stagge, J. H., Laaha, G., Van Lanen, H. A. J., Scholz, P., Chelcea, S. M., and Haslinger, K.: The European 2015 drought from a climatological perspective, *Hydrol. Earth Syst. Sci.*, 21, 1397-1419, <https://doi.org/10.5194/hess-21-1397-2017>, 2017.
- 980 Kaminski, T. Assimilating atmospheric data into a terrestrial biosphere model: A case study of the seasonal cycle. *Glob. Biogeochem. Cycles*, 16, 2002.
- Kidd, R.; Makhmara, H.; Paulik, C. GIO GL1 PUM SWI I1.00.pdf., p. 25. Available online: <http://land.copernicus.eu/global/products/SWI/Documents/ProductUserManual> (accessed on 1 June 2019), 2013.
- 985 Kumar, S.V., B.F. Zaitchik, C.D. Peters-Lidard, M. Rodell, R. Reichle, B. Li, M. Jasinski, D. Mocko, A. Getirana, G. De Lannoy, M.H. Cosh, C.R. Hain, M. Anderson, K.R. Arsenault, Y. Xia, and M. Ek: [Assimilation of Gridded GRACE Terrestrial Water Storage Estimates in the North American Land Data Assimilation System](#). *J. Hydrometeorol.*, 17, 1951–1972, <https://doi.org/10.1175/JHM-D-15-0157.1>, 2016
- 990 Kumar, S.V.; Jasinski, M.; Mocko, D.; Rodell, M.; Borak, J.; Li, B.; Kato Beaudoin, H.; Peters-Lidard, C.D. NCA-LDAS land analysis: Development and performance of a multisensor, multi-variate land data assimilation system for the National Climate Assessment. *J. Hydrometeorol.*, doi:10.1175/JHM-D-17-0125.1., 2018.
- 995 Kumar, S.V., D.M. Mocko, S. Wang, C.D. Peters-Lidard, and J. Borak, 0: Assimilation of remotely sensed Leaf Area Index into the Noah-MP land surface model: Impacts on water and carbon fluxes and states over the Continental U.S.. *J. Hydrometeorol.*, <https://doi.org/10.1175/JHM-D-18-0237.1>, 2019.
- 1000 Koster, R.D.; Mahanama, S.P.P.; Livneh, B.; Lettenmaier, D.P.; Reichle, R.H. Skill in streamflow forecasts derived from large-scale estimates of soil moisture and snow. *Nat. Geosci. Lett.*, 3, 613–616, 2010.
- Lahoz, W.; De Lannoy; G. Closing the gaps in our knowledge of the hydrological cycle over land: Conceptual problems. *Surv. Geophys.*, 35, 577–606, 2014.
- 1005 Leroux, D.J.; Calvet, J.-C.; Munier, S.; Albergel, C. Using Satellite-Derived Vegetation Products to Evaluate LDAS-Monde over the Euro-Mediterranean Area. *Remote Sens.*, 10, 1199, 2014.
- Luo, L.; Wood, E.F. Monitoring and predicting the 2007 U.S. drought. *Geophysical Research Letters*, 34. doi:10.1029/2007GL031673, 2007.

- 1010 Magnusson, L.; Ferranti, L.; Vamborg, F. Forecasting the 2018 European heatwave. *ECMWF Newslett.*, 157, 4, 2018.
- Mahfouf, J.-F.; Bergaoui, K.; Draper, C.; Bouyssel, F.; Taillefer, F.; Taseva, L. A comparison of two off-line soil analysis schemes for assimilation of screen level observations. *J. Geophys. Res.*, 114, D08105, 2009.
- 1015 Martens, B., Miralles, D. G., Lievens, H., van der Schalie, R., de Jeu, R. A. M., Fernández-Prieto, D., Beck, H. E., Dorigo, W. A., and Verhoest, N. E. C.: GLEAM v3: satellite-based land evaporation and root-zone soil moisture, *Geosci. Model Dev.*, 10, 1903–1925, <https://doi.org/10.5194/gmd-10-1903-2017>, 2017.
- 1020 Massari, C.; Camici, S.; Ciabatta, L.; Brocca, L. Exploiting Satellite-Based Surface Soil Moisture for Flood Forecasting in the Mediterranean Area: State Update Versus Rainfall Correction. *Remote Sens.*, 10, 292, 2018.
- 1025 Masson, V., Le Moigne, P., Martin, E., Faroux, S., Alias, A., Alkama, R., Belamari, S., Barbu, A., Boone, A., Bouyssel, F., Brousseau, P., Brun, E., Calvet, J.-C., Carrer, D., Decharme, B., Delire, C., Donier, S., Essaouini, K., Gibelin, A.-L., Giordani, H., Habets, F., Jidane, M., Kerdraon, G., Kourzeneva, E., Lafaysse, M., Lafont, S., Lebeaupin Brossier, C., Lemonsu, A., Mahfouf, J.-F., Marguinaud, P., Mokhtari, M., Morin, S., Pigeon, G., Salgado, R., Seity, Y., Taillefer, F., Tanguy, G., Tulet, P., Vincendon, B., Vionnet, V., and Voldoire, A.: The SURFEXv7.2 land and ocean surface platform for coupled or offline simulation of earth surface variables and fluxes, *Geosci. Model Dev.*, 6, 929–960, <https://doi.org/10.5194/gmd-6-929-2013>, 2013.
- 1030 McNally, A., Arsenault, K., Kumar, S., Shukla, S., Peterson, P., Wang, S., Funk, C., Peters-Lidard, C.P., Verdin, J.P. A land data assimilation system for sub-Saharan Africa food and water security applications. *Sci. Data* 4:170012 <https://doi.org/10.1038/sdata.2017.12>, 2017
- Mishra, A.K. and Singh, V.P., A review of drought concepts. *Journal of Hydrology*, 391(1): 202–216, 2010.
- 1035 Miralles, D.G., De Jeu, R.A.M., Gash, J.H., Holmes, T.R.H., Dolman, A.J., Magnitude and variability of land evaporation and its components at the global scale. *Hydrol. Earth Syst. Sci.* 15 (3), 967–981. <http://dx.doi.org/10.5194/hess-15-967-2011>, 2011.
- Nash, J. E. and Sutcliffe, V.: River forecasting through conceptual models, *J. Hydrol.*, 10, 282–290, 1970.
- 1040 Noilhan, J. and Planton, S.: A simple parameterization of land surface processes for meteorological models. *Mon. Weather Rev.*, 117, 536–549, doi: [10.1175/1520-0493\(1989\)117<0536%3AASPOLS>2.0.CO;3B2](https://doi.org/10.1175/1520-0493(1989)117<0536%3AASPOLS>2.0.CO;3B2), 1989.
- Noilhan, J.; Mahfouf, J.-F. The ISBA land surface parameterisation scheme. *Glob. Planet. Chang.*, 13, 145–159, 1996
- 1045 Muñoz-Sabater, J. , Lawrence, H. , Albergel, C. , de Rosnay, P. , Isaksen, L. , Mecklenburg, S. , Kerr, Y. and Drusch, M., Assimilation of SMOS brightness temperatures in the ECMWF Integrated Forecasting System. *Q J R Meteorol Soc.* Accepted Author Manuscript. doi:[10.1002/qj.3577](https://doi.org/10.1002/qj.3577), 2019.
- 1050 Munro, R.; Eisinger, M.; Anderson, C.; Callies, J.; Corpaccioli, E.; Lang, R.; Lefebvre, A.; Livschitz, Y.; Perez Albinana, A. GOME-2 on MetOp: From In-Orbit Verification to Routine Operations. In *Proceedings of the EUMETSAT Meteorological Satellite Conference*, Helsinki, Finland, 12–16 June 2006.
- Obasi, G.O.P., WMO’s role in the international decade for natural disaster reduction. *Bulletin of the American Meteorological Society*, 75(9): 1655–1661, 1994.

- Orsolini, Y., Wegmann, M., Dutra, E., Liu, B., Balsamo, G., Yang, K., de Rosnay, P., Zhu, C., Wang, W., and Senan, R.: Evaluation of snow depth and snow-cover over the Tibetan Plateau in global reanalyses using in-situ and satellite remote sensing observations, *The Cryosphere Discuss.*, <https://doi.org/10.5194/tc-2019-49>, in review, 2019.
- 1055 Reichle, R.H.; Koster, R.D.; Liu, P.; Mahanama, S.P.P.; Njoku, E.G.; Owe, M. Comparison and assimilation of global soil moisture retrievals from the Advanced Microwave Scanning Radiometer for the Earth Observing System (AMSR-E) and the Scanning Multichannel Microwave Radiometer (SMMR). *J. Geophys. Res.*, 112, D09108, doi:10.1029/2006JD008033, 2007.
- 1060 Reichle, R. H., C. S. Draper, Q. Liu, M. Girotto, S. P. P. Mahanama, R. D. Koster, and G. J. M. De Lannoy, Assessment of MERRA-2 land surface hydrology estimates, *Journal of Climate*, [30, 2937-2960](https://doi.org/10.1175/JCLI-D-16-0720.1), doi:10.1175/JCLI-D-16-0720.1, 2017.
- 1065 Reichle, R. H., Liu, Q., Koster, R. D., Crow, W. T., De Lannoy, G. J. M., Kimball, J. S., Ardizzone, J.V., Bosch, D., Colliander, A., Cosh, M., Kolassa, J., Mahanama, S.P., Prueger, J., Starks, P., Walker, J.P., Version 4 of the SMAP Level 4 Soil Moisture Algorithm and Data Product. *Journal of Advances in Modeling Earth Systems*, 11. <https://doi.org/10.1029/2019MS001729>, 2019.
- 1070 Rodell, M.; Houser, P.R.; Jambor, U.; Gottschalck, J.; Mitchell, K.; Meng, C.-J.; Arsenault, K.; Cosgrove, B.; Radakovich, J.; Bosilovich, M.; Entin, J.K., Walker, J.P., Lohmann, D., and Toll, D. The Global Land Data Assimilation System. *Bull. Am. Meteor. Soc.* 85, 381–394, 2004.
- Rodríguez-Fernández, N.; de Rosnay, P.; Albergel, C.; Richaume, P.; Aires, F.; Prigent, C.; Kerr, Y. SMOS Neural Network Soil Moisture Data Assimilation in a Land Surface Model and Atmospheric Impact. *Remote Sens.*, 11, 1334. <https://doi.org/10.3390/rs11111334>, 2019.
- 1075 Rüdiger, C.; Albergel, C.; Mahfouf, J.-F.; Calvet, J.-C.; Walker, J.P. Evaluation of Jacobians for leaf area index data assimilation with an extended Kalman filter. *J. Geophys. Res.* 2010.
- Sawada, Y.; Koike, T. Simultaneous estimation of both hydrological and ecological parameters in an ecohydrological model by assimilating microwave signal. *J. Geophys. Res. Atmos.*, 119, 2014.
- Sawada, Y.; Koike, T.; Walker, J.P. A land data assimilation system for simultaneous simulation of soil moisture and vegetation dynamics. *J. Geophys. Res. Atmos.*, 120, 2015.
- 1080 Schellekens, J., Dutra, E., Martínez-de la Torre, A., Balsamo, G., van Dijk, A., Sperna Weiland, F., Minvielle, M., Calvet, J.-C., Decharme, B., Eisner, S., Fink, G., Flörke, M., Peßenteiner, S., van Beek, R., Polcher, J., Beck, H., Orth, R., Calton, B., Burke, S., Dorigo, W., and Weedon, G. P.: A global water resources ensemble of hydrological models: the earth2Observe Tier-1 dataset, *Earth Syst. Sci. Data*, 9, 389-413, <https://doi.org/10.5194/essd-9-389-2017>, 2017.
- 1085 Scipal, K.; Drusch, M.; Wagner, W. Assimilation of a ERS scatterometer derived soil moisture index in the ECMWF numerical weather prediction system. *Adv. Water Resour.*, 31, 1101–1112, 2008.
- Schlosser, A.; Dirmeyer, P. Potential predictability of Eurasian snow cover. *Atmos. Sci. Lett.*, 2, 1–8, 2001.
- 1090 Shamambo, D.C.; Bonan, B.; Calvet, J.-C.; Albergel, C.; Hahn, S. Interpretation of ASCAT Radar Scatterometer Observations Over Land: A Case Study Over Southwestern France. *Remote Sens.*, 11, 2842, 2019.
- Svoboda, M. Drought Monitor. *Bulletin of the American Meteorological Society*, pp. 1181–1190. doi:10.1175/1520-0477(2002)083<1181:TDM>2.3.CO;2., 2002
- 1095 Tall, M.; Albergel, C.; Bonan, B.; Zheng, Y.; Guichard, F.; Dramé, M.S.; Gaye, A.T.; Sintondji, L.O.; Hountondji, F.C.C.; Nikiema, P.M.; Calvet, J.-C. Towards a Long-Term Reanalysis of Land

- Surface Variables over Western Africa: LDAS-Monde Applied over Burkina Faso from 2001 to 2018. *Remote Sens.*, 11, 735, 2019.
- 1100 Tramontana, G., Jung, M., Schwalm, C. R., Ichii, K., Camps-Valls, G., Ráduly, B., Reichstein, M., Arain, M. A., Cescatti, A., Kiely, G., Merbold, L., Serrano-Ortiz, P., Sickert, S., Wolf, S., and Papale, D.: Predicting carbon dioxide and energy fluxes across global FLUXNET sites with regression algorithms, *Biogeosciences*, 13, 4291–4313, <https://doi.org/10.5194/bg-13-4291-2016>, 2016.
- 1105 Urraca, R.; Huld, T.; Gracia-Amillo, A.; Martinez-de-Pison, F.J.; Kaspar, F.; Sanz-Garcia, A. Evaluation of global horizontal irradiance estimates from ERA5 and COSMO-REA6 reanalyses using ground and satellite-based data. *Sol. Energy*, 164, 339–354, 2018.
- Van Loon, A.F.: Hydrological drought explained. *WIREs Water*, 2:359–392, doi:10.1002/wat2.1085, 2015.
- 1110 Voldoire, A., Decharme, B., Pianezze, J., Lebeau-pin Brossier, C., Sevault, F., Seyfried, L., Garnier, V., Bielli, S., Valcke, S., Alias, A., Accensi, M., Arduin, F., Bouin, M.-N., Ducrocq, V., Faroux, S., Giordani, H., Léger, F., Marsaleix, P., Rainaud, R., Redelsperger, J.-L., Richard, E., and Riette, S.: SURFEX v8.0 interface with OASIS3-MCT to couple atmosphere with hydrology, ocean, waves and sea-ice models, from coastal to global scales, *Geosci. Model Dev.*, 10, 4207-4227, <https://doi.org/10.5194/gmd-10-4207-2017>, 2017.
- 1115 Wagner, W.; Lemoine, G.; Rott, H. A method for estimating soil moisture from ERS scatterometer and soil data. *Remote Sens. Environ.*, 70, 191–207, 1999.
- Wilhite, D.A., Drought, a global assessment. *Natural Hazards and Disasters Series*, vol. 1. Routledge, London, UK, 2000.
- 1120 World Meteorological Organization (WMO) and Global Water Partnership (GWP). Benefits of action and costs of inaction: Drought mitigation and preparedness – a literature review (N. Gerber and A. Mirzabaev). *Integrated Drought Management Programme (IDMP) Working Paper 1*. WMO, Geneva, Switzerland and GWP, Stockholm, Sweden, 2017.
- 1125 Xia, Y., Mitchell, K., Ek, M., Sheffield, J., Cosgrove, B., Wood, E., Luo, L., Alonge, C., Wei, H., Meng, J., Livneh, B., Lettenmaier, D., Koren, V., Duan, Q., Mo, K., Fan, Y. and Mocko, D., Continental-scale water and energy flux analysis and validation for the North American Land Data Assimilation System project phase 2 (NLDAS-2): 1. Intercomparison and application of model products, *J. Geophys. Res.*, 117, D03109, doi:[10.1029/2011JD016048](https://doi.org/10.1029/2011JD016048), 2012.
- 1130 Xia, Y., Mitchell K., Ek M., Cosgrove B., Sheffield J., Luo L., Alonge C., Wei H., Meng J., Livneh B., Duan Q. and Lohmann D., Continental-scale water and energy flux analysis and validation for North American Land Data Assimilation System project phase 2 (NLDAS-2): 2. Validation of model-simulated streamflow, *J. Geophys. Res.*, 117, D03110, doi:[10.1029/2011JD016051](https://doi.org/10.1029/2011JD016051), 2012.



## Tables

1135 Table I: Continental hot spots for droughts and heatwaves and number of monthly anomalies SSM and LAI below -1 standard deviation (stdev), above 1 stdev in 2018 with respect to the 2010-2018 period.

| Region name           | abbreviation | LON-W      | LON-E      | LAT-S      | LAT-N      | Number of monthly SSM anomalies below -1 (above 1) stdev | Number of monthly LAI anomalies below -1 (above 1) stdev |
|-----------------------|--------------|------------|------------|------------|------------|--|--|
| <b>Western-Europe</b> | <b>WEUR</b>  | <b>-1</b>  | <b>15</b>  | <b>48</b>  | <b>55</b>  | <b>5(1)</b>  | <b>5(0)</b>  |
| Western Mediterranean | WMED         | -10        | 15         | 35         | 45         | 0(7)   | 4(4)   |
| Eastern Europe        | EEUR         | 15         | 30         | 45         | 55         | 2(1)   | 0(2)   |
| Balkans               | BALK         | 15         | 30         | 40         | 45         | 3(3)   | 1(4)   |
| Western Russia        | WRUS         | 30         | 60         | 55         | 67         | 0(1)   | 1(3)   |
| Lower Volga           | LVOL         | 30         | 60         | 45         | 55         | 2(1)   | 2(1)   |
| India                 | INDI         | 73         | 85         | 12         | 27         | 3(0)   | 2(1)   |
| Southwestern China    | SWCH         | 100        | 110        | 20         | 32         | 0(2)   | 0(6)   |
| Northern China        | NRCH         | 110        | 120        | 30         | 40         | 0(3)   | 0(4)   |
| <b>Murray-Darling</b> | <b>MUDA</b>  | <b>140</b> | <b>150</b> | <b>-37</b> | <b>-26</b> | <b>6(0)</b>  | <b>7(0)</b>  |
| California            | CALF         | -125       | -115       | 30         | 42         | 2(0)   | 5(0)   |
| Southern Plains       | SPLN         | -110       | -90        | 25         | 37         | 0(3)   | 0(4)   |
| Midwest               | MIDW         | -105       | -85        | 37         | 50         | 1(2)   | 1(3)   |
| Eastern North         | ENRT         | -85        | -70        | 37         | 50         | 0(3)   | 0(7)   |
| Nordeste              | NDST         | -44        | -36        | -20        | -2         | 0(3)   | 1(2)   |
| Pampas                | PAMP         | -64        | -58        | -36        | -23        | 2(2)   | 2(0)   |
| Sahel                 | SAHL         | -18        | 25         | 13         | 19         | 2(0)   | 1(2)   |
| <b>East Africa</b>    | <b>EAFR</b>  | <b>38</b>  | <b>51</b>  | <b>-4</b>  | <b>12</b>  | <b>2(3)</b>  | <b>1(7)</b>  |
| Southern Africa       | SAFR         | 14         | 26         | -35        | -26        | 2(0)   | 2(1)   |

Table II: Set up of the experiments performed -in this study. LDAS\_ERA5 and LDAS\_HRES have an analysis (assimilation of surface soil moisture, SSM, and leaf area index, LAI) and a model equivalent (open-loop, no assimilation), LDAS\_fc4 and LDAS\_fc8 are model runs initialized by either LDAS\_HRES open-loop or analysis. N/A stands for not applicable.

| <b>Experiments<br/>(time period)</b> | <b>Model version</b>   | <b>Atmospheric<br/>forcing</b> | <b>Domain<br/>&amp; spatial resolution</b>   | <b>DA method</b> | <b>Assimilated<br/>observations</b> | <b>Model<br/>equivalents</b>    | <b>Control<br/>variables</b>       |
|--------------------------------------|--|--------------------------------|--|------------------|-------------------------------------|---------------------------------|------------------------------------|
| LDAS_ERA5<br>(2010 to 2018)          | ISBA<br>Multi-layer soil<br>model<br>CO <sub>2</sub> -responsive<br>version<br>(Interactive<br>vegetation) | ERA5                           | Global, ~0.25°x<br>0.25°   | SEKF             | SSM<br>(ASCAT)                      | Second layer of<br>soil (1-4cm) | Layers of soil 2<br>to 8 (1-100cm) |
| LDAS_HRES<br>(04/2016 to<br>12/2018) |  | IFS-HRES                       | North Western<br>Europe ( <b>WEUR</b> ) and<br>Murray-Darling<br>River basin ( <b>MUDA</b> )<br>(see spatial extend in<br>Table I) |                  | LAI<br>(GEOV1)                      | LAI                             | LAI                                |
| LDAS_fc4<br>(2017 to 2018)           |  |                                |  | N/A              | N/A                                 | N/A                             | N/A                                |
| LDAS_fc8<br>(2017 to 2018)           |  | ~0.10° x 0.10°                 | N/A  | N/A              | N/A                                 | N/A                             |                                    |

Table III: Evaluation datasets and associated metrics used in this study.

| <b>Datasets used for the evaluation</b>  | <b>Source</b>   | <b>Metrics associated</b>  | <b>Independent source of evaluation</b> |
|--|---|--|---|
| In situ measurements of soil moisture (ISMN Dorigo et al., 2011, 2015)                           | <a href="https://ismn.geo.tuwien.ac.at/en/">https://ismn.geo.tuwien.ac.at/en/</a>   | R for both absolute and anomaly time-series, unbiased RMSD and bias, NIC on R values | Yes                                     |
| In situ measurements of river discharge  | See Table S1  | Nash Efficiency (NSE), Normalized Information Contribution (NIC) based on NSE,       | Yes                                     |
| In situ measurements of evapotranspiration (FLUXNET-2015)  | <a href="http://fluxnet.fluxdata.org/data/fluxnet2015-dataset/">http://fluxnet.fluxdata.org/data/fluxnet2015-dataset/</a> | R, unbiased RMSD, Bias, NIC on R values  | Yes                                     |
| Satellite derived surface soil wetness index (ASCAT, Wagner et al., 1999, Bartalis et al., 2007) | <a href="http://land.copernicus.eu/global/">http://land.copernicus.eu/global/</a>   | R, RMSD and $N_{RMSD}$   | No (assimilated dataset)                |
| Satellite derived Leaf Area Index (GEOV1, Baret et al., 2013)                                    | <a href="http://land.copernicus.eu/global/">http://land.copernicus.eu/global/</a>   | R, RMSD and $N_{RMSD}$   | No (assimilated dataset)                |
| Satellite-driven model estimates of land evapotranspiration (GLEAM, Martens et al., 2017)        | <a href="http://www.gleam.eu">http://www.gleam.eu</a>   | R, RMSD and $N_{RMSD}$   | Yes                                     |
| Upscaled estimates of Gross Primary Production (GPP, Jung et al., 2017)                          | <a href="https://www.bgc-jenna.mpg.de/geodb/projects/Home.php">https://www.bgc-jenna.mpg.de/geodb/projects/Home.php</a>   | R, RMSD and $N_{RMSD}$   | Yes                                     |
| Solar Induced Fluorescence (SIF) from GOME-2 (Munro et al., 2006, Joiner et al., 2016)           | See references  | R  | Yes                                     |
| Interactive Multi-sensor Snow and Ice Mapping System (or IMS) snow cover                         | <a href="https://www.natice.noaa.gov/ims/">https://www.natice.noaa.gov/ims/</a>   | Differences  | Yes                                     |

## Figures

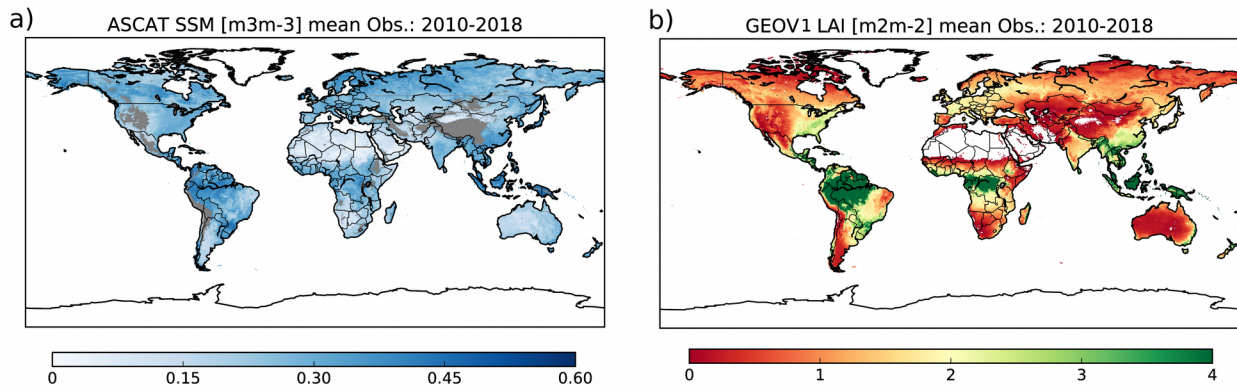


Figure 1: (a) Surface soil moisture (SSM) from the Copernicus Global Land Service (CGLS) for pixels with less than 15% of urban areas and with an elevation of less than 1500 m above sea level, (b) GEOV1 leaf area index (LAI) from CGLS, for pixels covered by more than 90 % of vegetation, averaged over 2010 to 2018. SSM is obtained after rescaling the ASCAT Soil Wetness Index (SWI) to the model climatology, grey areas on (a) represent filtered out data (see Section 2.3).

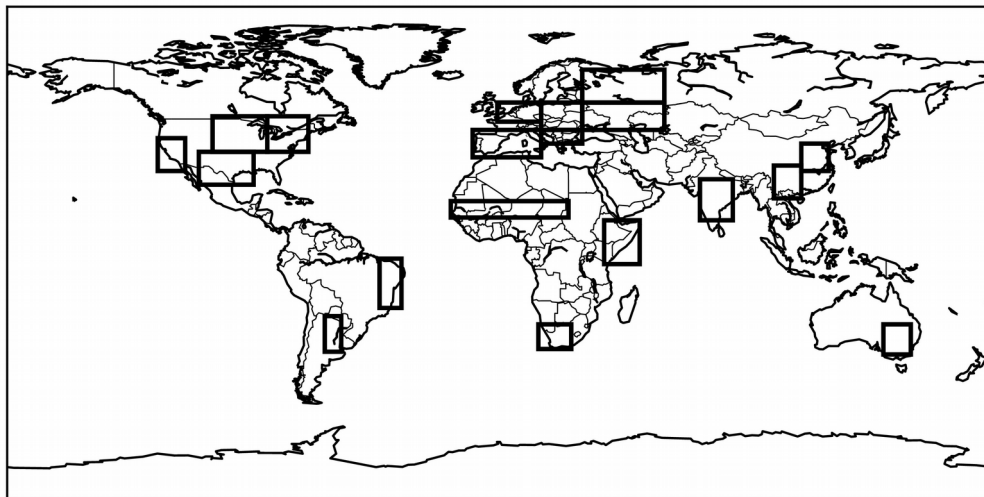


Figure 2: Selection of 19 regions across the globe known for being potential hot spots for droughts and heatwaves. The regions are defined in Table I.

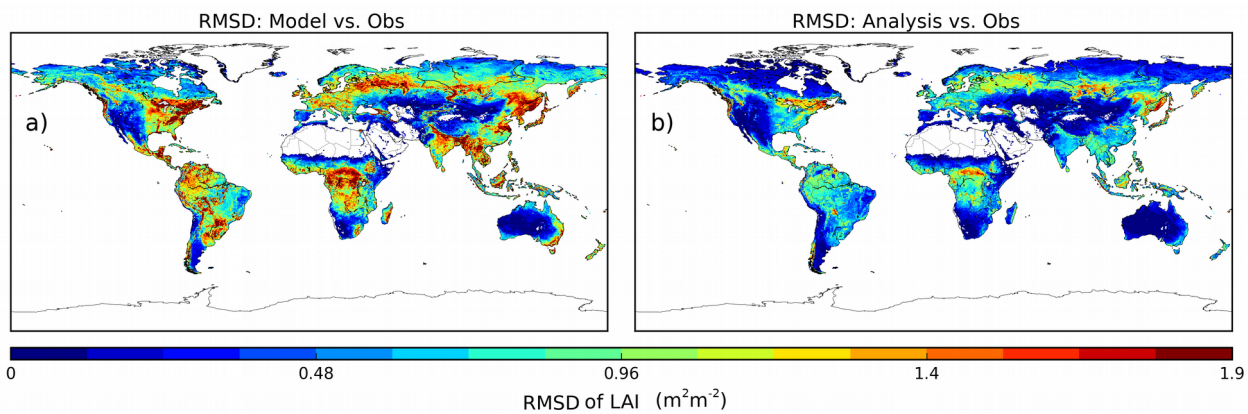


Figure 3: RMSD values between observed Leaf Area Index (LAI) and LDAS\_ERA5 (a) before assimilation and (b) after assimilation of surface soil moisture (SSM) and LAI.

1155

1160

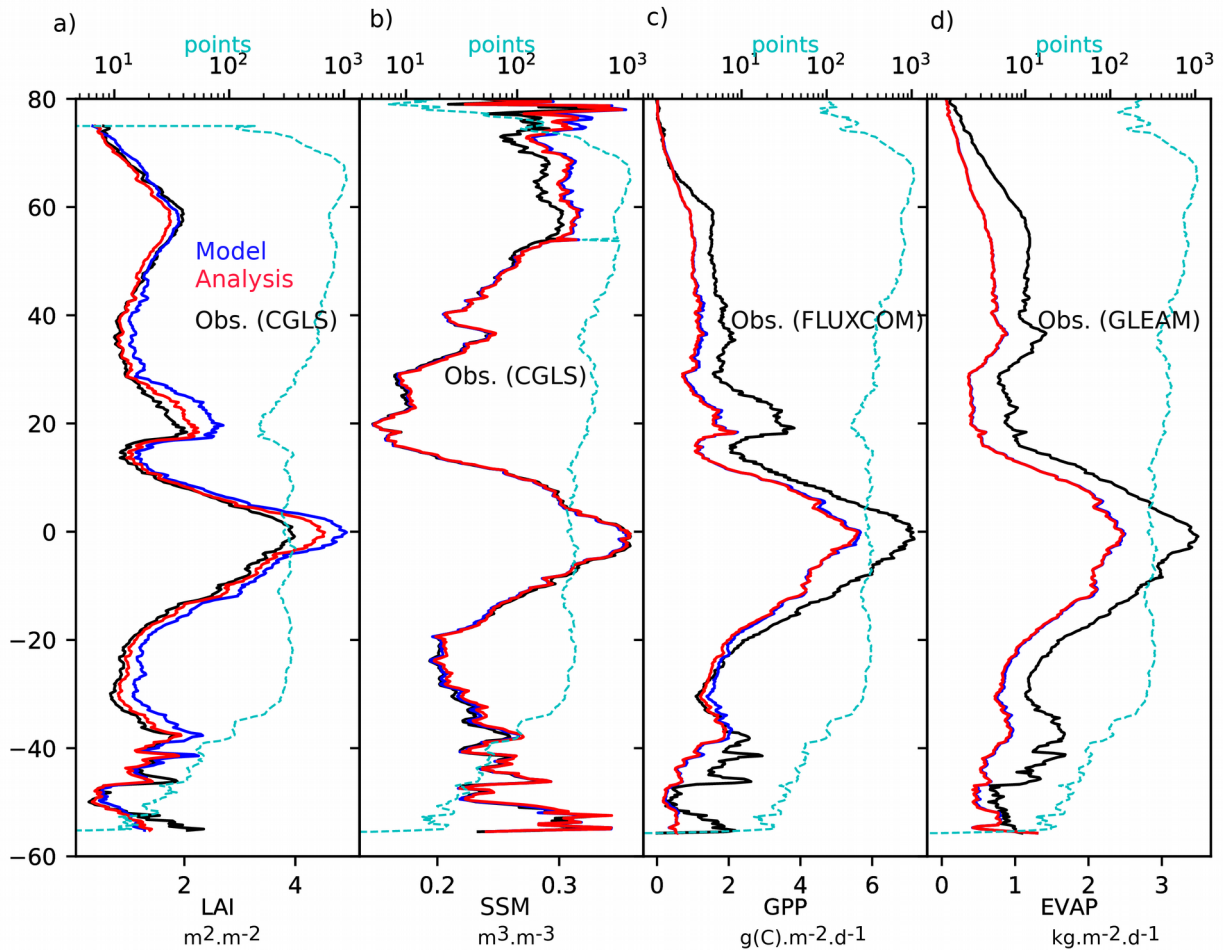


Figure 4: Latitudinal plots of (a) Leaf Area Index (LAI), (b) Surface Soil Moisture (SSM), (c) Gross Primary Production (GPP) and (d) Evapotranspiration (EVAP) for LDAS\_ERA5 before assimilation (Model, blue solid line) and after assimilation (Analysis, red solid line) as well as observations (black solid line). Cyan dashed line represents the number of points considered per latitudinal stripes of 0.25°.

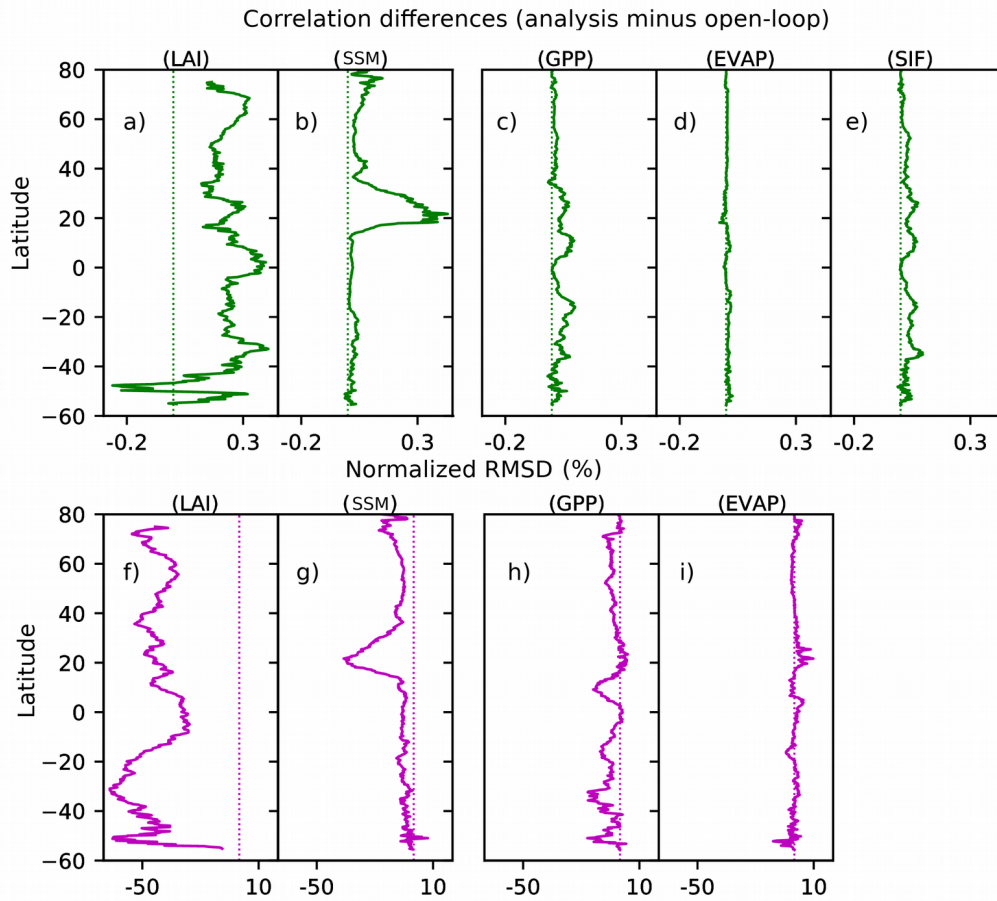


Figure 5: Latitudinal plots of score differences (analysis minus open-loop) for correlations (a-e) and normalized RMSD (f-i) for LAI (a,f), SSM (b,g), GPP (c,h), EVAP (d,i) and SIF (e, correlations only). Scores are computed based on monthly average over 2010-2018 for LAI and SSM, 2010-2013 for GPP, 2010-2016 for EVAP and 2010-2015 for SIF. Dashed lines represent the zero lines (equal scores for open-loop and analysis).

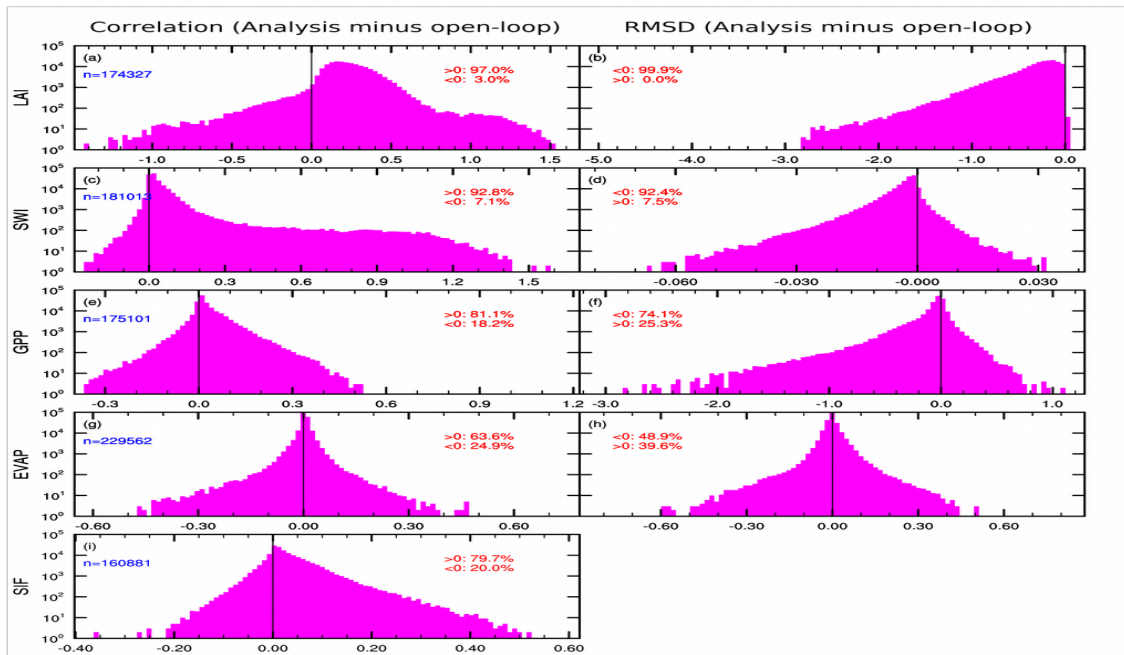


Figure 6: Histograms of score differences (correlation and RMSD, analysis minus open-loop) for a),b) LAI, c),d) SSM, e),f) GPP, g),h) EVAP and i) SIF. For SIF only differences in correlation are represented. Number of available data (in blue) as well as the percentage of positive and negative values (in red) are reported. Note that for sake of clarity, the y-axis is logarithmic.

1170

1175



Normalized Information Contribution (NIC) based on R values, LDAS\_Monde EKF-OL

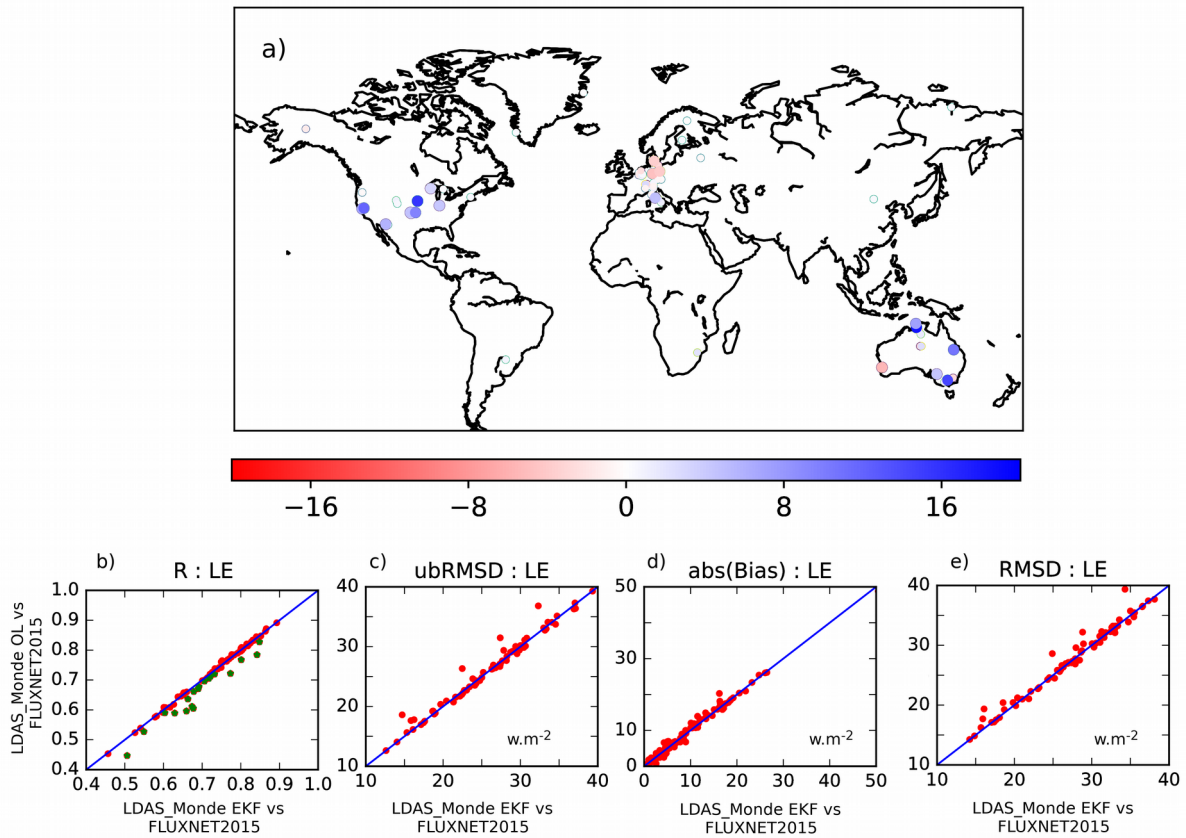


Figure 7:(a) Map of Normalized Information Contribution (NIC, Eq. 2 ) applied on correlation values between evapotranspiration from LDAS\_ERA5 analysis (open-loop) and observations from the FLUXNET 2015 synthesis data set. NIC scores are classified into 2 categories (i) negative impact from the analysis with respect to the model with values smaller than -3 % (red circles, 5 stations), (ii) positive impact from the analysis with respect to the model with values greater than +3 % (blue circles, 20 stations). Stations presenting a neutral impact with values between -3 % and +3 % (60 stations) are reported as small dots. Note that at this scale some stations are overlapping. (b), (c), (d) and (e) scatter-plots of R, ubRMSD, absolute bias and RMSD between LDAS\_ERA5 open-loop and the 85 stations from the FLUXNET 2015 (y-axis) and LDAS\_ERA5 analysis and the same pool of stations (x-axis). The set of 20 stations for which the analysis has a positive impact in R values at  $NIC_R$  greater than +3 are reported on a) in green.

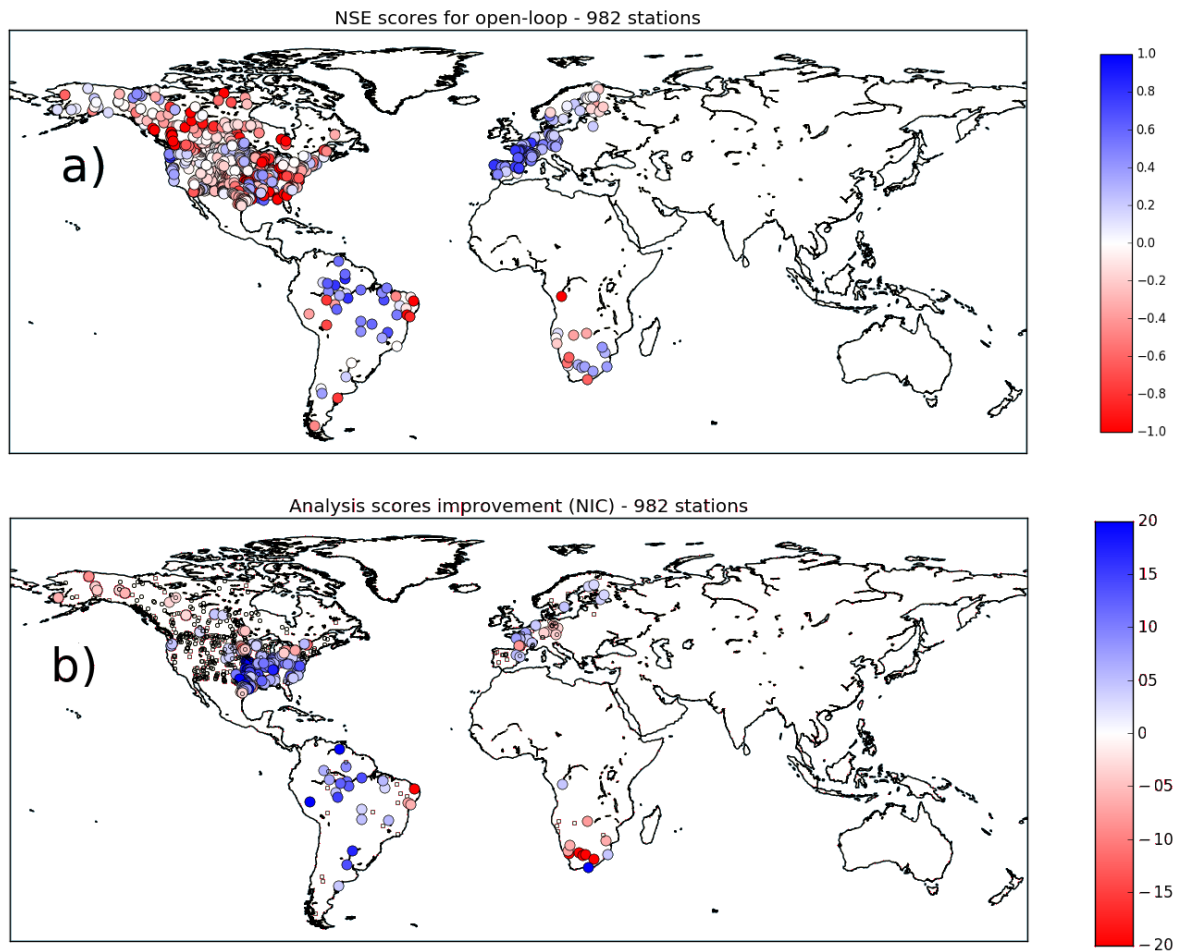


Figure 8:(a) Global map of Nash-Sutcliff Efficiency score (NSE) between river discharge from LDAS\_ERA5 open-loop and in situ measurements from the networks presented in Table S1 over 2010-2016. (b) Normalized Information Contribution scores (NIC, Eq.2) based on NSE scores on river discharge. Small dots represent stations for which NIC are between  $[-3\%, +3\%]$  (i.e. neutral impact from LDAS\_ERA5 analysis), NIC values greater than  $+3\%$  (blue large circles) suggest an improvement from LDAS\_ERA5 analysis over LDAS\_ERA5 open-loop while values smaller than  $-3\%$  (large red circles) suggest a degradation. Only stations where more than 4-year of data are available and with a drainage area greater than  $10000\text{km}^2$  are considered. Stations with NSE values smaller than  $-2$  are discarded, also, leading to a subset of 982 stations available.

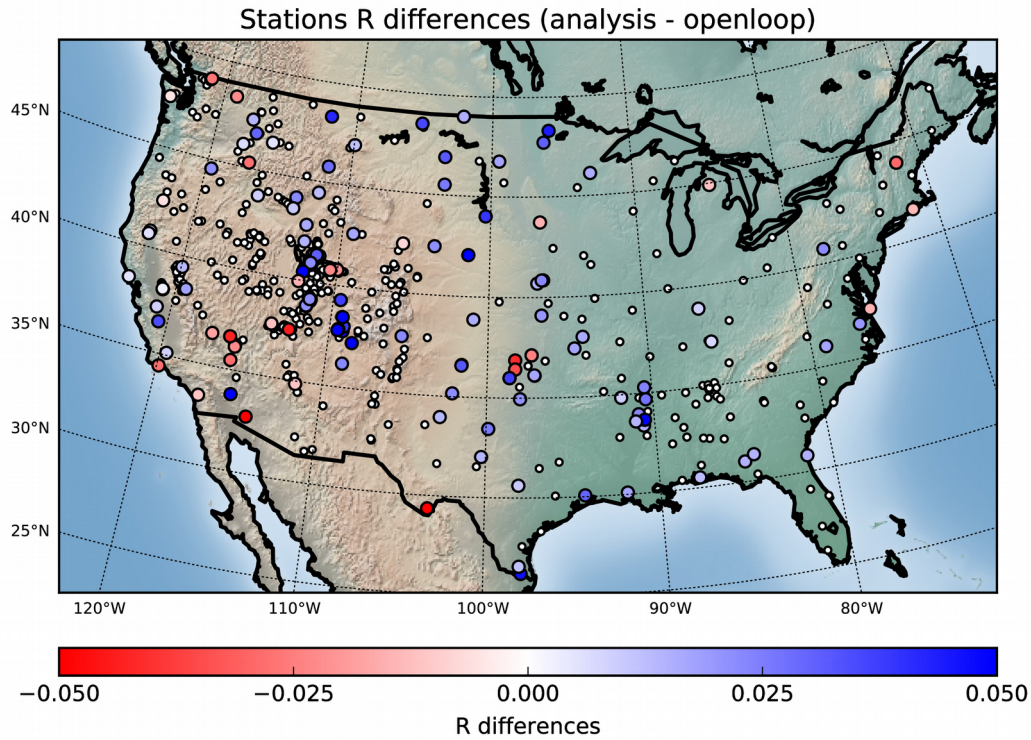


Figure 9: Map of correlations ( $R$ ) differences (analysis minus open-loop) for stations measuring soil moisture at 5 cm depth and being available over North America. Small dots represent stations where  $R$  differences are not significant (i.e. 95% confidence intervals are overlapping), large circles where differences are significant.

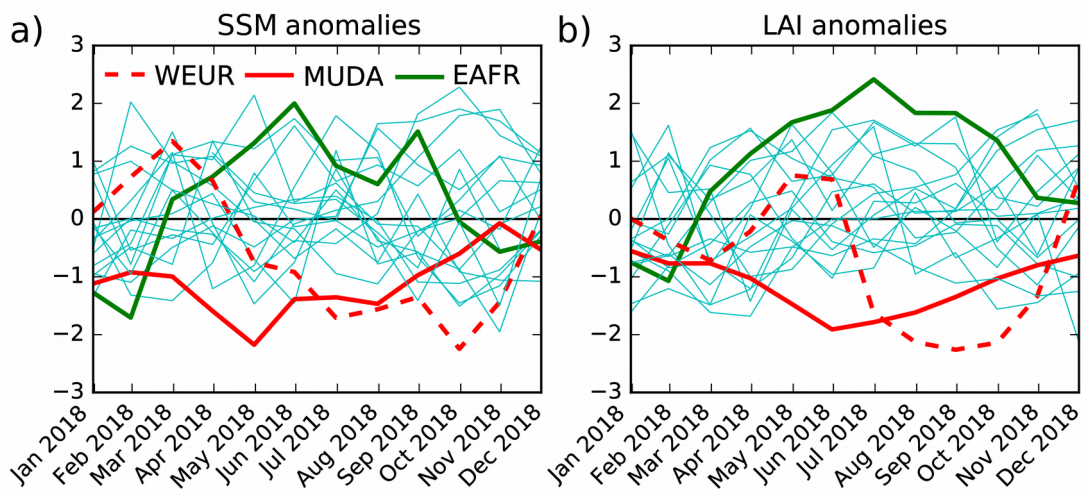


Figure 10: 2018 monthly anomalies scaled by standard deviation of analysed (a)SSM and (b)LAI, with respect to 2010-2018, for the 19 regions presented in Table 1 and Figure 2. Solid red line, dashed red line and solid green line represent regions MUDA, WEUR and EAFR. Solid cyan line represent all other boxes (see Table 1 and Figure 2).

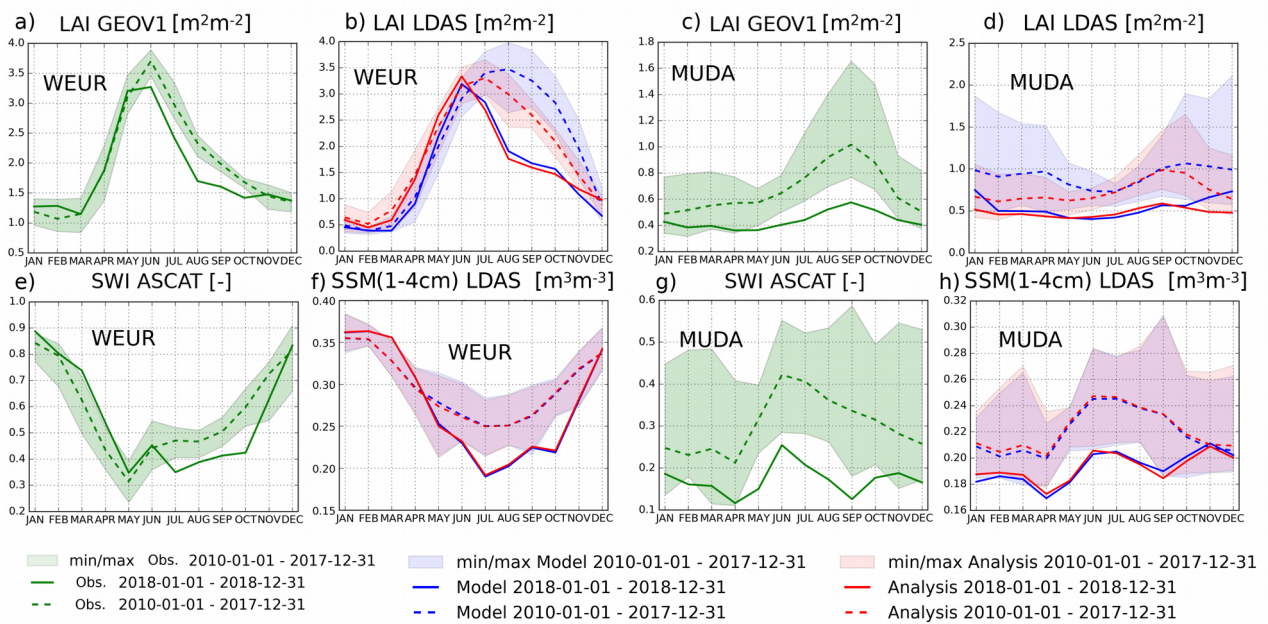


Figure 11: Upper panels represent seasonal cycles of a) observed GEOV1 LAI from CGLS, b) LAI from the open-loop (in blue) and the analysis (in red) for the WEUR area (see Table I for geographical extent). c) and d) panels are similar to a) and b) for the MUDA area. Lower panels represent seasonal cycles of e) ASCAT SWI from CGLS, f) SSM from the open-loop (in blue) and the analysis (in red) for the WEUR area. Panels g) and h) are similar to e) and f) for the MUDA area. For each panel dashed line represents the averaged over 2010-2017 along with the minimum and maximum values, the solid lines are for the year 2018.

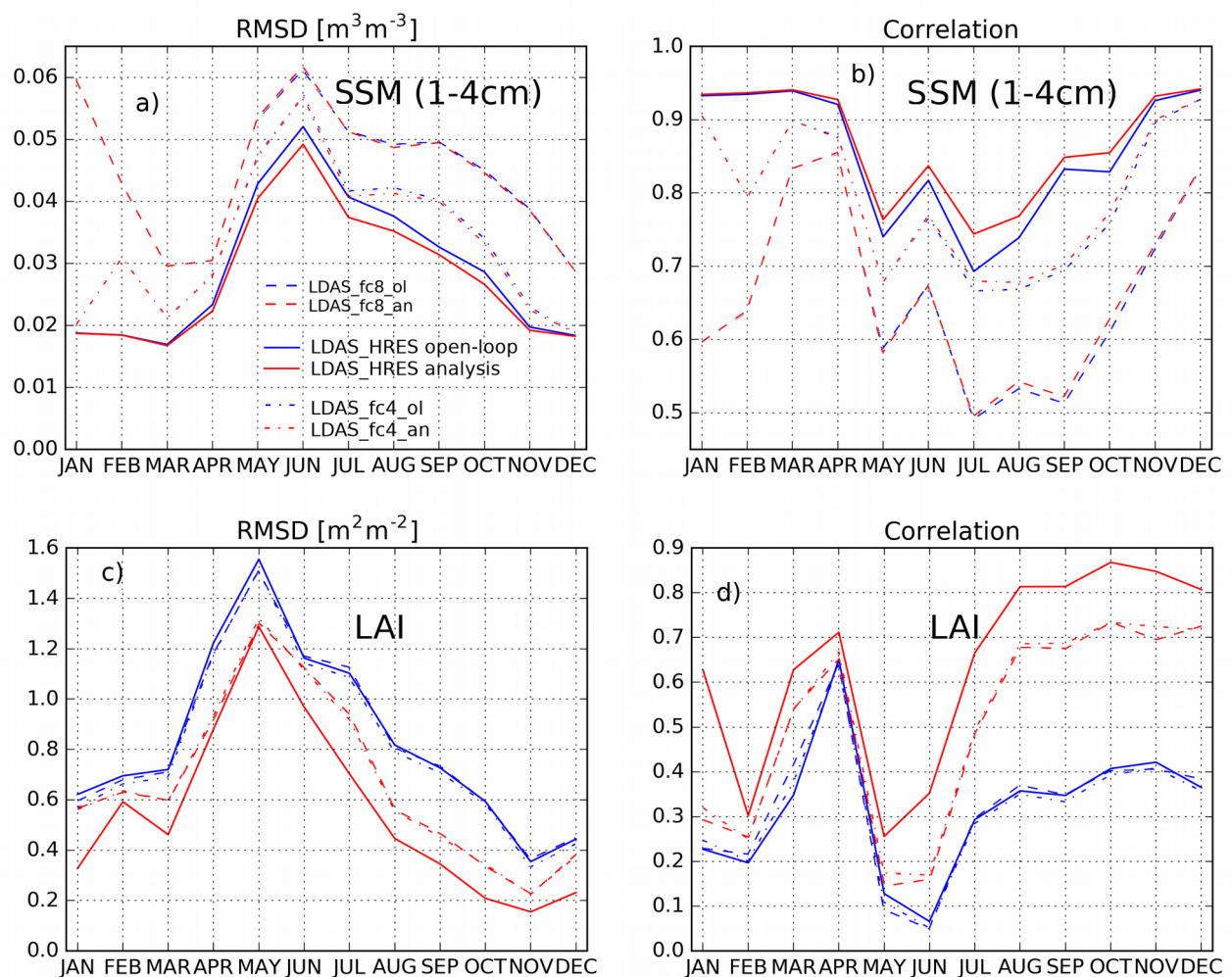


Figure 12: Upper panel, seasonal (a) RMSD and (b) correlation values between soil moisture from the second layer of soil (1–4 cm) from the model forced by HRES (LDAS\_HRES, open-loop in blue solid line, analysis in red solid line) and ASCAT SSM estimates over 2017-2018 over the WEUR area. Scores between SSM from the second layer of soil of LDAS\_HRES, 4-day (dashed/dotted blue – when initialised by the open-loop- and red – when initialised by the analysis- lines) and 8-day (dashed blue and red lines) forecasts and ASCAT SSM estimates are also reported. Lower panel (c) and (d), same as upper panel between modeled/analyzed Leaf Area index (LAI) and GEOV1 LAI estimates.

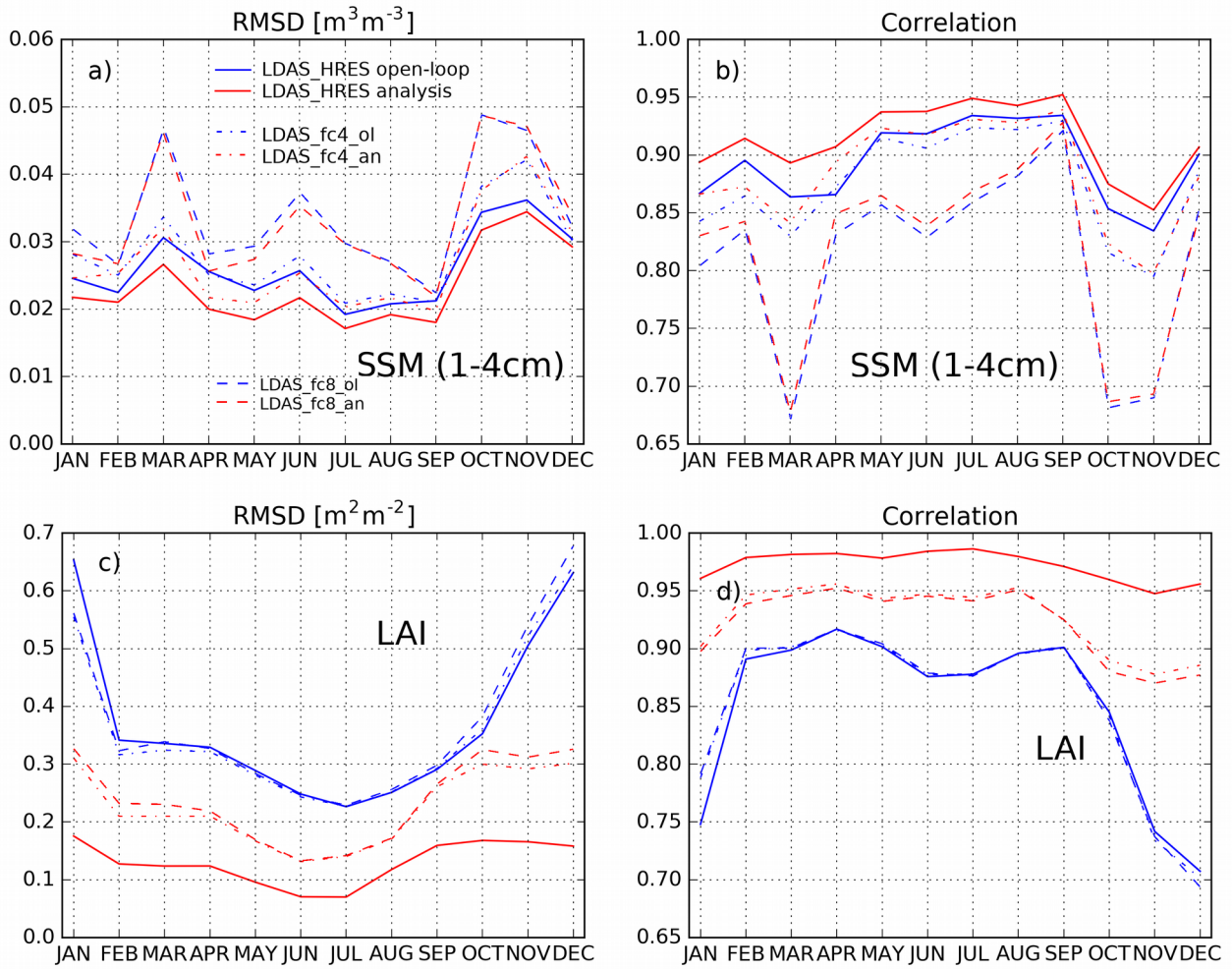


Figure 13: Same as Figure 12 for the Murray-Darling river (MUDA) area in South Eastern Australia.

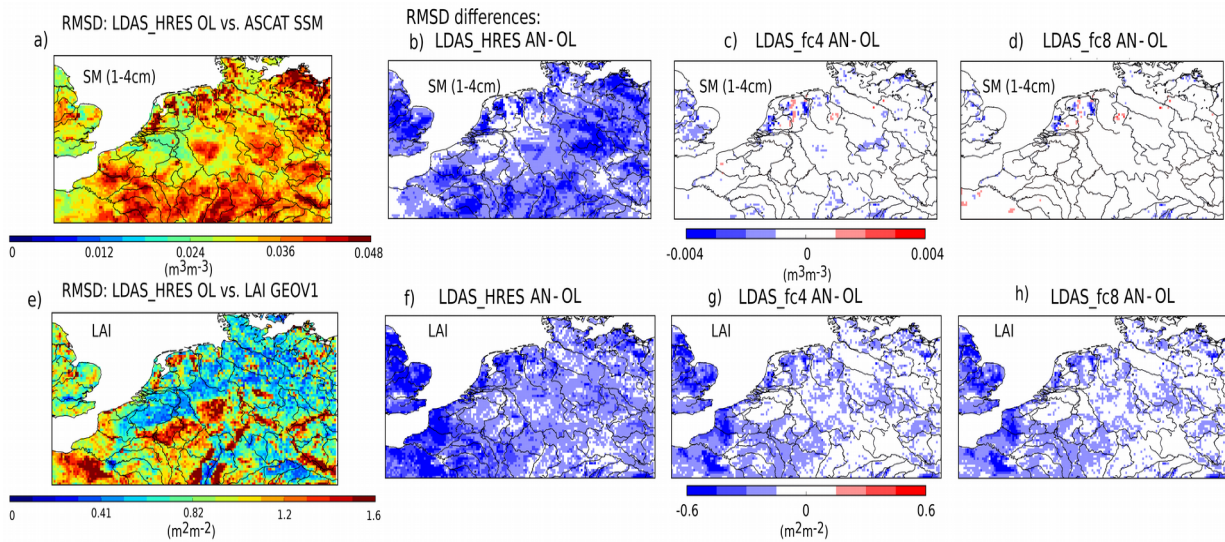


Figure 14: Top row, (a) RMSD values between *LDAS\_HRES* open-loop and ASCAT SSM estimates over 2017-2018 for the WEUR domain, (b) RMSD differences between *LDAS\_HRES* analysis (open-loop) and ASCAT SSM. (c), (d) and (e) Same as (b) between *LDAS\_fc4* initialised by the analysis (open-loop) and *LDAS\_fc8*. Bottom row, same as top row for LAI from the different experiments and LAI GEOV1.

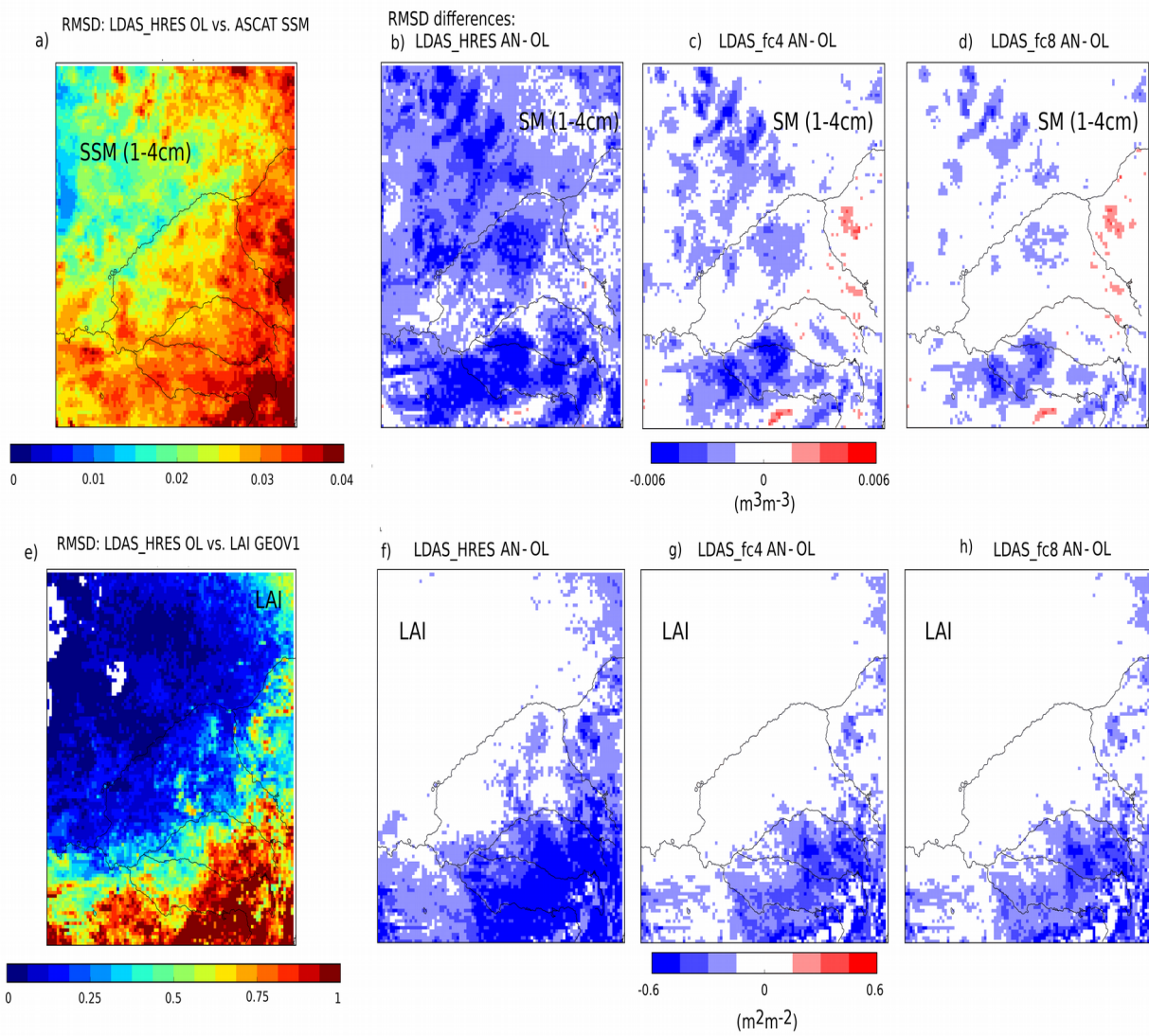


Figure 15: Same as Figure 14 or the Murray-Darling river (MUDA) area in South Eastern Australia.



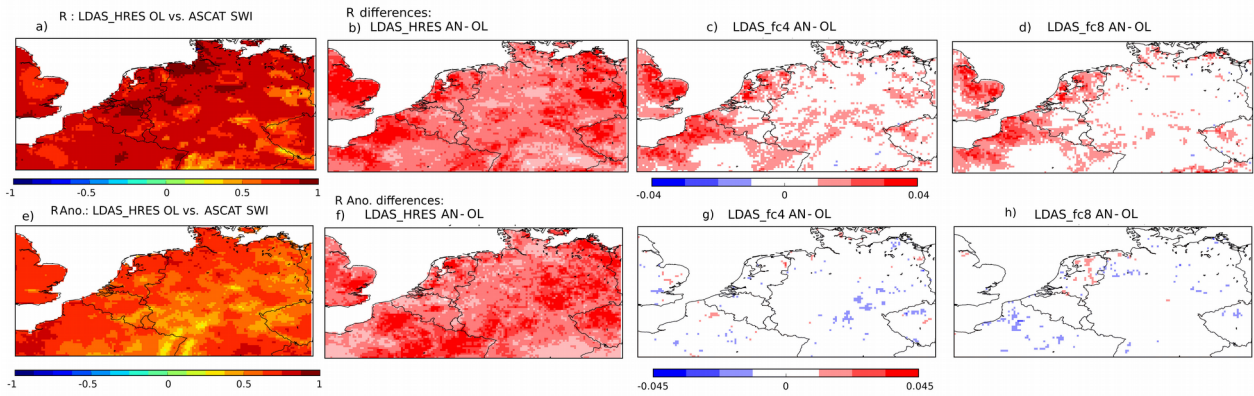


Figure 16: Top row, (a) R values between LDAS\_HRES open-loop and ASCAT SWI estimates over 2017-2018 for the WEUR domain, (b) R differences between LDAS\_HRES analysis (open-loop) and ASCAT SWI. (c) and (d) same as (b) between LDAS\_fc4 initialised by the analysis (open-loop) and LDAS\_fc8. Bottom row, same as top row for R values based on anomaly time-series.

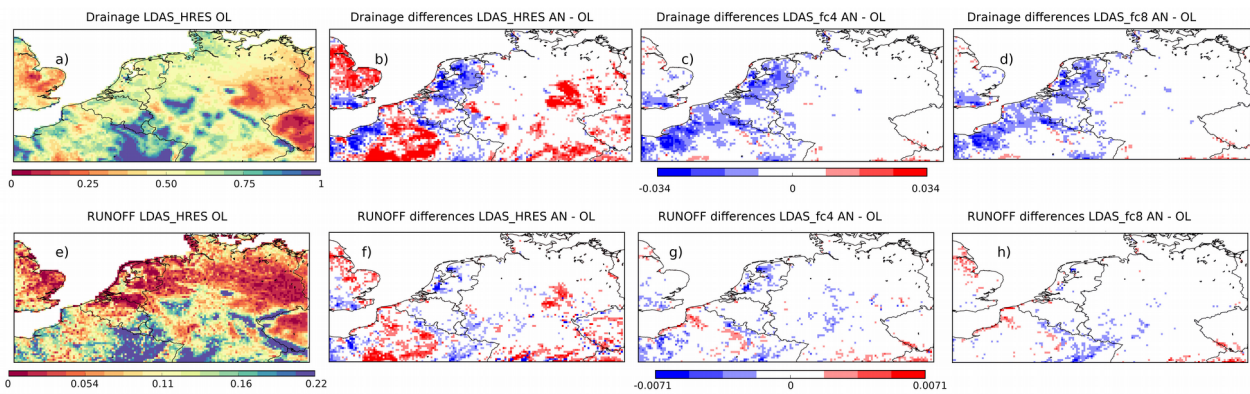


Figure 17: Top row, (a) drainage values for LDAS\_HRES open-loop over 2017-2018 for the WEUR domain, (b) drainage differences between LDAS\_HRES analysis and open-loop. (c), (d), same as (b) between LDAS\_fc4 initialised by the analysis and LDAS\_fc4 initialised by the open-loop, between LDAS\_fc8 initialised by the analysis and LDAS\_fc8 initialised by the open-loop. Bottom row, same as top row for runoff. Units are  $\text{kg.m}^{-2}.\text{day}^{-1}$