

# Flood trends in Europe: are changes in small and big floods different?

Miriam Bertola<sup>1</sup>, Alberto Viglione<sup>2</sup>, David Lun<sup>1</sup>, Julia Hall<sup>1</sup>, and Günter Blöschl<sup>1</sup>

<sup>1</sup>Institute of Hydraulic Engineering and Water Resources Management, Vienna University of Technology, Karlsplatz 13, 1040, Vienna, Austria

<sup>2</sup>Department of Environmental Engineering, Land and Infrastructure, Polytechnic University of Turin, Corso Duca degli Abruzzi 24, 10129 Torino, Italy

**Correspondence:** Miriam Bertola (bertola@hydro.tuwien.ac.at)

## Abstract.

Recent studies have revealed evidence of trends in the median or mean flood discharge in Europe over the last five decades, with clear and coherent regional patterns. The aim of this study is to assess whether trends in flood discharges also occurred for larger return periods, accounting for the effect of catchment scale. We analyze 2370 flood discharge records, selected from a newly-available pan-European flood database, with record length of at least 40 years over the period 1960-2010 and with contributing catchment area ranging from 5 to 100 000 km<sup>2</sup>. To estimate regional flood trends, we use a non-stationary regional flood frequency approach consisting of a regional Gumbel distribution, whose median and growth factor can vary in time with different strengths for different catchment sizes. A Bayesian Markov chain Monte Carlo (MCMC) approach is used for parameter estimation. We quantify regional trends (and the related sample uncertainties), for floods of selected return periods and for selected catchment areas, across Europe and for three regions where coherent flood trends have been identified in previous studies. Results show that in northwestern Europe the trends in flood magnitude are generally positive. In small catchments (up to 100 km<sup>2</sup>), the 100-year flood increases more than the median flood, while the opposite is observed in medium and large catchments, where even some negative trends appear, especially in northwestern France. In southern Europe flood trends are generally negative. The 100-year flood decreases less than the median flood and, in the small catchments, the median flood decreases less compared to the large catchments. In eastern Europe the regional trends are negative and do not depend on the return period, but catchment area plays a substantial role: the larger the catchment, the more negative the trend.

## 1 Introduction

Increasing flood hazard in Europe has become a major concern as a consequence of severe flood events experienced in the last decades, as, for instance, the extreme floods occurred in central Europe in 2002 (e.g. Ulbrich et al., 2003) and 2013 (e.g. Blöschl et al., 2013a), and the winter floods in northwest England in 2009 (e.g. Miller et al., 2013) and 2015-16 (e.g. Barker et al., 2016). Hence a growing number of flood trend detection studies has been published in recent years. These studies typically analyse a large set of time series of flood peaks in a region and test them for the presence of significant gradual or abrupt changes in flood magnitude or frequency. For example, Petrow and Merz (2009) analysed eight flood indicators, from 145

gauges in Germany over the period 1951-2002, and detected mainly positive trends in the magnitude and frequency of floods. 25 Villarini et al. (2011) tested flood time series of 55 stations in central Europe, with at least 75 years of data, for abrupt or gradual changes and found mostly abrupt changes associated with anthropogenic intervention (such as the construction of dams and reservoirs and river training). Mediero et al. (2014) detected a general decreasing trend in the magnitude and frequency of floods in Spain, with the exception of the north-west. Prosdocimi et al. (2014) investigated the presence of trends in annual and seasonal maxima of peak flows in the UK and found clusters of increasing trends for winter peaks in northern England 30 and Scotland, and decreasing trends for summer peaks in southern England. These studies are highly heterogeneous in terms of flood data types, period of records and detection approaches and it is therefore not trivial to deduce regional patterns of flood regime change at the larger continental scale. Despite this fragmentation, Hall et al. (2014) summarized the findings of previous studies in a map of increasing, decreasing and not detectable flood changes for Europe, and showed the existence of consistent regional patterns. In particular, in central and western Europe flood magnitude appeared to increase with time, while 35 it seemed to decrease in the Mediterranean catchments and in eastern Europe.

More recently, thanks to the availability of European and global high spatial resolution databases, large-scale investigation studies across Europe have been published. Mangini et al. (2018) extracted 629 flood records from the Global Runoff Data Center database (GRDC, 2016) and compared the detected trends in magnitude and frequency of floods from different approaches (annual maximum flood and peak over threshold) for the period 1965–2005. Blöschl et al. (2019) analysed 2370 40 flood records from a newly available pan-European flood database consisting of more than 7000 observational hydrometric stations and covering the last five decades (Hall et al., 2015) and revealed consistent spatial patterns of trends in the magnitude of the annual maximum flood, with clear positive trends in northwestern Europe and decreasing trends in southern and eastern Europe.

Existing studies typically analyse catchments individually and investigate whether spatial clusters or coherent regional pat- 45 terns of flood trends can be observed (e.g. Petrow and Merz, 2009; Prosdocimi et al., 2014; Mangini et al., 2018). Based on predefined regions or obtained change patterns, some studies aggregate flood records and local test results in order to assess their field significance (e.g. Douglas et al., 2000; Mediero et al., 2014; Renard et al., 2008). The main limitation of most at-site studies is the short length of the flood peak records locally available for the detection of trends, resulting in low signal-to-noise ratio and hence high uncertainties in the detected trend. Increasing the signal-to-noise ratio can be achieved by pooling 50 flood data from multiple sites within homogeneous regions, as in regional frequency analyses (Dalrymple, 1960; Hosking and Wallis, 1997). Several studies propose non-stationary regional frequency analyses for changes in precipitation extremes and flood trends, that consider the dependency of regional estimates on time (e.g. Cunderlik and Burn, 2003; Renard et al., 2006a; Leclerc and Ouarda, 2007; Hanel et al., 2009; Roth et al., 2012) or on climatic and anthropogenic covariates (e.g. Lima and Lall, 2010; Trambly et al., 2013; Renard and Lall, 2014; Sun et al., 2014; Prosdocimi et al., 2015; Viglione et al., 2016). 55 Other approaches analyse coherent regional change by testing for the presence of trends in regional variables, as the number of annual floods in the region (e.g. Hannaford et al., 2013), or with regional tests (e.g. Douglas et al., 2000; Renard et al., 2008).

However, most of the cited studies investigate changes in the mean annual (or median) flood only, and few examples exist where observed trends in different flood quantiles are analysed. Typically, flood quantiles obtained with stationary and non-

stationary flood frequency approaches are compared (see e.g. Machado et al., 2015; Šraj et al., 2016; Silva et al., 2017). The  
60 detection of changes in the magnitude of flood quantiles is much more common for precipitation (e.g. Hanel et al., 2009) or in  
flood projection studies (e.g. Prudhomme et al., 2003; Leander et al., 2008; Rojas et al., 2012; Alfieri et al., 2015).

To address this research gap, the aim of this study is to assess the changes in small vs. big flood events (corresponding  
to selected flood quantiles) across Europe over five decades (i.e. 1960-2010), and to determine whether these changes have  
been subject to different degrees of modification in time. Moreover, given that the impacts of different drivers of change on  
65 floods are expected to be strongly dependent on spatial scales (Blöschl et al., 2007; Hall et al., 2014), it is also of interest to  
assess the effect of catchment area, by comparing changes of flood quantiles for catchments of different sizes. Since the length  
of at-site flood records is often not sufficient to enable the reliable estimation of flood quantiles associated with high return  
periods (i.e. low probability of exceedance, e.g. the 100-year flood), in this study we adopt a (non-stationary) regional flood  
frequency approach, which pools flood data of multiple sites in order to increase the robustness of the estimated regional flood  
70 frequency curve and its changes over time. The methods and the flood database are described in detail in Sect. 2. The results  
are presented in Sect. 3, where we show the estimation of the flood quantiles and their trends in one example region (Sect. 3.1),  
the patterns of flood regime changes emerging from a spatial moving window analysis across Europe (Sect. 3.2) and the flood  
regime changes in three relevant macro-regions (Sect. 3.3).

## 2 Methods

### 75 2.1 Regional flood change model

In order to quantify the changes in time in flood quantiles corresponding to different return periods for catchments of different  
size, we propose a regional flood change model that is more robust than local (at-site) trend analysis, in particular regarding  
trends associated to large quantiles of the flood frequency curve. We assume annual maximum flood peak discharges to follow  
the Gumbel distribution (i.e. Extreme Value distribution type I), whose cumulative distribution is defined as:

$$80 \quad F_X(x) = p = \exp\left(-\exp\left(-\frac{x-\xi}{\sigma}\right)\right) = \exp(-\exp(-y)),$$

where  $\xi$  and  $\sigma$  are the location and scale parameter and

$$y = \frac{x-\xi}{\sigma} = -\ln(-\ln p),$$

is the Gumbel reduced variate. The corresponding quantile function, i.e., the inverse of the cumulative distribution function, is:

$$q(p) = \xi - \sigma \ln(-\ln p) = \xi + \sigma y,$$

85 In this paper we consider two alternative parameters which better relate to the literature on regional frequency analysis,  
especially to the Index-Flood method of Dalrymple (1960) and Hosking and Wallis (1997). The alternative parameters are:  
(1) the 2-year quantile or median  $q_2$  (which corresponds to the index-flood), and (2) the 100-year growth factor  $x'_{100}$ , which

gives the 100-year quantile as  $q_{100} = q_2(1 + x'_{100})$  in a similar fashion to the modified quantiles in Coles and Tawn (1996) and Renard et al. (2006b). The relationships linking these alternative parameters to the Gumbel location and scale parameters are:

$$90 \quad q_2 = \xi + \sigma y_2$$

$$x'_{100} = \sigma(y_{100} - y_2)/(\xi + \sigma y_2)$$

where  $y_2 = -\ln(-\ln(0.5))$  and  $(y_{100} - y_2) = -\ln(-\ln(0.99)) + \ln(-\ln(0.5))$ . The quantile function, with the alternative parametrisation, is here expressed as a function of the return period  $T = 1/(1 - p)$  as:

$$q_T = q_2(1 + a_T x'_{100}), \quad (1)$$

$$95 \quad \text{where } a_T = (y_T - y_2)/(y_{100} - y_2) \text{ and } y_T = -\ln(-\ln(1 - 1/T)). \text{ In particular, } a_T=0 \text{ for } T=2 \text{ and } a_T=1 \text{ for } T=100.$$

In the following we estimate the parameters of the Gumbel distribution both locally and regionally. For the local case, we allow the parameters to change with time according to the following log-linear relationships:

$$\ln q_2 = \ln \alpha_{2_0} + \alpha_{2_1} \cdot t \quad (2)$$

$$\ln x'_{100} = \ln \alpha_{g_0} + \alpha_{g_1} \cdot t$$

For the regional case we introduce the scaling of  $q_2$  and  $x'_{100}$  with catchment area  $S$ , according to the following relationships:

$$\ln q_2 = \ln \alpha_{2_0} + \gamma_{2_0} \ln S + (\alpha_{2_1} + \gamma_{2_1} \ln S) \cdot t + \varepsilon$$

$$100 \quad \ln x'_{100} = \ln \alpha_{g_0} + \gamma_{g_0} \ln S + (\alpha_{g_1} + \gamma_{g_1} \ln S) \cdot t \quad (3)$$

$$\varepsilon \sim \mathcal{N}(0, \sigma)$$

where the  $\alpha$  and  $\gamma$  terms are parameters to be estimated (the  $\gamma$  terms control the scaling with area) and the  $\varepsilon$  term accounts for the fact that additional local variability, on top of the one explained by time and catchment area, is affecting the index flood but not the growth curve. In our model, a homogeneous region is thus formed by sites whose growth curve depends on catchment area and time only, and whose index flood also depends on other factors which determine an additional noise (here assumed normal).

105

We investigate changes in flood quantiles associated with fixed annual exceedance probability  $1 - p$ , or, equivalently, with fixed return period  $T = 1/(1 - p)$ . The relative change in time of the generic flood quantile  $q_T$  is thus derived, for the local case, from Eq. 1 and Eq. 2:

$$\frac{1}{q_T} \frac{dq_T}{dt} = \alpha_{2_1} + \alpha_{g_1} - \frac{\alpha_{g_1}}{1 + a_T x'_{100}}, \quad (4)$$

110 and, for the regional case, from Eq. 1 and Eq. 3 :

$$\frac{1}{q_T} \frac{dq_T}{dt} = \alpha_{2_1} + \alpha_{g_1} + (\gamma_{2_1} + \gamma_{g_1}) \ln S - \frac{\alpha_{g_1} + \gamma_{g_1} \ln S}{1 + a_T x'_{100}}. \quad (5)$$

The model parameters, the quantiles and their local and regional relative trends are estimated by fitting the local and regional models to flood data with Bayesian inference through a Markov chain Monte Carlo (MCMC) approach. One of the advantages

of the Bayesian MCMC approach is that the credible bounds of the distribution parameters (and other estimated quantities) can be directly obtained from their posterior distribution, without any additional assumption. The MCMC inference is performed using the R package *rStan* (Carpenter et al., 2017). It generates samples with a Hamiltonian Monte Carlo algorithm, that uses the derivatives of the density function being sampled to generate efficient transitions spanning the posterior (Stan Development Team, 2018). For each inference, 4 chains, with 100 000 simulations each, are generated with different initial values of the parameters and checked for their convergence. An improper uniform prior distribution over the entire real line is set for the parameters, with the exception of  $\alpha_{2_0}$  and  $\alpha_{g_0}$  for which we use an improper uniform prior distribution over the entire positive real line. When fitting the regional model we make the assumption of regional homogeneity with regards to the distribution of flood peaks, allowing local variability of the median value and its changes in time.

Spatial cross-correlation between flood time series at different sites is not accounted for in this model (i.e. it assumes independence of flood time series in space), however, it is possible to quantify its effects in first approximation in a Bayesian framework through an approach based on a magnitude adjustment to the likelihood (Ribatet et al., 2012). This approach consists in scaling the likelihood with a proper constant exponent to be estimated between 0 and 1, that results in inflating the posterior variance of the parameters and consequent increase of the width of parameter uncertainty intervals, reflecting the overall effect of spatial dependence in the data. In the case of spatial independence the magnitude adjustment factor is 1, whereas values of the magnitude adjustment factor close to 0 indicate strong inter-site correlation of floods and substantially larger sample uncertainties resulting from the adjusted model compared to the model where spatial cross-correlation is not accounted for. For further details about the method and its application to hydrological data, see Smith (1990), Ribatet et al. (2012) and Sharkey and Winter (2019). We apply this method to an example region in central Europe, in order to quantify the magnitude of the uncertainty underestimation associated with the model assumption of spatial independence in flood data.

## 2.2 European flood database

In this study, we analyse annual maximum discharge series from a newly available pan-European flood database, consisting of more than 7000 observational hydrometric stations and covering five decades (Hall et al., 2015). Their contributing catchment areas range from 5 to 100 000 km<sup>2</sup> and several nested catchments are included in the database.

For comparability with Blöschl et al. (2019), only the stations satisfying the following selection criteria, based on record length and even spatial distribution, are considered for the estimation of the regional trends. We select stations with at least 40 years of data in the period 1960-2010, with record starting in 1968 or earlier, and ending in 2002 or later. Additionally, in order to ensure a more even spatial distribution across Europe, in Austria, Germany and Switzerland (countries with highest density of stations in the database) the minimum record length accepted is 49 years; in Cyprus, Italy and Turkey 30 years are accepted, and in Spain 40 years without restrictions to the start and end of the record. Figure 1 shows the locations of the 2370 station satisfying the above selection criteria. The flood discharge data are accessible at [https://github.com/tuwhydro/europe\\_floods](https://github.com/tuwhydro/europe_floods).

### 145 2.3 Experimental design for the regional analyses

In this study, the regional flood change model of Sect. 2.1 is initially fitted to flood data of multiple sites that are pooled within spatial windows of size 600x600 km, with an overlapping length of 200 km in both directions. The size and overlapping length of the windows are chosen, after several preliminary tests, in order to ensure a sufficient number of gauges within each window and an appropriate spatial resolution at which to present the regional trends at the continental scale. Significant differences in spatial change pattern are not observed when changing the window size (not shown). The rationale behind the homogeneity assumption is that the spatial windows, given their size, are characterized by comparatively homogeneous climatic conditions (and hence flood generation processes) and processes driving flood changes. Figure 1 shows the resulting 200x200 km grid cells. Each of the 600x600 km windows considered in this analysis is composed of 9 neighbouring cells as represented, for example, by the black rectangular region, whose regional trend estimates are shown in detail in Sect. 3.1. The example region is selected in central Europe because of the number of available gauges with different ranges of contributing catchment areas. In each window we estimate the regional relative trend in time of  $q_2$  and  $q_{100}$ , as defined in Eq. 5, for small and big catchment sizes (i.e. assuming  $S=100$  and  $10\,000\text{ km}^2$  in the model). Note that this analysis intends to show the estimated flood trends in hypothetical catchments with a specific size, which do not exist everywhere across Europe, based on fitting the model to existing catchments. We plot the resulting trends on a map by assigning their values to the respective central 200x200 km cell (e.g. the light red area in Fig. 1). The number of stations within each of the considered 600x600 km windows is shown in Fig. A1 for several ranges of catchment size.

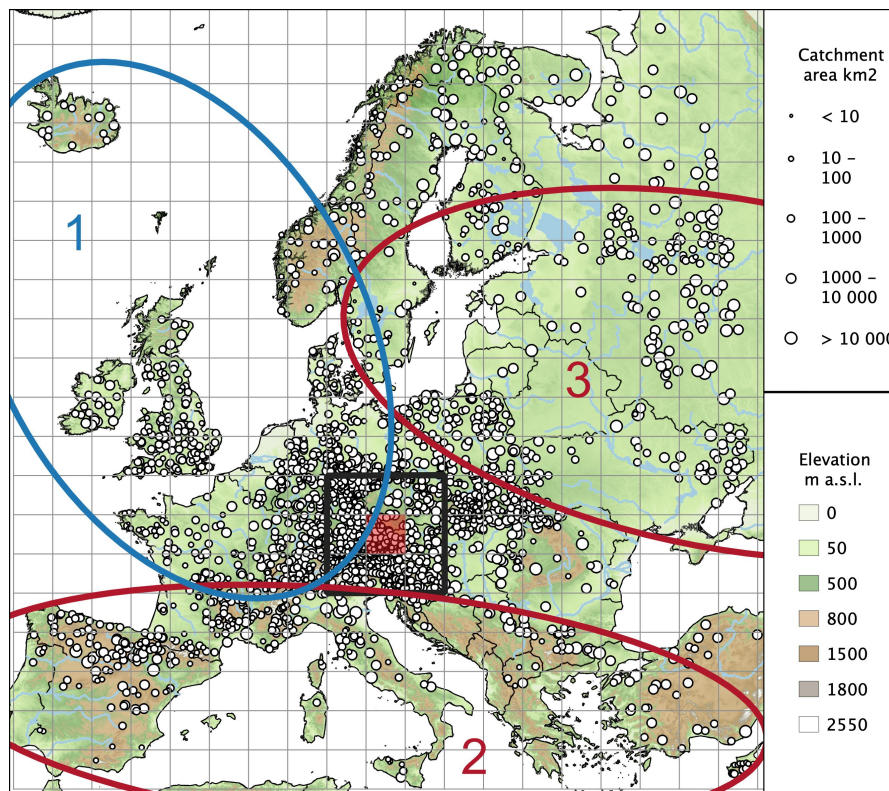
Figure 1 shows three macro-regions (numbers 1-3) located in northwestern Europe, southern Europe and eastern Europe, respectively. These regions were identified in Blöschl et al. (2019) by visual inspection of the flood trend and flood seasonality patterns and represent large homogeneous regions in terms of changes in the mean annual flood discharges. According to Köppen-Geiger climate classification (Köppen, 1884), northwestern Europe (region 1) corresponds approximately to the temperate oceanic climate zone, in southern Europe (regions 2) the hot and warm summer Mediterranean climate zones prevail, and eastern Europe (region3) is dominated by warm summer humid continental climate. Table 1 shows some related regional summary statistics. In this study, the same regions are analysed in terms of changes in flood quantiles, to allow a more detailed assessment of existing research and to allow for ready comparability of the results. The regional change model is consequently fitted to the pooled flood data of the sites within each of the three regions and trends in small and big floods for small to large catchments are analysed (Sect. 3.3).

In summary, the following regional analyses are carried out:

- In Sect. 3.1 regional flood regime changes in central Europe are investigated. As an example, the regional model is fitted to the black rectangular region of Fig. 1, which contains 601 hydrometric stations. For this example region, the regional model flood quantiles and their trends in time are shown as a function of catchment area and of return period (as defined in Eq. 1 and Eq. 5, respectively). The regional trends in  $q_2$  and  $q_{100}$  are compared for five hypothetical catchment sizes ( $S=10, 100, 1000, 10\,000$  and  $100\,000\text{ km}^2$ ) and local trend estimates (as in Eq. 4) are shown together with the regional

trends. In this example region we also investigate the overall effect of spatial dependence in flood data on the width of the estimated credible bounds, with the approach based on the magnitude adjustment to the likelihood.

- 180 – In Sect. 3.2 regional flood regime changes across Europe are investigated. The regional model is fitted to overlapping windows across Europe, of size 600x600 km, and the regional trends in  $q_2$  and  $q_{100}$  are estimated for small and big hypothetical catchments ( $S=100$  and  $10\,000\text{ km}^2$ , respectively). Maps of the estimated trends are shown, where the trend values are plotted in the respective central 200x200 km cell of each region. Differences among the estimated trends across Europe are calculated for further comparison.
- 185 – In Sect. 3.3 regional flood regime changes are investigated in three macro-regions, i.e. (1) northwestern Europe, (2) southern Europe and (3) eastern Europe. The regional model is fitted to these regions and the regional trends in  $q_2$  and  $q_{100}$  are estimated and compared for five hypothetical catchment sizes ( $S=10, 100, 1000, 10\,000$  and  $100\,000\text{ km}^2$ ).



**Figure 1.** Location of the selected 2370 hydro-metric stations in Europe and regions considered in this study. The size of the circles is representative for the contributing catchment area. The size of the grid cells is 200x200 km. The black rectangle shows the size of the spatial moving windows analysed in Sect. 3.2. It consists of 9 cells, corresponding to 600x600 km. The three ellipses (numbers 1-3) mark homogeneous macro-regions, analysed in Sect. 3.3, and consist of (1) northwestern Europe, (2) southern Europe and (3) eastern Europe, respectively.

Region	No. of stations	Mean catchment area (km <sup>2</sup> )	Mean outlet elevation (m a.s.l.)	Mean record length (years)
<b>1. Northwestern Europe</b>	895	1300.0	274.4	49.6
<b>2. Southern Europe</b>	458	2900.2	327.9	45.7
<b>3. Eastern Europe</b>	282	4959.4	101.5	49.7
<b>Europe</b>	2370	2472.3	286.0	48.8

**Table 1.** Regional summary statistics (number of stations, mean catchment area, mean outlet elevation, mean record length) of the flood database for the considered macro-regions (1-3 in Fig. 1) and for Europe.

### 3 Results

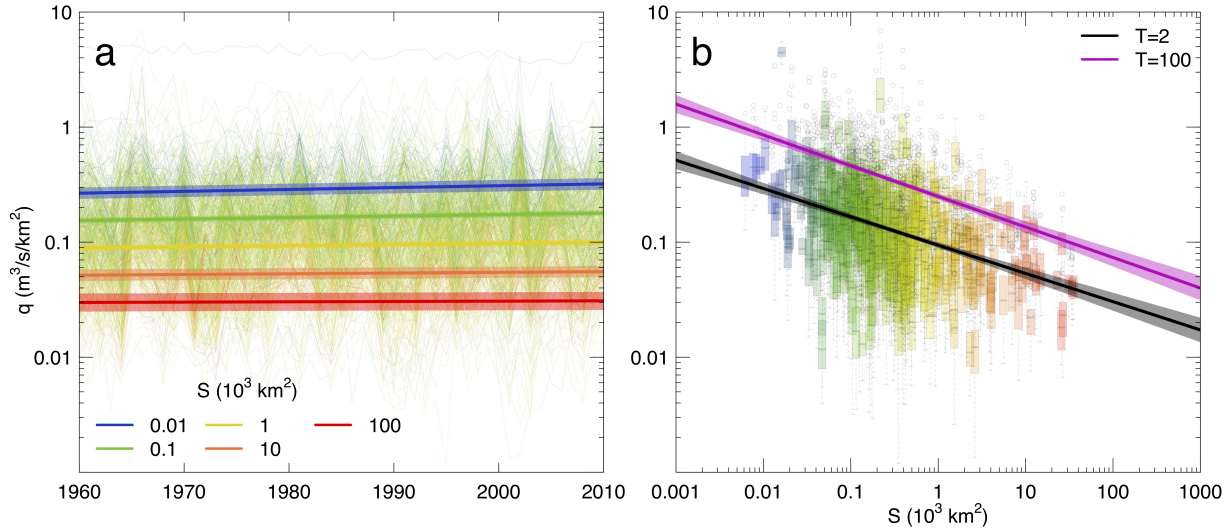
#### 3.1 Regional flood regime changes in central Europe

190 In this section, we show a detailed example of the (local and) regional model estimates for the black rectangular 600x600 km window of Fig. 1, located in central Europe and containing 601 hydrometric stations. The annual maximum discharge series of these stations are shown in Fig. 2 (with thin lines and box-plots in panels a and b, respectively). In the same figure, the regional flood quantiles  $q_2$  (panels a and b) and  $q_{100}$  (panel b), estimated with Eq. 1, are shown (thick lines and shaded areas) as a function of time for five selected catchment areas ( $S=10, 100, 1000, 10\,000$  and  $100\,000$  km<sup>2</sup>, indicated by different colours),

195 in panel a, and as a function of catchment area for 1985 (i.e. the median year of the analyses period), in panel b. In both panels, the 90% credible bounds (shaded areas) are shown together with the median (thick lines) of the posterior distribution of the regional flood quantiles. In general, both  $q_2$  and  $q_{100}$  (not shown) increase with time and their trend is larger for smaller catchment areas. The uncertainties in the quantile estimates also vary with catchment area: for very small (e.g. 10 km<sup>2</sup>) and very large (e.g. 100 000 km<sup>2</sup>) catchments the credible bounds get larger, reflecting the scarcity of samples with these (extremely

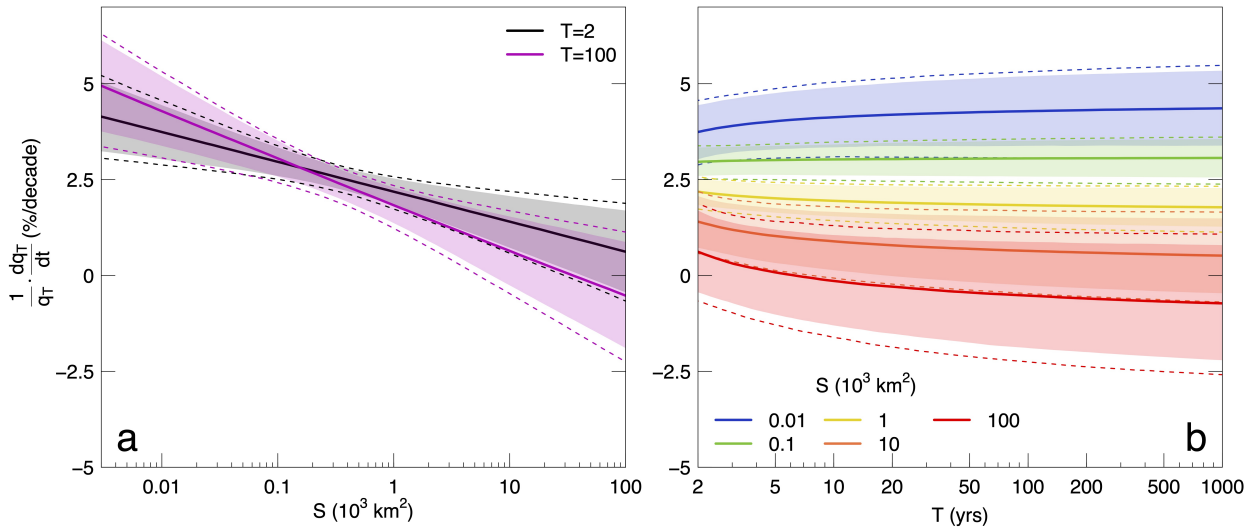
200 small and extremely large) sizes in the considered region (Fig. 1).





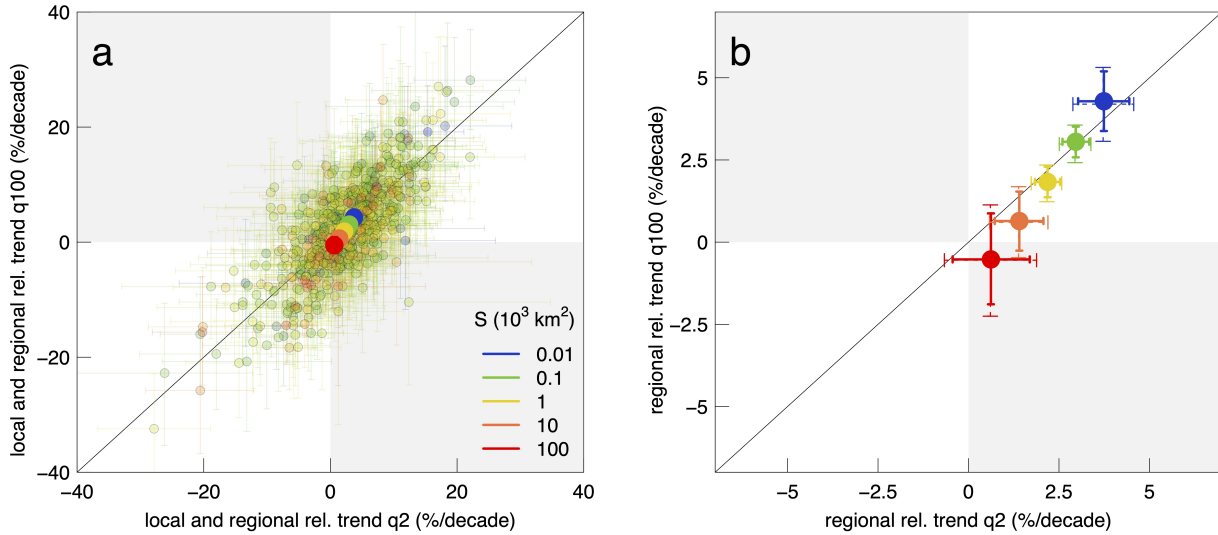
**Figure 2.** Fitting the regional model to flood data of 601 hydrometric stations in central Europe. In panel a, annual maximum discharge series are shown with thin lines, with colours referring to catchment area. The thick lines and the shaded areas represent respectively the median and the 90% credible intervals of the posterior distribution of the 2-year flood, for five hypothetical catchment areas ( $S=10, 100, 1000, 10\,000$  and  $100\,000\text{ km}^2$ , indicated by different colours). In panel b, the box-plots represent flood data as a function of catchment area. The thick lines and the shaded areas represent respectively the median and the 90% credible intervals of the posterior distribution of flood quantiles, corresponding to return periods of 2 and 100 years. The curves are shown for 1985, i.e. the median year of the period analysed.

The two panels of Fig. 3 show the relative change in time, in % per decade, of the regional flood quantile estimates  $q_T$  (as defined in Eq. 5) as a function of catchment area and of the return period, respectively. The curves are shown for 1985, the median year of the analysed period. The trends in  $q_T$  are mostly positive and their values tend to decrease with increasing catchment area, approaching zero and moving towards negative values for higher return periods and for very large catchment areas ( $S=100\,000\text{ km}^2$ ). For small catchment areas ( $S<100\text{ km}^2$ ) the trend tends to be bigger for floods with large return periods ( $q_{100}$ ) than for small return periods ( $q_2$ ). The opposite is observed for larger catchments. As in Fig. 2, we observe larger 90% credible bounds of the quantile estimates for very small and very large catchment areas. In this case, the overall effect of spatial cross-correlation between flood time series at different sites is investigated through the magnitude adjustment to the likelihood. The credible bounds for the regional trends obtained with the likelihood adjustment (dashed lines in Fig. 3) are 17.6 to 23.8% larger compared to the case where spatial cross-correlation is not accounted for (estimated magnitude adjustment factor 0.669).



**Figure 3.** Estimates of the regional relative trend of  $q_T$  in %/decade as a function of catchment area and return period in central Europe. The thick solid lines and the shaded areas represent respectively the median and the 90% credible intervals of the posterior distribution of the regional trends. Panel a shows the trend as a function of catchment area for selected values of the return period ( $T=2$  and 100 years). Panel b shows the trend as a function of return period and for five hypothetical catchment areas ( $S=10, 100, 1000, 10000$  and  $100000 \text{ km}^2$ ). The curves are shown for the median year of the period analysed (i.e. 1985). The credible bounds obtained with the magnitude adjustment to the likelihood are shown with dashed lines.

Figure 4 summarizes the relative flood trends in the considered region for big ( $q_{100}$ ) vs. small floods ( $q_2$ ) and for small ( $10 \text{ km}^2$ ) to large catchment areas ( $100000 \text{ km}^2$ ). Panel a shows a scatter plot (light transparent dots) of the local relative trends in  $q_{100}$  vs.  $q_2$ , as defined in Eq. 4, with the respective 90% credible intervals (error bars) for 1985. On top of the local trend estimates, the regional relative trends, calculated with Eq. 5, are plotted (dark solid dots). Again colours refer to catchment area for both the local and regional estimates. Regional flood trends are generally positive in the considered region (Fig. 4b), with the exception of big floods ( $T=100$ ) in the hypothesized very large catchments ( $S=100000 \text{ km}^2$ ). For both big and small events, the trend is generally larger in smaller catchments and it diminishes with increasing catchment area, approaching zero, for small floods ( $q_2$ ), and moving towards negative values for big floods ( $q_{100}$ , according to the credible intervals, we cannot determine if its trend for big catchments is different from zero). The credible bounds obtained with the likelihood adjustment (dashed lines in Fig. 4b) result slightly wider (about 20%) compared to the case where spatial cross-correlation is not accounted for.

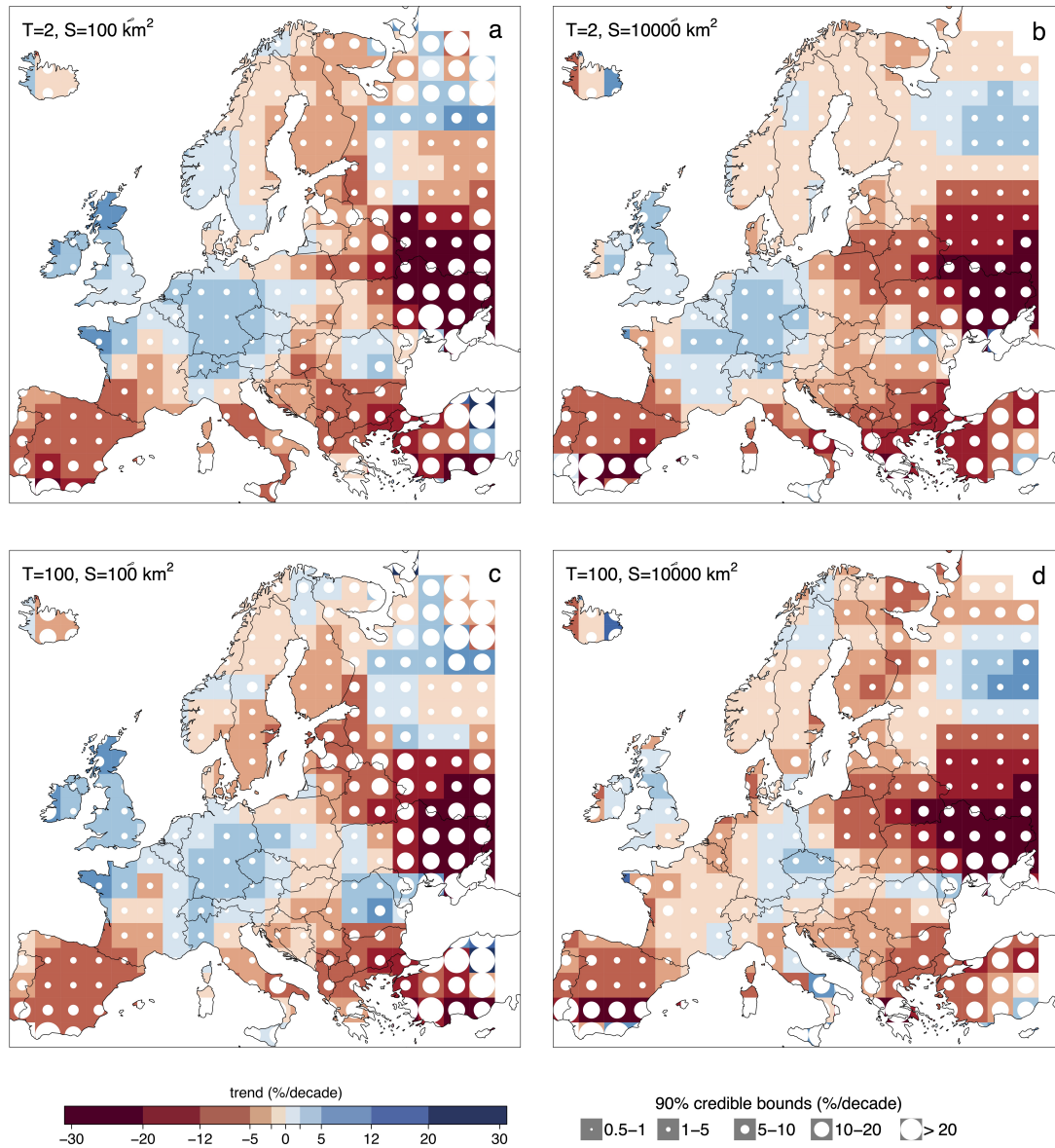


**Figure 4.** Local and regional relative trend in %/decade in large ( $q_{100}$ ) vs. small floods ( $q_2$ ) in central Europe. Panel a shows the median of the posterior distribution of the local trends in  $q_{100}$  vs.  $q_2$  (light transparent dots in the background), with the respective 90% credible intervals (error bars). On top of them, the estimated regional trends (dark solid dots) are shown. Panel b shows the median of the posterior distribution of the regional trends in  $q_{100}$  vs.  $q_2$  (dark solid dots), with the respective 90% credible intervals (error bars with solid lines). Colours refer to catchment area in both panels and for both the local and regional estimates. The figure is obtained for 1985, i.e. the median year of the analyses period. The credible bounds obtained with the magnitude adjustment to the likelihood are shown with dashed lines.

### 3.2 Regional flood regime changes across Europe

Figure 5 shows the results of the regional trend analysis with moving windows across Europe. It is obtained by fitting the regional model to overlapping 600x600 km windows and by plotting the estimated trend values in the respective central 200x200 km cell. Panels a and b show the percentage change of the median flood (i.e.  $T=2$  years) and panels c and d of the 100-year flood. Panels a and c refer to small (i.e. 100 km<sup>2</sup>) catchment area and panels b and d to big catchment area (i.e. 10 000 km<sup>2</sup>). The white circles represent a measure of the uncertainty in the estimation of the regional relative trend, with their dimension being proportional to the width of the respective 90% credible intervals. The larger the circle, the larger the uncertainty associated with the value of flood trend provided in the map.

When analysing the panels of Fig. 5, regional patterns of flood change appear: flood magnitudes increase in general in the British-Irish Isles and in central Europe, whereas they decrease in the Iberian Peninsula, in the Balkans, in eastern Europe and in most of Scandinavian countries. The larger uncertainties associated with the regional trends are evident in eastern Europe, Turkey, Iceland and the countries surrounding the Mediterranean, where the density of the hydrometric stations in the flood database is low. In the British-Irish Isles, the positive trends in small catchments (up to 10-12% per decade, Fig. 5a and c) appear to be larger for bigger return periods (Fig. 5c), whereas for larger catchments the trends are smaller in absolute value (up to 5% per decade) and, in some cases, they disappear or even tend to become negative. In central Europe, the magnitude of positive



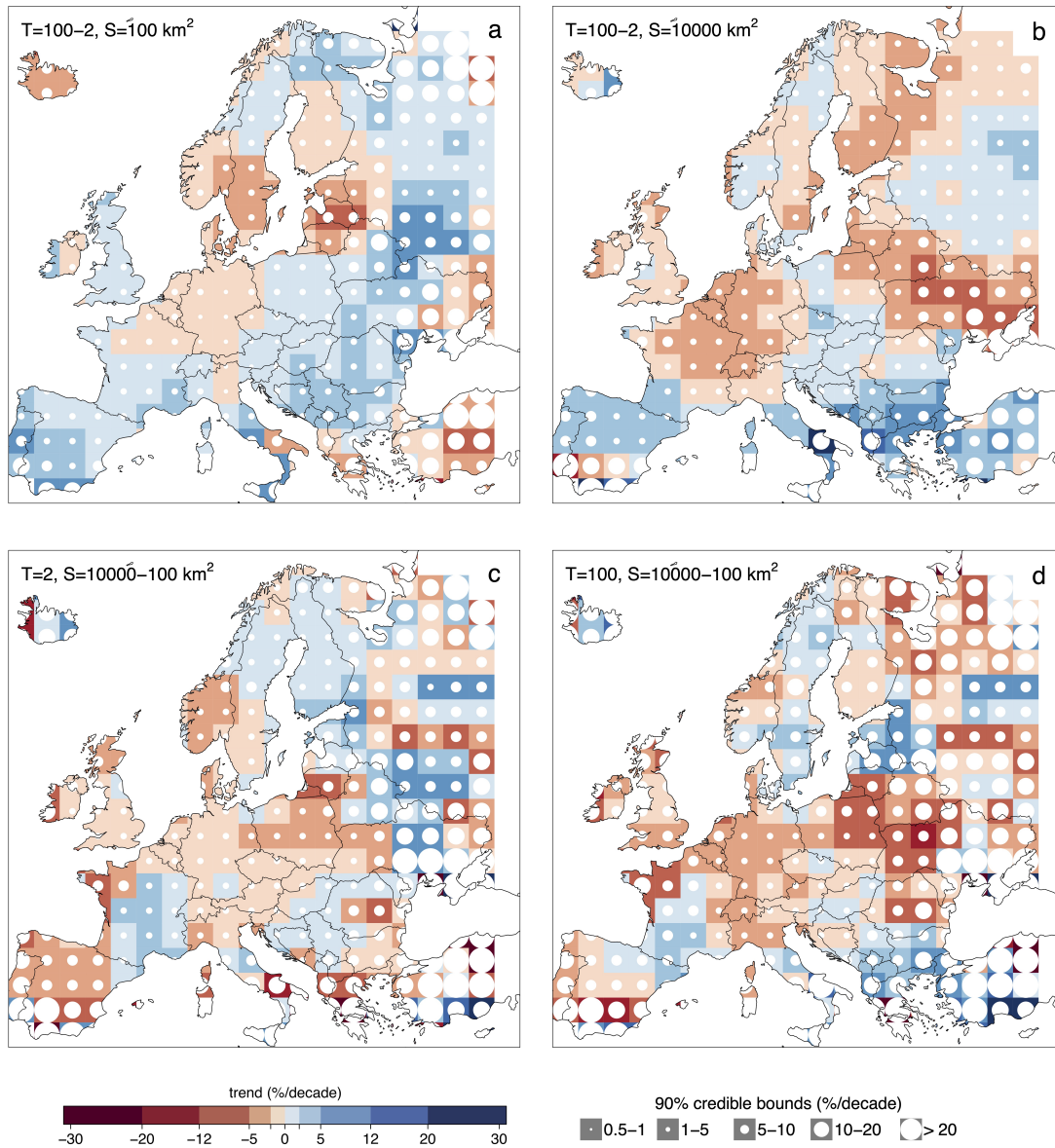
**Figure 5.** Flood trends in Europe: small vs big floods. The panels show the median of the posterior distribution of the regional relative trends of flood quantiles in time (i.e. the percentage change in %/decade). Positive trends in the magnitude of flood quantiles are shown in blue and negative trends in red. Circle size is proportional to the width of the 90% credible intervals. Results are shown for the median flood (i.e.  $T=2$  years), in panel a and b, and for the 100-year flood, in panel c and d. Flood trends refer to small (i.e.  $100 \text{ km}^2$ ) in panel a and c and to large catchment area (i.e.  $10\,000 \text{ km}^2$ ) in panels b and d.

trends (2-5% per decade) tends to decrease for large catchments and large return periods where, in most cases, the regional trends are between 0 and 2% per decade (Fig. 5b and d). Positive flood trends are also observed in northern Russia, especially in large catchments (Fig. 5b and d). These positive trends are however accompanied by strong uncertainties in the case of small catchments (Fig. 5a and c). In the Iberian Peninsula, southwestern France, Italy and in the Balkans, negative trends appear and they are particularly consistent for the median floods (i.e. return period  $T=2$  years), where the regional flood trends are mostly between -5 and -12% per decade (Fig. 5a and b). Trends in the magnitude of the big flood events ( $T=100$  years) are less negative and some isolated positive trends do appear. The lower number of large catchments in this areas is generally reflected in larger uncertainties (Fig. 5b and d). In eastern Europe strong negative trends in flood peak magnitude are detected for small and big floods and small and large catchments. In eastern Europe, contrary to the Mediterranean countries, the dataset contains mostly big catchments, hence the uncertainties are larger for small catchments (Fig. 5a and c). In Scandinavia the regional trends are, in general, neither clearly positive nor negative, with spatial patterns changing with return period and catchment area. However, in Finland negative trends are prevalent (mostly between -5 and -12% per decade) and they become less negative (0-5% per decade) for big catchments and small return periods (Fig. 5b). Overall, in more than half of the cases the 90% credible bounds do not include 0 (i.e. 68.9%, 59.2%, 58.5% and 50.2% respectively in panel a, b, c and d). Positive (negative) trends occur in 26.3 to 34.95% (65 to 76%) of the cases and their credible bounds do not include zero in 4.9 to 20.8% (39.5 to 48.1%) of the total cells. These percentages depend on the assumptions made, such as regional homogeneity and no spatial cross-correlation, and may, therefore, be overestimated.

For further comparison, we estimate the differences between the regional relative trends in the panels of Fig. 5. In particular, Fig. 6a and 6b show the difference between the trend in  $q_{100}$  and the trend in  $q_2$ , for a hypothetically big (i.e. 10 000 km<sup>2</sup>) and small catchment areas (i.e. 100 km<sup>2</sup>) respectively. Figure 6c and 6d show the difference between the trend in large and the trend in small catchments, for small ( $T=2$  years) and big ( $T=100$  years) return periods respectively. Positive differences are shown in blue and negative ones in red. The circle size is proportional to the width of their 90% credible intervals.

In small catchments (Fig. 6a) positive differences between the trend in  $q_{100}$  and in  $q_2$  prevail in the British Isles, the Iberian Peninsula and southern France, the Balkans, eastern Europe and northern Russia. This indicates that, in the small catchments of these regions, the trend of the extreme flooding events is more positive (or less negative) than the median flood. Negative differences appear in central Europe, Baltic countries, southern Scandinavia and Turkey. The magnitude of this difference varies in a narrow range (-2 to +2% per decade) in most parts of Europe and it gets larger (up to -12 to +12% per decade) in several regions in southern and eastern Europe

In the case of big catchments (Fig. 6b), negative differences between the trend in  $q_{100}$  and in  $q_2$  are more widespread across Europe, compared to those in smaller catchments. In the British Isles, southern France, northwestern Italy, eastern Europe and northern Russia the difference becomes in fact negative. This suggests that, in the big catchments of these regions, the trend of the extreme flooding events is less positive (or more negative) than the median flood. Positive values of this difference appear mostly in southern Europe and Russia. The magnitude of these differences, in the case of big catchments, varies in a wider range (generally from -5 to +5% per decade) with larger differences in few regions in southern and eastern Europe.

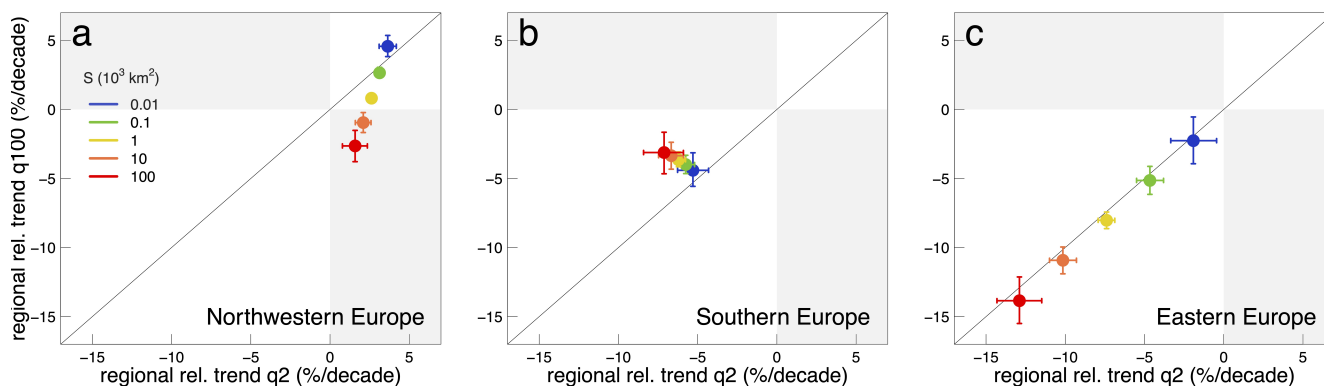


**Figure 6.** Differences between flood trends of big vs small floods (i.e.  $T=100$  and 2 years, respectively) and in large vs small catchments (i.e.  $S=10\,000$  and  $100 \text{ km}^2$ , respectively). The panels show the differences (in % per decade) between the trends of Fig. 5. Positive differences are shown in blue and negative in red. Circle size is proportional to the width of the 90% credible intervals. The panels in the first row show the difference between the trend in  $q_{100}$  and the trend in  $q_2$  for small (a) and big catchment area (b). The panels in the second row show the difference between the trend in large and the trend in small catchments for small (c) and big (d) return periods.

The patterns appear more fragmented when analysing the differences between trends in catchments with big and small catchment areas (Fig. 6c and d) and their magnitude is generally larger (mostly from -12 to +12 % per decade). Negative differences between trends in large and trends in small catchments prevail in western and central Europe (with the exception of France), for both the median and the 100-year flood, and they extend towards eastern countries, in the case of the 100-year flood (Fig. 6d). This indicates that trends in large catchments are more negative (or less positive) than those in small catchments. Positive differences appear in central and southern France, in the Balkans, Baltic countries and northern Russia, for both T=2 and 100 years (Fig. 6c and d), and in Finland and eastern Europe, for T=100 years (Fig. 6d).

### 3.3 Regional flood regime changes in northwestern, southern and and eastern Europe

The regional trends shown in Sect. 3.2 highlight the presence of predominantly positive trends in northwestern Europe and negative trends in southern and eastern Europe. In this section we fit the regional model of Sect. 2.1 by pooling flood data over each of these three regions and we estimate the regional relative trends for five hypothetical catchment areas ( $S=10, 100, 1000, 10\,000$  and  $100\,000$  km<sup>2</sup>) and for two selected values of return period ( $T=2$  and 100 years). The resulting trends are shown together with their 90% credible intervals in Fig. 7.



**Figure 7.** Regional relative trend in large ( $q_{100}$ ) vs. small floods ( $q_2$ ) in (a) northwestern Europe, (b) southern Europe and (c) eastern Europe for five hypothetical catchment areas ( $S$ ). The figure shows the median (solid dots) and the 90% credible intervals (error bars) of the posterior distribution of the regional trends. Catchment area is shown with different colours. The figure is obtained for 1985, i.e. the median year of the period analysed.

In northwestern Europe (Fig. 7a) the trends in flood magnitudes are predominantly positive, with the exception of very large catchments for the 100-year flood. The magnitude of the positive trend tends to decrease with increasing catchment area for the 2-year flood, whereas for the 100-year flood the positive trend decreases, it goes to zero for catchment sizes of about 10 000 km<sup>2</sup>, and then becomes negative and increases in absolute value for increasing catchment area. Generally, trends are bigger for the 2-year flood compared to the 100-year flood, with the exception of very small catchments ( $S=10$  km<sup>2</sup>). Overall there is

large variability of the trend in  $q_{100}$ , which ranges from about -2.5 to 5% per decade with catchment area, while the trend in  $q_2$  is around 2-3% per decade for all areas considered.

In southern Europe the trends are negative in all the considered cases and larger in absolute value for the 2-year flood. This means that the more frequent flood events tend to decrease more than the rare, more extreme events. However, there is small variability of the trends (especially in  $q_{100}$ ) with catchment size. In the smaller catchments the regional relative trends in  $q_2$  and  $q_{100}$  are both about -5% per decade. As catchment area increases, the trend in  $q_2$  decreases from -5.2 to -7.1% per decade, while the trend in  $q_{100}$  increases from -4.4 to -3.1% per decade.

In eastern Europe the regional relative trends are all negative. The estimates lay close to the 1:1 line, which means that the trends are similar for big and small events and that there is little variability with the return period. Catchment area seems to play a more important role in determining flood trends, as the magnitude of the negative trend appears to be very sensitive to the catchment size and ranges from about -13.8% per decade for the big catchments, to -1.9% per decade for smaller ones.

In all regions analysed, it is also evident that the uncertainties in the trend estimates vary with catchment area: the credible bounds are narrower for mid-sized catchments that are represented by more hydrometric stations in the database.

#### 4 Discussion and conclusions

In this study we assess and compare the changes that have occurred over five decades (i.e. 1960-2010) in small vs. big flood events, for catchments of different hypothetical sizes across Europe. We propose a regional flood change model that is more robust than local (at-site) trend analysis, in particular regarding trends associated with large quantiles of the flood frequency curve (e.g. the 100-year flood). Flood peaks are assumed to follow a regional Gumbel distribution, accounting for time dependency of two parameters alternative to the location and scale parameters: the 2-year flood  $q_2$  and the 100-year flood growth factor  $x'_{100}$ . The two parameters are modelled as varying in time according to log-linear relationships. Other relationships with time could be investigated as well as the use of physical covariates. In flood frequency analysis, the Generalized Extreme Value distribution (GEV) is commonly used to estimate flood quantiles. The suitability of the GEV distribution in the European context is discussed in detail in Salinas et al. (2014a, b). The estimate of the shape parameter of the GEV distribution is extremely sensitive to record length (Papalexiou and Koutsoyiannis, 2013), with strong bias and uncertainty for short records (Martins and Stedinger, 2000) and, when corrected for the effect of record length, it varies in a narrow range (Papalexiou and Koutsoyiannis, 2013). For these reasons, in regional frequency analyses the GEV shape parameter is commonly assumed to be identical for all sites within a region (see e.g. Renard et al., 2006a; Lima et al., 2016). Here, we fix the shape parameter equal to 0 (i.e. we assume a Gumbel distribution) which leads to more robust relationships, without compromising the general validity of the study (i.e. the analysis can be repeated with a more complex GEV distribution if longer flood records are available). A Bayesian Markov chain Monte Carlo (MCMC) approach is used for parameter estimation, allowing to directly obtain information about their associated uncertainties.

Spatial cross-correlation between flood time series at different sites is not accounted for in this model and may affect the estimation of sampling uncertainty (see e.g. Stedinger, 1983; Castellarin et al., 2008; Sun et al., 2014). Because of this,



the sampling uncertainties estimated in this paper should be considered as a lower boundary. We expect that the effect of spatial correlation on the identified spatial patterns is negligible, since the cross-correlation length is about 50 km (calculated from flood time series and distances between catchment outlets, using a nonlinear regression model proposed by Tasker and Stedinger (1989)), which is much shorter than the size of the spatial patterns. A possible way of taking into account spatial cross-correlation between sites is a magnitude adjustment to the likelihood, that reflects the overall effect of spatial dependence and results in increased width of uncertainty intervals of the estimated quantiles (see Ribatet et al., 2012). The application of this approach to the specific example region in central Europe shows that the 90% credible bounds of the regional trends in  $q_2$  and  $q_{100}$  result, on average, 20% wider compared to the case where the likelihood is not adjusted. However, further research is needed to properly characterize the effect of spatial dependence between flood peaks in regional trend analyses.

We analyse 2370 flood records, selected from a newly-available pan-European flood database (Hall et al., 2015). We estimate regional trends (and the related uncertainties) in the magnitude of floods of selected return periods ( $T=2$  and 100 years) and for selected catchment areas ( $S=10$  to  $100\,000\text{ km}^2$ ), by fitting the proposed regional flood change model to flood data pooled within defined regions. The trend patterns are investigated at the continental scale, by fitting the model to  $600\times 600\text{ km}^2$  overlapping windows, with a spatial moving window approach. Flood trends are then analysed in three macro-regions (i.e. northwestern, southern and eastern Europe), based on previously published change patterns of the mean annual flood magnitude and seasonality. When fitting the model to these regions, we allow for local spatial variations in the median, but assume homogeneity with regards to the growth curves of flood peaks to changes in time and the dependency of the trends on catchment area and on the return period. The assumption is that these regions are characterized by comparatively homogeneous climatic conditions (and hence flood generation processes) and processes driving flood changes. We have not assessed the statistical homogeneity of the regions in terms of the flood change model used here. One reason is that formal procedures to assess the regional homogeneity, such as for example those used in regional flood frequency analysis (e.g. Hosking and Wallis, 1993; Viglione et al., 2007), are not available at the moment. Also, while deviation from regional homogeneity would probably invalidate estimates of local flood change statistics from the regional information (e.g., as in the prediction in ungauged basins, see Blöschl et al., 2013b), we expect its effect on the average regional behavior to be less relevant. This is because we have not observed significant differences in the spatial change pattern when changing the size of the moving windows (not shown here). As a limiting case, the results obtained using the three macro-regions (Sect. 3.3) are consistent with those obtained by the moving window analysis across Europe (Sect. 3.2).

The results of this study show that the trends in flood magnitude are generally positive in northwestern Europe, where floods occur predominantly in winter (Mediero et al., 2015; Blöschl et al., 2017; Hall and Blöschl, 2018). The increasing winter runoff in UK is typically explained in the literature by increasing winter precipitation and soil moisture (Wilby et al., 2008). Recent studies show that extreme winter precipitation and flooding events in northwestern Europe are positively correlated with the North Atlantic Oscillation (NAO) and the East Atlantic (EA) pattern (Hannaford and Marsh, 2008; Steirou et al., 2019; Zanardo et al., 2019; Brady et al., 2019). Furthermore the largest winter floods in Britain occur simultaneously with Atmospheric Rivers (AR) (Lavers et al., 2011), which are expected to become more frequent in a warmer climate (Lavers and Villarini, 2013). When comparing trends in flood events associated with different return periods, we observe two opposite

behaviours depending on catchment area. In small catchments (up to 100 km<sup>2</sup>) the 100-year flood increases more than the median flood, while the opposite is observed in medium and large catchments, where even some negative trends appear, especially in northwestern France. Furthermore, in medium and large catchments the magnitude of the trends is in general smaller compared to the small catchments. This could be explained by different types of weather events and their changes affecting the flood trends in catchments of different sizes in different ways, for example, long-duration synoptic weather events are probably more influential in producing floods in medium and large catchments, in contrast to small catchments in western Europe where the largest peaks are often caused by summer convective events with high local intensities (Wilby et al., 2008), which are expected to increase in a warmer climate (IPCC, 2013).

In southern Europe flood trends are negative, possibly due to decreasing precipitation and soil moisture, caused by increasing evapotranspiration and temperature (Mediero et al., 2014; Blöschl et al., 2019). The big flood events (i.e.  $T=100$  years) decrease less in time compared to more frequent events (i.e.  $T=2$  years), leading to higher flood variability and steeper flood frequency curves. The reason for this may be (decreasing) soil moisture driving flood changes in southern Europe, causing drier catchments and consequent negative trends in flood magnitudes, that are particularly strong for small floods ( $q_2$ ), where the influence of soil moisture is stronger (as shown for e.g. by Grillakis et al., 2016). The magnitude of big flood events is also decreasing (probably, as an effect of decreasing precipitation) but in this case soil moisture is less influential, resulting in less strong negative trends compared to  $q_2$ . The flood trends do not vary significantly with catchment area. In smaller catchments we observe similar negative trends in  $q_2$  and  $q_{100}$  (about 5%/decade). With increasing catchment area the trends in  $q_2$  become more negative, while the opposite is observed for  $q_{100}$ . Notice, however, that the small catchments analysed in southern Europe have sizes of the order of 10 km<sup>2</sup> and are, therefore, larger than catchments where flash floods are the dominant flood type and infiltration excess runoff is the main generation mechanism (Amponsah et al., 2018). For these very small catchments (< 10 km<sup>2</sup>), floods may become larger due to more frequent thunderstorms (Ban et al., 2015) and land management changes, e.g. deforestation and urbanisation (Rogger et al., 2017).

In eastern Europe trends in flood peak magnitude are strongly negative for both small and big floods, and small to large catchments. These negative flood trends have been linked in past studies with increasing spring air temperature, earlier snow-melt and reduced spring snow-cover extents (Estilow et al., 2015), producing increased infiltration and consequent earlier and decreasing spring floods (Madsen et al., 2014; Blöschl et al., 2017, 2019). The resulting trends in eastern Europe do not seem to depend on the return period (i.e. for a given catchment area, the trend in  $q_2$  and the trend in  $q_{100}$  are almost identical), whereas catchment area plays a substantial role: the larger the catchment area, the more negative the trend. These results suggest that, in these region, snow-melt affects flood events of different magnitude in the same way and it represents a relevant processes for flood (trend) generation especially in large catchments. The explanation for the importance of these processes in large catchments could be found in the characteristics of snow-melt flooding, which originates from large-scale gradual processes, i.e. snowfall and temperature changes, that may be more influential for large scale events, compared to smaller-scale catchments, where other local conditions may prevail.

The uncertainty associated with the regional trend estimates is here assessed through their 90 % credible bounds. The results show that the uncertainties in the trend estimates varies with catchment area: the credible bounds are generally narrower for

mid-sized catchments, that are represented by more samples in the database, and the bounds become wider for very small and very large values of catchment area, where less samples are available. Spatial patterns in trend uncertainties are also observed. As expected, the uncertainty is lower in the regions where the density of stations is very high (i.e. central Europe and UK),  
395 while the estimated trend is very uncertain in the data-scarce regions (i.e. southern and eastern Europe).

This study provides a continental-scale analysis of the changes in flood quantiles that have occurred across Europe over five decades, however further research is needed to formally attribute the resulting regional change patterns to potential driving processes. According to flood hazard projections, the past flood regime changes found in this study, are likely to further occur in the next decades, led by increasing precipitation over northwestern Europe, decreasing precipitation over southern Europe  
400 and increasing temperature in eastern Europe (see e.g. Alfieri et al., 2015; Kundzewicz et al., 2016; Thober et al., 2018). This has relevant implications since flood risk management has to adapt to these new realities.

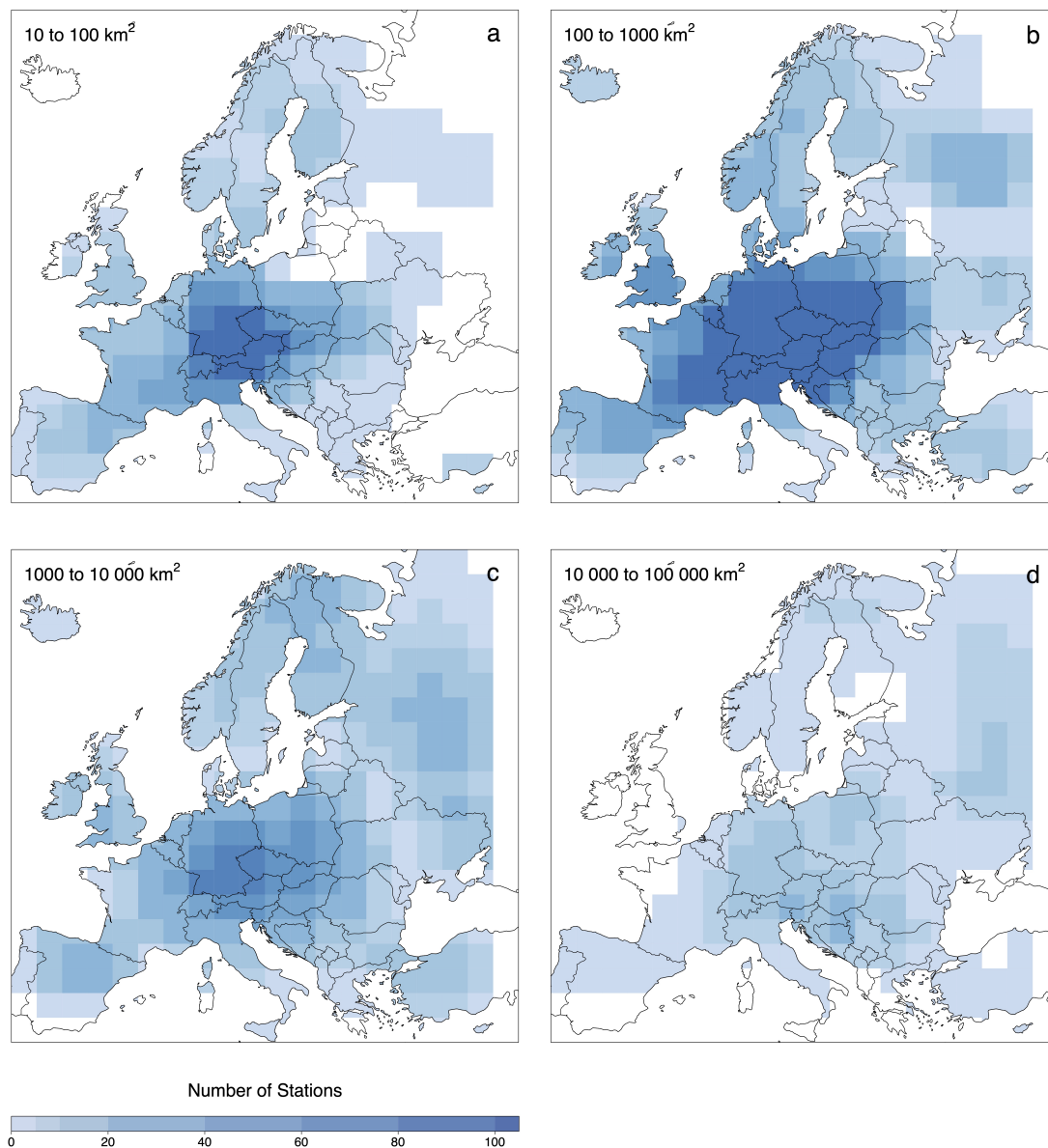
*Data availability.* The flood discharge data used in this paper are available at [https://github.com/tuwhydro/europe\\_floods](https://github.com/tuwhydro/europe_floods). Data regarding catchment areas belong to different institutions listed in Extended Data Table 1, Blöschl et al. (2019).

*Author contributions.* GB conceived the original idea, and all co-authors designed the overall study. AV developed the model. MB performed  
405 the analysis and prepared the paper. All co-authors contributed to the interpretation of the results and writing of the paper.

*Competing interests.* The authors declare they have no conflict of interest.

*Acknowledgements.* The authors would like to acknowledge funding from the European Union's Horizon 2020 Research and Innovation Programme under the Marie Skłodowska-Curie grant agreement No 676027, the FWF Vienna Doctoral Programme on Water Resource Systems (W1219-N28) and the Austrian Science Funds (FWF) "SPATE" project I 3174.

410 **Appendix A**



**Figure A1.** Number of stations in each 600x600 km region, stratified by catchment size: (a) 10 to 100 km<sup>2</sup>, (b) 100 to 1000 km<sup>2</sup>, (c) 1000 to 10 000 km<sup>2</sup> and (d) 10 000 to 100 000 km<sup>2</sup>. The value representative for the region is plotted in the respective central 200x200 km cell.

## References

Alfieri, L., Burek, P., Feyen, L., and Forzieri, G.: Global warming increases the frequency of river floods in Europe, *Hydrology and Earth System Sciences*, 19, 2247–2260, <https://doi.org/10.5194/hess-19-2247-2015>, 2015.

- Amponsah, W., Ayril, P.-A., Boudevillain, B., Bouvier, C., Braud, I., Brunet, P., Delrieu, G., Didon-Lescot, J.-F., Gaume, E., Lebouc, L.,  
415 Marchi, L., Marra, F., Morin, E., Nord, G., Payrastre, O., Zoccatelli, D., and Borga, M.: Integrated high-resolution dataset of high-intensity  
European and Mediterranean flash floods, *Earth System Science Data*, 10, 1783–1794, <https://doi.org/10.5194/essd-10-1783-2018>, 2018.
- Ban, N., Schmidli, J., and Schär, C.: Heavy precipitation in a changing climate: Does short-term summer precipitation increase faster?,  
*Geophysical Research Letters*, 42, 1165–1172, <https://doi.org/10.1002/2014GL062588>, 2015.
- Barker, L., Hannaford, J., Muchan, K., Turner, S., and Parry, S.: The winter 2015/2016 floods in the UK: a hydrological appraisal, *Weather*,  
420 71, 324–333, <https://doi.org/10.1002/wea.2822>, 2016.
- Blöschl, G., Ardoin-Bardin, S., Bonell, M., Dorninger, M., Goodrich, D., Gutknecht, D., Matamoros, D., Merz, B., Shand, P., and Szolgay, J.:  
At what scales do climate variability and land cover change impact on flooding and low flows?, *Hydrological Processes*, 21, 1241–1247,  
<https://doi.org/10.1002/hyp.6669>, 2007.
- Blöschl, G., Nester, T., Komma, J., Parajka, J., and Perdigo, R. A. P.: The June 2013 flood in the Upper Danube Basin, and comparisons  
425 with the 2002, 1954 and 1899 floods, *Hydrology and Earth System Sciences*, 17, 5197–5212, <https://doi.org/10.5194/hess-17-5197-2013>,  
2013a.
- Blöschl, G., Sivapalan, M., Wagener, T., Viglione, A., and Savenije, H.: *Runoff Prediction in Ungauged Basins: Synthesis across Processes,  
Places and Scales*, Cambridge University Press, <https://doi.org/10.1017/CBO9781139235761>, 2013b.
- Blöschl, G., Hall, J., Parajka, J., Perdigo, R. A. P., Merz, B., Arheimer, B., Aronica, G. T., Bilibashi, A., Bonacci, O., Borga, M., Čanjevac,  
430 I., Castellarin, A., Chirico, G. B., Claps, P., Fiala, K., Frolova, N., Gorbachova, L., Gül, A., Hannaford, J., Harrigan, S., Kireeva, M.,  
Kiss, A., Kjeldsen, T. R., Kohnová, S., Koskela, J. J., Ledvinka, O., Macdonald, N., Mavrova-Guirguinova, M., Mediero, L., Merz, R.,  
Molnar, P., Montanari, A., Murphy, C., Osuch, M., Ovcharuk, V., Radevski, I., Rogger, M., Salinas, J. L., Sauquet, E., Šraj, M., Szolgay,  
J., Viglione, A., Volpi, E., Wilson, D., Zaimi, K., and Živković, N.: Changing climate shifts timing of European floods, *Science*, 357,  
588–590, <https://doi.org/10.1126/science.aan2506>, 2017.
- 435 Blöschl, G., Hall, J., Parajka, J., Perdigo, R. A. P., Merz, B., Arheimer, B., Aronica, G. T., Bilibashi, A., Bonacci, O., Borga, M., Čanjevac,  
I., Castellarin, A., Chirico, G. B., Claps, P., Fiala, K., Frolova, N., Gorbachova, L., Gül, A., Hannaford, J., Harrigan, S., Kireeva, M.,  
Kiss, A., Kjeldsen, T. R., Kohnová, S., Koskela, J. J., Ledvinka, O., Macdonald, N., Mavrova-Guirguinova, M., Mediero, L., Merz, R.,  
Molnar, P., Montanari, A., Murphy, C., Osuch, M., Ovcharuk, V., Radevski, I., Rogger, M., Salinas, J. L., Sauquet, E., Šraj, M., Szolgay,  
J., Viglione, A., Volpi, E., Wilson, D., Zaimi, K., and Živković, N.: Changing climate both increases and decreases European river floods,  
440 *Nature*, <https://doi.org/10.1038/s41586-019-1495-6>, 2019.
- Brady, A., Faraway, J., and Prosdocimi, I.: Attribution of long-term changes in peak river flows in Great Britain, *Hydrological Sciences  
Journal*, 00, 1–12, <https://doi.org/10.1080/02626667.2019.1628964>, 2019.
- Carpenter, B., Gelman, A., Hoffman, M., Lee, D., Goodrich, B., Betancourt, M., Brubaker, M., Guo, J., Li, P., and Riddell, A.: Stan: A  
Probabilistic Programming Language, *Journal of Statistical Software, Articles*, 76, 1–32, <https://doi.org/10.18637/jss.v076.i01>, 2017.
- 445 Castellarin, A., Burn, D., and Brath, A.: Homogeneity testing: How homogeneous do heterogeneous cross-correlated regions seem?, *Journal  
of Hydrology*, 360, 67–76, <https://doi.org/10.1016/j.jhydrol.2008.07.014>, 2008.
- Coles, S. and Tawn, J.: A Bayesian analysis of extreme rainfall data., *Journal of the Royal Statistical Society: Series C (Applied Statistics)*,  
45, 463–478, 1996.
- Cunderlik, J. M. and Burn, D. H.: Non-stationary pooled flood frequency analysis, *Journal of Hydrology*, 276, 210–223,  
450 [https://doi.org/10.1016/S0022-1694\(03\)00062-3](https://doi.org/10.1016/S0022-1694(03)00062-3), 2003.
- Dalrymple, T.: Flood frequency methods, US geological survey, water supply paper A, 1543, 11–51, 1960.

- Douglas, E. M., Vogel, R. M., and Kroll, C. N.: Trends in floods and low flows in the United States: Impact of spatial correlation, *Journal of Hydrology*, 240, 90–105, [https://doi.org/10.1016/S0022-1694\(00\)00336-X](https://doi.org/10.1016/S0022-1694(00)00336-X), 2000.
- Estilow, T. W., Young, A. H., and Robinson, D. A.: A long-term Northern Hemisphere snow cover extent data record for climate studies and monitoring, *Earth System Science Data*, 7, 137–142, <https://doi.org/10.5194/essd-7-137-2015>, 2015.
- GRDC: The Global Runoff Data Centre, [http://www.bafg.de/GRDC/EN/Home/homepage\\_node.html](http://www.bafg.de/GRDC/EN/Home/homepage_node.html), 2016.
- Grillakis, M., Koutroulis, A., Komma, J., Tsanis, I., Wagner, W., and Blöschl, G.: Initial soil moisture effects on flash flood generation – A comparison between basins of contrasting hydro-climatic conditions, *Journal of Hydrology*, 541, 206 – 217, <https://doi.org/https://doi.org/10.1016/j.jhydrol.2016.03.007>, flash floods, hydro-geomorphic response and risk management, 2016.
- 460 Hall, J. and Blöschl, G.: Spatial patterns and characteristics of flood seasonality in Europe, *Hydrology and Earth System Sciences*, 22, 3883–3901, <https://doi.org/10.5194/hess-22-3883-2018>, 2018.
- Hall, J., Arheimer, B., Borga, M., Brázdil, R., Claps, P., Kiss, A., Kjeldsen, T. R., Kriaučiūnienė, J., Kundzewicz, Z. W., Lang, M., Llasat, M. C., Macdonald, N., McIntyre, N., Mediero, L., Merz, B., Merz, R., Molnar, P., Montanari, A., Neuhold, C., Parajka, J., Perdigão, R. A. P., Plavcová, L., Rogger, M., Salinas, J. L., Sauquet, E., Schär, C., Szolgay, J., Viglione, A., and Blöschl, G.: Understanding flood regime changes in Europe: a state-of-the-art assessment, *Hydrology and Earth System Sciences*, 18, 2735–2772, <https://doi.org/10.5194/hess-18-2735-2014>, 2014.
- 465 Hall, J., Arheimer, B., Aronica, G. T., Bilibashi, A., Boháč, M., Bonacci, O., Borga, M., Burlando, P., Castellarin, A., Chirico, G. B., Claps, P., Fiala, K., Gaál, L., Gorbachova, L., Gül, A., Hannaford, J., Kiss, A., Kjeldsen, T., Kohnová, S., Koskela, J. J., Macdonald, N., Mavrova-Guirguinova, M., Ledvinka, O., Mediero, L., Merz, B., Merz, R., Molnar, P., Montanari, A., Osuch, M., Parajka, J., Perdigão, R. A. P., Radevski, I., Renard, B., Rogger, M., Salinas, J. L., Sauquet, E., Šraj, M., Szolgay, J., Viglione, A., Volpi, E., Wilson, D., Zaimi, K., and Blöschl, G.: A European Flood Database: facilitating comprehensive flood research beyond administrative boundaries, *Proceedings of the International Association of Hydrological Sciences*, 370, 89–95, <https://doi.org/10.5194/piahs-370-89-2015>, 2015.
- 470 Hanel, M., Buishand, T. A., and Ferro, C. A.: A nonstationary index flood model for precipitation extremes in transient regional climate model simulations, *Journal of Geophysical Research Atmospheres*, 114, 1–16, <https://doi.org/10.1029/2009JD011712>, 2009.
- 475 Hannaford, J. and Marsh, T. J.: High-flow and flood trends in a network of undisturbed catchments in the UK, *International Journal of Climatology*, 28, 1325–1338, <https://doi.org/10.1002/joc.1643>, 2008.
- Hannaford, J., Buys, G., Stahl, K., and Tallaksen, L. M.: The influence of decadal-scale variability on trends in long European streamflow records, *Hydrology and Earth System Sciences*, 17, 2717–2733, <https://doi.org/10.5194/hess-17-2717-2013>, 2013.
- Hosking, J. and Wallis, J. R.: *Regional Frequency Analysis*, *Regional Frequency Analysis*, by JRM Hosking and James R. Wallis, pp. 240. ISBN 0521430453. Cambridge, UK: Cambridge University Press, April 1997., p. 240, 1997.
- 480 Hosking, J. R. M. and Wallis, J. R.: Some statistics useful in regional frequency analysis, *Water Resources Research*, 29, 271–281, <https://doi.org/10.1029/92WR01980>, 1993.
- IPCC: *Climate Change 2013: The Physical Science Basis*. Contribution of Working Group I to the Fifth Assessment Report of the Intergovernmental Panel on Climate Change, Cambridge University Press, Cambridge, United Kingdom and New York, NY, USA, <https://doi.org/10.1017/CBO9781107415324>, [www.climatechange2013.org](http://www.climatechange2013.org), 2013.
- 485 Köppen, W.: Die Wärmezonen der Erde, nach der Dauer der heissen, gemässigten und kalten Zeit und nach der Wirkung der Wärme auf die organische Welt betrachtet, *Meteorologische Zeitschrift*, 1, 5–226, 1884.
- Kundzewicz, Z. W., Krysanova, V., Dankers, R., Hirabayashi, Y., Kanae, S., Hattermann, F. F., Huang, S., Milly, P. C. D., Stoffel, M., Driessen, P. P. J., Matczak, P., Quevauviller, P., and Schellnhuber, H.-J.: Differences in flood hazard projections

- 490 in Europe – their causes and consequences for decision making, *Hydrological Sciences Journal*, 62, 02626667.2016.1241398, <https://doi.org/10.1080/02626667.2016.1241398>, 2016.
- Lavers, D. A. and Villarini, G.: The nexus between atmospheric rivers and extreme precipitation across Europe, *Geophysical Research Letters*, 40, 3259–3264, <https://doi.org/10.1002/grl.50636>, 2013.
- Lavers, D. A., Allan, R. P., Wood, E. F., Villarini, G., Brayshaw, D. J., and Wade, A. J.: Winter floods in Britain are connected to atmospheric  
495 rivers, *Geophysical Research Letters*, 38, n/a–n/a, <https://doi.org/10.1029/2011GL049783>, 2011.
- Leander, R., Buishand, T. A., van den Hurk, B. J., and de Wit, M. J.: Estimated changes in flood quantiles of the river Meuse from resampling of regional climate model output, *Journal of Hydrology*, 351, 331–343, <https://doi.org/10.1016/j.jhydrol.2007.12.020>, 2008.
- Leclerc, M. and Ouarda, T. B.: Non-stationary regional flood frequency analysis at ungauged sites, *Journal of Hydrology*, 343, 254–265, <https://doi.org/10.1016/j.jhydrol.2007.06.021>, 2007.
- 500 Lima, C. H. and Lall, U.: Spatial scaling in a changing climate: A hierarchical bayesian model for non-stationary multi-site annual maximum and monthly streamflow, *Journal of Hydrology*, 383, 307–318, <https://doi.org/10.1016/j.jhydrol.2009.12.045>, 2010.
- Lima, C. H., Lall, U., Troy, T., and Devineni, N.: A hierarchical Bayesian GEV model for improving local and regional flood quantile estimates, *Journal of Hydrology*, 541, 816–823, <https://doi.org/10.1016/j.jhydrol.2016.07.042>, 2016.
- Machado, M. J., Botero, B. A., López, J., Francés, F., Díez-Herrero, A., and Benito, G.: Flood frequency analysis of historical flood data  
505 under stationary and non-stationary modelling, *Hydrology and Earth System Sciences*, 19, 2561–2576, <https://doi.org/10.5194/hess-19-2561-2015>, 2015.
- Madsen, H., Lawrence, D., Lang, M., Martinkova, M., and Kjeldsen, T. R.: Review of trend analysis and climate change projections of extreme precipitation and floods in Europe, *Journal of Hydrology*, 519, 3634–3650, <https://doi.org/10.1016/j.jhydrol.2014.11.003>, 2014.
- Mangini, W., Viglione, A., Hall, J., Hundscha, Y., Ceola, S., Montanari, A., Rogger, M., Salinas, J. L., Borzì, I., and Para-  
510 jka, J.: Detection of trends in magnitude and frequency of flood peaks across Europe, *Hydrological Sciences Journal*, 63, 1–20, <https://doi.org/10.1080/02626667.2018.1444766>, 2018.
- Martins, E. S. and Stedinger, J. R.: Generalized maximum-likelihood generalized extreme-value quantile estimators for hydrologic data, *Water Resources Research*, 36, 737–744, <https://doi.org/10.1029/1999WR900330>, 2000.
- Mediero, L., Santillán, D., Garrote, L., and Granados, A.: Detection and attribution of trends in magnitude, frequency and timing of floods  
515 in Spain, *Journal of Hydrology*, 517, 1072–1088, <https://doi.org/10.1016/j.jhydrol.2014.06.040>, 2014.
- Mediero, L., Kjeldsen, T. R., Macdonald, N., Kohnova, S., Merz, B., Vorogushyn, S., Wilson, D., Alburquerque, T., Blöschl, G., Bogdanowicz, E., Castellarin, A., Hall, J., Kobold, M., Kriauciuniene, J., Lang, M., Madsen, H., Onuşluel Gül, G., Perdigão, R. A., Roald, L. A., Salinas, J. L., Toumazis, A. D., Veijalainen, N., and Órarinsson, Ó.: Identification of coherent flood regions across Europe by using the longest streamflow records, *Journal of Hydrology*, 528, 341–360, <https://doi.org/10.1016/j.jhydrol.2015.06.016>, 2015.
- 520 Miller, J. D., Kjeldsen, T. R., Hannaford, J., and Morris, D. G.: A hydrological assessment of the November 2009 floods in Cumbria, UK, *Hydrology Research*, 44, 180–197, <https://doi.org/10.2166/nh.2012.076>, 2013.
- Papalexiou, S. M. and Koutsoyiannis, D.: Battle of extreme value distributions: A global survey on extreme daily rainfall, *Water Resources Research*, 49, 187–201, <https://doi.org/10.1029/2012WR012557>, 2013.
- Petrow, T. and Merz, B.: Trends in flood magnitude, frequency and seasonality in Germany in the period 1951–2002, *Journal of Hydrology*,  
525 371, 129–141, <https://doi.org/10.1016/j.jhydrol.2009.03.024>, 2009.
- Prosdoci, I., Kjeldsen, T. R., and Svensson, C.: Non-stationarity in annual and seasonal series of peak flow and precipitation in the UK, *Natural Hazards and Earth System Sciences*, 14, 1125–1144, <https://doi.org/10.5194/nhess-14-1125-2014>, 2014.

- Prosdocimi, I., Kjeldsen, T. R., and Miller, J. D.: Detection and attribution of urbanization effect on flood extremes using nonstationary flood-frequency models, *Water Resources Research*, 51, 4244–4262, <https://doi.org/10.1002/2015WR017065>, 2015.
- 530 Prudhomme, C., Jakob, D., and Svensson, C.: Uncertainty and climate change impact on the flood regime of small UK catchments, *Journal of Hydrology*, 277, 1–23, [https://doi.org/10.1016/S0022-1694\(03\)00065-9](https://doi.org/10.1016/S0022-1694(03)00065-9), 2003.
- Renard, B. and Lall, U.: Regional frequency analysis conditioned on large-scale atmospheric or oceanic fields, *Water Resources Research*, 50, 9536–9554, <https://doi.org/10.1002/2014WR016277>, 2014.
- Renard, B., Garreta, V., and Lang, M.: An application of Bayesian analysis and Markov chain Monte Carlo methods to the estimation of a regional trend in annual maxima, *Water Resources Research*, 42, 1–17, <https://doi.org/10.1029/2005WR004591>, 2006a.
- 535 Renard, B., Lang, M., and Bois, P.: Statistical analysis of extreme events in a non-stationary context via a Bayesian framework: case study with peak-over-threshold data, *Stochastic Environmental Research and Risk Assessment*, 21, 97–112, <https://doi.org/10.1007/s00477-006-0047-4>, 2006b.
- Renard, B., Lang, M., Bois, P., Dupeyrat, A., Mestre, O., Niel, H., Sauquet, E., Prudhomme, C., Parey, S., Paquet, E., Neppel, L., and Gailhard, J.: Regional methods for trend detection: Assessing field significance and regional consistency, *Water Resources Research*, 44, 1–17, <https://doi.org/10.1029/2007WR006268>, 2008.
- 540 Ribatet, M., Cooley, D., and Davison, A. C.: Bayesian inference from composite likelihoods, with an application to spatial extremes, *Statistica Sinica*, pp. 813–845, 2012.
- Rogger, M., Agnoletti, M., Alaoui, A., Bathurst, J. C., Bodner, G., Borga, M., Chaplot, V., Gallart, F., Glatzel, G., Hall, J., Holden, J., Holko, L., Horn, R., Kiss, A., Quinton, J. N., Leitinger, G., Lennartz, B., Parajka, J., Peth, S., Robinson, M., Salinas, J. L., Santoro, A., Szolgay, J., Tron, S., and Viglione, A.: Land use change impacts on floods at the catchment scale: Challenges and opportunities for future research, *Water Resources Research*, 53, 5209–5219, <https://doi.org/10.1002/2017WR020723>. Received, 2017.
- Rojas, R., Feyen, L., Bianchi, A., and Dosio, A.: Assessment of future flood hazard in Europe using a large ensemble of bias-corrected regional climate simulations, *Journal of Geophysical Research Atmospheres*, 117, <https://doi.org/10.1029/2012JD017461>, 2012.
- 550 Roth, M., Buishand, T. A., Jongbloed, G., Klein Tank, A. M., and Van Zanten, J. H.: A regional peaks-over-threshold model in a nonstationary climate, *Water Resources Research*, 48, 1–12, <https://doi.org/10.1029/2012WR012214>, 2012.
- Salinas, J. L., Castellarin, A., Kohnová, S., and Kjeldsen, T. R.: Regional parent flood frequency distributions in Europe - Part 2: Climate and scale controls, *Hydrology and Earth System Sciences*, 18, 4391–4401, <https://doi.org/10.5194/hess-18-4391-2014>, 2014a.
- Salinas, J. L., Castellarin, A., Viglione, A., Kohnová, S., and Kjeldsen, T. R.: Regional parent flood frequency distributions in Europe - Part 1: Is the GEV model suitable as a pan-European parent?, *Hydrology and Earth System Sciences*, 18, 4381–4389, <https://doi.org/10.5194/hess-18-4381-2014>, 2014b.
- 555 Sharkey, P. and Winter, H. C.: A Bayesian spatial hierarchical model for extreme precipitation in Great Britain, *Environmetrics*, 30, e2529, <https://doi.org/10.1002/env.2529>, 2019.
- Silva, A. T., Portela, M. M., Naghettini, M., and Fernandes, W.: A Bayesian peaks-over-threshold analysis of floods in the Itajaí-açu River under stationarity and nonstationarity, *Stochastic Environmental Research and Risk Assessment*, 31, 185–204, <https://doi.org/10.1007/s00477-015-1184-4>, 2017.
- 560 Smith, R.: Regional estimation from spatially dependent data, Preprint. <http://www.stat.unc.edu/postscript/rs/regest.pdf>, 1990.
- Šraj, M., Viglione, A., Parajka, J., and Blöschl, G.: The influence of non-stationarity in extreme hydrological events on flood frequency estimation, *Journal of Hydrology and Hydromechanics*, 64, 426–437, <https://doi.org/10.1515/johh-2016-0032>, 2016.
- 565 Stan Development Team: Stan Modeling Language Users Guide and Reference Manual Version 2.18.0, <http://mc-stan.org>, 2018.



- Stedinger, J. R.: Estimating a regional flood frequency distribution, *Water Resources Research*, 19, 503–510, <https://doi.org/10.1029/WR019i002p00503>, 1983.
- Steirou, E., Gerlitz, L., Apel, H., Sun, X., and Merz, B.: Climate influences on flood probabilities across Europe, *Hydrology and Earth System Sciences*, 23, 1305–1322, <https://doi.org/10.5194/hess-23-1305-2019>, 2019.
- 570 Sun, X., Thyer, M., Renard, B., and Lang, M.: A general regional frequency analysis framework for quantifying local-scale climate effects: A case study of ENSO effects on Southeast Queensland rainfall, *Journal of Hydrology*, 512, 53–68, <https://doi.org/10.1016/j.jhydrol.2014.02.025>, 2014.
- Tasker, G. D. and Stedinger, J. R.: An operational GLS model for hydrologic regression, *Journal of Hydrology*, 111, 361–375, 1989.
- Thober, S., Kumar, R., Wanders, N., Marx, A., Pan, M., Rakovec, O., Samaniego, L., Sheffield, J., Wood, E. F., and Zink, M.: Multi-model  
575 ensemble projections of European river floods and high flows at 1.5, 2, and 3 degrees global warming, *Environmental Research Letters*, 13, 014 003, <https://doi.org/10.1088/1748-9326/aa9e35>, 2018.
- Tramblay, Y., Neppel, L., Carreau, J., and Najib, K.: Analyse fréquentielle non-stationnaire des pluies extrêmes dans le Sud de la France, *Hydrological Sciences Journal*, 58, 280–294, <https://doi.org/10.1080/02626667.2012.754988>, 2013.
- Ulbrich, U., Brücher, T., Fink, A. H., Leckebusch, G. C., Krüger, A., and Pinto, J. G.: The central European floods of August 2002: Part 1 –  
580 Rainfall periods and flood development, *Weather*, 58, 371–377, <https://doi.org/10.1256/wea.61.03A>, 2003.
- Viglione, A., Laio, F., and Claps, P.: A comparison of homogeneity tests for regional frequency analysis, *Water Resources Research*, 43, 1–10, <https://doi.org/10.1029/2006WR005095>, 2007.
- Viglione, A., Merz, B., Viet Dung, N., Parajka, J., Nester, T., and Blöschl, G.: Attribution of regional flood changes based on scaling fingerprints, *Water Resources Research*, 52, 5322–5340, <https://doi.org/10.1002/2016WR019036>, 2016.
- 585 Villarini, G., Smith, J. A., Serinaldi, F., and Ntelekos, A. A.: Analyses of seasonal and annual maximum daily discharge records for central Europe, *Journal of Hydrology*, 399, 299–312, <https://doi.org/10.1016/j.jhydrol.2011.01.007>, 2011.
- Wilby, R. L., Beven, K. J., and Reynard, N. S.: Climate change and fluvial flood risk in the UK: more of the same?, *Hydrological Processes*, 22, 2511–2523, <https://doi.org/10.1002/hyp.6847>, 2008.
- Zanardo, S., Nicotina, L., Hilberts, A. G. J., and Jewson, S. P.: Modulation of Economic Losses From European Floods by the North Atlantic  
590 Oscillation, *Geophysical Research Letters*, 46, 2563–2572, <https://doi.org/10.1029/2019GL081956>, 2019.