

# Supplementary Information: On the Conceptual Complexity of Non-Point Source Management: Impact of Spatial Variability

Christopher V. Henri<sup>1</sup>, Thomas Harter<sup>1</sup>, and Efstathios Diamantopoulos<sup>2</sup>

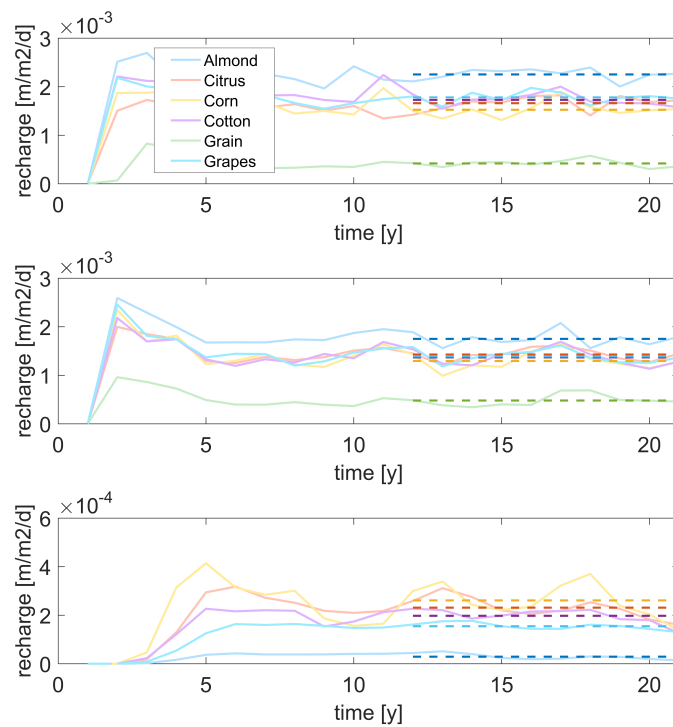
<sup>1</sup>University of California, Davis, Center for Watershed Sciences, Veihmeyer Hall, Davis, CA 95616, USA.

<sup>2</sup>University of Copenhagen, Department of Plant and Environmental Sciences, Thorvaldsensvej 40, Copenhagen, DK-1871, Denmark.

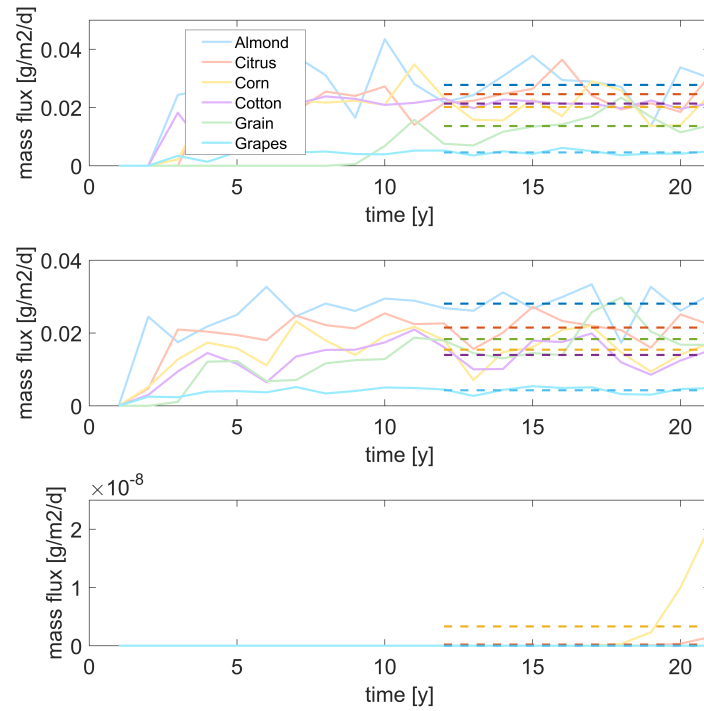
**Correspondence:** Christopher V. Henri (chenri@ucdavis.edu)

List of Figures as Supplementary Material:

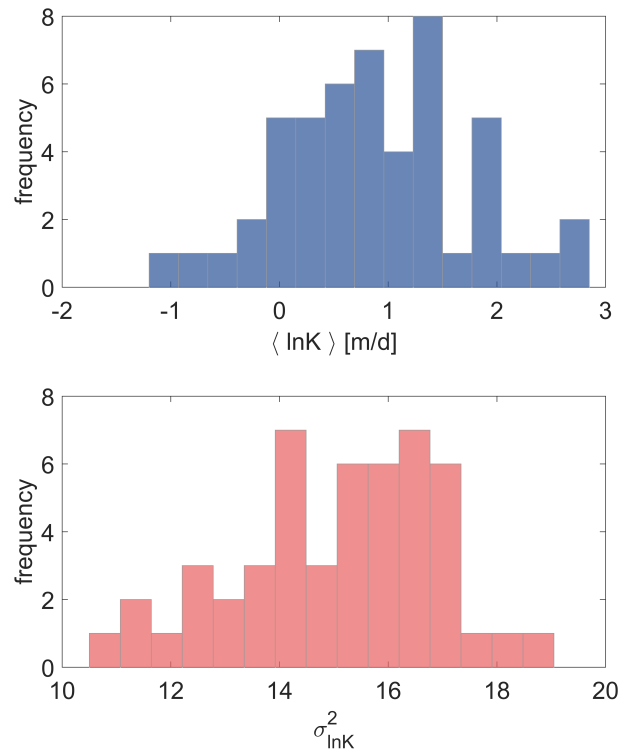
- **Figure SM1:** Time series of recharge rates
- **Figure SM2:** Time series of nitrate mass flux
- **Figure SM3:** Histogram of  $\ln K$
- 5 – **Figure SM5:** Histogram of initial concentration
- **Figure SM6:** Histograms of effective parameters
- **Figure SM7:** Convergence of effective parameters mean



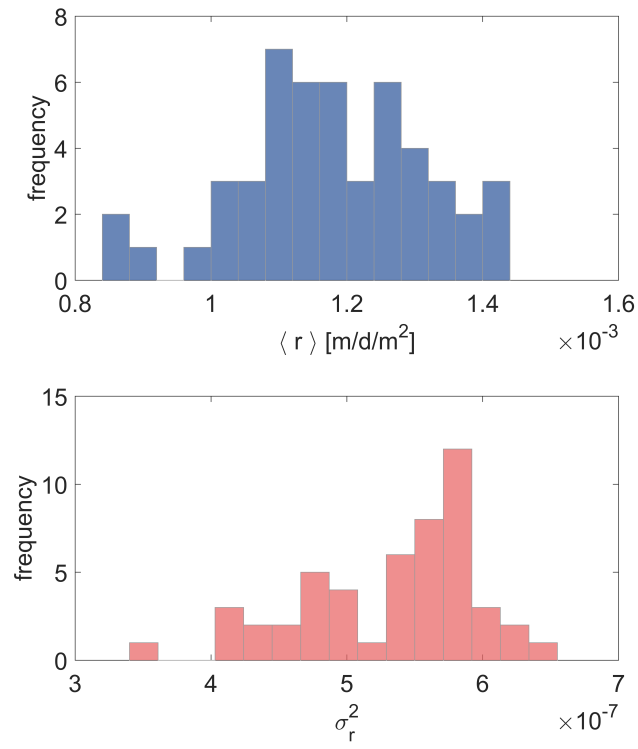
**Figure SM1.** Hydrus simulations output: Temporal evolution of the recharge rate for each crops (given by different color lines) for the three tested soil types (top: sand, middle: muddy-sand, bottom: mud). The dashed lines represent the temporal averages used in the study.



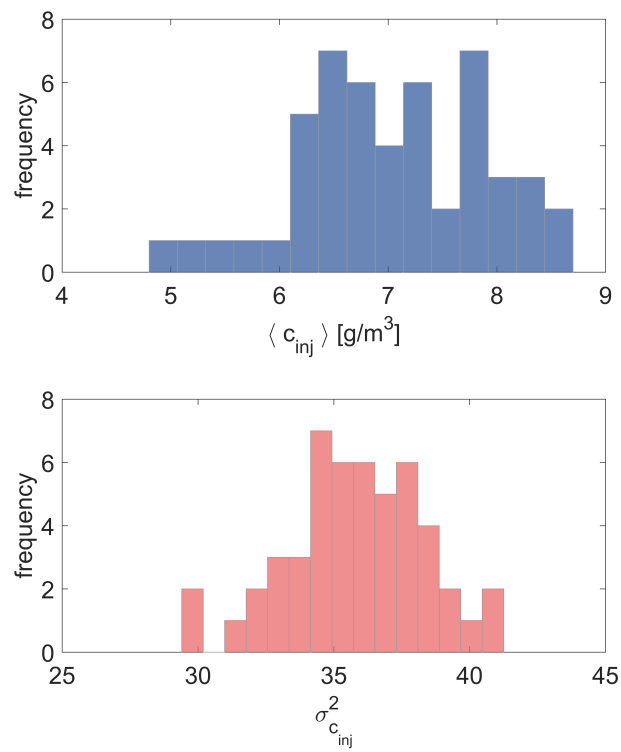
**Figure SM2.** Hydrus simulations output: Temporal evolution of the leaking nitrate mass flux for each crops (given by different color lines) for the three tested soil types (top: sand, middle: muddy-sand, bottom: mud). The dashed lines represent the temporal averages used in the study.



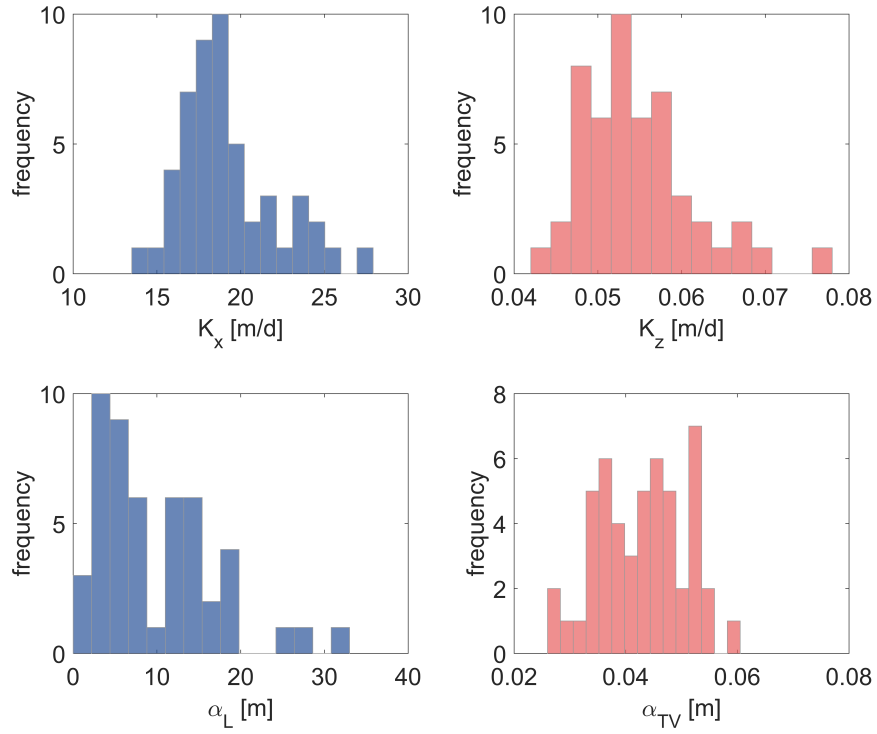
**Figure SM3.** Histogram of the mean (top) and variance (bottom) of the log-normal hydraulic conductivity.



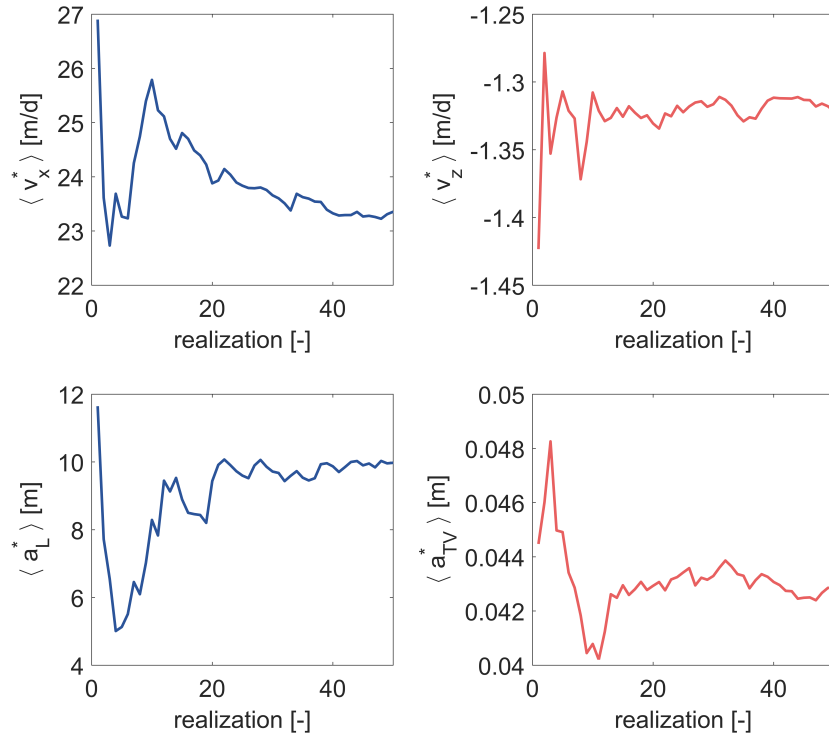
**Figure SM4.** Histogram of the mean (top) and variance (bottom) of the spatially variable recharge rate.



**Figure SM5.** Histogram of the mean (top) and variance (bottom) of the spatially variable source concentration.



**Figure SM6.** Histograms of the apparent hydraulic conductivity (top) and apparent dispersion (bottom) in the longitudinal (left) and vertical (right) flow direction.



**Figure SM7.** Convergence of the mean apparent velocities (top) and apparent dispersion (bottom) in the longitudinal (left) and vertical (right) flow direction.