

*Dear Prof. Giudici,*

*We thank you and the referees for the time spent reviewing our article, for your comments and for your suggestions. We have taken each one of them into account in order to create a clearer manuscript. Below, you will find a point-by-point response to the referees and an explanation on how we have addressed their comments. Also, we have attached a version of the manuscript that highlights the changes made from the previous to the revised version. We hope these changes will fulfill your expectations and look forward to your new assessment.*

*Yours truthfully,*

*On behalf of the co-authors,*

*Andrea Palacios*

#### REFEREE #1

The paper describes the application of CHERT (Cross-Hole Electrical Resistivity Tomography) in order to monitor the seawater intrusion in the time during a very long period (two years). I think the described technique is an interesting methodology in order to contribute on the monitoring by DC methods when the observed phenomenon is deeper than the normal ERT capacity of observation. Anyway, the use of CHERT needs more attention because the distance between each boreholes is a crucial point. Even if the authors did a good job, from my point of view, they should rewrite some parts because there are a lot of information that are not correlated with the DC measurements or the text was not sufficient to explain the relations (i.e. the wind velocity and the wave height).

According authors results, the classical ERT method is not able to observe deep phenomena due its low resolution compared with the depth. Therefore, the CHERT is a good opportunity to help the DC method to observe deep phenomena, even if it is a little bit invasive because it needs a borehole. On the contrary, to monitor an aquifer or seawater intrusion the boreholes are necessary...and the application of steel electrodes is a good opportunity. The work is very interesting because the authors describe a long monitoring approach by CHERT method even if the apparatus (steel electrodes) are located in an aggressive scenario due to high salinity in the aquifer. From the showed results, the EC images seems good in the time, even if the authors miss information on the data quality and if there was some decrease of electrical contact between the electrodes and the subsoil in the time. Moreover, the authors miss also some important consideration and description on the acquisition (i.e. what is the electrode distance?). The authors introduced the used protocols but they did not describe which was the best one. A large analysis and comments are important when a new approach is introduced. From my experience, to merge different protocol all together is not the best solution. The authors did not write any comment on the distance between the borehole (borehole distance) may be for their low experience on CHERT method. This is a crucial point on CHERT. From my experience and experiments that I did in my lab, the borehole distance should be maximum the half of the largest distance between the electrodes (distance from the superficial electrode and the deep one). If the distance increases the quality of the data decreases (the figure 3e highlights this point). In fact, the deep high EC value zone is well observed from the 35m to 80m from the coast (figure 4). On the contrary, this zone is not detected between the two boreholes (N225 and N325). I suppose that the low data coverage between the boreholes, due to large distance

(21.5m), should be a reason for that. In fact, on the water electrical conductivity measurements taken on water samples from piezometers highlight high EC values on N225 hole. Finally, I suggest to improve the description on the CHERT data quality and to reduce the part where the authors describe the correlation between the result and some data far from the electrical resistivity data (i.e. wind velocity and wave height). Therefore, I suggest to add a strong paragraph on the CHERT method.

*Answer. We thank the referee for the thorough assessment of our manuscript. **We have added information about the quality of the data, contact resistances and distance between electrodes in the manuscript. We have added a figure that shows the evolution of the number of data points with time during the two years of experiment. Also, we have pointed to relevant references and added a discussion on the distance between boreholes and the used protocols. However, we disagree with reducing the correlation of the results with hydrological and weather data.** It is the hydrological interpretation of the CHERT inversion that we consider the most valuable contribution of this study, which has led to a review of the current seawater intrusion paradigm as explained later in the specific comments. One of the novelties of our paper is the use of CHERT in a coastal aquifer context. Moreover, it is also nice that CHERT identifies many other processes (e.g., storm surges). The fact that you can use CHERT to analyze the impact of so distant causes as the impact of sea waves is a nice rare example of the unity of Earth Sciences. We have made an effort to improve the description of the correlations in the manuscript.*

*On the used protocol: our experience (Bellmunt et al., 2016) it is better to use different configurations (dipole-dipole, pole-tripole and Wenner) with different sensitivity patterns in order to obtain the maximum information about the subsurface. Moreover, we were aware that given the environment in which the steel electrodes were located some of the data measurements could be not repeated over time, so we decided to maximize the number of acquired data. The different configurations used were already described by Zhou and Greenland (2000) and Bellmunt et al. (2016).*

*On the distance between electrodes: We thank the referee for raising this point and apologize for the missing information in the article about the electrodes distances. All piezometers have 36 electrodes and the distance between electrodes is 70 cm, 55 cm and 40 cm in the 25 m, 20 m and 15 m depth piezometers respectively.*

*On the data quality: We follow the strategy proposed by Bellmunt and Marcuello (2011) for the quality control of the data based on the comparison between normal and reciprocal measurements. In our case we choose a threshold of 10% difference between the normal and reciprocal data in order to keep the measurement. Figure 1, that will be shown and introduced in the final manuscript, shows the time evolution of the data percentage that satisfies our quality control. The panel between boreholes PP20 and PP15 is the one with a lower quality likely due to its proximity to the coast. It also corresponds to the zone where lower resistivities cover a thicker vertical zone. The decrease in data quality with time is probably related to corrosion processes of the electrodes in contact with marine water. Furthermore, the electrical contact resistance between the electrodes and the subsoil was checked before each data acquisition. Although the specific values of each pair of electrodes were not recorded, they were low in general. The deepest electrodes, in contact with the SWI, had contact resistances values in the order of 1 kohm and the ones closer to the surface had values of a few 10's of kohm.*

*On the distance between boreholes:*

*We are aware that a key point to consider when defining a CHERT experiment is the aspect ratio between the horizontal distance of the boreholes and the maximum vertical distance between the electrodes located in each borehole (e.g., Labrecque et al., 1996). We agree with the referee that smaller values of the aspect ratio will be better, but the location of the boreholes was conditioned by several factors including logistics and requirements for other monitoring methods as well as experiments planned at the experimental site. Furthermore, there is a trade-off with the overall investigation area implying that larger borehole spacings are sometimes motivated. Nevertheless, Labrecque et al., (1996) suggest that the aspect ratio should be between 0.5 (ideal situation) and 0.75 maximum. Numerical simulations by Hagrey (2011) suggest that larger values of the aspect ratio can be used if constraints about the resistivity structures are considered during the inversion procedure. In our case the aspect ratio for the different panels considered ranges from 0.6 to 0.8.*

Line 50: I suggest to describe better this sentence. *““But, ironically, it is consistent with the fact that salinity profiles measured in open wells often display salinities much lower than that of seawater. So, it might be questioned whether the current paradigm is wrong.”*

*Answer: The statement refers to the fact that, on the one hand, surface ERT derived conductivities and those often measured in fully screened wells are much lower than what should be expected with the current paradigm, according to which freshwater floats above a seawater wedge. Given this paradox (field measurements with low salinities at the intrusion wedge and paradigm with high salinity), one must conclude that either the measurements or the paradigm are wrong. One of the results of this paper is that all of them are wrong (surface ERT underestimates salinities, open wells do not really measure true aquifer salinity, and SWI is a lot more complex than the current paradigm). But, at the introduction, we feel it is sufficient to formulate the paradox.*

***In the manuscript we have changed it to: “The computed bulk EC at depth is typically much lower than what we would expect from a seawater wedge with pores completely filled with seawater, which is the generally accepted paradigm of seawater intrusion, a seawater wedge beneath fresh water. Paradoxically, surface ERT results may be consistent with salinity profiles measured in fully screened wells, which often display salinities much lower than that of seawater (Abarca et al. 2007). It is clear that either measurement methods, or the current paradigm, or both, need to be revised.”***

Line 57-62: Even if there are not CHERT works on SWI phenomena, but I suggest to cite some papers on the CHERT application, in order to highlight the potentiality of this methodology.

***Answer: We have added several references to CHERT.***

Line 89-90: I suggest to cite some papers on this point or to indicate a personal information on that. *“The corrosive nature of saline environments causes the limited lifetime of the installation to be a main concern when planning the monitoring experiments.”*

*Answer: We have changes the paragraph to: “The objectives of the CHERT experiment are to image SWI in order to improve the geological conceptual model, and to infer SWI dynamics. This requires installing metal electrodes in a corrosive saline environment, especially vulnerable at the electrodes because electrolysis due to current injection accelerates the corrosion process, which limits the lifetime of the installation. Therefore, addressing corrosion was a main concern when designing the system and planning the monitoring experiments. Stainless-steel mesh electrodes were permanently attached to the outside of the seven deepest PVC piezometers*

*(Figure 2a). Electrodes were tested in the laboratory before they were employed in the field. The parts most sensitive to corrosion are the connection points between the mesh electrodes and the copper cables that bring current. The best strategy to delay corrosion at the connection points is to tie together the mesh and the cable, and to cover the connection point by a double silicone layer to prevent contact with water”.*

Line 99-100: the cited paper is not completed; there is only authors and title. . .the same for the paper Martinez et al.

*Answer: The two cited papers (Folch et al. and Martinez et al.) are in preparation and/or submitted. **We propose to add both manuscripts as supplements to this article, if the editor and referees think it’s necessary.***

Line 127: There are several software that visualize the distribution of the apparent resistivity data as a pseudosection view.

*Answer: Indeed, but only for surface ERT, where apparent resistivities are easily assigned a depth. The representation of the apparent resistivity is not a simple task with CHERT data, as we have shown in Bellmunt et al. (2012), because it involves more than two parameters (e.g., depth, level, orientation, etc.). Bellmunt et al. (2012) proposed to have a rough image of the subsoil electrical structure with CHERT data through an apparent resistivity pseudosection equivalent to the case of the equatorial dipole–dipole on the surface that was built considering only data in which the current and potential electrodes A and M are at the same depth as the current and potential electrodes B and N, respectively. Nevertheless, the resulting interpretation is not straightforward and can be confusing for non-CHERT specialists. **We have not added anything on this topic in the revised version of the manuscript.***

Line 131: It is not clear why the acquired data were 5800 (line 113), but the data used for the inversion were 2677. I suggest to describe this point.

*Answer: We have decided to only consider electrode configurations for which the resulting data at all measurement times passed our quality control. The consequence is that we only have 2677 left for each panel. **This was described in the manuscript on lines 123-132.***

Line 132: The authors indicate “forward modelling”, but in the paper there is no indication on a forward approach.

*Answer: We refer to the forward calculation required to do the inversion, but to avoid confusion **we have deleted these words in the revised manuscript.***

Line 258: Figure 5n-p.

*Answer: Thank you for the suggestion. **We have included this modification in the manuscript.***

Line 232-233: If the authors would like to combine the “wave activity data” with the EC data, I suggest to describe why these data can be compared with the SWI phenomena.

*Answer: **We have added the following paragraph before presenting the figure with the wave height data in the results.** “We analyze below the origins of long-term and short-term changes described in the previous paragraph by comparison with precipitation and wave activity data. The precipitation and the wave activity data are used as a proxy to indicate the likely timing when an effective freshwater recharge occurred and when water from large waves might have*

*formed seawater ponds at the surface". The readers can find more information about the effect of waves in the discussion.*

Line 253: The figure 7a has a different scale then the figure 5. . .also the figure 8.

*Answer: Indeed, Figures 7a and 7b represent different variables. The different color scales in figures 7a and figure 8 are meant to highlight the specific EC changes related to the precipitation and storm events. **We have added a sentence to points out that the color scales are different and why.***

Line 265: I suggest to delete the discussion on the wind velocity. It doesn't add some important information on the paper.

*Answer: Thank you for the suggestion. **We have chosen to delete the wind velocity information, as the wave height data alone is enough to make our point.***

Line 292: why steel electrodes only in the piezometer 25 m length corrupted the IL data. The problem should be the same everywhere. I suggest to improve the information on the text.

*Answer: The induction logs within the ERT boreholes only show the position of the electrodes because the steel mesh alters the electromagnetic field emitted by the Geovista EM51 tool that is placed inside the PVC casing (see figure Fig.2). For this reason, the induction logs were acquired in neighboring piezometers without electrodes that were located at least 1.45 m away from the ERT boreholes (Fig. 4 and Table 1).*

***We have changed the paragraph to: "Induction logs were not performed in the 25 m deep piezometers because the stainless-steel electrodes installed outside the casing severely corrupted the recorded signal. Instead, they were performed in neighboring 20 m deep piezometers that do not contain any electrodes."***

Line 355-414: I suggest to merge the paragraphs Time lapse study (long term, short term saltwater event). Moreover, I suggest to make a sketch on the figure 5 in order to detect the three main zone as the water samples data highlight: upper, transition and lower. Moreover, I suggest to explain better or delete some "weak" part. In example, the "freshwater event" is not well observable in the ratio bulk EC model (figure 7a). The "storm event" is not so clear and there is some confusion between the indicated period and the figure 8. I suggest to rewrite the paragraph.

*Answer: **We do not agree with merging the paragraphs.** The goal of the paper is to show that CHERT can be used to gain insights into different processes operating at different time scales. If we merge the paragraphs, the final text would be too confusing. **Nevertheless, with your suggestions we believe we have improved the clarity of the different points. Making a sketch of the upper, transition and lower zones in each cross-section of Figure 6 would make the figure too complex, but we have decided to add the zones in Figure 6b alone. We have changed the description of Figure 8 to avoid confusion with the time period and removed the wind information that was in the "storm event" section.***

Conclusions: Even if I agree the different points, I suggest to rewrite some sentences (i.e. point 4) after the revision of the paper.

*Answer: Thank you. We have reviewed the conclusion and made some small changes. As stated before, it is very important for us to highlight that CHERT experiment successfully captured both long- and short-term phenomena. We think the changes made in the manuscript should better*

*explain the importance of this geophysical experiment for the community of hydrologists, and more specifically, for the seawater intrusion community.*

REFEREE #2

Reviewer. The topic addressed by the authors is interesting, the application concerns the monitoring seawater intrusion aquifer with electrical resistivity tomography. The special feature is long-term monitoring around two years. The main techniques used are the surface electrical resistivity tomography (ERT) method and Cross-Hole Electrical Resistivity Tomography (CHERT). Furthermore, for the interpretation they made use of geological, rains and logs data.

The authors maintain that the surface ERT loses the resolution in depth, this is true, however to identify large bodies as in this case, I don't think it is a problem of resolution but could be due to the array used and the amplitude of relative values to ERT. In any case in these situations if it is possible to perform cross-holes it is preferable with respect to surface investigations even if they lose the non-destructive characteristic. However, there are disadvantages: -the data sensitivity is constrained to the region between the boreholes; - for vadose zone surveys, noise levels may be much higher than those using surface electrodes, owing to weaker electrical contacts (increased contact resistance).

*Answer. The reviewer is right in that CHERT suffers some drawbacks (increased contact resistance in the unsaturated zone, loss of the fully non-invasive nature of surface ERT, and sensitivity being mainly constrained to the region between the boreholes). We would like to stress though that ERT (surface- or borehole-based) have sensitivity to the electrical conductivity outside of the array (so-called outer-space sensitivities) as studied by Maurer and Friedel (2006). **We have mentioned these drawbacks in the revised version of the paper.***

*Regarding the loss of resolution with depth of surface ERT, the problem goes beyond traditional ERT. The problem in SWI is that with the high conductivity region at depth, bulk resistivity in this region is underestimated. This problem is well established (Huizer et al. 2017, Beaujean et al. 2014, Nguyen et al. 2009) and our presented results confirm this. Furthermore, the spatial extent of the high salinity (conductivity) region is not large at our field site. Indeed, there is no traditional SWI wedge. In this setting, the use of CHERT has allowed us to get the resolution necessary to show that the traditional SWI paradigm does not apply in this case. We believe further that the qualitative differences between surface-ERT and CHERT shown at our site are robust features that will appear for any reasonable choices of electrode configurations.*

Reviewer. The authors have done a good job, the causes that define authors on long-term changes are very interesting. But they should investigate some things. In particular, information is lacking about the cross-hole electrode, the contact resistances between the electrodes and the walls, it would be interesting to have a comparison of the results from different arrays.

*Answer. We thank the referee for raising this point and apologize for the missing information in the article about the electrodes distances. All piezometers have 36 electrodes and the distance between electrodes is 70 cm, 55 cm and 40 cm in the 25 m, 20 m and 15 m depth piezometers, respectively. **A new paragraph describing the acquisition geometry was added in the revised version of the manuscript.***

*In our experience (Bellmunt et al., 2016), it is better to combine different configurations (dipole-dipole, pole-tripole and Wenner) with different sensitivity patterns in order to obtain the maximum information about the subsurface. Moreover, we were anticipating that, given the*

*corrosive environment in which the steel electrodes were located, some of the data measurements could be not repeated over time, so we decided to acquire large data sets. Zhou and Greenland (2000) and Bellmunt et al. (2016) have already described and compared these configurations, while the focus of the present work is not on comparison of different electrode configurations. **In the revised manuscript, we have pointed to the relevant literature.***

Reviewer. It is not clear what happened to the data that gives 5800 data points but the data used for the inversion were 2677.

*Answer: We have decided to only consider electrode configurations for which the resulting data at all measurement times passed our quality control. The consequence is that we only have 2677 left for each panel. **This was described in the manuscript on lines 123-132.***

Reviewer. I also have serious doubts about the resolution of CHERT because the distances between wells are very large between them. In this case the authors, if it were possible, should have done synthetic models with array different at different distances between wells.

*Answer. We are aware that a key point to consider when defining a CHERT experiment is the aspect ratio between the horizontal distance of the boreholes and the maximum vertical distance between the electrodes located in each borehole (e.g., LaBrecque et al., 1996). We agree with the referee that smaller values of the aspect ratio will be better, but the location of the boreholes was conditioned by several factors including logistics and requirements for other monitoring methods as well as experiments planned at the experimental site. Furthermore, there is a trade-off with the overall investigation area implying that larger borehole spacings are sometimes motivated. Nevertheless, numerical simulations by al Hagrey (2011) state that large values of the aspect ratio can be used: "The ability to detect and often map the three sequestration targets (CO<sub>2</sub> plume, reservoir, and cap rock) by unconstrained inversions is still possible with AR values up to 2 for the most studied scenarios (even those with the worst scenario of least thickness and  $\rho$ )". Besides, it is also said: "The reconstructed output tomograms for higher AR values (>2) achieve a satisfactory resolution only for constrained inversions with an a priori fixing of boundaries and/or resistivities of the targets. The resolution increases with increasing the number of constraints". In our case the aspect ratio for the different panels considered ranges from 0.6 to 0.8. Beyond this, both the geology (Figure 1c and Figure 4 in the manuscript) and the SWI display significant lateral continuity so that vertical resolution is more critical than the horizontal one. This is achieved by imposing stronger regularization constraints in the horizontal than vertical directions. **We have added a discussion of the issue in the revised version.***

# Time-lapse cross-hole electrical resistivity tomography (CHERT) for monitoring seawater intrusion dynamics in a Mediterranean aquifer

Andrea Palacios<sup>1,2,3</sup>, Juan José Ledo<sup>4</sup>, Niklas Linde<sup>5</sup>, Linda Luquot<sup>6</sup>, Fabian Bellmund<sup>4</sup>, Albert Folch<sup>2,3</sup>, Alex Marcuello<sup>4</sup>, Pilar Queralt<sup>4</sup>, Philippe A. Pezard<sup>7</sup>, Laura Martínez<sup>1,3</sup>, Laura del Val<sup>2,3</sup>, David Bosch<sup>4</sup>, and Jesús Carrera<sup>1,3</sup>

<sup>1</sup>Institute of Environmental Assessment and Water Research (IDAEA), Consejo Superior de Investigaciones Científicas (CSIC), Barcelona, 08034, Spain

<sup>2</sup>Department of Geotechnical Engineering and Geosciences, Technical University of Catalonia (UPC-BarcelonaTech), Barcelona, 08034, Spain

<sup>3</sup>Associated Unit: Hydrogeology Group (UPC-CSIC)

<sup>4</sup>Geomodels Research Institute, University of Barcelona, Barcelona, 08028, Spain

<sup>5</sup>Environmental Geophysics Group, Institute of Earth Sciences, University of Lausanne, Lausanne, 1015, Switzerland

<sup>6</sup>HydroScience Montpellier Laboratory, UMR 5569, Montpellier, 34090, France

<sup>7</sup>Geosciences Montpellier Laboratory, UMR 5243, Montpellier, 34090, France

**Correspondence:** Andrea Palacios (andrea.palacios@idaea.csic.es)

**Abstract.** Surface electrical resistivity tomography (ERT) is a widely used tool to study seawater intrusion (SWI). It is non-invasive and offers a high spatial coverage at a low cost, but it is strongly affected by decreasing resolution with depth. We conjecture that the use of CHERT (cross-hole ERT) can partly overcome these resolution limitations since the electrodes are placed at depth, which implies that the model resolution does not decrease in the zone of interest. The objective of this study is to evaluate the CHERT for imaging the SWI and monitoring its dynamics at the Argenton site, a well-instrumented field site of a coastal alluvial aquifer located 40 km NE of Barcelona. To do so, we installed permanent electrodes around boreholes attached to the PVC pipes to perform time-lapse monitoring of the SWI on a transect perpendicular to the coastline. After two years of monitoring, we observe variability of SWI at different time scales: (1) natural seasonal variations and aquifer salinization that we attribute to long-term drought and (2) short-term fluctuations due to sea storms or flooding in the nearby stream during heavy rain events. The spatial imaging of bulk electrical conductivity allows us to explain non-trivial salinity profiles in open boreholes (step-wise profiles really reflect the presence of fresh water at depth). By comparing CHERT results with traditional in situ measurements such as electrical conductivity of water samples and bulk electrical conductivity from induction logs, we conclude that CHERT is a reliable and cost-effective imaging tool for monitoring SWI dynamics.

## 1 Introduction

Seawater intrusion (SWI) increasingly affects the ever growing populations near coastlines. The inland movement of saline groundwater not only contaminates drinking water resources, but also drives other important changes in ecological and hydrological cycles, thereby creating a hostile environment for plants and animals that are incapable of adapting to salinization (Michael et al., 2017; Post and Werner, 2017). SWI has been studied for many years but, even today, remains a research topic



because of the complex physical, chemical, mechanical, and geological processes involved. The equations that govern interactions between fresh and seawater are well established, and models of simplified generic scenarios are used to predict and assess the risks linked to SWI and to define appropriate management strategies (Abarca et al., 2007; Henry, 1964). However, real field conditions are much more complex and detailed case-studies are less common in the SWI literature.

Salinity is the critical physical property to describe SWI. Water salinity contrasts are so strong that salinity by itself indicates whether water is pure freshwater, pure seawater or a mixture of both (the transition or mixing zone). The electrical conductivity (EC) of water is strongly, positively and linearly correlated with water salinity (Sen and Goode, 1992), so that EC represents an excellent proxy to salinity, to the point that it is often used synonymously with salinity. Electrical and electromagnetic geophysical measurements provide information about the bulk or formation EC, that represents the effective conductivity of the mixture of solid rock material and the fluids contained in the pores (Bussian, 1983; Waxman and Smits, 1968). Pore-water electrical conductivity contributes to bulk electrical conductivity, which implies that higher pore water EC results in higher bulk EC. Consequently, bulk EC can be used as an indirect proxy measurement of water EC, and thus, of water salinity (Purvance and Andricevic, 2000; Lesmes and Friedman, 2005). However, bulk EC depends also on factors such as porosity, tortuosity, and constrictivity, which affect electrical current through the liquid, and clay content, which may contribute to bulk EC through mineral surface currents. This implies that detailed site knowledge is needed to quantitatively relate bulk EC to salinity.

Water EC is widely used to visualize SWI (Costall et al., 2018; Falgàs et al., 2011, 2009; Post, 2005; Zarroca et al., 2011). It is usually measured in piezometers to obtain either point measurements (samples) or as water EC profiles in fully screened boreholes. The limited sampling associated with the former makes it inefficient to derive an image of the typically heterogeneous salinity distribution. The latter is not good practice because density-dependent flow inside the borehole makes water EC profiles unrepresentative of the water EC in the surrounding environment (Carrera et al., 2010; Shalev et al., 2009). For this reason, it is tempting to infer water EC from bulk EC using geophysical techniques such as electrical resistivity tomography (ERT).

Since ERT provides more coverage than point measurements and is noninvasive, it has become a very common approach in SWI studies. In an inversion process, the ERT measurements are transformed into upscaled 2D and 3D images of bulk EC. Many authors have used ERT in real and synthetic SWI studies (de Franco et al., 2009; Nguyen et al., 2009; Tarallo et al., 2014; Beaujean et al., 2014; Huizer et al., 2017; Sutter and Ingham, 2017; Goebel et al., 2017) with the results being negatively affected by the low resolution of the images at depth. As a manifestation of this problem, Huizer et al. (2017), Beaujean et al. (2014) and Nguyen et al. (2009) showed that using ERT derived salt-mass fraction for solute transport model calibration lead to important errors due to poor ~~depth-resolution at depth and inside the seawater wedge~~. The computed ~~water EC-bulk EC at depth~~ is typically much lower than ~~that of seawater~~. ~~This is contradictory with what we would expect from a seawater wedge with pores completely filled with seawater, which is~~ the generally accepted ~~paradigms paradigm~~ of seawater intrusion (~~a seawater wedge beneath fresh water~~) (Abarca et al., 2007). ~~But, ironically, it is consistent with the fact that~~. ~~Paradoxically, surface ERT results may be consistent with~~ salinity profiles measured in ~~open wells fully screened wells, which~~ often display salinities much lower than that of seawater ~~So, it might be questioned whether~~ (Abarca et al., 2007). ~~It is clear that either measurement methods, or~~ the current paradigm ~~is wrong, or both, need to be revised~~.

Costall et al. (2018) revise some of the above issues in their comprehensive study about electrical resistivity imaging and the saline water interface in coastal aquifers. Specifically, they mention the scarcity of publications of time-lapse ERT for monitoring SWI dynamics, the low resolution of surface ERT, and imaging limitations related to electrode arrays. They also recommended designing optimized experiments which are suitable for the monitoring of short and long term salinity changes in the aquifers, and in the swash zone, rarely captured in land ERT surveys.

We conjecture that cross-hole ERT (CHERT) can enhance the imaging of natural saltwater-freshwater dynamics. ~~Using,~~ given that its superior resolution was proven in other type of studies (Bellmunt et al., 2016; Bergmann et al., 2012; Kiessling et al., 2010; L , Although CHERT has drawbacks (increased contact resistance in the unsaturated zone, loss of the fully non-invasive nature of surface ERT, and sensitivity being mainly constrained to the region between the boreholes), the benefits of this type of tomography may be more important because resolution using electrodes installed at depth ~~we will improve the resolution exactly will be highest~~ where the changes are expected to occur. Nevertheless, there is yet no field demonstration in the literature to test this conjecture. CHERT has never been used for monitoring SWI, most likely due to cost constraints, the high risk of electrode corrosion in saline environments, and because it typically covers a smaller scale than surface ERT or time-domain electromagnetics (the most typical geophysical technique in saltwater intrusion studies).

The objective of this work is to overcome the above-mentioned limitations. Specifically, we ~~evaluate-test~~ CHERT for imaging SWI and its dynamics through time-lapse acquisitions. To do so, a long-term monitoring experiment was conducted at the Argenton site for a period of two years, a permeable coastal alluvial aquifer in northeast Spain.

## 2 The Argenton site

The Argenton site (Figure 1) is located at the mouth of the “Riera de Argenton” (Argenton ephemeral stream), some 30 km northeast of Barcelona. The field site covers an area of some 1500 m<sup>2</sup> and the mean elevation is 3 m.

The Argenton stream only flows during heavy rainfall episodes that occur mainly in autumn. The climate is sub-Mediterranean. According to data from the Cabrils weather station, located 7 km northeast from the site, the mean annual precipitation since 2000 is 584,1 mm. Compared to other Mediterranean areas, the precipitation is more evenly distributed throughout with the rainiest seasons being spring and autumn.

We have installed 16 piezometers in a cross-shaped distribution with the longest arm oriented perpendicularly to the coastline (Figure 1a). These include four nests (N1-N4) of three piezometers with depths of 15, 20 and 25 m (N115, N120, N125, etc.), screened over 2 m at the bottom. The distance from the closest piezometer (PP20) to the coastline is almost 40 m. The field site is located on a coastal alluvial aquifer that overlies a granitic basement (Figure 1b). Core analyses reveal that the sediments are mostly unconsolidated. Martínez-Pérez et al. (2019) identify two sequences, above and below a silt layer at -9 m a.s.l. The upper and lower sequences display a fining-upward pattern. The granitic basement was found at -17 to -18 m a.s.l in piezometers N225, N325 and N125, with signs of intense weathering. A well-correlation profile was built from core descriptions supported by gamma-ray and induction logs. The silt layer at -9 m a.s.l appears to be continuous along the main transect between piezometers N225 and PP20. Its continuity, especially towards and below the sea and its low permeability

nature are yet to be defined. The present 2D conceptual model of the site is simple and several questions remain unanswered: is the silt layer continuous or is a significant water flow through it? Is the weathered granite an aquitard or another permeable unit despite its strongly weathered nature? (see, e.g. Dewandel et al. (2006)). One of the goals of the CHERT is to contribute to respond these open questions and improve the conceptual model of the site.

### 3 CHERT experimental setup

The objectives of the CHERT experiment are to image ~~the~~-SWI in order to improve the geological conceptual model, and to infer ~~the~~-SWI dynamics. This requires installing metal electrodes in a corrosive saline environment, especially vulnerable at the electrodes because electrolysis due to current injection accelerates the corrosion process, which limits the lifetime of the installation. Therefore, addressing corrosion was a main concern when designing the system and planning the monitoring experiments. Stainless-steel mesh electrodes were permanently attached to the outside of the seven deepest PVC piezometers (Figure 2a). ~~The corrosive nature of saline environments causes the limited lifetime of the installation to be a main concern when planning the monitoring experiments.~~

~~Metal corrosion due to exposure to saltwater is expected always, but electrolysis due to current injection accelerates the corrosion process. Current is injected using cables. Electrodes were tested in the laboratory before they were employed in the field.~~ The parts most sensitive to corrosion are the connection points between the ~~cables and the mesh electrodes.~~ ~~The ERT instrument was tested in the laboratory before it was employed in the field to determine the~~ mesh electrodes and the copper cables that bring current. The best strategy to delay corrosion at the connection points ~~-.The final prototype has is to tie together~~ the mesh and the cable  ~~tied together, with, and to cover~~ the connection point ~~covered~~ by a double silicone layer to prevent contact with water. The electrodes showed signs of corrosion after 500 hours of full contact with saline water (55 mS/cm), under a constant current injection of 1A at a frequency of 3 Hz. When conducting a CHERT, the injected current is less than 1 A and the time of injection is a fraction of a second. Based on these laboratory test results, it was suggested that the instrumentation would last for at least two years, which was the minimum desired duration of the experiment.

All piezometers have 36 electrodes and the distance between electrodes is 70 cm, 55 cm and 40 cm in the 25 m, 20 m and 15 m depth piezometers respectively. LaBrecque et al. (1996) suggest that the aspect ratio (horizontal distance of the boreholes and the maximum vertical distance) should be between 0.5 (ideal situation) and 0.75 maximum. Numerical simulations by al Hagrey (2011) state that satisfactory resolution can also be achieved with larger values of the aspect ratio (>2) by fixing constraints about the resistivity structures during the inversion procedure. In the Argenton site the aspect ratio for the different panels considered ranges from 0.6 to 0.8. Details on the set-up and installation are described by Folch et al. (2019).

When performing ERT, we measure an “apparent” resistivity that is dependent on the geometry of the acquisition. The apparent resistivity is related to measured voltage differences through:

$$\rho_{app} = K \frac{V}{I}, \quad (1)$$

where  $\rho_{app}$  is apparent resistivity,  $K$  is a geometric factor that depends on the electrode array and site characteristics,  $V$  is the voltage between two electrodes measured during current injection and  $I$  is the magnitude of the injected current. Any

120 electrode configuration or array can, in principle, be used to perform ERT at the surface or between boreholes. For surface ERT, there are several well-established array types, such as Wenner, Schlumberger, dipole-dipole, or pole-pole. For CHERT, several studies have sought to determine the most informative and cost-effective arrays for monitoring dynamic processes (Bellmunt et al., 2012; Zhou and Greenhalgh, 2000). ~~We have followed the scheme used by Bellmunt et al. (2012) in their study of the capability of CHERT for monitoring rapid plume migration.~~ In our experience (Bellmunt et al., 2016) it is better to use different configurations (dipole-dipole, pole-tripole and Wenner) with different sensitivity patterns in order to obtain the maximum information about the subsurface. Moreover, we were aware that given the environment in which the steel electrodes were located some of the data measurements could be not repeated over time, so we decided to maximize the number of acquired data. The different configurations used were already described by Zhou and Greenhalgh (2000) and Bellmunt et al. (2016). Figure 2b shows the electrode configurations used at the Argentona site: dipole-dipole, pole-tripole and Wenner. Note that

125

130 these data are acquired sequentially by considering one pair of neighboring boreholes at the time.

We use an optimized survey design that allows more than 5800 data points to be acquired in less than 30 minutes. After the installation of the electrodes around the boreholes (36 at each one), the data acquisition process was straightforward, with no need for large additional costs in maintenance or human working time. The equipment used was a Syscal-Pro multi-channel (10-channel) system from IRIS instruments with 72 electrodes. The current injection time was 250 ms, and stacking of up to 6

135 measurements was done to meet data quality requirements. It takes 2 hours to complete the 4 CHERT acquisitions needed to cover the whole 2D transect from boreholes N225 to PP20. The combination of four such sections are referred to as a complete CHERT.

#### 4 Imaging

Sixteen time-lapse datasets were collected during two years (five in 2015, eight in 2016, and three in 2017), corresponding

140 roughly to a complete CHERT every 90 days.

Data pre-processing was needed to remove anomalous and erroneous data points prior to imaging. Comparison of normal and reciprocal measured resistances is a common technique for appraising data errors (LaBrecque et al., 1996; Slater et al., 2000; Koestel et al., 2008; Oberdörster et al., 2010; Flores-Orozco et al., 2012). We ~~set~~ follow the strategy proposed by Bellmunt and Marcuello (2011) for the quality control of the data based on the comparison between normal and reciprocal measurements. We chose a threshold of 10% ~~as the maximum acceptable difference between~~ difference between the normal and reciprocal ~~measurements.~~ data in order to keep the measurement. Figure 3 shows the time evolution of the data percentage that satisfies our quality control. The panel between boreholes PP20 and PP15 is the one with a lower quality likely due to its proximity to the coast. It also corresponds to the zone where lower resistivities cover a thicker vertical zone. The decrease in data quality with time is probably related to corrosion processes of the electrodes in contact with marine water. Furthermore,

150 the electrical contact resistance between the electrodes and the subsoil was checked before each data acquisition. Although the specific values of each pair of electrodes were not recorded, they were low in general. The deepest electrodes, in contact with the SWI, had contact resistances values in the order of 1 kohm and the ones closer to the surface had values of a few tens of

[kohn](#). Pseudo-sections of the apparent resistivities are easily created for surface ERT surveys, but there is no corresponding visualization technique for CHERT surveys. Instead, we plot geometric factors, apparent resistivities, and data errors versus data number, to identify electrode configurations with anomalous values. Clearly, for time-lapse studies it is important to ensure that changes observed are due to subsurface processes, and not to changes in the survey setup. Consequently, the sixteen datasets were scanned and compared to keep only identical electrode configurations. This resulted in a reduced set of 2677 identical measurements that were extracted from each complete CHERT before being used in the time-lapse inversion. For ~~forward modeling and~~ inversion, we make the common assumption that the bulk EC distribution is constant in the direction perpendicular to the complete CHERT transect. The corresponding 2.5D electrical ~~forward and~~ inverse problem is solved on an unstructured mesh with tetrahedral elements using BERT (Boundless Electrical Resistivity Tomography) (Rücker et al., 2006; Günther et al., 2006) and pyGIMLi (Generalized Inversion and Modeling Library) (Rücker et al., 2017). The inversion algorithm inverts the log-transformed apparent resistivities, into a 2D log-transformed electrical resistivity distribution. The objective function to minimize is:

$$\phi = \phi_d + \lambda\phi_m = \|C_d^{-0.5}\Delta d\|^n + \lambda\|C_m^{-0.5}\Delta m\|^n, \quad (2)$$

where  $\phi_d$  is the data misfit term,  $\Delta d = d - f(m)$  is the vector containing data residuals; with  $d$  a vector containing field data;  $f(m)$  the forward response of the geoelectrical problem using model  $m$ , and  $n$  is the order of the norm. In order to make the inversion less sensitive to data outliers, we apply the L1 norm scheme to the data misfit term using iteratively reweighted least squares (ILRS) (Claerbout and Muir, 1973). We assume uncorrelated data errors, so  $C_d^{-0.5}$  is a diagonal matrix with entries containing the inverse of the relative resistance errors. A relative error model with a 3% standard deviation is further assumed.  $C_m^{-0.5}$  is the model regularization term.  $\Delta m = m - m^{ref}$  is the vector being penalized in the model regularization, with  $m$ , the vector of estimated parameters; and,  $m^{ref}$ , a vector of reference parameters.  $C_m^{-0.5}$  is the model regularization matrix. Smoothness operators are frequently used but are not suitable for capturing the sharp resistivity changes expected at the interface of the saltwater intrusion. We have chosen to define  $C_m$  as a geostatistical operator (Chasseriau and Chouteau, 2003; Linde et al., 2006; Hermans et al., 2012), containing site-specific information about how the resistive bodies are expected to correlate in space. Hermans et al. (2016) provide an example of how the inclusion of covariance information in ERT inversion improves the imaging of the target in terms of shape and amplitude, creating more realistic images. For this purpose, we use an exponential covariance model implemented in pyGIMLi by Jordi et al. (2018). The spatial support of the geostatistical operator helps to reduce the tendency of anomalies being clustered around the electrode region where sensitivities are high. The parameters used in the covariance model were chosen in agreement with the expected fluid dynamic processes. Pore water is expected to flow through the horizontal layers shown in the stratigraphic correlation, so the variations that we expect to observe will be more correlated in the horizontal direction than in the vertical direction. The integral scales in the horizontal and vertical direction are 10 m and 2 m respectively, the anisotropy angle is 90° and the variance of the logarithm of the resistivities was set to 0.25. The detailed description of this type of covariance model is found in, for example, Kitanidis (1997).

The minimization of  $\phi$  is performed iteratively using the Gauss-Newton scheme. We start the inversion with a homogeneous model corresponding to the average apparent resistivity. In Equation 2,  $\lambda$  is the regularization parameter. We apply an Occam

type inversion, in which we seek the smallest  $\phi_m$  while fitting the data (Constable et al., 1987). We set  $\lambda$  to a high value at the first iteration and decrease it by 0.8 in each subsequent iteration. The iterative process is stopped when the data are fitted to the noise level.

190 To study variations in time, the simplest approach consists of inverting independently each dataset to analyze the evolution of changes. This approach may work when changes are large, but it is no longer considered state of the art because inversion artifacts tend to be time independent (though not always, see discussion by Dietrich et al. (2018)) and may mask actual changes. Singha et al. (2014) describe time-lapse inversion as a way to impose a transient solution constraint through the analysis of differences or ratios in the data (Daily et al., 1992; LaBrecque and Yang, 2001), through the differentiation of  
 195 multiple individual inversions (Loke, 2008; Miller et al., 2008), or through temporal regularization (Karaoulis et al., 2011). Daily et al. (1992) introduced the ratio inversion, in which data are normalized with respect to a reference model represented by a homogeneous half space. The method allowed qualitative interpretation of resistivity changes, but made quantitative interpretation difficult. This motivated “cascaded inversion” (Miller et al., 2008), which consists of selecting as reference model the result of an initial inversion or baseline dataset. This approach removes the effects of errors and yields more reliable  
 200 sensitivity patterns (Doetsch et al., 2012). The difference inversion by LaBrecque and Yang (2001) assumes that the changes from one acquisition to another are small, but this is not the case throughout the two years of monitoring at the Argenton site. In the newest approaches, a 4D active time constrained inversion is applied simultaneously to all datasets (Karaoulis et al., 2011) penalizing differences between models. Although this is the most novel procedure for time-lapse inversion, it is computationally demanding. We have decided to apply the “ratio inversion”, solving for the updates of a reference model.

205 For data at time-lapse  $t$ ,  $\phi_d$  is:

$$\phi_d = \|C_d^{-0.5}(d^t - f(m^{ref}) \frac{d^t}{d^{ref}})\|^n, \quad (3)$$

where  $d^t$  is the data vector at time  $t$ ,  $f(m^{ref})$  is the calculated forward response of the geoelectrical problem using a reference model  $m^{ref}$ , and  $d^{ref}$  is the data vector of reference time  $t^{ref}$ .

The reference model for time-lapse inversion was built by inverting data from a complete CHERT and surface ERT from  
 210 September 8, 2015. The surface ERT dataset consists of 1600 data points acquired along the transect shown in Figure 1a. We used the Wenner-Schlumberger configuration with 72 electrodes spaced of 1.5 m.

Inversion results are displayed in the next section in terms of bulk electrical conductivities,  $\sigma_b$  (the reciprocal of resistivities  $\rho_b$ ).

## 5 Results

### 215 5.1 Reference Model

Results of data used for the reference model are shown in Figure 34. We display the bulk EC model obtained by the inversion of the CHERT and surface-based ERT data (Figure 34a), the result when only considering the complete CHERT (Figure 34b) and only the surface ERT (Figure 34c) next to the calculated coverages for each model (Figure 34d-f). The bulk EC model

obtained from the surface ERT campaign shows resistive layers in the first 5 to 10 m below surface, while the model from the complete CHERT data is unable to resolve them. The complete CHERT, however, shows high conductive anomalies at depth. Also, the magnitude of the bulk EC below -10 m a.s.l is higher in the complete CHERT model. These results confirm the expectations derived from the literature described in the introduction. Surface ERT is unable to image deep salinity. Figure 34e and Figure 34f display the coverage of the CHERT and surface ERT acquisitions computed using the cumulated sensitivity. The maximum coverage is attained near the electrodes. By combining the two datasets, the inverted bulk EC model has high sensitivity near the surface and in depth. The complementarity of the two surveys is well illustrated in Figure 34d. For the reference model of the time-lapse inversion, we chose the inversion result from the complete CHERT dataset and the surface dataset (Figure 34a).

Figure 45 shows the reference model with the site stratigraphic correlation. The estimated bulk electrical conductivity ranges from 1 to 1000 mS/m. A resistive layer of less than 5 mS/m is visible in the top 3 m, starting 60 m from the sea. This layer with low bulk EC is caused by the unsaturated zone, as it coincides with the depth to groundwater (gray dotted line in Figure 45) usually varying from 0 to 0.5 m a.s.l. The thickness of the unsaturated zone is resolved thanks to the surface ERT data. The bulk EC grows to a mean value of 50 mS/m below water table, in the shallow aquifer from 0 to -10 m.a.s.l. Conductivity grows further, exceeding 500 mS/m, below -10 m.

Bulk electrical conductivity values of more than 200 mS/m can here be conclusively attributed to the presence of seawater in the pore space. We see an upper conductive anomaly of 100 some mS/m in the unconfined aquifer above -5 m a.s.l towards the sea (from 35 m to 50 m to the coast). We attribute this anomaly to beach sediments saturated with a mixture of fresh- and seawater. The upper anomaly vanishes inland before piezometer PP15. The second conductive anomaly, below -10 m a.s.l, extends from 35 m to 90 m to the coast, and it vanishes before reaching piezometer N225. Poor imaging resolution is not expected at this depth, so we must consider the possibility that lithological heterogeneity or lower water salinity causes the change in bulk EC in the lower aquifer. In the bottom part of Figure 45, bulk EC decreases where the top of the granite is found in piezometer N125.

The reference model and stratigraphic units provided insights on the interpretation of subsurface processes. Time-lapse changes will help confirming whether conductivity anomalies in the reference model are related to fluid dynamics or to geologic structures.

## 245 5.2 Time-lapse results

Time-lapse results are displayed in Figure 56 as the ratio between each bulk EC model and the bulk EC of the reference model (September 2015) because the changes are too subtle to be clearly seen if bulk ECs were displayed. The color scale in the figure varies from a twofold increase (dark red) to a decrease by half (dark blue) in bulk EC with time. The color scale does not show the minimum and maximum magnitude of the variations; it was chosen to highlight major changes in the two years of monitoring. In the imaging process, the use of a geostatistical operator in model regularization helped in removing the boreholes' footprint in the bulk EC models, but these remain in the ratio images due to the high sensitivity of the method near the electrodes. Figure 56a (ratio of September to July 2015 ECs) shows an increase in bulk EC during summer 2015. That is, EC

is smaller in July than in September, which suggests advancement of salinity. From October 2015 to March 2016 (Figure 56c-g) an increase is successively observed near PP20, until 70 m from the sea. In March, April and May 2016 (Figure 56g-i), a decrease in bulk EC is observed in both aquifers. Complete CHERT from June 2016 to September 2017 (Figure 56j-l) show successive increase in the conductivity of the semi-confined aquifer, below -10 m a.s.l. In 2017 (Figure 56m-l), a highly conductive anomaly reappears in the upper right part of the time-lapse ratio images between nest N3 and borehole PP20. This is the largest anomaly captured by the experiment in size and magnitude. In the last ratio image between September 2017 and September 2015 (Figure 56l), the increase in bulk EC in the study area is clearly observed.

260 ~~Below, the time-lapse~~ We analyze below the origins of long-term and short-term changes described in the previous paragraph ~~will be interpreted along by comparison~~ with precipitation and wave activity data ~~to understand the origins of long-term and short-term behaviors in the dataset.~~ The precipitation and the wave activity data are used as a proxy to indicate the likely timing when an effective freshwater recharge occurred and when water from large waves might have formed seawater ponds at the surface.

265 Figure 6-7 displays the average conductivity of the inverted model at -8 m a.s.l, -12.5 m a.s.l and -16 m a.s.l. In this figure we also display daily precipitation data from the Cabrils Station, located 7 km northeast of the site. Precipitation data (inverted y-axis) shows two relevant features: (1) important precipitation events can occur in one day (e.g. 220 mm in October 2016); (2) the rainiest periods during the 2 years of monitoring consistently occurred in the fall and spring. The winter and summer of 2016 were the driest periods. Wave-related data (normal y-axis) is from a numerical model called SIMAR 44, and it was generated using HIPOCAS. The numerical model is calibrated using data from wave buoys distributed along the Catalan coast. Wave numerical models have limitations, and tend to underestimate wave height near the coast, but they give general insights about the wave activity (WAMDI Group, 1988). In Figure 67, we show the significant wave height from the numerical model. Significant wave height (Hs) is defined as the average height of the highest one-third waves in a wave spectrum (Ainsworth, 2006), and it is the most commonly used parameter because it correlates well with the wave height that an observer would perceive in a wave spectrum (thousands of waves that produce a wavy water surface). The wave data show increased wave heights in Autumn 2015, January 2016 and Winter 2017. These periods correspond to the appearance of a superficial conductive anomaly in the upper part of the time-lapse images.

The plots of average bulk EC in Figure 6-7 capture the evolution of the conductivity in the unconfined and semi-confined aquifer over time. The mean bulk EC of the upper portion of the lower aquifer's (at -12.5 m a.s.l) displays a more than twofold increase (from 200 mS/m to more than 500 mS/m) in the two years of monitoring . We can also observe cyclic variations throughout the year. In contrast, both fluctuations and overall variation are very small in the deeper portions of both the shallow (bulk EC around 20 mS/m) and deep (some 300 mS/m).

In order to assess the impact of a heavy rain event at the site, we have computed the ratio of the CHERT bulk EC models from September 30, 2016 and October 21, 2016, 11 days before and 9 days after the heavy 220 mm precipitation. Figure 7a-The color scale chosen for the Figure 8a differs from previous figures to improve visualization of the bulk conductivity variations. Figure 8a displays the conductivity ratio image, which reveals a decrease in the conductivity throughout the saturated zone, both above and below the -10 m a.s.l. silt layer, and an increase in the unsaturated zone, above the 0 m a.s.l, between nest N3



and PP20. No difference is observed below -15 m a.s.l. The decrease in conductivity observed along borehole PP15 is most likely related to water flowing along the borehole (the site was flooded). Heads measured in piezometers N115 (black) and N120 (blue) are shown in Figure 78b, showing that heads increased 60 cm in nest N1 during the rain. Rain was accompanied by an increase in the significant wave height. After 10 days, when the complete CHERT was acquired, groundwater level had already dropped by 30 cm.

A notorious change observed in time-lapse images of Figure 5-6n-p is the increase in bulk EC in the shallow layers during the winter of 2017. ~~In Figure 8a, we display~~ This increase in bulk EC occurs at a time of higher wave activity, as shown by Figure 7. To quantify the amount of the increase in conductivity, we compute the ratio of ~~bulk EC between the bulk EC of CHERT from October 2016 (the last tomography before winter) and February 2017 and October 2016 models.~~ (a tomography during winter and the high waves period). The result from the ratio is displayed in Figure 9a. Again, the color scale of the figure is adapted to better visualize the variations. EC increased by 200-500% from 80 m to 35 m from the coastline, between nest N3 and borehole PP20. The increase in conductivity observed along borehole PP15 is, again, most likely related to water flowing along the borehole. ~~In Figure 8b, we show data from precipitation records and wind velocity and significant wave height models. Between December and March 2017, high wind speeds were recorded in the study area corresponding to strong gale winds (more than 50 km/h). Gale winds are usually accompanied by an increase in wave height and precipitations. Even though strong precipitations were not recorded in the area, simulated wave data shows an increase in significant wave height.~~ Figure 8 Figure 9c shows the recovery of the bulk EC in the shallow layers around PP20 in September 2017.

Measurements of water EC from water samples are displayed in Figure 910. Piezometers from nests are screened at different depths, and we have grouped them in three categories: N115, N215, N315 and N415 are in the “upper” group (colored in blue), because the screening depth is above -10 m a.s.l.; N220, N320 and N420 are in the “transition” group (colored in green), with the screen around -12.5 m a.s.l, thus, just above the saltwater intrusion; and, N120, N125, N225, N325 and N425 in the “lower” group (colored in red), with the screen below the transition zone, where saltwater is considered to be concentrated. Similar to the plots of average bulk EC from complete CHERT in Figure 67, the major changes occur in the “transition” group, with an increase of water EC by 300%, from 1000 mS/m to 3000 mS/m in the two years of monitoring. Apart from the increase in water EC observed in N115 (screened interval at -9.9 m a.s.l), no clear variations are observed in the “upper” and “lower” groups. Note that N120 has higher conductivity values than N125, which suggests that a freshwater source is present or a desalination process is occurring below -18 m a.s.l.

Figure 10-11 displays the precipitation history recorded at the Cabrils station, 7 km northeast from the site. The annual precipitation of the last 17 years is plotted in gray. The black bar of year 2016 refers to the heavy singular 220 mm rain event, which causes that year to look wet but produces floods rather than proportional recharge. Average yearly precipitation since 2000 is 584,1 mm. 2015 was the driest year of the sequence with only 355 mm of precipitation (38% lower than average). Actually, rainfall was below the long-term average during the last three years of monitoring. The 2015 to 2017 drought is the likely cause for the overall increase in the aquifer bulk electrical conductivity, due to the decrease in freshwater recharge.

The reliability of bulk electrical conductivity models obtained with the CHERT experiment can be ~~evaluated~~ ref evaluated using other independent datasets. Induction logs (IL) acquired at the Argenton site also provide bulk EC models. Induction

logs were done using the GEOVISTA EM-51 electromagnetic induction sound. Figure [H12](#) displays a comparison of the bulk EC from IL along piezometers N2, N4, N3 and N1 (from left to right) and extractions from the complete CHERT conductivity models along the same piezometers. N4 is not on the complete CHERT transect, but as we neglect heterogeneity perpendicular to the transect, we assume nest N4 is comparable to nest N3. ~~IL logs were were not performed in the piezometers of 20 m length of each nest, because the stainless-steel electrodes installed in the 25 m length piezometers severely corrupt the IL signal. 25 m deep piezometers because the stainless-steel electrodes installed outside the casing severely corrupted the recorded signal. Instead, they were performed in neighboring 20 m deep piezometers that do not contain any electrodes.~~ IL from May 2015 (light blue), before the beginning of the CHERT experiment are available for all piezometers. They are compared with the CHERT conductivity model from July 2015 (dark blue). In Figure [H12c](#), an IL from July 2016 in nest N3 is compared with CHERT conductivity model from the same month. In Figure [H12b](#), an IL from October 2017 in nest N4, conducted two weeks after the end of the CHERT experiment, is displayed with the CHERT conductivity model from September 2017 of nest N3. CHERT conductivity model can be well correlated with the IL from all piezometers. There are differences in the magnitudes of the bulk EC, but both methods agree on the location of the transition zone, from -10 to -12 m a.s.l.

## 6 Discussion

### 6.1 Surface ERT vs. CHERT

Surface ERT reflects quite accurately the thickness of the unsaturated zone and the location at which the water becomes more saline, but it is impossible to image the difference between the transition zone and the actual saltwater intrusion. Using only the surface ERT bulk conductivity model, one could argue that SWI in the Argenton site displays the paradigmatic saline wedge shape of Abarca et al. (2007) or Henry (1964). Instead, the CHERT data model suggests two conductive anomalies, one in the unconfined aquifer towards the sea, and one in the semi-confined aquifer below the -10 m a.s.l. silt layer.

An important magnitude difference is observed between surface ERT and complete CHERT bulk EC models. The surface ERT model shows much lower bulk EC in the saltwater zone than the complete CHERT model. Studies trying to link hydrological and geophysical models in coastal aquifers (Huizer et al., 2017; Beaujean et al., 2014; Nguyen et al., 2009) have encountered difficulties using surface ERT-based models due to insufficient resolution at the depth of interest. This lack of resolution causes the underestimation of water EC, and thus, of water salinity. The differences in the models shown in Figure [34a](#) suggest that surface ERT is not able to correctly capture the conductivity contrasts in the subsurface. This finding is confirmed by the validation of the CHERT bulk EC models with induction logs (Figure [H12](#)).

### 6.2 Reference model: link between bulk EC and geological conceptual model

The complete CHERT produces a quite clear picture of the link between the bulk EC model and the stratigraphic units. We can explain the presence of two saline bodies with the presence of a continuous semi-confining layer, and the existence of up to three different aquifer layers. This is relevant by itself because it was unexpected. The only geologic feature is a relatively

minor but apparently continuous silt layer, which we originally discarded as relevant. Bulk EC imaging suggests that this layer  
355 may play an important role. The transition zone is not located at the depth of the silt layer. This silt layer is the one separating  
the unconfined from the semi-confined aquifer. It is not, however, separating the freshwater from the saltwater. The saltwater  
intrusion zone begins 2 to 3 m below the silt layer, thus suggesting that a significant flux of fresh water occurs below this layer.  
This result is consistent with sandbox experiments of Castro-Alcalá (2019) who found that relatively minor heterogeneities  
may cause the saltwater wedge to split.

360 ~~Part of the reason why~~In addition, CHERT allowed us to improve the visualization of the SWI in comparison to traditional  
hydrology monitoring methods. Indeed, using traditional methods the silt layer ~~was not considered relevant~~~~lies on the difficulty~~  
~~of visualizing~~ would have been completely discarded as relevant, but the CHERT made possible the visualization of a non-  
monotonic salinity ~~profiles with traditional hydrology monitoring methods~~profile that confirms the importance of the heterogeneity.  
Specifically, salinity profiles in fully screened boreholes (such as PP20) are always monotonic (EC increases with depth) and  
365 rarely reach seawater salinity. Our imaging points out that actual salinity is non-monotonic and leads to the suggestion that it  
is the flow of buoyant freshwater within the borehole what explains both the observed step-wise increase in traditional salinity  
profiles and the fact that salinity is below that of seawater. The process is described by Folch et al. (2019) and by Martínez-Pérez  
et al. (2019), but visualization is only possible by ERT (and specifically CHERT ~~at that~~).

Weathered granite was found in the cores at the bottom of N1, below -17 m a.s.l. At this depth, the magnitude of the CHERT  
370 bulk EC model decreases. We can, thus, infer that the decrease in bulk EC at the base of piezometers N325 and N225 is related  
to the continuity of the crystalline formation. Loss of resolution below PP20 and PP15 does not allow us to infer anything  
about the presence of weathered granite towards the sea. From the available data, we conclude that the decrease in bulk EC  
observed in the images has two causes: first, an important change in lithology from gravel to weathered granite; and, second,  
a decrease in water EC observed in the water samples from N125, with respect to the water sample from N120 (Figure 910).  
375 The water EC values from N125 samples suggest that pore water is a mixture of fresh and saltwater. The granite is, most likely,  
not an impervious boundary for mixing processes, but merely another source of heterogeneity in the system. The existence of  
a freshwater from bottom layers of the model is yet to be explored, but it is consistent with the findings of Dewandel et al.  
(2006), who described frequent highly transmissive zones at the base of the weathered granite in numerous sites around the  
globe.

380 The conductive anomalies fade while moving away from the sea. Above -10 m a.s.l, the small conductive anomaly stops  
before PP15, and is no longer present around N325. Below -10 m a.s.l, the conductive anomaly is present until N325, but is  
weaker around N225. This diminishing trend in the reference model coincides with water EC values from piezometer N320  
being slightly higher than water EC from piezometer N220. We identify a vertical mixing zone, but also, a lateral mixing zone  
between nests N3 and N2.

385 In summary, by comparing CHERT bulk EC model, water EC measurements and the site stratigraphic columns, we are able  
to highlight several features. (1) The resistive anomaly observed at the top is certainly related to partial water saturation. (2) The  
seemingly continuous silt layer found at -9 m a.s.l in boreholes N225, N325 and N125 does not represent a freshwater-seawater  
boundary. The freshwater-seawater boundary appears 2 to 3 m below, which implies that the silt layer is a semi-confining layer

and freshwater discharges below. (3) There are not one but two saline bodies, one in each aquifer. The lower one is a traditional  
390 one, but the upper one is more complex and will be discussed in Section 6.4. (4) The conductivity value of the most conductive  
anomaly below -10 m a.s.l, interpreted as seawater-bearing formations, decreases at the top of the weathered granite. This  
decrease in bulk EC is explained by the reduction of water EC, and by a reduction in bulk EC due to the larger electrical  
formation factor of the granite. (5) CHERT bulk EC models show the location of a vertical transition zone, and also the extent  
of a lateral transition zone.

## 395 **6.3 Time-lapse study: long-term effects**

### **6.3.1 Seasonality: the natural dynamics**

The time evolution of the average bulk EC displayed in Figure 6-7 shows that there are months with a decrease in bulk EC  
conductivity and months with an increase in bulk EC conductivity. These months are correlated with rainy and dry periods, and  
also with the occurrence of storm surges. During summer and beginning of autumn, the conductivity increases slowly until the  
400 rain period starts; in autumn, during heavy rains, conductivity decreases; during winter months, conductivity increases due to  
sea storms; in spring, conductivity decreases, and it reaches its lowest point before the dry summer period begins again. In the  
deeper areas where seawater is already in place, average bulk EC does not show important variations.

### **6.3.2 The drought: long-term salinization**

The time-lapse ratio image from September 2017 (Figure 561), the average bulk EC at -12.5 m a.s.l (Figure 67) and the water EC  
405 measurements in the transition zone (Figure 910) indicate a clear increase of bulk EC in the lower aquifer since the beginning  
of the experiment.

We conjecture that this increase in water salinity is linked to the drought that started in 2015, and had not yet ended by  
November 2017. In recent years, drought occurs every 8 to 10 years, and last a few years. This is visible in Figure 10-11  
in years 2006/2007 and 2015/2016/2017. The effect of the decrease of freshwater recharge by rainfall is observed in the  
410 experimental results, in the form of salinization of the aquifers at a distance of 100 meters from the coastline. This result is  
corroborated by water EC from water samples taken at the piezometers. Overall increase in bulk EC is attributed to overall  
increase in water EC. While this is not surprising, what may come ~~to~~ as a surprise is the ~~relative~~ relatively slow response of  
salinization of SWI to weather fluctuations. No steady regime has been reached after three years and salinization continues.

## **6.4 Time-lapse study: short-term effects**

### 415 **6.4.1 The heavy rain: a freshwater event**

A 220 mm - a third of the region's average annual precipitation – rainfall event lasting less than a day occurred on October 12,  
2016. It was a catastrophic event that created human and material losses due to flooding. The Argentona stream is an ephemeral

stream that carries water a few days each year during monsoon-like rains, typically between September and December. A rainfall of this magnitude floods the Argenton stream, and the entire experimental site.

420 Do the CHERT images capture the effect of the heavy rain in the coastal aquifer? Figure 78a displays the difference in conductivity obtained by the tomography from 11 days before the rain and 9 days after the rain. The bulk EC ratio image reveals a decrease in the bulk EC in both upper and lower aquifers. In October 2016, according to Figure 67, the increase in bulk EC that was taking place was interrupted after this heavy rainfall.

To understand the change in bulk EC, we must think in terms of water masses. When an important precipitation event occurs, 425 freshwater flows through rivers and streams towards the sea. Inland, some freshwater infiltrates into the subsurface, pushing in-situ water masses down and to the sides. The displacement of “old water” creates space for the newly infiltrating fresh rainwater, and this movement enhances mixing processes. Offshore, surface and submarine groundwater discharge is occurring at the same time. The observed change in bulk EC is most likely the result of the mixture of old saltwater with rainwater in the aquifer, which creates a new water, that is still saline but less than before the rain event. However, despite the rainfall 430 magnitude, EC changes were neither dramatic nor long lasting.

The effect of the heavy rain that lasted only a few hours supports what was said in the drought section about this rain not being representative of the region’s precipitation. One sudden episode, even of this magnitude, is not enough to make a significant difference in the seawater intrusion pattern and in the aquifer’s long-term salinization.

#### 6.4.2 The storm: a saltwater event

435 From July 2015 to October 2016, CHERT experiments had conveyed that the most conductive anomaly was concentrated below the silt layer, but another strong conductive body appeared between nest N3 and borehole PP20 early in 2017.

The traditional SWI paradigm (Abarca et al., 2007; Henry, 1964) suggests that it is the freshwater head what drives the seawater-freshwater interface movement. When heads rise, the interface moves down and seawards because freshwater pushes saltwater seaward. When the groundwater table falls, the opposite occurs, and the seawater interface moves up and inland. The 440 work by Michael et al. (2005) explains how other mechanisms, besides seasonal exchanges, can promote seawater circulation enhancing the seawater intrusion and mixing. According to Michael et al. (2005), some of these mechanisms are: tides, wave run-up on the beach, and dispersion of saline water into freshwater discharge. In the Mediterranean Sea, tidal forcing is not a cause of important change in heads because the tidal amplitude is small (< 20 cm). Wave action and wind could drive changes in the sea level and thus in groundwater heads, but these effects are not long lasting.

445 A recent study by Huizer et al. (2017) about monitoring salinity changes in response to tides and storms in coastal aquifers showed, through surface ERT experiments, as well as flow and transport simulations, that storm surges can have a strong impact on groundwater salinity. In time-lapse images of the Argenton site, storms seem to be enhancing the conditions for seawater to move inland, through the most superficial layers (Figure 89a); and further infiltrate the soil from the surface through piezometer PP15, which is fully screened, and between nests N1 and N3. However, salinity increases from the top, rather than 450 from an interface. Therefore, we conclude that these changes in salinity are the result of storm surges, rather than from interface dynamics. In fact, six months later (Figure 89c), the unconfined aquifer has recovered, which implies a more dynamic system

in the superficial layers. The CHERT experiment seems to constitute a good tool for the monitoring of such phenomenon near the coast related to tides, wave run-up, and submarine groundwater discharge.

## 6.5 Model validation

455 Differences between bulk EC models obtained from induction logs and CHERT are attributed to the differences in location and in time of acquisition, considering they were performed neither at the same time nor at the exact same location.

The comparison of the bulk EC model with other independent data sources was very important to prove the reliability of the CHERT experiment. The use of other types of data such as induction logs and water EC from water samples have helped in increasing the confidence in the capabilities of the CHERT experiment for monitoring coastal aquifer dynamics. Water  
460 samples are taken only from screened piezometers or with the use of sophisticated isolating equipment. With water samples we can observe the increase in water EC in time and in space, but we can't know the depth of the interface or the lateral variations between wells. Induction logs reproduce similar data than the CHERT experiment, but only along piezometers. Interpolation techniques must be applied to IL data to obtain a 2D image. The CHERT experiment involves real interaction between boreholes, ~~and the interaction is taken into account in the imaging procedure.~~ Furthermore, although sensitivity is  
465 concentrated around the electrodes (Figure 4), we would like to stress that ERT (surface- or borehole-based) have sensitivity to the electrical conductivity outside of the array (so-called outer-space sensitivities) as studied by Maurer and Friedel (2006).

## 6.6 The CHERT experiment

The CHERT experiment, contrary to surface ERT, is an invasive procedure because it needs the installation of boreholes, which may affect local dynamics. For example, the vertical anomalies along piezometer PP15, better observed in Figure 78a  
470 and Figure 89a, are attributed to fluid flow through the annular space between the borehole and the formation. Borehole measurements are, nonetheless, necessary for subsurface exploration. We suggest an additional consideration when planning the position of the boreholes to use CHERT.

We are aware that a key point to consider when defining a CHERT experiment is the aspect ratio between the horizontal distance of the boreholes and the maximum vertical distance between the electrodes located in each borehole (e.g., LaBrecque et al. (1996)  
475 ). Ideally, we would look for small values of the aspect ratio, but the location of the boreholes was conditioned by several factors including logistics and requirements for other monitoring methods as well as experiments planned at the experimental site. Furthermore, there is a trade-off with the overall investigation area implying that larger borehole spacings are sometimes motivated. Beyond this, both the geology (Figure 1c and Figure 5) and the SWI display significant lateral continuity so that vertical resolution is more critical than the horizontal one. This is achieved by imposing stronger regularization constraints in  
480 the horizontal than in the vertical direction. The use of an optimized protocol to acquire a complete dataset in the least amount of time is recommended to capture dynamic processes with changes happening in a smaller time-step. This was not the objective of the CHERT monitoring experiment in Argentona from 2015 to 2017, but it is feasible (taking into consideration that metal corrosion will be accelerated by the injection of electric current, implying that the life of the instrument will be certainly shorter). Although surface ERT does not have enough resolution for the depth of interest, the combination of CHERT with

485 surface ERT is suggested to understand the most superficial layers of the subsurface. Future work will include hydrological modeling of density-dependent flow and transport at the Argenton site in order to reproduce the observed bulk electrical conductivity changes observed with the CHERT experiment. It is anticipated that this model can be used to predict future changes in the system.

## 7 Conclusions

490 The monitoring experiment using CHERT at the Argenton site, from July 2015 to September 2017, was successful in several aspects, regarding both geophysical imaging and SWI understanding:

- 1) The joint use of CHERT ~~increased the~~ and surface ERT increased the initial model resolution compared with only surface ERT. Comparison of CHERT inversion to salinity profiles from induction logs is excellent and validates the methodology.
- 2) The increase in resolution allowed us to image unexpected salinity changes both in the upper layers, and the lower layers  
495 with only limited loss of resolution with depth despite the high salinity of water.
- 3) Imaging of spatially fluctuating salinity has led to explaining the paradoxical salinity profiles often recorded in fully screened wells (step-wise increase but without reaching seawater salinity) as due to deep freshwater flowing up inside the well and mixing.
- 4) Time-lapse CHERT ~~has also been successful in capturing~~ captured long-term and short-term conductivity changes. Long-  
500 term changes ~~include~~ included (a) seasonal fluctuations of groundwater flux that cause the seawater-freshwater interface to move seawards during periods of high flux or landwards during periods of low flux; and (b) the long-term salinization of the lower aquifer due to an intense drought in the study area during the monitoring period. Short-term changes ~~include~~ included (a) a decrease in conductivity related to a heavy individual rain event of 220 mm of precipitation (a third of the annual average rainfall) in only one day; and (b) an increase in conductivity in the beach area, coinciding with storms that caused ~~strong winds~~  
505 ~~and~~ enhanced wave activity.

In short, employing CHERT at the Argenton site experiment proved to be a cost-effective and efficient tool to shed light on seawater intrusion dynamics through the analysis of bulk formation conductivity.

*Code and data availability.* Datasets and instructions to reproduce the CHERT experiment results will be made available for the scientific community through the H+ database (<http://hplus.ore.fr/en/>). Data will include surface ERT and time-lapse CHERT files, plus the necessary  
510 input files to run the time-lapse inversion in BERT and PyGIMLi.

*Video supplement.* A supplementary video has been produced to dynamically show the time-lapse evolution of the CHERT experiment at the Argenton site.

*Competing interests.* The authors declare that they have no conflict of interest.

515 *Acknowledgements.* We wish to recognize the contribution of all the members of the MEDISTRAES I and II project, from the Groundwater Hydrology Group of the Barcelona Tech University (UPC) and the Spanish National Research Council (CSIC), the Autonomous University of Barcelona (UAB), the University of Barcelona (UB), the Geosciences and HydroSciences Montpellier Laboratories, and the University of Rennes, for their support during experimental laboratory tests, the Argenton site creation, the setup of the electrodes during boreholes installation and during acquisitions; for ensuring site maintenance, and for the fruitful discussions that led to the hydrological interpretation of the geophysical images.

520 ~~This work was funded by the project CGL2016-77122-C2-1-R/2-R of the Spanish Government.~~ We would like to thank SIMMAR (Serveis Integrals de Manteniment del Maresme) and the Consell Comarcal del Maresme in the construction of the research site. ~~This project~~  
[This work was funded by the project CGL2016-77122-C2-1-R/2-R of the Spanish Government. This project](#) also received funding from the European Union's Horizon 2020 research and innovation programme under the Marie Skłodowska-Curie Grant Agreement No 722028.



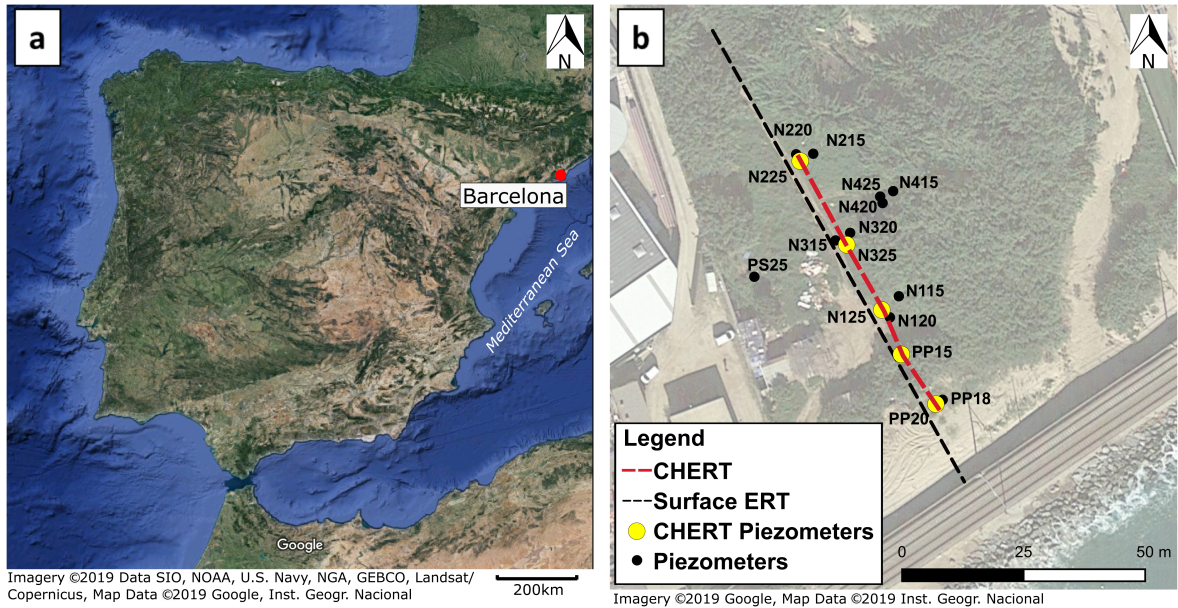
## References

- 525 Abarca, E., Carrera, J., Sánchez-Vila, X., and Dentz, M.: Anisotropic dispersive Henry problem, *Adv. Water Resour.*, 30, 913–926, <https://doi.org/10.1016/j.advwatres.2006.08.005>, 2007.
- Ainsworth, T.: When Do Ocean Waves Become 'Significant'? A Closer Look at Wave Forecasts, Tech. Rep. 1, <https://www.vos.noaa.gov/MWL/apr{ }06/waves.shtml>, 2006.
- al Hagrey, S. A.: 2D Model Study of CO<sub>2</sub> Plumes in Saline Reservoirs by Borehole Resistivity Tomography, *Int. J. Geophys.*, 2011,   
530 <https://doi.org/10.1155/2011/805059>, 2011.
- Beaujean, J., Nguyen, F., Kemna, A., Antonsson, A., and Engesgaard, P.: Calibration of seawater intrusion models: Inverse parameter estimation using surface electrical resistivity tomography and borehole data, *Water Resour. Res.*, 50, 6828–6849, <https://doi.org/10.1002/2013WR014020>, 2014.
- Bellmunt, F. and Marcuello, A.: Method to obtain standard pseudosections from pseudo pole–dipole arrays, *J. Appl. Geophys.*, 75, 419–430,   
535 <https://doi.org/10.1016/J.JAPPGEO.2011.07.020>, 2011.
- Bellmunt, F., Marcuello, A., Ledo, J., Queralt, P., Falgàs, E., Benjumea, B., Velasco, V., and Vázquez-Suñé, E.: Time-lapse cross-hole electrical resistivity tomography monitoring effects of an urban tunnel, *J. Appl. Geophys.*, 87, 60–70, <https://doi.org/10.1016/j.jappgeo.2012.09.003>, 2012.
- Bellmunt, F., Marcuello, A., Ledo, J., and Queralt, P.: Capability of cross-hole electrical configurations for monitoring rapid plume migration   
540 experiments, *J. Appl. Geophys.*, 124, 73–82, <https://doi.org/10.1016/J.JAPPGEO.2015.11.010>, 2016.
- Bergmann, P., Schmidt-Hattenberger, C., Kiessling, D., Rucker, C., Labitzke, T., Henniges, J., Baumann, G., and Schütt, H.: Surface-downhole electrical resistivity tomography applied to monitoring of CO<sub>2</sub> storage at Ketzin, Germany, *Geophysics*, 77, <https://doi.org/10.1190/geo2011-0515.1>, 2012.
- Bussian, A. E.: Electrical conductance in a porous medium, *Geophysics*, 48, 1258–1268, <https://doi.org/10.1190/1.1441549>, <https://dx.doi.org/10.1190/1.1441549>, 1983.   
545
- Carrera, J., Hidalgo, J. J., Slooten, L. J., and Vázquez-Suñé, E.: Computational and conceptual issues in the calibration of seawater intrusion models, *Hydrogeol. J.*, 18, 131–145, <https://doi.org/10.1007/s10040-009-0524-1>, 2010.
- Castro-Alcalá, E.: Laboratory experiments to evaluate the joint effect between heterogeneity and head fluctuation on mixing, effective porosity and tailing, Ph.D. thesis, UPC, Escola Tècnica Superior d'Enginyers de Camins, Canals i Ports de Barcelona, <http://hdl.handle.net/2117/134623>, 2019.   
550
- Chasseriau, P. and Chouteau, M.: 3D gravity inversion using a model of parameter covariance, *J. Appl. Geophys.*, 52, 59–74, [https://doi.org/10.1016/S0926-9851\(02\)00240-9](https://doi.org/10.1016/S0926-9851(02)00240-9), 2003.
- Constable, S. C., Parker, R., and Constable, C.: Occam's inversion: A practical algorithm for generating smooth models from electromagnetic sounding data, *Geophysics*, 52, 289–300, <https://doi.org/10.1190/1.1442303>, 1987.
- 555 Costall, A., Harris, B., and Pigois, J. P.: Electrical resistivity imaging and the saline water interface in high-quality coastal aquifers, *Surv. Geophys.*, 39, 753–816, <https://doi.org/10.1007/s10712-018-9468-0>, <https://doi.org/10.1007/s10712-018-9468-0>, 2018.
- Daily, W., Ramirez, A., LaBrecque, D., and Nitao, J.: Electrical resistivity tomography of vadose water movement, *Water Resour. Res.*, 28, 1429–1442, <https://doi.org/10.1029/91WR03087>, 1992.

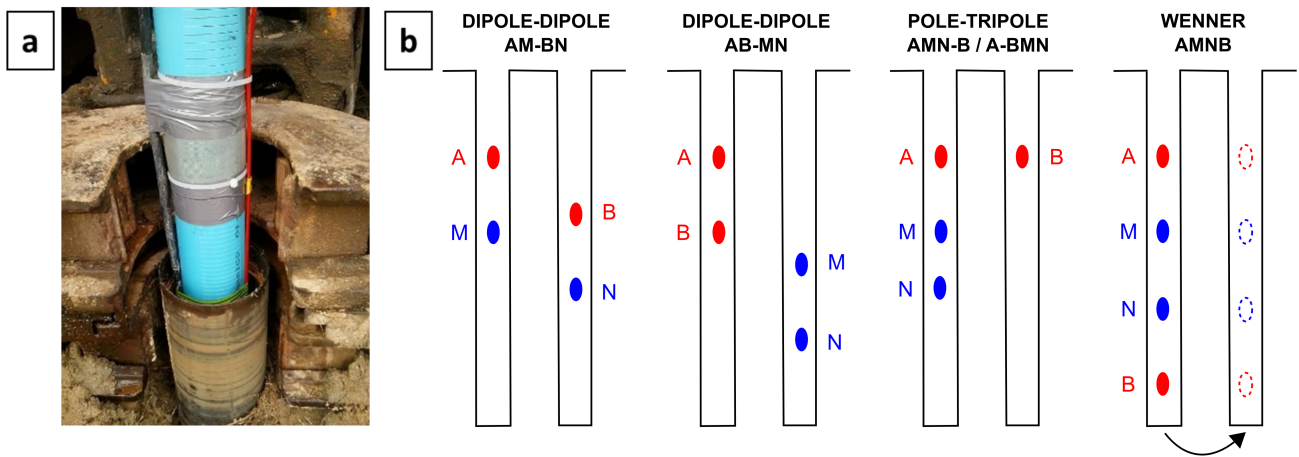
- de Franco, R., Biella, G., Tosi, L., Teatini, P., Lozej, A., Chiozzotto, B., Giada, M., Rizzetto, F., Claude, C., Mayer, A., Bassan, V., Gaspar, and  
560 Etto-Stori, G.: Monitoring the saltwater intrusion by time lapse electrical resistivity tomography: The Chioggia test site (Venice Lagoon,  
Italy), *J. Appl. Geophys.*, 69, 117–130, <https://doi.org/10.1016/j.jappgeo.2009.08.004>, 2009.
- Dewandel, B., Lachassagne, P., Wyns, R., Maréchal, J. C., and Krishnamurthy, N. S.: A generalized 3-D geological and hy-  
drogeological conceptual model of granite aquifers controlled by single or multiphase weathering, *J. Hydrol.*, 330, 260–284,  
<https://doi.org/10.1016/j.jhydrol.2006.03.026>, 2006.
- 565 Dietrich, S., Carrera, J., Weinzettel, P., and Sierra, L.: Estimation of Specific Yield and its Variability by Electrical Resistivity Tomography,  
*Water Resour. Res.*, 54, 8653–8673, <https://doi.org/10.1029/2018WR022938>, 2018.
- Doetsch, J., Linde, N., Vogt, T., Binley, A., and Green, A. G.: Imaging and quantifying salt-tracer transport in a riparian groundwater system  
by means of 3D ERT monitoring, *GEOPHYSICS*, 77, B207–B218, <https://doi.org/10.1190/geo2012-0046.1>, <http://library.seg.org/doi/10.1190/geo2012-0046.1>, 2012.
- 570 Falgàs, E., Ledo, J., Marcuello, A., and Queralt, P.: Monitoring freshwater-seawater interface dynamics with audiomagnetotelluric data, *Near  
Surf. Geophys.*, 7, 391–399, <https://doi.org/10.3997/1873-0604.2009038>, 2009.
- Falgàs, E., Ledo, J., Benjumea, B., Queralt, P., Marcuello, A., Teixidó, T., and Martí, A.: Integrating hydrogeological and geophysical  
methods for the characterization of a deltaic aquifer system, *Surv. Geophys.*, 32, 857–873, <https://doi.org/10.1007/s10712-011-9126-2>,  
2011.
- 575 Flores-Orozco, A., Kemna, A., and Zimmermann, E.: Data error quantification in spectral induced polarization imaging, *GEOPHYSICS*, 77,  
E227–E237, <https://doi.org/10.1190/geo2010-0194.1>, <https://doi.org/10.1190/geo2010-0194.1>, 2012.
- Folch, A., del Val, L., Luquot, L., Martínez-Pérez, F., Bellmunt, F., Le Lay, H., Rodellas, V., Ferrer, N., Palacios, A., Fernández, S., Marazuela,  
M. A., Diego-Feliu, M., Pool, M., Goyetche, T., Ledo, J., Pezard, P., Bour, O., Queralt, P., Marcuello, A., Garcia-Orellana, J., Saaltink,  
M., Vazquez-Suñe, E., and Carrera, J.: Combining Fiber Optic (FO-DTS), CHERT and time-lapse formation electrical conductivity to  
580 characterize and monitor a coastal aquifer, 2019.
- Goebel, M., Pidlisecky, A., and Knight, R.: Resistivity imaging reveals complex pattern of saltwater intrusion along Mon-  
terey coast, *J. Hydrol.*, 551, 746–755, <https://doi.org/10.1016/j.jhydrol.2017.02.037>, <https://www.sciencedirect.com/science/article/pii/S0022169417301154>, 2017.
- Günther, T., Rücker, C., and Spitzer, K.: Three-dimensional modelling and inversion of dc resistivity data incorporating topography —  
585 II. Inversion, *Geophys. J. Int.*, 166, 506–517, <https://doi.org/10.1111/j.1365-246X.2006.03011.x>, <http://dx.doi.org/10.1111/j.1365-246X.2006.03011.x>, 2006.
- Henry, H.: Effect of Dispersion on Salt Encroachment in Coastal Aquifers, *U.S. Geol. Surv. Water-Supply, Paper 1613*, 70–84, 1964.
- Hermans, T., Vandenhede, A., Lebbe, L., Martin, R., Kemna, A., Beaujean, J., and Nguyen, F.: Imaging artificial salt  
water infiltration using electrical resistivity tomography constrained by geostatistical data, *J. Hydrol.*, 438-439, 168–180,  
590 <https://doi.org/10.1016/j.jhydrol.2012.03.021>, 2012.
- Hermans, T., Kemna, A., and Nguyen, F.: Covariance-constrained difference inversion of time-lapse electrical resistivity tomography data,  
*GEOPHYSICS*, 81, E311–E322, <https://doi.org/10.1190/geo2015-0491.1>, 2016.
- Huizer, S., Karaoulis, M. C., Oude Essink, G. H., and Bierkens, M. F.: Monitoring and simulation of salinity changes in response to tide and  
storm surges in a sandy coastal aquifer system, *Water Resour. Res.*, 53, 6487–6509, <https://doi.org/10.1002/2016WR020339>, 2017.

- 595 Jordi, C., Doetsch, J., Günther, T., Schmelzbach, C., and Robertsson, J. O. A.: Geostatistical regularization operators for geophysical inverse problems on irregular meshes, *Geophys. J. Int.*, 213, 1374–1386, <https://doi.org/10.1093/gji/ggy055>, <http://dx.doi.org/10.1093/gji/ggy055>, 2018.
- Karaoulis, M. C., Kim, J. H., and Tsourlos, P. I.: 4D active time constrained resistivity inversion, *J. Appl. Geophys.*, 73, 25–34, <https://doi.org/10.1016/j.jappgeo.2010.11.002>, 2011.
- 600 Kiessling, D., Schmidt-Hattenberger, C., Schuett, H., Schilling, F., Krueger, K., Schoebel, B., Danckwardt, E., and Kummerow, J.: Geoelectrical methods for monitoring geological CO<sub>2</sub> storage: First results from cross-hole and surface–downhole measurements from the CO<sub>2</sub>SINK test site at Ketzin (Germany), *Int. J. Greenh. Gas Control*, 4, 816–826, <https://doi.org/10.1016/J.IJGGC.2010.05.001>, 2010.
- Kitanidis, P. K.: Introduction to Geostatistics: Applications in Hydrogeology, <https://doi.org/10.1017/CBO9780511626166>, 1997.
- Koestel, J., Kemna, A., Javaux, M., Binley, A., and Vereecken, H.: Quantitative imaging of solute transport in an unsaturated and undisturbed soil monolith with 3-D ERT and TDR, *Water Resour. Res.*, 44, <https://doi.org/10.1029/2007WR006755>, 2008.
- 605 LaBrecque, D. and Yang, X.: Difference Inversion of ERT Data: a Fast Inversion Method for 3-D In Situ Monitoring, *J. Environ. Eng. Geophys. - J. Env. ENG Geophys*, 6, <https://doi.org/10.4133/JEEG6.2.83>, 2001.
- LaBrecque, D. J., Ramirez, A. L., Daily, W. D., Binley, A. M., and Schima, S. A.: ERT monitoring of environmental remediation processes, *Meas. Sci. Technol.*, 7, 375–383, <https://doi.org/10.1088/0957-0233/7/3/019>, 1996.
- 610 Leontarakis, K. and Apostolopoulos, G. V.: Laboratory study of the cross-hole resistivity tomography: The Model Stacking (MOST) Technique, *J. Appl. Geophys.*, 80, 67–82, <https://doi.org/10.1016/j.jappgeo.2012.01.005>, 2012.
- Lesmes, D. P. and Friedman, S. P.: Relationships between the Electrical and Hydrogeological Properties of Rocks and Soils, in: *Hydrogeophysics*, edited by Rubin Yoram, , and Hubbard, S. S., pp. 87–128, Springer Netherlands, Dordrecht, [https://doi.org/10.1007/1-4020-3102-5\\_4](https://doi.org/10.1007/1-4020-3102-5_4), <https://doi.org/10.1007/1-4020-3102-5{ }4>, 2005.
- 615 Linde, N., Binley, A., Tryggvason, A., Pedersen, L. B., and Revil, A.: Improved hydrogeophysical characterization using joint inversion of cross-hole electrical resistance and ground-penetrating radar travelttime data, *Water Resour. Res.*, 42, W12404, <https://doi.org/10.1029/2006WR005131>, 2006.
- Loke, M. H.: Constrained Time-Lapse Resistivity Imaging Inversion, in: *Symp. Appl. Geophys. to Eng. Environ. Probl.* 2001, pp. EEM7–EEM7, <https://doi.org/10.4133/1.2922877>, <https://library.seg.org/doi/abs/10.4133/1.2922877>, 2008.
- 620 Martínez-Pérez, L., Marazuela, M. A., Goyetche, T., Luquot, L., Folch, A., del Val, L., Diego-Feliu, M., Palacios, A., Ferrer, N., Rodellas, V., Bellmunt, F., Ledo, J., Pool, M., Garcia-Orellana, J., Pezard, P., Saaltink, M., Vazquez-Suñe, E., and Carrera, J.: Facing geological heterogeneity impact at the Argenton experimental site, 2019.
- Maurer, H. and Friedel, S.: Outer-space sensitivities in geoelectrical tomography, *GEOPHYSICS*, 71, G93–G96, <https://doi.org/10.1190/1.2194891>, <https://doi.org/10.1190/1.2194891>, 2006.
- 625 Michael, H. A., Mulligan, A. E., and Harvey, C. F.: Seasonal oscillations in water exchange between aquifers and the coastal ocean, *Nature*, 436, 1145–1148, <https://doi.org/10.1038/nature03935>, 2005.
- Michael, H. A., Post, V. E., Wilson, A. M., and Werner, A. D.: Science, society, and the coastal groundwater squeeze, *Water Resour. Res.*, 53, 2610–2617, <https://doi.org/10.1002/2017WR020851>, 2017.
- Miller, C. R., Routh, P. S., Brosten, T. R., and McNamara, J. P.: Application of time-lapse ERT imaging to watershed characterization, *Geophysics*, 73, <https://doi.org/10.1190/1.2907156>, 2008.
- 630 Nguyen, F., Kemna, A., Antonsson, A., Engesgaard, P., Kuras, O., Ogilvy, R., Gisbert, J., Jorretto, S., and Pulido-Bosch, A.: Characterization of seawater intrusion using 2D electrical imaging, *Near Surf. Geophys.*, 7, 377–390, <https://doi.org/10.3997/1873-0604.2009025>, 2009.

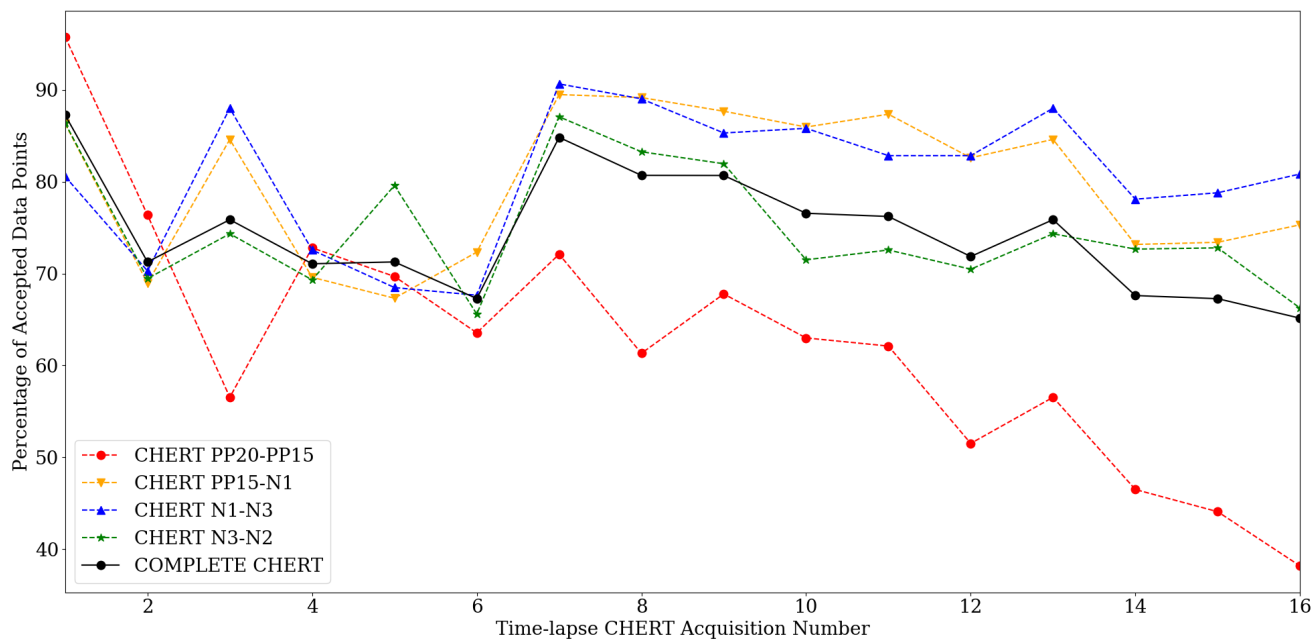
- Oberdörster, C., Vanderborght, J., Kemna, A., and Vereecken, H.: Investigating Preferential Flow Processes in a Forest Soil Using Time Domain Reflectometry and Electrical Resistivity Tomography, *Vadose Zo. J.*, 9, 350–361, <https://doi.org/10.2136/vzj2009.0073>, 2010.
- 635 Post, V. E. and Werner, A. D.: Coastal aquifers: Scientific advances in the face of global environmental challenges, *J. Hydrol.*, 551, 1–3, <https://doi.org/10.1016/j.jhydrol.2017.04.046>, 2017.
- Post, V. E. A.: Fresh and saline groundwater interaction in coastal aquifers: Is our technology ready for the problems ahead?, *Hydrogeol. J.*, 13, 120–123, <https://doi.org/10.1007/s10040-004-0417-2>, 2005.
- Purvance, D. T. and Andricevic, R.: On the electrical-hydraulic conductivity correlation in aquifers, *Water Resour. Res.*, 36, 2905–2913, 640 <https://doi.org/10.1029/2000WR900165>, 2000.
- Rücker, C., Günther, T., and Spitzer, K.: Three-dimensional modelling and inversion of dc resistivity data incorporating topography - I. Modelling, *Geophys. J. Int.*, 166, 495–505, <https://doi.org/10.1111/j.1365-246X.2006.03010.x>, <http://dx.doi.org/10.1111/j.1365-246X.2006.03010.x>, 2006.
- Rücker, C., Günther, T., and Wagner, F. M.: pyGIMLi: An open-source library for modelling and inversion in geophysics, *Comput. Geosci.*, 645 109, 106–123, <https://doi.org/10.1016/j.cageo.2017.07.011>, 2017.
- Schmidt-Hattenberger, C., Bergmann, P., Bösing, D., Labitzke, T., Möller, M., Schröder, S., Wagner, F., and Schütt, H.: Electrical resistivity tomography (ERT) for monitoring of CO<sub>2</sub> migration - From tool development to reservoir surveillance at the Ketzin pilot site, in: *Energy Procedia*, pp. 4268–4275, <https://doi.org/10.1016/j.egypro.2013.06.329>, 2013.
- Sen, P. N. and Goode, P. A.: Influence of temperature on electrical conductivity on shaly sands, *GEOPHYSICS*, 57, 89–96, 650 <https://doi.org/10.1190/1.1443191>, <https://doi.org/10.1190/1.1443191>, 1992.
- Shalev, E., Lazar, A., Wollman, S., Kington, S., Yechieli, Y., and Gvirtzman, H.: Biased monitoring of fresh water-salt water mixing zone in coastal aquifers, *Groundwater*, 47, 49–56, <https://doi.org/10.1111/j.1745-6584.2008.00502.x>, 2009.
- Singha, K., Day-Lewis, F. D., Johnson, T., and Slater, L. D.: Advances in interpretation of subsurface processes with time-lapse electrical imaging, *Hydrol. Process.*, 29, 1549–1576, <https://doi.org/10.1002/hyp.10280>, 2014.
- 655 Slater, L., Binley, A., Daily, W., and Johnson, R.: Cross-hole electrical imaging of a controlled saline tracer injection, *J. Appl. Geophys.*, 44, 85–102, [https://doi.org/10.1016/S0926-9851\(00\)00002-1](https://doi.org/10.1016/S0926-9851(00)00002-1), 2000.
- Sutter, E. and Ingham, M.: Seasonal saline intrusion monitoring of a shallow coastal aquifer using time-lapse DC resistivity traversing, *Near Surf. Geophys.*, 15, 59–73, <https://doi.org/10.3997/1873-0604.2016039>, 2017.
- Tarallo, D., Fiore, V. D., Cavuoto, G., Pelosi, N., Punzo, M., Giordano, L., and Marsella, E.: 4D Monitoring of sea water intrusion by 660 Electrical Resistivity Tomography: case study in the coastal alluvial plain of the Volturno River, Italy, Tech. rep., <https://www.researchgate.net/publication/269086309>, 2014.
- WAMDI Group: The WAM Model - A Third Generation Ocean Wave Prediction Model, *J. Phys. Oceanogr.*, 18, 1775–1810, [https://doi.org/10.1175/1520-0485\(1988\)018<1775:TWMGTGO>2.0.CO;2](https://doi.org/10.1175/1520-0485(1988)018<1775:TWMGTGO>2.0.CO;2), 1988.
- Waxman, M. H. and Smits, L. M.: Electrical conductivities in oil-bearing shaly sands, *Soc. Pet. Eng. J.*, 8, 107–122, 665 <https://doi.org/10.2118/1863-A>, 1968.
- Zarroca, M., Bach, J., Linares, R., and Pellicer, X.: Electrical methods (VES and ERT) for identifying, mapping and monitoring different saline domains in a coastal plain region (Alt Empordà, Northern Spain), *J. Hydrol.*, 409, 407–422, <https://doi.org/10.1016/j.jhydrol.2011.08.052>, 2011.
- Zhou, B. and Greenhalgh, S. A.: Cross-hole resistivity tomography using different electrode configurations, *Geophys. Prospect.*, 48, 887–912, 670 <https://doi.org/10.1046/j.1365-2478.2000.00220.x>, 2000.



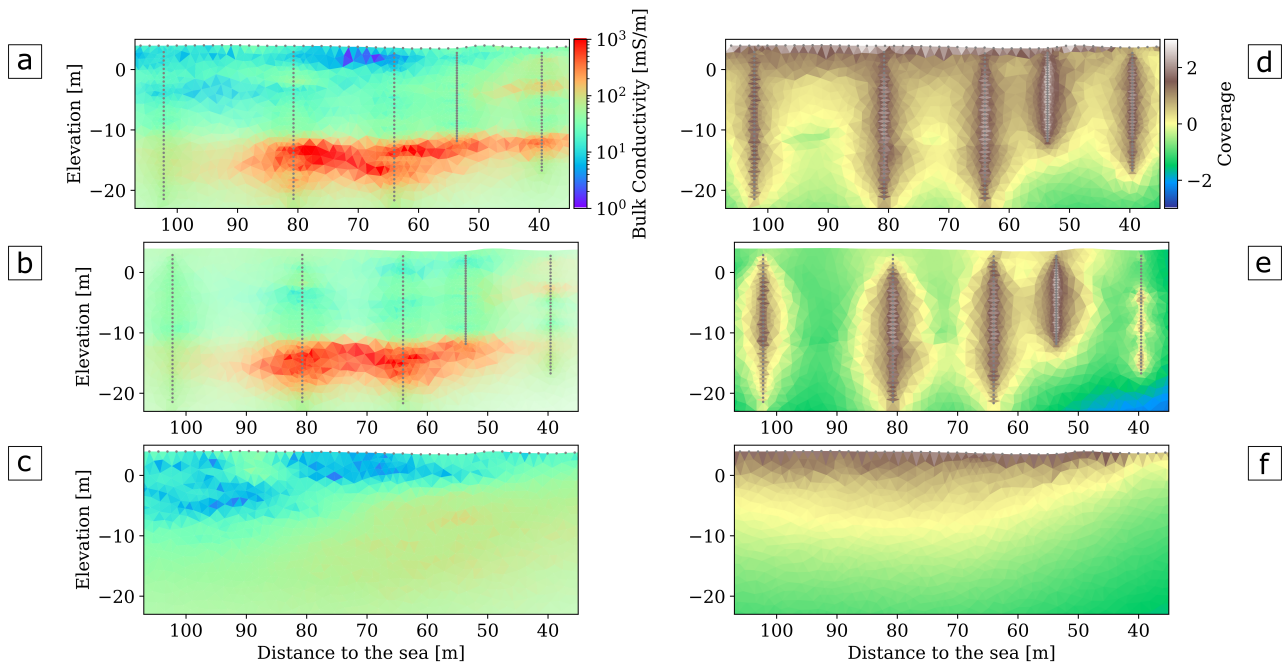
**Figure 1.** (a) Location map of the Argenton site, some 30 km northeast of Barcelona, Spain. (b) Field spread of the Argenton site, installed piezometers (black dots), piezometers equipped with electrodes (yellow dots), surface ERT and CHERT transects. (c) Vertical cross-section showing piezometers with screened depth, location of the 36 electrodes in each well and stratigraphic correlation (modified from Martínez-Pérez et al. (2019)). Two sandy aquifers are loosely separated by a silt layer at 12 m depth. The semi-confined aquifer is underlain by weathered granite.



**Figure 2.** (a) Stainless-steel meshes (electrodes) permanently fastened around PVC piezometers for time-lapse CHERT experiment during piezometer installation. (b) Electrode configurations used in the survey. A total of 5843 measurements are recorded per CHERT in less than 30 minutes. Data is acquired sequentially by considering one pair of neighbouring boreholes at the time. 4 CHERT are needed to build a complete CHERT, the whole 2D transect from boreholes N225 to PP20.

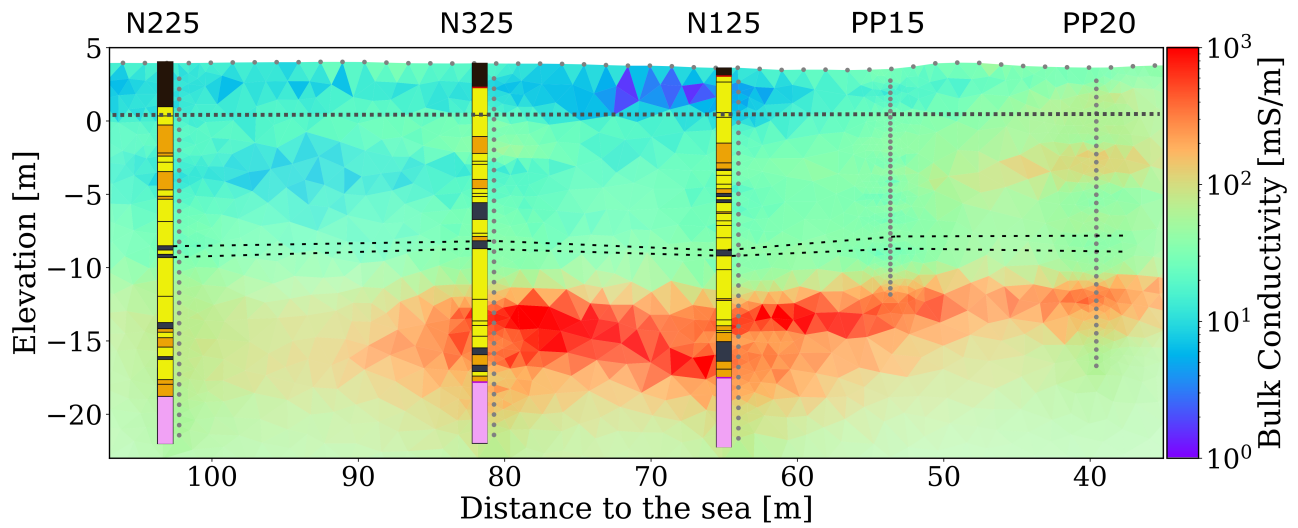


**Figure 3.** Percentage of accepted data points in each CHERT, after quality control during data pre-processing. Note the decrease in the amount of accepted data with time, most likely due to electrodes corrosion, particularly in the PP20-PP15 panel, which is closer to the sea.

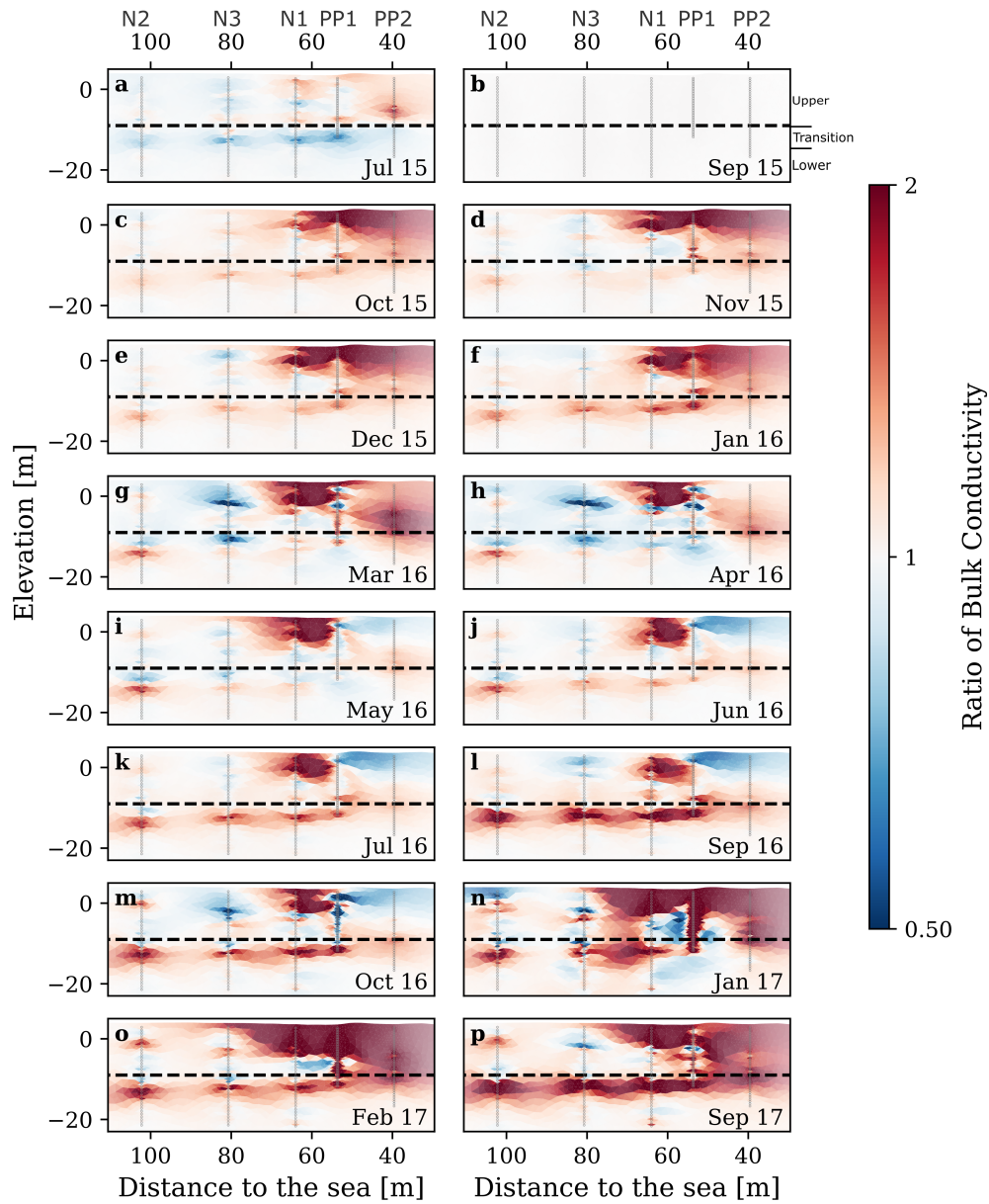


**Figure 4.** Bulk electrical conductivity models obtained by the inversion of the CHERT and surface-based ERT data (a), the result when only considering the complete CHERT (b) and only the surface ERT (c) with the corresponding calculated coverages for each model (d-f). The complete CHERT model shows conductive anomalies (in red), which are not shown by the surface ERT model. The inversion of both datasets combines the coverages and yields an image with higher resolution near the surface and in depth (d).

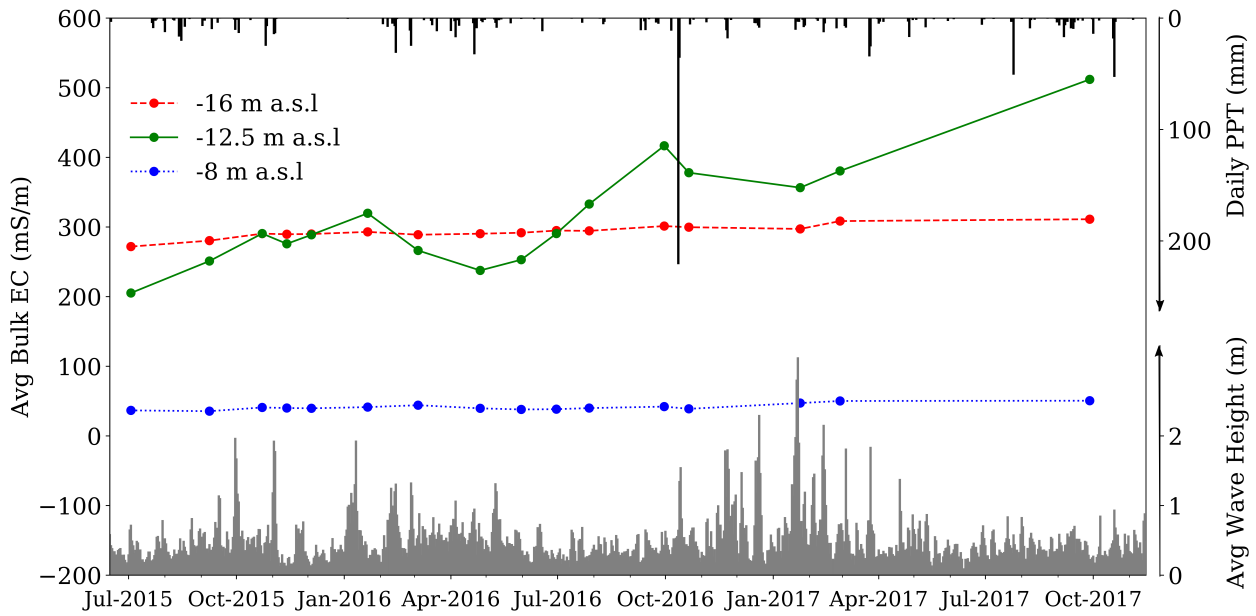




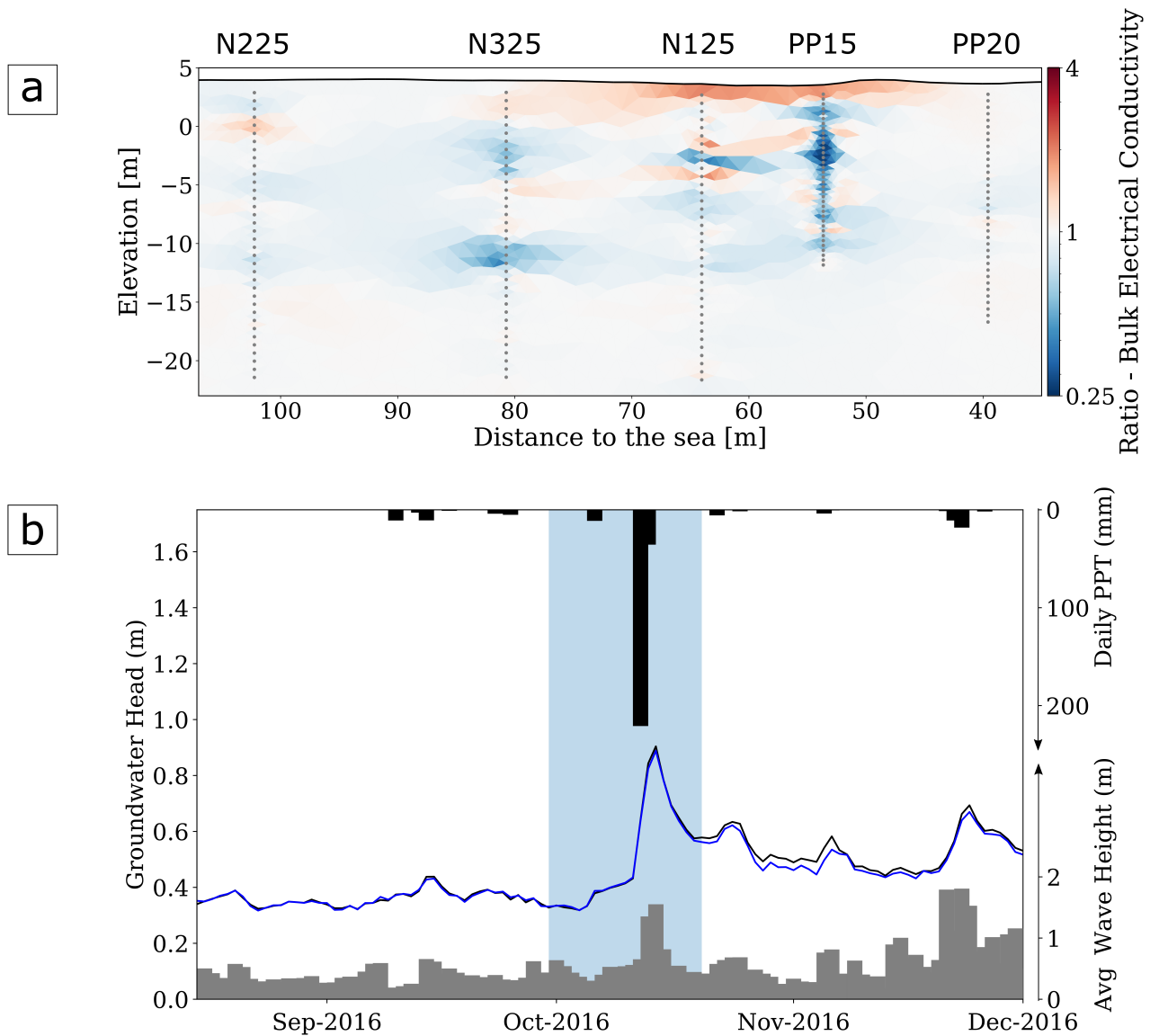
**Figure 5.** Result from the inversion of surface and cross-hole ERT (dataset from September 8th, 2015). Stratigraphic columns are shown to relate stratigraphic units with bulk conductivities. Grey dots represent the electrodes around the boreholes and on surface. Grey dashed line indicates the approximate groundwater table. Black dashed line indicates the silt layer. This cross-section is used as reference model in the time-lapse inversion.



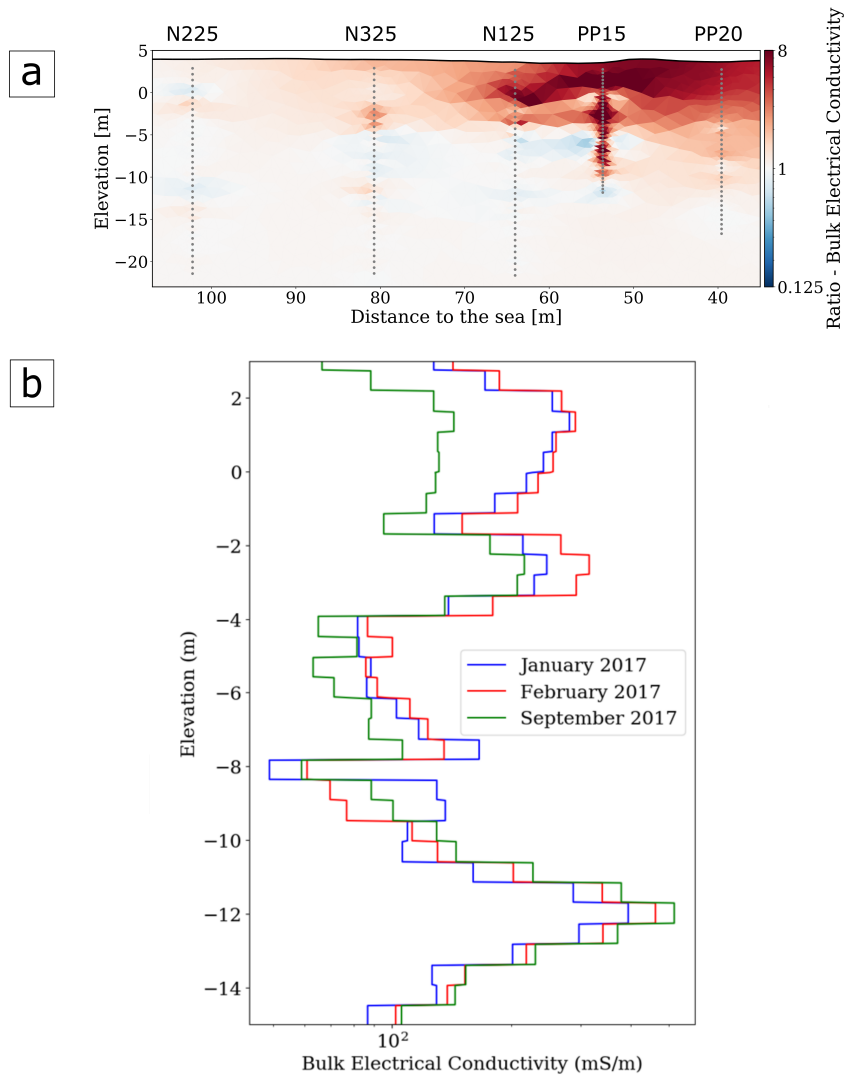
**Figure 6.** Results from the time-lapse inversion of 16 complete CHERT acquired during 2 years (July 2015 through September 2017). Images display the ratio of bulk electrical conductivity with respect to September 2015 (a brownish area implies higher EC and, therefore, salinity than in September, 2015). The silt layer is indicated with a dashed line. Note the increase in bulk EC in the upper-right side (<80 m of distance to the sea), and along a line just below the silt layer, indicating a rise in the saltwater interface.



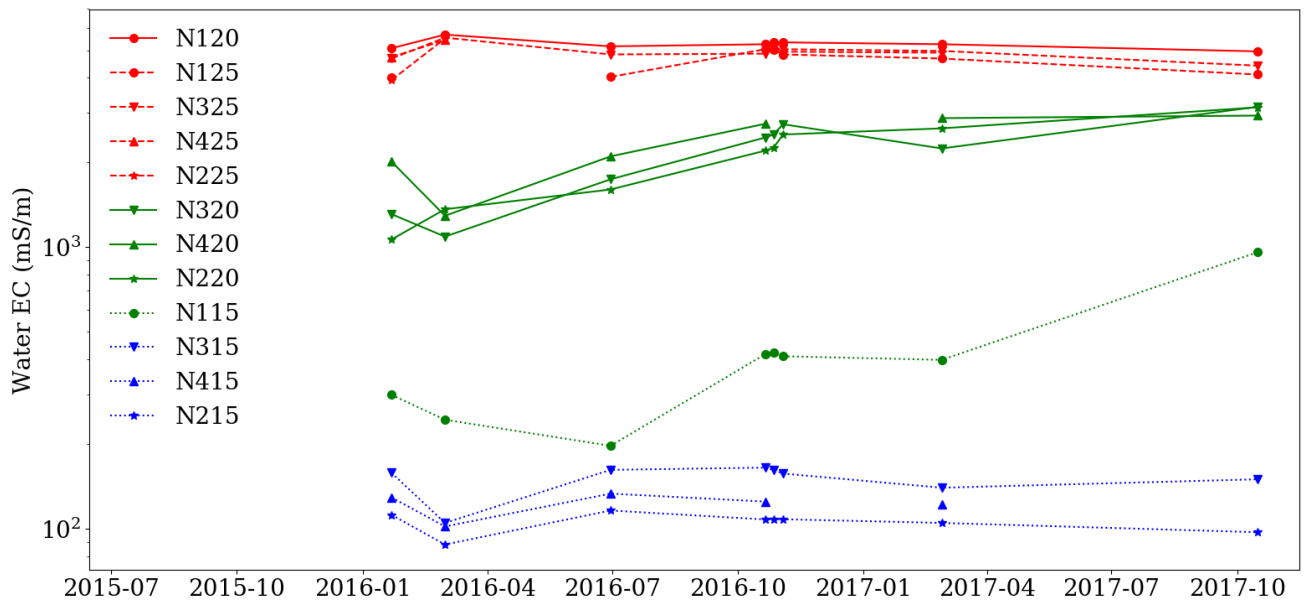
**Figure 7.** Average conductivities extracted from the inverted models, at -8 m a.s.l (blue), -12.5 m a.s.l (green) and -16 m a.s.l (red). Precipitation (PPT) data from Cabrils station and simulated significant wave height time-series are displayed. The points indicate times of CHERT campaigns. Note that acquisitions were made before and after the 220 mm precipitation event of October 12, 2016. Significant seasonal fluctuations and an overall increase of EC can be seen in the upper part of the semiconfined aquifer (elevation of -12 m a.s.l), but are negligible in the lower portion of both the shallow unconfined aquifer (-8 m a.s.l) and the semi-confined aquifer (-16 m a.s.l).



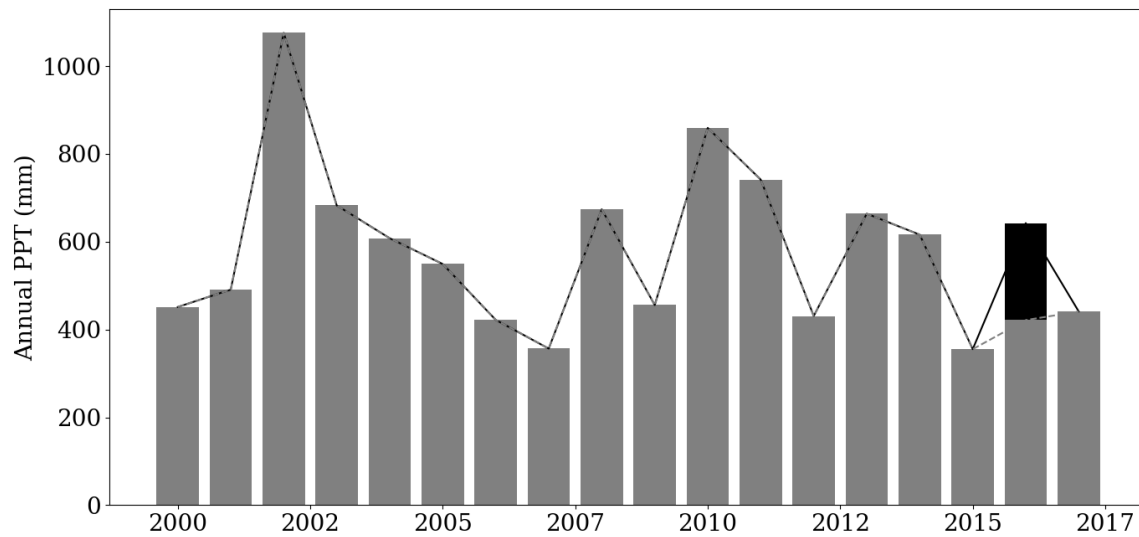
**Figure 8.** (a) Ratio between the bulk electrical conductivity model of September 30 and October 21, 2016. The heavy rain occurred on October 12, 2016. The image shows a decrease in conductivity in the unconfined and semi-confined aquifer and a conductivity increase in the unsaturated zone on both sides of nest N1. The decrease in conductivity observed along borehole PP15 is attributed to freshwater infiltration due to borehole construction. (b) Time-series of groundwater level in boreholes N115, average significant wave height (grey bars) and precipitation (black bars). Highlighted is the heavy rain event of 220mm that occurred on October 12, 2016. The event was accompanied with an increase in groundwater level and in significant wave height.



**Figure 9.** (a) Ratio of October 2016 to February 2017 CHERT ECs. (b) ~~Precipitation records (black bars), wind velocity (solid black line) and significant wave height (grey bars) simulated data from December 2016 to April 2017.~~ Extraction of CHERT bulk EC profiles along PP20. The winter period with ~~strong winds and~~ higher significant wave heights is marked by a twofold increase in bulk electrical conductivity values from the coastline until 90 m from the coastline. ~~Wind velocities doubled, and strong winds were accompanied with higher waves.~~ The extractions in (eb) show the bulk EC in the upper layers during winter (200 mS/m), and the recovery 6 months after winter (100 mS/m). The extractions also evidence the increase in conductivity in the lower aquifer.

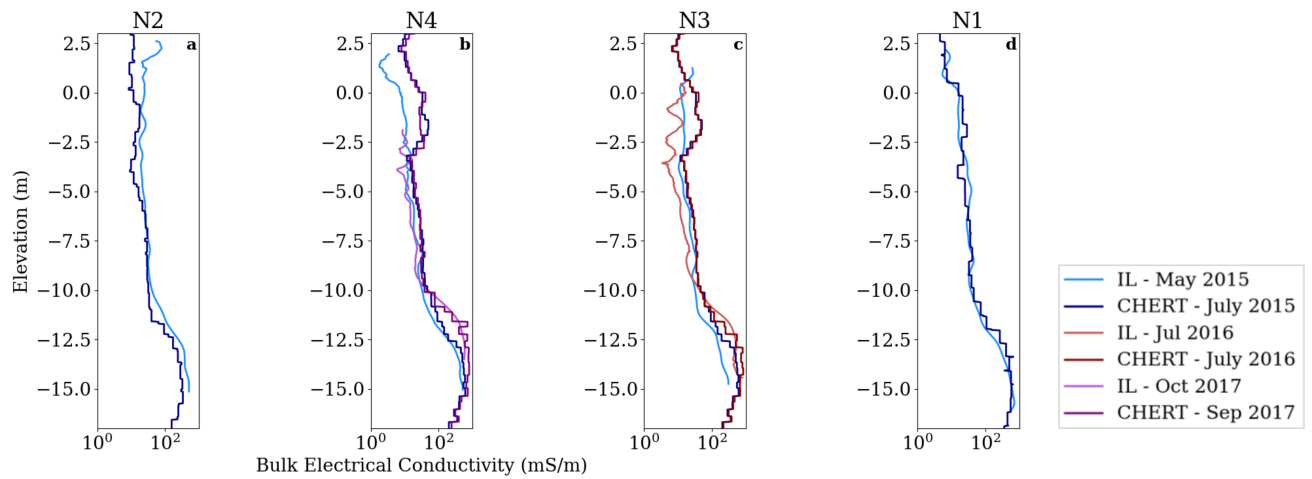


**Figure 10.** Water electrical conductivity measurements taken on water samples from piezometers in nests N1, N2, N3, and N4. The piezometers are grouped according to the elevation of the screened intervals: “upper” (blue, -7 to -10 m a.s.l), “transition” (green, -11.5 to -13.5 m a.s.l) and “lower” (red, -15.5 to -18.5 m a.s.l), where EC is that of seawater.



**Figure 11.** Annual precipitation since 2000 from Cabrils weather station, 7 kilometers northeast from the site. Average precipitation is 584,1 mm (dashed line). Note that the monitoring period is below the average. The black bar in 2016 represents the 220 mm rain event of October 12, which probably produced relatively less recharge than typical rainfalls.

Comparison of bulk electrical conductivity models obtained from induction logs and CHERT along piezometers in nests N2 (a), N4 (b), N3 (c) and N1 (d). The CHERT logs were extracted from the CHERT bulk EC models along the



boreholes.

**Figure 12.** Comparison of bulk electrical conductivity models obtained from induction logs and CHERT along piezometers in nests N2 (a), N4 (b), N3 (c) and N1 (d). The CHERT logs were extracted from the CHERT bulk EC models along the boreholes.