

Dear editor,

Thank you for your time and the detailed suggestions. We have revised the minor technical issues carefully.

Xudong Chen

# A novel data-driven analytical framework on hierarchical water allocation integrated with blue and virtual water transfers

Liming Yao<sup>1,2</sup>, Zhongwen Xu<sup>1</sup>, Huijuan Wu<sup>3</sup>, and Xudong Chen<sup>1</sup>

<sup>1</sup>Business School, Sichuan University, Chengdu 610064, China

<sup>2</sup>State Key Laboratory of Hydraulics and Mountain River Engineering, Sichuan University, Chengdu, 610064, China

<sup>3</sup>Institute of Water Policy, Lee Kuan Yew School of Public Policy, National University of Singapore, 469A Bukit Timah Road, 259770, Singapore

**Correspondence:** Xudong Chen (chenxudong198401@163.com)

**Abstract.** In this study a novel data-driven analytical framework is proposed for cooperative strategies that ensure the optimal allocation of blue and virtual water transfers under different hydrological and economic conditions. A Stackelberg-Nash-Harsanyi equilibrium model is also developed to deal with the hierarchical conflicts between the water affairs bureau and multiple water usage sectors and overcome problems associated with water scarcity and uneven distribution. It was found that cooperative blue and virtual water transfer strategies could save water and improve utilization efficiency without harming sector benefits or increasing the ecological stress. Data-driven analyses were employed to simulate the hydrological and economic parameters, such as available water, crop import price and water market price under various policies. By adjusting the hydrological and economic parameters, it was found that the optimal allocation and transfer strategies were more sensitive to hydrological factors than economic factors. It was also found that cooperative blue/virtual water transfers respond to market fluctuations. Overall, the proposed framework provides sustainable management for physical and virtual water supply systems under future hydrological and economic uncertainties.

*Copyright statement.* The authors declare that they have no known competing financial interests or personal relationships that could have appeared to influence the work reported in this paper.

## 1 Introduction

Extreme climatic and hydrological conditions have increased water scarcity pressure. Several Chinese provinces, mostly in northern China, now suffer from severe water scarcity for almost 7 months each year (Zhuo et al., 2016; Cai, 2008), with the relatively high crop provisioning in southern China further aggravating the problems in northern China (e.g., Xinjiang, Heilongjiang, Guangxi, Hunan, Hebei, and Inner Mongolia) (Wang et al., 2014). This pattern has led to a paradox whereby water-intensive crops are being exported from water-insufficient northern China to water-rich southern China, and to enable this crop production, water resources are being transferred from water-rich southern China to water-scarce northern China. However, the South-to-North Water Transfer Project should not be seen as a long-term approach to reduce northern Chinese

water shortages(Chen et al., 2017). In the light of the above problems, this paper examined two important issues: blue water transfers to reallocate water between sectors and decrease water usage vulnerability; and virtual water transfers to decrease water stress and modify water use structures under an international trading environment.

District irrigation in many countries usually involves two different hierarchical structures: a water affairs bureau and water usage sectors. Previous studies have employed stochastic dynamic, multi-objective programming models to resolve the conflicting objectives in water allocation problems (Zeng et al., 2017; Xu et al., 2018, 2019). However, these models have neglected dynamic feedback mechanisms possibly existing in different hierarchical structures, resulting in solutions that do not maximize benefits at the system scale. Instead, game theory, which originated with the pioneering work of (Neuman and Morgenstern, 1944), was a successful alternative tool used for analyzing strategic interactions among different hierarchical decision makers (Madani, 2010; Ye et al., 2018). We recall some typical game-theoretical models from water resource management relating to our work, as shown in Table 1. In a water allocation context, considering the conflict of two hierarchical stakeholders through strategic interaction is vital, hence Stackelberg game is used to solve water allocation problem having stakeholders in different positions.

However, as there are multiple followers, a major problem is equitably and sustainably allocating the limited water resources to the various water use sectors: agricultural, industrial, domestic and ecological: and deciding whether any excess water can be transferred to other sectors. Under government guidance, regional sector usage managers have the right to reallocate/sell their surplus water to other sector managers, with the transfer prices decided through negotiations between the transfer participants (Dai et al., 2017; Ahmadi et al., 2019; Wang, 2018). Multi-objective programming has been extensively used to resolve water allocation conflicts of competing water usage sectors (Sedghamiz et al., 2018a; Brown et al., 2015). Nash (1953) proposed a 2-player bargaining game for cooperative resource sharing, after which Harsanyi (1959, 1963); Sedghamiz et al. (2018b) generalized the Nash solution from a 2-player bargaining game to an  $n$ -players game, which was more suitable for the multiple stakeholder non-cooperative situation. In this paper, during the water transfer process, a  $n$ -person Nash-Harsanyi bargaining model is developed, which also considers the water withdrawal and reallocation process among sectors. To the best of our knowledge, there have been few studies that have applied game theory to resolve two different conflicts within an irrigation district that include a leader (water affairs bureau) in the dominant position and multiple followers (water usage sectors), or developed a suitable a bilevel model to solve the problem.

Blue water transfers allow for water transfers between sectors, and virtual water transfers (embedded in the crops) (Zhuo et al., 2016) allow for water transfers between countries. Therefore, it is possible that importing water-intensive goods (particularly crops) rather than producing them domestically could conserve water resources and drive economic development in the exporting countries (Shtull-Trauring and Bernstein, 2018; Jiang and Marggraf, 2015). Virtual water, which was first introduced by Allan (1993) refers to the water embedded in a product in a virtual form Liu et al. (2009). Virtual water transfers, therefore, allow for the redistribution of water resources between countries, which means that water-scarce countries can conserve their own water resources while water-sufficient countries can obtain greater economic benefits by selling their surplus water (Liu et al., 2015a, b) to water-scarce countries. In this study, blue and virtual water are jointly considered within an irrigation district to completely resolve water scarcity problems. As an increase in crop imports could lead to a decrease in local production,

which could significantly reduce local agricultural incomes, and an increase in crop exports could lead to local water and ecological stress. Determining the optimal blue and virtual water transfers is thus of great importance. While there have been several studies on the evolution of the virtual water trade (Lamastra et al., 2017; Duarte et al., 2016; Chen et al., 2017), its influence (Mohammadikanigolzar et al., 2014) and its determinants (Zhuo et al., 2016), no comprehensive systematic method has been developed to determine optimal virtual water transfers.

Therefore, to provide a new, unstructured alternative to sectoral water demand satisfaction, the first objective is to determine an optimal blue/virtual water transfer and water allocation strategy. In addition to accurately quantifying the blue water transfers between the sectors, this paper also determines the optimum imported crop quantity to conserve farmer enthusiasm in the importing country and the optimum exported crop quantity to ensure water sufficiency in the exporting country. The second innovation in this paper is the use of game theory within a bilevel framework to determine the blue/virtual water transfers and sectoral water allocations, which has rarely been applied to irrigation district analyses. Previous research in this area and the analysis techniques applied are given in Table 1. Because this problem cannot be modelled using conventional methods, a novel Stackelberg-Nash-Harsanyi equilibrium model is developed that jointly considers the blue/virtual water transfers and the sectoral water allocations within a hierarchical decision making structure. In this way, equilibrium can be achieved through the strategic interactions between the water affairs bureau and the water usage sectors, with the competing water usage sectors not only making sustainability decisions that target their own benefits, but also allowing blue water transfers to improve overall water usage system efficiency.

**Table 1.** Literature review

| Articles                                     | Problem statement   | Methodologies  | Difference in technical strategy point  |
|--|---|--|---|
| Dai et al. (2017)                            | The compensation mechanism for agricultural water transfer  | Classification theory                                      |   |
| Jiang and Marggraf (2015)                    | Assessing the virtual water transfer in agricultural products between Germany and China   | Statistic analysis   | Ignoring quantitative analysis  |
| Shtull-Trauring and Bernstein (2018)         | Analyzing virtual water transfer on a country level   | Statistic analysis   |   |
| Ahmadi et al. (2019)                         | Optimizing Beheshtabad Water Transfer Project   | Both cooperative and non-cooperative approaches            |   |
| Fu et al. (2018)                             | Water allocation  | Two-stage model considering Nash-Harsney equilibrium model | Ignoring virtual/blue water transfers and   |
| Xu et al. (2018)                             | Water allocation  | Multi-objective programming model                          | hierarchical strategic  |
| Sedghamiz et al. (2018b)                     | Water and crop area allocation  | Leader-follower game                                       | interaction   |
| Sedghamiz et al. (2018c)                     | Water management with the presence of executive managers in top-level and the agricultural sectors in low-level as leader and followers | Two-level optimization model                               | Ignoring virtual/blue water transfers and   |
| Guo et al. (2012)                            | Solving the multi-reservoir operation problem in inter-basin water transfer supply project  | A bilevel model  | conflict at the lower level   |
| Sedghamiz et al. (2018a); Wang et al. (2008) | The objectives consist of equity maximization, benefit maximization   | Multi-objective programming model                          | Ignoring virtual/blue water transfers, strategic interaction and the objective of sustainable development |

As is known, bilevel optimization techniques are intrinsically complex to solve referring to Hossein et al. (2018); Wei et al. (2017)'s research results. In regard to a solution, Eichfelder (2010) presented several new solutions for general multi-objective bilevel optimization problems using an optimistic approach. In other studies, different methods such as particle swarm optimization and artificial neural networks have been used to solve bilevel water exchange decision-making problems in eco-industrial parks (Ramos, 2016), and product engineering (Liu et al., 2017b). However, these techniques have seldom been applied to practical water allocation cases due to their complexity. In this paper, a bargaining weights method, a Nash-Harsanyi solution method, and a genetic algorithm (GA) are combined to solve the proposed model.

Overall, the main results and contributions in this study are summarized as follows:

**Contribution 1:** By incorporating blue and virtual water transfers, the developed model further relieves water scarcity stress, offers insights into crop planting and import/export quantities, and allows for the application of different strategies based on changing hydrological and market conditions. Overall, therefore, the model has positive effects on the water stress index, water usage efficiency and sectoral vulnerabilities, and saves water and land through its consideration of international transactions. Water usage efficiency between the three sectors was found to increase because of the crop planting plan modifications, blue water transfers.

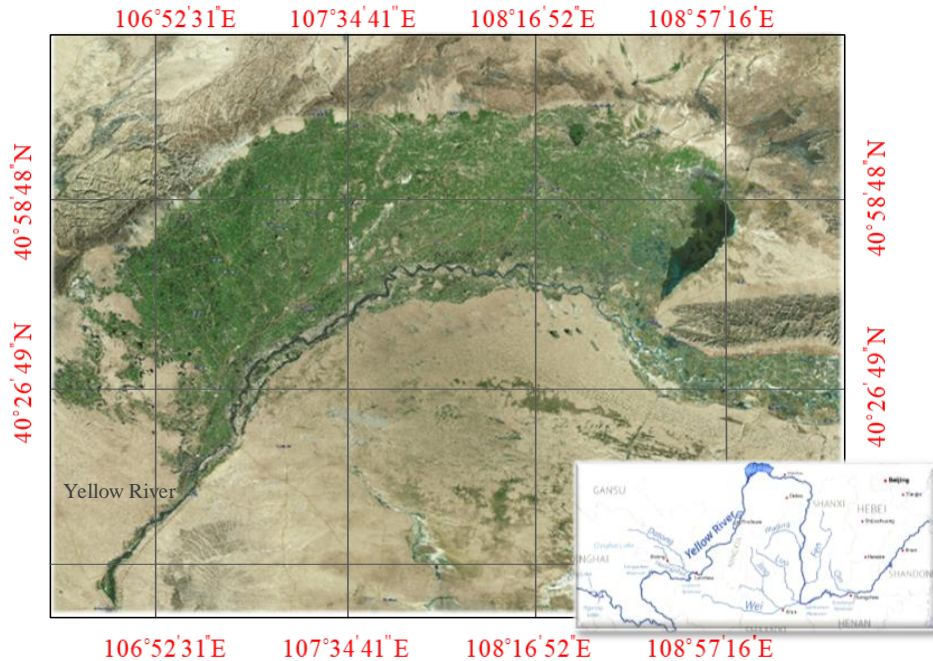
**Contribution 2:** A novel game-theory model based on the Stackelberg game and Nash-Harsanyi equilibrium was developed to resolve the "leader-followers" and "competing followers" conflicts through strategic interaction. It was found that the total consumption using a two-stage optimization model was generally higher than when using our proposed model, and was therefore detrimental to water conservation.

## 2 Study area and water trading background

### 2.1 Study area

The Hetao irrigation district has been facing a contradiction between North-South crop export requirements and water scarcity. Chinese irrigation districts, which produce more than 75% of the grain consumed in China, have become increasingly important in ensuring both China's food security and its socioeconomic development (Wang et al., 2005). As studies on small and specific irrigation districts have proved to be more significant than national studies in resolving water scarcity problems, the Hetao irrigation district was chosen as the case study area to: (1) optimize the agricultural, domestic and industrial sector water withdrawals in a planning year; (2) optimize the virtual water quantities to be imported and exported under the international trading environment; and (3) optimize the blue water quantities to be transferred under a water market environment. This study therefore provides water reallocation perspectives, assists in alleviating local water scarcity, and promotes sustainable socio-economic-environmental development.

The Hetao irrigation district (Fig. 1) is an agricultural production and trade area in western Inner Mongolia, China (40°13'-42°28'N, 105°12'-109°53'E) that has five counties (Dengkou, Hanghou, Linhe, Wuyuan, and Qianqi) and an irrigated area of  $5.74 \times 10^3 \text{ km}^2$ , the water for which comes mainly from the Yellow River. The main problems facing the Hetao irrigation district are continually increasing water requirements and severely constrained freshwater resources. The agricultural activities



**Figure 1.** Hetao irrigation district longitude-latitude projection image ©Google Maps

in this region consume approximately 93% of the total regional water consumption (Feng et al., 2012), and while it has a continental monsoon climate, there is little and erratically distributed rain (130-215 mm with 70% falling in July, August, and September) and an annual potential evaporation of 2100-2300 mm (Liu et al., 2015a, b; Wang et al., 2005). As the Hetao irrigation district is close to several port cities, key crops are imported from Russia and other countries, which helps relieve some of the water consumption stress.

## 2.2 Water trading background

The water trading environment considers both blue and virtual water trading. Blue water is the surface or groundwater that evaporates during production processes, while virtual water is the volume of water needed to produce a certain commodity (Allan et al., 1993). After each sector (e.g., domestic, industrial or agricultural) has been granted initial water withdrawal rights, blue water can be directly transferred from one sector to another using conveyance infrastructure. Virtual water, which is calculated based on the crops exports or import volume sums, is indirectly transferred from one country to another embedded in the traded crops. In this study, three crops are considered: wheat, maize and sunflower.

Water pricing is a key component of current water policy reforms in China as it is believed that reasonable pricing reform can guide water transfers; that is, reasonable transaction prices can control water use and market participation. Generally, water rights trading takes place between two participants, who together negotiate a suitable price. Therefore, in this study, the unit price of the water trade is based on the buyer's willingness to pay and the seller's reservation sales price (Erfani et al., 2014).

Therefore, the price is determined as the weighted sum of the willingness to pay the price and the reservation sales price, that is, the negotiated price, as follows;

$$125 \quad PTI = \theta p_1 + (1 - \theta)p_2, \quad PTD = \theta p_1 + (1 - \theta)p_3, \quad (1)$$

where  $\theta, 0 \leq \theta \leq 1$  is the degree of willingness to pay by the two trading participants, or the decision makers,  $p_i$  is the water price set by the leader for water withdrawal, PTI is the price of the water transferred to the industrial sector, and PTD is the price of the water transferred to the domestic sector.

### 3 Methods

#### 130 3.1 Notations

The following notations are used to develop the model.

##### Indexes:

$k$  : crop indicators,  $k = 1$  for wheat,  $k = 2$  for maize,  $k = 3$  for sunflower

$i$  : water usage indicator,  $i = 1$  for agricultural sector,  $i = 2$  for industrial sector,  $i = 3$  for domestic sector,  $i = 4$  for ecological  
135 sectors

##### Parameters:

$p_i$  : water price set by the leader for sectoral water uses, RMB/m<sup>3</sup>

$ERW_i$  : economic return per unit of water consumption in sectors,  $i = 1, 2, 3$ , RMB/m<sup>3</sup>

$ERP_k$  : economic return from agricultural products exports,  $i = 1$ , where  $ERP_k = ERW_k \times VW_k$ , RMB/kg<sup>3</sup>

140  $c_k$  : economic costs because of agricultural products imports, RMB/kg

$TC$  : transaction cost per unit of water resource from agricultural sector to industrial or domestic sectors, RMB/m<sup>3</sup>

$\mu$  : the irrigation coefficient, which presents the utilization effectiveness of irrigation water

$A$  : total available area for crop planting, hm<sup>2</sup>

$\phi_{ind}$  : the gross industrial output value, RMB

145  $R_k$  : effective rainfall, mm/day

$\beta$  : coefficient for efficient rainfall

$P_k$  : actual rainfall, mm/day

$\varpi_k$  : crop  $k$  consumption per unit in the Hetao irrigation area, kg/(person · year)

##### Auxiliary variables (continuous variables)

150  $AW$  : maximum volume of available water in Hetao irrigation district, m<sup>3</sup>/yr

$PTI$  : price of water transfers to industrial sector, RMB/m<sup>3</sup>

$PTD$  : price of water transfers to domestic sector, RMB/m<sup>3</sup>

$\theta$  : the degree of willingness to pay of the two trading participants, if  $\theta = 0.5$ , it means the average of willingness to pay of the

two trading participators

155  $w_k$  : water irrigation for crop  $k$ ,  $\text{m}^3/\text{yr}$

$W_k$  represents the blue and green water components in crop  $k$ ,  $\text{m}^3/(\text{hm}^2 \cdot \text{yr})$

$y_k$  represents the crop yield per unit of irrigation area,  $\text{kg}/(\text{hm}^2 \cdot \text{yr})$

$l_k$  : total yield of crop  $k$ ,  $\text{kg}/\text{yr}$

$\text{VW}_k$  : virtual water content of crop  $k$ ,  $\text{m}^3/\text{kg}$

160  $A_{1k}$  : area allocated to crop  $k$ ,  $\text{hm}^2/\text{yr}$

$d_i$  : water demand of sectors,  $i = 1, 2, 3, 4$ ,  $\text{m}^3/\text{yr}$

$d_{1k}$  : water demand of crops in agricultural sector,  $k = 1, 2, 3$ ,  $\text{m}^3/\text{yr}$

$\phi_{\text{pop}}$  : per capita disposable income, RMB

POP: population in the Hetao irrigation area

165 **Decision variables (continuous variables)**

$X_i$  : initial water rights in sectors,  $i = 1, 2, 3, 4$ , determined by the upper-level decision maker,  $\text{m}^3/\text{yr}$

$\text{EM}_k$ : quantity of products exports, determined by the upper-level decision maker,  $\text{kg}/\text{yr}$

$\text{IM}_k$ : quantity of products imports from international trade, determined by the upper-level decision maker,  $\text{kg}/\text{yr}$

$\text{WTI}$  : water transfer from agricultural sector to industrial sector, determined by the lower-level decision makers,  $\text{m}^3/\text{yr}$

170  $\text{WTD}$  : water transfer from agricultural sector to domestic sector, determined by the lower-level decision makers,  $\text{m}^3/\text{yr}$

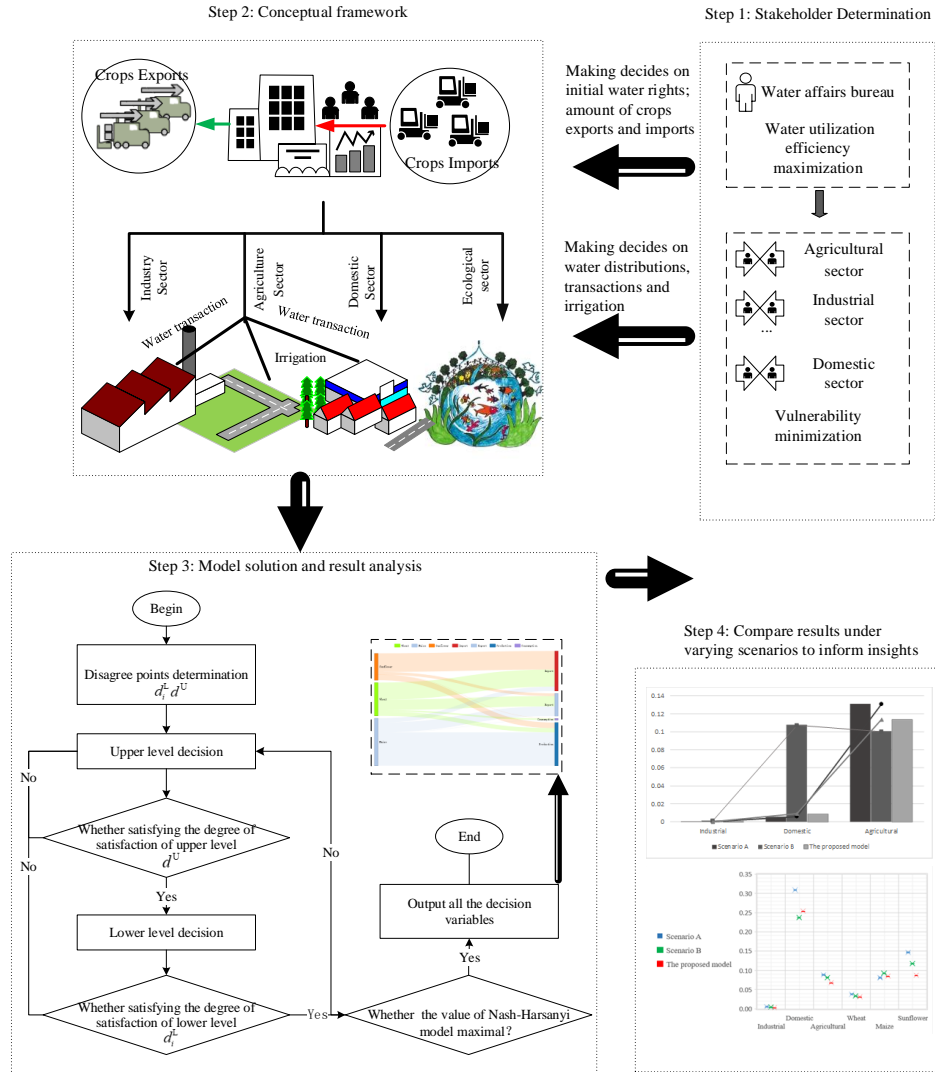
$x_{1k}$  : water irrigated to crop  $k$  in the agricultural sector, determined by the lower-level decision maker,  $\sum_{k=1}^3 x_{1k} = X_1 - \text{WTI} - \text{WTD}$ ,  $\text{m}^3/\text{yr}$

### 3.2 Bilevel water allocation system framework

Fig. 2 gives a complete description of the four steps covered in this study. First, the water allocation system stakeholders are identified, after which the conceptual water allocation framework is constructed (Fig. 3). The proposed model is then applied to a real-world case study and decisions made on the water allocations, crop irrigation, international imports, inter-regional exports and blue water transfer quantities. Finally, to determine the most appropriate approach for future water sustainability, multiple scenarios are examined.

Driven by a traditional water resource management process (Harsanyi, 1963), this study constructs a bilevel framework that has one leader, the water affairs bureau, and multiple followers, the water usage sectors, as shown in Fig. 3. Two games are included in the framework: a Stackelberg game between the leader and followers in which the water affairs bureau (the leader) takes the leading role in allocating the water resources, moves first and has complete information about the followers' possible reactions, and the water usage sectors (the followers), who react after being given the leader's strategy; and a Nash-Harsanyi bargaining solution between multiple followers in which the  $n$  followers make corresponding decisions based on the leader's decisions (Fu et al., 2018).



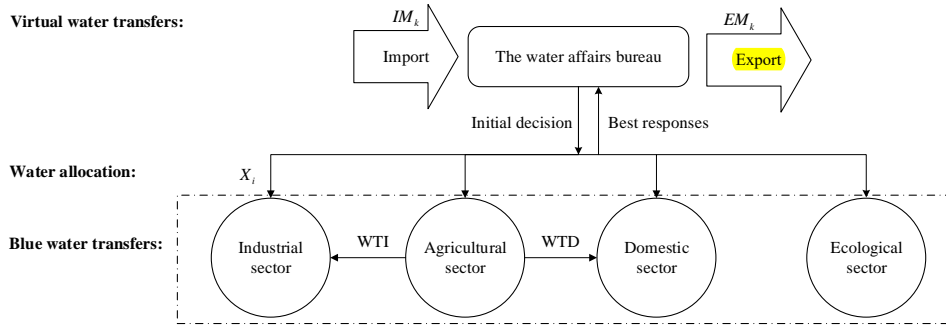


**Figure 2.** Four steps in the water allocation plan and future solutions

The following section outlines the mathematical model formulation. As water resource management allocation in Chinese irrigation districts usually involves a single leader and several followers, it is suitable for a Stackelberg-Nash-Harsanyi equilibrium model application. The model was developed based on the following assumptions:

**Assumption 1:** Regions with water deficits can import agricultural products from neighboring countries that have surplus water.

**Assumption 2:** The water market is available for all sectors, with the water trading prices being defined as the average willingness to pay of the participants.



**Figure 3.** Bilevel water allocation system framework

**Assumption 3:** In semiarid and arid regions, as the water is scarce relative to the available land, it is assumed that land availability does not constrain crop decisions.

### 195 3.3 Objective functions

To ensure both economic benefits and water demand satisfaction in the different sectors, the water affairs bureau seeks to maximize the water resource system's water utilization efficiency, as shown in Eq. (2). To achieve economic development, the leader also needs to determine the crop quantities to be exported or imported, and the followers need to independently minimize their own vulnerabilities.

200 Under a water-scarce environment, the leader focuses more on water utilization efficiency. Therefore, fractional linear programming model (2) is employed to reflect the water utilization efficiency, in which the imported crops and the water transfer costs are considered when determining total economic benefits.

$$\text{maxEff} = \frac{\text{Re}}{\text{Cons}} \quad (2)$$

$$\text{Re} = \text{Income} - \text{Cost},$$

$$= \left( \sum_{k=1}^3 (\text{ERP}_k \times \text{EM}_k) + \text{WTI} \times \text{PTI} + \text{WTD} \times \text{PTD} - \sum_{k=1}^3 (p_1 \times x_{1k}) \right) + (X_2 \times \text{ERW}_2 +$$

$$\text{WTI} \times \text{ERW}_2 - \text{PTI} \times \text{WTI} - p_2 \times X_2) + X_3 \times \text{ERW}_3 + \text{WTD} \times \text{ERW}_3 - \text{PTI} \times \text{WTD}$$

$$- p_3 \times X_3) - \sum_{k=1}^3 (c_k \text{IM}_k) - \text{TC} \times (\text{WTI} + \text{WTD}), \quad (3)$$

$$\text{Cons} = \left( \sum_{k=1}^3 x_{1k} + \text{WTI} + \text{WTD} \right) + X_2 + X_3, \quad (4)$$

where Re is the total economic returns from the agricultural, industrial and domestic sectors, as shown in Model (3).

210  $\left( \sum_{k=1}^3 (\text{ERP}_k \times \text{EM}_k) + \text{WTI} \times \text{PTI} + \text{WTD} \times \text{PTD} - \sum_{k=1}^3 (p_1 \times x_{1k}) \right), (X_2 \times \text{ERW}_2 + \text{WTI} \times \text{ERW}_2 - \text{PTI} \times \text{WTI} - p_2 \times X_2)$  and  $(X_3 \times \text{ERW}_3 + \text{WTD} \times \text{ERW}_3 - \text{PTI} \times \text{WTD} - p_3 \times X_3)$  represents the economic returns in the different sectors.  $\text{ERW}_k$  is the economic return per unit of water consumed by the crops,  $\text{ERP}_k$  is the economic return from the agricultural product exports, where  $\text{ERP}_k = \text{ERW}_k \times \text{VW}_k$ . In addition,  $\sum_{k=1}^3 (\text{ERP}_k \times \text{EM}_k)$ ,  $\sum_{k=1}^3 (c_k \times \text{IM}_k)$  and  $\text{TC} \times (\text{WTI} + \text{WTD})$  are respectively the export returns, import costs and transaction costs, where  $c_k$  is the economic cost due to agricultural product imports, and TC is the transaction cost per unit of water resource unit transferred from the agricultural sector to the industrial or domestic sectors.

215 The lower-level decision makers are the water usage sectors' managers that independently minimize their own vulnerabilities. Vulnerability is related to the water demand and the water supply, and is the extent to which the water allocation system can or cannot cope with water scarcity or water abundance (floods). In this way, the allocation strategy is expected to have the ability to meet the "water demands" while avoiding the waste of water. And thus, the vulnerability, which is denoted as  $F, F \geq 0$ , is assessed from the demand loss degree ( $F^{\text{DD}}$ ) and the supply loss degree ( $F^{\text{EL}}$ ), as shown in Eqs. (5-15). An  $F$  equal to 0 means that the water resource system is stable in the planned period. When  $F$  has a value greater than 0, this reflects  
220 poor management and water allocation and therefore greater vulnerability.

Agricultural sector:  $\min F_1$  (5)

$$F_1 = \omega^{\text{DD}} F_1^{\text{DD}} + \omega^{\text{EL}} F_1^{\text{EL}}, \quad (6)$$

$$F_1^{\text{DD}} = \frac{1}{3} \frac{\sum_{k=1}^3 \max((d_{1k} - x_{1k}), 0)}{\sum_{k=1}^3 d_{1k}}, \quad (7)$$

$$F_1^{\text{EL}} = \frac{1}{3} \frac{\sum_{k=1}^3 \max((x_{1k} - d_{1k}), 0)}{\sum_{k=1}^3 d_{1k}}. \quad (8)$$

225  $F_2 = \omega^{\text{DD}} F_2^{\text{DD}} + \omega^{\text{EL}} F_2^{\text{EL}}, \quad (9)$

$$F_2^{\text{DD}} = \frac{\max(d_2 - (X_2 + \text{WTI}), 0)}{d_2}, \quad (10)$$

$$F_2^{\text{EL}} = \frac{\max(((X_2 + \text{WTI}) - d_2), 0)}{d_2}. \quad (11)$$

Domestic sector:  $\min F_3$  (12)

$$F_3 = \omega^{\text{DD}} F_3^{\text{DD}} + \omega^{\text{EL}} F_3^{\text{EL}}, \quad (13)$$

230  $F_3^{\text{DD}} = \frac{\max(d_3 - (X_3 + \text{WTD}), 0)}{d_3}, \quad (14)$

$$F_3^{\text{EL}} = \frac{\max(((X_3 + \text{WTD}) - d_3), 0)}{d_3}. \quad (15)$$

where  $\omega^{DD}$  and  $\omega^{EL}$  are the weights for the demand loss degree and supply loss degree in the different sectors,  $\omega^{DD} + \omega^{EL} = 1$ .

### 3.4 Model constraints

Specific constraints reflect the real-world practice management rules and behaviors. The objective function (2) is subject to constraints (16)-(19), and constraint (21) characterizes the feasible region on the lower level.

#### 3.4.1 Available water constraint

The water withdrawals for the three sectors cannot exceed the initial water in the irrigation district.

$$\sum_{i=1}^4 X_i \leq AW \quad (16)$$

#### 3.4.2 Price constraint

The benefits need to be considered when deciding on internal sectoral transactions. When the water demand in the industrial or domestic sectors is greater than the available water withdrawal, the water usage sector needs to buy water from the water market; conversely, a manager can sell extra water in the water market if such water trading leads to greater benefits than using the water to irrigate crops. Nevertheless, the transaction price cannot exceed the water withdrawal price.

$$p_1 < PTI < p_2, \quad p_1 < PTD < p_3 \quad (17)$$

#### 3.4.3 Ecological water requirements

To guarantee sustainable development in the whole river basin, the minimum ecological water requirements must be satisfied across the whole river basin.

$$X_4 \geq e \quad (18)$$

#### 3.4.4 Export and import balance equation

The annual export volume plus the grain consumption should be smaller than the total grain yield plus the annual import volume. Eq. (19) is the import-export balance equation,  $POP\varpi_k$  is the total consumption in the irrigation area,  $POP$  is the Hetao irrigation area population,  $\varpi_k$  is the annual crop  $k$  consumption per unit in the Hetao irrigation area, and  $l_k$  is the crop yield, which is determined based on the water allocated to the different crops on the lower level.

$$EM_k + POP\varpi_k \leq l_k + IM_k \quad (19)$$

$$l_k = y_k \frac{x_{1k}}{W_k} \quad (20)$$

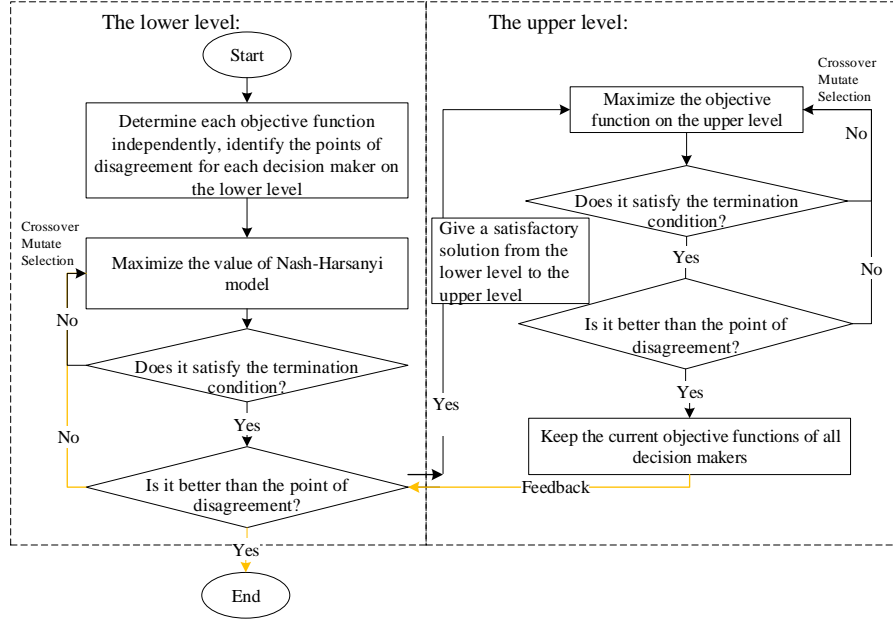
### 3.4.5 Planting area constraint

The land area allocated to the different crops in a given cropping season must not exceed the total cultivatable area (denoted by  $A$ ) in that season, as shown in constraint (21), in which  $A_k = \frac{X_k}{W_k}$ .

$$\sum_{k=1}^3 A_k \leq A \quad (21)$$

### 260 3.5 Solution procedure

There are two types of games in this solution procedure: the game between the leader and the followers, and the game between the followers. The leader makes virtual water or blue water transfer decisions, and the followers decide on their own rights to water withdrawal and irrigation. Therefore, a compromised solution is needed between the upper- and lower-level decision makers. Fig. 4 illustrates the four steps for the Stackelberg-Nash-Harsanyi bargaining process, and Table B1 in the Appendix shows a pseudo code for solving Stackelberg-Nash-Harsanyi bargaining process.



**Figure 4.** Steps for solving the proposed model

265

**Step 1:** Determine the disagreement points ( $dis^U, dis^L_i$ ) and the bargaining weights ( $\alpha_i$ ) for the decision makers on each level, and randomly generate an initial solution.

**Step 2:** Maximize the value  $\prod_{i=1,2,3} (F_i - dis^L_i)^{\alpha_i}$  by selecting the level objective functions that are better than the respective disagreement points, determine if the termination condition is satisfied, and if yes, go to Step 3; otherwise, continue to add generations.

270

**Step 3:** Maximize the upper-level objective function on the premise that it is better than the disagreement point, determine if the termination condition is satisfied, and if yes, output all decision variables, and go to *Step 4*; otherwise, continue to add generations.

**Step 4:** Determine whether the lower level objective function is still better than the disagreement points, and if yes, end the loop; otherwise go back to *Step 2*.

Combined with the practical problem described in this paper, the vector for the disagreement points is defined as the maximum vulnerability for the followers and the minimum water utilization efficiency from the leader. Specifically, the disagreement point is calculated as follows:

The leader's individual best and least solutions obtained by the GA method are  $(X_i, EM_k, IM_k, WTI, WTD, x_{1k}; Eff^{\max})$  and  $(X'_i, EM'_k, IM'_k, WTI', WTD', x'_{1k}; Eff^{\min})$ , where

$$Eff^{\max} = \max Eff(X_i, EM_k, IM_k, WTI, WTD, x_{1k}) \quad (22)$$

$$Eff^{\min} = \min Eff(X'_i, EM'_k, IM'_k, WTI', WTD', x'_{1k}) \quad (23)$$

Similarly, the best and least solutions of the followers are  $(X''_i, EM''_k, IM''_k, WTI'', WTD'', x_{1k}; F_i^{\min})$  and  $(X'''_i, EM'''_k, IM'''_k, WTI'''_k, WTD'''_k, x'_{1k}; F_i^{\max})$ , respectively, where

$$F_i^{\min} = \max F_i(X''_i, EM''_k, IM''_k, WTI'', WTD'', x_{1k}) \quad (24)$$

$$F_i^{\max} = \min F_i(X'''_i, EM'''_k, IM'''_k, WTI'''_k, WTD'''_k, x'_{1k}) \quad (25)$$

The lower tolerance limits  $(Eff^{\min}, F_i^{\max})$  for achieving the goal levels of the leader and follower can be defined as disagreement points (denoted as  $dis^U, dis^L_i$ ) for the decision makers on each level. Then, the additional constraints for each level are added so that each objective function value is better than the disagreement point respectively ( $Eff > dis^U$  with  $F_i < dis^L_i$ ), namely, the disagreement point presents the worst result that the decision maker was unwilling to accept.

The bargaining weights, which reflect each follower's degree of importance are defined based on water demand elasticity. For the demand principle, the formula for calculating the water demand elasticity level is  $\delta_i = 1 - \frac{d_i}{\sum d_i^L}$ , and then each follower's bargaining weight under demand principle is calculated as  $\alpha_i = \frac{\delta_i}{\sum \delta_i}$ . In this study, the disagreement points  $dis^U$  and  $dis^L_{i=1,2,3}$  are set to 33 and 0.3, respectively. The bargaining weights  $\alpha_{i=1,2,3}$  are respectively defined as 0.3, 0.4, 0.3. The solving algorithm is coded in MATLAB R2017a.

## 4 Data and Results

### 4.1 Economic parameters

The main data sources are based on the Bayna Noaoer Yearbook, the Hetao irrigation district statistical data and some published papers. The outputs for each sector per unit of water ( $ERW_i$ ) are  $ERW_1 = 2.34$  RMB/m<sup>3</sup>,  $ERW_2 = 109.96$  RMB/m<sup>3</sup>, and

300  $ERW_3 = 131.17 \text{ RMB/m}^3$  (Liu, 2016). From “<http://price.h2o-china.com/>” and the Development and Reform Commission and Department of Water Resources’ agricultural water price adjustment programs, the price of water is determined to be  $p_1 = 0.103$ ,  $p_2 = 3.85$ , and  $p_3 = 4.40$  in 2020. The prices of crops (wheat, maize and sunflower) imported from other countries are determined according to the average import prices of agricultural crops over the years, that is,  $c_1 = 2.58$ ,  $c_2 = 1.50$ , and  $c_3 = 4.10 \text{ RMB/kg}$ . The water transfer price,  $\theta$ , is set equal at 0.5; and the water transfer prices are  $PTI = 1.98$  and  $PTD = 2.25$ .

305 The transfer cost  $TC = 1.00 \text{ RMB/m}^3$  based on “<http://cwex.org.cn/lising/>”. The consumptions of each crop ( $\sum_{k=1}^3 \text{POP}_k \varpi_k$ ) in 2020 are predicted to be  $1.22 \times 10^8$ ,  $1.73 \times 10^7$  and  $2.90 \times 10^5 \text{ kg}$  respectively.

## 4.2 Hydrological parameters and water demand analysis

Using the data extracted from the BayanNur Water Resources Bulletin from 2012-2015 and based on the Eqs. (A4)-(A7),  $\eta$  is 0.574, and  $K^D$  is  $6.9 \times 10^6$  ( $R^2 = 0.978$ ),  $\vartheta$  is  $-0.858$ , and  $K^I$  is  $8.9 \times 10^{16}$  ( $R^2 = 0.835$ ).  $\mu$  is the irrigation coefficient,

310 which presents the utilization effectiveness of irrigation water, and its value is 0.487 in 2020 (Wang et al., 2017; Wang, 2017). Three representative crops (wheat, maize and sunflower) are chosen because these crops constitute a large share of the total production in the area. The water demand and virtual water content of these crops are calculated based on Eqs. (A4)-(A7). Water demand in each sector is predicted respectively,  $d_1 = 3.50 \times 10^9$ ,  $d_2 = 4.53 \times 10^7$ , and  $d_3 = 1.94 \times 10^9$ . Moreover, the annual water demand in the ecological sector for sediment scouring will be  $1.64 \times 10^8 \text{ m}^3$  in 2020 (Wang et al., 2017; Wang,

315 2017). More initial data are present in the Appendix D.

## 4.3 Optimal virtual water trade

This study considers both the inter-regional and international transactions (virtual water transfers) and then incorporates and quantifies water transfers in the form of virtual water when optimizing the import and export process. Table 2 shows the optimal amounts of inter-regional export and international import trade, and verifies the corresponding saved irrigation water

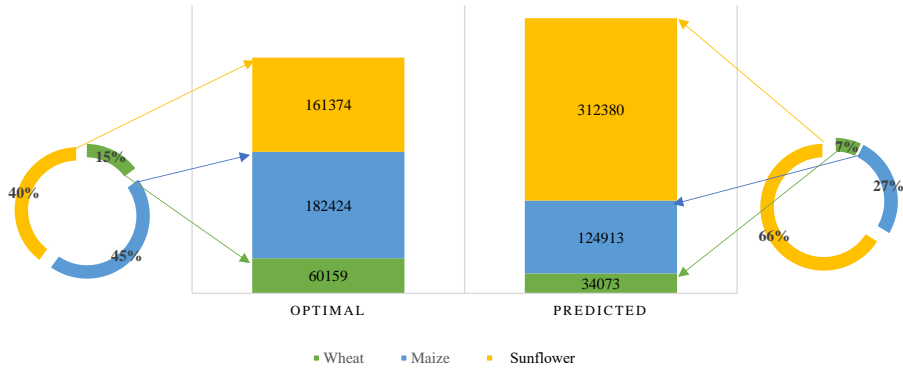
320 (the virtual water embedded in imported crops) and area (the virtual land that would have been planted if crops had not been imported).

**Table 2.** Optimal solutions to imported and exported crops

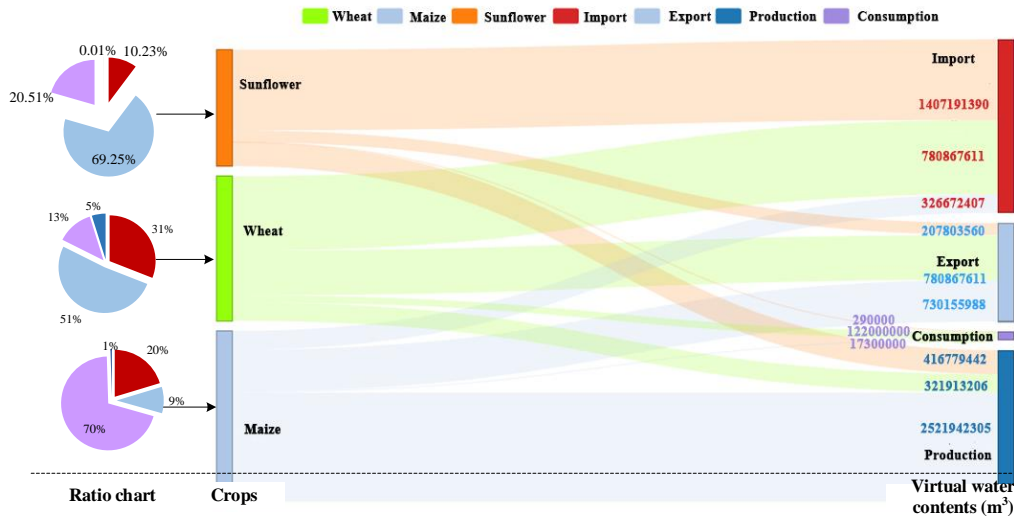
|   | Agricultural sector |        |           |
|---|---------------------|--------|-----------|
|   | Wheat               | Maize  | Sunflower |
| Imported crops $IM_k$ ( $10^9 \text{ kg/yr}$ )          | 1.30                | 0.327  | 1.41      |
| Exported crops $EM_k$ ( $10^9 \text{ kg/yr}$ )          | 0.781               | 0.730  | 0.208     |
| Virtual water $VW_k \times IM_k$ ( $10^9 \text{ m}^3$ ) | 1.21                | 0.108  | 2.84      |
| Virtual land $IM_k/y_k$ ( $\text{hm}^2$ )               | 242,456             | 23,630 | 544,853   |

From  $VW_k \times IM_k$ , the total virtual water in the imported crops was calculated as  $4.16 \times 10^9 \text{ m}^3$ , which would save 75.64% of the total available water in this area. The quantification of the land savings calculated by  $IM_k/y_k$ , is also shown in Table 2. A comparison with the national 2020 land-use planning is shown in Fig. 5. The results illustrate the differences between the

325 optimal solutions from the proposed model and the expected national land use planning. Specifically, if international imports were allowed, the total land needed for crops could be reduced by 16.7%, and to satisfy the wheat, maize and other food crop requirements, the land needed for growing sunflowers would decrease significantly. Therefore, the results clearly reflect the water use and land-use planning differences and how optimizing previous planting structures can improve water utilization efficiency.



**Figure 5.** Predicted crop areas in planning report compared with optimal values (hm<sup>2</sup>)



**Figure 6.** The amount of inter-regional export and international import trade (m<sup>3</sup>)

330 The crop proportions for each form (production, import, export and consumption) are shown on the left of Fig. 6, and the virtual water content is shown on the right. As can be seen, as the crop consumption in this district is far less than the crops produced, particularly **sunflower**, the surplus crops from the Hetao irrigation area can be sold to southern China. The light blue



rectangle shows the total water embedded in the exported sunflower, wheat and maize, and the red rectangle shows the total water embedded in the imported sunflower, wheat and maize.

335 **4.4 Irrigation, industrial and domestic water consumptions and blue water transfers**

Certain differences should be allowed when supplying limited water to sectors. As the model also maximizes the overall water utilization efficiency from the perspective of the system, an equilibrium between the multiple sectors is not always exactly equal when seeking to satisfy the water demand of each sector.

**Table 3.** Optimal water withdrawal results ( $10^9\text{ m}^3$ )

| Sectors      | Agricultural sector |          |          | Industrial sector | Domestic sector |
|--------------|---------------------|----------|----------|-------------------|-----------------|
| Initial      | $X_1$               |          |          | $X_2$             | $X_3$           |
| water rights | 3.05                |          |          | 0.015             | 1.38            |
| Water        | $X_{11}$            | $X_{12}$ | $X_{13}$ |                   |                 |
| irrigation   | 0.300               | 0.821    | 0.841    |                   |                 |
| Water        |                     |          |          | WTI               | WTD             |
| transfer     | -1.09               |          |          | 0.014             | 1.07            |

340 Table 3 gives an example of a compromised solution to water allocations, transfers, and crop irrigation. More initial water is allocated to the agricultural sector, followed by the domestic sector and the industrial sector, which conforms to actual practices. Through the water market (blue and virtual water transfers), blue water is transferred from the agricultural sector to the industrial or domestic sector:  $13.6\times10^6\text{ m}^3$  of water is transferred from the agricultural sector to industrial sector and  $1.07\times10^9\text{ m}^3$  of water is transferred from the agricultural sector to domestic sector: which improves the objective functions on both the upper and lower levels.

345 The agricultural sector has the largest gap between water supply and demand, followed by the industrial sector; however, the water demand in the domestic sector is satisfied. We analyze the reason is that more water-intensive crops are imported. In addition, with more sunflower being imported, saved water is allocated to sectors whose water utilization efficiency is higher. Overall, the above analysis verifies that the proposed model not only assists in optimizing water resource allocations but also assists in land use planning based on water utilization efficiency maximization and vulnerability minimization. Therefore, it is suggested that when there is insufficient water, blue water can be transferred to the industrial and domestic sectors from the agricultural sectors to enhance water utilization efficiency and achieve greater economic benefits, and virtual water imported to save irrigation water consumption.

350

## 5 Discussion

This section explores the reasons why virtual and blue water transfers should be conducted together and the effects available water, market prices and import prices have on the water allocations in the different sectors under future uncertainty.

### 5.1 Main reasons for water stress

Before developing long-term future water plans, it is vital to determine which sector is the largest contributor to regional water stress. A blue water scarcity index can be calculated from a production perspective, as shown in Eq. (26).  $BWS_1$ ,  $BWS_2$  and  $BWS_3$  respectively represent blue water scarcity in the agricultural, industrial and domestic sectors).  $X_2 + WTI$ ,  $X_3 + WTD$ , and  $\sum_{k=1}^3 x_{1k}$  are chosen to represent the blue water consumption. Liu et al. (2017a) concludes that water stress in an area is low if the ratio of the water consumption to availability is less than 0.07, is medium if the ratio is 0.15-0.3 and is high if the ratio is greater than 0.3.

$$BWS = \frac{\sum_{k=1}^3 x_{1k} + X_2 + WTI + X_3 + WTD + X_4}{AW + \sum_{k=1}^3 VW_k \times IM_k} \quad (26)$$

$$BWS_1 = \frac{\sum_{k=1}^3 x_{1k}}{AW + \sum_{k=1}^3 VW_k \times IM_k} \quad (27)$$

$$BWS_2 = \frac{X_2 + WTI}{AW + \sum_{k=1}^3 VW_k \times IM_k} \quad (28)$$

$$BWS_3 = \frac{X_3 + WTD}{AW + \sum_{k=1}^3 VW_k \times IM_k} \quad (29)$$

The BWS in the Hetao irrigation district is 0.47 after the optimization, indicating high water stress, with the BWS values for the agricultural, industrial, and domestic sectors being 0.068, 0.003, and 0.254, which indicates that the domestic sector is the largest contributor to the regional water stress. Analysis indicates that the main reason for these results is that an increase in the population, and therefore more water being needed for daily needs.

### 5.2 The importance of coalitional utilization of blue and virtual water transfers

Virtual water and blue water transfers have a significantly positive effect on water allocation systems. Previous research has not optimized water allocation problems by simultaneously incorporating virtual and blue water transfers. The following discusses the importance of including virtual water transfers (in terms of international imports and inter-regional exports) and blue water transfers from four perspectives: objective functions, total water consumption, import/export structures, and water stress.

Scenario A: Comparison to model (C1) without considering virtual water transfers.

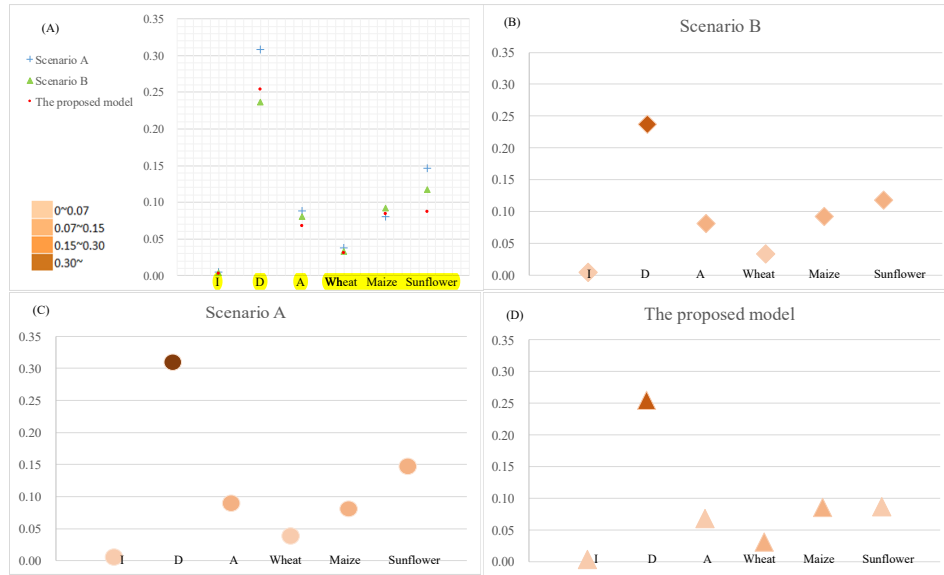
Scenario B: Comparison to model (C2) without considering blue water transfers.

375 Three compromise solutions are shown in Table 4. As can be seen, the proposed model has the highest water utilization efficiency, followed by Scenario A, with the lowest being Scenario B, which proves that blue water transfers improve water utilization efficiency. Specifically, when blue water transfers are included, both agricultural and industrial sector vulnerabilities are reduced; however, the virtual water transfers have a positive effect on the industrial and domestic sector vulnerability but not on agricultural sector vulnerability. Therefore, the analysis indicates that the inclusion of water transfers enables greater  
380 water consumption in sectors that use less water to produce greater economic benefits, which is in line with the conclusions in Liu and Yang (2012)'s research, that virtual water transfers potentially reduce the degree of crop self-sufficiency.

**Table 4.** Comparison results under different scenarios

|  | Scenario A | Scenario B | Proposed model | Two-stage model |
|--|------------|------------|----------------|-----------------|
| Decision variables                                     |            |            |                |                 |
| Initial water right $X_1$ ( $10^9$ m <sup>3</sup> /yr) | 3.21       | 2.17       | 3.05           | 3.08            |
| Initial water right $X_2$ ( $10^6$ m <sup>3</sup> /yr) | 24.2       | 40.4       | 15.2           | 34.3            |
| Initial water right $X_3$ ( $10^9$ m <sup>3</sup> /yr) | 1.32       | 2.12       | 1.38           | 0.793           |
| Water transfer WTI ( $10^6$ m <sup>3</sup> /yr)        | 18.5       | -          | 13.6           | 4.49            |
| Water transfer WTD ( $10^9$ m <sup>3</sup> /yr)        | 1.11       | -          | 1.07           | 0.778           |
| Crops export EM <sub>1</sub> ( $10^9$ kg/yr)           | -          | 0.260      | 0.781          | 0.115           |
| Crops export EM <sub>2</sub> ( $10^9$ kg/yr)           | -          | 1.11       | 0.73           | 0.583           |
| Crops export EM <sub>3</sub> ( $10^9$ kg/yr)           | -          | 0.633      | 0.208          | 0.456           |
| Crops import IM <sub>1</sub> ( $10^9$ kg/yr)           | -          | 1.14       | 1.30           | 0.482           |
| Crops import IM <sub>2</sub> ( $10^9$ kg/yr)           | -          | 0.799      | 0.327          | 0.751           |
| Crops import IM <sub>3</sub> ( $10^9$ kg/yr)           | -          | 1.04       | 1.41           | 0.697           |
| <hr/>  |            |            |                |                 |
| Agricultural use ( $10^9$ m <sup>3</sup> /yr)          | 2.08       | 2.17       | 1.97           | 3.08            |
| Industrial use ( $10^6$ m <sup>3</sup> /yr)            | 42.7       | 40.4       | 28.8           | 34.3            |
| Domestic use ( $10^9$ m <sup>3</sup> /yr)              | 2.43       | 2.12       | 2.45           | 0.793           |
| Net IM <sub>1</sub> ( $10^9$ kg/yr)                    | -          | 0.880      | 0.519          | 0.367           |
| Net IM <sub>2</sub> ( $10^9$ kg/yr)                    | -          | -0.311     | -0.403         | 0.168           |
| Net IM <sub>3</sub> ( $10^9$ kg/yr)                    | -          | 0.407      | 1.20           | 0.241           |
| <hr/>  |            |            |                |                 |
| Objective values                                       |            |            |                |                 |
| Lower level  |            |            |                |                 |
| Agricultural sector                                    | 0.131      | 0.100      | 0.114          | 0.417           |
| Industrial sector                                      | 0.000200   | 0.00112    | 0.000100       | 0.00800         |
| Domestic sector  | 0.00560    | 0.107      | 0.00920        | 0.000100        |
| Upper level: Efficiency (RMB/m <sup>3</sup> )          | 71.9       | 66.7       | 74.4           | 111             |

Compared with Scenario A, the total water consumption calculated using the proposed model decreased from  $4.55 \times 10^9$  to  $4.45 \times 10^9$  m<sup>3</sup>. Specifically, the industrial and agricultural sectors receive fewer initial water rights, the domestic sector receives more initial water rights, and the blue water transfer value declines from  $1.13 \times 10^9$  to  $1.09 \times 10^9$  m<sup>3</sup>. Therefore, the proposed  
385 model is able to appropriately reduce the water transfer quantities and thereby minimize the ecological and economic losses. In comparison, in Scenario B, the total water consumption calculated using the proposed model increases from  $4.33 \times 10^9$  to  $4.45 \times 10^9$  m<sup>3</sup>. Specifically, the international import and inter-regional export structures change, with greater quantities of wheat



**Figure 7.** Water stress comparisons. (A) Total water stress; (B) Scenario B water stress; (C) Scenario A water stress; (D) Water stress in the proposed model (I: Industrial sector, D: Domestic sector, A: Agricultural sector)

and sunflowers and lesser quantities of maize being imported, and greater quantities of wheat and lesser quantities of sunflower and maize being exported to neighboring regions. In general, when the blue water transfers are considered, there is a positive effect on water utilization efficiency and a reduction in sector vulnerability.

The water stress under different scenarios is then calculated, as shown in Fig. 7. Fig. 7 (A) shows the degree to which the water stress is relieved after the optimization, with the water stress under Scenario A being greater than the water stress under the other two scenarios, which indicate that the inclusion of virtual water transfers can alleviate water stress. The water stress values in the different sectors are then compared, as illustrated in Fig. 7 (B-D), which indicate that the consideration of blue water transfers decreases industrial and agricultural sector consumption stresses and the inclusion of virtual water transfers decreases water stress in all sectors. Therefore, as shown, both virtual water and blue water transfers should be considered in future water management planning.

### 5.3 Importance of the hierarchical strategic interaction

One of the most widely used water resource allocation models has been the two-stage optimization model. In comparison, the Stackelberg game between the leader and followers in this study is fully considered as the strategic interactions are considered before the final determination of the compromise solution. Therefore, to further illustrate the superiority of the proposed model, it is compared with a two-stage model that has the same objective functions for each stage decision maker, the results for which are shown in Table 4.

As can be seen, the total consumption determined using the two-stage optimization model is mostly higher than in the proposed model. To be specific, we find that under the two-stage model the domestic water sector receives significantly less water compared to the proposed model, on the contrary, the industrial sector and agricultural sector receive more water. In the first stage of the two-stage optimization model, the initial water rights and virtual water transfers for the sector users are determined by maximizing the water utilization efficiency, and following the decisions in the first stage, in the second stage, the followers decide on their water withdrawal and blue water transfer quantities based on the asymmetric Nash-Harsanyi game model. The comparison of the amount of inter-regional exports and international imports indicate that the trade scale is squeezed, which is not suitable for a region that sends grain from northern China to southern China. In addition, the increase in sector vulnerability could result in unsustainable irrigation district development.

Because the proposed model includes the strategic interactions, this cannot be ignored by the decision makers. Generally, the main reason for the strong discriminatory power in the developed model is that as it is able to deal with the conflicts between the leader and followers, it can produce a more realistic water allocation strategy.

## 5.4 Sensitivity Analysis

The extended Fourier amplitude sensitivity test (EFAST) is used to analyze the allocation results when the crop import prices, available water, or water demand change, with the solutions being assessed using two robustness measures: minimum water utilization efficiency and maximum sectoral vulnerability.

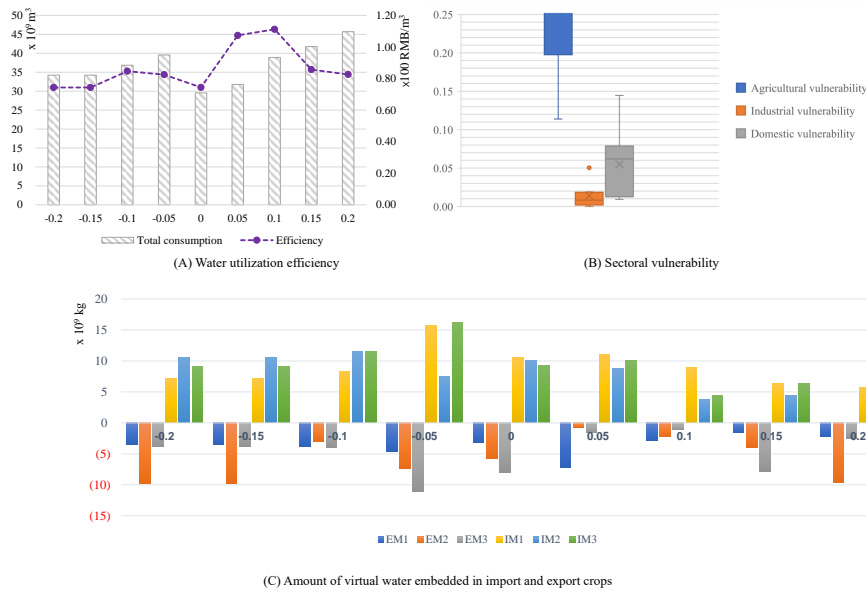
### 5.4.1 Future uncertainty due to changing available water

Available water is affected by precipitation, which in turn reflects a wet or a dry hydrological environment. In this section, to assist decision makers understand the overall water allocation and utilization strategies, the available water is assumed to increase/decrease by a 20% interval.

To quantify the available water sensitivity and determine the reactions to varying the model parameters, several scenarios are conducted and tested, the optimal responses and objective function values from which are shown in Figs. 8. As can be seen, when the amount of available water decreases, the water utilization efficiencies fluctuate slightly, thus verifying the model robustness. When the amount of available water increases, the utilization efficiency fluctuates with an increase in total water consumption, and in both cases, the vulnerability values are within an acceptable range. Therefore, the results indicate that after considering the blue and virtual water transfers, water allocation and import/export strategies could be used to adapt to varying available water quantities.

### 5.4.2 Future uncertainty due to sectoral water demand

Policies that encourage water-conserving irrigation techniques, improve resident water conservation awareness, focus on the construction of water reuse schemes, better manage water use mechanisms, and expand water conservation investments could reduce water demand in each sector by 10 to 20%. Therefore, in this section, seven scenarios are analyzed, including one with



**Figure 8.** Sensitivity analysis of available water. (in Fig. 8 (C) virtual water embedded in export crops are shown below the X-axis, while virtual water embedded in import crops are shown above the X-axis)

no change (the results from the proposed model). To monitor the performance and assess the actions relevant to each scenario, the results presented in Table 5 are analyzed. If there is a decrease in agricultural water demand, water utilization efficiency would improve, and total consumption would decrease. As can be seen in Table 5, the proposed model demonstrates robustness when the agricultural and industrial sectors parameters change, but the robustness is weak when the domestic water demand changes.

**Table 5.** Objective values and total consumption for the 10% and 20% reductions in water demand

|  |         | Agricultural (-10%) | Industrial (-10%) | Domestic (-10%) |
|--|---------|---------------------|-------------------|-----------------|
| Vulnerability $F_1$                                    | 0.00006 | 0.00030             | 0.00474           | 0.00162         |
| Vulnerability $F_2$                                    | 0.00920 | 0.04632             | 0.15199           | 0.02506         |
| Vulnerability $F_3$                                    | 0.11382 | 0.26058             | 0.14329           | 0.13170         |
| Efficiency (RMB/m <sup>3</sup> )                       | 74.40   | 95.42               | 77.48             | 57.68           |
| Total consumption (10 <sup>9</sup> m <sup>3</sup> /yr) | 4.61    | 3.90                | 4.07              | 3.02            |
|  |         | Agricultural (-20%) | Industrial (-20%) | Domestic (-20%) |
| Vulnerability $F_1$                                    | 0.00006 | 0.00002             | 0.00030           | 0.00460         |
| Vulnerability $F_2$                                    | 0.00920 | 0.06672             | 0.03920           | 0.03719         |
| Vulnerability $F_3$                                    | 0.11382 | 0.11124             | 0.11939           | 0.11469         |
| Efficiency (RMB/m <sup>3</sup> )                       | 74.40   | 59.99               | 72.24             | 38.93           |
| Total consumption (10 <sup>9</sup> m <sup>3</sup> /yr) | 4.61    | 3.09                | 4.23              | 2.93            |

The parametric sensitivity analysis information could be useful when deciding on future water conservation and sustainable development investments. For example, modifying irrigation frequency and adopting a single irrigation strategy could be

operative policies to reduce irrigation quantities while achieving acceptable crop yields. In line with Zou and Liu (2014)’s research and the results from the proposed model, it can be seen that there is an “inverse U-shaped relationship” between industrial water demand, industrial added value and the industrial water recycling rate. Water conservation in the industrial sector is observed to have a positive effect on economic development only when the industrial added value/water recycling rate has surpassed a certain value, which indicates that any reductions in industrial water demand should be accompanied by industrial structural adjustments and industrial water-recycling rate improvements. The suggested strategies for the domestic sector include incentive policies to encourage households to reduce domestic water consumption and policies to guarantee sustainable water utilization and reduce total consumption.

### 5.4.3 Future uncertainty due to import crop prices

Imported crop prices are increased/decreased by 10% and input into the model to analyze the effect on water allocation, withdrawal and transfer processes. Table 6 shows the optimal solution for water use and net imports, from which it can be seen that with a price change in the importing crops, there are minimal changes in the water utilization efficiency and vulnerability, which indicates that the proposed model is comparatively robust to import price changes; however, it is more sensitive to the virtual water price variations for sunflower, followed by maize and wheat.

**Table 6.** Optimal results under varying import crops’ prices

|   | No change | Wheat import price |        | Maize import price |        | Sunflower import price |        |
|---|-----------|--------------------|--------|--------------------|--------|------------------------|--------|
|   | 0         | -10%               | 10%    | -10%               | 10%    | -10%                   | 10%    |
| Agricultural use ( $10^9 \text{ m}^3/\text{yr}$ )   | 1.96      | 1.73               | 2.23   | 1.62               | 2.3    | 1.94                   | 2.32   |
| Industrial use ( $10^6 \text{ m}^3/\text{yr}$ )     | 28.7      | 29.6               | 26.7   | 28.9               | 25.2   | 30.8                   | 27.5   |
| Domestic use ( $10^9 \text{ m}^3/\text{yr}$ )       | 2.46      | 2.41               | 2.20   | 2.27               | 1.85   | 2.35                   | 2.12   |
| Net IM <sub>1</sub> ( $10^9 \text{ kg}/\text{yr}$ ) | 0.519     | 0.588              | 0.697  | 0.651              | 0.590  | 0.810                  | 0.758  |
| Net IM <sub>2</sub> ( $10^9 \text{ kg}/\text{yr}$ ) | -0.403    | -0.383             | -0.394 | 0.0240             | -0.029 | -0.717                 | -0.361 |
| Net IM <sub>3</sub> ( $10^9 \text{ kg}/\text{yr}$ ) | 1.20      | 1.07               | 1.28   | 0.816              | -0.068 | 0.919                  | 0.586  |
| Vulnerability $F_1$                                 | 0.0001    | 0.1130             | 0.1168 | 0.0905             | 0.1138 | 0.1263                 | 0.1788 |
| Vulnerability $F_2$                                 | 0.0092    | 0.0006             | 0.1321 | 0.0008             | 0.0001 | 0.0012                 | 0.0004 |
| Vulnerability $F_3$                                 | 0.1138    | 0.0001             | 0.0003 | 0.1203             | 0.0092 | 0.0321                 | 0.0455 |
| Water utilization efficiency (RMB/ $\text{m}^3$ )   | 74.4      | 72.5               | 73.1   | 66.6               | 74.4   | 59.9                   | 59.9   |

### 5.4.4 Future uncertainty due to market prices

We define the parameter  $\theta$  as 0.5, which presents the average of willingness to pay of the two trading participators, and then we obtain an optimal solution to water use and transfers. We probe deeper by changing the values of  $\theta$  and analyze the effects of blue water transfer price on solutions. An increase in  $\theta$  indicates a higher willingness to buy at the buyer’s price, and decrease in  $\theta$  indicates a higher willingness to trade at the seller’s price. Table 7 indicates that the optimized decision variables are less sensitive to a change in the market prices, and further verifies that the proposed model is robust to market prices.

**Table 7.** Optimal solutions under varying water market prices

|   | $\theta = 0.15$ | $\theta = 0.30$ | $\theta = 0.50$ | $\theta = 0.65$ | $\theta = 0.80$ |
|---|-----------------|-----------------|-----------------|-----------------|-----------------|
| Agricultural use ( $10^9 \text{ m}^3/\text{yr}$ ) | 1.74            | 2.29            | 1.96            | 1.78            | 1.75            |
| Industrial use ( $10^6 \text{ m}^3/\text{yr}$ )   | 26.7            | 38.2            | 28.7            | 55.3            | 61.5            |
| Domestic use ( $10^9 \text{ m}^3/\text{yr}$ )     | 2.02            | 2.26            | 2.46            | 1.32            | 1.35            |
| Net IM <sub>1</sub> ( $10^9 \text{ kg/yr}$ )      | 0.813           | 0.675           | 0.517           | 0.304           | 0.225           |
| Net IM <sub>2</sub> ( $10^9 \text{ kg/yr}$ )      | -0.347          | -0.220          | -0.403          | -0.569          | 0.824           |
| Net IM <sub>3</sub> ( $10^9 \text{ kg/yr}$ )      | 0.053           | 0.224           | 1.2             | 0.371           | 0.862           |
| Vulnerability $F_1$                               | 0.1168          | 0.0905          | 0.1138          | 0.1263          | 0.1788          |
| Vulnerability $F_2$                               | 0.1321          | 0.0008          | 0.0001          | 0.0012          | 0.00044         |
| Vulnerability $F_3$                               | 0.0003          | 0.1203          | 0.0092          | 0.0321          | 0.0455          |
| Water utilization efficiency (RMB/ $\text{m}^3$ ) | 73.2            | 66.7            | 74.4            | 59.9            | 59.9            |

6 Conclusions

In this study, a novel model based on Stackelberg-Nash-Harsanyi game theory was proposed to analyze a water reallocation problem that included water transfers and crop transactions. To describe the realistic water allocation, withdrawal and trans-  
action processes, a bilevel framework with one leader and multiple followers was employed in which the water affairs bureau  
was in the leader position and multiple water usage sectors were in the follower positions. Vulnerability, which included the  
demand loss degree (caused by deficient water withdrawal) and supply loss degree (caused by excess water withdrawal), was  
the lower level objective, with the water utilization efficiency across the whole system being maximized on the upper level.  
Blue and virtual water transfers, which are mechanisms that can essentially relieve uneven water distribution, were included  
in this study based on the idea that blue water can be reallocated to industrial and domestic sectors to develop water-saving  
agriculture and that virtual water in crops can be quantified to optimize inter-regional exports and international imports.

To verify the feasibility and practicality of the developed model, a real-world application was conducted in the Hetao irri-  
gation district in northern China. It was found that the water demand in the domestic sector was first satisfied, followed by the  
agricultural and industrial sectors, with the blue water transfers providing an opportunity for each sector to achieve efficient wa-  
ter utilization, and the virtual water transfers providing a new opportunity for water conservation and land use. To be specific,  
some initial water rights were transferred from the agricultural sector to the industrial and domestic sectors, and key crops,  
and particularly water-intensive crops (e.g., wheat and sunflower), were imported from other countries rather than being grown  
domestically. To demonstrate the superiority of the developed model, two comparative scenarios were considered: one without  
virtual water transfers and the other limiting blue water transfers. The analysis in Scenario A highlighted the importance of  
virtual water transfers in alleviating water usage stress, and the analysis in Scenario B verified that blue water transfers reduced  
the vulnerability in each sector and demonstrated how inter-regional exports, international imports and blue water transfers  
could result in higher water utilization efficiencies in all three sectors.

Several scenarios also assessed changes in the environment and water-conservation strategies, including one without  
changes (the results from the proposed model). These sensitivity analyses not only proved the robustness of the proposed  
model, but also determined the potential adjustments that could be made in water usage sector allocation strategies to alleviate



regional water stress, eliminate the negative impacts caused by the crop trade, ensure regional food security, and develop sustainable irrigation.

This work focused on water allocation in a bilevel framework and conducted a case study in an irrigation district. Given that we explored only one leader and multiple followers, there are possibilities for multiple leaders and multiple followers in future research. Further, a macroscopic analysis between China and foreign countries could also be interesting.

## Appendix A: Water demands computation

### A1 Virtual water content

This study provides detailed quantitative information on crop imports and exports. The principle for assessing the virtual water content (denoted by  $VW_k, k = 1, 2, 3, m^3 \text{ kg}^{-1}$ ) of a food was proposed by the Food and Agriculture Organization (FAO) as the amount of water per unit of food that is consumed during the production process Zeng et al. (2012), as shown in Eq. (A1).

$$VW_k = \frac{W_k}{y_k} = \frac{10(\mu \times w_k + R_k)}{y_k}, \quad (A1)$$

where effective rainfall over the crop-growing period is denoted as  $R_k$  (mm) and irrigated water is denoted as  $w_k$  (mm).  $\mu$  is the irrigated coefficient, which presents the utilization effectiveness of irrigation water.  $W_k$  ( $m^3/hm^2$ ), calculated by  $10(\mu \times w_k + R_k)$ , presents the water components in crop  $k$ , which consist of effective irrigated water and rainfall. The value of 10 is used to convert mm to  $m^3/hm^2$ .  $y_k$  ( $kg/hm^2$ ) represents the crop yield per irrigation area unit. As rainfall is an additional supplement for crop water demands, in addition to evapotranspiration (ET), water irrigation quantities are somewhat influenced by the effective rainfall in different seasons in addition to evapotranspiration (ET), as shown below.

$$ET_k = kET_0, \quad (A2)$$

$$w_k = \frac{(ET_k - R_k)}{\mu}, R_k = \beta P_k. \quad (A3)$$

The accumulated ET over the crop-growing period, shown in Eq. (A2).  $ET_0$  is the reference evapotranspiration of a standard crop, which can be calculated by the FAO Penman-Monteith function (Allan, 1998; Su et al., 2014).  $\beta$  is the coefficient for efficient rain, which presents the proportion of total rainfall that infiltrates into the soil profile and does not contribute to deep percolation, while  $P_k$  is the actual rainfall (Patwardhan et al., 1990).

### A2 Agricultural water demand

Agricultural water demand is the sum of the crops' demand for water, as calculated in Eqs. (A4) and (A5), for which several representative crops were chosen.

$$d_{1k} = w_k A_k, \quad (A4)$$

$$d_1 = \sum_{k=1}^3 d_{1k}, \quad (A5)$$

where  $d_{1k}$  is the water demand of crops in the agricultural sector, and  $A_k$  is the area allocated to crop  $k$ .

### A3 Domestic water demand

515 Domestic water demand includes all water consumed in a given period for all residential purposes, e.g., in-house water use for kitchens, laundry and baths, and outside uses in gardens. The domestic water demand can be determined based on population and income growth projections (Cai, 2002; Young and Haveman, 1985). From many studies on water demand, it was concluded that per capita disposable income was a key influence on water demand; therefore, a power function between water demand and water price was determined.

520  $d_3 = K^D \phi_{pop}^\eta,$  (A6)

where  $K^D$  is a constant,  $\phi_{pop}$  is the per capita disposable income, and  $\eta$  is the demand income elasticity coefficient.

### A4 Industrial water demand

The projection of industrial water demand depends upon income (gross industrial output value). Through the data obtained from the BayanNur Water Resources Bulletin, future industrial water demand is projected as follows:

525  $d_2 = K^I \phi_{ind}^\vartheta$  (A7)

where  $K^I$  is the constant,  $\phi_{ind}$  is the gross industrial output value, and  $\vartheta$  is the demand income elasticity coefficient.

### A5 Ecological water demand

The water demands for environmental protection and ecological systems are assumed to be constant at the present stage of the study, and these values are determined by the local government based on the consideration of current water use and climate change.

530

## Appendix B: Pseudo code

A pseudo code for solving Stackelberg-Nash-Harsanyi bargaining process is shown in Table B1.

**Table B1.** Pseudo code for the proposed model.

---

|                |  |
|----------------|--|
| <b>Input:</b>  | The correlation parameter, disagreement points ( $dis^U$ , $dis_i^L$ ), bargaining weights ( $\alpha_i$ );   |
| <b>Output:</b> | A satisfactory solution and objective functions for the proposed model;  |
| <b>Step 1:</b> | Initialize population, construct fitness functions for the upper objective (Eff) and an auxiliary fitness function for the Nash-Harsanyi model in the lower level ( $\prod_{i=1,2,3} (F_i - dis_i^L)^{\alpha_i}$ );  |
| <b>Step 2:</b> | Randomly generate an initial solution, maximize the fitness function in the lower level<br>IF (any lower level objective functions are lower than their disagreement points)<br>{ generation++;<br>population [generation+1]=Select (Mutate(Crossover (parents)));<br>Else: go to step (3);  |
| <b>Step 3:</b> | Input the satisfactory solution from step (2), maximize the fitness function in the upper level<br>IF (upper level objective function is lower than its disagreement point)<br>{ generation++;<br>population [generation+1]=select (mutate(crossover (parents)));<br>Else: keep the current decision variables and corresponding solutions and go to step (4); |
| <b>Step 4:</b> | Feedback<br>IF(the updated lower level objective functions are still better than the disagreement points)<br>{ IF (generation > Maximum generation )<br>{ Output all the decision variables<br>End loop} }<br>Else: go to step (2)   |

---

## Appendix C: Comparative models

$$\begin{aligned}
 \max \quad & \text{Eff} = \frac{\text{Re}}{\text{Cons}} \\
 s.t. \quad & \left\{ \begin{array}{l} \sum_{i=1}^4 X_i \leq \text{AW} \\ p_1 < \text{PTI} < p_2 \\ p_1 < \text{PTD} < p_3 \\ X_4 \geq e \\ \text{POP} \varpi_k \leq l_k \\ \min F_1 \\ s.t. \left\{ \begin{array}{l} \sum_{k=1}^s A_k \leq A, A_k = \frac{X_{1k}}{W_k} \\ x_{ik} > 0 \end{array} \right. \\ \min F_2 \\ s.t. X_2 > 0 \\ \min F_3 \\ s.t. X_3 > 0 \end{array} \right. \end{aligned} \tag{C1}$$

535

$$\begin{aligned}
& \max \text{Eff} = \frac{\text{Re}}{\text{Cons}} \\
& s.t. \left\{ \begin{aligned}
& \sum_{i=1}^4 X_i \leq \text{AW} \\
& X_4 \geq e \\
& \text{EM}_k + \text{POP} \varpi_k \leq l_k + \text{IM}_k \\
& \min F_1 = \omega^{\text{DD}} F_1^{\text{DD}} + \omega^{\text{EL}} F_1^{\text{EL}} \\
& s.t. \left\{ \begin{aligned}
& F_1^{\text{DD}} = \frac{\frac{1}{3} \sum_{k=1}^3 \max((d_{1k} - x_{1k}), 0)}{\sum_{k=1}^3 d_{1k}} \\
& F_1^{\text{EL}} = \frac{\frac{1}{3} \sum_{k=1}^3 \max((x_{1k} - d_{1k}), 0)}{\sum_{k=1}^3 d_{1k}} \\
& \sum_{k=1}^s A_k \leq A, A_k = \frac{X_{1k}}{W_k} \\
& x_{ik} > 0
\end{aligned} \right. \\
& \min F_2 = \omega^{\text{DD}} F_2^{\text{DD}} + \omega^{\text{EL}} F_2^{\text{EL}} \\
& s.t. \left\{ \begin{aligned}
& F_2^{\text{DD}} = \frac{\max(d_2 - X_2, 0)}{d_2} \\
& F_2^{\text{EL}} = \frac{\max(X_2 - d_2, 0)}{d_2} \\
& X_2 > 0
\end{aligned} \right. \\
& \min F_3 = \omega^{\text{DD}} F_3^{\text{DD}} + \omega^{\text{EL}} F_3^{\text{EL}} \\
& s.t. \left\{ \begin{aligned}
& F_3^{\text{DD}} = \frac{\max(d_3 - X_3, 0)}{d_3} \\
& F_3^{\text{EL}} = \frac{\max(X_3 - d_3, 0)}{d_3} \\
& X_3 > 0
\end{aligned} \right.
\end{aligned} \right. \tag{C2}
\end{aligned}$$

## Appendix D: Data collection

The main input data and sources are shown in Tables D1.

**Table D1.** Overview of input variables, data sources and determination

| Input variable                          | Source  | Determination   |
|---|---|---|
| Water demand in each sector             | BayanNur Water Resources Bulletin   | Predicted by Eqs. (A4)-(A7)   |
| Output in each sector per unit of water | Published paper Liu (2016)  |   |
| Consumption of each crop per capita     | Bayna Noaoer yearbook   | Average value from years 2012-2015  |
| Irrigation coefficient                  | Published paper Wang (2017)   | –   |
| The price of water                      | Published paper Wang (2017)   | –   |
| Prices of imported agricultural crops   | Wind database, FAO database.  | Calculated by average annual import price of each crop based on data for the period 2012-2015 |
| Consumptions of each crop yearly        | Bayna Noaoer yearbook, Bayannur water resources bulletin  | Calculated by $\sum_{k=1}^3 \text{POP}_k \varpi_k$  |
| Prices of blue water transfers          | Published paper: Erfani et al. (2014)   | Calculated by Eq. (1)   |
| Transfer cost                           | Website China water exchange ( <a href="http://cwex.org.cn/lising/">http://cwex.org.cn/lising/</a> )                                      | Average value   |
| The hydrologic data                     | Inner Mongolia Statistical Yearbook, Bayna Noaoer yearbook, China Meteorological Data Sharing Service System, Published paper Wang (2017) | –   |
| Agricultural data                       | Hetao Irrigation District Agricultural Statistical Data, Published paper Wang (2017)  | –   |

*Author contributions.* All of the authors helped to conceive and design the analysis. Zhongwen Xu and Xudong Chen developed the model and wrote the paper. Liming Yao and Huijuan Wu contributed to the data collection and the writing of the paper.

540 *Competing interests.* The authors declare that they have no competing financial interests.

*Acknowledgements.* The main data sources for the solution are based on the Bayna Noaoer yearbook, Hetao irrigation district statistical data, BayanNur Water Resources Bulletin and some published papers. Table D1 provides a general overview of the input variables, data sources and determination in this study. Some are cited from the website and published papers directly, and others are predicted by relative equations based on historical data.

545 We thank those that have given constructive comments and feedback to help improve this paper. Support was provided by the National Natural Science Foundation of China [Grant No. 71771157].

## References

- Ahmadi, A., Zolfagharipoor, M. A., and Afzali, A. A.: Stability analysis of stakeholders' cooperation in inter-basin water transfer projects: A case study, *Water Resources Management*, 33, 1–18, 2019.
- 550 Allan, J. A.: Virtual Water: A Strategic Resource Global Solutions to Regional Deficits, *Groundwater*, 36, 1998.
- Allan, J. A. et al.: Fortunately there are substitutes for water otherwise our hydro-political futures would be impossible, *Priorities for water resources allocation and management*, 13, 26, 1993.
- Brown, C., Lund, J., Cai, X., Reed, P. M., Zagona, E., Ostfeld, A., Hall, J., Characklis, G., Yu, W., and Brekke, L.: The future of water resources systems analysis: Toward a scientific framework for sustainable water management, *Water Resources Research*, 51, 6110–6124, 2015.
- 555 2015.
- Cai, X.: Global water demand and supply projections, Part 1: A modeling approach, *Water International*, 27, 159–169, 2002.
- Cai, X.: Water stress, water transfer and social equity in Northern China–Implications for policy reforms, *Journal of Environmental Management*, 87, 14–25, 2008.
- Chen, W., Wu, S., Lei, Y., and Li, S.: China's water footprint by province, and inter-provincial transfer of virtual water, *Ecological Indicators*, 74, 321–333, 2017.
- 560 74, 321–333, 2017.
- Dai, X., Han, Y., Zhang, X., Chen, J., and Li, D.: Development of a water transfer compensation classification: A case study between China, Japan, America and Australia, *Agricultural Water Management*, 182, 151–157, 2017.
- Duarte, R., Pinilla, V., and Serrano, A.: Understanding agricultural virtual water flows in the world from an economic perspective: A long term study, *Ecological Indicators*, 61, 980–990, 2016.
- 565 Eichfelder, G.: Multiobjective bilevel optimization, *Mathematical Programming*, 123, 419–449, 2010.
- Erfani, T., Binions, O., and Harou, J. J.: Simulating water markets with transaction costs, *Water Resources Research*, 50, 4726, 2014.
- Feng, K., Siu, Y., Guan, D., and Hubacek, K.: Assessing regional virtual water flows and water footprints in the Yellow River Basin, China: A consumption based approach, *Applied Geography*, 32, 691–701, 2012.
- Fu, J. S., Zhong, P., Zhu, F., Chen, J., Wu, Y., and Xu, B.: Water resources allocation in transboundary river based on asymmetric Nash-Harsanyi leader-follower game model, *Water*, 10, 270, 2018.
- 570 10, 270, 2018.
- Guo, X., Hu, T., Tao, Z., and Lv, Y.: Bilevel model for multi-reservoir operating policy in inter-basin water transfer-supply project, *Journal of Hydrology*, 424–425, 252–263, 2012.
- Harsanyi, J. C.: A bargaining model for the cooperative n-person game, *Contributions to the Theory of Games*, 4, 325–355, 1959.
- Harsanyi, J. C.: A simplified bargaining model for the n-person cooperative game, *International Economic Review*, 4, 194–220, 1963.
- 575 Hossein, Z., Hamid, A., and Mohammad, H. N.: Influential third party on water right conflict: A Game Theory approach to achieve the desired equilibrium (case study: Ilam dam, Iran), *Journal of Environmental Management*, 214, 283, 2018.
- Jiang, W. and Marggraf, R.: Bilateral virtual water trade in agricultural products: A case study of Germany and China, *Water International*, 40, 483–498, 2015.
- Lamastra, L., Miglietta, P., Toma, P., Leo, F., and Massari, S.: Virtual water trade of agri-food products: Evidence from Italian-Chinese relations, *Science of the Total Environment*, 5, 474–482, 2017.
- 580 5, 474–482, 2017.
- Liu, D.: Development and application of coupling model of water right transfer and virtual water compensation in irrigation district (in Chinese), Northwest Agriculture & Forestry University, 2016.
- Liu, J. and Yang, W.: Water sustainability for China and beyond., *Science*, 337, 649–650, 2012.

- Liu, J., Zehnder, A., and Yang, H.: Global consumptive water use for crop production: The importance of green water and virtual water, *Water Resources Research*, 45, 641–648, 2009.
- Liu, J., Sun, S., Wu, P., Wang, Y., and Zhao, X.: Inter-county virtual water flows of the Hetao irrigation district, China: A new perspective for water scarcity, *Journal of Arid Environments*, 119, 31–40, 2015a.
- Liu, J., Sun, S., Wu, P., Wang, Y., and Zhao, X.: Evaluation of crop production, trade, and consumption from the perspective of water resources: A case study of the Hetao irrigation district, China, for 1960–2010, *Science of the Total Environment*, 505, 1174–1181, 2015b.
- Liu, J., Wang, Y., Yu, Z., Cao, X., Tian, L., Sun, S., and Wu, P.: A comprehensive analysis of blue water scarcity from the production, consumption, and water transfer perspectives, *Ecological Indicators*, 72, 870–880, 2017a.
- Liu, X., Du, G., Jiao, R. J., and Xia, Y.: Product line design considering competition by bilevel optimization of a Stackelberg–Nash game, *IIE Transactions*, 49, 768–780, 2017b.
- Madani, K.: Game theory and water resources., *Journal of Hydrology*, 381, 225–238, 2010.
- Mohammadiganigolzar, F., Ameri, J., and Motee, N.: Virtual water trade as a strategy to water resource management in Iran, *Journal of Water Resource & Protection*, 6, 141–148, 2014.
- Nash, J.: Two Person Cooperative Games, *Econometrica*, 21, 128–140, 1953.
- Neuman, J. and Morgenstern, O.: *Theory of Games and Economic Behavior*, Princeton University Press, 1944.
- Patwardhan, A. S., Nieber, J. L., and Johns, E. L.: Effective Rainfall Estimation Methods, *Journal of Irrigation & Drainage Engineering*, 116, 182–193, 1990.
- Ramos, M.: Bilevel optimization of Eco-Industrial parks for the design of sustainable resource networks, Ph.D. thesis, Institut National Polytechnique de Toulouse, 2016.
- Sedghamiz, A., Heidarpour, M., Nikoo, M. R., and Eslamian, S.: A game theory approach for conjunctive use optimization model based on virtual water concept, *Civil Engineering Journal*, 4, 1315–1325, 2018a.
- Sedghamiz, A., Nikoo, M. R., Heidarpour, M., and Sadegh, M.: Developing a non-cooperative optimization model for water and crop area allocation based on leader-follower game, *Journal of hydrology*, 567, 51–59, 2018b.
- Sedghamiz, A., Reza, N., Heidarpour, M., and Sadegh, M.: Developing a Non-Cooperative Optimization Model for Water and Crop Area Allocation Based on Leader-follower Game, *Journal of Hydrology*, 567, 51–59, 2018c.
- Shtull-Trauring, E. and Bernstein, N.: Virtual water flows and water-footprint of agricultural crop production, import and export: A case study for Israel, *Science of the Total Environment*, 622, 1438–1447, 2018.
- Su, X., Li, J., and Singh, V. P.: Optimal allocation of agricultural water resources based on virtual water subdivision in shiyang river basin, *Water Resources Management*, 28, 2243–2257, 2014.
- Wang, H.: Structural adjustment mechanism, water conservation and ecological conservation (In Chinese), [http://paper.people.com.cn/rmrb/html/2018-10/21/nw.D110000renmrb\\_20181021\\_1-10.htm](http://paper.people.com.cn/rmrb/html/2018-10/21/nw.D110000renmrb_20181021_1-10.htm), accessed October 21, 2018, 2018.
- Wang, L., Fang, L., and Hipel, K. W.: Basin-wide cooperative water resources allocation, *European Journal of Operational Research*, 190, 798–817, 2008.
- Wang, X., Lu, Q., and Gao, Q.: Study on the volumes of water diverted from the yellow river to the irrigated area in the great bend of the yellow river, *Arid Zone Research*, 22, 146–151, 2005.
- Wang, Y.: Systematic calculation of irrigation water use and total amount analysis of agricultural water use in Hetao irrigation area (In Chinese), Yangzhou University, 2017.

- Wang, Y., Wu, P., Zhao, X., and Engel, B.: Virtual water flows of grain within China and its impact on water resource and grain security in 2010, *Ecological engineering*, 69, 255–264, 2014.
- Wang, Y., Liu, D., Cao, X. C., Yang, Z., Song, J., Chen, D., and Sun, S.: Agricultural water rights trading and virtual water export compensation coupling model: A case study of an irrigation district in China, *Agricultural Water Management*, 180, 99–106, 2017.
- 625 Wei, F., Jing, Z., Wu, P., and Wu, Q.: A Stackelberg game approach for multiple energies trading in integrated energy systems, *Applied Energy*, 200, 315–329, 2017.
- Xu, Y., Fu, X., and Qin, J.: Qualifying coordination mechanism for cascade-reservoir operation with a new game-theoretical methodology, *Water*, 10, 1857, 2018.
- Xu, Z., Yao, L., Zhou, X., Moudi, M., and Zhang, L.: Optimal irrigation for sustainable development considering water rights transaction: A Stackelberg-Nash-Cournot equilibrium model, *Journal of Hydrology*, 575, 628–637, 2019.
- 630 Ye, Q., Li, Y., Zhuo, L., Zhang, W., Xiong, W., Wang, C., and Wang, P.: Optimal allocation of physical water resources integrated with virtual water trade in water scarce regions: A case study for Beijing, China, *Water Research*, 129, 264–276, 2018.
- Young, R. A. and Haveman, R. H.: Economics of water resources: A survey, *Handbook of Natural Resource and Energy Economics*, 2, 465–529, 1985.
- 635 Zeng, X., Huang, G., Zhang, J., Li, Y., You, L., Chen, Y., and Hao, P.: A stochastic rough-approximation water management model for supporting sustainable water-environment strategies in an irrigation district of arid region, *Stochastic Environmental Research & Risk Assessment*, 31, 2183–2200, 2017.
- Zeng, Z., Liu, J., Koenenman, P., Zarate, E., and Hoekstra, A. Y.: Assessing water footprint at river basin level: a case study for the Heihe River Basin in northwest China, *Hydrology and Earth System Sciences*, 16, 2771–2781, 2012.
- 640 Zhuo, L., Mekonnen, M., and Hoekstra, A.: The effect of inter-annual variability of consumption, production, trade and climate on crop-related green and blue water footprints and inter-regional virtual water trade: A study for China (1978-2008), *Water Research*, 94, 73–85, 2016.
- Zou, Q. and Liu, X.: Research on Industrial Water Demand Forecasting Model and its Application in China, *Applied Mechanics & Materials*, 675, 976–981, 2014.