

## General comments

This is the revised version of the manuscript “A daily/25km short-latency rainfall product for data scarce regions based on the integration of the GPM IMERG Early Run with multiple satellite soil moisture products” of Massari et al.

The manuscript has been extensively revised to address the reviewers’ comments. We made our best effort to clarify all the issues raised and hope they are now satisfactorily addressed. In particular, we have included new scores to validate the products (i.e., KGE and variability ratio) as suggested by Reviewer 1 and better discussed many aspects related to the results and to the calibration dataset as suggested by Reviewer 2. The assessment of the validity of the TC analysis has been moved to the supplementary material as requested. We would like to thank the reviewers for their suggestions, which have greatly improved the quality of our manuscript.

The **answers** to the [reviewers’ comments](#) are provided in **bold** while the *manuscript text changes* are reported in *red* with the indication of the lines where these changes are located.

## Answers to the comments of Reviewer 1

- 1. The paper introduces a potentially useful precipitation product and is overall quite well written. However, some serious issues need to be resolved before it can be published. “we minimised the daily root mean squared error (RMSE) between the SM2RAIN rainfall applied to the specific SM product and YREF during 2015-2017.” This is problematic because of the noisy nature and highly skewed distribution of precipitation. ERA5 already underestimates precipitation peaks, and using this approach, the obtained SM2RAIN estimates will underestimate precipitation peaks even more. The Kling-Gupta Efficiency is probably a better choice as it accounts for the variability.*

**We thank the reviewer for their valuable suggestion. KGE would theoretically provide a better dynamic range although our attempts to use it instead of RMSE did not always show these improvements. Moreover, Figure 7 (which presents the results obtained using RMSE) shows some benefit to rainfall peaks with a reduction of FAR, an increase in POD and TS for percentiles larger than 90%, which is not in line with the reviewer’s recommendation. In this study, we would rather ensure homogeneity among all the calibration steps, keeping in mind that results obtained here can be further improved by a better calibration using, for instance, KGE.**

**We have underlined this aspect in the revised manuscript (see lines 4-9 p. 10):**

*“Note that being RMSE calibration a variance-minimization technique, it is subjected to conditional biases, which can potentially determine a reduction of the temporal variability of the estimated precipitation and, thus, underestimate extreme values. To*

*partially solve this issue, other metrics can be used, e.g., the Klinge-Gupta Efficiency index (KGE; Gupta et al., 2009) which are theoretically superior in this respect. However, to ensure homogeneity among all the calibration steps (see OLI theory in Section 3.2), we chose to use RMSE, keeping in mind that the results obtained here could be further improved.”*

We have also included KGE and variability ratio scores as additional metrics to evaluate the quality of the rainfall estimates specifically in terms extreme values estimation (see lines 15-26 Pag. 12).

*“Both continuous and categorical error metrics were adopted for validating daily rainfall. The continuous scores are the:*

- 1. Pearson correlation coefficient (R);*
- 2. Root Mean Squared Error (RMSE);*
- 3. Additive bias (BIAS);*
- 4. Variability ratio ( $\gamma$ ), where  $\gamma$  is the ratio of the standard deviation of the rainfall estimate  $\sigma_s$  and the one of the benchmark  $\sigma_o$ . ( $\gamma$ ) optimal value is 1;*
- 5. Kling-Gupta Efficiency index. KGE is a modified version of the classical Nash-Sutcliffe efficiency index (NS) commonly used for evaluating discharge simulation estimates. KGE is composed of three terms: correlation, variability ratio, and bias. KGE varies from  $-\infty$  to 1. KGE values close to 1 denote perfect model estimates, whereas  $KGE < -0.41$  indicate that the estimate deteriorates upon the mean rainfall benchmark (Knoben et al., 2019). With respect to NS, KGE gives more weight to the variability component and is less impacted by conditional bias. In this study, we use the version of KGE proposed by Beck et al. (2018). For further details on the topic, we refer the reader to Gupta et al. (2009).”*

The results are now discussed in terms of KGE and variability ratio as well (at lines 8-33 pag. 16).

*“Table 3 shows R, RMSE, BIAS,  $\gamma$ , and KGE of the different rainfall products obtained by using the ground-based observations described in Section 2.1 as references. The short latency products (less than 2-3 days) are shown in light blue, whereas the long latency ones (larger than 2 months) are left white. The integrated product  $P_{R+SM}$  outperforms both IMERG-ER (significantly) and in some cases long-latency products in terms of R and RMSE (see for instance  $P_{R+SM}$  correlations in Australia, Europe, and India vs ERA5 correlations). This suggests that the selection of the calibration dataset is not necessarily a major limiting factor in the proposed framework, as satellite SM contains inherent information about rainfall, as long as its quality is sufficiently high. However, this is not always true for all the scores. For instance, in terms of bias, results are not optimal in India. Here, ERA5-based climatological correction is probably the reason of the sub-optimal performance of the integrated product due to its relatively high bias over India. For other regions, results are overall good in terms*

of bias for  $P_{R+SM}$  although slightly worse for CONUS. The bias for IMERG-ER is particularly relevant over CONUS and Europe, as well as for IMERG-FR in Europe. On the other hand, GPCC and ERA5 biases over these regions and in Australia are very low, which is expected due to the large amount of gauge stations shared with the references.

In terms of variability ratio, we did not observe significant conditional biases of the  $P_{R+SM}$  product in Europe and CONUS, although the use of RMSE as a calibration score of SM2RAIN (see Section 3.3.2) and in the OLI procedure (see Section 3.2) would systematically suggest it. Rather, we observed the ability to reduce the high variability of IMERG-ER bringing it to values closer to one. Only for Australia  $\gamma$  is about 30 % lower than one, but this difference is not too far from the range of values observed for the other products (especially GPM-based products). The reason for that can be twofold. First, the integration was carried out only on non-zero rainfall values (thus the impact of SM2RAIN calibration with RMSE is overall lower than expected, see section 3.3.2). Second, the lower variability of SM2RAIN products is in this case beneficial as IMERG-ER shows too high variability.

KGE results provide an integrated measure of the scores discussed above.  $P_{R+SM}$  KGE values ranges around 0.6 for all the key regions. Lower performance is obtained for IMERG-ER with respect to  $P_{R+SM}$  due to its high variability, except for India where the higher bias of  $P_{R+SM}$  determines sub-optimal KGE. For long latency products, KGE measures are relatively good for GPCC, but in India where its lower correlation determines a decrease of the KGE. IMERG-FR suffers from large variability ratio in Europe (in addition to high bias) and CONUS, which causes relatively low KGE values. ERA5 KGE values are suboptimal over CONUS (due to a high bias and low variability ratio) and in India (due to high bias).”

		Australia	CONUS	Europe	India
<b>R [-]</b>	<b>P<sub>R+SM</sub></b>	0.770	<b>0.705</b>	0.679	<b>0.740</b>
	IMERG-ER	0.704	0.604	0.563	0.703
	IMERG-FR	0.767	0.665	0.630	0.737
	GPCC	<b>0.878</b>	0.696	<b>0.898</b>	0.595
	ERA5	0.720	0.647	0.699	0.603
<b>RMSE [mm/day]</b>	<b>P<sub>R+SM</sub></b>	3.043	3.562	3.016	<b>5.074</b>
	IMERG-ER	4.520	6.381	5.474	6.100
	IMERG-FR	3.509	4.689	4.542	6.142
	GPCC	<b>2.306</b>	<b>3.446</b>	<b>1.751</b>	6.669
	ERA5	3.330	4.027	2.888	6.867
<b>BIAS [mm/day]</b>	<b>P<sub>R+SM</sub></b>	0.090	0.135	-0.035	-0.238
	IMERG-ER	-0.238	-0.195	-0.394	-0.067
	IMERG-FR	-0.076	-0.008	-0.457	-0.129
	GPCC	<b>0.002</b>	<b>0.072</b>	-0.118	<b>-0.047</b>
	ERA5	0.087	0.129	<b>-0.031</b>	-0.237
<b>variability ratio <math>\gamma</math> [-]</b>	<b>P<sub>R+SM</sub></b>	0.73	<b>1.01</b>	1.01	0.86
	IMERG-ER	1.24	1.82	1.78	1.14
	IMERG-FR	1.11	1.41	1.59	1.26
	GPCC	0.88	1.03	0.99	<b>1.03</b>
	ERA5	<b>0.92</b>	1.18	<b>1.00</b>	1.08
<b>KGE [-]</b>	<b>P<sub>R+SM</sub></b>	0.651	0.572	0.607	0.585
	IMERG-ER	0.551	0.274	0.277	0.623
	IMERG-FR	0.702	0.462	0.445	<b>0.651</b>
	GPCC	<b>0.785</b>	<b>0.603</b>	<b>0.799</b>	0.545
	ERA5	0.654	0.469	0.638	0.529

Table R1: Correlation (R), root mean square error (RMSE), daily bias (BIAS), variability ratio  $\gamma$  (i.e., ratio between the standard deviation of the estimated rainfall and that of the benchmark) and Kling-Gupta Efficiency Index (KGE) obtained with the comparison of the different rainfall products against gauge-based AWAP (Australia), Stage IV (CONUS, gauge+radar), E-OBS (Europe) and IMD (India) during the period 2015-2017. P<sub>R+SM</sub> refers to the integrated product. Light blue highlighting refer to short-latency products.

Additional text on this aspect was also included in the abstract at lines 14-16 pag. 1.

*“We also found a relevant overestimation of the rainfall variability of GPM-based products (up to twice the reference value), which was significantly reduced after the integration with satellite soil moisture-based rainfall estimates.”*

and in the discussion (see lines 5-13 pag. 20):

*“.. we found:*

*1....*

*2...*

*3. an ability of reducing the too high variability ratio observed in IMERG-ER product. One of the reasons for this was also related to the lower variability of SM2RAIN-based*



*rainfall estimates, which were produced by minimizing the RMSE with the calibration dataset (i.e., ERA5). Despite beneficial in this case, this issue can be relevant and could also impact the ability in the prediction of extreme values and a modification of the true rainfall distribution. However, a closer look at the distributions of the reference and the estimated rainfall (not shown) suggests that the integrated product was not impacted too much from this issue.*

*4. an improvement of the KGE score as a consequence of the improvement of the correlation (mainly) and the variability ratio in all cases except India. Here, despite the better correlation, the integrated product was characterized by a higher bias and lower variability, which drew KGE to values lower than the ones of IMERG-ER.*

*5 ...”*

- 2. "The final product is then composed of multiple rainfall datasets weighed according to Eq. 6." An averaging scheme like this causes underestimation of peaks and introduces spurious drizzle. I realize that zero values of IMERG were kept, but this does not eliminate all spurious drizzle issue. It will, however, probably introduce a spurious discontinuity in the precipitation distribution.*

We investigated this issue and found no significant detrimental effects of the current integration scheme on either low rainfall regimes (below the 50 percentile) or high peaks (rainfall percentiles larger than 90, see Figure 7 of the revised manuscript). By contrast, we observed a slight increase of FAR in Australia and CONUS and little higher increments of this score for Europe and CONUS at medium/high rainfall regimes (60% up to 85%). Larger FARs were also accompanied by a significant increase in POD, which in turn determined the improvement in TS.

In addition, to have an idea of how much the rainfall distribution of  $P_{R+SM}$ , IMERG-ER, IMERG-FR, ERA5 and GPCC were similar to the benchmark, we compared the first four moments of their distributions (mean, variance, skewness and kurtosis) against those of the benchmark (pixel per pixel) and displayed them in four scatterplots each one representing a statistical moment. Optimal results for the scatterplot should lay on the 1:1 line.

We selected only Europe and CONUS to carry out this analysis to be sure to not have an impact of the interpolation used to align daily rainfall record of India and Australia to that of the 00:00 UTC. Indeed, while for Europe and CONUS daily rainfall data are provided at 00:00 UTC and recorded from 00:00 to 23:59, for AWAP and IMD (in Australia and India respectively) an interpolation was required to intercompare the products due to the different definition of the daily rainfall (from 9 AM) and the recording time. (local vs 00:00 UTC).

Figure R1 and Figure R2 show that every product is characterized by its own rainfall distribution with some products providing better behaviour in terms of mean and variance (i.e., GPCC) and others providing a very different one (IMERG-ER). In particular,  $P_{R+SM}$  behaves relatively well in comparison with long latency products and does not seem to present serious problems in the rainfall distribution (at least is not much different from the others).

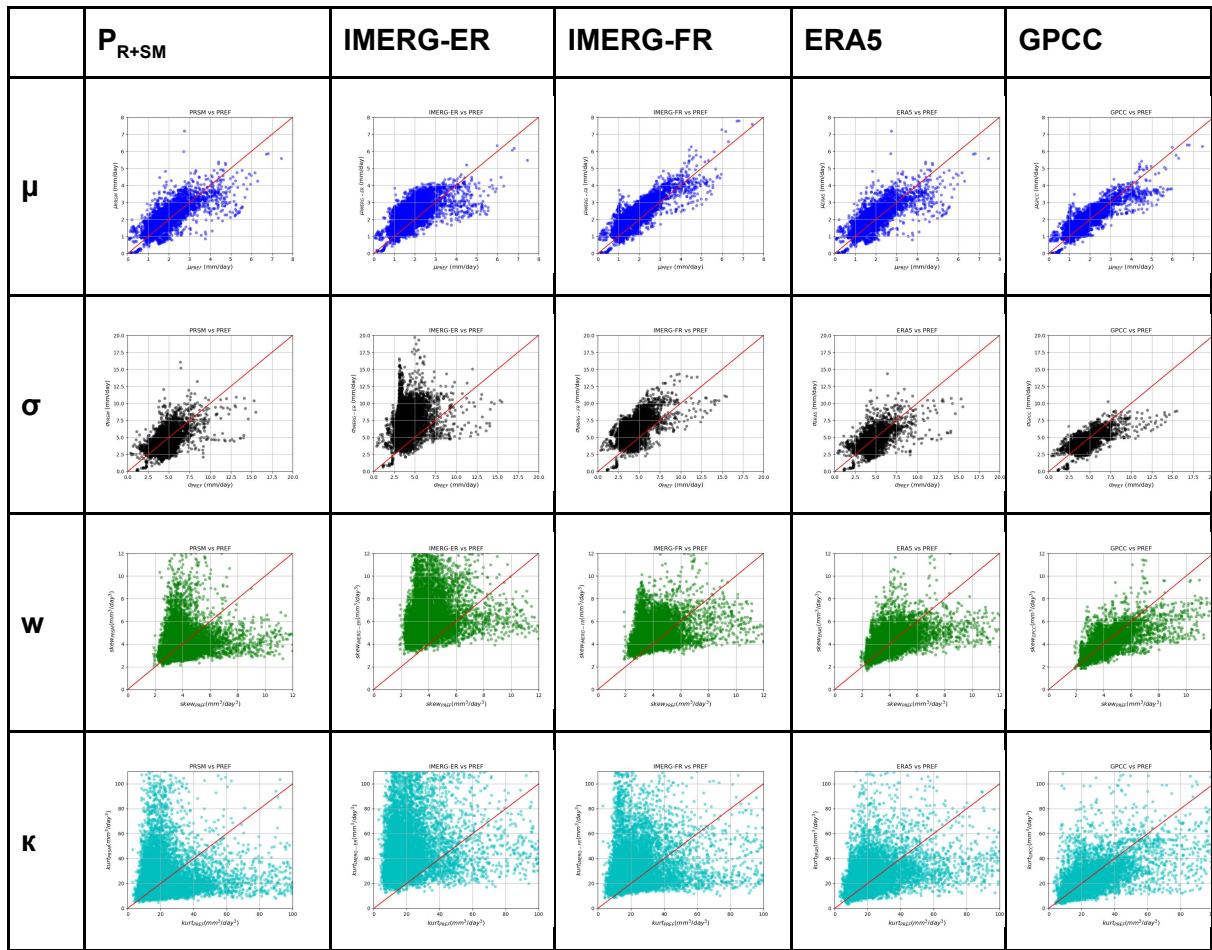
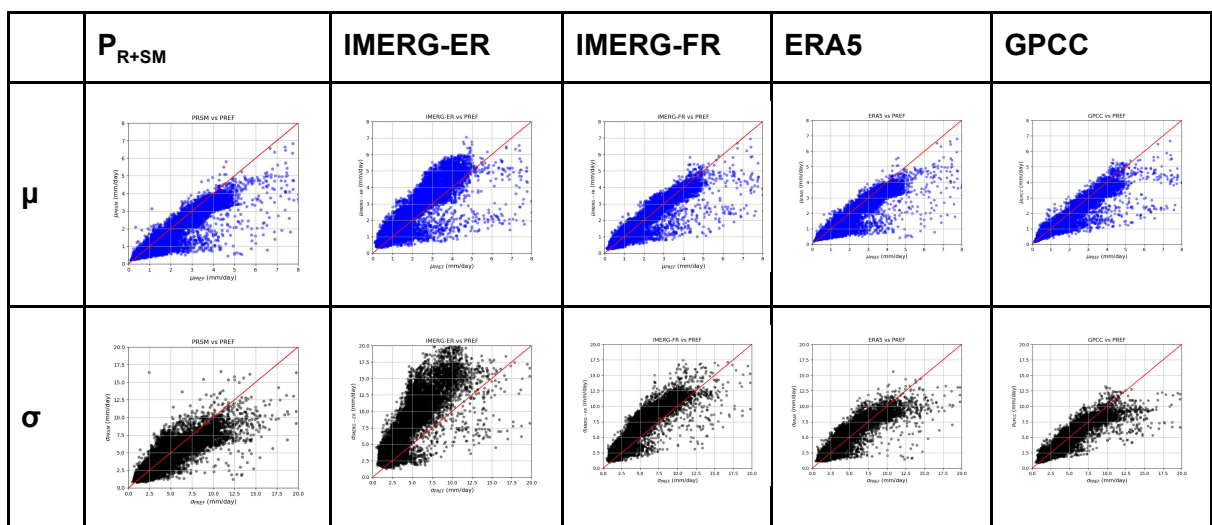


Figure R1. Scatterplot of the Mean ( $\mu$ ), variance ( $\sigma$ ), skewness ( $w$ ) and kurtosis ( $\kappa$ ) associated to each pixel of PR+SM , IMERG-ER, IMERG-FR, ERA5 and GPCC and E-OBS dataset in Europe.



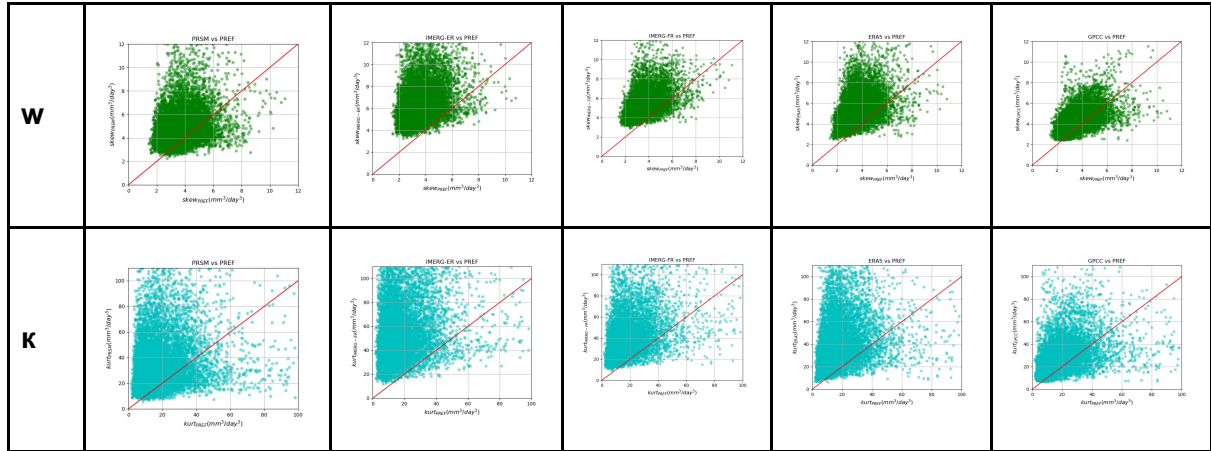


Figure R2. Scatterplot of the Mean ( $\mu$ ), variance ( $\sigma$ ), skewness ( $w$ ) and kurtosis ( $\kappa$ ) associated to each pixel of PR+SM , IMERG-ER, IMERG-FR, ERA5 and GPCP and STAGE-IV dataset over CONUS.

3. *"The continuous scores were the Pearson correlation coefficient ( $R$ ), the Root Mean Squared Error (RMSE), and the additive bias (BIAS)." The RMSE statistic should not be used at the daily time scale because it yields "better" values for datasets which underestimate precipitation peaks (such as SM2RAIN and the dataset introduced here). The KGE (with its three independent components) is probably a better choice. Overall, I think the authors should remove the RMSE from the evaluation and introduce metrics that evaluate the low and high tails of the precipitation distribution of the new product. Any issues revealed using these new metrics should be highlighted in the abstract.*

We thank the reviewer for this comment. Any error-based metric like Means Squared Error (MSE) or KGE includes a correlation component, a variability component (often known as multiplicative bias or conditional bias), and an additive bias component. This can be demonstrated with some simple mathematical manipulations (see Murphy et al. 1988 and Gupta et al. 2009):

$$MSE = 2\sigma_s\sigma_o(1 - r) + (\sigma_s - \sigma_o)^2 + (\mu_s - \mu_o)^2$$

$$KGE = 1 - \sqrt{(r - 1)^2 + \left(\frac{\sigma_s}{\sigma_o} - 1\right)^2 + \left(\frac{\mu_s}{\mu_o} - 1\right)^2}$$

where  $\sigma$  and  $\mu$  refer to the standard deviation and the mean of the simulated "s" and the reference "o" time series whereas  $r$  is the correlation between them. So the three components are present also in the MSE or in its root version.

The notable difference of KGE with respect to MSE is the weight associated to the variability component which is larger for KGE with respect to MSE and the fact that it is a self-consistent score as it varies from 0 to 1 (Gupta et al. 2009).

In the revised version of the manuscript we have included KGE and the variability ratio scores (see our replies to the points above and its inclusion in the abstract, methods, results and discussion). However, we have maintained the RMSE as:

- 1) many past studies are based on this metric and this facilitates the comparison of this work with them;
- 2) it is a physical error measure, therefore easier to relate to the actual physics of precipitation (e.g., mm/day vs some fraction of KGE);
- 3) it can be compared against the results obtained via TC in a more meaningful way.

Gupta, H. V., Kling, H., Yilmaz, K. K., & Martinez, G. F. (2009). Decomposition of the mean squared error and NSE performance criteria: Implications for improving hydrological modelling. *Journal of hydrology*, 377(1-2), 80-91.

Murphy, A. H. (1988). Skill scores based on the mean square error and their relationships to the correlation coefficient. *Monthly weather review*, 116(12), 2417-2424.

4. "Note that, based on this choice, the integrated product is totally independent upon rain gauges" This not true as ERA5 assimilates precipitation gauge observations.

The sentence has changed at (Line 23-24 pag. 15):

**"Note that, except CONUS where rain gauge information is ingested into ERA5 (Lopez, 2011), the integrated product is totally independent upon rain gauge."**

In addition, please, consider the following points:

- 1) From the document "Operational global reanalysis: progress, future directions and synergies with NWP" which describes in details the development of ERA5 reanalysis dataset it is clear that after 2009 "rain rate" is ingested (Figure 17 panel k) in the reanalysis but it is not clear which rainfall information is ingested. To our knowledge only the NCEP Stage IV analysis which combines rain gauges and radars estimates are ingested into the analysis and ERA5 reanalysis but only in United States while no other gauge information is present in the two products outside this area (see also Lopez et al. 2011). Future developments will ingest radar information from OPERA (<https://www.ecmwf.int/en/elibrary/18765-operational-global-reanalysis-progress-future-directions-and-synergies-nwp>) but currently this is not already done.
- 2) It is unlikely that rain gauges will be also ingested over data scarce regions as rain gauges are mostly absent over these regions (see Figure 2 in the paper).
- 3) Over CONUS we found relatively good correlations of ERA5 with Stage IV but also found it lower than the one obtained with our integrated product (see Table 3). This highlights that the integrated product is not really so dependant on the calibration dataset (i.e., ERA5) as highlighted also from the results in Figure 10 and 11 and in our previous studies (e.g., Brocca et al., 2019)

Lopez, P. (2011). Direct 4D-Var assimilation of NCEP stage IV radar and gauge precipitation data at ECMWF. *Monthly Weather Review*, 139(7), 2098-2116.

5. *"ERA5, which provides full coverage and generally homogeneous performance all over the world." Not sure I agree with this as atmospheric models tend to perform markedly worse in convection-dominated regions.*

Our application of TC demonstrated that ERA5 is the best available calibration dataset among those selected, although it still suffers from uncertainty in convection dominated systems (i.e., Western Africa and Sahel see Figure 2 of the revised manuscript). Despite this, the performance of the integrated product seems not to be too much impacted by its quality, as shown in Figure 10 (i.e., compare results over Western Africa of ERA5 and the integrated product).

We have added some discussion on this issue at lines 17-22 pag. 15:

*"This selection does not guarantee optimal solutions, but it is the best we can do with the available datasets considering that other potential candidates can be affected from other/similar issues, which could result in a very different global precipitation estimate (Herold et al., 2016). The solution to this problem is not straightforward, but a possible way forward would be the integration of GPCP and ERA5 or the use of available integrated products (Beck et al. 2017). The advantage of relying only on a single rainfall source (as to ensure homogeneity) however will be lost in that case."*

6. Page 10 line 27: Add "out" after "carried".

**It has been corrected.**

7. Figure 12: Can you add short titles to each subplot?

**It has been added.**

## Answers to the comments of Reviewer 2

1. The manuscript describes a novel approach to integrate multiple precipitation estimates from satellite soil moisture measurements into an existing precipitation data set. The validity of the approach is confirmed over six regions using triple collocation validation and cross-validation with rain-gauge measurements where available. The manuscript is overall well written and mostly well structured. Title and abstract fit the topic and content. Data generated within the study is publicly available, the URL in the manuscript should be updated in order to work properly (omit ".XThcfHvOOUk"). The supplementary materials contain plots and tables that are addressed in the text and support the conclusions. Using the SM2RAIN approach to improve existing precipitation products is a logical step in terms of deriving short-latency precipitation data and of interest for the community. The underlying concepts of the manuscript (OLI, SM2RAIN, TC) are well established, original contributions are summarized in a comprehensible way and referenced properly.

We thank the reviewer for pointing this out and for the valuable suggestions. We have updated the link.

2. More details on why the OLI method is preferred in the combination step over other approaches should be given.

Thanks for the comment. The ingestion of more SM2RAIN products implies that different satellite soil moisture products are used. Despite the potential benefits of one product with respect to another (i.e., active vs passive) the information we are ingesting is always soil moisture, thus it is potentially redundant. The OLI method is particularly advantageous in this respect, as it accounts for both performance differences and error covariance between the rainfall products and is therefore insensitive to the addition of redundant information. We are aware that other more sophisticated methods exist (as for instance those based on data assimilation). However, it must be said that their better performance is not always guaranteed given the higher number of parameters upon which they rely. For instance, Brocca et al. (2016) found that simple integration methods performed equally well and in some cases better than data assimilation-based methods. We are also exploring new integration techniques (see Massari et al. 2019), but we think they are not mature enough for a quasi-global scale application like this one.

In the revised manuscript we have added the following text in the OLI section at lines 26 pag. 8 to 4 pag. 9 to clarify this issue:

*“In addition, it is worth mentioning that the rainfall information brought from different SM2RAIN products to IMERG-ER is potentially redundant especially when the SM estimates from SMAP, ASCAT, and SMOS agree each other. The OLI method is particularly advantageous in this sense, as it accounts for both performance differences and error covariance between the rainfall products, and is therefore insensitive to the addition of redundant information. Other more sophisticated methods can be also applied, although there is no guarantee that such methods would lead to better results. For instance, Brocca et al. (2016) found that simple integration methods performed equally well and in some cases even better than more complex methods. Future developments will explore new and more complex integration techniques, as the one in Massari et al. (2019).”*

Brocca, Luca, et al. "Rainfall estimation by inverting SMOS soil moisture estimates: A comparison of different methods over Australia." *Journal of Geophysical Research: Atmospheres* 121.20 (2016): 12-062.

Massari, C., Maggioni, V., Barbetta, S., Brocca, L., Ciabatta, L., Camici, S., ... & Todini, E. (2019). Complementing near-real time satellite rainfall products with satellite soil moisture-derived rainfall through a Bayesian Inversion approach. *Journal of Hydrology*, 573, 341-351.

3. The chosen calibration data set YREF within the combination step should show “homogeneous performance in space and time” globally, yet the chosen ERA5



reanalysis is likely not to provide this. ERA5 was found the best fitting of three candidates, yet potential issues of reanalysis products should be discussed and the (in)dependence of ERA5 from the used satellite data resp. raingauge data should be addressed thoroughly.

Thanks for this important comment. A perfect candidate is hard to find and even ERA5, which provided overall relatively good results, suffers from significant uncertainty in convective dominated systems (please refer to the reduced correlation in Western Africa and the Sahel in Figure 2). We considered three potential candidates and found that both GPCP and IMERG-FR strongly rely on rain gauge information, which for many regions may be scarce or absent altogether.

It has to note that the choice of ERA5 was not assumed a priori but was the logical result of the application of TC to global scale as discussed in Section 4.1. Results of TC indicate the superiority of ERA5 with respect to GPCP in many areas worldwide especially over Africa where the problem of rainfall interpolation error seems very significant (Figure 2). Nevertheless this step could be improved by integrating GPCP and ERA5 in a long-latency high accurate rainfall dataset to be used for calibrating the procedure proposed in this study, but this would require additional analyses which are out of the scope of this manuscript. Moreover, such an integrated product would likely provide less homogeneous rainfall estimates especially in terms of bias and thus a different rainfall distribution in space (see Figure R1 to the answer to reviewer 1).

We also tried to understand the impact of the quality of the calibration dataset on the integrated product. Based on the results reported in Table 3 and Figure 10, the integrated product seems to be slightly impacted by it (unless its performance is very bad) as:

- 1) in the regions where ERA5 performs relatively bad (Sahel and Western Africa), the integrated product still provides relatively good results ; and
- 2) the integrated product generally performs better than the calibration dataset in the cross-validation analysis indicating that its impact on the quality of the integrated product is not significant.

We have included an additional discussion to highlight these issues at lines 17-22 pag. 15:

*“This selection does not guarantee optimal solutions, but it is the best we can do with the available datasets considering that other potential candidates can be affected from other/similar issues, which could result in a very different global precipitation estimate (Herold et al., 2016). The solution to this problem is not straightforward, but a possible way forward would be the integration of GPCP and ERA5 or the use of available integrated products (Beck et al. 2017). The advantage of relying only on a single rainfall source (as to ensure homogeneity) however will be lost in that case.”*

4. Some background for the chosen threshold of  $R < 0.4$  between Smt2RAIN and reference data to perform OLI should be given.

This was simply a choice to exclude poor performance of SM2RAIN by accepting the risk of low correlations ( $<0.4$ ) was due to the bad quality of ERA5. We performed some experiments over CONUS, Australia, Europe, and India and found that 0.4 is a reasonable threshold although its overall impact is very small and only limited to small regions (e.g., relatively high RFI regions for SMOS).

We have added more explanations on this on the revised version of the manuscript at lines 8-14 pag. 11.

*“0.4 was set to exclude the poor performance of SM2RAIN products at such thresholds, which could potentially impact the overall quality of the integrated product. To select this value, we performed ad hoc experiments (not shown) over CONUS, Australia, Europe, and India and found 0.4 as a good compromise to exclude problematic areas like those impacted by high RFI in the SMOS SM product. However, its overall impact on the final results was found very small and only limited to some specific regions (e.g., high RFI, dense forests, and desert areas, which were already masked out by the validation mask).”*

5. The “classical” validation part and the “assessment of TC validity” could be shorter or it should be explained, why extensive verification of the TC approach within this study was found to be necessary. As referenced in the manuscript, TC has been used to validate precipitation from satellite SM in a previous study (Massari et al., 2017).

Massari et al. 2015 adopts a 1-deg resolution, so we thought it was important to validate the procedure at a finer scale (0.25-deg). We have now moved the Assessment of the TC validity in the supplementary information. This has been highlighted at lines 11-14 pag. 18:

*“Prior to the assessment of the rainfall products over Africa and South America with TC, we run TC analysis over AU, CONUS, EU and IN where R and RMSE scores obtained with the classical validation are available. Results are described in Appendix A of the Supplementary material and show that TC provides similar conclusions to a classical validation and can therefore be used as a robust validation tool over data scarce regions.”*

6. Considering the short calibration/validation period, the potential impact of climate patterns or their absence (e.g. due to ENSO) on the calibration process should be discussed.

We are aware of potential problems related to this issue but at the time of writing IMERG (and SMAP) were only available since 2014 (2015). Now a reprocessed version of the IMERG products is available back to 2000. This is a potential opportunity to re-calibrate the integrated products with available soil moisture on specific years (i.e., ASCAT from 2007 onward, SMOS from 2010 onward, and SMAP from 2015 onward).

We want to highlight however that this study shows already great potential in merging soil moisture-based rainfall observations with IMERG-ER and any limitation found at this stage (not directly related to the product development itself) represents additional room of improvement.

In the revised version we have highlighted this issue in the discussion section. Now it reads (see lines 23-25 pag. 20):

*“The relatively short period of calibration has therefore potential impacts on the ability of the products to reproduce correct climate patterns. Thanks to the recent availability of the IMERG-ER from 2000 this aspect will be further investigated in the future versions of the product.”*

7. The increase in FAR in Fig. 7 needs more explanation.

We observed an increasing trend in FAR from 60 to 80 percentiles and a drop above 85-90. This means that medium-high rainfall classes are increased more than necessary while high rainfall intensity are rightly reduced. While these increments in FAR are very small for Australia and CONUS, they are not negligible in India and Europe. Soil moisture-based rainfall has a tendency to generally provide higher FAR (deterioration) and higher POD (improvement) than IMERG-ER. When merged, SM2RAIN and IMERG-ER, result in a small increase of FAR and a significant increase of POD with an overall improvement of TS. Although the integration is overall optimal (TS increases), the POD increment - not surprisingly - causes an increase in FAR and viceversa. This is a classical multi-objective calibration exercise where, for the choice of the best configuration, one has to operate with a specific application in mind.

In addition, we found that the higher FAR for SM2RAIN datasets could be reduced by changing the calibration score to KGE, which is less affected by conditional biases, however, this also reduced the POD with an overall lower TS.

In the revised manuscript, we have expanded the discussion and modified the text (see lines 1-14 pag. 18)

*“After 50-60th percentiles, a significant increment of POD is evident for all the study regions, whereas the differences in FAR denote a deterioration from the 50th to 80th percentile across CONUS, EU, AU (very small), and in IN (much larger). The latter seems caused by more noisy satellite SM observations over India, which directly impact the quality of SM2RAIN estimates (causing higher FAR, see also Zhan et al., 2015 and Massari et al., 2019). This problem could be faced by de-noising satellite SM observations with methods similar to the ones proposed by Massari et al. (2017b) and Su et al. (2014, 2015), or by selecting a higher rainfall threshold below which only IMERG-ER is retained (i.e., larger than 1 mm selected above). The improvement in terms of FAR becomes significant for higher rainfall accumulations (i.e., 95th percentile). The overall improvement*

*is shown by the TS score, which is generally positive suggesting that the integrated product helps to improve IMERG-ER in terms of categorical scores especially for 70-90th percentiles.”*

8. The measures (median) that are shown in the (bar) plots should be defined in the plots or the caption (also for the tables).

**It has been done.**

9. Areas that bar plots refer to are not always clear from the figures alone (Fig. 4), box plots resp. tables instead of bar plots would provide more information resp. improve readability/comparability. Information on what box edges, whiskers represent in Fig.8 are especially necessary, to show that the impact of (single) outlier triples is not omitted in the plots.

**We have modified Figure 4 which is now plotted as box plots (see below):**

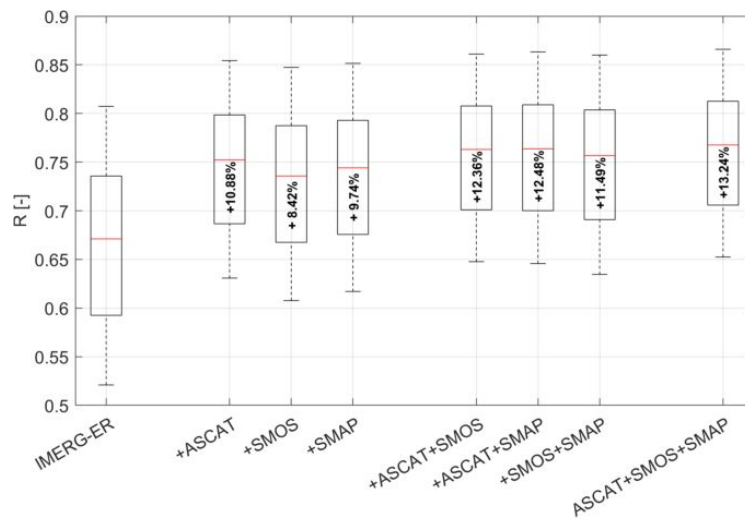


Figure R3: Correlation increments obtained by ingesting ASCAT, SMOS and SMAP SM2RAIN-based rainfall estimates into IMERG-ER product. Values in bold inside the box plots refer to the median increments expressed in terms of percentage. The box plot refer to the 25th and 75th percentiles while the whiskers refer the minimum and maximum values. Outliers are not shown in the plot.

**Moreover, we have updated figure 8 caption which is now in the supplementary information (Figure A1 and A2).**

**Minor points.**

P1, L5: "they are" instead of "they're"

**It has been corrected.**

P4, L25: "Metop" instead of "METOP"

**It has been corrected.**

P5, L12:A.M. - AM consistency

**It has been corrected.**

P6, L27: "within" instead of "wihtin"

**It has been corrected.**

P6, L29: "whereas suffer" missing words

**It has been corrected.**

P8, L3: "weighting" instead of "weighing"

**It has been corrected.**

P8, Eq. (5) : missing superscript "1"

**It has been corrected.**

P11, L3: "satisfy" instead of "satisfies"

**It has been corrected**

P12, L23: duplicate section reference

**It has been corrected**

P20, L6: "targeted" instead of "target" and duplicate "(" in L5

**It has been corrected**

Riepilogo  
1/28/2020 4:26:57 PM

I documenti presentano alcune differenze.

**Nuovo documento:**

[SMOS\\_RAINFALL\\_HESSD\\_2revision](#)

42 pagine (7.74 MB)

1/28/2020 4:26:45 PM

Utilizzato per la visualizzazione dei risultati.

**Documento precedente:**

[SMOS\\_RAINFALL\\_HESSD\\_1revision](#)

42 pagine (7.71 MB)

1/28/2020 4:26:45 PM


[Inizio: la prima modifica è a pagina 1.](#)


Nessuna pagina eliminata

**Come leggere questo rapporto**

**L'evidenziazione** indica una modifica.

**H-testo-barrato** indica il contenuto eliminato.

 indica pagine modificate.

 indica pagine spostate.



# 🚀 A daily/25km short-latency rainfall product for data scarce regions based on the integration of the GPM IMERG Early Run with multiple satellite soil moisture products

Christian Massari <sup>1</sup>, Luca Brocca <sup>1</sup>, Thierry Pellarin <sup>2</sup>, Gab Abramowitz <sup>3</sup>, Paolo Filippucci <sup>1</sup>, Luca Ciabatta <sup>1</sup>, Viviana Maggioni <sup>4</sup>, Yann Kerr <sup>5</sup>, and Diego Fernandez Prieto <sup>6</sup>

<sup>1</sup>Via Madonna Alta 126, Perugia, Italy

<sup>2</sup>Univ. Grenoble Alpes, CNRS, IRD, Grenoble INP, IGE, Grenoble F-38000, France

<sup>3</sup>ARC Centre of Excellence for Climate Extremes, UNSW Sydney

<sup>4</sup>George Mason University, Fairfax, VA, United States

<sup>5</sup>Centre d'Etudes Spatiales de la Biosphère (CESBIO), Université Toulouse 3 CNES CNRS IRD, Toulouse, France

<sup>6</sup>European Space Agency (ESA), Frascati, Italy

**Correspondence:** Christian Massari (christian.massari@irpi.cnr.it)

**Abstract.** Rain gauges are unevenly spaced around the world with extremely low gauge density over developing countries. For instance, in some regions in Africa the gauge density is often less than one station per 10000 km<sup>2</sup>. The availability of rainfall data provided by gauges is also not always guaranteed in near real time or with a timeliness suited for agricultural and water resource management applications as gauges are also subject to malfunctions and regulations imposed by national authorities. A potential alternative are satellite-based rainfall estimates, yet comparisons with in-situ data suggest they are often not optimal.

In this study, we developed a short-latency (i.e., 2-3 days) rainfall product derived from the combination of the Integrated Multi-Satellite Retrievals for GPM early run (IMERG-ER) with multiple satellite soil moisture-based rainfall products derived from ASCAT, SMOS and SMAP L3 satellite soil moisture (SM) retrievals. We tested the performance of this product over four regions characterized by high quality ground-based rainfall datasets (India, Conterminous United States, Australia and Europe) and over data scarce regions in Africa and South America by using Triple Collocation analysis (TC). We found the integration of satellite SM observations with in-situ rainfall observations is very beneficial with improvements of IMERG-ER up to 20% and 40% in terms of correlation and error, respectively, and a generalized enhancement in terms of categorical scores with the integrated product often outperforming reanalysis and ground-based long latency datasets. We also found a relevant overestimation of the rainfall variability of GPM-based products (up to twice the reference value), which was significantly reduced after the integration with satellite soil moisture-based rainfall estimates.

Given the importance of a reliable and readily available rainfall product for water resource management and agricultural applications over data scarce regions, the developed product can provide a valuable and unique source of rainfall information for these regions.

## 1 Introduction

Rainfall is the main driver of the hydrological cycle (Oki and Kanae, 2006) and plays an essential role in water resource management and agricultural applications (Vintrou et al., 2014; Gibon et al., 2018), drought monitoring (Garreaud et al., 2017) and flood forecasting (Maggioni and Massari, 2018).

5 Ground networks of rain gauges are considered the most accurate (and as a reflection the most used) rainfall observations across many regions of the world. However, the difficulty and the costs associated with their maintenance along with the timeliness of their data availability are critical obstacles for their use in real-time and seasonal applications. Moreover, while in developed regions the rain gauge distribution is sufficiently dense and supported by well organized and funded organizations, in developing countries the data coverage is extremely poor.

10 The number of gauges around the world has been estimated to range between 150000 and 250000 but their distribution is far from being homogeneous (Kidd et al., 2017). For instance, in regions like Africa, South America, and Central Asia the gauge density is often less than one station per 10000 km<sup>2</sup>, which results in large interpolation errors of gauge-based gridded rainfall products. This is an interesting paradox, since gauges are insufficient exactly where they are more needed. In these areas the only source of "observed" rainfall with a timeliness suited for applications is derived from satellite rainfall estimates (SRE) and meteorological models.

SRE are normally derived from sensors on board of low earth orbiting and geostationary satellites. (LEO; Kidd and Huffman, 2011; Serrat-Capdevila et al., 2014). While geostationary satellites use visible and infrared sensors to retrieve the precipitation signal with a high spatial and temporal resolutions (e.g., 1-3 km, 15-30 min), low earth orbiting satellites use passive microwave observations to provide global precipitation measurements with a frequency of about two observations per day with a spatial resolutions typically larger than 25 km. The latter are normally more accurate as they provide a more direct measurement of precipitation. A large number of techniques have been developed that exploit the synergy between polar-orbiting retrievals and geostationary observations (Huffman et al., 2007; Hsu et al., 1997; Joyce et al., 2004; Kubota et al., 2007).

25 The long history of research in the area led in 2014 to the Global Precipitation Measurement (GPM) Mission (Hou et al., 2014), launched by the NASA/JAXA agencies in coordination with the Goddard Earth Sciences Data and Information Services Center (GES DISC). The mission introduced a new concept for rainfall retrieval based on a multi-sensor integration. Within GPM, multiple observations from different instruments are intercalibrated, merged and interpolated with the GPM Combined Core Instrument product to produce half-hourly precipitation estimates on a 0.1° regular grid over the 60° N-S domain through the Integrated Multi-satellitE Retrievals for GPM (Huffman et al. (2018)). The mission provides three L3 products which are based on different level of timeliness and calibration configurations (the Early run IMERG-ER, the Late run IMERG-LR and the Final run IMERG-FR, see section 2.1.2 for further details).

30 Although extremely useful, one of the problems with SRE is the instantaneous nature of the measurement, which, along with the intermittent character of the rainfall, make SRE prone to errors (Kucera et al., 2013). For example, precipitation type and rate (Behrangi and Wen, 2017) along with satellite orbit and swath width (and thus the number of satellite snapshots available)

all play an important role in determining the sampling error magnitude (Nijssen and Lettenmaier, 2004; Ciabatta et al., 2017b; Gebremichael and Krajewski, 2004). Other problems are associated with seasonally dependent biases, light rainfall estimation, and detection over snow- and ice-covered surfaces (Ferraro et al., 1994; Ebert et al., 2007; Kidd and Levizzani, 2011; Tian et al., 2007; Gottschalck et al., 2005). Although these problems have been reduced with the advent of the GPM mission thanks to the a new Dual-frequency Precipitation Radar (DPR), recent works show that there is still room for improvement (Tan et al., 2016; Foelsche et al., 2017; Gebregiorgis et al., 2018b).

Model reanalysis datasets, such as the of European Center Medium Weather Forecast Interim Reanalysis (ERA-interim; extensively described in Dee et al., 2011) and the new ERA5 (European Centre For Medium-Range Weather Forecasts, 2017), are the obvious alternative to ground and satellite-based rainfall products. Although they offer good performance in simulating synoptic weather systems, they often misrepresent the variability of convective systems, mainly due to their relatively low resolution and deficiencies in the parameterization of sub-grid processes (Roads, 2003; Ebert et al., 2007; Kidd et al., 2013; Beck et al., 2017). Although reanalysis datasets perform relatively well globally (Massari et al., 2017a) and provide consistent long term precipitation estimation (which is paramount in many research fields) they are normally released with a latency that does not suit water resource and agricultural applications.

Despite these inherent limitations, SRE and reanalysis products are still the only valuable alternative to gauge-based observations within gauge scarce regions and the efforts to improve these datasets by merging procedures or by including other ancillary information has been significantly increasing in the last decade. For instance, Beck et al. (2017) released the Multi-Source Weighted-Ensemble Precipitation (MSWEP), a dataset with a 3-hourly temporal resolution that covers the period 1979 to the near-present. MSWEP is a unique product as it exploits the complementary strengths of gauge-, satellite-, and reanalysis-based data to provide rainfall estimates over the entire globe. Other notable examples are the CHIRPS rainfall estimates (Funk et al., 2015) which are based on a combination of gauges and infrared Cold Cloud Duration (CCD) observations. However, these datasets rely upon the availability of gauge observations, which constitute the "land" or the "bottom up" perspective of the precipitation signal (i.e., the precipitation that effectively reaches the land surface), in contrast to satellite (and reanalysis) estimates, which are more informative about the precipitation in the atmosphere layers (i.e. by cloud and atmospheric models). Where gauges are very sparse or totally missing or their functioning is not guaranteed in near real time, the quality of SRE and models can be significantly affected as the bottom constraint provided by gauges weakens.

A potential solution to circumvent this problem is the use of satellite SM observations as a source of rainfall ground information (Crow et al., 2009, 2011; Pellarin et al., 2008; Brocca et al., 2013; Pellarin et al., 2013; Wanders et al., 2015; Zhan et al., 2015; Ciabatta et al., 2015; Massari et al., 2019). In practice, SM can be used as a trace of precipitation, as the the SM signal after a rain event persists from a few hours to several days. In other words, SM contains information of the amount of water stored in the soil after rainfall. This information can be then exploited to retrieve spatial and temporal characteristics of the precipitation that has effectively reached the land surface. For instance, Brocca et al. (2013, 2014) proposed a direct inversion of the soil water balance equation and used two consecutive satellite SM observations to estimate rainfall fallen within the time interval between the two satellite passes. The underlying idea of this method, known as SM2RAIN, is the use of "soil as a natural rain gauge" as the difference in the water contained in the soil can be directly related to rainfall. This information was

used to improve SRE by Ciabatta et al. (2017a) and Massari et al. (2019). Other techniques that exploited SM observations relied upon data assimilation approaches based on sequential filtering techniques, like Kalman filter-based methods (SMART, Crow et al. (2011)) and particle filters (Pellarin et al., 2013; Zhan et al., 2015; Román-Cascón et al., 2017). All of them demonstrated a real benefit for flood forecasting applications (Alvarez-Garretón et al., 2016; Chen et al., 2014; Massari et al., 2018).

5 In all but two cases (Chen et al., 2014; Tarpanelli et al., 2017), one single SM product was combined with the SRE, a possible limitation if that product does not perform relatively well in the area of interest.

In general, the main advantage of using satellite SM as an indirect measure of ground rainfall information is its uniform temporal and spatial coverage, availability in near real time, and the fact that it transcends national boundaries. Drawbacks are the low spatial resolution and the relatively low quality in mountainous areas, frozen soils, and dense forests which, however, is also an issue in the case of ground-based observations (due to uneven spatial distribution and data transmission issues in inaccessible areas, undercatch problems, and cost of maintenance). As these problems impact the type of the sensor (active or passive) and the retrieval in different way, their combination would allow to exploit their relative strengths for improving SRE.

10 In this study, we developed a short-latency (2-3 days depending on the region) rainfall product derived from the combination of IMERG-ER with multiple satellite SM-based rainfall products. The latter are obtained from the inversion of the SM retrievals derived from: 1) the Soil Moisture Active and Passive (SMAP, Entekhabi et al. (2010)) mission, 2) the Advanced Scatterometer (ASCAT, Wagner et al. (2013)), and 3) the Soil Moisture and Ocean Salinity (SMOS, Kerr et al. (2001)) mission via SM2RAIN. The integrated product is explicitly designed for operational water resource management and agricultural applications over data scarce regions where rainfall observations from hydrometeorological networks are scarce or totally absent.

The integration method we adopted is the Optimal Linear Interpolation (OLI) approach (Bishop and Abramowitz, 2013; Hobeichi et al., 2018) which is based on a technique that provides an analytically optimal linear combination of rainfall products and accounts for both the performance differences and error covariance between the products. We tested the performance of the product 1) over four key regions, namely, India (IN), Conterminous United States (CONUS), Australia (AU) and Europe (EU), where high quality ground-based hydrometeorological networks are available, and 2) in Africa and South America by using a Triple Collocation (TC) analysis (Stoffelen, 1998). The validity of TC and the consistency of its results with respect to those obtained against classical validation was preliminary tested over the four regions mentioned at point 1 (Massari et al., 2017a).

The key strengths of this integrated product are the following:

1. The simultaneous use of multiple satellite SM observations derived from active and passive sensors, which exploits the advantages of each sensor in improving SRE. Note that ASCAT is on the Metop satellites, which are part of the space segment of the EUMETSAT Polar System (EPS) that will secure the continuation of meteorological observations from the polar orbit in the 2022-2043 timeframe.
2. The short latency (2-3 days, potentially lower in the near future and with L2 products), which is of paramount importance for operational applications like flood forecasting (for medium to large catchments, i.e., >20000 km<sup>2</sup>), water resource management, agricultural planning and vector borne disease control.

3. Independence from rain gauge observations, a key factor for data scarce regions like Africa.

The manuscript is divided as follows. Section 2 provides a brief overview of the ground-based and satellite observations used in the study. Section 3 describes algorithms and methods used as well as the integration methodology and the validation strategy. Results are presented in Section 4 followed by discussion and conclusions.

## 5 2 Data

In this section we describe the datasets used for the integration of IMERG-ER with SM2RAIN rainfall estimates, as well as the datasets used to validate the integrated product.

### 2.1 Regional rainfall datasets

10 Different ground-based rainfall datasets were used for the four different regions to cross-validate the integrated product, namely, the Australian Water Availability Project (AWAP) in Australia, the ECAD rainfall dataset E-OBS gridded dataset in Europe, the National Centers for Environmental Prediction (NCEP) Stage IV dataset over CONUS and the India Meteorological Institute (IMD) rainfall gridded dataset over India. Below we describe the main features of these datasets (readers interested in more details can refer to the related publications).

- 15 1. The Australian Water Availability Project (AWAP) rainfall product is generated via spatial analyses on the quality-controlled daily rain gauge measurements from the Australian Bureau of Meteorology daily rain gauge network. AWAP daily rainfall for a given day is the 24 h total rainfall from local time 9 AM the day before to 9 AM the current day. The rainfall fields are gridded on a  $0.05^\circ \times 0.05^\circ$  grid and spatially resampled to the desired 0.25 degree grid by taking area-weighted averages. Although this product is characterized by a relatively high quality it suffers also from known shortcomings (the reader interested can refer to (Contractor et al., 2015) for further details).
- 20 2. The ECA&D rainfall dataset E-OBS gridded dataset is derived through interpolation of the ECA&D (European Climate Assessment and Data) station data. The station dataset comprises a network of 2316 stations, with the highest station in Northern/Central Europe and lower density in the Mediterranean, Northern Scandinavia and eastern Europe. The E-OBS dataset is derived through a three stage process (Haylock et al., 2008) which bring to different resolutions and grid. In this analysis, we used the 0.25 degree regular latitude-longitude grid.
- 25 3. The National Centers for Environmental Prediction (NCEP) Stage IV (Lin and Mitchell, 2005) is based on the Next-Generation Weather Radar (NEXRAD) measurements, optimally merged with hourly-gauge based observations by using the Multisensor Precipitation Estimator (MPE Seo et al., 2010). This hourly dataset has a spatial resolution of approximately 4 km. The hourly gauge observations in the NCEP Stage IV estimates are derived from the Hydrometeorological Automated Data System (HADS). Stage IV is characterized by negligible amount (<1%) of missing data over the south eastern CONUS whereas about 90% of the data are missing over the northwest corner of CONUS (roughly between
- 30

43°–50°N and 115°–125°). In this study we aggregated the product by averaging all the 4 km pixels falling within the 0.25°×0.25° footprint. Daily data were obtained by accumulation of hourly observations. In the accumulation procedure, if any missing hourly observation was found in the day, the resulting daily rainfall was discarded.▲

▲▲ 4. The India Meteorological Institute rainfall gridded dataset is prepared from daily rainfall data of 6955 stations, archived at the National Data Centre, IMD, Pune, by using the Shepard method (Pai et al., 2014).▲ Out of these 6955 stations, 537 stations are the IMD observatory stations, 522 stations are under the Hydro-meteorology program and 70 are Agro met stations. Remaining stations are rainfall-reporting stations maintained by state governments. The product is released with a 0.25°×0.25° spatial resolution since 1856.▲

### ▲ 2.1.1 Satellite soil moisture products

10 In the following we describe the main characteristics of the satellite SM products used in the study. They are:

1. The Advanced SCATterometer (ASCAT) onboard Metop-A and Metop-B and Metop-C satellites is a scatterometer operating at C-band (5.255 GHz) onboard the Metop satellite series. It provides a SM product characterized by a spatial sampling of 12.5 km and from 1 to 2 observations per day depending on the latitude (Wagner et al., 2013). In this study, the SM product provided within the EUMETSAT project (<http://hsaf.meteoam.it/>) denoted as H115 was used.

15 2. The Soil Moisture and Ocean Salinity (SMOS) mission provides a SM product through a radiometer operating at L-band (1.4 GHz) with 50 km of spatial resolution and 1 observation every 2-3 days (Kerr et al., 2001). In this study, version RE04 (level 3) provided by the Centre Aval de Traitement des Données SMOS (CATDS, <https://www.catds.fr/>) was used. The version is gridded on the 25km EASEv2 grid and distributed in netcdf format.

20 3. SMAP L3. The Soil Moisture Active and Passive (SMAP) mission SM product is obtained by L-band radiometer observations (1.4 GHz) with 36 km and 1/2 observations every three days depending on the location (Entekhabi et al., 2010). In this study, the version 5 of the Level 3 SM retrievals was used.

25 4. AMSR2. The Advanced Microwave Scanning Radiometer 2 (AMSR2) onboard the Global Change Observation Mission for Water satellite is a radiometer operating in the microwave band. Soil moisture retrieval from AMSR2 is obtained from the C and X bands, which allow to obtain a spatial-temporal resolution of 25 km-daily (Kim et al., 2015). In this study, we focused on the X-band SM product obtained by the application of the Land Parameter Retrieval Model to AMSR2 brightness temperature data (Parinussa et al., 2015). Note that, AMSR2 was inverted to obtain rainfall via SM2RAIN but the resulting rainfall was not used in the integration whereas it was used in the validation via TC as an auxiliary dataset.

### 2.1.2 Global Rainfall datasets

30 In addition to satellite SM products different rainfall datasets were used in the study both for cross comparison purposes and as a part of the integration procedure. In the following the main characteristics of each dataset is provided.



1. The First Guess Daily product provided by the Global Precipitation Climatology Center (GPCC, (Schamm et al., 2014)) is a ground-based rainfall dataset available since 1 January 2009 with a spatial sampling grid of  $1^\circ$ . This dataset is used within the processing chain of in many gauge-corrected satellite rainfall products. Being based on gauge observations this dataset is very accurate where the station density is relatively high like in Europe, Australia and United States, whereas suffer from serious interpolation errors in areas uncovered by stations. For the sake of comparison, for GPCC we assumed the same rainfall observed at  $1^\circ$  on the  $0.25^\circ \times 0.25^\circ$  sub-pixels.
2. ERA5 is the latest climate reanalysis produced by ECMWF, providing hourly data on many atmospheric, land-surface and sea-state parameters together with estimates of uncertainty. The rainfall variable used in this study is characterized by a spatial resolution of 36 km and hourly temporal resolution. ERA5 is available from the Copernicus Climate Change service (<https://climate.copernicus.eu/climate-reanalysis>). Daily observations of rainfall were computed as the difference between total precipitation and snowfall. ERA5 was regridded to the the ASCAT grid (25 km) through the nearest neighbouring method to have consistent spatial observations with the satellite SM datasets (see section 3.3).
3. The IMERG algorithm, firstly released in early 2015 (Huffman et al., 2018), is run at  $0.1^\circ \times 0.1^\circ$  spatial and half-hourly temporal resolutions in three modes, based on latency and accuracy: "early" (IMERG-ER, latency of 4–6 h after observation), "late" (IMERG-LR, 12–18 h), and "final" (IMERG-FR about 3 months). The early and the final runs differentiate in calibration scheme and in the fact that IMERG-ER has a climatological rain gauge adjustment, whereas the IMERG-FR uses a month-to-month adjustment based on GPCC data.

### 3 Methods

#### 3.1 The SM2RAIN algorithm

- SM2RAIN (Brocca et al., 2014) is a method of rainfall estimation from SM observations. It is based on the inversion of a 1-layer water balance equation with appropriate simplifications valid only for liquid precipitation. Assuming a layer characterized by a soil water capacity (soil depth times soil porosity),  $Z^*$ , the water balance equation can be written as:

$$Z^* ds(t)/dt = p(t) - r(t) - e(t) - g(t) \quad (1)$$

- where  $s(t)$  is the relative saturation of the soil or relative SM,  $t$  is the time and  $p(t)$ ,  $r(t)$ ,  $e(t)$  and  $g(t)$  are the precipitation, surface runoff, evapotranspiration and drainage rates, respectively. Under unsaturated soil conditions, assuming a negligible evapotranspiration rate during rainfall and Dunnian runoff, solving Eq. (1) for precipitation yields:

$$p(t) = Z^* ds(t)/dt + as(t)^b \quad (2)$$

Note that in Eq. (2) the drainage rate function is of the type  $g = as^b$  as in Famiglietti and Wood (1994), with  $a$  and  $b$  being two fitted model parameters. Once two consecutive SM observations are available and the parameters  $a$ ,  $b$  and  $Z^*$  are known, then Eq. (2) can be used to estimate the rainfall within the time between the two observations. The SM2RAIN parameters  $a$ ,

$b$  and  $Z^*$  are commonly obtained by calibration as described in Ciabatta et al. (2018). For further details on the calibration procedure used within this study the reader is referred to Section 3.3.

### 3.2 The optimal Linear Interpolation approach, OLI

The Optimal Linear Combination approach, OLI (Bishop and Abramowitz, 2013; Hobeichi et al., 2018) provides an analytically optimal linear combination of ensemble members (rainfall estimates in this case) that minimizes the mean square error when compared to a dataset that is assumed enough accurate to be considered as a calibration dataset  $\mathbf{Y}_{REF}$ , and thus accounts for both the performance differences and error covariance between the rainfall products. The optimal linear combination is therefore insensitive to the addition of redundant information. This weighting approach has two key advantages: 1) it provides an optimal solution for integrating different rainfall datasets, and 2) it accounts for the error covariance between the different datasets (caused by the fact that single datasets may share a similar information), that is, they may not provide independent estimates. Given an ensemble of  $N + 1$  rainfall estimates and a corresponding calibration dataset  $\mathbf{Y}_{REF}$ , the weighting builds a linear combination of the  $N + 1$  ensemble members that minimises the mean square difference with respect  $Y_{REF}$  such that

$$\sum_{j=1}^N (Y_{REF} - \mathbf{w}^T Y_{PROD})^2 \quad (3)$$

is minimised, where

$$Y_{PROD} = [y_{IMERG}, y_{SM2RAIN_1}, y_{SM2RAIN_2}, \dots, y_{SM2RAIN_N}] \quad (4)$$

represents the different SM2RAIN products plus the IMERG-ER product. The vector of coefficients  $\mathbf{w}$  is calculated using

$$\mathbf{w} = \frac{\mathbf{A}^{-1} \mathbf{1}}{\mathbf{1}^T \mathbf{A}^{-1} \mathbf{1}} \quad (5)$$

where  $\mathbf{A}$  is the  $(N + 1) \times (N + 1)$  error covariance matrix of  $Y_{PROD}$  with respect to  $Y_{REF}$ , and  $\mathbf{1}^T = [1, 1, 1, \dots, 1]$  a vector of  $N + 1$  elements. The integrated product is then calculated as:

$$P_{R+SM} = \mathbf{w}^T Y_{PROD} \quad (6)$$

Note that the OLI method to be analytically optimal requires a bias correction of the ensemble members in  $Y_{PROD}$  (i.e.,  $y_{IMERG}, y_{SM2RAIN_1}, y_{SM2RAIN_2}, \dots, y_{SM2RAIN_N}$  in Eq. 4) with the  $Y_{REF}$  (i.e., the temporal mean of each member of  $Y_{PROD}$  and the mean of  $Y_{REF}$  must be equal). In Bishop and Abramowitz (2013) this bias correction was additive, however, for the nature of the precipitation signal (with a considerable amount of null values) a multiplicative bias correction is more appropriate (Hobeichi et al., 2018). Thus, the latter requires the calculation of appropriate multiplication factors (see section 3.3 for further details).

In addition, it is worth mentioning that the rainfall information brought from different SM2RAIN products to IMERG-ER is potentially redundant especially when the SM estimates from SMAP, ASCAT, and SMOS agree each other. The OLI method is particularly advantageous in this sense, as it accounts for both performance differences and error covariance between the

rainfall products, and is therefore insensitive to the addition of redundant information. Other more sophisticated methods can be also applied, although there is no guarantee that such methods would lead to better results. For instance, Brocca et al. (2016) found that simple integration methods performed equally well and in some cases even better than more complex methods. Future developments will explore new and more complex integration techniques, as the one in Massari et al. (2019).

### 5 3.3 Integration strategy

This section describes the four steps necessary for obtaining the integrated product  $P_{R+SM}$  (Figure 1). This involves the:

- a) pre-processing of the soil moisture and rainfall products used in the integration (section 3.3.1);
- b) selection of the parameters of SM2RAIN (section 3.3.2);
- c) selection of the multiplication factors (section 3.3.2);
- 10 d) calculation of the coefficients of OLI via Eq. 5 (section 3.3.3).

▲ Note that a unique calibration dataset,  $Y_{REF}$ , will be used to perform steps b-d. As  $Y_{REF}$  must be characterized by a relatively high accuracy, we performed a preliminary analysis for its proper selection that is described ahead in Section 4.1. Once  $Y_{REF}$  is selected it can be used to obtain the coefficients and parameters described at points b-d (i.e., calibration phase, 2015-2017) which can produce integrated rainfall estimates for an independent time period (e.g., 2018 onward) with a latency of 2-3 days.

#### 15 3.3.1 Step 0: soil moisture and rainfall pre-processing

Global SM and rainfall products come with different resolutions and grids. Moreover, the application of the SM2RAIN algorithm to SM observations requires preliminary processing. In Step 0, we resampled all the datasets to the same  $0.25^\circ \times 0.25^\circ$  grid over land between  $\pm 60^\circ$  by using nearest-neighbor interpolation on the ASCAT grid (25 km). In particular, the IMERG products, characterized by a resolution of  $0.1^\circ$ , were upscaled to  $0.25^\circ$  using a box-shaped kernel with antialiasing, an approach  
20 that was found to outperform simple spatial averaging. Rainfall accumulations were aggregated to daily-scale (from 00:00 to 23:59 UTC).

As satellite SM data are not provided regularly spaced in time and contain gaps (for instance we did not include in the analysis observations characterized by frozen soils, snow presence, or radio interference contamination, by using the specific flags for each product), they were linearly interpolated at 00:00 UTC to produce SM2RAIN daily rainfall from 00:00 to 23:59  
25 UTC (see step 1). Note that we limited the interpolation to a maximum of 2 days; beyond that we assumed SM2RAIN rainfall as missing (in these cases only IMERG-ER is used in the integrated product as better described in section 3.3.3). Note that the amount of missing data is generally dependent upon the location. Locations where the quality of satellite SM observations is poor are characterized by a lot of missing data and the integrated product is basically close to IMERG-ER.

### 3.3.2 Step 1 and 2: calibration phase

Step 1 refers to the calibration of SM2RAIN for the selection of the optimal parameters distribution pixel per pixel. All the parameters described in section 3.1 were selected by using  $Y_{REF}$ . For that, we minimised the daily root mean squared error (RMSE) between the SM2RAIN rainfall applied to the specific SM product and  $Y_{REF}$  during 2015-2017. Note that being

5 RMSE calibration a variance-minimization technique, it is subjected to conditional biases, which can potentially determine a reduction of the temporal variability of the estimated precipitation and, thus, underestimate extreme values. To partially solve this issue, other metrics can be used, e.g., the Klinge-Gupta Efficiency index (KGE; Gupta et al. (2009)) which are theoretically superior in this respect. However, to ensure homogeneity among all the calibration steps (see OLI theory in Section 3.2), we chose to use RMSE, keeping in mind that the results obtained here could be further improved. The products so obtained  
10 are referred to SM2RAIN-ASCAT if the satellite SM observations were derived from ASCAT, SM2RAIN-SMOS if derived from SMOS, and SM2RAIN-SMAP if derived from SMAP. In addition to these products, we also produced SM2RAIN-ASMR2\* and SM2RAIN-ASCAT\*, by using satellite SM observations derived from AMSR2 and ASCAT with non-calibrated parameters, i.e., we used constant parameters globally derived from previous studies as in Massari et al. (2017a). Remember that, these two last products were not used in the within OLI but will serve then only for validation purposes with TC.

15 As depicted in Section 3.2, the application of OLI requires unbiased ensemble members. This implies matching the long term temporal mean of  $Y_{REF}$  with the ones of IMERG-ER, SM2RAIN-ASCAT, SM2RAIN-SMOS and SM2RAIN-SMAP by using a different (and temporally constant) multiplication factor for each member (i.e., a factor that multiplied by the mean of the member guarantees the matching with the mean of the calibration dataset). However, applying this procedure resulted in an overall reduction of the quality of the SM2RAIN members because a temporally constant multiplication factor deteriorated the  
20 quality of light rainfall (<5 mm/day) with an increase of the false alarms (due to the noise contained in the satellite SM time series). To overcome this issue, we adopted a slight different strategy which, despite does not guarantee a perfect matching of the long temporal means and thus is not theoretically optimal, limited the problem of the increase of false alarms. In practice, for each member (i.e., SM2RAIN-ASCAT, SM2RAIN-SMOS, SM2RAIN-ASCAT, SM2RAIN-SMAP and IMERG-ER) we calculated the the ratio between its mean monthly rainfall (i.e., mean of all the Januaries, mean of all the Februaries and so on)  
25 and the monthly mean of  $Y_{REF}$  (obtaining one multiplication factor per month per pixel for a total of 12 multiplication factors for each grid point). These factors were then used to multiply the daily rainfall observations of each member (relative to the desired month) to obtain a monthly-based rescaled daily rainfall estimate.

This procedure is in principle a climatological correction rather than a bias correction because it uses the climatology of  $Y_{REF}$  as a reference. It guarantees a more consistent spatial pattern of rainfall among the members prior to the application of  
30 OLI which helps also to avoid spatial inconsistencies when different combinations of members are used within the integrated product. Note that this operation does not constrain the variability of the precipitation from year to year to the one of  $Y_{REF}$  as it only redistributes rainfall within the year and guarantees all the members to be realigned to the same climatology. Note also that a similar procedure is used for the production of IMERG-ER and IMERG-LR products (Huffman et al., 2018), and can

be easily implemented for its use in near real time once the 12 factors for each member are known. From here onward we will refer to this procedure as a climatological correction.

### 3.3.3 Step 3: application of OLI

For the application of OLI (i.e., integration) we proceeded by considering these three methodological aspects:

- 5 1. First off, we performed a quality check, by comparing the correlation coefficient of each SM2RAIN product with the calibration dataset ( $Y_{REF}$ ). When the correlation was found less than 0.4 (i.e., no correlation), the product was automatically excluded and the OLI was applied on the reminder of them. If all the SM2RAIN products correlation fall below this threshold (for example in dense forests or high mountainous regions), only IMERG-ER was retained. 0.4 was set to exclude the poor performance of SM2RAIN products at such thresholds, which could potentially impact the overall quality of the integrated product. To select this value, we performed ad hoc experiments (not shown) over CONUS, Australia, Europe, and India and found 0.4 as a good compromise to exclude problematic areas like those impacted by high RFI in the SMOS SM product. However, its overall impact on the final results was found very small and only limited to some specific regions (e.g., high RFI, dense forests, and desert areas, which were already masked out by the validation mask).
- 15 2. The calculation of the OLI coefficients in Eq. 5 is not computationally demanding and uses the full calibration time series (2015-2017). In particular, Eq. 5 provides the specific coefficients to be used in Eq. 6 at each time step. If one of the SM2RAIN product is not available at a specific time step for the reasons described in Step 0 (see section 3.3.1), we linearly redistributed the coefficients to the products available at that time step so that their sum is one (to ensure unbiased estimates).
- 20 3. The application of OLI among the SM2RAIN products and IMERG-ER was carried only when IMERG-ER values are larger than zero taking advantage of the enhanced rain/no rain detection accuracy of IMERG that uses DPR (Gebregiorgis et al., 2018a) whereas when IMERG-ER was zero this value was kept in the merged product. This tactic mitigates the degradation of rainfall estimates during low-rainfall time steps as demonstrated by Massari et al. (2019).
- 25 4. The final product is then composed of multiple rainfall datasets weighed according to Eq. 6. IMERG-ER is always present whereas the presence of the three SM2RAIN rainfall estimates derived from ASCAT, SMOS, and SMAP depends on their relative accuracy (if they satisfy the threshold) and availability in time and space.

The success of the overall procedure described above is dependent upon the quality of  $Y_{REF}$ . Although the calibration phase seems very intensive, it will be demonstrated in section 4 that, if  $Y_{REF}$  has a relatively good accuracy, its effect on the final quality of the integrated product is very low. However, its choice is strategic in some regions, as will be shown in section 4.1, and thus deserves a careful investigation.

### 3.4 Validation strategies

For the validation of the integrated product two different strategies were followed. First, we selected four key regions characterized by different climates and landscapes (i.e., CONUS, AU, EU and IN) where ground-based observations (derived from rain gauges and rain gauges plus radar) are very dense and of high quality (see section 2.1). Both continuous and categorical scores are considered, as commonly used in a classical validation of global precipitation products (see Maggioni et al. (2016) for further details).

Next, since many areas of the world like Africa, South America, and Central Asia have highly variable density of rain gauges, validation was also performed using a TC analysis as proposed by (Massari et al., 2017a; Khan and Maggioni, 2019) (see section 3.4.2). TC offers a viable way to validate rainfall products in data scarce regions by providing (theoretical) error and correlation of each product with the "unknown" truth. Note that, we tested the validity of the TC validation by applying it to the same key regions where the classical validation was carried out. Then, TC was applied to Africa and South America to validate the integrated product and the other datasets that are part of the analysis. The validation with TC was carried out in 2018 (only one year) which is independent from the calibration period (2015-2017).

#### 3.4.1 Classical validation

Both continuous and categorical error metrics were adopted for validating daily rainfall. The continuous scores are the:

1. Pearson correlation coefficient (R).
2. Root Mean Squared Error (RMSE).
3. additive bias (BIAS).
4. Variability ratio ( $\gamma$ ), where  $\gamma$  is the ratio of the standard deviation of the rainfall estimate  $\sigma_s$  and the one of the benchmark  $\sigma_o$ .  $\gamma$  optimal value is 1.
5. Kling-Gupta Efficiency index. KGE is a modified version of the classical Nash-Sutcliffe efficiency index (NS) commonly used for evaluating discharge simulation estimates. KGE is composed of three terms: correlation, variability ratio, and bias. KGE varies from  $-\infty$  to 1. KGE values close to 1 denote perfect model estimates whereas  $KGE < -0.41$  indicate that the estimate deteriorates upon the mean rainfall benchmark (Knoben et al., 2019). With respect to NS, KGE gives more weight to the variability component and is less impacted by conditional bias. In this study, we used the version of KGE proposed by Beck et al. (2019). For further details on the topic, we refer the reader to Gupta et al. (2009).

In addition, three categorical scores were considered: the Probability of detection  $POD = H/(H+M)$ , which measures the likelihood of the rainfall estimate to detect an event when it in fact occurs; the False alarm ratio  $FAR = F/(F+H)$ , which measures the likelihood that a precipitation event does occur when reference does not estimate rain; and the Threat Score (TS), which is an integrated measure of POD and FAR. All these scores are based on the contingency Table 1. In the table, H represents hit cases, when both the precipitation estimate and reference are greater than or equal to the rain/no-rain threshold



percentile ( $th$ );  $F$  represents false alarms, when precipitation estimate is greater than or equal to  $th$ , but the reference is less than  $th$ ;  $M$  represents missed events, when the reference is greater than or equal to  $th$ , but the precipitation estimate is less than  $th$ ; and  $Z$  represents correct no-rain detection, when both the precipitation estimate and reference are less than  $th$ .  $N$  is the sample size, i.e., the total number of observed events and  $N = H + M + F + Z$ .

### 5 3.4.2 Triple Collocation Analysis applied to rainfall observations

In this study, TC analysis (Stoffelen, 1998) was applied to estimate the correlation and the error of the rainfall estimates when a reliable reference is missing like in Africa. Here we present a summary of the theory behind TC while the reader interested in more details can refer to Massari et al. (2017a).

Suppose we have three measurement systems  $X_i$ , observing the true variable  $t$  characterized by an additive error model

$$X_i = X'_i + \varepsilon_i = \alpha_i + \beta_i t + \varepsilon_i \quad (7)$$

- 10 where  $X_i$  ( $i=1, 2, 3$ ) are collocated measurement systems linearly related to the true underlying value  $t$  with additive random errors  $\varepsilon_i$ , respectively, while  $\alpha_i$  and  $\beta_i$  are the ordinary least squares intercepts and slopes. Assuming that the errors from the independent sources have zero mean ( $E(\varepsilon_i)=0$ ) and are uncorrelated with each other ( $Cov(\varepsilon_i, \varepsilon_j)=0$ , with  $i \neq j$ ) and with  $t$  ( $Cov(\varepsilon_i, t)=0$ ) the variance of the error of each dataset can be expressed as ((McColl et al., 2014)):

$$\sigma_\varepsilon = \begin{bmatrix} \sqrt{Q_{11} - \frac{Q_{12}Q_{13}}{Q_{23}}} \\ \sqrt{Q_{22} - \frac{Q_{12}Q_{23}}{Q_{13}}} \\ \sqrt{Q_{33} - \frac{Q_{12}Q_{23}}{Q_{12}}} \end{bmatrix} \quad (8)$$

where  $Q_{ij} = Cov(X_i, X_j)$  is the covariance within the variables  $X_i$ .

- 15 In addition, McColl et al. (2014), using the definition of the correlation and covariance, demonstrated that:

$$R_{TC}^2(t, \mathbf{X}) = \begin{bmatrix} \frac{Q_{12}Q_{13}}{Q_{11}Q_{23}} \\ \frac{Q_{12}Q_{23}}{Q_{13}Q_{22}} \\ \frac{Q_{13}Q_{23}}{Q_{12}Q_{33}} \end{bmatrix} \quad (9)$$

where  $R_{TC}^2(t, \mathbf{X})$  is the squared correlation coefficient between  $t$  and  $X_i$  (McColl et al., 2014).

Note that the error (and correlation) calculated via TC are generally lower (higher) than those calculated using the classical validation given that it does not include the reference uncertainty.

### 3.4.3 Validation mask

- 20 Although the integrated product is potentially available everywhere, we found that where the quality of satellite SM observations is very low like in forests, frozen soils and mountainous areas OLI coefficients associated to the SM2RAIN products was very small and the integrated product was mainly constituted by IMERG-ER. Therefore, to avoid any misinterpretation about the real benefit of integrating IMERG-ER with satellite SM observations we limited the validation of the integrated product to

the ASCAT committed area (Hahn, 2016). The area is limited to low and moderate vegetation regimes, unfrozen and no snow cover, low to moderate topographic variations, no wetlands, no coastal areas, no deserts (see Figure B1 of the supplementary information). Outside of this area, satellite SM observations might suffer from several problems and are weighed much less by OLI (although we also found benefits here, see section 4.1.1). In addition, for the sake of product distribution and use we can ensure optimal results only over this area and thus we associated a flag to the pixels fallen outside it in the netCDF file included in the supplementary information.

## 4 Results and discussion

Both the calibration of SM2RAIN and the OLI implementation need a calibration dataset as described in Section 3.3 (i.e.,  $Y_{REF}$ ). The choice of this dataset is strategic for obtaining a good quality integrated product. Section 4.1 describes the process of the selection of  $Y_{REF}$  considering different potential candidates. Sections 4.1.1 and 4.1.2 describe the validation over US, IN, AU and EU by using the hydrometeorological networks described in Section 2.1 and the validation in Africa and South America by using TC (section 3.4.2), respectively.

### 4.1 Calibration dataset selection

The choice of a calibration dataset is strategic for both the SM2RAIN parameters selection and the OLI coefficients calculation. Thus, it has to be carefully selected based on i) accuracy (i.e., low error and high correlation with "true" rainfall), ii) homogeneous performance in time and space, and iii) continuous spatial and temporal coverage (as well as spatial and temporal resolution closer to the one of the rainfall to be estimated). Potential candidates are:

1. GPCC, which has potentially high accuracy and low biases where the rain gauge coverage is good, but can be unreliable when the rain gauge distribution is scarce (e.g., Africa and South America). It might also suffer from time dependence performance as a function of rain gauge availability.
2. ERA5, which provides full coverage and generally homogeneous performance all over the world.
3. IMERG-FR, which is a gauge-corrected satellite product and potentially highly accurate where rain gauges distribution is dense. The drawback is highly dependent upon IMERG-ER where rain gauge observations are scarce. For this reason, we initially excluded this product from the list of potential candidates and focused only on the other two.

To explore the performance of ERA5 and GPCC we applied TC as described in 3.4.2 during the whole period 2015-2018. The following triplets were used (by keeping in mind the need to satisfy the assumptions of TC highlighted above):

1. GPCC, IMERG-ER, and SM2RAIN-ASCAT\* (triplet A)
2. GPCC, IMERG-ER, and ERA5 (triplet B)
3. GPCC, ERA5, and SM2RAIN-ASCAT\* (triplet C)

Note that SM2RAIN-ASCAT\* above is not the one used in the integration, but it was produced using constant parameters  $a$ ,  $b$ , and  $Z$  all over the world (i.e., it is not regionally calibrated) as in (Massari et al., 2017a) to avoid potential violation of the TC assumptions. On the other hand, even using SM2RAIN-ASCAT (the calibrated dataset), similar results were obtained (not shown) as we found a negligible effect of the calibration on TC results (in terms of TC correlations).

5 Table 2 shows results for triplet A, B, and C. Different configurations of the triplets provide similar results, suggesting that TC can be considered reliable. In particular, ERA5 performs the best among all, but it also suffers from significant uncertainty over convection dominated systems like West Africa and Sahel (see Figure 2). Elsewhere, the performance are relatively good except over Northwestern CONUS and tropical forests of Africa and Indonesia. GPCC product provide relatively good performance over Europe, Eastern Asia, Australia and Canada but its performance are very low over Africa.

10 Figure 2a plots the number of stations used for the GPCC First Guess 1.0 degree product for years 2015-2018 whereas Figures 2b and 2c show the TC temporal correlation of the GPCC and that one of ERA5 for the period 2015-2018. An interesting feature is that lower correlations of GPCC closely match with low station density areas (by comparing Figures 2a and 2b) whereas ERA5 shows a more homogeneous and higher correlation overall the globe. It has also to be noted that the number of stations used by GPCC in Africa during this period are very low with areas totally uncovered which likely lead to significant interpolation error. The uneven rain gauge spatial distribution seems to significantly impact the GPCC quality and in turn can potentially cause sub-optimal performances, if used as a calibration dataset. ERA5 relies less on observation density and shows a more homogeneous performance pattern with respect to GPCC. Thus, ERA5 was selected as  $Y_{REF}$ . This selection does not guarantee optimal solutions, but it is the best we can do with the available datasets considering that other potential candidates can be affected from other/similar issues, which could result in a very different global precipitation estimate (Herold et al., 2016). The solution to this problem is not straightforward, but a possible way forward would be the integration of GPCC and ERA5 or the use of available integrated products Beck et al. (2017). The advantage of relying only on a single rainfall source (as to ensure homogeneity) however will be lost in that case.

15 Note that, except CONUS where rain gauge information is ingested into ERA5 (Lopez, 2011), the integrated product is totally independent upon rain gauge. This allows to independently cross-validate the integrated product in EU, IN, AU and CONUS during 2015-2017 against high quality ground-based rainfall observations (see section 4.1.1). The latter serves to understand if the entire procedure of integration described in section 3.3 is correct and provide an overall idea of the maximum potential performance that can be obtained by the integrated product (being performed in the same period used for calibration).

#### 4.1.1 Classical validation over key regions using high-quality ground-based observations

30 Figure 3 summarizes the products used in  $P_{R+SM}$  pixel per pixel for the different key regions. While for India and Australia, SM2RAIN-ASCAT, SM2RAIN-SMOS, and SM2RAIN-SMAP are present almost everywhere, over CONUS and Europe there exist areas where SM2RAIN-SMOS was not used either because too high Radio Frequency Interference was found in the SMOS product or because of its relatively low performance (Chen et al., 2018). In the figure, we did not superimpose the mask described in section 3.4.3 to show that the areas in dark blue (i.e., where only IMERG-ER is retained) almost coincide with the ASCAT-committed area. For instance the north-eastern CONUS region is known to be a challenging area for satellite SM

products and, as a result, here  $P_{R+SM}$  relies on IMERG-ER alone. Similarly, the coastal areas are mostly characterized by dark blues pixels, which indicates no integration with any SM2RAIN product. Note however that the ASCAT committed area does not always match the area where only IMERG-ER is present, e.g., north eastern Africa. Here, ASCAT SM product is known to perform relatively bad due to volume scattering (Wagner et al., 2013), whereas passive products perform relatively well (in orange the presence of only passive sensors integrated with IMERG-ER can be seen). Although in areas like this we still have an improvement of IMERG-ER and thus they could be considered part of the integrated product we preferred to be conservative and guarantee the product reliability only over the mask described in section 3.4.3.

Table 3 shows R, RMSE, BIAS, and KGE of the different rainfall products obtained by using the ground-based observations described in Section 2.1 as references. The short latency products (less than 2-3 days) are shown in light blue, whereas the long latency ones (larger than 2 months) are left white. The integrated product  $P_{R+SM}$  outperforms both IMERG-ER (significantly) and in some cases long-latency products in terms of R and RMSE (see for instance  $P_{R+SM}$  correlations in Australia, Europe, and India vs ERA5 correlations). This suggests that the selection of the calibration dataset is not necessarily a major limiting factor in the proposed framework, as satellite SM contains inherent information about rainfall, as long as its quality is sufficiently high. However, this is not always true for all the scores. For instance, in terms of bias, results are not optimal in India. Here, ERA5-based climatological correction is probably the reason of the sub-optimal performance of the integrated product due to ERA5 relatively high bias over India. For other regions, results are overall good in terms of bias for  $P_{R+SM}$  although slightly worse for CONUS. The bias for IMERG-ER is particularly relevant over CONUS and Europe, as well as for IMERG-FR in Europe. On the other hand, GPCC and ERA5 biases over these regions and in Australia are very low, which is expected due to the large amount of gauge stations shared with the references.

In terms of variability ratio, we did not observe significant conditional biases of the  $P_{R+SM}$  product in Europe and CONUS, although the use of RMSE as a calibration score of SM2RAIN (see Section 3.3.2) and in the OLI procedure (see Section 3.2) would systematically suggest it. Rather, we observed the ability to reduce the high variability of IMERG-ER bringing it to values closer to one. Only for Australia  $\gamma$  is about 30 % lower than one, but this difference is not too far from the range of values observed for the other products (especially GPM-based products). The reason for that can be twofold. First, the integration was carried out only on non-zero rainfall values (thus the impact of SM2RAIN calibration with RMSE is overall lower than expected, see section 3.3.2). Second, the lower variability of SM2RAIN products is in this case beneficial as IMERG-ER shows too high variability.

KGE results provide an integrated measure of the scores discussed above.  $P_{R+SM}$  KGE values ranges around 0.6 for all the key regions. Lower performance is obtained for IMERG-ER with respect to  $P_{R+SM}$  due to its high variability, except for India where the higher bias of  $P_{R+SM}$  determines sub-optimal KGE. For long latency products, KGE measures are relatively good for GPCC, but in India where its lower correlation determines a decrease of KGE. IMERG-FR suffers from a large variability ratio in Europe (in addition to high bias) and CONUS, which causes relatively low KGE values. ERA5 KGE values are sub-optimal over CONUS (due to a high bias and low variability ratio) and in India (due to high bias).

Figure 4 shows, for AU, the increase in temporal correlation (2015-2017) with respect to IMERG-ER obtained by integrating the latter with one (either ASCAT or SMAP or SMOS), two (either ASCAT+SMOS, or SMAP+SMOS or ASCAT+SMAP) or

three SM2RAIN products (ASCAT+SMAP+SMOS)  $\blacktriangle$  The addition of multiple products, though beneficial, gets smaller as we ingest more SM2RAIN-based rainfall estimates. This is due to the redundancy of information provided by SM, which causes no further improvement. Although this might suggest that using a single SM2RAIN product is equivalent to using multiple products, the use of multiple products always guarantees optimal performance per pixel and is useful where one of the products does not perform well, as shown Figure 3. Results for the other key regions provide similar overall conclusions and are not shown here.

Figure 5 shows the correlation and RMSE differences in percentage obtained between the integrated product and IMERG-ER. Blue areas are those characterized by improvements, whereas red denotes deterioration. There is an overall improvement for both scores over the study areas. Larger improvements are obtained in terms of RMSE, which in some cases (i.e., CONUS) are larger than 40 %. In terms of R, the improvement spans from 5 to 15% with larger values obtained for Europe and Australia. There are also spots over northwestern CONUS characterized by deterioration. We attributed this to the low agreement between stage IV data and ERA5 data (used as calibration dataset), which can be also found in (Beck et al., 2019). Note this is a challenging area for Stage IV data as also demonstrated by Tian et al. (2007) who found significant performance differences of the 3B42 rainfall product in northwestern CONUS when compared either to the CPC Unified Gauge-based Analysis of Global Daily Precipitation (Higgins et al., 2000) product or with the Stage IV dataset.

To understand the benefit of integrating SM-based rainfall with IMERG-ER as a function of the topographic complexity, Figure 6 shows the median differences, in terms of correlation (panel a) and RMSE (panel c), obtained by  $P_{R+SM}$  with respect to IMERG-ER for CONUS. The topographic complexity come along the ASCAT H115 product and is computed as the normalized standard deviation of elevation using GTOPO30 data (Hahn, 2016). It ranges between 0% for flat areas to 100 % for very complex terrain. The integrated product is able to improve the quality of IMERG-ER over flat areas better than complex terrain. This result is somehow expected, as we know that the topographic complexity impacts the quality of the SM retrieval.

The benefit of the integration was also computed as a function of land cover (panels b and d in Figure 6 for CONUS). Land cover information comes from the ECOCLIMAP dataset (Champeaux et al., 2005), provided at 1km spatial resolution. We have simplified the original land use classes into 8 categories: bare land, rocks, urban, forest, wooded grassland, shrub land, grassland, and crop. Except for urban, rock, and bare soil (with a percentage of pixels within CONUS less than 0.5%), the integrated product performs better over shrub land, grassland, and crop, whereas lower performance are obtained over forests. This result is also expected as the quality of the satellite SM product can be highly impacted by the presence of dense vegetation for the difficulty of the retrieval in separating the effect of the soil water content from the water contained in leaves.  $\blacktriangle$

$\blacktriangle$  Figure 6 refers to CONUS as we found highly representative of different landscape complexity and land cover type. Results for AU, EU and IN picture very similar findings and are reported in the supplementary information (Figures B2 and A3)

Figure 7 shows the differences in terms of POD, FAR and TS between the integrated product  $P_{R+MS}$  and IMERG-ER as a function of the rainfall percentiles. As the correction of IMERG-ER was only carried for positive rainfall values and SM2RAIN-based rainfall lower than 1 mm was assumed unreliable (to exclude the possibility to interpret satellite SM noise as rainfall Zhan et al. (2015)) the differences with respect to IMERG-ER are visible only above the 50-60<sup>th</sup> percentiles.

After 50-60<sup>th</sup> percentiles, a significant increment of POD is evident for all the study regions, whereas the differences in FAR denote a deterioration from the 50th to 80<sup>th</sup> percentile across CONUS, EU, AU (very small), and in IN (much larger). The latter seems caused by more noisy satellite SM observations over India, which directly impact the quality of SM2RAIN estimates (causing higher FAR, see also Zhan et al. (2015) and Massari et al. (2019)). This problem could be faced by de-noising satellite SM observations with methods similar to the ones proposed by Massari et al. (2017b); Su et al. (2014, 2015), or by selecting a higher rainfall threshold below which only IMERG-ER is retained (i.e., larger than 1 mm selected above). The improvement in terms of FAR becomes significant for higher rainfall accumulations (i.e., 95<sup>th</sup> percentile). The overall improvement is shown by the TS score, which is generally positive suggesting that the integrated product helps to improve IMERG-ER in terms of categorical scores especially for 70-90<sup>th</sup> percentiles.

#### 4.1.2 Validation over data scarce regions using TC

Prior to the assessment of the rainfall products over Africa and South America with TC, we run TC analysis over AU, CONUS, EU and IN where R and RMSE scores obtained with the classical validation are available. Results are described in Appendix A of the Supplementary material and show that TC provides similar conclusions to a classical validation and can therefore be used as a robust validation tool over data scarce regions.

Figure 8 shows the product combinations for each pixel of the study areas used for obtaining  $P_{R+SM}$  in Africa and South America. These combinations and the associated OLI coefficients (including the SM2RAIN parameter calibration) were obtained during the calibration period 2015-2017. Areas where all SM2RAIN products are ingested match with those characterized by relatively good quality of satellite SM observations, i.e., those not characterized by dense forests, desert areas and frozen soil, as well as snow covered areas. This suggests that the integration is robust and exclude meaningfully low-quality SM information.

Unlike the results presented in Section 4.1.1, here we validate the products during 2018, independent from the calibration period (i.e., 2015-2017). As in Africa and South America the rain gauge distribution is scarce (see Figure 2a), the validation was carried out via TC, using 3 triplets built among ERA5, SM2RAIN-ASCAT\*,  $P_{R+SM}$ , GPCC, and IMERG-ER:

1. ERA5-GPCC-IMERG-ER
2. ERA5-GPCC-SM2RAIN-ASCAT\*
3. ERA5-GPCC- $P_{R+SM}$

Figure 9 shows  $R_{TC}^2$  (left) and TC-RMSE (right) over Africa obtained by triplets 1 (ERA5-GPCC-IMERG-ER) and 3 (ERA5-GPCC- $P_{R+SM}$ ). In particular, panels a-d refer to the short latency products while the rest of them are long latency ones (>2 months). The integrated product outperforms both IMERG-ER and long-latency products like GPCC and ERA5 as we found in section 4.1.1. ERA5 is characterized by lower performance in the Sahel region as highlighted in Figure 2b whereas GPCC is strongly affected by the uneven rain gauge distribution as depicted in Figure 2c. Similar results are obtained for South America in Figure 10, where the central eastern part gets greener (higher correlation) and whiter (lower error) after integration



with SM2RAIN based rainfall estimates. In South America the performance of ERA5 is higher than the one obtained in Africa and consistently more homogeneous.

Figure 11 summarizes the results obtained in the two regions by considering only the committed area (panels a and b) and all the pixels of the analysis (non-masked by the committed area, panels c and d) also in terms of boxplots. It can be seen that in Africa (panels a and c) the integrated product is always the best both in terms of error and correlation. In South America (panels b and d) ERA5 outperforms the integrated product if no mask is used (panel d). A reason for that is the lower skill of IMERG-ER over dense forests especially in terms of error, which impacts the overall quality of the integrated product. In particular, relatively good performance are obtained in Africa over the Sahel region and in South America over eastern Brazil.

## 5 Discussion and conclusions

In this study, we have developed a procedure to obtain a short latency (less than 2-3 days), 25km/daily satellite-based rainfall product based on the integration of IMERG-ER with SM2RAIN-based rainfall estimates derived from three different satellite SM products (i.e., SMOS, SMAP and ASCAT). With this latency – potentially reduced to about 1 day via the use of L2 products – the product targets agricultural and water resource management applications over data scarce regions like Africa, South America and Central Asia.

To merge SM2RAIN based rainfall estimates with IMERG-ER, we used the OLI approach previously used by Bishop and Abramowitz (2013) to combine different climate model estimates. The procedure optimally merges multiple estimates of the same variable by minimizing the error with a calibration dataset. The choice of this calibration dataset was discussed and analyzed in detail by applying Triple Collocation analysis to different candidates leading to the choice of ERA5 reanalysis rainfall product. In the procedure, no gauge information was directly used either in the calibration of SM2RAIN or in the integration of estimates via OLI, therefore the developed product is totally independent from ground-based observations of rainfall (except the inherent gauge information contained in IMERG-ER).

The integrated product was cross-validated with high quality ground-based rainfall observations in Australia, India, Europe, and continental United States and cross-compared in the same regions against long-latency products (i.e., released with a time span of 1-2 months and thus not suited for operational applications). The validation entailed different continuous and categorical scores and was carried out for different land cover classes and as a function of the topographic complexity. In this respect, we found:

1. the integrated product performed relatively well and often better than the long latency products, which are designed to obtain best performance as they ingest many observations and use gauges (often the same used here for validation). The best product in regions with high density rain gauge observations was found to be GPCC (although this product is obviously correlated with the ground reference). An interesting feature was the better performance of the integrated product with respect to the calibration dataset which highlights the high value of information provided by SM. These results are relevant given that the integrated product can be potentially released within 2-3 days.



2. the improvement of IMERG-ER was relevant and ranged from 10-15 % in terms of correlation and up to 40 % in terms of RMSE. A smaller impact of the integration was obtained over very dense forests and complex terrain given the inherent limitations of satellite-based observations over these areas. We also observed deterioration in correlation in some areas of northwestern CONUS and India which need further analysis.

3. an ability of reducing the too high variability ratio observed in IMERG-ER product. One of the reasons for this was also related to the lower variability of SM2RAIN-based rainfall estimates, which were produced by minimizing the RMSE with the calibration dataset (i.e., ERA5). Despite beneficial in this case, this issue can be relevant and could also impact the ability in the prediction of extreme values and a modification of the true rainfall distribution. However, a closer look at the distributions of the reference and the estimated rainfall (not shown) suggests that the integrated product was not impacted too much from this issue;

4. an improvement of the KGE score as a consequence of the improvement of the correlation (mainly) and the variability ratio in all cases except India. Here, despite the better correlation, the integrated product was characterized by a higher bias and lower variability, which drew KGE to values lower than the ones of IMERG-ER;

5. An additional validation, totally independent from the calibration, was carried out in Africa and South America. Here, due to the lack of a reliable benchmark dataset, we adopted TC analysis (after having validated it) to calculate error and correlation of the integrated product, IMERG-ER, GPCC as well as ERA5. Results confirm those obtained via classical validation with the integrated product outperforming IMERG-ER. Moreover, in data scarce regions, the integrated product outperforms GPCC and providing similar performance to ERA5 (better in the Sahel region).

Despite the good performance achieved by the product several aspects need further investigation.

1. The short time records of some of the satellite-based observations used in the integration (i.e., SMAP and IMERG-ER) limited the length of the calibration period which could impact the calculation of the climatological correction procedure and the OLI coefficients shown in the method section. It also shrinks the length of the validation period which was restricted to 2018. The relatively short period of calibration has therefore potential impacts on the ability of the products to reproduce correct climate patterns. Thanks to the recent availability of the IMERG-ER from 2000 this aspect will be further investigated in the future versions of the product.

2. Although TC is a possible (and likely the only) alternative for evaluating rainfall estimates over data scarce regions, it does not provide a thorough evaluation of the rainfall estimates as it does not provide information about categorical scores and bias. Therefore, over these regions it is not guaranteed that the integrated product performance is optimal in this respect. Future work should focus in testing the product for applications like flood prediction, water resource management, crop modelling and risk insurance. Note that first attempts in using the product for flood prediction (not shown in this study) are providing promising results.

3. The integration is not possible everywhere given the low quality of the satellite SM observations over dense forests and the lack of SM information over frozen surfaces. We can only have confidence in the optimal performance of the

integrated product over the area described in section 3.4.3. This of course does not exclude the possibility that the product might work well outside of this area.

4. Daily/25 km temporal/spatial sampling might be not adequate for small scale applications. Future work should therefore take into account satellite SM products with higher spatial resolution (e.g. Piles et al., 2011; Merlin et al., 2012; Malbêteau et al., 2016; Bauer-Marschallinger et al., 2018a, b; Chan et al., 2018) and shorter revisit times. Note that with the current constellation of Metop A, B and C satellites in addition to the future SCA scatterometer (Rostan et al., 2016), or with potential availability of geosynchronous C-band radars we will have the opportunity to collect multiple satellite SM observations within the day which could be used to calculate sub-daily rainfall estimates from SM observations.
5. Despite 2-3 days of latency being fine for many applications, it might not be sufficient for rainfall monitoring in real time and flood forecasting in medium to small basins. In this respect, IMERG-ER, with its 4-5 hours of latency is the only satellite product potentially providing rainfall observations that could be used for such applications, although in that case not only the latency is important but also the spatial resolution. Future work should focus in the integration of L2 satellite SM products with IMERG-ER also using alternative integration schemes and products with respect to those used in this study.
6. The record length of the product is restricted to the GPM and SMAP eras (i.e., 2015 onward). This potentially limits the use of the products for drought and flood frequency analysis. However, the integration procedure does not rely upon the availability of the above products but can be applied to any other long-term rainfall and soil moisture dataset available. Note that all the IMERG products are now reprocessed back to the start of the TRMM era (from March 2000 to present) and SM observations are available back to 1978 (Dorigo et al., 2017). Therefore, there is a large potential for developing a long-term integrated product specifically targeted for climate applications.

*Data availability.*  $P_{R+SM}$  is available via <https://zenodo.org/record/3345323>

*Competing interests.* The authors declare no conflicts of interest.

*Acknowledgements.* This work is supported by the European Space Agency ESA (contract 4000114738/15/I-SBo) project SMOS+Rainfall Land II. Gab Abramowitz acknowledges the support of the Australian Research Council Centre of Excellence for Climate Extremes (CE170100023). 

## References



- Alvarez-Garreton, C., Ryu, D., Western, A. W., Crow, W. T., Su, C.-H., and Robertson, D. R.: Dual assimilation of satellite soil moisture to improve streamflow prediction in data-scarce catchments, *Water Resources Research*, 52, 5357–5375, 2016.
- Bauer-Marschallinger, B., Freeman, V., Cao, S., Paulik, C., Schaffler, S., Stachl, T., Modanesi, S., Massari, C., Ciabatta, L., Brocca, L.,  
5 et al.: Toward Global Soil Moisture Monitoring With Sentinel-1: Harnessing Assets and Overcoming Obstacles, *IEEE Transactions on Geoscience and Remote Sensing*, pp. 1–20, 2018a.
- Bauer-Marschallinger, B., Paulik, C., Hochstöger, S., Mistelbauer, T., Modanesi, S., Ciabatta, L., Massari, C., Brocca, L., and Wagner, W.: Soil moisture from fusion of scatterometer and SAR: Closing the scale gap with temporal filtering, *Remote Sensing*, 10, 1030, 2018b.
- Beck, H. E., Van Dijk, A. I., Levizzani, V., Schellekens, J., Gonzalez Miralles, D., Martens, B., and De Roo, A.: MSWEP: 3-hourly 0.25  
10 global gridded precipitation (1979–2015) by merging gauge, satellite, and reanalysis data, *Hydrology and Earth System Sciences*, 21, 589–615, 2017.
- Beck, H. E., Pan, M., Roy, T., Weedon, G. P., Pappenberger, F., van Dijk, A. I., Huffman, G. J., Adler, R. F., and Wood, E. F.: Daily evaluation of 26 precipitation datasets using Stage-IV gauge-radar data for the CONUS, *Hydrology and Earth System Sciences*, 23, 207–224, 2019.
- Behrangi, A. and Wen, Y.: On the Spatial and Temporal Sampling Errors of Remotely Sensed Precipitation Products, *Remote Sensing*, 9,  
15 <https://doi.org/10.3390/rs9111127>, <https://www.mdpi.com/2072-4292/9/11/1127>, 2017.
- Bishop, C. H. and Abramowitz, G.: Climate model dependence and the replicate Earth paradigm, *Climate dynamics*, 41, 885–900, 2013.
- Brocca, L., Moramarco, T., Melone, F., and Wagner, W.: A new method for rainfall estimation through soil moisture observations, *Geophysical Research Letters*, 40, 853–858, 2013.
- Brocca, L., Ciabatta, L., Massari, C., Moramarco, T., Hahn, S., Hasenauer, S., Kidd, R., Dorigo, W., Wagner, W., and Levizzani, V.: Soil  
20 as a natural rain gauge: Estimating global rainfall from satellite soil moisture data, *Journal of Geophysical Research: Atmospheres*, 119, 5128–5141, <https://doi.org/10.1002/2014JD021489>, <https://agupubs.onlinelibrary.wiley.com/doi/abs/10.1002/2014JD021489>, 2014.
- Brocca, L., Pellarin, T., Crow, W. T., Ciabatta, L., Massari, C., Ryu, D., Su, C.-H., Rüdiger, C., and Kerr, Y.: Rainfall estimation by inverting  
SMOS soil moisture estimates: A comparison of different methods over Australia, *Journal of Geophysical Research: Atmospheres*, 121,  
12–062, 2016.
- 25 Champeaux, J., Masson, V., and Chauvin, F.: ECOCLIMAP: a global database of land surface parameters at 1 km resolution, *Meteorological Applications*, 12, 29–32, 2005.
- Chan, S., Bindlish, R., O’Neill, P., Jackson, T., Njoku, E., Dunbar, S., Chaubell, J., Piepmeier, J., Yueh, S., Entekhabi, D., et al.: Development and assessment of the SMAP enhanced passive soil moisture product, *Remote sensing of environment*, 204, 931–941, 2018.
- Chen, F., Crow, W. T., and Ryu, D.: Dual forcing and state correction via soil moisture assimilation for improved rainfall–runoff modeling,  
30 *Journal of hydrometeorology*, 15, 1832–1848, 2014.
- Chen, F., Crow, W. T., Bindlish, R., Colliander, A., Burgin, M. S., Asanuma, J., and Aida, K.: Global-scale evaluation of SMAP, SMOS and ASCAT soil moisture products using triple collocation, *Remote Sensing of Environment*, 214, 1–13, 2018.
- Ciabatta, L., Brocca, L., Massari, C., Moramarco, T., Puca, S., Rinollo, A., Gabellani, S., and Wagner, W.: Integration of satellite soil moisture and rainfall observations over the Italian territory, *Journal of Hydrometeorology*, 16, 1341–1355, 2015.
- 35 Ciabatta, L., Marra, A. C., Panegrossi, G., Casella, D., Sanò, P., Dietrich, S., Massari, C., and Brocca, L.: Daily precipitation estimation through different microwave sensors: Verification study over Italy, *Journal of hydrology*, 545, 436–450, 2017a.

- Ciabatta, L., Marra, A. C., Panegrossi, G., Casella, D., Sanò, P., Dietrich, S., Massari, C., and Brocca, L.: Daily precipitation estimation through different microwave sensors: Verification study over Italy, *Journal of Hydrology*, 545, 436 – 450, <https://doi.org/https://doi.org/10.1016/j.jhydrol.2016.12.057>, <http://www.sciencedirect.com/science/article/pii/S0022169416308551>, 2017b. 
- 5 Ciabatta, L., Massari, C., Brocca, L., Gruber, A., Reimer, C., Hahn, S., Paulik, C., Dorigo, W., Kidd, R., and Wagner, W.: SM2RAIN-CCI: A new global long-term rainfall data set derived from ESA CCI soil moisture, *Earth System Science Data*, 10, 267, 2018.
- Contractor, S., Alexander, L. V., Donat, M. G., and Herold, N.: How well do gridded datasets of observed daily precipitation compare over Australia?, *Advances in Meteorology*, 2015, 2015.
- Crow, W., van Den Berg, M., Huffman, G., and Pellarin, T.: Correcting rainfall using satellite-based surface soil moisture retrievals: The Soil Moisture Analysis Rainfall Tool (SMART), *Water Resources Research*, 47, 2011.
- 10 Crow, W. T., Huffman, G. J., Bindlish, R., and Jackson, T. J.: Improving satellite-based rainfall accumulation estimates using spaceborne surface soil moisture retrievals, *Journal of Hydrometeorology*, 10, 199–212, 2009.
- Dee, D. P., Uppala, S., Simmons, A., Berrisford, P., Poli, P., Kobayashi, S., Andrae, U., Balmaseda, M., Balsamo, G., Bauer, d. P., et al.: The ERA-Interim reanalysis: Configuration and performance of the data assimilation system, *Quarterly Journal of the royal meteorological society*, 137, 553–597, 2011.
- 15 Dorigo, W., Wagner, W., Albergel, C., Albrecht, F., Balsamo, G., Brocca, L., Chung, D., Ertl, M., Forkel, M., Gruber, A., et al.: ESA CCI Soil Moisture for improved Earth system understanding: State-of-the art and future directions, *Remote Sensing of Environment*, 203, 185–215, 2017.
- Ebert, E. E., Janowiak, J. E., and Kidd, C.: Comparison of Near-Real-Time Precipitation Estimates from Satellite Observations and Numerical Models, *Bulletin of the American Meteorological Society*, 88, 47–64, <https://doi.org/10.1175/BAMS-88-1-47>, <https://doi.org/10.1175/BAMS-88-1-47>, 2007.
- 20 Entekhabi, D., Njoku, E. G., O’Neill, P. E., Kellogg, K. H., Crow, W. T., Edelstein, W. N., Entin, J. K., Goodman, S. D., Jackson, T. J., Johnson, J., et al.: The soil moisture active passive (SMAP) mission, *Proceedings of the IEEE*, 98, 704–716, 2010.
- European Centre For Medium-Range Weather Forecasts: ERA5 Reanalysis, <https://doi.org/10.5065/D6X34W69>, <https://rda.ucar.edu/datasets/ds630.0/>, 2017.
- 25 Famiglietti, J. and Wood, E. F.: Multiscale modeling of spatially variable water and energy balance processes, *Water Resources Research*, 30, 3061–3078, 1994.
- Ferraro, R. R., Grody, N. C., and Marks, G. F.: Effects of surface conditions on rain identification using the DMSP-SSM/I, *Remote Sensing Reviews*, 11, 195–209, <https://doi.org/10.1080/02757259409532265>, <https://doi.org/10.1080/02757259409532265>, 1994.
- 30 Foelsche, U., Kirchengast, G., Fuchsberger, J., Tan, J., Petersen, W. A., et al.: Evaluation of GPM IMERG Early, Late, and Final rainfall estimates using WegenerNet gauge data in southeastern Austria, *Hydrology and Earth System Sciences*, 21, 6559–6572, 2017.
- Funk, C., Peterson, P., Landsfeld, M., Pedreros, D., Verdin, J., Shukla, S., Husak, G., Rowland, J., Harrison, L., Hoell, A., et al.: The climate hazards infrared precipitation with stations—a new environmental record for monitoring extremes, *Scientific data*, 2, 150066, 2015.
- Garreaud, R. D., Alvarez-Garreton, C., Barichivich, J., Boisier, J. P., Christie, D., Galleguillos, M., LeQuesne, C., McPhee, J., and Zambrano-Bigiarini, M.: The 2010–2015 megadrought in central Chile: impacts on regional hydroclimate and vegetation., *Hydrology & Earth System Sciences*, 21, 2017.
- 35 Gebregiorgis, A. S., Kirstetter, P.-E., Hong, Y. E., Gourley, J. J., Huffman, G. J., Petersen, W. A., Xue, X., and Schwaller, M. R.: To What Extent is the Day 1 GPM IMERG Satellite Precipitation Estimate Improved as Compared to TRMM TMPA-RT?, *Journal of Geophysi-*

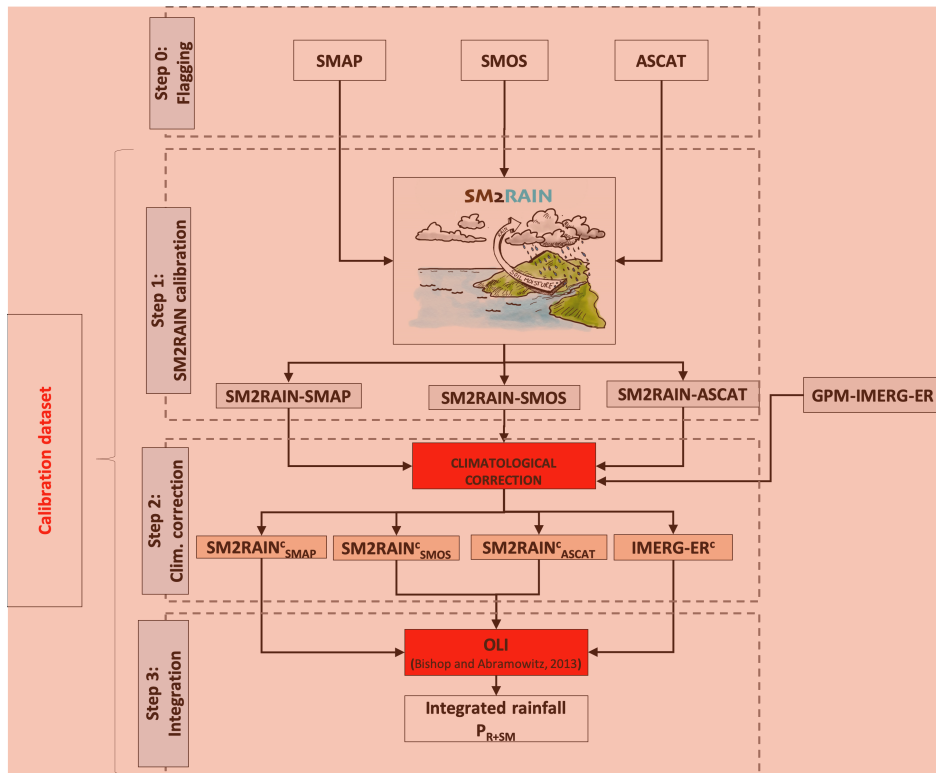
- cal Research: Atmospheres, 123, 1694–1707, <https://doi.org/10.1002/2017JD027606>, <https://agupubs.onlinelibrary.wiley.com/doi/abs/10.1002/2017JD027606>, 2018a.
- ▲ Gebregiorgis, A. S., Kirstetter, P.-E., Hong, Y. E., Gourley, J. J., Huffman, G. J., Petersen, W. A., Xue, X., and Schwaller, M. R.: To What Extent is the Day 1 GPM IMERG Satellite Precipitation Estimate Improved as Compared to TRMM TMPA-RT?, *Journal of Geophysical Research: Atmospheres*, 123, 1694–1707, 2018b.
- 5 Gebremichael, M. and Krajewski, W. F.: Characterization of the temporal sampling error in space-time-averaged rainfall estimates from satellites, *Journal of Geophysical Research: Atmospheres*, 109, 2004.
- Gibon, F., Pellarin, T., Román-Cascón, C., Alhassane, A., Traoré, S., Kerr, Y., Seen, D. L., and Baron, C.: Millet yield estimates in the Sahel using satellite derived soil moisture time series, *Agricultural and Forest Meteorology*, 262, 100 – 109, <https://doi.org/https://doi.org/10.1016/j.agrformet.2018.07.001>, <http://www.sciencedirect.com/science/article/pii/S0168192318302223>, 2018.
- 10 Gottschalk, J., Meng, J., Rodell, M., and Houser, P.: Analysis of Multiple Precipitation Products and Preliminary Assessment of Their Impact on Global Land Data Assimilation System Land Surface States, *Journal of Hydrometeorology*, 6, 573–598, <https://doi.org/10.1175/JHM437.1>, <https://doi.org/10.1175/JHM437.1>, 2005.
- 15 Gupta, H. V., Kling, H., Yilmaz, K. K., and Martinez, G. F.: Decomposition of the mean squared error and NSE performance criteria: Implications for improving hydrological modelling, *Journal of hydrology*, 377, 80–91, 2009.
- Hahn, S.: Product Validation Report (PVR) Soil Moisture, Metop ASCAT Soil Moisture, Tech. rep., H-SAF, 2016.
- Haylock, M., Hofstra, N., Klein Tank, A., Klok, E., Jones, P., and New, M.: A European daily high-resolution gridded data set of surface temperature and precipitation for 1950–2006, *Journal of Geophysical Research: Atmospheres*, 113, 2008.
- 20 Herold, N., Alexander, L., Donat, M., Contractor, S., and Becker, A.: How much does it rain over land?, *Geophysical Research Letters*, 43, 341–348, 2016.
- Higgins, R. W., Shi, W., Yarosh, E., and Joyce, R.: Improved United States precipitation quality control system and analysis, *NCEP/Climate prediction center atlas*, 7, 40, 2000.
- Hobeichi, S., Abramowitz, G., Evans, J., and Ukkola, A.: Derived Optimal Linear Combination Evapotranspiration (DOLCE): a global gridded synthesis ET estimate, *Hydrology and Earth System Sciences*, 22, 1317, 2018.
- 25 Hou, A. Y., Kakar, R. K., Neeck, S., Azarbarzin, A. A., Kummerow, C. D., Kojima, M., Oki, R., Nakamura, K., and Iguchi, T.: The global precipitation measurement mission, *Bulletin of the American Meteorological Society*, 95, 701–722, 2014.
- Hsu, K.-l., Gao, X., Sorooshian, S., and Gupta, H. V.: Precipitation estimation from remotely sensed information using artificial neural networks, *Journal of Applied Meteorology*, 36, 1176–1190, 1997.
- 30 Huffman, G., Bolvin, D., Braithwaite, D., Hsu, K., Joyce, R., Kidd, C., Nelkin, E., , and Xie, P.: Algorithm Theoretical Basis Document (ATBD) Version 4.5. NASA Global Precipitation Measurement (GPM) Integrated Multi-satellitE Retrievals for GPM (IMERG) NASA, 2018.
- Huffman, G. J., Bolvin, D. T., Nelkin, E. J., Wolff, D. B., Adler, R. F., Gu, G., Hong, Y., Bowman, K. P., and Stocker, E. F.: The TRMM multisatellite precipitation analysis (TMPA): Quasi-global, multiyear, combined-sensor precipitation estimates at fine scales, *Journal of hydrometeorology*, 8, 38–55, 2007.
- 35 Joyce, R. J., Janowiak, J. E., Arkin, P. A., and Xie, P.: CMORPH: A method that produces global precipitation estimates from passive microwave and infrared data at high spatial and temporal resolution, *Journal of Hydrometeorology*, 5, 487–503, 2004.

- Kerr, Y. H., Waldteufel, P., Wigneron, J.-P., Martinuzzi, J., Font, J., and Berger, M.: Soil moisture retrieval from space: The Soil Moisture and Ocean Salinity (SMOS) mission, *IEEE transactions on Geoscience and remote sensing*, 39, 1729–1735, 2001.
- Khan, S. and Maggioni, V.: Assessment of level-3 gridded Global Precipitation Mission (GPM) products over oceans, *Remote Sensing*, 11, 255, 2019.
- 5 Kidd, C. and Huffman, G.: Global precipitation measurement, *Meteorological Applications*, 18, 334–353, 2011.
- Kidd, C. and Levizzani, V.: Status of satellite precipitation retrievals, *Hydrology and Earth System Sciences*, 15, 1109–1116, <https://doi.org/10.5194/hess-15-1109-2011>, <https://www.hydrol-earth-syst-sci.net/15/1109/2011/>, 2011.
- ▲ Kidd, C., Dawkins, E., and Huffman, G.: Comparison of precipitation derived from the ECMWF operational forecast model and satellite precipitation datasets, *Journal of Hydrometeorology*, 14, 1463–1482, 2013.
- 10 Kidd, C., Becker, A., Huffman, G. J., Muller, C. L., Joe, P., Skofronick-Jackson, G., and Kirschbaum, D. B.: So, how much of the Earth’s surface is covered by rain gauges?, *Bulletin of the American Meteorological Society*, 98, 69–78, <https://doi.org/10.1175/BAMS-D-14-00283.1>, <http://journals.ametsoc.org/doi/10.1175/BAMS-D-14-00283.1>, 2017.
- Kim, S., Liu, Y. Y., Johnson, F. M., Parinussa, R. M., and Sharma, A.: A global comparison of alternate AMSR2 soil moisture products: Why do they differ?, *Remote Sensing of Environment*, 161, 43–62, 2015.
- 15 Knoben, W. J., Freer, J. E., and Woods, R. A.: Inherent benchmark or not? Comparing Nash–Sutcliffe and Kling–Gupta efficiency scores, *Hydrology and Earth System Sciences*, 23, 4323–4331, 2019.
- Kubota, T., Shige, S., Hashizume, H., Aonashi, K., Takahashi, N., Seto, S., Hirose, M., Takayabu, Y. N., Ushio, T., Nakagawa, K., et al.: Global precipitation map using satellite-borne microwave radiometers by the GSMaP project: Production and validation, *IEEE Transactions on Geoscience and Remote Sensing*, 45, 2259–2275, 2007.
- 20 Kucera, P. A., Ebert, E. E., Turk, F. J., Levizzani, V., Kirschbaum, D., Tapiador, F. J., Loew, A., and Borsche, M.: Precipitation from space: Advancing Earth system science, *Bulletin of the American Meteorological Society*, 94, 365–375, 2013.
- Lin, Y. and Mitchell, K.: The NCEP Stage II/IV hourly precipitation analyses: Development and applications. 19th Conf, Hydrology, San Diego, CA, Amer. Meteor. Soc., Paper1, 2, 2005.
- Maggioni, V. and Massari, C.: On the performance of satellite precipitation products in riverine flood modeling: A review, *Journal of hydrology*, 558, 214–224, 2018.
- 25 Maggioni, V., Meyers, P. C., and Robinson, M. D.: A review of merged high-resolution satellite precipitation product accuracy during the Tropical Rainfall Measuring Mission (TRMM) era, *Journal of Hydrometeorology*, 17, 1101–1117, 2016.
- Malbêteau, Y., Merlin, O., Molero, B., Rüdiger, C., and Bacon, S.: DisPATCh as a tool to evaluate coarse-scale remotely sensed soil moisture using localized in situ measurements: Application to SMOS and AMSR-E data in Southeastern Australia, *International journal of applied earth observation and geoinformation*, 45, 221–234, 2016.
- 30 Massari, C., Crow, W., and Brocca, L.: An assessment of the performance of global rainfall estimates without ground-based observations, *Hydrology and Earth System Sciences*, 21, 4347–4361, 2017a.
- Massari, C., Su, C.-H., Brocca, L., Sang, Y.-F., Ciabatta, L., Ryu, D., and Wagner, W.: Near real time de-noising of satellite-based soil moisture retrievals: An intercomparison among three different techniques, *Remote Sensing of Environment*, 198, 17–29, 2017b.
- 35 Massari, C., Camici, S., Ciabatta, L., and Brocca, L.: Exploiting satellite-based surface soil moisture for flood forecasting in the Mediterranean area: State update versus rainfall correction, *Remote Sensing*, 10, 292, 2018.

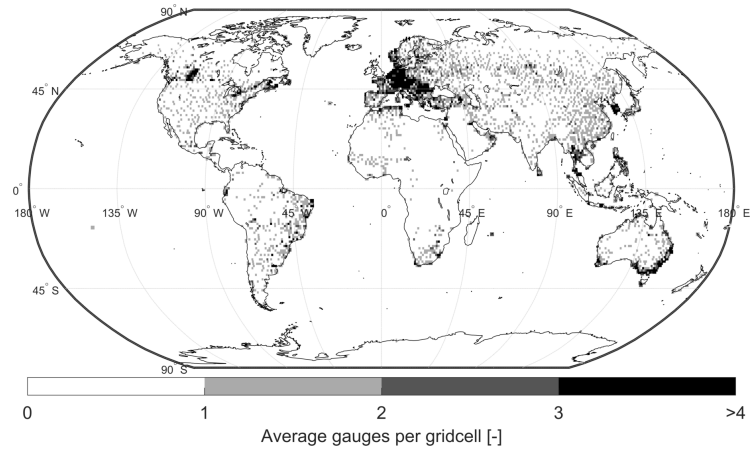


- Massari, C., Maggioni, V., Barbetta, S., Brocca, L., Ciabatta, L., Camici, S., Moramarco, T., Coccia, G., and Todini, E.: Complementing near-real time satellite rainfall products with satellite soil moisture-derived rainfall through a bayesian inversion approach, *Journal of Hydrology*, 2019.
- 5 McColl, K. A., Vogelzang, J., Konings, A. G., Entekhabi, D., Piles, M., and Stoffelen, A.: Extended triple collocation: Estimating errors and correlation coefficients with respect to an unknown target, *Geophysical Research Letters*, 41, 6229–6236, <https://doi.org/10.1002/2014GL061322>, <https://agupubs.onlinelibrary.wiley.com/doi/abs/10.1002/2014GL061322>, 2014.
- Merlin, O., Rudiger, C., Al Bitar, A., Richaume, P., Walker, J. P., and Kerr, Y. H.: Disaggregation of SMOS soil moisture in Southeastern Australia, *IEEE Transactions on Geoscience and Remote Sensing*, 50, 1556–1571, 2012.
- Nijssen, B. and Lettenmaier, D. P.: Effect of precipitation sampling error on simulated hydrological fluxes and states: Anticipating the Global  
10 Precipitation Measurement satellites, *Journal of Geophysical Research: Atmospheres*, 109, 2004.
- Oki, T. and Kanae, S.: Global hydrological cycles and world water resources, *science*, 313, 1068–1072, 2006. 
-  Pai, D., Sridhar, L., Rajeevan, M., Sreejith, O., Satbhai, N., and Mukhopadhyay, B.: Development of a new high spatial resolution (0.25×  
0.25) long period (1901–2010) daily gridded rainfall data set over India and its comparison with existing data sets over the region, *Mausam*, 65, 1–18, 2014.
- 15 Parinussa, R. M., Holmes, T. R., Wanders, N., Dorigo, W. A., and de Jeu, R. A.: A preliminary study toward consistent soil moisture from AMSR2, *Journal of Hydrometeorology*, 16, 932–947, 2015.
- Pellarin, T., Ali, A., Chopin, F., Jobard, I., and Bergès, J.-C.: Using spaceborne surface soil moisture to constrain satellite precipitation estimates over West Africa, *Geophysical Research Letters*, 35, 2008.
- Pellarin, T., Louvet, S., Gruhier, C., Quantin, G., and Legout, C.: A simple and effective method for correcting soil moisture and precipitation  
20 estimates using AMSR-E measurements, *Remote sensing of environment*, 136, 28–36, 2013.
- Piles, M., Camps, A., Vall-Llossera, M., Corbella, I., Panciera, R., Rudiger, C., Kerr, Y. H., and Walker, J.: Downscaling SMOS-derived soil moisture using MODIS visible/infrared data, *IEEE Transactions on Geoscience and Remote Sensing*, 49, 3156–3166, 2011.
- Roads, J.: The NCEP–NCAR, NCEP–DOE, and TRMM tropical atmosphere hydrologic cycles, *Journal of Hydrometeorology*, 4, 826–840, 2003.
- 25 Román-Cascón, C., Pellarin, T., Gibon, F., Brocca, L., Cosme, E., Crow, W., Fernández-Prieto, D., Kerr, Y. H., and Massari, C.: Correcting satellite-based precipitation products through SMOS soil moisture data assimilation in two land-surface models of different complexity: API and SURFEX, *Remote sensing of environment*, 200, 295–310, 2017.
- Rostan, F., Ulrich, D., Riegger, S., and Østergaard, A.: MetoP-SG SCA wind scatterometer design and performance, in: 2016 IEEE International Geoscience and Remote Sensing Symposium (IGARSS), pp. 7366–7369, IEEE, 2016.
- 30 Schamm, K., Ziese, M., Becker, A., Finger, P., Meyer-Christoffer, A., Schneider, U., Schröder, M., and Stender, P.: Global gridded precipitation over land: a description of the new GPCC First Guess Daily product, *Earth System Science Data*, 6, 49–60, 2014.
- Seo, D.-J., Seed, A., and Delrieu, G.: Radar and multisensor rainfall estimation for hydrologic applications, *Rainfall: State of the science*, 191, 2010.
- Serrat-Capdevila, A., Valdes, J. B., and Stakhiv, E. Z.: Water management applications for satellite precipitation products: Synthesis and  
35 recommendations, *JAWRA Journal of the American Water Resources Association*, 50, 509–525, 2014.
- Stoffelen, A.: Toward the true near-surface wind speed: Error modeling and calibration using triple collocation, *Journal of Geophysical Research: Oceans*, 103, 7755–7766, 1998.

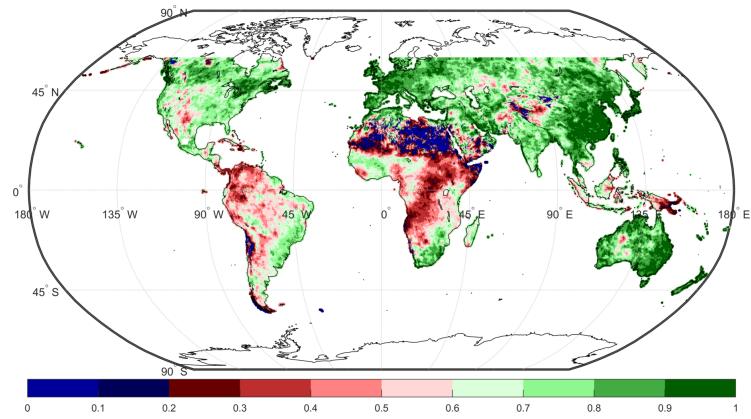
- Su, C.-H., Ryu, D., Crow, W. T., and Western, A. W.: Stand-alone error characterisation of microwave satellite soil moisture using a Fourier method, *Remote sensing of environment*, 154, 115–126, 2014.
- Su, C.-H., Narsey, S. Y., Gruber, A., Xaver, A., Chung, D., Ryu, D., and Wagner, W.: Evaluation of post-retrieval de-noising of active and passive microwave satellite soil moisture, *Remote Sensing of Environment*, 163, 127–139, 2015.
- 5 Tan, J., Petersen, W. A., and Tokay, A.: A novel approach to identify sources of errors in IMERG for GPM ground validation, *Journal of Hydrometeorology*, 17, 2477–2491, 2016.
- Tarpanelli, A., Massari, C., Ciabatta, L., Filippucci, P., Amarnath, G., and Brocca, L.: Exploiting a constellation of satellite soil moisture sensors for accurate rainfall estimation, *Advances in Water Resources*, 108, 249 – 255, <https://doi.org/https://doi.org/10.1016/j.advwatres.2017.08.010>, <http://www.sciencedirect.com/science/article/pii/S0309170817300374>, 2017.
- 10 Tian, Y., Peters-Lidard, C. D., Choudhury, B. J., and Garcia, M.: Multitemporal Analysis of TRMM-Based Satellite Precipitation Products for Land Data Assimilation Applications, *Journal of Hydrometeorology*, 8, 1165–1183, <https://doi.org/10.1175/2007JHM859.1>, <https://doi.org/10.1175/2007JHM859.1>, 2007.
- Vintrou, E., Bégué, A., Baron, C., Saad, A., Lo Seen, D., and Traoré, S.: A comparative study on satellite-and model-based crop phenology in West Africa, *Remote Sensing*, 6, 1367–1389, 2014. ↴
- 15 ↴ Wagner, W., Hahn, S., Kidd, R., Melzer, T., Bartalis, Z., Hasenauer, S., Figa-Saldaña, J., de Rosnay, P., Jann, A., Schneider, S., et al.: The ASCAT soil moisture product: A review of its specifications, validation results, and emerging applications, *Meteorologische Zeitschrift*, 22, 5–33, 2013.
- Wanders, N., Pan, M., and Wood, E. F.: Correction of real-time satellite precipitation with multi-sensor satellite observations of land surface variables, *Remote Sensing of Environment*, 160, 206–221, 2015.
- 20 Zhan, W., Pan, M., Wanders, N., and Wood, E. F.: Correction of real-time satellite precipitation with satellite soil moisture observations, *Hydrology and Earth System Sciences*, 19, 4275–4291, 2015. ↴



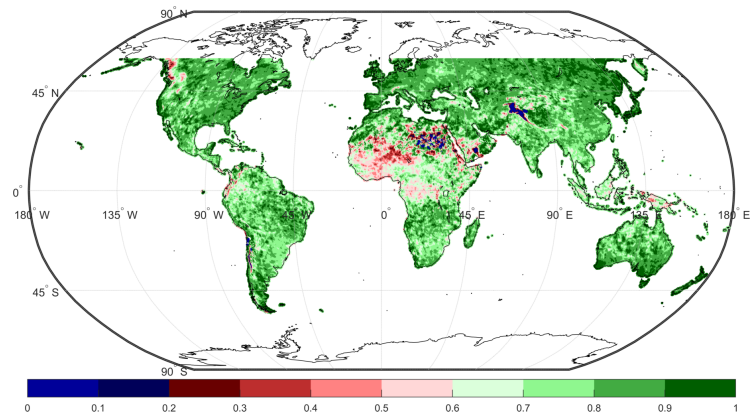
**Figure 1.** Integration scheme used for the calculation of the integrated rainfall product  $PR+SM$ . In step 2  $SM2RAIN_{SMAP}^c$ ,  $SM2RAIN_{SMOS}^c$ ,  $SM2RAIN_{ASCAT}^c$  and  $IMERG-ER^c$  refer to the SM2RAIN products with climatological correction (using the calibration dataset)



(a)

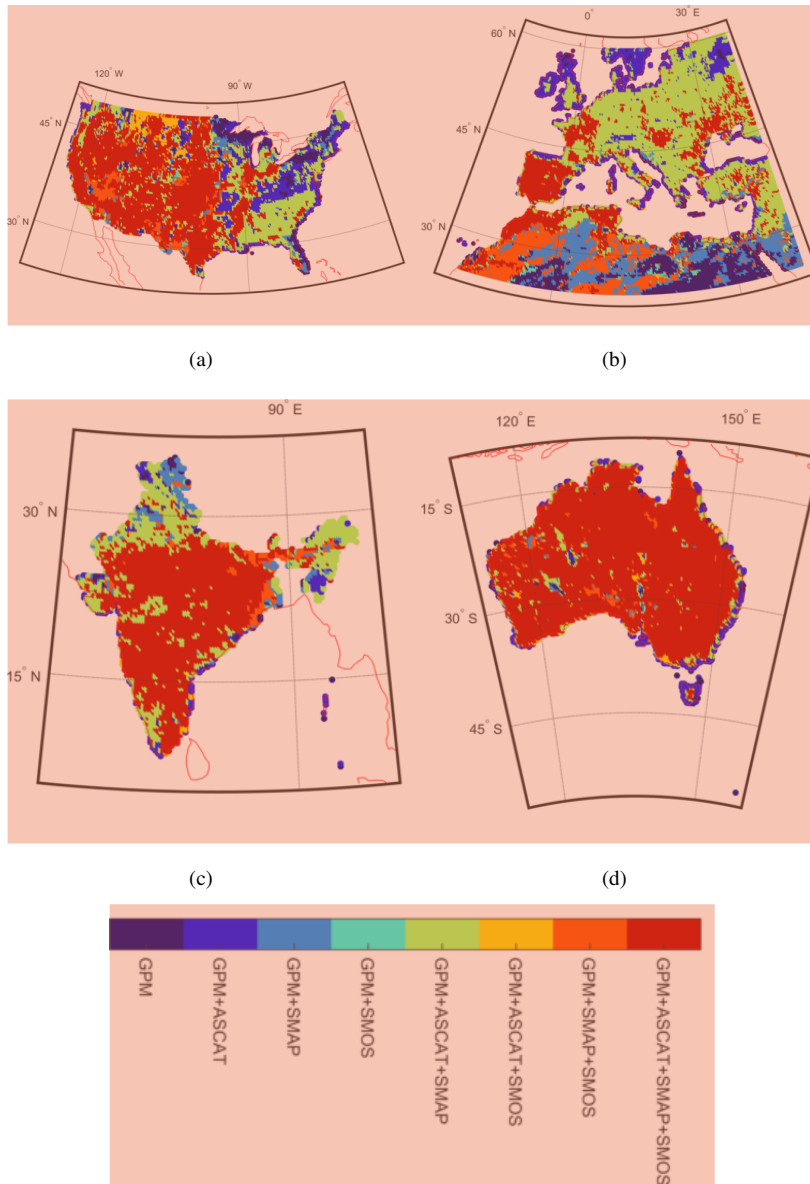



(b)

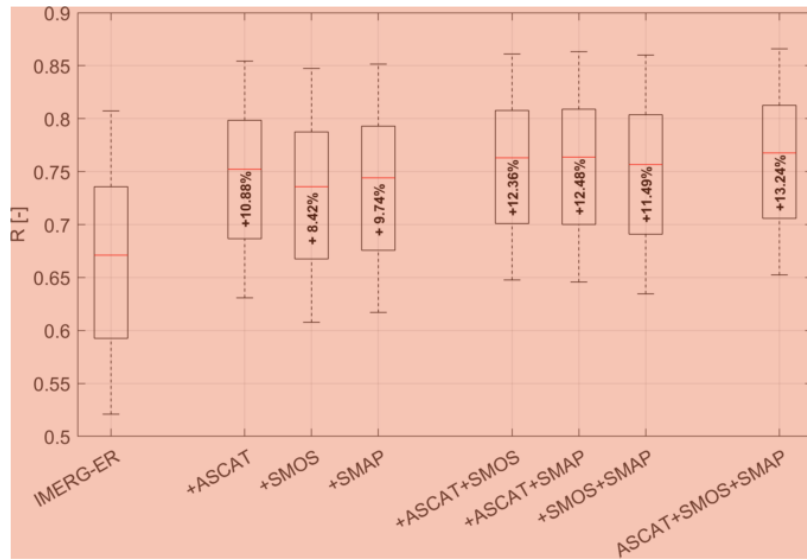


(c)

**Figure 2.** (a) Number of stations used for the GPCP First Guess 1.0 degree product for years 2015-2018. (b) TC correlation of the GPCP First Guess 1.0 in Africa during 2015-2018 using the triplet GPCP, ERA5, and SM2RAIN-ASCAT\*. It can be seen that lower correlation areas closely match with low station density areas. (c) TC correlation of the ERA5 reanalysis during 2015-2018 GPCP, ERA5, and SM2RAIN-ASCAT\*.

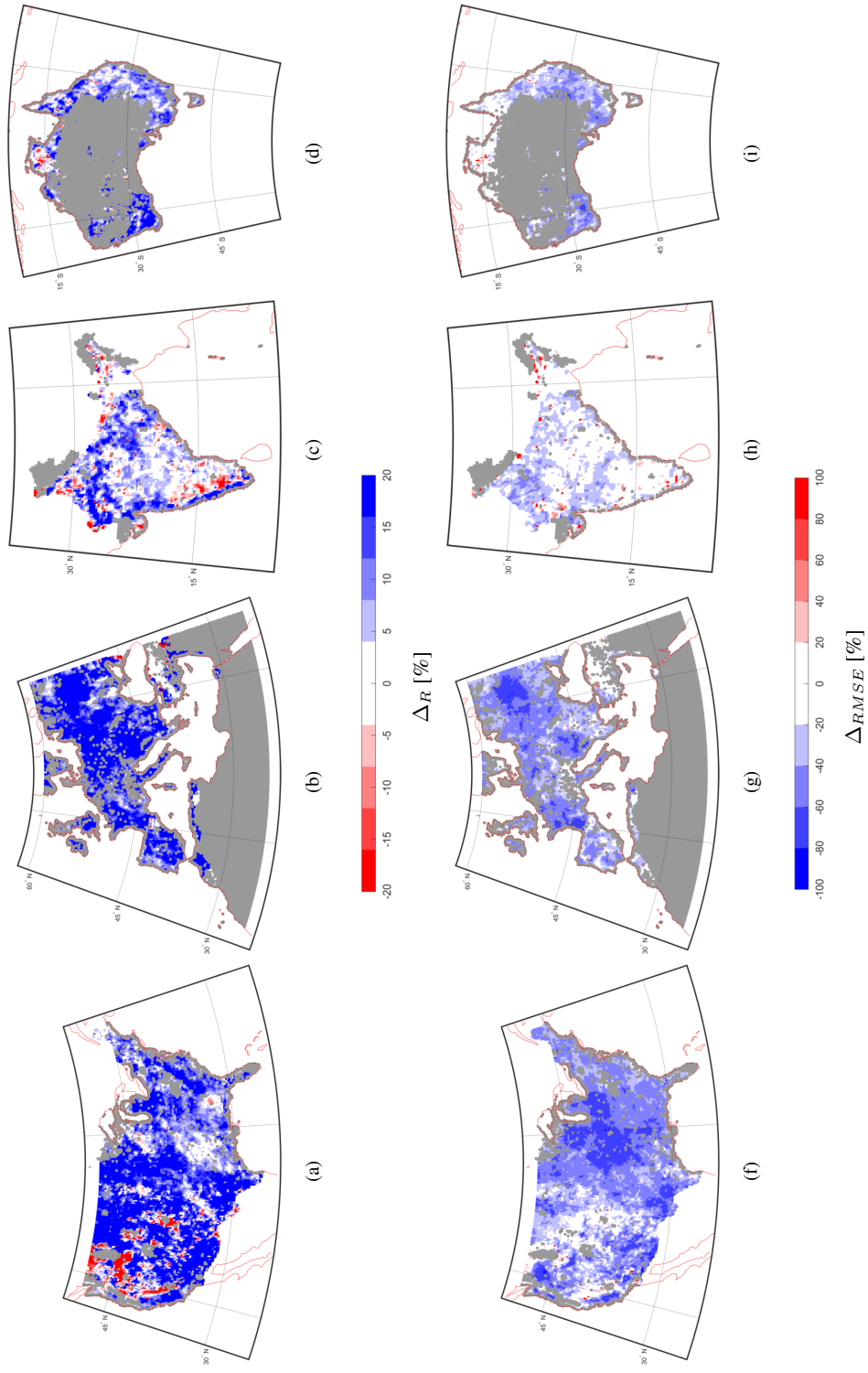


**Figure 3.** Products used in the integration over CONUS (a), Europe (b) and India (c) and Australia (d). The results refer to 2015-2017 period. 



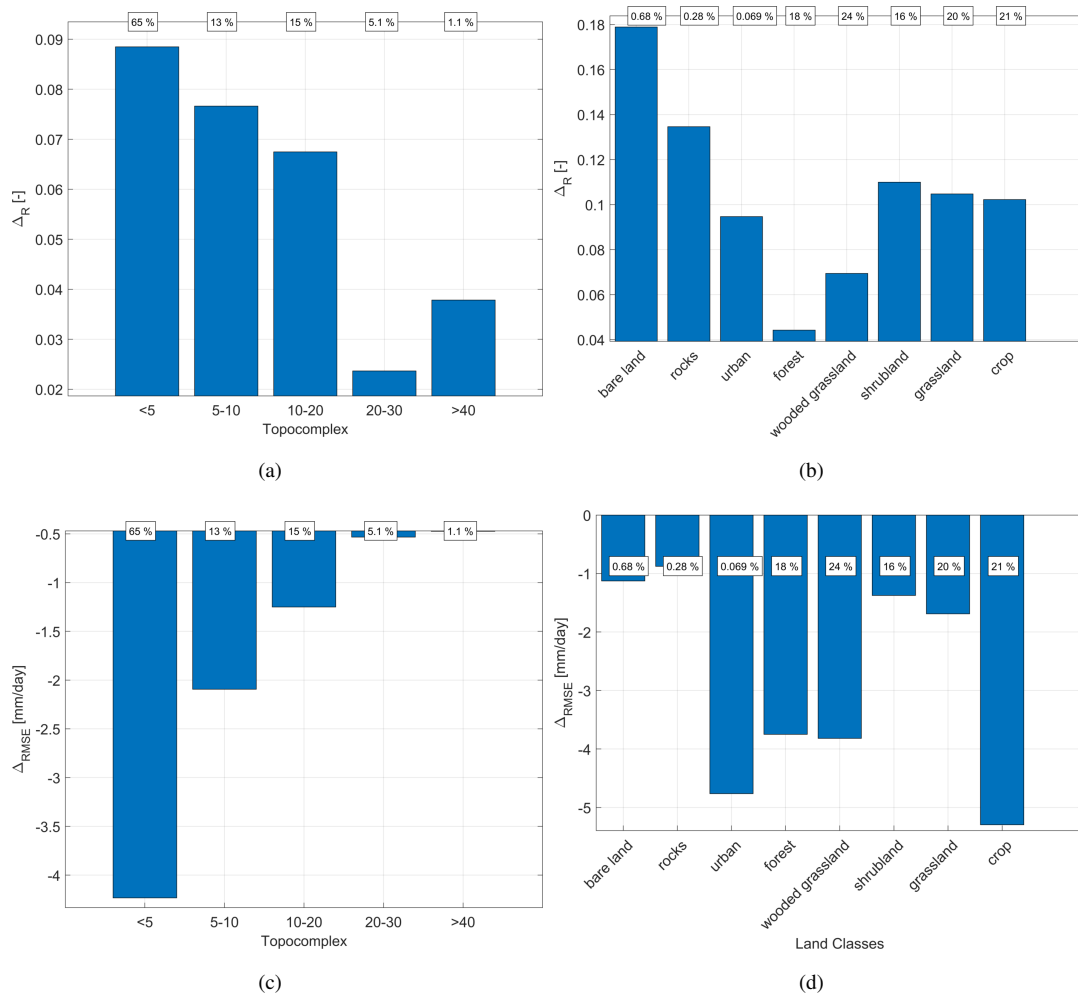
(a)

**Figure 4.** Correlation increments obtained by ingesting ASCAT, SMOS and SMAP SM2RAIN-based rainfall estimates into IMERG-ER product. Values in bold inside the box plots refer to the median increments expressed in terms of percentage. The box plot refer to the 25<sup>th</sup> and 75<sup>th</sup> percentiles while the whiskers refer the minimum and maximum values. Outliers are not shown in the plot.

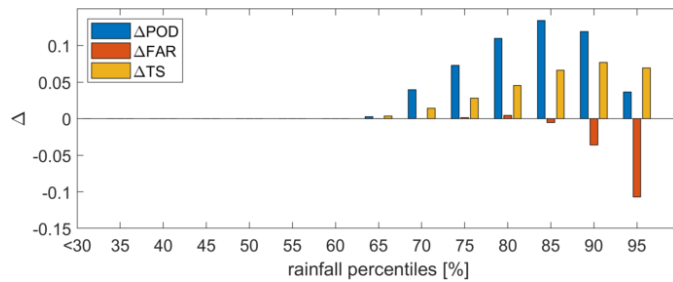


**Figure 5.** Percentage differences in correlation ( $\Delta_R$  [%]), panels a, b, c and d top) and in root mean square error ( $\Delta_{RMSE}$  [%]), panels f, g, h and i bottom) between the integrated product  $P_{R+SM}$  and the IMERG Early Run product (IMERG-ER) over CONUS, Europe, India and Australia, Period 2015-2017. Grey areas represent the masked areas based on what described in Section 3.4.3.

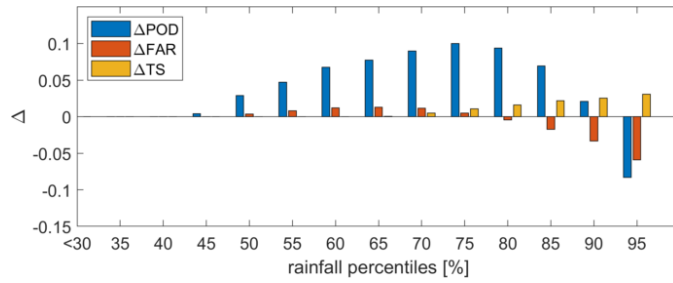




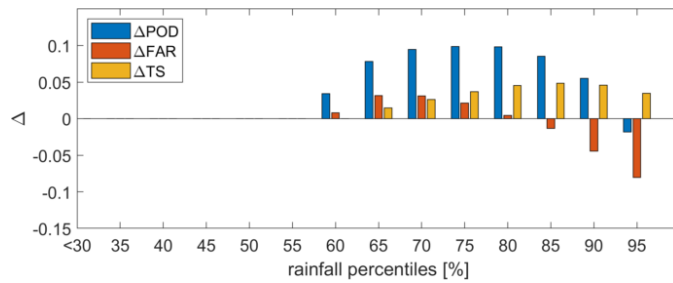
**Figure 6.** Difference in **median** correlation ( $\Delta_R$ ) and in **median** root mean square error ( $\Delta_{RMSE}$ ) between the integrated product  $P_{R+SM}$  and IMERG-ER as a function of the topographic complexity (panels a and c) and as a function of the Land Cover type (panels b and d) over CONUS. The results refer to 2015-2017 period. The text boxes on the top show the percentage of the area occupied by the specific topographic complexity or land cover type.



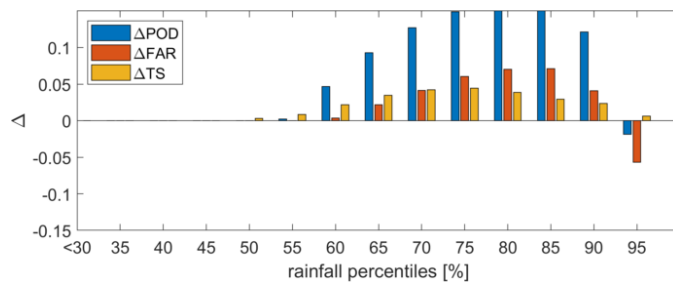
(a)



(b)

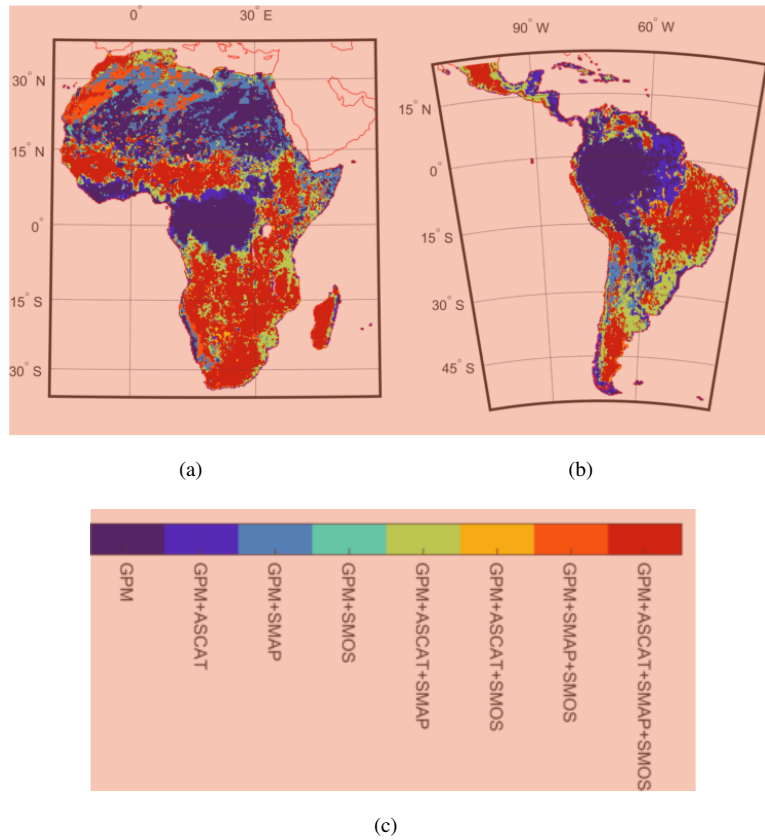


(c)

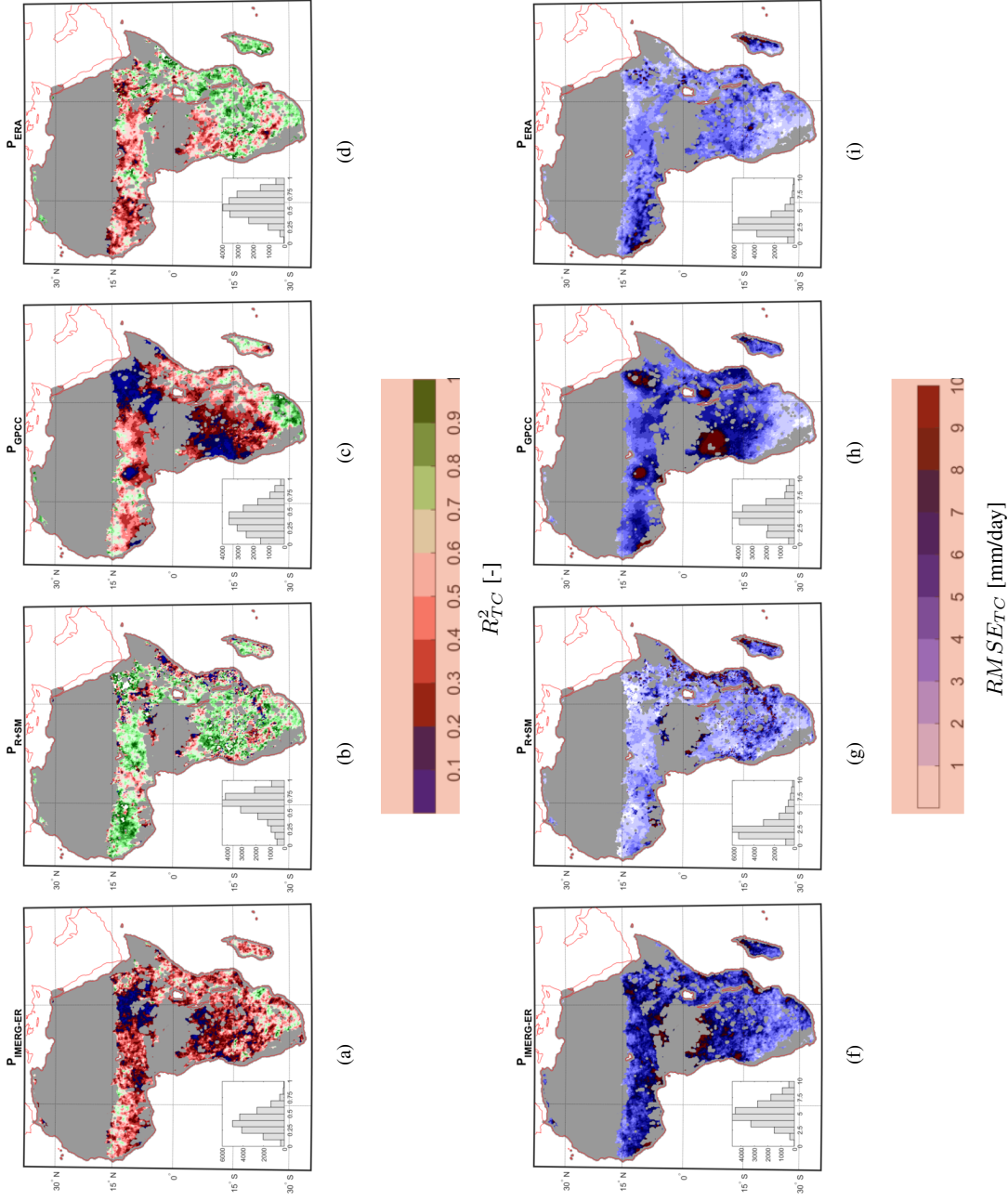


(d)

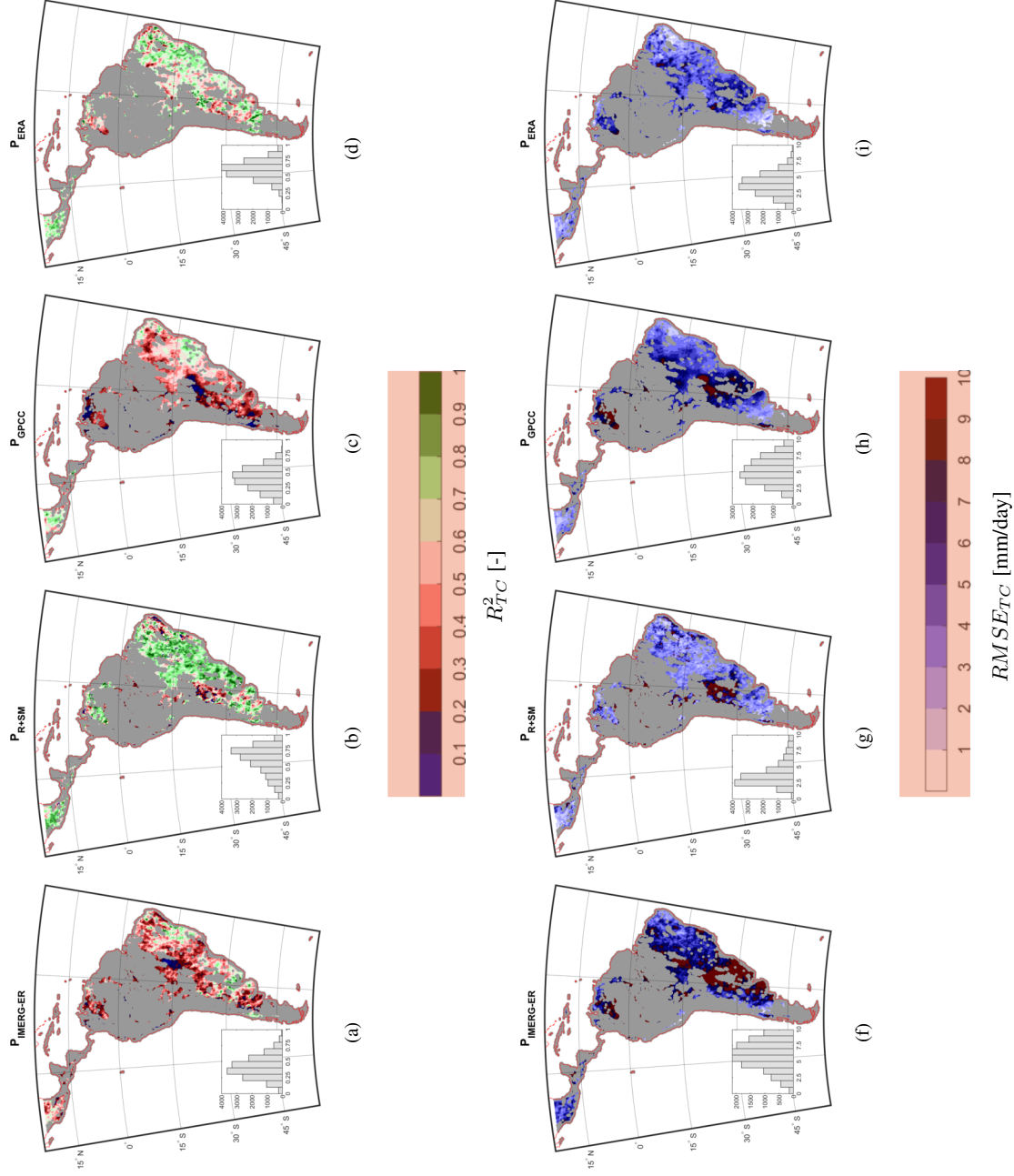
**Figure 7.** Difference in categorical indices (Probability of detection, POD, False Alarm Ratio, FAR and and Threat Score, TS) between the integrated product  $P_{R+SM}$  and the IMERG-ER as a function of the rainfall classes for Australia (a), CONUS (b), Europe (c) and India (d). Period 2015-2017. The bars refer to median values.



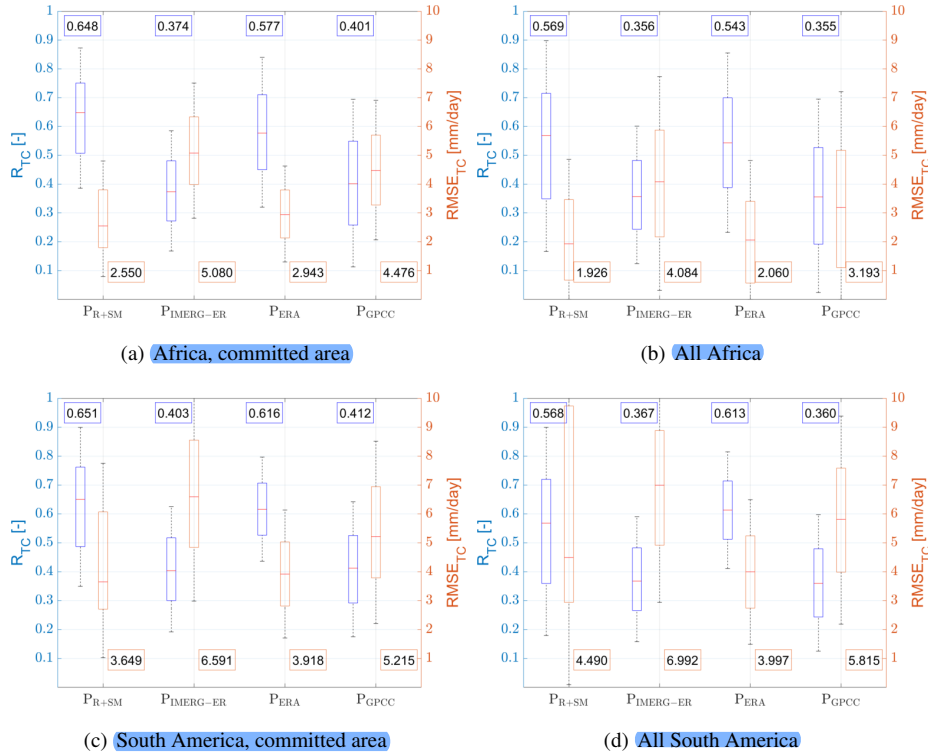
**Figure 8.** Products used to integrate IMERG-ER with SM2RAIN products derived from the setup during the calibration period in South America. When low correlation was found between the reference dataset (ie., GPCC) and the SM2RAIN product, the latter was excluded from the analysis and only IMERG-ER was retained.



**Figure 9:** Triple collocation squared correlation ( $R^2_{TC}$ , left) and Root Mean Square error ( $RMSE_{TC}$ , right) in mm/day for (top to bottom) IMERG Early run (IMERG-ER, panels a and f), the integrated product (IMERG early run + SM2RAIN applied to ASCAT, SMAP and SMOS, ( $P_{R+SM}$ , panels b and g), the Global Precipitation Climatology Center product (GPCC, panels c and h) and the reanalysis product ERA5 (ERA5, panels d and i). Gray areas represent the masked area of ASCAT which we excluded from the analysis. The results refer to the validation period (i.e., 2018). The results are based on what described in Section 3.4.3.



**Figure 10:** As in Figure 9 but for South America.



**Figure 11.** Box plots of Triple collocation squared correlation ( $R_{TC}^2$ , left axis in blue) and Root Mean Square error ( $RMSE_{TC}$ , right axis in red) in mm/day obtained during validation period (i.e., 2018) in Africa over the committed area mask (a) and over all the study area (b). (c) and (d) refer to the same results but in South America. The box plot refer to the 25<sup>th</sup> and 75<sup>th</sup> percentiles while the whiskers refer the minimum and maximum values.

**Table 1.** Contingency table commonly used for characterizing detection errors of precipitation products.

	$R_{prod} \geq th$	$R_{prod} < th$
$R_{ref} \geq th$	H	M
$R_{ref} < th$	F	Z



**Table 2.** Triple collocation correlation obtained by using triplet A)  $P_{\text{GPCC}} - \text{IMERG} - \text{ER} - P_{\text{SM2R-ASCAT}}$ , B)  $P_{\text{GPCC}} - \text{IMERG} - \text{ER} - P_{\text{ERA}}$ , C)  $P_{\text{GPCC}} - P_{\text{ERA}} - P_{\text{SM2R-ASCAT}}$  for the period 2015-2018. **The numbers refer to median values.**

	<b>A</b>	<b>B</b>	<b>C</b>
GPCC	0.7079	0.7144	0.6976
ERA5	-	0.8136	0.8262
IMERG-ER	0.6671	0.6558	
SM2RAIN-ASCAT	0.7032	-	0.6791

**Table 3.** Median Correlation (R), root mean square error (RMSE), daily bias (BIAS), variability ratio  $\gamma$  (i.e., ratio between the standard deviation of the estimated rainfall and that of the benchmark) and Klinge-Gupta Efficiency Index (KGE) obtained with the comparison of the different rainfall products against gauge-based AWAP (Australia), Stage IV (CONUS, gauge+radar), E-OBS (Europe) and IMD (India) during the period 2015-2017.  $P_{R+SM}$  refers to the integrated product. Light blue highlighting refer to short-latency products.

		Australia	CONUS	Europe	India
R [-]	$P_{R+SM}$	0.770	<b>0.705</b>	0.679	<b>0.740</b>
	IMERG-ER	0.704	0.604	0.563	0.703
	IMERG-FR	0.767	0.665	0.630	0.737
	GPCC	<b>0.878</b>	0.696	<b>0.898</b>	0.595
	ERA5	0.720	0.647	0.699	0.603
RMSE [mm/day]	$P_{R+SM}$	3.043	3.562	3.016	<b>5.074</b>
	IMERG-ER	4.520	6.381	5.474	6.100
	IMERG-FR	3.509	4.689	4.542	6.142
	GPCC	<b>2.306</b>	<b>3.446</b>	<b>1.751</b>	6.669
	ERA5	3.330	4.027	2.888	6.867
BIAS [mm/day]	$P_{R+SM}$	0.090	0.135	-0.035	-0.238
	IMERG-ER	-0.238	-0.195	-0.394	-0.067
	IMERG-FR	-0.076	-0.008	-0.457	-0.129
	GPCC	<b>0.002</b>	<b>0.072</b>	-0.118	<b>-0.047</b>
	ERA5	0.087	0.129	<b>-0.031</b>	-0.237
variability ratio $\gamma$ [-]	$P_{R+SM}$	<b>0.73</b>	<b>1.01</b>	<b>1.01</b>	<b>0.86</b>
	IMERG-ER	<b>1.24</b>	<b>1.82</b>	<b>1.78</b>	<b>1.14</b>
	IMERG-FR	<b>1.11</b>	<b>1.41</b>	<b>1.59</b>	<b>1.26</b>
	GPCC	<b>0.88</b>	<b>1.03</b>	<b>0.99</b>	<b>1.03</b>
	ERA5	<b>0.92</b>	<b>1.18</b>	<b>1.00</b>	<b>1.08</b>
KGE [-]	$P_{R+SM}$	0.651	0.572	0.607	0.585
	IMERG-ER	<b>0.551</b>	<b>0.274</b>	<b>0.277</b>	<b>0.623</b>
	IMERG-FR	0.702	0.462	0.445	<b>0.651</b>
	GPCC	<b>0.785</b>	<b>0.603</b>	<b>0.799</b>	<b>0.545</b>
	ERA5	0.654	0.469	0.638	0.529