

Supplement of

A novel regional irrigation water productivity model for complex cropping patterns in arid regions coupling soil water and salinity dynamics, irrigation and drainage, and shallow groundwater movement

Jingyuan Xue¹, Zailin Huo^{1*}, Ian White², Isaya Kisekka³, Zhuping Sheng⁴, Shuai Wang¹, Chaozi Wang¹, Guanhua Huang¹, Xu Xu¹

¹College of Water Resource and Civil Engineering, China Agricultural University, Beijing 100083, China. ²Fenner School of Environment & Society, Australian National University, Fenner Building 141 Canberra ACT 0200. ³University of California Davis, Department of Land, Air and Water Resources and Department of Biological and Agricultural Engineering. ⁴Texas A&M University, Agriculture Research and Extension Center, El Paso, USA

* Correspondence to: Zailin Huo (huozl@cau.edu.cn)

Contents of this file

Figure S1 to Figure S3

Figure Captions

Fig.S1. The representation of (a) regional HRUs division and (b) groundwater boundary condition division.

Fig.S2. Spatial distribution and their control zones of main and sub-main (a) canals and (b) drainage ditches.

Fig.S3. Comparison of the simulated and remote sensing cumulative ET during the crop growing

season in the years of 2006-2013.

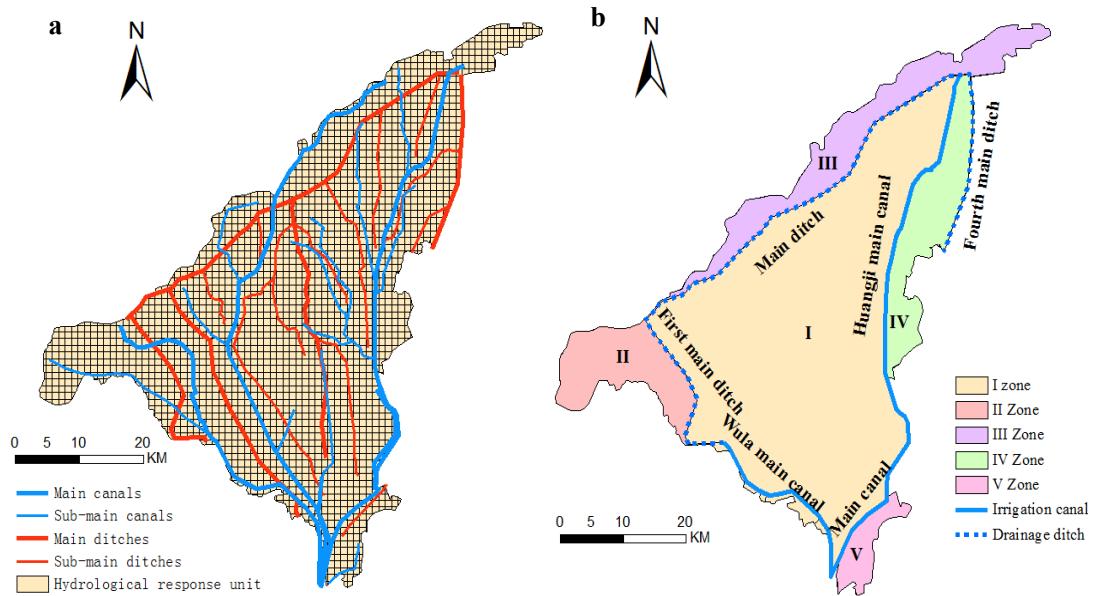


Fig.S1. The representation of (a) regional HRUs division and (b) groundwater boundary condition division.

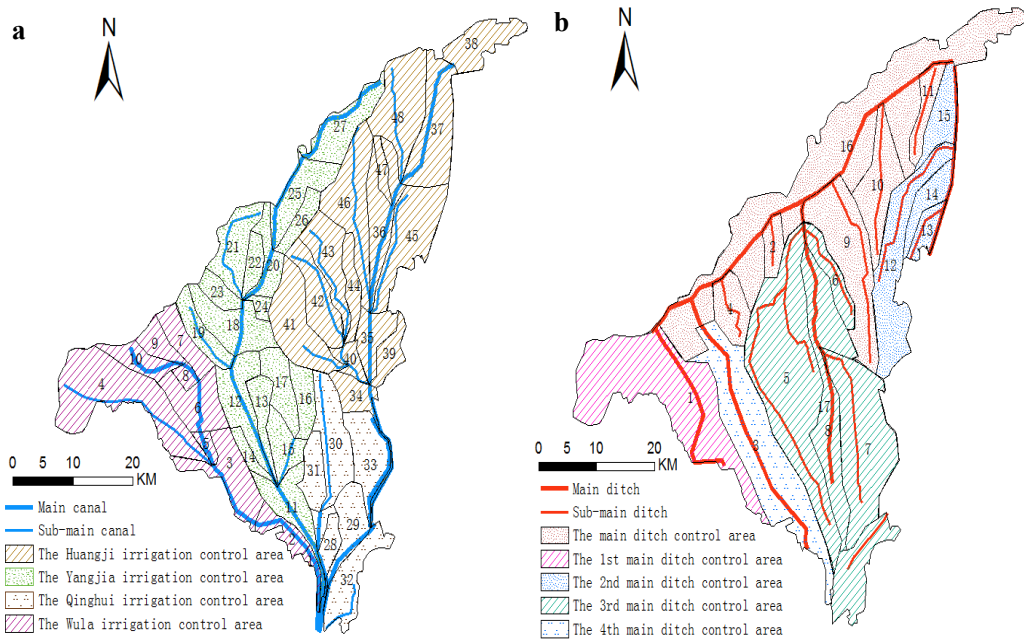
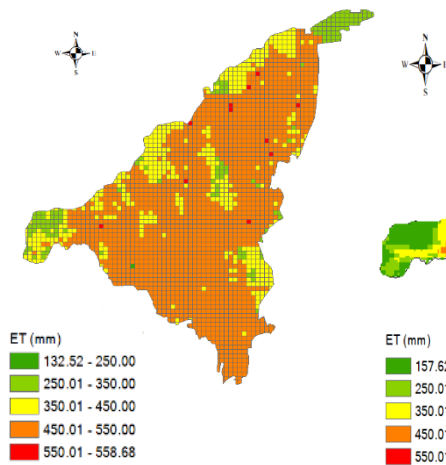
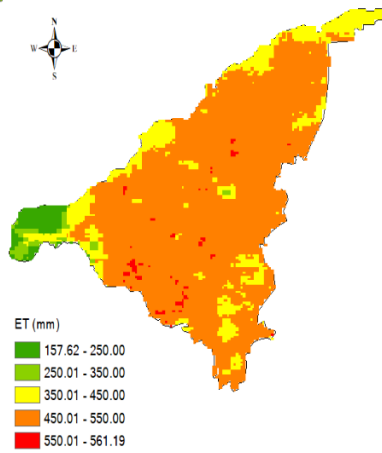


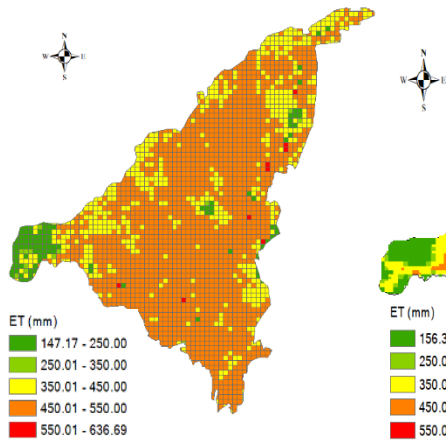
Fig.S2. Spatial distribution and their control zones of main and sub-main (a) canals and (b) drainage ditches.



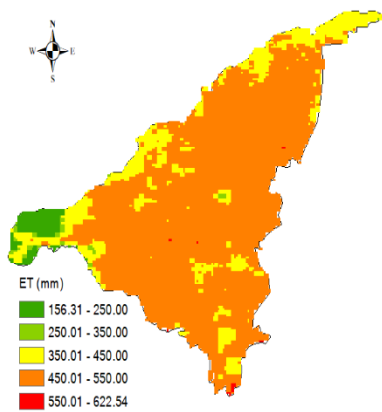
a- Simulated ET (2006)



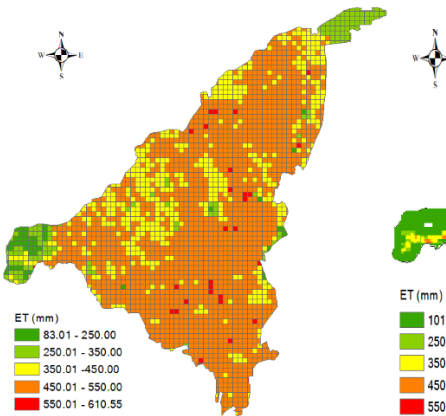
b- Remote sensing ET (2006)



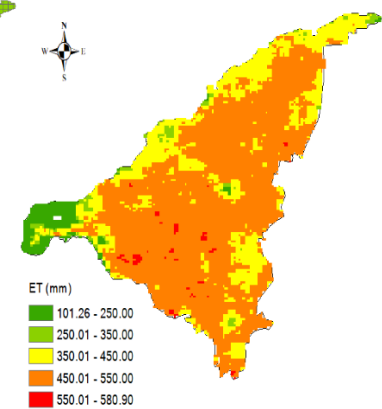
c- Simulated ET (2007)



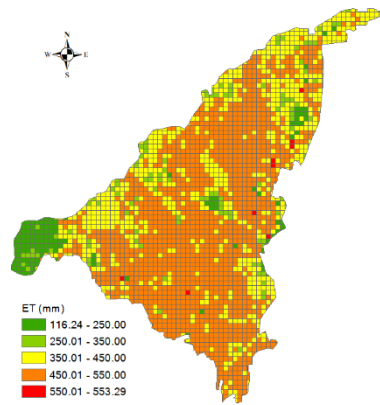
d- Remote sensing ET (2007)



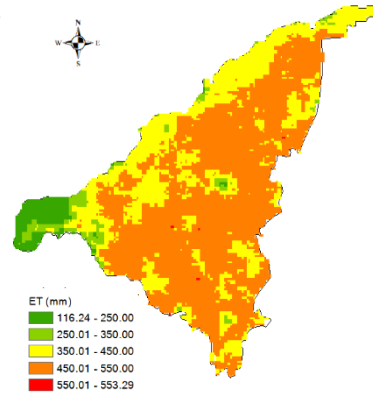
e- Simulated ET (2008)



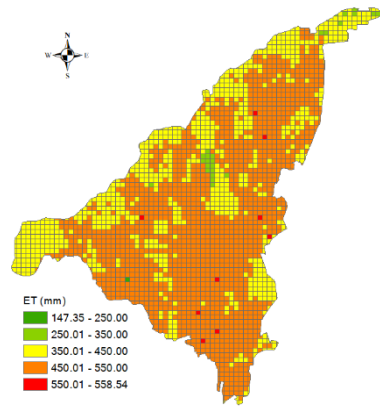
f- Remote sensing ET (2008)



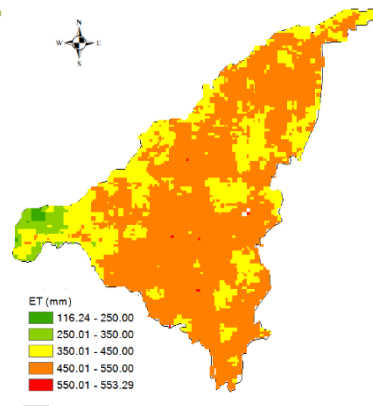
g- Simulated ET (2009)



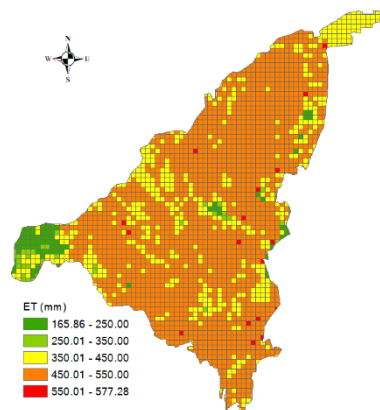
h- Remote sensing ET (2009)



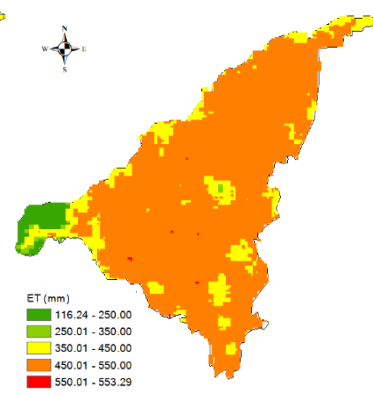
i- Simulated ET (2010)



j- Remote sensing ET (2010)



k- Simulated ET (2011)



l-Remote sensing ET (2011)

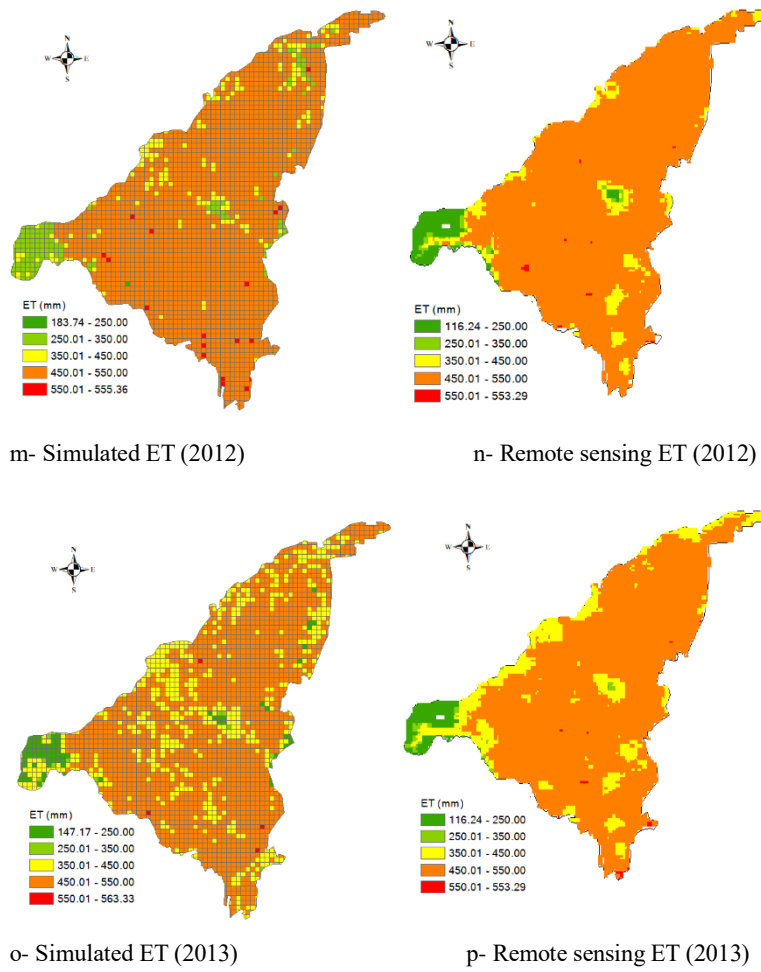


Fig.S3. Comparison of the simulated and remote sensing cumulative ET during the crop growing season in the years of 2006-2013.