



To:

Prof. Dr. Brian Berkowitz
(handling editor)

Prof. Dr. Erwin Zehe
(chief-executive editor)

Prof. Dr. Bernd R. Schöne
Institute of Geosciences
Applied and Analytical Paleontology
University of Mainz
Joh.-Joachim-Becher-Weg 21
55128 Mainz - Germany

Phone: +49 6131 39 24757
Fax: +49 6131 39 24768

schoeneb@uni-mainz.de
www.paleontology.uni-mainz.de

23 November 2019

Revised manuscript for Hydrology and Earth System Sciences (HESS) # hess-2019-337

Dear Dr. Berkowitz,
Dear Dr. Zehe,

Enclosed please find the revised version of the manuscript entitled "Freshwater pearl mussels from northern Sweden serve as long-term, high-resolution stream water isotope recorders" for publication in HESS.

Reviewer comments were really useful and helped to increase the robustness of our interpretations. Once again, I apologize that the revisions took longer than planned, but the requested statistical re-evaluations were quite time-consuming and complex. As expected by Rev#2, these tests resulted in the same outcome as before and strongly supported our initial conclusion that the winter NAO exerts strong control over the oxygen isotope signature of precipitation and river water in northern Sweden, which was also recorded by the bivalves.

Introducing the potential for freshwater mollusks to serve as recorders of stream water isotope signatures, we believe our contribution to be well aligned with the journal's overall scope. The contents of our manuscript have not been published elsewhere and are not considered for publication elsewhere, neither in English nor any other language.



2

Should another round of reviews be required and the reviewers of round one cannot do another review of this ms, we recommend the following persons as potential reviewers:

- (1) Prof. Dr. Gunhild Rosqvist
Dept. of Physical Geography
Institutionen för naturgeografi
106 91 Stockholm, Sweden
Email: ninis.rosqvist@natgeo.su.se
- (2) Dr. David L. Dettman
Department of Geosciences
University of Arizona
1040 E. 4th Street Tucson, AZ 85721, USA
Email: dettman@email.arizona.edu
- (3) Prof. Dr. Donna M. Surge
University of North Carolina
Department of Geological Sciences
104 South Road, CB #3315
225 Mitchell Hall
Chapel Hill, NC 27599-3315, USA
Email: donna64@email.unc.edu
- (4) Prof. Dr. Melanie J. Leng
University of Nottingham
Sutton Bonington
Leicestershire
LE12 5RD Nottingham, United Kingdom
E-mail: mjl@bgs.ac.uk
- (5) Prof. Dr. David P. Gillikin
Department of Geology
Union College
807 Union St.
Schenectady, NY 12308, USA
Email: gillikid@union.edu
- (6) Prof. Dr. Dan Hammarlund
Department of Quaternary Geology
Lund University, Tornav. 13,
SE-223 63 Lund, Sweden
Email: dan.hammarlund@geol.lu.se

If there are any questions, please let me know. We look forward hearing from you. Thank you very much for your consideration.

Kind regards

A handwritten signature in blue ink, appearing to be 'Dan Hammarlund', with a long horizontal line extending to the right.

First of all, we wish to thank the reviewers for his/her thoughtful comments and suggestions that greatly improved the quality of the manuscript.

In the following, we list the comments by the reviewers in blue. Our replies are given in black font, and textual changes in the manuscript are highlighted red. The revised ms with all changes highlighted is attached at the end of the replies.

Reviewer #1

L51: Rephrased as suggested: „underutilized“

L62: *Has any other study verified this in *M. margaritifera* ?* There is currently no long-term $\delta^{18}\text{O}$ and $\delta^{13}\text{C}$ record of *M. margaritifera*. However, there is a $\delta^{13}\text{C}$ record (not subannually precisely aligned) by Geist et al. (2005). Citation added.

L66: *...and limited existing environmental data, right?* added as suggested

L68: Rephrased as suggested: “occurs”

Last paragraph of section 1: *What are your hypotheses?* Hypotheses were added.

First paragraph of section 2: *Add this information above to the introduction when you're talking about shells precipitating near isotopic equilibrium with their environment.* Moved as suggested.

L83: “were used” deleted as suggested

L88: *What kind of material?* “Material” substituted by “bivalves”

L96: “soft parts” replaced by “soft tissues”; Rephrased as suggested: “air-dried”

L101: “... mounted onto glass slides with the mirroring sides facing upward. The latter facilitated...”. *Why?* The reason for mounting the shells slabs like this is given in the following sentence: “This method facilitated the temporal alignment of isotope data measured in one slab to growth patterns determined in the other shell slab.” The addition that the adjoining portions of the shell slabs need to face upward is relevant because patterns in one slab can otherwise not properly be crossdated with the same portion in the other shell slab.

L111: “ca.” deleted as suggested

L125: *How did you micromill at a constant sampling resolution by hand?* long experience, quiet hands, sampling at higher magnification under the binocular microscope

L135: *Given this is your analytical precision, I would report all isotope values to the tenths place, not the hundredths place.* It is common usage to report isotope values to the second decimal, also because precision error is far better than 0.10 permil.

L141: *Did you define this?* yes, to distinguish oxygen isotope values of river water from shell etc.

L162: space added between “21” and “July”

Section 2.6: I find this section difficult to follow, so if there's any way to simplify and/or clarify I recommend doing so. We did our best to slightly rephrase individual sentences, but find it difficult to simplify this section further.

L192: "ca." deleted as suggested

L235: "ca." deleted as suggested

L236: Rephrased as suggested: "The largest..."

L242: "long" deleted as suggested

L243: Rephrased as suggested: "The $\delta^{18}\text{O}_s$..."

L254: n values? added "values" after $\delta^{18}\text{O}$; corrected throughout ms, likewise for $\delta^{13}\text{C}$

L257: number of values added in parentheses

L260: You use this phrase a lot, do you mean dampened? According to Miriam Webster, "damped" (= attenuated, truncated) is synonymous to "dampened"; therefore, adjective left unchanged

L261: Rephrased as suggested: " $\delta^{18}\text{O}_p$ ", corrected in most other instances

L266: I would break this out into two sentences. It's confusing as written. As suggested, split in two sentences

L273: second "and" deleted; "values" added (see above)

L277: Reference table with statistics. Reference to Table 3 added

L280: Rephrased as suggested: " $\delta^{18}\text{O}_w$ ", corrected in most other instances

L282: "further" deleted

L301: "likewise" deleted

L304: "values" added (see above), "the" added

L305: "The" added

L310: Do you mean through ontogeny? "youth" replaced by "ontogeny"

L330: Really you're discussing the benefit of using shell archives rather than sedimentary archives, and I suggest that the title of this section reflect this. Modified as suggested: "Advantages and disadvantages of using bivalve shells for stream water $\delta^{18}\text{O}$ reconstruction; comparison to sedimentary archives"

L333: This does not make sense. Please clarify. You repeatedly say that data are damped relative to precipitation, but what does that mean? Rephrased with explanation of the term "damped" as suggested: "Since $\delta^{18}\text{O}_w$ values have a much lower seasonal amplitude than $\delta^{18}\text{O}_p$ values (i.e., $\delta^{18}\text{O}_w$ signals are damped relative to $\delta^{18}\text{O}_p$ data as a result of the water transit times through the catchment of the stream), the..."

L334: Added "values" after $\delta^{18}\text{O}$ (see above)

L337: This section should be discussed in the context of other studies that use bivalves as paleoenvironmental archives. There are many other studies that have investigated this and they should be discussed within the context of this study. Since the paper is already quite long and not a

review, and similar reconstructions presented here (= reconstruction of $\delta^{18}\text{O}_{\text{water}}$ from $\delta^{18}\text{O}_{\text{shell}}$ and temperature) have not been done, we prefer not to extend this section further.

L342: This needs to be cited with other relevant publications that have demonstrated similar results. Citations added; text slightly rephrased. “This is possible by solving the paleothermometry equation of Grossman & Ku (1986) for $\delta^{18}\text{O}_{\text{wr}}$ * (Eq. 2) and compute the oxygen isotope values of the water from those of the shells and river water temperature.”

L344: Slightly expanded as suggested: “Similar studies in which the oxygen isotope composition of microfossils or authigenic carbonate obtained from lake sediments were used to infer the oxygen isotope value of the water, however, merely relied on estimates of the temperature variability during the formation of the diatoms, ostracods, abiogenic carbonates etc., and how these temperature changes affected reconstructions of $\delta^{18}\text{O}_{\text{w}}$ values (e.g., Rosqvist et al., 2013). In such studies, it was impossible to reconstruct the actual water temperatures from other proxy archives.”

L348: But there are other archives that precipitate in oxygen isotope equilibrium with their environment. I would expand this bullet point and compare the freshwater bivalve archive directly to other archives in the region that have been problematic for paleoenvironmental reconstructions. To our knowledge, no attempts have been made to reconstruct river water isotope data in that region.

L352: Why is high-res data significant??? Explanation added: “Such high-resolution isotope data can be used for a more detailed analysis of changes in the precipitation-runoff transformation across different seasons.”

L367: Combine bullet points 3 and 5. Done: “If required, a refined sampling strategy and computer-controlled micromilling could ensure that time-averaging consistently remains below one year. Such high-resolution isotope data can be used for a more detailed analysis of changes in the precipitation-runoff transformation across different seasons. Furthermore, the specific sampling method based on micromilling produced uninterrupted isotope chronologies, i.e., no shell portion of the outer shell layer remained un-sampled. Due to the high temporal resolution, bivalve shell-based isotope chronologies can provide insights into inter-annual and decadal-scale paleoclimatic variability. With the new, precisely calendar-aligned data, it becomes possible to test hypotheses brought forward in previous studies according to which $\delta^{18}\text{O}$ signatures of meteoric water are controlled by the winter and/or summer NAO (e.g., Rosqvist et al., 2007, 2013).”

L373: Expand. Summarize the above points and discuss specifically how the benefits of using freshwater mussels can complement new and existing sedimentary archives. We have followed this suggestion and added: “In summary, bivalve shells can provide uninterrupted, seasonally to annually resolved, precisely temporally constrained records of past stream water isotope data that enable a direct comparison to climate indices and instrumental environmental data.” and “For example, once the low-frequency variations have been reconstructed from sedimentary archives, a more detailed insight into seasonal to inter-annual climate variability can be obtained from bivalve shells. As long as the date of death of the bivalves is known, such records can be placed in absolute temporal context (calendar year). Although the same is currently impossible with fossil shells, each absolutely dated (radiocarbon, amino acid racemization dating) shell of a long-lived bivalve species can open a seasonally to annually resolved window into the climatic and hydrological past of a region of interest.”

L380: “if the shells were precipitated near oxygen isotopic equilibrium” was rephrased into “if the bivalves precipitated their shells near oxygen isotopic equilibrium”

L383-384: [The thoughts in this sentence and the one above it seem disconnected.](#) To accommodate the comment, the previous sentence was shortened, detailed information on the Water Resources Program deleted.

L389: Suggest rephrasing (“high-resolution”) does not capture exactly what we intended to say. Therefore, we rephrased the sentence as follows: “Due to the **micromilling** sampling technique, ...”

Section 4.3: [This needs to be expanded upon and the freshwater studies should be discussed in the context of your study.](#) We feel that a more detailed discussion of why the studied rivers differ with respect to $\delta^{18}\text{O}_w$ would be far beyond the scope of the present study. Moreover, this would require detailed monitoring. We added references for listed potential influences on $\delta^{18}\text{O}_w$.

L406: [But can you speculate using existing data sets? Can you explain the differences between rivers based on the set of physiographic characteristics you mention?](#) Reviewer suggested to speculate what could have caused the differences in isotope signatures of the studied rivers. Given the number of potential variables (which we listed) that can contribute to such differences as well the complex interplay between them, we prefer to stick to the notion that an explanation for the isotope differences would require detailed monitoring. The difference in absolute values among the studied rivers is also not the main scope of the present study.

L434: [do you mean \$\delta^{18}\text{O}_w\$ values?](#) We indeed meant a winter precipitation signal (snow) was recorded by the bivalves during the following spring (meltwater). Slightly rephrased to make things clearer: “The specific isotope signatures in the rivers **were** controlled by the snowmelt in spring. **Essentially**, the bivalves recorded the (**damped**) isotope signal of the last winter precipitation in their shells.”

Paragraph starting at L440: [This paragraph needs to be clarified and expanded.](#) We followed the suggestion and clarified the text, but refrained from expanding this paragraph significantly, because the ms is already quite long.

L450: We prefer to keep “further”, because this provides a better transition between paragraphs.

L481: [Do you know this or are you speculating that this is the cause?](#) It is a hypothesis. To make this clearer we rephrased as follows: “The attenuated variance on inter-annual time-scales can **possibly** be explained – **amongst others** – by inter-annual...”

L484: [How much is 'not massive'?](#) Rephrased: “...so that the net effect on $\delta^{18}\text{O}_w$ in spring was **less severe than the isotopic shift in $\delta^{18}\text{O}_p$** .”

L490: [Citation?](#) Except one study that we now cited (“... , **yet in *M. margaritifera* the seasonal timing of shell growth is remarkably invariant across large distances (Dunca et al., 2005).**”), there is no other citation to back this assumption, because no studies exist on the seasonal timing during different life stages of this species. However, an unchanged seasonal growth trait can be deduced from the fact that chronologies of ontogenetically young and old specimens can be successfully crossdated. We have slightly rephrased the sentence: “. It was further assumed that the timing of shell growth has not significantly changed through the lifetime of the **studied specimens. In fact, if ontogenetic changes of seasonal growth traits had occurred ...**” and added more references on crossdating of *M. margaritifera* shell chronologies.

L494: [Citations to back this assertion up?](#) Citation added.

L498: [Citations to verify this?](#) Added

L499: [Is this a valid assumption?](#) See reply to comment in L490. If the timing would differ through ontogeny, and old shells grew several weeks or months less per year than young specimens, it would be impossible to combine these chronologies by means of crossdating. Crossdating requires that the timing of seasonal growth remains unchanged.

L508: [Why?](#) We amended that the contribution of metabolic carbon dioxide to the shell carbonate “likely remains **nearly constant through lifetime as it does in other long-lived bivalve mollusks (Schöne et al., 2005c, 2011; Butler et al., 2011; Reynolds et al., 2017)**”

Table 3: Not a [formatting issue](#), but we forgot a notion in the captions: Isotope values next to months represent the multi-year averages. Statistically significant values are bold.

Fig. 2: As requested, thickness of white lines and line of white box was increased.

Fig. 4: As requested, “direction of growth” was written out. CHECK ELSEWHERE

Fig. 5: [LARGER TEXT POSSIBLE???](#) The text will appear larger in the final version, because the figure will be on a single page

Fig. 8: [ENLARGE EQUATIONS](#) As requested, size was increased

Reviewer #2

I have some broader concerns about some of the assumptions made when transforming the data, and some concerns about the statistical approaches employed. I anticipate that addressing these concerns will not have major impacts on the conclusions reached, but I cannot be sure at this point. [...]

The authors provide a fairly straightforward equation (1) linking air temperature to water temperature, basically with a damping effect, based on the authors' previous research. This seems reasonable, but as this is an empirical relationship (that looks pretty good in original manuscript), it should really have some form of uncertainty estimates on the slope and intercept, and these uncertainties should be propagated to later equations. Otherwise it is difficult for the reader to assess whether the nature of this relationship is important later.

Another assumption the authors make (first stated in Line 69) is the use of annual increment width to determine weighted annual water temperature. On its face, this approach also seems reasonable, but again, the importance of the choices made here (with respect to weighting) is not evaluated, nor are uncertainties in SGI measurements. The equation in question (3) is also presented with no uncertainty estimates, as above – this could be important, especially given the fair amount of scatter in Figure 3b. There is clearly a meaningful relationship, but that does not imply that using SGI for predicting T_w^* can be done without uncertainty, and there is certainly more scatter than the T_a - T_w relationship.

As suggested, error estimates of the slope and intercept of the relationship between stream water and air temperature were provided (L149, Eq. 1). The same was provided for the relationship between shell growth (SGI) and stream water temperature (L186, Eq. 3). All errors were propagated and used in complex simulation experiments (see below).

The use of annual weighting scheme (detailed in Table 2) is also reasonable, but is of course a necessary simplification that includes several other assumptions. Does the exact 143 day growing window matter? How much does the exact weighting of samples matter? Maybe a comparison to an unweighted calculation may be appropriate as a test for the importance of this step?

Since it has not been evaluated so far, how much the seasonal growth traits change among specimens, we cannot provide an error estimate for the weights, which have been used to compute weighted annual averages. However, in a previous study (Dunca et al., 2005), it has been demonstrated that the seasonal timing of shell growth in this species remains notably invariant across large distances. We therefore assume that the seasonal growth traits are genetically controlled (biological clocks). Another implication for a nearly unchanged duration of seasonal shell growth comes from crossdating SGI chronologies. If the seasonal growth traits would change, it would be impossible to combine SGI chronologies of young and old specimens.

As the second part of the comment is concerned: Considering differences in time represented by each isotope sample can improve the results. For example, without weighted calculations the R^2 value for the correlation between SGI and water temperature was 0.60, with the weighting scheme it increased to 0.64 (section 3.1). The larger the isotopic differences among samples of a given year are, the more does weighting matter.

Basically – T_w is determined from T_a without uncertainty. $\delta^{18}O_s^*$ is calculated using assumptions outlined in the point above. Then T_w is used along with $\delta^{18}O_s^*$ to calculate $\delta^{18}O_{wr}^*$ via an equation with no uncertainty (though none is presented in the original text to be fair). I'd like to see some effort to either propagate uncertainty, or to at least test the sensitivity of their final result to these assumptions. We have followed this recommendation, propagated all uncertainties and evaluated the effect on the regression analyses. For this purpose, we ran Monte Carlo simulations and randomly generated isotope chronologies (1,000 per set) that were subsequently compared to climate indices etc. A whole new section was added in the Discussion (section 4.7) and a new table with the results of these simulations tests added (Table 5). As anticipated by Rev#2, the propagation of errors did not change the core interpretation: the winter NAO leaves an imprint in the oxygen isotope value of winter precipitation, which is transferred into the river isotope values and eventually the shells during snowmelt in late spring and early summer. The bivalve shells thus serve as an archive for past changes of the wNAO.

Statistics – I have some issues with the way statistics are handled in the manuscript. Like the assumptions above, it is quite possible that improving them will not change the ultimate conclusions of the manuscript, but there is certainly a possibility that some ideas will have to be revisited. Specifically:

One principle for using p-values is that it is not appropriate to run a large number of p-value tests and the use 0.05 as a threshold for significance. There a number of ways to account for this (like a Bonferroni correction) that provide a more appropriate significant threshold when running multiple tests.

That said, there are likely other multivariate statistical approaches that would be more appropriate to use for a variety of the questions the authors propose. They can probably get by without them here, but it might something to explore.

The comparison of $\delta^{18}O_w$ and $\delta^{18}O_w^*$ (Fig. 6a) is determined to be “good” but by what standard. Can this comparison be improved/quantified statistically?

We have applied the Bonferroni adjustment for all p-values. The majority of regression analyses remained statistically significant at $p < 0.05$. As expected, regression analyses with a very low number of data points (Table 3) no longer reached the significance threshold when the Bonferroni adjustment was applied. However, the main conclusions were not affected.

Since the main conclusion (wNAO affects $\delta^{18}O_w$) is already obvious from the raw shell data ($\delta^{18}O_s$), we refrained from applying even more complex multivariate statistical approaches. Future studies using specimens from a closely monitored river system should certainly consider this recommendation.

Following non-parametric t-tests, the water isotope data sets are statistically not different. The caption of Fig. 6 was rephrased accordingly, and text added in section 3.3.

Broadly – if space isn't a concern, a table of all the various $\delta_{\text{asterisk/subscript}}$ variations (and potentially other abbreviations/nomenclature) and ideally even their method of calculation might be useful as a reference for the reader. I found myself constantly flipping back and forth to remind myself what each permutation meant. Great suggestion! We have added such a list ([Overview of abbreviations used in the manuscript](#)).

Line 35: “required” – could a quantitative measure of the required resolution be listed here? Also, this sentence would be better written a required resolution for what? added. We have specified this further: “the required, i.e., at least annual temporal resolution”

Line 41: “short”, “small” both could also have a quantitative measure added. Quantification added, “small” deleted

Line 42: “signatures” at least according to Sharp (Principles of Stable Isotope Geochemistry) the word ‘signatures’ should be reserved for large reservoirs with consistent isotopic values (e.g. the ocean, the mantle). There are few other places below I will flag the isotopic terminology as a place to make slight (possibly pedantic) improvements. We feel that “signatures” is a valid alternative to value or data and thus did not change this term.

Line 88: I believe that typically for endangered species, if there was an approved permit for collection, that the permit should be referenced here and/or in the acknowledgements, even if they were originally collected as part of another project. I am not sure if the journal has a policy on this issue though. The permit does not have a number.

Line 94: should this be “flow-through” lakes? Yes, changed.

Line 95: “dried from air” would be better written as “air-dried,” or “dried in ambient air,” or something similar; “from air” is awkward. Changed as requested.

Line 101-102: This mirrored idea is intriguing, but I am having trouble visualizing it. Given its potentially utility to others, a supplementary image of this set up would be nice. Instead of adding another figure, we specified the text as follows: “... mirroring sides (= the portions that were located to the left and right of the saw blade during the cutting process)”

Lines 114-117: Given the importance of this method to this manuscript, it might be worth providing a few more details here, despite the previous publications. Although we think that this method is fairly well described in the literature (many review articles), we have added the following: “Briefly, for detrending, measured annual increment widths were divided by the data predicted by the cubic spline fit. From each resulting growth index, we subtracted the mean of all growth indices and divided the result by the standard deviation of all growth indices of the respective bivalve specimen. This transformation resulted in SGI chronologies.”

Lines 122-125: The text here seems to indicate they micromilled shell material by hand while maintaining consistent sample spacing. That’s really quite challenging in my experience (though not impossible). It would be useful in Figure 2 to include an image of the actual drilled sample pathways. Was any attempt made to control (or later check) the depth of drilling? This would could be a significant source of variability. We have added this information schematically in Fig. 2c. We have long-term experience with such kind of micromilling and obtained much better results than with the stiff NewWave/Merchantec micromill robot, which cannot really follow shapes in three dimensions. It would certainly be a useful undertaking to quantify how the two methods compare to each other and which produces the largest (= most realistic) seasonal amplitude. We are ready for a test! A depth control would make sense if one simultaneously monitors the shape of the growth front. Most likely, this is not routinely done when the micromill robot is used. However, when the sample is watched under the binocular microscope during sampling, it is possible to track the growth front in three dimensions.

Lines 135+: I couldn't find access to a full table of data, but such a table must be provided with the final submission. That table (or tables) should include both the uncorrected $\delta^{18}\text{O}$ value, but also the corrected $\delta^{18}\text{O}$ for aragonite. As written in section "Data and code availability", everything will be made available on request. We would be more than happy to submit a package with EXCEL files as a supplement if permitted by the journal.

Line 227: Why do we care that omitting GJ samples slightly increases R^2 ? Agreed. Deleted.

Line 228: I feel like a reference was omitted at the end of this line? Missing reference was added.

Line 240: "Major common period" is not a calculation I am familiar with. Is this a formal calculation or a general observation by the authors? "common" deleted

Line 281: "isotopes" should probably be "isotope values" or just " $\delta^{18}\text{O}$ " As requested by Rev#1, we added "value(s)" or "data" behind all deltas

Figure 1: Potentially color/symbol differently for bivalve vs. water vs. temperature measuring sites? I'd propose removing the lines on 1b that presumably indicate districts within the province? They are not mentioned and visually complicate the figure. Moving Lat/Long markers outside 1b (especially the internal tickmarks) would also help simplify the figure. Potentially indicate the precipitation direction for NAO+/- on 1a if possible? As requested, different symbols were used for shell sites and measuring sites. We cannot remove the grey lines in the figure, because the base map that we used is not a vector graphic. We prefer leaving the lat/lon markers in the figure, because otherwise the curvature of the lat/lon would not be apparent any more. Precipitation directions would further complicate the figure.

Figure 2: Possibly include an image of the sample after drilling here as well? We are not sure how would this help the reader.

Figure 3: if more space is available, making 3a longer (extending x-axis) would be helpful in visually comparing the two records. Uncertainty on 3b best fit equation should be calculated and used (see comments above). A similar figure was previously used in two articles by the lead author. The new Fig. 3 is just a version with more chronologies. Even if we expanded the x-axis in Fig. 3a, we think that the cross-plot is more informative and better reveals the strength of the relationship between SGI and T_w^* . In the final version, we will request this figure to be plotted to page width. As requested, uncertainties were added and the errors propagated and used in the simulation experiments.

Figure 4: Are these four just the best selections, or are they the most highly resolved? What was selection criteria? Like Figure 3a, extending these laterally would make viewing easier. These four specimens were sampled with very high spatial resolution. And the majority of isotope data came from these shells (Table 1). Text in figure caption was amended accordingly. In the final version, we will request this figure to be plotted on a single page.

Figure 4: Are these four just the best selections, or are they the most highly resolved? What was selection criteria? Like Figure 3a, extending these laterally would make viewing easier. We will ensure that this figure is plotted on a single page in the final version.

Figure 6: Line 866- is there a statistical way to evaluate the "good agreement" observed here. Visually here, I do not find this as convincing as some of the other comparisons made. See reply to comment further above: We have conducted non-parametric t-test and verified that the measured and reconstructed data are statistically invariant.

Figure 7: “ $\delta^{18}\text{C}$ ” typo, also pretty hard to see at presented size. Thanks for spotting this. As in other figures, we will request this figure be plotted on a single page in the final version.

Table 1: Weird formatting issue (floating 800 in top right), line 799 – I believe the second “L” here should be an “i”? Formatting issue is not our fault. “i” vs “L”: indeed misspelled. Thanks.

Table 3: see comments above about statistics and p-values. Also, probably don’t need to report R and R^2 – if R is reported just to indicate is relationship is positive, why not also instead provide the slope, which is more informative? I am a little torn here – I expect these relationships are pretty solid, but is running a regression on $n=4$, appropriate? + Table 4: See comments above about p-values, and R and R^2 . We prefer leaving both the R and R^2 values for completeness. All p-values are now Bonferroni-adjusted.

Freshwater pearl mussels from northern Sweden serve as long-term, high-resolution stream water isotope recorders

Bernd R. Schöne¹, Aliona E. Meret², Sven M. Baier³, Jens Fiebig⁴, Jan Esper⁵, Jeffrey McDonnell⁶,
5 Laurent Pfister⁷

¹Institute of Geosciences, University of Mainz, Mainz, 55128, Germany

²Naturhistoriska riksmuseet, Stockholm, 114 18, Sweden

³Agilent Technologies Sales & Services GmbH & Co.KG, Frankfurt/M., 60528, Germany

⁴Institute of Geosciences, J.W. Goethe University, Frankfurt/M., 60438, Germany

10 ⁵Department of Geography, University of Mainz, Mainz, 55128, Germany

⁶Global Institute for Water Security, University of Saskatchewan, Saskatoon, SK S7N 3H5, Canada

⁷Department 'Environmental Research and Innovation', Luxembourg Institute of Science and Technology, Belvaux, 4422, Grand-Duchy of Luxembourg

Correspondence to: Bernd R. Schöne (schoeneb@uni-mainz.de)

15 **Abstract.** The stable isotope composition of lacustrine sediments is routinely used to infer Late Holocene changes in precipitation over Scandinavia and ultimately, atmospheric circulation dynamics in the North Atlantic realm. However, such archives provide only low temporal resolution (ca. 15 years) precluding the ability to identify changes on inter-annual and quasi-decadal time-scales. Here we present a new, high-resolution reconstruction using shells of freshwater pearl mussels, *Margaritifera margaritifera*, from three rivers in north Sweden. We present seasonally to annually resolved, calendar-aligned
20 stable oxygen and carbon isotope data from ten specimens covering the time interval from 1819 to 1998. The studied bivalves formed their shells near equilibrium with the oxygen isotope signature of ambient water and thus reflected hydrological processes in the catchment as well as changes, albeit damped, in the isotope signature of local atmospheric precipitation. The shell oxygen isotopes were correlated significantly with the North Atlantic Oscillation index (up to 56 % explained variability), suggesting that moisture from which winter precipitation formed originated predominantly in the North Atlantic during NAO⁺
25 years, but in the Arctic during NAO⁻ years. The isotope signature of winter precipitation was attenuated in the stream water and this damping effect was eventually recorded by the shells. Shell stable carbon isotope values did not show consistent ontogenetic trends, but rather oscillated around an average that ranged from ca. -12.00 to -13.00 ‰ among the studied rivers. Results of this study contribute to an improved understanding of climate dynamics in Scandinavia and the North Atlantic sector and can help to constrain eco-hydrological changes in riverine ecosystems. Moreover, long isotope records of precipitation
30 and streamflow are pivotal for improving our understanding and modeling of hydrological, ecological, biogeochemical and atmospheric processes. Our new approach offers a much higher temporal resolution and superior dating control than data from existing archives.

1 Introduction

Multi-decadal records of $\delta^{18}\text{O}$ signals in precipitation and stream water are important for documenting climate change impacts on river systems (Rank et al., 2017), improving mechanistic understanding of water flow and quality controlling processes (Darling and Bowes, 2016) and testing earth hydrological and land surface models (Reckerth et al., 2017; Risi et al., 2016; see also Tetzlaff et al., 2014). However, the common sedimentary archives used for such purposes typically do not provide the required, i.e., at least annual temporal resolution (e.g., Rosqvist et al., 2007). In such studies, the temporal changes in the oxygen isotope signatures of meteoric water are encoded in biogenic tissues and abiogenic minerals formed in rivers and lakes (e.g., Teranes et al. 2001; Leng & Marshall 2004). In fact, many studies have determined the oxygen isotope composition of diatoms, ostracods, authigenic carbonate and aquatic cellulose preserved in lacustrine sediments to reconstruct Late Holocene changes in precipitation over Scandinavia and ultimately, atmospheric circulation dynamics in the North Atlantic realm (e.g., Hammarlund et al., 2002; Andersson et al., 2010; Rosqvist et al., 2004, 2013). With their short residence times of a few months (Rosqvist et al., 2013), the hydrologically connected, through-flow lakes of northern Scandinavia are an ideal region for this type of study. Their isotope signatures – while damped in comparison to isotope signals in precipitation – directly respond to changes in precipitation isotope composition (Leng & Marshall 2004). However, even the highest available temporal resolution of such records (15 years per sample in sediments from Lake Tibetanus, Swedish Lappland; Rosqvist et al., 2007) is still insufficient to resolve inter-annual to decadal-scale variability, i.e., the time-scales at which the North Atlantic Oscillation (NAO) operates (Hurrell, 1995; Trouet et al., 2009). The NAO steers weather and climate dynamics in northern Scandinavia and determines the origin of air masses from which meteoric waters form. While sediment records are still of vital importance for century and millennial-scale variations, new approaches are needed for finer scale resolution on the 1–100-year time-scale.

One underutilized approach for hydroclimate reconstruction is the use of freshwater mussels as natural stream water stable isotope recorders (Dettman et al., 1999; Kelemen et al., 2017; Pfister et al., 2018, 2019). Their shells can provide seasonally to annually resolved, chronologically precisely constrained records of environmental changes in the form of variable increment widths (= distance between subsequent growth lines) and geochemical properties (e.g., Nyström et al. 1996; Schöne et al. 2005a; Geist et al., 2005; Black et al., 2010; Schöne and Krause, 2016; Geeza et al., in press a, b; Kelemen et al., in press). In particular, similar to marine (Epstein et al., 1953; Mook & Vogel, 1968; Killingley & Berger, 1979) and other freshwater bivalves (Dettman et al., 1999; Kaandorp et al., 2003; Versteegh et al., 2009; Kelemen et al., 2017; Pfister et al., 2019), *M. margaritifera* forms its shell near equilibrium with the oxygen isotope composition of the ambient water ($\delta^{18}\text{O}_w$) (Pfister et al., 2018; Schöne et al., 2005a). If the fractionation of oxygen isotopes between the water and shell carbonate is only temperature-dependent and the temperature during shell formation is known or can be otherwise estimated (e.g., from shell growth rate), reconstruction can be made of the oxygen isotope signature of the water from that of the shell CaCO_3 ($\delta^{18}\text{O}_s$). Freshwater pearl mussels, *Margaritifera margaritifera*, are particularly useful in this respect, because they can reach a lifespan of over 200

65 years (Ziuganov et al., 2000; Mutvei & Westermark, 2001) offering an insight into long-term changes of freshwater ecosystems at unprecedented temporal resolution.

Here we present the first, absolutely dated, annually resolved stable oxygen and carbon isotope record of freshwater pearl mussels from three different rivers in northern Sweden covering nearly two centuries (1819–1998). We test the ability of these freshwater pearl mussels to reconstruct the NAO index and associated changes in precipitation provenance using shell oxygen isotope data ($\delta^{18}\text{O}_s$). We evaluate how shell oxygen isotope data compare to $\delta^{18}\text{O}$ values in stream water ($\delta^{18}\text{O}_w$) and precipitation ($\delta^{18}\text{O}_p$) as well as limited existing environmental data (such as stream water temperature) and how these variables relate to each other. We hypothesize that $\delta^{18}\text{O}_w$ and $\delta^{18}\text{O}_p$ values are positively correlated to each other as well as to the North Atlantic Oscillation index. In other terms, during positive NAO years, oxygen isotope values in stream water and shells are higher than during negative NAO years, when shell and stream water oxygen isotope values tend to be more depleted in ^{18}O . In addition, we explore the physical controls on shell stable carbon isotope signatures. Presumably, these data reflect changes in the stable carbon isotope value of dissolved inorganic carbon, which in turn, is sensitive to changes in primary production. We leverage past work in Sweden that has shown that the main growing season of *M. margaritifera* occurs from mid-May to mid-October, with fastest growth rates occurring between June and August (Dunca & Mutvei, 2001; Dunca et al. 2005; Schöne et al., 2004a, b, 2005a). We use changes in annual increment width of *M. margaritifera* to infer water temperature, because growth rates are faster during warm summers and result in broader increment widths (Schöne et al., 2004a, b, 2005a). Since specimens of a given population react similarly to changes in temperature, their average shell growth patterns can be used to estimate climate and hydrological changes. Consequently, increment series of specimens with overlapping lifespans can be crossdated and combined to form longer chronologies covering several centuries (Schöne et al., 2004a, b, 2005a).

85

2 Material and methods

We collected ten specimens of the freshwater pearl mussel, *M. margaritifera* from three rivers in Norrland (Norrbottnens län), northern Sweden (Fig. 1+2; Table 1). Bivalves were collected between 1993 and 1999 and included nine living specimens and one found dead and articulated (bi-valved; ED-GJ-D6R). Four individuals were taken from the river Nuortejaurbäcken (NJB), two from Grundträsktjärnbäcken (GTB) and four from Görjeån (GJ) (Fig. 1). Since *M. margaritifera* is an endangered species (Moorkens et al., 2018), we refrained from collecting additional specimens that could have covered the time interval since collection and manuscript preparation, but relied on bivalves that we obtained – with permission – for a postdoctoral project of one co-author (AEM, formerly known as Elena Dunca) and the doctoral thesis of another co-author (SMB).

95 The bedrock in the studied catchments is dominated by orthogneiss and granodiorite. The vegetation at GTB (ca. 90 m a.s.l. [above sea-level]) and GJ (ca. 200 m a.s.l.) consisted of a mixed birch forest, while conifers, shrubs and bushes dominated at

NJB (ca. 400 m a.s.l.). The studied rivers were thus rich in humin acids. The studied streams were fed by small upstream open (flow-through) lakes.

2.1 Sample preparation

100 The soft tissues were removed immediately after collection and shells were then air-dried. One valve of each specimen was wrapped in a protective layer of WIKO metal epoxy resin #5 and mounted to a Plexiglas cube using Gluetec Multipower plastic welder #3. Shells were then cut perpendicular to the growth lines using a low-speed saw (Buehler Isomet) equipped with a diamond-coated (low-diamond concentration) wafering thin blade (400 μm thickness]. One specimen (ED-NJB-A3R) was cut along the longest axis, all others along the height axis from the umbo to the ventral margin (Fig. 2a). From each specimen, two
105 ca. 3 mm-thick shell slabs were obtained and mounted onto glass slides with the mirroring sides (= the portions that were located to the left and right of the saw blade during the cutting process) facing upward. This method facilitated the temporal alignment of isotope data measured in one slab to growth patterns determined in the other shell slab. The shell slabs were ground on glass plates using suspensions of 800 and 1200 grit SiC powder and subsequently polished with Al_2O_3 powder (grain size: 1 μm) on a Buehler G-cloth. Between each grinding step and after polishing, the shell slabs were ultrasonically
110 cleaned with water.

2.2 Shell growth pattern analysis

For growth pattern analysis, one polished shell slab was immersed in Mutvei's solution for 20 min at 37–40° C under constant stirring (Schöne et al., 2005b). After careful rinsing in demineralized water, the stained sections were air-dried under a fume hood. Dyed thick-sections were then viewed under a binocular microscope (Olympus SZX16) equipped with sectoral dark
115 field illumination (Schott VisiLED MC1000) and photographed with a Canon EOS 600D camera (Fig. 2b). The widths of the annual increments were determined to the nearest ca. 1 μm with the image processing software (Panopea, © Peinl and Schöne). Measurements were completed in the outer portion of the outer shell layer (oOSL, prismatic ultrastructure) from the boundary between the oOSL and the inner portion of the outer shell layer (iOSL, nacreous ultrastructure) perpendicularly to the previous annual growth line (Fig. 2c). Annual increment width chronologies were detrended with stiff cubic spline functions and
120 standardized to produce dimensionless measures of growth (standardized growth indices, i.e., SGI values [σ]) following standard sclerochronological methods (Helama et al., 2006; Butler et al., 2013; Schöne, 2013). Briefly, for detrending, measured annual increment widths were divided by the data predicted by the cubic spline fit. From each resulting growth index, we subtracted the mean of all growth indices and divided the result by the standard deviation of all growth indices of the respective bivalve specimen. This transformation resulted in SGI chronologies. Due to low heteroscedasticity, no variance
125 correction was needed (Frank et al., 2007). Uncertainties in annual increment measurements resulted in an SGI error of $\pm 0.06 \sigma$.

2.3 Stable isotope analysis

The other polished shell slab of each specimen was used for stable isotope analysis. To avoid contamination of the shell aragonite powders (Schöne et al., 2016), the cured epoxy resin and the periostracum were completely removed prior to sampling. A total of 1,551 powder samples (32-128 µg) were obtained from the oOSL by means of micromilling (Fig. 2c) under a stereomicroscope at 160 × magnification. An equidistant sampling strategy was applied, i.e., within each annual increment the milling step size was held constant (Schöne et al., 2005c). We used a cylindrical, diamond-coated drill bit (1 mm diameter; Komet/Gebr. Brasseler GmbH and Co. KG, model no. 835 104 010) mounted on a Rexim Minimo drill. While the drilling device was affixed to the microscope, the sample was handheld during sampling. In early ontogenetic years, up to 16 samples were obtained between successive annual growth lines. In the latest ontogenetic portions of specimens ED-NJB-A2R (last year of life) and ED-GJ-D6R (last nine years of life), each isotope sample represented two to three years.

Stable carbon and oxygen isotopes were measured at the Institute of Geosciences at the University of Frankfurt/Main (Germany). Carbonate powder samples were digested in He-flushed borosilicate exetainers at 72 °C using a water-free phosphoric acid. The released CO₂ gas was then measured in continuous flow mode with a ThermoFisher MAT 253 gas source isotope ratio mass spectrometer coupled to a GasBench II. Stable isotope ratios were corrected against an NBS-19 calibrated Carrara marble ($\delta^{13}\text{C} = +2.02 \text{ ‰}$; $\delta^{18}\text{O} = -1.76 \text{ ‰}$). Results are expressed as parts per thousand (‰) relative to the Vienna Pee Dee Belemnite (V-PDB). The long-term accuracy based on blindly measured reference materials with known isotopic composition is better than 0.05 ‰ for both isotope systems. Note that no correction was applied for differences in fractionation factors of the reference material (calcite) and shells (aragonite; verified by Raman spectroscopy), because the paleothermometry equation used below (Eq. 2) did also not consider these differences (Füllenbach et al., 2015). However, the correction of -0.38 ‰ would be required if $\delta^{18}\text{O}$ values of shells and other carbonates were compared with each other.

2.4 Instrumental data sets

Shell growth and isotope data were compared to a set of environmental variables including the station-based winter (DJFM) NAO index (obtained from <https://climatedataguide.ucar.edu>, last access: 9 April 2019) as well as oxygen isotope values of river water ($\delta^{18}\text{O}_w$) and weighted (corrected for precipitation amounts) oxygen isotope values of precipitation ($\delta^{18}\text{O}_p$). Data on monthly river water and precipitation came from the Global Network of Isotopes in Precipitation (GNIP) and Rivers (GNIR), available at the International Atomic Energy Agency from their website at <https://nucleus.iaea.org/wiser/index.aspx> (last access: 1 April 2019). Furthermore, monthly air temperature (T_a) data came from the station Stensele, available at the Swedish Meteorological and Hydrological Institute (<https://www.smhi.se>). From these data, monthly river water temperature (T_w) was computed by using the summer air-river water temperature conversion by Schöne et al. (2004a) supplemented by the standard errors of the slope and intercept, Eq. (1):

$$T_w = 0.88 \pm 0.05 \times T_a - 0.86 \pm 0.49. \quad (1)$$

160 2.5 Weighted annual shell isotope data

Since shell growth rate varied during the growing season with fastest biomineralization rates occurring during June and July (Dunca et al., 2005), annual growth increments are biased toward summer, and powder samples taken from the shells at equidistant intervals represent different amounts of time. To compute growing season averages (henceforth referred to as ‘annual averages’) from such intra-annual shell isotope data ($\delta^{18}\text{O}_s$, $\delta^{13}\text{C}_s$), weighted (henceforth denoted with an asterisk) annual means are thus needed, i.e., $\delta^{18}\text{O}_s^*$ and $\delta^{13}\text{C}_s^*$ values (Schöne et al., 2004a). The relative proportion of time of the growing season represented by each isotope sample was computed from a previously published intra-annual growth curve of juvenile *M. margaritifera* from Sweden (Dunca et al., 2005). For example, if four isotope samples were taken between two winter lines at equidistant intervals, the first sample would represent 22.38 % of the time of the main growing season duration, the second, third and fourth 20.28, 24.47 and 32.87 %, respectively (Table 2). Accordingly, the weighted annual mean isotope values ($\delta^{18}\text{O}_s^*$, $\delta^{13}\text{C}_s^*$) were calculated by multiplying these numbers (= weights) with the respective $\delta^{18}\text{O}_s$ and $\delta^{13}\text{C}_s$ values and dividing the sum of the products by 100. The four isotope samples of the example above comprise the time intervals of 23 May–22 June, 23 June–21 July, 22 July–25 August, and 26 August–12 October, respectively. Missing isotope data due to lost powder, machine error, air in the exetainer etc. were filled in by linear interpolation in 20 instances. We assumed that the timing and rate of seasonal growth remained nearly unchanged throughout lifetime of the specimens and in the study region (see also Sect. 4).

2.6 Reconstruction of oxygen isotope signatures of river water on annual and intra-annual time-scales

To assess how well the shells recorded $\delta^{18}\text{O}_w$ values on inter-annual time-scales, the stable oxygen isotope signature of river water ($\delta^{18}\text{O}_{wr}^*$) during the main growing season (‘annual’ $\delta^{18}\text{O}_{wr}^*$) was reconstructed from $\delta^{18}\text{O}_s^*$ data and the arithmetic average of (monthly) river water temperatures, T_w , during the same time interval, i.e., 23 May–12 Oct. Through this approach, the effect of temperature-dependent oxygen isotope fractionation was removed from the $\delta^{18}\text{O}_s^*$ data. For this purpose, the paleothermometry equation of Grossman and Ku (1986; corrected for the VPDB-VSMOW scale difference following Gonfiantini et al., 1995) was solved for $\delta^{18}\text{O}_{wr}^*$, Eq. (2):

$$\delta^{18}\text{O}_{wr}^* = \frac{19.43 - 4.34 \times \delta^{18}\text{O}_s^* - T_w}{-4.34}. \quad (2)$$

185

Since air temperature data were only available from 1860 onward, T_w prior to that time were inferred from age-detrended and standardized annual growth increment data (SGI values) using a linear regression model similar to that introduced by Schöne et al. (2004a). In the revised model, SGI data of 25 shells from northern Sweden (fifteen published chronologies, provided in the article cited above, and ten new chronologies from the specimens studied in the present paper) were arithmetically averaged

190 for each year and then regressed against weighted annual water temperature, henceforth referred to as annual T_w^* . The annual T_w^* data consider variations in seasonal shell growth rate. 6.29, 25.49, 24.52, 21.92, 16.88 and 4.90 % of the annual growth increment were formed in each month between May and October, respectively. The values were multiplied with T_w of the corresponding month and the sum of the products divided by 100 to obtain annual T_w^* data. The revised (shell growth vs. temperature) model is as follows, Eq. (3):

195

$$T_w^* = 1.45 \pm 0.19 \times SGI + 8.42 \pm 0.08. \quad (3)$$

For coherency purposes, we also applied this model to post-1859 SGI values and computed river water temperatures that were subsequently used to estimate $\delta^{18}O_{wr(SGI)^*}$ values.

200

To assess how well the shells recorded $\delta^{18}O_w$ values at intra-annual time-scales, we focused on two shells from NJB (ED-NJB-A4R and ED-NJB-A6R), which provided the highest isotope resolution of one to two weeks per sample during the few years of overlap with GNIP and GNIR data. Note, only for this bivalve sampling locality, monthly instrumental oxygen isotope data were available from the GNIP and GNIR data sets (data by Burgman et al., 1981). The $\delta^{18}O_w$ data were measured in the river Skellefteälven near Slagnäs, ca. 40 km SW of NJB (65°34'59.50"N, 18°10'39.12"E) and covered the time interval of 1973-1980. The $\delta^{18}O_p$ data came from Racksund (66°02'60.00"N, 17°37'60.00"E; ca. 75 km NW of NJB) and covered the time interval of 1975–1979. Since precipitation amounts were not available from Racksund, we computed average monthly precipitation amounts from data recorded at Arjeplog (66°02'60.00"N, 17°53'60.00"E) during 1961–1967. Arjeplog is located ca. 65 km NW of NJB and ca. 12 km W of Racksund. Equation (2) was used to calculate $\delta^{18}O_{wr}^*$ values from individual $\delta^{18}O_s^*$ data and water temperature that existed during the time when the respective shell portion was formed. Intra-annual water temperatures were computed as weighted averages, T_w^* , from monthly T_w considering seasonal changes of the shell growth rate. For example, if four powder samples were taken from the shell at equidistant intervals within one annual increment, 6.29 % of the first sample were formed in May and 18.63 % in June (sum ca. 25 %). The average temperature during that time interval is computed with these numbers as follows: (T_w of May \times 0.0629 + T_w of June \times 0.1863) / 25. 6.86 % of the second sample from that annual increment formed in June and 17.97 % in July. Accordingly, the average temperature was: (T_w of June \times 0.0686 + T_w of July \times 17.47) / 25 etc. Note that annual $\delta^{18}O_{wr}^*$ values can also be computed from intra-annual $\delta^{18}O_{wr}^*$ data, but this approach is much more time-consuming and complex than the method described further above. Yet, both methods produce nearly identical results.

205

215

2.7 Stable carbon isotopes of the shells

220 Besides the winter and summer NAO index, weighted annual stable carbon isotope data of the shells, $\delta^{13}C_s^*$ values, were compared to shell growth data (SGI chronologies). Since the $\delta^{13}C_s^*$ values could potentially be influenced by ontogenetic

effects, the chronologies were detrended and standardized ($\delta^{13}\text{C}_{s(d)^*}$) following methods typically used to remove ontogenetic age trends from annual increment width chronologies (see e.g., Schöne, 2016). Detrending was **done** with cubic spline functions capable of removing any directed trend toward higher or lower values through lifetime.

225 **3 Results**

The lengths of the annual increment chronologies of *M. margaritifera* from the three studied rivers (Nuortejaurbäcken, Grundträsktjärnbäcken and Görjeån) ranged from 21 to 181 years and covered the time interval of 1819 to 1999 AD (Table 1). Since the umbonal shell portions were deeply corroded and the outer shell layer was missing – a typical feature of long-lived freshwater bivalves (Schöne et al., 2004a; Fig 2a) – the actual ontogenetic ages of the specimens could not be determined and
230 may have been up to 10 years higher than listed in Table 1.

3.1 Shell growth and temperature

The ten new SGI series from NJB, GTB and GJ were combined with fifteen published annual increment series of *M. margaritifera* from the rivers Pärälven, Päralskalsbäcken and Bölsmanån (Schöne et al., 2004a, b, 2005) to a revised Norrland master chronology. During the 50-year calibration interval of 1926–1975 (the same time interval was used in the previous
235 study by Schöne et al., 2004 a, b, 2005), the chronology was significantly ($p < 0.05$; **note, all p-values of linear regression analyses in this paper are Bonferroni-adjusted**) and positively correlated ($R = 0.74$; $R^2 = 0.55$) to the weighted annual river water temperature (T_w^*) during the main growing season (Fig. 3). These values were similar to the previously published coefficient of determination for a stacked record using *M. margaritifera* specimens from rivers across Sweden ($R^2 = 0.60$ (Schöne et al., 2005); note that this number is for SGI vs. an arithmetic annual T_w ; a regression of SGI against weighted annual
240 T_w returns an R^2 of 0.64).

3.2 Shell stable oxygen isotope data

The shell oxygen isotope curves showed distinct seasonal and inter-annual variations (Fig. 4+5). The former were particularly well developed in specimens from GTB and NJB (Fig. 4), which were sampled with a very high spatial resolution of ca. 30 μm (ED-GTB-A1R, ED-GTB-A2R, ED-NJB-A4R, ED-NJB-A6R). In these shells, up to 16 samples were obtained from single
245 annual increments translating into a temporal resolution of one to two weeks per sample. Typically, the highest $\delta^{18}\text{O}_s$ values of each cycle occurred at the winter lines and lowest values about half way between consecutive winter lines (Fig. 4). **The largest seasonal $\delta^{18}\text{O}_s$ amplitudes of ca. 2.20 ‰ were measured in specimens from GTB (-8.68 to -10.91 ‰) and ca. 1.70 ‰ in shells from NJB (-8.63 to -10.31 ‰).**

250 Weighted annual shell oxygen isotope ($\delta^{18}\text{O}_s^*$) values fluctuated on decadal time-scales (common period: ca. 8 years) with amplitudes larger than those occurring on seasonal scales, i.e., ca. 2.50 and 3.00 ‰ in shells from NJB (-8.63 to -11.10 ‰)

and GTB (-7.84 to -10.85 ‰), respectively (Fig. 5a+b). The chronologies from GJ also revealed a century-scale variation with minima in the 1820s and 1960s and maxima in the 1880s and 1990s (Fig. 5c). The $\delta^{18}\text{O}_s^*$ curves of specimens from the same locality showed notable agreement in terms of absolute values and visual agreement (running similarity), specifically specimens from NJB and GTB (Fig. 5a+b). However, the longest chronology from GJ showed only little agreement with the remaining three series from that site (Fig 5c). The similarity among the series also changed through time (Fig 5a-c). In some years, the difference between the series was less than 0.20 ‰ at NJB (N = 4) and GTB (N = 2) (1983) and 0.10 ‰ at GJ (1953; N = 4), whereas in other years, differences varied by up to 0.82 ‰ at NJB and 1.00 ‰ at GTB and GJ, respectively. Average shell oxygen isotope chronologies of the three studied rivers exhibited a strong running similarity (passed the ‘Gleichläufigkeitstest’ by Baillie and Pilcher, 1983, for $p < 0.001$) and were significantly positively correlated to each other (R^2 values of NJB vs GTB = 0.34, NJB vs GJ = 0.40 and GTB vs GJ = 0.36; all at $p < 0.0001$).

3.3 Shell stable oxygen isotope data and instrumental records

At NJB – the only bivalve sampling site for which measured stream water isotope data were available from nearby localities – May–Oct ranges of reconstructed and instrumental stream water $\delta^{18}\text{O}$ values between 1973 and 1980 (without 1977 because missing $\delta^{18}\text{O}_w$ data) were in close agreement (shells: 2.83 and 3.19 ‰ vs. stream water: 3.20 ‰; Fig. 6a). During the same time interval, arithmetic means \pm one standard deviation of the shells were -12.48 ± 0.74 ‰ (ED-NJB-A6R; N = 79) and -12.45 ± 0.66 ‰ (ED-NJB-A4R; N = 44), whereas the stream water values equaled -12.33 ± 0.76 ‰ (river Skellefteälven; N = 42). When computed from growing season averages (N = 7), shell values are as follows: -12.48 ± 0.29 ‰, -12.42 ± 0.34 ‰ and -12.30 ± 0.32 ‰, respectively. According to non-parametric t-tests, these data sets are statistically indistinguishable. Also, the inter-annual trends of $\delta^{18}\text{O}_{wr}^*$ and $\delta^{18}\text{O}_w$ values were similar (Fig. 6a): Values declined by ca. 1.00 ‰ between 1973 and 1977 followed by a slight increase of ca. 0.50 ‰ until 1980. In contrast to the damped stream water signal (average seasonal range during four years for which both stream water and precipitation data were available [1975, 1976, 1978, 1979]: -1.50 ± 0.57 ‰), $\delta^{18}\text{O}_p$ values exhibited much stronger fluctuations at seasonal scale (on average, -9.37 ± 2.81 ‰; extreme monthly values of -4.21 and -17.60 ‰; N = 46; station Racksund; Fig. 6b) and inter-annual time-scales (unweighted annual averages: -11.41 to 13.68 ‰; weighted Dec-Sep averages: -9.54 to 13.16 ‰).

Despite the limited number of instrumental data, seasonally averaged $\delta^{18}\text{O}_{wr}^*$ data showed some – though not always statistically significant – agreement with $\delta^{18}\text{O}_w$ and weighted $\delta^{18}\text{O}_p$ data (corrected for precipitation amounts), respectively, both in terms of correlation coefficients and absolute values (Table 3). These findings were corroborated by the regression analyses of instrumental $\delta^{18}\text{O}_p$ values against $\delta^{18}\text{O}_w$ values (Table 3). For example, the oxygen isotope values of summer (June–Sep) precipitation were significantly (Bonferroni-adjusted $p < 0.05$) and positively correlated to those of shell carbonate precipitated during the same time interval (98 % explained variability in both specimens, but only at $p < 0.05$ in ED-NJB-A6R). Likewise, $\delta^{18}\text{O}_w$ and $\delta^{18}\text{O}_p$ values during summer were positively correlated to each other ($R = 0.91$), though less significant ($p = 0.546$). Strong relationships were also found for $\delta^{18}\text{O}_{wr}^*$ and $\delta^{18}\text{O}_w$ values during the main growing season as

285 well as annual $\delta^{18}\text{O}_{\text{wr}}^*$ and Dec-Sep $\delta^{18}\text{O}_p$ values. The underlying assumption for the latter was that the $\delta^{18}\text{O}_{\text{wr}}^*$ average value reflects the combined $\delta^{18}\text{O}_p$ of snow precipitated during the last winter (received as meltwater during spring) and rain precipitated during summer. Instrumental data supported this hypothesis, because stream water $\delta^{18}\text{O}$ values during the main growing season were highly significantly and positively correlated to Dec-Sep $\delta^{18}\text{O}_p$ data (Table 3). On the other hand, changes of the isotope signal of winter (Dec–Feb) snow were only weakly and not significantly mirrored by changes in river water oxygen isotope values during the snowmelt period (May–June), or in $\delta^{18}\text{O}_{\text{wr}}^*$ values from shell portions formed during the same time interval (Table 3). During the four years under study (1975, 1976, 1978, 1979), measured and reconstructed $\delta^{18}\text{O}_w$ values were nearly identical during the main growing season ($\delta^{18}\text{O}_w = -12.46$ ‰; $\delta^{18}\text{O}_{\text{wr}}^* = -12.57$ ‰ and -12.46 ‰) and during summer ($\delta^{18}\text{O}_w = -12.39$ ‰; $\delta^{18}\text{O}_{\text{wr}}^* = -12.44$ ‰ and -12.43 ‰) (Table 3). In contrast, isotopes in precipitation and river water showed larger discrepancies (see above and Fig. 6b, Table 3).

295 3.4 Shell stable oxygen isotope data and synoptic circulation patterns (NAO)

Site-specific annual $\delta^{18}\text{O}_{\text{wr}}^*$ (and $\delta^{18}\text{O}_{\text{wr(SGI)}}^*$) chronologies (computed as arithmetic averages of all chronologies at a given river) were significantly (Bonferroni-adjusted $p < 0.05$) positively correlated to NAO indices (Fig. 7; Table 4). In NAO⁺ years, the $\delta^{18}\text{O}_{\text{wr}}^*$ (and $\delta^{18}\text{O}_{\text{wr(SGI)}}^*$) values were higher than during NAO⁻ years. The strongest correlation existed between the winter (Dec–Mar) NAO and $\delta^{18}\text{O}_{\text{wr}}^*$ (and $\delta^{18}\text{O}_{\text{wr(SGI)}}^*$) values at NJB (44 to 49 % explained variability). At GTB, the explained variability ranged between 24 and 27 %, whereas at GJ only 16 to 18 % of the inter-annual $\delta^{18}\text{O}_{\text{wr}}^*$ (and $\delta^{18}\text{O}_{\text{wr(SGI)}}^*$) variability was explained by the winter NAO (wNAO) index. Between 1947 and 1991, the time interval for which isotope data were available for all sites, R^2 values were more similar to each other and ranged between 0.27 and 0.46 (Table 4). All sites reflected well-known features of the instrumental NAO index series such as the recent (1970–2000) positive shift toward a more dominant wNAO, which delivered isotopically more positive (less depleted in ^{18}O) winter precipitation to our region of interest (Fig. 7a–c). The correlation between $\delta^{18}\text{O}_{\text{wr}}^*$ (and $\delta^{18}\text{O}_{\text{wr(SGI)}}^*$) values and the summer (June–Aug) NAO index was much lower than for the wNAO, but likewise positive and sometimes significant at $p < 0.05$ (Table 4). Between 1947 and 1991, 7 to 43 % of the inter-annual oxygen isotope variability was explained by the summer NAO index.

We have also computed an average $\delta^{18}\text{O}_{\text{wr(SGI)}}^*$ curve for the entire study region (Fig. 8a–c). Since the level (absolute values) of the three rivers differed from each other (average $\delta^{18}\text{O}_{\text{wr}}^*$ values of NJB, GTB and GJ during 1947–1992 were -12.51 , -12.21 and -14.16 ‰, respectively), the site-specific series were standardized and then arithmetically averaged. The resulting chronology, $\delta^{18}\text{O}_{\text{wr(Norrland)}}^*$, was strongly positively and statistically significantly (Bonferroni-adjusted p-value below 0.05) correlated to the wNAO index (56 % explained variability; Fig. 8a). Despite the limited instrumental dataset, $\delta^{18}\text{O}$ values of river water and precipitation were strongly positively correlated to the wNAO index (R^2 values of 0.72 and 0.84, respectively; Fig. 8d+e), but the Bonferroni-adjusted p-values exceeded 0.05 (note, uncorrected p-values were 0.07 and 0.03, respectively).

3.5 Shell stable carbon isotope data

Shell stable carbon isotope ($\delta^{13}\text{C}_s$) data showed less distinct seasonal variations than $\delta^{18}\text{O}_s$ values, but the highest values were often also associated with the winter lines and lowest values occurred between subsequent winter lines (Fig. 4). The largest seasonal amplitudes of ca. 3.90 ‰ were observed in specimens from NJB (-8.21 to -12.10 ‰) and ca. one per mil smaller ranges at GTB (-10.97 to -13.88 ‰).

Weighted annual $\delta^{13}\text{C}_s^*$ curves varied greatly from each other in terms of change through lifetime, among localities and even at the same locality (Fig. 5d-f). Note that all curves started in early ontogeny (below the age of ten), except ED-GJ-A1L and ED-GJ-A3L which began only at a minimum age of 25 and 29, respectively (Table 1). Whereas two specimens from NJB (ED-NJB-A6R, ED-NJB-A4R) showed strong ontogenetic $\delta^{13}\text{C}_s^*$ trends from ca. -8.70 to -12.50 ‰, weaker trends toward more negative values were observed in ED-NJB-A2R (ca. -10.00 to -11.70 ‰) and shells of GTB (ca. -11.50 to -13.00 ‰). Opposite ontogenetic trends occurred in ED-GJ-A1L and ED-GJ-A2R (ca. -15.00 to -12.00 ‰), but no trends at all were found in ED-NJB-A3R, ED-GJ-A3L and ED-GJ-D6R (fluctuations around -12.00 ‰). All curves were also overlain by some decadal variability (typical periods of 3-6 and 13-16, 60-80 years). Even after detrending and standardization (Fig. 5g-i), no statistically significant correlation at $p < 0.05$ was found between average $\delta^{13}\text{C}_{s(d)}^*$ curves of the three sites (NJB-GTB: $R = -0.11$, $R^2 = 0.01$; NJB-GJ: $R = -0.17$, $R^2 = 0.03$; GTB-GJ: $R = 0.10$, $R^2 = 0.01$). However, at each site, individual curves revealed reasonable visual agreement, specifically at NJB and GTB (Fig. 5g+h). At GJ, the agreement was largely limited to the low frequency oscillations (Fig. 5i).

The detrended and standardized annual shell stable carbon isotope ($\delta^{13}\text{C}_{s(d)}$) curves showed no statistically significant (Bonferroni-adjusted $p < 0.05$) agreement with the NAO indices or shell growth rate (SGI values) (Fig. 7; Table 4). A weak negative correlation (10 % explained variability) only existed between $\delta^{13}\text{C}_{s(d)}^*$ values and the wNAO at NJB. Some visual agreement was apparent between $\delta^{13}\text{C}_{s(d)}$ values and SGI in the low frequency realm. For example, at NJB, faster growth during the mid-1950s, 1970s, 1980s and 1990s fell together with lower $\delta^{13}\text{C}_{s(d)}$ values (Fig. 7g). Likewise at GTB, faster shell growth seemed to be inversely linked to $\delta^{13}\text{C}_{s(d)}$ values (Fig. 7h).

4 Discussion

4.1 Advantages and disadvantages of using bivalve shells for stream water $\delta^{18}\text{O}$ reconstruction; comparison to sedimentary archives

Our results have shown that shells of freshwater pearl mussels from rivers in northern Scandinavia (fed predominantly by small, open lakes and precipitation) can serve as a long-term, high-resolution archive of the stable oxygen isotope signature of the water in which they lived. Since $\delta^{18}\text{O}_w$ values have a much lower seasonal amplitude than $\delta^{18}\text{O}_p$ values (i.e., $\delta^{18}\text{O}_w$ signals are damped relative to $\delta^{18}\text{O}_p$ data as a result of the water transit times through the catchment of the stream), the observed and

350 reconstructed stream water isotope signal mirror the seasonal and inter-annual variability in $\delta^{18}\text{O}_p$ values. The NAO and subsequent atmospheric circulation patterns determine the origin of air masses and subsequently the $\delta^{18}\text{O}$ signal in precipitation.

Compared to lake sediments, which have traditionally been used for similar reconstructions at nearby localities (e.g., Hammarlund et al., 2002; Andersson et al., 2010; Rosqvist et al., 2004, 2013), this new shell-based archive has a number of advantages.

355

(1) The effect of temperature-dependent oxygen isotope fractionation can be removed from $\delta^{18}\text{O}_s$ values so that the stable oxygen isotope signature of the water in which the bivalves lived can be computed. This is possible by solving the paleothermometry equation of Grossman & Ku (1986) for $\delta^{18}\text{O}_{wr}^*$ (Eq. 2) and compute the oxygen isotope values of the water from those of the shells and river water temperature. Stream water temperature during shell growth can be reconstructed from shell growth rate data (Eq. 3; Schöne et al., 2004a+b, 2005) or instrumental air temperature (Eq. 1; Morrill et al., 2005; Chen & Fang, 2015). Similar studies in which the oxygen isotope composition of microfossils or authigenic carbonate obtained from lake sediments were used to infer the oxygen isotope value of the water, however, merely relied on estimates of the temperature variability during the formation of the diatoms, ostracods, abiogenic carbonates etc., and how these temperature changes affected reconstructions of $\delta^{18}\text{O}_w$ values (e.g., Rosqvist et al., 2013). In such studies, it was impossible to reconstruct the actual water temperatures from other proxy archives. Moreover, at least in some of these archives, such as diatoms, the effect of temperature on the fractionation of oxygen isotopes between the skeleton and the ambient water is still debated (Leng, 2006).

360

365

370

(2) *M. margaritifera* precipitates its shell near oxygen isotopic equilibrium with the ambient water, and shell $\delta^{18}\text{O}$ values reflect stream water $\delta^{18}\text{O}$ data. This may not be the case in all archives, which have previously been used. For example, ostracods possibly exhibit vital effects (Leng and Marshall, 2004).

375

(3) The shells can provide seasonally to inter-annually resolved data. In the present study, each sample typically represented as little as one week up to one full growing season (= one 'year'; mid-May to mid-October; Dunca et al., 2005). In very slow growing shell portions of ontogenetically old specimens, individual samples occasionally covered two or, in exceptional cases, three years of growth which resulted in a reduction of variance. If required, a refined sampling strategy and computer-controlled micromilling could ensure that time-averaging consistently remains below one year. Such high-resolution isotope data can be used for a more detailed analysis of changes in the precipitation-runoff transformation across different seasons. Furthermore, the specific sampling method based on micromilling produced uninterrupted isotope chronologies, i.e., no shell portion of the outer

380

shell layer remained un-sampled. Due to the high temporal resolution, bivalve shell-based isotope chronologies can provide insights into inter-annual and decadal-scale paleoclimatic variability. **With the new, precisely calendar-aligned data**, it becomes possible to test hypotheses brought forward in previous studies according to which $\delta^{18}\text{O}$ signatures of meteoric water are controlled by the winter and/or summer NAO (e.g., Rosqvist et al., 2007, 2013).

- (4) Each sample taken from the shells can be placed in a precise temporal context. The very season and exact calendar year during which the respective shell portion formed can be determined in shells of specimens with known dates of death based on the seasonal growth curve and annual increment counts. Existing studies suffer from the disadvantage that time cannot be precisely constrained, neither at seasonal nor annual time-scales (unless varved sediments are available). **However**, isotope results can be biased toward a particular season of the year or a specific years within a decade. **Such biases can be avoided with subannual data provided by bivalve shells.**

In summary, bivalve shells can provide uninterrupted, seasonally to annually resolved, precisely temporally constrained records of past stream water isotope data that enable a direct comparison to climate indices and instrumental environmental data. In contrast to bivalve shells, sedimentary archives come with a much coarser temporal resolution. Each sample taken from sediments typically represents the average of several years, and the specific season and calendar year during which the ostracods, diatoms, authigenic carbonates etc. grew remains unknown. On the other hand, the time intervals covered by sedimentary archives are much larger and can reveal century and millennial-scale variations with much less effort than sclerochronology-based records. As such, the two types of archives could complement each other perfectly and increase the understanding of past climatic variability. **For example, once the low-frequency variations have been reconstructed from sedimentary archives, a more detailed insight into seasonal to inter-annual climate variability can be obtained from bivalve shells. As long as the date of death of the bivalves is known, such records can be placed in absolute temporal context (calendar year).** Although the same is currently impossible with fossil shells, each absolutely dated (radiocarbon, amino acid racemization dating) shell of a long-lived bivalve species can open a seasonally to annually resolved window into the climatic and hydrological past of a region of interest.

4.2 *M. margaritifera* shell $\delta^{18}\text{O}$ values reflect stream water $\delta^{18}\text{O}$ values

Unfortunately, complete, **high-resolution and long-term** records of $\delta^{18}\text{O}_w$ values of the studied rivers were not available. Such data is required for a direct comparison with those **reconstructed** from shells ($\delta^{18}\text{O}_{\text{wr}}^*$ or $\delta^{18}\text{O}_{\text{wr(SGI)}}^*$ values) and to determine if the **bivalves precipitated their** shells near oxygen isotopic equilibrium with the ambient water. However, one of the study sites (NJB) is located close to the river Skellefteälven, **where $\delta^{18}\text{O}_w$ values were** irregularly analyzed between 1973 and 1980 (Fig. 6a) **by** the Water Resources Program (**GNIR dataset**). It should be noted that the $\delta^{18}\text{O}_w$ data of GNIR merely reflect

temporal snapshots, but not actual monthly averages. In fact, the isotope signature of meteoric water can vary significantly on short time-scales (e.g., Darling, 2004; Leng and Marshall 2004; Rodgers et al., 2005). In addition, for some months, no GNIR data were available. In contrast, shell isotope data represent changes in the isotope composition of the water over coherent time intervals ranging from one week to one year (and in few cases two or three years). Due to the micromilling sampling technique, uninterrupted $\delta^{18}\text{O}_s$ time-series were available. It is thus compelling how well the ranges of intra-annual $\delta^{18}\text{O}_{\text{wr}}^*$ data compared to instrumental oxygen isotope data of the river Skellefteälven (Fig. 6a), and that summer averages as well as growing season averages of shells and GNIR were nearly identical (Table 3). Furthermore, in each studied river, individual $\delta^{18}\text{O}_{\text{wr}}^*$ series agreed strongly with each other (Fig. 5). All these aspects strongly suggest that shell formation occurred near equilibrium with the oxygen isotope composition of the ambient water, and *M. margaritifera* recorded changes of stream water $\delta^{18}\text{O}$ values. Our conclusions are in agreement with previously published results from various different freshwater mussels (e.g., Dettman et al., 1999; Kaandorp et al. 2003; Versteegh et al., 2009) and numerous marine bivalves (e.g., Epstein et al., 1953; Mook and Vogel, 1968; Killingley and Berger, 1979).

4.3 Site-specific and synoptic information recorded in shell oxygen isotopes

Although individual chronologies from a given river compared well to each other with respect to absolute values, the three studied sites differed by almost 2.00 ‰ (average $\delta^{18}\text{O}_{\text{wr}}^*$ values between 1947 and 1992: NJB = -12.51 ‰; GTB = -12.21 ‰; GJ = -14.16 ‰; Fig. 5+7). If our interpretation is correct and $\delta^{18}\text{O}_s$ values of the studied margaritiferids reflect the oxygen isotope signature of the water in which they lived, then these numbers reflect hydrological differences in the upstream catchment controlled by a complex set of physiographic characteristics: catchment size and elevation, transit times, upstream lake size and depth controlling the potential for evaporative depletion in ^{16}O , river flux rates, river width and depth, humidity, wind speed, groundwater influx, differences in meltwater influx etc. (Peralta-Tapia et al., 2014; Geris et al., 2017; Pfister et al., 2017). However, detailed monitoring would be required to identify and quantify the actual reason(s) for the observed hydrological differences. Thus, we refrain from speculations.

Despite site-specific differences described above, the $\delta^{18}\text{O}_{\text{wr}}^*$ chronologies of the three rivers were significantly positively correlated to each other, suggesting that common environmental forcings controlled isotopic changes in the entire study region. Previous studies suggest that these environmental forcings may include changes in the isotope composition of precipitation, specifically the amount, origin and air-mass trajectory of winter snow and summer rain, timing of snowmelt as well as condensation temperature (Rosqvist et al., 2013). The latter is probably the most difficult to assess, because no records are available documenting the temperature, height and latitude at which the respective clouds formed. Likewise, we cannot confidently assess the link between the isotope signature of precipitation and stream water because only limited and incoherent datasets are available from the study region. Besides that, data on precipitation amounts were taken from another locality and another time interval. Yet, it is well known that precipitation in northern Scandinavia, particularly during winter, originates from two different sources, the Atlantic and arctic/polar regions (Rosqvist et al., 2013), and the moisture of these air masses is

isotopically distinct (Araguás-Araguás et al., 2000; Bowen and Wilkinson, 2002). During NAO⁺ years, the sea level pressure difference between the Azores High and the Iceland Low is particularly large resulting in mild, wet winters in central and northern Europe, with strong westerlies carrying heat and moisture across the Atlantic Ocean toward higher latitudes (Hurrell et al., 2003). During NAO⁻ years, however, westerlies are weaker and the Polar Front is shifted southward, allowing Arctic air masses to reach northern Scandinavia. Precipitation originating from the North Atlantic is isotopically heavier ($\delta^{18}\text{O}_p = -5.00$ to -10.00 ‰) than precipitation from subarctic and polar regions ($\delta^{18}\text{O}_p = -10.00$ to -15.00 ‰). Furthermore, changes in air mass properties over northern Europe are controlled by atmospheric pressure patterns in the North Atlantic, particularly the NAO during winter (Hurrell, 1995; Hurrell et al., 2003). The positive correlation between $\delta^{18}\text{O}_{\text{wr}}$ * chronologies of the three studied rivers and the wNAO index (Table 4; Fig. 7a-c, 8a) suggests that the shell isotopes recorded a winter precipitation signal, and this can be explained as follows. A larger proportion of arctic air masses carried to northern Scandinavia during winter resulted in lower $\delta^{18}\text{O}_p$ values, whereas the predominance of North Atlantic air masses caused the opposite. In NAO⁺ years, strong westerlies carried North Atlantic air masses far northward so that winter precipitation in northern Sweden had significantly higher $\delta^{18}\text{O}_p$ values than during NAO⁻ years. When the NAO was in its negative state, precipitation originated predominantly from moisture of polar regions which are depleted in ^{18}O , and hence have lower $\delta^{18}\text{O}_p$ values. The specific isotope signatures in the rivers were controlled by the snowmelt in spring. Essentially, the bivalves recorded the (damped) isotope signal of the last winter precipitation – occasionally mixed to spring and summer precipitation – in their shells. This hypothesis is supported by the correlation of the few available GNIP and GNIR data with the wNAO index (Fig. 8d+e). Rosqvist et al. (2007) hypothesized that the summer NAO strongly influences $\delta^{18}\text{O}_p$ values and thus, the $\delta^{18}\text{O}_w$ signature of the open, through-flow lakes in northern Scandinavia. However, our data did not support a profound influence of the summer NAO index on $\delta^{18}\text{O}_{\text{wr}}$ * values (Fig. 7d-f). This conclusion is consistent with other studies suggesting that the summer NAO has a much weaker influence on European climate than the NAO during winter (e.g., Hurrell, 1995).

Following Baldini et al. (2008) and Comas-Bru et al. (2016), northern Sweden is not the ideal place to conduct oxygen isotope-based wNAO reconstructions. Their models predicted only a weak negative or no correlation between $\delta^{18}\text{O}_p$ values and the wNAO index in our study region (Baldini et al., 2008: Fig. 1; Comas-Bru et al. 2016: Fig. 3a). One possible explanation for this weak correlation is the limited and temporally incoherent GNIP dataset in northern Sweden, from which these authors extracted the $\delta^{18}\text{O}_p$ data that were used to construct the numerical models. In contrast, $\delta^{18}\text{O}$ data of diatoms from open lakes in northern Sweden revealed a strong link to the amount of precipitation and $\delta^{18}\text{O}_p$ values, which reportedly are both controlled by the predominant state of the NAO (Hammarlund et al., 2002; Andersson et al., 2010; Rosqvist et al., 2004, 2007, 2013). Findings of the present study substantiated these proxy-based interpretations. Furthermore, we presented, for the first time, oxygen isotope time-series with sufficient temporal resolution (annual) and precise temporal control (calendar years) required for a year-to-year comparison with the NAO index time-series.

480 As Comas-Bru et al. (2016) further suggested, the relationship between $\delta^{18}\text{O}_p$ values and the wNAO index is subject to spatial non-stationarities, because the southern pole of the NAO migrates along a NE-SW axis in response to the state of another major atmospheric circulation mode in the North Atlantic realm, known as the East Atlantic Oscillation or East Atlantic Pattern (EA) (Moore and Renfrew, 2012; Moore et al., 2013; Comas-Bru and McDermott, 2014). Like the NAO, the EA is most distinct during winter and describes atmospheric pressure anomalies between the North Atlantic west of Ireland (low) and the subtropical North Atlantic (high). Through interaction of these circulation patterns, the correlation between the wNAO and $\delta^{18}\text{O}_p$ values can weaken at times in certain regions. For example, when both indices are in their positive state, the jet stream shifts poleward (Woolings and Blackburn, 2012) and the storm trajectories that enter Europe in winter take a more northerly route (Comas-Bru et al., 2016). The $\delta^{18}\text{O}_p$ values will then be lower than during NAO⁺/EA⁻ years. To identify whether this applies to the study region, we followed Comas-Bru et al. (2016) and tested if the relationship between the wNAO and reconstructed river water oxygen isotope data remain significant during years when the signs of both indices are the same (EQ) and during years when they are opposite (OP) (note, the EA index is only available from 1950 onward). As demonstrated in Fig. 8b+c, the correlations between the region-wide shell-based oxygen isotope curve ($\delta^{18}\text{O}_{\text{wr(Norrlund)*}}$) and the wNAO (EQ) ($R = 0.83$, $R^2 = 0.69$, $p < 0.0001$) as well as the wNAO (OP) ($R = 0.65$, $R^2 = 0.42$, $p = 0.0021$) remain positive and significant above the Bonferroni-adjusted 95 % confidence level. Hence, in the study region, the relationship between the wNAO and $\delta^{18}\text{O}_{\text{wr}*}$ values is not compromised by the EA; $\delta^{18}\text{O}_{\text{wr}*}$ values thus serve as a faithful proxy for the wNAO index.

4.4 Damped river water oxygen isotope signals

Compared to the large isotopic difference between winter precipitation sourced from SW or N air masses, the huge seasonal spread and inter-annual fluctuations of $\delta^{18}\text{O}_p$ values (seasonal: -4.21 to -17.60 ‰, Fig. 6b; inter-annual, unweighted Dec-Jan averages: -10.18 to 14.64 ‰; weighted Dec-Sep averages: -9.54 to -14.10 ‰; Fig. 8e) as well as the predicted seasonal variance of $\delta^{18}\text{O}_w$ values in the study region (Waterisotopes Database 2019: <http://www.waterisotopes.org>, last access: 25 May 2019: -8.70 to 17.30 ‰), the observed and shell-derived variance of stream water $\delta^{18}\text{O}$ values was notably small and barely exceeded 2.00 ‰, both on seasonal (Fig. 6) and inter-annual time-scales (Fig. 5a-c). This figure agrees well with seasonal amplitudes determined in other rivers at higher latitudes of the Northern Hemisphere (Halder et al. 2015) and can broadly be explained by catchment damping effects due to water collection, mixing, storage and release processes in upstream lakes and groundwater from which these rivers were fed. Catchment mean transit time (MTT), determined via a simple precipitation vs. stream flow isotope signal amplitude damping approach (as per de Walle et al., 1997), is approximately 6 months – corroborating the hypothesis of a mixed snowmelt and precipitation contribution to the stream water $\delta^{18}\text{O}$ signal during the growing season.

The attenuated variance on inter-annual time-scales can possibly be explained – amongst others – by inter-annual changes in the amount of winter precipitation and the timing of snowmelt. Colder spring temperatures typically resulted in a delayed snowmelt so that lower oxygen isotope signatures still prevailed in the river water when the main growing season of the bivalves started. However, winter precipitation amounts remained below average in NAO⁻ years, so that the net effect on $\delta^{18}\text{O}_w$

515 values in spring was less severe than the isotopic shift in $\delta^{18}\text{O}_p$ values. In contrast, the amount of snow precipitated during NAO⁺ years was larger, but milder spring temperatures resulted in an earlier and faster snowmelt, so that the effect on the isotope signature of river water at the beginning of the growing season of the mussels likely remained moderate.

4.5 Sub-annual dating precision and relative changes of seasonal shell growth rate

520 The precision by which the time can be determined that is represented by individual isotope samples depends on the validity of the seasonal growth model. We assumed that the timing of seasonal shell growth was similar to published data of *M. margaritifera* and remained the same in each year and each specimen. This may not be entirely correct, because the timing and rate of seasonal shell growth can potentially vary between localities, among years and among individuals, yet in *M. margaritifera* the seasonal timing of shell growth is remarkably invariant across large distances (Dunca et al., 2005). A major dating error exceeding four weeks, however, seems unlikely because the oxygen isotope series of individual specimens at each site were in good agreement. Presumably, the timing of seasonal shell growth is controlled by genetically determined biological clocks, which serve to maintain a consistent duration of the growing season (Schöne, 2008). Although shells grew faster in 525 some years and slower in others, the relative seasonal changes in shell growth rates likely remained similar and consisted of a gradual increase as the water warmed and more food became available in spring and summer followed by a gradual decline as temperatures dropped in fall. It was further assumed that the timing of shell growth has not significantly changed through the lifetime of the studied specimens. In fact, if ontogenetic changes of seasonal growth traits had occurred, it would be impossible to crossdate growth curves from young and old individuals and construct master chronologies (Schöne et al., 2004a, b, 2005; 530 Helama et al., 2006; Black et al., 2010). Based on these arguments, seasonal dating errors were likely minor.

4.6 Shell stable carbon isotopes

Our results are consistent with previous studies using long-lived bivalves (Beirne et al., 2012; Schöne et al., 2005c, 2011), where $\delta^{13}\text{C}_s$ chronologies of *M. margaritifera* did not show consistent ontogenetic trends, but rather oscillated around an average value (ca. -12.00 to -13.00 ‰). The time-series of NJB were too short to reject the hypothesis of directed trends 535 through lifetime, but we propose here that the $\delta^{13}\text{C}_s$ values of shells from that river would also average out at ca. -12.50 ‰ like at the other two studied sites, if longer chronologies were available. If a contribution of metabolic CO₂ to the shell carbonate exists in this species (which we cannot preclude because no $\delta^{13}\text{C}$ values of the dissolved inorganic carbon (DIC) data are available for the studied rivers), it likely remains nearly constant through lifetime as it does in other long-lived bivalve mollusks (Schöne et al., 2005c, 2011; Butler et al., 2011; Reynolds et al., 2017). Observed stable carbon isotope signatures in the mussel 540 shells are in the range of those expected and observed in stream waters of northern Europe (-10.00 to -15.00 ‰; Leng and Marshall, 2004)

Seasonal and inter-annual changes of $\delta^{13}\text{C}_s$ values could be indicative of changes in primary production, food composition, respiration and influx of terrestrial detritus. However, in the absence of information on how the environment of the studied

545 rivers changed through time, we can only speculate about possible causes of temporal $\delta^{13}\text{C}_{\text{DIC}}$ variations. For example, increased primary production in the water would not only have propelled shell growth rate, but also resulted in a depletion of ^{12}C in the DIC pool and thus, higher $\delta^{13}\text{C}_{\text{DIC}}$ and $\delta^{13}\text{C}_s$ values. However, just the opposite was observed on seasonal and inter-annual time-scales. Highest $\delta^{13}\text{C}_s$ values often occurred near the annual growth lines, i.e., during times of slow growth, and, although not statistically significant, annual $\delta^{13}\text{C}_{\text{s(d)}}^*$ values at NJB and GTB were inversely related to shell growth rate (Fig. 7g+h; Table 4). Accordingly, $\delta^{13}\text{C}_{\text{s(d)}}^*$ values do not seem to reflect phytoplankton dynamics. Another possibility is that a change in the composition of mussel food occurred which changed the shell stable carbon isotope values without a statistically significant effect on shell growth rate. Since the isotope signatures of potential food sources differ from each other (e.g., Gladyshev, 2009), a change in relative proportions of phytoplankton, decomposing plant litter from the surrounding catchment vegetation, bacteria, POM deriving from higher organisms etc. could have left a footprint in the $\delta^{13}\text{C}_{\text{s(d)}}^*$ values. Furthermore, seasonal and inter-annual changes in respiration or influx of terrestrial detritus may have changed the isotope signature of the DIC pool and thus the shells. Support for the latter comes from the weak negative correlation between $\delta^{13}\text{C}_{\text{s(d)}}^*$ values and the wNAO (Tab. 4; without Bonferroni correction, p-values remained below 0.05). After wet (snow-rich) winters (NAO⁺ years), stronger terrestrial runoff may have flushed increased amounts of light carbon into the rivers which lowered $\delta^{13}\text{C}_{\text{DIC}}$ values. To test these hypotheses, data on the stable carbon isotope signature of digested food and DIC would be required, a task for subsequent studies.

4.7 Error analysis and sensitivity tests

To test the robustness of the findings presented in Tables 3 and 4 as well as their interpretation, we have propagated all uncertainties associated with measurements and modeled data and randomly generated $\delta^{18}\text{O}_{\text{wr}}^*$, $\delta^{18}\text{O}_{\text{wr(SGI)}}^*$, $\delta^{18}\text{O}_{\text{wr(Norrland)}}^*$ and $\delta^{13}\text{C}_{\text{s(d)}}^*$ chronologies (via Monte Carlo simulation). A brief overview of the errors and simulation procedures are provided here below.

Water temperature estimates (Eq. 1) were associated with an error (one standard deviation) of ± 2.07 °C. Amongst others, this large uncertainty results from the combination of temperature data of four different rivers, which all varied with respect to average temperature and year-to-year variability. The error exceeds the inter-annual variance (one standard deviation of ± 0.90 °C) of the instrumental water temperature average (8.64 °C) more than two times. Instead of reconstructing T_w from T_a with an uncertainty of ± 2.07 °C, we could have assumed a constant water temperature value of 8.64 °C with an uncertainty of only ± 0.90 °C. However, our goal was to improve the $\delta^{18}\text{O}_{\text{wr}}^*$ reconstructions by taking into account the actual year-to-year temperature variability. To simulate the effect of different temperature uncertainties, we randomly generated 1,000 T_w^* chronologies with an error of ± 0.90 °C as well as 1,000 chronologies with ± 2.07 °C. Both sets of simulated T_w^* time-series were used in subsequent calculations. Errors involved with shell growth patterns include the measurement error (± 1 μm equivalent to an SGI error of ± 0.06 units) and the variance of crossdated SGI data. In different calendar years, the standard error of the mean of the 25 SGI chronologies ranged between ± 0.03 and ± 0.66 SGI units. The measurement and crossdating

uncertainties were propagated, 1,000 new SGI chronologies randomly generated and regressed against simulated T_w^* chronologies. The uncertainty of the new SGI vs. T_w^* model (standard error of ± 1.35 °C) was propagated in subsequent calculations of $\delta^{18}O_{wr(SGI)^*}$ values using Eq. 2. A third set of uncertainties was associated with isotope measurements (analytical precision error, one standard deviation = ± 0.06 ‰), the calculation of site-specific annual averages from contemporaneous specimens (for $\delta^{18}O$, on average: ± 0.11 ‰ to ± 0.15 ‰; for $\delta^{13}C$, on average: ± 0.37 ‰ to ± 0.42 ‰), and the calculation of the Norrland average. All errors were propagated and new $\delta^{18}O_{wr}^*$, $\delta^{18}O_{wr(SGI)^*}$, $\delta^{18}O_{wr(Norrland)^*}$ and $\delta^{13}C_{s(d)^*}$ chronologies simulated (1,000 representations each). The simulated chronologies were regressed against NAO and SGI chronologies (results of sensitivity tests for regressions of $\delta^{18}O_{wr(SGI)^*}$ and $\delta^{18}O_{wr(Norrland)^*}$ values vs. wNAO indices are given in Table 5).

According to the complex simulation experiments, the observed links between reconstructed stream water oxygen isotope values and the wNAO largely remained statistically robust disregarding of which T_w^* error was assumed (Table 5). This outcome is not particularly surprising given that even the annual $\delta^{18}O_s$ chronologies of the studies specimens were strongly coherent and values fluctuated at time-scales similar to that of the wNAO (Fig. 4). Apparently, decadal-scale atmospheric circulation patterns exert indeed a strong control over the isotope signature of river water in the study area. However, none of the correlations between shell isotope data and sNAO attained significance level. The importance of summer rainfall seems much less important for the isotope value of river water than winter snow. As before, the relationship between stable carbon isotope data of the shells and climate indices as well as shell growth rate remained weak and were statistically not significant. Inevitably, the propagated errors, specifically the uncertainty associated with the reconstruction of the stream water temperature from air temperature resulted in a notable drop of explained variability and statistical probability (Tab. 5). The use of instrumental water temperatures could greatly improve the reconstruction of $\delta^{18}O_{wr}^*$ values, because the measurement error would be on the order of 0.1 °C instead of 2.07 °C or 0.90 °C. Future calibration studies should therefore be conducted in monitored rivers.

5 Summary and conclusions

Stable oxygen isotope values in shells of freshwater pearl mussels, *M. margaritifera*, from rivers in northern Sweden mirror stream water stable oxygen isotope values. Despite a well-known damping of the precipitation signal in stream water isotope records, these mollusks archive local precipitation and synoptic atmospheric circulation signals, specifically the NAO during winter. Stable carbon isotope data of the shells are more challenging to interpret, but they seem to record local environmental conditions such as changes in DIC and/or food composition. Future studies should be conducted in rivers in which temperature, DIC and food levels are closely monitored to further improve the reconstruction of stream water $\delta^{18}O$ values from $\delta^{18}O_s$ data and better understand the meaning of $\delta^{13}C_s$ fluctuations.

610 The bivalve shell oxygen isotope record presented here extends back to AD 1819, but there is potential for developing longer
isotope chronologies through the use of fossil shells of *M. margaritifera* collected in the field or taken from museum
collections. With suitable material and by applying the crossdating technique, the existing chronology could probably be
extended by several centuries back in time. Stream water isotope records may shed new light on pressing questions related to
climate change impacts on river systems, mechanistic understanding of water flow and quality controlling processes,
615 calibration and validation of flow and transport models, climate and earth system modeling, time variant catchment travel time
modeling, etc. Longer and coherent chronologies are essential to reliably identify multidecadal and century-scale climate
dynamics. Even individual radiocarbon dated fossil shells that do not overlap with the existing master chronology can provide
valuable paleoclimate information, because each specimen of *M. margaritifera* can open a seasonally to annually resolved,
multi-year window into the history of rivers.

620 **Acknowledgements.** We thank Denis Scholz and Erika Pietroniro for constructive discussions. **We are grateful for comments
and suggestions provided by two anonymous reviewers that greatly improved the quality of this article.**

Data and code availability. All data and code used in this study are available from the authors on request. **Additional
supplementary files are available at https://www.paleontology.uni-mainz.de/datasets/HESS_2019_337_supplements.zip.**

625 **Sample availability.** Bivalve shell samples are archived and stored in the paleontological collection of the University of
Mainz.

Author contributions. BRS designed the study, performed the analyses and wrote the manuscript; AEM and SMB conducted
630 the field work and collected samples; SMB sampled the shells and temporally aligned the isotope data; JF isotopically analyzed
the shell powder; LP conducted MTT calculations. All authors jointly contributed to the discussion and interpretation of the
data.

Competing interests. The authors declare that they have no conflict of interest.

635 **Financial support.** This study has been made possible through a research grant by the Deutsche Forschungsgemeinschaft
DFG to BRS (SCHO793/1).

Overview of abbreviations used in the manuscript.

640 **Studied rivers:**

GJ – Görjeån

GTB – Grundträsktjärnbäcken

645 Sclerochronology:

iOSL – inner portion of the outer shell layer

oOSL – outer portion of the outer shell layer

SGI values – standardized growth indices

650 Climate indices and environmental data sets:

EA – East Atlantic Oscillation (superscript plus and minus denotes if EA is in its positive or negative state)

GNIP – Global Network of Isotopes in Precipitation

GNIR – Global Network of Isotopes in Rivers

NAO – North Atlantic Oscillation (superscript plus and minus denotes if NAO is in its positive or negative state)

655 sNAO – North Atlantic Oscillation during summer (June – September)

wNAO – North Atlantic Oscillation during winter (December – March)

wNAO(EQ) – winters during which the NAO and EA have the same sign

wNAO(OP) – winters during which the NAO and EA have opposite signs

660 Stable carbon isotopes:

$\delta^{13}\text{C}_s$ – stable carbon isotope value of the shell carbonate

$\delta^{13}\text{C}_s^*$ – weighted (considering variations in seasonal shell growth rate) $\delta^{13}\text{C}_s$ value; annual $\delta^{13}\text{C}_s^*$ = growing season mean value

$\delta^{13}\text{C}_{s(d)}^*$ – detrended and standardized weighted annual (= growing season) $\delta^{13}\text{C}_s$ mean value

665

Stable oxygen isotopes:

$\delta^{18}\text{O}_p$ – stable oxygen isotope value of precipitation

$\delta^{18}\text{O}_s$ – stable oxygen isotope value of the shell carbonate

$\delta^{18}\text{O}_s^*$ – weighted (considering variations in seasonal shell growth rate) $\delta^{18}\text{O}_s$ value; annual $\delta^{18}\text{O}_s^*$ = growing season mean

670 value

$\delta^{18}\text{O}_w$ – stable oxygen isotope value of the water in which the bivalve lived

$\delta^{18}\text{O}_{wr}^*$ – stable oxygen isotope value of the water reconstructed from $\delta^{18}\text{O}_s^*$ and T_w

$\delta^{18}\text{O}_{wr(\text{Norrländ})}^*$ – $\delta^{18}\text{O}_{wr(\text{SGI})}^*$ average of all studied specimens in Norrbottens län

$\delta^{18}\text{O}_{wr(\text{SGI})}^*$ – stable oxygen isotope value of the water reconstructed from $\delta^{18}\text{O}_s^*$ and T_w^*

675

Temperature:

T_a – instrumental air temperature

T_w – river water temperature reconstructed from T_a

T_w^* – weighted (considering variations in seasonal shell growth rate) river water temperature reconstructed from SGI and T_w ;

680 annual T_w^* = growing season mean value

References

Andersson, S., Rosqvist, G., Leng, M. J., Wastegard, S., and Blaauw, M.: Late Holocene climate change in central Sweden inferred from lacustrine stable isotope data, *J. Quat. Sci.*, 25, 1305–1316, <https://doi.org/10.1002/jqs.1415>, 2010.

685

Araguás-Araguás, L., Froehlich, K., and Rozanski, K.: Deuterium and oxygen-18 isotope composition of precipitation and atmospheric moisture, *Hydrol. Process.*, 14, 1341–1355, [https://doi.org/10.1002/1099-1085\(20000615\)14:8<1341::AID-HYP983>3.0.CO;2-Z](https://doi.org/10.1002/1099-1085(20000615)14:8<1341::AID-HYP983>3.0.CO;2-Z), 2000.

690

Baillie, M. G. L., and Pilcher, J. R.: A simple crossdating program for tree-ring research, *Tree-ring Bull.*, 33, 7–14, 1973.

Baldini, L. M., McDermott, F., Foley, A. M., and Baldini, J. U. L.: Spatial variability in the European winter precipitation $\delta^{18}\text{O}$ -NAO relationship: Implications for reconstructing NAO-mode climate variability in the Holocene, *Geophys. Res. Lett.*, 35, L04709, 6 p., <https://doi.org/10.1029/2007GL032027>, 2008.

695

Beirne, E. C., Wanamaker Jr., A. D., and Feindel, S. C.: Experimental validation of environmental controls on the $\delta^{13}\text{C}$ of *Arctica islandica* (ocean quahog) shell carbonate, *Geochim. Cosmochim. Acta*, 84, 395–409, <https://doi.org/10.1016/j.gca.2012.01.021>, 2012.

700

Black, B. A., Dunham, J. B., Blundon, B. W., Raggon, M. F., and Zima, D.: Spatial variability in growth-increment chronologies of long-lived freshwater mussels: Implications for climate impacts and reconstructions, *Écosci.*, 17, 240–250, <https://doi.org/10.2980/17-3-3353>, 2010.

705

Bowen, G. J., and Wilkinson, B.: Spatial distribution of $\delta^{18}\text{O}$ in meteoric precipitation, *Geology*, 30, 315–318, [https://doi.org/10.1130/0091-7613\(2002\)030%3C0315:SDOOIM%3E2.0.CO;2](https://doi.org/10.1130/0091-7613(2002)030%3C0315:SDOOIM%3E2.0.CO;2), 2002.

Bowen G. J., Wassenaar L. I., and Hobson K. A.: Global application of stable hydrogen and oxygen isotopes to wildlife forensics, *Oecologia*, 143, 337–348, doi:10.1007/s00442-004-1813-y, 2005.

- 710 Burgman, J. O., Eriksson, E., and Westman, F.: Oxygen-18 variation in river waters in Sweden. Avd. Hydrol. Unpublished Report, Uppsala Univ., Naturgeogr. Inst., 42 p., 1981.
- Butler, P. G., Wanamaker Jr., A. D., Scourse, J. D., Richardson, C. A., and Reynolds, D. J.: Long-term stability of $\delta^{13}\text{C}$ with respect to biological age in the aragonite shell of mature specimens of the bivalve mollusk *Arctica islandica*, *Palaeogeogr. Palaeoclimatol. Palaeoecol.*, 302, 21–30, <https://doi.org/10.1016/j.palaeo.2010.03.038>, 2011.
- 715 Butler, P. G., Wanamaker Jr., A. D., Scourse, J. D., Richardson, C. A., and Reynolds, D. J.: Variability of marine climate on the North Icelandic Shelf in a 1357-year proxy archive based on growth increments in the bivalve *Arctica islandica*, *Palaeogeogr. Palaeoclimatol. Palaeoecol.*, 373, 141–151, <https://doi.org/10.1016/j.palaeo.2012.01.016>, 2013.
- 720 Chen, G. and Fang, X.: Accuracy of hourly water temperatures in rivers calculated from air temperatures, *Water* 7, 1068–1087, <https://doi.org/10.3390/w7031068>, 2015.
- Comas-Bru, L., and McDermott, F.: Impacts of the EA and SCA patterns on the European twentieth century NAO winter climate relationship, *Quart. J. R. Meteorol. Soc.*, 140, 354–363, <https://doi.org/10.1002/qj.2158>, 2014.
- 725 Comas-Bru, L., McDermott, F., and Werner, M.: The effect of the East Atlantic pattern on the precipitation $\delta^{18}\text{O}$ -NAO relationship in Europe, *J. Clim. Dyn.*, 47, 2059–2069, <https://doi.org/10.1007/s00382-015-2950-1>, 2016.
- 730 Darling, W. G.: Hydrological factors in the interpretation of stable isotopic proxy data present and past: a European perspective, *Quat. Sci. Rev.*, 23, 743–770, <https://doi.org/10.1016/j.quascirev.2003.06.016>, 2004.
- Darling, W. G., and Bowes, M. J.: A long-term study of stable isotopes as tracers of processes governing water flow and quality in a lowland river basin, *Hydrol. Process.*, 30, 2178–2195, <https://doi.org/10.1016/j.quascirev.2003.06.016>, 2016.
- 735 Dettman, D. L., Reische, A. K., and Lohmann, K. C.: Controls on the stable isotope composition of seasonal growth bands in aragonitic fresh-water bivalves (unionidae), *Geochim. Cosmochim. Acta*, 63, 1049–1057, [https://doi.org/10.1016/S0016-7037\(99\)00020-4](https://doi.org/10.1016/S0016-7037(99)00020-4), 1999.
- 740 DeWalle, D. R., Edwards, P. J., Swistock, B. R., Aravena, R., and Drimmie, R. J.: Seasonal isotope hydrology of three Appalachian forest catchments. *Hydrol. Process.*, 11, 1895–1906, [https://doi.org/10.1002/\(SICI\)1099-1085\(199712\)11:15<1895::AID-HYP538>3.0.CO;2-%23](https://doi.org/10.1002/(SICI)1099-1085(199712)11:15<1895::AID-HYP538>3.0.CO;2-%23), 1997.

- 745 Dunca, E., and Mutvei, H.: Comparison of microgrowth pattern in *Margaritifera margaritifera* shells from south and north Sweden, *Am. Malacol. Bull.*, 16, 239–250, 2001.
- Dunca E., Schöne, B.R., and Mutvei, H.: Freshwater bivalves tell of past climates: But how clearly do shells from polluted rivers speak? *Palaeogeogr. Palaeoclimatol. Palaeoecol.*, 228, 43–57, <https://doi.org/10.1016/j.palaeo.2005.03.050>, 2005.
- 750 Epstein S., Buchsbaum R., Lowenstam H. A., and Urey H. C.: Revised carbonate-water isotopic temperature scale, *Geol. Soc. Am. Bull.*, 64, 1315–1326, [https://doi.org/10.1130/0016-7606\(1953\)64\[1315:RCITS\]2.0.CO;2](https://doi.org/10.1130/0016-7606(1953)64[1315:RCITS]2.0.CO;2), 1953.
- Frank, D., Esper, J., and Cook, E. R.: Adjustment for proxy number and coherence in a large-scale temperature reconstruction, *Geophys. Res. Lett.*, 34, 5 p., <https://doi.org/10.1029/2007GL030571>, 2007.
- 755 Füllenbach, C. S., Schöne, B. R., and Mertz-Kraus, R.: Strontium/lithium ratio in shells of *Cerastoderma edule* (Bivalvia) - A new potential temperature proxy for brackish environments, *Chem. Geol.*, 417, 341–355, <http://dx.doi.org/10.1016/j.chemgeo.2015.10.030>, 2015.
- 760 Geeza, T. J., Gillikin, D. P., Goodwin, D. H., Evans, S. D., Watters, T., and Warner, N. R.: Controls on magnesium, manganese, strontium, and barium concentrations recorded in freshwater mussel shells from Ohio. *Chem. Geol.*, <https://doi.org/10.1016/j.chemgeo.2018.01.001>, in press a.
- 765 Geeza, T. J., Gillikin, D. P., McDevitt, B., Van Sice, K., and Warner, N. R.: Accumulation of Marcellus Formation oil and gas wastewater metals in freshwater mussel shells. *Environ. Sci. Technol.*, <http://dx.doi.org/10.1021/acs.est.8b02727>, in press b.
- Geist, J., Auerswald, K., and Boom, A.: Stable carbon isotopes in freshwater mussel shells: Environmental record or marker for metabolic activity? *Geochim. Cosmochim. Acta* 69, 3545–3554, <https://doi.org/10.1016/j.gca.2005.03.010>.
- 770 Geris, J., Tetzlaff, D., McDonnell, J. J., and Soulsby, C., Spatial and temporal patterns of soil water storage and vegetation water use in humid northern catchments. *Sci. Total Environ.* 595, 486–493, <https://doi.org/10.1016/j.scitotenv.2017.03.275>, 2017.
- 775 Gladyshev, M. I.: Stable isotope analyses in aquatic ecology (a review), *Journal of Siberian Federal University - Biology* 4, 381–402, <https://doi.org/10.17516/1997-1389-0220>, 2009.

Gonfiantini, R., Stichler, W., and Rozanski, K.: Standards and intercomparison materials distributed by the International Atomic Energy Agency for stable isotope measurements (IAEA-TECDOC-825), International Atomic Energy Agency (IAEA), Vienna, Austria, 13–29, https://www-pub.iaea.org/MTCD/publications/PDF/te_825_prn.pdf, 1995.

780

Grossman, E. L., and Ku, T.-L.: Oxygen and carbon isotope fractionation in biogenic aragonite; temperature effects, *Chem. Geol. Isot. Geosci. Sect.*, 59, 59–74, [https://doi.org/10.1016/0168-9622\(86\)90057-6](https://doi.org/10.1016/0168-9622(86)90057-6), 1986.

785 Halder, J., Terzer, S., Wassenaar, L. I., Araguás-Araguás, L., and Aggarwal, P. K.: The Global Network of Isotopes in Rivers (GNIR): integration of water isotopes in watershed observation and riverine research, *Hydrol. Earth Syst. Sci.*, 19, 3419–3431, <https://doi.org/10.5194/hess-19-3419-2015>, 2015.

790 Hammarlund, D., Barnekow, L., Birks, H. J. B., Buckardt, B., and Edwards, T. W. D.: Holocene changes in atmospheric circulation recorded in the oxygen-isotope stratigraphy of lacustrine carbonates from northern Sweden, *Holocene*, 12, 339–351, <https://doi.org/10.1191/0959683602hl548rp>, 2002.

Helama, S., Schöne, B. R., Black, B.A., and Dunca, E.: Constructing long-term proxy series for aquatic environments with absolute dating control using a sclerochronological approach: introduction and advanced applications, *Mar. Freshw. Res.*, 57, 591–599, <https://doi.org/10.1071/MF05176>, 2006.

795

Hurrell, J. W.: Decadal trends in the North Atlantic Oscillation: regional temperatures and precipitation, *Science*, 269, 676–679, <https://doi.org/10.1126/science.269.5224.676>, 1995.

800 Hurrell, J. W., Kushnir, Y., Ottersen, G., and Visbeck, M.: An overview of the North Atlantic Oscillation, in: *The North Atlantic Oscillation. Climatic Significance and Environmental Impact*, edited by: Hurrell, J.W., Kushnir, Y., Ottersen, G., and Visbeck, M., *Geophysical Monograph*, 134, American Geophysical Union, Washington, DC, U.S.A., 1–35, <https://doi.org/10.1029/134GM01>, 2003.

805 Kaandorp, R. J. G., Vonhof, H. B., Del Busto, C., Wesselingh, F. P., Ganssen, G. M., Marmól, A. E., Romero Pittman, L., and van Hinte, J. E.: Seasonal stable isotope variations of the modern Amazonian freshwater bivalve *Anodontites trapesialis*, *Palaeogeogr. Palaeoclimatol. Palaeoecol.*, 194, 339–354, [https://doi.org/10.1016/S0031-0182\(03\)00332-8](https://doi.org/10.1016/S0031-0182(03)00332-8), 2003.

810 Kelemen, Z., Gillikin, D. P., Graniero, L. E., Havel, H., Darchambeau, F., Borges, A. V., Yambélé, A., Bassirou, A., and Bouillon, S.: Calibration of hydroclimate proxies in freshwater bivalve shells from Central and West Africa. *Geochim. Cosmochim. Acta*, 208, 41–62, <http://dx.doi.org/10.1016/j.gca.2017.03.025>, 2017.

Kelemen, Z., Gillikin, D. P., and Bouillon, S.: Relationship between river water chemistry and shell chemistry of two tropical African freshwater bivalve species. *Chem. Geol.*, <https://doi.org/10.1016/j.chemgeo.2018.04.026>, in press.

815 Killingley, J. S., and Berger, W. H.: Stable isotopes in a mollusk shell: detection of upwelling events, *Science*, 205, 186–188, <https://doi.org/10.1126/science.205.4402.186>, 1979.

Leng, M. L.: Isotopes in Palaeoenvironmental Research, *Developments in Palaeoenvironmental Research* 10, 1–307, <https://doi.org/10.1007/1-4020-2504-1>, 2006.

820

Leng, M. L., and Marshall, J. D.: Palaeoclimate interpretation of stable isotope data from lake sediment archives, *Quat. Sci. Rev.*, 23, 811–831, <https://doi.org/10.1016/j.quascirev.2003.06.012>, 2004.

Mook, W. G., and Vogel, J. C.: Isotopic equilibrium between shells and their environment, *Science*, 159, 874–875, 825 <https://doi.org/10.1126/science.159.3817.874>, 1968.

Moore, G. W. K., and Renfrew, I. A.: Cold European winters: interplay between the NAO and the East Atlantic mode, *Atmos. Sci. Lett.*, 13, 1–8, <https://doi.org/10.1002/asl.356>, 2012.

830 Moore, G. W. K., Renfrew, I. A., and Pickart, R. S.: Multidecadal mobility of the North Atlantic Oscillation, *J. Clim.*, 26, 2453–2466, <https://doi.org/10.1175/JCLI-D-12-00023.1>, 2013.

Moorkens, E., Cordeiro, J., Seddon, M. B., von Proschwitz, T., and Woolnough, D.: *Margaritifera margaritifera* (errata version published in 2018). The IUCN Red List of Threatened Species 2018, e.T12799A128686456, 835 <http://dx.doi.org/10.2305/IUCN.UK.2017-3.RLTS.T12799A508865.en>, 2018.

Morrill, J. C., Bales, R. C., and Conklin, M. H.: Estimating stream temperature from air temperature: Implications for future water quality, *J. Environ. Engineer.*, 131, 139–146, [https://doi.org/10.1061/\(ASCE\)0733-9372\(2005\)131:1\(139\)](https://doi.org/10.1061/(ASCE)0733-9372(2005)131:1(139)), 2005.

840 Mutvei, H., and Westermark, T.: How environmental information can be obtained from naiad shells, *Ecol. Stud.*, 145, 367–379, https://doi.org/10.1007/978-3-642-56869-5_21, 2001.

Nyström, J., Dunca, E., Mutvei, H., and Lindh, U., Environmental history as reflected by freshwater pearl mussels in the river Vramsån, southern Sweden, *Ambio* 25, 350–355, <https://www.jstor.org/stable/4314490>, 1996.

Peralta-Tapia, A., Sponseller, R. A., Tetzlaff, D., Soulsby, C., and Laudon, H., Connecting precipitation inputs and soil flow pathways to stream water in contrasting boreal catchments. *Hydrol. Process.* 29, 3546–3555, <https://doi.org/10.1002/hyp.10300>, 2014.

850 Pfister, L., Martínez-Carreras, N., Hissler, C., Klaus, J., Stewart, M. K., and McDonnell J. J., Bedrock geology controls on catchment storage, mixing and release: a comparative analysis of 16 nested catchments. *Hydrol. Process.* 31, 1828–1845, <http://doi.org/10.1002/hyp.11134>, 2017.

Pfister, L., Thielen, F., Deloule, E., Valle, N., Lentzen, E., Grave, C., Beisel, J.-N., and McDonnell, J. J.: Freshwater pearl
855 mussels as a stream water stable isotope recorder, *Ecohydrol.*, 2018e, e2007, 10 p. <https://doi.org/10.1002/eco.2007>, 2018.

Pfister, L., Grave, C., Beisel, J.-N., McDonnell, J. J.: A global assessment of freshwater mollusk shell oxygen isotope signatures and their relation to precipitation and stream water. *Sci. Rep.*, 9, 4312, 6 p. <https://doi.org/10.1038/s41598-019-40369-0>, 2019.

860

Pulteney, R.: A General View of the Writing of Linnaeus, Payne and White, London, <https://doi.org/10.5962/bhl.title.96885>, 1781.

Rank, D., Wyhlidal, S., Schott, K., Weigand, S., and Oblin, A.: Temporal and spatial distribution of isotopes in river water in
865 Central Europe: 50 years of experience with the Austrian network of isotopes in rivers, *Isotop. Environ. Health Stud.*, 54, 115–136, <https://doi.org/10.1080/10256016.2017.1383906>, 2017.

Reckerth, A., Stichler, W., Schmidt, A., and Stumpp, Ch.: Long-term data set analysis of stable isotopic composition in German rivers, *J. Hydrol.* 552, 718–731, <https://doi.org/10.1016/j.jhydrol.2017.07.022>, 2017.

870

Reynolds, D. J., Hall, I. R., Scourse, J. D., Richardson, C. A., Wanamaker, A. D., and Butler, P. G.: Biological and climate controls on North Atlantic marine carbon dynamics over the last millennium: Insights from an absolutely dated shell-based record from the North Icelandic shelf. *Global Biogeochem. Cycl.*, 31, 1718–1735, <https://doi.org/10.1002/2017GB005708>, 2017.

875

Risi, C., Ogée, J., Bony, S., and Kurz Besson, C.: The water isotopic version of the land-surface model ORCHIDEE: Implementation, evaluation, sensitivity to hydrological parameters, *Hydrol. Current Res.*, 7, 258, doi:10.4172/2157-7587.1000258, 2016.

880 Rodgers, P., Soulsby, C., Waldron, S., and Tetzlaff, D.: Using stable isotope tracers to identify hydrological flow paths, residence times and landscape controls in a mesoscale catchment, *Hydrol. Earth Syst. Sci.*, 9, 139–155, <https://doi.org/10.5194/hessd-2-1-2005>, 2005.

Rosqvist, G., Jonsson, C., Yam, R., Karlen, W., and Shemesh, A.: Diatom oxygen isotopes in pro-glacial lake sediments from northern Sweden: a 5000 year record of atmospheric circulation, *Quat. Sci. Rev.*, 23, 851–859, <https://doi.org/10.1016/j.quascirev.2003.06.009>, 2004.

Rosqvist, G. C., Leng, M. J., and Jonsson, C.: North Atlantic region atmospheric circulation dynamics inferred from a late-Holocene lacustrine carbonate isotope record, northern Swedish Lapland, *Holocene*, 17, 867–873, <https://doi.org/10.1177/0959683607080508>, 2007.

Rosqvist, G. C., Leng, M. J., Goslar, T., Sloane, H. J., Bigler, C., Cunningham L., Dadal, A., Bergman, J., Berntsson, A., Jonsson, C., and Wastegård, S.: Shifts in precipitation during the last millennium in northern Scandinavia from lacustrine isotope records, *Quat. Sci. Rev.*, 66, 22–34, <https://doi.org/10.1016/j.quascirev.2012.10.030>, 2013.

895

Schöne, B. R.: The curse of physiology – challenges and opportunities in the interpretation of geochemical data from mollusk shells. *Geo-Mar. Lett.*, 28, 269–285, <http://dx.doi.org/10.1007/s00367-008-0114-6>, 2008.

Schöne, B. R.: *Arctica islandica* (Bivalvia): A unique paleoenvironmental archive of the northern North Atlantic Ocean, *Global Planet. Change*, 111, 199–225, <https://doi.org/10.1016/j.gloplacha.2013.09.013>, 2013.

900

Schöne, B. R., and Krause, R. A.: Retrospective environmental biomonitoring – Mussel Watch expanded. *Global Planetary Change*, 144, <http://dx.doi.org/10.1016/j.gloplacha.2016.08.002>, 228–251.

905 Schöne, B. R., Dunca, E., Mutvei, H., and Norlund, U.: A 217-year record of summer air temperature reconstructed from freshwater pearl mussels (*M. margaritifera*, Sweden), *Quat. Sci. Rev.*, 23, 1803–1816, <https://doi.org/10.1016/j.quascirev.2004.02.017>, 2004a.

Schöne, B. R., Dunca, E., Mutvei, H., and Norlund, U.: Corrigendum to “A 217-year record of summer air temperature reconstructed from freshwater pearl mussels (*M. margaritifera*, Sweden)” [*Quaternary Science Reviews* 23 (2004) 1803–1816]. *Quat. Sci. Rev.*, 23, 2057, <https://doi.org/10.1016/j.quascirev.2004.07.005>, 2004b.

910

- Schöne, B. R., Dunca, E., Mutvei, H., Baier, S., and Fiebig, J.: Scandinavian climate since the late 18th century reconstructed from shells of bivalve mollusks, *Z. Dt. Ges. Geowiss.*, 156, 501–515, <https://dx.doi.org/10.1127/1860-1804/2005/0156-0501>,
915 2005a.
- Schöne, B. R., Dunca, E., Fiebig, J., and Pfeiffer, M.: Mutvei's solution: an ideal agent for resolving microgrowth structures of biogenic carbonates, *Palaeogeogr. Palaeoclimatol. Palaeoecol.*, 228, 149–166, <https://doi.org/10.1016/j.palaeo.2005.03.054>,
920 2005b.
- Schöne, B. R., Fiebig, J., Pfeiffer, M., Gleß, R., Hickson, J., Johnson, A. L. A., Dreyer, W., and Oschmann, W.: Climate records from a bivalved Methuselah (*Arctica islandica*, Mollusca; Iceland), *Palaeogeogr. Palaeoclimatol. Palaeoecol.*, 228, 130–148, <https://doi.org/10.1016/j.palaeo.2005.03.049>, 2005c.
- 925 Schöne, B. R., Wanamaker Jr., A. D., Fiebig, J., Thébault, J., and Kreutz, K. J.: Annually resolved $\delta^{13}\text{C}_{\text{shell}}$ chronologies of long-lived bivalve mollusks (*Arctica islandica*) reveal oceanic carbon dynamics in the temperate North Atlantic during recent centuries, *Palaeogeogr. Palaeoclimatol. Palaeoecol.*, 302, 31–42, <https://doi.org/10.1016/j.palaeo.2010.02.002>, 2011.
- Teranes, J. L., and McKenzie, J. A.: Lacustrine oxygen isotope record of 20th-century climate change in central Europe:
930 evaluation of climatic controls on oxygen isotopes in precipitation, *J. Paleolimnol.*, 26, 131–146, <https://doi.org/10.1023/A:1011175701502>, 2001.
- Tetzlaff, D., Buttle, J., Carey, S. K., McGuire, K., Laudon, H., and Soulsby, C., *Tracer-based assessment of flow paths, storage and runoff generation in northern catchments: a review. Hydrol. Process.* 29, 3475–3490, <https://doi.org/10.1002/hyp.10412>,
935 2014.
- Trouet, V., Esper, J., Graham, N. E., Baker, A., Scourse, J. D., and Frank, D. C.: Persistent positive North Atlantic Oscillation mode dominated the Medieval Climate Anomaly, *Science*, 324, 78–80, <https://doi.org/10.1126/science.1166349>, 2009.
- 940 Versteegh, E. A. A., Troelstra, S. R., Vonhof, H. B., and Kroon, D.: Oxygen isotope composition of bivalve seasonal growth increments and ambient water in the rivers Rhine and Meuse, *Palaios*, 24, 497–504, <https://doi.org/10.2110/palo.2008.p08-071r>, 2009.
- von Hessling, T.: *Die Perlmuscheln und ihre Perlen naturwissenschaftlich und geschichtlich; mit Berücksichtigung der*
945 *Perlengewässer Bayerns*, Engelmann, Leipzig, <https://doi.org/10.5962/bhl.title.47047>, 1859.

Woollings, T., and Blackburn, M.: The North Atlantic jet stream under climate change and its relation to the NAO and EA patterns, *J. Clim.*, 25, 886–902, <https://doi.org/10.1175/JCLI-D-11-00087.1>, 2012.

950 Ziuganov, V., San Miguel, E., Neves, R.J., Longa, A., Fernández, C., Amaro, R., Beletsky, V., Popkovitch, E., Kaliuzhin, S., and Johnson, T.: Life span variation of the freshwater pearl shell: A model species for testing longevity mechanisms in animals, *Ambio*, 29, 102–105, <https://doi.org/10.1579/0044-7447-29.2.102>, 2000.

955 **Table 1: Shells of *Margaritifera margaritifera* from three rivers in northern Sweden used in present study for isotope and growth pattern analysis. Last set of digits denotes whether bivalves were collected alive (a) or dead (d), specimen number and which valve was used (R = right, L = left). § = minimum estimate of lifespan. i = last sampled year incomplete. A = Add ten years to these values to obtain approximate ontogenetic years.**

| River name | Specimen ID | Coordinates and elevation | Age [§] (yr) | Life during year AD | # isotope samples ⁹⁶⁰ (coverage of years ^A) |
|-----------------------|-------------|--|-----------------------|-------------------------|--|
| Nuortejaurbäcken | ED-NJB-A6R | 65°42'13.22"N, 19°02'31.01"E, ca. 400 m a.s.l. | 22 | 1972-1993 | 175 (1-22 ⁱ) |
| | ED-NJB-A4R | | 27 | 1967-1993 | 154 (2-27 ⁱ) |
| | ED-NJB-A2R | 48 | 1946-1993 | 78 (2-48 ⁱ) | |
| | ED-NJB-A3R | 24 | 1970-1993 | 50 (1-24 ⁱ) | |
| Grundträsktjärnbäcken | ED-GTB-A1R | 66°02'59.98"N, 22°05'02.25"E, ca. 90 m a.s.l. | 51 | 1943-1993 | 368 (2-49) |
| | ED-GTB-A2R | 51 | 1943-1993 | 315 (3-49) | |
| Görjeån | ED-GJ-A1L | 66°20'30.77"N, 20°30'15.02"E, ca. 200 m a.s.l. | 80 | 1916-1997 | 56 (25-80 ⁱ) |
| | ED-GJ-A2R | | 82 | 1918-1997 | 76 (1-78) |
| | ED-GJ-A3L | 123 | 1875-1997 | 110 (29-122) | |
| | ED-GJ-D5L | 181 | 1819-1999 | 169 (1-180) | |

Table 2: Weights for isotope samples of *Margaritifera margaritifera*. Due to variations of seasonal shell growth rate, each isotope sample taken at equidistant intervals represents different amounts of time. To calculate seasonal or annual averages from individual isotope data, the relative proportion of time of the growing season contained in each sample must be considered when weighted averages are computed. The duration of the growing season comprises 143 days and covers the time interval of 23 May to 12 October.

| Number of isotope samples per annual increment | Weight of n th isotope sample (%) within an annual increment; direction of growth to the right (increasing numbers) | | | | | | | | | | | | | | | |
|--|--|-----------------|-----------------|-----------------|-----------------|-----------------|-----------------|-----------------|-----------------|------------------|------------------|------------------|------------------|------------------|------------------|------------------|
| | 1 st | 2 nd | 3 rd | 4 th | 5 th | 6 th | 7 th | 8 th | 9 th | 10 th | 11 th | 12 th | 13 th | 14 th | 15 th | 16 th |
| 1 | 100.00 | | | | | | | | | | | | | | | |
| 2 | 42.66 | 57.34 | | | | | | | | | | | | | | |
| 3 | 27.97 | 31.47 | 40.56 | | | | | | | | | | | | | |
| 4 | 22.38 | 20.28 | 24.47 | 32.87 | | | | | | | | | | | | |
| 5 | 18.18 | 15.39 | 18.88 | 20.27 | 27.28 | | | | | | | | | | | |
| 6 | 15.38 | 12.59 | 14.69 | 16.78 | 18.18 | 22.38 | | | | | | | | | | |
| 7 | 13.29 | 11.88 | 11.19 | 13.29 | 13.99 | 16.08 | 20.28 | | | | | | | | | |
| 8 | 11.59 | 10.79 | 9.09 | 11.19 | 12.58 | 11.89 | 14.69 | 18.18 | | | | | | | | |
| 9 | 10.49 | 9.79 | 7.69 | 9.09 | 10.49 | 11.89 | 10.49 | 13.29 | 16.78 | | | | | | | |
| 10 | 9.79 | 8.39 | 7.69 | 7.70 | 9.09 | 9.78 | 9.80 | 10.49 | 11.89 | 15.38 | | | | | | |
| 11 | 9.09 | 7.69 | 7.70 | 5.59 | 7.69 | 8.39 | 9.79 | 8.40 | 10.49 | 10.48 | 14.69 | | | | | |
| 12 | 8.39 | 6.99 | 7.00 | 5.59 | 6.99 | 7.70 | 8.39 | 8.39 | 7.69 | 10.49 | 9.09 | 13.29 | | | | |
| 13 | 7.69 | 6.30 | 6.99 | 5.59 | 5.60 | 6.29 | 7.69 | 8.40 | 6.99 | 7.69 | 9.79 | 8.39 | 12.59 | | | |
| 14 | 7.69 | 5.60 | 6.29 | 5.59 | 4.90 | 6.29 | 6.30 | 6.99 | 6.99 | 7.70 | 6.28 | 9.10 | 8.39 | 11.89 | | |
| 15 | 6.29 | 6.30 | 5.59 | 5.60 | 4.19 | 5.60 | 5.59 | 6.99 | 6.30 | 6.99 | 6.29 | 7.00 | 8.38 | 7.70 | 11.19 | |
| 16 | 6.29 | 5.60 | 5.59 | 4.90 | 4.19 | 4.90 | 5.59 | 5.60 | 6.29 | 4.90 | 7.69 | 5.59 | 7.70 | 6.99 | 7.69 | 10.49 |

Table 3. Relationship between stable oxygen isotope values in precipitation (amount-corrected $\delta^{18}\text{O}_p$), river water and shells of *Margaritifera margaritifera* from Nuortejaurbäcken during different portions of the year (during four years for which data from shells, water and precipitation were available: 1975, 1976, 1978, 1979; hence $N = 4$). The arithmetic mean $\delta^{18}\text{O}$ values for each portion of the year are also given. The rationale behind the comparison of $\delta^{18}\text{O}$ values of winter precipitation and spring (May-June) river water or shell carbonate is that the isotope signature of meltwater may have left a signal in the water. Statistically significant values (Bonferroni-adjusted $p < 0.05$) are marked in bold. Isotope values next to months represent multi-year averages.

| | Season | $\delta^{18}\text{O}_p$ (Racksund) | | | $\delta^{18}\text{O}_w$ (Skellefteälven) | | |
|--|----------------------|--|--|--|--|--|----------------------|
| | | Dec _{t-1} -Sep _t -11.39 ‰ | June-Sep -10.98 ‰ | Dec _{t-1} -Feb _t -14.18 ‰ | May-Oct -12.46 ‰ | June-Sep -12.39 ‰ | May-June -13.08 ‰ |
| $\delta^{18}\text{O}_w$ Skellefteälven | | R = 1.00 | | | | | |
| | May-Oct -12.46 ‰ | R² = 1.00 p = 0.006 | | | | | |
| | June-Sep -12.39 ‰ | | R = 0.91 R ² = 0.83 p = 0.546 | | | | |
| | May-June -13.08 ‰ | | | R = 0.95 R ² = 0.90 p = 1.000 | | | |
| $\delta^{18}\text{O}_{wr}^*$ ED-NJB-A6R | May-Oct -12.57 ‰ | R = 0.98 R ² = 0.96 p = 0.134 | | | R = 0.99 R ² = 0.97 p = 0.065 | | |
| | June-Sep -12.44 ‰ | | R = 0.99 R² = 0.98 p = 0.045 | | | R = 0.86 R ² = 0.75 p = 0.609 | |
| | May-June -12.44 ‰ | | | R = 0.46 R ² = 0.21 p = 1.000 | | R = 0.64 R ² = 0.41 p = 1.000 | |
| | May-Oct -12.46 ‰ | R = 0.99 R² = 0.98 p = 0.035 | | | R = 0.99 R² = 0.98 p = 0.034 | | |
| $\delta^{18}\text{O}_{wr}^*$ ED-NJB-A4R | June-Sep -12.43 ‰ | | R = 0.99 R ² = 0.98 p = 0.070 | | | R = 0.95 R ² = 0.91 p = 0.217 | |
| | May-June -12.30 ‰ | | | R = 0.76 R ² = 0.58 p = 1.000 | | R = 0.89 R ² = 0.80 p = 0.484 | |

Table 4. Site-specific annual isotope chronologies of *Margaritifera margaritifera* shells linearly regressed against winter and summer NAO (wNAO, sNAO) as well as detrended and standardized shell growth rate (SGI). $\delta^{18}\text{O}_{\text{wr}}^*$ data were computed from shell oxygen isotope data and temperature data computed from instrumental air temperatures, whereas in the case of $\delta^{18}\text{O}_{\text{wr}(\text{SGI})}^*$ data, temperatures were estimated from a growth-temperature model. See text for details. Statistically significant values (**Bonferroni-adjusted** $p < 0.05$) are **marked in bold**.

985

| | $\delta^{18}\text{O}_{\text{wr}}^*$ | | | $\delta^{18}\text{O}_{\text{wr}(\text{SGI})}^*$ | | | $\delta^{13}\text{C}_{\text{s(d)}}^*$ | | |
|-----------------------|--|---|--|--|---|--|---|---|---|
| | NJB | GTB | GJ | NJB | GTB | GJ | NJB | GTB | GJ |
| wNAO (DJFM) | R = 0.67 R² = 0.44 <i>p < 0.0001</i> | R = 0.49 R² = 0.24 <i>p = 0.0011</i> | R = 0.39 R² = 0.16 <i>p < 0.0001</i> | R = 0.70 R² = 0.49 <i>p < 0.0001</i> | R = 0.52 R² = 0.27 <i>p = 0.0005</i> | R = 0.42 R² = 0.18 <i>p < 0.0001</i> | R = -0.18 R ² = 0.03 <i>p = 1.0000</i> | R = -0.31 R ² = 0.10 <i>p = 0.1911</i> | R = -0.10 R ² = 0.01 <i>p = 1.0000</i> |
| wNAO (DJFM) 1947-1991 | R = 0.65 R² = 0.43 <i>p < 0.0001</i> | R = 0.52 R² = 0.27 <i>p = 0.0008</i> | R = 0.60 R² = 0.36 <i>p < 0.0001</i> | R = 0.68 R² = 0.46 <i>p < 0.0001</i> | R = 0.56 R² = 0.31 <i>p = 0.0002</i> | R = 0.65 R² = 0.42 <i>p < 0.0001</i> | R = -0.17 R ² = 0.03 <i>p = 1.0000</i> | R = -0.30 R ² = 0.09 <i>p = 0.2657</i> | R = 0.14 R ² = 0.02 <i>p = 1.0000</i> |
| sNAO (JJA) | R = 0.38 R² = 0.14 <i>p = 0.0293</i> | R = 0.40 R² = 0.16 <i>p = 0.0138</i> | R = 0.20 R ² = 0.04 <i>p = 0.0704</i> | R = 0.29 R ² = 0.09 <i>p = 0.1451</i> | R = 0.34 R ² = 0.11 <i>p = 0.0593</i> | R = 0.02 R ² = 0.00 <i>p = 1.0000</i> | R = 0.12 R ² = 0.01 <i>p = 1.0000</i> | R = 0.01 R ² = 0.00 <i>p = 1.0000</i> | R = 0.04 R ² = 0.00 <i>p = 1.0000</i> |
| sNAO (JJA) 1947-1991 | R = 0.65 R² = 0.43 <i>p < 0.0001</i> | R = 0.40 R² = 0.16 <i>p = 0.0212</i> | R = 0.38 R² = 0.14 <i>p = 0.0333</i> | R = 0.27 R ² = 0.07 <i>p = 0.2172</i> | R = 0.32 R ² = 0.10 <i>p = 0.0985</i> | R = 0.26 R ² = 0.07 <i>p = 0.2581</i> | R = 0.13 R ² = 0.02 <i>p = 1.0000</i> | R = 0.10 R ² = 0.01 <i>p = 1.0000</i> | R = 0.15 R ² = 0.02 <i>p = 1.0000</i> |
| SGI | | | | | | | R = -0.28 R ² = 0.08 <i>p = 0.3812</i> | R = -0.23 R ² = 0.05 <i>p = 0.6938</i> | R = 0.08 R ² = 0.01 <i>p = 1.0000</i> |
| SGI 1947-1991 | | | | | | | R = -0.27 R ² = 0.07 <i>p = 0.4202</i> | R = -0.22 R ² = 0.05 <i>p = 0.9238</i> | R = 0.10 R ² = 0.01 <i>p = 1.0000</i> |

Table 5. Results of sensitivity tests. To test the robustness of statistically significant correlations presented in Tables 3 and 4, uncertainties (one of them the error associated with the reconstruction of stream water temperatures, T_w , from air temperatures, T_a) were propagated and used to randomly generate $\delta^{18}\text{O}_{\text{wr(SGI)*}}$ chronologies, which were subsequently regressed against winter North Atlantic Oscillation (wNAO) indices. Simulations were computed with propagated T_w^* of 2.07 °C and 0.90 °C. See text for details. Statistically significant values (Bonferroni-adjusted $p < 0.05$) are marked in bold.

| | T_w^* uncertainty = ± 2.07 °C | | | | T_w^* uncertainty = ± 0.90 °C | | | |
|------------------------|---|---|---|---|--|--|---|---|
| | Norrland | NJB | GTB | GJ | Norrland | NJB | GTB | GJ |
| wNAO 1950-1998 | R = 0.60 R² = 0.36 <i>p = 0.0007</i> | | | | R = 0.65 R² = 0.42 <i>p < 0.0001</i> | | | |
| wNAO (EQ) 1950-1998 | R = 0.70 R² = 0.51 <i>p = 0.0001</i> | | | | R = 0.76 R² = 0.58 <i>p < 0.0001</i> | | | |
| wNAO (OP) 1950-1998 | R = 0.45 R ² = 0.22 <i>p = 0.0710</i> | | | | R = 0.50 R² = 0.26 <i>p = 0.0256</i> | | | |
| wNAO | | R = 0.62 R² = 0.38 <i>p = 0.0001</i> | R = 0.46 R² = 0.22 <i>p = 0.0075</i> | R = 0.35 R² = 0.13 <i>p = 0.0008</i> | | R = 0.66 R² = 0.43 <i>p < 0.0001</i> | R = 0.49 R² = 0.24 <i>p = 0.0028</i> | R = 0.38 R² = 0.15 <i>p = 0.0001</i> |
| wNAO 1947-1991 | | R = 0.60 R² = 0.36 <i>p = 0.0003</i> | R = 0.48 R² = 0.24 <i>p = 0.0088</i> | R = 0.51 R² = 0.27 <i>p = 0.0067</i> | | R = 0.64 R² = 0.41 <i>p < 0.0001</i> | R = 0.51 R² = 0.27 <i>p = 0.0026</i> | R = 0.57 R² = 0.33 <i>p = 0.0007</i> |

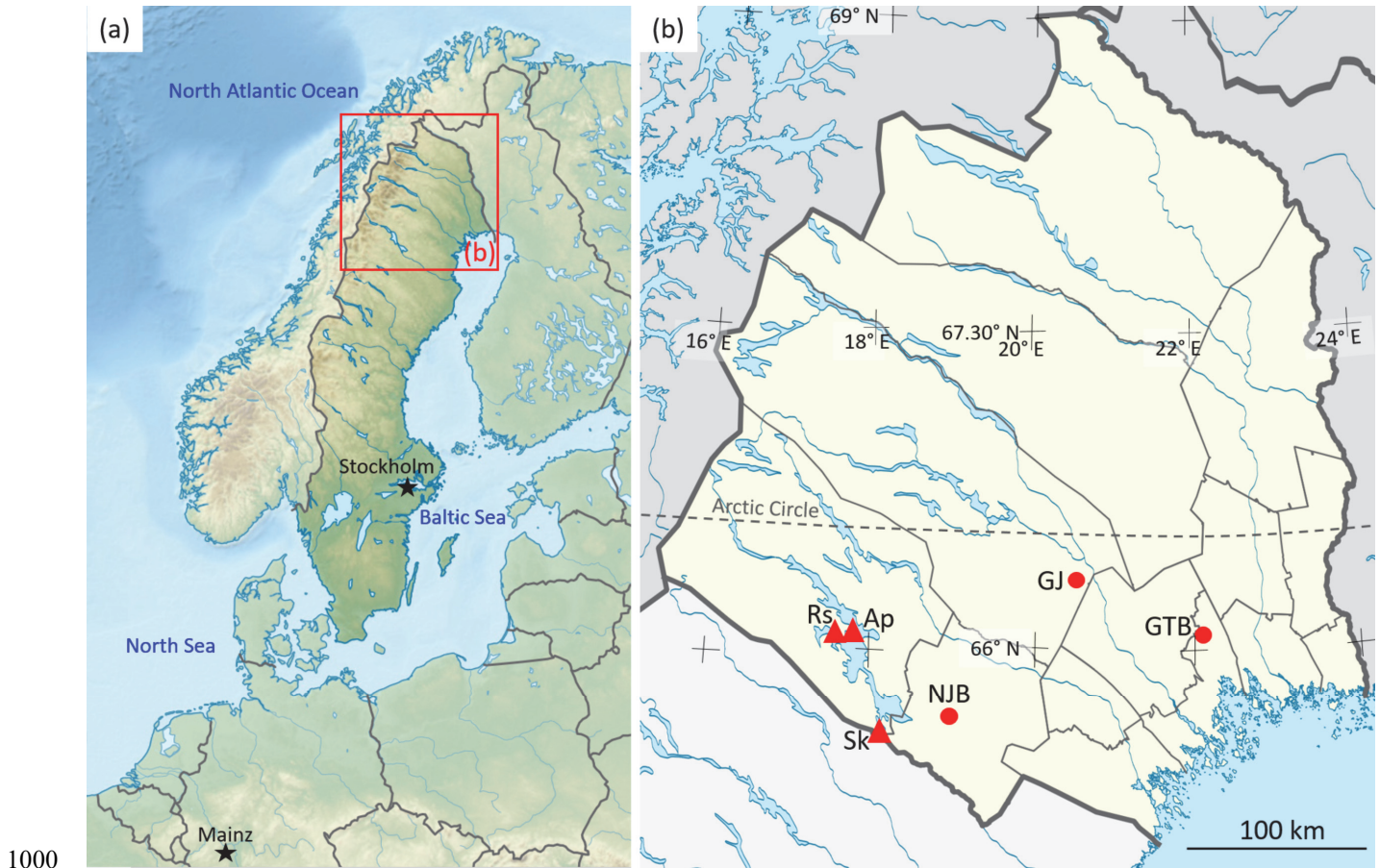
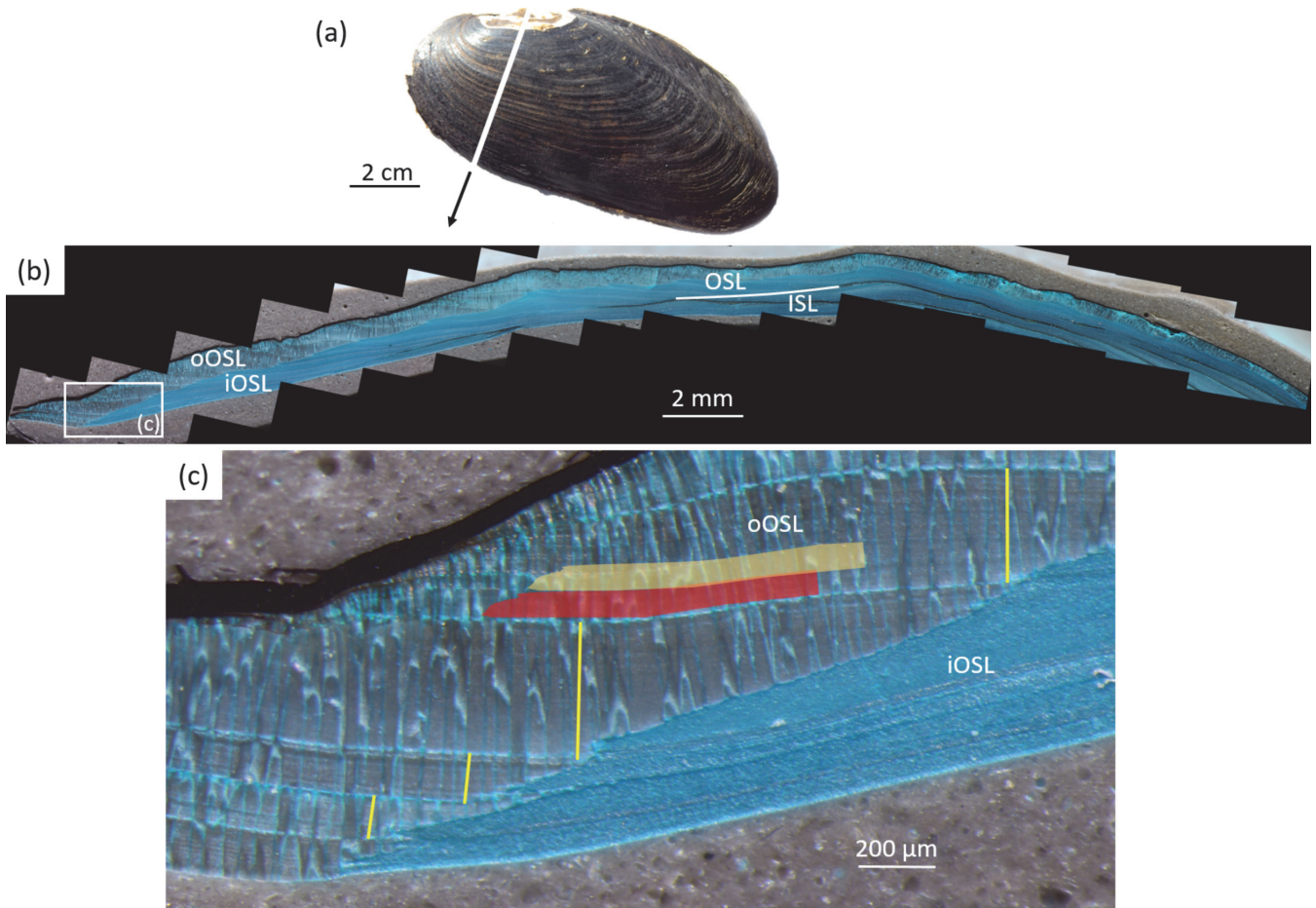
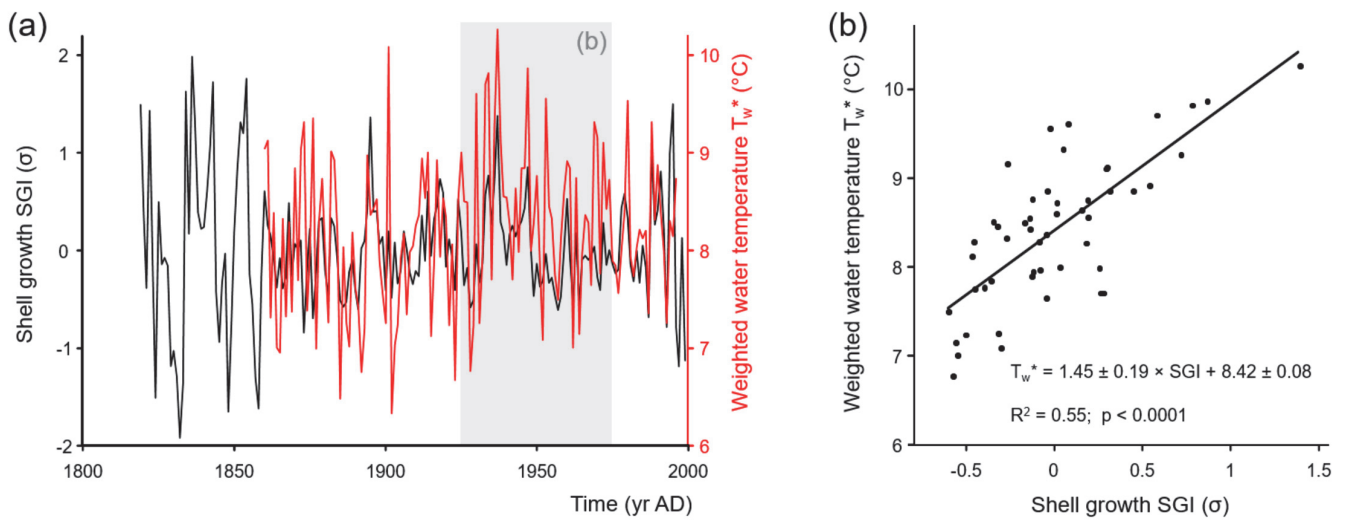


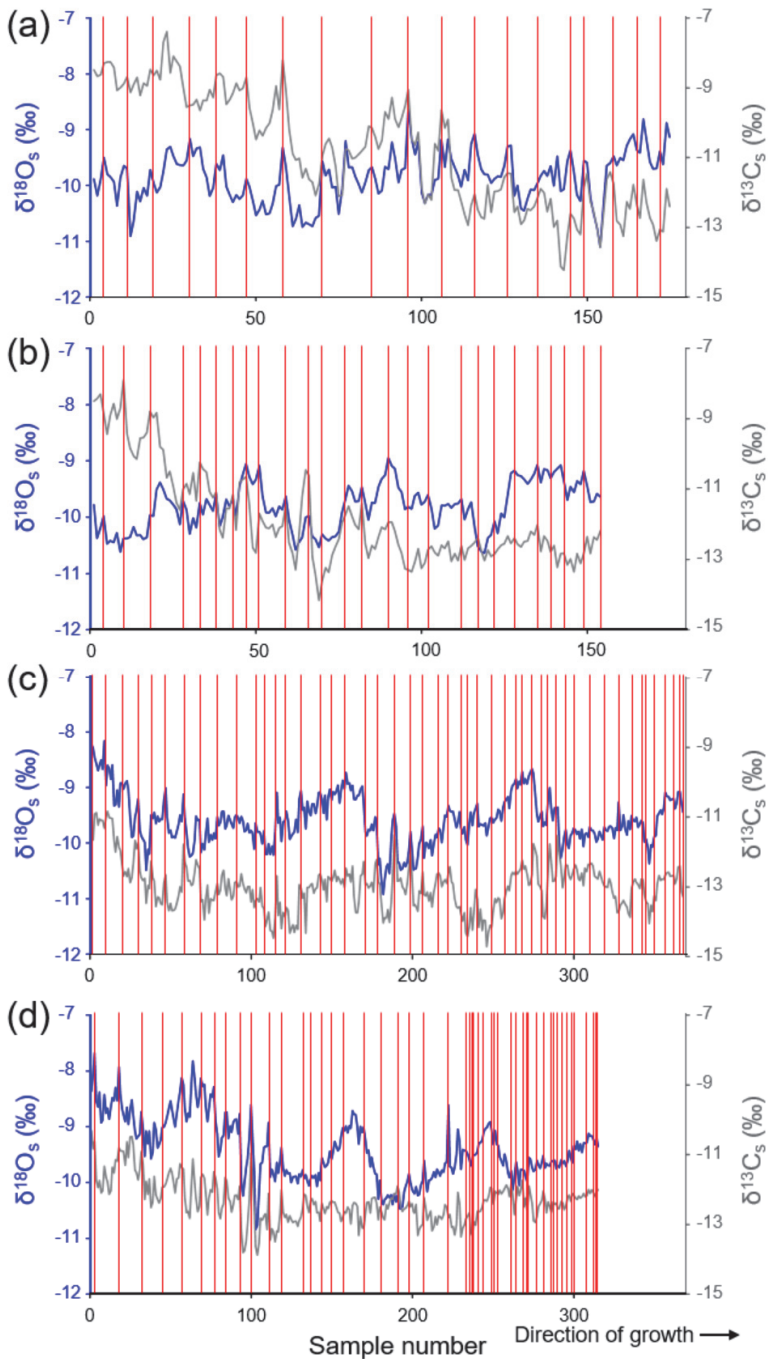
Figure 1: Maps showing sample sites in northern Sweden. (a) Topographic map of Scandinavia. (b) Enlargement of red box in (a) showing Norrbottens län (yellow), a province in northern Sweden, and localities where bivalve shells (*Margaritifera margaritifera*) were collected and isotopes in rivers and precipitation were measured. Shell collection sites (filled circles): NJB = Nuortejaurbäcken, GTB = Grundträsktjärnbäcken, GJ = Görjeån; GNIP sites: Rs = Racksund and Ap = Arjeplog. Basemap of A is by TUBS and used under Creative Commons: [https://commons.wikimedia.org/wiki/File:Sweden_in_Europe_\(relief\).svg](https://commons.wikimedia.org/wiki/File:Sweden_in_Europe_(relief).svg). Basemap of B is by Erik Frohne (redrawn by Silverkey) and used under Creative Commons: https://commons.wikimedia.org/wiki/File:Sweden_Norrbotten_location_map.svg.



1010 Figure 2: Sclerochronological analysis of *Margaritifera margaritifera*. (a) Left valve of a freshwater pearl mussel. Cutting axis is
 1015 indicated with white line. Note erosion in umbonal shell portion. (b) Mutvei-immersed shell slab showing the outer and inner shell
 layers (OSL, ISL) separated by the myostracum (white line). The OSL is further subdivided into an outer and inner portion (oOSL,
 iOSL). ISL and iOSL consist of nacreous ultrastructure, the oOSL of prismatic ultrastructure. (c) Enlargement of B shows annual
 growth patterns. Annual increment width measurements (yellow) were completed as perpendiculars from the intersection of the
 oOSL and iOSL toward the next annual growth line. Semi-transparent red and orange boxes schematically illustrate the
 micromilling sampling technique.



1020 **Figure 3: Age-detrended and standardized annual shell growth rate (SGI values) and water temperature during the main growing season (23 May–12 October). (a) Time-series; (b) Cross-plot. Water temperatures were computed from monthly air temperature data using a published transfer function and considering seasonally varying rates of shell growth. Grey box in (a) denotes 50-year calibration interval from which the temperature model (b) was constructed. As seen from the cross-plot in (b), 55 % of the variations in annual shell growth was highly significantly explained by water temperature. Higher temperature resulted in faster shell growth.**



1025 Figure 4: Shell stable oxygen and carbon isotope chronologies from four specimens of *Margaritifera margaritifera* from
 Nuortejaurbäcken and Grundträsktjärnbäcken that were sampled with very high spatial resolution and from which the majority of
 isotope data were obtained (Table 1). Individual isotope samples represent time intervals of a little as six days to two weeks in
 ontogenetically young shell portions and up to one full growing season in the last few years of life. Red vertical lines stand for annual
 growth lines. (a): ED-NJB-A6R; (b) ED-NJB-A4R; (c) ED-GTB-A1R; (d) ED-GTB-A2R. Since the umbonal shell portions are
 1030 corroded, the exact ontogenetic age at which the chronologies start cannot be provided. Assuming that the first ten years of life are
 missing, sampling in (a) started in year eleven, in (b) and (c) in year twelve and in (d) in year thirteen. See also Table 1.

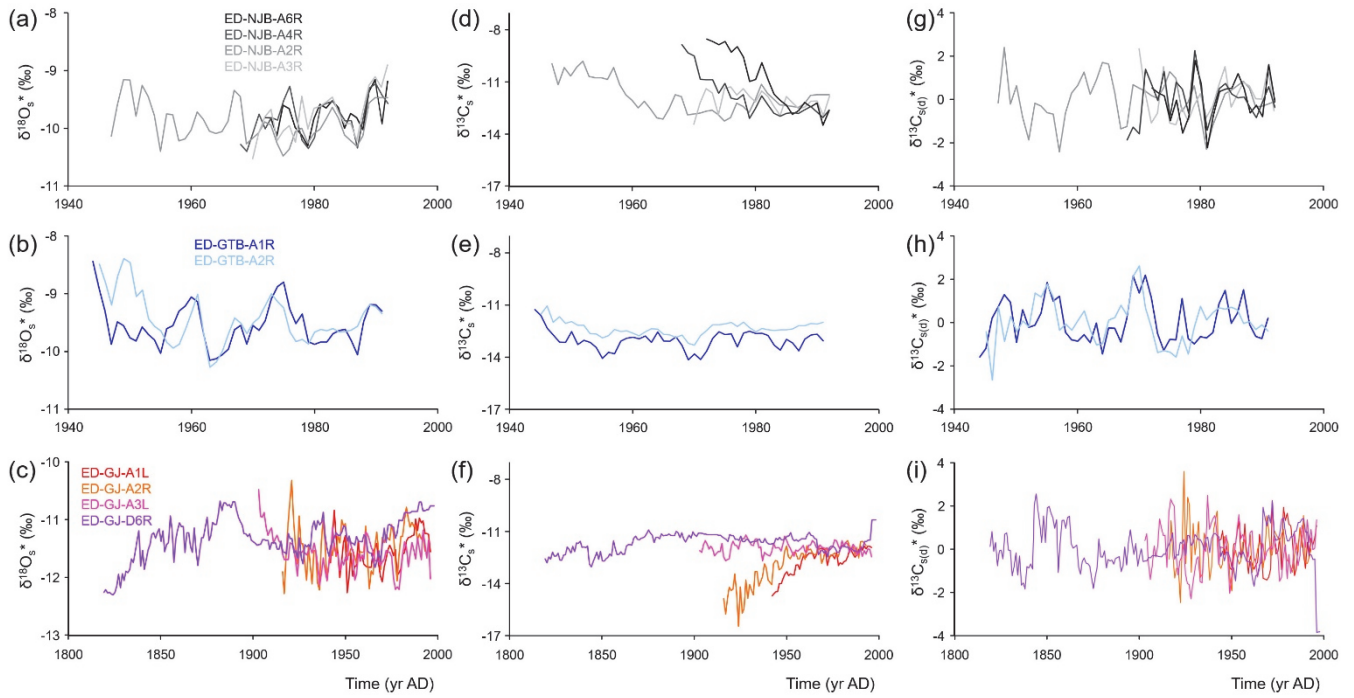
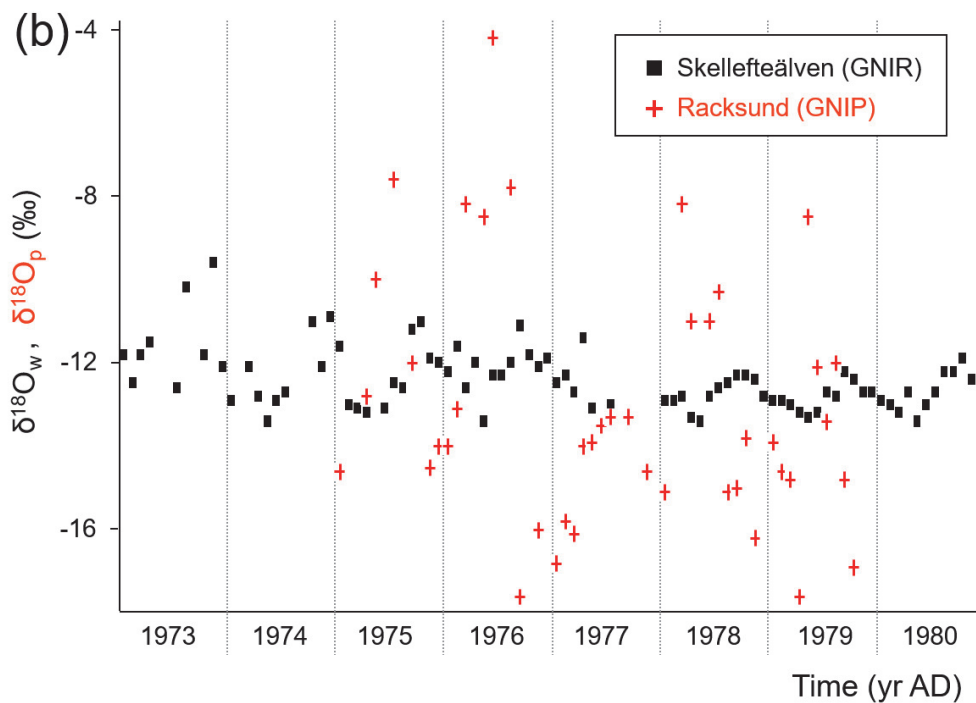
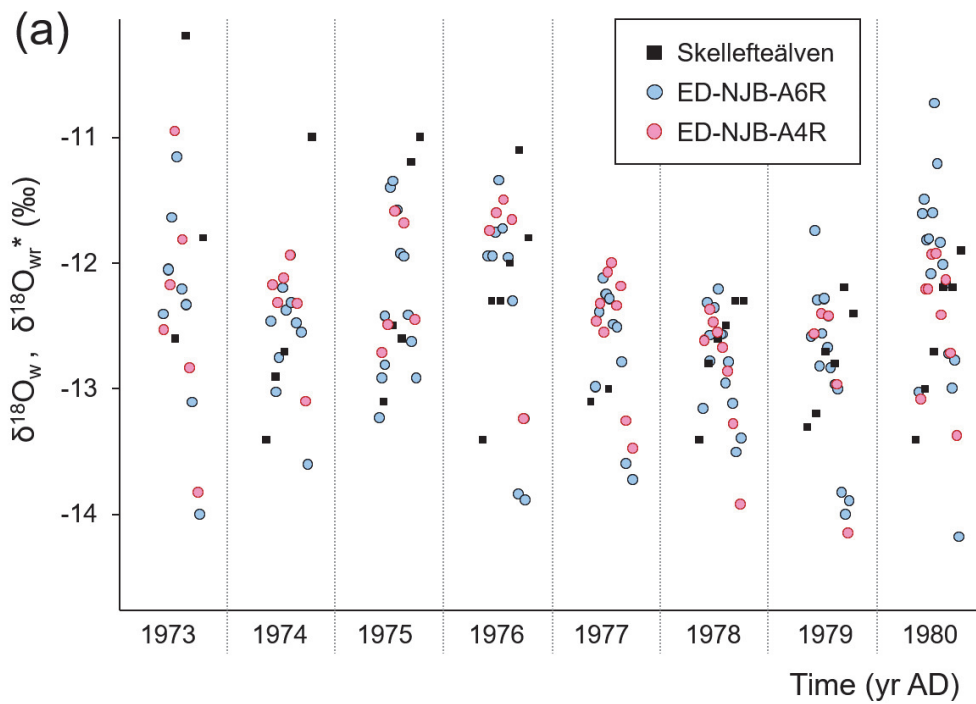


Figure 5: Annual shell stable oxygen and carbon isotope chronologies of the studied specimens of *Margaritifera margaritifera*. Data were computed as weighted averages from intra-annual isotope data, i.e., growth rate-related variations were taken into consideration. First row (a, d, g) = river Nuortejaurbäcken; second row (b, e, h) = Grundträsktjärnbäcken; third row (c, f, i) = Görjeån. (a-c) = oxygen isotopes; (d-f) = carbon isotopes; (g-i) = Detrended and standardized carbon isotopes.

1035



1040 **Figure 6: Intra-annual stable oxygen isotope values (1973–1980).** (a) Monthly isotopes measured in the river Skellefteälven (May–Oct) and weighted seasonal averages ($\delta^{18}\text{O}_{\text{wr}}^*$) of two shells (*Margaritifera margaritifera*) from Nuortejaurbäcken (see Fig. 1). **According to non-parametric t-tests, instrumental and reconstructed oxygen isotope data are statistically indistinguishable. Note, also that inter-annual changes are nearly identical.** (b) Comparison of monthly oxygen isotope data in stream water (river Skellefteälven; May–Oct) and precipitation (Racksund; whole year).

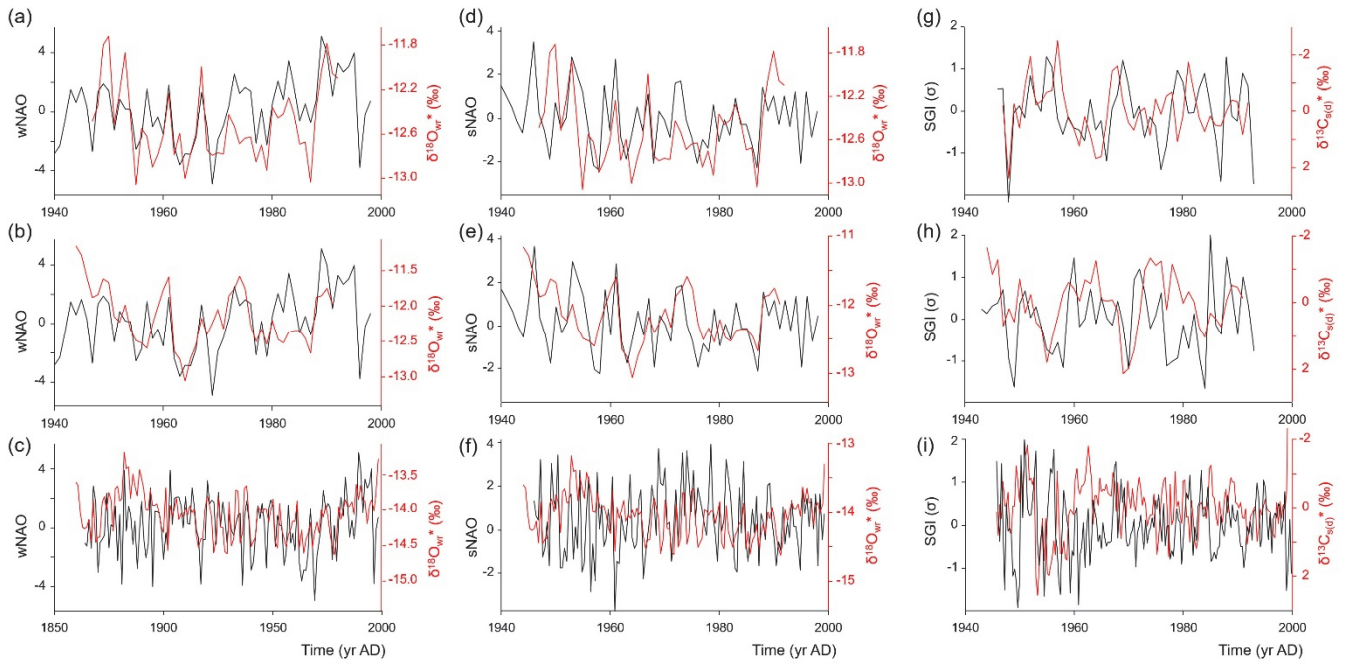
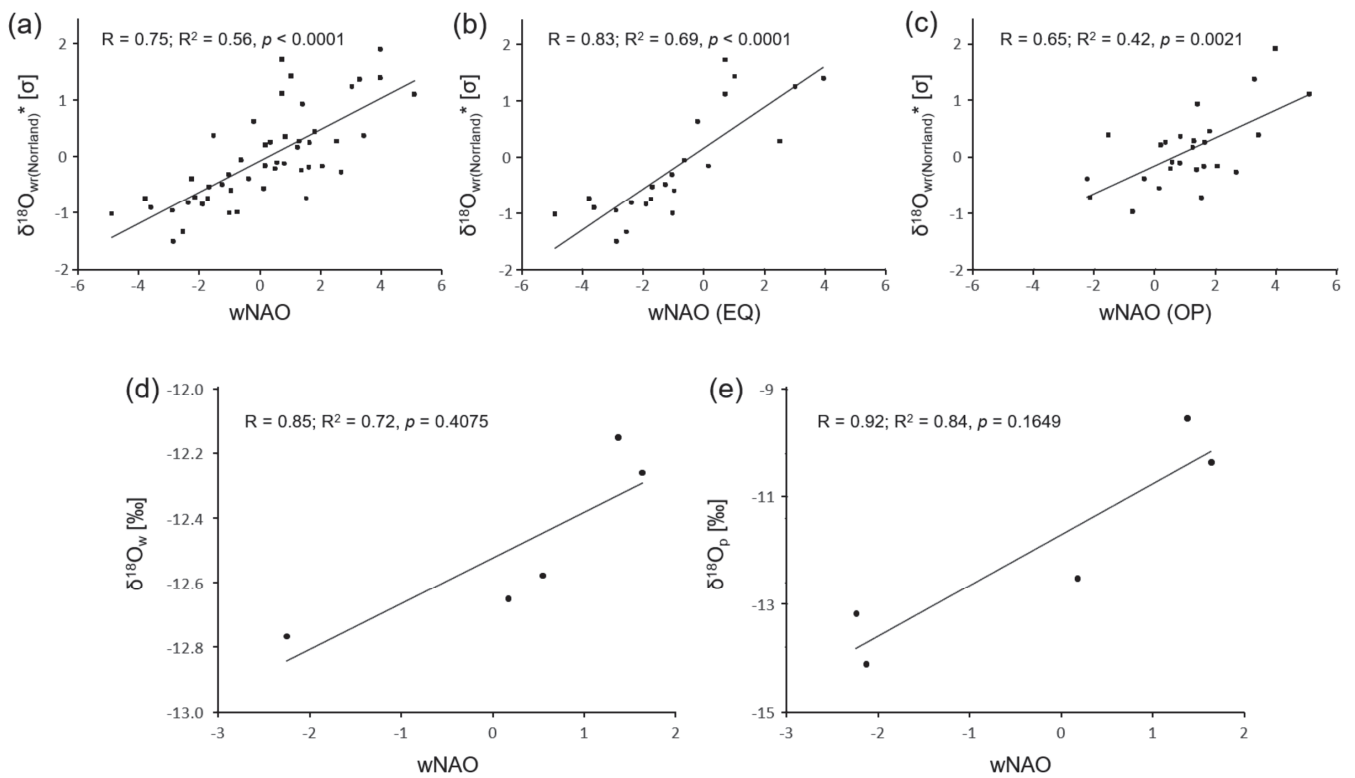


Figure 7: Site-specific weighted annual $\delta^{18}\text{O}_{\text{wt}}^*$ (a-f) and $\delta^{13}\text{C}_{\text{s(d)}}^*$ (g-i) curves of *Margaritifera margaritifera* compared to the winter (a-c) and summer (d-f) North Atlantic Oscillation indices as well as detrended and standardized shell growth rate (g-i). (a, d, g) = Nuortejaurbäcken; (b, e, h) = Grundträsktjärnbäcken; (c, f, i) = Görjeån.



1055 **Figure 8: Oxygen isotope data compared to winter NAO index. (a)** Standardized $\delta^{18}\text{O}_{\text{wr}}^*$ chronology of the study region compared to the winter NAO index between 1950 and 1998. **(b)** Same as in (a), but only when the East Atlantic Pattern (EA) index has the same sign (EQ) as the winter NAO. **(c)** Same as in A, but only for cases when the EA index is in the opposite (OP) mode than the winter NAO. **(d)** $\delta^{18}\text{O}_{\text{w}}$ values of the river Skellefteälven (during the growing season of the mussels: May–Oct) in comparison to the winter NAO index (1975–1980). **(e)** $\delta^{18}\text{O}$ values of precipitation (Dec–Sep) measured at Racksund in comparison to the winter NAO index (1975–1979).