

# ***Interactive comment on “Neighbourhood and stand structure affect stemflow generation in a heterogeneous deciduous temperate forest” by J. C. Metzger et al.***

**J. C. Metzger et al.**

johanna.clara.metzger@uni-jena.de

Received and published: 8 August 2019

We thank Referee #1 very much for the supportive and encouraging comment on our manuscript. We thank also for the attentive review and the suggestions in the Specific Comments, giving us the opportunity to further improve the article. We are currently working on their incorporation:

We made a flow chart of the model selection process, yet, it looked very complicated, which is why we switched to a workflow presentation instead (figure given below). We hope that Referee #1 finds the figure suitable for making the process easily accessible to the reader. If Referee #1 wants to give an opinion and/or improvement ideas on the

[Printer-friendly version](#)

[Discussion paper](#)



workflow, we would be glad to learn them.

We are also reviewing the literature Referee #1 suggested, including the book “The adaptive geometry of trees” by Henry Horn, which is ordered for interlibrary loan but has yet to be delivered.

---

Interactive comment on Hydrol. Earth Syst. Sci. Discuss., <https://doi.org/10.5194/hess-2019-336>, 2019.

## HESD

---

Interactive  
comment

Printer-friendly version

Discussion paper



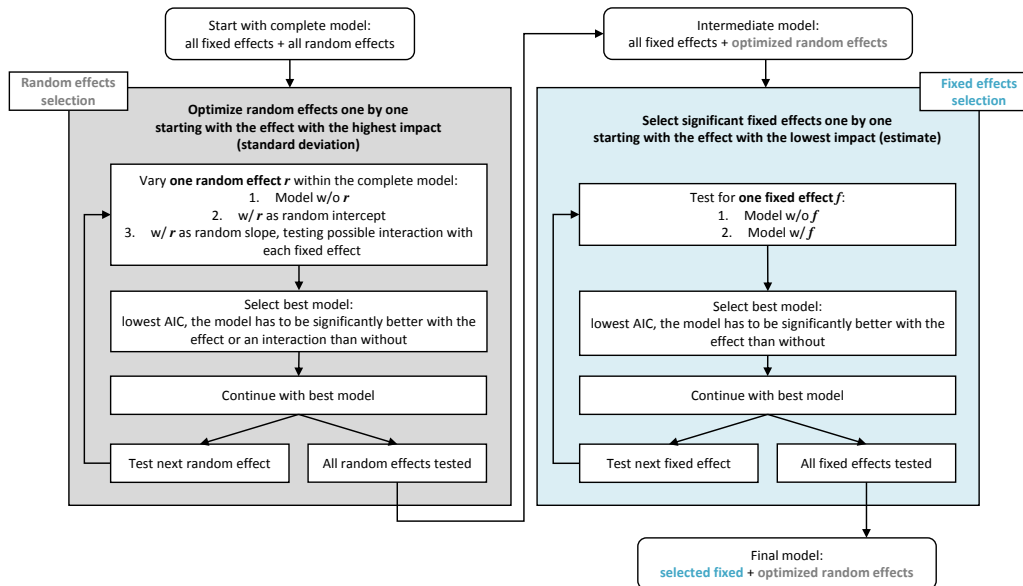


Fig. 1.