

Influence of multidecadal ~~hydroclimate variations~~ variability on ~~hydrological extremes~~ high and low flows: the case of the Seine basin

Rémy Bonnet¹, Julien Boé¹, and Florence Habets^{2,3}

¹CECI, Université de Toulouse, CNRS, Cerfacs, Toulouse, France

²UMR 8538, Laboratoire de Géologie de l'Ecole Normale Supérieure, CNRS, PSL

³UMR 7619 METIS, Sorbonne Université-Faculté des Sciences, CNRS

Correspondence: Bonnet (remy.bonnet@ipsl.fr)

Abstract. The multidecadal hydroclimate variations of the Seine basin since the 1850s are investigated. Given the scarcity of long term ~~observations of hydrological variables~~ hydrological observations, a hydrometeorological reconstruction is developed based on ~~an hydrological modelling and a~~ method that combines the results of a downscaled long-term atmospheric reanalysis and local observations of precipitation and temperature. This method improves ~~the previous attempts and provides a realistic~~ representation of daily flows as well as at longer time steps. This reconstruction provide therefore and monthly river flows. This new hydrometeorological reconstruction, available over more than 150 years while maintaining fine spatial and temporal resolutions, provides an interesting tool to ~~study the multidecadal hydroclimate variability of improve our understanding of the multidecadal hydrological variability in~~ the Seine basin, as well as its possible influence on extreme hydrological events. Based on this reconstruction, it is shown that the influence on high and low flows. This long term reconstitution allows analysing the strong multidecadal variations of the Seine river flows, ~~groundwater and soil moisture, have been influenced by multidecadal variations from the 1850s. Spring precipitations play.~~ The main hydrological mechanisms at the origin of these variations are highlighted. Spring precipitation plays a central role by directly influencing the multidecadal variability ~~of in~~ spring flows, but also soil moisture and groundwater recharge, which then ~~modulate regulate~~ modulate summer river flows. ~~Groundwater controls a large part of the multidecadal variations in river flows, particularly in summer and fall. These hydroclimate variations seem to influence extreme hydrological events. The positive multidecadal phases indeed appear to be more conducive to flooding, with twice as many flood days as in the negative phases while the negative multidecadal phases seems to influenced the droughts intensity. These hydroclimate variations over the~~ These multidecadal hydroclimate variations in the Seine basin are driven by anomalies in large scale atmospheric ~~eirculations~~ circulation, which themselves appear to be influenced by sea surface temperature anomalies over of the North Atlantic ~~Ocean~~ and the North Pacific ~~Ocean~~. The multidecadal hydroclimate variations seem also to influence high flows and low flows over the last 150 years. The analysis of two particularly severe historical droughts, the 1921 and the 1949 events, illustrates how long-term hydroclimate variations may impact short-term drought events, with in particular an important role of groundwater-river exchanges. The multidecadal hydroclimate variations described in this study, probably of internal origin, could play an important role in the evolution of water resources in the Seine basin in the coming decades. The way in which the associated uncertainties are accounted for in future projections remains to be addressed.

1 Introduction

The future impacts of climate change on the hydrological cycle could have major socio-economic consequences (Pachauri et al., 2014). In France, important hydrological changes are expected at the end of the 21st century in response to global warming, with for example a strong reduction of river flows in summer (Dayon et al., 2018). ~~For adaptation purposes, an adequate~~
5 ~~characterization~~ To develop robust adaptation strategies, an accurate assessment of the uncertainties in impact projections is crucial.

Internal climate variability is a major source of uncertainties in future projections, especially over the coming decades (Deser et al., 2012) and regarding ~~hydrological variables~~ precipitation (Hawkins and Sutton, 2009; Hingray and Saïd, 2014; Terray and Boé, 2013). ~~Internal variations at decadal to~~ Efforts to better evaluate the capacity of climate and/or hydrological models to
10 reproduce correctly hydroclimate variability are therefore necessary, to ensure that the uncertainties in impact projections are correctly estimated. As a first and mandatory step, it is necessary to better characterize and understand hydrological variations in the observations.

A large body of work has dealt with river flows variability over Europe. At interannual time scales, the large scale atmospheric circulation over the North-Atlantic plays a major role in hydrological variations over Europe (Kingston et al., 2006b, a; Bouwer et al., 2008).
15 The North Atlantic Oscillation (NAO) (Cassou et al., 2004; Hurrell and Deser, 2009) in particular is known to influence river flows over Europe, mainly in winter (Kingston et al., 2006b, a; Bouwer et al., 2008; Steirou et al., 2017).

Regarding the uncertainties in impact projections due to internal variability, variations at longer time-scales, i.e. at decadal and ~~multidecadal time-scales~~ are especially important in that context, are far more important than interannual variations, as they may modulate the ~~mean~~ hydroclimate state on several decades-, i.e. at climate time scales. They may temporarily reinforce or
20 reduce, or even reverse, especially over the coming decades, the long-term impacts of climate change.

~~The studies cited above that characterized the uncertainties due to internal variability in climate and/or hydrological projections are model-based, and therefore rely, at least implicitly, on the hypothesis that climate models provide a realistic representation of the decadal to multidecadal internal climate variability, which is not granted (e.g. Qasmi et al. 2017). Efforts to better evaluate the capacity of climate models to reproduce correctly the multidecadal hydroclimate variability are therefore necessary.~~
25 ~~As a first and mandatory step, it is necessary to characterize such multidecadal variations in the observations, a work that has been undertaken in recent years.~~

~~Sutton and Dong (2012) showed~~ Sutton and Dong (2012) have shown that over the 20th century, the Atlantic Multidecadal Variability (AMV; Schlesinger and Ramankutty, 1994; Kerr, 2000; Deser et al., 2010; Cassou et al., 2018), the main mode of decadal to multidecadal variability of the North Atlantic, characterized by basin-wide variations of sea surface temperatures
30 (SST), ~~may impact~~ impacts the European climate through changes in large scale ~~circulation.~~ Large multidecadal variations are observed in mean river flows atmospheric circulation. The positive phases of the AMV tend to reduce precipitation in spring over France. Recent studies have highlighted the existence of strong multidecadal variations in river flows over France (Boé and Habets, 2014; Bonnet et al., 2017). These variations, which can reach up to 40% of the average river flows, are especially important in spring and are consistent with the negative anomalies in spring precipitation associated with the AMV

noted by Sutton and Dong (2012). The river flows variations over France however seem to lag the AMV (Boé and Habets, 2014). Consistently, large multidecadal variations have also been observed on a glacier in the French Pyrénées and glaciers over France and are likely associated with the AMV (Boé and Habets, 2014; Marti et al., 2014). These (Marti et al., 2014). These multidecadal hydrological variations seem to strongly modulate secular trends in river flows (Dieppois et al., 2016).

5 Additionally, the AMV could influence extreme hydrological events, with Willems (2013) notes the existence of multi-decadal variations in extreme precipitation and river flows in over Europe, including France (Willems, 2013). Giuntoli et al. (2013) also showed a, which he attributes to change in atmospheric circulation likely associated with the AMV. A recent study of Hodgkins et al. (2017) shows a significant positive influence of the AMV on floods over Europe. A positive relation has also been found between the AMV and heavy precipitation over Europe in all seasons (Casanueva Vicente et al., 2014). The role of warm Atlantic sea surface temperature as provider of moisture has been put forward to explain this link. Based on current literature, a competition may therefore exist between the AMV-driven changes in large scale circulation, that may lead to increases or decreases in precipitation and / or extreme precipitation over Europe, depending on the region and the season, and the increase in atmospheric moisture associated with the warmer SSTs of positive AMV phases. Regarding droughts, Giuntoli et al. (2013) show a statistical link between droughts severity of their severity for some French rivers and the averaged SSTs of the North Atlantic North Atlantic SSTs on the second half of the 20th century, which are influenced by the AMV, as well as external anthropogenic forcings.

It is difficult to go further in the both impacted by internal variability and anthropogenic forcings.

Climate and hydrological observations before the 20th century are rare. As a consequence, the studies discussed previously are very often limited to the 20th century or less, which represents a very short period to characterize decadal and multidecadal variability. The sampling uncertainties are indeed very large when statistics of multidecadal variations are calculated over barely more than 100 years and non-stationarity may exist (Qasmi et al., 2017). Additionally, the climate of the 20th century, especially after 1950, is strongly influenced by external forcings (Bindoff et al., 2013), such as greenhouse gases or anthropogenic aerosols, which may also influence the hydrological cycle over Europe (e.g Boé, 2016). It is therefore difficult to disentangle the respective roles of external forcings and internal variability in the decadal to multidecadal climate variations of the 20th century, and consequently to understand the responsible mechanisms. The shortness of the observational record has been recognized as a major challenge by the specialists of decadal climate variability and predictability, with the need to go further back in the past using innovative new approaches (e.g Cassou et al., 2018).

It is also difficult to gain a deep understanding of multidecadal hydrological variations only based based only on observations. Long-term observations of river flows are rare, with very few stations starting before 1900 for example, and they may suffer from non-climatic anthropogenic influences as well as temporal inhomogeneities. The Importantly, the other variables of the continental hydrological cycle, such as evapotranspiration, soil moisture or snow cover, are virtually not observed on such long time scales, which makes it very difficult to understand the hydrological mechanisms at play.

To move forward, long-term hydrometeorological reconstructions based on hydrological modelling have been developed (e.g Kuentz et al. 2015; Caillouet et al. 2016). Due to the scarcity of meteorological observations in the early 20th century (Minvielle et al., 2015), the meteorological forcing needed for hydrological modelling may be obtained by downscaling,

for example statistical downscaling, of a ~~must first be reconstructed~~. The recent release of long-term ~~atmospheric reanalysis~~ global atmospheric reanalyses (e.g. Caillouet et al. 2016). ~~Twentieth Century Reanalysis (20CR, Compo et al. 2011) from the National Oceanic and Atmospheric Administration (NOAA))~~ opens great opportunities in that context. Statistical downscaling methods, typically used in climate change impact studies, can be applied to derive the high resolution meteorological forcing
5 necessary for hydrological modelling from these global atmospheric reanalyses, as in Caillouet et al. (2016). This approach presents two main limitations. First, the quality of ~~reconstructions~~ the reconstruction depends on the quality of the reanalyses. As the density of assimilated observations (e.g. surface pressure in ~~the Twentieth Century Reanalysis (NOAA 20CR) (Compo et al., 2011) from the National Oceanic and Atmospheric Administration (NOAA)~~), Compo et al. 2011) strongly evolves over time, potential unrealistic trends and/or low frequency variations may exist ~~in the reanalyses~~ (Krueger et al., 2013;
10 Oliver, 2016; Bonnet et al., 2017). Second, this approach ~~is far from optimal, as it does not make use~~ does not take advantage of the long-term local meteorological observations that may exist. ~~Indeed, even if they are scarce, long-term observations of precipitation and temperature exist and provide a very valuable and independent source of information.~~

Given these limitations, following the same general idea as Kuentz et al. (2015), Bonnet et al. (2017) presented a new hybrid method that combines available long-term monthly observations of precipitation and temperature with the results of a statistical
15 downscaling method applied to long-term atmospheric reanalyses. ~~Based on the hydrometeorological reconstructions over France obtained with this method, Bonnet et al. (2017) showed in particular that the multidecadal variations in river flows over France are mainly of climatic origin. They also showed that other variables of the hydrological cycle, such as snow cover and soil moisture, also exhibit variations at multidecadal time scales~~ Compared to standard dynamical or statistical downscaling methods that only use large scale information and do not take advantage of local observations (e.g. temperature and precipitation) a more
20 realistic representation of local hydroclimate variations can be obtained (Bonnet et al., 2017).

In this study, we build upon the methodology developed in Bonnet et al. (2017) and target two main improvements. First, the reconstruction is extended back in the past in order to assess more robustly the multidecadal variations ~~over France~~. Given data availability, the reconstruction of Bonnet et al. (2017) ~~began~~ begins in 1900. Focusing on the Seine basin (Figure 1), one of the main French river basins, we are able to extend ~~back the reconstruction to~~ the reconstruction back to the 1850s. ~~It is important because the shortness of the instrumental record is one of the main difficulties that exist in the study of multidecadal variability. It leads to large sampling uncertainties (e.g. Qasmi et al. 2017) and makes it difficult to characterize robustly the observed multidecadal variations~~ A major interest of this basin is indeed the existence of a few long and varied series of observations, which are useful either to develop or evaluate the reconstruction method. Additionally, we improve the method to better capture daily variability ~~and therefore extreme events such as floods and droughts~~, in order to ~~study their potential~~
30 multidecadal variations have a finer reconstruction of the high and low flows. This allows to study whether high and low flows exhibit multidecadal variations, which may have important socio-economic impacts.

This study has therefore three main objectives: (i) to characterize the hydroclimate variations of the Seine basin since the 1850s, (ii) to study the hydrological and climatic mechanisms that cause these variations and (iii) to investigate the influence of these multidecadal variations on ~~extreme hydrological events~~ low and high flows.

The data, models ~~-, hydrometeorological reconstruction-~~ and methods used are presented in section 2. The development of the hydrometeorological reconstruction is described in section 3. The hydrometeorological reconstruction is then evaluated against observations in section ~~3-4~~. From this reconstruction, the hydroclimate variations of the Seine basin are characterized in section ~~45~~, and the hydrological mechanisms associated with these variations are analysed. ~~The link between these multidecadal~~
5 ~~variations and extreme hydrological events (e.g. floods and droughts) is then explored in section 5.~~ In section 6, the ~~climatic~~ climate mechanisms underlying the hydrological multidecadal variations over the Seine basin are analysed. The link between these multidecadal variations and high and low flows is then explored in section 7. Two historical droughts are then analysed in detail. Finally, the conclusions of this study are summarized in section ~~78~~, and some perspectives are discussed.

2 Data, models and ~~Methods~~methods

10 2.1 Observations

Daily river flows at 136 gauging stations over the Seine basin (Figure 1) from the national HYDRO database (www.hydro.eaufrance.fr) are used for the evaluation of the reconstruction. These river flows series of variable lengths all start before 1970 and may ~~eon-tain~~ contain missing values. Some of the stations are very likely influenced by human activities (e.g. dams or water abstraction). ~~Additionally, these~~ These series are not homogenized, and therefore not necessarily free of measurement artifacts.
15 The interpretation of observed variations at any single station must therefore be carried out carefully. Two long-term series, starting before 1900, are also available and used for the analysis of the link between extreme events and multidecadal hydroclimate variations, one at Paris Austerlitz (on the Seine river (catchment area: 43800km²)) and one at Aisy-sur-Armançon (on the Armançon river (catchment area: 1350km²)) (Figure 1).

A long series of piezometric ~~heights~~ levels is also used to evaluate the hydrological reconstruction (Figure 1). The Beauce
20 groundwater table at Toury, which has been monitored from the 1870s, is one of the few long piezometric measuring stations in France (Nicolas et al., 2013). These observations, which are used in particular to evaluate the hydrometeorological reconstruction developed in this study, are independent from it.

Different meteorological observations are used for the reconstruction. Monthly homogenized series of temperature and precipitation over the Seine basin from the Série Mensuelle de Référence (SMR, monthly series of reference) data set, developed
25 by Météo-France (Moisselin et al., 2002) are used. 17 stations are available for precipitation and 4 for temperature, from 1885 to 2005. A long series of monthly precipitation at Paris (Slonosky, 2002), available since the late 17th century, is also used for the periods not covered by the SMR observations series at Paris, from 1852 to 1885 and from 2005 to 2008.

Daily temperature and precipitation series from the Série Quotidienne de Référence (SQR, daily series of reference) data set between 1885-2003 are also used (Moisselin and Dubuisson, 2006). They are not homogenized. The number of ~~station~~ stations
30 varies greatly in time, from ~~a few 2 to around 60~~ two to around sixty for precipitation and from one to seven for temperature.

2.2 The Safran-Surfex-AquiFR hydrometeorological system

The hydrological reconstruction is based on the French AQUIFR hydrogeological modelling platform (Vergnes et al., 2019). AQUIFR couples several hydrogeological models over France to the Surfex land surface model (Masson et al., 2013). The ISBA (Noilhan and Planton, 1989) component of the Surfex modular land surface model, used for example in the French CNRM-5 CM5 coupled climate model (Voldoire et al., 2013), computes the water and energy exchanges at the interface between the soil, the vegetation and the atmosphere. In this study, the version 8.1 of Surfex is used, with the multilayer version of ISBA (Decharme et al., 2013). The surface runoff and the drainage simulated by Surfex are then routed through the multi-layer aquifers and rivers of the Seine basin by AQUIFR.

Over the Seine basin, the EauDyssée hydrogeological model (Saleh et al., 2011) is used in the AQUIFR platform. This hydro-10 geological model is an improved version of the Modcou hydrogeological model used in Bonnet et al. (2017). Unlike Modcou, the EauDyssée hydrogeological model implemented in AQUIFR includes the simulation of river water levels, allowing for a better estimation of water exchanges between groundwater and rivers (Saleh et al., 2011). The water transfers in the unsaturated zone are improved (Philippe et al., 2011), which can may be important considering that the unsaturated zone can be reach 60 meters in the Seine basin, implying a delay in the groundwater recharge. Finally, AQUIFR uses a 6-layer representation of the15 aquifers (Viennot et al. 2009, https://www.metis.upme.fr/aqui-fr/#_Documents<http://www.geosciences.ens.fr/aqui-fr/#docume> compared to the 3 layers used in Modcou (Rousset-Regimbeau, 2007)(Rousset et al., 2004). AQUIFR has therefore a more realistic representation of groundwater and water exchanges between groundwater and rivers compared to the version of Modcou used in Bonnet et al. (2017). Water abstractions can also be taken into account by in AQUIFR. However, in order to focus only on the climatic climate influences, the reconstruction used developed in this study does not take these water20 abstraction into account water abstractions into account, which may explain some of the differences between the reconstruction and observations. In any case, water abstractions of the late 19th and early 20th centuries are not known mostly unknown prior to 1980. known.

The Safran analysis, based on about thousands observation stations collected by Météo-France and an optimal interpolation algorithm, provides the seven atmospheric variables necessary to force the Surfex-AQUIFR system (liquid and solid precipita-25 tion, incoming longwave and shortwave radiation fluxes, 10m wind speed, 2m specific humidity and temperature), at the hourly time step, on an 8km grid, from 1958 to present. This The Safran analysis is described and evaluated in Quintana-Segui et al. (2008) and Vidal et al. (2010). Safran is used in our study to run a reference simulation with the Surfex AQUIFR system. The30 A simulation based on the Safran Surfex AQUIFR system is available over the 1958 present period. This so-called reference simulation in the following is used for the evaluation of the hydrometeorological reconstruction on their common period. As they share the same hydrological model, potential differences between the reconstruction and the Safran Surfex AQUIFR reference simulation only depend on the quality of the reconstructed meteorological forcing.

2.3 The Seine hydrometeorological reconstruction Method

In order to extract the multidecadal variations from interannual series, a Lanczos low-pass filter (Duchon, 1979) with a cutoff frequency of 30 years and 31 weights is applied. No padding at the ends of the series is applied: the first 15 years and the last 15 years of the unfiltered series are considered as missing values in the filtered series. As this study is focused on multidecadal variations, long-term trends are first removed for most of the analyses presented in this study. As it is very unlikely for the trend to be linear on the long periods analyzed in the paper, non-linear trends are computed using an ensemble empirical mode decomposition algorithm (EEMD; Wu and Huang 2009). This algorithm decomposes a series into a sum of signals that characterize the different temporal variability scales that compose this series. The algorithm also extracts a non-linear trend. The interest of this method is that it is adaptive to the signal studied and non-parametric.

In order to avoid an artificial skill induced by the annual cycle when calculating daily or monthly correlations between the observations and the reconstruction, the series are deseasonalized beforehand. For daily series, a centered running average of 31 days is applied first to limit the noise in the computed annual cycle. Then, the climatological average is calculated for each day of the year. For monthly series, the annual cycle is simply calculated as the climatological average of each month.

In this paper, winter means December-January-February (DJF), spring means March-April-May (MAM), summer means June-July-August (JJA) and fall means September-October-November (SON).

3 Development of the Seine hydrometeorological reconstruction

A new hydrological reconstruction, based on hydrological modelling, is developed over the Seine basin, improving on the method presented in Bonnet et al. (2017), with two main objectives: (i) to increase-extend the study period to the 1850s, in order to characterize more robustly the multidecadal hydroclimate variations, and (ii) to improve the representation of river flows, particularly at the daily time scale, in order to obtain a better representation of extreme events such as droughts and floods in order to high and low flows and study their multidecadal variations. Figure 2 describes the main steps of the method developed in the present study and highlights the improvements over the one used in Bonnet et al. (2017).

To extend the study period, the obtain the meteorological forcing necessary for hydrological modelling the main idea of the Bonnet et al. (2017) method is to use the analog method (Lorenz, 1969), a stochastic statistical downscaling method, to downscale a long-term atmospheric reanalysis such as NOAA 20CRv2c (Compo et al., 2011), which begins in 1851, is used. This reanalysis and produce an ensemble of trajectories of precipitation and temperature over France (Step 1, Figure 2). Then, local long-term monthly precipitation and temperature observations are used to select the best trajectory.

The analog method is based on a global atmospheric model, using observed sea-ice (COBE-SST2; Hirahara et al. 2014) and sea surface temperature (SODAsi.2) as boundary conditions, and with the hypothesis that two days with similar large scale atmospheric states (e.g. large scale atmospheric circulation over the North Atlantic) are characterized by similar local weather conditions. In its most basic form, for each day D of the reanalysis, the day D_a (the assimilation of surface and so-called analog day), with the closest large scale atmospheric state is searched in the learning period, defined as the common period between the reanalysis and the observational database with the local variables necessary for hydrological modelling, e.g. here the Safran analysis. The local variables of interest of the day D_a in the observational database are selected as an

estimate of the local weather conditions for the day D . To quantify the similarity between large scale atmospheric states, four predictors are used in the present work: precipitation, surface temperature, sea level pressure and specific humidity at 850 hPa. An Euclidean distance is computed for each predictor, except for sea level pressure observations, for which the Teweles and Wobus score (Teweles Jr and Wobus, 1954; Obled et al., 2002) is calculated. The distances and the score are then combined after standardization to give the same weight to each predictor. Two domains of analogy are used. The domain for sea level pressure is delimited by the following coordinates: 44°N , 56°E . The domain for the three other predictors is defined by 46°N , 51°N , -2°E , 7°E .

In Bonnet et al. (2017), instead of searching only for the best analog day D_a for each day D of the reanalysis, the N best analog days were selected $D_{a1}, D_{a2}, \dots, D_{aN}$, with $N = 10$. The corresponding maps of precipitation $Pr(D_{a1}), Pr(D_{a2}), \dots, Pr(D_{aN})$ and temperature over France at high resolution is generated thanks to the stochastic downscaling method. Then, the trajectory the closest to the monthly observed homogenized series of precipitations and temperature $Tas(D_{a1}), Tas(D_{a2}), \dots, Tas(D_{aN})$ from Safran constituted different estimates of precipitation and temperature for the day D . Multiple trajectories of precipitation and temperature over the domain of interest were then created by repeatedly selecting randomly one of the 10 analog days for each day D of the reconstruction. In practice, 5000 trajectories were created. The monthly averages of precipitation (temperature) for these trajectories were computed. From the 10 different maps of precipitation (temperature) over France obtained with the analog method (as $N = 10$) for each day D of the reanalysis, 5000 different monthly maps of precipitation (temperature) were obtained with this procedure (Bonnet et al., 2017).

For each month of the reconstruction, the 5000 maps of precipitation (temperature) obtained on the Safran grid were regridded and compared to the actual observed precipitation (temperature) map, using the long-term homogenized precipitation (temperature) series over France (see section 2.1) is selected.

To improve the representation of the daily variability of the Seine reconstruction in this study, a daily constraint is added before the monthly constraint described above. In order to create an ensemble of trajectories large enough to find satisfactory trajectories at the daily time scale 2) as reference. Regridding simply consisted in selecting the Safran grid point the closest to the long-term homogenized precipitation (temperature) stations. The spatial root mean square errors (RMSE) were computed for temperature and precipitation. The sum of the RMSEs corresponding to precipitation and to temperature was then computed, after the temporal standardization of the series of RMSEs in order to give the same weight to each variable. In the end, for each month of the reconstruction, the daily series of analog days among the 5, the 56 members of the 000 ones that leads to the lowest sum of RMSEs was selected. The term "monthly constraint" used in this study refers to this last step (it corresponds to Step 3 in Figure 2).

This approach benefits from the advantages of the analog statistical downscaling method. From the analog days, all the meteorological variables from Safran necessary to force the Surfex-AquiFR hydrological model were obtained. The spatial and inter-variable consistencies were maintained after this procedure, because for each day of the reconstruction the entire

map of precipitation (and temperature, humidity etc.) over France from Safran was selected based on a single analog day. Compared to a basic statistical downscaling method, this approach allows additionally taking into account local observations in the downscaling process and not simply large scale information. This approach is therefore more accurate, as shown in Bonnet et al. (2017). Note that the temporal consistency of the meteorological forcing is ensured by both the temporal consistency of the predictors and of the local observations.

In the present study, to extend the study period, the long-term NOAA 20CRv2c reanalysis are downsampled. The same downscaling method as in Bonnet et al. (2017) is used here. It atmospheric reanalysis (Compo et al., 2011), which begins in 1851, is used. This reanalysis is based on the analog method (Lorenz, 1969) at the daily time scale. Four predictors are used: precipitations, surface temperature, a global atmospheric model, using observed sea ice and sea surface temperature as boundary conditions, and with the assimilation of surface and sea level pressure and specific humidity at 850 hPa. For each day D_n observations, 56 members, sampling the reanalysis uncertainties, are available.

Compared to Bonnet et al. (2017) where only one member of the long term reanalysis is downsampled, here we statistically downscale with the same analog method as described above, the 56 members of NOAA 20CRv2c. It leads for each day D of the reconstruction period (to a much larger pool of analog days, which allows adding a new step: a daily constraint with local observations (Step 2, Figure 2). The objective of this additional daily constraint is to obtain a better representation of the daily variations of the meteorological forcing.

As previously, for each day D of the reconstruction period (1852-2008), the 50 of a given member, the N best analog days $A_i=1..50$ ($D_{a1}, D_{a2}, \dots, D_{aN}$) in the learning period (1958-2008), limited by the availability of Safran) i.e. with the most similar large-scale atmospheric state (as characterized by the 4 predictors) states are searched. The local variables of interests of the analog days $A_i=1..50$ from the Safran analysis are finally used to estimate the potential local states of the day D_n . With this approach, all the variables necessary for hydrological modelling are obtained on the Safran grid from 1852 to 2008.

Here, the 50 best analog days of each of the In the present method, $N = 50$. As the 56 downsampled members of NOAA 20CRv2c members are conserved, which results in are downsampled, in the end 2800 potential analog days are obtained for each day D of the reconstruction period (with potentially similar analog days in for the different members). As each analog day corresponds to a day of the learning period, the corresponding daily map-maps of precipitation and temperature from Safran are selected and compared to the daily station observations (SQR, see section 2.1) after regridding. Regridding-Regidding consists in selecting the Safran grid point the closer-closest to each observation station over the Seine basin. Note that the number of stations vary-varies on the 1852-2008 period: the comparison is. The comparison is therefore done each day of the reconstruction on-with the available stations. The-

The daily comparison is based on the following approach:

- (i) The average daily bias in mean precipitation averaged over the Seine basin is calculated for the 2800 analog days, and the 60 analog days with the lower-bias-are-conserved-lowest bias are selected.

- (ii) The spatial root mean square errors for ~~to~~ the 60 analog days are calculated for temperature. For precipitation, the error to the cubic power rather than to the square power is used, in order to give more weight to strong values of precipitation, and the absolute value is ~~then~~ used.
- (iii) The daily series of the spatial errors obtained for precipitation and temperature ~~errors obtained~~ are then standardized ~~over the whole~~ based on the statistics of the entire period and added, with a weight of 1 for precipitation and 0.5 for temperature. ~~Different tests have been conducted to choose the best combination of weights. Each~~
- (iv) Finally, each day of the reconstruction period, the 3 best analog days (out of 60) ~~with the lower errors are finally conserved,~~ i.e. with the smallest errors, are selected.

Based on these 3 selected analog days, a monthly constraint is then applied as in Bonnet et al. (2017) ~~.The interest of also~~ and described above, except that the number of analog days is different (3 versus 10) (Step 3, Figure 2). Multiple trajectories are created by repeatedly randomly selecting one of the 3 analog days for each day D of the reconstruction. The monthly averages are computed over the Seine basin and then long-term monthly homogenized precipitation and temperature series are used to select the best overall trajectory. The interest of using a monthly constraint after the daily constraint is that monthly data are homogenized contrary to daily data (Section 2) and therefore it allows for a better representation of low-frequency variations.

Multiple tests have been conducted to set-up the different ad-hoc aspects of the method, trying to obtain the best overall hydrometeorological reconstruction. These tests concern, for example, the best combination of weights given to precipitation and temperature errors, the number of analogs selected at each steps etc. For example, selecting only the 3 best analog days leads to best overall performance in capturing daily and monthly variations. Using more analog days may allow for a better representation of monthly variations but degrade the representation of daily variations.

To sum up, the hydrometeorological reconstruction developed on the Seine basin is constrained on a daily basis over the period 1885-2003 by observations of precipitation and temperature (SQR), on a monthly basis over the period 1885-2005 by homogenized observations of precipitation and temperature (SMR), and over the ~~periods~~ 1852-1884 and 2005-2008 ~~by a~~ periods by the monthly series of precipitation at Paris (~~Slonosky, 2002~~) (Slonosky, 2002) (see section 2.1 for more details ~~about~~ the observations used). The results, especially at the daily time scale have therefore to be interpreted with more caution over the period only constrained by the monthly series of precipitation.

During the development of the reconstruction, mean climatological biases were found on reconstructed ~~precipitations~~ precipitation and incoming shortwave radiation with comparison to Safran on their common period. These mean climatological biases are simply corrected based on Safran as reference before forcing the hydrological model.

The meteorological forcing obtained on the 1852-2008 period with the approach described in this section is finally used to force the Surfex-AquiFR hydrogeological model to obtain the hydrological reconstruction over the Seine basin (Step 4, Figure 2).

3.1 Method

In order to extract the multidecadal variations from the interannual series, a Lanczos low-pass filter (Duchon, 1979) with a cutoff frequency of 30 years and 31 weights is applied. No padding at the ends of the series is applied: the first 15 years and the last 15 years of the unfiltered series are considered as missing values in the filtered series.

In order to focus on multidecadal variations, long-term trends are removed before most of the analyses shown in this study. As it is very unlikely for the trend to be linear on the very long period analyzed in the paper, non-linear long-term trends are computed using an ensemble empirical mode decomposition algorithm (EEMD; Wu and Huang 2009). This algorithm decomposes a series into a sum of signals that characterize the different temporal variability scales that compose this series. The interest of this method is that it is adaptive to the signal studied and non-parametric. Intrinsic mode functions (IMFs), with a zero average, are built up over time, from the lowest to the highest frequencies. The algorithm also extracts a non-linear trend adapted to the series and the period concerned.

In order to avoid an artificial skill induced by the annual cycle when calculating daily or monthly correlations between the observations and the reconstruction, the series are deseasonalized beforehand. For daily series, a centered running average of 31 days is applied first to limit the noise in the computed annual cycle. Then, the climatological average is calculated for each days of the year. For monthly series, the annual cycle is simply calculated by the climatological average of each month.

In this paper, winter means December-January-February (DJF), spring means March-April-May (MAM), summer means June-July-August (JJA) and fall means September-October-November (SON).

4 Evaluation of the Seine reconstruction

4.1 Mean river flows

The daily and monthly river flows variations are well represented in the Seine reconstruction. The medians of the correlations with observations over the 1958-2005 period are respectively of 0.7 and 0.97 for daily and monthly river flows (Figure 23). At the monthly time scale, the river flows variability is even almost as well reproduced as in the reference simulation (Figure 23). For most gauging stations, the representation of daily and monthly river flows is improved in the Seine reconstruction compared to the reconstruction developed over France by Bonnet et al. (2017) (Figure 23). Some low correlations are still seen at for a few stations (Figure 23). These stations are identical in the reconstructions and in the reference simulation, showing that this issue is not due to the reconstructed meteorological forcing. Non-climatic anthropogenic influences (e.g. dams, pumping or land use changes) that are not taken into account by the hydrological model, or measurement artifacts may-might be responsible for these lower correlations. Alternatively, they may be due to hydrological modelling the hydrological model, especially since these lower correlations are seen for small catchments (not shown), generally less well simulated by the hydrological system.

To go further in assessing the reconstruction, the two long observations of available flows in the Seine basin evaluate the reconstruction on a longer period, river flows from the reconstruction are compared to the reconstructed river flows (Figure 3 observations at the two stations with long-term data on the catchment: the Seine at Paris and the Armançon at Aisy-sur-Armançon (Section 2). The reconstruction correctly reproduces interannual variability of both long-term river flows observations (Figure 3a-b). River the interannual variability at both stations (Figure 4a-b), even if differences in terms of

amplitude are seen. For example, river flows in 1910, influenced by an exceptional flood, are underestimated at Paris while it is . They are rather correctly reproduced at Aisy-sur-Armançon. The multidecadal variability of observed flows is also quite well reproduced by the reconstruction (Figure 3e-d). For the 4c-d), even if the anomalies for the Seine at Paris , these variations are tend to be underestimated at the beginning of the 20th century and underestimated-overestimated at the end (Figure 3e4c).

5 Differences in long-term trends, with a much stronger negative trend in the observed series compared to the reconstruction (not shown), are probably at the origin of these differences. The meteorological forcing variables-of the reconstruction that can be evaluated, and in particular precipitation, is very likely not responsible for the potentially unrealistic trend in river flows, as reconstructed precipitation and temperature do not show an unrealistic trend-unrealistic trends (not shown). It is possible that measurement artifacts, or non-climatic anthropogenic influences, not taken into account in the reconstruction, have influenced

10 the long-term variability-of-the-variations of observed river flows in this highly anthropized region-- that region heavily impacted by human activities. Multidecadal river flows variations at Paris and at Aisy-sur-Armançon are in phase, with a generally in phase. A strong positive multidecadal phase around 1920 and, which corresponds to a succession of years with higher than average river flows, is visible around 1920. On the contrary, a negative phase is present around 1890 and 1960.

15 4.2 Annual maximum of daily river flowsflow

The interannual variability of the annual maximum value-of-daily-river-flows-daily river flow of the Seine at Paris is well captured in the Seine reconstruction, with a correlation of 0.88 with the observations on the 1900-2005 period (Figure 45). The correlation is consistent over time, with a correlation of 0.92 over the 1900-1960 period, and of 0.89 over the 1960-2005 period. On the later period, the correlation between the reconstruction and the observation is close to the correlation obtained

20 with the reference simulation (r=0.95).

A negative bias exists in the Seine reconstruction until The annual maximum daily river flow is generally underestimated in the reconstruction before the 1960s (Figure 45). As a result, the magnitude of the exceptional 1910 flood is largely underestimated in the reconstruction, even if this event remains the strongest one of the reconstruction. The bias is far less pronounced in the reconstruction after 1960 and in the reference simulation, as a result of a decrease-of-an apparent decrease in the observed

25 annual maximum values-of-daily-river-flows. The construction of large reservoirs over the Seine basin upstream from Paris that started in the 1960s, whose objectives include flood control, may-might be the cause of this-the observed decrease.

4.3 Piezometric levels

In France, long-term observations of piezometric levels (measure of the head of a groundwater table) are very rare. The measurements at the Toury sugar plant, which have monitored the Beauce groundwater table from the beginning of the 20th

30 century, is especially interesting in this context. The Beauce aquifer is a limestone aquifer from the Oligocene, and it is drained by rivers mainly at its borders. The observed piezometric level at Toury shows strong multidecadal variations, with a positive phase around the 1920-1940 period, preceded by a negative phase in the early 20th century and followed by a negative phase

in the 1950s (Figure 56). Strong decadal peaks are also seen after 1950, consistent with Flipo et al. (2012). The evolution of the Beauce groundwater is ~~therefore~~ generally consistent with that of river flows (Figure 34) at multidecadal time scales.

The ~~Seine reconstruction reproduces quite well the~~ interannual variations of piezometric heads at Toury are quite well reproduced in the reconstruction, with a correlation of 0.74 over the 20th century. The ~~intensity amplitude~~ of these variations is however strongly underestimated, by a factor 2, both in the reconstruction and in the reference simulation. This might be linked to a coarse representation of the aquifer complexity (~~Violette, personal~~ in AquifR (S. Violette, personal communication)). A partially captive part of the ~~aquifere limestone aquifer, which contains lenses of clay~~, is not represented in the model due to his insufficient resolution. This part of the ~~aquifere aquifer~~ amplifies the flow time and, therefore, the memory of the aquifer.

5 Multidecadal hydroclimate variations ~~on~~ in the Seine basin

10 5.1 Characterization

Annual river flows of the Seine at Poses (Figure 1) from the reconstruction show strong multidecadal variations during the 20th century (Figure 67), consistently with the observed variations over France described in Boé and Habets (2014). ~~The length of the reconstruction allows to show~~ As said in the introduction, major sampling uncertainties exist when dealing with multidecadal variations on the short observational record. Additionally, since the mid-20th century, the climate has been strongly impacted by anthropogenic forcings, making it difficult to disentangle the respective role of internal variability and external forcings in observed hydroclimate variations.

It is therefore interesting to note, thanks to the extended length of our reconstruction compared to previous works, that multidecadal variations ~~are also present also exist~~ before the 20th century, with ~~in particular a strong negative phase around lower than average river flows around the~~ 1885-1905 ~~period (about 15% lower than the average of 446m³/s for annual river~~ flows). It reinforces our confidence in the reality of the multidecadal hydrological variations in France observed over the 20th century and in the idea that they are at least partly of internal origin. Phased multidecadal variations also exist for the seasonal averages, with the strongest absolute variations seen in spring and winter. Note however that as climatological river flows are smaller in summer and early fall, the multidecadal variations seen in these seasons are also important.

To better understand the mechanisms at the origin of the multidecadal hydroclimate variations on the Seine basin, a composite analysis between ~~dry and wet multidecadal~~ the negative multidecadal phases, which correspond to the drier than average periods identified on the ~~river flows of the Seine at Poses~~ Seine river flows at Poses after low-frequency filtering, and positive multidecadal phases, which correspond to the wetter than average periods, is conducted for the main hydrological variables (Figure 67). The ~~positive negative~~ phases are defined as the ~~1910-1930 and 1975-1995~~ 1885-1905 and 1940-1960 periods, and the ~~negative positive~~ phases are defined as the ~~1885-1905 and 1940-1960~~ 1910-1930 and 1975-1995 periods. The use of four 20-year periods thanks to the length of the reconstruction makes the analysis of these variations more robust in comparison to previous works (e.g. Boé and Habets 2014 and Bonnet et al. 2017).

~~Most simulated stations on the Seine basin show strong~~ Strong river flows variations between the negative and positive multidecadal phases (~~Figure 7a-e-i~~ are seen at most simulated stations (Figure 8a-e-i-m)). The relative differences are stronger

in ~~summer and spring~~ spring and summer, as large as 40% for some stations, and significant almost everywhere. ~~The differences are weaker in winter but still significant for most of the stations. In autumn, only a few stations show significant changes between the positive and negative multidecadal phases, although some stations still show strong variations of 30%.~~

5 In spring, the river flows variations anomalies are concomitant with strong and significant precipitation variations anomalies over the entire Seine basin (Figure ~~7f~~8f). During the negative multidecadal phases, spring precipitation is on average 20% lower than during the positive phases. These precipitation anomalies also lead to significant soil moisture anomalies, between 5 and 10% (Figure ~~7g~~8g). The evapotranspiration in spring does not show significant differences between the negative and positive multidecadal phases of the Seine river flows (Figure ~~7h~~8h), likely because ~~it~~ evapotranspiration is energy-limited rather than water-limited in this region in spring.

10 ~~Except for a small area in the south east of the catchment in fall~~ In summer, unlike in spring, no significant differences in precipitation ~~are noted except in spring~~ between positive and negative multidecadal phases are noted (Figure 8j). The significant summer river flows variations ~~in winter and summer~~ therefore cannot be explained by concomitant precipitation variations alone, suggesting that hydrological processes are at play. Large soil moisture anomalies, significant over a large part of the catchment, are noted in summer between positive and negative multidecadal phases (between 10 and 15%, Figure 8k). The
15 absence of significant precipitation and evapotranspiration anomalies in summer suggests that the persistence of soil moisture anomalies from spring to summer (e.g. Boé and Habets 2014) is responsible for the multidecadal variations of summer soil moisture.

In winter, the relative variations in river flows between the positive and negative multidecadal phases of the Seine river flows are weaker than in spring and summer, but they are still significant for most of the stations. Slight differences in precipitation, between 5 and 10% on average over the Seine basin, are noted, but they are not significant. The variations in precipitation alone therefore likely cannot explain such river flows variations in winter. The negative multidecadal phases of the Seine river flows are characterized by significantly lower evapotranspiration ~~than in the positive phases~~ (Figure ~~5d~~anomalies (Figure 8d). Negative temperature anomalies, close to ~~0.8~~0.8K and significant over the whole basin (not shown), are likely the cause of these evapotranspiration anomalies. As the evapotranspiration anomalies are negative during the dry phases, they are not responsible
25 for the river flows anomalies and they actually tend to moderate-mitigate them. The soil moisture presents significant variations between the negative and positive phases over a part of the Seine basin in winter (between 5 and 10%) (Figure ~~7e~~8c). They are probably related to ~~differences of precipitation, between 10 and 15%, the differences in precipitation previously noted,~~ even if they are not significant.

~~Large, and significant over a large part of the catchment, soil moisture anomalies between~~ In fall, only a few stations show significant differences in river flows between the positive and negative multidecadal phases, ~~between 10 and 15%, are noted in summer~~ (Figure ~~7k~~8k). ~~The absence of significant precipitation and evapotranspiration anomalies in summer suggest that the persistence of soil moisture anomalies from spring to summer (e.g. Boé and Habets 2014) is responsible for the multidecadal variations of summer soil moisture~~ although some stations, mainly in the south east of the catchment, still show strong variations of 30% (Figure 8m). A part of these anomalies are likely driven by the concomitant variations in precipitation, significant over
35 a small area in the south east of the catchment (Figure 8n).

Two important conclusions arise from the previous analysis. (i) Significant multidecadal variations ~~of in~~ soil moisture exist in spring and summer from the mid-19th century, with potential important societal consequences, for example regarding agriculture, which is highly developed over the Seine catchment. (ii) Large and significant multidecadal variations in summer and winter river flows exist, which cannot be explained by concomitant variations in precipitation. Hydrological mechanisms that could be responsible for these variations are now investigated.

5.2 Role of groundwater table

In the Seine basin, the groundwater-river ~~water-exchanges-plays~~ exchanges play an important role in sustaining summer flows ~~on the Seine catchment~~ (Rousset et al., 2004). Interestingly, the groundwater-river exchanges ~~over the Seine basin~~ show strong multidecadal variations over the past 150 years for all seasons (Figure 89). These variations are in phase with the multidecadal variations in river flows noted previously and their amplitude is large (compare Figure 6 and Figure 87 and Figure 9), pointing to an important role of groundwater dynamics in multidecadal river flows. We calculated the standard deviation of filtered river flows series (as ~~in Figure 6~~ shown in Figure 7) before and after the ~~removal of the contribution of~~ subtraction of groundwater-river exchanges shown in Figure 8-9. The standard deviation is 64% lower in summer, 52% lower in autumn, 41% lower in spring and 38% lower in winter after the ~~removal-subtraction~~ of the contribution of groundwater to river flows. Groundwater-river exchanges are therefore the dominant driver of multidecadal variations in summer and autumn river flows, with also an important influence in winter and spring. The multidecadal variations in groundwater ~~recharge and therefore~~ levels are very likely due to variations in the recharge explained by the multidecadal variations ~~seen in late winter and early spring~~ precipitations noted previously in spring precipitation, especially in early spring, a period favorable to the recharge.

5.3 Role of soil moisture

~~Groundwater-river~~ As groundwater-river exchanges roughly explain 2/3 of the strong multidecadal river flows variations that exist in summer, ~~pointing to the role of other mechanism(s)~~ other mechanisms are involved. As seen in Figure 7k8k, a large part of the basin in summer is characterized by significant negative soil moisture anomalies during negative multidecadal river flows phases. Soil moisture anomalies may impact river flows through the modulation of the partitioning of precipitation between runoff and infiltration (e.g. Boé and Habets 2014), as higher soil moisture may favor runoff against infiltration. Consistently, ~~the during the dry multidecadal phases, the~~ ratio between total runoff and precipitation in summer is significantly lower over a large part of the basin, where the soil moisture anomalies are significant, ~~during the dry multidecadal phases~~ (Figure 9) (Figure 10). As suggested by Bonnet et al. (2017) for the Loire Basin (see Figure 1), positive multidecadal anomalies ~~of in~~ spring soil moisture due to anomalous ~~precipitations~~ precipitation persist in summer, especially over the upstream part of the catchment, and then influence summer river flows by favoring runoff against infiltration.

6 **Influence Role of multidecadal river flow variations on extreme events** large-scale circulation and influence of ocean variability

6.1 **Links with floods and droughts**

5 The Strong multidecadal hydroclimate variations in the Seine basin from the 1850s have been highlighted in the previous section. They are mainly linked to variations in precipitation and therefore the question is now to understand their origin.

Large-scale atmospheric circulation shows significant differences between the positive and negative hydroclimate phases identified in section 5.1 (Figure 11a). The negative multidecadal phases of the Seine river flows are characterized by significantly higher pressures over northern Europe, and significantly lower pressures over North Africa. This circulation pattern leads to lower westerlies over Western Europe and therefore to negative precipitation anomalies over the Seine basin. This dipole pattern of sea level pressure bears resemblance with the NAO, but with slight shift to the south.

10 The existence of significant atmospheric circulation anomalies on a few decades suggests the existence of a slow external forcing acting on the atmosphere. Because of its inertia, the ocean could be involved. Significant variations of sea surface temperature in the North Atlantic are visible between the multidecadal phases of the Seine river flows. During the negative phases, the North Atlantic basin is characterized by warmer surface temperatures, around 0.4 to 0.7°C, especially in the subpolar gyre and the tropical North Atlantic (Figure 11b). These SST anomalies in the North-Atlantic are reminiscent of those associated with the AMV, the main mode of multidecadal variability in the North-Atlantic / Europe region. Our results are therefore consistent with Sutton and Dong (2012) who suggested, based on an observational analysis, that the AMV is associated with negative precipitation anomalies over France in spring, the season during which the decadal precipitation anomalies are the largest (Figure 8f), through a modulation of large scale atmospheric circulation. Boé and Habets (2014) came to a similar conclusion, but suggested the existence of a lag between the AMV and river flows anomalies, with the AMV leading by several years. Interestingly, considering a 10-year time lag in the composite analysis (with the SST leading), SST anomalies in the North Atlantic are much higher than with no lag (Figure 11c).

20 Significant SST anomalies between the negative and positive multidecadal phases of the Seine river flows are also observed in the North Pacific. SSTs there are significantly warmer during the negative multidecadal phases of Seine river flows compared to the positive phases. The potential mechanisms linking the SST anomalies in the North Pacific and multidecadal hydroclimate variations over France are not clear. Ding et al. (2017) suggest that the Pacific decadal variability (PDV) (Mantua and Hare, 2002) combined with La Niña events could result in precipitation and temperature anomalies over Europe by favoring NAO-like circulation patterns. The phase of the NAO and therefore the sign of precipitation and temperature anomalies is dependent on the type of La Niña. Note also that the apparent link between the North Pacific SSTs and Seine river flows might not be causal. Indeed, the SST anomalies in the North Pacific might be to a certain extent also driven by the AMV. Ruprich-Robert et al. (2017) indeed suggest that the AMV may influence North Pacific SSTs, mainly through an atmospheric teleconnection originating from the tropical Atlantic.

30 In order to further investigate the relationship between the AMV and the multidecadal hydroclimate variations over the Seine basin, the lagged correlations between the AMV and spring river flows and precipitation are computed. Significant

anti-correlations (around -0.8 and -0.9) are found between the AMV index calculated with the SSTs from the 20CRv2c reanalysis and low-frequency filtered spring precipitation over the Seine catchment, with a lag of about 10 years, consistent with the lag found by Boé and Habets (2014) (Figure 12a). Similar results are obtained using the AMV index from Wang et al. (2017). This paleoclimate reconstruction, based on multiple proxies, is largely independent of the first AMV index. Given the length of the paleoclimate AMV index of Wang et al. (2017) and the availability of a very long observed series of precipitation at Paris (Section 2), it is possible to investigate the temporal stability of the AMV / spring precipitation relationship. Very interestingly, similar results are obtained on the 1779-1889 and 1890-1990 periods, highlighting the robustness of the relationship.

The influence of the AMV on spring precipitation is reflected on spring river flows. Significant anti-correlations are found between the AMV and the river flows of the Seine at Paris at multidecadal time scales on the 1876-1985 period, with a lag of about 10 years, as for precipitation (Figure 12b). The results obtained with the observations and the reconstruction are very similar.

As said in the introduction, the 20th century is a very short period to characterize multidecadal climate variations. On such a short period, the sampling uncertainties are extremely large, which may question the robustness of the results. Additionally, non-stationarities may exist (Cassou et al., 2018) and the strong influence of anthropogenic forcings on the climate of the second half of the 20th century may complicate the interpretation of observed multidecadal variations. The results previously described are therefore important because they confirm those obtained in previous works, but on a period considerably longer, at least from the end of the 18th century. They show the robustness of the teleconnection between the AMV and spring precipitation over France described in Sutton and Dong (2012) and confirm the existence of the lag suggested in Boé and Habets (2014), even if its physical origin is still unknown. These results also confirm that the multidecadal hydroclimate variations observed over France are likely not mainly the result of anthropogenic forcings.

7 Influence of multidecadal river flow variations on high and low flows

7.1 Links with high and low flows

The improvements to the reconstruction described in section 2.3.3 allows for a better representation of high-frequency variations compared to previous works (Bonnet et al. 2017, see Figure 23) and therefore of extreme events, such as floods and droughts low and high flows. To assess the influence of multidecadal hydroclimate variations on extreme hydrological events high and low flows, the ratios of the number of flood (drought) days during high (low) flow days during the positive and negative multidecadal phases of the Seine river flows are calculated. A flood-high flow day is simply defined here as a day with flows larger than the 95th percentile computed on the four multidecadal phases considered (1910-1930, 1975-1995, 1885-1905 and 1940-1960) for the flood season, from November to April. Conversely drought-, low flow days are defined as days with flows lower than the 5th percentile at on the same periods considering the whole but considering all months of the year.

Floods Days with high flows are on average twice as likely to occur during a positive multidecadal phase of the Seine river flows, and up to three times more likely for some stations (Figure 10a13a). During the flood season, the positive multidecadal

phases of the Seine river flows are characterized by higher mean ~~precipitations~~precipitation, wetter soils (Figure 78) and higher groundwater levels (not shown). Such anomalies favor the occurrence of ~~floods~~high flows. The positive multidecadal phases are also characterized by ~~a higher number of intense precipitations~~more days with intense precipitation (not shown), which also ~~favor~~favors the occurrence of ~~flood~~This results high flows. This result is consistent with Willems (2013), ~~which~~
5 ~~who~~highlighted the existence of multi-decadal variations in observed ~~intense precipitation, correlated to rainfall extremes in Europe, correlated with~~intense river flows. The results from the reconstruction are consistent with the ~~ones from observations for~~the two long series of observed flows available on available in the Seine basin (Seine at Paris and Armançon at Aisy-sur-Armançon, see triangles in Figure 10a13a).

~~Regarding drought days, a large number of stations have a ratio between~~The multidecadal hydroclimate variability of the
10 ~~Seine basin does not seem to strongly influence daily low flows for many stations. The ratio of low flow days between negative and positive multidecadal phases is indeed between~~one and two (Figure 10b). It is the case for the for a large number of stations (Figure 13b). For the observations at Aisy-sur-Armançon , with a ratio of (triangle in the south east of the basin) the ratio is 1.1~~consistents~~, consistent with the reconstructionin that region. The multidecadal hydroclimate variability of the Seine basin does not seem to strongly influence this type of events for many stations. For the observations at Paris, days with low
15 ~~flows are more than four times more frequent during negative multidecadal phases, whereas there are only twice more frequent in the reconstruction. This discrepancy might be explained by the important influence of human activities on the Seine at Paris.~~Some stations, notably in the central part of the catchment , still show a ratio close or superior to two, pointing to an influence of multidecadal hydroclimate variations on droughts low flow days there. It may be due to the multidecadal variations seen previously in groundwater-river exchanges (Figure 89), which may impact the daily low flows. For the observations at Paris,
20 ~~droughts are more than four times more likely to happen during a negative multidecadal phase of the Seine flows, whereas there are only twice more likely to happen based on the reconstruction. This result must, however, be taken with caution as the observations at Paris are influenced by human activities.~~

7.2 The 1921 and 1949 droughts

To go ~~a little~~ further in the understanding of the influence of multidecadal hydroclimate variability on droughts, we focus
25 on two major droughts of the last 150 years: the 1921 and 1949 events. The 1921 drought, characterized as the most severe hydrological drought of the Seine basin since the 1850s in our reconstruction (not shown), occurred in the middle of a ~~strong~~strong positive multidecadal phase of the Seine river flows (Figure 67). The 1949 drought, ~~which is~~characterized as the second longest and third strongest hydrological drought of the Seine basin according to the hydrometeorological reconstruction (not shown), occurred ~~on the contrary~~in the middle of a negative multidecadal phase of the Seine river flows. Considering . Considering
30 ~~the 20-year periods around centred on~~these events, the average climatic mean climate conditions during which these events developed are therefore very different. ~~Groundwater Climatological groundwater~~levels are very high in the decades around 1921 compared to the decades around 1949 (Figure 11d14d), with therefore higher larger groundwater-river exchanges (Figure 11e14c). The same applies to river flows (Figure 11b14b).

For both droughts, ~~precipitations are~~ precipitation is below the climatological average from the autumn of the previous year (i.e. n-1) and extremely small in February, March, April of the year n. Between October of year n-1 and December of year n, ~~the year 1921 has a lower average precipitation than~~ average precipitation was lower in 1921 than in 1949, ~~with averages of~~ (1.25 and 1.50 mm/j respectively. These average precipitation are ~~day~~ respectively, well below the climatological average in

5 both cases). The groundwater levels ~~at the end of in autumn~~ 1920 are very high, partly because of the multidecadal variations previously described, ~~are very high in the autumn 1920~~, while the heads are already below average in ~~the~~ autumn 1948. In both cases, the ~~level falls~~ levels fall down during the drought, but they remain not extreme in 1921, while ~~extremely~~ exceptionally low values are reached ~~from the in~~ in spring 1949. As a result, the water to river exchanges in 1921 remain above those of 1949 by between 17 and 83 ~~m³/s~~ m³/s from ~~august of the~~ August of year n-1 to September of ~~the~~ year n (Figure ~~He-d~~ 14c-d). Despite the

10 lower groundwater-river exchanges, the rivers flows of the 1949 event generally remain above those of the 1921 drought from the autumn of ~~the~~ year n-1 to ~~spring of the~~ the spring of year n. The larger groundwater-river exchanges in 1921 allowed by the high climatological levels during this period thanks to favorable multidecadal hydroclimate variations contributed to ~~moderate~~ mitigate the severity of the 1921 hydrological drought, while in 1949 ~~groundwater-river exchanges in~~, the lower climatological groundwater levels contributed to increase ~~its severity~~. ~~The~~ the severity of the drought. The already exceptional 1921 drought

15 could have been even worse should it had occurred during a dry multidecadal phase ~~such as~~ as for the 1949 ~~drought, pointing that an even worse event is possible even without anthropogenic climate change~~ event.

~~8 Role of large-scale circulation and influence of ocean variability~~

~~Strong multidecadal hydroclimate variations~~

8 Conclusions and perspectives

20 In this study, a new hydrometeorological reconstruction focused on the Seine basin ~~from the 1850s have been highlighted in the previous section. They are mainly linked to variations in precipitation and therefore the question is now to understand the origin of these precipitation variations.~~ is presented. The method improves upon the one described in Bonnet et al. (2017). It leads to a better representation of daily river flows. This reconstruction is therefore suitable to study the multidecadal variability of high and low flows, as well as hydrological extremes. The reconstruction is extended back to middle of the 19th century.

25 The longer study period compared to previous works (e.g. Boé and Habets 2014) allows for a more robust characterization of multidecadal hydrological variations, which is crucial in that context (e.g. Cassou et al. 2018).

~~Large-scale atmospheric circulation shows significant differences between the positive and negative hydroclimatic phases identified in section 4.1 (Figure 12a). The negative multidecadal phases of the Seine river flows are characterized by significantly higher pressures over northern Europe, and significantly lower pressures over North Africa. This circulation pattern leads to lower westerlies over Western Europe and therefore to negative precipitation anomalies over the Seine basin. Large-scale circulation therefore likely explains a large part of multidecadal variations in precipitation.~~

30

The persistence of significant atmospheric circulation anomalies on decades suggests the existence of a slower external forcing acting on the atmosphere. Because of its inertia, the ocean is a good candidate. Significant variations of sea surface temperature in the North Atlantic are visible between the multidecadal phases of the Seine river flows. During the negative phases, Although the reconstruction developed in this study is an interesting tool for studying the past variability of the North
5 Atlantic basin is characterized by significant warmer surface temperatures, around 0.4 to 0.7°C, especially in the subpolar gyre and the tropical North Atlantic (Figure 12). These SST anomalies suggest that hydrological cycle over the Seine basin,
it is obviously not perfect. Uncertainties are present throughout the modelling chain. The statistical downscaling method used at the first step of the reconstruction method assumes that the learning period, over which the large-scale reanalysis and the Safran analysis overlap (1959-2010), is representative of the meteorological conditions of the 1851-2010 period. The consistent
10 performances of the reconstruction over the entire period shown by several analyses in this study suggest that this hypothesis has no major impact on our results. Important uncertainties are associated with the 20CRv2c reanalysis at the beginning of the period, due to the smaller number of assimilated observations (Krueger et al., 2013). We use monthly homogenized local precipitation and temperature observations to constrain the results of statistical downscaling in order to improve the temporal homogeneity of the reconstruction, but the homogenization method is not state-of-the-art. The good agreement between the
15 low-frequency variations of the homogenized monthly precipitation series and of the Global Precipitation Climatology Centre dataset (Schneider et al., 2008) from 1901 to 2011 (not shown) still gives good confidence in the overall realism of the Atlantic Multidecadal Variability, the main mode of variability at these time scales in this region, is at the origin of these multidecadal variations of atmospheric circulation. This result is consistent with Sutton and Dong (2012) and Boé and Habets (2014).

Significant variations of SST between the negative and positive multidecadal phases of the Seine river flows are also observed
20 in the North Pacific. The SSTs there are significantly warmer during the negative multidecadal phases of the Seine river flows compared to the positive phases. The North Pacific basin could therefore also influence the multidecadal variations of French river flows described in this study.

Boé and Habets (2014) highlighted the existence of a lag between the AMV and river flow variations in France, with the AMV in advance of several years. Interestingly, considering a 10-year time lag in the composite analysis (with the SST leading),
25 temperature anomalies in
The hydrological model used in this work is also not perfect, with potential consequences on our results. The amplitude of the North Atlantic and North Pacific are much higher than with no lag (Figure 12c). The physical origin of this lag is still unknown. It could be variations in the sign of a retroaction between SSTs and the atmospheric circulation. In any case, this analysis confirms with a longer period that the lag noted previously in Boé and Habets (2014) with the AMV is a robust feature
30 piezometric levels at Toury in particular is strongly underestimated. Although this is a one-point measurement, it is possible that this underestimation exists for the entire Beauce aquifer, which could imply an underestimation of the multidecadal variability of reconstructed river flows, especially in summer when the role of groundwater is particularly important. This underestimation is likely due to hydrological modelling, and could come from a too simple representation of the limestone aquifer that neglects some confined parts. The river channel dimensions and conveyance capacity are also supposed constant over time, whereas they could be affected by multidecadal climate variability (Slater et al., 2019).

Some important uncertainties are also associated with the observations used for the evaluation of the reconstruction. They may indeed be influenced by non-climatic anthropogenic influences such as dams and pumping, not taken into account in the hydrological model, or changes in measurement methods for example. We have evaluated the reconstruction against multiple observations in an effort to ensure that our results are not too dependent on a particular source of information and to better understand the potential limitations of the reconstruction.

Even if it is not the object of this study, a new hydrometeorological reconstruction focused on the Seine basin is presented. The method improves upon the one described in Bonnet et al. (2017). It leads to a better representation of daily river flows. This reconstruction is therefore suitable to study the multidecadal variability of hydrological extremes such as floods or droughts. The reconstruction is extended back to 1852. The longer study period compared to previous works (e.g. Bonnet et al. 2017) allows for a more robust characterization of multidecadal hydrological variations. An important difference of long-term trends in river flows exists between the reconstruction and the observations for the Seine at Paris. The origin of these differences is not understood currently. The meteorological variables used as forcing for the reconstruction, and precipitation in particular, don't show unrealistic trends (not shown) and therefore the trends in reconstructed river flows may not be unrealistic. As the Seine basin is heavily impacted by human activities, it is possible that non-climatic anthropogenic influences, which are not taken into account in the reconstruction, are responsible for the large negative trend in the observed series. It is something worth investigating in future work.

We Based on the reconstruction, we show the existence of strong multidecadal variations in river flows over the Seine catchment since the 1850s. Consistently with previous studies over France (Boé and Habets (2014) and Bonnet et al. (2017)), strong variations are noted in spring. For many stations, even stronger variations are noted in summer. Significant multidecadal variations are also noted in winter thanks to the longer period studied here.

Multidecadal variations in spring ~~precipitations~~ precipitation play a major role, as ~~in-suggested by~~ previous studies over France. Spring ~~precipitations directly impact river flows of the same season and~~ precipitation directly impacts river flows in spring but also river flows in the other seasons through different hydrological processes. Spring ~~precipitations lead to variations of soil moisture~~ precipitation leads to soil moisture anomalies in spring that persist until summer and ~~modulate~~ regulate the runoff-to-precipitation ratio in summer. ~~Precipitations variations in late winter and~~ Precipitation variations in early spring play on groundwater recharge and then on river flows during all seasons through groundwater-river exchanges. Both the multidecadal variations in soil moisture ~~in spring and summer and~~ and in groundwater may have important direct societal impacts, ~~for example independently of their impacts of river flows, in particular~~ with regards to agriculture. Interestingly, the variations in summer river flows are much larger than seen in Bonnet et al. (2017). These differences are likely both due to the longest period studied here and ~~potentially to the different hydrogeological model used~~ to different hydrogeological models, with a ~~different~~ finer representation of aquifers in the present study.

The multidecadal hydroclimate variations over the Seine basin are due to large-scale atmospheric circulation anomalies, themselves associated with sea surface temperature anomalies in the North Atlantic. ~~It confirms the~~ Interestingly, a potential impact of the North Pacific, not described before, is also noted.

As discussed by Cassou et al. (2018), because of major sampling uncertainties and potential non-stationarities, it is crucial to extend observational works further back in time in order to confirm or infirm the results obtained by most studies on the 20th century. Our results confirm the link between the AMV and French hydro-climate variations seen in previous studies on much shorter periods, pointing to its robustness. Interestingly, an impact of the North Pacific, not described before, seems also to exist. The fact that multidecadal hydroclimate variations are present exist before the 20th century, which is a period where anthropogenic forcings were very small, reinforce the role of anthropogenic forcings is small, also reinforces the idea that they are of internal origin and not to a large extent and not primarily forced by greenhouse gases or nor sulphate aerosols.

An interesting new result is that the multidecadal variations previously described for the mean hydroclimate may influence extreme events also influence high and low flows. The positive multidecadal phases seem to be more conducive of flooding. Over large parts of the catchment the probability of floods high flows is more than doubled during wet multidecadal phases. Although these events are mainly the result of exceptional specific weather conditions, the average mean state of the hydrological system (e.g. soil moisture or groundwater) influenced by the multidecadal hydroclimate variability variations, may amplify or reduce the magnitude of these events. The influence impact of multidecadal variations on hydrological droughts is less clear, and in low flows is more regional. Still, we have illustrated for two major droughts of the 20th century, that of 1921 and that of 1949, how multidecadal hydroclimate variations, through their impact on groundwater, may modulate the intensity of droughts. Multidecadal variations in groundwater may have reduced the intensity of the 1921 drought and increased the intensity of the 1949 drought.

Although the reconstruction developed in this study is an interesting tool for studying the past variability of the hydrological cycle over the Seine basin, it is obviously not perfect. Multidecadal (and interannual) variations of the piezometric levels at Tournay are strongly underestimated. Although this is a one-point measurement, it is possible that this underestimation exists for the entire Beauce aquifer, which would imply an underestimation of the multidecadal variability of river flows in the reconstruction, especially in summer when the role of groundwater is particularly important. This underestimation seems to be due to hydrological modelling, and could come from a too simple representation of the limestone aquifer that neglects some confined parts. It would be interesting to confirm this hypothesis. The results described in this paper illustrate how dangerous it can be for practical purposes to rely on short periods of few decades (e.g. three) to characterize hydrological hazards.

Even if it is not the object of this study, an important difference of long-term trends in river flows exists between the reconstruction and the observations for the Seine at Paris. The origin of these differences is not understood currently. The meteorological variables used as forcing for the reconstruction, and precipitations in particular, don't show an unrealistic trend (not shown) and therefore the trends in river flows from the reconstruction may not be unrealistic. As the Seine basin is highly anthropized, it is possible that non-climatic anthropogenic influences, which are not taken into account in the reconstruction, are responsible for the large negative trend in the observed series. It is something worth investigating in the coming years.

The origin of the This study reinforces the idea that the hydroclimate variability over the Seine basin seems to be and more generally over France results from a teleconnection with SSTs of the North Atlantic and potentially the North Pacific. Such teleconnections North Atlantic SSTs, and suggests a potential role of North Pacific SSTs. The associated mechanisms are still poorly understood, yet. The Decadal Climate Projection Project (Boer et al., 2016) of the Coupled Model Intercomparison

Project Phase 6 (Eyring et al., 2016) proposes some dedicated numerical experiments to tackle these questions. ~~The study of their results~~ They will hopefully allow some progresses in our understanding of the physical origin of multidecadal hydrological variations over France.

Given the large multidecadal hydroclimate variations described in this study, it is crucial to assess whether climate models reproduce them correctly and therefore if the uncertainties due to internal variability are correctly captured in current projections. It may not be the case. For example, Qasmi et al. (2017) show that climate models may have ~~some issues~~ difficulties to capture some properties of the AMV. Simpson et al. (2018) suggest that current climate models ~~may have difficulties to capture~~ underestimate the multidecadal variations of the atmospheric jet over the North Atlantic in late winter / early spring, which would have consequences for the French hydroclimate. Understanding the potential consequences of these issues ~~for~~ regarding the uncertainties in hydroclimate projections is now crucial.

Competing interests. The authors declare that there are no conflicts of interest regarding this work.

Acknowledgements. This work has been supported by the French National program LEFE/INSU through the VITESSE project. The figures have been produced using the NCAR Command Language: The NCAR Command Language (Version 6.3.0) [Software]. (2016). Boulder, Colorado: UCAR/NCAR/CISL/TDD. <https://doi.org/10.5065/D6WD3XH5>. The authors acknowledge all the colleagues from ~~Météo-France~~ Météo-France and Mines-ParisTech who have been contributing to the development of the Safran-Surfex system, as well as AQUI-FR, and ~~Météo-Météo~~ France (direction de la climatologie et des services climatiques) for providing the precipitation and temperature data sets. We also want to thank Thierry Morel from Cerfacs, strongly involved in the AQUI-FR project. The authors also thank Laurence Lestel, involved in the VITESSE project, for useful discussions about this work. Twentieth Century Reanalysis data were provided by the NOAA/OAR/ESRL PSD, Boulder, Colorado, USA, from their website: <https://www.esrl.noaa.gov/psd/>. Support for the Twentieth Century Reanalysis Project data set is provided by the U.S. Department of Energy, Office of Science Innovative and Novel Computational Impact on Theory and Experiment (DOE INCITE) program, and Office of Biological and Environmental Research (BER), and by the National Oceanic and Atmospheric Administration Climate Program Office. Other data used in this study are available from the authors upon request.

References

- Bindoff, N. L., Stott, P. A., AchutaRao, K. M., Allen, M. R., Gillett, N., Gutzler, D., Hansingo, K., Hegerl, G., Hu, Y., Jain, S., et al.: Detection and attribution of climate change: from global to regional, 2013.
- Boé, J.: Modulation of the summer hydrological cycle evolution over western Europe by anthropogenic aerosols and soil-atmosphere interactions, *Geophysical Research Letters*, 43, 7678–7685, 2016.
- Boé, J. and Habets, F.: Multi-decadal river flow variations in France, *Hydrology and Earth System Sciences*, 18, 691–708, 2014.
- Boer, G. J., Smith, D. M., Cassou, C., Doblas-Reyes, F., Danabasoglu, G., Kirtman, B., Kushnir, Y., Kimoto, M., Meehl, G. A., Msadek, R., et al.: The decadal climate prediction project (DCPP) contribution to CMIP6, *Geoscientific Model Development (Online)*, 9, 2016.
- Bonnet, R., Boé, J., Dayon, G., and Martin, E.: Twentieth-Century Hydrometeorological Reconstructions to Study the Multidecadal Variations of the Water Cycle Over France, *Water Resources Research*, 53, 8366–8382, 2017.
- Bouwer, L. M., Vermaat, J. E., and Aerts, J. C.: Regional sensitivities of mean and peak river discharge to climate variability in Europe, *Journal of Geophysical Research: Atmospheres*, 113, 2008.
- Caillouet, L., Vidal, J.-P., Sauquet, E., and Graff, B.: Probabilistic precipitation and temperature downscaling of the Twentieth Century Reanalysis over France, *Climate of the Past*, 12, 635–662, 2016.
- Casanueva Vicente, A., Rodríguez Puebla, C., Frías Domínguez, M. D., González Reviriego, N., et al.: Variability of extreme precipitation over Europe and its relationships with teleconnection patterns, 2014.
- Cassou, C., Terray, L., Hurrell, J. W., and Deser, C.: North Atlantic winter climate regimes: Spatial asymmetry, stationarity with time, and oceanic forcing, *Journal of Climate*, 17, 1055–1068, 2004.
- Cassou, C., Kushnir, Y., Hawkins, E., Pirani, A., Kucharski, F., Kang, I.-S., and Caltabiano, N.: Decadal Climate Variability and Predictability: Challenges and Opportunities, *Bulletin of the American Meteorological Society*, 99, 479–490, 2018.
- Compo, G. P., Whitaker, J. S., Sardeshmukh, P. D., Matsui, N., Allan, R. J., Yin, X., Gleason, B. E., Vose, R. S., Rutledge, G., Bessemoulin, P., et al.: The twentieth century reanalysis project, *Quarterly Journal of the Royal Meteorological Society*, 137, 1–28, 2011.
- Davison, A. C. and Hinkley, D. V.: *Bootstrap methods and their application*, vol. 1, Cambridge university press, 1997.
- Dayon, G., Boé, J., Martin, É., and Gailhard, J.: Impacts of climate change on the hydrological cycle over France and associated uncertainties, *Comptes Rendus Geoscience*, 2018.
- Decharme, B., Martin, E., and Faroux, S.: Reconciling soil thermal and hydrological lower boundary conditions in land surface models, *Journal of Geophysical Research: Atmospheres*, 118, 7819–7834, 2013.
- Deser, C., Alexander, M. A., Xie, S.-P., and Phillips, A. S.: Sea surface temperature variability: Patterns and mechanisms, *Annual review of marine science*, 2, 115–143, 2010.
- Deser, C., Phillips, A., Bourdette, V., and Teng, H.: Uncertainty in climate change projections: the role of internal variability, *Climate dynamics*, 38, 527–546, 2012.
- Dieppois, B., Lawler, D., Slonosky, V., Massei, N., Bigot, S., Fournier, M., and Durand, A.: Multidecadal climate variability over northern France during the past 500 years and its relation to large-scale atmospheric circulation, *International Journal of Climatology*, 36, 4679–4696, 2016.
- Ding, S., Chen, W., Feng, J., and Graf, H.-F.: Combined impacts of PDO and two types of La Niña on climate anomalies in Europe, *Journal of Climate*, 30, 3253–3278, 2017.
- Duchon, C. E.: Lanczos filtering in one and two dimensions, *Journal of applied meteorology*, 18, 1016–1022, 1979.

- Eyring, V., Bony, S., Meehl, G. A., Senior, C. A., Stevens, B., Stouffer, R. J., and Taylor, K. E.: Overview of the Coupled Model Intercomparison Project Phase 6 (CMIP6) experimental design and organization, *Geoscientific Model Development (Online)*, 9, 2016.
- Flipo, N., Monteil, C., Poulin, M., Fouquet, C. d., and Krimissa, M.: Hybrid fitting of a hydrosystem model: Long-term insight into the Beauce aquifer functioning (France), *Water Resources Research*, 48, 2012.
- 5 Giese, B. S., Seidel, H. F., Compo, G. P., and Sardeshmukh, P. D.: An ensemble of ocean reanalyses for 1815–2013 with sparse observational input, *Journal of Geophysical Research: Oceans*, 121, 6891–6910, 2016.
- Giuntoli, I., Renard, B., Vidal, J.-P., and Bard, A.: Low flows in France and their relationship to large-scale climate indices, *Journal of Hydrology*, 482, 105–118, 2013.
- Hawkins, E. and Sutton, R.: The potential to narrow uncertainty in regional climate predictions, *Bulletin of the American Meteorological Society*, 90, 1095–1108, 2009.
- 10 Hingray, B. and Saïd, M.: Partitioning internal variability and model uncertainty components in a multimember multimodel ensemble of climate projections, *Journal of Climate*, 27, 6779–6798, 2014.
- Hirahara, S., Ishii, M., and Fukuda, Y.: Centennial-scale sea surface temperature analysis and its uncertainty, *Journal of Climate*, 27, 57–75, 2014.
- 15 Hirahara, S., Ishii, M., and Fukuda, Y.: Centennial-scale sea surface temperature analysis and its uncertainty, *Journal of Climate*, 30, 2017.
- Hodgkins, G. A., Whitfield, P. H., Burn, D. H., Hannaford, J., Renard, B., Stahl, K., Fleig, A. K., Madsen, H., Mediero, L., Korhonen, J., et al.: Climate-driven variability in the occurrence of major floods across North America and Europe, *Journal of Hydrology*, 552, 704–717, 2017.
- Hurrell, J. W. and Deser, C.: North Atlantic climate variability: the role of the North Atlantic Oscillation, *Journal of marine systems*, 78, 20 28–41, 2009.
- Kerr, R. A.: A North Atlantic climate pacemaker for the centuries, *Science*, 288, 1984–1985, 2000.
- Kingston, D., Lawler, D., and McGregor, G.: Linkages between atmospheric circulation, climate and streamflow in the northern North Atlantic: research prospects, *Progress in Physical Geography*, 30, 143–174, 2006a.
- Kingston, D. G., McGregor, G. R., Hannah, D. M., and Lawler, D. M.: River flow teleconnections across the northern North Atlantic region, 25 *Geophysical Research Letters*, 33, 2006b.
- Krueger, O., Schenk, F., Feser, F., and Weisse, R.: Inconsistencies between long-term trends in storminess derived from the 20CR reanalysis and observations, *Journal of Climate*, 26, 868–874, 2013.
- Kuentz, A., Mathevet, T., Gailhard, J., and Hingray, B.: Building long-term and high spatio-temporal resolution precipitation and air temperature reanalyses by mixing local observations and global atmospheric reanalyses: the ANATEM model, *Hydrology and Earth System Sciences*, 19, 2717, 2015.
- 30 Lorenz, E. N.: Atmospheric predictability as revealed by naturally occurring analogues, *Journal of the Atmospheric sciences*, 26, 636–646, 1969.
- Mantua, N. J. and Hare, S. R.: The Pacific decadal oscillation, *Journal of oceanography*, 58, 35–44, 2002.
- Marti, R., Gascoïn, S., Houet, T., Ribière, O., Laffly, D., Condom, T., Monnier, S., Schmutz, M., Camerlynck, C., Tihay, J., et al.: Evolution of Ossoue Glacier (French Pyrenees) since the end of the Little Ice Age, *The Cryosphere*, 9, 1773–1795, 2014.
- 35 Masson, V., Le Moigne, P., Martin, E., Faroux, S., Alias, A., Alkama, R., Belamari, S., Barbu, A., Boone, A., Bouysse, F., et al.: The SURFEXv7. 2 land and ocean surface platform for coupled or offline simulation of earth surface variables and fluxes, *Geoscientific Model Development*, 6, 929–960, 2013.

- Minvielle, M., Pagé, C., Céron, J.-P., and Besson, F.: Extension of the SIM reanalysis by combination of observations and statistical down-scaling, in: *Engineering Geology for Society and Territory-Volume 1*, pp. 189–192, Springer, 2015.
- Moisselin, J.-M. and Dubuisson, B.: *Évolution des valeurs extrêmes de température et de précipitations au cours du XXe siècle en France*, La Météorologie, 2006.
- 5 Moisselin, J.-M., Schneider, M., and Canellas, C.: *Les changements climatiques en France au XXè siècle. Etude des longues séries homogénéisées de données de température et de précipitations.*, 2002.
- Nicolas, J., Verley, F., and Chery, L.: *La mesure et la surveillance des niveaux d'eau dans les eaux souterraines: une décennie d'évolutions en France*, *Géologues*, pp. 58–62, 2013.
- Noilhan, J. and Planton, S.: A simple parameterization of land surface processes for meteorological models, *Monthly weather review*, 117, 10 536–549, 1989.
- Obled, C., Bontron, G., and Garçon, R.: Quantitative precipitation forecasts: a statistical adaptation of model outputs through an analogues sorting approach, *Atmospheric research*, 63, 303–324, 2002.
- Oliver, E. C.: Blind use of reanalysis data: apparent trends in Madden-Julian Oscillation activity driven by observational changes, *International Journal of Climatology*, 36, 3458–3468, 2016.
- 15 Pachauri, R. K., Allen, M. R., Barros, V. R., Broome, J., Cramer, W., Christ, R., Church, J. A., Clarke, L., Dahe, Q., Dasgupta, P., et al.: *Climate change 2014: synthesis report. Contribution of Working Groups I, II and III to the Fifth assessment report of the Intergovernmental Panel on Climate Change*, IPCC, 2014.
- Philippe, É., Habets, F., Ledoux, E., Goblet, P., Viennot, P., and Mary, B.: Improvement of the solute transfer in a conceptual unsaturated zone scheme: a case study of the Seine River basin, *Hydrological Processes*, 25, 752–765, 2011.
- 20 Qasmi, S., Cassou, C., and Boé, J.: Teleconnection Between Atlantic Multidecadal Variability and European Temperature: Diversity and Evaluation of the Coupled Model Intercomparison Project Phase 5 Models, *Geophysical Research Letters*, 44, 11–140, 2017.
- Quintana-Segui, P., Le Moigne, P., Durand, Y., Martin, E., Habets, F., Baillon, M., Canellas, C., Franchisteguy, L., and Morel, S.: Analysis of near-surface atmospheric variables: Validation of the SAFRAN analysis over France, *Journal of applied meteorology and climatology*, 47, 92–107, 2008.
- 25 Rousset, F., Habets, F., Gomez, E., Le Moigne, P., Morel, S., Noilhan, J., and Ledoux, E.: Hydrometeorological modeling of the Seine basin using the SAFRAN-ISBA-MODCOU system, *Journal of Geophysical Research: Atmospheres*, 109, 2004.
- Rousset Regimbeau, F.: *Modélisation des bilans de surface et des débits sur la France, application à la prévision d'ensemble des débits*, Ph.D. thesis, Toulouse 3, 2007.
- Ruprich-Robert, Y., Msadek, R., Castruccio, F., Yeager, S., Delworth, T., and Danabasoglu, G.: Assessing the climate impacts of the observed 30 Atlantic multidecadal variability using the GFDL CM2. 1 and NCAR CESM1 global coupled models, *Journal of Climate*, 30, 2785–2810, 2017.
- Saleh, F., Flipo, N., Habets, F., Ducharne, A., Oudin, L., Viennot, P., and Ledoux, E.: Modeling the impact of in-stream water level fluctuations on stream-aquifer interactions at the regional scale, *Journal of Hydrology*, 400, 490–500, 2011.
- Schlesinger, M. E. and Ramankutty, N.: An oscillation in the global climate system of period 65–70 years, *Nature*, 367, 723, 1994.
- 35 Schneider, U., Fuchs, T., Meyer-Christoffer, A., and Rudolf, B.: *Global precipitation analysis products of the GPCC*, Global Precipitation Climatology Centre (GPCC), DWD, Internet Publikation, 112, 2008.
- Simpson, I. R., Deser, C., McKinnon, K. A., and Barnes, E. A.: Modeled and Observed Multidecadal Variability in the North Atlantic Jet Stream and Its Connection to Sea Surface Temperatures, *Journal of Climate*, 31, 8313–8338, 2018.

- Slater, L., Khouakhi, A., and Wilby, R.: River channel conveyance capacity adjusts to modes of climate variability, *Scientific reports*, 9, 1–10, 2019.
- Slonosky, V. C.: Wet winters, dry summers? Three centuries of precipitation data from Paris, *Geophysical Research Letters*, 29, 34–1, 2002.
- Steirou, E., Gerlitz, L., Apel, H., and Merz, B.: Links between large-scale circulation patterns and streamflow in Central Europe: A review, *Journal of hydrology*, 549, 484–500, 2017.
- 5 Sutton, R. T. and Dong, B.: Atlantic Ocean influence on a shift in European climate in the 1990s, *Nature Geoscience*, 5, 788, 2012.
- Terray, L. and Boé, J.: Quantifying 21st-century France climate change and related uncertainties, *Comptes Rendus Geoscience*, 345, 136–149, 2013.
- Teweles Jr, S. and Wobus, H. B.: Verification of prognostic charts, *Bulletin of the American Meteorological Society*, 35, 455–463, 1954.
- 10 Vergnes, J.-P., Roux, N., Habets, F., Ackerer, P., Amraoui, N., Besson, F., Caballero, Y., Courtois, Q., de Dreuzy, J.-R., Etchevers, P., Gallois, N., Leroux, D. J., Longuevergues, L., Le Moigne, P., Morel, T., Munier, S., Regimbeau, F., Thiéry, D., and Viennot, P.: The AquifR hydrometeorological modelling platform as a tool for improving groundwater resource monitoring over France: evaluation over a 60 year period, *Hydrology and Earth System Sciences Discussions*, 2019, 1–38, <https://doi.org/10.5194/hess-2019-166>, <https://www.hydrol-earth-syst-sci-discuss.net/hess-2019-166/>, 2019.
- 15 Vidal, J.-P., Martin, E., Franchistéguy, L., Baillon, M., and Soubeyroux, J.-M.: A 50-year high-resolution atmospheric reanalysis over France with the Safran system, *International Journal of Climatology*, 30, 1627–1644, 2010.
- Viennot, P., Ducharne, A., Habets, F., Lamy, F., and Ledoux, E.: Hydrogéologie du bassin de la Seine, comprendre et anticiper le fonctionnement hydrodynamique du bassin pour une gestion durable de la ressource, Agence de l'eau Seine-Normandie, <https://hal-mines-paristech.archives-ouvertes.fr/hal-00507066>, 2009.
- 20 Voldoire, A., Sanchez-Gomez, E., y Méliá, D. S., Decharme, B., Cassou, C., Sénési, S., Valcke, S., Beau, I., Alias, A., Chevallier, M., et al.: The CNRM-CM5. 1 global climate model: description and basic evaluation, *Climate Dynamics*, 40, 2091–2121, 2013.
- Wang, J., Yang, B., Ljungqvist, F. C., Luterbacher, J., Osborn, T. J., Briffa, K. R., and Zorita, E.: Internal and external forcing of multidecadal Atlantic climate variability over the past 1,200 years, *Nature Geoscience*, 10, 512, 2017.
- Willems, P.: Multidecadal oscillatory behaviour of rainfall extremes in Europe, *Climatic Change*, 120, 931–944, 2013.
- 25 Wu, Z. and Huang, N. E.: Ensemble empirical mode decomposition: a noise-assisted data analysis method, *Advances in adaptive data analysis*, 1, 1–41, 2009.

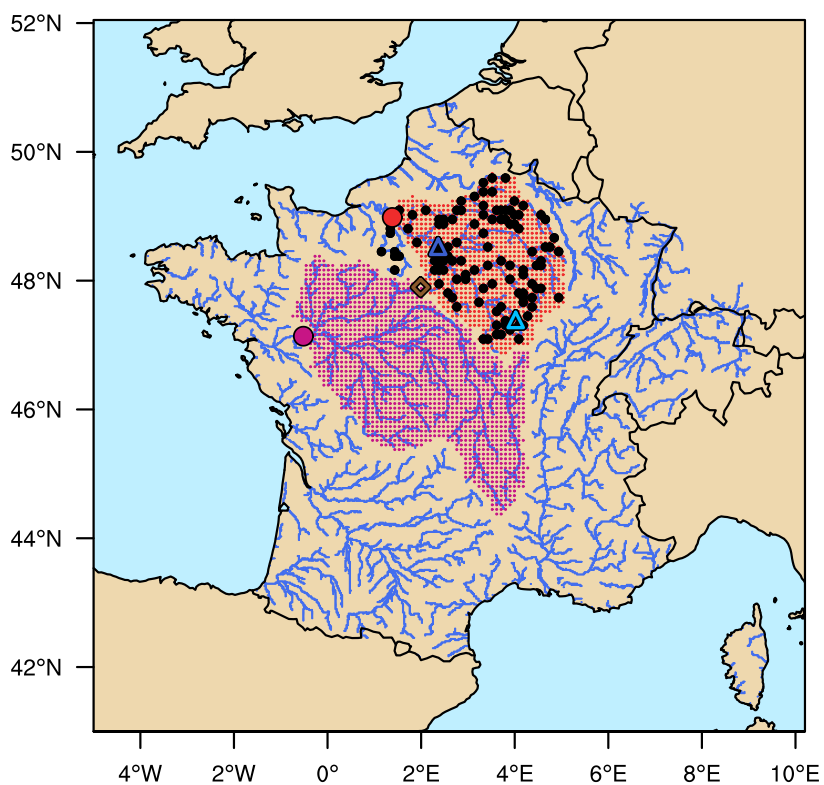


Figure 1. Location of the Seine catchment (red area) corresponding to the Seine at Poses station, considered as the outlet (red dot), and of the Loire catchment (green-magenta area) for the Loire at Montjean sur Loire station (green-magenta dot). Location of hydrometric stations both observed and simulated (black circles), and of the two long-term river flows observations available: the Paris Austerlitz station (dark blue triangle) and the Aisy-sur-Armançon station (light blue triangle). Location of the long-term piezometric level [series](#) at Toury (brown rhombus).

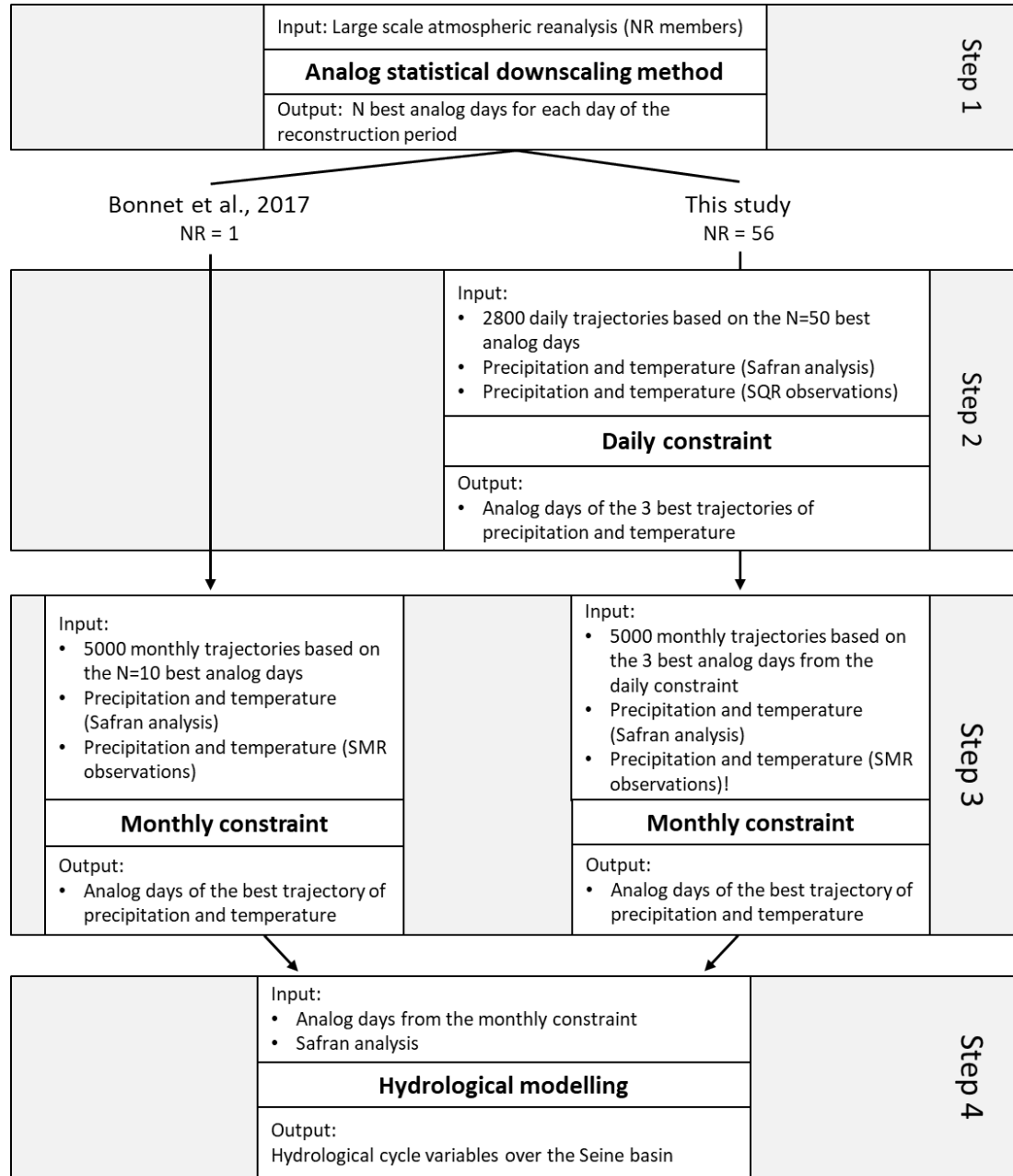


Figure 2. [Schematic representation of the methods used to obtain the hydrological reconstruction, with on the right the method used in this study and on the left the method used in Bonnet et al. \(2017\), which doesn't include the daily constraint.](#)

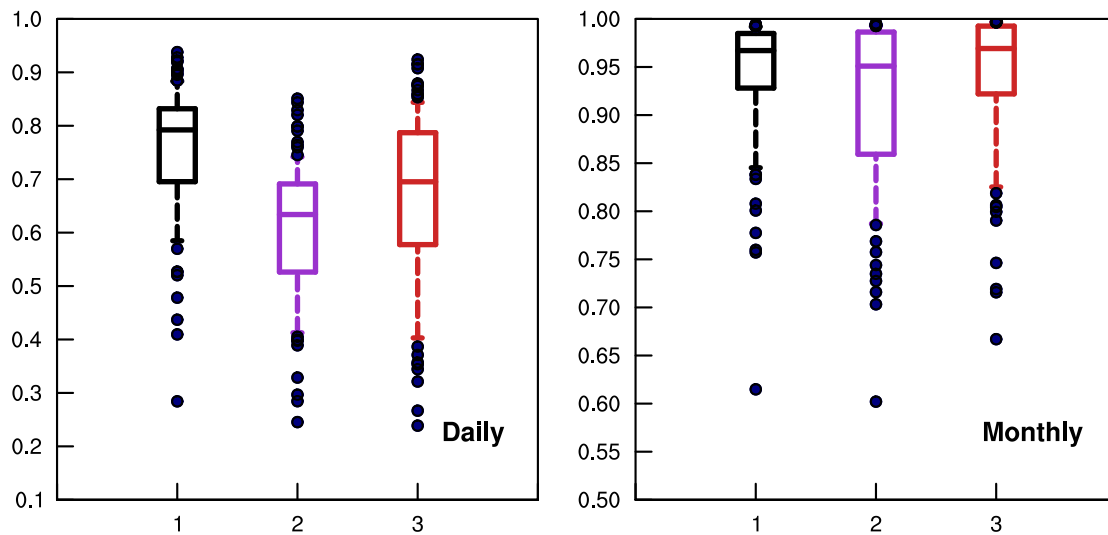


Figure 3. Spatial distribution of the correlations between (left) daily and (right) monthly observations of river flows and the (black) reference simulation (Safran-IsbaSurfex-AquiFR), (purple) the 20CRpt reconstruction used in Bonnet et al. (2017) and (red) the Seine reconstruction. The correlations are calculated on the 1958-2005 period and the series have been deseasonalized beforehand. The boxplots show the 10th percentile/25th percentile/median/75th percentile and the 90th percentile. The blue dots are the value below/above the 10th and the 90th percentiles.

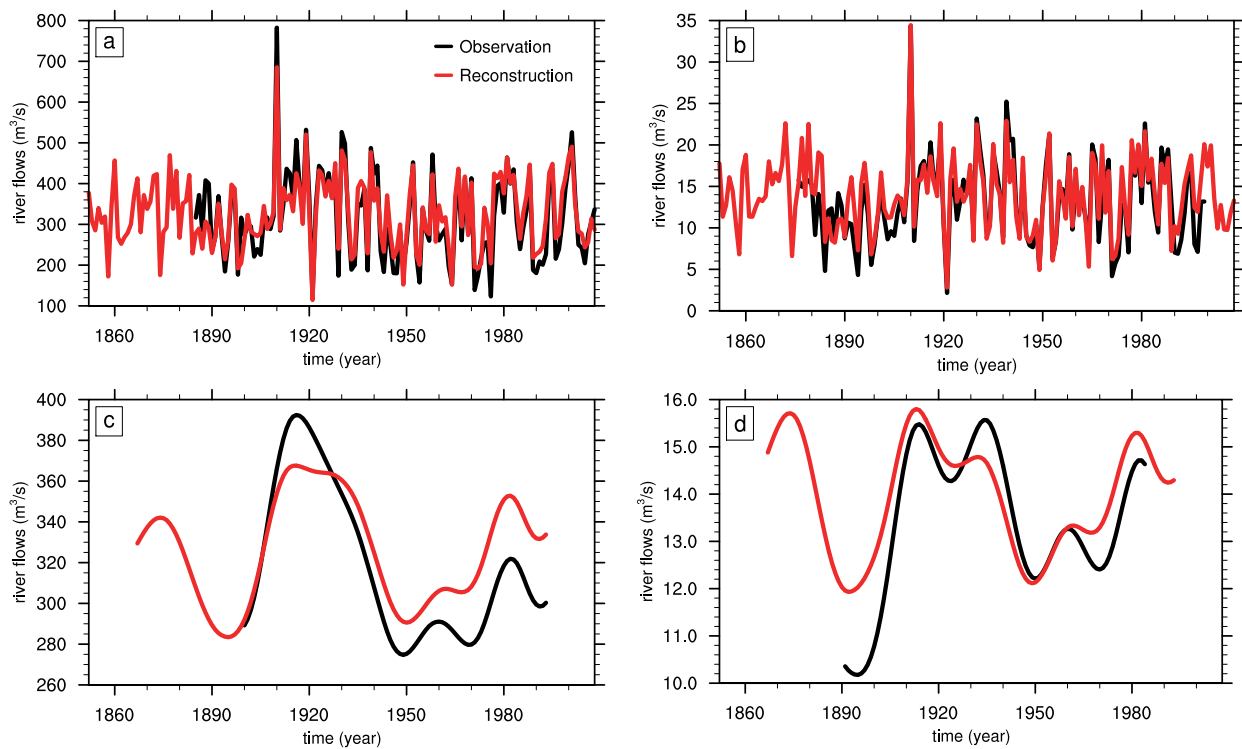


Figure 4. Annual series of river flows for the (a) Seine at Paris station and (b) [Aisy-sur-Armançon](#) station (see Figure 1). (c) and (d): annual low-pass filtered series of river flows for the same stations [of as](#) (a) and (b). Black: [the](#) observations. Red: [the](#) Seine reconstruction.

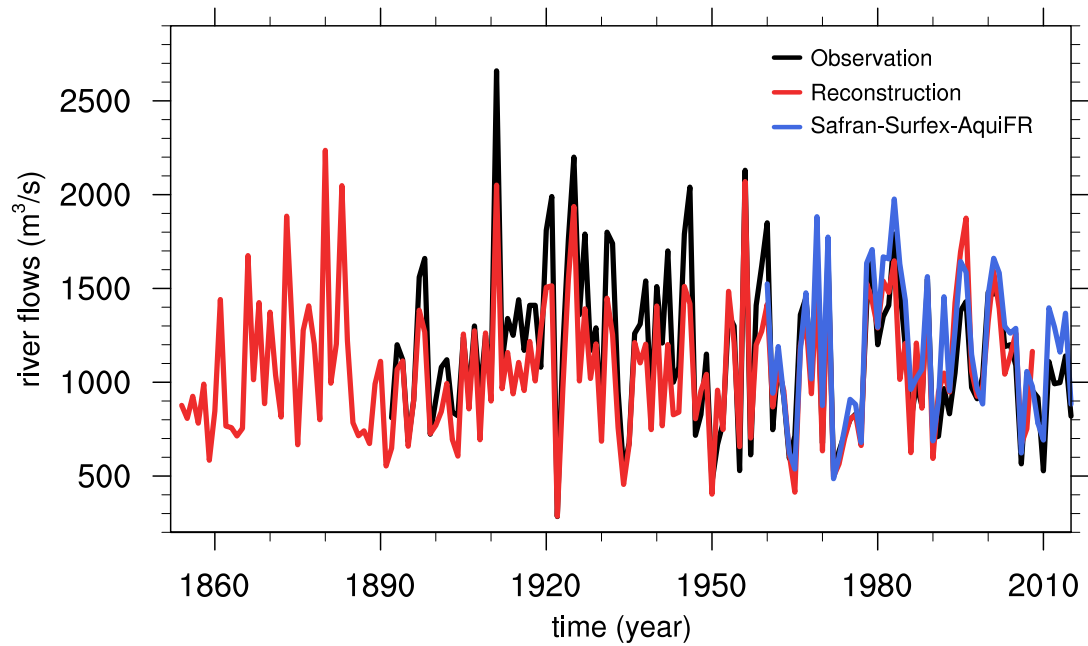


Figure 5. Annual maximum of daily river flows at for the Seine at Paris station for the. Black: observations (black), the. Red: Seine reconstruction (red) and the. Blue: reference simulation (based on Safran-Surfex-AquiFR).

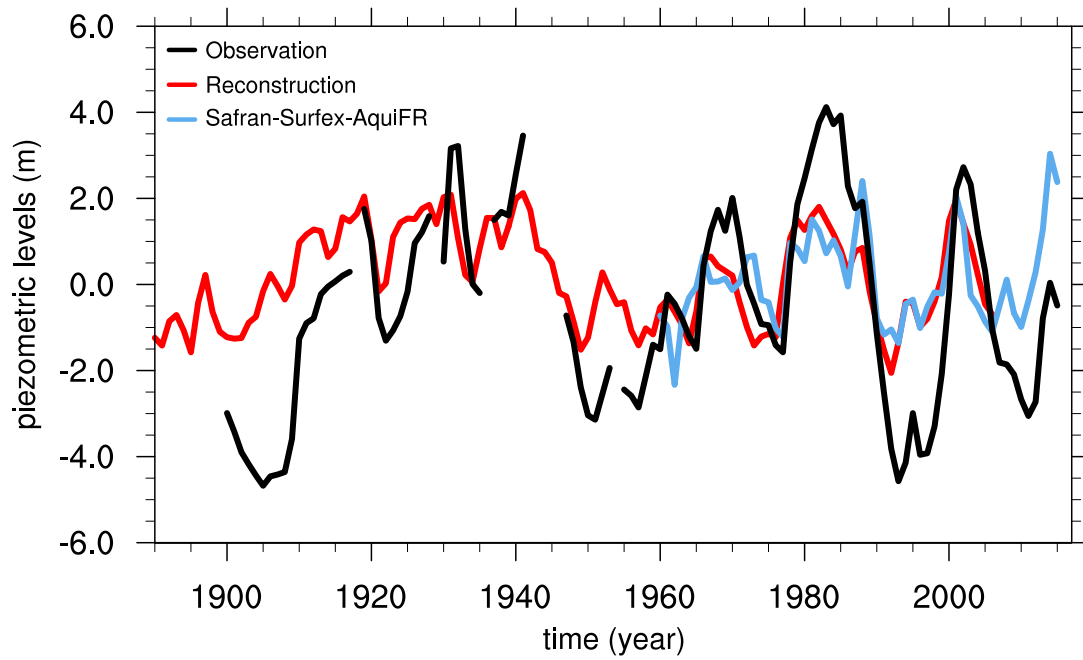


Figure 6. Annual anomalies of the piezometric levels of the Beauce groundwater table at Toury. The reference period is 1960-2005. Black: Observations. Red: the Seine reconstruction. Blue: the reference simulation (Safran-Surfex-AquiFR).

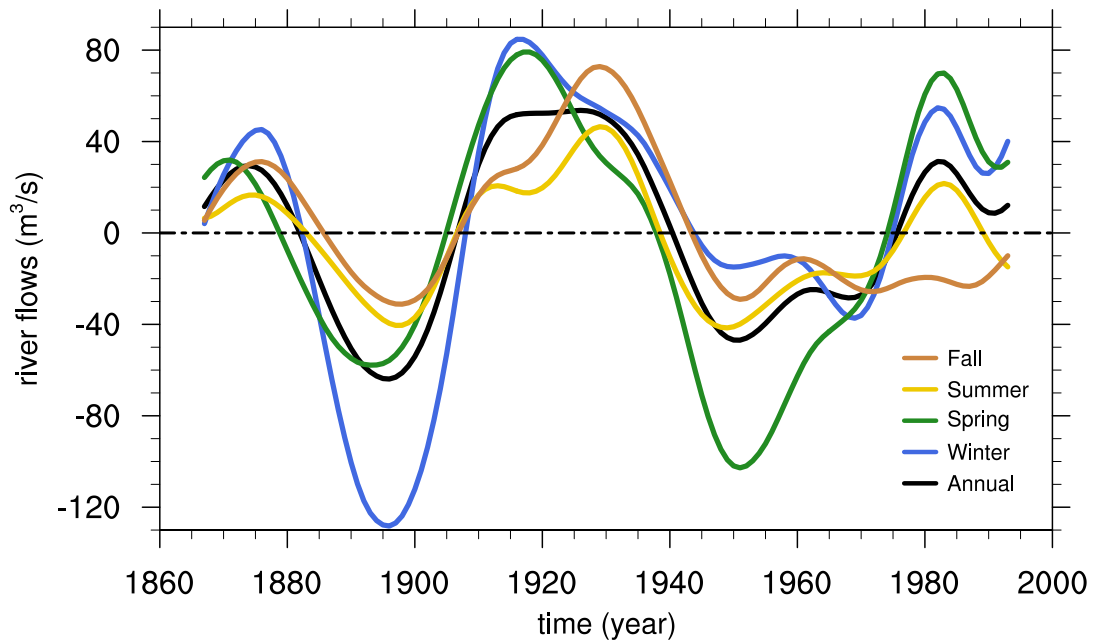


Figure 7. Low-pass filtered interannual anomalies of the Seine river flows at the Poses station. Black: annual, blue: winter, green: spring, ~~red~~yellow: summer and brown: autumn. The annual mean over the whole period is 446m³/s.

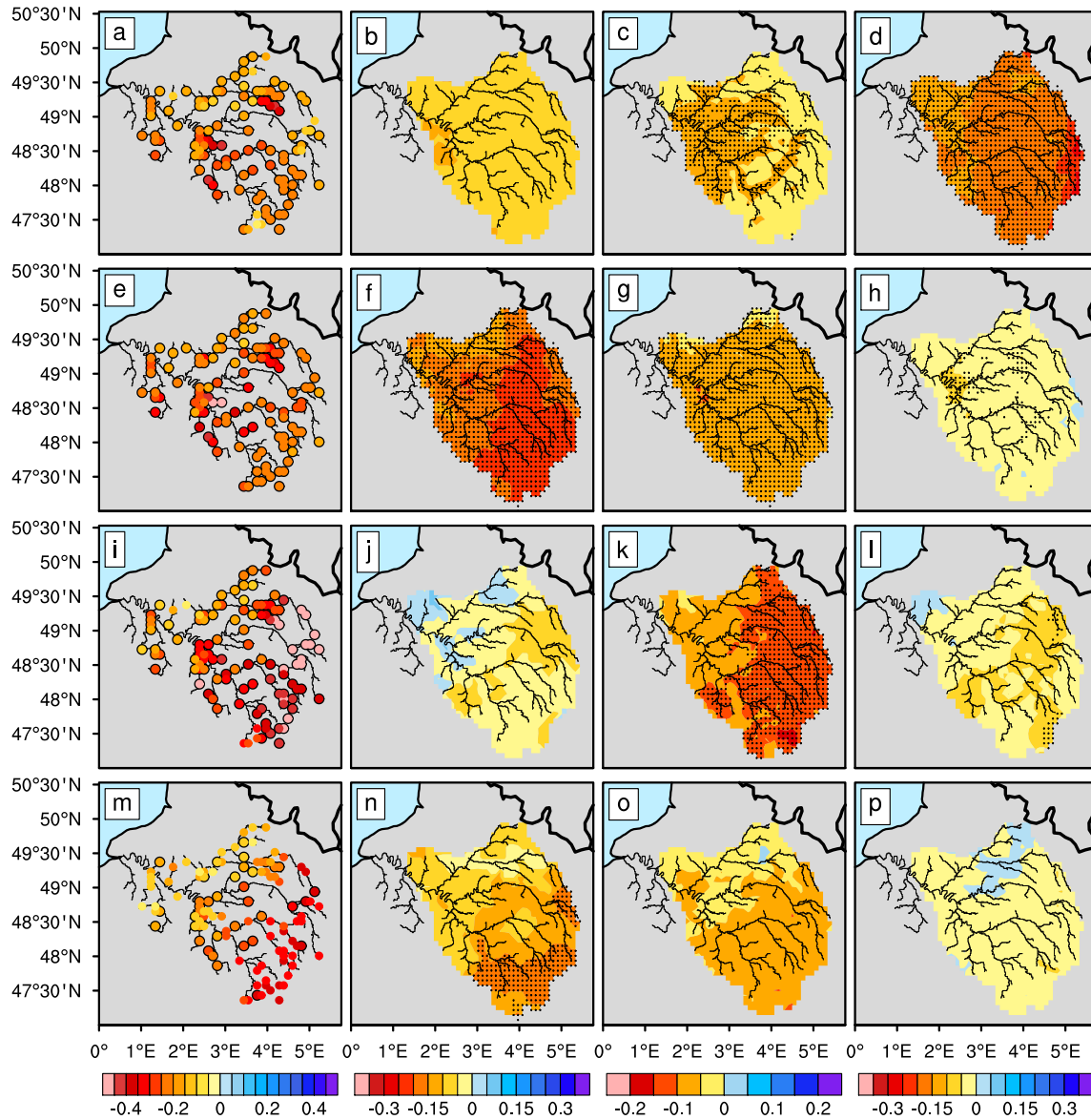


Figure 8. Relative differences of \ln -detrended (a-e-i-m) simulated river flows, (b-f-j-n) precipitation, (c-g-k-o) soil wetness index (SWI) and (d-h-l-p) evapotranspiration between the negative multidecadal phases of the Seine river flows (1885-1905 and 1940-1960) and the positive phases (1910-1930 and 1975-1995). The reference is calculated as the average of these four periods. (a-b-c-d) winter, (e-f-g-h) spring, (i-j-k-l) summer and (m-n-o-p) autumn. Simulated river flows, precipitation, SWI and evapotranspiration come from the Seine reconstruction. Black circles and dots show where the differences are significant with $p < 0.05$ based on a t-test.

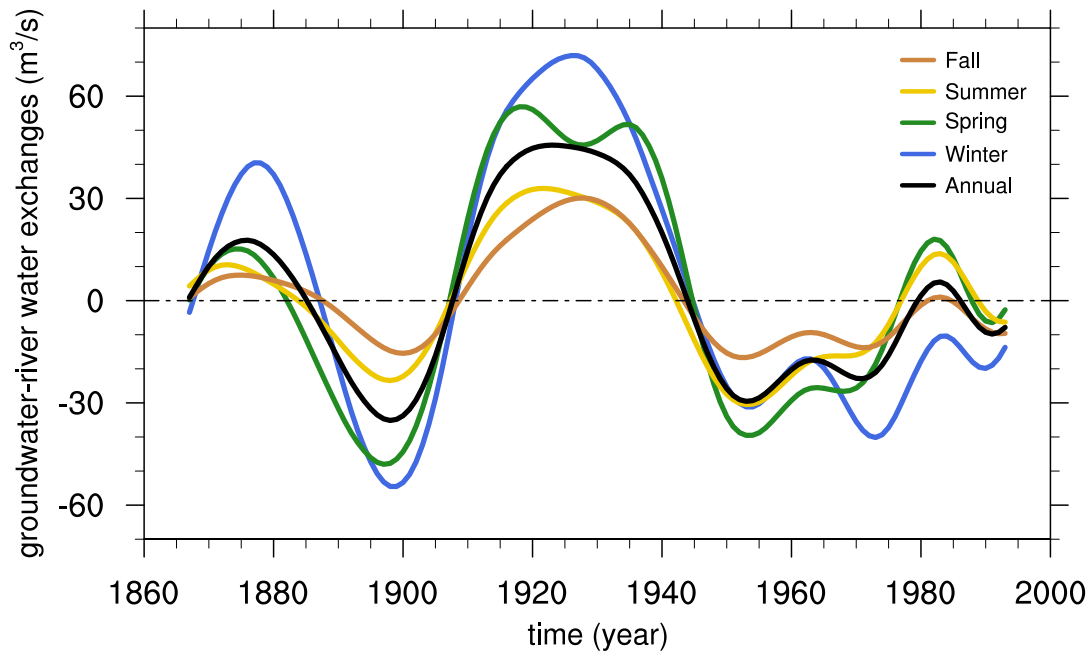


Figure 9. Annual low-pass filtered anomalies of the (black) annual, (blue) winter, (green) spring, (redyellow) summer, (brown) autumn average groundwater-river water exchanges over the Seine basin in the reconstruction. The reference period is 1852-2008.

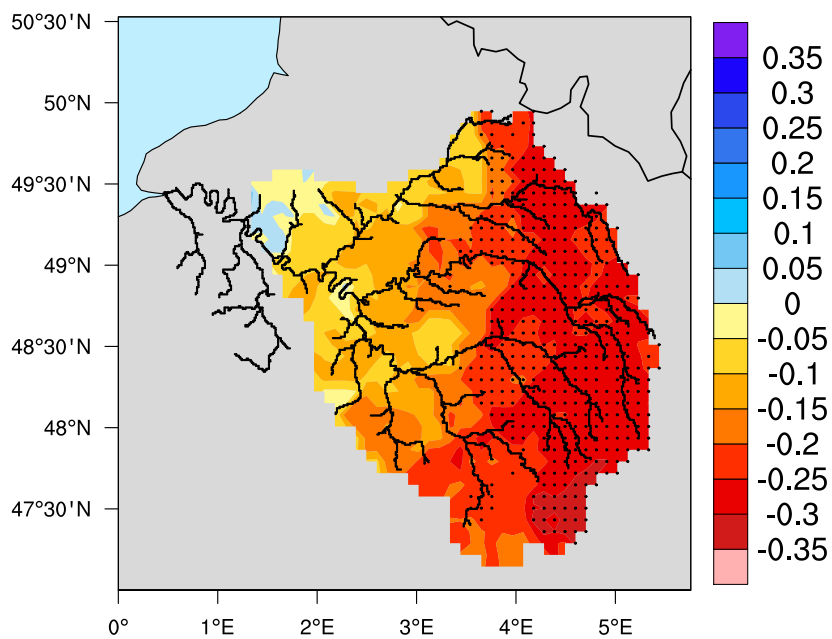


Figure 10. Relative differences $\frac{R}{P}$ in the ratio between the total runoff and precipitation of the reconstruction, calculated in summer between the negative multidecadal phases of the Seine river flows (1885-1905 and 1940-1960) and the positive phases (1910-1930 and 1975-1995). The reference for the calculation of the relative anomalies is calculated as the average of these four periods. Dots show where the differences are significant with $p < 0.05$ based on a t-test.

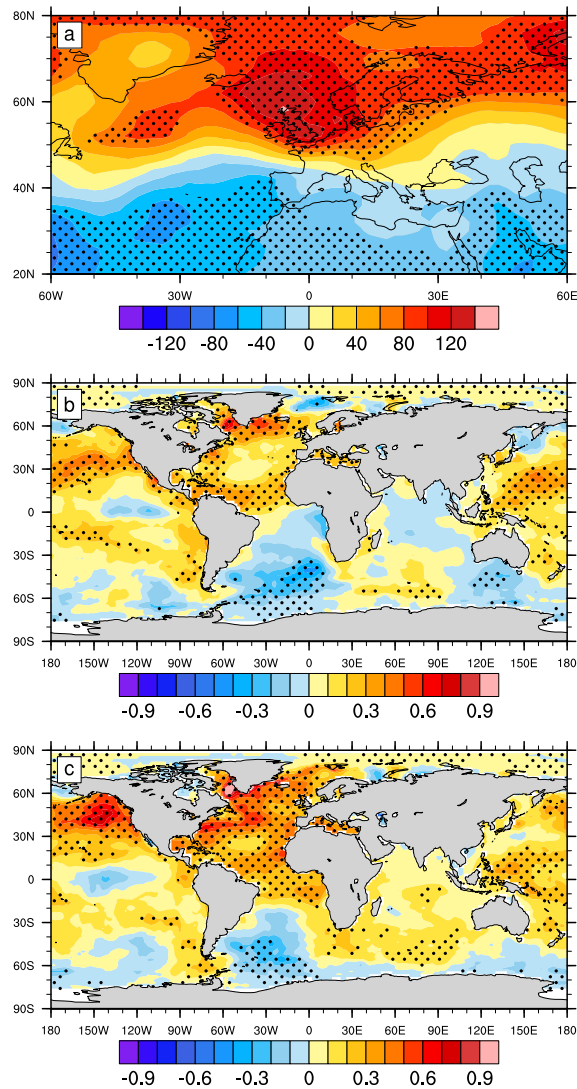


Figure 11. Differences in (a) Ratio of the number of the day with a river flow rates equal or greater of the 95th percentile detrended pressure at sea level (SLP) (Pa), (b) detrended sea surface temperature (SST) (K) between the positive-negative multidecadal phases of the Seine river flows (1910-1930-1885-1905 and 1975-1995/1940-1960) and the negative-positive phases (1885-1905-1910-1930 and 1940-1960/1975-1995) calculated with the reconstruction (dots), and for the two long-term observations (triangles; see figure-1). The ratio is calculated for the days in the months of November to April, which corresponds to the flood period. The reference period is 1852-2009. (Right c): same as (b) for, and with the inverse a lag of -10 years. SLP comes from the ratio the number of the day NOAA 20CrV2c reanalysis. SST comes from ERSSTv5 (Huang et al., 2017). The trends are calculated with a river flow rates equal or lower of the 5% percentile EEMD method and subtracted at each grid point. All days of Dots indicate where the year differences are considered significant with $p < 0.05$ (based on a t-test)

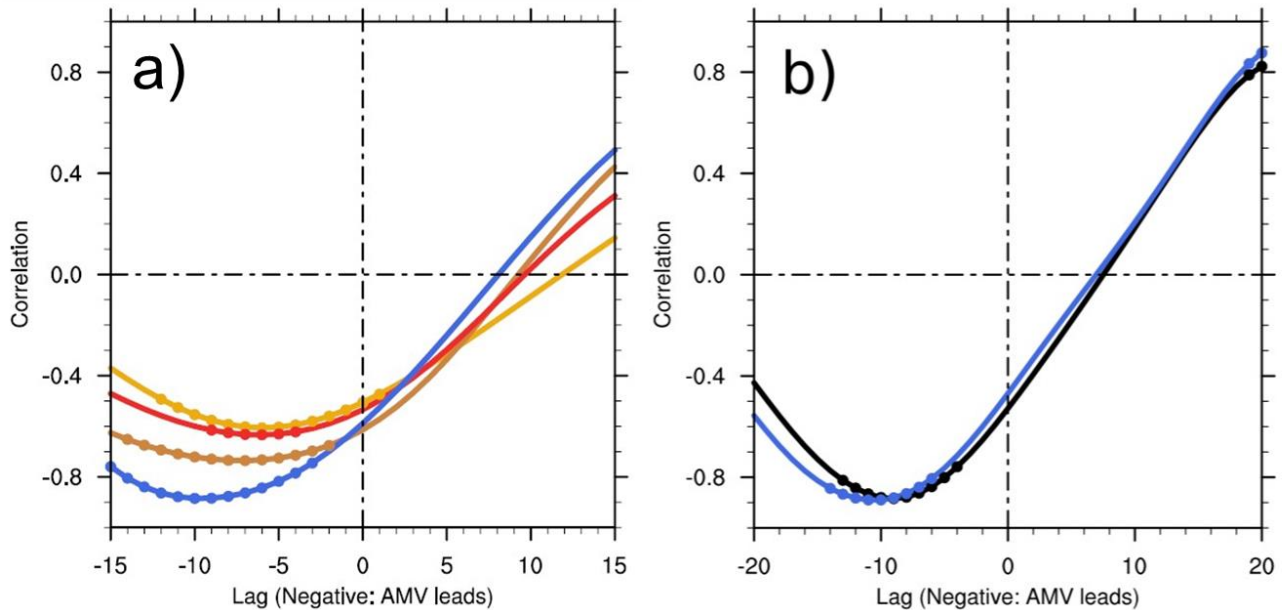


Figure 12. (a) Evolution of correlations between the paleoclimate AMV index of Wang et al. (2017) and the long series of annual precipitation (mm/f) observed at Paris (Slonosky, 2002) over the Seine basin from August 1920 to July 1922 period 1780-1889 (red dots yellow), 1890-1889 (brown) and from August 1948 to July 1950-1779-1889 (green dots red). The boxplots represent in blue, the climatological monthly distributions correlations between the AMV index calculated from the SST of the 20CRv2c reanalysis and the precipitation from the reconstruction over the 1852-2008 period 1882-1979. Red (green) crosses represent the AMV index is defined as the monthly average of the 1910-1930 North Atlantic SSTs, from which the forced signal has been removed (Deser et al., 2010). Here, the forced signal is estimated with the trend calculated from the EEMD method (1940-1960 period see section 2.4). (b) The same for correlations between the AMV index calculated with the SST of the 20CRv2c reanalysis and the spring river flows at the Poses stations from (m³/s) blue, the reconstruction at Paris and (black) water exchanges the observations at Paris Austerlitz over the period 1882-1979. The 20CRv2c reanalyses SSTs use SODasi.2 (Giese et al., 2016) for latitudes between 60N and 60S and (d) COBE-SST2 (Hirahara et al., 2017) for the piezometric levels (m) of the unconfined part of the aquifer highest latitudes. The data come trends in precipitation and river flows series are calculated with the EEMD algorithm and subtracted from the Seine reconstruction original series before the calculation of the correlations. Boxplots The series are defined as: 10th percentile, 25th percentile, median, 75th percentile and 90th percentile filtered with a Lanczos filter with a 21-year window. The points represent significant correlations with $p < 0.05$ (at least 95% of the null hypothesis is rejected) according to the "phase-scrambled bootstrapping test" (Davison and Hinkley, 1997)

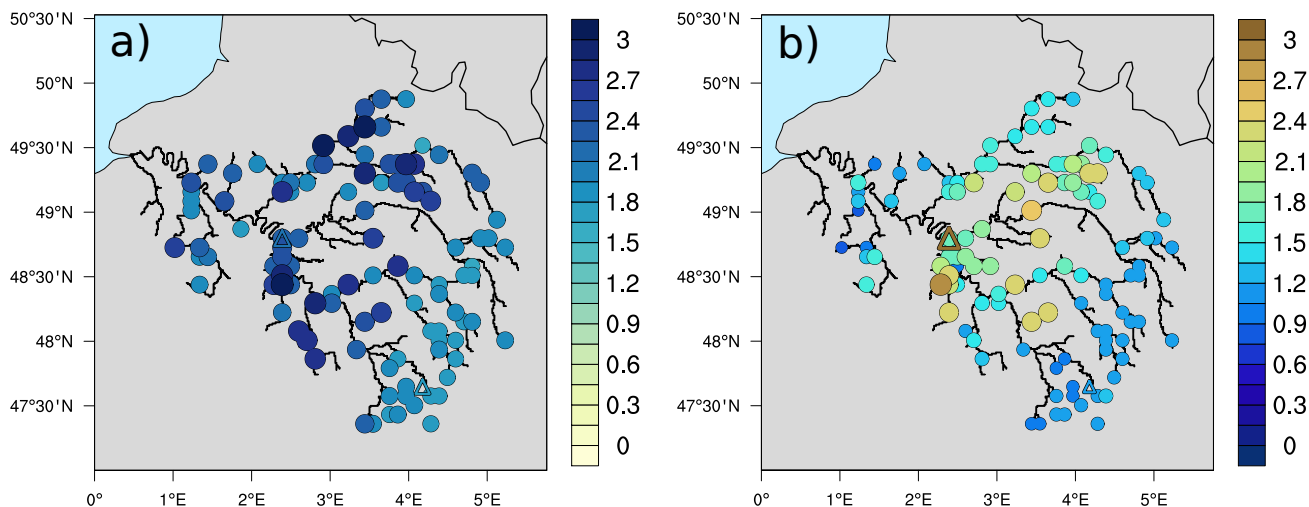


Figure 13. Differences of the (a) detrended pressure at sea level (SLP) (Pa), (b) detrended sea surface temperature (SST) (K) Ratio of the number of days with river flows equal to or greater than the 95th percentile between the negative-positive multidecadal phases of the Seine river flows (1885-1905-1910-1930 and 1940-1960/1975-1995) and the positive-negative phases (1910-1930-1885-1905 and 1975-1995/1940-1960) -calculated for the reconstruction (edots)-same as-, and for the two available long term observation series (btriangles, see figure 1)considering a lag 10 years earlier over the periods. SLP comes from Only the NOAA 20CRv2e reanalysis. SST comes from days of the ERSSTv5 reconstruction flood season are used (Huang et al., 2017 November to April). The trends are calculated (b) same as (a) for the days with river flows equal to or lower than the EEMD method 5th percentile between the negative and removed for each grid points. Dots indicate where the differences are significant with $p < 0.05$ (based on a t-test) positive multidecadal phases, considering the whole year.

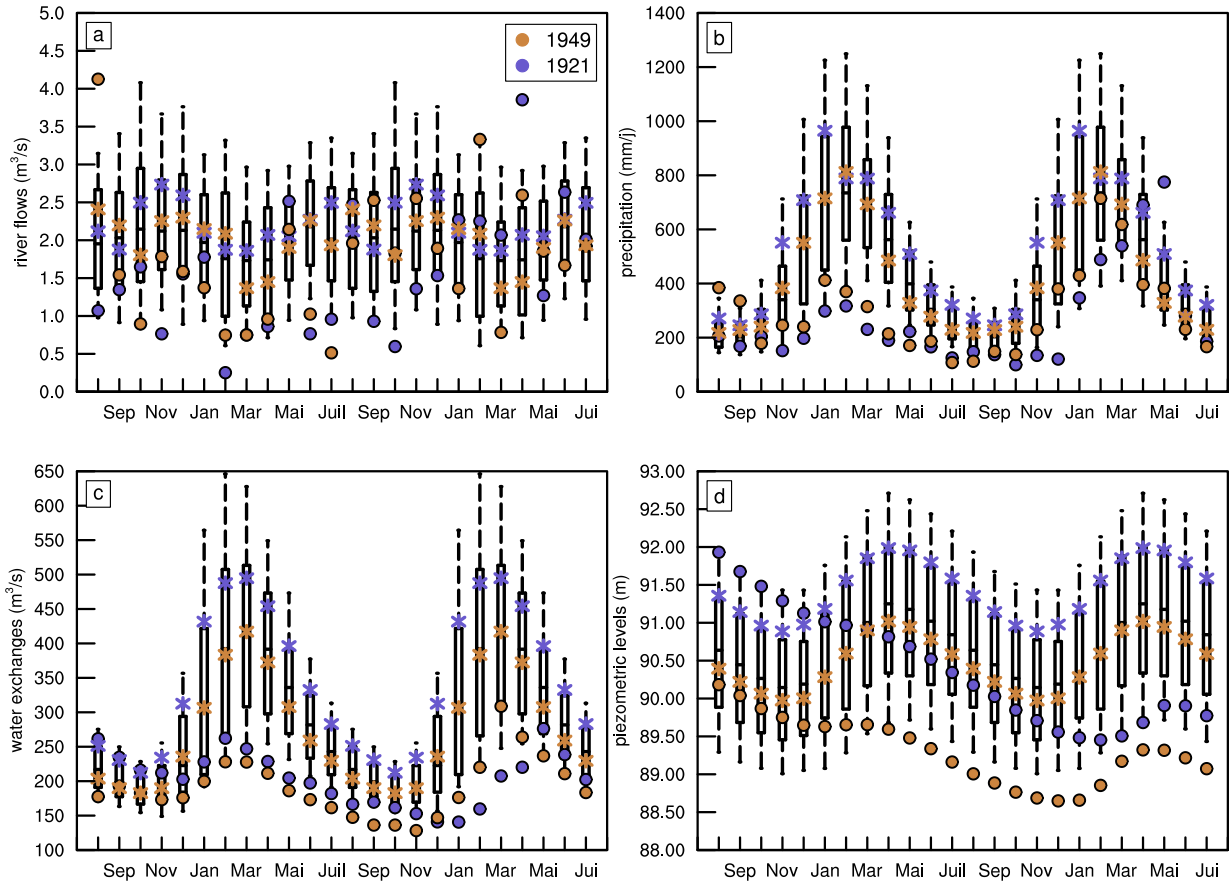


Figure 14. a) Evolution of monthly precipitation (mm/j) averaged over the Seine basin from August 1920 to July 1922 (purple dots) and from August 1948 to July 1950 (beige dots). The boxplots represent the climatological monthly distributions calculated over the 1852-2008 period. Purple (beige) crosses show the monthly average over the 1910-1930 (1940-1960) period. (b) Same as (a) for river flows at Poses (m³/s), (c) water exchanges between groundwater and rivers (m³/s) and (d) the piezometric levels (m) of the unconfined part of the aquifer. The data come from the Seine reconstruction. Boxplots are defined as: 10th percentile, 25th percentile, median, 75th percentile and 90th percentile.