

Dear Theresa Blume, thank you for your handling of this manuscript and your feedback. Below you will find a point-by-point answer to all suggestions with the referees' comments in black and authors comment in blue.

Referee number 1:

Thank you for staying with this manuscript and revising it for the second time. We are glad to know you are happy with the corrections made to the manuscript and the additional figures and table that you highlight.

Line 35: Consider including: 1) Peters et al. 2018 2) Flo et al. 2019.

Line 35: I thank the referee for important and relevant additions to the literature list. The Peters et al., 2018 and Flo et al., 2019 was added.

Line 37: For SHB one can use: Langensiepen M, Kupisch M, Graf A, Schmidt M, Ewert F. 2014. Improving the stem heat balance method for determining sap-flow in wheat. Agricultural and Forest Meteorology 186:34-42.

L40: Thank you for the suggestion, Langensiepen et al., 2014 was added for the SHB method as suggested by the referee.

Line 30: The manuscript from Jasechko et al. 2013 has received some criticism (<http://dx.doi.org/10.1038/nature12925>), consider citing: Schlesinger WH, Jasechko S. 2014. Transpiration in the global water cycle. Agricultural and Forest Meteorology 189-190:115-117.

L31: The article of Jasechko et al., 2013 was replaced with the one from Schelsinger and Jasechko, 2014. We found that the same statement still held, only they had adjusted the values of transpiration/evapotranspiration ratio in the second paper.

Line 71: Why specifically 3 months? Is this the time in which the authors do not expect any wounding effect to develop? Or is this the time which is commonly used for monitoring? Please clarify.

This was clarified in the manuscript accordingly:

L74: "The adjustment proposed here, which is built on the calculations of Burgess et al. (2001), is necessary when monitoring transpiration continuously for more than 3 months due to observed shift in probe placement from one season to another (Fig. 4, 6)."

Line 76: "...probe misalignment correction for the HRM.." Remove one dot at the end of this sentence please.

Removed.

Line 86-87: Please explain why you drilled the sensors into the uphill side of the tree

We clarified this by adding:

L96-97: To establish a criterion that unified the effect of the slope on all trees, with the upper part facilitating the retention of water in the soil, all the sensors were drilled into the uphill side of each tree trunk.

Line 273: "... 0.29 (cm cm³ cm⁻² h⁻¹)". I presume the authors should remove cm?

Yes, removed.

Lines 274: "... (Table 1, Fig. 4) In terms of...". A dot is missing after "Fig. 4)".
Added.

Referee number 2:

We thank referee number 2, Miriam Coenders-Gerrits, for taking an interest in our manuscript and for the valuable feedback. Comments are answered point-by-point below.

- P1L30: Jasechko later corrected his global estimate for transpiration (Schlesinger & Jasechko 10.1016/j.agrformet.2014.01.011)

L31: Yes, this was suggested by both referees and has been changed.

- P2L46: I would elaborate on what you mean by probe misalignment. Maybe a schematic drawing would help.

L55: We appreciate the suggestion and have included a schematic drawing of the probe misalignment (Fig. 1), which we hope improves the understanding of the method.

- P2L74: methodological paper=> technical note
Changed.

- P2L76: remove one dot after HRM
Removed.

- P2L83: unit of annual rainfall is mm/YEAR
Yes, thank you.

- P3L114-122: add units.
L132-140: Units added.

- P4L124: an image would help to understand your coordinate system.
L140: We included a photo of the probes showing the coordinate system we describe in the text. Hopefully giving the reader a good understanding of the positions.

- P5L189: what is both x_1 and x_2 are misaligned? Does your method work then? Please explain and/or elaborate on this.

We added to an explanation for this in the text L208-210:

“Usually both x_1 and x_2 are slightly misaligned, which means that each correction step will assume an error, that the other probe is correctly placed. However, taking the average of the misalignment calculated from each probe, both misalignments will be accounted for (Burgess et al., 2001).”

- P7L256" remove "average". This is already said in L255.
Thank you.

Other corrections:

Note that we have added an addition to equation 7, it is explained in the text accordingly:

“The negative sign in front x_2 is to clarify that this probe needs a negative solution.”

Technical note on long-term probe misalignment and proposed quality control using the heat pulse method for transpiration estimations

Elisabeth K. Larsen^{1,3}, Jose Luis Palau¹, Jose Antonio Valiente¹, Esteban Chirino² and Juan Bellot^{3,4}.

5 ¹Mediterranean Centre for Environmental Studies (Foundation CEAM), Charles R. Darwin 14, Parque Tecnológico, 46980 Paterna, Valencia, Spain

²Faculty of Agricultural Sciences, Lay University Eloy Alfaro of Manabí, Ave. Circunvalación, Vía San Mateo, Manta 130802, Ecuador

³Department of Ecology, University of Alicante, Apdo. 99, E-03080 Alicante, Spain

10 ⁴MEM Ramón Margalef, Department of Ecology, Faculty of Sciences, University of Alicante, 03080 Alicante, Spain

Correspondence to: Elisabeth K. Larsen (eli@ceam.es)

1 Abstract

Transpiration is a crucial component in the hydrological cycle and a key parameter in many disciplines like agriculture, forestry, ecology and hydrology. Sap flow measurements are one of the most widely used methods to estimate whole-plant transpiration in woody species due to its applicability in different environments and in a variety of species, as well as having the capacity of continuous high temporal resolution measurements. Several methods have been developed and tested under different climatic conditions and wood properties. However, the scientific literature also identifies several sources of error when using sap flow measurements that needs to be accounted for; misalignment of the probes, wound to the xylem, thermal diffusivity and stem water content. This study aims to integrate probe misalignment as a function of time to improve measurements during long-term studies (> 3 months). Heat ratio method (HRM) sensors were installed in four *Pinus halepensis* during 20 months, in a coastal valley in South-Eastern Spain (39°57'45" N 1°8'31" W) in a Mediterranean climate. We conclude that even when geometrical misalignment errors are small, the introduced corrections can generate an important shift in sap flow estimations. Additionally, we propose a new set of statistical information to be recorded during the measurement period, which can be used as a quality control of the heat ratio readings obtained from the sensors. Relative standard deviation and slope against time of the averaged heat pulse ratio, was used as quality indicators to conclude that no general time limit can be decided for the longevity of the ~~sensors, but~~sensors but should rather be determined from individual performance over time.

2 Introduction

30 Plant transpiration is a key process in the hydrological cycle, and in forest ecosystems it is often the largest component of total evapotranspiration (Schlesinger & Jasechko et al., 2014³). However, accurate estimations of transpiration are still difficult to obtain, and field assessments of transpiration estimations are therefore crucial in hydrological planning as well as in forestry, ecophysiological research and climate forecasting. Sap flow measurements are one of the most widely used techniques to estimate transpiration in woody species as it is readily automated for continuous readings and not limited to single leaf measurements (Forster, 2017; Peters et al., 2018; Flo et al., 2019). Although some sap will go to stem and leaf storage, it is estimated that 99% is lost through transpiration, and sap flow measurements can therefore be used to directly estimate transpiration values (Forster, 2017).

40 There are a range of different approaches to sap flow measurements, and method-families vary between heat dissipation (HD) (Granier, 1987; Lu et al., 2004), stem heat balance (SHB) (Langensiepen et al., 2014), trunk segment heat balance (THB) (Smith and Allen, 1996), and heat pulse velocity (HPV) (Marshall, 1958). However, they are all based on tracing heat within the xylem (Burgess et al., 2001; Davis et al., 2012; Forster, 2017). Marshall (1958) developed a theoretical method to determine

sap flow from thermal diffusion and dissipation theory of heat pulses in heterogeneous material. His theory relies on calculating the heat ratios measured in two parallel thermocouples aligned vertically and symmetrically with respect to a line heater along the direction of the xylem (Fig. 1). Burgess et al. (2001) developed an improved HPV technique, termed the heat ratio method (HRM), based on the Marshall (1958) methodology, which is sensitive to the direction of sap flow and is capable of measuring low and reverse rates (Burgess et al., 2001). The HRM is therefore more appropriate to use in water-deficit environments where flow rates are low. Burgess et al. (2001) developed two steps of corrections for sap flow calculations by considering probe misalignment and wounding, (caused by the implementation of the sensors (Fig. 1)). By accounting for these sources of error and additionally estimating the stem moisture content and radial variability, the HRM has been evaluated as the HPV-method with the highest accuracy, although with a tendency of underestimating transpiration values (Forster, 2017), an error that is shown to increase with higher sap flow values (Steppe et al., 2010).

Con formato: Fuente: 12 pto

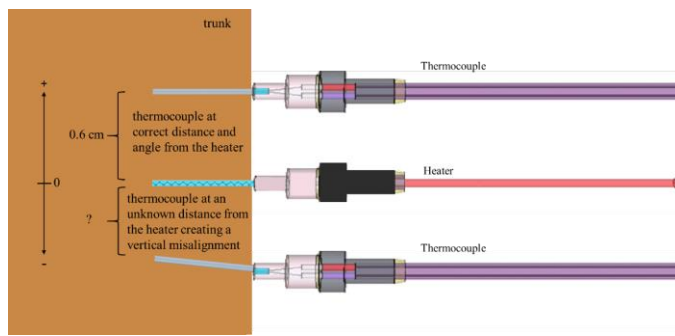


Figure 1. Schematic drawing of the three probes used for the heat ratio method: two thermocouple and one heater. One thermocouple demonstrates the correct placement, aligned vertically and symmetrically at 0.6 cm from the heater. The other thermocouple demonstrates the misalignment: when the probe is closer to the heater and not aligned symmetrically. The zero is marked at the height of the heater, indicating that the placement of the thermocouples are estimated in relation to the heater, at 0.6 cm and -0.6 cm distance, as indicated by the arrows. The other thermocouple demonstrates the misalignment: when the probe is closer to the heater and not aligned symmetrically. Sensors are modified from Davis et al., 2012, sizes.

Previous studies have suggested additional solutions for probe misalignment (Ren et al., 2017), for determining thermal diffusivity (Vandegheuchte and Steppe, 2012), and correcting for heterogeneous heat capacity in wood (Becker and Edwards, 1999). However, there is no recent recommendation for how long newly deployed sap flow sensors can be employed. Some studies have shown how sensor probes inserted into the xylem can dampen the signal due to blocking or destruction of vessels (Moore et al., 2010; Wiedemann et al., 2016). One way to account for changes over time has been to reinstall sensors throughout the study period (Moore et al. 2010), however there is little information to be found on the exact interval for which this needs to happen (Vandegheuchte and Steppe, 2013), and for continuous measurements this will interrupt the dataset (Moore et al. 2010). Therefore, we aim to find a quality indication that can ensure that the readings don't deteriorate over time, or if they do, that it would be detectable. Attention should be given to check the accuracy of the heat pulse ratio itself, in which the rest of the methodology is built on. In addition, to allow for sensors to be employed over longer periods it's necessary to develop a dynamic probe misalignment correction method due to observed change in probe position over time. The adjustment proposed here, which is built on the calculations of Burgess et al. (2001), is necessary when monitoring transpiration continuously for more than 3 months due to observed shift in probe placement from one season to another (Fig. 4, 6). because wood properties, the heterogeneity of the xylem, and plant tissue growth might further misplace the sensor after its implementation (Barrett et al., 1995). Burgess et al. (2001) corrected for linear probe misalignment *in situ*. This correction must be effectuated during zero flow. Actual probe placement is therefore suggested to be calculated one time, usually at the end of the experiment when the root system can be severed to enforce zero flow, to correct for the misalignment (Burgess et

al., 2001). However, this solution is not suitable for long-term measurements, as the misplacement will change over time (Ren et al., 2017), or when intrusive methods are not an option. Thus, the objective of this research is firstly, to develop a statistical filtering method to ensure the quality and consistency of the measurements over time, and secondly, to implement a modified version of the probe-placement calculation for sap flow series longer than 3 months.

This [methodological papertechnical note](#) is structured in two parts: the first one, dealing with the statistical analysis of long-term time series of averaged heat pulse ratios to ensure the quality of data and their stability over time; the second part, proposing an adaptation of the method developed by Burgess et al. (2001) to [propose-introduce](#) a dynamic probe misalignment correction for the HRM. The aim is to obtain a more precise calculation of transpiration by parameterising the probe misalignment as a function of time to correct for the effect of tree growth.

90 3 Materials and method

3.1 Field site

This study was carried out in the Turia river basin, Eastern Spain (39°57'45" N 1°8'31" W), in a Mediterranean climate. Average annual rainfall is 475 mm [year⁻¹](#), average annual maximum and minimum temperature is 15.5 °C and 4.4 °C respectively. Sap flow sensors were installed in four pine trees (*Pinus halepensis* Mill.) according to the heat ratio method (HRM, Burgess et al., 2001). Each sap flow sensor consists of three needles; one heater and two thermocouples. We will refer to the thermocouples as probes, and when using the term "sensors" we refer to both probes and the heater. [To a establish a criterion that unified the effect of the slope on all trees, with the upper part facilitating the retention of water in the soil, all the sensors were drilled into the uphill side of each tree trunk. The sensors were drilled into the uphill side of each tree trunk.](#) Since *P. halepensis* has a higher sap velocity average near the cambium with the velocity steady declining nearer to the heartwood (Cohen et al., 2008), sensors were installed at 20 mm depth below the cambium for average sap velocity rates, as estimated by Manrique-Alba (2017). A metal plate was used as guide to ensure 0.6 cm spacing between the drilling holes. The selected pines had an average diameter of 24.5 cm at breast height. Continuous measurements were obtained from April 2017 to December 2018.

Con formato: Superíndice

105 3.2 Environmental conditions

Air relative humidity (%) and air temperature (°C) were registered every 30-minute (U23 Pro V2, Onset Computer Corporation, USA). Precipitation was registered using a rain gauge with 0.2 mm resolution (RGR-M, Onset Computer, USA). Three soil moisture probes were inserted at 20-25 cm depth to register SWC (S-SND.M005, Onset Computer Corporation, USA), using a datalogger for logging specifications (HOBO Micro Station, USA). To assume periods of zero-flow, relative extractable water (REW) was calculated using the method of Bréda et al. (1995):

$$REW = \frac{(\theta_t - \theta_{min})}{(\theta_{max} - \theta_{min})} \quad [1]$$

Were θ_t is the registered SWC, θ_{min} is the minimum SWC observed during the measurement period, and θ_{max} is the SWC at field capacity. Values surpassing one were converted into one, according to Granier et al. (2000).

115 3.3 Construction of the sensors

The thermocouples were made after Davis et al. (2012), with a type E junction of chromium and constantan. The wires of the thermocouples were soldered together at temperatures not surpassing 200°C, placed 20 mm inside a micropipettes (10µL), and

then into a needle (0.12 cm x 4 cm, Sterican, Braun). The heater was made from a constantan wire of 20 mm coiled around a 7 cm long aluminum wire, and placed inside the same type of needle as the thermocouples. The wire-ends were then soldered on to an electrical cable. Another resistance of 4.95 ohms were soldered onto to the cable to get a total resistance of 14.95 ohms. The heater was connected to a 12 V battery and delivered 7.0 W of power. Both thermocouples and heaters were connected to a CR800 datalogger (Campbell Scientific Inc., USA).

3.4 Quality control of heat pulse ratios

Marshall (1958) parameterised the heat pulse velocity (V) in the HRM as a function of time (s) following a heat pulse, and the instantaneous ratio of the increase in temperature ($^{\circ}C$) (from the temperature prior to the release of the thermal pulse) at the downstream and upstream, v_1 and v_2 respectively, from a line heater:

$$V = \frac{4Kt \ln\left(\frac{v_1}{v_2}\right) - (x_2^2 + y_2^2) + (x_1^2 + y_1^2)}{2t(x_1 - x_2)} \quad [2]$$

where K is the thermal diffusivity ($cm^2 s^{-1}$), t is the time passed from the release of thermal pulse in seconds, (x_1, y_1) and (x_2, y_2) are the relative positions (cm) of the thermocouples to the line heater (considering x-axis along the xylem and y-axis the perpendicular direction ~~both and to the heater line~~) (Fig. 2), and v_1, v_2 represents the temperature increases following the heat release.

Con formato: Superindice

Con formato: Superindice

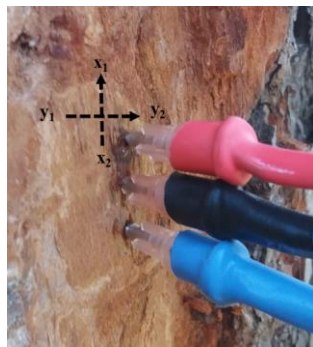


Figure 2. Sensor placements, from top: thermocouple, heater, thermocouple, in an Aleppo pine. x_1, x_2, y_1 and y_2 represents the vertical and horizontal directions used to calculate the placement of the probes. The axes should cross where the heater is inserted but was moved for a clearer view of the coordinates.

If probes are installed symmetrically above and below the heater line, $x = x_1 = -x_2$ and $y_1 = -y_2$, equation 2 simplifies into a function that is not dependent on time:

$$V = \phi \ln\left(\frac{v_1}{v_2}\right) \quad [3]$$

$$\phi = \frac{K}{x}$$

where ϕ is a priori, a constant only depending on the placement of the probes and on the thermal diffusivity of both the xylem and the material used in the sensors.

150 The “perfect symmetry” assumption renders that the heat pulse ratio (HPR) remains constant with time if heat pulse velocity
(V), thermal diffusivity (K) and probe positions (in both, x and y directions) have negligible variations during the time following
each heat pulse (Marshall, 1958). Burgess et al. (2001) further demonstrated how empirical results initially differed from the
ideal approach described by equation 3 due to blocking of xylem vessels and misplacement of sensors. However, the study
concludes that the heat pulse ratio converge asymptotically at least 60 seconds after the heat pulse release and, for at least, 40
155 seconds more (until 100 seconds after the heat pulse release), which is when the ratio should be measured. Our study argues
that a visual inspection of heat pulse velocities (V in equations 2 and 3) does not necessarily give enough information to decide
if measured values are a good representation of the sap flow. The method does not consider that random ratios can arise, which
due to the sensitivity of the method, are likely to occur in practice. On these premises, we have built a methodology to quality
check sap flow measurements systematically by introducing a statistical analysis performed on the instantaneous heat pulse
160 ratio, acquired between 60 and 100 seconds after the heat pulse release. Hereafter, we will denote the averaged instantaneous
heat pulse ratio between 60 and 100 seconds as HPR. The quality check consisted of establishing threshold values for relative
standard deviation (RSD), statistically defined as the standard deviation divided by the mean, and the slope of the HPR. The
statistical information obtained would account for any deterioration of the measurement. Burgess et al. (2001) proposed two
separately methods to correct for wound ing and misalignment. The methods assume that errors arising from the wound inflicted
165 by a sensor probe can be estimated using an empirical factor, whereas a misalignment of the probe needs to be calculated in
situ. We propose a development of the misalignment correction method, while arguing that a statistical check of the HPR
would detect a deterioration of the signal caused by a worsening of the wound. This would lead to a smaller sample mean and
hence a higher RSD and was therefore chosen as a quality-check parameter along with the slope, which was a parameter
proposed by Burgess et al. (2001).

170 3.4.1 Logging specifications

The proposed analysis to ensure the reliability of long time series of sap flow measurements require the storage of statistics
that are not usually recorded (as it is considered unnecessary). The datalogger must have a minimum performance of the
storage capacity (memory), and the processing speed of the algorithm implemented (especially in the routines related to the
175 statistical calculations to be performed). In this study a CR800 (Campbell Scientific, USA) was used. A flow chart of sampling
and data log (Fig. S1) was specifically designed, programmed and implemented in the datalogger to enable the calculus that
are presented in the next sections of this paper.

We selected RSD (%) and Slope (s^{-1}) of the instantaneous heat pulse ratio versus time, calculated for each of the periods from
180 60 to 100 seconds to filter out random ratios (Fig. 3). All HPR with relative standard deviation $> 5\%$ and a $|\text{slope} - \text{median}$
(slope) $< 0.003 s^{-1}$ were removed. The 5 % threshold was chosen to ensure that 95 % of the dataset was considered in the data
processing. The slope median was taken from all slope values obtained during the measurement period. The magnitude of the
threshold chosen for the slope was taken from a modelled output of instantaneous ratios performed by Burgess et al. (2001),
were low sap flow velocities (5 cm h^{-1}) combined with a small wound width (0.17 cm) were shown to display a slope of 0.001.
185 Due to our low sap flow velocities ($< 8 \text{ cm h}^{-1}$) and small probe diameter (0.12 cm), we expected the slope to be as close to
0.001 as possible. The specific threshold of 0.003 was decided upon inspection of the measurements and can be modified
according to needle size and magnitude of the sap velocity measured. According to Burgess et al. (2001), higher values of
slope (0.01) can be expected with wound width and higher velocities.

190 3.5 Correction for long-term probe misplacement

Under the assumption of “perfect symmetry”, in periods when $V = 0 \text{ cm h}^{-1}$, the ratio of the increase in temperature at the
downstream and upstream from a line heater would be equal to 1 ($v_1 = v_2$ in equation 3). However, this is not always the case

with field measurements due to misalignment of the probe, damage to xylem vessels when inserting the probes, and the different thermal properties of wood and needle (Fig. 3A, Burgess et al., 2001). The same study showed how probe placement can be estimated *in situ* with the HRM. Further, it proposed a methodology for probe misalignment which builds on the assumption that errors arising from inaccurate probe spacing can be treated one-dimensionally. This approach assume that the total effect of probe misalignment (in both axes directions), observed in the ratio of the increase in temperature, can be parameterised calculating an “effective” probe misalignment in only one direction (x direction, parallel to the xylem). Thus, without the assumption of “perfect symmetry”, in periods when $V = 0 \text{ cm h}^{-1}$, equation 2 takes a more simplified form:

$$4Kt \ln\left(\frac{v_1}{v_2}\right) = (x_2^2 + y_2^2) - (x_1^2 + y_1^2) \quad [4]$$

Which becomes equation (5) if $y_1 = -y_2$

$$4Kt \ln\left(\frac{v_1}{v_2}\right) = x_2^2 - x_1^2 \quad [5]$$

As it is unknown if the misalignment is in x_1 or in x_2 , the calculation is repeated twice, assuming first that x_1 is correct when calculating actual x_2 placement, and vice versa. Usually both x_1 and x_2 are slightly misaligned, which means that each correction step will assume an error, that the other probe is correctly placed. However, taking the average of the misalignment calculated from each probe, both misalignments will be accounted for (Burgess et al., 2001). Each probe placement is calculated as:

$$x_2 = \sqrt{(4kt \ln\left(\frac{v_1}{v_2}\right) + x_1^2)} \quad [6]$$

Two different heat pulse velocities, V_1 and V_2 , are then derived (using equation 2 but with the assumption $y_1 = -y_2$) for the x_1 and x_2 obtained; and the final V provided as their average.

Zero flow conditions can either be imposed artificially by severing the root or stem (Burgess et al., 2001), or found when there is no biophysical driving force (Forster, 2007). That is, when atmospheric vapour pressure deficit (VPD) is close to zero, the soil is saturated, usually after substantial precipitation, and values are taken at predawn (Forster, 2017). Zero flow conditions were assumed at night (22:00-03:00h solar time) during days when relative extractable water, $REW > 0.75$, and vapor pressure deficit (VPD) was close to zero (Fig. S2). Multiple readings were used to produce an average of each event. These conditions were limited to five occasions during our study period. Saturated soil is a necessary criterion due to the possibility of reverse flow at night-time (Forster, 2014). If not considered, low HPR values representing reverse flows can be interpreted as zero flow. The non-intrusive approach of zero flow allows the parameterisation of misalignment as a function of time (equation 7), if several calculations of x_1 and x_2 (equation 6) are performed. By applying equation 6 at varies times throughout the measurement period, it is possible to calculate a linear regression using the estimation of Burgess et al. (2001) for misalignment for each of the thermocouples:

$$\begin{aligned} x_1 &= m_1 d + n_1 \\ -x_2 &= m_2 d + n_2 \end{aligned} \quad [7]$$

where x_1 and $-x_2$ are the relative positions of the thermocouples to the line heater in cm, d is the time along the measuring campaign in days, m_1 and m_2 are the slopes of the regressions for thermocouple 1 and 2, and n_1, n_2 are the interception coefficients respectively. The negative sign in front x_2 is to clarify that this probe needs a negative solution.

Con formato: Subíndice

Con formato: Sin Superíndice / Subíndice

Con formato: Subíndice

Con formato: Subíndice

235 By introducing equation 7 in equation 2 and allowing the simplification assuming $y_1 = -y_2$, two equations of the corrected heat pulse velocities are obtained as a function of the time in the measuring campaign:

$$V_1 = \frac{4Kt \ln \left(\frac{v_1}{v_2} \right) + (m_1 d + n_1)^2 - 0.6^2}{2t(m_1 d + n_1 + 0.6)} \quad [8]$$

$$V_2 = \frac{4Kt \ln \left(\frac{v_1}{v_2} \right) + 0.6^2 - (m_2 d + n_2)^2}{2t(0.6 + m_2 d + n_2)}$$

240

In accordance to what Burgess et al. (2001) proposes, our approach averages the two estimates obtained from equation 8 to obtain a corrected heat pulse velocity.

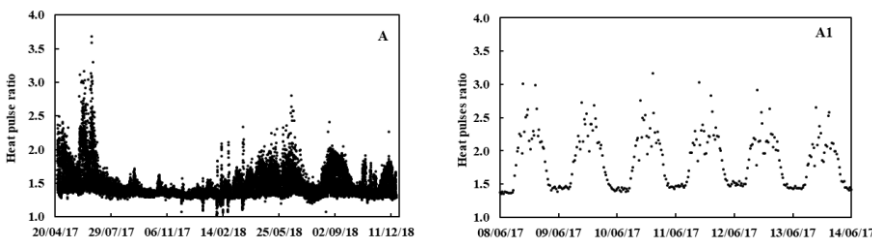
4 Results

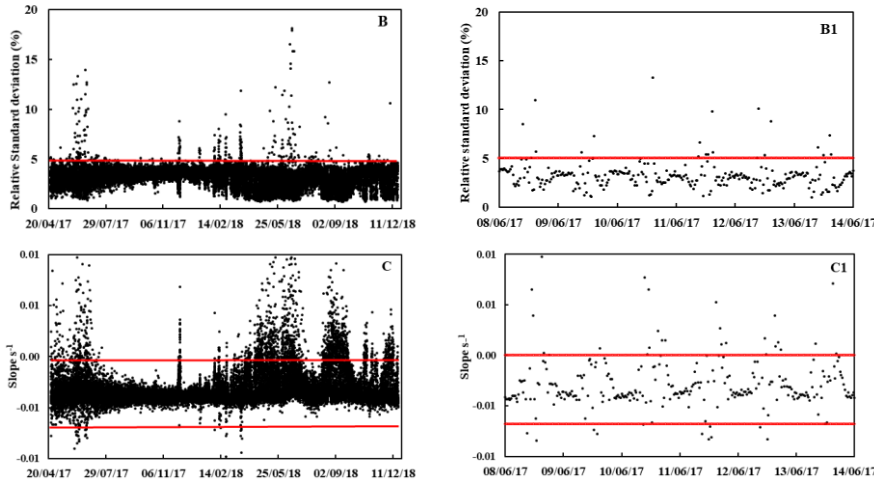
245

4.1 Heat pulse ratios

The HPR obtained during the measurement period displayed a clear positive shift away from the theoretical ideal where the HPR would equal to one at zero flow (Fig. 3A). This gives an indication of the necessity of corrections, that being due to error inflicted by the probe, misalignment, misestimation of thermal diffusivity- or stem water content. However, the HPR data by itself does not give an indication of the quality of each measurement, nor if it deteriorates over time. Therefore, the quality of the measurements was indicated by calculating the RSD, the relative standard deviation divided by the sample mean, and the slope for each HPR (Fig. 3B and 3C). All HPR with RSD higher than 5% were eliminated. The data points eliminated corresponded to a 1 % of the total dataset. Because the HRM is built on the theoretical assertion that the temperature in each of the thermocouples is steady with time, specifically between 60 and 100 seconds after the release of a heat pulse, the slope of the HPR should be close to zero. All HPR with $|\text{slope} - \text{median}(\text{slope})| < 0.003 \text{ s}^{-1}$ were eliminated, which corresponded to a 12 % of the original dataset (Fig. 3C).

255

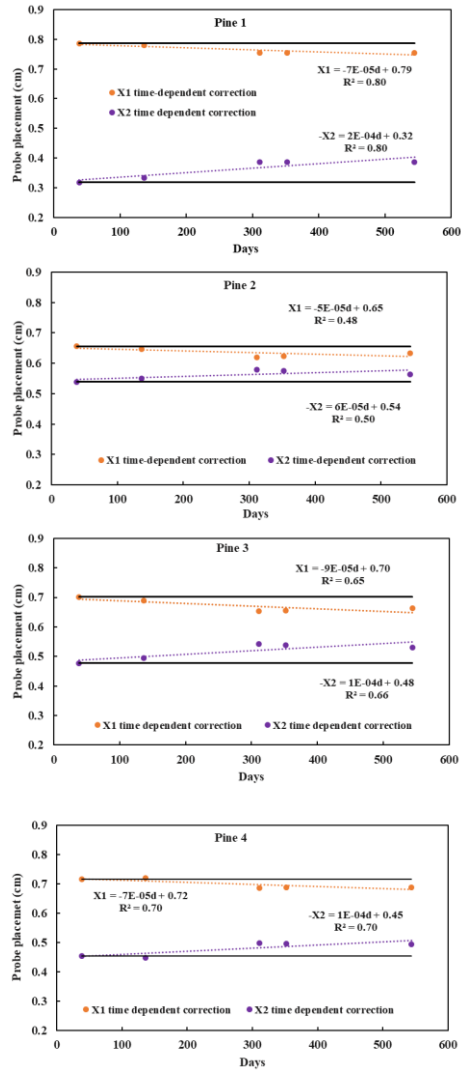




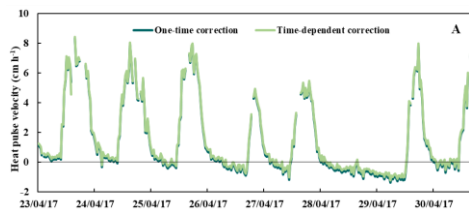
260 Figure 3. (A) Heat pulse ratios (HPR) throughout the measurement period at 30-minute intervals in tree number 1. Each HPR is an average
of 41 instantaneous ratios corresponding to the temperature difference in two thermocouples at 0.6 cm up and down stream from a heater
probe at 0.2 cm depth. (A1) Zoomed in panel of HPR data for one week of measurements. (B) Relative standard deviation (%) for each HPR
in tree number 1 for the whole measurement period. Red line indicates threshold used for the quality control were all HPR relative standard
deviation > 5% were removed from the data analysis. (B1) Zoomed in panel of RSD data for one week. (C) Slope (s^{-1}) for each HPR in tree
265 number 1 for the whole measurement period. Red line indicates threshold used for the quality control for this particular sensor. HPR with
 $|\text{slope} - \text{median}(\text{slope})| < 0.003 s^{-1}$ were removed from the data analysis. (C1) Zoomed in panel of slope data for one week of
measurements.

270 4.2 Heat pulse velocities

A linear regression was obtained from misalignment calculations for each sensor performed during zero-flow conditions. Zero-
flow conditions were assumed at night (22:00-03:00h solar time) during days when relative extractable water, REW > 0.75,
and vapor pressure deficit (VPD) was close to zero (Fig. S2). Multiple readings were used to produce an average of each event.
These conditions were limited to five occasions during our study period. The outputs indicate a clear shift of placement in each
275 of the sensors over time, here denoted as x_1 and x_2 in each tree (Fig. 4). The eight probes, two per tree, all deviated from the
ideal of 0.6 cm. Probe x_2 in pine number 1 had the highest inaccuracy with the initial value close to 0.3 cm. On average, the
probes showed a **averaged** shift of 0.04 cm in placement after twenty months of measurement (Fig. 4). The equation obtained
from the linear regression was then implemented in equation 8, and corrections of the heat pulse velocity data was done using
an average of V_1 and V_2 (Fig. 5). Outputs were compared with one-time misalignment corrections, which was calculated in the
280 beginning of the measurement period to demonstrate the evolution of the probe misalignment. The one-time correction
demonstrated a steady decline in accuracy over time (Fig. 5). The difference between the two correction methods showed
significance after three months of employment (table 1).



285 Figure 4. Placement of the probes are shown as distance from the heater (cm). Probe placement was calculated once at the beginning of the measurement period (solid lines) for the whole study period and compared to probe placement calculated varies times (solid circles with dotted lines) throughout the study period. Each point represents the probe position calculated during its respective zero-flow event



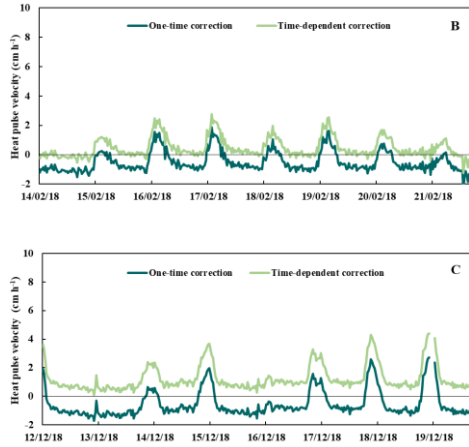


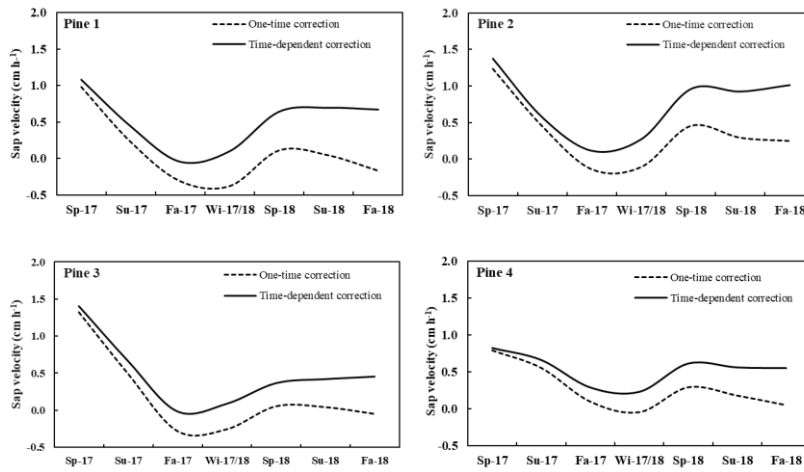
Figure 5. Heat pulse velocities during one week of measurements in the beginning (A), halfway (B) and at the end (C) of the measurement period. Dark green lines represent velocities with probe misalignment corrected for once at the beginning of the experiment. Light green lines represent velocities with the time-dependent probe misalignment corrections.

4.3 Sap flow

Heat pulse velocities (cm h^{-1}) were converted into sap flow ($\text{cm}^3 \text{cm}^{-2} \text{h}^{-1}$) according to Burgess et al. (2001). Our data demonstrated that by not correcting for changes in probe misalignment under continuous measurement for more than 3 months, the errors corresponded to an averaged difference of $0.29 \text{ cm}^3 \text{cm}^{-2} \text{h}^{-1}$ in sap flow per quartile for the four trees. At the end of the 20-months period, this corresponded to an averaged difference of $0.53(\pm 0.23) \text{ cm}^3 \text{cm}^{-2} \text{h}^{-1}$ (Table 1, Fig. 6). In terms of transpiration values, this corresponded to a mean difference of $0.7 \text{ L tree}^{-1} \text{day}^{-1}$ (sapwood area = 170 cm^2), which would correspond to a difference of $542 \text{ L ha}^{-1} \text{day}^{-1}$ ($775 \text{ trees ha}^{-1}$) assuming 8 hours of daylight. It is relevant to note that our conversion did not consider the differences in stem moisture content, which can also affect the output values (Vandegehuchte and Steppe, 2013). The outputs obtained should be considered as relative differences as the one-time correction was applied in the beginning of the experiment.

Table 1. Seasonal averages of sap velocity for 4 different pines. All sap flow values are expressed in $\text{cm}^3 \text{cm}^{-2} \text{h}^{-1}$. Sap flow corrected for with time-dependent misalignment calculations are compared with sap flow corrected for once in the beginning of the measurement period. Averages were taken from daily values. Abbreviations Sp, Su, Fa, and Wi indicates Spring, Summer, Fall and Winter respectively, each with the corresponding year.

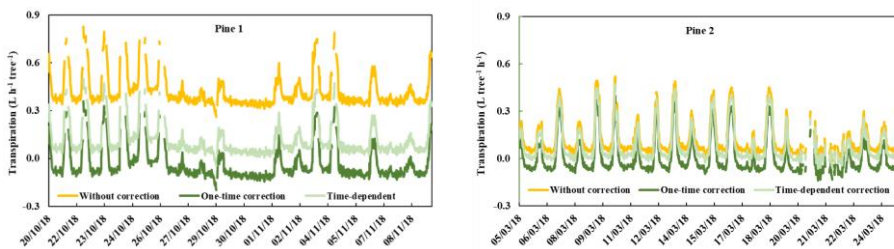
Pine	Correction method	Sp-17	Su-17	Fa-17	Wi-17	Sp-18	Su-18	Fa-18
1	One-time correction	0.98 ± 1.2	0.23 ± 0.8	-0.31 ± 0.2	-0.37 ± 0.5	0.12 ± 0.7	0.05 ± 0.5	-0.16 ± 0.5
	Time-dependent correction	1.08 ± 1.2	0.44 ± 0.7	0.04 ± 0.2	0.10 ± 0.5	0.64 ± 0.7	0.70 ± 0.6	0.69 ± 0.5
2	One-time correction	1.33 ± 2.1	0.49 ± 1.2	-0.28 ± 0.4	-0.25 ± 0.5	0.06 ± 0.6	0.04 ± 0.5	-0.05 ± 1.8
	Time-dependent correction	1.40 ± 2.1	0.66 ± 1.2	-0.02 ± 0.4	0.09 ± 0.5	0.36 ± 0.7	0.42 ± 0.5	0.45 ± 2.0
3	One-time correction	0.82 ± 1.7	0.73 ± 1.1	-0.02 ± 0.5	-0.24 ± 0.5	0.57 ± 0.6	0.75 ± 0.5	0.53 ± 0.60
	Time-dependent correction	0.84 ± 1.7	0.79 ± 1.1	0.09 ± 0.5	-0.09 ± 0.5	0.76 ± 0.6	0.99 ± 0.5	0.80 ± 0.63
4	One-time correction	0.79 ± 1.1	0.56 ± 0.7	0.09 ± 0.4	-0.05 ± 0.4	0.29 ± 0.6	0.18 ± 0.5	0.05 ± 0.5
	Time-dependent correction	0.82 ± 1.1	0.66 ± 0.7	0.29 ± 0.4	0.23 ± 0.4	0.61 ± 0.6	0.56 ± 0.5	0.55 ± 0.5



310 Figure 6. Seasonal averages of sap flow ($\text{cm}^3 \text{cm}^{-2} \text{h}^{-1}$) calculated using the two misalignment corrections throughout the 20-month measurement period. Dotted lines represent probe misalignment corrected for once. Solid lines represent sap flow corrected for with the time-dependent probe misalignment method. Abbreviations Sp, Su, Fa and Wi indicates Spring, Summer, Fall and Winter respectively, each with the corresponding year.

4.4 Transpiration

315 To demonstrate the difference in terms of transpiration, sap flow values ($\text{cm}^3 \text{cm}^{-2} \text{h}^{-1}$) without misalignment correction (T_r), with one-time correction ($T_{r_{\text{one}}}$), and with time-dependent correction ($T_{r_{\text{time}}}$) were converted into transpiration values ($\text{L tree}^{-1} \text{h}^{-1}$) and compared against each other during a period of three weeks. Data from three of the pines (1, 3 and 4) were taken towards the end of the measurement period, to demonstrate the greatest differences (Fig. 7). However, the sensor placement in pine number two demonstrated a misplacement closer to target (0.6 cm) towards the end of the measurement period (Fig. 4), and another measurement period was therefore chosen for this tree, for a better demonstration of the differences between the estimations. Note that the transpiration estimations without misalignment correction still went through the wound correction step as shown in Burgess et al. (2001). Pine number 1 displayed the biggest differences between the T_r and $T_{r_{\text{time}}}$, with an average daily difference of 1.5 ± 0.002 (L tree^{-1}) during the three weeks, and a daily average difference of 0.3 ± 0.003 (L tree^{-1}) between $T_{r_{\text{one}}}$ and the $T_{r_{\text{time}}}$. Pine number 3 and 4 showed similar differences between the methods, with a daily average of 0.1 ± 0.001 and 0.2 ± 0.002 (L tree^{-1}) respectively, between T_r and $T_{r_{\text{time}}}$, and both had a daily average difference of 0.1 ± 0.001 (L tree^{-1}) between $T_{r_{\text{one}}}$ and $T_{r_{\text{time}}}$ (Fig. 7).



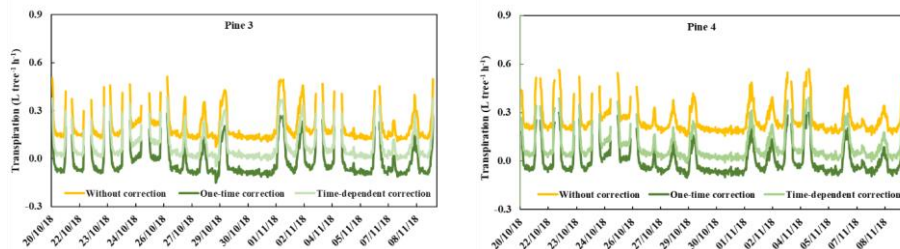


Figure 7. Three weeks of transpiration rates ($L \text{ tree}^{-1} \text{ h}^{-1}$). ‘Without correction’ represents rates without misalignment-corrections, ‘One-time correction’ represents rates corrected for once in the beginning of the measurement period, and ‘Time-dependent correction’ represents rates being corrected for at varies days throughout the measurement period.

330 5 Discussion

5.1 Filtering heat pulse ratios

Because the HPR is an average of instantaneous temperature ratios, it is difficult to ensure its accuracy only by visual inspection of the averaged output, and without further statistical information. We suggest RSD and slope to filter out random ratios, and to ensure the quality of the data. A clear tendency was seen of higher RSD and slope values during periods of higher flow rates when compared to the HPR data (Fig. 3A, 3B and 3C), indicating more noise and less trustworthy data during higher flow rates. The HRM is known for being limited at higher rates ($> 45 \text{ cm h}^{-1}$, Forster, 2017), but our dataset showed no sap velocity values higher than 6 cm h^{-1} , and therefore was not initially considered as a limitation.

340 During twenty months of field measurements, the thermocouples showed no visible sign of deterioration with time. However, it is still important to note that this does not consider the possible diminishing amplitude of the ratios over time, which can also lead to underestimations of actual flow (Barett et al., 1995; Green et al., 2003; Forster, 2017). Therefore, this should be observed separately, comparing sap flow ratios using data obtained under similar climatic conditions (Moore et al., 2010). Due to the variation in rainfall between the two years, SWC differed significantly on similar calendar dates with the exception of six days in June (9 – 15). When comparing the relationship of sap flow versus VPD on these days, there was an increase in the slope; 2.3 for 2017 and 2.9 in 2018. This, we attributed to an overall weaker correlation between VPD and sap flow in 2017; $R^2 = 0.4$ in 2017 versus $R^2 = 0.6$ in 2018, due to higher values of VPD the first year (S3). In conclusion, it was clear that the HPR readings had not decreased in the second year, when compared to the first year, under similar environmental conditions.

350 5.2 Long term variation in probe placement

When applying the HRM for longer than a few weeks it is relevant to quantify how ϕ in equation (3) and the misalignment term in equation (5) evolve during the measuring period. The predicted variation of x_1 and x_2 is due to the growth of the tree and, on the other hand, periodical variations of K due to annual and seasonal variations of the physiological properties of the tree (Green et al., 2003; Vandeghechuchte and Steppe, 2012; Ren et al., 2017). In the HRM, the probe misalignment calculations can be corrected using the methodology proposed here, considering that as an average, each sensor displayed a 0.04 cm displacement within the tree after twenty months of measurements. The correction would also be more rigorous with more assumed zero flow events, which would be easier to obtain in humid environments with more periods of saturated soil.

The theory behind the HPV method were tested on conifers (Marshall, 1958), whereas Burgess et al. (2001) more generally refers to woody species when working with HRM. The time-dependent correction method could be useful with any species

already tested with the HRM, where misalignment of probes can create a source of error and sensors are installed over a longer period. Specifically, where the movement of the wood might cause further displacement of the sensor.

By going back to the original assumption of “perfect symmetry”, we investigated the original premises the method is built on. Even though Burgess et al. (2001) elaborated a correction method for sensor misalignment we saw that changes in sensor misplacement was detectable after each season. Therefore, multiple corrections should be carried out throughout the measurement period. The proposed modified method coincides with the one-time correction method (Burgess et al., 2001) for short time periods (< 3 months) but differs progressively over time. We found that this shift in placement is significant already after 3 months, and therefore dynamically misplacement calculations should be carried out or sensors should be reinstalled at this frequency. However, as pointed out by Moore et al. (2010), re-installing the sensors might create a shift in the data due to spatial variation within the tree. Leaving the same sensors in the tree throughout the study period avoids this problem and enables the study to focus on the intrinsic factors affecting the sap flow rates.

2. Conclusion

In conclusion, we found that high quality measurements with sap flow sensors can be ensured over longer periods (>3 months), if the HPR is assessed using the proposed filtering method, and the probe misalignment variability over time corrected for. In this study, we observed data over a 20-month period in *Pinus halepensis*, and saw no sign of deterioration in the second year compared to the first, when observing the values obtained for slope and relative standard deviation. However, when observing the alignment of each probe, there was a clear shift from the beginning to the end of the measurement period. This indicate that measurements can be obtained during a second season without the need of re-installing sap flow sensors, if the proposed time-dependent misalignment correction is incorporated in the data processing. This would increase the accuracy of point measurements, and consequently transpiration estimations. The different errors related to upscaling are beyond the scope of this paper, but significant differences were observed when comparing sap flow estimations with no correction, one-time correction, and time-dependent correction for probe misalignment. To avoid sensor reinstallation, this should therefore be considered.

Author contributions

JLP and ECH conceptualized the study. EKL made the sensors with the supervision of JB. EKL implemented the sensors and had the responsibility of the data processing and field site. JLP, EKL and JAV all worked on the data analysis. JAV wrote the script for the datalogger and had the technical responsibility. EKL and JLP prepared the manuscript with inputs from all the co-authors. JLP and JAV designed the flow chart to be programmed in any data logger system.

The authors declare that they have no conflict of interest

Acknowledgements

The CEAM Foundation is supported by the Generalitat Valenciana (Spain). This study is partially funded by the Spanish Ministry of Science, Innovation and Universities and the European Regional Development Fund CGL2015-67466-R (MICINN/FEDER) through the research project “VERSUS”, by the project “IMAGINA” PROMETEU/2019/110 (Conselleria de Cultura GVA, and by the research project “DESESTRES”– PROMETEOII/2014/038 (Conselleria de Cultura GVA),. We thank the municipality of Aras de los Olmos for permitting field experiments on a public managed forest site. We thank J. Puértolas and H. Moutahir for their feedback and encouragement on the manuscript.

References

405 Barrett, D.J.; Hatton, T.J.; Ash, J.E.; Ball, M.C.: Evaluation of the heat pulse velocity technique for measurement of sap flow
in rainforest and eucalypt forest species of south-eastern Australia. *Plant Cell Environment*, 18, 463–469.
<https://doi.org/10.1111/j.1365-3040.1995.tb00381.x>, 1995

Becker, P., Edwards, W. R. N.: Corrected heat capacity of wood for sap flow calculations. *Tree Physiology*, 19, 767–768.
doi:10.1093/treephys/19.11.767, 1999

410 Bréda, N., Granier, A., Aussenac, G.: Effects of thinning on soil and tree water relations, transpiration and growth in an oak
forest (*Quercus petraea* (Matt.) Liebl.). *Tree Physiology*. 15, 295-306, 1995.

415 Burgess, S. S. O., Adams M, Turner NC, Beverly CR, Ong CK, Khan AAH, Bleby TM,: An improved heat pulse method to
measure low and reverse rates of sap flow in woody plants. *Tree Physiology*, 21, 589–598. doi:10.1093/treephys/21.9.589,
2001

420 Cohen, Y., Cohen, S., Cantuarias-aviles, T., Schiller, G.: Variations in the radial gradient of sap velocity in trunks of forest
and fruit trees. *Plant and soil*, 305, 49-59. doi:10.1007/s11104-007-9351-0, 2008

Davis, T.W., Kuo, C. M., Liang, X., Yu, P. S.: Sap Flow Sensors: Construction, Quality Control and Comparison. *Sensors*,
12, 954-971; doi: 10.3390/s120100954, 2012

425 [Flo, V., Martinez-Vilalta, J., Steppe, K., Schuldt, B., Poyatos, R.: A synthesis of bias and uncertainty in sap flow methods.
Agricultural and Forest Meteorology, 271, 362-374. doi: <https://doi.org/10.1016/j.agrformet.2019.03.012>, 2019](#)

Forster, M. A., How reliable are heat pulse velocity methods for estimating tree transpiration? *Forests* 8(9), 350:
doi:10.3390/f8090350, 2017

430 Granier, A.: Evaluation of transpiration in a Douglas-fir stand by means of sap flow measurements. *Tree Physiology*, 3, 309-
320, 1987.

Granier, A. A.: generic model of forest canopy conductance dependent on climate, soil water availability and leaf area index.
Ann. For. Sci, 57, 755 – 765, 2000.

435 Green, S.; Clothier, B., Jardine, B.: Theory and practical application of heat pulse to measure sap flow. *Agron. J*. 95, 1371-
1379. doi:10.2134/agronj2003.1371, 2003

440 [Langensiepen, M., Kupisch, M., Graf, A., Schmidt, M., Ewert, F.: Improving the stem heat balance method for determining
sap-flow in wheat. *Agricultural and Forest Meteorology*, 186, 34–42. doi: <https://doi.org/10.1016/j.agrformet.2013.11.007>,
2014](#)

[Jasechko, S., Sharp, Z. D., Gibson J. J., Birks S.J., Yi, Y., Fawcett, P. J.: Terrestrial water fluxes dominated by transpiration.
Nature, 496, 347–350. Doi: <https://doi.org/10.1038/nature11983>, 2013](#)

Con formato: Centrado

Con formato: Fuente: 10 pto

445 Lu, P., Urban, L., Zhao P.: Graniers Thermal Dissipation Probe (TDP) Method for Measuring Sap Flow in Trees: Theory and Practice. *Acta Botanica Sinica*, 46 (6), 631-646, 2004.

Manrique-Alba, A.: Ecohydrological relationships in pine forests in water-scarce environments. Ph.D. thesis, University of Alicante, Spain, 165 pp., 2017.

450

Marshall, D. C.: Measurement of sap flow in conifers by heat transport. *Plant Physiology*, 33, 385-396. doi:10.1104/pp.33.6.385, 1958

455

Moore, G. W., Bond, B. J., Jones, J. A., Meinzer, F. C.: Thermal-dissipation sap flow sensors may not yield consistent sap-flux estimates over multiple years. *Trees – Structure and Function*, 24, 165-174. doi:10.1007/s00468-009-0390-4, 2010

460

[Peters, L.P., Fonti, P., Frank, D.C., Poyatos, R., Pappas, C., Kahmen, A., Carraro, V., Prendin, A.L., Schneider, L., Baltzer, J.L., Baron-Gafford, G.A., Dietrich, L., Heinrich, I., Minor R.L., Sonnentag, O., Matheny, A.M., Wightman, M.G., Steppe, K.: Quantification of uncertainties in conifer sap flow measured with the thermal dissipation method. *New Phytologist*, 219, 1283-1299. doi: <https://doi.org/10.1111/nph.15241>, 2018](#)

465

Ren, R.; Liu, G.; Wen, M.; Horton, R.; Li, B., Si, B.: The effects of probe misalignment on sap flow measurements and in situ probe spacing correction methods. *Agric. For. Meteorol.* 232, 176-185. <https://doi.org/10.1016/j.agrformet.2016.08.009>, 2017

[Schlesinger, W.H., Jasechko, S.: Transpiration in the global water cycle. *Agricultural and Forest Meteorology*, 189-190, 115-117, doi: <https://doi.org/10.1016/j.agrformet.2014.01.011>, 2014](#)

470

Smith, D.M., Allen, S.J.: Measurement of sap flow in plant stems. *Journal of Experimental Botany*, 305, 1833-1844. <https://doi.org/10.1093/jxb/47.12.1833>, 1996.

475

Steppe, K., De Pauw, D.J.W., Doody, T.M., Teskey, R.O.: A comparison of sap flux density using thermal dissipation, heat pulse velocity and heat field deformation methods. *Agricultural and Forest Meteorology*. 7-8, 1046-1056. doi: <https://doi.org/10.1016/j.agrformet.2010.04.004>, 2010

Vandegheuchte, M.W., Steppe, K.: Sapflow+: A four-needle heat-pulse sap flow sensor enabling nonempirical sap flux density and water content measurements. *New Phytologist*, 196, 306-317. <https://doi.org/10.1111/j.1469-8137.2012.04237.x>, 2012

480

Vandegheuchte, M. W., Steppe, K.: Sap-flux density measurement methods: working principles and applicability. *Functional Plant Biology*, 40, 213-223. http://dx.doi.org/10.1071/FP12233_CO, 2013

485

Wiedemann, A., Marañón-Jiménez, Rebmann, C., Herbst, M., Cuntz, M.: An empirical study of the wound effect on sap flux density measured with thermal dissipation probes. *Tree Physiology*, 36, 1471-1484. <https://doi.org/10.1093/treephys/tpw071>, 2016

Con formato: Interlineado: 1.5 líneas, Diseño: Claro

Con formato: Fuente: Times New Roman, 10 pto, Sin Negrita

Con formato: Fuente: 10 pto

Con formato: Fuente: Times New Roman, 10 pto, Color de fuente: Automático

Con formato: Fuente: 12 pto

Con formato: Fuente: 11 pto

Con formato: Fuente: 10 pto