

Interactive comment on “Assimilation of wide-swath altimetry observations to correct large-scale river routing model parameters” by Charlotte M. Emery et al.

Charlotte M. Emery et al.

charlotte.emery@jpl.nasa.gov

Received and published: 25 November 2019

The authors would like to thank referee Claire Michailovsky for her detailed and very helpful comments. She raises very pertinent points that helped us better articulate our purpose. Please find attached our replies and associated modifications to the manuscript with which we hope to address her concerns. To easily address all comments, we numbered each comment: they are referenced with a “M” for the major comments and with a “m” for the minor comments.

We kept the reviewer’s comments and question in bold while our replies are in italic. When the associated manuscript’s modifications remain small, we inserted the mod-

[Printer-friendly version](#)

[Discussion paper](#)



ified paragraph in our reply in plain text: the black text corresponds to the original unmodified text, the crossed text corresponds to deleted text and the blue text corresponds to new text.

The abstract, the introduction (the latest paragraphs) and the discussions sections have been more updated due to several remarks from all reviewers. Therefore, we attached to our reply separate files with the new version of these sections. In these rewritten sections, we used a color code to differentiate which reviewer made the comment and suggested a modification: comments from reviewer 1 (Hessel Winsemius), 2 (Claire Michailovsky) and 3 (Paul Bates) are in purple, orange and green respectively. Each modification is also referenced by a code in bracket indicating the reviewer (R#**) and the type and index of the comment (M/m#**) such as: “[R#3-M#1]”.

Documents in attached archives: - Replies to reviewer: Reply-to-reviewer-2.pdf - Modified abstract: Hess-2019-242-corrected-abstract.pdf - Modified introduction (latest paragraphs: from p.3, l.19 – p.4, l.5 in original version of the manuscript): Hess-2019-242-corrected-introduction.pdf - Modified discussions: Hess-2019-242-corrected-discussions.pdf

Please also note the supplement to this comment:

<https://www.hydrol-earth-syst-sci-discuss.net/hess-2019-242/hess-2019-242-AC2-supplement.zip>

Interactive comment on Hydrol. Earth Syst. Sci. Discuss., <https://doi.org/10.5194/hess-2019-242>, 2019.

Printer-friendly version

Discussion paper



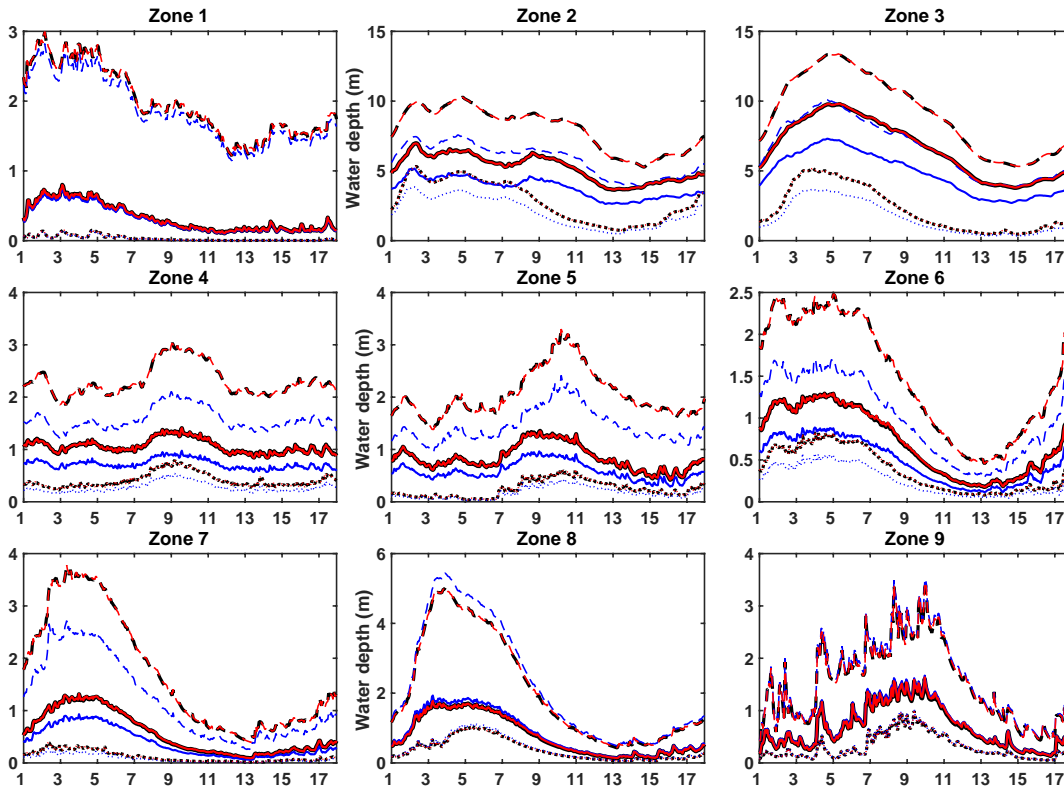


Fig. 1. Modified Figure 8 to address comment m#6

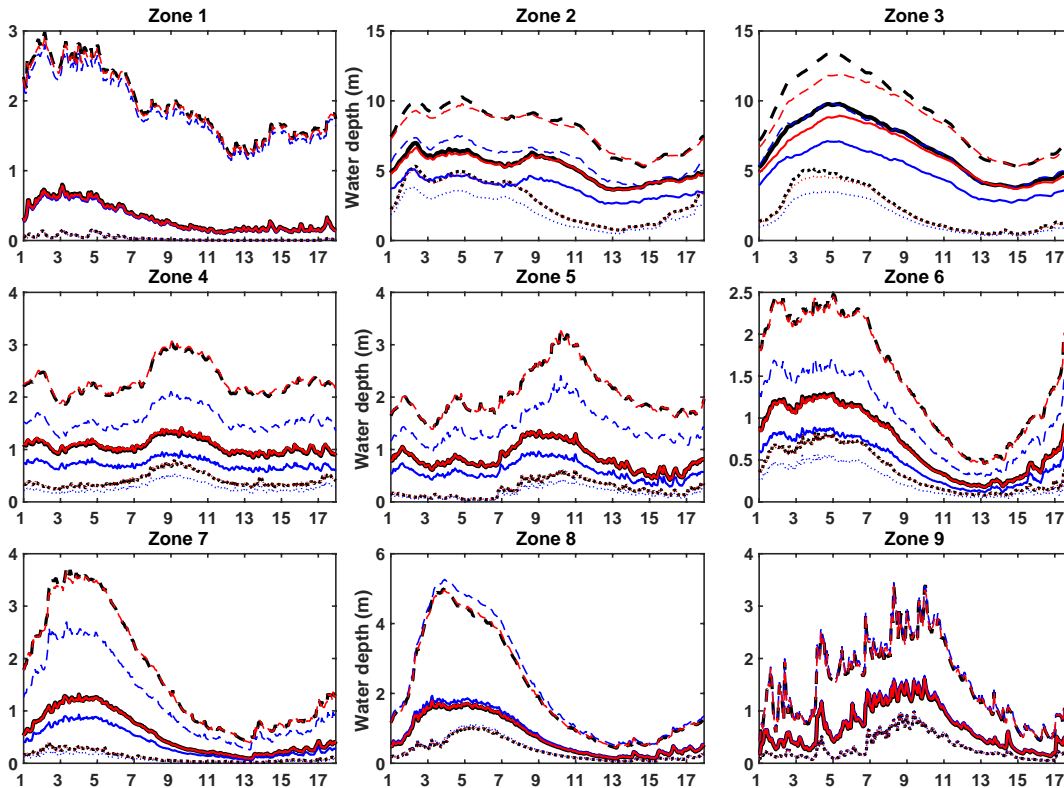


Fig. 2. Modified Figure 10 to address comment m#6