

Dear Editor,

We have revised our manuscript as described in the online responses to reviewer I and II. We specifically addressed the following points to improve the paper focusing on the major concerns of the two reviewers. All changes / revisions can be found in the track change version.

1. We rewrote and improved the **introduction** of the paper, which is now 20% shorter and more concise. Suggested pieces of literature were added, e.g. the Meyer et al. 2011 paper is now integrated into the introduction. The discussion about fast- and slow flow concepts confused the reviewers, we thus concentrate on the main point of the paper: the reasoning why quick- and baseflow separation can be improved with a separation procedure considering multiple delayed contributions. The description of different regime types along the elevation gradient was removed and is now integrated into section 3 "data and regime classification".
2. We now explain more clearly that **the DFI is an extension of the former BFI** procedure and that we see the DFI as a complement to BFI analysis, not as a replacement for BFI.
3. We carried out technical improvements of the paper (e.g. hyphen, abbreviations) to improve the readability of the text. Also, we **revised Fig. 1** with improved coloring and larger subplots (Sect. 2.1).
4. We improved the given **information about the catchments**, explained our indices in more detail, and added metrics about low flow stability and seasonality into Table 1 (Sect. 3). **More catchment, climate and streamflow** characteristics are now shown in Fig. A1 in the appendix. We also revised the suspicious small SNOW catchments (there was an error in Table 1: the mean catchment size of SNOW catchments is 62km² not 19km²). We also show now that SNOW catchments have a smaller flashiness than HYBR catchments (Fig. A1).
5. We **removed the headwater terminology** completely and state now more clearly that the catchments are not pristine and streamflow might be human-influenced. The potential effects of human influences on the different delayed contributions are now part of the discussion. We also checked that influenced catchments (like the Maggia catchment) are not causing extreme values in the breakpoint estimation or the derived delay classes (Sect. 5.1).
6. Regarding the concerns about our **catchment grouping** based on elevation we performed a **cluster analysis** (new Fig. 9) showing that the grouping by elevation is reasonable as the groups have different patterns of delayed contributions. In addition, we discuss cases where specific catchment or climate characteristics can superimpose the derived patterns based on elevation grouping (Sect. 5.1).
7. Both reviewers had concerns regarding our statements about **groundwater recharge** (Section 5). We rewrote the section and introduced the **concept of dynamic storage** (Staudinger et al., 2017). Dynamic storage can be derived from streamflow analysis. With that, we revised the inconsistent usage of wording (e.g. storage, sustained streamflow, etc.) in the whole paper.
8. Lastly, **we removed Section 6** (Application of DFI: Seasonal sensitivity of low streamflow based on delayed contributions and the corresponding method description in 2.6) as the reviews criticized that the paper was rather long and the application example provided no or only minor additional value on the proposed DFI method. Removing the low flow stability index means also that we have reduced the number of used abbreviations, symbols and indices, which improves the general readability of the paper.

Best regards,

Michael Stölzle

Beyond binary baseflow separation: a delayed flow index ~~as a fresh perspective on~~ for multiple streamflow contributions

Michael Stoelzle¹, Tobias Schuetz², Markus Weiler¹, Kerstin Stahl¹, and Lena M. Tallaksen³

5 ¹Faculty of Environment and Natural Resources, University Freiburg, Germany

²Department of Hydrology, Faculty VI Regional and Environmental Sciences, University of Trier, Germany

³Department of Geosciences, University of Oslo, Norway

Correspondence to: Michael Stoelzle (michael.stoelzle@hydro.uni-freiburg.de)

Abstract. Understanding components of the total streamflow is important to assess the ecological functioning of rivers. Binary
10 or two-component separation of streamflow into a quick- and a slow (often referred to as baseflow) component, ~~and the~~
~~associated and~~ are often ~~used~~ baseflow index (BFI), ~~have been criticised for their~~ based on arbitrary ~~choice~~ choices of separation
parameters. ~~These methods and~~ also merge different delayed components in one baseflow component: and one baseflow index
(BFI). As streamflow generation during dry weather often results from drainage of multiple sources, we propose ~~a novel to~~
extend the BFI by a delayed flow index (DFI) considering the dynamics of multiple delayed contributions to streamflow. The
15 DFI is based on characteristic delay curves where the identification of breakpoint estimates helps to avoid rather
~~arbitrary~~ subjective separation parameters and allows distinguishing four types of delayed streamflow contributions. The
methodology is ~~illustrated~~ demonstrated using streamflow records from a set of 60 headwater mesoscale catchments in Germany
and Switzerland covering a pronounced ~~elevation~~ elevation gradient of roughly 3000 m. We found that the quickflow signal
often diminishes earlier than ~~given assumed~~ by two-component BFI-analyses ~~with only two flow components~~, and ~~further~~
20 distinguished a variety of additional flow contributions with delays shorter than 60 days ~~controlling the seasonal streamflow~~
~~dynamics~~. For streamflow contributions with delays longer than 60 days, we show that the method ~~was can be~~ used to assess
catchments' water sustainability during dry spells. Colwells's Predictability, a measure of streamflow periodicity and
sustainability, was applied to attribute the identified delay patterns to ~~streamflow dynamics and~~ dynamic catchment
~~storages~~ storage. The smallest dynamic storages were consistently found for catchments between approx. 800 and 1800 m a.s.l.
25 Above an elevation of 1800 m the DFI suggests that seasonal snowpack provides the primary contribution, whereas below 800
m groundwater resources are most likely the major streamflow contributions. Our analysis also indicates that
~~subsurface~~ dynamic storage in high alpine catchments ~~may~~ might be large and is overall not smaller than in lowland catchments.
We conclude that the DFI can be used to assess the range of sources forming catchments' storages and to judge ~~their~~ long-
term sustainability of streamflow. ~~Combining the DFI with a low flow stability index, allows us to better understand controls~~
30 ~~of seasonal low flow regimes across different regimes.~~

1 Introduction

~~Sustained freshwater availability is essential for ecosystem functioning.~~ During dry weather sustained streamflow modulates aquatic ecosystem functioning and is important for groundwater-surface-water-interactions (Sophocleous, 2002), ~~streamflow drought severity~~, the variability of water temperature (Constantz, 1998) or the dilution of contaminants (Schuetz et al., 2016).

35 ~~In hydrology, sustained streamflow and hence freshwater availability, is often estimated by~~ Estimates of the amount or timing of baseflow or ~~as a single value of the~~ baseflow index (BFI) quantify catchments' freshwater availability during dry weather. The BFI is the proportion of baseflow to total streamflow, i.e. higher BFI values are interpreted as an indicator of more water being provided from stored sources (Tallaksen and van Lanen, 2004). Total streamflow is composed of quick- and baseflow.

~~Quickflow~~ Quickflow is the portion of total streamflow originating ~~rather~~ directly from precipitation input (also termed direct runoff or stormflow). In contrast, ~~different names for baseflow (i.e. sustained flow, delayed flow, groundwater flow, dry or fair weather flow) highlight its relevance during prolonged dry weather.~~ baseflow has commonly been considered “as the portion of flow that comes from groundwater storage or other delayed sources” (Hall, 1968), i.e. water that has previously infiltrated into the soil and recharged to aquifers, but can also origin from other sources of delayed flow (e.g. snowmelt). ~~In later studies it is described as the contribution from persistent and slowly varying sources, including groundwater flow.~~

45 ~~Dingman~~ Dingman (2015) understands baseflow as water maintaining streamflow between water-input events. ~~Between these events~~ Different sources such as groundwater, melt water from snow, glacier or ice, water from lakes, riverbanks, floodplains, wetlands, spring or return flow from irrigation can contribute to the “baseflow” component of streamflow (Smakhtin, 2001). Considering these different potential sources requires consideration of the different delayed contributions that may maintain streamflow during prolonged dry weather and are thus important to assess the vulnerability of aquatic ecosystems, e.g. due to

50 climatic change (e.g. Olden et al., 2011) ~~definitions, the amount of baseflow and its seasonal variability is controlled by multiple delayed sources. Groundwater contributes to the baseflow component of river's streamflow, but baseflow is not a measure of groundwater storage only.~~ Therefore, the various contributions from different sources to the “baseflow” component need to be better distinguished, in particular across different climates and streamflow regimes.

The question is, how we can identify and quantify different delayed contributions to streamflow? Traditionally, conceptual

55 methods use reservoir algorithms to represent multiple contributions to streamflow (Schwarze et al., 1989; Wittenberg, 2003). Stoelzle et al. (2015) have shown that baseflow modelling can be improved by using information on geology to select appropriate groundwater model structures. However, instead of using parameterized box models with assumptions about their drainage behavior, the observed hydrograph can also be consulted directly. Hydrometric- or tracer-based hydrograph separation allow decomposing different streamflow contributions to gain a quick- and baseflow component (Smakhtin,

60 2001) ~~Baseflow is often estimated using hydrometric or tracer based hydrograph separation to decompose the different streamflow contributions. Hydrometric based hydrograph.~~ Hydrograph-based separation has a long history, but has been also criticized for ambiguous results compared to newer approaches based on chemical- or isotopic tracers (Klaus and McDonnell, 2013). A general assumption is that the latter approaches are ~~assumed to be~~ physically more meaningful and allow assessing

the water age (~~transit and residence time modeling~~), the mixing of the water (e.g. pre-event and event water) and the sources of different water contributions (~~e.g. groundwater, snowmelt~~). However, isotope or chemical data sets are often ~~only~~not available for a short period. Hence, hydrograph analysis is often the only possibility to provide an estimate of the amount of slowly varying flow, i.e. delayed contributions, to streamflow.

Quantification and attribution of the delayed responses to potential sources are important to predict streamflow, including its seasonality and water sustainability. Seasonal consideration of delayed contributions to streamflow is particularly important for environmental flow assessment as both high flow and low flow variability are crucial for the integrity of river ecosystems. Different delayed contributions may sustain streamflow during periods with low precipitation and are thus important to assess the vulnerability of aquatic ecosystems to climate change. During wet conditions, streamflow contributions will ~~or~~ have predominantly short delays (e.g. due to frequent rainfall events). During dry conditions catchment-specific drainage of water storages, such as groundwater aquifers, snowmelt, wetlands etc., control the stability and the interannual variability of low flows. The spatio-temporal variability of delayed contributions to streamflow cause major concerns limitations regarding reliability and resilience of hydropower generation, low flow forecast, water supply or water management, especially in water spatial extent, resolution or data scarce areas with high water demand (e.g. due to irrigation).

Regarding the terminology, quick and baseflow might be inconclusive as sometimes the term quickflow is seen as a description of the response, whereas the term baseflow is seen as a description of the source. For this reason, it has been suggested to separate the flow into a fast and slow component, taking a purely response-orientated perspective. Then the quick and baseflow terminology related to event and pre-event water, takes a more source-orientated perspective. Kronholm and Capel introduced a Slow Flow Index to “separate water that is moving slowly through the hydrological system” and consequently concluded that baseflow (defined as groundwater discharge by the authors) is not always the same as slowflow. However, fast and slowflow might be also an insufficient terminology or classification as all contributions to streamflow have specific delays: some are slow, but others are even slower. In the proposed fast-slow flow concept, slowflow will, as well as the source-orientated baseflow, include contributions from multiple sources; but neither different response signals nor the contributions from different sources are distinguishable the period of record. Furthermore. Freyberg et al. (2018) therefore recommend developing hydrograph separation beyond the traditional separation of event and pre-event ~~and event~~-water (i.e. quick- and baseflow) to ~~identify~~ eventually identify many different sources of streamflow.

In the past, two-component baseflow hydrograph separation ~~methods~~-such as ~~the~~-recursive digital filtering (Lyne and Hollick, 1979; Nathan and McMahon, 1992) or separation based on progressively identified streamflow minima in the IH-UK (Institute of Hydrology, United Kingdom) baseflow separation method (Gustard et al., 1992; Natural Environment Research Council, 1980); have proven a simple and practical way of indexing ~~the~~-catchment response. Both methods were developed in regional studies (e.g. Australia, United Kingdom) and need reasonable, but subjective, decisions on ~~parameterization to separate~~the separation of quick- and baseflow from total ~~flow~~streamflow. The proposed parameter ranges reflect region-specific streamflow response characteristics (e.g. for BFI, the choice of 5-days windows for separation in the UK is adapted to the typical rainfall regime in the UK) and would have to be recalibrated for other climates as demonstrated e.g. for seasonal snow

regimes by (Tallaksen, 1987) or for intermittent ~~streams~~ by (Aksoy et al., 2008). Accordingly, other studies have discussed the limitations of the BFI and two-component baseflow separation due to e.g. arbitrary separation parameters or the mixture of different delayed sources into one baseflow component (Hellwig and Stahl, 2018; Kronholm and Capel, 2015; Parry et al., 2016a; Partington et al., 2012). Meyer et al. (2011) applied different baseflow separation methods (IH-UK procedure, Wittenberg procedure (Wittenberg and Sivapalan, 1999) and the Demuth procedure (Demuth, 1993; Demuth and Kulls, 1997)) demonstrating that different procedures of quick- and baseflow separation lead to different BFI values with a consistent ranking across the procedures (i.e. Demuth < IH-UK < Wittenberg). The authors found for rainfall-dominated catchments in Switzerland reliable relationships between BFI and catchment characteristics such as groundwater availability or soil properties. In general, BFI and mean catchment elevation were negatively correlated (below 1500 m a.s.l.), but between 1500-3000 m a.s.l. (i.e. However, allowing general applicability to catchments containing a range of different delayed sources, each with possibly different origins and varying contributions, another approach might be more appropriate to disentangle delayed components in the BFI “baseflow” component. snowmelt-dominated catchments) their results indicated generally higher BFI values, an indication of additional delayed contributions, and a much weaker correlation between BFI and elevation, an indication of importance of specific catchment characteristics.

To ~~tackle some~~ improve our understanding of ~~these issues~~ different streamflow components we propose to extend common hydrograph analysis ~~binary (i.e. baseflow separation) of a binary quick- and baseflow- (resulting in BFI) into a hydrograph separation into an analysis~~ considering multiple delayed contributions to streamflow. The objectives of our study are:

- 1) to develop a delayed flow separation procedure with the ability to quantify multiple delayed streamflow contributions (i.e. the delayed flow index (DFI) and
- 2) to evaluate the reliability and applicability of this procedure by linking delayed flow contributions to catchment characteristics and dynamic catchment storage.

For this purpose, the DFI is tested for a set of catchments in Germany and Switzerland covering a pronounced elevational gradient acting as a proxy for different streamflow regimes. From lowland to montane to alpine catchments catchment characteristics generally show gradual changes. Overall, lowland catchments are thought to have thicker soils, larger groundwater storages and longer growing season. Montane catchments comprise pronounced slopes, large elevation ranges and higher freeze-thaw dynamics due to high variations in catchment snowpack. Alpine catchments are often snowmelt- or (occasionally) glaciermelt dominated, they have thinner soils and are characterized by bedrock, gravel and taluses, and are near or above the treeline. Given the variety of ecosystems along elevational gradients, we can expect that catchment characteristics are also reflected in various streamflow regimes and climate characteristics (e.g. rainfall- or snowmelt-dominated catchments with low flows in different seasons) and). Accordingly, we hypothesize that multiple delayed streamflow contributions with specific signals (e.g. stormflow, snowmelt or groundwater contributions) are distinguishable. As catchment storage is both seasonally stored surface water (e.g. snow) as well as sub-surface water stored with less pronounced seasonality (e.g. shallow or deep groundwater aquifers), we used Colwell’s Predictability (Colwell, 1974) as a

~~thorough~~ metric to assess streamflow predictability considering both facets of water storage in catchments. ~~The objectives of our study are:~~

- ~~1) to develop a delayed flow separation method with the ability to quantify multiple delayed streamflow contributions and~~
- ~~1) to evaluate the reliability and applicability of this method by linking delayed flow contributions to catchment characteristics, storage and low flow variability.~~

2 Methods

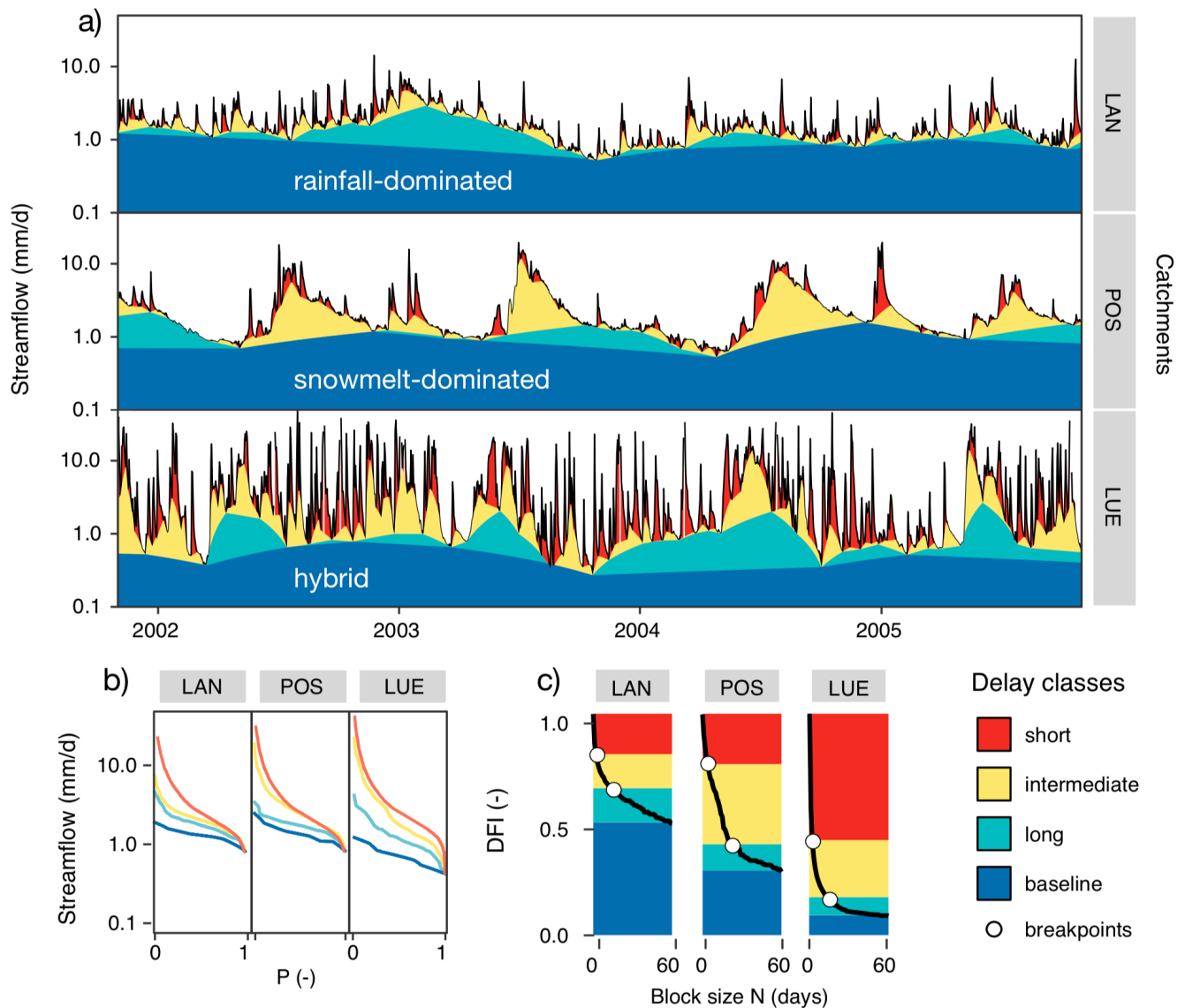
2.1 Delayed flow separation ~~method~~

~~This study~~ The proposed procedure is ~~built~~ built on the widely used IH-UK baseflow separation method (Gustard et al., 1992), also referred to as the smoothed minima method. The IH-UK method was developed for humid, rainfall-dominated catchments in the United Kingdom (UK) and separates the total flow into two components (quick- and baseflow), i.e. above and below a baseflow hydrograph derived from a daily streamflow series of perennial streams. For a thorough description of the original method see e.g. Hisdal et al. (2004) and the Manual on Low-flow Estimation and Prediction of WMO (2009). ~~This~~ The IH-UK method identifies local minima in daily streamflow series ~~and~~. A continuous baseflow hydrograph is then obtained by linear interpolation between the identified local streamflow minima. The separation method is based on identifying streamflow minima in consecutive periods of $N=5$ days (block size) and a multiplying factor f (also referred to as a turning point parameter) that determines whether the minimum is identified as a local minimum or not (f equal 0.9 in the original method). The estimated baseflow hydrograph is more sensitive to changes in parameter N than to changes in the turning point parameter f (Aksoy et al., 2008; Tallaksen, 1987). Hence, we focus in this study only on the variation of block size N , which can be seen as an estimate of an average streamflow delay and catchments response (i.e. unit of N is ‘days’).

It has further been suggested to calculate the BFI separately for different seasons using different N values to avoid identifying minima during seasons with a ~~different~~ deviating runoff response (to that of rainfall), such as spring flood due to snowmelt (Tallaksen, 1987). Aksoy et al. (2008; 2009) adapted the IH-UK method for perennial and intermittent streams accounting for the sensitivity of BFI to different block sizes N . They also compared the IH-UK method to other filter separation methods such as the recursive digital filter method (Lyne and Hollick, 1979), and were amongst others aware of the sensitivity of BFI to different block sizes N (Miller et al., 2015; Piggott et al., 2005). However, to our knowledge, a comprehensive analysis of the sensitivity in BFI to different block sizes N is still missing. Aksoy et. al (2008) suggested to determine catchment-specific values for N as a function of catchment area A [km²] with $N = 1.6A^{0.2}$, however, if applied as “a rule of thumb” (Linsley et al., 1958), N will only vary between roughly 2 and 10 days for catchment areas between 10 and 10.000 km². Thus, there is a need for a more systematic approach. In this study, we expand on the IH-UK method (i.e. smoothed minima method) to derive a delayed flow index (DFI_N) for integer values of N ranging between 1 and 90 days, as follows:

1. Similar to the BFI procedure (WMO, 2009) the time series is divided into non-overlapping consecutive blocks of N days.
2. The minimum value of each block is compared to the minimum of the two adjacent blocks. If a factor $f = 0.9$ times of the minimum value, is less than or equal to the two adjacent minima, a turning point (TP) is defined. TPs will be separated by a varying number of days due to the algorithm.
3. The TPs are connected by straight lines to become the delayed flow hydrograph. Between TPs the delayed flow values are derived by linear interpolation. If the estimated delayed flow exceeds the original streamflow value, the delayed flow is replaced by the original streamflow value.
4. The delayed flow index for a given N (DFI_N) is then calculated as the ratio of the sum of delayed flow to the sum of total streamflow.

$N = 0$ represent the case of no separation and the delayed flow series is set equal to the streamflow series ($DFI_0 = 1$). For $N = 1$ the DFI value will be slightly less than 1 as some peaks in the hydrograph will be cut by the $f = 0.9$ criterion. The BFI value of the original method is equal to DFI_5 , i.e. $N = 5$ days. Theoretically, DFI_N (as well as the original BFI value) range between 0 and 1. With increasing N the length of each consecutive period increases and DFI decreases because TPs are set wider apart and more and more streamflow peaks (i.e. contributions with shorter delays) are excluded from the separation as illustrated in Figure 1. Here the methodology is demonstrated for three catchments with different streamflow regimes (Fig. 1a and 1b), showing the full range of delayed contributions as a continuous change from $N = 1$ (only the sharpest peaks are identified) to $N = 60$ (all peaks are separated). With increasing N , the DFI_N shows a monotonic decrease and converges to a catchment-specific limiting value for large values of N (Fig. 1c). DFI_N would only approach 0, if streamflow series has regularly zero flow periods (intermittent streams): Zero flow must then occur approximately every N days, which was not the case for any of our study catchments.



185 **Figure 1:** a) Delayed flow separation for three catchments from Switzerland, namely Langeten (LAN), Poschiavino (POS) and Lümpepenbach (LUE), with different streamflow regimes, b) Flow duration curves for delayed flow hydrographs (for 1 day, at breakpoint 1, at breakpoint 2 and, for 60 days) and c) DFI_N -values for different block size N shown in combination with breakpoints (circles). Colours refer to the four different delay classes identified. The methodology to derive the breakpoints and delay classes is explained in section 2.3. The catchment classification is explained in Table 1 in section 3. Note the logarithmic y-axis in a) and b).

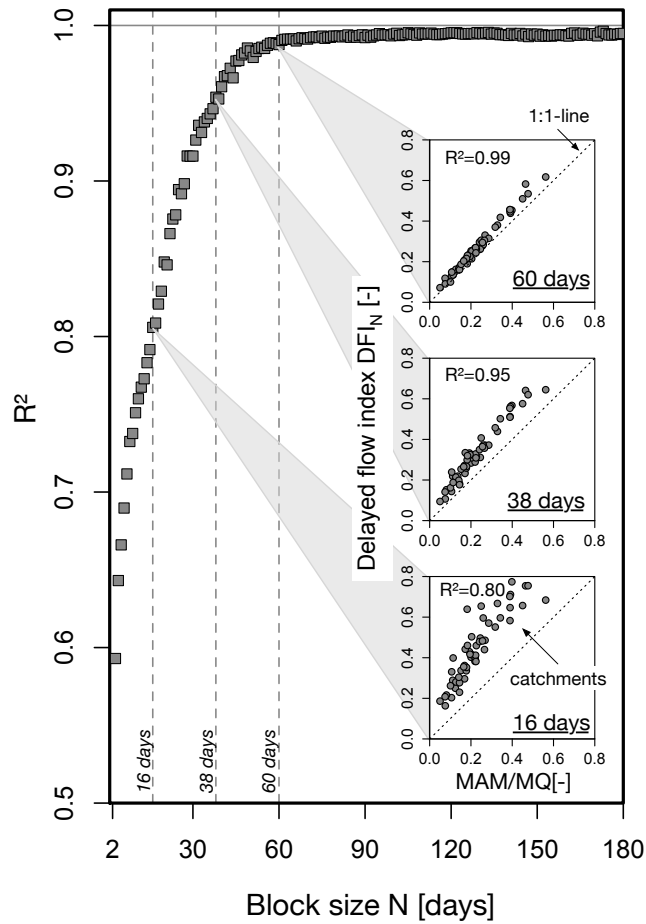
190 As ~~an~~the appropriate maximum block size (N_{max}) is unknown a priori, we originally calculated the DFI_N index for block sizes from 1 to 180 days (cf. Sect. 2.2) ~~providing~~to receive characteristic delay curves (CDC) characterizing the relationship between block size N and DFI_N . DFI_N values and resulting CDCs are calculated for the ~~the~~whole year and separately for the

summer season (May to October) and the winter season (November to April) to allow the seasonal variability of different contributing sources to be assessed. The final CDC was smoothed by choosing the minimum of two consecutive DFI values for all pairs of DFI_i and DFI_{i+1} .

2.2 Maximum block size N_{max}

Some studies (Wahl and Wahl, 1995) have shown that CDCs converge to a catchment-specific asymptotic value for large N . Accordingly, we hypothesize that for a given N_{max} the proportion of delayed streamflow stays nearly constant even if N is further increased ($N > N_{max}$). This value, which is considered a typical (~~maximum~~) delay of all contributing sources, is then captured by this maximum block size N_{max} . ~~In the seasonal~~ During low flow period flows, streamflow typically originates from one or only a few delayed sources (e.g. slowly draining groundwater aquifers). We thus attributed the ~~variability of the~~ mean annual minimum streamflow (~~AM~~MAM) to the slowest contributing ~~source(s)~~sources and identified N_{max} by comparing the fraction of ~~mean annual minimum flows~~ (MAM) to mean streamflow (MQ) as an indicator of low flow sensitivity ~~to~~ DFI_N (MAM/MQ). This indicator is comparable to Q_{95}/Q_{50} , but integrates one minimum flow per year. Higher MAM/MQ means higher low flow stability. MAM and MQ are calculated for each catchment based on daily streamflow values for block sizes N between 2 and 180 days. This implies (see Sect. 3). With that N in the delayed flow separation is increased until a clear relationship between MAM/MQ values and DFI_N values for all catchments ~~and N values~~ is established.

The relationships between MAM/MQ and DFI_N is shown in Figure 2 for different N . As the block size N is increasing, the maximum block size N_{max} is identified as the point when the explanatory power of the regression between MAM/MQ and DFI_N , the coefficient of determination (Fig. 2, insets), ceases to increase. Based on this initial analysis, N_{max} is set to 60 days as $N = 60$ is sufficient to capture all annual minimum flows across the catchments and larger values of N provide no additional information on streamflow variability (i.e. CDCs flatten out for $N > 60$, cf. Sect. 2.3).



215 **Figure 2: The Coefficient of determination, R^2 , between DFI_N and the ratio of Mean Annual Minimum flow to Mean Flow (MAM/MQ) for varying block size N ranging between 2 and 180 days. Insets show the degree of agreement (as compared to a 1:1 line) for $N = 16, 38$ and 60 days.**

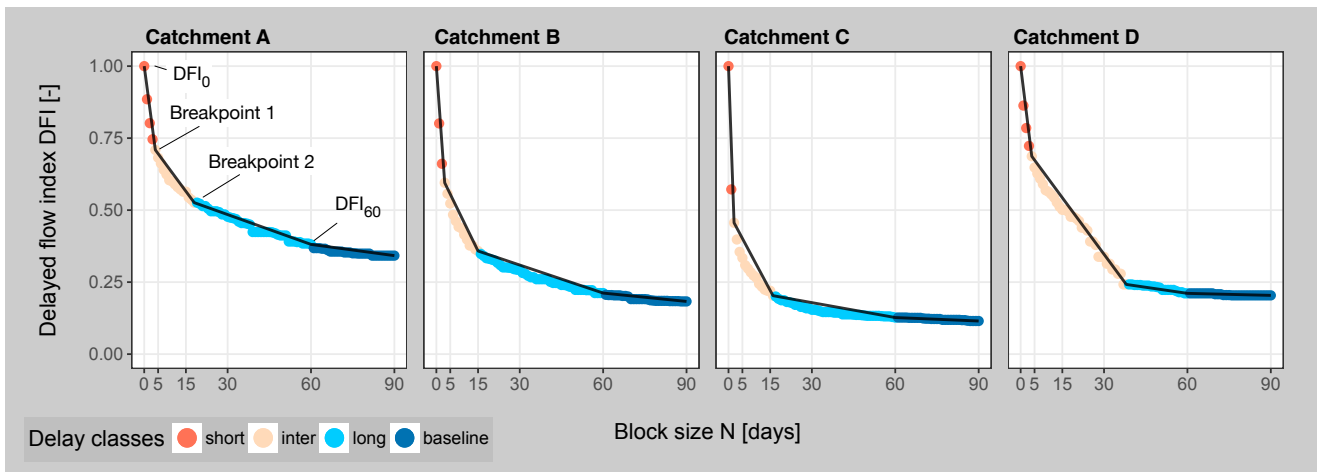
2.3 Breakpoints and delay classes

220 **Figure 3 shows a general decrease in** Generally, DFI values **decrease** with increasing N , but the rate of decrease varies among the catchments. **It is assumed (Fig. 3). We assume** that a **change decrease** in the slope of the CDC indicates a transition from faster to slower contributing sources (stores) in the catchment. Such specific values of N can be defined as breakpoints (BP) splitting the CDCs into piecewise linear segments with different slopes (Miller et al., 2015; Wahl and Wahl, 1995). We calculated two breakpoints between 0 and 60 days for each CDC by minimizing the residual sums of the resulting three linear regressions (Muggeo, 2008). Accordingly, the linear **regression represents** **regressions represent** the piecewise linear shape of the CDCs for the four segments as shown in Figure 3 for four random catchments from the data set (catchment A, B, C and 225 D). The position of each breakpoint pair (DFI_{BP1} and DFI_{BP2} ; given as integer values) together with the associated DFI_{60} value, hence characterize the shape (e.g. curvature, changes in slope, minimum level) of each single CDC. The delayed contributions

to streamflow are then classified into four delay classes, and quantified as the ratio of each component to the total annual streamflow (ranging between zero and one) for each class (Fig. 3):

- short delay (D_S): between $N = 0$ (equal to original streamflow series) and BP_1
- 230 • intermediate delay (D_I): between the two breakpoints (BP_1 and BP_2)
- long delay (D_L): between the BP_2 and $N = 60$
- baseline (D_B) delay: equals the DFI_{60} value ($N = 60$).

The resulting four delay classes can be interpreted according to their relative contributions to streamflow, but also in terms of their absolute values (e.g. mean annual water volume contributing to streamflow in each delay class). Absolute streamflow contributions in each delay class are then calculated based on the catchment-specific average annual streamflow. Relative contributions are calculated based on the differences of the DFI values, i.e. relative contribution in the delay class $D_S = DFI_0 - DFI_{BP_1}$, $D_I = DFI_{BP_1} - DFI_{BP_2}$, $D_L = DFI_{BP_2} - DFI_{60}$, and $D_B = DFI_{60}$.



240 **Figure 3: Various CDC curves for four example catchments A-D and their variation in DFI_0 , DFI_{60} and breakpoints 1 and 2. The example catchments are extracted from the study data set to highlight the variety of CDCs and ratios of delayed streamflow contributions.**

2.5 Colwell's Predictability

245 ~~One aim~~ Testing the physical interpretability of the ~~study is to assess to what degree it is possible to attribute the varying~~ delayed flow contributions to catchments identified delay classes regarding catchment storages (and processes). ~~To answer this question,~~ we utilize Colwell's Predictability (Colwell, 1974) to ~~classify~~ interpret different delay classes of streamflow based on the predictability, constancy, and seasonality of streamflow regimes. Colwell's Predictability is an approach to compare regime constancy or stability in multi-catchment studies with pronounced ~~elevation~~ elevation gradients and different streamflow regimes (Viviroli and Weingartner, 2004). Colwell developed a metric to assess the uncertainty of periodically changing environmental variables with respect to state and time. The detailed mathematical derivation of Colwell's

250

Predictability can be found in Colwell (1974). ~~Examples~~[Exemplary applications](#) of ~~applied~~ Colwell's Predictability are the periodicity of fruiting and flowering (Colwell, 1974) or the analyses of streamflow (Poff, 1996)~~patterns~~ and precipitation (Gan et al., 1991). ~~patterns~~. Based on information theory, the uncertainty of a variable with respect to its state and timing has been defined as an estimate of reciprocal predictability. This means, if the state and/or timing of a variable is highly uncertain, it is also poorly predictable. This, in turn, leads to a highly predictable flow regime when flow is nearly invariant throughout the year (state is known) or when streamflow has a clear ~~year-to-year~~[interannual](#) seasonal pattern (timing is known). Combining variation in state and timing the total Colwell's Predictability P_T ~~[]~~ is calculated as

$$P_T = P_C + P_S$$

with a component for constancy P_C ~~[]~~ and a component for contingency or seasonality P_S ~~[]~~. All three values can vary between 0 and 1 under the condition $P_C + P_S \leq 1$. The variables P_C and P_S are calculated with the R package hydrostats with standard configuration (Bond, 2016). A value of $P_T = 1$ indicates that the mean monthly streamflow values show the same temporal pattern (here streamflow regime) for each temporal cycle (here the hydrological year) (Gan et al., 1991). If so, Constancy P_C is 1 (e.g. constant flow without any seasonality) or Seasonality P_S is 1 (e.g. pronounced seasonality with identical monthly flows from ~~year-to-year~~[between the years](#)) or P_C and P_S add theoretically up to 1. In reality, smaller values for P_T are found due to the variability of climate and the influences of catchment characteristics and water uses (i.e. stronger ~~year-to-year~~[interannual](#) variability).

2.6 Sensitivity in delayed flow components during low flow

~~Here we investigate the different streamflow contributions and delays for months with low streamflow. The low flow stability index S_{LF} is calculated for each calendar month m based on 37 years of streamflow data (1976-2012) for ten randomly selected catchments in each catchment group (RLWR, RUPR, HYBR, SNOW) with:~~

$$S_{LF(m)} = \bar{Q}_{4,m} / \bar{Q}_m$$

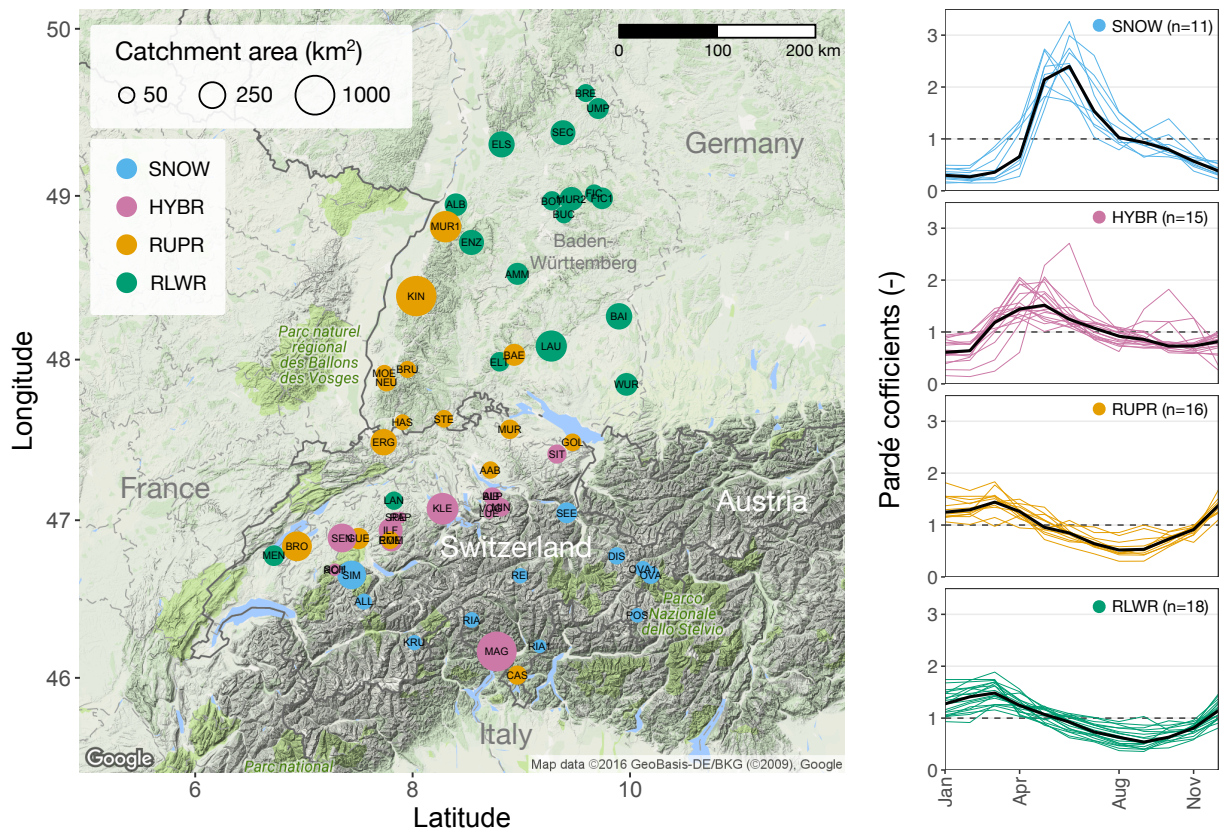
~~where $\bar{Q}_{4,m}$ is the average streamflow of the four driest months (~10% of data) and \bar{Q}_m is the average monthly streamflow of all 37 years. $S_{LF(Apr)}$ is, for example, the average of the four driest Aprils in the time series divided by the average streamflow in April. The average of the four driest months is considered to represent the variability in the ~10% most extreme low flow months and preferred to using only one month with the lowest streamflow. The low flow stability index S_{LF} varies between 0 and 1 and quantifies how stable streamflow is during the low flow season. High S_{LF} suggest relatively stable flows during low flow seasons, lower values indicate pronounced variability in the low flows compared to the monthly mean flow. A seasonal~~

low flow sensitivity analysis is undertaken including the months January, April, August and October to account for different low flow generating processes dominating in different streamflow regimes (i.e. winter versus summer low flows).

3 Data and regime classification

285 We use daily streamflow data (1976–2012) with flow rates per unit area (mm d^{-1}) for a set of 60 headwater catchments with
catchment areas between 0.54 and 955 km^2 , all located in south-western/southwestern Germany and Switzerland (Fig. 4). Mean
catchment elevations range from 227 to 2377 m a.s.l., whereas maximum catchment elevation ranges from 338 up to 3231 m
a.s.l. Some of the high-elevation catchments include small proportions of glaciers (2–7%). Although most of the catchments
are not pristine, human interventions/influences (e.g. urbanization) in these headwater catchments are often negligible and
290 ~~streamflow is assumed to be mostly near natural.~~ small. However, a few streamflow records are influenced by hydropower (i.e.
hydropowering, dams) or sewage discharge; ~~however, the interventions are considered minor.~~

Mountain regions are heterogeneous in many aspects (morphology, geology, climate, etc.). Since their catchment
characteristics offer many plausible catchment classifications, we classify catchments with a rather simple, but straightforward
scheme based on the mean and maximum catchment elevation, reflecting hydrological regime types: rainfall-dominated (mean
295 catchment elevation below 1000 m a.s.l.), snowmelt-dominated (mean catchment elevation above 1600 m a.s.l.) and “hybrid”-
regime catchments (i.e. mixture of rainfall and snowmelt) between these elevation bounds (Table 1, Fig. 4). From lowland to
montane to alpine catchments catchment characteristics generally show gradual changes. Overall, lowland catchments are
thought to have thicker soils, larger groundwater storages and longer growing season. Montane catchments comprise
pronounced slopes, large elevation ranges and higher freeze-thaw-dynamics due to high variations in catchment snowpack.
300 Alpine catchments are often snowmelt- or (occasionally) glaciermelt-dominated, they have thinner soils and are characterized
by bedrock, gravel and taluses, and are near or above the treeline.







305 **Figure 4: Location and area (size of circle) of study catchments. Catchment classification (colors) is explained in Table 1. The right panel shows Pardé coefficients, i.e. the ratio of the long-term mean monthly streamflow to the long-term mean annual streamflow for all catchments grouped by regime type.**

310 The classification follows the definitions of mountains and lowlands for the Alps by Viviroli and Weingartner (2004), which are Pardé coefficients to characterize the seasonality of streamflow (e.g. different typical low flow periods, Table 1). Rainfall-dominated catchments were further divided into “lower” and “upper” catchments with maximum elevations below and above 1000 m a.s.l. to consider possible differences in seasonal snowmelt and evaporative processes between the two groups. The number of classes and lower and upper elevation bounds are comparable to other catchment classifications used in other studies in the same region (Jenicek et al., 2015; Staudinger et al., 2017; 2015; Viviroli and Weingartner, 2004).

315

Table 1: Classification scheme separating the catchments into four different classes/groups (abbreviation and color coded) according to elevation and hydrological regime types. Typical low flow periods are derived from streamflow data. Information on snow onset and snowmelt periods are derived from literature (Klein et al., 2016) and generalized for the regime types/groups HYBR and SNOW.

Regime type	Classification scheme				<u>Snow season</u>		
	<u>Catchment group</u> <u>Class</u>	Color code	Mean Elevation (m a.s.l.)	Maximum Elevation (m a.s.l.)	Typical low flow period	Typical snow onset	Typical begin of snowmelt
rainfall-dominated (lower elevation)	RLWR		< 1000	< 1000	Aug – Sep	variable	variable
rainfall-dominated (upper elevation)	RUPR		< 1000	> 1000	Aug – Sep	variable	variable
rainfall- and snowmelt	HYBR		1000 - 1600	-	Jan – Feb	Nov – Dec	Mar – Apr
snowmelt-dominated	SNOW		> 1600	-	Jan – Mar	Oct – Nov	Apr – May

320

Our study catchments are uniformly distributed over the four classes allowing for a balanced statistical analysis across the four regime types (Table 2). However, the snowmelt-dominated catchments (SNOW) have notably smaller catchment areas compared to the other groups (around 40%) but their streamflow flashiness is not higher than for catchments in the other groups (Fig. A1). The catchment characteristics and hydrometeorological metrics show ~~a decrease in catchment area A with elevation, whereas in general a increase in~~ precipitation P , streamflow Q and the runoff ratio Q/P with elevation. The HYBR catchment group has the smallest low flow stability index (Q_{95}/Q_{50}) and almost no low flow seasonality ($R_S \approx 1$), whereas RLWR and RUPR catchments have summer low flows ($R_S < 1$) and SNOW catchments have winter low flows ($R_S > 1$) (Brunner and Tallaksen, 2019; Laaha and Blöschl, 2006) ~~are generally increasing with elevation.~~

325

330

Table 2: Catchment characteristics and hydrometeorological metrics (based on period 1992–2013) of the four catchment groups. Numbers given are the average values along with the standard deviation (in brackets) of catchments within one each group. The seasonality ratio R_S is the ratio of standardised summer low flows (Q_{95} during May – Oct) and winter low flows (Q_{95w} during Nov – Apr). More details on catchment, climate and streamflow characteristics are given in Fig. A1.

<u>Class</u> <u>Catchment group</u>	Number of catchments (- /%)	Catchment Area A (km ²)	Mean Elevation (m a.s.l.)	Precipitation P (mm a ⁻¹)	Streamflow Q (mm a ⁻¹)	Q/P (-)	Q_{95}/Q_{50} (-)	$R_S = Q_{95}/Q_{95w}$ (-)
RLWR	18 (30)%	152 ± 102	512 ± 181	1038 ± 191	387 ± 141	0.36 ± 0.07	0.43 ± 0.10	0.78 ± 0.14
RUPR	16 (27)%	172 ± 253 178 ± 245	767 755 ± 158	1433 ± 234	732 ± 236	0.50 ± 0.09	0.30 ± 0.06	0.63 ± 0.16
HYBR	15 (25)%	152 ± 257	1213 ± 166	1803 ± 200	1240 ± 397	0.67 ± 0.17	0.26 ± 0.09	0.98 ± 0.18
SNOW	11 (18)%	19 ± 86 62 ± 97	2025 ± 254 2101 ± 302	1635 ± 187	1529 ± 358	0.92 ± 0.13	0.31 ± 0.09	2.39 ± 0.78

4. Results

4.1 Characteristic Delay Curves

335 The [Characteristic Delay Curves \(CDCs\)](#) demonstrate a high variability among catchments and within catchments groups. In Figure 5a the CDCs ~~of~~for all catchments are ~~shown~~grouped by regime type and season (summer and winter), whereas the average CDCs ~~curve~~ for each regime type is shown in Figure 5b (~~averages per season~~). In general, the shape of the CDCs for rainfall-dominated (~~lower elev.~~) (RLWR) catchments decreases more slowly for increasing N than ~~is the case~~for ~~rainfall~~more snowmelt-dominated (~~upper elev.~~) RUPR and rainfall- and snowmelt (hybrid) HYBR catchments. The shapes of the ~~CDCs~~curves and also the values of DFI_{60} , (indicated by the boxplots in Fig. 5a), vary markedly among all catchment groups. Steeper ~~CDCs~~curves imply higher streamflow dynamics, whereas a gentle decrease ~~in~~CDCs indicates a higher ratio of longer delayed contributions (compare Fig. 1). Seasonal differences ~~in~~CDCs suggest different streamflow generation processes, (Fig. 340 [5b](#)), e.g. in snowmelt-dominated SNOW catchments rather stable winter flows and higher flashiness during summer.

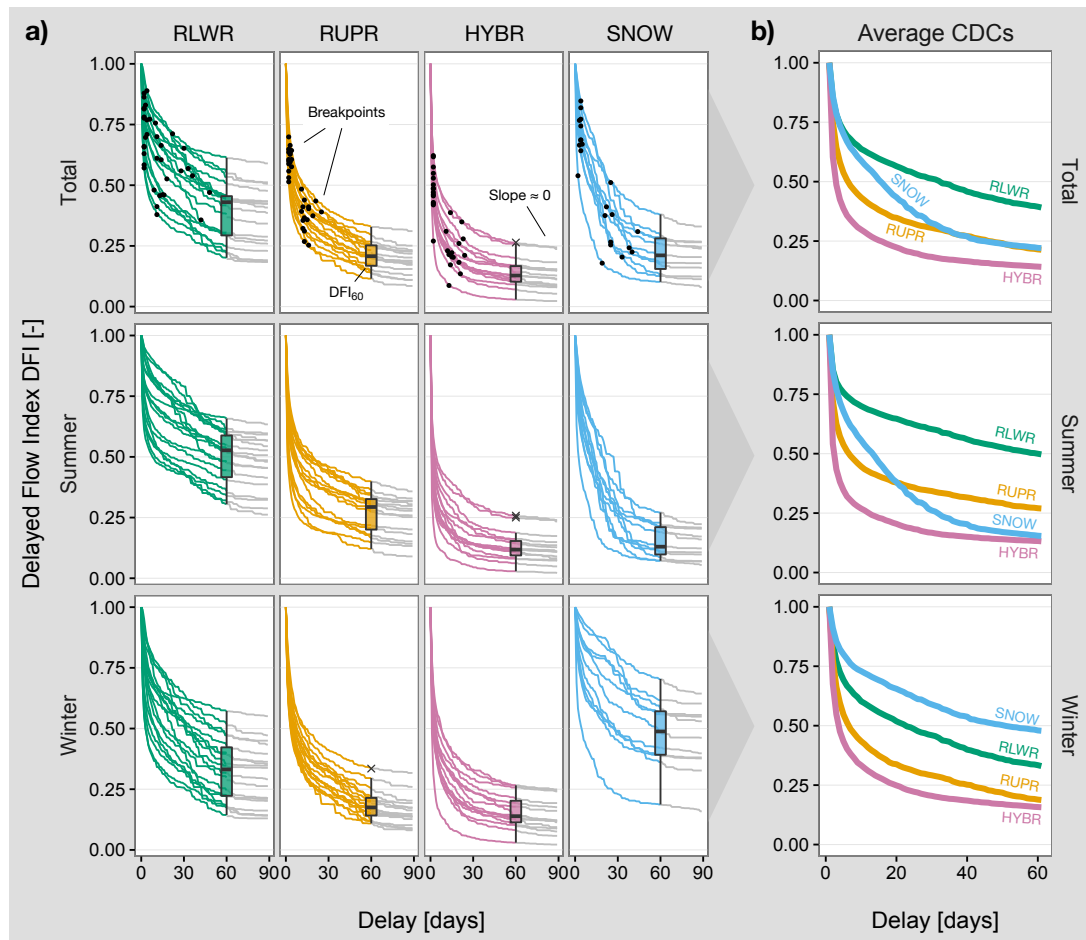


Figure 5: Characteristic delay curves (CDCs) for a) all catchments and b) as average for each catchment groups. CDCs are shown for the whole year, and summer (May–Oct) and winter (Nov–Apr) separately. Black dots are estimated breakpoints. Boxplots show the distribution of DFI_{60} values. The grey lines (delay > 60 days) have very small or zero slopes.

~~flows dominates.~~ We found a higher variation in the CDCs in the lowest and the highest catchment group (RLWR and SNOW catchments) with an interquartile range (IQR) of DFI_{60} between 0.12 and 0.20 for all seasons) ~~than in~~. In the other catchment groups (RUPR and HYBR catchments) IQR of DFI_{60} is between 0.06 and 0.12 for all seasons). ~~In RUPR and HYBR,~~ There the CDCs have a smaller range and show a faster decrease compared to RLWR and SNOW catchments. Overall, ~~CDCs~~ the curves have ~~a~~ small or near ~~zero~~ slopes for delays $N > 60$ (Fig. 5a), however, ~~some CDCs~~ a few curves continue to decrease, although slowly, for $N > 60$. The relative changes in DFI between $N = 60$ and $N = 90$ are in all cases relatively small compared to the changes ~~for the range 0 <~~ when $N < 60$. The proportion of DFI_{60} – DFI_{90} to DFI_0 – DFI_{60} is overall small, varying between 6% (RLWR) and 1.5% (HYBR) with an average of 3% for all catchments.

From a hydrological perspective, the DFI_{60} (baseline delay D_B ; Section 2.4) value is important as it quantifies the streamflow contribution of slowly varying sources with delays of 60 days and longer. Considering the whole year, RLWR catchments have on average the largest proportion of slowly varying sources (0.39), whereas SNOW (0.22), RUPR (0.21) and HYBR catchments (0.14) have notable lower DFI_{60} contributions (Fig. 5). Compared to the annual analysis, the summer season (May–Oct) DFI_{60} is higher for RLWR and RUPR catchments (+10% and +5%) and lower for HYBR and SNOW catchments (-1% and -6%). For the winter season ~~(Nov–Apr)~~ average DFI_{60} are lower compared to the whole year for RLWR and RUPR catchments (-6% and -3%) and higher for SNOW catchments (+26%) and almost equal for HYBR catchments (+1%). This result reveals that low-elevation catchments have relatively comparably fewer streamflow contributions with longer delays during winter (e.g. due to the snow season and melt events), whereas SNOW catchments show higher streamflow contributions with longer delays during winter low flows (Fig. 5b). The HYBR catchments have the smallest DFI_{60} values for both seasons and the corresponding CDCs are characterized by a rapid decrease as N increases until a value of approximately $N = 20$ – 30 days where the curve flattens in both summer and winter. In case of HYBR catchments (Fig. 5a), we found that on average 65% of the streamflow contributions have delays of 5 ~~days~~ or less ($DFI_5 = 0.35$), 78% have 20 ~~days~~ or less ($DFI_{20} = 0.22$) and 84% have 40 ~~days~~ or less ($DFI_{40} = 0.16$).

4.2 Breakpoint estimates and streamflow contributions in delay classes

The locations of the first and second breakpoints (BP_1 and BP_2) show some distinct features for the four catchment groups. The breakpoint estimates for RLWR and SNOW catchments are generally further apart than for RUPR and HYBR catchments. Short delayed contributions corresponding to BP_1 are between 2 and 4 days for 95% of the catchments. Three catchments have BP_1 of 5, 6 or 10 days, respectively. BP_2 are around 15 days for RUPR and HYBR catchments and around 25 days for RLWR and SNOW catchments, indicating that the RLWR and SNOW catchments have overall larger streamflow contributions with intermediate delays.

375 Transforming the resulting CDC fractions into delay classes many ~~study~~ catchments show overall larger streamflow
contributions from the short delay class (D_S), second largest contributions in the intermediate delay (D_I) or the baseline delay
(D_B) and the smallest streamflow contributions in the long delay class (D_L). This suggests that D_S contributions are often
important for streamflow generation. However, the DFI -analysis unveils also exceptions from this pattern with dominant
streamflow contributions in D_B for RLWR catchments and in D_I for SNOW catchments (Fig. 6a, lower panel). These dominant
380 contributions account for around 40% of the total streamflow in both catchment groups (Fig 6b, lower panel) and are clearly
larger than the D_L contributions in these groups. In contrast, HYBR catchments have an average D_S contribution of 50% and
an average D_S plus D_I contribution of 75%. For all HYBR catchments, the first breakpoint is consistently assigned at a delay
of $N=2$ (Fig. 5a), highlighting the importance of fast streamflow generation processes and comparable fast streamflow
recessions. Beside D_S also D_I contributions stand out and show a clear increase in absolute streamflow contributions with
385 increasing elevation (see also Sect. 4.3, Fig. 7).

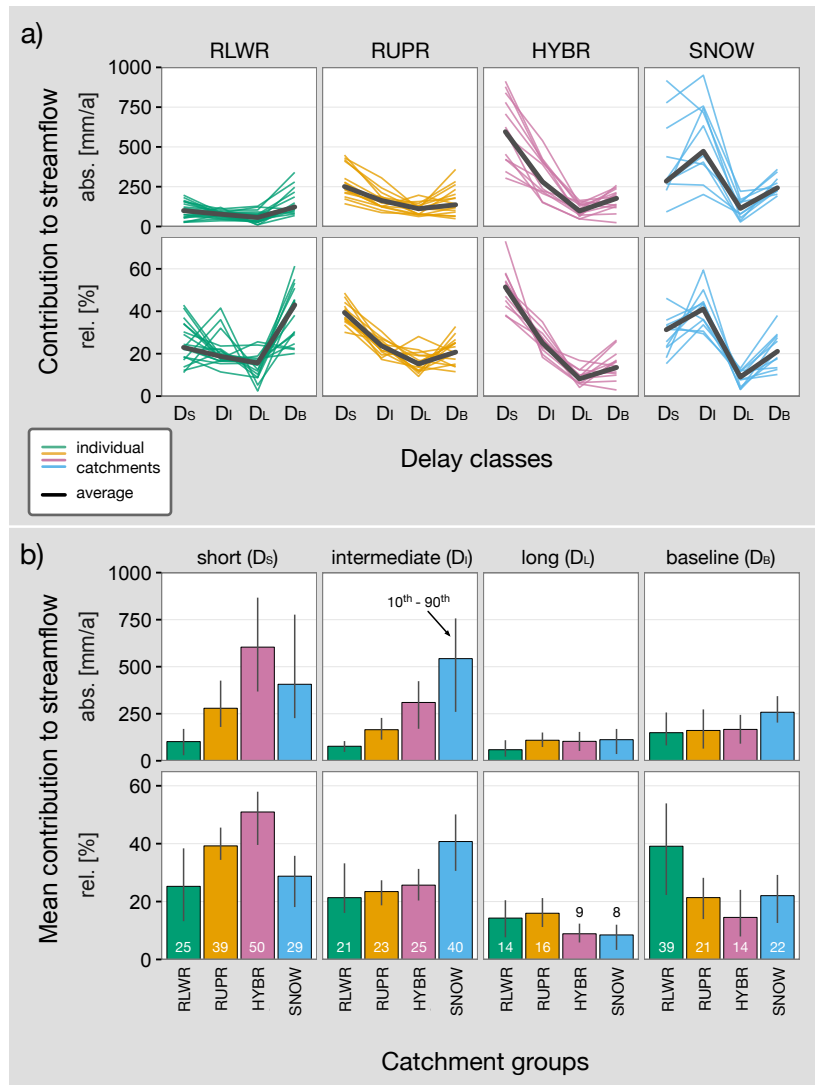


Figure 6: Delayed contributions (in absolute and relative terms) to streamflow according to a) delay classes and b) catchment groups. In panel a) each coloured line intentionally represents one catchment to highlight the catchment-specific composition of different contributions.

390

4.3 ~~Elevational~~Elevation patterns of delayed flows

To explore the elevation-dependent dependency pattern of delayed contributions in more detail and to investigate whether these results are sensitive to the catchment classification scheme (Table 1), we sorted the catchments by the mean catchment elevation and binned ten catchments together to calculate smoothed relative streamflow contributions for the four delay classes as shown in Figure 7. This analysis reveals distinct patterns of varying streamflow contributions. Below approximately 800 m

395

a.s.l the contributions for all delay classes show a high variability and the delay classes are less distinguishable. Above this elevation, the different delay classes show a clear pattern. D_S contributions dominate in an elevation range between approx. 800 and 1800 m a.s.l. Below 800 m a.s.l. D_L contributions dominates whereas above 1800 m a.s.l. D_I contributions are more prominent. The peak of the D_S contribution is around 1300 m a.s.l. corresponding to the smallest D_B contribution. D_L contributions decrease with increasing elevation levelling off at around 10% streamflow contribution slightly above 1500 m a.s.l. D_B contributions are large for a few low-elevation catchments and show an opposed pattern to D_S contributions. The decreasing D_S contributions for elevations higher than 1300 m a.s.l. are compensated not only by D_I , but also by D_B contributions. Catchments above 2000 m a.s.l. have larger D_I than D_S contributions and D_B contributions are almost as large as D_S indicating that at these elevations intermediate and baseline delayed contributions control around 60% of the streamflow dynamics.

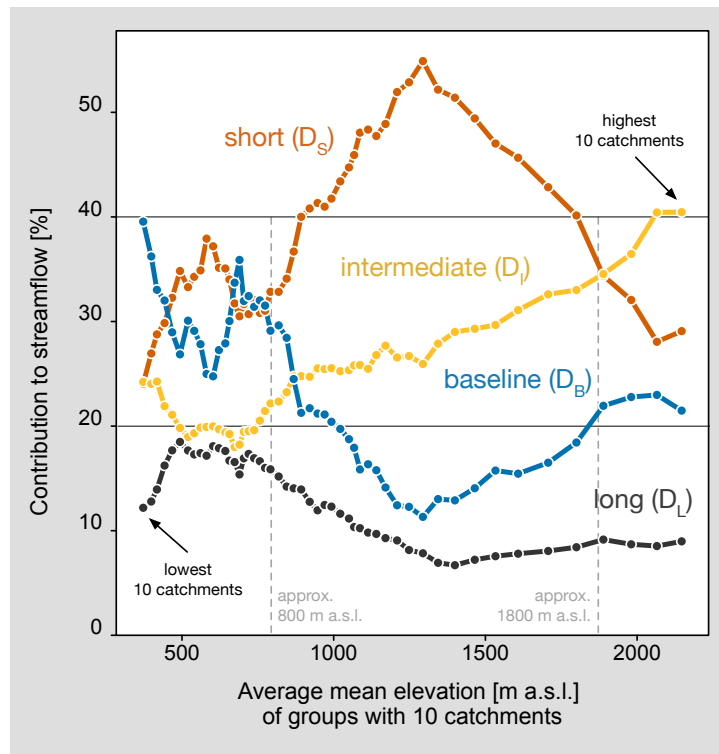


Figure 7: Relationship between elevation and contributions to streamflow in different delay classes. Catchments are sorted according to mean elevation and grouped into sets of 10 catchments to estimate average mean elevation for each group.

4.4 Colwell's Predictability for attribution of delayed contributions

Following Colwell's Predictability (P_T) measure, streamflow predictability is composed of constancy (P_C) and seasonality (P_S). Adding up P_C and P_S reveals a distinct *U-shape* pattern for P_T (Fig. 8a). Overall, P_T of RLWR and SNOW catchments is higher than for RUPR and HYBR catchments. The lower P_T provide insights into the catchment characteristics of HYBR, and partly RUPR catchments, as smaller contributions in D_L and D_B identify catchments with point to smaller storages. dynamic storage capacity. As HYBR catchments are mainly controlled by D_S contributions we attribute a smaller dynamic storage capacity and less water retention potential to those catchments. A higher P_T is mainly attributable to higher P_C in RLWR and higher P_S in SNOW catchments. Including a correlation analysis (Fig 8c) we found strong relationships between D_B contributions and P_C ($r = 0.61$) and between D_I contributions and P_S ($r = 0.82$). Interestingly, P_C for SNOW catchments is not markedly lower compared to the other three catchment groups. Higher P_C is an indication of indicates higher streamflow sustainability throughout the year and this sustainability is related to D_B contributions. Correlation analysis (Fig. 8c) also reveals that D_S contributions is negatively correlated to P_T ($r = -0.47$) and P_C ($r = -0.45$).

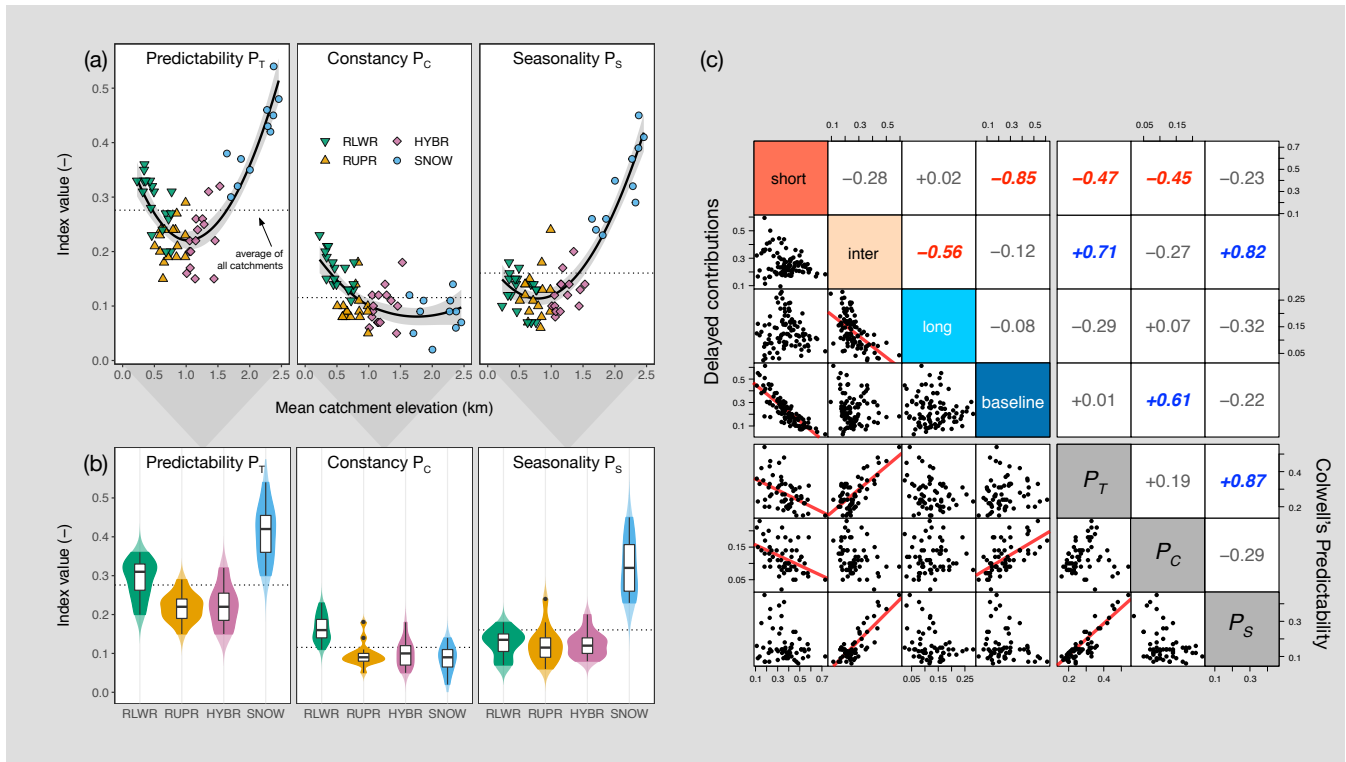


Figure 8: Overview of Colwell's Predictability (P_T) = Constancy (P_C) + Seasonality (P_S) for (a) all catchments and (b) the four catchment groups (higher saturation of violin plots delimits the data range). (c) Relationship (i.e. Pearson's correlation coefficient) between relative streamflow contributions in the four delay classes and the components of Colwell's Predictability ($P_T = P_C + P_S$). Coloured coefficients are statistically significant (p -value < 0.001).

5. Discussion

5.1 Technical aspects of delayed flow separation

430 Any discussion of the applicability of the UK-IH baseflow separation method has to account for the fact that the methodology was developed for humid- and rainfall-dominated catchments (Gustard et al., 1992) and the conventional block size $N = 5$ is not necessarily valid for catchments with a different climate and hydrological regime, such as lake- or snow-dominated catchments (WMO, 2009). It provides a first-order estimate of catchment responsiveness, separating the streamflow into a fast and a slow component, and has proved useful in many studies around the world.

435 ~~For some studies' objectives, however, the BFI and the two-component baseflow separation into binary quick- and baseflow has too strong limitations due to e.g. arbitrary separation parameters or the mixture of different delayed sources into one baseflow component.~~ In this study, we introduce ~~athe~~ new ~~index, the~~ Delayed Flow Index (DFI), which allows to assess a range of different delayed sources ~~to be assessed-an may hence provide~~ providing an alternative to the BFI for more complex systems. From a practical perspective the proposed method is data parsimonious and has a high potential for hydrological
440 application worldwide (due to readily available streamflow data) and can be also adapted for other regimes e.g. for intermitted streams with zero flows in semiarid regions as suggested by Aksoy et al. (2008) or other variables (e.g. precipitation, groundwater). Comparing DFI and BFI we found a relatively consistent ranking between BFI and DFI₆₀ values with a Spearman's rank coefficient $p = 0.83$. However, the DFI₆₀ values varied between 20 and 80% of the corresponding BFI values among the catchments included in our study. Accordingly, we argue that DFI₆₀ may provide a ~~better measure~~ more precise
445 quantification of the ~~catchment in terms of its~~ catchment's ability to ~~sustain low~~ maintain flows ~~for sustained~~ during dry periods. This is important ~~knowledge~~ for assessing the resilience of aquatic ecosystems, improve water resources management (e.g. for quantification of ~~residual water amount in streams~~ environmental flow) or test low flow sensitivity to climate change (e.g. change of DFI₆₀ over time).

The decision to use the smoothed minima method instead of the also well-established recursive filter procedures (Eckhardt,
450 2008; Nathan and McMahon, 1990; Smakhtin, 2001) had the advantage that the choice of block size N (in days) can be directly related to catchment response and thus, usable for interpretation of main sources of streamflow and as such generally more accessible compared to parameterization of recursive filters (e.g. recession parameters) and their forward- and backward-filtering procedures. However, a preliminary analysis showed that using a common recursive filter procedure (Nathan and McMahon, 1990) lead to the same ranking of BFI (DFI₅) values as the original IH-UK method (results not shown). Similarly,
455 it would be possible to systematically vary parameters in recursive filter procedures to derive different DFI values for different recession parameters.

The wide variety in the shape of CDCs can be seen as reflecting the wide range of catchments spanning from ~~erratic~~ irregular (more flashy) to persistent (more stable) streamflow regimes (Botter, 2014). Accordingly, we identified catchments with large fractions of shorter and ~~more~~ intermediate delayed contributions ~~as compared to more long~~, and baseline catchments with large
460 fractions of longer delayed contributions to streamflow. The fraction of ~~the~~ flow contributions within each delay class is,

however, depending on the number of delay classes, i.e. the number of breakpoints and N_{max} . ~~In particular RLWR catchments showed a relatively wide range of breakpoint estimates.~~ Both fewer or more breakpoints are feasible to imbed as long as the breakpoints represent the stepwise decrease of the slope and the shape of the CDC (Miller et al., 2015). Also, an adjusted value of N_{max} might be needed for other climates or streamflow regimes.

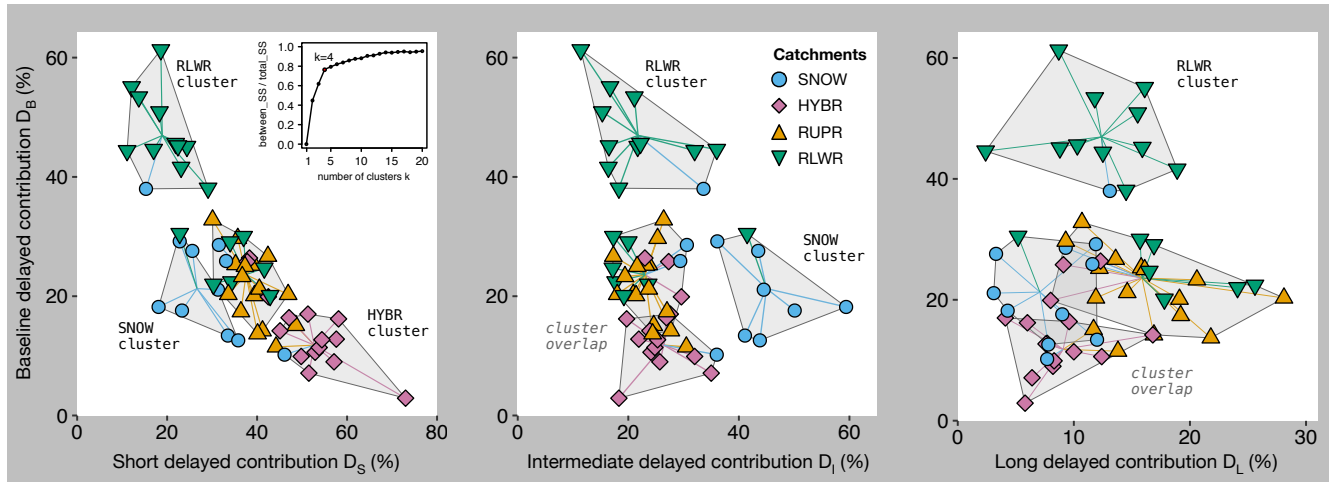
465 ~~The decreasing CDC slope and the piecewise linearity of CDCs is a meaningful tool for hydrological analysis as breakpoints might identify a specific point in time during receding streamflow when a faster source stops to contribute and slower contributions then maintain flow and control streamflow dynamics. Nevertheless, a definite attribution of delayed streamflow contributions to specific sources within a catchment is technically only feasible if a catchment's fingerprint of contributing sources is known and underlying processes are understood. Hence, the DFI is separating different components of the~~
470 ~~streamflow hydrograph based on their delay patterns and not based on their source identification. A clear classification of delayed streamflow contribution seems to be more challenging if streamflow is less consistently controlled either by rain or snow. Our findings of a shift in the catchment response from rainfall to snow dominated (at around 1800 m a.s.l., ref. Fig. 6), for example, support the results of a soil moisture analysis in Switzerland suggesting that around 2000 m a.s.l., the regime controls change from precipitation/evaporation to more frost affected.~~ In this respect, another potential future application of
475 DFI may be the separation of snowmelt and glaciermelt contributions to streamflow with an additional breakpoint. Some of our study catchments are partly glacierized (<7%) and glacier melt in headwaters during warm and dry summers will eventually make a significant streamflow contribution. However, due to the small proportion of glacierized catchments in our data set, ~~we~~ the detected delay classes did not separate clearly between snow- and glaciermelt in catchments represented both by the intermediate delayed component. One useful future approach might be to investigate CDCs of years with more/less snowmelt
480 and more/less glaciermelt (i.e., in total four combinations) to identify the specific delays of those contributions or alternatively, to perform a seasonal analyse of DFI values, e.g. during specific “melt months” (i.e. May versus August in Switzerland). Then the variation in the CDC slope and the piecewise linearity of CDCs can be compared across catchments and seasons building a meaningful tool for hydrological analysis as breakpoints identify specific points in time during receding streamflow when a faster source stops to contribute. Nevertheless, a definite attribution of delayed streamflow contributions to specific sources within a catchment is technically only feasible if a catchment's fingerprint (e.g. chemical or isotopic) of contributing sources is known and underlying processes are understood. Hence, the DFI is separating different components of the streamflow hydrograph based on their delay patterns and not based on their source identification. ~~However, the scope of this paper was not to identify the specific sources in each catchment, but rather to present a framework for attributing patterns of delayed contributions to (potential) dominant sources including rainfall, snowmelt and groundwater. From a practical perspective the proposed method is data parsimonious and has a high potential for hydrological application worldwide (due to readily available streamflow data) and can be also adapted for other regimes e.g. for intermitted streams with zero flows in semi-arid regions as suggested by Aksoy et al. or other variables (e.g. precipitation, groundwater).~~

490 We analysed if the elevation-based classification is a valuable proxy to link patterns of delayed contribution to potential sources. We evaluate the catchment grouping with a cluster analysis to examine the relationship between different delayed

495 contributions and catchments' assignment to one catchment group based on elevation. K-Means clustering is performed based
on the relative proportion of contributions across the four delay classes. Each cluster should then ideally represent a
homogenous group of catchments, i.e. RLWR, RUP, HYBR, and SNOW catchments. The applied cluster analysis (Fig. 9)
leads to three conclusions: Firstly, clustering based on four clusters explained 76.8% of the total variance in the data set and
more additional clusters ($k > 4$) will only slightly increase the explained variance (see inset in Fig. 9). Secondly, three of four
500 clusters (assigned to RLWR, HYBR, and SNOW) are mainly homogenous and distinguishable comparing short and baseline
and intermediate and baseline delayed contributions. The fourth cluster is rather heterogeneous but encloses most of the RUPR
catchments. Consequently, maximum catchment elevation compared to mean catchment elevation seems to be a rather weak
classification criteria as the patterns of delayed contributions in the groups RLWR and RUPR are less distinguishable. A clear
classification of delayed streamflow contributions seems to be more challenging if streamflow is not consistently controlled
505 by either rain or snow. Thirdly, for long-delayed contributions (right panel in Fig. 9) the clusters except for the RLWR cluster
mostly overlap indicating that specific catchment characteristics (e.g. hydrogeology) or different climate can superimpose the
general partitioning of delayed contributions along the proposed elevation gradient. The scattered clustering for long delayed
contributions suggests that contributions in this class can also assigned to intermediate or baseline delayed contributions which
will reduce one breakpoint (i.e. BP_2) during DFI separation (Fig. 1 and 3). If so, one should note that also BP_1 will most likely
510 shift to longer delays, because BP_1 and BP_2 estimates are not independent during the minimization of residuals of the piecewise
linear segmentation through the breakpoints.

From a more hydrological perspective, some catchments in the southern Alps have a second regime peak in fall (see Pardé
coefficients in g. 4) and are deviating from the nival alpine regimes in the northern Alps. Here, an additional catchment group
with nivo-pluvial méridional regimes (Weingartner and Aschwanden, 1992) might be feasible demonstrating in general that
515 future DFI applications in other regions or climates needs potentially an adjusted catchment grouping. We are also aware of
some catchments with human influences (like dams and hydropeaking for the Maggia river in the Southern Alps) and
recommend to handle such catchments with care. Regardless, for our study neither different climates in the same catchment
group (i.e. Northern and Southern Alps) nor human influences lead to extreme behaviour with respect to the breakpoint
estimates or the delayed contributions within one of the four catchment groups. Human influences will most likely effect

520 [specific delayed contributions, e.g. hydropeaking will alter short delayed contributions whereas damped flow or elevated low flows will alter baseline delayed contributions, e.g. due to zero flow periods or flow stabilization.](#)



525 **Figure 9: Relationship between short (left panel), intermediate (middle panel) and long delayed (right panel) contributions and baseline delayed contributions (each time on the y-axis). Each point represents one catchment and is colored by its catchment group (RLWR, RUPR, HYBR, SNOW). Each grey polygon is the envelope of one cluster and the lines within the polygon are pointing to the cluster center. The inset in the left panel shows the ratio of between-cluster sum of squares (between SS) and total sum of squares (total SS), i.e. the ratio of explained variance.**

~~had the advantage that the choice of block size N (in days) can be directly related to catchment response and thus, usable for~~
530 ~~interpretation of main sources of streamflow and as such generally more accessible compared to parameterization of recursive filters (e.g. recession parameters) and their forward and backward filtering procedures. However, a preliminary analysis showed that using a common recursive filter procedure lead to the same ranking of BFI (DFI_s) values as the original IH UK-method (results not shown). Similarly, it would be possible to systematically vary parameters in recursive filter procedures to derive different BFI values for different recession parameters, which may represent a faster and slower recession behavior of~~
535 ~~catchments (i.e. short and long term recession behavior).~~

5.2 Paradigm shift from quick- and baseflow to delayed flow

Splitting contributions into two main categories, i.e. fast and slow, has ~~proved~~[been proven](#) to be useful as a simple measure of catchment responsiveness. Several studies using hydrograph separation with empirical parameter values, e.g. fixed block size
540 N or fixed recursive filter parameter like suggested by Nathan and McMahon (1990), ignore that different environments have a different type and number of storages and hence, various delayed contributions to streamflow, which also may be highly depending on season. Even if, for example, a snowmelt pulse is considered as a baseflow contribution to streamflow, the higher BFI value should not be attributed to (large) groundwater storages, but instead to the snowpack and snowmelt processes and

their seasonality. Furthermore, especially in large sample hydrology single specific catchment features like the proportion of lakes, wetlands or reservoirs are not considered appropriately in two-component hydrograph separation, as often climate variability is used to explain streamflow variability. With DFI analysis two catchments with the same climate will have different CDCs if e.g. one has streamflow contributions from a lake or reservoir and the other has not. In this respect, delayed flow contributions can be seen as “response patterns” ~~and accompanied~~ which go along with recent efforts to focus more on effect tracking instead of particle tracking to understand streamflow components and streamflow generation processes (Weiler et al., 2017). Breakpoint estimates are particularly helpful to support this effort as their positions on the CDCs can be interpreted as the maximum delay of a faster source ($N = BP$). Beyond the breakpoint, the streamflow contribution of the faster source diminishes continuously and streamflow variability is more and more controlled by the slower source ($N > BP$). According to the breakpoint analysis, quickflow can be considered as the short delayed component (D_s) that ceases to contribute after 2, 3 and 4 days in 55%, 70% and 95% of all our study catchments, respectively. Comparing D_s contributions (DFI) with quickflow contributions (BFI; $N = 5$) we found on average 11.5, 7.0 and 2.9 % less short delayed contributions to streamflow for catchments with their first breakpoint BP_1 at 2, 3 or 4 days, respectively. Differences between ~~BFI~~-quickflow (in BFI analysis) and D_s contributions are higher for HYBR and RLWR catchments and less pronounced for SNOW and RLWR catchments. ~~It is important to note that the position of a breakpoint depends on the total number of breakpoints on the CDC and on the value of N_{max} .~~

Based on the breakpoint and DFI analysis, we ~~follow~~ encourage the recommendation of Hellwig and Stahl (2018) to integrate catchment-specific response times in low flow analysis and hydrological modelling. The authors show that it is impossible to distinguish the contributions from groundwater and snowmelt in snowmelt-dominated catchments with a two-component ~~baseflow separation. We found from CDCs that the slowest dynamic contributions have response times with mean values between 28 and 45 days in the long delay class (D_L).~~ hydrograph baseflow separation. The governing time scales of streamflow dynamics are also subject of other studies. Brutsaert (2008) reviewed storage coefficients in comparison with recession analysis and identified characteristic drainage processes on timescales of 45 ± 15 days, ~~but his study catchments had a larger average catchment area compared to this study.~~ Staudinger and Seibert (2014) estimated streamflow persistence in various pre-alpine and alpine catchments ($3-350 \text{ km}^2$) and found even in quickly responding catchments with assumingly small storages, the slowest delayed signal to be around 50 days. ~~Compared to these results, our estimates of D_L .~~ We found from CDC analysis that ~~the slowest dynamic contributions are rather small, showing on average delayed streamflow contributions over around 42 days. Andermann et al. found the time lag between precipitation and discharge with hysteresis loops in high alpine catchments in central Himalaya to have a characteristic response time of times with mean values between 28 and 45 days. in the long delay class (D_L).~~ In a pan-European modelling study, Longobardi and Van Loon (2018) separated response patterns of catchments into poorly -drained ($BFI < 0.5$) and well -drained ($BFI > 0.5$) catchments and assigned estimated delay times of the slowest storage in the model to be 48 ± 14 days and 126 ± 47 , respectively. This ~~gives~~ provides some evidence that for mostly groundwater-dominated catchments, N_{max} may be set to a larger value (here 60 days) to better capture small variations in ~~year-~~ to-year interannual low flow magnitude. However, also smaller delays around 60 days for groundwater-dominated systems

were found (Huang et al., 2012). A 60-day 'seasonal' period has also been reported as an appropriate window size to characterize the variability of streamflow regimes in respect to environmental flow and ecohydrology (Lytle and Poff, 2004; Poff, 1996). Schmieder et al. (2019) reported for a glacierized high-elevation catchment that “streamflow is dominated by the release of water younger than 56 days”. Accordingly, our results suggest that the DFI method (with N_{max} set to 60 days) is able a suitable block size to capture virtually all the time-scales of variability in the most relevant dynamic drainage processes annual minimum flows (Fig. 2 and response patterns between 1 and 60 days). Our findings are also consistent with studies based on isotopic tracers revealing that a high proportion of streamflow is less than three months old (Jasechko et al., 2016). However, we recommend further evaluating evaluation of the methodology DFI approach, in particular the breakpoint-delayed flow -separation based on breakpoints in catchments where contributing sources to streamflow are well understood and timescales of contribution are already estimated by isotopic or solute measurements with, for example, end-member mixing analysis (Miller et al., 2016).

5.3 Attribution of delayed flows to catchments' dynamic storages

In lowland catchments, Recharge is crucial to maintain a constant year-to-year replenish the dynamic storage that supplies groundwater contribution to streamflow, in alpine catchments the seasonal snowpack controls a large part of streamflow contributions and maintains streamflow during the summer period (e.g. due to meltwater or saturated soils that allow for Estimating future groundwater recharge). It has been suggested that the latter contribution will gradually decrease in the future due to global warming, related shift of snowmelt season and elevation dependent warming. However, projections of future groundwater recharge in lowland catchments are complex is difficult due to the combined effects of anticipated changes in precipitation, evapotranspiration, land use and land cover as well as in human water demand. Knowledge about different delayed contributions could help to better understand recharge, drainage mechanisms, and dynamic storage in different catchments or regimes. We investigate the relationship between delayed flows and dynamic storage that can be estimated by streamflow analysis (Staudinger et al., 2017). Higher short delayed contributions indicate lower dynamic storage capacities (i.e. flashier hydrograph) and higher baseline delayed contributions indicate higher potential of a catchment to temporally store water (i.e. smoother hydrograph). The analysis of delayed contributions (Fig. 7) reveals that for our study catchments region, certain elevational thresholds can be established mean catchment elevations influence the contributions with different delays for streamflow generation. For example, D_s contributions show are highest relevance at around 1300 m a.s.l., but then decrease for higher elevations. Above this elevation water stored in snow has increasing influence on streamflow contributions (higher D_I contributions), but also D_B contributions (e.g. groundwater) increase and play an important role in maintaining streamflow. Furthermore, our findings of a shift in the catchment response from rainfall- to snow-dominated (at around 1800 m a.s.l. in Fig. 7) support the results of a soil moisture analysis in Switzerland which identified a change from precipitation/evaporation to more frost-affected regime controls at around 2000 m a.s.l. (Pellet and Hauck, 2017) high elevation catchments. Regarding the smaller subsurface catchment storages for HYBR and partly RUPR catchments (i.e. lower D_B contributions), the results suggest that low predictability of streamflow (i.e. Colwell's Predictability P_T) is caused by a high amount (up to 60%) of D_s -

~~contributions. For the HYBR catchments, the results suggest that a smaller storage capacity causes more short delayed contributions (i.e. flashier hydrographs) indicating that these catchments are likely to be more exposed to future streamflow droughts. The streamflow variability in these catchments is highly sensitive to rainfall, evapotranspiration and fast runoff processes throughout most of the year (Fig. 8). But, if geology rather than climate was a first-order control of groundwater storage, high alpine geology would exhibit functional units that provide slowly draining groundwater stores in extended dry seasons as the observed low predictability of streamflow (i.e. Colwell's Predictability P_7) is caused by a high amount (up to 60%) of short delayed contributions (Fig. 8).~~

Parry et al. (2016b) have shown that elevation outperforms BFI as a measure to characterize the spatial variability of catchments' responsiveness in the UK. Hence, BFI might not be sufficient to capture the dominant delayed contributions to streamflow across different streamflow regimes. Whereas for some regions, such as the UK, a linear relationship between elevation and responsiveness will be sufficient, the U-shape of Colwell's Predictability (Fig. 8a) suggests that higher streamflow predictability in our study region can be caused by different delayed contributions (i.e. D_I and D_B contributions). This justifies using multiple delayed components during response analysis. ~~For example, we found that a 60-day block size captures virtually all the variability in the annual minimum flows of the catchments (Fig. 2 and 5).~~ Minimum annual flow is sustained by a rather constant delayed contribution with slower and deeper pathways with minimal variations from year to year. The baseline contribution (D_B) has a smooth seasonal variability and accounts for up to 60% of mean streamflow in our study catchments (mean 25%). ~~Focusing on~~ %) and is an estimate of the dynamic storage controlling the streamflow variability. Analysing the baseline contributions of our study catchments the corresponding storages drain between 70 and 350 mm a⁻¹ (using the range between the 5th and 95th percentile of all 60-day minimum flows, the contributing storages contribute to the flow with annual averages between 70 and 350 mm baseline contributions). This ~~amount~~ storage drainage is equivalent to 6–24% of annual rainfall and 11–53% of annual streamflow. Interestingly, this ~~ratio~~ proportion is not much smaller in alpine catchments (catchment group SNOW), where D_B accounts for 12–24% of annual precipitation, and 15–39% of annual discharge. ~~Smaller absolute D_B contributions with increasing elevation could be expected due to less developed soils, steeper slopes.~~ Hood and Hayashi (2015) estimated peak groundwater storage amount (60–100 mm a⁻¹) in a small headwater located above 2000 m to be roughly 5–8% of mean annual precipitation and 9–20% of pre-melt snow water equivalent. Floriancic et al. (2018) more direct topography driven runoff generation. Interestingly, estimated 50 – 200 mm storage depletion for the whole year an alpine headwater catchment in the Alps during a four-month monitoring period in winter. We found ~~higher or equal relative D_B contributions for that~~ SNOW catchments (22%) have higher baseline delayed contributions compared to RUPR (21%) and HYBR (14%) catchments, ~~and the highest.~~ The average absolute D_B contributions for SNOW catchments of 250 mm/a ~~compared to~~ are around 150 mm/a ~~for~~ 100 mm/a larger than the average absolute D_B contribution in each of the other three catchment groups (Fig 5b, Fig. 6). ~~However, during summer season RLWR and RUPR catchments have larger D_B contributions compared to HYBR and SNOW catchments due to the dominance of D_I contributions (i.e. snowmelt) in SNOW~~

and D_s contributions in HYBR catchments or longer periods in summer without rain in lower-elevation catchments (i.e. less D_s and D_r contributions in RLWR and RUPR).

645 Nevertheless, D_B contributions in SNOW catchments during winter are considerably high and these findings contradict the assumption of small or negligible subsurface water stores in high-elevation catchments. Along with other recent studies ~~;~~ Consequently, we found compelling evidence (cf. higher level of CDCs for SNOW catchments during winter season in Fig. 5b) recommend to reconsider the hydrological role of dynamic storages beyond snow storage in alpine environments (Staudinger et al., 2017). According to our CDC analysis ~~winterly~~ the recession behavior during winter in high-elevation catchments ~~(is in many SNOW) are~~ catchments likely the results of slowly draining ~~subsurface water stores and/or large~~ dynamic storage. This is underpinned by the “frozen state” ~~that~~ of the SNOW catchments ~~have~~ during winter; precipitation is stored in the snowpack, snowmelt is not occurring and recharge ~~impulses~~ pulses are ~~comparably low~~ infrequent. Thus, subsurface storages (e.g. groundwater) are responsible for sustaining flow during winter (Schmieder et al., 2019) and debris cover and weathered rock might be important groundwater storages (Floriantic et al., 2018).

655 Our analysis suggests amongst other studies that beside transient snowpack storage also diverse groundwater storage units in alpine catchments (e.g. glacier forefields, taluses, gravel banks, and other colluvial features) are important subsurface storages sustaining streamflow and downstream water availability (Clow et al., 2003; Hood and Hayashi, 2015; Miller et al., 2014; Roy and Hayashi, 2009; Staudinger and Seibert, 2014). Weekes et al. (2014) argued that depositional, often paraglacial landforms with colluvial channel, talus and rock glacier features are good indicators of higher recession constants and thus high water storages indicating slower draining and more sustained baseflow. Amongst others, our analysis suggests that beside transient snowpack storage also diverse groundwater storage units in alpine catchments (e.g. glacier forefields, taluses, gravel banks, and other colluvial features) are likely important subsurface storages sustaining streamflow and downstream water availability. Water drainage from these units is especially important during the snow accumulation period in winter and subsequently in years with reduced snowmelt in summer. Talus fields, for example, can contribute more than 40% to streamflow and sustained baseflow after the snowmelt period (Liu et al., 2004). Estimates of total storage volume and a comprehensive understanding of the recharge cycle of those storage units are missing so far, but Paznekas and Hayashi (2015) assumed, for multiple alpine catchments in the Canadian Rockies, that groundwater storage is completely filled up every year and described alpine groundwater as an important streamflow contribution. ~~Hood and Hayashi estimated peak groundwater storage amount (60–100 mm a⁻¹) in a small headwater located above 2000 m to be roughly 5–8% of mean annual precipitation and 9–20% of pre-melt snow water equivalent.~~ Also in semiarid mountainous regions, groundwater is supposed to be a major streamflow contribution, sustaining water availability downstream (Jódar et al., 2017). ~~In accordance with the above studies, we found that~~ Regarding dynamic storage in high-elevation catchments ~~have larger catchment storages than previously thought and thus,~~

the results of our data-driven analysis agrees agree well with methodological more advanced studies in the same (Staudinger et al., 2017) or similar regions (Hood and Hayashi, 2015).

675 **6. Application of DFI: Seasonal sensitivity of low streamflow based on delayed contributions**

In this section a potential application of the DFI is given for ten randomly selected catchments of each catchment group. The low flow stability (S_{LF}) index compares the average streamflow of the four driest months of a given month to the average flow of that month (Sect. 2.6). Higher S_{LF} values indicate higher flow stability during dry months. The selected SNOW and RLWR catchments have an average S_{LF} of 45-50%, whereas the selected HYBR and RUPR catchments show smaller S_{LF} between 20-35% (represented by the length of the colored bars in Fig. 9). S_{LF} can be combined with information on contributing sources for different months and streamflow regimes as highlighted by the stacked coloring of the bars (note that each color stack is sealed to the length of the total bar and thus not comparable in size across catchments and months). Dashed boxes in Figure 9 show the month with the lowest monthly streamflow for each of the four catchment groups. SNOW (winter low flows in January) and RLWR (summer low flows in August) catchments have around 75% to 80% D_L and D_B contributions during low flow season. Compared to that HYBR (winter low flows in January) and RUPR (summer low flows in August) catchments have only around 60% D_L and D_B contributions during low flows. Combining information about low flow stability and streamflow contributions with different delays offers new insights in the drivers of seasonal low flows across different catchment regimes. Extending the analysis on more months (March and October in Fig. 9), in March SNOW catchments have still in average 80% D_B contributions, whereas the other catchment groups have around 50-60%. Here the analysis points to the likely role of potentially slowly draining groundwater aquifers that must be recharged to sustain streamflow during late winter and early spring before the snowmelt pulse, i.e typically in April or May (Table 1). In August and October, the picture is changing, high-elevation catchments (SNOW) have then in average large D_L contributions (45% and 30%) compared to January and March (15% and 5%) whereas low-elevation catchments (RLWR) have large D_B contributions during dry months in summer (65% in August and 80% in October).

695 These contribution patterns are in accordance with Zappa and Kan who found that catchment elevation can explain more than 80% of the hydrological response during the Swiss 2003 heatwave. In 2003 the snowmelt buffered low flows in higher elevation catchments and lowest flows (i.e. ratio to long-term average streamflow) were found below 1000 m a.s.l. where subsurface water stores (e.g. groundwater) were no longer able to sustain streamflow. HYBR catchments are in general more sensitive to precipitation deficits during dry months in summer due to lower D_B contributions (20% in August, 30% in October) and higher D_S contributions (50% in August, 45% in October) (Fig. 9). Focusing on summer (low) flows the analyses suggests that decreasing snowpacks (SNOW), decreasing summer precipitation (HYBR) or changes in recharge mechanisms (RLWR) might lead to reduced streamflow and to eventually new or intensified streamflow droughts. Incidentally, changes in headwater snowpacks can also have severe consequences on groundwater recharge in lowland basins. As the snowmelt season in high-

elevation catchments is also relevant for the downstream freshwater availability, low flow stability and DFI analyses can give important insights in the water availability for large river basins (e.g. Rhine basin).

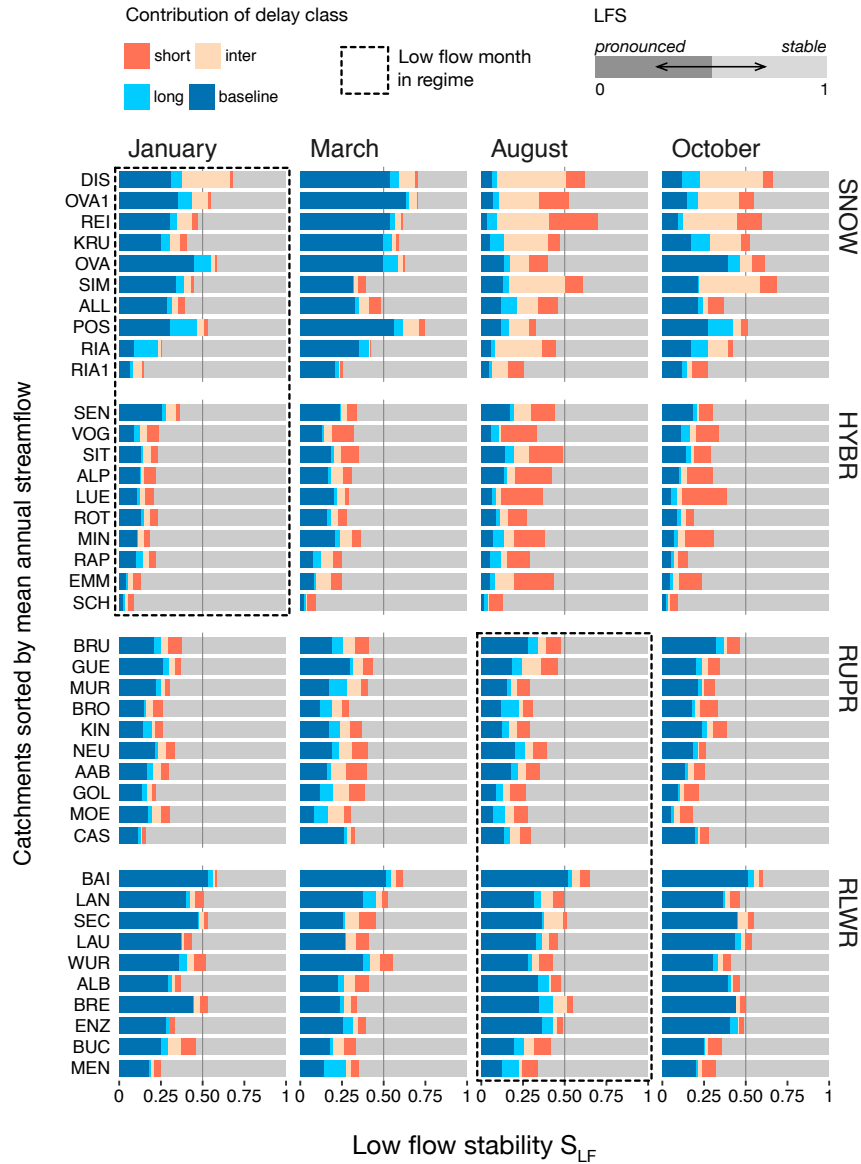


Figure : Low flow stability index (S_{LF}) for four different months shown for the four catchment groups, each composed of ten randomly selected catchments. The month with lowest monthly streamflow across the catchment groups is marked with dashed boxes. Stacked colouring of the bars represents the composition of different delayed contributions to streamflow (scaled to the total length, which is here equal to the value of S_{LF}).

7. Conclusions

We ~~advanced~~extended a commonly used binary quickflow-baseflow hydrograph separation method and introduced a novel concept of delayed flow index (DFI) based on short, intermediate, long and baseline delayed streamflow contributions.

715 Testing the DFI for a set of 60 mesoscale catchments revealed that catchments along a pronounced elevation~~elevation~~ gradient have characteristic delay curves ~~and~~with sets of unique breakpoints. The breakpoints in these curves identify different streamflow contributions with different controls on streamflow regime. Our analysis shows that for headwater catchments in Switzerland and south-west Germany covering a pronounced elevation gradient, short delayed contributions (i.e. quickflow) cease 2–4 days after hydrograph peaking and baseline delayed contributions (delays with > 60 days) control
720 the magnitude of streamflow sustainability. The continuous analysis for delays between 1 and 60 days is one of the major differences compared to two-component BFI analysis ~~with two delayed components~~ (delay smaller or larger than 5 days). The response-oriented perspective on streamflow contributions supports a more comprehensive analysis of different catchment storages revealing that groundwater and snowmelt are often mixed in one baseflow component in binary baseflow separation given that the whole year is considered. In addition, intermediate delayed contributions can have a strong
725 influence on the streamflow regime. Hence, the proposed DFI allows a more physically meaningful insight ~~to~~into governing processes than the binary, two-component separation procedures, and thus represent a step towards an attribution of delayed contribution to potential sources (storages).

The notably high baseline delayed contributions even in alpine catchments further support the need to reconsider the role of dynamic alpine groundwater storages, which may indeed be larger than previously thought (Staudinger et al., 2017).

730 Baseline delayed contributions in high elevation catchments can account for around 25% of annual precipitation and 40% of annual streamflow. Study catchments in between approx. ~~stores~~ 800–1800 m a.s.l. show the highest low flow sensitivity to climate variability due to high amount of short delayed contributions to streamflow which can be explained by smaller dynamic catchment storage. The distribution of different delays across catchments improves our understanding of catchment storage and release across streamflow regimes, drivers of low flow variability in different seasons, and allows quantifying
735 streamflow sustainability.

~~The notable high baseline delayed contributions even in alpine catchments further support the need to reconsider the role of alpine groundwater storages, which may indeed be larger than previously thought and hence, to reject the former concept of Teflon catchments in these environments. Baseline delayed contributions in high elevation catchments can account for around 25% of annual precipitation and 40% of annual streamflow. Study catchments in between approx. 800 and 1800 m
740 a.s.l. show the highest low flow sensitivity to climate variability due to smallest catchment storages and high amount of short delayed contributions to streamflow. The DFI analysis suggests that the severity of low streamflow in summer is controlled by snowmelt (in higher elevation catchments) and groundwater or other delayed sources (in lower elevation catchments) advocating that changes in corresponding recharge mechanism and subsurface storages could lead potentially to more severe low flows in the future.~~

745 **Code availability**

The R Code to calculate the Delayed Flow Index is available in the R package *lfstat* (Koffler et al., 2016). Within the package, the function *baseflow* allows calculating delayed flow time series based on the parameter *block.len* (N). Breakpoints of CDCs can be calculated with R package *segmented* (Muggeo, 2008) (Muggeo et al., 2008).

Data availability

750 Data is not freely available, but streamflow data can be accessed through the agencies.

Appendix

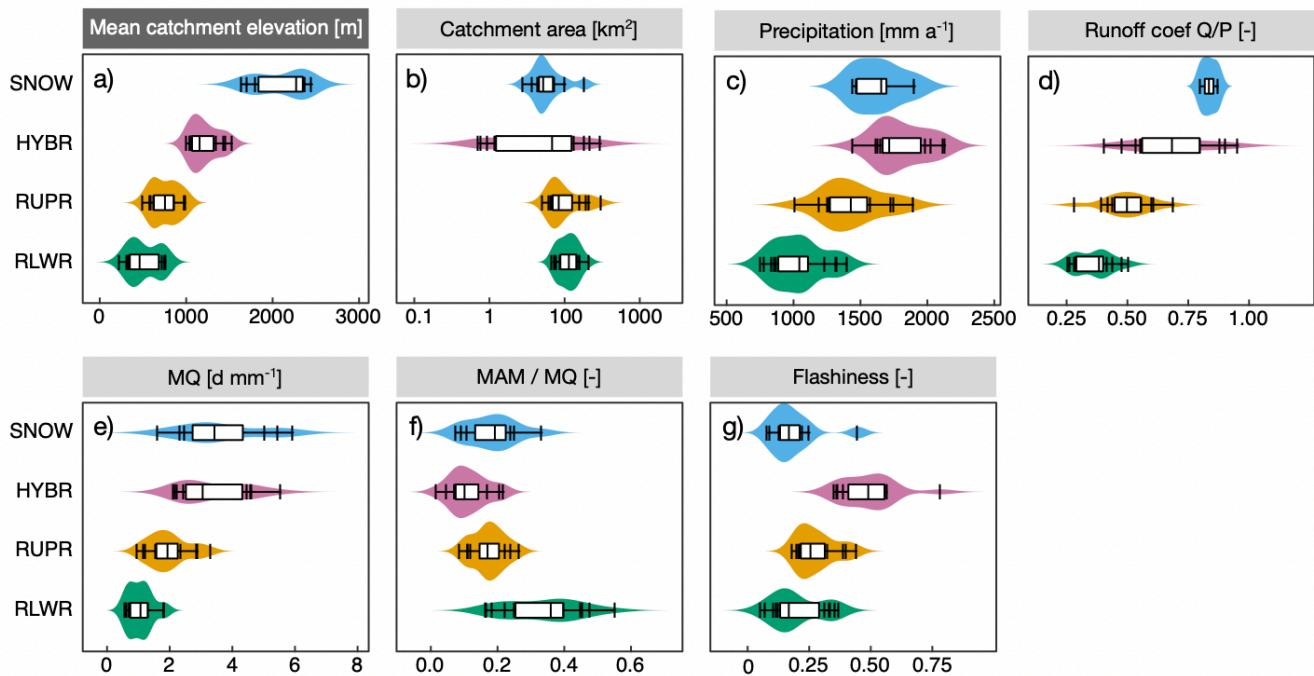


Figure A1: Distribution of catchment, climate and streamflow characteristics across the four catchment groups. Data points outside the boxplot range are marked with vertical lines. Catchment characteristics (a, b) are derived from (FOEN, 2013) „catchment precipitation (c) is estimated on basis of gridded daily precipitation P (MeteoSwiss RHiresD, 2km interpolated observations data set). For streamflow related metrics (d-g) the same streamflow data is used as described in section 3. Streamflow metrics show the distribution of average daily flow (e), ratio of mean annual minimum flow to average flow as metric for low flow stability (f) and the R-B Index (Baker et al., 2004), where higher values indicating higher hydrograph flashiness (g).

755

Author contribution

760 MS, TS, MW and LMT had the research idea and designed the study. MS performed the analyses and developed the delayed flow index framework together with TS and MW. All co-authors edited the manuscript.

Competing interests

The authors declare that they have no conflict of interest.

Acknowledgments

765 Streamflow and catchment metadata were provided by the Environment Agency of the German state of Baden-Württemberg (LUBW) and the Federal Office for the Environment (FOEN), section of hydrology in Switzerland (BAFU). The authors thank Maria Staudinger and Benedikt Heudorfer for their comments during manuscript drafting. The study is also a contribution to UNESCO IHP-VII and the Euro-FRIEND project.

References

- 770 ~~Acreman, M.: Environmental flows basics for novices, *WIREs Water*, 3(5), 622–628, doi:10.1002/wat2.1160, 2016.~~
- Aksoy, H., Kurt, I. and Eris, E.: *Journal of Hydrology, J. Hydrol.*, 372(1-4), 94–101, doi:10.1016/j.jhydrol.2009.03.037, 2009.
- Aksoy, H., Unal, N. E. and Pektas, A. O.: Smoothed minima baseflow separation tool for perennial and intermittent streams, *Hydrological Processes*, 22(22), 4467–4476, doi:10.1002/hyp.7077, 2008.
- 775 ~~Ameli, A. A., Gabrielli, C., Morgenstern, U. and McDonnell, J.: Groundwater subsidy from headwaters to their parent water watershed: A combined field modeling approach, *Water Resources Research*, doi:10.1029/2017WR022356, 2018.~~
- ~~Andermann, C., Longuevergne, L., Bonnet, S., Crave, A., Davy, P. and Gloaguen, R.: Impact of transient groundwater storage on the discharge of Himalayan rivers, *Nature Geoscience*, 5(1), 127–132, doi:10.1038/ngeo1356, 2012.~~
- 780 [Baker, D. B., Richards, R. P., Loftus, T. T. and Kramer, J. W.: A New Flashiness Index: Characteristics And Applications To Midwestern Rivers And Streams, *Journal of the American Water Resources Association*, 40\(2\), 503–522, doi:10.1111/j.1752-1688.2004.tb01046.x, 2004.](#)
- Bond, N.: Hydrological Indices for Daily Time Series Data, [online] Available from: <https://CRAN.R-project.org/package=hydrostats>, 2016.
- 785 Botter, G.: Flow regime shifts in the Little Piney creek (US), *Adv. Water. Resour.*, 71, 44–54, doi:10.1016/j.advwatres.2014.05.010, 2014.

[Brunner, M. I. and Tallaksen, L. M.: Proneness of European catchments to multi-year streamflow droughts, *Water Resources Research*, 2019WR025903–35, doi:10.1029/2019WR025903, 2019.](#)

Brutsaert, W.: Long-term groundwater storage trends estimated from streamflow records: Climatic perspective, *Water Resources Research*, 44(2), W02409, doi:10.1029/2007WR006518, 2008.

- 790 Clow, D. W., Schrott, L., Webb, R., Campbell, D. H., Torizzo, A. and Dornblaser, M.: Ground Water Occurrence and Contributions to Streamflow in an Alpine Catchment, Colorado Front Range, *Ground Water*, 41(7), 937–950, doi:10.1111/j.1745-6584.2003.tb02436.x, 2003.

Colwell, R. K.: Predictability, constancy, and contingency of periodic phenomena, *Ecology*, 55(5), 1148–1153, 1974.

- 795 Constantz, J.: Interaction between stream temperature, streamflow, and groundwater exchanges in alpine streams, *Water Resources Research*, 1998.

[Demuth, S.: Untersuchungen zum Niedrigwasser in West-Europa \[Low flow studies in West Europe\], *Freiburger Schriften zur Hydrologie, Institute of Hydrology*, 1, 1993.](#)

[Demuth, S. and Kulls, C.: Probability analysis and regional aspects of droughts in southern Germany, *IAHS-AISH publication*, 240, 97–104, 1997.](#)

- 800 Dingman, S. L.: *Physical hydrology*, 3rd ed., Waveland Press. 2015.

Eckhardt, K.: A comparison of baseflow indices, which were calculated with seven different baseflow separation methods, *J. Hydrol.*, 352(1-2), 168–173, doi:10.1016/j.jhydrol.2008.01.005, 2008.

- 805 [Floriantic, M. G., Meerveld, I., Smoorenburg, M., Margreth, M., Naef, F., Kirchner, J. W. and Molnar, P.: Spatio-temporal variability in contributions to low flows in the high Alpine Poschiavino catchment, *Hydrological Processes*, 32\(26\), 3938–3953, doi:10.1002/hyp.13302, 2018.](#)

[FOEN: Federal Office for the Environment, section of hydrology, \[online\] Available from: <http://www.hydrodaten.admin.ch/en/>, 2013.](#)

- 810 Freyberg, von, J., Studer, B., Rinderer, M. and Kirchner, J. W.: Studying catchment storm response using event and pre-event water volumes as fractions of precipitation rather than discharge, *Hydrol. Earth Syst. Sci. Discuss.*, 1–34, doi:10.5194/hess-2018-401, 2018.

Gan, K. C., McMahon, T. A. and Finlayson, B. L.: Analysis of periodicity in streamflow and rainfall data by Colwell's indices, *J. Hydrol.*, 123(1), 105–118, 1991.

~~Griffiths, G. A. and Clausen, B.: Streamflow recession in basins with multiple water storages, *J. Hydrol.*, 190(1), 60–74, 1997.~~

- 815 Gustard, A., Bullock, A. and Dixon, J. M.: Low flow estimation in the United Kingdom, *Institute of Hydrology (UK)*, 108, 88, 1992.

~~Halford, K. J. and Mayer, G. C.: Problems Associated with Estimating Ground Water Discharge and Recharge from Stream-Discharge Records, *Ground Water*, 38(3), 331–342, doi:10.1111/j.1745-6584.2000.tb00218.x, 2000.~~

Hall, F. R.: Base-flow recessions—a review, *Water Resources Research*, 4(5), 973–983, 1968.

- 820 Hellwig, J. and Stahl, K.: An assessment of trends and potential future changes in groundwater-baseflow drought based on catchment response times, *Hydrol. Earth Syst. Sci.*, 22(12), 6209–6224, doi:10.5194/hess-22-6209-2018, 2018.
- Hisdal, H., Tallaksen, L., Clausen, B., Peters, E. and Gustard, A.: Hydrological Drought Characteristics, in *Hydrological Drought Processes and Estimation Methods for Streamflow and Groundwater*, vol. 48, edited by L. M. Tallaksen and H. A. J. van Lanen, pp. 139–198, Elsevier B.V., the Netherlands. 2004.
- 825 Hood, J. L. and Hayashi, M.: *Journal of Hydrology*, *J. Hydrol.*, 521(C), 482–497, doi:10.1016/j.jhydrol.2014.12.041, 2015.
- Huang, J., Halpenny, J., van der Wal, W., Klatt, C., James, T. S. and Rivera, A.: Detectability of groundwater storage change within the Great Lakes Water Basin using GRACE, *J. Geophys. Res.*, 117(B8), B08401, doi:10.1029/2011JB008876, 2012.
- Jasechko, S., Kirchner, J. W., Welker, J. M. and McDonnell, J. J.: Substantial proportion of global streamflow less than three months old, *Nature Geoscience*, 9(2), 126–129, doi:10.1038/ngeo2636, 2016.
- 830 Jenicek, M., Seibert, J., Zappa, M., Staudinger, M. and Jonas, T.: Importance of maximum snow accumulation for summer low flows in humid catchments, *Hydrol. Earth Syst. Sci. Discuss.*, 12(7), 7023–7056, doi:10.5194/hessd-12-7023-2015, 2015.
- Jódar, J., Cabrera, J. A., Martos-Rosillo, S., Ruiz-Constán, A., González-Ramón, A., Lambán, L. J., Herrera, C. and Custodio, E.: Groundwater discharge in high-mountain watersheds: A valuable resource for downstream semi-arid zones. The case of the Bérchules River in Sierra Nevada (Southern Spain), *Science of The Total Environment*, 593-594(C), 760–772, doi:10.1016/j.scitotenv.2017.03.190, 2017.
- 835 Klaus, J. and McDonnell, J. J.: *Journal of Hydrology*, *J. Hydrol.*, 505(C), 47–64, doi:10.1016/j.jhydrol.2013.09.006, 2013.
- Klein, G., Vitasse, Y., Rixen, C., Marty, C. and Rebetez, M.: 2016-09-28_art%3A10.1007%2Fs10584-016-1806-y, *Climatic Change*, 1–13, doi:10.1007/s10584-016-1806-y, 2016.
- 840 Koffler, D., Gauster, T. and Laaha, G.: *lfstat: Calculation of Low Flow Statistics for Daily Stream Flow Data*, ~~R package,~~ <https://CRAN.R-project.org/package=lfstat> [online] Available from: <https://CRAN.R-project.org/package=lfstat> (Accessed 2016), 2016.
- Kronholm, S. C. and Capel, P. D.: A comparison of high-resolution specific conductance-based end-member mixing analysis and a graphical method for baseflow separation of four streams in hydrologically challenging agricultural watersheds, *Hydrological Processes*, 29(11), 2521–2533, doi:10.1002/hyp.10378, 2015.
- 845 [Laaha, G. and Blöschl, G.: Seasonality indices for regionalizing low flows, *Hydrological Processes*, 20\(18\), 3851–3878, doi:10.1002/hyp.6161, 2006.](https://doi.org/10.1002/hyp.6161)
- Linsley, R., Kohler, M. and Paulhus, J.: *Hydrology for Engineers*, McGraw-Hill, New York. 1958.
- Liu, F., Williams, M. W. and Caine, N.: Source waters and flow paths in an alpine catchment, Colorado Front Range, United States, *Water Resources Research*, doi:10.1029/2004WR003076, 2004.
- 850 Longobardi, A. and Van Loon, A. F.: Assessing baseflow index vulnerability to variation in dry spell length for a range of catchment and climate properties, *Hydrological Processes*, 32(16), 2496–2509, doi:10.1002/hyp.13147, 2018.
- Lyne, V. and ~~Hollwick~~Hollick, M.: *Stochastic time-variable rainfall-runoff modelling*. 1979.

- 855 Lytle, D. A. and Poff, N. L.: Adaptation to natural flow regimes, *Trends in Ecology & Evolution*, 19(2), 94–100, doi:10.1016/j.tree.2003.10.002, 2004.
- [Meyer, R., Schadler, B. and Weingartner, D. V. U. R.: Die Rolle des Basisabflusses bei der Modellierung von Niedrigwasserprozessen in Klimaimpaktstudien, *Hydrologie und Wasserbewirtschaftung*, 55\(5\), 244–257, 2011.](#)
- Miller, M. P., Buto, S. G., Susong, D. D. and Rumsey, C. A.: The importance of base flow in sustaining surface water flow in the Upper Colorado River Basin, *Water Resources Research*, 52(5), 3547–3562, doi:10.1002/2015WR017963, 2016.
- 860 Miller, M. P., Johnson, H. M., Susong, D. D. and Wolock, D. M.: A new approach for continuous estimation of baseflow using discrete water quality data: Method description and comparison with baseflow estimates from two existing ..., *J. Hydrol.*, doi:10.1016/j.jhydrol.2014.12.039, 2015.
- 865 Miller, M. P., Susong, D. D., Shope, C. L., Heilweil, V. M. and Stolp, B. J.: Continuous estimation of baseflow in snowmelt-dominated streams and rivers in the Upper Colorado River Basin: A chemical hydrograph separation approach, *Water Resources Research*, n/a–n/a, doi:10.1002/2013WR014939, 2014.
- Muggeo, V. M.: Segmented: an R package to fit regression models with broken-line relationships, *R news*, 8(1), 20–25, 2008.
- Nathan, R. and McMahon, T.: Evaluation of automated techniques for base flow and recession analyses, *Water Resources Research*, 26(7), 1465–1473, 1990.
- 870 Nathan, R. J. and McMahon, T. A.: Estimating low flow characteristics in ungauged catchments, *Water Resour Manage*, 6(2), 85–100, doi:10.1007/BF00872205, 1992.
- Natural Environment Research Council: *Low Flow Studies*, Institute of Hydrology, 1–50, 1980.
- Olden, J. D., Kennard, M. J. and Pusey, B. J.: A framework for hydrologic classification with a review of methodologies and applications in ecohydrology, *Ecohydrol.*, 5(4), 503–518, doi:10.1002/eco.251, 2011.
- 875 Parry, S., Wilby, R. L., Prudhomme, C. and Wood, P. J.: A systematic assessment of drought termination in the United Kingdom, *Hydrol. Earth Syst. Sci.*, 20(10), 4265–4281, doi:10.5194/hess-20-4265-2016, ~~2016~~2016a.
- [Parry, S., Wilby, R. L., Prudhomme, C. and Wood, P. J.: A systematic assessment of drought termination in the United Kingdom, *Hydrol. Earth Syst. Sci.*, 20\(10\), 4265–4281, doi:10.5194/hess-20-4265-2016, 2016b.](#)
- 880 Partington, D., Brunner, P., Simmons, C. T., Werner, A. D., Therrien, R., Maier, H. R. and Dandy, G. C.: Evaluation of outputs from automated baseflow separation methods against simulated baseflow from a physically based, surface water-groundwater flow model, *J. Hydrol.*, 458, 28–39, doi:10.1016/j.jhydrol.2012.06.029, 2012.
- Paznekas, A. and Hayashi, M.: Groundwater contribution to winter streamflow in the Canadian Rockies, *Canadian Water Resources Journal / Revue canadienne des ressources hydriques*, 41(4), 484–499, doi:10.1080/07011784.2015.1060870, 2015.
- 885 Pellet, C. and Hauck, C.: Monitoring soil moisture from middle to high elevation in Switzerland: set-up and first results from the SOMOMOUNT network, *Hydrol. Earth Syst. Sci.*, 21(6), 3199–3220, doi:10.5194/hess-21-3199-2017, 2017.
- ~~Pepin, N., Bradley, R. S., Diaz, H. F., Baraer, M., Caceres, E. B., Forsythe, N., Fowler, H., Greenwood, G., Hashmi, M. Z., Liu, X. D., Miller, J. R., Ning, L., Ohmura, A., Palazzi, E., Rangwala, I., Schöner, W., Severskiy, I., Shahgedanova, M.,~~

- 890 ~~Wang, M. B., Williamson, S. N. and Yang, D. Q.: Elevation-dependent warming in mountain regions of the world, Nature Publishing Group, 5(5), 424–430, doi:10.1038/nclimate2563, 2015.~~
- Piggott, A. R., Moin, S. and Southam, C.: A revised approach to the UKIH method for the calculation of baseflow, *Hydrol. Sci. J.*, 50(5), 911–920, 2005.
- Poff, N. L.: A hydrogeography of unregulated streams in the United States and an examination of scale-dependence in some hydrological descriptors, *Freshwater Biology*, 36(1), 71–91, 1996.
- 895 Roy, J. W. and Hayashi, M.: Multiple, distinct groundwater flow systems of a single moraine-talus feature in an alpine watershed, *J. Hydrol.*, 373(1-2), 139–150, doi:10.1016/j.jhydrol.2009.04.018, 2009.
- [Schmieder, J., Seeger, S., Weiler, M. and Strasser, U.: “Teflon Basin” or Not? A High-Elevation Catchment Transit Time Modeling Approach, *Hydrology*, 92\(6\), doi:10.3390/hydrology6040092, 2019.](#)
- 900 Schuetz, T., Gascuel-Oudou, C., Durand, P. and Weiler, M.: Nitrate sinks and sources as controls of spatio-temporal water quality dynamics in an agricultural headwater catchment, *Hydrol. Earth Syst. Sci.*, 20(2), 843–857, doi:10.5194/hess-20-843-2016, 2016.
- [Schwarze, R., Grünewald, U., Becker, A. and Fröhlich, W.: Computer-aided analyses of flow recessions and coupled basin water balance investigations, *FRIENDS in Hydrology*, 75–83, 1989.](#)
- Smakhtin, V.: Low flow hydrology: a review, *J. Hydrol.*, 240(3), 147–186, doi:10.1016/S0022-1694(00)00340-1, 2001.
- 905 Sophocleous, M.: Interactions between groundwater and surface water: the state of the science, *Hydrogeol. J.*, 10(1), 52–67, doi:10.1007/s10040-001-0170-8, 2002.
- Staudinger, M. and Seibert, J.: Predictability of low flow - An assessment with simulation experiments, *J. Hydrol.*, 519, 1383–1393, doi:10.1016/j.jhydrol.2014.08.061, 2014.
- 910 Staudinger, M., Stoelzle, M., Seeger, S., Seibert, J., Weiler, M. and Stahl, K.: Catchment water storage variation with elevation, *Hydrological Processes*, 47(4), 1–16, doi:10.1002/hyp.11158, 2017.
- Staudinger, M., Weiler, M. and Seibert, J.: Quantifying sensitivity to droughts - an experimental modeling approach, *Hydrol. Earth Syst. Sci.*, 19(3), 1371–1384, doi:10.5194/hess-19-1371-2015, 2015.
- [Stoelzle, M., Weiler, M., Stahl, K. and Morhard, A.: Is there a superior conceptual groundwater model structure for baseflow simulation? *Hydrological Processes*, 29, doi:10.1002/hyp.10251, 2015.](#)
- 915 Tallaksen, L.: An evaluation of the base flow index (BFI), *Rapportserie: HYDROLOGI*, 16, 1–27, 1987.
- ~~Tallaksen, L.: A review of baseflow recession analysis, *J. Hydrol.*, 165(1), 349–370, 1995.~~
- ~~Tallaksen, L. M. and van Lanen, H.: Hydrological Drought: Processes and Estimation Methods for Streamflow and Groundwater, edited by L. M. Tallaksen and H. van Lanen, Elsevier Publ. The Netherlands, Amsterdam, 2004.~~
- 920 Viviroli, D. and Weingartner, R.: The hydrological significance of mountains: from regional to global scale, *Hydrol. Earth Syst. Sci.*, 8(6), 1016–1029, 2004.

- Wahl, K. L. and Wahl, T. L.: Determining the flow of comal springs at New Braunfels, Texas, Proceedings of Texas Water, 95, 16–17, 1995.
- Weekes, A. A., Torgersen, C. E., Montgomery, D. R., Woodward, A. and Bolton, S. M.: Hydrologic response to valley-scale structure in alpine headwaters, Hydrological Processes, 29(3), 356–372, doi:10.1002/hyp.10141, 2014.
- 925 Weiler, M., Seibert, J. and Stahl, K.: Magic components - why quantifying rain, snow- and icemelt in river discharge isn't easy, Hydrological Processes, 1–10, doi:10.1002/hyp.11361, 2017.
- [Weingartner, R. and Aschwanden, H.: Abflussregimes als Grundlage zur Abschätzung von Mittelwerten des Abflusses, Hydrologischer Atlas der Schweiz, Tafel, 5, 1992.](#)
- 930 [Wittenberg, H.: Effects of season and man-made changes on baseflow and flow recession: case studies, Hydrological Processes, 17\(11\), 2113–2123, doi:10.1002/hyp.1324, 2003.](#)
- [Wittenberg, H. and Sivapalan, M.: Watershed groundwater balance estimation using streamflow recession analysis and baseflow separation, J. Hydrol., Williams, M. W., Hood, E., Molotch, N. P., Caine, N., Cowie, R. and Liu, F.: The “teflon basin” myth: hydrology and hydrochemistry of a seasonally snow-covered catchment, Plant Ecology & Diversity, 8\(5–6\), 639–661, doi:10.1080/17550874.2015.1123318, 2016.](#)
- 935 [219\(1\), 20–33, doi:10.1016/S0022-1694\(99\)00040-2, 1999.](#)
- WMO: Manual on Low-flow Estimation and Prediction – Operational Hydrology Report No. 50, edited by A. Gustard and S. Demuth, World Meteorological Organization, 1029, 136, 2009.
- [Zaidman, M. D., Rees, H. G. and Young, A. R.: Spatio-temporal development of streamflow droughts in north-west Europe, Hydrol. Earth Syst. Sci. Discuss., 6\(4\), 733–751, doi:10.5194/hess-6-733-2002, 2002.](#)
- 940 [Zappa, M. and Kan, C.: Extreme heat and runoff extremes in the Swiss Alps, Natural Hazards and Earth System Sciences, 7\(3\), 375–389, 2007.](#)