

**Anonymous Reviewer #1 comments and Authors reply to the manuscript of Margarita Choulga et al. “Upgraded mapping information for earth system modelling: an application to surface water depth at ECMWF”**

Thank you for the positive evaluation and useful comments. Below you will find our detailed responses to your comments.

*Topicality.* The present paper is devoted to the highly topical theme of the interaction between atmosphere and the underlying surface. Namely, the study concerns methodology of accounting for the influence of inland water bodies on the local weather and climatic conditions. This problem was raised relatively recently, but very quickly became one of the main in improving the numerical weather prediction. Thus, the problem discussed in the article is important and relevant.

*Abstract.* Should be rewritten. First 7 lines contain information about previous results. Moreover, the FLake scheme is described in detail in the Introduction. In my opinion, the abstract should contain a brief, but close to complete information on new results obtained in the current study. In addition, it seems that the use of acronyms in the abstract is not the best idea.

We propose to rewrite the Abstract in a following way:

“Water bodies influence local weather and climate, especially in lake-rich areas. The FLake (Fresh-water Lake model) parametrization is employed in the Integrated Forecast System (IFS) of the European Centre for Medium-range Weather Forecasts (ECMWF) model which is used operationally to produce global weather predictions. Lake depth and lake fraction are the main driving parameters in the FLake parametrization. The lake parameter fields for IFS should be global and realistic, because FLake runs over all the grid boxes, and then only lake-related results are used further. In this study new datasets and methods for generating lake fraction and lake depth fields for IFS are proposed. The data include the new version of the Global Lake Database (GLDBv3) which contains depth estimates for unstudied lakes based on a geological approach, the General Bathymetric Chart of the Oceans and the Global Surface Water Explorer dataset which contains information on the spatial and temporal variability of surface water. The first new method suggested is a two-step lake fraction calculation; the first step is at 1 km grid resolution and the second is at the resolution of other grids in the IFS system. The second new method involves the use of a novel algorithm for ocean and inland water separation. This new algorithm may be used by anyone in the environmental modelling community. To assess the impact of using these innovations, in-situ measurements of lake depth, lake water surface temperature and ice formation/disappearance dates for 27 lakes collected by the Finnish Environment Institute were used. A set of offline experiments, driven by atmospheric forcing from the ECMWF ERA5 Reanalysis were carried out using the IFS HTESSEL land surface model. In terms of lake depth, the new dataset shows a much lower mean absolute error, bias and error standard deviation compared to the reference set-up. In terms of lake water surface temperature, the mean absolute error is reduced by 13.4 %, the bias by 12.5 % and the error standard deviation by 20.3 %. Seasonal verification of the mixed layer depth temperature and ice formation/disappearance dates revealed a cold bias in the meteorological forcing from ERA5. Spring, summer and autumn verification scores confirm an overall reduction in the surface water temperature errors. For winter, no statistically significant change in the ice formation/disappearance date errors was detected.”.

*Introduction.*

Line 20. Authors wrote: “... thaw area are rich in nutrients, which affect the CO<sub>2</sub> budget (Walter et al., 2006;...”

I didn't find any mention of CO<sub>2</sub> in Walter et al, 2006. In the study cited, CO<sub>2</sub> is found only in the list of references, and the article itself is devoted to methane emission. Indeed, both gases are greenhouse gases

and are formed by the decomposition of organic matter. But the conditions of their formation differ radically. Carbon dioxide is formed in aerobic conditions and methane in the complete absence of dissolved oxygen in water. In addition, these greenhouse gases are formed as a result of the activity of completely different microorganisms. Maybe the authors meant that due to the abundance of organic matter in the lakes of Siberia lakes produce a large amount of greenhouse gases?

Moreover, the term “nutrients” in respect to lakes usually is applying to so-called “biogenic” elements, such as phosphorus and nitrogen.

Suitable corrections are needed.

Corrected as follows:

“Lakes can also influence global climate by affecting the carbon cycle through carbon dioxide (CO<sub>2</sub>) and methane (CH<sub>4</sub>) emissions (Tranvik et al., 2009, Stepanenko et al., 2016). Small shallow thermokarst lakes located at Boreal and Arctic latitudes in the permafrost thaw area are rich in organic matter from permafrost eroding into anaerobic lake bottoms (Walter et al., 2006; Stepanenko et al., 2012), which affect the CH<sub>4</sub> budget, being as large as CO<sub>2</sub> budget for these lakes (Walter et al., 2007).”.

#### *Data*

No comments, just a question concerning the fourth distinction between GLDBv3 and GLDBv1. What are the “analytical equations to define the lake mean depth from the lakes’ area and boreal zones climate type”? How they were derived, how to look at them or where they can be found?

Please, add few words.

Analytical equations to define the lake mean depth from the lakes’ area and boreal zones climate type were developed using the study of Kitaev in 1984. He considered geographical zones of tundra, northern taiga, middle taiga and mixed forest, and presented his results in generalized tables. To improve the accuracy and usability, the tables were transformed into analytical equations approximating statistical dependencies and are presented in Table 3 of Section 4.4 in Choulga et al., 2014.

In the text for the fourth point we suggest adding the citation on Choulga et al., 2014.

#### *Methods*

##### 3.2 Updates

Lines 5 – 10 and Fig. 4, second from the left plot.

The authors can hang me, but I couldn't find any lake in this plot - neither lake Moondarra nor lake area Machattie. Even at 400% image magnification.

I trust to the authors and their respected Australian experts, but something should be done to improve the Figure.

Yes, these lakes are practically not visible due to the scale. We have added red circles around these two lakes to specify their location.

Page 11. Lines 15, 17 and 21. Please, clarify: "on Fig. 7" or "in Fig. 7".

Definitely “in Fig. 7”, thank you for pointing on that.

#### *Verification and discussion*

Page 14. Lines 30 – 31. The third and the fourth seasons are marked identically – (iii)

Actually the freshwater lakes have five main seasons at least. The fifth is the period of winter lake cooling between the temperature of maximal density and start of ice formation. During this period cooling takes place under so-called inverse stable density stratification conditions. Corrections are needed.

Corrected.

#### 4.2 Model verification results

All the authors' explanations of the large values of errors in dates of ice-on and ice-off have the right to exist. Nevertheless, I'd like to put their attention to such parameter as ice albedo. The point is as follows. During melting the value of ice albedo radically decreases, that leads to the essential increase of the ice melting rate. If the ice albedo in numerical experiments was constant for the whole period of calculations that can lead to large mistakes in dates of ice melting at least. My advice to the authors: Add a few phrases about it.

In the IFS the following parameterization of the ice surface albedo  $\alpha_i$  with respect to solar radiation is adopted:

$$\alpha_i = \alpha_i^{max} - (\alpha_i^{max} - \alpha_i^{min}) \cdot e^{-C_\alpha (T_f - T_{ice}) / T_f},$$

where  $\alpha_i^{max} = 0.7$  and  $\alpha_i^{min} = 0.4$  are maximum and minimum values of the ice albedo, respectively,  $C_\alpha = 95.6$  is a fitting coefficient,  $T_f = 273.15$  K is the fresh-water freezing point, and  $T_{ice}$  is temperature at the ice upper surface.

The presence of snow over lake ice and its seasonal changes are parametrized in the equation above as a function of  $T_{ice}$ . During the melting season, the ice surface temperature is close to the fresh-water freezing point. The presence of wet snow, puddles, melt-water ponds is again parametrized implicitly and results in a decrease of the area-averaged surface albedo. The water surface albedo with respect to solar radiation,  $\alpha_w = 0.07$ , is assumed to be constant.

For more information "IFS Documentation CY43R3 - Part IV: Physical processes" Section 8.8.3, ECMWF, 4, 2017, can be used.

In the text we suggest adding this information to the model description (in Section 1):

"The ice albedo is dependent on the temperature at the ice upper surface and is lower in spring, during the melting period, see (IFS Documentation, 2017) for more details."

#### Discussion

No comments.

#### Conclusion

No comments.

#### Data availability

Please change the site of FLake model link to <http://www.lakemodel.net>

Corrected.

#### Summary

The manuscript can be published after minor revision.

**Second Anonymous Reviewer #1 comments and Authors reply to the manuscript of Margarita Choulga et al. “Upgraded mapping information for earth system modelling: an application to surface water depth at ECMWF”**

The reviewer is completely satisfied with the authors' response to the reviewer's comments. The manuscript can be published in its current form.

Thank you for your kind words. We are looking forward to proceed with publication.

**Anonymous Reviewer #2 comments and Authors reply to the manuscript of Margarita Choulga et al. “Upgraded mapping information for earth system modelling: an application to surface water depth at ECMWF”**

Thank you for the positive evaluation and useful comments. Below you will find our detailed responses to your comments.

- The abstract could be reviewed to make it easier for any kind of readers to understand what is this work about and what is addressed and expected. The abstract here started with many previous results which make it not easy to understand it.

We propose to rewrite the Abstract in a following way:

“Water bodies influence local weather and climate, especially in lake-rich areas. The FLake (Fresh-water Lake model) parametrization is employed in the Integrated Forecast System (IFS) of the European Centre for Medium-range Weather Forecasts (ECMWF) model which is used operationally to produce global weather predictions. Lake depth and lake fraction are the main driving parameters in the FLake parametrization. The lake parameter fields for IFS should be global and realistic, because FLake runs over all the grid boxes, and then only lake-related results are used further. In this study new datasets and methods for generating lake fraction and lake depth fields for IFS are proposed. The data include the new version of the Global Lake Database (GLDBv3) which contains depth estimates for unstudied lakes based on a geological approach, the General Bathymetric Chart of the Oceans and the Global Surface Water Explorer dataset which contains information on the spatial and temporal variability of surface water. The first new method suggested is a two-step lake fraction calculation; the first step is at 1 km grid resolution and the second is at the resolution of other grids in the IFS system. The second new method involves the use of a novel algorithm for ocean and inland water separation. This new algorithm may be used by anyone in the environmental modelling community. To assess the impact of using these innovations, in-situ measurements of lake depth, lake water surface temperature and ice formation/disappearance dates for 27 lakes collected by the Finnish Environment Institute were used. A set of offline experiments, driven by atmospheric forcing from the ECMWF ERA5 Reanalysis were carried out using the IFS HTESSEL land surface model. In terms of lake depth, the new dataset shows a much lower mean absolute error, bias and error standard deviation compared to the reference set-up. In terms of lake water surface temperature, the mean absolute error is reduced by 13.4 %, the bias by 12.5 % and the error standard deviation by 20.3 %. Seasonal verification of the mixed layer depth temperature and ice formation/disappearance dates revealed a cold bias in the meteorological forcing from ERA5. Spring, summer and autumn verification scores confirm an overall reduction in the surface water temperature errors. For winter, no statistically significant change in the ice formation/disappearance date errors was detected.”.

- The paper is well structured and all information references are well cited.

- A lot of data are engaged and comparisons with other models and validation are present. Obtaining accurate and timely lake surface water temperature analyses from remote sensing remains difficult. Data gaps, cloud contamination, variations in temperature atmospheric profiles and moisture, and a lack of in situ observations provide challenges for satellite-derived surface water temperature for climatological analysis or input into geophysical models. The authors used different sources of data including Reanalysis to test the operational and new lake depths. The seasonal and annual variations may need further assessment mainly if the authors got time-series data. The upscaling or downscaling of satellite resolution is always a challenge but it is well addressed in this work.

Currently we are gathering satellite-based data of surface water temperature for several hundred lakes all over the globe to have a more detailed analysis of seasonal and annual lake surface water

temperature variations and ice formation. We mention the importance of the remote sensing data for lakes in the Discussion section:

“... it would be useful to compare model results with measurements from the other countries and climate zones as IFS is a global forecasting system. For that, data from remote sensing could be beneficial, although they contain gaps and cloud contamination problems.”.

- I congratulate the authors for such rich and rigorous paper, which will definitely add to the knowledge of the scientific committee in this field.

# Upgraded global mapping information for earth system modelling: an application to surface water depth at ECMWF

Margarita Choulga<sup>1</sup>, Ekaterina Kourzeneva<sup>2</sup>, Gianpaolo Balsamo<sup>1</sup>, Souhail Boussetta<sup>1</sup>, Nils Wedi<sup>1</sup>

<sup>1</sup>Research Department, European Centre for Medium-range Weather Forecasts (ECMWF), Reading, RG2 9AX, UK

5 <sup>2</sup>Research Department, Finnish Meteorological Institute (FMI), Helsinki, FI-00560, Finland

*Correspondence to:* Margarita Choulga (margarita.choulga@ecmwf.int)

**Abstract.** Water bodies influence local weather and climate, especially in lake-rich areas. The FLake (Fresh-water Lake model) parametrization is employed in the Integrated Forecast System (IFS) of the European Centre for Medium-range Weather Forecasts (ECMWF) model which is used operationally to produce global weather predictions. Lake depth and lake fraction are the main driving parameters in the FLake parametrization. The lake parameter fields for IFS should be global and realistic, because FLake runs over all the grid boxes, and then only lake-related results are used further. In this study new datasets and methods for generating lake fraction and lake depth fields for IFS are proposed. The data include the new version of the Global Lake Database (GLDBv3) which contains depth estimates for unstudied lakes based on a geological approach, the General Bathymetric Chart of the Oceans and the Global Surface Water Explorer dataset which contains information on the spatial and temporal variability of surface water. The first new method suggested is a two-step lake fraction calculation; the first step is at 1 km grid resolution and the second is at the resolution of other grids in the IFS system. The second new method involves the use of a novel algorithm for ocean and inland water separation. This new algorithm may be used by anyone in the environmental modelling community. To assess the impact of using these innovations, in-situ measurements of lake depth, lake water surface temperature and ice formation/disappearance dates for 27 lakes collected by the Finnish Environment Institute were used. A set of offline experiments, driven by atmospheric forcing from the ECMWF ERA5 Reanalysis were carried out using the IFS HTESSEL land surface model. In terms of lake depth, the new dataset shows a much lower mean absolute error, bias and error standard deviation compared to the reference set-up. In terms of lake water surface temperature, the mean absolute error is reduced by 13.4 %, the bias by 12.5 % and the error standard deviation by 20.3 %. Seasonal verification of the mixed layer depth temperature and ice formation/disappearance dates revealed a cold bias in the meteorological forcing from ERA5. Spring, summer and autumn verification scores confirm an overall reduction in the surface water temperature errors. For winter, no statistically significant change in the ice formation/disappearance date errors was detected.

## 1 Introduction

A lake can be defined as a significant volume of water, which occupies a depression in the land and has no direct connection with the sea. Inland water bodies are often referred to as lakes when the lateral movement of the water is negligible, and as

rivers when there is a sizeable lateral transport, although a clear separation is often complex and varies in time. Despite these complexities, in the following we use the term lakes in the broad sense of inland water body with any lateral movement of water. Globally lakes occupy about 3.7 % of the land surface (Borre, 2014; Verpoorter et al., 2014). According to the latest calculations the total number of lakes with a water surface area not less than 0.002 km<sup>2</sup>, is 117 million (excluding Greenland and Antarctica), and their combined area is about 5 million km<sup>2</sup> (excluding the Caspian Sea) (Borre, 2014; Verpoorter et al., 2014). Lakes are distributed very unevenly. Most lakes are situated in Boreal and Arctic climate zones 45-75 °N (Borre, 2014), namely in Canada, the Scandinavian Peninsula, Finland and Northern Russia and Siberia. Lakes influence local weather conditions and local climate. For example, during freezing and melting the lake surface radiative and conductive properties and the latent and sensible heat released to the atmosphere changes dramatically, resulting in a completely different surface energy balance (Eerola et al., 2010; Mironov et al., 2010a; Samuelsson et al., 2010; Rontu et al., 2012). Lake Ladoga in Russia can generate low clouds, which lead to an increase in 2-meter temperatures of up to 10 °C in neighbouring Finland (Eerola et al., 2014). The Great Lakes in the USA intensify winter snow storms (Hjelmfelt, 1990; Notaro et al., 2013; Vavrus et al., 2013). During summer in the Boreal zone lakes usually cause a decrease in the amount of precipitation (Samuelsson et al., 2010). The African Lake Victoria generates night convection with intensive thunderstorms, which leads to the death of thousands of fishermen every year (Thiery et al., 2015; Thiery et al., 2017). Lakes can also influence global climate by affecting the carbon cycle through carbon dioxide (CO<sub>2</sub>) and methane (CH<sub>4</sub>) emissions (Tranvik et al., 2009; Stepanenko et al., 2016). Small shallow thermokarst lakes located at Boreal and Arctic latitudes in the permafrost thaw area are rich in organic matter from permafrost eroding into anaerobic lake bottoms (Walter et al., 2006; Stepanenko et al., 2012), which affect the CH<sub>4</sub> budget, being as large as CO<sub>2</sub> budget for these lakes (Walter et al., 2007). This type of lake is most common (representing approximately 77 % of the lakes globally), and in general has a small surface area (0.002-0.01 km<sup>2</sup>) and a big surface-to-volume ratio. This shape characteristics are important as carbon dioxide and methane degassing takes place through the lake's surface (Borre, 2014; Verpoorter et al., 2014).

The effect of lakes is handled in Numerical Weather Prediction (NWP) and climate models through parametrization, which needs information on the locations of the lakes and their morphological characteristics. However, their representation within global models may be problematic because 90 million of the world's lakes range between 0.002 to 0.01 km<sup>2</sup> in size (Borre, 2014; Verpoorter et al., 2014). To date, the majority of the morphological parameters of these lakes have not been measured, not to mention constantly monitored! Reasons for this include: (i) most of these lakes are too small and common to have specially dedicated measuring campaigns, or (ii) they are situated in very remote and hard to reach areas. In NWP lakes with areas smaller than the model grid-box size are considered to be sub-grid features. For example, the high-resolution version of the Integrated Forecasting System (IFS) model at European Centre for Medium-range Weather Forecasts (ECMWF) uses a grid spacing of approximately 9 km. In this configuration lakes with a surface area of less than 81 km<sup>2</sup> are considered to be sub-grid. The effect of both sub-grid and resolved lakes in NWP and climate modelling is taken into account through parameterization. However, to represent the sub-grid lakes, the lake fraction (relative to the model grid size) is needed.



At ECMWF, the lake parameterization was introduced in 2015 by including the Fresh-water Lake model FLake into the IFS (Mironov et al., 2006; Mironov, 2008; Mironov et al., 2010b; Mironov et al., 2012). To represent surface heterogeneity, the Tiled ECMWF Scheme for Surface Exchanges over Land incorporating land surface hydrology (HTESSEL) was used. This computes surface turbulent fluxes (of heat, moisture and momentum) and skin temperature over different tiles (vegetation, bare soil, snow, interception and water) and then calculates an area-weighted average for the grid-box to couple with the atmosphere (Balsamo et al., 2012; IFS Documentation, 2017). A new tile, representing lakes, reservoirs, rivers and coastal waters, was introduced (Dutra et al., 2010; IFS Documentation, 2017; see <http://www.flake.igb-berlin.de/papers.shtml>) in HTESSEL based on the FLake model. Currently FLake only accurately represents fresh-water lakes, but in the future its large research community plans to also include representation of saline water. FLake is a one-dimensional model, which uses an assumed shape for the lake temperature profile including the mixed layer (uniform distribution of temperature) and the thermocline (its upper boundary located at the mixed layer bottom, and the lower boundary at the lake bottom). The model also contains an ice module, a snow module and a bottom sediments module. **The ice albedo is dependent on the temperature at the ice upper surface and is lower in spring, during the melting period, see (IFS Documentation, 2017) for more details.** At present FLake runs in IFS with no bottom sediment and snow modules (snow accumulation over ice is not allowed and snow parameters are used only for albedo purposes). In the implementation in IFS lake ice can be fractional within a grid-box with inland water (10 cm of ice means 100 % of a grid-box or tile is covered with ice; 0 cm of ice means 100 % of the grid-box is covered by water; in between a linear interpolation is applied) (Manrique-Sunen et al., 2013). At present, the water balance equation is not included for lakes and the lake depth and surface area are kept constant in time (IFS Documentation, 2017). FLake also requires the lake fraction,  $Fr_{lake}$ , and lake depth (preferably bathymetry),  $D_{water}$ , and lake initial conditions.  $D_{water}$  is the most important external parameter that FLake uses. Note that the IFS model is a global spectral NWP model, which uses different setups for its climate, ocean and ensemble run calculations and different horizontal resolutions. Currently, the highest operational resolution is 9 km (Tco1279; the resolution of the IFS is indicated by specifying the spectral truncation prefixed by the acronym Tco for triangular-cubic-octahedral). It is important, that lake parametrization is consistent with other external model parameters on different resolution grids.

Under the framework of the continuous upgrade of the ECMWF IFS model, lake related data are updated. The implementation of updates should be straightforward with a minimum disturbance to forecast production. Attention should be paid to coastal waters and areas with significant changes to inland water bodies, and major depth changes to large lakes. The  $D_{water}$  field should be updated with the latest available information to ensure that depths are close to observed values, as overestimated depths can be blamed for cold biases in summer temperatures or lack of ice. A realistic bathymetry can be obtained from new in-situ measurements and high-resolution datasets, and a re-evaluation of the default depths.

The aim of this research is to improve forecasts of surface parameters in ECMWF's IFS model by upgrading the lake model  $Fr_{lake}$  and  $D_{water}$  fields with newly available information. The new methods are suggested. The first new method is a two-step lake fraction calculation; the first step is at 1 km grid resolution and the second is at the resolution of other grids in the

IFS system. The second new method involves the use of a novel algorithm for ocean and inland water separation. This includes providing consistency between lake data and other land surface fields. The impact of these innovations was studied.

The paper is organised as follows. Section 2 describes the “Data” and includes the description of the physiographic datasets used to generate the lake parameters. Section 3 discusses the “Methods” applied to the datasets, both for the currently operational and upgraded versions. Verification of IFS simulations against in-situ measurements of lake depth, lake surface water temperature and ice formation/disappearance dates, and a discussion of the results and further developments are covered in Section 4 on “Verification and discussion”. The main results, a discussion and further research guidance are covered in the “Conclusion” in Section 5.

## 2 Data

The physiographic datasets used in the IFS model to generate the lake parameters are described here, both for the current and upgraded versions. In addition, descriptions of the other lake related land surface parameter datasets are described. Firstly, *Fr\_lake* is related to land use. There are a lot of regional and global ecosystem datasets such as Corine (CLC2006 technical guidelines, 2007) and Ecoclimap (Champeaux et al., 2004), that provide information on land cover types, including inland water (lakes, rivers, etc.). For land cover types, ECMWF uses the global map GlobCover 2009 (Bontemps et al, 2011; Arino et al., 2012) which has a nominal resolution of 300 meters. This land cover map is used by many limited area models (e.g. COSMO), and has been proven to be an accurate and reliable source of data for NWP modelling (Arino et al., 2012; Quaife and Cripps, 2016). GlobCover 2009 is derived from an automatic, regionally-tuned classification of a time series of global Medium Resolution Imaging Spectrometer Instrument Fine Resolution (MERIS FR) mosaics for the year 2009. It consists of a global land cover map on a Plate-Carree (WGS84 ellipsoid) projection covering the Earth. Its legend is compatible with the GLC2000 (Bartholome and Belward, 2005) global land cover classification and accounts for 22 land cover classes defined with the United Nations (UN) Land Cover Classification System (LCCS). A 23rd class (coded as “230”) has been added to the final legend to account for pixel with no data (Bontemps et al, 2011). GlobCover 2009 land cover map is available from 60 °S to 85 °N, but contains only one “water” cover type, and hence does not distinguish between ocean (sea) and inland water bodies (lakes, rivers, etc.).

Over polar regions, for the land cover map ECMWF uses the high-resolution Radarsat Antarctic Mapping Project (RAMP) Digital Elevation Model (DEM) Version 2 (RAMP2) data (Liu et al., 2015) for Antarctica. These data are on a 1 km (30") grid in Polar Stereographic coordinates (IFS Documentation, 2017) and are provided as raw binary (the only values 0 = water and 1 = land). In the Arctic, north of 85 °N no land is assumed.

For the upgrade of lake location in selected places, Digital map database of Iceland and Global Surface Water Explorer data are used. National Land Survey of Iceland are constantly reviewing and processing the Digital map database of Iceland (IS 50V). It is based on a variety of sources and data such as GPS-tracking for roads, aerial photographs, SPOT-5 satellite images and data from other agencies and municipalities. IS 50V consists of 8 layers, including hydrology and coastline. Layers are

presented in conical Lambert projection (reference is ISN93 or ISN2004). For our purposes, only coastline and hydrology layers are used to update water distribution for Iceland, these were processed by the Icelandic Meteorological Office (Bolli Palmason and Ragnar Heiðar Þrastarson, personal communication 2018).

The Joint Research Centre (JRC) has created a 30-meter (1") horizontal resolution Global Surface Water Explorer (GSWE) dataset by using Landsat 5, 7 and 8 individual full-resolution 185 km<sup>2</sup> global reference system II satellite images over the past 32 years (between March 1984 and October 2015) to map the spatial and temporal variability of global surface water and its long-term changes. These satellites have a near polar orbit and provide global coverage every 16 days (the individual satellite orbits are such that when two operate concurrently there is an eight-day revisit period). Thermal imagery and the contrasting spectral properties of water and other features (including snow, clouds, shadows, bare rock and vegetated land) in the Landsat sensors' six visible, near and shortwave infrared channels were used within the expert system to separate pixels acquired over open water from those acquired over other surfaces. Validation of the system shows less than 1 % of false water detections and less than 5 % of missed water surfaces out of 40'000 control points from around the world and during the 32 years (Pekel et al., 2016). GSWE consists of several datasets that show different facets of surface water dynamics. For IFS lake information upgrade, the Water Transitions facet is used, which shows changes in water classes between the first and last years in which reliable observations were obtained. These are the following:

- (0) No water – water was not detected in this place,
- (1) Permanent – unchanging permanent water surfaces,
- (2) New Permanent – conversion of a no water place into a permanent water place,
- (3) Lost Permanent – conversion of a permanent water place into a no water place,
- (4) Seasonal – unchanging seasonal water surfaces,
- (5) New Seasonal – conversion of a no water place into a seasonal water place,
- (6) Lost Seasonal – conversion of a seasonal water place into a no water place,
- (7) Seasonal to Permanent – conversion of seasonal water into permanent water,
- (8) Permanent to Seasonal – conversion of permanent water into seasonal water,
- (9) Ephemeral Permanent – no water places replaced by permanent water that subsequently disappeared within the observation period,
- (10) Ephemeral Seasonal – no water places replaced by seasonal water that subsequently disappeared within the observation period,
- (255) No data – no reliable observations were obtained.

This map is used to upgrade only certain geographical regions (i.e. Australia, Aral Sea, Alqueva Reservoir).

The lake depth is specified according to Global Lake DataBase, v1 and v3, (Kourzeneva, 2010) and (Choulga et al., 2014), for operational and upgraded versions respectively. In 2008 GLDBv1 was developed for implementation in lake parameterization schemes in NWP and climate modelling (Kourzeneva, 2010). GLDBv1 uses:

- (i) the mean depth for individual lakes (~ 13'000 lakes) from different regional databases,

(ii) the global lake mask created from Ecoclimap2 ecosystem dataset (Champeaux et al., 2004), and  
(iii) bathymetry data for 36 large lakes from ETOPO1 (Amante and Eakins, 2009) and digitized navigation and topographic maps.

To combine individual lake depth data with a raster cover map, an automatic probabilistic mapping method is used, see (Kourzeneva et al., 2012) for more information. The result was a global lake depth data set on a 30" (~ 1 km) grid. When there was a lake on the map, but its depth value was unknown from the individual lake dataset, the “default” depth of 10 m was used. GLDBv1 is used in the IFS operational setup. In GLDB later versions, the “default” depth was the main subject of study. GLDBv1 was upgraded with indirect mean depth estimates, depending on the geological origin of lake. The geological approach, used for the depth estimation of uninspected freshwater lakes, assumes that water bodies of the same origin and the same age should have similar morphological parameters, see (Choulga et al., 2014) for more information. An innovative algorithm, which combined information about lake location and morphological parameters, and surface geological and tectonic information was developed and applied. Globally 374 regions (141 for boreal climate zone and 233 for the rest of the globe) with a homogeneous geological origin of lakes were outlined. The typical lake depth values were derived from (1) the individual lake dataset and global gridded lake depth map statistics, (2) expert judgment, and (3) lists with different lake types, exceptional for the region with the same lake origin. The recent version of the dataset is GLDBv3. Its main differences from GLDBv1:

- (i) increase of the individual lake list by ~ 1’500 lakes,
- (ii) addition of extra bathymetry data for all navigable and most of non-navigable Finish lakes,
- (iii) addition of indirect mean depth estimates based on lake geological origin,
- (iv) use of the derived analytical equations to define the lake mean depth from the lakes’ area and boreal zones climate type, see (Choulga et al., 2014) for more detailed information,
- (v) introduction of freshwater/saline lake differentiation: the “default” depth for freshwater lakes is set to 10 m, for saline lakes 5 m,
- (vi) introduction of two lists with exceptions: artificial lakes (reservoirs) with unknown depths and crater (caldera) lakes with the “default” depths of 10 and 50 m respectively.

Verification of indirect depth estimates (based on geological origin) against new observations for 353 Finish lakes showed 52 % bias reduction (from 5.4 m in GLDBv1 to 2.6 m in GLDBv3) and 34 % RMSE reduction (from 6.1 m in GLDBv1 to 4.0 m in GLDBv3); improvements in the depth estimates are proved to be statistically significant. In this study GLDBv3 is used to upgrade the IFS lake information.

Operationally, the Caspian Sea bathymetry is from ~ 4 km resolution digitalized data (Cavaleri, personal communication 2008); the Great Lakes, the Azov Sea and the ocean – bathymetry from Global Relief Model ETOPO1 (Amante and Eakins, 2009) with the horizontal resolution 1’ (~ 2 km). ETOPO1 consists of regional and global datasets, and bathymetry estimates from satellite altimetry for unsurveyed ocean areas. Horizontal and vertical datum of the model are WGS 84 geographic and “sea level” accordingly.

The upgraded bathymetry for the Caspian Sea, the Azov Sea and the ocean is from General Bathymetric Chart of the Oceans (GEBCO) (Weatherall et al., 2015). Published in 2014, GEBCO is a global terrain model for ocean and land with a 30" (~ 1 km) global grid of elevations. It is largely generated by combining new versions of regional bathymetric compilations from the International Bathymetric Chart of the Arctic Ocean, the International Bathymetric Chart of the Southern Ocean, the Baltic Sea Bathymetry Database, and data from the European Marine Observation and Data network bathymetry portal, quality-controlled ship depth soundings with interpolation between sounding points guided by satellite-derived gravity data. The dataset is accompanied by auxiliary data, where each cells value is identified as based on actual depth values or predicted ones.

### 3 Methods

#### 3.1 Current status

10 The IFS is a global model, and according to its design, lake parameterization runs on each surface grid-point, whether the simulation results in this point are used later or not. Independently on the resolution, missing values are not allowed to ease the interoperability of the output at diverse spatial resolutions of IFS model.

Main physiographic fields that govern use of all land-surface parameterization results in the IFS are the land fraction ( $Fr_{land}$ ) and corresponding land-water binary mask ( $LWM$ , 0 = water and 1 = land).  $Fr_{land}$  provides information about land and water (oceans, seas, lakes, rivers, etc.) fraction in each model grid-box of the underlying surface. In the IFS, model grid-box is land dominated if more than 50 % of the actual surface is land (Manrique-Sunen et al., 2013) (i.e.  $Fr_{land} > 50\% \rightarrow LWM = 1$ ). All sub-grid water in the land-dominating case is treated as lake water (simulated by FLake). If a grid-box is water dominated (i.e.  $Fr_{land} \leq 50\% \rightarrow LWM = 0$ ), then extra knowledge of water type is required, as salt ocean and dominantly freshwater lakes and rivers have different physical properties and are treated with different model parameterizations. Both  $Fr_{land}$  and  $LWM$  are grid-dependent. Primarily,  $Fr_{land}$  is calculated from the land-cover maps (operationally from GlobCover 2009 and RAMP2) by aggregating the “land”-type information on a certain grid. Then  $LWM$  is produced. Note that since GlobCover 2009 does not distinguish between ocean (sea) and inland water,  $LWM$  also does not distinguish between them.

To distinguish between ocean and inland water, a binary lake mask ( $LKM$ , 0 = non-lake and 1 = lake) is produced from  $LWM$  using a flood-filling algorithm for different resolutions and grids. The idea of this algorithm is to start from a seed somewhere in the open ocean on  $LWM$  and let the flood-filling procedure (IFS Documentation, 2017) march through all connected water points (i.e. where  $LWM = 0$ ) marking them as non-lake (i.e. with  $LKM = 0$ ); unmarked points with  $LWM = 0$  are not connected to the ocean and stand for the inland water bodies (i.e.  $LKM = 1$ ). The reasons for applying this method instead of using  $LKM$  produced from external sources (e.g., from GLDBv1) are the following. Various sources of information almost always have some compatibility errors, in this case – spatial distribution errors – inland water bodies from different inventories can have variations in location, shape and size. It is vital to have  $LKM$  consistent with  $LWM$ , otherwise ocean water can surprisingly appear on the Tibetan Plato. Also, a new high resolution updated  $LWM$  appear much earlier than  $LKM$  based on them, which are usually with lower resolution. As in NWP the quality (accuracy and reliability) of water land data is extremely important,

having an up-to-date high resolution *LWM* is very appealing. This leads to necessity of an in-house algorithm to generate *LKM* from the chosen *LWM* dataset. Issues here are grid-dependency and low accuracy. Some lakes are very close to the sea, and especially for low resolutions, the flood-filling algorithm just fills them up as ocean. Issue was resolved by manually blocking coastal lakes. Another issue was that some narrow parts of the ocean (e.g. fjords in Norway and Greenland) were not filled up

5 by the flood-filling algorithm (leaving them to freeze as freshwater bodies). Solution here was to use a latitude-dependent threshold for *LWM* (to distinguish water from land) while using the flood-filling algorithm, with lower values in mid- and low-latitudes, and higher values at high latitudes (IFS Documentation, 2017). Finally, FLake results are used for the grid-boxes with  $LWM = 1$  or with  $LWM = 0$  &  $LKM = 1$ , using  $Fr_{lake} = 1 - Fr_{land}$ . This algorithm is applied separately for each IFS grid with different horizontal resolutions (operational ( $\sim 9$  km, Tco1279), climate, ocean, and ensemble).

10 Since FLake runs in each grid box independently on  $Fr_{lake}$ ,  $D_{water}$  field should be global and realistic, even if  $D_{water}$  values for some points are actually dummy. To obtain the global depth field with the ocean/lake depth in each grid-box and no missing values, the following steps are made: (1) data from GLDBv1 with 1 km native resolution are aggregated to a 5' grid, (2) in all inland points where GLDBv1 has no information, a default value of 25 m is assumed, (3) the minimum depth value is set to 2 m; the Great lakes, the Azov Sea and the Caspian Sea are treated as lakes with (4) the Caspian Sea bathymetry from

15  $\sim 4$  km resolution digitalized data (Cavaleri, personal communication 2008), and (5) the Great lakes, the Azov Sea and the ocean bathymetry are from ETOPO1 (Balsamo et al., 2012; IFS Documentation, 2017). Finally, the resulting field is interpolated on various IFS grids and resolutions.

Main disadvantage of the current ocean/inland water separating procedure is simplification of a complex coastline (e.g. Finland, Norway) and neglect of small islands. On coarser resolution narrow land parts that separate freshwater lakes and

20 saline ocean disappear (land fraction becomes too small) and coastal lakes and wide estuaries are treated as ocean (the surface temperature is extrapolated from Sea Surface Temperature of the nearest ocean grid point), which can lead to no ice conditions during winter in high latitudes or rather low temperatures and almost no diurnal cycle during summer. One example is disappearing islands that separate freshwater lake Alexandrina in South Australia from saline Great Australian Bight (Indian Ocean), which results into flooding of the freshwater lake with saline ocean, and in modelling perspective to the completely

25 different surface temperature. Figures 1 and 2 left columns show results of operational  $Fr_{land}$  and  $Fr_{lake}$  fields combination (remaining fractional ocean part) at 9 km (Tco1279, upper plots) and 32 km (Tco319, lower plots) horizontal resolutions over Finland and North-Western Russia (59-72 °N, 20-42 °E) and North-Eastern Russia (60-74 °N, 122-163 °E) regions respectively. These plots show how use of the current ocean/inland water separating procedure leads to deep ocean penetration into land and/or separated ocean parts over the land at coarser resolutions. For example, Fig. 1 left column upper plot at 9 km

30 resolution shows neat separation of inland water and ocean, and Fig. 1 left column lower plot at 32 km resolution shows that same water separation procedure leads to deep ocean penetration inlands filling lake Saimaa with salt water through pixel, that became not land dominated on coarser resolution. In addition, several inaccuracies were reported in inland water distribution, such as too wet Australia and omission of Alqueva Reservoir – the biggest man-made lake in Western Europe. All these features required an urgent update.

### 3.2 Updates

The proposed way of creating lake fields is first to create *LKM* compatible with *LWM* at 1 km resolution regular latitude longitude grid, then to interpolate both to the needed resolution and grid. This will allow to preserve water fractions of both types at any resolution independently from *Fr\_land*. Figures 1 and 2 right columns give quick peek on *Fr\_land* and *Fr\_lake* fields combination (remaining fractional ocean part) created with the new way at 9 km (Tco1279, upper plots) and 32 km (Tco319, lower plots) horizontal resolutions over Finland and North-Western Russia (59-72 °N, 20-42 °E) and North-Eastern Russia (60-74 °N, 122-163 °E) regions respectively. These plots show how use of the new ocean/inland water separating procedure prevents deep ocean penetration into land and/or separation of ocean parts over the land at coarser resolutions. Proposed methodology is designed bearing in mind quite prompt update of global ecosystem maps: new satellite-based products become freely available with higher and higher resolution more often. To ease the *LKM* compatible with *LWM* upgrade process, water type separation procedure is as automated as possible. *D\_water* is the main parameter to drive lake parameterization. In IFS surface scheme FLake runs on each grid-point independently from the *Fr\_lake*, so *D\_water* field should be global and as realistic as possible. To achieve this, newer dataset versions, various data source compilation and innovative approaches were used.

The new way of generating *LKM* field was (1) to start with 1 km *LWM* and (2) to create a consistent 1 km *LKM*, then (3) to convert binary *LKM* field into fractional *Fr\_lake* field, and finally (4) to interpolate it to all IFS grids and resolutions. In this case separation between ocean and inland water is done only once at rather high horizontal resolution (~ 1 km), which still preserves a lot of coastal features, but is computationally (and in data handling sense) cheaper, than the nominal resolution of GlobCover 2009 or GSWE (~ 300 meters and ~ 30 meters respectively).

First step was to aggregate the water cover from initial GlobCover 2009 10" map to 30" (43200/21600 grid-boxes along longitude/latitude) horizontal resolution. At the end of this step aggregated *LWM* was also corrected at certain regions where big water distribution errors were reported. Regions and sources are following.

The Aral Sea is an endorheic lake that used to be one of the four largest lakes in the world. In 1960 its water surface area was 68'900 km<sup>2</sup>. However, the Aral Sea is shrinking. According to historical records this process started at least in the middle of the 18<sup>th</sup> century and was accelerated in 1960's after massive diversion of water for cotton and rice cultivation. GlobCover 2009 shows the Aral Sea for 1998 when its water surface area was 28'990 km<sup>2</sup> (less than a half of its initial size) (Duhovny et al., 2017), see Fig. 3 upper left plot. Nevertheless after 1998 shrinking continued. The Aral Sea water surface area started stabilizing only in 2014 at area 7'660 km<sup>2</sup> (almost 9 times less of its initial size), due to the major Aral Sea recovery program launched in 2001 by the president of Kazakhstan and supported by the World Bank (ENS, 2008), see Fig. 3 upper right plot. On the updated map, an up-to-date Aral Sea water distribution from GSWE replaced an outdated one from GlobCover 2009. Only currently present water types were used, i.e. Permanent, New Permanent and Seasonal to Permanent.

The Alqueva reservoir is the largest man-made water body in western Europe, and it is completely omitted on GlobCover 2009, see Fig. 3 lower left plot. Its surface area is ~ 210 km<sup>2</sup> with minor inter-/annual variability (Miguel Potes and Rui

Salgado, personal communication 2017). An up-to-date Alqueva reservoir water distribution from GSWE based on Permanent, New Permanent and Seasonal to Permanent water types replaced one from GlobCover 2009, see Fig. 3 lower right plot.

Australia is the 6<sup>th</sup> largest (by total area) country in the world with vast number of lakes. Lakes are predominantly dry and salt, located in the flat desert regions. Excess inland water on GlobCover 2009 map was reported for the South-East part of Western Australia and North part of South Australia (20-30 °S, 130-140 °E), as illustrated by Fig. 4. The left plot shows region in question on GlobCover 2009, with shallow endorheic Kati Thanda-Lake Eyre (28.37 °S, 137.37 °E) in its lower right corner. This lake fills on rare occasions, only few times a century. Here it is seen in its maximum extent. Right three plots show the same region on GSWE Water Transitions map with different water class combinations. The combination of permanent, new permanent and seasonal to permanent water classes reflects permanent water, see second from the left plot. This combination has almost no inland water, except artificial lake Moondarra (20.59 °S, 139.54 °E) and lake Machattie area (24.90 °S, 139.50 °E), which consists of three lakes: Mipia (usually retains water until the following flood season), Koolivoo (usually dries up by early summer) and Machattie (flooded ~ once in three years). Lakes in lake Machattie area are fresh when filled by floods but become saline as they dry out. If seasonal, new seasonal and permanent to seasonal water classes (which reflect seasonal water) are added, see third from the left plot, then region in question has more water, yet much less than on GlobCover 2009. If also ephemeral permanent and ephemeral seasonal water classes (which stay for ephemeral water) are added, see right plot, region in question gets even more water than on GlobCover 2009, which was reported as too wet! To make a choice of all year-round plausible water distribution for Australia, experts from Australian National University and Bureau of Meteorology were consulted. It was explained that there are large scale ephemeral inundations in inland Australia, but most of them are occasional rather than seasonal (Albert van Dijk, personal communication 2017). Based on this, it was decided to use the combination of permanent, new permanent and seasonal to permanent water classes from GSWE Water Transitions map as a whole year static water distribution for Australia, see Fig. 4 second from the left plot. This corresponds well with Water Observations from Space for Australia (see <http://www.ga.gov.au/interactive-maps/#/theme/water/map/wofs>).

Iceland is located around 63-67 °N which makes it quite poor for reliable satellite observations, also due to much cloud and cloud shadow conditions. Figure 5 left plot shows the GlobCover 2009 water distribution for Iceland. If possible, it is good to compliment these data with ground observations (e.g. theodolite, lidar). Here, Digital map database of Iceland provided by Icelandic Meteorological Office and referred as the best available for the region source of water distribution information (Bolli Palmason and Ragnar Heiðar Þrastarson, personal communication 2018) was used, see Fig. 5 right plot.

Then corrected *LWM* produced from GlobCover 2009 (which is available from 85 °N to 60 °S) was combined with RAMP2 dataset over Antarctica and assumption of no land north of 85 °N. The resulting field is an updated *LWM*, further used for upgraded *LKM* creation.

Next step is dividing of *LWM* water into inland and ocean parts. At the beginning the basic flood-filling algorithm was used. However, with the fine ~ 1 km resolution problematic regions with the deep ocean into land penetration (through river estuaries) or merge of different inland water bodies were revealed. Figure 6 shows results of water separation with different techniques at several geographical locations. Upper row plots display no ocean/inland water separation, and middle row plots



– separation with basic flood-filling algorithm. Left column plots show region of Finland and North-Western part of Russia, where inland water is neatly separated by the basic flood-filling algorithm. Middle column plots show region of St Lawrence River with light ocean penetration into the land through the St Lawrence River and its lakes (i.e. Saint Pierre, Saint Louis and Two Mountains) and the Ottawa River. Right column plots show region of the Amazon River with deep ocean penetration into the land through the estuary of the Amazon River and nearby lakes (e.g. Grande do Curuai, Itarim, etc.), as well as the estuaries of the Xingu River and the Tocantins River with the Tucurui Reservoir. This Amazon River region example also shows several inner waterbodies merge, which makes it extremely challenging to automatically map individual lake depth with each water body, as was done in (Kourzeneva et al., 2012) for mapping lake depths for GLDB.

Specially for these complicated situations, when separation should be based on rather physical and geographical than geometrical features, the innovative waterbody separation algorithm was developed and applied. In general, the algorithm allows to separate narrow rivers or bays from large water bodies (e.g. lakes or seas). Since it is based on something more than just geometry, it contains 2 parameters, which depend on the resolution and complexity of the regions' coastline. These parameters should be defined beforehand relying on the expert opinion (i.e. tuning parameters). The algorithm is pixel-by-pixel and iterative. The parameters are

- (i) the window width  $W$  – the checking radius around the water pixel in question, defined in number of pixels (in Fig. 7 example  $W = 1$ ); and
- (ii) the number of iterations  $L$  – how many times the algorithm must be applied over each water body (in Fig. 7 example  $L = 2$ ).

Step 0 of the new algorithm starts working from the results of the basic flood-filling algorithm. In this case the basic flood-filling algorithm should be applied so that it creates an individual water body mask, to avoid any mismatch between closely located water bodies. Then the new algorithm may be applied to each water body successively. Step 0 is shown in Fig. 7 left plot. At Step 0, each water pixel is marked with “x” if all pixels within the moving window of the  $W$  width are water, or “•” if at least one pixel in this window is non-water. Next starts the iteration phase, that will be repeated  $L$  times. At the beginning of each iteration pixels with “•” are checked again with the moving window of the  $W$  width – if around the pixel in question there is at least one “x” pixel, it is marked as “••”, see Fig. 7 second from the left plot. At the end of each iteration all “••” pixels are changed into “x”, and the next iteration starts if required, see Fig. 7 third from the left plot. At the end of the iteration phase the considered water body will be divided into several ones, see Fig. 7 right plot – “x” pixels will mark the main part of the water body, and “•” pixels will mark the narrow rivers or bays. We applied this algorithm to separate automatically large rivers from the ocean – to stop deep penetration of the salt ocean into the land. The  $W$  and  $L$  parameters are regionally and grid dependent. If they are unsuccessfully defined or coastal line is too complicated, the negative side effect of the algorithm will appear – erroneous separation of fjords and bays from the ocean (e.g. in Norway, North Canada, Greece and on the West coast of USA). To stay on the safe side all the separated water bodies with the area less than 500 km<sup>2</sup> were converted back to ocean. To minimize the tuning process, the new algorithm was applied only for the specific geographical locations, where big river estuaries and lagoon type freshwater lakes are situated, see Table 1. For the upgrade  $L = 2$  and  $W = 3$  were used. Figure 6 lower

row plots show results of basic flood-filling & newly developed pixel-by-pixel water separation algorithms use. The left plot in this row shows the region of Finland and North-Western part of Russia which looks the same as with use of the basic flood-filling algorithm only, because this region has no big river estuaries. The middle plot in the lower row shows the region of the St Lawrence River with neat separation of the freshwater river and saline ocean next to the Orleans Island in Quebec (Île d'Orléan). The right plot in the lower row shows the region of the Amazon River with the realistic separation of the ocean and river estuary.

Final step in the *LWM* water separation is the visual check of the significant freshwater coastal lagoons and lakes over the globe, in case if some separating islands or spits are missing on the initial ecosystem map. Also, some water bodies such as the Azov Sea and the Caspian Sea are better represented as inland water than ocean due to current features of IFS. This leads to a list of exceptional water bodies (see Table 2), that were manually separated from the ocean (the Caspian Sea is marked as a lake automatically), and creation of an updated *LKM*.

The upgrade of the *D\_water* field concluded in combination of all most up-to-date reliable high-resolution global datasets, which are GLDBv3, ETOPO1 and GEBCO. Information from GLDBv3 is used for the mean depth of the inland water bodies, bathymetry of 36 large lakes and majority of Finnish lakes, ETOPO1 is used for the Great Lakes, and GEBCO is used for the Azov Sea, the Caspian Sea and the ocean bathymetry. The “default” 25 m depth was substituted with depth estimates based on geological approach (Choulga et al., 2014), which was implemented all around the globe. In rare cases where geological approach had no value, the “default” depth of 10 m was used. Figure 8 shows *D\_water* field at 9 km horizontal resolution (Tco1279): the upper plot – the operational version, the lower plot – the new version. On average, all depths became shallower as the “default” depth of 25 m in the operational version was substituted with more realistic values.

The depth aggregation algorithm was also upgraded (from operational simple averaging). The lake depth is not a continuous field, like the air pressure or temperature, and averaging is not the most accurate way of treating it. The new lake depth aggregation is based on the mode (most common) value and the water type (ocean or inland water). Also, now the depth data source is considered: if there are in-situ measurements, indirect estimates or “default” value. For the depth aggregation only *LWM* water pixels are used; ocean and inland water pixels are aggregated separately. In the coastal regions, where both water types are present, *D\_water* is averaged proportionally to the number of each water type pixels. Ocean pixels are aggregated by averaging as the ocean bathymetry can be considered as a continuous field (values change smoothly from point to point). For aggregation of the inland waterbody depths, the mode is used. The mode is calculated for each type of the depth data separately and the non-zero value with the highest priority is used as an aggregated grid-box depth; the highest priority is given to the value calculated only from the in-situ measurement, the second – to the value calculated only from the depth indirect estimates, the lowest – to the “default” 10 m depth. This helps to preserve the measured values at rather high resolutions where the lake effect is the most pronounced.

## 4 Verification and discussion

Upgraded lake related fields must be tested prior operational implementation, as inland water bodies can have significant impact on local climate and weather in terms of 2-meter temperature: over 1 K (Balsamo et al., 2012) and up to 10 K (Eerola et al., 2014) respectively. FLake prognostic variables are: the mixed-layer temperature  $T_{ML}$ , the mixed-layer depth, the bottom temperature, the mean temperature of the total water column, the shape factor, the temperature at the ice upper surface, and the ice thickness (IFS Documentation, 2017). Verification is performed in terms of  $T_{ML}$  and the ice formation/disappearance dates. Modelling results are verified against in-situ measurements of lake water surface temperature and ice formation/disappearance dates recorded by Data and Information Centre of the Finnish Environment Institute (SYKE).

### 4.1 Model experiment setup and verification methods

- 10 Numerical experiments with IFS model using operational and upgraded *LKM* and *D\_water* run for 5 years from 2010.01.01 to 2014.12.31, with 3 months of model spin up from 2009.10.01 to 2009.12.31. Experiments started in the middle of autumn 2009, when all Finish lakes are mixed till the bottom, to shorten the model spin up time and to get reliable results straight after ice melting in spring 2010. Experiments run with IFS CY43R3 model on the triangular cubic octahedral grid with the high horizontal resolution  $\sim 9$  km (i.e. Tco1279), in the surface off-line mode (i.e. no feedback of the surface to the atmosphere).
- 15 For the forcing, the lowest model level variables were taken from the newly available ERA5 reanalysis (C3S, 2017). In ERA5, the lake parameterization is included in the model. The experiments *GTZP<sub>OPR</sub>* (red in all figures) and *GTZL<sub>NEW</sub>* (blue in all figures) used operational and upgraded *Fr\_lake* and *D\_water* values respectively.

For verification, we used the standard scores: mean error or bias (difference between observed and simulated values), mean absolute error (MAE), and error standard deviation (STD). The statistical significance of the difference in model errors between two experiments was checked with a non-parametric Kruskal-Wallis test (Glantz, 2012) as prior it was noted that errors have a non-Gaussian distribution. For the Kruskal-Wallis test, data from all comparing groups are combined, sorted ascending and ranked, equal values are assigned with their mean rank. The Kruskal-Wallis test statistic  $H$  is:

$$H = \frac{12}{N(N+1)} \sum_{k=1}^K [n_k (\bar{R}_k - \bar{R})^2], \quad (4)$$

where  $K$  – number of groups,  $n_k$  – sample volume for the group  $k$ ,  $N$  – the total volume of all groups combined  $N = \sum_{k=1}^K n_k$ ,

- 25  $\bar{R}_k$  – the average rank of the group  $k$ ,  $\bar{R}$  – the average rank of combined groups  $\bar{R} = \frac{N+1}{2}$ . To estimate the statistical significance,  $H$  is compared with a critical value  $\chi^2$  for  $(K - 1)$  groups with the significance level  $\alpha$  (if not stated differently  $\alpha = 0.05$ ). If  $H > \chi^2$ , then differences between groups are statistically significant.

In-situ SYKE data. SYKE is responsible for producing, storing and distributing Finland's national environmental information and spatial data (SYKE, 2017). SYKE operates more than 30 regular lake and river water temperature measurement sites over Finland. In-situ lake water surface temperature measurements and on-shore observations of the lake visible area freeze-up/break-up dates collected by SYKE are used for the model verification. The water temperature is measured every morning during the ice-free season at 8.00 am local time, close to the shore, at 20 cm below the water surface (Rontu et al., 2012,

Kheyrollah Pour et al., 2017). Temperature measurements and ice formation/disappearance dates from 27 lakes for 2010-2014 are used for verification. Locations of the measurement points are shown in Fig. 9.

The main morphological properties of lakes are given in Table 3 and Fig. 10. This table contains also  $D_{water}$  values from the model grid. Differences between in-situ depth measurements and  $D_{water}$  values from the model are due to horizontal resolution: the in-situ depth values are from point measurements and the model depth values are from aggregated 9 by 9 km grid-boxes. During the  $D_{water}$  upgrade it was noted that lake Saimaa has incorrect mean depth (18.0 m instead of 10.8 m), correction is planned during the next upgrade.

Comparison between the operational and upgraded fields, considering the error as a difference between in-situ and modelled values, shows that for 27 selected lake sites even with 9 km resolution the upgraded  $D_{water}$  values have 25.4 times lower bias (-0.2 m instead of -4.8 m), 3.4 times lower MAE (2.4 m instead of 8.2 m) and 2.7 times lower STD (3.6 m instead of 9.7 m). Changes are statistically significant.

#### 4.2 Model verification results

Measured and modelled lake surface temperatures were compared for the full experiment period 2010-2014. The model values were sampled for the ice-free season at 8.00 am local time to correspond the measured values. Figure 11 shows the bias, MAE, STD and total amount of data used per each site. In general, errors became smaller (modelled values are closer to the measured ones) as the lake depth values became more realistic. Averaging over all 27 lakes, the comparison between two experiments shows that for  $GTZL_{NEW}$  bias is lower for 12.5 %, MAE – for 13.4 %, and STD – for 20.3 %. For some lakes water temperature modelling errors remained the same as their depth values are the same or changed insignificantly in two experiments. These lakes are: Paijanne, Pyhajarvi, Paajarvi2, Kuivajarvi, Pesiojarvi, Rehja-Nuas, Kilpisjarvi and Inarijarvi. The only statistically significant deterioration in the temperature scores was for the lake Lappajarvi, which depth is overestimated 2.5 times in the upgraded  $D_{water}$  (18.0 m instead of 6.9 m) due to the depth mapping algorithm and/or horizontal resolution of the depth field.

Model errors may be different during different seasons depending on the model physics. It was shown that FLake has the best performance in boreal zone during autumn, when lakes are mixed (Choulga and Kourzeneva, 2014), provided that the lake depth is correct. Thus, it is interesting to dig into details and to verify the model results for different seasons, depending on lake mixing regime. Typically, lakes in the boreal zone are dimictic (Lewis, 1983) and have 5 main seasons in relation to the mixing and ice cover:

(i) spring mixing, when lakes are mixed till the bottom and the mixed layer depth equals to the lake depth,

(ii) summer, which is the stratified period,

(iii) autumn mixing period, which is usually longer than the spring one,

(iv) winter lake cooling period with the inverse temperature stratification, between the temperature of maximal density and start of ice formation, and

(v) winter, when lakes are covered with ice.

However, this classical pattern is approximate, it may be distorted, depending on the lake depth and the atmospheric forcing. For example, a stratified summer period may be interrupted by a short mixing period. Also, in early spring the inverse temperature stratification may appear. Patterns of mixing and ice periods may be defined from the modelling results. Figure 12 shows ice covered (blue), mixed (red) and stratified (green) periods, defined for different lakes for the model experiments

5 *GTZP<sub>OPR</sub>* and *GTZL<sub>NEW</sub>*. Most of the selected lakes show rather complex behaviour with distorted classical pattern. For example, lakes Paajarvi2 and Kuivajarvi may have the multiple ice and mixing periods during the year. Some lakes change patterns from one experiment to another, because of noticeable depth changes (e.g. lakes Haukivesi and Saimaa). To ease the verification process, these patterns were smoothed to better correspond with the dimictic lake classical pattern (simplified by merging the short period of the inverse temperature stratification with autumn mixing). For each lake in both experiments,

10 each year was separated into 4 main uninterrupted lake seasons, according to the modelling results. Figure 13 shows the results:

- (i) winter period (blue), which contains the merged ice periods when ice-free time between them is 30 days or less,
- (ii) spring and autumn mixing periods (red and yellow respectively), which contain the merged mixed periods (when the mixed layer depth is approximately equal to the lake depth, with the maximum difference of 10 cm allowed) when the stratified regime between them is 20 days or less,
- 15 (iii) the stratified summer period (green), which is defined as a residual between spring and autumn periods.

Thus, the spring and autumn mixing periods appeared to be separated by the summer stratified period (e.g. lake Inarijarvi). With this approximation, some lakes became monomictic (Lewis, 1983), containing no stratified period (e.g. lakes Pyhajarvi and Tuusulanja). For the verification purposes, for these lakes the mixing period was equally divided between spring and autumn seasons.

20 Distribution of model errors in terms of  $T_{ML}$  depending on a mixing season is shown in Fig. 14-17. The important note is that bias in both experiments in all seasons was predominantly cold (positive) and large. It was so large that STD was smaller than bias. In another FLake model error studies bias was dependent on the season. For example, in (Kourzeneva, 2014), where forcing was from the High Resolution Limited Area Model (HIRLAM) (Unden et. al, 2002), in summer for the same Finish lakes there was a strong warm bias, while in spring bias was cold. Errors in  $T_{ML}$  simulations depend on FLake itself, on the

25 errors in  $D_{water}$ , which is the main lake model parameter and on the errors in forcing. Since results of current experiments differ from the other studies, it should be suggested that in present research errors came from the forcing – ERA5 is supposedly too cold for this region. This problem was previously mentioned in (Haiden et al., 2018). Thus, for  $D_{water}$  parameter, the situation of compensating errors may appear, depending on a season. Too shallow (underestimated) lake depth can lead to a smaller cold bias during spring mixing and a stronger cold bias during autumn, while the overestimated  $D_{water}$  parameter

30 can lead to a stronger cold bias in spring and a smaller bias in autumn. In other words, for better spring results it is “advantageously” to underestimate  $D_{water}$ , but for better autumn results it is “advantageously” to overestimate it. In the stratified summer period, this kind of compensation does not take place, because the mixed layer depth during stable stratification does not depend on the lake depth. However, in summer  $T_{ML}$  diurnal cycle depends on  $D_{water}$ : the deeper the lake, the smaller the  $T_{ML}$  diurnal cycle amplitude. This may be reflected in STD scores because they relate to the diurnal cycle

amplitude in present experiments. These suggestions are in accordance with the obtained results. For all lakes, where upgraded  $D_{water}$  was smaller than operational one,  $GTZL_{NEW}$  bias was smaller in spring and larger in autumn comparing with  $GTZP_{OPR}$  (e.g. lakes Konnevesi and Vaskivesi). And vice versa, for all lakes, where upgraded  $D_{water}$  was larger than operational one,  $GTZL_{NEW}$  bias was larger in spring and smaller in autumn comparing with  $GTZP_{OPR}$  (e.g. lakes Haukivesi and Oulujarvi). This was independent from whether new  $D_{water}$  is closer to the reality or not. For example, for lakes Lappajarvi and Saimaa, where upgraded  $D_{water}$  became larger and even further from the reality than operational,  $GTZL_{NEW}$  autumn bias improved, due to compensating errors (good result for the wrong reason). The only exception was lake Niilakka, which autumn bias was negative (warm). For the combined spring-autumn mixing period, bias scores were generally better, or the effect was neutral. For the summer stratified period, the impact of  $D_{water}$  on the bias scores was neutral or slightly positive. The STD scores were the best for the autumn mixing period, when the lake surface temperature diurnal cycle is absent. For lakes Saimaa and Lappajarvi, the summer period STD scores were worse in  $GTZL_{NEW}$  comparing with  $GTZP_{OPR}$ , however  $D_{water}$  was worse as well. For the lakes with better  $D_{water}$  values in  $GTZL_{NEW}$ , STD scores improved or remained unchanged for all seasons. Exception was the lake Oulujarvi, its STD scores deteriorated, mainly in autumn.

Winter season verification was based on ice formation/disappearance dates comparison. Table 4 shows the ice formation/disappearance dates from SYKE in-situ archive and based on experiment results with operational ( $GTZP_{OPR}$ ) and upgraded ( $GTZL_{NEW}$ )  $D_{water}$  for 27 lake sites. In general, present experiments showed too late ice melt in spring and too early ice formation in autumn, this is in accordance with suggestion of a cold bias in forcing. Thus, compensation may happen also for the errors in freeze-up dates: for compensating the cold forcing, it is “advantageously” to overestimate the lake depth. Melting dates are mainly dependent on the atmospheric forcing rather than  $D_{water}$ , but for the freeze-up dates  $D_{water}$  plays an important role. For the melting dates it was almost no difference between two experiments, but in freeze-up dates the difference was substantial. Errors were large – ice melt date maximum error was 26 days (lake Niilakka in 2011) and ice freeze-up date maximum error was 61 days (lake Oulujari in 2017,  $GTZP_{OPR}$ ). The ice off date errors were not dependent on  $D_{water}$ , the largest errors corresponded to large-area lakes (e.g. lakes Haukivesi and Kallavesi, see Table 4). It can be explained by the fact that the ice formation/disappearance in-situ measurements represent the freeze-up and break-up dates in the visible area around the observer’s location (usually on the shore), and due to physiographic features (e.g. complicated rugged coast) and/or meteorological conditions (e.g. low clouds, rain) can be not fully representative for the whole 9 by 9 km grid-box. Ice measurement locations differ from temperature measurement locations, and distance between these two can vary from 0.7 to 49.0 km, see Table 5. SYKE provides also the break up dates in far central parts of the lake and permanently freeze up dates of the visible area around the observer’s location, but the amount of data is very limited and can’t be used for verification. However, it gives a hint that in the central part of a lake comparing with the shore, ice breaks later up to a week, and close to the coast the permanent ice can appear straight away or up to even a month after the first freeze-up date. The rough estimate of the error due to the model and forcing comes from the break-up date analysis for Lake Kevojarvi. This lake has small representativeness error, because its surface area is only 1 km<sup>2</sup>. However, the error in the break-up date for this lake was large – 14 days in both  $GTZP_{OPR}$  and  $GTZL_{NEW}$  experiments. Thus, in this verification no difference between experiments

$GTZP_{OPR}$  and  $GTZL_{NEW}$  were assumed, if it was less than 14 days. In Table 4, improvements in the freeze-up date in  $GTZL_{NEW}$  comparing with  $GTZP_{OPR}$  are marked with bold and underline, and degradation – with italics and underline, but only for the cases, when difference was larger than 14 days. Otherwise no impact of  $D_{water}$  is considered. From Table 5, freeze-up dates improved for the lakes with increased  $D_{water}$ , these lakes became deeper and start to freeze later (e.g. lakes Oulujarvi and Unari). This is independent from whether new  $D_{water}$  is closer to the reality or not (e.g. for lakes Saimaa and Lappajarvi, the freeze-up dates improved for wrong reasons). If during the upgrade  $D_{water}$  decreased, errors became larger (e.g. lakes Konnevesi and Vaskivesi). This agrees with the autumn  $T_{ML}$  bias scores: if they improve, the freeze-up dates improve as well.

### 4.3 Discussion

Upgraded lake related fields were tested for 5 successive years to capture short climate deviations (one particular year can be slightly warmer or colder than the average one), yet not to deal with major water distribution and/or inland water body depth changes that can occur in 10-year period and would have to be taken into account comparing against in-situ measurements. Current verification included only 27 lake sites over Finland which are freely available online, it would be useful to compare model results with measurements from the other countries and climate zones as IFS is a global forecasting system. For that, data from remote sensing could be beneficial, although they contain gaps and cloud contamination problems. Experiments run with model cycle CY43R3. New cloud physics in cycle recent upgrade lead to improvements in calculating 2-meter temperature and humidity, and precipitations (especially near coasts) which can lead to better agreement of the modelled and in-situ lake surface temperature and ice formation/disappearance dates respectively. Verification of operational and upgraded  $D_{water}$  for 27 Finish lakes resulted in significant reduction of errors, though it is still possible to upgrade  $D_{water}$  with new measurements and test new aggregating techniques in order to better represent initial high-resolution lake depth field. Verification in terms of modelled and in-situ lake surface temperature for the whole 5-year period showed general error reduction for 12-14 %. Seasonal verification also showed an overall error reduction although amount of data during 5-year period was not sufficient to have always statistically significant results. Seasonal verification also revealed the cold bias in the forcing and situation, when changes in the  $D_{water}$  parameter compensate this bias. For more detailed ice formation/disappearance date verification and explanation of the results, first and permanent ice formation/disappearance dates in a far central part of the lake (compatible with IFS model high resolution 9 km grid), are needed.

### 5 Conclusion

Earth System Models used for weather and climate monitoring and forecasting applications, including the IFS, need lower boundary conditions (skin temperature, surface fluxes of heat, moisture and momentum) to calculate the evolution of dynamic processes in the atmosphere and to produce a usable weather forecast. To compute them sufficiently accurately, an up-to-date ecosystem map is needed. Nowadays human activities influence Earth's surface and adapt it to societal needs on relatively short timescales, for example to construct new artificial lakes to supply people and/or crops in arid places with water, or to

create new islands to build homes. Inland water bodies can influence local climate by over 1 K (Balsamo et al., 2012), and the influence on local weather can be even more pronounced: correct lake surface state (ice/no ice) in winter conditions can lead to up to 10 K difference in 2-meter temperature (Eerola et al., 2014). Major changes in water bodies can occur in just a few years, which means that ecosystem-based maps used for numerical weather prediction need to be updated regularly. The most frequent updates of ecosystem maps come from satellite products, which are becoming available at increasingly high resolution. The main obstacle to using these maps in the model without any modification is that they do not distinguish between ocean and inland water. An automatic algorithm to separate ocean and inland water has been presented in this article. This new algorithm may be used by anyone in the environmental modelling community. This algorithm can also be used to distinguish between rivers and lakes, but it will require more testing and tuning of parameters before it can be applied globally. For the IFS, the most reliable data sources are used to ensure the best possible representation of the global inland water distribution. The continuous water depth field was updated with new ocean and lake bathymetries, new versions of the lake database, and indirect depth estimates based on the geological origin of lakes. Verification of the depth field for 27 Finish lake sites showed significant lake depth error reductions in the GLDBv3 dataset compared to GLDBv1. Verification in terms of the lake water surface temperature showed an overall error reduction of between 12 and 14 %. Seasonal lake water surface temperature verification, according to lake mixing periods (spring mixing, summer stratification and autumn mixing) showed an overall error reduction, although forcing in the numerical experiments was too cold, and it may be that this error was compensated for by lake depth parameter errors. Winter season verification based on an ice formation/disappearance date comparison was also influenced by the problem of too cold forcing and compensating errors. A more detailed ice formation/disappearance date verification and further experiments are clearly needed. The first and permanent ice formation/disappearance dates in far central part of the lake (compatible with IFS model high resolution 9 km grid) would be very helpful for verification. Lake depth and lake cover variability over time are recognised as key aspects for future developments. The present study aims to document the methodology and to provide experimental evidence of its benefits, and it will be used to characterise temporal variations (e.g. in annual or monthly updates).

### **Data availability**

SYKE datasets are freely available online at <http://rajapinnat.ymparisto.fi/api/Hydrologiarajapinta/1.0/>. ERA5 reanalysis is freely available online at <http://www.ecmwf.int>. Source code of lake model FLake is freely available online at <http://www.lakemodel.net>. Raw output of the IFS model at 9 km resolution for 27 verification sites is available from the corresponding author by request.



## Author contribution

All authors were participating in lake field update (methodology, data generation), IFS model experiment set up, analysis of the in-situ and model result comparison. Margarita Choulga wrote the manuscript with contributions from all other authors.

## Competing interests

- 5 The authors declare that they have no conflict of interest.

## Acknowledgements

The authors thank Matti Horttanainen (FMI) for providing in-situ  $T_{ML}$  and ice formation/disappearance dates from the SYKE archive; Laura Rontu (FMI) for useful discussions and help with data handling; Emily Gleeson (Met Eireann), Peter Janssen (ECMWF) and Joe McNorton (ECMWF) for editorial help and assistance; Anabel Bowen (ECMWF) for invaluable help with  
10 figure design; and anonymous reviewer 1 for useful comments. Margarita Choulga was funded by the Earth2Observe project which received funding from the European Union's Seventh Programme for research, technological development and demonstration under grant agreement No 603608, and by CO<sub>2</sub> Human Emission (CHE) project which received funding from the European Union's Horizon 2020 research and innovation programme under grant agreement No 776186.

## References

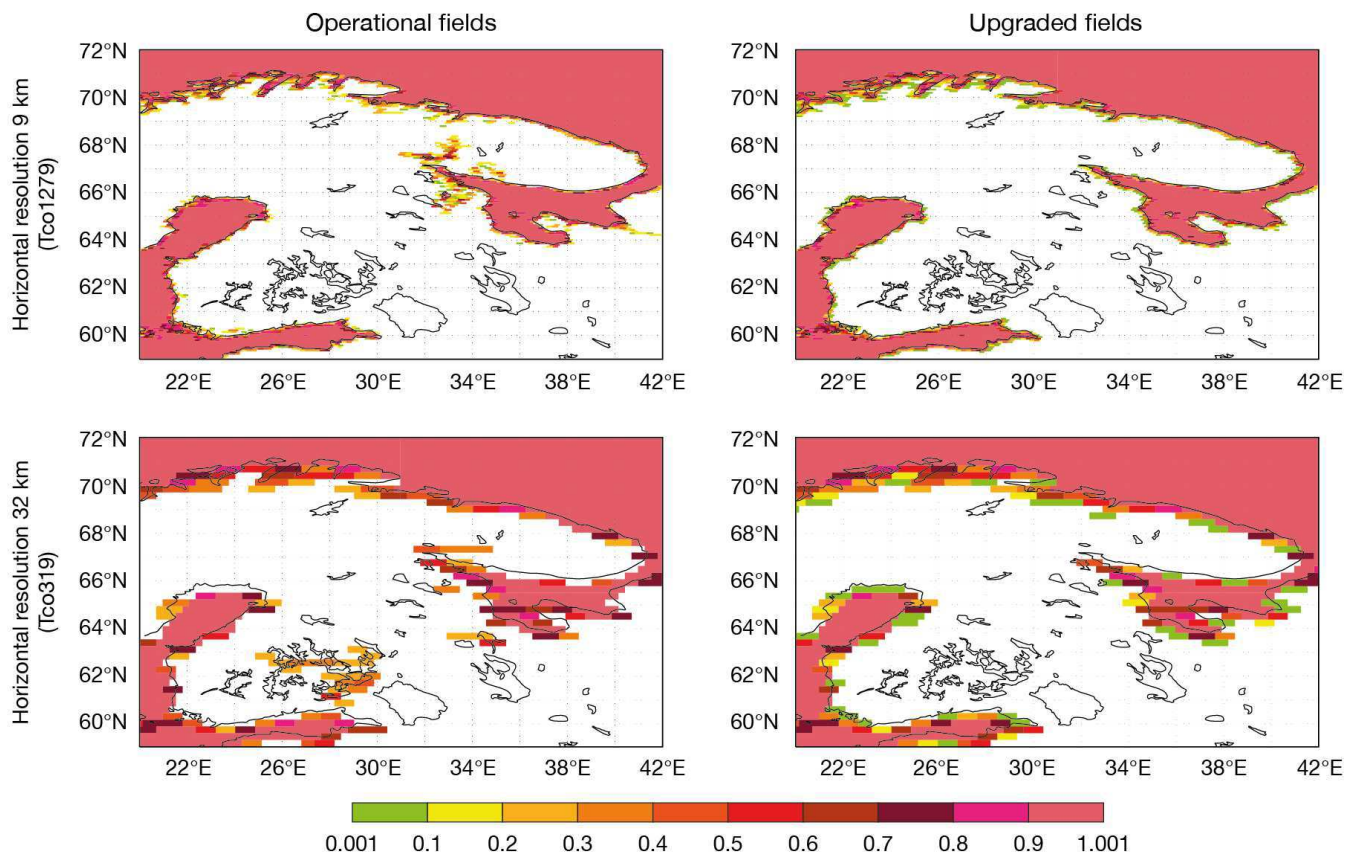
- 15 Amante, C., and Eakins, B.W.: ETOPO1 1 Arc-Minute Global Relief Model: Procedures, Data Sources and Analysis, NOAA Technical Memorandum NESDIS NGDC-24, National Geophysical Data Center, NOAA, 1-19, doi:10.7289/V5C8276M, 2009.
- Arino, O., Ramos Perez, J. J., Kalogirou, V., Bontemps, S., Defourny, P., and Van Bogaert, E.: Global Land Cover Map for 2009 (GlobCover 2009), European Space Agency (ESA) & Universite catholique de Louvain (UCL), PANGAEA,  
20 doi:10.1594/PANGAEA.787668, 2012.
- Balsamo, G., Salgado, R., Dutra, E., Boussetta, S., Stockdale, T., and Potes, M.: On the contribution of lakes in predicting near-surface temperature in a global weather forecasting model, *Tellus A: Dynamic Meteorology and Oceanography*, 64:1, doi:10.3402/tellusa.v64i0.15829, 2012.
- Bartholome, E., and Belward, A. S.: GLC2000: a new approach to global land cover mapping from Earth observation data,  
25 *International Journal of Remote Sensing*, 26:9, 1959-1977, doi:10.1080/01431160412331291297, 2005.
- Bontemps, S., Defourny, P., Van Bogaert, E., Arino, O., Kalogirou, V., and Ramos Perez, J.: GLOBCOVER 2009 Product description and validation report, UCLouvain & ESA Team, link to ESA DUE GlobCover website: [http://due.esrin.esa.int/page\\_globcover.php](http://due.esrin.esa.int/page_globcover.php), 2011.

- Borre, L.: 117 Million Lakes found in Latest World Count, National Geographic Blog Changing Planet, <https://blog.nationalgeographic.org/2014/09/15/117-million-lakes-found-in-latest-world-count/>, 2014.
- Champeaux, J.-L., Han, K.-S., Arcos, D., Habets, F., and Masson, V.: Ecoclimap2: A new approach at global and European scale for ecosystems mapping and associated surface parameters database using SPOT/VEGETATION data - First results, International Geoscience and Remote Sensing Symposium, 3, 2046-2049, doi:10.1109/IGARSS.2004.1370752, 2004.
- Choulga, M., and Kourzeneva, E.: Verification of indirect estimates for the lake depth database for the purpose of numerical weather prediction and climate modelling, Proceedings of the Russian State Hydrometeorological University: A theoretical research journal, 37, 120-142, 2014.
- Choulga, M., Kourzeneva, E., Zakharova, E., and Doganovsky, A.: Estimation of the mean depth of boreal lakes for use in numerical weather prediction and climate modelling, Tellus A., 66, 21295, doi:10.3402/tellusa.v66.21295, 2014.
- CLC2006 technical guidelines, European Environment Agency, 1-66, doi:10.2800/12134, 2007.
- Copernicus Climate Change Service (C3S): ERA5: Fifth generation of ECMWF atmospheric reanalyses of the global climate. Copernicus Climate Change Service Climate Data Store (CDS), <https://cds.climate.copernicus.eu/cdsapp#!/home>, 2017.
- Dutra, E., Stepanenko, V. M., Balsamo, G., Viterbo, P., Miranda, P. M. A., Mironov, D., and Schär, C.: An offline study of the impact of lakes on the performance of the ECMWF surface scheme, Boreal Env. Res., 15, 100-112, 2010.
- Duhovny, V., Avakyan, I., Zholdasova, I., Mirabdullaev, I., Muminov, S., Roshenko, E., Ruziev, I., Ruziev, M., Stulina, G., and Sorokin, A.: Aral Sea and Its Surrounding, UNESCO Office in Uzbekistan and Baktaria Press, 1–120, <https://unesdoc.unesco.org/ark:/48223/pf0000260741>, 2017.
- Eerola, K., Rontu, L., Kourzeneva, E., and Shcherbak, E.: A study on effects of lake temperature and ice cover in HIRLAM, Boreal Env. Res., 15, 130–142, 2010.
- Eerola, K., Rontu, L., Kourzeneva, E., Kheyrollah Pour, H., and Duguay, C.: Impact of partly ice-free Lake Ladoga on temperature and cloudiness in an anticyclonic winter situation – a case study using a limited area model, Tellus A: Dynamic Meteorology and Oceanography, 66:1, doi:10.3402/tellusa.v66.23929, 2014.
- The Kazakh Miracle: Recovery of the North Aral Sea, Environment News Service (ENS), <http://www.ens-newswire.com/ens/aug2008/2008-08-01-01.asp>, 2008.
- Glantz, S. A.: Primer of Biostatistics, Seventh Edition, McGraw-Hill Education, 1-320, 2012.
- Haiden, T., Sandu, I., Balsamo, G., Arduini, G., and Beljaars, A.: Addressing biases in near-surface forecasts, ECMWF Newsletter, 157, 2018.
- Hjelmfelt, M. R.: Numerical study of the influence of environmental conditions on lake-effect snowstorms over Lake Michigan, Monthly weather review, 118(1), 138-150, 1990.
- IFS Documentation CY43R3 - Part IV: Physical processes, ECMWF, 4, 2017.
- Kheyrollah Pour, H., Choulga, M., Eerola, K., Kourzeneva, E., Rontu, L., Pan, F., and Duguay, C. R.: Towards improved objective analysis of lake surface water temperature in a NWP model: preliminary assessment of statistical properties, Tellus A: Dynamic Meteorology and Oceanography, 69:1, doi:10.1080/16000870.2017.1313025, 2017.

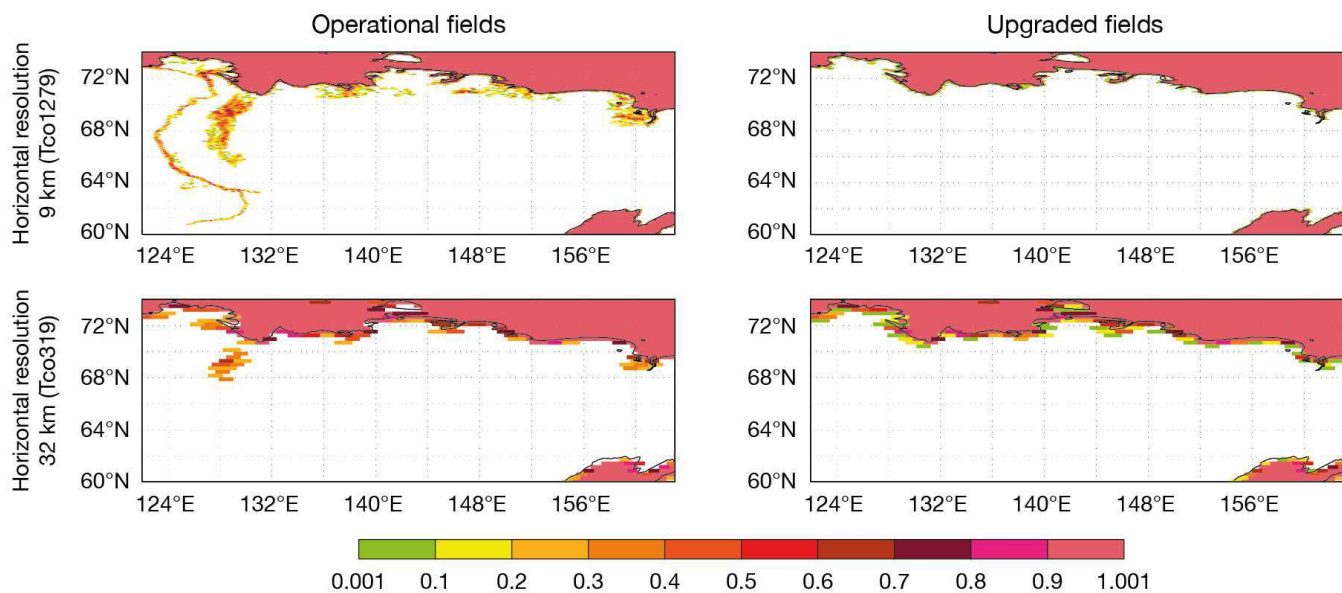
- Kourzeneva E.: External data for lake parameterization in Numerical Weather Prediction and climate modelling, *Boreal Env. Res.*, 15, 165–177, 2010.
- Kourzeneva, E., Asensio, H., Martin, E., and Faroux, S.: Global gridded dataset of lake coverage and lake depth for use in numerical weather prediction and climate modelling, *Tellus A: Dynamic Meteorology and Oceanography*, 64:1, doi:10.3402/tellusa.v64i0.15640, 2012.
- Kourzeneva, E.: Assimilation of lake water surface temperature observations using an extended Kalman filter, *Tellus A: Dynamic Meteorology and Oceanography*, 66:1, doi:10.3402/tellusa.v66.21510, 2014.
- Lewis Jr., W. M.: A Revised Classification of Lakes Based on Mixing, *Canadian Journal of Fisheries and Aquatic Sciences*, 40, 10, 1779-1787, doi:10.1139/f83-207, 1983.
- Liu, H., Jezek, K. C., Li, B., and Zhao, Z.: Radarsat Antarctic Mapping Project Digital Elevation Model, Version 2, 1 km subset, Boulder, Colorado USA, NASA National Snow and Ice Data Center Distributed Active Archive Center, doi:https://doi.org/10.5067/8JKNEW6BFRVD, 2015.
- Manrique-Suñén, A., A. Nordbo, G. Balsamo, A. Beljaars, and I. Mammarella, 2013: Representing Land Surface Heterogeneity: Offline Analysis of the Tiling Method. *J. Hydrometeor.*, 14, 850–867, https://doi.org/10.1175/JHM-D-12-0108.1
- Mironov, D.V., Terzhevik, A., Beyrich, F., Golosov, S., Haise, E., Kirillin, G., Kourzeneva, E., Ritter, B., and Schneider, N.: Parameterization of lakes in numerical weather prediction: description of a lake model, single-column tests, and implementation into the limited-area NWP model, *Bound. Lay. Meteor., Spec. issue.*, 1-56, 2006.
- Mironov, D.: Parameterization of lakes in numerical weather prediction. Description of a lake model, COSMO Technical Report, 11, 1-41, 2008.
- Mironov, D., Rontu, L., Kourzenev, E., and Terzhevik, A.: Towards improved representation of lakes in numerical weather prediction and climate models: Introduction to the special issue of *Boreal Environment Research*, *Boreal Environment Research*, 15, 97-99, 2010.
- Mironov, D., Heise, E., Kourzeneva, E., Ritter, B., Schneider, N., and Terzhevik, A.: Implementation of the lake parameterisation scheme FLake into the numerical weather prediction model COSMO, *Boreal Env. Res.*, 15, 218–230, 2010.
- Mironov, D., Ritter, B., Schulz, J.-P., Buchhold, M., Lange, M., and Machulskaya, E.: Parameterization of sea and lake ice in numerical weather prediction models of the German Weather Service, *Tellus A.*, 64, doi:10.3402/tellusa.v64i0.17330, 2012.
- Notaro, M., Holman, K., Zarrin, A., Fluck, E., Vavrus, S., and Bennington, V.: Influence of the Laurentian Great Lakes on Regional Climate, *Journal of Climate*, 26(3), 789-804, 2013.
- Pekel, J.-F., Cottam, A., Gorelick, N., and Belward, A. S.: High-resolution mapping of global surface water and its long-term changes, *Nature*, 540, 418-422, doi:10.1038/nature20584, 2016.
- Quaife, T., and Cripps, E.: Bayesian Analysis of Uncertainty in the GlobCover 2009 Land Cover Product at Climate Model Grid Scale, *Remote Sens.*, 8, 314, 2016.

- Rontu, L., Eerola, K., Kourzeneva, E., and Vehvilainen, B.: Data assimilation and parametrisation of lakes in HIRLAM, *Tellus A.*, 64, 17611, doi:10.3402/tellusa.v64i0.17611, 2012.
- Samuelsson, P., Kourzeneva, E., and Mironov, D.: The impact of lakes on the European climate as simulated by a regional climate model, *Boreal Environment Research*, 15, 113-129, 2010.
- 5 Stepanenko, V., Machulskaya, E., Glagolev, M., and Lykossov, V.: Numerical Modeling of Methane Emissions from Lakes in the Permafrost Zone, *Izvestiya Atmospheric and Oceanic Physics*, 47, 252-264, doi:10.1134/S0001433811020113, 2012.
- Stepanenko, V., Mammarella, I., Ojala, A., Miettinen, H., Lykosov, V., and Vesala, T.: LAKE 2.0: a model for temperature, methane, carbon dioxide and oxygen dynamics in lakes, *Geoscientific Model Development*, 9, 5, doi:10.5194/gmd-9-1977-2016, 2016.
- 10 SYKE: Data and Information Centre, official website [http://www.syke.fi/en-US/SYKE\\_Info/Organisation/Data\\_and\\_Information\\_Centre\(3037\)](http://www.syke.fi/en-US/SYKE_Info/Organisation/Data_and_Information_Centre(3037)), 2017.
- Thiery, W., Davin, E. L., Panitz, H.-J., Demuzere, M., Lhermitte, S., and Lipzig, N.: The Impact of the African Great Lakes on the Regional Climate, *Journal of Climate*, 28, 4061-4085, doi:10.1175/JCLI-D-14-00565.1, 2015.
- Thiery, W., Gudmundsson, L., Bedka, K., Semazzi, F. H. M., Lhermitte, S., Willems, P., Van Lipzig, N. P. M., and Seneviratne, S. I.: Early warnings of hazardous thunderstorms over Lake Victoria, *Environmental Research Letters*, 12, 7, doi:10.1088/1748-9326/aa7521, 2017.
- 15 Tranvik, L. J., Downing, J., Cotner, J., Loiselle, S., Striegl, R., Ballatore, T. J., Dillon, P., Finlay, K., Fortino, K., Knoll, L. B., Kortelainen, P. L., Kutser, T., Larsen, S., Laurion, I., Leech, D., McCallister, S., Mcknight, D., Melack, J. M., Overholt, E., and Weyhenmeyer, G. A.: Lakes and reservoirs as regulators of carbon cycling and climate, *Limnology and Oceanography*, 54, 2298-2314, doi:10.4319/lo.2009.54.6\_part\_2.2298, 2009.
- 20 Unden, P., Rontu, L., Jarvinen, H., Lynch, P., Calvo Sánchez, F. J., Cats, G., Cuxart, J., Eerola, K., Fortelius, C., García-Moya, J. A., Jones, C., Lenderink, G., McDonald, A., McGrath, A., Navascués, R. B., Woetman-Nielsen, N., Odegaard, V., Rodríguez Camino, E., Rummukainen, M., Room, R., Sattler, K., Hansen Sass, B., Wichers Schreur, B., Sigg, R., and Tijm, A.: HIRLAM-5 scientific documentation, Swedish Meteorological and Hydrological Institute, 25 [https://www.researchgate.net/publication/278962772\\_HIRLAM-5\\_scientific\\_documentation](https://www.researchgate.net/publication/278962772_HIRLAM-5_scientific_documentation), 2002.
- Vavrus, S., Notaro, M., and Zarrin, A.: The role of ice cover in heavy lake-effect snowstorms over the Great Lakes Basin as simulated by RegCM4, *Monthly weather review*, 141(1), 148-165, 2013.
- Verpoorter, C., Kutser, T., A. Seekell, D., and Tranvik, L.: A Global Inventory of Lakes Based on High-Resolution Satellite Imagery, *Geophysical Research Letters*, GRL, 6396-6402, doi:10.1002/2014GL060641, 2014.
- 30 Walter, K. M., Zimov, S. A., Chanton, J. P., Verbyla, D., and Chapin, F. S.: Methane bubbling from Siberian thaw lakes as a positive feedback to climate warming, *Nature*, 443, 71-75, 2006.
- Walter, K. M., Smith, L. C., and Chapin, F. S.: Methane bubbling from northern lakes: present and future contributions to the global methane budget, *Philosophical Transactions of the Royal Society A: Mathematical, Physical and Engineering Sciences*, 365, 1856, 1657-1676, doi:10.1098/rsta.2007.2036, 2007.

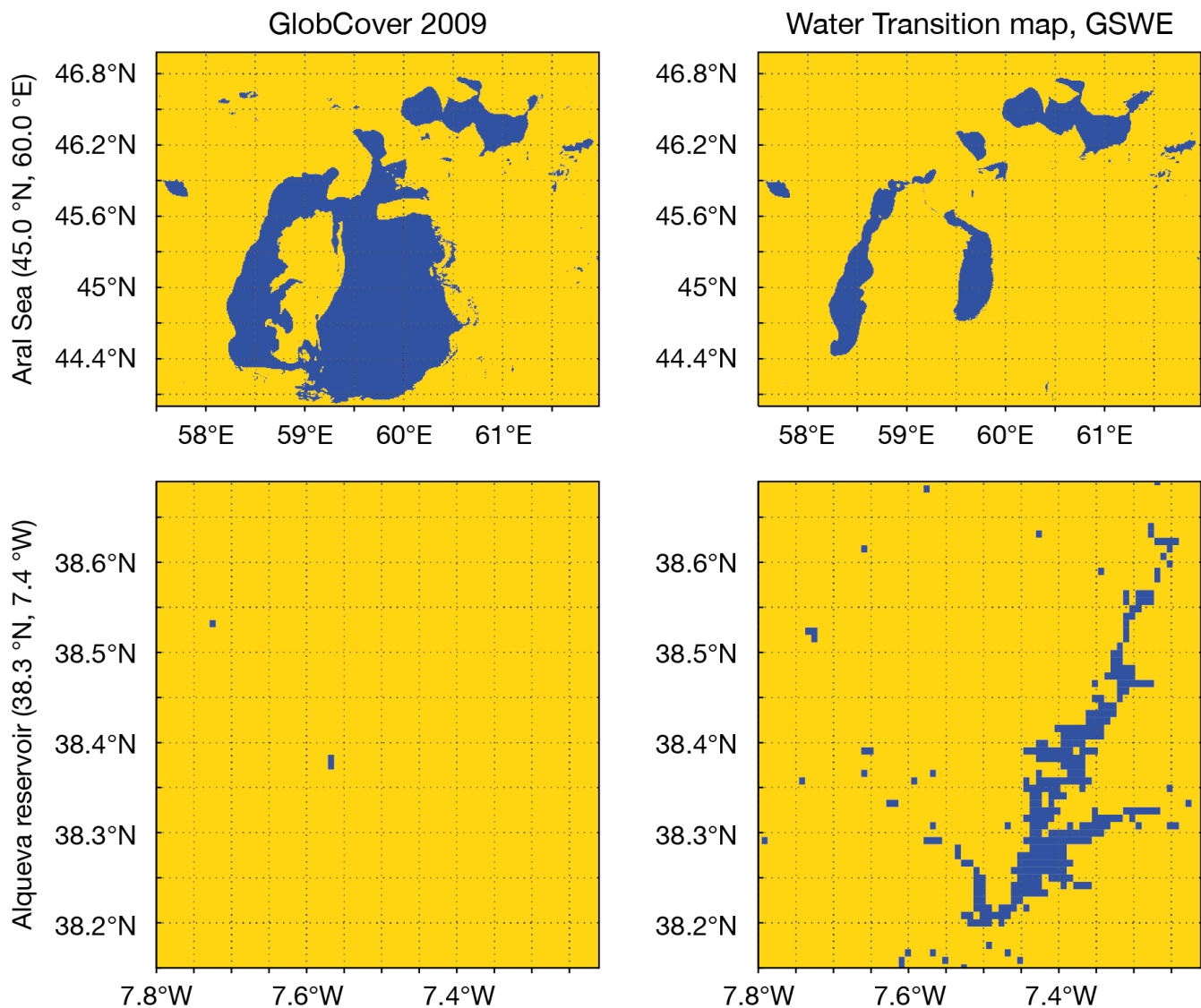
Weatherall, P., Marks, K. M., Jakobsson, M., Schmitt, T., Tani, S., Arndt, J. E., Rovere, M., Chayes, D., Ferrini, V., and Wigley, R.: A new digital bathymetric model of the world's oceans, *Earth and Space Science*, 2, 331-345, doi:10.1002/2015EA000107, 2015.



**Figure 1: Combination of operational and upgraded  $Fr_{land}$  and  $Fr_{lake}$  fields showing remaining ocean water over Finland and North-Western Russia (59-72 °N, 20-42 °E) at different horizontal resolutions; colours indicate ocean fraction in each grid-box: white - no ocean, pink - fully covered with ocean**

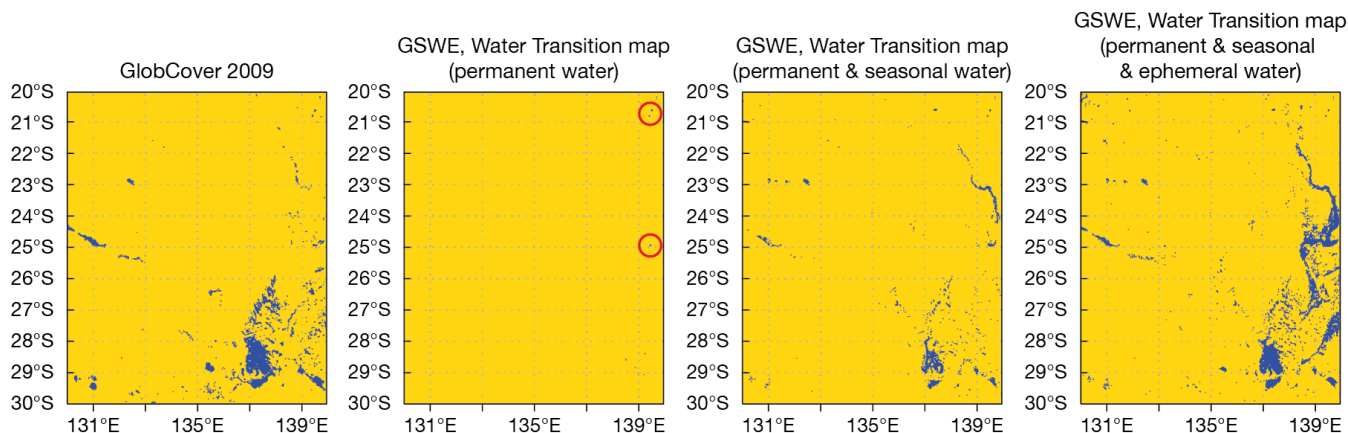


**Figure 2: Same as Fig. 1, but over North-Eastern Russia (60-74 °N, 122-163 °E)**

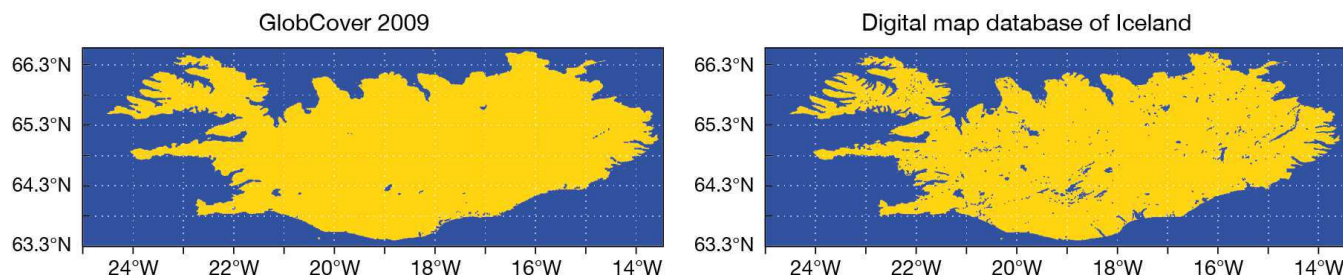


**Figure 3: Water distribution from GlobCover 2009 and GSWE Water Transitions map (only (1) Permanent, (2) New Permanent and (7) Seasonal to Permanent water classes are used); yellow colour indicates land, dark blue – water**

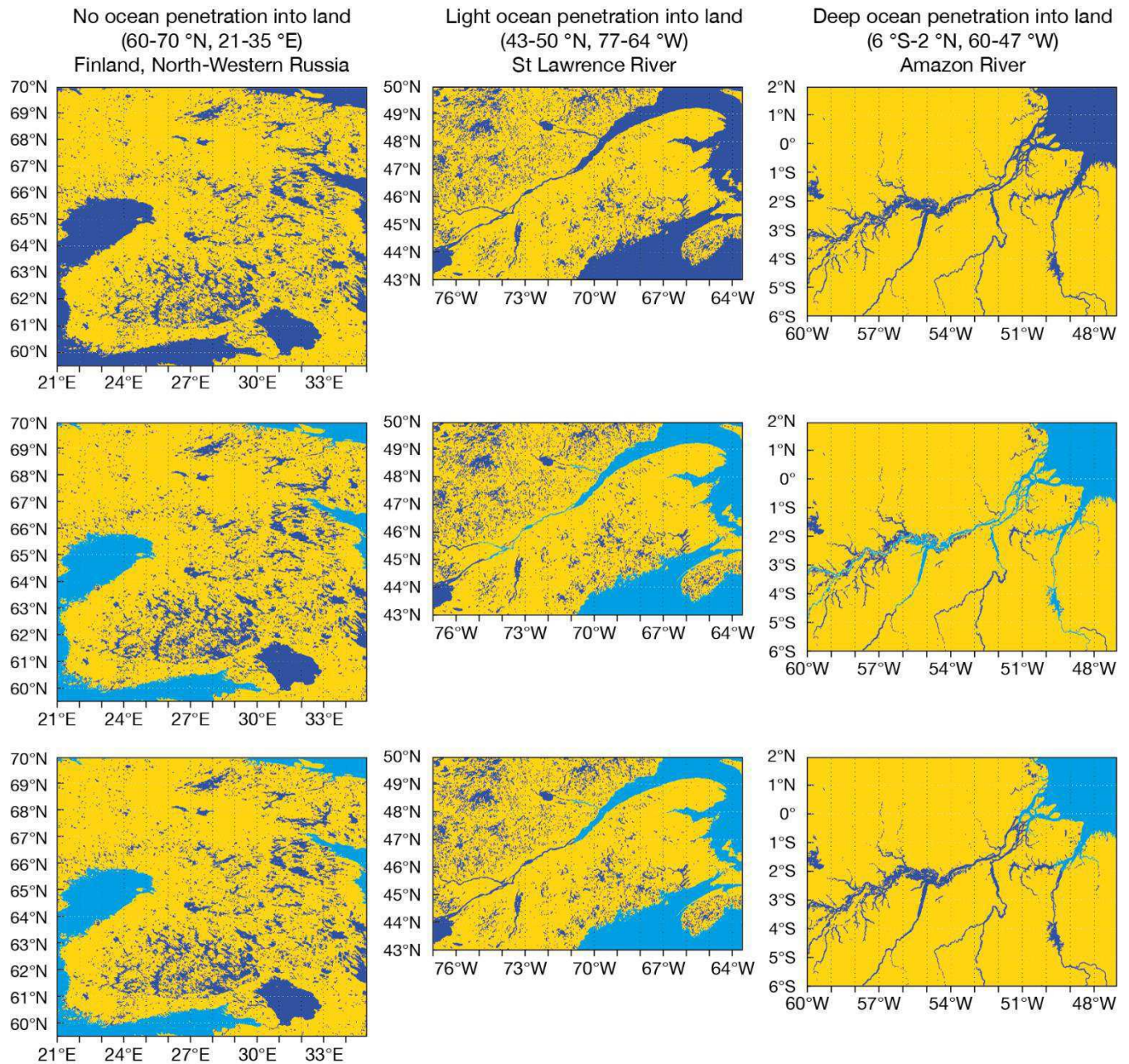




**Figure 4: Water distribution for Australian (20-30 °S, 130-140 °E) region using GlobCover 2009 and GSWE Water Transition map with different water classes combinations; permanent water stands for combination of (1) Permanent, (2) New Permanent and (7) Seasonal to Permanent water classes; seasonal water – (4) Seasonal, (5) New Seasonal and (8) Permanent to Seasonal; ephemeral water – (9) Ephemeral Permanent and (10) Ephemeral Seasonal; yellow colour indicates land, dark blue – water, red circles – location of lake Moondarra (upper circle) and lake Machattie (lower circle)**



**Figure 5: Water distribution for Iceland using GlobCover 2009 and Digital map database of Iceland; yellow colour indicates land, dark blue – water**



**Figure 6: Phases of LWM water separation for Finland and North-Western part of Russia (left column), St Lawrence River region (middle column), and Amazon River region (right column): no water separation (upper row), separation with flood-filling algorithm only ("basic" flooding, middle row) and separation with flood-filling and newly developed pixel-by-pixel water separation algorithms ("extra" flooding, lower row); yellow colour indicates land, dark blue – inland water (in middle and lower row) or total water (in upper row), light blue – ocean**

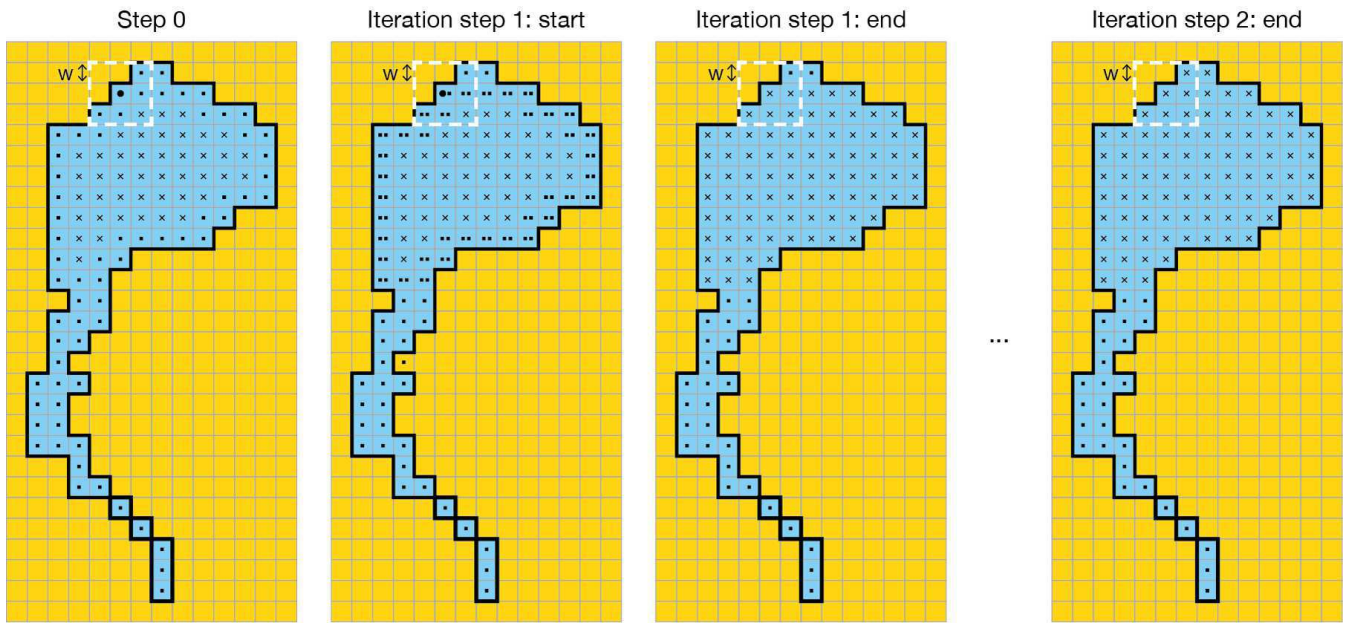
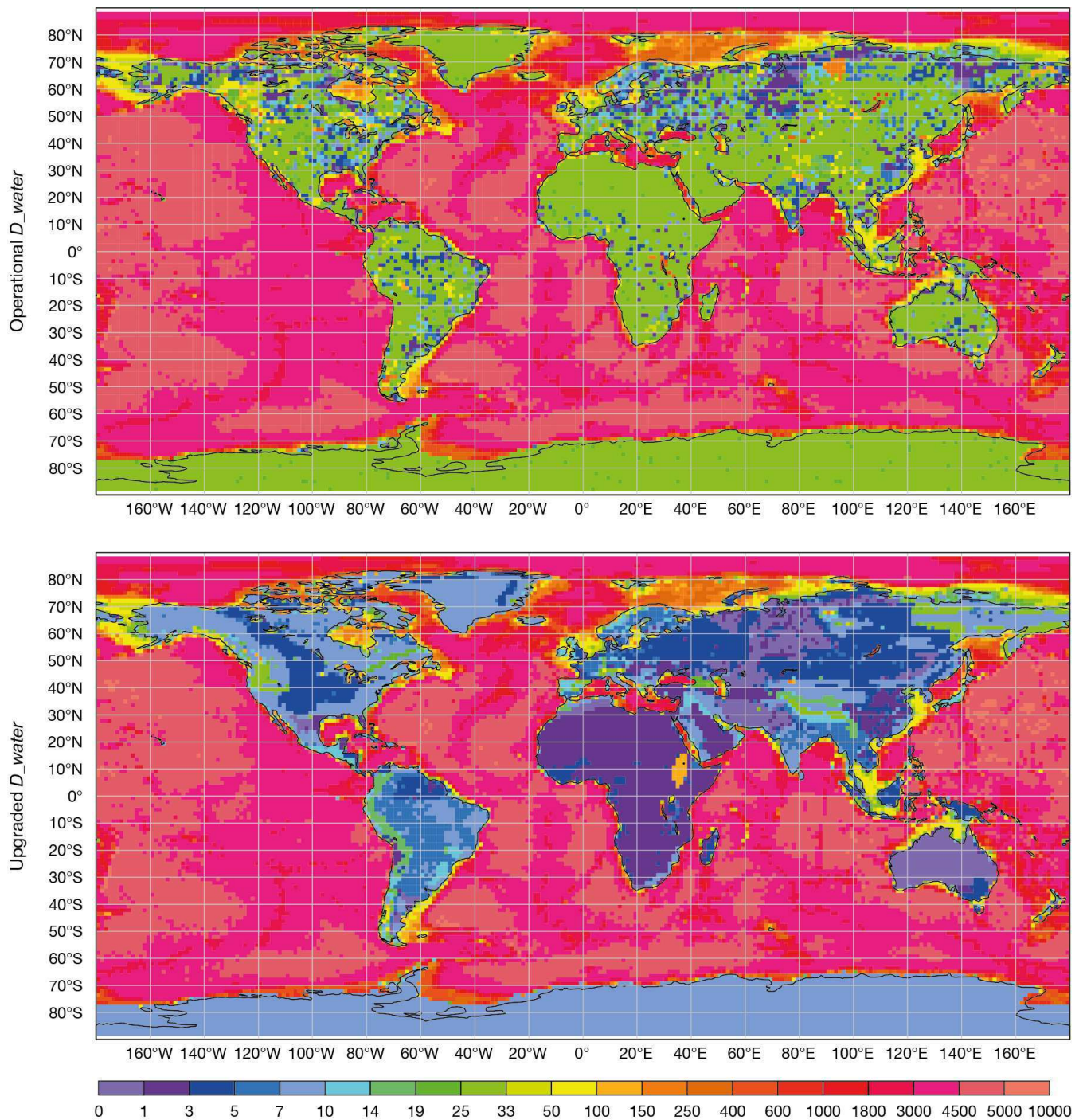
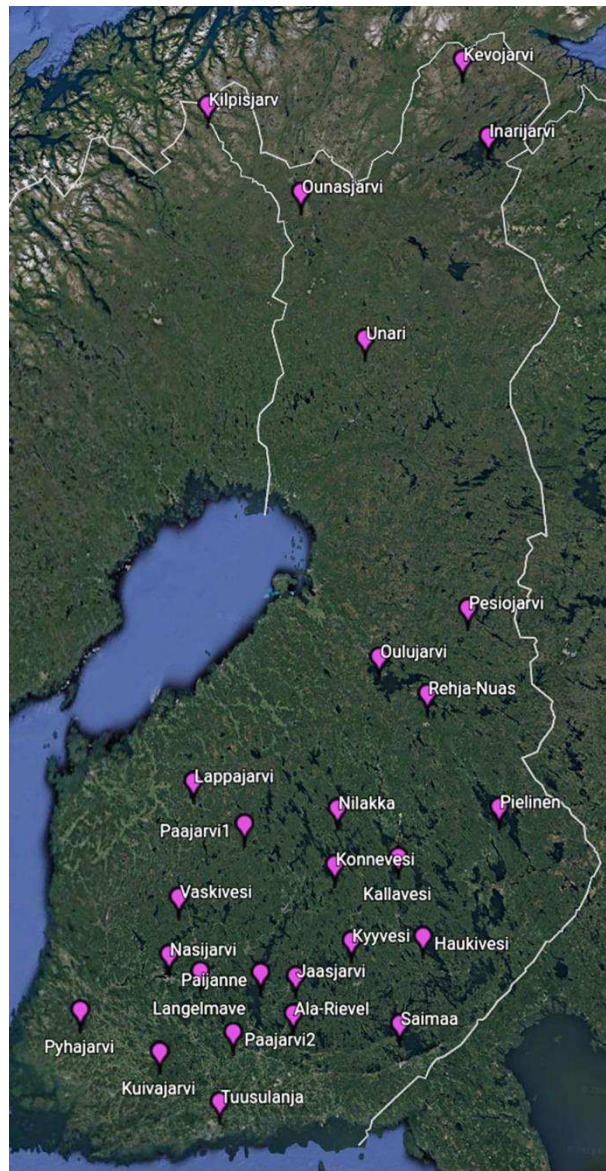


Figure 7: Steps of pixel-by-pixel water separation algorithm;  $L$  – number of iterations (here  $L=2$ ),  $W$  – window width (here  $W=1$ ), • – water grid-box has no water points in its checking window, x – water grid-box has only water points in its checking window, •• – water grid-box has at least one x in its checking window; yellow colour indicates land, dark blue – water



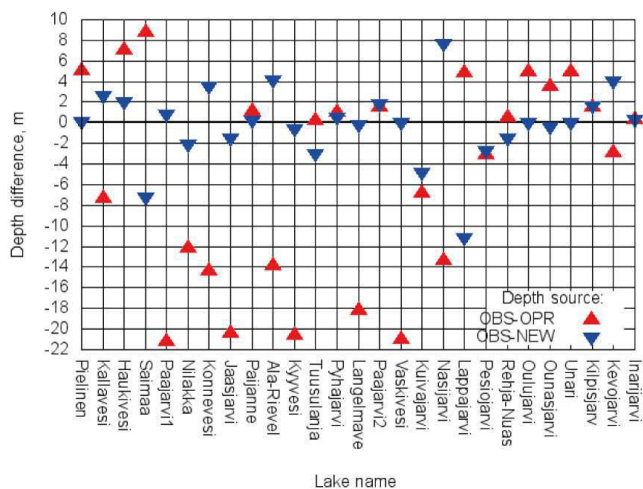
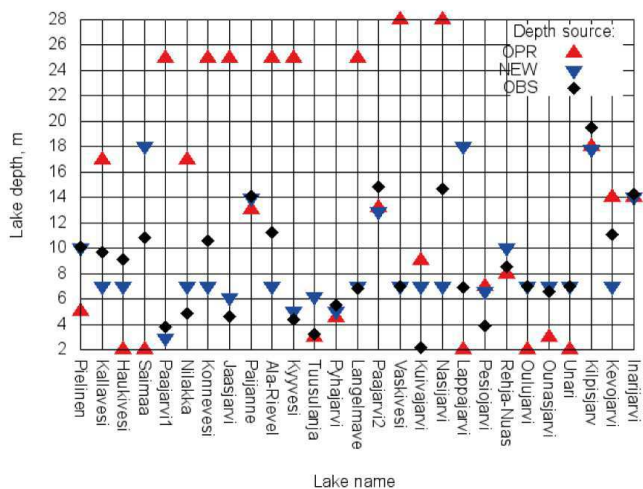


**Figure 8: Operational (upper panel) and new (lower panel) depth fields at 9 km horizontal resolution (Tco1279); depth values in meters**



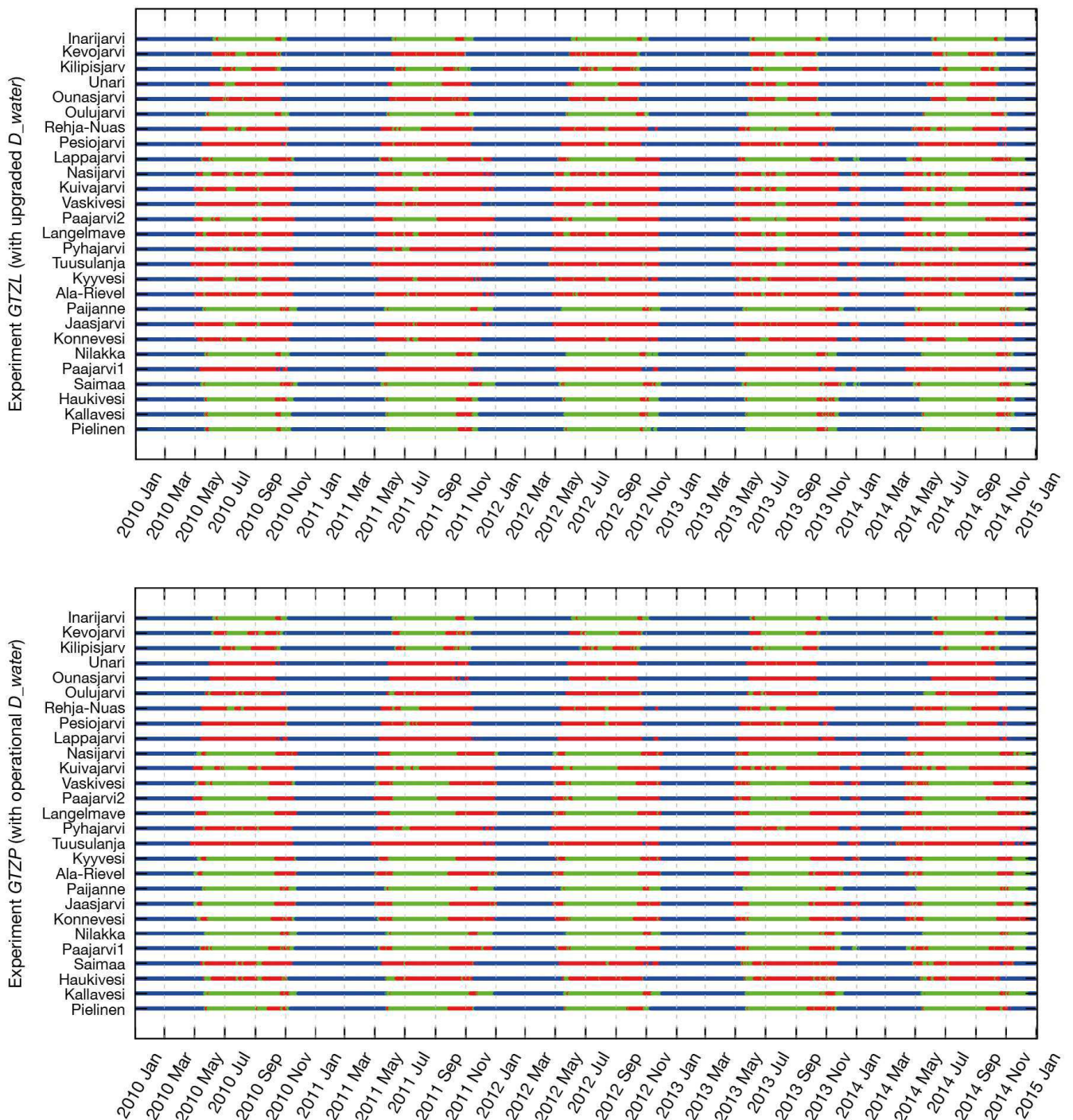
**Figure 9: Locations of 27 lake verification sites (Google Maps, maps.google.com, 2019)**





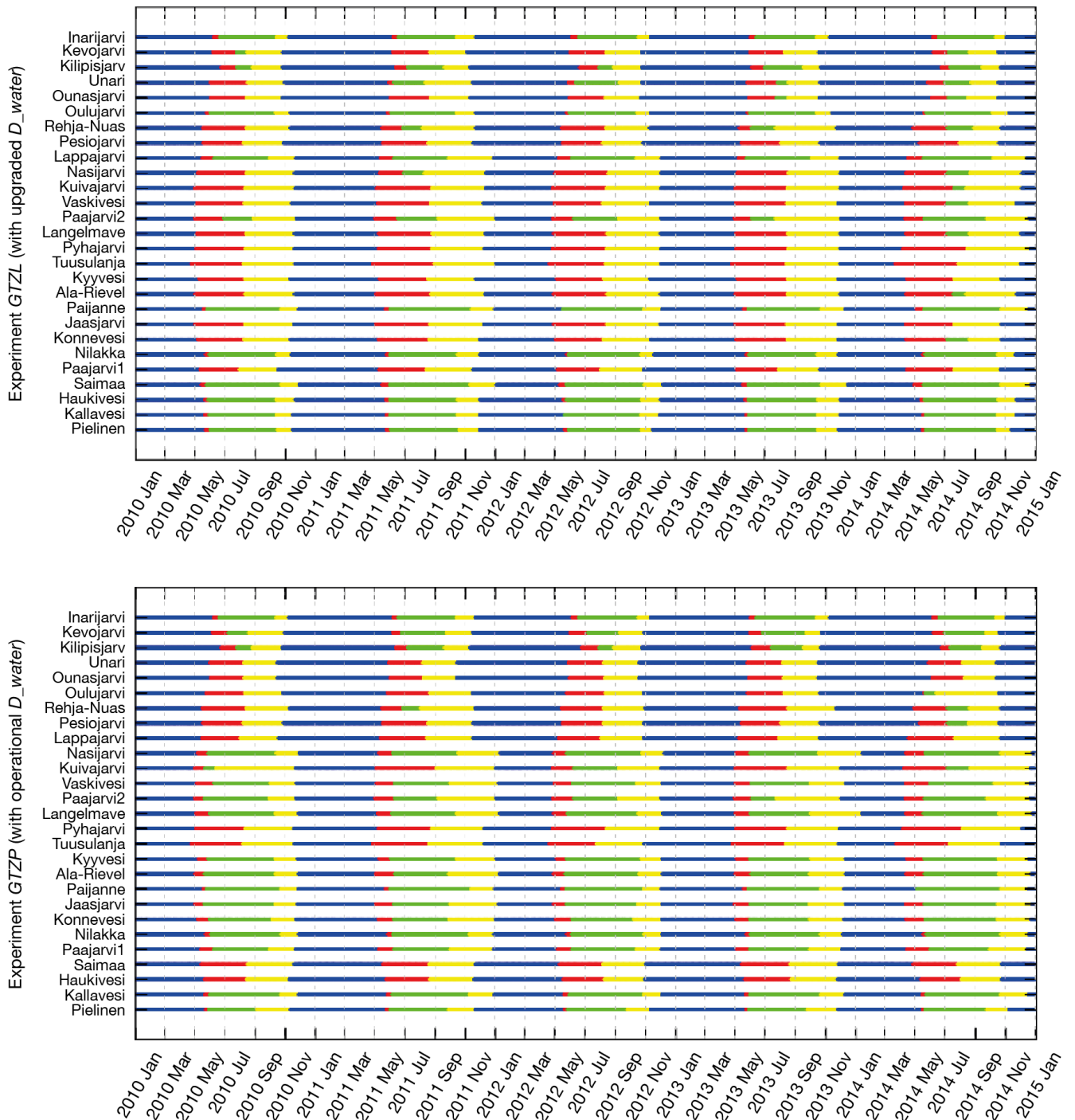
**Figure 10: Lake depths and their differences in meters for 27 verification sites; OBS – measured by SYKE, OPR – from ECMWF operational file and NEW – from upgraded file**



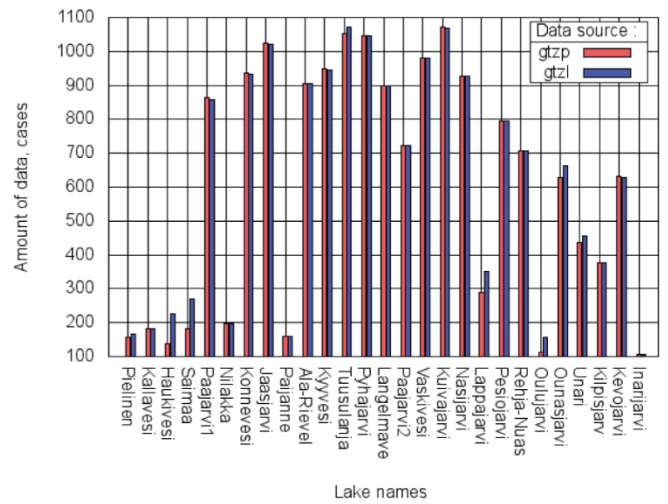
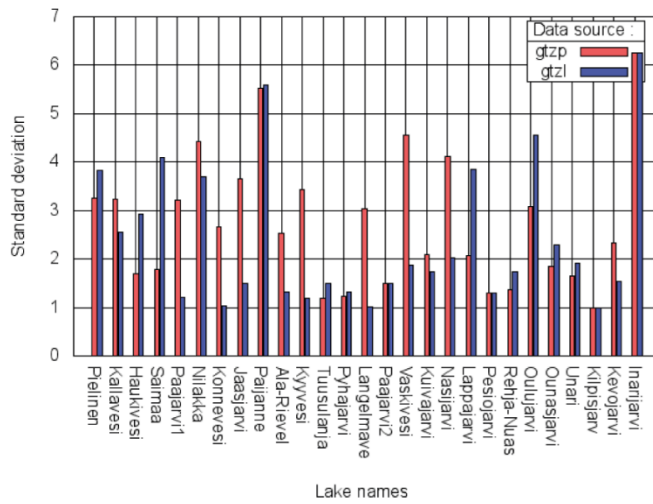
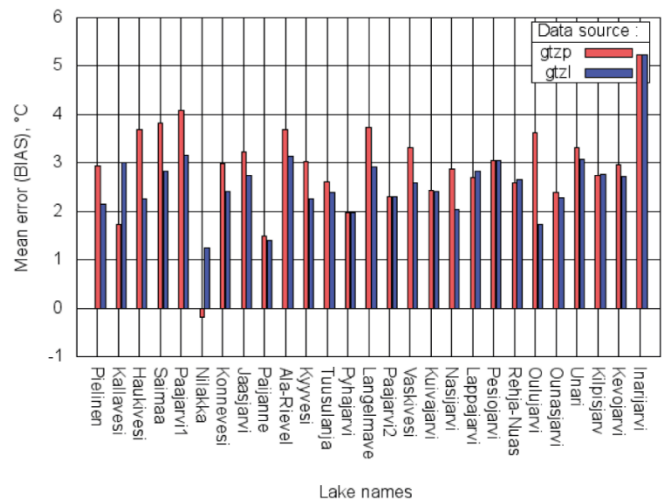
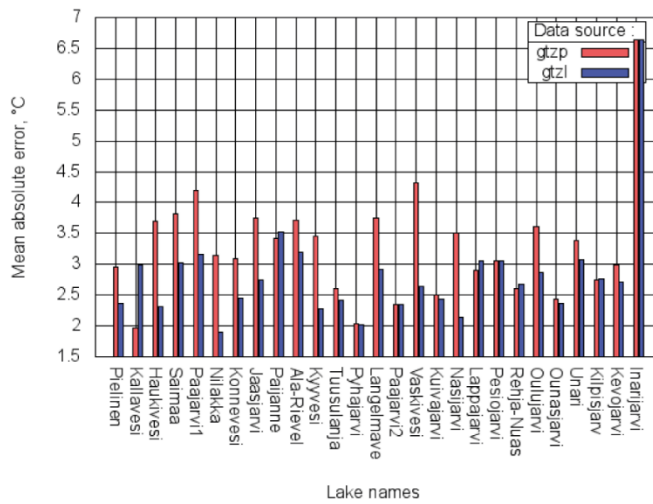


**Figure 12: Lake seasons for 2010-2014 for 27 verification sites based on operational (lower panel) and upgraded (upper panel)  $D_{water}$ ; blue – lake is ice covered, red – lake is mixed till the bottom, green – lake is stratified (ice-free and non-mixed, residual period)**





**Figure 13: Uninterrupted lake seasons for 2010-2014 for 27 verification sites based on operational (lower panel) and upgraded (upper panel)  $D_{water}$ ; blue - winter, red - spring mixing, green - stratified summer, yellow - autumn mixing period**



**Figure 14: MAE, BIAS, STD and amount of data calculated over all mixing periods 2010-2014 for 27 verification sites; GTZP (red) – experiment with operational *D<sub>water</sub>*, GTZL (blue) – with upgraded *D<sub>water</sub>***

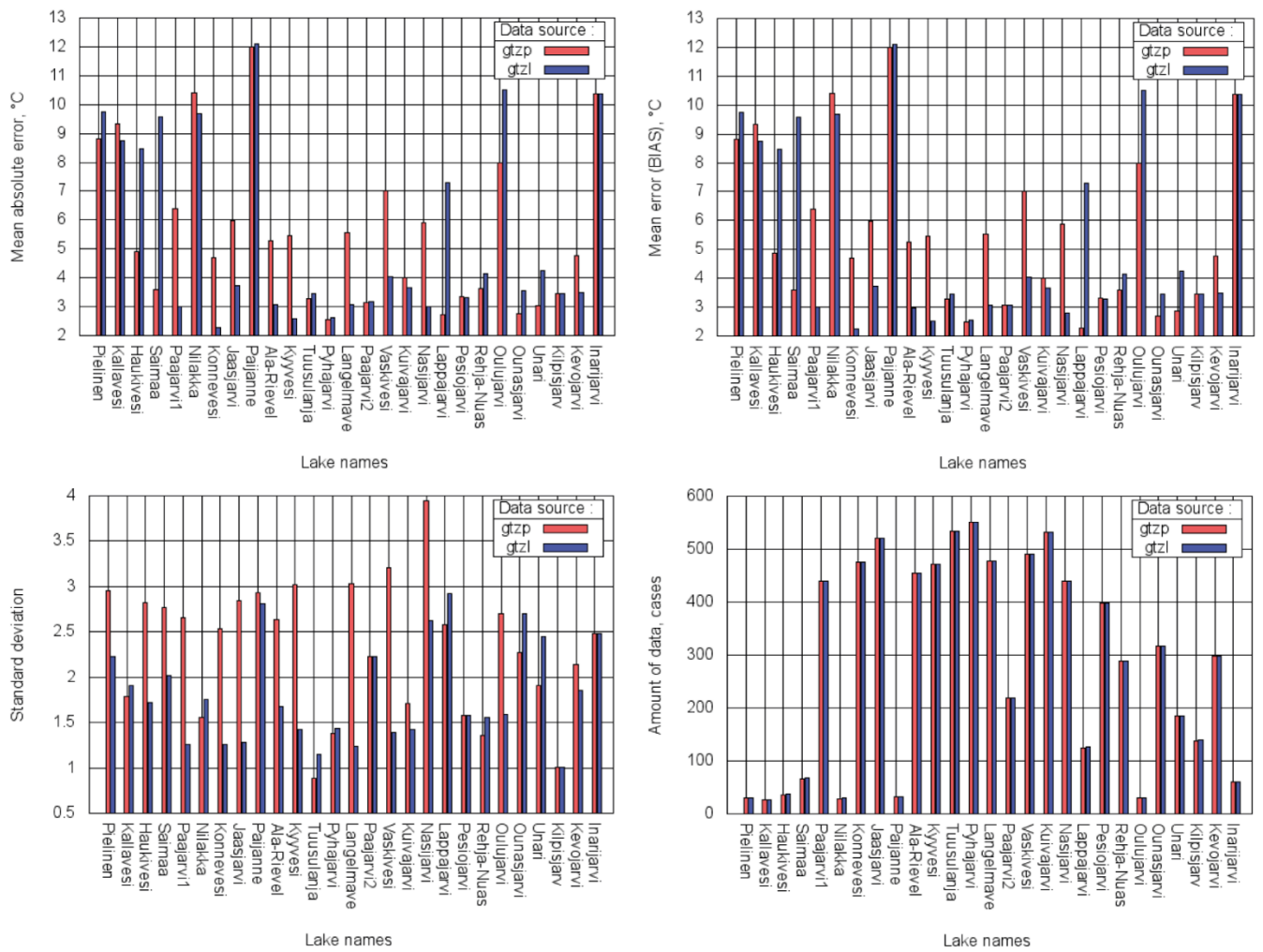
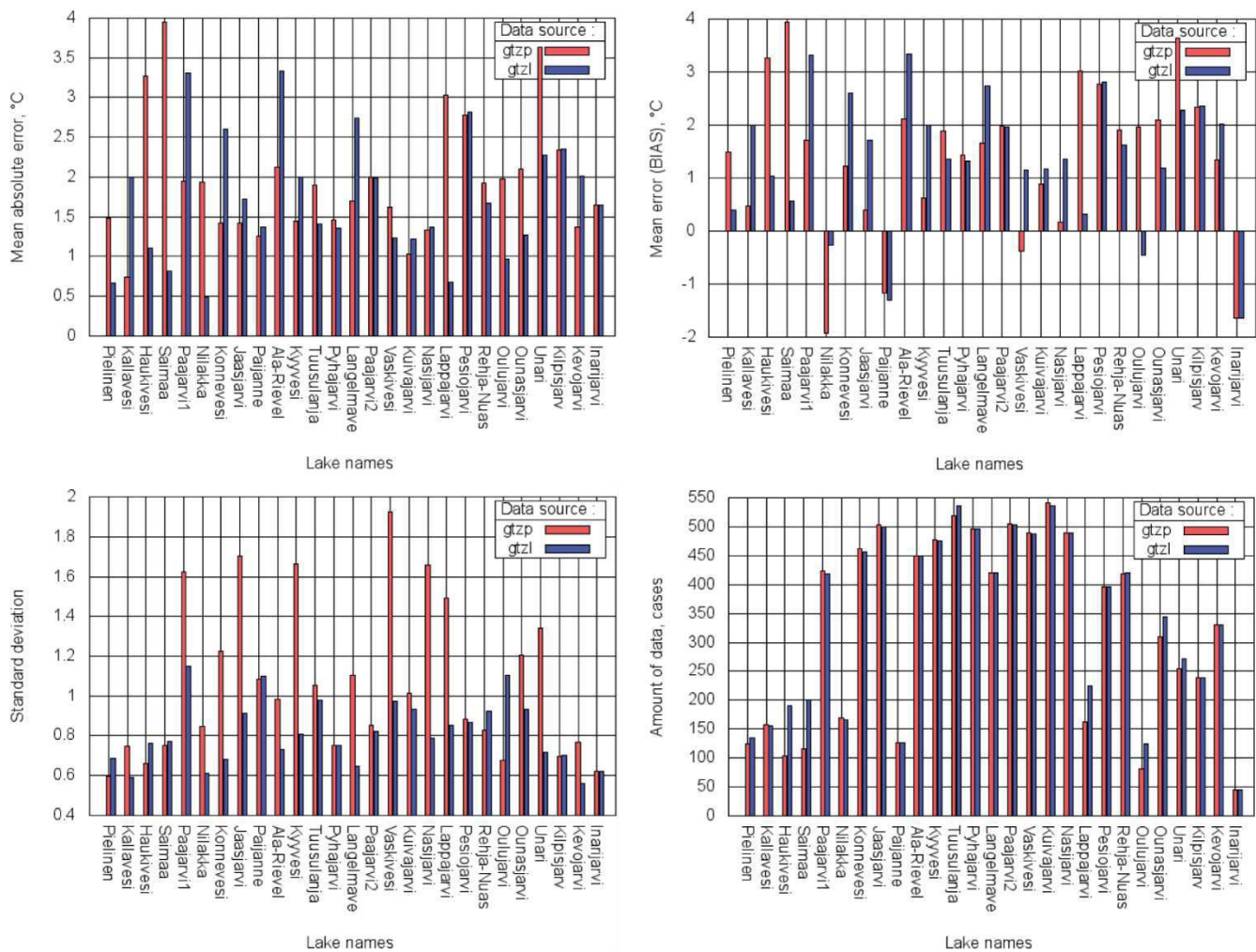


Figure 15: Same as Fig. 14, but calculated over all spring mixing periods



**Figure 16: Same as Fig. 14, but calculated over all autumn mixing periods**

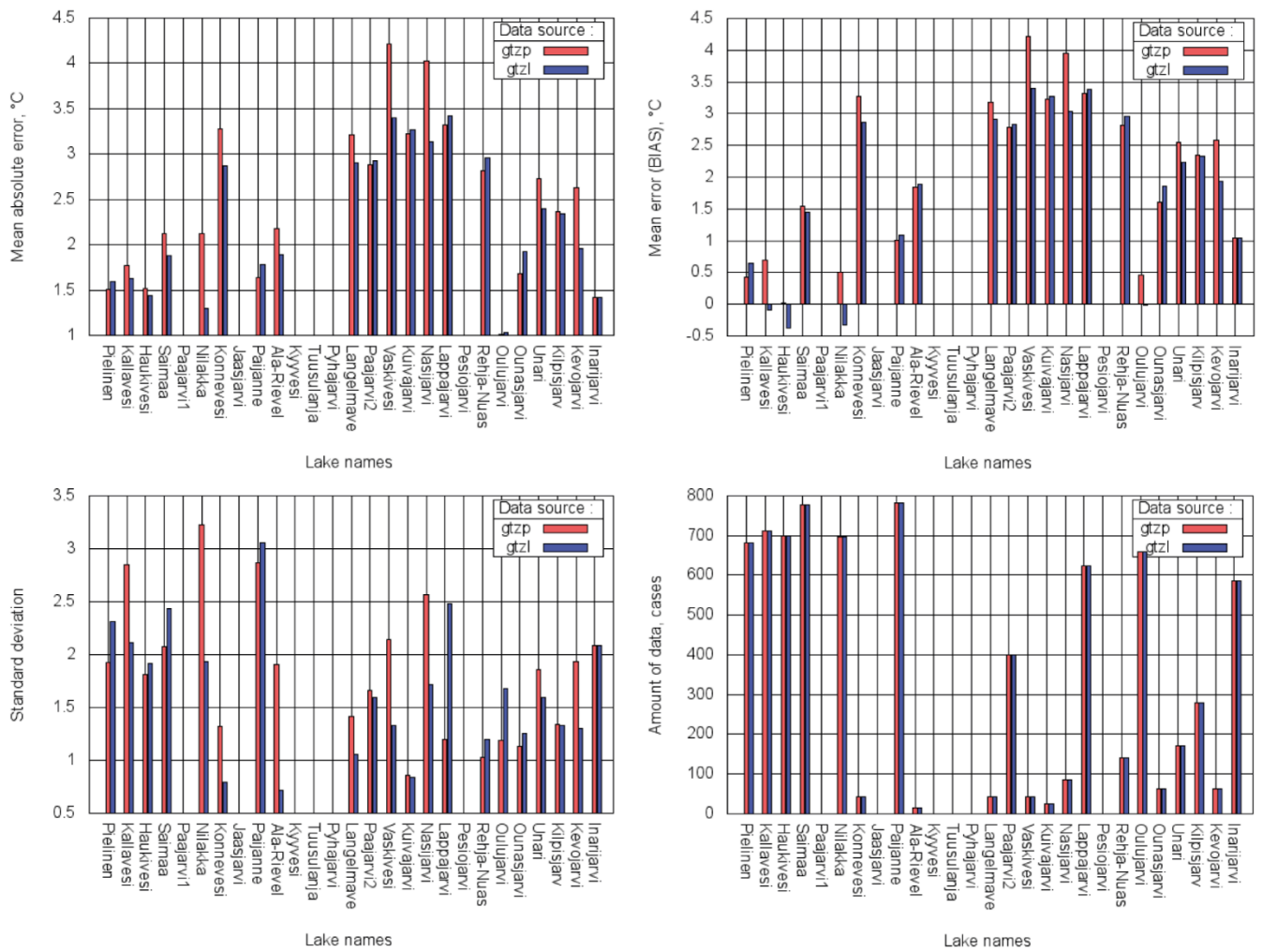


Figure 17: Same as Fig. 14, but calculated over all stratified summer periods

**Table 1: List of geographical locations for the water pixel-by-pixel separation algorithm application**

Region №	North	South	West	East
1	80°N	70°N	80°E	90°E
2	80°N	70°N	120°E	130°E
3	70°N	60°N	170°W	160°W
4	70°N	60°N	140°W	130°W
5	70°N	60°N	60°E	70°E
6	70°N	60°N	160°E	170°E
7	60°N	50°N	60°W	50°W
8	60°N	50°N	10°E	20°E
9	60°N	50°N	140°E	150°E
10	50°N	40°N	80°W	60°W
11	40°N	30°N	90°W	80°W

Region №	North	South	West	East
12	34°N	30°N	120°E	130°E
13	30°N	20°N	100°W	90°W
14	30°N	0°N	90°E	100°E
15	20°N	10°N	70°E	80°E
16	20°N	10°N	100°E	110°E
17	10°N	10°S	60°W	50°W
18	0°N	10°S	80°W	70°W
19	0°N	10°S	50°W	40°W
20	0°N	10°S	10°E	20°E
21	0°N	10°S	140°E	150°E
22	30°S	40°S	60°W	50°W

**Table 2: List of the exceptional water bodies for manual separation from the ocean**

Latitude	Longitude	Water body name	Reason for separation
46.06°N	36.64°E	The Azov Sea	Currently better modelled as inland water than ocean
68.66°N	53.01°E	Lake Peschanka	Freshwater shallow lake with surface area 122 km <sup>2</sup>
16.31°N	94.90°W	Laguna Superior	Lagoon with surface area 380 km <sup>2</sup>
10.17°N	71.56°W	Lago de Maracaibo	Brackish lake with surface area 13 210 km <sup>2</sup>
35.44°S	139.17°E	Lake Alexandrina	Freshwater shallow lake with surface area 649 km <sup>2</sup>

**Table 3: Locations of 27 verification lake sites, lake morphological parameters measured by SYKE and from ECMWF Tco1279 fields**

№	Lake ID	Lake name	Coordinates, deg		In-situ depth, m		In-situ area, km <sup>2</sup>	Modelled mean depth, m	
			Latitude	Longitude	Mean	Maximum		Operational	New
1	44111001	Pielinen	63.2705	29.6067	10.1	61.0	894.2	5.0	10.0
2	42721001	Kallavesi	62.7616	27.7826	9.7	75.0	316.1	17.0	7.0
3	42111001	Haukivesi	62.1083	28.3887	9.1	55.0	560.4	2.0	7.0
4	41121001	Saimaa	61.3377	28.1158	10.8	85.8	1377.0	2.0	18.0
5	146311001	Paajarvi1	62.8638	24.7894	3.8	14.9	29.5	25.0	2.9
6	147311001	Nilakka	63.1146	26.5268	4.9	21.7	169.0	17.0	7.0
7	147111001	Konnevesi	62.6326	26.6046	10.6	57.1	189.2	25.0	7.0
8	148211001	Jaasjarvi	61.6310	26.1351	4.6	28.2	81.1	25.0	6.1
9	142211001	Paijanne	61.6139	25.4820	14.1	86.0	864.9	13.0	13.9
10	141711001	Ala-Rievel	61.3035	26.1718	11.2	46.9	13.0	25.0	7.0
11	149321001	Kyyvesi	61.9988	27.0796	4.4	35.3	130.0	25.0	5.0
12	210821001	Tuusulanja	60.4414	25.0544	3.2	9.8	5.9	3.0	6.2
13	340311001	Pyhajarvi	61.0011	22.2913	5.5	26.2	155.2	4.5	5.0
14	357211001	Langelmave	61.5353	24.3705	6.8	59.3	133.0	25.0	7.0
15	358331003	Paajarvi2	61.0635	25.1325	14.8	85.0	13.4	13.2	12.9
16	354121001	Vaskivesi	62.1416	23.7635	7.0	62.0	46.1	28.0	7.0
17	359311007	Kuivajarvi	60.7855	23.8596	2.2	9.9	8.2	9.0	7.0
18	353111001	Nasijarvi	61.6318	23.7505	14.7	65.6	210.6	28.0	7.0
19	470311001	Lappajarvi	63.1480	23.6706	6.9	36.0	145.5	2.0	18.0
20	595411001	Pesiojarvi	64.9451	28.6502	3.9	15.8	12.7	7.0	6.6
21	598111001	Rehja-Nuas	64.1840	28.0162	8.5	42.0	96.4	8.0	10.0
22	593111001	Oulujarvi	64.4500	26.9700	7.0	35.0	887.1	2.0	7.0
23	656321001	Ounasjarvi	68.3771	23.6016	6.6	31.0	6.9	3.0	7.0
24	655921001	Unari	67.1725	25.7112	7.0	24.8	29.1	2.0	7.0
25	676401001	Kilpisjarv	69.0070	20.8160	19.5	57.0	37.3	18.0	17.8
26	680721002	Kevojarvi	69.7515	27.0148	11.1	35.0	1.0	14.0	7.0
27	711111001	Inarijarvi	69.0821	27.9245	14.3	92.0	1039.4	14.0	14.0

**Table 4: Ice formation/disappearance dates for 2010-2014 of 27 verification sites; OBS – measured by SYKE,  $GTZP_{OPR}$  and  $GTZL_{NEW}$  – ECMWF experiments with operational and updated  $D_{water}$  respectively**

№	Lake name	Year	2010	2011	2012	2013	2014	2010	2011	2012	2013	2014
		Data	Ice melting					Ice freezing				
1	Pielinen	OBS	05/10	05/02	05/14	05/08	04/28	11/22	12/12	12/03	12/02	12/18
		$GTZP_{OPR}$	05/23	05/26	05/21	05/24	05/17	11/11	11/21	11/10	11/25	11/08
		$GTZL_{NEW}$	05/23	05/26	05/21	05/24	05/17	11/15	11/30	11/15	11/27	11/14
2	Kallavesi	OBS	05/08	05/06	05/08	05/06	04/19	11/29	99/99	01/01	12/09	12/24
		$GTZP_{OPR}$	05/22	05/28	05/20	05/23	05/16	11/27	12/30	12/03	12/09	12/18
		$GTZL_{NEW}$	05/22	05/26	05/21	05/24	05/18	11/15	11/30	11/30	11/30	11/22
3	Haukivesi	OBS	05/04	05/08	05/07	05/05	04/19	11/27	99/99	<b>01/02</b>	12/10	<b>12/22</b>
		$GTZP_{OPR}$	05/21	05/25	05/18	05/21	05/13	11/08	11/18	<b>10/29</b>	11/24	<b>10/23</b>
		$GTZL_{NEW}$	05/22	05/24	05/18	05/22	05/13	11/20	11/30	<b>11/30</b>	11/30	<b>11/22</b>
4	Saimaa	OBS	05/02	04/27	05/02	05/06	04/17	11/25	<b>12/25</b>	<b>12/05</b>	<i>11/23</i>	<b>12/22</b>
		$GTZP_{OPR}$	05/15	05/18	05/11	05/15	04/28	11/18	<b>11/21</b>	<b>10/31</b>	<i>11/26</i>	<b>10/23</b>
		$GTZL_{NEW}$	05/15	05/16	05/11	05/17	04/30	11/28	<b>01/04</b>	<b>12/05</b>	<i>12/15</i>	<b>12/23</b>
5	Paajarvi1	OBS	05/02	04/27	05/03	05/02	04/18	<i>11/20</i>	<i>12/12</i>	<i>11/30</i>	<i>11/29</i>	<i>12/05</i>
		$GTZP_{OPR}$	05/14	05/10	05/06	05/05	04/15	<i>11/21</i>	<i>12/28</i>	<i>12/02</i>	<i>12/03</i>	<i>12/15</i>
		$GTZL_{NEW}$	05/13	05/10	05/06	05/05	04/15	<i>10/16</i>	<i>11/16</i>	<i>10/27</i>	<i>10/20</i>	<i>10/22</i>
6	Nilakka	OBS	05/05	05/02	05/08	05/06	04/23	11/17	12/12	<i>11/29</i>	11/23	<i>12/02</i>
		$GTZP_{OPR}$	05/23	05/28	05/25	05/24	05/18	11/27	12/29	<i>12/03</i>	12/05	<i>12/18</i>
		$GTZL_{NEW}$	05/23	05/26	05/25	05/24	05/17	11/12	11/30	<i>11/17</i>	11/26	<i>11/20</i>
7	Konnevesi	OBS	05/05	05/02	05/05	05/05	04/20	11/22	<i>12/31</i>	<i>12/02</i>	99/99	<i>01/12</i>
		$GTZP_{OPR}$	05/08	05/09	05/03	05/04	04/14	11/22	<i>01/01</i>	<i>12/03</i>	12/08	<i>12/22</i>
		$GTZL_{NEW}$	05/08	05/09	05/03	05/04	04/14	11/11	<i>11/30</i>	<i>11/10</i>	11/26	<i>10/24</i>
8	Jaasjarvi	OBS	04/27	04/27	05/01	05/02	04/11	11/21	99/99	01/01	12/05	<i>12/19</i>
		$GTZP_{OPR}$	05/02	05/04	04/29	04/30	04/13	11/25	01/07	12/04	12/10	<i>12/24</i>
		$GTZL_{NEW}$	05/02	05/04	04/29	05/01	04/13	11/18	12/08	11/30	11/27	<i>10/24</i>
9	Paijanne	OBS	05/04	04/30	05/01	05/03	04/12	11/27	99/99	01/01	12/15	12/26
		$GTZP_{OPR}$	05/19	05/23	05/15	05/19	05/06	11/26	12/31	12/03	12/08	12/18
		$GTZL_{NEW}$	05/19	05/23	05/17	05/19	05/05	11/27	12/31	12/03	12/10	12/19
10	Ala-Rievel	OBS	04/28	05/01	05/02	05/01	04/13	11/23	99/99	01/01	12/08	<i>12/24</i>
		$GTZP_{OPR}$	05/02	05/03	04/28	05/01	04/13	11/26	01/08	12/04	12/10	<i>12/23</i>
		$GTZL_{NEW}$	05/02	05/04	04/28	05/01	04/13	11/19	12/10	11/30	11/30	<i>11/23</i>
11	Kyyvesi	OBS	99/99	04/30	99/99	05/02	04/12	<i>11/21</i>	99/99	<i>12/03</i>	<b>11/30</b>	<i>12/22</i>
		$GTZP_{OPR}$	05/09	05/11	05/05	05/05	04/15	<i>11/25</i>	01/03	<i>12/04</i>	<b>12/10</b>	<i>12/19</i>



		<i>GTZL<sub>NEW</sub></i>	05/10	05/11	05/05	05/06	04/15	<u>11/10</u>	11/21	<u>11/09</u>	<b><u>11/26</u></b>	<u>10/23</u>
12	Tuusulanja	OBS	04/21	04/25	04/24	04/29	04/05	11/09	<b><u>11/21</u></b>	<u>11/10</u>	11/25	<b><u>12/01</u></b>
		<i>GTZP<sub>OPR</sub></i>	04/25	04/27	04/20	04/26	03/25	11/19	<b><u>12/09</u></b>	<u>10/28</u>	11/26	<b><u>10/23</u></b>
		<i>GTZL<sub>NEW</sub></i>	04/25	04/27	04/20	04/26	03/23	11/20	<b><u>01/02</u></b>	<u>12/01</u>	11/30	<b><u>12/02</u></b>
		OBS	04/26	05/02	04/26	05/01	04/03	11/22	99/99	01/07	12/11	<b><u>12/24</u></b>
13	Pyhajarvi	<i>GTZP<sub>OPR</sub></i>	05/04	05/09	04/26	05/04	04/07	11/18	12/09	12/01	11/29	<b><u>12/04</u></b>
		<i>GTZL<sub>NEW</sub></i>	05/04	05/09	04/26	05/04	04/07	11/19	12/09	12/01	11/30	<b><u>12/21</u></b>
		OBS	05/01	04/30	05/01	05/03	04/20	11/22	99/99	01/01	<b><u>12/09</u></b>	<u>12/23</u>
14	Langelmave	<i>GTZP<sub>OPR</sub></i>	05/04	05/08	04/29	05/02	04/13	11/27	01/09	12/05	<b><u>01/13</u></b>	<u>12/25</u>
		<i>GTZL<sub>NEW</sub></i>	05/05	05/09	04/29	05/03	04/13	11/19	12/11	11/30	<b><u>11/30</u></b>	<u>12/02</u>
		OBS	99/99	99/99	99/99	99/99	99/99	99/99	99/99	99/99	99/99	99/99
15	Paajarvi2	<i>GTZP<sub>OPR</sub></i>	05/01	05/02	04/27	04/30	04/12	11/22	01/02	12/01	12/02	12/21
		<i>GTZL<sub>NEW</sub></i>	05/01	05/02	04/27	04/30	04/12	11/22	01/02	12/01	12/02	12/19
		OBS	04/27	04/28	04/30	05/01	04/12	11/23	<u>12/31</u>	<u>12/02</u>	<u>12/08</u>	<b><u>11/30</u></b>
16	Vaskivesi	<i>GTZP<sub>OPR</sub></i>	05/06	05/06	04/30	05/02	04/13	11/23	<u>01/07</u>	<u>12/04</u>	<u>12/10</u>	<b><u>12/22</u></b>
		<i>GTZL<sub>NEW</sub></i>	05/05	05/08	04/30	05/03	04/13	11/13	<u>12/07</u>	<u>11/10</u>	<u>11/26</u>	<b><u>11/22</u></b>
		OBS	04/21	04/26	04/24	04/29	04/02	11/22	99/99	01/01	12/01	<u>12/22</u>
17	Kuivajarvi	<i>GTZP<sub>OPR</sub></i>	05/01	05/05	04/26	05/01	04/09	11/21	01/01	12/01	12/01	<u>12/21</u>
		<i>GTZL<sub>NEW</sub></i>	05/01	05/06	04/26	05/01	04/09	11/20	12/12	12/01	11/30	<u>12/04</u>
		OBS	04/29	05/01	05/01	05/03	04/13	<u>11/29</u>	99/99	<u>01/10</u>	99/99	<u>01/14</u>
18	Nasijarvi	<i>GTZP<sub>OPR</sub></i>	05/07	05/10	04/29	05/04	04/13	<u>11/28</u>	01/10	<u>12/08</u>	01/14	<u>12/26</u>
		<i>GTZL<sub>NEW</sub></i>	05/07	05/11	05/01	05/05	04/13	<u>11/19</u>	12/12	<u>12/01</u>	11/30	<u>12/04</u>
		OBS	05/04	05/03	05/02	05/03	04/17	<b><u>11/22</u></b>	<b><u>12/31</u></b>	<b><u>12/03</u></b>	<b><u>11/22</u></b>	<b><u>12/22</u></b>
19	Lappajarvi	<i>GTZP<sub>OPR</sub></i>	05/16	05/13	05/09	05/09	04/18	<b><u>10/17</u></b>	<b><u>11/16</u></b>	<b><u>10/27</u></b>	<b><u>10/19</u></b>	<b><u>10/22</u></b>
		<i>GTZL<sub>NEW</sub></i>	05/16	05/13	05/09	05/09	04/17	<b><u>11/21</u></b>	<b><u>12/28</u></b>	<b><u>12/02</u></b>	<b><u>11/30</u></b>	<b><u>12/14</u></b>
		OBS	99/99	99/99	99/99	99/99	99/99	99/99	99/99	99/99	99/99	99/99
20	Pesiojarvi	<i>GTZP<sub>OPR</sub></i>	05/18	05/17	05/16	05/14	05/11	10/28	11/16	10/27	10/20	10/18
		<i>GTZL<sub>NEW</sub></i>	05/18	05/17	05/16	05/14	05/11	10/27	11/16	10/26	10/20	10/18
		OBS	05/04	05/02	05/01	05/04	04/20	11/14	99/99	11/09	11/27	11/07
21	Rehja-Nuas	<i>GTZP<sub>OPR</sub></i>	05/17	05/16	05/14	05/11	04/29	11/09	11/20	10/30	11/21	10/22
		<i>GTZL<sub>NEW</sub></i>	05/17	05/16	05/14	05/11	04/28	11/10	11/21	11/08	11/22	10/23
		OBS	05/15	05/10	05/13	05/14	05/02	<b><u>11/24</u></b>	99/99	99/99	<b><u>12/04</u></b>	<b><u>12/18</u></b>
22	Oulujarvi	<i>GTZP<sub>OPR</sub></i>	05/25	05/28	05/25	05/27	05/20	<b><u>10/27</u></b>	11/15	10/27	<b><u>10/20</u></b>	<b><u>10/18</u></b>
		<i>GTZL<sub>NEW</sub></i>	05/25	05/28	05/25	05/27	05/20	<b><u>11/11</u></b>	11/21	11/10	<b><u>11/15</u></b>	<b><u>11/08</u></b>
		OBS	05/24	05/23	05/27	05/25	06/01	11/06	<b><u>11/16</u></b>	10/28	11/12	10/31
23	Ounasjarvi	<i>GTZP<sub>OPR</sub></i>	06/03	06/02	05/31	05/30	06/05	10/15	<b><u>10/14</u></b>	10/18	10/16	10/13
		OBS	05/24	05/23	05/27	05/25	06/01	11/06	<b><u>11/16</u></b>	10/28	11/12	10/31

		<i>GTZL<sub>NEW</sub></i>	06/03	06/02	05/31	05/30	06/05	10/25	<b><u>11/11</u></b>	10/21	10/19	10/17
24	Unari	OBS	05/19	05/15	05/21	05/18	05/23	<b><u>11/06</u></b>	<b><u>11/19</u></b>	<b><u>10/26</u></b>	<b><u>11/08</u></b>	<b><u>11/02</u></b>
		<i>GTZP<sub>OPR</sub></i>	06/02	05/30	05/28	05/26	05/29	<b><u>10/15</u></b>	<b><u>10/15</u></b>	<b><u>10/18</u></b>	<b><u>10/16</u></b>	<b><u>10/13</u></b>
		<i>GTZL<sub>NEW</sub></i>	06/02	05/30	05/28	05/26	05/28	<b><u>10/30</u></b>	<b><u>11/15</u></b>	<b><u>10/23</u></b>	<b><u>10/20</u></b>	<b><u>10/17</u></b>
25	Kilpisjarv	OBS	06/15	06/09	06/19	06/03	06/19	11/10	12/07	11/14	11/19	11/05
		<i>GTZP<sub>OPR</sub></i>	06/24	06/13	06/24	06/05	06/24	10/25	11/10	10/23	10/21	10/22
		<i>GTZL<sub>NEW</sub></i>	06/24	06/13	06/21	06/05	06/24	10/25	11/10	10/23	10/21	10/22
26	Kevojarvi	OBS	05/23	05/25	05/26	05/19	05/27	10/29	11/18	10/27	11/07	10/25
		<i>GTZP<sub>OPR</sub></i>	06/07	06/07	06/01	06/01	06/08	10/30	11/16	10/28	10/23	10/19
		<i>GTZL<sub>NEW</sub></i>	06/07	06/07	06/01	06/01	06/08	10/26	11/04	10/23	10/18	10/17
27	Inarijarvi	OBS	06/03	06/03	05/31	05/25	06/02	11/26	99/99	11/26	11/27	11/13
		<i>GTZP<sub>OPR</sub></i>	06/09	06/08	06/05	06/02	06/07	11/07	11/21	11/10	11/09	11/02
		<i>GTZL<sub>NEW</sub></i>	06/09	06/08	06/05	06/02	06/07	11/07	11/21	11/10	11/09	11/02

**Table 5: Locations of in-situ water surface temperature and ice formation/disappearance measurement points and distance between them for 27 verification sites; latitude and longitude in degrees, distance in km**

Lake name	Measurement location (ML) coordinates, deg						Distance between WST and ice ML, km
	Water surface temperature (WST)			Ice			
	Latitude	Longitude	Note	Latitude	Longitude	Note	
Pielinen	63.2705	29.6067	middle of the lake	63.5418	29.1314	on/close to the lake shore	38.45
Kallavesi	62.7616	27.7826	middle of the lake	62.8993	27.7317	on/close to the lake shore	15.56
Haukivesi	62.1083	28.3887	middle of the lake	62.1107	28.6064	on/close to the lake shore	11.37
Saimaa	61.3377	28.1158	middle of the lake	61.5008	27.2636	on/close to the lake shore	49.00
Paajarvi1	62.8638	24.7894	middle of the lake	62.8474	24.8142	close to the lake shore	2.22
Nilakka	63.1146	26.5268	middle of the lake	63.1993	26.6696	on/close to the lake shore	11.87
Konnevesi	62.6326	26.6046	middle of the lake	62.6166	26.3492	on/close to the lake shore	13.23
Jaasjarvi	61.6310	26.1351	middle of the lake	61.5674	26.0467	on/close to the lake shore	8.50
Paijanne	61.6139	25.4820	middle of the lake	61.1760	25.5362	on/close to the lake shore	48.88
Ala-Rievel	61.3035	26.1718	middle of the lake	61.3358	26.2012	on/close to the lake shore	3.93
Kyyvesi	61.9988	27.0796	middle of the lake	62.0127	27.1895	on/close to the lake shore	5.96
Tuusulanja	60.4414	25.0544	middle of the lake	60.4168	25.0427	on/close to the lake shore	2.82
Pyhajarvi	61.0011	22.2913	middle of the lake	61.1015	22.1802	on/close to the lake shore	12.70
Langelmave	61.5353	24.3705	middle of the lake	61.4180	24.1474	on/close to the lake shore	17.67
Paajarvi2	61.0635	25.1325	middle of the lake			no station	
Vaskivesi	62.1416	23.7635	middle of the lake	62.1175	23.9249	on/close to the lake shore	8.84
Kuivajarvi	60.7855	23.8596	middle of the lake	60.7821	23.8383	on/close to the lake shore	1.22
Nasijarvi	61.6318	23.7505	middle of the lake	61.5086	23.7725	on/close to the lake shore	13.78
Lappajarvi	63.1480	23.6706	middle of the lake	63.2595	23.6353	on/close to the lake shore	12.55
Pesiojarvi	64.9451	28.6502	middle of the lake			no station	
Rehja-Nuas	64.1840	28.0162	middle of the lake	64.1616	28.2441	on/close to the lake shore	11.36
Oulujarvi	64.4500	26.9700	middle of the lake	64.5509	26.8240	on/close to the lake shore	13.26
Ounasjarvi	68.3771	23.6016	close to lake shore	68.3975	23.7170	on/close to the lake shore	5.26
Unari	67.1725	25.7112	middle of the lake	67.1366	25.7416	on/close to the lake shore	4.22
Kilpisjarv	69.0070	20.8160	middle of the lake	69.0497	20.7881	on/close to the lake shore	4.90
Kevojarvi	69.7515	27.0148	middle of the lake	69.7566	27.0031	on/close to the lake shore	0.72
Inarijarvi	69.0821	27.9245	middle of the lake	68.9577	27.6942	middle of the lake	16.65