

Can we trust remote sensing ET products across Africa?

Imeshi WEERASINGHE^{a,*}, Ann van GRIENSVEN^{ab}, Wim BASTIAANSEN^b, Marloes MUL^b, Li JIA^c
celray.chawanda@vub.be

^aVrije Universiteit Brussel (VUB)

^bIHE Delft Institute for Water Education

^cChinese Academy of Sciences

^dJoint Center for Global Change Studies

Overview

We would like to thank the editor for his dedication in reviewing the manuscript and responses to the reviewers. We are also thankful for his thoughtful and constructive suggestions and comments. We have addressed all the comments raised by the editor and the manuscript has improved from the proposed changes.

Contents

CONTENTS	1
EDITOR COMMENTS	1
EDITOR, COMMENT 1.....	1
EDITOR, COMMENT 2.....	1

Editor Comments

Editor, Comment 1

Title of table 1 should be corrected. You are listing ETRS products here not precipitation.

Authors Response

1. The title of table 1 was corrected to say 'evapotranspiration' instead of 'precipitation'.

Authors Changes in Manuscript

“Characteristics of evapotranspiration products”

Editor, Comment 2

Page 10 Line 19: Consider using PET for "potential evapotranspiration".

Authors Response

“potential evapotranspiration” was changed to “PET”

Authors Changes in Manuscript

“Precipitation and PET were taken as the average of three products.”

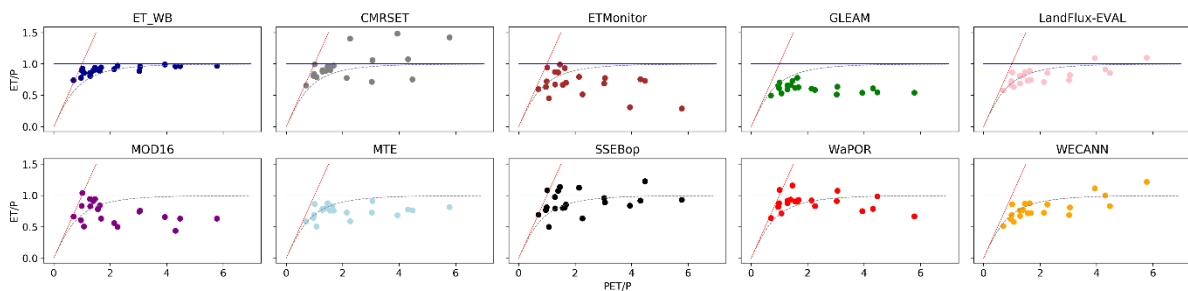
Editor, Comment 3

Figure 9: The yellow color used for SSEBop is hardly visible. Please consider using a different color.

Authors Response

SSEBop colour in graph was changed to black

Authors Changes in Manuscript



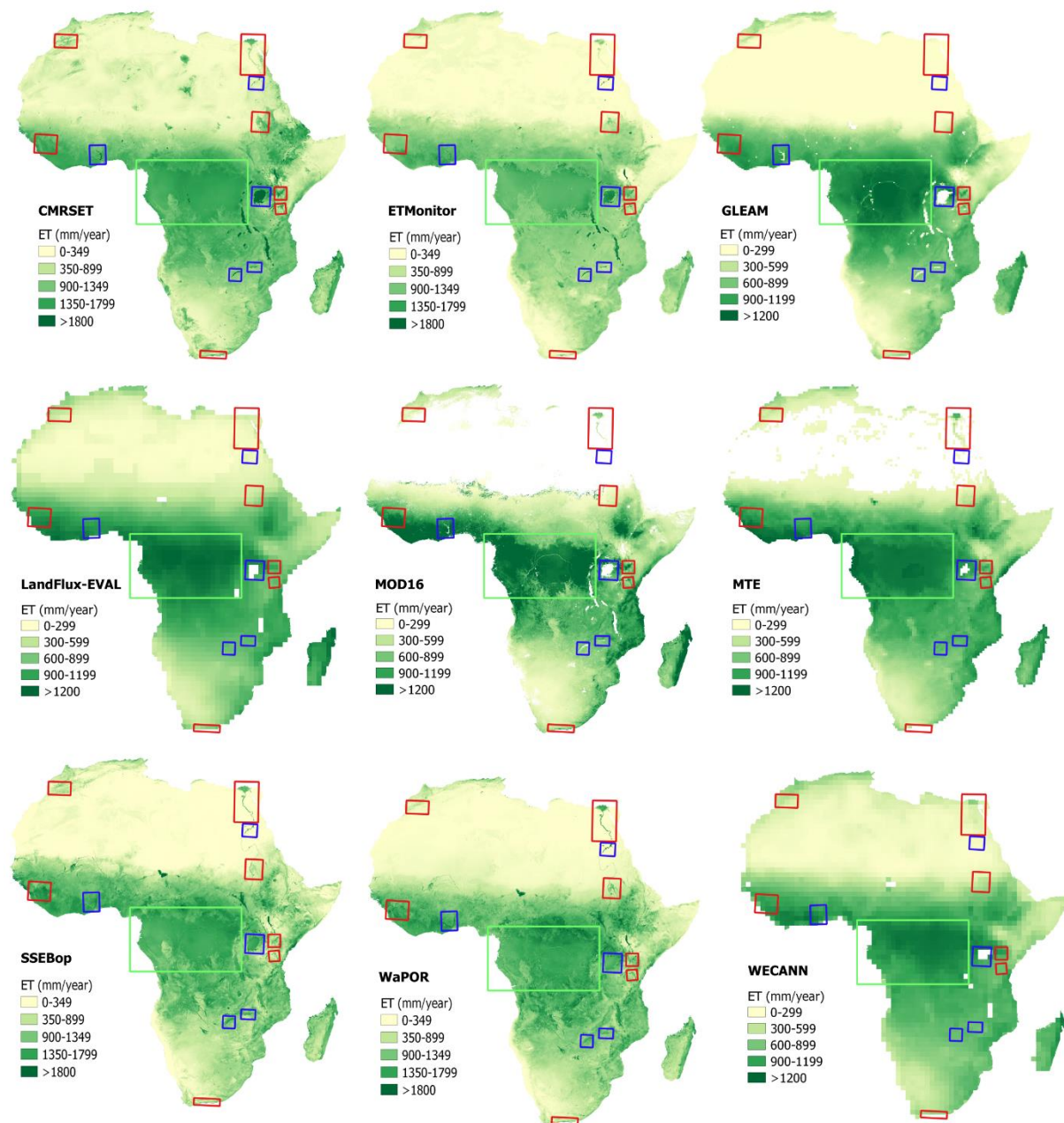
Editor, Comment 4

Figure 10: Please consider mentioning in the caption what each of the rectangles indicate. Also the color bars should be revised and enlarged. I assume that each of the colors are indicating a range of ET values not a discrete ET value?.

Authors Response

We have included the description of the rectangles/boxes in the description. Yes each of the colours indicated a range of ET values and not a discrete value which has been amended in the figure.

Authors Changes in Manuscript



Editor, Comment 5

Figure 11: Please provide the source of forest ET found from literature.

Authors Response

This was already included in the text. Do you need more references here?

Authors Changes in Manuscript

“For forested areas, the average ET was taken from literature where estimations for the Congo forest, the forested area being evaluated, were between 1200-1500 mm/year (Otto2013,Reynolds1988).”

Editor, Comment 6

Table 2: Please also consider mentioning the latency of each of these datasets. This information would be helpful for readers and potential users of these datasets.

Authors Response

Unfortunately this information is not available for all datasets as I could find so I did not include this in the manuscript.

Authors Changes in Manuscript

No changes

Editor, Comment 6

Table 7: I think the title should be "Bias between the ET_{Budyko} and, ET_{WB} and ET_{RS} ".

Authors Response

The title of table 7 was changes to "Bias between the ET_{Budyko} and, ET_{WB} and WT_{RS}

Authors Changes in Manuscript

"Bias between the ET_{Budyko} and, ET_{WB} and WT_{RS}