

Supplementary Material for “Global scale human pressure evolution imprints on sustainability of river systems”

By Serena Ceola, Francesco Laio and Alberto Montanari

Contents

1. Supplementary Figures
2. Supplementary Tables

1. Supplementary Figures

Figure S1. Global distribution of input variables used for the estimation of the Differential Human Pressure on Rivers index, DHPR. (A) Long term average nightlights in the study period 1992-2013, (B) long term average cumulative human presence and activity, HP, computed by following STN-30 flow direction paths (Eq. 3), (C) long term mean annual discharge, Q, derived from long term mean annual runoff data and computed as cumulative values by following STN-30 flow direction paths (Eq. 1). Colors differentiate grid cells ($n = 20770$) according to levels of variables on a (A) lin-scale, (B-C) log-scale.

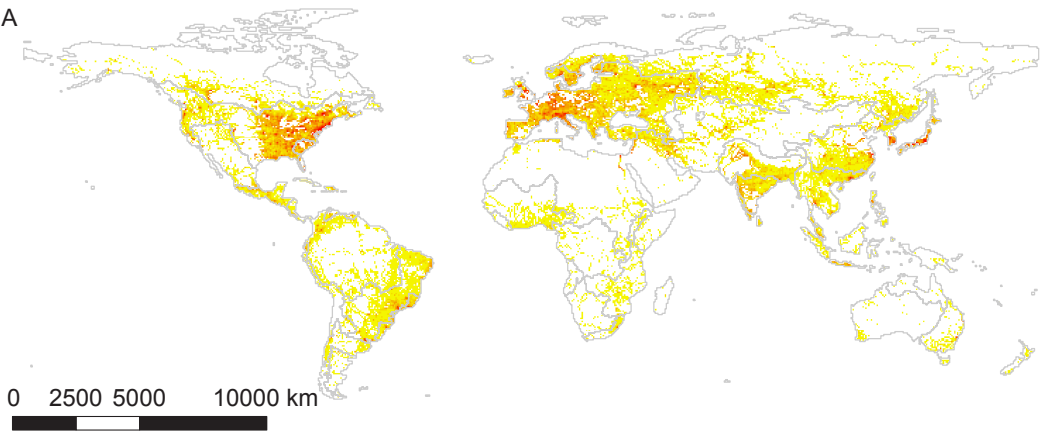
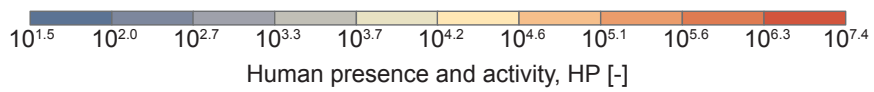
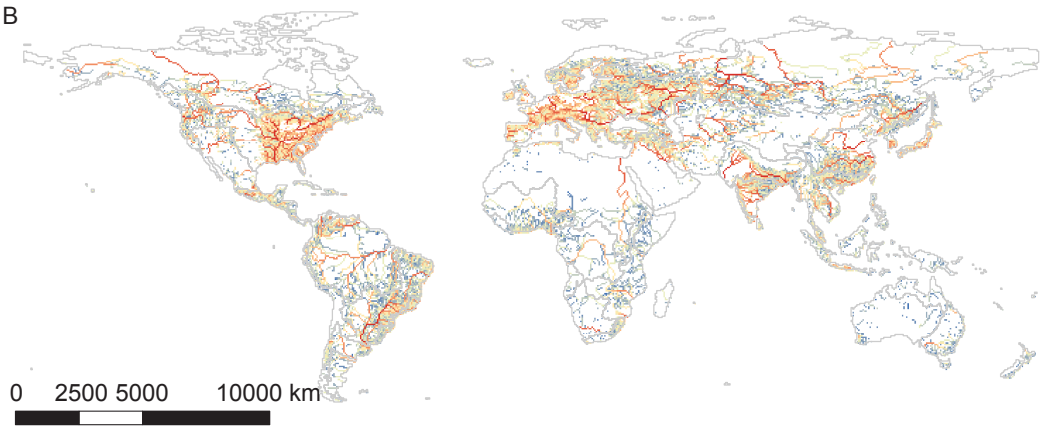
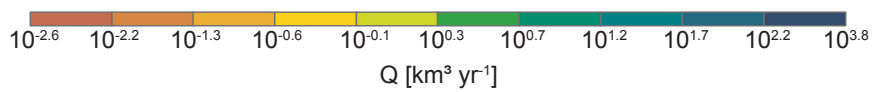
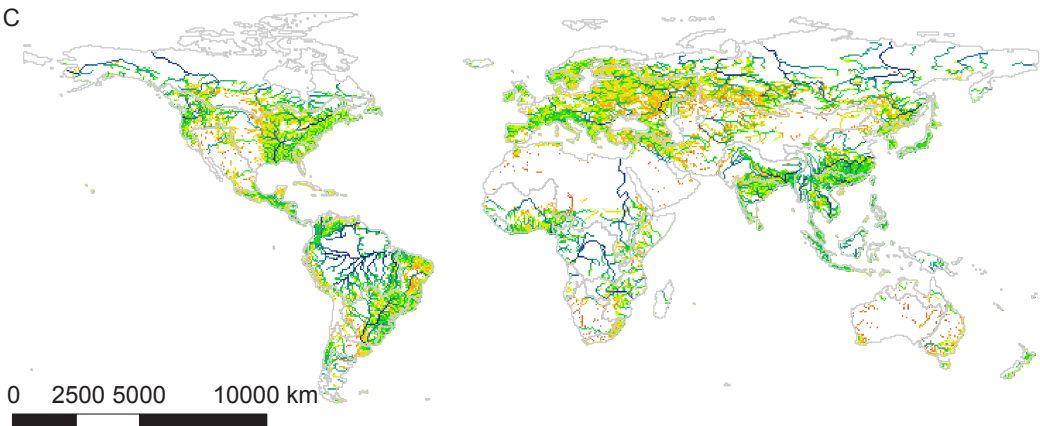
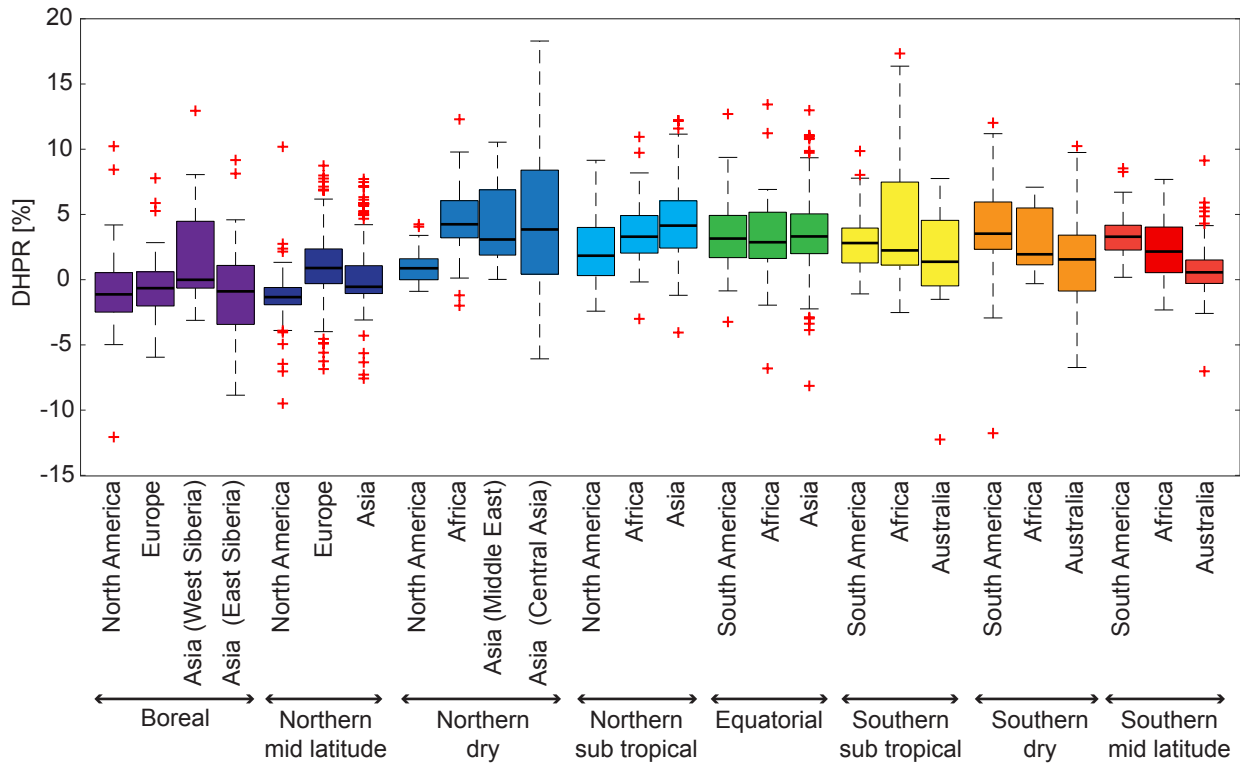
A**B****C**

Figure S2. Regional patterns of the Differential Human Pressure on Rivers index, DHPR. Box plot statistics for DHPR grouped by hydroregion (basin and grid cell abundance are reported in Table S1). Box plots include the median (thick black line), interquartile range (colored boxes) and whiskers (confidence interval of $\pm 2.7/\sigma$).



2. Supplementary Tables

Table S1. Relationship between standardized human pressure values F and existing global scale datasets. Water threats to human water security and river biodiversity (Vorosmarty et al., 2010) for year 2000 and the terrestrial human footprint (Sanderson et al., 2002; Venter et al., 2016a,b) for years 1993 and 2009 are considered. Results are summarized at hydrobelt and hydroregion level. Log-lin regression slope m_x (95% confidence bounds), coefficient of determination R^2 , and P values for the Student's T test are reported.

Hydrobelt	Hydroregion	# pixel	# basin	Water threats						Human Footprint					
				Human water security			River biodiversity			Human Footprint in 1993			Human Footprint in 2009		
				m_x (95% confidence bounds)	R^2	p-value	m_x (95% confidence bounds)	R^2	p-value	m_x (95% confidence bounds)	R^2	p-value	m_x (95% confidence bounds)	R^2	p-value
	all	4375	170	2.732 (2.640, 2.824)	0.45	<0.001	2.770 (2.647, 2.866)	0.43	<0.001	0.127 (0.121, 0.132)	0.32	<0.001	0.132 (0.126, 0.137)	0.34	<0.001
	North America	1050	55	4.316 (4.093, 4.540)	0.58	<0.001	3.714 (3.520, 3.908)	0.57	<0.001	0.183 (0.164, 0.202)	0.25	<0.001	0.195 (0.172, 0.218)	0.21	<0.001
Boreal	Europe	698	73	3.033 (2.740, 3.326)	0.37	<0.001	3.115 (2.829, 3.401)	0.39	<0.001	0.113 (0.102, 0.125)	0.35	<0.001	0.140 (0.127, 0.154)	0.37	<0.001
	Asia – West Siberia	1502	9	2.404 (2.226, 2.582)	0.35	<0.001	2.422 (2.226, 2.618)	0.31	<0.001	0.124 (0.115, 0.134)	0.30	<0.001	0.106 (0.097, 0.114)	0.29	<0.001
	Asia – East Siberia	1125	33	2.238 (2.118, 2.358)	0.54	<0.001	2.378 (2.236, 2.520)	0.49	<0.001	0.101 (0.093, 0.109)	0.34	<0.001	0.151 (0.141, 0.160)	0.46	<0.001
	all	7124	800	2.620 (2.533, 2.707)	0.32	<0.001	2.475 (2.379, 2.571)	0.26	<0.001	0.050 (0.047, 0.053)	0.13	<0.001	-0.002 (-0.001, 0.006)	0.18	<0.001
Northern Mid Latitude	North America	2181	200	3.389 (3.287, 3.491)	0.66	<0.001	3.029 (2.917, 3.141)	0.56	<0.001	0.072 (0.068, 0.075)	0.38	<0.001	0.072 (0.068, 0.076)	0.36	<0.001
	Europe	3339	413	2.467 (2.367, 2.568)	0.40	<0.001	2.336 (2.228, 2.444)	0.34	<0.001	0.047 (0.044, 0.050)	0.21	<0.001	0.061 (0.058, 0.063)	0.34	<0.001
	Asia	1604	187	4.031 (3.834, 4.229)	0.50	<0.001	3.194 (2.949, 3.44)	0.29	<0.001	0.104 (0.096, 0.111)	0.31	<0.001	0.078 (0.072, 0.085)	0.26	<0.001
	all	2095	133	3.341 (3.173, 3.688)	0.30	<0.001	3.018 (2.749, 3.287)	0.23	<0.001	0.014 (0.004, 0.024)	0.004	0.006	-0.002 (-0.001, 0.006)	0.0001	0.692
	North America	286	32	2.238 (1.588, 2.888)	0.16	<0.001	3.137 (2.455, 3.819)	0.26	<0.001	0.020 (-0.001, 0.041)	0.01	0.062	0.034 (0.014, 0.053)	0.04	<0.001
Northern Dry	Africa	622	42	4.058 (3.649, 4.466)	0.41	<0.001	3.292 (2.804, 3.780)	0.24	<0.001	0.038 (0.020, 0.055)	0.03	<0.001	0.017 (0.001, 0.032)	0.01	0.031
	Asia – Middle East	383	23	2.973 (2.307, 3.638)	0.22	<0.001	1.784 (0.958, 2.610)	0.06	<0.001	0.002 (-0.012, 0.015)	0.001	0.820	-0.007 (-0.017, 0.003)	0.01	0.149
	Asia – Central Asia	804	36	2.151 (1.752, 2.55)	0.18	<0.001	1.567 (1.152, 1.982)	0.10	<0.001	0.031 (0.016, 0.045)	0.02	<0.001	0.012 (-0.001, 0.025)	0.004	0.073
	all	2039	319	4.220 (4.017, 4.422)	0.45	<0.001	3.589 (3.355, 3.824)	0.31	<0.001	0.093 (0.085, 0.102)	0.19	<0.001	0.065 (0.057, 0.072)	0.13	<0.001
Northern Sub Tropical	North America	465	163	3.743 (3.318, 4.167)	0.40	<0.001	3.027 (2.65, 3.403)	0.35	<0.001	0.064 (0.049, 0.079)	0.13	<0.001	0.061 (0.048, 0.074)	0.15	<0.001
	Africa	558	42	4.473 (3.968, 4.978)	0.35	<0.001	3.260 (2.656, 3.864)	0.17	<0.001	0.063 (0.042, 0.085)	0.06	<0.001	0.014 (-0.004, 0.032)	0.01	0.128

	Asia	1016	114	4.662 (4.46, 4.863)	0.67	<0.001	4.775 (4.511, 5.039)	0.55	<0.001	0.104 (0.096, 0.111)	0.40	<0.001	0.108 (0.099, 0.117)	0.39	<0.001
	all	2149	354	4.335 (4.174, 4.496)	0.57	<0.001	4.207 (4.011, 4.403)	0.45	<0.001	0.104 (0.097, 0.111)	0.26	<0.001	0.089 (0.082, 0.096)	0.24	<0.001
Equatorial	South America	1323	67	5.115 (4.934, 5.297)	0.70	<0.001	5.333 (5.103, 5.564)	0.61	<0.001	0.156 (0.143, 0.168)	0.31	<0.001	0.133 (0.122, 0.143)	0.32	<0.001
	Africa	341	24	4.503 (3.808, 5.198)	0.32	<0.001	2.703 (2.041, 3.365)	0.16	<0.001	0.104 (0.080, 0.127)	0.18	<0.001	0.103 (0.078, 0.129)	0.16	<0.001
	Asia	485	263	4.335 (4.014, 4.657)	0.59	<0.001	3.865 (3.482, 4.248)	0.45	<0.001	0.113 (0.102, 0.124)	0.46	<0.001	0.117 (0.106, 0.129)	0.45	<0.001
	all	1767	141	4.030 (3.812, 4.248)	0.44	<0.001	3.595 (3.353, 3.836)	0.34	<0.001	0.092 (0.081, 0.104)	0.12	<0.001	0.097 (0.087, 0.107)	0.17	<0.001
Southern Sub Tropical	South America	1262	68	4.026 (3.788, 4.265)	0.48	<0.001	3.970 (3.690, 4.250)	0.40	<0.001	0.094 (0.083, 0.104)	0.19	<0.001	0.074 (0.064, 0.083)	0.15	<0.001
	Africa	439	44	5.768 (5.359, 6.178)	0.64	<0.001	5.011 (4.539, 5.483)	0.50	<0.001	0.180 (0.151, 0.209)	0.25	<0.001	0.148 (0.118, 0.178)	0.17	<0.001
	Australia	66	29	0.3578 (-2.300, 3.015)	0.001	0.789	1.082 (-1.033, 3.197)	0.02	0.311	0.018 (-0.093, 0.128)	0.002	0.750	0.006 (-0.093, 0.105)	0.0002	0.900
	all	477	84	2.528 (2.088, 2.968)	0.29	<0.001	2.342 (1.866, 2.817)	0.23	<0.001	0.021 (-0.006, 0.047)	0.01	0.122	0.004 (-0.017, 0.026)	0.0003	0.703
Southern Dry	South America	227	44	3.067 (2.590, 3.544)	0.46	<0.001	3.441 (2.814, 4.068)	0.39	<0.001	0.124 (0.075, 0.173)	0.10	<0.001	0.082 (0.045, 0.118)	0.08	<0.001
	Africa	125	9	3.745 (2.613, 4.877)	0.36	<0.001	3.105 (1.958, 4.252)	0.27	<0.001	0.002 (-0.042, 0.047)	0.001	0.911	-0.012 (-0.055, 0.031)	0.002	0.582
	Australia	125	31	0.176 (-0.983, 1.334)	0.002	0.761	0.131 (-0.987, 1.250)	0.001	0.815	-0.007 (-0.036, 0.021)	0.002	0.614	-0.018 (-0.046, 0.010)	0.01	0.200
	all	744	194	3.568 (3.293, 3.842)	0.49	<0.001	3.043 (2.725, 3.362)	0.34	<0.001	0.087 (0.074, 0.101)	0.17	<0.001	0.059 (0.046, 0.073)	0.09	<0.001
Southern Mid Latitude	South America	378	71	3.799 (3.356, 4.241)	0.44	<0.001	3.716 (3.208, 4.224)	0.36	<0.001	0.091 (0.072, 0.111)	0.19	<0.001	0.046 (0.029, 0.064)	0.07	<0.001
	Africa	78	19	5.289 (3.926, 6.653)	0.46	<0.001	3.712 (2.402, 5.023)	0.32	<0.001	0.014 (-0.023, 0.052)	0.01	0.451	0.032 (-0.012, 0.076)	0.03	0.147
	Australia	288	104	3.319 (2.882, 3.756)	0.48	<0.001	2.428 (1.941, 2.916)	0.28	<0.001	0.092 (0.067, 0.116)	0.15	<0.001	0.070 (0.047, 0.094)	0.11	<0.001
World	all	20770	2195	2.701 (2.654, 2.749)	0.39	<0.001	2.731 (2.682, 2.780)	0.37	<0.001	0.072 (0.070, 0.075)	0.16	<0.001	0.067 (0.065, 0.069)	0.18	<0.001

Table S2. Calculation of the Differential Human Pressure on Rivers index. Watershed based values DHPR, coefficient of determination R^2 , and P values for the Student's T test are reported.

Basin Name	# pixel	Hydrobelt	Hydroregion	DHPR [% yr ⁻¹]	R ²	P-value
Mackenzie	286	Boreal	North America	-0.24	0.004	7.91E-01
Nelson	221	Boreal	North America	-1.26	0.244	1.95E-02
Yukon	137	Boreal	North America	-1.05	0.064	2.57E-01
Churchill (HudsonBay)	62	Boreal	North America	0.66	0.045	3.42E-01
Koksoak	24	Boreal	North America	0.26	0.009	6.77E-01
Albany	35	Boreal	North America	-0.41	0.035	4.02E-01
Kuskowin	15	Boreal	North America	-0.51	0.022	5.06E-01
Moose	36	Boreal	North America	-2.40	0.571	<0.001
Churchill (Atlantic)	21	Boreal	North America	-0.39	0.072	2.28E-01
Severn	18	Boreal	North America	0.66	0.031	4.33E-01
LaGrande	23	Boreal	North America	-3.43	0.504	<0.001
Hayes (HudsonBay)	22	Boreal	North America	0.14	0.004	7.92E-01
Nottaway	19	Boreal	North America	-2.40	0.455	<0.001
Copper	10	Boreal	North America	-2.78	0.498	<0.001
Winisk	16	Boreal	North America	0.67	0.024	4.94E-01
Attawapiskat	18	Boreal	North America	8.46	0.701	<0.001
Rupert	16	Boreal	North America	0.44	0.014	6.02E-01
Stikine	10	Boreal	North America	-2.70	0.370	2.69E-03
GHAASBasin341	4	Boreal	North America	-0.42	0.022	5.11E-01
Grande Riviere Baleine	13	Boreal	North America	-11.93	0.572	<0.001
Eastmain	3	Boreal	North America	10.25	0.594	<0.001
Nushagak	1	Boreal	North America	-1.98	0.180	4.91E-02
Harricana	11	Boreal	North America	-2.49	0.624	<0.001
Alsek	4	Boreal	North America	-0.91	0.102	1.47E-01
Broadback	1	Boreal	North America	0.46	0.007	7.19E-01
GHAASBasin581	1	Boreal	North America	-2.26	0.396	1.70E-03
Kapiskau	1	Boreal	North America	1.47	0.186	4.52E-02
Kuzitrin	4	Boreal	North America	-2.34	0.197	3.86E-02
Taku	1	Boreal	North America	-2.03	0.234	2.26E-02
GHAASBasin823	1	Boreal	North America	0.98	0.085	1.87E-01
GHAASBasin904	3	Boreal	North America	-2.83	0.390	1.88E-03
GHAASBasin1057	4	Boreal	North America	-1.53	0.118	1.18E-01
GHAASBasin1082	5	Boreal	North America	-1.50	0.223	2.63E-02
GHAASBasin1147	1	Boreal	North America	1.39	0.217	2.87E-02
GHAASBasin1220	4	Boreal	North America	4.25	0.345	4.06E-03
GHAASBasin1407	1	Boreal	North America	4.14	0.251	1.75E-02
GHAASBasin1409	1	Boreal	North America	1.10	0.040	3.73E-01
GHAASBasin1527	1	Boreal	North America	-4.28	0.344	4.15E-03
GHAASBasin2372	1	Boreal	North America	0.00	0.000	9.97E-01
GHAASBasin2505	1	Boreal	North America	-2.23	0.260	1.53E-02
GHAASBasin2518	1	Boreal	North America	-1.06	0.072	2.27E-01
GHAASBasin2810	1	Boreal	North America	-2.31	0.103	1.45E-01
GHAASBasin2811	2	Boreal	North America	-0.91	0.057	2.83E-01
GHAASBasin2981	1	Boreal	North America	-2.46	0.210	3.18E-02
GHAASBasin3225	1	Boreal	North America	-2.94	0.249	1.82E-02
GHAASBasin4590	1	Boreal	North America	0.77	0.010	6.63E-01
GHAASBasin4595	1	Boreal	North America	-2.62	0.338	4.56E-03
GHAASBasin4600	1	Boreal	North America	1.19	0.157	6.81E-02
GHAASBasin4649	1	Boreal	North America	1.79	0.106	1.38E-01
GHAASBasin4708	1	Boreal	North America	-3.53	0.224	2.60E-02
GHAASBasin4731	1	Boreal	North America	-1.20	0.054	2.98E-01
GHAASBasin4737	1	Boreal	North America	-1.34	0.101	1.50E-01
GHAASBasin4757	1	Boreal	North America	-4.88	0.444	<0.001
GHAASBasin4890	1	Boreal	North America	-4.53	0.498	<0.001
GHAASBasin4922	1	Boreal	North America	-0.35	0.006	7.26E-01
Dvina	180	Boreal	Europe	-1.87	0.259	1.56E-02
Pechora	88	Boreal	Europe	-0.11	0.001	9.11E-01

Mezen	19	Boreal	Europe	-5.49	0.603	<0.001
Onega	30	Boreal	Europe	-2.85	0.351	3.67E-03
Kemijoki	18	Boreal	Europe	1.15	0.087	1.81E-01
Kovda	19	Boreal	Europe	-0.66	0.014	5.99E-01
Tornionjoki	3	Boreal	Europe	0.64	0.021	5.18E-01
Amgerman	22	Boreal	Europe	-2.56	0.415	1.22E-03
Kem	18	Boreal	Europe	-1.38	0.141	8.54E-02
Dalalven	18	Boreal	Europe	-1.63	0.216	2.93E-02
Ume-Vindealven	18	Boreal	Europe	-0.88	0.084	1.92E-01
Lulealven	7	Boreal	Europe	-1.68	0.137	9.00E-02
Kokemaenjoki	19	Boreal	Europe	-0.13	0.003	8.24E-01
Oulujoki	19	Boreal	Europe	0.25	0.008	7.00E-01
Belomorkanal	10	Boreal	Europe	-2.92	0.401	1.56E-03
GHAASBasin523	19	Boreal	Europe	1.08	0.126	1.05E-01
GHAASBasin567	16	Boreal	Europe	-2.68	0.462	<0.001
Trondheims Fjord	13	Boreal	Europe	-1.21	0.098	1.56E-01
Kalix	7	Boreal	Europe	0.40	0.007	7.13E-01
Ljungan	13	Boreal	Europe	-2.14	0.374	2.51E-03
Skelleftalv	11	Boreal	Europe	-1.65	0.235	2.21E-02
Pitalven	10	Boreal	Europe	-0.67	0.033	4.20E-01
Indalsalven	11	Boreal	Europe	-2.04	0.417	1.17E-03
Sogre Fjord	8	Boreal	Europe	1.24	0.067	2.44E-01
GHAASBasin1140	7	Boreal	Europe	0.66	0.044	3.48E-01
Thjorsa	3	Boreal	Europe	-0.24	0.001	9.03E-01
GHAASBasin1172	4	Boreal	Europe	0.56	0.011	6.48E-01
GHAASBasin1326	6	Boreal	Europe	0.35	0.015	5.90E-01
Olfusa	2	Boreal	Europe	7.83	0.754	<0.001
GHAASBasin1534	4	Boreal	Europe	1.00	0.030	4.41E-01
GHAASBasin1865	4	Boreal	Europe	0.94	0.104	1.44E-01
GHAASBasin1879	4	Boreal	Europe	-1.03	0.077	2.10E-01
GHAASBasin1955	4	Boreal	Europe	-3.20	0.503	<0.001
GHAASBasin2011	3	Boreal	Europe	5.33	0.362	3.04E-03
GHAASBasin2098	3	Boreal	Europe	0.00	0.000	1.00E+00
GHAASBasin2242	3	Boreal	Europe	-0.34	0.005	7.61E-01
GHAASBasin2243	3	Boreal	Europe	0.72	0.064	2.55E-01
GHAASBasin2261	3	Boreal	Europe	-1.33	0.049	3.21E-01
GHAASBasin2278	3	Boreal	Europe	0.84	0.058	2.81E-01
GHAASBasin2286	1	Boreal	Europe	-4.87	0.605	<0.001
GHAASBasin2300	3	Boreal	Europe	-2.88	0.461	<0.001
GHAASBasin2314	3	Boreal	Europe	-5.82	0.264	1.45E-02
GHAASBasin2338	1	Boreal	Europe	2.09	0.087	1.82E-01
GHAASBasin2353	3	Boreal	Europe	-1.15	0.090	1.74E-01
GHAASBasin3071	2	Boreal	Europe	0.69	0.042	3.59E-01
GHAASBasin3282	1	Boreal	Europe	-2.39	0.376	2.41E-03
GHAASBasin3373	2	Boreal	Europe	1.49	0.212	3.10E-02
GHAASBasin3417	2	Boreal	Europe	-0.83	0.038	3.87E-01
GHAASBasin3486	2	Boreal	Europe	-0.97	0.033	4.19E-01
GHAASBasin3487	1	Boreal	Europe	-0.54	0.006	7.29E-01
GHAASBasin3488	2	Boreal	Europe	0.96	0.040	3.74E-01
GHAASBasin3547	1	Boreal	Europe	-2.76	0.220	2.76E-02
GHAASBasin3649	1	Boreal	Europe	0.62	0.018	5.48E-01
GHAASBasin3709	2	Boreal	Europe	1.48	0.040	3.73E-01
GHAASBasin4856	1	Boreal	Europe	-2.34	0.205	3.42E-02
GHAASBasin4857	1	Boreal	Europe	-2.17	0.142	8.34E-02
GHAASBasin4858	1	Boreal	Europe	-2.50	0.176	5.23E-02
GHAASBasin4919	1	Boreal	Europe	0.79	0.016	5.74E-01
GHAASBasin4920	1	Boreal	Europe	1.09	0.035	4.01E-01
GHAASBasin4939	1	Boreal	Europe	0.27	0.005	7.55E-01
GHAASBasin4940	1	Boreal	Europe	-0.79	0.051	3.14E-01

GHAASBasin4970	1	Boreal	Europe	5.94	0.754	<0.001
GHAASBasin4993	1	Boreal	Europe	-2.79	0.405	1.45E-03
GHAASBasin4994	1	Boreal	Europe	-4.62	0.578	<0.001
GHAASBasin5004	1	Boreal	Europe	-1.17	0.015	5.86E-01
GHAASBasin5011	1	Boreal	Europe	-0.55	0.021	5.17E-01
GHAASBasin5012	1	Boreal	Europe	-1.28	0.095	1.63E-01
GHAASBasin5020	1	Boreal	Europe	-0.74	0.031	4.32E-01
GHAASBasin5025	1	Boreal	Europe	2.87	0.168	5.82E-02
GHAASBasin5027	1	Boreal	Europe	-1.81	0.200	3.69E-02
GHAASBasin5031	1	Boreal	Europe	-0.14	0.000	9.39E-01
GHAASBasin5038	1	Boreal	Europe	1.50	0.144	8.16E-02
GHAASBasin5039	1	Boreal	Europe	-0.40	0.005	7.64E-01
GHAASBasin5068	1	Boreal	Europe	2.92	0.175	5.25E-02
GHAASBasin5084	1	Boreal	Europe	0.16	0.001	9.19E-01
GHAASBasin5129	1	Boreal	Europe	-0.35	0.002	8.51E-01
Ob	1028	Boreal	Asia (West Siberia)	-0.35	0.029	4.49E-01
Yenisei	451	Boreal	Asia (West Siberia)	-0.55	0.055	2.92E-01
Taz	19	Boreal	Asia (West Siberia)	8.09	0.381	2.22E-03
Pur	39	Boreal	Asia (West Siberia)	0.06	0.000	9.37E-01
Nadym	13	Boreal	Asia (West Siberia)	-0.63	0.022	5.08E-01
GHAASBasin633	9	Boreal	Asia (West Siberia)	0.69	0.038	3.86E-01
GHAASBasin1626	1	Boreal	Asia (West Siberia)	12.95	0.710	<0.001
GHAASBasin2053	2	Boreal	Asia (West Siberia)	-3.03	0.344	4.15E-03
GHAASBasin2369	3	Boreal	Asia (West Siberia)	3.34	0.371	2.61E-03
Lena	337	Boreal	Asia (East Siberia)	0.64	0.046	3.37E-01
Amur	542	Boreal	Asia (East Siberia)	3.15	0.646	<0.001
Kolyma	93	Boreal	Asia (East Siberia)	-4.38	0.514	<0.001
Indigirka	34	Boreal	Asia (East Siberia)	-8.58	0.417	1.16E-03
Anadyr	16	Boreal	Asia (East Siberia)	4.79	0.400	1.58E-03
Yana	9	Boreal	Asia (East Siberia)	-5.11	0.181	4.81E-02
Olenek	50	Boreal	Asia (East Siberia)	1.32	0.099	1.55E-01
Kamchatka	12	Boreal	Asia (East Siberia)	-3.12	0.390	1.90E-03
GHAASBasin575	7	Boreal	Asia (East Siberia)	9.35	0.668	<0.001
GHAASBasin892	1	Boreal	Asia (East Siberia)	3.00	0.241	2.04E-02
GHAASBasin1070	4	Boreal	Asia (East Siberia)	-5.37	0.344	4.15E-03
GHAASBasin1112	4	Boreal	Asia (East Siberia)	-3.18	0.498	<0.001
GHAASBasin1127	3	Boreal	Asia (East Siberia)	-0.04	0.000	9.64E-01
GHAASBasin1133	1	Boreal	Asia (East Siberia)	-0.65	0.007	7.17E-01
GHAASBasin1425	2	Boreal	Asia (East Siberia)	-0.69	0.160	6.47E-02
GHAASBasin1640	3	Boreal	Asia (East Siberia)	-3.56	0.375	2.45E-03
GHAASBasin1876	2	Boreal	Asia (East Siberia)	1.24	0.061	2.69E-01
GHAASBasin1895	2	Boreal	Asia (East Siberia)	-0.09	0.002	8.51E-01
GHAASBasin1924	2	Boreal	Asia (East Siberia)	-1.94	0.460	<0.001
GHAASBasin2188	3	Boreal	Asia (East Siberia)	-6.57	0.546	<0.001
GHAASBasin2196	1	Boreal	Asia (East Siberia)	-2.54	0.186	4.49E-02
GHAASBasin2357	1	Boreal	Asia (East Siberia)	1.36	0.042	3.61E-01
GHAASBasin2383	2	Boreal	Asia (East Siberia)	-0.13	0.001	8.99E-01
GHAASBasin4316	1	Boreal	Asia (East Siberia)	2.70	0.351	3.64E-03
GHAASBasin4320	1	Boreal	Asia (East Siberia)	8.32	0.591	<0.001
GHAASBasin4342	1	Boreal	Asia (East Siberia)	-0.68	0.047	3.33E-01
GHAASBasin4400	1	Boreal	Asia (East Siberia)	-0.56	0.013	6.16E-01
GHAASBasin4407	1	Boreal	Asia (East Siberia)	-0.63	0.010	6.56E-01
GHAASBasin4569	1	Boreal	Asia (East Siberia)	-5.13	0.169	5.75E-02
GHAASBasin4587	1	Boreal	Asia (East Siberia)	-2.70	0.069	2.37E-01
GHAASBasin4597	1	Boreal	Asia (East Siberia)	-1.62	0.329	5.24E-03
GHAASBasin4636	1	Boreal	Asia (East Siberia)	1.92	0.046	3.35E-01
GHAASBasin4836	1	Boreal	Asia (East Siberia)	-2.09	0.260	1.54E-02
GHAASBasin4837	1	Boreal	Asia (East Siberia)	-3.48	0.160	6.51E-02
Mississippi	853	Northern mid latitude	North America	-0.51	0.183	4.73E-02

St.Lawrence	365	Northern mid latitude	North America	-1.60	0.738	<0.001
Columbia	233	Northern mid latitude	North America	-1.04	0.281	1.11E-02
Fraser	61	Northern mid latitude	North America	-1.08	0.272	1.28E-02
Brazos	7	Northern mid latitude	North America	-0.99	0.242	2.01E-02
Alabama	48	Northern mid latitude	North America	-0.39	0.136	9.14E-02
Colorado (Texas)	7	Northern mid latitude	North America	0.38	0.160	6.54E-02
San Joaquin	18	Northern mid latitude	North America	-0.53	0.359	3.23E-03
Saguenay	17	Northern mid latitude	North America	-2.27	0.746	<0.001
Susquehanna	31	Northern mid latitude	North America	-1.58	0.647	<0.001
Sacramento	24	Northern mid latitude	North America	-1.16	0.725	<0.001
Skeena	20	Northern mid latitude	North America	-2.25	0.293	9.25E-03
Appalachicola	19	Northern mid latitude	North America	0.31	0.186	4.49E-02
SaintJohn	24	Northern mid latitude	North America	-2.05	0.635	<0.001
Trinity	6	Northern mid latitude	North America	-0.56	0.095	1.63E-01
GHAASBasin350	8	Northern mid latitude	North America	-2.39	0.816	<0.001
Hudson	19	Northern mid latitude	North America	-1.49	0.731	<0.001
Potomac	14	Northern mid latitude	North America	-0.57	0.239	2.11E-02
Roanoke	14	Northern mid latitude	North America	-0.43	0.094	1.66E-01
Klamath	10	Northern mid latitude	North America	-1.13	0.421	1.08E-03
Connecticut	14	Northern mid latitude	North America	-1.83	0.761	<0.001
Sabine	10	Northern mid latitude	North America	0.20	0.042	3.61E-01
GHAASBasin531	10	Northern mid latitude	North America	-3.03	0.849	<0.001
Nass	2	Northern mid latitude	North America	-1.09	0.020	5.28E-01
Suwannee	9	Northern mid latitude	North America	0.21	0.037	3.88E-01
Pearl	9	Northern mid latitude	North America	0.24	0.041	3.63E-01
James	9	Northern mid latitude	North America	-0.21	0.024	4.87E-01
GHAASBasin586	2	Northern mid latitude	North America	-1.59	0.289	9.82E-03
Moisie	6	Northern mid latitude	North America	-0.59	0.067	2.45E-01
Neches	7	Northern mid latitude	North America	-0.14	0.029	4.51E-01
Natashquan	1	Northern mid latitude	North America	-1.35	0.175	5.25E-02
Delaware	8	Northern mid latitude	North America	-0.83	0.647	<0.001
Skagit	9	Northern mid latitude	North America	-1.21	0.426	<0.001
Kennebec	9	Northern mid latitude	North America	-1.41	0.324	5.70E-03
GHAASBasin656	2	Northern mid latitude	North America	-2.55	0.210	3.19E-02
Penobscot	5	Northern mid latitude	North America	-1.62	0.424	1.02E-03
GHAASBasin776	6	Northern mid latitude	North America	0.08	0.012	6.25E-01
GHAASBasin782	6	Northern mid latitude	North America	0.67	0.198	3.79E-02
GHAASBasin828	4	Northern mid latitude	North America	-0.53	0.014	6.06E-01
Chowan	6	Northern mid latitude	North America	0.27	0.023	4.99E-01
GHAASBasin842	7	Northern mid latitude	North America	-2.65	0.688	<0.001
Eel	3	Northern mid latitude	North America	-2.56	0.764	<0.001
GHAASBasin877	5	Northern mid latitude	North America	-0.99	0.649	<0.001
Merrimack	5	Northern mid latitude	North America	-1.25	0.665	<0.001
SaintAugustin	1	Northern mid latitude	North America	-1.59	0.181	4.83E-02
GHAASBasin913	5	Northern mid latitude	North America	-0.71	0.474	<0.001
GHAASBasin915	5	Northern mid latitude	North America	-0.31	0.047	3.34E-01
GHAASBasin916	6	Northern mid latitude	North America	-1.36	0.368	2.78E-03
GHAASBasin924	4	Northern mid latitude	North America	-2.09	0.558	<0.001
GHAASBasin978	5	Northern mid latitude	North America	-0.36	0.359	3.22E-03
GHAASBasin989	5	Northern mid latitude	North America	-1.28	0.447	<0.001
GHAASBasin1017	1	Northern mid latitude	North America	-1.30	0.044	3.47E-01
GHAASBasin1039	5	Northern mid latitude	North America	-0.48	0.044	3.46E-01
GHAASBasin1085	2	Northern mid latitude	North America	-1.12	0.195	3.98E-02
GHAASBasin1097	4	Northern mid latitude	North America	-3.04	0.622	<0.001
GHAASBasin1098	2	Northern mid latitude	North America	-1.67	0.240	2.07E-02
GHAASBasin1101	4	Northern mid latitude	North America	-1.39	0.287	1.02E-02
GHAASBasin1105	3	Northern mid latitude	North America	-1.61	0.496	<0.001
GHAASBasin1161	3	Northern mid latitude	North America	-1.64	0.720	<0.001
GHAASBasin1236	3	Northern mid latitude	North America	-0.93	0.393	1.80E-03

GHAASBasin1240	4	Northern mid latitude	North America	-1.49	0.612	<0.001
GHAASBasin1294	4	Northern mid latitude	North America	-1.36	0.266	1.41E-02
GHAASBasin1320	3	Northern mid latitude	North America	-0.74	0.716	<0.001
GHAASBasin1341	3	Northern mid latitude	North America	-0.10	0.018	5.56E-01
GHAASBasin1344	3	Northern mid latitude	North America	0.31	0.062	2.64E-01
GHAASBasin1345	2	Northern mid latitude	North America	-0.18	0.035	4.02E-01
GHAASBasin1354	3	Northern mid latitude	North America	-0.05	0.003	8.20E-01
GHAASBasin1356	3	Northern mid latitude	North America	-0.42	0.063	2.60E-01
GHAASBasin1357	3	Northern mid latitude	North America	0.34	0.092	1.71E-01
GHAASBasin1370	1	Northern mid latitude	North America	-0.48	0.006	7.41E-01
GHAASBasin1374	1	Northern mid latitude	North America	10.21	0.419	1.12E-03
GHAASBasin1375	3	Northern mid latitude	North America	0.90	0.096	1.61E-01
GHAASBasin1455	1	Northern mid latitude	North America	-1.54	0.670	<0.001
GHAASBasin1462	3	Northern mid latitude	North America	-1.47	0.297	8.73E-03
GHAASBasin1471	2	Northern mid latitude	North America	-2.62	0.151	7.35E-02
GHAASBasin1482	2	Northern mid latitude	North America	-0.77	0.668	<0.001
GHAASBasin1483	3	Northern mid latitude	North America	-1.44	0.549	<0.001
GHAASBasin1514	3	Northern mid latitude	North America	-1.69	0.316	6.46E-03
GHAASBasin1523	2	Northern mid latitude	North America	-1.93	0.626	<0.001
GHAASBasin1533	3	Northern mid latitude	North America	-0.77	0.203	3.51E-02
GHAASBasin1546	1	Northern mid latitude	North America	-3.80	0.542	<0.001
GHAASBasin1548	2	Northern mid latitude	North America	-1.51	0.137	8.95E-02
GHAASBasin1775	1	Northern mid latitude	North America	-0.98	0.030	4.39E-01
GHAASBasin1787	1	Northern mid latitude	North America	-6.35	0.342	4.22E-03
GHAASBasin1832	1	Northern mid latitude	North America	-3.94	0.252	1.74E-02
GHAASBasin1930	2	Northern mid latitude	North America	-0.35	0.004	7.69E-01
GHAASBasin1957	2	Northern mid latitude	North America	-1.75	0.435	<0.001
GHAASBasin1961	2	Northern mid latitude	North America	-0.95	0.550	<0.001
GHAASBasin1973	1	Northern mid latitude	North America	2.21	0.539	<0.001
GHAASBasin1985	2	Northern mid latitude	North America	-1.01	0.536	<0.001
GHAASBasin2097	2	Northern mid latitude	North America	-0.11	0.010	6.51E-01
GHAASBasin2109	2	Northern mid latitude	North America	-1.14	0.519	<0.001
GHAASBasin2111	2	Northern mid latitude	North America	0.30	0.051	3.12E-01
GHAASBasin2112	1	Northern mid latitude	North America	-0.75	0.245	1.92E-02
GHAASBasin2124	2	Northern mid latitude	North America	-0.55	0.190	4.27E-02
GHAASBasin2176	1	Northern mid latitude	North America	-2.21	0.776	<0.001
GHAASBasin2212	2	Northern mid latitude	North America	-2.23	0.753	<0.001
GHAASBasin2225	2	Northern mid latitude	North America	-2.12	0.285	1.06E-02
GHAASBasin2236	2	Northern mid latitude	North America	-1.29	0.164	6.16E-02
GHAASBasin2240	2	Northern mid latitude	North America	-0.02	0.000	9.79E-01
GHAASBasin2241	2	Northern mid latitude	North America	-0.24	0.009	6.80E-01
GHAASBasin2251	2	Northern mid latitude	North America	-1.14	0.176	5.18E-02
GHAASBasin2252	2	Northern mid latitude	North America	-0.61	0.026	4.72E-01
GHAASBasin2263	2	Northern mid latitude	North America	-0.79	0.029	4.47E-01
GHAASBasin2264	1	Northern mid latitude	North America	-1.39	0.489	<0.001
GHAASBasin2281	2	Northern mid latitude	North America	-0.17	0.003	8.07E-01
GHAASBasin2285	2	Northern mid latitude	North America	-1.47	0.236	2.20E-02
GHAASBasin2304	1	Northern mid latitude	North America	-1.81	0.285	1.05E-02
GHAASBasin2305	2	Northern mid latitude	North America	-1.45	0.333	4.95E-03
GHAASBasin2310	2	Northern mid latitude	North America	-1.41	0.154	7.06E-02
GHAASBasin2312	1	Northern mid latitude	North America	-1.67	0.161	6.39E-02
GHAASBasin2315	1	Northern mid latitude	North America	-2.49	0.271	1.30E-02
GHAASBasin2322	1	Northern mid latitude	North America	-1.01	0.114	1.24E-01
GHAASBasin2323	1	Northern mid latitude	North America	-1.99	0.693	<0.001
GHAASBasin2340	2	Northern mid latitude	North America	-1.11	0.097	1.58E-01
GHAASBasin3513	1	Northern mid latitude	North America	-0.93	0.091	1.72E-01
GHAASBasin3524	1	Northern mid latitude	North America	2.44	0.599	<0.001
GHAASBasin3556	1	Northern mid latitude	North America	-0.26	0.032	4.29E-01
GHAASBasin3609	1	Northern mid latitude	North America	0.96	0.246	1.90E-02

GHAASBasin3612	1	Northern mid latitude	North America	-0.07	0.002	8.42E-01
GHAASBasin3617	1	Northern mid latitude	North America	-1.22	0.315	6.56E-03
GHAASBasin3627	1	Northern mid latitude	North America	-1.40	0.373	2.55E-03
GHAASBasin3632	1	Northern mid latitude	North America	0.46	0.066	2.47E-01
GHAASBasin3656	1	Northern mid latitude	North America	0.35	0.167	5.93E-02
GHAASBasin3817	1	Northern mid latitude	North America	-2.59	0.683	<0.001
GHAASBasin3853	1	Northern mid latitude	North America	-0.28	0.070	2.33E-01
GHAASBasin3948	1	Northern mid latitude	North America	-1.91	0.827	<0.001
GHAASBasin3949	1	Northern mid latitude	North America	-2.16	0.646	<0.001
GHAASBasin3965	1	Northern mid latitude	North America	-1.16	0.742	<0.001
GHAASBasin3966	1	Northern mid latitude	North America	-1.96	0.760	<0.001
GHAASBasin3967	1	Northern mid latitude	North America	-3.67	0.799	<0.001
GHAASBasin3976	1	Northern mid latitude	North America	-0.42	0.128	1.02E-01
GHAASBasin3985	1	Northern mid latitude	North America	-1.06	0.623	<0.001
GHAASBasin3986	1	Northern mid latitude	North America	-0.95	0.679	<0.001
GHAASBasin3994	1	Northern mid latitude	North America	-4.84	0.462	<0.001
GHAASBasin4008	1	Northern mid latitude	North America	-3.14	0.442	<0.001
GHAASBasin4028	1	Northern mid latitude	North America	-0.95	0.551	<0.001
GHAASBasin4029	1	Northern mid latitude	North America	-0.67	0.808	<0.001
GHAASBasin4086	1	Northern mid latitude	North America	-1.34	0.591	<0.001
GHAASBasin4087	1	Northern mid latitude	North America	-1.98	0.807	<0.001
GHAASBasin4095	1	Northern mid latitude	North America	-0.89	0.650	<0.001
GHAASBasin4203	1	Northern mid latitude	North America	-1.37	0.587	<0.001
GHAASBasin4222	1	Northern mid latitude	North America	-1.35	0.305	7.72E-03
GHAASBasin4232	1	Northern mid latitude	North America	-1.26	0.090	1.75E-01
GHAASBasin4237	1	Northern mid latitude	North America	-1.06	0.227	2.50E-02
GHAASBasin4241	1	Northern mid latitude	North America	-0.72	0.300	8.37E-03
GHAASBasin4242	1	Northern mid latitude	North America	-1.70	0.358	3.27E-03
GHAASBasin4243	1	Northern mid latitude	North America	-0.97	0.104	1.43E-01
GHAASBasin4254	1	Northern mid latitude	North America	-1.71	0.397	1.67E-03
GHAASBasin4264	1	Northern mid latitude	North America	-0.44	0.010	6.56E-01
GHAASBasin4265	1	Northern mid latitude	North America	-1.50	0.047	3.30E-01
GHAASBasin4266	1	Northern mid latitude	North America	-1.25	0.213	3.08E-02
GHAASBasin4285	1	Northern mid latitude	North America	-0.74	0.020	5.27E-01
GHAASBasin4290	1	Northern mid latitude	North America	-1.27	0.156	6.93E-02
GHAASBasin4292	1	Northern mid latitude	North America	-2.70	0.540	<0.001
GHAASBasin4306	1	Northern mid latitude	North America	-0.66	0.033	4.19E-01
GHAASBasin4314	1	Northern mid latitude	North America	-2.56	0.681	<0.001
GHAASBasin4318	1	Northern mid latitude	North America	-0.49	0.014	6.01E-01
GHAASBasin4319	1	Northern mid latitude	North America	-1.75	0.194	4.01E-02
GHAASBasin4323	1	Northern mid latitude	North America	-3.34	0.363	3.02E-03
GHAASBasin4339	1	Northern mid latitude	North America	-2.35	0.518	<0.001
GHAASBasin4350	1	Northern mid latitude	North America	-2.26	0.440	<0.001
GHAASBasin4351	1	Northern mid latitude	North America	-1.68	0.199	3.73E-02
GHAASBasin4352	1	Northern mid latitude	North America	-2.48	0.598	<0.001
GHAASBasin4354	1	Northern mid latitude	North America	-1.28	0.259	1.55E-02
GHAASBasin4355	1	Northern mid latitude	North America	-0.10	0.001	9.15E-01
GHAASBasin4356	1	Northern mid latitude	North America	-1.14	0.142	8.43E-02
GHAASBasin4357	1	Northern mid latitude	North America	-2.47	0.431	<0.001
GHAASBasin4359	1	Northern mid latitude	North America	-3.25	0.327	5.39E-03
GHAASBasin4360	1	Northern mid latitude	North America	-1.72	0.763	<0.001
GHAASBasin4361	1	Northern mid latitude	North America	-1.79	0.423	1.04E-03
GHAASBasin4362	1	Northern mid latitude	North America	-1.39	0.188	4.36E-02
GHAASBasin4380	1	Northern mid latitude	North America	-3.18	0.829	<0.001
GHAASBasin4383	1	Northern mid latitude	North America	-2.66	0.369	2.70E-03
GHAASBasin4386	1	Northern mid latitude	North America	-2.17	0.567	<0.001
GHAASBasin4387	1	Northern mid latitude	North America	-2.34	0.729	<0.001
GHAASBasin4389	1	Northern mid latitude	North America	-1.45	0.198	3.78E-02
GHAASBasin4391	1	Northern mid latitude	North America	-1.85	0.255	1.64E-02

GHAASBasin4403	1	Northern mid latitude	North America	-2.65	0.658	<0.001
GHAASBasin4404	1	Northern mid latitude	North America	-2.47	0.313	6.76E-03
GHAASBasin4405	1	Northern mid latitude	North America	-1.40	0.428	<0.001
GHAASBasin4406	1	Northern mid latitude	North America	-3.82	0.436	<0.001
GHAASBasin4408	1	Northern mid latitude	North America	2.81	0.151	7.35E-02
GHAASBasin4410	1	Northern mid latitude	North America	0.51	0.011	6.47E-01
GHAASBasin4412	1	Northern mid latitude	North America	-1.25	0.246	1.89E-02
GHAASBasin4421	1	Northern mid latitude	North America	-2.73	0.515	<0.001
GHAASBasin4423	1	Northern mid latitude	North America	-1.47	0.313	6.77E-03
GHAASBasin4434	1	Northern mid latitude	North America	-6.92	0.660	<0.001
GHAASBasin4435	1	Northern mid latitude	North America	-9.37	0.697	<0.001
GHAASBasin4437	1	Northern mid latitude	North America	-0.52	0.020	5.28E-01
GHAASBasin4438	1	Northern mid latitude	North America	-1.45	0.267	1.38E-02
GHAASBasin4439	1	Northern mid latitude	North America	-3.37	0.145	8.01E-02
GHAASBasin4445	1	Northern mid latitude	North America	-0.80	0.095	1.64E-01
GHAASBasin4458	1	Northern mid latitude	North America	-0.84	0.023	5.01E-01
GHAASBasin4459	1	Northern mid latitude	North America	1.39	0.026	4.72E-01
GHAASBasin4483	1	Northern mid latitude	North America	0.31	0.003	8.20E-01
GHAASBasin4489	1	Northern mid latitude	North America	-3.52	0.540	<0.001
GHAASBasin4500	1	Northern mid latitude	North America	-0.17	0.001	8.71E-01
GHAASBasin4506	1	Northern mid latitude	North America	-2.48	0.414	1.25E-03
GHAASBasin4548	1	Northern mid latitude	North America	-0.20	0.003	8.03E-01
Volga	737	Northern mid latitude	Europe	-1.00	0.221	2.72E-02
Danube	303	Northern mid latitude	Europe	1.09	0.354	3.47E-03
Dnepr	216	Northern mid latitude	Europe	-1.62	0.201	3.65E-02
Don	150	Northern mid latitude	Europe	-1.35	0.276	1.20E-02
Neva	169	Northern mid latitude	Europe	0.04	0.000	9.39E-01
Kura	76	Northern mid latitude	Europe	3.07	0.671	<0.001
Wisla	71	Northern mid latitude	Europe	2.90	0.545	<0.001
Rhine	61	Northern mid latitude	Europe	0.18	0.019	5.35E-01
Elbe	37	Northern mid latitude	Europe	0.43	0.033	4.21E-01
Odra	35	Northern mid latitude	Europe	2.88	0.497	<0.001
Loire	47	Northern mid latitude	Europe	0.57	0.230	2.40E-02
Kizillrmak	44	Northern mid latitude	Europe	2.71	0.494	<0.001
Po	46	Northern mid latitude	Europe	1.09	0.784	<0.001
Rhone	45	Northern mid latitude	Europe	0.66	0.344	4.10E-03
Douro	35	Northern mid latitude	Europe	2.37	0.769	<0.001
Nemanus	54	Northern mid latitude	Europe	2.38	0.270	1.31E-02
Daugava	47	Northern mid latitude	Europe	1.58	0.151	7.36E-02
Ebro	20	Northern mid latitude	Europe	1.74	0.679	<0.001
Seine	28	Northern mid latitude	Europe	0.37	0.140	8.57E-02
Tejo	17	Northern mid latitude	Europe	1.62	0.823	<0.001
Dnestr	28	Northern mid latitude	Europe	-2.75	0.343	4.18E-03
GHAASBasin233	19	Northern mid latitude	Europe	-2.78	0.346	3.99E-03
Bug	29	Northern mid latitude	Europe	-2.78	0.307	7.44E-03
Guadiana	10	Northern mid latitude	Europe	1.85	0.775	<0.001
GHAASBasin249	26	Northern mid latitude	Europe	2.23	0.702	<0.001
Kuban	26	Northern mid latitude	Europe	-0.58	0.034	4.13E-01
Narva	34	Northern mid latitude	Europe	1.50	0.197	3.87E-02
Garonne	25	Northern mid latitude	Europe	0.67	0.365	2.90E-03
Sakarya	17	Northern mid latitude	Europe	3.28	0.749	<0.001
Evros	22	Northern mid latitude	Europe	1.14	0.404	1.47E-03
Guadalquivir	15	Northern mid latitude	Europe	1.20	0.783	<0.001
Gota	32	Northern mid latitude	Europe	-1.50	0.187	4.43E-02
Glama	29	Northern mid latitude	Europe	-0.63	0.059	2.76E-01
GHAASBasin339	21	Northern mid latitude	Europe	-2.42	0.374	2.48E-03
Weser	19	Northern mid latitude	Europe	-0.36	0.041	3.68E-01
Yesil	15	Northern mid latitude	Europe	2.94	0.389	1.92E-03
Meuse	10	Northern mid latitude	Europe	0.01	0.000	9.84E-01

GHAASBasin382	15	Northern mid latitude	Europe	1.06	0.094	1.65E-01
GHAASBasin387	18	Northern mid latitude	Europe	-0.07	0.000	9.34E-01
Kymijoki	25	Northern mid latitude	Europe	-0.51	0.047	3.34E-01
Ceyhan	13	Northern mid latitude	Europe	4.85	0.821	<0.001
Coroch	11	Northern mid latitude	Europe	7.27	0.747	<0.001
Dordogne	12	Northern mid latitude	Europe	0.91	0.263	1.47E-02
GHAASBasin525	10	Northern mid latitude	Europe	1.10	0.326	5.55E-03
Buyuk Menderes	7	Northern mid latitude	Europe	2.50	0.485	<0.001
Seyhan	10	Northern mid latitude	Europe	2.90	0.681	<0.001
GHAASBasin563	7	Northern mid latitude	Europe	-0.99	0.709	<0.001
GHAASBasin565	11	Northern mid latitude	Europe	-1.85	0.221	2.72E-02
GHAASBasin568	10	Northern mid latitude	Europe	-1.49	0.162	6.36E-02
GHAASBasin572	10	Northern mid latitude	Europe	3.19	0.737	<0.001
GHAASBasin580	7	Northern mid latitude	Europe	3.39	0.729	<0.001
GHAASBasin582	12	Northern mid latitude	Europe	2.64	0.639	<0.001
Segura	1	Northern mid latitude	Europe	2.37	0.533	<0.001
Scheldt	2	Northern mid latitude	Europe	0.44	0.138	8.90E-02
Jucar	2	Northern mid latitude	Europe	2.42	0.475	<0.001
Strymon	8	Northern mid latitude	Europe	1.86	0.572	<0.001
Drammenselva	13	Northern mid latitude	Europe	-0.28	0.018	5.56E-01
Minho	8	Northern mid latitude	Europe	0.25	0.054	3.00E-01
Pregolya	10	Northern mid latitude	Europe	2.91	0.390	1.91E-03
GHAASBasin719	9	Northern mid latitude	Europe	-1.02	0.100	1.53E-01
Thames	1	Northern mid latitude	Europe	-1.44	0.723	<0.001
Aksu	5	Northern mid latitude	Europe	2.92	0.717	<0.001
GHAASBasin753	6	Northern mid latitude	Europe	2.12	0.767	<0.001
Gediz	6	Northern mid latitude	Europe	3.69	0.750	<0.001
GHAASBasin766	7	Northern mid latitude	Europe	2.62	0.583	<0.001
Axios	7	Northern mid latitude	Europe	2.18	0.717	<0.001
GHAASBasin787	9	Northern mid latitude	Europe	2.21	0.217	2.90E-02
GHAASBasin798	4	Northern mid latitude	Europe	-3.09	0.325	5.60E-03
GHAASBasin820	6	Northern mid latitude	Europe	-0.58	0.130	9.98E-02
GHAASBasin824	7	Northern mid latitude	Europe	0.92	0.315	6.58E-03
GHAASBasin874	6	Northern mid latitude	Europe	1.03	0.697	<0.001
GHAASBasin885	7	Northern mid latitude	Europe	-0.79	0.204	3.50E-02
Adour	6	Northern mid latitude	Europe	0.89	0.402	1.52E-03
Luga	8	Northern mid latitude	Europe	-1.34	0.142	8.41E-02
GHAASBasin934	2	Northern mid latitude	Europe	-0.03	0.000	9.41E-01
GHAASBasin960	1	Northern mid latitude	Europe	-2.03	0.129	1.01E-01
GHAASBasin1014	4	Northern mid latitude	Europe	3.59	0.534	<0.001
GHAASBasin1064	3	Northern mid latitude	Europe	-0.17	0.008	6.87E-01
GHAASBasin1073	5	Northern mid latitude	Europe	0.81	0.485	<0.001
GHAASBasin1074	4	Northern mid latitude	Europe	-5.39	0.556	<0.001
GHAASBasin1076	4	Northern mid latitude	Europe	1.19	0.517	<0.001
GHAASBasin1078	2	Northern mid latitude	Europe	-4.70	0.667	<0.001
GHAASBasin1084	5	Northern mid latitude	Europe	-3.18	0.272	1.28E-02
GHAASBasin1090	2	Northern mid latitude	Europe	1.40	0.485	<0.001
GHAASBasin1095	6	Northern mid latitude	Europe	-1.26	0.540	<0.001
GHAASBasin1109	6	Northern mid latitude	Europe	-0.59	0.026	4.71E-01
GHAASBasin1129	6	Northern mid latitude	Europe	2.81	0.365	2.90E-03
GHAASBasin1131	3	Northern mid latitude	Europe	2.98	0.867	<0.001
GHAASBasin1132	4	Northern mid latitude	Europe	3.18	0.825	<0.001
GHAASBasin1134	4	Northern mid latitude	Europe	1.39	0.517	<0.001
GHAASBasin1135	4	Northern mid latitude	Europe	3.61	0.639	<0.001
Simav	3	Northern mid latitude	Europe	4.19	0.759	<0.001
GHAASBasin1143	4	Northern mid latitude	Europe	4.00	0.949	<0.001
Skienselva	6	Northern mid latitude	Europe	0.47	0.032	4.27E-01
GHAASBasin1151	5	Northern mid latitude	Europe	0.13	0.004	7.87E-01
GHAASBasin1204	4	Northern mid latitude	Europe	3.08	0.399	1.61E-03

GHAASBasin1206	3	Northern mid latitude	Europe	3.43	0.560	<0.001
GHAASBasin1209	4	Northern mid latitude	Europe	1.21	0.018	5.51E-01
GHAASBasin1215	4	Northern mid latitude	Europe	0.59	0.673	<0.001
GHAASBasin1229	2	Northern mid latitude	Europe	0.10	0.001	8.93E-01
GHAASBasin1238	4	Northern mid latitude	Europe	5.04	0.711	<0.001
GHAASBasin1306	2	Northern mid latitude	Europe	1.08	0.064	2.57E-01
GHAASBasin1307	2	Northern mid latitude	Europe	-6.64	0.534	<0.001
GHAASBasin1310	5	Northern mid latitude	Europe	0.51	0.013	6.15E-01
GHAASBasin1314	5	Northern mid latitude	Europe	-0.12	0.002	8.46E-01
GHAASBasin1331	5	Northern mid latitude	Europe	2.52	0.327	5.41E-03
GHAASBasin1387	4	Northern mid latitude	Europe	-0.22	0.003	8.10E-01
GHAASBasin1405	4	Northern mid latitude	Europe	2.01	0.549	<0.001
GHAASBasin1418	3	Northern mid latitude	Europe	3.56	0.657	<0.001
GHAASBasin1419	3	Northern mid latitude	Europe	2.58	0.454	<0.001
GHAASBasin1420	1	Northern mid latitude	Europe	2.60	0.643	<0.001
GHAASBasin1423	2	Northern mid latitude	Europe	0.77	0.090	1.75E-01
GHAASBasin1434	3	Northern mid latitude	Europe	2.07	0.553	<0.001
GHAASBasin1435	3	Northern mid latitude	Europe	2.85	0.735	<0.001
GHAASBasin1437	3	Northern mid latitude	Europe	2.27	0.692	<0.001
GHAASBasin1448	4	Northern mid latitude	Europe	0.27	0.021	5.16E-01
GHAASBasin1456	3	Northern mid latitude	Europe	-0.91	0.305	7.75E-03
GHAASBasin1463	2	Northern mid latitude	Europe	3.03	0.926	<0.001
GHAASBasin1464	3	Northern mid latitude	Europe	1.91	0.310	7.08E-03
GHAASBasin1470	1	Northern mid latitude	Europe	1.07	0.704	<0.001
GHAASBasin1472	3	Northern mid latitude	Europe	1.75	0.518	<0.001
GHAASBasin1475	2	Northern mid latitude	Europe	5.97	0.684	<0.001
GHAASBasin1476	1	Northern mid latitude	Europe	0.59	0.331	5.09E-03
GHAASBasin1478	3	Northern mid latitude	Europe	0.27	0.118	1.17E-01
GHAASBasin1486	4	Northern mid latitude	Europe	1.35	0.051	3.14E-01
GHAASBasin1492	3	Northern mid latitude	Europe	2.58	0.172	5.50E-02
GHAASBasin1493	4	Northern mid latitude	Europe	0.19	0.003	7.94E-01
GHAASBasin1501	3	Northern mid latitude	Europe	2.45	0.338	4.58E-03
GHAASBasin1502	2	Northern mid latitude	Europe	0.42	0.032	4.25E-01
GHAASBasin1503	3	Northern mid latitude	Europe	-1.64	0.436	<0.001
GHAASBasin1504	3	Northern mid latitude	Europe	1.16	0.357	3.30E-03
GHAASBasin1520	3	Northern mid latitude	Europe	1.13	0.789	<0.001
GHAASBasin1528	4	Northern mid latitude	Europe	3.00	0.338	4.52E-03
GHAASBasin1530	4	Northern mid latitude	Europe	1.25	0.122	1.12E-01
GHAASBasin1532	4	Northern mid latitude	Europe	1.31	0.173	5.42E-02
GHAASBasin1540	1	Northern mid latitude	Europe	5.32	0.579	<0.001
GHAASBasin1541	3	Northern mid latitude	Europe	-4.34	0.543	<0.001
GHAASBasin1543	3	Northern mid latitude	Europe	0.77	0.050	3.20E-01
GHAASBasin1670	1	Northern mid latitude	Europe	1.80	0.559	<0.001
GHAASBasin1688	1	Northern mid latitude	Europe	1.58	0.450	<0.001
GHAASBasin1857	3	Northern mid latitude	Europe	-1.18	0.656	<0.001
GHAASBasin1870	2	Northern mid latitude	Europe	1.54	0.486	<0.001
GHAASBasin1875	3	Northern mid latitude	Europe	-0.87	0.196	3.91E-02
GHAASBasin1938	3	Northern mid latitude	Europe	0.77	0.056	2.89E-01
GHAASBasin1941	3	Northern mid latitude	Europe	-1.15	0.784	<0.001
GHAASBasin1949	3	Northern mid latitude	Europe	3.71	0.586	<0.001
GHAASBasin1972	3	Northern mid latitude	Europe	0.29	0.031	4.35E-01
GHAASBasin1977	3	Northern mid latitude	Europe	-1.50	0.291	9.56E-03
GHAASBasin1987	3	Northern mid latitude	Europe	-0.76	0.239	2.09E-02
GHAASBasin2014	3	Northern mid latitude	Europe	-0.39	0.053	3.03E-01
GHAASBasin2016	3	Northern mid latitude	Europe	-0.28	0.008	6.97E-01
GHAASBasin2034	1	Northern mid latitude	Europe	-1.31	0.310	7.08E-03
GHAASBasin2036	2	Northern mid latitude	Europe	-1.13	0.163	6.22E-02
GHAASBasin2061	3	Northern mid latitude	Europe	0.19	0.003	8.09E-01
GHAASBasin2062	3	Northern mid latitude	Europe	3.50	0.485	<0.001

GHAASBasin2063	3	Northern mid latitude	Europe	0.16	0.007	7.04E-01
GHAASBasin2065	3	Northern mid latitude	Europe	-0.61	0.045	3.46E-01
GHAASBasin2078	2	Northern mid latitude	Europe	2.82	0.516	<0.001
GHAASBasin2079	2	Northern mid latitude	Europe	1.37	0.528	<0.001
GHAASBasin2081	1	Northern mid latitude	Europe	-0.27	0.004	7.92E-01
GHAASBasin2088	2	Northern mid latitude	Europe	3.75	0.296	8.91E-03
GHAASBasin2089	2	Northern mid latitude	Europe	-0.12	0.130	9.97E-02
GHAASBasin2090	2	Northern mid latitude	Europe	-0.11	0.232	2.32E-02
GHAASBasin2091	1	Northern mid latitude	Europe	0.82	0.326	5.55E-03
GHAASBasin2096	2	Northern mid latitude	Europe	2.82	0.773	<0.001
GHAASBasin2116	2	Northern mid latitude	Europe	0.71	0.671	<0.001
GHAASBasin2123	2	Northern mid latitude	Europe	-0.66	0.041	3.66E-01
GHAASBasin2132	2	Northern mid latitude	Europe	-3.39	0.664	<0.001
GHAASBasin2133	2	Northern mid latitude	Europe	3.01	0.551	<0.001
GHAASBasin2134	2	Northern mid latitude	Europe	1.80	0.640	<0.001
GHAASBasin2138	2	Northern mid latitude	Europe	3.68	0.700	<0.001
GHAASBasin2143	2	Northern mid latitude	Europe	4.84	0.324	5.74E-03
GHAASBasin2145	2	Northern mid latitude	Europe	1.22	0.054	2.98E-01
GHAASBasin2151	2	Northern mid latitude	Europe	0.86	0.416	1.18E-03
GHAASBasin2152	2	Northern mid latitude	Europe	2.97	0.924	<0.001
GHAASBasin2162	2	Northern mid latitude	Europe	1.49	0.288	1.01E-02
GHAASBasin2163	1	Northern mid latitude	Europe	4.21	0.840	<0.001
GHAASBasin2164	3	Northern mid latitude	Europe	1.07	0.046	3.36E-01
GHAASBasin2171	2	Northern mid latitude	Europe	2.29	0.717	<0.001
GHAASBasin2173	2	Northern mid latitude	Europe	5.63	0.948	<0.001
GHAASBasin2182	2	Northern mid latitude	Europe	2.73	0.910	<0.001
GHAASBasin2191	2	Northern mid latitude	Europe	0.64	0.495	<0.001
GHAASBasin2194	2	Northern mid latitude	Europe	1.12	0.225	2.58E-02
GHAASBasin2199	2	Northern mid latitude	Europe	0.32	0.151	7.41E-02
GHAASBasin2201	2	Northern mid latitude	Europe	0.08	0.018	5.54E-01
GHAASBasin2202	2	Northern mid latitude	Europe	-0.04	0.003	8.20E-01
GHAASBasin2205	2	Northern mid latitude	Europe	4.15	0.725	<0.001
GHAASBasin2208	2	Northern mid latitude	Europe	0.61	0.202	3.58E-02
GHAASBasin2215	2	Northern mid latitude	Europe	0.52	0.431	<0.001
GHAASBasin2216	2	Northern mid latitude	Europe	0.19	0.141	8.51E-02
GHAASBasin2217	1	Northern mid latitude	Europe	0.49	0.112	1.29E-01
GHAASBasin2219	2	Northern mid latitude	Europe	0.78	0.449	<0.001
GHAASBasin2224	2	Northern mid latitude	Europe	0.69	0.497	<0.001
GHAASBasin2258	2	Northern mid latitude	Europe	1.04	0.730	<0.001
GHAASBasin2259	2	Northern mid latitude	Europe	1.33	0.816	<0.001
GHAASBasin2265	2	Northern mid latitude	Europe	-2.31	0.306	7.61E-03
GHAASBasin2274	2	Northern mid latitude	Europe	-4.66	0.637	<0.001
GHAASBasin2275	2	Northern mid latitude	Europe	-6.05	0.685	<0.001
GHAASBasin2276	2	Northern mid latitude	Europe	-3.79	0.639	<0.001
GHAASBasin2283	2	Northern mid latitude	Europe	-2.63	0.520	<0.001
GHAASBasin2292	2	Northern mid latitude	Europe	1.28	0.590	<0.001
GHAASBasin2301	1	Northern mid latitude	Europe	1.81	0.578	<0.001
GHAASBasin2306	2	Northern mid latitude	Europe	1.28	0.424	1.02E-03
GHAASBasin2330	2	Northern mid latitude	Europe	-1.56	0.786	<0.001
GHAASBasin2348	2	Northern mid latitude	Europe	1.48	0.437	<0.001
GHAASBasin2355	2	Northern mid latitude	Europe	2.75	0.632	<0.001
GHAASBasin2358	2	Northern mid latitude	Europe	-0.59	0.089	1.77E-01
GHAASBasin2366	1	Northern mid latitude	Europe	-0.89	0.233	2.28E-02
GHAASBasin2371	1	Northern mid latitude	Europe	1.48	0.453	<0.001
GHAASBasin2381	2	Northern mid latitude	Europe	2.26	0.238	2.13E-02
GHAASBasin2385	2	Northern mid latitude	Europe	4.59	0.465	<0.001
GHAASBasin2386	2	Northern mid latitude	Europe	3.60	0.384	2.11E-03
GHAASBasin2387	2	Northern mid latitude	Europe	1.19	0.087	1.81E-01
GHAASBasin2388	2	Northern mid latitude	Europe	0.11	0.002	8.40E-01

GHAASBasin2396	2	Northern mid latitude	Europe	3.46	0.574	<0.001
GHAASBasin2398	2	Northern mid latitude	Europe	-0.09	0.001	8.77E-01
GHAASBasin2406	1	Northern mid latitude	Europe	-0.44	0.038	3.86E-01
GHAASBasin2407	2	Northern mid latitude	Europe	-0.86	0.614	<0.001
GHAASBasin2415	1	Northern mid latitude	Europe	-0.84	0.260	1.53E-02
GHAASBasin2422	2	Northern mid latitude	Europe	-0.49	0.024	4.92E-01
GHAASBasin2433	2	Northern mid latitude	Europe	-0.44	0.018	5.52E-01
GHAASBasin2439	2	Northern mid latitude	Europe	0.40	0.012	6.33E-01
GHAASBasin2442	2	Northern mid latitude	Europe	0.17	0.002	8.46E-01
GHAASBasin2445	2	Northern mid latitude	Europe	1.01	0.073	2.23E-01
GHAASBasin2452	2	Northern mid latitude	Europe	-1.21	0.337	4.59E-03
GHAASBasin2455	2	Northern mid latitude	Europe	-0.39	0.016	5.69E-01
GHAASBasin2464	2	Northern mid latitude	Europe	-0.47	0.015	5.89E-01
GHAASBasin2475	2	Northern mid latitude	Europe	-0.14	0.001	8.75E-01
GHAASBasin2490	2	Northern mid latitude	Europe	2.52	0.393	1.81E-03
GHAASBasin2495	2	Northern mid latitude	Europe	3.44	0.436	<0.001
GHAASBasin2496	2	Northern mid latitude	Europe	3.39	0.398	1.66E-03
GHAASBasin2497	2	Northern mid latitude	Europe	-1.21	0.126	1.05E-01
GHAASBasin2502	1	Northern mid latitude	Europe	1.21	0.114	1.25E-01
GHAASBasin2507	2	Northern mid latitude	Europe	4.26	0.627	<0.001
GHAASBasin2977	2	Northern mid latitude	Europe	0.26	0.006	7.29E-01
GHAASBasin2978	2	Northern mid latitude	Europe	0.08	0.001	9.20E-01
GHAASBasin2979	2	Northern mid latitude	Europe	0.24	0.005	7.51E-01
GHAASBasin3072	2	Northern mid latitude	Europe	-0.89	0.052	3.10E-01
GHAASBasin3130	2	Northern mid latitude	Europe	-0.87	0.060	2.72E-01
GHAASBasin3131	2	Northern mid latitude	Europe	-0.49	0.032	4.23E-01
GHAASBasin3783	1	Northern mid latitude	Europe	1.78	0.809	<0.001
GHAASBasin3809	1	Northern mid latitude	Europe	1.54	0.704	<0.001
GHAASBasin3810	1	Northern mid latitude	Europe	1.84	0.662	<0.001
GHAASBasin3811	1	Northern mid latitude	Europe	1.79	0.484	<0.001
GHAASBasin3834	1	Northern mid latitude	Europe	7.01	0.789	<0.001
GHAASBasin3835	1	Northern mid latitude	Europe	4.51	0.890	<0.001
GHAASBasin3836	1	Northern mid latitude	Europe	3.12	0.546	<0.001
GHAASBasin3841	1	Northern mid latitude	Europe	3.68	0.697	<0.001
GHAASBasin3842	1	Northern mid latitude	Europe	0.56	0.139	8.70E-02
GHAASBasin3846	1	Northern mid latitude	Europe	4.32	0.272	1.28E-02
GHAASBasin3847	1	Northern mid latitude	Europe	1.46	0.390	1.90E-03
GHAASBasin3848	1	Northern mid latitude	Europe	1.86	0.711	<0.001
GHAASBasin3852	1	Northern mid latitude	Europe	0.54	0.636	<0.001
GHAASBasin3858	1	Northern mid latitude	Europe	2.27	0.723	<0.001
GHAASBasin3859	1	Northern mid latitude	Europe	2.75	0.817	<0.001
GHAASBasin3860	1	Northern mid latitude	Europe	1.42	0.363	3.02E-03
GHAASBasin3884	1	Northern mid latitude	Europe	2.99	0.560	<0.001
GHAASBasin3885	1	Northern mid latitude	Europe	2.20	0.532	<0.001
GHAASBasin3886	1	Northern mid latitude	Europe	1.58	0.265	1.41E-02
GHAASBasin3895	1	Northern mid latitude	Europe	0.76	0.199	3.72E-02
GHAASBasin3896	1	Northern mid latitude	Europe	2.09	0.797	<0.001
GHAASBasin3898	1	Northern mid latitude	Europe	1.81	0.726	<0.001
GHAASBasin3899	1	Northern mid latitude	Europe	-0.05	0.021	5.25E-01
GHAASBasin3900	1	Northern mid latitude	Europe	2.79	0.902	<0.001
GHAASBasin3902	1	Northern mid latitude	Europe	-0.20	0.189	4.30E-02
GHAASBasin3903	1	Northern mid latitude	Europe	-0.29	0.303	8.00E-03
GHAASBasin3904	1	Northern mid latitude	Europe	-0.08	0.047	3.33E-01
GHAASBasin3912	1	Northern mid latitude	Europe	4.10	0.791	<0.001
GHAASBasin3913	1	Northern mid latitude	Europe	1.94	0.801	<0.001
GHAASBasin3919	1	Northern mid latitude	Europe	1.46	0.452	<0.001
GHAASBasin3928	1	Northern mid latitude	Europe	0.49	0.513	<0.001
GHAASBasin3935	1	Northern mid latitude	Europe	2.65	0.767	<0.001
GHAASBasin3936	1	Northern mid latitude	Europe	1.66	0.605	<0.001

GHAASBasin3957	1	Northern mid latitude	Europe	2.13	0.571	<0.001
GHAASBasin3958	1	Northern mid latitude	Europe	1.07	0.569	<0.001
GHAASBasin3962	1	Northern mid latitude	Europe	3.33	0.908	<0.001
GHAASBasin3963	1	Northern mid latitude	Europe	0.74	0.308	7.39E-03
GHAASBasin3964	1	Northern mid latitude	Europe	0.75	0.504	<0.001
GHAASBasin3974	1	Northern mid latitude	Europe	2.38	0.612	<0.001
GHAASBasin3975	1	Northern mid latitude	Europe	0.72	0.714	<0.001
GHAASBasin3982	1	Northern mid latitude	Europe	4.82	0.908	<0.001
GHAASBasin3983	1	Northern mid latitude	Europe	2.11	0.789	<0.001
GHAASBasin3988	1	Northern mid latitude	Europe	0.24	0.092	1.69E-01
GHAASBasin3992	1	Northern mid latitude	Europe	1.12	0.713	<0.001
GHAASBasin3993	1	Northern mid latitude	Europe	2.72	0.942	<0.001
GHAASBasin4016	1	Northern mid latitude	Europe	4.61	0.807	<0.001
GHAASBasin4023	1	Northern mid latitude	Europe	2.63	0.495	<0.001
GHAASBasin4025	1	Northern mid latitude	Europe	0.60	0.491	<0.001
GHAASBasin4026	1	Northern mid latitude	Europe	0.87	0.838	<0.001
GHAASBasin4027	1	Northern mid latitude	Europe	1.56	0.667	<0.001
GHAASBasin4033	1	Northern mid latitude	Europe	2.55	0.716	<0.001
GHAASBasin4036	1	Northern mid latitude	Europe	1.14	0.810	<0.001
GHAASBasin4040	1	Northern mid latitude	Europe	1.81	0.158	6.65E-02
GHAASBasin4041	1	Northern mid latitude	Europe	0.46	0.019	5.38E-01
GHAASBasin4042	1	Northern mid latitude	Europe	1.04	0.111	1.29E-01
GHAASBasin4043	1	Northern mid latitude	Europe	1.40	0.172	5.54E-02
GHAASBasin4044	1	Northern mid latitude	Europe	3.65	0.612	<0.001
GHAASBasin4045	1	Northern mid latitude	Europe	2.31	0.442	<0.001
GHAASBasin4059	1	Northern mid latitude	Europe	0.93	0.719	<0.001
GHAASBasin4060	1	Northern mid latitude	Europe	0.97	0.840	<0.001
GHAASBasin4061	1	Northern mid latitude	Europe	0.40	0.364	2.97E-03
GHAASBasin4069	1	Northern mid latitude	Europe	3.68	0.318	6.24E-03
GHAASBasin4070	1	Northern mid latitude	Europe	2.06	0.155	6.94E-02
GHAASBasin4071	1	Northern mid latitude	Europe	1.86	0.362	3.04E-03
GHAASBasin4072	1	Northern mid latitude	Europe	1.53	0.367	2.81E-03
GHAASBasin4084	1	Northern mid latitude	Europe	0.13	0.053	3.01E-01
GHAASBasin4085	1	Northern mid latitude	Europe	0.67	0.743	<0.001
GHAASBasin4089	1	Northern mid latitude	Europe	0.49	0.309	7.21E-03
GHAASBasin4090	1	Northern mid latitude	Europe	3.11	0.227	2.51E-02
GHAASBasin4091	1	Northern mid latitude	Europe	3.17	0.174	5.33E-02
GHAASBasin4092	1	Northern mid latitude	Europe	3.32	0.234	2.25E-02
GHAASBasin4093	1	Northern mid latitude	Europe	1.24	0.596	<0.001
GHAASBasin4100	1	Northern mid latitude	Europe	5.03	0.429	<0.001
GHAASBasin4101	1	Northern mid latitude	Europe	6.32	0.879	<0.001
GHAASBasin4102	1	Northern mid latitude	Europe	1.09	0.321	6.00E-03
GHAASBasin4111	1	Northern mid latitude	Europe	0.27	0.081	1.98E-01
GHAASBasin4112	1	Northern mid latitude	Europe	2.10	0.471	<0.001
GHAASBasin4114	1	Northern mid latitude	Europe	0.37	0.169	5.77E-02
GHAASBasin4124	1	Northern mid latitude	Europe	7.00	0.919	<0.001
GHAASBasin4125	1	Northern mid latitude	Europe	0.86	0.300	8.32E-03
GHAASBasin4127	1	Northern mid latitude	Europe	-0.10	0.009	6.76E-01
GHAASBasin4134	1	Northern mid latitude	Europe	4.73	0.792	<0.001
GHAASBasin4153	1	Northern mid latitude	Europe	5.29	0.795	<0.001
GHAASBasin4154	1	Northern mid latitude	Europe	4.88	0.879	<0.001
GHAASBasin4158	1	Northern mid latitude	Europe	0.56	0.313	6.80E-03
GHAASBasin4159	1	Northern mid latitude	Europe	0.80	0.581	<0.001
GHAASBasin4160	1	Northern mid latitude	Europe	2.20	0.532	<0.001
GHAASBasin4161	1	Northern mid latitude	Europe	-0.39	0.178	5.04E-02
GHAASBasin4162	1	Northern mid latitude	Europe	0.31	0.151	7.44E-02
GHAASBasin4163	1	Northern mid latitude	Europe	-0.18	0.042	3.62E-01
GHAASBasin4170	1	Northern mid latitude	Europe	7.65	0.827	<0.001
GHAASBasin4172	1	Northern mid latitude	Europe	-0.65	0.278	1.16E-02

GHAASBasin4173	1	Northern mid latitude	Europe	0.16	0.043	3.55E-01
GHAASBasin4174	1	Northern mid latitude	Europe	0.29	0.103	1.46E-01
GHAASBasin4175	1	Northern mid latitude	Europe	1.27	0.540	<0.001
GHAASBasin4176	1	Northern mid latitude	Europe	1.10	0.397	1.67E-03
GHAASBasin4177	1	Northern mid latitude	Europe	2.08	0.425	1.01E-03
GHAASBasin4178	1	Northern mid latitude	Europe	1.96	0.473	<0.001
GHAASBasin4179	1	Northern mid latitude	Europe	0.53	0.193	4.10E-02
GHAASBasin4180	1	Northern mid latitude	Europe	1.49	0.355	3.44E-03
GHAASBasin4181	1	Northern mid latitude	Europe	0.19	0.005	7.58E-01
GHAASBasin4186	1	Northern mid latitude	Europe	3.10	0.430	<0.001
GHAASBasin4187	1	Northern mid latitude	Europe	0.98	0.311	6.99E-03
GHAASBasin4193	1	Northern mid latitude	Europe	1.73	0.100	1.52E-01
GHAASBasin4194	1	Northern mid latitude	Europe	4.65	0.392	1.84E-03
GHAASBasin4195	1	Northern mid latitude	Europe	5.99	0.961	<0.001
GHAASBasin4196	1	Northern mid latitude	Europe	4.40	0.924	<0.001
GHAASBasin4202	1	Northern mid latitude	Europe	0.24	0.154	7.10E-02
GHAASBasin4220	1	Northern mid latitude	Europe	7.89	0.849	<0.001
GHAASBasin4221	1	Northern mid latitude	Europe	4.66	0.866	<0.001
GHAASBasin4229	1	Northern mid latitude	Europe	4.07	0.849	<0.001
GHAASBasin4230	1	Northern mid latitude	Europe	0.81	0.461	<0.001
GHAASBasin4234	1	Northern mid latitude	Europe	3.79	0.496	<0.001
GHAASBasin4235	1	Northern mid latitude	Europe	8.12	0.837	<0.001
GHAASBasin4239	1	Northern mid latitude	Europe	2.09	0.665	<0.001
GHAASBasin4260	1	Northern mid latitude	Europe	2.34	0.473	<0.001
GHAASBasin4269	1	Northern mid latitude	Europe	3.62	0.889	<0.001
GHAASBasin4305	1	Northern mid latitude	Europe	-3.21	0.310	7.09E-03
GHAASBasin4312	1	Northern mid latitude	Europe	1.46	0.737	<0.001
GHAASBasin4338	1	Northern mid latitude	Europe	-3.33	0.411	1.31E-03
GHAASBasin4353	1	Northern mid latitude	Europe	1.26	0.602	<0.001
GHAASBasin4382	1	Northern mid latitude	Europe	0.22	0.076	2.13E-01
GHAASBasin4385	1	Northern mid latitude	Europe	2.53	0.737	<0.001
GHAASBasin4411	1	Northern mid latitude	Europe	1.62	0.487	<0.001
GHAASBasin4436	1	Northern mid latitude	Europe	2.01	0.522	<0.001
GHAASBasin4440	1	Northern mid latitude	Europe	0.78	0.182	4.77E-02
GHAASBasin4462	1	Northern mid latitude	Europe	-1.87	0.882	<0.001
GHAASBasin4463	1	Northern mid latitude	Europe	-2.76	0.913	<0.001
GHAASBasin4475	1	Northern mid latitude	Europe	-2.11	0.839	<0.001
GHAASBasin4481	1	Northern mid latitude	Europe	-1.37	0.575	<0.001
GHAASBasin4482	1	Northern mid latitude	Europe	-0.96	0.203	3.51E-02
GHAASBasin4486	1	Northern mid latitude	Europe	-1.97	0.855	<0.001
GHAASBasin4487	1	Northern mid latitude	Europe	-1.67	0.767	<0.001
GHAASBasin4488	1	Northern mid latitude	Europe	-1.60	0.818	<0.001
GHAASBasin4514	1	Northern mid latitude	Europe	-1.47	0.629	<0.001
GHAASBasin4518	1	Northern mid latitude	Europe	-1.16	0.425	1.02E-03
GHAASBasin4519	1	Northern mid latitude	Europe	0.47	0.135	9.23E-02
GHAASBasin4520	1	Northern mid latitude	Europe	2.19	0.344	4.13E-03
GHAASBasin4521	1	Northern mid latitude	Europe	1.56	0.192	4.12E-02
GHAASBasin4542	1	Northern mid latitude	Europe	1.83	0.435	<0.001
GHAASBasin4547	1	Northern mid latitude	Europe	-0.04	0.000	9.38E-01
GHAASBasin4557	1	Northern mid latitude	Europe	-1.88	0.762	<0.001
GHAASBasin4572	1	Northern mid latitude	Europe	-1.42	0.344	4.13E-03
GHAASBasin4574	1	Northern mid latitude	Europe	-1.20	0.608	<0.001
GHAASBasin4579	1	Northern mid latitude	Europe	-1.46	0.446	<0.001
GHAASBasin4580	1	Northern mid latitude	Europe	-1.44	0.595	<0.001
GHAASBasin4588	1	Northern mid latitude	Europe	-0.66	0.150	7.46E-02
GHAASBasin4599	1	Northern mid latitude	Europe	2.84	0.407	1.40E-03
GHAASBasin4628	1	Northern mid latitude	Europe	-0.62	0.089	1.78E-01
GHAASBasin4629	1	Northern mid latitude	Europe	8.87	0.791	<0.001
GHAASBasin4634	1	Northern mid latitude	Europe	5.42	0.543	<0.001

GHAASBasin4638	1	Northern mid latitude	Europe	-0.52	0.049	3.24E-01
GHAASBasin4639	1	Northern mid latitude	Europe	-2.39	0.892	<0.001
GHAASBasin4644	1	Northern mid latitude	Europe	-1.53	0.515	<0.001
GHAASBasin4645	1	Northern mid latitude	Europe	-1.18	0.078	2.08E-01
GHAASBasin4652	1	Northern mid latitude	Europe	4.59	0.544	<0.001
GHAASBasin4670	1	Northern mid latitude	Europe	-0.11	0.005	7.49E-01
GHAASBasin4674	1	Northern mid latitude	Europe	-0.85	0.107	1.38E-01
GHAASBasin4675	1	Northern mid latitude	Europe	-0.75	0.083	1.94E-01
GHAASBasin4697	1	Northern mid latitude	Europe	-0.74	0.076	2.15E-01
GHAASBasin4701	1	Northern mid latitude	Europe	-0.56	0.037	3.90E-01
GHAASBasin4702	1	Northern mid latitude	Europe	4.69	0.383	2.14E-03
GHAASBasin4706	1	Northern mid latitude	Europe	0.35	0.013	6.07E-01
GHAASBasin4711	1	Northern mid latitude	Europe	-1.04	0.074	2.21E-01
GHAASBasin4721	1	Northern mid latitude	Europe	0.59	0.027	4.61E-01
GHAASBasin4725	1	Northern mid latitude	Europe	0.03	0.000	9.79E-01
GHAASBasin4730	1	Northern mid latitude	Europe	2.93	0.290	9.65E-03
GHAASBasin4739	1	Northern mid latitude	Europe	1.98	0.108	1.35E-01
GHAASBasin4740	1	Northern mid latitude	Europe	1.55	0.133	9.47E-02
GHAASBasin4743	1	Northern mid latitude	Europe	7.05	0.199	3.74E-02
GHAASBasin4744	1	Northern mid latitude	Europe	-0.28	0.006	7.29E-01
GHAASBasin4761	1	Northern mid latitude	Europe	3.89	0.273	1.27E-02
GHAASBasin4763	1	Northern mid latitude	Europe	0.53	0.047	3.32E-01
GHAASBasin4764	1	Northern mid latitude	Europe	-1.29	0.083	1.93E-01
GHAASBasin4778	1	Northern mid latitude	Europe	7.00	0.482	<0.001
GHAASBasin4779	1	Northern mid latitude	Europe	0.48	0.034	4.12E-01
GHAASBasin4783	1	Northern mid latitude	Europe	5.14	0.193	4.10E-02
GHAASBasin4810	1	Northern mid latitude	Europe	2.03	0.414	1.23E-03
GHAASBasin4820	1	Northern mid latitude	Europe	-0.09	0.001	8.98E-01
GHAASBasin4821	1	Northern mid latitude	Europe	-0.19	0.004	7.80E-01
GHAASBasin4822	1	Northern mid latitude	Europe	0.62	0.023	5.02E-01
GHAASBasin4823	1	Northern mid latitude	Europe	2.92	0.343	4.20E-03
GHAASBasin4824	1	Northern mid latitude	Europe	3.75	0.436	<0.001
GHAASBasin4851	1	Northern mid latitude	Europe	-0.48	0.023	4.96E-01
GHAASBasin4870	1	Northern mid latitude	Europe	-0.46	0.020	5.32E-01
GHAASBasin4886	1	Northern mid latitude	Europe	-0.18	0.002	8.34E-01
GHAASBasin4887	1	Northern mid latitude	Europe	0.08	0.000	9.25E-01
GHAASBasin4950	1	Northern mid latitude	Europe	0.71	0.016	5.70E-01
ChangJiang	490	Northern mid latitude	Asia	5.97	0.927	<0.001
Ganges	376	Northern mid latitude	Asia	1.43	0.432	<0.001
Indus	124	Northern mid latitude	Asia	1.05	0.554	<0.001
HuangHe	119	Northern mid latitude	Asia	4.16	0.900	<0.001
Liao	53	Northern mid latitude	Asia	3.37	0.731	<0.001
HaiHo	2	Northern mid latitude	Asia	2.67	0.646	<0.001
Huai	30	Northern mid latitude	Asia	4.82	0.901	<0.001
GHAASBasin133	3	Northern mid latitude	Asia	1.09	0.169	5.76E-02
FuchunJiang	24	Northern mid latitude	Asia	5.99	0.950	<0.001
Menjiang	24	Northern mid latitude	Asia	3.97	0.783	<0.001
Damodar	21	Northern mid latitude	Asia	1.46	0.677	<0.001
GHAASBasin299	4	Northern mid latitude	Asia	2.05	0.326	5.54E-03
Yalu	20	Northern mid latitude	Asia	3.81	0.806	<0.001
Luan	15	Northern mid latitude	Asia	5.91	0.859	<0.001
GHAASBasin424	6	Northern mid latitude	Asia	6.47	0.738	<0.001
GHAASBasin434	11	Northern mid latitude	Asia	0.96	0.293	9.30E-03
GHAASBasin496	12	Northern mid latitude	Asia	3.75	0.644	<0.001
GHAASBasin545	9	Northern mid latitude	Asia	1.07	0.111	1.29E-01
Kaladan	6	Northern mid latitude	Asia	0.91	0.033	4.18E-01
NagDong	7	Northern mid latitude	Asia	0.81	0.469	<0.001
Han	8	Northern mid latitude	Asia	1.53	0.663	<0.001
GHAASBasin676	2	Northern mid latitude	Asia	0.35	0.006	7.40E-01

Tone	7	Northern mid latitude	Asia	-0.49	0.573	<0.001
GHAASBasin770	5	Northern mid latitude	Asia	7.27	0.952	<0.001
GHAASBasin829	6	Northern mid latitude	Asia	-0.23	0.264	1.45E-02
GHAASBasin837	6	Northern mid latitude	Asia	1.12	0.555	<0.001
Shinano	5	Northern mid latitude	Asia	-1.59	0.722	<0.001
GHAASBasin865	5	Northern mid latitude	Asia	-0.74	0.207	3.32E-02
GHAASBasin933	4	Northern mid latitude	Asia	-0.51	0.803	<0.001
GHAASBasin966	4	Northern mid latitude	Asia	1.23	0.594	<0.001
GHAASBasin997	3	Northern mid latitude	Asia	-0.50	0.016	5.79E-01
GHAASBasin999	3	Northern mid latitude	Asia	1.56	0.102	1.47E-01
Ishikari Gawa	4	Northern mid latitude	Asia	-0.88	0.260	1.54E-02
GHAASBasin1058	4	Northern mid latitude	Asia	5.30	0.820	<0.001
GHAASBasin1065	1	Northern mid latitude	Asia	-1.99	0.333	4.95E-03
GHAASBasin1108	2	Northern mid latitude	Asia	-1.34	0.208	3.31E-02
GHAASBasin1126	2	Northern mid latitude	Asia	-0.88	0.027	4.65E-01
GHAASBasin1136	1	Northern mid latitude	Asia	-0.57	0.023	4.97E-01
GHAASBasin1142	4	Northern mid latitude	Asia	4.37	0.661	<0.001
GHAASBasin1144	2	Northern mid latitude	Asia	-6.13	0.422	1.07E-03
GHAASBasin1239	4	Northern mid latitude	Asia	0.73	0.036	3.98E-01
GHAASBasin1313	3	Northern mid latitude	Asia	1.41	0.702	<0.001
GHAASBasin1338	3	Northern mid latitude	Asia	5.99	0.973	<0.001
GHAASBasin1364	3	Northern mid latitude	Asia	-1.18	0.567	<0.001
GHAASBasin1390	3	Northern mid latitude	Asia	-0.64	0.533	<0.001
GHAASBasin1394	3	Northern mid latitude	Asia	-0.31	0.544	<0.001
GHAASBasin1396	3	Northern mid latitude	Asia	-0.67	0.209	3.23E-02
GHAASBasin1401	3	Northern mid latitude	Asia	-0.64	0.616	<0.001
GHAASBasin1414	3	Northern mid latitude	Asia	-0.55	0.268	1.36E-02
GHAASBasin1441	3	Northern mid latitude	Asia	0.17	0.023	4.99E-01
GHAASBasin1449	1	Northern mid latitude	Asia	2.95	0.171	5.59E-02
GHAASBasin1452	3	Northern mid latitude	Asia	-0.12	0.010	6.56E-01
GHAASBasin1459	3	Northern mid latitude	Asia	3.47	0.754	<0.001
GHAASBasin1479	2	Northern mid latitude	Asia	-2.77	0.217	2.87E-02
GHAASBasin1490	3	Northern mid latitude	Asia	-0.95	0.256	1.62E-02
GHAASBasin1494	2	Northern mid latitude	Asia	-0.50	0.054	2.96E-01
GHAASBasin1499	2	Northern mid latitude	Asia	-7.07	0.617	<0.001
GHAASBasin1507	2	Northern mid latitude	Asia	-4.10	0.548	<0.001
GHAASBasin1510	3	Northern mid latitude	Asia	-0.07	0.001	8.93E-01
GHAASBasin1770	2	Northern mid latitude	Asia	6.27	0.166	5.99E-02
GHAASBasin1853	2	Northern mid latitude	Asia	-2.06	0.160	6.49E-02
GHAASBasin1863	2	Northern mid latitude	Asia	-2.15	0.624	<0.001
GHAASBasin1946	2	Northern mid latitude	Asia	5.79	0.972	<0.001
GHAASBasin2022	1	Northern mid latitude	Asia	5.11	0.841	<0.001
GHAASBasin2025	1	Northern mid latitude	Asia	-0.85	0.207	3.35E-02
GHAASBasin2043	2	Northern mid latitude	Asia	-0.95	0.736	<0.001
GHAASBasin2047	2	Northern mid latitude	Asia	-1.21	0.674	<0.001
GHAASBasin2049	2	Northern mid latitude	Asia	-0.67	0.578	<0.001
GHAASBasin2051	1	Northern mid latitude	Asia	-1.03	0.483	<0.001
GHAASBasin2055	2	Northern mid latitude	Asia	0.37	0.093	1.67E-01
GHAASBasin2060	2	Northern mid latitude	Asia	0.69	0.249	1.80E-02
GHAASBasin2077	1	Northern mid latitude	Asia	-0.49	0.261	1.52E-02
GHAASBasin2084	2	Northern mid latitude	Asia	-1.39	0.751	<0.001
GHAASBasin2094	2	Northern mid latitude	Asia	0.12	0.010	6.65E-01
GHAASBasin2095	2	Northern mid latitude	Asia	2.05	0.443	<0.001
GHAASBasin2127	2	Northern mid latitude	Asia	0.00	0.000	9.95E-01
GHAASBasin2142	2	Northern mid latitude	Asia	-0.68	0.166	5.99E-02
GHAASBasin2149	2	Northern mid latitude	Asia	0.26	0.021	5.17E-01
GHAASBasin2159	2	Northern mid latitude	Asia	3.45	0.433	<0.001
GHAASBasin2161	2	Northern mid latitude	Asia	-0.14	0.020	5.31E-01
GHAASBasin2200	2	Northern mid latitude	Asia	-0.89	0.349	3.77E-03

GHAASBasin2206	2	Northern mid latitude	Asia	0.39	0.010	6.55E-01
GHAASBasin2207	2	Northern mid latitude	Asia	1.48	0.153	7.20E-02
GHAASBasin2209	2	Northern mid latitude	Asia	-0.52	0.020	5.31E-01
GHAASBasin2232	2	Northern mid latitude	Asia	0.47	0.024	4.91E-01
GHAASBasin2253	1	Northern mid latitude	Asia	-1.41	0.073	2.25E-01
GHAASBasin2334	1	Northern mid latitude	Asia	7.85	0.558	<0.001
GHAASBasin3205	1	Northern mid latitude	Asia	-0.79	0.009	6.68E-01
GHAASBasin3403	1	Northern mid latitude	Asia	-0.72	0.041	3.68E-01
GHAASBasin3410	1	Northern mid latitude	Asia	0.59	0.123	1.09E-01
GHAASBasin3423	1	Northern mid latitude	Asia	-1.09	0.166	5.94E-02
GHAASBasin3441	1	Northern mid latitude	Asia	1.31	0.593	<0.001
GHAASBasin3445	1	Northern mid latitude	Asia	2.76	0.825	<0.001
GHAASBasin3454	1	Northern mid latitude	Asia	1.32	0.255	1.65E-02
GHAASBasin3455	1	Northern mid latitude	Asia	1.16	0.698	<0.001
GHAASBasin3467	1	Northern mid latitude	Asia	1.72	0.367	2.81E-03
GHAASBasin3473	1	Northern mid latitude	Asia	0.77	0.717	<0.001
GHAASBasin3477	1	Northern mid latitude	Asia	1.48	0.625	<0.001
GHAASBasin3481	1	Northern mid latitude	Asia	1.28	0.776	<0.001
GHAASBasin3495	1	Northern mid latitude	Asia	5.20	0.887	<0.001
GHAASBasin3562	1	Northern mid latitude	Asia	7.30	0.896	<0.001
GHAASBasin3604	1	Northern mid latitude	Asia	5.99	0.948	<0.001
GHAASBasin3610	1	Northern mid latitude	Asia	7.62	0.932	<0.001
GHAASBasin3619	1	Northern mid latitude	Asia	5.93	0.937	<0.001
GHAASBasin3626	1	Northern mid latitude	Asia	5.41	0.950	<0.001
GHAASBasin3673	1	Northern mid latitude	Asia	-0.56	0.370	2.67E-03
GHAASBasin3674	1	Northern mid latitude	Asia	-0.57	0.383	2.12E-03
GHAASBasin3681	1	Northern mid latitude	Asia	3.91	0.590	<0.001
GHAASBasin3693	1	Northern mid latitude	Asia	4.28	0.633	<0.001
GHAASBasin3700	1	Northern mid latitude	Asia	-1.04	0.526	<0.001
GHAASBasin3701	1	Northern mid latitude	Asia	-0.81	0.187	4.42E-02
GHAASBasin3706	1	Northern mid latitude	Asia	-0.37	0.281	1.12E-02
GHAASBasin3713	1	Northern mid latitude	Asia	-0.88	0.784	<0.001
GHAASBasin3714	1	Northern mid latitude	Asia	-0.70	0.589	<0.001
GHAASBasin3715	1	Northern mid latitude	Asia	-1.50	0.783	<0.001
GHAASBasin3717	1	Northern mid latitude	Asia	-1.05	0.457	<0.001
GHAASBasin3718	1	Northern mid latitude	Asia	0.66	0.052	3.07E-01
GHAASBasin3719	1	Northern mid latitude	Asia	-0.68	0.658	<0.001
GHAASBasin3722	1	Northern mid latitude	Asia	-1.36	0.512	<0.001
GHAASBasin3724	1	Northern mid latitude	Asia	-0.85	0.130	9.97E-02
GHAASBasin3725	1	Northern mid latitude	Asia	-0.28	0.154	7.06E-02
GHAASBasin3733	1	Northern mid latitude	Asia	-0.64	0.645	<0.001
GHAASBasin3738	1	Northern mid latitude	Asia	-0.69	0.527	<0.001
GHAASBasin3749	1	Northern mid latitude	Asia	-1.06	0.325	5.62E-03
GHAASBasin3750	1	Northern mid latitude	Asia	-0.41	0.135	9.19E-02
GHAASBasin3751	1	Northern mid latitude	Asia	-1.10	0.591	<0.001
GHAASBasin3757	1	Northern mid latitude	Asia	-0.95	0.628	<0.001
GHAASBasin3763	1	Northern mid latitude	Asia	-0.64	0.676	<0.001
GHAASBasin3770	1	Northern mid latitude	Asia	-0.60	0.218	2.85E-02
GHAASBasin3789	1	Northern mid latitude	Asia	-0.90	0.669	<0.001
GHAASBasin3798	1	Northern mid latitude	Asia	-0.13	0.003	8.08E-01
GHAASBasin3802	1	Northern mid latitude	Asia	-1.30	0.654	<0.001
GHAASBasin3803	1	Northern mid latitude	Asia	-0.62	0.557	<0.001
GHAASBasin3804	1	Northern mid latitude	Asia	-0.41	0.062	2.65E-01
GHAASBasin3805	1	Northern mid latitude	Asia	0.11	0.003	8.13E-01
GHAASBasin3806	1	Northern mid latitude	Asia	-0.31	0.034	4.12E-01
GHAASBasin3807	1	Northern mid latitude	Asia	-0.73	0.285	1.06E-02
GHAASBasin3808	1	Northern mid latitude	Asia	-0.88	0.347	3.89E-03
GHAASBasin3823	1	Northern mid latitude	Asia	0.40	0.168	5.78E-02
GHAASBasin3830	1	Northern mid latitude	Asia	0.28	0.015	5.90E-01

GHAASBasin3831	1	Northern mid latitude	Asia	-0.68	0.410	1.32E-03
GHAASBasin3839	1	Northern mid latitude	Asia	-0.51	0.455	<0.001
GHAASBasin3840	1	Northern mid latitude	Asia	-0.42	0.136	9.14E-02
GHAASBasin3844	1	Northern mid latitude	Asia	-0.53	0.321	6.00E-03
GHAASBasin3851	1	Northern mid latitude	Asia	-0.66	0.597	<0.001
GHAASBasin3856	1	Northern mid latitude	Asia	-2.44	0.511	<0.001
GHAASBasin3871	1	Northern mid latitude	Asia	-1.32	0.175	5.25E-02
GHAASBasin3890	1	Northern mid latitude	Asia	-0.57	0.026	4.71E-01
GHAASBasin3894	1	Northern mid latitude	Asia	5.10	0.876	<0.001
GHAASBasin3909	1	Northern mid latitude	Asia	-0.70	0.295	8.99E-03
GHAASBasin3921	1	Northern mid latitude	Asia	0.52	0.023	5.02E-01
GHAASBasin3925	1	Northern mid latitude	Asia	-1.44	0.044	3.49E-01
GHAASBasin3932	1	Northern mid latitude	Asia	-0.25	0.146	7.91E-02
GHAASBasin3933	1	Northern mid latitude	Asia	0.81	0.092	1.70E-01
GHAASBasin3972	1	Northern mid latitude	Asia	-2.48	0.365	2.89E-03
GHAASBasin3973	1	Northern mid latitude	Asia	0.19	0.010	6.61E-01
GHAASBasin3979	1	Northern mid latitude	Asia	-0.69	0.107	1.38E-01
GHAASBasin4006	1	Northern mid latitude	Asia	-0.46	0.072	2.29E-01
GHAASBasin4007	1	Northern mid latitude	Asia	-0.22	0.014	5.98E-01
GHAASBasin4012	1	Northern mid latitude	Asia	1.99	0.496	<0.001
GHAASBasin4021	1	Northern mid latitude	Asia	3.48	0.215	2.96E-02
GHAASBasin4049	1	Northern mid latitude	Asia	-0.32	0.038	3.84E-01
GHAASBasin4064	1	Northern mid latitude	Asia	-2.13	0.336	4.69E-03
GHAASBasin4096	1	Northern mid latitude	Asia	-2.70	0.821	<0.001
GHAASBasin4097	1	Northern mid latitude	Asia	-2.90	0.670	<0.001
GHAASBasin4115	1	Northern mid latitude	Asia	-0.67	0.074	2.22E-01
GHAASBasin4118	1	Northern mid latitude	Asia	0.01	0.000	9.92E-01
GHAASBasin4119	1	Northern mid latitude	Asia	-0.53	0.038	3.82E-01
GHAASBasin4123	1	Northern mid latitude	Asia	-1.41	0.332	5.05E-03
GHAASBasin4132	1	Northern mid latitude	Asia	0.13	0.002	8.26E-01
GHAASBasin4133	1	Northern mid latitude	Asia	-1.24	0.168	5.84E-02
GHAASBasin4150	1	Northern mid latitude	Asia	0.78	0.064	2.56E-01
GHAASBasin4151	1	Northern mid latitude	Asia	0.33	0.014	6.04E-01
GHAASBasin4167	1	Northern mid latitude	Asia	-0.95	0.228	2.47E-02
GHAASBasin4169	1	Northern mid latitude	Asia	-1.38	0.113	1.26E-01
GHAASBasin4185	1	Northern mid latitude	Asia	-2.25	0.709	<0.001
GHAASBasin4198	1	Northern mid latitude	Asia	-0.98	0.176	5.18E-02
GHAASBasin4199	1	Northern mid latitude	Asia	-1.16	0.299	8.51E-03
GHAASBasin4200	1	Northern mid latitude	Asia	1.25	0.139	8.72E-02
GHAASBasin4206	1	Northern mid latitude	Asia	-0.53	0.056	2.91E-01
GHAASBasin4207	1	Northern mid latitude	Asia	-1.37	0.379	2.28E-03
GHAASBasin4226	1	Northern mid latitude	Asia	-0.76	0.084	1.91E-01
GHAASBasin4231	1	Northern mid latitude	Asia	0.37	0.017	5.59E-01
GHAASBasin4256	1	Northern mid latitude	Asia	0.33	0.010	6.65E-01
GHAASBasin4321	1	Northern mid latitude	Asia	0.08	0.000	9.56E-01
GHAASBasin4343	1	Northern mid latitude	Asia	-0.21	0.003	7.96E-01
GHAASBasin4388	1	Northern mid latitude	Asia	-1.41	0.048	3.28E-01
GHAASBasin4402	1	Northern mid latitude	Asia	-1.23	0.016	5.71E-01
GHAASBasin4420	1	Northern mid latitude	Asia	-5.43	0.418	1.15E-03
GHAASBasin4443	1	Northern mid latitude	Asia	-7.36	0.644	<0.001
GHAASBasin4491	1	Northern mid latitude	Asia	-2.69	0.172	5.52E-02
Colorado (Arizona)	101	Northern dry	North America	-0.13	0.023	5.04E-01
RioGrande (US)	59	Northern dry	North America	1.09	0.603	<0.001
Grande de Santiago	14	Northern dry	North America	2.15	0.547	<0.001
GHAASBasin123	16	Northern dry	North America	0.16	0.015	5.87E-01
GHAASBasin151	18	Northern dry	North America	-0.68	0.097	1.57E-01
Panuco	10	Northern dry	North America	1.19	0.621	<0.001
GHAASBasin212	3	Northern dry	North America	-0.72	0.069	2.36E-01
GHAASBasin324	6	Northern dry	North America	0.18	0.009	6.75E-01

GHAASBasin391	7	Northern dry	North America	2.53	0.559	<0.001
GHAASBasin401	1	Northern dry	North America	0.56	0.049	3.25E-01
Fuerte	8	Northern dry	North America	0.91	0.320	6.09E-03
GHAASBasin433	7	Northern dry	North America	0.89	0.178	5.05E-02
GHAASBasin526	1	Northern dry	North America	1.56	0.353	3.54E-03
GHAASBasin530	3	Northern dry	North America	1.71	0.580	<0.001
GHAASBasin587	1	Northern dry	North America	3.55	0.641	<0.001
GHAASBasin646	3	Northern dry	North America	0.74	0.326	5.55E-03
GHAASBasin749	6	Northern dry	North America	1.83	0.404	1.49E-03
GHAASBasin757	5	Northern dry	North America	1.96	0.523	<0.001
GHAASBasin855	5	Northern dry	North America	1.71	0.557	<0.001
GHAASBasin884	3	Northern dry	North America	1.00	0.662	<0.001
GHAASBasin970	1	Northern dry	North America	0.26	0.010	6.59E-01
GHAASBasin1021	4	Northern dry	North America	1.48	0.697	<0.001
GHAASBasin1830	2	Northern dry	North America	1.49	0.475	<0.001
GHAASBasin1855	2	Northern dry	North America	-0.67	0.034	4.13E-01
GHAASBasin1886	2	Northern dry	North America	1.24	0.150	7.47E-02
GHAASBasin1993	1	Northern dry	North America	4.40	0.473	<0.001
GHAASBasin3327	1	Northern dry	North America	-0.19	0.008	6.88E-01
GHAASBasin3337	1	Northern dry	North America	4.21	0.454	<0.001
GHAASBasin3364	1	Northern dry	North America	-0.27	0.018	5.54E-01
GHAASBasin3371	1	Northern dry	North America	0.01	0.000	9.79E-01
GHAASBasin3526	1	Northern dry	North America	2.00	0.173	5.41E-02
GHAASBasin3541	1	Northern dry	North America	0.72	0.136	9.15E-02
Nile	273	Northern dry	Africa	3.44	0.940	<0.001
Tamanrasett	14	Northern dry	Africa	8.73	0.816	<0.001
LakeChad	131	Northern dry	Africa	7.44	0.655	<0.001
Irharhar	2	Northern dry	Africa	6.16	0.386	2.04E-03
Jubba	85	Northern dry	Africa	4.69	0.877	<0.001
Bodele Depression	5	Northern dry	Africa	12.26	0.610	<0.001
GHAASBasin116	4	Northern dry	Africa	8.28	0.809	<0.001
GHAASBasin130	2	Northern dry	Africa	0.26	0.011	6.38E-01
Tana (Kenya)	24	Northern dry	Africa	5.67	0.497	<0.001
GHAASBasin200	1	Northern dry	Africa	4.65	0.114	1.24E-01
GHAASBasin256	9	Northern dry	Africa	3.75	0.716	<0.001
Moulouya	1	Northern dry	Africa	8.01	0.655	<0.001
Cheliff	6	Northern dry	Africa	3.59	0.752	<0.001
GHAASBasin315	10	Northern dry	Africa	8.79	0.907	<0.001
Sebou	15	Northern dry	Africa	3.49	0.911	<0.001
OumErRbia	7	Northern dry	Africa	3.85	0.919	<0.001
GHAASBasin438	1	Northern dry	Africa	5.42	0.682	<0.001
Medjerda	8	Northern dry	Africa	3.22	0.868	<0.001
GHAASBasin553	3	Northern dry	Africa	1.27	0.100	1.51E-01
GHAASBasin622	1	Northern dry	Africa	-1.16	0.078	2.09E-01
Zeroud	1	Northern dry	Africa	2.86	0.636	<0.001
GHAASBasin899	1	Northern dry	Africa	0.15	0.000	9.58E-01
GHAASBasin943	1	Northern dry	Africa	3.37	0.218	2.83E-02
GHAASBasin1002	1	Northern dry	Africa	8.19	0.838	<0.001
GHAASBasin1091	4	Northern dry	Africa	3.07	0.870	<0.001
GHAASBasin1093	1	Northern dry	Africa	4.04	0.479	<0.001
GHAASBasin1103	1	Northern dry	Africa	3.22	0.537	<0.001
GHAASBasin1111	1	Northern dry	Africa	4.98	0.844	<0.001
GHAASBasin1114	3	Northern dry	Africa	3.12	0.735	<0.001
GHAASBasin1115	2	Northern dry	Africa	4.47	0.712	<0.001
GHAASBasin1347	1	Northern dry	Africa	9.28	0.643	<0.001
GHAASBasin1361	1	Northern dry	Africa	6.05	0.684	<0.001
GHAASBasin1412	3	Northern dry	Africa	5.18	0.780	<0.001
GHAASBasin1676	1	Northern dry	Africa	9.77	0.977	<0.001
GHAASBasin1953	1	Northern dry	Africa	3.77	0.739	<0.001

GHAASBasin1975	2	Northern dry	Africa	7.84	0.883	<0.001
GHAASBasin2068	2	Northern dry	Africa	2.50	0.482	<0.001
GHAASBasin2069	1	Northern dry	Africa	2.30	0.598	<0.001
GHAASBasin2070	1	Northern dry	Africa	3.30	0.260	1.54E-02
GHAASBasin2655	1	Northern dry	Africa	-1.95	0.036	3.99E-01
GHAASBasin3703	1	Northern dry	Africa	4.79	0.897	<0.001
GHAASBasin3704	1	Northern dry	Africa	3.33	0.858	<0.001
GHAASBasin3771	1	Northern dry	Africa	5.00	0.855	<0.001
GHAASBasin3785	1	Northern dry	Africa	6.05	0.889	<0.001
GHAASBasin3801	1	Northern dry	Africa	6.75	0.840	<0.001
GHAASBasin3824	1	Northern dry	Africa	5.38	0.963	<0.001
GHAASBasin3861	1	Northern dry	Africa	5.22	0.668	<0.001
GHAASBasin3862	1	Northern dry	Africa	1.00	0.299	8.49E-03
GHAASBasin3863	1	Northern dry	Africa	1.97	0.673	<0.001
GHAASBasin3864	1	Northern dry	Africa	3.75	0.862	<0.001
Shatt el Arab	188	Northern dry	Asia (Middle East)	2.71	0.799	<0.001
Dawasir	3	Northern dry	Asia (Middle East)	9.88	0.782	<0.001
Muqshin	1	Northern dry	Asia (Middle East)	4.40	0.732	<0.001
Jaji	59	Northern dry	Asia (Middle East)	2.41	0.929	<0.001
Dead Sea	1	Northern dry	Asia (Middle East)	1.41	0.699	<0.001
Shur	15	Northern dry	Asia (Middle East)	2.84	0.731	<0.001
GHAASBasin101	4	Northern dry	Asia (Middle East)	5.32	0.472	<0.001
GHAASBasin102	1	Northern dry	Asia (Middle East)	6.83	0.527	<0.001
GHAASBasin174	24	Northern dry	Asia (Middle East)	2.98	0.874	<0.001
GHAASBasin215	4	Northern dry	Asia (Middle East)	3.53	0.725	<0.001
Karun	24	Northern dry	Asia (Middle East)	2.15	0.799	<0.001
GHAASBasin310	12	Northern dry	Asia (Middle East)	2.84	0.919	<0.001
GHAASBasin332	16	Northern dry	Asia (Middle East)	2.38	0.761	<0.001
GHAASBasin345	1	Northern dry	Asia (Middle East)	10.66	0.272	1.27E-02
GHAASBasin361	2	Northern dry	Asia (Middle East)	8.46	0.742	<0.001
GHAASBasin399	6	Northern dry	Asia (Middle East)	4.22	0.817	<0.001
GHAASBasin440	3	Northern dry	Asia (Middle East)	3.58	0.802	<0.001
GHAASBasin449	7	Northern dry	Asia (Middle East)	1.11	0.042	3.61E-01
Asi	8	Northern dry	Asia (Middle East)	1.21	0.173	5.42E-02
GHAASBasin559	2	Northern dry	Asia (Middle East)	1.91	0.403	1.50E-03
GHAASBasin590	8	Northern dry	Asia (Middle East)	7.38	0.633	<0.001
GHAASBasin664	3	Northern dry	Asia (Middle East)	3.24	0.418	1.14E-03
GHAASBasin900	1	Northern dry	Asia (Middle East)	7.09	0.845	<0.001
GHAASBasin986	1	Northern dry	Asia (Middle East)	3.38	0.299	8.50E-03
GHAASBasin1055	1	Northern dry	Asia (Middle East)	10.06	0.891	<0.001
GHAASBasin1317	1	Northern dry	Asia (Middle East)	9.98	0.667	<0.001
GHAASBasin1381	3	Northern dry	Asia (Middle East)	0.70	0.063	2.58E-01
GHAASBasin1887	1	Northern dry	Asia (Middle East)	7.80	0.914	<0.001
GHAASBasin3764	1	Northern dry	Asia (Middle East)	0.64	0.038	3.83E-01
GHAASBasin3790	1	Northern dry	Asia (Middle East)	0.20	0.006	7.27E-01
GHAASBasin3845	1	Northern dry	Asia (Middle East)	2.02	0.363	2.98E-03
Tarim	64	Northern dry	Asia (Central Asia)	10.89	0.880	<0.001
Kerulen	86	Northern dry	Asia (Central Asia)	7.99	0.876	<0.001
Syr-Darya	211	Northern dry	Asia (Central Asia)	-1.41	0.386	2.04E-03
Amu-Darya	94	Northern dry	Asia (Central Asia)	-1.30	0.480	<0.001
Farah	27	Northern dry	Asia (Central Asia)	5.35	0.891	<0.001
Garagum	62	Northern dry	Asia (Central Asia)	2.79	0.928	<0.001
Dzungarian	4	Northern dry	Asia (Central Asia)	8.89	0.867	<0.001
Ural	84	Northern dry	Asia (Central Asia)	0.07	0.001	8.77E-01
RuoDong	12	Northern dry	Asia (Central Asia)	6.27	0.919	<0.001
Lake Balkhash	48	Northern dry	Asia (Central Asia)	-0.25	0.002	8.59E-01
Ili	43	Northern dry	Asia (Central Asia)	3.60	0.511	<0.001
Qarqan	8	Northern dry	Asia (Central Asia)	11.28	0.834	<0.001
GHAASBasin129	12	Northern dry	Asia (Central Asia)	11.89	0.822	<0.001

GHAASBasin148	4	Northern dry	Asia (Central Asia)	3.73	0.895	<0.001
Tes-Chem	1	Northern dry	Asia (Central Asia)	5.76	0.436	<0.001
GHAASBasin189	6	Northern dry	Asia (Central Asia)	6.35	0.511	<0.001
GHAASBasin192	4	Northern dry	Asia (Central Asia)	9.47	0.420	1.10E-03
Emba	12	Northern dry	Asia (Central Asia)	1.40	0.099	1.54E-01
GHAASBasin232	4	Northern dry	Asia (Central Asia)	8.06	0.689	<0.001
GHAASBasin244	13	Northern dry	Asia (Central Asia)	9.13	0.754	<0.001
GHAASBasin269	9	Northern dry	Asia (Central Asia)	-3.04	0.651	<0.001
GHAASBasin272	18	Northern dry	Asia (Central Asia)	2.68	0.849	<0.001
GHAASBasin319	3	Northern dry	Asia (Central Asia)	8.97	0.882	<0.001
GHAASBasin325	2	Northern dry	Asia (Central Asia)	1.01	0.030	4.43E-01
GHAASBasin358	2	Northern dry	Asia (Central Asia)	10.11	0.690	<0.001
GHAASBasin366	10	Northern dry	Asia (Central Asia)	-2.18	0.050	3.17E-01
GHAASBasin378	4	Northern dry	Asia (Central Asia)	4.08	0.402	1.53E-03
GHAASBasin463	6	Northern dry	Asia (Central Asia)	3.83	0.264	1.44E-02
GHAASBasin479	2	Northern dry	Asia (Central Asia)	10.36	0.619	<0.001
GHAASBasin497	1	Northern dry	Asia (Central Asia)	-0.18	0.001	8.74E-01
GHAASBasin591	3	Northern dry	Asia (Central Asia)	18.33	0.681	<0.001
GHAASBasin645	1	Northern dry	Asia (Central Asia)	4.51	0.450	<0.001
GHAASBasin853	4	Northern dry	Asia (Central Asia)	4.17	0.404	1.49E-03
GHAASBasin895	2	Northern dry	Asia (Central Asia)	-5.92	0.582	<0.001
GHAASBasin1130	1	Northern dry	Asia (Central Asia)	-2.36	0.080	2.01E-01
GHAASBasin1413	3	Northern dry	Asia (Central Asia)	4.12	0.932	<0.001
GHAASBasin1489	1	Northern dry	Asia (Central Asia)	-3.13	0.547	<0.001
GHAASBasin2067	2	Northern dry	Asia (Central Asia)	2.57	0.927	<0.001
GHAASBasin2071	2	Northern dry	Asia (Central Asia)	1.68	0.823	<0.001
GHAASBasin3833	1	Northern dry	Asia (Central Asia)	3.73	0.880	<0.001
Balsas	39	Northern sub tropical	North America	0.33	0.174	5.31E-02
Usumacinta	20	Northern sub tropical	North America	3.99	0.818	<0.001
GHAASBasin262	18	Northern sub tropical	North America	-0.84	0.305	7.70E-03
Grijalva	17	Northern sub tropical	North America	1.62	0.791	<0.001
Altamaha	16	Northern sub tropical	North America	0.52	0.272	1.28E-02
Savannah	14	Northern sub tropical	North America	-0.28	0.087	1.83E-01
GHAASBasin422	7	Northern sub tropical	North America	4.45	0.861	<0.001
GHAASBasin448	2	Northern sub tropical	North America	0.25	0.188	4.40E-02
Patuca	10	Northern sub tropical	North America	5.73	0.775	<0.001
Ulua	9	Northern sub tropical	North America	4.03	0.949	<0.001
Papaloapan	10	Northern sub tropical	North America	0.46	0.087	1.83E-01
PeeDee	10	Northern sub tropical	North America	-0.15	0.038	3.83E-01
GHAASBasin490	7	Northern sub tropical	North America	-0.25	0.063	2.60E-01
GHAASBasin491	2	Northern sub tropical	North America	0.60	0.119	1.17E-01
SaintJohns	3	Northern sub tropical	North America	0.15	0.075	2.19E-01
Motagua	9	Northern sub tropical	North America	3.00	0.895	<0.001
GHAASBasin509	7	Northern sub tropical	North America	0.98	0.293	9.28E-03
GHAASBasin511	9	Northern sub tropical	North America	0.60	0.148	7.76E-02
GHAASBasin546	8	Northern sub tropical	North America	4.89	0.797	<0.001
GHAASBasin564	5	Northern sub tropical	North America	1.21	0.507	<0.001
GHAASBasin634	5	Northern sub tropical	North America	3.03	0.782	<0.001
GHAASBasin636	7	Northern sub tropical	North America	0.56	0.227	2.50E-02
GHAASBasin701	5	Northern sub tropical	North America	4.40	0.570	<0.001
GHAASBasin728	4	Northern sub tropical	North America	4.94	0.914	<0.001
GHAASBasin730	5	Northern sub tropical	North America	-0.20	0.081	1.98E-01
GHAASBasin736	6	Northern sub tropical	North America	2.27	0.438	<0.001
GHAASBasin818	5	Northern sub tropical	North America	1.48	0.431	<0.001
GHAASBasin836	5	Northern sub tropical	North America	3.03	0.591	<0.001
GHAASBasin851	4	Northern sub tropical	North America	5.14	0.775	<0.001
GHAASBasin918	5	Northern sub tropical	North America	-0.22	0.018	5.48E-01
GHAASBasin930	5	Northern sub tropical	North America	-0.54	0.273	1.26E-02
GHAASBasin992	4	Northern sub tropical	North America	3.40	0.869	<0.001

GHAASBasin998	4	Northern sub tropical	North America	0.58	0.113	1.26E-01
GHAASBasin1009	4	Northern sub tropical	North America	4.58	0.619	<0.001
GHAASBasin1010	3	Northern sub tropical	North America	1.37	0.303	7.89E-03
GHAASBasin1020	4	Northern sub tropical	North America	0.64	0.142	8.35E-02
GHAASBasin1092	4	Northern sub tropical	North America	-0.19	0.052	3.09E-01
GHAASBasin1225	3	Northern sub tropical	North America	6.54	0.932	<0.001
GHAASBasin1232	2	Northern sub tropical	North America	5.48	0.871	<0.001
GHAASBasin1261	3	Northern sub tropical	North America	0.31	0.080	2.01E-01
GHAASBasin1263	3	Northern sub tropical	North America	3.68	0.599	<0.001
GHAASBasin1264	3	Northern sub tropical	North America	1.19	0.463	<0.001
GHAASBasin1281	3	Northern sub tropical	North America	7.11	0.370	2.66E-03
GHAASBasin1284	3	Northern sub tropical	North America	1.74	0.529	<0.001
GHAASBasin1288	2	Northern sub tropical	North America	5.15	0.699	<0.001
GHAASBasin1386	3	Northern sub tropical	North America	-0.60	0.259	1.56E-02
GHAASBasin1398	3	Northern sub tropical	North America	0.18	0.064	2.57E-01
GHAASBasin1399	1	Northern sub tropical	North America	0.68	0.561	<0.001
GHAASBasin1400	2	Northern sub tropical	North America	-0.39	0.245	1.91E-02
GHAASBasin1679	2	Northern sub tropical	North America	2.75	0.317	6.41E-03
GHAASBasin1680	1	Northern sub tropical	North America	0.12	0.035	4.04E-01
GHAASBasin1719	2	Northern sub tropical	North America	4.42	0.808	<0.001
GHAASBasin1727	1	Northern sub tropical	North America	5.64	0.691	<0.001
GHAASBasin1741	2	Northern sub tropical	North America	4.31	0.831	<0.001
GHAASBasin1742	2	Northern sub tropical	North America	1.93	0.691	<0.001
GHAASBasin1764	2	Northern sub tropical	North America	2.47	0.576	<0.001
GHAASBasin1767	2	Northern sub tropical	North America	0.67	0.076	2.13E-01
GHAASBasin1768	2	Northern sub tropical	North America	0.95	0.239	2.11E-02
GHAASBasin1772	2	Northern sub tropical	North America	4.37	0.746	<0.001
GHAASBasin1806	2	Northern sub tropical	North America	-0.64	0.645	<0.001
GHAASBasin1807	1	Northern sub tropical	North America	-1.08	0.715	<0.001
GHAASBasin1808	1	Northern sub tropical	North America	9.18	0.597	<0.001
GHAASBasin1812	2	Northern sub tropical	North America	-0.17	0.003	8.10E-01
GHAASBasin1816	1	Northern sub tropical	North America	2.71	0.315	6.53E-03
GHAASBasin1819	1	Northern sub tropical	North America	5.58	0.543	<0.001
GHAASBasin1821	2	Northern sub tropical	North America	-0.45	0.055	2.95E-01
GHAASBasin1842	2	Northern sub tropical	North America	5.28	0.878	<0.001
GHAASBasin1843	1	Northern sub tropical	North America	1.04	0.311	6.98E-03
GHAASBasin1844	1	Northern sub tropical	North America	-0.24	0.007	7.02E-01
GHAASBasin1845	2	Northern sub tropical	North America	2.96	0.399	1.62E-03
GHAASBasin1864	2	Northern sub tropical	North America	3.78	0.606	<0.001
GHAASBasin1867	2	Northern sub tropical	North America	2.78	0.754	<0.001
GHAASBasin2023	2	Northern sub tropical	North America	-0.38	0.187	4.43E-02
GHAASBasin2029	2	Northern sub tropical	North America	-0.70	0.325	5.62E-03
GHAASBasin2037	1	Northern sub tropical	North America	-0.96	0.523	<0.001
GHAASBasin2045	2	Northern sub tropical	North America	0.30	0.110	1.32E-01
GHAASBasin2057	2	Northern sub tropical	North America	-0.18	0.067	2.44E-01
GHAASBasin2923	1	Northern sub tropical	North America	7.87	0.682	<0.001
GHAASBasin2924	1	Northern sub tropical	North America	3.69	0.661	<0.001
GHAASBasin2948	1	Northern sub tropical	North America	1.20	0.636	<0.001
GHAASBasin2950	1	Northern sub tropical	North America	5.15	0.601	<0.001
GHAASBasin2954	1	Northern sub tropical	North America	4.08	0.764	<0.001
GHAASBasin2955	1	Northern sub tropical	North America	1.03	0.098	1.57E-01
GHAASBasin2992	1	Northern sub tropical	North America	5.15	0.850	<0.001
GHAASBasin2994	1	Northern sub tropical	North America	4.44	0.781	<0.001
GHAASBasin2995	1	Northern sub tropical	North America	-0.67	0.180	4.89E-02
GHAASBasin3001	1	Northern sub tropical	North America	2.38	0.381	2.21E-03
GHAASBasin3002	1	Northern sub tropical	North America	0.66	0.421	1.10E-03
GHAASBasin3003	1	Northern sub tropical	North America	-0.54	0.409	1.36E-03
GHAASBasin3023	1	Northern sub tropical	North America	3.32	0.782	<0.001
GHAASBasin3039	1	Northern sub tropical	North America	1.42	0.263	1.47E-02

GHAASBasin3040	1	Northern sub tropical	North America	1.13	0.174	5.35E-02
GHAASBasin3069	1	Northern sub tropical	North America	1.93	0.543	<0.001
GHAASBasin3075	1	Northern sub tropical	North America	1.87	0.523	<0.001
GHAASBasin3091	1	Northern sub tropical	North America	5.12	0.730	<0.001
GHAASBasin3105	1	Northern sub tropical	North America	2.92	0.525	<0.001
GHAASBasin3120	1	Northern sub tropical	North America	1.20	0.282	1.10E-02
GHAASBasin3138	1	Northern sub tropical	North America	2.84	0.784	<0.001
GHAASBasin3157	1	Northern sub tropical	North America	1.19	0.291	9.56E-03
GHAASBasin3174	1	Northern sub tropical	North America	5.27	0.852	<0.001
GHAASBasin3178	1	Northern sub tropical	North America	4.89	0.858	<0.001
GHAASBasin3179	1	Northern sub tropical	North America	5.36	0.707	<0.001
GHAASBasin3187	1	Northern sub tropical	North America	0.50	0.089	1.78E-01
GHAASBasin3188	1	Northern sub tropical	North America	1.49	0.306	7.60E-03
GHAASBasin3189	1	Northern sub tropical	North America	-0.42	0.008	6.91E-01
GHAASBasin3217	1	Northern sub tropical	North America	0.57	0.072	2.27E-01
GHAASBasin3218	1	Northern sub tropical	North America	1.26	0.313	6.80E-03
GHAASBasin3226	1	Northern sub tropical	North America	0.49	0.056	2.88E-01
GHAASBasin3228	1	Northern sub tropical	North America	3.88	0.696	<0.001
GHAASBasin3244	1	Northern sub tropical	North America	1.51	0.425	1.01E-03
GHAASBasin3248	1	Northern sub tropical	North America	1.49	0.183	4.73E-02
GHAASBasin3249	1	Northern sub tropical	North America	3.36	0.154	7.12E-02
GHAASBasin3250	1	Northern sub tropical	North America	7.61	0.534	<0.001
GHAASBasin3252	1	Northern sub tropical	North America	-0.57	0.337	4.63E-03
GHAASBasin3253	1	Northern sub tropical	North America	-0.69	0.242	2.01E-02
GHAASBasin3254	1	Northern sub tropical	North America	0.11	0.010	6.64E-01
GHAASBasin3262	1	Northern sub tropical	North America	2.25	0.548	<0.001
GHAASBasin3269	1	Northern sub tropical	North America	1.41	0.287	1.02E-02
GHAASBasin3272	1	Northern sub tropical	North America	4.62	0.662	<0.001
GHAASBasin3276	1	Northern sub tropical	North America	1.79	0.465	<0.001
GHAASBasin3277	1	Northern sub tropical	North America	2.42	0.444	<0.001
GHAASBasin3289	1	Northern sub tropical	North America	0.83	0.253	1.70E-02
GHAASBasin3290	1	Northern sub tropical	North America	0.25	0.017	5.69E-01
GHAASBasin3292	1	Northern sub tropical	North America	0.84	0.094	1.66E-01
GHAASBasin3295	1	Northern sub tropical	North America	2.93	0.304	7.80E-03
GHAASBasin3301	1	Northern sub tropical	North America	-0.36	0.006	7.36E-01
GHAASBasin3307	1	Northern sub tropical	North America	-0.35	0.018	5.57E-01
GHAASBasin3308	1	Northern sub tropical	North America	4.58	0.376	2.41E-03
GHAASBasin3312	1	Northern sub tropical	North America	3.42	0.706	<0.001
GHAASBasin3313	1	Northern sub tropical	North America	-1.40	0.427	<0.001
GHAASBasin3328	1	Northern sub tropical	North America	7.76	0.743	<0.001
GHAASBasin3329	1	Northern sub tropical	North America	4.74	0.578	<0.001
GHAASBasin3330	1	Northern sub tropical	North America	4.30	0.718	<0.001
GHAASBasin3331	1	Northern sub tropical	North America	6.91	0.870	<0.001
GHAASBasin3335	1	Northern sub tropical	North America	5.30	0.666	<0.001
GHAASBasin3344	1	Northern sub tropical	North America	1.30	0.260	1.54E-02
GHAASBasin3357	1	Northern sub tropical	North America	3.39	0.636	<0.001
GHAASBasin3358	1	Northern sub tropical	North America	5.23	0.339	4.48E-03
GHAASBasin3363	1	Northern sub tropical	North America	6.15	0.641	<0.001
GHAASBasin3378	1	Northern sub tropical	North America	3.30	0.374	2.51E-03
GHAASBasin3381	1	Northern sub tropical	North America	3.02	0.236	2.17E-02
GHAASBasin3382	1	Northern sub tropical	North America	4.25	0.403	1.50E-03
GHAASBasin3387	1	Northern sub tropical	North America	4.27	0.702	<0.001
GHAASBasin3392	1	Northern sub tropical	North America	-1.85	0.740	<0.001
GHAASBasin3397	1	Northern sub tropical	North America	3.25	0.560	<0.001
GHAASBasin3398	1	Northern sub tropical	North America	5.75	0.472	<0.001
GHAASBasin3401	1	Northern sub tropical	North America	3.16	0.476	<0.001
GHAASBasin3402	1	Northern sub tropical	North America	3.71	0.399	1.61E-03
GHAASBasin3405	1	Northern sub tropical	North America	3.08	0.635	<0.001
GHAASBasin3406	1	Northern sub tropical	North America	3.38	0.589	<0.001

GHAASBasin3408	1	Northern sub tropical	North America	6.36	0.588	<0.001
GHAASBasin3430	1	Northern sub tropical	North America	3.92	0.419	1.12E-03
GHAASBasin3431	1	Northern sub tropical	North America	3.04	0.342	4.24E-03
GHAASBasin3432	1	Northern sub tropical	North America	3.19	0.360	3.15E-03
GHAASBasin3433	1	Northern sub tropical	North America	3.18	0.448	<0.001
GHAASBasin3434	1	Northern sub tropical	North America	3.36	0.524	<0.001
GHAASBasin3435	1	Northern sub tropical	North America	3.43	0.490	<0.001
GHAASBasin3503	1	Northern sub tropical	North America	-2.33	0.532	<0.001
GHAASBasin3512	1	Northern sub tropical	North America	-1.99	0.542	<0.001
GHAASBasin3571	1	Northern sub tropical	North America	0.44	0.123	1.10E-01
GHAASBasin3621	1	Northern sub tropical	North America	1.00	0.806	<0.001
GHAASBasin3659	1	Northern sub tropical	North America	-0.52	0.324	5.69E-03
GHAASBasin3664	1	Northern sub tropical	North America	0.27	0.036	3.95E-01
GHAASBasin3684	1	Northern sub tropical	North America	0.51	0.280	1.14E-02
Niger	231	Northern sub tropical	Africa	2.14	0.559	<0.001
Senegal	16	Northern sub tropical	Africa	6.72	0.948	<0.001
Volta	75	Northern sub tropical	Africa	3.35	0.764	<0.001
Lake Rudolf	38	Northern sub tropical	Africa	8.22	0.923	<0.001
GHAASBasin125	26	Northern sub tropical	Africa	4.60	0.892	<0.001
Bandama	22	Northern sub tropical	Africa	3.74	0.531	<0.001
Comoe	17	Northern sub tropical	Africa	2.59	0.729	<0.001
Sassandra	18	Northern sub tropical	Africa	6.10	0.877	<0.001
Gambia	9	Northern sub tropical	Africa	5.47	0.711	<0.001
Oueme	13	Northern sub tropical	Africa	5.80	0.799	<0.001
GHAASBasin485	9	Northern sub tropical	Africa	-0.06	0.001	9.14E-01
Mono	7	Northern sub tropical	Africa	2.95	0.486	<0.001
Pra	8	Northern sub tropical	Africa	2.79	0.565	<0.001
GHAASBasin557	2	Northern sub tropical	Africa	4.93	0.849	<0.001
GHAASBasin688	6	Northern sub tropical	Africa	1.93	0.161	6.46E-02
GHAASBasin690	6	Northern sub tropical	Africa	3.38	0.566	<0.001
GHAASBasin695	6	Northern sub tropical	Africa	2.81	0.729	<0.001
GHAASBasin708	2	Northern sub tropical	Africa	1.10	0.260	1.53E-02
GHAASBasin807	5	Northern sub tropical	Africa	5.55	0.711	<0.001
GHAASBasin811	5	Northern sub tropical	Africa	2.14	0.267	1.39E-02
GHAASBasin959	4	Northern sub tropical	Africa	2.67	0.740	<0.001
GHAASBasin968	2	Northern sub tropical	Africa	4.00	0.424	1.03E-03
GHAASBasin972	2	Northern sub tropical	Africa	3.55	0.381	2.20E-03
GHAASBasin1169	3	Northern sub tropical	Africa	-0.10	0.001	8.76E-01
GHAASBasin1173	3	Northern sub tropical	Africa	7.06	0.874	<0.001
GHAASBasin1174	3	Northern sub tropical	Africa	3.29	0.585	<0.001
GHAASBasin1182	3	Northern sub tropical	Africa	1.11	0.095	1.62E-01
GHAASBasin1183	2	Northern sub tropical	Africa	3.81	0.463	<0.001
GHAASBasin1190	2	Northern sub tropical	Africa	5.67	0.785	<0.001
GHAASBasin1248	1	Northern sub tropical	Africa	1.31	0.389	1.92E-03
GHAASBasin1616	2	Northern sub tropical	Africa	4.10	0.493	<0.001
GHAASBasin1617	1	Northern sub tropical	Africa	4.47	0.749	<0.001
GHAASBasin1622	2	Northern sub tropical	Africa	10.97	0.873	<0.001
GHAASBasin1627	2	Northern sub tropical	Africa	2.09	0.691	<0.001
GHAASBasin1631	2	Northern sub tropical	Africa	2.18	0.478	<0.001
GHAASBasin1638	2	Northern sub tropical	Africa	1.09	0.162	6.34E-02
GHAASBasin1744	1	Northern sub tropical	Africa	4.97	0.854	<0.001
GHAASBasin2741	1	Northern sub tropical	Africa	-2.92	0.333	4.93E-03
GHAASBasin2743	1	Northern sub tropical	Africa	2.99	0.668	<0.001
GHAASBasin2761	1	Northern sub tropical	Africa	1.66	0.200	3.71E-02
GHAASBasin3015	1	Northern sub tropical	Africa	1.85	0.385	2.07E-03
GHAASBasin3143	1	Northern sub tropical	Africa	4.50	0.890	<0.001
GHAASBasin3237	1	Northern sub tropical	Africa	9.75	0.803	<0.001
Mekong	157	Northern sub tropical	Asia	6.75	0.708	<0.001
Zhujiang	140	Northern sub tropical	Asia	4.37	0.958	<0.001

Irrawaddy	68	Northern sub tropical	Asia	5.08	0.469	<0.001
Godavari	90	Northern sub tropical	Asia	1.48	0.421	1.08E-03
Salween	48	Northern sub tropical	Asia	9.74	0.754	<0.001
Krishna	42	Northern sub tropical	Asia	2.80	0.793	<0.001
Hong	50	Northern sub tropical	Asia	5.13	0.960	<0.001
Chao Phraya	39	Northern sub tropical	Asia	3.06	0.528	<0.001
Mahanadi	49	Northern sub tropical	Asia	5.17	0.801	<0.001
Narmada	39	Northern sub tropical	Asia	-1.00	0.122	1.12E-01
Cauweri	17	Northern sub tropical	Asia	2.37	0.819	<0.001
Tapti	17	Northern sub tropical	Asia	-0.55	0.073	2.23E-01
Brahmani	18	Northern sub tropical	Asia	4.39	0.816	<0.001
Sittang	7	Northern sub tropical	Asia	11.29	0.465	<0.001
GHAASBasin364	13	Northern sub tropical	Asia	7.32	0.966	<0.001
Dongjiang	12	Northern sub tropical	Asia	3.51	0.960	<0.001
Mae Klong	4	Northern sub tropical	Asia	2.92	0.656	<0.001
GHAASBasin420	10	Northern sub tropical	Asia	2.14	0.675	<0.001
GHAASBasin462	2	Northern sub tropical	Asia	8.95	0.929	<0.001
GHAASBasin465	7	Northern sub tropical	Asia	5.78	0.898	<0.001
Mahi	10	Northern sub tropical	Asia	0.81	0.176	5.19E-02
Rabarmati	9	Northern sub tropical	Asia	0.40	0.071	2.29E-01
Hanjiang	9	Northern sub tropical	Asia	4.64	0.881	<0.001
Subamarekha	8	Northern sub tropical	Asia	3.82	0.857	<0.001
GHAASBasin623	4	Northern sub tropical	Asia	12.32	0.879	<0.001
Song Duong	5	Northern sub tropical	Asia	4.30	0.863	<0.001
GHAASBasin698	5	Northern sub tropical	Asia	4.22	0.831	<0.001
Song Hau	4	Northern sub tropical	Asia	8.54	0.934	<0.001
GHAASBasin835	4	Northern sub tropical	Asia	3.31	0.328	5.33E-03
GHAASBasin838	1	Northern sub tropical	Asia	11.07	0.894	<0.001
GHAASBasin883	5	Northern sub tropical	Asia	5.01	0.853	<0.001
GHAASBasin1011	1	Northern sub tropical	Asia	9.03	0.826	<0.001
GHAASBasin1012	4	Northern sub tropical	Asia	1.45	0.273	1.26E-02
GHAASBasin1028	4	Northern sub tropical	Asia	3.80	0.790	<0.001
GHAASBasin1033	4	Northern sub tropical	Asia	4.86	0.896	<0.001
GHAASBasin1178	3	Northern sub tropical	Asia	4.96	0.883	<0.001
GHAASBasin1212	3	Northern sub tropical	Asia	2.88	0.565	<0.001
GHAASBasin1213	2	Northern sub tropical	Asia	2.49	0.659	<0.001
GHAASBasin1256	1	Northern sub tropical	Asia	3.71	0.204	3.50E-02
GHAASBasin1265	1	Northern sub tropical	Asia	8.43	0.800	<0.001
GHAASBasin1277	3	Northern sub tropical	Asia	1.78	0.453	<0.001
GHAASBasin1278	3	Northern sub tropical	Asia	5.96	0.787	<0.001
GHAASBasin1282	3	Northern sub tropical	Asia	1.20	0.193	4.10E-02
GHAASBasin1283	3	Northern sub tropical	Asia	4.74	0.816	<0.001
GHAASBasin1295	2	Northern sub tropical	Asia	2.71	0.617	<0.001
GHAASBasin1299	3	Northern sub tropical	Asia	8.30	0.916	<0.001
GHAASBasin1301	3	Northern sub tropical	Asia	4.21	0.814	<0.001
GHAASBasin1632	2	Northern sub tropical	Asia	6.39	0.910	<0.001
GHAASBasin1639	2	Northern sub tropical	Asia	3.71	0.848	<0.001
GHAASBasin1648	2	Northern sub tropical	Asia	2.71	0.570	<0.001
GHAASBasin1655	1	Northern sub tropical	Asia	2.77	0.691	<0.001
GHAASBasin1658	2	Northern sub tropical	Asia	3.31	0.614	<0.001
GHAASBasin1667	2	Northern sub tropical	Asia	10.48	0.917	<0.001
GHAASBasin1671	2	Northern sub tropical	Asia	9.50	0.907	<0.001
GHAASBasin1705	1	Northern sub tropical	Asia	10.50	0.486	<0.001
GHAASBasin1706	1	Northern sub tropical	Asia	2.49	0.725	<0.001
GHAASBasin1710	1	Northern sub tropical	Asia	2.15	0.249	1.82E-02
GHAASBasin1713	2	Northern sub tropical	Asia	10.23	0.893	<0.001
GHAASBasin1714	1	Northern sub tropical	Asia	3.83	0.766	<0.001
GHAASBasin1722	1	Northern sub tropical	Asia	3.23	0.704	<0.001
GHAASBasin1723	2	Northern sub tropical	Asia	1.68	0.836	<0.001

GHAASBasin1735	2	Northern sub tropical	Asia	1.86	0.587	<0.001
GHAASBasin1793	2	Northern sub tropical	Asia	3.30	0.681	<0.001
GHAASBasin1800	2	Northern sub tropical	Asia	2.73	0.788	<0.001
GHAASBasin1801	2	Northern sub tropical	Asia	3.58	0.690	<0.001
GHAASBasin1828	1	Northern sub tropical	Asia	4.45	0.331	5.07E-03
GHAASBasin1838	2	Northern sub tropical	Asia	0.33	0.036	3.97E-01
GHAASBasin1854	2	Northern sub tropical	Asia	1.56	0.215	2.97E-02
GHAASBasin1860	1	Northern sub tropical	Asia	8.65	0.743	<0.001
GHAASBasin1888	2	Northern sub tropical	Asia	5.53	0.751	<0.001
GHAASBasin1903	1	Northern sub tropical	Asia	5.68	0.838	<0.001
GHAASBasin1905	2	Northern sub tropical	Asia	5.25	0.942	<0.001
GHAASBasin2779	1	Northern sub tropical	Asia	5.17	0.882	<0.001
GHAASBasin2820	1	Northern sub tropical	Asia	1.23	0.107	1.38E-01
GHAASBasin2840	1	Northern sub tropical	Asia	3.18	0.392	1.83E-03
GHAASBasin2884	1	Northern sub tropical	Asia	10.87	0.680	<0.001
GHAASBasin2917	1	Northern sub tropical	Asia	3.04	0.591	<0.001
GHAASBasin2968	1	Northern sub tropical	Asia	1.96	0.420	1.10E-03
GHAASBasin2985	1	Northern sub tropical	Asia	11.20	0.924	<0.001
GHAASBasin2989	1	Northern sub tropical	Asia	4.71	0.586	<0.001
GHAASBasin3013	1	Northern sub tropical	Asia	8.08	0.821	<0.001
GHAASBasin3020	1	Northern sub tropical	Asia	11.72	0.725	<0.001
GHAASBasin3026	1	Northern sub tropical	Asia	0.31	0.038	3.86E-01
GHAASBasin3045	1	Northern sub tropical	Asia	12.34	0.576	<0.001
GHAASBasin3068	1	Northern sub tropical	Asia	6.20	0.778	<0.001
GHAASBasin3074	1	Northern sub tropical	Asia	4.42	0.869	<0.001
GHAASBasin3082	1	Northern sub tropical	Asia	-3.84	0.513	<0.001
GHAASBasin3094	1	Northern sub tropical	Asia	0.70	0.026	4.76E-01
GHAASBasin3099	1	Northern sub tropical	Asia	2.41	0.297	8.68E-03
GHAASBasin3107	1	Northern sub tropical	Asia	4.32	0.810	<0.001
GHAASBasin3108	1	Northern sub tropical	Asia	6.20	0.728	<0.001
GHAASBasin3123	1	Northern sub tropical	Asia	2.44	0.618	<0.001
GHAASBasin3142	1	Northern sub tropical	Asia	0.37	0.005	7.67E-01
GHAASBasin3167	1	Northern sub tropical	Asia	7.18	0.718	<0.001
GHAASBasin3192	1	Northern sub tropical	Asia	7.66	0.825	<0.001
GHAASBasin3193	1	Northern sub tropical	Asia	5.93	0.106	1.39E-01
GHAASBasin3196	1	Northern sub tropical	Asia	2.07	0.564	<0.001
GHAASBasin3201	1	Northern sub tropical	Asia	7.48	0.796	<0.001
GHAASBasin3202	1	Northern sub tropical	Asia	1.38	0.156	6.90E-02
GHAASBasin3233	1	Northern sub tropical	Asia	9.82	0.832	<0.001
GHAASBasin3240	1	Northern sub tropical	Asia	1.41	0.275	1.23E-02
GHAASBasin3265	1	Northern sub tropical	Asia	5.06	0.843	<0.001
GHAASBasin3278	1	Northern sub tropical	Asia	9.46	0.843	<0.001
GHAASBasin3297	1	Northern sub tropical	Asia	5.26	0.774	<0.001
GHAASBasin3299	1	Northern sub tropical	Asia	7.75	0.939	<0.001
GHAASBasin3302	1	Northern sub tropical	Asia	6.20	0.872	<0.001
GHAASBasin3306	1	Northern sub tropical	Asia	5.05	0.779	<0.001
GHAASBasin3354	1	Northern sub tropical	Asia	4.28	0.707	<0.001
GHAASBasin3365	1	Northern sub tropical	Asia	6.21	0.908	<0.001
GHAASBasin3377	1	Northern sub tropical	Asia	5.74	0.644	<0.001
GHAASBasin3385	1	Northern sub tropical	Asia	3.42	0.527	<0.001
GHAASBasin3421	1	Northern sub tropical	Asia	5.61	0.922	<0.001
GHAASBasin3422	1	Northern sub tropical	Asia	1.88	0.901	<0.001
GHAASBasin3446	1	Northern sub tropical	Asia	3.94	0.739	<0.001
GHAASBasin3451	1	Northern sub tropical	Asia	4.08	0.819	<0.001
GHAASBasin3462	1	Northern sub tropical	Asia	3.69	0.843	<0.001
Amazon	711	Equatorial	South America	4.24	0.909	<0.001
Orinoco	161	Equatorial	South America	1.43	0.634	<0.001
Tocantins	186	Equatorial	South America	3.78	0.795	<0.001
Magdalena	78	Equatorial	South America	0.60	0.166	6.00E-02

Essequibo	15	Equatorial	South America	2.27	0.710	<0.001
GHAASBasin195	21	Equatorial	South America	2.91	0.802	<0.001
GHAASBasin226	6	Equatorial	South America	7.53	0.976	<0.001
Corantijn	1	Equatorial	South America	3.44	0.707	<0.001
Maroni	2	Equatorial	South America	3.27	0.843	<0.001
Araguari	4	Equatorial	South America	9.40	0.890	<0.001
SanJuan	13	Equatorial	South America	1.97	0.616	<0.001
Atrato	11	Equatorial	South America	0.73	0.131	9.80E-02
Grande-Matagalpa	11	Equatorial	South America	4.09	0.691	<0.001
GHAASBasin410	11	Equatorial	South America	2.24	0.617	<0.001
Oyapok	1	Equatorial	South America	5.29	0.926	<0.001
Coco	5	Equatorial	South America	8.58	0.875	<0.001
Suriname	4	Equatorial	South America	3.93	0.844	<0.001
Mazaruni	3	Equatorial	South America	0.88	0.079	2.04E-01
GHAASBasin685	5	Equatorial	South America	-0.46	0.050	3.18E-01
GHAASBasin697	6	Equatorial	South America	0.60	0.102	1.48E-01
GHAASBasin792	5	Equatorial	South America	3.25	0.842	<0.001
GHAASBasin803	1	Equatorial	South America	7.66	0.930	<0.001
GHAASBasin826	4	Equatorial	South America	4.58	0.786	<0.001
GHAASBasin940	2	Equatorial	South America	3.21	0.886	<0.001
GHAASBasin942	3	Equatorial	South America	3.74	0.788	<0.001
GHAASBasin944	4	Equatorial	South America	3.76	0.753	<0.001
GHAASBasin954	1	Equatorial	South America	5.64	0.546	<0.001
GHAASBasin955	1	Equatorial	South America	5.06	0.803	<0.001
GHAASBasin1168	1	Equatorial	South America	-3.14	0.095	1.63E-01
GHAASBasin1177	3	Equatorial	South America	1.46	0.560	<0.001
GHAASBasin1211	2	Equatorial	South America	-0.75	0.058	2.81E-01
GHAASBasin1214	2	Equatorial	South America	2.98	0.443	<0.001
GHAASBasin1234	1	Equatorial	South America	4.71	0.732	<0.001
GHAASBasin1551	2	Equatorial	South America	2.11	0.731	<0.001
GHAASBasin1572	2	Equatorial	South America	6.03	0.601	<0.001
GHAASBasin1586	2	Equatorial	South America	0.24	0.047	3.30E-01
GHAASBasin1599	1	Equatorial	South America	-0.35	0.048	3.25E-01
GHAASBasin1608	1	Equatorial	South America	1.77	0.828	<0.001
GHAASBasin1624	2	Equatorial	South America	12.71	0.806	<0.001
GHAASBasin1665	2	Equatorial	South America	3.00	0.933	<0.001
GHAASBasin1674	1	Equatorial	South America	0.97	0.327	5.39E-03
GHAASBasin1691	2	Equatorial	South America	1.96	0.431	<0.001
GHAASBasin2536	1	Equatorial	South America	7.56	0.639	<0.001
GHAASBasin2538	1	Equatorial	South America	8.30	0.439	<0.001
GHAASBasin2541	1	Equatorial	South America	4.71	0.537	<0.001
GHAASBasin2548	1	Equatorial	South America	6.18	0.783	<0.001
GHAASBasin2549	1	Equatorial	South America	1.90	0.439	<0.001
GHAASBasin2572	1	Equatorial	South America	5.09	0.827	<0.001
GHAASBasin2751	1	Equatorial	South America	0.02	0.000	9.57E-01
GHAASBasin2813	1	Equatorial	South America	0.93	0.011	6.40E-01
GHAASBasin2825	1	Equatorial	South America	2.89	0.770	<0.001
GHAASBasin2826	1	Equatorial	South America	6.69	0.684	<0.001
GHAASBasin2850	1	Equatorial	South America	3.96	0.436	<0.001
GHAASBasin2852	1	Equatorial	South America	2.92	0.702	<0.001
GHAASBasin2880	1	Equatorial	South America	3.94	0.605	<0.001
GHAASBasin2885	1	Equatorial	South America	2.68	0.842	<0.001
GHAASBasin2886	1	Equatorial	South America	3.77	0.553	<0.001
GHAASBasin2887	1	Equatorial	South America	5.71	0.595	<0.001
GHAASBasin2894	1	Equatorial	South America	2.02	0.120	1.14E-01
GHAASBasin2896	1	Equatorial	South America	6.30	0.864	<0.001
GHAASBasin2898	1	Equatorial	South America	5.91	0.693	<0.001
GHAASBasin2931	1	Equatorial	South America	1.26	0.122	1.11E-01
GHAASBasin2937	1	Equatorial	South America	1.75	0.708	<0.001

GHAASBasin2957	1	Equatorial	South America	2.04	0.385	2.08E-03
GHAASBasin2969	1	Equatorial	South America	-0.78	0.063	2.58E-01
GHAASBasin2997	1	Equatorial	South America	3.30	0.624	<0.001
GHAASBasin3042	1	Equatorial	South America	2.64	0.261	1.51E-02
Zaire	236	Equatorial	Africa	2.94	0.676	<0.001
Ogooue	19	Equatorial	Africa	4.20	0.823	<0.001
Sanaga	14	Equatorial	Africa	2.08	0.451	<0.001
Kouilou	5	Equatorial	Africa	6.54	0.472	<0.001
Cross	10	Equatorial	Africa	3.68	0.569	<0.001
GHAASBasin390	4	Equatorial	Africa	1.86	0.073	2.23E-01
Ntem	6	Equatorial	Africa	5.02	0.776	<0.001
Nyanga	2	Equatorial	Africa	2.50	0.231	2.35E-02
Nyong	6	Equatorial	Africa	2.76	0.722	<0.001
Cavally	6	Equatorial	Africa	6.87	0.633	<0.001
GHAASBasin604	5	Equatorial	Africa	11.16	0.753	<0.001
GHAASBasin609	2	Equatorial	Africa	3.69	0.291	9.61E-03
GHAASBasin699	1	Equatorial	Africa	5.26	0.281	1.11E-02
GHAASBasin797	5	Equatorial	Africa	13.36	0.761	<0.001
GHAASBasin801	4	Equatorial	Africa	1.37	0.486	<0.001
GHAASBasin805	3	Equatorial	Africa	-6.78	0.564	<0.001
GHAASBasin809	4	Equatorial	Africa	2.03	0.135	9.31E-02
GHAASBasin817	1	Equatorial	Africa	-1.95	0.032	4.23E-01
GHAASBasin821	1	Equatorial	Africa	-0.29	0.006	7.23E-01
GHAASBasin953	2	Equatorial	Africa	-0.44	0.005	7.46E-01
GHAASBasin1550	1	Equatorial	Africa	2.56	0.493	<0.001
GHAASBasin1606	2	Equatorial	Africa	1.06	0.184	4.61E-02
GHAASBasin1615	1	Equatorial	Africa	6.69	0.619	<0.001
GHAASBasin2691	1	Equatorial	Africa	4.02	0.404	1.48E-03
Kapuas	9	Equatorial	Asia	1.56	0.195	3.97E-02
Sepik	4	Equatorial	Asia	-1.51	0.145	8.00E-02
Barito	7	Equatorial	Asia	3.25	0.562	<0.001
Mahakam	4	Equatorial	Asia	3.94	0.685	<0.001
Fly	15	Equatorial	Asia	1.88	0.367	2.79E-03
GHAASBasin273	14	Equatorial	Asia	3.14	0.454	<0.001
Rajang	6	Equatorial	Asia	3.80	0.845	<0.001
GHAASBasin357	2	Equatorial	Asia	5.46	0.348	3.85E-03
GHAASBasin359	5	Equatorial	Asia	1.26	0.067	2.44E-01
Hari	8	Equatorial	Asia	5.33	0.527	<0.001
Pahang	10	Equatorial	Asia	3.24	0.869	<0.001
Purari	5	Equatorial	Asia	-2.94	0.420	1.11E-03
Inderagiri	8	Equatorial	Asia	4.24	0.333	4.92E-03
GHAASBasin480	1	Equatorial	Asia	-2.20	0.070	2.35E-01
Cagayan	8	Equatorial	Asia	5.34	0.730	<0.001
GHAASBasin532	3	Equatorial	Asia	2.13	0.257	1.60E-02
GHAASBasin539	2	Equatorial	Asia	4.53	0.687	<0.001
Ramu	5	Equatorial	Asia	0.27	0.007	7.13E-01
GHAASBasin549	5	Equatorial	Asia	2.00	0.675	<0.001
GHAASBasin594	4	Equatorial	Asia	1.96	0.208	3.28E-02
GHAASBasin595	5	Equatorial	Asia	4.39	0.318	6.30E-03
Kikori	6	Equatorial	Asia	0.44	0.005	7.45E-01
GHAASBasin679	5	Equatorial	Asia	7.64	0.704	<0.001
GHAASBasin680	1	Equatorial	Asia	7.55	0.883	<0.001
GHAASBasin681	6	Equatorial	Asia	-3.33	0.480	<0.001
GHAASBasin684	3	Equatorial	Asia	4.82	0.604	<0.001
Perak	5	Equatorial	Asia	3.37	0.801	<0.001
Mindanao	6	Equatorial	Asia	3.48	0.311	6.98E-03
GHAASBasin696	5	Equatorial	Asia	1.63	0.512	<0.001
GHAASBasin793	2	Equatorial	Asia	2.40	0.152	7.26E-02
GHAASBasin794	4	Equatorial	Asia	2.01	0.164	6.16E-02

GHAASBasin799	3	Equatorial	Asia	3.88	0.857	<0.001
GHAASBasin804	5	Equatorial	Asia	6.13	0.701	<0.001
GHAASBasin806	5	Equatorial	Asia	2.29	0.531	<0.001
GHAASBasin808	1	Equatorial	Asia	0.01	0.000	9.87E-01
GHAASBasin812	5	Equatorial	Asia	1.95	0.477	<0.001
GHAASBasin816	3	Equatorial	Asia	3.27	0.590	<0.001
GHAASBasin819	4	Equatorial	Asia	4.89	0.250	1.79E-02
GHAASBasin945	4	Equatorial	Asia	3.95	0.490	<0.001
GHAASBasin948	1	Equatorial	Asia	2.49	0.218	2.85E-02
GHAASBasin951	2	Equatorial	Asia	2.69	0.494	<0.001
GHAASBasin956	2	Equatorial	Asia	2.31	0.577	<0.001
GHAASBasin964	4	Equatorial	Asia	0.91	0.477	<0.001
GHAASBasin982	3	Equatorial	Asia	4.47	0.794	<0.001
GHAASBasin987	3	Equatorial	Asia	3.29	0.845	<0.001
GHAASBasin988	4	Equatorial	Asia	0.91	0.344	4.10E-03
GHAASBasin1154	2	Equatorial	Asia	4.75	0.800	<0.001
GHAASBasin1156	1	Equatorial	Asia	-8.07	0.252	1.73E-02
GHAASBasin1157	2	Equatorial	Asia	9.33	0.769	<0.001
GHAASBasin1166	1	Equatorial	Asia	4.01	0.448	<0.001
GHAASBasin1184	3	Equatorial	Asia	2.45	0.697	<0.001
GHAASBasin1188	3	Equatorial	Asia	2.29	0.639	<0.001
GHAASBasin1189	3	Equatorial	Asia	1.52	0.271	1.31E-02
GHAASBasin1195	3	Equatorial	Asia	3.36	0.652	<0.001
GHAASBasin1199	3	Equatorial	Asia	2.88	0.751	<0.001
GHAASBasin1223	3	Equatorial	Asia	2.08	0.507	<0.001
GHAASBasin1252	3	Equatorial	Asia	2.97	0.830	<0.001
GHAASBasin1254	3	Equatorial	Asia	3.19	0.745	<0.001
GHAASBasin1549	2	Equatorial	Asia	1.90	0.475	<0.001
GHAASBasin1552	1	Equatorial	Asia	5.22	0.754	<0.001
GHAASBasin1555	1	Equatorial	Asia	7.02	0.832	<0.001
GHAASBasin1559	1	Equatorial	Asia	5.29	0.324	5.67E-03
GHAASBasin1560	1	Equatorial	Asia	2.86	0.870	<0.001
GHAASBasin1561	1	Equatorial	Asia	6.98	0.917	<0.001
GHAASBasin1565	2	Equatorial	Asia	4.36	0.912	<0.001
GHAASBasin1566	2	Equatorial	Asia	4.57	0.846	<0.001
GHAASBasin1567	1	Equatorial	Asia	6.91	0.589	<0.001
GHAASBasin1568	1	Equatorial	Asia	7.22	0.569	<0.001
GHAASBasin1570	2	Equatorial	Asia	5.27	0.143	8.25E-02
GHAASBasin1573	2	Equatorial	Asia	5.53	0.918	<0.001
GHAASBasin1575	1	Equatorial	Asia	3.59	0.233	2.30E-02
GHAASBasin1577	2	Equatorial	Asia	4.86	0.783	<0.001
GHAASBasin1583	1	Equatorial	Asia	2.96	0.245	1.92E-02
GHAASBasin1585	1	Equatorial	Asia	3.22	0.687	<0.001
GHAASBasin1592	1	Equatorial	Asia	6.82	0.658	<0.001
GHAASBasin1594	2	Equatorial	Asia	1.29	0.306	7.54E-03
GHAASBasin1595	1	Equatorial	Asia	7.82	0.655	<0.001
GHAASBasin1598	2	Equatorial	Asia	4.62	0.917	<0.001
GHAASBasin1604	2	Equatorial	Asia	2.97	0.352	3.64E-03
GHAASBasin1605	1	Equatorial	Asia	5.14	0.590	<0.001
GHAASBasin1607	1	Equatorial	Asia	1.16	0.215	2.97E-02
GHAASBasin1609	1	Equatorial	Asia	2.65	0.666	<0.001
GHAASBasin1611	1	Equatorial	Asia	5.34	0.658	<0.001
GHAASBasin1612	2	Equatorial	Asia	7.21	0.475	<0.001
GHAASBasin1613	1	Equatorial	Asia	0.86	0.135	9.28E-02
GHAASBasin1618	1	Equatorial	Asia	3.87	0.657	<0.001
GHAASBasin1620	1	Equatorial	Asia	4.71	0.575	<0.001
GHAASBasin1621	2	Equatorial	Asia	4.18	0.740	<0.001
GHAASBasin1623	2	Equatorial	Asia	5.06	0.883	<0.001
GHAASBasin1633	2	Equatorial	Asia	2.81	0.678	<0.001

GHAASBasin1634	2	Equatorial	Asia	1.39	0.509	<0.001
GHAASBasin1635	2	Equatorial	Asia	0.82	0.406	1.43E-03
GHAASBasin1636	1	Equatorial	Asia	2.97	0.519	<0.001
GHAASBasin1642	2	Equatorial	Asia	3.42	0.781	<0.001
GHAASBasin1644	2	Equatorial	Asia	3.08	0.263	1.47E-02
GHAASBasin1645	1	Equatorial	Asia	0.41	0.003	8.13E-01
GHAASBasin1647	2	Equatorial	Asia	2.69	0.420	1.10E-03
GHAASBasin1651	1	Equatorial	Asia	4.44	0.472	<0.001
GHAASBasin1652	2	Equatorial	Asia	-0.09	0.001	8.74E-01
GHAASBasin1660	2	Equatorial	Asia	2.47	0.830	<0.001
GHAASBasin1686	2	Equatorial	Asia	1.17	0.530	<0.001
GHAASBasin1694	2	Equatorial	Asia	2.64	0.439	<0.001
GHAASBasin1699	2	Equatorial	Asia	2.53	0.762	<0.001
GHAASBasin1702	2	Equatorial	Asia	1.44	0.128	1.02E-01
GHAASBasin1718	2	Equatorial	Asia	3.98	0.708	<0.001
GHAASBasin1771	2	Equatorial	Asia	2.74	0.655	<0.001
GHAASBasin1790	2	Equatorial	Asia	2.56	0.511	<0.001
GHAASBasin1794	1	Equatorial	Asia	3.89	0.255	1.65E-02
GHAASBasin1817	1	Equatorial	Asia	1.35	0.453	<0.001
GHAASBasin1825	2	Equatorial	Asia	1.83	0.438	<0.001
GHAASBasin2539	1	Equatorial	Asia	4.21	0.527	<0.001
GHAASBasin2555	1	Equatorial	Asia	5.40	0.661	<0.001
GHAASBasin2556	1	Equatorial	Asia	7.60	0.640	<0.001
GHAASBasin2557	1	Equatorial	Asia	3.90	0.847	<0.001
GHAASBasin2558	1	Equatorial	Asia	4.54	0.599	<0.001
GHAASBasin2559	1	Equatorial	Asia	6.56	0.454	<0.001
GHAASBasin2560	1	Equatorial	Asia	4.45	0.089	1.79E-01
GHAASBasin2567	1	Equatorial	Asia	4.08	0.662	<0.001
GHAASBasin2568	1	Equatorial	Asia	2.90	0.072	2.27E-01
GHAASBasin2576	1	Equatorial	Asia	-1.77	0.157	6.82E-02
GHAASBasin2580	1	Equatorial	Asia	12.95	0.649	<0.001
GHAASBasin2583	1	Equatorial	Asia	2.02	0.428	<0.001
GHAASBasin2589	1	Equatorial	Asia	8.66	0.889	<0.001
GHAASBasin2597	1	Equatorial	Asia	7.97	0.456	<0.001
GHAASBasin2599	1	Equatorial	Asia	0.60	0.032	4.23E-01
GHAASBasin2601	1	Equatorial	Asia	-2.84	0.323	5.76E-03
GHAASBasin2606	1	Equatorial	Asia	4.03	0.430	<0.001
GHAASBasin2607	1	Equatorial	Asia	5.95	0.315	6.59E-03
GHAASBasin2608	1	Equatorial	Asia	0.37	0.001	8.66E-01
GHAASBasin2609	1	Equatorial	Asia	5.99	0.222	2.67E-02
GHAASBasin2616	1	Equatorial	Asia	7.71	0.674	<0.001
GHAASBasin2618	1	Equatorial	Asia	4.57	0.846	<0.001
GHAASBasin2628	1	Equatorial	Asia	4.51	0.514	<0.001
GHAASBasin2636	1	Equatorial	Asia	6.36	0.517	<0.001
GHAASBasin2640	1	Equatorial	Asia	5.73	0.819	<0.001
GHAASBasin2641	1	Equatorial	Asia	5.13	0.920	<0.001
GHAASBasin2650	1	Equatorial	Asia	5.84	0.800	<0.001
GHAASBasin2652	1	Equatorial	Asia	1.58	0.070	2.32E-01
GHAASBasin2656	1	Equatorial	Asia	-0.29	0.002	8.60E-01
GHAASBasin2657	1	Equatorial	Asia	11.01	0.856	<0.001
GHAASBasin2664	1	Equatorial	Asia	6.33	0.778	<0.001
GHAASBasin2669	1	Equatorial	Asia	3.46	0.289	9.80E-03
GHAASBasin2671	1	Equatorial	Asia	4.10	0.955	<0.001
GHAASBasin2675	1	Equatorial	Asia	5.61	0.647	<0.001
GHAASBasin2678	1	Equatorial	Asia	2.39	0.269	1.34E-02
GHAASBasin2685	1	Equatorial	Asia	1.80	0.118	1.17E-01
GHAASBasin2695	1	Equatorial	Asia	10.75	0.682	<0.001
GHAASBasin2696	1	Equatorial	Asia	0.41	0.019	5.44E-01
GHAASBasin2702	1	Equatorial	Asia	9.85	0.820	<0.001

GHAASBasin2703	1	Equatorial	Asia	2.18	0.151	7.44E-02
GHAASBasin2704	1	Equatorial	Asia	5.57	0.808	<0.001
GHAASBasin2706	1	Equatorial	Asia	6.64	0.821	<0.001
GHAASBasin2714	1	Equatorial	Asia	4.70	0.662	<0.001
GHAASBasin2716	1	Equatorial	Asia	5.76	0.699	<0.001
GHAASBasin2719	1	Equatorial	Asia	10.87	0.751	<0.001
GHAASBasin2720	1	Equatorial	Asia	1.67	0.695	<0.001
GHAASBasin2722	1	Equatorial	Asia	9.25	0.784	<0.001
GHAASBasin2726	1	Equatorial	Asia	2.85	0.231	2.36E-02
GHAASBasin2729	1	Equatorial	Asia	4.38	0.394	1.75E-03
GHAASBasin2732	1	Equatorial	Asia	2.50	0.249	1.81E-02
GHAASBasin2733	1	Equatorial	Asia	-1.77	0.145	8.05E-02
GHAASBasin2735	1	Equatorial	Asia	4.39	0.873	<0.001
GHAASBasin2738	1	Equatorial	Asia	3.39	0.559	<0.001
GHAASBasin2747	1	Equatorial	Asia	11.05	0.630	<0.001
GHAASBasin2748	1	Equatorial	Asia	5.89	0.353	3.54E-03
GHAASBasin2749	1	Equatorial	Asia	9.70	0.869	<0.001
GHAASBasin2750	1	Equatorial	Asia	7.27	0.804	<0.001
GHAASBasin2752	1	Equatorial	Asia	6.32	0.431	<0.001
GHAASBasin2753	1	Equatorial	Asia	8.49	0.884	<0.001
GHAASBasin2754	1	Equatorial	Asia	5.83	0.923	<0.001
GHAASBasin2755	1	Equatorial	Asia	-0.89	0.092	1.70E-01
GHAASBasin2757	1	Equatorial	Asia	4.04	0.639	<0.001
GHAASBasin2763	1	Equatorial	Asia	0.94	0.050	3.20E-01
GHAASBasin2767	1	Equatorial	Asia	-0.61	0.018	5.55E-01
GHAASBasin2771	1	Equatorial	Asia	6.08	0.959	<0.001
GHAASBasin2775	1	Equatorial	Asia	2.52	0.696	<0.001
GHAASBasin2780	1	Equatorial	Asia	4.35	0.916	<0.001
GHAASBasin2788	1	Equatorial	Asia	2.39	0.645	<0.001
GHAASBasin2792	1	Equatorial	Asia	4.24	0.781	<0.001
GHAASBasin2794	1	Equatorial	Asia	3.80	0.527	<0.001
GHAASBasin2799	1	Equatorial	Asia	6.64	0.424	1.02E-03
GHAASBasin2800	1	Equatorial	Asia	8.02	0.491	<0.001
GHAASBasin2802	1	Equatorial	Asia	3.99	0.632	<0.001
GHAASBasin2803	1	Equatorial	Asia	2.02	0.525	<0.001
GHAASBasin2805	1	Equatorial	Asia	3.54	0.104	1.43E-01
GHAASBasin2807	1	Equatorial	Asia	6.20	0.728	<0.001
GHAASBasin2808	1	Equatorial	Asia	2.54	0.761	<0.001
GHAASBasin2816	1	Equatorial	Asia	2.24	0.281	1.12E-02
GHAASBasin2819	1	Equatorial	Asia	2.41	0.875	<0.001
GHAASBasin2821	1	Equatorial	Asia	1.73	0.611	<0.001
GHAASBasin2822	1	Equatorial	Asia	6.32	0.526	<0.001
GHAASBasin2831	1	Equatorial	Asia	2.69	0.155	6.99E-02
GHAASBasin2832	1	Equatorial	Asia	1.31	0.281	1.12E-02
GHAASBasin2833	1	Equatorial	Asia	2.25	0.652	<0.001
GHAASBasin2834	1	Equatorial	Asia	4.16	0.387	2.00E-03
GHAASBasin2839	1	Equatorial	Asia	-0.37	0.006	7.31E-01
GHAASBasin2844	1	Equatorial	Asia	1.96	0.656	<0.001
GHAASBasin2845	1	Equatorial	Asia	2.05	0.445	<0.001
GHAASBasin2847	1	Equatorial	Asia	4.25	0.750	<0.001
GHAASBasin2848	1	Equatorial	Asia	5.12	0.854	<0.001
GHAASBasin2849	1	Equatorial	Asia	0.87	0.142	8.43E-02
GHAASBasin2856	1	Equatorial	Asia	2.25	0.325	5.64E-03
GHAASBasin2858	1	Equatorial	Asia	1.87	0.116	1.21E-01
GHAASBasin2859	1	Equatorial	Asia	2.99	0.639	<0.001
GHAASBasin2860	1	Equatorial	Asia	-0.63	0.018	5.49E-01
GHAASBasin2861	1	Equatorial	Asia	3.39	0.108	1.36E-01
GHAASBasin2862	1	Equatorial	Asia	5.03	0.877	<0.001
GHAASBasin2864	1	Equatorial	Asia	2.12	0.563	<0.001

GHAASBasin2873	1	Equatorial	Asia	1.96	0.546	<0.001
GHAASBasin2874	1	Equatorial	Asia	2.93	0.604	<0.001
GHAASBasin2875	1	Equatorial	Asia	2.25	0.567	<0.001
GHAASBasin2876	1	Equatorial	Asia	2.23	0.451	<0.001
GHAASBasin2877	1	Equatorial	Asia	5.12	0.580	<0.001
GHAASBasin2878	1	Equatorial	Asia	3.95	0.797	<0.001
GHAASBasin2889	1	Equatorial	Asia	0.23	0.003	8.19E-01
GHAASBasin2893	1	Equatorial	Asia	7.54	0.841	<0.001
GHAASBasin2900	1	Equatorial	Asia	2.95	0.461	<0.001
GHAASBasin2901	1	Equatorial	Asia	0.69	0.067	2.44E-01
GHAASBasin2906	1	Equatorial	Asia	-0.66	0.005	7.50E-01
GHAASBasin2907	1	Equatorial	Asia	7.46	0.313	6.82E-03
GHAASBasin2908	1	Equatorial	Asia	4.71	0.344	4.14E-03
GHAASBasin2909	1	Equatorial	Asia	1.62	0.228	2.48E-02
GHAASBasin2911	1	Equatorial	Asia	5.32	0.599	<0.001
GHAASBasin2912	1	Equatorial	Asia	2.55	0.135	9.21E-02
GHAASBasin2913	1	Equatorial	Asia	6.11	0.400	1.60E-03
GHAASBasin2914	1	Equatorial	Asia	4.74	0.525	<0.001
GHAASBasin2915	1	Equatorial	Asia	5.27	0.786	<0.001
GHAASBasin2916	1	Equatorial	Asia	2.26	0.561	<0.001
GHAASBasin2918	1	Equatorial	Asia	5.84	0.850	<0.001
GHAASBasin2920	1	Equatorial	Asia	4.73	0.506	<0.001
GHAASBasin2921	1	Equatorial	Asia	4.96	0.142	8.41E-02
GHAASBasin2926	1	Equatorial	Asia	3.65	0.536	<0.001
GHAASBasin2940	1	Equatorial	Asia	4.99	0.526	<0.001
GHAASBasin2946	1	Equatorial	Asia	4.87	0.224	2.60E-02
GHAASBasin2964	1	Equatorial	Asia	2.96	0.310	7.10E-03
GHAASBasin2966	1	Equatorial	Asia	1.91	0.278	1.16E-02
GHAASBasin2967	1	Equatorial	Asia	3.46	0.195	3.97E-02
GHAASBasin2984	1	Equatorial	Asia	1.09	0.392	1.82E-03
GHAASBasin2999	1	Equatorial	Asia	4.67	0.432	<0.001
GHAASBasin3008	1	Equatorial	Asia	3.46	0.656	<0.001
GHAASBasin3011	1	Equatorial	Asia	3.01	0.331	5.09E-03
GHAASBasin3019	1	Equatorial	Asia	4.44	0.437	<0.001
GHAASBasin3032	1	Equatorial	Asia	5.87	0.100	1.52E-01
GHAASBasin3036	1	Equatorial	Asia	4.20	0.677	<0.001
GHAASBasin3037	1	Equatorial	Asia	2.64	0.161	6.39E-02
GHAASBasin3053	1	Equatorial	Asia	3.06	0.775	<0.001
GHAASBasin3073	1	Equatorial	Asia	5.31	0.378	2.32E-03
GHAASBasin3084	1	Equatorial	Asia	4.43	0.824	<0.001
GHAASBasin3103	1	Equatorial	Asia	1.54	0.371	2.63E-03
GHAASBasin3104	1	Equatorial	Asia	-0.19	0.003	8.25E-01
GHAASBasin3109	1	Equatorial	Asia	2.98	0.774	<0.001
GHAASBasin3118	1	Equatorial	Asia	-3.82	0.285	1.05E-02
GHAASBasin3124	1	Equatorial	Asia	3.23	0.639	<0.001
GHAASBasin3137	1	Equatorial	Asia	2.29	0.222	2.69E-02
GHAASBasin3140	1	Equatorial	Asia	0.42	0.029	4.46E-01
GHAASBasin3147	1	Equatorial	Asia	0.44	0.210	3.19E-02
GHAASBasin3149	1	Equatorial	Asia	1.33	0.308	7.29E-03
GHAASBasin3166	1	Equatorial	Asia	2.88	0.306	7.57E-03
GHAASBasin3168	1	Equatorial	Asia	2.93	0.832	<0.001
GHAASBasin3206	1	Equatorial	Asia	4.06	0.618	<0.001
GHAASBasin3235	1	Equatorial	Asia	2.35	0.452	<0.001
GHAASBasin3243	1	Equatorial	Asia	2.92	0.723	<0.001
GHAASBasin3259	1	Equatorial	Asia	0.92	0.133	9.48E-02
GHAASBasin3280	1	Equatorial	Asia	0.89	0.184	4.63E-02
Parana	629	Southern sub tropical	South America	2.52	0.800	<0.001
Sao Francisco	151	Southern sub tropical	South America	3.02	0.815	<0.001
Uruguay	105	Southern sub tropical	South America	2.84	0.687	<0.001

Parnaiba	72	Southern sub tropical	South America	2.98	0.759	<0.001
Mearim	24	Southern sub tropical	South America	4.86	0.721	<0.001
GHAASBasin207	24	Southern sub tropical	South America	3.48	0.757	<0.001
GHAASBasin214	20	Southern sub tropical	South America	3.01	0.765	<0.001
Jequitinhonha	21	Southern sub tropical	South America	4.04	0.869	<0.001
GHAASBasin263	18	Southern sub tropical	South America	2.69	0.638	<0.001
Pardo	15	Southern sub tropical	South America	3.29	0.770	<0.001
GHAASBasin326	14	Southern sub tropical	South America	2.49	0.511	<0.001
Gurupi	13	Southern sub tropical	South America	1.78	0.397	1.67E-03
GHAASBasin342	8	Southern sub tropical	South America	3.84	0.659	<0.001
Guayas	14	Southern sub tropical	South America	3.24	0.852	<0.001
GHAASBasin388	11	Southern sub tropical	South America	1.53	0.364	2.93E-03
GHAASBasin442	10	Southern sub tropical	South America	1.08	0.224	2.62E-02
GHAASBasin507	9	Southern sub tropical	South America	3.52	0.703	<0.001
GHAASBasin535	7	Southern sub tropical	South America	4.42	0.784	<0.001
GHAASBasin597	7	Southern sub tropical	South America	4.17	0.860	<0.001
GHAASBasin612	4	Southern sub tropical	South America	2.86	0.620	<0.001
GHAASBasin683	5	Southern sub tropical	South America	4.70	0.650	<0.001
GHAASBasin687	5	Southern sub tropical	South America	0.84	0.152	7.32E-02
GHAASBasin845	5	Southern sub tropical	South America	3.08	0.710	<0.001
GHAASBasin849	5	Southern sub tropical	South America	5.36	0.900	<0.001
GHAASBasin929	4	Southern sub tropical	South America	0.67	0.652	<0.001
GHAASBasin952	4	Southern sub tropical	South America	3.98	0.707	<0.001
GHAASBasin961	3	Southern sub tropical	South America	0.69	0.115	1.22E-01
GHAASBasin1099	4	Southern sub tropical	South America	0.50	0.102	1.48E-01
GHAASBasin1163	3	Southern sub tropical	South America	5.31	0.703	<0.001
GHAASBasin1164	2	Southern sub tropical	South America	4.83	0.672	<0.001
GHAASBasin1179	3	Southern sub tropical	South America	0.71	0.132	9.62E-02
GHAASBasin1203	3	Southern sub tropical	South America	0.22	0.006	7.35E-01
GHAASBasin1222	3	Southern sub tropical	South America	2.25	0.522	<0.001
GHAASBasin1262	2	Southern sub tropical	South America	4.89	0.830	<0.001
GHAASBasin1388	2	Southern sub tropical	South America	4.46	0.777	<0.001
GHAASBasin1564	2	Southern sub tropical	South America	3.56	0.590	<0.001
GHAASBasin1578	2	Southern sub tropical	South America	7.96	0.901	<0.001
GHAASBasin1590	2	Southern sub tropical	South America	3.81	0.757	<0.001
GHAASBasin1593	2	Southern sub tropical	South America	6.28	0.901	<0.001
GHAASBasin1596	2	Southern sub tropical	South America	3.66	0.800	<0.001
GHAASBasin1619	2	Southern sub tropical	South America	3.63	0.749	<0.001
GHAASBasin1625	2	Southern sub tropical	South America	1.77	0.739	<0.001
GHAASBasin1628	2	Southern sub tropical	South America	1.30	0.406	1.42E-03
GHAASBasin1703	2	Southern sub tropical	South America	2.46	0.841	<0.001
GHAASBasin1731	2	Southern sub tropical	South America	0.88	0.249	1.81E-02
GHAASBasin2056	2	Southern sub tropical	South America	1.67	0.542	<0.001
GHAASBasin2581	1	Southern sub tropical	South America	9.78	0.720	<0.001
GHAASBasin2595	1	Southern sub tropical	South America	5.48	0.837	<0.001
GHAASBasin2633	1	Southern sub tropical	South America	2.27	0.594	<0.001
GHAASBasin2662	1	Southern sub tropical	South America	7.71	0.735	<0.001
GHAASBasin2687	1	Southern sub tropical	South America	5.03	0.807	<0.001
GHAASBasin2710	1	Southern sub tropical	South America	2.05	0.352	3.59E-03
GHAASBasin2837	1	Southern sub tropical	South America	-1.11	0.262	1.50E-02
GHAASBasin2934	1	Southern sub tropical	South America	0.36	0.010	6.58E-01
GHAASBasin2935	1	Southern sub tropical	South America	0.65	0.016	5.70E-01
GHAASBasin2960	1	Southern sub tropical	South America	-0.35	0.009	6.72E-01
GHAASBasin2998	1	Southern sub tropical	South America	-0.35	0.011	6.48E-01
GHAASBasin3043	1	Southern sub tropical	South America	3.14	0.609	<0.001
GHAASBasin3044	1	Southern sub tropical	South America	1.25	0.141	8.51E-02
GHAASBasin3101	1	Southern sub tropical	South America	1.25	0.847	<0.001
GHAASBasin3152	1	Southern sub tropical	South America	0.28	0.033	4.21E-01
GHAASBasin3159	1	Southern sub tropical	South America	-0.15	0.003	8.07E-01

GHAASBasin3732	1	Southern sub tropical	South America	3.58	0.539	<0.001
GHAASBasin3761	1	Southern sub tropical	South America	1.36	0.171	5.61E-02
GHAASBasin3762	1	Southern sub tropical	South America	0.28	0.006	7.42E-01
GHAASBasin3777	1	Southern sub tropical	South America	1.32	0.429	<0.001
GHAASBasin3787	1	Southern sub tropical	South America	2.32	0.395	1.74E-03
GHAASBasin3788	1	Southern sub tropical	South America	1.28	0.176	5.17E-02
Zambezi	177	Southern sub tropical	Africa	0.66	0.155	6.95E-02
Limpopo	32	Southern sub tropical	Africa	1.80	0.918	<0.001
Rufiji	29	Southern sub tropical	Africa	1.19	0.111	1.31E-01
Cuanza	7	Southern sub tropical	Africa	16.36	0.710	<0.001
Roviuna	21	Southern sub tropical	Africa	4.16	0.546	<0.001
Galana	25	Southern sub tropical	Africa	2.30	0.599	<0.001
Save	24	Southern sub tropical	Africa	-2.44	0.313	6.82E-03
Cunene	13	Southern sub tropical	Africa	9.55	0.744	<0.001
Pangani	8	Southern sub tropical	Africa	1.32	0.180	4.90E-02
GHAASBasin231	4	Southern sub tropical	Africa	0.96	0.068	2.43E-01
Ikopa	8	Southern sub tropical	Africa	1.16	0.239	2.08E-02
Lurio	9	Southern sub tropical	Africa	8.25	0.639	<0.001
Incomati	15	Southern sub tropical	Africa	2.16	0.714	<0.001
Pungoe	9	Southern sub tropical	Africa	1.91	0.400	1.60E-03
Wami	4	Southern sub tropical	Africa	1.15	0.086	1.86E-01
GHAASBasin444	1	Southern sub tropical	Africa	9.92	0.526	<0.001
Licungo	3	Southern sub tropical	Africa	6.07	0.469	<0.001
GHAASBasin510	4	Southern sub tropical	Africa	2.21	0.247	1.86E-02
Buzi	8	Southern sub tropical	Africa	1.86	0.170	5.69E-02
GHAASBasin552	1	Southern sub tropical	Africa	17.32	0.703	<0.001
GHAASBasin561	3	Southern sub tropical	Africa	8.55	0.713	<0.001
GHAASBasin691	1	Southern sub tropical	Africa	-2.35	0.025	4.81E-01
GHAASBasin702	2	Southern sub tropical	Africa	3.33	0.116	1.20E-01
GHAASBasin709	1	Southern sub tropical	Africa	10.71	0.694	<0.001
GHAASBasin715	5	Southern sub tropical	Africa	10.32	0.570	<0.001
GHAASBasin810	3	Southern sub tropical	Africa	0.10	0.002	8.40E-01
GHAASBasin831	1	Southern sub tropical	Africa	4.42	0.338	4.57E-03
GHAASBasin859	1	Southern sub tropical	Africa	-0.69	0.024	4.89E-01
GHAASBasin949	1	Southern sub tropical	Africa	6.66	0.510	<0.001
GHAASBasin973	1	Southern sub tropical	Africa	7.40	0.714	<0.001
GHAASBasin977	1	Southern sub tropical	Africa	1.24	0.046	3.38E-01
GHAASBasin993	4	Southern sub tropical	Africa	15.29	0.606	<0.001
GHAASBasin1165	1	Southern sub tropical	Africa	6.97	0.361	3.11E-03
GHAASBasin1241	2	Southern sub tropical	Africa	3.29	0.401	1.56E-03
GHAASBasin1250	1	Southern sub tropical	Africa	7.87	0.632	<0.001
GHAASBasin1251	2	Southern sub tropical	Africa	4.66	0.647	<0.001
GHAASBasin1308	1	Southern sub tropical	Africa	1.39	0.204	3.49E-02
GHAASBasin1678	1	Southern sub tropical	Africa	1.83	0.067	2.46E-01
GHAASBasin1795	1	Southern sub tropical	Africa	5.25	0.738	<0.001
GHAASBasin1805	1	Southern sub tropical	Africa	4.47	0.464	<0.001
GHAASBasin1856	1	Southern sub tropical	Africa	11.52	0.717	<0.001
GHAASBasin2971	1	Southern sub tropical	Africa	-1.69	0.325	5.56E-03
GHAASBasin3079	1	Southern sub tropical	Africa	-0.08	0.002	8.34E-01
GHAASBasin3186	1	Southern sub tropical	Africa	1.71	0.147	7.86E-02
GHAASBasin3332	1	Southern sub tropical	Africa	1.14	0.541	<0.001
Burdekin	8	Southern sub tropical	Australia	-0.21	0.012	6.25E-01
Flinders	8	Southern sub tropical	Australia	2.43	0.473	<0.001
Victoria	1	Southern sub tropical	Australia	-1.48	0.023	4.98E-01
Ord	4	Southern sub tropical	Australia	-1.10	0.237	2.16E-02
Mitchell	8	Southern sub tropical	Australia	-0.97	0.079	2.05E-01
Gilbert	6	Southern sub tropical	Australia	-12.17	0.709	<0.001
GHAASBasin274	3	Southern sub tropical	Australia	6.68	0.599	<0.001
Daly	6	Southern sub tropical	Australia	-0.84	0.098	1.57E-01

Leichhardt	1	Southern sub tropical	Australia	1.37	0.383	2.15E-03
GHAASBasin349	1	Southern sub tropical	Australia	3.72	0.459	<0.001
GHAASBasin400	1	Southern sub tropical	Australia	4.44	0.788	<0.001
GHAASBasin974	2	Southern sub tropical	Australia	0.38	0.037	3.94E-01
GHAASBasin1006	1	Southern sub tropical	Australia	0.26	0.005	7.44E-01
GHAASBasin1218	1	Southern sub tropical	Australia	5.57	0.604	<0.001
GHAASBasin1737	1	Southern sub tropical	Australia	5.36	0.374	2.50E-03
GHAASBasin1773	1	Southern sub tropical	Australia	-0.09	0.001	8.91E-01
GHAASBasin1788	2	Southern sub tropical	Australia	2.38	0.389	1.92E-03
GHAASBasin1798	1	Southern sub tropical	Australia	3.27	0.517	<0.001
GHAASBasin1820	1	Southern sub tropical	Australia	1.41	0.760	<0.001
GHAASBasin3066	1	Southern sub tropical	Australia	4.87	0.272	1.27E-02
GHAASBasin3078	1	Southern sub tropical	Australia	4.96	0.357	3.34E-03
GHAASBasin3088	1	Southern sub tropical	Australia	1.39	0.451	<0.001
GHAASBasin3092	1	Southern sub tropical	Australia	7.74	0.767	<0.001
GHAASBasin3232	1	Southern sub tropical	Australia	-0.33	0.005	7.58E-01
GHAASBasin3238	1	Southern sub tropical	Australia	-1.16	0.018	5.56E-01
GHAASBasin3341	1	Southern sub tropical	Australia	-0.82	0.041	3.68E-01
GHAASBasin3359	1	Southern sub tropical	Australia	-0.24	0.005	7.64E-01
GHAASBasin3379	1	Southern sub tropical	Australia	2.93	0.595	<0.001
GHAASBasin3399	1	Southern sub tropical	Australia	6.43	0.913	<0.001
NegroArg	42	Southern dry	South America	3.05	0.818	<0.001
Chubut	32	Southern dry	South America	2.32	0.367	2.83E-03
GHAASBasin113	14	Southern dry	South America	4.54	0.929	<0.001
GHAASBasin134	22	Southern dry	South America	2.65	0.748	<0.001
GHAASBasin184	17	Southern dry	South America	3.72	0.855	<0.001
GHAASBasin204	3	Southern dry	South America	9.16	0.719	<0.001
Deseado	6	Southern dry	South America	5.72	0.713	<0.001
GHAASBasin371	5	Southern dry	South America	4.05	0.841	<0.001
GHAASBasin383	8	Southern dry	South America	4.11	0.809	<0.001
GHAASBasin493	8	Southern dry	South America	2.64	0.869	<0.001
SantaCruz	8	Southern dry	South America	7.44	0.941	<0.001
GHAASBasin573	1	Southern dry	South America	3.41	0.861	<0.001
Santa	6	Southern dry	South America	5.71	0.857	<0.001
GHAASBasin625	5	Southern dry	South America	7.59	0.821	<0.001
GHAASBasin751	1	Southern dry	South America	1.70	0.030	4.41E-01
GHAASBasin896	2	Southern dry	South America	5.15	0.794	<0.001
GHAASBasin905	1	Southern dry	South America	-1.16	0.045	3.42E-01
GHAASBasin912	4	Southern dry	South America	7.12	0.939	<0.001
GHAASBasin967	4	Southern dry	South America	2.73	0.570	<0.001
GHAASBasin976	3	Southern dry	South America	2.18	0.406	1.43E-03
GHAASBasin979	2	Southern dry	South America	2.39	0.521	<0.001
GHAASBasin994	2	Southern dry	South America	11.96	0.857	<0.001
GHAASBasin996	2	Southern dry	South America	6.41	0.852	<0.001
GHAASBasin1003	1	Southern dry	South America	1.16	0.132	9.60E-02
GHAASBasin1175	3	Southern dry	South America	11.13	0.578	<0.001
GHAASBasin1181	3	Southern dry	South America	3.05	0.824	<0.001
GHAASBasin1197	3	Southern dry	South America	5.25	0.892	<0.001
GHAASBasin1237	2	Southern dry	South America	5.09	0.680	<0.001
GHAASBasin1249	3	Southern dry	South America	8.27	0.850	<0.001
GHAASBasin1253	1	Southern dry	South America	8.46	0.895	<0.001
GHAASBasin1259	2	Southern dry	South America	3.61	0.581	<0.001
GHAASBasin1268	1	Southern dry	South America	2.32	0.151	7.40E-02
GHAASBasin1271	2	Southern dry	South America	1.42	0.373	2.52E-03
GHAASBasin1371	3	Southern dry	South America	3.26	0.801	<0.001
GHAASBasin1672	2	Southern dry	South America	4.44	0.756	<0.001
GHAASBasin1693	2	Southern dry	South America	3.29	0.718	<0.001
GHAASBasin1698	2	Southern dry	South America	2.31	0.641	<0.001
GHAASBasin1920	1	Southern dry	South America	-2.89	0.063	2.59E-01

GHAASBasin2000	2	Southern dry	South America	5.92	0.790	<0.001
GHAASBasin2010	1	Southern dry	South America	7.03	0.895	<0.001
GHAASBasin2172	1	Southern dry	South America	0.01	0.000	9.92E-01
GHAASBasin2359	1	Southern dry	South America	-11.71	0.709	<0.001
GHAASBasin2389	1	Southern dry	South America	0.69	0.037	3.90E-01
GHAASBasin4515	1	Southern dry	South America	-2.92	0.425	1.00E-03
GHAASBasin4516	1	Southern dry	South America	-1.23	0.024	4.95E-01
GHAASBasin4635	1	Southern dry	South America	7.75	0.744	<0.001
Orange	73	Southern dry	Africa	0.54	0.195	3.98E-02
Okavango	36	Southern dry	Africa	4.05	0.697	<0.001
GHAASBasin160	6	Southern dry	Africa	6.59	0.899	<0.001
Olifants	3	Southern dry	Africa	7.23	0.492	<0.001
GHAASBasin386	2	Southern dry	Africa	1.63	0.330	5.16E-03
GHAASBasin519	4	Southern dry	Africa	1.54	0.260	1.54E-02
GHAASBasin731	3	Southern dry	Africa	4.70	0.738	<0.001
GHAASBasin737	3	Southern dry	Africa	2.59	0.461	<0.001
GHAASBasin767	1	Southern dry	Africa	1.26	0.031	4.31E-01
GHAASBasin908	1	Southern dry	Africa	7.21	0.396	1.69E-03
GHAASBasin1874	1	Southern dry	Africa	-0.13	0.000	9.39E-01
GHAASBasin2028	2	Southern dry	Africa	1.35	0.424	1.04E-03
Great Artesian Basin	38	Southern dry	Australia	0.63	0.156	6.86E-02
Mackey	1	Southern dry	Australia	-4.57	0.348	3.88E-03
LakeFrome	9	Southern dry	Australia	1.27	0.091	1.72E-01
Taymyr	7	Southern dry	Australia	3.56	0.594	<0.001
FitzroyWest	6	Southern dry	Australia	-1.07	0.060	2.70E-01
Swan-Avon	13	Southern dry	Australia	0.61	0.280	1.13E-02
GHAASBasin115	2	Southern dry	Australia	-3.41	0.316	6.50E-03
GHAASBasin158	3	Southern dry	Australia	0.13	0.000	9.44E-01
GHAASBasin164	8	Southern dry	Australia	3.43	0.149	7.65E-02
Ashburton	4	Southern dry	Australia	7.10	0.542	<0.001
Murchinson	5	Southern dry	Australia	-6.60	0.573	<0.001
GHAASBasin254	1	Southern dry	Australia	2.10	0.100	1.52E-01
Fortesque	1	Southern dry	Australia	2.11	0.122	1.11E-01
GHAASBasin435	7	Southern dry	Australia	1.35	0.189	4.34E-02
GHAASBasin456	1	Southern dry	Australia	-1.80	0.088	1.81E-01
GHAASBasin458	1	Southern dry	Australia	4.88	0.715	<0.001
GHAASBasin632	7	Southern dry	Australia	-0.15	0.002	8.26E-01
GHAASBasin638	2	Southern dry	Australia	3.78	0.100	1.51E-01
GHAASBasin772	2	Southern dry	Australia	5.11	0.616	<0.001
GHAASBasin786	6	Southern dry	Australia	1.22	0.500	<0.001
GHAASBasin788	1	Southern dry	Australia	-3.84	0.151	7.38E-02
GHAASBasin1025	2	Southern dry	Australia	8.39	0.359	3.21E-03
GHAASBasin1315	1	Southern dry	Australia	2.09	0.180	4.89E-02
GHAASBasin1349	1	Southern dry	Australia	0.79	0.017	5.68E-01
GHAASBasin1379	1	Southern dry	Australia	9.80	0.530	<0.001
GHAASBasin1383	1	Southern dry	Australia	-1.75	0.241	2.05E-02
GHAASBasin1389	3	Southern dry	Australia	1.94	0.360	3.16E-03
GHAASBasin1813	1	Southern dry	Australia	-0.46	0.005	7.58E-01
GHAASBasin2048	1	Southern dry	Australia	2.49	0.786	<0.001
GHAASBasin3185	1	Southern dry	Australia	10.29	0.543	<0.001
GHAASBasin3449	1	Southern dry	Australia	1.98	0.208	3.28E-02
GHAASBasin3641	1	Southern dry	Australia	3.09	0.520	<0.001
GHAASBasin3662	1	Southern dry	Australia	2.79	0.317	6.32E-03
GHAASBasin3741	1	Southern dry	Australia	3.77	0.802	<0.001
GHAASBasin3755	1	Southern dry	Australia	-1.26	0.134	9.39E-02
GHAASBasin3756	1	Southern dry	Australia	-6.29	0.273	1.26E-02
Colorado (Argentina)	66	Southern mid latitude	South America	4.49	0.960	<0.001
Salado	34	Southern mid latitude	South America	3.07	0.838	<0.001
Doce	31	Southern mid latitude	South America	3.20	0.772	<0.001

Jacui	30	Southern mid latitude	South America	2.33	0.774	<0.001
GHAASBasin246	22	Southern mid latitude	South America	1.84	0.405	1.45E-03
ParaibadoSul	22	Southern mid latitude	South America	1.50	0.582	<0.001
GHAASBasin375	15	Southern mid latitude	South America	1.94	0.663	<0.001
GHAASBasin584	8	Southern mid latitude	South America	3.28	0.808	<0.001
GHAASBasin617	8	Southern mid latitude	South America	3.69	0.827	<0.001
GHAASBasin651	7	Southern mid latitude	South America	2.26	0.598	<0.001
GHAASBasin653	6	Southern mid latitude	South America	3.23	0.708	<0.001
BioBio	4	Southern mid latitude	South America	4.20	0.894	<0.001
GHAASBasin678	7	Southern mid latitude	South America	2.27	0.488	<0.001
Maipo	4	Southern mid latitude	South America	2.61	0.894	<0.001
Rapel	6	Southern mid latitude	South America	3.80	0.871	<0.001
Itata	5	Southern mid latitude	South America	4.58	0.871	<0.001
GHAASBasin755	4	Southern mid latitude	South America	2.65	0.715	<0.001
Maule	3	Southern mid latitude	South America	3.43	0.775	<0.001
GHAASBasin847	6	Southern mid latitude	South America	1.94	0.743	<0.001
GHAASBasin861	6	Southern mid latitude	South America	2.56	0.502	<0.001
GHAASBasin894	4	Southern mid latitude	South America	8.51	0.811	<0.001
GHAASBasin903	4	Southern mid latitude	South America	5.08	0.797	<0.001
GHAASBasin975	3	Southern mid latitude	South America	4.27	0.909	<0.001
GHAASBasin984	4	Southern mid latitude	South America	4.87	0.844	<0.001
GHAASBasin1029	3	Southern mid latitude	South America	8.24	0.940	<0.001
GHAASBasin1123	3	Southern mid latitude	South America	2.13	0.531	<0.001
GHAASBasin1124	4	Southern mid latitude	South America	1.85	0.650	<0.001
GHAASBasin1125	4	Southern mid latitude	South America	4.58	0.817	<0.001
GHAASBasin1137	3	Southern mid latitude	South America	3.71	0.858	<0.001
GHAASBasin1293	3	Southern mid latitude	South America	2.82	0.619	<0.001
GHAASBasin1397	2	Southern mid latitude	South America	5.28	0.898	<0.001
GHAASBasin1440	3	Southern mid latitude	South America	2.19	0.678	<0.001
GHAASBasin1473	1	Southern mid latitude	South America	4.85	0.959	<0.001
GHAASBasin1834	1	Southern mid latitude	South America	3.84	0.711	<0.001
GHAASBasin1885	2	Southern mid latitude	South America	0.50	0.308	7.29E-03
GHAASBasin1909	2	Southern mid latitude	South America	3.01	0.641	<0.001
GHAASBasin1937	2	Southern mid latitude	South America	3.30	0.857	<0.001
GHAASBasin1948	2	Southern mid latitude	South America	3.75	0.876	<0.001
GHAASBasin1954	2	Southern mid latitude	South America	3.88	0.857	<0.001
GHAASBasin2108	2	Southern mid latitude	South America	2.59	0.489	<0.001
GHAASBasin2117	2	Southern mid latitude	South America	2.23	0.521	<0.001
GHAASBasin2118	2	Southern mid latitude	South America	3.54	0.838	<0.001
GHAASBasin2174	2	Southern mid latitude	South America	4.96	0.887	<0.001
GHAASBasin3305	1	Southern mid latitude	South America	3.83	0.852	<0.001
GHAASBasin3409	1	Southern mid latitude	South America	4.91	0.962	<0.001
GHAASBasin3437	1	Southern mid latitude	South America	0.20	0.029	4.47E-01
GHAASBasin3439	1	Southern mid latitude	South America	0.55	0.432	<0.001
GHAASBasin3440	1	Southern mid latitude	South America	1.47	0.603	<0.001
GHAASBasin3453	1	Southern mid latitude	South America	3.63	0.767	<0.001
GHAASBasin3522	1	Southern mid latitude	South America	3.29	0.800	<0.001
GHAASBasin3530	1	Southern mid latitude	South America	3.55	0.883	<0.001
GHAASBasin3608	1	Southern mid latitude	South America	3.65	0.734	<0.001
GHAASBasin3624	1	Southern mid latitude	South America	2.99	0.793	<0.001
GHAASBasin3635	1	Southern mid latitude	South America	2.48	0.477	<0.001
GHAASBasin3636	1	Southern mid latitude	South America	3.60	0.613	<0.001
GHAASBasin3692	1	Southern mid latitude	South America	1.31	0.675	<0.001
GHAASBasin3712	1	Southern mid latitude	South America	3.45	0.819	<0.001
GHAASBasin3760	1	Southern mid latitude	South America	5.06	0.348	3.87E-03
GHAASBasin3797	1	Southern mid latitude	South America	2.69	0.835	<0.001
GHAASBasin3818	1	Southern mid latitude	South America	3.73	0.676	<0.001
GHAASBasin3829	1	Southern mid latitude	South America	5.09	0.636	<0.001
GHAASBasin3850	1	Southern mid latitude	South America	2.32	0.525	<0.001

GHAASBasin3854	1	Southern mid latitude	South America	2.08	0.668	<0.001
GHAASBasin3888	1	Southern mid latitude	South America	2.03	0.509	<0.001
GHAASBasin3918	1	Southern mid latitude	South America	4.05	0.710	<0.001
GHAASBasin3924	1	Southern mid latitude	South America	1.29	0.126	1.05E-01
GHAASBasin4104	1	Southern mid latitude	South America	5.21	0.822	<0.001
GHAASBasin4121	1	Southern mid latitude	South America	6.69	0.946	<0.001
GHAASBasin4136	1	Southern mid latitude	South America	6.62	0.801	<0.001
GHAASBasin4582	1	Southern mid latitude	South America	3.25	0.409	1.36E-03
GHAASBasin4584	1	Southern mid latitude	South America	4.09	0.256	1.64E-02
Gourits	3	Southern mid latitude	Africa	4.94	0.731	<0.001
Gamtoos	6	Southern mid latitude	Africa	1.82	0.485	<0.001
Great Fish	1	Southern mid latitude	Africa	-2.24	0.175	5.24E-02
Great Kei	5	Southern mid latitude	Africa	0.53	0.074	2.21E-01
GHAASBasin452	11	Southern mid latitude	Africa	0.68	0.218	2.83E-02
GHAASBasin469	3	Southern mid latitude	Africa	0.07	0.001	9.04E-01
Maputo	10	Southern mid latitude	Africa	3.35	0.735	<0.001
GHAASBasin663	5	Southern mid latitude	Africa	3.53	0.853	<0.001
Breede	6	Southern mid latitude	Africa	1.14	0.403	1.51E-03
GHAASBasin778	6	Southern mid latitude	Africa	2.39	0.405	1.44E-03
GHAASBasin891	5	Southern mid latitude	Africa	2.05	0.375	2.45E-03
GHAASBasin910	5	Southern mid latitude	Africa	4.58	0.562	<0.001
GHAASBasin1071	4	Southern mid latitude	Africa	-0.16	0.030	4.41E-01
GHAASBasin1080	3	Southern mid latitude	Africa	3.06	0.689	<0.001
GHAASBasin1335	3	Southern mid latitude	Africa	5.75	0.703	<0.001
GHAASBasin1992	2	Southern mid latitude	Africa	7.31	0.438	<0.001
GHAASBasin2032	1	Southern mid latitude	Africa	-2.05	0.502	<0.001
GHAASBasin3599	1	Southern mid latitude	Africa	3.59	0.516	<0.001
GHAASBasin3667	1	Southern mid latitude	Africa	7.72	0.769	<0.001
GHAASBasin3737	1	Southern mid latitude	Africa	1.32	0.200	3.67E-02
Murray	102	Southern mid latitude	Australia	1.15	0.428	<0.001
Fitzroy East	8	Southern mid latitude	Australia	3.64	0.679	<0.001
Hunter	2	Southern mid latitude	Australia	0.26	0.021	5.17E-01
Burnett	2	Southern mid latitude	Australia	1.11	0.359	3.22E-03
Waikato	7	Southern mid latitude	Australia	1.10	0.351	3.69E-03
GHAASBasin674	6	Southern mid latitude	Australia	-0.63	0.124	1.08E-01
Clutha	4	Southern mid latitude	Australia	0.04	0.001	9.18E-01
GHAASBasin857	4	Southern mid latitude	Australia	2.87	0.535	<0.001
GHAASBasin880	2	Southern mid latitude	Australia	5.89	0.718	<0.001
GHAASBasin890	2	Southern mid latitude	Australia	-0.35	0.095	1.63E-01
GHAASBasin897	2	Southern mid latitude	Australia	1.09	0.222	2.70E-02
GHAASBasin911	4	Southern mid latitude	Australia	0.77	0.020	5.28E-01
GHAASBasin947	4	Southern mid latitude	Australia	1.24	0.174	5.35E-02
GHAASBasin1019	3	Southern mid latitude	Australia	1.51	0.171	5.56E-02
GHAASBasin1023	5	Southern mid latitude	Australia	0.03	0.000	9.22E-01
GHAASBasin1042	3	Southern mid latitude	Australia	0.29	0.076	2.13E-01
GHAASBasin1053	2	Southern mid latitude	Australia	0.57	0.101	1.50E-01
GHAASBasin1081	2	Southern mid latitude	Australia	2.12	0.305	7.69E-03
GHAASBasin1104	3	Southern mid latitude	Australia	0.23	0.034	4.13E-01
GHAASBasin1107	2	Southern mid latitude	Australia	0.57	0.017	5.60E-01
GHAASBasin1121	3	Southern mid latitude	Australia	-0.91	0.191	4.18E-02
GHAASBasin1290	4	Southern mid latitude	Australia	1.59	0.398	1.64E-03
GHAASBasin1303	1	Southern mid latitude	Australia	-0.07	0.002	8.28E-01
GHAASBasin1351	3	Southern mid latitude	Australia	0.29	0.008	6.96E-01
GHAASBasin1378	3	Southern mid latitude	Australia	-0.79	0.516	<0.001
GHAASBasin1385	2	Southern mid latitude	Australia	-0.13	0.078	2.07E-01
GHAASBasin1403	1	Southern mid latitude	Australia	5.51	0.452	<0.001
GHAASBasin1422	1	Southern mid latitude	Australia	2.63	0.646	<0.001
GHAASBasin1429	2	Southern mid latitude	Australia	-0.56	0.098	1.56E-01
GHAASBasin1430	2	Southern mid latitude	Australia	1.13	0.383	2.13E-03

GHAASBasin1432	3	Southern mid latitude	Australia	0.87	0.338	4.52E-03
GHAASBasin1438	3	Southern mid latitude	Australia	0.86	0.042	3.63E-01
GHAASBasin1439	2	Southern mid latitude	Australia	-1.45	0.356	3.37E-03
GHAASBasin1442	2	Southern mid latitude	Australia	0.02	0.000	9.57E-01
GHAASBasin1465	2	Southern mid latitude	Australia	-1.39	0.137	9.04E-02
GHAASBasin1484	1	Southern mid latitude	Australia	9.10	0.683	<0.001
GHAASBasin1500	2	Southern mid latitude	Australia	1.53	0.566	<0.001
GHAASBasin1521	2	Southern mid latitude	Australia	2.32	0.384	2.11E-03
GHAASBasin1848	2	Southern mid latitude	Australia	5.22	0.680	<0.001
GHAASBasin1915	2	Southern mid latitude	Australia	1.39	0.358	3.27E-03
GHAASBasin1925	2	Southern mid latitude	Australia	0.62	0.096	1.61E-01
GHAASBasin1943	2	Southern mid latitude	Australia	0.63	0.554	<0.001
GHAASBasin1988	1	Southern mid latitude	Australia	0.28	0.017	5.60E-01
GHAASBasin2046	2	Southern mid latitude	Australia	-0.05	0.002	8.52E-01
GHAASBasin2064	1	Southern mid latitude	Australia	-1.55	0.483	<0.001
GHAASBasin2074	2	Southern mid latitude	Australia	0.22	0.028	4.55E-01
GHAASBasin2075	1	Southern mid latitude	Australia	1.17	0.128	1.02E-01
GHAASBasin2082	2	Southern mid latitude	Australia	0.24	0.003	8.10E-01
GHAASBasin2085	1	Southern mid latitude	Australia	-0.01	0.000	9.91E-01
GHAASBasin2092	2	Southern mid latitude	Australia	1.19	0.025	4.81E-01
GHAASBasin2093	1	Southern mid latitude	Australia	1.35	0.340	4.36E-03
GHAASBasin2103	2	Southern mid latitude	Australia	0.92	0.407	1.41E-03
GHAASBasin2104	1	Southern mid latitude	Australia	0.12	0.003	8.15E-01
GHAASBasin2106	2	Southern mid latitude	Australia	0.60	0.225	2.58E-02
GHAASBasin2107	2	Southern mid latitude	Australia	-0.73	0.136	9.09E-02
GHAASBasin2114	2	Southern mid latitude	Australia	2.82	0.359	3.24E-03
GHAASBasin2125	2	Southern mid latitude	Australia	-1.41	0.182	4.77E-02
GHAASBasin2130	2	Southern mid latitude	Australia	0.53	0.042	3.58E-01
GHAASBasin2131	1	Southern mid latitude	Australia	0.17	0.012	6.32E-01
GHAASBasin2139	1	Southern mid latitude	Australia	0.37	0.090	1.74E-01
GHAASBasin2140	2	Southern mid latitude	Australia	-0.40	0.122	1.11E-01
GHAASBasin2154	2	Southern mid latitude	Australia	-0.37	0.118	1.18E-01
GHAASBasin2177	1	Southern mid latitude	Australia	0.04	0.001	8.98E-01
GHAASBasin2181	1	Southern mid latitude	Australia	1.55	0.229	2.41E-02
GHAASBasin2183	2	Southern mid latitude	Australia	0.56	0.009	6.78E-01
GHAASBasin2189	1	Southern mid latitude	Australia	2.41	0.579	<0.001
GHAASBasin2195	2	Southern mid latitude	Australia	-2.37	0.394	1.77E-03
GHAASBasin2213	1	Southern mid latitude	Australia	3.05	0.761	<0.001
GHAASBasin2214	1	Southern mid latitude	Australia	2.51	0.704	<0.001
GHAASBasin2247	1	Southern mid latitude	Australia	-0.98	0.305	7.69E-03
GHAASBasin3350	1	Southern mid latitude	Australia	-1.02	0.048	3.26E-01
GHAASBasin3393	1	Southern mid latitude	Australia	0.65	0.020	5.26E-01
GHAASBasin3498	1	Southern mid latitude	Australia	2.22	0.671	<0.001
GHAASBasin3560	1	Southern mid latitude	Australia	0.45	0.204	3.49E-02
GHAASBasin3586	1	Southern mid latitude	Australia	0.53	0.199	3.74E-02
GHAASBasin3597	1	Southern mid latitude	Australia	0.62	0.097	1.59E-01
GHAASBasin3680	1	Southern mid latitude	Australia	-0.42	0.049	3.24E-01
GHAASBasin3691	1	Southern mid latitude	Australia	3.24	0.449	<0.001
GHAASBasin3795	1	Southern mid latitude	Australia	0.86	0.150	7.53E-02
GHAASBasin3796	1	Southern mid latitude	Australia	4.14	0.829	<0.001
GHAASBasin3820	1	Southern mid latitude	Australia	0.97	0.373	2.53E-03
GHAASBasin3838	1	Southern mid latitude	Australia	3.99	0.737	<0.001
GHAASBasin3873	1	Southern mid latitude	Australia	-0.07	0.022	5.12E-01
GHAASBasin3892	1	Southern mid latitude	Australia	-0.67	0.110	1.32E-01
GHAASBasin3907	1	Southern mid latitude	Australia	-2.07	0.149	7.55E-02
GHAASBasin3923	1	Southern mid latitude	Australia	2.62	0.539	<0.001
GHAASBasin3930	1	Southern mid latitude	Australia	2.57	0.495	<0.001
GHAASBasin3952	1	Southern mid latitude	Australia	-0.48	0.045	3.42E-01
GHAASBasin3954	1	Southern mid latitude	Australia	-6.98	0.647	<0.001

GHAASBasin3968	1	Southern mid latitude	Australia	-2.43	0.385	2.08E-03
GHAASBasin4010	1	Southern mid latitude	Australia	1.96	0.398	1.64E-03
GHAASBasin4037	1	Southern mid latitude	Australia	-0.25	0.047	3.31E-01
GHAASBasin4050	1	Southern mid latitude	Australia	0.78	0.233	2.29E-02
GHAASBasin4063	1	Southern mid latitude	Australia	-1.07	0.770	<0.001
GHAASBasin4067	1	Southern mid latitude	Australia	4.84	0.643	<0.001
GHAASBasin4073	1	Southern mid latitude	Australia	2.62	0.342	4.23E-03
GHAASBasin4074	1	Southern mid latitude	Australia	0.06	0.002	8.37E-01
GHAASBasin4076	1	Southern mid latitude	Australia	0.67	0.073	2.24E-01
GHAASBasin4077	1	Southern mid latitude	Australia	0.76	0.336	4.68E-03
GHAASBasin4078	1	Southern mid latitude	Australia	-0.39	0.053	3.03E-01
GHAASBasin4103	1	Southern mid latitude	Australia	-2.56	0.243	1.99E-02
GHAASBasin4128	1	Southern mid latitude	Australia	1.09	0.170	5.64E-02
GHAASBasin4183	1	Southern mid latitude	Australia	4.29	0.209	3.23E-02
GHAASBasin4288	1	Southern mid latitude	Australia	-1.43	0.597	<0.001
GHAASBasin4303	1	Southern mid latitude	Australia	-1.92	0.072	2.29E-01
