

5 High-Resolution Regional Climate Modeling and Projection over Western Canada using a Weather Research Forecasting Model with a Pseudo-Global Warming Approach

Yanping Li^{1,2}, Zhenhua Li¹, Zhe Zhang^{1,2}, Liang Chen^{3,1}, Sopan Kurkute^{1,2}, Lucia Scaff^{1,2}, Xicai Pan^{4,1}

¹Global Institute for Water Security, University of Saskatchewan, Saskatoon, SK, Canada

10 ²School of Environment and Sustainability, University of Saskatchewan, Saskatoon, SK, Canada

³CAS Key Laboratory of Regional Climate Environment for Temperate East Asia, Institute of Atmospheric Physics, Chinese Academy of Sciences (CAS), Beijing, China

⁴Institute of Soil Science, Chinese Academy of Sciences (CAS), Nanjing, China

Correspondence to: Yanping Li (Yanping.li@usask.ca); Zhenhua Li(zhenhua.li@usask.ca)

15 **Abstract.** Climate change poses great risks to western Canada's ecosystem and socioeconomical development. To assess this hydroclimatic risks under high-end emission scenario RCP8.5, this study used Weather Research Forecasting (WRF) model at a convection-permitting (CP) 4-km resolution to dynamically downscale the mean projection of 19-member CMIP5 ensemble by the end of 21st century. The CP simulations include a retrospective simulation (CTL, 2000-2015) for verification forced by ERA-Interim and a pseudo-global warming (PGW) for climate change projection forced with climate change forcing (2071-2100 – 1976-2005) from CMIP5 ensemble added on ERA-Interim. The retrospective WRF-CTL's surface air temperature simulation was evaluated against Canadian daily analysis ANUSPLIN, showing good agreements in the geographical distribution with cold biases east of the Canadian Rockies, especially in spring. WRF-CTL captures the main pattern of observed precipitation distribution from CaPA and ANUSPLIN, but shows a wet bias near the British Columbia coast in winter and over the immediate region on the lee side of the Canadian Rockies. The WRF-PGW simulation shows significant warming relative to CTL, especially over the polar region in the northeast during the cold season, and in daily minimum temperature. Precipitation changes in PGW over CTL vary with the seasons: In spring and late fall precipitation increases in most areas, whereas in summer in the Saskatchewan River Basin and southern Canadian Prairies, the precipitation change is negligible or decreased slightly. With almost no increase in precipitation and much more evapotranspiration in the future, the water availability during the growing season will be challenging for the Canadian Prairies. The WRF-PGW projected warming is less than that by the CMIP5 ensemble in all seasons. The CMIP5 ensemble projects a 10-20% decrease of summer precipitation over the Canadian Prairies, and generally agree with WRF-PGW except regions with significant terrain. This difference may be due the much higher resolution of WRF can more faithfully represent small scale summer convection and orographic lifting due to steep terrain. WRF-PGW shows an increase of high-intensity precipitation events and shifts the distribution of precipitation events toward more extremely intensive events in all seasons. Due to this shift in precipitation intensity to the higher end in the PGW simulation, the seemingly moderate increase in the total amount of precipitation in summer east of the Canadian Rockies may underestimate the increase in flooding risk and water shortage for agriculture. The change in the probability distribution of precipitation intensity also calls for innovative bias-correction methods to be developed for the application of the dataset when bias-correction is required. High quality meteorological observation over the region is needed for both forcing high-resolution climate simulation and conducting verification. The high-resolution downscaled climate simulations provide abundant opportunities both for investigating local-scale atmospheric dynamics and for
40 studying climate impacts in hydrology, agriculture, and ecosystems.

1 Introduction

Climate change has been increasingly evident as shown by the rising global mean surface temperature since the instrumental records started in 19th century (Bindoff et al., 2013; IPCC, 2013). Climate change and its potential risks to the environment and society have become one of the most pressing issues for humanity. As greenhouse gas (GHG) emissions continue to rise due to human activities in the foreseeable future, the global mean temperature will increase, consequently, so will climate extremes (Easterling et al., 2000; Karl et al., 2006; Sugiyama et al., 2009). The changing climatological mean and increasing extremes could impact many aspects of the ecosystem, environment, and society. Although consensus about climate change has been established, how the regional climate systems will respond to potential GHG radiative forcing is less clear due to the complexity of the climate system and uncertainties in future emissions. Even for a specific representative concentration pathway, it is unclear how the regional climate and hydrology will respond. This challenge to project a regional climate response is due not only to the complexity of atmosphere, ocean, land surface, and hydrological processes themselves, but also to the numerous interconnections, interactions, and types of feedback between each component of the climate system.

Numerical models, supported by comprehensive observation validations, are indispensable tools to enhance our knowledge of the climate system and to make climate projections. Global Climate Models (GCMs) have been widely used to assess the climatic impacts of accumulated GHG emissions and to project the future climate under different emission scenarios since the industrial revolution. For example, the Coupled Model Intercomparison Project Phase 5 (CMIP5) comprises more than 20 model centers and more than 60 GCM combinations. CMIP5 uses a standard set of model simulations to evaluate how realistic the GCMs are in simulating the recent past and also provides multiple scenario projections of future climate changes in the near term (out to about 2035) and long term (out to 2100 and beyond).

GCMs include a multitude of processes with a gamut of temporal-spatial scales. To represent the complex climate system in numerical models, processes ranging from scales as small as aerosols and turbulence to those as large as the planet, e.g., the continental drift in paleoclimate simulation, have to be formulated explicitly or through parameterization. To faithfully represent the basic energy balance of the planet, GCMs need to simulate the planetary scale climate processes that transfer heat and mass through extensive ocean currents and jet streams. In addition to this large-scale advection in the atmosphere and oceans by mean flow, GCMs also need to simulate the atmospheric and oceanic eddies embedded in the flow that transport a massive amount of heat meridionally. These eddies, which rise from the thermal gradient, are bound to evolve as the global temperature rises and alters the tropic-polar thermal gradient. Because of the complexity of the climate system, different approaches to numerically represent the climate processes can introduce substantial inter-model variability among GCMs (Deser et al., 2012; Mearns et al., 2013). Climate projections from GCMs introduce large uncertainties and usually an ensemble mean of GCMs is used to reduce the uncertainty.

The climate system also has multiple-year oscillations (e.g., the El-Nino Southern Oscillation) and multi-decadal oscillations (e.g., the Pacific Decadal Oscillation and Atlantic Meridional Oscillation), which often obscure the secular trend (Xie and Kosaka, 2017). To average out the natural oscillations in the climate system and to reach equilibrium for the slow processes (e.g., deep ocean circulation, permafrost), GCM usually needs to perform simulations for periods from decades to centuries. Due to high computation costs, the large spatial and temporal scales that GCMs have to capture compel them to settle on coarse resolutions. Thus, GCMs

80 have to represent the effects of small-scale processes such as convection, gravity waves, and turbulent transport through parameterization.

However, climate impacts on the ecosystem and human society often occur on local and regional scales, both of which are important for climatic impacts. For example, surface air temperature is strongly affected by underlying surface and local circulation. To bridge the gap between large-scale projection and local-scale climatic impact, regional climate downscaling is often performed on GCM projections. Statistical downscaling has the advantage of being computationally cheap and easy to implement but suffers from the assumption of the stationarity of the statistical distribution of the hydrometeorology variables. In an ever-changing climate and earth system, stationarity is not a norm but an exception. Dynamical downscaling using regional climate models (RCM) can provide added value to the understanding of regional climate change by explicitly representing some of the small-scale processes that are critical but poorly represented in GCMs (Castro, 2005).

90 The added values of RCM simulations relative to driving GCMs are widely accepted, especially in regions with a strong heterogeneous underlying boundary and for mesoscale atmospheric processes, in particular, when the RCM is constrained at the large spatial scales through boundary conditions and spectral nudging (Feser et al., 2011). RCM simulations are especially valuable for variables such as near-surface temperature and humidity, which are strongly affected by the representation of near surface processes. The mesoscale phenomena such as polar lows (Feser et al., 2011) and mesoscale convective systems (Prein et al., 2017a) can be represented more realistically in RCM simulations. Because RCMs can resolve subgrid-scale processes in GCMs, which are important to water cycles and the ecosystem, they are widely used to provide detailed projections of future climate scenarios and downscaling information for impact studies, especially those associated with the aforementioned fine-scale processes.

95 RCMs have been individually applied to downscale temperature and precipitation projection over North America and under inter-comparison frameworks such as NARCCAP (Mearns et al., 2009, 2015) and CORDEX (Giorgi et al., 2009). These inter-comparison frameworks provide a glimpse into the uncertainties in regional climate downscaling through a common combination of driving GCMs, RCMs, and multiple emission scenarios. The horizontal resolutions of RCMs used in the recent coordinated regional climate downscaling efforts are usually larger than 10 km. With these relatively coarse resolutions, RCMs still have to rely on convection parameterization to represent deep convection in the models.

105 In climate simulation, convection parameterization is a major source of errors, which is used to represent the statistical effects of subgrid cumulus plumes on the redistribution of mass, heat, and momentum on the grid-scale mean flow. Convection parameterization used in GCMs and coarse-resolution RCMs causes bias in the simulated hydrological cycle: underestimated dry days, misrepresentation of the diurnal cycles of convective precipitation, etc. Deep convection, however, contributes to a relatively large percentage of precipitation amounts and extremes, especially during warm seasons. Poor simulation of deep convection is a stubborn problem for RCMs in climate projection and regional climate dynamical downscaling. One way to avoid the errors introduced by convective parameterization is to resolve convection explicitly with high resolution models. RCMs with horizontal grid spacing less than 4 km can resolve convective processes and are often referred to as convection-permitting models (CPMs). As well as explicitly representing deep convection, CPMs also permit a more accurate representation of underlying surface and topography. As computing capability grows, CPMs, or cloud-resolving models emerge as a promising tool to generate more realistic regional to local scale climate simulations compared to models with coarser resolution and convective parameterization (Prein et al., 2015). Although CPMs require higher computational resources than lower resolution models, the computing costs of

CPMs can be justified by their ability to simulate mesoscale convective systems more realistically and to produce better convective and orographic precipitation (Prein et al., 2015; Weusthoff et al., 2010).

120

CPMs have great benefits for dynamical downscaling over western Canada due to its geographic characteristics. Most notably, western Canada features the Canadian Rockies, where steep terrain and small-scale atmospheric processes play important roles in wave dynamics and mountain meteorology. In cold seasons, especially, the atmosphere, hydrology, and cryosphere strongly couple with each other through small-scale boundary layer processes, including snow cover, snow melt, and blowing snow. On the other hand, western Canada also encompasses the Canadian Prairies, where climate downscaling seems straightforward because of its seemingly homogeneous landscape. However, in the Prairies summer convections contribute the most precipitation, and these subgrid scale convections in GCMs need to be properly simulated by using high-resolution convection permitting models.

125

130

To provide high-resolution convection-permitting downscaling for western Canada, a set of 4-km convection-permitting Weather Research and Forecasting (WRF) simulations was conducted for the current climate and the high-end emission scenario of RCP8.5. The 4-km convection-permitting retrospective simulation (CTL, October 2000-September 2015) was driven by ERA-interim reanalysis (Dee et al., 2011). The future climate sensitivity simulation was conducted using reanalysis-derived initial and boundary conditions for the same period as CTL but perturbed with changes in field variables derived from the CMIP5 ensemble-mean high-end emission scenario (RCP8.5) climate projections, the so called Pseudo-Global Warming (PGW) method. In this paper, we evaluate the performance of the retrospective simulation and investigate the dynamically downscaled regional climate change over western Canada, especially the Mackenzie River Basin (MRB) and Saskatchewan River Basin (SRB). We evaluated the capability of the current generation of RCMs such as WRF, running at convection-permitting resolution to reproduce precipitation and temperature features important for hydrology and water resources applications in western Canada. The paper is organized as follows: section 2 introduces the model setup and data; section 3 evaluates the retrospective simulation (CTL) against observation; section 4 describes the projected climate change by the PGW versus CTL; section 5 shows the changes in temperature and precipitation extremes; section 6 discusses the results, and section 7 summarizes the results and concludes the paper.

135

140

2 Model Setup and Data

2.1 Model Setup

The WRF model Version 3.6.1 was used to simulate the historical (2000-2015) and projected climate (RCP8.5) over western Canada with a convection-permitting resolution of 4 km. The WRF model is fully compressible and nonhydrostatic and uses the Advanced Research WRF (ARW) dynamical solvers. The model domain is composed of 699 x 639 grid points with 4-km horizontal resolution to cover western Canada from British Columbia and the Yukon to the west and the Mackenzie River Basin (MRB), and the Saskatchewan River Basin (SRB) to the east as shown in Fig. 1. In total, the model domain covers 2800 km in the east-west direction and 2560 km in the north-south direction. The model's vertical coordinate comprised 37 stretched vertical levels topped at 50 hPa in the lower stratosphere. The model simulations employed several parameterization schemes, including Thompson microphysics scheme (Thompson et al., 2008), the Yonsei University (YSU) planetary boundary layer scheme, the Noah land surface model (Chen and Dudhia, 2001), and the CAM3 radiative transfer scheme (Collins et al., 2004). These physics schemes were chosen based past good model performances using these schemes in cold regions (Liu et al. 2011, Rasmussen et al. 2014, Liu et al. 2017). Liu et al. (2011) did a comprehensive sensitivity study on the simulation of winter precipitation in the Colorado

145

150

155 headwater region using various physics schemes. They found the Thompson et al. (2008) and Morrison et al. (2009) microphysics
schemes have comparable skills and are superior to other schemes. The dependence of performance on land surface, PBL, and
radiation parameterizations is moderate or weak due to the weak land surface coupling, shallow PBL, and weak solar radiative
heating in the winter (Liu et al. 2011). The deep cumulus parameterization was turned off because with a 4-km horizontal resolution
160 the model can explicitly resolve deep convection and simulate convective storms. The convection-permitting model produces
precipitation more realistically by directly resolving convections. As well, because using cumulus parameterization schemes at this
resolution often produces unrealistic convection (Westra et al., 2014), cumulus parameterization was switched off. Subgrid cloud
cover was also disabled.

2.2 Numerical experiments

Two 15-year WRF simulations were conducted to simulate the regional climate under the historical and future climate using
165 reanalysis and climate change forcing derived from CMIP5 ensembles, respectively. The control experiment (CTL), a
retrospective/control simulation, aimed to reproduce the current climate statistics in terms of variability and mean state from
October 1, 2000 to 30 September 2015. This control simulation was forced using 6-hourly 0.7 degree ERA-Interim reanalysis
data (Dee et al., 2011) directly. WRF simulation was directly forced by 4-km one-way nesting without an intermediate buffering
coarse grid between the ERA-Interim reanalysis and WRF domain because the ~75 km resolution reanalysis was shown to be
170 adequate (Liu et al., 2017). The second simulation was a climate perturbation or sensitivity experiment following the Pseudo-
Global Warming (PGW) approach used in Colorado-Headwaters work (Rasmussen et al., 2014, 2011). Climate projections from
GCMs introduce large uncertainties because of the substantial inter-model variability among GCMs (Deser et al., 2012; Mearns
et al., 2013), which can obscure the climate change response due to global warming. Using the PGW approach with GCM
ensembles can overcome the inter-model variability and isolate radiative forcing and its associated circulation as the sole reason
175 for the regional climate response. Using PGW methodology during a future period also requires less computation resource than
a continuous simulation spanning a century. However, the PGW method also has its disadvantages and limitations. Addition of
climate change signal onto the reanalysis field may introduce an imbalance to the lateral boundary forcing because the nonlinear
terms are not necessarily additive to balance the dynamics (Misra et al. 2004). PGW also does not fully consider the nonlinear
interaction between global warming and atmospheric circulation changes, thus, cannot estimate the changes in future
180 storm frequency, storm intensity, and the positions of storm tracks, which all interact with the large-scale climate system
beyond the model boundary and could not be represented by simply adding thermodynamic and kinetic change to current
weather and climate (Sato et al. 2007).

Regional climate downscaling using convection-permitting models has a range of advantages over using models that rely on
convection parameterization, including better convective precipitation simulation and the ability to compare regional climate
185 changes directly related to global warming scenarios. Due to these benefits, convection-permitting PGW simulation (Liu et al.,
2017) has been used in several recent studies to investigate the intensification of hourly precipitation extremes (Prein et al., 2017b),
the decrease of overall precipitation frequency and light-moderate precipitation events over the contiguous United States (CONUS)
(Dai et al., 2017), the increase of rain-on-snow events in western North America (Musselman et al., 2018), and the change of cloud
population (Rasmussen et al., 2018). The PGW forcing was derived from climate change signals from a 19-member ensemble
190 mean of CMIP5 models. In particular, PGW 15-year (2000-2015) simulation was forced with the same period of 6-h ERA-Interim
reanalysis as in CTL, plus a climate perturbation from the ensemble CMIP5 RCP8.5 projection:

$$\text{PGW_forcing} = \text{ERA-Interim} + \Delta_{\text{CMIP5rcp8.5}}, \quad (1)$$

where $\Delta_{\text{CMIP5rcp8.5}}$ is the climate change signals derived from the CMIP5 multi-model (19 ensemble members) ensemble-mean under the RCP8.5 emission scenario from 2071-2100 relative to 1976-2005. The choice of the model members and the details of the ensemble members of the 19 CMIP5 models are provided in Liu et al. (2017). Climate change signals are interpolated according to calendar date using the monthly $\Delta_{\text{CMIP5rcp8.5}}$ data for both surface variables and three-dimensional field variables. The surface variables such as surface temperature, soil temperature, sea level pressure, and sea ice are incorporated into the PGW forcing by including the climate changes signals in the initial and boundary conditions for CTL. Similarly, PGW forcing perturbations were also added to the three-dimensional field variables, such as horizontal wind components, air temperature, specific humidity, and geopotential in the initial and boundary conditions of CTL.

The climate change signals in Fig. 2 show the circulation and thermodynamic changes in the PGW forcing for different seasons from the lower troposphere (750hPa) to the jet-stream level (250hPa). As shown in the third row of Fig. 2, the temperature increases at 750 hPa in the lower troposphere under RCP8.5. The warming is larger in the northwest and in the MRB than in the southwest and in the SRB, especially in autumn and winter. The warming ranges from 3 to 4°C in winter and spring and from 4 to 5°C in summer and autumn. Accompanying this warming is a moderate decrease (0.5 to 2 percent) of relative humidity throughout the domain, with a larger decrease in the south in summer and autumn. The change of geopotential height (GPH) at 750 hPa presents a pattern as thickness between the lower atmospheric isobaric surfaces, consistent with the temperature change, as the thickness is proportional to the average temperature of the layer. Accompanying this pattern of change in GPH, there is a weakening of the westerly flow in all seasons in the order of .5 to 1 ms⁻¹ at 750 hPa due to geostrophic balance. At the mid-troposphere level, the general pattern of change in GPH at 500 hPa is similar to that at 750 hPa but with larger values of 90-100m, as shown in the second row of Fig. 2. For the upper level at 250hPa, the increase in temperature ranges from 1 to 4°C, with stronger warming in the south, as shown in the top row of Fig. 2. The warming at 250hPa is less than that at the lower levels, especially for the cold seasons, when the warming is only about 1°C. The geopotential height experiences the largest increase in summer and the smallest increase in winter.

2.3 Verification Data

1. The simulation evaluation was conducted against two gridded datasets for temperature and precipitation for the retrospective CTL simulation from 2000 to 2015. The NCEP North American Regional Reanalysis (NARR) (Mesinger et al., 2006) and the surface station observations from Environment Climate Change Canada were also used in basin average evaluations. Several facts have to be noted when conducting intercomparison between models, reanalyses, and gridded observations. The gridded observation dataset makes interpolations based on station observation, which makes ANUSPLIN less reliable in regions with complex terrain such as in the Canadian Rockies and areas with sparse observations like in the northern territories. Though NARR assimilates precipitation unlike most atmospheric reanalyses, the poor coverage of observation in Canada makes it also less reliable outside the populated regions in the southern Canada. As a result, NARR's performance is worse than CaPA and ANUSPLIN over western Canada, especially in cold seasons (Wong et al. 2017). Because CaPA incorporates both station observation and radar precipitation, it produces better spatial distribution of precipitation than ANUSPLIN (Fortin et al. 2018). Additionally, the different horizontal resolutions between models also introduce large difference in elevation in mountainous terrains, which can make the temperature and precipitation evaluation on a common grid difficult as the elevation difference can cause large temperature and precipitation biases. Finally, ANUSPLIN and CaPA

230 still cannot capture mountain weather processes well. These gridded dataset are mainly based on ground observation and
CaPA assimilates radar observation. Both data source have difficulty to capture mountain weather processes. The sparse
observation network cannot adequately cover the area to delineate the drastic change in temperature and precipitation and
the elevation placement of sites tend to be in the valley. Radar observation is also hindered by the topography. Winter
precipitation observation often suffers from under catchment due to boundary layer processes. Therefore, the evaluation of
235 WRF-CTL must be considered with these limitation in mind.

2.3.1 ANUSPLIN

ANUSPLIN was first used to develop a high spatial resolution (~10 km) data set of daily precipitation and minimum and maximum
temperature for the period 1961–2003 for Canada (Hutchinson et al., 2009). ANUSPLIN uses a thin-plate smoothing spline
240 algorithm composed of the spatially continuous functions of latitude, longitude, and elevation (Hutchinson et al., 2009). The
algorithm offers an efficient way to develop spatially continuous climate distribution for temperature and precipitation (Xu and
Hutchinson, 2013). Hopkinson et al. (2011) further improved the Canadian ANUSPLIN data through reducing significant residuals
by aligning the climatological day at observation stations and expanding the gridded dataset to cover 1950–2011. The Canadian
ANUSPLIN has been constantly updated and used to evaluate gridded climate models and reanalysis datasets (Eum et al., 2012)
245 and to compare the impacts of different climate products on hydro-climatological applications (Bonsal et al., 2013; Eum et al.,
2014; Wong et al., 2017). Our evaluation of CTL performance uses daily temperature, maximum temperature, minimum
temperature, and precipitation from ANUSPLIN Canada.

2.3.2 CaPA

The Canadian Precipitation Analysis (CaPA) data set is a precipitation reanalysis with high spatial resolution (~15 km) and 6-
250 hourly temporal resolution. CaPA is derived from various sources of precipitation data such as station observation, satellite remote
sensing, weather radar, and short-term forecasts from the Global Environmental Multiscale (GEM) model (Mahfouf et al., 2007).
The short-term precipitation forecasts from the Canadian Meteorological Centre (CMC) regional GEM model were used as the
background field with the rain-gauge measurements from the National Climate Data Archive as the observations to generate an
analysis error at every grid point (Mahfouf et al., 2007). CaPA's optimum interpolation method depends on three key parameters
255 to specify the error statistics: background error, observation error, and characteristic length scale. The error statistics from
observations and the background field were then used in the optimum interpolation technique to generate 6-hourly precipitation
data. A recent paper by Fortin et al. (2018) presents a summary on the development and applications of CaPA in the last decade.

2.3.3 NARR

NARR uses the NCEP Eta Model together with the Regional Data Assimilation System to assimilate precipitation along with other
260 variables. In NARR precipitation observations are assimilated using latent heating profiles (Mesinger et al., 2006) unlike most
atmospheric analyses (e.g., ERA-Interim) that precipitation is prognostic instead of assimilated. NARR data are available from
October 1978 to November 2018 at a relatively high spatial and temporal resolution: 32-km grid spacing, 45 vertical layers, and
3-hour time intervals. The NARR dataset is used only for comparing basin average temperature and precipitation for SRB and
MRB.

For the evaluation purpose, the coarser resolution datasets are downscaled to WRF's 4 km grid. The coarser grid spacing in the interpolated observation and reanalyses means their surface elevation is smoother than that of the WRF simulation. Due to the difference in surface elevation as grid spacing changes, high-resolution WRF has higher peaks and lower valleys, which can introduce elevation related temperature difference and orographic precipitation difference. The 4km WRF simulation also provides more details for temperature and precipitation compared to coarse resolution reanalysis and GCM outputs especially over complex terrains in the Canadian Rockies. However, lack of high-resolution precipitation observation, such as those provided by NCEP Stage IV (Nelson et al. 2016) in the US, make a thorough evaluation of the spatial features of 4km WRF against coarse resolution RCMs and GCMs over western Canada difficult. Here we show that 4km WRF simulation produces much better mean precipitation distribution than GCMs in western Canada.

275

3.1 Near Surface Temperature

Surface air temperature is a key meteorological variable that directly affects the daily life of human beings, physiological development of field crops, agricultural product quality, and various hydrological processes. For humans, extreme and persistent hot days in summer can cause health issues including heat cramps, heat exhaustion, and heat stroke, especially for vulnerable populations such as the elderly. For agriculture, extreme hot spells of multiple days with a maximum temperature hovering above the cardinal maximum, the temperature at which crop growth ceases, can significantly reduce crop yields. At the other extreme, the effects of very cold temperatures range from a minor inconvenience for some to severe infrastructure damage and increased mortality for vulnerable populations. As the mean temperature changes, the extreme distribution of temperature also changes substantially, sometimes more than the changes in the mean. From the perspective of hydrology, surface air temperature's simulation is also crucial to obtain realistic evapotranspiration, energy exchange between the surface and atmosphere, and phase transition of water near the ground. Because of all these temperature effects, evaluating the surface air temperature simulation is critical in laying the foundation for applying the WRF-CTL and PGW simulations to hydrological modeling, climate projection, and climate change impact analysis.

3.1.1 Mean Temperature

The comparison of surface air temperature (2m) between CTL and ANUSPLIN in Fig. 3 shows that WRF simulation of daily mean temperature agrees well with ANUSPLIN temperature in terms of the geographical distribution of cold biases east of the Canadian Rockies, especially in spring. The spring (March, April, May), summer (June, July, August), autumn (September, October, November) and winter (December, January, February) from WRF-CTL and the gridded observation analysis ANUSPLIN are presented in Fig. 3. Both ANUSPLIN and CTL show a consistent spatial distribution and seasonal change of temperature gradient. In spring there is a strong cold bias (about -5°C) over the Canadian Prairies, with a small warm bias of $1\text{-}2^{\circ}\text{C}$ in the northeast domain. In summer the hottest region is located in the southern Canadian Prairies, with temperatures decreasing toward northeast and coastal regions. In autumn the temperature in both ANUSPLIN and WRF decreases from the southern border to the Arctic. However, there are a few noticeable biases in the simulated daily mean temperature. In winter and spring, the temperature decreases from southwest British Columbia toward northeast of the domain as the regional climate changes from oceanic to subarctic. There

300

is a significant warm bias (about 3–4°C) in winter near the Yukon and western Northwest Territories, which is likely inherited from the forcing since it is also present in ERA-Interim but with smaller magnitude (2 °C) as seen in Fig. S3. In winter small warm biases (about 2°C) also occur in central and northern British Columbia. To the east there are small cold biases (-1 - -2°C) in all seasons east of the Canadian Rockies, where the forcing data ERA-Interim have small warm biases (about 1°C) compared to ANUSPLIN in the region. Due to these biases in winter and spring, the WRF-CTL simulation tend to enhance the temperature difference between the warmer regions near the Pacific coast and the colder Canadian Prairies. Although regional climate models are forced by reanalysis data on the boundary and underlying surface, the near surface temperature is strongly affected by the representation of surface processes and boundary layer energy exchange. The cold bias in spring over the Canadian Prairies is caused by several factors: a wet bias precipitation and cold bias in temperature in winter, and the overestimation of snow cover in the region, which amplifies the cold bias in spring through snow-albedo feedback. WRF-CTL shows a slight warm bias in the valleys of southern BC where WRF's high-resolution grid has lower elevations than ANUSPLIN grid, where ERA-Interim shows a cold bias due to its coarser resolution and inability to resolve the valleys.

3.1.2 Daily Minimum and Maximum Temperature

The daily minimum temperature (T_{\min}) of WRF-CTL and ANUSPLIN (Fig. S1) shows a similar geographical distribution to that of the daily mean temperature in all seasons. The main difference between the T_{\min} distribution and daily mean temperature distribution is that the south-north temperature gradient becomes less in summer. Compared to the bias of daily mean temperature, WRF-CTL simulation of T_{\min} relative to ANUSPLIN shows a stronger warm bias in the northwest (the Yukon and western Northwest Territories), with a magnitude of 4°C in winter. Additionally, the cold bias of CTL in T_{\min} over the Prairies in spring decreases by 50% compared to that of the daily mean temperature (about -2–4°C vs -6°C).

The daily maximum temperature for four seasons by WRF and ANUSPLIN is shown in Fig. S2. The cold bias in the Prairies during spring shown in the T_{\max} is more pronounced ($> 6^{\circ}\text{C}$) in the daily mean temperature. The warm bias in the northeast in spring is also stronger. The T_{\max} and T_{\min} daily minimum bias distribution shows that the cold bias in spring in the Prairies is stronger in the early afternoon, when there is strong solar insolation, and much weaker at night. This cold bias in spring may relate to a combination of the overestimation of snow cover and the albedo biases associated with improper representation of snow in the land surface model (Meng et al., 2018).

3.2 Precipitation

Water resources are of strategic significance for the environment, agriculture, and society, especially for semi-arid regions in most of western Canada. Precipitation is an important component of water balance and is essential for hydrological modeling as all runoff comes from precipitation, either directly or indirectly. The ability of climate models to capture the temporal-spatial characteristics of observed precipitation is crucial for their application as input for hydrological models. GCMs' precipitation simulations are known to be one of the most challenging tasks for climate modellers as precipitation processes involve many subgrid scale processes that have to be parameterized. Also, due to resolution limit, GCM's precipitation output has to be downscaled to be applicable in regional and local scale hydrological and ecological studies. The purpose of the WRF simulations is to dynamically downscale the current climate using ERA-Interim reanalysis and a future RCP8.5 climate projection based on the ensemble mean of 19 CMIP5 models. Especially, using a convection-permitting resolution, the WRF model avoids the utilization of convection parameterization, which introduces large biases and distortion in simulating convective precipitation systems. Fig.

S6 shows the CMIP5 GCM ensemble mean precipitation that differs from the observed pattern of seasonal precipitation distribution: the high precipitation band near the BC coast is much broader; the dry area between mountain ranges and a secondary peak on the eastern edge of the Canadian Rockies are missing. Both features are well captured by WRF-CTL. Due to the poor performance of GCM precipitation simulation and coarse resolution reanalysis, we did not conduct a full evaluation of the WRF-CTL precipitation against any GCM output or reanalysis with coarse resolution (> 25km).

The number of global gridded precipitation datasets grow in recent years with increasing coverage of satellite; however, the quality of the precipitation analysis is still limited by the number of observation stations over Canada, especially in the complex terrain in the Canadian Rockies and the northern territories where only a few observation sites scatter across vast domain. Wong et al. (2017) compared multiple precipitation products over the Canada for various climatic zones and river basins against station observation and found the performance of CaPA and ANUSPLIN are generally superior than other datasets, even though both datasets performs poorly in the mountainous regions and northern territories. Furthermore, ANUSPLIN's coverage over the northern part of western Canada relies on a very limited number of stations and shows a large dry bias in the regions. CaPA, a reanalysis dataset, has been shown to have better overall spatial distribution of precipitation than ANUSPLIN (Fortin et al., 2018, Wong et al. 2017). Bearing these in mind, we conducted the evaluation of precipitation against two observation precipitation analysis datasets, ANUSPLIN and CaPA.

As shown in Fig. 4 and S4, the WRF-CTL simulation captures the main precipitation distribution pattern in the observed precipitation from CaPA and ANUSPLIN, respectively: high precipitation near the BC coast in winter and over the immediate region on the lee side of the Canadian Rockies. WRF-CTL's spatial pattern more closely resembles CaPA's and bears noticeable difference to ANUSPLIN's, especially over the eastern ranges of the Canadian Rockies. Both CaPA and WRF-CTL are significantly wetter than ANUSPLIN, especially in the mountainous region and northern part. Compared to ANUSPLIN, WRF-CTL's wet bias mainly resides over the mountain ranges by the Pacific Ocean and in the Canadian Rockies. This wet bias associated with topography is as high as 1.7 mm/day and more prominent in winter and spring. It must be considered, though, that gridded observation analyses often underestimate precipitation over mountains, where data is scarce, through interpolation from available lower elevation observations. East of the Canadian Rockies, there are moderate wet biases (about 0.5-0.9 mm/day) across the Prairies and the boreal forest. In terms of WRF-CTL's relative bias in reference to ANUSPLIN, there is significant wet bias (+90%) in the northern domain including the MRB for all seasons. For the SRB, a large dry relative bias occurs in winter due to low observed precipitation during this season. However, according to the evaluation by Wong et al. (2017), ANUSPLIN underestimates annual precipitation by 10% to 50% from the south to north of western Canada relative to gauge observation in the region from 2002-2012. Thus, the large wet bias of WRF-CTL relative to ANUSPLIN in the north is largely due to the large dry biases of ANUSPLIN there.

Relative to CaPA, the wet bias of WRF-CTL is generally less in magnitude and less correlated with topography because CaPA assimilates GEM forecast and remote sensing data to better represent orographic precipitation than analysis data, which rely heavily on rain gauges located at lower elevations. The wet bias along the British Columbia coastal mountain ranges and the Canadian Rockies are prominent in spring, autumn, and winter. East of the Canadian Rockies, the wet bias is located mainly over SRB and southern MRB in spring and summer. There are also regions of dry biases in the region surrounding the MRB and SRB in spring, summer, and autumn. In winter the difference between CTL and CaPA is small east of the Canadian Rockies. It is noteworthy that, according to Wong et al. (2017), the WRF-CTL wet bias relative to CaPA's east of the Canadian Rockies may be partly attributed to CaPA's relatively small dry bias (10%) relative to station observation.

In summary, the WRF-CTL simulation captures well the spatial distribution of precipitation in all seasons. WRF-CTL's agreement with CaPA is more widespread and consistent. There are wet biases in WRF-CTL over the mountainous region compared to both ANUSPLIN and CaPA. According to the evaluation of Wong et al. (2017), both ANUSPLIN and CaPA show wet bias in the mountainous region compared to station observation, but this may be because the stations are usually situated at low altitudes and thus fail to capture the representative areal precipitation due to the topography. East of the Canadian Rockies, WRF-CTL shows a wet bias relative to ANUSPLIN and CaPA, although both the observation and reanalysis datasets show dry bias from 2002-2012 in the region, especially in the northern part.

3.3 Basin Averaged Statistics

The evaluation of the simulation over the two major river basins focuses on the model performance in simulating the seasonal and interannual variations of the two key variables for hydrology: temperature and precipitation. To validate the WRF simulation results in SRB, we compared them with several existing observation and reanalysis products. Fig. 5 shows the time series of basin-averaged temperature (top) and precipitation (bottom) in the MRB (left) and SRB (right) for the simulation period, together with different observation and reanalysis datasets (NARR, ANUSPLIN, CaPA). Fig. 6 shows the mean annual temperature cycle from WRF-CTL (black), NARR (red), and ANUSPLIN (blue) for the MRB. Fig. 7 shows the annual cycle of precipitation for the two basins.

3.3.1 Mackenzie River Basin

The WRF simulation faithfully reproduces the seasonal and interannual variations of temperature of MRB. Compared to the observation, the WRF temperature simulation is within the observation spread but on the lower end of the distribution in MRB. NARR is generally much warmer than both ANUSPLIN and WRF-CTL during summer. The WRF simulation shows a cold bias for the whole year, especially from March to July compared to ANUSPLIN. The simulated basin averaged precipitation matches well with the observation in terms of interannual variability and seasonal cycle. This good match indicates confidence in the ability of WRF-CTL to capture the main characteristics of precipitation regime changes year-on-year, despite biases in the total amount. ANUSPLIN shows much lower basin averaged precipitation in MRB throughout the year, which is consistent with previous evaluations (Wong et al 2017). The simulated precipitation shows a wet bias as the WRF-CTL curve is almost always on the top of the observation envelope, especially for spring and summer. As shown on the left in Fig. 7, the mean annual cycle of precipitation over the MRB is compared between WRF-CTL, the reanalysis CaPA, NARR, and observation analysis, ANUSPLIN. Both WRF-CTL simulated and observed a precipitation peak in July. The simulated precipitation by WRF-CTL is higher than ANUSPLIN in all months and very close to NARR and CaPA, except in summer when it is about 5mm/month wetter than NARR and CaPA on average.

3.3.2 Saskatchewan River Basin

The WRF simulation captures the seasonal and interannual variation of temperature in the SRB. Compared to the observation, the WRF simulation is close to ANUSPLIN with a cold bias in spring and slight cold biases in other seasons. NARR is much warmer than WRF-CTL and ANUSPLIN in the warm season with a basin averaged bias as large as 5 °C. According to Fig. 6, the annual cycles of temperature from WRF, NARR, and ANUSPLIN show good agreement for the SRB. The WRF simulation shows a cold bias for the whole year relative to ANUSPLIN, especially from March to July. The cold bias for the SRB is larger than that of

MRB, which is consistent with the spatial distribution of temperature bias in Fig. 3, where cold bias in the Prairies are stronger in spring over the Saskatchewan River Basin.

415 Fig. 5 shows the simulated monthly precipitation by WRF-CTL over SRB (solid black line) from 2001 to 2013 among gridded analysis and reanalyses for most of the years. WRF-CTL precipitation is comparable to the precipitation from NARR, ANUSPLIN, and CaPA in SRB in general. WRF-CTL is significantly wetter than other datasets during summer of 2002-2003 when the Prairies experience drought. The simulated basin averaged precipitation shows a similar seasonal cycle and interannual variability and as observation, as shown in Fig. 7. The simulated and analysis/reanalyses precipitation data peak in June with the amount of about 420 60 to 90 mm, and also show the least amount of monthly precipitation in winter, with about 20-30 mm. Again, the precipitation simulated by WRF-CTL is closer to NARR and CaPA than it is to ANUSPLIN over the SRB. ANUSPLIN is much drier than other datasets especially in cold seasons. The simulated precipitation has a wet bias for all seasons compared to CaPA and ANUSPLIN, with the WRF-CTL simulated curve almost always at the top of the observation envelope, as shown in 7.

4 Pseudo-Global Warming Simulation

425 Regional climate modeling as a dynamical downscaling tool generates not only climate projections with a higher spatial resolution but also hydroclimatic regimes different from GCMs and statistical downscaling. These improvements can be attributed to enhanced representation of fine-scale processes in the atmosphere and boundary conditions.

4.1 Near Surface Temperature

The daily mean temperature simulated by WRF-CTL and WRF-PGW, and the warming in WRF-PGW relative to CTL are presented in Fig. 8 together with the projected warming by CMIP5 ensemble (2071-2100 – 1976-2005). The temperature increase in WRF-PGW is larger in the northeast domain and smaller in the southwest, generally reducing the northeast-southwest temperature gradient in CTL climatology in all seasons. The warming is the greatest in winter with around a 10C increase in the northeast quadrant. In the Prairie, the largest warming shift occurs in the spring compared with the other seasons. This larger warming over the Prairies is related to the shift of the daily mean temperature increase from below freezing in early and mid-spring 435 to above freezing, likely causing amplified warming through snow-albedo feedback. The mean temperature in the Yukon and NWT will be similar to those currently experienced in Saskatchewan and Alberta in spring and summer, which has great implications for the length of the growing season in the northern territories. The winter temperature in the coldest region of the domain will be as warm as the central Canadian Prairies in the current climate. The higher temperatures in the boreal forest region will greatly increase the probability of wildfire, water stress, and insect pests, threatening the boreal forest ecosystem, which could eventually 440 be replaced by grassland and parkland (Stralberg et al., 2018). As shown in Fig. 8 and Fig. S5, CMIP5 ensemble projection indicates a larger warming for all seasons than WRF projection and different spatial pattern for spring and summer. In spring WRF has larger warming (about 7°C) in the Canadian Prairies and about 6°C warming in the north comparing to CMIP5 has a warming of 9°C in the north and about 5°C in the Canadian Prairies. In summer, WRF show a 5°C warming in most of the domain except the northeast corner (about 6°C warmer); CMIP5 shows a much stronger warming in southern domain, about 7°C, south of 55°N. 445 The stronger summer warming in CMIP5 over the southern domain is consistent with the decrease of summer precipitation in the region.

4.2 Precipitation

The comparison of WRF-PGW and WRF-CTL precipitation is shown in Fig. 9. Generally speaking, the precipitation will increase in most of the domain. In most places, WRF-PGW show an increase of precipitation of about 15–30% in all seasons compared with WRF-CTL. Near the British Columbia coast, the magnitude of the increase can be as large as 2 mm day⁻¹. This substantial increase of precipitation in British Columbia’s coastal mountains is related to the larger water vapor loading in PGW and the stronger effective orographic lifting to produce precipitation in that region. The change in precipitation is the least in summer, when parts of the Prairies receive less precipitation in PGW than in CTL. With almost no increase in summer precipitation and the much larger evapotranspiration in the Canadian Prairies in PGW than in CTL, the water availability during the growing season will be challenging for the Canadian Prairies. The dynamic downscaling by WRF is less pessimistic for growing season water availability in the Canadian Prairies than CMIP5 ensemble projection in Fig. 9 and Fig. S6, which shows a much larger decrease (-10-20%) of precipitation in summer in the southern part of the domain including SRB and southern MRB. In the northeast portion of the domain, northern Manitoba and NWT, the precipitation increase could be as large as 0.5-1 mm/day, with an increase of about 40% in autumn and winter. The Yukon and central-northern British Columbia are expected to have a 40% increase of precipitation in winter due to the higher loading of water vapor in a warmer climate. In addition to wetter projection for the Canadian Prairies in summer, the WRF projection also shows a larger increase of precipitation near the BC coast, along the eastern mountain ranges of the Canadian Rockies throughout the year in Fig. 9. These regions have significant orographic lifting, which is better represented in WRF than GCMs, to initiate convection and/or precipitation and convert the higher water vapour concentration in a warmer climate to higher precipitation. GCMs’ poor representation of orography may be the reason that less precipitation increases are generated over these terrains.

4.3 Basin Average Changes Compared to CMIP5

Here we compared the regional averaged temperature and precipitation for two major river basins and for output from CMIP5 versus 4-km WRF. Fig. 10 and 11 show the temperature and precipitation changes between the 1976-2005 and 2071-2100 as projected by CMIP5 ensembles and those of WRF-CTL (2000-2015) and PGW, with 2070-2100 climate forcing simulation. In Fig. 10 and 11, the historical runs are shown in the red/orange columns for temperature for CMIP5/WRF-CTL; the future runs equivalent to the end of the 21st century are shown in the light red/orange columns for the temperature of CMIP5-RCP8.5/WRF-PGW, and the difference between the future simulation and the historical simulation are represented by the white columns. In general, temperature will increase for all months for both CMIP5 and WRF in both basins. The temperature increases in most months for SRB are smaller in the WRF simulation than they are in CMIP5, especially in summer. The temperature increases in MRB are about 3 degrees smaller in WRF in December and February, and about 2 degrees smaller in summer. For MRB, the temperature increase simulated by WRF is smaller than the CMIP5 ensemble mean for most months.

The historical precipitations are shown in the dark blue/green columns in Figs. 10 and 11; the future precipitations equivalent to the end of the 21st century are shown in the light blue/green columns, and the difference between the future run and the historical run are represented by the white columns. The projected changes from the CMIP5 ensemble and WRF show seasonally dependent differences. In MRB, the precipitation increase in WRF PGW simulation is lower in April, May and higher in other months compared to that in CMIP5. For SRB the ensemble of CMIP5 RCP8.5 projection shows that the winter and early spring precipitation will experience a large increase, and the warm season (May-September) precipitation will decrease, especially the precipitation in July decreases significantly. In contrast to this, WRF shows a large increase of precipitation in June and smaller

485 decreases of precipitation in July and August, with moderate increases in other months in SRB. Due to this difference in the annual
cycle of precipitation change in SRB, the dynamical downscaling by WRF-PGW shows an increase of precipitation before July,
whereas the CMIP5 ensemble projection increases the precipitation before May.

490 Precipitation in summer and late fall for SRB either remains unchanged or shows a decrease for both WRF-CTL and CMIP5
ensemble. This seasonal difference in precipitation change indicates that the Canadian Prairies and the southern boreal forest
biomes will likely see a slight decline in precipitation minus evapotranspiration during the summer months, possibly affecting soil
moisture for farming and forest fires. Because the precipitation increases substantially in spring in both SRB and MRB, when
combined with large temperature increases in spring, western Canada may experience more frequent rain-on-snow events that can
cause severe flooding. This projection calls for thorough investigations that combine the high-resolution regional climate
simulation and state-of-the-art hydrological modeling to quantify the probability of catastrophic flooding in spring over western
495 Canada (Li et al., 2017).

4.4 Daily Precipitation Frequency Distribution

Both for hydrological applications and societal impacts, the temporal precipitation distribution and precipitation intensity
distribution are as important as the total amount of precipitation. For example, more high-intensity precipitation events tend to
500 cause flash flooding and sharp spikes of runoff, while lower effective precipitation during warm seasons increases the possibility
of drought and fire.

The probability density function of precipitation shows the distribution of precipitation amounts among both light and intense
precipitation events. Fig. 12 shows the probability density function of daily precipitation for the simulation of WRF-CTL and
WRF-PGW and observation from CaPA and ANUSPLIN in MRB (top two rows) and SRB (bottom two rows). In the top panel,
505 the precipitation intensity is shown with a linear scale on the x-axis and a logarithmic scale on the y-axis for probability density
function (PDF) to show the detail in high-end precipitation. Compared to that of ANUSPLIN and CaPA, the WRF-CTL simulated
precipitation shows a heavy tail on the high end of the distribution, indicating that the bias in WRF-CTL mean precipitation relative
to ANUSPLIN and CaPA in MRB is largely caused by a larger number of heavy precipitation events. WRF-PGW future simulation
shows an even higher distribution for extreme precipitation events, indicating that these events will become even more severe
510 under future climate conditions. In the lower panel, both log-X and log-Y are used for precipitation and probability density,
enabling us to zoom in on the probability distribution of the light-to-moderate events. The red curve, the WRF-PGW future climate
simulation, is now underneath CTL, ANUSPLIN, and CaPA curves in events lower than 5 mm/day, especially in summer (JJA).
This means that MRB is expected to experience fewer moderate precipitation events in addition to an increase in the probability
of high intensity precipitation.

515 For SRB, the bottom two rows of Fig. 12, the difference between WRF-CTL (blue curve), ANUSPLIN, and CaPA is less than that
in MRB. This difference is consistent with the spatial distribution of precipitation bias in Fig. 4 and S4, where the bias in SRB is
much smaller than it is in MRB. WRF-PGW shows that heavy precipitation events increase and that their distribution trends
towards more extreme intensive events in all seasons, especially in summer. Similar to MRB, there is also a decrease in moderate
precipitation events, shown in the log-log plot in the second row. Due to this shift in precipitation intensity to the higher end in the
520 PGW simulation, the seemingly moderate increase in total amounts in summer for both basins may not reflect the real change in
flooding risk and water availability for agriculture. Although the total amount of precipitation is expected to increase in the future,

there will be less water for agriculture because extreme precipitation will contribute more to runoff than soil moisture, reducing its accessibility to crops.

As seen in Fig 12, the intervals between light to moderate precipitation events increase, because the total summer precipitation slightly increases and heavy precipitation events significantly increase, while the atmosphere needs more time to replenish water vapor (Dai et al., 2017; Trenberth et al., 2003). Dry spells also increase in frequency because both evaporation and the intervals between precipitation events increase. The intensification of droughts will have a wide-reaching impact beyond the agricultural sector: conditions are likely to be ideal for wild-fires, like those experienced across the western provinces and territories from 2014 to 2018.

530 4.5 Hourly Precipitation Extremes

The future distribution of subdaily precipitation extremes in western Canada is of particular concern, as they can cause flash floods and landslides, which damage human infrastructure and result in injuries and deaths. Here we compare the 3-hourly precipitation rate distribution among station observation, WRF-CTL, and WRF-PGW in the two basins and then investigate the changes in the hourly precipitation rate distribution. The 3-hourly precipitation rate is first compared to observation to evaluate the extreme precipitation simulation at 3-hour intervals. The 3-hourly precipitation histograms for extreme precipitation events in MRB and SRB are shown in Fig. 13. WRF simulations are compared with EC station observations in Fig. 1 because these station observations are closer to the ground truth than the gridded observational products for which the spatial resolution is 10 km at most and are shown to have biases (Wong et al., 2017). Only the moderate to extreme values of precipitation distribution are shown here by cutting it off at a precipitation rate of 5 mm/3hr. WRF-CTL's precipitation distribution (the blue columns) is close to that of the station observation (the gray columns) in SRB in spring, summer, and autumn, whereas WRF-CTL produces more light to moderate precipitation events than observation in MRB in most seasons except spring. These results indicate that high-resolution WRF simulations capture the local precipitation extremes in all seasons well, except winter in SRB. WRF also shows a wet bias in light to moderate rain events in MRB in all seasons but spring, while WRF-PGW simulations (the red columns) show a significant increase in the frequency of high intensity rainfall events across seasons.

For MRB, the WRF-CTL 3-hourly precipitation events are much more frequent than those captured by observation in the 5 mm/3hr range, but comparable and less frequent at a higher rate in autumn and winter. In spring WRF-CTL shows fewer extreme precipitation events than observation. In summer WRF-CTL shows more extreme events than observation at most precipitation bins. For autumn, spring, and winter WRF-PGW sees a significant increase, 50%, 150%, 300% for 5 mm/3hr, respectively, in precipitation events. The change in number of extreme precipitation events in MRB in the 5-10 mm/3hr range is negligible in summer but significant at higher precipitation rates.

For SRB, the WRF-CTL agrees well with observation in spring, summer, and autumn in terms of moderate to extreme 3-hour precipitation events, but significantly underestimates the extreme precipitation events in winter. In spring, autumn, and winter WRF-PGW shows significant increases in extreme precipitation events. In summer WRF-PGW shows a small decrease of precipitation events at 5 mm/3hr and only moderate increases for higher rates. It is also worth mentioning that extreme events are much more numerous in SRB than in MRB, especially in spring and summer because the seasonal mean precipitation is higher in SRB.

Fig. 15 shows the changes of hourly precipitation distribution between surface observation and WRF simulations at 1-hour interval. The black line represents observation data collected from 232 surface stations in SRB and MRB from Environment Climate Change Canada (Website: http://climate.weather.gc.ca/index_e.html). The blue and red bars are the closest grid points to these stations extracted every hour (in total 113952 time steps in 13 years) from the WRF domain for CTL and PGW runs, respectively. Despite

the spatial scarcity and data quality associated with station observation, the results do provide some evaluation of the WRF simulated hourly rainfall, from small to extreme. The majority of hourly precipitation simulated by WRF CTL is close to that in observations, within the range of 1~10 mm/hr. In this range, future rainfall shows little increase compared to that under the current climate, with even a slight decrease in the amount of light rainfall. The higher hourly rainfall at the high end of the distribution (> 10 mm/hr), although comprising only 0.5% of density in total events, shows a dramatic increase by a probability of 1.5 to 3 times in frequency in the future warmer climate. Notably, the density in the high-end distribution is much higher in the station observation than in CTL because the denominator for observed density, the total number of events, is significantly less in observation, although the absolute number of high-intensity events is comparable or higher in WRF-CTL. In addition to a greater likelihood for the high end of extreme rainfall occurring, a slight decrease in light rainfall is also evident, supporting previous findings from other modeling studies (Cubasch et al., 2013; Easterling et al., 2000; Karl et al., 2006).

5 Extreme Temperature and Precipitation

In recent decades, there has been an increase in the number of hot extremes in Canada, particularly an increase of nighttime temperature in summer as the global mean temperature rises. Both extreme cold and hot days greatly affect the economy, society, and the daily lives of people. The changes in the high/low percentile values in the temperatures of WRF-PGW and CTL are used to assess the future change in the extreme hot days in summer and cold temperatures in winter in western Canada. The 95th (5th) percentile of the daily maximum (minimum) temperature for CTL, PGW, and their changes in summer (winter) are shown in Fig. 15. We only show the 95th (5th) percentile here as the patterns of warming for the 90th(1st) to 99th(10th) percentiles are similar in summer (winter). The least warming occurs over the central part of the domain where boreal forests are found, mostly within MRB with a magnitude of about 2.5°C. Over the surrounding area, the warming is stronger with 4-5°C for 95th percentile. The change in the 5th percentile of the daily minimum temperature in winter in WRF-PGW relative to WRF-CTL is shown in the bottom row of Fig. 15. In winter the strongest warming for the low percentile T_{min} occurs in the eastern domain where the general warming is also stronger.

The high percentile daily precipitation distribution in CTL and PGW simulation shows different geographical patterns for different percentiles in summer. The 90th, 95th, and 99th percentiles have typical values around 10,18,36 mm/day in the high precipitation region, respectively. Compared to CTL, the 90th percentile of daily precipitation in PGW in summer experiences little change in the majority of the domain except for an increase (1.5-3 mm/day) in the Yukon and western MRB and a small decrease (-1.5 mm/day) in the southeastern domain, as shown in the first row in Fig. 16(a). The 95th percentile of PGW shows a more widespread increase of precipitation by 1-3 mm/day, compared to CTL, except for a small strip of decreased precipitation east of SRB, as shown in the second row of Fig. 16(a). The 99th percentile of daily summer precipitation shows a consistent increase of 6-9 mm/day and about a 15-30% increase across the domain. Extremely high percentile such as 99% is usually associated with synoptic weather systems, for which the increase of precipitation is more uniform over the domain as it is proportional to vapor loading. The 90th percentile for summer precipitation, about 6-10 mm/day over the Canadian Prairies for CTL, can be associated with strong local thunderstorms, which will be strongly affected by boundary layer changes and lower atmospheric conditions in the future. Local water availability and partitioning between sensible and latent heat flux can change the convective inhibition and available convective potential energy, in turn affecting the convective precipitation. Therefore, there is large inhomogeneity of 90th percentile summer precipitation over the domain compared to the lower and higher percentiles.

In winter the relative changes (PGW - CTL) in high percentile daily precipitation are similar for all the percentiles as shown in Fig. 16(b). The change in amount for each percentile follows the general pattern of high daily precipitation distribution in winter: it is

concentrated along the coastal mountains in the west and in the Canadian Rockies. In terms of percentage increase, the largest increase is in the northern MRB and the northeastern domain, where precipitation is less than in other parts of the domain. The pattern of the changes in extreme precipitation in winter follows the distribution of mean precipitation, indicating the increase mostly comes from more vapor loading in the atmosphere.

6 Discussion

The lack of observation presents challenges for regional climate modelling in several respects. The mountainous terrain and numerous lakes make interpolation of observation data to gridded data-sets difficult. Canada's meteorological observation network is heavily concentrated in the southern part of the country and over the plains because of the higher population density and logistical factors. There are far fewer surface observation stations in the sparsely populated area in the north and over the mountainous regions. The sparse observation networks in the regions with low population density provide less reliable and representative observation data to develop and validate regional climate models in the region (Hofstra et al., 2009; Takhsha et al., 2017). As a result, the evaluation of model performance relative to a gridded observation dataset such as ANUSPLIN is less reliable in mountainous and polar regions.

The cold region hydrological cycle and treatment of the snow cover in the land surface model component of RCMs also pose a great challenge to simulate the characteristics of surface temperature and hydrological processes in the region (Casati and Elia, 2014; Niu et al., 2011). For instance, cold region hydrometeorology is strongly affected by snow processes, which are, in turn, affected by fine-scale topography and wind transport. The representation of snow pack and cover in the mountainous region is a challenging obstacle to overcome in realistically reproducing hydro-climatic conditions in the Canadian Rockies (Casati and Elia, 2014; McCrary et al., 2017; Niu et al., 2011). In our case, the near surface temperature in spring is highly sensitive to the representation of spring snow cover as the snow-albedo feedback can amplify bias in the snow amount in winter to temperature bias in spring.

The convection-permitting high-resolution downscaling by WRF-CTL is in good agreement with CaPA in showing a precipitation pattern with a small wet bias in the northern part of the domain and mountainous region. Notably, however, the regions where WRF-CTL show wet biases also suffer from observation data scarcity or non-representativeness due to orographic precipitation. WRF-PGW projection produces smaller warming in the simulation domain, especially in the eastern part. WRF-PGW also projects a smaller decrease of summer precipitation over the Canadian Prairies compared to CMIP5 ensemble, which means the high-resolution simulation tends to generate more summer precipitation than GCMs over the Prairies. In the PGW simulation, the Canadian Prairies, unlike other regions, show a slight decline or no change in total precipitation in summer, especially in moderate intensity precipitation compared to CTL. One reason there is little to no increase in precipitation in summer may be the decrease of relative humidity in the region, both in the PGW forcing and in the simulation. Dai et al. (2017) showed that a smaller increase of specific humidity than temperature rise can cause a decrease of relative humidity (see the PGW forcing in Fig. 2), as well as a much smaller increase of precipitation. The detailed mechanisms behind the suppression of summer precipitation in the region compared to surrounding regions are currently under investigation.

The high intensity precipitation events are projected to increase by the end of the 21st century under RCP8.5, as indicated by the notable increase of high intensity precipitation in the PDF of both MRB and SRB in WRF-PGW. Extreme precipitation is affected by both water-vapor loading in the atmosphere and changes in vertical velocity, size of storms, translation velocity of storms, etc. Large synoptic-scale storms tend to be affected by vapor loading more than by local-scale circulation, which is consistent with the relative uniformity of the 99th percentile daily precipitation increase across the domain in all seasons. In contrast, large regional

differences are seen in the 90th percentile precipitation associated with lesser storms in summer. The hourly precipitation histogram shows a much larger increase in number for heavy precipitation events (about 300%) versus light precipitation (about 150%). Research is ongoing on changes of storm-related characteristics based on an objective storm tracking algorithm known as MODE-
640 TD.

For many hydrological and agricultural applications, bias-correction of temperature and precipitation for RCM outputs often need to be reconciled with benchmarked parameters or criteria. Various bias correction methods have been used to bias-correct RCM output before their application. Quantile mapping, in its various forms, tends to project simulated distribution onto the observed distribution and achieve observed mean and distribution. Due to WRF-CTL's cold bias in spring east of the Canada Rockies and wet bias in MRB, bias correction based on quantile mapping is recommended for applications calibrated on observed hydroclimate.
645 However, due to shifting in the distribution of hourly precipitation probability in WRF-PGW relative to WRF-CTL, quantile mapping for our PGW simulation alters the precipitation change signal between the original WRF-PGW and WRF-CTL. To preserve the climate change signal in bias-correction and to produce properly bias-corrected summer precipitation for future scenarios, the physical processes involved in the change need to be considered.

650 7 Summary

The 4-km WRF dynamical downscaling of the current and future (RCP8.5) climate provides valuable high-resolution regional climate data for applications in hydrology and climatic impact studies. High-resolution convection-permitting regional climate simulations were conducted using WRF at 4-km grid-spacing for western Canada for the current climate (CTL, 2000-2015) and a high-end emission scenario RCP8.5 through the PGW approach. The WRF-CTL simulation is forced with ERA-Interim reanalysis
655 at 6-h intervals on the boundary. The WRF-PGW's forcing is the same as that of CTL plus the climate change signals derived from an ensemble of 19 CMIP5 members from 2070-2100 and from 1976-2005. At a 4-km horizontal resolution, the convection in the model is explicitly resolved and the convective parameterization schemes are disabled.

The evaluation of WRF-CTL against the gridded observation dataset ANUSPLIN and reanalyses such as CaPA and NARR shows good agreement between WRF-CTL and the reference datasets in terms of geographical distribution, seasonal cycle, and interannual variation. For temperature bias, the largest bias occurs over the plains east of the Rockies in spring. In general, WRF-CTL produces more precipitation than both ANUSPLIN and CaPA, especially in the northern part of domain where there are few observations and over terrains where most observation sites are at a lower elevation and less representative than desired. The precipitation bias of WRF-CTL against CaPA is less than that versus ANUSPLIN, which has been shown to be too dry in the northern domain and SRB (Wong et al., 2017). The evaluation reminds us many discrepancies are due to poor coverage of
660 observation data that were interpolated to data sparse region. It shows the urgent need for high quality and reasonable geographical coverage of meteorological observation over Canada for both providing forcing for RCM simulation and model evaluation.

In a future warming scenario, WRF-PGW shows substantial warming across western Canada under the RCP.8.5 emission scenario, though the warming is slightly less than that from the CMIP5 ensemble projection. The warming is stronger in the cold season, especially over the northeast polar region in winter and over the Canadian Prairies in spring. While precipitation changes in PGW over CTL vary with the seasons, in both basins, more increases occur in spring and late fall, whereas precipitation in SRB in summer either shows no increase (remains at zero) or decreases. The smallest change in precipitation occurs in summer, when parts of the Prairies receive less precipitation in PGW than in CTL. With almost no increase in summer precipitation and much larger evapotranspiration in PGW than in CTL, the Canadian Prairies will experience water availability challenges during the

675 growing season. With the large temperature increase and potential increased evaporation, the small increase/decrease of summer
precipitation indicates that the Canadian Prairies and the southern Boreal Forest biomes will see a slight decline in effective
precipitation in summer, which will likely have a significant impact on soil moisture for farming and forest fire occurrences. This
dynamic downscaling by WRF is also different from CMIP5 ensemble mean projection for SRB and southern MRB where a
680 significant decline of summer precipitation is projected. As convection plays an important role in summer precipitation over the
Canadian Prairies, the difference between 4km WRF and the GCM ensemble may be due to the difference in simulating convection.
There is also more increase in the projected precipitation change over the BC coast and Canadian Rockies in WRF than in CMIP5,
which results from the representation of the underlying topography and lack of orographic lifting in GCM relative to 4km WRF.

As the warmer atmosphere holds more water vapor, WRF-PGW shows an increase of precipitation over WRF-CTL. Severe
685 precipitation events increase more than moderate and light precipitation events as the distribution of precipitation events shifts
toward more higher intensity events in all seasons except summer. In summer, light to moderate precipitation (5-10 mm/3hr) in
WRF-PGW actually decreases compared to WRF-CTL in both MRB and SRB. The increase of precipitation in cold seasons is
larger in terms of percentage in the northeast where greater warming is expected. Due to this shift in precipitation intensity to the
higher end in the PGW simulation, the seemingly moderate increase in total precipitation in summer for both basins may not reflect
690 the real change in flooding risk and water availability for agriculture because the frequency of extreme precipitation events
increases disproportionately. The shift in the precipitation intensity distribution in WRF-PGW also poses challenges, for bias-
correction relies on fitting an observed distribution.

In summary, the high-resolution convection-permitting WRF simulations are shown to reproduce the general characteristics of the
695 regional climate in western Canada. The model results provide bountiful opportunities for not only atmospheric and climate
scientists interested in local-regional scale meteorological phenomena and dynamics and circulation changes under global warming,
but also stakeholders in hydrology and agriculture who need high-resolution climate information and detailed global warming
projections for western Canada.

Author contributions

700 YL designed the experiments and CL, ZZ, SK, ZL performed the simulations. ZL, ZZ conducted the analysis and prepared the
figures with the helps from YL, LS and PX. YL and ZL prepared the manuscript with contributions from all co-authors.

Acknowledgments

The authors gratefully acknowledge the support from the Changing Cold Regions Network (CCRN) funded by the Natural Science
and Engineering Research Council of Canada (NSERC), as well as the Global Water Future project and Global Institute of Water
705 Security at University of Saskatchewan. Yanping Li acknowledge the support from NSERC Discovery Grant.

The authors declare that they have no conflict of interest.

References

- 710 Bindoff, N., Stott, P., Achuta Rao, K., Allen, M., Gillett, N., Gutzler, D., Hansingo, K., Hegerl, G., Hu, Y., Jain, S., Mokhov, I., Overland, J., Perlwitz, J., Sebbari, R. and Zhang, X.: Detection and attribution of climate change: From global to regional, in *Climate change 2013: The physical science basis. Contribution of working group I to the fifth assessment report of the intergovernmental panel on climate change*, edited by T. Stocker, D. Qin, G.-K. Plattner, M. Tignor, S. Allen, J. Boschung, A. Nauels, Y. Xia, V. Bex, and P. Midgley, pp. 867–952, Cambridge University Press, Cambridge, United Kingdom; New York, NY, USA., 2013.
- 715 Bonsal, B. R., Aider, R., Gachon, P. and Lapp, S.: An assessment of Canadian prairie drought: Past, present, and future, *Climate Dynamics*, 41(2), 501–516, doi:10.1007/s00382-012-1422-0, 2013.
- Casati, B. and Elía, R. de: Temperature extremes from Canadian regional climate model (CRCM) climate change projections, *Atmosphere-Ocean*, 52(3), 191–210, doi:10.1080/07055900.2014.886179, 2014.
- Castro, C. L.: Dynamical downscaling: Assessment of value retained and added using the regional atmospheric modeling system (RAMS), *Journal of Geophysical Research*, 110(D5), D05108, doi:10.1029/2004jd004721, 2005.
- 720 Chen, F. and Dudhia, J.: Coupling an advanced land surface-hydrology model with the Penn State-NCAR MM5 modeling system. Part I: Model implementation and sensitivity, *Monthly Weather Review*, 129(4), 569–585, doi:10.1175/1520-0493(2001)129<569:CAALSH>2.0.CO;2, 2001.
- Collins, W. D., Rasch, P., Boville, B., Hack, J., McCaa, J., Williamson, D., Kiehl, J., Briegleb, B., Bitz, C., Lin, S.-J., Zhang, M. and Dai, Y.: Description of the NCAR community atmosphere model (CAM 3.0), *Natl. Cent. for Atmos. Res., Boulder, Colorado.*, 2004.
- 725 Cubasch, U., Wuebbles, D., Chen, D., Facchini, M., Frame, D., Mahowald, N. and Winther, J.-G.: Introduction, in *Climate change 2013: The physical science basis. Contribution of working group I to the fifth assessment report of the intergovernmental panel on climate change*, edited by T. Stocker, D. Qin, G.-K. Plattner, M. Tignor, S. Allen, J. Boschung, A. Nauels, Y. Xia, V. Bex, and P. Midgley, pp. 119–158, Cambridge University Press, Cambridge, United Kingdom; New York, NY, USA., 2013.
- 730 Dai, A., Rasmussen, R. M., Liu, C., Ikeda, K. and Prein, A. F.: A new mechanism for warm-season precipitation response to global warming based on convection-permitting simulations, *Climate Dynamics*, doi:10.1007/s00382-017-3787-6, 2017.
- Dee, D. P., Uppala, S. M., Simmons, A. J., Berrisford, P., Poli, P., Kobayashi, S., Andrae, U., Balmaseda, M. A., Balsamo, G., Bauer, P., Bechtold, P., Beljaars, A. C. M., Berg, L. van de, Bidlot, J., Bormann, N., Delsol, C., Dragani, R., Fuentes, M., Geer, A. J., Haimberger, L., Healy, S. B., Hersbach, H., Hólm, E. V., Isaksen, I., Kållberg, P., Köhler, M., Matricardi, M., McNally, A. P., 735 Monge-Sanz, B. M., Morcrette, J.-J., Park, B.-K., Peubey, C., Rosnay, P. de, Tavolato, C., Thépaut, J.-N. and Vitart, F.: The ERA-Interim reanalysis: Configuration and performance of the data assimilation system, *Quarterly Journal of the Royal Meteorological Society*, 137(656), 553–597, doi:10.1002/qj.828, 2011.
- Deser, C., Phillips, A., Bourdette, V. and Teng, H.: Uncertainty in climate change projections: The role of internal variability, *Climate Dynamics*, 38(3-4), 527–546, doi:10.1007/s00382-010-0977-x, 2012.
- 740 Easterling, D. R., Meehl, G. A., Parmesan, C., Changnon, S. A., Karl, T. R. and Mearns, L. O.: Climate extremes: Observations, modeling, and impacts., *Science*, 289 5487, 2068–74, 2000.
- Eum, H.-I., Gachon, P., Laprise, R. and Ouarda, T.: Evaluation of regional climate model simulations versus gridded observed and regional reanalysis products using a combined weighting scheme, *Climate Dynamics*, 38(7), 1433–1457, doi:10.1007/s00382-011-1149-3, 2012.

- 745 Eum, H.-I., Dibike, Y., Prowse, T. and Bonsal, B.: Inter-comparison of high-resolution gridded climate data sets and their implication on hydrological model simulation over the athabasca watershed, canada, *Hydrological Processes*, 28(14), 4250–4271, doi:10.1002/hyp.10236, 2014.
- Feser, F., Rockel, B., Storch, H. von, Winterfeldt, J. and Zahn, M.: Regional Climate Models Add Value To Global Model Data: A Review and Selected Examples, *Bulletin of the American Meteorological Society*, 92(9), 1181–1192, 750 doi:10.1175/2011bams3061.1, 2011.
- Fortin, V., Roy, G., Stadnyk, T., Koenig, K., Gasset, N. and Mahidjiba, A.: Ten years of science based on the canadian precipitation analysis: A capa system overview and literature review, *Atmosphere-Ocean*, 56(3), 178–196, doi:10.1080/07055900.2018.1474728, 2018.
- Giorgi, F., Jones, C. and Asrar, G. R.: Addressing climate information needs at the regional level: The cordex framework, *WMO 755 Bulletin*, 58(3), 175, 2009.
- Hofstra, N., New, M. and McSweeney, C.: The Influence of Interpolation and Station Network Density on the Distributions and Trends of Climate Variables in Gridded Daily data, *Clim Dyn*, 35(5), 841–858, doi:10.1007/s00382-009-0698-1, 2009.
- Hopkinson, R. F., McKenney, D. W., Milewska, E. J., Hutchinson, M. F., Papadopol, P. and Vincent, L. A.: Impact of aligning climatological day on gridding daily maximum–minimum temperature and precipitation over canada, *Journal of Applied 760 Meteorology and Climatology*, 50(8), 1654–1665, doi:10.1175/2011JAMC2684.1, 2011.
- Hutchinson, M. F., McKenney, D. W., Lawrence, K., Pedlar, J. H., Hopkinson, R. F., Milewska, E. and Papadopol, P.: Development and testing of canada-wide interpolated spatial models of daily minimum-maximum temperature and precipitation for 1961-2003, *Journal of Applied Meteorology and Climatology*, 48(4), 725–741, doi:10.1175/2008jame1979.1, 2009.
- IPCC: Climate change 2013: The physical science basis. Contribution of working group i to the fifth assessment report of the 765 intergovernmental panel on climate change, Book, Cambridge University Press, Cambridge, United Kingdom; New York, NY, USA., 2013.
- Karl, T. R., Meehl, G. A., Miller, C. D., Hassol, S. J., Waple, A. and Murray, W.: *Weather and Climate Extremes in a Changing Climate. Regions of focus: North America, Hawaii, Caribbean, and U.S. Pacific islands.*, 2006.
- Li, Y., K. Szeto, R.E. Stewart, J.M. Thériault, L. Chen, B. Kochtubajda, A. Liu, S. Boodoo, R. Goodson, C. Mooney, and S. 770 Kurkute: A Numerical Study of the June 2013 Flood-Producing Extreme Rainstorm over Southern Alberta. *J. Hydrometeor.*, 18, 2057–2078, <https://doi.org/10.1175/JHM-D-15-0176.1>, 2017.
- Liu, C., Ikeda, K., Thompson, G., Rasmussen, R., & Dudhia, J., High-resolution simulations of wintertime precipitation in the colorado headwaters region: sensitivity to physics parameterizations, *Monthly Weather Review*, 139(11), 3533–3553. <http://dx.doi.org/10.1175/MWR-D-11-00009.1>, 2011
- 775 Liu, C., Ikeda, K., Rasmussen, R., Barlage, M., Newman, A. J., Prein, A. F., Chen, F., Chen, L., Clark, M., Dai, A., Dudhia, J., Eidhammer, T., Gochis, D., Gutmann, E., Kurkute, S., Li, Y., Thompson, G. and Yates, D.: Continental-Scale Convection-Permitting Modeling of the Current and Future Climate of North America, *Climate Dynamics*, 49(1), 71–95, doi:10.1007/s00382-016-3327-9, 2017.
- Mahfouf, J.-F., Brasnett, B. and Gagnon, S.: A Canadian precipitation analysis (CaPA) project: Description and preliminary results, 780 *ATMOSPHERE-OCEAN*, 45(1), 1–17, doi:10.3137/ao.450101, 2007.
- McCrary, R. R., McGinnis, S. and Mearns, L. O.: Evaluation of Snow Water Equivalent in Narecap Simulations, Including Measures of Observational Uncertainty, *J. Hydrometeor*, 18(9), 2425–2452, doi:10.1175/JHM-D-16-0264.1, 2017.
- Mearns, L. O., Gutowski, W., Jones, R., Leung, R., McGinnis, S., Nunes, A. and Qian, Y.: A Regional Climate Change Assessment Program for North America, *Eos, Transactions American Geophysical Union*, 90(36), 311–311, doi:10.1029/2009EO360002, 2009.

- 785 Mearns, L. O., Sain, S., Leung, L. R., Bukovsky, M. S., McGinnis, S., Biner, S., Caya, D., Arritt, R. W., Gutowski, W., Takle, E., Snyder, M., Jones, R. G., Nunes, A. M. B., Tucker, S., Herzmann, D., McDaniel, L. and Sloan, L.: Climate change projections of the north american regional climate change assessment program (narccap), *Climatic Change*, 120(4), 965–975, doi:10.1007/s10584-013-0831-3, 2013.
- Mearns, L. O., Lettenmaier, D. P. and McGinnis, S.: Uses of results of regional climate model experiments for impacts and adaptation studies: The example of NARCCAP, *Current Climate Change Reports*, 1(1), 1–9, doi:10.1007/s40641-015-0004-8, 2015.
- 790 Meng, X., Lyu, S., Zhang, T., Zhao, L., Li, Z., Han, B., Li, S., Ma, D., Chen, H., Ao, Y., Luo, S., Shen, Y., Guo, J. and Wen, L.: Simulated Cold Bias Being Improved By Using Modis Time-Varying Albedo in the Tibetan Plateau in Wrf model, *Environ. Res. Lett.*, 13(4), 044028 [online] Available from: <http://stacks.iop.org/1748-9326/13/i=4/a=044028>, 2018.
- 795 Mesinger, F., DiMego, G., Kalnay, E., Mitchell, K., Shafran, P. C., Ebisuzaki, W., Jović, D., Woollen, J., Rogers, E., Berbery, E. H. and al.: North american regional reanalysis, *Bulletin of the American Meteorological Society*, 87(3), 343–360, doi:10.1175/bams-87-3-343, 2006.
- Misra, V., & Kanamitsu, M., Anomaly nesting: a methodology to downscale seasonal climate simulations from agcms, *Journal of Climate*, 17(17), 3249–3262, [http://dx.doi.org/10.1175/1520-0442\(2004\)017\\$<\\$3249:anamtd>2.0.co;2](http://dx.doi.org/10.1175/1520-0442(2004)017$<$3249:anamtd>2.0.co;2), 2004
- 800 Morrison, H., Thompson, G., & Tatarskii, V., Impact of cloud microphysics on the development of trailing stratiform precipitation in a simulated squall line: comparison of one- and two-moment schemes, *Monthly Weather Review*, 137(3), 991–1007, <http://dx.doi.org/10.1175/2008mwr2556.1>, 2009
- Musselman, K. N., Lehner, F., Ikeda, K., Clark, M. P., Prein, A. F., Liu, C., Barlage, M. and Rasmussen, R.: Projected increases and shifts in rain-on-snow flood risk over western north america, *Nature Climate Change*, 8(9), 808–812, doi:10.1038/s41558-018-0236-4, 2018.
- 805 Nelson, B.R., O.P. Prat, D. Seo, and E. Habib, Assessment and Implications of NCEP Stage IV Quantitative Precipitation Estimates for Product Intercomparisons. *Wea. Forecasting*, **31**, 371–394, <https://doi.org/10.1175/WAF-D-14-00112.1>, 2016
- Niu, G.-Y., Yang, Z.-L., Mitchell, K. E., Chen, F., Ek, M. B., Barlage, M., Kumar, A., Manning, K., Niyogi, D., Rosero, E. and al.: The community noah land surface model with multiparameterization options (noah-mp): 1. Model description and evaluation with local-scale measurements, *Journal of Geophysical Research*, 116(D12), doi:10.1029/2010jd015139, 2011.
- 810 Prein, A. F., Langhans, W., Fossier, G., Ferrone, A., Ban, N., Goergen, K., Keller, M., Tölle, M., Gutjahr, O., Feser, F., Brisson, E., Kollet, S., Schmidli, J., Lipzig, N. P. M. van and Leung, R.: A Review on Regional Convection-Permitting Climate Modeling: Demonstrations, Prospects, and challenges, *Rev Geophys*, 53(2), 323–361, doi:10.1002/2014RG000475, 2015.
- Prein, A. F., Liu, C., Ikeda, K., Bullock, R., Rasmussen, R. M., Holland, G. J. and Clark, M.: Simulating north american mesoscale convective systems with a convection-permitting climate model, *Climate Dynamics*, nil(nil), nil, doi:10.1007/s00382-017-3993-2, 2017a.
- 815 Prein, A. F., Rasmussen, R. M., Ikeda, K., Liu, C., Clark, M. P. and Holland, G. J.: The future intensification of hourly precipitation extremes, *Nature Climate Change*, 7(1), 48–52, doi:10.1038/nclimate3168, 2017b.
- Rasmussen, R., Liu, C., Ikeda, K., Gochis, D., Yates, D., Chen, F., Tewari, M., Barlage, M., Dudhia, J., Yu, W., Miller, K., Arsenault, K., Grubišić, V., Thompson, G. and Gutmann, E.: High-resolution coupled climate runoff simulations of seasonal snowfall over colorado: A process study of current and warmer climate, *Journal of Climate*, 24(12), 3015–3048, doi:10.1175/2010JCLI3985.1, 2011.
- 820

- Rasmussen, R., Ikeda, K., Liu, C., Gochis, D., Clark, M., Dai, A., Gutmann, E., Dudhia, J., Chen, F., Barlage, M., Yates, D. and
825 Zhang, G.: Climate change impacts on the water balance of the colorado headwaters: High-resolution regional climate model
simulations, *Journal of Hydrometeorology*, 15(3), 1091–1116, doi:10.1175/jhm-d-13-0118.1, 2014.
- Sato, T., Kimura, F., & Kitoh, A., Projection of global warming onto regional precipitation over mongolia using a regional climate
model, *Journal of Hydrology*, 333(1), 144–154, <http://dx.doi.org/10.1016/j.jhydrol.2006.07.023>, 2007
- Stralberg, D., Wang, X., Parisien, M.-A., Robinne, F.-N., Sólomos, P., Mahon, C. L., Nielsen, S. E. and Bayne, E. M.: Wildfire-
830 mediated vegetation change in boreal forests of alberta, canada, *Ecosphere*, 9(3), e02156, doi:10.1002/ecs2.2156, 2018.
- Sugiyama, M., Shiogama, H. and Emori, S.: Precipitation extreme changes exceeding moisture content increases in miroc and ipcc
climate models, *Proceedings of the National Academy of Sciences*, 107(2), 571–575, doi:10.1073/pnas.0903186107, 2009.
- Takhsha, M., Nikiéma, O., Lucas-Picher, P., Laprise, R., Hernández-Díaz, L. and Winger, K.: Dynamical downscaling with the
835 fifth-generation canadian regional climate model (crcm5) over the cordex arctic domain: Effect of large-scale spectral nudging and
of empirical correction of sea-surface temperature, *Climate Dynamics*, doi:10.1007/s00382-017-3912-6, 2017.
- Thompson, G., Field, P. R., Rasmussen, R. M. and Hall, W. D.: Explicit forecasts of winter precipitation using an improved bulk
microphysics scheme. Part ii: Implementation of a new snow parameterization, *Monthly Weather Review*, 136(12), 5095–5115,
doi:10.1175/2008mwr2387.1, 2008.
- Trenberth, K. E., Dai, A., Rasmussen, R. M. and Parsons, D. B.: The changing character of precipitation, *Bulletin of the American
840 Meteorological Society*, 84(9), 1205–1218, doi:10.1175/bams-84-9-1205, 2003.
- Westra, S., Fowler, H. J., Evans, J. P., Alexander, L. V., Berg, P., Johnson, F., Kendon, E. J., Lenderink, G. and Roberts, N. M.:
Future changes to the intensity and frequency of short-duration extreme rainfall, *Reviews of Geophysics*, 52(3), 522–555,
doi:10.1002/2014rg000464, 2014.
- Weusthoff, T., Ament, F., Arpagaus, M. and Rotach, M. W.: Assessing the benefits of convection-permitting models by
845 neighborhood verification: Examples from map d-phase, *Monthly Weather Review*, 138(9), 3418–3433,
doi:10.1175/2010mwr3380.1, 2010.
- Wong, J. S., Razavi, S., Bonsal, B. R., Wheeler, H. S., & Asong, Z. E., Inter-comparison of daily precipitation products for large-
scale hydro-climatic applications over canada, *Hydrology and Earth System Sciences*, 21(4), 2163–2185,
<http://dx.doi.org/10.5194/hess-21-2163-2017>, 2017.
- 850 Xie, S.-P. and Kosaka, Y.: What caused the global surface warming hiatus of 1998-2013?, *Current Climate Change Reports*, 3(2),
128–140, doi:10.1007/s40641-017-0063-0, 2017.
- Xu, T. and Hutchinson, M. F.: New developments and applications in the ANUCLIM spatial climatic and bioclimatic modelling
package, *Environmental Modelling & Software*, 40(nil), 267–279, doi:10.1016/j.envsoft.2012.10.003, 2013.

8 Figures and Tables

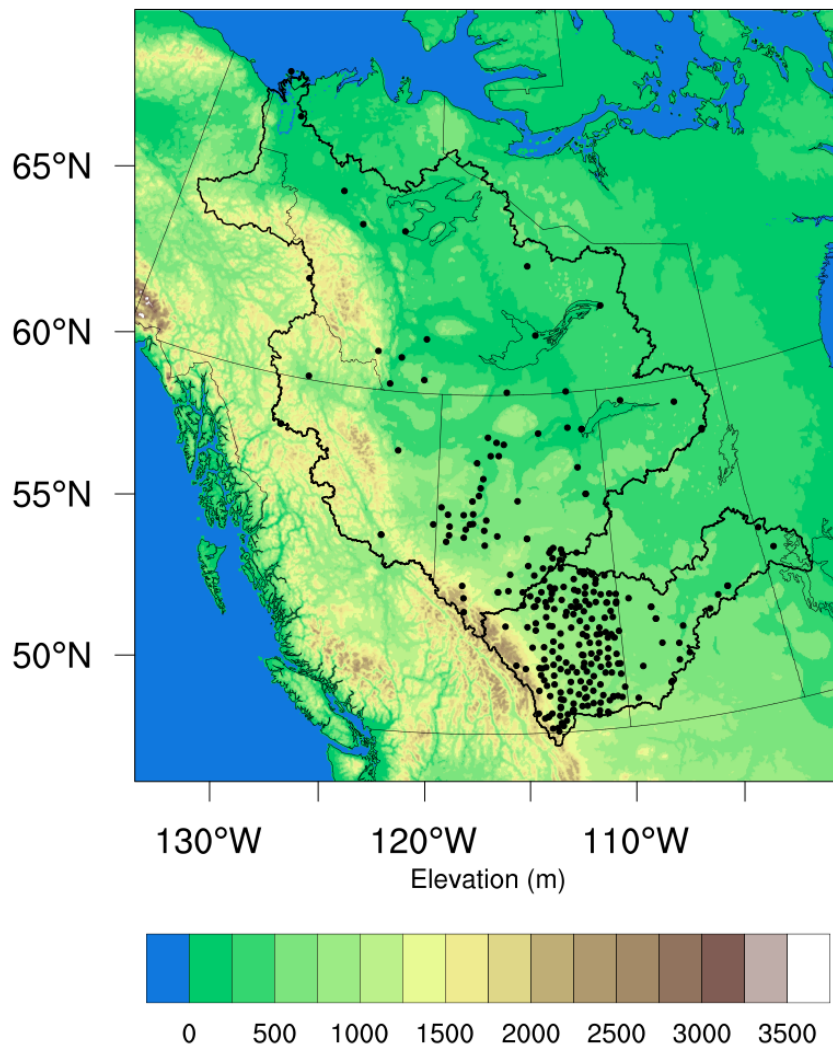


Figure 1: The domain of WRF simulation. The black dots indicate the observation stations used in the evaluation of the simulations.

860

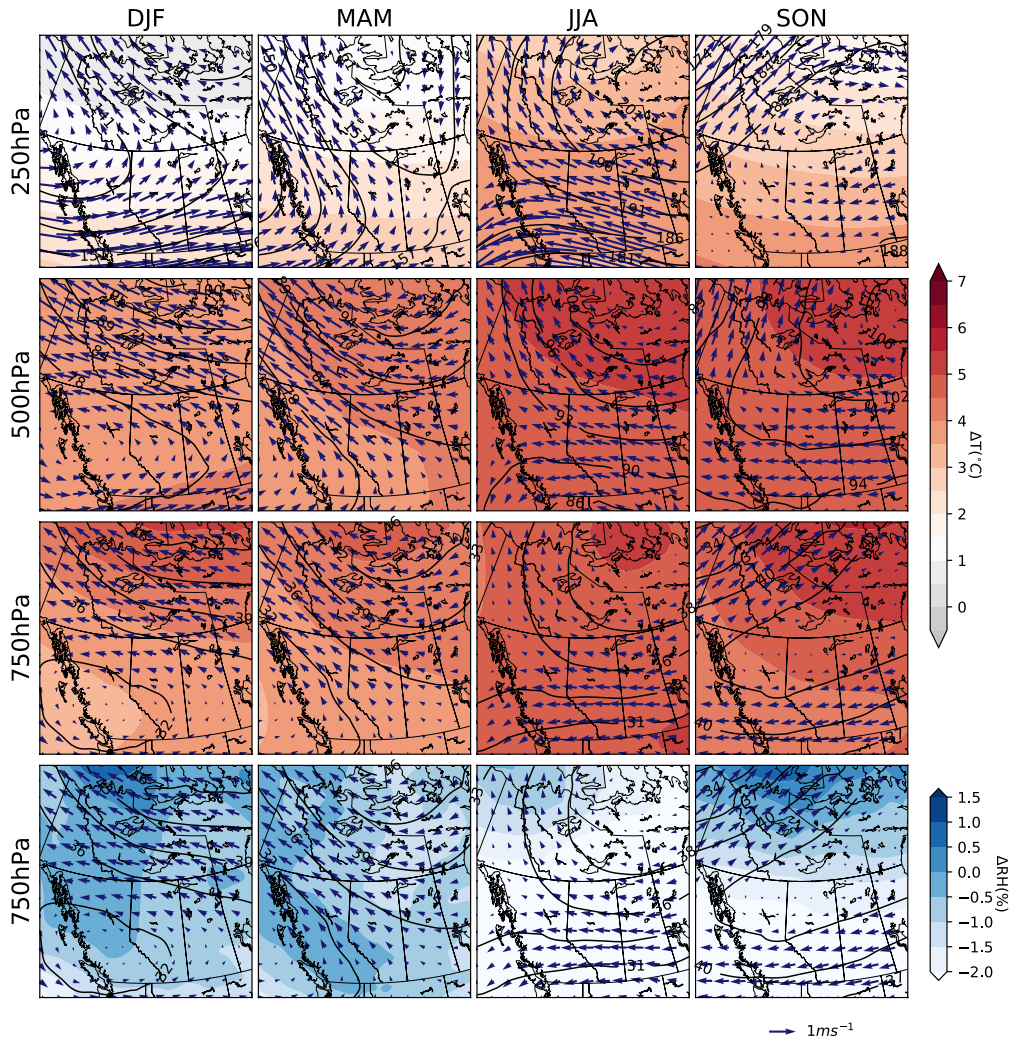
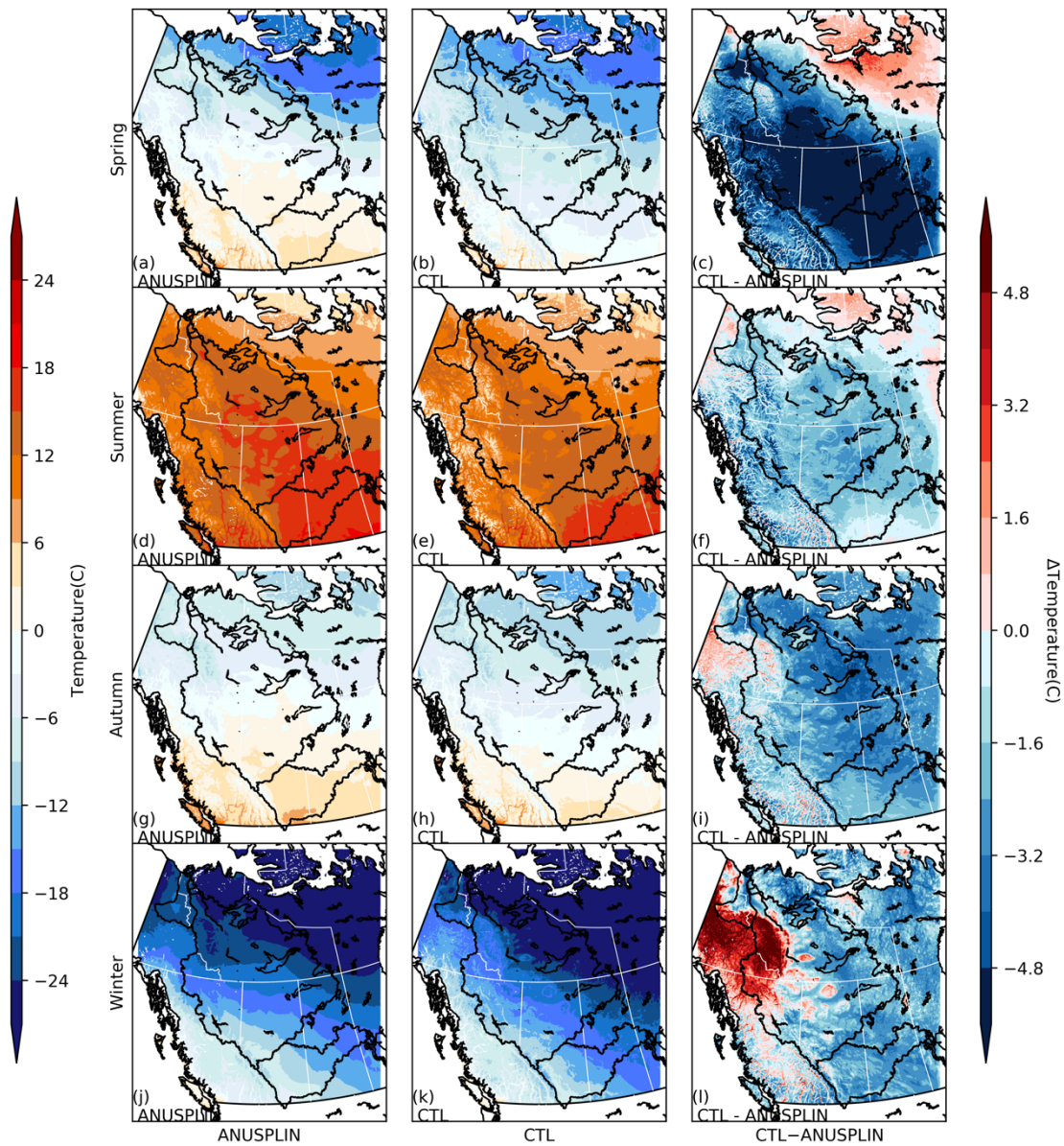
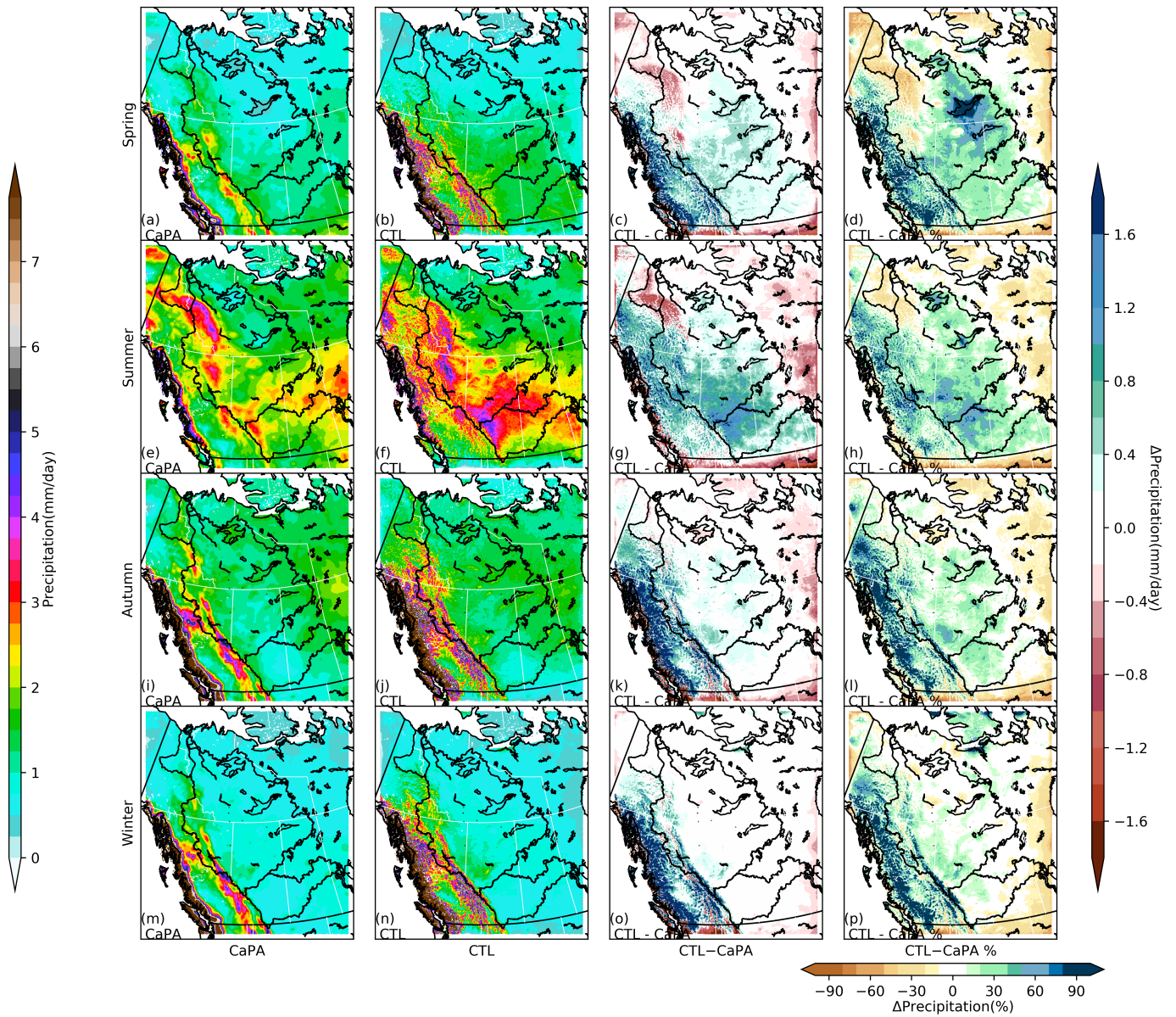


Figure 2: The climate change signal in the PGW forcing derived from 19-member CMIP5 ensemble for each season (from left to right: spring, summer, autumn, and winter) at upper-levels (250 hPa, 1st row; 500 hPa, 2nd row) and lower atmosphere (bottom two rows). The contours are the changes in geopotential height relative to current climate. The shadings are changes in temperature or moisture at each pressure level. The wind vectors denote the change in the mean wind at each level.

865



870 **Figure 3: Seasonal mean (from top to bottom: spring, summer, autumn, and winter) daily mean temperature for spring (MAM), summer (JJA), and autumn (SON), and winter (DJF) from 2000 to 2015 of ANUSPLIN (left column), WRF-CTL (middle column) and the difference (CTL - ANUSPLIN, right column). The Δ sign indicates the bias of WRF-CTL relative to ANUSPLIN.**

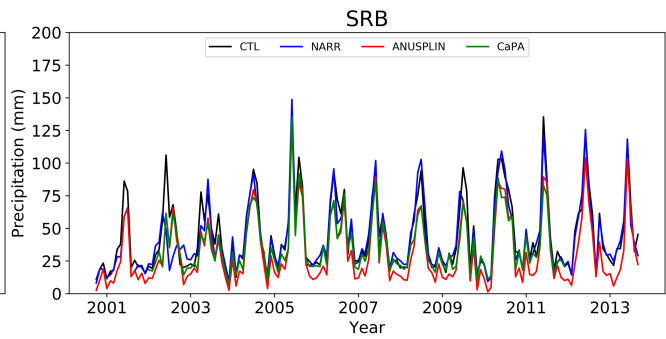
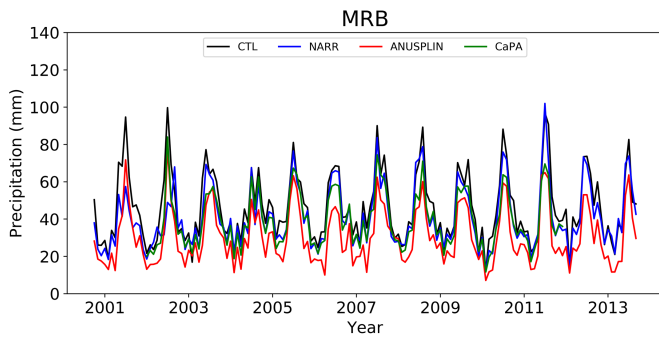
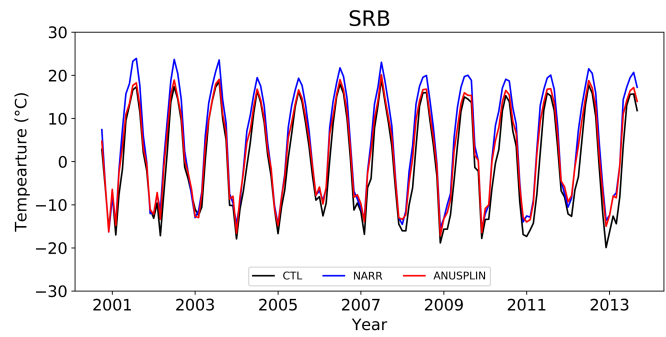
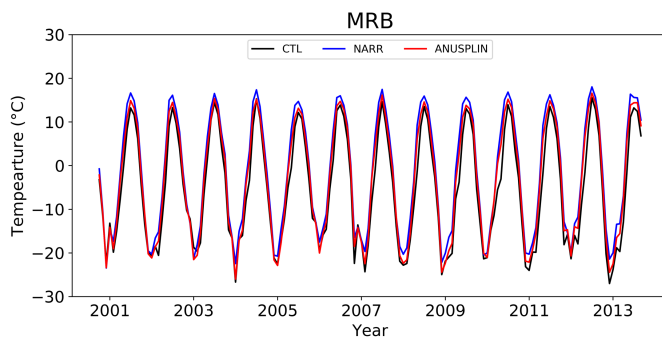


875

Figure 4: Seasonal mean (from top to bottom: spring, summer, autumn, and winter) daily precipitation from CaPA (1st column) and WRF-CTL (2st column), and their absolute (3rd column) and relative differences in percentage (4th column). The Δ sign indicates the bias of WRF-CTL relative to CaPA.

880

885



890

Figure 5: The monthly mean precipitation/temperature averaged over the Mackenzie River Basin (left) and Saskatchewan River Basin (right) from 2000 to 2015 from WRF-CTL (black curve) and an ensemble of observation/reanalyses of temperature (NARR, blue; ANUSPLIN, red) and precipitation (NARR, blue; ANUSPLIN, red; CaPA, green).

895

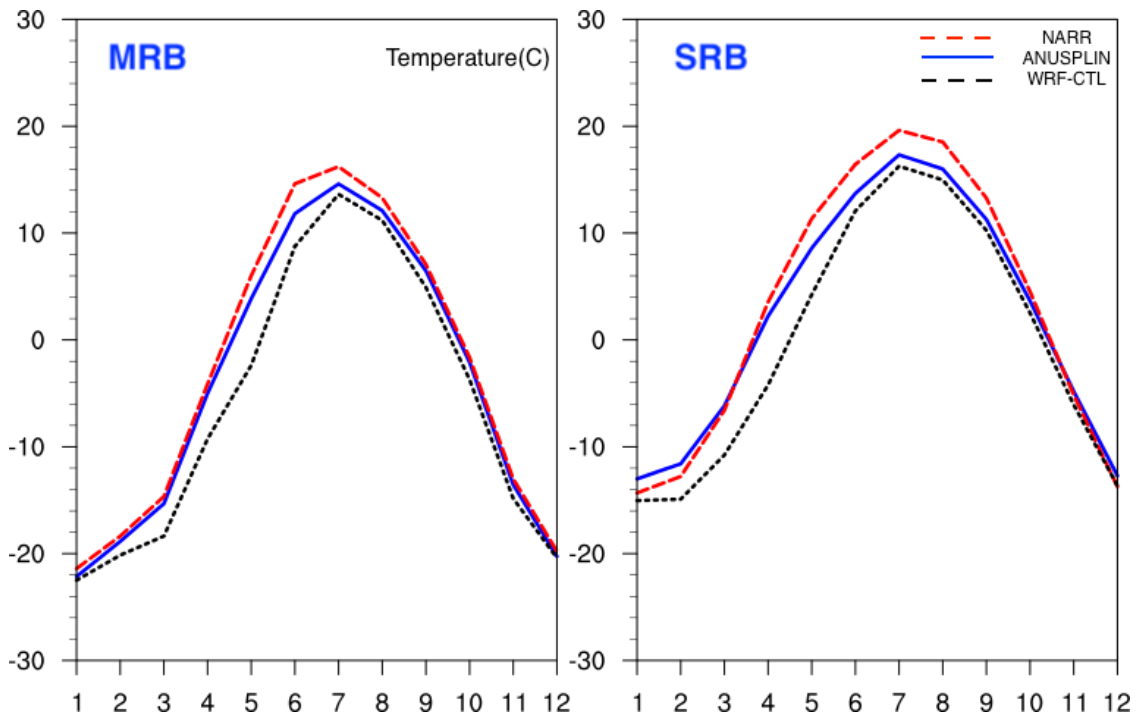


Figure 6: The mean annual cycle for WRF-CTL (black), NARR (red), and ANUSPLIN (blue) over the Mackenzie River Basin (left) and Saskatchewan River Basin (right). Monthly basin averaged precipitation over Saskatchewan River Basin from WRF-CTL, WRF-CONUS control run and the ensemble of observation datasets (NARR, ANUSPLIN, CaPA).

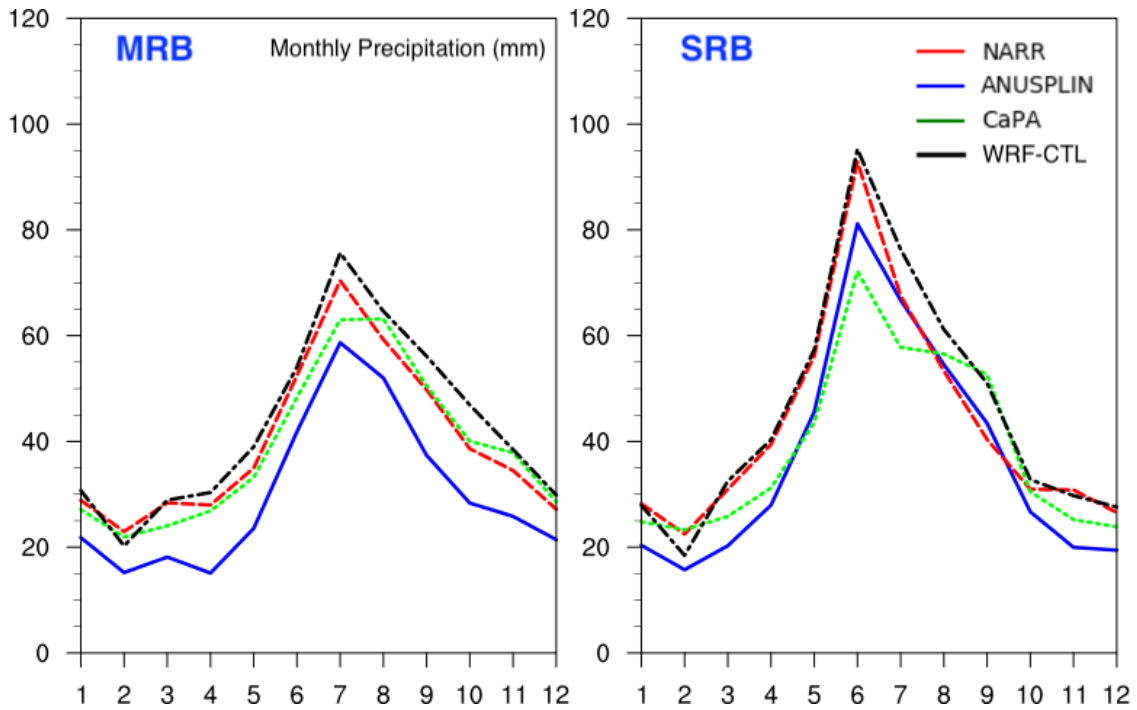


Figure 7: The mean annual cycle of monthly precipitation for WRF-CTL (black), NARR (red), and ANUSPLIN (blue) over the Mackenzie River Basin (left) and Saskatchewan River Basin (right).

905

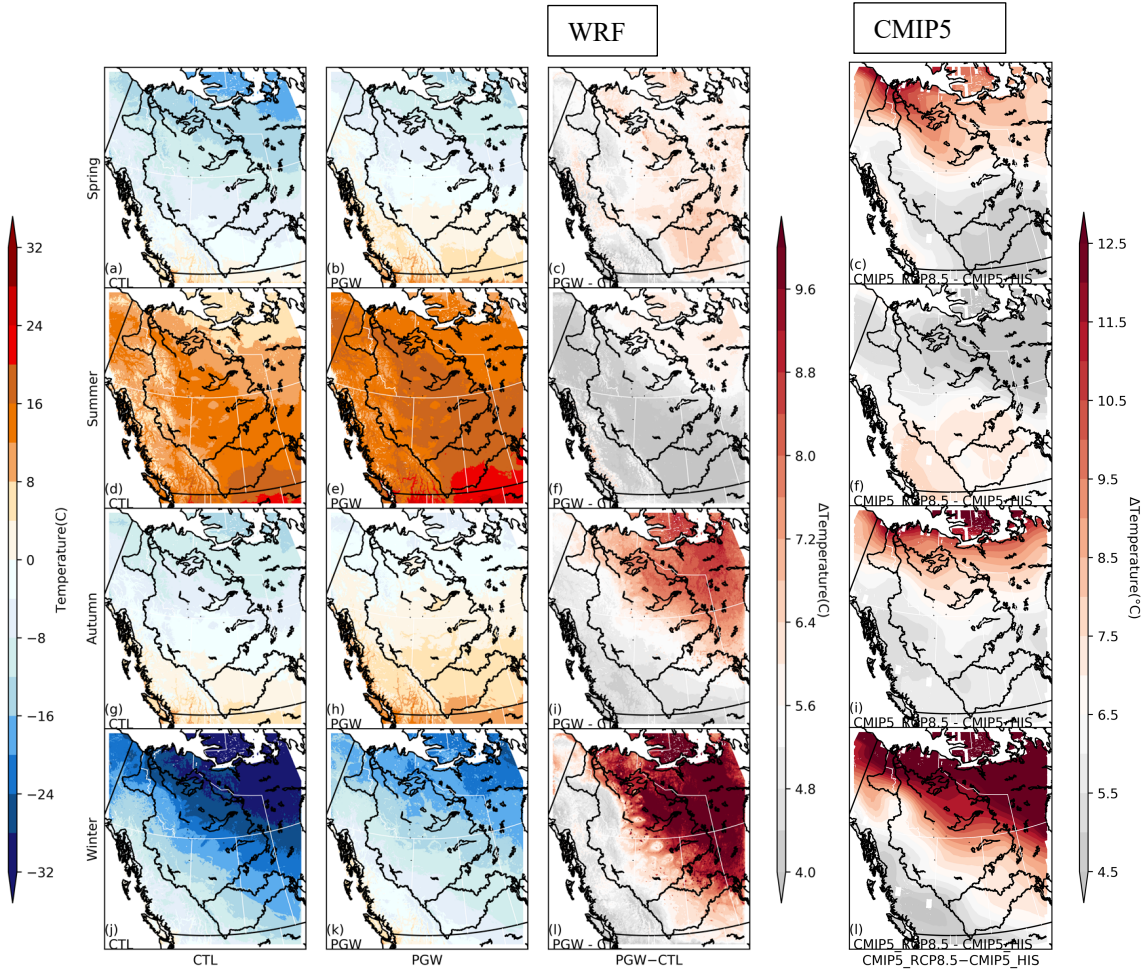
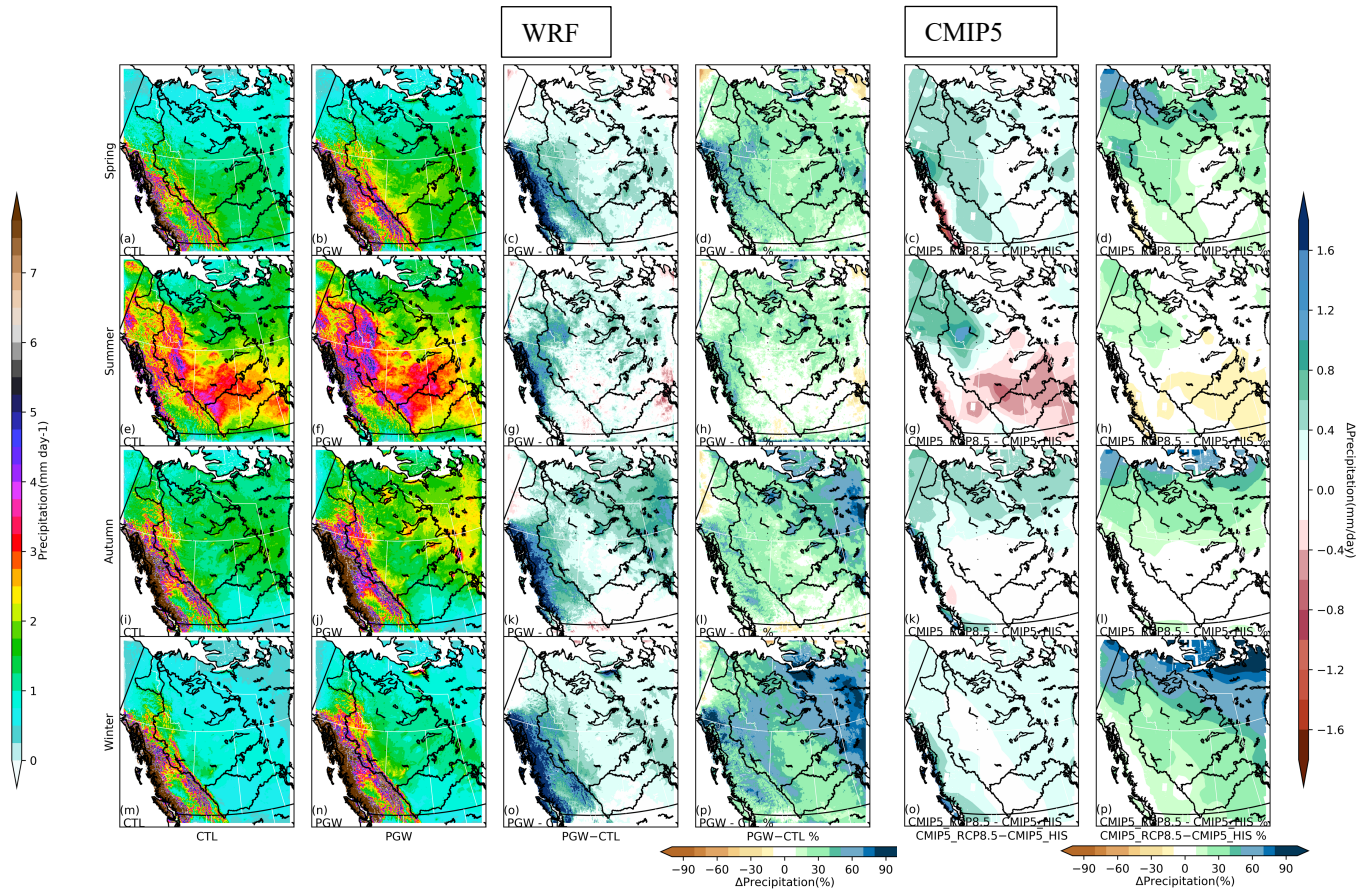


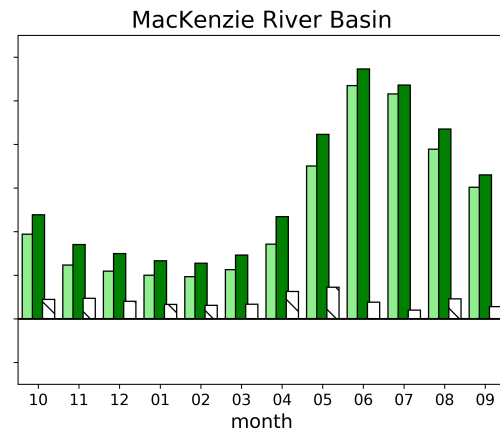
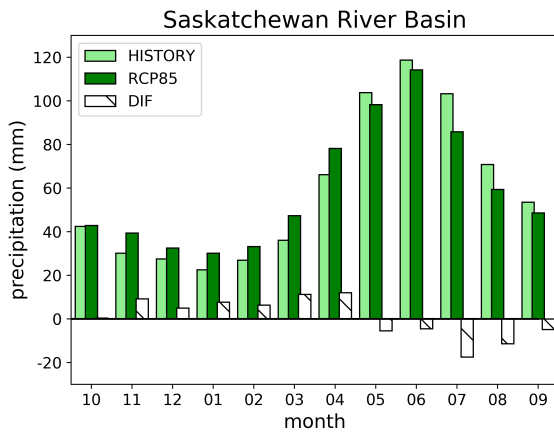
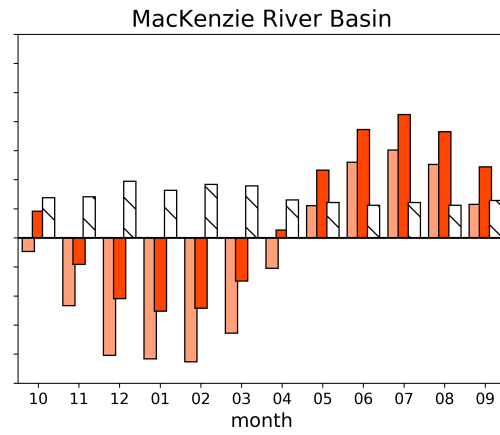
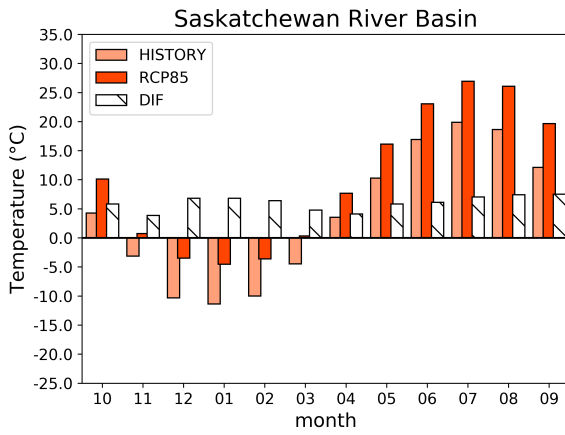
Figure 8: Daily mean temperature from WRF-CTL (1st column) and WRF-PGW (2nd column), the difference (PGW - CTL, 3rd column), and the projected warming from CMIP5 ensemble (2071-2100 – 1976-2005, 4th column) for spring (1st row), summer (2nd row), autumn (3rd row), and winter (4th row).

910



915

Figure 9: From top to the bottom, spring, summer, autumn, and winter seasonal mean daily precipitation are shown for WRF-CTL (1st column), WRF-PGW (2nd column), the difference (PGW - CTL, 3rd column), and percentage difference over CTL (4th column). On the right hand side, the projected changes from CMIP5 ensemble for precipitation (2071-2100 – 1976-2005, 5th column) and in percentage (6th column) are shown.

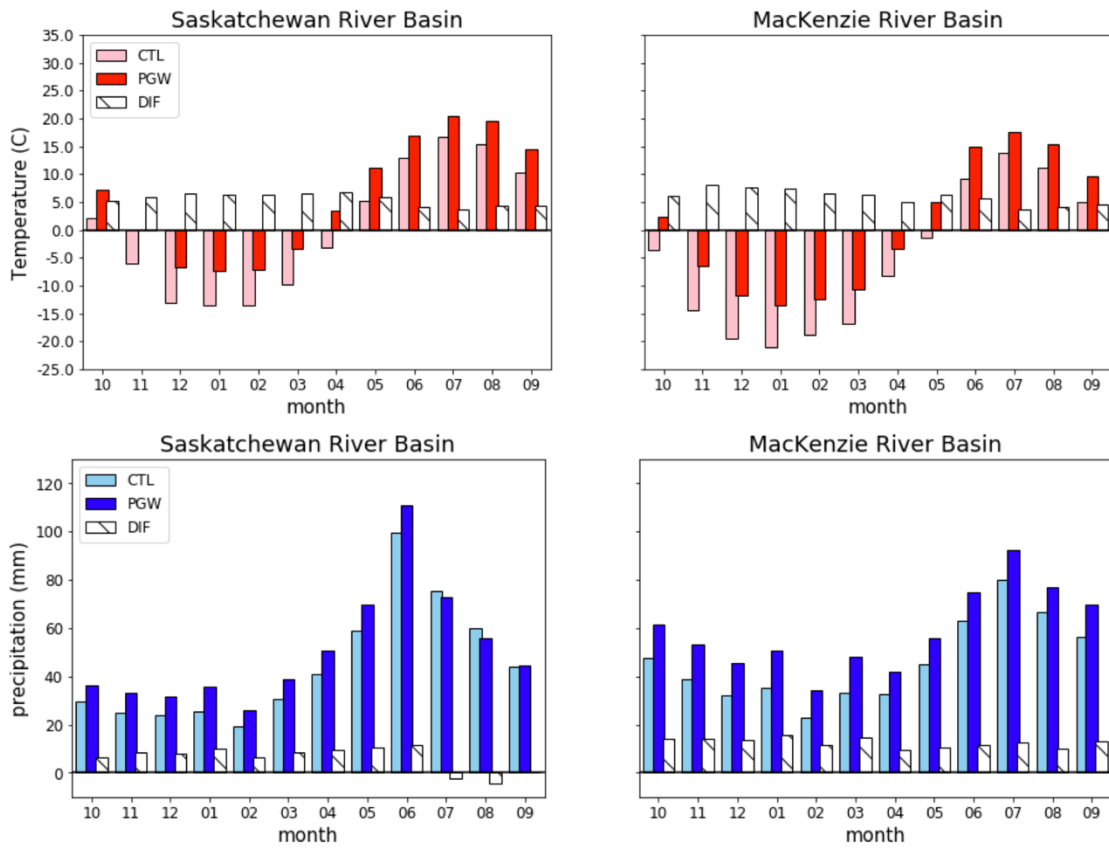


920

925

Figure 10: Annual cycle of temperature and precipitation projected by CMIP5 ensemble. The orange bars indicate the basin average temperature of current climate (1976-2005). The red bars represent the basin average temperature at the end 21st century under RCP8.5(2076-2100). The white bars denote the change in temperature at the end of century relative to the current climate. The dark green bars indicate the basin average precipitation of current climate. The shallow green bars represent the basin average precipitation at the end 21st century under RCP8.5. The white bars denote the change in precipitation.

WRF west Canada 4-km downscaling



930 **Figure 11: Annual cycle of temperature and precipitation projected by WRF-PGW (2001-2015). The pink bars indicate the basin average temperature of current climate. The red bars represent the basin average temperature at the end 21st century under RCP8.5. The white bars denote the change in temperature at the end of century relative to the current climate. The dark blue bars indicate the basin average precipitation of current climate. The shallow blue bars represent the basin average precipitation at the end 21st century under RCP8.5. The white bars denote the change in precipitation.**

935

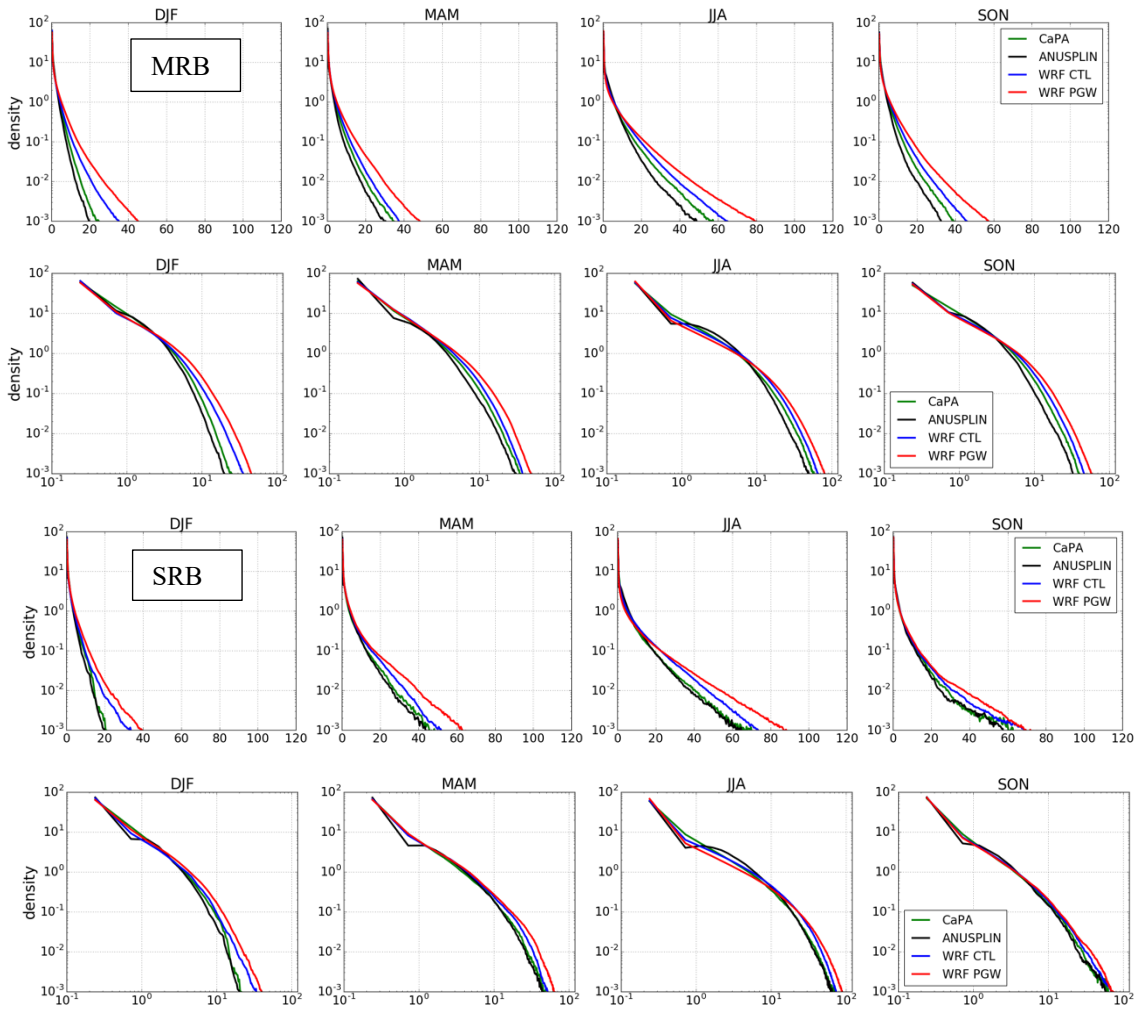


Figure 12: Daily precipitation probability density function in Mackenzie River Basin (top two rows) and Saskatchewan River Basin (bottom two rows) for WRF (CTL, PGW) and CaPA, ANUSPLIN with linear-log, log-log axes for density (y) and amount (x).

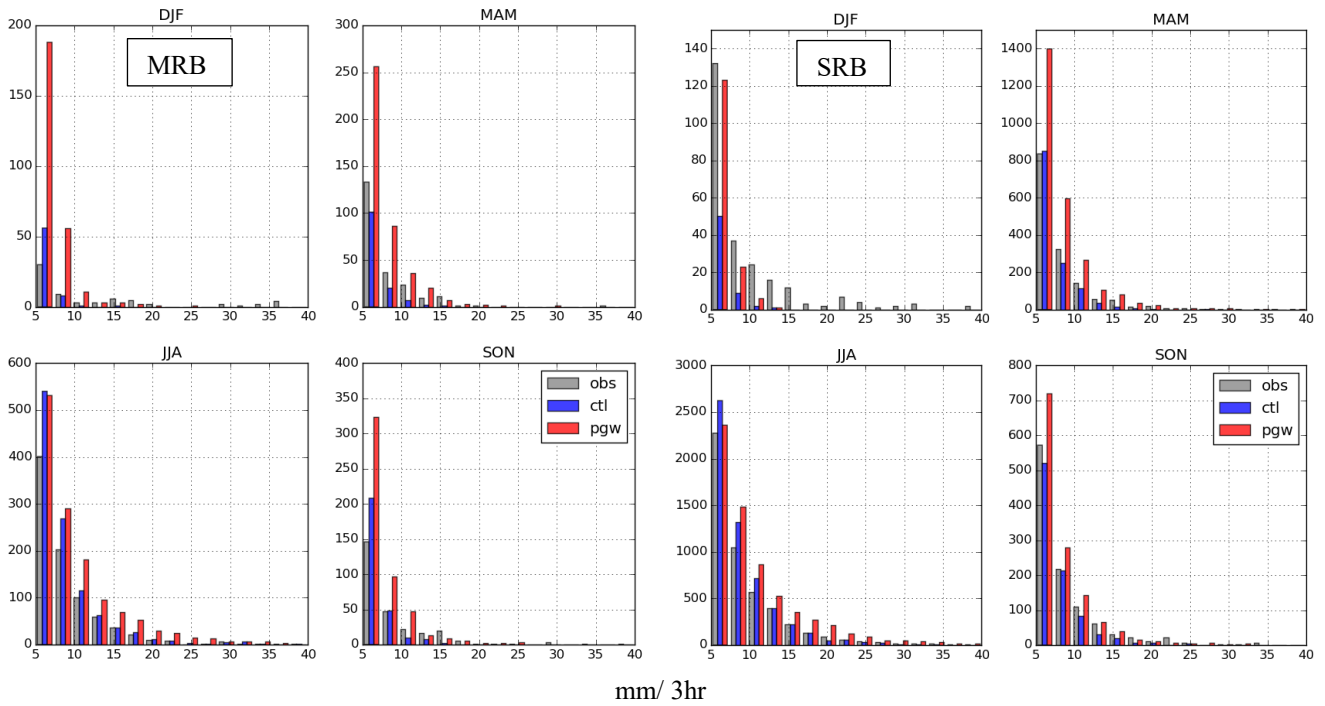


Figure 13: Three hourly precipitation distribution from station observation in MRB (left) and SRB (right) and those corresponding to WRF-CTL, WRF-PGW simulations.

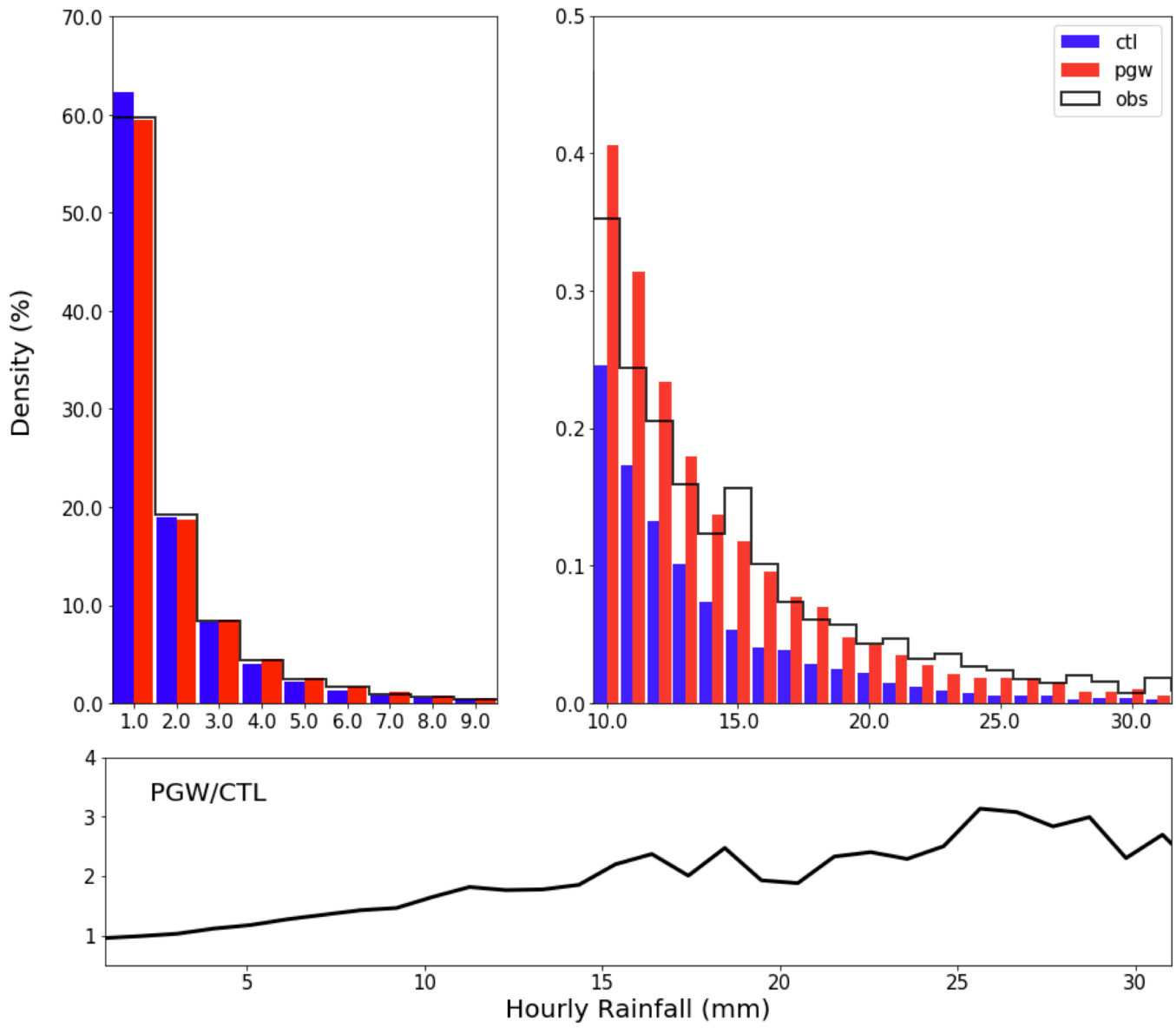


Figure 14: Hourly extreme precipitation frequency density over western Canada from station observation, WRF-CTL and PGW. The bottom panel shows the ratio between PGW and CTL for events with different intensities.

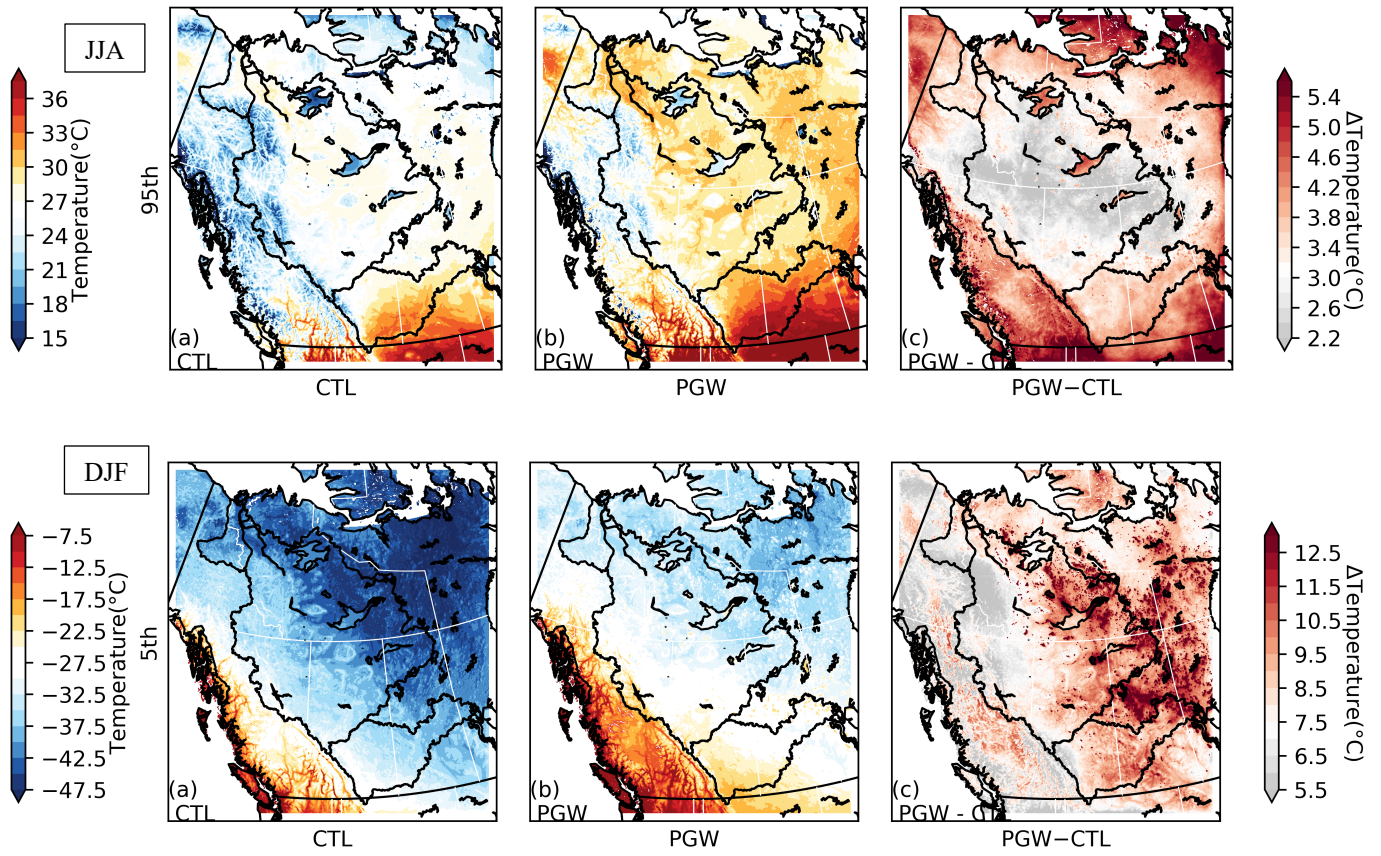


Figure 15: Top: Extreme statistics of daily maximum temperature in summer WRF-CTL vs WRF-PGW, 95th percentile. Bottom: Extreme statistics of daily minimum temperature in winter WRF-CTL vs WRF-PGW, 5th percentile.

960

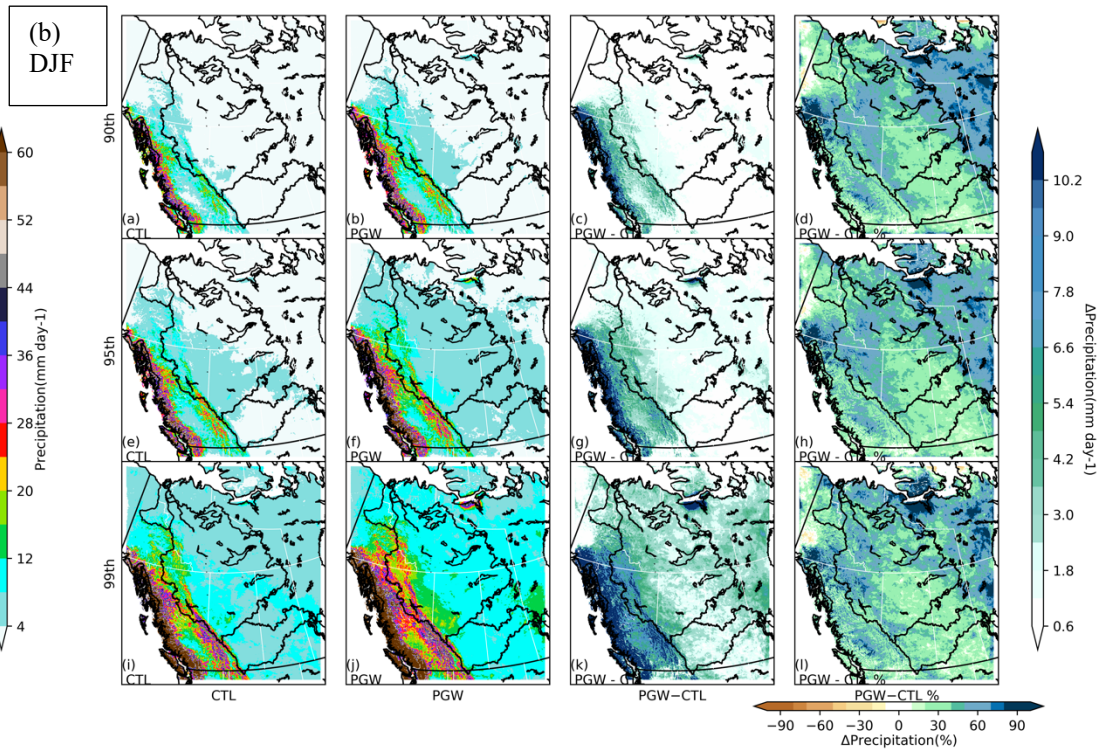
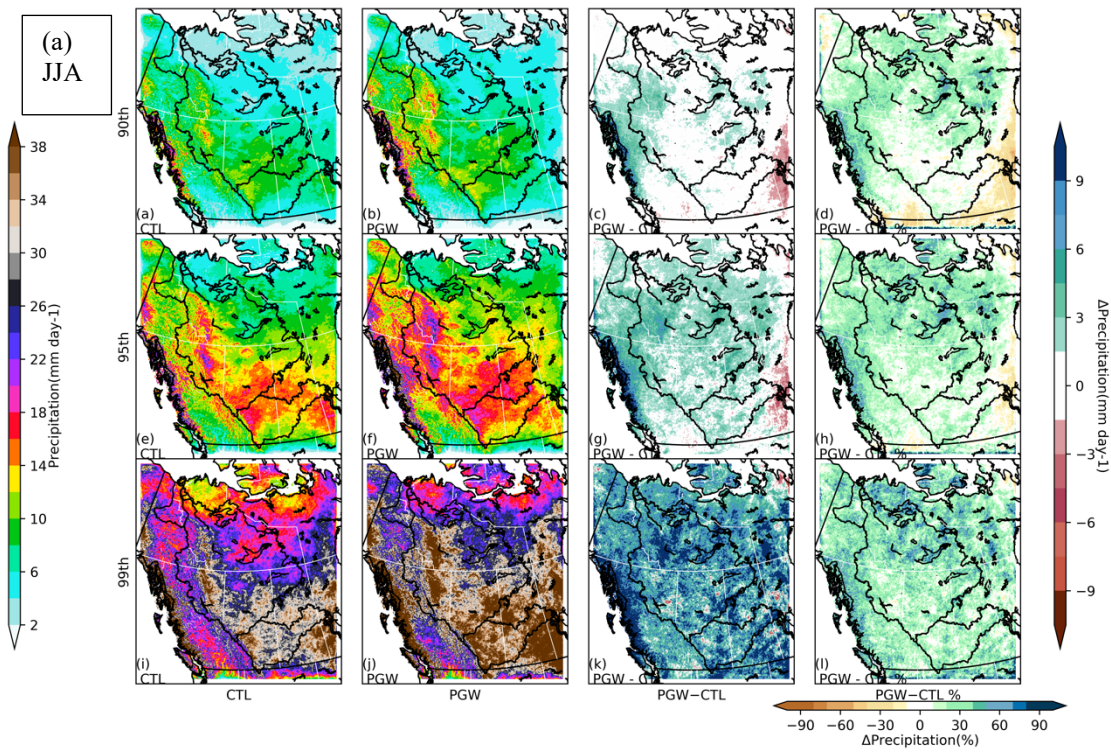


Figure 16: Extreme statistics of daily precipitation in summer (a) and winter(b) for WRF-CTL vs WRF-PGW, from top to bottom: 90th, 95th, and 99th percentile.

