

WHAT-IF: an open-source decision support tool for water infrastructure investment planning within the Water-Energy-Food-Climate Nexus

Raphaël Payet-Burin^{1,2}, Mikkel Kromann², Silvio Pereira-Cardenal², Kenneth Strzepek³, Peter Bauer-Gottwein¹

¹Department of Environmental Engineering, Technical University of Denmark, Kgs. Lyngby, 2800, Denmark

²COWI A/S, Kgs. Lyngby, 2800, Denmark

³MIT, Joint Program Sci & Policy Global Change, 77 Massachusetts Ave, Cambridge, MA 02139, USA

Correspondence to: Raphaël Payet-Burin (rapp@env.dtu.dk)

Abstract. Water infrastructure investment planning must consider the interdependencies within the water-energy-food nexus. Moreover, uncertain future climate, evolving socio-economic context, and stakeholders with conflicting interests, lead to a highly complex decision problem. Therefore, there is a need for decision support tools to objectively determine the value of investments, considering the impacts on different groups of actors, and the risks linked to uncertainties. We present a new open-source hydroeconomic optimization model, linking in a holistic framework, representations of the water, agriculture, and power systems. The model represents the joint development of nexus-related infrastructure and policies and evaluates their economic impact, as well as the risks linked to uncertainties in future climate and socio-economic development. We apply the methodology in the Zambezi River Basin, a major African basin shared by eight countries, in which multiple investment opportunities exist, including new hydropower plants, new or resized reservoirs, development of irrigation agriculture, and investments into the power grid. We show that the linkage of the different systems is crucial to evaluate impacts of climate change and socio-economic development, which will ultimately influence investment decisions. We find that climate change could induce economic losses up to 2.3 billion dollars per year on the current system. We show that the value of the hydropower development plan is sensitive to future fuel prices, carbon pricing policies, the capital cost of solar technologies, and climate change. Similarly, we show that the value of the irrigation development plan is sensitive to the evolution of crop yields, world market crop prices and climate change. Finally, we evaluate the opportunity costs of restoring the natural floods in the Zambezi delta; we find limited economic trade-offs under the current climate, but potentially major trade-offs with irrigation and hydropower generation under climate change.

1 Introduction

Having established Integrated Water Resources Management Plans, many countries and river basins around the world are now planning to formulate water infrastructure development plans. These plans will help countries and regions realize the potential of their water resources – including agriculture, energy generation, and tourism – while preserving the environment.

Infrastructure investments will contribute to multiple Sustainable Development Goals (United Nations, 2015), such as : End Poverty (1), Zero Hunger (2), Clean and affordable energy for all (6), Clean and available water for all (7), Sustainable economic growth (8), and Climate Action (13). However, formulating these investment plans is a complex process involving competing objectives, upstream-downstream trade-offs, interactions between investments, multiple stakeholders and uncertainty related to socio-economic changes and future climate. In particular, it requires evaluating the interactions in the Water-Energy-Food (WEF) nexus.

The WEF nexus is an expanding topic in the literature. Albrecht et al. (2018) provide a systematic review of nexus approaches; Bazilian et al. (2011), McCarl et al. (2017) and Miralles-Wilhelm (2016) consider modelling and research challenges and Khan et al. (2017) focus on the water and energy sectors. Nexus studies cover resource use efficiency, institutional analysis, decision-making, and policy integration, using a broad range of methods such as integrated models, input-output analysis, Life Cycle Assessment and stakeholder engagement. In general, they aim to identify trade-offs between the different sectors and to support the development of cross-sectorial solutions, which produce additional benefits in comparison to single resource assessments (Albrecht et al., 2018). There are two strategies to model the interdependencies in the nexus: one is to couple well-established single system models where the output of the one feeds the input of the other in a one-way or iterative process (e.g. Howells et al. (2013) and Kraucunas et al. (2015)); another is the holistic approach which internally represents all interactions within a single model (e.g. Kahil et al. (2018) and Khan et al. (2018)). The advantage of coupling models is that it simplifies communication among stakeholders in different areas that can use their respective tools and enables a more detailed representation of single systems, while the holistic approach better represents interrelations and is more effective in an optimization framework. A challenge in both cases is to represent the diversity of the scales (spatial, temporal and political) where interactions occur (McCarl et al., 2017). While there is no approach that can fit all purposes, few models consider a spatial and temporal scale that can represent the interactions of water infrastructure with the WEF nexus.

Hydroeconomic optimization models (HOM) have developed into potential decision support tools for basin-scale water resources management over the past decade (see reviews by Bauer-Gottwein et al. (2017) and Harou et al. (2009)). They have been used to analyse water infrastructure investments, reservoir release scheduling and transboundary resources sharing problems. (e.g. Dogan et al. (2018), Draper et al. (2003), Goor et al. (2010), and Tilmant and Kinzelbach (2012)). Models include a representation of the regional-scale flow network; water availability, water uses and willingness-to-pay. By associating an economic impact to each decision, the complex multi-objective management problem becomes a simpler single-objective problem. Traditionally, agricultural and energy water users are represented with an exogenous demand and willingness-to-pay for water (Bauer-Gottwein et al., 2017). Therefore, classic hydroeconomic models are able to analyse trade-offs and synergies between water users, but are not as effective in terms of representing dynamic interactions between infrastructure, policies, and commodity markets. For example, increased production of a commodity may lead to a lower market price of the commodity and thus to a lower willingness-to-pay for water. On the other hand, nexus models, particularly energy centred models (e.g. OSeMOSYS (Howells et al., 2011) and TIAM-FR (Dubreuil et al., 2013)) tend to ignore the spatial and temporal scale of water availability and therefore may overlook water scarcity problems (Khan et al., 2017).

Over the past 20 years, an increasing amount of legal and policy frameworks for transboundary water management have been implemented in internationally shared water courses (Qwist-Hoffmann and McIntyre, 2016). River basin organisations are intended to facilitate the application of such mechanisms. In the Southern African Development Community (SADC), a state willing to implement a project, needs to notify potentially affected riparian states, including a description of the projects and its potential impacts (SADC, 2000). Furthermore, most international financial institutions (e.g. AfDB, World Bank) require "No-objection" from riparian states to fund projects. Therefore, there is a need for decision support tools to objectively determine the impacts of WEF related projects on transboundary watersheds.

In this study, we developed a new open-source decision support tool for water infrastructure investment planning: WHAT-IF, Water, Hydropower, Agriculture Tool for Investment and Financing. The novelty of the tool is that it combines a hydro-economic optimization framework, with a nexus representation of the agriculture and food systems. The tool can represent political boundaries, the joint development of WEF infrastructure and policies, and uncertainty in future climate and socio-technical changes. It aims to provide quantitative answers to the following prototypical questions:

- What is the economic impact of a given project or set of projects? Which is the best alternative among different investment plans?
- What are the synergies or trade-offs between investments and/or policies in different sectors? (e. g. what are the trade-offs between hydropower, irrigation development plans and ecosystem preservation)
- What are the risks linked to uncertainty in future climate and socio-economic changes? Which investments and policies will be more robust to a range of future conditions?

This article is structured as follow: firstly, Sect. 2 presents the general modelling framework and details the representations of the water, energy, and food systems and the economic optimization. Secondly, we illustrate an application of the model on the Zambezi river basin, where water resources of the eight riparian countries play a central role in the regional economy and are critical to sustainable economic growth and poverty reduction. Section 3 shows the input dataset for the study case, as well as the investment opportunities such as new hydropower plants, new or resized reservoirs, development of irrigation agriculture, and investments into the power grid. We show in Sect. 4 how the model answers the previous questions to assist decision-making. Finally, we discuss the limitations and improvement opportunities of the modelling approach in Sect. 5.

2 Methodology of the decision support tool

Figure 1 provides an overview of the decision support tool methodology, with the representation of the WEF subsystems and their main components. Subsystem representations are based on the concepts used in models such as WEAP (Yates et al., 2005) for the hydrology and water management, OSeMOSYS (Howells et al., 2011) for energy systems and IMPACT (Robinson et al., 2015) for agriculture. Subsystems are presented as blocks only for explanation purposes; the model internally represents the interrelations in the nexus. The core component is the economic optimization framework, using a single objective function taking into account the different production costs, transaction costs and supply benefits of the different WEF

commodities. In welfare economic terms, the objective function maximizes the sum of the total consumer and producer surpluses, where the consumer surplus is the difference between the consumers' willingness to pay and the market price, and the producer surplus is the difference between the market price and the producers' production costs (Krugman and Wells, 2005). In contrast to simulation models that are rule-based (such as WEAP), the model finds the optimal water, agriculture and energy management decisions, considering trade-offs and synergies between them. The optimization framework simulates adaptation to new infrastructure and policies, climate change, and socio-economic development. Conversely, in a rule-based simulation framework, allocation rules are usually based on the current socio-economic conditions or new rules are estimated, which may lead to suboptimal allocation decisions and underestimation of project benefits (Pereira-Cardenal et al., 2016). The optimization approach is based on a perfect foresight formulation, assuming that optimal decisions are found with full knowledge of the planning period; limitations of this common approach in sectoral planning models are discussed in Sect. 5. The main outputs are economic indicators (such as market prices, consumer and producer surpluses), as well as water, energy and agriculture management decisions (such as supply, consumption, storage, production and transport). To calculate the economic impacts of an investment plan or a specific project, with/without analyses are performed, and different options can be compared. With/without analyses tend to overestimate benefits when no alternative is represented, particularly in growing economies (Griffin, 2008). Therefore, the model also integrates capacity expansion representations for the energy system and alternative supply sources for agriculture, such as import or rainfed agriculture. To represent uncertainties linked to future climate or socio-economic development, the same investment plan or infrastructure is evaluated for different scenarios defined by the user. Hence, the decision support tool can be used as a discussion platform for stakeholders, answering questions such as "What are the economic impacts on producers and consumers of crops, energy and water of the projects?", "What if in the future available water resources are reduced because of climate change?" or "How robust is a plan considering uncertainties in socio-economic development?".

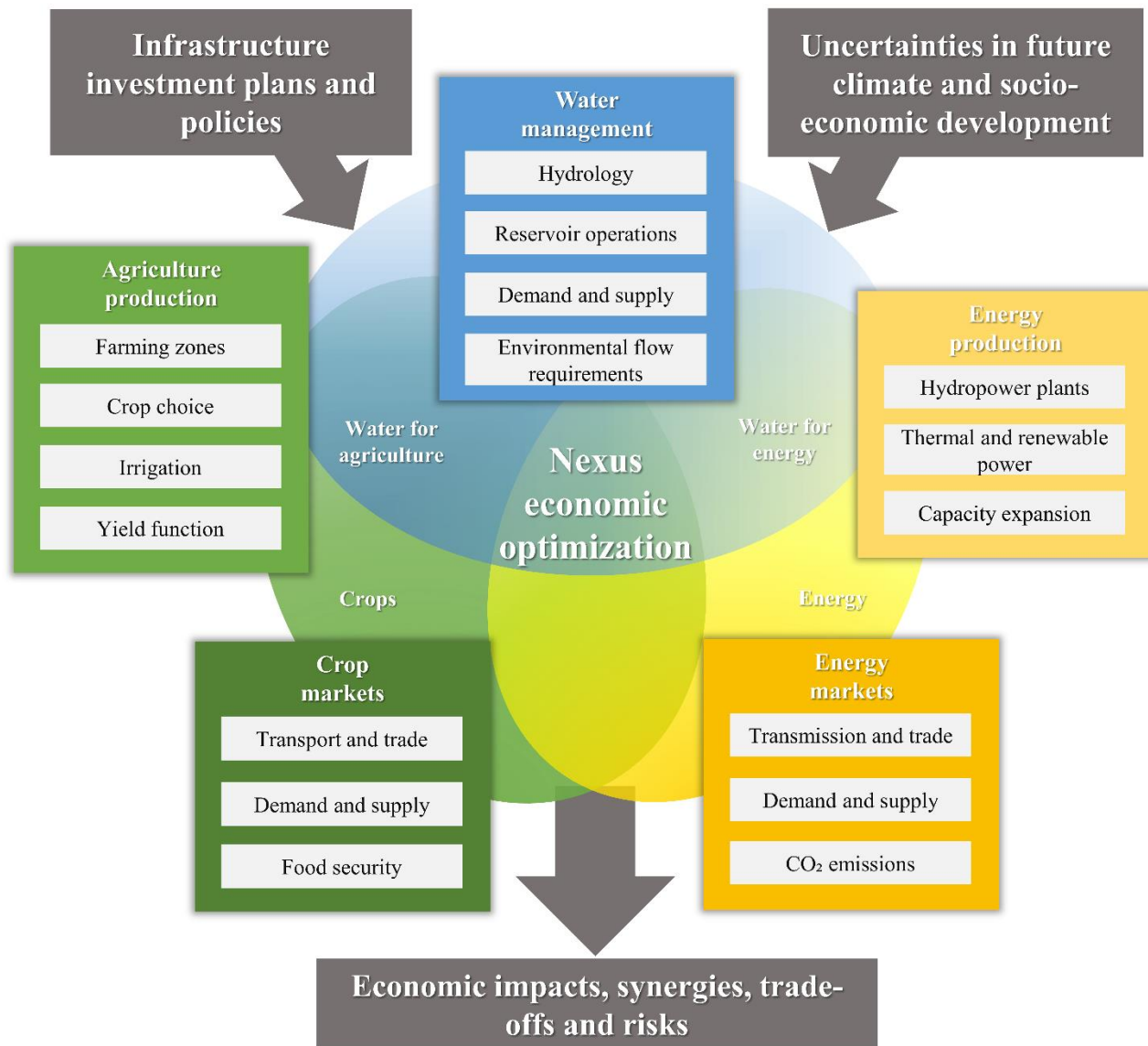


Figure 1: Conceptual framework of the decision support tool. The water, agriculture and energy system are connected in the economic optimization framework. The blocks represent the different processes used in the model to represent the water, energy and food systems, while the circle contains the economic and physical interactions. The block representation is only for explanatory purposes; interactions are solved in a holistic approach.

The model is open-source and coded in the python programming language, using the pyomo modelling framework (Hart et al., 2017). The code and installation instructions can be found on Github (<https://github.com/RaphaelPB/WHAT-IF>). The model can be connected to different open-source or commercial solvers; input data and output results are organized in MS Excel

spreadsheets. We adopt a general framework that is study case independent. Depending on the context, the availability of data, and the questions that the decision support tool is supposed to answer, some components can be relevant or not. For this reason, the model is holistic in its resolution, but modular in its formulation, the user can activate or deactivate different modules and new modules representing relevant interrelations are easy to add. McIntosh et al. (2011) describes some of the challenges and best practices of developing an environmental decision support system, it includes: start simple and small with a modular approach, plan for longevity with a framework easy to update, design for ease of use including a user-friendly interface, and design for usefulness by including stakeholders' input. Following these recommendations, the flexibility of the framework and its open-source character will enable the tool to evolve with user and stakeholder inputs and additional features will be added such as GIS visualization and data acquisition modules.

In the following sections, we describe the individual modules represented in Figure 1. All the parameters, equations and decision variables are detailed in the supplementary material. For the practical implementation of the modules and their parametrization, the reader is referred to Sect. 3 for the Zambezi study case.

2.1 Water management

The water module represents hydrology and water management. The basic hydrological time scale is at monthly time steps, but this is not a fixed requirement. The river network is described by a node-based approach, where the modelled area is divided into catchments with corresponding precipitation, evapotranspiration, surface runoff and groundwater recharge. Water transfer channels form additional links to the river network. The water is stored and released from reservoirs and is allocated to water users, while lakes and groundwater are represented as linear reservoirs. Evaporative losses take place in the river network, reservoirs and lakes. Water supply costs and losses are also considered. Water users can be defined with a water demand and an associated marginal value; however, agriculture users and hydropower have a dynamic demand and marginal value detailed in the agriculture and energy modules.

The water resource can have an important value for activities that are not directly represented in the model, such as ecosystems, tourism, fishing, and transportation. Rather than giving it an economic value that may be hard to define and very uncertain (Loucks et al., 2005), the environmental flows module enables to define minimum flow requirements that have to be guaranteed in the river. For methods to quantify environmental flow requirements, see Tharme (2003).

2.2 Agriculture production

The agriculture module computes local water demand for agriculture and production of crops depending on water allocation and rainfall. Farming zones represent agriculture areas with a specific farm type, have a limited area and belong to a catchment and a country. Farm types can represent different soil qualities, fertilizer/pesticides inputs and availability of irrigation and drainage systems. Farm types define the potential yields, cultivation and infrastructure costs, they can be used to represent different kinds of agriculture, such as rainfed, irrigated and subsistence agriculture or differences among the countries/regions depending on available data and the user's interest. Crops (as a traded commodity) are produced at the yearly time step by

cultures. Cultures are divided into growth phases (e.g. initial, crop-development, mid-season and late season) which take place during a specific period of the year. Water requirements by cultures are estimated using the FAO 56 method (Allen et al., 1998), with the reference evapotranspiration and a culture and phase specific crop coefficient. The relation between water allocated to cultures and yield is estimated using the additive yield water response function based on the FAO 33 method (Doorenbos and Kassam, 1979). In a farming zone the same area can be used by several cultures during different periods of the year, representing multiple harvests per year; the schedules are defined by the user. The model either finds the optimal crop choice per year or assumes a fixed crop distribution for the entire simulation period. However, additional constraints such as maximum area per culture and farming zone can be used to represent physical, institutional or economic constraints which are otherwise not included in the modelling framework. Crop production costs represent costs of infrastructure, machinery, labour, land, chemicals and fertilizers, depending on the culture and farm type.

2.3 Crop markets

The crop market module represents the local demand, transport, and trade of crops. Crop markets are characterized by a demand, a marginal value and a demand elasticity for the different crops. A minimum supply requirement can be defined, to represent food security constraints. Crops produced in the farming zones are transported between crop markets through transport routes, with associated costs and losses. External markets can be introduced to represent imports and exports out of the study area. These markets behave as the other crop markets, but their crop production is represented through an external crop production function which does not depend on farming zones (the function is assumed to be infinite and perfectly inelastic).

2.4 Energy production

The energy modules focus on electric energy, also called the "power system", and do not consider fuels for transportation, cooking or heating. Power is produced by hydropower turbines and other power plants (such as thermal, solar, wind and biomass). Hydropower turbines are either linked to a reservoir or are run-off-the-river and have associated operation costs and water-energy equivalent factors. Other power plants are defined by their efficiency, fuel use, operation costs and production capacity. In addition, generic power technologies represent additional capacity that can be invested in, similarly to capacity expansion models (e.g. Howells et al. (2011)). They have associated capacity construction costs, fixed and variable operational costs, fuel use and efficiencies that can be defined for every power market (see Sect. 2.5 for power markets). "Other power plants" and "generic power technologies" are represented in a similar way; the main difference is that the first can be used to represent specific existing or planned power production units, while the second represents potential technologies available to the capacity expansion model. Fuels represent the different natural resources that can be used to produce energy (e.g. coal, gas or sun); fuel consumption is determined by the power plant's efficiency and a fuel price can be defined per power market. CO₂ emissions are associated to different fuels, which lead to CO₂ emission costs if a carbon cost is defined.

2.5 Energy markets

The power market module accounts for the power network and the power demand. Power markets define the resolution of the power network and the power demand, they can be defined nationally or regionally. As for crop markets, they are characterized by a demand and marginal value for power, however demand is assumed to be perfectly inelastic. Transmission lines carry energy between power markets with associated costs and losses and a limited capacity. This corresponds to a "transport model" or "transshipment model", which does not consider reactive power flows and voltage angles, but is commonly used for planning energy systems as it requires less data and computation time than AC or DC power flow models (Krishnan et al., 2016). The base time scale for the power system is, as for the hydrology, the monthly time step. However, the power demand can be divided into different load segments (such as peak and base, day and night) defined by the user. Load segments are commonly used in energy models with large time steps to better represent the effects of peaking demand (Palminier, 2013). Some generic power technologies can have a limited capacity during specific load segments, this feature serves to represent renewable energies such as solar or wind (e.g. no solar energy is available at night, windy or less windy segments can be defined).

2.6 Economic optimization

The economic module is the objective function of the optimization model. The equations are solved to find the optimal water, agriculture and energy management decision variables minimizing the costs (/maximizing the benefits) resulting from previous modules while respecting the physical, political and economic constraints. In welfare economic terms, this corresponds to the maximization of the total consumer and producer surplus for all commodities represented: water, crops, and energy (see Krugman and Wells (2005) for details on consumer and producer surplus). According to the second welfare economic theorem, any pareto optimal allocation can be reached by a competitive market. This means that the "centrally planned" solution from the economic optimization module, is the same as the individual profit maximization solution, assuming that water, energy and crops could be traded on perfect markets.

The objective function φ to maximize is expressed as:

$$\varphi = \text{WSB} - \text{WSC} + \text{CSB} - \text{CSC} - \text{CPC} + \text{ESB} - \text{ETC} - \text{EPC}$$

Where WSB represents the water supply benefits, WSC the water supply costs, CSB the crop supply benefits, CSC the crop supply costs, CPC the crop production costs, ESB the energy supply benefit, ETC the energy transmission costs, and EPC the energy production costs which are the sum of the energy operational costs, fuel consumption and CO₂ emission costs and the capacity expansion costs (see the Supplementary materials for the complete description of the equations).

The main link in the nexus, is the water resource for which hydropower, irrigation and ecosystems compete (Figure 2). The energy markets provide a dynamic value to hydropower production, while the crop markets provide a dynamic value of irrigation. The markets are therefore indirectly linked through the water trade-offs between hydropower and irrigation. Exogenous drivers on these markets such as new policies, technological and socio-economic changes, indirectly affect the water trade-offs and therefore all markets.

The main outputs of the economic optimisation are the optimal decisions in terms of water, energy and agricultural management and the resulting economic impacts on different groups of actors. Equally important outputs are the shadow prices of the constraints (also called duals) that reveal the equilibrium prices of the different commodities and give information about capacity constraints (e.g. the marginal value of additional storage or transmission capacity) that can help identify bottlenecks in the systems (Harou et al., 2009).

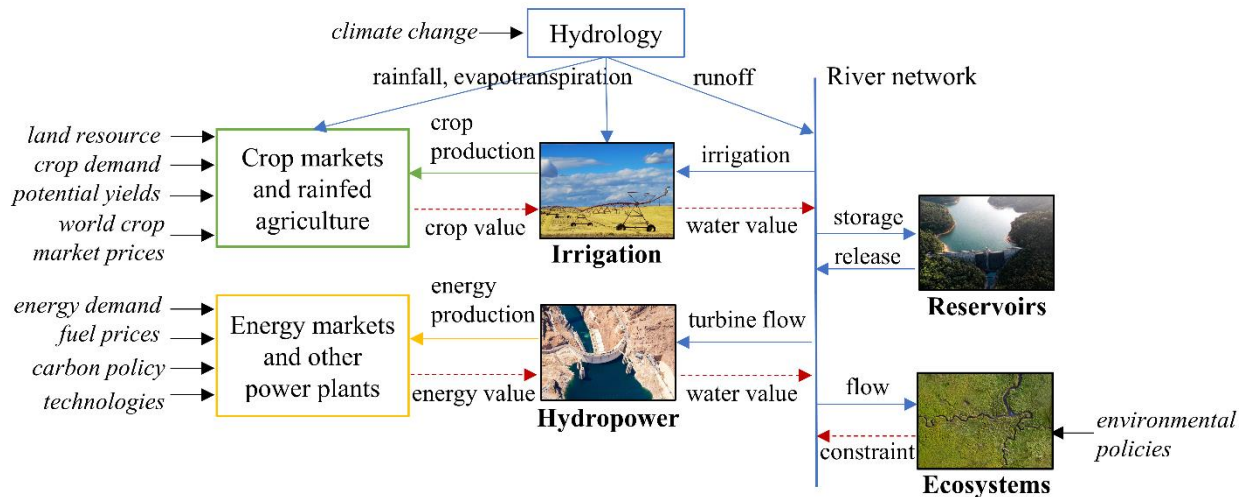


Figure 2: Main feedback loops in the water-energy-food nexus representation. All flows are holistically solved to maximize total economic surplus, the water, energy and crop values are the resulting duals of the mass balances constraints. The figure does not show the temporal and spatial scale of the nexus problem.

3 The Zambezi river basin study case

The Zambezi river plays a central role in the regional economy and is shared by eight riparian countries: Angola, Botswana, Malawi, Mozambique, Namibia, Tanzania, Zambia, and Zimbabwe. The countries formed the Zambezi River Commission (ZAMCOM) in 2014, which is the river basin organisation supporting transboundary water management. The water resource supports agriculture, fisheries, hydropower production, water supply and sanitation, navigation, tourism, industries and mining. The basin extends over almost 1.4 million square kilometres, sustaining the basic needs of 40 million people and a rich and diverse natural environment. In the river basin, 77% of the population have access to safe and adequate water supply and 60% has access to adequate sanitation, which is above the Southern Africa averages (SADC et al., 2015). The area is mainly covered by forest and bush (75%), while cropland represents only 13% of the area, mainly rainfed, as less than 5% of the cropland is irrigated (SADC et al., 2015). The main source of energy is biomass, fulfilling 80% of the demand; a limited share of the population has access to grid electricity, ranging from 12% in Zambia to 40% in Zimbabwe (SADC et al., 2015). Population is expected to grow rapidly, reaching 51 million in 2025 and 70 million in 2050, which will increase the demand for water,

food and energy (SADC et al., 2015). Therefore, the water resources of the river basin are critical to sustainable economic growth and poverty reduction in the region.

The World Bank carried out the Multi-Sector Investment Opportunities Analysis (MSIOA) study (World Bank, 2010), that analyses the value of the hydropower and irrigation projects and trade-offs between them. The study finds that the hydropower development plan is able to meet the region's current energy demand and that the implementation of the irrigation development plan would reduce the current hydropower production by 9%. Tilmant et al. (2012) also investigate trade-offs between hydropower and irrigation development in the Zambezi basin, using a stochastic hydroeconomic optimization formulation. The study finds that some of the upstream irrigation projects are not viable if the downstream hydropower projects are developed. However, the study uses an exogenous price for hydropower and irrigation water, and, as the World Bank study, it does not consider climate or socio-economic changes. Beilfuss (2012) points out that most of the planned hydropower projects were evaluated using historical hydrologic data, not considering climate change and may therefore be economically not viable. Furthermore, the study highlights the lack of consideration of the impact on ecosystems of large hydropower projects. In a further World Bank study, Cervigni et al. (2015) assess potential impacts of climate change on water infrastructure in sub-Saharan Africa. The study finds for the Zambezi that in the driest scenario hydropower production could decline by up to 60% and unmet irrigation demand increase by up to 25%. Focused on the power system, the IRENA (2013) study shows that 80% of capacity addition between 2010 and 2030 in the South African Power Pool (SAPP) could be renewable technologies. This tendency is confirmed in Spalding-Fecher et al., (2017b) analysing electricity supply and demand scenarios for the SAPP power pool until 2070. Spalding-Fecher et al. (2017a) by combining the previous study with data from Cervigni et al. (2015) find that hydropower production could decline by 10-20% in a drying climate which could increase generation costs by 20 to 30% in the most hydropower-dependent countries. The agriculture system is, however, not part of the integrated analysis. In a broader perspective, the Zambezi Environment Outlook study (SADC et al., 2015), presents an integrated analysis of the Zambezi river considering ecological, social and economic issues.

3.1 Hydrology, reservoirs and environmental flows

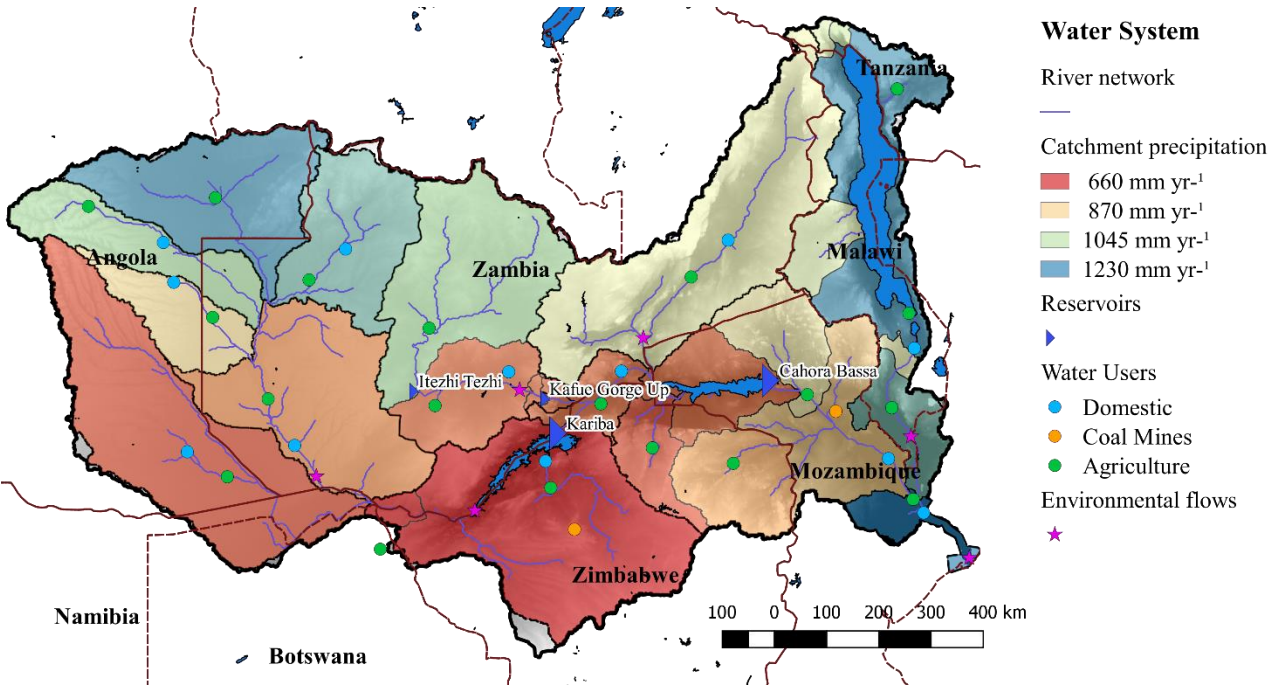


Figure 3: The water system representation. The river basin is divided into hydrological catchments defining the river network and a rainfall-runoff model gives water availability. Reservoirs can store and release water. Water users represent large non-agricultural consumption, such as mining.

The hydrologic data used in this study is the same as the data used in Cervigni et al. (2015). The historical climate dataset is from Sheffield et al. (2006), and runoff is given by a lumped rainfall-runoff model from Strzepek et al. (2011). As the annual flow follows long term cycles, we use a 40 years time series, from 1960 to 1999: the years 1982-1998 are significantly below average and the years 1960-1982 are above average (Beilfuss, 2012). The rainfall-runoff model exogenously considers the effect of wetlands that evaporate part of the river flow. Therefore, the impact of reservoir operations on wetland dynamics is not represented; however, only the Kafue flats are located downstream of a major reservoir (Itezhi-Tezhi) and upstream of other water users. According to World Bank (2010) groundwater is not overexploited in the river basin, furthermore there is almost no data available concerning groundwater, therefore, like in similar studies in the basin, groundwater is ignored in this study. The main reservoirs of the Zambezi river, Itezhi-Tezhi, Kariba and Cahora Bassa dam (Figure 3) have a total active storage capacity of 127 000 million m³, slightly higher than the mean annual flow. Evaporation from the reservoirs is the main consumptive water use, ranging from 7 800 to 16 989 million m³ per year depending on the studies (Beilfuss, 2012; Euroconsult and Mott MacDonald, 2008; Tilmant et al., 2012), see Sect. 4.1 for more details. The volume-area relationships used to compute evaporation are derived from World Bank (2010). The main non-agricultural water users are the Gokwe and Moatize coal mines with 622 million m³ per year, other industrial and domestic water consumptions are relatively small and represent only 175 million m³ per year (World Bank, 2010). Waters of the Zambezi sustain some fragile ecosystems, among them are:

Kafue flats and Barotse Plain in Zambia, Mana Pools in Zambia and Zimbabwe, and Zambezi Delta in Mozambique. We do not represent the economic value of these, but use environmental flow requirements from (World Bank, 2010), which are based on two assumptions: flow should not drop below the low-flow level in dry years and average annual flow should not drop below 60% of the mean average annual flow. This constraint is applied at the Barotse floodplain, the Kafue Flats, the Luangwa river, the lower shire, and the Zambezi delta (Figure 3).

3.2 Energy

The national power utilities of the Zambezi basin are members of the Southern African Power Pool (SAPP), which is the institution overseeing the power sector in southern Africa. The goal of the SAPP is to develop of a competitive electricity market in which power is traded in bilateral, forward physical, day ahead and intraday markets. The SAPP power pool is dominated by South Africa which represents roughly 80 % of the demand and production (SAPP, 2015). Coal is the main source of power production (77%), followed by hydropower on the Zambezi and Congo river basins (21% of installed capacity), nuclear, gas and renewables representing only a minor share (SAPP, 2015). The members of the SAPP are interconnected with transmission lines, except for Angola, Malawi and Tanzania which are isolated. The demand for electricity is growing rapidly, and in recent years power shortfalls became common particularly in Mozambique, Malawi, South Africa, Zambia and Zimbabwe (World Bank, 2010). Figure 4 shows an overview of the energy system representation.

3.2.1 Energy markets

To represent the energy system, we consider one power market per country (Figure 4), including South Africa which is the main power exchanger with the Zambezi basin. National power demands are found in SAPP (2015). We assume non-satisfied power demand is compensated by running fuel generators, so power curtailment costs are estimated at 240 \$ MWh⁻¹. The monthly energy demand is divided in two load segments: a base demand and a peak demand. Based on SAPP (2015), the peak load is during day and covers 70% of the total demand, while the base load is during night and covers 30% of the demand, both are assumed to cover half of the monthly time step. Energy demand is assumed to be perfectly inelastic, as most consumers do not have hour-by-hour metering, the price signal from the marginal cost of production is assumed to not reach the consumer. The transmission network is represented by aggregated transmission lines among countries that are connected, the transmission capacity and loss rate are found in IRENA (2013), SAPP (2018) and World Bank (2010).

3.2.2 Energy production

We represent the existing hydropower plants and one aggregated power plant per country (Figure 4) representing the total non-hydropower generation capacity, using data from World Bank (2010). For hydropower plants, the water-energy equivalent factor is derived from turbine capacity in m³/s and power output in MW from World Bank (2010). In addition, three generic technologies are available for additional investments: supercritical coal, combined cycle gas turbines (CCGT) and solar photovoltaic. Investment costs, fix and variable operation and maintenance costs, lifetime, and efficiency of these technologies

are found in (IRENA, 2013), we assume the same parameters for all countries. However, gas and coal (fuels) costs vary among countries, depending on their local availability (IRENA, 2013). To represent intermittency constraints in a simplified way, solar energy is assumed to be unavailable during the base load segment (night), and the peak load segment (day) is divided in two: days where solar energy can be produced and days where it can't. The length of these two load segments is adjusted to fit the load factor of 25 % used in (IRENA, 2013) for solar photovoltaic energy.

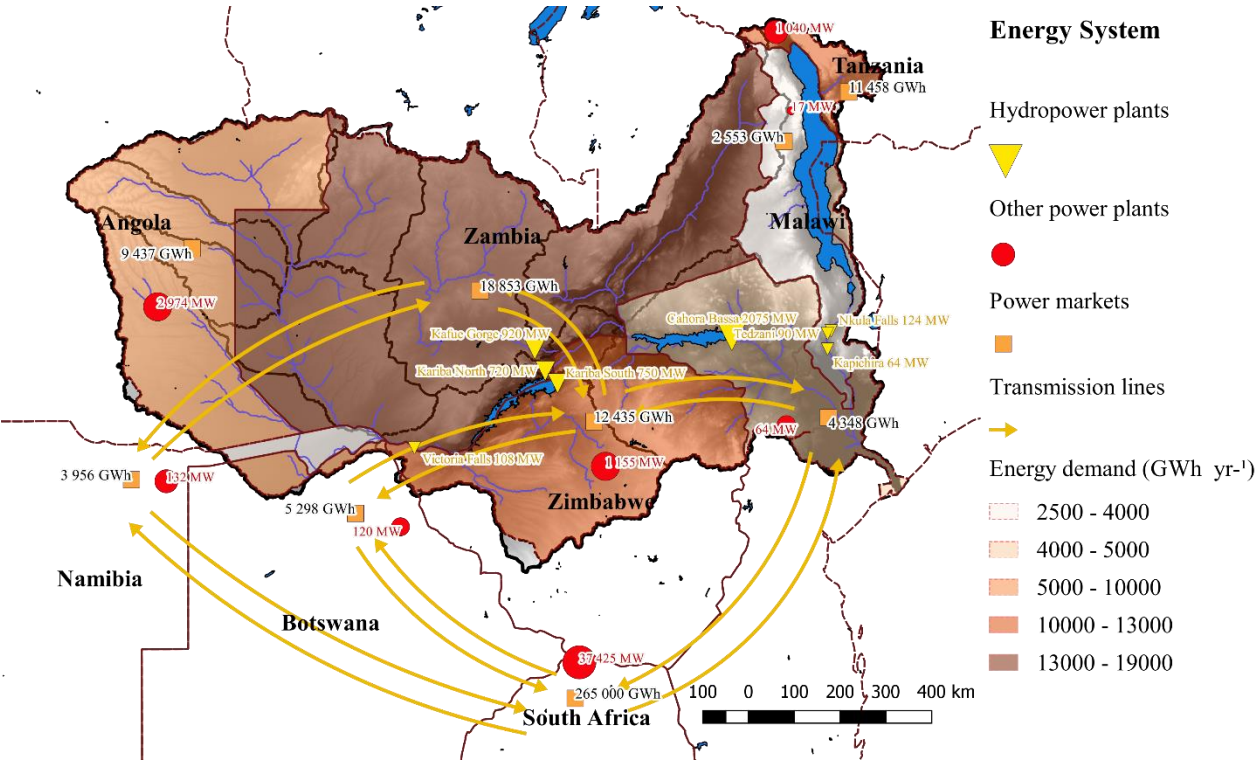


Figure 4: The energy system representation. Hydropower plants are represented individually while the remaining generating capacity is aggregated in a single power plant per country. Transmission lines among the countries permit power exchanges. Additional power generating capacity can be added in every power market by investing in one of the generic power technologies (Coal, Gas or Solar).

3.3 Agriculture

According to FAO (2018), the total production value of the agricultural sector in the Zambezi basin is around 6.7 billion dollars per year (the numbers are estimated by downscaling national statistics from 2010 to 2016 with the population ratio). Among these, 1.7 billion dollars is from exports and half of the exports are tobacco. The crop imports represent 1.2 billion dollars per year, wheat and rice being the most imported crops. Agricultural markets are heavily regulated by policies such as import or export bans and crop prices fixed by the governments, therefore little trade occurs among the Zambezi countries. The trade among Zambezi countries accounts for only 320 million dollars per year, and almost half of it is exports of maize and tobacco from Zambia to Zimbabwe.

3.3.1 Main crops and cultures

To represent the most significant crops in the agricultural module different aspects should be considered: the cultivated area per crop has the strongest impact on water demands for agriculture, however the value of agricultural production indicates which crops have the biggest economic impact. Another factor is which crops are mainly used for irrigated agriculture, as these will have a bigger impact on the nexus and irrigation projects. To simplify the model, some crops are grouped, which assumes that crops in the same group are fully substitutable and have the same value. Table 1 shows all selected crops; cassava, maize and roots represent more than half of crop production, cultivated area and value of production. However, for irrigated agriculture the most important crops are cereals, rice, sugar cane and stimulants. Some of the crops can be produced by different cultures (e.g. summer and winter); the represented cultures are: cassava, potato (roots), wheat and sorghum (cereals), summer and winter maize, vegetables, sugarcane, summer and winter rice, fruits, groundnuts and soybeans (oilseeds), stimulants, summer and winter beans (pulses).

Potential yields of the different cultures are estimated as the maximum observed yield in each country from the FAO (2018) "Production quantity" and "Area harvested" data between the years 2000 and 2016. This assumes the maximum yield was obtained due to optimal hydrologic conditions, all other inputs being equal. In general, yields in Zambezi countries are lower than average expected yields because of very low inputs (World Bank, 2010). We consider four growing phases for all cultures (initial, crop-development, mid-season and late season). The corresponding crop coefficients (Kc) and yield water response coefficients (kY) used in the model to calculate the water requirements and the resulting yields are found in FAO 56 (Allen et al., 1998), World Bank (2010) and FAO 33 (Doorenbos and Kassam, 1979). Average irrigation losses in the Zambezi area are estimated at 55% between gravity and sprinkler irrigation systems, considering conveyance, distribution and application losses (World Bank, 2010). Return flows are estimated at 30% for all cultures and catchments. Cultivation costs per hectare for different cultures are derived from Social Accounting Matrices of Malawi, Mozambique and Tanzania (IFPRI, 2014, 2015, 2017a). Cultivation costs include seeds, fertilizers, chemicals, labour and capital costs, the cost per hectare is calculated by dividing the total economic flow by the area cultivated the corresponding year. As few data are available, we consider a different cost per culture but use an average cost over all countries. The land costs are not included as the model internally represents a market for agricultural land use. We consider two farming zones per catchment, representing irrigated and rainfed land. Available area for rainfed and irrigated agriculture is obtained from the spatial data of the SPAM model (IFPRI and IIASA, 2017) and from World Bank (2010). For irrigated agriculture the crop choice is constrained by the observed area for each culture, this is to avoid over production of very profitable cash crops and takes into account non-represented physical, socio-economic or political constraints.

Table 1: Represented crops and their importance in the agricultural sector. The modelled crops represent more than 90% of the crop production, cultivated and irrigated area and of the production value. The production value excludes meat and dairy products. Some crops have a moderate impact on the global economy (e.g. cereals, rice and stimulants) but are important for irrigated agriculture. The share of irrigated area is from World Bank (2010), other indicators from FAO (2018) averaged over 2010 to 2016.

Crop group	Main crops	Production	Cultivated area	Irrigated area	Production value
------------	------------	------------	-----------------	----------------	------------------

cassava	cassava	22%	7%	0%	30%
maize	maize	20%	43%	7%	18%
roots	potatoes and sweet potatoes	9%	3%	0%	18%
fruits	bananas, pineapples and coconuts	5%	2%	3%	5%
oilseeds	groundnuts, soybeans and sunflower	3%	13%	5%	7%
pulses	beans, peas and other pulses	2%	12%	0%	7%
cereals	wheat, sorghum, millet and barley	2%	7%	17%	2%
rice	rice	1%	1%	13%	2%
vegetables	tomatoes and other vegetables	2%	1%	5%	3%
stimulants	tobacco, tea and coffee	1%	2%	8%	7%
sugarcane	sugarcane	28%	1%	33%	-
TOTAL		95%	92%	91%	99%

3.3.2 Crop markets, demands and values

To represent demand for crops, we consider one crop market per country, as data is usually at national level. Demand per country is derived from the "food supply quantity" data (in crops primary equivalent) from FAO (2018) averaging the years 2010-2016. National data is then downscaled by the ratio of population within the Zambezi basin to get the local demand. As

5 no data was available, we assume the demand to be perfectly inelastic. To represent imports and exports out of the Zambezi area, we also consider an international market that has an infinite demand for cash crops like sugarcane and stimulants. Willingness to pay for crops in each crop market is evaluated as the "value of agricultural production" divided by the "production quantity" from FAO (2018). International market crop prices are the average import price for the Southern African market, calculated as the "value of import" divided by "import quantity" from FAO (2018). The same value is used for external

10 supply costs from the international market, meaning that crop markets in the Zambezi can import crops at this price. As few data are available on transport and transaction costs, we assume that the transaction costs for imports from the international market are the difference between the international market price and the observed import price in each country from FAO (2018). Similarly, for exports towards the international market, the transaction costs are estimated as the difference between the international market price and the observed export price in each country. Transaction costs among countries are set as the

15 difference between the import prices.

3.4 Development plans

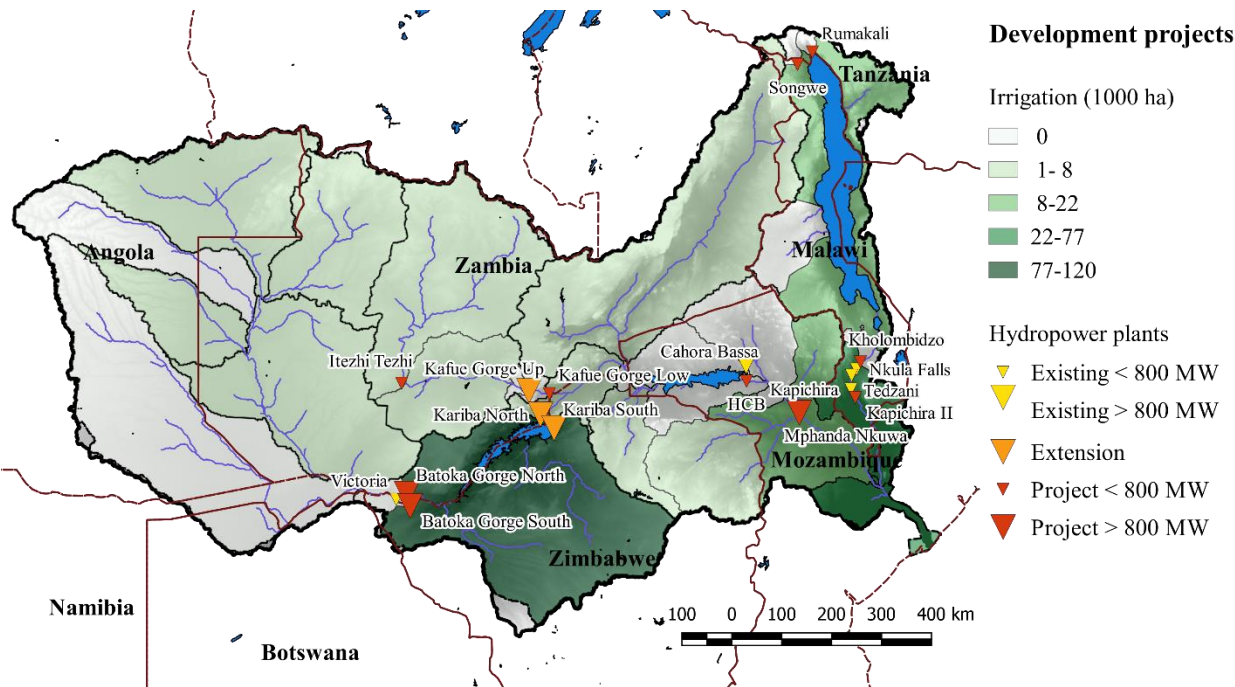


Figure 5: Hydropower and irrigation development projects. The major irrigation development projects are located at the Kariba Lake (Zimbabwe), in the Zambezi Delta (Mozambique) and in the Lower Shire (Malawi). The major hydropower projects are Batoka Gorge North and South with 800 MW in Zambia and 800 MW in Zimbabwe and Mphanda Nkuwa with 1300 MW in Mozambique.

3.4.1 Hydropower development plan

To respond to the rapidly increasing demand, SAPP countries are planning new or refurbished hydropower and thermal power plants, as well as new transmission lines. We refer to the " hydropower development plan" or "HDP" as the ensemble of projects described in World Bank (2010), it includes 15 projects with 7.2 GW of new operating capacity (Figure 5, Table 2).

Investment costs in the hydropower projects range from 837 \$ kW⁻¹ for Kapichira II to 3375 \$ kW⁻¹ for the Batoka Gorge South project, total investment costs reach 12.5 billion dollars and fixed annual operating costs are estimated at 56 million dollars (IRENA, 2013). Transmission line projects are not considered as part of the HDP but are considered in future scenarios. Other power generation projects are not considered individually, however the representation of generic power technologies simulates additional investments in power generation.

Table 2: Hydropower development projects. For extension projects the original and projected capacity are indicated. Songwe (I+II+III) is an aggregation of three cascade hydropower projects. Projects are from World Bank (2010) and investment costs from IRENA (2013).

Hydropower projects	Country	Capacity (MW)	Investment costs (M\$)
Kapichira II	Malawi	64	54
Songwe (I+II+III)	Malawi	340	456
Kholombidzo	Malawi	240	419

Mphanda Nkuwa	Mozambique	1300	2142
HCB	Mozambique	850	826
Rumakali	Tanzania	222	553
Batoka Gorge North	Zambia	800	2143
Batoka Gorge South	Zimbabwe	800	2700
Kariba North	Zambia	720->1200	643
Kariba South	Zimbabwe	750->1050	400
KafueGorge Low	Zambia	750	1607
KafueGorge Up	Zambia	990->1140	321
Itezhi Tezhi	Zambia	120	268

3.4.2 Irrigation development plan

We consider the irrigation development projects formulated in World Bank (2010), referred as "Irrigation development plan" or "IDP". With almost 100 identified irrigation projects aggregated per catchment, the IDP adds around 336 000 ha of equipped area to the 182 000 existing (Figure 5, Table 3). "Equipped area" refers to the actual land use, while "irrigated area" usually double counts winter and summer crops on the same land. The total investment costs of the IDP are evaluated at 2.5 billion dollars (World Bank, 2010). The most important cultures in terms of area are: sugarcane (23%), rice (17%), wheat (15%) and maize (14%). The crop choice for the irrigated areas is constrained to the planned crops using data in World Bank (2010). We assume that irrigation projects replace existing rainfed areas as long as the irrigated area does not exceed the total available area.

- 10 **Table 3: Irrigation development projects.** The irrigation development projects are aggregated per catchment. Areas are expressed in terms of "equipped area" which counts the land use.

Catchment	Existing area (1000 ha)	Project area (1000 ha)	Major culture
Kabompo	0	6	Wheat
Upper Zambezi	3	5	Sugarcane
Lungue	1	1	Rice
Luanginga	1	5	Rice
Baroste	0	7	Vegetables
Cuando	1	0.3	Rice
Kafue	36	8	Sugarcane
Kariba	28	106	Wheat
Luangwa	10	6	Wheat
Mupata	14	6	Stimulants
Lake Malawi (TAZ)	12	12	Rice
Lake Malawi (MLW)	14	10	Maize
Tete	0	19	Maize
Delta	7	77	Sugarcane
Kariba (BOT)	0	14	Maize
Lower Shire	17	38	Maize
Kafue Up	4	6	Soybeans
Harare	22	8	Wheat
Mazowe	13	4	Wheat
TOTAL	183	336	-

3.5 Climate change, future scenarios and uncertainty analysis

The Zambezi river basin was classified by IPCC as being severely threatened by the potential effects of climate change (IPCC, 2001), according to World Bank (2010) the runoff might be reduced by 12 to 34 % depending on the regions. Furthermore, population is expected to grow from 40 to 70 million until 2050 (SADC et al., 2015). This will drastically increase energy and food demand and accentuate the pressure on ecosystems. As the investment plans involve infrastructure with a long lifetime, over 50 years for hydropower plants, it is crucial to consider the potential future climate and socio-economic scenarios. Table 4 offers an overview of the considered scenarios.

We consider four climate change scenarios from Cervigni et al. (2015): dry, semi-dry, semi-wet and wet for the period 2001 to 2050. The scenarios are derived using Bias Correction and Spatial Downscaling from the General Circulation Models (GCM) of the Climate Model Intercomparison Project – Phase 5 (Brekke et al., 2014), applied to historical climate data. Figure 6 shows how the different climate change scenarios impact the average evapotranspiration, precipitation and runoff in the Zambezi river basin. Like in World Bank (2010), we consider different flood restoration policies in the Zambezi delta: 4 500, 7 000 and 10 000 m³ s⁻¹ in February as sub-scenarios of the 2030 scenario.

Expected energy demand growth rates range from 0.7 % (Zambia) to 5.1 % (Tanzania) per year in the coming decades (SAPP, 2015), meaning that demand will more than double in some countries towards 2030. We consider a continuous growth rate of the demand for scenarios 2030 and 2050. Carbon pricing policies might have an important impact on energy generation, IRENA (2013) uses a carbon tax of 25 \$ t-CO_{2eq}⁻¹ in 2030. Thus, fuel prices would increase drastically: coal prices would double, while gas prices would increase by 30% (IRENA, 2013). We consider the expected 25\$/t-CO_{2eq} carbon price for scenarios 2030 and 2050, and measure the sensitivity of this policy by varying the carbon tax from 0 to 50 \$ t-CO_{2eq}⁻¹ in the 2030 scenario. Capital costs of solar photovoltaic are expected to be halved until 2030 (IRENA, 2013), we consider a capital cost of 1000 \$ kW⁻¹ in scenarios 2030 and 2050, and vary it from 2000 \$ kW⁻¹ to 500 \$ kW⁻¹ in the 2030 scenario. Future transmission lines, between Malawi and Mozambique, Tanzania and Zambia and Namibia and Angola (SAPP, 2015) are considered as constructed in the 2030 and 2050 scenarios.

Crop demand is expected to increase by 10% (roots and tuber, Angola) to 140% (fruits and vegetables, Zambia) by 2030, depending on crops and countries (IFPRI, 2017b). We consider demand growth in the 2030 and 2050 scenarios, using projected demands for 2030 and 2050 from IFPRI (2017b). According to OECD and FAO (2017), yields will increase by 0.5 % (roots, Mozambique) to 3.8 % (rice, Zambia) per year; we consider this in the 2030 and 2050 scenarios, assuming continuous growth. This might be optimistic when FAO (2018) data shows that yields for some crops (e.g. rice, wheat, and sugarcane) in the Zambezi countries have been stable for the past 20 years. Thus, we also consider no yield growth for the sensitivity analysis of the 2030 scenario. National and crop specific yield data are available for Mozambique, Tanzania and Zambia, the sub-Saharan average is used for the other countries. Similarly, rainfed area should increase by 1.2% (Tanzania) to 2% (Mozambique) per year (OECD and FAO, 2017), we include these changes in the 2030 and 2050 scenarios. As no data was

available, we assume world market crop prices remain stable in the future scenarios. However, we test the sensitivity of this assumption by varying world market crop prices by +/- 20% in the 2030 scenario.

Table 4: Main scenarios. The table presents trends in the water, energy and agriculture sectors for the three main scenarios: 2010, 2030 and 2050. The sub-scenarios are relative to the 2030 scenario, to evaluate the sensitivity of the results to climate change, world market crop prices, CO₂ pricing policies, capital costs of solar photovoltaic capacity, and environmental flow policy. ¹The price variation is only for the world market. ²Flood level restoration at the Zambezi delta during the month of February.

Scenarios	2010	2030	2050	Sub-scenarios of 2030	Source
Crop demand (Mt yr ⁻¹)	26	+60%	+144%	-	(FAO, 2018; IFPRI, 2017b)
Cultivated Area (M ha ⁻¹)	6.6	+39%	+92%	-	(OECD and FAO, 2017)
Yields (t ha ⁻¹)	-	+41%	+100%	-	(OECD and FAO, 2017)
Crop Value (\$ t ⁻¹)	669	-	-	-20% to +20% ¹	(FAO, 2018)
Energy demand (GWh yr ⁻¹)	68 338	+87%	+278%	-	(SAPP, 2015)
CO ₂ price (\$ t-CO _{2eq} ⁻¹)	0	25	25	0 to 50	(IRENA, 2013)
Solar capital costs (\$ kW ⁻¹)	2 000	1000	1000	2000 to 500	(IRENA, 2013)
Runoff (Mm ³ yr ⁻¹)	114 868	-	-	-54% to +35%	(Cervigni et al., 2015)
Flood level ² (m ³ s ⁻¹)	0	-	-	4 500 to 10 000	(World Bank, 2010)

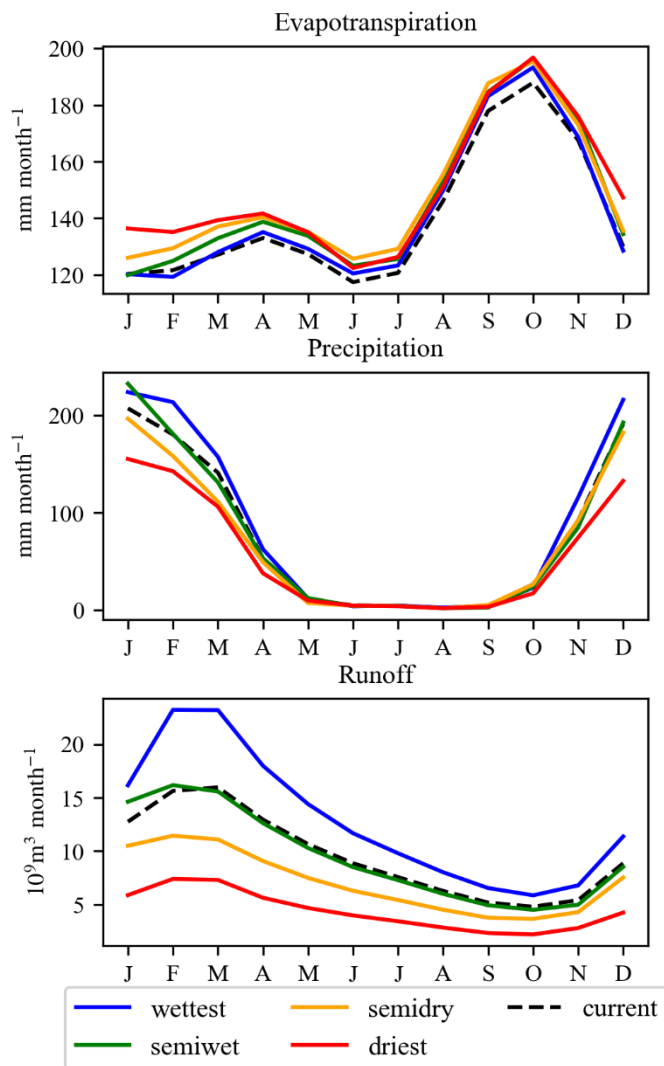


Figure 6: Impact of climate change on hydrologic parameters. The average yearly pattern of evapotranspiration, precipitation and runoff is shown for the four climate change scenarios and the current climate.

4. Results and discussion

- 5 In this section, we illustrate how the Zambezi model can be used to answer questions such as "What are the potential impacts of climate change on the agriculture and energy systems?", "What are the benefits of the hydropower and agricultural development plans?", "What is the sensitivity of these benefits regarding uncertainties in policies, future climate and socio-

economic development ?", "What are the synergies and trade-offs between the irrigation and hydropower development plan?", and "What are the opportunity costs of restoring flood regimes in the Zambezi delta ?"

4.1 Model validation

To validate the model, we show the overall results of the 2010 scenario, which is the situation in the Zambezi river basin around the year 2010. The water balance for the Zambezi river basin (Table 5) shows that the main water consumption is evaporative losses from reservoirs (mainly the Kariba and Cahora Bassa dams). The total water consumption reaches around 10% of the total available water. Agricultural uses represent only around 25 % of the total water consumption, and domestic and industrial consumption around 5%. The average runoff and reservoir evaporation vary significantly among the different studies (Table 5), it is unclear if the studies report net or gross evaporation (including or excluding rainfall on the reservoir area). For the average runoff, the difference is most likely due to different reference periods, according to our data the average yearly runoff from 1960 to 1980 was $129\,000\,10^6\text{ m}^3$, while from 1980 to 2000 it was only $100\,600\,10^6\text{ m}^3$.

The model reproduces the patterns of agricultural water consumption per country (Table 6), with some differences between Zambia and Zimbabwe. These differences may be explained by differences in aggregation of agricultural areas at the border between Zambia and Zimbabwe between this and the World Bank (2010) study. The modelled value of crop production (Table 7) is in accordance with observations; main production is in Malawi, followed by Zambia and Zimbabwe. The "observed" value is obtained by downscaling national statistics assuming constant per capita value, and is therefore not a precise number. Hydroeconomic models often value agriculture by considering a willingness-to-pay for water by agriculture users, or by representing crop production and valuating crops at the farm level (Bauer-Gottwein et al., 2017; Harou et al., 2009). Non-market approaches include the following limitations: (1) crop demand is not represented, (2) crop trade, transaction costs, and losses are not represented, (3) food security constraints cannot be represented, (4) the interactions with rainfed agriculture cannot be represented, and (5) it requires to calculate an exogenous willingness-to-pay for water or crops for each considered socio-economic development scenario potentially affecting the crop markets. In this study we use a market approach valuating crops at the consumer level. Non-market and market approaches can be similar if irrigated crops are a marginal share of the total production, and if supply, demand, and trade of crops remain stable. In the Zambezi, irrigated crops are a small share of the total production. However, we analyse the potential impacts of climate change, significantly affecting rainfed production, and therefore crop supply and food security constraints, in the context of an increasing crop demand. Therefore, the market approach is necessary to perform the analysis of this study.

Hydropower production per plant (Table 8) is similar to World Bank (2010), with small variations linked to differences in modelling approach and hydrologic data. A common approach to value hydropower production, is to use the concepts of firm and secondary power and value them differently to indirectly represent the power market. In the World Bank (2010) study, firm power is calculated as the power production available 99% of the time (at the monthly scale) at a single plant, while secondary power is the remaining power production. Indeed, assuming a constant power demand at the monthly time scale, firm power can replace investments in thermal power capacity, while secondary power needs to be balanced by thermal

capacity. Thus, secondary power is only saving fuel costs but not ramping and capacity investment costs and has therefore a lower value. In this study we do not use the firm power concept but simulate the power market instead. Although the hydropower plant production is not optimized for firm power, we find similar results to the World Bank (2010) study (Table 8). The reasons are that: (1) we do not consider seasonal variations in the availability of a power source (e.g. solar capacity has a diurnal variation but seasonal variation is assumed to be negligible), (2) low and high flow seasons occur at the same time of the year throughout the basin reducing the benefit of coordinating hydropower production in different subbasins, and (3) reservoirs have a high storage capacity enabling hydropower plants to operate with relatively stable monthly releases. Although the firm power and market approaches give similar results in this case, the firm power approach has some limitations: (1) it does not represent transmission constraints which are considered to be important in the SAPP power system (Spalding-Fecher et al., 2017b), (2) it does not consider the power demand, (3) it does not enable coordination between several hydropower plants to balance fluctuations in production at individual plants, (4) it does not enable representation of the benefits of hydropower as a peak power source, satisfying peak demand or balancing an unstable power source such as solar or wind, and (5) it cannot be used to evaluate the impact of carbon tax policies, capital costs of renewable technologies, and future energy demand, which would require an exogenous model to calculate firm and secondary power values for each scenario.

In general, the model reproduces the trends observed in the reference scenario for the water, energy and agriculture systems, but some differences appear. Therefore, in the following analysis, most of results are not shown as absolute values, but as relative changes between different scenarios.

Table 5: Water balance of the reference scenario. Results are presented as the average for the 40 years simulation. The amount of runoff and reservoir evaporation varies significantly depending on the studies. Average yearly runoff might be influenced by the historical period considered. *It is not clear if the cited studies report reservoir evaporation as net (including rainfall) or gross values, this might explain differences. **The publication reports an average runoff of $130\,300\,10^6\text{m}^3\text{year}^{-1}$, however this is believed to be a reporting mistake (Strzepek 2019, Personal communication), the average runoff used in the calculations is $107\,000\,10^6\text{m}^3\text{year}^{-1}$.

Water Balance [$10^6\text{m}^3\text{year}^{-1}$]	This study	World Bank (2010)	Tilmant et al. (2012)	(Beilfuss, 2012)	(Euroconsult and Mott MacDonald, 2008)
Runoff	114 868	107 000**		110 732	103 224
Domestic and Industrial consumption	772	797			344
Agricultural consumption	3 409	3 234			1 478
Net Reservoir Evaporation*	8 825	8 000	7 800	12 181	16 989

Table 6: Agricultural water consumption in the Zambezi river basin.

Agricultural water consumption ($10^6\text{m}^3\text{yr}^{-1}$)	World Bank (2010)	This study
Angola	75	119
Botswana	0	0
Malawi	494	575
Mozambique	134	117

Namibia	2	0
Tanzania	154	102
Zambia	879	1 353
Zimbabwe	1 496	1 153
Total	3 234	3 419

Table 7: Value of crop production in the Zambezi river basin. Data from FAO (2018) is at national level, downscaled to the Zambezi river basin assuming constant per capita value, therefore it might not be fully representative for the actual regional value.

Value of crop Production (M\$ yr⁻¹)	(FAO, 2018)	This study
Angola	207	216
Botswana	0	1
Malawi	4 497	4495
Mozambique	418	329
Namibia	11	0
Tanzania	150	241
Zambia	1 082	1 325
Zimbabwe	572	527
Total	6 936	7 130

- 5 **Table 8: Hydropower production.** Simulated hydropower production is compared to the results of the MSIOA study (World Bank, 2010). Firm power is calculated as the power production available 99% of the time (at the monthly scale) at a single plant.

Hydropower Production (GWh yr⁻¹)	World Bank (2010)		This study	
	Total	Firm	Total	Firm
Cahora Bassa	13 535	11 922	12 541	9 232
Kafue Gorge Up	6 785	4 695	7 498	4 857
Kapichira	560	455	421	275
Kariba North	3 834	3 184	4 409	2 809
Kariba South	3 834	3 184	4 659	2 926
Nkula	1 017	462	869	711
Tedzani	722	300	597	455
Victoria Falls	-	-	852	852
Total	30 247	22 776	31 848	22 116

4.2 Potential impacts of climate change

Table 9: Impact of climate change on the water-energy-food system. The results show the difference in key indicators with and without the four climate change scenarios for the 2030 scenario without infrastructure development plans.

Key indicators	Driest	Semi dry	Semi wet	Wettest
Available runoff (10 ⁶ m ³ yr ⁻¹)	-62 195	-29 838	-892	40 156
Agriculture sector benefits (M\$ yr ⁻¹)	-1 644 (-15%)	-176 (-2%)	-206 (-2%)	218 (+2%)
Crop price index	+33%	+7%	+4%	-4%

Energy sector benefits (M\$ yr ⁻¹)	-714	-365	-24	187
Hydropower production (GWh yr ⁻¹)	-15 668	-8 801	-518	4 981
CO2 emissions (Mt yr ⁻¹)	10	5	0	-2

Climate change is found to have important potential impacts, inducing losses of more than 2.3 billion dollars per year in the driest scenario to increasing benefits by 400 million dollars per year in the wettest scenario (Table 9). In the driest scenario, average runoff is more than halved, reducing by 50% current hydropower production. This causes economic losses to the energy sector of more than 700 M\$ yr⁻¹. In the wettest scenario, the average runoff increases by 35%, increasing hydropower production by almost 5 000 GWh yr⁻¹, resulting in an increased benefit of 220 M\$ yr⁻¹ for the energy sector. The agricultural sector is particularly sensitive as it mainly relies on rainfed agriculture. The driest scenario seems to be a critical threshold where an important portion of rainfed cultures show low yields. Indeed, from the semi dry to the driest scenario the induced economic losses rise from 200 to 1 640 M\$ yr⁻¹ and the crop price index from +4% to +33%. Similarly, the value of water in the Shire river (Malawi) is not affected in the semi dry scenario but rises considerably in the driest scenario (Figure 7). In fact, in the semi dry scenario Malawi observes losses of only 8 M\$ yr⁻¹, but in the driest scenario, losses reach more than 800 M\$ yr⁻¹ (mostly to the agriculture sector).

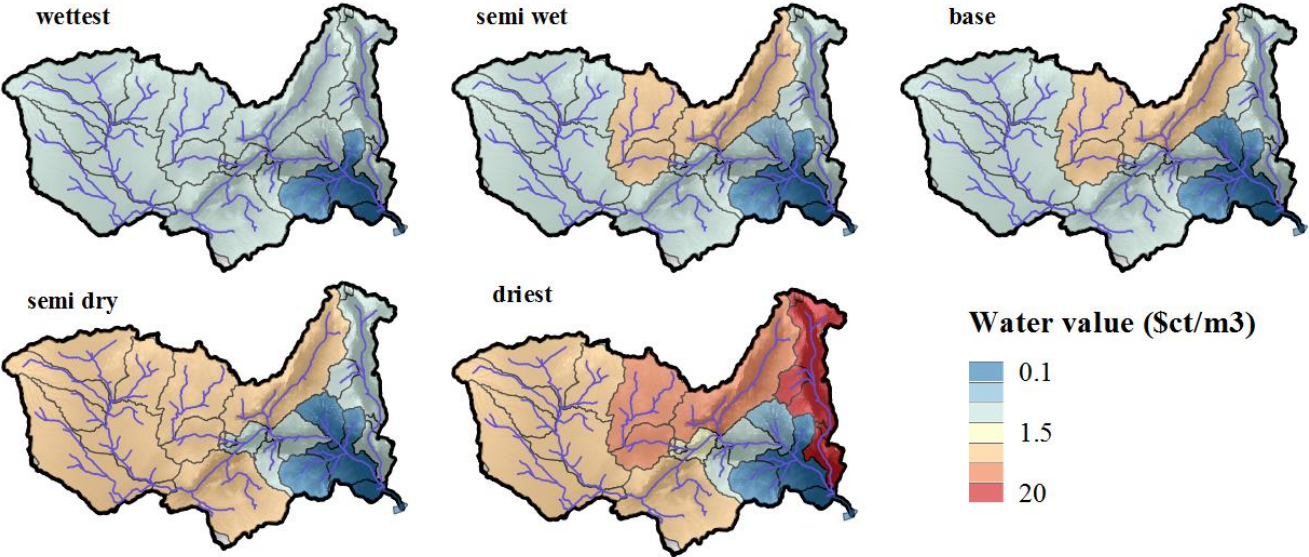


Figure 7: Average water value under climate change scenarios. The "water value" is the result of the shadowprices/duals of the constraint of the hydroeconomic model, it represents the potential economic benefits of an additional m³ of water in the river. The increased water value is a sign for increased water scarcity.

4.3 Hydropower development plan

The hydropower development plan (HDP) is found to produce an extra 28 000 to 33 000 GWh yr⁻¹ (Table 10), which is in accordance with World Bank (2010) (30 400 GWh yr⁻¹). For the 2030 scenario, the resulting value is around 1 932 M\$ yr⁻¹. Considering the total investment costs of 12.5 billion dollars as well as the fix annual operating costs and a lifetime of 50 years

for the hydropower projects, this represents an internal rate of return of 14.7 % (assuming overnight construction of the hydropower projects, excluding cost and benefits linked to non-represented elements such as fishing, tourism, flood regulation, navigation and ecosystem services). The main benefits occur in countries with new major hydropower projects (Zambia, Zimbabwe, Mozambique and Malawi), however even countries that do not have any projects (e.g. Namibia) benefit from cheaper power imports (Table 11). While Zambia and Zimbabwe use most of the additional energy for own supply, Malawi exports half and Mozambique exports all of it. The impact of the HDP on the electricity price is relatively small as an important share of the demand is satisfied through thermal power. Therefore, the economic impact is mainly producer surplus, while consumer surplus is limited (Table 10). However, this varies locally, in Malawi the HDP makes the country almost independent from thermal power, lowering electricity prices by 16 \$ MWh⁻¹ and generating important consumer surplus (Table 11).

Hydropower production is around 4 000 GWh yr⁻¹ lower in the 2010 than in the 2030 scenario (Table 10), this can be explained by demand limits and the fact that in the 2010 scenario Malawi is not connected to the SAPP grid and cannot export over production of its Run-Off-the-River hydropower plants. In fact, under the HDP in the 2030 scenario, power transmission among SAPP countries is considerably increased, including transfers from Malawi to Mozambique (Figure 8). In the practical implementation of the HDP, projects would be implemented gradually, therefore the demand constraint would probably not be a problem, however in this study we do not consider the timing and sequencing of the projects. The main difference between the 2010 and the 2030 scenarios is the generated benefits. The driving factor is the potential carbon pricing policy, as it will considerably affect fuel costs and therefore the cost of generating power with thermal power plants (Figure 9). We consider carbon price as a cost, while it could also be considered as a tax and therefore have no effect on the welfare impact (being a money transfer from producers to states). However, the principle of a carbon price/tax is to compensate for CO₂ emissions, which will therefore result in a cost. Thus, the price of electricity for consumers increases from 53 \$ MWh⁻¹ in the 2010 scenario to 73 \$ MWh⁻¹ in the 2030 scenario, increasing the value of developing hydropower.

The HDP has no impact on the agricultural system (Table 10), neither positive or negative, and vice versa, the development of the irrigation development plan does almost not affect its value (Figure 9). The value of the HDP is relatively sensitive to climate change; it varies from 1 651 to 2 075 M\$ yr⁻¹ for the driest to the wettest scenarios. The additional hydropower production is severely impacted in the driest scenario, producing only 25 000 GWh yr⁻¹ against 37 000 GWh yr⁻¹ for the wettest scenario. However, climate change has more impact on the current hydropower plants, where the driest climate change scenario is found to halve current power production (Table 9). Another influencing parameter for the value of the HDP is the capital costs of solar photovoltaic power, as this affects the cost of producing alternative energy. With solar capital costs ranging from 2000 \$ kW⁻¹ to 500 \$ kW⁻¹, the electricity consumer price varies from 80 \$ MWh⁻¹ to 70 \$ MWh⁻¹, and the value of the HDP from 2070 to 1880 M\$ yr⁻¹. Excluding solar photovoltaic technology from the simulation does result in the same value for the HDP in the 2030 scenario. Solar power has a double effect on the value of hydropower plants: on one hand, it reduces electricity prices and therefore the value of hydropower energy; on the other hand, it increases intermittency of the power system and so the value of flexible hydropower generation. As there is already an important hydropower capacity available in the Zambezi river basin, both effects compensate in this case.

Table 10: Impacts of the Hydropower development plan. Results are shown as the difference with and without the hydropower development plan for the 2010, 2030 and 2050 scenarios. Sector benefits exclude construction costs.

Impacts of the Hydropower development	2010	2030	2050
Energy sector benefits (M\$ yr ⁻¹)	1 042	1 932	2 058
Agriculture sector benefits (M\$ yr ⁻¹)	0	1	1
Energy consumer surplus (M\$ yr ⁻¹)	737	271	206
Energy producer surplus (M\$ yr ⁻¹)	305	1 661	1 852
Reservoir evaporation (10 ⁶ m ³ yr ⁻¹)	288	-132	-81
Water shadowprice (\$ 10 ³ m ⁻³)	3	8	10
Hydropower production (GWh yr ⁻¹)	28 536 (+95%)	32 809 (+100%)	32 360 (+100%)
Energy trade (GWh yr ⁻¹)	15 767 (+195%)	14 238 (+185%)	6 570 (+150%)
Thermal power investments (MW)	-3 651	-4 859	-5 657
Solar power investments (MW)	0	-3 387	-2 955
Energy price (\$ MWh ⁻¹)	-12 (-15%)	-3 (-5%)	-2 (-3%)
CO ₂ emissions (Mt yr ⁻¹)	-25	-23	-24

Table 11: Country-scale impacts of the Hydropower development plan. Results are shown as the difference with and without the hydropower development plan for the 2030 scenario. The added value excludes construction costs.

Impacts of the Hydropower development	Angola	Botswana	Malawi	Mozambique	Namibia	Tanzania	Zambia	Zimbabwe
Added value (M\$ yr ⁻¹)	0	1	196	470	12	128	654	467
Hydropower production (GWh yr ⁻¹)	0	0	3 792	9 321	0	1421	11 077	7 197
Energy exports (GWh yr ⁻¹)	0	1	1 635	9 604	0	58	1 549	1 391
Thermal power investments (MW)	0	0	-438	0	0	-200	-2 064	-1 418
Solar power investments (MW)	0	0	-455	-1 435	0	0	-1 051	-446
Energy consumer surplus (M\$ yr ⁻¹)	0	0	69	45	0	0	104	52
Energy producer surplus (M\$ yr ⁻¹)	0	1	127	425	12	128	550	415
Energy price (\$ MWh ⁻¹)	0	0	-16	-5	0	0	-4	-2
CO ₂ emissions (Mt yr ⁻¹)	0	-1	-1	0	-1	-1	-7	-6

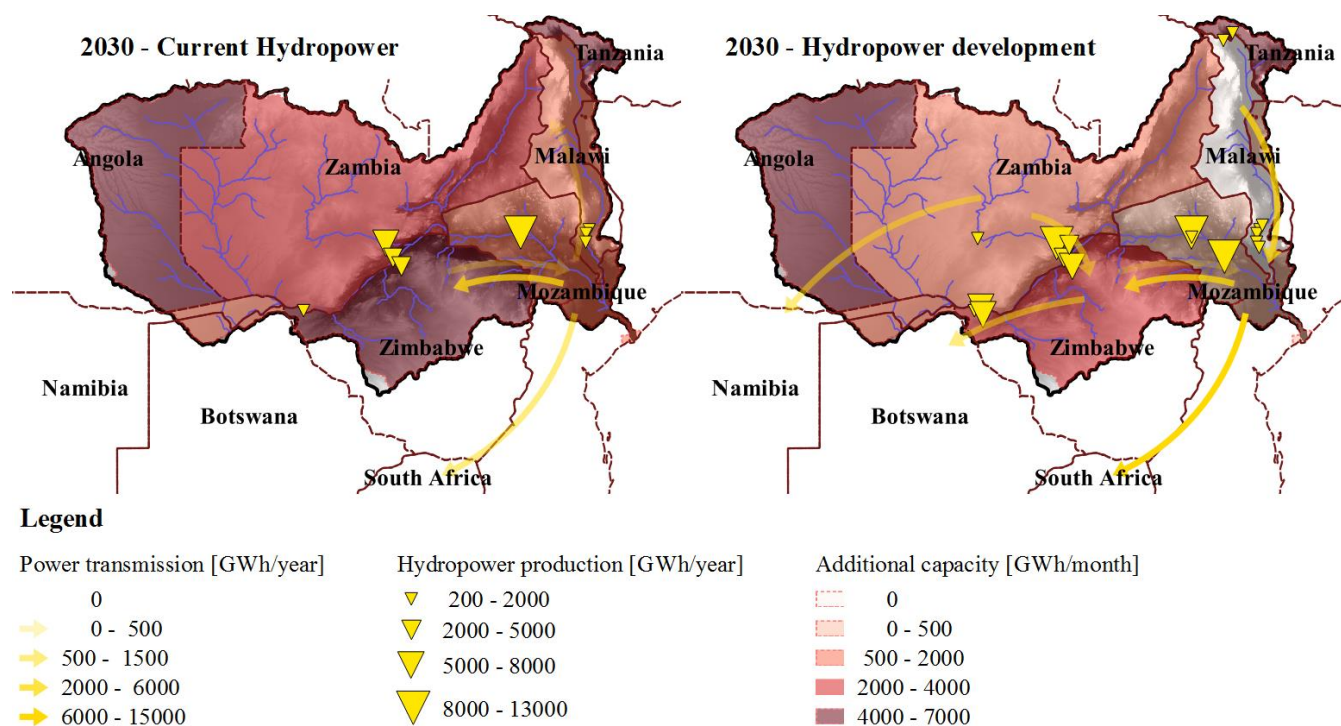


Figure 8: Power transmission, hydropower production and additional capacity investments before and after implementation of the hydropower investment plan. The implementation of the hydropower development plan is found to increase considerably the power exchanges among the SAPP countries and reduce the needs to invest in additional power generation capacity.

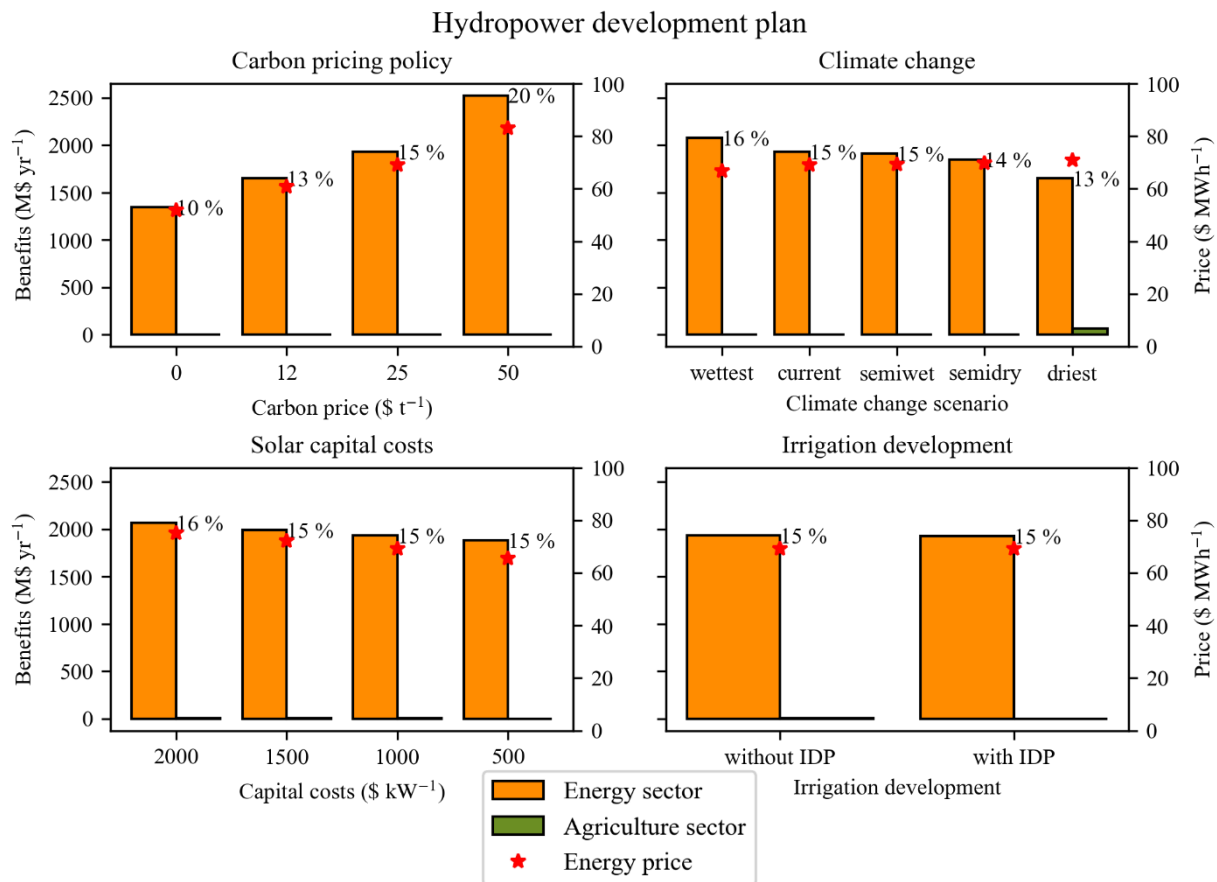


Figure 9: Sensitivity of the hydropower development plan benefits to uncertainties in future climate and socio-economic development. Benefits are calculated from with/without analyses of the hydropower development in variations of the 2030 scenario, percentages indicate the internal rate of return. The value of the hydropower development plan is found to be most sensitive to carbon pricing policy, climate change and capital costs of solar photovoltaic. Current carbon price is 0\$/t and 25\$/t is used in the 2030 scenario; current solar capital costs are 2000 \$ kW⁻¹ and 1000 \$ kW⁻¹ is used in the 2030 scenario.

4.3 Irrigation development plan

The irrigation development plan (IDP) is valued between 650 and 1220 M\$ yr⁻¹ depending on the scenario (Table 12). Considering investment costs of 2.5 billion dollars and a lifetime of 20 years for the infrastructure, this corresponds to an internal rate of return of 26 % to 49 % (ignoring maintenance costs). The important variation can be explained by the expected growth in yields that should more than double between the 2010 and 2050 scenarios (OECD and FAO, 2017). This assumption might be optimistic given that according to FAO (2018) data, for several crops yields have been relatively stable over the past twenty years. The implementation of the IDP more than doubles irrigated area (+430 000 ha), as well as water consumption (+5 200 10⁶ m³ yr⁻¹). Because of the increased water consumption, the benefits of the IDP for the agriculture sector are to a limited extent counterbalanced by losses in the energy sector. In fact, around 5% of the benefits are lost because of resulting hydropower shortages of about 1 200 GWh yr⁻¹ (Table 12). This is a lower level of trade-offs than in World Bank (2010),

which estimated hydropower shortages around 2 700 GWh yr⁻¹. The most affected country is Mozambique (-650 GWh per year); because it is the most downstream country, its hydropower production is affected by the water consumption in Zimbabwe, Zambia and Malawi (Table 13, Figure 10). More than 80% of the value of the IDP is generated through crop trade (Table 12, Figure 10), thus world market crop prices are a very sensitive parameter (Figure 11). A reduction of 20 % in world market crop prices would reduce by 25 % the value of the IDP. As most of the profits are linked to exports, the IDP has a relatively small impact on crop prices, and therefore, benefits occur mostly as producer surplus rather than consumer surplus (Table 12). A drier climate has a twofold impact on the IDP (Figure 11): it reduces rainfed production and thus increases the value of irrigation, but it also increases trade-offs with the energy sector. In fact, in the current climate scenario the IDP saves 48 M\$ yr⁻¹ of import value from the world crop market to satisfy food security constraints, while in the driest scenario it saves 95 M\$ yr⁻¹ of import value. This shows the importance of representing rainfed agriculture to assess the value of irrigation projects. However, hydropower shortages induced by additional water consumption range from 515 GWh yr⁻¹ in the wettest scenario to 1 600 GWh yr⁻¹ in the driest scenario, inducing losses in the range of 24 to 104 M\$ yr⁻¹ (representing up to more than 10% of the benefits) which counterbalance the import substitution effect in the crop market. The trade-offs are limited because the water consumption is a small share of the available water (around 15% including the irrigation development). Implementation of the hydropower development plan is not found to increase trade-offs between irrigation and hydropower and has no impact on the value of the IDP (Figure 11).

Table 12: Impacts of the irrigation development plan. Results are shown as the difference with and without the irrigation development plan for the 2010, 2030, and 2050 scenarios. Sector benefits exclude project development costs.

Impacts of the Irrigation development plan	2010	2030	2050
Energy sector benefits (M\$ yr ⁻¹)	-29	-51	-50
Agriculture sector benefits (M\$ yr ⁻¹)	670 (+12%)	948 (+9%)	1 270 (+8%)
Crop consumer surplus (M\$ yr ⁻¹)	150	186	119
Crop producer surplus (M\$ yr ⁻¹)	520	762	1151
Gross irrigated area (1000 ha)	420 (+200%)	430 (+185%)	400 (+178%)
Crop Price Index	-15%	-12%	-7%
Irrigation consumption (10 ⁶ m ³ yr ⁻¹)	5 151 (+155%)	5 252 (+160%)	5 052 (+154%)
Reservoir evaporation (10 ⁶ m ³ yr ⁻¹)	160	-58	-67
Hydropower production (GWh yr ⁻¹)	-1 219	-1 231	-1 187
Thermal power investments (MW)	15	0	0
Solar power investments (MW)	0	144	144

Table 13: Country-scale impacts of the irrigation development plan. Results are shown as the difference with and without the irrigation development plan for the 2030 scenario. The added value excludes construction costs.

Impacts of the Irrigation development plan	Angola	Botswana	Malawi	Mozambique	Namibia	Tanzania	Zambia	Zimbabwe
--	--------	----------	--------	------------	---------	----------	--------	----------

Added value (M\$ yr ⁻¹)	7	24	75	192	1	4	120	476
Net irrigated area (1000 ha)	9	13	43	95	0	10	33	121
Crop consumer surplus (M\$ yr ⁻¹)	1	1	5	5	1	4	40	130
Crop producer surplus (M\$ yr ⁻¹)	5	24	70	209	0	0	99	355
Crop Price Index	-4%	-45%	0%	7%	-6%	-2%	9%	-24%
Irrigation consumption (10 ⁶ m ³ yr ⁻¹)	178	221	411	1383	0	43	671	2345
Hydropower production (GWh yr ⁻¹)	0	0	-4	-654	0	0	-430	-143
Thermal power investments (MW)	0	0	0	0	0	0	0	0
Solar power investments (MW)	0	0	0	0	0	0	144	0

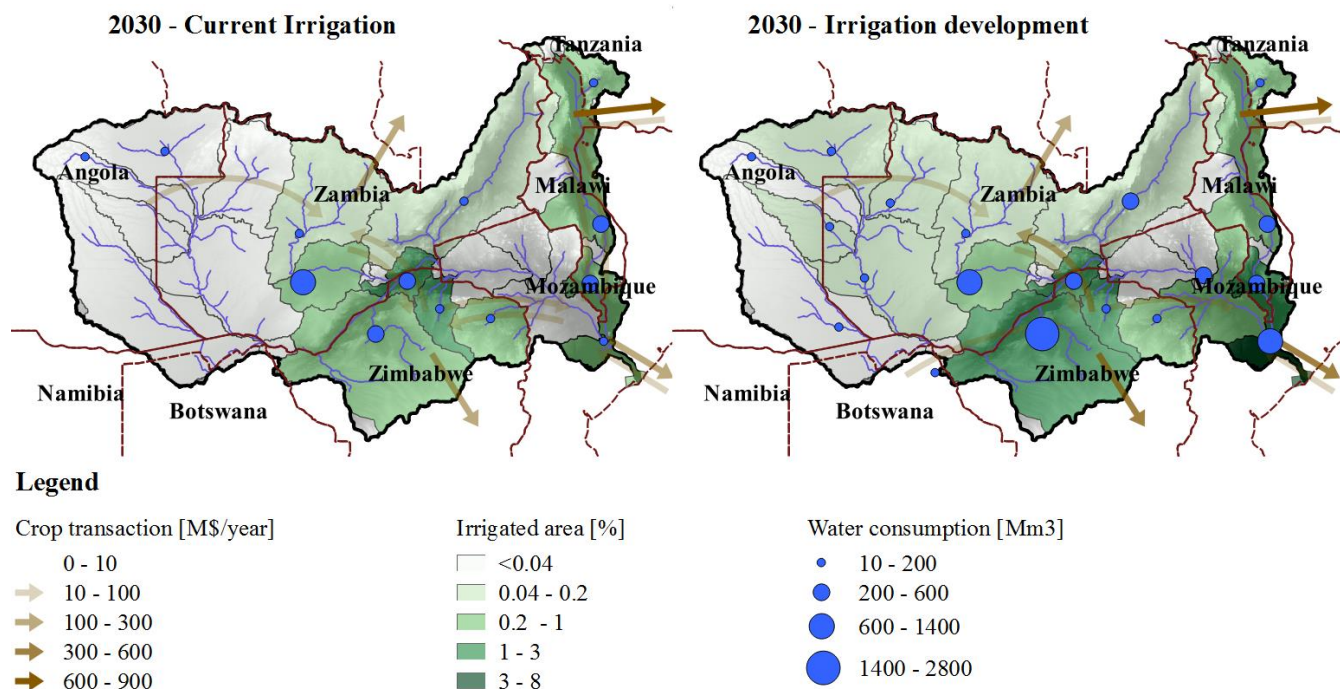


Figure 10: Crop trade and irrigation water consumption before and after implementation of the irrigation development plan (IDP). Implementation of the IDP is found to increase crop exports to the world market and more than double water consumption. The "crop transactions" towards the exterior of the Zambezi area represent exports to the world market.

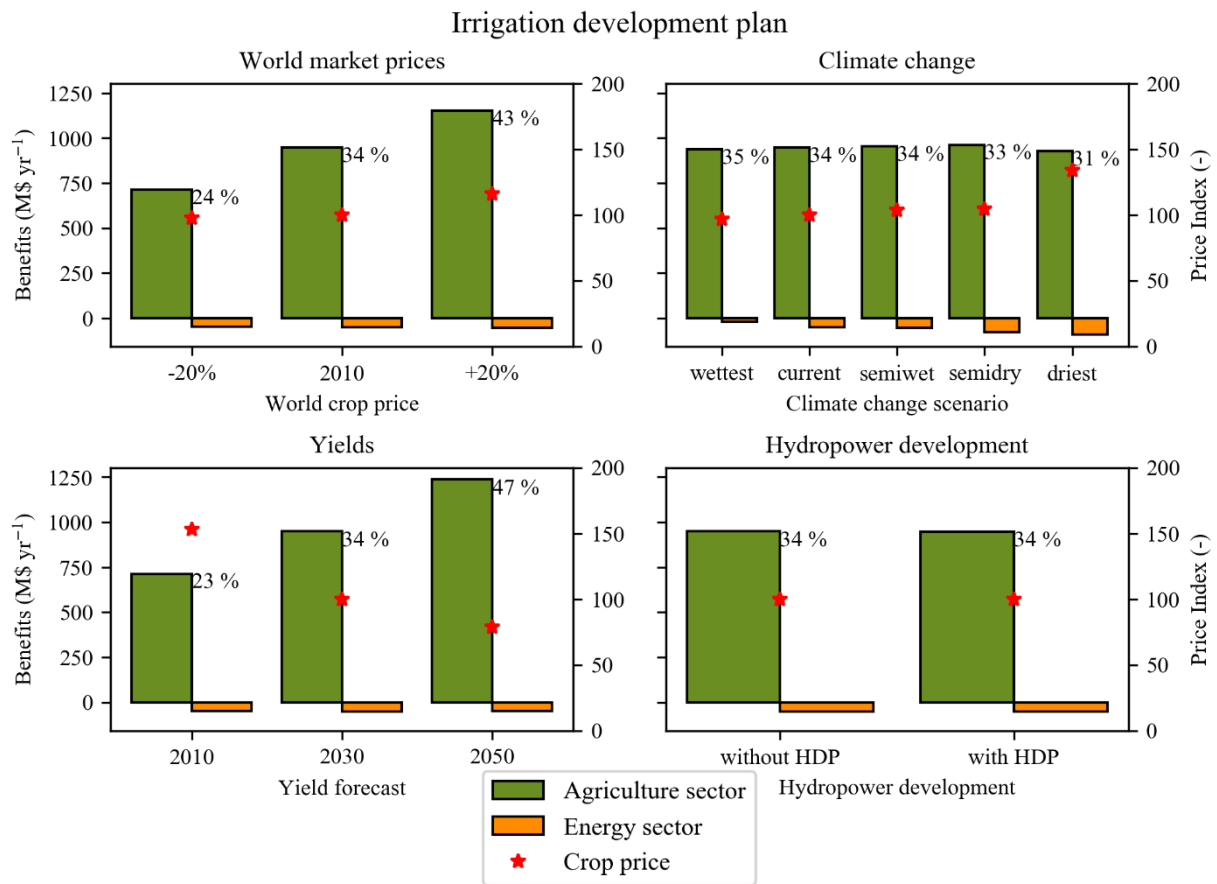


Figure 11: Sensitivity of irrigation development plan to uncertainties in future climate and socio-economic development. Benefits are calculated from with/without analyses of the irrigation development in variations of the 2030 scenario, the percentages show the internal rate of return. The value of the irrigation development plan is found to be very sensitive to crop yields, world market crop prices, and less to the climate change scenario. The crop price index is proportional to the weighted average crop price of supplied crops within the Zambezi, 100 is the reference value for the 2030 scenario.

4.4 Restoration of flood regimes

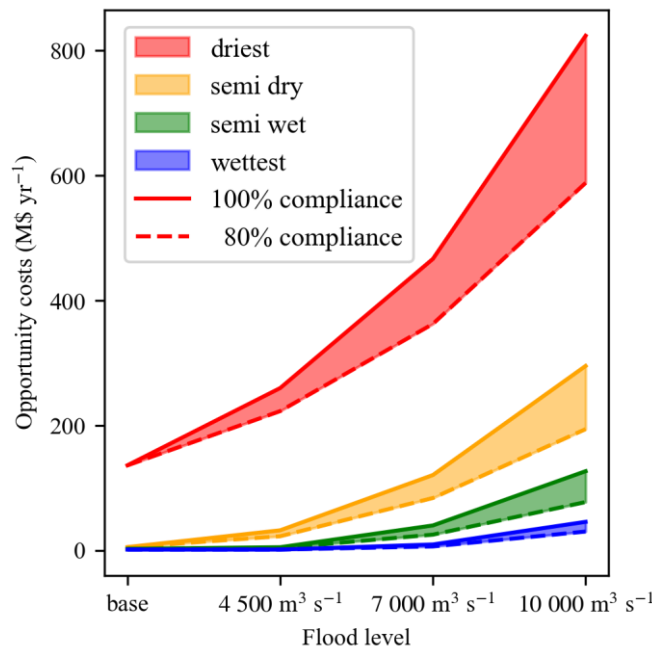


Figure 12: Opportunity costs of restoring flooding regimes in the Zambezi delta. The opportunity costs of the different flood level targets are calculated for the four different climate scenarios assuming the hydropower and irrigation development plan are implemented. The "base" flood level corresponds to the environmental flows constraint without including flood restoration. A 100 % compliance means the flood level is ensured every year, while an 80 % compliance means the environmental flow constraint must be achieved four out of five years.

Natural flooding in the wetlands and the Zambezi delta was severely affected by the construction of the Kariba and Cahora Bassa dams. Indeed, as at the monthly scale, thermal power plants have a stable production, hydropower production is more valuable when it is as constant as possible, therefore the dams tend to stabilize the water releases throughout the year. However, floods play an important role for ecosystems in the wetlands and therefore a potential policy is to restore the natural floods (World Bank, 2010). Figure 12 shows the opportunity costs of restoring floods in February for three flood levels and the four climate change scenarios, considering a 100 % (the constraint is fulfilled every year) and an 80 % compliance (the constraint must be fulfilled 4 out of 5 years). Opportunity costs of the "base" environmental flow policy are almost zero except for the driest climate change scenario. The restoration of the natural floods induces increasing costs with the flood level target: costs reach up to more than 800 M\$ yr⁻¹ for the driest scenario and the highest flood level, but stay under 150 M\$ yr⁻¹ for the semi wet and wettest scenarios. This is in accordance with Tilmant et al. (2012) who found opportunity costs of 104 M\$ yr⁻¹ for restoring floods under current climate. We consider here only opportunity costs of the policy as trade-offs with hydropower production and irrigation, but not benefits linked to direct and indirect use and non-use values of ecosystems or costs linked to population displacement. More than half of the population depends directly on wetland ecosystems (SADC et al., 2015),

therefore benefits linked to the protection of ecosystems might be important and a complete cost-benefit analysis would reveal the value of such environmental policies.

5. Limitations and further research

By connecting the water, energy and food systems in a holistic framework and using an economic optimization approach we showed how we could evaluate the development plans in the Zambezi river basin considering different scenarios. We list here some limitations of the model and avenues for further development that could be particularly interesting:

Depending on the context, additional interrelations in the Water-Energy-Food nexus, which are currently not simulated in the framework, can play an important role such as: energy consumption for water treatment or desalinisation (Dubreuil et al., 2013), energy for water pumping in the agricultural or domestic sector (Bauer-Gottwein et al., 2016; Dubreuil et al., 2013), water for cooling purposes of thermal power plants (Payet-Burin et al., 2018; Van Vliet et al., 2016) and production of crops for biofuels (Mirzabaev et al., 2015). For study cases where these interactions have an important impact, they can be added to the modelling framework.

In the next decades, renewables such as solar or wind energy will be crucial in the Southern African power sector (IRENA, 2013) and intermittence constraints will be a key element of future power systems. Hydropower plants have a lifetime of above 50 years and will therefore evolve among these future conditions. Hence, valuation of hydropower projects using a fixed price (e.g. Tilmant et al., 2012) or the concept of "firm energy" (e.g. World Bank, 2010) might no longer be appropriate (Palmintier, 2013). In this study, by using the concept of "load segments" (sometimes called "time slices"), we made a step towards the representation of intermittent energy systems, but a more detailed representation (considering e.g. ramping constraints, minimum loads, sun or wind profiles) will be key to correctly value hydropower projects.

In this study, we only considered the water resource in terms of quantity, however water quality may have an important impact for water treatment, irrigation, fishing, and tourism. Different approaches could be considered: (Boehlert et al., 2015) combine a water management model with a water quality model considering chemicals and reactions and represent advection among river branches, while Martinsen et al. (2018) consider water quality classes, with associated treatment costs and quality requirements for the demands, in a hydroeconomic optimization framework.

We presented the economic values of the development plans and their sensitivity to different sets of parameters but did not perform a complete Cost-Benefit Analysis of the projects. Costs and benefits linked to impacts on ecosystems, fishing, flood control, tourism, sedimentation and navigation need to be considered separately to complete a full Cost-Benefit Analysis of the infrastructure projects. Besides, some studies claim that the evaluation of investment costs, including financing, construction and resettlement costs are systematically and significantly underestimated (Ansar et al., 2014; Awojobi and Jenkins, 2015), which adds to the uncertainty in the net present value of the infrastructure projects.

By evaluating the development plans in the 2010, 2030 and 2050 scenarios, we showed that the timing of the investments plays an important role in an evolving socio-economic context. Furthermore, not all projects which are part of the development

plans may be profitable. Therefore, an important analysis would be the selection of the optimal projects, as well as timing and sequencing of investments, considering gradual changes in the socio-economic and climatic context.

The optimization framework of the model assumes full cooperation among different political and sectorial entities (e.g. upstream farmers in Zimbabwe may forgo some water abstractions to benefit Mozambique's downstream hydropower production). The practical implementation of such trade-offs might be possible by using compensating payments (Tilmant et al., 2009), another approach is to consider trade-offs between efficiency and equity by using a multi-objective optimization (Hu et al., 2016). However, as this may be institutionally and politically complicated, decision makers might be interested in knowing the impacts on the planned projects if one or several countries do not cooperate. This could be implemented in the current modelling framework by solving the management decisions using a local objective function from upstream to downstream.

Finally, we use a perfect foresight approach which is common to sectorial planning models (e.g. Kahil et al. (2018), Khan et al. (2018)). This means that optimal management decisions will anticipate future conditions such as droughts by storing additional water or cultivating crops with lower water requirements, leading to overestimation of system performance. In reality, water planners and managers will not have perfect foresight, and will be limited by the availability and skill of existing forecasting systems. The validation of the model against observed indicators, shows that the bias due to perfect foresight assumption is not excessive. Furthermore, part of the bias is cancelled by doing relative analysis (e.g. with and without infrastructure development, with and without climate change scenario). However, as droughts have important economic impacts (SADC et al., 2015), a more realistic way of modelling reservoir operations and agriculture decisions could improve the reliability of the results. One way to implement this in the current modelling framework is to use Model Predictive Control and iteratively solve the optimal management decisions in each time step with a limited knowledge of the future (Sahu, 2016).

6. Conclusion

We presented a new open-source decision support tool for economic valuation of water infrastructure and policies in the water-energy-food-climate nexus. The tool fills a gap in the existing planning tools, that are mostly single-resource focused, or do not have an optimization framework. Based on a hydroeconomic optimization framework, the tool considers synergies and trade-offs among WEF infrastructure and policies and can be used to evaluate different scenarios.

In the Zambezi river basin, we show how the integrated analysis of the energy, agriculture, and water systems, including commodity markets, provides additional insights to the economic impacts of infrastructure and policies. This may lead to different investment decisions than those based on models not considering the nexus or market effects. We show that in a rapidly evolving socio-economic context and under potential pressure from climate change it is crucial to consider risks linked to these uncertainties. In the driest climate change scenario, decrease in runoff reduces the hydropower production by 50%, causing losses of 700 million dollars per year, while rainfed agriculture is severely impacted by increased evapotranspiration and reduced rainfall, causing losses of about 1.6 billion dollars per year. The benefits of the hydropower development plan are

found to be around 1.9 billion dollars per year but are sensitive to future fuel prices or carbon pricing policies, capital costs of solar technologies and climate change. Climate change is the main factor impacting hydropower production as it affects the water resource availability. A carbon pricing policy could have a significant impact on fuel prices and thus power production costs and is therefore the main driver on hydropower production value. The development of solar capacity will increase the intermittency in the power system and thus the value of flexible hydropower, however it will decrease the cost of power production, and thus potentially counterbalance the first effect. Similarly, the benefits of the irrigation development plan are found sensitive to the evolution of crop yields, world crop market prices and climate change. The potential improvements in yields could have significant positive impact on the crop production, however the increase is uncertain as past data does not show a clear improving trend. As most of the value of the irrigation development is generated through exports, the development plan is very sensitive to world crop market prices. A dryer climate will reduce the availability of water and thus the potential benefits, however it also increases the value of crops during dry years as rainfed crops will be affected. The development of irrigation infrastructure will decrease hydropower production, leading to reduced benefits. As the total water consumption is a limited share of the available water, trade-offs represent only 5% of the value of the development plan. However, this effect could be exacerbated by climate change. Restoring natural flooding in the Zambezi delta involves limited economic trade-offs in the current climate, however under climate change it could result in major trade-offs with irrigation and hydropower generation.

Code and data availability

The decision support tool is available under the GNU General Public License version 3 (GPLv3) and can be downloaded with the input data for the Zambezi study case from Github (<https://github.com/RaphaelPB/WHAT-IF>). The study case data are also available at <https://zenodo.org/record/2646476> (Payet-Burin, 2019), with the detailed sources.

Author contribution

SPC, MK, KS and PBG designed the study, MK and RPB developed the computer model, RPB performed the analysis and wrote the manuscript, all authors contributed to the interpretation of results and commented on the manuscript.

Competing Interests

The authors declare that they have no conflict of interest.

Acknowledgments

Innovation Fund Denmark, COWIfonden, and COWI A/S founded the Industrial PhD project in which this research was carried out. The authors also thank Charles Fant for providing the data from the rainfall-runoff model.

References

- 5 Albrecht, T. R., Crootof, A. and Scott, C. A.: The Water-Energy-Food Nexus : A systematic review of methods for nexus assessment OPEN ACCESS The Water-Energy-Food Nexus : A systematic review of methods for nexus assessment, *Environ. Res. Lett.*, 13, 1–26, doi:10.1088/1748-9326/aaa9c6, 2018.
- Allen, R. G., Pereira, L. S., Raes, D. and Smith, M.: Crop evapotranspiration: guidelines for computing crop water requirements. FAO Irrigation and Drainage Paper No. 56, FAO, Rome, Italy., 1998.
- 10 Ansar, A., Flyvbjerg, B., Budzier, A. and Lunn, D.: Should we build more large dams? The actual costs of hydropower megaproject development, *Energy Policy*, 69, 43–56, doi:10.1016/j.enpol.2013.10.069, 2014.
- Awojobi, O. and Jenkins, G. P.: Were the hydro dams financed by the World Bank from 1976 to 2005 worthwhile?, *Energy Policy*, 86, 222–232, doi:10.1016/j.enpol.2015.06.040, 2015.
- Bauer-Gottwein, P., Schneider, R. and Davidsen, C.: Optimizing Wellfield Operation in a Variable Power Price Regime, *Groundwater*, 54(1), 92–103, doi:10.1111/gwat.12341, 2016.
- 15 Bauer-Gottwein, P., Riegels, N., Pulido-Velazquez, M., Harou, J. J., Cai, X., Davidsen, C. and Pereira-Cardenal, S. J.: Hydroeconomic Analysis, in *Handbook of Applied Hydrology*, edited by V. Singh, pp. 36/1-36/7, McGraw-Hill., 2017.
- Bazilian, M., Rogner, H., Howells, M., Hermann, S., Arent, D., Gielen, D., Steduto, P., Mueller, A., Komor, P., Tol, R. S. J. and Yumkella, K. K.: Considering the energy, water and food nexus: Towards an integrated modelling approach, *Energy Policy*, 39(12), 7896–7906, doi:10.1016/j.enpol.2011.09.039, 2011.
- 20 Beilfuss, R.: A Risky Climate for Southern African Hydro: assessing hydrological risks and consequences for Zambezi River Basin dams, *Int. Rivers*, (September), 1–60, doi:10.13140/RG.2.2.30193.48486, 2012.
- Boehlert, B., Strzepek, K. M., Chapra, S. C., Fant, C., Gebretsadik, Y., Lickley, M., Swanson, R., McCluskey, A., Neumann, J. E. and Martinich, J.: Climate change impacts and greenhouse gas mitigation effects on U.S. water quality, *J. Adv. Model. Earth Syst.*, 7(3), 1326–1338, doi:10.1002/2014MS000400, 2015.
- 25 Brekke, L., Wood, A. and Pruitt, T.: Downscaled CMIP3 and CMIP5 Hydrology Climate Projections: Release of Hydrology Projections, Comparison with Preceding Information, and Summary of User Needs, *US Bur. Reclam.*, (July), 111, doi:10.1175/JHM-D-14-0236.1, 2014.
- Cervigni, R., Liden, R., Neumann, J. E. and Strzepek, K. M.: Enhancing the Climate Resilience of Africa’s Infrastructure: The Power and Water Sectors. [online] Available from: <https://openknowledge.worldbank.org/handle/10986/21875>, 2015.
- 30 Dogan, M. S., Fefer, M. A., Herman, J. D., Hart, Q. J., Merz, J. R., Medellín-Azuara, J. and Lund, J. R.: An open-source Python implementation of California’s hydroeconomic optimization model, *Environ. Model. Softw.*,

- doi:10.1016/j.envsoft.2018.07.002, 2018.
- Doorenbos, J. and Kassam, A. H.: Yield response to water. FAO Irrigation and Drainage Paper No. 33, Food and Agricultural Organisation of the United Nations, Rome., 1979.
- Draper, A. J., Jenkins, M. W., Kirby, K. W., Lund, J. R. and Howitt, R. E.: Economic-Engineering Optimization for California Water Management, *J. Water Resour. Plan. Manag.*, 129(3), 155–164, doi:10.1061/(ASCE)0733-9496(2003)129:3(155), 2003.
- Dubreuil, A., Assoumou, E., Bouckaert, S., Selosse, S. and Maïzi, N.: Water modeling in an energy optimization framework - The water-scarce middle east context, *Appl. Energy*, 101, 268–279, doi:10.1016/j.apenergy.2012.06.032, 2013.
- Euroconsult and Mott MacDonald: Integrated water resources management strategy and implementation plan for the Zambezi River Basin, Lusaka, Zambia., 2008.
- 10 FAO: FAOSTAT, [online] Available from: <http://www.fao.org/faostat/en/#data/QC> (Accessed 27 July 2018), 2018.
- Goor, Q., Halleux, C., Mohamed, Y. and Tilmant, A.: Optimal operation of a multipurpose multireservoir system in the Eastern Nile River Basin, *Hydrol. EARTH Syst. Sci.*, 14(10), 1895–1908, doi:10.5194/hess-14-1895-2010, 2010.
- Griffin, R. C.: Benchmarking in water project analysis, *Water Resour. Res.*, 44(11), 1–10, doi:10.1029/2008WR006868, 2008.
- Harou, J. J., Pulido-Velazquez, M., Rosenberg, D. E., Medellín-Azuara, J., Lund, J. R. and Howitt, R. E.: Hydro-economic models: Concepts, design, applications, and future prospects, *J. Hydrol.*, 375(3–4), 627–643, doi:10.1016/j.jhydrol.2009.06.037, 2009.
- 15 Hart, W. E., Laird, C. D., Watson, J.-P., Woodruff, D. L., Hackebeil, G. A., Nicholson, B. L. and Sirola, J. D.: *Pyomo — Optimization Modeling in Python.*, 2017.
- Howells, M., Rogner, H., Strachan, N., Heaps, C., Huntington, H., Kypreos, S., Hughes, A., Silveira, S., DeCarolis, J., Bazillian, M. and Roehrl, A.: OSeMOSYS: The Open Source Energy Modeling System. An introduction to its ethos, structure and development., *Energy Policy*, 39(10), 5850–5870, doi:10.1016/j.enpol.2011.06.033, 2011.
- 20 Howells, M., Hermann, S., Welsch, M., Bazilian, M., Segerström, R., Alfstad, T., Gielen, D., Rogner, H., Fischer, G., Van Velthuisen, H., Wiberg, D., Young, C., Alexander Roehrl, R., Mueller, A., Steduto, P. and Ramma, I.: Integrated analysis of climate change, land-use, energy and water strategies, *Nat. Clim. Chang.*, 3(7), 621–626, doi:10.1038/nclimate1789, 2013.
- 25 Hu, Z., Chen, Y., Yao, L., Wei, C. and Li, C.: Optimal allocation of regional water resources: From a perspective of equity-efficiency tradeoff, *Resour. Conserv. Recycl.*, 109, 102–113, doi:10.1016/j.resconrec.2016.02.001, 2016.
- IFPRI: Tanzania Social Accounting Matrix (SAM), 2009, , doi:10.7910/DVN/28540, 2014.
- IFPRI: Mozambique Social Accounting Matrix, 2007, , doi:10.7910/DVN/28556, 2015.
- IFPRI: 2014 Social Accounting Matrix for Malawi, , doi:<https://doi.org/10.7910/DVN/REUCQR>, 2017a.
- 30 IFPRI: IMPACT Projections of Demand for Agricultural Products: Extended Country-level Results for 2017 GFPR Annex IMPACT Trend 1, , doi:10.7910/DVN/BKMBNU, 2017b.
- IFPRI and IIASA: Global Spatially-Disaggregated Crop Production Statistics Data for 2005 Version 3.2, , doi:10.7910/DVN/DHXBXX, 2017.
- IRENA: Southern African Power Pool: Planning and Prospects for Renewable Energy, , 1–91 [online] Available from:

www.irena.http://www.irena.org/documentdownloads/publications/sapp.pdforg, 2013.

Kahil, T., Parkinson, S., Satoh, Y., Greve, P., Burek, P., Veldkamp, T. I. E., Burtcher, R., Byers, E., Djilali, N., Fischer, G., Krey, V., Langan, S., Riahi, K., Tramberend, S. and Wada, Y.: A continental-scale hydro-economic model for integrating water-energy-land nexus solutions, *Water Resour. Res.*, doi:10.1029/2017WR022478, 2018.

- 5 Khan, Z., Linares, P. and García-González, J.: Integrating water and energy models for policy driven applications. A review of contemporary work and recommendations for future developments, *Renew. Sustain. Energy Rev.*, 67, 1123–1138, doi:10.1016/j.rser.2016.08.043, 2017.

Khan, Z., Linares, P., Rutten, M., Parkinson, S., Johnson, N. and García-González, J.: Spatial and temporal synchronization of water and energy systems: Towards a single integrated optimization model for long-term resource planning, *Appl. Energy*, 10 210, 499–517, doi:10.1016/j.apenergy.2017.05.003, 2018.

Kraucunas, I., Clarke, L., Dirks, J., Hathaway, J., Hejazi, M., Hibbard, K., Huang, M., Jin, C., Kintner-Meyer, M., van Dam, K. K., Leung, R., Li, H. Y., Moss, R., Peterson, M., Rice, J., Scott, M., Thomson, A., Voisin, N. and West, T.: Investigating the nexus of climate, energy, water, and land at decision-relevant scales: the Platform for Regional Integrated Modeling and Analysis (PRIMA), *Clim. Change*, 129(3–4), 573–588, doi:10.1007/s10584-014-1064-9, 2015.

- 15 Krishnan, V., Ho, J., Hobbs, B. F., Liu, A. L., McCalley, J. D., Shahidehpour, M. and Zheng, Q. P.: Co-optimization of electricity transmission and generation resources for planning and policy analysis: review of concepts and modeling approaches., 2016.

Krugman, P. and Wells, R.: *Microeconomics*, edited by Craig Bleyer, Catherine Woods. [online] Available from: https://www.academia.edu/27915897/Paul_Krugman_Robin_Wells_Microeconomics?auto=download, 2005.

- 20 Loucks, D. P., Beek, E. Van and Van Beek, E.: 00 Water Resources Systems Planning and Management and Applications, *Water Resour. Plan. Manag.*, 2–37, 2005.

Martinsen, G., Liu, S., Mo, X. and Bauer-Gottwein, P.: Joint optimization of water allocation and water quality management in Haihe River basin, *Sci. Total Environ.*, #pagerange#, doi:10.1016/j.scitotenv.2018.11.036, 2018.

McCarl, B. A., Yang, Y., Schwabe, K., Engel, B. A., Mondal, A. H., Ringler, C. and Pistikopoulos, E. N.: Model Use in WEF Nexus Analysis: a Review of Issues, *Curr. Sustain. Energy Reports*, 4(3), 144–152, doi:10.1007/s40518-017-0078-0, 2017.

- 25 McIntosh, B. S., Li, J. C. A., Twery, M., Chew, J., Elmahdi, A., Haase, D., Harou, J. J., Hepting, D., Cuddy, S., Jakeman, A. J., Chen, S., Kassahun, A., Lautenbach, S., Matthews, K., Merritt, W., Quinn, N. W. T., Rodriguez-roda, I., Sieber, S., Stavenga, M., Sulis, A., Ticehurst, J., Volk, M., Wrobel, M., Delden, H. Van, El-sawah, S., Rizzoli, A. and Voinov, A.: Environmental Modelling & Software Environmental decision support systems (EDSS) development e Challenges and best practices q, *Environ. Model. Softw.*, 26(12), 1389–1402, doi:10.1016/j.envsoft.2011.09.009, 2011.

Miralles-Wilhelm, F.: Development and application of integrative modeling tools in support of food-energy-water nexus planning—a research agenda, *J. Environ. Stud. Sci.*, 6(1), 3–10, doi:10.1007/s13412-016-0361-1, 2016.

Mirzabaei, A., Gata, D., Goedecke, J., Gaur, V., Börner, J., Virchow, D., Denich, M. and von Braun, J.: Bioenergy, food security and poverty reduction: trade-offs and synergies along the water–energy–food security nexus, *Water Int.*, 40(5–6),

- 772–790, doi:10.1080/02508060.2015.1048924, 2015.
- OECD and FAO: OECD-FAO Agricultural Outlook 2017-2026, [online] Available from: <https://stats.oecd.org/index.aspx?queryid=76858> (Accessed 13 December 2018), 2017.
- Palminier, B. S.: Incorporating operational flexibility into electric generation planning : impacts and methods for system
 5 design and policy analysis, PhD Thesis, Massachusetts Institute of Technology. [online] Available from: <http://hdl.handle.net/1721.1/79147>, 2013.
- Payet-Burin, R.: Zambezi dataset to “WHAT-IF: an open-source decision support tool for water infrastructure investment planning within the Water-Energy-Food-Climate Nexus,” zenodo.org, doi:10.5281/zenodo.2646476, 2019.
- Payet-Burin, R., Bertoni, F., Davidsen, C. and Bauer-Gottwein, P.: Optimization of regional water - power systems under
 10 cooling constraints and climate change, *Energy*, 155, 484–494, doi:10.1016/j.energy.2018.05.043, 2018.
- Pereira-Cardenal, S. J., Mo, B., Gjelsvik, A., Riegels, N. D., Arnbjerg-Nielsen, K. and Bauer-Gottwein, P.: Joint optimization of regional water-power systems, *Adv. Water Resour.*, 92, 200–207, doi:10.1016/j.advwatres.2016.04.004, 2016.
- Qwist-Hoffmann, P. and McIntyre, O.: Transboundary water law and policy : exchanging experiences across African River Basin Organisations, , 34, 2016.
- 15 Robinson, S., Mason-D ’croz, D., Islam, S., Sulser, T. B., Robertson, R., Zhu, T., Gueneau, A., Pitois, G. and Rosegrant, M.: The International Model for Policy Analysis of Agricultural Commodities and Trade (IMPACT): Model Description for Version 3, IFPRI Discuss. Pap. 1483. Washington, D.C. Int. Food Policy Res. Inst., (November) [online] Available from: <http://ebrary.ifpri.org/cdm/ref/collection/p15738coll2/id/129825>, 2015.
- SADC: Southern African Development Community Revised Protocol on Shared Watercourses, SADC Revis. Protocol Shar.
 20 Watercourses, 1–12 [online] Available from: <http://www.internationalwaterlaw.org/documents/regionaldocs/Revised-SADC-SharedWatercourse-Protocol-2000.pdf>, 2000.
- SADC, ZAMCOM and SARDC: Zambezi Environmental Outlook, Harare, Gaborone., 2015.
- Sahu, R. K.: Optimal Reservoir Operation using Stochastic Model Predictive Control Signature redacted Co-Director, Computation for Design and Optimization LIBRARIES ARCHNES, 2016.
- 25 SAPP: South African Power Pool, Annual Report 2015, Harare, Zimbabwe. [online] Available from: <http://www.sapp.co.zw/annual-reports>, 2015.
- SAPP: Transfer Limits | Southern African Power Pool, [online] Available from: <http://www.sapp.co.zw/transfer-limits> (Accessed 31 July 2018), 2018.
- Sheffield, J., Goteti, G. and Wood, E. F.: Development of a 50-year high-resolution global dataset of meteorological forcings
 30 for land surface modeling, *J. Clim.*, 19(13), 3088–3111, doi:10.1175/JCLI3790.1, 2006.
- Spalding-Fecher, R., Joyce, B. and Winkler, H.: Climate change and hydropower in the Southern African Power Pool and Zambezi River Basin: System-wide impacts and policy implications, *Energy Policy*, 103(June 2016), 84–97, doi:10.1016/j.enpol.2016.12.009, 2017a.
- Spalding-Fecher, R., Senatla, M., Yamba, F., Lukwesa, B., Himunzowa, G., Heaps, C., Chapman, A., Mahumane, G., Tembo,

- B. and Nyambe, I.: Electricity supply and demand scenarios for the Southern African power pool, *Energy Policy*, 101(December 2015), 403–414, doi:10.1016/j.enpol.2016.10.033, 2017b.
- Strzepek, K., McCluskey, A., Boehlert, B., Jacobsen, M. and Fant IV, C.: Climate Variability and Change : A basin scale indicator approach to understanding the risk of climate variability and change: to water resources development and management, , 1–139, 2011.
- Tharme, R. E.: A global perspective on environmental flow assessment: Emerging trends in the development and application of environmental flow methodologies for rivers, *River Res. Appl.*, 19(5–6), 397–441, doi:10.1002/rra.736, 2003.
- Thornes, J. E.: IPCC, 2001: Climate change 2001: impacts, adaptation and vulnerability, Contribution of Working Group II to the Third Assessment Report of the Intergovernmental Panel on Climate Change, edited by J. J. McCarthy, O. F. Canziani, N. A. Leary, D. J. Dokken a, *Int. J. Climatol.*, 22(10), 1285–1286, doi:10.1002/joc.775, 2002.
- Tilmant, A. and Kinzelbach, W.: The cost of noncooperation in international river basins, *WATER Resour. Res.*, 48, doi:10.1029/2011WR011034, 2012.
- Tilmant, A., Goor, Q. and Pinte, D.: Agricultural-to-hydropower water transfers: Sharing water and benefits in hydropower-irrigation systems, *Hydrol. Earth Syst. Sci.*, 13(7), 1091–1101, doi:10.5194/hess-13-1091-2009, 2009.
- 15 Tilmant, A., Kinzelbach, W., Juizo, D., Beevers, L., Senn, D. and Casarotto, C.: Economic valuation of benefits and costs associated with the coordinated development and management of the Zambezi river basin, *Water Policy*, 14(3), 490–508, doi:10.2166/wp.2011.189, 2012.
- United Nations: Transforming our world: the 2030 Agenda for Sustainable Development, *Gen. Assem. 70 Sess.*, 16301(October), 1–35, doi:10.1007/s13398-014-0173-7.2, 2015.
- 20 Van Vliet, M. T. H., Wiberg, D., Leduc, S. and Riahi, K.: Power-generation system vulnerability and adaptation to changes in climate and water resources, *Nat. Clim. Chang.*, 6(4), 375–380, doi:10.1038/nclimate2903, 2016.
- World Bank: The Zambezi River Basin, *World Bank*, 4, 1–202, doi:10.4324/9781315282053, 2010.
- Yates, D., Sieber, J., Purkey, D. and Huber-Lee, A.: WEAP21 - A demand-, priority-, and preference-driven water planning model. Part 1: Model characteristics, *Water Int.*, 30(4), 487–500, doi:10.1080/02508060508691893, 2005.