

1 **SUPPLEMENTAL FIGURES AND TABLES**

2 **Storage and routing of water in the deep critical zone of a snow**
3 **dominated volcanic catchment**

4 Alissa White¹, Bryan Moravec², Jennifer McIntosh¹, Yaniv Olshansky², Ben Paras¹, Andres
5 Sanchez¹, Ty P.A. Ferré¹, Tom Meixner¹, Jon Chorover²

6 ¹Department of Hydrology and Atmospheric Sciences, University of Arizona, Tucson, 85721, USA

7 ²Department of Soil, Water, and Environmental Sciences, University of Arizona, Tucson, 85721, USA

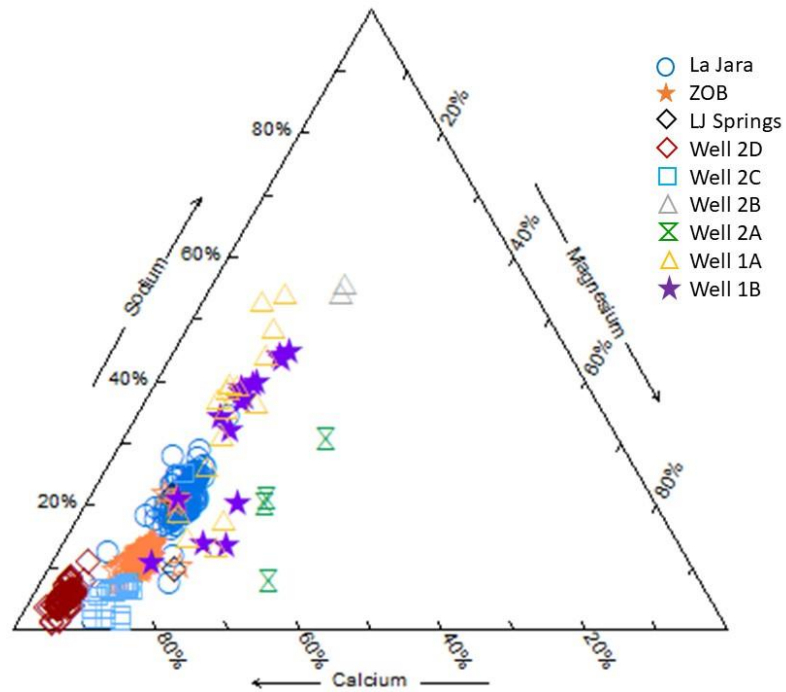
8 *Correspondence to:* Alissa White (alissawhite@email.arizona.edu)

9

Well ID	Well Casing Diameter [cm]	Annulus Diameter [cm]	Screened Interval Depth [mbgs]	Vibrating Wire Piezometer (VWP) or Transducer (T) Depth [mbgs]	Total Depth [mbgs]
1A	2.54	9.6	38.7 to 41.7	VWP @ 41.5	41.7
1B	2.54	9.6	31.7 to 37.8	T @ 37.8	37.8
2A	5.08	9.6	42.8 to 45.9	T @ 45.5	47.15
2B	5.08	9.6	34.7 to 37.8	T @ 37.7	39.1
2C	5.08	9.6	24.7 to 30.8	T @ 30.1	30.85
2D	5.08	9.6	3.7 to 6.7	VWP @ 6.4	6.7
3A	2.54	9.6	13.8 to 16.9	VWP @ 15.3	16.85
3B	5.08	9.6	6.8 to 12.9	VWP @ 12.7	12.93

10 **Supplemental Table 1: Completed well dimensions. All screened intervals are 0.051 cm slotted intervals. It is**
11 **important to note that VWPs were installed during monitoring well installation while transducers were**
12 **installed more than one year after drilling; therefore, only VWPs cover the entire time range of this study.**

13

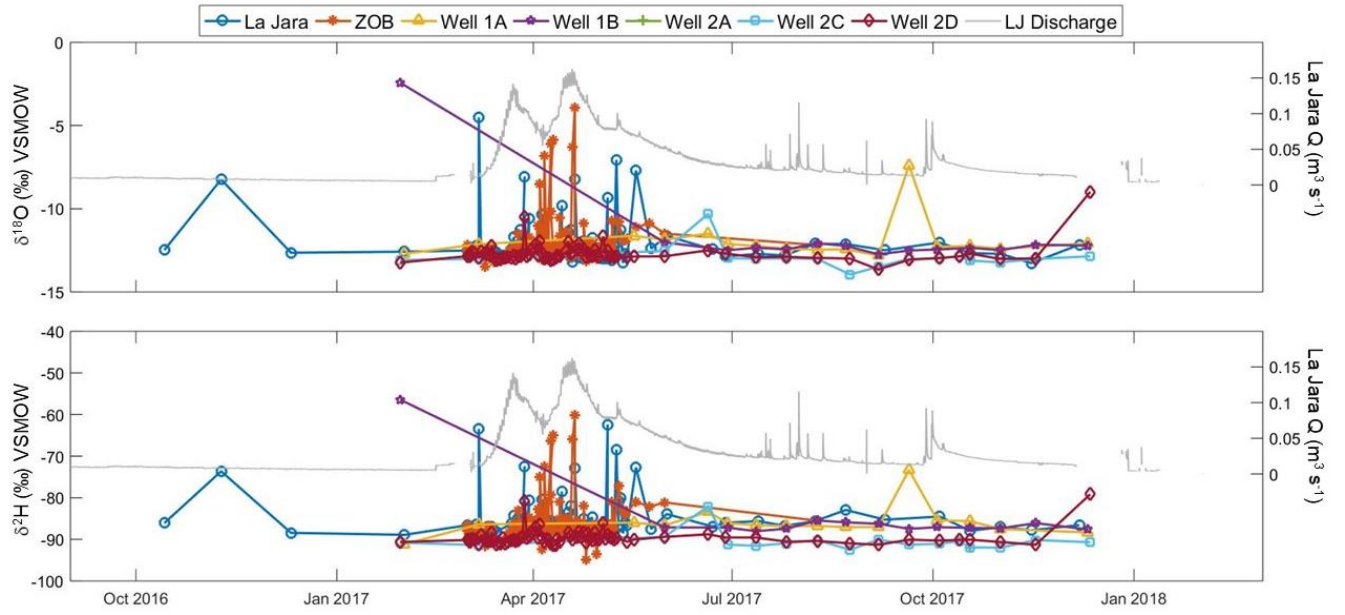


14

15 Supplemental Figure 1: Ternary diagram showing percent microequivalents of sodium, calcium, and
16 magnesium. Shallow site two groundwaters are calcium dominant while deeper site two groundwater are more
17 of a mix of calcium-sodium-magnesium and site one groundwaters have a larger range in composition
18 dominated by calcium and sodium. Finally, surface waters from the La Jara flume and La Jara springs are
19 calcium-sodium waters that plot in overlapping space with site one groundwaters and have generally slightly
20 greater percentages of sodium and less percentages of calcium than ZOB surface waters which overlap in space
21 with site one groundwaters and site 2C groundwaters.

22

23



24
25
26
27

Supplemental Figure 2: Time series of $\delta^{18}\text{O}$ and $\delta^2\text{H}$ surface waters and groundwaters plotted with La Jara discharge to indicate timing of shifts in stable water isotope values.