

# Understanding dominant controls on streamflow spatial variability to set-up a semi-distributed hydrological model: the case study of the Thur catchment.

Marco Dal Molin<sup>1,2,3</sup>, Mario Schirmer<sup>2,3</sup>, Massimiliano Zappa<sup>4</sup>, Fabrizio Fenicia<sup>1</sup>

<sup>1</sup>Department Systems Analysis, Integrated Assessment and Modelling, Eawag, Swiss Federal Institute of Aquatic Science and Technology, 8600 Dübendorf, Switzerland

<sup>2</sup>The Centre of Hydrogeology and Geothermics (CHYN), University of Neuchâtel, 2000 Neuchâtel, Switzerland

<sup>3</sup>Department of Water Resources and Drinking Water, Eawag, Swiss Federal Institute of Aquatic Science and Technology, 8600 Dübendorf, Switzerland

<sup>4</sup>Hydrological Forecast, Swiss Federal Research Institute WSL, 8903 Birmensdorf, Switzerland

*Correspondence to:* Marco Dal Molin (marco.dalmolin@eawag.ch)

## Abstract

This study documents the development of a semi-distributed hydrological model aimed at reflecting the dominant controls on observed streamflow spatial variability. The process is presented through the case study of the Thur catchment (Switzerland, 1702 km<sup>2</sup>), an alpine and pre-alpine catchment where streamflow (measured at 10 subcatchments) has different spatial characteristics in terms of amounts, seasonal patterns, and dominance of baseflow. In order to appraise the dominant controls on streamflow spatial variability, and build a model that reflects them, we follow a two-stages approach. In a first stage, we identify the main climatic or landscape properties that control the spatial variability of streamflow signatures. This stage is based on correlation analysis, complemented by expert judgment to identify the most plausible cause-effect relationships. In a second stage, the results of the previous analysis are used to develop a set of model experiments aimed at determining an appropriate model representation of the Thur catchment. These experiments confirm that only a hydrological model that accounts for the heterogeneity of precipitation, snow related processes, and landscape features such as geology, produces hydrographs that have signatures similar to the observed ones. This model provides consistent results in space-time validation, which is promising for predictions in ungauged basins. The presented methodology for model building can be transferred to other case studies, since the data used in this work (meteorological variables, streamflow, morphology and geology maps) is available in numerous regions around the globe.

## 1 Introduction

Semi-distributed rainfall-runoff models are widely applied in operation for applications such as flood forecasting (e.g., Ajami et al., 2004) or developing sustainable irrigation practices (e.g., McInerney et al., 2018). The main purpose of these models is to simulate streamflow at a limited number of fixed points along river channels (e.g., Boyle et al., 2001), and for this reason they are characterized by a coarser spatial resolution than fully distributed models, which allows a very detailed representation of the spatial variability of catchment processes. Compared to fully distributed models, they are characterized by lower data and computational requirements, which represents an valuable practical advantage in their operational use.

Similarly to the case of lumped models, the parameters of semi-distributed models are estimated via calibration. Therefore, it is important that the structure of these models is commensurate to the available data, including length, time scale, and spatial distribution (Wooldridge et al., 2001). However, semi-distributed models used for similar applications differ significantly in terms of their process representation as well as number of calibration parameters. For example, Gao et al. (2014) assumes topography as a dominant control on hydrological processes, whereas the SWAT model (Arnold et al., 1998) emphasizes the role of soil. These differences raise the question of how to select an appropriate model structure for the data at hand, which

requires understanding the association between model parameters and the climatological and geomorphological characteristics of the catchment.

Understanding the relationship between climate, landscape and catchment response is a common objective of many research areas in hydrology, including comparative hydrology (e.g., Falkenmark and Chapman, 1989), model regionalization (e.g., Parajka et al., 2005), catchment classification (e.g., Wagener et al., 2007), and prediction in ungauged basins (e.g., Hrachowitz et al., 2013). In the case of streamflow, the attempt to explain its spatial variability is typically accomplished either using statistical approaches, which are designed to regionalize selected characteristics of the hydrograph (streamflow signatures), or through hydrological models that account for relevant spatial information. In particular, statistical approaches such as regression analysis (e.g., Berger and Entekhabi, 2001; Bloomfield et al., 2009) and correlation analysis (e.g., Trancoso et al., 2017), or machine learning techniques like clustering (e.g., Sawicz et al., 2011; Toth, 2013; Kuentz et al., 2017) are used to group together catchments that present similar characteristics and to extrapolate the signatures where unknown. Such approaches have been useful to quantify the hydrological variability and identify its principal drivers. However, they are often not designed to discover causality links and can be affected by multicollinearity, that arises when multiple factors are correlated internally and with the target variable (Kroll and Song, 2013).

By incorporating spatial information about meteorological forcings and landscape characteristics, semi-distributed hydrological models have the ability to mimic the mechanisms that influence hydrograph spatial variability. However, identifying the relevant mechanisms is challenging. One possibility is to be as inclusive as possible in accounting for all the catchment properties that are, in principle, important in controlling catchment response. However, this approach leads to models that tend to be data demanding and contain many parameters. For example, Gurtz et al. (1999) considered several landscape characteristics (elevation, land use, etc.) in their application of a semi-distributed model to the Thur catchment (Switzerland), which resulted into a model with hundreds of HRUs that were defined a-priori based on the complexity of the catchment. The other option is to try to identify the most relevant processes and neglect others, in order to control model complexity. For example, Fenicia et al. (2016) compared various model hypotheses to determine an appropriate discretization of the catchment in HRUs and appropriate structures for different HRUs. Antonetti et al. (2016) used a map of dominant runoff processes following Scherrer and Naef (2003) for defining HRUs. However, these approaches require a good experimental understanding of the area, which is not always available.

Convincing model calibration-validation strategies are essential to provide confidence that the model ability to fit observations is a reflection of model realism and not a consequence of calibrating an overparameterized model (e.g., Andréassian et al., 2009). A common approach for calibration of semi-distributed models is the so called 'sequential' approach, where subcatchments are calibrated sequentially from upstream to downstream (e.g., Verbunt et al., 2006; Feyen et al., 2008; Lerat et al., 2012; De Lavenne et al., 2016). Although this approach may provide good fits and therefore it has its practical utility where data is available, it does not provide understanding into the causes of streamflow spatial variability and results into models that are not spatially transferable. Moreover, such models are prone to contain many parameters, as each subcatchment would be represented by its own set of parameters. Alternative calibration-validation approaches that enable model validation not only in time but also in space are conceptually preferable, particularly when the modeling is used for process understanding or prediction in ungauged locations (e.g., Wagener et al., 2004; Fenicia et al., 2016).

The objective of this study is to develop a semi-distributed hydrological model with the appropriate level of functional complexity to reproduce streamflow spatial variability in the Thur catchment. For this purpose, we use a two stages approach, the first one dedicated to an in-depth analysis of the available data, and the second one focused on hydrological modeling.

Our specific objectives are to: (1) explore the spatial variability present in the Swiss Thur catchment regarding landscape characteristics, meteorological forcing and streamflow signatures; (2) identify the main climate and landscape controls that explain the variability of the hydrological response; (3) based on this analysis, build a set of model experiments aimed to test

the relative importance of dominant processes and their effect on the hydrograph; (4) appraise model assumptions against competing alternatives using a stringent validation strategy.

The paper is organized as follows: Section 2 presents the study area and gives information about data availability; Section 3 illustrates the methodology; Section 4 shows the results; Section 5 analyzes the results and puts them in perspective, showing what other similar studies have found; Section 6, finally, summarizes the main conclusions.

## 2 Study area

This study is carried out in the Thur catchment (Fig. 1), located in north-east of Switzerland, south-west of the Lake Constance. With a total length of 127 km and a catchment area of 1702 km<sup>2</sup>, the Thur is the longest Swiss river without any natural or artificial reservoir along its course. The Thur river is very dynamic, with streamflow values that can change by two orders of magnitude within a few hours (Schirmer et al., 2014).

The Thur catchment has been subject of several studies in the past; Gurtz et al. (1999) performed the first modelling study on the entire catchment using a semi-distributed hydrological model; Abbaspour et al. (2007) modelled hydrology and water quality using the SWAT model; Fundel et al. (2013) and Jorg-Hess et al. (2015) focused on low flows and droughts; Jasper et al. (2004) investigated the impact of climate change on the natural water budget. Other modelling studies include also Melsen et al. (2014) and Melsen et al. (2016), who investigated parameters estimation in data limited scenarios and their transferability across spatial and temporal scales, and Brunner et al. (2019) who studied the spatial dependence of floods. The Thur includes also a small-size experimental subcatchment (Rietholzbach, called Mosnang in this paper after the name of the gauging station) that was subject of many field studies at the interface between process understanding and hydrological modelling (e.g., Menzel, 1996; Gurtz et al., 2003; Seneviratne et al., 2012; von Freyberg et al., 2014; von Freyberg et al., 2015).

The topography of the catchment is presented in Fig. 1b; the elevation ranges between 356 m a.s.l. at the outlet and 2502 m a.s.l. at Mount Säntis. The majority of the catchment lies below 1000 m a.s.l (75 %) and only 0.6 % is above 2000 m a.s.l. (Gurtz et al., 1999). Based on topography (Fig. 1b), the catchment can be visually subdivided into two distinct regions: the northern part, with low elevation and dominated by hills and flat land, and the southern part, which presents a mountainous landscape.

The land use (Fig. 1c) is dominated by pasture and sparse vegetated soil (60 %) and forest (25 %); urbanized and cultivated areas are located mainly in the north and cover 7 % and 4 % of the catchment respectively.

Most of the catchment is underlain by conglomerates, marl incrustations and sandstone (Gurtz et al., 1999). For the purpose of this study, the geological formations have been divided into three classes (Fig. 1d): “consolidated”, covering mainly the mountainous part of the catchment, “unconsolidated”, located in the north, and “alluvial”, located in the proximity of the river network, mainly in the plateau area; the latter formation constitutes the main source of groundwater in the region (Schirmer et al., 2014). The soil depth (Fig. 1e) is shallower in the mountainous part of the catchment and deeper in the northern part.

Based on the availability of gauging stations (Table 1), the catchment was divided in 10 subcatchments (Fig. 1a), with a total drained area that ranges between 3.2 km<sup>2</sup> (Mosnang) and 1702 km<sup>2</sup> (Andelfingen). Streamflow time series are obtained from the Federal Office for the Environment FOEN and the data is available from 1974 to 2017 but is used only from 1981 to 2005 to match the precipitation, temperature, and potential evapotranspiration (PET) time series. In the considered range, the streamflow data are relatively continuous, with two gaps, one in St. Gallen, from 31 December 1981 to 01 January 1983, and the other one in Herisau, from 31 December 1982 to 09 May 1983.

The raw maps (topography, land use, geology, and soil) are obtained from the Federal Office of Topography swisstopo. The meteorological data is obtained from the Federal Office of Meteorology and Climatology MeteoSwiss. Precipitation and

temperature are interpolated, as done in Melsen et al. (2016), with the pre-processing tool WINMET (Viviroli et al., 2009) using inverse distance weight (IDW) and detrended IDW respectively; while the first method considers only the horizontal variability (related to the distance from the meteorological stations), the second adds a vertical component to the variability related with the elevation (Garen and Marks, 2001). PET data is then obtained, as done in Gurtz et al. (1999), starting from meteorological and land use data, using the Penman–Monteith equation (Monteith, 1975), implemented as part of the hydrological model PREVAH (Viviroli et al., 2009). All these values are calculated at pixel (100 m) scale and then averaged over the subcatchments. All the time series are used at daily resolution in the subsequent analyses, aggregating the available hourly data. This choice was influenced on the one hand by the need of limiting the computational demand for the model experiments, for which a coarser temporal resolution is preferable, and on the other hand by the need of representing relevant hydrograph dynamics, for which finer temporal resolution is desirable (e.g., Kavetski et al., 2011). A daily data resolution, although it may obscure subdaily process dynamics, appeared to be a good compromise, and it is a typical choice in distributed model applications at such spatial scales (e.g., Kirchner et al., 2004).

### 3 Methods

The methodology follows a two stages approach. The first stage aims at determining the climatic and landscape controls on streamflow signatures. The second stage uses this understanding to configure the structure of a semi-distributed model, whose functional suitability is tested through a set of model experiments. Section 3.1 describes the first stage of the analysis, that is, the identification of influencing factors on the spatial variability of streamflow signatures. Section 3.2 describes the general structure of the semi-distributed model, and the model evaluation approach. The design of the model experiments, which is dependent on the outcomes of the first stage of analyses, is presented directly in the results (Sect. 4.2.1).

#### 3.1 Identification of influencing factors on the spatial variability of streamflow signatures

The purpose of the analysis presented in this section is to understand the influence of climatic conditions and landscape characteristics on streamflow. Climatic conditions are represented by precipitation, potential evaporation, and temperature time series. Landscape characteristics are represented by maps of topography, land use, geology, and soil.

Climatic conditions, landscape characteristics and streamflow are represented through a set of statistics (listed in Table 2). In the following, statistics calculated based on streamflow data will be called streamflow “signatures”, as it is often done in catchment classification literature (e.g., Sivapalan, 2006). We will refer to climatic and landscape “indices” for statistics calculated based on climatic data and landscape characteristics. A broad list of signatures and indices is presented in Sect. 3.1.1; Section 3.1.2 presents the approach for reducing such list to a set of meaningful variables; Section 3.1.3 illustrates the approach for determining the indices that mostly control streamflow signatures; Sect. 3.1.4 describes how the signature analysis is used to set-up the model experiments.

##### 3.1.1 Catchment indices for representing streamflow, climate, and landscape

Streamflow signatures ( $\zeta$ ) and climatic indices ( $\psi$ ) were obtained using streamflow, precipitation, PET, and temperature time series. The values were calculated using 24 years of data, between 01 September 1981 and 31 August 2005; we considered the 01 September as the beginning of the hydrological year. The periods with gaps in the data (refer to Sect. 2 for details) were discarded from the analysis of the specific subcatchment. Landscape indices were obtained using the maps described in Section 2.

Addor et al. (2017) recently compiled a comprehensive list of streamflow signatures and climatic indices for characterizing catchment behaviour (see Table 3 in Addor et al. (2017)). Here, we adopted their selection: while being originally introduced for a study about large sample hydrology, we believe that the indices proposed are also able to capture several different

aspects of the time series and are therefore suitable also for this regional study. The streamflow signatures here considered are described hereafter, followed by an explanation of their rationale:

- average daily streamflow  $\zeta_Q = \bar{q}$ , where  $q$  is the streamflow time series and the overbar represents the average over the observation period;

- runoff ratio  $\zeta_{RR} = \frac{\bar{q}}{\bar{p}}$ , where  $p$  is the precipitation time series;

- streamflow elasticity ( $\zeta_{EL}$ ) defined as

$$\zeta_{EL} = \text{med} \left( \left( \frac{\Delta q}{q} \right) / \left( \frac{\Delta p}{p} \right) \right) \quad (1)$$

where  $\Delta q$  and  $\Delta p$  represent the streamflow and precipitation difference between two consecutive years and med is the median function;

- slope of the flow duration curve ( $\zeta_{FDC}$ ) defined as the slope between the log-transformed 33<sup>rd</sup> and 66<sup>th</sup> streamflow percentiles;

- baseflow index  $\zeta_{BFI} = \frac{q^{(b)}}{q}$ , where  $q^{(b)}$  represents the baseflow and was calculated using a low-pass filter as illustrated in Ladson et al. (2013) with the equation

$$q_t^{(f)} = \min \left( 0, \vartheta_b q_{t-1}^{(f)} + \frac{1+\vartheta_b}{2} (q_t - q_{t-1}) \right) \quad (2)$$

$$q_t^{(b)} = q_t - q_t^{(f)} \quad (3)$$

with  $q_t^{(f)}$  representing the quick flow. The settings of the filter were taken according to the findings of Ladson et al. (2013) and, in particular, three filter passes were applied (forward, backward, and forward), the parameter  $\vartheta_b$  was chosen to be equal to 0.925, and a reflection of 30 time steps at the beginning and at the end of the time series was used;

- mean half streamflow date ( $\zeta_{HFD}$ ) (Court, 1962), defined as the number of days needed in order to have a cumulated streamflow that reaches the 50 % of the total annual streamflow;

- 5<sup>th</sup> and 95<sup>th</sup> percentiles of the streamflow ( $\zeta_{Q5}$  and  $\zeta_{Q95}$  respectively);

- frequency ( $\zeta_{HQF}$ ) and mean duration ( $\zeta_{HQD}$ ) of high-flow events: they are defined as the days when the streamflow is bigger than nine times the median daily streamflow;

- frequency ( $\zeta_{LQF}$ ) and mean duration ( $\zeta_{LQD}$ ) of low-flow events: they are defined as the days when the streamflow is smaller than 0.2 times the mean daily streamflow;

The frequency of days with zero streamflow, present in Addor et al. (2017), was not considered in this study because there are no ephemeral subcatchments in the study area.

This group of streamflow signatures is capable of capturing various characteristics of the hydrograph:  $\zeta_Q$  measures the overall water flows,  $\zeta_{RR}$  represents the proportion of precipitation that becomes streamflow,  $\zeta_{EL}$  measures the sensitivity of the streamflow to precipitation variations, with a value greater than 1 indicating an elastic subcatchment (i.e. sensitive to change of precipitation) (Sawicz et al., 2011),  $\zeta_{FDC}$  measures the variability of the hydrograph, with a steeper flow duration curve indicating a more variable streamflow,  $\zeta_{BFI}$  measures the magnitude of the baseflow component of the hydrograph, and can be considered as a proxy for the relative amount of groundwater flow in the hydrograph,  $\zeta_{HFD}$  measures the streamflow seasonality,  $\zeta_{Q5}$ ,  $\zeta_{LQF}$ , and  $\zeta_{LQD}$  measure low-flow dynamics,  $\zeta_{Q95}$ ,  $\zeta_{HQF}$ , and  $\zeta_{HQD}$  measure high-flow dynamics.

Climatology was represented through the following indices (see Addor et al. (2017), Table 2):

- average daily precipitation  $\psi_P = \bar{p}$ ;
- average daily PET  $\psi_{PET} = \overline{e_{pot}}$ , where  $e_{pot}$  is the potential evapotranspiration time series;
- aridity index  $\psi_{AI} = \frac{\bar{e_{pot}}}{\bar{p}}$ ;

- fraction of snow ( $\psi_{FS}$ ), defined as the volumetric fraction of precipitation falling as snow (i.e. on days colder than 0 °C);
- frequency ( $\psi_{HPF}$ ) and mean duration ( $\psi_{HPD}$ ) of high precipitation events: they are defined as days when the precipitation is bigger than five times the mean daily precipitation;
- season ( $\psi_{HPS}$ ) with most high precipitation events (defined as above);
- frequency ( $\psi_{LPF}$ ) and mean duration ( $\psi_{LPD}$ ) of dry days: they defined as days when the precipitation is lower than 1 mm day<sup>-1</sup>;
- season ( $\psi_{LPS}$ ) with most dry days (defined as above).

The seasonality of precipitation used in Addor et al. (2017) was not considered in this study as it relied on fitting a sinusoidal function to the precipitation values, which in our case did not produce reliable results. Nevertheless, these climatological indices are able to comprehensively represent the climatic conditions of the subcatchment, with  $\psi_p$  representing average water input,  $\psi_{PET}$  representing average evaporative demand,  $\psi_{AI}$  measuring the dryness of the climate,  $\psi_{FS}$  measuring the relative importance of snow,  $\psi_{HPF}$ ,  $\psi_{HPD}$ , and  $\psi_{HPS}$  measuring the importance of intense precipitation events, and  $\psi_{LPF}$ ,  $\psi_{LPD}$ , and  $\psi_{LPS}$  measuring the importance of dry days.

The landscape characteristics were divided in four categories: topography, land use, soil, and geology. In order to quantify the characteristics of each category, a set of indices ( $\xi$ ) was defined. It is important to notice that all the areas calculated in this analysis were normalized by the respective subcatchment area ( $\xi_A$ ) in order to get comparable values between subcatchments of different size.

Topography was represented with the following indices, calculated based on the digital elevation model (DEM):

- average elevation ( $\xi_{TE}$ );
- average slope ( $\xi_{TSM}$ );
- fraction of the subcatchment with steep areas ( $\xi_{TSS}$ ), with slope larger than 10°;
- aspect, i.e. fraction of the subcatchment facing north ( $\xi_{TAN}$ ), south ( $\xi_{TAS}$ ), or east and west ( $\xi_{TAew}$ ).

Land use was represented with the following characteristics, obtained by reclassifying the land use map in four categories (from 22 original classes):

- fraction of the subcatchment with crops land use ( $\xi_{LC}$ );
- fraction of the subcatchment with pasture land use ( $\xi_{LP}$ );
- fraction of the subcatchment with forest land use ( $\xi_{LF}$ );
- fraction of the subcatchment with urbanized land use ( $\xi_{LU}$ ).

Soil type was represented with the following indices, derived by the soil map:

- fraction of the subcatchment with deep soil (soil depth greater than two meters) ( $\xi_{SD}$ );
- average soil depth ( $\xi_{SM}$ ).

Geology was represented by the following indices, obtained by reclassifying the original map in three categories (from 22 original classes):

- fraction of the subcatchment with alluvial geology ( $\xi_{GA}$ );
- fraction of the subcatchment with consolidated geology ( $\xi_{GC}$ );
- fraction of the subcatchment with unconsolidated geology ( $\xi_{GU}$ ).

The reclassification of the land use and of the geology maps consisted in aggregating specific classes into general classes (e.g. combining different types of forests into a unique forest class) with the objective of reducing their number, in order to facilitate subsequent analyses.

The consideration of topography, land use, soil, and geology for defining landscape indices was based on their potential influence on hydrological processes, and in turn, on the shape of the hydrograph. These landscape characteristics can all play

an important role in controlling hydrological processes: land use can, for example, influence the infiltration of water in the substrate; soil thickness can affect the partitioning between water storage and runoff; vegetation is typically assumed to affect evaporation, and geology can affect groundwater dynamics. Indeed, these characteristics are used by many semi-distributed hydrological models, for example for determining parameter values or for dividing the catchment in areas with homogenous hydrological response (e.g., Gurtz et al., 1999).

### 3.1.2 Selection of meaningful streamflow signatures, climatic indices, and catchment indices

The sets of statistics presented in Sect. 3.1.1 were designed to be comprehensive. However, they may also be redundant, for example by containing metrics that express similar characteristics of the underlying data. In order to facilitate subsequent correlation analyses between the various sets of statistics, it is important to reduce each set to a short list of meaningful variables. The reduction of each set of streamflow signatures, climatic indices, and landscape indices was achieved through the following steps:

- All the statistics that did not show sufficient variability between the subcatchments were eliminated. We were in fact interested in identifying causes of spatial variability in the streamflow dynamics of the subcatchments of the Thur. Therefore, statistics that had a low variability were not of interest in this analysis. The variability was assessed using the coefficient of variation (defined by the ratio between the standard deviation and the average) and statistics with a coefficient of variation less than 5 % were discarded.
  - All the catchment indices (e.g. a certain type of land use) that account for a limited part of the subcatchment were discarded. This point was motivated by the expectation that landscape characteristics covering a very small fraction of the subcatchment should not have a strong influence on the streamflow signatures considered. Here, landscape indices accounting for less than 5 % of the subcatchment area were discarded.
  - Within each set of streamflow signatures, climatic indices, and catchment indices we retained only relatively independent metrics, if these are believed to represent the same underlying features of the time series. This step was motivated by the need of removing redundant information within each set. The selection of independent metrics was aided by the Spearman's rank score between each pair of metrics, which represents (also non-linear) correlation between variables. Pairs of metrics with high absolute value of the Spearman's rank score are potentially redundant. In eliminating potentially redundant variables, we adopted the following criteria:
    - Among highly correlated metrics, we preferred those depending on single variables (e.g. only precipitation or only streamflow) to those containing multiple variables (e.g. combining precipitation and streamflow or evaporation, such as the aridity index or the runoff ratio), as this may be a problem when looking for correlations between metrics;
    - With respect to landscape indices, in many cases the high correlation is due to the fact that they are complementary (the areal fractions sum up to unity). In such cases, we kept one index per class (e.g. a single index for geology).
    - A high correlation between metrics does not always mean that the metrics represent the same information.
- Therefore, the final selection of relevant metrics within each set was guided by expert judgment.

Based on this process, we compiled a reduced list of signatures, climatic indices, and landscape indices, which was used in subsequent analyses.

### 3.1.3 Identification of climate and landscape controls on streamflow and consequences for model development

This analysis aimed to identify climatic and landscape indices that mostly control streamflow signatures. In order to identify causality links between indices ( $\psi$  and  $\xi$ ) and signatures ( $\zeta$ ) we proceed as follows:

- We calculated the correlation between indices and signatures using the Spearman's rank score, and identified pairs of variables with high correlation;
- We scrutinized pairs of variables with high correlations using expert judgment to decide if a causality link between variables is justified.

5 The outcome of this process will be used to inform the semi-distributed model setup. The expert judgment is a critical step in the elicitation of causality from correlation (e.g., Antonetti and Zappa, 2018), and it is clearly subjective, being dependent on personal experience and subject matter knowledge. Although personal and subjective, expert decisions are based on an attempt to interpret data rather than be a-priori defined, which is typically the case in the application of semi-distributed hydrological models.

#### 10 **3.1.4 Semi-distributed model setup and model experiments**

We assumed a generic structure for a semi-distributed hydrological model, described in Section 3.2.1, where some model structure characteristics are defined a priori, and others are to be defined. In order to motivate the open decisions, we proceeded as follows:

- We used the identified causality links to interpret the dominant processes influencing signature spatial variability;
- We designed model experiments aimed to confirm the hypothesized climatic and landscape controls on streamflow spatial variability.

The overall objective of the model experiments is to prove that only models that incorporate the correct dependencies are able to correctly predict regional streamflow variability. In order to test this assumption, the model experiments will include cases where the assumed dependencies are not incorporated. Omitting an assumed dependency leads to structurally simpler model, which may raise the doubt that potential differences in model performance might be due to differences in model complexity. For this reason, the model experiments will include cases where alternative dependencies are incorporated, which do not reduce model complexity. In order to keep the study and presentation tractable, the model experiments will be limited to a few cases, illustrated in Sect. 4.2.1 which we judge relevant for this specific application.

### **3.2 General structure of the semi-distributed hydrological model and model evaluation approach**

25 This section describes the approach for building and testing a semi-distributed hydrological model designed to represent the observed streamflow and particularly the observed spatial variability of streamflow signatures. The general model structure is explained in Sect. 3.2.1, the error model and the calibration procedure are described in Sect. 3.2.2 and 3.2.3, the metrics utilized to assess the performance are shown in Sect. 3.2.4.

#### **3.2.1 General structure of the hydrological model**

30 We describe here the general model structure; the definition of specific model experiments, which depends on the results of the signatures analysis done in the first step, will be described in Sect. 4.2.1.

The model uses a two-layers decomposition of the catchment:

1. Subcatchments are defined by the presence of the gauging stations; this subdivision is due to the necessity of having locations in the model where the streamflow is both observed and simulated and, therefore, it is possible to calibrate and evaluate the parameters of the hydrological model.
2. HRUs are defined based on catchment characteristics (e.g. topography, geology or vegetation); they represented parts of the catchment that are supposed to have a similar hydrological response to the meteorological forcing. Each HRU is characterized by its own parameterization. Different definitions of HRUs are tested, as described in Section 4.2.1.



Each HRU has a unique parameterization. However, depending on how the inputs are discretized, the same HRU can have different states in different parts of the catchment. Therefore, the same HRU needs its own model representation whenever the spatial variability of states needs to be considered. For example, if the inputs are discretized per subcatchment, the same HRU needs a separate model representation in each subcatchment where it is present. For more details about our model implementation of “HRUs” refer to Fig. 4 of Fenicia et al. (2016).

In order to limit the levels of decisions of the semi-distributed models, some of the aspects of the distributed models are fixed a-priori, and others are left open. In particular:

- The structure chosen to represent the various HRUs is kept fixed. That is, differences between HRUs will be reflected only through the parameter values.
- The definition of HRUs is left open. In particular, we do not a-priori specify which approach is used to discretize the landscape.
- The spatial discretization of the model inputs is left open. Hence, we do not decide in advance which spatial discretization of the inputs is most appropriate.

Only the fixed decision about the HRUs model structure is here described, whereas the open decisions are described in the Results section (Sect. 4.2.1). The spatial organization of the model structure is represented in Fig. 6 with the equations listed in the Appendix A. The structure includes a snow reservoir (WR), with inputs distributed per subcatchments. Snowmelt and rainfall are input to an unsaturated reservoir (UR), which determines the portion of precipitation that produces runoff. This flux is split through a fast reservoir (FR), designed to represent the peaks of the hydrograph, proceeded by a lag function to offset the hydrograph, and a slow reservoir (SR), designed to represent baseflow. This structure was chosen to be parsimonious while general enough to reproduce typical hydrograph behaviour; it was tested in previous applications ( e.g., van Esse et al., 2013; Fenicia et al., 2014; Fenicia et al., 2016) demonstrating its suitability to reproduce a wide range of catchment responses. It also resembles popular conceptual hydrological models such as HBV (Lindstrom et al., 1997) and HyMod (Boyle, 2003), which are shown to have wide applicability. The model was built using the modelling framework SUPERFLEX (Fenicia et al., 2011).

### 3.2.2 Error model

As commonly done in hydrological modelling (e.g., McInerney et al., 2017), we here account for uncertainties by considering a probabilistic model of the observations  $Q(\theta, \mathbf{x})$ , where  $\theta$  is the vector of parameters and  $\mathbf{x}$  the model input, which is composed of a deterministic hydrological model  $h(\theta_h, \mathbf{x})$  (illustrated in Sect. 3.2.1) and a random residual error term  $E(\theta_E)$  that accounts for all data and model uncertainties ( $\theta_h$  and  $\theta_E$  represent the hydrological and the error parameters):

$$z[Q(\theta, \mathbf{x}); \lambda] = z[h(\theta_h, \mathbf{x}); \lambda] + E(\theta_E) \quad (4)$$

where  $z[\mathbf{y}; \lambda]$  represents the Box–Cox transformation (Box and Cox, 1964) with parameter  $\lambda$ , which is used to account for heteroscedasticity (stabilize the variance). For  $\lambda \neq 0$ :

$$z[y_t; \lambda] = \frac{y_t^\lambda - 1}{\lambda} \quad (5)$$

The residual error term is assumed to follow a Gaussian distribution with zero mean and variance  $\sigma^2$

$$E_t \sim N(0; \sigma^2) \quad (6)$$

The error model has, therefore, two parameters ( $\lambda$  and  $\sigma^2$ ); the first one was fixed to 0.5 (McInerney et al., 2017) and the second one was inferred.

This choice of error model (Gaussian noise applied to the Box–Cox transformation of the streamflow) allows for an explicit definition of the likelihood function (McInerney et al., 2017)

$$p(\mathbf{q}_{\text{obs}} | \theta_h, \theta_E, \mathbf{x}) = \prod_{t=1}^T z'(q_{\text{obs},t} | \theta_E) f_N(E_t | 0; \sigma^2) \quad (7)$$

where  $T$  represents the length of the time series,  $f_N$  is the Gaussian probability density function (PDF) and  $z'(\mathbf{q}_{obs}|\boldsymbol{\theta}_E)$  is the derivative of  $z(\mathbf{q}_{obs}, \boldsymbol{\theta}_E)$  with respect to  $\mathbf{q}$  evaluated at the observed data  $\mathbf{q}_{obs}$ . Specifying Eq. (7) for the case where  $z(\mathbf{q}_{obs}; \boldsymbol{\theta}_E)$  is defined by Eq. (5), the expression of the likelihood function becomes:

$$p(\mathbf{q}_{obs}|\boldsymbol{\theta}_h, \boldsymbol{\theta}_E, \mathbf{x}) = \prod_{t=1}^T q_{obs,t}^{(\lambda-1)} f_N(E_t|0; \sigma^2) \quad (8)$$

- 5 Equation (8) represents the likelihood function that is then used, together with an uniform prior distribution, to calibrate the parameters of the model as described in Sect. 3.2.3.

### 3.2.3 Calibration

Parameter calibration is performed with the objective of maximizing their posterior density. According to Bayes equation, the posterior distribution of model parameters is expressed as the product between the prior distribution and the likelihood function; since an uniform prior is used for the parameters, this is equivalent to maximizing the likelihood function in the defined parameter space; the optimization procedure is performed with a multi-start quasi-Newton method (Kavetski et al., 2007) with 20 independent searches. We empirically established that with models of our complexity (about 10 parameters), 20 independent searches provide good confidence that a global optimum is found.

The evaluation of the model ability to reproduce streamflow is carried out in space-time validation (see also Fenicia et al., 2016). For this purpose, the time domain is divided in two periods of 12 years each (from 01 September 1981 to 01 September 1993, and from 01 September 1993 to 01 September 2005) and the subcatchments are split into two groups (A and B), according to a spatial alternation (subcatchment in group A flows into a subcatchment in group B that flows into one in group A and so on); the subcatchments belonging to group A are Andelfingen, Herisau, Jonschwil, St. Gallen, Wängi and the ones in group B are Appenzell, Frauenfeld, Halden, Mogelsberg, Mosnang. This method implies a division of the space-time domain in four quadrants, such that the model can be calibrated in one quadrant and validated in the other three. For space-time validation, the model is calibrated using each group of subcatchment and each period, and validated using the other group of subcatchment and period. That is, the model calibrated using group A and period 1 was validated using group B and period 2, and so on for the other 3 combinations of subcatchments and groups. The model output in the 4 space-time validation periods is then combined, to calculate model performance using various indicators (see Sect. 3.2.4). Results are presented for space time validation, which represents the most challenging test of model performance.

### 3.2.4 Performance assessment

Model performance is assessed using the following metrics:

1. Time series metrics, which evaluate the ability of reproducing streamflow time series. The metrics used for this assessment are the following:

- Normalized log-likelihood (LL), that is, the logarithm of Eq. (8) normalized by the number of time steps present in the time series. This metrics corresponds to the objective function used for model optimization. It can be observed that, since  $\lambda$  is fixed at 0.5 in the Box-Cox transformation, model calibration is equivalent to maximising the Nash-Sutcliffe efficiency (NS) calculated with the square root of the streamflow. LL is not bounded but a higher value means a better match between two time series since, in this case, the absolute value of the residual is smaller and, thus, their PDF higher.
- Nash-Sutcliffe efficiency

$$NS(\mathbf{q}_{obs}, \mathbf{q}_{sim}) = 1 - \frac{\sum_{t=1}^T (q_{sim,t} - q_{obs,t})^2}{\sum_{t=1}^T (q_{obs,t} - \overline{q_{obs}})^2} \quad (9)$$

Which is often used in hydrological applications, and it provides a sense of general quality of the simulations. NS is bounded between  $-\infty$  and 1, with 1 meaning a perfect match.

2. Signature metrics, which determine the ability of reproducing the streamflow signatures ( $\zeta$ ) selected using the procedure illustrated in Sect. 3.1.2. The accordance between simulated and observed signatures is assessed both visually and using the Spearman's rank correlation.

The use of multiple metrics for assessing model performance enables a comprehensive assessment of various characteristics of the simulations. Time series metrics are designed to appraise the general quality of the model fit. Signatures, instead, are designed to highlight selected characteristics of the data at the expense of others.

## 4 Results and interpretation

### 4.1 Influencing factors on the spatial variability of streamflow signatures

This section illustrates the results of the correlation analysis complemented by expert judgement aimed to identify influencing factors that control the spatial variability of streamflow signatures; Section 4.1.1 presents the results of the selection of meaningful statistics; Section 4.1.2 identifies climate and landscape indices controlling streamflow signatures and presents consequences for model development; Section 4.1.3 formulates the hypotheses that have to be tested by the hydrological model.

#### 4.1.1 Selection of meaningful streamflow signatures, climatic indices, and catchment indices

The streamflow signatures defined in Sect. 3.1.1 were calculated for each subcatchment and the values are shown in Table 3 together with the coefficient of variation. All the signatures have a coefficient of variability bigger than the threshold value of 5%, with the most variable signature being  $\zeta_{LQF}$  (71%) and the least variable  $\zeta_{HQD}$  (6%). Therefore, none of these signatures was discarded.

Figure 2 shows the correlations between the streamflow signatures: the lower triangle contains the Spearman's rank correlation and the upper triangle the p-value associated with the correlations. Based on correlations and on its interpretation, a subset of  $\zeta$  can be defined as follows:

- $\zeta_Q$ ,  $\zeta_{RR}$  and  $\zeta_{EL}$  are strongly correlated ( $r > 0.72$ ). We retained  $\zeta_Q$  and discarded  $\zeta_{RR}$  and  $\zeta_{EL}$  because both contain climatic information (precipitation) in their definition;
- $\zeta_{BFI}$  and  $\zeta_{FDC}$  are strongly correlated ( $r = -0.77$ ). We decided to retain  $\zeta_{BFI}$  as it is of easier interpretation (it is a proxy for the importance of groundwater flow, which is a potentially important process for the subsequent model development);
- $\zeta_{HFD}$  was kept because it measures the seasonality of the streamflow. Note that  $\zeta_{HFD}$  is strongly correlated with  $\zeta_Q$  ( $r = 0.88$ ). However, they reflect different properties of the hydrograph. In particular,  $\zeta_{HFD}$  can be an useful indicator for the effect of snow-related processes;
- $\zeta_{Q5}$  and  $\zeta_{HQD}$  were retained because they have low correlation ( $r < 0.71$ ) with the other selected signatures and because the first represents low flows and the second high flows;
- $\zeta_{Q95}$ ,  $\zeta_{HQF}$ ,  $\zeta_{LQD}$ , and  $\zeta_{LQF}$  were discarded because they all show correlations with the selected signatures.

In summary, the original set of streamflow signatures was reduced to a set of five meaningful signatures, which will be used in the subsequent analyses: average daily streamflow ( $\zeta_Q$ ), baseflow index ( $\zeta_{BFI}$ ), half streamflow period ( $\zeta_{HFD}$ ), 5<sup>th</sup> percentiles of the streamflow ( $\zeta_{Q5}$ ), and duration of high-flow events ( $\zeta_{HQD}$ ).

In terms of climatic indices, Table 4 shows their values together with the coefficient of variation. It can be seen that there are some indices that show very little or no variation at all and, therefore, they could be already excluded from the subsequent correlation analysis; they are:  $\psi_{HPD}$  (1 %),  $\psi_{HPS}$  (0 %),  $\psi_{LPF}$  (4 %),  $\psi_{LPD}$  (3 %), and  $\psi_{LPS}$  (0 %).

Figure 3 shows the correlation between the remaining indices. It can be observed they all have strong internal correlation ( $r > 0.71$ ). For this reason it was decided to retain only  $\psi_P$  and  $\psi_{FS}$ , as they have lower correlation. The first represents an important term of the water budget, the latter captures snow dynamics.

Table 5 shows the values of the catchment characteristics considered in this study. All of them have a coefficient of variation larger than the minimum threshold of 5%. Therefore, none of them was excluded based on this criterion. The second criterion for the pre-exclusion of the catchments characteristics, consisting in removing  $\xi$  occupying less than 5% of the subcatchments, led to the suppression of  $\xi_{LC}$  (which occupies 4% of the subcatchment).

Figure 4 shows the correlations between catchment characteristics; in many cases the high correlation is due to the fact that many indices are complementary (e.g. different types of geology). The following  $\xi$  were selected (one index per class):

- $\xi_A$  because it is low correlated to the other features;
- $\xi_{TE}$  and  $\xi_{TAS}$  in representation of the topography;
- $\xi_{LF}$  for the land use;
- $\xi_{SD}$  representing the soil characteristics;
- $\xi_{GC}$  for the geology.

In summary, the original set of catchment indices was reduced to a set of 5 indices.

#### 4.1.2 Selection of controlling factors on streamflow signatures

Figure 5 reports the results of the Spearman correlation between climatic indices plus catchment characteristics on streamflow signatures. The upper panel contains the Spearman's rank coefficients and the lower panel shows p-values associated with them.

The following results can be noted:

- The three statistics average precipitation ( $\psi_P$ ), fraction of snow ( $\psi_{FS}$ ), and average elevation ( $\xi_{TE}$ ) correlate strongly with average streamflow ( $\zeta_Q$ ) and seasonality ( $\zeta_{HFD}$ ) ( $r > 0.64$  and  $p\text{-value} < 0.05$ ). This correlation can be interpreted as follows: subcatchments with high elevation ( $\xi_{TE}$ ) tend to have higher precipitation ( $\psi_P$ ) due to orographic effects, which leads to higher streamflow ( $\zeta_Q$ ). They also tend to have more snow ( $\psi_{FS}$ ) due to lower temperatures, which influences the seasonality ( $\zeta_{HFD}$ ).
- There are then some catchment characteristics that have no correlation ( $r < 0.45$ ) with the streamflow signatures (catchment area ( $\xi_A$ ) and land use ( $\xi_{LF}$ )) or limited correlation (aspect ( $\xi_{TAS}$ ) and deep soil ( $\xi_{SD}$ ), with  $r < 0.64$ ).
- The consolidated geology ( $\xi_{GC}$ ) presents a strong correlation ( $r = -0.87$ ) only with the baseflow index ( $\zeta_{BFI}$ ) that it is not captured by the other indices.
- The streamflow signatures of low and high flows ( $\zeta_{Q5}$  and  $\zeta_{HQD}$ ) cannot be explained by any index, with little correlation only with  $\psi_P$  and  $\xi_{TE}$  ( $r < 0.60$ ) that is not sufficient to reach a p-value lower than 0.05.

These results are the premise for designing meaningful model experiments.

#### 4.1.3 Hypotheses for model building

In this section, we synthesize the outcomes of previous analyses in the form of testable hypotheses for model building.

1. The precipitation is the first driver of the differences in the water balance of the subcatchments. The effect of topographic variability manifests itself primarily as an influence on precipitation (amount and type). Accounting for variability of precipitation therefore implicitly reflects such effect of topography on the hydrograph, since some inputs were interpolated taking into account the effect of the elevation (Sect. 2). Other phenomena potentially altering the water balance (e.g. regional groundwater flow) do not have a significant role and should not be considered.

2. Snow related processes (e.g. amount of snow, timing of snowmelt) control differences in streamflow seasonality between subcatchments. Hence, the model needs to account for snow related processes and their spatial variability.
3. Geology exerts an important control on the partitioning between quick flow and baseflow. Hence, the model should distinguish the different response behaviour of distinct geological areas.
- 5 4. The other catchment characteristics (e.g. soil, vegetation) show little or no correlations with the streamflow signatures and therefore they should not be considered if the idea is to keep the model as simple as possible.

These hypotheses will be tested through specific model comparisons, described in Sect. 4.2.1.

## 4.2 Modelling

10 This section presents the results of the modelling experiments. Section 4.2.1 describes the model comparisons designed to test the hypotheses formulated in section 4.1.3. Section 4.2.2 illustrates model results in terms of hydrograph metrics. Section 4.2.3 presents model results in terms of signatures. An interpretation of the results, including a comparison with the conclusions of the signatures analysis, is given in Sect. 4.2.4.

### 4.2.1 Model experiments for testing the results of the signatures analysis

15 Using the model structure described in Sect. 3.2.1, four model configurations were compared by varying the number and the definition of the HRUs, and changing the structure of the HRUs (Fig. 6). The objective of the experiments was to test the hypotheses 1-4 in Sect. 4.1.3 using semi-distributed hydrological models.

For all models, the meteorological inputs (precipitation, PET, temperature) are aggregated at the subcatchment scale. Based on the first hypothesis in Section 4.1.3, we assume that this discretization is sufficient to capture the regional difference in water balance between subcatchments. This hypothesis is tested with the model M0, with uniform parameters in the catchment (i.e. a single HRU) and distributed precipitation input. This model does not consider snow processes. We expect  
20 that this model will be able to reproduce differences in streamflow averages between subcatchments.

The second hypothesis in Section 4.1.3 (snow controls seasonality) is tested with the model M1. Relatively to M0, M1 accounts for snow processes, represented by simple degree day snow module (see Kavetski and Kuczera, 2007), with inputs (temperature) distributed per subcatchment. We expect that this model will be able to reproduce differences in streamflow  
25 seasonality between subcatchments.

The third hypothesis in Section 4.1.3 (geology controls baseflow) is tested with the model M2. Relatively to M1, M2 considers two HRUs, defined based on geology type. One HRU contains the areas with consolidated geology while the other HRU contains the rest of the catchment (unconsolidated and alluvial geology together). We expect that M2 will be able to reproduce differences in the baseflow index between subcatchments.

30 The fourth hypothesis in Section 4.1.3 (other catchment characteristics should not be considered if the idea is to keep the model as simple as possible) is exemplified by the model M3. M3 is analogous to M2 in terms of complexity but the HRUs are based on catchment characteristics that did not show correlation with the streamflow signatures. Among those characteristics, we have selected land use, and considered an HRU based forest and crops and the second one that occupies the rest of the catchment. This model is as complex as M2 (therefore it is more complex than M1); hence it has the same  
35 dimensions of flexibility to fit the data. However, since the structure of this model does not incorporate the cause-effect relationships derived from the signatures analysis, we expect that its predictive performance will be poorer than M2.

The total number of the calibrated parameters depends on the number of HRUs and on the structure used to represent them: it was 8 for M0, 9 in M1, and 13 in M2 and M3, where 5 parameters were linked between different HRUs (Fig. 6 and Table A1); those parameters are:  $C_e$  that governs the evapotranspiration,  $t_{rise}^{OL}$  and  $t_{rise}^{IL}$  that control the routing in the river network,  
40  $k_{WR}$  that regulates the outflow of the snow reservoir, and  $S_{max}^{UR}$  that determines the behaviour of the unsaturated reservoir.

#### 4.2.2 Model performance in terms of hydrograph metrics

Figure 7a shows the values of the likelihood function (corresponding to the calibration objective function) for the four models in calibration and validation. It can be observed that M0 is, by far, the worst model, with the lowest value of the likelihood function. Regarding the other three models, it can be seen that, during calibration, M1, which has the lowest number of calibration parameters, has the lowest performance, whereas M2 and M3 have higher and similar likelihood values. This behaviour persists in time validation, with M2 and M3 that outperform M1. In space and space–time validation, however, M3 has the lowest likelihood value of the three, whereas M1 and M2 limit their decrease in performance, ranking, respectively, second and the first in terms of optimal likelihood value.

The likelihood function represents an aggregate metrics of model performance; in order to get a sense of appreciation of model fit on individual subcatchments, Fig. 7b reports the values of Nash Sutcliffe efficiency in space time validation for each of the subcatchments. On average, M2 has the best performance of all models (NS = 0.79), followed by M1 (NS = 0.78), M3 (NS = 0.77), and M0 (NS = 0.68). M3 and M0 have the highest variability of performance, with NS values between 0.58 and 0.86 and between 0.59 and 0.81. M1 and M2 have similar spread of NS values, ranging from 0.69 to 0.85 for M1 and from 0.73 to 0.87 for M2. Therefore, M1 and M2 have a more stable performance across subcatchments than M3. M3 obtains a significantly worse performance than the other 2 models on Mosnang, where it reaches a NS value of 0.58 (M1 and M2 have values of 0.69 and 0.73 respectively).

It can also be observed that M2 is generally better than M1, with NS values that are higher or approximately equal except for the subcatchments Andelfingen and Halden, where the NS is slightly worse (however still higher than 0.80). M3 is clearly better than M1 in Andelfingen, Frauenfeld and Wängi, and clearly worse in Herisau and Mosnang. In particular, in Mosnang (the smallest basin), M3 reaches the worst performance of all models on all subcatchments.

Regarding M0, it is interesting to observe that it has the worst performance (among all the subcatchments) in Appenzell, which is the subcatchment that is mostly affected by snow ( $\psi_{FS} = 0.21$ ), while it reaches a performance similar to M1 in Frauenfeld and Wängi, which are two subcatchments with almost no snow.

#### 4.2.3 Model performance in terms of signature metrics

Figure 8 compares the ability of M0 and M1 to capture the signatures representing average streamflow ( $\zeta_Q$ ) and seasonality ( $\zeta_{HFD}$ ). The analysis is presented for space–time validation and, for  $\zeta_{HFD}$ , it focuses only on the four subcatchments that are most affected by the snow ( $\psi_{FS} > 0.10$ ) to emphasize the differences between the results of the two models. Each colour represents a different subcatchment and each dot a year; the red dashed line has a 45 ° slope and represents where the dots should align in case of perfect simulation results. The Spearman's rank score is also reported and gives information about the degree of dependency between the two variables. It is important to stress that the models have not been calibrated using any of the signatures as objective function, which therefore represent an independent evaluation metrics.

It can be observed that M0 represents  $\zeta_Q$  as well as M1, with almost no difference between the two models. Focusing on the ability of capturing  $\zeta_{HFD}$ , it can be seen that the points corresponding to M0 all lie in the upper-left part of the plot, meaning that this model underestimates the signature values. With respect to M1, instead, the points are more aligned around the diagonal. This difference in performance is also exemplified by the value of  $r$  that is 0.66 for M0 and 0.85 for M1.

Figure 9 compares the observed and simulated signatures for the other three models (M1, M2, and M3). All of them are extremely good in representing  $\zeta_Q$  ( $r$  is 0.95, 0.96, and 0.95 for M1, M2, and M3 respectively) and  $\zeta_{HFD}$  ( $r$  is 0.88, 0.88, and 0.87 for M1, M2, and M3 respectively). In all cases the cloud of points appears aligned to the diagonal meaning that the three models are able to capture the value of the signatures each year. Moreover, there is no sensible difference in the various models in representing those signatures.

The performance of all the models decreases for  $\zeta_{Q5}$  where the models have a similar performance with  $r$  equal to 0.62, 0.66, and 0.61 for M1, M2, and M3 respectively. The points are still aligned along the diagonal but are quite dispersed, especially if compared with  $\zeta_Q$  and  $\zeta_{HFD}$ , meaning that the models capture the general tendency but have deficiencies capturing the inter-annual variability.

- 5 In terms of  $\zeta_{BFI}$ , M2 performs clearly better than the other models. It is the only model that is able to represent this signature, with  $r$  equal to 0.83 and the points that align to the diagonal. The other two models have a lower performance ( $r$  equal to 0.31 and 0.52 for M1 and M3 respectively) with the points that are quite dispersed and the dots align almost vertically, implying that the simulated values have a range of variability that is definitely smaller than the observed data.

Figure 10 shows the comparison between observed and simulated  $\zeta_{HQD}$ ; since this signature requires a long time window to be computed, it is not calculated year by year (as done with the other signatures) but as an aggregated value over the 24 years. The performance of M1 and M2 is overall good, with  $r$  that is 0.77 and 0.69, while M3 shows some deficiencies ( $r$  equal to 0.48); all the models tend to slightly overestimate the duration of high flow events with most of the points that lie on the right side of the diagonal.

#### 4.2.4 Interpretation of hydrological model results

- 15 The results of the hydrological model experiments appear to support our hypothesis that only models that account for the influencing factors that affect the streamflow signatures are able to reproduce streamflow spatial variability (see Sect. 4.1.3). This provides confidence that those models are a realistic representation of dominant processes in the catchment.

In particular, the results of M0 show that accounting for the spatial heterogeneity of the precipitation alone is sufficient to achieve a good accuracy signatures of water balance, with  $r$  of 0.95 for average streamflow  $\zeta_Q$ . More complex models with more HRUs and more parameters do not result in any improvement in reproducing the average streamflow signature.

- 20 The differences between M1 and M0 show that differences in streamflow seasonality  $\zeta_{HFD}$  can be largely attributed to the (spatially variable) effect of snow accumulation and melting. More complex models (M2 and M3) do not demonstrate an improvement in this signature.

M2 determines a large improvement in matching signatures of baseflow variability. The ability of fitting  $\zeta_{BFI}$  goes from 0.31 for M1 to 0.83 for M2. This result confirms that geology influences spatial variability of quickflow vs baseflow partitioning, as indicated by signatures analysis.

- 25 M3 reassures that the relatively good results of M2 are not just due to increasing complexity. Although this model performs slightly better than the M1 in terms of matching signatures such as  $\zeta_{BFI}$ , M2 is still much better (e.g. the Spearman's rank score for  $\zeta_{BFI}$  is 0.83 for M2 and 0.52 for M3).

- 30 All the models do not perform particularly well in reproducing  $\zeta_{Q5}$  and  $\zeta_{HQF}$ . These problems show that such models may not represent well extreme values (high and low flows), and therefore they are still amenable to improvements.

Overall, distributing the inputs in space and accounting for the spatial distribution of snow related processes is sufficient to get good performance metrics of water balance and seasonality, confirming the fact that only the precipitation rate and the partitioning between rainfall and snow are the first controllers on these hydrograph characteristics. However, in order to capture other important characteristics of the hydrograph, described by signatures like  $\zeta_{BFI}$ , the discretization of the catchment in HRUs is necessary. This discretization has to be carefully made and a preliminary analysis to understand dominant influencing factors on signatures can help in this decision. As shown in Fig. 9, if we use characteristics that are not strongly correlated with the signatures (e.g. land use) the results are worse than if we choose characteristics that show a correlation with signatures (e.g. geology). This means that M2 is capable of capturing the signatures not just because it is more complex than M1, but because it incorporates the causality link between the geology and the streamflow signatures in its structure.

## 5 General discussion

Explaining the spatial variability observed in catchment hydrological behaviour by identifying the most important controls on water fluxes and pathways is a major focus of catchment hydrology and a central theme in classification studies (e.g., McDonnell and Woods, 2004; Wagener et al., 2007). A common approach for interpreting the spatial variability of catchment responses is through correlation based analyses, which seek correlations between climatic or catchment characteristics and streamflow signatures (e.g., Lacey and Grayson, 1998; Bloomfield et al., 2009). One of the issues with this approach is that correlation does not always imply causality, and the presence of multiple correlated variables can obscure process interpretation.

In this study, we combine correlation analysis and expert judgement for identifying dominant influencing factors on streamflow signatures with hydrological modelling, by using the interpretation of the correlation analysis as an inspiration for generating testable model hypotheses. The combination of correlation analysis on streamflow signatures and hydrological modelling is beneficial because on the one hand, the speculations on dominant processes resulting from the correlation analyses can be verified in the modelling process. Specifically, we developed model experiments to test the influence of precipitation spatial distribution on streamflow average and seasonality, and the influence of geology on quickflow vs baseflow partitioning. On the other hand, model building benefits from guidance resulting from preliminary signatures analysis. The construction of a distributed model requires several decisions (e.g., Fenicia et al., 2016), including how to “break-up” the catchment in a meaningful way, and preliminary signatures analysis can motivate some of these decisions. For example, the HRUs defined based on geology, as suggested by signatures analysis resulted in better model performance than HRUs based on land use, particularly in the representation of streamflow signatures.

Although several modelling decisions were guided by data analysis, it should be noted that alternative decisions would have been similarly consistent with the data. For example, both precipitation and elevation are correlated with average streamflow, and both geology, topography and soil type characteristics are correlated between each other and with baseflow index (Section 4.1.2 and Figure 5). The correlation of catchment characteristics (e.g. geology, soil and topography) can be attributed to the fact that they evolved together in the shaping of the catchment morphology (e.g. mountainous regions have impervious topography with shallower soil and, for these reasons, are less suitable for human activities, influencing land use). The decisions on which variables are chosen to reflect a causality link is not always obvious from correlation analysis alone, and it requires expert judgment, which is necessarily subjective. Although subjectivity is difficult to avoid, it is important being transparent about the decision taken and the argumentations on which they are based, how weak or strong they may be, so that they can be reappraised and revised if new evidence is acquired.

The choice of streamflow signatures is based on the large-sample study from Addor et al. (2017), which provides a broad range of signatures typically used in hydrology. Our analyses showed that this selection is rather inclusive, with several strongly correlated signatures (e.g.  $\zeta_Q$  and  $\zeta_{RR}$ ). For this reason, we eventually used a much smaller selection of the original set of signatures (12 in the original set vs. 5 in the final set). The apparent inclusivity of the set from Addor et al. (2017) provides confidence that the main properties of streamflow are captured in our study. However, it does not guarantee that this set of signatures is sufficient in representing streamflow time series.

Our results on the Thur catchment with respect to the effect of meteorological inputs on average streamflow and of the geology on baseflow index are in general agreement with previous work. Kuentz et al. (2017) made a classification study over more than 40000 catchments across all Europe (of which almost 2700 are gauged) and found that the rainfall is the first controller of the average streamflow, geology controls the BFI, topography the flashiness index, and, for most of the cases, land use is the second controller of them; Bloomfield et al. (2009) used a linear regression model and linked the lithology of the Thames Basin (UK) with the BFI; Lacey and Grayson (1998) noted that geology controls the BFI in two ways, storing the water and impacting the soil formations; Fenicia et al. (2016) compared different model structures and catchment



discretization methods in the Attert Basin (Luxemburg) and discovered that the best model was the one that incorporates a spatial representation of the meteorological inputs and of the geology.

On the other hand, this general tendency should not be generalized to all places. For example, Mazvimavi et al. (2005) found that geology was not important for the BFI, as in their case study the aquifer was deep and disconnected from the river.

5 Bouaziz et al. (2018) found a strong influence of regional groundwater flow in the Meuse catchment which altered the water balance.

One of the main limitations of this work is the restricted number of catchments involved and the limited spatial extension of the study. For this reason, it is difficult to generalize the results to other climatic regions. The subcatchments belong all to the same region and the landscape and climatic characteristics, while varying substantially within the basin, are still a small  
10 sample of the characteristics found elsewhere. Moreover, although the model evaluation uses validation in space and time, which is a relatively incisive test, the spatial validation is carried out in a nested setup. The application of systematic model development strategies to other places and scales, and spatial validation to entirely different regions, are necessary to obtain more generalizable insights.

The small number of subcatchments involved in this study (10) limits the range of viable methods for identifying  
15 relationships between landscape and climatic indices and streamflow signatures (Sect. 3.1) to rather simple approaches. In particular, our correlation analysis, although accounting for non-linearity, is limited to monotonic correlations between variables, and it is unable to identify other forms of relationship, including the mutual interaction between various influencing factors. The usage of more advanced techniques, including machine learning approaches such as random forest or clustering analyses, are most efficient when larger samples are available and could represent a more suitable choice in  
20 these situations.

## 6 Conclusion

In this study, we presented a methodology for the construction of a semi-distributed hydrological model where model hypotheses, instead of being made a-priori, are informed by preliminary analysis on determining the dominant climatic and landscape controls on streamflow spatial variability. Besides providing guidance to model development, the proposed  
25 approach is useful in the fact that modelling can be used to test specific hypotheses on dominant processes resulting from such preliminary analysis. Our analysis was applied to the Thur catchment, subdivided in 10 subcatchments based on available stream gauging stations. The main findings are summarized in the following points:

1. we found large spatial variability between the subcatchments of the Thur in terms of various streamflow signatures reflecting multiple temporal scales: yearly, seasonal and event scale. In terms of climatic characteristics, indices  
30 reflecting fraction of snow, precipitation totals, and aridity varied considerably among catchments. Other precipitation characteristics such as season, frequency and duration of dry and wet days did not vary significantly among catchments. In terms of landscape characteristics, there is large variability of topography (e.g. from upstream mountainous to downstream flat areas), geology (with unconsolidated, more permeable, and consolidated, relatively impermeable formations), and soils (with low depths in the mountains, and large depth in the floodplains) in all  
35 catchments;
2. based on correlation analysis and expert judgment, we determined that climatic variables, especially precipitation average, are the main controls on streamflow average yearly values; the fraction of snow is responsible for streamflow seasonality by delaying the release of winter precipitation to the spring season, and geology controls the baseflow index, with a higher fraction of unconsolidated material determining higher baseflow;
- 40 3. the results of the signatures analysis were translated into a set of model hypotheses: a model with uniform parameters and distributed precipitation input (M0), the addition of a snow component (M1), the subdivision of the

catchment in geology based HRUs (M2), and the alternative subdivision the catchment using vegetation based HRUs (M3);

4. using model comparison, and a validation approach that considers model performance (also in terms of signatures) in space time validation, accounting for the heterogeneity of precipitation, snow related processes, and landscape features such as geology, is necessary to produce hydrographs that have signatures similar to the observed ones. In particular, we confirmed that M0, in spite of a generally poor performance, is sufficient to capture signatures of streamflow average, showing that only distributing the meteorological inputs is sufficient to explain regional differences in average streamflow and that other phenomena potentially altering the water balance (e.g. regional groundwater flows) do not play a significant role. M1 improves signatures of streamflow seasonality, showing that snow is the main responsible for the variability of the seasonality among the catchments. M2 enables reproducing signatures such as the baseflow index, showing that incorporating the geology of the catchment is important for reproducing regional differences in baseflow. Model modifications that are not in line with the results of the signature analysis, such as subdividing the catchment using vegetation based HRUs (M3), despite leading to the same complexity as M2, cause deterioration in model performance in space-time validation. Overall, these results confirm the hypotheses based on the signatures analysis and suggest that the causality relationships, explaining the influence of climate and landscape characteristics on streamflow signatures, can be constructively used for distributed model building.

The relatively good performance obtained in space–time validation suggests that the proposed approach could be used for the prediction of the streamflow in other ungauged locations within the Thur catchment. The method proposed uses data that is commonly available in many gauged catchments (e.g. meteorological data, streamflow measurements, and maps of elevation, geology, land use, and soil); therefore, it is easily transferable to other locations.

## **7 Appendix**

### **7.1 Appendix A: Hydrological model details**

#### **7.1.1 A.1 Model equations**

The equations of the model are listed in this appendix; the model structure is presented in Fig. 6. Table A1 contains the model parameters with the range of variability used in calibration, Table A2 lists the water–budget equations, Table A3 and A4 present the functions and the constitutive functions used.

## **8 Team list**

Marco Dal Molin, Mario Schirmer, Massimiliano Zappa, Fabrizio Fenicia.

## **9 Author contribution**

MDM and FF designed all the experiments. MZ contributed in the preparation of the input data for the study. MDM conducted all the experiments and analysed the results. MDM prepared the paper with the contributions from all the authors.

## **10 Competing interests**

The authors declare that they have no conflict of interest.

## 11 Acknowledgements

This study was funded by the Swiss National Science Foundation (grant 200021\_169003). The authors thank Federal Office of Meteorology and Climatology MeteoSwiss for the meteorological data and the Federal Office for the Environment FOEN for the streamflow data. The authors thank Dr. Conrad Jackisch (editor), Dr. Lieke Melsen, Dr. Shervan Gharari, and the two anonymous referees for their feedback and their help in improving this paper. MZ and MS dedicate this work in memory of Dr. Joachim Gurtz, who pioneered the work on distributed hydrological modelling in the Thur catchment (Gurtz et al., 1999).

## 12 References

- Abbaspour, K. C., Yang, J., Maximov, I., Siber, R., Bogner, K., Mieleitner, J., Zobrist, J., and Srinivasan, R.: Modelling hydrology and water quality in the pre-alpine/alpine Thur watershed using SWAT, *J Hydrol*, 333, 413-430, 10.1016/j.jhydrol.2006.09.014, 2007.
- Addor, N., Newman, A. J., Mizukami, N., and Clark, M. P.: The CAMELS data set: catchment attributes and meteorology for large-sample studies, *Hydrol Earth Syst Sc*, 21, 5293-5313, 10.5194/hess-21-5293-2017, 2017.
- Ajami, K. N., Gupta, H., Wagener, T., and Sorooshian, S.: Calibration of a semi-distributed hydrologic model for streamflow estimation along a river system, *J Hydrol*, 298, 112-135, <https://doi.org/10.1016/j.jhydrol.2004.03.033>, 2004.
- Andréassian, V., Perrin, C., Berthet, L., Le Moine, N., Lerat, J., Loumagne, C., Oudin, L., Mathevet, T., Ramos, M. H., and Valéry, A.: HESS Opinions "Crash tests for a standardized evaluation of hydrological models", *Hydrol. Earth Syst. Sci.*, 13, 1757-1764, 10.5194/hess-13-1757-2009, 2009.
- Antonetti, M., Buss, R., Scherrer, S., Margreth, M., and Zappa, M.: Mapping dominant runoff processes: an evaluation of different approaches using similarity measures and synthetic runoff simulations, *Hydrol. Earth Syst. Sci.*, 20, 2929-2945, 10.5194/hess-20-2929-2016, 2016.
- Antonetti, M., and Zappa, M.: How can expert knowledge increase the realism of conceptual hydrological models? A case study based on the concept of dominant runoff process in the Swiss Pre-Alps, *Hydrol. Earth Syst. Sci.*, 22, 4425-4447, 10.5194/hess-22-4425-2018, 2018.
- Arnold, J. G., Srinivasan, R., Muttiah, R. S., and Williams, J. R.: LARGE AREA HYDROLOGIC MODELING AND ASSESSMENT PART I: MODEL DEVELOPMENT1, *JAWRA Journal of the American Water Resources Association*, 34, 73-89, 10.1111/j.1752-1688.1998.tb05961.x, 1998.
- Berger, K. P., and Entekhabi, D.: Basin hydrologic response relations to distributed physiographic descriptors and climate, *J Hydrol*, 247, 169-182, Doi 10.1016/S0022-1694(01)00383-3, 2001.
- Bloomfield, J. P., Allen, D. J., and Griffiths, K. J.: Examining geological controls on baseflow index (BFI) using regression analysis: An illustration from the Thames Basin, UK, *J Hydrol*, 373, 164-176, 10.1016/j.jhydrol.2009.04.025, 2009.
- Bouaziz, L., Weerts, A., Schellekens, J., Sprokkereef, E., Stam, J., Savenije, H., and Hrachowitz, M.: Redressing the balance: quantifying net intercatchment groundwater flows, *Hydrol Earth Syst Sc*, 22, 6415-6434, 2018.
- Box, G. E. P., and Cox, D. R.: An Analysis of Transformations, *J R Stat Soc B*, 26, 211-252, 1964.
- Boyle, D. P., Gupta, H. V., Sorooshian, S., Koren, V., Zhang, Z., and Smith, M.: Toward improved streamflow forecasts: value of semidistributed modeling, *Water Resour Res*, 37, 2749-2759, 10.1029/2000wr000207, 2001.
- Brunner, M. I., Furrer, R., and Favre, A. C.: Modeling the spatial dependence of floods using the Fisher copula, *Hydrol. Earth Syst. Sci.*, 23, 107-124, 10.5194/hess-23-107-2019, 2019.
- Court, A.: Measures of streamflow timing, *Journal of Geophysical Research* (1896-1977), 67, 4335-4339, doi:10.1029/JZ067i011p04335, 1962.
- De Lavenne, A., Thirel, G., Andréassian, V., Perrin, C., and Ramos, M.-H.: Spatial variability of the parameters of a semi-distributed hydrological model, 7th International Water Resources Management Conference of ICWRS, 2016, 87-94, Falkenmark, M., and Chapman, T.: Comparative hydrology: An ecological approach to land and water resources, The Unesco Press, 1989.
- Fenicia, F., Kavetski, D., and Savenije, H. H. G.: Elements of a flexible approach for conceptual hydrological modeling: 1. Motivation and theoretical development, *Water Resour Res*, 47, Artn W11510, 10.1029/2010wr010174, 2011.
- Fenicia, F., Kavetski, D., Savenije, H. H. G., Clark, M. P., Schoups, G., Pfister, L., and Freer, J.: Catchment properties, function, and conceptual model representation: is there a correspondence?, *Hydrol Process*, 28, 2451-2467, 10.1002/hyp.9726, 2014.
- Fenicia, F., Kavetski, D., Savenije, H. H. G., and Pfister, L.: From spatially variable streamflow to distributed hydrological models: Analysis of key modeling decisions, *Water Resour Res*, 52, 954-989, 10.1002/2015wr017398, 2016.
- Feyen, L., Kalas, M., and Vrugt, J. A.: Semi-distributed parameter optimization and uncertainty assessment for large-scale streamflow simulation using global optimization/Optimisation de paramètres semi-distribués et évaluation de l'incertitude pour la simulation de débits à grande échelle par l'utilisation d'une optimisation globale, *Hydrological Sciences Journal*, 53, 293-308, 2008.

- Fundel, F., Jorg-Hess, S., and Zappa, M.: Monthly hydrometeorological ensemble prediction of streamflow droughts and corresponding drought indices, *Hydrol Earth Syst Sc*, 17, 395-407, 10.5194/hess-17-395-2013, 2013.
- Gao, H., Hrachowitz, M., Fenicia, F., Gharari, S., and Savenije, H. H. G.: Testing the realism of a topography-driven model (FLEX-Topo) in the nested catchments of the Upper Heihe, China, *Hydrol. Earth Syst. Sci.*, 18, 1895-1915, 10.5194/hess-18-1895-2014, 2014.
- Garen, D. C., and Marks, D.: Spatial fields of meteorological input data including forest canopy corrections for an energy budget snow simulation model, *IAHS PUBLICATION*, 349-354, 2001.
- Gurtz, J., Baltensweiler, A., and Lang, H.: Spatially distributed hydrotope-based modelling of evapotranspiration and runoff in mountainous basins, *Hydrol Process*, 13, 2751-2768, Doi 10.1002/(Sici)1099-1085(19991215)13:17<2751::Aid-Hyp897>3.3.Co;2-F, 1999.
- Gurtz, J., Verbunt, M., Zappa, M., Moesch, M., Pos, F., and Moser, U.: Long-term hydrometeorological measurements and model-based analyses in the hydrological research catchment Rietholzbach, *Journal of Hydrology and Hydromechanics*, 51, 162-174, 2003.
- Hrachowitz, M., Savenije, H., Blöschl, G., McDonnell, J., Sivapalan, M., Pomeroy, J., Arheimer, B., Blume, T., Clark, M., and Ehret, U.: A decade of Predictions in Ungauged Basins (PUB)—a review, *Hydrological sciences journal*, 58, 1198-1255, 2013.
- Jasper, K., Calanca, P., Gyalistras, D., and Fuhrer, J.: Differential impacts of climate change on the hydrology of two alpine river basins, *Climate Res*, 26, 113-129, DOI 10.3354/cr026113, 2004.
- Jorg-Hess, S., Kempf, S. B., Fundel, F., and Zappa, M.: The benefit of climatological and calibrated reforecast data for simulating hydrological droughts in Switzerland, *Meteorol Appl*, 22, 444-458, 10.1002/met.1474, 2015.
- Kavetski, D., and Kuczera, G.: Model smoothing strategies to remove microscale discontinuities and spurious secondary optima in objective functions in hydrological calibration, *Water Resour Res*, 43, Artn W03411 10.1029/2006wr005195, 2007.
- Kavetski, D., Kuczera, G., Thyer, M., and Renard, B.: Multistart Newton-type optimisation methods for the calibration of conceptual hydrological models, *Modsim 2007: International Congress on Modelling and Simulation*, 2513-2519, 2007.
- Kavetski, D., Fenicia, F., and Clark, M. P.: Impact of temporal data resolution on parameter inference and model identification in conceptual hydrological modeling: Insights from an experimental catchment, *Water Resour Res*, 47, Artn W05501 10.1029/2010wr009525, 2011.
- Kirchner, J. W., Feng, X. H., Neal, C., and Robson, A. J.: The fine structure of water-quality dynamics: the (high-frequency) wave of the future, *Hydrol Process*, 18, 1353-1359, 10.1002/hyp.5537, 2004.
- Kroll, C. N., and Song, P.: Impact of multicollinearity on small sample hydrologic regression models, *Water Resour Res*, 49, 3756-3769, 10.1002/wrcr.20315, 2013.
- Kuentz, A., Arheimer, B., Hundecha, Y., and Wagener, T.: Understanding hydrologic variability across Europe through catchment classification, *Hydrol Earth Syst Sc*, 21, 2863-2879, 10.5194/hess-21-2863-2017, 2017.
- Lacey, G. C., and Grayson, R. B.: Relating baseflow to catchment properties in south-eastern Australia, *J Hydrol*, 204, 231-250, Doi 10.1016/S0022-1694(97)00124-8, 1998.
- Ladson, A. R., Brown, R., Neal, B., and Nathan, R.: A Standard Approach to Baseflow Separation Using The Lyne and Hollick Filter, *Australasian Journal of Water Resources*, 17, 25-34, 10.7158/13241583.2013.11465417, 2013.
- Lerat, J., Andreassian, V., Perrin, C., Vaze, J., Perraud, J.-M., Ribstein, P., and Loumagne, C.: Do internal flow measurements improve the calibration of rainfall-runoff models?, *Water Resour Res*, 48, 2012.
- Lindstrom, G., Johansson, B., Persson, M., Gardelin, M., and Bergstrom, S.: Development and test of the distributed HBV-96 hydrological model, *J Hydrol*, 201, 272-288, Doi 10.1016/S0022-1694(97)00041-3, 1997.
- Mazvimavi, D., Meijerink, A. M. J., Savenije, H. H. G., and Stein, A.: Prediction of flow characteristics using multiple regression and neural networks: A case study in Zimbabwe, *Phys Chem Earth*, 30, 639-647, 10.1016/j.pce.2005.08.003, 2005.
- McDonnell, J. J., and Woods, R.: On the need for catchment classification, *J Hydrol*, 299, 2-3, 2004.
- McInerney, D., Thyer, M., Kavetski, D., Lerat, J., and Kuczera, G.: Improving probabilistic prediction of daily streamflow by identifying Pareto optimal approaches for modeling heteroscedastic residual errors, *Water Resour Res*, 53, 2199-2239, 10.1002/2016wr019168, 2017.
- McInerney, D., Thyer, M., Kavetski, D., Githui, F., Thayalakumaran, T., Liu, M., and Kuczera, G.: The Importance of Spatiotemporal Variability in Irrigation Inputs for Hydrological Modeling of Irrigated Catchments, *Water Resour Res*, 54, 6792-6821, 10.1029/2017wr022049, 2018.
- Melsen, L., Teuling, A., Torfs, P., Zappa, M., Mizukami, N., Clark, M., and Uijlenhoet, R.: Representation of spatial and temporal variability in large-domain hydrological models: case study for a mesoscale pre-Alpine basin, *Hydrol Earth Syst Sc*, 20, 2207-2226, 10.5194/hess-20-2207-2016, 2016.
- Melsen, L. A., Teuling, A. J., van Berkum, S. W., Torfs, P. J. J. F., and Uijlenhoet, R.: Catchments as simple dynamical systems: A case study on methods and data requirements for parameter identification, *Water Resour Res*, 50, 5577-5596, doi:10.1002/2013WR014720, 2014.
- Menzel, L.: Modelling canopy resistances and transpiration of grassland, *Phys Chem Earth*, 21, 123-129, [https://doi.org/10.1016/S0079-1946\(97\)85572-3](https://doi.org/10.1016/S0079-1946(97)85572-3), 1996.
- Monteith, J. L.: *Vegetation and the atmosphere*, Academic Press, London ; New York, 1975.
- Parajka, J., Merz, R., and Blöschl, G.: A comparison of regionalisation methods for catchment model parameters, *Hydrol. Earth Syst. Sci.*, 9, 157-171, 10.5194/hess-9-157-2005, 2005.

- Sawicz, K., Wagener, T., Sivapalan, M., Troch, P. A., and Carrillo, G.: Catchment classification: empirical analysis of hydrologic similarity based on catchment function in the eastern USA, *Hydrol. Earth Syst. Sci.*, 15, 2895-2911, 10.5194/hess-15-2895-2011, 2011.
- Scherrer, S., and Naef, F.: A decision scheme to indicate dominant hydrological flow processes on temperate grassland, *Hydrol Process*, 17, 391-401, 10.1002/hyp.1131, 2003.
- Schirmer, M., Luster, J., Linde, N., Perona, P., Mitchell, E. A. D., Barry, D. A., Hollender, J., Cirpka, O. A., Schneider, P., Vogt, T., Radny, D., and Durisch-Kaiser, E.: Morphological, hydrological, biogeochemical and ecological changes and challenges in river restoration – the Thur River case study, *Hydrol. Earth Syst. Sci.*, 18, 2449-2462, 10.5194/hess-18-2449-2014, 2014.
- Seneviratne, S. I., Lehner, I., Gurtz, J., Teuling, A. J., Lang, H., Moser, U., Grebner, D., Menzel, L., Schroff, K., Vitvar, T., and Zappa, M.: Swiss prealpine Rietholz bach research catchment and lysimeter: 32 year time series and 2003 drought event, *Water Resour Res*, 48, Artn W06526, 10.1029/2011wr011749, 2012.
- Sivapalan, M.: Pattern, Process and Function: Elements of a Unified Theory of Hydrology at the Catchment Scale, in: *Encyclopedia of Hydrological Sciences*, 2006.
- Toth, E.: Catchment classification based on characterisation of streamflow and precipitation time series, *Hydrol Earth Syst Sc*, 17, 1149-1159, 10.5194/hess-17-1149-2013, 2013.
- Trancoso, R., Phinn, S., McVicar, T. R., Larsen, J. R., and McAlpine, C. A.: Regional variation in streamflow drivers across a continental climatic gradient, *Ecohydrology*, 10, UNSP e1816, 10.1002/eco.1816, 2017.
- van Esse, W. R., Perrin, C., Booij, M. J., Augustijn, D. C. M., Fenicia, F., Kavetski, D., and Lobligeois, F.: The influence of conceptual model structure on model performance: a comparative study for 237 French catchments, *Hydrol Earth Syst Sc*, 17, 4227-4239, 10.5194/hess-17-4227-2013, 2013.
- Verbunt, M., Zappa, M., Gurtz, J., and Kaufmann, P.: Verification of a coupled hydrometeorological modelling approach for alpine tributaries in the Rhine basin, *J Hydrol*, 324, 224-238, <https://doi.org/10.1016/j.jhydrol.2005.09.036>, 2006.
- Viviroli, D., Zappa, M., Gurtz, J., and Weingartner, R.: An introduction to the hydrological modelling system PREVAH and its pre- and post-processing-tools, *Environ Modell Softw*, 24, 1209-1222, 10.1016/j.envsoft.2009.04.001, 2009.
- von Freyberg, J., Radny, D., Gall, H. E., and Schirmer, M.: Implications of hydrologic connectivity between hillslopes and riparian zones on streamflow composition, *J Contam Hydrol*, 169, 62-74, 10.1016/j.jconhyd.2014.07.005, 2014.
- von Freyberg, J., Moeck, C., and Schirmer, M.: Estimation of groundwater recharge and drought severity with varying model complexity, *J Hydrol*, 527, 844-857, 10.1016/j.jhydrol.2015.05.025, 2015.
- Wagener, T., Sivapalan, M., McDonnell, J., Hooper, R., Lakshmi, V., Liang, X., and Kumar, P.: Predictions in ungauged basins as a catalyst for multidisciplinary hydrology, *Eos, Transactions American Geophysical Union*, 85, 451-457, 2004.
- Wagener, T., Sivapalan, M., Troch, P., and Woods, R.: Catchment Classification and Hydrologic Similarity, *Geography Compass*, 1, 901-931, doi:10.1111/j.1749-8198.2007.00039.x, 2007.
- Wooldridge, S., Kalma, J., and Kuczera, G.: Parameterisation of a simple semi-distributed model for assessing the impact of land-use on hydrologic response, *J Hydrol*, 254, 16-32, [https://doi.org/10.1016/S0022-1694\(01\)00489-9](https://doi.org/10.1016/S0022-1694(01)00489-9), 2001.



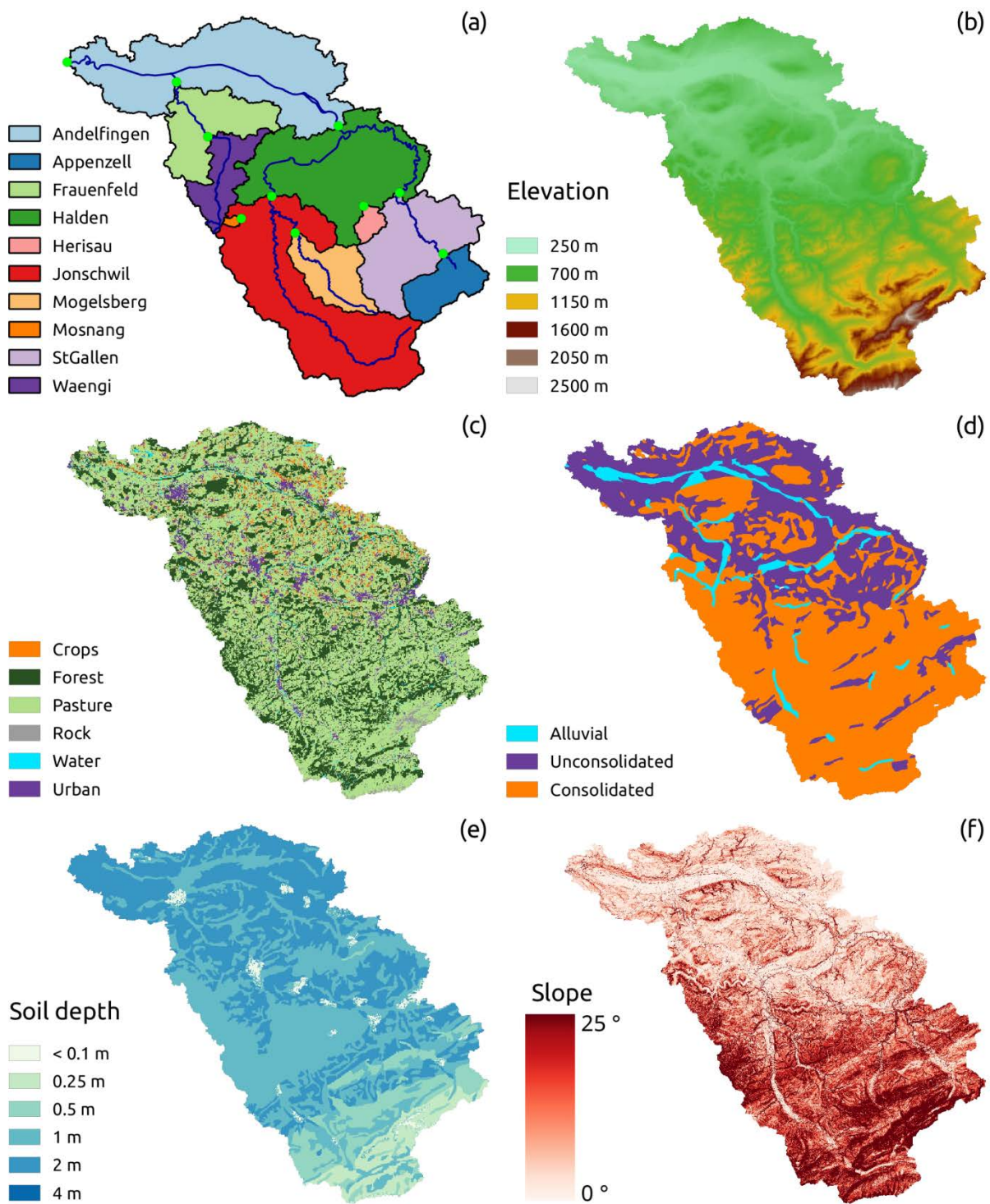


Figure 1: Landscape characteristics of the Thur catchment: (a) subdivision in subcatchments, river network, and gauging stations; (b) elevation map; (c) land use map; (d) simplified geology map; (e) soil depth map; (f) slope map (derived from the elevation map).

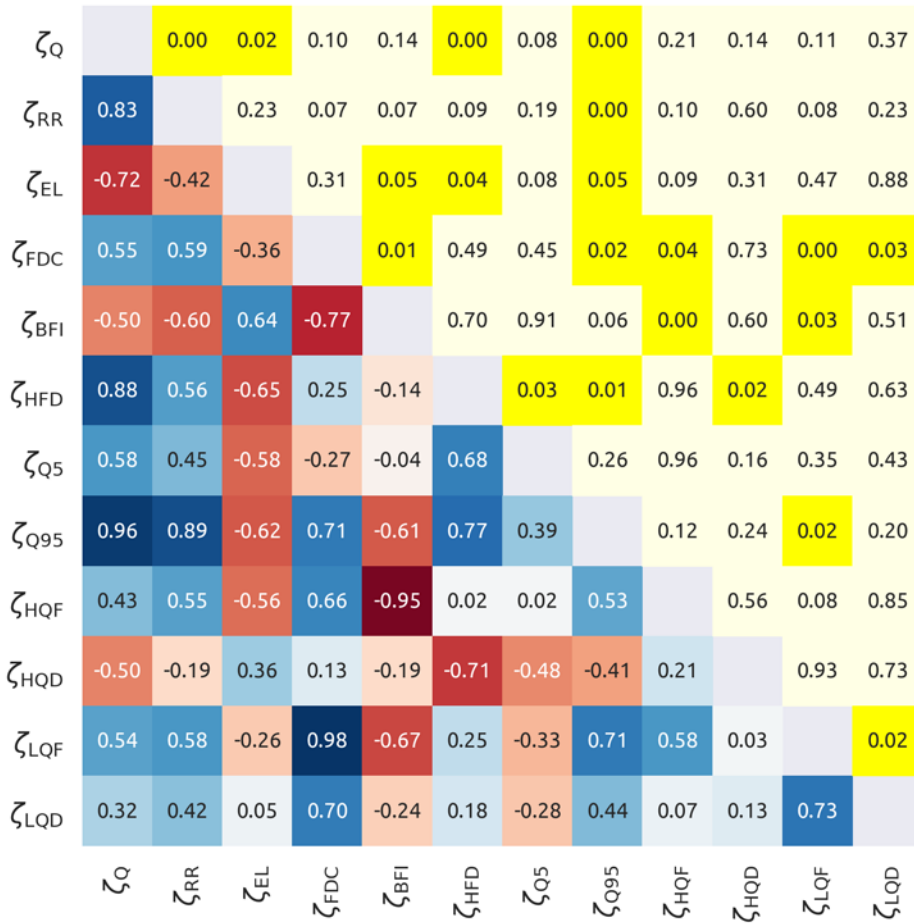


Figure 2: Internal correlation between the streamflow signatures. The lower triangle shows the Spearman's rank score with the red colour that indicates negative correlations and the blue that indicates positive correlations. The upper triangle reports the corresponding p-values, where yellow colour indicates a statistically significant correlation (p-value < 0.05). The symbols used in the figure are reported in Table 2.

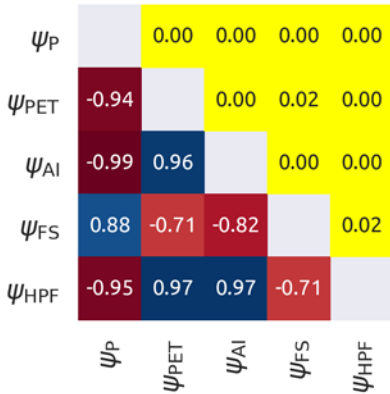
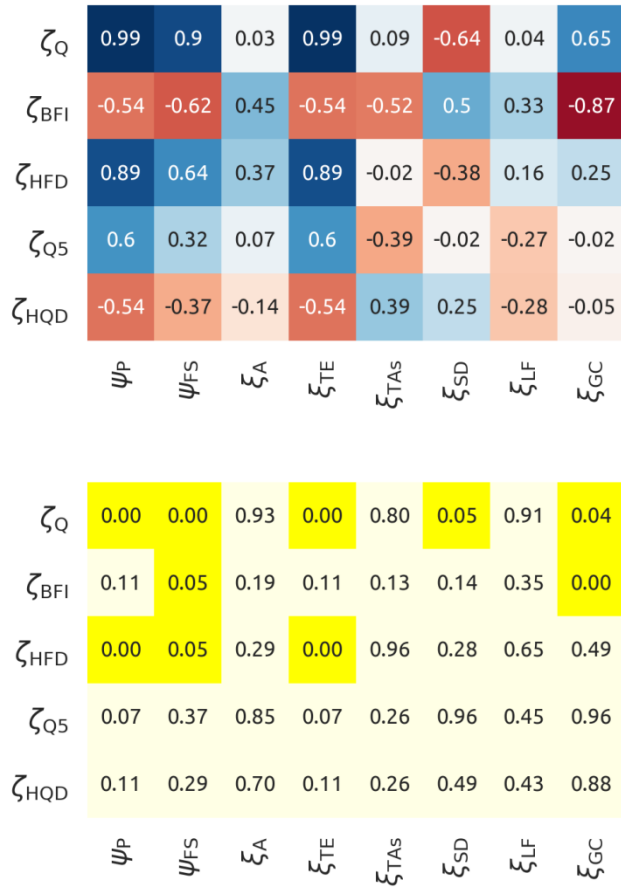


Figure 3: Internal correlation between the climatic indices. The lower triangle shows the Spearman's rank score with the red colour that indicates negative correlations and the blue that indicates positive correlations. The upper triangle reports the corresponding p-values, where yellow colour indicates a statistically significant correlation (p-value < 0.05). The symbols used in the figure are reported in Table 2.

$\xi_A$		0.96	0.99	0.53	0.45	0.83	0.75	0.88	0.60	0.20	0.63	0.58	0.07	0.14	0.14
$\xi_{TE}$	0.02		0.00	0.00	0.75	0.63	0.75	0.00	0.06	0.99	0.08	0.28	0.10	0.05	0.05
$\xi_{TSm}$	-0.01	0.95		0.00	0.63	0.99	0.75	0.00	0.02	0.80	0.02	0.31	0.13	0.01	0.01
$\xi_{TSs}$	-0.22	0.90	0.95		0.56	0.85	0.70	0.00	0.04	0.99	0.01	0.19	0.04	0.00	0.00
$\xi_{TAs}$	0.27	0.12	0.18	0.21		0.04	0.01	0.29	0.31	0.65	0.08	0.04	0.51	0.31	0.31
$\xi_{TAn}$	-0.08	0.18	-0.01	-0.07	-0.66		0.63	0.78	0.45	0.65	0.31	0.20	1.00	0.29	0.29
$\xi_{TAew}$	-0.12	-0.12	-0.12	-0.14	-0.77	0.18		0.19	0.26	0.13	0.10	0.37	0.44	0.58	0.58
$\xi_{SM}$	0.05	-0.82	-0.88	-0.82	-0.37	0.10	0.45		0.00	0.56	0.00	0.26	0.09	0.01	0.01
$\xi_{SD}$	0.19	-0.61	-0.72	-0.66	-0.36	0.27	0.39	0.92		0.58	0.00	0.26	0.17	0.01	0.01
$\xi_{LF}$	0.44	-0.01	0.09	-0.01	-0.16	-0.16	0.52	0.21	0.20		0.80	0.38	0.05	0.68	0.68
$\xi_{LU}$	0.18	-0.58	-0.72	-0.75	-0.58	0.36	0.55	0.83	0.85	0.09		0.17	0.17	0.00	0.00
$\xi_{LP}$	-0.20	0.38	0.36	0.45	0.65	-0.44	-0.32	-0.39	-0.39	-0.31	-0.47		0.02	0.04	0.04
$\xi_{GA}$	0.60	-0.55	-0.51	-0.66	-0.24	0.00	0.27	0.56	0.47	0.63	0.47	-0.73		0.01	0.01
$\xi_{GC}$	-0.50	0.64	0.75	0.85	0.36	-0.37	-0.20	-0.75	-0.77	-0.15	-0.83	0.66	-0.75		0.00
$\xi_{GU}$	0.50	-0.64	-0.75	-0.85	-0.36	0.37	0.20	0.75	0.77	0.15	0.83	-0.66	0.75	-1.00	
	$\xi_A$	$\xi_{TE}$	$\xi_{TSm}$	$\xi_{TSs}$	$\xi_{TAs}$	$\xi_{TAn}$	$\xi_{TAew}$	$\xi_{SM}$	$\xi_{SD}$	$\xi_{LF}$	$\xi_{LU}$	$\xi_{LP}$	$\xi_{GA}$	$\xi_{GC}$	$\xi_{GU}$

Figure 4: Internal correlation between the catchment characteristics. The lower triangle shows the Spearman's rank score with the red colour that indicates negative correlations and the blue that indicates positive correlations. The upper triangle reports the corresponding p-values, where yellow colour indicates a statistically significant correlation (p-value < 0.05). The symbols used in the figure are reported in Table 2.





**Figure 5: Correlation between the selected streamflow signatures (rows) and the selected climatic indices and catchment characteristics (columns). The upper panel shows the Spearman's rank score with the red colour that indicates negative correlations and the blue that indicates positive correlations. The lower panel reports the corresponding p-values, where yellow colour indicates a statistically significant correlation (p-value < 0.05). The symbols used in the figure are reported in Table 2.**

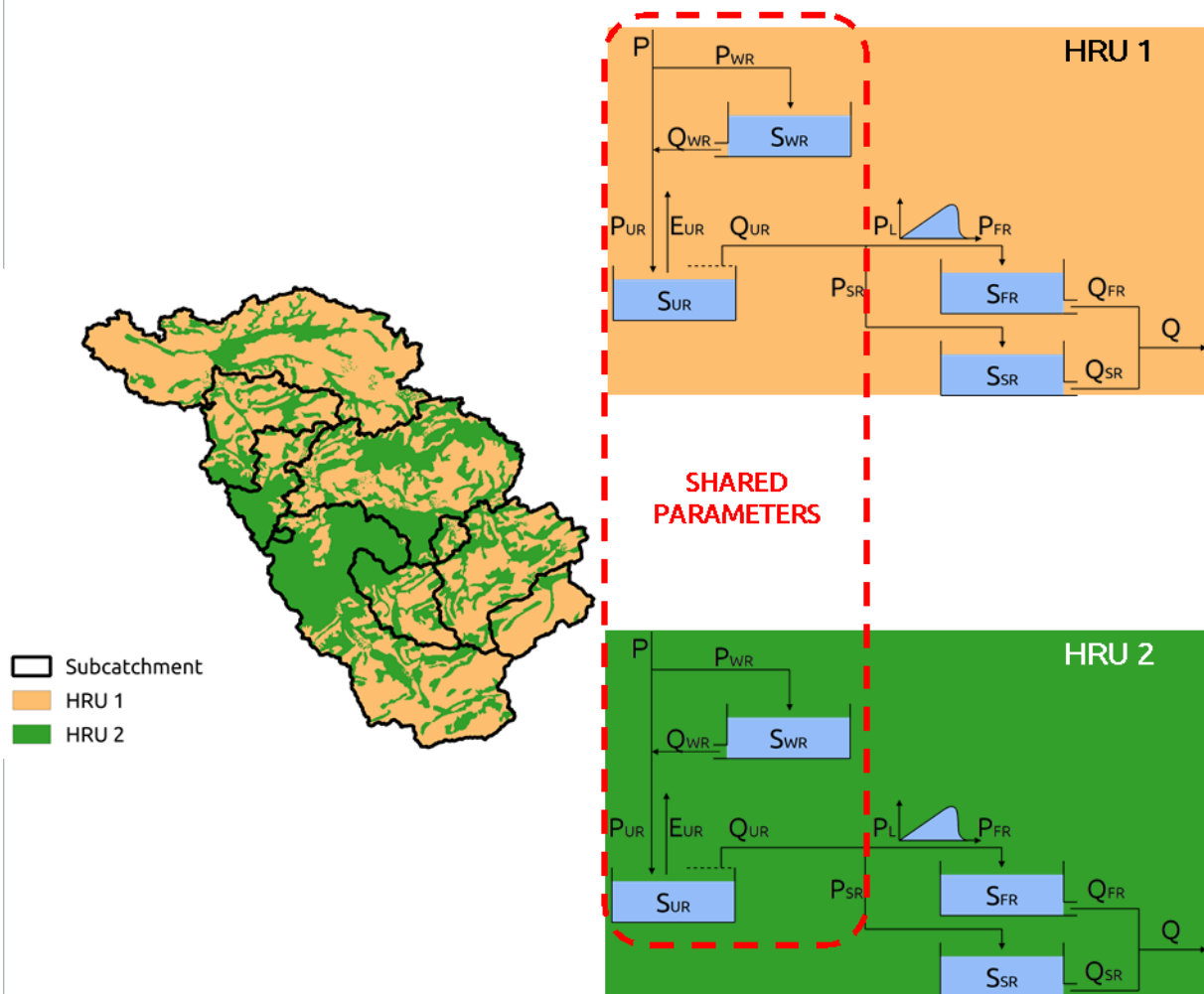
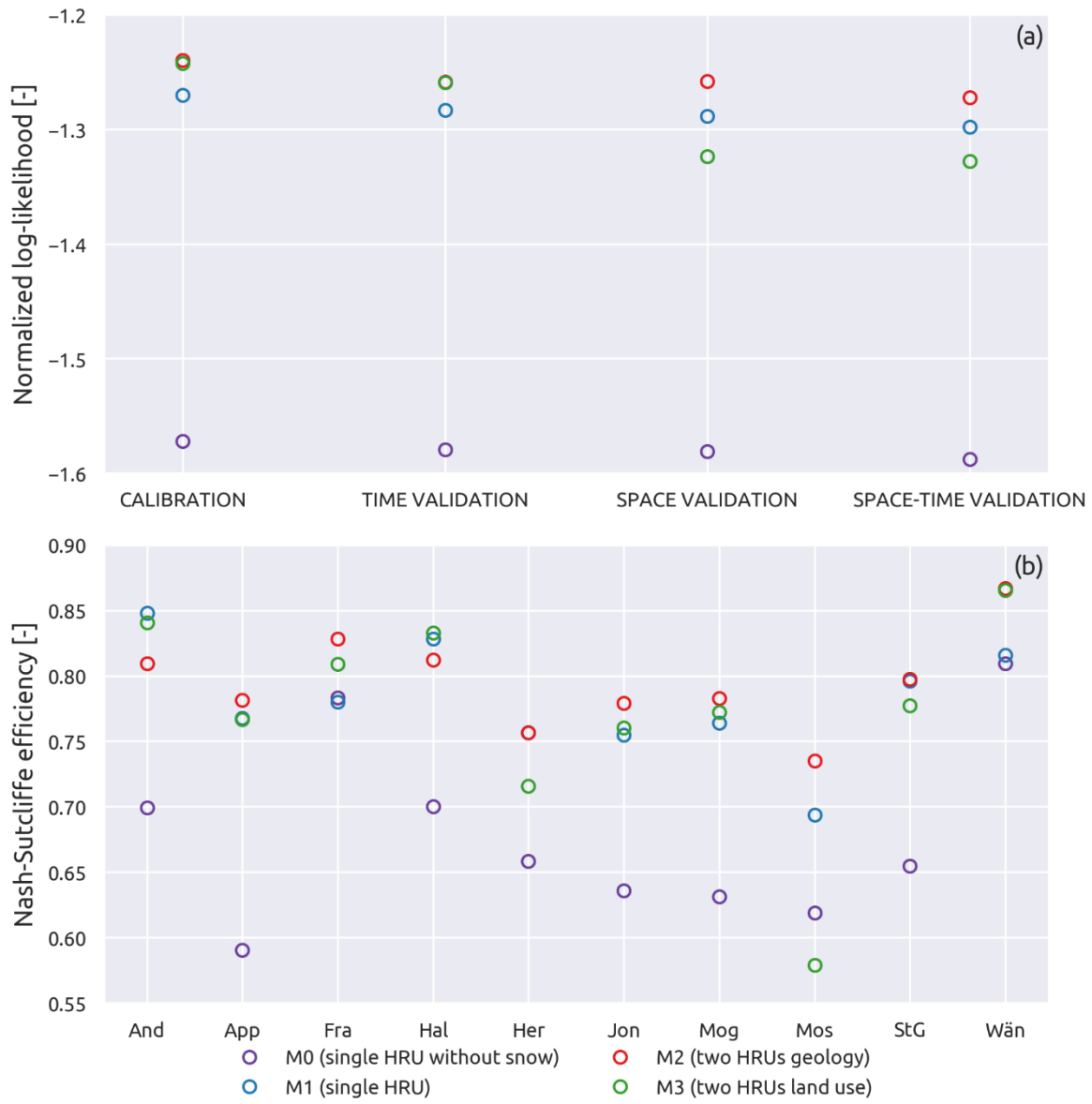
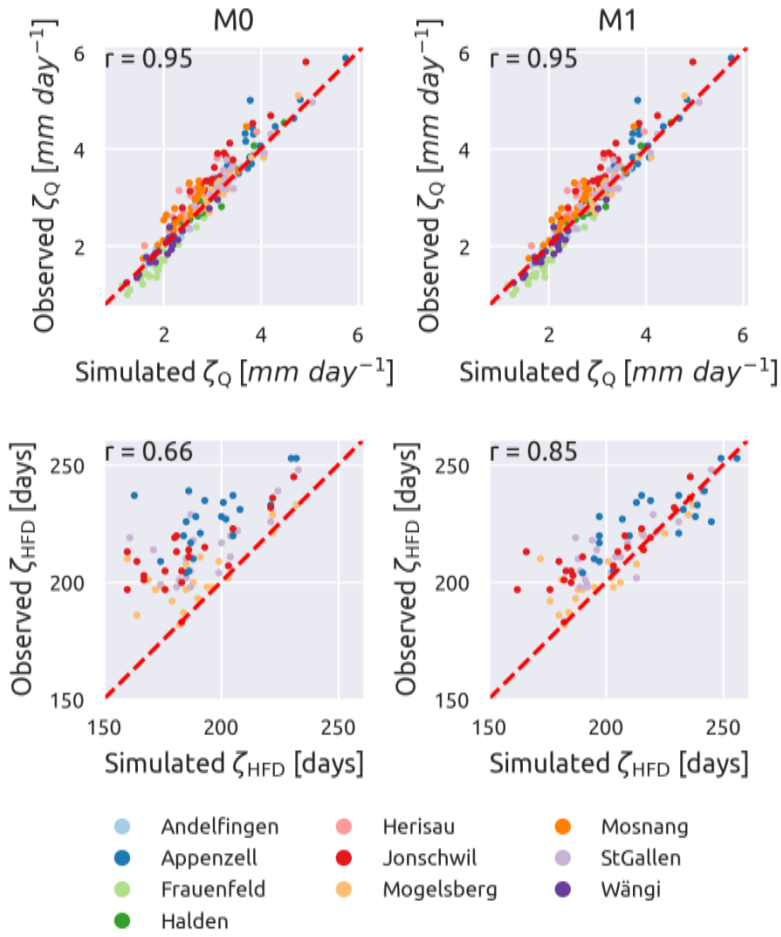


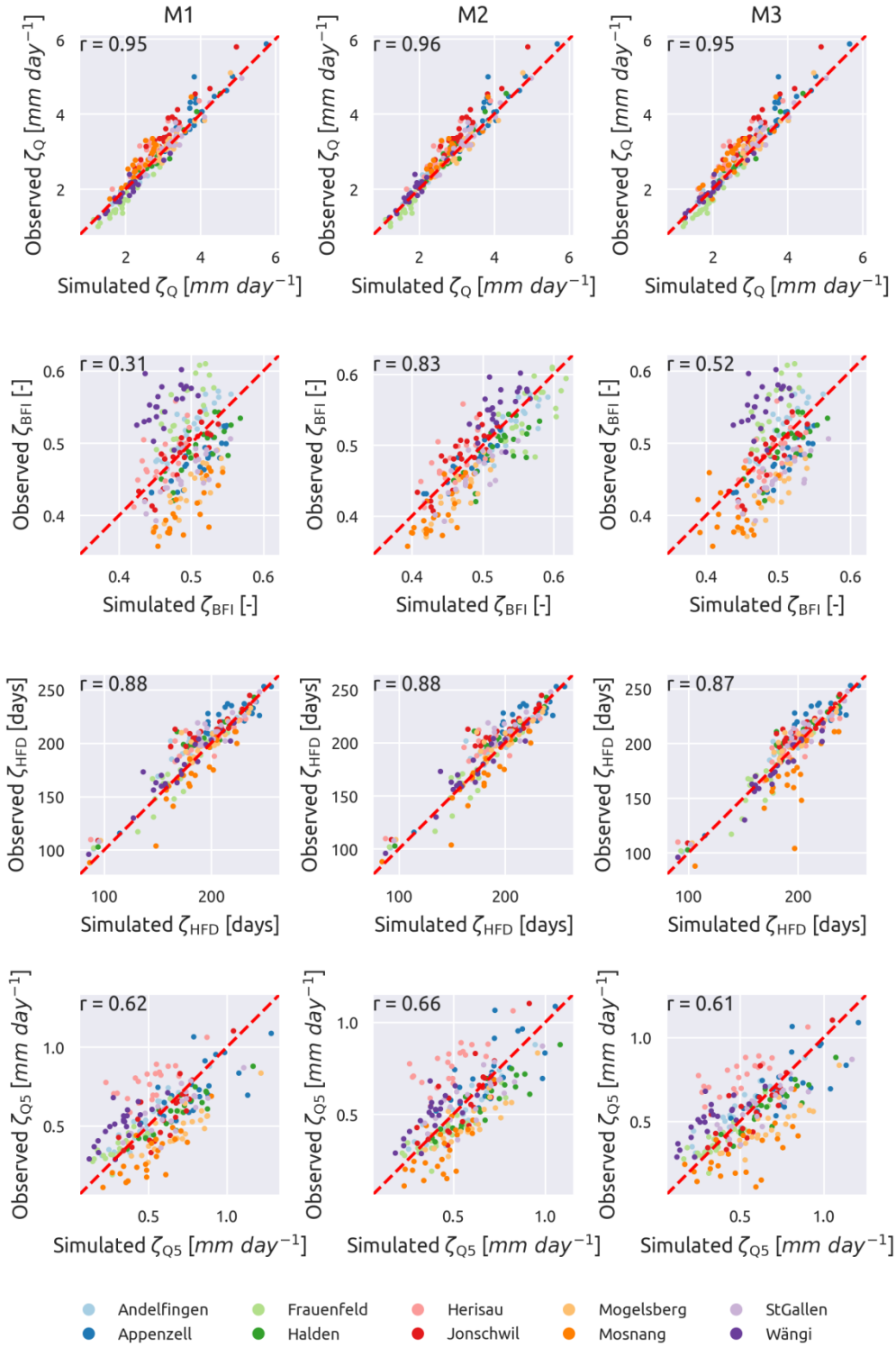
Figure 6: Spatial organization of the model structure: the catchment is divided in subcatchments (black lines), based on the location of the gauging stations, and HRUs (background colour), based on the catchment characteristics. All the HRUs have the same structure but each HRU has its own parameterization except for some shared parameters. In the case of a single HRU model (i.e. M0 and M1), the model maintains the subdivision in subcatchments but loses the subdivision in multiple HRUs.



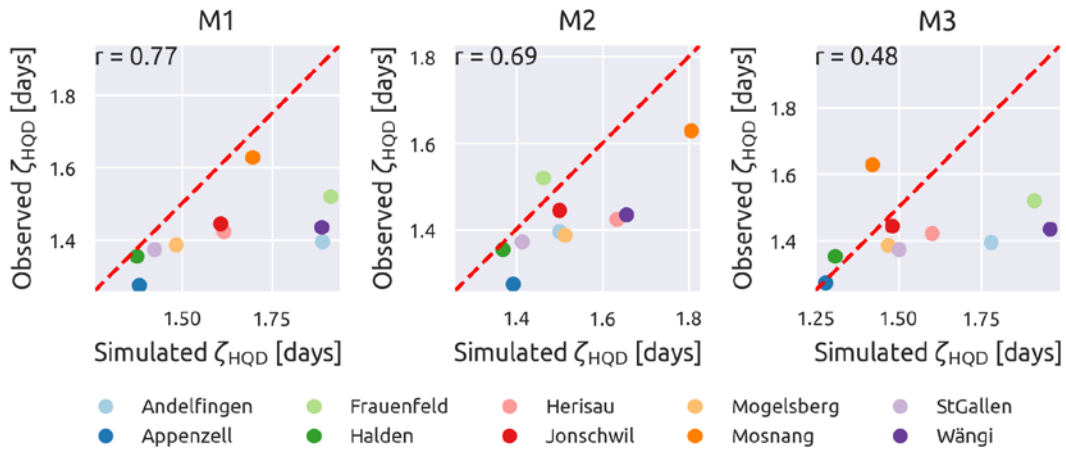
**Figure 7: Normalized log-likelihood (a) and Nash-Sutcliffe efficiency (b) for the three model configurations. The upper plot (a) reports the variation between calibration and validation of the average of the 10 subcatchments; the lower plot (b) shows the variation between subcatchments during space-time validation.**



**Figure 8:** Influence of the model structure on the representation of the average streamflow ( $\zeta_Q$ ) and the mean half streamflow day ( $\zeta_{\text{HFD}}$ ). Single HRU model without snow reservoir on the left (M0), single HRU model with snow reservoir on the right (M1). Each dot represents a year and each colour a subcatchment. For  $\zeta_{\text{HFD}}$ , only the four subcatchments with the fraction of snow ( $\psi_{\text{FS}}$ ) larger than 10 % are plotted. The red dashed line has a 45° slope and indicates where all points should align in case of perfect match. The Spearman's rank score ( $r$ ) is also reported.



**Figure 9: Simulated vs observed streamflow signatures.** Single HRU model on the left (M1), two HRUs model based on geology in the centre (M2), two HRUs model based on land use on the right (M3). Each dot represents a year and each colour a subcatchment. From up to bottom, mean daily streamflow ( $\zeta_Q$ ), baseflow index ( $\zeta_{BFI}$ ), mean half streamflow date ( $\zeta_{HFD}$ ), and 5<sup>th</sup> percentile of the streamflow ( $\zeta_{Q5}$ ). The red dashed line has a 45° slope and indicates where all points should align in case of perfect match. The Spearman's rank score ( $r$ ) is also reported.



**Figure 10: Ability of the hydrological models of representing the signature duration of low-flow events ( $\zeta_{HQD}$ ). Single HRU model on the left, two HRUs model based on geology in the centre, two HRUs model based on land use on the right.**

## 14 Tables

**Table 1: Identification of the gauging stations and description of the river network.**

	Index	Code <sup>(a)</sup>	Upstream catchments
Andelfingen	1	2044	2 – 10
Appenzell	2	2112	–
Frauenfeld	3	2386	10
Halden	4	2181	2, 3, 5 – 10
Herisau	5	2305	–
Jonschwil	6	2303	7, 8
Mogelsberg	7	2374	–
Mosnang	8	2414	–
St. Gallen	9	2468	2
Wängi	10	2126	–

<sup>(a)</sup> Code of the gauging station, as defined by the Federal Office for the Environment FOEN

**Table 2: List of streamflow signatures, climatic indices, and subcatchments characteristics considered in the study.**

Symbol	Name
Streamflow signatures	
$\zeta_Q$	Average daily streamflow
$\zeta_{RR}$	Runoff ratio
$\zeta_{EL}$	Streamflow elasticity
$\zeta_{FDC}$	Slope of the flow duration curve
$\zeta_{BFI}$	Baseflow index
$\zeta_{HDF}$	Mean half streamflow date
$\zeta_{Q5}$	5 <sup>th</sup> percentile of the streamflow
$\zeta_{Q95}$	95 <sup>th</sup> percentile of the streamflow
$\zeta_{HQF}$	Frequency of high-flow events
$\zeta_{HQD}$	Mean duration of high-flow events
$\zeta_{LQF}$	Frequency of low-flow events
$\zeta_{LQD}$	Mean duration of low-flow events
Climatic indices	
$\psi_P$	Average daily precipitation
$\psi_{PET}$	Average daily potential evapotranspiration
$\psi_{AI}$	Aridity index
$\psi_{FS}$	Fraction of snow
$\psi_{HPF}$	Frequency of high-precipitation events
$\psi_{HPD}$	Mean duration of high-precipitation events
$\psi_{HDS}$	Season with most high-precipitation events
$\psi_{LPF}$	Frequency of low-precipitation events
$\psi_{LPD}$	Mean duration of low-precipitation events
$\psi_{LPS}$	Season with most low-precipitation events
Subcatchments characteristics	
$\xi_A$	Subcatchment area
$\xi_{TE}$	Average elevation
$\xi_{Tsm}$	Average slope
$\xi_{TSs}$	Fraction of the subcatchment with steep areas
$\xi_{TAs}$	Fraction of the subcatchment facing south
$\xi_{TAn}$	Fraction of the subcatchment facing north
$\xi_{TAew}$	Fraction of the subcatchment facing east or west
$\xi_{SM}$	Average soil depth
$\xi_{SD}$	Fraction of the subcatchment with deep soil
$\xi_{LF}$	Fraction of the subcatchment with forest land use
$\xi_{LC}$	Fraction of the subcatchment with crops land use
$\xi_{LU}$	Fraction of the subcatchment with urbanized land use



$\xi_{LP}$	Fraction of the subcatchment with pasture land use
$\xi_{GA}$	Fraction of the subcatchment with alluvial geology
$\xi_{GC}$	Fraction of the subcatchment with consolidated geology
$\xi_{GU}$	Fraction of the subcatchment with unconsolidated geology

**Table 3: Values of the streamflow signatures. The names of the subcatchments are abbreviated using the first three letters, the symbols are reported in Table 2. The last column contains the coefficient of variation of each signature.**

	Subcatchment										CV
	And	App	Fra	Hal	Her	Jon	Mog	Mos	StG	Wän	
$\zeta_Q$	2.46	4.14	1.64	3.08	2.95	3.71	3.21	2.91	3.43	2.03	0.25
$\zeta_{RR}$	0.63	0.80	0.49	0.70	0.71	0.80	0.70	0.72	0.71	0.56	0.14
$\zeta_{EL}$	1.35	1.22	1.68	1.24	1.17	1.35	0.97	1.37	0.99	1.54	0.17
$\zeta_{FDC}$	2.12	2.41	2.11	2.30	2.08	2.49	2.76	2.78	2.47	2.02	0.12
$\zeta_{BFI}$	0.55	0.50	0.56	0.52	0.50	0.50	0.45	0.42	0.48	0.57	0.10
$\zeta_{HDF}$	194.21	220.63	170.38	202.00	193.87	205.38	196.96	168.33	209.36	173.17	0.09
$\zeta_{Q5}$	0.50	0.70	0.35	0.57	0.74	0.54	0.44	0.28	0.60	0.49	0.27
$\zeta_{Q95}$	6.96	12.85	4.83	9.23	9.17	11.19	10.57	10.46	11.00	5.98	0.28
$\zeta_{HQF}$	2.21	5.17	3.50	3.67	6.34	4.46	6.54	12.96	5.87	2.96	0.57
$\zeta_{HQD}$	1.39	1.25	1.45	1.35	1.40	1.39	1.37	1.58	1.35	1.29	0.06
$\zeta_{LQF}$	17.50	31.92	12.92	24.21	2.62	37.21	49.42	66.92	28.35	7.25	0.71
$\zeta_{LQD}$	6.67	6.18	3.69	6.53	2.00	7.44	6.38	7.11	4.53	4.35	0.32

**Table 4: Values of the climatic indices. The names of the subcatchments are abbreviated using the first three letters, the symbols are reported in Table 2. The last column contains the coefficient of variation of each index.**

	Subcatchment										CV
	And	App	Fra	Hal	Her	Jon	Mog	Mos	StG	Wän	
$\psi_P$	3.91	5.15	3.36	4.38	4.13	4.64	4.57	4.04	4.80	3.62	0.13
$\psi_{PET}$	1.60	1.37	1.70	1.55	1.61	1.54	1.57	1.69	1.49	1.71	0.07
$\psi_{AI}$	0.41	0.27	0.50	0.35	0.39	0.33	0.34	0.42	0.31	0.47	0.19
$\psi_{FS}$	0.04	0.21	0.04	0.05	0.09	0.15	0.13	0.09	0.13	0.05	0.57
$\psi_{HPF}$	15.21	14.38	17.67	14.58	15.82	14.54	14.58	16.13	14.31	17.50	0.08
$\psi_{HPD}$	1.20	1.17	1.17	1.18	1.22	1.20	1.19	1.22	1.17	1.19	0.01
$\psi_{HDS}$	Summer	Summer	Summer	Summer	Summer	Summer	Summer	Summer	Summer	Summer	0.00
$\psi_{LPF}$	201.67	195.79	216.83	198.54	205.04	197.21	198.92	205.75	197.69	213.17	0.04
$\psi_{LPD}$	3.57	3.50	3.83	3.50	3.63	3.51	3.51	3.66	3.51	3.76	0.03
$\psi_{LPS}$	Fall	Fall	Fall	Fall	Fall	Fall	Fall	Fall	Fall	Fall	0.00

**Table 5: Values of the subcatchment characteristics. The names of the subcatchments are abbreviated using the first three letters, the symbols are reported in Table 2. The last two columns contain the coefficient of variation and the maximum value of each signature.**

	Subcatchment										CV	MAX
	And	App	Fra	Hal	Her	Jon	Mog	Mos	StG	Wän		
$\xi_A$	1701	74.46	213.34	1085	16.72	493.0	88.11	3.19	261.1	78.96	1.40	1701
$\xi_{TE}$	768	1250	591	908	831	1020	954	797	1039	650	0.22	1250
$\xi_{Tsm}$	13.32	25.23	9.70	16.87	15.44	20.66	19.77	15.68	19.72	12.49	0.27	25.23
$\xi_{TSs}$	0.47	0.81	0.33	0.62	0.69	0.77	0.79	0.71	0.73	0.45	0.26	0.81
$\xi_{TAs}$	0.25	0.22	0.23	0.23	0.21	0.23	0.24	0.40	0.24	0.21	0.23	0.40
$\xi_{TAn}$	0.32	0.35	0.33	0.32	0.33	0.32	0.31	0.24	0.33	0.32	0.09	0.35
$\xi_{TAew}$	0.43	0.43	0.44	0.44	0.46	0.44	0.45	0.36	0.43	0.47	0.07	0.47
$\xi_{SM}$	1.30	0.56	1.48	1.10	1.32	0.93	1.17	1.00	1.03	1.35	0.23	1.48
$\xi_{SD}$	0.40	0.04	0.49	0.25	0.41	0.13	0.28	0.00	0.26	0.36	0.63	0.49
$\xi_{LF}$	0.26	0.25	0.28	0.27	0.21	0.31	0.34	0.18	0.27	0.30	0.17	0.34
$\xi_{LC}$	0.04	0.00	0.04	0.03	0.03	0.01	0.01	0.01	0.01	0.04	0.79	0.04
$\xi_{LU}$	0.08	0.03	0.10	0.06	0.15	0.04	0.03	0.03	0.05	0.10	0.63	0.15
$\xi_{LP}$	0.60	0.59	0.57	0.61	0.61	0.61	0.62	0.77	0.63	0.55	0.09	0.77
$\xi_{GA}$	0.06	0.01	0.09	0.03	0.00	0.02	0.02	0.00	0.01	0.11	1.05	0.11
$\xi_{GC}$	0.59	0.92	0.54	0.73	0.88	0.90	0.92	1.00	0.88	0.63	0.20	1.00
$\xi_{GU}$	0.35	0.07	0.36	0.23	0.12	0.07	0.06	0.00	0.10	0.26	0.79	0.36

**Table A1: hydrological model parameters with range of variation used for the definition of the uniform prior distribution. The “component” column indicates the element (reservoir, lag or network) where the parameter belongs.**

Parameter	Unit	Component	Range of variability
$C_e$	—	Unsaturated reservoir (UR)	0.1 – 3.0
$S_{\max}^{\text{UR}}$	mm	Unsaturated reservoir (UR)	0.1 – 500.0
$k_{\text{WR}}$	$\text{d}^{-1}$	Snow reservoir (WR)	0.1 – 10.0
$t_{\text{rise}}^{\text{IL}}$	d	Network lag	0.5 – 10.0
$t_{\text{rise}}^{\text{OL}}$	d	Network lag	0.5 – 10.0
$D$	—	Structure	0.0 – 1.0
$k_{\text{FR}}$	$\text{d}^{-1}\text{mm}^{-2}$	Fast reservoir (FR)	$10^{-6}$ – 10.0
$k_{\text{SR}}$	$\text{d}^{-1}$	Slow reservoir (SR)	$10^{-6}$ – 1.0
$t_{\text{rise}}^{\text{lag}}$	d	Structure lag	1.0 – 20.0

**Table A2: Water–budget equations (see model schematic in Figure 6).**

Component	Equation
Snow reservoir (WR)	$\frac{dS_{WR}}{dt} = P_{WR} - Q_{WR}$
Unsaturated reservoir (UR)	$\frac{dS_{UR}}{dt} = P_{UR} - Q_{UR} - E_{UR}$
Lag function	$Q_{UR} = P_{SR} + P_{lag}$
Slow reservoir (SR)	$\frac{dS_{SR}}{dt} = P_{SR} - Q_{SR}$
Fast reservoir (FR)	$\frac{dS_{WR}}{dt} = P_{FR} - Q_{FR}$
Outflow	$Q = Q_{FR} + Q_{SR}$

**Table A3: Constitutive functions of the model. Refer to Table A4 for the definition of the functions  $f$ . The calibrated parameters are marked in red**

Component	Equation
Snow reservoir (WR) <sup>(a)</sup>	$P_{WR} = \begin{cases} P & \text{if } T \leq 0 \\ 0 & \text{if } T > 0 \end{cases}$
Snow reservoir (WR) <sup>(b)</sup>	$M_{max}^{WR} = \begin{cases} 0 & \text{if } T \leq 0 \\ k_{WR} T & \text{if } T > 0 \end{cases}$
Snow reservoir (WR)	$Q_{WR} = M_{max}^{WR} f_e(S_{WR} 2)$
Unsaturated reservoir (UR)	$\overline{S_{UR}} = \frac{S_{UR}}{S_{max}^{UR}}$
Unsaturated reservoir (UR)	$E_{UR} = C_e(PET) f_m(S_{UR} 0.01)$
Unsaturated reservoir (UR)	$Q_{UR} = P_{UR} f_p(\overline{S_{UR}} 2)$
Slow reservoir (SR)	$P_{SR} = D Q_{UR}$
Slow reservoir (SR)	$Q_{SR} = k_{SR} S_{SR}$
Lag function <sup>(c)</sup>	$P_{FR} = (P_L * h_{lag})(t)$
Lag function	$h_{lag} = \begin{cases} 2t / (t_{rise}^{lag})^2 & \text{if } t \leq t_{rise}^{lag} \\ 0 & \text{if } t > t_{rise}^{lag} \end{cases}$
Fast reservoir (FR)	$Q_{FR} = k_{FR} S_{FR}^3$
Lags in the network <sup>(c)</sup>	$Q_{out} = (Q_{in} * h_{lag}^{net})(t)$
Lags in the network	$h_{lag}^{net} = \begin{cases} 2t / (t_{rise}^{OL/IL})^2 & \text{if } t \leq t_{rise}^{OL/IL} \\ (1/t_{rise}^{OL/IL}) \left( 1 - ((t - t_{rise}^{OL/IL}) / t_{rise}^{OL/IL}) \right) & \text{if } t_{rise}^{OL/IL} < t \leq 2t_{rise}^{OL/IL} \\ 0 & \text{if } t > 2t_{rise}^{OL/IL} \end{cases}$

<sup>(a)</sup> This equation is smoothed using logistic scheme, Eq. (8) in Kavetski and Kuczera (2007), with smoothing parameter  $m_p = 1.5^\circ C$

5 <sup>(b)</sup> This equation is smoothed using logistic scheme, Eq. (13) in Kavetski and Kuczera (2007), with smoothing parameter  $m_M = 1.5^\circ C$

<sup>(c)</sup> The operator  $*$  denotes the convolution operator, smoothed according to Kavetski and Kuczera (2007)

**Table A4: Constitutive functions**

Function	Name
$f_e(x \theta) = 1 - \exp(-x/\theta)$	Tessier function. Note that $f_e(x \theta) \rightarrow 1$ as $x \rightarrow \infty$
$f_p(x \theta) = x^\theta$	Power function
$f_m(x \theta) = \frac{x(1+\theta)}{x+\theta}$	Monod-type kinetics, adjusted so that $f_m(1 \theta) = 1$