

Assimilation of passive microwave AMSR-2 satellite observations in a snowpack evolution model over North-Eastern Canada

Fanny Larue^{1,2,3}, Alain Royer^{1,2}, Danielle De Sève³, Alexandre Roy^{1,2,4*}, Emmanuel Cosme⁵

1 CARTEL, Université de Sherbrooke, Québec, Canada

5 2 Centre d'Études Nordiques, Québec, Canada

3 IREQ, Hydro-Québec, Québec, Canada

4 Département de Géographie, Université de Montréal, Québec, Canada

5 Institut des Géosciences de l'Environnement, IGE, UGA-CNRS, Grenoble, France

*Actual affiliation : Université du Québec à Trois-Rivières, Québec, Canada

10 **Corresponding author:** Fanny Larue (fanny.larue@usherbrooke.ca)

Abstract. Over northeastern Canada, the amount of water stored in a snowpack, estimated by its snow water equivalent (SWE) amount, is a key variable for hydrological applications. The limited number of weather stations driving snowpack models over large and remote northern areas generates great uncertainty in SWE evolution. A data assimilation (DA) scheme was developed to improve SWE estimates by updating meteorological forcing data and snowpack states with passive microwave (PMW) satellite observations and without using any surface-based data. In this DA experiment, a particle filter with a Sampled Importance Resampled algorithm (SIR) was applied and an inflation technique of the observation error matrix was developed to avoid ensemble degeneracy. Advanced Microwave Scanning Radiometer – 2 (AMSR-2) brightness temperature (T_B) observations were assimilated into a chain of models composed of the Crocus multi-layer snowpack model and radiative transfer models. The microwave snow emission model (Dense Media Radiative Transfer – Multi-Layers (DMRT-ML)), the vegetation transmissivity model (ω - τ_{opt}), and atmospheric and soil radiative transfer models were calibrated to simulate the contributions from the snowpack, the vegetation and the soil, respectively, at the top of the atmosphere. DA experiments were performed for 12 stations where daily continuous SWE measurements were acquired over 4 winters (2012-2016). Best SWE estimates are obtained with the assimilation of the T_B s at 11, 19 and 37 GHz in vertical polarizations. The overall SWE bias is reduced by 68% compared to the original SWE simulations, from 23.7 kg m⁻² without assimilation to 7.5 kg m⁻² with the assimilation of the three frequencies. The overall SWE relative percentage of error (RPE) is 14.1% (19% without assimilation) for sites with a fraction of forest cover below 75%, which is in the range of accuracy needed for hydrological applications. This research opens the way for global applications to improve SWE estimates over large and remote areas, even when vegetation contributions are up to 50% of the PMW signal.

30

Keywords: passive microwave, Crocus snowpack evolution model, DMRT-ML radiative transfer model, vegetation contributions, SWE retrievals, Eastern Canada, Assimilation scheme, Particle Filter

1 Introduction

In Québec, Eastern Canada, snowmelt runoff has become a major economic issue and plays a considerable role in flood events (Perry, 2000). Good forecasting of this water supply is essential in optimizing hydroelectric dam management. The amount of water stored in a snowpack is estimated by the snow water equivalent (SWE). Accurately predicting the evolution of the SWE is challenging over large and remote areas due to the high spatial and temporal variability of the snowpack and to the lack of *in situ* data, which are time-consuming and expensive to measure. Current operational hydrological forecasting models used by Hydro-Québec, one of the larger energy producers in North America, rely on the interpolation of surface snow survey measurements (Tapsoba et al., 2005, Brown et al., 2018). It has been shown that the highest uncertainties in hydrological forecasting related to snow result from a lack of accurate estimates of the amount of snow accumulated over a large area during the winter season (Turcotte et al., 2010). To better determine the spatial distribution of the SWE, many approaches use snowpack models to simulate the evolution of the snow cover in response to meteorological conditions (Brun et al., 1989; Jordan, 1991; Lehning et al., 2002). However, using these models is challenging due to the incomplete meteorological forcing data for remote areas where weather stations are scarce (Raleigh et al., 2015) and the snow physics simplifications used in the models (Foster et al., 2005).

The assimilation of satellite observations is a promising approach for reducing uncertainties related to the lack of *in situ* data (Pietroniro and Leconte, 2005; Durand et al., 2009; Touré et al., 2011; De Lannoy et al., 2012; DeChant and Moradkhani, 2011; Andreadis and Lettenmaier, 2012; Kwon et al., 2017). In particular, passive microwave (PMW) satellite observations, which measure brightness temperatures (T_B), are sensitive to the volume of snow and provide information at a good temporal and spatial coverage (Hallikainen, 1984; Chang et al., 1996; Tedesco et al., 2004). It has been shown that the assimilation of PMW satellite data into snow models adds valuable information to compensate for initialization errors and improve SWE simulated by snow model (Sun et al., 2004). These approaches appear to be very promising to evaluate and predict water resources but are still under development for further use in operational hydrological applications (Xu et al., 2014). Larue et al. (2017) showed that the GlobSnow-2 SWE product (Takala et al., 2011), which assimilates both T_B satellite data and local snow depth observations, was not accurate enough for hydrological modeling, mainly because of its dependence on *in situ* data in remote areas.

The main difficulty in the assimilation of PMW satellite observations in boreal forest areas is quantifying all the contributions that affect the measured signal. PMW satellite observations have a low spatial resolution ($\sim 10 \times 10 \text{ km}^2$) and satellite sensors measure many contributions in addition to the PMW emission from the volume of the snowpack (vegetation canopy, ice crust, frozen/unfrozen soil, lakes, moisture in the snow, topography, etc.) (Kelly et al., 2003; Koenig & Forster, 2004). In boreal areas, the PMW emission from the forest canopy within a pixel can contribute up to half of the PMW signal measured by satellite sensors (Roy et al., 2012, 2016). This contribution does not only depend on the fraction of forest cover, but also on the biomass (liquid water content), the vegetation volume and the canopy structure (stem, leaf, trunk) (Franklin, 1987). To adjust snowpack model simulations, several studies suggest using radiative transfer models, coupled to a snowpack model, to

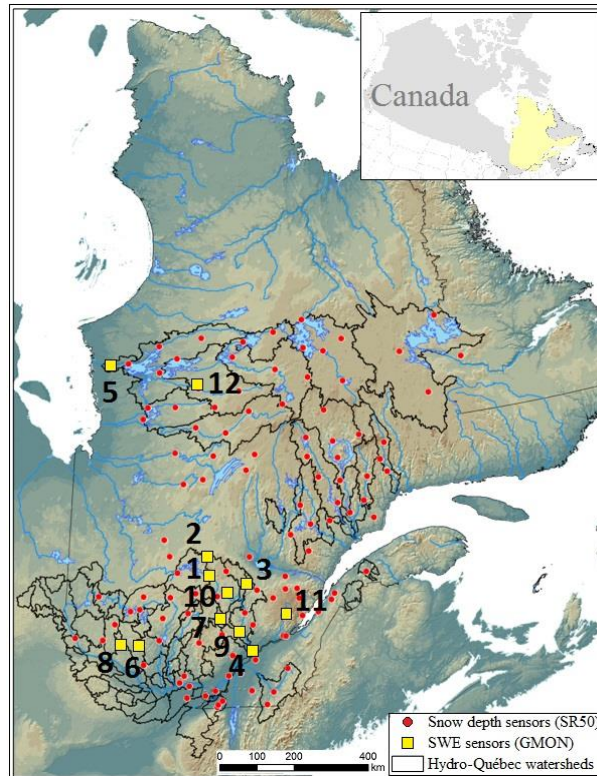
take into account the different contributions to the PMW signal at the top of the atmosphere and to directly assimilate PMW satellite observations (Brucker et al., 2011; Durand et al., 2011; Langlois et al., 2012; Roy et al., 2016). However, the assimilation of PMW must be used with care, and a good understanding of the interactions between the properties and microwave emission of the snowpack is crucial to avoid degrading the SWE estimates. For instance, the assimilation of passive
5 microwave in wet snow conditions can introduce large uncertainties since the presence of liquid water in the snowpack increases T_{Bs} , whereas increases in snow grain size decrease the brightness temperature independent of any change in SWE (Klehmet et al., 2013). The assimilation of PMW thus can help to adjust the modeled snowpack states during the winter, but it cannot be used at the beginning and at the end of the season (snowmelt periods).

This paper aims at developing and validating the assimilation of PMW satellite observations for SWE improvements over
10 Québec by adjusting meteorological forcing data and simulated snowpack states without using any surface-based observations. AMSR-2 satellite sensors provide the T_B observations at 11, 19 and 37 GHz. The data assimilation scheme (DA) is a Sequential Importance Resampling Particle filter (referred to as PF-SIR) (Van Leeuwen (2009, 2014)). The PMW emission from the snowpack is computed by using the Crocus snowpack model (Brun et al., 1989) coupled to a microwave snow emission model, the Dense Media Radiative Transfer - Multi Layers model (DMRT-ML) (Picard et al., 2013). This scheme is further referred
15 as the Crocus/DMRT-ML chain and was previously calibrated over Québec (Larue et al., 2018). As a first step, the previous study of Larue et al. (2018) tested the feasibility of the DA scheme in a controlled environment by using synthetic T_{Bsnow} observations, obtained by running the Crocus/DMRT-ML chain with perturbed meteorological forcings. The results showed SWE RMSE reduced by 82% with the multi-variate assimilation of T_{Bs} at 37, 19 GHz and 11 GHz in vertical polarizations, compared to SWE RMSE without assimilation. In the present study, the same DA setup as described in Larue et al. (2018)
20 was implemented except that real satellite observations were used. For the assimilation of satellite data, the challenge is to accurately simulate the T_B measured at the top of the atmosphere ($T_{B TOA}$) by including contributions other than snow (i.e. soil, vegetation and atmosphere). The vegetation transmissivity model ($\omega\text{-}\tau_{opt}$), the Wegmüller and Mätzler (1999) soil emission model and the Liebe (1989) atmospheric emission model were added and calibrated to simulate the PMW emission of satellite observations (Roy et al., 2015).
25 The specific objectives of this paper were thus to: 1) calibrate the soil and the vegetation radiative transfer models coupled with the Crocus/DMRT-ML chain to simulate $T_{B TOA}$ over several years (2012 to 2016); and 2) evaluate the performance of the assimilation of PMW data in Crocus using SWE measurements obtained over twelve reference nivometric stations from 2012 to 2016 (43 winters). This paper opens the way to a functional spatialized method for improving SWE estimates over large and remote areas without using surface-based data.

2 General framework

2.1 Study area and evaluation database

Figure 1 shows the region of interest located in the province of Québec, Eastern Canada (46-56°N). This area includes the La Grande (LG) watershed, in north-central Québec (below 56°N) and the Outaouais and Saint-Maurice watersheds in southwestern and south-central Québec, respectively (46-48°N), which are equipped with SWE and snow depth sensors for hydrological purposes. Québec is characterized by different eco-climatic conditions, a high percentage of forested area (dense boreal forests and mixed coniferous and deciduous), and a flat topography.



10 **Figure 1. SWE measurement stations with the ‘GMON’ SWE sensors (yellow squares, see Table 1 for details) in the province of Québec. The red circles are the snow depth sensors (‘SR50’) used by Hydro-Québec for hydrological purposes, overlaid on a relief map (from blue-low to brown-higher altitudes) and watershed contours (black lines).**

To evaluate SWE simulations, SWE measurements were acquired from 2012 to 2016 by twelve nivometric stations (see 15 numbered stations on Fig. 1), located through a north-south gradient in Québec. This SWE database (coordinates, sensors, operating period, etc.) was fully described in Larue et al. (2018). Table 1 describes the main station characteristics, including the mean maximum SWE values over operating periods. Daily SWE measurements were derived from gamma ray SWE

sensors (Campbell Scientific CS725, ‘GMON’) with an average error of +5% (Choquette et al., 2008). Two stations (Nos. 5 and 12) were located in the subarctic eco-climatic zone (53-54°N, James Bay area), eight in the coniferous boreal zone (46-48°N) and two (Nos. 4 and 11) in a mixed forest area in southern Québec (45.3°N). Sensors were calibrated by Hydro-Québec from numerous field measurement campaigns during the first year following their installation.

5 A total of 43 winters were studied (Table 1). These winters were all very different. Winter 2012-2013 had the lowest snow accumulation in ten years (165 cm) whereas winter 2013-2014 was very snowy (379 cm) compared to the average snow accumulation (217 cm). Winter 2014-2015 was unusually cold (3° below average temperatures), and winter 2015-2016 was the warmest in 60 years (statistics can be found at <http://www.mddep.gouv.qc.ca>).

10 **Table 1. Characteristics of the nivometric SWE stations: Site number, Latitude (Lat.), Longitude (Long.) and Elevation (El., a.s.l. in meters) of stations, Dist. GEM-station is the distance between the station and the center of the associated GEM grid cell (with GEM: Global Environmental Multiscale weather prediction model, Section 2.2), time period of observations, average of the maximum observed data over the studied period, and data provider (HQ: Hydro-Québec, U. Sherb: Université de Sherbrooke, U. Laval: Université Laval).**

Sites #	Lat.	Long.	El.	Dist. GEM-station (km)	Time period	Mean maximum SWE value (kg m ⁻²)	Data provider
1	48.3	-74.1	100	3.4	2012-2016	272	HQ
2	48.9	-74.2	100	4.9	2012-2016	277	HQ
3	47.9	-72.9	100	4.7	2012-2016	252	HQ
4	46.6	-72.8	136	4.2	2012-2016	253	HQ
5	53.7	-78.2	103	4.2	2012-2016	213	HQ
6	46.7	-76.0	229	2.3	2012-2016	161	HQ
7	47.0	-74.3	469	3.3	2012-2016	235	HQ
8	46.9	-76.4	330	1.8	2012-2016	212	HQ
9	46.9	-73.7	372	1.9	2012-2016	180	HQ
10	47.7	-73.6	398	3.5	2012-2016	202	HQ
11	47.3	-71.2	669	2.6	2015-2016	396	U. Laval
12	53.4	-75.0	389	4.0	2014-2016	211	U. Sherb
Mean				3.4	2012-2016	237	

15 2.2 General setup

Figure 2 shows the general methodology developed to simulate and to assimilate AMSR-2 satellite observations into the snowpack model.

To simulate the signal measured by satellite sensors at the top of the atmosphere ($T_{B\ TOA}$), a chain of models was implemented and calibrated over Eastern Canada. The three hourly-continuous atmospheric forcing database provided by the Global Environmental Multiscale weather prediction model (referred to as ‘GEM’; Coté et al., 1998) was used to drive the multi-layer Crocus snowpack model (described in Sect. 3.2.1). Each GEM grid cell has a spatial resolution of 10 x 10 km², which is on the same order as the observation scale. The Crocus model updates the snowpack every 15 minutes by interpolating meteorological inputs, but in this study we used daily Crocus outputs (SWE, snow depth, density, etc.) computed at 14:00

20

local time (19:00 UTC), in agreement with the AMSR-2 pass (Sect. 3.1.1). The DMRT-ML radiative transfer model (Sect. 3.2.1), driven with Crocus outputs, was used to simulate the PMW emission from the modeled snowpack (referred to as ‘ $T_{B_{\text{snow}}}$ ’) at 11, 19 and 37 GHz, at vertical and horizontal polarizations (‘V-pol’ and ‘H-pol’, respectively). The contribution of the atmosphere was estimated by using an atmospheric model (Liebe, 1989) driven with the total precipitable water integrated over 28 atmospheric layers and provided by GEM (Sect. 3.3). The surface emissivity for a rough soil was deduced by calibrating the Wegmüller and Mätzler (1999) soil model and vegetation contributions were quantified with the $(\omega, \tau_{\text{opt}})$ radiative transfer model (Sect. 3.3). To take into account canopy emissivity variability, the inversions of the $(\omega, \tau_{\text{opt}})$ parameters were linked to the 4-day leaf area index (LAI) product from MODIS data ($1 \times 1 \text{ km}^2$), averaged for each AMSR-2 grid cell ($10 \times 10 \text{ km}^2$) (Sect. 3.3). These inversions of soil and vegetation parameters were performed over the summer period to avoid bias due to the presence of the snowpack.

The brightness temperatures (T_{B_s}) measured by AMSR-2 satellite sensors were assimilated in a DA scheme (see Sect. 3.4). Raleigh et al. (2015) have shown that meteorological forcing data are the major sources of errors in snow model simulations. Hence, we assume here that the uncertainties of GEM meteorological forcing data are the only sources of errors in the T_B modeling. It is very difficult to quantify modeling errors due to physical simplifications inside the model due to the spatial scale of the observations. Further studies are needed to estimate these errors over the study area and to take it into account in the DA experiment. The observation error was assumed to be known and the modeling errors were estimated by perturbing selected meteorological forcing variables. An ensemble of 150 T_B simulations was obtained and the distribution of these ‘prior estimates’ represent the modeling error in response to GEM uncertainties. A Particle filter with an SIR algorithm was used to update the simulated $T_{B_{\text{TOA}}}$ over the winter by adjusting meteorological forcing data and snowpack states (posterior estimates) when an observation was available (Fig. 2).

Several configurations of the DA scheme were tested over three evaluation sites representing different environmental conditions. The best configuration was evaluated over the validation reference sites from 2012 to 2016 (for 43 winters, Sect. 3.4).

Comparing data simulated at the station against model cells involves uncertainty due to spatial variations of the snowpack and land cover. This is a well-known problem for model validation studies and we assume here that the high number of sites (12 SWE stations, or 43 snowpack simulations) provides a useful assessment of simulations. It is also known that the spatial localization of measurements can lead to some biases (Molotch and Bales, 2005). To diversify its measurements, Hydro-Québec has installed two SWE sensors in the forest, and not in a clearing as is the usual practice for ease of maintenance.

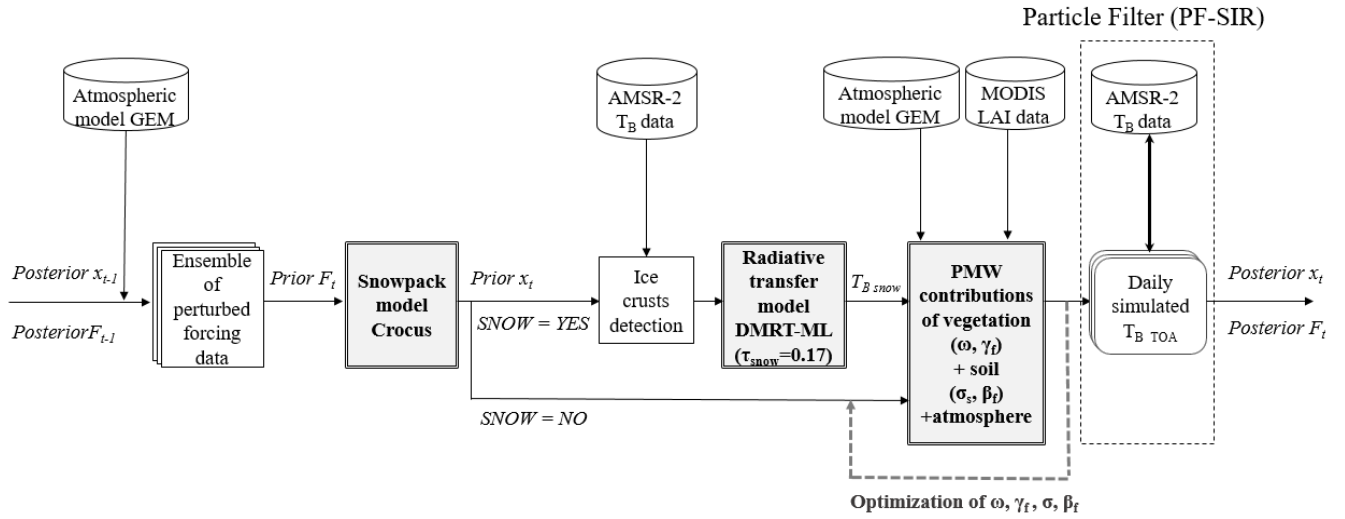


Figure 2. Methodological scheme describing the DA scheme in the chain of models for SWE retrievals by updating perturbed atmospheric forcing data and snowpack states (‘ F_t ’ and ‘ x_t ’, respectively, see Sect. 3.4).

3 Materials and methods

5 3.1 Data

3.1.1 AMSR-2 observations

AMSR-2 satellite sensors (Imaoka et al., 2010) provide PMW satellite observations on the 11 (10.7), 19 and 37 GHz channels at V-pol and H-pol. Images produced by AMSR-2 are freely available on the Japan Aerospace Exploration Agency (JAXA) website. This study used the Level 3 Version 2 product, which provides daily T_{Bs} normalized on a North Hemisphere polar stereographic projection with a spatial resolution of $10 \times 10 \text{ km}^2$ (see <http://gcom-w1.jaxa.jp> for the specifications of the projection), from 1 August 2012 to 1 July 2016. T_{Bs} from AMSR-2 are computed twice a day: around 13:30 local time, or 17:30 UTC (ascending pass), and around 01:30 local time, or 5:30 UTC (descending pass). Only the ascending pass was used in this study since the snowpack was computed once a day at 14:00 (local time). The use of the ascending pass allowed avoiding the nighttime refreeze process. To reduce observation errors due to the daytime melting process, the approach was evaluated during the dry snow period, from December to mid-March. This aspect is further discussed in Sect. 5.1.

3.1.2 LAI MODIS data

The 4-day LAI product provided by MODIS TERRA data (MOD15A3; Myneni et al., 2002) was used to characterize the vegetation contributions to the total emissivity (Fig. 2). The product has a spatial resolution of $1 \times 1 \text{ km}^2$ and was resampled on the AMSR-2 grid of $10 \times 10 \text{ km}^2$ by averaging all LAI data within each AMSR-2 grid cell (referred to as ‘ $\text{LAI}_{\text{AMSR-2}}$ ’). For

each site, Table 2 describes the summer and winter average values ('LAI_{summer}' and 'LAI_{winter}') calculated using LAI_{AMSR-2} from 1 July to 31 August and from 1 January to 1 March over the 2012 to 2016 time period, respectively (Roy et al., 2014).

5 **Table 2.** LAI_{summer} is the mean of the LAI provided by MODIS for the summer period (1 July to 31 August) and averaged over the AMSR-2 grid cell (10 x 10 km²), LAI_{winter} is the mean LAI for the winter period (1 January to 1 March). f_{cover} is the fraction of forest cover within the AMSR-2 grid cell extracted from the land cover map Circa 2000 (see Sect. 3.1.3). The percentages of coniferous, deciduous and water areas are the percentages distributed within the f_{cover} . Sites are ranked in the increasing order of f_{cover} . The three highlighted sites (gray cells) are the sites selected to test the configuration of the DA scheme in Sect. 3.4.3.

Site #	LAI _{summer}	LAI _{winter}	f_{cover} (%)	Coniferous (%)	Deciduous (%)	Water (%)
#12	1.07	0.04	24.2	77.6	14.4	4.9
#5	1.07	0.08	31.5	66.5	25.9	7.0
#4	2.63	0.06	47.6	8.5	70.3	1.4
#7	3.13	0.28	59.3	49.9	45.8	4.0
#10	2.47	0.17	61.8	67.3	30.1	2.4
#1	2.96	0.28	63.7	41.6	55.8	2.2
#3	3.69	0.25	65.5	44.6	52.1	3.3
#2	1.99	0.12	66.6	79.4	16.6	3.5
#8	4.11	0.22	72.1	15.5	80.2	4.3
#11	2.43	0.19	74.5	52.5	46.6	0.5
#6	2.82	0.11	81.5	18.1	75.3	6.5
#9	3.65	0.43	84.0	60.9	36.1	2.9

10 3.1.3 Land cover map of Canada

The land cover map of Canada Circa 2000 (available at <http://www.geobase.ca/geobase/en/data/landcover/index.html>) (referred to as 'LCC') was used to extract the fraction of forest cover (f_{cover}) within each AMSR-2 grid cell. This product provides the percentage of coniferous, herbaceous, deciduous and water areas with a spatial resolution of 1 x 1 km² and was resampled to generate average values within each 10 x 10 km² AMSR-2 grid cell. Table 2 shows the fractions of forest cover provided by the LCC and resampled over AMSR-2 grid cells for each site. As expected, Sites 5 and 12, which are located in the subarctic area (Fig. 1), have a low f_{cover} (below 32%). The other sites in boreal areas have an f_{cover} of up to 60%. Sites 6 and 9 are in particularly densely forested areas, with a high f_{cover} (up to 80%). The measured T_B signal can be significantly affected by the forest and the signature of the underlying snow is attenuated during the winter period in such densely forested areas. The sensitivity of the DA scheme to the f_{cover} was analyzed for sites with a f_{cover} above and below 75% (Sect. 4.2.1).

20 Moreover, the presence of lakes can affect the PMW signal. Lake ice (when snow cover is absent) increases the PMW signal at high frequencies, and at low frequencies, the contribution of water bodies acts as a reflector and the emissivity remains low (De Sève et al., 1999). With snow cover on lakes, the different snow states on the lakes compared to snow cover under forest also modified the emitted signal (see Derksen et al., 2012, 2014). Nevertheless, we made the hypothesis that these impacts

were negligible over our studied sites, which have lake water fractions under 7% within their AMSR-2 grid cells (Table 2) (masks are generally applied for water fractions of up to 20%, Takala et al., 2011).

3.2 Simulation of the PMW emission from the snowpack

3.2.1 Coupling of Crocus and DMRT-ML

5 The chain of models developed to simulate T_{Bsnow} is identical to that of Larue et al. (2018), so only a brief description of the approach is detailed here (see Fig. 2).

The Crocus snowpack evolution model (Brun et al., 1989, 1992; Vionnet et al., 2012) is coupled with the ISBA land surface model within the SURFEX interface (Surface Externalisée, in French) (Decharme et al., 2011; Masson., 2013). SURFEX/ISBA/Crocus (hereafter referred to as “Crocus”) computes the evolution of the physical properties of the snowpack
10 and the underlying ground (soil). In particular, the snow layers are modeled with a set of variables representing the morphological properties of snow grains (shape and size), including the specific surface area (SSA), which is one of the most sensitive variables for snowpack emission simulations. The snow microstructure evolves in time according to semi empirical laws (Vionnet et al., 2012). Crocus is the only model able to simulate the SSA as a prognostic variable (rather than as a diagnostic variable) by using the formulations of Carmagnola et al. (2014). The number of snow layers is dynamic and evolves
15 with physical properties updated at each time step. The maximum number of simulated snow layers was fixed at 15 in this study as a compromise between accuracy and computing time (not shown). Configuration and initialization of the Crocus snowpack model are the same as described in Larue et al. (2018).

$T_{\text{B snow}}$ was computed by driving the radiative transfer model DMRT-ML with Crocus outputs. The DMRT-ML model is well-detailed in the literature (Tsang et al., 1992; Tsang and Kong, 2001; Picard et al., 2013, Royer et al., 2017), so only the
20 calibration is described here. Snow grain size, and more generally snow microstructure, are factors that most affect the accuracy of simulated PMW emission from a snowpack as they determine the strength of scattering mechanisms in the snowpack at the high frequencies used (Roy et al., 2013; Leppänen et al., 2015; Sandells et al., 2017, Larue et al., 2018). In DMRT-ML, snow grains are represented as spheres of ice with variable interactions between them. The potential formation of clusters of grains, which increases the effective snow grain size, is not taken into account, generating uncertainties (Picard et al., 2013). Several
25 studies have shown that DMRT-ML needed an effective scaling factor to represent the stickiness between snow grains and to correct the snow microstructure representation (Brucker et al., 2011; Roy et al., 2013; Royer et al., 2017). Larue et al. (2018) have shown that a mean snow stickiness parameter (τ_{snow}) of 0.17 was optimal to simulate T_{Bsnow} over boreal snow in Québec (RMSE of 27 K) when DMRT-ML is driven by Crocus snow profiles. This constant τ_{snow} value was thus used in the implemented chain of models (Section 3.4.3, Experiment A and B). Nevertheless, this effective parameter could change with
30 snow type (Royer et al., 2017; Larue et al., 2018). Hence, the quality of the DA scheme with the use of the τ_{snow} parameter as a free variable was studied (Section 3.4.3, Experiment C).

3.2.2 Ice lens detection algorithm

Since ice lenses ('IL') within a snowpack significantly reduce T_B mainly at H-pol (Montpetit et al., 2013; Roy et al., 2016), ice layers must be detected and added in the simulated Crocus snow profiles to improve $T_{B_{\text{snow}}}$ simulations. T_B in H-pol are much more attenuated by the presence of an IL than T_B in V-pol, since the coefficient of reflectivity is stronger in H-pol (Montpetit et al., 2013). Therefore, by following the daily evolution of the PMW emission from the snowpack with AMSR-2 observations, the formation of an IL can be detected by using a threshold on the polarization ratio PR defined by Cavalieri et al. (1984) for a given frequency (ν),

$$PR(\nu) = \frac{T_B(\nu, V-pol) - T_B(\nu, H-pol)}{T_B(\nu, V-pol) + T_B(\nu, H-pol)} \quad (1).$$

In this study, an IL was added on the top of the simulated snowpack if the AMSR-2 PR(11) was above 0.06 (Roy, 2014). This IL was represented as a 1-cm layer with a density of 900 kg m^{-3} and with snow grain radius set to zero (Roy et al., 2016). The difficulty is to know how to evolve this IL in the snowpack. The Crocus snowpack model has not yet been adapted to integrate the formation of ILs and evolve them in a coherent way (Quéno et al., 2016). Nevertheless, it was shown in Larue et al. (2018) (from field measurements) that an IL of 1 cm located at 4 cm from the surface of the simulated snowpack minimized the bias of DMRT-ML simulations due to the presence of an IL (regardless of its real location in the snow profile). Hence, the IL first added at the surface of the snowpack was moved to 4 cm from the surface as soon as a snowfall was detected with GEM precipitation data or, if not, after five days to take into account the snowpack transformations (percolations, sublimations, etc.). The maximum number of detected IL was fixed at two. When a second IL was detected (IL2), IL2 was added at the surface while the first detected IL (IL1) was left at 4 cm. After the next snowfall (or after five days otherwise), IL1 was moved to 8 cm from the surface and IL2 to 4 cm. For instance, during winter 2014-2015, one IL was detected at sites 1 and 12 (22 December 2014 and 15 December 2014). At Site 9, two ILs were detected: one on 10 December 2014 and another on 1 January 2015.

This is a simplified way to take into account the presence of ILs, and further studies are needed to dynamically evolve these ILs in the snowpack and to model the impact on the neighboring layers. This work is particularly complex, and no solution has yet been found (D'Ambroise et al., 2017), in particular because measurements are difficult to take.

25 3.3 Simulation of the PMW emission at the top of the atmosphere

The PMW brightness temperature ($T_{B, TOA}$) emitted at the scale of the AMSR-2 product can be written for each grid cell as,

$$T_{B, TOA} = f_{\text{season}} \cdot T_{B \text{ forest}} + (1 - f_{\text{season}}) T_{B \text{ open}} + T_{B \text{ atm}\uparrow} \quad (2)$$

where $T_{B_{\text{atm}\uparrow}}$ is the ascending atmospheric contribution, estimated using the Liebe (1989) model implemented in the Helsinki University of Technology (HUT) snow emission model (Pulliainen et al., 1999). The model considers radiative transfer through the atmospheric layers and provides $T_{B_{\text{atm}\uparrow}}$ values at the satellite sensor level (Liebe, 1989) according to the precipitable water integrated for all atmospheric layers provided by GEM. f_{season} is the seasonal (winter or summer) fraction of forest cover in the

AMSR-2 grid cell, $T_{B \text{ forest}}$ is the PMW emission with vegetation contributions and $T_{B \text{ open}}$ is the PMW emission without vegetation contributions.

The f_{cover} values provided by the LCC map were constants whereas these fractions of forest evolve with the season. To take into account the temporal evolution of the forest cover for the winter and summer periods (defined as the time period with and without snow, respectively) and to estimate the f_{season} used in Eq. (2), f_{cover} was linked respectively to LAI_{winter} and to LAI_{summer} by comparing the f_{cover} map to the two resampled maps (both resampled on the AMSR-2 projection) throughout Québec (not shown). The seasonal fraction of f_{cover} were related to seasonal LAIs with the Eq. (3) and (4) for summer and winter respectively,

$$f_{summer} = 0.9 * (1 - \exp(-2.7 * LAI_{summer}))^{3.2} \quad (3)$$

$$f_{winter} = 0.9 * (1 - \exp(-16.0 * LAI_{winter}))^{0.3} \quad (4)$$

The linear correlation between the f_{summer} values estimated from the LCC and the f_{summer} values fitted to LAI data with the Eq. (3) had a coefficient correlation R equal to 0.94 and a p-value below 0.01. For the LCC f_{winter} values and the f_{winter} values fitted to the LAI data (see Eq. 4), the coefficient correlation R was equal to 0.95 and the p-value was below 0.01.

3.3.1 Vegetation contributions

The PMW emission from the vegetation varies with the forest characteristics, such as the biomass, the structure of the vegetation or the liquid water content of the canopy. In this study, the vegetation contribution was modeled with the simplified radiative transfer model ($\omega - \tau_{opt}$) (Mo et al., 1982), where the parameters should be estimated by fitting the simulated T_{Bs} with observations (Grant et al., 2008; Roy et al., 2012). The ω is the single scattering factor of the albedo. Given the incidence angle $\theta = 55^\circ$ of AMSR-2 satellite sensors, the optical thickness of the vegetation τ_{opt} was a function of the forest transmissivity (γ) such that $\gamma = \exp(-\tau_{opt}/\cos\theta)$. The forest transmissivity varies with the frequency (ν) used and is further called γ_ν . At the satellite sensor, the expression of $T_{B \text{ TOA}}$ in boreal areas was described by Eq. (2), which can be detailed with Eq. (5) and (6) (see Roy et al., 2012),

$$T_{B \text{ forest}} = \left[\gamma_\nu \cdot e_{surf} \cdot T_{surf} + (1 - \omega) \cdot (1 - \gamma_\nu) \cdot T_{veg} + \gamma_\nu \cdot (1 - e_{surf}) \cdot (1 - \omega) \cdot (1 - \gamma_\nu) \cdot T_{veg} + (1 - e_{surf}) \cdot \gamma_\nu^2 \cdot T_{B \text{ atm}\downarrow} + (1 - \gamma_\nu) \cdot \omega \cdot T_{B \text{ atm}\downarrow} \right] \cdot \gamma_{atm} \quad (5)$$

$$T_{B \text{ open}} = \left[e_{surf} \cdot T_{surf} + (1 - e_{surf}) \cdot T_{B \text{ atm}\downarrow} \right] \cdot \gamma_{atm} \quad (6)$$

where T_{surf} is the surface temperature, e_{surf} is the surface emissivity under the canopy (with or without snow) for a given frequency, T_{veg} is the temperature of the vegetation (taken as equal to the air temperature at 2 meters, provided by GEM). $T_{B \text{ atm}\downarrow}$ is the descending atmospheric contributions and γ_{atm} is the transmittance of the atmosphere. These atmospheric contributions were modeled using the Liebe (1989) model, as were the $T_{B \text{ atm}\uparrow}$ values. Thus, for snow free conditions, only forest (ω , γ_ν) and soil (e_{surf}) parameters were unknown and needed to be adjusted for each site by fitting the model output to the observations.

3.3.2 Soil contributions

To deduce the surface emissivity for rough soil ($e_{surf,p}$ for a given polarization p), the Wegmüller and Mätzler (1999) soil model was used to calculate the surface reflectivity of rough soil under the canopy ($r_{surf,p}$ for a given polarization p), with or without snow by using Eq. (7) and (8),

$$5 \quad r_{surf,H} = 1 - e_{surf,H} = \Gamma_{Fresnel,H} \cdot \exp(-\sigma_s \sqrt{\alpha \cdot \cos\theta}) \quad (7)$$

$$r_{surf,V} = 1 - e_{surf,V} = r_{surf,H} \cdot \cos\theta^{\beta_v} \quad (8)$$

$r_{surf,p}$ mainly depends on the surface roughness and Fresnel coefficients ($\Gamma_{Fresnel,H}$). In Eq. (7), the simplified parameter $\sigma_s = k\sigma$ was used, where k is the wave number and σ the standard deviation of the surface height (in meters). α is a constant parameter fixed to -0.1 (Wegmüller and Mätzler (1999)). For frozen soil, parameters derived from Montpetit et al. (2018) were used (see Sect. 4.1). For thawed soil, $\Gamma_{Fresnel,H}$ was estimated from the dielectric constant calculated with the Dobson (1985) equations according to the soil moisture and soil temperature. These variables were computed with the Crocus model, coupled to the ISBA land surface model, and extracted daily (at 2 pm, as the other variables). The soil reflectivity in vertical polarization also depends on a parameter β_v (Montpetit et al., 2018), which describes the polarization of the signal and is frequency-dependent. Note that we will often use ‘v’ subscript to denote quantities that are dependent on frequency, hereafter.

15 Hence, the soil parameter e_{surf} was linked to the set of values (σ_s, β_v) and mainly evolved with soil moisture and soil temperature.

3.3.3 Inversions of vegetation and soil parameters

The inversion of forest (ω, γ_v) and soil (σ_s, β_v) parameters was carried out in summer to avoid the bias due to the presence of a snowpack. Forest parameters (ω, γ_v) depend on the forest characteristics, such as the biomass and the structure of the canopy at each site. They also depend on LAI, which allows the season forest emission cycle to be accounted for. Using the vegetation water content equation defined by Pampaloni and Paloscia (1986), the parameter γ_v was related to the 4-day LAI for a given frequency ν with the relation (9),

$$20 \quad \gamma_v = e^{-b \cdot k^a \cdot (\exp(-\frac{LAI}{3}) - 1) / \cos\theta} \quad (9)$$

where a and b are two constants to calibrate. To reduce the number of unknown variables, Eq. (9) was simplified to use only one constant η_v such as $\eta_v = e^{-b \cdot k^a}$.

25 The vegetation and soil parameters were inverted by minimizing the difference between $T_{B TOA}$ simulations and $T_{B TOA}$ measured with AMSR-2 sensors at 11, 19 and 37 GHz in vertical polarizations. We used the same approach developed by Roy et al. (2014) since it was well adapted for PMW emission in boreal areas: the two frequency-dependent parameters (η_v, β_v) and two frequency-invariant parameters (ω, σ_s) were inverted with a two-stage calibration by permuting all possible combinations of the two frequency invariant parameters. Specifically, ω values varied from 0.02 to 0.16 in steps of 0.01, and σ_s varied from 0.01 to 1.1 in steps of 0.05. This yields a total of 300 possible combinations of the frequency invariant parameters. Then, for each possible combination of the frequency-invariant parameters, a calibration of the frequency-dependent parameters, η_v and

β_v , was performed for each frequency. A total of 900 frequency-dependent calibrations were thus computed. Finally, for each possible combination of the frequency-invariant parameters, the total post-calibration T_B RMSE across all three frequencies was computed. The combination of frequency-invariant parameters resulting in the lowest T_B RMSE was chosen.

$T_{B\ TOA}$ were simulated from 2012 to 2016. The inversion was not very sensitive to σ_s . (not shown) and Figure 3 shows the optimal overall $T_{B\ TOA}$ RMSE between simulated and measured $T_{B\ TOA}$ for the 12 sites and for the summer period according to ω values. Over the summer period, a ω value at 0.07 and a σ_s value at 0.2 cm gave best results for $T_{B\ TOA}$ simulations, with a minimum overall RMSE equal to 9.0 K. These parameters were previously optimized over the same study area by Montpetit et al. (2018). A value of $\omega=0.07$ was coherent with the literature for dense boreal forest areas (Pellarin et al., 2006; Meissner and Wentz, 2010; Roy et al., 2012). For this optimal (ω , σ_s) set of values, the mean optimal values of the η_v and β_v factors were estimated, by considering the soil contribution constant if the soil was frozen.

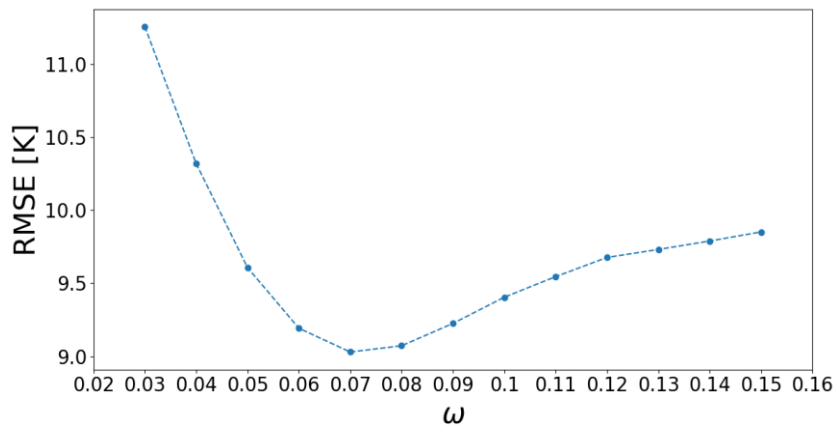


Figure 3. Overall T_B RMSE (at 11, 19 and 37 GHz, for the 12 sites and for the summer period) between the simulated and measured $T_{B\ TOA}$ as a function of the values of ω . A σ_s value at 0.2 cm gives the best results but T_B RMSE is not very sensitive to this variable. The parameters β_v and η_v were optimized for each (ω , σ_s) couple according to the frequency used.

3.4 Data assimilation setup

The DA setup is the same as the one developed in Larue et al. (2018) except that we added an inflation technique of the covariance matrix of observation errors (R matrix) to avoid ensemble degeneracy, i.e. when an ensemble collapses to a unique particle.

3.4.1 DA framework

The DA scheme is a particle filter with a Sequential Importance Resampling algorithm ('PF-SIR') that is well-documented in Van Leeuwen (2009, 2014) and Gordon et al. (1993) and relatively easy to implement with a snowpack model (Dechant and Moradkhani, 2011; De Lannoy et al., 2012; Charrois et al., 2016; Larue et al., 2018). The PF-SIR represents the probability density function (pdf) of the model state with an ensemble of states (called particles), which is updated when an observation

is available. An ensemble approach was preferred because of the non-linearity of the system. Moreover, the particle filter approach can cope with the variable number of state variables resulting from the changing number of snow layers in Crocus. The created ensemble represents uncertainty in SWE and in T_B simulations due to the uncertainties of meteorological inputs (Fig. 2).

5 Assuming that the meteorological forcing data were the only source of uncertainties, the ensemble of T_{Bs} was created by running the chain of models described in Fig. 2 with an ensemble of perturbed inputs. The assimilation was performed daily (at 1 pm) and the ensemble was composed of 150 members, which was found to be an adequate size (Larue et al., 2018). The daily ensemble of meteorological forcing data was created by perturbing selected GEM data (air temperature, wind speed, precipitation and short and long wave radiations) with Gaussian noises according to their respective uncertainties (estimated
10 in Larue et al., 2018). Meteorological forcing perturbations were propagated in time following a first-order autoregressive process to simulate their realistic temporal variations (Charrois et al., 2016). Precipitation, wind speed and short-wave radiation (' SW_{down} ') were perturbed by a multiplicative factor centered at 1. Perturbation boundaries were fixed at -0.9 and 0.9. The air temperature was perturbed by an additive factor, with boundaries fixed at -3 K and +3 K. Perturbed long wave radiation (' LW_{down} ') was estimated with perturbed T_{air} from a linear regression estimated in Larue et al. (2018). In order to maintain
15 physical consistency in the simulations, SW_{down} was limited to $200 \text{ W}\cdot\text{m}^{-2}$ when there was precipitation (presence of clouds) (Charrois et al., 2016).

The observation error standard deviation associated with AMSR-2 observations was assumed to be 2 K (Durand & Margulis, 2006, 2007). Note that in reality it was probably larger since it represents all mismatches between observations and simulations obtained if the model was run with 'correct' inputs. This observation error cannot be easily estimated (low spatial resolution, representativeness, etc.), but it is only a sort of initial value here, since we used a covariance inflation to adjust it.
20

DA experiments were applied between 1 November and 1 May. To avoid wet snow conditions, which increase the emissivity of the snowpack whereas the SWE does not change, the DA was not performed when a liquid water content was observed in the modeled snowpack. This variable was computed by Crocus, driven with original meteorological forcing data. SWE values were evaluated over both the dry snow period (from 1 December to 15 March) and the whole winter (when a snowpack was
25 detected).

3.4.2 DA and inflation technique

The snowpack prior state x_t at time t is computed with the updated past state of snowpack simulations at time $t-1$ (posterior state x_{t-1}) and the prior perturbed meteorological forcing data F_t from time $t-1$ to t (see Fig. 2). The predicted observation is computed with

$$30 \quad y_t^i = h(x_t^i) \quad (10)$$

where y_t^i is $T_{B \text{ TOA}}$ predicted from particle i ($i=0..N$, with N the ensemble size). The observation operator h is the τ_{snow} -calibrated DMRT-ML model and the calibrated radiative transfer models estimating soil, atmosphere and vegetation contributions. In the analysis step, the new posterior distribution is updated by weighting each particle x_t^i according to the distance between y_t^i and

the AMSR-2 T_B observation (with the weight $w_{e_i}^i$). With the SIR algorithm, the pdf is resampled by duplicating particles with high weights (i.e. close to observations) and dropping with negligible weights (far from observations). With the Arakawa's procedure used here for ensemble resampling (Arakawa, 1996; same as Charrois et al, 2016), a particle is definitely selected if its weight is higher or equal to the inverse of the ensemble size ($w_{e_i}^i > 1/N$, with $N=150$).

- 5 Ensemble resampling considerably reduces the risk of degeneracy but does not eliminate it. Degeneracy starts when only a few particles have significant weights. These particles are selected many times, leading to a loss of diversity of the posterior ensemble. After several assimilation steps, the ensemble quickly reduces to a single particle. Ensemble degeneracy can be detected when the number of selected particles (those with high weights) is below an effective limit number N_{keep} , here fixed at 25 as a compromise between the quality of the DA scheme and the size of the ensemble (not shown). In this study, we
- 10 developed a new technique to avoid a degeneracy problem, which consists in the online adjustment of the R matrix (i.e. observation standard deviation squared times the identity matrix) such that the weight of the 25-th selected particle ($w_{e_{keep}}$) is at least equal to $1/N$. The rationale here is that, because the weights are nonlinear functions of the observation error covariance matrix, a larger matrix tends to flatten the distribution of weights and favours the selection of more particles. This adjustment is performed with an inflation of the initial matrix, and the detailed algorithm is provided in Appendix A.
- 15 Ensemble degeneracy is often caused by extreme precipitation events resulting in very high T_B values difficult to represent with the model. The online adjustment technique mitigates the consequences of this model deficiency on the snow simulations over the rest of the season. The other side of the coin is that a "good" observation can be ruled out if the model is not able to reproduce it, thereby reducing the accuracy of the snowpack estimation.

3.4.3 Experimental setup

- 20 To study the sensitivity and the quality of T_B assimilation for SWE improvements, three experiments were performed.

- Experiment A:

- To test the feasibility of the DA scheme for several environmental conditions, and to find the best DA configuration to apply, T_B assimilation for three representative sites was performed in a preliminary experiment for winter 2014-2015. Following a north-south gradient, we selected site 12 ($f_{cover} = 24.2\%$, northern coniferous area), site 1 ($f_{cover} = 63.7\%$, coniferous area) and
- 25 site 9 ($f_{cover} = 84.0\%$, mixed forest area), each representing a different environmental condition. Over these three sites, we estimated the quality of the DA scheme according to the assimilated frequencies: a) assimilation of the T_B difference between 19 and 37 GHz (referred to as ΔT_{B19-37}); b) assimilation of the ΔT_{B19-37} and the T_B difference between 11 and 19 GHz, in V-pol (referred to as ' $\Delta T_{B,11-19}$ '); c) assimilation of the three T_B s at 11, 19 and 37 GHz in V-pol ($T_{B,11}$, $T_{B,19}$, $T_{B,37}$). Table 3 summarizes the experiment set-up information (acronyms of the experiments, sites, time period). We used V-pol T_B because
- 30 H-pol T_B is more sensitive to the stratigraphy of the snowpack and to the presence of ILs (Mätzler, 1987). While the DA of T_B s at 11, 19 and 37 GHz in V-pol should give best results since this combination of frequencies imposes more constraints, the risk of encountering a degeneracy problem is higher. The combination of both $\Delta T_{B,19-37}$ and $\Delta T_{B,11-19}$ is commonly used in the literature for SWE retrievals (Chang et al., 1987; Tedesco et al., 2004; Tedesco & Nervekar, 2010). The assimilation of the

$\Delta T_{B,19-37}$ only was also studied to analyze the sensitivity of T_B assimilation for deep snowpack when $T_{B,37}$ saturates for a SWE up to about 150 mm (Mätzler et al., 1994) and to evaluate the supply of information from 11 GHz in the assimilation of both $\Delta T_{B,19-37}$ and $\Delta T_{B,11-19}$ for SWE improvements.

To quantify the performance of the DA scheme, the daily RMSEs of ensembles of simulated SWE obtained with and without the DA scheme were compared by using Eq. (11),

$$RMSE_t = \sqrt{\left(\frac{1}{N} \sum_{i=1}^N (X_{sim\ i,t} - X_{Obs\ t})^2\right)} \quad (11)$$

where N is the ensemble size, $X_{sim\ i,t}$ is the simulated variable from the member i at time t , and $X_{Obs\ t}$ is the diagnostic variable at time t obtained from AMSR-2 observations.

- Experiment B:

The best configuration of the DA scheme (DA of the three T_B s at 11, 19 and 37 GHz in V-pol, called the “DA_b_TB_11, 19, 37” experiment in Table 3) was applied over the 43 winters. To estimate the accuracy for hydrological applications, the median of the resampled SWE ensemble obtained with the DA_b_TB_11, 19, 37 experiment (called ‘SWE_{DA}’ further) was compared to SWE measurements. The median was used instead of the mean to reduce the potential impact of extreme perturbations. The evaluation of this experiment was performed by comparing SWE_{DA} RMSE and the relative percentage of error (‘RPE’) values to the original SWE simulations (SWE_{Crocus}), obtained by driving Crocus with original meteorological forcing data. The relative percentage of error (‘RPE’) is defined as,

$$RPE = 100 \cdot \frac{|Bias|}{MEAN_{Obs}} \quad (12).$$

The mean biases of SWE estimates obtained without and with assimilation were also compared. Performance was estimated for SWE higher than 48 kg m⁻² (about 20 cm of snow depth), derived from measurements, to attenuate problems of shallow snow cover variability or heterogeneity in the AMSR-2 gridcells. To analyse the impact of the vegetation, results were separated according to the fraction of f_{cover} : moderate f_{cover} ($f_{cover} < 75\%$, 10 sites) and high f_{cover} ($f_{cover} > 75\%$, 2 sites) (see Table 2 for f_{cover} site information).

The accuracy needed for hydrological applications is a SWE RPE lower than 15% (Vachon, 2009; Larue et al., 2017), which is the same performance objective as the CoreH2O project (10% for SWE > 30 cm and 3 cm for SWE < 30 cm, Rott et al., 2010) and the GlobSnow2 product (Luoju et al., 2014). This error threshold corresponds to a RMSE of about 45 kg m⁻² for a measured average Québec snowpack about 300 kg m⁻² of SWE. The ability to accurately estimate the annual SWE maximum (SWE_{max}) was also studied since it is one of the most important variables for hydrological applications. It allows the amount of water stored in the snowpack before the spring snow melt to be described. To avoid extreme values, the SWE_{max} is estimated as the average of the SWE for a time period of +/- 2 days around the detected SWE_{max}.

- Experiment C:

The quality of the DA scheme could strongly depend upon the choice of state variables. In the A and B experiments, we chose to pre-calibrate forest and soil parameters and to use a constant snow stickiness parameter (τ_{snow}) fixed at 0.17 (Larue et al., 2018). Nevertheless, these calibrations are empirical and should be adjusted for each site. It depends on several parameters

that are difficult to measure at a 10 x 10 km² spatial scale (snow grains, canopy, biomass, etc.). The forest parameter ω strongly affects the PMW emission from the vegetation, which can represent more than 60% of the signal measured by satellite sensors (see discussion in Sect. 5.2). Kwon et al. (2017) have shown that the contribution of $T_{B \text{ veg}}$ to $T_{B \text{ TOA}}$ was better represented by considering ω free in the DA scheme, and improvements in the resulting SD were evident for the forest land-cover type (about 5% with DMRT-ML). In Experiment C, the DA scheme was thus tested using ω and τ_{snow} as free variables in the assimilation process (called the “DA_c_TB_11,19,37” experiment). The DA_c_TB_11,19,37 experiment is identical to the DA_b_TB_11,19,37 experiment (over the 43 winters), only the state variables were changed. The ω parameter was perturbed with Gaussian noise, centered on 0.07 (as calibrated) with a standard deviation of 0.02 and bounded by 0.05 and 0.12 (reasonable range of $T_{B \text{ TOA}}$ RMSE values, Fig. 3). The snow stickiness parameter was perturbed by Gaussian noise, centered on 0.17, with a standard deviation of 0.15 and bounded by 0.1 and 0.46. These limits correspond to the range of τ_{snow} values extracted from Larue et al. (2018) over the same study area. The ensemble size was kept to 150 members.

Table 3. Experiment set-up information. Exp. is the experiment identifier (see text). T_{B_s} are in V-pol.

Exp.	State variables	Sites	Time period	Assimilated frequencies	Acronyms
A	T_{air} , Wind, Precipitation, SW_{down} , LW_{down}	1, 9, 12, one winter	1 November 2014 to 1 May 2015	$\Delta T_{B,19-37}$	DA1_DTB19-37
				$\Delta T_{B,19-37}$ and $\Delta T_{B,11-19}$	DA2_DTB19-37,DTB11-19
				$T_{B \ 11}$, $T_{B \ 19}$, $T_{B \ 37}$	DA3_TB_11,19,37
B	T_{air} , Wind, Precipitation, SW_{down} , LW_{down}	12 sites, 43 winter simulations	From 1 November to 1 May, winters 2012 to 2016	$T_{B \ 11}$, $T_{B \ 19}$, $T_{B \ 37}$	DA_b_TB_11,19,37
C	T_{air} , Wind, Precipitation, SW_{down} , LW_{down} , ω , τ_{snow}	12 sites, 43 winter simulations	From 1 November to 1 May, winters 2012 to 2016	$T_{B \ 11}$, $T_{B \ 19}$, $T_{B \ 37}$	DA_c_TB_11,19,37

4 Results

15 4.1 Results of model inversions

The mean optimal values of the η_v and β_v factors were estimated for the optimal (ω , σ_s) set of values (0.07 and 0.2, respectively, see Table 4). The (σ_s , β_v) soil parameters are given in Table 4 and are used to estimate the $T_{B \text{ TOA}}$ RMSE obtained with the calibrated chain of models. Without parameter inversions, the annual mean RMSE of the original T_{B} simulations varies from 12.9-47.1 K for the three frequencies (not shown). With parameter inversions over the summer period, the three frequencies have a similar T_{B} RMSE_{summer} (8.6-10.1 K, Table 4), while over the year (using parameters inverted over the summer period) the annual $T_{B \text{ TOA}}$ RMSE significantly increases at 37 GHz due to the presence of the snowpack (26.0 K). The inversions make

it possible to reduce the annual $T_{B,37}$ RMSE by 21.1 K. Figures 4a, 4b and 4c show the multi-year $T_{B\ TOA}$ variations for Sites 12, 1 and 9, respectively, from 2012 to 2016 and at 37 GHz. At this frequency, the simulated $T_{B\ TOA}$ is strongly underestimated when a snowpack is observed. This is likely due to an overestimation of the SWE or snow grain sizes since $T_{B,37}$ are attenuated in the snowpack as snow grains act as diffusers while the $T_{B,19}$ and $T_{B,11}$ are relatively unaffected by snow grains (RMSE_{summer} similar to RMSE_{winter} at 11 and 19 GHz, Table 2). Simulated SWE were overestimated by 16% and 20.2% compared to SWE measurements for Sites 1 and 9, respectively, for winter 2014-2015. The objective of T_B assimilation is to reduce these overestimations. Note that the SWE simulated at Site 12 is underestimated by 19%. The underestimation of $T_{B,37}$ can also be caused by an underestimation of the vegetation contributions. This aspect is further discussed in Sect. 5.2.

By integrating ILs within the snowpack when the PR11 is above 0.06, the annual $T_{B\ TOA}$ RMSE at 37 GHz is reduced and goes from 28.9 K to 26.0 K.

In winter, the overall $T_{B\ TOA}$ RMSE (all frequencies) is equal to 17.4 K from 2012 to 2016 (not shown), similar to the overall RMSE estimated for the τ_{snow} -calibrated DMRT-ML driven by in situ measurements in an open area and equal to 19.9 K compared to surface-based radiometric measurements in Québec (Larue et al., 2018).

Table 4. Effective parameters calibrated for the 12 studied sites to quantify soil contributions ϵ_{surf} (calibrated surface roughness ‘cal. σ_s ’ and calibrated polarization ratio ‘cal. β_v ’) and vegetation contributions (controlled by the calibrated (ω , η_v) parameters ‘cal. ω ’ and ‘cal. η_v ’ according to the daily LAI) measured at the top of the atmosphere. The parameterization of frozen ground was estimated by Montpetit et al. (2018). ϵ_{eff} is the effective dielectric constant estimated with the permittivity of frozen and unfrozen soils derived from the Dobson's equations (1985). Annual and seasonal $T_{B\ TOA}$ RMSE estimated for the summer and the winter period (RMSE_{summer} and RMSE_{winter}) are calculated from 2012 to 2016 with the calibrated parameters.

Frequency (GHz)	Frozen soil			Unfrozen soil		Cal. ω	Cal. η_v	Mean RMSE _{summer} (K)	Mean annual RMSE (K)
	ϵ_{eff}	σ_s (cm)	β_v	Cal. σ_s (cm)	Cal. β_v				
11	3.18- 0.006134i	0.19	1.08	0.2	0.69	0.07	0.01	8.6	8.4
19	3.42- 0.00508i		0.72		0.60		0.05	8.7	9.1
37	4.47- 0.32643i		0.42		0.67		0.23	10.1	26.0

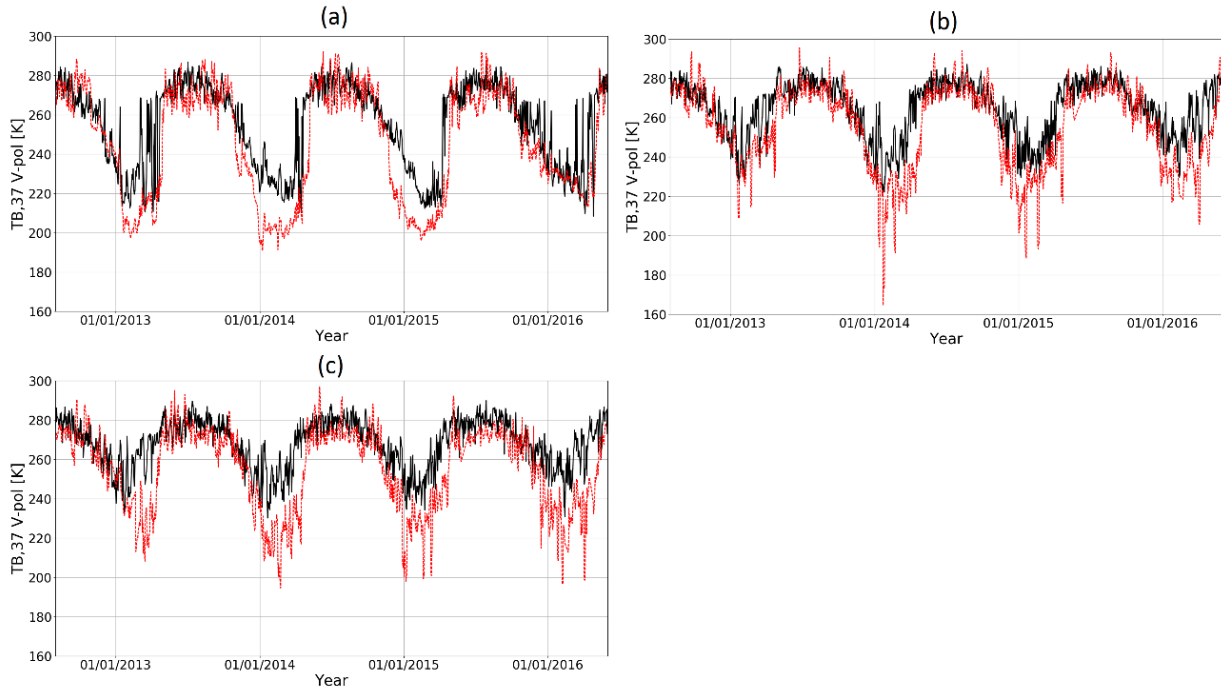


Figure 4. Multi-year variations of simulated $T_{B\ TOA}$ (red dotted lines) and measured $T_{B\ TOA}$ (black full lines) from 2012 to 2016 at 37 GHz in vertical polarization: (a) Site 12 (f_{cover} of 24%); (b) Site 1 (f_{cover} of 64%); (c) Site 9 (f_{cover} of 84%) (see Table 2).

4.2 Results of AMSR-2 data assimilation (DA)

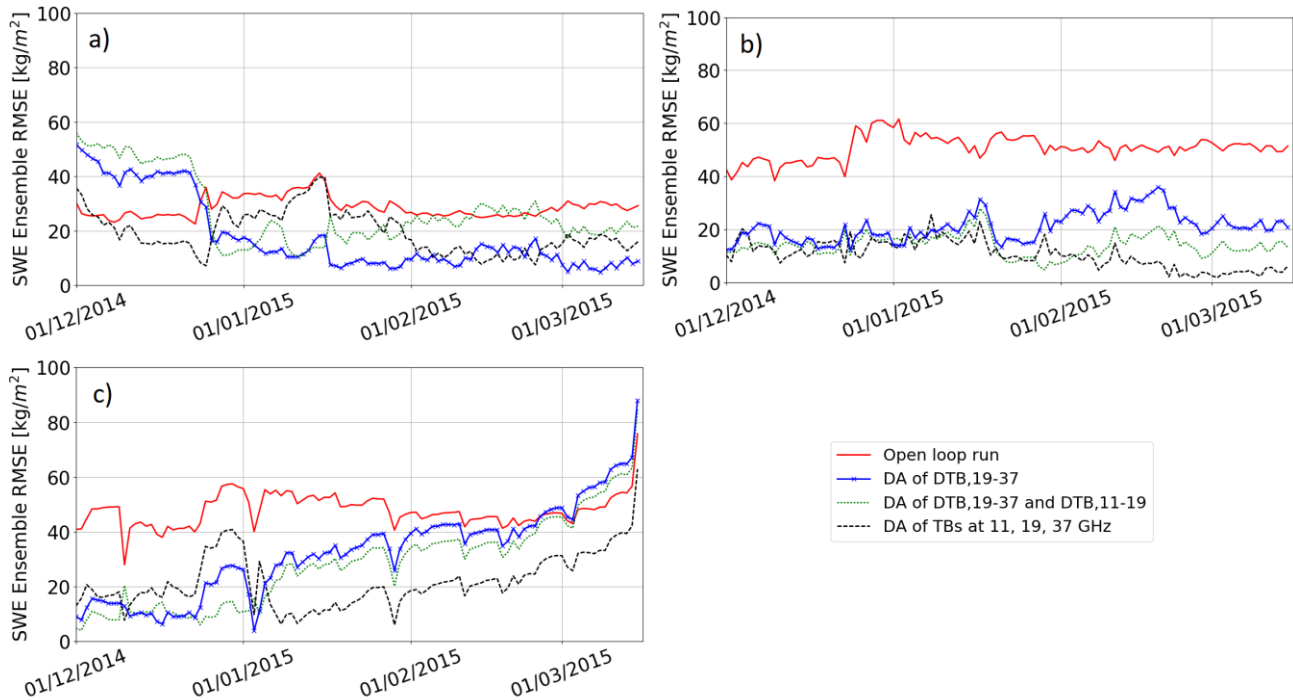
5 4.2.1 Experiment A

Figure 5 shows variations of the daily RMSE of SWE ensemble (see Eq. 11) obtained without and with DA (prior and posterior estimates) according to the combination of frequencies used as observation (DA1_DTB19-37, DA2_DTB19-37, DTB11-19 and DA3_TB_11,19,37 experiments, see Table 3). Table 5 summarizes these averaged RMSEs for the studied period (dry snow period and whole winter) for tested sites.

10 Over the three sites and for the dry snow period, the DA reduced the overall SWE ensemble RMSE by 43.9%, 45.8% and 59.7% with the DA1_DTB19-37, DA2_DTB19-37, DTB11-19 and DA3_TB_11,19,37 experiments, respectively, compared to the SWE ensemble RMSE obtained with prior estimates (Table 5). The assimilation of the three frequencies (DA3_TB_11,19,37) helps to improve SWE simulations, giving the lowest RMSE compared to other scenarios. The same trend is observed over the whole winter and the assimilation of the three frequencies reduces the overall SWE ensemble RMSE
 15 by 47.0% (SWE ensemble RMSE of $22.1\ \text{kg m}^{-2}$) compared to the SWE ensemble RMSE of prior estimates (SWE ensemble RMSE of $41.7\ \text{kg m}^{-2}$).

In our previous work (Larue et al., 2018), we have shown a reduction of 82% of the SWE RMSE by assimilating both the $\Delta T_{B,19-37}$ and $\Delta T_{B,11-19}$ and using synthetic observation data over a dry snow period. The differences between results using

synthetic and real data in DA experiments are likely due to two aspects. Firstly, the snow model does not resolve the intra-pixel surface variability. We assumed homogeneous snow cover within the pixel in open areas, thus with no interactions between snow and vegetation. Even if we compare simulations with surface-based measurements in open areas, this could introduce large uncertainties (Roy et al., 2016). Secondly, the land cover variability and heterogeneity within each pixel also induce uncertainties in the mean T_B simulation over a pixel (T_B weighted by the fraction of forest cover, see Eq. 2).



10 **Figure 5. Variations of the SWE ensemble RMSE (Eq. 11) obtained with and without DA for the dry snow period (from 1 December to 15 March). Experiments are performed for (a) Site 12; (b) Site 1; (c) Site 9, over the winter 2014-2015. The red line is the SWE ensemble RMSE obtained without DA (open loop runs), the blue line is the RMSE obtained with the DA1_TB19-37 experiment, the green dashed line the RMSE with the DA2_TB19-37,TB11-19 experiment, and the black dotted line the RMSE with the DA3_TB_11,19,37 experiment.**

Table 5. Averaged SWE ensemble RMSE (see Eq. 11) obtained with and without DA, according to the experiment (see Sect. 3.4.3, Table 3 for acronyms) for each tested site. $RMSE_{dry-snow}$ is the SWE ensemble RMSE obtained from 1 December to 15 March. $RMSE_{annual}$ is estimated over the whole winter (when snowpack is detected). # correspond to the site (see Table 1).

	Experiments	SWE ensemble RMSE (kg m ⁻²)			
		#1	#12	#9	Overall
$RMSE_{dry\ snow}$ (kg m⁻²)	Without assimilation (prior estimates)	50.7	28.6	47.8	42.4
	DA1_DTB19-37	21.1	18.1	32.4	23.8
	DA2_DTB19-37,DTB11-19	14.0	26.9	28.2	23.0
	DA3_TB_11,19,37	10.5	19.7	21.0	17.1
$RMSE_{annual}$ (kg m⁻²)	Without assimilation (prior estimates)	47.2	28.9	48.9	41.7
	DA1_DTB19-37	21.6	22.1	40.1	27.9
	DA2_DTB19-37,DTB11-19	16.7	28.1	38.5	27.8
	DA3_TB_11,19,37	15.1	21.9	29.1	22.1

5 Figure 6 illustrates the comparison between SWE measurements, the original SWE Crocus simulations (SWE_{Crocus}) and the median of the SWE ensemble obtained with the DA3_TB_11,19,37 experiment. The yellow envelope corresponds to the SWE ensemble obtained without DA (prior estimates) and shows a large ensemble spread in response to meteorological forcing uncertainties. The gray envelope is the resampled SWE ensemble (posterior estimates). SWE simulations are very sensitive to the uncertainties of meteorological forcing data at the beginning of the winter season. If an event (melting or precipitation) is missed, a constant bias on SWE estimates is kept throughout the winter. For sites 1 and 9, the DA scheme allows the correction of these uncertainties at the beginning of the season: The SWE ensemble RMSE of posterior estimates are reduced by about 30 kg m⁻² at the beginning of the season, compared to the RMSE of prior estimates (Fig. 5). For these two sites, the SWE ensemble RMSE obtained with the DA1_DTB19-37 experiment increases as the snowpack becomes deeper, especially from mid-January when the snowpack becomes deeper than 100 kg m⁻² (Fig. 6). The PMW signal from the snowpack at 37 GHz saturates for such deep snowpack (Mätzler et al., 1982; Mätzler, 1994; De Sève et al., 1997; 2007) and the assimilation of $\Delta T_{Bv,19-37}$ only does not give enough information to significantly improve SWE retrievals. For Site 9, posterior estimates are deteriorated at the end of the season compared to prior estimates with the DA1_DTB19-37 experiment. By adding $\Delta T_{Bv,11-19}$ (DA2_DTB19-37,DTB11-19), this effect is reduced but stays sensitive to the depth of the snowpack (Fig. 5).

Note that the gray envelope does not always include the observations (Fig. 6a and 6c). This could be due to an under-estimation of the R matrix. In the developed approach, the inflation technique of the R matrix is limited by a threshold on the α factor fixed at 5 since the simulations are limited by the simplifications of physical parameters in the models and we may introduce a bias if we force them to follow the observation by perturbing meteorological forcings only. Further work is needed to quantify the model errors in order to consider it in the DA scheme and to improve the representativeness of the simulations. To represent the uncertainties about the physical processes simulated with the Crocus snow model, a new system based on snow model ensembles could be an alternative. Such an approach was recently developed by implementing different configurations estimating the physical parameters of the Crocus snow model (ESCROC, Lafaysse et al., 2017).

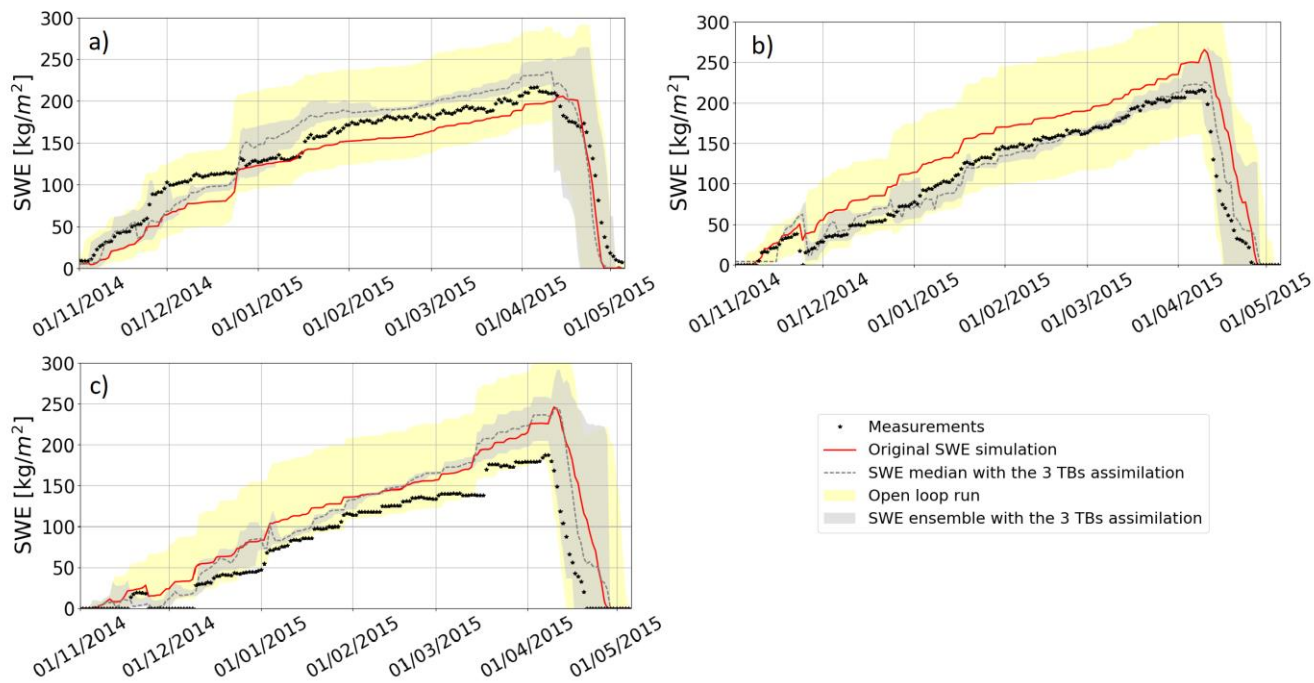


Figure 6. Evolution of SWE measurements (black points) and SWE simulations. The SWE_{Crocus} is the red line and the SWE obtained with the DA3_TB_11,19,37 experiment is the gray dotted line. The yellow envelope is the spread of the SWE ensemble obtained with open loop runs (prior estimates). The gray envelope is the spread of the SWE ensemble obtained with the assimilation of the three frequencies (posterior estimates). Both spreads are delimited by the 5th and the 95th percentiles. Experiments are computed for (a) Site 12, (b) Site 1, (c) Site 9, over the winter 2014-2015.

4.2.2 Experiment B

10 The median of the resampled ensemble of SWE obtained with the DA of the three frequencies (SWE_{DA}) is used to estimate the global performance of the DA scheme for SWE improvements. Table 6 details the statistical performance of simulated SWE_{DA} compared to measurements and to the original SWE Crocus simulations (SWE_{Crocus}) over the 43 winters. Figure 7 compares the SWE_{DA} , SWE_{Crocus} and SWE measurements (SWE_{obs}) from 2012 to 2016 for four sites with different f_{cover} taken as an example: Site 5 ($f_{cover} = 31.5\%$), 10 ($f_{cover} = 61.8\%$), 1 ($f_{cover} = 63.7\%$) and 9 ($f_{cover} = 84.0\%$). In this section, we first analyze

15 the overall SWE improvements obtained with T_B assimilation compared to original SWE simulations and the impact of the vegetation on the quality of the DA scheme is discussed.

- Overall SWE improvements compared to original Crocus simulations

The overall SWE_{Crocus} RMSE, bias and RPE are of 45.0 kg m^{-2} , 23.7 kg m^{-2} and 22.1% , respectively (Table 6). In comparison, the overall SWE_{DA} RMSE, bias and RPE are improved and equal to 41.2 kg m^{-2} , 7.5 kg m^{-2} and 18.4% , respectively. The

overall bias is reduced by 16.2 kg m^{-2} (68% of $\text{SWE}_{\text{Crocus}}$ bias) with the DA scheme. The DA of the three frequencies thus helps to improve SWE estimates over Québec. Correlation between SWE_{DA} simulations and SWE measurements gives a similar R coefficient to the one obtained with $\text{SWE}_{\text{Crocus}}$ simulations ($R = 0.79$ and $R = 0.78$, respectively), but the offset is significantly reduced with SWE_{DA} compared to $\text{SWE}_{\text{Crocus}}$ (offset = 10 kg m^{-2} and 29 kg m^{-2} , respectively). We analysed the number of cases with significant improvements for the total of 43 simulations studied by considering a 5% threshold on the bias and RMSE differences before and after assimilation. The SWE_{DA} bias is significantly reduced for 26 winters (60% of cases) compared to original SWE simulations. However, the RMSE is significantly improved for only 35% of simulations, and in 35% of cases, RMSEs are similar.

- Evaluation of SWE_{max}

10 The mean observed SWE_{max} is equal to 235.6 kg m^{-2} from 2012 to 2016, and the mean simulated SWE_{max} is equal to 278.3 kg m^{-2} and 266.8 kg m^{-2} without and with the assimilation, respectively. Compared to original SWE simulations, the DA scheme improves 63% of SWE_{max} simulations with an overall improvement of 12.2 kg m^{-2} , corresponding to 8% of SWE measurements (Table 6). Such an uncertainty extended over the whole territory could have a strong impact, considering that 1 mm of SWE in the LG watershed could represent \$1M in hydroelectric power production (Brown and Tapsoba, 2007).

15

- SWE accuracy for sites according to the f_{cover}

The overall RPE obtained with the DA scheme is below 15% (RPE=14.1%) for sites with an f_{cover} below 75% (Table 6), which is the accuracy required for hydrological applications (Larue et al., 2017). Hence, the accuracy of SWE_{DA} estimates, obtained without the use of any surface-based data, are very encouraging for hydrological needs in remote areas. In comparison, the GlobSnow-2 SWE product (Takala et al., 2011), which assimilates both T_{Bs} and in situ snow depth measurements, has a SWE RPE equal to 35.9 % over the same area in Québec (Larue et al., 2017), twice the uncertainty of SWE_{DA} . Figures 7a and 7b (Sites 5 and 1) show that for a single site original $\text{SWE}_{\text{Crocus}}$ simulation works well for some years but can be underestimated or overestimated over other years. The DA scheme allows a more stable solution when the overall f_{cover} is under 75% (not the case for Site 9, for example).

Nevertheless, even if the overall RMSE is improved, the DA scheme does not help to improve SWE estimates for sites with an f_{cover} above 75% (RMSE of 66 kg m^{-2}) compared to original SWE simulations (RMSE of 62.0 kg m^{-2}). The presence of vegetation is a major source of uncertainty in $T_{\text{B TOA}}$ simulations. The emission of the trees is superimposed on the signal emitted by the underlying snowpack and increases the T_{B} measured at the satellite level (Chang et al., 1996, Brown et al., 2003). At same time, the canopy also attenuates the surface emission toward the satellite. These contributions are complex to quantify since it depends not only on the tree fraction within the pixel but also on the tree species and states which emit/attenuate a different PMW signal depending on their biomass (liquid water content), volume and structure (stem, leaf, trunk) (Franklin, 1987). Also, the presence of trees modifies snow accumulation on the ground, depending on interception, shade and sublimation effects (Dutra et al., 2011; Wang et al., 2009), which increases the spatial variability of the snowpack

within the same pixel. These interactions between the vegetation and the snowpack are not taken into account with Crocus and it might induce uncertainties due to model errors. Note that SWE sensors are mostly installed in clearings, which reduces this impact in comparisons against surface-based measurements.

Kwon et al. (2016) used a similar snow radiance assimilation system to correct SD by updating the Community Land Model, version 4 (CLM4), snow/soil states and radiative transfer model (RTM) with the assimilation of the 19 and 37 GHz of AMSR-E. Over North America, it produced significant improvements of SD for tundra type, but also produced degradations for taiga snow class and forest land cover (7.1% and 7.3% degradations, respectively). In the present study, the use of a multi-layer snowpack model makes it possible to well represent PMW emission from the snowpack with DMRT-ML, and to improve overall snowpack simulations with T_B assimilation in boreal areas when the f_{cover} is below 75%. Kwon et al. (2017) obtained better results for areas with a high f_{cover} in comparison to their previous study (Kwon et al., 2016) over North America by using the vegetation parameter ω as a free variable in the DA scheme, instead of pre-calibrating it as we chose to do. This aspect is further studied with the experiment C.

Table 6. Averaged SWE RMSE, bias and RPE (Eq. 12) over the 43 winters for original SWE simulation (SWE_{Crocus}) and assimilated SWE_{DA} (Experiment B). Statistical performances were estimated for $SWE_{obs} > 48 \text{ kg m}^{-2}$ (snow depth higher than ~20 cm). SWE_{obs} and SWE_{sim} are the averaged observed and simulated SWE, respectively.

	\overline{SWE}_{obs}	SWE_{Crocus}			\overline{SWE}_{sim}	SWE_{DA} with the DA_b_TB_11,19,37			\overline{SWE}_{sim}
		RMSE (kg.m^{-2})	Bias (kg.m^{-2})	RPE (%)		RMSE (kg.m^{-2})	Bias (kg.m^{-2})	RPE (%)	
$f_{cover} < 75\%$	162.2	42.5	17.3	19.0	179.4	37.1	-1.2	14.1	161.0
$f_{cover} > 75\%$	139.0	62.0	47.8	33.9	186.8	68.0	40.2	38.0	179.2
Mean	157.3	45.0	23.7	22.1		41.2	7.5	18.4	164.8

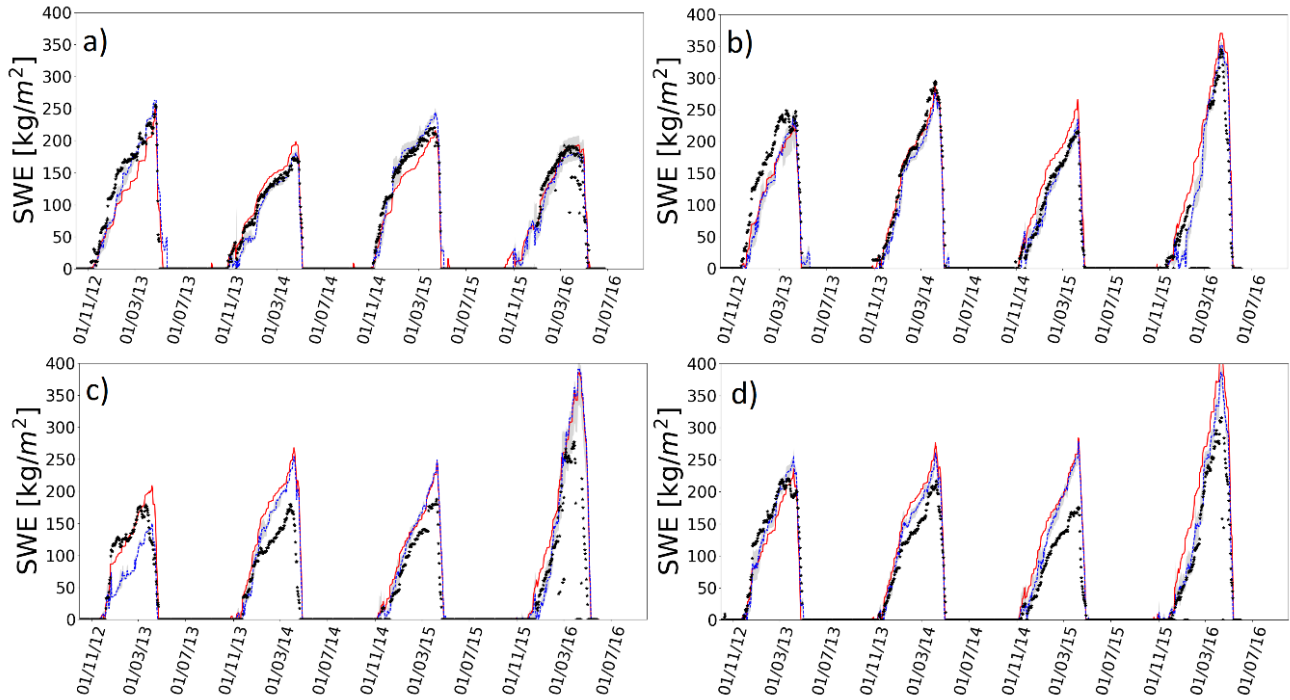


Figure 7. Evolution of SWE measurements (black points), original SWE simulations (red full line), and the median of the SWE ensemble obtained with the DA_b_TB_11,19,37 experiment (SWE_{DA}) (blue dotted line). The gray envelope is the spread of the SWE_{DA} ensemble (posterior estimates). Experiments are computed for (a) Site 5 ($f_{cover} = 31.5\%$), (b) Site 1 ($f_{cover} = 63.7\%$), (c) Site 9 ($f_{cover} = 84\%$), d) Site 10 ($f_{cover} = 61.8\%$), from 2012 to 2016.

4.2.3 Experiment C

Table 7 shows the statistical SWE performances obtained with the DA_c_TB_11,19,37 experiment (see Table 3 for definitions), where ω and τ_{snow} are taken as free variables in the DA scheme ('SWE_{DA, ω , τ_s '') over the 43 winters.}

10 Table 7. Same as Table 6 but using the forest parameter ω and the snow stickiness parameter (τ_{snow}) as free variables in the DA scheme (Experiment C) to improve SWE retrievals (SWE_{DA, ω , τ_s '').}

	SWE _{obs}	SWE _{DA, ω, τ_s' with the DA of the three frequencies}			
		RMSE (kg m ⁻²)	Bias (kg m ⁻²)	RPE (%)	SWE _{sim}
$f_{cover} < 75\%$	162.2	45.6	-14.8	21.6	147.4
$f_{cover} > 75\%$	139.0	45.1	-7.1	17.5	131.9
Mean	157.3	45.5	-13.2	20.7	144.1

The overall SWE_{DA, ω , τ_s ' RMSE, bias and RPE are equal to 45.5 kg m⁻², -13.2 kg m⁻² and 20.7%, respectively, very close to the statistical performances of the original SWE_{Crocus} simulations. The use of ω and τ_{snow} as free variables does not help to improve}

15 SWE_{Crocus} simulations for sites with an f_{cover} below 75%, but the bias is significantly reduced for sites with an f_{cover} above 75%

(-7.1 kg m⁻² and a RPE of 17.5%). In addition, the simulated SWE_{max} is improved for 86% of the 43 simulations (37 cases), with a reduction of the SWE_{max} bias of 26.6 kg m⁻² (17% of SWE measurements) compared to the original SWE_{Crocus} simulation.

The use of pre-calibrated parameters is justified because the parameters ω and τ_{snow} were not measurable and could not be directly validated. Furthermore, if parameters are added as state variables in the DA scheme, a larger ensemble size in the DA scheme would be needed to improve the representativeness of T_B uncertainties and to ensure the solution's stability (or at least to prevent a degeneracy problem). The ensemble size was kept to 150 here but this DA_c_TB_11,19,37 experiment should produce improved results with a larger ensemble size. However, this would require a significant computational effort. This study is a preliminary step of a PMW DA implementation for operational hydrological applications, so there was a need to limit computing time. These results suggest that the developed approach using pre-calibrated ω and τ_{snow} parameters helps to improve the retrievals for sites with an f_{cover} below 75%, and the use of ω and τ_{snow} parameters as free variables in the DA scheme should be investigated in further work for sites with more than 75% forest cover.

5 Discussion

In this section, we discuss a) the sensitivity of wet snow conditions for T_B assimilation, and b) the percentage of surface, vegetation and atmospheric contributions in the PMW signal measured by satellite sensors.

5.1 Wet snow conditions

In wet snow conditions, water droplets act as emission sources (especially at frequencies above 30 GHz), and the snowpack becomes close to a black body (Brucker et al., 2011; Picard et al., 2013; Klehmet et al., 2013). The PMW observations are thus complex to use for SWE retrievals, especially at the end of the season before the spring snow melt when the SWE is maximal. Figure 8 illustrates the SWE_{DA} obtained with the DA of the three frequencies applied over the whole winter and when the snow is dry only (with a Liquid Water Content 'LWC' equal 0 kg m⁻²), for Site 3 (winter 2013/2014). SWE estimates are strongly deteriorated when T_B assimilation is performed in wet snow conditions. For this example, the SWE_{DA} RMSE is equal to 31.1 kg m⁻² with a DA performed over the dry snow period only and significantly increases to 70.2 kg m⁻² by assimilating T_{Bs} over the whole winter (dry and wet snow conditions).

Here we used the LWC simulated by Crocus to detect wet and dry snow. This variable is subject to model errors and is linked to the original atmospheric forcing data and to their uncertainties. Further studies are needed to automatically detect wet snow events by using direct satellite observations. Previous studies have shown the potential to use the gradient ratio ($GR = T_{B,37} - T_{B,19} / T_{B,37} + T_{B,19}$) to detect Rain-on-snow events in arctic areas (Langlois et al., 2016; Dolant et al., 2017) and this approach should be investigated for boreal forest areas in further work. The use of active microwave observations is also a promising approach with a good spatial resolution (Roy et al., 2010).

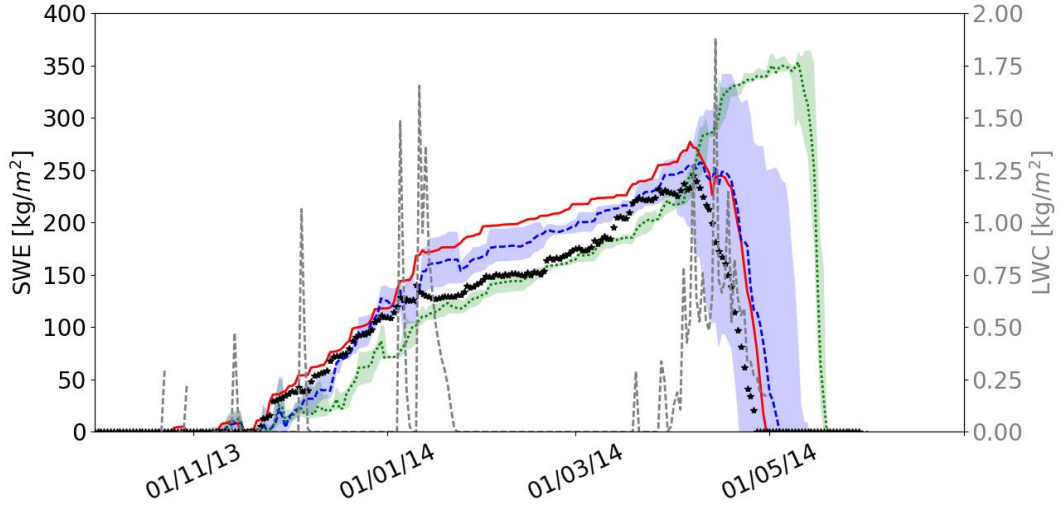


Figure 8. Evolutions of measured SWE (black points) for Site 3 from 2013 to 2014, original SWE Crocus simulation (red full line), and SWE_{DA} obtained with a DA of the three frequencies applied for the entire winter (green dotted line) and when LWC=0 only (blue full line). The simulated total Liquid Water Content (LWC) in the snowpack (dotted gray lines) is also shown.

5 5.2 Land cover contributions within the simulated $T_{B\ TOA}$

To properly assimilate PMW satellite observations, all contributions that affect the observed signal need to be well identified and quantified. The estimation of $T_{B\ TOA}$ (see Eq. 5 and 6) can be written as the sum of the PMW contributions of the open surface ($T_{B\ surf}$), vegetation ($T_{B\ veg}$) and atmosphere ($T_{B\ atm}$) according to the fraction of forest (f_{cover} , estimated with the LAI as in Eq. 2 and 3) and open area ($1 - f_{cover}$) with the Eq. (13), (14) and (15) as,

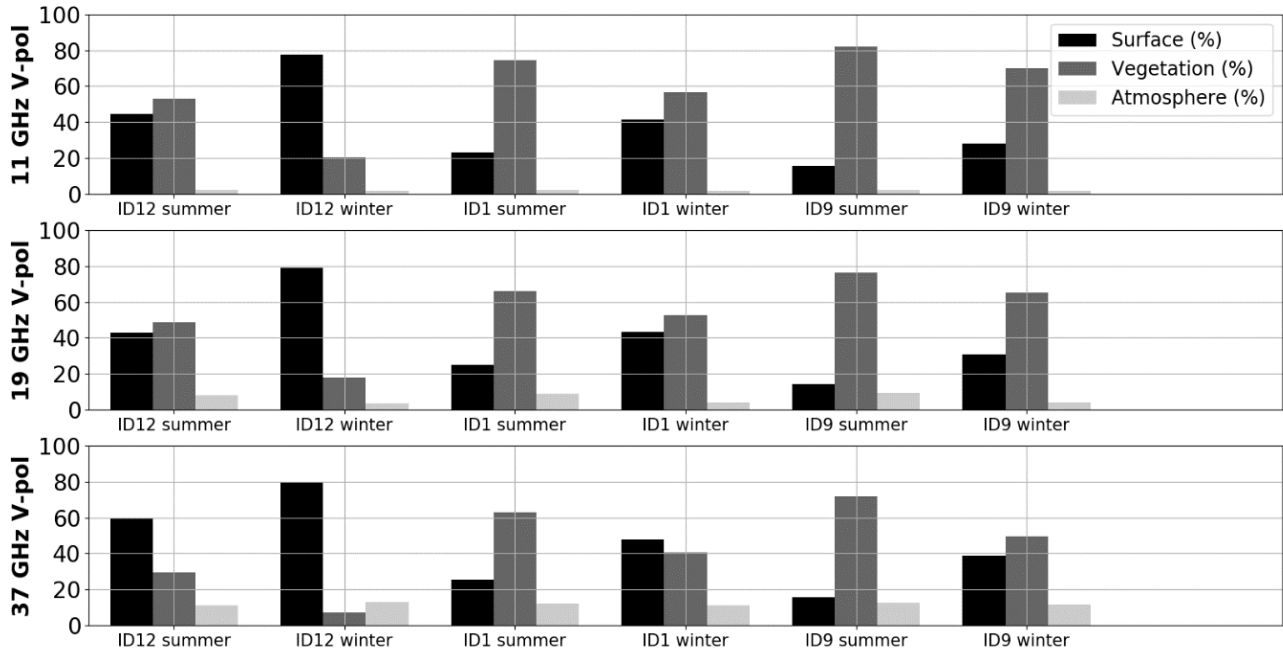
$$10 \quad T_{B\ veg} = f_{cover} \cdot [(1 - \omega) \cdot (1 - \gamma_v) \cdot T_{veg} + \gamma_v \cdot (1 - e_{surf}) \cdot (1 - \omega) \cdot (1 - \gamma_v) \cdot T_{veg}] \cdot \gamma_{atm} \quad (13)$$

$$T_{B\ surf} = f_{cover} \cdot [\gamma_v \cdot e_{surf} \cdot T_{surf}] \cdot \gamma_{atm} + (1 - f_{cover}) \cdot [e_{surf} \cdot T_{surf}] \cdot \gamma_{atm} \quad (14)$$

$$T_{B\ atm} = f_{cover} \cdot \left([(1 - e_{surf}) \cdot \gamma_v^2 \cdot T_{B\ atm\downarrow} + (1 - \gamma_v) \cdot \omega \cdot T_{B\ atm\downarrow}] \cdot \gamma_{atm} + T_{B\ atm\uparrow} \right) + (1 - f_{cover}) \cdot \left((1 - e_{surf}) \cdot T_{B\ atm\downarrow} \cdot \gamma_{atm} + T_{B\ atm\uparrow} \right) \quad (15)$$

Figure 9 illustrates the percentage of each contribution before DA at 11, 19 and 37 GHz in V-pol from 2012 to 2016, for the summer and for the winter periods (defined when a snowpack is detected) for Site 12 (f_{cover} of 24.2%), Site 1 (f_{cover} of 63.7%) and Site 9 (f_{cover} of 84.0%). The percentages of each contribution are similar at 11 and 19 GHz. The contributions from the atmosphere are weak. As expected for all frequencies, the surface contributions increase for the winter period with the presence of the snowpack, while the vegetation contributions decrease as the LAI decreases, especially at 37 GHz. For Site 12, the surface contributions represent more than 80% of the PMW signal in winter when the vegetation contributions represent less than 10% of the PMW signal (same magnitude as atmosphere contributions). For Site 1, the surface and the vegetation contributions are similar in winter (40-55%) whereas the vegetation contributions were more than 60% of the PMW signal in summer. For Site 9, the vegetation contributions remain the main contribution to the PMW signal in comparison to the surface contributions, even in winter (50-70% of the PMW signal for 37-10 GHz). In this dense boreal forest area, the measured

snowpack emission represents less than 30% of the measured signal and SWE improvements using only T_B observations is challenging. This high vegetation contribution (emission and attenuation) explains why the developed DA scheme does not succeed to significantly improve SWE estimates for these sites with a f_{cover} exceeding 75%.



5 **Figure 9.** Percentage of surface (black), vegetation (dark gray) and atmosphere (light gray) contributions to the simulated PMW signal at the top of the atmosphere (before DA) at the three frequencies 11 (top), 19 (middle) and 37 (bottom) GHz. ID12, ID1 and ID9 are site 12 (f_{cover} of 24.2%), 1 (f_{cover} of 63.7%) and 9 (f_{cover} of 84.0%), respectively (see Table 2). Summer and winter periods are defined when snowpack is observed or not.

6 Summary and conclusion

10 An ensemble data assimilation (DA) scheme was implemented in a calibrated chain of models (Crocus/DMRT-ML, soil, vegetation and atmosphere radiative transfer models) to improve SWE estimates by updating forcing data and snowpack states with the AMSR-2 satellite observations. The developed approach does not use any surface-based data and was tested over a boreal forest area in Québec (Eastern Canada). The proposed DA scheme is a particle filter with a resampled SIR algorithm, using an inflation technique of the R matrix to avoid degeneracy problems. The multi-layer snowpack model Crocus, coupled to the surface land model ISBA, was used to simulate the evolution of the snowpack. The DMRT-ML, the $(\omega-\tau_{opt})$ model, an atmospheric model and the Wegmüller and Mätzler (1999) radiative transfer model were pre-calibrated to simulate the PMW contributions from the snowpack, the vegetation and the soil, respectively, at the top of the atmosphere. The DA scheme was performed over 43 winters (12 sites from 2012 to 2016, Table 1), only in the presence of dry snow. Ice lenses were detected and integrated in the snowpack by using a thresholding approach on the polarization ratio at 11 GHz. The study shows:

- 1- $T_{B\ TOA}$ can be well simulated with the developed chain of models. By calibrating soil and forest parameters ($\omega=0.07$ and $\sigma_s=0.2$ cm), the annual $T_{B\ TOA}$ RMSE (all frequencies) is equal to 14.5 K from 2012 to 2016. This RMSE is similar to the overall RMSE estimated with the τ_{snow} -calibrated DMRT-ML model driven by in situ measurements in an open area (19.9 K compared to surface-based radiometric measurements in Québec; Larue et al., 2018).
- 2- The assimilation of T_{Bs} at 11, 19 and 37 GHz (V-pol) improves the SWE estimates compared to the assimilation of $\Delta T_{B\ 19-37}$ only (sensitive to snowpack depth) or to the assimilation of both $\Delta T_{B\ 19-37}$ and $\Delta T_{B\ 11-19}$. For 3 sites (with different f_{cover}), the SWE ensemble RMSE of posterior estimates is reduced by 47% over the whole winter compared to the SWE ensemble RMSE of prior estimates (open loop runs).
- 3- By using pre-calibrated ω and τ_{snow} parameters in the DA scheme, the overall bias (for 43 winters) of the original SWE_{Crocus} simulations is significantly reduced by assimilating T_{Bs} at 11, 19 and 37 GHz (from 23.7 kg m⁻² to 7.5 kg m⁻²). The bias on SWE_{max} is reduced by 12.2 kg m⁻² (8% of SWE measurements). The overall RPE goes from 22.1% to 18.4%, which is close to the range of accuracy needed for hydrological applications (SWE RPE < 15%). This accuracy is achieved with the T_B assimilation for sites with a f_{cover} below 75%, but the DA deteriorates SWE simulations for sites with a f_{cover} above 75%. However, by using ω and τ_{snow} as free variables, the DA significantly improves SWE simulations for sites with a f_{cover} above 75% (RPE=17.5%).

Even with the difficulties associated with quantifying all the different factors that contribute to the PMW signal measured by satellite sensors in remote boreal areas (canopy, ice crust, frozen ground / unfrozen, presence of lakes, moisture in the snow, topography, etc.) (Kelly et al., 2003, Koenig & Forster, 2004), and even when vegetation contributions are 50% of the PMW signal, the implementation of a DA scheme in a well-calibrated chain of models reduces SWE uncertainties without using any surface-based data. This assimilation scheme can be easily implemented in an operational system using real satellite-borne observations, despite the relatively significant computing time required. This research opens the way for global applications to obtain more accurate SWE estimates over large and remote areas where few meteorological weather stations are present.

Data availability. The daily SWE data provided by Hydro-Québec are used for hydrological purposes and are not available to the public due to legal constraints on the data's availability. The SWE data, SD data and field campaign measurements provided by the University of Sherbrooke will soon be available on the GRIMP snow group website <http://www.grimp.ca/data/>. Meteorological GEM data are freely available on the Government of Canada's website https://weather.gc.ca/grib/grib2_reg_10km_e.html. Other data used are listed in the references.

Competing interests. The authors declare that they have no conflict of interest.

Acknowledgements. The authors would like to thank the data providers: Hydro-Québec, Environment Canada (CMC-ECCC) and the University of Laval. This project was supported by financial contributions from NSERC, Canada, FRQ-NT and MITACS Québec, and the CFQCU France-Québec collaboration program.

Appendix A: Online adjustment of the observation error covariance matrix R

5 Online adjustment of covariance matrices in data assimilation is quite a common approach with the Ensemble Kalman filter (Dee, 1995; Miyoshi, 2001, Brankart et al., 2010, 2011) but not with the particle filter. However, in many implementations of the particle filter, the measurement pdf is considered Gaussian, so that the particle weights are computed using the observation error covariance matrix R. This matrix can therefore also be subject to adjustment in the context of the particle filter. Online adjustment can be and is often performed by tuning a simple inflation of the initial covariance matrix. This is the approach
10 chosen here.

Noting $\delta_i = y - h(x_i)$ the innovation for particle i , the weight of this particle is

$$\widetilde{w}_i = \frac{w_i}{\sum_j w_j} \quad (\text{A1})$$

where

$$w_i = \exp\left(-\frac{1}{2}\delta_i^T R^{-1}\delta_i\right) \quad (\text{A2})$$

15 An inflation of matrix R by a factor $1/\alpha$ (larger than 1) can be interpreted as an exponent α (smaller than 1) to w_i . Because the weights \widetilde{w}_i are nonlinear functions of R, inflating R tends to flatten their distribution. Online adjustment consists in finding a value for α that flattens the distribution of weights to the point where N_{keep} particles are selected with certainty, N_{keep} being a number to be prescribed. The number N_{keep} being fixed, if the resampling step is performed using Arakawa's procedure (Arakawa, 1996), the weight of the N_{keep} -th particle to be selected, $\widetilde{w}_{\text{keep}}$, must become equal to $\widetilde{w}_{\text{ref}} = 1/N_{\text{keep}}$. Consequently,

$$20 \quad \widetilde{w}_{\text{keep}} = \frac{(w_{\text{keep}})^\alpha}{\sum_j (w_j)^\alpha} = \widetilde{w}_{\text{ref}} \quad (\text{A3})$$

or, written differently after taking the logarithm:

$$\alpha = \left(\log(\widetilde{w}_{\text{ref}}) + \log(\sum_i (w_j)^\alpha)\right) / \log(w_{\text{keep}}) \quad (\text{A4})$$

This equation for α is not solvable analytically. Instead, we find α after the convergence of the series:

$$\alpha_n = \left(\log(\widetilde{w}_{\text{ref}}) + \log(\sum_i w_j^{\alpha_{n-1}})\right) / \log(w_{\text{keep}}) \quad (\text{A5})$$

25 The result of this adjustment is illustrated in Figure A1. The blue dots show the first 20 weights of a sorted distribution for an ensemble of 50 particles strongly prone to degeneracy: only 4 particles have a weight larger than $1/50 = 0.02$. The minimum number of particles to be selected is fixed to $N_{\text{keep}} = 10$. After the adjustment procedure, the identified inflation factor for matrix R is 3.6 ($\alpha = 0.277$) and the weight w_{keep} of the 10th particle is exactly equal to 0.02.

Obviously, this procedure is used only if the number of selected particles is below the N_{keep} threshold with the initial weights.

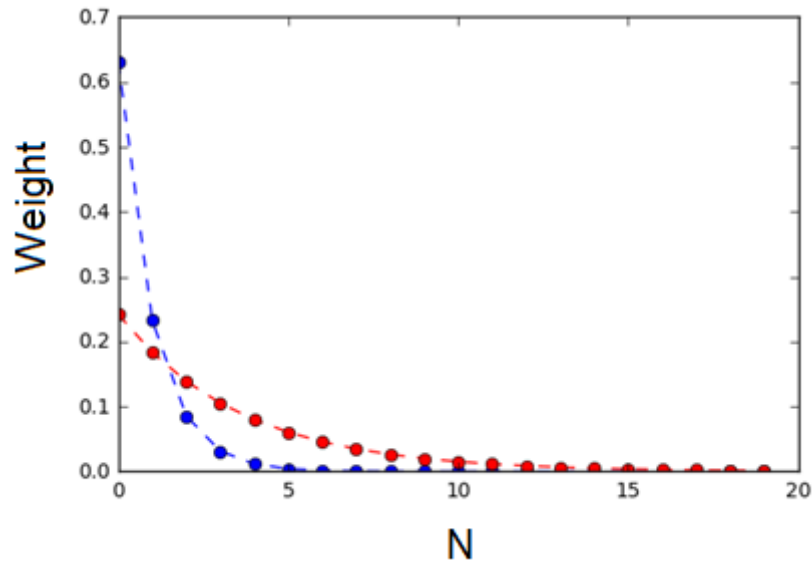


Figure A1. Weight distribution of the first 20 weights of a sorted distribution for an ensemble of 50 particles: distribution before the adjustment (blue dotted points), showing a degeneracy problem, and distribution after the adjustment procedure (red dotted points), where weight distribution is ‘flattened’ and significant weights are distributed around N_{keep} particles (10 particles for this example).

5 References

- Andreadis, K. M., and D. P. Lettenmaier (2012), Implications of representing snowpack stratigraphy for the assimilation of passive microwave satellite observations, *J. of Hydrometeorology*, 13(5), 1493–1506, doi:10.1175/JHM-D-11-056.1.
- Arulampalam, M.S., Maskell, S., Gordon, N., Clapp, T.: A tutorial on particle filters for online nonlinear/non-Gaussian Bayesian tracking. *IEEE Transactions on Signal Processing*, 50 (2), 174–188, 2002.
- 10 Borghese, F., Denti, P., and Saija, R.: *Scattering from model nonspherical particles theory and applications to environmental physics*, Springer, Berlin, New York, available at: <http://search.ebscohost.com/login.aspx?direct=true&scope=site&db=nlebk&db=nlabk&AN=255898>, 2007.
- Brown, R. D., B. Brasnett, and D. Robinson: Gridded North American monthly snow depth and snow water equivalent for GCM evaluation. *Atmos.–Ocean*, 41, 1–14, doi:10.3137/ao.410101, 2003.
- 15 Brown, R. and Tapsoba, D.: Improved mapping of snow water equivalent over Quebec. *64th Eastern Snow Conference*, St. John's, Newfoundland, Canada, 2007.
- Brown R., D. Tapsoba and C. Derksen: Evaluation of snow water equivalent datasets over the Saint-Maurice river basin region of southern Québec. *Hydrol. Processes*, Published online in Wiley Online Library <https://doi.org/10.1002/hyp.13221>, 2018
- Brucker L., A. Royer, G. Picard, A. Langlois, M. Fily: Hourly simulations of the microwave brightness temperature of seasonal snow in Quebec, Canada, using a coupled snow evolution-emission model. *Rem. Sens. of Enviro.* 115, 1966-1977, 2011.
- 20

- Brun, E., Martin, E., Simon, V., Gendre, C., and Coleou, C.: An energy and mass model of snow cover suitable for operational avalanche forecasting. *J. Glaciol.*, 35, 333–342, 1989.
- Brun, E., David, P., Sudul, M., and Brunot, G.: A numerical model to simulate snow cover stratigraphy for operational avalanche forecasting. *J. Glaciol.*, 38, 13–22, 1992.
- 5 Carmagnola, C. M., Morin, S., Lafaysse, M., Domine, F., Lesaffre, B., Lejeune, Y., Picard, G., and Arnaud, L.: Implementation and evaluation of prognostic representations of the optical diameter of snow in the SURFEX/ISBA-Crocus detailed snowpack model. *The Cryosphere*. 8, 417–437. doi:10.5194/tc-8-417-2014, 2014.
- Cavalieri, D. J., Gloersen, P., and Campbell, W, J.: Determination of sea ice parameters with the Nimbus 7 SMMR. *J. Geophys. Res.* 89:5355-5369, 1984.
- 10 Chang, A.T.C., J. L. Foster, and D. K. Hall: Nimbus-7 derived global snow cover parameters. *Ann. Glaciol.*, 9, 39–44, 1987.
- Chang, A. T. C. J. L. Foster. and D. K. Hall: Effects of forest on the snow parameters derived from microwave measurements during the BOREAS winter field campaign. *Hydrol. Processes*, 10, 1565-1574, 1996.
- Charrois, L., Cosme, E., Dumont, M., Lafaysse, M., Morin, S., Libois, Q., and Picard, G.: On the assimilation of optical reflectances and snow depth observations into a detailed snowpack model. *The Cryosphere*. 10, 1021–1038. doi:10.5194/tc-15 10-1021-2016, 2016.
- Choquette Y., Lavigne, P., Nadeau, M., Ducharme, P., Martin, J. P., Houdayer, A., and Rogoza, J.: GMON, a new sensor for snow water equivalent via gamma monitoring. *Proceedings Whistler 2008 International Snow Science Workshop*. 21–27 September 2008. Whistler, B.C, 2008.
- Côté, J., S. Gravel, A. Méthot, A. Patoine, M. Roch, and A. Staniforth: The operational CMC-MRB Global Environmental Multiscale model: Part I - Design considerations and formulation. *Monthly Weather Review*, 126, 1373-1395, 1998.
- 20 DeChant C. and H. Moradkhani: Radiance data assimilation for operational snow and streamflow forecasting. *Adv. Water Resou.*, 34(3), 351–364, 2011.
- Decharme, B., Boone, A., Delire, C., and Noilhan, J.: Local evaluation of the Interaction between Soil Bio- sphere Atmosphere soil multilayer diffusion scheme using four pedotransfer functions. *J. Geophys. Res.*, 116(D20). DOI: 25 10.1029/2011JD016002, 2011.
- De Lannoy, G.J.M., R. Reichle, P. Houser, K. Arsenault, N. Verhoest, and V. Pauwels: Satellite-Scale Snow Water Equivalent Assimilation into a High-Resolution Land Surface Model. *J. Hydrometeorol.*, 11, 352-369. doi:10.1175/2009JHM1192.1, 2010.
- De Lannoy, G. J. M., R. H. Reichle, K. R. Arsenault, P. R. Houser, S. Kumar, N. E. C. Verhoest, and V. R. N. Pauwels: 30 Multiscale assimilation of AMSR-E snow water equivalent and MODIS snow cover fraction observations in northern Colorado. *Water Resources Research*. 48(1). W01522, 2012.
- De Sève, D., M. Bernier, J.P. Fortin, and A.E. Walker: Preliminary analysis of the snow microwave radiometry using SSM/I passive microwave data: The case of the La Grande River watershed (Québec). *Ann. of Glaciol.*, 25: 353–361, 1997.

- De Sève D., M. Bernier, J.P. Fortin, and A. Walker: Spatio-temporal analysis of microwave radiometry of snow cover with SSM/I data in a taïga area. *Eastern Snow Conference*. Fredericton, Canada, 200-205, 1999.
- De Sève D., N. D. Evora, and D. Tapsoba: Comparison of three algorithms for estimating Snow Water Equivalent (SWE) over the La Grande River watershed using SSM/I data in the context of Hydro- Québec's hydraulic power management. *Proc. of the IEEE Geosci. Rem. Sens. Symp. 2007, IGARSS 2007*, DOI: 10.1109/IGARSS.2007.4423791, 2007.
- 5 Derksen, C., P. Toose, J. Lemmetyinen, J. Pulliainen, A. Langlois, N. Rutter, and M. Fuller: Evaluation of passive microwave brightness temperature simulations and snow water equivalent retrievals through a winter season, *Remote Sens. Environ.*, 117, 236–248, 2012.
- Derksen, C., J. Lemmetyinen, P. Toose, A. Silis, J. Pulliainen, and M. Sturm: Physical properties of Arctic versus subarctic snow: Implications for high latitude passive microwave snow water equivalent retrievals, *J. Geophys. Res. Atmos.*, 119, 7254–7270, 2014.
- 10 Dolant C., A. Langlois, B. Montpetit, L. Brucker. A. Roy and A. Royer: Development of a rain-on-snow detection algorithm using passive microwave radiometry. *Hydrol. Processes*. Published in Wiley Online Library. DOI: 10.1002/hyp.10828, 2016.
- 15 Dobson, M.C., F.T. Ulaby, M.T. Hallikainen, and M.A. El-Rayes: “Microwave dielectric behavior of wet soil-part II : dielectric mixing models,” *IEEE Transactions on Geoscience and Remote Sensing*. vol. GE-23, no. 1, pp. 35-46, Jan. 1985.
- Ducharme, P.: *Estimation de l'équivalent en eau du couvert nival (Plan de projet étape 3)*. Technical report, Plate-forme Production, Hydro-Québec., 2003.
- Durand, M. and S. Margulis: Feasibility test of multi-frequency radiometric data assimilation to estimate snow water equivalent, *Journal of Hydrometeorology*, Vol. 7(3). 443–457, 2006.
- 20 Durand, M., and S. A. Margulis: Correcting first-order errors in snow water equivalent estimates using a multifrequency, multiscale radiometric data assimilation scheme, *J. Geophys. Res.*, **112**, D13121, doi:10.1029/2006JD008067, 2007.
- Durand, M., E. J. Kim., and S. A. Margulis: Radiance assimilation shows promise for snowpack characterization. *Geophys. Res. Lett.*, 36. L02503. doi:10.1029/2008GL035214, 2009.
- 25 Durand, M., E. Kim, S. Margulis, and N. Molotch: A first-order characterization of errors from neglecting stratigraphy in forward and inverse passive microwave modeling of snow. *IEEE Geosci. Remote Sens. Lett.* 8(4). 730–734, 2011.
- Dutra, S., Kotlarski, P. Viterbo, G. Balsamo, P. M. A. Miranda, C. Schär, P. Bissolli and T. Jonas: Snow cover sensitivity to horizontal resolution, parameterizations and atmospheric forcing in a land surface model. *J. Geophys. Res.*, 116, D21109, doi:10.1029/2011JD016061, 2011.
- 30 Ferrazzoli P., Guerriero L., Wigneron J.-P.: Simulating L-band emission of forests in view of future satellite applications. *IEEE Transaction Geoscience and Remote Sensing*, 40: 2700-2708, 2002.
- Foster J, Sun C, Walker J, Kelly R, Chang A, Dong J, Powell H.: Quantifying the uncertainty in passive microwave snow water equivalent observations. *Remote Sensing of Environment*, 94, 187–203, 2005.

- Franklin, S.E.: Terrain analysis from digital patterns in geomorphometry and Landsat MSS spectral response. *Photogrammetric Engineering and Remote Sensing*, 53, 59-65, 1987.
- Gordon, N. J., Salmond, D. J., and Smith, A. F.: Novel approach to nonlinear/non-Gaussian Bayesian state estimation, *IEEE Proc.-F*, 140, 107–113, 1993.
- 5 Grant, A.A. Van de Griend, M. Schwank, and J.-P. Wigneron: “Observations and modeling of a pine forest floor at L-band,” *IEEE Transactions on Geoscience and Remote Sensing*, 47(7), 2009.
- Hallikainen, M.: Retrieval of Snow Water Equivalent from Nimbus-7 SMMR Data: Effect of Land-Cover Categories and Weather Conditions. *IEEE Journal of Oceanic Engineering*, OE-9(5): 372-376, 1984.
- Imaoka, K., M. Kachi, M. Kasahara, K. Nakagawa, and T. Oki: Instrument performance and calibration of AMSR-E and
10 AMSR2, *International Archives of the Photogrammetry, Remote Sensing and Spatial Information Science, ISPRS*, Kyoto, Japan, 2010.
- Jordan, R. E.: A one-dimensional temperature model for a snow cover: Technical documentation for SNTHERM.89. *Special Rep. 91-16*. U.S. Army Cold Regions Research and Engineering Laboratory. Hanover. NH. 49 pp, 1991.
- Kelly, R., A. T. C. Chang, L. Tsang, and J. Foster: A prototype AMSR-E global snow area and snow depth algorithm. *IEEE*
15 *Trans. Geoscience and Remote Sensing*, 41(2). 230–242, 2010.
- Klehmet K, Geyer B and Rockel B.: A regional climate model hindcast for Siberia: analysis of snow water equivalent. *The Cryosphere*, 7, 1017–34, 2013.
- Koenig LS, Forster RR.: Evaluation of passive microwave snow water equivalent algorithms in the depth-hoar dominated snowpack of the Kuparuk River Watershed, Alaska, USA. *Remote Sensing of Environment* 93: 511–527, 2004.
- 20 Kwon, Y., Z.-L. Yang, L. Zhao, T. J. Hoar, A. M. Toure, and M. Rodell: Estimating snow water storage in North America using CLM4, DART, and snow radiance data as- simulation. *J. Hydrometeor.*, 17, 2853–2874, 2016.
- Kwon, Y., Z.-L. Yang, T. J. Hoar and A. M. Toure: Improving the Radiance Assimilation Performance in Estimating Snow Water Storage across Snow and Land-Cover Types in North America. *J. Hydrometeor.*, 18, 651-668, 2017.
- Lafaysse, M., Cluzet, B., Dumont, M., Lejeune, Y., Vionnet, V., and Morin, S.: A multiphysical ensemble system of numerical
25 snow modelling, *The Cryosphere*, 11, 1173–1198, <https://doi.org/10.5194/tc-11-1173-2017>, 2017.
- Larue, F., A. Royer, D. De Sève, A. Langlois. A. Roy, L. Brucker: Validation of GlobSnow-2 snow water equivalent over Eastern Canada. *Remote Sensing of Environment*, 194, 264–277. <http://doi.org/10.1016/j.rse.2017.03.027>, 2017.
- Larue, F., Royer, A., De Sève, D., Roy, A., Picard, G., Vionnet, V., & Cosme, E. : Simulation and assimilation of passive microwave data using a snowpack model coupled to a calibrated radiative transfer model over northeastern Canada. *Water*
30 *Resources Research*, 54, 4823-4848, <https://doi.org/10.1029/2017WR022132>, 2018.
- Lehning, M., Bartelt. P. Brown. R.L, and Fierz. C.: A physical SNOWPACK model for the Swiss avalanche warning; Part III: meteorological forcing. thin layer formation and evaluation. *Cold Reg. Sci. Technol.*, 35(3): 169-184, 2002.
- Leppänen, L., Kontu. A., Vehviläinen. J., Lemmetyinen, J., and Pulliainen. J.: Comparison of traditional and optical grain size field measurements with SNOWPACK simulations in a taiga environment. *J. Glaciol.*, 61. 151–162, 2015.

- Liebe, H.: MPM - an atmospheric millimeter-wave propagation model, *International Journal on Infrared and Millimeter Waves*, vol. 10, p. 631-650, 1989.
- Luojus, K., Pulliainen, J., Takala, M., Lemmetyinen, J., Smolander, T., Derksen, C.: The GlobSnow Snow Water Equivalent Product. 22 July 2014 – *SnowPEX ISSPI-1*, College Park, Maryland, USA, 2014.
- 5 Maslanik, J. and J. Stroeve: *DMSP SSM/I brightness temperature grids for the polar regions on CD-ROM: user's guide*. Boulder, CO USA: National Snow and Ice Data Center, 1990.
- Masson, V.: The SURFEXv7.2 land and ocean surface platform for coupled or offline simulation of earth surface variables and fluxes. *Geosci. Model Dev.*, 6(4), 929–960. <http://dx.doi.org/10.5194/gmd-6-929-2013>, 2013.
- Mätzler, C., E. Schanda, and W. Good: Towards the definition of optimum sensor specifications for microwave remote sensing
10 of snow. *IEEE Trans. Geosci. And Rem. Sens.*, GE-20, 57–66, 1982.
- Mätzler, C.: Passive microwave signatures of landscapes in winter. *Meteorol. Atmos. Phys.*, 54, 241–260, 1994.
- Meissner, T., & Wentz, F.: Intercalibration of AMSR-E and WINDSAT brightness temperature measurements over land scenes, *presented at the 11th Specialist Meeting on Microwave Radiometry and Remote Sensing of the Environment (MicroRad 2010)*, 1-4 March 2010, Washington, DC, USA, 2010.
- 15 Mo, T., B. J. Choudhury, T. J. Schmugge, J. R. Wang, and T. J. Jackson: A model for microwave emission from vegetation-covered fields. *J. Geophys. Res.*, 87(C13), 11 229–11 237, 1982.
- Molotch, N. P., and R. C. Bales (2005), Scaling snow observations from the point to the grid element: Implications for observation network design, *Water Resources Research*, 41(W11421), doi:10.1029/2005WR004229.
- Montpetit, B., Royer, A., Roy, A., Langlois, A., and Derksen, D.: Snow microwave emission modeling of ice lenses within a
20 snowpack using the microwave emission model for layered snowpacks. *IEEE Trans. Geosci. Remote Sensing*, Available online. doi:10.1109/TGRS.2013.2250509, 2013.
- Montpetit B., A. Royer, A. Roy and A. Langlois: In-situ passive microwave parameterization of sub-arctic frozen organic soils. *Rem. Sens. of Enviro*, 205, 112-118, 2018.
- Myneni R.B. and 15 other authors: Global products of vegetation leaf area and fraction absorbed PAR from year one of MODIS
25 data, *Remote Sens. Environ.*, 83, 214-231, 2002.
- Pampaloni, P., and S. Paloscia: Microwave emission and plant water content: A comparison between field measurements and theory, *IEEE Trans. Geosci. Remote Sens.*, GE-24, 900-905, 1986.
- Pellarin, T., Kerr, Y. H., and Wigneron, J. P.: Global simulation of brightness temperatures at 6.6 and 10.7 GHz over land based on SMMR data set analysis, *IEEE T. Geosci. Remote Sensing*, 44, 2492– 2505, 2006.
- 30 Picard G., L. Brucker, A. Roy, F. Dupont, M. Fily, A. Royer, C. Harlow: Simulation of the microwave emission of multi-layered snowpacks using the dense media radiative transfer theory: the DMRT-ML model. *Geosci. Model Dev.*, 1061–1078, <http://dx.doi.org/10.5194/gmd-6-1061-2013>, 2013.
- Pietroniro, A. and R. Leconte: A review of Canadian Remote Sensing and Hydrology. 1999-2003. *Hydrological Processes*. 19(1):285-301, 2005.

- Pulliainen, J. T., Grandel, J., and Hallikainen, M. T.: HUT snow emission model and its applicability to snow water equivalent retrieval. *IEEE Transactions on Geoscience and Remote Sensing*, 37(3), 1378–1390, 1999.
- Quéno, Louis, Vionnet, Vincent, Dombrowski-Etchevers, Ingrid, Lafaysse, Matthieu, Dumont, Marie, and Karbou, Fatima: Snowpack modelling in the Pyrenees driven by kilometric resolution meteorological forecasts, *The Cryosphere*, 1571-1589, doi:10.5194/tc-10-1571-2016, 2016.
- 5 Raleigh, M.S., J.D. Lundquist. and M.P. Clark: Exploring the impact of forcing error characteristics on physically based snow simulations within a global sensitivity analysis framework. *Hydrology and Earth System Sciences*. 19. 3153-3179. doi:10.5194/hess-19-3153-2015, 2015.
- Rott, H., Yueh, S.H., Cline, D.W., Duguay, C., Essery, R., Haas, C., Hélière, F., Kern, M.G., Malnes, E., Nagler, T., Pulliainen, J., Rebhan, H., Thompson, A.: Cold regions hydrology high-resolution observatory for Snow and Cold Land Processes. *Proc. IEEE*, 98(5), 752–765. <http://dx.doi.org/10.1109/JPROC.2009.2038947>, 2010.
- 10 Roy, A., Royer, A., and Turcotte, R.: Analyse de l'identification de la fonte de neige printanière avec QuickSCAT dans le Sud du Québec, Canada, *Canadian Journal of Remote Sensing*, 36(2), 89–98, 2010.
- Roy, A., Royer, A., Wigneron, J.-P., A. Langlois, J. Bergeron and P. Cliche: A simple parameterization for a boreal forest radiative transfer model at microwave frequencies. *Rem. Sens. of Enviro.*, 124, 371–383, 2012.
- 15 Roy, A., Picard. G., Royer. A., Montpetit. B., Dupont. F., Langlois. A., Derksen. C., Champollion. N.: Brightness Temperature Simulations of the Canadian Seasonal Snowpack Driven by Measurements of the Snow Specific Surface Area. *Journal IEEE Transactions on Geoscience and Remote Sensing*, 51, 4692-4704, 2013.
- Roy, A., Royer, A., and Hall, R.: Relationship between forest microwave transmissivity and structural parameters for Canadian boreal forest, *IEEE Geoscience and Remote Sensing Letters*, 11(10), 1802-1806, 2014.
- 20 Roy A., A. Royer, B. Montpetit, and A. Langlois: Microwave snow emission modeling of boreal forest, *Proc. of the Int. Geosci. Rem. Sens. Symp. 2015* (IGARSS 2015) Paper #8044, July 26-31, 2015, Milan, Italy, 4 p., 2015.
- Roy, A., Royer. A., St-Jean-Rondeau. O., Montpetit. B., Picard. G., Mavrovic. A., Marchand. N., and Langlois. A.: Microwave snow emission modeling uncertainties in boreal and subarctic environments. *The Cryosphere*, 623-638, doi:10.5194/tc-10-623-2016, 2016.
- 25 Royer A., A. Roy. B. Montpetit. O. Saint-Jean-Rondeau. G. Picard. L. Brucker and A. Langlois: Comparison of commonly-used microwave radiative transfer models for snow remote sensing. *Rem. Sens. of Enviro.*, 190, 247–259, 2017.
- Sandells, M., Essery. R., Rutter. N., Wake. L., Leppänen. L., and Lemmetyinen. J.: Microstructure representation of snow in coupled snowpack and microwave emission models. *The Cryosphere Discuss*. 11, 229–246, 2017.
- 30 Sun C, Walker JP, Houser PR: A methodology for snow data assimilation in a land surface model. *J. Geophys. Res.*, 109: D08108, 2004.
- Takala, M., K. Luojus, J. Pulliainen, C. Derksen, J. Lemmetyinen, J.-P. Kärnä, J. Koskinen, and B. Bojkov: Estimating northern hemisphere snow water equivalent for climate research through assimilation of space-borne radiometer data and ground-based measurements, *Rem. Sens. of Enviro.*, 115(12), 3517–3529, 2011.

- Tapsoba, D., V. Fortin, F. Anctil, and M. Haché: Apport de la technique du krigeage avec dérive externe pour une cartographie raisonnée de l'équivalent en eau de la neige: Application aux bassins de la rivière Gatineau. *Can. J. Civil Engineering*, 32(1), 289-297(9), 2009.
- 5 Tedesco, M. and P. S. Narvekar: Assessment of the NASA AMSR-E SWE product. *IEEE J. Sel. Top. Appl. Earth Obs. Remote Sens.*, 3, 141–159, 2010.
- Tedesco, M., R. Kelly, J. L. Foster, and A. T. C. Chang: *AMSR-E/Aqua Daily L3 Global Snow Water Equivalent EASE-Grids. Version 2. Boulder, Colorado USA: NASA National Snow and Ice data center Distributed Active Archive Center.* doi: 10.5067/AMSR-E/AE_DYSNO.002, 2004.
- 10 Touré A., K. Goïta, A. Royer, E. Kim, M. Durand, S.A. Margulis and Huizhong Lu: A Case Study of Using a Multi-Layered Thermo-Dynamical Snow Model for Radiance Assimilation. *IEEE Transactions on Geoscience and Remote Sensing*, 49(8), 2828-2837, 2011.
- Tsang, L., Ding, K. H. & Wen, B.: Dense Media Radiative Transfer Theory for Dense Discrete Random Media with Particles of Multiple Sizes and Permittivities. *Progress In Electromagnetics Research*, 6, 181-230, 1992.
- 15 Tsang, L. & Kong, J. A.: *Scattering of Electromagnetic Waves. vol. 3.* Advanced Topics. Wiley Intersci. and Hoboken, N. J., 2001.
- Turcotte R., Fortier-Filion, T.-C., Fortin, V., Roy, A., and Royer, A.: Simulation hydrologiques des derniers jours de la crue du printemps : le problème de la neige manquante. *Hydrological Sciences Journal*. 55(6): 872-882, 2010.
- Vachon, F.: *Estimation de l'équivalent en eau de la neige en milieu subarctique du Québec par télédétection micro-ondes passives.* Mémoire de thèse, Université de Sherbrooke, Sherbrooke, Canada, Mai 2009.
- 20 Van Leeuwen, P. J.: Particle filtering in geophysical systems, *Mon. Weather Rev.*, 137, 4089–4114, doi:10.1175/2009MWR2835.1, 2009.
- Van Leeuwen, P. J. : Particle filters for the geosciences, *Advanced Data Assimilation for Geosciences: Lecture Notes of the Les Houches School of Physics: Special Issue, June 2012*, p. 291, doi:10.1093/acprof:oso/9780198723844.003.0013, 2014.
- 25 Vionnet, V., Brun, E., Morin, S., Boone, A., Faroux, S., Le Moigne, P., Martin, E., and Willemet, J.-M.: The detailed snowpack scheme Crocus and its implementation in SURFEX v7.2. *Geosci. Model Dev.*, 5, 773–791. doi: 10.5194/gmd-5-773-2012, 2012.
- Wang, N., C. Liu, R. Ferraro, D. Wolff, E. Zipser and C. Kummerow: TRMM 2A12 land precipitation product-status and future plans, *J. Met. Soc. of Japan*, 87A, 237–253, 2009.
- 30 Wegmüller, U. et Mätzler, C.: Rough bare soil reflectivity model, *IEEE Transactions on Geoscience and Remote Sensing*, 37, 1391-1395, 1999.
- Xu, X., J. Li, and B. A. Tolson: Progress in integrating remote sensing data and hydrologic modeling. *Prog. Phys. Geog.*, 0309133314536583, 2014.