

Dear Editor,

We are grateful to you and the Reviewer for the time and effort spent on the review of our manuscript. Our detailed response to the comments raised by you and the Reviewer is attached. These revisions have helped clarify aspects of our work and improve its presentation.

Page/Line numbers given in our response refer to the pages/lines of the ORIGINAL manuscript.

Sincerely,

Mireia Fontanet Ambròs on behalf of all co-authors

Legend

Bold: the comments and questions by the editor and the reviewers.

Blue: our answers.

Red: the detailed changes introduced in the manuscript.

Response to Editor:

SPECIFIC COMMENTS:

- **Page 1, Line 7: change by “spatial distribution of soil moisture”.**
We changed it
- **Page 1, Line 25: change by “does not work”.**
We changed it.
- **Page 1, Line 29: change by “droughts”.**
We changed it.
- **Page 2, Line 14:**
We dropped “in a commercial field”.
- **Page 2, Line 15: add “either at” and “at a”.**
We added these words in the text.
- **Page 3, Line 8: change by “this satellite has”**
We changed it.
- **Page 4, Line 9: change by “processing”.**
We changed it.
- **Page 4, Line 10: add “the”.**
We added it.
- **Page 4, Line 17: modify the sentence.**
We modified with “conducted only if there is no cloud coverage.”

- **Page 4, Line 18: modify by “success”.**
We modify it.
- **Page 4, Line 22: modify the word.**
We modify it using value as according with the title of the manuscript.
- **Page 5, Line 3: change by “irrigation development project”.**
We changed it.
- **Page 5, Line 5: drop these words.**
We dropped them.
- **Page 6, Line 2: add defined to.**
We added these words.
- **Page 6, Line 3: add “about the spatial variability across the field”.**
We added these words.
- **Page 6, Line 11: modify by “registers”.**
We modify it.
- **Page 7, Line 20: add the “ground surface”.**
We added it.
- **Page 7, Line 20: drop “instead”.**
We dropped “Instead”.
- **Page 8, Line 8: drop “finally”.**
We dropped it.
- **Page 8, Line 9: modify by “contend”.**
We modified it.
- **Page 8, Line 19: How was this crop demand determined? Was this done using the satellite information - or through the sensor SM data?**
The crop demand is not determined. This sentence has been added just for describing two different hydrologic scenarios; i) when there is precipitation, and ii) when irrigation satisfies crop water requirements. We can modify the “crop demand” by “crop water requirements”.
- **Page 9, Line 1: change by “the point”**
We changed it.
- **Page 9, Line 1: add “a support”**
We added it.
- **Page 9, Line 2: add “instead”**

- We added it.
- **Page 9, Line 2: change by “point”.**
We changed it.
 - **Page 9, Line 3: drop “the”.**
We dropped it.
 - **Page 9, Line 6: change by “the area between the light and dark green lines”.**
We changed it.
 - **Page 9, Line 7: change by “the five EC-5 sensors”.**
We changed it.
 - **Page 9, Line 7: change by “always lies”.**
We changed it.
 - **Page 9, Line 8: modify the sentence.**
We modified by” This supports the use of this information to complement”.
 - **Page 9, Line 8: add “on days”.**
We added it.
 - **Page 9, Line 12: clarify how maximum and minimum soil moisture values have been determined:**
We modified the sentence as:
“...are the minimum and maximum values of the soil moisture time series data obtained with the EC-5 sensors.”
We hope that it clarifies how maximum and minimum soil moisture values have been determined.
 - **Page 9, Line 13: drop “general”.**
We dropped it.
 - **Page 9, Line 15: change by “underestimates”**
We changed it.
 - **Page 9, Line 19: change by “it can be seen that”**
We changed it.
 - **Page 9, Line 20: change by “even though there is a response to”**
We changed it.
 - **Page 9, Line 23: change by “it is not sensitive”.**
We changed it.
 - **Page 10, Line 9: change by “contend” and “negligible”.**
We changed them.

- **Page 11, Line 10: correct by “1/10th”.**
We corrected it.
- **Page 11, Line 11: correct by “neighbouring pixels with a size of 1 km”.**
We corrected it.
- **Page 11, Line 12: corrected by “adjoining”.**
We corrected it.
- **Page 11, Line 13: clarify pixels compared.**
Foradada area is assumed that is represented just for one pixel (1 km), see Page 9, Line 3: *“Average of the soil moisture is representative of the entire irrigated area associated with the Foradada field site. Consequently, these two variables have similar support scale and are therefore comparable. Error bars in the gravimetric measurements represent the standard deviation of all the measurements obtained in one day.”* Thus in this section the main idea was compare two different pixels with theoretically different hydrological scenarios and see if NDVI and LST were able to represent these different conditions. But the scale of these comparisons is the same.
We modified the sentence with *“the Foradada pixel, where Foradada is located, and its North-West neighbour pixel.”*
- **Page 11, Line 13: change by “to an area that is not irrigated”.**
We change it.
- **Page 11, Line 17: clarify some aspects.**
We tried to clarify some aspects of the discussion:

We finally note that these results suggest that the resolution of LST and NDVI is not appropriate in this case but can also express that these two variables are simply not sensitive to irrigation because they only provide information about the status of the crop and land surface. Further research is needed in this sense.
- **Page 12, Line 11: clarify some aspects.**
We change the word occasional heterogeneity by “different hydrological scenarios and behaviors”.
- **Figure 1: improve Figure 1 (resolution and location).**
We have improved resolution of Figure 1. Regarding the location, we added Barcelona coast because Segarra – Garrigues and Urgell areas are well appreciated in the figure. We think that if all Spain area is shown in the Figure, these areas will be too small in comparison with Spain area.
- **Figure 2: improve Figure 2 (legend).**
We have improved Figure 2, modifying the legend.

Response to Reviewer:

GENERAL COMMENTS

1) A quantitative comparison between in situ measurements and DISPATCH soil moisture is easy to be performed and would add quantitative results to the paper. For instance, the correlation between the average of in situ observations and DISPATCH in the two investigated periods will quantify the difference in the performance of DISPATCH product.

- We agree that this information adds quantitative results to the paper that is why we have added two extra plots; the first one, represents the sensors average soil moisture measurements and DISPATCH data during rainfall periods, and the second one represents the same data but during local irrigation period. The information has been added at Page 10, Line 7 (new version).

This can also be seen from a different perspective by looking at the scatterplot between the average of the normalized relative soil moisture data obtained with the EC-5 sensors and the corresponding DISPATCH measurement determined at the same day. Figure 5 shows the scatterplots obtained during rainfall events and irrigation period. We note that even though a clear tendency is seen during rainfall events ($R^2=0.57$), no correlation seems to exist during irrigation ($R^2=0.04$).

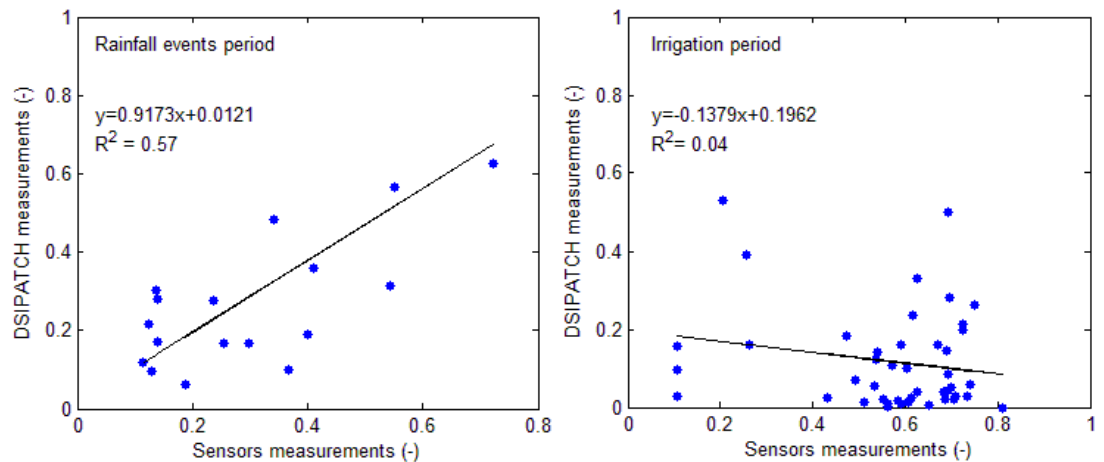


Figure 5. Scatterplot between the average of the normalized soil moisture obtained with EC-5 sensors and the DISPATCH measurements obtained during both hydrologic scenarios, rainfall events and irrigation period.

We hope that this information will help and improve the data existing in the manuscript.

2) The introduction contain the recent studies the attempted in using satellite soil moisture for providing irrigation information. For instance, see the papers by Lawston et al. (2017, doi: 10.1002/2017GL075733), Brocca et al. (2018, doi: 10.1016/j.jag.2018.08.023), Zaussinger et al. (2018, doi: 10.5194/hess-2018-388) and references therein.

- We have added these references in the Introduction section improving the State of the Art. Page 4, Line 7 (new version):

Satellite soil moisture has been recently used for providing irrigation detection signals (Lawston et al., 2017), quantifying the amount of water applied (Brocca et al., 2018; Zaussinger et al., 2018), and estimating the water use (Zaussinger et al., 2018). All these works deal with relatively homogeneous and extensive irrigation surface coverages (several kms).

- 3) The obtained results might be not only related to the spatial resolution of LST and NDVI, but also simply to the low sensitivity of these two variables to irrigation application. They provide information at the surface and of vegetation conditions, which might be not sensitive to irrigation. I am not aware of studies that have shown the LST or NDVI variation in time is sensitive to irrigation. I suggest adding this option should be added in the discussion of the results.

- We have added this option in the discussion part Page 12, Line 6 (new version).

We finally note that these results suggest that the resolution of LST and NDVI is not appropriate in this case but can also express that these two variables are simply not sensitive to irrigation because they only provide information about the status of the crop and land surface. Further research is needed in this sense.

SPECIFIC COMMENTS:

- **Page 1, line 16: Remove the bracket before “Normalized”**
We deleted the bracket.
- **Page 1, Line 29: change “draught” with “drought”.**
We changed the word.
- **Page 2, Line 1: Change “exchange” with “exchanges”**
We changed the word.
- **Page 2, Line 14: remove “in a commercial field site”.**
We removed it.
- **Page 2, Line 17: change “true value” with “reference value”.**
We changed the expression.
- **Page 2, Line 23: change “from the fact that field data is typically scarce and provides” with “from the typical low number of in situ sensors that provide”.**
We changed the sentence.
- **Page 3, Line 3: remove comma after “Sensing”. Why Remote sensing in capital.**
We removed comma and Remote Sensing capital letters.
- **Page 3, Line 4: add “(or less)” after 5 cm.**

We added.

- **Page 3, Line 3-14: The other satellites soil moisture products currently available should be mentioned, i.e., SMAP, ASCAT, AMSR2 and ESA CCI SM.**

We added the follow information:

Different satellites exist that are capable of estimating NSSM: the Soil Moisture Active Passive (SMAP) satellite, the Advanced Scatterometer (ASCAT) remote sensing instrument flown on board of the Meteorological Operational (METOP), the Advanced Microwave Scanning Radiometer 2 (AMSR2) instrument on board of the Global Change Observation Mission 1-Water (GCOM-W1) satellite, and the Soil Moisture and Ocean Salinity (SMOS) satellite launched in November 2009 (Kerr et al., 2001).

- **Page 3, Line 17: change “This data can be freely... web sites” with “data are freely available”.**

We changed it.

- **Page 3, Line 20: add a reference to the downscaling studies at the end of the sentence.**

The manuscript includes different references for this sentence at the next paragraph where different downscaling algorithms are mentioned.

- **Page 3, Line 21: please, check, I do not think the spatial resolution in the study by Chauhan is 25 km.**

Yes, you are right; the spatial resolution is 1 km. I have corrected the mistake.

- **Page 3, Line 23-24: the sentence “The change in... resolution” should be revised as it is not clear.**

We modified the sentence with:

The change in the detection method reported by Narayan et al. (2006) downscales soil moisture at 100 m resolution.

- **Page 4, Line 12: The recent study by Bauer-Marschallinger et al. (2018, doi: 10.1109/TGRD.2018.2858004) demonstrated the feasibility to obtain a soil moisture product operationally from Sentinel-1. I suggest adding this reference.**

We added this reference.

- **Page 4, Line 16: change “even if” with “only if”.**

We changed it.

- **Page 5, Line 12: change “sprinkle” with “sprinkler”.**

We changed it.

- **Page 5, Line 12: please specify the source of the soil texture information. Does it refer to one point, a spatial average of multiple measurements?**

We clarified the source of the information:

The soil texture, in a single point, is 65.6% Clay, 17.6% Silt and 16.8 Sand.

- **Page 5, Line 23: remove the point after “Figure 1”.**
We removed the point.
- **Page 6, Line 10: change “resolution” with “accuracy” and specify how this number is obtained.**
We changed the word.
- **Page 8, Line 9: what is the meaning of “content”? Also later in the text (P10, L9). Please revise.**
We modified and correct the sentence.
- **Page 8, Line 10: add a reference here. Always, when you cite results of previous studies, a reference should be added.**
We added the follow references:
Atkinson and Curran, 1997; Curran, 1988
- **Page 8, Line 17: what is the meaning of “transpired”? Please revise.**
We changed “transpired” by “occurs”.
- **Page 9, Line 13: remove “general”, also in the conclusions (P12, L1).**
We removed them.
- **Page 9, Line 15: change “can slightly underestimate” with “slightly underestimates” (remove can).**
We modified the word.
- **Page 9, Line 22: remove “significant”.**
We removed it.
- **Page 12, Line 8: change “can” with “might”.**
We change it.

The value of satellite remote sensing soil moisture data and the DISPATCH algorithm in irrigation fields

Mireia Fontanet^{1,2,3}, Daniel Fernàndez-Garcia^{2,3}, Francesc Ferrer¹

¹LabFerrer, Cervera, 25200, Spain

5 ²Department of Civil and Environmental Engineering, Universitat Politècnica de Catalunya (UPC), Barcelona, 08034, Spain

³Associated Unit: Hydrogeology Group (UPC-CSIC)

Correspondence to: Mireia Fontanet (mireia@lab-ferrer.com)

Abstract. Soil moisture measurements are needed in a large number of applications such as hydro-climate approaches, watershed water balance management and irrigation scheduling. Nowadays, different kinds of methodologies exist for measuring soil moisture. Direct methods based on gravimetric sampling or Time Domain Reflectometry (TDR) techniques measure soil moisture in a small volume of soil at few particular locations. This typically gives a poor description of the spatial distribution soil moisture in relatively large agriculture fields. Remote sensing of soil moisture provides a large coverage and can overcome this problem but suffers from other problems stemming from its low spatial resolution. In this context, the DISaggregation based on Physical And Theoretical scale CHange algorithm (DISPATCH) has been proposed in the literature to downscale soil moisture satellite data from 40 km to 1 km of resolution by combining the low resolution Soil Moisture Ocean Salinity (SMOS) satellite soil moisture data with the high resolution Normalized Difference Vegetation Index (NDVI) and Land Surface Temperature (LST) datasets obtained from a Moderate Resolution Imaging Spectroradiometer (MODIS) sensor. In this work, DISPATCH estimations are compared with soil moisture sensors and gravimetric measurements to validate the DISPATCH algorithm in an agricultural field during two different hydrologic scenarios; wet conditions driven by rainfall events and local sprinkler irrigation. Results show that the DISPATCH algorithm provides appropriate soil moisture estimates during general rainfall events but not when sprinkler irrigation generates occasional heterogeneity. In order to explain these differences, we have examined the spatial variability scales of NDVI and LST data, which are the input variables involved in the downscaling process. Sample variograms show that the spatial scales associated with the NDVI and LST properties are too large to represent the variations of the average soil moisture at the site and this could be a reason why the DISPATCH algorithm does not work properly in this field site.

1. Introduction

Soil moisture measurements taken over different spatial and temporal scales are increasingly required in a wide range of environmental applications, which include crop yield forecasting (Holzman et al., 2014), irrigation planning (Vellidis et al., 2016), early warnings for floods and droughts (Koriche and Rientjes, 2016), and weather forecasting (Dillon et al., 2016).

This is mostly due to the fact that soil moisture controls the water and energy exchanges between key environmental compartments (atmosphere and earth) and hydrological processes, such as precipitation, evaporation, infiltration, and run-off (Ochsner, 2013; Robock et al., 2000).

There are several applications in which soil moisture measurements have been shown to provide relevant information (Robock et al., 2000). For example, in environmental applications, soil moisture is typically used for defining the water stress occurring in natural and human systems (Irmak et al., 2000) or for quantifying nitrate leaching and drainage quality (Clothier and Green, 1994). Here, we highlight that soil moisture measurements from the root zone yields important information for field irrigation scheduling, determining to a great extent the duration and frequency of irrigation needed for plant growth as a function of water availability (Blonquist et al., 2006; Jones, 2004; Campbell, 1982).

10 Soil moisture is highly variable in space and time, mainly as a result of the spatial variability in soil properties (Hawley, 1983), topography (Burt and Butcher, 1985), land uses (Fu, 1994), vegetation (Le Roux et al., 1995) and atmospheric conditions (Koster and Suarez, 2001). As a result, soil moisture data exhibits a strong scale effect that can substantially affect the reliability of predictions depending on the method of measurement used. For this reason, it is important to understand how to measure soil moisture for irrigation scheduling.

15 Nowadays, available techniques for measuring or estimating soil moisture can provide data either at a small or at a large scale. Gravimetric measurements (Gardner, 1986) estimate soil moisture by the difference between the natural and the dry weight of a given soil sample. They are used as a reference value of soil moisture for sensor calibration (Starr and Paltineanu, 2002) or soil moisture validation studies (Bosch et al., 2006; Cosh et al., 2006). The main disadvantage of this method is that these measurements are time-consuming; users have to go to the field to collect soil samples and place them
20 in the oven for a long time. Soil moisture sensors such as Time Domain Reflectometry sensors (Clarke Topp and Reynolds, 1998; Schaap et al., 2003; Topp et al., 1980) or capacitance sensors (Bogena et al., 2007; Dean et al., 1987) are capable of measuring soil moisture continuously using a data logger, thereby enabling the final user to save time. Soil moisture sensors are especially useful for studying processes at a small scale, but suffer from the typical low number of in situ sensors that provide an incomplete picture of a large area (Western et al., 1998). Nevertheless, the use of soil moisture sensors is a

common practice for guiding irrigation scheduling in cropping field systems (Fares and Polyakov, 2006; Thompson et al., 2007; Vellidis et al., 2008).

Remote sensing can estimate soil moisture continuously over large areas (Jackson et al., 1996). In this case, soil moisture estimations refer to the Near Surface Soil Moisture (NSSM), which represents the first 5 cm (or less) of the top soil profile.

5 In recent years, Remote Sensing techniques have been improved and diversified their estimation, making them an interesting tool for monitoring NSSM and other variables such as the Normalized Difference Vegetation Index (NDVI) and the Land Surface Temperature (LST). Different satellites exist that are capable of estimating NSSM: the Soil Moisture Active Passive (SMAP) satellite, the Advanced Scatterometer (ASCAT) remote sensing instrument flown on board of the Meteorological Operational (METOP), the Advanced Microwave Scanning Radiometer 2 (AMSR2) instrument on board of the Global
10 Change Observation Mission 1-Water (GCOM-W1) satellite, and the Soil Moisture and Ocean Salinity (SMOS) satellite launched in November 2009 (Kerr et al., 2001). The SMOS satellite has global coverage and a revisit period of 3 days at the equator, giving two soil moisture estimations, the first one taken during the ascending overpass at 6:00 am and the second one during the descending overpass at 6:00 pm local solar time. SMOS satellite is a passive 2D interferometer operating at L-band (1.4 GHz) (Kerr et al., 2010). The spatial resolution ranges from 35 to 55 km, depending on the incident angle. Its
15 goal is to retrieve NSSM with a target accuracy of a $0.04 \text{ m}^3/\text{m}^3$ (Kerr et al., 2012). Since SMOS NSSM have been validated on a regular basis since the beginning of its mission (Bitar et al., 2012; Delwart et al., 2008), it is considered suitable for hydro-climate applications (Lievens et al., 2015; Wanders et al., 2014).

The relatively large variability of soil moisture compared to the low resolution of SMOS-NSSM data hinders the direct application of this method to irrigation scheduling. However, the need for estimating NSSM with a resolution higher than 35
20 – 55 km using Remote Sensing has increased for different reasons: 1) Data are freely available; 2) A field installation of soil moisture sensors is not necessary; and 3) No specific maintenance is needed. For these reasons, in the last few years, different algorithms have been developed to downscale Remote Sensing soil moisture data to tens or hundreds of meters.

Chauhan et al., (2003) developed a Polynomial fitting method which estimates soil moisture at 1 km resolution (Carlson, 2007; Wang and Qu, 2009). This method links soil moisture data with surface temperature, vegetation index and albedo. It

25 does not require in situ measurements but cannot be used under cloud coverage conditions. The improvements in the

detection method reported by Narayan et al. (2006) downscales soil moisture at 100 m resolution. This is an optimal resolution for agricultural applications, but the method is highly dependent on the accuracy of its input data. The same problem is attributed to the Baseline algorithm for the Soil Moisture Active Passive (SMAP) satellite (Das and Mohanty, 2006), which downscales soil moisture at 9 km resolution. These algorithms have to be validated using in situ measurements.

5 For this purpose, most studies use soil moisture sensors installed at the top soil profile, i.e., the first 5 cm of soil (Albergel et al., 2011; Cosh et al., 2004; Jackson et al., 2010), while others use gravimetric soil moisture measurements (Merlin et al., 2012) or the combination of both methodologies (Robock et al., 2000). **Satellite soil moisture has been recently used for providing irrigation detection signals (Lawston et al., 2017), quantifying the amount of water applied (Brocca et al., 2018; Zaussinger et al., 2018), and estimating the water use (Zaussinger et al., 2018). All these works deal with relatively**

10 **homogeneous and extensive irrigation surface coverages (several kms).**

Other satellites, such as Sentinel-1, can estimate NSSM at 1 km resolution (Bauer-Marschallinger et al., 2018; Hornacek et al., 2012; Mattia et al., 2015; Paloscia et al., 2013). Sentinel-1 provides two kinds of products, the first one is Single Look Complex (SLC) and the second one is Ground Range Detected (GRD). The last one can be used for solving a wide range of problems related to Earth surface monitoring, such as soil moisture, but it is not a direct measurement and therefore data

15 processing is needed. In this case, the GRD product is converted into radar backscatter coefficient and then into dB units to estimate soil moisture. Usually, these conversions are cumbersome because these kind of measurements have surface roughness and vegetation influence that affect the signal (Garkusha et al., 2017; Wagner et al., 2010).

The DISPATCH method (DISaggregation based on Physical And Theoretical CHange) (Merlin et al., 2012; Merlin et al., 2008) is an algorithm that downscales SMOS NSSM data from 40 km (low resolution) to 1 km resolution (high resolution).

20 This algorithm uses Terra and Aqua satellite data to estimate NDVI and LST twice a day using the Moderate Resolution Imaging Spectroradiometer (MODIS) sensor. These estimations have 1 km resolution and can be conducted only if there is no cloud coverage. This downscaling process provides the final user with the possibility of estimating NSSM using Remote Sensing techniques at high resolution. DISPATCH succeeds to reveal spatial heterogeneities as rivers, large irrigation areas and floods (Escorihuela and Quintana-Seguí, 2016; Malbéteau et al., 2015, 2017; Molero et al., 2016) and it has also been

validated (Malbêteau et al., 2015; Merlin et al., 2012; Molero et al., 2016) in fairly large and homogeneous irrigation areas, but not in complex settings with spatially changing hydrologic conditions such as those representing a local irrigation field.

In this work, we evaluate the value of Remote Sensing in agricultural irrigation scheduling by comparing in situ soil moisture data obtained from gravimetric and soil moisture sensors, with soil moisture data determined by downscaling

5 Remote Sensing information with the DISPATCH algorithm.

1.1. Study Area

The study area shown in Figure 1 is located in the village of Foradada (1.015 lat., 41.866 lon.), in the Segarra – Garrigues (SG) system (Lleida, Catalonia). The SG system is an important irrigation development project currently being carried out in the province of Lleida, Catalonia, which involves converting most of the current dry land fields into irrigated fields. Its
10 construction enables 1000 new hectares with a long agricultural tradition to be irrigated. To achieve this, an 85 km long channel was constructed to supply water for irrigation. At present, approximately 16000 irrigators are potential beneficiaries of these installations. However, most farmers have not yet installed this irrigation system, which means that the SG systems can still be regarded as dry land.

The Urgell area is located in the west of the SG system. This area has totally different soil moisture conditions, especially
15 during the summer season when the majority of fields are currently irrigated. This gives rise to two clearly distinguishable wet and dry soil moisture conditions. Figure 1 shows the Foradada field, which represents 25 ha of a commercial field irrigated by a solid set sprinkler irrigation system distributed with 18 different irrigation sectors. The soil texture, in a single point, is 65.6% Clay, 17.6% Silt and 16.8 Sand. Every year two different crops are grown, the first one during the winter and spring seasons, when wet conditions are maintained by precipitation, and the second one during the summer and autumn
20 seasons, when wet conditions are maintained by sprinkler irrigation. The Foradada field is thus one of the few irrigated fields located within the SG system. Consequently, this field has soil moisture conditions similar to those in the surrounding area during the winter and spring season, but completely different conditions during the summer and autumn seasons. This makes this site unique for assessing Remote Sensing in a distinct isolated irrigation field.

2. Materials and Methods

2.1. In situ Soil Moisture Measurements

A total of 9 intensive and strategic field campaigns were conducted in the study area during 2016: DOY42, DOY85, DOY102, DOY187, DOY194, DOY200, DOY215, DOY221 and DOY224. During each field campaign, disturbed soil samples were collected from the top soil profile (0-5 cm depth) for measuring gravimetric soil moisture data. A total of 101 measurement points, depicted in Figure 1, were defined around the field. They are divided into two different kinds of points: 1) Cross section points; 75 points defined to represent the spatial variability of soil moisture in different cross sections. In these cross sections, points are separated by 9, 16 and 35 m; 2) Support points; 26 points defined to complement information measured from cross sections, thereby adding and supporting information about the spatial variability across the field. Each soil sample is analyzed using the gravimetric method for measuring gravimetric soil moisture content, which is transformed to volumetric soil moisture content using bulk density measurements (Letelier, 1982). Daily averages of gravimetric measurements and their standard deviations were computed to represent the soil moisture associated with the entire field site. Soil moisture was also measured using capacitive EC-5 sensors (METER Group, Pullman, WA, USA), previously calibrated in the laboratory (Star and Paltineanu, 2002). As Figure 1 shows, a total of 5 control points were installed across one of the three gravimetric cross sections. Each control point represents a different irrigation sector of the field. Soil moisture sensors were installed at 5 cm depth, taking into account the explore volume of these sensors. Their accuracy is $\pm 0.03 \text{ cm}^3/\text{cm}^3$ (Campbell and Devices, 1986). They were connected to an EM50G data logger (METER Group, Pullman, WA, USA) that registers soil moisture every 5 minutes.

2.2. DISPATCH Soil Moisture Measurements

In this section we briefly describe the DISPATCH algorithm. Further details can be found in Merlin et al. (2013) and references therein. The DISPATCH algorithm aims to downscale NSSM data obtained from SMOS at 40 km resolution to 1 km resolution. The method assumes that NSSM is a linear function of the Soil Evaporative Efficiency (SEE), which can be estimated at high resolution (1 km) from the acquisition of two products obtained from MODIS, i.e., LST and NDVI datasets. This MODIS-derived SEE is further considered as a proxy for the NSSM variability within the SMOS pixel. The

estimation of SEE is assumed to be approximately constant during the day given clear sky conditions. The downscaling relationship is given by Eq. (1)

$$\theta_{HR} = \theta_{SMOS} + \theta'_{HR}(SEE_{SMOS}) \times (SEE_{HR} - SEE_{SMOS}), \quad (1)$$

where θ_{SMOS} is the low resolution SMOS soil moisture data, SEE_{HR} is the MODIS-derived SEE at a high resolution (1 km),
 5 SEE_{SMOS} is the average of SEE_{HR} within the SMOS pixel at a low resolution (40 km), and $\theta'_{HR}(SEE_{SMOS})$ is the partial derivative of soil moisture with respect to the soil evaporative efficiency at high resolution evaluated at the SEE_{SMOS} value. This partial derivative is typically estimated by using the linear soil evaporative efficiency model of Budyko (1956) and Manabe (1969), which is written by Eq. (2)

$$\theta_{HR} = SEE_{HR} \times \theta_p \quad (2)$$

10 where θ_{HR} represents the soil moisture of the top soil layer (0-5 cm) at high resolution, and θ_p is an empirical parameter that depends on soil properties and atmospheric conditions. The soil evaporation efficiency at high resolution SEE_{HR} is estimated as a linear function of the soil temperature at high resolution ($T_{s,HR}$), Eq. (3)

$$SEE_{HR} = \frac{T_{s,max} - T_{s,HR}}{T_{s,max} - T_{s,min}}, \quad (3)$$

The soil temperature at high resolution is estimated by partitioning the MODIS surface temperature data (LST) into the soil
 15 and the vegetation component according to the trapezoid method of Moran et al. (1994). This also requires an estimation of the fractional vegetation cover, which is calculated from the NDVI data. $T_{s,min}$ and $T_{s,max}$ are the soil temperature end-members (Merlin et al., 2012).

In this work, the DISPATCH algorithm has been executed during period DOY36 and DOY298 to estimate NSSM at 1 km
 20 resolution in the Foradada field site. DISPATCH provides a daily NSSM pixel map (regular grid). The Foradada field site is entirely included in one pixel. In this pixel, 51.5% of the total area corresponds to irrigated area. The remaining portion of the pixel corresponds to dry land (shown in Figure 2).

2.3. Image Spatial Resolution and Spatial Variability

The information contained in a satellite image is characterized here by two properties: the spatial resolution and the spatial variability of the image attributes. The spatial resolution of a satellite image is the ground area represented by each pixel, i.e.,

the raster cell size. It is essentially the representative support volume chosen to describe the variations of the attributes of interest at the ground surface. This is typically determined based on the type of satellite sensor. The spatial variability refers to the variations of the attributes presented in the image at the ground surface, e.g., patterns of spatial continuity, size of objects in the scene, and so on. In random field theory and geostatistics, the spatial variability is mainly characterized by the covariance function or by its equivalent, the semivariogram, which is defined by (Journel and Huijbregts, 1978) Eq. (4),

$$\gamma(\mathbf{h}) = \frac{1}{2} E\{[Z(\mathbf{x} + \mathbf{h}) - Z(\mathbf{x})]^2\}, \quad (4)$$

where $Z(\mathbf{x})$ is the random variable at the \mathbf{x} position, and $E\{\cdot\}$ is the expectation operator. Essentially, the semivariogram is a function that measures the variability between pairs of variables separated by a distance \mathbf{h} . Very often, the correlation between two variables separated by a certain distance disappears when $|\mathbf{h}|$ becomes too large. At this instant, $\gamma(\mathbf{h})$ approaches a constant value. The distance beyond which $\gamma(\mathbf{h})$ can be considered to be a constant value is known as the range, which represents the transition of the variable to the state of negligible correlation. Thus, the range can ultimately be seen as the size of independent objects in the image. If the pixel size is smaller than 10 times the minimum range (in the absence of the nugget effect), then neighbour pixels will be alike, containing essentially the same level of information (Journel and Huijbregts, 1978). This will be a critical point in the discussion of the results later on. We note that the spatial resolution and the spatial variability are two related concepts. Several authors note that a rational choice of the spatial resolution for remote sensing should be based on the relationship between spatial resolution and spatial dependence (Atkinson and Curran, 1997; Curran, 1988). However, since this is not the usual procedure, the spatial resolution can be inappropriate in some cases or provide unnecessary data (Atkinson and Curran, 1997; Woodcock and Strahler, 1987).

3. Results

3.1. General Observations

One of the main advantages of our experiment is that remote sensing soil moisture data is evaluated during two different hydrologic periods of the same year in a given agriculture field site. The first period represents crop growth with soil wet conditions caused by natural rainfall events (without irrigation). This period occurs during the winter and spring season, i.e., from February to June. The following period occurs during the dry season with artificially created soil wet conditions caused

by sprinkler irrigation operating upon crop water requirements during the summer and autumn season, from June to October. In contrast to the rainfall events, sprinkler irrigation creates a local artificial rainfall event using several rotating sprinkler heads. The comparisons of these two hydrologic periods allow us to evaluate the sole effect of local sprinkler irrigation on remote sensing estimates.

5 Figures 3 compares gravimetric and soil moisture sensor measurements with the DISPATCH soil moisture estimates obtained from remote sensing data during the first period of time (without irrigation). We note that the comparison here is not between the point gravimetric measurements (with a support volume of few centimetres) and the satellite information (1 km in resolution). Instead, we compare the average of these point measurements over the entire field site (very well distributed with more than 100 measurement points) with satellite information. The average of the soil moisture is
10 representative of the entire irrigated area associated with the Foradada field site. Consequently, these two variables have similar support scale and are therefore comparable. Error bars in the gravimetric measurements represent the standard deviation of all the measurements obtained in one day. In addition, the area between the light and dark green lines in this figure displays the daily minimum and maximum values of soil moisture data obtained from the five EC-5 sensors. We note that the average of gravimetric soil moisture data always lies within this region. This supports the use of this information to
15 complement soil moisture data on days where no gravimetric sampling is available. The error bars associated with DISPATCH data refer to the standard deviation obtained with two daily SMOS estimations and four MODIS data (two at 6:00am and two more at 6:00 pm). To better appreciate tendencies, the same information is also presented as a normalized relative soil moisture, i.e., $(\theta - \theta_{\min}) / (\theta_{\max} - \theta_{\min})$, where θ_{\min} are the minimum and maximum values of the soil moisture time series data obtained with the EC-5 sensors. Results show that DISPATCH estimates can properly detect the
20 relative increase in soil moisture estimates caused by rainfall events. Note for instance that all methods produce a similar relative increase in soil moisture signal after the occurrence of a strong rainfall event. In absolute terms, we see that DISPATCH slightly underestimates the true value of soil moisture but this could be attributed to small differences between the support volume of the field site and the spatial resolution of the satellite image.

A similar analysis is shown in Figure 4, which compares gravimetric and sensor soil moisture measurements with
25 DISPATCH soil moisture estimations during the second period (soil wet conditions maintained by sprinkler irrigation). In

contrast to our previous results, it can be seen that the DISPATCH dataset is essentially not sensitive to sprinkler irrigation even though there is a proper response to sporadic small rainfall events. Likewise, the relative increase in soil moisture measurements also shows that sprinkler irrigation does not affect the DISPATCH estimation. Thus, even though the DISPATCH estimations seems to properly respond to rainfall events during the first period, irrigation operating at the Foradada field scale remains undetected during the second period. The DISPATCH dataset is not sensitive irrigation and merely indicates that soil dry conditions exist at a larger picture.

This can also be seen from a different perspective by looking at the scatterplot between the average of the normalized relative soil moisture data obtained with the EC-5 sensors and the corresponding DISPATCH measurement determined at the same day. Figure 5 shows the scatterplots obtained during rainfall events and irrigation period. We note that even though a clear tendency is seen during rainfall events ($R^2=0.57$), no correlation seems to exist during irrigation ($R^2=0.04$). We conclude then that the DISPATCH dataset provides representative estimates of soil moisture at a resolution lower than expected.

3.2. Analysis and Discussion

We seek to answer the important question of why the DISPATCH soil moisture estimates obtained by downscaling satellite information from 40 km to 1 km of resolution are not sensitive to sprinkler irrigation in this case. The following possible sources of discrepancies can be identified: (i) errors associated with the approximations used in the DISPATCH downscaling formulation; (ii) differences in the scale of observations; (iii) low quality of information associated with DISPATCH input variables; and (iv) poor relationship between irrigation fluctuations and DISPATCH input variables dynamics. We concentrate the analysis on (ii), (iii). First, we note that the DISPATCH resolution of 1 km is similar to the characteristic scale of the irrigated area at the Foradada field site and therefore a better performance was expected. The extent of the irrigated area in the DISPATCH pixel size of interest is 51.5 % (see Figure 2). Given that soil moisture is a linear property, we contend that this cannot explain the negligible relative increase in soil moisture obtained during irrigation. Then, we examine the semivariograms of the different input variables involved in the downscaling process, i.e., the NDVI and the LST properties provided by the MODIS sensor. The NDVI and LST semivariograms were respectively estimated from the MOD13A2 and MOD11A1 product data, which can be freely downloaded from the Google Earth Engine website

(<https://earthengine.google.com>). We selected a daily representative image of April, June and August. The April image describes a general rainfall event in the region, the June image shows when local irrigation starts in the Foradada field, and finally the August image represents when the crop is well developed and frequent irrigation is needed. Experimental semivariograms have been fitted with a theoretical model (spherical and exponential models for the LST and NDVI, respectively), which can be formally expressed as Eq. 5 and 6,

$$\gamma_{LST}(\mathbf{h}) = c_{11} \text{Sph}\left(\frac{|\mathbf{h}|}{a_{11}}\right) + c_{12} \left[1 - \cos\left(\frac{|\mathbf{h}|}{a_{12}} \pi\right)\right], \quad (5)$$

$$\gamma_{NDVI}(\mathbf{h}) = c_{21} \text{Exp}\left(\frac{|\mathbf{h}|}{a_{21}}\right) + c_{22} \text{Exp}\left(\frac{|\mathbf{h}|}{a_{22}}\right) + c_{23} \left[1 - \cos\left(\frac{|\mathbf{h}|}{a_{23}} \pi\right)\right], \quad (6)$$

where c_{ij} are constant coefficients that represent the contribution of the different standard semivariogram models, and a_{ij} are the corresponding ranges of the different structures. The LST and NDVI experimental and theoretical semivariograms are shown in Figure 6. The parameters adopted in the random function model are summarized in Tables 1 and 2. The analysis determines a nested structure with a positive linear combination between isotropic stationary semivariogram models and the hole effect model. Hole effect structures most often indicate a form of periodicity (Pyrcz and Deutsch, 2003). In our case, this periodicity reflects the presence of areas with different watering and crop growth conditions, i.e., in contrast to the SG area, the Urgell area is based on irrigation.

The spatial variability of NDVI and LST vary with time according to changes in hydrologic conditions. In April, the semivariogram of NDVI displays more variability and less spatial continuity due to the differences in growth rate and crop type conditions existing at the regional scale during the wet season (controlled by rainfall events). On the other hand, the spatial dependence of LST is more significant in August. Importantly, results show that the scale of variability (range) associated with MODIS data during the dry season, when a controlled amount of water by irrigation is applied, ranges between 35 and 36 km for the NDVI and between 22 and 32 km for the LST. Recalling the discussion provided in section 2.3., this means that the size of independent objects in the NDVI and LST images is about 30 km and that insignificant spatial variations of NDVI and LST values are expected below $1/10^{\text{th}}$ of this size. This suggests that the NDVI and LST products provided by MODIS cannot detect differences between neighbouring pixels with a size of 1 km.

To further corroborate this point, Figure 7 compares the temporal evolution of LST and NDVI obtained from two adjoining MODIS pixels: the Foradada pixel, where Foradada is located, and its North-West neighbour pixel. Note that the neighbour

pixel corresponds to an area that is not irrigated. Data was downloaded using MOD13A2 and MOD11A1 products with Google Earth Engine website, from DOY036 to DOY298. In general, based on DISPATCH suppositions, irrigation in an agriculture field site should produce a decrease in LST values as a consequence of uniform irrigation over the entire field site and an increase in NDVI due to well-developed crop growth conditions. However, Figure 7 shows the same dynamics and similar values in both pixels even when irrigation is applied. Results show that the LST and NDVI information cannot detect neither the sprinkler irrigation nor the crop growth as a consequence of irrigation in this case. We finally note that these results suggest that the resolution of LST and NDVI is not appropriate in this case but can also express that these two variables are simply not sensitive to irrigation because they only provide information about the status of the crop and land surface. Further research is needed in this sense.

10 4. Conclusions

We analyze the value of Remote Sensing and the DISPATCH downscaling algorithm for predicting soil moisture variations in an irrigated field site of size close to image resolution. The DISPATCH algorithm based on the NDVI and LST data obtained from the MODIS satellite is used for downscaling the SMOS information and transforming the SMOS soil moisture estimations from a resolution of 40 km to 1 km. These estimates are then compared with average gravimetric and soil moisture sensors measures taken all over the field site. Results have shown that in this case the downscaled soil moisture estimations are capable of predicting the variations in soil moisture caused by rainfall events but fail to reproduce the temporal fluctuations of the average water content caused by local irrigation. To provide insight into this problem, we examine the spatial variability of the different input variables involved, i.e., the NDVI, the LST. Results indicated that the size of individual objects in the NDVI and LST images is too large to be able to represent adequately the variations of the average water content at the site. This effect is not significant during rainfall events because the typical spatial scale of rainfall events is much larger than the size of the irrigated field site.

From a different perspective, these results also suggest that irrigation scheduling based on satellite information coupled with the DISPATCH downscaling algorithm might be appropriate in regions of the world with extensive irrigation surface coverage, larger than approximately 10 km (e.g., Punjab basin). However, caution should be paid to the direct application of

this method as its performance will strongly depend on the spatiotemporal variation of the irrigation within the area. These variations can generate occasional areas with different hydrologic scenarios and behaviors leading to the failure of the soil moisture prediction method.

References

- 5 Albergel, C., Rosnay, P. De, Gruhier, C., Muñoz-sabater, J., Hasenauer, S., Isaksen, L., Kerr, Y. and Wagner, W.: in Situ Observations, 2011.
- Atkinson, P. and Curran, P.: Choosing an appropriate spatial resolution for remote sensing investigations, *Photogramm. Eng. Remote Sens.*, 63(12), 1345–1351 [online] Available from: http://asprs.org/a/publications/pers/97journal/december/1997_dec_1345-1351.pdf, 1997.
- 10 Bauer-Marschallinger, B., Freeman, V., Cao, S., Paulik, C., Schaufler, S., Stachl, T., Modanesi, S., Massari, C., Ciabatta, L., Brocca, L. and Wagner, W.: Toward Global Soil Moisture Monitoring With Sentinel-1: Harnessing Assets and Overcoming Obstacles, *IEEE Trans. Geosci. Remote Sens.*, PP, 1–20, doi:10.1109/TGRS.2018.2858004, 2018.
- Bitar, A. Al, Leroux, D., Kerr, Y. H., Member, S., Merlin, O., Richaume, P., Sahoo, A. and Wood, E. F.: Evaluation of SMOS Soil Moisture Products Over Continental U . S . Using the SCAN / SNOTEL Network, *IEEE Trans. Geosci. Remote*
- 15 *Sens.*, 50(5), 1572–1586, doi:10.1109/TGRS.2012.2186581, 2012.
- Blonquist, J. M., Jones, S. B. and Robinson, D. A.: Precise irrigation scheduling for turfgrass using a subsurface electromagnetic soil moisture sensor, *Agric. Water Manag.*, 84(1–2), 153–165, doi:10.1016/j.agwat.2006.01.014, 2006.
- Bogena, H. R., Huisman, J. A., Oberdörster, C. and Vereecken, H.: Evaluation of a low-cost soil water content sensor for wireless network applications, *J. Hydrol.*, 344(1–2), 32–42, doi:10.1016/j.jhydrol.2007.06.032, 2007.
- 20 Bosch, D. D., Lakshmi, V., Jackson, T. J., Choi, M. and Jacobs, J. M.: Large scale measurements of soil moisture for validation of remotely sensed data: Georgia soil moisture experiment of 2003, *J. Hydrol.*, 323(1–4), 120–137, doi:10.1016/j.jhydrol.2005.08.024, 2006.
- Brocca, L., Tarpanelli, A., Filippucci, P., Dorigo, W., Zaussinger, F., Gruber, A. and Fernández-prieto, D.: Int J Appl Earth Obs Geoinformation How much water is used for irrigation? A new approach exploiting coarse resolution satellite soil
- 25 moisture products, *Int J Appl Earth Obs Geoinf.*, 73(May), 752–766, doi:10.1016/j.jag.2018.08.023, 2018.
- Burt, T. P. and Butcher, D. P.: Topographic controls of soil moisture distributions, *J. Soil Sci.*, 36(3), 469–486, doi:10.1111/j.1365-2389.1985.tb00351.x, 1985.
- Campbell, C. S. and Devices, D.: Calibrating ECH 2 O Soil Moisture Probes, , 2–4, 1986.
- Carlson, T.: An overview of the “triangle method” for estimating surface evapotranspiration and soil moisture from satellite
- 30 imagery, *Sensors*, 7(8), 1612–1629, doi:10.3390/s7081612, 2007.
- Chauhan, N. S., Miller, S. and Ardanuy, P.: Spaceborne soil moisture estimation at high resolution: A microwave-optical/IR

- synergistic approach, *Int. J. Remote Sens.*, 24(22), 4599–4622, doi:10.1080/0143116031000156837, 2003.
- Clarke Topp, G. and Reynolds, W. D.: Time domain reflectometry: A seminal technique for measuring mass and energy in soil, *Soil Tillage Res.*, 47(1–2), 125–132, doi:10.1016/S0167-1987(98)00083-X, 1998.
- Clothier, B. E. and Green, S. R.: Rootzone processes and the efficient use of irrigation water, *Agric. Water Manag.*, 25(1), 1–12, doi:10.1016/0378-3774(94)90048-5, 1994.
- Cosh, M. H., Jackson, T. J., Bindlish, R. and Prueger, J. H.: Watershed scale temporal and spatial stability of soil moisture and its role in validating satellite estimates, *Remote Sens. Environ.*, 92(4), 427–435, doi:10.1016/j.rse.2004.02.016, 2004.
- Cosh, M. H., Jackson, T. J., Starks, P. and Heathman, G.: Temporal stability of surface soil moisture in the Little Washita River watershed and its applications in satellite soil moisture product validation, *J. Hydrol.*, 323(1–4), 168–177, doi:10.1016/j.jhydrol.2005.08.020, 2006.
- Curran, P. J.: The semivariogram in remote sensing: An introduction, *Remote Sens. Environ.*, 24(3), 493–507, doi:10.1016/0034-4257(88)90021-1, 1988.
- Das, N. N. and Mohanty, B. P.: Root Zone Soil Moisture Assessment Using Remote Sensing and Vadose Zone Modeling, *Vadose Zo. J.*, 5(1), 296, doi:10.2136/vzj2005.0033, 2006.
- Dean, T. J., Bell, J. P. and Baty, A. J. B.: Soil moisture measurement by an improved capacitance technique, Part I. Sensor design and performance, *J. Hydrol.*, 93(1–2), 67–78, doi:10.1016/0022-1694(87)90194-6, 1987.
- Delwart, S., Bouzinac, C., Wursteisen, P., Berger, M., Drinkwater, M., Martín-Neira, M. and Kerr, Y. H.: SMOS validation and the COSMOS campaigns, *IEEE Trans. Geosci. Remote Sens.*, 46(3), 695–703, doi:10.1109/TGRS.2007.914811, 2008.
- Dillon, M. E., Collini, E. A. and Ferreira, L. J.: Sensitivity of WRF short-term forecasts to different soil moisture initializations from the GLDAS database over South America in March 2009, *Atmos. Res.*, 167, 196–207, doi:10.1016/j.atmosres.2015.07.022, 2016.
- Escorihuela, M. J. and Quintana-Seguí, P.: Comparison of remote sensing and simulated soil moisture datasets in Mediterranean landscapes, *Remote Sens. Environ.*, 180, 99–114, doi:10.1016/j.rse.2016.02.046, 2016.
- Fares, A. and Polyakov, V.: Advances in Crop Water Management Using Capacitive Water Sensors, *Adv. Agron.*, 90(May 2014), 43–77, doi:10.1016/S0065-2113(06)90002-9, 2006.
- Fu, B. and H. G.: Land evaluations in an area of severe erosion: the loess plateau of China, *L. Degrad. Rehabil. Degrad. Rehabil.*, 5:33-40(February), 33–40 [online] Available from: f, 1994.
- Garkusha, I. N., Hnatushenko, V. V. and Vasyliov, V. V.: Using Sentinel-1 data for monitoring of soil moisture, 2017 IEEE Int. Geosci. Remote Sens. Symp., (July), 1656–1659, doi:10.1109/IGARSS.2017.8127291, 2017.
- Hawley: *Journal of Hydrology*, 62 (1983) 179–200, *J. Hydrol.*, 62, 179–200, doi:10.1016/0022-1694(83)90102-6, 1983.
- Holzman, M. E., Rivas, R. and Piccolo, M. C.: *International Journal of Applied Earth Observation and Geoinformation* Estimating soil moisture and the relationship with crop yield using surface temperature and vegetation index, , 28, 181–192, 2014.
- Hornacek, M., Wagner, W., Sabel, D., Truong, H.-L., Snoeij, P., Hahmann, T., Diedrich, E. and Doubkova, M.: Potential for

- High Resolution Systematic Global Surface Soil Moisture Retrieval via Change Detection Using Sentinel-1, *IEEE J. Sel. Top. Appl. Earth Obs. Remote Sens.*, 5(4), 1303–1311, doi:10.1109/JSTARS.2012.2190136, 2012.
- Irmak, S., Haman, D. Z. and Bastug, R.: Determination of crop water stress index for irrigation timing and yield estimation of corn, *Agron. J.*, 92(6), 1221–1227, doi:10.2134/agronj2000.9261221x, 2000.
- 5 Jackson, T. J., Schugge, J. and Engman, E. T.: Remote sensing applications to hydrology: soil moisture, *Hydrol. Sci. J.*, 41(4), 517–530, doi:10.1080/02626669609491523, 1996.
- Jackson, T. J., Cosh, M. H., Bindlish, R., Starks, P. J., Bosch, D. D., Seyfried, M., Goodrich, D. C., Moran, M. S. and Du, J.: Validation of advanced microwave scanning radiometer soil moisture products, *IEEE Trans. Geosci. Remote Sens.*, 48(12), 4256–4272, doi:10.1109/TGRS.2010.2051035, 2010.
- 10 Jones, H. G.: Irrigation scheduling: Advantages and pitfalls of plant-based methods, *J. Exp. Bot.*, 55(407), 2427–2436, doi:10.1093/jxb/erh213, 2004.
- Kerr, Y. H., Waldteufel, P., Wigneron, J. P., Martinuzzi, J. M., Font, J. and Berger, M.: Soil moisture retrieval from space: The Soil Moisture and Ocean Salinity (SMOS) mission, *IEEE Trans. Geosci. Remote Sens.*, 39(8), 1729–1735, doi:10.1109/36.942551, 2001.
- 15 Kerr, Y. H., Waldteufel, P., Wigneron, J., Delwart, S., Cabot, F., Font, J., Reul, N., Boutin, J., Gruhier, C., Juglea, S. E., Drinkwater, M. R., Mecklenburg, S., Hahne, A. and Martu, M.: The SMOS Mission: New Tool for Monitoring Key Elements of the Global Water Cycle, , 98(5), 2010.
- Kerr, Y. H., Waldteufel, P., Richaume, P., Wigneron, J. P., Ferrazzoli, P., Mahmoodi, A., Bitar, A. Al, Cabot, F., Gruhier, C., Juglea, S. E., Leroux, D., Mialon, A. and Delwart, S.: The SMOS Soil Moisture Retrieval Algorithm, *Geosci. Remote*
- 20 *Sens.*, 50(5), 1384–1403, doi:10.1109/TGRS.2012.2184548, 2012.
- Koriche, S. A. and Rientjes, T. H. M.: Application of satellite products and hydrological modelling for flood early warning, *Phys. Chem. Earth*, 93, 12–23, doi:10.1016/j.pce.2016.03.007, 2016.
- Koster, R. D. and Suarez, M. J.: Soil Moisture Memory in Climate Models, *J. Hydrometeorol.*, 2(6), 558–570, doi:10.1175/1525-7541(2001)002<0558:SMMICM>2.0.CO;2, 2001.
- 25 Lawston, P. M., Santanello Jr, J. A. and V. Kumar, S.: *Geophysical Research Letters*, , 860–867, doi:10.1002/2017GL075733, 2017.
- Lievens, H., Tomer, S. K., Al Bitar, A., De Lannoy, G. J. M., Drusch, M., Dumedah, G., Hendricks Franssen, H. J., Kerr, Y. H., Martens, B., Pan, M., Roundy, J. K., Vereecken, H., Walker, J. P., Wood, E. F., Verhoest, N. E. C. and Pauwels, V. R. N.: SMOS soil moisture assimilation for improved hydrologic simulation in the Murray Darling Basin, Australia, *Remote*
- 30 *Sens. Environ.*, 168, 146–162, doi:10.1016/j.rse.2015.06.025, 2015.
- Malbêteau, Y., Merlin, O., Molero, B., Rüdiger, C. and Bacon, S.: DisPATCh as a tool to evaluate coarse-scale remotely sensed soil moisture using localized in situ measurements: Application to SMOS and AMSR-E data in Southeastern Australia, *Int. J. Appl. Earth Obs. Geoinf.*, 45(January 2015), 221–234, doi:10.1016/j.jag.2015.10.002, 2015.
- Malbêteau, Y., Merlin, O., Balsamo, G., Er-Raki, S., Khabba, S., Walker, J. P. and Jarlan, L.: Towards a surface soil

- moisture product at high spatio-temporal resolution: temporally-interpolated spatially-disaggregated SMOS data, *J. Hydrometeorol.*, JHM-D-16-0280.1, doi:10.1175/JHM-D-16-0280.1, 2017.
- Mattia, F., Satalino, G., Balenzano, A., Rinaldi, M., Steduto, P. and Moreno, J.: SENTINEL-1 FOR WHEAT MAPPING AND SOIL MOISTURE RETRIEVAL, *IGARSS*, 2(1), 2832–2835, 2015.
- 5 Merlin, O., Chehbouni, G., Walker, J. P., Panciera, R., Kerr, Y. H., Merlin, O., Chehbouni, G., Walker, J. P., Panciera, R. and Kerr, Y. H. A.: A simple methods for downscaling passive microwave based soil moisture Passive microwave soil moisture downscaling using evaporative fraction Olivier Merlin Abdelghani Chehbouni Jeffrey P . Walker Rocco Panciera Yann Kerr Centre d ' Etudes Spatiales de la, *IEEE Geosci. Remote Sens. Lett.*, 46, 786–769, 2008.
- Merlin, O., Jacob, F., Wigneron, J. P., Walker, J. and Chehbouni, G.: Multidimensional disaggregation of land surface
10 temperature using high-resolution red, near-infrared, shortwave-infrared, and microwave-L bands, *IEEE Trans. Geosci. Remote Sens.*, 50(5 PART 2), 1864–1880, doi:10.1109/TGRS.2011.2169802, 2012.
- Molero, B., Merlin, O., Malbêteau, Y., Al Bitar, A., Cabot, F., Stefan, V., Kerr, Y., Bacon, S., Cosh, M. H., Bindlish, R. and Jackson, T. J.: SMOS disaggregated soil moisture product at 1 km resolution: Processor overview and first validation results, *Remote Sens. Environ.*, 180, 361–376, doi:10.1016/j.rse.2016.02.045, 2016.
- 15 Narayan, U., Lakshmi, V. and Jackson, T. J.: High resolution estimation of soil moisture using L-band radiometer and radar observations made during trhe SMEX02 experiments, *IEEE Trans. Geosci. Remote Sens.*, 44(6), 1545–1554, 2006.
- Ochsner, et al.: State of the art in large-scale soil moisture monitoring, *Soil Sci. Soc. Am. Journal*, *Soil Sci. Soc. Am.*, 2013.
- Paloscia, S., Pettinato, S., Santi, E., Notarnicola, C., Pasolli, L. and Reppucci, A.: Soil moisture mapping using Sentinel-1 images: Algorithm and preliminary validation, *Remote Sens. Environ.*, 134(February 2015), 234–248,
20 doi:10.1016/j.rse.2013.02.027, 2013.
- Pyrzcz, M. and Deutsch, C.: The whole story on the hole effect, *Geostatistical Assoc. Australas. Newsl.* 18, 18, 18 [online] Available from: http://www.gaa.org.au/pdf/gaa_pyrzcz_deutsch.pdf, 2003.
- Robock, A., Vinnikov, K. Y., Srinivasan, G., Entin, J. K., Hollinger, S. E., Speranskaya, N. A., Liu, S. and Namkhai, A.: The Global Soil Moisture Data Bank, *Bull. Am. Meteorol. Soc.*, 81(6), 1281–1299, doi:10.1175/1520-
25 0477(2000)081<1281:TGSMDB>2.3.CO;2, 2000.
- Le Roux, X., Bariac, T. and Mariotti, a: Spatial partitioning of the soil water resoucre between grasses and shrub compnents in a west African humid savanna., *Oecologia*, 104, 145–155, doi:10.1007/BF00328579, 1995.
- Schaap, M. G., Robinson, D. a., Friedman, S. P. and Lazar, a.: Measurement and Modeling of the TDR Signal Propagation through Layered Dielectric Media, *Soil Sci. Soc. Am. J.*, 67(4), 1113, doi:10.2136/sssaj2003.1113, 2003.
- 30 Thompson, R. B., Gallardo, M., Valdez, L. C. and Fernández, M. D.: Using plant water status to define threshold values for irrigation management of vegetable crops using soil moisture sensors, *Agric. Water Manag.*, 88(1–3), 147–158, doi:10.1016/j.agwat.2006.10.007, 2007.
- Topp, G. C., Davis, J. L. and Annan, A. P.: Electromagnetic Determination of Soil Water Content: Measruements in Coaxial Transmission Lines, *Water Resour. Res.*, 16(3), 574–582, doi:10.1029/WR016i003p00574, 1980.

- Vellidis, G., Tucker, M., Perry, C., Kvien, C. and Bednarz, C.: A real-time wireless smart sensor array for scheduling irrigation, *Comput. Electron. Agric.*, 61(1), 44–50, doi:10.1016/j.compag.2007.05.009, 2008.
- Vellidis, G., Liakos, V., Perry, C., Porter, W. M. and Tucker, M. A.: Irrigation Scheduling for Cotton Using Soil Moisture Sensors, Smartphone Apps, and Traditional Methods, , 772–780 [online] Available from: <http://vellidis.org/wp-content/uploads/2016/07/Vellidis-Beltwide-Paper-16779-Irrigation-Scheduling.pdf>, 2016.
- Wagner, W., Sabel, D., Doubkova, M., Bartsch, A. and Pathe, C.: The Potential of Sentinel-1 for Monitoring Soil Moisture with a high Spatial Resolution at Global Scale, *ESA Spec. Publ. SP-674*, 5, 2010.
- Wanders, N., Karssenber, D., De Roo, A., De Jong, S. M. and Bierkens, M. F. P.: The suitability of remotely sensed soil moisture for improving operational flood forecasting, *Hydrol. Earth Syst. Sci.*, 18(6), 2343–2357, doi:10.5194/hess-18-2343-2014, 2014.
- Wang, L. and Qu, J. J.: Satellite remote sensing applications for surface soil moisture monitoring: A review, *Front. Earth Sci. China*, 3(2), 237–247, doi:10.1007/s11707-009-0023-7, 2009.
- Western, A. W., Blöschl, G. and Grayson, R. B.: Geostatistical characterisation of soil moisture patterns in the Tarrawarra catchment, *J. Hydrol.*, 205(1–2), 20–37, doi:10.1016/S0022-1694(97)00142-X, 1998.
- Woodcock, C. E. and Strahler, A. H.: the Factor of Scale in Remote-Sensing, *Remote Sens. Environ.*, 21(3), 311–332, doi:10.1016/0034-4257(87)90015-0, 1987.
- Zaussinger, F., Dorigo, W., Gruber, A., Tarpanelli, A., Filippucci, P. and Brocca, L.: Estimating irrigation water use over the contiguous United States by combining satellite and reanalysis soil moisture data, , (August), 1–42, 2018.

20 **Figures**

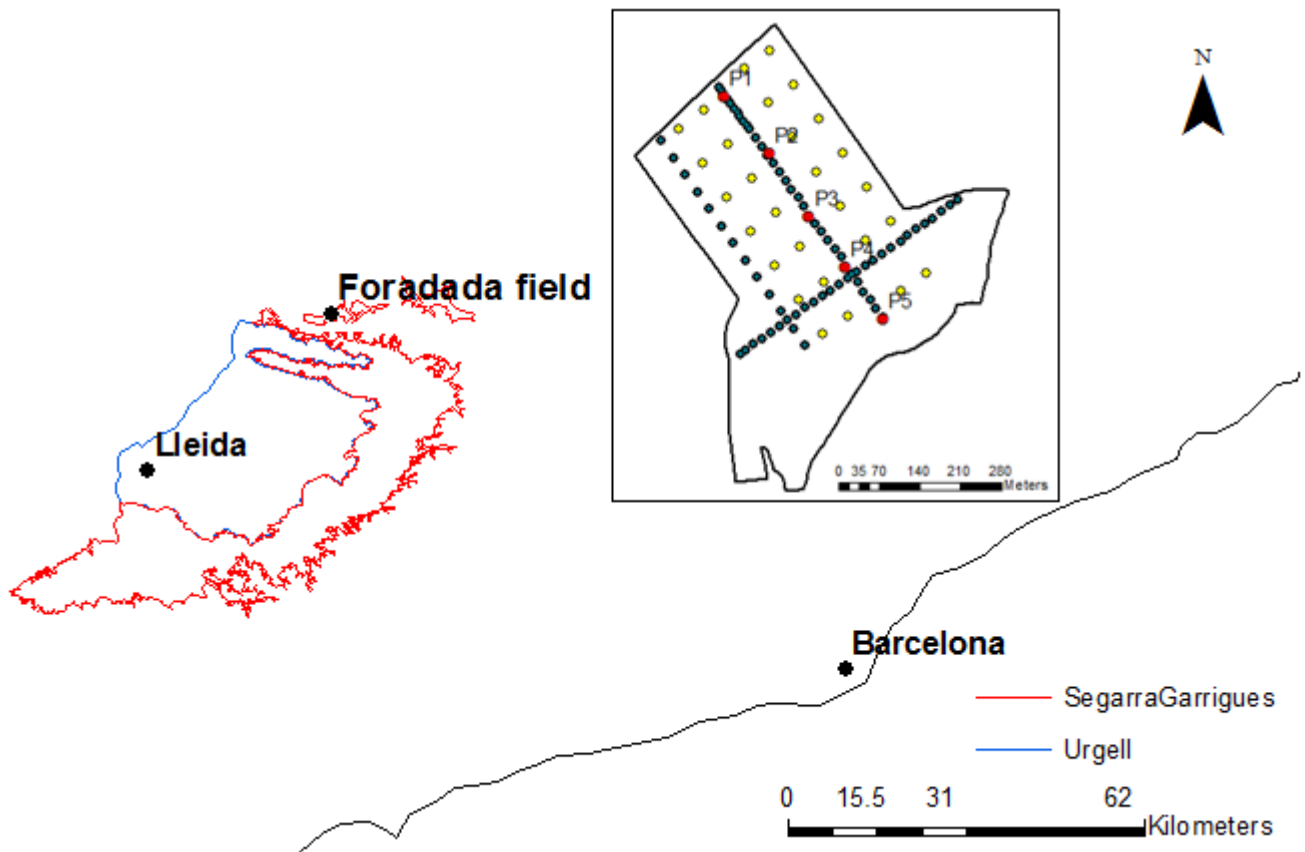


Figure 1. Location of the Foradada field site within the Segarra-Garriga irrigation system and distribution of soil moisture measurement points. Gravimetric measurement points are arranged with cross section points in green and support points in yellow. The location of EC-5 sensors are represented in red.

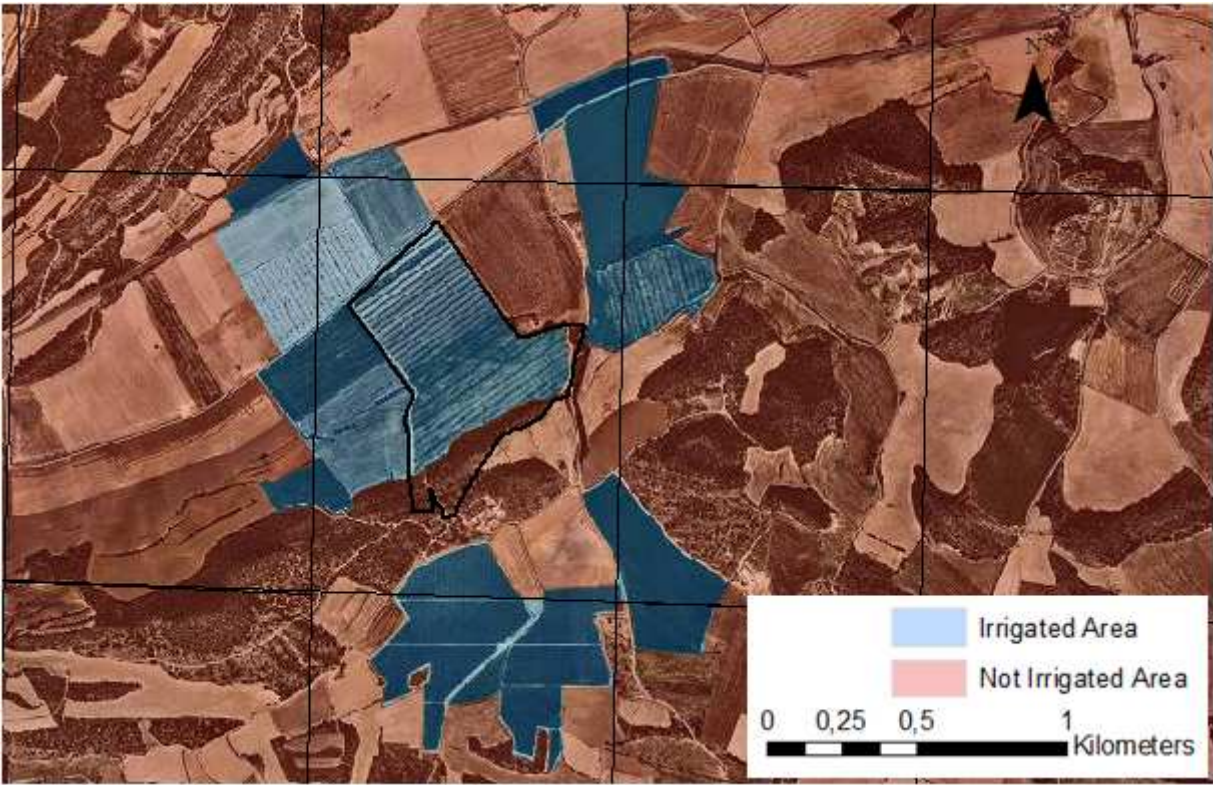


Figure 2. The DISPATCH grid representing the Foradada field, outlined in dark blue; irrigated fields, in light blue; and dry land in light red.

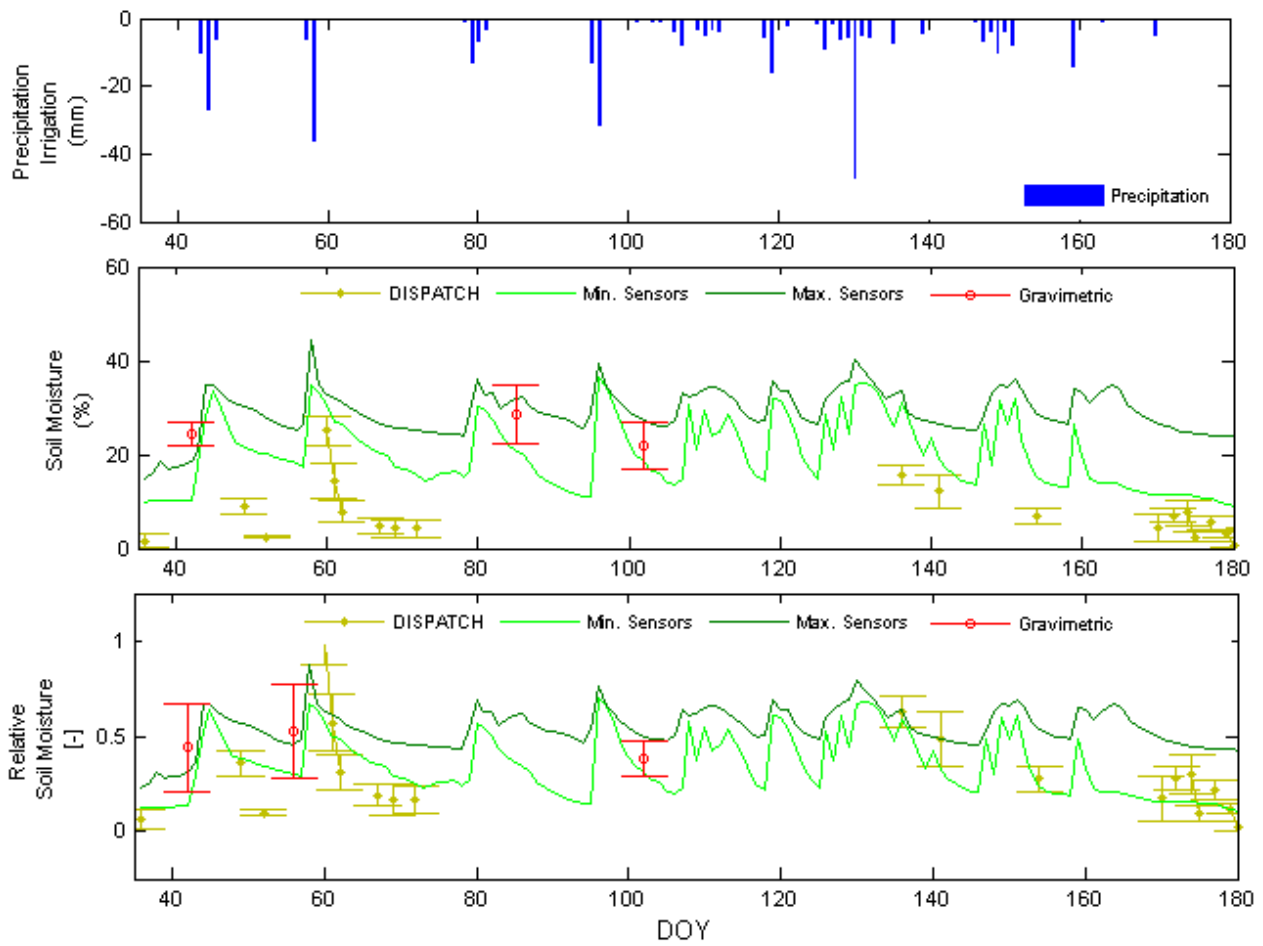


Figure 3. Comparison of average gravimetric soil moisture measurements (red) with the DISPATCH soil moisture estimations (yellow) and the daily maximum and minimum soil moisture sensors measurements (green) during the first hydrologic period (soil wet conditions caused by rainfall events only).

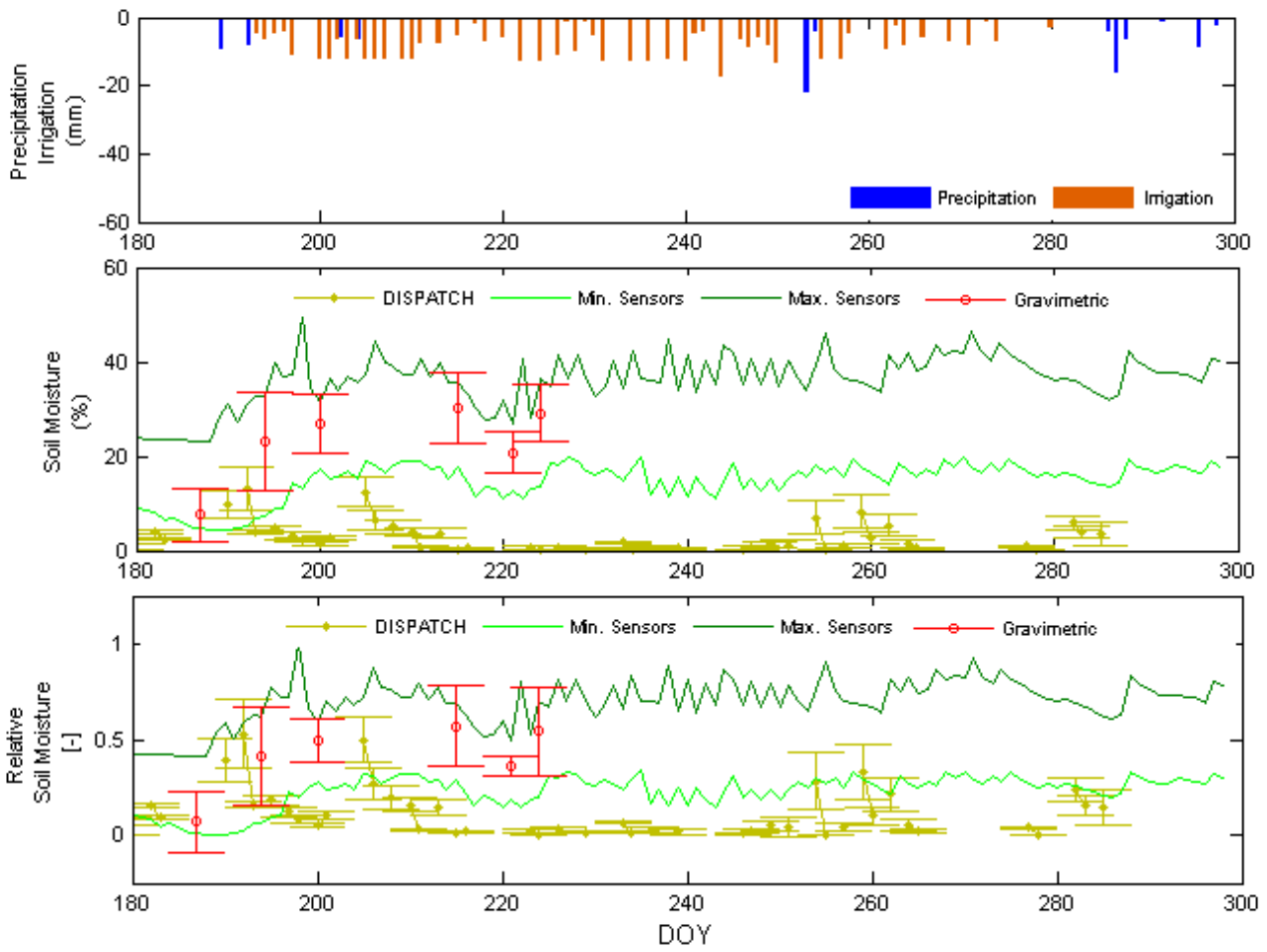


Figure 4. Comparison of average gravimetric soil moisture measurements (red) with the DISPATCH soil moisture estimations (yellow) and the daily maximum and minimum soil moisture sensors measurements (green) during the second hydrologic period (soil wet conditions caused by irrigation). The top figure shows the intensity of precipitation and irrigation.

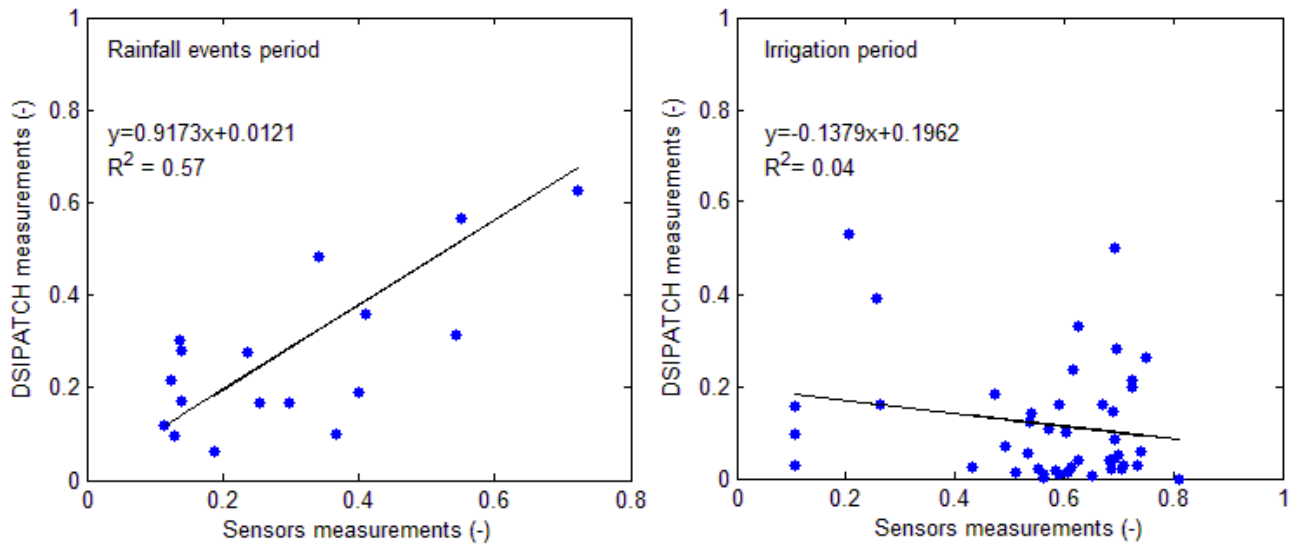


Figure 5. Scatterplot between the average of the normalized soil moisture obtained with EC-5 sensors and the DISPATCH measurements obtained during both hydrologic scenarios, rainfall events and irrigation period.

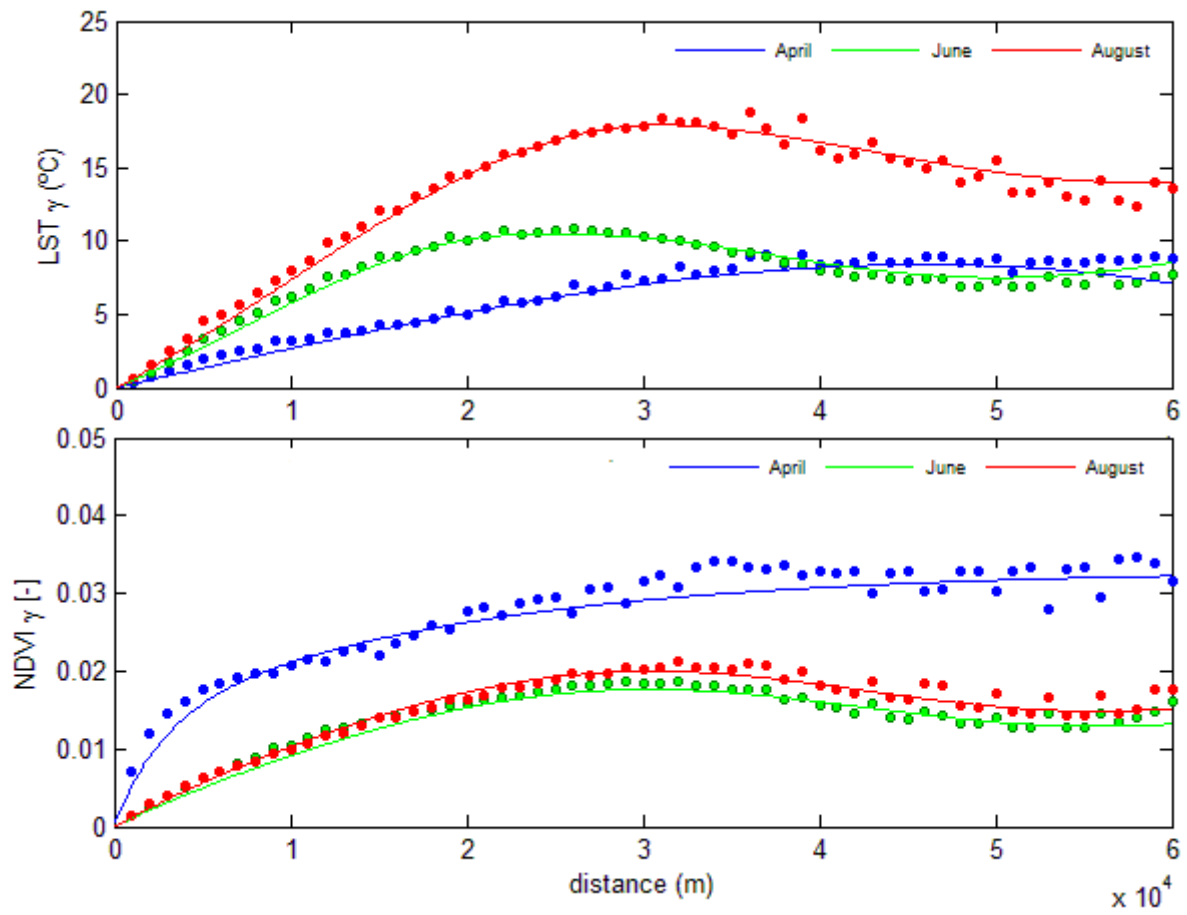


Figure 6. LST and NDVI experimental and theoretical semivariograms associated with April (blue), June (green), and August (red).

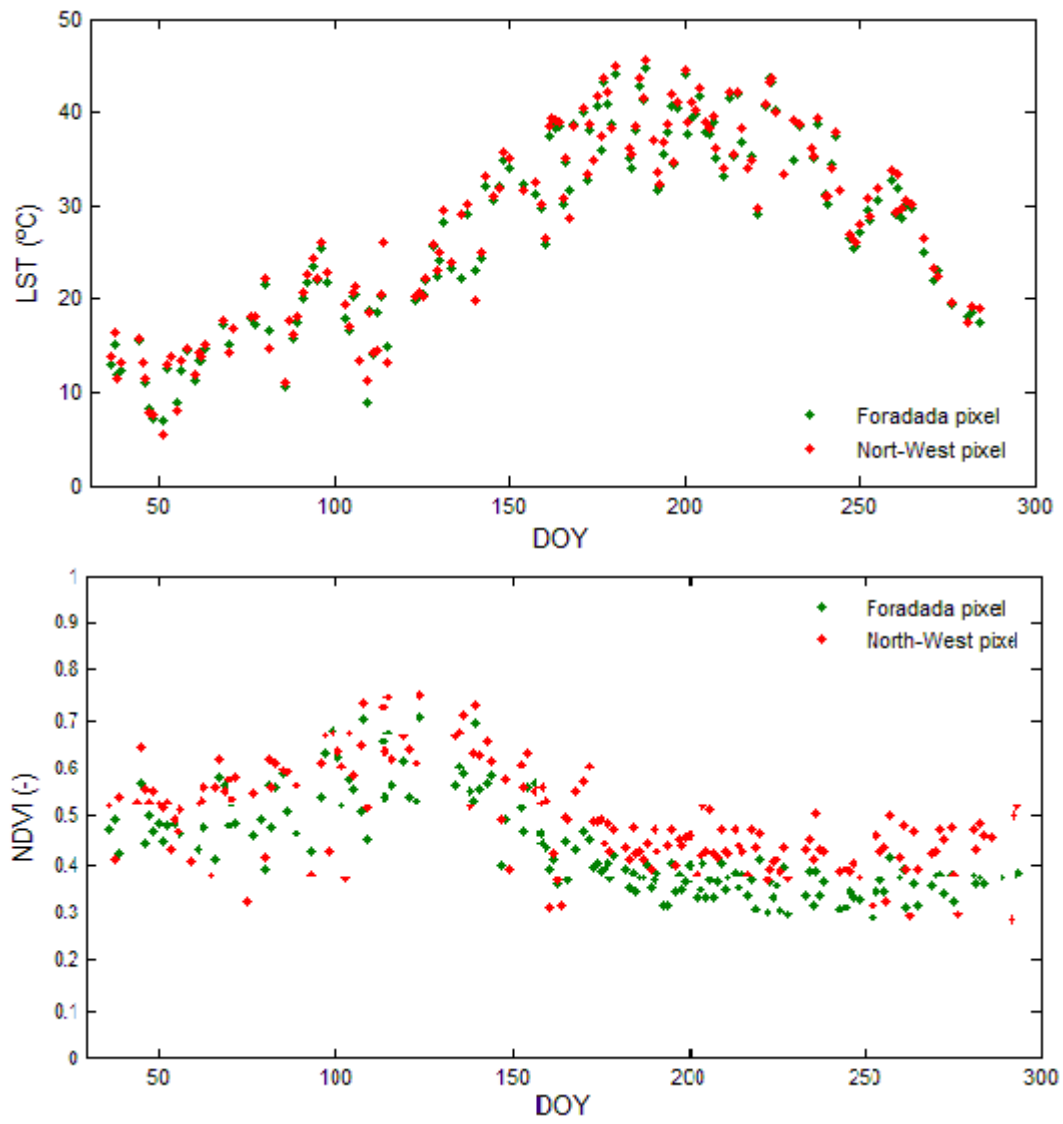


Figure 7. Temporal evolution of LST and NDVI obtained at the Foradada pixel and its neighbour North-West pixel situated 2 kms away.

Tables

LST					
		Variogram		Hole effect	
Month	Model	Sill (c_{11})	Range (a_{11})	Sill (c_{12})	Range (a_{12})
April	Spheric	8.4	46000	-	-
June	Spheric	7.5	22000	1.5	25000
August	Spheric	14	32000	2	29000

Table 1. Random function model parameters of LST semivariograms.

5

NDVI							
		Variogram			Hole effect		
Month	Model	Sill (c_{21})	Range (a_{21})	Sill (c_{22})	Range (a_{22})	Sill (c_{23})	Range (a_{23})
April	Exponential	0.013	8000	0.02	55000	-	-
June	Exponential	0.013	35000	-	-	0.22	28000
August	Exponential	0.015	36000	-	-	0.21	28000

Table 2. Random function model parameters of NDVI semivariograms.