

Dear Editor, dear Referees,

We would like to thank you for the positive response and helpful feedback. We addressed the comments of all referees, as detailed below in blue. The page and line numbers refer to the currently revised manuscript (no tracked changes). More specifically, we improved our estimation of the young water fraction based on the methods outlined by Kirchner (2016a). However, we limited the analysis of the discharge-dependence of the young water fraction to two discharge classes, due to the size of the dataset and the uncertainty associated with small sample sizes. We further highlighted the limitations of the used MTT estimations and value of the more robust young water fraction estimation. With regard to the confidence bounds, we removed the modelled parameters and corresponding confidence bounds for sites with low NSE from Table 5.

We hope we have addressed any shortcomings, and look forward to hearing your decision on the suitability of the manuscript for publication.

Kind regards,

Suzanne Jacobs

### **Referee #1**

General comments:

I acknowledge the effort made by the authors to follow the intricate suggestions given during the first revision. Nevertheless, there are some aspects relevant to the determination of MTTs in the stream waters that yet deserve a particular attention.

There are some misunderstandings on the issues about the MTT determination using water stable isotopes in the new manuscript; these issues may be abridged as it follows:

1) The use of any seasonal variation of tracer input signal for the determination of MTTs, using any type of model, is limited to a short range of years because the characterisation of the tracer signal is limited by the occurrence of spurious errors such as the analytical ones. DeWalle et al. (1997) showed that 5 years is the realistic limit for an exponential TTD.

2) It has been shown (e.g. Stewart et al., 2010; 2012) that MTT determinations using any seasonally varying input signal typically underestimate the old tails of the TTDs and subsequently the corresponding MTTs (because the relationship between the signal modification and TT is very non-linear; Kirchner, 2016a).

3) A frequent case of 2) is produced when young waters are mixed with old ones; the form of the TTD may become very dissimilar and the MTT of the mixed water becomes strongly underestimated (Kirchner, 2016a).

The authors cannot therefore suggest that applying “more sophisticated methods like timevariant approaches” using the same stable water isotopes data may help to improve their MTT results. Looking for a better determination of MTTs, when they are of the order of several years, is not possible with these data but using other tracers, as sensibly suggested by the authors. Instead, as far as I know, the more advanced and reliable approach using stable water isotopes for analysing catchment waters

ages is the unsophisticated analysis of the young water fraction ( $F_{yw}$ ) for different stream discharge ranges as proposed by Kirchner (2016b) and implemented by von Freyberg et al. (2018). I would not recommend the use of tracer signal standard deviation instead of sinusoid amplitude because spurious errors may be important for much damped signals as well as for precipitation input signal. This approach might be very adequate to the purpose of the authors, because different  $F_{yw}$  sensitivities to discharge might be identified in the diverse sub-basins, demonstrating different behaviours of the runoff generation processes.

Reply: We thank the referee for the advise on the use of the young water fraction ( $F_{yw}$ ) to improve our understanding of runoff generation processes in our study area. As recommended, we calculated the sinusoid amplitude of the tracer signals and used this instead of standard deviation to estimate the  $F_{yw}$ . Additionally, we estimated the  $F_{yw}$  for samples during low and high discharge, which corresponds to the classification used to differentiate between high and low flow end member contributions and in the conceptual model (Fig. 5–6). Due to the sample size, classification into more discharge classes with a lower number of samples per class would result in higher uncertainty, as highlighted by Von Freyberg et al. (2018). We also acknowledge the limitations of the use of  $\delta^{18}\text{O}$  and  $\delta^2\text{H}$  to estimate MTT in catchments with long transit times (e.g. P. 14, L. 4–8) and therefore removed the reference to using more sophisticated approaches using the same tracers as a way to improve the MTT estimations.

#### Detailed comments:

P. 2, L. 1–3: As commented before, this is not a model issue but a tracer one.

Reply: Based on the recommendation by the referee, we changed the sentence to: “The results further suggest that the selected transit time models and tracers might not be appropriate in tropical catchments with highly damped stream water isotope signatures. A more in-depth investigation of the discharge-dependence of the young water fraction and transit time estimation using other tracers, such as tritium, could therefore shed more light on potential land use effects on the hydrological behaviour of tropical montane catchments.” (P. 2, L. 2–6).

P. 6, L. 22–33: Steady state conditions refer primarily to time and homogeneity refers primarily to space; If one property is given, this do not necessarily imply that the other is also given. In the case of the studied basins, none of both assumptions (homogeneity or stationarity) may be sensibly claimed, given both their large sizes and the diverse water sources analysed in the paper. The relatively similar  $F_{yw}$  assessed for the catchment waters, obtained following a time-weighted approach, may hide their dependences on discharge and possible differences of these dependences among catchments (von Freyberg et al, 2018).

Reply: We removed the statement on the homogeneity and steady state in the study area, based on the similarity in  $F_{yw}$  between the sub-catchments. We added the  $F_{yw}$  analysis as an additional method to complement the other analyses. We now highlight the potential inappropriateness of assuming homogeneity and steady state: “According to Kirchner (2016a), the estimation of MTT through tracer cycles and methods like the lumped convolution approach should be limited to homogeneous catchments

for which steady state conditions apply. Because we cannot be certain of the degree of homogeneity and steady state in our study area, we complemented the analysis with the more robust calculation of the young water fraction  $F_{yw}$  (Kirchner, 2016a).” (P. 7, L. 20–23).

5 P. 7, L. 23–25: As already stated in the first review, using as behavioural only the parameter sets that are 5% below the best efficiency is not adequate when the best efficiency is so low and results in artificially reduced uncertainties. For instance, on table 5, the GM model applied to TTP-RV yielded a MTT of 3.3 (2.8-4.3) with a NSE of 0.05; for  $n=75$ , this NSE has a probability of the null hypothesis higher than 0.05: although all the parameter sets should be discarded as non-behavioural, a short uncertainty range is claimed.

10 Reply: We removed the estimated parameters for sites and models with a low NSE, i.e. TTP-RV (gamma model) and all stream water sites (exponential piston flow model), from Table 5, and therefore also the claimed short uncertainty range.

P. 9, L. 27–29: discussed above.

15 Reply: As mentioned in our earlier reply, we removed our statement on homogeneity of our study area based on similarity in  $F_{yw}$  between the three sub-catchments.

P. 10, L. 11–19: This is a severe argument against table 5, so this table should be changed.

Reply: We changed the table as detailed in our previous response.

20 P. 13, L. 22–27: As discussed before, the problem is the tracer, not the model.

Reply: Following the earlier comment of the referee, we removed the paragraph from the manuscript and remain with the use of tritium or other tracers as more appropriate methods to estimate MTT (P. 14, L. 4–8)

P. 13, L. 30–33: The research should be focused to  $F_{yw}$  and its dependence on discharge, instead on MTT.

25 Reply: We thank the referee for this suggestion. The inclusion of the  $F_{yw}$  is definitely a valuable addition to the manuscript. However, we think that an in-depth analysis of the dependence of the  $F_{yw}$  on discharge requires a larger dataset, as a low number of samples per discharge class would lead to considerable uncertainty. Therefore, we would like to keep the MTT analysis, now backed by an investigation of  $F_{yw}$ .

30 References:

DeWalle DR, Edwards PJ, Swistock BR, Aravena R, Drimmie RJ. (1997). Seasonal isotope hydrology of three Appalachian forest catchments. *Hydrological Processes* 11(15): 1895–1906.

Kirchner, J. W. (2016a). Aggregation in environmental systems-Part 1: Seasonal tracer cycles quantify young water fractions, but not mean transit times, in spatially heterogeneous catchments, *Hydrol. Earth Syst. Sci.*, 20, 279-297.

Kirchner, J. W. (2016b). Aggregation in environmental systems-Part 2: Catchment mean transit times and young water fractions under hydrologic nonstationarity, *Hydrol. Earth Syst. Sci.*, 20, 299-328.

Stewart MK, Morgenstern U, McDonnell JJ. (2010). Truncation of stream residence time: how the use of stable isotopes has skewed our concept of streamwater age and origin. *Hydrological Processes* 24: 1646–1659.

5 Stewart MK, Morgenstern U, McDonnell JJ, Pfister L. (2012). The ‘hidden streamflow’ challenge in catchment hydrology: a call to action for stream water transit time analysis. *Hydrological Processes* 26: 2061–2066.

von Freyberg, J., Allen, S. T., Seeger, S., Weiler, M., and Kirchner, J. W. (2018): Sensitivity of young water fractions to hydro-climatic forcing and landscape properties across 22 Swiss catchments, *Hydrol. Earth Syst. Sci.*, 22, 3841-3861.

## 10 **Referee #2**

The authors have done an adequate job responding to my concerns. Acknowledging the potential limitations of the analysis considered is important as it provides clarity to the findings. This study has value as it highlights a topic of clear importance for water resources.

Reply: We appreciate the positive review and thank the referee for his valuable feedback in the previous review round to  
15 improve the manuscript.

## **Referee # 3**

The authors have addressed all of my comments in detail and implemented the changes into the manuscript. The high uncertainties of the MTT's were presented more clearly and the discussion of the results was adapted accordingly.

20 There is only one more issue I would like the authors to address:

In Sect. 3.3 (P. 9, L. 18–19), the authors summarize the results of the end-member mixing analysis: “The EMMA resulted in a dominant contribution of precipitation (PC) in NF (median: 46.4, 95 % confidence interval: 30.5–54.4 %) and SHA (57.4, 45.3–78.6 %), while spring water (TTP-SP.a) dominated in TTP (55.6, 45.3–70.7 %) (Fig. 5).” In contrast, the transit time modeling and the young water fractions suggests the opposite for NF and SHA (Sect. 4.3, P. 12, L. 25): “However, the long

25 estimated MTTs and the low fraction of young water (YWF) suggest that the majority stream water in all catchments originates from ‘old’ water or groundwater.” At the end of this paragraph, the authors point out that (P. 12, L. 30–31): “The importance of groundwater does, however, contradict the generally high contribution of precipitation and throughfall to streamflow in most catchments.”. However, an explanation for these opposite results is missing here. Instead, the section continues to discuss the MTT's of soil water. Only later in Sect. 4.4 the authors point towards the large uncertainties in the EMMA, as well as to

30 the uncertainties in the transit time models, without clearly indicating which result of their two analysis methods is (if at all) the most reliable. As a consequence, the reader might be left puzzled about the validity of the presented results as well as the conclusions drawn from them (i.e., flow processes). I would therefore encourage the authors to discuss the opposite results for NF and SHA more thoroughly.

Reply: We addressed the validity of the results by including “Due to the weaknesses associated with both methods, there is considerable uncertainty in the estimated MTT and end member contributions. However, supported by the young water fraction analysis, we were able to draw a reliable conclusion about the importance of groundwater during low and high flows in the different land use types.” (P. 15, L. 4–7) in the conclusion.

- 5 We moved the sentence about the discrepancy between the high precipitation contribution and the importance of groundwater in NF and SHA to Sect. 4.3 (P. 12, L. 17), where we explain that the high precipitation contribution in SHA is most likely an overestimation due to the selection of SHA-WE.b as end member.

*Specific comments:*

- 10 P. 11, L. 28–30: “The end member mixing analysis (EMMA) showed that precipitation (PC) was one of the three selected end members in all catchments, as depicted in our conceptual model of the rainfall–runoff generation processes in the three sub-catchments with different land use (Fig. 6).” This is not logical: you select PC as an end-member in the EMMA and then present this selection of PC as a result? Do you mean instead that “precipitation (PC) was the dominant contribution in streamflow in all catchments”?

- 15 Reply: We thank the referee for pointing out this confusing sentence. As mentioned in Sect. 2.4, the three end members for each sub-catchment were not selected *a-priori*, but in the processes of assessing how many end members were required and which of the sampled end members fit best to the stream water samples. In that sense, the selection of PC is a result of the analysis. However, the referee is correct that the actual EMMA can only be carried out after selection. We therefore changed the sentence to: “The end member mixing analysis (EMMA) showed that precipitation (PC) was an important end member in  
20 all catchments, as depicted in our conceptual model of the rainfall–runoff generation processes in the three sub-catchments with different land use (Fig. 6).” (P. 12, L. 4–6).

P. 11, L. 32: Include “high” before “hydraulic conductivity”

Reply: Thank you, we corrected this in the manuscript (P. 12, L. 8).

25

P. 12, L. 15: “The latter...” Use “This” instead, since only one end-member is mentioned in the previous sentence.

Reply: We changed this in the manuscript (P. 12, L. 19).

# Assessment of hydrological pathways in East African montane catchments under different land use

Suzanne R. Jacobs<sup>1,2,3,4\*</sup>, Edison ~~Timbe~~<sup>5</sup>~~Timbe~~<sup>5</sup>, Björn Weeser<sup>1,3,2-6</sup>, Mariana C. ~~Rufino~~<sup>2</sup>~~Rufino~~<sup>4,7,6</sup>, Klaus Butterbach-Bahl<sup>1,4,3,7</sup>, Lutz Breuer<sup>3,6,1,2</sup>

- 5 ~~<sup>6</sup>Centre for International Development and Environmental Research (ZEU), Justus Liebig University, Senckenbergstr. 3, 35390 Giessen, Germany~~  
~~<sup>3,2</sup>Institute for Landscape Ecology and Resources Management (ILR), Justus Liebig University, Heinrich-Buff-Ring 26, 35392 Giessen, Germany~~  
~~<sup>1</sup>Karlsruhe <sup>3</sup>Karlsruhe Institute of Technology – Institute of Meteorology and Climate Research, Atmospheric Environmental~~  
10 ~~Research (KIT/IMK-IFU), Kreuzteckbahnstr. 19, 82467 Garmisch-Partenkirchen, Germany~~  
~~<sup>2</sup>Centre <sup>4</sup>Centre for International Forestry Research (CIFOR), c/o World Agroforestry Centre, United Nations Avenue, Gigiri, P.O. Box 30677 – 00100 Nairobi, Kenya~~  
~~<sup>5</sup>Facultad de Ciencias Agropecuarias, Carrera de Ingeniería Agronómica, Universidad de Cuenca, Cuenca 010111, Ecuador~~  
~~<sup>6</sup>Lancaster Environment Centre, Lancaster University, Lancaster LA1 4YQ, United Kingdom~~  
15 ~~<sup>3</sup>Institute for Landscape Ecology and Resources Management (ILR), Justus Liebig University, Heinrich-Buff-Ring 26, 35392 Giessen, Germany~~  
~~<sup>4</sup>Mazingira <sup>7</sup>Mazingira Centre, International Livestock Research Institute (ILRI), P.O. Box 30709 – 00100 Nairobi, Kenya~~  
~~<sup>5</sup>Faculty of Agricultural Sciences, University of Cuenca, Av. Doce de Octubre, Cuenca, Ecuador~~  
~~<sup>6</sup>Centre for International Development and Environmental Research (ZEU), Justus Liebig University, Senckenbergstr. 3, 35390 Giessen, Germany~~  
20 ~~<sup>7</sup>Lancaster Environment Centre, Lancaster University, Lancaster LA1 4YQ, United Kingdom~~

\* Current address: Centre for International Development and Environmental Research (ZEU), Justus Liebig University, Senckenbergstr. 3, 35390 Giessen, Germany

*Correspondence to:* Suzanne R. Jacobs (suzanne.r.jacobs@zeu.uni-giessen.de)

- 25 **Abstract.** Conversion of natural forest to other land uses could lead to significant changes in catchment hydrology, but the nature of these changes has been insufficiently investigated in tropical montane catchments, especially in Africa. To address this knowledge gap, we aimed to identify stream water sources and flow paths in three tropical montane sub-catchments (27–36 km<sup>2</sup>) with different land use (natural forest, smallholder agriculture and commercial tea plantations) within a 1 021 km<sup>2</sup> catchment in the Mau Forest Complex, Kenya. Weekly samples were collected from stream water, precipitation and mobile
- 30 soil water for 75 weeks and analysed for stable ~~water~~ isotopes of water ( $\delta^2\text{H}$  and  $\delta^{18}\text{O}$ ) for mean transit time estimation with two lumped parameter models (gamma model and exponential piston flow model) and for the calculation of the young water fraction, whereas, Weekly samples from stream water and potential end members were collected over a period of 55 weeks and analysed for Li, Na, Mg, K, Rb, Sr and Ba for end member mixing analysis. Solute concentrations in precipitation were
- 35 generally more similar to stream water. The stream water isotope signal was considerably damped compared to the isotope signal in precipitation. Mean transit time analysis suggested long transit times for stream water (up to 4 years) in the three sub-catchments, but model efficiencies were very low. The young water fraction ranged from 13 % in the smallholder agriculture sub-catchment to 15 % in the tea plantation sub-catchment. Mean transit times of mobile soil water ranged from 3.2–3.3 weeks

in forest soils and 4.5–7.9 weeks in pasture soils at 15 cm depth to 10.4–10.8 weeks in pasture soils at 50 cm depth. The contribution of springs and wetlands to stream discharge increased from median 16.5 (95% confidence interval: 11.3–22.9), 2.1 (–3.0–24.2) and 50.2 (30.5–65.5) % during low flow to 20.7 (15.2–34.7), 53.0 (23.0–91.3) and 69.4 (43.0–123.9) % during high flow in the natural forest, smallholder agriculture and tea plantation sub-catchments, respectively. Our results indicate that groundwater is an important component of stream water, irrespective of land use. The results further suggest that the selected transit time models and tracers might not be appropriate in tropical catchments with highly damped stream water isotope signatures. ~~Further research, using, for example, time variant approaches~~ A more in-depth investigation of the discharge-dependence of the young water fraction and transit time estimation using other tracers, such as tritium, could therefore shed more light on potential land use effects on the hydrological behaviour of tropical montane catchments.

## 10 1 Introduction

Tropical montane forests are under high anthropogenic pressure through deforestation. Evidence from tropical montane regions in Central and South America shows that conversion of montane forests to pastures increases the contribution of surface runoff to streamflow, caused by changes in flow paths and stream water sources (Ataroff and Rada, 2000; Germer et al., 2010; Muñoz-Villers and McDonnell, 2013). This could affect the timing and quantity of water supply through reduced infiltration of precipitation and increased occurrence of flood events, and could reduce water quality as a result of soil erosion. In Africa, where much of the population relies on surface water as main water source, understanding the effect of land use change on water supply and quality is crucial to manage resources sustainably. However, the hydrological functioning of tropical catchments is generally less well understood than that of temperate catchments. This is specifically true for tropical montane forest catchments, as those have received less attention in hydrological research compared to the tropical lowlands. Several studies investigated the hydrological functioning of tropical montane catchments in Latin America (e.g. Correa et al., 2017; Crespo et al., 2012; Mosquera et al., 2016b; Roa-García and Weiler, 2010; Timbe et al., 2014; Windhorst et al., 2014). These studies highlight the importance of soil and groundwater as source of stream water, as both Andean Páramo catchments and tropical montane cloud forest catchments showed a high contribution of pre-event water to streamflow (Correa et al., 2017; Crespo et al., 2012; Mosquera et al., 2016a). Land use change could, however, affect the relative contribution of different water sources and flow paths. Pasture catchments showed, for example, a higher contribution of event water to streamflow compared to forest catchments in the Amazon (Chaves et al., 2008; Neill et al., 2011) and shorter transit times than montane forest catchments in Mexico and the Ecuadorian Andes (Muñoz-Villers et al., 2016; Timbe et al., 2014). Furthermore, montane catchments in the Colombian Andes showed a faster response to events in catchments with a higher grassland cover than in catchments with a higher forest cover (Roa-García and Weiler, 2010). In contrast, Crespo et al. (2012) found that montane catchments in the Ecuadorian Andes were dominated by deep ground water, irrespective of topography or land cover. Differences in climate, land use types, topography and geology, limit the potential to extrapolate the results obtained from studies in Latin America to other tropical montane catchments. This highlights the need for research on hydrological processes

in relation to land use in less-studied regions, such as East Africa, where population growth puts significant pressure on forests and water resources, but where little is known about the consequences of deforestation for water supply and quality.

The Mau Forest Complex in western Kenya is the largest tropical montane rainforest in the country and considered a major ‘water tower’, supplying fresh water to approximately 5 million people living downstream (Kenya Water Towers Agency, 2015). However, conversion of forest to agricultural land resulted in a 25 % forest loss in the past decades (Kinyanjui, 2011). This has supposedly led to changes in flow regime (Baldyga et al., 2004; Mango et al., 2011; Mwangi et al., 2016) and increased surface runoff (Baker and Miller, 2013). This suggests that changes in dominant flow paths occurred as a consequence of land use change, but no scientific evidence is available to confirm this. In this study, we used a combination of mean transit time (MTT) analysis and end member mixing analysis (EMMA) to assess the effect of land use on spatial and temporal dynamics of water sources and flow paths in catchments with contrasting land use (i.e. natural forest, smallholder agriculture and commercial tea and tree plantations) in the Mau Forest Complex. Mean transit time, i.e. the time required for rainfall to reach the stream, is a good indicator to assess flow paths, water storage capacity and mixing at the catchment scale (Asano and Uchida, 2012). Since MTT can be influenced by catchment characteristics that are often affected by land use, such as soil cover (Capell et al., 2012; Rodgers et al., 2005; Soulsby et al., 2006) and soil hydraulic properties (Heidbüchel et al., 2013; Mosquera et al., 2016b; Muñoz-Villers et al., 2016), MTT is a useful indicator to assess the effect of land use on hydrological processes. A quantification of the contribution of different ‘end members’ or water sources in a catchment, through the application of EMMA, provides relevant insight into dominant flow paths and stream water sources (Barthold et al., 2010; Burns et al., 2001; Correa et al., 2017; Crespo et al., 2012; Soulsby et al., 2003) or water provenance (Fröhlich et al., 2008a, 2008b). Previous studies have shown the advantage of combining the two approaches to improve the understanding of hydrological systems (Crespo et al., 2012; Katsuyama et al., 2009).

We used stable ~~water~~ isotopes of water ( $^2\text{H}$  and  $^{18}\text{O}$ ) and trace element data collected over a 55 to 75 week period in the South-West Mau block of the Mau Forest Complex to assess water provenance and flow paths in three sub-catchments, dominated by either natural forest, smallholder agriculture or tea and tree plantations. Earlier studies in the South-West Mau observed reduced infiltration rates in agricultural compared to forested land use types (Owuor et al., 2018). Furthermore, analysis of nitrate concentration–discharge relationships of rainfall events suggested more surface runoff in catchments dominated by smallholder agriculture or commercial tea and tree plantations than in a montane forest catchment (Jacobs et al., 2018). Based on these results, we hypothesised that (a) the natural forest sub-catchment has a longer MTT than the tea plantation and the smallholder agriculture sub-catchments, because precipitation contributes less to streamflow in the forest catchment, and (b) the precipitation that contributes directly to streamflow will reach the stream through surface runoff in the tea plantation and smallholder agriculture sub-catchments and through shallow sub-surface flow in the forest sub-catchment.



## 2 Methods

### 2.1 Study area

This study was conducted in the South-West Mau block of the Mau Forest Complex, western Kenya (Fig. 1, Table 1). Three sub-catchments (27–36 km<sup>2</sup>) were characterised by different land use types: natural forest (NF), smallholder agriculture (SHA) and commercial tea and tree plantations (TTP). These were nested in a 1 021 km<sup>2</sup> large catchment, referred to as the main catchment (OUT), which was characterized by a mixture of these three land use types (NF = 37.6 %, SHA = 51.0 % and TTP = 11.4 %). The natural forest is classified as Afromontane mixed forest, with species including *Podocarpus milanjanus*, *Juniperus procera* and *Olea hochstetteri* (Kinyanjui, 2011; Krhoda, 1988). The vegetation transitions into bamboo forest, characterised by *Arundinaria alpina*, above 2 300 m elevation. The north-western side of the forest, bordering smallholder agriculture, is degraded through encroachment of farms, livestock grazing, charcoal burning and logging (Bewernick, 2016). The smallholder agriculture area is characterised by small farms of less than 2 ha, where beans, maize, cabbage and potatoes are grown interspersed with grazing fields for livestock and small woodlots of *Eucalyptus*, *Pinus* and *Cupressus* spp. The riparian zones are severely degraded by vegetation clearance for grazing or cultivation and access to the river by humans and livestock. Commercial tea plantations, covering approximately 20 000 ha, are found at lower elevation (1 700–2 200 m) closer to Kericho town (0° 22' 08" S, 35° 17' 10" E) and consist of a mosaic of tea fields and *Eucalyptus* plantations, the latter mainly being used for tea processing. Riparian forests of up to 30 m width are well-maintained and contain native tree species, such as *Macaranga kilimandscharica*, *Polyscias kikuyuensis*, *Olea hochstetteri* and *Casearia battiscombei* (Ekirapa and Shitakha, 1996). A more detailed description of land use in the study area can be found in Jacobs et al. (2017).

The geology in OUT originates from the early Miocene, with the lower part, encompassing NF and TTP, dominated by phonolites and the upper part, covering SHA, by phonolitic nephelinites with a variety of Tertiary tuffs (Binge, 1962; Jennings, 1971). The soils are deep and well-drained, classified as humic Nitisols (ISRIC, 2007; Krhoda, 1988). The area has a bi-modal rainfall pattern with highest rainfall between April and July (long rains) and October and December (short rains). January to March are the driest months. Long-term annual precipitation at 2 100 m elevation is 1 988±328 mm yr<sup>-1</sup> (Jacobs et al., 2017).

### 2.2 Hydroclimatic instrumentation

Hydroclimatic data has been measured in the study area since October 2014 at a 10 minute interval (Jacobs et al., 2018). Water level data was recorded at the outlet of each catchment with a radar based sensor (VEGAPULS WL61, VEGA Grieshaber KG, Schiltach, Germany). Discharge was estimated from this data using a site-specific second order polynomial rating curve (Jacobs et al., 2018). Nine tipping bucket rain gauges (Theodor Friedrichs, Schenefeld, Germany and ECRN-100 high resolution rain gauge, Decagon Devices, Pullman WA, USA) were installed in the study area across an elevation gradient of 1 717 to 2 602 m (Fig. 1). Each tipping bucket recorded cumulative precipitation (resolution of 0.2 mm per tip) per 10 minutes. Precipitation in each catchment was calculated using Thiessen polygons.

### 2.3 Sampling and laboratory analysis

Each catchment had one site with a precipitation and throughfall sampler, constructed of a 1 litre glass bottle covered with aluminium foil and a funnel of 12.5 cm diameter with a table tennis ball to reduce sample fractionation due to evaporation (Windhorst et al., 2013). The throughfall sampler was placed inside the forest, underneath maize or sugar cane (depending on growing season) and underneath tea bushes in NF, SHA and TTP, respectively. The main catchment only had a precipitation sampler. Additionally, a passive capillary wick sampler was installed in each catchment to collect mobile soil water (Brown et al., 1989). Three polythene plates of 30 by 30 cm were inserted horizontally at 15, 30 and 50 cm depth in the soil with as little disturbance of the soil above and around the plate as possible. A glass fibre wick was unravelled and draped on top of each plate to maximize surface area. The remaining wick length was led through a hosepipe to a 1 litre glass bottle, which was placed at 1 to 1.5 m depth in the soil. The installation of all samplers was carried out in September 2015 and samples were collected from 15 October 2015 to 17 March 2017. Stream water samples were taken at the outlet of all catchments on a weekly basis. The samples were filtered with 0.45 µm polypropylene filters (Whatman Puradisc 25 syringe filter, GE Healthcare, Little Chalfont, UK or KX syringe filter, Kinesis Ltd., St. Neods, UK) and stored in 2 ml glass vials with screw cap. Weekly integrated samples were collected from the wick, precipitation and throughfall samplers. The samples were analysed for isotopic composition in the laboratory of Justus Liebig University Giessen, Germany, with cavity ring-down spectroscopy (Picarro, Santa Clara CA, USA). Precipitation water samples from all four sites were used to calculate the local meteoric water line (LMWL) with a linear regression model and the 95 % confidence interval was estimated for the slope and intercept. Only samples with a sampling volume of more than 100 ml were included to avoid the effect of evaporative enrichment of small sample volumes stored in the collector over the period between sample collections (Prechsl et al., 2014). A linear regression model was also used to assess the effect of elevation on isotope signatures.

For end member mixing analysis (EMMA), samples were filtered with 0.45 µm polypropylene filters and collected in HDPE bottles (25–30 ml) with screw cap. Samples were immediately acidified to pH < 2 with nitric acid and stored frozen until analysis for trace elements Li, Na, Mg, Al, Si, K, Ca, Cr, Fe, Cu, Zn, Rb, Sr, Y, Ba, Ce, La and Nd with inductively coupled plasma mass spectrometry (ICP-MS) in the laboratory of Justus Liebig University Giessen, Germany ( $n = 122$ ) or the University of Hohenheim, Germany ( $n = 231$ ). At the University of Hohenheim, samples were analysed for Al, Ca, K, Mg, Na and Si with inductively coupled plasma optical emission spectrometry (ICP-OES) instead of ICP-MS. Samples with values below the limit of quantitation (Table S1) were excluded. Differences in solute concentration between end members within each catchment and between catchments were assessed using the non-parametric Kruskal-Wallis test and Conover-Iman posthoc test. Samples for EMMA were collected between 15 October 2015 and 21 October 2016. Weekly samples were taken for stream water, while precipitation and throughfall were sampled approximately every 4–6 weeks ( $n = 9–11$ ). Due to difficult access to sampling sites, other potential water sources were sampled less frequently: wetland SHA-WL ( $n = 4$ ) and spring NF-SP.b ( $n = 3$ ). Springs NF-SP.a and TTP-SP.a were a combination of samples taken at different locations rather than different points in time with  $n = 2$  and  $n = 5$ , respectively. Ten shallow wells (nine named SHA-WE.a and one SHA-WE.b) in SHA

were sampled twice. Initially all samples for this end member were combined, but SHA-WE.b showed a strongly different chemical composition than the other samples and was therefore treated as a separate end member. No separate end member sampling was carried out for OUT, except for one spring sample and regular precipitation samples. Since all end members from the sub-catchments were sampled within OUT, these end members were used to identify potential stream water sources for OUT. It was not possible to use samples collected from the wick samplers for EMMA, because the glass fibre wick could have contaminated the samples and the sample volume was generally too low (< 25 ml).

## 2.4 End member mixing analysis

In EMMA, stream water is assumed to be a mixture of different ‘end members’ or water sources, such as precipitation, throughfall, groundwater and soil water (Christophersen et al., 1990). The EMMA was carried out following the procedures described in Christophersen and Hooper (1992) and Hooper (2003). The final set of solutes to be included in the EMMA was selected based on conservative behaviour of the solutes, which was assessed with bivariate scatter plots of all possible solute combinations, including stable ~~water~~-isotopes of water. A solute was considered conservative when it showed at least one significant ( $p < 0.01$ ) linear relationship with another solute with  $R^2 > 0.5$  (Hooper, 2003; James and Roulet, 2006). The relative root mean square error (RRMSE) was calculated based on the measured and projected stream water concentrations for the selected solutes for up to four dimensions (i.e. principal components in EMMA). This was used in combination with residual analysis (Hooper, 2003) and the ‘Rule of One’ (last included dimension needs to explain at least  $1/n^{\text{th}}$  of the variation, where  $n$  is the number of solutes included in the analysis) to assess how many dimensions ( $d$ ) should be included in the analysis. Median end member concentrations were projected in the  $d$ -dimensional mixing space of the stream water samples of the respective catchments and the  $d + 1$  end members enclosing most of the stream water samples in this mixing space were selected for EMMA. Then, contributions of each end member to streamflow were calculated. Although it is common practice to project stream water samples that fall outside the triangle enclosed by the three selected end members back into the mixing space to constrain end member contributions to a range of 0 to 100 %, we decided to omit this step as it is indicative of uncertainty in the analysis caused by uncertainty in field and laboratory analyses, non-conservative solute behaviour, unidentified end members, and temporal variability of end members (Barthold et al., 2010). To quantify the uncertainty in end member contributions, we used a Monte Carlo approach, whereby the EMMA was performed  $10^4$  times for every stream water sample in each catchment. For each simulation, the input values for the three selected end members were sampled randomly using bootstrapping. The 5<sup>th</sup> and 95<sup>th</sup> percentile were then calculated from the simulations and presented as uncertainty range.

## 2.5 Mean transit time analysis

~~The degree of heterogeneity in a catchment determines the methods that can be used to estimate mean transit time (MTT). According to Kirchner (2016), the estimation of MTT through tracer cycles and methods like the lumped convolution approach should be limited to homogeneous catchments for which steady state conditions apply. We used the young water fraction (YWF) (Kirchner, 2016) as indicator for the degree of heterogeneity in the study area and thus to test the appropriateness of~~

~~the selected method for MTT estimation. The YWF in stream water is defined as the fraction of discharge with transit times of less than approximately 0.2 years, and can be calculated as the ratio of the amplitude of the stable isotope signal in stream water to the amplitude in precipitation. This is based on the assumption that the amplitude ratio will be proportional to the fraction of precipitation that bypasses storage (i.e. a near zero transit time) (Kirchner, 2016). In a nested catchment set up, as~~  
5 ~~in our study, the homogeneity assumption can be tested by comparing the amplitude in the isotope signals and the YWF of the sub-catchments, since similarity in the amplitude of isotope signals and YWF of different sub-catchments is a preliminary indication of homogeneity (Kirchner, 2016), in which case traditional steady state approaches can be applied. We used the standard deviation as a proxy of the amplitude of the isotopic signal following Garvelmann et al. (2017).~~

~~Because the YWF for our sub-catchments (Section 3.4) suggested homogeneity, mean transit time (MTT)~~

10 ~~estimations~~ Preliminary estimations of mean transit times (MTT) of stream and mobile soil water were obtained through lumped parameter models. In this approach, the transport of a tracer through a catchment is expressed mathematically by a convolution integral (Maloszewski and Zuber, 1982) in which the composition of the outflow (e.g. stream or mobile soil water)  $C_{out}$  at a time  $t$  (time of exit) consists of a tracer  $C_{in}$  that falls uniformly on the catchment in a previous time step  $t'$  (time of entry).  $C_{in}$  becomes lagged according to its transit time distribution  $g(t - t')$ . Having in mind that the time span  $t - t'$  is in fact the tracer's  
15 transit time  $\tau$ , the convolution integral could be expressed as Eq. (1), in which  $g(\tau)$  is the weighting function (i.e. the tracer's transit time distribution TTD) that describes the normalized distribution of the tracer added instantaneously over an entire area (McGuire and McDonnell, 2006).

$$C_{out}(t) = \int_0^{\infty} C_{in}(t - \tau)g(\tau)d\tau \quad (1)$$

The isotopic composition of precipitation was used as input, while stream water and mobile soil water were used as output.  
20 Because of the limited length of the collected time series and assuming that the seasonality of the isotopic precipitation signal was similar every year, we artificially extended the input time series of precipitation by repeating the available sampled precipitation time series 20 times in a loop. This is common practice in studies where input data is limited (e.g. Hrachowitz et al., 2010, 2011; Muñoz-Villers and McDonnell, 2012; Timbe et al., 2014).

Two-parameter models such as the gamma model (GM) or the exponential piston flow model (EPM) are commonly used for  
25 MTT estimations (Hrachowitz et al., 2010; McGuire and McDonnell, 2006). These models were identified by Timbe et al. (2014) as most suited to infer MTT estimations of spring, stream and mobile soil water in an Andean tropical montane forest catchment, and were therefore applied in our study (Table 2). The selection of acceptable model parameters was based on the statistical comparison of  $10^4$  random simulations (Monte Carlo approach), which assumes a uniform random distribution of the variables of each model. For each site and model, the performance was evaluated based on the best matches to a predefined  
30 objective function: the Nash-Sutcliffe efficiency (NSE) (Nash and Sutcliffe, 1970). Quantification of errors and deviations from the observed data were calculated using the root mean square error (RMSE) and the bias, respectively. MatLab R2017a was used for data handling and solving the convolution equation, while R was used for weighting the range of behavioural solutions (generalised likelihood uncertainty estimation, GLUE) (Beven and Binley, 1992). When using GLUE, the range of behavioural solutions is discrete. ~~In our case~~ Following the methods of Timbe et al. (2014), the lower limit was set to 5 %

below the best fitting efficiency. In order to refine the limits of behavioural solutions, the 90 % of the prediction limits were calculated for every variable through weighted quantiles between 0.05 and 0.95.

## **2.6 Young water fraction**

~~The degree of heterogeneity in a catchment determines the methods that can be used to estimate mean transit time (MTT).~~

5 ~~According to Kirchner (2016a)(2016), the estimation of MTT through tracer cycles and methods like the lumped convolution approach should be limited to homogeneous catchments for which steady state conditions apply. **Because we cannot be certain of the degree of homogeneity and steady state in our study area, we complemented the analysis with the more robust calculation of the young water fraction  $F_{yw}$  (Kirchner, 2016a).** We used the young water fraction (YWF) (Kirchner, 2016) as indicator for the degree of heterogeneity in the study area and thus to test the appropriateness of the selected method for MTT estimation.~~

10 ~~The  $F_{yw}$ -YWF in stream water is defined as the fraction of discharge with transit times of less than approximately 0.2 years, and can be calculated as the ratio of the amplitude of the stable isotope signal in stream water to the amplitude in precipitation. This is based on the assumption that the amplitude ratio will be proportional to the fraction of precipitation that bypasses storage (i.e. a near-zero transit time) (Kirchner, 2016a)(Kirchner, 2016). In a nested catchment set up, as in our study, the homogeneity assumption can be tested by comparing the amplitude in the isotope signals and the YWF of the sub catchments,~~

15 ~~since similarity in the amplitude of isotope signals and YWF of different sub catchments is a preliminary indication of homogeneity (Kirchner, 2016), in which case traditional steady state approaches can be applied. We used the standard deviation as a proxy of the amplitude of the isotopic signal following Garvelmann et al. (2017). **We used multiple regression analysis to obtain coefficients  $a$  and  $b$  in Eq. (2), which were then used to estimate the amplitude with Eq. (3). The  $F_{yw}$  was estimated by dividing the amplitude of the isotopic signature in stream water by that in precipitation.**~~

20 
$$C(t) = a_X \cos(2\pi ft) + b_X \sin(2\pi ft) + k_X \quad (2)$$

$$A_X = \sqrt{a_X^2 + b_X^2} \quad (3)$$

~~In Eq. (2) and (3),  $C(t)$  is the isotopic composition (‰) of  $X$  (either precipitation or stream water) at time  $t$  (decimal years), the seasonal cycle is given in radians,  $f$  is the frequency ( $\text{yr}^{-1}$ ),  $k_X$  the vertical offset to the isotope signal (‰), and  $A_X$  the amplitude (‰). As suggested by Kirchner (2016b) and demonstrated by Von Freyberg et al. (2018), additional information on the~~

25 ~~hydrological behaviour of catchments can be obtained by the estimation of the  $F_{yw}$  for different discharge classes. Therefore, we divided the stream water dataset in samples taken during low flow (smaller than or equal to median streamflow) and high flow, and estimated  $F_{yw}$  for each set of stream water samples separately.~~

### 3 Results

#### 3.1 Solute concentrations

Solute concentrations were significantly lower in precipitation (PC) than in stream water (RV) in all catchments ( $p < 0.05$ ; Table 3). Concentrations of Rb, Sr, Mg and K in throughfall (TF) were 3–40 times higher than in precipitation in the natural forest (NF), smallholder agriculture (SHA) and tea and tree plantation (TTP) sub-catchments ( $p < 0.05$ ) and had a larger range. For throughfall, only Rb showed a significantly lower concentration in (median:  $2.6 \mu\text{g L}^{-1}$ ) SHA than in NF ( $23.8 \mu\text{g L}^{-1}$ ) and TTP ( $15.6 \mu\text{g L}^{-1}$ ). All other solute concentrations in throughfall did not differ significantly between catchments. Solute concentrations in springs SP.b in NF and the main catchment (OUT), wetland WL in SHA and springs SP.a in TTP were generally not significantly different from stream water samples of the respective catchments ( $p > 0.05$ ). Solute concentrations in spring samples SP.a in NF were up to 4 times higher than in stream water. Samples from shallow well WE.b in SHA had up to 8 times higher solute concentrations than stream water. Concentrations of Li and Na were higher in groundwater-related end members than in precipitation and throughfall, with median concentrations ranging from  $1.3$  to  $5.0 \mu\text{g L}^{-1}$  for Li and  $1.1$  to  $3.5 \text{mg L}^{-1}$  for Na in springs, wetland and shallow wells (SP.a, SP.b, WE.a, WE.b and WL) versus  $0.19$  to  $0.62 \mu\text{g L}^{-1}$  for Li and  $0.20$  to  $0.71 \text{mg L}^{-1}$  for Na in precipitation and throughfall. Rb and K were correspondingly high in groundwater-related end members (median concentrations ranging from  $3.2$  to  $34.7 \mu\text{g L}^{-1}$  for Rb and  $0.6$  to  $10.0 \text{mg L}^{-1}$  for K), but concentrations in throughfall in NF and TTP were similar with median concentration of  $23.8$  and  $15.6 \mu\text{g L}^{-1}$  for Rb, and  $6.1$  and  $4.2 \text{mg L}^{-1}$  for K in NF and TTP, respectively. These elements (Li, Na, Rb and K), which are indicative of mineral origin, contributed on average  $90.1 \pm 10.7\%$  of the total dissolved solute concentration in all samples. In NF, solute concentrations in stream water were fairly constant throughout the year, with a small increase at the start of rainy season in March 2016 (Fig. S1). A similar increase was observed for most solutes in stream water in SHA and OUT, but not in TTP (Fig. S2–4). Concentrations of K in stream water did not differ between the catchments ( $p = 0.22$ ). The solute composition of stream water was most similar for TTP and OUT, with most solutes showing no significant difference, while NF had generally lowest concentrations for all solutes. Sr and Ba concentrations in stream water were significantly higher in SHA (median:  $33.3$  and  $19.8 \mu\text{g L}^{-1}$ , respectively) than in all other catchments ( $p < 0.05$ ).

#### 3.2 Isotopic composition

Isotopic values for precipitation plotted slightly above the global meteoric water line (GMWL), resulting in a local meteoric water line (LMWL) with a slope of  $8.05 \pm 0.21$  and an intercept of  $15.31 \pm 0.61$  ( $p < 0.001$ ,  $R^2 = 0.962$ ; Fig. 2). The slopes of the LMWL and GMWL were not significantly different ( $p = 0.619$ ), but the intercepts were ( $p < 0.001$ ). Samples with low volume ( $< 100 \text{ml}$ ) fell below the LMWL, which suggests evaporative enrichment. Although these samples were not used for the development of the LMWL, they were included in the mean transit time (MTT) analysis. The slope of the linear regression for stream water samples was  $5.00 \pm 0.54$ , which was significantly smaller than the slope of the LMWL ( $p < 0.001$ ). Precipitation samples collected at higher altitude (SHA-PC) were generally more depleted than those collected at lower altitudes (NF-PC,

TTP-PC and OUT-PC), with a change of  $-0.099 \text{ ‰ } \delta^{18}\text{O}$  per 100 m. However, linear regression analysis revealed there was no effect of elevation on  $\delta^{18}\text{O}$  values of the precipitation samples ( $p = 0.08$ ).

There was very little variation in  $\delta^{18}\text{O}$  values in stream water throughout the study period, as indicated by the low standard deviation (0.26–0.47 ‰; Table 4). Conversely, values for precipitation showed pronounced minima in November 2015, May 2016 and November 2016 in all catchments, coinciding with periods of high rainfall (Fig. 3). The isotopic composition of throughfall was similar to precipitation, with a Spearman correlation coefficient ( $r$ ) for  $\delta^{18}\text{O}$  values of 0.962, 0.978 and 0.962 for NF, SHA and TTP, respectively. The isotopic composition of mobile soil water showed more variation than stream water (standard deviation of 1.64, 1.20 and 1.35 ‰ for NF-S15, OUT-S15 and OUT-S50, respectively), but the signal was more damped than that of precipitation (Fig. 3). It was not possible to collect mobile soil water samples ( $n = 4\text{--}47$ ) every week, because the wick samplers – the devices used to collect the samples – only collect the portion of the water moving through the soil, i.e. they start to collect water for soil conditions near to saturation.

### 3.3 End member mixing analysis

The trace elements Li, Na, Mg, K, Rb, Sr and Ba displayed conservative behaviour in all catchments and were therefore retained for EMMA. The relative root mean square error (RRMSE; Table S2), based on measured and projected trace element concentrations in stream water, indicated that higher-dimensional end member mixing models were more appropriate. However, the residual analysis and ‘Rule of One’ both indicated that a 2-dimensional end member mixing model with three end members was sufficient for all catchments. The first two eigenvectors (dimensions) explained 92.4, 90.7, 89.5 and 92.4 % of the variance in stream water solute concentrations in NF, SHA, TTP and OUT, respectively.

Based on the projection of all end members in the stream water mixing space for each catchment, three end members were selected that enclosed most of the stream water samples (Fig. 4). Although most stream water samples fell within the triangle of the three selected end members in NF, 42, 49 and 33 % of the samples fell outside the triangle in SHA, TTP and OUT, respectively. Predicted stream water solute concentrations, based on median solute concentrations of the selected end members, matched well with observed stream water solute concentrations ( $R^2 > 0.85$  for most solutes). The poorest predictions were for Li in TTP ( $R^2 = 0.683$ ) and Ba in SHA ( $R^2 = 0.755$ ). The EMMA resulted in a dominant contribution of precipitation (PC) in NF (median: 46.4, 95 % confidence interval: 30.5–54.4 %) and SHA (57.4, 45.3–78.6 %), while spring water (TTP-SP.a) dominated in TTP (55.6, 45.3–70.7 %) (Fig. 5). The three selected end members for OUT generally had similar contributions ranging from 30 to 40 %. The contribution of wetland WL in SHA increased from 2.1 (–3.0–24.2) % during low flow to 53.0 (23.0–91.3) % during periods of high flow, similar to contributions of springs SP.a in NF (16.5, 11.3–22.9 % to 20.7, 15.2–34.7 %) and TTP (50.2, 30.5–62.5 % to 69.4, 43.0–123.9 %). Conversely, shallow well SHA-WE.b in SHA showed highest contributions during the dry season (up to 54 %). The EMMA resulted in large over- and underestimations and uncertainty in TTP (e.g. spring water SP.a contribution of up to 853 %).

### 3.4 — Young water fraction

Based on the standard deviations of the observed rainfall and streamflow isotopic signatures (Table 4), we estimated a young water fraction (YWF) of 12.4, 11.4 and 10.2 % for NF, SHA and TTP, respectively. The similarity between the amplitudes and YWF of the three sub-catchments indicated homogeneous characteristics, meaning that they could be characterized by a single transit time distribution. The small fraction of young water also suggested that stream water in the three sub-catchments corresponded to baseflow dominated catchments in which steady state conditions would apply.

#### 3.5.3.4 MTT estimates for stream and mobile soil water

Only  $\delta^{18}\text{O}$  was used for MTT analysis, because the two measured conservative isotopes ( $\delta^{18}\text{O}$  and  $\delta^2\text{H}$ ) showed a strong linear relationship (Fig. 2), meaning that similar estimations could be obtained by using just one isotope (Mosquera et al., 2016a).

The isotopic signals of precipitation (weekly scheme,  $n = 75$ ) were considered as input function of the lumped parameter models. All the available weekly isotope data for stream water ( $n = 75$ ) were included in the analysis. Although some of the stream water samples could have been taken during interflow or high flow conditions, the highly damped isotopic signature of stream water suggested that those samples still showed a major component of 'old' or baseflow water. For mobile soil water, only three sites had enough data to perform model calibration and were therefore considered: NF-S15 ( $n = 47$ ), OUT-S15 ( $n = 47$ ) and OUT-S50 ( $n = 46$ ).

Based on the Nash-Sutcliffe efficiency (NSE), the gamma model (GM) provided a better mean transit time (MTT) estimate for stream water than the exponential piston flow model (EPM; Table 5). The results of TTP-RV were discarded because of a very low performance of both models (NSE = 0.05). The generally low fitting efficiencies were caused by the low amplitude of seasonal isotopic signatures of  $\delta^{18}\text{O}$  in stream water samples from all four catchments. There was a moderate positive relationship between the standard deviation of the observed values and corresponding NSE of modelled results ( $R^2 = 0.84$ ). NF-RV and SHA-RV had a similar transit time distribution (Fig. S5) and estimated MTT of approximately 4 years (Table 5). The shortest estimated MTT of 2.5 years was for OUT-RV. ~~Due to the low fitting efficiencies and selected threshold of 5 % below the highest obtained NSE, the uncertainty bands for all sites were relatively narrow (Fig. S5–18). The uncertainties should therefore be considered as means of comparison of model parameters between sites and cannot be compared to uncertainties obtained in other studies with higher NSE values.~~ For mobile soil water, both models (GM and EPM) yielded similar results in terms of fitting efficiencies (NSE), MTT estimations and uncertainty ranges (Table 6), although comparison of transit time distributions using quantile plots suggests that the models resulted in slightly different distributions (Fig. S19–20S6). NF-S15 showed the shortest estimated transit time (3.2–3.3 weeks), while estimated transit time for OUT-S15 was 4.5–7.9 weeks and for OUT-S50 10.4–10.8 weeks. The selected parameter ranges for behavioural models and uncertainty in modelled  $\delta^{18}\text{O}$  signatures in stream and mobile soil water are presented in Figure S7–S15.



### **3.5 Young water fraction**

Due to the occurrence of two minima in the isotopic signature of rainfall, we used a frequency of 2 in the estimation of the amplitude of the seasonal cycle. We estimated the  $F_{yw}$  over the whole study period at 15 %, 13 % and 15 % for NF, SHA and TTP, respectively, while OUT had a  $F_{yw}$  of 22 %. The  $F_{yw}$  in SHA and TTP decreased from 18 % in both sub-catchments during low flow to 5 % and 12 % during high flow, indicating an increased groundwater contribution to streamflow with increasing discharge in these sub-catchments. The  $F_{yw}$  increased slightly from 11 % to 14 % in NF, and remained similar under low and high flow conditions in OUT (18 % and 19 %, respectively).

## **4 Discussion**

### **4.1 Hydrochemistry**

Low solute concentrations in precipitation (PC) compared to other end members are commonly observed in the tropics (Chaves et al., 2008; Correa et al., 2017; Crespo et al., 2012). Similar to observations in the Amazon (Chaves et al., 2008), concentrations of K and Mg were higher in throughfall (TF) than in precipitation, while Na concentrations were similar. Furthermore, solute concentrations in throughfall were more variable in space and time than in precipitation. This has also been observed in Canada (Ali et al., 2010) and the Brazilian Amazon (Chaves et al., 2008; Germer et al., 2007), and can be attributed to seasonal variations in plant growth and dry and wet atmospheric deposition of K and Mg originating from biomass burning in our study area. Shallow well SHA-WE.b had trace element concentrations that were much higher than those of the other nine sampled shallow wells SHA-WE.a, but similar in magnitude to solute concentrations in a spring in the Andean Páramo (Correa et al., 2017) and deep groundwater in Tanzania (Koutsouris and Lyon, 2018). Since the trace elements with high concentrations in SHA-WE.b correspond with elements related to geology (e.g. Li, K, Na and Rb), it is likely that this source is groundwater-related. Wetland SHA-WL, located near shallow well SHA-WE.b, did not show these high concentrations, which could indicate that the shallow well received water from a different source than the wetland and other shallow wells. Conversely, similarity in solute concentrations in springs NF-SP.b and OUT-SP.b and shallow wells SHA-WE.a indicate that these end members represent the same water source, despite their different geographical location. The same was observed for wetland SHA-WL and springs NF-SP.a and TTP-SP.a.

The higher intercept of the local meteoric water line (LMWL) than of the global meteoric water line (GMWL) indicates deuterium-excess ( $d$ -excess) as consequence of more arid vapour sources (McGuire and McDonnell, 2007) or re-evaporated rainfall (Goldsmith et al., 2012). The  $d$ -excess value (5.31 ‰) corresponds to values observed in other tropical montane environments (e.g. Goldsmith et al., 2012; Mosquera et al., 2016a; Muñoz-Villers et al., 2016; Otte et al., 2017; Windhorst et al., 2013). The value for the slope of the linear relationship between stream water isotopic values ( $5.00 \pm 0.54$ ) was similar to the slope of  $\sim 5$  found by Craig (1961) for East African rivers and lakes and suggests evaporative enrichment of stream water.

The observed change in  $\delta^{18}\text{O}$  with altitude ( $-0.099\text{‰}$   $\delta^{18}\text{O}$  per 100 m) is smaller than the  $-0.22\text{‰}$   $\delta^{18}\text{O}$  per 100 m found in an Andean tropical montane forest (Windhorst et al., 2013),  $-0.31\text{‰}$   $\delta^{18}\text{O}$  per 100 m in an Ecuadorian Páramo ecosystem (Mosquera et al., 2016a), but similar to values of  $-0.10$  and  $-0.11\text{‰}$   $\delta^{18}\text{O}$  per 100 m observed on Mt. Kilimanjaro in Tanzania (Mckenzie et al., 2010; Otte et al., 2017). The occurrence of the lowest precipitation  $\delta^{18}\text{O}$  values during the rainy seasons also agrees with seasonal observations by Otte et al. (2017) on Mt. Kilimanjaro and is most likely related to the different isotopic composition of precipitation from storms caused by the movement of the intertropical convergence zone (ITCZ) over the study area during the rainy seasons (Otte et al., 2017). Furthermore, most storm trajectories originate from south-easterly direction during the long and short rainy season, while coming from an easterly direction during the dry season, suggesting different origin and thus isotopic composition of precipitation (Soderberg et al., 2013). Stream water isotope signals that were equally damped compared to precipitation ( $-8.0$  to  $-6.2\text{‰}$  versus  $-15.2$  to  $-0.4\text{‰}$  for  $\delta^{18}\text{O}$  in stream water and precipitation, respectively) were observed in a Mexican tropical montane forest catchment with similar deep volcanic soil (Muñoz-Villers and McDonnell, 2012).

## 4.2 Dominant water sources

The end member mixing analysis (EMMA) showed that precipitation (PC) was ~~one of the three selected~~ an important end members in all catchments, as depicted in our conceptual model of the rainfall–runoff generation processes in the three sub-catchments with different land use (Fig. 6). The high contribution of precipitation (median: 46.4, 95 % confidence interval: 30.5–54.4 %) to streamflow in the natural forest (NF) sub-catchment is unexpected, as a major contribution of surface runoff is unlikely due to high infiltration rates and high hydraulic conductivity of forest soils (Owuor et al., 2018). Furthermore, it contradicts the low young water fraction ( $F_{yw}$ ) estimated for this sub-catchment. Although surface runoff can occur in tropical forests (e.g. Chaves et al., 2008; Johnson et al., 2006; de Moraes et al., 2006), we suggest that the observed signatures were caused by shallow sub-surface flow during rainfall events, which agrees with findings in NF by Jacobs et al. (2018), and is commonly observed in tropical montane forested catchments (e.g. Boy et al., 2008; Muñoz-Villers and McDonnell, 2012; Saunders et al., 2006). Additionally, shallow flow from the riparian zone could occur during rainfall events, when the riparian zone is near saturation (von Freyberg et al., 2014; Mosquera et al., 2015).

Results from the EMMA support our hypothesis that surface runoff occurs in the smallholder agriculture (SHA) sub-catchment, which agrees with observations from, for example, Mexico (Muñoz-Villers and McDonnell, 2013) and the Amazon (Neill et al., 2011). However, it does not agree with the importance of groundwater implied by the long estimated MTTs and small  $F_{yw}$ . ~~the~~ The contribution of precipitation (57.4, 45.3–78.6 %) in SHA is probably overestimated due to the inclusion of shallow well SHA-WE.b as end member. ~~The latter~~ This end member was required to explain stream water chemistry during the dry season, but would ideally not have been used due to its small sample size. However, Correa et al. (2017) found that inclusion of a spring with similarly high solute concentrations was required in their end member model. Similar to SHA-WE.b, this spring contributed more to streamflow during the dry season (Correa et al., 2017). In contrast to SHA, the relatively low contribution of precipitation to streamflow in the tea and tree plantation sub-catchment (TTP) suggests a minor input of surface

runoff to streamflow during both wet and dry conditions (Fig. 6). This seemingly contradicts previous findings in the same sub-catchment, where rainfall events led to significant dilution of nitrate concentrations in stream water due to surface runoff (Jacobs et al., 2018). The role of precipitation as stream water source in TTP might, however, have been underestimated due to the poor performance of the end member model and high uncertainty in results.

- 5 Similar to findings by Muñoz-Villers and McDonnell (2012) in Mexico and Chaves et al. (2008) in the Brazilian Amazon, the contribution of precipitation and throughfall decreased in all sub-catchments during high flows (Fig. 6, right hillslopes in each graph). This suggests increased inputs from groundwater through wetlands (SHA-WL) or springs (TTP-SP.a and NF-SP.a) during the rainy season.

#### 4.3 Mean transit times and young water fractions

- 10 The low fitting efficiencies, high uncertainty and the long estimated MTT (i.e. in the order of years), did not allow us to accept, nor to reject our hypothesis that agricultural catchments have a shorter MTT than forested catchments due to increased importance of faster flow paths such as surface runoff. However, the long estimated MTTs and the low fraction of young water ( $F_{yw}$ , YWF) suggest that the majority stream water in all catchments originates from ‘old’ water or groundwater. This could be explained by the deep and well-drained soil in our study area (Cooper, 1979; Edwards and Blackie, 1981), compared to the  
15 shallower soils and steep slopes in, for example, Andean tropical montane forest catchments with shorter mean transit times (e.g. Crespo et al., 2012; Timbe et al., 2014). Such deep soils promote slow flow paths through deeper soil layers and thus result in longer transit times (Asano and Uchida, 2012). This finding agrees with the selection of groundwater-related end members springs TTP-SP.a and NF-SP.a and wetland SHA-WL in the EMMA (Fig. 6). Furthermore, the  $F_{yw}$  during low and high flow follows the same trend as the estimated precipitation contribution in the three sub-catchments. The importance of groundwater does, however, contradict the generally high contribution of precipitation and throughfall to streamflow in most catchments.  
20

- The longer MTT for mobile soil water for OUT-S15, located in a pasture, than for NF-S15 contradicts findings in an Andean tropical montane catchment: Timbe et al. (2014) compared pasture and forest soil water MTTs and found longer MTTs for forested sites. In our case, the difference could be caused by differences in hydraulic conductivity, since soil hydraulic  
25 properties can influence MTT (Geris et al., 2015; Mueller et al., 2013; Muñoz-Villers et al., 2016). Pasture soils in our study area had a generally lower hydraulic conductivity (2–53 cm h<sup>-1</sup>) than natural forest soils (10–207 cm h<sup>-1</sup>) due to soil compaction by livestock trampling (Owuor et al., 2018). The estimated MTTs fell within the range observed for soil water from 30 to 60 cm depth (20–62 days) in a tropical montane catchment in Mexico (Muñoz-Villers and McDonnell, 2012).

#### 4.4 Methodological limitations and implications for further research

- 30 There was a large uncertainty in end member contributions, which is related to the large number of samples falling outside the triangle bounded by the three selected end members in SHA, TTP and OUT (Fig. 4–5). Although this could be attributed to the variability in end member composition, uncertainty in laboratory analysis or non-conservative solute behaviour (Barthold

et al., 2010), it is very likely that one or more important end members are missing. Furthermore, inclusion of additional end members to increase dimensionality of the end member model may be required, as was necessary in an Andean Páramo ecosystem (Correa et al., 2017) and a tropical forested catchment in Panama (Barthold et al., 2017). Since our results suggest that our catchments are largely groundwater dominated, deep groundwater is most likely an important missing end member in our analysis, as observed in many studies (e.g. Barthold et al., 2011; Chaves et al., 2008; Crespo et al., 2012; Katsuyama et al., 2009). However, access to groundwater in the study area is complicated by the absence of wells or boreholes in NF and TTP. Furthermore, the existing wells in SHA are often not properly sealed, which means that deep groundwater can mix with water from shallower soil layers and precipitation, obscuring the groundwater signal. In addition to groundwater, inclusion of soil water might improve the mixing models, as other studies in tropical montane regions showed the importance of soil water as source of streamflow (Chaves et al., 2008; Correa et al., 2017). Alternatives for wick samplers, such as suction lysimeters, should be used to avoid contamination of soil water samples.

Due to the low fitting efficiencies of the MTT models, specifically for stream water, we consider the presented MTT estimations as valuable preliminary findings. ~~These can serve as a baseline for future studies, in which more sophisticated methods like time variant approaches can be used. Through the application of such methods in combination with high frequency sampling, more subtle differences in the movement of water through the soil could be distinguished and related to catchment characteristics, such as land use, where appropriate. Furthermore, time variant approaches could deal with shifts in storage conditions, which can confound the potential impact of land use on MTT (Van der Velde et al., 2014). The latter was not considered in our study, since the sub-catchments are subjected to similar rainfall patterns (Fig. 3).~~

However, because of the significant risk of underestimation of MTTs using seasonally varying input signals of  $\delta^{18}\text{O}$  or  $\delta^2\text{H}$  (Kirchner, 2016a; Stewart et al., 2010), the long estimated transit time of up to 4 years might is likely be beyond the reliability of the present used method with  $\delta^{18}\text{O}$  or  $\delta^2\text{H}$  tracers (DeWalle et al., 1997), which adds to the uncertainty of our results. Better predictions might be obtained by using more appropriate tracers for estimating transit times of several years to decades, such as tritium ( $^3\text{H}$ ) (Cartwright et al., 2017; Stewart and Morgenstern, 2016) (Cartwright et al., 2017). Despite this uncertainty, the implications of the long estimated MTT, i.e. that the sub-catchments are groundwater-dominated irrespective of land use, are confirmed by the unsophisticated and more robust estimation of the  $F_{\text{vw}}$ . Although a longer sampling period of at least 4 years might also improve the ~~fitting efficiencies that were obtained~~ goodness of fit of the models (McGuire and McDonnell, 2006), we believe that the low fitting efficiencies were mainly a result of the highly damped isotope signal of stream water, suggesting that the applied method and models for MTT estimation are less suitable for groundwater-dominated tropical catchments with a similarly damped stream water isotope signal. Conversely, both selected MTT models provided reasonable results for mobile soil water. However, a simpler exponential distribution model (EM) might have been equally appropriate, since the parameter range of behaviour solutions of the gamma model (GM) and the exponential piston flow model (EPM) suggest that both models could be simplified to an exponential distribution model (EM). In order to avoid over-parametrization, models with fewer parameters (in this case EM) are preferred when they provide comparable results.

## 5 Conclusion

In this study we aimed to identify the dominant water sources and flow paths in three sub-catchments with contrasting land use (i.e. natural forest, smallholder agriculture and commercial tea and tree plantations) using mean transit time (MTT) analysis and end member mixing analysis (EMMA) to assess the effect of land use on catchment hydrology. The low fitting efficiencies of the MTT analysis did not allow us to relate differences in estimated MTT between the catchments to land use and we were thus unable to confirm or reject our hypothesis that the natural forest sub-catchment would have a longer MTT than the catchments dominated by smallholder agriculture or commercial tea plantations. The long estimated MTT (up to 4 years) and high contributions of groundwater-related end members did, however, suggest that the catchments in our study area are generally groundwater-dominated. These results emphasize the importance of sufficient groundwater recharge and sustainable management of groundwater resources to maintain streamflow throughout the year.

The differences in contribution of end members to streamflow, based on EMMA, suggest that land use could affect hydrological flow paths. We expect that the observed high contribution of precipitation and throughfall in the natural forest sub-catchment occurs as shallow sub-surface flow, while precipitation in the smallholder agriculture sub-catchments could contribute to streamflow as surface runoff. Further evidence to support this statement is necessary, because surface runoff generally has negative impact on soil fertility, erosion and sedimentation. In general, over- and under-prediction of end member contributions, especially during the dry season and at the peak of the rainy season, indicate that the mixing models could be improved by identification of additional end members. The use of more appropriate methods to estimate transit times could further improve our knowledge of the hydrological behaviour of tropical catchments under different land use. Due to the weaknesses associated with both methods, there is considerable uncertainty in the estimated MTT and end member contributions. However, supported by the young water fraction analysis, we were able to draw a reliable conclusion about the importance of groundwater during low and high flows in the different land use types. Nevertheless, due to ~~Because of~~ the lack of data on the hydrological behaviour of African tropical montane catchments, our study provides a good baseline for future research. Due to the close linkage of forests, land use and water, such research is required to support decision making on forest protection and land management, to ensure the supply of clean and sufficient water to communities living in and downstream of tropical montane areas.

### Data availability

Hydroclimatic data (discharge and precipitation) and the full isotope and trace element dataset for all study sites is available from the online database <http://fb09-pasig.umwelt.uni-giessen.de:8050/wiki/publications> hosted by Justus Liebig University, Giessen, Germany.

## Author contributions

The study was designed by SJ, BW and LB. SJ and BW installed all instruments. SJ was in charge of field campaigns, instrument maintenance and sample collection, and performed end member mixing analysis. BW managed the laboratory analysis. ET performed the analysis for mean transit time estimation. SJ, MR, KBB and LB prepared the manuscript.

## 5 Competing interests

The authors declare that they have no conflict of interest.

## Acknowledgements

We would like to thank the Kenya Forest Service (KFS) for supporting us to conduct this study in the South-West Mau. This work was partially funded by the CGIAR program on Forest, Trees and Agroforestry led by the Centre for International Forestry Research (CIFOR). We thank the Deutsche Forschungsgemeinschaft DFG (BR2238/23-1) and the Deutsche Gesellschaft für Internationale Zusammenarbeit GIZ (Grants 81195001 “Low cost methods for monitoring water quality to inform upscaling of sustainable water management in forested landscapes in Kenya”) for generously providing additional support. We also appreciate the valuable feedback provided by the reviewers to improve this manuscript.

## References

- 15 [Ali, G. A., Roy, A. G., Turmel, M.-C. and Courchesne, F.: Source-to-stream connectivity assessment through end-member mixing analysis, \*J. Hydrol.\*, 392\(3–4\), 119–135, doi:10.1016/j.jhydrol.2010.07.049, 2010.](#)
- [Asano, Y. and Uchida, T.: Flow path depth is the main controller of mean base flow transit times in a mountainous catchment, \*Water Resour. Res.\*, 48\(3\), W03512, doi:10.1029/2011WR010906, 2012.](#)
- 20 [Ataroff, M. and Rada, F.: Deforestation impact on water dynamics in a Venezuelan Andean cloud forest, \*Ambio\*, 29\(7\), 440–444, doi:https://doi.org/10.1579/0044-7447-29.7.440, 2000.](#)
- [Baker, T. J. and Miller, S. N.: Using the Soil and Water Assessment Tool \(SWAT\) to assess land use impact on water resources in an East African watershed, \*J. Hydrol.\*, 486, 100–111, doi:https://doi.org/10.1016/j.jhydrol.2013.01.041, 2013.](#)
- [Baldyga, T. J., Miller, S. N., Shivoga, W. and Gichaba, M.: Assessing the impact of land cover change in Kenya using remote sensing and hydrologic modelling, in \*ASPRS Annual Conference Proceedings\*, Denver, Colorado., 2004.](#)
- 25 [Barthold, F. K., Wu, J., Vaché, K. B., Schneider, K., Frede, H.-G. and Breuer, L.: Identification of geographic runoff sources in a data sparse region: Hydrological processes and the limitations of tracer-based approaches, \*Hydrol. Process.\*, 24\(16\), 2313–2327, doi:10.1002/hyp.7678, 2010.](#)

- Barthold, F. K., Tyralla, C., Schneider, K., Vaché, K. B., Frede, H.-G. and Breuer, L.: How many tracers do we need for end member mixing analysis (EMMA)? A sensitivity analysis, Water Resour. Res., 47(8), W08519, doi:10.1029/2011WR010604, 2011.
- 5 Barthold, F. K., Turner, B. L., Elsenbeer, H. and Zimmermann, A.: A hydrochemical approach to quantify the role of return flow in a surface flow-dominated catchment, Hydrol. Process., 31(5), 1018–1033, doi:10.1002/hyp.11083, 2017.
- Beven, K. and Binley, A.: The future of distributed models: Model calibration and uncertainty prediction, Hydrol. Process., 6(3), 279–298, doi:10.1002/hyp.3360060305, 1992.
- Bewernick, T.: Mapping forest degradation in the Mau Forest Complex using NDFI time series, MSc thesis, Wageningen University, Wageningen, the Netherlands, August., 2016.
- 10 Binge, F. W.: Geology of the Kericho area, Ministry of Commerce, Industry and Communications, Geological Survey of Kenya., 1962.
- Boy, J., Valarezo, C. and Wilcke, W.: Water flow paths in soil control element exports in an Andean tropical montane forest, Eur. J. Soil Sci., 59(6), 1209–1227, doi:10.1111/j.1365-2389.2008.01063.x, 2008.
- 15 Brown, K. W., Thomas, J. C. and Holder, M. W.: Development of a capillary wick unsaturated zone pore water sampler, United States Environmental Protection Agency, Las Vegas, USA., 1989.
- Burns, D. A., McDonnell, J. J., Hooper, R. P., Peters, N. E., Freer, J. E., Kendall, C. and Beven, K.: Quantifying contributions to storm runoff through end-member mixing analysis and hydrologic measurements at the Panola Mountain Research Watershed (Georgia, USA), Hydrol. Process., 15(10), 1903–1924, doi:10.1002/hyp.246, 2001.
- 20 Capell, R., Tetzlaff, D., Hartley, A. J. and Soulsby, C.: Linking metrics of hydrological function and transit times to landscape controls in a heterogeneous mesoscale catchment, Hydrol. Process., 26(3), 405–420, doi:10.1002/hyp.8139, 2012.
- Cartwright, I., Cendón, D., Currell, M. and Meredith, K.: A review of radioactive isotopes and other residence time tracers in understanding groundwater recharge: Possibilities, challenges, and limitations, J. Hydrol., 555, 797–811, doi:10.1016/j.jhydrol.2017.10.053, 2017.
- 25 Chaves, J., Neill, C., Germer, S., Neto, S. G., Krusche, A. and Elsenbeer, H.: Land management impacts on runoff sources in small Amazon watersheds, Hydrol. Process., 22(12), 1766–1775, doi:10.1002/hyp.6803, 2008.
- Christophersen, N. and Hooper, R. P.: Multivariate analysis of stream water chemical data: The use of principal components analysis for the end-member mixing problem, Water Resour. Res., 28(1), 99–107, doi:10.1029/91WR02518, 1992.
- 30 Christophersen, N., Neal, C., Hooper, R. P., Vogt, R. D. and Andersen, S.: Modelling streamwater chemistry as a mixture of soilwater end-members — A step towards second-generation acidification models, J. Hydrol., 116(1–4), 307–320, doi:10.1016/0022-1694(90)90130-P, 1990.
- Cooper, J. D.: Water use of a tea estate from soil moisture measurements, E. Afr. Agr. Forestry J., 43(Special issue), 102–121, 1979.
- Correa, A., Windhorst, D., Tetzlaff, D., Crespo, P., Céleri, R., Feyen, J. and Breuer, L.: Temporal dynamics in dominant runoff sources and flow paths in the Andean Páramo, Water Resour. Res., 53, doi:10.1002/2016WR020187, 2017.
- 35 Craig, H.: Isotopic variations in meteoric waters, Science, 133(3465), 1702–1703, doi:10.1126/science.133.3465.1702, 1961.



- Crespo, P., Bücker, A., Feyen, J., Vaché, K. B., Frede, H.-G. and Breuer, L.: Preliminary evaluation of the runoff processes in a remote montane cloud forest basin using Mixing Model Analysis and Mean Transit Time, *Hydrol. Process.*, 26(25), 3896–3910, doi:10.1002/hyp.8382, 2012.
- 5 DeWalle, D. R., Edwards, P. J., Swistock, B. R., Aravena, R. and Drimmie, R. J.: Seasonal isotope hydrology of three Appalachian forest catchments, *Hydrological Processes*, 11(15), 1895–1906, doi:10.1002/(SICI)1099-1085(199712)11:15<1895::AID-HYP538>3.0.CO;2-#, 1997.
- Edwards, K. A. and Blackie, J. R.: Results of the East African Catchment Experiments 1958-1974, in *Tropical Agricultural Hydrology*, pp. 163–200, John Wiley & Sons Ltd., 1981.
- 10 Ekirapa, E. A. and Shitakha, F. M.: Semi detailed soil survey of the African Highland Produce Company farm, Kenya Agricultural Research Institute, Nairobi, Kenya., 1996.
- von Freyberg, J., Radny, D., Gall, H. E. and Schirmer, M.: Implications of hydrologic connectivity between hillslopes and riparian zones on streamflow composition, *J. Contam. Hydrol.*, 169(Supplement C), 62–74, doi:10.1016/j.jconhyd.2014.07.005, 2014.
- 15 Freyberg, J. von, Allen, S. T., Seeger, S., Weiler, M. and Kirchner, J. W.: Sensitivity of young water fractions to hydro-climatic forcing and landscape properties across 22 Swiss catchments, *Hydrology and Earth System Sciences*, 22(7), 3841–3861, doi:https://doi.org/10.5194/hess-22-3841-2018, 2018.
- Fröhlich, H. L., Breuer, L., Vaché, K. B. and Frede, H.-G.: Inferring the effect of catchment complexity on mesoscale hydrologic response, *Water Resour. Res.*, 44(9), W09414, doi:10.1029/2007WR006207, 2008a.
- 20 Fröhlich, H. L., Breuer, L., Frede, H.-G., Huisman, J. A. and Vaché, K. B.: Water source characterization through spatiotemporal patterns of major, minor and trace element stream concentrations in a complex, mesoscale German catchment, *Hydrol. Process.*, 22(12), 2028–2043, doi:10.1002/hyp.6804, 2008b.
- Geris, J., Tetzlaff, D., McDonnell, J. and Soulsby, C.: The relative role of soil type and tree cover on water storage and transmission in northern headwater catchments, *Hydrol. Process.*, 29(7), 1844–1860, doi:10.1002/hyp.10289, 2015.
- 25 Germer, S., Neill, C., Krusche, A. V., Neto, S. C. G. and Elsenbeer, H.: Seasonal and within-event dynamics of rainfall and throughfall chemistry in an open tropical rainforest in Rondônia, Brazil, *Biogeochemistry*, 86(2), 155–174, doi:10.1007/s10533-007-9152-9, 2007.
- Germer, S., Neill, C., Krusche, A. V. and Elsenbeer, H.: Influence of land-use change on near-surface hydrological processes: Undisturbed forest to pasture, *J. Hydrol.*, 380(3–4), 473–480, doi:10.1016/j.jhydrol.2009.11.022, 2010.
- 30 Goldsmith, G. R., Muñoz-Villers, L. E., Holwerda, F., McDonnell, J. J., Asbjornsen, H. and Dawson, T. E.: Stable isotopes reveal linkages among ecohydrological processes in a seasonally dry tropical montane cloud forest, *Ecohydrology*, 5(6), 779–790, doi:10.1002/eco.268, 2012.
- Heidbüchel, I., Troch, P. A. and Lyon, S. W.: Separating physical and meteorological controls of variable transit times in zero-order catchments, *Water Resour. Res.*, 49(11), 7644–7657, doi:10.1002/2012WR013149, 2013.
- 35 Hooper, R. P.: Diagnostic tools for mixing models of stream water chemistry, *Water Resour. Res.*, 39(3), 1055, doi:10.1029/2002WR001528, 2003.

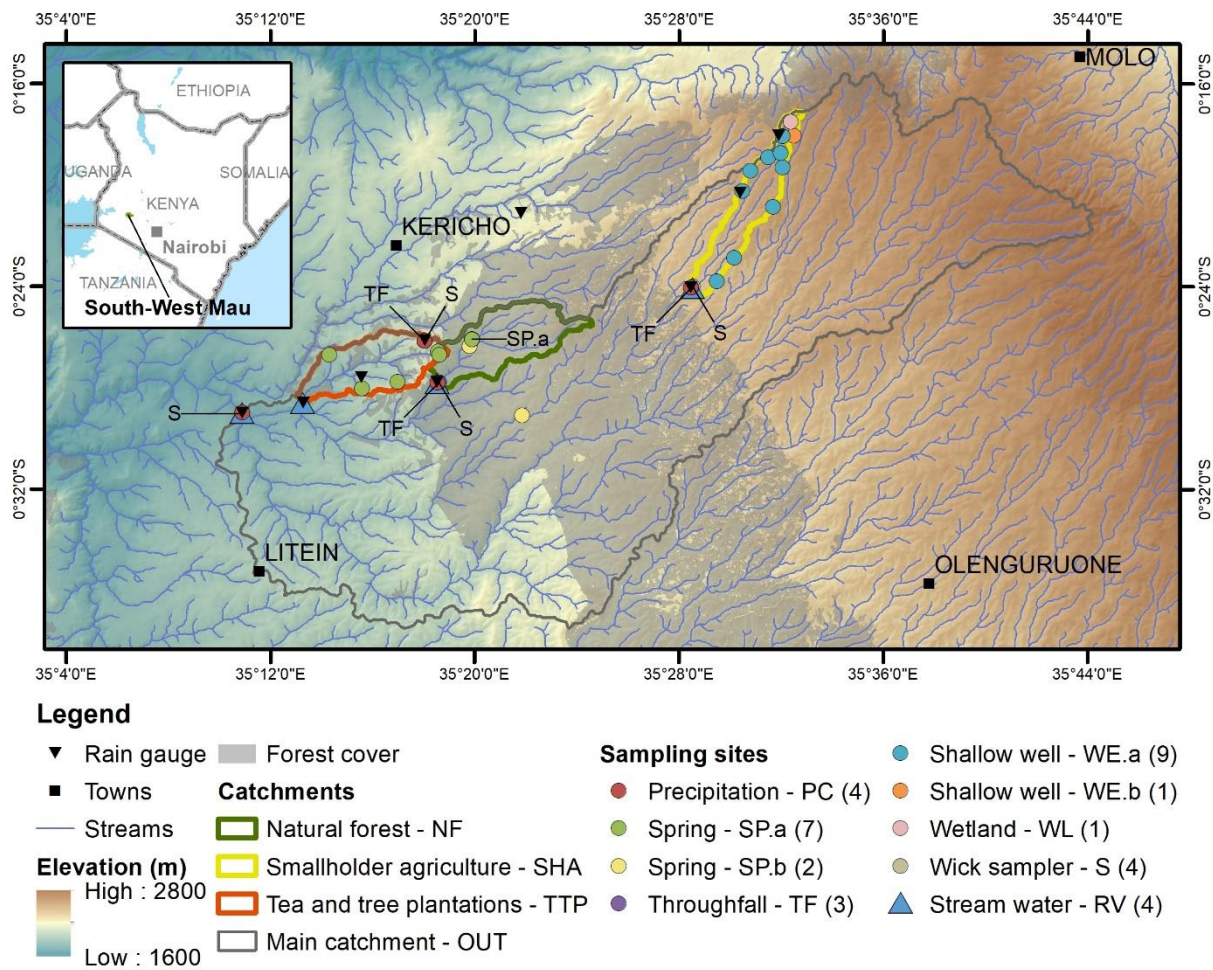


- Hrachowitz, M., Soulsby, C., Tetzlaff, D., Malcolm, I. A. and Schoups, G.: Gamma distribution models for transit time estimation in catchments: Physical interpretation of parameters and implications for time-variant transit time assessment, *Water Resour. Res.*, 46(10), W10536, doi:10.1029/2010WR009148, 2010., 2010.
- 5 Hrachowitz, M., Soulsby, C., Tetzlaff, D. and Malcolm, I. A.: Sensitivity of mean transit time estimates to model conditioning and data availability, *Hydrol. Process.*, 25(6), 980–990, doi:10.1002/hyp.7922, 2011.
- ISRIC: Soil and terrain database for Kenya, version 2.0, at scale 1:1 million (KENSOTER), 2007.
- Jacobs, S. R., Breuer, L., Butterbach-Bahl, K., Pelster, D. E. and Rufino, M. C.: Land use affects total dissolved nitrogen and nitrate concentrations in tropical montane streams in Kenya, *Sci. Total Environ.*, 603–604, 519–532, doi:https://doi.org/10.1016/j.scitotenv.2017.06.100, 2017.
- 10 Jacobs, S. R., Weeser, B., Guzha, A. C., Rufino, M. C., Butterbach-Bahl, K., Windhorst, D. and Breuer, L.: Using high-resolution data to assess land use impact on nitrate dynamics in East African tropical montane catchments, *Water Resour. Res.*, 54(3), 1812–1830, doi:10.1002/2017WR021592, 2018.
- 15 James, A. L. and Roulet, N. T.: Investigating the applicability of end-member mixing analysis (EMMA) across scale: A study of eight small, nested catchments in a temperate forested watershed, *Water Resour. Res.*, 42(8), W08434, doi:10.1029/2005WR004419, 2006.
- Jennings, D. J.: Geology of the Molo area, Ministry of Natural Resources, Geological Survey of Kenya., 1971.
- Johnson, M. S., Lehmann, J., Selva, E. C., Abdo, M., Riha, S. and Couto, E. G.: Organic carbon fluxes within and streamwater exports from headwater catchments in the southern Amazon, *Hydrol. Process.*, 20(12), 2599–2614, doi:10.1002/hyp.6218, 2006.
- 20 Katsuyama, M., Kabeya, N. and Ohte, N.: Elucidation of the relationship between geographic and time sources of stream water using a tracer approach in a headwater catchment, *Water Resour. Res.*, 45(6), W06414, doi:10.1029/2008WR007458, 2009.
- Kenya Water Towers Agency: Kenya Water Towers status report, Kenya Water Towers Agency, Nairobi, Kenya., 2015.
- Kinyanjui, M. J.: NDVI-based vegetation monitoring in Mau Forest Complex, Kenya, *Afr. J. Ecol.*, 49, 165–174, doi:10.1111/j.1365-2028.2010.01251.x, 2011.
- 25 Kirchner, J. W.: Aggregation in environmental systems – Part 1: Seasonal tracer cycles quantify young water fractions, but not mean transit times, in spatially heterogeneous catchments, *Hydrol. Earth Syst. Sci.*, 20(1), 279–297, doi:10.5194/hess-20-279-2016, 2016a.
- Kirchner, J. W.: Aggregation in environmental systems – Part 2: Catchment mean transit times and young water fractions under hydrologic nonstationarity, *Hydrol. Earth Syst. Sci.*, 20(1), 299–328, doi:10.5194/hess-20-299-2016, 2016b.
- 30 Koutsouris, A. J. and Lyon, S. W.: Advancing understanding in data-limited conditions: estimating contributions to streamflow across Tanzania’s rapidly developing Kilombero Valley, *Hydrological Sciences Journal*, 63(2), 197–209, doi:10.1080/02626667.2018.1426857, 2018.
- Krhoda, G. O.: The impact of resource utilization on the hydrology of the Mau Hills Forest in Kenya, *Mt. Res. Dev.*, 8(2/3), 193–200, doi:10.2307/3673447, 1988.

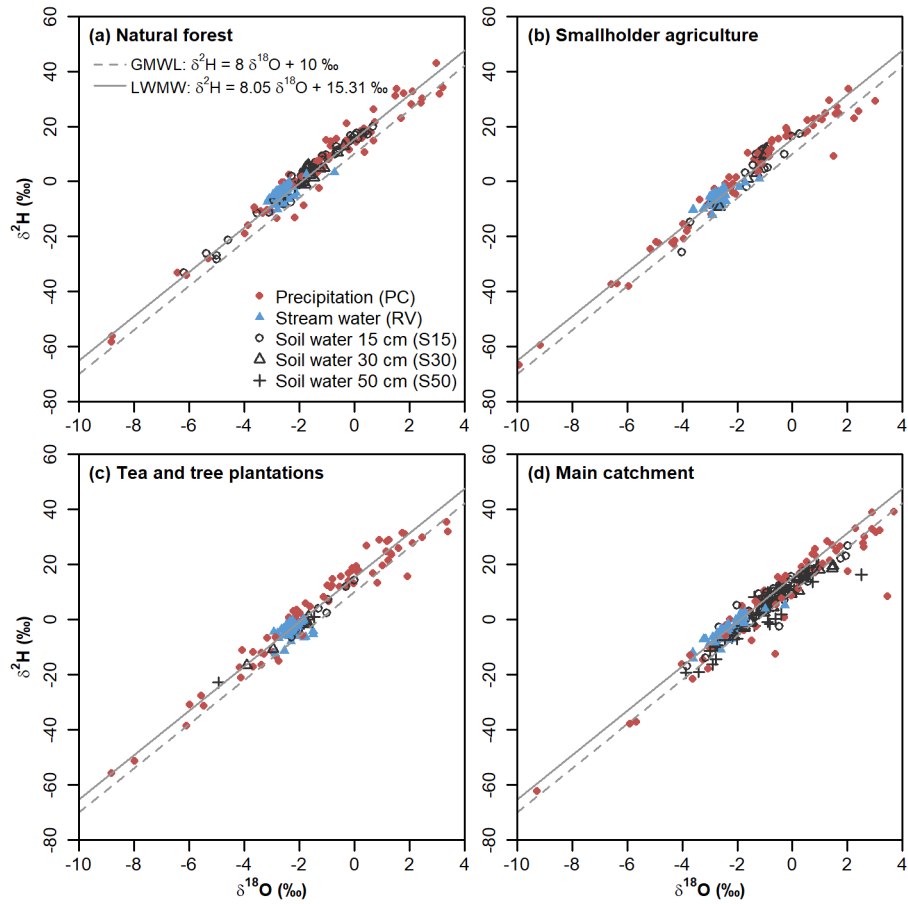
- Maloszewski, P. and Zuber, A.: Determining the turnover time of groundwater systems with the aid of environmental tracers. I. Models and their applicability, J. Hydrol., 57(3–4), 207–231, doi:https://doi.org/10.1016/0022-1694(82)90147-0, 1982.
- 5 Mango, L. M., Melesse, A. M., McClain, M. E., Gann, D. and Setegn, S. G.: Land use and climate change impacts on the hydrology of the upper Mara River Basin, Kenya: Results of a modeling study to support better resource management, Hydrol. Earth Syst. Sci., 15, 2245–2258, doi:https://doi.org/10.5194/hess-15-2245-2011, 2011.
- McGuire, K. and McDonnell, J.: Stable isotope tracers in watershed hydrology, in Stable Isotopes in Ecology and Environmental Science, edited by R. Michener and K. Lajtha, pp. 334–374, Blackwell Publishing Ltd., 2007.
- McGuire, K. J. and McDonnell, J. J.: A review and evaluation of catchment transit time modeling, J. Hydrol., 330(3–4), 543–563, doi:10.1016/j.jhydrol.2006.04.020, 2006.
- 10 Mckenzie, J. M., Mark, B. G., Thompson, L. G., Schotterer, U. and Lin, P.-N.: A hydrogeochemical survey of Kilimanjaro (Tanzania): implications for water sources and ages, Hydrogeol. J., 18(4), 985–995, doi:10.1007/s10040-009-0558-4, 2010.
- de Moraes, J. M., Schuler, A. E., Dunne, T., Figueiredo, R. de O. and Victoria, R. L.: Water storage and runoff processes in plinthic soils under forest and pasture in eastern Amazonia, Hydrol. Process., 20(12), 2509–2526, doi:10.1002/hyp.6213, 2006.
- 15 Mosquera, G. M., Lazo, P. X., Célleri, R., Wilcox, B. P. and Crespo, P.: Runoff from tropical alpine grasslands increases with areal extent of wetlands, CATENA, 125(Supplement C), 120–128, doi:10.1016/j.catena.2014.10.010, 2015.
- Mosquera, G. M., Célleri, R., Lazo, P. X., Vaché, K. B., Perakis, S. S. and Crespo, P.: Combined use of isotopic and hydrometric data to conceptualize ecohydrological processes in a high-elevation tropical ecosystem, Hydrol. Process., 30(17), 2930–2947, doi:10.1002/hyp.10927, 2016a.
- 20 Mosquera, G. M., Segura, C., Vaché, K. B., Windhorst, D., Breuer, L. and Crespo, P.: Insights into the water mean transit time in a high-elevation tropical ecosystem, Hydrol. Earth Syst. Sci., 20(7), 2987–3004, doi:10.5194/hess-20-2987-2016, 2016b.
- Mueller, M. H., Weingartner, R. and Alewell, C.: Importance of vegetation, topography and flow paths for water transit times of base flow in alpine headwater catchments, Hydrol. Earth Syst. Sci., 17(4), 1661–1679, doi:10.5194/hess-17-1661-2013, 2013.
- 25 Muñoz-Villers, L. E. and McDonnell, J. J.: Runoff generation in a steep, tropical montane cloud forest catchment on permeable volcanic substrate, Water Resour. Res., 48(9), W09528, doi:10.1029/2011WR011316, 2012.
- Muñoz-Villers, L. E. and McDonnell, J. J.: Land use change effects on runoff generation in a humid tropical montane cloud forest region, Hydrol. Earth Syst. Sci., 17(9), 3543–3560, doi:10.5194/hess-17-3543-2013, 2013.
- Muñoz-Villers, L. E., Geissert, D. R., Holwerda, F. and McDonnell, J. J.: Factors influencing stream baseflow transit times in tropical montane watersheds, Hydrol. Earth Syst. Sci., 20(4), 1621–1635, doi:10.5194/hess-20-1621-2016, 2016.
- 30 Mwangi, H. M., Julich, S., Patil, S. D., McDonald, M. A. and Feger, K.-H.: Relative contribution of land use change and climate variability on discharge of upper Mara River, Kenya, J. Hydrol.: Regional Studies, 5, 244–260, doi:10.1016/j.ejrh.2015.12.059, 2016.
- Nash, J. E. and Sutcliffe, J. V.: River flow forecasting through conceptual models part I — A discussion of principles, Journal of Hydrology, 10, 282–290, doi:10.1016/0022-1694(70)90255-6, 1970.

- Neill, C., Chaves, J. E., Biggs, T., Deegan, L. A., Elsenbeer, H., Figueiredo, R. O., Germer, S., Johnson, M. S., Lehmann, J., Markewitz, D. and Piccolo, M. C.: Runoff sources and land cover change in the Amazon: An end-member mixing analysis from small watersheds, *Biogeochemistry*, 105(1–3), 7–18, doi:10.1007/s10533-011-9597-8, 2011.
- 5 Otte, I., Detsch, F., Gütlein, A., Scholl, M., Kiese, R., Appelhans, T. and Naus, T.: Seasonality of stable isotope composition of atmospheric water input at the southern slopes of Mt. Kilimanjaro, Tanzania, *Hydrol. Process.*, 31(22), 3932–3947, doi:10.1002/hyp.11311, 2017.
- Owuor, S. O., Butterbach-Bahl, K., Guzha, A. C., Jacobs, S., Merbold, L., Rufino, M. C., Pelster, D., Díaz-Pinés, E. and Breuer, L.: Conversion of natural forest results in a significant degradation of soil hydraulic properties in the highlands of Kenya, *Soil Till. Res.*, 176, 36–44, doi:https://doi.org/10.1016/j.still.2017.10.003, 2018.
- 10 Prechsl, U. E., Gilgen, A. K., Kahmen, A. and Buchmann, N.: Reliability and quality of water isotope data collected with a low-budget rain collector, *Rapid Commun. Mass Sp.*, 28, 879–885, doi:10.1002/rcm.6852, 2014.
- Roa-García, M. C. and Weiler, M.: Integrated response and transit time distributions of watersheds by combining hydrograph separation and long-term transit time modeling, *Hydrol. Earth Syst. Sci.*, 14(8), 1537–1549, doi:10.5194/hess-14-1537-2010, 2010.
- 15 Rodgers, P., Soulsby, C., Waldron, S. and Tetzlaff, D.: Using stable isotope tracers to assess hydrological flow paths, residence times and landscape influences in a nested mesoscale catchment, *Hydrol. Earth Syst. Sci.*, 9(3), 139–155, doi:10.5194/hess-9-139-2005, 2005.
- Saunders, T. J., McClain, M. E. and Llerena, C. A.: The biogeochemistry of dissolved nitrogen, phosphorus, and organic carbon along terrestrial-aquatic flowpaths of a montane headwater catchment in the Peruvian Amazon, *Hydrol. Process.*, 20(12), 2549–2562, doi:10.1002/hyp.6215, 2006.
- 20 Soderberg, K., Good, S. P., O'Connor, M., Wang, L., Ryan, K. and Caylor, K. K.: Using atmospheric trajectories to model the isotopic composition of rainfall in central Kenya, *Ecosphere*, 4(3), 33, 2013.
- Soulsby, C., Rodgers, P., Smart, R., Dawson, J. and Dunn, S.: A tracer-based assessment of hydrological pathways at different spatial scales in a mesoscale Scottish catchment, *Hydrol. Process.*, 17(4), 759–777, doi:10.1002/hyp.1163, 2003.
- 25 Soulsby, C., Tetzlaff, D., Rodgers, P., Dunn, S. and Waldron, S.: Runoff processes, stream water residence times and controlling landscape characteristics in a mesoscale catchment: An initial evaluation, *J. Hydrol.*, 325(1–4), 197–221, doi:10.1016/j.jhydrol.2005.10.024, 2006.
- Stewart, M. K. and Morgenstern, U.: Importance of tritium-based transit times in hydrological systems, *Wiley Interdisciplinary Reviews: Water*, 3(2), 145–154, doi:10.1002/wat2.1134, 2016.
- 30 Stewart, M. K., Morgenstern, U. and McDonnell, J. J.: Truncation of stream residence time: how the use of stable isotopes has skewed our concept of streamwater age and origin, *Hydrological Processes*, 24(12), 1646–1659, doi:10.1002/hyp.7576, 2010.
- Timbe, E., Windhorst, D., Crespo, P., Frede, H.-G., Feyen, J. and Breuer, L.: Understanding uncertainties when inferring mean transit times of water through tracer-based lumped-parameter models in Andean tropical montane cloud forest catchments, *Hydrol. Earth Syst. Sci.*, 18, 1503–1523, doi:https://doi.org/10.5194/hess-18-1503-2014, 2014.
- 35 Windhorst, D., Waltz, T., Timbe, E., Frede, H.-G. and Breuer, L.: Impact of elevation and weather patterns on the isotopic composition of precipitation in a tropical montane rainforest, *Hydrol. Earth Syst. Sci.*, 17(1), 409–419, doi:10.5194/hess-17-409-2013, 2013.

Windhorst, D., Kraft, P., Timbe, E., Frede, H.-G. and Breuer, L.: Stable water isotope tracing through hydrological models for disentangling runoff generation processes at the hillslope scale, Hydrol. Earth Syst. Sci., 18(10), 4113–4127, doi:10.5194/hess-18-4113-2014, 2014.

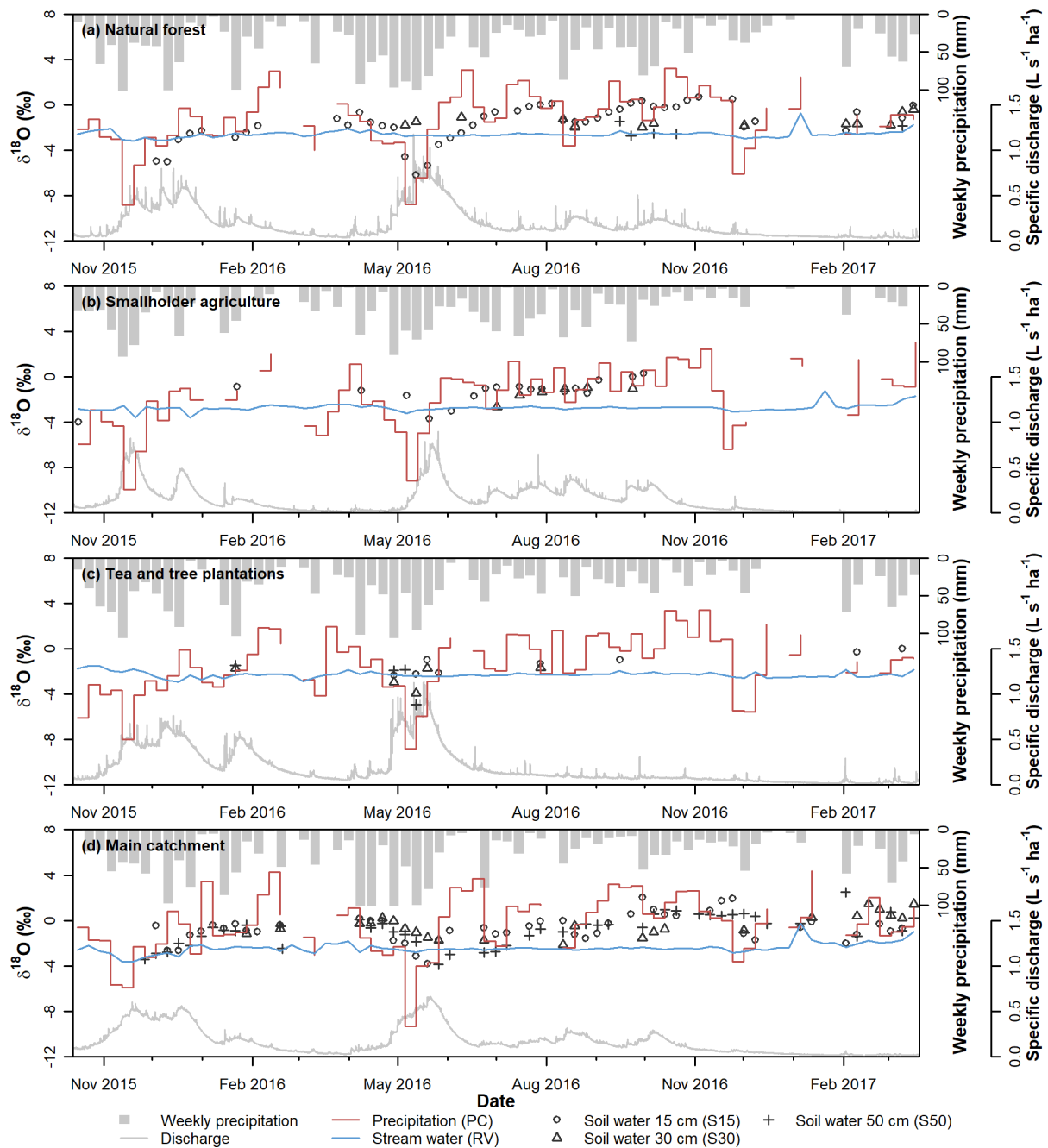


**Figure 1.** Map of the study area in the South-West Mau, Kenya, showing the three sub-catchments with different land use types within the main catchment, location of rain gauges, and sampling sites for stream water and selected end members. Sampling sites with overlapping symbols are indicated with labels instead of symbols. Numbers in brackets in the legend indicate the number of sampling sites per end member.

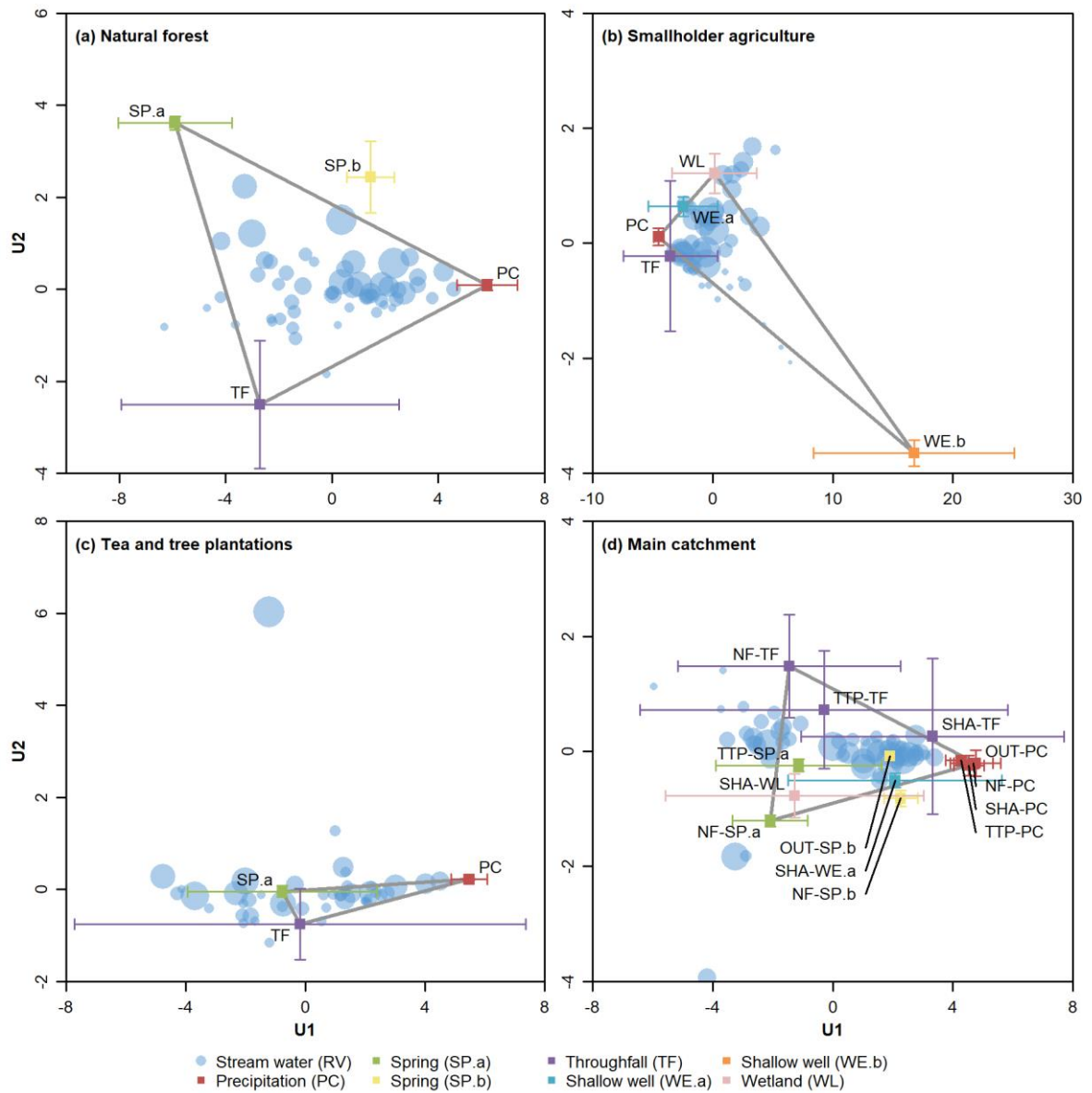


**Figure 2.** Relationship between  $\delta^{18}\text{O}$  and  $\delta^2\text{H}$  values in precipitation (PC), stream water (RV) and mobile soil water at 15, 30 and 50 cm depth (S15, S30 and S50, respectively) for the (a) natural forest (NF), (b) smallholder agriculture (SHA), and (c) tea and tree plantations (TTP) sub-catchments, and (d) the main catchment (OUT) between 15 October 2015 and 17 March 2017 in the South-West Mau, Kenya. The global meteoric water line (GMWL) and local meteoric water line (LMWL) are indicated as dashed and solid lines, respectively.





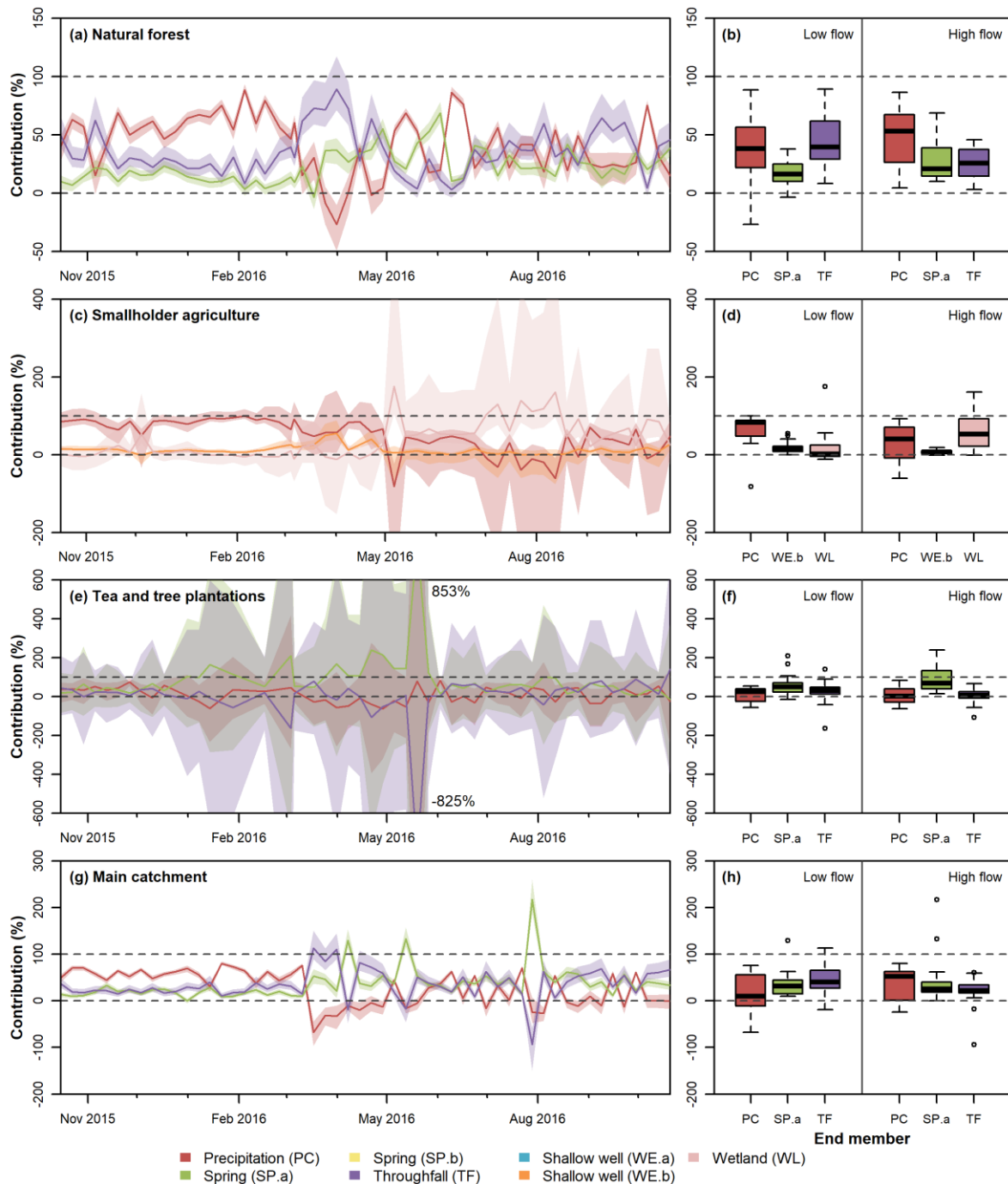
**Figure 3.** Time series of  $\delta^{18}\text{O}$  values in precipitation (PC), stream water (RV) and mobile soil water at 15, 30 and 50 cm depth (S15, S30 and S50, respectively), specific discharge and weekly precipitation in the (a) natural forest (NF), (b) smallholder agriculture (SHA), and (c) tea and tree plantations (TTP) sub-catchments, and (d) the main catchment (OUT) between 15 October 2015 and 17 March 2017 in the South-West Mau, Kenya.



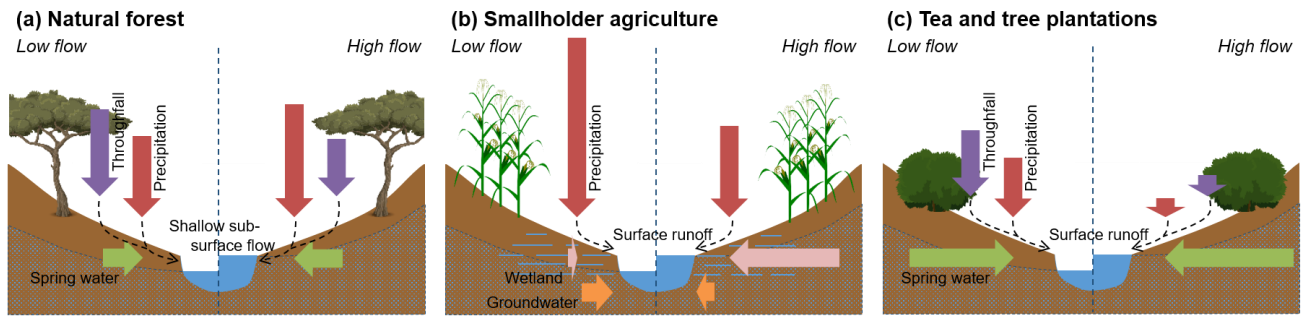
**Figure 4.** Projection of end members in the 2-dimensional (U1 and U2) mixing space of stream water samples of the (a) natural forest (NF), (b) smallholder agriculture (SHA), and (c) tea and tree plantation (TTP) sub-catchments and (d) the main catchment (OUT) between 15 October 2015 and 21 October 2016 in the South-West Mau, Kenya. The size of the symbol for stream water represents the relative discharge at the time of sampling (larger symbol means higher discharge).

5





5 **Figure 5.** Contribution of selected end members to streamflow for the (a–b) natural forest (NF), (c–d) smallholder agriculture (SHA) and (e–f) tea and tea plantation (TTP) sub-catchments and (g–h) the main catchment (OUT) between 15 October 2015 and 21 October 2016 in the South-West Mau, Kenya. The grey dashed lines indicate the realistic range of end member contributions. Shaded areas represent the 5<sup>th</sup> to 95<sup>th</sup> percentile of 10 000 Monte Carlo simulations of the EMMA, while the line represents the median end member contribution. The thick line in the box plots represents the median end member contribution, separated by flow condition. The box shows the interquartile range and the whiskers the minimum and maximum values within 1.5 times the interquartile range. Outliers are indicated with open circles.



**Figure 6.** Conceptual model of dominant water sources and flow paths in different land use types during low ( $\leq$  mean-median discharge) and high flows ( $>$  mean-median discharge) in a tropical montane area: (a) natural forest (NF), (b) smallholder agriculture (SHA) and (c) commercial tea and tree plantations (TTP), based on results of end member mixing and mean transit time analysis in the South-West Mau, Kenya. Arrow length represents the median contribution (%) of each end member. Black dashed arrows show the most likely pathway for precipitation and throughfall to reach the stream.

**Table 1.** Physical and hydroclimatic characteristics of the study catchments in the South-West Mau, Kenya. Precipitation, specific discharge and runoff ratio are presented for the study period of 15 October 2015 to 14 October 2016.

Catchment	Area	Elevation	Slope <sup>a</sup>	Precipitation	Specific discharge	RR <sup>b</sup>
	<i>km<sup>2</sup></i>	<i>m</i>	<i>%</i>	<i>mm yr<sup>-1</sup></i>	<i>mm yr<sup>-1</sup></i>	-
Natural forest (NF)	35.9	1 954–2 385	15.5±8.0	2 299	744	0.323
Smallholder agriculture (SHA)	27.2	2 380–2 691	11.5±6.5	1 738	607	0.349
Tea and tree plantations (TTP)	33.3	1 786–2 141	12.2±7.3	2 045	791	0.387
Main catchment (OUT)	1021.3	1 715–2 932	12.8±7.7	2 019	701	0.347

<sup>a</sup> Mean±SD; <sup>b</sup> Runoff ratio, i.e. ratio of specific discharge to precipitation

**Table 2.** The lumped parameter models used for the estimation of mean transit times in the South-West Mau, Kenya.

Model	Transit time distribution $g(\tau)$	Parameter range for Monte Carlo simulations <sup>a</sup>
Gamma model (GM)	$\frac{\tau^{\alpha-1}}{\beta^\alpha \Gamma(\alpha)} \exp\left(-\frac{\tau}{\beta}\right)$	$\alpha$ [0.0001–10] $\tau$ [1–400] $\beta = \alpha/\tau$
Exponential piston flow model (EPM)	$\frac{\eta}{\tau} \exp\left(-\frac{\eta t}{\tau} + \eta - 1\right)$ for $t \geq \tau(1 - \eta^{-1})$ 0 for $t < \tau(1 - \eta^{-1})$	$\tau$ [1–400] $\eta$ [0.1–4]

<sup>a</sup>  $\tau$  = tracer's mean transit time;  $\alpha$  and  $\beta$  = shape parameters;  $\eta$  ratio of the total volume to the volume of water with exponential distribution of transit times. Units for parameters and their respective ranges are a-dimensional except for  $\tau$ , which has units of weeks.

**Table 3.** Number of samples (*n*), median and range (in parentheses) solute concentrations for all sampled end members and stream water collected between 15 October 2015 and 21 October 2016 in the South-West Mau, Kenya. Different letters after median values indicated significant differences in solute concentrations between sources.

Source <sup>a</sup>	<i>n</i>	Li $\mu\text{g L}^{-1}$	Rb $\mu\text{g L}^{-1}$	Sr $\mu\text{g L}^{-1}$	Ba $\mu\text{g L}^{-1}$	Na $\text{mg L}^{-1}$	Mg $\text{mg L}^{-1}$	K $\text{mg L}^{-1}$
<i>Natural forest (NF)</i>								
RV	55	1.91 <sup>a</sup> (0.49–4.83)	6.34 <sup>a</sup> (1.91–16.84)	10.15 <sup>a</sup> (3.17–18.70)	5.35 <sup>a</sup> (1.70–11.68)	1.78 <sup>ac</sup> (0.63–3.91)	0.25 <sup>a</sup> (0.07–0.55)	1.66 <sup>a</sup> (0.56–3.71)
PC	11	0.19 <sup>b</sup> (0.01–0.41)	0.52 <sup>b</sup> (0.13–1.94)	1.20 <sup>b</sup> (0.39–11.12)	0.63 <sup>b</sup> (0.21–2.99)	0.30 <sup>b</sup> (0.18–0.87)	0.02 <sup>b</sup> (0.01–0.14)	0.24 <sup>b</sup> (0.05–0.87)
SP.a	2	4.95 <sup>a</sup> (4.85–5.05)	12.75 <sup>ac</sup> (10.16–15.34)	13.58 <sup>a</sup> (12.96–14.20)	20.45 <sup>a</sup> (17.82–23.07)	3.16 <sup>a</sup> (2.88–3.44)	0.33 <sup>a</sup> (0.28–0.38)	2.79 <sup>ac</sup> (2.22–3.36)
SP.b	3	2.98 <sup>a</sup> (1.32–3.49)	3.16 <sup>b</sup> (2.73–3.60)	6.80 <sup>ab</sup> (6.29–7.26)	8.73 <sup>a</sup> (8.32–10.82)	1.11 <sup>bc</sup> (0.86–1.28)	0.17 <sup>ab</sup> (0.17–0.18)	0.63 <sup>b</sup> (0.53–0.78)
TF	11	0.27 <sup>b</sup> (0.03–0.65)	23.80 <sup>c</sup> (8.88–56.78)	6.37 <sup>ab</sup> (2.94–12.10)	3.26 <sup>c</sup> (1.99–8.43)	0.33 <sup>b</sup> (0.22–1.78)	0.34 <sup>a</sup> (0.08–0.65)	6.14 <sup>c</sup> (2.02–11.27)
<i>Smallholder agriculture (SHA)</i>								
RV	55	1.63 <sup>a</sup> (0.37–3.79)	5.85 <sup>a</sup> (2.01–16.54)	33.33 <sup>a</sup> (8.68–107.27)	19.84 <sup>a</sup> (4.38–48.63)	2.13 <sup>a</sup> (0.79–9.40)	0.40 <sup>a</sup> (0.17–1.24)	1.62 <sup>ac</sup> (0.57–4.54)
PC	9	0.24 <sup>b</sup> (0.01–0.92)	0.70 <sup>b</sup> (0.38–1.18)	2.61 <sup>b</sup> (0.34–5.37)	1.17 <sup>b</sup> (0.34–8.11)	0.37 <sup>b</sup> (0.22–0.78)	0.02 <sup>b</sup> (0.01–0.10)	0.23 <sup>b</sup> (0.20–0.52)
TF	9	0.31 <sup>b</sup> (0.01–0.53)	2.63 <sup>a</sup> (0.85–19.75)	4.14 <sup>bc</sup> (0.95–13.89)	1.51 <sup>bc</sup> (0.56–8.35)	0.59 <sup>bc</sup> (0.14–1.42)	0.22 <sup>ab</sup> (0.05–0.92)	1.01 <sup>ac</sup> (0.47–16.32)
WE.a	18	1.32 <sup>a</sup> (0.18–4.41)	4.33 <sup>a</sup> (1.00–20.87)	10.69 <sup>cd</sup> (2.06–40.05)	8.47 <sup>cd</sup> (1.36–26.92)	1.45 <sup>ab</sup> (0.16–4.80)	0.18 <sup>b</sup> (0.03–1.18)	1.01 <sup>c</sup> (0.18–6.01)
WE.b	2	4.62 <sup>a</sup> (2.6–6.63)	34.65 <sup>a</sup> (24.26–45.04)	113.54 <sup>a</sup> (88.93–138.15)	155.32 <sup>a</sup> (123.88–186.76)	3.29 <sup>ac</sup> (2.02–4.57)	2.34 <sup>a</sup> (1.72–2.97)	9.99 <sup>a</sup> (7.23–12.74)
WL	4	2.49 <sup>a</sup> (0.6–4.08)	7.26 <sup>a</sup> (3.23–21.60)	22.30 <sup>ad</sup> (8.20–50.71)	18.53 <sup>ad</sup> (5.13–32.32)	3.45 <sup>a</sup> (1.29–4.18)	0.42 <sup>a</sup> (0.19–0.71)	2.06 <sup>ac</sup> (1.03–4.96)
<i>Tea and tree plantations (TTP)</i>								
RV	55	2.32 <sup>a</sup> (0.75–5.45)	7.69 <sup>a</sup> (2.86–17.81)	13.11 <sup>a</sup> (3.81–30.55)	9.18 <sup>a</sup> (3.01–86.18)	2.77 <sup>a</sup> (1.01–4.95)	0.34 <sup>a</sup> (0.10–0.60)	1.88 <sup>a</sup> (0.58–3.34)
PC	11	0.22 <sup>b</sup> (0.00–0.51)	0.91 <sup>b</sup> (0.16–1.66)	3.44 <sup>b</sup> (0.13–7.60)	1.42 <sup>b</sup> (0.12–2.82)	0.49 <sup>b</sup> (0.17–0.61)	0.06 <sup>b</sup> (0.01–0.12)	0.37 <sup>b</sup> (0.06–0.50)
SP.a	5	2.67 <sup>a</sup> (1.63–4.66)	9.72 <sup>a</sup> (3.00–12.55)	14.56 <sup>a</sup> (5.17–21.26)	14.82 <sup>a</sup> (4.22–23.57)	2.61 <sup>a</sup> (0.95–4.31)	0.52 <sup>a</sup> (0.16–0.67)	2.43 <sup>a</sup> (0.79–3.43)
TF	11	0.62 <sup>b</sup> (0.05–3.68)	15.59 <sup>a</sup> (2.93–69.08)	10.06 <sup>a</sup> (1.4–77.26)	6.08 <sup>b</sup> (0.42–19.42)	0.71 <sup>b</sup> (0.07–1.26)	0.33 <sup>a</sup> (0.04–0.69)	4.23 <sup>a</sup> (0.70–14.56)
<i>Main catchment (OUT)</i>								
RV	54	2.17 <sup>a</sup> (0.06–5.59)	6.81 <sup>a</sup> (2.59–19.84)	12.46 <sup>a</sup> (2.39–34.63)	8.11 <sup>a</sup> (1.59–45.30)	2.13 <sup>a</sup> (0.21–5.64)	0.30 <sup>a</sup> (0.08–0.79)	1.53 <sup>a</sup> (0.62–3.93)
PC	9	0.28 <sup>b</sup> (0.01–0.43)	0.34 <sup>b</sup> (0.09–2.10)	1.67 <sup>b</sup> (0.27–10.93)	0.32 <sup>b</sup> (0.22–2.48)	0.20 <sup>b</sup> (0.08–1.08)	0.02 <sup>b</sup> (0.01–0.29)	0.14 <sup>a</sup> (0.03–0.92)
SP.b	1	2.42	5.06	11.36	4.59	1.42	0.16	0.99

<sup>a</sup> RV = stream water, PC = precipitation, SP.a = SP.b = spring, TF = throughfall, WE.a = WE.b = shallow well, WL = wetland

**Table 4.** Number of samples (*n*), coordinates, elevation, and summary statistics of  $\delta^{18}\text{O}$  values of samples collected at all sampling sites between 15 October 2015 and 21 October 2016 in the South-West Mau, Kenya.

Source <sup>a</sup>	<i>n</i>	Coordinates	Elevation	Mean	Standard deviation	Minimum	Maximum
			<i>m</i>	‰	‰	‰	‰
<i>Natural forest (NF)</i>							
RV	75	35° 18' 32.616" E, 0° 27' 48.570" S	1 969	-2.58	0.32	-3.15	-0.73
PC	68	35° 18' 32.232" E, 0° 27' 47.862" S	1 964	-1.20	2.49	-8.80	3.20
S15	47	35° 18' 35.508" E, 0° 27' 46.938" S	1 971	-1.62	1.64	-6.18	0.68
S30	13	35° 18' 35.508" E, 0° 27' 46.938" S	1 971	-1.46	0.49	-1.94	-0.38
S50	6	35° 18' 35.508" E, 0° 27' 46.938" S	1 971	-2.20	0.49	-2.72	-1.44
SP.a	2	35° 19' 53" E, 0° 26' 5" S	2 081	-2.31	0.02	-2.32	-2.29
SP.b	3	35° 19' 47.292" E, 0° 26' 21.246" S	2 070	-2.67	0.04	-2.71	-2.63
TF	66	35° 18' 35.268" E, 0° 27' 46.842" S	1 965	-0.83	2.32	-8.37	3.22
<i>Smallholder agriculture (SHA)</i>							
RV	75	35° 28' 31.452" E, 0° 24' 3.930" S	2 386	-2.72	0.31	-3.62	-1.21
PC	65	35° 28' 27.324" E, 0° 24' 2.322" S	2 401	-1.62	2.68	-9.93	3.02
S15	18	35° 28' 31.812" E, 0° 24' 0.504" S	2 395	-1.39	1.14	-4.02	0.27
S30	6	35° 28' 31.812" E, 0° 24' 0.504" S	2 395	-1.43	0.65	-2.65	-0.94
TF	64	35° 28' 28.002" E, 0° 24' 2.550" S	2 393	-1.52	2.63	-9.27	2.86
WE.a	18	35° 29' 28.590"-35° 32' 3.468" E, 0° 18' 3.918"-0° 23' 47.700" S	2 492-2 612	-2.64	0.17	-2.89	-2.29
WE.b	2	35° 32' 29.316" E, 0° 18' 3.450" S	2 655	-2.52	0.16	-2.64	-2.40
WL	4	35° 32' 22.554" E, 0° 17' 30.186" S	2 614	-3.06	0.27	-3.40	-2.77
<i>Tea and tree plantations (TTP)</i>							
RV	75	35° 13' 16.086" E, 0° 28' 35.826" S	1 788	-2.29	0.26	-2.92	-1.49
PC	68	35° 18' 1.266" E, 0° 26' 9.348" S	2 106	-1.29	2.54	-8.80	3.40
S15	8	35° 18' 1.206" E, 0° 26' 9.144" S	2 106	-1.29	0.90	-2.34	0.00
S30	5	35° 18' 1.206" E, 0° 26' 9.144" S	2 106	-2.40	1.00	-3.90	-1.67
S50	4	35° 18' 1.206" E, 0° 26' 9.144" S	2 106	-2.54	1.61	-4.93	-1.46
SP.a	5	35° 14' 17.592"-35° 18' 36.252" E, 0° 26' 34.044"-0° 28' 1.698" S	1 862-2 079	-2.51	0.15	-2.63	-2.26
TF	65	35° 18' 1.110" E, 0° 26' 9.288" S	2 106	-1.29	2.49	-8.50	3.23
<i>Main catchment (OUT)</i>							
RV	75	35° 10' 53.046" E, 0° 28' 59.232" S	1 717	-2.42	0.47	-3.62	-0.28
PC	69	35° 10' 53.904" E, 0° 28' 58.824" S	1 718	-0.34	2.53	-9.29	4.37
S15	47	35° 10' 53.712" E, 0° 29' 0.720" S	1 721	-0.68	1.20	-3.83	2.03
S30	24	35° 10' 53.712" E, 0° 29' 0.720" S	1 721	-0.43	0.99	-2.12	1.47
S50	46	35° 10' 53.712" E, 0° 29' 0.720" S	1 721	-0.84	1.35	-3.87	2.50
SP.b	1	35° 21' 50.682" E, 0° 29' 5.208" S	2 159	-2.61	n.a.	-2.61	-2.61

<sup>a</sup> RV = stream water, PC = precipitation, SP.a = SP.b = spring, TF = throughfall, WE.a = WE.b = shallow well, WL = wetland, S15 = S30 = S50 = mobile soil water at 15, 30 and 50 cm depth, respectively.

**Table 5.** Main statistical parameters of observed and modelled  $\delta^{18}\text{O}$  for stream water in the three sub-catchments and the main catchments for the gamma model (GM) and exponential piston flow model (EPM). Uncertainty bounds of the modelled parameters ( $\tau$  and  $\alpha$  or  $\eta$ ), in parentheses, were calculated through generalized likelihood uncertainty estimation (GLUE).

Site <sup>a</sup>	Area	Elevation	Observed $\delta^{18}\text{O}$		Modelled $\delta^{18}\text{O}$						
			Mean	SD <sup>b</sup>	Mean	SD <sup>b</sup>	NSE <sup>c</sup>	RMSE <sup>d</sup>	Bias	MTT <sup>e</sup>	$\alpha/\eta^f$
	km <sup>2</sup>	m	‰	‰	‰	‰	-	‰	‰	years	-
<i>Gamma model (GM)</i>											
NF-RV	35.9	1 969	-2.58	0.32	-2.56	0.13	0.15	0.30	0.021	4.0 (3.3–4.6)	0.65 (0.63–0.71)
SHA-RV	27.2	2 386	-2.72	0.31	-2.69	0.16	0.22	0.27	0.029	3.8 (3.1–4.5)	0.61 (0.57–0.66)
TTP-RV	33.3	1 788	-2.29	0.26	-2.29	0.06	0.05	0.25	0.000	<del>n.a. 3.3 (2.8–4.3)</del>	<del>n.a. 1.09 (0.99–1.17)</del>
OUT-RV	1021.3	1 717	-2.42	0.47	-2.36	0.26	0.33	0.38	0.061	2.5 (1.8–3.4)	0.48 (0.43–0.54)
<i>Exponential piston flow model (EPM)</i>											
NF-RV	35.9	1 969	-2.58	0.32	-2.58	0.10	0.09	0.31	0.000	<del>n.a. 2.4 (2.1–2.9)</del>	<del>n.a. 1.000 (0.994–1.003)</del>
SHA-RV	27.2	2 386	-2.72	0.31	-2.72	0.11	0.12	0.29	0.000	<del>n.a. 2.2 (1.9–2.6)</del>	<del>n.a. 1.001 (0.994–1.004)</del>
TTP-RV	33.3	1 788	-2.29	0.26	-2.29	0.07	0.07	0.25	0.000	<del>n.a. 3.5 (3.1–4.1)</del>	<del>n.a. 1.011 (1.009–1.018)</del>
OUT-RV	1 021.3	1 717	-2.42	0.47	-2.42	0.20	0.14	0.43	0.001	<del>n.a. 1.2 (1.0–1.4)</del>	<del>n.a. 1.001 (0.998–1.007)</del>

<sup>a</sup> NF = natural forest, SHA = smallholder agriculture, TTP = tea and tree plantations, OUT = main catchment, RV = stream water; <sup>b</sup> standard deviation; <sup>c</sup> Nash-Sutcliffe efficiency of objective function; <sup>d</sup> root mean square error; <sup>e</sup> estimated mean transit time (in years); <sup>f</sup> model parameters for GM ( $\alpha$ ) and EPM ( $\eta$ ); n.a. = modelled parameters and corresponding uncertainty are not presented for models with a low NSE.

**Table 6.** Main statistical parameters of observed and modelled  $\delta^{18}\text{O}$  for mobile soil water at 15 cm depth in the natural forest sub-catchment and at 15 and 50 cm depth in the main catchment for the gamma model (GM) and exponential piston flow model (EPM). Uncertainty bounds of the modelled parameters ( $\tau$  and  $\alpha$  or  $\eta$ ), in parentheses, were calculated through generalized likelihood uncertainty estimation (GLUE).

Site <sup>a</sup>	<i>n</i> <sup>b</sup>	Elevation	Observed $\delta^{18}\text{O}$		Modelled $\delta^{18}\text{O}$						
			Mean	SD <sup>c</sup>	Mean	SD <sup>c</sup>	NSE <sup>d</sup>	RMSE <sup>e</sup>	Bias	MTT <sup>f</sup>	$\alpha/\eta$ <sup>g</sup>
-	<i>m</i>		‰	‰	‰	‰	-	‰	‰	weeks	-
<i>Gamma model (GM)</i>											
NF-S15	47	1 971	-1.62	1.64	-1.74	1.48	0.79	0.75	-0.12	3.2 (2.8–4.1)	1.5 (0.9–2.2)
OUT-S15	47	1 721	-0.68	1.20	-0.71	0.99	0.50	0.84	-0.03	7.9 (6.1–11.3)	0.9 (0.6–1.2)
OUT-S50	46	1 721	-0.84	1.35	-0.92	0.93	0.47	0.97	-0.08	10.4 (8.8–12.6)	1.4 (1.1–2.0)
<i>Exponential piston flow model (EPM)</i>											
NF-S15	47	1 971	-1.62	1.64	-1.67	1.38	0.78	0.77	-0.05	3.3 (2.6–4.4)	1.0 (0.9–1.1)
OUT-S15	47	1 721	-0.68	1.20	-0.58	0.94	0.52	0.82	0.11	4.5 (3.2–6.7)	0.8 (0.7–1.1)
OUT-S50	46	1 721	-0.84	1.35	-0.90	0.85	0.46	0.99	-0.06	10.8 (8.0–13.9)	1.0 (0.9–1.3)

<sup>a</sup> NF = natural forest, OUT = main catchment, S15 = mobile soil water 15 cm depth, S50 = mobile soil water 50 cm depth; <sup>f</sup> number of samples; <sup>c</sup> standard deviation; <sup>d</sup> Nash-Sutcliffe efficiency of objective function; <sup>e</sup> root mean square error; <sup>f</sup> predicted mean transit time (in weeks); <sup>g</sup> model parameters for GM ( $\alpha$ ) and EPM ( $\eta$ ).