

Point-by-point response to the referee's review and marked-up manuscript version

The page and line numbers indicated in the replies are referred to the marked-up manuscript version.

Dear Referee,

Thank you very much for taking the time to read the revised version of the manuscript and commenting on parts of it. Below you will find the answers to the comments you made.

1. The abstract is difficult to read. The authors also mentioned the aim of the paper as well as the objective. They can combine these two.

The abstract is divided into four paragraphs:

- Brief introduction explaining why it is important to analyse drought modelling
- The aim of the study. The phrase about the objectives has been removed to make clearer the abstract. This paragraph also informs that the study has been carried out by means of standardized indices.
- RCMs analysed and references used.
- Main results.

2. P2L2: Although the paper does not discuss the socioeconomic drought, it is still worth to mention in this paragraph.

The phrase "The latter case, corresponds to socioeconomic drought and is out of the scope of this paper" has been included in the paragraph (P1L23-P2L1).

3. P2L22: I do not fully agree if RCM is frequently used at the catchment scale, except for big catchment.

The phrase has been rewritten as "Such models are suitable for drought analyses performed at the scale of large river basins" (P2L20-21).

4. P3L8-29: This paragraph can be shortened.

The paragraph has been shortened (P3L6-24).

5. P3L30-31: I suggest to write a better opening sentence in line with the previous one.

The opening sentence has been rewritten as "Taking into account the different types of drought analyses performed with RCMs and the need to better understand droughts at the current time, but also in the future, the regional modelling tools must be evaluated" (P3L25-26).

6. P4L1-2: Since this paper has 2 objectives, so it should be written: These are....

The text "This is a key issue for the understanding ..." refers to the second objective of the study. To avoid a possible misunderstanding, we propose to replace "This is a..." by "The latter objective..." (P3L31).

7. P4L15-17: This sentence is unclear.

The sentence has been removed for the sake of clarity.

8. P5L4: Remove the word "analyzed" and add "in the study" at the end of the sentence.

The text has been rewritten as "This section describes the RCMs (Sect. 3.1) and the reference products (Sec. 3.2) used in the study" (P4L30).

9. P6L15: ERA interim.

We believe that the comment refers to P6L14. In our opinion "ERA" should not be replaced by "ERA-Interim" because previously in Sec. 3.1, where ERA-Interim is described, it is said that "Hereafter, it will be referred to as ERA" (P5L30).

10. P7L25: More than 550 "land" cover types.

The word "land" has been added (P7L19).

11. P8L26-27: ...and the third one or final by 8 stations.

The text has been rewritten as "... and the third one by 8 of the 13 stations, which is the final selection" (P8L22-23).

12. P9L13-14: Variability does not mean drought.

In our opinion, the text does not say that variability is drought, but a key aspect of drought analysis, as said in P9L10. Further on in the text (Sec. 4.1) we explain that the resulting values of the standardized indices calculation correspond to the number of standard deviations by which the anomaly deviates from the mean (P10L3-4).

13. P10L12: I am wondering why meteorological drought is represented by SPI-12. There must be a clarification from the authors about the use of SPI-12.

We have extended the text to include the fact that it is a suitable scale considering hydrological resource management (P10L12).

14. P10: In the drought index calculation section, there is no explanation about the SRI, SSMI, and SSI accumulation period. Later I know that it is 1 month.

We propose to include this information in Sec. 4.1 as "On the other hand, the analysis of the RCMs' soil moisture and hydrological drought representation was performed through the calculation of Root Mean Square Difference (RMSD) and the Pearson correlation coefficient (r) at a 95% significance level of the standardized indices computed using an accumulation period of 1 month" (P10L16-17).

15. P11L2: Here you mention SSI-1. You need to mention SRI and SSMI as well.

The text has been modified to include SRI (P11L2). There is no need to include SSMI because it is already mentioned and this paragraph is about the hydrological drought.

16. P11L13: I do not agree that meteorological drought occurs due to an absence of precipitation. Less precipitation can cause drought.

The text has been rewritten as "In this section, we will focus on precipitation because its decrease or absence are the main cause of meteorological drought" (P11L13).

17. P12: Figure 2, from 1989 to 2008. Also for all figures, I prefer the alphabets a, b, c, d, etc are placed in the caption.

The text from the caption has been changed to "from 1989 to 2008" (P12). The captions have been rewritten to place the alphabets a, b, c, d, etc. (P12, P14, and P16).

18. P14: Figure 3. The use of word aggregated is not well fit. Aggregated can have meaning accumulated. It is averaged, right?

The word "aggregated" has been replaced by "averaged" (P14).

19. P16: Figure 5. Actually, the white color in this figure is the area that is not studied.

This is true for Portugal, which is not studied and appears in white. However, some regions across northeastern Spain appear in white on the map showing the correlation between SLR and ERA. Since these regions belong to the study area but are not within the colour scale range, they are represented in white. This has been indicated in the captions of Figs. 5 (P16) and 6 (P18).

20. P16L9: Reference for SPI classification is needed.

The reference is provided in Sec. 4.1 "... according to the SPI drought classification scale (McKee et al., 1993)" (P10L19). In our opinion, it is not necessary to refer to it again. However, we can include it if the referee and editor deem it necessary.

21. P17: Need a color-coding explanation for Table 3 and 4, especially about the gradient colors from red to blue.

The text explaining the color-coding has also been included the caption of Tables 3 (P17), 4 (P19), and 5 (P20).

22. P17L10-12: Please provide the Figure number in the text, thus the reader can easily refer to what Figure. Example: For example, the RS4 and ISB maps show similar patterns (Figure 6a and 6e).

The figure panels have been referenced in the text (P17L10, P18L1,3,5).

23. P18L1: What do you mean with CL4 behavior is quite flat?

We mean that CL4's behaviour is quite constant and homogeneous across the peninsula. The word "flat" has been replaced by "homogeneous" (P18L3).

24. P19: Table 4 caption. Better use SMP instead of SIMPA model. Just to be consistent. I also suggest the author provide the average values of KGE for all station below the last row.

- "SIMPA" has been replaced by "SMP" (P19).
- The average KGE values have been included in Table 4 and referred to in the text (P19L6).

25. P20: For table 5 and 6, I suggest you writing the station names again and writing which column belong to i) and which column belong to ii).

Since the station names are not written in the manuscript, we believe that you propose to include the stations' basins and areas. This has been done. We are sorry but we do not understand the second part of the comment regarding the columns. If you could please explain it again to us, we will see to include the improvement proposed in the manuscript.

26. P21: In the discussion section, why the results are different, are poorly discussed. Example different in the model structures, different in the LSM scheme, or how ET was calculated in the models, or how many subsurface layers the models have, different spatial resolution, etc.

The study analyses how RCMs represent drought and its propagation. In Sec. 6 several issues which can explain the differences found are discussed. The paragraph about LSM (one of the issues treated) has been rewritten (P23L8-13).

27. P22L5: Be careful when you use term intensity for drought. Drought intensity is drought deficit volume/drought duration.

The word "intensity" has been replaced by "severity" in P1L1 and P21L26.

28. P24: Conclusion does not tell the reader about the results. For example which model performs better, how the meteorological drought propagates to hydrological drought, etc.

The model that performs better was explained in Sec. 6. This text has been moved to Sec. 7 and extended (P24L11-18).

We hope you will see a clear improvement in the revised version of the manuscript.

Yours sincerely,

Anaïs Barella-Ortiz

Relevant changes made in the manuscript

Most of the changes proposed by the referee have been included in the manuscript. The most relevant ones are:

- Figure and table captions: Color scales have been explained in the captions.
- Table 4: The average KGE has been included.
- Conclusions: The text has been extended to include the model that best performs in each drought type analysed and drought propagation.

Evaluation of drought representation and propagation in Regional Climate Model simulations across Spain

Anaïs Barella-Ortiz¹ and Pere Quintana-Seguí¹

¹Observatori de l'Ebre (Universitat Ramon Llull - CSIC), Roquetes (Spain)

Correspondence: : Anaïs Barella-Ortiz (abarella@obsebre.es)

Abstract. Drought is an important climatic risk that is expected to increase in frequency, duration, and **severity** as a result of a warmer climate. It is complex to model due to the interactions between atmospheric and continental processes. A better understanding of these processes and how the current modelling tools represent them and characterize drought is vital.

The aim of this study is to analyse how Regional Climate Models (RCMs) represent meteorological, soil moisture, and hydrological drought as well as propagation from precipitation anomalies to soil moisture and streamflow anomalies. The analysis was carried out by means of standardized indices calculated using variables directly related to each type of drought: precipitation (SPI), soil moisture (SSMI), runoff (SRI), and streamflow (SSI).

The RCMs evaluated are the CNRM-RCSM4, COSMO-CLM, and PROMES. All of the simulations were obtained from the Med-CORDEX database and were forced with ERA-Interim. The following datasets were used as references: SAFRAN (meteorological drought), offline land surface model simulations from the ISBA-3L and ORCHIDEE (soil moisture drought), a SIMPA hydrological model simulation and observed streamflow (hydrological drought).

The results show that RCMs improve meteorological drought representation. However, uncertainties are identified in their characterization of soil moisture and hydrological drought, as well as in drought propagation. These are mainly explained by the model structure. For instance, model structure affects the temporal scale at which precipitation variability propagates to soil moisture and streamflow.

Copyright statement. TEXT

1 Introduction

Impacts from recent climate-related extremes show that ecosystems and human systems are significantly vulnerable and exposed to current climate variability (IPCC, 2014). In addition, most of these impacts have been observed to increase in climate change scenarios. For instance, drought frequency has increased in Mediterranean regions during recent decades (Mariotti, 2010; Sousa et al., 2011; Hoerling et al., 2012).

Drought is a complex phenomenon with important impacts on the environment (Reichstein et al., 2013; Vicente-Serrano et al., 2013) as well as on society and the economy (FAO, 2009; Owens et al., 2003). **The latter case, corresponds to socioeconomic**

drought and is out of the scope of this paper. There are several types of drought (IPCC, 2007; Mishra and Singh, 2010; Van Loon, 2015) depending on which part of the system suffers from water deficit:

- Meteorological drought: corresponds to a period during which precipitation has been considerably lower than its average level.
 - 5 – Soil moisture drought (also known as agricultural drought): is due to a deficit of water in the soil's unsaturated zone, making it impossible to cover the crop's needs.
 - Hydrological drought: occurs when runoff, streamflow and water levels in rivers, lakes, and groundwater are low. A more precise definition refers to superficial and groundwater water availability decreases in managed systems, affecting water demand.
- 10 Since precipitation deficits propagate through the hydrological system (Wilhite, 2000; Van Loon et al., 2012b), drought types are interrelated. Soil moisture drought is slightly out of phase with meteorological drought in non-irrigated areas and depends on several factors, such as the soil type and capacity to retain water as well as actual evapotranspiration. This is also applicable to regions where irrigation is carried out under unusual circumstances, for example, to avoid crop loss. In irrigated areas, soil moisture drought is directly related to the availability of irrigation water and therefore depends on hydrological drought.
- 15 Hydrological drought is also affected by meteorological drought but generally at a larger temporal scale than soil moisture drought. Therefore, each system component is characterized by its own propagation dynamics and memory.

A better understanding of the different types of drought and their propagation processes is key to improving current and future drought representation and thus drought prediction and management tools. Regional Climate Models (RCMs) can help in this task. One of their greatest advantages is their adaptation to the regional scale (Feser et al., 2011). This allows us to use

20 regional observations and to increase the model's physical parametrization complexity. **Such models are suitable for drought analyses performed at the scale of large river basins.** Another important aspect of RCMs is that these models are used to develop regional climate change scenarios through downscaling processes (Jiménez et al., 2013). In addition, using high resolution permits RCMs to be used to perform studies of atmospheric phenomena at a small scale. However, drought is difficult to

25 model, since complex interactions between atmospheric and continental surface processes must be combined together with human action (Van Loon et al., 2012a). Furthermore, the relationships among drought types add complexity to such modelling.

Drought studies have gained interest in recent years due to increasing concern regarding i) complexity in hydrological resource management, ii) the escalation of the frequency, severity, and duration of extreme events, iii) the increase in both the vulnerability to such events and the probability of being affected by them, and iv) climate change (Andreadis and Lettenmaier, 2006; Mishra and Singh, 2010, 2011; López-Bustins et al., 2013; Jenkins and Warren, 2014). Drought studies are normally

30 performed using drought indices, among which the Palmer Drought Severity Index (PDSI) (Palmer, 1965) and the Standardized Precipitation Index (SPI) (McKee et al., 1993) are two of the most widely used. According to Farahmand and AghaKouchak (2015), standardized indices can be computed using other variables besides precipitation. For instance, Xu et al. (2018) used data from the Soil Moisture Active Passive (SMAP) satellite and the North American Land Data Assimilation System (NLDAS)

to compute a standardized soil moisture index for drought warning. Shukla and Wood et al. (2008) calculated a standardized runoff index using a simulation from the Variable Infiltration Capacity (VIC) model. They compared its behaviour to that of the SPI and concluded that a runoff-based index has the potential to complement other climate indices. Vicente-Serrano et al. (2012) analysed a method to compute a standardized streamflow index to compare streamflow hydrological conditions both spatially and temporally in a precise way.

Several studies analyse meteorological drought by means of RCMs. For instance, Maule et al. (2013) used the SPI and a version of the PDSI to analyse drought representation by 14 RCMs from the ENSEMBLES project (van der Linden and Mitchell, 2009) at a European scale. Blenkinshop and Fowler (2007a, b) analysed drought characteristics using RCMs from the PRUDENCE project (Christensen et al., 2007) across Britain and at a European scale by means of the Drought Severity Index (DSI). PaiMazumder et al. (2013) and Masud et al. (2017) analysed projected changes to drought aspects in Canadian prairies by means of RCMs. The first study used three severity drought indices, while the second one used the SPI and PDSI. Other studies employed RCMs to analyse drought trends (Wu et al., 2016) or to study the capacity of downscaled data to represent drought spells (Anagnostopoulou, 2017). RCMs are also used in soil moisture and hydrological drought analyses. However, there have been fewer studies about these types of drought. Vu et al. (2015) and Meresa et al. (2016) studied hydro-meteorological drought by computing precipitation and runoff standardized indices using simulations of the Weather Research and Forecasting (WRF) RCM driven by General Climate Models (GCMs). Wang et al. (2011) studied the impact of climate change on drought. They analysed drought characteristics and the propagation impacts on meteorological, soil moisture, and hydrological droughts in Illinois using GCM-RCM nested simulations. Soil moisture and hydrological drought are also analysed by setting a given accumulated period to compute the drought index. García-Valdecasas Ojeda et al. (2017) studied how the WRF model improved dry and wet period detection using the SPI and the Standardised Precipitation-Evapotranspiration Index (SPEI) computed at 3 and 12 month time scales to study episodes related to soil moisture and hydrological droughts. Vicente-Serrano (2006) used the SPI to analyse drought spatial patterns as a function of the time scales used in the index computation. For this, the SPI was computed at several time scales to detect soil moisture and hydrological droughts. Other studies analysing the effect of the accumulated period are Vicente-Serrano and López-Moreno (2005) and Edossa et al. (2009).

Taking into account the different types of drought analyses performed with RCMs and the need to better understand droughts at the current time, but also in the future, the regional modelling tools must be evaluated. The work presented here has two objectives:

- To analyse how RCMs characterise meteorological, soil moisture, and hydrological drought.
- To analyse how RCMs represent the propagation from a precipitation anomaly to a soil moisture and streamflow anomaly.

While the first objective aims towards contributing to drought representation analysis by RCMs, the second one assesses how these models simulate drought propagation. **The latter objective** is a key issue for the understanding of drought that has not been fully analysed from a RCM perspective. In this study, each type of drought is characterised using standardized indices that define drought according to the variability in a given variable: precipitation (meteorological drought), soil moisture (soil moisture drought), and streamflow and total runoff (hydrological drought). The work carried out analyses three RCMs: i) the “Centre

National de Recherche Météorologique” Regional Climate System Model (CNRM-RCSM4, Sevault et al. (2014); Nabat et al. (2014)), ii) the Consortium for Small-scale MOdelling (COSMO) model in CLimate Mode (COSMO-CLM, Rockel et al. (2008)), and iii) PROMES (Castro et al., 1993; Sánchez et al., 2004; Domínguez et al., 2010). The reference data used are i) the "Système d'Analyse Fournissant des Renseignements Atmosphériques à la Neige" (SAFRAN) atmospheric analysis (Quintana-Seguí, 2015), ii) LSM offline simulations from the 3-layer version of the "Interaction Sol-Biosphère-Atmosphère" (ISBA-3L) (Quintana-Seguí et al., 2019) and the Organising Carbon and Hydrology In Dynamic EcosystEms (ORCHIDEE) models, iii) a simulation from the "Sistema Integrado de Modelización Precipitación-Aportación" (SIMPA) hydrological model (Estrela and Quintas, 1996; Ruiz, 1999), and iv) observed streamflow.

2 Area and study period

5 **This study was carried out across mainland Spain, which is known to experience frequent droughts (Olcina, 2001). The time period has been limited to the availability of RCM simulations and observations: from 1989 to 2008 for the meteorological and soil moisture drought and from 1989 to 2005 for the hydrological drought.**

Precipitation across mainland Spain is complex (Serrano et al., 1999) and highly influenced by relief. The main climatic regimes are oceanic and Mediterranean. However, a semiarid climate or even a desert-like climate can be identified in the southeast (Aemet, 2011). In general, Spain is a semi-arid region and is not densely vegetated. As a result, soil moisture displays a large annual cycle. From a hydrological point of view, there is a strong dependence of the main rivers on the precipitation generated in the nearby relief and the resulting runoff. An example is in the Ebro Basin and the Pyrenees. In addition, the impact of the anthropic effect must be taken into account because there is a wide network of dams and river canals that, in some cases, operate between basins.

20 According to Sousa et al. (2011), drought in Spain has increased in severity and frequency. Although precipitation does not show significant annual trends, observations show a reduction in spring and summer (de Luis et al., 2010) as well as an increase in the number of consecutive dry days (Turco and Llasat, 2011). Both aspects have an impact on soil moisture drought, which is also affected by an increase in annual and seasonal temperatures (del Rio et al., 2011; Kenawy et al., 2013). This rise in temperature increases the atmospheric demand (Vicente-Serrano et al., 2014) and thus evapotranspiration, reducing the soil's water content. For hydrological drought, we must also consider the advance in the thaw date and a thinning of the blanket of snow in mountainous areas, such as in the Pyrenees (Morán-Tejeda et al., 2013), which affect streamflow and increase this type of drought. However, it should be noted that snow melt can affect streamflow and thus hydrological drought in different ways depending on its timing (Van Loon et al., 2010).

3 Datasets

30 **This section describes the RCMs (Sect. 3.1) and the reference products (Sec. 3.2) used in the study.**

3.1 Regional climate models

In this study, drought representation and propagation in three RCMs are analysed. RCM simulations were downloaded from the Med-CORDEX database, which is a contribution to the Coordinated Regional Climate Downscaling Experiment (CORDEX, Giorgi et al. (2009)) focusing on the Mediterranean region (Ruti et al., 2015). The criterion used to select the models was that each one used a different surface scheme and therefore represented physical processes related to precipitation, soil moisture, and surface and sub-surface runoff in different ways. The three RCMs selected are listed in Table 1 and described below:

- The CNRM-RCSM4 (Sevault et al., 2014; Nabat et al., 2014) is a RCM developed by the CNRM. It includes the regional climatic atmospheric model "Aire Limitée Adaptation dynamique Développement InterNational" (ALADIN-Climate, Radu et al. (2008); Déqué and Somot (2008); Farda et al. (2010); Colin et al. (2010); Herrmann et al. (2011)), the 3-layer version of the ISBA LSM (Noilhan and Planton, 1989; Noilhan and Mahfouf, 1996), the Total Runoff Integrating Pathways (TRIP) routing scheme (Decharme et al., 2010), and the regional ocean model NEMOMED8 (Beuvier et al., 2010). Hereafter, it will be referred to as RS4.
- The COSMO-CLM (CCLM) model (Rockel et al., 2008) is the climate version of the COSMO model developed by the Goethe Universität Frankfurt (GUF). The surface scheme is a multilayer version of the Jacobsen and Heise (1982) two-layer model. Hereafter, it will be referred to as CL4.
- The PROMES model (Castro et al., 1993; Sánchez et al., 2004; Domínguez et al., 2010) was developed by the Universidad Complutense de Madrid (UCM) and the Universidad de Castilla-La Mancha (UCLM). It is coupled to the ORCHIDEE LSM (De Rosnay and Polcher, 1998; Krinner et al., 2005). Hereafter, it will be referred to as PMS.

All the RCM simulations are driven by the ECMWF Interim Re-Analysis (ERA-Interim) (Balsamo et al., 2012; Dee et al., 2011), which provides a global atmospheric reanalysis that starts in 1979 and is continuously updated in real time. In addition, it improves some important issues pertaining to ERA-40, such as the representation of the hydrological cycle. This reanalysis is performed by means of a data assimilation system based on a 2006 release of the ECMWF's Integrated Forecast System, IFS (Cy31r2), and uses a 4-dimensional variational analysis (4D-Var) with a 12-hour analysis window. The database has atmospheric and surface parameters with a temporal scale of 6 and 3 hours, respectively. The spatial resolution is 80 km, with 60 vertical levels from the surface to 0.1 hPa.

ERA-Interim is a well-known atmospheric forcing used in a large number of studies. For instance, Belo-Pereira et al. (2011) and Quintana-Seguí et al. (2017) have validated it across the Iberian Peninsula. However, biases in this type of forcing have a negative effect on LSM simulations, which can be corrected (Ngo-Duc et al., 2005; Weedon et al., 2011).

In this study, ERA-Interim is the driving data of the three RCMs analysed. In addition, it is also used to force LSM simulations used as a reference in the soil moisture drought analysis. Hereafter, it will be referred to as ERA.

Table 1. RCMs analysed in this study.

RCM Name		Surface Scheme	Driving Data
CNRM-RCSM4	RS4	ISBA-3L	ERA-Interim
COSMO-CLM	CL4	Multilayer	
PROMES	PMS	ORCHIDEE	

Table 2. Reference products used in the meteorological, soil moisture and hydrological drought analyses.

Drought Analysis	Product Type	Name	Comments
Meteorological	Analysis	SAFRAN (Low Resolution)	Spatial resolution: 30 km
			Temporal resolution: 1 h
Soil moisture	LSM	ISBA-3L	Simulation forced with SLR
			Simulation forced with ERA
		ORCHIDEE	Simulation forced with ERA
Hydrological	Hydrological model	SIMPA	Simulation using its own forcing
	Observations	OBS	Daily data

3.2 Reference products

This section is divided into three subsections to describe the products used as reference data in the meteorological (Sect. 3.2.1), soil moisture (Sect. 3.2.2), and hydrological (Sect. 3.2.3) drought analyses. The products are listed in Table 2.

3.2.1 Meteorological drought reference

- 5 SAFRAN is a meteorological analysis system (Durand et al., 1993, 1999) developed by Météo-France. It provides estimates of the following variables: precipitation, 2 m temperature, 10 m wind speed, 2 m relative humidity, and cloudiness, as well as modelled downward visible and infrared radiation following the radiation scheme of (Ritter and Geleyn, 1992). For this, an optimal interpolation algorithm (Gandin, 1966) that combines observations and a first guess is used. The first guess employed is ERA for all variables, except for precipitation, which is obtained from observations, and this is the reason why it has been
- 10 selected as the reference dataset for the meteorological drought analysis. The meteorological station data belong to the Spanish Meteorological State Agency (Agencia Estatal de METeorología, AEMET) network. Precipitation is analysed by means of daily observations, while the remaining variables are analysed every 6 hours. The data are then interpolated hourly using different methods that depend on the variable. In Spain, SAFRAN was extended for a 35-year period (1979/1980 – 2013/2014) (Quintana-Seguí et al., 2017) and was implemented and validated over the Ebro Basin (north-eastern Spain) (Quintana-Seguí
- 15 et al., 2016).

In this study, the standard version of SAFRAN, at 5 km resolution, has been regridded to 30 km resolution (Quintana-Seguí et al., 2019) to compare it with the RCM simulations as the reference in meteorological drought analysis and to force LSM simulations which are the reference in the soil moisture drought analysis. Hereafter, it will be referred to as SLR (SAFRAN Low Resolution).

5 3.2.2 Soil moisture drought reference

Offline LSM simulations are used in this study as a reference to analyse soil moisture drought because there is a lack of soil moisture data across mainland Spain that are suitable for studies that require a large spatial coverage. Internally, in RCMs, LSMs are bidirectionally coupled to the atmospheric model to simulate surface processes. However, when LSMs are run offline (forced by gridded databases), biases due to the atmospheric model and the coupling between the atmospheric model and the LSM are avoided. This makes offline LSM simulations good reference datasets to study drought. We selected three offline LSM simulations that use the same surface schemes employed by two of the RCMs analysed in this study.

The ISBA LSM (Noilhan and Planton, 1989; Noilhan and Mahfouf, 1996), developed by the CNRM, is composed of various modules that simulate heat and water transfer in the soil, vegetation, snow, and surface hydrology. This scheme has evolved using different approaches to model the soil. As a result, there are several versions that can be used. For this study, we selected the ISBA-3L (Boone et al., 1999), which considers a three layered description of the soil. It should be stressed that the ISBA-3L is limited by certain aspects. For example, underground water is not represented, and there is no horizontal water transfer. Most of the ISBA's soil and vegetation parameters are derived from the ECOCLIMAP land cover database at a 1 km resolution (Masson et al., 2003; Kaptue et al., 2010; Faroux et al., 2013), such as the cover types and soil texture. This database considers more than 550 land cover types from all around the world. Its vegetation variability depends on the location, climate, and phenology.

The ORCHIDEE LSM (De Rosnay and Polcher, 1998; Krinner et al., 2005) was developed by the Institut Pierre-Simon Laplace (IPSL). It can be run in a stand-alone mode or coupled to the Laboratoire de Météorologie Dynamique (LMD-Z) General Circulation Model (Li, 1999), which was developed by the LMD in Paris. Hydrology is approached by means of a diffusive equation with a multilayer scheme. For this, the Fokker-Planck equation is solved considering a soil depth of 2 m distributed across eleven layers. The fine resolution is key to better model the interaction between the root profile and the soil moisture distribution at different depths as well as infiltration processes. In addition, ORCHIDEE includes sub-grid variability in soil moisture. Each grid box is divided into three soil moisture profiles with different vegetation distributions, but the same soil texture and structure that are obtained from the Zobler map (Post and Zobler, 2000).

In this study, three offline LSM simulations are used in the soil moisture drought analysis. Two of them use the 3-layer version of the ISBA model (one simulation was forced with SLR and another one with ERA), and the other simulation uses the ORCHIDEE LSM forced with ERA. Hereafter, the ISBA and ORCHIDEE LSMs will be referred to as the ISB and ORC, respectively.

3.2.3 Hydrological drought reference

For the hydrological drought analysis, modelled and observed streamflow data were used as references. Two issues should be stressed before explaining these datasets. The first is that the Med-CORDEX database does not provide simulated streamflow for any of the three RCMs, which would be the variable ideally suited for this study. In the absence of such data, it was decided to use modelled total runoff (hereafter referred to as runoff) corresponding to the sub-basins defined by a selection of gauging stations. We believe that this approximation is valid because we use a coarse time step, with a larger time propagation than the flow propagation. In fact, other studies use this variable to analyse hydrological drought (Vu et al., 2015; Meresa et al., 2016). The second issue is that Spanish basins are highly influenced by human management. However, RCMs do not simulate water management procedures but do simulate natural regime behaviour. Bearing these considerations in mind, only gauging stations satisfying the following criteria were considered:

1. Ninety-five percent data completeness during the study period; this assures that the monthly series of observations has few gaps.
2. Area greater than 10000 km²; the analysis was limited to large areas because streamflow is approximated by runoff, which is likely to perform poorly in small basins considering the coarse resolution of RCM simulations.
3. A KGE between SIMPA and the observations greater than 0.5 for the consideration of a near-natural regime. Stations had to be as natural as possible and their corresponding basins large enough to be compared to a low-resolution RCM. This is difficult in Spain due to the high degree of human influence. A high KGE value between SIMPA (naturalized flow) and the observations would indicate near-natural regime behaviour. Therefore, we performed a sensitivity analysis testing different values, and 0.5 was a reasonable compromise between the near-natural regime and a sufficient number of stations for the analysis. It is true that this threshold does not represent a completely natural regime, and thus some human influence can be present. However, it allows a fair comparison of the RCMs and observations.

The first criterion was satisfied by 87 stations, the second one by 13 of the 87 stations, and the third one by 8 of the 13 stations, which is the final selection. Fig. 1 shows the locations of these stations together with the relief and the river network. Tables 4, 5, and 6 contain their code, their area, and the basin to which they belong.

SIMPA is a Spanish acronym meaning Integrated System for Rainfall-Runoff Modelling ("Sistema Integrado de Modelización Precipitación-Aportación") (Estrela and Quintas, 1996; Ruiz, 1999). It is a conceptually distributed hydrological model for water management developed by the Spanish Centre for Studies and Experimentation on Public Works ("Centro de Estudios y Experimentación de Obras Públicas", CEDEX). SIMPA provides estimates of the water cycle's main components, such as precipitation, evapotranspiration, and river discharge, at a monthly scale in a natural regime. This regime is characterized by the free flowing of water, with no aspect unrelated to the environment (such as dams for water resource management) affecting it. Data are provided on a 1 km² grid. The model employs its own forcing, which uses an observational dataset similar to that of SAFRAN.

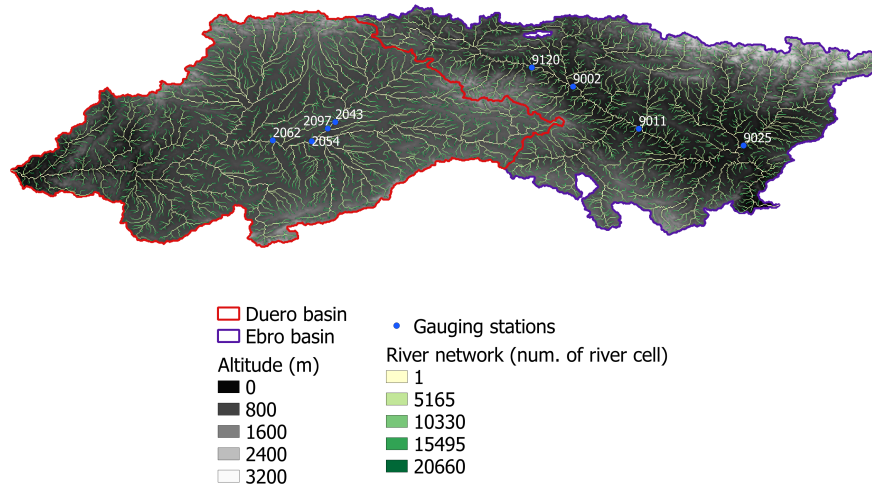


Figure 1. Map showing the relief, river network, and the locations of the gauging stations.

In this study SIMPA is used as a reference product for streamflow to analyse hydrological drought. Hereafter, it will be referred to as SMP.

Daily streamflow observations were also used as a reference in the hydrological drought analysis. These belong to the Spanish Ministry for the Ecological Transition, which provides data for basins comprising more than one region. Hereafter, they will be referred to as OBS.

4 Methodology

The methodology employed in this study is the same as that used in Quintana-Seguí et al. (2019). Therefore, the two studies complement each other, providing a wider analysis of drought representation by both LSMs and RCMs.

Drought can be characterized in several ways. Here, we used standardized indices that define drought according to the variability in a given variable. It should be noted that variability is a key aspect of drought analysis. For the meteorological and soil moisture drought analyses, we computed the SPI and a Standardized Soil Moisture Index (SSMI) using precipitation and soil moisture data, respectively. For the hydrological drought analysis we computed two indices: the Standardized Streamflow Index (SSI) using streamflow and the Standardized Runoff Index (SRI) using total runoff.

4.1 Drought index calculation

We followed the spirit of the SPI to compute the SSMI, SSI, and SRI. In these indices, the variable's time series is transformed from its original distribution to a normal one. The resulting values correspond to the number of standard deviations by which the anomaly deviates from the mean. Biases were not computed, as they are zero by construction. The computation was carried out using monthly data for all indices. In the case of the SPI, a time series of the accumulated precipitation from the previous n months (with n being the index scale) was also calculated to perform the drought propagation analyses. It should be noted that in the SPI methodology, data are fitted to the corresponding parametric distribution, which can be an issue in studies that standardize several variables, as in our case. To solve this problem, we used the non-parametric methodology described by Farahmand and AghaKouchak (2015).

On the one hand, meteorological drought representation by RCMs was addressed by comparing their SPI-12 time series with those of ERA and SLR. Using results from an accumulation period of 12 months is particularly robust due to seasonal reasons. In addition, this scale is suitable for the study area defined from a hydrological resource management perspective. Special attention was paid to differences in duration, severity and area. In addition, the temporal correlation of the RCMs' SPI-12 with that of ERA and SLR was computed to identify regions where drought representation improved, if any. On the other hand, the analysis of the RCMs' soil moisture and hydrological drought representation was performed through the calculation of Root Mean Square Difference (RMSD) and the Pearson correlation coefficient (r) at a 95% significance level of the standardized indices computed using an accumulation period of 1 month. We would like to stress that an RMSD equal to or greater than 0.5 often implies a change in drought category (i.e., from moderate to severe, for example) according to the SPI drought classification scale (McKee et al., 1993). To facilitate the Pearson correlation analysis interpretation, the guideline proposed by Evans (1996) was followed.

4.2 Meteorological drought propagation

The analysis of how meteorological drought propagates to soil moisture and hydrological drought is useful in hydrological resource management and allows the detection of similarities and differences in the way models address the physical processes that drive this propagation. The methodology employed to analyse meteorological drought propagation is based on Barker et al. (2016). The soil moisture memory of precedent precipitation will vary from one point to another depending on the location because soil moisture is controlled by different aspects regarding climate, soil and vegetation properties, such as precipitation, actual evapotranspiration, soil texture, stomatal resistance and root depth, among others. To determine the month scale at which the precipitation deficit propagates to a soil moisture deficit, we carried out the following analysis:

- Computed the standardized soil moisture index with a time accumulation of 1 month (SSMI-1).
- Computed the SPI with a time accumulation of 1 to 28 months (SPI- n_x).
- Identified the n_x scale that maximizes the correlation between SPI- n and SSMI-1.

The same methodology was employed to analyse how meteorological drought propagates to hydrological drought. For this, the SSI-1 and the SRI-1 were computed instead of the SSMI-1, and the SPI computation was performed using the areal mean of the basin precipitation defined by each studied gauging station.

4.3 Streamflow validation

- 5 The streamflow validation was carried out using the Kling-Gupta Efficiency (KGE) (Gupta et al., 2009). The optimal KGE value is 1, while negative values are sign of a model's bad performance.

5 Results

- First, meteorological drought representation by RCMs is evaluated (Sect. 5.1). Next, soil moisture drought representation by RCMs is analysed as well as how the models address the transition from meteorological to soil moisture drought (Sect. 10 5.2). Finally, hydrological drought representation by RCMs and the propagation of meteorological to hydrological drought are analysed (Sect. 5.3).

5.1 Meteorological drought

- In this section, we will focus on precipitation because its decrease or absence are the main cause of meteorological drought. The SPI is computed for the RCMs, ERA (driving data) and SLR (reference dataset). On the one hand, the comparison of the 15 RCMs' SPI with that of ERA allows us to identify and determine to what extent these models reproduce the structures of their driving data. On the other hand, the comparison of the RCMs' and SLR's SPI shows to what extent the RCMs improve these structures, since the SLR dataset is based on observations.

5.1.1 Mean annual precipitation comparison

- The first row of Fig. 2 shows the mean annual precipitation of ERA and SLR as well as the difference in mean annual precipi- 20 tation between them. The rest of the rows show the RCMs' mean annual precipitation and their difference with respect to ERA (second column) and SLR (third column). All products show greater precipitation in the north-western and northern regions of the peninsula (exceeding 2000 mm/y) as well as over mountainous chains. The products also show that precipitation is lower along the main basin valleys (due to the orographic shadow effect) and minimal over the southeast, which is the driest region of the peninsula. For instance, precipitation across some areas of this region does not exceed 100 mm/y. The RCMs' mean 25 precipitation spatial structures show similar behaviour as those from ERA and SLR. The fact that precipitation is high over mountainous chains indicates the strong influence of relief, which is key in the way water from precipitation is distributed. In fact, we would like to stress SLR's significant contrast in relief due to its use of data from AEMET's dense pluviometric network. This evidence indicates the complex spatial structure of precipitation in Spain.

- Regarding the RCMs, RS4 and PMS show the greatest similarity and the highest contrast with CL4. When compared to 30 ERA, both RCMs have higher precipitation, especially in mountainous areas. Modelled precipitation tends to overestimate

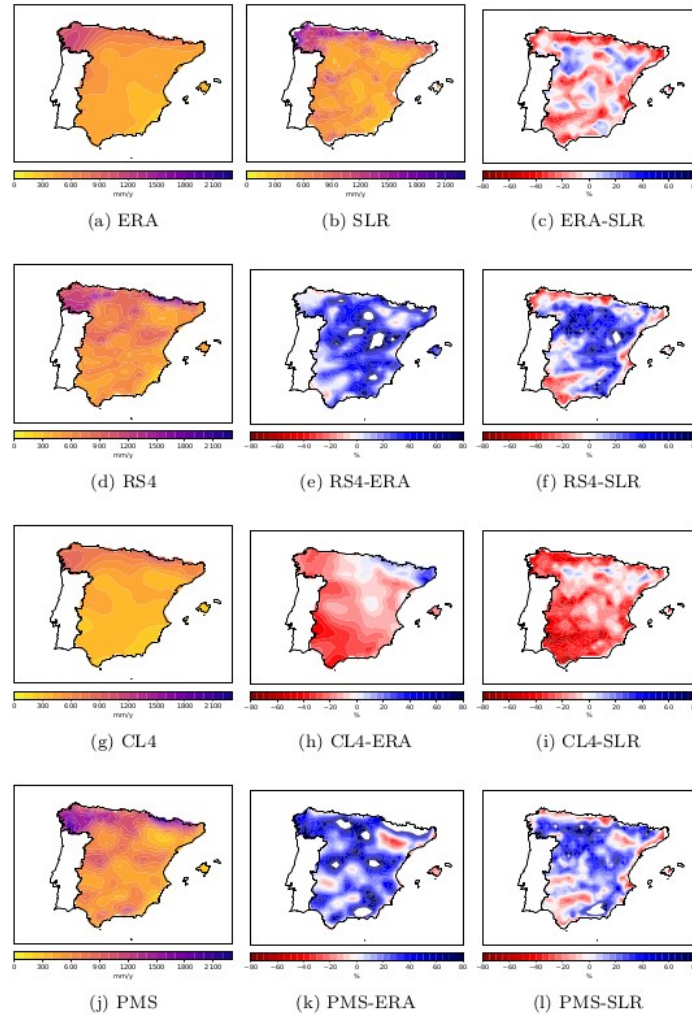


Figure 2. Mean annual precipitation across the study area from 1989 to 2008: ERA (a), SLR (b), RS4 (d), CL4 (g), and PMS (j). Panel c shows the difference between ERA and SLR mean annual precipitation. Panels e, h, and k show the difference between the RCMs and ERA mean annual precipitation, while panels f, i, and l show the difference between the RCMs and SLR mean annual precipitation.

precipitation compared to observations and ERA (Sylla et al., 2010). This reflects the addition of water in the form of precipitation, improving the RCMs' spatial distribution of precipitation with respect to the driving data. However, when RS4 and PMS are compared to SLR, precipitation is underestimated over some areas (valleys and the coastline). It must be borne in mind that SAFRAN is mainly based on rain gauge information. The CL4 model is a different matter, since it underestimates

5 precipitation for almost all of Spain when compared to ERA and SLR.

5.1.2 SPI comparison

Once the spatial distribution of precipitation in the peninsula is described, we can study the variability in the different products and thus their capacity to reproduce drought spells.

Figure 3 shows the time series of the SPI-12 calculated using mainland Spain's average precipitation as reproduced by ERA (panel a), SLR (panel b) and the RCMs (panels d, g, and j). The computation is performed for a time accumulation of 12 months. ERA and SLR show several drought spells that occurred during the 20 years that comprise the study period (the most severe occurred in 2005-2006). These spells coincide with those found by (Belo-Pereira et al., 2011) and appear in the RCMs' SPI time series plots as well. Therefore, RCMs are capable of reproducing these spells. However, differences in duration and severity can be observed. For instance, the duration of the spell that occurred in 1992 and 1993 was 21 and 22 months according to CL4 and PMS, respectively. However, it lasted 19 and 17 months according to SLR and ERA, respectively. Another interesting result is found in the spell that took place in 2002. CL4's mean severity is similar to that of ERA. However, the mean severity of both RS4 and PMS is in better agreement with that of SLR than with their driving data. Other information that can be extracted from these results is the timing of drought between the RCMs and their driving data and reference data. For example, the RCMs, ERA, and SLR agree that the spell that occurred between 1994 and 1995 started in May 1994. RS4, CL4, ERA, and SLR agree that it ended in December 1995, but the PMS model indicates the end of the spell occurring a month before the rest (November 1995). The spell between 2004 and 2006 started in November 2004 according to SLR, ERA, and PMS, which show similar durations (ERA = 23 months and SLR and CL4 = 24 months). However, it started in January 2005 according to RS4 and CL4 and had a longer duration: 27 (RS4) and 25 (CL4) months. In a previous study, a spurious trend in ERA was detected (Quintana-Seguí et al., 2019). This can be observed in Fig. 3c, where the difference between the SPI-12 time series of ERA and SLR is represented. However, the differences between the RCMs and SLR SPI-12 time series show that these models do not drag this trend.

To deepen the analysis of the spatial structure of meteorological drought, monthly SPI-12 maps were computed. The comparison of these structures, as shown by the RCMs, with those of their driving data and the reference dataset, provides more information about drought representation by RCMs. For instance, the temporal evolution of the spatial correlation of the SPI-12 maps of the RCMs with ERA and SLR (not shown) indicates the similarity between the RCMs and their driving data and reality (as approximated by SLR), respectively. In the first case, RS4 most resembles ERA. Despite not showing the highest correlations, it has less variability and is therefore more robust. The correlations of CL4 and PMS with ERA are more variable, reaching values close to zero in some months, in which the spatial structure of drought is not captured. In the second case, RCMs are found to correlate worse with SLR than with ERA, as expected. It should be stressed that RS4 also shows better correlations than the other RCMs when these are compared to SLR. Thus, out of the three RCMs studied, RS4 deviates less from the driving data and most resembles the reference. The correlation between ERA and SLR shows some variability in its temporal evolution, especially since 2000. This is likely due to the effect of the spurious trend identified in Fig. 3. To complement the spatial structure analysis, Fig. 4 provides information about the difference in the percentage of area affected by drought ($SPI-12 < -1$) between the RCMs and i) ERA (panel a) and ii) SLR (panel b). The differences are generally under

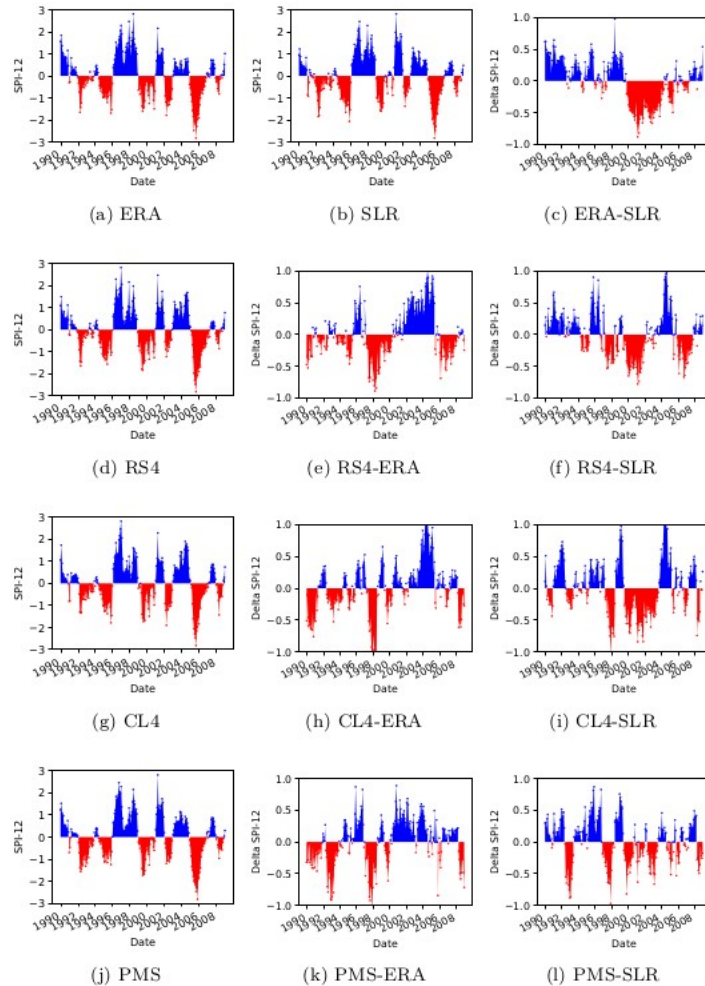


Figure 3. SPI-12 time series calculated with the spatially averaged time series of mainland Spain precipitation, as reproduced by ERA (a), SLR (b), RS4 (d), CL4 (g), and PMS (j). Panel c shows the difference between ERA and SLR SPI-12. Panels e, h, and k show the difference between the RCMs and ERA SPI-12, while panels f, i, and l show the difference between the RCMs and SLR SPI-12.

25%, slightly lower than those with respect to SLR. In general, the RCMs show similar behaviour during a drought spell, meaning that they all overestimate or underestimate the affected area. For example, all three underestimate the area in 1994, overestimate it in 1995 and underestimate it in 1996. The difference relates to the degree to which they deviate. On the one hand, in 1995, RS4 overestimates the percentage of area affected by drought by 20 %, CL4 by approximately 15 %, and PMS by less than 10 %. On the other hand, in 1996, PMS underestimates this percentage by more than 30 %, while RS4 and CL4 underestimate it by 10 %. Another example is how the RCMs overestimate the area in 2000 and how they underestimate it

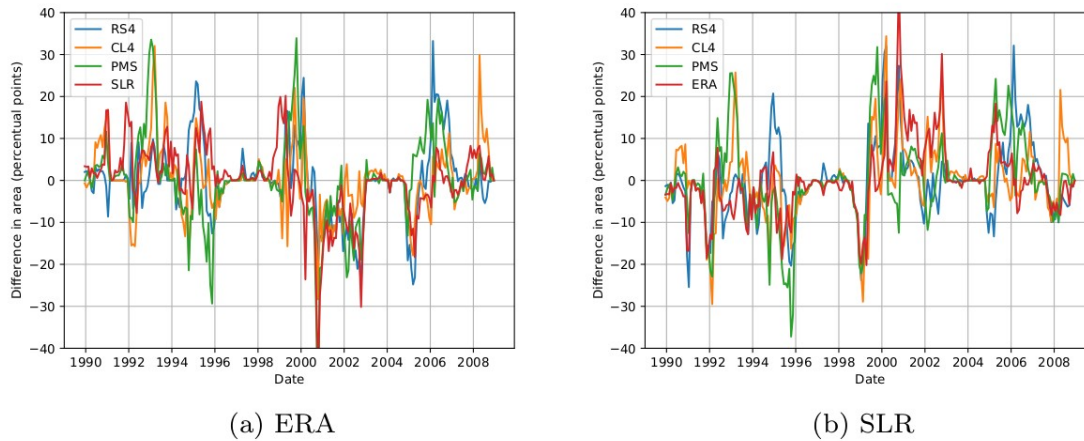


Figure 4. Differences in the proportion of area under drought (SPI-12 < -1) estimated by i) the RCMs and SLR with respect to ERA (panel a) and ii) the RCMs and ERA with respect to SLR (panel b).

between 2001 and 2003. RS4 is the RCM that shows the lowest percentage difference, which is consistent with our previous results.

Finally, Fig. 5 provides an idea of the spatial structures of drought representation. For this, the temporal correlation (Pearson) of the SPI-12 between the RCMs and i) ERA (upper row) and ii) SLR (lower row) is computed for each grid point. The correlations of the RCMs with ERA are above 0.8 in the south and worsen towards the north and the eastern coast, reaching 0.2. The Ebro Basin is the region showing the poorest values and thus the largest differences in drought representation between the RCMs and ERA. Differences in this area are also identified in the map showing the correlation between ERA and SLR, where values are even negative. However, when the RCMs are compared to SLR (lower row), the correlations are higher across this basin. Consequently, RCMs improve drought representation across this region.

10 5.2 Soil moisture drought

In this section, the analysis focuses on models (Table 2). More precisely, it focuses on how they reproduce soil moisture drought (Sect. 5.2.1) and its propagation from precipitation to soil moisture (Sect. 5.2.2). Offline LSM simulations from the ISBA-3L and ORCHIDEE are used as references. We should bear in mind that in these simulations, soil processes do not impact the atmosphere, while the RCM simulations are performed in coupled mode and thus interact with the atmosphere.

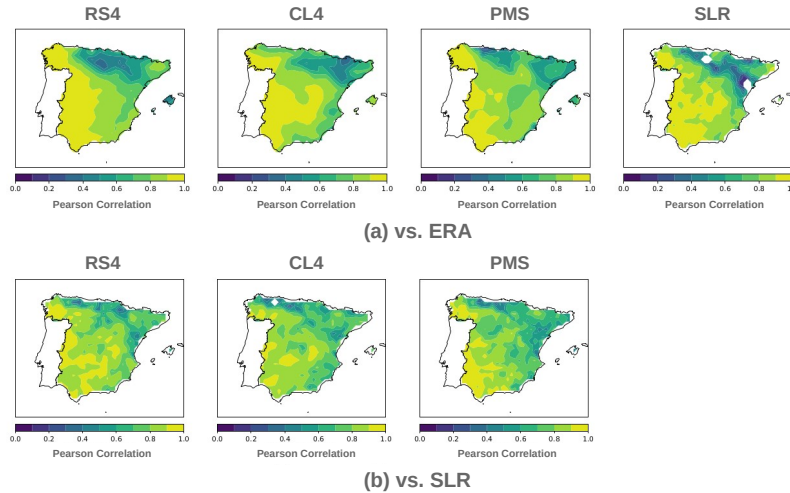


Figure 5. Map of the temporal correlation (Pearson) between the SPI-12 time series produced by i) the RCMs and SLR with respect to ERA (a) and ii) the RCMs and ERA with respect to SLR (b). Portugal and regions from the study area (mainland Spain) whose values are not within the colour scale are represented in white.

5.2.1 SSMI comparison

The RMSD and the Pearson correlation coefficient (r) are calculated by comparing the SSMI from the RCM simulations and the LSM simulations. All mesh points and time steps are included in the comparison. Therefore, the results provide information regarding spatial and temporal drought structures. It should be noted that biases are not calculated because they are zero by construction (the mean of the SSMI is zero). The results are shown in Table 3, the table above corresponds to the RMSD and the table below corresponds to the r calculations. A colour scale consisting of a blue (largest similarity between models) to red (lowest similarity between models) gradient via white has been included to facilitate reading.

To put these results into context, we will consider the drought classification according to the SPI, which is divided into 8 categories from "extremely wet" (SPI = 2) to "extreme drought" (SPI = -2). A RMSD equal to 1 is a standard deviation of the index studied (in this case, the SSMI). In the framework of drought analysis, a value higher than 0.5 would imply a change in category (for example, from "slightly wet" to "moderately dry"). Therefore, the upper block of Table 3 shows that there is a change in drought category when comparing the RCMs with the reference offline LSM simulations, since the RMSD is above 0.5 (fourth to sixth columns). In addition, the three RCMs compared among them also represent soil moisture droughts of different categories (second and third columns), as expected.

Going into detail, we can observe some similarity between the RS4 simulation, which uses the ISBA surface scheme, and the ISB simulations. Compared to ISB, RS4 reproduces drought better than the other RCMs used in this study. However, this does not occur when the PMS and ORC simulations are compared, despite using the same surface scheme. In fact, RS4 and CL4 are, in general, more similar to ORC than PMS, according to the statistics. The SSMI comparison of the RCMs with both

Table 3. Comparison of the SSMI data from the RCM and LSM simulations. The upper block shows the RMSD, and the lower block shows the Pearson correlation (r). The colour scale is a gradient from blue (largest similarity between models) to red (lowest similarity between models) gradient via white.

RMSD	ERA-CL4	ERA-PMS	ERA-ORC	ERA-ISB	SLR-ISB
ERA-RS4	1.3	1.26	1	0.79	0.81
ERA-CL4		0.96	1.12	1.2	1.24
ERA-PMS			1.23	1.17	1.19
ERA-ORC				0.87	0.97
ERA-ISB					0.58

r	ERA-CL4	ERA-PMS	ERA-ORC	ERA-ISB	SLR-ISB
ERA-RS4	0.3	0.36	0.46	0.66	0.65
ERA-CL4		0.65	0.5	0.35	0.3
ERA-PMS			0.39	0.39	0.37
ERA-ORC				0.58	0.49
ERA-ISB					0.82

ISB simulations (fifth column vs. sixth column) shows very similar statistics. Discrepancies could be explained by the RCMs' land-atmosphere coupling and forcing effects.

5.2.2 Propagation to soil moisture drought

n_x maps from Fig. 6 indicate the scale in months at which the correlation between the SSMI-1 and SPI- n is maximal and thus the temporal scale at which meteorological drought propagates to soil moisture drought. The first row shows RCM maps, while the second row shows ISB and ORC LSM (reference data) maps. The scale ranges from 0 to 28 months, with the dynamics of the model in regions with a yellowish tone slower than those in regions with a bluish tone.

The first row shows that the RCMs provide different results even though they use the same driving data, which indicates the predominance of model structure with respect to the driving data. This becomes more evident when a RCM is compared to the LSM that has the same surface scheme. For example, the RS4 and ISB (Figs. 6a, 6d, and 6e) maps show similar spatial patterns. These are very homogeneous, with scales that range from 1 to 4 months, implying that ISB reacts very quickly to precipitation.

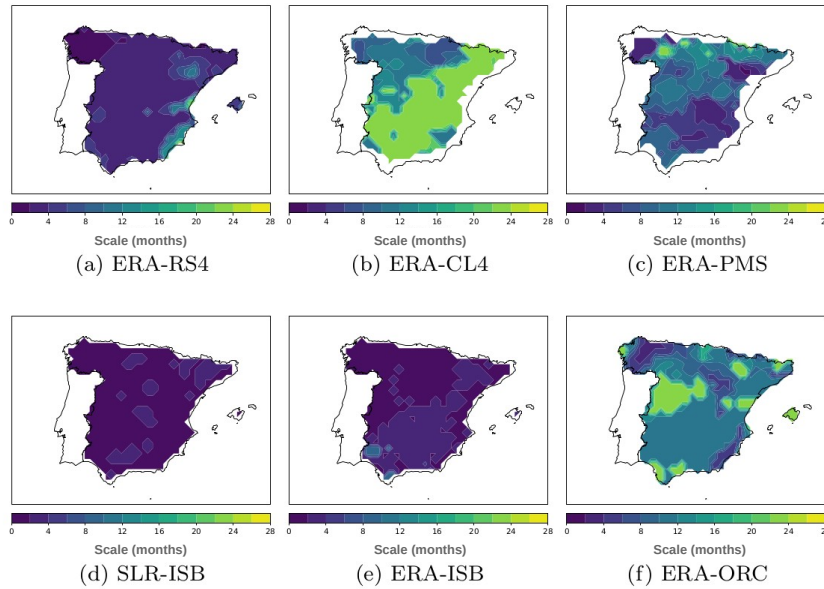


Figure 6. n_x Timescale maximizing the correlation between the $SPI-n_x$ and $SSMI-1$ for the RCM and LSM simulations. (Portugal and regions from the study area (mainland Spain) whose values are not within the colour scale are represented in white.

Another example is the comparison between PMS and ORC (Figs. 6c and 6f). Both models show greater heterogeneity than ISB, with scales from 1 to 20 (PMS) and 24 (ORC) months, highlighting the role of the continental surface. Finally, the CL4 (Fig. 6b) behaviour is quite homogeneous. The peninsula is divided into two areas, one over the north-west, where the n_x scale ranges between 6 and 12 months, and a larger one with a fixed value of 20 months. It is interesting to note the similar spatial structures from the ERA-CL4 and ERA-ISM maps (Figs. 6b and 6e), indicating that soil moisture drought propagation by CL4 drags the same spatial structures as its driving data.

5.3 Hydrological drought

In Sect. 5.3.1, streamflow and aggregated runoff will be compared. Next, the RCMs' capacity to simulate hydrological drought will be analysed by comparing the SSI and SRI (Sect. 5.3.2). Finally, we will analyse the way in which RCMs reproduce meteorological drought propagation to hydrological drought (Sect. 5.3.3).

5.3.1 Streamflow and aggregated runoff comparison

Table 4 shows the KGE comparing RCM aggregated runoff with SMP and OBS as well as the comparison between SMP and OBS. All of these comparisons are performed at a monthly scale. Negative values, indicating poor performance, are marked in

Table 4. KGE of the aggregated runoff simulated by the RCMs compared with the reference streamflow of the SMP model and OBS. Note that observations are affected by anthropic effects. Negative values (model's poor performance) are shown in red. The colour scale comprehends only positive KGE values, and consists of a blue (best performance between the RCMs and SMP or OBS) to red (worst performance between the RCMs and SMP or OBS) gradient via white. The last row shows the average KGE for each RCM.

Basin	Area (km ²)	Gauging station's code	vs. SMP			vs. OBS			
			ERA-RS4	ERA-CL4	ERA-PMS	ERA-RS4	ERA-CL4	ERA-PMS	SMP
Duero	41808	2062	-0.28	0.25	0.21	-0.57	0.4	0.33	0.52
Ebro	40434	9011	0.54	0.05	0.28	0.61	0.14	0.43	0.52
Duero	36570	2054	-0.13	0.23	0.22	-0.44	0.37	0.35	0.56
Ebro	25194	9002	0.6	-0.01	0.33	0.7	0.1	0.51	0.5
Duero	15638	2097	0.15	0.31	0.55	0.13	0.36	0.59	0.82
Duero	14283	2043	0.23	0.29	0.57	0.23	0.34	0.61	0.78
Ebro	12782	9025	0.27	0.04	0.27	-0.13	0.19	-0.04	0.51
Ebro	12010	9120	0.52	-0.03	0.19	0.53	0	0.22	0.76
Average KGE			0.24	0.14	0.33	0.13	0.24	0.38	0.62

red. For the positive KGE values, a colour scale consisting of a blue (best performance between the RCMs and SMP or OBS) to red (worst performance between the RCMs and SMP or OBS) gradient via white has been included to facilitate reading.

The RCMs show KGE values that are negative or close to zero at many stations. Focusing on the positive KGE values, CL4 has the worst performance, since the values are below 0.5. Although RS4 is the RCM showing the highest KGE value (0.7 at station number 9002 for the comparison between RS4 and OBS), PMS performs better across both basins according to the average value (last row of Table 4).

An analysis comparing the temporal series (not shown) of the RCMs' aggregated runoff with the reference streamflow (SMP and OBS) shows that CL4 sustains summer flows, which is a positive aspect. This is not the case for RS4 and PMS, which have steeper recession curves. In addition, RS4 is found to overestimate streamflow peaks at stations in the Duero basin. Finally, we would like to note that RS4 and PMS show a different behaviour from that of the reference data at station number 9025 (which represents the Segre sub-basin). Both models overestimate a large number of peaks. We believe that this may be explained by the fact that the Segre sub-basin is nival.

Table 5. Comparison of the SRI from the RCMs with the SSI from SMP. The table shows the RMSD and the Pearson correlation (r). The colour scale is a gradient from blue (largest similarity between models) to red (lowest similarity between models) gradient via white.

Basin	Area (km ²)	Gauging station's code	RMSD			r		
			ERA-RS4	ERA-CL4	ERA-PMS	ERA-RS4	ERA-CL4	ERA-PMS
Duero	41808	2062	1	0.82	0.98	0.49	0.62	0.47
Ebro	40434	9011	0.78	0.87	0.84	0.68	0.57	0.6
Duero	36570	2054	0.99	0.84	0.97	0.5	0.61	0.48
Ebro	25194	9002	0.8	0.9	0.83	0.66	0.55	0.61
Duero	15638	2097	0.99	0.91	0.98	0.5	0.54	0.47
Duero	14283	2043	0.99	0.92	0.99	0.51	0.53	0.46
Ebro	12782	9025	0.97	1.17	1.07	0.49	0.24	0.36
Ebro	12010	9120	1.07	0.94	0.97	0.43	0.5	0.47

5.3.2 SSI and SRI comparison

Table 5 shows the RMSD and the Pearson correlation coefficient, r , comparing the RCMs' SRI with SMP's SSI. A colour scale consisting of a blue (largest similarity between models) to red (lowest similarity between models) gradient via white has been included to facilitate reading.

- 5 The results are similar to those in Sect. 5.2.1, since the RMSD values are above 0.5 (which often indicates a change in drought category). Therefore, according to the SPI drought classification, the RCMs represent hydrological droughts of a different category from that of the reference dataset. Nevertheless, the RCMs show moderate positive correlations with SMP according to the guideline proposed by Evans (1996). We would like to note that the worst statistics are shown by station 9025, which is identified in the previous section as the station showing the worst performance. It is highly influenced by the effects
- 10 of snow, which could explain the high RMSD and weak r values.

5.3.3 Propagation to hydrological drought

Table 6 shows the n_x values that indicate the monthly scale at which the correlation between the SPI- n_x and i) SRI-1 (RCMs) and ii) SSI-1 (SMP and OBS) is maximal. This can be interpreted as the temporal scale at which meteorological drought propagates to hydrological drought. To better understand these results and to what extent they reflect the propagation of a

precipitation anomaly to a streamflow anomaly, a colour scale is included to indicate the strength of the correlation. It follows the guideline given by Evans (1996): very strong (yellow), strong (blue), moderate (white), and weak (red).

Opposite to Sect. 5.2.2, RS4 and PMS show very similar scales: means of 3 months for stations in the Duero Basin and 2 months (RS4) and 1 month (PMS) for stations in the Ebro Basin. However, CL4 provides larger scales, from 9 to 13 months (Duero Basin) and from 1 to 8 months (Ebro Basin). The difference in scales shown by the RCMs is an indicator of the relevance of model structure in drought propagation. This result is also obtained in Sect. 5.2.2.

The RCMs and SMP show higher n_x values and thus slower dynamics in the Duero Basin than in the Ebro Basin. This is in agreement with the n_x values obtained using the SSI-1 computed with OBS, in which the mean n_x values are 9 (Duero) and 4 (Ebro). Analysing these results, we can establish that the RS4 and PMS runoff responds quickly to precipitation anomalies. When compared to SMP and OBS, the monthly scales provided are in good agreement in the Ebro Basin but are too low in the Duero Basin. In contrast, CL4 shows larger scales and behaves inversely to RS4 and PMS, since it is in better agreement with SMP and OBS in the Duero Basin.

Focusing on the strength of the correlations, RS4 (coupled to ISB) shows strong positive correlations at six of the eight stations analysed, indicating that precipitation has a significant role in streamflow variability. However, the correlations of CL4 and PMS with the SPI- n_x are moderate (even weak for station number 9025), which implies that there are also other factors driving this variability.

6 Discussion

This study provides an assessment of how RCMs represent meteorological, soil moisture, and hydrological drought as well as the way in which precipitation anomalies propagate to soil moisture and streamflow anomalies. This assessment was performed using standardized indices, which we believe are a good option for performing drought analysis. The reason for this is that they describe drought based on the variability in a given variable, and thus each type of drought can be studied using the variable that best suits its characteristics. In this work, four indices were computed: SPI (precipitation), SSMI (soil moisture), SSI (streamflow), and SRI (total runoff).

RCMs provide a good representation of meteorological drought. The results show that they are capable of reproducing the same drought spells as those detected by their driving data and the reference data. However, they differ in terms of an event's duration, **severity**, and area, as expected. We have identified that RCMs improve drought representation with respect to the driving data in several aspects. For instance, the temporal evolution of the SPI-12 shows that the severity of some of the drought spells is closer to that of the reference data. In addition, they do not reproduce the spurious trend identified in the driving data, which could lead to a misrepresentation of the phenomenon. Finally, a temporal correlation analysis shows that drought representation is improved over the north-eastern region of the Iberian Peninsula, which is a known limitation of global analysis across Spain. These results are consistent with previous studies showing that RCMs provide a suitable representation of drought using drought indices across Spain (Barrera-Escoda et al., 2013; Maule et al., 2013; García-Valdecasas Ojeda et al., 2017).

Table 6. n_x scale maximizing the correlation between the SPI- n_x and i) SRI-1 (RCMs) and ii) SSI-1 (SMP and OBS). Scales longer than 12 months are marked in bold. A colour scale has been included to indicate the strength of the correlations between the SPI- n_x and i) SRI-1 and ii) SSI-1 following the guide proposed by Evans (1996). The correlation ranges and the associated colours are i) very strong, 0.80-1.0 (yellow), ii) strong, 0.60-0.79 (blue), iii) moderate, 0.40-0.59 (white), and iv) weak, 0.20-0.39 (red).

Basin	Area (km ²)	Gauging station's code	RCMs			SMPA	
			ERA-RS4	ERA-CL4	ERA-PMS	SMP-SMP	SMP-OBS
Duero	41808	2062	3	12	3	9	9
Ebro	40434	9011	2	8	1	2	3
Duero	36570	2054	3	9	3	9	9
Ebro	25194	9002	2	8	1	1	3
Duero	15638	2097	3	13	3	8	10
Duero	14283	2043	3	13	3	8	10
Ebro	12782	9025	2	1	1	2	8
Ebro	12010	9120	3	6	3	1	3

Unlike the previous analysis, the results regarding soil moisture and hydrological drought representation show differences when RCMs are compared among themselves and to the reference data. The analyses are carried out using the RMSD and Pearson correlations, and the observed uncertainty corresponds, in most cases, to a change in the drought category (according to the SPI drought classification) of RCMs with respect to the reference data. These differences are expected if we consider the following aspects:

- 5 First, the reference data that are employed. LSM offline simulations are used as reference datasets for soil moisture drought analysis due to the lack of observations. In Spain, soil moisture data from the REMEDHUS network (Martínez-Fernández et al., 2013) and the Valencia Anchor Station (Coll-Pajarón, 2017) are available. However, these datasets are suitable for studies in which large spatial coverage is not an issue (such as model or satellite-derived data validation), which does not apply to our case.
- 10 Remote sensing products could also be an option, but there are certain limitations that should be taken into account, for example, uncertainty sources, gaps in the data, and short time series (AghaKouchak et al., 2015). Escorihuela and Quintana-Seguí (2016) showed that different satellite products behave differently across a region representative of Mediterranean landscapes (Catalonia in the northeast Iberian Peninsula). Therefore, using these products would add more uncertainty to the study. In addition, the retrieved soil moisture data correspond to surface soil moisture, and in this study, we considered root zone soil
- 15 moisture. If the study was limited to the consideration of surface soil moisture, processes important to soil moisture drought

would not be considered. Nevertheless, improvements in this discipline, as well as an increase in the length of time series, will convert these products into interesting alternatives for LSM simulations. Regarding the hydrological drought analysis, the observed streamflow in mainland Spain was used as a reference. However, the large number of dams and canals have a high anthropic impact on river systems, affecting the observed streamflow. Since RCMs do not take into account these effects, a simulation from the SIMPA model that provides streamflow data considering a natural regime is necessary as a reference dataset. It would be interesting to include these effects in RCM modelling to perform drought analysis using the observed streamflow as reference data. This would provide an idea of the anthropic impact on hydrological drought.

The second consideration is the use of LSMs. In this study offline LSM simulations are used as reference datasets to compare with the RCM simulated soil moisture, due to the lack of observed soil moisture data. This is natural as RCMs internally use a LSM coupled to the atmosphere. We used three simulations as references, instead of one, because LSMs vary from one to another in several important aspects, such as soil discretization, evapotranspiration formulation, runoff formulation, subgrid processes, etc. All these differences impact soil moisture (Koster et al., 2009) and streamflow.

Third, the use of simulated total runoff to compute the SRI is due to the lack of RCM modelled streamflow data to compute the SSI. Hydrological drought representation and propagation are likely to be affected by this approximation according to the KGE values shown in Sect. 5.3.1. When compared to SMP, the KGE using total runoff is under 0.25 in almost half of the cases, which indicates poor performance. However, we would like to stress that PMS is the RCM that best approximates streamflow according to the KGE values.

Finally, the effects of RCM coupling with the atmosphere should be taken into account, since the soil moisture references are LSM simulations performed in an uncoupled mode and thus do not include atmospheric feedback.

We would also like to note the relevance of the time scale used to compute drought indices. According to García-Valdecasas Ojeda et al. (2017) and Bowden et al. (2016), the added value of the SPI is influenced by the accumulation period employed. This is interesting to consider because soil moisture and hydrological droughts have different scales of propagation, and differences are also found in the propagation analysis in Sect. 5.2.2 and 5.3.3.

The main objectives of this study are to evaluate drought properties and propagation in RCM simulations. At this point, we would like to mention uncertainty, which is an important issue in this kind of study. Although the analysis was performed using only three models, these models provide different results in terms of drought indices and, especially, drought propagation. Adding more models would show the spread with more detail, but we believe that the differences among the three models are large enough to show that RCM developers should look at these issues and that RCM users should take them into account.

A key result of the study is the relevance of the models' physics, which prevails over the driving data. This is shown in the soil moisture and hydrological drought representation evaluation as well as in the analyses of drought propagation. In the latter case, the model's structure influences the temporal scale at which the variability in precipitation affects that of soil moisture and streamflow. For instance, in the analysis in Sect. 5.2.2, the spatial patterns of RS4 (coupled to ISB) and ISB are very similar and show that ISB, and thus RS4, respond too quickly to precipitation. The spatial structures of PMS (coupled to ORC) and ORC differ to a greater extent. The temporal scale of PMS is shorter than that of ORC, which may be due to coupling effects and to the fact that the precipitation extremes in PMS are too strong (Domínguez et al., 2013). Wang et al. (2011), in their analysis of

climate change impacts on droughts, also highlight the fact that model structure is likely to contribute in an extensive way to different regional climate change projections.

The results obtained are coherent with those from Quintana-Seguí et al. (2019), in which the soil moisture and hydrological drought analyses also showed differences among LSMs. Therefore, both studies provide clear proof that improvements in
5 modelling concerning soil moisture and streamflow are needed.

7 Conclusions

In the context of a changing climate, it is necessary to evaluate the evolution of extremes, such as drought. Understanding the processes involved is therefore vital. To do so, the current modelling tools must first be evaluated. The work presented here analyses how RCMs represent meteorological, soil moisture and hydrological drought and the propagation from a precipitation
10 anomaly to soil moisture and streamflow anomalies.

Of the three RCMs analysed, RS4 shows the largest similarities with the reference data and deviates the least from its driving data in the meteorological and soil moisture drought representation analyses. However, none of the RCMs analyzed can be clearly identified as the best performing in regard to hydrological drought representation. CL4 and RS4 show larger similarities with the reference data than the other RCMs across the Duero and Ebro basin, respectively. The propagation to
15 soil moisture drought analysis indicates that RS4 reacts too fast to precipitation anomalies, while PMS provides richer spatial patterns and a higher role of the continental surface. Finally, the propagation to hydrological drought analysis shows that RS4 and PMS react fast to precipitation anomalies. These RCMs are in better agreement with the reference data than CL4 over the Ebro basin, while CL4 is in better agreement with the reference data over the Duero basin.

It is concluded that RCMs provide added value to meteorological drought representation, minimizing possible error sources
20 from the driving data and ameliorating its characterization over areas that are known to pose certain problems to global driving data products. However, soil moisture and hydrological drought representation by RCMs show uncertainties. This is mainly due to the relevance of model physics and its prevalence to the driving data. Similar results were obtained for the propagation processes, in which model structure was found to influence the dynamics of drought propagation, showing different temporal scales depending on how precipitation variability is formulated within the model.

RCMs are a suitable tool for meteorological drought studies but should be used cautiously for soil moisture and hydrological
25 drought analyses. Improvements regarding soil moisture modelling and streamflow-related processes (natural and anthropic) should be performed to better characterise drought events as well as their propagation.

Some prospective studies pertaining to this work could be to relate the results obtained to real drought impact data to study the relevance of the uncertainties found in the soil moisture and hydrological drought analyses. In addition, the analyses can
30 be extended by including more RCMs and other drought indices. On the one hand, using more models would increase the information about drought simulation at a regional scale but also allow the identification of further improvements in LSMs. On the other hand, if the analysis is performed with other indices, we can study the effects that other variables and processes, such as temperature and evapotranspiration, have on droughts. Studies of seasonal effects on droughts would also be inter-

esting because these effects play an important role in drought propagation. Considering the soil moisture drought analysis, a comparison could be performed using in situ soil moisture data over a given point. Finally, it would be interesting to analyse the added value of drought indices as a function of the time scale used and how this may affect drought representation and its propagation.

- 5 *Data availability.* The forcing datasets and driving data used in this study can be accessed from their original source: ERA-Interim: <https://www.ecmwf.int/en/forecasts/datasets/archive-datasets/reanalysis-datasets/era-interim>; the SAFRAN dataset for Spain is available for research purposes from the Mistrals-HyMeX database (Quintana-Seguí, 2015). The RCM simulations were downloaded from the Med-CORDEX database: <https://www.medcordex.eu/>. The ORCHIDEE and SURFEX LSM simulations were produced for this study but can be reproduced using the corresponding release of the models: <https://forge.ipsl.jussieu.fr/orchidee> (release no. 4676); SURFEX: <https://www.umr-cnrm.fr/surfex/spip.php?rubrique>. Finally, the observed and modelled streamflow data from SIMPA can be accessed from the Spanish Ministry for the Ecological Transition website: <https://www.miteco.gob.es/en/cartografia-y-sig/ide/descargas/agua/default.aspx>
- 10

Competing interests. The authors declare that they have no conflict of interest.

Disclaimer. TEXT

- Acknowledgements.* We thank the Spanish State Meteorological Agency (Agencia Estatal de Meteorología, AEMET) and the Spanish Ministry for the Ecological Transition for providing us with data. This work contributes to the HyMeX programme (Hydrological Cycle in the Mediterranean Experiment; <http://www.hymex.org>). and was funded by the Spanish Ministry of Science, Innovation and Universities and the European Regional Development Fund through the MARCO (CGL2013-47261-R) and HUMID (CGL2017-85687-R) projects, and by the Interreg POCTEFA project PIRAGUA (EFA210/16/ PIRAGUA).
- 15

References

- AEMET: Iberian Climate Atlas, Agencia Estatal de Meteorología, Madrid (Spain), 2011
- AghaKouchak, A., Farahmand, A., Melton, F.S., Teixeira, J., Anderson, M.C., Wardlow, B.D., and Hain, C.R.: Remote sensing of drought: Progress, challenges and opportunities, *Reviews of Geophysics*, 53(2):452–480, doi:10.1002/2014RG000456, <http://doi.wiley.com/10.1002/2014RG000456>, 2015
- 5 Anagnostopoulou, C.: Drought episodes over Greece as simulated by dynamical and statistical downscaling approaches, *Theor. Appl. Climatol.*, 129:587–605, doi:10.1007/s00704-016-1799-5, 2017
- Andreadis, K., and Lettenmaier, D.: Trends in 20th century drought over the continental United States, *Geophys. Res. Lett.*, 33, doi:10.1029/2006GL025711, 2006
- 10 Balsamo, G., Albergel, C., Beljaars, A., Boussetta, S., Brun, E., Cloke, H., Dee, D., Dutra, E., Pappenberger, F., de Rosnay, P., Muñoz-Sabater, J., Stockdale, F., and Vitart, F.: ERA-Interim/Land: A global land-surface reanalysis based on ERA-Interim meteorological forcing, Tech. rep., ECMWF, 2012
- Barker, L.J., Hannaford, J., Chiverton, A., and Svensson, C.: From meteorological to hydrological drought using standardized indicators, *Hydrology and Earth System Sciences*, 20,2483–2505, doi.org/10.5194/hess-20-2483-2016, 2016
- 15 Barrera-Escoda, A., Goncalves, M., Guerreiro, D., Cunillera, J., and Baldasano, J.: Projections of temperature and precipitation extremes in the North Western Mediterranean Basin by dynamical downscaling of climate scenarios at high resolution (1971-2050), *Clim. Change*, 122:567–582, doi:10.1007/s10584-013-1027-6, 2013
- Belo-Pereira, M., Dutra, E., and Viterbo, P.: Evaluation of global precipitation data sets over the Iberian Peninsula, *J. Geophys. Res.*, 116, D20101, doi:10.1029/2010JD015481, 2011
- 20 Beuvier, J., Sevault, F., Herrmann, M., Kontoyiannis, H., Ludwig, W., Rixen, M., Stanev, E., Béranger, K., and Somot, S.: Modeling the Mediterranean Sea interannual variability during 1961-2000: Focus on the Eastern Mediterranean Transient, *J. Geophys. Res.*, 115, C08017, doi:10.1029/2009JC005950, 2010
- Blenkinshop, S., and Fowler, H.: Changes in drought frequency, severity and duration for the British Isles projected by the PRUDENCE regional climate models, *Journal of Hydrology*, 342:50–71, 2007a
- 25 Blenkinshop, S., and Fowler, H.: Changes in European drought characteristics projected by the PRUDENCE regional climate models, *Int. J. Climatol.*, 27:1595–1610, 2007b
- Boone, A., Calvet, J.C., and Noilhan, J.: Inclusion of a Third Soil Layer in a Land Surface Scheme Using the Force–Restore Method, *Journal of Applied Meteorology*, 38(11):1611–1630, [http://journals.ametsoc.org/doi/pdf/10.1175/1520-0450\(1999\)038%3C1611:IOATSL%3E2.0.CO;2](http://journals.ametsoc.org/doi/pdf/10.1175/1520-0450(1999)038%3C1611:IOATSL%3E2.0.CO;2), 1999
- 30 Bowden, J., Talgo, K., Spero, T., and Nolte, C.: Assessing the Added Value of Dynamical Downscaling Using the Standardized Precipitation Index, *Advances in Meteorology*, 2016, 8432064, 14 pages, doi:10.1155/2016/8432064, 2016
- Castro, M., Fernández, C., and Gaertner, M.A.: Description of a Mesoscale Atmospheric Numerical Model, in: Diaz, J.I. and Lions, J.L. (eds), *Mathematics, Climate and Environment. Rech. Math. Appl. Ser. Mason*, 55:230–253, 1993
- Christensen, J., Carter, T., Rummukainen, M., and Amanatidis, G.: Evaluating the performance and utility of regional climate models: the PRUDENCE approach, *Climatic Change*, 81 (Suppl. 1):1–6, 2007
- 35

- Colin, J., Déqué, M., Radu, R., and Somot, S.: Sensitivity study of heavy precipitations in Limited Area Model climate simulations: influence of the size of the domain and the use of the spectral nudging technique. *Tellus A*, 62:591–604, doi:10.1111/j.1600-0870.2010.00467.x, 2010
- Coll-Pajarón, M.: Distribución de la humedad del suelo mediante observaciones del satélite SMOS, modelización con SURFEX y medidas in situ sobre la Valencia Anchor Station. Phd, Universitat de València, <http://roderic.uv.es/handle/10550/60877>, 2017
- De Rosnay, P., and Polcher, J.: Improvements of the representation of the hydrological exchanges between the biosphere and the atmosphere in a GCM, *Hydrology and Earth System Sciences*, 2:239–256, 1998
- Decharme, B., Alkama, R., Douville, H., Becker, M., and Cazenave, A.: Global Evaluation of the ISBA-TRIP Continental Hydrological System. Part II: Uncertainties in River Routing Simulation Related to Flow Velocity and Groundwater Storage, *J Hydrometeor.*, 11:601–617, doi:10.1175/2010JHM1212.1, 2010
- Dee, D.P., Uppala, S.M., Simmons, A.J., Berrisford, P., Poli, P., Kobayashi, S., Andrae, U., Balmaseda, M.A., Balsamo, G., Bauer, P., Bechtold, P., Beljaars, A.C.M., van de Berg, L., Bidlot, J., Bormann, N., Delsol, C., Dragani, R., Fuentes, M., Geer, A.J., Haimberger, L., Healy, S.B., Hersbach, H., Hólm, E.V., Isaksen, L., Kållberg, P., Köhler, M., Matricardi, M., McNally, A.P., Monge-Sanz, B.M., Morcrette, J.J., Park, B.K., Peubey, C., de Rosnay, P., Tavolato, C., Thépaut, J.N., and Vitart, F.: The ERA-Interim reanalysis: Configuration and performance of the data assimilation system, *Quarterly Journal of the Royal Meteorological Society*, 137(656):553–597, doi:10.1002/qj.828, <http://doi.wiley.com/10.1002/qj.828>, 2011
- Déqué, M. and Somot, S.: Analysis of heavy precipitation for France using ALADIN RCM simulations, *Időjárás Q. J. Hungarian Meteorological Service*, 112:179-190, 2008
- Domínguez, M., Gaertner, M.A., de Rosnay, P., and Losada, T.: A regional climate model simulation over West Africa: Parameterization tests and analysis of land-surface fields, *Climate Dynamics*, Ed Springer Berlin, 35(1):249–265, 2010
- Domínguez, M., Romera, R., Sánchez, E., Fita, L., Fernández, J., Jiménez-Guerrero, P., Montávez, J., Cabos, W., Liguori, G., and Gaertner, M.: Present-climate precipitation and temperature extremes over Spain from a set of high resolution RCMs, *Clim. Res.*, 58:149–164, doi:10.3354/cr01186, <http://www.int-res.com/abstracts/cr/v58/n2/p149-164/>, 2013
- Durand, Y., Brun, E., Merindol, L., Guyomarc'h, G., Lesaffre, B., and Martin, E.: A meteorological estimation of relevant parameters for snow models, *Annals of Glaciology*, 18:65–71, 1993
- Durand, Y., Giraud, G., Brun, E., Merindol, L., and Martin, E.: A computer-based system simulating snowpack structures as a tool for regional avalanche forecasting, *J. Glaciol.*, 45(151):469–484, 1999
- Edossa, D., Babel, M., and Das Gupta, A.: Drought Analysis in the Awash River Basin, Ethiopia, *Water Resour. Manag.*, 24:1441–1460, doi:10.1007/s11269-009-9508-0, 2009
- Escorihuela, M.J., and Quintana-Seguí, P.: Comparison of remote sensing and simulated soil moisture datasets in Mediterranean landscapes, *Remote Sensing of Environment*, 180:99 - 114, doi = "<https://doi.org/10.1016/j.rse.2016.02.046>", 2016
- Estrela, T., and Quintas, L.: El sistema integrado de modelización precipitación-aportación SIMPA, *Revista de Ingeniería Civil*, 104:43–52, 1996
- Evans, J.: *Straightforward Statistics for the Behavioral Sciences*, Pacific Grove, CA: Brooks/Cole Publishing, 1996
- FAO: *The State of Food Insecurity in the World*, Rome, Italy: FAO, 2009
- Farahmand, A. and AghaKouchak, A.: A generalized framework for deriving nonparametric standardized drought indicators, *Advances in Water Resources*, 76:140–145, doi:10.1016/j.advwatres.2014.11.012, <http://linkinghub.elsevier.com/retrieve/pii/S0309170814002322>, 2015

- Farda, A., Déqué, M., Somot, S., Horányi, A., Spiridonov, V., and Tóth, H.: Model ALADIN as regional climate model for Central and Eastern Europe, *Studia Geophysica et Geodaetica*, 54:313–332, doi:10.1007/s11200-010-0017-7, 2010
- Faroux, S., Kaptué Tchuenté, A.T., Roujean, J.L., Masson, V., Martin, E., and Le Moigne, P.: ECOCLIMAP-II/Europe: a twofold database of ecosystems and surface parameters at 1 km resolution based on satellite information for use in land surface, meteorological and climate models, *Geoscientific Model Development*, 6(2):563–582, doi:10.5194/gmd-6-563-2013, 2013
- 5 Feser, F., Rockel, B., von Storch, H., Winterfeldt, J., and Zahn, M.: Regional Climate Models Add Value to Global Model Data: A Review and Selected Examples, *Bull. Am. Meteorol. Soc.*, 92:1181–1192, doi:10.1175/2011BAMS3061.1, <https://doi.org/10.1175/2011BAMS3061.1>, 2011
- Gandin, L.S.: Objective analysis of meteorological fields. By L. S. Gandin. Translated from the Russian. Jerusalem (Israel Program for Scientific Translations). *Quarterly Journal of the Royal Meteorological Society* 92(393):447–447, doi:10.1002/qj.49709239320, <http://doi.wiley.com/10.1002/qj.49709239320>, 1966
- 10 García-Valdecasas Ojeda, M., Gámiz-Fortis, S.R., Castro-Díez, Y., and Esteban-Parra, M.: Evaluation of WRF capability to detect dry and wet periods in Spain using drought indices, *J. Geophys. Res. Atmos.*, 122:1569–1594, doi:10.1002/2016JD025683, 2017
- Giorgi, F., Jones, C., Asrar, G.: Addressing climate information needs at the regional level: The CORDEX framework, *WMO Bull.*, 15 58:175–183, 2009
- Gupta, H.V., Kling, H., Yilmaz, K.K., and Martínez, G.F.: Decomposition of the mean squared error and NSE performance criteria: Implications for improving hydrological modelling, *Journal of Hydrology*, 377(1-2):80–91, doi:10.1016/j.jhydrol.2009.08.003, <http://doi.org/10.1016/j.jhydrol.2009.08.003>, 2009
- Herrmann, M., Somot, S., Calmanti, S., Dubois, C., and Sevault, F.: Representation of spatial and temporal variability of daily wind speed and of intense wind events over the Mediterranean Sea using dynamical downscaling: Impact of the regional climate model configuration, *Nat. Hazards Earth Syst. Sci.*, 11, 1983–2001, doi:10.5194/nhess-11-1983-2011, 2011
- 20 Hoerling, M., Eischeid, J., Perlwitz, J., Quan, X., Zhang, T., and Pegion, P.: On the Increased Frequency of Mediterranean Drought, *Journal of Climate*, 25(6):2146–2161, doi=10.1175/JCLI-D-11-00296.1, 2012
- IPCC, 2007: *Climate Change 2007: Impacts, Adaptation and Vulnerability. Contribution of Working Group II to the Fourth Assessment Report of the Intergovernmental Panel on Climate Change*, M.L. Parry, O.F. Canziani, J.P. Palutikof, P.J. van der Linden and C.E. Hanson, Eds., Cambridge University Press, Cambridge, UK, 976pp.
- IPCC: *Climate change 2014: Synthesis Report. Contribution of Working Groups I, II and III to the Fifth Assessment Report of the Intergovernmental Panel on Climate Change* [Core Writing Team, R.K. Pachauri and L.A. Meyer (eds.)]. IPCC, Geneva, Switzerland, 151 pp, 2014
- 30 Jacobsen, I. and Heise, E.: A new economic method for the computation of the surface temperature in numerical models, *Beitr. Phys. Atm.*, 55:128–141, 1982
- Jenkins, K. and Warren, R.: Quantifying the impact of climate change on drought regimes using the Standardised Precipitation Index, *Theoretical and Applied Climatology*, 120(1-2):41–54, doi:10.1007/s00704-014-1143-x, <http://link.springer.com/10.1007/s00704-014-1143-x>, 2014
- 35 Jiménez-Guerrero, P., Montávez, J.P., Domínguez, M., Romera, R., Fita, L., Fernández, J., Cabos, W.D., Liguori, G., and Gaertner, M.A.: Description of mean fields and interannual variability in an ensemble of RCM evaluation simulations over Spain: results from the ESCENA project, *Climate Research*, 57:201–220, doi:10.3354/cr01165, 2013

- Kaptue Tchunte, A.T., Roujean, J.L., and Faroux, S.: ECOCLIMAP-II: An ecosystem classification and land surface parameters database of Western Africa at 1km resolution for the African Monsoon Multidisciplinary Analysis (AMMA) project, *Remote Sensing of Environment*, 114(5):961–976, doi:10.1016/j.rse.2009.12.008, 2010
- Kenawy, A., López-Moreno, J.I., and Vicente-Serrano, S.M.: Summer temperature extremes in northeastern Spain: Spatial regionalization and links to atmospheric circulation (1960–2006), *Theoretical and Applied Climatology*, 113(3-4):387–405, doi:10.1007/s00704-012-0797-5, <http://dx.doi.org/10.1007/s00704-012-0797-5>, 2013
- Koster, R.D., Guo, Z., Yang, R., Dirmeyer, P.A., Mitchell, K., and Puma, M.J.: On the Nature of Soil Moisture in Land Surface Models, *Journal of Climate*, 22(16):4322–4335, doi:10.1175/2009JCLI2832.1, 2009
- Krinner, G., Viovy, N., de Noblet-Ducoudré, N., Ogée, J., Polcher, J., Friedlingstein, P., Ciais, P., Sitch, S., and Prentice, I.: A dynamic global vegetation model for studies of the coupled atmosphere-biosphere system, *Global Biogeochem. Cycles*, 19, GB1015, doi:10.1029/2003GB002199, 2005
- Li, Z.X.: Ensemble Atmospheric GCM Simulation of Climate Interannual Variability from 1979 to 1994, *J. Climate*, 12:986–1001, 1999
- van der Linden, P., and Mitchell, J.F.B. (eds.): ENSEMBLES: Climate Change and its Impacts: Summary of research and results from the ENSEMBLES project, MetOffice Hadley Centre, FitzRoy Road, Exeter EX1 3PB, UK. 160pp, 2009
- López-Bustins, J.A., Pascual, D., Pla, E., and Retana, J.: Future variability of droughts in three Mediterranean catchments, *Natural Hazards*, 69(3):1405–1421, doi:10.1007/s11069-013-0754-3, <http://link.springer.com/10.1007/s11069-013-0754-3>, 2013
- de Luis, M., Brunetti, M., González-Hidalgo, J.C., Longares, L.A., and Martín-Vide, J.: Changes in seasonal precipitation in the Iberian Peninsula during 1946–2005, *Global and Planetary Change*, 74(1):27–33, doi:10.1016/j.gloplacha.2010.06.006, 2010
- Mariotti, A.: Recent Changes in the Mediterranean Water Cycle: A Pathway toward Long-Term Regional Hydroclimatic Change?, *J. Climate*, 23:1513–1525, doi:10.1175/2009JCLI3251.1, <https://doi.org/10.1175/2009JCLI3251.1>, 2010
- Martínez-Fernández, J., Sánchez, N., and Herrero-Jiménez, C.M.: Recent trends in rivers with near-natural flow regime: The case of the river headwaters in Spain, *Progress in Physical Geography: Earth and Environment*, 37(5):685–700, doi:10.1177/0309133313496834, <https://doi.org/10.1177/0309133313496834>, 2013
- Masson, V., Champeaux, J.L., Chauvin, F., Meriguet, C., and Lacaze, R.: A Global Database of Land Surface Parameters at 1-km Resolution in Meteorological and Climate Models, *Journal of Climate*, 16(9):1261–1282, doi:10.1175/1520-0442-16.9.1261, <https://doi.org/10.1175/1520-0442-16.9.1261>, 2003
- Masud, M.B., Khaliq, M.N., and Wheeler, H.S.: Future changes to drought characteristics over the Canadian Prairie Provinces based on NARCCAP multi-RCM ensemble, *Climate Dynamics*, 48:2685–2705, doi:10.1007/s00382-016-3232-2, 2017
- Maule, C.F., Thejll, P., Christensen, J.H., Svendsen, S.H., and Hannaford, J.: Improved confidence in regional climate model simulations of precipitation evaluated using drought statistics from the ENSEMBLES models, *Climate Dynamics*, 40:155–173, doi:10.1007/s00382-012-1355-7, 2013
- McKee, T.B., Doesken, N.J., and Kleist, J.: The Relationship of Drought Frequency and Duration Time Scales, In: *Proceedings of the 8th Conference on Applied Climatology*, American Meteorological Society Boston, MA, vol 17, pp 179–183, 1993
- Meresa, H., Osuch, M., and Romanowicz, R.: Hydro-Meteorological Drought Projections into the 21-st Century for Selected Polish Catchments, *Water*, 8:206, doi:10.3390/w8050206, 2016
- Mishra, A. and Singh, V.P.: Drought modeling - A review, *Journal of Hydrology*, 403:157–175, doi:10.1016/j.jhydrol.2011.03.049, 2011
- Mishra, A.K. and Singh, V.P.: A review of drought concepts, *Journal of Hydrology*, 391(1-2):202-216, <https://doi.org/10.1016/j.jhydrol.2010.07.012>, 2010

- Morán-Tejeda, E., Herrera, S., López-Moreno, J.I., Revuelto, J., Lehmann, A., and Beniston, M.: Evolution and frequency (1970–2007) of combined temperature–precipitation modes in the Spanish mountains and sensitivity of snow cover, *Regional Environmental Change*, 13(4):873–885, doi:10.1007/s10113-012-0380-8, <http://dx.doi.org/10.1007/s10113-012-0380-8>, 2013
- Nabat, P.S., Somot, S., Mallet, M., Sánchez-Lorenzo, A., and Wild, M.: Contribution of anthropogenic sulfate aerosols to the changing Euro-Mediterranean climate since 1980, *Geophys. Res. Lett.*, 41:5605–5611, doi:10.1002/2014GL060798, 2014
- 5 Ngo-Duc, T., Polcher, J., and Laval, K.: A 53-year forcing data set for land surface models, *Journal of Geophysical Research*, 110, doi:10.1029/2004JD005434, 2005
- Noilhan, J. and Mahfouf, J.F.: The ISBA land surface parameterisation scheme, *Global and Planetary Change*, 13(1-4):145–159, DOI:10.1016/0921-8181(95)00043-7, 1996
- 10 Noilhan, J. and Planton, S.: A Simple Parameterization of Land Surface Processes for Meteorological Models, *Monthly Weather Review*, 117(3):536–549, 1989
- Olcina, J.: Tipología de sequías en España, *Ería* 56, 201–227, 2001
- Owens, T., Hoddinott, J., and Kinsey, B.: Ex-Ante Actions and Ex-Post Public Responses to Drought Shocks: Evidence and Simulations from Zimbabwe, *World Development* 31:1239–1255, DOI:10.1016/S0305-750X(03)00068-8, 2003
- 15 PaiMazumder, D., Sushama, L., Laprise, R., Khaliq, M., and Sauchyn, D.: Canadian RCM projected changes to short and long term drought characteristics over the Canadian Prairies, *Int J Climatol*, 33:1409–1423, DOI:10.1002/joc.3521, 2013
- Palmer, W.C.: *Meteorological Drought*, vol 30. US Department of Commerce, Weather Bureau Washington, DC, 1965
- Post, W. and Zobler, L.: Global soil types, 0.5-degree grid (modified zobler). Available on-line [<http://www.daac.ornl.gov>] from Oak Ridge National Laboratory Distributed Active Archive Center, Oak Ridge, Tennessee, U.S.A., 2000
- 20 Quintana-Seguí, P.: SAFRAN analysis over Spain. ESPRI/IPSL, DOI:10.14768/MISTRALS-HYMEX.1388, 2015
- Quintana-Seguí, P., Peral, M.C., Turco, M., Llasat, M.C., and Martin, E.: Meteorological Analysis Systems in North-East Spain: Validation of SAFRAN and SPAN, *Journal of Environmental Informatics* 27(2):116–130, DOI:10.3808/jei.201600335, <http://www.iseis.org/jei/abstract.asp?no=201600335>, 2016
- Quintana-Seguí, P., Turco, M., Herrera, S., Miguez-Macho, G.: Validation of a new SAFRAN-based gridded precipitation product for Spain and comparisons to Spain02 and ERA-Interim. *Hydrology and Earth System Sciences*, 21(4):2187–2201, DOI:10.5194/hess-21-2187-2017, <http://www.hydrol-earth-syst-sci.net/21/2187/2017/>, 2017
- 25 Quintana-Seguí, P., Barella-Ortiz, A., Regueiro-Sanfiz, S., and Míguez-Macho, G.: The Utility of Land-Surface Model Simulations to Provide Drought Information in a Water Management Context Using Global and Local Forcing Datasets, *Water Resources Management*, 1573-1650, doi:10.1007/s11269-018-2160-9, <https://doi.org/10.1007/s11269-018-2160-9>, 2019
- 30 Radu, R., Déqué, M., and Somot, S.: Spectral nudging in a spectral regional climate model. *Tellus A: Dynamic Meteorology and Oceanography*, 60:898–910, DOI:10.1111/j.1600-0870.2008.00341.x, 2008
- Reichstein, M., Bahn, M., Ciais, P., Frank, D., Mahecha, M., Seneviratne, S., Zscheischler, J., Beer, C., Buchmann, N., Frank, D., Papale, D., Rammig, A., Smith, P., Thonicke, K., van der Velde, M., Vicca, S., Walz, A., and Wattenbach, M.: Climate extremes and the carbon cycle, *Nature*, 500:287–295, DOI:10.1038/nature12350, 2013
- 35 del Río, S., Herrero, L., Pinto-Gomes, C., and Penas, A.: Spatial analysis of mean temperature trends in Spain over the period 1961–2006, *Global and Planetary Change*, 78(1-2):65–75, DOI:10.1016/j.gloplacha.2011.05.012, <http://www.sciencedirect.com/science/article/pii/S0921818111000919>, 2011

- Ritter, B., and Geleyn, J.F.: A comprehensive radiation scheme for numerical weather prediction models with potential applications in climate simulations, *Monthly Weather Review*, 120(2):303–325, DOI:10.1175/1520-0493(1992)120<0303:ACRSFN.2.0.CO;2, <http://journals.ametsoc.org/doi/abs/10.1175/1520-0493%7B281992%7D29120%7D3C0303%7D3AACRSFN%7D3E2.0.CO%7D3B2>, 1992
- Rockel, B., Will, A., and Hense, A.: The Regional Climate Model COSMO-CLM (CCLM). *Meteorologische Zeitschrift*, 17(4):347–348, DOI:10.1127/0941-2948/2008/0309, <http://dx.doi.org/10.1127/0941-2948/2008/0309>, 2008
- 5 Ruíz, J.M.: Modelo distribuido para la evaluación de recursos hídricos (modelo SIMPA). Madrid, CEDEX, Ministerio de Fomento Doctorado 180, 1999
- Ruti, P., Somot, S., Giorgi, F., Dubois, C., Flaounas, E., Obermann, A., Dell’Aquila, A., Pisacane, G., Harzallah, A., Lombardi, E., Ahrens, B., Akhtar, N., Alias, A., Arsouze, T., Aznar, R., Bastin, S., Bartholy, J., Béranger, K., Beuvier, J., Bouffies-Cloch e, S., Brauch, J., Cabos, W., Calmanti, S., Calvet, J., Carillo, A., Conte, D., Coppola, E., Djurdjevic, V., Drobinski, P., Elizalde-Arellano, A., Gaertner, M., Gal an, P., Gallardo, C., Gualdi, S., Goncalves, M., Jorba, O., Jord a, G., L’Heveder, B., Lebeau-pin-Brossier, C., Li, L., Liguori, G., Lionello, P., Maci as, D., Nabat, P., Onol, B., Raikovic, B., Ramage, K., Sevault, F., Sannino, G., Struglia, M., Sanna, A., Torma, C., and Vervatis, V.: Med-CORDEX Initiative for Mediterranean Climate Studies, *Bull. Am. Meteorol. Soc.*, DOI:10.1175/BAMS-D-14-00176.1, 2015
- 10 S anchez, E., Gallardo, C., Gaertner, M., Arribas, A., and Castro, M.: Future climate extreme events in the Mediterranean simulated by a regional climate model: a first approach. *Global and Planetary Change*, 44:163–180, 2004
- 15 Serrano, A., Garc a, J. A., Mateos, V. L., Cencillo, M. L., and Garrido, J.: Monthly modes of variation of precipitation over the Iberian peninsula, *Journal of Climate* 12, 2894–2919, 1999
- Sevault, F., Somot, S., Alias, A., Dubois, C., Lebeau-pin-Brossier, C., Nabat, P., Adloff, F., D equ e, M., and Decharme, B.: A fully coupled Mediterranean regional climate system model: design and evaluation of the ocean component for the 1980–2012 period. *Tellus A: Dynamic Meteorology and Oceanography*, 66(1):23967, DOI:10.3402/tellusa.v66.23967, <https://doi.org/10.3402/tellusa.v66.23967>, 2014
- 20 Shukla, S., and Wood, A.W.: Use of a standardized runoff index for characterizing hydrologic drought. *Geophysical Research Letters*, 35:2405, DOI:10.1029/2007GL032487, 2008
- Sylla, M.B., Coppola, E., Mariotti, L., Giorgi, F., Ruti, P. M., Dell’Aquila, A. and Bi, X.: Multiyear simulation of the African climate using a regional climate model (RegCM3) with the high resolution ERA-interim reanalysis, *Climate Dynamics*, 35(1):231–247, doi=10.1007/s00382-009-0613-9,2010
- 25 Sousa, P.M., Trigo, R.M., Aizpurua, P., Nieto, R., Gimeno, L., and Garc a-Herrera, R.: Trends and extremes of drought indices throughout the 20th century in the Mediterranean, *Natural Hazards and Earth System Science*, 11(1):33–51, DOI:10.5194/nhess-11-33-2011, <http://www.nat-hazards-earth-syst-sci.net/11/33/2011/nhess-11-33-2011.html>, 2011
- Turco, M., and Llasat, M.C.: Trends in indices of daily precipitation extremes in Catalonia (NE Spain), 1951–2003, *Natural Hazards and Earth System Science*, 11(12):3213–3226, DOI:10.5194/nhess-11-3213-2011, <http://www.nat-hazards-earth-syst-sci.net/11/3213/2011/>, 2011
- 30 Van Loon, A.: Hydrological drought explained, *WIREs Water*2015, 2:359–392. doi: 10.1002/wat2.1085, 2015
- Van Loon, A.F., and Van Lanen, H.A.J.: A process-based typology of hydrological drought, *Hydrology and Earth System Sciences* 16:1915–1646, DOI:10.5194/hess-16-1915-2012, 2012a
- 35 Van Loon, A.F., Van Huijgevoort, M.H.J., and Van Lanen, H.A.J.: Evaluation of drought propagation in an ensemble mean of large-scale hydrological models, *Hydrology and Earth System Sciences* 16(11):4057–4078, DOI:10.5194/hess-16-4057-2012, 2012b

- Van Loon, A. F., Van Lanen, H. A. J., Hisdal, H., Tallaksen, L. M., Fendekova, M., Oosterwijk, J., ... Machlica, A.: Understanding hydrological winter drought in Europe. In *Global Change: Facing Risks and Threats to Water Resources (189-197)*. Centre for Ecology and Hydrology, Wallingford, Oxfordshire, OX10 8BB, UK: IAHS.,2010
- 5 Vicente-Serrano, S.: Differences in spatial patterns of drought on different time scales: An analysis of the Iberian Peninsula, *Water Resour. Manage.*, 20:37–60, DOI:10.1007/s11269-006-2974-8, 2006
- Vicente-Serrano, S., and López-Moreno, J.: Hydrological response to different time scales of climatological drought: an evaluation of the standardized precipitation index in a mountainous Mediterranean basin, *Hydrol. Earth Syst. Sci.*, 9:523–533, DOI:10.5194/hess-9-523-2005, <https://www.hydrol-earth-syst-sci.net/9/523/2005/>, 2005
- 10 Vicente-Serrano, S., López-Moreno, J.I., Beguería, S., Lorenzo-Lacruz, J., Azorín-Molina, C., and Morán-Tejeda.: Accurate Computation of a Streamflow Drought Index, *Journal of Hydrological Engineering*, 17(2), 2012
- Vicente-Serrano, S., Gouveia, C., Camarero, J.J., Beguería, S., Trigo, R., López-Moreno, J., Azorín-Molina, C., Pasho, E., Lorenzo-Lacruz, J., Revuelto, J., Morán-Tejeda, E., and Sánchez-Lorenzo, A.: Response of vegetation to drought timescales across global land biomes, *Proc. Nat. Acad. Sci.*, 110:52–57, DOI:10.1073/pnas.1207068110, 2013
- 15 Vicente-Serrano, S., López-Moreno, J.I., Beguería, S., Lorenzo-Lacruz, J., Sánchez-Lorenzo, A., García-Ruiz, J.M., Azorín-Molina, C., Morán-Tejeda, E., Revuelto, J., Trigo, R., Coelho, F., and Espejo, F.: Evidence of increasing drought severity caused by temperature rise in southern Europe, *Environmental Research Letters*, 9(4):044,001, DOI:10.1088/1748-9326/9/4/044001, 2014
- Vu, M., Raghavan, V., and Liang, S.: Ensemble Climate Projection for Hydro-Meteorological Drought over a river basin in Central Highland, Vietnam, *Journal of Civil Engineering*, 19:427–433, DOI:10.1007/s12205-015-0506-x, 2015
- 20 Wang, D., Hejazi, M., Cai, X., and Valocchi, A.J.: Climate change impact on meteorological, agricultural, and hydrological drought in central Illinois, *Water Resources Research*, 47, doi:10.1029/2010WR009845, 2011
- Weedon, G., Gomes, S., Viterbo, P., Shuttleworth, W., Blyth, E., Osterle, H., Adam, J.C, Bellouin, N., Boucher, O., and Best M.: Creation of the WATCH Forcing Data and Its Use to Assess Global and Regional Reference Crop Evaporation over Land during the Twentieth Century, *Journal of Hydrometeorology*, 12:823–848, DOI:10.1175/2011JHM1369.1, <http://doi.org/10.1175/2011JHM1369.1>, 2011
- 25 Willite, D.A.: *Drought: a global assessment*. Vols I and II, Routledge Hazards and Disasters Series, Routledge, London, UK, 2000
- Wu, C., Xian, Z., and Huang, G.: Meteorological drought in the Beijiing River basin, South China: current observations and future projections, *Stoch. Environ. Res. Risk Assess.*, 30:1821–1834, doi:10.1007/s00477-015-1157-7, <https://doi.org/10.1007/s00477-015-1157-7>, 2016
- 30 Xu, Y., Wang, L., Ross, K.W., Liu, C., Berry, K.: Standardized soil moisture index for drought monitoring based on soil moisture active passive observations and 36 years of north American land data assimilation system data: A case study in the southeast United States, *Remote. Sens.*, 10, 301,2018