

Referee #1: Comments, authors' replies, and changes

General reply to Referee #1's comments

We thank Anonymous Referee #1 for the positive appreciation of the manuscript and valuable suggestions.

Comment #1.1

Given the target audience will primarily be hydrologists, I find the description of the methodology (particularly the software development and computational methodology) to be very complex and in-depth. I'm sure for some in the community this will be fairly easy language to interact with, but certainly to someone that doesn't design, code or work the tools such as this, I found much of the section passed straight over my head.

Thank you for this notice. We are aware that this manuscript and the description is outside the discipline of pure hydrology. After considering moving the methodological details to the appendix, we are inclined to leave them in the main body of the article. The reason we find this appropriate is that the methodology presented forms the core novelty of the paper.

Comment #1.2

The presentation of some of the figures are a little poor - while the matrix of images used to highlight how the model has been trained are undoubtedly a worthwhile addition to the paper, I definitely found them a little illegible due to their size - even zooming right in to the PDF rendered some of the images unclear as to what was going on. Furthermore, I originally elected to print a copy of the paper to review while travelling and the images do not translate to black and white or greyscale, perhaps highlighting an accessibility issue.

Thank you for raising this point.

Changes: We changed Figure 4 to improve its readability: we moved the three less interesting case studies to the appendix, so that the size of the images can be increased. Also, we increased the image resolution to 600 dpi. Finally, we modified the colors so that the segmentation boundaries are clear.

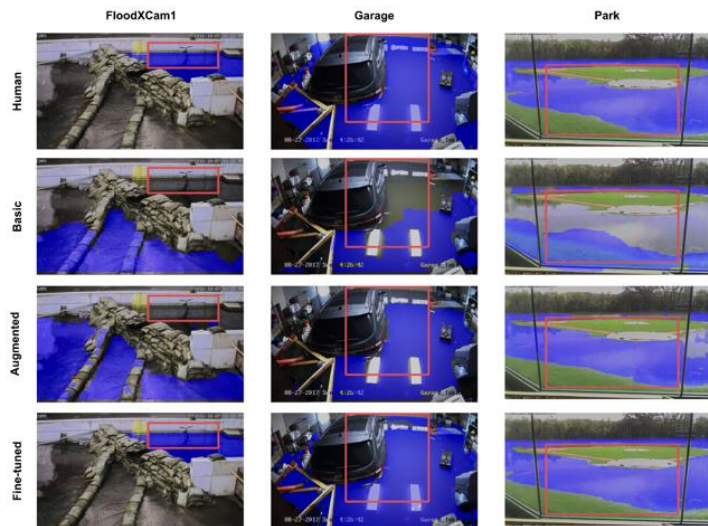


Figure 4: Sample frames taken from three of the six analyzed surveillance videos, shown with the human label or automatic flood segmentation in blue and the regions of interest (ROI) in red. The samples show how the “Augmented” strategy improves segmentation in the Garage and Park samples, but the segmentation for FloodXCam1 is only successful with the “Fine-tuned” training strategy. The sample frames from the remaining three videos are provided in the supplementary materials.

Moy de Vitry, Matthew March 19, 2019
Deleted: footage

Moy de Vitry, Matthew March 19, 2019
Deleted: ,

Moy de Vitry, Matthew March 19, 2019
Deleted: , and River

Comment #1.3

Appreciating the author’s comments about copyright and third party ownership of CCTV imagery, I do feel a specific case study may have aided the paper rather than just the catalogue of training videos presented in section 3.1. I understand this may not be an option for the authors, based on the nature of the copyright imagery they had access to, but it would have been useful to see an example using real data and images from an observed urban flood event.

It is true that a specific case study of a real urban flood event would be beneficial to show the practical feasibility of the method proposed. Unfortunately, the possibility to collect such data would require a long-term study that was not within the means of the project. Nevertheless, other projects that aim to collect real flooding data could pick up this point. For example, the data collected in the ongoing Flood-Prepared project ([link](#)) might be a good candidate for such an applied study.

Changes: We mentioned the need for a more in depth, practical case study of urban flooding in the discussion section of the manuscript.

15 4.7 Recommendations for future research

Future research should assess the actual value of the information provided by SOFI for the validation and calibration of urban flood models. For this, it would be of value to have a large-scale, long-term case study of a flood-prone urban area, in which surveillance footage and reference flood measurements are available. Additionally, possible methods to de-noise the SOFI signal and quantify its reliability should be investigated.

Comment #1.4

Finally, I found the discussion section to be a little too focused on the technical aspects and challenges of the methodology. What would have been nice, was a slightly more "big picture" discussion that highlight the impacts and possible extensions of this work in an urban setting. Some of the findings here would be significant for urban drainage managers, infrastructure managers (particularly transport etc), quantifying economic risks associated via damage etc and future policy creation around climate change scenarios and drainage dimensions. I acknowledge the authors touched on some of these issues in the introductory section, but it would have been a nice conclusion to the paper

to discuss how some of their results may help remove some of the challenges that they identified in the introduction.

Thank you for this suggestion.

Changes: In the Conclusions section of the manuscript, we have elaborated on the possibilities that the proposed method opens up, at the same “big-picture” level as the introduction.

20 5 Conclusions

In this study, we explored the potential of using a deep convolutional neural network (DCNN) and a simple but novel index (SOFI) to obtain flood level trend information from generic surveillance cameras. The results of our study strongly suggest that qualitative flood level information can indeed be extracted automatically and universally from any static camera, although we see the need for many training images to cover the range of appearances that floodwater can take. To
 25 compensate for the limited number of training images available in this study, we found that degrading image quality during training improved segmentation performance by approximately 10% (IoU) on low-quality surveillance images. Additionally, fine-tuning the DCNN to a specific video with as few as seven manually labeled images further improved performance. In our results, the SOFI signal from the camera-independent DCNN correlated with water level trends at a rate of 75% on average (Spearman rank correlation coefficient). The proof of concept presented in this study has significant implications.
 30 Namely, it confirms that footage from surveillance cameras, processed with artificial intelligence, could provide urban flood monitoring data for entire cities while preserving privacy. Without the need for specialized instrumentation or field measurements, monitoring could be conducted at a relatively low cost, which is especially attractive for cities with limited financial resources. Previous research suggests that the qualitative information contained in SOFI can easily be used to reduce parameter uncertainty in urban flood models. Apart from modelling-related applications, SOFI could also be useful
 5 for coordinating flood response and verifying insurance claims.

Referee #2: Comments, authors' replies, and changes

Reply to general comments from Referee # 2

This paper proposed an approach to monitor flood level trend using DCNN. The topic is very interesting. However, in my opinion, it could be difficult for modelers, decisionmakers and city planners to use the Static Observer Flooding Index (SOFI) directly. The authors should clearly explain what the direct or specific application scenarios of SOFI are. If SOFI or visible area of the flooding can be converted into water depth value or even class information on water depth, it would make this approach more useful and valuable. Unfortunately, this paper lacks this attempt, so I suggest rejecting this paper but encourage resubmission after the improvements have been made.

We thank Referee 2 for the overall positive review, for the useful recommendations, and for the questions, which have allowed us to further improve the manuscript.

On the value of flood level trend information

While we agree with Referee 2 that decision-makers and city planners may not be accustomed to flood trend information, modelers in research have already successfully used trend data for model calibration (e.g. van Meerveld et al 2017), albeit in the field of natural catchment hydrology. In that publication, stream level class data are used as trend information in a conventional calibration scheme, with the minor adaptation being the use of the Spearman rank correlation coefficient as an objective function. Similarly, Wani et al. (2017) showed that even simple binary information of a combined sewer overflow in an urban catchment can reduce model parameter uncertainty. Making the link to our manuscript, binary flooding information can easily be derived from the flood trend information that SOFI provides, by defining for each camera a baseline SOFI value below which no flooding is assumed. We agree with Referee 2 that our manuscript could better explain how the utility of SOFI is supported by literature. To do so, we have augmented our manuscript with details and background information for the examples listed above. We made these changes in the introduction, discussion, and conclusion of the manuscript (see “changes” below).

On the advantages of SOFI over water depth estimation

Referee 2 also suggests converting SOFI into water depths (either values or classes) if possible. Although methodologies for determining flood water levels are of value, we argue that the concept of flood trend monitoring with SOFI has advantageous characteristics that would be lost if SOFI were to be converted into a water depth.

1. Higher scalability.

The obtention of water depth information from a segmented flooding image requires knowledge of the dimensions of reference objects in the camera scene. As shown by the literature suggested by Referee 2, there are different ways of obtaining this information. For example, one can rely on the visibility of ubiquitous objects of known dimensions (Jiang et al. 2019). This approach is limited to scenes in which such objects are visible, and fails if the reference object is hidden or partially hidden by mobile objects during a flood. Another way of obtaining reference measurements is with a survey of a large feature in each scene. Bohla et al. (2018) demonstrate this method nicely with bridges in urban stream settings. Needless to say, this method requires

time, effort, and field knowledge for each of the sites surveyed, making it expensive and time-consuming to deploy at scale. SOFI was conceived as a metric that has few prerequisites and relies on minimal on-site knowledge, making it applicable to a broader range of scenes than any alternative method known to the authors.

2. Fewer errors.

In stream or river settings, direct conversion of SOFI to a water depth is most probably possible e.g., by determining a “SOFI-water depth” curve analogous to an H-Q curve. However, in an urban environment, the movement of objects (e.g., cars, people) constantly change the extent of visible water. It follows that the “SOFI-water depth” curve will be inherently wrong. By setting lower ambitions, SOFI also relies on fewer assumptions about the scene monitored, and thereby introduces fewer possible sources of error.

3. Lower risk of overvaluation.

Although a conversion of SOFI into water depth (either absolute value or class) could make the data more interpretable, it would dissimulate uncertainty about the information delivered and could risk being valued at the same level of trust as data from conventional sensors. We therefore see value in keeping SOFI an adimensional, qualitative metric.

Summary

In summary, literature supports the argument that the flood level trend information reflected in SOFI is valuable in itself to improve urban flood analysis, and do not necessarily need to be converted into water depth. Furthermore, the conversion of SOFI into a water depth would not only reduce the ease of applicability, but also introduce additional error sources and lead to possible overvaluation. Based on these arguments, we do not see the need to transform SOFI into a water level estimation method.

Changes: However, we understand that the value of SOFI can be clarified and we have done this in Sections 1.1, 4.6, and 5.

1 Introduction

1.1 The need for urban pluvial flood monitoring data

Urban pluvial floods are floods caused by intense local rainfall in urban catchments, where drainage systems are usually not designed to cope with storm events of more than a 10-year return period. Although the full impact of such flood events is difficult to gauge because of reporting and knowledge gaps (Paprotny et al., 2018; van Riel, 2011), some studies estimate the societal cost of small but frequent urban pluvial floods to be comparable to the cost of large, infrequent fluvial flooding events (Jiang et al., 2018b; ten Veldhuis, 2011). Additionally, it is generally acknowledged that the frequency of urban pluvial floods will increase under the driving forces of climate change and urbanization (Skougaard Kaspersen et al., 2017; Zahnt et al., 2018).

To cope with urban pluvial flood risk, [urban drainage managers](#) must understand long-term flooding trends, design appropriate flood mitigation solutions in the medium term, and provide flood alerts in the short term. Numerical flood

[modelling](#) is a widely used tool for all these tasks, but a certain amount of data is needed [for modelling](#). Data pertaining to drainage infrastructure, land use, and elevation is required to construct a model, and rainfall data is required to test the model on past rain events. Additionally, flood monitoring data allows for model calibration, which is essential for improving the accuracy of urban drainage models (Tscheikner-Gratl et al., 2016). However, conventional sensors are ill suited to urban environments, where vehicles can disturb the flow and vandalism is a high risk. Similarly, remote sensing is not able to provide data with sufficient spatiotemporal resolution. The lack of monitoring methods and ensuing data scarcity are frequently decried in the urban pluvial flood modelling community (Gaitan et al., 2016; Hunter et al., 2008; El Kadi Abderrezzak et al., 2009; Leandro et al., 2009). In this context, researchers and practitioners have turned to alternative sources of data such as surveillance footage (Liu et al., 2015; Lv et al., 2018), [ultrasonic-infrared sensor combinations](#) (Mousa et al., 2016), field surveys (Kim et al., 2014), [social media and apps](#) (Wang et al., 2018), and first-hand reports (Kim et al., 2014; Yu et al., 2016).

Although quantitative information (e.g. water level) is commonly sought for, studies show that even qualitative [data](#) are useful for calibrating hydraulic and hydrological models. [Van Meerveld et al. \(2017\) calibrated a bucket-type hydrological model with stream level data transformed into sparse, dimensionless class information, such as might be collected by citizen scientists. To accomplish this, the authors used a genetic algorithm \(Seibert, 2000\) for parameter estimation and the Spearman rank correlation coefficient as an objective function. In doing so, they demonstrated that information could be gained from water level trend data with a conventional calibration toolset. Exploiting a different kind of qualitative information, Wani et al. \(2017\) showed that binary data from a combined sewer overflow to estimate the parameter value distributions of an urban drainage model. In their research, the Bayesian framework used allowed the reduction of parameter and model uncertainty to be described explicitly. We therefore also expect unconventional, qualitative monitoring data to be valuable for the estimation of parameters in urban pluvial flood models.](#)

4.6 Practical value of SOFI

Since the qualitative nature and noisiness of SOFI might raise questions about its practical value, two aspects must be recalled. First, SOFI aims to provide information in the context of urban pluvial flood events, for which monitoring data is admittedly difficult to obtain. The studies cited in the introduction have proven that in situations of data scarcity, even qualitative information can be useful in improving model accuracy. In particular, the sparse stream level class information used by van Meerveld et al. (2017) is conceptually equivalent to the flood level trend information contained in SOFI. Second, thanks to the scalability of SOFI, one should be able to apply it to large surveillance networks or retroactively to archived footage at a reasonable cost. By providing data for model calibration and validation, the approach we propose can help reduce modeling uncertainty for urban flood risk assessment and assist in the planning of flood mitigation measures. In addition, the flood level trend information provided by SOFI could help direct the focus of decision-makers and rescue personnel during flood events so that resource use can be optimized. For insurance companies, the flooding information can also help verify claims and establish fair insurance policy premiums.

5 Conclusions

In this study, we explored the potential of using a deep convolutional neural network (DCNN) and a simple but novel index (SOFI) to obtain flood level trend information from generic surveillance cameras. The results of our study strongly suggest that qualitative flood level information can indeed be extracted automatically and universally from any static camera, although we see the need for many training images to cover the range of appearances that floodwater can take. To compensate for the limited number of training images available in this study, we found that degrading image quality during training improved segmentation performance by approximately 10% (IoU) on low-quality surveillance images. Additionally, fine-tuning the DCNN to a specific video with as few as seven manually labeled images further improved performance. In our results, the SOFI signal from the camera-independent DCNN correlated with water level trends at a rate of 75% on average (Spearman rank correlation coefficient). The proof of concept presented in this study has significant implications. Namely, it confirms that footage from surveillance cameras, processed with artificial intelligence, could provide urban flood monitoring data for entire cities while preserving privacy. Without the need for specialized instrumentation or field measurements, monitoring could be conducted at a relatively low cost, which is especially attractive for cities with limited financial resources. Previous research suggests that the qualitative information contained in SOFI can easily be used to reduce parameter uncertainty in urban flood models. Apart from modelling-related applications, SOFI could also be useful for coordinating flood response and verifying insurance claims.

We now also present the advantageous characteristics of SOFI in an extended comparison with alternative methods, as requested by Referee 2 in Comment # 2.13 (see comment #2.13 for changes).

References

- Bhola, Punit Kumar, Bhavana B. Nair, Jorge Leandro, Sethuraman N. Rao, and Markus Disse. 2018. "Flood Inundation Forecasts Using Validation Data Generated with the Assistance of Computer Vision." *Journal of Hydroinformatics* 21 (2): 240–56. <https://doi.org/10.2166/hydro.2018.044>.
- Jiang, Jingchao, Junzhi Liu, Changxiu Cheng, Jingzhou Huang, and Anke Xue. 2019. "Automatic Estimation of Urban Waterlogging Depths from Video Images Based on Ubiquitous Reference Objects." *Remote Sensing* 11 (5): 587. <https://doi.org/10.3390/rs11050587>.
- van Meerveld, H. J. I., Vis, M. J. P., and Seibert, J.: Information content of stream level class data for hydrological model calibration, *Hydrol. Earth Syst. Sci.*, 21, 4895–4905, <https://doi.org/10.5194/hess-21-4895-2017>, 2017.

Wani, Omar, Andreas Scheidegger, Juan Pablo Carbajal, Jörg Rieckermann, and Frank Blumensaat. 2017. "Parameter Estimation of Hydrologic Models Using a Likelihood Function for Censored and Binary Observations." *Water Research* 121 (September): 290–301. <https://doi.org/10.1016/j.watres.2017.05.038>

Comment # 2.1

Page 1, Line 16 "The results suggest that the approach can be used with almost any surveillance footage". I think this conclusion may be too strong.

Thank you for pointing this out. This conclusion is indeed too strong given the limited number of videos on which the method was demonstrated (even though we chose videos that are diverse from a quality and scenery standpoint).

Changes: We now instead write that the results confirm that the method is versatile and can be applied to a variety of camera models and flooding situations.

Abstract. In many countries, urban flooding due to local, intense rainfall is expected to become more frequent because of climate change and urbanization. Cities trying to adapt to this growing risk are challenged by a chronic lack of surface flooding data that is needed for flood risk assessment and planning. In this work, we propose a new approach that exploits existing surveillance camera systems to provide qualitative flood level trend information at scale. The approach uses a deep convolutional neural network (DCNN) to detect floodwater in surveillance footage and a novel qualitative flood index (SOFI) as a proxy for water level fluctuations visible from a surveillance camera's viewpoint. To demonstrate the approach, we trained the DCNN on 1281 flooding images collected from the Internet and applied it to six surveillance videos representing different flooding and lighting conditions. The SOFI signal obtained from the videos had on average a 75% correlation to the actual water level fluctuation. By retraining the DCNN with a few frames from a given video, performance for that video is further increased to 85% on average. The results confirm that the approach is versatile, with the potential to be applied to a variety of surveillance camera models and flooding situations without the need for on-site camera calibration. Thanks to this flexibility, this approach could be a cheap and highly scalable alternative to conventional sensing methods.

Comment # 2.2

Some new related references about automatic water level monitoring with surveillance images should be included to strengthen this paper. Wang, R. Q., Mao, H., Wang, Y., Rae, C., & Shaw, W. (2018). Hyper-resolution monitoring of urban flooding with social media and crowdsourcing data. *Computers & Geosciences*, 111, 139-147. Jiang, J., Liu, J., Cheng, C., Huang, J., & Xue, A. (2019). Automatic Estimation of Urban Waterlogging Depths from Video Images Based on Ubiquitous Reference Objects. *Remote Sensing*, 11(5), 587. Bhola, P. K., Nair, B. B., Leandro, J., Rao, S. N., & Disse, M. (2019). Flood inundation forecasts using validation data generated with the assistance of computer vision. *Journal of Hydroinformatics*, 21(2), 240-256.

Thank you for referring us to these recent publications, which both highlight the need for flood monitoring data and illustrate the complexity of extracting absolute water level information from images.

Changes: We have added the reference to Wang et al (2018) to Section 1.1.

Abderrezzak et al., 2009; Leandro et al., 2009). In this context, researchers and practitioners have turned to alternative sources of data such as surveillance footage (Liu et al., 2015; Lv et al., 2018), ultrasonic-infrared sensor combinations (Mousa et al., 2016), field surveys (Kim et al., 2014), social media and apps (Wang et al., 2018), and first-hand reports (Kim et al., 2014; Yu et al., 2016).

And the other two references have been added to Section 1.3

1.3 Automatic water level monitoring with surveillance images

While manual reading of water level from surveillance images is possible (e.g. in the study of Liu et al. (2015)), it is both
 5 prohibitively labor-intensive at scale and potentially critical from a privacy perspective. Automatic image analysis helps
 overcome these hurdles, and has already been the subject of research. The following publications provide the current state of
 the art of automatic water level estimation from ground-level images.

In the work of Lo et al. (2015), video frames are segmented into a number of visually distinct areas using a graph-based
 approach. The area corresponding to water is identified thanks to an operator-provided “seed”, and the water level is
 10 qualitatively assessed by comparing the water area to virtual markers placed in the image by the operator. With a more
 camera-specific solution, Sakano (2016) estimates water levels with a supervised histogram-based approach which assumes
 a straight water line on a wall visible in the footage. Similarly, Kim et al. (2011) used a ruler in the camera’s field of view as
 a reference for the water level measurement. A similar approach is used by Bhole et al. (2018), who used the size of large
 objects like bridges to estimate the real height of automatically detected water surface in the image. Although these methods
 15 work well, they rely on in-situ measurements and site-specific calibration, and may be challenging to apply to a large
 number of cameras.

A more modern approach for image-based flood level estimation has been proposed by Jiang et al. (2018a). The authors use
 a deep convolutional neural network to extract image features and then apply a regression to infer water level. Although the
 results are positive, the approach requires that the neural network and regression be retrained for each camera. Thus, the
 20 method is probably most valuable for providing redundancy to existing water level readings and not as a scalable flood
 monitoring solution. Recently, a new approach has been proposed, which theoretically overcomes this problem by estimating
 water depth from the immersion of ubiquitous reference objects (e.g. bicycles) of known height (Chaudhary et al., 2019;
 Jiang et al., 2019). However, this approach requires that such objects be visible in the scene in order to provide information.

Comment # 2.3

Page 4, Figure 1. There should be a “surveillance images” box between “camera” box and “deep conv.
 network” box.

Thank you for this input. We had several versions of Figure 1, some of which contained the box
 proposed, but left it out in the final version.

Changes: We have introduced a “video frames” box between “camera” box and “deep conv. neural
 network” box.

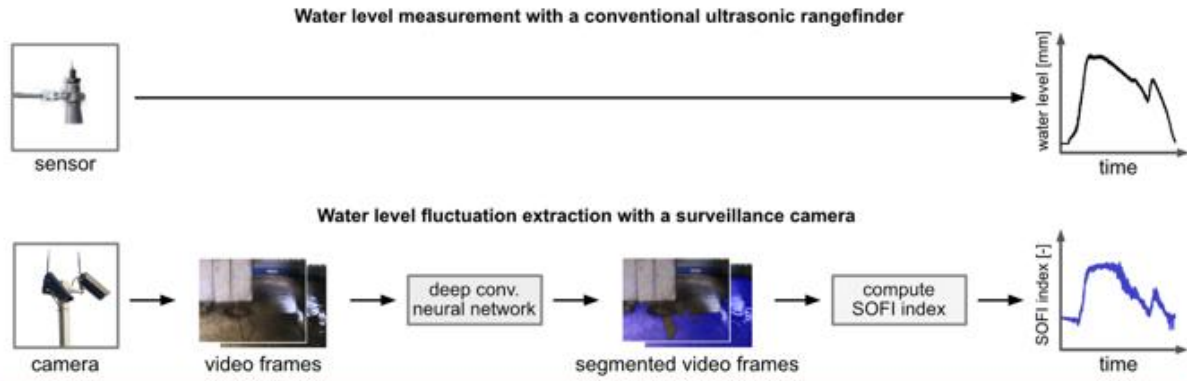


Figure 1: As an alternative to conventional sensors (top), flood trend information is extracted from surveillance footage by computing the fractional water-covered area (SOFI) over a series of video frames (bottom).

Comment # 2.4

Page 4, Line 18. Why U-net was selected for water segmentation?

U-Net is a very well known DCNN architecture for semantic segmentation, as the method has nearly 5000 citations in Google Scholar. It is well-suited to the flooding segmentation problem because of its relatively compact size compared to more recent state-of-the-art architectures (such as Mask-RCNN). The smaller size makes it both easier to train with small datasets (which we have) and faster to run, which is useful for flood monitoring.

Changes: We have included these reasons in the manuscript.

2.1.2 Water segmentation with U-net

The DCNN architecture used for water segmentation in this work is that of U-net (Ronneberger et al., 2015). U-net builds on the FCN architecture, but differs in that the decoding layers have as many features as their respective encoding layers, which allows the network to propagate context and texture information to the final layers. Additionally, U-net implements “skip” connections to preserve details and object boundaries, by carrying information directly from the encoding to the decoding layers. The U-net architecture is well-suited to the water segmentation problem because of its relatively compact size compared to more recent state-of-the-art semantic segmentation architectures, such as Mask R-CNN (He et al., 2017). The smaller size makes it both easier to train with small datasets (like the one available for this study) and faster to run, which is useful for flood monitoring. To code the DCNN, we built on an open source implementation of U-net (Pröve, 2017) that uses Keras (Chollet and others, 2015) to interface with the TensorFlow library (Abadi et al., 2016).

Comment # 2.5

Page 6, Lines 18-20. In the augmented strategy, how many images were used to train the U-net model? Is the augmented data the same amount as the basic data? Moreover, Page 7, Table 1, the augmentation steps in the augmented strategy should be clearly explained.

Thank you for this question. For the augmented strategy, we use the same images as for the basic strategy. Like for the basic strategy, each training image is fed into the network up to 200 times during training (fewer if the training is completed faster). For the augmented strategy, however, each image is first randomly transformed before being fed into the DCNN.

Changes: We have added information about the augmented strategy in Section 2.1.3. Furthermore, we have provided more details about the augmentation transformations applied.

In the **Augmented** strategy, the same images as for the basic training strategy were used but with additional augmentation steps that degraded image quality to the level of typical surveillance footage. The following image transformations, implemented with the Keras library (Chollet and others, 2015) were applied during augmentation:

- random horizontal mirroring
- translate image horizontally and vertically by +/- 20%
- change in contrast by +/- 50%
- resolution deterioration by zooming into image at different locations up to 33%
- decreasing saturation by up to 80%
- alter image brightness between -80 and +20 units
- blurring with random Gaussian filter

Augmentation was applied with a 20% probability each time an image was fed into the network for training (up to 200 times, corresponding to the number of epochs).

Comment # 2.6

Page 7, Lines 5-6. It is not accurate enough. How many seconds or minutes does each model training take?

Changes: At the line indicated, instead of a range we now indicate the approximate average training time in minutes for the basic and augmented strategies separately.

To train the network, the Adaptive Moment Estimation (Adam) was chosen as the gradient descent optimizer because it shows good convergence properties (Kingma and Ba, 2015). The dice coefficient served as the loss function, defined after

5 Zou et al. (2004). The DCNN was trained on an Nvidia Titan X (Pascal) 12 GB GPU. The “Basic” strategy took approximately 120 minutes on average, whereas the “Augmented” strategy required approximately 180 minutes for training. The fine-tuning process required an additional 5 minutes of training per video.

Comment # 2.7

Page 8, Table2. The total frames or minutes and the resolutions of surveillance images should be given. How to define the quality of surveillance footage should be explained.

It is true we could have provided more information here about the videos and the quality terms used.

Changes: We added the requested information to Table 2. “Quality” has been replaced with “visual clarity” and is specified for each video. (The tables have been moved to the end of the manuscript to match the manuscript preparation guidelines).

TABLE 2: SURVEILLANCE FOOTAGE USED IN STUDY

Video	Setting	Flood type	Image resolution	Water level trend	Analysis frequency (frames/min)	Event duration	Visual clarity of flooding	Source
FloodX Cam1	Experimental facility, weir	Artificial	1280x720	Sensor	60	164 minutes	High: Wet surfaces	(Moy de Vitry et al., 2017)
FloodX Cam5	Experimental facility, cellar	Artificial	1280x720	Sensor	60	166 minutes	Medium: Wet surfaces, desaturated image	(Moy de Vitry et al., 2017)
Garage	Indoor, garage	Extreme rainfall	1280x720	Visual	24	19.8 hours	High: Moving objects floating in water	(Roisman, 2017)
Park	Outside, sport field	River flooding	640x480	Visual	1	13.5 hours	Low: Camera behind window with reflections; camera is sometimes	(Cityofchaska, 2010)

Comment # 2.8

Please add the average segmentation time of a single frame for the testing as a performance, since the real-time monitoring is usually important.

Thank you for this request; it is true that this figure could be of interest to readers.

Changes: We have provided average segmentation time in Section 3.1

3 Results

3.1 Automatic flood water segmentation

Image segmentation, with the setup described in Section 2.1.3, takes around 50ms per image. Figure 4 provides sample frames from three of the six surveillance videos used in this work. The other three videos are provided in Figure 1 of the supplementary material. In each case, the human labels as well as automatic segmentations from the various DCNNs are drawn in blue. Additionally, the ROIs are drawn in red for each video, defined manually according to the criteria mentioned in section 2.2.

Comment # 2.9

Page 9, Lines 16-17. The authors should explain more extensively how to compute the rank of each signal value.

Thank you for your interest. The computation of the Spearman rank-order correlation coefficient, including signal rank of each value, was performed using the pandas Python library (McKinney, 2010), which is open source.

Changes: We have added a reference to this library in Section 2.3.3. However, Referee 1 commented that the description of the methodology is already very detailed, so we did not further develop on the signal rank computation in the manuscript.

McKinney, Wes. 2010. "Data Structures for Statistical Computing in Python." In *Proceedings of the 9th Python in Science Conference*, edited by Stéfan van der Walt and Jarrod Millman, 51–56.

an in-situ sensor or by visual inspection of the surveillance footage, as described in Section 2.3.1. The pandas Python library (McKinney, 2010), which contains an implementation of the Spearman rank correlation coefficient, was used for time series analysis.

Comment # 2.10

Page 9, Line 20. "the two signals" should be clearly identified as the SOFI signal and the reference signal.

Thank you for pointing this out.

Changes: We have identified the two signals as suggested.

coefficient, the rank of each signal value must be computed relative to its respective signal. For signals in which the same value can appear multiple times (tied ranks), the Spearman rank-order correlation coefficient ρ is given by

$$\rho = \frac{\sum (x_i - \bar{x})(y_i - \bar{y})}{\sqrt{\sum (x_i - \bar{x})^2 \sum (y_i - \bar{y})^2}} \quad (3)$$

where x_i and y_i are the ranks of the two signals for time step i , and where \bar{x} and \bar{y} are the average ranks of the SOFI and water level signals, respectively. In the current study, the reference signal for the water level trend was obtained either from

Comment # 2.11

Page 12, Figure 6. Only the case of video FloodXCam5 was given, please add cases of parking lot and park that are the typical scenes of urban flooding.

It is true that these other cases could be of interest to readers. We had left them out for space reasons.

Changes: We have added all other video cases to the supplementary materials.

Figure 6: Water level (blue) and SOFI signal for whole image (black) or Region of Interest (ROI, red) for video FloodXCam5. With more advanced DCNN training strategies, noise and outliers in SOFI are visibly reduced in the ROI. The time series for the remaining videos can be found in the supplementary materials, Figures A2-A6.

Comment # 2.12

Page 14, Line 2. "the visually estimated flooding intensity" and "Flooding intensity" in Figure 8 should be consistent with "the visually estimated water level" in the caption of Figure 8.

Thank you for pointing this out.

Changes: We have changed the figure caption accordingly.

Figure 8: Videos without reference measurements: SOFI computed from full images (black) or from ROI (red) plotted against visually estimated flood intensity, for different training strategies. There is a visible reduction of noise and increased correlation with the "Augmented" and "Fine-tuned" strategies.

Comment # 2.13

In the "Discussion" section, more comparisons with other existing methods for urban flooding information extraction from surveillance images should be added.

Thank you for this comment. We were originally not sure how much to develop comparisons, but are happy to do add a few more.

Changes: We have added additional comparisons to existing methods for urban flood information extraction from surveillance images, showing both advantages and disadvantages of the alternatives. The publication of Jiang et al. (2019) proposed in comment # 2.2 was referred to.

4.1 SOFI as a scalable and robust approach for qualitative water level sensing

Compared to alternative methods for water level monitoring, our approach is less ambitious in the type of information it aims to provide, as it only attempts to communicate water level fluctuation and not an absolute water level. This weakness is at least partially compensated for by an increased scope of applicability, as it is almost the only surveillance image-based monitoring approach designed to provide water level information without needing to be calibrated to each camera. As described in Section 1.3, research has typically been focused on extracting absolute water levels from images, mainly by identifying the water edge in relation to an object that has been measured and manually identified in the image (Bhola et al., 2018; Kim et al., 2011; Sakaino, 2016). Although Lo et al. (2015) present a method that does not necessarily need reference measurements, human intervention is still needed for each camera to define virtual markers and a “seed” to inform water segmentation. The concept presented by Jiang et al. (2019) is an exception, theoretically overcoming the need for per-image calibration by taking ubiquitous objects as scale references. Nonetheless, that method assumes that such reference objects are visible in the flooding scene, which may not always hold. In comparison, SOFI does not need specific objects to be present, nor does it need field measurements or manual set-up of the image. The DCNN-based water segmentation approach used is flexible enough that given sufficient training data, it can theoretically be applied to any situation. In this study, the scalability of SOFI was demonstrated by applying the “Augmented” DCNN to six videos not seen during training, from which information was extracted despite complex environments, moving objects, and bad lighting conditions. The simplicity of the SOFI approach also gives it robustness. By using areal integration to quantify flood intensity, the index is less sensitive to small segmentation errors, which could be problematic if punctual virtual markers are used as in the case of Lo et al. (2015). Also, since SOFI only claims to provide trend information, systematic segmentation errors (e.g. misclassification at the water-background boundary) should only be of minor consequence. This aspect of SOFI is well illustrated in this study by the *Park* video, for which the SOFI signal had a high correlation to the water level trend despite mediocre segmentation performance. Besides the advantages of SOFI, its use of a DCNN carries a disadvantage due to its need for training data. Methods that use heuristics to segment water, such as Lo et al. (2015), do not require as much training data, although their application is then often limited to visually similar situations.

Comment # 2.14

The accuracy of this approach could be affected by camera inclination and manual labeling. Topography can also affect the accuracy, e.g., in flat areas, the visible area of the flooding varies greatly, but the change of water depth value may be very small, while in low-lying areas, the change of visible area of the flooding is small, but the change of water depth value may be very big. These error sources should be discussed in the “Discussion” section.

Thank you for this comment. It is true that a variety of factors can affect the accuracy of our approach. Although some error sources are already mentioned in the Discussion, it is true that we could have developed this further.

Changes: We have added an additional discussion of influencing factors after Section 4.1.

4.2 Factors influencing the information quality of SOFI

Although SOFI is theoretically applicable at locations where the extent of visible water correlates with flooding depth, there are certain conditions that can negatively influence the quality of information obtained.

First, floodwater can look very different from case to case. For example, (i) water surface movement can cause a range of different wave structures, and the color of water itself is variable, (ii) water reflects light that falls on it, even in a mirror-like fashion if the water surface is still, and (iii) surveillance cameras tend to have low color fidelity, dynamic range, resolution, and sharpness. Due to the complexity of segmenting floodwater, one can expect that more training images would be required than for a typical segmentation problem. In our results, the high inter-video variability in segmentation performance suggests that the number of training images should be increased in future studies. In particular, the variability suggests that the training images were not fully representative of the testing images. Thus, it is probable that the segmentation performance could be substantially improved if a larger and more diverse training set were available.

Second, in situations where large quantities of manually labeled images are required, it is inevitable that some labelling errors occur. Looking into the implications of such errors, Heller et al. (2018) showed that U-net is relatively insensitive to jagged label boundaries. Regarding non boundary-localized errors, all DCNN architectures investigated were found to be very robust.

Finally, the basic assumption that the extent of visible water correlates with flooding depth may not fully hold for every camera scene. For example, the lowest flooding depths may not be visible in the image, and if the camera is oriented such that the whole image can be covered by water, the highest stages of flooding may be censored from the signal as well. These situations will require special handling when the data is assimilated for model calibration. The scene topography and camera placement also affect the slope and linearity of the SOFI-water depth relationship, and can make the trend more difficult to determine if the correlation in the relationship is small. Additionally, the entry and exit of objects in a flooding scene can compromise the approach, especially if the object are large and occur with low frequency in a non-systematic way.

Comment # 2.15

In the "Conclusions" section, the authors should explain the direct applications and managerial implications of this approach.

Thank you for this comment. We agree that a broader perspective was lacking in the Conclusions section.

Changes: In the Conclusions, we now relate how our method could be applied in practice and how it could change the management of urban water systems.

20 **5 Conclusions**

In this study, we explored the potential of using a deep convolutional neural network (DCNN) and a simple but novel index (SOFI) to obtain flood level trend information from generic surveillance cameras. The results of our study strongly suggest that qualitative flood level information can indeed be extracted automatically and universally from any static camera, although we see the need for many training images to cover the range of appearances that floodwater can take. To

25 compensate for the limited number of training images available in this study, we found that degrading image quality during training improved segmentation performance by approximately 10% (IoU) on low-quality surveillance images. Additionally, fine-tuning the DCNN to a specific video with as few as seven manually labeled images further improved performance. In our results, the SOFI signal from the camera-independent DCNN correlated with water level trends at a rate of 75% on average (Spearman rank correlation coefficient). The proof of concept presented in this study has significant implications.

30 Namely, it confirms that footage from surveillance cameras, processed with artificial intelligence, could provide urban flood monitoring data for entire cities while preserving privacy. Without the need for specialized instrumentation or field measurements, monitoring could be conducted at a relatively low cost, which is especially attractive for cities with limited financial resources. Previous research suggests that the qualitative information contained in SOFI can easily be used to reduce parameter uncertainty in urban flood models. Apart from modelling-related applications, SOFI could also be useful

5 for coordinating flood response and verifying insurance claims.

Scalable Flood Level Trend Monitoring with Surveillance Cameras using a Deep Convolutional Neural Network

Matthew Moy de Vitry^{1,2}, Simon Kramer², Jan Dirk Wegner³, and João P. Leitão¹

¹ Department of Urban Water Management, Eawag - Swiss Federal Institute of Aquatic Science and Technology, 8600 Dübendorf, Switzerland

² Institute of Environmental Engineering, ETH Zurich, 8093 Zürich, Switzerland

³ EcoVision Lab, Photogrammetry and Remote Sensing group, ETH Zurich, 8093 Zürich, Switzerland

Correspondence to: Matthew Moy de Vitry (matthew.moydevitry@eawag.ch)

Abstract. In many countries, urban flooding due to local, intense rainfall is expected to become more frequent because of climate change and urbanization. Cities trying to adapt to this growing risk are challenged by a chronic lack of surface flooding data that is needed for flood risk assessment and planning. In this work, we propose a new approach that exploits existing surveillance camera systems to provide qualitative flood level trend information at scale. The approach uses a deep convolutional neural network (DCNN) to detect floodwater in surveillance footage and a novel qualitative flood index (SOFI) as a proxy for water level fluctuations visible from a surveillance camera’s viewpoint. To demonstrate the approach, we trained the DCNN on 1218 flooding images collected from the Internet and applied it to six surveillance videos representing different flooding and lighting conditions. The SOFI signal obtained from the videos had on average a 75% correlation to the actual water level fluctuation. By retraining the DCNN with a few frames from a given video, correlation is increased to 85% on average. The results confirm that the approach is versatile, with the potential to be applied to a variety of surveillance camera models and flooding situations, without the need for on-site camera calibration. Thanks to this flexibility, this approach could be a cheap and highly scalable alternative to conventional sensing methods.

1 Introduction

1.1 The need for urban pluvial flood monitoring data

Urban pluvial floods are floods caused by intense local rainfall in urban catchments, where drainage systems are usually not designed to cope with storm events of more than a 10-year return period. Although the full impact of such flood events is difficult to gauge because of reporting and knowledge gaps (Paprotny et al., 2018; van Riel, 2011), some studies estimate the societal cost of small but frequent urban pluvial floods to be comparable to the cost of large, infrequent fluvial flooding events (Jiang et al., 2018b; ten Veldhuis, 2011). Additionally, it is generally acknowledged that the frequency of urban pluvial floods will increase under the driving forces of climate change and urbanization (Skougaard Kaspersen et al., 2017; Zahnt et al., 2018).

Deleted: 1281

Deleted: performance

Deleted: for that video

Deleted: further

Deleted: suggest

Deleted: can be used with almost any surveillance footage

Commented [MMdV1]: modified for clarity

Deleted: , making it cheap

Deleted: ,

Deleted: , and retroactively applicable to archived surveillance footage

To cope with urban pluvial flood risk, urban drainage managers must understand long-term flooding trends, design appropriate flood mitigation solutions in the medium term, and provide flood alerts in the short term. Numerical flood modelling is a widely used tool for all these tasks, but a certain amount of data is needed for modelling. Data pertaining to drainage infrastructure, land use, and elevation is required to construct a model, and rainfall data is required to test the model on past rain events. Additionally, flood monitoring data allows for model calibration, which is essential for improving the accuracy of urban drainage models (Tscheikner-Gratl et al., 2016). However, conventional sensors are ill suited to urban environments, where vehicles can disturb the flow and vandalism is a high risk. Similarly, remote sensing is not able to provide data with sufficient spatiotemporal resolution. The lack of monitoring methods and ensuing data scarcity are frequently decried in the urban pluvial flood modelling community (Gaitan et al., 2016; Hunter et al., 2008; El Kadi Abderrezzak et al., 2009; Leandro et al., 2009). In this context, researchers and practitioners have turned to alternative sources of data such as surveillance footage (Liu et al., 2015; Lv et al., 2018), ultrasonic-infrared sensor combinations (Mousa et al., 2016), field surveys (Kim et al., 2014), social media and apps (Wang et al., 2018), and first-hand reports (Kim et al., 2014; Yu et al., 2016).

Although quantitative information (e.g. water level) is commonly sought for, studies show that even qualitative data are useful for calibrating hydraulic and hydrological models. Van Meerveld et al. (2017) calibrated a bucket-type hydrological model with stream level data transformed into sparse, dimensionless class information, such as might be collected by citizen scientists. To accomplish this, the authors used a genetic algorithm (Seibert, 2000) for parameter estimation and the Spearman rank correlation coefficient as an objective function. In doing so, they demonstrated that information could be gained from water level trend data with a conventional calibration toolset. Exploiting a different kind of qualitative information, Wani et al. (2017) showed that binary data from a combined sewer overflow to estimate the parameter value distributions of an urban drainage model. In their research, the Bayesian framework used allowed the reduction of parameter and model uncertainty to be described explicitly. We therefore also expect unconventional, qualitative monitoring data to be valuable for the estimation of parameters in urban pluvial flood models.

1.2 Surveillance cameras as a data source

Surveillance footage has several advantages when used for flood monitoring. First, many municipalities have already invested in a network of surveillance cameras. In the cities investigated by Goold et al. (2010), these networks usually have fifty to several hundred cameras. In certain cities, however, camera systems operated by institutions are also integrated in the municipal monitoring network. For example, the Command and Control Centre for the London Police is reported to have access to 60'000 cameras (Goold et al., 2010), and the police in Paris have access to 10'000 cameras operated by partners (Sperber et al., 2013). The second advantage of surveillance cameras is their high reliability, since their utility for traffic surveillance and crime reduction depends on continuous operation.

However, the use of surveillance footage for flood monitoring has complications. First, camera placement is generally controlled by outside parties for security purposes, thus critical flooding locations may be only partially visible in the footage

Commented [MMdV2]: Modified for clarity

Deleted: city planners

Field Code Changed

Deleted: information, e.g. binary information (Wani et al., 2017) or class information (van Meerveld et al., 2017).

Deleted: permanent

Deleted: uptime

or even completely missed. Second, the personal privacy of individuals visible in the footage must be protected. Finally, the interpretation of surveillance footage into a signal that can be assimilated into a flood model is not trivial.

1.3 Automatic water level monitoring with surveillance images

While manual reading of water level from surveillance images is possible (e.g. in the study of Liu et al. (2015)), it is both prohibitively labor-intensive at scale and potentially critical from a privacy perspective. Automatic image analysis helps overcome these hurdles, and has already been ~~the subject of~~ research. ~~The following publications provide the current state of~~ the art of automatic water level estimation from ground-level images.

In the work of Lo et al. (2015), video frames are segmented into a number of visually distinct areas using a graph-based approach. The area corresponding to water is identified thanks to an operator-provided “seed”, and the water level is qualitatively assessed by comparing the water area to virtual markers placed in the image by the operator. With a more camera-specific solution, Sakaino (2016) estimates water levels with a supervised histogram-based approach which assumes a straight water line on a wall visible in the footage. Similarly, Kim et al. (2011) used a ruler in the camera’s field of view as a reference for the water level measurement. ~~A similar approach is used by Bhola et al. (2018), who used the size of large objects like bridges to estimate the real height of automatically detected water surface in the image.~~ Although these methods work well, they rely on ~~in-situ measurements and site-specific calibration,~~ and may be challenging to apply to a large number of cameras.

A more modern approach for image-based flood level estimation has been proposed by Jiang et al. (2018a). The authors use a deep convolutional neural network to extract image features and then apply a regression to infer water level. Although the results are positive, the approach requires that the neural network and regression be retrained for each camera. Thus, the method is probably most valuable for providing redundancy to existing water level readings and not as a scalable flood monitoring solution. ~~Recently, a new approach has been proposed, which theoretically overcomes this problem by estimating water depth from the immersion of ubiquitous reference objects (e.g. bicycles) of known height~~ (Chaudhary et al., 2019; Jiang et al., 2019). ~~However, this approach requires that such objects be visible in the scene in order to provide information.~~

1.4 Objective of the present work

In this work, we propose a novel and highly scalable approach to automatically extract local flood level fluctuations from surveillance footage. By proposing this approach, we aim to provide a tool that can exploit existing surveillance infrastructure to furnish much-needed flood information to urban flood modelers and decision-makers. By making scalability a priority, we hope to facilitate adoption of the tool by practitioners, especially in cities where extensive surveillance camera systems are already in place.

Deleted: explored

Deleted: in

Deleted: prior knowledge about the images to be analyzed

2 Materials and methods

Our approach consists in a two-step processing pipeline that combines automatic image analysis with data aggregation (Fig. 1). In a first step, floodwater is segmented in individual video frames with a deep convolutional network (DCNN). The segmented frames are then summarized with an index (SOFI) that qualifies the visible extent and thereby the depth of the water over time. We evaluate the performance of this approach using footage from surveillance cameras during various flood events. Additionally, we investigate how the data used to train the DCNN influences both segmentation performance and the information content of the SOFI.

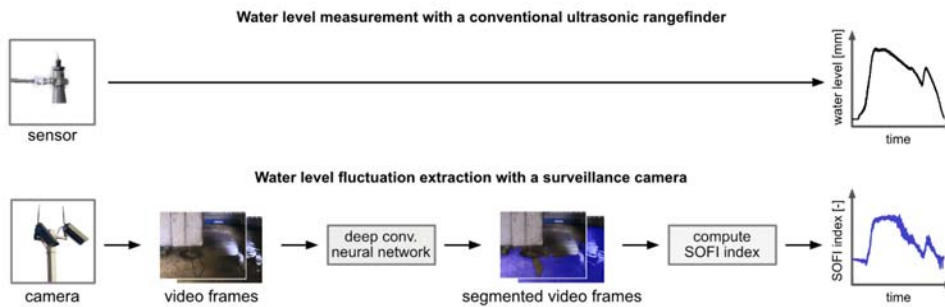


Figure 1: As an alternative to conventional sensors (top), flood trend information is extracted from surveillance footage by computing the fractional water-covered area (SOFI) over a series of video frames (bottom).

2.1 Flood water segmentation

2.1.1 Image segmentation with deep convolutional neural networks

Semantic segmentation is the task of annotating each pixel in an image according to a predefined taxonomy. The most recent advances in image segmentation have been made with DCNNs (He et al., 2017), so it is of value to apply this powerful tool to the problem of flood segmentation. DCNNs are a subset of artificial neural networks (ANN), machine learning models with a structure that mimics the structure of neurons in the brain. In the case of DCNNs, images are interpreted through consecutive convolutional (matrix-like) layers that extract and combine information at varying levels of abstraction.

Although the concept of DCNNs originated in the 80s (Fukushima, 1980), their success for non-trivial problems requires large training sets and computational resources that have only become available relatively recently. An important breakthrough in DCNN development was the fully convoluted network (FCN) introduced by Long et al. (2015), in which the fully connected layers responsible for generating class labels are also formulated as convolutional layers, thereby providing spatially explicit label maps. However, FCN suffered an issue of resolution loss. To solve this issue, Noh et al. (2015) combined FCN with a “deconvolution network”, a network that predates FCN (Zeiler et al., 2011) and consists in upsampling and unpooling layers.

2.1.2 Water segmentation with U-net

The DCNN architecture used for water segmentation in this work is that of U-net (Ronneberger et al., 2015). U-net builds on the FCNN architecture, but differs in that the decoding layers have as many features as their respective encoding layers, which allows the network to propagate context and texture information to the final layers. Additionally, U-net implements “skip” connections to preserve details and object boundaries, by carrying information directly from the encoding to the decoding layers. The U-net architecture is well-suited to the water segmentation problem because of its relatively compact size compared to more recent state-of-the-art semantic segmentation architectures, such as Mask R-CNN (He et al., 2017). The smaller size makes it both easier to train with small datasets (like the one available for this study) and faster to run, which is useful for flood monitoring. To code the DCNN, we built on an open source implementation of U-net (Pröve, 2017) that uses Keras (Chollet and others, 2015) to interface with the TensorFlow library (Abadi et al., 2016).

After exploring a range of hyperparameter values (layer depth, feature size, etc.), we found the following network structure (Fig. 2) to have the best combination of performance and generalization potential for the flood segmentation problem. As input, the network takes color images with a resolution of 512x512 pixels. The network is composed of five encoding and five decoding blocks, each block consisting of two 3x3 convolutions. A residual connection around the two convolutions was added to improve the learning capacity of the network (He et al., 2016). A batch normalization layer between each convolution accelerates the training and makes the training performance less dependent on the initial weights (Ioffe and Szegedy, 2015). On the encoding side, the blocks end with a 2x2 max pooling operation while on the decoding side, blocks start with a 2D upsampling (or “up-convolution”) operation. The skip connections between the encoding and decoding blocks are implemented by taking the final convoluted map of each encoding block and concatenating it to the first map of the corresponding decoding block. The number of features in the first layer is 16, and the number of features is doubled with increasing layer depth. Additionally, dropout regularization is added between the two deepest convolution layers of the network in order to avoid over-fitting.

Field Code Changed

Formatted: French (Switzerland)

Formatted: French (Switzerland)

Formatted: English (United States)

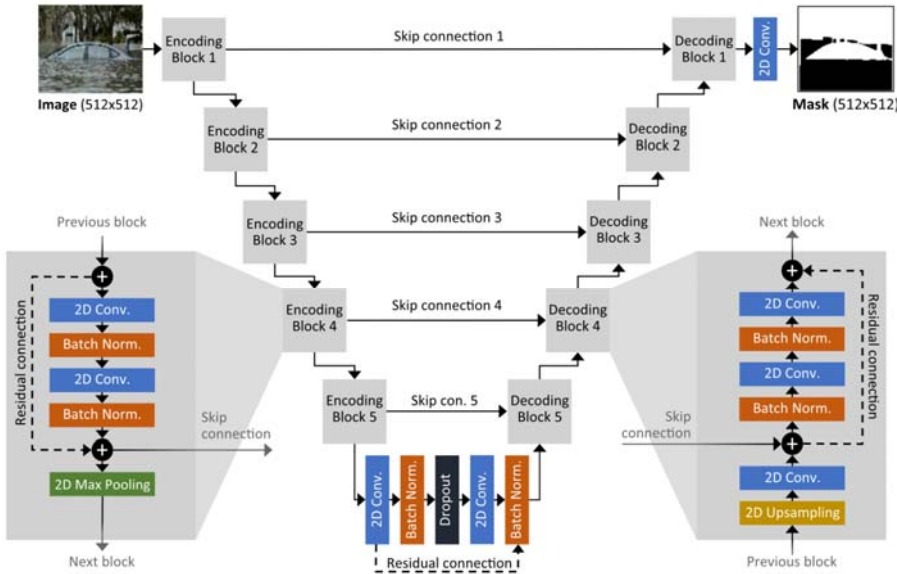


Figure 2. The deep convolutional neural network architecture used to perform water segmentation.

2.1.3 Deep convolutional neural network training strategies

The collection and labelling of training data is one of the most costly and time-consuming aspects of training DCNNs. For the specific application of flood detection in CCTV and webcam images, training images are particularly rare. Therefore, in this study we evaluated the effectiveness of two strategies for increasing segmentation performance with few training images.

Given the relative rarity of flooding images from surveillance cameras, we used a collection of 1218 labelled images that were collected from the Internet and manually labeled (Chaudhary, 2018). Since almost all of the images in the dataset are subject to copyright, we provide a sample of images in the public domain that are representative of the dataset in Fig. 3. These images have two differences as compared to typical surveillance camera images. First, the image quality is generally better in terms of resolution and color reproduction. Second, the pictures almost only depict extensive flooding where most of the ground is covered by water. To provide examples of dry ground, 300 images of street scenery without flooding from the Cityscapes dataset (Cordts et al., 2015) were added to the 1218 Internet images, forming a pool of reference images.

Deleted: 1214

Deleted: 4



Figure 3: Public-domain images of flooding, representative of the dataset provided by Chaudhary (2018) that was used in this work.

These reference images were used to train a **Basic** version of the DCNN (80% for training, 10% for validation, and 10% for testing). Conventional augmentation was applied to the images as they were fed into the network: a random displacement of up to 20% and a random horizontal flip. In this work, we considered two strategies for improving the flood segmentation performance of the “Basic” training strategy ().

In the **Augmented** strategy, the same images as for the basic training strategy were used but with additional augmentation steps that degraded image quality to the level of typical surveillance footage. The following image transformations, implemented with the Keras library (Chollet and others, 2015) were applied during augmentation:

- random horizontal mirroring
- translate image horizontally and vertically by +/- 20%
- change in contrast by +/- 50%
- resolution deterioration by zooming into image at different locations up to 33%
- decreasing saturation by up to 80%
- alter image brightness between -80 and +20 units
- blurring with random Gaussian filter

Augmentation was applied with a 20% probability each time an image was fed into the network for training (up to 200 times, corresponding to the number of epochs).

In the **Fine-tuned** strategy, we performed transfer learning to adapt the DCNN to specific surveillance videos. This was done by retraining the “Augmented” network with seven manually labeled frames from each video.¹ The retraining is performed in two steps. First, only the weights of the last deconvolution block are released and retrained. Then, the rest of the weights are also released and the whole network is retrained. This process resulted in a distinct and specialized network for each footage sequence. While it was comparatively the most laborious strategy, it allowed the networks to learn specific characteristics of a given surveillance camera that may not have been represented in the reference images.

¹ Manual labelling takes around 2 minutes per image for someone with a little experience.

Formatted: List Paragraph, Bulleted + Level: 1 + Aligned at: 0.25" + Indent at: 0.5"

Deleted: : Gaussian blur, color desaturation, contrast modification, brightness alteration, and resolution reduction.

Deleted: were

Commented [MMdV3]: clarifications

Deleted: were

To train the network, the Adaptive Moment Estimation (Adam) was chosen as the gradient descent optimizer because it shows good convergence properties (Kingma and Ba, 2015). The dice coefficient served as the loss function, defined after Zou et al. (2004). The DCNN was trained on an Nvidia Titan X (Pascal) 12 GB GPU. The “Basic” strategy took approximately 120 minutes on average, whereas the “Augmented” strategy required approximately 180 minutes for training. The fine-tuning process required an additional 5 minutes of training per video.

2.2 Static Observer Flooding Index

The Static Observer Flooding Index (SOFI) is introduced in this work as a dimensionless proxy for water level fluctuations that can be extracted from segmented images of stationary surveillance cameras. The SOFI signal is computed as

$$\text{SOFI} = \frac{\# \text{Pixels}_{\text{flooded}}}{\# \text{Pixels}_{\text{Total}}} \quad (1)$$

and corresponds to the visible area of the flooding as seen by a stationary observer. Its value can vary between 0% (no flooding visible) and 100% (only flooding visible). When this index is evaluated at multiple consecutive moments in time, the variation of its value provides information about fluctuations of the actual water level under the assumption that the camera remains static and that the view of the flooding is not overly obstructed by moving objects or people. In principle, objects and people will move in and out of the image at a higher frequency than the water level fluctuations, so the influence of such obstructions should be limited to an additional noise that can be filtered out. Nevertheless, situations may arise in which the assumption does not hold, for example if an obstruction is permanently removed from the scene during a flood event.

In certain cases, it may make sense to restrict the computation of the SOFI to a region of interest (ROI) of the image. For example, if the image contains more than one hydraulic process, such as accumulation in one part of the image and flow in the other, a ROI can be defined so that the SOFI only reflects the evolution of the accumulation process. The ROI can also be defined to exclude areas in which water segmentation is problematic due to unfavorable lighting conditions or visual obstructions, for example. Finally, the ROI can also be chosen over a region of the image in which changes of water level are going to be most visible, e.g. over a vertical wall. In this study, the ROI was implemented by means of a rectangular selection made by the authors according to these criteria. To gauge the effectiveness of this measure, performance was assessed both with and without user-defined ROI.

2.3 Performance assessment

2.3.1 Surveillance footage

Six videos depicting flooding were used to assess the performance of the proposed flood monitoring approach. provides the characteristics of these videos, which provide a diverse and realistic range of environmental conditions and image qualities.

Deleted: Table 1: Training strategies for the deep convolutional neural network¶
Strategy ... [1]

Deleted: and “Augmented” training

Deleted: ies

Deleted: each

Deleted: two

Deleted: to three hours

Deleted: , and t

Deleted: so as to

Deleted: Table 2: surveillance footage used in study¶
Video ... [2]

Formatted: English (United States)

Formatted: English (United States)

Formatted: English (United States)

Formatted: English (United States)

Formatted: English (United States)

Formatted: English (United States)

To assess the performance of the method in terms of flood trend extraction, a reference for the water level trend was established for each video. In the cases of the two FloodX camera videos, a water level signal was available from ultrasonic rangefinders, as documented in (Moy de Vitry et al., 2017). For the other four videos, a qualitative trend was visually estimated with an arbitrary scale. The qualitative trend obtained in this manner was judged sufficient for the present study since this study only investigates the ability of SOFI to predict water level trend, and not the actual water level.

Deleted: by visually identifying points in time when

Deleted: flooding reached a minimum or maximum level

2.3.2 Flood segmentation performance

Three images from each video, representing low, medium, and high flooding conditions, were used to assess segmentation performance. Image segmentation is a common classification task that is often evaluated with the mean intersection over union ratio (IoU), also known as the Jaccard index (Levandowsky and Winter, 1971). This metric is applied by running the DCNN on a series of testing images that were not seen during training, and comparing the segmentation result (S) to a manually annotated ground truth (G). The mean IoU is then computed as

$$\frac{1}{N} \sum_{i=1}^N \frac{|S_i \cap G_i|}{|S_i \cup G_i|} \quad (2)$$

where N is the number of testing images and S_i or G_i is the water-covered area in a segmented image or corresponding ground truth image, respectively. The index varies between 0% for complete misclassification and 100% for perfect classification.

2.3.3 Performance of SOFI as a proxy for the water level trend

To evaluate whether SOFI can be considered a proxy for real water level trends, one can assess to what extent the relationship between the two signals is monotonic increasing. This quality can be evaluated with the Spearman rank-order correlation coefficient (Spearman, 1904), which is used to measure the degree of association between two synchronous signals. Importantly, it does not assume any other (e.g. linear) relationship between the two signals. To compute the coefficient, the rank of each signal value must be computed relative to its respective signal. For signals in which the same value can appear multiple times (tied ranks), the Spearman rank-order correlation coefficient ρ is given by

$$\rho = \frac{\sum (x_i - \bar{x})(y_i - \bar{y})}{\sqrt{\sum (x_i - \bar{x})^2 \sum (y_i - \bar{y})^2}} \quad (3)$$

where x_i and y_i are the ranks of the two signals for time step i , and where \bar{x} and \bar{y} are the average ranks of the SOFI and water level signals, respectively. In the current study, the reference signal for the water level trend was obtained either from an in-situ sensor or by visual inspection of the surveillance footage, as described in Section 2.3.1. The pandas Python library (McKinney, 2010), which contains an implementation of the Spearman rank correlation coefficient, was used for time series analysis.

Deleted: two

3 Results

3.1 Automatic flood water segmentation

Image segmentation, with the setup described in Section 2.1.3, takes around 50ms per image. Figure 4 provides sample frames from three of the six surveillance videos used in this work. The other three videos are provided in Figure A1 of the supplementary material. In each case, the human labels as well as automatic segmentations from the various DCNNs are drawn in blue. Additionally, the ROIs are drawn in red for each video, defined manually according to the criteria mentioned in section 2.2.

The basic DCNN was able to detect water in certain cases, but also committed large segmentation errors in the cases of the FloodXCam1, Garage, and Park videos. In the Parking lot video, segmentation appears quite successful, which could be due to the scene being visually similar to the images with which the “Basic” network was trained.

Compared to the “Basic” DCNN, the “Augmented” DCNN provides a visible improvement in most cases. The case of FloodXCam1 is an exception since the DCNN successfully segmented the shallow water flowing on the ground (which was not classified as flooding in the human labels), but did not detect the water ponding in the upper right of the image. This error is fixed in the “Fine-tuned” DCNN for this video thanks to the use of additional training images from the FloodXCam1 video.

Deleted: the
Deleted: footage

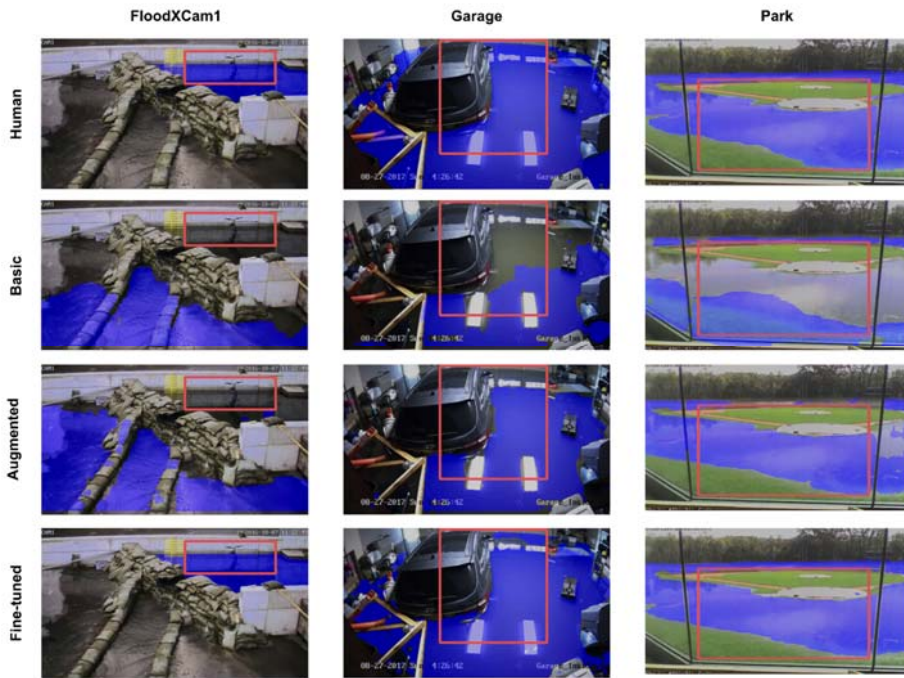


Figure 4: Sample frames taken from three of the six analyzed surveillance videos, shown with the human label or automatic flood segmentation in blue and the regions of interest (ROI) in red. The samples show how the “Augmented” strategy improves segmentation in the *Garage* and *Park* samples, but the segmentation for *FloodXCam1* is only successful with the “Fine-tuned” training strategy. The sample frames from the remaining three videos are provided in the supplementary materials.

Figure 5 shows the segmentation performance of the DCNNs measured by the IoU, both for the full image and within the defined ROI. The “Augmented” DCNN improves performance for all videos except for the two *FloodX* videos. In the case of the *Park* video, the improvement of IoU for the full image is around 30 percentage points. For the two *FloodX* videos, however, segmentation seems to suffer slightly under the “Augmented” network, possibly because the augmentation transformations increased dissimilarity of the training images instead of vice versa. For these two videos, improvement is only achieved thanks to fine-tuning, which proved beneficial for all videos by providing IoUs higher than 90% on average. Figure 5 also shows that within the “expert-defined” ROIs, segmentation performance is generally worse. We conclude that a human is generally not able to identify and exclude “difficult” regions of the image a priori, which was one of the original reasons for defining an ROI.

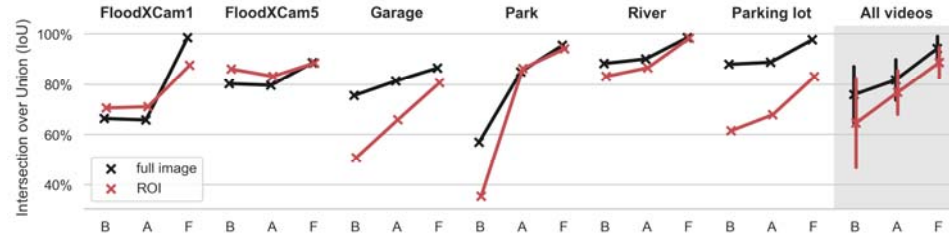


Figure 5: Automatic segmentation performance measured in terms of the Intersection over Union (IoU) for each video using the “Basic” (B), “Augmented” (A), and “Fine-tuned” (F) DCNNs. On the right side, the overall performance for all videos is depicted, with the vertical segments representing the standard deviation of values.

Commented [MMdV4]: clarification

3.2 Flood level trend extraction

After the frames of a video are segmented, the SOFI is computed for each frame, providing information about the temporal evolution of the visible flood extent. In Fig. 6, the case of video *FloodXCam5* is a clear example of how the SOFI reflects changes in the actual water level. Comparing the SOFI signals to the measured water level, it is evident that a correlation exists, although the relationship does not appear linear. For all DCNN training strategies, the trend of the SOFI signal from the ROI (in red) is easier to visually identify than the trend of the SOFI computed from the whole image (in black), which is advantageous if the signal is to be visually interpreted. However, the SOFI signal from the ROI is also noisier, and does not capture the first flood event occurring at 12:48.

In Fig. 6, we also see that a systematic segmentation error is committed in that water is always falsely detected on the ground between the two events. This example illustrates why our approach focuses on the trend of the SOFI signal and not its absolute values, which are more sensitive to systematic errors.

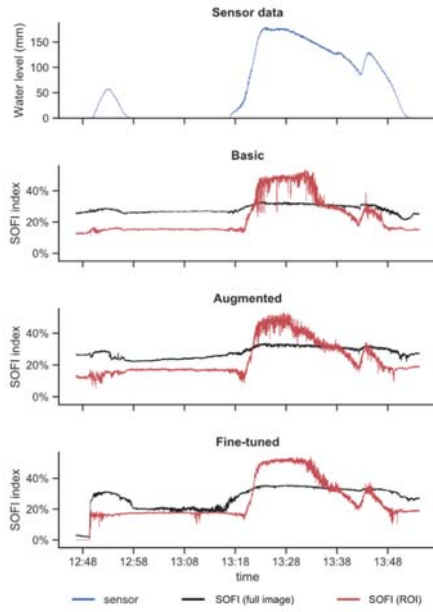


Figure 6: Water level (blue) and SOFI signal for whole image (black) or Region of Interest (ROI, red) for video *FloodXCam5*. With more advanced DCNN training strategies, noise and outliers in SOFI are visibly reduced in the ROI. [The time series for the remaining videos can be found in the supplementary materials, Figures A2-A6.](#)

In Fig. 7, the relationship between the SOFI and the water level is further explored for both *FloodX* videos. This figure shows how the relationship between SOFI and the water level can be non-linear, a consequence of the topography in which the flooding occurred. For example, in *FloodXCam5* a large area of the image is rapidly segmented as water starts covering the floor of the basement, causing an almost vertical segment on the left side of the scatter plot (especially visible for the “Fine-tuned” network). For the SOFI computed from the full images, we also see systematic and time-variant errors, resulting in portions of the data having a larger internal correlation that are visible as strands of points in Fig. 7. Generally, it appears that the use of an ROI (red) leads to a stronger association between water level and SOFI. However, the SOFI signals from the ROIs also contain more noise than the SOFI signal derived from the full image. Additionally, in *FloodXCam5*, it seems that the ROI was poorly selected, resulting in lower sensitivity of SOFI to the water level up to a depth of around 100 mm.

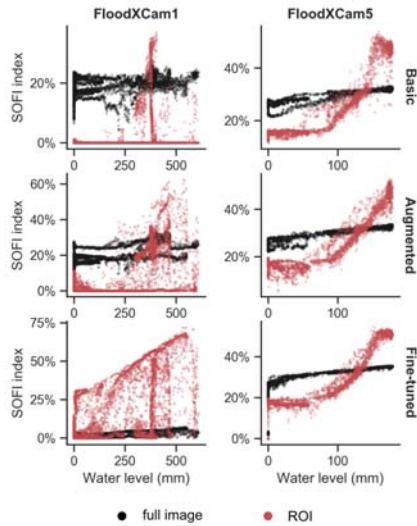
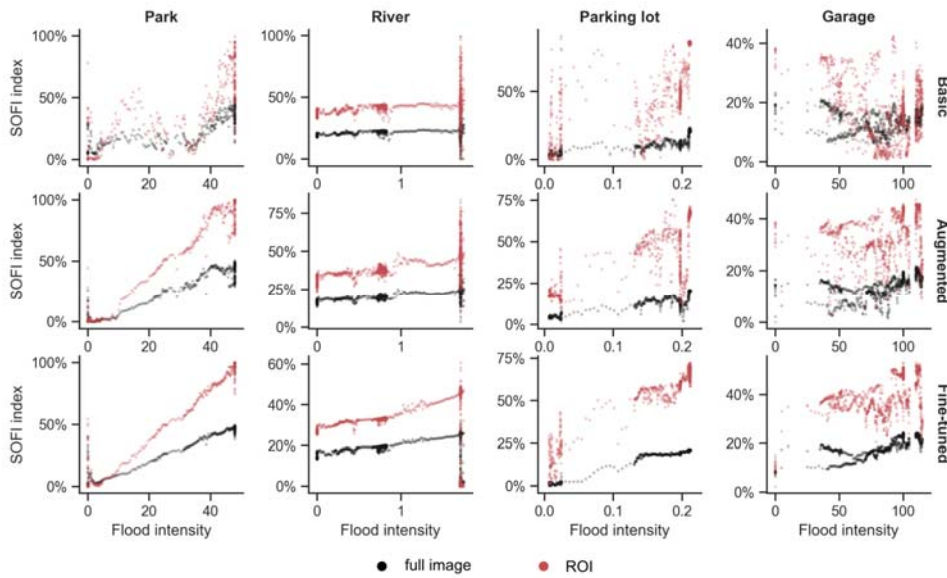


Figure 7: Videos with reference measurements: SOFI computed from full images (black) or from ROI (red) plotted against measured water level for different training strategies. The reduction of noise and systematic errors with the “Fine-tuned” strategy is evident.

Figure 8 shows the relationship between SOFI and the visually estimated flood intensity in the remaining videos, for which no in-situ water level measurement is available. In this figure, the value of the “Augmented” and “Fine-tuned” networks appears in the progressive reduction of noise in the SOFI signal.

- 5 Two exceptional cases in Fig. 8 need to be explained in more detail. First, the SOFI signal for the *River* footage suddenly appears to be arbitrary at the highest flood intensity. This is due to intermittent submersion of the camera by the floodwater that leads to gross segmentation errors. The *Garage* video is also exceptional; flooding caused objects to float around in the garage causing constant changes of the visible inundated area and thus noise in the SOFI signal.



- 10 Figure 8: Videos without reference measurements: SOFI computed from full images (black) or from ROI (red) plotted against visually estimated flood intensity, for different training strategies. There is a visible reduction of noise and increased correlation with the “Augmented” and “Fine-tuned” strategies.

Figure 9 shows the Spearman correlation coefficients between the SOFI and the flooding intensity for each video and each training strategy. This figure shows that using the “Augmented” training strategy, the Spearman correlation coefficient for the full image reaches 75% on average, while for the “Fine-tuned” training strategy the average correlation coefficient reaches around 85%.

We draw two general conclusions from the results shown in Fig. 9. First, defining an ROI does not consistently improve the ability of the SOFI signal to reproduce flood trends. This could be due to the poorer segmentation performance within the ROIs (Fig. 5), thereby introducing noise in the water level-SOFI relationship (Fig. 7 and Fig. 8). Second, the “Fine-tuned” networks generally improve the correlation of SOFI with the water level trend, with the exception of the *River* video. As made visible in Fig. 8, the submersion of the camera leads to frequent outliers that become more distinct from the rest of the signal after fine-tuning, leading to a lower correlation with the water level trend.

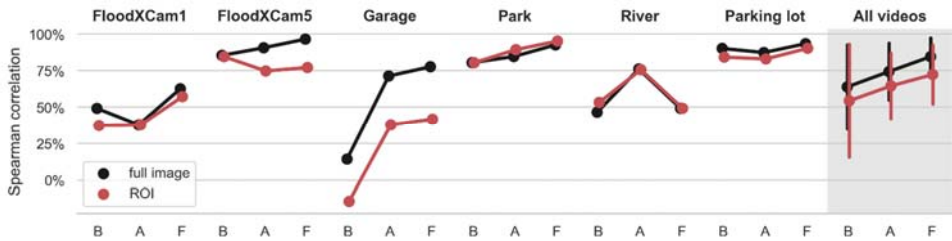


Figure 9: Spearman rank correlation coefficients for each video using the “Basic” (B), “Augmented” (A), and “Fine-tuned” (F) DCNNs. The final category *All videos* excludes the *River* video which is an outlier because the camera is intermittently submerged. The vertical segments in the *All videos* category represent the standard deviation of values. The results show that both the “Augmented” and “Fine-tuned” networks improve the correlation of SOFI with the water level, although performance is still varied.

4 Discussion

4.1 SOFI as a scalable and robust approach for qualitative water level sensing

Compared to alternative methods for water level monitoring, our approach is less ambitious in the type of information it aims to provide, as it only attempts to communicate water level fluctuation and not an absolute water level. This weakness is at least partially compensated for by an increased scope of applicability, as it is almost the only surveillance image-based monitoring approach designed to provide water level information without needing to be calibrated to each camera. As described in Section 1.3, research has typically been focused on extracting absolute water levels from images, mainly by identifying the water edge in relation to an object that has been measured and manually identified in the image. (Bhola et al., 2018; Kim et al., 2011; Sakaino, 2016). Although Lo et al. (2015) present a method that does not necessarily need reference

- Deleted: (
- Deleted:)
- Formatted: French (Switzerland)
- Field Code Changed
- Formatted: French (Switzerland)
- Field Code Changed

measurements, human intervention is still needed for each camera to define virtual markers and a “seed” to inform water segmentation. The concept presented by Jiang et al. (2019) is an exception, theoretically overcoming the need for per-image calibration by taking ubiquitous objects as scale references. Nonetheless, that method assumes that such reference objects are visible in the flooding scene, which is an assumption that may not always hold. In comparison, SOFI does not need specific objects to be present, nor does it need field measurements or manual set-up of the image. The DCNN-based water segmentation approach used is flexible enough that given sufficient training data, it can theoretically be applied to any situation. In this study, the scalability of SOFI was demonstrated by applying the “Augmented” DCNN to six videos not seen during training, from which information was extracted despite complex environments, moving objects, and bad lighting conditions.

The simplicity of the SOFI approach also gives it robustness. By using areal integration to quantify flood intensity, the index is less sensitive to small segmentation errors, which could be problematic if punctual virtual markers are used as in the case of Lo et al. (2015). Also, since SOFI only claims to provide trend information, systematic segmentation errors (e.g. misclassification at the water-background boundary) should only be of minor consequence. This aspect of SOFI is well illustrated in this study by the *Park* video, for which the SOFI signal had a high correlation to the water level trend despite mediocre segmentation performance.

Besides the advantages of SOFI, its use of a DCNN carries a disadvantage due to its need for training data. Methods that use heuristics to segment water, such as Lo et al. (2015), do not require as much training data, although their application is then often limited to visually similar situations.

4.2 Factors influencing the information quality of SOFI

Although SOFI is theoretically applicable at locations where the extent of visible water correlates with flooding depth, there are certain conditions that can negatively influence the quality of information obtained.

First, floodwater can look very different from case to case. For example, (i) water surface movement can cause a range of different wave structures, and the color of water itself is variable, (ii) water reflects light that falls on it, even in a mirror-like fashion if the water surface is still, and (iii) surveillance cameras tend to have low color fidelity, dynamic range, resolution, and sharpness. Due to the complexity of segmenting floodwater, one can expect that more training images would be required than for a typical segmentation problem. In our results, the high inter-video variability in segmentation performance suggests that the number of training images should be increased in future studies. In particular, the variability suggests that the training images were not fully representative of the testing images. Thus, it is probable that the segmentation performance could be substantially improved if a larger and more diverse training set were available.

Second, in situations where large quantities of manually labeled images are required, it is inevitable that some labelling errors occur. Looking into the implications of such errors, Heller et al. (2018) showed that U-net is relatively insensitive to jagged label boundaries. Regarding non boundary-localized errors, all DCNN architectures investigated were found to be very robust.

Deleted: This

Deleted: quality of

Deleted: An additional advantage of

Deleted: over other methods is that it is intrinsically robust. The use

Deleted: of

Deleted: makes

Deleted: small

Deleted: we

Deleted: attempt

Deleted: obtain

Deleted: slightly disturb the result of the analysis

Moved (insertion) [1]

Deleted: Compared to other studies that use handcrafted spatial texture features to segment water, the

Deleted: is possibly

Deleted: , although further research is needed to compare the two approaches at this level

Deleted: When questioning the practical utility of SOFI in light of its qualitative nature and noisiness, two aspects must be considered. First, SOFI aims to provide information in the context of urban pluvial flood events, for which monitoring data is admittedly difficult to obtain. The studies cited in the introduction have proved that in situations of data scarcity, even qualitative information can be useful in improving model accuracy. Second, thanks to the scalability of SOFI, one should be able to apply it to large surveillance networks or retroactively to archived footage at a reasonable cost. Nevertheless, future research should assess the actual value of the information provided by SOFI for the validation and calibration of urban flood models. Additionally, possible methods to de-noise the SOFI signal and quantify its reliability should be investigated.¶

Deleted: Challenges of flood segmentation in surveillance camera images

Deleted: Several factors make

Deleted: segmentation in surveillance footage a complex task

Deleted: ,

Deleted: namely

Deleted: water

Deleted: ¶

Deleted: the task

Deleted: need for additional training data is suggested by the

Deleted: between

Deleted: results for the different videos

Deleted: Despite the potential for improvement, this study (... [3])

Moved up [1]: Compared to other studies that use handcrafted

Finally, the basic assumption that the extent of visible water correlates with flooding depth may not fully hold for every camera scene. For example, the lowest flooding depths may not be visible in the image, and if the camera is oriented such that the whole image can be covered by water, the highest stages of flooding may be censored from the signal as well. These situations will require special handling when the data is assimilated for model calibration. The scene topography and camera placement also affect the slope and linearity of the SOFI-water depth relationship, and can make the trend more difficult to determine if the correlation in the relationship is small. Additionally, the entry and exit of objects in a flooding scene can compromise the approach, especially if the object are large and occur with low frequency.

4.3 Degradation of training image quality improves segmentation of surveillance images

In this study, the training images available were of higher quality than typical images originating from surveillance cameras, a discrepancy that was expected to limit the performance of the DCNN on surveillance images. Therefore, in the “Augmented” training strategy, the augmentation step included transformations that lowered the quality of the training images, making them more similar to surveillance images.

The results from the six videos used in this study confirm that the artificial degradation of training image quality not only improves segmentation performance in surveillance footage but also increases the correlation of SOFI with the actual water level trend. While in most videos the improvement was clear, no improvement was observed for the two *FloodX* videos. These two videos stand out in terms of low image quality, location of water in the upper part of the image, and a different setting surrounded by concrete walls. We therefore see a need to investigate such failure cases in order to improve the training data collection and augmentation steps.

4.4 Fine-tuning of the DCNN to specific cameras

In situations where segmentation performance is critical, one can fine-tune a general DCNN to a specific surveillance camera. Even with very few additional training images, we find that the segmentation performance and correlation of SOFI with water level trends both improve thanks to fine-tuning. Despite this result, it should be kept in mind that the fine-tuned DCNNs also lose some generality and may, for example, have issues when lighting conditions are different from those present in the images for fine-tuning.

Our recommendation for fine-tuning is that care should be taken in creating a set of training images that is roughly as diverse as situations in which the fine-tuned DCNN will be used. Additionally, although we performed fine-tuning with very small sets of seven images per video, fine-tuning performance could be further increased by using more images.

4.5 Regions of interest (ROI) do not deliver expected value

The definition of ROIs for SOFI computation, motivated by the possibility of omitting difficult portions of the images and focusing on more information-rich portions, proved unsuccessful. Not only was it difficult for the human “expert” to foresee what area of the image met the above criteria, but a systematic increase of noise in the SOFI signal was observed within the

Deleted: very

ROI. We therefore do not recommend that ROIs be defined systematically for all cameras but only in cases where multiple hydraulic processes are visible in the image and need to be distinguished.

4.6 Practical value of SOFI

Since the qualitative nature and noisiness of SOFI might raise questions about its practical value, two aspects must be recalled. First, SOFI aims to provide information in the context of urban pluvial flood events, for which monitoring data is admittedly difficult to obtain. The studies cited in the introduction have proven that in situations of data scarcity, even qualitative information can be useful in improving model accuracy. In particular, the sparse stream level class information used by van Meerveld et al. (van Meerveld et al., 2017) is conceptually equivalent to the flood level trend information contained in SOFI. Second, thanks to the scalability of SOFI, one should be able to apply it to large surveillance networks or retroactively to archived footage at a reasonable cost. By providing data for model calibration and validation, the approach we propose can help reduce modeling uncertainty for urban flood risk assessment and assist in the planning of flood mitigation measures. In addition, the flood level trend information provided by SOFI could help direct the focus of decision-makers and rescue personnel during flood events so that resource use can be optimized. For insurance companies, the flooding information can also help verify claims and establish fair insurance policy premiums.

4.7 Recommendations for future research

Future research should assess the actual value of the information provided by SOFI for the validation and calibration of urban flood models. For this, it would be of value to have a large-scale, long-term case study of a flood-prone urban area, in which surveillance footage and reference flood measurements are available. Additionally, possible methods to de-noise the SOFI signal and quantify its reliability should be investigated.

5 Conclusions

In this study, we explored the potential of using a deep convolutional neural network (DCNN) and a simple but novel index (SOFI) to obtain flood level trend information from generic surveillance cameras. The results of our study strongly suggest that qualitative flood level information can indeed be extracted automatically and universally from any static camera, although we see the need for many training images to cover the range of appearances that floodwater can take. To compensate for the limited number of training images available in this study, we found that degrading image quality during training improved segmentation performance by approximately 10% (IoU) on low-quality surveillance images. Additionally, fine-tuning the DCNN to a specific video with as few as seven manually labeled images further improved performance. In our results, the SOFI signal from the camera-independent DCNN correlated with water level trends at a rate of 75% on average (Spearman rank correlation coefficient). The proof of concept presented in this study has significant implications. Namely, it confirms that footage from surveillance cameras, processed with artificial intelligence, could provide urban flood

Formatted: Heading 2

Deleted: ¶

Deleted: and

Deleted: , even with as few as seven manually labeled images

monitoring data for entire cities while preserving privacy. Without the need for specialized instrumentation or field measurements, monitoring could be conducted at a relatively low cost, which is especially attractive for cities with limited financial resources. Previous research suggests that the qualitative information contained in SOFI can easily be used to reduce parameter uncertainty in urban flood models. Apart from modelling-related applications, SOFI could also be useful for coordinating flood response and verifying insurance claims.

Code availability

The code used in this work for creating, training, and evaluating the DCNN, as well as extracting the SOFI and plotting results can be found in the following archive: <https://doi.org/10.25678/000150>.

Data availability

The licenses to the images and video data used in this work are held by third parties and cannot be republished by the authors. We encourage the interested reader to refer to the references provided for the individual data sources. The DCNN weights trained for each training strategy are available in the following archive: <https://doi.org/10.25678/000150>.

Author contribution

M.M.d.V. conceived the method; S.K. and M.M.d.V. implemented the method, analyzed the data, and made the figures; J.W. contributed guidance for the DCNN methods and J.P.L. was the principle investigator of the study, M.M.d.V. wrote the paper. All authors read and helped edit the manuscript.

Competing interests

The authors declare no conflict of interest. The funding sponsors had no role in the design of the study; in the collection, analyses, or interpretation of data; in the writing of the manuscript, and in the decision to publish the results.

Acknowledgements

The authors thank Priyanka Chaudhary for providing the images and annotations used to train the DCNN, as well as Nadine Rüegg for DCNN implementation tips. This project was financed by the Swiss National Science Foundation under grant #169630.

Deleted: . Nevertheless, the signals obtained were often noisy, and the impact of this noise on flood model calibration should be assessed in future research. In the best case, the approach proposed in this work will allow modelers to obtain part of the urban flood monitoring information they need to improve their models' accuracy.

Field Code Changed

Deleted: <https://doi.org/10.25678/0000BB>

Field Code Changed

Deleted: <https://doi.org/10.25678/0000BB>

References

- Abadi, M., Barham, P., Chen, J., Chen, Z., Davis, A., Dean, J., Devin, M., Ghemawat, S., Irving, G., Isard, M., Kudlur, M., Levenberg, J., Monga, R., Moore, S., Murray, D. G., Steiner, B., Tucker, P., Vasudevan, V., Warden, P., Wicke, M., Yu, Y., Zheng, X., Brain, G., Osd, I., Barham, P., Chen, J., Chen, Z., Davis, A., Dean, J., Devin, M., Ghemawat, S., Irving, G., Isard, M., Kudlur, M., Levenberg, J., Monga, R., Moore, S., Murray, D. G., Steiner, B., Tucker, P., Vasudevan, V., Warden, P., Wicke, M., Yu, Y. and Zheng, X.: TensorFlow : A System for Large-Scale Machine Learning This paper is included in the Proceedings of the TensorFlow : A system for large-scale machine learning, Proc 12th USENIX Conf. Oper. Syst. Des. Implement., 272–283, 2016.
- Bhola, P. K., Nair, B. B., Leandro, J., Rao, S. N. and Disse, M.: Flood inundation forecasts using validation data generated with the assistance of computer vision, J. Hydroinformatics, doi:10.2166/hydro.2018.044, 2018.
- Blanchard, E.: Hurricane Harvey Flooding in Houston, Youtube.com [online] Available from: https://www.youtube.com/watch?v=__IBuu06URY (Accessed 8 October 2018), 2017.
- Chaudhary, P.: Floodwater-estimation through semantic image interpretation, Technical University Munich., 2018.
- Chaudhary, P., Aronco, S. D., Moy de Vitry, M., Leitao, J. P. and Wegner, J. D.: Flood-Water Level Estimation from Social Media Images, in ISPRS Ann. Photogramm. Remote Sens. Spatial Inf. Sci., vol. IV-2/W5, pp. 5–12., 2019.
- Chollet, F. and others: Keras Documentation, [online] Available from: <https://keras.io>, 2015.
- Cityofchaska: Athletic Park Flood, Youtube.com [online] Available from: <https://www.youtube.com/watch?v=7cnXTgpcnSo> (Accessed 8 October 2018), 2010.
- Cordts, M., Enzweiler, M., Benenson, R., Ramos, S., Scharw, T., Franke, U., Roth, S., R. D. a G., Darmstadt, T. U., Informatics, M. P. I. and Dresden, T. U.: The Cityscapes Dataset, Cvpr, 2015.
- Fukushima, K.: Neocognitron: A self-organizing neural network model for a mechanism of pattern recognition unaffected by shift in position, Biol. Cybern., 36(4), 193–202, doi:10.1007/BF00344251, 1980.
- Gaitan, S., van de Giesen, N. C. and ten Veldhuis, J. A. E.: Can urban pluvial flooding be predicted by open spatial data and weather data?, Environ. Model. Softw., 85, 156–171, doi:10.1016/j.envsoft.2016.08.007, 2016.
- Goold, B., Van Den Hoven, J., Lim, L., Seck, M., Squires, P. and Töpfer, E.: Citizens , Cities and Video Surveillance., 2010.
- He, K., Zhang, X., Ren, S. and Sun, J.: Deep Residual Learning for Image Recognition, in 2016 IEEE Conference on Computer Vision and Pattern Recognition (CVPR), pp. 770–778., 2016.
- He, K., Gkioxari, G., Dollar, P., Girshick, R., Dollár, P. and Girshick, R.: Mask R-CNN, in Proceedings of the IEEE International Conference on Computer Vision., 2017.
- Heller, N., Dean, J. and Papanikolopoulos, N.: Imperfect Segmentation Labels: How Much Do They Matter?, in Intravascular Imaging and Computer Assisted Stenting and Large-Scale Annotation of Biomedical Data and Expert Label Synthesis, pp. 112–120, Springer International Publishing., 2018.
- Hunter, N. M., Bates, P. D., Neelz, S., Pender, G., Villanueva, I., Wright, N. G., Liang, D., Falconer, R. A., Lin, B., Waller,

- S., Crossley, A. J. and Mason, D. C.: Benchmarking 2D hydraulic models for urban flooding, *Proc. Inst. Civ. Eng. - Water Manag.*, 161(1), 13–30, doi:10.1680/wama.2008.161.1.13, 2008.
- Hurricane track: Brays Bayou Flooding Time Lapse and Real-Time Archive, Youtube.com [online] Available from: <https://www.youtube.com/watch?v=y6jByqVX7PE> (Accessed 8 October 2018), 2015.
- 5 Ioffe, S. and Szegedy, C.: Batch Normalization: Accelerating Deep Network Training by Reducing Internal Covariate Shift, arXiv1502.03167 [cs] [online] Available from: <http://arxiv.org/abs/1502.03167>, 2015.
- Jiang, J., Liu, J., Qin, C.-Z. and Wang, D.: Extraction of Urban Waterlogging Depth from Video Images Using Transfer Learning, *Water*, 10(10), doi:10.3390/w10101485, 2018a.
- Jiang, J., Liu, J., Cheng, C., Huang, J. and Xue, A.: Automatic Estimation of Urban Waterlogging Depths from Video
10 Images Based on Ubiquitous Reference Objects, *Remote Sens.*, doi:10.3390/rs11050587, 2019.
- Jiang, Y., Zevenbergen, C. and Ma, Y.: Urban pluvial flooding and stormwater management: A contemporary review of China's challenges and "sponge cities" strategy, *Environ. Sci. Policy*, 80, 132–143, doi:10.1016/j.envsci.2017.11.016, 2018b.
- El Kadi Abderrezzak, K., Paquier, A. and Mignot, E.: Modelling flash flood propagation in urban areas using a two-
15 dimensional numerical model, in *Natural Hazards*, vol. 50, pp. 433–460., 2009.
- Kim, B., Sanders, B. F., Han, K., Kim, Y. and Famiglietti, J. S.: Calibration of Stormwater management model using flood extent data, *Proc. Inst. Civ. Eng. Water Manag.*, 167(1), 17–29, doi:10.1680/wama.12.00051, 2014.
- Kim, J., Han, Y. and Hahn, H.: Embedded implementation of image-based water-level measurement system, *Iet Comput. Vis.*, 5(2), 125–133, doi:10.1049/Iet-Cvi.2009.0144, 2011.
- 20 Kingma, D. P. and Ba, J. L.: Adam: A method for stochastic gradient descent, *ICLR Int. Conf. Learn. Represent.*, 1–15, 2015.
- Leandro, J., Chen, A. S., Djordjević, S. and Savić, D. A.: Comparison of 1D/1D and 1D/2D Coupled (Sewer/Surface) Hydraulic Models for Urban Flood Simulation, *J. Hydraul. Eng.*, 135(6), 495–504, doi:10.1061/(ASCE)HY.1943-7900.0000037, 2009.
- 25 Levandowsky, M. and Winter, D.: Distance between Sets, *Nature*, 234(5323), 34–35, doi:10.1038/234034a0, 1971.
- Liu, L., Liu, Y., Wang, X., Yu, D., Liu, K., Huang, H. and Hu, G.: Developing an effective 2-D urban flood inundation model for city emergency management based on cellular automata, *Nat. Hazards Earth Syst. Sci.*, 15(3), 381–391, doi:10.5194/nhess-15-381-2015, 2015.
- Lo, S. W., Wu, J. H., Lin, F. P. and Hsu, C. H.: Visual sensing for urban flood monitoring, *Sensors (Switzerland)*, 15(8),
30 20006–20029, doi:10.3390/s150820006, 2015.
- Long, J., Shelhamer, E. and Darrell, T.: Fully Convolutional Networks for Semantic Segmentation, in *Proceedings of the IEEE Conference on Computer Vision and Pattern Recognition*, pp. 3431–3440., 2015.
- Lv, Y., Gao, W., Yang, C. and Wang, N.: Inundated Areas Extraction Based on Raindrop Photometric Model ({RPM}) in Surveillance Video, *Water*, 10(10), 1332, 2018.

- McKinney, W.: Data Structures for Statistical Computing in Python, in Proceedings of the 9th Python in Science Conference., 2010.
- van Meerveld, H. J. I., Vis, M. J. P. and Seibert, J.: Information content of stream level class data for hydrological model calibration, *Hydrol. Earth Syst. Sci.*, 21(9), 4895–4905, doi:10.5194/hess-21-4895-2017, 2017.
- 5 Mousa, M., Zhang, X. and Claudel, C.: Flash Flood Detection in Urban Cities Using Ultrasonic and Infrared Sensors, *IEEE Sens. J.*, 16(19), 7204–7216, doi:10.1109/JSEN.2016.2592359, 2016.
- Moy de Vitry, M., Dicht, S. and Leitão, J. P.: floodX: urban flash flood experiments monitored with conventional and alternative sensors, *Earth Syst. Sci. Data*, 9(2), 657–666, doi:10.5194/essd-9-657-2017, 2017.
- Noh, H., Hong, S. and Han, B.: Learning Deconvolution Network for Semantic Segmentation, in 2015 IEEE International
- 10 Conference on Computer Vision (ICCV), vol. 2015 Inter, pp. 1520–1528, IEEE., 2015.
- Paprotny, D., Sebastian, A., Morales-Nápoles, O. and Jonkman, S. N.: Trends in flood losses in Europe over the past 150 years, *Nat. Commun.*, 9(1), doi:10.1038/s41467-018-04253-1, 2018.
- Pröve, P.-L.: Unet-keras, [online] Available from: <https://github.com/pietetz/unet-keras>, 2017.
- van Riel, W.: Exploratory study of pluvial flood impacts in Dutch urban areas., 2011.
- 15 Roisman, D.: Houston Harvey Flood - Meyerland Neighborhood - August 27 2017 - Garage Time Lapse, Youtube.com [online] Available from: <https://www.youtube.com/watch?v=ZO7pWO7rJbtU> (Accessed 8 October 2018), 2017.
- Ronneberger, O., Fischer, P. and Brox, T.: U-net: Convolutional networks for biomedical image segmentation, *Lect. Notes Comput. Sci. (including Subser. Lect. Notes Artif. Intell. Lect. Notes Bioinformatics)*, 9351, 234–241, doi:10.1007/978-3-319-24574-4_28, 2015.
- 20 Sakaino, H.: Camera-Vision-Based Water Level Estimation, *IEEE Sens. J.*, 16(21), 7564–7565, doi:10.1109/JSEN.2016.2603524, 2016.
- Seibert, J.: Multi-criteria calibration of a conceptual runoff model using a genetic algorithm, *Hydrol. Earth Syst. Sci.*, 4(2), 215–224, doi:10.5194/hess-4-215-2000, 2000.
- Skougaard Kaspersen, P., Høegh Ravn, N., Arnbjerg-Nielsen, K., Madsen, H. and Drews, M.: Comparison of the impacts of
- 25 urban development and climate change on exposing European cities to pluvial flooding, *Hydrol. Earth Syst. Sci.*, 21(8), 4131–4147, doi:10.5194/hess-21-4131-2017, 2017.
- Spearman, C.: The Proof and Measurement of Association between Two Things, *Am. J. Psychol.*, 15(1), 72, doi:10.2307/1412159, 1904.
- Sperber, S., Seck, M. and Johnston, E.: Surveillance Deliverable 2.3: Paper by local authorities end-users., 2013.
- 30 Tscheikner-Gratl, F., Zeisl, P., Kinzel, C., Leimgruber, J., Ertl, T., Rauch, W. and Kleidorfer, M.: Lost in calibration: why people still don't calibrate their models, and why they still should – a case study from urban drainage modelling, *Water Sci. Technol.*, 395, doi:10.2166/wst.2016.395, 2016.
- ten Veldhuis, J. A. E.: How the choice of flood damage metrics influences urban flood risk assessment, *J. Flood Risk Manag.*, 4(4), 281–287, doi:10.1111/j.1753-318X.2011.01112.x, 2011.

- Wang, R. Q., Mao, H., Wang, Y., Rae, C. and Shaw, W.: Hyper-resolution monitoring of urban flooding with social media and crowdsourcing data, *Comput. Geosci.*, doi:10.1016/j.cageo.2017.11.008, 2018.
- Wani, O., Scheidegger, A., Carbajal, J. P., Rieckermann, J. and Blumensaat, F.: Parameter estimation of hydrologic models using a likelihood function for censored and binary observations, *Water Res.*, 121, 290–301, doi:10.1016/j.watres.2017.05.038, 2017.
- 5 Yu, D., Yin, J. and Liu, M.: Validating city-scale surface water flood modelling using crowd-sourced data, *Environ. Res. Lett.*, 11(12), 124011, doi:10.1088/1748-9326/11/12/124011, 2016.
- Zahnt, N., Eder, M. and Habersack, H.: Herausforderungen durch pluviale Überflutungen -- Grundlagen, Schäden und Lösungsansätze, *Osterr. Wasser Abfallwirtsch.*, 70(1), 64–77, 2018.
- 10 Zeiler, M. D., Taylor, G. W. and Fergus, R.: Adaptive deconvolutional networks for mid and high level feature learning, in *Proceedings of the IEEE International Conference on Computer Vision*, pp. 2018–2025., 2011.
- Zou, K. H., Warfield, S. K., Bharatha, A., Tempany, C. M. C., Kaus, M. R., Haker, S. J., Wells, W. M., Jolesz, F. A. and Kikinis, R.: Statistical Validation of Image Segmentation Quality Based on a Spatial Overlap Index, *Acad. Radiol.*, 11(2), 178–189, doi:10.1016/S1076-6332(03)00671-8, 2004.

Table 1: Training strategies for the deep convolutional neural network

Strategy	Images used for training	Data augmentation steps	Training steps
Basic	1214 images from Internet (Chaudhary, 2018) + 300 images from Cityscapes (Cordts et al., 2015)	Random displacement of up to 20%, random horizontal flip	End-to-end training with 80% of images for up to 200 epochs
Augmented	Same as “Basic”	Same as “Basic” + random Gaussian blur, color desaturation, contrast modification, brightness alteration, reduction of resolution	Same as “Basic”
Fine-tuned	Same as “Basic” + seven frames taken from each video	No augmentation is applied when fine-tuning the network.	Retrain “Augmented” network with 7 manually labeled video frames

Table 2: surveillance footage used in study

Video	Setting	Flood type	Image resolution	Water level trend	Analysis frequency (frames/min)	Event duration	Visual clarity of flooding	Source
FloodX Cam1	Experimental facility, weir	Artificial	1280x720	Sensor	60	164 minutes	High: Wet surfaces	(Moy de Vitry et al., 2017)
FloodX Cam5	Experimental facility, cellar	Artificial	1280x720	Sensor	60	166 minutes	Medium: Wet surfaces, desaturated image	(Moy de Vitry et al., 2017)
Garage	Indoor, garage	Extreme rainfall	1280x720	Visual	24	19.8 hours	High: Moving objects floating in water	(Roisman, 2017)
Park	Outside, sport field	River flooding	640x480	Visual	1	13.5 hours	Low: Camera behind window with reflections; camera is sometimes jostled; many	(Cityofchaska, 2010)

Field Code Changed

							different lighting conditions throughout the day.	
<u>River</u>	Outside, river under concrete bridge	Extreme rainfall	1280x720	Visual	30	6 hours	Low: Camera sometimes submerged; lens blurry due to water drops; high image compression	(Hurricane track, 2015)
<u>Parking lot</u>	Street Scenery	Extreme rainfall	1280x720	Visual	12	200 minutes	Low: partially nighttime images; lens blurry due to water drops	(Blanchard, 2017)

Formatted: English (United Kingdom)

Table 1: Training strategies for the deep convolutional neural network

Strategy	Images used for training	Data augmentation steps	Training steps
Basic	1214 images from Internet (Chaudhary, 2018) + 300 images from Cityscapes (Cordts et al., 2015)	Random displacement of up to 20%, random horizontal flip	End-to-end training with 80% of images
Augmented	Same as “Basic”	Same as “Basic” + random Gaussian blur, color desaturation, contrast modification, brightness alteration, reduction of resolution	Same as “Basic”
Fine-tuned	Same as “Basic” + seven frames taken from each video	No augmentation is applied when fine-tuning the network.	Retrain “Augmented” network with 7 manually labeled video frames

Table 2: surveillance footage used in study

Video	Setting	Flood type	Water level trend	Analysis frequency (frames/min)	Notes	Source
FloodX Cam1	Experimental facility, weir	Artificial	Sensor	60	Wet concrete, high image compression	(Moy de Vitry et al., 2017)
FloodX Cam5	Experimental facility, cellar	Artificial	Sensor	60	Wet concrete, a lot of grey tones	(Moy de Vitry et al., 2017)
Garage	Indoor, garage	Extreme rainfall	Visual	24	Moving obstacles in water	(Roisman, 2017)
Park	Outside, sport field	River flooding	Visual	1	Camera behind window	(Cityofchaska, 2010)
River	Outside, river under concrete bridge	Extreme rainfall	Visual	30	Camera sometimes submerged	(Hurricane track, 2015)
Parking lot	Street Scenery	Extreme rainfall	Visual	12	Sometimes by night, very	(Blanchard, 2017)

					blurry	
--	--	--	--	--	--------	--

Despite the potential for improvement, this study demonstrates the feasibility of the proposed approach.