

Exposure of tourism development to salt karst hazards along the Jordanian Dead Sea shore

Najib Abou Karaki^{1*}, Simone Fiaschi², Killian Paenen³, Mohammad Al-Awabdeh⁴, Damien Closson⁵

¹ Department of Environmental and Applied Geology, University of Jordan, Amman, 11942, Jordan

*On sabbatical leave at the Environmental Engineering Department, Al-Hussein bin Talal University, Ma'an-Jordan

² UCD School of Earth Sciences, University College Dublin, Belfield, Dublin 4, Ireland

³ Vrije Universiteit Brussel & Katholieke Universiteit Leuven, Belgium

⁴ Tafila Technical University, Tafila, Jordan

⁵ GIM n.v., Leuven, Belgium

Correspondence to: Najib Abou Karaki (naja@ju.edu.jo & naja@ahu.edu.jo)

Abstract. The Dead Sea shore is a unique, young, and dynamic salt karst system. Development of the area began in the 1960s, when the main water resources that used to feed the Dead Sea were diverted towards deserts, cities and industries. During the last decade, the water level has fallen at more than one meter per year, causing a hydrostatic disequilibrium between the underground fresh waters and the base level. Thousands of underground cavities have developed as well as hectometre-size landslides. Despite these unfavourable environmental conditions, large tourism development projects have flourished along the northern coast of the Jordanian Dead Sea. In this work, which is based on a multi-method approach (analyses of radar and optical satellites data, in-situ observations, and public science), we show that a 10 kilometres-long strip of coast that encompass several resorts is exposed to subsidence, sinkholes, landslides, and flash floods. Geological discontinuities are the weakest points where the system can re-balance and where most of the energy is dissipated through erosional processes. Groundwater is moving rapidly along fractures to reach the dropping base level. The salt that fill the sediments matrix is dissolved along the water flow paths favouring the development of enlarged conduits, cavities, and then the proliferation of sinkholes. The front beaches of the hotels, the roads and bridges are the most affected infrastructures. We point out the importance for the land planners to include in the Dead Sea development schemes the historical records and present knowledge of geological hazards in the area.

1 Introduction

The Dead Sea (DS) is a terminal lake located in a pull-apart basin which lies in a complex transform fault plate boundary. This tectonically active zone has been historically exposed to destructive earthquakes (Garfunkel et al., 1981; Abou Karaki 1987; Bonnin et al., 1988; Abou Karaki et al., 1993; Galli, 1999; Klinger et al., 2015). In the last two decades, most of the

coastal segments of the lake turned into a young and dynamic salt karst system. Subsidence and sinkholes developed very quickly and disrupted the economic development of the area (El-Isa et al., 1995; Salameh and El-Naser, 2000, 2005, 2008; Arkin and Gilat, 2000; Parise et al., 2015; Abou Karaki et al., 2017; Al-Halbouni et al., 2017; Ezersky et al., 2017; Fiaschi et al., 2017; Polom et al., 2018, Salameh et al. 2019 and references therein). Since the sixties, the DS level has dropped at an accelerating pace. From 1960 (397 m below mean sea level (bmsl)) to 2018 (432 m bmsl), the level dropped by 35 m due to the transfer of the Tiberias Lake water (located around 100 km north of the DS), the damming of the main tributaries (e.g. the Jordan river), and the exploitation of the DS brine itself for industrial purposes. More recently, a persistent drought has further aggravated the situation.

This drastic change in the hydrogeological setting of the area and its aftermath, led the DS region to become a natural laboratory for studies of the Anthropocene (Abou Karaki et al., 2016 and references therein). The expectation of economic growth based on natural DS resources comes face to face with the reality of the human-induced geological hazards.

The environmental impact of water scarcity in the region is so high that during the last decade, the Jordanian, Israeli, and Palestinian Authorities agreed to work on a mega-engineering project, the Red Sea–Dead Sea Water Conveyance. The project seeks to promote the development of the area, stop the degradation of the environment, and solve problems related to the need for fresh-water. One of the project’s anticipated outcomes is the raising and stabilisation of the DS water level at 410 m bmsl. However, given that the target year for completion is 2050, the subsidence phenomena and sinkholes proliferation will continue. As such, it is becoming more and more necessary to systematically delineate, monitor and model hazardous areas.

Studies concerning the DS sinkholes started in mid-1990s, concomitant with increasing occurrences of decametre-size collapses. The southern part of the lake was first affected (Fig. 1: Lisan Peninsula (LP), Ghor Al-Haditha (GAH)). In the 2000s, the western coast was progressively covered by dozens of sinkhole clusters (Abelson et al., 2006; 2017; Ezersky et al., 2017). The opposite eastern side was not affected because it comprises rocky cliffs plunging directly into the DS. Noticeably, the northern part of the terminal lake was less exposed during most of that period (Abou Karaki and Closson, 2012). It is only during the last 10 years that the number of hazardous events has increased. The pace remains low, but the type of incident has changed. Landslides, with or without the occurrence of sinkholes, are now predominant.

[FIGURE 1]

Geological and geophysical surveys carried out in the southern DS have highlighted the main conditions associated with the formation of sinkholes:

1. the seawards migration of the underground interface between fresh and salt water causes the lake-ward shifting of a dissolution front (El-Isa et al., 1995; Salameh and El-Naser, 2000; Ezersky and Frumkin, 2013);
2. along the western coast, a salt layer (~11000 yr in age) has been identified as the main source of the underground cavities leading to ground collapses (e.g. Yechieli et al., 1993; Abelson et al., 2003; Ezersky et al., 2017). Below the LP

wave-cut platform, (Fig. 1), a thick salt layer has been identified by Arab Potash Company (APC) security engineers dealing with grouting operations for the stability of earthen dikes (Mansour, oral communication 2015, 2017). In the eastern part of the DS, the existence of this salt layer is still in debate, due to the lack of boreholes with unquestionable dated rock samples. An alternative model developed by Al-Halbouni et al. (2017) suggests a mechanism based on numerous salt lens/layers dispersed into the alluvial fan sediments;

3. sinkholes are developing in elongated clusters following geological discontinuities and underground flow paths (Abelson et al., 2003; Closson and Abou Karaki, 2009). Faults and fractures act as conduits that facilitate the displacement of the underground water towards the base level (Ezersky and Frumkin, 2013; Abou Karaki et al., 2016);
4. the difference in elevation between the riparian fresh groundwater and the base level leads to the circulation of underground water with high erosional capabilities (both chemical and mechanical) and increasing velocity along interconnected subsurface channels. One of the consequences is that dissolution can take place below the DS water level (Abou Karaki et al., 2016);
5. recent studies (e.g. Abelson et al., 2017) have highlighted a connection between the rainfall regime in the recharge zones surrounding the DS basin and the development of sinkholes along the western shore.

The co-existence and interaction between these five conditions resulted in the development of a hydro-mechanical model that explain the majority of the sinkholes occurring in the coastal zones (e.g. Ezersky et al., 2017). This model encountered some difficulties to convincingly explain a number of observations (Al-Halbouni et al., 2017; Ezersky et al., 2017), especially in Sweimeh, located along the DS north-eastern coast, which is the area of interest of this work (Fig. 1). The fundamental reason is the presence of different aquifer systems along the DS coast that do not react in the same way to the base level drop. Repeated field surveys in the northern DS have shown that sinkholes are not only associated with subsidence but also with hectometre-wide landslides (Closson et al., 2010).

The Sweimeh area is singular in the context of the DS geo-hazards because of the higher number of exposed people/assets in respect to the rest of the Jordanian DS area. In the mid-1990s, the Jordanian authorities invested in infrastructures (e.g. roads, bridges, water pipelines) to create a favourable nest for private investments in the tourism sector. Framed as part of the “Dead Sea Master Plan”, dozens of five-star hotels were built along a ~10 km long stretch of the coast. Although the urbanization occurred concomitantly with a sporadic development of destructive landslides and sinkholes, no adaptations/remediation measures were taken. In the mid-2000s, it became obvious that the sustainability of private and public investments in tourist resorts and infrastructures along the DS shoreline was questionable.

In this paper, we present and discuss a selection of observations collected in the Sweimeh area in the last two decades. We describe the main features obtained by combining field observations, Synthetic Aperture Radar Interferometry (InSAR) techniques, both Differential (D-InSAR) and Advanced Differential (A-DInSAR) and the analysis of thematic maps and ancillary data in a Geographical Information System (GIS). Following this approach, we deduce that the development and application in the DS area of an Early Warning System (EWS), based on the detection of precursory deformations (Closson

et al., 2003), is necessary to monitor the proliferation of geological hazards and to provide warning signals prior to the occurrence of ground failures.

2 Geological setting of the study area

The Sweimeh area corresponds to a stretch of coast, about 2 km wide and 10 km long, situated along the north-eastern part of the DS (Figs. 1 and 2). The landscape is shaped by Pleistocene to Holocene sediments overlying a thick Mesozoic sequence of Triassic and Cretaceous rocks. The Triassic is represented by the Zarqa Ma'in Group (dolomitic limestone and marls, massive limestones, sandstones and shales). The Cretaceous sequence composed of sandstones, limestones and dolomitic limestones, overlays the Triassic Zarqa Ma'in group.

The Middle-Late Pleistocene is represented by the Lisan Formation that is made of lacustrine sediments (sandstone, marl and claystone) of the Lisan lake yielding ages from 70 to 12 kyr (Landmann et al., 2002). On top of the sequence, Holocene sediments are made of gravels and soils that cover broad areas in the Jordan valley. The Sweimeh Formation (Shawabkeh 1993, 2001) comprises massive and bedded Anisian Dolomitic Limestone interlayered with colourful Scythian Sandstone (Bandel and Abuhamad, 2013). The Kurnub Sandstone and the Naur Dolomitic Limestone (Lower to Middle Cretaceous) overlaying these strata crop out in the central and north-eastern parts of the study area, while the Lisan Formation and the Holocene colluvial sediments overlay the Triassic and the Lower Cretaceous in the northern part.

Regarding the structural setting, the eastern branch of the Dead Sea Transform (DST) fault emerges and reactivates the Amman-Hallabat Structure (AHS) in its southernmost tip (Al-Awabdeh et al., 2016a) (Fig. 2). The AHS is an 80 km fold-bend fault striking NE-SW running from the easternmost corner of the DS up to central Jordan (Diabat, 2009; Al-Awabdeh et al., 2012; Al-Awabdeh, 2015).

The DST is an active structure (e.g. Al-Awabdeh et al., 2016b). Conjugated normal and normal dextral fault systems are being developed in NW-SE direction. Fracture systems in Sweimeh point to compressional stresses in N-S and NNE-SSW directions and, in return, tensional stresses in NW-SE directions. These fractures and active faults are concordant with the current stress configuration.

In terms of hydro-geological setting, the highly fractured Sweimeh area contributes to the rainfall percolation from the Moab plateau (around 346 mm per year) to the DS base level (East, not visible in Fig. 2). This fact is attested to by the large number of pumping wells located along the fault zone (Goode D.J. et al., 2013). The extracted water is essential for irrigation needs.

Concerning surface water, flash floods initiated by heavy rainstorms are common in the area. They damage infrastructure and are potentially lethal. On the 25th October 2018, a bridge collapsed, killing 21 people. Most of the energy released during such catastrophic events dissipates through incisions into weak mud deposits.

Regarding groundwater data and volume, the natural outflow was 300 Million Cubic Meters (MCM) per year for the whole East coast of the DS before the lake level began falling. Currently, the natural outflow measures at 500 MCM. For Sweimeh,

15 MCM per year of natural outflow have been calculated by the Natural Resources Authority of Jordan (NRA, 1966) and field measurements carried out by the University of Jordan during the last 20 years. This estimation includes also the underwater springs.

[FIGURE 2]

3 Material and methods

The methods used to understand the dynamics of the geological hazards in the DS, and to derive maps of the most exposed areas, are based on a combination of inputs coming from three independent data sets:

1) images acquired by satellite SAR sensors are used for the mapping of ground displacements. Differential interferograms and velocity maps computed from multi-temporal DInSAR analysis have been used to delineate ground deformations. These observations have also served to prepare field validation campaigns;

2) satellite optical images were used for the detection of the shoreline’s positions through time, the infrastructures (building footprints, roads, bridges), the soil moisture gradient, and the vegetation appearance/disappearance, especially in the recently emerged areas;

3) Since the early 1990s, field surveys have been carried out to complement/confirm satellite observations and to map additional information such as wall repairs and cracks in the facades that are otherwise impossible to capture with space-borne sensors.

All available information was geocoded and imported in a GIS to perform further analyses.

3.1 SAR data sets and derived products

The available SAR images used in this study consists of 68 Sentinel-1A/B (S1-A/B) acquired in vertical co-polarization and descending orbit from 20/09/2015 to 09/09/2017. Further specifications of the S1-A/B images are presented in Table 1. The scenes have been processed with the Small Baseline Subset (SBAS) (Berardino et al., 2002) technique implemented in the Sarscape™ software in order to retrieve information of the spatial distribution and rates of the displacements along the DS eastern coastline. In total, 463 inteferometric pairs have been connected by using 1% of geometric baseline threshold (in respect to the critical baseline) and 120 days of temporal baseline thresholds. A coherence threshold of 0.40 was used to unwrap the interferograms. A detailed description of the adopted SBAS processing workflow is available in Fiaschi et al., (2017). The products derived from the standard DInSAR analysis consisting of geocoded intensity and coherence maps, and differential interferograms are used to check, in particular dates, the displacements and changes in the geophysical properties of the ground surface. They were also used to better assess the possible cause of specific ground failure events.

[TABLE 1]

The processing results were supported by field observations and visual interpretation of optical images. Ancillary data, such as the location of the pumping stations and the faults/fractures datasets, were integrated in the analysis to get an overview of the ground deformation dynamics.

3.2 Optical data sets and derived products

Three data sets derived from space-borne optical sensors have been used to get knowledge of the landscape evolution:

1) Very High Resolution (VHR) WorldView-2 (WV-2) images (Digital Globe™) have been processed to extract information of the shoreline position, the building footprints, the vegetation, the soil moisture, and of geomorphological features such as depressions located below the water level, generally associated with the presence of underwater springs.

The WV-2 images consist of one VHR panchromatic band at 0.46 m resolution and eight spectral bands at 1.86 m resolution, “coastal, blue, yellow, green, red, red edge, Near-InfraRed (NIR), and NIR2”. Image fusion algorithms implemented in ENVI™ and Erdas Imagine™ were applied to create pan-sharpened images, i.e. an image with colour information but at 0.46 m resolution. Such processed images are very efficient for the extraction, interpretation and validation of infrastructures, vegetation, etc. Further specifications are found in Table 2.

[TABLE 2]

2) LANDSAT and Sentinel-2 imagery were used to monitor the position of the DS shoreline and the vegetation development along the coast from 1973 to 2019. The most recent LANDSAT data are at 15 m spatial resolution in panchromatic and 30 m in optical-NIR spectral bands. Pan-sharpening techniques were applied to work at higher resolution with colours. Sentinel-2 images are at 10 m resolution for the optical-NIR bands. In this case, there was no need to apply pan-sharpening methods.

3) Declassified CORONA scanned pictures dating back to the late 1960s were interpreted to map the shoreline prior to the base level drop. At that time, a relative equilibrium existed in the coastal environment as attested, for example, by the river profiles. Additionally, the vegetation had colonized almost the totality of the shore. According to the CORONA mission designator, the Best Ground Resolution (BGR) achievable was 2.74 m. After a careful geocoding of the scanned pictures, and without resampling the original data from the USGS, a resolution of around 10 m was found.

The extraction of data about the landscape’s changes was performed by computing two basic indices over Worldview-2, Sentinel-2 and Landsat-8 images: the Normalized Difference Vegetation Index ($NDVI = (R-IR)/(R+IR)$) and the Normalized Difference Water Index ($NDWI = (G-IR)/(G+IR)$). They were applied to map the vegetation cover and the emerged areas between two acquisition dates. Changes have been computed based on a simple difference between pairs of images acquired by the same sensor. The classification of the results was based on the standard deviation. Emphasis was given to the extreme classes corresponding to the appearance of vegetation.

The interpretation of these data sets allowed for the detection of springs and shallow water flow paths in the lands that have emerged as the water levels have fallen. With less than 100 mm of rainfall per year, the growth and decline of vegetation in the DS depends on small variations in the groundwater elevation, which in turn, depends on the elevation of the base level. Thus, the study of the vegetation and of the soil moisture provides information about changes in underground water circulation close to the shoreline. These observations were also used to prepare field campaigns. The building footprints have been digitized manually. The boundaries of the hotels' parcels were derived from the interpretation of the VHR satellite images and compared to the available land planning maps.

3.3 Field surveys and ancillary data

Since the beginning of the 1990s, our research team has been photographically documenting the induced geological hazards in the whole Jordanian DS area. Field surveys served to validate the observations derived from satellites' imagery and to delineate more accurately the areas exposed to geological hazards. The location of each observation was recorded over topographic maps and later on with a GPS system.

Dozens of field surveys were carried to monitor the development of fissures, landslides and sinkholes. During the last 15 years, the emergence of photo repositories on the Internet has made new original data sources accessible. More and more, the photographs are correctly geo-tagged, which helps to speed up the work of archiving those images.

The geo-tagged images have been collected and archived to allow a multi-temporal analysis in a GIS system. The delineation of affected zones through time relies also on this source of data, and has supported the delineation of hazardous areas inside the cadastral plots. Web Map Service (WMS) servers have provided a large number of ancillary data such as VHR images from Bing and Open Street Map.

The Shuttle Radar Topography Mission (SRTM) Digital Elevation Model (DEM) with a spatial resolution of 30 m x 30 m was used to position all observations into a 3D environment and to remove the topographic phase in the InSAR processing. The SRTM DEM corresponds to the landscape of February 2000 (DS elevation of -413 m), therefore there is no topographic data for the coastal zones that have emerged after that date (DS elevation of -432 m in 2018). Taking into consideration the thalwegs delineated with hydrological tools in ArcGIS™, the missing information for the landscape that has emerged after 2000 was created from the visual interpretation of the more recent VHR images.

Geological data have been collected from the existing published sources at 1:50,000 scale (1980s) and complemented by more recent studies at 1:10,000 scale (e.g. Al-Awabdeh, 2015).

The "Master-Plan Development Strategy of the Jordan Valley" prepared by Tegler (2007) was used to extract and digitize the cadastral maps matching the area of interest, in order to obtain a more precise mapping and classification of the damage to the infrastructure in study area.

Well data have been collected to support the interpretation of the differential interferograms. The underground water resources in the Jordan Valley are pumped for agricultural purposes. The ground deformations related to the extraction of water are generally localized around the pumping stations and are not related to those resulting from the lowering of the DS

level, which affects larger areas along the coastline. The inventory of pumping stations is, therefore, important for the interpretation of subsidence zones. Some of the wells managed by the Jordan Ministry of Water and Irrigation (MWI) were monitored in conjunction with the U.S. Geological Survey (USGS) to extract groundwater-levels and salinity trends (Goode J.R. et al., 2013). Groundwater level data from 30 of these wells were available for the northern DS, among which only 3 are located in the Sweimeh area.

3.4 Method for mapping exposure of tourism infrastructures

In this study, we focused on the exposure to geological hazards (landslides, sinkholes, subsidence, and rivers' incision) of the Dead Sea's tourist infrastructures (buildings, roads, front beaches, bridges, walls, buildable cadastral plots) created over the last 20 years. Exposure is the first variable that ranks areas in order of priority. Depending on the criteria used to determine this priority, high, medium or low exposure areas have been considered.

The exposure maps are produced by classifying the damage at cadastral plot level based on the combination of field observations, security engineers/employees' testimonies, and remote sensing diachronic results. The assessment of the parcels' exposure includes the spatial extent of the observed damage, the period and frequency at which a particular asset is regularly affected, and its position in respect to critical factors such as the distance from the shoreline. The polygons were drawn manually after a careful analysis of all pieces of evidence. The contribution of the photographic documentation was essential because it provided information not accessible with remote sensing techniques. The damage to the buildings is categorized in eight classes from 0 (minimum) to 7 (maximum). Visible signs on buildings gradually increase from hairline cracking (rank 1) to total collapse (rank 7) (Cooper, 2008). A similar approach was successfully applied previously in two cases: the forecast of the Numeira Salt Factory destruction more than one year before being swallowed by sinkholes, and the prediction of the collapse of a 3 km-long section of APC 'dike 18' (Abou Karaki et al., 2016) one year before the amputation of the affected segment from saltpan SP-0A. The workflow that was used to create the exposure maps is presented in Fig. 3. SAR images are used to generate time-series of ground deformation. A-DInSAR is one of the main techniques used to quantify the changes in the coastal areas. The obtained results are checked during regular field observations. The ground deformations (i.e. subsidence) related to water pumping are excluded from the process, while those related to DS level decline are used as the main input of the study. All the information is combined and is associated with five cadastral plots in a GIS environment.

Optical imagery also plays an important role in providing information about the landscape modifications that range from the appearance/disappearance of springs to the construction of new urban areas. NDVI and other indices are used to capture some specific elements related to the vegetation distribution and its stress, as well as major changes in the soil moisture corresponding to the emergence of new springs (prior to the development of vegetation).

The NDVI has been correlated to long-term water stress (e.g. Martin et al., 2005) and should be considered as a measurement of amalgamated plant growth that reflects various plant growth factors (Verhulst and Govaerts, 2010). The physical characteristics detected by the index are likely related to some measure of canopy density or total biomass. The

underlying factor for variability in a typical vegetation index cannot be blindly linked to a specific input without some knowledge of the primary factor that limits growth. For example, in the DS coastal zone, the limiting factor can be the drop of the groundwater level caused by the base level lowering.

- 5 Well data and field observations are useful to obtain information about the status of the water table level, the groundwater flow dynamic and position, as well as about the variations in the salinity of the springs, which may correspond to variations in the salt dissolution processes.

The exposure map of touristic cadastral plots includes a combination of evidences that an ongoing threat is emerging. The main causes of the occurrence of sinkholes, subsidence and landslides are mainly related to the underground water
10 circulation: flow rates, saturation with respect to salt, and the lateral variation of facies in the DS alluvial-colluvial environment. This information can be obtained only by direct borehole measurements, which are lacking in the study area. For this reason, in this study we postulated that the water table depth can be extrapolated by combining different sources of information including: streams and springs locations, vegetation covers/types, structural features, and ground displacements. For other elements some assumptions should be made: thalwegs are mostly dried up, but water is still present beneath the
15 surface at a depth of ~1 m; springs elevation indicates the intersection of the water table with the surface; elevation of water residing in sinkholes is another source of direct observation; roots characteristics of different vegetation can be used to map the water table level at 1 m – 2 m of depth, depending on the type of plants; the subsidence detected with InSAR could occur in areas where the water table presents higher gradient in respect to the surroundings.

This cost-effective approach for the mapping of areas exposed to geohazards, already proved to be efficient several times in
20 the southern DS with the predictions of the destruction of the Numeira Salt factory at Ghor Al Haditha and the deterioration of the southern part of ‘dike 18’ of the APC network (Parise et al., 2015). The same approach also helped explain the phenomena responsible of the destruction of ‘dike 19’ (i.e. sinkholes and strong subsidence).

[FIGURE 3]

25 4 Results

4.1 Ground deformations derived from A-DInSAR

The processing of the available S-1A/B images with the SBAS approach resulted in a detailed (~15 x 15 m pixels size) vertical velocity map of the entire study area (Fig. 4). In total, it was possible to retrieve the displacement time-series of 52,340 points. The obtained results indicate that all the areas west of the 1959 shoreline (Fig. 4, red line) are affected by
30 subsidence (red and purple areas). Highest subsidence velocities up to -130 mm/yr are found in seepage areas along the coastline and in the exposed muddy plains. The front beaches of the parcels A, B and D are the most affected, with velocities reaching -25 mm/yr, -36 mm/yr and -68 mm/yr. Examples of the displacement time-series extracted at the hotels’ location

are presented in Fig. 5. Field observations have confirmed that sinkholes and landslides affect these areas over a distance between 100 to 200 m landwards. Subsidence also affects some areas east of the former 1959 shoreline (yellow and orange areas), in particular between parcels A and B. This zone corresponds to the damage fault zone associated with the Amman-Hallabat Structure. A possible explanation for this subsidence could be the permeability increase (fractures) that allows a more important underwater flow than in the surrounding areas. The same phenomenon occurs also between parcels C and E.

[FIGURE 4]

[FIGURE 5]

10 4.2 Vegetation dynamics derived from optical imagery

Figures 6 and 7 illustrate the contribution of the vegetation mapping to the identification of areas prone to landslides and sinkholes. Figure 6 displays side by side a major landslide observed with optical imagery and its equivalent using the NDVI index. The vegetation appears in green while the salty-mud is in yellow. The DS is in the lower left corner (dark in colour). The growth of Tamarix bushes at the landslide crown underlines the presence of seepage zones. Areas covered by reeds are also found in the downstream sections of the landslide.

[FIGURE 6]

The springs are located at the intersection between the top of the water table and the ground surface. They are generally found several meters above the base level. This difference in elevation is proportional to the disequilibrium in the hydrogeological system. In the 1950s-1960s, the springs appeared more or less at the same level of the lake. Figure 7 shows the reclassified vegetation change values obtained from the difference between the 2010 and 2017 NDVI maps. The areas characterized by growth of vegetation are in green, while in red are the areas that show vegetation loss. On the 18th of November 2018, a 120 m wide landslide occurred at the same elevation as four former landslides.

[FIGURE 7]

The largest part of the vegetation loss can be attributed to the development of tourism infrastructure while the vegetation gains to the presence of fresh/brackish water at or close to the surface. Four main zones with major vegetation development where mudslides occurred have been observed in the study area (Fig. 7, white circles). The emergence of springs in the beachfront of the hotels could represent a substantial hazard for the stability of the ground and the infrastructure (Fig. 8c). Since early 2016, we observed two distinct places where reeds have developed in the Holiday Inn beachfront (Fig. 8d). These areas have been fenced off by the security engineers, as sinkholes developed some meters upstream.

4.3 Field observations

During the last decade, regular field inspections were carried out approximately biannually to follow and monitor the deteriorations of the DS shore in Sweimeh. All areas show surface deformations reflecting the ongoing subsurface dissolution processes. Cracks occur very frequently on land, on walls, in swimming pools and in other man-made structures (Fig. 8). No effort was generally made by investors to investigate the causes of the damage or define a reasonable strategy to deal with the quite visible deteriorations. Instead, these were “repaired” hastily, inefficiently, and superficially on a nearly daily basis. Land cracks are still being systematically filled with sand, while cracks affecting structures are being filled with concrete. Most of these cracks are likely to be associated with the subsidence occurring in the area, as measured by SBAS. Some of the monitored infrastructures are affected on two fronts (e.g. Fig. 9): a river incision causes lateral slope displacement, and the emergence of springs in the beach areas are connected to the development of ground collapses. Heavy engineering work is, in this case, needed to stabilize the river profile and to avoid the undermining of slopes during flash flood events. The strong effects of river incision on the stability of infrastructure are obvious, especially on bridges located hundreds of meters away from the DS shore (Fig. 10).

[FIGURE 8]

[FIGURE 9]

The King Hussein bin Talal convention centre, located between plots B and C (Fig. 4) is a 3-story building featuring 27 conference halls often used for winter World Economic and Scientific Forums, major exhibitions, conferences and meetings. The convention centre is capable of hosting up to several thousand participants at a time. The recent state of the centre and the repair works done in order to protect it are shown in Figs. 9a and b. Efforts seem to be focused on large scale engineering measures designed to attenuate the erosion effects of flash floods on the slopes. However, field evidence on the shorefront highlights the presence of water seepage, possibly coming from beneath the centre. In the medium term (years) and long term (decades), this water flow may increase the geological hazard of the area, which could be exposed to subsidence, sinkholes and landslides, as already occurred in the near coastal zones. As mentioned above, the presence of springs is one factor that may indicate the possible occurrence of ground instability. Figure 9d illustrates the growth of vegetation around such springs in the beachfront of the Holiday Inn. This area has been hit at least three times by hectometre-size landslides, in September 1999, May 2009, and August 2012.

[FIGURE 10]

There are several major bridges on the DS highway, all suffering the effects of the DS water level decline, especially vertical erosion processes. In October 2017, one of these bridges located three kilometres south of parcel E, was heavily damaged and lost one of its supporting pillars. Another bridge that suffered significant damage as a consequence of vertical soil erosion is the Zara-Ma'in Bridge, situated just a few kilometres south of the study area. Figure 10 shows the extent of the evolution of the damage affecting the western side of the Zara-Ma'in Bridge on the highway between 2012 (renovated bridge), and 2018. Most of the other bridges on the eastern DS highway show advanced signs of deteriorations.

4.4 Exposure maps

Exposure maps were produced for the five main touristic infrastructures located along the DS coastline in Sweimeh (Fig. 11: (a) Holiday Inn; (b) Hilton; (c) Marriott; (d) Dead Sea Spa; and (e) Crown Plaza). The colour chart ranges from green to red, indicating increasing structural damage observed in each plot. In the Holiday Inn plot, during the 1960s, the shoreline was in the area now occupied by the main swimming pools. Therefore, most of the infrastructures developed over areas exposed in the last years, which are susceptible to geohazard exposure. The beach area (Fig. 4a) has been affected by landslides and sinkholes since 1999. Because the beach is constantly worked and repaired to offer tourists a pristine sandy beach, cracks are not clearly visible there. The red polygon corresponds to a landslide, while the orange one has fewer observable features. Northwest of the orange zone, the beach is not affected by cosmetic work and fissures are apparent. Close to the shoreline, several springs of brackish water and areas covered by reeds are found. In the upstream part of the orange zone, the presence of sinkholes suggests groundwater circulation towards the springs. The part of the hotel next to the beach is marked by a large number of cracks in the pavements (yellow and orange polygons). Here the size of the cracks is smaller and their number lower in respect to the beach area. The main section of the hotel has no visible cracks, but the main entrance of the building is subsiding with significant damage to the walls (in green).

The Hilton plot (Fig. 11b) is affected by geohazards on two sides. The beach area, in red, is directly exposed to a landslide which has its crown upstream, in orange. Similar to the Holiday Inn, the beach area is entirely covered with sand and regularly worked. During field surveys, cracks related to strong subsidence were evident. North of the plot, cracks were much more visible and extended hundreds of meters northwards, parallel to the shore. In this area, it appears that the whole coastal zone is sliding. The obtained InSAR results confirmed these observations. The access road to the beach is located next to the landscaped Wadi Mukheris. This road shows important fissures that indirectly delineate the lack of stability of Wadi Mukheris' northern slope.

South of Wadi Mukheris, the Marriott plot (Fig. 11c) is strongly affected by recurrent landslides. The entire beach area is in red and/or orange, depending on the density and size of the damage. The red colour corresponds to active landslides, and the orange colour indicates areas where engineers managed to stabilize hazardous ground. The exposed zone corresponds to the steepest part of Wadi Mukheris delta that has emerged with the decline of the DS water level.

The area of the Dead Sea Spa in its entirety (Fig. 11d) presents a high number of fissures. The beach area shows numerous cracks and is affected by sinkholes. Different parts of the plot are sliding towards the DS at different rates. The presence of

underwater circulation is demonstrated by ground displacements (subsidence and lateral movements), vegetation (reeds), and sinkholes.

The beach of the Crowne Plaza Hotel (Fig. 11e) presents many cracks and springs of brackish water. Walls separating terraced gardens outside the hotel are either fissured or partially collapsed. The southeast part of the plot is also affected by underground water circulation related to the Wadi ad Dardur delta. Repeated field investigations suggest that although the river bed has been diverted southwards, groundwater circulation follows the direction prior to its diversion.

[FIGURE 11]

5 Discussions

- Before the 1960s, the DS water level had remained relatively stable for decades, at ~395 m bmsl. It fluctuated by approximately 2 m per year due to rainfalls variations in the watershed. On average, the lake body and the surrounding aquifers were in equilibrium. When the DS level started to decline, the groundwater level adapted accordingly, leading to an increase in groundwater discharge. With the movement of the groundwater interface, sediments rich in halite began to dissolve, leaving voids that iteratively increased until they became unstable. Because the northern DS is generally a muddy area, the ground gradually sinks, causing structural deformations. The ground deformations (subsidence) occurring all along the coastline could be explained because of the lateral shift of the interface between the DS brine/fresh water. Investigations carried out in the southern DS in relation to the collapse of APC “dike 18”, have suggested that subsidence may be the result of chemical erosion, while landslides and sinkholes may be the results of mechanical erosion produced by groundwater flows (Abou Karaki et al., 2016).
- The results obtained from the SBAS analysis of the S1-A/B SAR images (Fig. 4) show rates and spatial distribution of the mean ground deformations along the northeastern DS coastline from 2015 to 2017. The ground subsidence detected extends well beyond the coastline of the 1960s. We interpreted this outgrowth as a repercussion of the continuous decline of the DS level over the groundwater discharge several kilometres inland. This landward extension of subsidence could be a result of a greater permeability of certain zones characterized by an increased density of fractures. This zone co-occurs with the Amman-Hallabat Structure, in which frequent fractures have been observed (Al-Awabdeh, 2015). The magnitude of ground deformations decreases as the distance from the shoreline increases. The zone along the shoreline is the most affected, and the highest intensity is generally found where the water table intersects with the ground surface. This intersection zone materializes with the presence of vegetation, major ground failures, sinkholes and landslides. This assertion is based on both repeated field surveys carried out in the hotel area of Sweimeh over two decades, and on optical satellite images interpretations. For example, a first landslide occurred in the Holiday Inn area in September 1999. Two others occurred in May 2009 and in August 2012. What is interesting about this series of landslides is the time of year in which they occurred. If we were to consider rainfall the main triggering mechanism of these landslides, we would expect to see landslides with

more frequency during the wet season and with less frequency during the dry season. However, here, the origin of such instabilities could be the lateral injection of fresh water into soft sediments on a slope balance profile created under the DS level. One hypothesis could be that the injection is favoured by the drop of the DS level that usually occurs during the dry period (see Fig. 3b of Sirona et al., 2016).

5 The DS area is one of three poles of major tourism development projects in Jordan; these also include the capital Amman and the southern port of Aqaba at the northern tip of the Red Sea. The amount of new investments in the DS and Aqaba areas was evaluated to be about 22.6 Billion US \$. By the year 2022, tourism industry is expected to generate 8.6 Billion to the national economy (Ennab, 2017; 2018). Investigations regarding the technical decision-making process for land-use and land-planning in Jordan have highlighted the weaknesses and the general framework in which industrial projects originate,
10 are designed and realized (Abou Karaki et al., 2016). Four categories of stakeholders can be distinguished: i) funding providers and industrial projects developers want a rapid return on their investments, especially in areas of potential multivariable conflicts. Environmental constraints are often considered as secondary issues and very seldom properly taken into account; ii) engineers, architects, and planners are generally working on a range of global projects and are in charge of project design. Anyway, their knowledge of the environmental setting of any particular remote local project is generally
15 poor, or at best based on a limited data set centred over the parcels they have to valorise. They tend to minimize geomorphologic constraints. The real geomorphological conditions of an area are thus often neglected or reshaped without taking into account the dynamic nature of the ongoing deformations; iii) companies qualified to construct infrastructures are a mixture of local and international enterprises. In general, local workers are more informed about the environmental issues in their work areas. However, their main objective is to realize the project, not planning or questioning it, if they ever have
20 any opinion to express; iv) security engineers in charge of preserving projects after completion are locals who are fully aware of the environmental degradation processes, although they lack a synoptic view and a sound understanding of the underlying mechanism.

Security engineers of five parcels have been consulted for the inspection of their area of interest. They provided a large amount of relevant data regarding the intensity and frequency of the repair works done. Their knowledge, complemented by
25 our own data collection (field observations guided by InSAR deformation maps), has been summarized in the produced exposure maps. To turn those maps into operational documents, in late 2017, several meetings and workshops were held in Amman, Jordan, with the participation of the main governmental and private stakeholders.

In November 2017, an extended special session of the World Science Forum 2017 devoted to the DS environmental issue was held at the King Hussein Convention Centre, in Sweimeh. It was the first scientific forum to be held in the area affected
30 by these phenomena and deformations. The exchanges and discussions have highlighted the absence of appropriate awareness about the ongoing karst development (Abou Karaki et al., 2017).

Currently there is practically no strategy in the “Dead Sea Master Plan” to manage the geological hazards resulting from the DS lowering in relation to the tourism development. The lessons learned from these meetings and discussions are: all business related to major touristic infrastructures in karst environment (i.e. hotels, roads, dams, etc.) depends on decisions

made by the national touristic authorities, land planners, architects, civil engineers, and private investors; the very nature of these decisions is affected by the quality, the completeness and the immediacy of the information available to the decision makers. The access to the information needed for the decision-making process, is strongly influenced by how business knowledge is managed. The ability to leverage expert knowledge, especially in matter of environment, is a critical yet significantly underutilized asset. Explicit knowledge, codified into repositories, is more easily accessed but still requires a level of interpretation.

From the field surveys carried out in the study area, we observed that most of the damage to the structures were repaired as soon as they appeared. However, the repair/remediation works were carried out without any consideration or knowledge of the underlying causes of the damage, and without thinking to what might happen either in the near future (re-occurrence of the damage) or to the adjacent parcels (extension of the damage). In the framework of large infrastructure planning and construction, it is necessary to consider the geological and geomorphological factors that shape and modify the territory in order to avoid or reduce damage and economic losses. Most of the accidents involving the heavy damage or destruction of man-made structures are often related to the inadequate knowledge of the geotechnical conditions at which the constructions took place, and to the absence of a monitoring system capable of apprehending ground deformations such as collapses, subsidence, and landslides. For a given project, the principle “observe-plan-do-check-adjust” should be applied each time a new stakeholder is involved. Based on the habits of the new generation of stakeholders, each project should ideally have traceability for the common good and enable stakeholders to learn from failures.

In the karst terrains more than elsewhere, every project should have a platform where different stakeholders can communicate and share relevant information in complete transparency. The implementation of indices like Karst Disturbance Index and Karst Sustainability Index (van Beynen and Townsend 2005; North et al., 2009; van Beynen et al., 2012; Mazzei and Parise, 2018) specifically developed for karst, will represent an important step in accurately defining the problems related to this fragile environment and developing proper land use planning and management techniques.

6 Conclusions

In this work, we presented the results obtained from the integration of several different data sets over the Sweimeh area (eastern Dead Sea shore). Thanks to the adopted approach, we were able to map the subsidence occurring along the Dead Sea shoreline and quantify the hazard exposure of five main touristic infrastructure. The results obtained from the analysis of Sentinel-1A/B SAR images with the SBAS approach revealed subsidence rates up to -130 mm/yr. In particular, the infrastructure built on lands that have emerged in the last 40 to 50 years are not only the most affected by subsidence but also exposed to sinkholes and landslides phenomena. The monitoring of natural vegetation growth permits to locate the water sources and partially to deduce the underground flow channels which sinuate close or beneath the hotels. This information is important to predict the occurrence of potential ground failures or underline the areas more vulnerable.

The importance of this work can be estimated with respect to some catastrophic events occurred in 2018: a Jordanian teenager died after falling into a sinkhole in Ghor Al Haditha, south-eastern DS, Jordan. Some months later, South of Sweimeh, one flash flood event killed a group of 21 children and their teachers. A bridge collapsed during the same event. The 18th November, a landslide 120 m wide destroyed a recreation area close to the Holiday In. Bridges and roads are heavily affected during flash-flood periods.

This sequence of events underlines the necessity to consider the study of geological hazards related to the DS level lowering as a priority for the sustainable development of the area. Appropriate measures for risk mitigation should also be taken to avoid further lethal incidents. This is especially true in Sweimeh area, where the exposed population is higher than other places along the DS shore. The mapping of exposure areas at the cadastral parcel level presented in this study is the very first step towards the computation of vulnerability and risk, and the development of an Early Warning System. The exposure maps are a combination of information coming from different sources such as optical and radar data, direct field observations (structural geology), and interviews of security engineers – hotel managers. The approach presented in this paper is very pragmatic but efficient, and its robustness mainly relies on the multi-sources and multi-temporal analysis.

Human activities have left signatures on the Earth for millennia, and the magnitude of this fingerprint is currently growing with clear impacts upon morphology, ecosystems, and climate. It is now widely accepted that the world is changing fast and at a pace that could become a real issue for business development. The tourism sector could be negatively impacted in the near future as well. Geological hazards in karst areas are feared by engineers since the 19th century (Milanovic, 2000, 2002; Parise et al., 2015, 2018 and references therein; Stevanovic, 2015). In the next few decades a sharp increase in karst geo-hazards is expected due to global water resources becoming scarcer, leading to a drop of water tables, and consequently leading to proliferation of subsidence areas, sinkholes and related phenomena. To avoid exposure of people and assets to these hazards, land planners and investors need an overview of the environmental situation. Presently, recognition and analysis of environmental changes is a considerable challenge for sustainable development and profitability of major tourism projects.

Acknowledgments

Part of Najib Abou Karaki's contribution was done during two sabbatical years supported by the Deanship of scientific research – The University of Jordan. Two field works have been performed in the frame of the European Space Agency (ESA) contract No. 4000120391/17/NL/US. EU Copernicus services provided Sentinel data. [The Authors thank Dr. Simone Popperl for revising the English form of the manuscript.](#)

References

- Abelson, M., Baer, G., Shtivelman, V., Wachs, D., Raz, E., Crouvi, O., Kurzon, I. and Yechieli, Y.: Collapse-sinkholes and radar interferometry reveal neotectonics concealed within the Dead Sea basin, *Geophysical Research Letters*, 30, 10, 1545, 52-1 – 52-4, doi: 10.1029/2003GL017103, 2003.
- 5 Abelson, M., Yechieli, Y., Baer, G., Lapid, G., Behar, N., Calvo, R., and Rosenshaft, M.: Natural versus human control on subsurface salt dissolution and development of thousands of sinkholes along the Dead Sea coast. *Journal of Geophysical Research: Earth Surface*, 122, 1262 – 1277, doi: 10.1002/2017JF004219, 2017.
- Abelson, M., Yechieli, Y., Crouvi, O., Baer, G., Wachs, D., Bein, A. and Shtivelman, V.: Evolution of the DS sinkholes, in: *New frontiers in Dead Sea paleo environmental research*, edited by: Enzel, Y., Agnon, A. and Stein, M., Geological Society of America Special Paper, 241 - 253, doi: 10.1130/2006.2401(16), 2006.
- 10 Abou Karaki, N., Fiaschi, S. and Closson, D.: Sustainable development and Anthropogenic induced geomorphic hazards in subsiding areas, *Earth Surface Processes and Landforms*, 41, 2282 - 2295, doi: 10.1002/esp.4047, 2016.
- Abou Karaki, N., Dorbath, L., and Haessler, H.: La Crise sismique du golfe d'Aqaba de 1983: Implications tectoniques, *Comptes Rendus de l'Académie des Sciences de Paris*, 317, II, 1411 - 1416, 1993.
- 15 Abou Karaki, N., and Closson D. (Eds.): *Workshop on Dead Sea Sinkholes, causes, effects & solutions*, Field Guidebook, European Association of Geoscientists & Engineers publication, 2012.
- Abou Karaki, N., Closson, D., Fiaschi, S., Calve P. J., Al-Awabdeh, M., and Paenen, K.: *Can Science save the Dead Sea?* World Science Forum Conference, King Hussein Bin Talal Convention Centre, Dead Sea, Jordan, 7 - 11 November 2017, 2017.
- 20 Abou Karaki, N.: *Synthèse et carte sismotectonique des pays de la bordure orientale de la Méditerranée: Sismicité du system de failles du Jourdain - Mer Morte*, Ph.D. thesis, Université Louis Pasteur de Strasbourg, Institut de Physique du Globe, IPGS, France, 417 pp., 1987.
- Akkawi, E., Kakish, M. and Haddadin, N.: The geological model and the groundwater aspects of the area surrounding the eastern shores of the Dead Sea, Jordan, *WSEAS Transactions on Information Science and Applications*, 4, 6, 670 – 683, ISSN: 1790-0832, 2009.
- 25 Al-Awabdeh, M., Perez-Pena, J.V., Azanon, J.M., Booth-Rea, G., Abed, A., Atallah, M. and Galve, J.P.: Quaternary tectonic activity in NW Jordan: Insights for a new model of transpression – transtension along the southern Dead Sea Transform Fault, *Tectonophysics*, 693, 465 – 473, doi.org/10.1016/j.tecto.2016.04.018, 2016a.
- Al-Awabdeh, M., Perez-Pena, J.V., Azanon, J.M., Booth-Rea, G., Abed, A., Atallah, M. and Galve, J.P.: Stress analysis of NW Jordan. New episode of tectonic rejuvenation related to the Dead Sea Transform Fault, *Arabian Journal of Geosciences*, 9, 4, 264, doi: 10.1007/s12517-015-2239-z, 2016b.
- 30 Al-Awabdeh, M., Azañón, J. and Pérez-Peña, J.: Recent tectonic activity in the intersection between the Amman-Hallabat structure and the Dead Sea Transform Fault (Jordan), *Geotemas*, 469 - 472, 2012.

- Al-Awabdeh, M.: Active tectonics of the Amman-Hallabat and Shueib structures (NW of Jordan) and their implication in the Quaternary evolution of the Dead Sea Transform Fault system, Ph.D. thesis, University of Grenada, Spain, 207 pp., 2015.
- Al-Halbouni, D., Holohan, E.P., Saberria, L., Alrshdan, H., Sawarieh, A., Closson, D., Waltera, T.R., and Dahm, T.: Sinkholes, subsidence and subrosion on the eastern shore of the Dead Sea as revealed by a close-range photogrammetric survey, *Geomorphology*, 285, 305 - 324, doi: 765 10.1016/j.geomorph.2017.02.006, 2017.
- Arkin, Y. and Gilat, A.: Dead Sea sinkholes – an ever-developing hazard, *Environmental Geology*, 39, 7, 711 – 722, doi: 10.1007/s002540050485, 2000.
- Bandel, K. and Abu Hamad A. M. B.: Permian and Triassic Strata of Jordan, in: *The Triassic System*, edited by: Anner, L.H., Spielmann, J.A. and Lucas, S.G., New Mexico Museum of Natural History and Science, 61, 31 – 41, 2013.
- 10 Berardino, P., Fornaro, G., Lanari, R. and Sansosti, E.: A new algorithm for surface deformation monitoring based on small baseline differential interferograms, *IEEE Transactions on Geoscience and Remote Sensing*, 40, 112375–2383, doi: 10.1109/TGRS.2002.803792, 2002.
- Bonnin, J., Cara, M., Cisternas, A., and Fantechi, A. (Eds.): *Seismic Hazard in Mediterranean Regions*, Springer Science & Business Media, ISBN 978-90-277-2779-4, 1988.
- 15 Closson, D., Abou Karaki, N., Hansen, H., Derauw, D., Barbier, C., and Ozer, A.: Space-borne radar interferometric mapping of precursory deformations of a dike collapse, Dead Sea area, Jordan, *International Journal of Remote Sensing*, 24, 4, 843 – 849, doi: 10.1080/01431160210147388, 2003.
- Closson, D., and Abou Karaki, N.: Salt karst and tectonics: sinkholes development along tension cracks between parallel strike-slip faults, Dead Sea, Jordan, *Earth Surface Processes and Landforms*, 34, 10, 1408 – 1421, doi: 10.1002/esp.1829, 2009.
- 20 Closson, D., Abou Karaki, N. and Hallot, F.: Landslides along the Jordanian Dead Sea coast triggered by the lake level lowering, *Environmental Earth Sciences*, 59, 7, 1417 - 1430, doi: 10.1007/s12665-009-0128-z, 2010.
- Cooper, A. H.: The classification, recording, data basing and use of information about building damage caused by subsidence and landslides, *Quarterly Journal of Engineering Geology and Hydrogeology*, 41, 3, 409 - 424, DOI: 10.1144/1470-9236/07-223, 2008.
- 25 Diabat, A.A.: Structural and stress analysis based on fault-slip data in the Amman area, Jordan, *Journal of African Earth Sciences*, 54, 5, 155 - 162, DOI: 10.1016/j.jafrearsci.2009.03.011, 2009.
- El-Isa Z. H., Rimawi, O., Jarrar, G., Abou Karaki, N., Atallah, M., Seifed-din, N., Taqieddin, S., and Al-Saed, A.: Assessment of the hazard of subsidence and sinkholes in Ghor Al-Haditha area, Final Report, Center for Consultation, Technical Services and Studies, University of Jordan, 141 pp., 1995.
- 30 Ennab, L. (Jordanian Ministry of Tourism): www.ammonnews.net/article/3311458, 25-04-2017.
- Ennab, L. (Jordanian Ministry of Tourism): www.ammonnews.net/article/384012, 11-07-2018.
- Ezersky, M., and Frumkin, A.: Fault-Dissolution front relations and the Dead Sea sinkhole problem, *Geomorphology*, 201, 35 - 44, doi: 10.1016/j.geomorph.2013.06.002, 2013.

- Ezersky, M., Legchenko, A., Eppelbaum, L., and Al-Zoubi, A.: Overview of the geophysical studies in the Dead Sea coastal area related to evaporite karst and recent sinkhole development, *International Journal of Speleology*, 46, 2, 277 – 302, doi: 10.5038/1827-806X.46.2.2087, 2017.
- Fiaschi, S., Closson, D., Abou Karaki, N., Pasquali, P., Riccardi, P., and Floris, M.: The complex karst dynamics of the Lisan Peninsula revealed by 25 years of DInSAR observations, Dead Sea, Jordan, *ISPRS Journal of Photogrammetry and Remote Sensing*, 130, 358 - 369, DOI: 10.1016/j.isprsjprs.2017.06.008, 2017.
- Galli, P.: Active tectonics along the Wadi Araba – Jordan valley transform fault, *Journal of Geophysical Research*, 104, B2, 2777 - 2796, 1999.
- Garfunkel, Z., Zak, I., and Freund, R.: Active faulting in the Dead Sea rift, *Tectonophysics*, 80 (1-4), 1-26, DOI: 10.1016/0040-1951(81)90139-6, 1981.
- Goode, D.J., Senior, L.A., Subah, A., and Jaber A.: Groundwater-level trends and forecasts, and salinity trends, in the Azraq, Dead Sea, Hammad, Jordan Side Valleys, Yarmouk, and Zarqa groundwater basins, Jordan, edited by: U.S. Geological Survey Open-File Report 2013–1061, 80 p., doi.org/10.3133/ofr20131061, 2013.
- Goode, J. R., Buffington, J. B., Tonina, D., Isaak D. I., Thurow, R. F., Wenger, S., Nagel, D., Luce, C., Tetzlaff, D., and Soulsby, C.: Potential effects of climate change on streambed scour and risks to salmonid survival in snow-dominated mountain basins. *Hydrological Processes* 27, 5, 750 – 765, doi: 10.1002/hyp.9728, 2013.
- Klinger, Y., Le Beon, M., and Al-Qaryouti, M.: 5000 yr of paleoseismicity along the southern Dead Sea fault, *Geophysical Journal International*, 202, 1, 313 – 327, doi: 10.1093/gji/ggv134, 2015.
- Landmann, G., Abu Qudaira, G.M., Shawabkeh, K., Wrede, V., and Kempe, S.: Geochemistry of the Lisan and Damya Formations in Jordan, and implications for paleoclimate, *Quaternary International*, 89, 1, 45 – 57, doi: 10.1016/S1040-6182(01)00080-5, 2002.
- Martin, K.L., Hodgen, P.J., Freeman, K.W., Melchiori, R., Arnall, D.B., Teal, R.K., Mullen, R.W., Desta, K., Phillips, S.B., Solie, J.B., Stone, M.L., Caviglia, O., Solari, F., Bianchini, A., Francis, D.I., Schepers, J.S., Hatfield, J., and Raun, W.R.: Plant-to-plant variability in corn production, *Agronomy Journal*, 97, 1603 - 1611, 2005.
- Mazzei, M., and Parise, M.: On the implementation of environmental indices in karst, in: *Karst Groundwater Contamination and Public Health*, edited by: White, W.B., Herman, J.S., Herman, E.K., and Rutigliano, M., *Advances in Karst Science*, Springer, 245-247, ISBN 978-3-319-51069-9, 2018.
- Milanovic P.T.: The environmental impacts of human activities and engineering constructions in karst regions, *Episodes*, 25, 1, 13 – 21, 2002.
- Milanovic P.T. (Ed.): *Geological engineering in karst*, Zebra, Belgrade, 2000.
- North, L.A., van Beynen, P.E., and Parise, M.: Interregional comparison of karst disturbance: West-central Florida and southeast Italy, *Journal of Environmental Management*, 9, 5, 1770 –1781, doi: 10.1016/j.jenvman.2008.11.018, 2009.
- Natural Resources Authority (NRA), Jordan, Hashemite Kingdom: review of Spring Flow Data prior to October 1965, Technical Paper No 40, Amman, 1966.

- Parise, M., Closson, D., Gutierrez, F., and Stevanovic, Z.: Anticipating and managing engineering problems in the complex karst environment, *Environmental Earth Sciences*, 74, 12, 7823-7835, 2015.
- Parise, M., Gabrovsek, F., Kaufmann, G., and Ravbar, N. (eds.): *Advances in Karst Research: Theory, Fieldwork and Applications*, Geological Society, London, Special Publication 466: 486 pp., ISBN 978-1-78620-359-5, 2018.
- 5 Polom, U., Alrshdan, H., Al-Halbouni, D., Holohan, E.P., Dahm, T., Sawarieh, A., Atallah, Y. and Krawczyk, C.M.: Shear wave reflection seismics yields subsurface dissolution and subrosion patterns: application to the Ghor Al-Haditha sinkhole site, Dead Sea, Jordan, *Solid Earth Discussions*, doi: 10.5194/se-2018-22, 2018.
- Quba'a, R., Alameddine, I., AbouNajm, M., and El-Fadel, M.: Comparative assessment of joint water development initiatives in the Jordan River Basin, *International Journal of River Basin Management*, 15, 1, 115 - 131, doi: 10.1080/15715124.2016.1213272, 2016.
- 10 Salameh E., Alraggad M., Amaireh.: *Degradation processes along the new northeastern shores of the Dead Sea* *Environmental Earth Sciences*, 78:164, 2019. doi.org/10.1007/s12665-019-8155-x.
- Salameh, E. and El-Naser, H.: The interface configuration of the fresh-/DS water – theory and measurement, *Acta Hydrochimica et Hydrobiologica*, 28, 323 - 328, doi: 10.1002/1521-401X(200012)28:6<323::AID-AHEH323>3.0.CO;2-1, 15 2000.
- Salameh E, El-Naser H.: *Retreat of the Dead Sea and its effects on the surrounding groundwater resources and the stability of its coastal deposits*. In: *sustainable use of water resources along the lower Jordan River*. Ed. Hoetzi H, Karlsruhe, 2005.
- Salameh E, El-Naser H.: *Restoring the shrinking Dead Sea—the environmental imperative*. In: Zereini F and Hoetzi H (eds) *Climatic changes and water resources in the Middle East and North Africa*. Springer Publishing Company, Heidelberg, 2008.
- 20 Sawarieh, A., Hotzl, H., and Salameh, E.: Aquifers in the eastern Jordan Valley Hydrogeology and hydrochemistry of Wadi Waleh and Wadi Zarqa Ma'in catchment, central Jordan, in: *The Water of the Jordan Valley: Scarcity and Deterioration of Groundwater and its Impact on the Regional Development*, edited by: Hötzi, H., Möller, P., and Rosenthal, E., Springer, 361-370, ISBN 978-3-540-77757-1, 2009.
- Shawabkeh, K.F.: *The map of Main Area*. Map Sheet No. 3153-III, Scale 1:50,000. National Resources Authority, Amman, 25 Jordan, 1993.
- Shawabkeh, K.F.: *Geological map of Al Karama - 3153-IV*, 1:50.000, Internal Report of Natural Resources Authority, Amman, Jordan, 2001.
- Stevanovic, Z. (ed.): *Karst Aquifers – Characterization and Engineering*. Professional Practice in Earth Science Series, Springer, ISBN 978-3-319-12850-4, 2015.
- 30 Taqieddin, S.A., Abderahman, N.S., and Atallah M.: Sinkholes hazards along the eastern Dead Sea shoreline area, Jordan: a geological and geotechnical consideration, *Environmental Geology*, 39, 11, 1237 – 1253, doi: 10.1007/s002549900095, 2000.
- Tegler, B.: *Terms of reference for the master plan development strategy in the Jordan Valley*, United States Agency for International Development (USAID), 2007.

Van Beynen, P.E., and Townsend, K.M.: A disturbance index for karst environments, *Environmental Management*, 36, 1, 101 – 116, doi: 10.1007/s00267-004-0265-9., 2005.

Van Beynen, P.E., Brinkmann, R., and van Beynen, K. A.: Sustainability index for karst environments, *Journal of Cave and Karst Studies*, 74, 2, 221 – 234, doi: 10.4311/2011SS0217, 2012.

- 5 Verhulst, N., and Govaerts, B.: The Normalized Difference Vegetation Index (NDVI) GreenSeeker™ Handheld Sensor: Toward the Integrated Evaluation of Crop Management, Part A: Concepts and Case Studies, CIMMYT, Mexico D.F, 2010.
- Yechieli, Y., Magaritz, M., Levy, Y., Weber, U., Kafri, U., Woelfli, W., and Bonani, G.: Late Quaternary geological history of the Dead Sea area, Israel, *Quaternary Research*, 39, 59 – 67, doi: 10.1006/qres.1993.1007, 1993.

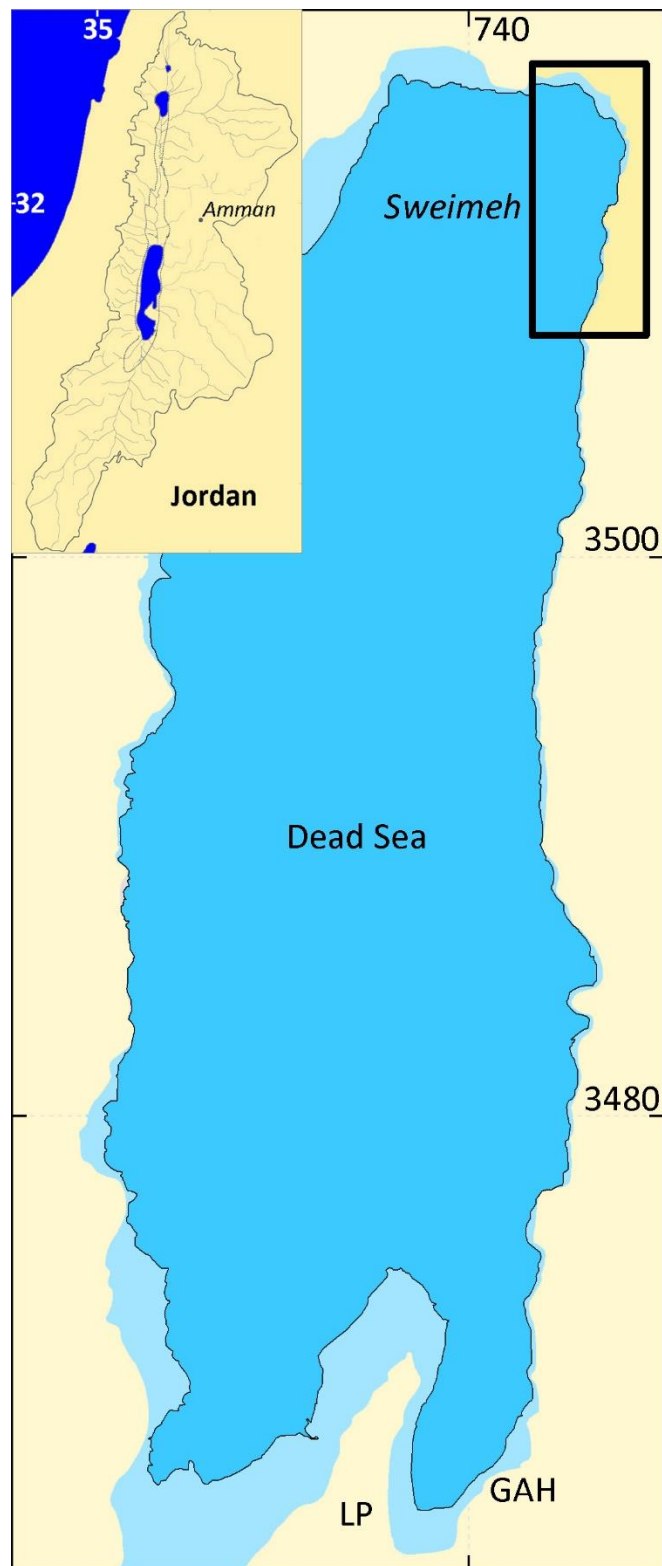


Figure 1. Inset: the Dead Sea watershed (coordinates in degrees). Main map: location and extent of the Dead Sea. The study area (Sweimeh) is located in the north-east (black box). The extent of the lake in the 1960s appears in light blue colour. The black line indicates the shoreline in 2018. In the south are located two main sinkhole sites: the Lisan Peninsula (LP) and Ghor Al Haditha (GAH) (coordinates in UTM 36 (km), WGS 84).

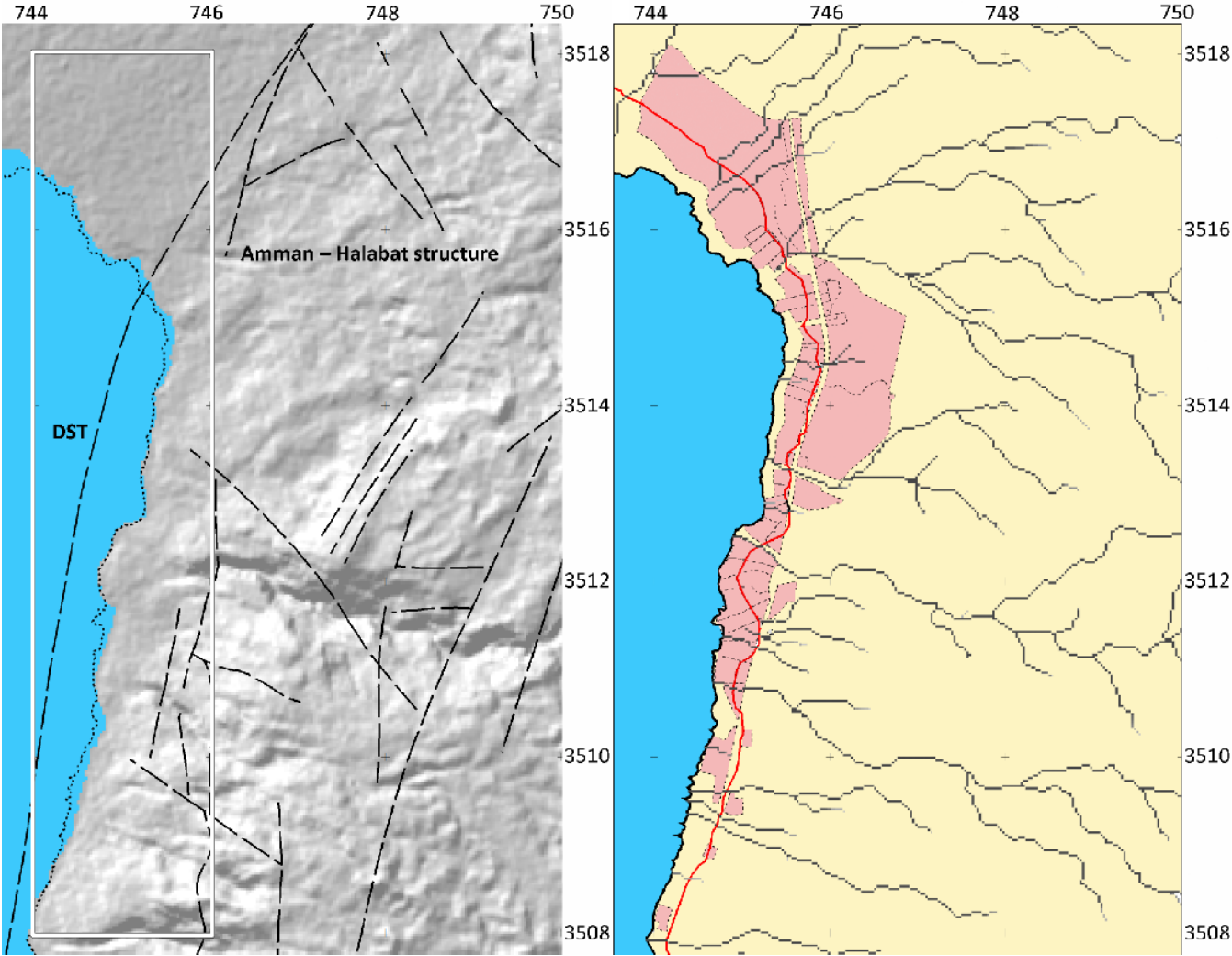


Figure 2. Hydrogeological setting of the Sweimeh area. Coordinates system: UTM 36 (km), WGS84. Left: structural features (from Al-Awabdeh, 2015). The Dead Sea Transform (DST) crosses the study area (white rectangle). The black dotted line is the coastline in 2018. The hill shade relief derived from the SRTM Digital Elevation Model shows the coastline in February 2000. Right: the red line shows the coastline in 1959. The pink colour represents the cadastral parcels that are either already built or that are selected for future urban development. The black lines represent the thalwegs network.

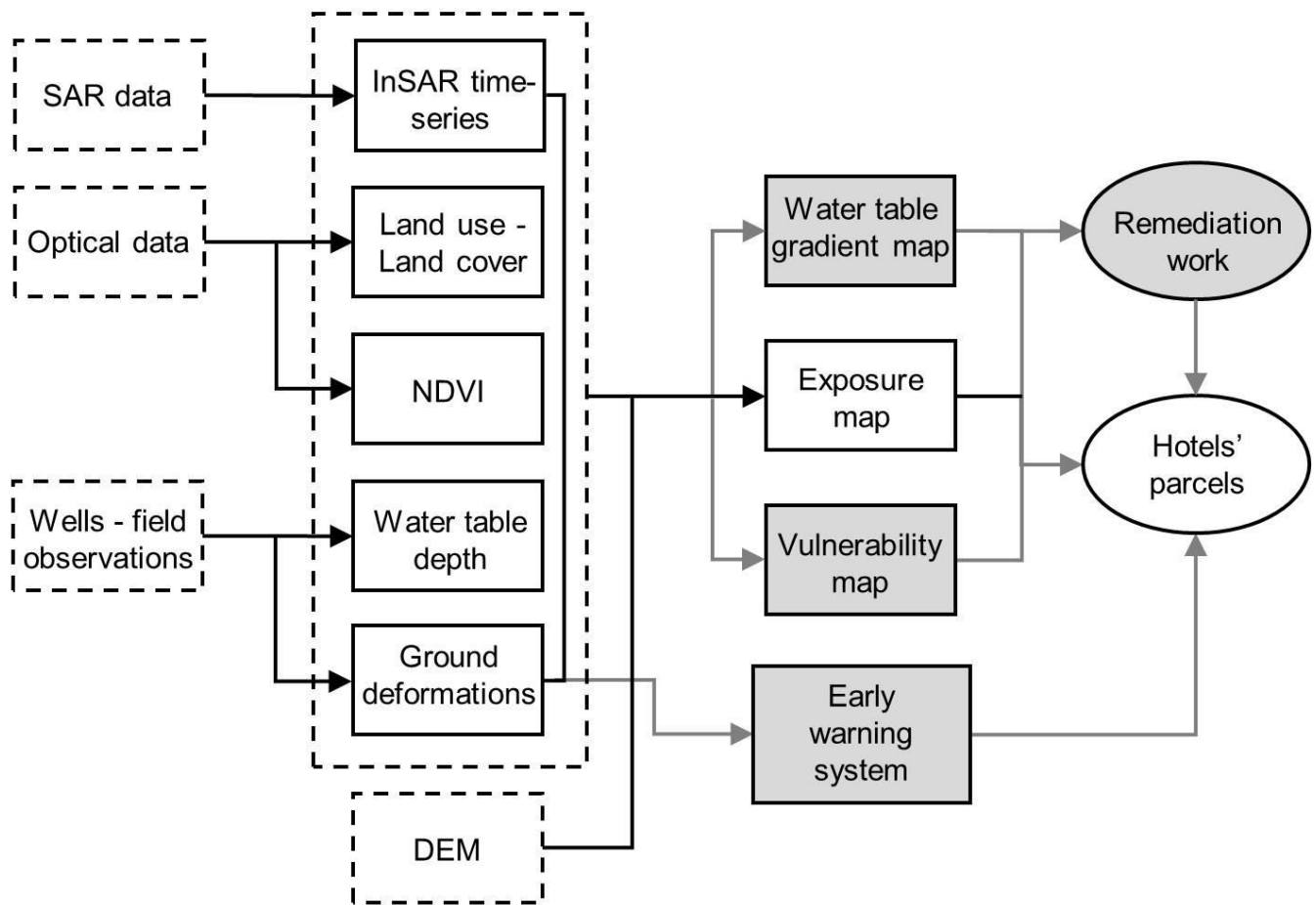


Figure 3. Flow chart of the methodology applied in this research (black rectangles). Rectangles coloured in grey indicates the future targets of the research.

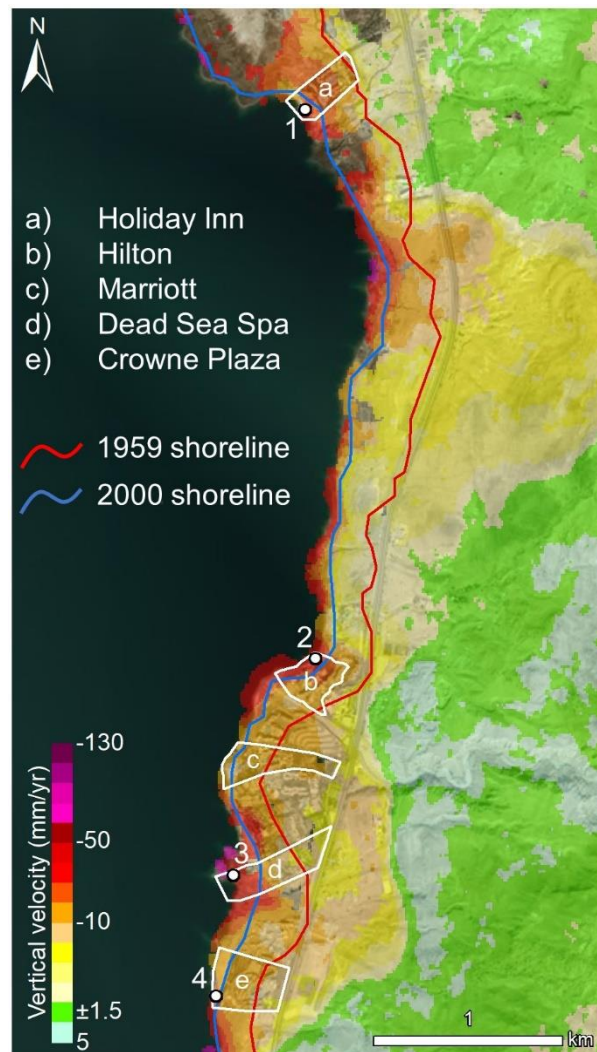


Figure 4. Vertical velocity map of the study area obtained from the SBAS processing of Sentinel-1A/B images. The white dots labelled with numbers are the points select to extract the displacement time-series presented in Fig. 5.

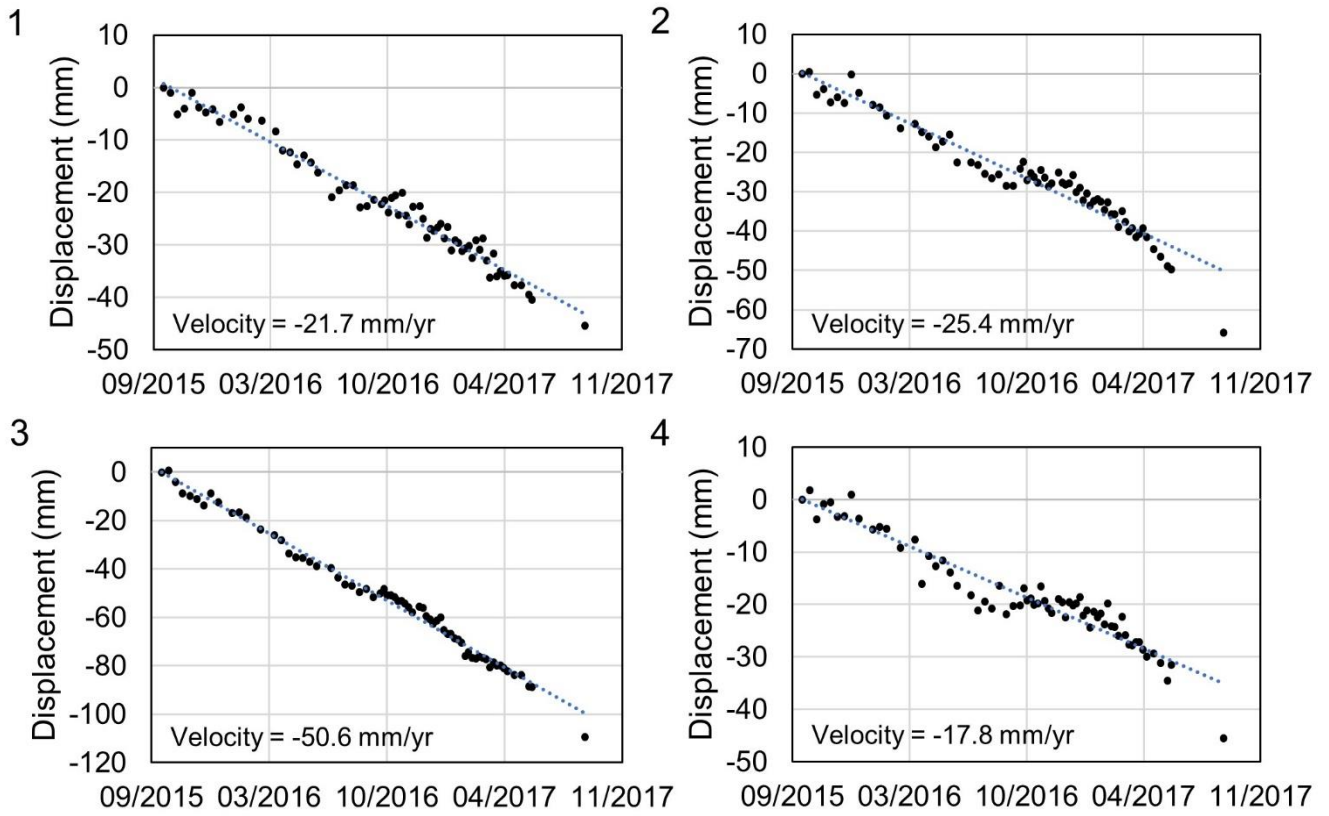


Figure 5. Displacement time-series of four points selected in the hotels' cadastral parcels.

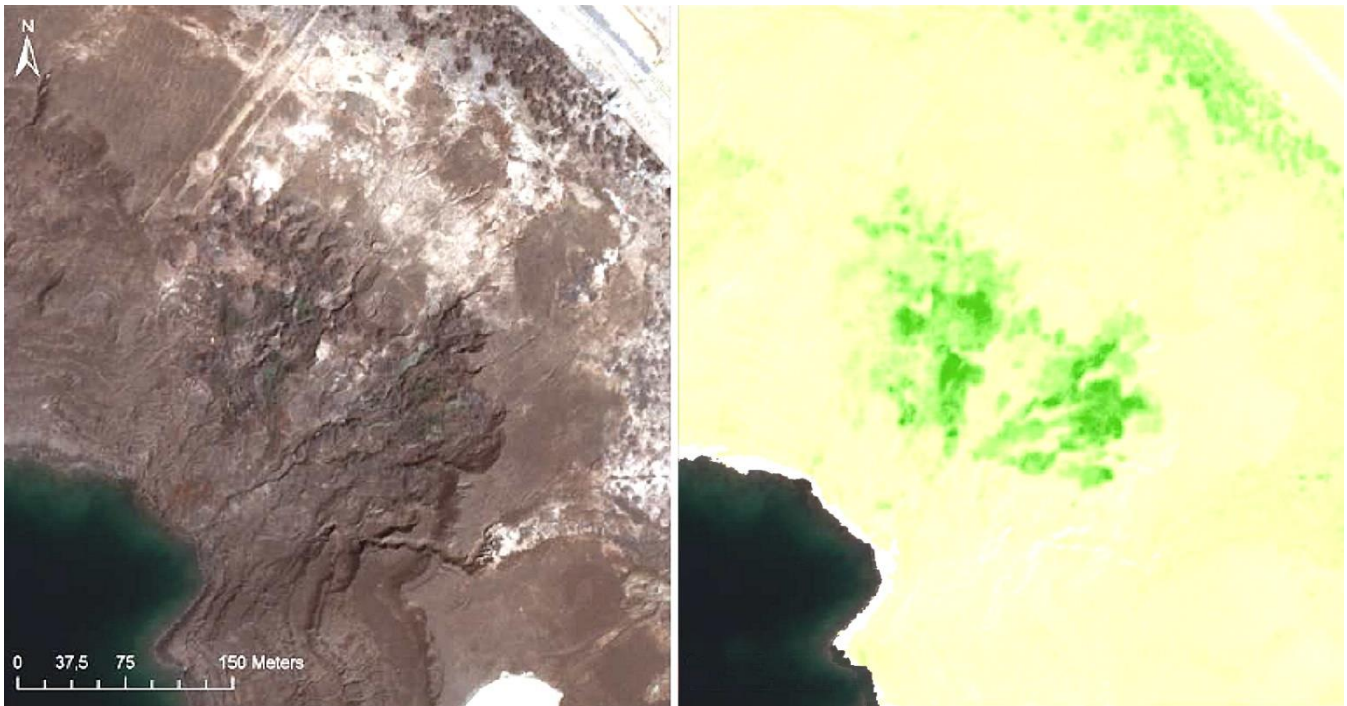


Figure 6. Comparison between optical and NDVI images over a landslide area. Left: optical image (RGB) showing a seepage area. The muddy sediments impregnated with water and salt (white patches) flowed towards the lake and created an amphitheatre. Right: in evidence the vegetation (green) that develops only near the springs.

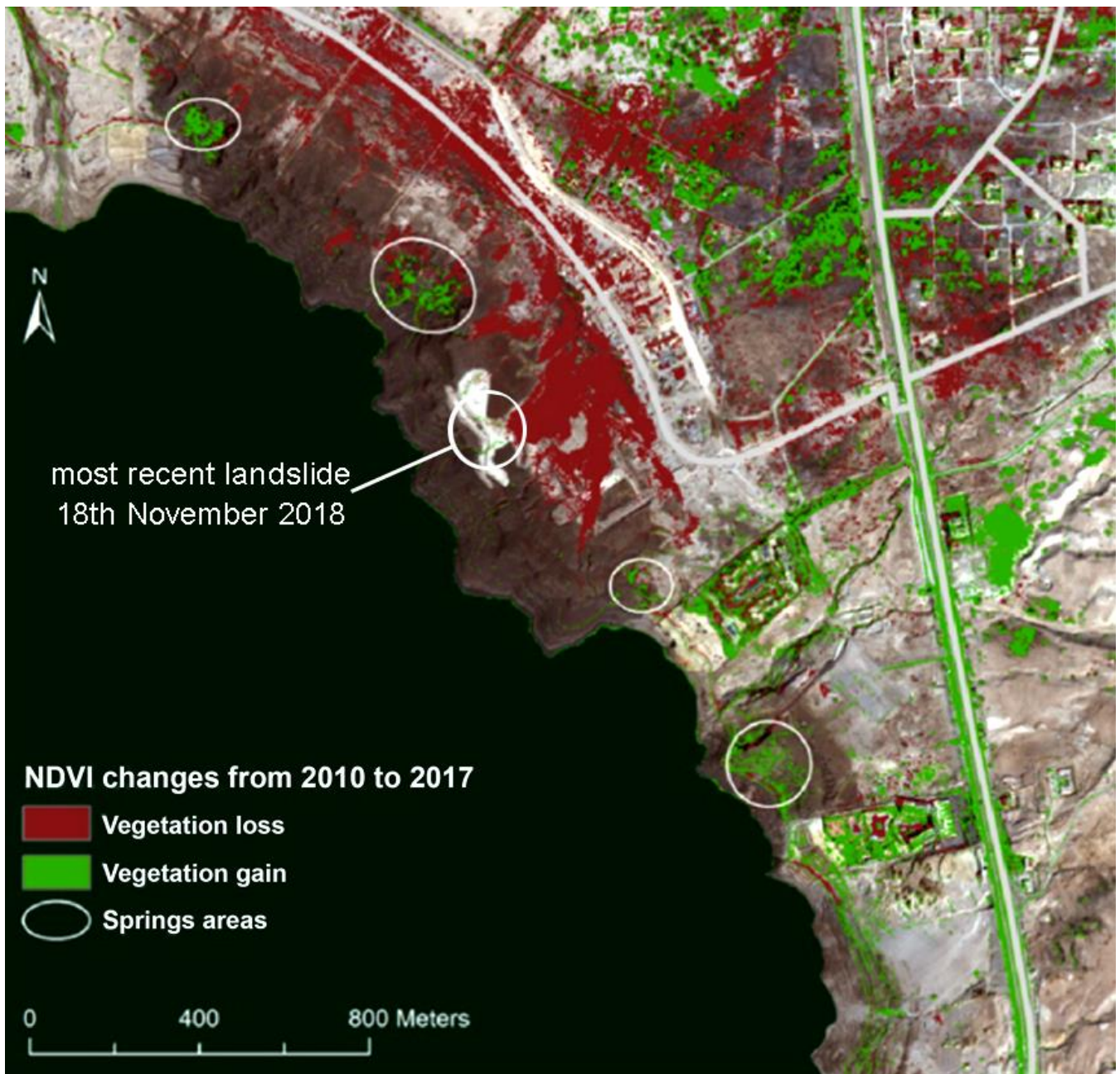


Figure 7. Vegetation change detection map obtained from NDVI difference between 2010 and 2017 in the north-eastern part of the study area. The white circles highlight the areas along the coastline where new springs appeared in correspondence of vegetation gain.



Figure 8. Examples of damage (left) and of quick repair (right) that are common in the beachfront of the hotels along the DS coastline.

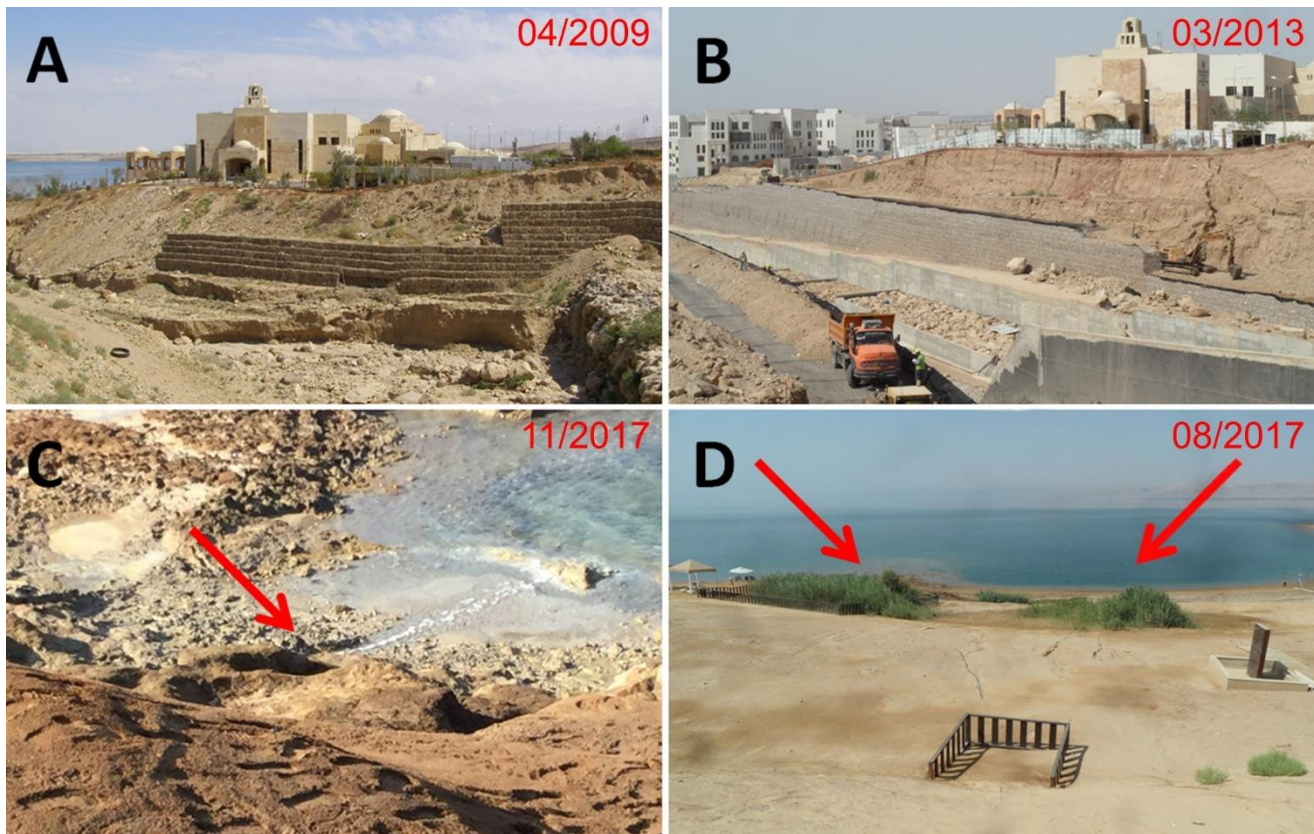


Figure 9. The King Hussein bin Talal convention centre and surrounding areas. a and b: the river next to the conference centre is entrenching at the same pace as the DS level lowering. Frequent works are needed to stabilize the slopes in the area.

c: groundwater flowing under the convention centre. d: when the flow path remains stable and the water is unsaturated with respect to salt, then vegetation can grow.



Figure 10. Example of a bridge along the Dead Sea motorway damaged by progressive erosion of the sediments. All bridges along the Dead Sea coast are affected by the rapid incision of the river bed.

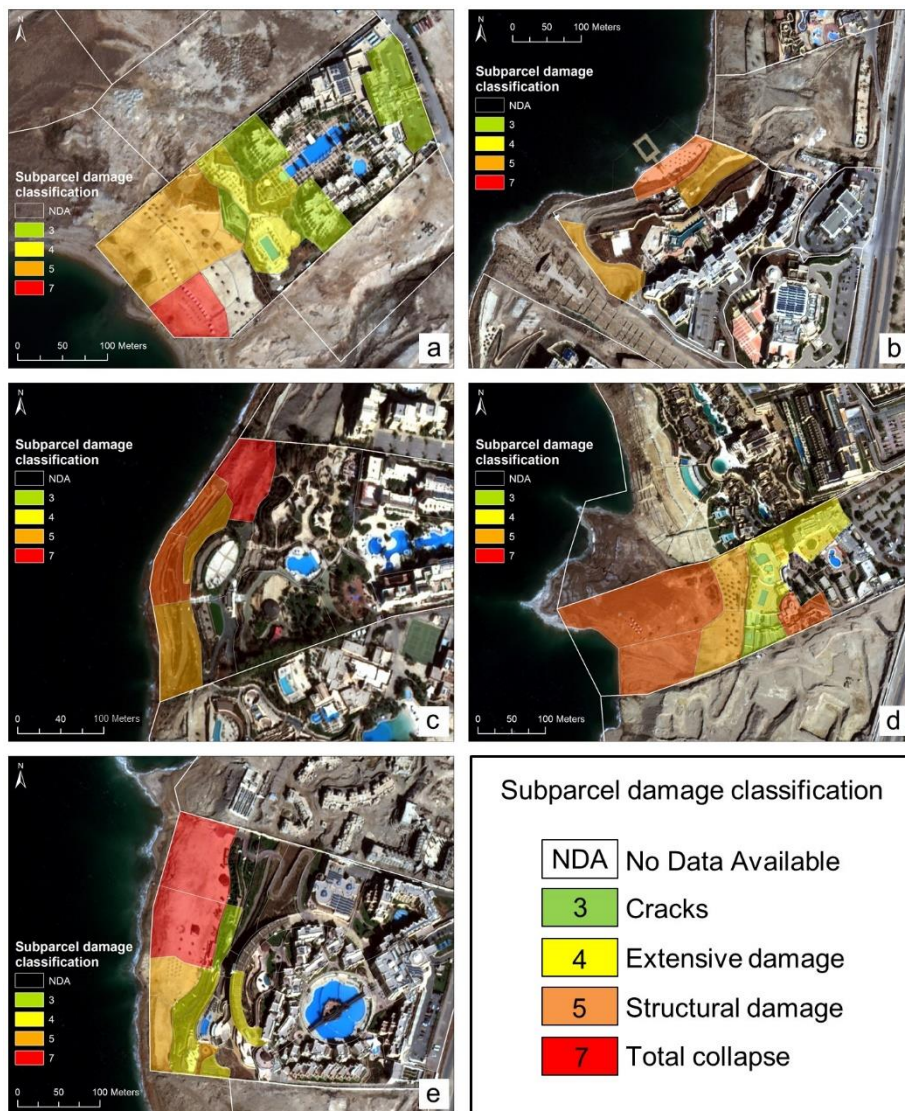


Figure 11. Damage exposure map of five main hotels in the study area. a: Holiday Inn; b: Hilton; c: Marriott; d: Dead Sea Spa; e: Crowne plaza.

5 **Table 1.** Specifications of the Sentinel-1A/B images used in this study.

Satellite	Acquisition mode	Band/wavelength (cm)	Revisit time (days)	Native ground resolution (m)	Incidence angle range (degrees)
Sentinel-1A/B	Interferometric Wide Swath (IW)	C/5.6	12/6	~4 x 14 (range and azimuth)	41.33-41.49

Table 2. VHR optical images specifications.

WV-2 VHR (Year)	2017	2011	2010
Collection date	2017-02-19	2011-04-02	2010-06-04
Off-Nadir angle (°)	23	17	15
Panchromatic resolution (m)	0.46 at Nadir, 0.52 at 20° Off-Nadir		
Multispectral resolution (m)	1.84 at Nadir, 2.4 at 20° Off-Nadir		