

Response to Reviewer

December 2019

Manuscript title: Reconstructing the 2015 Salgar Flash Flood Using Radar Retrievals and a Conceptual Modeling Framework in an Ungauged Basin

Authors: Nicolás Velásquez, Carlos D. Hoyos, Jaime I. Vélez, and Esneider Zapata

General Concept:

I already did the revision of the three first versions of manuscript. I really appreciated the clarification of the method as well as the new points supplied into the discussion. As the limitations of the results (related to the applied method and the data availability) are now clarified, the present manuscript gained in reliability. It is now easier to see what has been achieved, what has been limited, and what would be the next step. Also as the method has been now well exposed – and even though I’m not totally convinced by several avenues pursued by the authors – any reader has the possibility to understand the scientific guidelines and to make it own review. For those reasons, I contend that this manuscript could be accepted when answering only one question about the floodplain methodology and looking at some writing revisions.

As we have mentioned before, we sincerely thank the reviewer, and feel honestly in debt taking into account the quality of the comments and the time put into this review. We are truly impressed by the careful and detailed review.

1 Comments on the floodplain methodology

Concerning the 1D floodplain methodology, I really don’t understand why you are going to such complex method, looking for the loaded sediment while you do not have any data to apply it. Why don’t you look directly at the floodplain according to the flood peak discharge without sediment? Moreover, it introduced a big inconsistency within the overall methodology: on the one hand you assessed the flood peak according to mud and flood prints on one river section; on the other hand you use this value to validate your hydrological model while this value must actually content both water + sediment discharge. I agree this is mainly done in hydrological modelling assuming a negligible amount of sediment. But here, as you introduced the sediment discharge in a third step, and above all as you found a non negligible 30 % of loaded sediments, it means that the hydrological model validation on (water) flood peak is not correct anymore. Could you justify that?

We understand the point raised by the reviewer and we partially agree with it. It is usually hard for a hydrological model to estimate the sediment production associated with a flash flood and it would be certainly easier to estimate the floodplain just using the flood peak discharge at each point in the channels. However, observational evidence in mountainous terrain strongly suggests that streamflow increments due to sediments are significant, and could be around 30% of the total volume [e.g. 2, 1, 3]. We decided to evaluate the model considering only the water discharge since the uncertainty in the erosion processes and their representation in the model is still significant, and the fact that we are only considering 1D processes in the channel: The hydrological model relies on water balance. In spite of that, and in order to be in the conservative side for risk management

applications, we consider a potential increase in the total discharge associated with the sediment load. We note this issue in the manuscript (discussion section).

2 Technical comments

- Being picky, I just noticed that the slope is called $M_{i,0}$ when being described in the THETIS model, while $\beta_{i,0}$ is used in the landslide submodel. That could be attuned.

We have unified the terminology using $M_{i,0}$.

- A general comment: the authors often use the word “approximately” even for quantities that shouldn’t be approximative (e.g the distance between the radar and the basin is approximately 90 km, line 222, page 10). I suggest to simply remove that word in those case that doesn’t make sense.

We checked the manuscript and corrected the text in a couple of instances (distance to the radar and DEM resolution)..

2.1 Abstract

- line 17: changed **event that** for **event**. The latter..
- line 19: changed **modulating** for **impacting**

2.2 Introduction

- line 34: changed **trying to identify** for **identifying**
- line 34: changed **tried to understand the governing processes of flash floods from the geological formation of the basin** for **related the flash floods governing processes to the geological properties of the basins**
- line 39: Removed **Due to their rapid nature, flash floods are more likely to occur in small and steep basins (Younis et al., 2008)**
- line 45: changed **vital** for **significant**
- line 45: Removed **Using a modeling approach**
- line 46: changed **important flash flood dependence on** for **significant correlation between flash flood magnitude and the...**
- line 50: changed **increases their intrinsic physical and measurement uncertainty of the latter (Wagener et al., 2007), making difficult their** for **makes difficult their measurements and, consequently, their understanding and their...**
- line 54: changed **)and underlining the need for** for **The local rainfall storm events related to flash floods require that...**
- line 55: changed **precipitation data (Norbiato et al., 2008). Given the critical role of precipitation, some** for **to be characterized (Noribato, 2008). Some ...**
- line 60: changed **approximately** for **about**
- line 63: changed **to examine the structure and evolution of each extreme rain event. The use of radar data to study flash flood-generating storms is vital for understanding and forecasting these events** for **They ...**
- line 93: changed **approximately** for **about**

- line 101: changed with non-existing for without any
- line 103: removed certainly not available in real time
- line 116: changed issue for one
- line 119: changed The methodology followed in this study is based on a modeling framework using for We use the WMF (Watershed Modeling Framework) which includes a variation of the TETIS model.
- line 122: changed termed for called
- line 127: changed t Aristizábal et al. (2016). HydroFlash corresponds to for (Aristizabal et al, 2016). HydroFlash is...
- line 128: removed assumes infinite sediment supply and
- line 129: changed based on the for on the basis of the
- line 138: Removed used for the reconstruction of the 2015 La Liboriana flash flood event

2.3 Study site and data

- line 147: changed , the population of Salgar was estimated at for Salgar counted
- line 147: changed persons for inhabitants including
- line 150: changed a resolution of approximately for an approximate resolution of
- line 151: changed allows estimating the fundamental for allow to estimate the main...
- line 169: changed While the elevation differences described in Figure 2 are typical of the region, the for The
- line 182: changed , corresponding for corresponds
- line 204, 207, and 214: removed approximately
- line 221: changed central for used
- line 226: removed within the radar domain to obtain spatiotemporal precipitation maps over the basin
- line 230: changed located approximately for The radar is
- line 230: changed The radar for It
- line 249: changed approximately for a moderate average of
- line 249: changed ; however, over the upper watershed for however
- line 250: changed according to the estimated rainfall amounts based on the radar measurements for over the upper watershed

2.4 Methodology

- line 350: changed allowing the study of the role of flows of different nature during extreme events for enabling to study the different flow paths and water origins
- line 351: removed , thereby providing insight about the soil-dependent flow regulation
- line 363: removed approximately

References

- [1] Chi-Wen Chang, Ping-Sien Lin, and Cheng-Lin Tsai. Estimation of sediment volume of debris flow caused by extreme rainfall in taiwan. *Engineering Geology*, 123(1):83 – 90, 2011. Reconnaissance of Extreme Natural Disasters of Morakot Typhoon, Taiwan.
- [2] Dieter Rickenmann and Anja Koschni. Sediment loads due to fluvial transport and debris flows during the 2005 flood events in Switzerland. 1007(February):993–1007, 2010.
- [3] Dieter Rickenmann, Jens M. Turowski, Bruno Fritschi, Angela Klaiber, and Andreas Ludwig. Bedload transport measurements at the erlenbach stream with geophones and automated basket samplers. *Earth Surface Processes and Landforms*, 37(9):1000–1011, 2012.

Reconstructing the 2015 Salgar Flash Flood Using Radar Retrievals and a Conceptual Modeling Framework in an Ungauged Basin

Nicolás Velásquez ^{1,2}, Carlos D. Hoyos ^{1,2}, Jaime I. Vélez ¹, and Esneider Zapata ²

¹Universidad Nacional de Colombia, Sede Medellín, Facultad de Minas, Departamento de Geociencias y Medio Ambiente

²Sistema de Alerta Temprana de Medellín y el Valle de Aburrá (SIATA), Área Metropolitana del Valle de Aburrá (AMVA)

Correspondence to: Nicolás Velásquez (nvelasqg@unal.edu.co)

Abstract. On May 18, 2015, a severe rainfall event triggered a flash flood in the municipality of Salgar, located in the northwestern Colombian Andes. This work aims to reconstruct the main hydrological features of the flash flood to better understand the processes modulating the occurrence of the event. Radar quantitative precipitation estimates (QPEs), satellite information, and post-event field visits are used to reconstruct the Salgar flash flood, in an ungauged basin, addressing the relationship among rainfall spatiotemporal structure, soil moisture, and runoff generation during successive rainfall events by using a conceptual modeling framework including landslide and hydraulic sub-models. The hydrological model includes virtual tracers to explore the role of runoff and subsurface flow and the relative importance of convective and stratiform precipitation in flash flood generation. Despite potential shortcomings due to the lack of data, the modeling results allow an assessment of the impact of the interactions between runoff, subsurface flow, and convective-stratiform rainfall on the short-term hydrological mechanisms leading to the flash flood event. The overall methodology reproduces the magnitude and timing of the La Liboriana flash flood peak discharge considerably well, as well as the areas of landslide occurrence and flood spots, with limitations due to the spatial resolution of the available digital elevation model. Simulation results indicate that the flash flood and regional landslide features were strongly influenced by the antecedent rainfall, which was associated with a northeasterly stratiform event. The latter recharged the gravitational and capillary storages within the mode, moistening the entire basin before the occurrence of the flash flood event and impacting the subsurface-runoff partitioning during the flash flood event. Evidence suggests that the spatial structure of the rainfall is at least as important as the geomorphological features of the basin in regulating the occurrence of flash flood events.

1 Introduction

Flash floods are regarded as one of the most destructive hydrological hazards, resulting in considerable loss of human life and high costs due to infrastructure damage (Roux et al., 2011; Grunfest and Handmer, 2001). Among all different types of floods, Jonkman (2005) shows that flash floods result in the highest average mortality rate per event (3.62%), almost ten times larger than the mortality rate for river floods. Flash floods are usually described as rapidly rising water level events occurring in steep streams and rivers, associated with short-term, very intense convective precipitation systems or orographically forced rainfall events over highly saturated land surfaces and steep terrains (Šálek et al., 2006; Llasat et al., 2016; Douinot et al., 2016). Convective precipitation episodes often feature high intensity, short duration, and relatively reduced spatial coverage (Houze, 2004).

Several authors have assessed the role of the geological and geomorphological features of the catchment, soil type, soil moisture conditions, and the spatiotemporal structure of rainfall on flash flood occurrence, identifying the leading causative mechanisms of this hazard (Merz and Blöschl, 2003). Adamovic et al. (2016) and Vannier et al. (2016) related the flash floods governing processes to the geological properties of the basins with mixed results. Wu and Sidle (1995) emphasized the role of the topography, ground cover, and groundwater in the occurrence of shallow landslides and associated debris flows. Many authors have assessed the influence of hills and stream slopes, suggesting the slopes of the hills are significantly more important for flash flood occurrence and magnitude than the slope of the stream (Šálek et al., 2006; Roux et al., 2011; Yatheendradas et al., 2008; Younis et al., 2008). Rodriguez-Blanco et al. (2012) analyzed flash flood episodes in Spain and determined that antecedent soil moisture conditions play a significant role in runoff production. Castillo et al. (2003), also suggested an significant correlation between flash flood magnitude and the antecedent moisture conditions. Aronica et al. (2012) used spatial and statistical analysis to reconstruct landslides and deposits, finding a connection between flash flood occurrence and soil moisture antecedent conditions.

The fact that small basins are more prone to flash floods (Wagener et al., 2007), makes difficult their measurement and, consequently, their understanding and their prediction (Hardy et al., 2016; Ruiz-Villanueva et al., 2013; Yamanaka and Ma, 2017; Borga et al., 2011; Marra et al., 2017). The local rainfall storm events related to flash floods require that high spatiotemporal resolution to be characterized (Norbiato et al., 2008). Some authors follow a climatological approximation to assess the recurrence of flash floods in particular regions, focusing on the atmospheric causative mechanisms. For example, Kahana et al. (2002) examined the extent to which floods in the Negev Desert are the outcome of climatological synoptic-scale features, finding that about 80% of the events can be linked to distinct synoptic conditions occurring days prior to the flood events. Schumacher and Johnson (2005) studied extreme rain events associated with flash flooding in the United States over a 3-yr period, using the national radar reflectivity composite data. They found that 65% of the total number of flash floods are associated with mesoscale convective systems (MCSs), with two recurrent

patterns of organization: the existence of training convective elements and the generation of quasi-stationary areas of convection with stratiform rainfall downstream. Fragoso et al. (2012) analyzed storm characteristics and rainfall conditions for flash flood occurrence at Madeira (Portugal), and their results suggest an essential role of global climate patterns (North Atlantic Oscillation -NAO-forcing) and local forcing (orographic features) in the triggering of such events. Implicitly, these studies and all the others available in the peer-reviewed literature point to the need for local and regional high-quality spatiotemporal rainfall data. Berne and Krajewski (2013) highlighted the need to incorporate high-resolution weather radar information, even with some limitations, in flash flood hydrology.

The topography of Colombia is characterized by three branches of the Andes crossing the country south-to-north, generating a mixture of landscapes from high snow-capped mountains, vast highland plateaus, deep canyons to wide valleys, making some regions highly prone to flash flood occurrence. The likelihood of flash flood occurrence in Colombia is also high due to the spatiotemporal behavior of the Intertropical Convergence Zone, and the direction of the near-surface moist air flow leading to orographic enhancement of convective cores (Poveda et al., 2007). In the last decade, there have been several widespread and localized flash flood events in Colombia associated with climatological features and the local intensification of rainfall events. According to estimates by the "Comisión Económica para América Latina y el Caribe", the 2010-2011 La Niña event alone triggered 1233 flooding events and 778 mass removal processes in Colombia, with more than 3 million people affected and damages estimated at more than 6.5 billion US dollars.

After the 2010-2011 widespread disaster, several isolated events have occurred in the country with devastating consequences. The present paper focuses on studying the processes triggering a flash flood in La Liboriana basin, a 56 km² basin located in the western range of the Colombian Andes, as a result of consecutive rainfall storms that took place between May 15 and May 18, 2015. The resulting flash flood dramatically affected the region, causing more than 100 casualties, affecting several buildings and critical infrastructure, and resulting in a total reconstruction cost estimated at 36,000 million Colombian pesos (about 12.5 million dollars considering the 2018 exchange rate), which corresponds to three times the annual income of the municipality. Figure 1 shows an example of infrastructure damage and changes in the basin's main channel as a result of the flash flood event, showing considerable river margin and bed erosion. Despite the data scarcity, including of discharge measurements, the analysis of the successive rainfall events triggering the Salgar flash flood provides an interesting case of study for assessing the mechanisms that depend on the soil moisture conditions and rainfall distribution.

La Liboriana is a typical case of an ungauged basin (Sivapalan et al., 2003; Seibert and Beven, 2009; Beven, 2007; Bonell et al., 2006; Yamanaka and Ma, 2017), without any detailed records of soils or land use, topographic maps or high-resolution digital elevation models (DEMs), and scarce hydro-meteorological data. According to Blöschl et al. (2012), there are three general strategies for



a) Aerial photograph before the event (2012).



b) Aerial photograph taken after the event (2015-05).

Figure 1. Example of infrastructure damage as a result of La Liboriana flash flood event on May 18, 2015. a) Aerial photograph taken before the event (2012), during a mission of the Department of Antioquia's government, and b) satellite image after the event ([2015-05 courtesy of CNES/Airbus via Google Earth](#)). The images show the destruction of most houses in that particular community, a bridge over La Liboriana, and the main road. All of the houses shown in the 2015 image had to be either demolished or structurally repaired. The images also show changes in the delineation of the main channel as well as considerable erosion in the river margins.

using models under these conditions. The first strategy is to obtain the required model parameters from the historical basin behavior and the morphological characteristics of the basin. This strategy often leads to low model performance (Duan et al., 2006). The second approach is to inherit the hydrological model calibration from a neighboring gauged watershed, which in this case does not exist. The third method is to parameterize the model based on proxy variables, such as hydraulic information obtained during field visits. In the case of the 2015 La Liboriana basin flash flood, there are no previous historical streamflow records, nor records from a neighboring watershed; thus, we followed the third approach. We use precipitation information derived from radar, satellite and

aerial images, in addition to post-event field visits, to reconstruct the Salgar flash flood event. This study addresses two broad hydrological issues. The first issue consists in exploring the relationship between rainfall spatiotemporal structure (Llasat et al., 2016; Fragoso et al., 2012), soil moisture and runoff generation (Penna et al., 2011; Trambly et al., 2012; Garambois et al., 2013) during the successive rainfall events, and the second one in proposing a simplified hydrological modeling scheme, including landslide and hydraulic submodels, to assess the potential occurrence of flash flood events.

We use the WMF (Watershed Modeling Framework) which includes a variation of the TETIS hydrological model (Vélez, 2001; Francés et al., 2007), modified to include a shallow landslide submodel, and a floodplain submodel called *HydroFlash*. The TETIS model is a cell-distributed conceptual hydrological model that uses storage tanks and the kinematic wave approximation to simulate the most relevant processes in the basin. The landslides submodel is a stability model that classifies cells into unconditionally-stable, unconditionally-unstable, and conditionally stable depending on geomorphology; conditionally stable cells are further classified as stable or unstable based in their variable water content (Aristizábal et al., 2016). *HydroFlash* is a low-cost 1D model that estimates the cross-sectional filled area at all time steps on the basis of the liquid discharge and the sediment transport. In addition, the TETIS model was modified to include four virtual tracers to separately explore the role of runoff and subsurface flow, as well as the relative importance of convective and stratiform precipitation in flash flood generation. The assessment of the interactions between runoff, subsurface flow, and convective-stratiform rainfall allows a better understanding of the short-term hydrological mechanisms leading to the flash flood event.

The document is structured as follows. Section 2 describes in more detail the region of study, La Liboriana basin, including geomorphological and climatological characteristics of the basin, and the information sources used in this assessment. Section 3 presents a description of the overall methodology and the TETIS model, including flow separation, and the shallow landslide and *HydroFlash* submodels. Section 4 describes the main results of the study, including model validation and sensitivity analysis, and presents results from the landslide and *HydroFlash* submodels. Section 5 includes a discussion on the role of the rainfall structure in the flash flood reconstruction. Finally, the conclusions are presented in section 6.

2 Study site and data

2.1 Catchment description

The urban area of the municipality of Salgar is located near the outlet of La Liboriana basin, a small (56 km²) tropical watershed located in the westernmost range of Colombia's Andes (Figure 2). By 2015, Salgar counted 17 400 inhabitants, including 8 800 residing in the urban area. La Liboriana basin joins the El Barroso river basin, and both drain to the Cauca River.

The availability of the ALOS-PALSAR DEM (ASF, 2011), with a resolution of 12.7 m, allow
140 to estimate the main geomorphological features of the basin. The average slope of La Liboriana is
57.6%, and the basin longitude and perimeter are 13.5 km and 57.8 km, respectively. The Strahler-
Horton order of the main stream is 5, and its longitude and slope are 18.1 km and 8.1%, respec-
tively. The highest elevation of the watershed (Cerro Plateado) reaches 3 609 meters above sea level
(m.a.s.l), while the outlet of the basin is at 1 316 m.a.s.l. The 99th slope percentile of order 1 streams
145 is 78%. For streams of order 2, 3, 4, and 5, the 99th slope percentiles are 61, 27, 18 and 11%,
respectively. Figure 2 shows the spatial distribution of the slopes in the watershed. These features
are typical of Andean mountainous basins. Geomorphologically, this kind of watershed tends to be
prone to the occurrence of flash floods (Lehmann and Or, 2012; Penna et al., 2011; Martín-Vide and
Llasat, 2018; Longoni et al., 2016; Ozturk et al., 2018; Khosravi et al., 2018; Marchi et al., 2016;
150 Bisht et al., 2018).

At the subbasin scale, La Liboriana exhibits a vast range of slopes and altitude differences. Figure
2 shows the height above the nearest drainage (HAND) model (Rennó et al., 2008) for La Liboriana.
The HAND calculates the relative height difference between cell i and its nearest streamflow cell j .
La Liboriana HAND exhibits values between 500 and 800 m. Near the outlet of the basin, over the
155 banks, there are values close to 0 m. High HAND values at the upper region of the watershed often
denote areas of high potential energy, with increased sediment production and frequent shallow
landslide occurrence. Banks with low HAND values are more susceptible to flooding and tend to
correspond to areas prone to extensive damages caused by extreme events. The social challenges lie
in the high vulnerability of Salgar, given the location of the main urban settlement.

160 Vegetation and land use vary considerably within the basin. Figure 3 shows land use in different
regions of the watershed from a 2012 aerial image. In the upper La Liboriana basin, there is dense
vegetation (see Zoom 1 in Figure 3), with a high percentage of the area covered by tropical forests
and presence of grass and few crop fields. A portion of the upper watershed is considered a national
park. Hillslopes near the divide do not evidence significant anthropic intervention most likely due to
165 the steepness of this region. Down the hills and at the bottom of the valley, there are coffee plantations
(the primary economic activity of the region) and pastures. Downstream (Figure 3, Zoom 2), the
presence of crops is evident among forest and grass areas. Near the middle of the basin (Figure 3,
Zoom 3), the presence of crops is more obvious, and human settlements and roads start to appear.
The watershed exhibits grazing areas and urban development near the river banks. In Figure 3, the
170 Zoom 4 corresponds to the first affected urban area from upstream to downstream during the flash
flood. It is also possible to see a marked presence of crops and some patches of forest. Finally, Zoom
5 shows the main urban area of Salgar surrounded by crops, grass and an important loss of forest
coverage.

One of the challenges for hydrological modeling and risk management in the country is that soils
175 are not well mapped; the national soil cartography is usually available in a 1:400,000 scale. At this

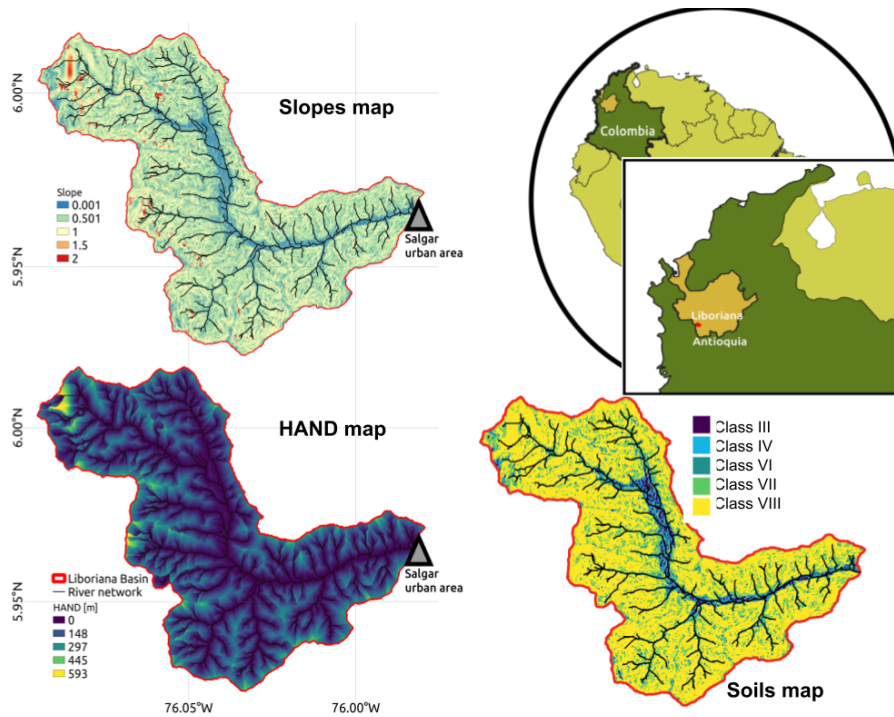


Figure 2. Geographical context of Liboriana basin, located in Colombia, in the Department of Antioquia. The panels include the map of slopes, the height above the nearest drainage (HAND), and the soil type map. The HAND values were estimated using a 12.7 m-resolution DEM. Low HAND values correspond to areas prone to flooding. Note that the soil type map is an extrapolation of the soil properties as a function of slope.

Table 1. Description of the soils in the region (Osorio, 2008).

Type	Slope	Depth [m]	Retention	Permeability	Percentage
Class III	<12	0.6	Low	High	3.2
Class IV	12-25	0.6	Mean	Mean	8.3
Class VI	25-30	1.0	Mean	Mean	2.1
Class VII	30-50	0.3	Too Low	Low	25.5
Class VIII	>50	0.2	Too Low	Low	60.0

scale, the municipality of Salgar, including La Liboriana basin, corresponds to only one category of soil texture. Osorio (2008), based on field campaign observations and laboratory tests, described La Liboriana soils as well-drained with poor retention capacity. Organic material is predominant in the first layer, and clay loam soil predominates within the second layer. The depth of the soil is hillslope dependent, varying from 20 cm to 1 m (Osorio, 2008). Table 1 provides a summary of soil characteristics for five different categories, all as a function of slope. Each soil category has a corresponding depth and a qualitative description of permeability and retention.

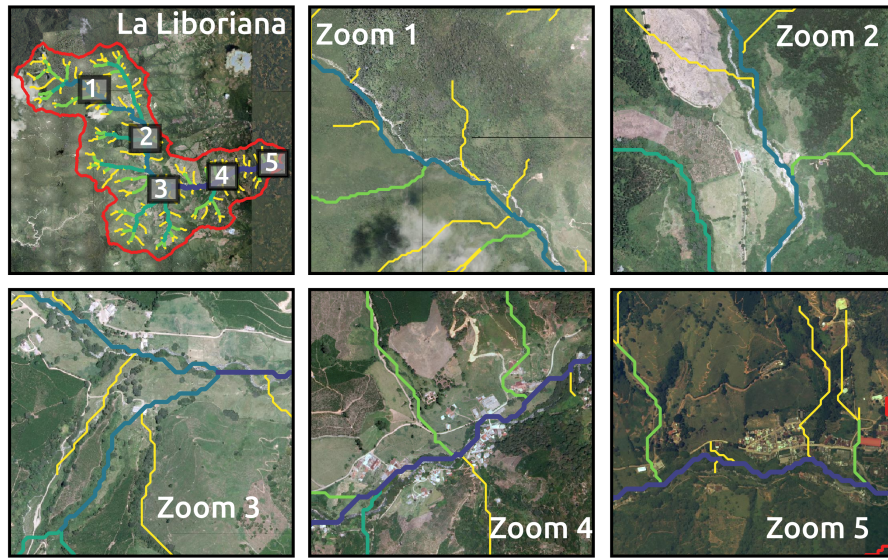


Figure 3. Aerial overview of La Liboriana basin (source: Department of Antioquia). The top-right panel presents the entire basin, showing the location of key regions detailed in the following panels, in zooms 1 to 5. The stream network is also presented, colored by order, from yellow to deep blue corresponding to orders 1 to 5.

2.2 Flash flood post-event observations

We conducted a field campaign a few days after the May 18th flash flood to assess the cross-section geometry along the main channel in different sites, including at the outlet of the basin. During the campaign, we measured sectional distances and the surface water speed, at different points of the streamflow. The surface water speed was measured using a hand-held Stalker Pro II velocity radar. We also identified traditional post-event terrain, land cover, vegetation and infrastructure markers to record the approximate level associated with the peak flow during the flash flood. Figure 4 presents the selected cross-section used for the estimation of the maximum discharge during the flash flood given its geometrical and hydraulic regularity. The section has a rectangular shape, 4.6 m wide and a height of 5 m for a total area of 23 m². A visual inspection of the flooded house around the section, located 4-5 m away from the channel, reveals the presence of mud marks on the walls with heights varying between 0.5 and 1.2 m (see Figure 4). The area of the section plus the flooded area during the event was estimated to be 37 m². During the campaign, the surface speeds in the channel varied between 2 and 3 ms⁻¹, for a 3 m³ s⁻¹ discharge. Instrumented basins in the region, with similar characteristics in terms of area and slopes, show peak flow surface water speeds ranging between 5 and 7 ms⁻¹ (See Figure A.1). By assuming an area of 37 m² and velocities between 5 and 6, we estimate that the flash flood peak flow was between 185 and 222 m³s⁻¹. Local authorities reported that the peak streamflow reached the urban perimeter after 2:10 a.m. on May 18th (personal com-



Figure 4. Channel cross-section showing an example of flooded infrastructure during the flash flood event. The section shows mud marks on the walls of adjacent houses, with heights varying between 0.5 and 1.2 m. The houses in the picture are located 4-5 m away from the channel. The photograph also shows the width of the channel and the total estimated depth during the flash flood. The cross-section is downstream from the bridge shown in the picture.

munication during the field visit). Reports state that the peak flow in the most affected community occurred near 2:40 a.m.¹.

Aerial information before and after the occurrence of the event is relevant to analyze the location of the landslides and flooded areas. During 2012, the Department of Antioquia conducted a detailed aerial survey of the municipality of Salgar, and a few days after the event, DigitalGlobe and CNES/Airbus made available highly detailed satellite images of the same region. We performed a detailed contrast between both products by using a geographic information system (QGIS), which provided us with information about flooded areas and landslide locations (see Figures 1 and 16). Field campaign peak flow estimates and aerial imagery are used to validate the results obtained with the TESTIS model.

2.3 Rainfall information

The assessment of the 2015 Salgar flash flood event following a hydrological modeling strategy uses a radar-based QPE technique described in Sepúlveda (2016) and Sepúlveda and Hoyos (2017), using radar reflectivity fields, rainfall gauges and disdrometers. The QPE technique uses retrievals from a C-band polarimetric Doppler weather radar operated by the Sistema de Alerta Temprana de Medellín y el Valle de Aburra (SIATA, a local early warning system from a neighboring region, www.siata.gov.co). The radar is 65 km away from the basin. It has an optimal range in a radius of 120 km for rainfall estimation and a maximum operational range of 240 km for weather detection.

¹As reported by the media and the national government: <http://www.elcolombiano.com/antioquia/tragedia-en-antioquia-salgar-un-ano-despues-XX4145514>, https://caracol.com.co/emisora/2015/12/25/medellin/1451076926_792470.html, <http://portal.gestiondelriesgo.gov.co/Paginas/Noticias/2015/Antecion-Emergencia-Salgar-Antioquia.aspx>

The radar operating strategy allows obtaining precipitation information at 5 minutes time step, with a spatial resolution of about 128 m. Despite the distance between the radar and the basin, and the mountains between them, there are no blind spots for the radar. A comparison between the radar QPE estimates and records from two rain gauges installed three days after the flash flood event show a correlation for an hourly time scale of 0.65. A detailed description of the rainfall estimation, as well as the overall meteorological conditions that led to the La Liboriana extreme event, are described in a companion paper (Hoyos et al., 2019). Radar retrievals are also used to classify precipitation into convective and stratiform areas following a methodology proposed by Yuter and Houze (1997) and Steiner et al. (1995), based on the intensity and sharpness of the reflectivity peaks. The methodology has been widely used in tropical regions as reported in the review by Houze et al. (2015).

Between May 15 and May 18, 2015, several storms took place over La Liboriana basin. During the night of May 17, between 02:00 and 09:00 a.m. (local time), a precipitation event covered almost all of the basin (hereafter referred to as precipitation Event 1). Twenty hours later, between 23:00 p.m. on May 17 and 02:00 a.m. on May 18, two successive extreme convective systems occurred over the basin with the maximum intensity in the upper hills (precipitation Event 2). Event 1 corresponds mainly to a stratiform event with an average precipitation accumulation of 47 mm over the basin. Event 2 corresponds to a moderate average of 38 mm, however the accumulation exceeded 180 mm over the upper watershed. Hoyos et al. (2019) show that the individual events during May 2015 were not exceptional, the climatological precipitation anomalies were negative-to-normal, and the synoptic patterns associated with the extreme events were similar to the expected ones for the region. However, but the combination of high rainfall accumulation in a 96-hour period as a result of successive precipitation events over the basin, followed by a moderate extreme event during May 18, is unique in the available observational radar record, in particular for the upper part of the basin. Figure 5a presents the temporal evolution of the estimated convective-stratiform rainfall partitioning during both Events 1 and 2. The main difference between both events is the timing of the convective versus stratiform participation within each case. Event 1 started as a stratiform precipitation event moving northeastward, from the Department of Chocó to the Department of Antioquia across the westernmost Andes mountain range. After 3 hours of stratiform rainfall, training convective cores move over La Liboriana basin generating intense precipitation peaks in a 2.5 hour period. It is important to note that these cores did not strengthen within La Liboriana basin; these systems formed and intensified over the western hills of Farallones de Citará, draining to the Department of Chocó towards the Atrato river. This is not a minor fact because, as a result of the latter process, the maximum intensity cores did not fall over the steepest hills of La Liboriana basin but rather near the basin outlet where the slopes are considerably flatter. Figure 5b shows the spatial distribution of cumulative rainfall during Event 1, with the maximum precipitation located toward the bottom third of the basin. Event 2, on the other hand, started as a thunderstorm training event with two convective cores moving from the southeast, followed by the remaining stratiform precipitation. Even though the average

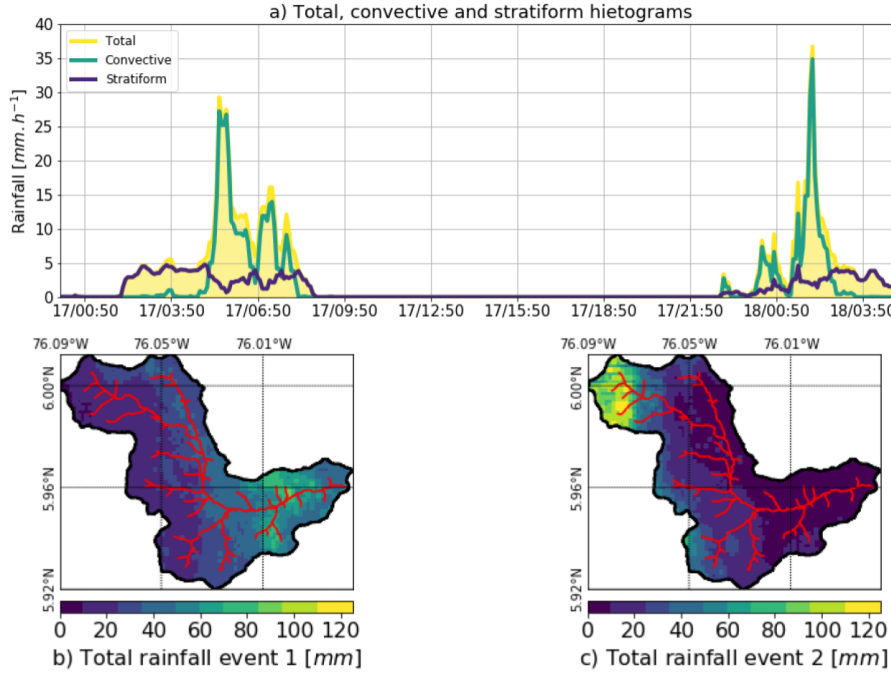


Figure 5. a) Temporal evolution of the convective-stratiform rainfall partitioning during both Events 1 and 2 (precipitation intensity in mm per hour, for 5-minute periods). The figure shows the total rainfall (yellow), the convective (blue) and stratiform (green) portions integrated over La Liboriana basin. b) and c) Spatial distribution of the cumulative rainfall during Events 1 and 2 over La Liboriana basin, respectively.

cumulative rainfall over the basin was 9 mm less than during Event 1, this event is characterized by orographic intensification within the basin, leading to a more heterogeneous spatial distribution with the highest cumulative precipitation in the steepest portion of the basin (see Figure 5b).

The data requirements and rainfall preprocessing needed for the overall methodology followed in the reconstruction of the 2015 Salgar flash flood, are summarized in Table 2 and are presented in a schematic diagram in Figure 6.

3 Methodology

3.1 TETIS hydrological model

We used a physically-based, distributed hydrological model developed and fully described in Vélez (2001) and Francés et al. (2007). The spatial distribution and the hydrological flow path schema is based on the 12.75 m-resolution DEM. In each cell, five tanks represent the hydrological processes including capillary (tank 1), gravitational (tank 2), runoff (tank 3), baseflow (tank 4) and channel storage tanks (tank 5). The state of each tank varies as a function of vertical and lateral flows as shown in Figure 6, where the storage is represented by S_i [mm] and the vertical input to each tank

Item	Description/Source	Period	Usage
Radar data	QPE rainfall estimations	2015-05-17 to 2015-05-18	TETIS runs, rainfall characterization and event analysis.
Field campaign	Maximum streamflow estimation through visual inspection	2015-05-20	TETIS model comparison for indirect validation.
Satellite imagery	Visible channel compositions from the DigitalGlobe CNES imagery	2015-05 (post-event)	Flash flood model validation, shallow landslides model validation, and comparison with pre-event conditions.
Aerial photos	Aerial photos taken by the government of Antioquia during 2012.	2012	Pre-event conditions comparison.
Soils description	Physical description of the soils of the region by Osorio (2008)	2008	SimulationS using TETIS (model setup).

Table 2. Summary of the data used for the setup of TETIS.

270 by D_i [mm], which in turns depends on the vertical flow through tanks R_i [mm]. E_i [mm] represents the downstream connection between cells, except for tank 1, where E_1 represents the evaporation rate.

The original model is modified to improve the representation of the flow processes that occur during flash floods (see section 3.1.1). In addition, two analysis tools of the TETIS results are introduced: virtual tracers tracking convective and stratiform precipitation as well as water paths over
275 or through the soils; and a catchment-state analysis by cell grouping (see Figure 13). The goal is to analyze the spatially distributed response of the watershed to precipitation events of distinct nature.

3.1.1 Lateral flow modeling modifications

The TETIS model relies on the concept of mass balance where the storage of tank i at the end of the simulation interval $S_i(t)^*$ [mm] is function of the storage at the start of the simulation interval $S_i(t)$
280 [mm] and the storage outflow $E_i(t)$ [mm] during the interval t , as follows:

$$S_i(t)^* = S_i(t) - E_i(t) \quad (1)$$

The storage outflow E_i is estimated by transforming the storage $S_i(t)$ into an equivalent cross sectional area A_i [m²], as follows:

$$285 \quad A_i(t) = S_i(t)F_c/L, \quad (2)$$

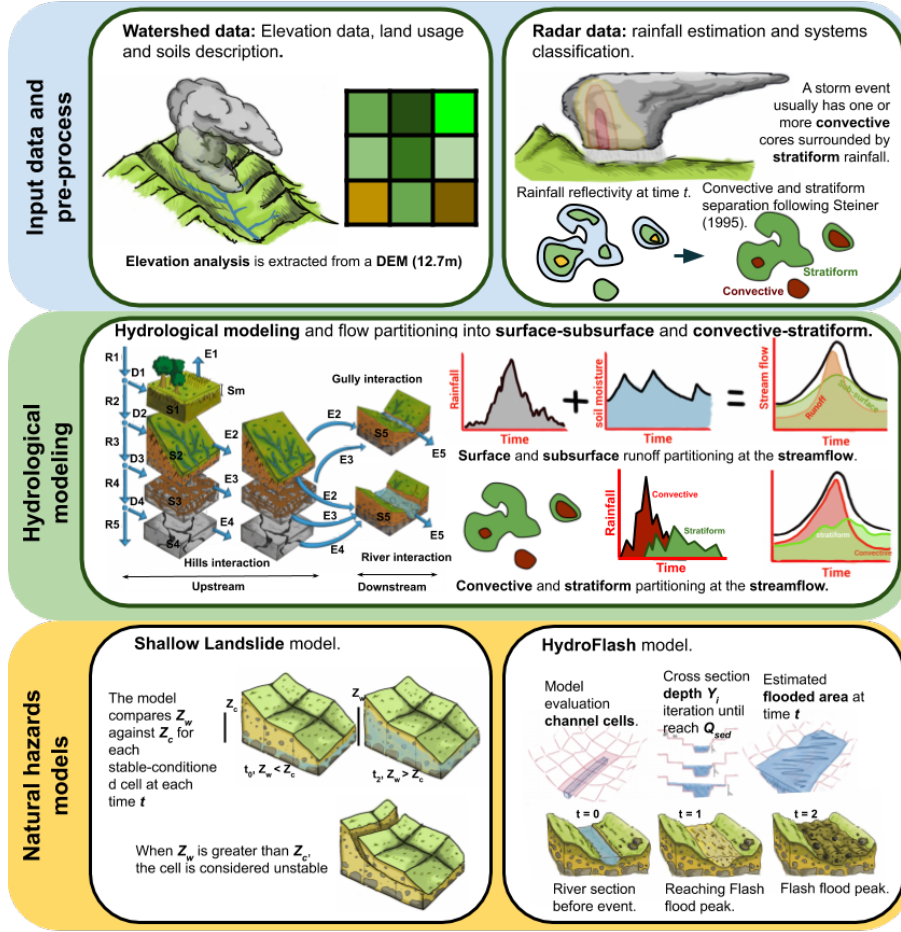


Figure 6. Illustrative diagram of the methodology followed in the present study. The top row represents the key input data, specifically a digital elevation model (DEM) and radar-based QPE as the basis of the modeling framework. The second row represents the conceptual basis of the TETIS model. In each cell, five tanks represent the hydrological processes including capillary (tank 1), gravitational (tank 2), runoff (tank 3), baseflow (tank 4) and channel storage tank (tank 5). The state of each tank varies as a function of vertical and lateral flows as shown in the diagram, where the storage is represented by S_i and the vertical input by D_i , which in turns depends on the vertical flow through tanks R_i . E_i represents the downstream connection between cells and evaporation. The implementation of convective and stratiform rainfall separation and virtual tracers is also portrayed. The implementation of the landslide and HydroFlash submodels are schematized in the bottom row.

where L depends on the model cell width Δx [m], $L = \Delta x$ for orthogonal flow and $L = 2\Delta x$ for diagonal flow, and F_c [$\text{m}^3 \text{mm}^{-1}$] is a units conversion factor that is equal to the area of each cell element A_e [m^2] multiplied by 1 m/1000 mm. According to Vélez (2001), E_i changes as a function of A_i , the flow speed v_i [ms^{-1}], and the model time step Δt [s], as follows:

$$290 \quad E_i(t) = A_i(t) * v_i(t) \Delta t / F_c. \quad (3)$$

The expression for the cross sectional area at the end of the simulation period $A_i(t)^*$ is found by replacing $S_i(t)$ in equation (2) for $S_i(t)^*$, and then resulting expression and equation (3) into equation (1),

$$A_i(t)^* = \frac{S_i(t)F_c}{L + v_i(t)\Delta t}. \quad (4)$$

Equation (4) is solved coupled with the equation for the speed v_i :

$$v_i(t) = \beta A_i(t)^\alpha \quad (5)$$

Equation 5 is the generic formulation for the speed used in this work to represent nonlinearities in the relationship between v_i and A_i . In the formulation, both, β and α change depending on the type of flow: overland, subsurface, base, and channel flow. The solution for v_i is obtained by using the successive substitution method described by Chapra (2012). In the model, we use a 5-minute time step which ensures the stability of the computations. When a solution is reached, E_i is computed using equation (3) and S_i is updated using equation (1).

Nonlinear equations in lateral flows result in a better representation of processes at high resolutions (Beven, 1981; Kirkby and Chorley, 1967). A nonlinear approximation of runoff is presented in equation 6. This approximation is a modification of Manning's formula for flow in gullies. According to Foster et al. (1984), ε and e_1 are a coefficient and an exponent used to translate the Manning channel concept into multiple small channels or gullies. The values of ε and e_1 are 0.5 and 0.64, respectively (Foster et al., 1984). $A_{i,2}$ [m²] is the corresponding sectional area obtained from $S_{i,2}$ by using equation (4). In addition, $M_{i,0}$ is the slope of the cell, and n_i is the Manning coefficient.

$$v_{i,2} = C_7 \frac{\varepsilon}{n} M_{i,0}^{1/2} A_{i,2}(t)^{(2/3)e_1} \quad (6)$$

The nonlinear equation 7 corresponds to an adaptation of the Kubota and Sivapalan (1995) formula for subsurface runoff $v_{i,4}$, where $k_{i,s}$ is the saturated hydraulic conductivity of cell i , and the exponent b is dependent on the soil type, and it is assumed to be equal to 2. $A_{i,g}$ is the equivalent cross-section area of the maximum gravitational storage ($H_{i,g}$ [mm]). $A_{i,3}$ is the corresponding sectional area for the gravitational storage ($S_{i,3}$) obtained by using equation (4). There is also return flow from tank 3 to tank 2, when $S_{i,3} = H_{i,g}$, which represents runoff generation by saturation. In the case of the base-flow, we assume that the speed $v_{i,4}$ is constant for each cell and depends on the aquifer hydraulic conductivity $k_{i,p}$ (see equation 8).

$$v_{i,3} = C_8 \frac{k_{i,s} M_{i,0}^2}{(b+1) A_{i,g}^b} A_{i,3}(t)^b \quad (7)$$

$$v_{i,4} = C_9 k_{i,p} \quad (8)$$

Finally, the stream flow velocity is calculated by using the geomorphological kinematic wave approximation (Vélez, 2001; Francés et al., 2007), in which Λ [km²] represents the upstream area, and Ω and ω_i , a regional coefficient and regional exponents, respectively

$$v_{i,5} = C_{10} \Omega M_{i,0}^{\omega_1} \Lambda_i^{\omega_2} A_{i,5}^{\omega_3} \quad (9)$$

An extended discussion of the regional parameters can be found in Vélez (2001). The streamflow speed expression is a version of equation (5). This considering that the terms Ω , $M_{i,0}^{\omega_1}$, Λ^{ω_2} , and the exponent ω_3 are constant with time.

3.1.2 Tools for spatial analysis of the results: virtual tracers and catchment cell grouping

Virtual tracers are implemented in the model to discriminate the streamflow sources into surface runoff and subsurface flow, and to assess the portion of streamflow from convective rainfall and stratiform precipitation, recording the source at each time step and for each cell. The model archives the results of the virtual tracing algorithm at the outlet of the basin and for each reach, enabling to study the different flow paths and water origins at different spatial scales.

The flow tracing module operates in tanks 2 (runoff storage) and 3 (subsurface storage). The module marks water once it reaches either of these tanks, and the runoff-subsurface flow percentage is taken into account once the water enters tank 5 (the channel). At this point, the scheme assumes that the water in the channel is well mixed, implying that the flow percentage is constant until new water enters the channel.

With a similar concept, the model also follows convective and stratiform rainfall. For this, at each time step, the model takes into account the rainfall classified as convective or stratiform and assumes that at each particular cell, the precipitation is either entirely convective or entirely stratiform. This assumption could lead to estimation errors at basins represented by coarse cells (low DEM resolution) where convective and stratiform precipitation are likely to coexist. In the present study, the spatial resolution of the DEM is 12.7 m, higher than the resolution of the radar retrievals, so the potential convective and stratiform rainfall concurrence is very low, and it could not be identified using the Steiner et al. (1995) approach.

Additionally, we propose a graphical method to analyze, at the same time, the evolution of multiple hydrological variables in the entire basin. The first step is to classify all the cells within the watershed in a predetermined number of groups according to their localization and the distance to the outlet. The aim is to establish a coherent and robust spatial discretization, thus allowing the concurrent spatiotemporal variability of the different processes to be summarized in 2D diagrams.

Parameter Name	Symbol	Scalar Factor	Spatial distribution
Capillarity storage	$Hu = Hu' C_1$ [mm]	$C_1 = 1$	As a function of the slope
Gravitational storage	$Hg = Hg' C_2$ [mm]	$C_2 = 1$	As a function of the slope
Evaporation rate	$Etr = Etr' C_3$ [mm s ⁻¹]	$C_3 = 0.1$	As a function of the DEM
Infiltration rate	$k_s = k'_s C_4$ [mm s ⁻¹]	$C_4 = 2.7$	Lumped
Percolation rate	$k_p = k'_p C_5$ [mm s ⁻¹]	$C_5 = 0.8$	Lumped
System losses	$k_f = k'_f C_6$ [mm s ⁻¹]	$C_6 = 0.0$	Lumped
Surface speed	$v_2 = v'_2 C_7$ [ms ⁻¹]	$C_7 = 0.5$	Coefficient of eq (6)
Subsurface speed	$v_3 = v'_3 C_8$ [ms ⁻¹]	$C_8 = 1$	Coefficient of eq (7)
Subterranean speed	$v'_4 = v'_4 C_9$ [ms ⁻¹]	$C_9 = 0.5$	Lumped
Channel speed	$v_5 = v'_5 C_{10}$ [ms ⁻¹]	$C_{10} = 1$	Coefficient of eq (9)

Table 3. TETIS model parameters. Primed variables correspond to values prior calibration. Values for the parameters with a scalar factor of 1 are left uncalibrated. Parameters C_1 to C_6 are not presented in the explanation of the model. C_1 modulates the maximum capillarity storage, and C_2 the maximum gravitational storage. C_3 to C_5 modulate evaporation, infiltration, and percolation rates, respectively. C_6 is assumed as zero, as this variable determines the subterranean system losses. More detail about the calibration parameters is presented at Francés et al. (2007).

3.1.3 TETIS model calibration

The TETIS model requires a total of 10 parameters. Table 3 includes all the parameters used in the model. The values of the parameters were derived from the soil properties described in section 2. Due to the lack of detailed information in the region, parameters such as the infiltration and percolation rates are assumed to be constant in the entire basin. Other parameters, such as the capillarity and gravitational storages, vary as a function of the geomorphological characteristics of the basin such as the elevation and slope. The calibration consists of finding the optimal scaling for each physical parameter, using a constant value for the entire basin (Francés et al., 2007). The model simulation is set to reach a base flow of 3 m³ s⁻¹, a value that corresponds to the discharge measurements during field campaigns days and weeks after the flash flood event, during dry spells. To set the soil wetness initial conditions realistically, the model simulations start two days prior to Event 1. Before this period, there were only a couple of weak rainfall events; for this reason, the overall wetness was set to represent dry conditions at the start of the simulation. Table 3 shows the mean value for all of the parameters used in the model, and the scalar factor adjusted during the model calibration phase. For the 2015 Salgar flash flood reconstruction, we calibrate the evaporation rate, the infiltration, the percolation, the overland flow speed, and the subterranean flow speed (see Table 3). The values for not calibrated parameters are inherited from a local watershed with similar characteristics.

370 3.2 Landslide submodel

The landslide submodel coupled to the TETIS model is proposed by Aristizábal et al. (2016). The stability of each cell is calculated through the assessment of the different stresses applied to the soil matrix. The coupling between TETIS and the landslide submodel is required because the stability of the soil decreases with the pore water pressure (Graham, 1984). The saturated soil depth $Z_{i,w}$ depends on the gravitational storage $S_{i,3}(t)$, the soil wilting point $W_{i,pwp}$, and the soil field capacity $W_{i,fc}$, as follows:

$$Z_{i,w}(t) = \frac{S_{i,3}(t)}{W_{i,fc} - W_{i,pwp}} \quad (10)$$

When $Z_{i,w}$ is greater than the critical depth $Z_{i,c}$ (equation (11)), failure occurs. The critical saturated depth depends on the shallow soil depth Z_i , the soil bulk density γ_i , the water density γ_w , the gradient of the slope $M_{i,0}$, the soil stability angle ϕ_i , and the soil cohesion C'_i .

$$Z_{i,c} = \frac{\gamma_i}{\gamma_w} Z_i \left(1 - \frac{\tan M_{i,0}}{\tan \phi_i} \right) + \frac{C'_i}{\gamma_w \cos^2 M_{i,0} \tan \phi_i} \quad (11)$$

Figure 7 describes the variables of the model and the balance of forces considered, and Table 4 presents the required parameters for this model. According to the soil stability definition, the topography and the soil properties, all cells are classified into three classes: unconditionally stable, conditionally stable and unconditionally unstable. In particular, three parameters determine the stability of each cell: (i) residual soil water table $Z_{i,min}$ (equation (12)), (ii) the maximum soil depth at which a particular soil remains stable $Z_{i,max}$ (equation (13)), and (iii) the maximum slope at which the soil remains stable $M_{i,c}$ (equation (14)).

$$Z_{i,min} = \frac{C'_i}{\gamma_w \cos^2 M_{i,0} \tan \phi_i + \gamma_i \cos^2 M_{i,c} (i,0 - \tan \phi_i)} \quad (12)$$

$$Z_{i,max} = \frac{C'_i}{\gamma_i \cos^2 M_{i,0} (i,c - \tan \phi_i)} \quad (13)$$

$$M_{i,c} = \tan^{-1} \left[\tan \phi_i \left(1 - \frac{\gamma_w}{\gamma_i} \right) \right] \quad (14)$$

A cell is unconditionally stable when Z_i is smaller than $Z_{i,min}$ or when the cell slope is smaller than $M_{i,0}$. On the other hand, a cell is unconditionally unstable when Z_i is greater than $Z_{i,max}$, and finally, a cell is conditionally stable when Z_i is between $Z_{i,min}$ and $Z_{i,max}$. Shallow landslides are calculated at each time step of the hydrological simulation, based on the latter cell class, where the soil stability depends on the storm event, becoming unstable when $Z_{i,w}(t)$ is greater than $Z_{i,c}$.

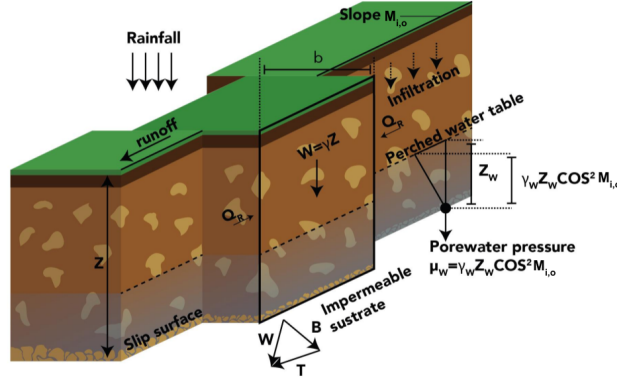


Figure 7. Schematic diagram of the landslide submodel. The figure and description are adapted from Aristizábal et al. (2016). Q_L and Q_R are the resultant forces on the sides of the slice of soil.

Parameter Name	Symbol	Scalar Parameter	Mean Value	Spatial distribution
Soil depth	Z_i [mm]	3.5	300	As a function of the slope
Topography slope	$M_{i,0}$ [-]	1	0.01 - 5.3	From the DEM
Soil bulk density	γ_{sed} [KNm ⁻³]	1	18	Assumed constant
Water density	γ_w [KNm ⁻³]	1	9.8	Constant
Soil stability angle	ϕ_i [°]	1	30°	Assumed constant
Soil cohesion	C'_i [KN]	1	4	Assumed constant

Table 4. Landslide model parameters.

3.3 Floodplain submodel (HydroFlash)

400 The HydroFlash submodel is designed to interpret the TETIS simulations as floodplain inundations (Figure 8). For each stream cell and at each time step, the submodel (i) calculates the stream discharge including sediment load (equations 15 - 20, see Takahashi (1991)), and (ii) determines the inundated cells according to the stream cross-profile, the sectional area, and the stream velocities when including the sediment load (equations 19 - 21, Takahashi (1991)). To determine the discharge including sediment load ($Q_{i,load}$), a realistic channel width is calculated according to Leopold (1953) approach as

$$W_i = 3.26 Q_i^{-0.469} \quad (15)$$

where Q_i corresponds to the streamflow estimated based on a long-term water balance.

Assuming an infinite sediment and rubble supply, equations 16, 17, 18 are used to deduce, from the channel width W_i , the water level Y_i (equation (16)), the friction velocity $v_{i,fr}$ (equation (16), de-

scribed in Takahashi (1991)), the sediment concentration c_i (equation (18)), and finally the sediment-loaded stream discharge (equation (20)), as follows:

$$Y_i(t) = \frac{Q_{i,sim}(t)}{v_{i,sim}(t)W_i} \quad (16)$$

$$415 \quad v_{i,fr}(t) = \frac{v_{i,sim}(t)}{5.75 \log \left(\frac{Y_i(t)}{D_{i,50}} \right) + 6.25} \quad (17)$$

$$c_i(t) = C_{max} (0.06 Y_i(t))^{\frac{0.2}{v_{i,fr}(t)}} \quad (18)$$

$$r_i(t) = \frac{1}{D_{i,50}} \left[\frac{g}{0.0128} \left(c_i + (1 - c_i) \frac{\gamma_w}{\gamma_{sed}} \right) \right]^{1/2} \cdot \left[\left(\frac{C_{max}}{c_i} \right)^{1/3} - 1 \right] \quad (19)$$

420

$$Q_{i,load}(t) = \frac{Q_{i,sim}(t)}{1 - c_i(t)} \quad (20)$$

where $v_{i,sim}$ and $Q_{i,sim}$ are the simulated velocity and streamflow, respectively. Also, r_i is the constitutive coefficient of the flow, that summarizes the flow dynamics associated with sediments and colliding particles. The above mentioned relationships depend of 2 parameters: the maximum
425 sediment concentration (C_{max} [-]) and the characteristic diameter of the sediments $D_{i,50}$ [m]. Both terms are assumed to be constant and equal to 0.75 (Obrien, 1988) and 0.138 (Golden and Springer, 2006), respectively.

To determine the inundated cells, the flood depth ($F_{i,d}$) and the sectional area of the stream including sediments ($A_{i,load}$) are iteratively calculated by reducing the difference between $Q_{i,load}$ and
430 $\hat{Q}_{i,load}$. The channel cross-section for cell i , $E_{i,bed}$, is defined by the DEM. In each iteration N , the model updates $F_{i,d}$ with a $\Delta y = 0.1$ m increase. The cross sectional area $A_{i,load}$ is calculated by taking difference between $F_{i,d}$ and the elevation of each cell j in the cross-section $E_{i,bed}$.

$$\hat{Q}_{i,load}(t) = 0.2 r_i(t) (N \Delta y)^{\frac{3}{2}} S_{i,0} A_{i,load}(t) \quad (21)$$

$$F_{d,i}^N = F_{d,i}^{N-1} + \Delta y \quad (22)$$

$$435 \quad A_{i,load}^N = \Delta x \sum_{j=1}^N F_{i,j,d}^N - E_{i,j,bed} \text{ with } E_{i,j,bed} < F_{i,j,d}^N \quad (23)$$

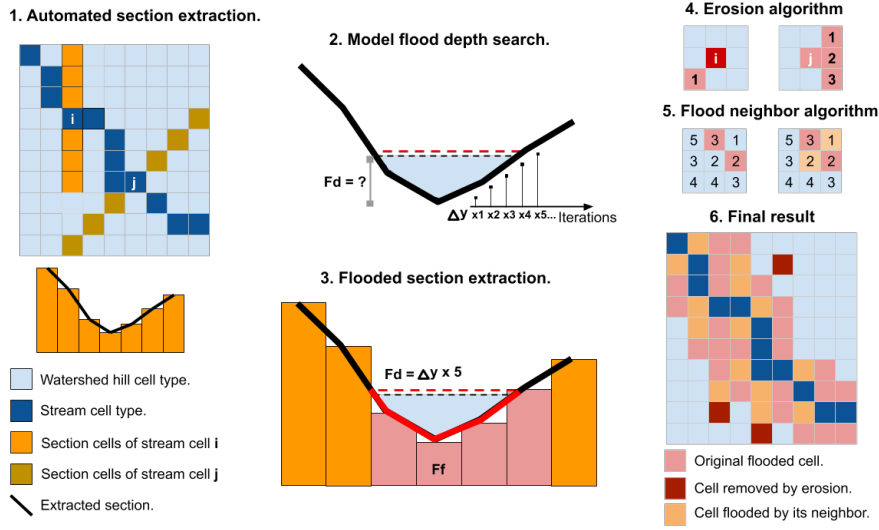


Figure 8. Illustrative diagram of the HydroFlash submodel scheme. Step 1. The submodel extracts the cross-profile from the network considering the DEM and flow direction. Step 2. Based on equation (21), the submodel obtains the first approximation of the flash flood streamflow; then, the flood depth and the cross-section area are obtained from equations (22) to (21). Step 3. The submodel obtains the flooded portion of the cross section. Step 4. Erosion post-process. Step 5. Filling post-process. 6. The final result for a time step t .

The resulting flood maps might include the presence of small isolated flood spots and discontinuities where the flow direction changes from orthogonal to diagonal across or vice versa. We included two post-processing steps to correct these issues by (i) using an image processing erosion algorithm (Serra, 1983) to remove the small and isolated flood spots (step 4 in Figure 8), and, to solve the flow direction discontinuities, (ii) for each flooded cell the model seeks to inundate the eight neighboring cells: A neighbor cell is also flooded if the altitude of the original flooded cell, plus the flood depth, is higher than its elevation (step 5 in Figure 8). The image erosion is performed once with a 3 by 3 kernel. An example of the final result for a time step t is shown in the step 6 in Figure 8.

4 Results

The main results of the present study include the reconstruction of the 2015 Salgar flash flood, the assessment of the importance of soil moisture in the hydrological response of the basin, and the evaluation of the relative role of stratiform and convective precipitation cores in the generation of the observed extreme event. This section is based on the analysis of the hydrological simulation, as well as the occurrence of shallow landslides and flash floods, and their simulation. A comparison of the results from both submodels and the observed landslide scars and flooded spots allows to evaluate the overall skill of the proposed methodology.

4.1 TETIS validation and sensitivity analysis

Figure 9a presents the results of the hydrological simulation at the outlet of the basin. The simulation shows that Event 1 generates a hydrograph with a peak flow of $Q_{max} = 160 \text{ m}^3 \text{ s}^{-1}$. It is important to note that during Event 1, there were no damage or flooding reports by local authorities. Even though this precipitation event did not generate flooding, it set wet conditions in the entire basin before the occurrence of Event 2 (see the purple line in Figure 9b representing the capillary storage). Additionally, it is clear from the simulation that during the flash flood event, the two successive convective cores over the same region (training convection) generated a peak flow of $Q_{max} = 220 \text{ m}^3 \text{ s}^{-1}$, a value that is in the upper range of the estimated streamflow based on post-event field evidence (185-222 $\text{m}^3 \text{ s}^{-1}$). Figure 9a also presents the simulated runoff and subsurface flow separation as well as the convective-stratiform-generated discharge discrimination. The modeling evidence during Event 2 suggests the convective rainfall fraction dominates the hydrograph formation. In both events, convective (stratiform) precipitation appears to be closely related to the simulated runoff (subsurface flow). The simulated subsurface flow is more important in magnitude than that runoff in describing Event 1, while runoff is more relevant for Event 2. Figure 9b presents not only the capillary storage (purple), but also the runoff (continuous blue) and the gravitational storage (dashed blue) temporal variability, as represented by the proposed model. As expected, runoff storage is only nonzero during the storm duration, while gravitational storage increases considerably during rain events, followed by a slow recession. There is an increase in basin-wide capillary storage during Event 1, remaining considerably high during the time leading to the occurrence of Event 2. According to the model simulations, the peak flow occurred at 2:20 a.m. LT on May 18th, which is accurate compared to the reports from local authorities (between 2:10 and 2:40 a.m. LT), considering all the data limitations.

Figure 10 shows the results of a sensitivity analysis of the hydrological simulation during the second rainfall event, varying the surface speed, infiltration rate, and the subsurface speed factors. The aim of the sensitivity analysis is to evaluate the robustness of the overall results, considering the fact that the quality and quantity of some of the watershed information is limited. In the sensitivity analysis, we vary the surface speed factor between 0.01 and 20, the infiltration factor between 0.02 and 20, and the subsurface speed factor between 0.1 and 10. The overall sensitivity results show that the main findings described in the previous paragraphs are, in fact, robust to almost all changes in the mentioned parameters, with the surface runoff associated with convective rainfall controlling the magnitude of the peak discharge during the Event 2. The model's highest sensitivity, and hence the largest uncertainty source, appears to be related to the surface speed parameter (Figure 10a), particularly during the peak flow and the early recession. On the other hand, changes in the infiltration rate factor (Figure 10b) and subsurface velocity factor (Figure 10c) are associated with a simulation sensitivity smaller than 7 and 20% of the peak flow, respectively.

After the flash flood event, a stream gauge level station was installed near the outlet of the basin (see Figure 2). We use these records to validate the model results without further calibration. Since

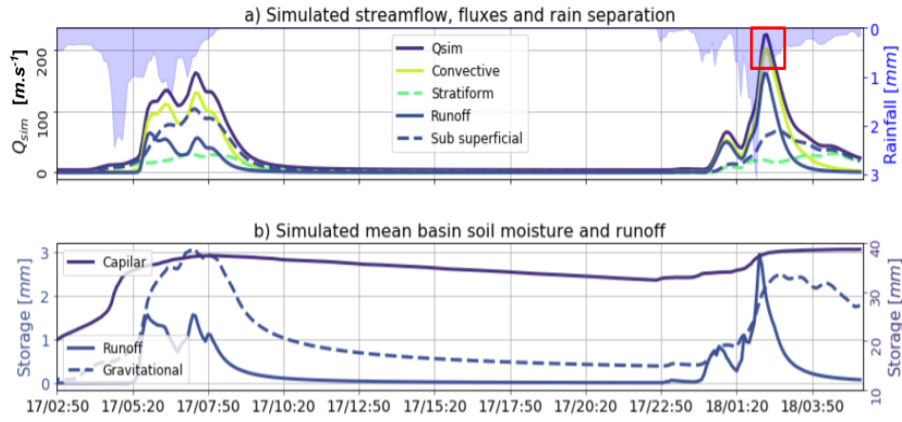


Figure 9. Summary of the results from the TETIS hydrological simulation. a) Simulated streamflow, convective-stratiform-generated discharge discrimination, and runoff and subsurface flow separation. The red square represents the flash flood peakflow interval that is estimated based on field campaign evidence. b) Basin average capillary, runoff and gravitational storages during the simulation period.

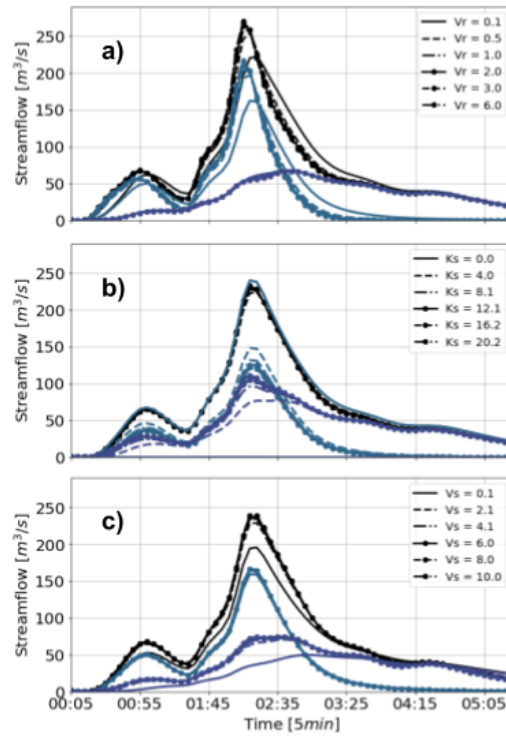


Figure 10. Hydrological simulation sensitivity analysis. Similarly as in Figure 9, all panels show the simulated streamflow (purple), and the runoff (green) and subsurface flow (dashed purple) separation. From top to bottom, the panels show the simulation sensitivity to changes in the a) surface speed, b) infiltration rate, and c) subsurface speed factors.

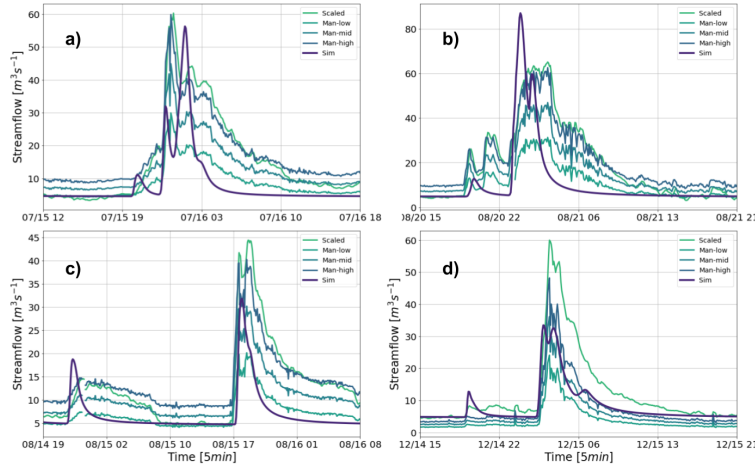


Figure 11. Comparison between TETIS simulations and streamflow estimations from a stage level station installed on a bridge at the outlet of the basin (see Figure 2)

the observed series correspond to stage level records, the streamflow estimation is performed following two different approaches. The first approach, the empirical one, consists of subtracting the 10th percentile of the observed stage time series from the observational record, and the 10th percentile of the simulated streamflow, from the same series. On the other hand, the second method uses the Manning formula. For this, we consider the geometry of the section in Figure 4, and the slope from the DEM. Additionally, due to the potential uncertainties, we consider three different Manning values (0.015, 0.02, 0.03). Figure 11 shows the estimated streamflow using the two methods for four different hydrographs during July, August (2 events) and December 2015. The simulated magnitudes appear relatively close to the observations, and the peak discharge time is captured skillfully in three of the four cases presented. The discharge values using the "high" Manning number estimation (0.015) are similar to the empirical method. The performance of the model is acceptable (Figure 11), considering the lack of calibration, the size of the basin, and the magnitude of the recorded events. The results shown include cases where the peak flow was over-estimated (panels c and d), and under-estimated (panel b).

Figure 12 shows the temporal evolution of discharge during Event 2 in different locations along the watershed's main channel. The upper location corresponds to 15% of the area of the basin, and the other downstream locations correspond to 52%, 76%, and 100% of the watershed. The difference in the time of the peak discharge between the upper location and the outlet of the basin is around 35 minutes, which is plausible with travel speeds between 5 and 7 ms^{-1} and an effective distance of 14 km. In terms of volume, about 737,000 m^3 of the total 1,438,000 m^3 simulated at the outlet of the basin are generated on the 15% upstream part of the watershed, corresponding to about half of the total mass. In terms of peak flow, due to the slope and velocity changes, the simulated discharge at

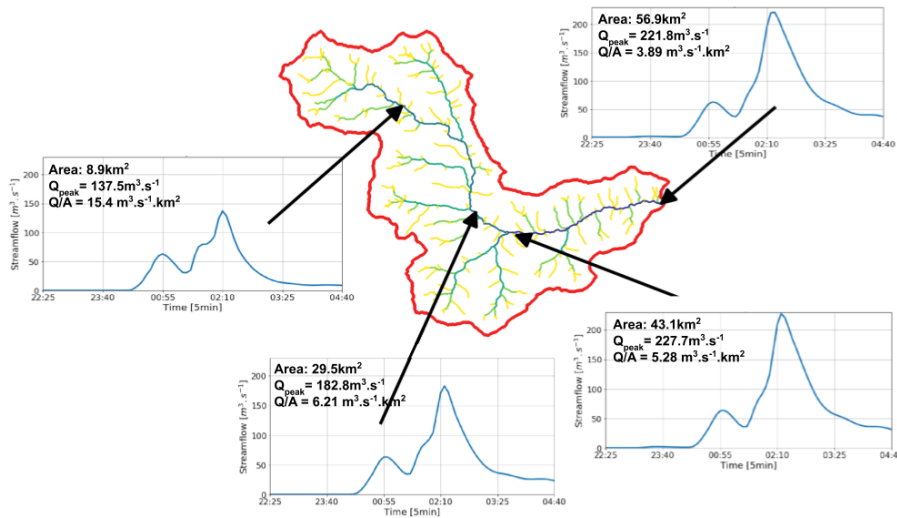


Figure 12. Temporal evolution of discharge during Event 2 in different locations along the watershed's main channel. The upper location corresponds to 15% of the area of the basin, and the other downstream locations correspond to 52%, 76%, and 100% of the watershed, respectively.

the 15% upstream part of the watershed corresponds to 50% of the peak discharge at the outlet of the basin.

4.2 Flash flood processes

Figure 13 presents the proposed 2D diagrams obtained for the simulation of the La Liboriana basin flash flood using a spatial discretization with 50 groups. Figure 13a includes the evolution of the average rainfall over the basin (black line), and the spatiotemporal evolution of capillary storage (filled isolines) and return flow (colored isolines from white to red) by groups. For the analysis, it is relevant to highlight that higher numbered groups are located away from the outlet of the basin and correspond in this case to considerably steeper slopes. Figure 13b presents the evolution of stream-flow at the outlet of the basin (black line), as well as the gravitational storage (filled isolines) and runoff (colored isolines) spatiotemporal evolution. Figure 13 shows variations in the capillary and gravitational storages associated with Event 1 in the higher numbered groups. The capillary storage remains high in almost all the basin until the start of Event 2. According to the conceptualization of the model, the gravitational storage and surface runoff start to interact when the capillary storage is full. In this case, this situation is set up by Event 1. The model runs for Event 2 using dry initial states, show no flooding in the results.

The temporal variability of rainfall intensity plays an important role in the hydrograph structure. During Event 1, rainfall accumulated over the basin at a relatively stable rate (Figure 14a). On the

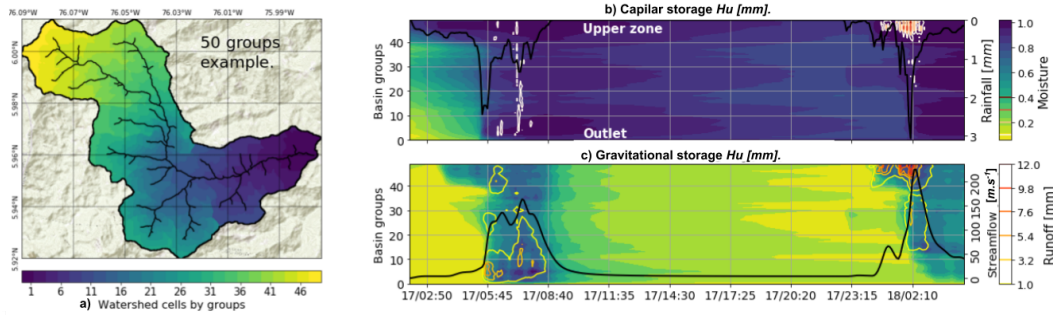


Figure 13. a) Example of watershed grouping as a function of their localization and distance to the outlet for La Liboriana basin using a 50-group categorization. b) Simulated capillary moisture (filled green-to-blue contours) and returned flow occurrence (white to red isolines). The black line represents the average rainfall over the basin. c) Simulated gravitational moisture (filled green-to-blue contours) and runoff (yellow-to-red isolines). The black line represents streamflow at the outlet of the basin. The green-to-blue color bar serves as a reference for capillary moisture and gravitational water content.

other hand, Event 2 presents a significant increase in rainfall rate in the second half of the life cycle (Figure 14b). This change in precipitation intensity is associated with a considerable enhancement of the training convective cores due to orographic effects. Events 1 and 2 also exhibit differences in the elapsed time between rainfall occurrence and streamflow increment given the relative timing of stratiform versus convective rainfall (see the gray band in Figure 14a and b). We compute the elapsed time between the rainfall and the simulated streamflow by measuring the time differences between the lines for the cumulative rainfall and streamflow in Figure 14. For Event 1, the median elapsed time between rainfall and streamflow (Et_{p50}) is 1.12 hours, while for Event 2, Et_{p50} is 0.79 hours. The median elapsed time between the convective portion and the streamflow (Etc_{p50}) in Event 1 is 0.75 and 0.46 in Event 2. The minimum value of the convective elapsed time Etc_{min} also descends from 0.42 to 0.25 hours. On the other hand, there is an increase in median elapsed time between stratiform rainfall and streamflow (Ets_{p50}) from 1.21 to 1.83 hours. The observed differences are largely due to the timing of the convective precipitation during each of the events. During Event 1, the convective precipitation occurred near the end of the event, explaining the delayed peak discharge time (see Figure 5).

According to Figure 14b for Event 2, the accumulations of streamflow runoff and convective rainfall become similar with the increase in time. This fact highlights the strong control that, in this case, the convective portion has on the runoff, with almost no effect of the stream network filtering out the convective signal, most likely due to the size and the rapid response of the basin. This description, however, only applies for the runoff portion, since the evolution is different when we consider the total simulated streamflow.

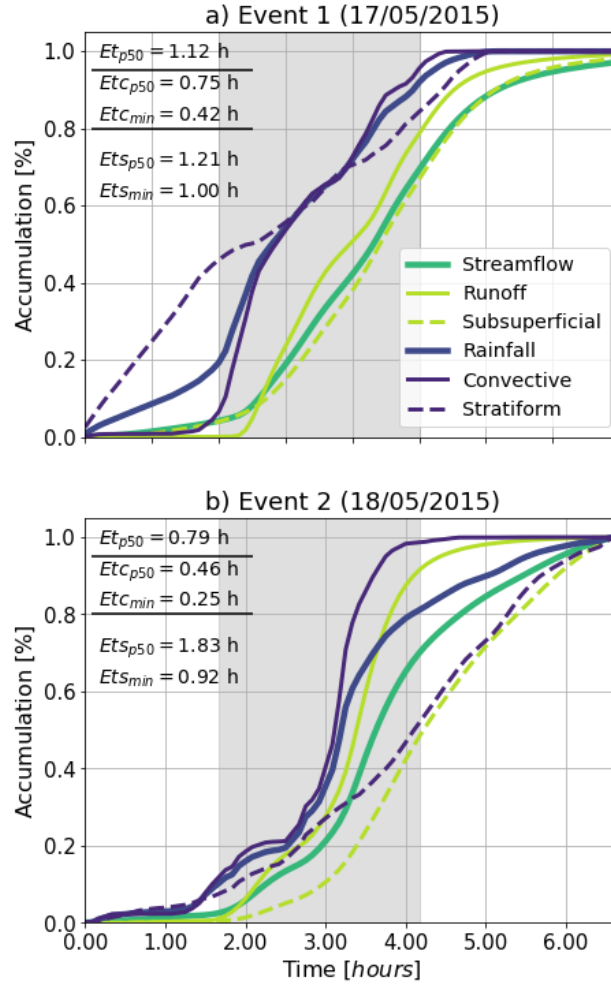


Figure 14. Accumulated rainfall and streamflow for a) Event 1 and b) Event 2. The accumulation is expressed in percentage with respect to the total value in each case. The median elapsed time and minimum elapsed time are estimated between total (Et_{p50} , Et_{min}), convective (Etc_{p50} , Etc_{min}), and stratiform (Ets_{p50} , Ets_{min}) rainfall and the runoff portion of the streamflow. Gray bands correspond to the periods for elapsed time estimation.

4.3 Landslide and flood simulations

Figure 15a presents the observed landslides triggered by Event 2 based on aerial photos and satellite images taken before and after the flash flood. Figure 15b shows, by hills, the map of total unstable cells during the simulation period, and Figure 15c shows the time series of the number of simulated
 555 unstable cells during Event 2 (continuous purple line) and the mean rainfall over the basin (inverse axes, blue line). Calibration of the landslide submodel was performed by finding the maximum overlap between simulated and observed unstable and stable cells, and at the same time reducing the overall number of false positives and false negatives. It is important to note that the calibration strat-

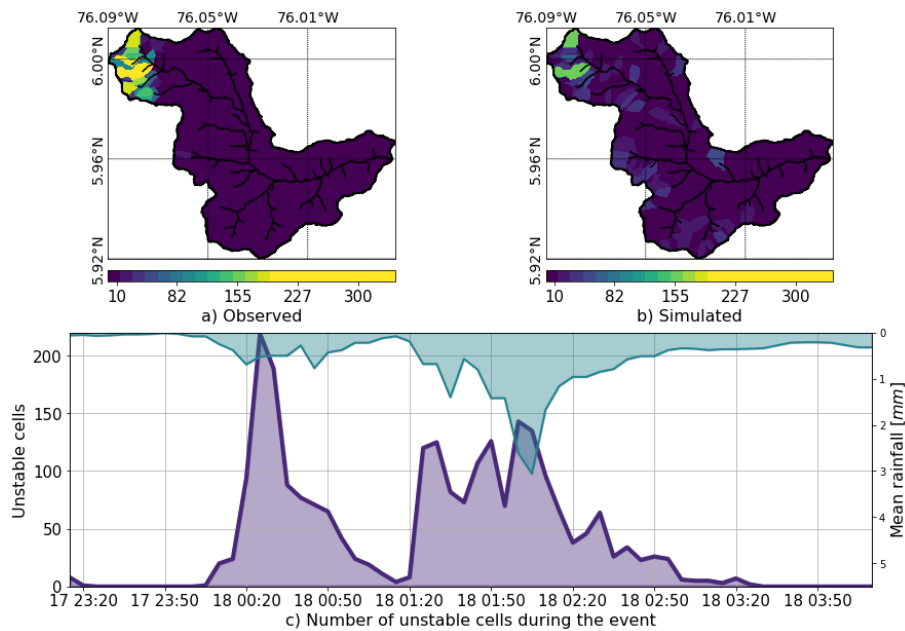


Figure 15. a) Observed landslides triggered by Events 1 and 2. The figure is based on aerial photos and satellite images taken before and after the flash flood event. b) Map of total unstable cells during the simulation period. c) Time series of the number of simulated unstable cells during Event 2 (continuous purple line) and mean rainfall over the basin (inverse axes, blue line).

egy is not a cell-by-cell modification of the parameters involved but rather a basin-wide modification of soil properties. A sensitivity analysis of soil parameters is carried out by making small variations of the variables within specified intervals: ϕ between 25 and 32, γ between 17 and 19, C' between 3.5 and 4.2, and Z between 0.1 and 3 m. The sensitivity analysis suggests that slight variations in the parameter in Z produce the largest changes in the number of unstable cells. Following Table 1, the average soil depth in the basin is only 0.3 m, a value that likely corresponds to underestimation according to the inspections during field visits. For this reason, the results presented in Figure 15 use a Z map scaled by a calibration factor of 3.5, preserving the spatial dependence on the slope but achieving a more realistic soil depth and better spatial distribution of a landslide occurrence. The model represents the spatial distribution of the areas that are prone to trigger shallow landslides during Event 2 reasonably well, especially in the upper part of the basin, showing a significant density of unstable cells in the hills where slides took place.

Figure 16 shows the identification of the flood spots at the peak of Event 2 (May 18, 2015, 2:00 a.m.) as simulated using HydroFlash. Figures 16b to f present a detailed view of the results from the outlet of the basin to the upper region. Cases presented in Figures 16e and f exhibit a satisfactory agreement with observed flood spots (blue shadow). Cases in Figures 16c and d also show a good approximation, but with minor spatial shifts in some sections. The largest spatial differences are

observed in Figures 16b. At the entrance of the urban zone, the model overestimates the flood spots. The model results indicate that 11% of flood spots occur at elements of order 1 and 2, and 18, 38 and 32% occur at orders 3, 4 and 5, respectively. Table 5 summarizes the described percentages and the total length of each order. These results also highlight a coherent geomorphological representation of the flooded channels and hills relative to the order.

Table 5. Channels and flooded cells percentages summary. Sh_0 and Ss_0 correspond to the mean hill and stream slope, respectively. L corresponds to the total channel length. F Spots and S spots correspond to the flooded and slides percentages, respectively.

Order	Sh_0 [%]	Ss_0 [%]	L [km]	F Spots	Ss Spots
1	60	37	59	5	64.5
2	57	27	26	6	26.3
3	49	13	16	18.5	5.5
4	43	9	10	38.5	3.6
5	42	6	6	32	0.05
Mean/total	50	18	117	100	100

5 Discussion

On the morning of May 18, 2015, a flash flood occurred in the steep La Liboriana basin, in the municipality of Salgar, Department of Antioquia, Colombia, leaving more than 100 human casualties, 535 houses destroyed, and significant infrastructure losses. Due to the lack of local information of soil type, land use and real-time hydrometeorological data, the La Liboriana case implies a challenge for flash flood prediction, modeling and, consequently, risk management. The present paper introduces a hydrological model-based approach and an integral graphical analysis tool (an integrated spatiotemporal analysis of rainfall evolution, together with soil storages in the basin) for the following purposes: 1) to simulate and understand the soil-rainfall-discharge processes that led to the 2015 Salgar flash flood, and 2) to propose it as a radar QPE-based and modeling-based landslide and flash flood guidance low-cost tool for basins with scarce data and regions with limited resources.

The methodology implies changes and additions to the TETIS distributed hydrological model including tracking independently convective and stratiform precipitation within the model, as well as keeping track of the runoff and subsurface portions of the streamflow. TETIS was coupled with a shallow landslide submodel and HydroFlash, a one-dimensional floodplain scheme. The model proposed here indeed allows studying the different hydrological processes relevant to flash flood and landslide occurrence by using different simulation resources, serving as the basis for a better understanding of the overall basin response. Despite the lack of data, the evidence suggest that the results represents, to a large degree, the magnitude of the disaster; considering also that the simulated

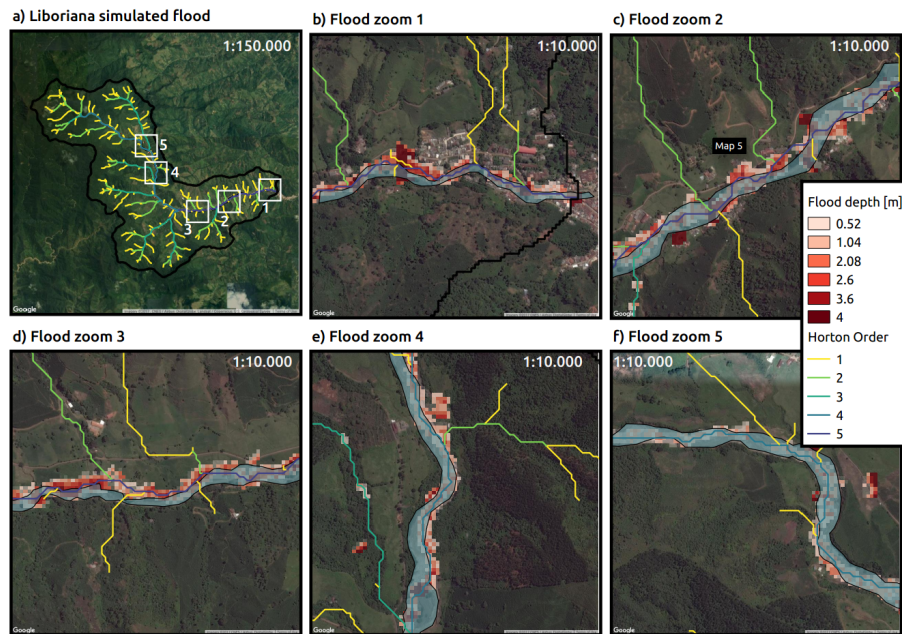


Figure 16. Simulated flood spot at the peak of Event 2 in different locations ([Image courtesy of CNES/Airbus](#)). a) Basin drainage network. White squares correspond to regions of interest highlighted in panes b) to f). The colors of the streams correspond to the Strahler order of the network. b) Zoom at the outlet of the basin, where an important portion of the human and infrastructure losses took place. c) Zoom at La Margarita settlement also affected by the flash flood. d) to f) Zoom at key locations along the principal stream. Observed flood spots are shown in blue polygons and model flood spots in red to white grids.

peak flow is consistent with the peak flow envelope proposed by Gaume et al. (2009) for flash floods. This approach helps to examine the first-order flood-generating mechanisms or causative factors both in time and in space, focusing on the most important physical processes (Klemes, 1993; Merz and Blöschl, 2003), potentially allowing the anticipation of flash flooding events, the issue of warnings, and response by risk management entities.

The evolution of the simulation of Events 1 and 2 show evidence of remarkable behavioral differences. During Event 1, both gravitational and capillary tanks are filled along and across the basin as a result of the quasi-homogeneous rainfall spatial distribution. Zocatelli et al. (2011) found similar results for watersheds in Europe with areas ranging between 982 and 52 km². The return flow is low, and most of the runoff occurs within the first 20 groups (40% of the watershed closest to the outlet).

In the period between both events, there is a recession in the capillary and gravitational storages in the entire basin. Capillary storage decays considerably slower than gravitational storage. During Event 2, the flash flood triggering event, the first convective core saturates both capillary and gravitational storages in the upper part of the basin and generates both return flow and significant runoff. Due to soil saturation, the second convective core results mainly in surface runoff. During this event,

615 extreme runoff rates are evident in the upper part of the basin, collocated with the steeper slopes. On the other hand, subsurface flow is more important in magnitude than runoff describing Event 1, while runoff is more relevant for Event 2. The precedent storage and the presence of thunderstorm training profoundly condition the streamflow during Event 2. The overall evidence suggests that precedent capillary moisture in the basin plays an essential role in modulating river discharge. This behavior

620 could be linked to the temporal occurrence and relative importance and timing of stratiform and convective formations previously described. During the extreme event, when the soils were already wet, the convective rainfall fraction dominated the hydrograph formation. While stratiform rainfall plays an important role moistening the entire basin, convective rainfall generates considerable runoff, leading to flash flooding. Several authors have argued about the role of convective rainfall triggering flash floods (Doswell et al., 1996; Kahana et al., 2002; Schumacher and Johnson, 2005; Delrieu et al., 2005; Šálek et al., 2006; Milelli et al., 2006; Rozalis et al., 2010; Fragoso et al., 2012; Berne and Krajewski, 2013; Gochis et al., 2015; Bruni et al., 2015; Piper et al., 2016; Douinot et al., 2016; Llasat et al., 2016; Baltaci, 2017), however, to our knowledge no other study has tracked convective and stratiform water in a modeling setting to explore their relative role leading to flash flooding.

630 While convective and stratiform partitioning influence the runoff and subsurface flow separation, the spatial distribution of rainfall relative to watershed network morphometry structure also imposes a condition on the hydrological response of the basin (Douinot et al., 2016). In other words, hydrograph formation is determined not only by the rainfall accumulation or maximum intensity but also by its spatial structure (Zoccatelli et al., 2011; Douinot et al., 2016). As mentioned before, average rainfall accumulation over the basin for Events 1 and 2 is 47 mm and 38 mm, respectively.

635 During Events 1 and 2, convective (stratiform) average accumulations are 28 (23) and 17 (14) mm, respectively. The maximum rainfall intensities are relatively similar with 150 mm/h and 180 mm/h for Events 1 and 2, respectively, but the location was significantly different. Convective rainfall occurrence at the upper subbasins has significant implications due to geomorphological conditions associated to zero-order subbasins (Sidle et al., 2018). Besides, at Event2 with a moist soil, the convective portion of the rainfall significantly influences the hydrograph formation. Additionally, when we compare Events 1 and 2, there is an interplay between the rainfall spatial structure and the soil storage capacity. During Event 1, there is almost no saturation, hence runoff production is low, while Event 2 is influenced by the pre-event water and the occurrence of multiple convective systems over

645 the same region. The structure of the rainfall associated with the La Liboriana event and its interaction with the soils highlights the need to consider in more detail the role of orographic rainfall intensification in practical applications such as early warning systems. Evidence suggests the spatial structure of the rainfall is at least as important as the geomorphological features of the basin in regulating the generation of flash flood events.

650 An integrated spatiotemporal analysis of rainfall evolution, together with soil storages in the basin, is necessary to study the relevance of antecedent conditions and precipitation type, intensity, and

location in the generation of flash flood events. Event 1 increased the overall soil moisture with an associated decrease in infiltration rates, similar to the results reported by Marchi et al. (2010); Penna et al. (2011) and Zehe et al. (2010); additionally, low infiltration increased the runoff rates, ultimately affecting the susceptibility of the basin to flash flood occurrence (Wagner et al., 1999; Penna et al., 2011; Trambly et al., 2012). Due to geomorphological characteristics (see Table 5), water tends to reach faster the channels in hills of order 1 and 2, and, at the same time, the sediment production and transport in these hills tend to be larger. Order 3 subbasins most likely act as transport elements, with no important energy losses (Table 5), and floods tend to occur at order 4 and 5 subbasins due to the widening of the channel and slope attenuation.

Different authors have focused on trying to understand the general causative factors behind the occurrence of flash floods (Marchi et al., 2010), also suggesting a significant combined role of geomorphology, orography, soil characteristics and local convection. For example, Lehmann and Or (2012), using a shallow landslide model, found an important role of the topography and the rainfall conditions. Turkington et al. (2014) showed how intense locally driven convection is the main meteorological trigger for flash occurrence in the French Alps. Camarasa-Belmonte (2016) showed the important role of rainfall intensity and duration on the shape of the hydrograph, with intense rainfall shortening the response time of the basin, and large durations increasing the flood peak. In the Mediterranean region, Boudou et al. (2016) stated that in addition to the rainfall, geomorphological characteristics and antecedent soil conditions are key in the generation of flash flooding.

The landslides submodel presents an overall acceptable performance with limitations in certain regions. In particular, there are some false positives in the middle of the basin. These limitations could be associated with the assumptions and approximations inherent to the submodel, including that it only determines unstable cells by slowly filling the soil matrix with water, which, in this case, given the lack of information, depends on the soil depth derived from the topography, and that the model does not consider instability due to intense rainfall events. The lack of detailed soil depth information could explain the false positives landslides. On the other hand, the relation between landslides and high-intensity rainfall must be explored and included in this kind of models. There is also an apparent contradiction regarding the depth of the soils in the basin: While the values derived from topography appear to work well for the hydrological model, the depth had to be calibrated to obtain a better representation of landslides. There are two possible explanations for the contradiction, (i) that the soils are in fact thicker in the entire basin, but the calibration of the infiltration and percolation rates corrected the hydrological simulations, and (ii) that the landslides submodel is too simplistic, or that no other parameters were calibrated, possibly resulting in over calibration of the soil depth. This is an aspect that needs to be explored further.

The landslide submodel has been used in a nearby watershed with similar characteristics, but with high-quality distributed information (Aristizábal et al., 2016). In that case, the model shows a better performance, which highlights the relevance of the quality of the input data. It is also important to

consider that, a pinpoint localization of the unstable cells is still considered a hard task, in part due to
690 the small temporal and spatial scale at which landslide processes take place (Aristizábal et al., 2016;
Dhakal and Sidle, 2004; Wu and Sidle, 1995).

Similarly, results of the HydroFlash submodel are satisfactory despite the hydraulic over sim-
plifications, and are potentially useful for issuing warnings to the community. From that point of
view, it is important to stress that the low computing cost of HydroFlash, different to that of detailed
695 2D/3D hydraulic geomorphological models, makes it possible to be executed in real time coupled
with rainfall observations, providing valuable information that, while not 100% accurate spatially,
helps discriminating to a high degree, for example, which communities need to be evacuated given
an extreme event. In addition, the floodplain submodel provides an indirect estimation of the sedi-
ment load during extreme events. In the 2015 Salgar simulations, the peak discharge obtained with
700 the hydrological model was $220 \text{ m}^3\text{s}^{-1}$; the total streamflow considering the sediment load reached
values around $285 \text{ m}^3\text{s}^{-1}$, for a Q_{sed}/Q_{sim} ratio of 1.3. The extra 30% discharge corresponding
to the sediment load is certainly a relevant contribution to the total discharge, with impacts in the
floodplain determination. Considering the stream network slope, the simulated ratio is comparable
with reports in the literature Rickenmann and Koschni (e.g. 2010); Chang et al. (e.g. 2011); ?. The
705 sediment load is mainly constrained by the maximum sediment concentration C_{max} and the depth
of the flow, suggesting that better information about C_{max} could improve the simulation of flood
spots. It is important to note that the model was calibrated considering only the water discharge
since the uncertainty in the erosion processes and their representation in the model is still signifi-
cant, and the fact that only 1D processes in the channel are taken into account: The hydrological
710 model relies on water balance. In spite of that, and in order to be in the conservative side for risk
management applications, the potential increase in the total discharge associated with the sediment
load is considered.

However useful, the evidence in this work only takes into account two successive events; an anal-
ysis of more cases and different spatial scales (different basins) would provide robust conclusions
715 in this direction. It is clear that focusing on a single extreme event, rather than on a spectrum of
floods, is not conclusive enough Merz and Blöschl (2003). The model simulation results suggest it
is imperative to study in depth the long-term link between the relative basin and drainage network
orientation and the preferred path of precipitation events and its role in defining the frequency of
flash flood occurrence. A better understanding of the network-hills-preferential rainfall advection
720 structure could provide information about basins prone to flash floods when information is scarce.

6 Conclusions

Extreme rainfall events such as the one that triggered the La Liboriana tragedy frequently take place
in Colombia and the entire global tropical belt over ungauged basins, often triggering flash floods

and debris flows, which endanger vulnerable communities due to poor long-term planning and lack
725 of functional early warning systems. There is a global need for better knowledge and understanding
of the hydrological and meteorological conditions that, combined, lead to the manifestation of dis-
asters linked to natural hazards. Such an understanding must result in useful practical applications
that improve risk management practices and thus save lives. In the current work, we approach the
730 problem from a hydrological modeling point of view, trying, despite the data limitations and the un-
certainty of the results, to shed some light on the first-order processes that modulate the occurrence
of flash floods in the region of study.

In the case of the La Liboriana flash flood, radar reflectivity fields were available from a C-Band
radar operated by the Early Warning System of Medellín and its metropolitan area, as part of a local
risk management strategy. While the municipality of Salgar is located far from Medellín's metropoli-
735 tan area, the radar is 90 km away from Salgar, and the reflectivity retrievals enable the classification
of precipitation fields into convective and stratiform areas, using widely accepted methodologies by
the meteorological community. Radar reflectivity also serves as a proxy for precipitation, allowing
a quantitative estimation of rainfall fields. This estimation was used together with the TETIS model
to assess the different basin-wide processes taking place during the flash flood triggering rainfall
740 event. The limitations of the methodology presented in this work do not allow representing all the
detailed small-scale preferential pathways of the water in the watershed, but rather focus on the
first-order processes to study the partitioning between runoff vs. subsurface flow. Additionally, the
model results are used to obtain a conceptual idea about the general processes, but it must be taken
into account that the simulations are subject to a calibration process that could lead to erroneous
745 conclusions about the mentioned processes. This consideration could be true even considering that
different steps were taken trying to avoid this situation.

The overall model simulation methodology reproduces the estimated magnitude and reported tim-
ing of the La Liboriana flash flood discharge peak quite well, showing robustness to changes in the
most important model parameters. Simulation results suggest that the soil storage capacity available
750 before flooding event, impacted not only the flood magnitude itself, but also the response time of the
catchment, highlighting the role of soil wetness distribution within the basin. The model also repro-
duces the areas of regional landslide occurrence and flood spot locations satisfactorily. The model
simulation results indicate that the flash flood and the regional landslide features were strongly in-
fluenced by the observed antecedent rainfall associated with a northwesterly stratiform event that
755 recharged the gravitational and capillary storages in the entire basin. The TETIS model simulation
shows that the antecedent event set wet conditions in the entire basin before the occurrence of the
flash flood event, governing the streamflow during the latter. The results of the model simulation
also suggest that the first of the two successive convective cores (training convective elements) over
the same region during the second precipitation event (the flash flood event) saturated both capillary
760 and gravitational storages in the upper part of the basin and generated both return flow and signifi-

cant runoff. The second convective core resulted mainly in surface runoff spatially collocated with the steeper slopes, generating the kinetic energy needed to produce the La Liboriana flash flood. The overall results also show a good agreement between the simulated flood spots and the observed ones, despite the limitations imposed by the resolution of the DEM used for extracting cross-sections and the model oversimplifications.

Results of the landslide submodel and HydroFlash, while satisfactory, are far from perfect, showing significant differences compared to observations. The evidence suggests, by and large, that most of the observed differences are mainly due to the lack of higher spatial resolution DEM, in the case of HydroFlash, and due to the lack of a detailed soil dataset, in the case of the landslide submodel.

However, there is also considerable room for improvement in both submodels, including a better representation of non-Newtonian hydraulic processes in HydroFlash, and a direct link between landslides and flood spots following, for example, a similar strategy to the one presented in the STEP-TRAMM model (Fan et al., 2017). Notwithstanding the difficulties, the results suggest that the submodel simulations could have been used and should be used in the future for early detection and warning to improve both short- and long-term risk reduction strategies.

Considering all the shortcomings and generalizations, the described model-based approach is potentially useful to assess flood-generating mechanisms and as a tool for policy-makers, not only for short-term decisions in the context of an early warning system but also as a planning resource for long-term risk management. The results suggest it is possible to use low-cost methodologies such as the one introduced here as a risk management tool in countries and regions with scarce resources.

7 Acknowledgments

This work was supported by SIATA (Sistema de Alerta Temprana de Medellín y el Valle de Aburrá) funds provided by Area Metropolitana del Valle de Aburrá (AMVA), Municipio de Medellín, Grupo EPM, and ISAGEN under the Research and Technology Contract CD511, 2017. Universidad Nacional de Colombia partly funded Nicolás Velásquez under the Facultad de Minas graduate scholarship program. Both authors would like to thank anonymous reviewer 1 for the detailed and insightful comments that helped to clarify and highlight the message of this work. Both authors also thank Dr. Eric Gaume, reviewer 2, for his thoughtful comments.

For the technically inclined reader, the TETIS hydrological model and submodels are written in Fortran 90, and the interface to the model, pre-process, and post-process tools are in Python 2.7. The Fortran code is warped to Python using **f2py** (Peterson, 2009), and it is publicly available under the Watershed Modeling Framework **WMF** in a web repository (**GitHub**).

Appendix A: Figures

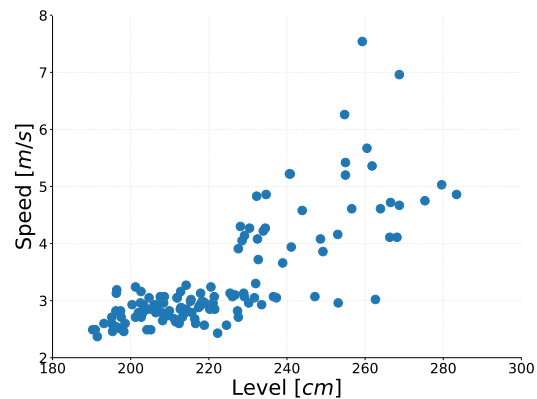


Figure A.1. Scatter plot of water level (depth) (cm) and surface speed (ms^{-1}) for Doña María basin, located in the Aburrá Valley (Basin outlet coordinates: 75.651°W, 6.190°N). The basin slope is 34.09%, the area :72.84 km^2 , and the maximum (minimum) height is 2,835 m.a.s.l. (1,562 m.a.s.l.)

References

- 795 Adamovic, M., Branger, F., Braud, I., and Kralisch, S.: Development of a data-driven semi-distributed hydrological model for regional scale catchments prone to Mediterranean flash floods, *Journal of Hydrology*, 541, 173–189, doi:10.1016/j.jhydrol.2016.03.032, <http://dx.doi.org/10.1016/j.jhydrol.2016.03.032>, 2016.
- Aristizábal, E., Vélez, J. I., Martínez, H. E., and Jaboyedoff, M.: SHIA_Landslide: a distributed conceptual and physically based model to forecast the temporal and spatial occurrence of shallow landslides triggered by rainfall in tropical and mountainous basins, *Landslides*, 13, 497–517, doi:10.1007/s10346-015-0580-7, 800 2016.
- Aronica, G. T., Brigandí, G., and Morey, N.: Flash floods and debris flow in the city area of Messina, north-east part of Sicily, Italy in October 2009: The case of the Giampilieri catchment, *Natural Hazards and Earth System Science*, 12, 1295–1309, doi:10.5194/nhess-12-1295-2012, 2012.
- 805 ASF, J.: Dataset: ASF DAAC 2015, ALOS PALSAR Radiometric Terrain Corrected high res; Includes Material JAXA/METI 2007, doi:10.5067/Z97HFCNKR6VA, <https://vertex.daac.asf.alaska.edu/>, 2011.
- Baltaci, H.: Meteorological analysis of flash floods in Artvin (NE Turkey) on 24 August 2015, *Natural Hazards and Earth System Sciences*, 17, 1221–1230, doi:10.5194/nhess-17-1221-2017, <https://www.nat-hazards-earth-syst-sci.net/17/1221/2017/>, 2017.
- 810 Berne, A. and Krajewski, W.: Radar for hydrology: Unfulfilled promise or unrecognized potential?, *Advances in Water Resources*, 51, 357 – 366, doi:<https://doi.org/10.1016/j.advwatres.2012.05.005>, <http://www.sciencedirect.com/science/article/pii/S0309170812001157>, 35th Year Anniversary Issue, 2013.
- Beven, K.: Kinematic subsurface stormflow, *Water Resources Research*, 17, 1419–1424, doi:10.1029/WR017i005p01419, 1981.
- 815 Beven, K.: Towards integrated environmental models of everywhere: uncertainty, data and modelling as a learning process, *Hydrology and Earth System Sciences*, 11, 460–467, doi:10.5194/hess-11-460-2007, <http://www.hydrol-earth-syst-sci.net/11/460/2007/>{%}5Cn<https://hal.archives-ouvertes.fr/hal-00305631/>, 2007.

Bisht, S., Chaudhry, S., Sharma, S., and Soni, S.: Assessment of flash flood vulnerability zonation through Geospatial technique in high altitude Himalayan watershed, Himachal Pradesh India, *Remote Sensing Applications: Society and Environment*, 12, 35–47, doi:10.1016/j.rsase.2018.09.001, <https://doi.org/10.1016/j.rsase.2018.09.001>, 2018.

Blöschl, G., Sivapalan, M., Wagener, T., Viglione, A., and Savenije, H.: Runoff Prediction in Ungauged Basins, in: *Runoff Prediction in Ungauged Basins: Synthesis across Processes, Places and Scales*, edited by Blöschl, G., Sivapalan, M., Wagener, T., Viglione, A., and Savenije, H., Cambridge University Press, Cambridge, <https://www.cambridge.org/core/books/runoff-prediction-in-ungauged-basins/runoff-prediction-in-ungauged-basins/A5DFE99C3CA857127C4C03C6C20032EE>, 2012.

Bonell, M., McDonnell, J. J., Scatena, F. N., Seibert, J., Uhlenbrook, S., and van Lanen, H. A. J.: HELPing FRIENDs in PUBs: Charting a course for synergies within international water research programmes in gauged and ungauged basins, *Hydrological Processes*, 20, 1867–1874, doi:10.1002/hyp.6196, 2006.

Borga, M., Anagnostou, E. N., Blöschl, G., and Creutin, J. D.: Flash flood forecasting, warning and risk management: The HYDRATE project, *Environmental Science and Policy*, 14, 834–844, doi:10.1016/j.envsci.2011.05.017, 2011.

Boudou, M., Lang, M., Vinet, F., and C??ur, D.: Comparative hazard analysis of processes leading to remarkable flash floods (France, 1930???1999), *Journal of Hydrology*, 541, 533–552, doi:10.1016/j.jhydrol.2016.05.032, <http://dx.doi.org/10.1016/j.jhydrol.2016.05.032>, 2016.

Bruni, G., Reinoso, R., Van De Giesen, N. C., Clemens, F. H. L. R., and Ten Veldhuis, J. A. E.: On the sensitivity of urban hydrodynamic modelling to rainfall spatial and temporal resolution, *Hydrology and Earth System Sciences*, 19, 691–709, doi:10.5194/hess-19-691-2015, 2015.

Camarasa-Belmonte, A. M.: Flash floods in Mediterranean ephemeral streams in Valencia Region (Spain), *Journal of Hydrology*, doi:10.1016/j.jhydrol.2016.03.019, 2016.

Castillo, V. M., Gómez-Plaza, A., and Martínez-Mena, M.: The role of antecedent soil water content in the runoff response of semiarid catchments: A simulation approach, *Journal of Hydrology*, 284, 114–130, doi:10.1016/S0022-1694(03)00264-6, 2003.

Chang, C.-W., Lin, P.-S., and Tsai, C.-L.: Estimation of sediment volume of debris flow caused by extreme rainfall in Taiwan, *Engineering Geology*, 123, 83 – 90, doi:<https://doi.org/10.1016/j.enggeo.2011.07.004>, <http://www.sciencedirect.com/science/article/pii/S0013795211001700>, reconnaissance of Extreme Natural Disasters of Morakot Typhoon, Taiwan, 2011.

Chapra, S. C.: *Applied Numerical Methods with MATLAB*, McGraw-Hill, 3rd edn., 2012.

Delrieu, G., Nicol, J., Yates, E., Kirstetter, P.-E., Creutin, J. D., Anquetin, S., Obled, C., Saulnier, G.-M., Ducrocq, V., Gaume, E., Payrastre, O., Andrieu, H., Ayral, P.-A., Bouvier, C., Neppel, L., Livet, M., Lang, M., du Châtelet, J. P., Walpersdorf, A., and Wobrock, W.: The Catastrophic Flash-Flood Event of 8–9 September 2002 in the Gard Region, France: A First Case Study for the Cévennes–Vivarais Mediterranean Hydrometeorological Observatory, *Journal of Hydrometeorology*, 6, 34–52, 2005.

Dhakal, A. S. and Sidle, R. C.: Distributed simulations of landslides for different rainfall conditions, *Hydrological Processes*, 18, 757–776, doi:10.1002/hyp.1365, 2004.

- Doswell, C. A., Brooks, H. E., and Maddox, R. A.: Flash Flood Forecasting: An Ingredients-Based Methodology, *Weather and Forecasting*, 11, 560–581, doi:10.1175/1520-0434(1996)011<0560:FFFAIB>2.0.CO;2, [https://doi.org/10.1175/1520-0434\(1996\)011<0560:FFFAIB>2.0.CO;2](https://doi.org/10.1175/1520-0434(1996)011<0560:FFFAIB>2.0.CO;2), 1996.
- Douinot, A., Roux, H., Garambois, P. A., Larnier, K., Labat, D., and Dartus, D.: Accounting for rainfall systematic spatial variability in flash flood forecasting, *Journal of Hydrology*, 541, 359–370, doi:10.1016/j.jhydrol.2015.08.024, <http://dx.doi.org/10.1016/j.jhydrol.2015.08.024>, 2016.
- Duan, Q., Schaake, J., Andreassian, V., Franks, S., Goteti, G., Gupta, H., Gusev, Y., Habets, F., Hall, a., Hay, L., Hogue, T., Huang, M., Leavesley, G., Liang, X., Nasonova, O., Noilhan, J., Oudin, L., Sorooshian, S., Wagener, T., and Wood, E.: Model Parameter Estimation Experiment (MOPEX): An overview of science strategy and major results from the second and third workshops, *Journal of Hydrology*, 320, 3–17, doi:10.1016/j.jhydrol.2005.07.031, 2006.
- Fan, L., Lehmann, P., McArdell, B., and Or, D.: Linking rainfall-induced landslides with debris flows runout patterns towards catchment scale hazard assessment, *Geomorphology*, 280, 1–15, doi:10.1016/j.geomorph.2016.10.007, <http://dx.doi.org/10.1016/j.geomorph.2016.10.007>, 2017.
- Foster, G., Huggins, L., and L.D., M.: A Laboratory Study of Rill Hydraulics: I. Velocity Relationships, *American Society of Agricultural and Biological Engineers*, 3, 0790–0796, doi:10.13031/2013.32873, 1984.
- Fragoso, M., Trigo, R. M., Pinto, J. G., Lopes, S., Lopes, a., Ulbrich, S., and Magro, C.: The 20 February 2010 Madeira flash-floods: Synoptic analysis and extreme rainfall assessment, *Natural Hazards and Earth System Science*, 12, 715–730, doi:10.5194/nhess-12-715-2012, 2012.
- Francés, F., Vélez, J. I., and Vélez, J. J.: Split-parameter structure for the automatic calibration of distributed hydrological models, *Journal of Hydrology*, 332, 226–240, doi:10.1016/j.jhydrol.2006.06.032, 2007.
- Garambois, P. a., Roux, H., Larnier, K., Castaings, W., and Dartus, D.: Characterization of process-oriented hydrologic model behavior with temporal sensitivity analysis for flash floods in Mediterranean catchments, *Hydrology and Earth System Sciences*, 17, 2305–2322, doi:10.5194/hess-17-2305-2013, 2013.
- Gaume, E., Bain, V., Bernardara, P., Newinger, O., Barbuc, M., Bateman, A., Blaškovičová, L., Blöschl, G., Borga, M., Dumitrescu, A., Daliakopoulos, I., Garcia, J., Irimescu, A., Kohnova, S., Koutroulis, A., Marchi, L., Matreata, S., Medina, V., Preciso, E., Sempere-Torres, D., Stancalie, G., Szolgay, J., Tsanis, I., Velasco, D., and Viglione, A.: A compilation of data on European flash floods, *Journal of Hydrology*, 367, 70–78, 2009.
- Gochis, D., Schumacher, R., Friedrich, K., Doesken, N., Kelsch, M., Sun, J., Ikeda, K., Lindsey, D., Wood, A., Dolan, B., Matrosov, S., Newman, A., Mahoney, K., Rutledge, S., Johnson, R., Kucera, P., Kennedy, P., Sempere-Torres, D., Steiner, M., Roberts, R., Wilson, J., Yu, W., Chandrasekar, V., Rasmussen, R., Anderson, A., and Brown, B.: The great Colorado flood of September 2013, *Bulletin of the American Meteorological Society*, 96, 1461–1487, doi:10.1175/BAMS-D-13-00241.1, 2015.
- Golden, L. A. and Springer, G. S.: Channel geometry, median grain size, and stream power in small mountain streams, *Geomorphology*, 78, 64–76, doi:10.1016/j.geomorph.2006.01.031, 2006.
- Graham, J.: *Methods of Stability Analysis. Slope Instability*, John Wiley and sons, 1984.
- Gruntfest, E. and Handmer, J.: *Coping with Flash Floods*, NATO science series. Partnership sub-series 2, Environmental security, Springer Netherlands, <https://books.google.com.co/books?id=pwsczTbbY9sC>, 2001.

- 895 Hardy, J., Gourley, J. J., Kirstetter, P. E., Hong, Y., Kong, F., and Flamig, Z. L.: A method for probabilistic flash flood forecasting, *Journal of Hydrology*, 541, 480–494, doi:10.1016/j.jhydrol.2016.04.007, <http://dx.doi.org/10.1016/j.jhydrol.2016.04.007>, 2016.
- Houze, R.: Mesoscale convective systems, *Reviews of Geophysics*, 42, doi:10.1029/2004RG000150, <https://agupubs.onlinelibrary.wiley.com/doi/abs/10.1029/2004RG000150>, 2004.
- 900 Houze, R. A., Rasmussen, K. L., Zuluaga, M. D., and Brodzik, S. R.: The variable nature of convection in the tropics and subtropics: A legacy of 16 years of the Tropical Rainfall Measuring Mission satellite, *Reviews of Geophysics*, 53, 994–1021, doi:10.1002/2015RG000488, 2015.
- Hoyos, C., Ceballos, L., Pérez, J., Sepúlveda, J., López, S., Zuluaga, M., Velásquez, N., Herrera, L., Hernández, O., Guzmán, G., and Zapata, M.: Meteorological Conditions Leading to the 2015 Salgar Flash Flood: Lessons for Vulnerable Regions in Tropical Complex Terrain, *Natural Hazards and Earth System Sciences Discussions*, 2019, 1–43, 2019.
- 905 Jonkman, S.: Global perspectives on loss of human life caused by floods, *NATURAL HAZARDS*, 34, 151–175, doi:10.1007/s11069-004-8891-3, 2005.
- Kahana, R., Ziv, B., Enzel, Y., and Dayan, U.: Synoptic climatology of major floods in the Negev Desert, Israel, *International Journal of Climatology*, 22, 867–882, doi:10.1002/joc.766, 2002.
- 910 Khosravi, K., Pham, B. T., Chapi, K., Shirzadi, A., Shahabi, H., Revhaug, I., Prakash, I., and Tien Bui, D.: A comparative assessment of decision trees algorithms for flash flood susceptibility modeling at Haraz watershed, northern Iran, *Science of the Total Environment*, 627, 744–755, doi:10.1016/j.scitotenv.2018.01.266, <https://doi.org/10.1016/j.scitotenv.2018.01.266>, 2018.
- 915 Kirkby, M. J. and Chorley, R. J.: Throughflow, Overland Flow and Erosion, *International Association of Scientific Hydrology. Bulletin*, 12, 5–21, doi:10.1080/02626666709493533, <http://www.tandfonline.com/doi/abs/10.1080/02626666709493533>, 1967.
- Klemes, V.: Probability of extreme hydrometeorological events—A different approach, in *Extreme Hydrological Events: Precipitation, Floods and Droughts*, IAHS Publ, 1993.
- 920 Kubota, J. and Sivapalan, M.: Towards a Catchment-Scale Model of Subsurface Small-Scale Process-Based Modelling and Runoff Generation Based on Synthesis of Field Studies, *Hydrological Processes*, 9, 541–554, 1995.
- Lehmann, P. and Or, D.: Hydromechanical triggering of landslides: From progressive local failures to mass release, *Water Resources Research*, 48, 1–24, doi:10.1029/2011WR010947, 2012.
- 925 Leopold, L.B., M. T.: The hydraulic geometry of stream channels and some physiographic implications, *Geological survey professional paper*, 1953.
- Llasat, M. C., Marcos, R., Turco, M., Gilabert, J., and Llasat-Botija, M.: Trends in flash flood events versus convective precipitation in the Mediterranean region: The case of Catalonia, *Journal of Hydrology*, 541, 24–37, doi:10.1016/j.jhydrol.2016.05.040, <http://dx.doi.org/10.1016/j.jhydrol.2016.05.040>, 2016.
- 930 Longoni, L., Ivanov, V. I., Brambilla, D., Radice, A., and Papini, M.: Analysis of the temporal and spatial scales of soil erosion and transport in a Mountain Basin, *Italian Journal of Engineering Geology and Environment*, 16, 17–30, doi:10.4408/IJEGE.2016-02.O-02, 2016.

- Marchi, L., Borga, M., Preciso, E., and Gaume, E.: Characterisation of selected extreme flash floods in Europe and implications for flood risk management, *Journal of Hydrology*, 394, 118–133, doi:10.1016/j.jhydrol.2010.07.017, <http://dx.doi.org/10.1016/j.jhydrol.2010.07.017>, 2010.
- Marchi, L., Cavalli, M., Amponsah, W., Borga, M., and Crema, S.: Upper limits of flash flood stream power in Europe, *Geomorphology*, 272, 68–77, doi:10.1016/j.geomorph.2015.11.005, <http://dx.doi.org/10.1016/j.geomorph.2015.11.005>, 2016.
- Marra, F., Destro, E., Nikolopoulos, E. I., Zoccatelli, D., Dominique Creutin, J., Guzzetti, F., and Borga, M.: Impact of rainfall spatial aggregation on the identification of debris flow occurrence thresholds, *Hydrology and Earth System Sciences*, 21, 4525–4532, doi:10.5194/hess-21-4525-2017, 2017.
- Martín-Vide, J. P. and Llasat, M. C.: The 1962 flash flood in the Rubí stream (Barcelona, Spain), *Journal of Hydrology*, 566, 441–454, doi:10.1016/j.jhydrol.2018.09.028, <https://doi.org/10.1016/j.jhydrol.2018.09.028>, 2018.
- Merz, R. and Blöschl, G.: A process typology of regional floods, *Water Resources Research*, 39, 1–20, doi:10.1029/2002WR001952, <http://doi.wiley.com/10.1029/2002WR001952>, 2003.
- Milelli, M., Llasat, M. C., and Ducrocq, V.: The cases of June 2000, November 2002 and September 2002 as examples of Mediterranean floods, *Natural Hazards and Earth System Sciences*, 6, 271–284, doi:10.5194/nhess-6-271-2006, <https://www.nat-hazards-earth-syst-sci.net/6/271/2006/>, 2006.
- Norbiato, D., Borga, M., Degli Esposti, S., Gaume, E., and Anquetin, S.: Flash flood warning based on rainfall thresholds and soil moisture conditions: An assessment for gauged and ungauged basins, *Journal of Hydrology*, pp. 274–290, doi:10.1016/j.jhydrol.2008.08.023, 2008.
- Obrien, J.S., J. P.: Laboratory analysis of mudflow properties, *Journal of Hydrological Engineering*, 8, 877–887, 1988.
- Osorio, H.G., A. S.: Unidades de suelo representativas de la zona cafetera de Colombia, *Federación de Cafeteros de Colombia*, 2008.
- Ozturk, U., Wendi, D., Crisologo, I., Riemer, A., Agarwal, A., Vogel, K., López-Tarazón, J. A., and Korup, O.: Rare flash floods and debris flows in southern Germany, *Science of the Total Environment*, 626, 941–952, doi:10.1016/j.scitotenv.2018.01.172, 2018.
- Penna, D., Tromp-Van Meerveld, H. J., Gobbi, a., Borga, M., and Dalla Fontana, G.: The influence of soil moisture on threshold runoff generation processes in an alpine headwater catchment, *Hydrology and Earth System Sciences*, 15, 689–702, doi:10.5194/hess-15-689-2011, 2011.
- Peterson, P.: F2PY: a tool for connecting Fortran and Python programs, *International Journal of Computational Science and Engineering*, 4, 296, doi:10.1504/IJCSE.2009.029165, <http://www.inderscience.com/link.php?id=29165>, 2009.
- Piper, D., Kunz, M., Ehmele, F., Mohr, S., Mühr, B., Kron, A., and Daniell, J.: Exceptional sequence of severe thunderstorms and related flash floods in May and June 2016 in Germany. Part I: Meteorological background, *Natural Hazards and Earth System Sciences Discussions*, pp. 1–30, doi:10.5194/nhess-2016-275, <http://www.nat-hazards-earth-syst-sci-discuss.net/nhess-2016-275/>, 2016.
- Poveda, G., Vélez, J. I., Mesa, O. J., Cuartas, A., Barco, J., Mantilla, R. I., Mejía, J. F., Hoyos, C. D., Ramírez, J. M., Ceballos, L. I., Zuluaga, M. D., Arias, P. a., Botero, B. a., Montoya, M. I., Giraldo, J. D., and Quevedo, D. I.: Linking Long-Term Water Balances and Statistical Scaling to Estimate River Flows along

- the Drainage Network of Colombia, *Journal of Hydrologic Engineering*, 12, 4–13, doi:10.1061/(ASCE)1084-0699(2007)12:1(4), 2007.
- 975 Rennó, C. D., Nobre, A. D., Cuartas, L. A., Soares, J. V., Hodnett, M. G., Tomasella, J., and Waterloo, M. J.: HAND, a new terrain descriptor using SRTM-DEM: Mapping terra-firme rainforest environments in Amazonia, *Remote Sensing of Environment*, 112, 3469–3481, doi:10.1016/j.rse.2008.03.018, <http://linkinghub.elsevier.com/retrieve/pii/S003442570800120X>, 2008.
- Rickenmann, D. and Koschni, A.: Sediment loads due to fluvial transport and debris flows during the 2005 flood
980 events in Switzerland, 1007, 993–1007, doi:10.1002/hyp.7536, 2010.
- Rodriguez-Blanco, M., Taboada-Castro, M., and Taboada-Castro, M.: Rainfall–runoff response and event-based runoff coefficients in a humid area (northwest Spain), *Hydrological Sciences Journal*, 403, 319–329, doi:10.1080/02626669509491418, <http://www.tandfonline.com/action/journalInformation?journalCode=thsj20>, 2012.
- 985 Roux, H., Labat, D., Garambois, P. A., Maubourguet, M. M., Chorda, J., and Dartus, D.: A physically-based parsimonious hydrological model for flash floods in Mediterranean catchments, *Natural Hazards and Earth System Science*, 11, 2567–2582, doi:10.5194/nhess-11-2567-2011, 2011.
- Rozalis, S., Morin, E., Yair, Y., and Price, C.: Flash flood prediction using an uncalibrated hydrological model and radar rainfall data in a Mediterranean watershed under changing hydrological conditions, *Journal of Hydrology*, 394, 245–255, doi:10.1016/j.jhydrol.2010.03.021, <http://dx.doi.org/10.1016/j.jhydrol.2010.03.021>,
990 2010.
- Ruiz-Villanueva, V., Díez-Herrero, A., Bodoque, J. M., Ballesteros Cánovas, J. A., and Stoffel, M.: Characterisation of flash floods in small ungauged mountain basins of Central Spain using an integrated approach, *Catena*, 110, 32–43, doi:10.1016/j.catena.2013.06.015, <http://dx.doi.org/10.1016/j.catena.2013.06.015>,
995 015, 2013.
- Šálek, M., Brezková, L., and Novák, P.: The use of radar in hydrological modeling in the Czech Republic – case studies of flash floods, *Natural Hazards and Earth System Science*, 6, 229–236, doi:10.5194/nhess-6-229-2006, 2006.
- Schumacher, R. S. and Johnson, R. H.: Organization and Environmental Properties of Extreme-Rain-Producing
1000 Mesoscale Convective Systems, *Monthly Weather Review*, 133, 961–976, doi:10.1175/MWR2899.1, <http://journals.ametsoc.org/doi/abs/10.1175/MWR2899.1>, 2005.
- Seibert, J. and Beven, K. J.: Gauging the ungauged basin : how many discharge measurements are needed?, *Hydrology and Earth System Sciences*, 13, 883–892, doi:10.5194/hessd-6-2275-2009, <http://www.hydrol-earth-syst-sci.net/13/883/2009/>, 2009.
- 1005 Sepúlveda, J. and Hoyos, C. D.: Disdrometer-based C-Band Radar Quantitative Precipitation Estimation (QPE) in a highly complex terrain region in tropical Colombia., AGU Fall Meeting Abstracts, 2017.
- Sepúlveda, J.: Estimación cuantitativa de precipitación a partir de la información de Radar Meteorológico del Área Metropolitana del Valle de Aburrá, Master’s thesis, Universidad Nacional de Colombia - Sede Medellín, <http://bdigital.unal.edu.co/54581/>, 2016.
- 1010 Serra, J.: Image Analysis and Mathematical Morphology, Academic Press, Inc., Orlando, FL, USA, 1983.

- 1015 Sidle, R., Gomi, T., and Tsukamoto, Y.: Discovery of zero-order basins as an important link for progress in hydrogeomorphology, *Hydrological Processes*, pp. 1–7, doi:10.1002/hyp.13246, <http://doi.wiley.com/10.1002/hyp.13246>, 2018.
- 1020 Sivapalan, M., Takeuchi, K., Franks, S. W., Gupta, V. K., Karambiri, H., Lakshmi, V., Liang, X., McDonnell, J. J., Mendiondo, E. M., O'Connell, P. E., Oki, T., Pomeroy, J. W., Schertzer, D., Uhlenbrook, S., and Zehe, E.: IAHS Decade on Predictions in Ungauged Basins (PUB), 2003–2012: Shaping an exciting future for the hydrological sciences, *Hydrological Sciences Journal*, 48, 857–880, 2003.
- Steiner, M., Houze, R. a., and Yuter, S. E.: Climatological Characterization of Three-Dimensional Storm Structure from Operational Radar and Rain Gauge Data, doi:10.1175/1520-0450(1995)034<1978:CCOTDS>2.0.CO;2, [papers3://publication/uuid/D11C9905-6CE2-40B5-8A93-5E5300EB3A6E](https://doi.org/10.1175/1520-0450(1995)034<1978:CCOTDS>2.0.CO;2), 1995.
- Takahashi, T.: Debris flow, Taylor y francis, 2 edn., 1991.
- 1025 Tramblay, Y., Bouaicha, R., Brocca, L., Dorigo, W., Bouvier, C., Camici, S., and Servat, E.: Estimation of antecedent wetness conditions for flood modelling in northern Morocco, *Hydrology and Earth System Sciences*, 16, 4375–4386, doi:10.5194/hess-16-4375-2012, 2012.
- Turkington, T., Ettema, J., Van Westen, C. J., and Breinl, K.: Empirical atmospheric thresholds for debris flows and flash floods in the southern French Alps, *Natural Hazards and Earth System Sciences*, 14, 1517–1530, doi:10.5194/nhess-14-1517-2014, 2014.
- 1030 Vannier, O., Anquetin, S., and Braud, I.: Investigating the role of geology in the hydrological response of Mediterranean catchments prone to flash-floods: Regional modelling study and process understanding, *Journal of Hydrology*, 541, 158–172, doi:10.1016/j.jhydrol.2016.04.001, <http://dx.doi.org/10.1016/j.jhydrol.2016.04.001>, 2016.
- Vélez, J.: Desarrollo de un modelo hidrológico conceptual y distribuido orientado a la simulación de crecidas, Tesis doctoral - Universidad Politécnica de Valencia, p. 266, 2001.
- 1035 Wagener, T., Gupta, H., Yatheendradas, S., Goodrich, D., Unkrich, C., and Schaffner, M.: Understanding sources of uncertainty in flash-flood forecasting for semi-arid regions., *IAHS Publication* 313, pp. 204–212, 2007.
- Wagner, W., Lemoine, G., and Rott, H.: A method for estimating soil moisture from ERS Scatterometer and soil data, *Remote Sensing of Environment*, 70, 191–207, doi:10.1016/S0034-4257(99)00036-X, 1999.
- 1040 Wu, W. and Sidle, R. C.: and Number Values Agreed Closely With, *Water Resources*, 31, 2097–2110, doi:10.1029/95WR01136, 1995.
- Yamanaka, T. and Ma, W.: Runoff prediction in a poorly gauged basin using isotope-calibrated models, *Journal of Hydrology*, 544, 567–574, doi:10.1016/j.jhydrol.2016.12.005, <http://dx.doi.org/10.1016/j.jhydrol.2016.12.005>, 2017.
- 1045 Yatheendradas, S., Wagener, T., Gupta, H., Unkrich, C., Goodrich, D., Schaffner, M., and Stewart, A.: Understanding uncertainty in distributed flash flood forecasting for semiarid regions, *Water Resources Research*, 44, 1–17, doi:10.1029/2007WR005940, 2008.
- Younis, J., Anquetin, S., and Thielen, J.: The benefit of high-resolution operational weather forecasts for flash flood warning, *Hydrology and Earth System Sciences Discussions*, 5, 345–377, doi:10.5194/hessd-5-345-2008, 2008.
- 1050

Yuter, S. E. and Houze, R. A.: Measurements of Raindrop Size Distributions over the Pacific Warm Pool and Implications for Z–R Relations, *Journal of Applied Meteorology*, 36, 847–867, doi:10.1175/1520-0450(1997)036<0847:MORSDO>2.0.CO;2, [https://doi.org/10.1175/1520-0450\(1997\)036<0847:MORSDO>2.0.CO;2](https://doi.org/10.1175/1520-0450(1997)036<0847:MORSDO>2.0.CO;2), 1997.

1055 Zehe, E., Graeff, T., Morgner, M., Bauer, A., and Bronstert, A.: Plot and field scale soil moisture dynamics and subsurface wetness control on runoff generation in a headwater in the Ore Mountains, *Hydrology and Earth System Sciences*, 14, 873–889, doi:10.5194/hess-14-873-2010, 2010.

Zocatelli, D., Borga, M., Viglione, A., Chirico, G. B., and Blöschl, G.: Spatial moments of catchment rainfall: Rainfall spatial organisation, basin morphology, and flood response, *Hydrology and Earth System Sciences*,

1060 15, 3767–3783, doi:10.5194/hess-15-3767-2011, 2011.